



HAL
open science

Data Quality of National Monitoring Schemes: Filling the Gap between Specialists and the General Public

Benjamin Bergerot, Benoit Fontaine

► **To cite this version:**

Benjamin Bergerot, Benoit Fontaine. Data Quality of National Monitoring Schemes: Filling the Gap between Specialists and the General Public. *Land*, 2024, 13 (8), pp.1252. 10.3390/land13081252 . mnhn-04688291v1

HAL Id: mnhn-04688291

<https://hal.science/mnhn-04688291v1>

Submitted on 5 Sep 2024 (v1), last revised 12 Sep 2024 (v2)

HAL is a multi-disciplinary open access archive for the deposit and dissemination of scientific research documents, whether they are published or not. The documents may come from teaching and research institutions in France or abroad, or from public or private research centers.

L'archive ouverte pluridisciplinaire **HAL**, est destinée au dépôt et à la diffusion de documents scientifiques de niveau recherche, publiés ou non, émanant des établissements d'enseignement et de recherche français ou étrangers, des laboratoires publics ou privés.



Distributed under a Creative Commons Attribution 4.0 International License

Data Quality of National Monitoring Schemes: Filling the Gap between Specialists and the General Public

Benjamin Bergerot ^{1,*}  and Benoît Fontaine ² 

¹ University of Rennes, CNRS UMR 6553 ECOBIO, 35042 Rennes Cedex, France

² PatriNat (OFB-MNHN-CNRS-IRD), UMR 7204 CESCO (MNHN-CNRS-SU), 75005 Paris, France; benoit.fontaine@mnhn.fr

* Correspondence: benjamin.bergerot@univ-rennes.fr; Tel.: +33-02-23-23-56-16

Abstract: Worldwide, large-scale biodiversity monitoring schemes are developing and involve many non-specialist volunteers. If the opening of schemes to non-specialists allows for the gathering of huge amounts of data, their quality represents a controversial issue. In the framework of the French Garden Butterfly Observatory (FGBO), we studied non-specialist volunteer identification errors based on identifications provided during a one-shot experiment. With 3492 butterfly pictures sent by 554 non-specialist volunteers, we directly measured identification errors and misidentification rates for each butterfly species or species group targeted by the FGBO. The results showed that when non-specialist volunteers identified butterflies at the species level, identification errors (i.e., the misidentification rate) reached 20.9%. It was only 5.0% when FGBO species groups were used. This study provides novel insights into the trade-off between data quantity and quality provided by non-specialist volunteers and shows that if protocols, research questions and identification levels are adapted, participatory monitoring schemes relying on non-specialists represent a powerful and reliable tool to study common species at a large scale and on a long-term basis.

Keywords: citizen science; French Garden Butterfly Observatory; volunteers; misidentification rate; undetection rate



Citation: Bergerot, B.; Fontaine, B. Data Quality of National Monitoring Schemes: Filling the Gap between Specialists and the General Public. *Land* **2024**, *13*, 1252. <https://doi.org/10.3390/land13081252>

Academic Editor: Theo van der Sluis

Received: 22 July 2024

Revised: 5 August 2024

Accepted: 7 August 2024

Published: 9 August 2024



Copyright: © 2024 by the authors. Licensee MDPI, Basel, Switzerland. This article is an open access article distributed under the terms and conditions of the Creative Commons Attribution (CC BY) license (<https://creativecommons.org/licenses/by/4.0/>).

1. Introduction

Biodiversity monitoring schemes based on the involvement of volunteers in research programs are now being established in many countries (e.g., [1–3]). Volunteer involvement is widely used to reduce the cost of biodiversity monitoring at a large scale [4–7] and has the added benefit of increasing citizen awareness of scientific processes and environmental issues [8,9]. Biodiversity monitoring schemes are also useful to build scientifically sound decision-making tools (e.g., biodiversity indicators) for conservation, particularly at a large scale [10–12]. They allow for the assessment of spatial and temporal trends of biological diversity with the collection of a large amount of data [5,13].

However, volunteer-based monitoring may be perceived as simplistic by the scientific community and prone to higher biases compared to professional monitoring schemes [14–17]. In some cases, data gathered by volunteers have been excluded [18]. Thus, the quality of data provided by volunteers is subject to debate [4,19]. It has been argued that volunteers are not sufficiently trained to prevent both false positive and false negative data, especially for species identifications [20,21]. This feeling is reinforced by the fact that papers based on data collected by volunteers usually do not deal with training or compensation for volunteer error (e.g., [20]). Different solutions have been proposed, such as the selection of volunteers and training (e.g., [21]), the use of skilled volunteers only (e.g., [22]) or data validation and calibration (e.g., [20,23–25]). However, with the increase in large monitoring schemes based on volunteers who may come from the general public [26], it is of prime importance that the quality of data provided by such schemes is reliable for scientific analysis [27–32].

Among insect taxa, butterflies are generally advocated as good indicators of many aspects of environmental changes at the landscape level [33–35]. They are also well documented, easy to recognize and popular with the general public [35]. Thus, specific volunteer monitoring schemes based on butterflies have been launched all over Europe [22]. The French Garden Butterfly Observatory (FGBO) began in 2006. This national citizen science program based on a standardized protocol involves thousands of volunteers from the general public each year. No minimum identification skills are requested of volunteers for them to be allowed to take part in the scheme.

In this study, we tested volunteer identification errors using data produced via a side participatory program involving FGBO volunteers [36], which allowed us to directly measure volunteer error rates in butterfly identifications. Moreover, since the FGBO scheme relies on non-specialist volunteers, in addition to species that are easy to identify, it uses species groups. These groups represent closely related and look-alike species that cannot be a priori discriminated from each other by non-specialists (e.g., the *Pieris* species). We thus also estimated the relevance of these species' groups in FGBO to investigate the trade-off between precision and data quality when non-expert volunteers are involved in participatory schemes.

2. Materials and Methods

We used data from a specific participative survey realized in the framework of the FGBO, called “flowers for butterflies” [36]. The initial purpose of this experiment was to study butterfly diet preferences. A collection of pictures of butterflies on flowers made by FGBO volunteers all over France was produced between March and October 2008 (Figure 1). Volunteers were asked to identify butterfly species or species groups and provide their pictures with identifications. The identifications provided by participants were used to estimate misidentification rates by comparison with identifications made by an expert (Benjamin Bergerot, a French university academic associate professor). Based on the expert identifications, only pictures of species monitored in the framework of the FGBO were selected (i.e., species belonging to the 28 common species or species groups, Table 1).

We defined two identification levels: the “species level” and the “FGBO level”. At the species level, we investigated whether specific identifications made by volunteers matched those made by the expert. Based on the pictures, some butterflies could not be identified at the species level by the specialist, and four groups were created (which are different from the FGBO groups): *Pieris* sp., *Leptidea* sp., *Pyrgus* sp. and Polyommatae (Table 1). When volunteers identified a butterfly at the species level while it was in theory not possible to identify that butterfly in a picture, we considered the identification as a misidentification.

At the FGBO level, butterflies were identified following the FGBO guidelines, i.e., some species such as *Vanessa atalanta* are identified at the species level (low misidentification risk), whereas others are attributed to species groups (e.g., blue lycaenids, white pierids). In the latter case, misidentifications at the species level inside FGBO groups (e.g., whites between *Pieris rapae* and *P. napi*, coppers between *Lycaena tityrus* and *L. phlaeas*) were considered good identifications.

At both the species and the FGBO levels, we calculated the volunteer misidentification rate (MR) for species x (in %) with the following Equation (1):

$$\text{Misidentification rate (MR}_x\text{)} = 100 - \left(\frac{N_{mx}}{N_{vx}} \times 100 \right) \quad (1)$$

with N_{mx} being the number of correct identifications by volunteers of species x as indicated by the specialist and N_{vx} being the number of pictures identified by volunteers as species x, correctly or not.

Table 1. Butterfly species list at the species level and the French Garden Butterfly Observatory (FGBO) level. Butterfly species were ordered by family and grouped by FGBO level (Ns: butterfly number identified by the specialist in the data collection, Nv: butterfly number identified by volunteers in the data collection, Nm: number of matching identifications between the specialist and volunteers, MR: misidentification rate in %, UR: undetection rate in %).

Family	Scientific Name	French Garden Butterfly Observatory Level						Species Level						
		FGBO Groups	Ns	Nm	Nv	MR	UR	Ns	Nm	Nv	MR	UR		
Heliconiidae	<i>Argynnis paphia</i> (Linnaeus, 1758)	Silver-washed fritillary	87	74	74	0.0	14.9	87	74	74	0.0	14.9		
Hesperiidae	<i>Ochlodes sylvanus</i> (Esper, 1777)	Orange skippers	23	9	9	0.0	60.9	4	0	0	NA	100.0		
	<i>Thymelicus acteon</i> (Rottemburg, 1775)		13	2	2	0.0	84.6							
	<i>Thymelicus sylvestris</i> (Poda, 1761)		6	3	7	57.1	50.0							
	<i>Carcharodus alceae</i> (Esper, 1780)	Speckled skippers	12	4	4	0.0	66.7	7	4	4	0.0	42.9		
	<i>Pyrgus</i> sp.		5	0	0	NA	100.0							
Limenitidae	<i>Limenitis camilla</i> (Linnaeus, 1764)	Admirals	27	18	19	5.3	33.3	1	0	3	100.0	100.0		
	<i>Limenitis reducta</i> (Staudinger, 1901)		26	15	16	6.3	42.3							
Lycaenidae	<i>Cacyreus marshalli</i> (Butler, 1898)	Geranium bronze	72	69	70	1.4	4.2	72	69	70	1.4	4.2		
	<i>Callophrys rubi</i> (Linnaeus, 1758)	Green hairstreak	2	2	3	33.3	0	2	2	3	33.3	0		
	<i>Celastrina argiolus</i> (Linnaeus, 1758)	Blues	264	234	244	4.1	11.4	27	10	11	9.1	63.0		
	<i>Cupido alceas</i> (Hoffmannsegg, 1804)		3	1	1	0.0	66.7							
	<i>Cupido argiades</i> (Pallas, 1771)		5	1	1	0.0	80.0							
	<i>Cupido minimus</i> (Fuessly, 1775)		1	1	1	0.0	0							
	<i>Lampides boeticus</i> (Linnaeus, 1767)		4	3	4	25.0	25.0							
	<i>Leptotes pirithous</i> (Linnaeus, 1767)		12	9	9	0.0	25.0							
	<i>Maculinea arion</i> (Linnaeus, 1758)		2	1	1	0.0	50.0							
	<i>Plebejus argyrognomon</i> (Bergsträsser, 1779)		1	1	1	0.0	0							
	Polyommatainae (subfamily)		79	69	186	62.9	12.7							
	<i>Polyommatus icarus</i> (Rottemburg, 1775)		125	24	24	0.0	80.8							
	<i>Polyommatus bellargus</i> (Rottemburg, 1775)		5	1	5	80.0	80.0							
			<i>Lycaena phlaeas</i> (Linnaeus, 1761)	Coppers	137	115	117	1.7	16.1	118	106	109	2.8	10.2
			<i>Lycaena tityrus</i> (Poda, 1761)		17	7	7	0.0	58.8					
<i>Lycaena virgaureae</i> (Linnaeus, 1758)		2	0		1	100.0	100.0							
Nymphalidae	<i>Aglais urticae</i> (Linnaeus, 1758)	Small tortoiseshell	37	36	38	5.3	2.7	37	36	38	5.3	2.7		
	<i>Inachis io</i> (Linnaeus, 1758)	European peacock	302	292	293	0.3	3.3	302	292	293	0.3	3.3		
	<i>Polygonia c-album</i> (Linnaeus, 1758)	Comma	99	98	98	0.0	1.0	99	98	98	0.0	1.0		
	<i>Vanessa atalanta</i> (Linnaeus, 1758)	Red admiral	185	182	183	0.5	1.6	185	182	183	0.5	1.6		
	<i>Vanessa cardui</i> (Linnaeus, 1758)	Painted lady	83	76	79	3.8	8.4	83	76	79	3.8	8.4		
Papilionidae	<i>Iphiclides podalirius</i> (Linnaeus, 1758)	Scarce swallowtail	106	95	97	2.1	10.4	106	95	97	2.1	10.4		
	<i>Papilio machaon</i> Linnaeus, 1758	Common yellow swallowtail	92	84	89	5.6	8.7	92	84	89	5.6	8.7		
Pieridae	<i>Anthocharis cardamines</i> (Linnaeus, 1758)	Orange tips	10	8	9	11.1	20.0	9	7	8	12.5	22.2		
	<i>Anthocharis euphenoides</i> (Staudinger, 1869)		1	1	1	0.0	0							
	<i>Colias crocea</i> (Fourcroy, 1785)	Clouded yellows	57	50	55	9.1	12.3	34	28	49	42.9	17.7		
	<i>Colias hyale</i> (Linnaeus, 1758)		23	2	6	66.7	91.3							
	<i>Gonepteryx cleopatra</i> (Linnaeus, 1767)	Brimstones	232	217	221	1.8	6.5	9	7	7	0.0	22.2		
	<i>Gonepteryx rhamni</i> (Linnaeus, 1758)		223	209	214	2.3	6.3							

Table 1. Cont.

Family	Scientific Name	French Garden Butterfly Observatory Level					Species Level					
		FGBO Groups	Ns	Nm	Nv	MR	UR	Ns	Nm	Nv	MR	UR
Satyridae	<i>Leptidea</i> sp.		514	497	504	1.4	3.3	8	7	8	12.5	12.5
	<i>Pieris brassicae</i> (Linnaeus, 1758)	Whites						137	23	37	37.8	83.2
	<i>Pieris napi</i> (Linnaeus, 1758)							126	12	14	14.3	90.5
	<i>Pieris rapae</i> (Linnaeus, 1758)							186	15	29	48.3	91.9
	<i>Pieris</i> sp.							57	56	416	86.5	1.7
	<i>Aporia crataegi</i> (Linnaeus, 1758)		Black-veined white	11	11	21	47.6	0.0	11	11	21	47.6
	<i>Brintesia circe</i> (Fabricius, 1775)	Great banded grayling	37	34	39	12.8	8.1	37	34	39	12.8	8.1
	<i>Coenonympha pamphilus</i> (Linnaeus, 1758)	Small heath	41	34	71	52.1	17.1	41	34	71	52.1	17.1
	<i>Lasiommata megera</i> (Linnaeus, 1767)	Wall browns	89	76	89	14.6	14.6	63	49	70	30.0	22.2
	<i>Lasiommata maera</i> (Linnaeus, 1758)		26	13	19	31.6	50.0					
	<i>Maniola jurtina</i> (Linnaeus, 1758)	Meadow brown	384	320	347	7.8	16.7	384	320	347	7.8	16.7
	<i>Melanargia galathea</i> (Linnaeus, 1758)	Marbled whites	112	106	107	0.9	5.4	111	106	107	0.9	4.5
	<i>Melanargia lachesis</i> (Hübner, 1790)		1	0	0	NA	100.0					
	<i>Pararge aegeria</i> (Linnaeus, 1758)	Speckled wood	86	74	81	8.6	14.0	86	74	81	8.6	14.0
	<i>Pyronia tithonus</i> (Linnaeus, 1771)	Gatekeepers	277	227	253	10.3	18.1	270	220	246	10.6	18.5
<i>Pyronia bathseba</i> (Fabricius, 1793)	7		6	7	14.3	14.3						
Sphingidae	<i>Macroglossum stellatarum</i> (Linnaeus, 1758)	Hummingbird hawk-moth	208	199	199	0.0	4.3	208	199	199	0.0	4.3
	Total counts		3586	3241	3413	5.0	9.6	3586	2699	3413	20.9	24.7

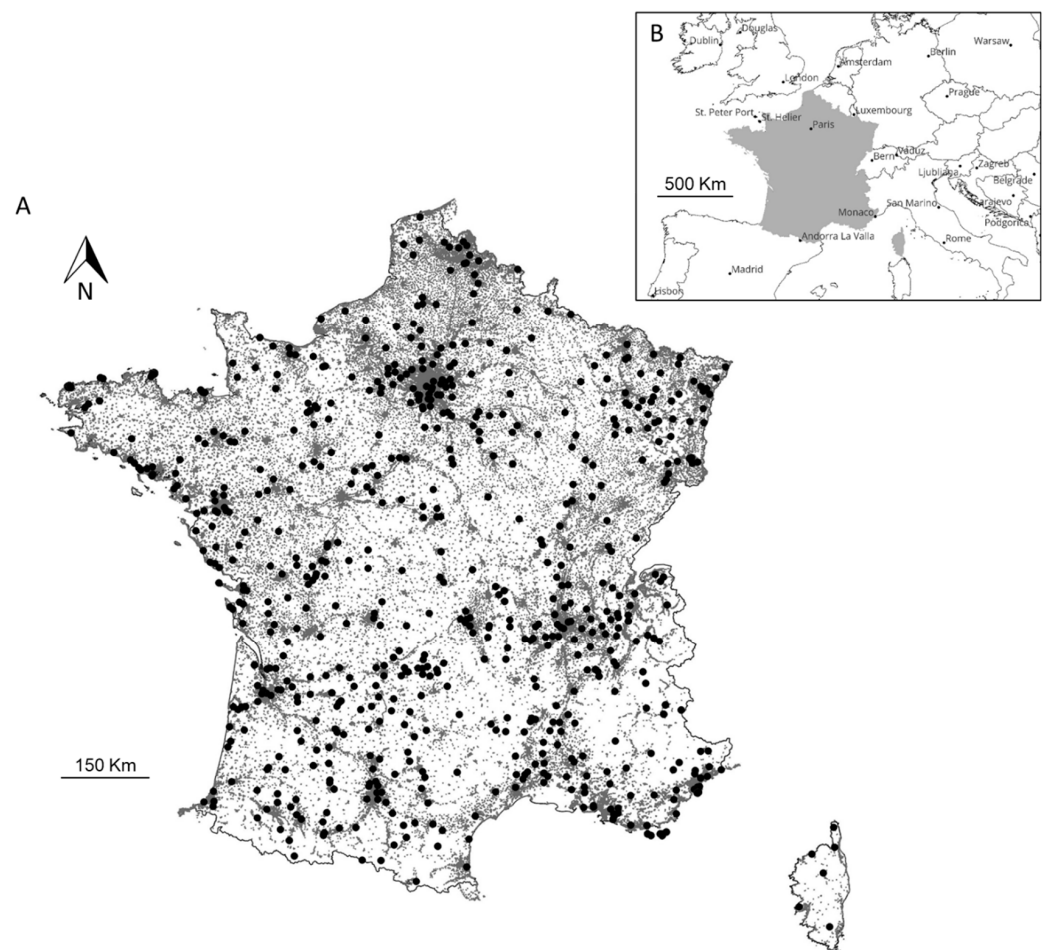


Figure 1. Localization of the municipalities (black dots) in France where FGBO volunteers realized their pictures in 2008 (A) and the main urbanized areas (gray). Localization of France in Europe (B).

We also calculated the volunteer undetection rate (UR) for species x (in %) with the following Equation (2):

$$\text{Undetection Rate (UR}_x) = \frac{N_{sx} - N_{mx}}{N_{sx}} \times 100 \quad (2)$$

with N_{sx} being the total number of photos of species x identified by the specialist and N_{mx} being the number of correct identifications by volunteers of species x , as indicated by the specialist.

These two indices are complementary and allow for distinction between species that are well identified but difficult to detect (low MR and high UR) and species that are well detected but regularly misidentified.

All correlation tests were conducted in R 4.2.3 (www.R-project.org, accessed on 16 January 2024).

3. Results

In 2008, 3619 volunteers sent data to the FGBO and 554 (i.e., 15.3% of the 2008 active participants) took part in the “flowers for butterflies” experiment (Figure 1), a one-shot participatory science experiment to analyze butterfly feeding preferences, sending 3492 pictures. A total of 3586 butterflies belonging to the 28 common species or FGBO species groups were identified by the specialist in the data collection. It included 3437 butterflies identified at the species level (95.8% of the data). A total of 149 butterflies were unidentifiable at the species level (4.2%) and were identified at the group level (Table 1).

Volunteers identified 3413 butterflies which, according to their identifications, belonged to the FGBO. For the whole dataset, at the species level, 20.9% of the pictures were ill identified (2699 pictures were well identified by volunteers), while this error rate reached 5.0% (3241 butterflies were well identified by volunteers) when the identification was conducted with FGBO species or species groups. The undetection rates reached 24.7% and 9.6% for species and FGBO levels, respectively (Table 1).

At the species level, misidentification rates ranged from 0% (*Polygonia c-album*, for instance) to 100% (for two species with fewer than three pictures in the whole dataset). Considering that species were represented in more than 10 pictures, the highest misidentification rate was 66.7% for *Colias hyale*. For species represented in more than 100 pictures, the three *Pieris* spp. (*P. napi*, *P. brassicae* and *P. rapae*) had the highest misidentification rates (14.3%, 37.8% and 48.3%, respectively), followed by *Pyronia tithonus* (10.6%) and *Maniola jurtina* (7.8%). The three *Pieris* sp. had undetection rates above 80%, while it was 18.5% for *Pyronia tithonus* and 16.7% for *Maniola jurtina*. The other eight species with more than 100 pictures had a misidentification rate below 3%. Unexpectedly, *Polyommatus icarus* had a misidentification rate of 0%, but this was counterbalanced by the fact that it had an undetection rate of 80.8%; this species is poorly detected but always well identified when it is detected.

At the FGBO level, MRs ranged from 0% (both skipper groups, *Argynnis paphia*, *Polygonia c-album* and *Macroglossum stellatarum*) to 52.1% for *Coenonympha pamphilus*. A total of 15 out of 28 species/species groups had misidentification rates below 5%. Volunteer undetection rates (URs) were the highest for speckled and orange skippers (66.7% and 60.9%, respectively) and admirals (33.3%). URs and MRs were significantly correlated at the species level (Spearman correlation test, $r = 0.3$, $p < 0.05$, Figure 2A), but not at the FGBO level (Spearman correlation test, $r = 0.07$, $p = 0.72$, Figure 2B).

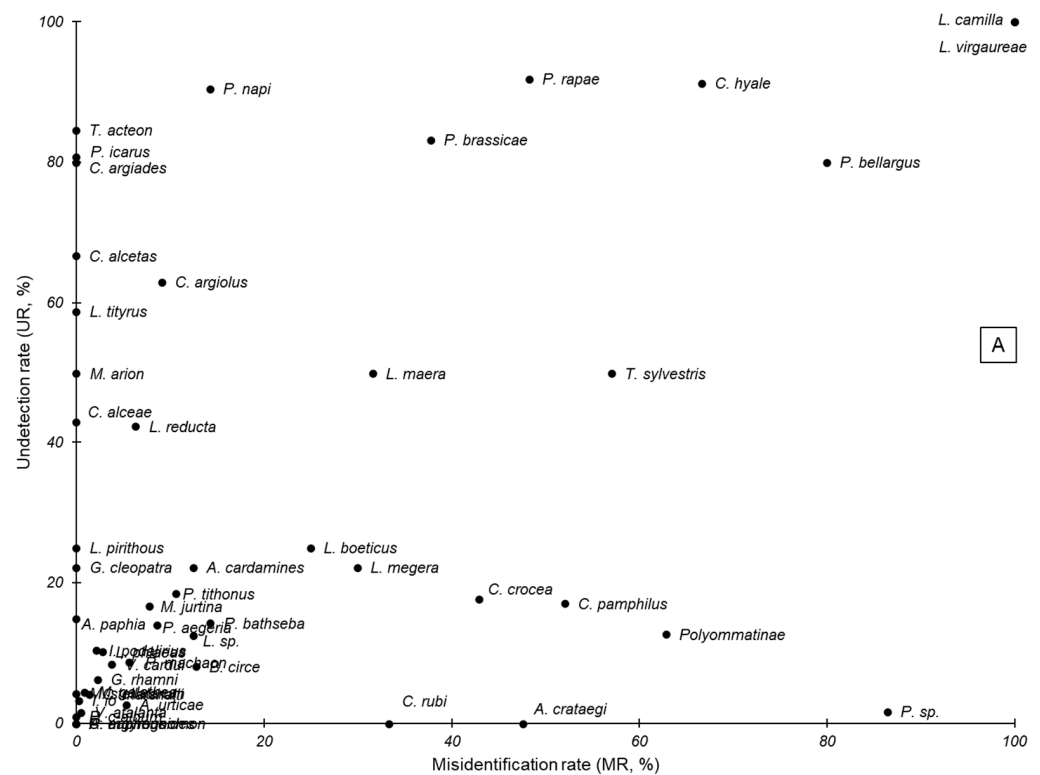


Figure 2. Cont.

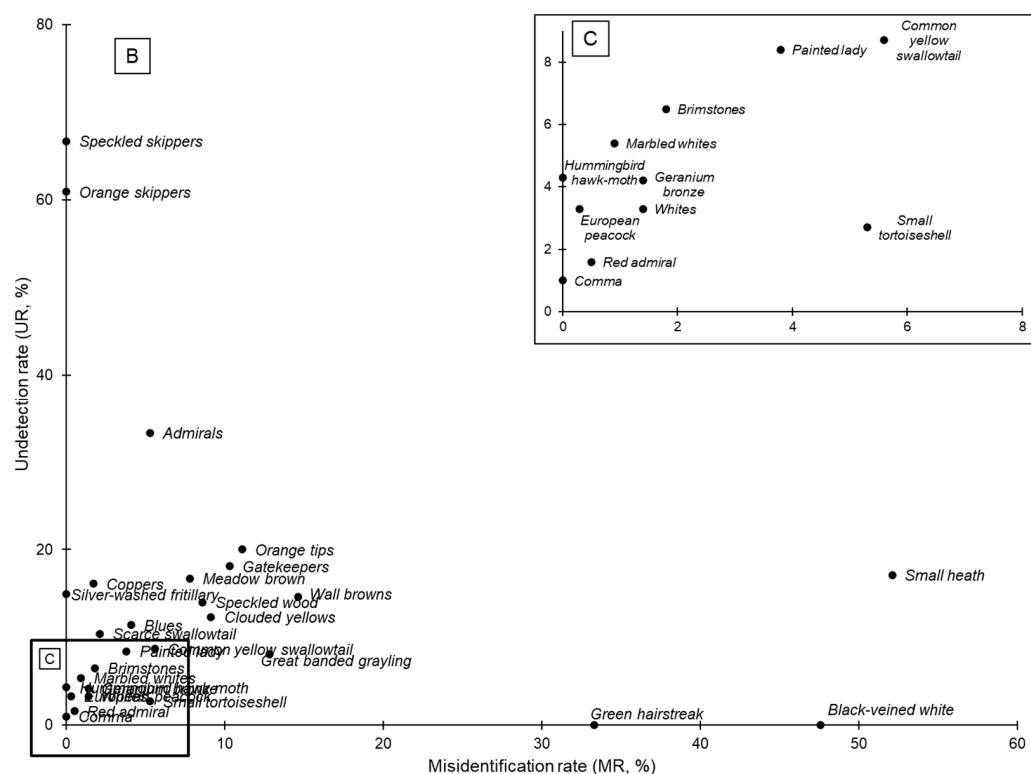


Figure 2. Relation between undetection rates (URs) and misidentification rates (MRs) at the species (A) and FGBO (B) levels, following the Table 1 species and group names. For ease of reading, a zoom image is shown for FGBO levels with low MRs and low URs (C).

4. Discussion

Unlike many European butterfly monitoring schemes [22], identification skills at the species level are not required in the FGBO. However, based on a large sample of FGBO volunteers (15.3% of all active observers), we showed that identification errors (MRs) made during the “flowers for butterflies” project reached 5.0% at the FGBO level (species easy to identify and groups of look-alike species). By comparing misidentification rates at the species and FGBO species group levels, we also illustrated the trade-off between data quality and the desired level of precision: at the species level, the misidentification rate reached 20.9%. The use of FGBO species groups limits the result analysis (e.g., the group “blues” includes more than 50 species in France with a wide range of ecological needs, which hampers result interpretation at the species level). The use of species groups increases data reliability and allows for analyses when species identification is not required (e.g., when species-specific analyses or species richness issues may not be possible). However, opening the schemes to non-specialists allows for the gathering of huge amounts of data that can be used for large temporal and spatial-scale studies (e.g., [37]). This is particularly true for common whites, where misidentification rates were high at the species level but only 1.4% at the FGBO level, with an undetection rate of 3.3%, making the data collected on this group reliable.

Moreover, even if there is no clear-cut line between UR and MR as expected [38–40], the use of species groups in such schemes is necessary to avoid volunteer frustration, since some of the most commonly encountered butterflies in gardens (i.e., Pieridae, Lycaenidae) are difficult to identify (high MR value, low UR value). This social aspect is not to be underestimated because it favors volunteer involvement [41]. We consider that the bias related to the fear of misidentification was low because, in the initial purpose of this experiment [36], volunteers were not obliged to provide identifications.

Some methodological caveats should be pointed out in the conclusions based on the “flowers for butterflies” experiment to study FGBO error misidentifications. First, as the “flowers for butterflies” experiment was a one-shot additional survey in the framework of the FGBO, it may have attracted mostly highly motivated volunteers (with a mean number of 6.3 pictures sent by each volunteer) who may have been more skilled than average volunteers [42]. Perhaps more importantly, butterflies were identified in photos. It implies that volunteers had time to identify butterflies, allowing them to use documents to determine species names. However, compared to FGBO protocol, based on field observations, the misidentification rate could be either underestimated since it may be more difficult to identify a butterfly in the field than in a picture, or overestimated since volunteers could hesitate between a larger range of species when they are confronted with guidebook plates.

Interestingly, identification in pictures provided useful information on the species that were mostly affected by misidentifications, such as *Aporia crataegi*, *Maniola jurtina* and *Coenonympha pamphilus*. It also pointed out which species are often undetected. For example, orange and speckled skippers were widely undetected but well identified, whereas the black-veined white (*Aporia crataegi*) was always detected but often misidentified. These results may help researchers target specific communication campaigns in order to improve volunteer skills and monitoring scheme reliability.

URs and MRs are not specific to butterflies and could easily be implemented in many other monitoring programs. Many monitoring programs are subject to the same bias. Data quality could be improved by incorporating metrics that highlight the specific characteristics of species and group identifications, enabling fine characterization of fluctuations in UR and MR at the species or species group level. One strategy could be to identify, on the basis of MR and UR, the level of identification that optimizes data quality (e.g., for plants [43] or insects [44]). Our results provide novel insights into the trade-off between data quantity and quality provided by volunteers in monitoring schemes, and future research should better examine misidentification rates directly in the field.

Author Contributions: Conceptualization, B.B. and B.F.; methodology, B.B. and B.F.; validation, B.B. and B.F.; formal analysis, B.B.; data curation, B.B.; writing—original draft preparation, B.B. and B.F.; writing—review and editing, B.B. and B.F. All authors have read and agreed to the published version of the manuscript.

Funding: This research received no external funding.

Data Availability Statement: Data are available in Table 1.

Acknowledgments: We particularly thank Jane O'Rourke for her kind improvement of the English language. We are grateful to Noé Conservation, which provided support for the communication about the “flowers for butterflies” program, and all of the volunteers of the FGBO for their participation.

Conflicts of Interest: The authors declare no conflicts of interest.

References

1. Biggs, J.; Ewald, N.; Valentini, A.; Gaboriaud, C.; Dejean, T.; Griffiths, R.A.; Foster, J.; Wilkinson, J.W.; Arnell, A.; Brotherton, P.; et al. Using eDNA to Develop a National Citizen Science-Based Monitoring Programme for the Great Crested Newt (*Triturus cristatus*). *Biol. Conserv.* **2015**, *183*, 19–28. [[CrossRef](#)]
2. Westgate, M.J.; Scheele, B.C.; Ikin, K.; Hofer, A.M.; Beaty, R.M.; Evans, M.; Osborne, W.; Hunter, D.; Rayner, L.; Driscoll, D.A. Citizen Science Program Shows Urban Areas Have Lower Occurrence of Frog Species, but Not Accelerated Declines. *PLoS ONE* **2015**, *10*, e0140973. [[CrossRef](#)] [[PubMed](#)]
3. Bergerot, B. The Citizen Science Paradox. *Land* **2022**, *11*, 1151. [[CrossRef](#)]
4. Burgess, H.K.; DeBey, L.B.; Froehlich, H.E.; Schmidt, N.; Theobald, E.J.; Ettinger, A.K.; HilleRisLambers, J.; Tewksbury, J.; Parrish, J.K. The Science of Citizen Science: Exploring Barriers to Use as a Primary Research Tool. *Biol. Conserv.* **2017**, *208*, 113–120. [[CrossRef](#)]
5. Bonney, R.; Cooper, C.B.; Dickinson, J.; Kelling, S.; Phillips, T.; Rosenberg, K.V.; Shirk, J. Citizen Science: A Developing Tool for Expanding Science Knowledge and Scientific Literacy. *BioScience* **2009**, *59*, 977–984. [[CrossRef](#)]
6. Nolan, V.; Reader, T.; Gilbert, F.; Atkinson, N. The Ancient Tree Inventory: A Summary of the Results of a 15 Year Citizen Science Project Recording Ancient, Veteran and Notable Trees across the UK. *Biodivers. Conserv.* **2020**, *29*, 3103–3129. [[CrossRef](#)]

7. Theobald, E.J.; Ettinger, A.K.; Burgess, H.K.; DeBey, L.B.; Schmidt, N.R.; Froehlich, H.E.; Wagner, C.; HilleRisLambers, J.; Tewksbury, J.; Harsch, M.A.; et al. Global Change and Local Solutions: Tapping the Unrealized Potential of Citizen Science for Biodiversity Research. *Biol. Conserv.* **2015**, *181*, 236–244. [[CrossRef](#)]
8. Bonney, R.; Phillips, T.B.; Ballard, H.L.; Enck, J.W. Can Citizen Science Enhance Public Understanding of Science? *Public Underst. Sci.* **2016**, *25*, 2–16. [[CrossRef](#)]
9. Bell, S.; Marzano, M.; Cent, J.; Kobierska, H.; Podjed, D.; Vandzinskaite, D.; Reinert, H.; Armaitiene, A.; Grodzinska-Jurczak, M.; Mursic, R. What Counts? Volunteers and Their Organisations in the Recording and Monitoring of Biodiversity. *Biodivers. Conserv.* **2008**, *17*, 3443–3454. [[CrossRef](#)]
10. Silvertown, J.; Cook, L.; Cameron, R.; Dodd, M.; McConway, K.; Worthington, J.; Skelton, P.; Anton, C.; Bossdorf, O.; Baur, B.; et al. Citizen Science Reveals Unexpected Continental-Scale Evolutionary Change in a Model Organism. *PLoS ONE* **2011**, *6*, e18927. [[CrossRef](#)]
11. Callaghan, C.T.; Poore, A.G.B.; Major, R.E.; Rowley, J.J.L.; Cornwell, W.K. Optimizing Future Biodiversity Sampling by Citizen Scientists. *Proc. R. Soc. B-Biol. Sci.* **2019**, *286*, 20191487. [[CrossRef](#)]
12. Danielsen, F.; Pirhofer-Walzl, K.; Adrian, T.P.; Kapijimpanga, D.R.; Burgess, N.D.; Jensen, P.M.; Bonney, R.; Funder, M.; Landa, A.; Levermann, N.; et al. Linking Public Participation in Scientific Research to the Indicators and Needs of International Environmental Agreements. *Conserv. Lett.* **2014**, *7*, 12–24. [[CrossRef](#)]
13. Schmeller, D.S.; Henry, P.Y.; Julliard, R.; Gruber, B.; Clobert, J.; Dziock, F.; Lengyel, S.; Nowicki, P.; Deri, E.; Budrys, E.; et al. Advantages of Volunteer-Based Biodiversity Monitoring in Europe. *Conserv. Biol.* **2009**, *23*, 307–316. [[CrossRef](#)] [[PubMed](#)]
14. Engel, S.R.; Voshell, J.R., Jr. Volunteer Biological Monitoring: Can It Accurately Assess the Ecological Condition of Streams? *Am. Entomol.* **2002**, *48*, 164–177. [[CrossRef](#)]
15. Kremen, C.; Ullman, K.S.; Thorp, R.W. Evaluating the Quality of Citizen-Scientist Data on Pollinator Communities. *Conserv. Biol.* **2011**, *25*, 607–617. [[CrossRef](#)]
16. Holt, B.G.; Rioja-Nieto, R.; Aaron MacNeil, M.; Lupton, J.; Rahbek, C. Comparing Diversity Data Collected Using a Protocol Designed for Volunteers with Results from a Professional Alternative. *Methods Ecol. Evol.* **2013**, *4*, 383–392. [[CrossRef](#)]
17. Vantieghem, P.; Maes, D.; Kaiser, A.; Merckx, T. Quality of Citizen Science Data and Its Consequences for the Conservation of Skipper Butterflies (Hesperiidae) in Flanders (Northern Belgium). *J. Insect Conserv.* **2017**, *21*, 451–463. [[CrossRef](#)]
18. Root, T.L.; Alpert, P. Volunteers and the NBS. *Science* **1994**, *263*, 1205. [[CrossRef](#)]
19. McDonough MacKenzie, C.; Murray, G.; Primack, R.; Weihrauch, D. Lessons from Citizen Science: Assessing Volunteer-Collected Plant Phenology Data with Mountain Watch. *Biol. Conserv.* **2017**, *208*, 121–126. [[CrossRef](#)]
20. Fore, L.S.; Paulsen, K.; O’Laughlin, K. Assessing the Performance of Volunteers in Monitoring Streams. *Freshw. Biol.* **2001**, *46*, 109–123. [[CrossRef](#)]
21. Easa, P.S.; Asari, P.K.S.; Basha, S.C. Status and Distribution of the Endangered Lion-Tailed Macaque *Macaca Silenus* in Kerala, India. *Biol. Conserv.* **1997**, *80*, 33–37. [[CrossRef](#)]
22. Van Swaay, C.A.M.; Nowicki, P.; Settele, J.; van Strien, A.J. Butterfly Monitoring in Europe: Methods, Applications and Perspectives. *Biodivers. Conserv.* **2008**, *17*, 3455–3469. [[CrossRef](#)]
23. Foster-Smith, J.; Evans, S.M. The Value of Marine Ecological Data Collected by Volunteers. *Biol. Conserv.* **2003**, *113*, 199–213. [[CrossRef](#)]
24. Newman, C.; Buesching, C.D.; Macdonald, D.W. Validating Mammal Monitoring Methods and Assessing the Performance of Volunteers in Wildlife Conservation—“Sed Quis Custodiet Ipsos Custodiet?” *Biol. Conserv.* **2003**, *113*, 189–197. [[CrossRef](#)]
25. Krabbenhoft, C.A.; Kashian, D.R. Citizen Science Data Are a Reliable Complement to Quantitative Ecological Assessments in Urban Rivers. *Ecol. Indic.* **2020**, *116*, 106476. [[CrossRef](#)]
26. Henry, P.Y.; Lengyel, S.; Nowicki, P.; Julliard, R.; Clobert, J.; Celik, T.; Gruber, B.; Schmeller, D.; Babij, V.; Henle, K. Integrating Ongoing Biodiversity Monitoring: Potential Benefits and Methods. *Biodivers. Conserv.* **2008**, *17*, 3357–3382. [[CrossRef](#)]
27. Bonter, D.N.; Cooper, C.B. Data Validation in Citizen Science: A Case Study from Project FeederWatch. *Front. Ecol. Environ.* **2012**, *10*, 305–307. [[CrossRef](#)]
28. Bird, T.J.; Bates, A.E.; Lefcheck, J.S.; Hill, N.A.; Thomson, R.J.; Edgar, G.J.; Stuart-Smith, R.D.; Wotherspoon, S.; Krkosek, M.; Stuart-Smith, J.F.; et al. Statistical Solutions for Error and Bias in Global Citizen Science Datasets. *Biol. Conserv.* **2014**, *173*, 144–154. [[CrossRef](#)]
29. Serret, H.; Deguines, N.; Jang, Y.; Lois, G.; Julliard, R. Data Quality and Participant Engagement in Citizen Science: Comparing Two Approaches for Monitoring Pollinators in France and South Korea. *Citiz. Sci. Theory Pract.* **2019**, *4*, 22. [[CrossRef](#)]
30. Van Eupen, C.; Maes, D.; Herremans, M.; Swinnen, K.R.R.; Somers, B.; Luca, S. The Impact of Data Quality Filtering of Opportunistic Citizen Science Data on Species Distribution Model Performance. *Ecol. Model.* **2021**, *444*, 109453. [[CrossRef](#)]
31. Kosmala, M.; Wiggins, A.; Swanson, A.; Simmons, B. Assessing Data Quality in Citizen Science. *Front. Ecol. Environ.* **2016**, *14*, 551–560. [[CrossRef](#)]
32. Baker, E.; Drury, J.P.; Judge, J.; Roy, D.B.; Smith, G.C.; Stephens, P.A. The Verification of Ecological Citizen Science Data: Current Approaches and Future Possibilities. *Citiz. Sci. Theory Pract.* **2021**, *5*, e75506. [[CrossRef](#)]
33. New, T.R. Are Lepidoptera an Effective ‘umbrella Group’ for Biodiversity Conservation? *J. Insect Conserv.* **1997**, *1*, 5–12. [[CrossRef](#)]
34. Parmesan, C. Butterflies as Bioindicators for Climate Change Effects. In *Butterflies: Ecology and Evolution Taking Flight*; Boggs, C.L., Watt, W.B., Ehrlich, P.R., Eds.; The University of Chicago Press: Chicago, IL, USA, 2003; pp. 541–560.

35. Thomas, J.A. Monitoring Change in the Abundance and Distribution of Insects Using Butterflies and Other Indicator Groups. *Philos. Trans. R. Soc. B-Biol. Sci.* **2005**, *360*, 339–357. [[CrossRef](#)]
36. Bergerot, B.; Fontaine, B.; Renard, M.; Cadi, A.; Julliard, R. Preferences for exotic flowers do not promote urban life in butterflies. *Landsc. Urban Plan.* **2010**, *96*, 98–107. [[CrossRef](#)]
37. Muratet, A.; Fontaine, B. Contrasting Impacts of Pesticides on Butterflies and Bumblebees in Private Gardens in France. *Biol. Conserv.* **2015**, *182*, 148–154. [[CrossRef](#)]
38. Banner, K.M.; Irvine, K.M.; Rodhouse, T.J.; Wright, W.J.; Rodriguez, R.M.; Litt, A.R. Improving Geographically Extensive Acoustic Survey Designs for Modeling Species Occurrence with Imperfect Detection and Misidentification. *Ecol. Evol.* **2018**, *8*, 6144–6156. [[CrossRef](#)] [[PubMed](#)]
39. Chambert, T.; Grant, E.H.C.; Miller, D.A.W.; Nichols, J.D.; Mulder, K.P.; Brand, A.B. Two-Species Occupancy Modelling Accounting for Species Misidentification and Non-Detection. *Methods Ecol. Evol.* **2018**, *9*, 1468–1477. [[CrossRef](#)]
40. Miller, D.A.; Nichols, J.D.; McClintock, B.T.; Grant, E.H.C.; Bailey, L.L.; Weir, L.A. Improving Occupancy Estimation When Two Types of Observational Error Occur: Non-Detection and Species Misidentification. *Ecology* **2011**, *92*, 1422–1428. [[CrossRef](#)]
41. Cosquer, A.; Raymond, R.; Prévot-Julliard, A.-C. Observations of everyday biodiversity: A new perspective for conservation? *Ecol. Soc.* **2012**, *17*, 2–15. [[CrossRef](#)]
42. Deguines, N.; de Flores, M.; Lois, G.; Julliard, R.; Fontaine, C. Fostering Close Encounters of the Entomological Kind. *Front. Ecol. Environ.* **2018**, *16*, 202–203. [[CrossRef](#)]
43. Scott, W.A.; Hallam, C.J. Assessing Species Misidentification Rates through Quality Assurance of Vegetation Monitoring. *Plant Ecol.* **2003**, *165*, 101–115. [[CrossRef](#)]
44. Gardiner, M.M.; Allee, L.L.; Brown, P.M.; Losey, J.E.; Roy, H.E.; Smyth, R.R. Lessons from Lady Beetles: Accuracy of Monitoring Data from US and UK Citizen-Science Programs. *Front. Ecol. Environ.* **2012**, *10*, 471–476. [[CrossRef](#)] [[PubMed](#)]

Disclaimer/Publisher’s Note: The statements, opinions and data contained in all publications are solely those of the individual author(s) and contributor(s) and not of MDPI and/or the editor(s). MDPI and/or the editor(s) disclaim responsibility for any injury to people or property resulting from any ideas, methods, instructions or products referred to in the content.