



HAL
open science

Differential Impacts of Drought and Esca Expression on Ascomycota Fungi in the Trunks and Young Organs of Mature Grapevines

Pierre Gastou, Giovanni Bortolami, Nathalie Ferrer, Gregory A Gambetta, Samuele Moretti, Jessica Vallance, Chloé E L Delmas

► To cite this version:

Pierre Gastou, Giovanni Bortolami, Nathalie Ferrer, Gregory A Gambetta, Samuele Moretti, et al.. Differential Impacts of Drought and Esca Expression on Ascomycota Fungi in the Trunks and Young Organs of Mature Grapevines. *Phytobiomes Journal*, 2026, 10 (1), pp.57-71. <10.1094/PBIOMES-07-25-0048-R>. <hal-05558959>

HAL Id: hal-05558959

<https://hal.science/hal-05558959v1>

Submitted on 19 Mar 2026

HAL is a multi-disciplinary open access archive for the deposit and dissemination of scientific research documents, whether they are published or not. The documents may come from teaching and research institutions in France or abroad, or from public or private research centers.

L'archive ouverte pluridisciplinaire HAL, est destinée au dépôt et à la diffusion de documents scientifiques de niveau recherche, publiés ou non, émanant des établissements d'enseignement et de recherche français ou étrangers, des laboratoires publics ou privés.



Distributed under a Creative Commons CC BY-NC-ND 4.0 - Attribution - Non-commercial use - No Derivative Works - International License



RESEARCH

Differential Impacts of Drought and Esca Expression on Ascomycota Fungi in the Trunks and Young Organs of Mature Grapevines

Pierre Gastou,^{1,2} Giovanni Bortolami,¹ Nathalie Ferrer,¹ Gregory A. Gambetta,³ Samuele Moretti,¹ Jessica Vallance,¹ and Chloé E. L. Delmas^{1,†} 

¹ SAVE, INRAE, Bordeaux Sciences Agro, ISVV, F-33882 Villenave d'Ornon, France

² Département Sciences de l'Environnement, Université de Bordeaux, F-33405 Talence, France

³ EGFV, Bordeaux Sciences Agro, Université de Bordeaux, INRAE, ISVV, F-33882 Villenave d'Ornon, France

Accepted for publication 14 November 2025.

Abstract

Perennial plant decline is increasingly threatening the profitability and sustainability of agriculture and forestry worldwide. It results from intricate interactions between microbial communities, the plant host, and abiotic stressors. We investigated the effects of drought and esca disease on mature grapevine phytobiomes. Grapevines display no esca leaf symptoms during droughts, but the impacts of drought and esca expression on fungal communities and wood health in mature plants remain poorly understood. We studied 43 uprooted 30-year-old naturally infected vines in three experimental conditions: well-watered asymptomatic vines (the control condition), vines with esca symptoms, and vines subjected to water deficit over two consecutive summers. We profiled trunk, cane, stem, and petiole Ascomycota communities by DNA metabarcoding with primers specifically designed for grapevine trunk-associated Ascomycota, and quantified wood necrosis. The Ascomycota communities of trunks and younger organs

clearly differed, and drought and esca had different impacts on the Ascomycota communities of perennial and young organs. In the trunk, drought significantly decreased fungal diversity in healthy wood and increased the abundance of wood pathogens (e.g., *Phaeomoniella chlamydospora* and *Botryosphaeria dothidea*). In young organs, esca expression decreased the species richness and diversity of the Ascomycota community to a greater extent than drought. We also found that the relative proportion of healthy wood was smaller in plants with esca symptoms than in control plants. Thus, drought increased Ascomycota pathogen abundance in the trunk but did not increase wood degradation and esca expression, highlighting the need to investigate the molecular basis of plant–microbiome interactions under multistress conditions.

Keywords: agriculture, ecology, endophytes, metagenomics, microbiome, mycology, plant pathology

A balanced plant microbiota is essential to preserve plant health and productivity in a context of global changes and emerging biotic

[†]Corresponding author: C. E. L. Delmas; chloe.delmas@inrae.fr

Author contributions: C.E.L.D., G.A.G., and G.B. conceived the experimental drought × esca study; G.B. and N.F. sampled the tissues and ground the samples; G.B. analyzed the trunk section images; N.F. extracted the DNA and performed the polymerase chain reaction; P.G. and J.V. processed the bioinformatics pipeline; P.G. analyzed the data; S.M. contributed to the discussion section and to data interpretation; P.G. wrote the first draft of the paper under the supervision of C.E.L.D.; and all authors critically revised and approved the final version of the manuscript for submission.

Current address for G. Bortolami: Plant Ecology Research Laboratory PERL, School of Architecture, Civil and Environmental Engineering ENAC, EPFL, CH-1015 Lausanne, Switzerland.

Data availability: DNA sequencing datasets are available in the European Nucleotide Archive database under accession number PRJEB87388.

pressures (Compant et al. 2019; Trivedi et al. 2020, 2022). The disequilibrium or dysbiosis of endophytic microbiota has been associated with plant dieback, although the causal mechanism is generally unknown (Arnault et al. 2023, Bettenfeld et al. 2020; Broberg et al. 2018; Griffiths et al. 2020). Pathogenic and saprotrophic species that are present in a latent endophytic phase within healthy plants (Hallmann et al. 1997; Marsberg et al. 2017) are often overabundant or more active in symptomatic plants, potentially worsening the decline of these plants (Bettenfeld et al. 2020; Jiao et al. 2023).

Funding: This work was supported by (i) the French Ministry of Agriculture and Food, FranceAgriMer, and the Comité National des Interprofessions des Vins à appellation d'origine et à indication géographique within the PHYSIOPATH Project (22001150-1506; Plan National Dépérissement du Vignoble program) and (ii) the French government through the IdEX Bordeaux University “Investments for the Future” program/GPR Bordeaux Plant Sciences. P. Gastou was awarded a PhD grant by the French Ministère de l'Enseignement Supérieur et de la Recherche.

e-Xtra: Supplementary material is available online.

The author(s) declare no conflict of interest.

Copyright © 2026 The Author(s). This is an open access article distributed under the CC BY-NC-ND 4.0 International license.



Plant microbial communities are also affected by abiotic factors, and these interactions are associated with plant dieback events worldwide (Ciesla and Donaubaer 1994; Desprez-Loustau et al. 2006; Manion 1981). In a context of climate change, the effects of drought on interactions between plant physiology, plant pathogens, and the whole microbial community (i.e., holobiont) are a major issue that cannot be reduced to unequivocal relationships. Depending on plant host species and physiological status, pathogen lifestyle, and the intensity and timing of the stress, drought may exacerbate, inhibit, or have no effect on plant–pathogen interactions (Desprez-Loustau et al. 2006; Jactel et al. 2012; Luna et al. 2025; Ramegowda and Senthil-Kumar 2015; Torres-Ruiz et al. 2024). The impact of drought stress on phytobiomes has been documented principally for the rhizosphere and the phyllosphere (Bechtold et al. 2021; Fitzpatrick et al. 2018; Jaeger et al. 2024; Xu et al. 2018) but remains largely unknown for other compartments (e.g., endosphere or woody perennial organs). A comprehensive understanding of the interactions between perennial plant phytobiomes, abiotic stresses, and biotic stresses would contribute to deciphering the relative roles of the various factors in plant decline.

Grapevine (*Vitis vinifera* L.), a major cultivated perennial crop, is particularly severely affected by complex dieback processes, mostly involving trunk diseases and environmental factors (Claverie et al. 2020; Etienne et al. 2024). Esca is a trunk disease causing grapevine dieback worldwide, with harmful consequences for the productivity and perenniality of the vineyard (Gramaje et al. 2018). Esca triggers physiological modifications in the leaf, stem, and whole plant, impairing growth, hydraulic conductivity, gas exchange, and metabolism within perennial and vegetative organs (Bortolami et al. 2019, 2021a, b, 2023; Chambard et al. 2025; Dell’Acqua et al. 2024; Magnin-Robert et al. 2016, 2017). This disease is detected in the summer on plant canopies displaying typical symptoms of scorching between the veins of the leaf (so-called “tiger-stripe” symptoms) and apoplexy, which may be observed on some or all of the stems of plants randomly distributed over the vineyard (Lecomte et al. 2024). Internal wood necrosis, with black necrotic tissue and white rot, is observed in both leaf-symptomatic and asymptomatic plants (Bertsch et al. 2013). However, white rot tends to be more frequent in symptomatic plants (Bruez et al. 2020; Maher et al. 2012). The trunk microbiota differs between necrotic and nonnecrotic (healthy) wood tissues (Bruez et al. 2020; Elena et al. 2018). In particular, black necroses are characterized by a high abundance of Ascomycota, whereas white rot necrosis is caused by Basidiomycota fungi, such as *Fomitiporia mediterranea* (Bruez et al. 2020; Moretti et al. 2021). Conversely, there is no clear difference between the microbial communities of healthy wood collected from plants with and without esca leaf symptoms (Del Frari et al. 2019; Dell’Acqua et al. 2025b; Hofstetter et al. 2012; Monod et al. 2024). Several environmental factors are typically involved in perennial plant dieback. Drought has a particularly strong impact in viticulture, and this impact is growing even stronger with the acceleration of climate change (van Leeuwen et al. 2024). In this context, the impact of drought on esca pathogens is a growing matter of concern, as both drought and esca have deleterious effects on grapevine hydraulic function.

Recent advances have improved our understanding of the environmental drivers of esca symptom expression, highlighting the key role of drought through its impact on plant water status. Contrasting with the many observations of synergistic impacts of drought and pathogens in trees (Desprez-Loustau et al. 2006; Gomez-Gallego et al. 2022; Torres-Ruiz et al. 2024), esca and drought are antagonist in grapevine, inhibiting each other (Bortolami et al. 2021b; Dell’Acqua et al. 2025a). Bortolami et al. (2021b) demonstrated that uprooted naturally infected plants subjected to moderate drought

(predawn water potential around -1 MPa) did not express esca leaf symptoms at any time in the course of a 2-year experiment. Dell’Acqua et al. (2025a) showed that vines with esca symptoms are less affected by intense drought stress and recover more quickly after such stress. The characteristics of fungal communities probably play a key role in drought–esca relationships, but this role has never been elucidated in mature plants.

Drought modifies the structure and functioning of plant microbial communities across compartments (see, for example, Carbone et al. 2021; Debray et al. 2022; Lin et al. 2023; Trivedi et al. 2022). A 2024 pluriannual study on young potted vines revealed a significant shift in wood fungal communities during drought, with a decrease in the complexity of microbiota structure and interactions, and an increase in the abundance of *Phaeoaniella chlamydospora*, a pathogenic Ascomycota involved in Petri disease that has been implicated in the esca pathosystem (Leal et al. 2024). These results seem to contradict the antagonism between drought and esca. There is therefore a need to validate these findings on mature grapevines and to consider again which Ascomycota pathogens are associated with the different disease symptoms.

We studied the effects of abiotic (drought) and biotic (esca) stresses on Ascomycota communities in the various organs of grapevine. We addressed the following questions: (i) What impact do seasonal drought and esca leaf symptom expression have on the Ascomycota communities in trunk and younger vegetative organs? (ii) Is the antagonistic relationship between esca and drought associated with shifts in the functional properties of Ascomycota communities? (iii) How do drought and esca expression affect internal wood necrosis and the corresponding Ascomycota communities? We used the same 43 uprooted vines with different esca histories and exposure to contrasting water conditions as described by Bortolami et al. (2021b). We sampled the trunk (separating the necrotic and healthy wood) and young organs (2-year-old canes, current-year stems, and petioles), and used a metabarcoding approach to study grapevine trunk-associated ascomycete fungi.

Materials and Methods

Plant material and sampling

Sampling was conducted between 7 and 14 October 2019 on a subset of uprooted vines (*V. vinifera* ‘Sauvignon blanc’; $n = 43$; Fig. 1A and F) from the experimental design described in detail by Bortolami et al. (2021b). This experimental design included three factors: (i) two levels of watering regime in two consecutive summer seasons in 2018 and 2019: well-watered for 2 years (WW; Ψ_{PD} close to 0 MPa) and water-deficit (WD; presenting Ψ_{PD} approximately -1 MPa from July to October in 2018 and 2019), (ii) two contrasting histories of esca symptoms since 2012: previously asymptomatic (pA) (i.e., plants that had never expressed esca leaf symptoms at any time since 2012), and previously symptomatic (pS) (i.e., plants that had expressed esca leaf symptoms at least once since 2012), and (iii) two canopy phenotypes in 2019: presence of esca leaf symptoms (typical tiger-stripe symptoms) and asymptomatic plants (hereafter referred to as “control plants”). Plants subjected to a water deficit never expressed esca leaf symptoms (see Bortolami et al. 2021b). We therefore sampled vines from four distinct groups (Table 1): WD asymptomatic plants in 2019 (water deficit-pS; $n = 12$), esca well-watered plants expressing tiger-stripe symptoms in 2019 (esca-pS; $n = 10$), well-watered plants asymptomatic since 2012 (control-pA; $n = 10$), and well-watered plants asymptomatic in 2019 (control-pS; $n = 11$). Esca history had no significant effect (see Results), so the control-pA and control-pS groups were merged into a single control category ($n = 21$, well-watered plants asymptomatic in 2019) for some analyses. During the growing seasons,

the plants were regularly treated for powdery mildew (with 80% micronized sulfur-based multisite products).

We sampled four different organs from each plant for DNA metabarcoding (Fig. 1; Table 1): petioles (several petioles pooled together), stems from the current year (one debarked internode from the middle of the stem), 2-year-old canes (one debarked internode), and trunks (with the separation of necrotic and healthy wood; Fig. 1E and H). Consequently, both endophytic and epiphytic Ascomycota communities were included in petiole analyses but only endophytic Ascomycota communities were included in the analyses of

woody organs (i.e., stems, canes, and trunks). For plants expressing esca symptoms, we separated petioles, stems and canes according to their disease status: asymptomatic (AS) or displaying tiger-stripe symptoms on the leaves (S) (see pictures of leaves in Fig. 1A, C, and G).

We used sterilized tools to remove the bark from the trunk of all plants. We searched for the presence of a brown stripe, a colored band of xylem band appearing under the bark concomitantly with esca leaf symptoms (Lecomte et al. 2012, 2024). A brown stripe was observed in all the plants presenting leaf symptoms (Fig. 1D) but

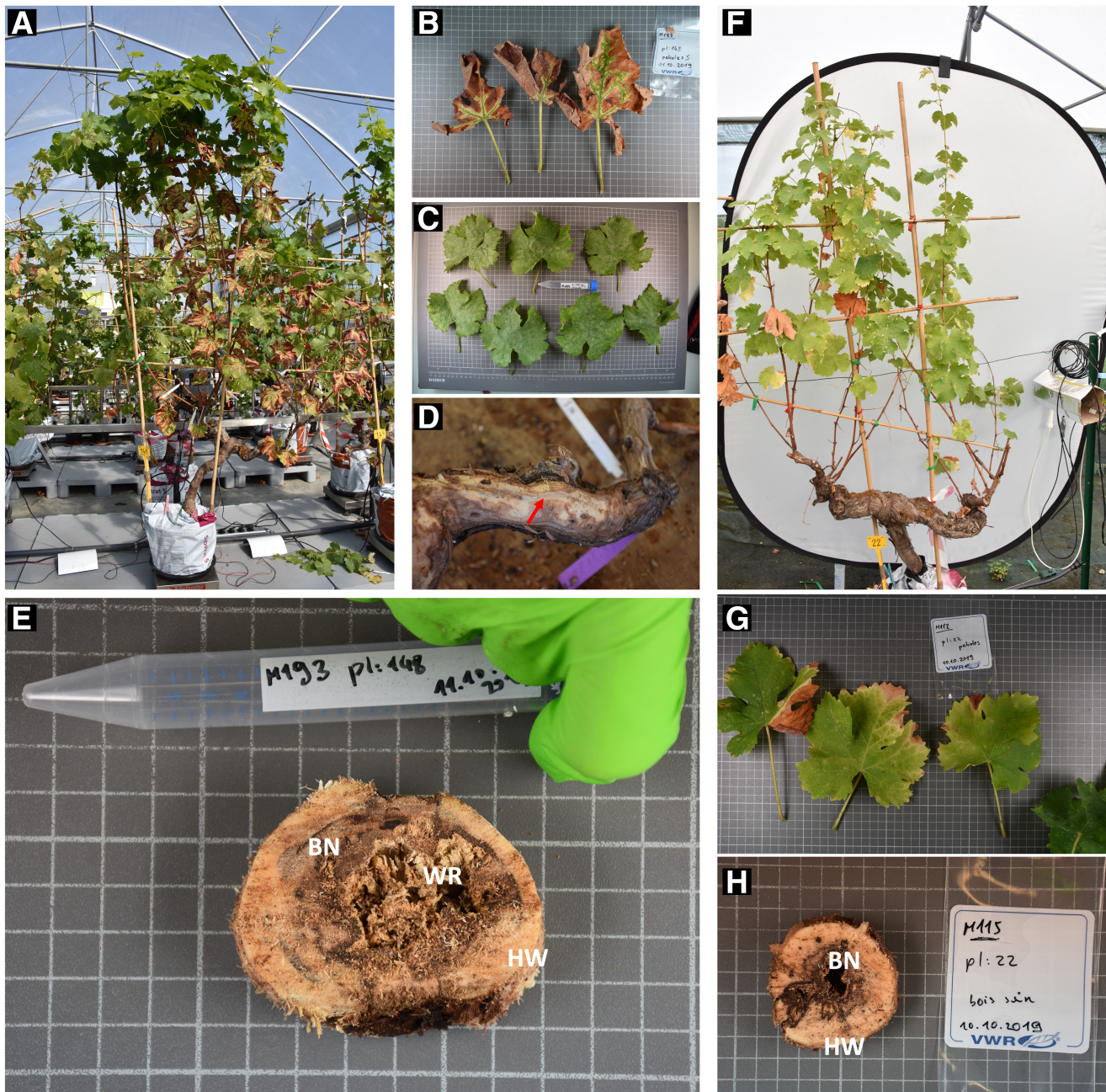


Fig. 1. Pictures of the sampling. **A**, *Vitis vinifera* 'Sauvignon blanc' expressing esca leaf symptoms, from which we sampled petioles from **B**, symptomatic or **C**, asymptomatic leaves; **D**, wood tissues from the xylem showing a brown stripe (red arrow); different wood tissues collected from **E**, a trunk cross section, on which healthy wood (HW), black necrosis (BN), and white rot (WR) were visible; and 1-year-old (stems) and 2-year-old (canes) shoots that were not photographed. **F**, *V. vinifera* 'Sauvignon blanc' under water deficit, from which we sampled petioles from **G**, leaves; different wood tissues collected from **H**, a trunk cross section, on which HW and BN are visible, and 1-year-old (stems) and 2-year-old (canes) shoots (not photographed). Similarly, we sampled the same types of tissue from control well-watered asymptomatic plants (not shown).

none of the control plants. We sampled chips from the brown stripe at different heights along the trunk to obtain sufficient material. We then cut a 2 cm-thick cross section of the trunk 15 cm from the top of the plant and photographed it for further analyses (Fig. 1E and H). We collected tissue of different wood types from this cross section (after removal of the bark) with sterile shears in a sterile field. This tissue was immediately immersed in liquid nitrogen and stored at -80°C . We collected the following wood types (Fig. 1D, E, and H; Table 1): apparently healthy wood, black necrotic wood, white rot, and brown stripe. For white rot, if insufficient necrotic tissue was collected for pathogen detection, we sampled additional white rot tissues from just above or below the cut section. Necrotic tissue was sampled only when present, whereas healthy wood was sampled from every plant. We obtained a total of 251 samples (Table 1): 134 young organs (48 petioles, 47 stems, and 39 canes) and 117 trunks (43 healthy wood, 36 black necrosis, 29 white rot, and 9 brown stripes).

DNA extraction and sequencing

Samples ($n = 251$) were ground in liquid nitrogen with a one-ball mill TissueLyser II (Qiagen, Hilden, Germany), taking care to sterilize the balls and sample holders with ethanol 70% v/v between samples. Genomic DNA was extracted from 60-mg tissue samples with the Invisorb Spin Plant Mini Kit (Invitex Diagnostics, Berlin, Germany) according to the manufacturer's instructions. Empty tubes (containing only the extraction reagents, without sample) were included as negative controls for DNA ex-

traction ($n = 5$). DNA was then quantified with a DS-11 spectrophotometer (DeNovix, Wilmington, DE, U.S.A.) and adjusted to a uniform concentration of $15 \text{ ng } \mu\text{l}^{-1}$. The internal transcribed spacer (ITS) 2 region of the nuclear ribosomal repeat unit was then amplified with the GTAAf/GTTAr primers (AAAACCTTCAACAACG GATC/GACCTCGGATCAGGTAGGRA), which were specifically designed and optimized for the profiling of pathogenic Ascomycota fungal communities associated with trunk diseases (Morales-Cruz et al. 2018b). DNA was amplified by polymerase chain reaction (PCR) with an Eppendorf Ep-gradient Mastercycler (Eppendorf, Hambourg, Germany) in a reaction mixture (25 μl final volume) consisting of 1 μl DNA template ($15 \text{ ng } \mu\text{l}^{-1}$), 10 μl of $2\times$ Platinum Hot Start PCR Master Mix (Invitrogen, Waltham, MA, U.S.A.), 0.5 μl of each primer (10 μM), 1.25 μl $20\times$ bovine serum albumin (New England Biolabs, Ipswich, MA, U.S.A.), and 11.75 μl DNase/RNase-free sterile water. The cycling parameters were as follows: enzyme activation at 95°C for 2 min; 35 cycles of denaturation at 95°C for 45 s, 60°C for 1 min, and 72°C for 1.5 min; and a final extension at 72°C for 10 min. Empty wells on the PCR plate (i.e., those containing the PCR mix but without template) were used as negative controls ($n = 9$). The PCR products were visualized by electrophoresis in a 2% agarose gel in tris-borate-ethylenediaminetetraacetic acid (molecular weight approximately 350 bp). They were then sent to the Plateforme Génome Transcritome de Bordeaux sequencing facility (Pierroton, France) for sequencing on an Illumina MiSeq platform (v3 chemistry, $2 \times 300 \text{ bp}$; Illumina, San Diego, CA, U.S.A.). PCR product purification, the

TABLE 1
Number of *Vitis vinifera* 'Sauvignon blanc' plants and samples included in this study, classified by experimental plant status, organ, and sample type^a

Plant status and esca history	No. of plants	Organ	No. of samples (per sample type or organ status)
Control-pA	$n = 11$	Trunk	$n = 22$ (10 healthy, 6 black necrosis, 6 white rot)
		Cane	$n = 9$
		Stem	$n = 9$
		Petiole	$n = 9$
Control-pS	$n = 10$	Trunk	$n = 29$ (11 healthy, 10 black necrosis, 8 white rot)
		Cane	$n = 10$
		Stem	$n = 11$
		Petiole	$n = 10$
Esca-pS	$n = 10$	Trunk	$n = 35$ (10 healthy, 9 brown stripe, 8 black necrosis, 8 white rot)
		Cane	$n = 9$ (8 AS; 1 S)
		Stem	$n = 14$ (4 AS; 10 S)
		Petiole	$n = 18$ (10 AS; 8 S)
Water deficit-pS	$n = 12$	Trunk	$n = 31$ (12 healthy, 12 black necrosis, 7 white rot)
		Cane	$n = 11$
		Stem	$n = 13$
		Petiole	$n = 11$

^a For esca plants, samples of petioles, current-year stems, and 2-year-old canes were classified by organ status: asymptomatic (AS) or presenting tiger-stripe symptoms on the leaves (S). Plants were classified by esca history: previously asymptomatic (pA) or previously symptomatic (pS).

addition of multiplex identifiers and sequencing adapters, library sequencing, and sequence demultiplexing (with exact index search) were performed by the sequencing service, who included another five negative PCR control samples at this stage.

Sequence analysis and operational taxonomic units (OTUs) table construction

Metabarcoding data were processed with the Find Rapidly OTUs with Galaxy Solution (FROGS) pipeline implemented on a Galaxy instance (Escudie et al. 2018). In brief, VSEARCH was used to merge paired reads with a maximum of mismatch of 10% in the overlapping region. After denoising (i.e., reads with no expected length [between 150 and 590 bp] and containing ambiguous bases, N, were discarded) and the removal of primers/adapters removal with CUTADAPT (Martin 2011), clustering was performed with SWARM (Mahé et al. 2014), with an aggregation distance $d = 1$. Chimeras were removed and low-abundance sequences were filtered out at 0.00005% (i.e., we retained OTUs accounting for at least 0.00005% of all sequences, adapted from Bokulich et al. 2013), to discard singletons from the datasets. The ITS2 region was extracted with ITSx (Bengtsson-Palme et al. 2013) before determining the taxonomic affiliation of the fungal OTUs by BLAST queries against the UNITE Fungi v8.2 (implemented in FROGS), trunkdiseaseID.org (<http://www.grapeipm.org/>), and National Center for Biotechnology Information (nr/nt) nucleotide collection (<https://blast.ncbi.nlm.nih.gov/Blast.cgi>) databases.

We performed a decontamination step, based on 19 DNA extraction and PCR blanks, with the *metabar* v.1.0.0 package (Zinger et al. 2021) implemented in R v.4.2.1 software. Graphical and statistical methods were used to flag and selectively remove non-Ascomycota, putatively contaminating or artifactual OTUs, and potentially unusable samples (i.e., highly contaminated or low sequencing depth).

Metabarcoding statistical analysis

We compared the diversity, structure, and composition of Ascomycota communities (see metrics below) between different categories (Table 1): (i) organs (trunk, cane, stem, and petiole; $n = 251$ samples), considering plant status as a covariate, (ii) plant statuses in healthy trunk wood samples; $n = 43$), (iii) plant statuses and organ statuses in young organs ($n = 134$), (iv) trunk wood types (i.e., healthy wood, black necrosis, white rot, and brown stripe; $n = 117$), considering plant status as a covariate, and (v) esca symptom histories (i.e., previously asymptomatic versus previously symptomatic) in control plants, considering plant status as a covariate. For the final category, the analysis was performed separately on trunk ($n = 51$) and young organ ($n = 58$) samples. For all categories, we checked the normality of the residuals (QQ-plot) and the homogeneity of the residual variance (residuals versus fitted and residuals versus predictors) graphically. Nonparametric analyses were performed if these assumptions were not satisfied. All analyses were performed with R v.4.2.1 and with an alpha risk of 5%.

To estimate the diversity, structure, and composition of Ascomycota communities, we calculated three alpha diversity indices (i.e., observed richness, Shannon index, and Simpson index) with the “estimate_richness” function in the *phyloseq* v.1.42.0 package (McMurdie and Holmes 2013), and compared them across categories by analysis of variance (ANOVA) procedures followed by Tukey’s posthoc tests. For the Simpson index, the normality assumptions were not fulfilled, so we performed nonparametric alternatives (i.e., Kruskal–Wallis test followed by Dunn’s test). We subjected the Ascomycota community structure of the samples to principal component analysis (PCA) based on a redundancy analysis (RDA) ordination on centered log-ratio (CLR) transformed

data (recommended for compositional data; Gloor et al. 2017), with the *phyloseq* “ordinate” function. We performed a permutational analysis of variance (PERMANOVA) on CLR-transformed data, with the “adonis2” function in the *vegan* v.2.6-4 package (Oksanen et al. 2022), to assess the effect of organ, plant statuses, or trunk wood type on Ascomycota community structure, with plant status included as a covariate. The multivariate homogeneity of group dispersions was checked a posteriori, and multilevel pairwise comparisons were calculated with the “pairwise.adonis2” function in *pairwiseAdonis* v.0.4.1 (Arbizu 2025). A pseudocount of one was added to all OTU counts to handle zero values before CLR transformation, thereby ensuring numerical stability during log-ratio calculations.

For some analyses, we classified Ascomycota OTUs into three groups according to function: putative grapevine wood pathogens, putative antagonists of grapevine wood pathogens (tested with success in vitro, in the greenhouse or in the vineyard), and other taxa. This taxonomic classification to genus level was based on the available scientific literature (Supplementary Table S1). The effect of plant status or wood type on these functional classes was evaluated by ANOVA followed by Tukey’s post-hoc tests.

We performed differential analysis with linear discriminant analysis effect size to identify the Ascomycota species most likely to explain differences between wood types, with the “run_lefse” function in the *microbiomeMarker* v.1.4.0 package (Cao et al. 2022) and the following parameters: $kw_cutoff = 0.05$ and $lda_cutoff = 2$.

We performed a differential analysis with the ALDEx2 procedure to identify the Ascomycota species most likely to explain differences between control and esca plants, and between control and WD plants. In this case, the “run_aldex” function was applied to relative log expression-transformed data, with a P value cutoff of 0.05.

Analysis of trunk necrosis

We used ImageJ software (Schneider et al. 2012) to analyze each trunk cross section image. We measured the area of apparently healthy wood, black necrosis, and white rot (in mm²) relative to the entire cross section. The brown stripe was not visible on the cross sections because it affects only the outermost xylem rings and was not, therefore, quantified as for the other tissues.

We assessed the effect of plant status (control, esca, and WD) on the relative proportions of healthy wood, black necrosis, and white rot in trunk cross sections ($n = 43$). The effect of plant status on the statistical distribution of wood type proportions was assessed with Fisher’s exact test (simulated P value, 2,000 replicates). The effect of plant status on the proportion of each type of necrosis was assessed by ANOVA followed by Tukey’s post hoc tests with “HSD.test” in the *agricolae* v.1.3-7 package (de Mendiburu 2023). We then plotted the statistical distribution of healthy wood and compared it across plant statuses, using the minimal proportion of healthy wood in control plants as a threshold. Finally, we assessed the effect of esca symptom history on the proportion of each type of necrosis in control plants ($n = 21$).

Results

General description of the Ascomycota community and differences between organs

In total, 10,765,305 reads were generated and assigned to 320 OTUs (Supplementary Tables S2 and S3). The final decontaminated dataset contained 9,641,320 reads (i.e., 10.4% of reads were removed) from 251 plant samples that were affiliated to 297 OTUs (i.e., 7.2% were removed). Ascomycota communities were

composed of four main classes: Dothideomycetes (59.5%), Eurotiomycetes (19.0%), Sordariomycetes (18.4%), and Leotiomycetes (2.2%). Less than 1% of OTUs were affiliated to multiple classes or to no class. Global metrics for both the raw and decontaminated datasets are provided in Supplementary Table S2. The decontaminated OTUs are presented in Supplementary Table S3. The number of reads per sample after decontamination and sample metadata are provided in Supplementary Table S4.

We compared the diversity and structure of Ascomycota communities between plant organs (i.e., trunk, cane, stem, and petiole) across all samples. Shannon and Simpson indices differed significantly between organs, whereas observed richness did not ($P = 0.005$, $P = 10^{-4}$ and $P = 0.10$, respectively). Ascomycota richness and diversity were slightly lower in trunk samples than in other organs (Supplementary Fig. S1A). PCA and PERMANOVA analyses revealed that organ accounted for 21% of the variance of the total Ascomycota community ($P = 0.001$). Trunk samples were clearly separated from canes, stems, and petioles (Supplementary Fig. S1B). We therefore decided to compare trunk samples and young organ samples (canes, stems, and petioles, corresponding to organs that were no more than 2 years old) in subsequent analyses.

Effects of drought and esca on the Ascomycota community in healthy trunk wood samples

Three species predominated in healthy trunk wood samples: *P. chlamydospora* (28.2%), *Cladosporium sphaerospermum* (13.0%), and *Phaeoacremonium minimum* (8.1%; Fig. 2A). Plant status significantly influenced the Shannon and Simpson indices of healthy wood but not observed richness ($P = 0.01$, $P = 0.04$, and $P = 0.17$, respectively). Ascomycota diversity was significantly lower in the healthy wood of WD plants than in that of control plants, whereas it did not differ significantly between esca and the other two experimental conditions (Fig. 2B). PCA and PERMANOVA analyses revealed that plant status accounted for 6.9% of the variance of the Ascomycota community in healthy wood ($P = 0.001$). WD plants differed significantly from control plants, whereas for esca plants, the difference was intermediate (Fig. 2C).

Plant status significantly affected the relative abundance of putative grapevine wood pathogens and antagonists of wood pathogens (the genera included in those categories and the associated references are provided in Supplementary Table S1) in healthy wood, but did not affect the abundance of other taxa ($P = 0.006$, $P = 0.006$, and $P = 0.38$, respectively; Fig. 2D). The relative abundance of putative pathogens was significantly higher in WD plants than in control plants (Fig. 2D), whereas the abundance of putative antagonists of wood pathogens was significantly lower in WD plants than in control plants (Fig. 2D).

Finally, ALDEx2 differential analyses to identify Ascomycota species highlighted differences in microbial composition between plants with different disease statuses. One phylum-affiliated Ascomycota OTU was significantly less abundant in plants with esca symptoms than in control plants. Four fungal species, including the pathogens *P. chlamydospora* and *Botryosphaeria dothidea*, were significantly more abundant in WD plants than in control plants. Conversely, four fungal species, including putative antagonists of grapevine pathogens (*Cladosporium* spp. and *Epicoccum nigrum*), were significantly less abundant in WD plants than in control plants (Fig. 2A; Supplementary Table S5).

Effects of drought and esca on Ascomycota communities in young organs

We first looked for differences in the Ascomycota community between asymptomatic and esca-symptomatic young organs from plants with esca symptoms. We found no significant difference be-

tween these two groups of organs for either alpha or beta diversity metrics (Supplementary Table S6).

We then compared the Ascomycota communities in young organs between control, esca (pooling samples from asymptomatic and symptomatic canes, stems, and petioles), and WD plants. Three species predominated in young organs: *C. sphaerospermum* (44.5%), *C. halotolerans* (20.0%), and *Diaporthe ampelina* (5.1%; Fig. 3A). The genus *Cladosporium* accounted for 69.1% of the OTUs retrieved from young organs.

Plant status significantly influenced observed richness, and the Shannon and Simpson indices ($P = 10^{-6}$, $P = 0.003$, and $P = 0.02$, respectively). Ascomycota diversity was lower in the young organs of esca plants than in those of control and WD plants (Fig. 3B). PCA and PERMANOVA analyses revealed that plant status accounted for 5.5% of the variance of the Ascomycota community in young organs ($P = 0.001$). In pairwise comparisons, there were slight differences between plant statuses (Fig. 3C).

We performed ALDEx2 differential analyses to identify the Ascomycota species underlying the differences in microbial composition between the young organs of plants with different disease statuses. *Erysiphe necator* was significantly more abundant in esca plants than in control plants. Conversely, 12 fungal species, including several putative antagonists of grapevine wood pathogens (*Cladosporium* spp. and *Aureobasidium pullulans*), were significantly less abundant in esca plants than in control plants. Two fungal species, *Exophiala* sp. and *Botryosphaeria dothidea*, were found to be significantly more abundant in young organs from WD plants than in those of control plants. Conversely, six fungal species, including several *Cladosporium* spp. and *A. pullulans*, were found to be significantly less abundant in WD plants than in control plants (Fig. 3A; Supplementary Table S5). Overall, putative wood pathogens accounted for $11.8 \pm 0.2\%$ of the OTUs in young organs. These pathogens were slightly more abundant in esca and WD plants than in control plants ($P = 0.05$). Putative pathogen-antagonistic genera accounted for $72.9 \pm 0.2\%$ of OTUs in young organs and were less abundant in esca and WD plants than in control plants ($P = 10^{-4}$).

Effects of drought and esca on wood integrity

We quantified the areas occupied by apparently healthy wood, black necrotic wood, and white rot in trunk cross sections (see pictures in Fig. 1E and H; Supplementary Table S7). The relative proportions of these three types of wood differed significantly between plant statuses (i.e., control, esca, and WD; $P = 10^{-4}$). The proportion of healthy wood was significantly lower in plants with esca symptoms than in control plants but did not differ significantly between WD plants and the other two categories (Fig. 4A). The proportions of black necrosis and white rot did not differ significantly between plant disease statuses ($P = 0.10$ and $P = 0.12$, respectively), but there was a trend toward a higher proportion of white rot in plants with esca symptoms and a higher proportion of black necrosis in WD plants (Fig. 4A). In 60% of plants with esca symptoms, the proportion of healthy wood was lower than the minimum value recorded in control plants (34.3%).

Ascomycota communities in trunk necrotic wood tissues

We compared trunk Ascomycota communities between apparently healthy wood, brown stripe, black necrosis, and white rot samples collected in October, several weeks after symptom onset. Brown stripe samples were collected only from plants displaying esca symptoms (Table 1), and the sample size was lower for this tissue type. Wood type significantly affected alpha diversity metrics, i.e., observed richness, and the Shannon and Simpson indices ($P < 10^{-16}$, $P = 10^{-12}$ and $P = 10^{-6}$, respectively). Ascomycota rich-

ness and diversity were lower in necrotic wood (i.e., black necrosis or white rot), than in healthy wood and brown stripe (Fig. 4B). PCA and PERMANOVA analysis revealed that wood type accounted for 11.9% of the variance of the Ascomycota community in a model including plant status and wood type \times plant status as covariates ($P = 0.001$). All pairwise comparisons between wood types were significant, but the clearest difference was that between necrotic and nonnecrotic areas (Fig. 4C). The interaction between wood type and

plant status was not significant: the differences in Ascomycota communities between nonnecrotic and necrotic wood were observed in control, esca, and WD plants (Supplementary Fig. S2).

Classifying Ascomycota OTUs into putative wood pathogens, putative antagonists of wood pathogens and others (Supplementary Table S1), we found that wood type significantly modified the relative abundance of putative wood pathogens and putative antagonists of wood pathogens but not of other taxa ($P = 10^{-15}$, $P = 10^{-10}$,

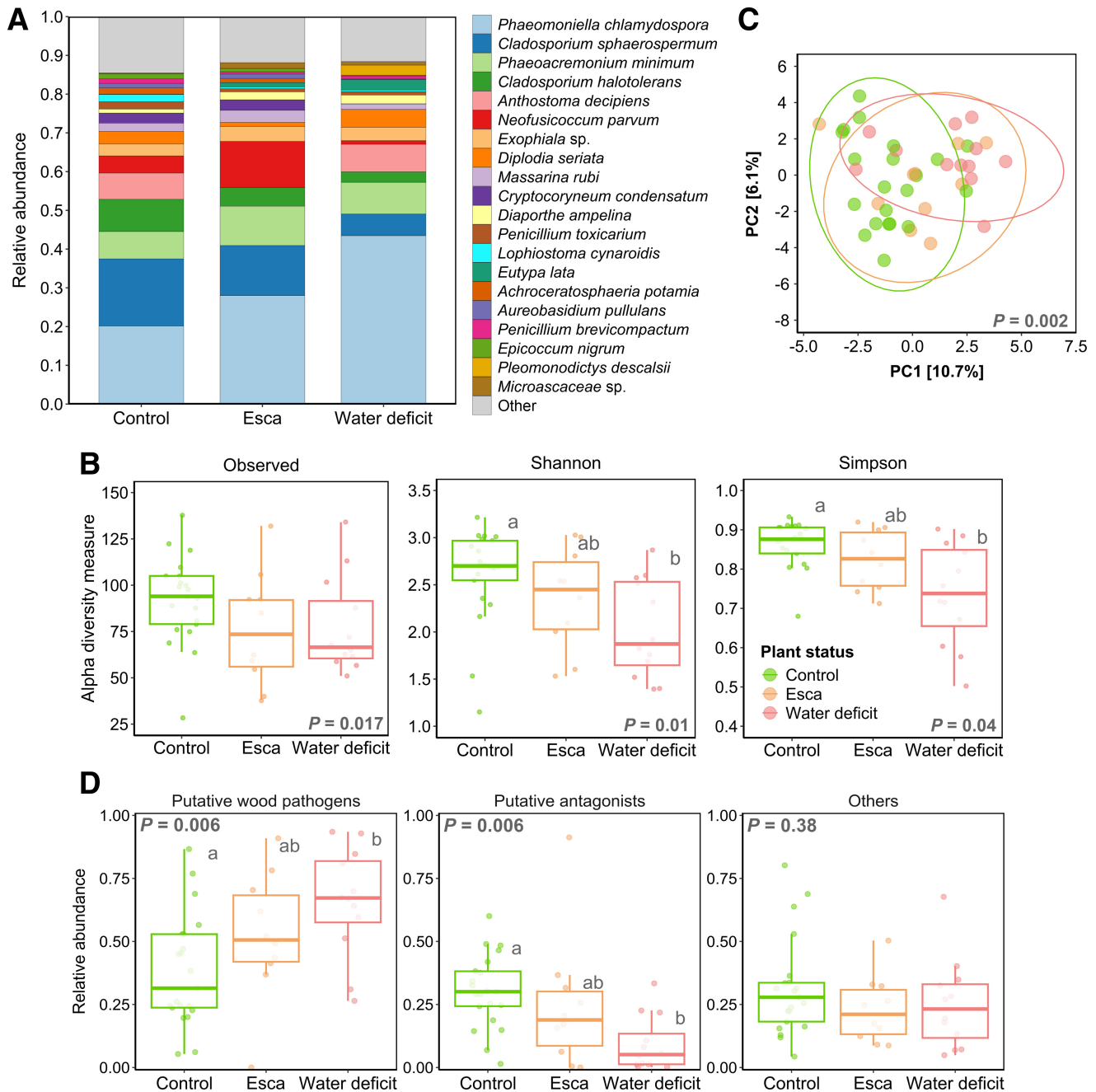


Fig. 2. Properties of endophytic Ascomycota communities in healthy trunk samples according to plant status. **A**, Distribution of the 20 most abundant Ascomycota operational taxonomic units (OTUs) in trunk samples, by plant status. The mean relative abundance was calculated for each OTU, by plant status. Stacked bars are colored according to the OTU. Less abundant OTUs are grouped in the category “Other” and are colored in light gray. **B**, Effect of plant status on alpha diversity metrics (i.e., observed richness, Shannon index, and Simpson index) associated with Ascomycota communities. **C**, Principal component analysis summarizing the structure of Ascomycota communities according to a redundancy dependence analysis on centered log-ratio-transformed data. Ellipses correspond to the 95% interval for each group. PC1, principal component 1; PC2, principal component 2. **D**, Relative abundance of putative wood pathogens, putative antagonists of wood pathogens, and other taxa, by plant status. All graphs are colored according to plant status.

and $P = 0.16$, respectively; Fig. 5A). The abundance of putative pathogens was higher within the areas of black and white rot than in healthy wood (Fig. 5A). The abundance of wood pathogen putative antagonists was high in healthy wood and brown stripe, whereas these fungi were almost entirely absent from necrotic areas (Fig. 5A). Finally, we performed a linear discriminant analysis to identify the Ascomycota species driving the differences in microbial composition between wood types. Six fungal species, including the putative antagonist of wood pathogens *Epicoccum nigrum*, were identified as biomarkers of healthy wood. Nine fungal species were identified as biomarkers of brown stripe samples, including several pathogens belonging to the Botryosphaeriaceae and putative antagonist *Cladosporium* spp. Three fungal species were significantly associated with black necrosis, including the pathogenic species *P. minimum*. Four fungal species were significantly associated with white rot. One of which was the wood pathogen *P. chlamydospora*. Three common endophytes of Angiosperms were also retrieved at a greater extent in white rot: *Penicillium toxicarium*, *Penicillium citreonigrum*, and *Biatriospora antibiotica* (Fig. 5B). The first two were already associated with wood decay or root rot, but are also regularly associated with beneficial (e.g., plant growth promotion) or neutral functions (Korcan et al. 2022; Srinivasan et al. 2020; Ye et al. 2025).

Effects of esca history on wood necrosis and Ascomycota communities

We assessed the effect of esca history on the distribution of wood types and the properties of Ascomycota communities in control plants. Esca history (comparing pA and pS plants with plant status

as a covariable) had no significant impact on the distribution of wood types (healthy wood, black necrosis, and white rot) in trunk cross sections (Supplementary Table S8).

In addition, the Ascomycota community in healthy trunk wood and young organ samples did not differ significantly between pA and pS plants in terms of either alpha or beta diversity metrics (Supplementary Table S8).

Discussion

Disentangling the complex interplay between plants, microbial communities, and abiotic stresses is crucial for understanding the processes underlying perennial plant decline. In this study, we used a unique experimental design to characterize plant and Ascomycota community responses to esca disease and drought stress in mature grapevines. We extended the work of Bortolami et al. (2021b) showing that the expression of esca symptoms is inhibited by drought under controlled conditions, using naturally infected plants. We sampled the plants at the end of the experiment and demonstrated that the impact of drought on Ascomycota communities was greatest in the trunk, whereas the expression of esca symptoms affected mostly younger organs. The esca-drought antagonism revealed by Bortolami et al. (2021b) is not related to a decrease in the abundance of grapevine wood pathogens. Finally, we demonstrated that the incidence of esca symptoms on leaves was associated with a significant decrease in the relative proportion of apparently healthy (i.e., nonnecrotic) wood in the trunk, with a corresponding increase in the proportion of necrotic tissues with a low diversity of Ascomycota and a high abundance of wood pathogens.

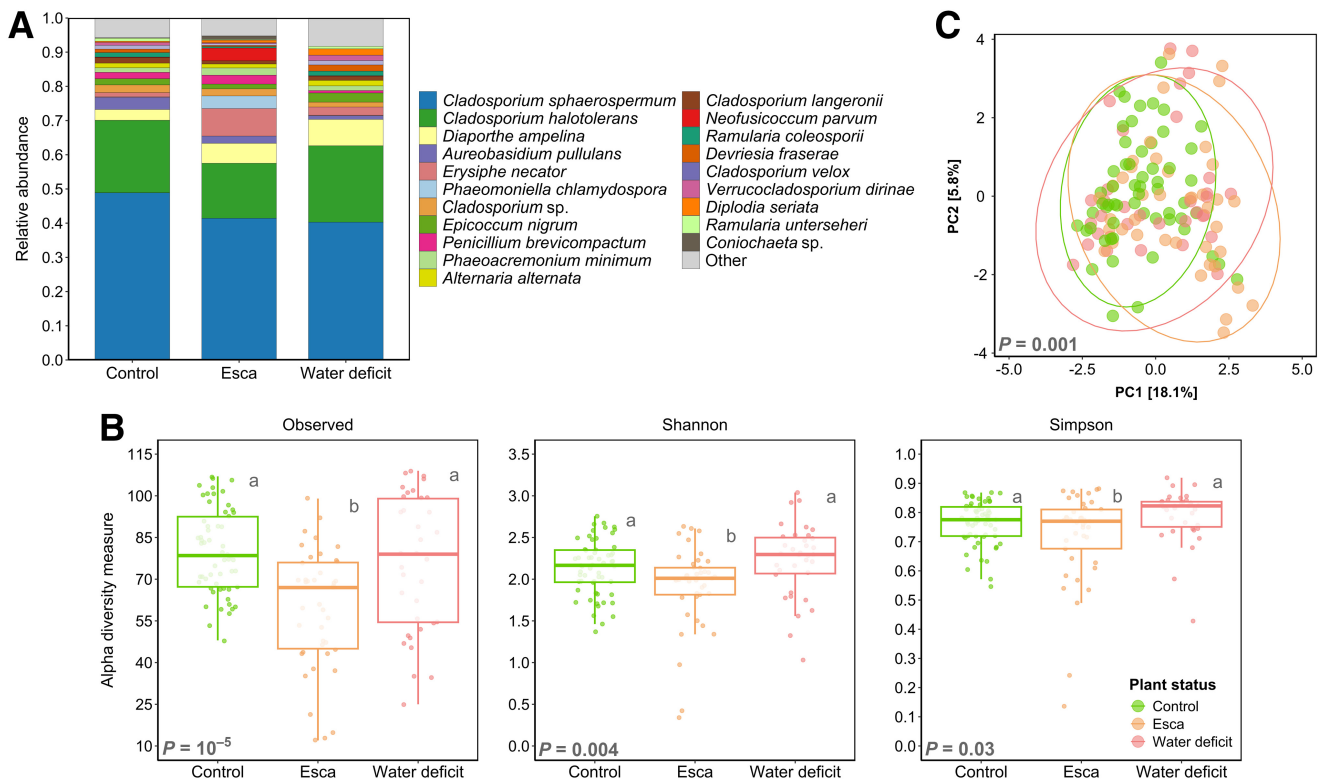


Fig. 3. Properties of endophytic and epiphytic Ascomycota communities in young organs (i.e., petioles, stems, and canes), by plant status. **A**, Distribution of the 20 most abundant Ascomycota operational taxonomic units (OTUs), by plant status, in young samples. Mean relative abundances were calculated for each OTU, by plant status. Stacked bars are colored according to the OTU. Less abundant OTUs are grouped into the “Other” category and colored in light gray. **B**, Effect of plant status on alpha diversity metrics (i.e., observed richness, Shannon index, and Simpson index) associated with Ascomycota communities. **C**, Principal component analysis summarizing the structure of Ascomycota communities according to a redundancy dependence analysis on centered log-ratio-transformed data. Ellipses correspond to the 95% interval for each group. PC1, principal component 1; PC2, principal component 2. Panels B and C are colored according to plant status.

Drought favors the pathogenic component of the Ascomycota community in trunk healthy wood, whereas esca does not

In this study, the endophytic Ascomycota community in the healthy wood of the trunk was particularly strongly affected by intense drought stresses applied during two consecutive summers, whereas the seasonal expression of esca leaf symptoms affected the Ascomycota within young organs. The impact of drought has been studied in belowground communities in particular (e.g., Carbone et al. 2021; Jaeger et al. 2024), but drought can also shape endophytic microbial communities, by (i) directly affecting the living environment of fungi, by decreasing xylem water potential and humidity (Aung et al. 2018; Dell'Acqua et al. 2025a; Luard and Griffin 1981) and (ii) modulating microbe–microbe and plant–microbe interactions (Trivedi et al. 2020). We found a low diversity of Ascomycota in healthy trunk wood under drought conditions. This finding is consistent with the results of Leal et al. (2024), who used 1-year-old grapevine cuttings to demonstrate a substantial decrease in microbial interactions, thereby providing evidence in support of a drought-induced microbial imbalance. The effects of drought stress on plant and microbial communities include

osmotic shock and the generation of reactive oxygen species (ROS) (Miller et al. 2010; Schimel et al. 2007; Singh et al. 2011). Under drought conditions, the Ascomycota community in the trunk may shift toward specific taxa with more efficient intracellular ROS scavenging mechanisms and an ability to produce compatible osmolytes. The relative abundance of Ascomycota wood pathogens, including *P. chlamydospora* in particular, increased in the trunk under water deficit conditions, even in the absence of foliar symptoms on water-stressed plants (Bortolami et al. 2021b). The increase in *P. chlamydospora* levels under drought conditions has been reported before (Hrycan et al. 2025; Leal et al. 2024). It may be because of a change in fungal interactions, with an increase in the abundance of competitive species and their activities under drought, and a greater adaptation of *P. chlamydospora* to a constrained environment (i.e., in the presence of activated plant defenses and a low water potential) potentially favoring its development at the expense of its usual microbial antagonists and competitors. Interestingly, *P. chlamydospora* seems to cope well with the oxidative stress induced by plant cells because of its efficient ROS scavenging arsenal (Fischer et al. 2016). However, this finding is more surprising given

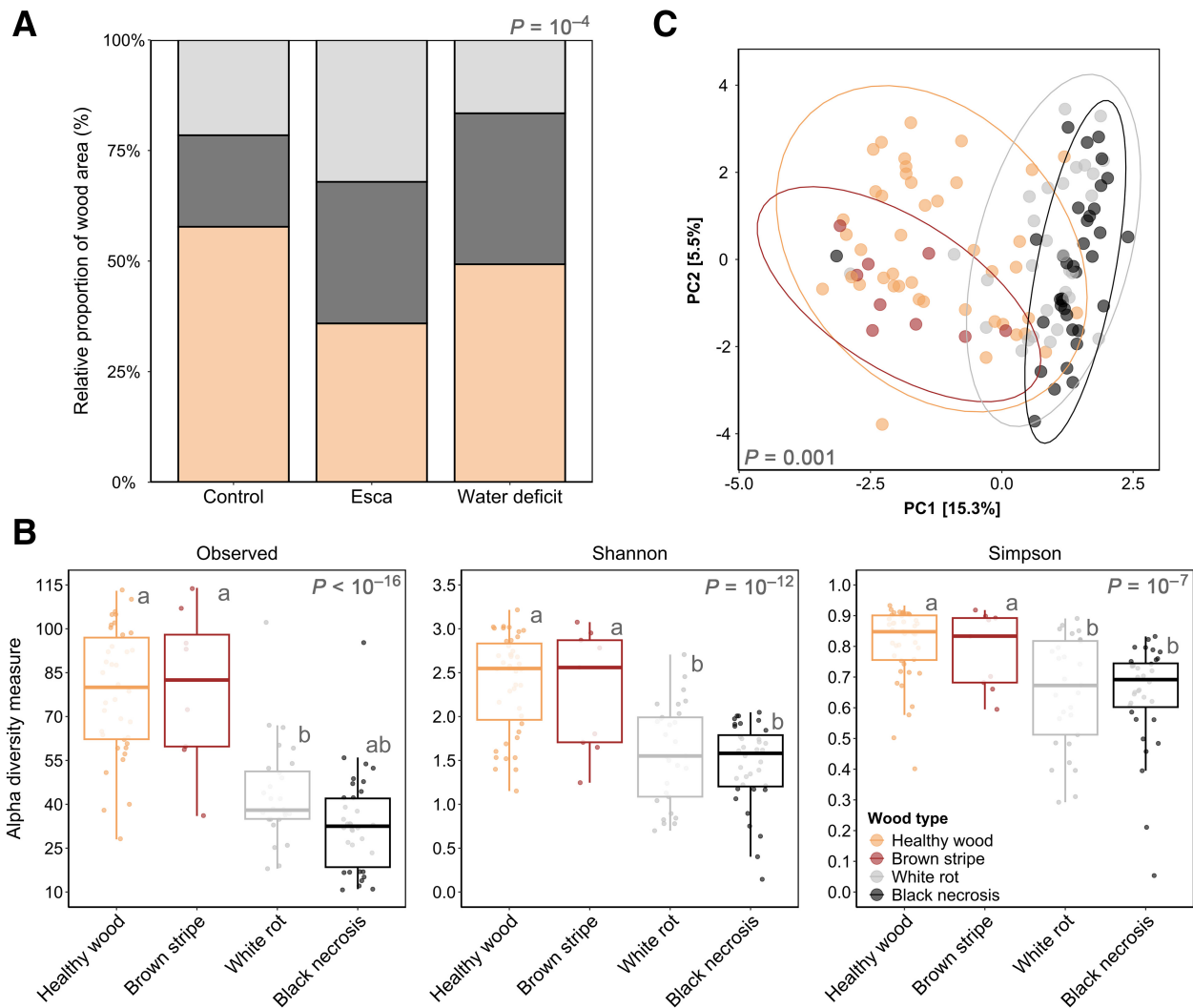


Fig. 4. Relative proportions of wood symptoms in trunk cross sections according to plant status (control, esca expression, and water deficit), and the properties of the endophytic Ascomycota communities associated with each wood type. **A**, Mean proportions of healthy wood, black necrosis, and white rot for each set of experimental conditions. **B**, Effect of wood type on the alpha diversity metrics (i.e., observed richness, Shannon index, and Simpson index) associated with Ascomycota communities. **C**, Principal component analysis summarizing the structure of Ascomycota communities according to a redundancy dependence analysis on centered log-ratio-transformed data. Ellipses correspond to the 95% interval for each group. PC1, principal component 1; PC2, principal component 2. All graphs are colored according to wood type.

that the foliar expression of esca symptoms was inhibited under drought conditions.

During the years following rewatering, the WD plants kept alive had a probability of expressing esca leaf symptoms similar to that of control plants (C. E. L. Delmas, *personal communication*). The increase in *P. chlamydospora* abundance did not lead to a higher incidence of symptoms in subsequent years. The total wood pathogen load appeared to be higher in plants expressing esca, because of the presence of larger necrotic areas rich in pathogens. However, the observation that these pathogens are not more abundant in the healthy wood of symptomatic plants, where the process of degradation leading to necrosis presumably occurs, raises questions about the exact role of Ascomycota—accounting for around 80% of the whole fungal community in grapevine wood (Chambard et al. 2025; Jayawardena et al. 2018)—in esca pathogenesis.

Ascomycota pathogens are generally considered to play an important if not essential role in the expression of esca symptoms (e.g., Bertsch et al. 2013; Gramaje et al. 2018). However, relative abundance, studied here through metabarcoding approaches, may not be the most relevant trait. Instead, the activity of Ascomycota pathogens (e.g., *P. chlamydospora* and *Botryosphaeriaceae* spp.), including their expression of virulence factors, may decrease in water deficit conditions, or increase before the expression of esca symptoms (Desprez-Loustau et al. 2006; Morales-Cruz et al. 2018a; Nerva et al. 2022). A 2025 study on the same plants as the present one did not confirm these hypotheses. Chambard et al. (2025) highlighted an increase of *P. chlamydospora* activity (growth and reproduction) under drought, and no modification of Ascomycota wood pathogen behavior following esca symptom expression. Thus, there is growing scientific evidence to suggest that the contribution of

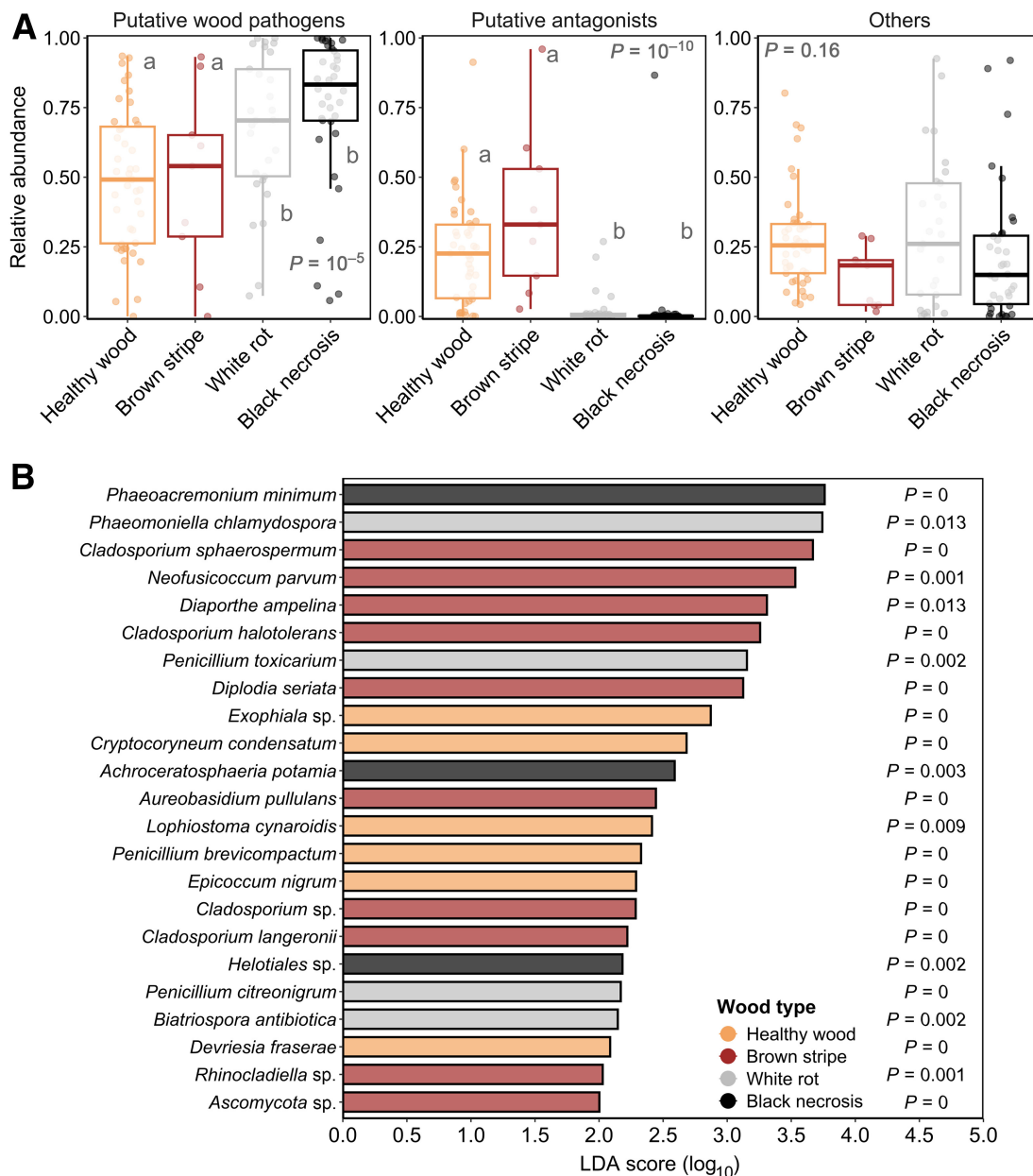


Fig. 5. Functional and taxonomic characterization of Ascomycota communities across wood types. **A**, Relative abundance of putative wood pathogens, putative antagonists of wood pathogens, and other taxa, by wood type. All graphs are colored according to wood type. **B**, Operational taxonomic units with significantly different abundances between wood types according to a linear discriminant analysis (LDA) effect size analysis. Features with an LDA score > 2 and a Kruskal–Wallis P value < 0.05 are shown, and each bar is colored according to the group in which the operational taxonomic unit is overrepresented.

Ascomycota to esca expression is overestimated (Chambard et al. 2025; Hofstetter et al. 2012; Moretti et al. 2023; Nerva et al. 2022). These results call for refining our knowledge of gene expression and metabolic changes in both plants and pathogens in the context of multiple stress experiments.

Drought did not significantly modify the proportion of necrotic wood, but it did slightly decrease the white rot/black necrosis ratio. This suggests that drought may interfere slightly with the activity of white-rot basidiomycetes that degrade wood through both enzymatic and nonenzymatic decay pathways (Moretti et al. 2021, 2023). Drought has already been identified as a variable that may affect wood decay (Jia et al. 2024). Indeed, to grow through the lignocellulose matrix and release their arsenal of decay-mediating molecules (i.e., enzymes and low-molecular weight compounds) into the wood cell wall, wood decay fungi (Basidiomycota included) require the moisture content in the wood to be at least above the fiber saturation point (Goodell 2020; Zabel and Morrell 2012). This highlights the importance of studying the abundance and activity of Basidiomycota, but also of bacteria that can act in synergy in the wood degradation process (Del Frari et al. 2021; Haidar et al. 2021).

The expression of esca symptoms did not significantly modify plant–microbiome interactions in healthy trunk tissues (despite a trend toward lower species richness and an increase in the abundance of wood pathogens) as reported in other studies (Del Frari et al. 2019; Dell’Acqua et al. 2025b; Monod et al. 2024). Very few studies have quantified the impact of dieback diseases on endophytic communities in other plants (e.g., Raghavendra et al. [2017] and Steinrucken et al. [2016]), although modifications in below-ground microbial diversity were highlighted (Darriaut et al. 2024; Farooq et al. 2022; Han et al. 2022; Lasa et al. 2024). Such modifications may be accompanied by an ecological disequilibrium, with an increase in the pathogenic component and a loss of beneficial functions, such as symbioses between plants and fungi and the promotion of plant growth (Gómez-Aparicio et al. 2022; Ma et al. 2024; Solís-García et al. 2021). Our findings confirm that esca is a complex pathosystem, in which plant physiology, interacting with the abiotic environment, plays a key role in leaf symptom onset, without any major change in fungal communities in healthy wood tissue.

Esca induces a more significant shift in Ascomycota communities in young organs than drought

Two consecutive summer seasons under drought conditions had a greater impact on the trunk than esca, but seasonal esca expression had a greater effect on Ascomycota communities in younger organs, which undergo significant physical, physiological, and metabolic changes during the expression of esca symptoms (Bortolami et al. 2021a, b; Dell’Acqua et al. 2024, 2025b). The Ascomycota communities inhabiting young organs (mainly endophytes, except for the petioles, from which we sampled both endophytes and epiphytes) on plants displaying esca symptoms were less diverse than those of control plants and were largely dominated by *Cladosporium* species. This finding suggests that the presence of leaf symptoms influences, albeit slightly, microbial communities distal to the infection zone characterized by necrosis and abundant trunk pathogens (i.e., perennial organs). Leaf endophytic fungal communities have been shown to be modified by esca expression (Del Frari et al. 2025). Accumulation and qualitative changes have been reported for primary and secondary metabolites (e.g., sugars, terpenes, and flavonoids [Bortolami et al. 2021b; Del Frari et al. 2025; Weiller et al. 2024]) in leaves and stems expressing esca symptoms, and these effects may be greater than those observed in the trunk, explaining the stronger response of fungal communities to esca expression in younger organs. Moreover, biotic stresses (such as esca disease) also induce ROS generation, and fungi have developed

strategies for scavenging ROS (Lehmann et al. 2015). Therefore, as discussed above for the trunk, Ascomycota communities in young organs may shift toward specific taxa with more efficient ROS scavenging mechanisms.

However, esca had only a small effect in our experiment, and other studies have revealed the stem microbial communities to be similar in asymptomatic plants and plants with esca symptoms (Del Frari et al. 2019). Water deficit had an even weaker effect on the Ascomycota communities of young organs, despite the highly significant physiological impact of drought during the experiment (Bortolami et al. 2021b). The main physiological difference between the plants subjected to water deficit and those expressing esca symptoms was that water potential was strongly affected by drought but not by esca expression, despite both conditions decreasing plant transpiration. Photosynthesis and the balance of nonstructural carbohydrates were more strongly affected by esca expression, with a decrease in leaf chlorophyll content and an accumulation of monosaccharides in leaves and stems, at the expense of sucrose production and starch storage (Bortolami et al. 2021b). The Ascomycota communities in young organs may have been more sensitive to carbon resource availability and the concentration of nonstructural carbohydrates, whereas wood water status may be ecologically more selective for trunk communities. Conversely, these results demonstrate the resilience of the microbial communities in young aerial organs to decreases in water potential during drought, with no significant decrease in diversity and no increase in the abundance of specific ecological guilds. Finally, the relative abundance of *E. necator*, the causal agent of grapevine powdery mildew, was higher in asymptomatic vegetative organs on plants displaying esca symptoms, potentially because of a slight increase in gas exchange in these specific organs (Bortolami et al. 2021b). *E. necator* was less prevalent in organs expressing esca symptoms, perhaps because of the impairment of carbon assimilation (Guilpart et al. 2017).

On the relationship between wood necrosis, pathogens, and the expression of esca foliar symptoms

The causal links between the internal consequences of plant–pathogen interactions (i.e., wood necrosis) and the external expression of disease (i.e., foliar symptoms) remain poorly understood in perennial plant decline (Claverie et al. 2020; Gosling et al. 2024; Skovsgaard et al. 2010). Esca foliar symptoms have been reported to be associated with a higher proportion of wood necrosis, especially white rot, in *V. vinifera* ‘Cabernet-Sauvignon’ (Maher et al. 2012; Ouadi et al. 2019). Consistent with these findings, we found that plants displaying esca symptoms had significantly lower proportions of healthy wood in their trunks than control plants. However, our results demonstrate that the proportion of healthy wood explained esca symptom expression in *V. vinifera* ‘Sauvignon blanc’ better than the type of necrosis. This may reflect a cumulative loss of functional xylem area (i.e., of the active tissues located in the outer xylem; McElrone et al. 2021) in symptomatic plants, regardless of the type of degradation. The mean proportion of white rot was about 20% in control plants (i.e., well-watered and asymptomatic in the year of sampling), higher than in previous reports. As plant age and genotype are significant drivers of esca leaf symptom expression (Etienne et al. 2024; Gastou et al. 2024), we can hypothesize that these factors modulate the proportion of necrotic wood (Claverie et al. 2023). In old plants (30 years old in our study), control plants with an asymptomatic history had similar necrosis extent and Ascomycota community in the trunk than previously symptomatic plants. In addition to a threshold of necrotic wood proportion in the trunk, the area of contact between active xylem tissue (efficiently transporting sap) and specific necrotic tissues, or the activity of microbial communities (e.g., virulence factors) may

be involved in the onset of foliar symptoms and should be explored further.

In the classical model of plant–microorganism interactions underpinning esca expression, Ascomycota fungi are considered to be responsible for black necrosis, black spots, wood streaks, and discoloration, whereas white rot is associated with Basidiomycota wood-degrading species, probably in interaction with bacteria (Bertsch et al. 2013; Bruez et al. 2020; Haidar et al. 2021, 2024; Moretti et al. 2021). However, less attention has been paid to the relationship between the total microbiome and the type and extent of necrosis and to the role of Ascomycota fungi in white rot propagation. Our study demonstrated that, whatever the health status of the plant (i.e., control, esca, or WD), the necrotic areas in the trunk harbored less diverse Ascomycota fungal communities than adjacent apparently healthy areas, confirming the results obtained for cordons (Bruez et al. 2020). These areas were dominated by Ascomycota wood pathogens, the proportion of which increased at the expense of other taxa, including putative antagonists of wood pathogens, as previously highlighted in grapevine trunk diseases (Martín et al. 2022), but not in other pathosystems (Bakys et al. 2009; Denman et al. 2016). We found that *P. minimum* was clearly overrepresented in black necrotic areas, whereas *P. chlamydospora* was not. *P. chlamydospora* was significantly overrepresented in white rot tissues, as previously reported by Bruez et al. (2020) and Pacetti et al. (2021). The previously favored hypothesis of a pioneering role of Ascomycota fungi before Basidiomycota species in the sequence of events occurring during the colonization of healthy grapevine wood has recently been revisited in light of new findings on potential intracellular and extracellular machinery for the detoxification of wood phenolic compounds in *F. mediterranea* (García et al. 2024; Moretti et al. 2021; Schilling et al. 2022). It seems more plausible that the role of *P. chlamydospora* in wood decay associated with esca expression is opportunistic. It may colonize already degraded wood areas (e.g., white rot) or code grade wood alongside Basidiomycota. Its presence as a primary pathogen would not be necessary for the development of necrosis associated with esca leaf symptoms. Moreover, *P. chlamydospora* may be less closely associated with black necrosis, as previously suggested (e.g., Bertsch et al. 2013; Surico et al. 2006). It is, in any case, a very abundant endophyte in healthy tissues (Del Frari et al. 2019; Dell’Acqua et al. 2025b; Hofstetter et al. 2012). Finally, we resequenced healthy wood samples, using ITS markers to quantify Basidiomycota and determine their relative abundance in healthy wood samples; we confirmed that *F. mediterranea* was present at high abundance in the wood of plants expressing esca symptoms (Chambard et al. 2025). The activity of *F. mediterranea* was also significantly altered, with overexpression of genes involved in growth, nutrition, and interactions with the plant and other fungal species (Chambard et al. 2025). Although the cooccurrence of white-rot and esca expression is established (Maher et al. 2012; Ouadi et al. 2019), a direct causal link between the abundance and activity of Basidiomycota pathogens in wood and the development of external symptoms has yet to be demonstrated.

We also characterized the Ascomycota community associated with the brown stripe xylem sampled about 3 months after the onset of leaf symptoms. We showed that the Ascomycota community in this symptomatic tissue is diverse and similar to that retrieved from healthy woody tissues. This finding is consistent with the fact that the brown stripe has not yet become a necrotic area. This tissue no longer conducts water, as shown by the use of a dye to follow sapwood transport (Lecomte et al. 2024), and in other vascular pathosystems (Agrios 2005; Bubicic and Cirulli 2012; Jiménez-Díaz et al. 2012). The brown color is most likely a result of the translocation of oxidizing phytotoxins and degradation products and is

associated with nongaseous vascular embolism (e.g., tyloses and gels; Agrios 2005; Bubicic and Cirulli 2012; Lecomte et al. 2024). We confirmed the high abundance of Botryosphaeriaceae spp. in brown stripe tissues late in the season (Dubos et al. 2001), alongside *Cladosporium* spp. and *A. pullulans*. The latter was reported in the literature as an antagonist of wood pathogens (Mesguida et al. 2023) and, in our experiment, was particularly abundant in control vines compared with stressed ones. Conversely, in planta, some strains are associated with esca leaf symptom severity and may act synergistically with *P. chlamydospora* to induce wilts (Karácsony et al. 2023). Hence, its role in esca pathogenesis deserves further investigation, to determine its contribution (positive or negative) to internal and external symptom expression, and its activity within brown stripes. More generally, observations were performed 3 months after symptom onset. We cannot, therefore, draw any firm conclusions about the changes in plant–fungus interactions potentially leading to the cooccurrence of brown stripe and foliar symptoms. Detailed studies of the microbial and physiological features related to the brown stripe symptom, and of the temporal dynamics linking internal and external symptoms, are now required.

Conclusion

Overall, this experimental study provides a new perspective on the ways in which abiotic and biotic stresses can shape microbial communities in perennial plants and contribute to plant decline. The trunk and younger grapevine organs had different endophytic fungal communities with different responses to drought and esca. Only esca significantly altered wood integrity. However, we were unable to investigate the dual-stress situation, as water deficit inhibited the expression of esca foliar symptoms. Based on these findings, assessments of the responses of the grapevine holobiont to combinations of stresses at the physiological and microbiome levels across various cultivars appear relevant to identify promising genotypes in the context of climate change and perennial plant decline. Indeed, wood degradation (Arnold et al. 2025), the incidence of esca foliar symptoms (Gastou et al. 2024), drought tolerance (Dayer et al. 2022), and endophytic microbial communities (Bekris et al. 2021; Hamaoka et al. 2022) differ between grapevine genotypes. Finally, plant dieback is related not only to endophytic communities, but also to microbiomes inhabiting the soil compartment (Darriaut et al. 2021, 2023; Gómez-Aparicio et al. 2022; Lasa et al. 2024). Future holistic in natura microbiome studies (i.e., multidisciplinary, multi-compartments, multitaxa, or a combination) would be particularly helpful, providing precise and generalizable results on the response of the holobiont to stressful conditions.

Acknowledgments

We thank Elena Farolfi and Jérôme Pouzoulet for help with plant sectioning and wood sampling and Corinne Vacher for advice on metabarcoding analyses.

Literature Cited

- Agrios, G. N. 2005. Plant Pathology, 5th ed. Academic Press, Amsterdam, the Netherlands.
- Arbizu, P. M. 2025. pmartinezarbizu/pairwiseAdonis. <https://github.com/pmartinezarbizu/pairwiseAdonis>
- Arnault, G., Mony, C., and Vandenkoornhuysse, P. 2023. Plant microbiota dysbiosis and the Anna Karenina principle. Trends Plant Sci. 28:18–30.
- Arnold, G., Prado, E., Dumas, V., Butterlin, G., Duchêne, É., Merdinoglu, D., and Avia, K. 2025. Discovery of a locus associated with susceptibility to esca in grapevine. Plant Dis. 109:1517–1525.
- Aung, K., Jiang, Y., and He, S. Y. 2018. The role of water in plant–microbe interactions. Plant J. 93:771–780.
- Bakys, R., Vasaitis, R., Barklund, P., Thomsen, I. M., and Stenlid, J. 2009. Occurrence and pathogenicity of fungi in necrotic and non-symptomatic shoots

- of declining common ash (*Fraxinus excelsior*) in Sweden. *Eur. J. For. Res.* 128:51-60.
- Bechtold, E. K., Ryan, S., Moughan, S. E., Ranjan, R., and Nüsslein, K. 2021. Phyllosphere community assembly and response to drought stress on common tropical and temperate forage grasses. *Appl. Environ. Microbiol.* 87:e00895-21.
- Bekris, F., Vasileiadis, S., Papadopoulou, E., Samaras, A., Testempasis, S., Gkizi, D., Tavlaki, G., Tzima, A., Paplomatas, E., Markakis, E., Karaoglanidis, G., Papadopoulou, K. K., and Karpouzas, D. G. 2021. Grapevine wood microbiome analysis identifies key fungal pathogens and potential interactions with the bacterial community implicated in grapevine trunk disease appearance. *Environ. Microbiome* 16:23.
- Bengtsson-Palme, J., Ryberg, M., Hartmann, M., Branco, S., Wang, Z., Godhe, A., De Wit, P., Sánchez-García, M., Ebersberger, I., de Sousa, F., Amend, A., Jumpponen, A., Unterseher, M., Kristiansson, E., Abarenkov, K., Bertrand, Y. J. K., Sanli, K., Eriksson, K. M., Vik, U., Veldre, V., and Nilsson, R. H. 2013. Improved software detection and extraction of ITS1 and ITS2 from ribosomal ITS sequences of fungi and other eukaryotes for analysis of environmental sequencing data. *Methods Ecol. Evol.* 4:914-919.
- Bertsch, C., Ramírez-Suero, M., Magnin-Robert, M., Larignon, P., Chong, J., Abou-Mansour, E., Spagnolo, A., Clément, C., and Fontaine, F. 2013. Grapevine trunk diseases: Complex and still poorly understood. *Plant Pathol.* 62:243-265.
- Bettenfeld, P., Fontaine, F., Trouvelot, S., Fernandez, O., and Courty, P.-E. 2020. Woody plant declines. What's wrong with the microbiome? *Trends Plant Sci.* 25:381-394.
- Bokulich, N. A., Subramanian, S., Faith, J. J., Gevers, D., Gordon, J. I., Knight, R., Mills, D. A., and Caporaso, J. G. 2013. Quality-filtering vastly improves diversity estimates from Illumina amplicon sequencing. *Nat. Methods* 10: 57-59.
- Bortolami, G., Farolfi, E., Badel, E., Burlett, R., Cochard, H., Ferrer, N., King, A., Lamarque, L. J., Lecomte, P., Marchesseau-Marchal, M., Pouzoulet, J., Torres-Ruiz, J. M., Trueba, S., Delzon, S., Gambetta, G. A., and Delmas, C. E. L. 2021a. Seasonal and long-term consequences of esca grapevine disease on stem xylem integrity. *J. Exp. Bot.* 72:3914-3928.
- Bortolami, G., Ferrer, N., Baumgartner, K., Delzon, S., Gramaje, D., Lamarque, L. J., Romanazzi, G., Gambetta, G. A., and Delmas, C. E. L. 2023. Esca grapevine disease involves leaf hydraulic failure and represents a unique premature senescence process. *Tree Physiol.* 43:441-451.
- Bortolami, G., Gambetta, G. A., Cassan, C., Dayer, S., Farolfi, E., Ferrer, N., Gibon, Y., Jolivet, J., Lecomte, P., and Delmas, C. E. L. 2021b. Grapevines under drought do not express esca leaf symptoms. *Proc. Natl. Acad. Sci. U.S.A.* 118:e2112825118.
- Bortolami, G., Gambetta, G. A., Delzon, S., Lamarque, L. J., Pouzoulet, J., Badel, E., Burlett, R., Charrier, G., Cochard, H., Dayer, S., Jansen, S., King, A., Lecomte, P., Lens, F., Torres-Ruiz, J. M., and Delmas, C. E. L. 2019. Exploring the hydraulic failure hypothesis of esca leaf symptom formation. *Plant Physiol.* 181:1163-1174.
- Broberg, M., Doonan, J., Mundt, F., Denman, S., and McDonald, J. E. 2018. Integrated multi-omic analysis of host-microbiota interactions in acute oak decline. *Microbiome* 6:21.
- Bruez, E., Vallance, J., Gautier, A., Laval, V., Compant, S., Maurer, W., Sessitsch, A., Lebrun, M.-H., and Rey, P. 2020. Major changes in grapevine wood microbiota are associated with the onset of esca, a devastating trunk disease. *Environ. Microbiol.* 22:5189-5206.
- Bubici, G., and Cirulli, M. 2012. Control of Verticillium wilt of olive by resistant rootstocks. *Plant Soil* 352:363-376.
- Cao, Y., Dong, Q., Wang, D., Zhang, P., Liu, Y., and Niu, C. 2022. microbiomeMarker: An R/Bioconductor package for microbiome marker identification and visualization. *Bioinformatics* 38:4027-4029.
- Carbone, M. J., Alaniz, S., Mondino, P., Gelabert, M., Eichmeier, A., Tekielska, D., Bujanda, R., and Gramaje, D. 2021. Drought influences fungal community dynamics in the grapevine rhizosphere and root microbiome. *J. Fungi* 7:686.
- Chambard, M., Cantù, D., Bortolami, G., Dell'Acqua, N., Ferrer, N., Gambetta, G. A., García, J. F., Gastou, P., Massonnet, M., Moretti, S., Rochepeau, A., Pétriacq, P., Foulongne-Oriol, M., and Delmas, C. E. L. 2025. Stress-dependent responses of grapevine wood and fungal pathogen activity under esca and drought. *bioRxiv* 668645.
- Ciesla, W. M., and Donaubaue, E. 1994. Decline and Dieback of Trees and Forests: A Global Overview. Food and Agriculture Organization, Vienna, Austria.
- Claverie, M., Lecomte, P., Delorme, G., Dumot, V., Jacquet, O., and Cochard, H. 2023. Xylem water transport is influenced by age and winter pruning characteristics in grapevine (*Vitis vinifera*). *OENO One* 57:53-68.
- Claverie, M., Notaro, M., Fontaine, F., and Wery, J. 2020. Current knowledge on grapevine trunk diseases with complex etiology: A systemic approach. *Phytopathol. Mediterr.* 59:29-53.
- Compant, S., Samad, A., Faist, H., and Sessitsch, A. 2019. A review on the plant microbiome: Ecology, functions, and emerging trends in microbial application. *J. Adv. Res.* 19:29-37.
- Darriaut, R., Martins, G., Dewasme, C., Mary, S., Darrieutort, G., Ballestra, P., Marguerit, E., Vivin, P., Ollat, N., Masneuf-Pomarède, I., and Lauvergeat, V. 2021. Grapevine decline is associated with difference in soil microbial composition and activity. *OENO One* 55:67-84.
- Darriaut, R., Tran, J., Martins, G., Ollat, N., Masneuf-Pomarède, I., and Lauvergeat, V. 2023. In grapevine decline, microbiomes are affected differently in symptomatic and asymptomatic soils. *Appl. Soil Ecol.* 183:104767.
- Darriaut, R., Marzari, T., Lailheugue, V., Tran, J., Martins, G., Marguerit, E., Masneuf-Pomarède, I., and Lauvergeat, V. 2024. Microbial dysbiosis in roots and rhizosphere of grapevines experiencing decline is associated with active metabolic functions. *Front. Plant Sci.* 15:1358213.
- Dayer, S., Lamarque, L. J., Burlett, R., Bortolami, G., Delzon, S., Herrera, J. C., Cochard, H., and Gambetta, G. A. 2022. Model-assisted ideotyping reveals trait syndromes to adapt viticulture to a drier climate. *Plant Physiol.* 190:1673-1686.
- Debray, R., Socolar, Y., Kaulbach, G., Guzman, A., Hernandez, C. A., Curley, R., Dhond, A., Bowles, T., and Koskella, B. 2022. Water stress and disruption of mycorrhizas induce parallel shifts in phyllosphere microbiome composition. *New Phytol.* 234:2018-2031.
- Del Frari, G., Gobbi, A., Aggerbeck, M. R., Oliveira, H., Hansen, L. H., and Ferrera, R. B. 2019. Characterization of the wood mycobiome of *Vitis vinifera* in a vineyard affected by esca. Spatial distribution of fungal communities and their putative relation with leaf symptoms. *Front. Plant Sci.* 10: 910.
- Del Frari, G., Ingrà, C., Rønne Aggerbeck, M., Gobbi, A., Nascimento, T., Cabral, A., Oliveira, H., Hestbjerg Hansen, L., Ferrandino, A., and Boavida Ferreira, R. 2025. Fungal community dynamics and anthocyanin profiling of grapevine leaves in a vineyard affected by esca. *Plant Stress* 15:100793.
- Del Frari, G., Oliveira, H., and Boavida Ferreira, R. 2021. White rot fungi (*Hymenochaetales*) and esca of grapevine: Insights from recent microbiome studies. *J. Fungi* 7:770.
- Dell'Acqua, N., Gambetta, G. A., Bartlett, M. K., Burlett, R., Chambard, M., Delzon, S., Ferrer, N., Pinol Daubisse, M., Sinclair, G., and Delmas, C. E. L. 2025a. The reduced canopy area in esca-symptomatic grapevine plants leads to lower canopy transpiration and mitigates water stress. *Plant Physiol.* 199:kiaf361.
- Dell'Acqua, N., Gambetta, G. A., Comont, G., Ferrer, N., Rochepeau, A., Pétriacq, P., and Delmas, C. E. L. 2025b. Nitrogen nutrition impacts grapevine esca leaf symptom incidence, physiology, and metabolism. *J. Exp. Bot.* 76:3225-3242.
- Dell'Acqua, N., Gambetta, G. A., Delzon, S., Ferrer, N., Lamarque, L. J., Saurin, N., Theodore, P., and Delmas, C. E. L. 2024. Mechanisms of grapevine resilience to a vascular disease: Investigating stem radial growth, xylem development and physiological acclimation. *Ann. Bot.* 133:321-336.
- de Mendiburu, F. 2023. agricolae: Statistical procedures for agricultural research. R package version 1.3-7. <https://cran.r-project.org/package=agricolae>
- Denman, S., Plummer, S., Kirk, S., Peace, A., and McDonald, J. E. 2016. Isolation studies reveal a shift in the cultivable microbiome of oak affected with acute oak decline. *Syst. Appl. Microbiol.* 39:484-490.
- Desprez-Loustau, M.-L., Marçais, B., Nageleisen, L.-M., Piou, D., and Vannini, A. 2006. Interactive effects of drought and pathogens in forest trees. *Ann. For. Sci.* 63:597-612.
- Dubos, B., Cere, L., Larignon, P., and Fulchic, R. 2001. Observation on black dead arm in French vineyards. *Phytopathol. Mediterr.* 40:336-342.
- Elena, G., Bruez, E., Rey, P., and Luque, J. 2018. Microbiota of grapevine woody tissues with or without esca-foliar symptoms in northeast Spain. *Phytopathol. Mediterr.* 57:425-438.
- Escudé, F., Auer, L., Bernard, M., Mariadassou, M., Cauquil, L., Vidal, K., Maman, S., Hernandez-Raquet, G., Combes, S., and Pascal, G. 2018. FROGS: Find, Rapidly, OTUs with Galaxy Solution. *Bioinformatics* 34:1287-1294.
- Etienne, L., Fabre, F., Martinetti, D., Frank, E., Michel, L., Bonnardot, V., Guérin-Dubrana, L., and Delmas, C. E. L. 2024. Exploring the role of cultivar, year and plot age in the incidence of esca and Eutypa dieback: Insights from 20 years of regional surveys in France. *Plant Pathol.* 73:2344-2358.
- Farooq, Q. U. A., St. John Hardy, G. E., McComb, J. A., Thomson, P. C., and Burgess, T. I. 2022. Changes to the bacterial microbiome in the rhizosphere and root endosphere of *Persea americana* (avocado) treated with organic

- mulch and a silicate-based mulch or phosphite, and infested with *Phytophthora cinnamomi*. *Front. Microbiol.* 13:870900.
- Fischer, J., Compant, S., Pierron, R. J. G., Gorfer, M., Jacques, A., Thines, E., and Berger, H. 2016. Differing alterations of two esca associated fungi, *Phaeoacremonium aleophilum* and *Phaeoconiella chlamydospora* on transcriptomic level, to co-cultured *Vitis vinifera* L. calli. *PLoS One* 11:e0163344.
- Fitzpatrick, C. R., Copeland, J., Wang, P. W., Guttman, D. S., Kotanen, P. M., and Johnson, M. T. J. 2018. Assembly and ecological function of the root microbiome across angiosperm plant species. *Proc. Natl. Acad. Sci. U.S.A.* 115:E1157-E1165.
- García, J. F., Figueroa-Balderas, R., Comont, G., Delmas, C. E. L., Baumgartner, K., and Cantu, D. 2024. Genome analysis of the esca-associated Basidiomycetes *Fomitiporia mediterranea*, *Fomitiporia polymorpha*, *Inonotus vitis*, and *Tropicoporus texanus* reveals virulence factor repertoires characteristic of white-rot fungi. *G3* 14:jkae189.
- Gastou, P., Irvine, A. D., Arcens, C., Courchinoux, E., This, P., van Leeuwen, C., and Delmas, C. 2024. Large gradient of susceptibility to esca disease revealed by long-term monitoring of 46 grapevine cultivars in a common garden vineyard. *OENO One* 58:8043.
- Gloor, G. B., Macklaim, J. M., Pawlowsky-Glahn, V., and Egozcue, J. J. 2017. Microbiome datasets are compositional: And this is not optional. *Front. Microbiol.* 8:2224.
- Gómez-Aparicio, L., Domínguez-Begines, J., Villa-Sanabria, E., García, L. V., and Muñoz-Pajares, A. J. 2022. Tree decline and mortality following pathogen invasion alters the diversity, composition and network structure of the soil microbiome. *Soil Biol. Biochem.* 166:108560.
- Gomez-Gallego, M., Galiano, L., Martínez-Vilalta, J., Stenlid, J., Capador-Barreto, H. D., Elfstrand, M., Camarero, J. J., and Oliva, J. 2022. Interaction of drought- and pathogen-induced mortality in Norway spruce and Scots pine. *Plant Cell Environ.* 45:2292-2305.
- Goodell, B. 2020. Fungi involved in the biodeterioration and bioconversion of lignocellulose substrates. Pages 369-397 in *The Mycota: A Comprehensive Treatise on Fungi as Experimental Systems for Basic and Applied Research*. Vol. 2, Genetics and Biotechnology. J. P. Benz and K. Schipper, eds. Springer, Cham, Switzerland.
- Gosling, R. H., Jackson, R. W., Elliot, M., and Nichols, C. P. 2024. Oak declines: Reviewing the evidence for causes, management implications and research gaps. *Ecol. Solut. Evid.* 5:e12395.
- Gramaje, D., Úrbez-Torres, J. R., and Sosnowski, M. R. 2018. Managing grapevine trunk diseases with respect to etiology and epidemiology: Current strategies and future prospects. *Plant Dis.* 102:12-39.
- Griffiths, S. M., Galambao, M., Rowntree, J., Goodhead, I., Hall, J., O'Brien, D., Atkinson, N., and Antwis, R. E. 2020. Complex associations between cross-kingdom microbial endophytes and host genotype in ash dieback disease dynamics. *J. Ecol.* 108:291-309.
- Guilpart, N., Roux, S., Gary, C., and Metay, A. 2017. The trade-off between grape yield and grapevine susceptibility to powdery mildew and grey mould depends on inter-annual variations in water stress. *Agric. For. Meteorol.* 234-235:203-211.
- Haidar, R., Compant, S., Robert, C., Antonielli, L., Yacoub, A., Grélard, A., Loquet, A., Brader, G., Guyoneaud, R., Attard, E., and Rey, P. 2024. Two *Paenibacillus* spp. strains promote grapevine wood degradation by the fungus *Fomitiporia mediterranea*: From degradation experiments to genome analyses. *Sci. Rep.* 14:15779.
- Haidar, R., Yacoub, A., Vallance, J., Compant, S., Antonielli, L., Saad, A., Habenstein, B., Kauffmann, B., Grélard, A., Loquet, A., Attard, E., Guyoneaud, R., and Rey, P. 2021. Bacteria associated with wood tissues of esca-diseased grapevines: Functional diversity and synergy with *Fomitiporia mediterranea* to degrade wood components. *Environ. Microbiol.* 23:6104-6121.
- Hallmann, J., Quadt-Hallmann, A., Mahaffee, W. F., and Klopper, J. W. 1997. Bacterial endophytes in agricultural crops. *Can. J. Microbiol.* 43:895-914.
- Hamaoka, K., Aoki, Y., Takahashi, S., Enoki, S., Yamamoto, K., Tanaka, K., and Suzuki, S. 2022. Diversity of endophytic bacterial microbiota in grapevine shoot xylems varies depending on wine grape-growing region, cultivar, and shoot growth stage. *Sci. Rep.* 12:15772.
- Han, G., Mannaa, M., Jeon, H., Jung, H., Kim, J.-C., Park, A. R., and Seo, Y.-S. 2022. Dysbiosis in the rhizosphere microbiome of standing dead Korean fir (*Abies koreana*). *Plants* 11:990.
- Hofstetter, V., Buyck, B., Croll, D., Viret, O., Couloux, A., and Gindro, K. 2012. What if esca disease of grapevine were not a fungal disease? *Fungal Diversity* 54:51-67.
- Hrycan, J., Bowen, P., Forge, T., Hart, M., and Úrbez-Torres, J. R. 2025. Impact of water stress on *Phaeoconiella chlamydospora* abundance and Petri disease symptom development in young grapevines. *OENO One* 59: 8317.
- Jactel, H., Petit, J., Desprez-Loustau, M.-L., Delzon, S., Piou, D., Battisti, A., and Koricheva, J. 2012. Drought effects on damage by forest insects and pathogens: A meta-analysis. *Global Change Biol.* 18:267-276.
- Jaeger, A. C. H., Hartmann, M., Conz, R. F., Six, J., and Solly, E. F. 2024. Drought-induced tree mortality in Scots pine mesocosms promotes changes in soil microbial communities and trophic groups. *Appl. Soil Ecol.* 194:105198.
- Jayawardena, R. S., Purahong, W., Zhang, W., Wubet, T., Li, X., Liu, M., Zhao, W., Hyde, K. D., Liu, J., and Yan, J. 2018. Biodiversity of fungi on *Vitis vinifera* L. revealed by traditional and high-resolution culture-independent approaches. *Fungal Diversity* 90:1-84.
- Jia, S., Yuan, T., Fu, Y., Penuelas, J., Zhou, G., Zhou, L., Liu, D., He, Y., Liu, R., Wang, X., Song, B., Jiang, Z., and Zhou, X. 2024. Fungi and bacteria trade-off mediates drought-induced reduction in wood decomposition. *CATENA* 243:108169.
- Jiao, Z., Gao, Z., Liao, Y., Liu, Y., Dong, L., and Sun, H. 2023. Effects of pine wilt disease on rhizosphere microbiota and fine root fungi: Insights into enzyme activity, ectomycorrhizal infection and microbial composition. *Forests* 14:1884.
- Jiménez-Díaz, R. M., Cirulli, M., Bubici, G., del Mar Jiménez-Gasco, M., Antoniou, P. P., and Tjamos, E. C. 2012. Verticillium wilt, a major threat to olive production: Current status and future prospects for its management. *Plant Dis.* 96:304-329.
- Karácsony, Z., Mondello, V., Fontaine, F., and Váczy, K. Z. 2023. The potential role of *Aureobasidium pullulans* in the development of foliar symptoms of esca disease in grapevine. *OENO One* 57:189-203.
- Korcan, S. E., Kahraman, T., Ocak, İ., Abed, A. B., and Aydın, B. 2022. Isolation and identification of *Penicillium toxicarium*: A new record for Turkey. *Mantar Dergisi* 13:44-54.
- Larignon, P., and Dubos, B. 1997. Fungi associated with esca disease in grapevine. *Eur. J. Plant Pathol.* 103:147-157.
- Lasa, A. V., Fernández-González, A. J., Villadas, P. J., Mercado-Blanco, J., Pérez-Luque, A. J., and Fernández-López, M. 2024. Mediterranean pine forest decline: A matter of root-associated microbiota and climate change. *Sci. Total Environ.* 926:171858.
- Leal, C., Bujanda, R., Carbone, M. J., Kiss, T., Eichmeier, A., Gramaje, D., and Maldonado-González, M. M. 2024. Drought influences the structure, diversity, and functionality of the fungal community inhabiting the grapevine xylem and enhances the abundance of *Phaeoconiella chlamydospora*. *Phytobiomes J.* 8:529-539.
- Lecomte, P., Bénétreau, C., Diarra, B., Meziani, Y., Delmas, C. E. L., and Fermaud, M. 2024. Logistic modeling of summer expression of esca symptoms in tolerant and susceptible cultivars in Bordeaux vineyards. *OENO One* 58:7571.
- Lecomte, P., Darrieutort, G., Liminana, J.-M., Comont, G., Muruamendiari, A., Legorburu, F.-J., Choueiri, E., Jreijiri, F., El Amil, R., and Fermaud, M. 2012. New insights into esca of grapevine: The development of foliar symptoms and their association with xylem discoloration. *Plant Dis.* 96: 924-934.
- Lehmann, S., Serrano, M., L'Haridon, F., Tjamos, S. E., and Metraux, J.-P. 2015. Reactive oxygen species and plant resistance to fungal pathogens. *Phytochemistry* 112:54-62.
- Lin, T., Tang, J., Li, S., Li, S., Han, S., Liu, Y., Yang, C., Chen, G., Chen, L., and Zhu, T. 2023. Drought stress-mediated differences in phyllosphere microbiome and associated pathogen resistance between male and female poplars. *Plant J.* 115:1100-1113.
- Luard, E. J., and Griffin, D. M. 1981. Effect of water potential on fungal growth and turgor. *Trans. Br. Mycol. Soc.* 76:33-40.
- Luna, I. J., Santiago, L., Ezcurra, E., Xi, M., Ashworth, V. E. T. M., Nothnagel, E., and Rolshausen, P. E. 2025. Physiological symptoms induced by drought stress outweigh vascular pathogen infection in walnut. *Tree Physiol.* 45:tpaf034.
- Ma, Y., Shen, Y., Zhou, X., Ma, H., Lan, J., Fu, B., and Xue, Q. 2024. Biological decline of alfalfa is accompanied by negative succession of rhizosphere soil microbial communities. *Plants* 13:2589.
- Magnin-Robert, M., Adrian, M., Trouvelot, S., Spagnolo, A., Jacquens, L., Letousey, P., Rabenoelina, F., Harir, M., Roullier-Gall, C., Clément, C., Schmitt-Kopplin, P., Vallat, A., Abou-Mansour, E., and Fontaine, F. 2017. Alterations in grapevine leaf metabolism occur prior to esca apoplexy appearance. *Mol. Plant-Microbe Interact.* 30:946-959.
- Magnin-Robert, M., Spagnolo, A., Boulanger, A., Joyeux, C., Clément, C., Abou-Mansour, E., and Fontaine, F. 2016. Changes in plant metabolism and

- accumulation of fungal metabolites in response to esca proper and apoplexy expression in the whole grapevine. *Phytopathology* 106:541-553.
- Mahé, F., Rognes, T., Quince, C., de Vargas, C., and Dunthorn, M. 2014. Swarm: Robust and fast clustering method for amplicon-based studies. *PeerJ* 2:e593.
- Maher, N., Piot, J., Bastien, S., Vallance, J., Rey, P., and Guérin-Dubrana, L. 2012. Wood necrosis in esca-affected vines: Types, relationships and possible links with foliar symptom expression. *OENO One* 46:15-27.
- Manion, P. D. 1981. *Tree Disease Concepts*. Prentice-Hall, Englewood Cliffs, NJ.
- Marsberg, A., Kemler, M., Jami, F., Nagel, J. H., Postma-Smidt, A., Naidoo, S., Wingfield, M. J., Crous, P. W., Spatafora, J. W., Hesse, C. N., Robbertse, B., and Slippers, B. 2017. *Botryosphaeria dothidea*: A latent pathogen of global importance to woody plant health. *Mol. Plant Pathol.* 18:477-488.
- Martín, L., García-García, B., and del Mar Alguacil, M. 2022. Interactions of the fungal community in the complex patho-system of esca, a grapevine trunk disease. *Int. J. Mol. Sci.* 23:14726.
- Martin, M. 2011. Cutadapt removes adapter sequences from high-throughput sequencing reads. *EMBnetjournal* 17:10-12.
- McElrone, A. J., Manuck, C. M., Brodersen, C. R., Patakas, A., Pearsall, K. R., and Williams, L. E. 2021. Functional hydraulic sectoring in grapevines as evidenced by sap flow, dye infusion, leaf removal and micro-computed tomography. *AoB Plants* 13:plab003.
- McMurdie, P. J., and Holmes, S. 2013. phyloseq: An R package for reproducible interactive analysis and graphics of microbiome census data. *PLoS One* 8:e61217.
- Mesguida, O., Haidar, R., Yacoub, A., Dreux-Zigha, A., Berthon, J.-Y., Guyoneaud, R., Attard, E., and Rey, P. 2023. Microbial biological control of fungi associated with grapevine trunk diseases: A review of strain diversity, modes of action, and advantages and limits of current strategies. *J. Fungi* 9:638.
- Miller, G., Suzuki, N., Ciftci-Yilmaz, S., and Mittler, R. 2010. Reactive oxygen species homeostasis and signalling during drought and salinity stresses. *Plant Cell Environ.* 33:453-467.
- Monod, V., Hofstetter, V., Viret, O., Zufferey, V., Gindro, K., and Croll, D. 2024. Landscape-scale endophytic community analyses in replicated grapevine stands reveal that dieback disease is not caused by specific fungal communities. *bioRxiv*. 588363.
- Morales-Cruz, A., Allenbeck, G., Figueroa-Balderas, R., Ashworth, V. E., Lawrence, D. P., Travadon, R., Smith, R. J., Baumgartner, K., Rolshausen, P. E., and Cantu, D. 2018a. Closed-reference metatranscriptomics enables in planta profiling of putative virulence activities in the grapevine trunk disease complex. *Mol. Plant Pathol.* 19:490-503.
- Morales-Cruz, A., Figueroa-Balderas, R., García, J. F., Tran, E., Rolshausen, P. E., Baumgartner, K., and Cantu, D. 2018b. Profiling grapevine trunk pathogens in planta: A case for community-targeted DNA metabarcoding. *BMC Microbiol.* 18:214.
- Moretti, S., Goddard, M.-L., Puca, A., Lalevé, J., Di Marco, S., Mugnai, L., Gelhaye, E., Goodell, B., Bertsch, C., and Farine, S. 2023. First description of non-enzymatic radical-generating mechanisms adopted by *Fomitiporia mediterranea*: An unexplored pathway of the white rot agent of the esca complex of diseases. *J. Fungi* 9:498.
- Moretti, S., Pacetti, A., Pierron, R., Kassemeyer, H.-H., Fischer, M., Péros, J.-P., Perez-Gonzalez, G., Bieler, E., Schilling, M., Marco, S. D., Gelhaye, E., Mugnai, L., Bertsch, C., and Farine, S. 2021. *Fomitiporia mediterranea* M. Fisch., the historical esca agent: A comprehensive review on the main grapevine wood rot agent in Europe. *Phytopathol. Mediterr.* 60:351-379.
- Nerva, L., García, J. F., Favaretto, F., Giudice, G., Moffa, L., Sandrini, M., Cantu, D., Zanzotto, A., Gardiman, M., Velasco, R., Gambino, G., and Chitarra, W. 2022. The hidden world within plants: Metatranscriptomics unveils the complexity of wood microbiomes. *J. Exp. Bot.* 73:2682-2697.
- Oksanen, J., Simpson, G. L., Blanchet, F. G., Kindt, R., Legendre, P., Minchin, P. R., O'Hara, R. B., Solymos, P., Stevens, M. H. H., Szoecs, E., et al. 2022. *vegan*: Community ecology package. <https://cran.r-project.org/web/packages/vegan/vegan.pdf>
- Ouadi, L., Bruetz, E., Bastien, S., Vallance, J., Lecomte, P., Domec, J.-C., and Rey, P. 2019. Ecophysiological impacts of esca, a devastating grapevine trunk disease, on *Vitis vinifera* L. *PLoS One* 14:e0222586.
- Pacetti, A., Moretti, S., Pinto, C., Compant, S., Farine, S., Bertsch, C., and Mugnai, L. 2021. Trunk surgery as a tool to reduce foliar symptoms in diseases of the esca complex and its influence on vine wood microbiota. *J. Fungi* 7:521.
- Raghavendra, A. K. H., Bissett, A. B., Thrall, P. H., Morin, L., Steinrucken, T. V., Galea, V. J., Goulter, K. C., and van Klinken, R. D. 2017. Characterisation of above-ground endophytic and soil fungal communities associated with dieback-affected and healthy plants in five exotic invasive species. *Fungal Ecol.* 26:114-124.
- Ramegowda, V., and Senthil-Kumar, M. 2015. The interactive effects of simultaneous biotic and abiotic stresses on plants: Mechanistic understanding from drought and pathogen combination. *J. Plant Physiol.* 176:47-54.
- Schilling, M., Maia-Grondard, A., Baltenweck, R., Robert, E., Huguency, P., Bertsch, C., Farine, S., and Gelhaye, E. 2022. Wood degradation by *Fomitiporia mediterranea* M. Fischer: Physiologic, metabolomic and proteomic approaches. *Front. Plant Sci.* 13:988709.
- Schimel, J., Balsler, T. C., and Wallenstein, M. 2007. Microbial stress-response physiology and its implications for ecosystem function. *Ecology* 88:1386-1394.
- Schneider, C. A., Rasband, W. S., and Eliceiri, K. W. 2012. NIH Image to ImageJ: 25 years of image analysis. *Nat. Methods* 9:671-675.
- Singh, L. P., Singh Gill, S., and Tuteja, N. 2011. Unraveling the role of fungal symbionts in plant abiotic stress tolerance. *Plant Signal. Behav.* 6:175-191.
- Skovsgaard, J. P., Thomsen, I. M., Skovsgaard, I. M., and Martinussen, T. 2010. Associations among symptoms of dieback in even-aged stands of ash (*Fraxinus excelsior* L.). *For. Pathol.* 40:7-18.
- Solís-García, I. A., Ceballos-Luna, O., Cortazar-Murillo, E. M., Desgarennes, D., Garay-Serrano, E., Patiño-Conde, V., Guevara-Avenidaño, E., Méndez-Bravo, A., and Reverchon, F. 2021. Phytophthora root rot modifies the composition of the avocado rhizosphere microbiome and increases the abundance of opportunistic fungal pathogens. *Front. Microbiol.* 11:574110.
- Srinivasan, R., Prabhu, G., Prasad, M., Mishra, M., Chaudhary, M., and Srivastava, R. 2020. *Penicillium*. Pages 651-667 in *Beneficial Microbes in Agro-Ecology*. N. Amaran, M. Senthil Kumar, K. Annapurna, K. Kumar, and A. Sankaranarayanan, eds. Academic Press, Cambridge, MA.
- Steinrucken, T. V., Bissett, A., Powell, J. R., Raghavendra, A. K. H., and van Klinken, R. D. 2016. Endophyte community composition is associated with dieback occurrence in an invasive tree. *Plant Soil* 405:311-323.
- Surico, G., Mugnai, L., and Marchi, G. 2006. Older and more recent observations on esca: A critical overview. *Phytopathol. Mediterr.* 45:68-86.
- Torres-Ruiz, J. M., Cochard, H., Delzon, S., Boivin, T., Burrell, R., Caillet, M., Corso, D., Delmas, C. E. L., De Caceres, M., Diaz-Espejo, A., Fernández-Conradi, P., Guillemot, J., Lamarque, L. J., Limousin, J.-M., Mantova, M., Mencuccini, M., Morin, X., Pimont, F., De Dios, V. R., Ruffault, J., Trueba, S., and Martin-StPaul, N. K. 2024. Plant hydraulics at the heart of plant, crops and ecosystem functions in the face of climate change. *New Phytol.* 241:984-999.
- Trivedi, P., Batista, B. D., Bazany, K. E., and Singh, B. K. 2022. Plant-microbiome interactions under a changing world: Responses, consequences and perspectives. *New Phytol.* 234:1951-1959.
- Trivedi, P., Leach, J. E., Tringe, S. G., Sa, T., and Singh, B. K. 2020. Plant-microbiome interactions: From community assembly to plant health. *Nat. Rev. Microbiol.* 18:607-621.
- van Leeuwen, C., Sgubin, G., Bois, B., Ollat, N., Swingedouw, D., Zito, S., and Gambetta, G. A. 2024. Climate change impacts and adaptations of wine production. *Nat. Rev. Earth Environ.* 5:258-275.
- Weiller, F., Diniz, I., Pimentel, D., Erban, A., Reis, P., Soares, F., Rego, C., Kopka, J., and Fortes, A. M. 2024. Metabolomic analysis of grapes and leaves from symptomatic and asymptomatic *Vitis vinifera* grapevines with esca disease. *Curr. Plant Biol.* 40:100378.
- Xu, L., Naylor, D., Dong, Z., Simmons, T., Pierroz, G., Hixson, K. K., Kim, Y.-M., Zink, E. M., Engbrecht, K. M., Wang, Y., Gao, C., DeGraaf, S., Madera, M. A., Sievert, J. A., Hollingsworth, J., Birdseye, D., Scheller, H. V., Huttmacher, R., Dahlberg, J., Jansson, C., Taylor, J. W., Lemaux, P. G., and Coleman-Derr, D. 2018. Drought delays development of the sorghum root microbiome and enriches for monoderm bacteria. *Proc. Natl. Acad. Sci. U.S.A.* 115:E4284-E4293.
- Ye, Z., Liu, Q., Chen, M., Zhang, H. H., Zeng, H., Tan, Y., Jia, B., Ye, Z., and Tang, X. 2025. First report of *Penicillium citreonigrum* causing root rot disease in blueberries in China. *Plant Dis.* 109:2445.
- Zabel, R. A., and Morrell, J. J. 2012. *Wood Microbiology: Decay and Its Prevention*. Academic Press, Cambridge, MA.
- Zinger, L., Lionnet, C., Benoiston, A.-S., Donald, J., Mercier, C., and Boyer, F. 2021. metabar: An R package for the evaluation and improvement of DNA metabarcoding data quality. *Methods Ecol. Evol.* 12:586-592.