



HAL
open science

Exploring the life trajectories and care pathways of immigrant women from Sub-Saharan Africa diagnosed with endometriosis and living in France

Tony Zitti, Alain Piveteau, Clémence Schantz, Annabel Desgrées Du Loû

► **To cite this version:**

Tony Zitti, Alain Piveteau, Clémence Schantz, Annabel Desgrées Du Loû. Exploring the life trajectories and care pathways of immigrant women from Sub-Saharan Africa diagnosed with endometriosis and living in France. Women's and Couples' Health Symposium 2025, Nov 2025, Paris, France. <hal-05466562>

HAL Id: hal-05466562

<https://hal.science/hal-05466562v1>

Submitted on 20 Jan 2026

HAL is a multi-disciplinary open access archive for the deposit and dissemination of scientific research documents, whether they are published or not. The documents may come from teaching and research institutions in France or abroad, or from public or private research centers.

L'archive ouverte pluridisciplinaire **HAL**, est destinée au dépôt et à la diffusion de documents scientifiques de niveau recherche, publiés ou non, émanant des établissements d'enseignement et de recherche français ou étrangers, des laboratoires publics ou privés.



HAL Authorization



RESEARCH PROGRAM
WOMEN'S AND COUPLES' HEALTH

Exploring the life trajectories and care pathways of immigrant women from Sub-Saharan Africa diagnosed with endometriosis and living in France

Tony Zitti^{1,2}, Alain Piveteau², Clémence Schantz¹, Annabel Desgrées du Loû¹

¹ Centre Population Développement (Ceped), Université Paris Cité and Université Sorbonne Paris Nord, IRD, Inserm, Paris, France; ² Laboratoire Les Afriques dans le monde, UMR 5115, IRD, Sciences Po Bordeaux



Introduction

- In France, the immigrant population has less access to prevention and healthcare, particularly for specialist consultations, compared with the non-immigrant population (Berchet & Jusot, 2012).
- In France, very few studies on endometriosis focus on specific population groups to examine the link between social health inequalities (SHI) and endometriosis, including prevalence, screening, lived experience, and access to treatment (Kvaskoff, 2024).
- A study in England shows that sociodemographic characteristics affect the likelihood of receiving an endometriosis diagnosis, with lower diagnosis rates in the most disadvantaged areas and variation by ethnic origin (Bunk et al., 2024).
- In the United States, women from minority ethnic groups, particularly Black women, are underrepresented in clinical research and epidemiological studies on endometriosis (Bougie et al., 2022; Westwood et al., 2023).
- In the United States, studies show that women from minority ethnic groups, particularly Black women, are less likely to receive a diagnosis, more likely to experience perioperative complications and higher mortality, and have limited knowledge of endometriosis (Bougie et al., 2022).



Objective

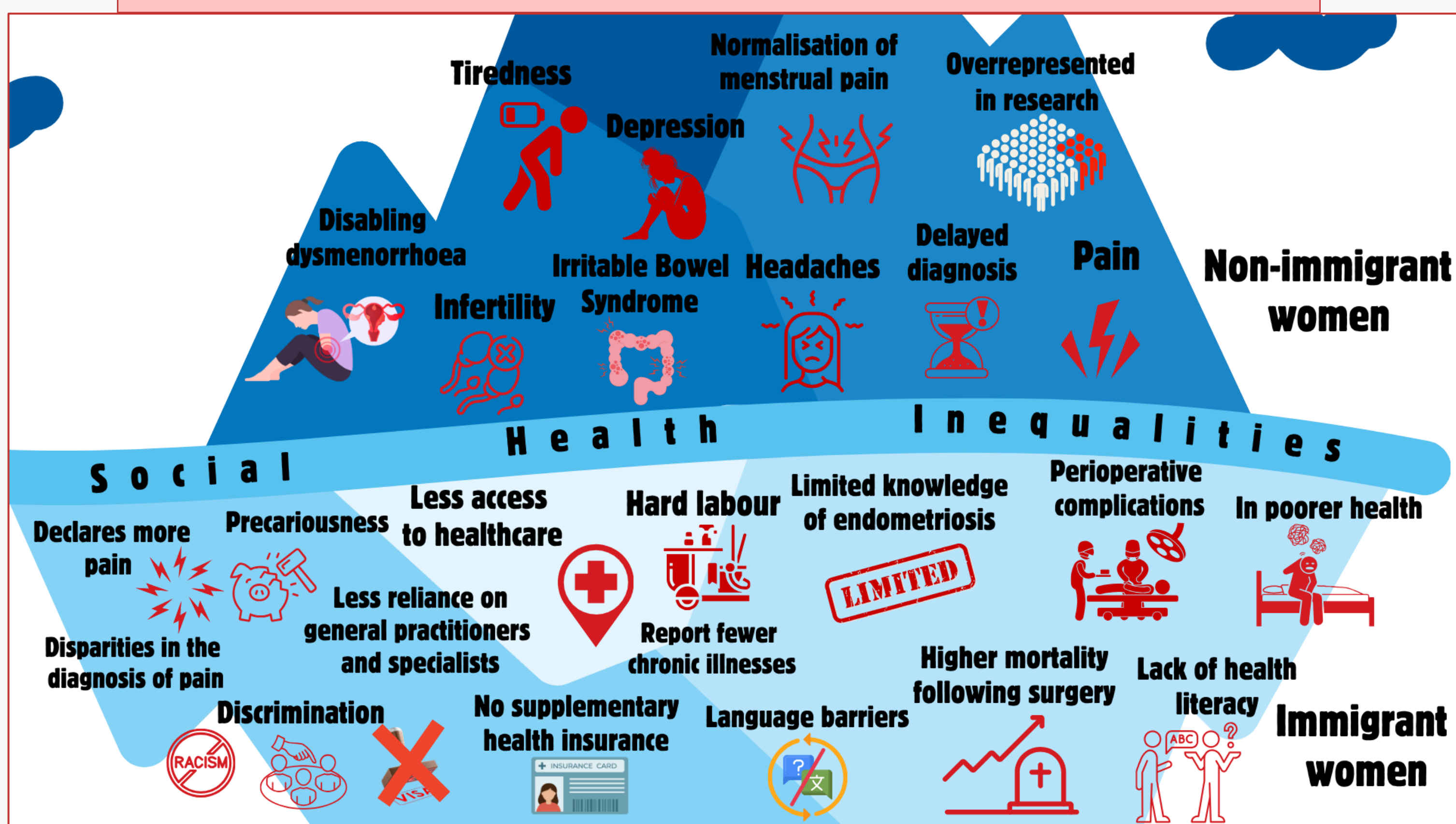
This study aims to understand the specificities of life trajectories and care pathways of immigrant women from Sub-Saharan Africa diagnosed with endometriosis and living in France.



Social Health Inequalities : What are we talking about?

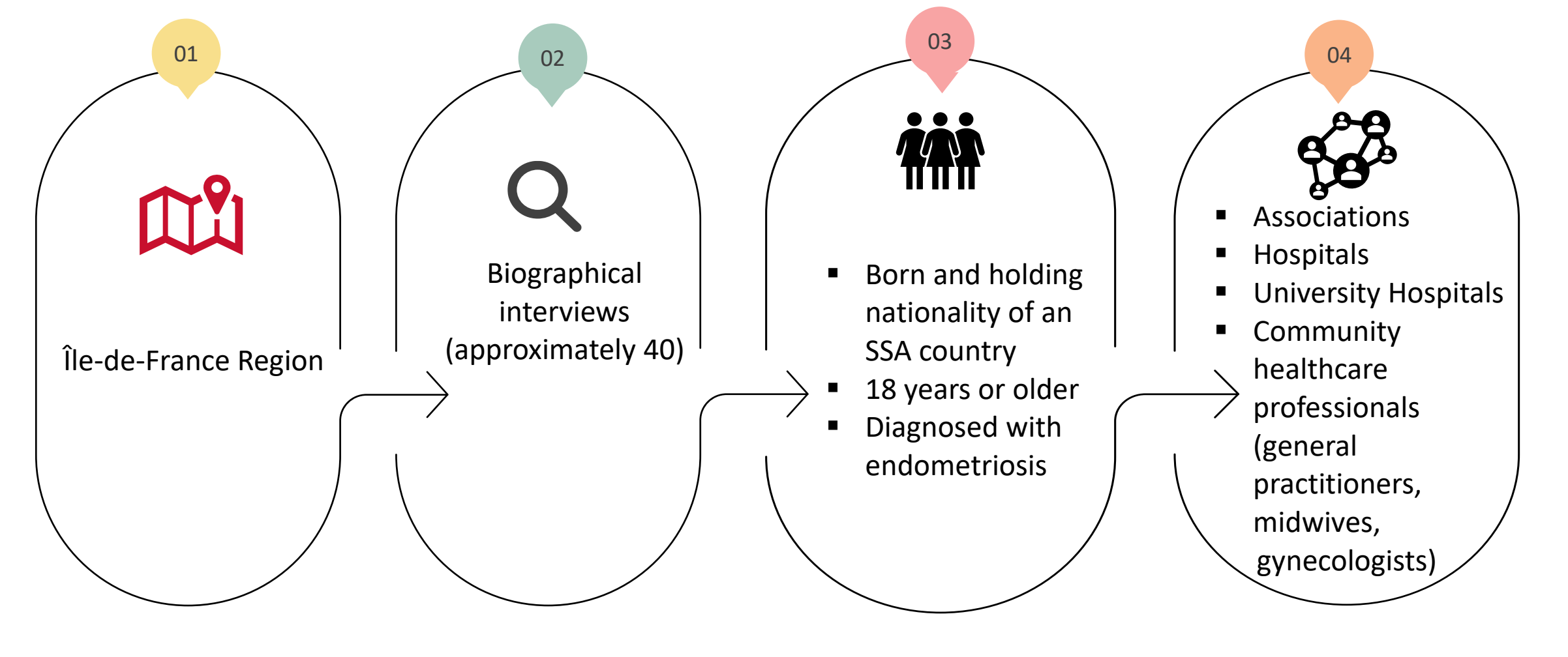
Social health inequalities (SHI) are defined as systematic, avoidable, and unjust differences in health status and access to healthcare between social groups, caused by several social determinants such as gender, country of birth, family composition, income, education, occupation, social environment, and social policies (Santé publique France, 2021).

What are the sources of social health inequalities related to endometriosis among immigrant women?



Method

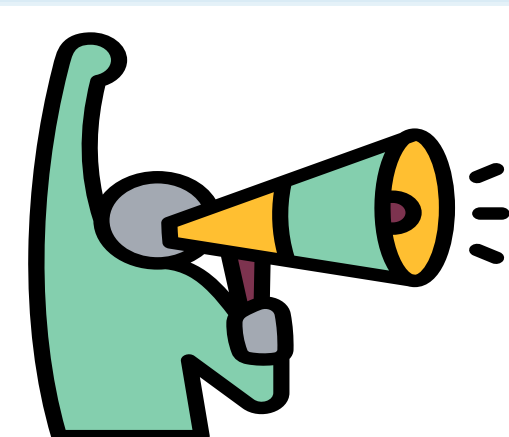
According to the definition adopted by the Haut Conseil à l'Intégration, an immigrant is a person born abroad and residing in France (Direction générale des étrangers en France, 2025). In our study, immigrant women from Sub-Saharan Africa (SSA) are defined as women born abroad from an SSA country (West, East, Central, Southern Africa, Madagascar and the Comoros) who reside in France.



Expected Outcomes of the Study

- Highlight the differentiated profiles of life trajectories and care pathways among immigrant women from Sub-Saharan Africa with endometriosis in France.
- Identify structural, institutional, and cultural barriers that delay the diagnosis and management of endometriosis in this group, in relation to their experiences with the French healthcare system and migration.
- Formulate recommendations to improve and adapt prevention and endometriosis management programs to the specific realities of immigrant women in France.

Better awareness of immigrant women about endometriosis



Better information for immigrant women about endometriosis



Better support for immigrant women with endometriosis



Conclusion

- Social health inequalities (SHI) must be into account in research projects and interventions addressing endometriosis in France.
- Immigrant women with endometriosis may have specific needs that require the implementation of adapted public policies and interventions.
- The experiential knowledge of immigrant women with endometriosis in France should be valued to improve prevention, diagnosis, and care practices.

References

- Berchet, C., & Jusot, F. (2012). État de santé et recours aux soins des immigrés en France : Une revue de la littérature. Journal de Pédiatrie et de Puériculture, 25(2), 120-125. <https://doi.org/10.1016/j.jpp.2012.01.002>
- Bougie, O., Nwosu, I., & Warshafsky, C. (2022). Revisiting the impact of race/ethnicity in endometriosis. Reproduction and Fertility, 3(2), R34-R41. <https://doi.org/10.1530/RAF-21-0106>
- Bunk, H., Campbell, E., Sharp, G. C., Nafilyan, V., Ayoubkhani, D., & Ward, I. L. (2024). Characteristics of women diagnosed with endometriosis in England : A decade of diagnoses, 2011-2021. medRxiv, 2024-12.
- Direction générale des étrangers en France. (2025). Les populations immigrées par département de 1968 à 2021 en France métropolitaine. 119, 9.
- Kvaskoff, M. (2024). Endométriose : État des connaissances épidémiologiques. Questions de santé publique, 48, 1-8. <https://doi.org/10.1051/qs/2024048>
- Santé publique France. (2021, mai 17). Les inégalités sociales et territoriales de santé. <https://www.santepubliquefrance.fr/les-inegalites-sociales-et-territoriales-de-sante#block-344915>
- Westwood, S., Fannin, M., Ali, F., Thigpen, J., Tatro, R., Hernandez, A., Peltzer, C., Hildebrand, M., Fernandez-Pacheco, A., Raymond-Lezman, J. R., & Jacobs, R. J. (2023). Disparities in Women With Endometriosis Regarding Access to Care, Diagnosis, Treatment, and Management in the United States : A Scoping Review. Cureus. <https://doi.org/10.7759/cureus.38765>