



HAL
open science

Bioavailable human metabolites from TOTUM-448 (plant-based formulation) maintain liver cell functionality in a hyperlipidic context that drives MASLD onset

Fabien Wauquier, Vivien Chavanelle, Annie Bouchard-Mercier, Line Boutin-Wittrant, Yolanda Otero, Stéphanie Krisa, Josep Valls, Florian Le Joubioux, Bruno Pereira, Véronique Roux, et al.

► To cite this version:

Fabien Wauquier, Vivien Chavanelle, Annie Bouchard-Mercier, Line Boutin-Wittrant, Yolanda Otero, et al.. Bioavailable human metabolites from TOTUM-448 (plant-based formulation) maintain liver cell functionality in a hyperlipidic context that drives MASLD onset. *Scientific Reports*, 2025, 16 (1), pp.2748. <10.1038/s41598-025-32556-z>. <hal-05462850>

HAL Id: hal-05462850

<https://hal.science/hal-05462850v1>

Submitted on 27 Mar 2026

HAL is a multi-disciplinary open access archive for the deposit and dissemination of scientific research documents, whether they are published or not. The documents may come from teaching and research institutions in France or abroad, or from public or private research centers.

L'archive ouverte pluridisciplinaire HAL, est destinée au dépôt et à la diffusion de documents scientifiques de niveau recherche, publiés ou non, émanant des établissements d'enseignement et de recherche français ou étrangers, des laboratoires publics ou privés.



HAL Authorization

Bioavailable human metabolites from TOTUM-448 (plant-based formulation) maintain liver cell functionality in a hyperlipidic context that drives MASLD onset

Received: 26 August 2025

Accepted: 10 December 2025

Published online: 16 December 2025

Cite this article as: Wauquier F., Chavanelle V., Bouchard-Mercier A. *et al.* Bioavailable human metabolites from TOTUM-448 (plant-based formulation) maintain liver cell functionality in a hyperlipidic context that drives MASLD onset. *Sci Rep* (2025). <https://doi.org/10.1038/s41598-025-32556-z>

Fabien Wauquier, Vivien Chavanelle, Annie Bouchard-Mercier, Line Boutin-Wittrant, Yolanda F. Otero, Stéphanie Krisa, Josep Valls, Florian Le Joubioux, Bruno Pereira, Véronique Roux, Nicolas Macian, Gisèle Pickering, Véronique Sapone, Murielle Cazaubiel, Auriane Bron, Sébastien Peltier, Stéphanie Blanquet, Pascal Sirvent & Yohann Wittrant

We are providing an unedited version of this manuscript to give early access to its findings. Before final publication, the manuscript will undergo further editing. Please note there may be errors present which affect the content, and all legal disclaimers apply.

If this paper is publishing under a Transparent Peer Review model then Peer Review reports will publish with the final article.

Bioavailable Human Metabolites from TOTUM-448 (plant-based formulation) Maintain Liver Cell Functionality in a Hyperlipidic Context That Drives MASLD Onset

Fabien Wauquier¹, Vivien Chavanelle², Annie Bouchard-Mercier², Line Boutin-Wittrant¹, Yolanda F Otero², Stéphanie Krisa³, Josep Valls⁴, Florian Le Joubioux⁵, Bruno Pereira⁷, Véronique Roux⁶, Nicolas Macian⁶, Gisèle Pickering⁶, Véronique Sapone⁵, Murielle Cazaubiel⁵, Auriane Bron^{8,9,10}, Sébastien Peltier⁵, Stéphanie Blanquet^{8,9}, Pascal Sirvent², Yohann Wittrant^{1,11*}

¹Clinic'n'Cell SAS, Faculté de Médecine, 28 place Henri Dunant, 63001 Clermont-Ferrand, France

²Valbiotis, 20 rue Henri et Gilberte Goudier, 63200 Riom, France

³Université de Bordeaux-INRAE-INP-ISVV, 210 Chem. de Leysotte, 33140 Villenave-d'Ornon, France

⁴MetaboHUB, Bordeaux Metabolome, 210 Chem. de Leysotte, 33140 Villenave-d'Ornon, France

⁵Valbiotis, Zone Industrielle des 4 Chevaliers, Bâtiment 12F, Rue Paul Vatine, 17180 Perigny, France

⁶CIC INSERM 1405/Plateforme d'Investigation Clinique CHU Gabriel Montpied, 63000, Clermont-Ferrand, France

⁷Biostat Unit, DRCl, CHU, 63000, Clermont-Ferrand, France

⁸Université Clermont Auvergne, UMR 454 MEDIS UCA-INRAE, Microbiology, Digestive Environment and Health, Clermont-Ferrand, France

⁹International associated laboratory Host Microbes Interactions in the Human Gut (HOMIGUT)

¹⁰Center for Microbial Ecology and Technology (CMET), Department of Biotechnology, Ghent University, Ghent, Belgium

¹¹INRAE, UMR 1019, UNH, 63000, Clermont-Ferrand, France

*Correspondence: Dr. Yohann Wittrant; yohann.wittrant@inrae.fr; Tel.: +33 (0)682297271

ABSTRACT

Lipotoxic and inflammatory environment drives metabolic dysfunction-associated steatotic liver disease (MASLD) onset. As most conventional treatments present adverse side effects, alternative options such as preventive nutritional interventions have been developed, though further clinical validation is needed. In this study, we conducted an innovative *ex vivo* clinical investigation to examine how circulating metabolites generated after oral intake of TOTUM-448 (a plant-based, polyphenol-rich formulation) may influence hepatocyte function. UHPLC-MS/MS analysis confirmed and characterized the bioavailable polyphenol metabolites present in human serum. This metabolite-enriched serum was further used to treat HepG2 hepatocytes, with or without palmitate pretreatment (250 μ M). The effects of TOTUM-448-derived metabolites on hepatocytes were evaluated by monitoring cell viability, lipid metabolism, inflammation, oxidative stress, and endoplasmic reticulum (ER) stress, all of which are central features of MASLD. Treated hepatocytes exhibited resistance to palmitate-induced lipotoxic stress, showing reduced intracellular lipid accumulation. TOTUM-448-derived metabolites also prevented the palmitate-induced upregulation of inflammatory gene expression. Additionally, while palmitate strongly upregulated CHOP and XBP1 mRNA expression as well as ATF6 and Caspase-3 activities, the presence of TOTUM-448-derived metabolites restored these ER stress markers to normal levels.

Keywords: clinical trial; *ex vivo*; MASLD; plant extract; human metabolites; human hepatocytes; oxidative stress; lipotoxic stress

Introduction

Chronic liver disease is a social and economic burden¹. Among the most common liver disorders is metabolic dysfunction-associated steatotic liver disease (MASLD), redefined in 2023 and previously described as non-alcoholic fatty liver disease (NAFLD)². Its prevalence is estimated at about 30% of the adult population worldwide³⁻⁵. More precisely, the prevalence can reach up to 90% in individuals with obesity and 60% in those with diabetes^{1,6}. However, MASLD is not limited to overweight individuals, as approximately 15% of patients present with a normal body weight⁷.

MASLD is characterized by the association of excessive fat accumulation in liver with one or more metabolic risk factor such as overweight/obesity, type 2 diabetes, metabolic syndrome, hypertriglyceridemia and hypercholesterolemia². This steatosis results from the accumulation of lipids in liver parenchymal cells and triggers hepatic inflammation and fibrosis. Over time, it leads to cirrhosis and its associated complications⁸. Consequently, MASLD is associated with elevated risks of cancer and cardiovascular mortality^{9,10} and ranks as the second most frequent indication for liver transplantation in the United States and Europe^{11,12}.

In this context, strategies promoting hepatic lipid clearance are of particular interest. Different pharmacological approaches have been studied, including statins, SGLT-2 inhibitors, GLP-1 agonists, pioglitazone, vitamin E, Resmetirom and Semaglutide (Wegovy)^{3,13,14,15}. The latter two, Resmetirom, a liver-directed thyroid hormone receptor beta-selective agonist, and Wegovy, a glucagon-like peptide-1 receptor agonist, have recently been approved by FDA for MASH treatment (March 2024 and August 2025, respectively)¹⁶⁻¹⁸. However, these treatments designed to cure rather than to prevent, evidence side effects (e.g., muscle related issues for statins; gastrointestinal adverse events for both resmetirom and semaglutide)^{14,15} and may be quite expensive for patients and healthcare systems¹⁹. These observations highlight the necessity for safer and preventive therapeutic alternatives. Lifestyle modifications, including dietary changes and regular physical activity constitute the first-line treatment, while nutritional and nutraceutical strategies have emerged as a major area of therapeutic innovation¹.

Among natural bioactives of interest, polyphenols are plant compounds known for their antioxidant and anti-inflammatory properties. Notably, over half of the research on their role in MASLD has been published in the past five years, underscoring the increasing focus on nutritional strategies in this area. Yet, only about 7% of these investigations have been conducted at the clinical level. Certain plant extracts are already known for their hepato-protective properties. For example, artichoke leaf extract (*Cynara scolymus*) is widely described in the literature for its choleric, hepatoprotective²⁰ and lipid metabolism regulation properties²¹⁻²⁴. However, these approaches are limited by a lack of robust clinical evidence, and optimizing their benefits, particularly through potential nutritional synergies, requires further clinical validation.

TOTUM-448 is a patented polyphenol-rich blend of 5 different plant extracts (olive leaf (*Olea europaea*), bilberry (*Vaccinium myrtillus*), artichoke leaf (*Cynara scolymus*), chrysanthellum (*Chrysanthellum indicum subsp. afroamericanum* B.L. Turner), black pepper (*Piper nigrum*)) and choline, with potential synergistic properties on liver function. The aim of this work was to investigate whether and how this combination can maintain, preserve, or even improve hepatocyte metabolism in a lipotoxic context.

To address this working hypothesis, we collected human serum containing circulating metabolites resulting from TOTUM-448 ingestion and, following Clinic'n'Cell's patented methodology²⁴⁻³¹, we evaluated *ex vivo* their effect on the function and responses of human hepatocytes under a lipotoxic condition.

Results

Kinetic analysis of circulating metabolites detected in human serum following from TOTUM-448 ingestion

TOTUM-448 was ingested and digested by fasted healthy volunteers, and the presence of circulating metabolites in the bloodstream was monitored over time using a kinetic approach to determine their absorption profile. We found 12 detectable circulating human metabolites, including 2 oleuropein glucuronide isomers, 3 luteolin glucuronide isomers, 1 ferulic acid sulfate, 3 hydroxytyrosol sulfate isomers, 1 hydroxytyrosol glucuronide, 1 tyrosol glucuronide, and 1 homovanilic acid sulfate (Figure 1A). The T_{max} ranged from 40 min to 160 min post-absorption depending on the targeted metabolite and the volunteer. To get a representative viewpoint of the diversity of the metabolites detected, we

plotted, for each time point, the cumulative absorption for each metabolite family. The resulting curve rapidly reached a peak between 80 and 140 min (Figure 1B). Thus, to ensure the collection of serum fractions enriched with the highest diversity of metabolites, the 100 min time point (post-ingestion) was chosen for blood sampling during the second clinical phase.

Viability of HepG2 hepatocytes exposed to naïve or metabolite-enriched human serum

The final objective of this clinical *ex vivo* approach was to investigate whether and how these bioavailable human metabolites may preserve human hepatocyte function (in comparison with naïve serum) in a lipotoxic context mimicking MASLD. Therefore, blood was sampled out from the subjects before the ingestion of TOTUM-448 (naïve fraction), and at 100 min post ingestion (enriched fraction) for *ex vivo* investigations. Cell culture procedures were set as presented in Figure 2A. Hepatocytes were pre-incubated in the presence of either naïve serum (NHS) or TOTUM-448 enriched serum (EHS) for 24 hours before exposure to 250 μ M palmitate for 48 hours, resulting in a total serum incubation of 72 hours

To ensure the biological soundness of this *ex vivo* approach, we first checked that human serum (either naïve or enriched) had no adverse impact on cell growth and viability (Figure 2B). As expected, the absence of fetal calf serum stopped the cell proliferation, while its presence allowed normal cell behavior. The presence of human serum slightly limited cell growth but there was no significant difference between the naïve or the enriched fraction (Figure 2B). The presence of palmitate had no impact on this parameter (Figure 2C). However, when looking more precisely into the pro-apoptotic mechanisms, we found that palmitate markedly induced caspase-3 activity (Figure 2D). This induction was significantly limited in the presence of the enriched serum fraction (group EHS-P compared to NHS-P; -31%, $p \leq 0.01$, Figure 2D).

TOTUM-448 human metabolites limit fat accumulation in human hepatocytes

Hepatocytes were subjected to 250 μ M palmitate to reproduce MASLD-associated lipotoxicity, in presence of either naïve or enriched serum, to determine if metabolites could maintain cellular function under these conditions. Red oil staining revealed that the presence of palmitate dramatically promoted lipid storage in hepatocytes while neither NHS nor EHS impacted lipid accumulation. Pre-incubation of hepatocytes with EHS before palmitate exposure resulted in a significant reduction of Red-Oil staining (Figure 3A and B). To gain deeper insight, we analyzed the lipid species involved in this accumulation. Consistent with the results obtained with Red-Oil staining, palmitate exposure significantly stimulated the accumulation of esterified fatty acids (under the form of mono-, di and triglycerides) and cholesterol in human hepatocytes. The presence of TOTUM-448 metabolites in group EHS-P significantly prevented lipid storage, compared to NHS-P (mono-, di-, triglycerides -27%, $p \leq 0.001$; cholesterol -52%, $p \leq 0.0001$, Figure 3 C and D). Finally, we investigated hepatocytes transcriptomic activity of genes related to lipid metabolism. Exposure to palmitate led to a significant increase in DGAT2 and SREBP1c expression (Figure 3E and F). Co-incubation with EHS fraction (group EHS-P) significantly blunted this effect, reducing DGAT2 and SREBP1c levels by 64% ($p \leq 0.001$) and 68% ($p \leq 0.0001$), compared to NHS-P, respectively.

Limited contribution of oxidative and inflammatory stress modulation to the effects of TOTUM-448 metabolites in human hepatocytes

Along with lipotoxicity, the development of inflammation and oxidative stress is a potent driver of altered hepatocyte function and subsequent MASLD onset. Using a DCFDA probe, we showed that palmitate exposure promoted ROS production (Figure 4A). The presence of TOTUM-448 metabolites in group EHS-P tended to limit this production ($p > 0.05$). Regarding the inflammatory status, while only statistical trends appeared when expressions of the targeted genes were considered separately (suppl. figure S1), 2-way ANOVA revealed a significant group effect ($p = 0.0008$) and significant differences in *post hoc* comparisons of overall inflammatory gene expression between groups NHS and NHS + P (250 μ M), $p < 0.05$, EHS and EHS + P (250 μ M), $p < 0.05$, and NHS + P (250 μ M) and EHS + P (250 μ M), $p < 0.01$, Figure 4B. This suggests that palmitate consistently induced inflammatory gene expression while the presence of Totum-448 metabolites significantly limited this induction. Nonetheless, Totum-448 metabolites did not fully prevent the induction, as the inflammation markers in EHS-P group remained significantly different from the EHS control group.

TOTUM-448 human metabolites prevent lipotoxicity-induced ER stress in human hepatocytes

Abnormal lipid accumulation in steatotic liver coincides with perturbed endoplasmic reticulum (ER) proteostasis in hepatocytes. Therefore, we checked for Unfolded Protein Response (UPR) markers in palmitate stressed hepatocytes. As expected, palmitate markedly and significantly promoted both CHOP and XBP-1 gene expression (Figure 5A and B). Such induction was abolished when cells were treated with TOTUM-448 metabolites in EHS-P, compared to NHS-P (-36%, $p \leq 0.01$ and -66%, $p \leq 0.0001$ for CHOP and XBP1, respectively). Neither the naïve (NHS) nor the enriched human serum (EHS) fraction had any impact on those markers in the absence of a lipotoxic context. To support these data, we analyzed ATF-6 activity as the result of the presence of ATF-6 protein in the nucleus. ATF-6 activity was significantly increased following palmitate stress in NHS-P. In contrast, TOTUM-448 metabolites (EHS-P) tended to inhibit this phenomenon, although this result did not reach statistical significance (-29%, $p = 0.2$, Figure 5C).

Discussion

In this manuscript, we first demonstrated that the ingestion of TOTUM-448 (1) led to bioavailable circulating metabolites. When incubated with human hepatocytes, these metabolites attenuated palmitate-induced intracellular storage of several lipids including (2) esterified fatty acids (under the form of mono-, di and triglycerides) (-27%, $p \leq 0.001$) and (3) cholesterol (-52%, $p = 0.0001$), while inhibiting the gene expression of (4) DGAT2 (-64%, $p \leq 0.001$) and (5) SREBP1-c (-68%, $p \leq 0.0001$). In addition, TOTUM-448 metabolites also blunted (6) palmitate-induced inflammatory gene expression ($p \leq 0.01$). The analysis of ER stress markers showed that, while palmitate exposure potently induced (7) CHOP, ($p \leq 0.001$) and (8) XBP1 mRNA expression ($p \leq 0.0001$), (9) ATF-6 activity ($p = 0.0053$) and (10) Caspase-3 activity ($p \leq 0.0001$), the presence of TOTUM-448 metabolites normalized these markers (-36%, $p \leq 0.01$; -66%, $p \leq 0.0001$ and -31%, $p \leq 0.01$, for CHOP, XBP1 and Caspase-3, respectively; a trend was observed for ATF-6 (-29%, $p = 0.2$)).

Each volunteer was exposed once per clinical phase to 4284 mg of TOTUM-448 representing an approximative global amount of 372 mg of polyphenols (see suppl. Table S1 for chemical characterization of TOTUM-448), making it relevant when considering the recommended daily dose for polyphenol intakes (1g). Additionally, the dose in this work matches that of our parallel clinical trial (currently underway, NCT06704321), where it is being evaluated for long-term human supplementation.

Following Totum-448 ingestion, we were able to detect 12 different circulating metabolites including 2 oleuropein glucuronide isomers (olive leaf ³²), 3 luteolin glucuronide isomers (metabolites that may derive from luteolin-7-O-glucoside, luteolin-7-O-glucuronide and luteolin presents in *chrysanthellum*, in both artichoke and olive leaves ³³), 1 ferulic acid sulfate (metabolite that may derive from either chlorogenic acid present in artichoke leaf and, *chrysanthellum* or caffeoylquinic acid also present in artichoke leaf ^{34,35}), 3 hydroxytyrosol sulfate isomers, 1 hydroxytyrosol glucuronide, 1 tyrosol glucuronide, 1 homovanilic acid sulfate (metabolites that may derive from both hydroxytyrosol and oleuropein present in olive leaf ³²). These metabolomic analyses evidenced a clear and diverse bioavailability of the components of the blend and supported the rationale for further investigation of the bioactivity of the serum.

We recruited male healthy volunteers with no treatment or pathology, ageing from 18 to 35, with a BMI from 20 to 28, and with normal kidney and liver functions. In our clinical *ex vivo* approach, volunteers should be seen as metabolites producers rather than patients expecting health benefits with measurable clinical scores. Thus, this protocol was designed to collect circulating metabolites in a standardized way. The collected serum, either naïve (control baseline) or enriched (with circulating metabolites of interest) are further used/incubated on cell cultures according to the patent DIRV#18-0058 (written invention disclosure by the French National Institute for Agronomic, Food and Environment Research INRAE) to investigate a wide range of cell activities/markers that represent the final readout/score. In this study we targeted hepatocytes as a major protagonist in lipid metabolism and MASLD onset.

Hepatocytes are responsible for glucose, xenobiotic, and lipid metabolism. In this culture model, palmitate consistently promoted lipid accumulation in hepatocytes including esterified fatty acids (under the form of mono-, di and triglycerides) and cholesterol mimicking the onset of MASLD. The presence of metabolites resulting from TOTUM-448 ingestion potently prevented this phenomenon. From a mechanistic point of view, these results align with the downregulation of the gene expression

of DGAT2, an enzyme involved in triglycerides synthesis³⁶ and SREBP1c, involved in the *de novo* lipogenesis in the liver³⁷. Besides, these results are fully consistent with published observations regarding the effect of the different components of TOTUM-448 formulation studied separately. Indeed, in patients with diagnosed MASLD, supplementation with artichoke leaf extracts (*Cynara scolymus L.*, present in Totum-448) (600 mg daily for 9 weeks) reduced liver size and decreased serum total cholesterol and triglyceride concentrations³⁸. In a high-fat diet rat model, artichoke leaf extract supplementation limited hepatic steatosis³⁹. Additionally, a clinical study on a cohort of steatotic patients showed that supplementation with *Chrysanthellum americanum* extract (another ingredient of Totum-448) decreased fibrosis and hepatic steatosis⁴⁰.

In MASLD, the lipotoxic context fuels inflammation and oxidative stress by stimulating ROS production, pro-inflammatory cytokine release and by promoting the recruitment of immune cells. Interestingly, our cellular model replicates these events, as we showed that palmitate exposure increased DCF-DA staining and inflammatory gene expressions. Of note, these detrimental effects were blunted in hepatocytes incubated with TOTUM-448-enriched serum. This observation must be tempered by the fact that the induction of the expression of CXCL1, IL-1 β , IL-6, MCP-1 and TNF α did not reach significance when analyzed separately, suggesting a global effect on inflammatory status rather than a specific effect on a target gene. Consistently, in a recent randomized, controlled clinical study, Guo et al. demonstrated that NLRP3 inflammasome activation is significantly increased in patients with MASLD, but that this activation can be strongly repressed by anthocyanins (provided here by blueberry extract, *Vaccinium myrtillus L.*⁴¹). Additionally, several polyphenols present in the enriched serum have already demonstrated antioxidant properties through scavenging of free radicals or inhibition of oxidative enzymes^{42 43} including oleuropein in a similar HepG2 model⁴⁴. Preclinically, olive leaf extracts have shown anti-inflammatory, antioxidant, and antifibrotic effects⁴⁵. Finally, a 2021 randomized double-blind clinical study shows that supplementation with olive leaf extract (*Olea europaea L.*), characterized by its oleuropein and hydroxytyrosol content, shows a reduction in oxidized LDL⁴⁶.

Hepatocytes are involved in *de novo* lipid synthesis as well as lipid metabolism, making the smooth and rough endoplasmic reticulum (ER) crucial for these functions. Dysregulated lipid metabolism, inflammation, or oxidative stress can thus be both a cause and a consequence of ER dysfunction. As a consequence, a vicious cycle is established that triggers the UPR (Unfolded Protein Response) and activates IRE1, PKR-like ER kinase (PERK), and ATF6 to restore ER homeostasis⁴⁷. Notably, PERK activation induces an antioxidant response^{48,49}, while both PERK and ATF6 contribute to liver recovery, as demonstrated by knockout studies⁵⁰⁻⁵².

In this study, the influence of the TOTUM-448 metabolites on ER-stress management seems to be the cornerstone. In our hepatocytes, palmitate exposure enhanced both XBP-1^{53,54} and CHOP⁵⁵ expressions and significantly stimulated ATF-6 activity. XBP-1 and CHOP upregulation result from the activation of IRE1 and PKR-like ER kinase (PERK), respectively. This upregulation is fully consistent with the literature data. The association between chronic ER and steatotic liver was previously established in both obese mouse models (genetic and high-fat diet models) and obese patients⁵⁶. In parallel, palmitate exposure also significantly enhanced caspase-3 activity in HepG2 cells. Surprisingly, palmitate did not affect hepatocyte viability after 72 hours, a parameter typically considered a hallmark of lipotoxicity. This apparent lack of effect may reflect a lipotoxic stress level sufficient to elicit measurable cellular responses without compromising viability within the timeframe of the experiment. Yet, the absence of cell death during the study period reduces potential bias in data interpretation. The increase in caspase-3 activity, however, was consistently described in liver biopsies from patients suffering from MASH⁵⁷. In line with this, in rats fed a high fat diet, CHOP expression and the active form of caspase-3 were found increased in liver⁵⁸. Interestingly in our work, the presence of metabolites from TOTUM-448 potentially limited this palmitate-induced ER stress and normalized the gene expression of these markers (-36%, $p \leq 0.01$; -66%, $p \leq 0.0001$ and -31%, $p \leq 0.01$, for CHOP, XBP1 and Caspase-3, respectively; while a trend was observed for ATF-6 (-29%, $p = 0.2$)) supporting the relevance of this nutritional strategy to manage MASLD. The protective effects of the serum enriched with TOTUM-448-derived metabolites against palmitate-induced endoplasmic reticulum (ER) stress may, at least in part, be attributed to the action of specific polyphenols known to be present in the plant extracts composing TOTUM-448. Several of these compounds have already been reported to mitigate ER stress. For example, hydroxytyrosol, a major compound of olive leaf extract, has been shown to protect HepG2 cells from tunicamycin-induced ER stress⁵⁹. Similarly, luteolin, found in artichoke and *Chrysanthellum* extracts, was reported to prevent palmitate-induced ER stress, autophagy and apoptosis in AML12 hepatocytes⁶⁰. In addition, chlorogenic acid, which is present in artichoke leaf extract, demonstrated protective effects against palmitate-induced ER stress in primary rat hepatocytes⁶¹.

Inflammation, oxidative stress and ER stress being widely imbricated^{62,63} we are facing a chicken-and-egg situation and the mode of action by which TOTUM-448 metabolites confer hepatoprotection remains unclear, as they may either improve hepatocyte function and lipid metabolism by preserving ER homeostasis, or ER stress may decrease as a result of enhanced lipid metabolism. Indeed, it has been reported that caloric restriction improves steatosis and alleviates ER stress⁶⁴ while normalization of ER stress markers was correlated with reduced hepatic lipid content⁶⁵. ER is the major site of lipid synthesis in hepatocytes including triglyceride synthesis and storage. Indeed, SREBP1c and SREBP2, transcription factors responsible for fatty acid and sterol synthesis respectively, together with the enzyme diacylglycerol acyltransferase (DGAT), are localized to the ER and play key roles in regulating and catalyzing de novo lipogenesis⁴⁷. Accordingly, TOTUM-448 metabolites were found to reduce SREBP1c and DGAT2 expression to blunt the vicious cycle of MASLD and promote hepatocyte homeostasis. Notably, the metabolites had no effect on their own but showed protective effects in the presence of palmitate, supporting the preventive role of this ingredient in maintaining hepatocyte function and homeostasis (Figure 6).

We acknowledge several limitations to this study. First, the type of fatty acid used to induce lipotoxicity may play a role. In recent lipidomic studies using *in vitro* models of lipotoxicity in hepatocytes (HepaRG and HuH7), palmitic acid (PA) was found to induce a more severe phenotype than oleic acid with greater inflammation and oxidative stress, accompanied by specific changes in the lipidome^{66,67}. In this work, we chose to use only palmitic acid. Since saturated and unsaturated fatty acids modulate lipid metabolism differently in these models (a statement that is particularly true for triglycerides metabolism), further investigations with a combination of different type of fatty acids would increase the physiological relevance of the observed hepatoprotective properties of TOTUM-448. On a different note, although HepG2 cells provide a well-characterized and reproducible hepatocyte model for assessing lipotoxicity-associated mechanisms, they remain a cell line derived from a hepatocellular carcinoma and hence differ from primary hepatocytes in many physiological features including metabolic profile, inflammatory cascade and lipotoxic sensitivity. HepG2 cells display limited activation of inflammatory pathways compared with primary hepatocytes or co-culture systems including immune cells. Additional investigations in primary hepatocytes would be required to reach a more comprehensive view. However, our study primarily aimed to investigate hepatocellular responses to lipotoxic stress rather than to model the full inflammatory cascade. Another limitation of this study lays in the fact that oxidative stress was assessed using DCFDA staining, which reflects total cellular ROS levels. Although this approach does not specifically distinguish mitochondrial ROS, it provides an integrated measure of redox imbalance under palmitic acid exposure.

In conclusion, this *ex vivo* clinical trial demonstrates for the first time that TOTUM-448-derived metabolites protect hepatocytes from lipotoxic stress by modulating lipid metabolism, inflammation, and ER stress, highlighting the potential of TOTUM-448 formulation as a preventive strategy for managing early stages of MASLD.

Methods

Study Product

VALBIOTIS has developed TOTUM-448 (priority French patent: FR1460064), a food ingredient composed of the combination of different plant extracts aforementioned, and choline. The selection of the extracts was originally driven by published data regarding their possible support in preventing liver conditions. The formulation of the product meets the requirements of European regulations relating to food supplements (European directive n°2002/46/EC and French decree n°2006-352 of March 20, 2006 which transposes it).

Ethics Preclinical Study

The study was conducted in accordance with the Declaration of Helsinki of 1975 (<https://www.wma.net/what-we-do/medical-ethics/declaration-of-helsinki> (accessed on November, 12th 2021)) revised in 2013. The human study was approved by the French Ethical Committee (NCT06047847/ N° ID RCB: 2023-A00579-36/ Comité de Protection des Personnes CPP Est III; approved 25th July 2023). The volunteers were informed of the objectives and the potential risks of the present study and provided their written informed consent before they participated in the study.

Human Study Design and Pharmacokinetic of Absorption

Ten healthy men (age: 24.5 years old, +/- 3.48; BMI: 23.35 kg/m², +/-1.72; >60 kg) were enrolled for this study. Only male healthy volunteers with no treatment or pathology, aged from 18 to 35,

BMI ranged from 20 to 28, with normal kidney and liver functions were recruited. They were checked for normal blood formulation, renal (urea and creatinine), and liver functions (aspartate aminotransferase (AST), alanine aminotransferase (ALT), and gamma-glutamyltransferase (GGT) activities). Serum samples from all participants were collected in plain tubes. Unfortunately, female volunteers were not to be recruited to avoid hormonal variation and subsequent bias.

The first phase of this clinical project was dedicated to determine TOTUM-448 metabolites absorption profile. Prior to receiving the tested product, volunteers were fasted for 12 h before being given 4284 mg of TOTUM-448 in the form of eight capsules. Nine milliliters of venous blood (median cubital vein) were collected before the ingestion of TOTUM-448 and then every 20 min for 240 min after the ingestion of the ingredient. Collected serum was aliquoted in sterile tubes and then stored until analyses at $-80\text{ }^{\circ}\text{C}$. Location of storage: Clinical Investigation Center - Inserm 1405, University Hospital of Clermont-Ferrand. This dedicated research department is fully compliant with regulatory and ethical clinical obligations (certification according to the French standard NF S 96900).

Circulating metabolites resulting from TOTUM-448 ingestion were quantified and characterized by ultra-high performance liquid chromatography with tandem mass spectrometry (UHPLC-MS/MS). Upon characterization of the absorption profile, volunteers underwent a second visit to the clinical center for the second phase of the project in order to collect serum containing TOTUM-448 metabolites at $T_{\text{max}}/C_{\text{max}}$. Context was similar to phase 1, namely, prior to receiving the tested product, volunteers were fasted for 12 h before being given 4284 mg of TOTUM-448 (eight capsules). Forty-eight milliliters of venous blood were collected before the product ingestion as a control baseline naïve serum. Then, at C_{max} in the post-absorptive phase, forty-eight milliliters of enriched blood was collected. Collection, aliquoting and storage conditions were similar to phase 1.

Phenolic Compounds Extraction from Serum

To extract phenolic compounds from serum, 0.9 mL of serum was combined with 2.7 mL of 100% methanol and mixed for one minute. The mixture was then centrifuged at $20,000\times g$ for 15 minutes at room temperature. The supernatant was collected in separate tubes and evaporated to dryness using a SpeedVac Concentrator (Thermo Fisher Scientific, Illkirch, France). The dried material was reconstituted in 80 μL of a 50:50 methanol/water solution. After agitation for one minute, ultrasonication for one minute, and centrifugation at $20,000\times g$ for 15 minutes at room temperature, the supernatant was stored at $-20\text{ }^{\circ}\text{C}$ until analysis by ultra-high performance liquid chromatography with tandem mass spectrometry detection.

Ultra-High Performance Liquid Chromatography-Mass Spectrometry (UHPLC-MS/MS)

Phenolic compounds of serum were analyzed using a 1260 Infinity UHPLC system (Agilent Technologies) coupled to a 6430 triple quadrupole mass spectrometer (Agilent Technologies, Les Ulis, France). Four microliters of the sample were injected into a Zorbax SB-C18 column ($2.1\times 100\text{ mm}$, $1.8\text{ }\mu\text{m}$) (Agilent Technologies, Les Ulis, France). The mobile phase consisted of two solvents: solvent A (water/formic acid 99.9:0.1, v/v) and solvent B (acetonitrile/formic acid 99.9:0.1, v/v), with a flow rate of 0.3 mL/min. The gradient for solvent A was as follows: 0 min 1% B, 2 min 5% B, 3 min 25% B, 6 min 25% B, 8 min 40% B, 11.5 min 95% B, 14 min 95% B, and 16 min 1% B. The MS/MS parameters were set to negative ion mode, with a capillary tension of 3000 V, a nebulizer pressure of 15 psi, a dry gas flow rate of 11 L/min, a dry temperature of $350\text{ }^{\circ}\text{C}$, and acquisition in multiple reaction monitoring (MRM) mode (Supplementary Table S2). Data were processed using MassHunter software (Agilent Technologies).

Human Hepatocyte Cultures

The HepG2 human hepatocyte cell line was obtained from the European Collection of Authenticated Cell Cultures and purchased from Sigma-Aldrich (Saint-Quentin-Fallavier, France - 85011430). During the maintenance phase, HepG2 cells were cultured in Dulbecco's modified Eagle's medium (Invitrogen, Carlsbad, CA, USA) supplemented with 10% fetal bovine serum (Invitrogen) and 1% penicillin/streptomycin (Life Technologies, Villebon-Sur-Yvette, France). All cell cultures were maintained at $37\text{ }^{\circ}\text{C}$ in an atmosphere of 5% $\text{CO}_2/95\%$ air. To analyze the effects of TOTUM-448 metabolites, the cells were preincubated for 24 hours in DMEM with 10% human serum (either naïve, NHS or containing circulating metabolites, EHS) according to Clinic'n'Cell methodology (DIRV INRAE 18-0058), followed by an additional 48-hour incubation in a palmitate-induced lipidic

stress environment (palmitate 250 μ M; Sigma, Saint-Quentin-Fallavier, France).

Palmitate Solution

Palmitate (Sigma, Saint-Quentin-Fallavier, France) was first coupled to bovine serum albumin (BSA; Sigma, Saint-Quentin-Fallavier, France) and then fully dissolved in pure ethanol at 70 °C to achieve a final concentration of 500 mmol/L. This stock solution was mixed with a prewarmed BSA solution (10% w/w, 37 °C) to reach a final concentration of 5 mmol/L. The mixture was clarified by incubating at 55 °C for 15 minutes twice. The final palmitate:BSA molar ratio was set at 3.2:1. The control vehicle was prepared under the same conditions. A 10% w/w BSA solution was added to an equivalent volume of ethanol to match the final palmitate solution. The final ethanol concentration was less than 0.05% by volume in all experiments.

Cell Viability

Cell viability was assessed using an XTT-based method (Cell Proliferation Kit II, Sigma-Aldrich, Saint-Quentin-Fallavier, France). Experimental procedures were followed according to the supplier's recommendations. Optical density was measured at 450 nm, with measurements performed in hexuplicate for each sample condition of the ten volunteers.

DCF-DA Staining

HepG2 cells were seeded on a 96-well dark-wall clear-bottom plate at a density of 12,000 cells/cm². Twenty-four hours after palmitate (PA) stimulation, cells were washed and incubated with 5 μ M of 2',7'-dichlorofluorescein diacetate (DCF-DA) solution (ab113851, Abcam) for 45 minutes at 37 °C in the dark, then rinsed with the dilution buffer according to the manufacturer's protocol. Fluorescence was measured using a fluorescence plate reader (Berthold – Mitras) at Ex/Em = 485/535 nm in end-point mode.

Red Oil Staining

Oil Red O solution (0.5% in isopropanol) was obtained from Sigma (Saint-Quentin-Fallavier, France) and staining was performed according to the supplier's recommendations. The working solution (0.2% in 60% isopropanol) was prepared by mixing Oil Red O solution with distilled water in a 3:2 ratio. Prior to staining, cells were washed twice with PBS and fixed with 4% paraformaldehyde for 30 minutes at room temperature. After discarding the PFA solution, cells were washed twice with water, incubated with 60% isopropanol for 5 minutes, and then stained with the working Oil Red O solution for 20 minutes. After five additional washes with water, cells were observed under a microscope.

Mono-, di- and triglycerides Levels

Mono-, di- and triglyceride content in HepG2 cells was determined using a triglyceride assay kit (Abcam, Paris, France—ab65336) according to the manufacturer's protocol. Tri-, di- and monoglycerides were converted to free fatty acids and glycerol, and the glycerol was oxidized to generate a colorimetric product measured at 570 nm. The lipase used in the kit has a high affinity for triglycerides in micellar form but a weaker affinity for di- and monoglycerides. However, since the enzyme cleaves triglycerides sequentially into free fatty acids and glycerol, all three forms may be detected.

Cholesterol Levels in HepG2 Cells

Cholesterol levels were evaluated in cell lysates using a cholesterol quantification kit (Sigma, Saint-Quentin-Fallavier, France—MAK043) according to the manufacturer's recommendations. Total cholesterol concentration was measured by a coupled enzyme reaction resulting in a fluorometric (λ_{ex} = 535 nm/ λ_{em} = 587 nm) product related to the cholesterol content.

Real-Time RT-qPCR

mRNA from HepG2 cells were isolated using TRIzol™ Reagent (Ambion - Life Technologies) according to the supplier's recommendations. The expression levels of DGAT2 (Diacylglycerol O-acyltransferase 2), SREBP1-c (Sterol regulatory element-binding protein 1c), CXCL-1 (CXC motif chemokine ligand 1), IL-1 β , IL-6, MCP-1, TNF α , CHOP (C/EBP homologous protein), and XBP-1 mRNA were measured by RT-qPCR (PowerUp SYBRgreen, Applied Biosystems). β -Actin was used as a housekeeping gene. Primers were designed as follows: IL6-F: 5'- TTC TGT GCC TGC AGC TTC -3'; IL6-R: 5'- GCA GAT GAG TAC AAA AGT CCT GA -3'; MCP-1-F: 5'- GCC TCT GCA CTG AGA TCT TC -3'; MCP-1-R: 5'- AGC AGC CAC CTT CAT TCC -3'; TNF α -F: 5'- TCA GCT TGA GGG TTT GCT AC -3';

TNF α -R: 5'- TGC ACT TTG GAG TGA TCG G -3'; IL1b-F: 5'- GAA CAA GTC ATC CTC ATT GCC -3'; IL1b-R: 5'- CAG CCA ATC TTC ATT GCT CAA G -3'; CXCL1-F: 5'- TCT CTC TTT CCT CTT CTG TTC CTA -3'; CXCL1-R: 5'- CAT CCC CCA TAG TTA AGA AAA TCA TC -3'; DGAT2-F: 5'- TCA GCA GGT TGT GTG TCT TC -3'; DGAT2-R: 5'- GGC TGG TGT TTG ACT GGA A -3'; SREBP1c-F: 5'- CGG AAC CAT CTT GGC AAC AGT -3'; SREBP1c-R: 5'- CGC TTC TCA ATG GCG TTG T -3'; XBP1-F: 5'- CGC TGT CTT AAC TCC TGG TTC -3'; XBP1-R: 5'- CTG GAA CAG CAA GTG GTA GA -3'; CHOP-F: 5'- CAA TGA CTC AGC TGC CAT CT -3'; CHOP-R: 5'- AGC GAC AGA GCC AAA ATC AG -3'; ACT β -F: 5'-ATT GGC AAT GAG CGG TTC-3'; ACT β -R: 5'-GGA TGC CAC AGG ACT CCA-3'.

Cell Lysis

The lysis buffer was prepared by mixing 50 mmol/L Tris pH 7.8, 150 mmol/L NaCl, 0.5% sodium deoxycholate, and 1% NP40. Cell lysates were stored at -80°C until analysis.

Protein Quantification

Protein content was measured using the BCA Protein Assay Kit (Sigma-Aldrich, Saint-Quentin-Fallavier, France). The BCA protein assay is based on a biuret reaction, where the reduction of Cu $^{2+}$ to Cu $^{+}$ in the presence of proteins in an alkaline environment is proportional to the protein concentration. The chromogenic reagent bicinchoninic acid chelates the reduced copper, forming a purple complex that absorbs at 562 nm.

Caspase-3 activity

Caspase-3 activity in cells was evaluated using the Caspase-3 Assay Kit (Abcam, Paris, France—ab39401) according to the manufacturer's protocol. To lyse the frozen monolayer of HepG2 cells grown on a twelve-well plate, 200 μL of the provided lysis buffer was used per well. Fifty microliters of freshly prepared lysate were then mixed with 55 μL of reconstituted reaction mix. Optical density at 405 nm was measured every two minutes for 90 minutes at 37°C .

ATF6 activity

Nuclear extracts were prepared from HepG2 cells using the Nuclear Extraction Kit (Abcam, Paris, France—ab113474), and protein content was determined using the BCA Protein Assay Kit (Sigma-Aldrich, Saint-Quentin-Fallavier, France). ATF6 protein expression was assessed using the ATF6 ELISA Kit (Signosis, TE-0041) according to the manufacturer's instructions.

Statistics

Statistical analyses and figure generation were performed using Prism V.10.4.1 (GraphPad Software). The statistical plan included a Shapiro-Wilk normality test to determine if the data were consistent with Gaussian distribution. If the data were not normally distributed, a Kruskal-Wallis non-parametric test was used, followed by Dunn's test for post hoc comparisons. For normally distributed data with equal variance, one-way or two-way ANOVA with Tukey's test for multiple comparisons was applied. For inflammatory gene expression, a two-way ANOVA targeting a main column effect was followed by Tukey's post hoc test. If data were missing, making it impossible to run a repeated-measure two-way ANOVA, a mixed-effects analysis was used instead. In Figure 1, values are presented as means \pm SEM, with statistical significance indicated as follows: * for $p < 0.05$; ** for $p < 0.01$; *** for $p < 0.001$; **** for $p < 0.0001$; ns for $p > 0.05$. For Figures 2 to 5, values are presented as box plots indicating median and interquartile range (lower and upper), with whiskers indicating minimum and maximum values. Statistical significance is indicated as follows: * for $p < 0.05$; ** for $p < 0.01$; **** for $p < 0.0001$; ns for $p > 0.05$.

References

- 1 Younossi, Z. *et al.* Global burden of NAFLD and NASH: trends, predictions, risk factors and prevention. *Nat Rev Gastroenterol Hepatol* **15**, 11–20, doi:10.1038/nrgastro.2017.109 (2018).
- 2 Rinella, M. E. *et al.* A multisociety Delphi consensus statement on new fatty liver disease nomenclature. *Hepatology* **78**, 1966–1986, doi:10.1097/HEP.0000000000000520 (2023).
- 3 Chan, W. K. *et al.* Metabolic Dysfunction-Associated Steatotic Liver Disease (MASLD): A State-of-the-Art Review. *J Obes Metab Syndr* **32**, 197–213, doi:10.7570/jomes23052 (2023).

- 4 European Association for the Study of the Liver, European Association for the Study of Diabetes & European Association for the Study of Obesity. EASL-EASD-EASO Clinical Practice Guidelines for the management of non-alcoholic fatty liver disease. *J Hepatol* **64**, 1388-1402, doi:10.1016/j.jhep.2015.11.004 (2016).
- 5 Marjot, T., Moolla, A., Cobbold, J. F., Hodson, L. & Tomlinson, J. W. Nonalcoholic Fatty Liver Disease in Adults: Current Concepts in Etiology, Outcomes, and Management. *Endocr Rev* **41**, doi:10.1210/edrv/bnz009 (2020).
- 6 Younossi, Z. M. Non-alcoholic fatty liver disease - A global public health perspective. *J Hepatol* **70**, 531-544, doi:10.1016/j.jhep.2018.10.033 (2019).
- 7 Sato-Espinoza, K., Chotiprasidhi, P., Huaman, M. R. & Diaz-Ferrer, J. Update in lean metabolic dysfunction-associated steatotic liver disease. *World J Hepatol* **16**, 452-464, doi:10.4254/wjh.v16.i3.452 (2024).
- 8 Israelsen, M., Francque, S., Tsochatzis, E. A. & Krag, A. Steatotic liver disease. *Lancet* **404**, 1761-1778, doi:10.1016/S0140-6736(24)01811-7 (2024).
- 9 Zhao, Q. & Deng, Y. Comparison of mortality outcomes in individuals with MASLD and/or MAFLD. *J Hepatol* **80**, e62-e64, doi:10.1016/j.jhep.2023.08.003 (2024).
- 10 Ciardullo, S. *et al.* Impact of MASLD and MetALD on clinical outcomes: A meta-analysis of preliminary evidence. *Liver Int* **44**, 1762-1767, doi:10.1111/liv.15939 (2024).
- 11 Zhang, H. *et al.* Global burden of metabolic diseases, 1990-2021. *Metabolism* **160**, 155999, doi:10.1016/j.metabol.2024.155999 (2024).
- 12 Parente, A. *et al.* Liver transplant for hepatocellular carcinoma in metabolic dysfunction-associated steatotic liver disease versus other etiologies: A meta-analysis. *Dig Liver Dis* **57**, 362-369, doi:10.1016/j.dld.2024.09.025 (2025).
- 13 Ciardullo, S., Muraca, E., Vergani, M., Invernizzi, P. & Perseghin, G. Advancements in pharmacological treatment of NAFLD/MASLD: a focus on metabolic and liver-targeted interventions. *Gastroenterol Rep (Oxf)* **12**, goae029, doi:10.1093/gastro/goae029 (2024).
- 14 Dutta, D. *et al.* Role of Resmetirom, a Liver-Directed, Thyroid Hormone Receptor Beta-Selective Agonist, in Managing Nonalcoholic Steatohepatitis: A Systematic Review and Meta-Analysis. *Endocr Pract* **30**, 631-638, doi:10.1016/j.eprac.2024.04.016 (2024).
- 15 Sanyal, A. J. *et al.* Phase 3 Trial of Semaglutide in Metabolic Dysfunction-Associated Steatohepatitis. *N Engl J Med* **392**, 2089-2099, doi:10.1056/NEJMoa2413258 (2025).
- 16 Harrison, S. A. *et al.* A Phase 3, Randomized, Controlled Trial of Resmetirom in NASH with Liver Fibrosis. *N Engl J Med* **390**, 497-509, doi:10.1056/NEJMoa2309000 (2024).
- 17 Taub, R. *et al.* Lipid lowering in healthy volunteers treated with multiple doses of MGL-3196, a liver-targeted thyroid hormone receptor-beta agonist. *Atherosclerosis* **230**, 373-380, doi:10.1016/j.atherosclerosis.2013.07.056 (2013).
- 18 Keam, S. J. Resmetirom: First Approval. *Drugs* **84**, 729-735, doi:10.1007/s40265-024-02045-0 (2024).
- 19 Javanbakht, M., Fishman, J., Moloney, E., Rydqvist, P. & Ansari-pour, A. Early Cost-Effectiveness and Price Threshold Analyses of Resmetirom: An Investigational Treatment for Management of Nonalcoholic Steatohepatitis. *Pharmacoecon Open* **7**, 93-110, doi:10.1007/s41669-022-00370-2 (2023).
- 20 Tang, X., Wei, R., Deng, A. & Lei, T. Protective Effects of Ethanolic Extracts from Artichoke, an Edible Herbal Medicine, against Acute Alcohol-Induced Liver Injury in Mice. *Nutrients* **9**, doi:10.3390/nu9091000 (2017).
- 21 Sahebkar, A. *et al.* Lipid-lowering activity of artichoke extracts: A systematic review and meta-analysis. *Crit Rev Food Sci Nutr* **58**, 2549-2556, doi:10.1080/10408398.2017.1332572 (2018).
- 22 Santos, H. O., Bueno, A. A. & Mota, J. F. The effect of artichoke on lipid profile: A review of possible mechanisms of action. *Pharmacol Res* **137**, 170-178, doi:10.1016/j.phrs.2018.10.007 (2018).
- 23 Ben Salem, M. *et al.* Pharmacological Studies of Artichoke Leaf Extract and Their Health Benefits. *Plant Foods Hum Nutr* **70**, 441-453, doi:10.1007/s11130-015-0503-8 (2015).

- 24 Wauquier, F. *et al.* Metabolic and Anti-Inflammatory Protective Properties of Human Enriched Serum Following Artichoke Leaf Extract Absorption: Results from an Innovative Ex Vivo Clinical Trial. *Nutrients* **13**, doi:10.3390/nu13082653 (2021).
- 25 Le Faouder, J. *et al.* Human Serum, Following Absorption of Fish Cartilage Hydrolysate, Promotes Dermal Fibroblast Healing through Anti-Inflammatory and Immunomodulatory Proteins. *Biomedicines* **12**, doi:10.3390/biomedicines12092132 (2024).
- 26 Pourtau, L. *et al.* Reduced Production of Pro-Inflammatory and Pro-Catabolic Factors by Human Serum Metabolites Derived from a Patented Saffron Extract Intake. *Pharmaceutics* **16**, doi:10.3390/pharmaceutics16030336 (2024).
- 27 Wauquier, F. *et al.* Benefits of Circulating Human Metabolites from Fish Cartilage Hydrolysate on Primary Human Dermal Fibroblasts, an Ex Vivo Clinical Investigation for Skin Health Applications. *Nutrients* **14**, doi:10.3390/nu14235027 (2022).
- 28 Wauquier, F. *et al.* Circulating Human Metabolites Resulting from TOTUM-070 Absorption (a Plant-Based, Polyphenol-Rich Ingredient) Improve Lipid Metabolism in Human Hepatocytes: Lessons from an Original Ex Vivo Clinical Trial. *Nutrients* **15**, doi:10.3390/nu15081903 (2023).
- 29 Wauquier, F. *et al.* Circulating Human Serum Metabolites Derived from the Intake of a Saffron Extract (Safr'Inside(TM)) Protect Neurons from Oxidative Stress: Consideration for Depressive Disorders. *Nutrients* **14**, doi:10.3390/nu14071511 (2022).
- 30 Wauquier, F. *et al.* Chondroprotective Properties of Human-Enriched Serum Following Polyphenol Extract Absorption: Results from an Exploratory Clinical Trial. *Nutrients* **11**, doi:10.3390/nu11123071 (2019).
- 31 Yves, H. *et al.* Oral supplementation with fish cartilage hydrolysate in an adult population suffering from knee pain and function discomfort: results from an innovative approach combining an exploratory clinical study and an ex vivo clinical investigation. *BMC Musculoskelet Disord* **24**, 748, doi:10.1186/s12891-023-06800-4 (2023).
- 32 Galmes, S., Reynes, B., Palou, M., Palou-March, A. & Palou, A. Absorption, Distribution, Metabolism, and Excretion of the Main Olive Tree Phenols and Polyphenols: A Literature Review. *J Agric Food Chem* **69**, 5281–5296, doi:10.1021/acs.jafc.1c00737 (2021).
- 33 Hayasaka, N. *et al.* Absorption and Metabolism of Luteolin in Rats and Humans in Relation to in Vitro Anti-inflammatory Effects. *J Agric Food Chem* **66**, 11320–11329, doi:10.1021/acs.jafc.8b03273 (2018).
- 34 Lu, H., Tian, Z., Cui, Y., Liu, Z. & Ma, X. Chlorogenic acid: A comprehensive review of the dietary sources, processing effects, bioavailability, beneficial properties, mechanisms of action, and future directions. *Compr Rev Food Sci Food Saf* **19**, 3130–3158, doi:10.1111/1541-4337.12620 (2020).
- 35 Naveed, M. *et al.* Chlorogenic acid (CGA): A pharmacological review and call for further research. *Biomed Pharmacother* **97**, 67–74, doi:10.1016/j.biopha.2017.10.064 (2018).
- 36 Yen, C. L., Stone, S. J., Koliwad, S., Harris, C. & Farese, R. V., Jr. Thematic review series: glycerolipids. DGAT enzymes and triacylglycerol biosynthesis. *J Lipid Res* **49**, 2283–2301, doi:10.1194/jlr.R800018-JLR200 (2008).
- 37 Sanders, F. W. & Griffin, J. L. De novo lipogenesis in the liver in health and disease: more than just a shunting yard for glucose. *Biol Rev Camb Philos Soc* **91**, 452–468, doi:10.1111/brv.12178 (2016).
- 38 Panahi, Y. *et al.* Efficacy of artichoke leaf extract in non-alcoholic fatty liver disease: A pilot double-blind randomized controlled trial. *Phytother Res* **32**, 1382–1387, doi:10.1002/ptr.6073 (2018).
- 39 Ben Salem, M. *et al.* LC-MS/MS Analysis and Hepatoprotective Activity of Artichoke (*Cynara scolymus* L.) Leaves Extract against High Fat Diet-Induced Obesity in Rats. *Biomed Res Int* **2019**, 4851279, doi:10.1155/2019/4851279 (2019).
- 40 Palmieri, B., Corazzari, V., Panariello Brasile, D. G., Sangiovanni, V. & Vadal, A. M. Hepatic steatosis integrated approach: nutritional guidelines and joined nutraceutical administration. *Minerva Gastroenterol Dietol* **66**, 307–320, doi:10.23736/S1121-421X.20.02738-5 (2020).

- 41 Zhu, X. *et al.* Upregulated NLRP3 inflammasome activation is attenuated by anthocyanins in patients with nonalcoholic fatty liver disease: A case-control and an intervention study. *Clin Res Hepatol Gastroenterol* **46**, 101843, doi:10.1016/j.clinre.2021.101843 (2022).
- 42 Hussain, T. *et al.* Oxidative Stress and Inflammation: What Polyphenols Can Do for Us? *Oxid Med Cell Longev* **2016**, 7432797, doi:10.1155/2016/7432797 (2016).
- 43 Tsao, R. Chemistry and biochemistry of dietary polyphenols. *Nutrients* **2**, 1231-1246, doi:10.3390/nu2121231 (2010).
- 44 Katsoulieiris, E. N. The olive leaf extract oleuropein exerts protective effects against oxidant-induced cell death, concurrently displaying pro-oxidant activity in human hepatocarcinoma cells. *Redox Rep* **21**, 90-97, doi:10.1179/1351000215Y.0000000039 (2016).
- 45 Karanovic, D. *et al.* Olive leaf extract attenuates adriamycin-induced focal segmental glomerulosclerosis in spontaneously hypertensive rats via suppression of oxidative stress, hyperlipidemia, and fibrosis. *Phytother Res* **35**, 1534-1545, doi:10.1002/ptr.6920 (2021).
- 46 Stevens, Y., Winkens, B., Jonkers, D. & Masclee, A. The effect of olive leaf extract on cardiovascular health markers: a randomized placebo-controlled clinical trial. *Eur J Nutr* **60**, 2111-2120, doi:10.1007/s00394-020-02397-9 (2021).
- 47 Lebeauupin, C. *et al.* Endoplasmic reticulum stress signalling and the pathogenesis of non-alcoholic fatty liver disease. *J Hepatol* **69**, 927-947, doi:10.1016/j.jhep.2018.06.008 (2018).
- 48 Cullinan, S. B. & Diehl, J. A. PERK-dependent activation of Nrf2 contributes to redox homeostasis and cell survival following endoplasmic reticulum stress. *J Biol Chem* **279**, 20108-20117, doi:10.1074/jbc.M314219200 (2004).
- 49 Cullinan, S. B. *et al.* Nrf2 is a direct PERK substrate and effector of PERK-dependent cell survival. *Mol Cell Biol* **23**, 7198-7209, doi:10.1128/MCB.23.20.7198-7209.2003 (2003).
- 50 Rutkowski, D. T. *et al.* UPR pathways combine to prevent hepatic steatosis caused by ER stress-mediated suppression of transcriptional master regulators. *Dev Cell* **15**, 829-840, doi:10.1016/j.devcel.2008.10.015 (2008).
- 51 Wu, J. *et al.* ATF6alpha optimizes long-term endoplasmic reticulum function to protect cells from chronic stress. *Dev Cell* **13**, 351-364, doi:10.1016/j.devcel.2007.07.005 (2007).
- 52 Yamamoto, K. *et al.* Induction of liver steatosis and lipid droplet formation in ATF6alpha-knockout mice burdened with pharmacological endoplasmic reticulum stress. *Mol Biol Cell* **21**, 2975-2986, doi:10.1091/mbc.E09-02-0133 (2010).
- 53 Jurkin, J. *et al.* The mammalian tRNA ligase complex mediates splicing of XBP1 mRNA and controls antibody secretion in plasma cells. *EMBO J* **33**, 2922-2936, doi:10.15252/embj.201490332 (2014).
- 54 Wang, M. & Kaufman, R. J. Protein misfolding in the endoplasmic reticulum as a conduit to human disease. *Nature* **529**, 326-335, doi:10.1038/nature17041 (2016).
- 55 Averous, J. *et al.* Induction of CHOP expression by amino acid limitation requires both ATF4 expression and ATF2 phosphorylation. *J Biol Chem* **279**, 5288-5297, doi:10.1074/jbc.M311862200 (2004).
- 56 Ozcan, U. *et al.* Endoplasmic reticulum stress links obesity, insulin action, and type 2 diabetes. *Science* **306**, 457-461, doi:10.1126/science.1103160 (2004).
- 57 Feldstein, A. E. *et al.* Hepatocyte apoptosis and fas expression are prominent features of human nonalcoholic steatohepatitis. *Gastroenterology* **125**, 437-443, doi:10.1016/s0016-5085(03)00907-7 (2003).
- 58 Wang, D., Wei, Y. & Pagliassotti, M. J. Saturated fatty acids promote endoplasmic reticulum stress and liver injury in rats with hepatic steatosis. *Endocrinology* **147**, 943-951, doi:10.1210/en.2005-0570 (2006).
- 59 Giordano, E., Davalos, A., Nicod, N. & Visioli, F. Hydroxytyrosol attenuates tunicamycin-induced endoplasmic reticulum stress in human hepatocarcinoma cells. *Mol Nutr Food Res* **58**, 954-962, doi:10.1002/mnfr.201300465 (2014).

- 60 Huang, C. Y. *et al.* Luteolin ameliorates palmitate-induced lipotoxicity in hepatocytes by mediating endoplasmic reticulum stress and autophagy. *Food Chem Toxicol* **171**, 113554, doi:10.1016/j.fct.2022.113554 (2023).
- 61 Zhang, Y. *et al.* Chlorogenic acid against palmitic acid in endoplasmic reticulum stress-mediated apoptosis resulting in protective effect of primary rat hepatocytes. *Lipids Health Dis* **17**, 270, doi:10.1186/s12944-018-0916-0 (2018).
- 62 Wauquier, F., Leotoing, L., Coxam, V., Guicheux, J. & Wittrant, Y. Oxidative stress in bone remodelling and disease. *Trends Mol Med* **15**, 468–477, doi:10.1016/j.molmed.2009.08.004 (2009).
- 63 Malhi, H. & Kaufman, R. J. Endoplasmic reticulum stress in liver disease. *J Hepatol* **54**, 795–809, doi:10.1016/j.jhep.2010.11.005 (2011).
- 64 Ding, S. *et al.* Resveratrol and caloric restriction prevent hepatic steatosis by regulating SIRT1-autophagy pathway and alleviating endoplasmic reticulum stress in high-fat diet-fed rats. *PLoS One* **12**, e0183541, doi:10.1371/journal.pone.0183541 (2017).
- 65 Gregor, M. F. *et al.* Endoplasmic reticulum stress is reduced in tissues of obese subjects after weight loss. *Diabetes* **58**, 693–700, doi:10.2337/db08-1220 (2009).
- 66 Migni, A. *et al.* Melatonin Repairs the Lipidome of Human Hepatocytes Exposed to Cd and Free Fatty Acid-Induced Lipotoxicity. *J Pineal Res* **77**, e70047, doi:10.1111/jpi.70047 (2025).
- 67 Moliterni, C. *et al.* Lipotoxicity of palmitic acid is associated with DGAT1 downregulation and abolished by PPARalpha activation in liver cells. *J Lipid Res* **65**, 100692, doi:10.1016/j.jlr.2024.100692 (2024).
- 68 Kleinnijenhuis, A. J. *et al.* Non-targeted and targeted analysis of collagen hydrolysates during the course of digestion and absorption. *Anal Bioanal Chem* **412**, 973–982, doi:10.1007/s00216-019-02323-x (2020).
- 69 Wauquier, F. *et al.* Human Enriched Serum Following Hydrolysed Collagen Absorption Modulates Bone Cell Activity: from Bedside to Bench and Vice Versa. *Nutrients* **11**, doi:10.3390/nu11061249 (2019).
- 70 Wauquier, F. *et al.* TOTUM-854 Human Circulating Bioactives Preserve Endothelial Cell Function. *Nutrients* **17**, doi:10.3390/nu17081331 (2025).

Funding

This study was sponsored by VALBIOTIS SA.

This work was supported by the Bordeaux Metabolome Facility and the MetaboHUB (ANR11-INBS-0010) project.

This work was funded by the Pack Ambition Recherche 2021 MICROMETiv (Region Auvergne Rhône Alpes) and the common laboratory MEDIS-VALBIOTIS Labcom MIMETiv (ANR, ANR-22-LCV1-0003-01).

Author contributions statement

Conceptualization, F.W. and Y.W.; design, V.C., Y.F.O., P.S., M.C., V.S.; methodology, Y.W., L.B.-W., and F.W.; formal analysis, S.K., J.V., F.L.-J. and F.W.; clinical investigation, A.B.M, V.R., N.M., G.P. and L.B.-W.; writing F.W., V.C. and Y.W.; data interpretation and reviewing B.P., V.C., F.W.,Y.W., S.B-D. and A.B; project administration V.S., M.C., S.P. and L.B.-W. All authors have read and agreed to the published version of the manuscript. All authors have read and agreed to the published version of the manuscript.

Additional information

The human *ex vivo* methodology used in this study has been registered as a written invention disclosure by the French National Institute for Agronomic, Food and Environment Research (INRAE) (DIRV#18-0058). Clinic'n'Cell® has been registered as a mark^{24-28,30,31,68-70}.

F.W. and L.W.-B. work for Clinic'n'Cell SAS (Faculty of Medicine and Pharmacy Clermont-Ferrand-France); V.C., A.B.M., Y.F.O., F.L.-J., V.S., M.C., S.P., P.S. work for VALBIOTIS and provided the ingredient. Y.W. provides scientific consulting for Clinic'n'Cell SAS; S.K., J.V., B.P., V.R., N.M., G.P., S.B-D and A.B. have no conflict of interest to declare.

Data availability statement

The datasets generated and analyzed during the current study are available from the corresponding author on reasonable request.

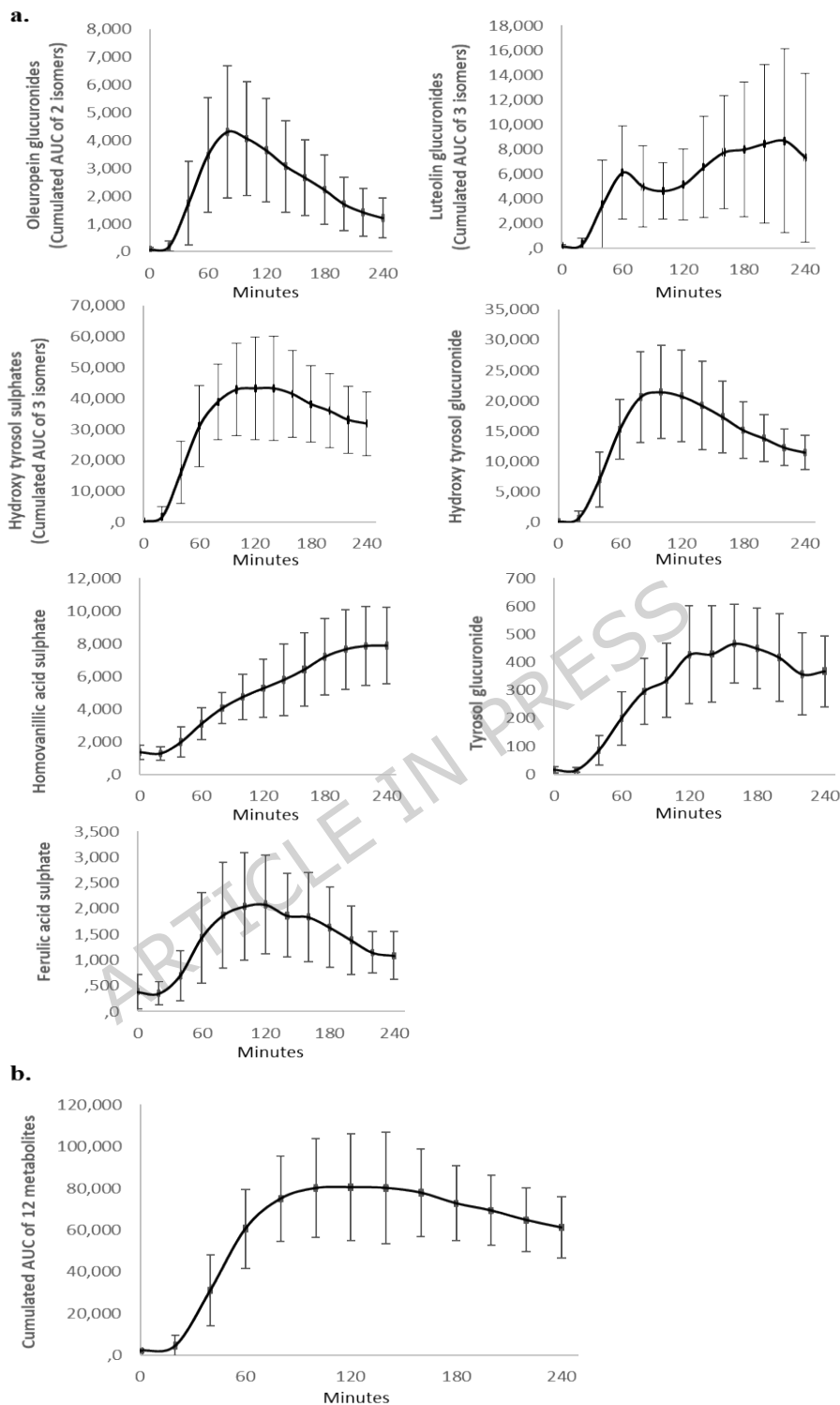


Figure 1. Metabolomic profiles in human serum following TOTUM-448 ingestion.

A: Circulating metabolites resulting from TOTUM-448 ingestion were determined using Ultra-High Performance Liquid Chromatography-Mass Spectrometry (UHPLC-MS/MS). Twelve detectable circulating human metabolites are presented (2 oleuropein glucuronide isomers, 3 luteolin glucuronide isomers, 1 ferulic acid sulfate, 3 hydroxytyrosol sulfate isomers, 1 hydroxytyrosol glucuronide, 1 tyrosol glucuronide, and 1 homovanillic acid sulfate). B: Cumulative absorption for

each metabolite family. AUC: Area under curve. n=10 human volunteers.

ARTICLE IN PRESS

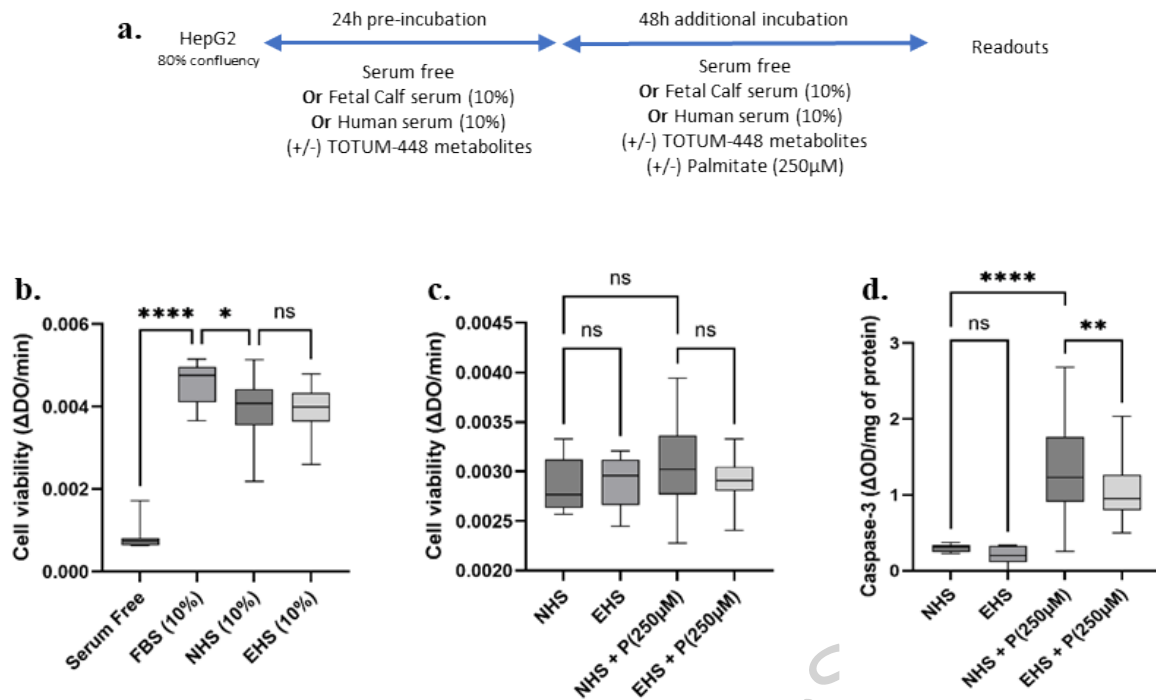


Figure 2. Cell culture experimental design and validation of the *ex vivo* procedures (Human hepatocytes, HepG2).

A. Protocol design. B. Validation of the use of human serum for human hepatocyte cultures. Cell viability was determined using a XTT-based method. Fetal Bovine Serum (FBS) was used as the reference. C. Impact of palmitate on hepatocyte viability. D. Caspase-3 activity. NHS: Naïve human serum; EHS: Enriched human serum (serum collected at Cmax 100min and containing circulating metabolites resulting from TOTUM-448 ingestion); P(250 μ M): palmitate 250 μ M. The control vehicle was set according to the palmitate preparation, a 10% w/w BSA solution was added to an equivalent volume of ethanol to match the final palmitate solution. Measurements were realized in hexaplicate (XTT) or triplicate (caspase-3 activity) for each volunteer (n=10 human volunteers).

Boxes indicate median and interquartile range (lower and upper), while whiskers indicate minimum and maximum *: p < 0.05; **: p < 0.01; ****: p < 0.0001; ns: p > 0.05.

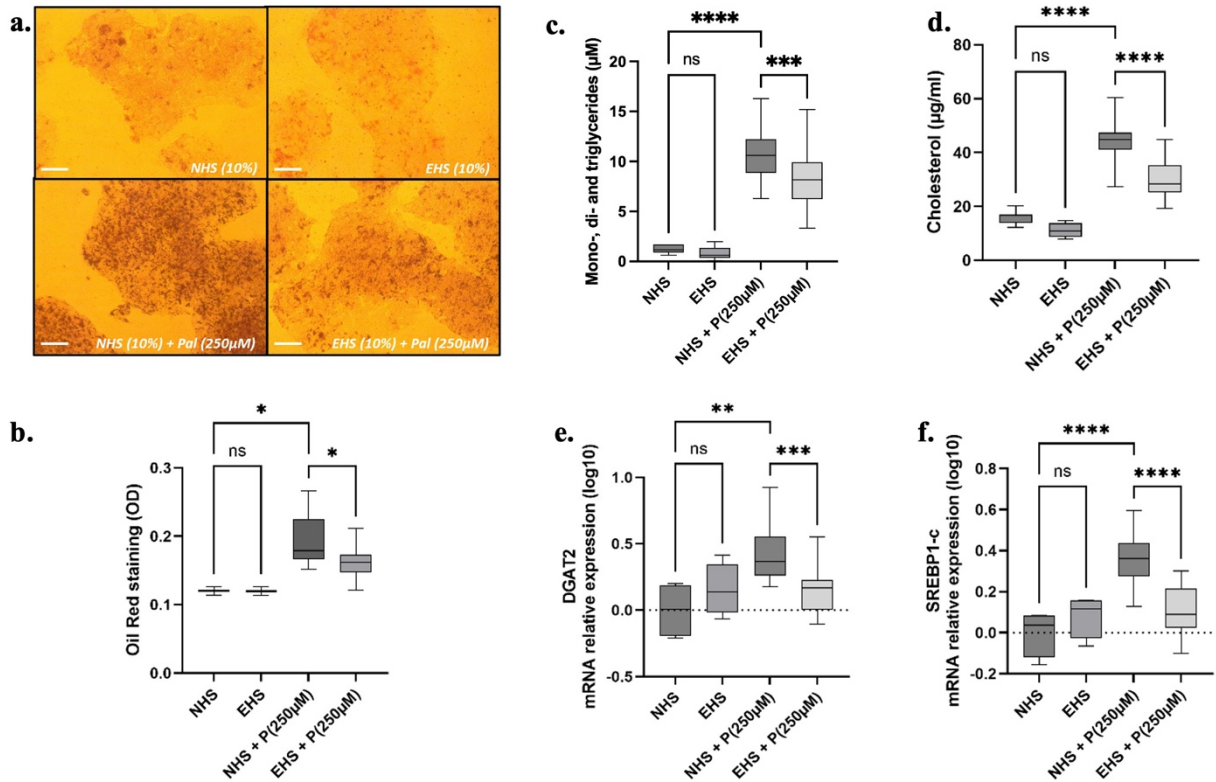


Figure 3. Influence of TOTUM-448 metabolites on lipid storage in human hepatocytes
 A. Red oil staining. B. Red oil staining quantification. C. Intracellular cumulated mono-, di- and triglyceride content. D. Intracellular cholesterol content. E and F: mRNA relative expression of DGAT2 and SREBP1c (RTqPCR). NHS: Naïve human serum; EHS: Enriched human serum (containing circulating metabolites resulting from TOTUM-448 ingestion); P(250µM): palmitate 250µM. The control vehicle was set according to the palmitate preparation, a 10% w/w BSA solution was added to an equivalent volume of ethanol to match the final palmitate solution. Measurements were realized in triplicate for each volunteer (n=10 human volunteers). Boxes indicate median and interquartile range (lower and upper), while whiskers indicate minimum and maximum *: p < 0.05; **: p < 0.01; ***: p < 0.001; ****: p < 0.0001; ns: p > 0.05.

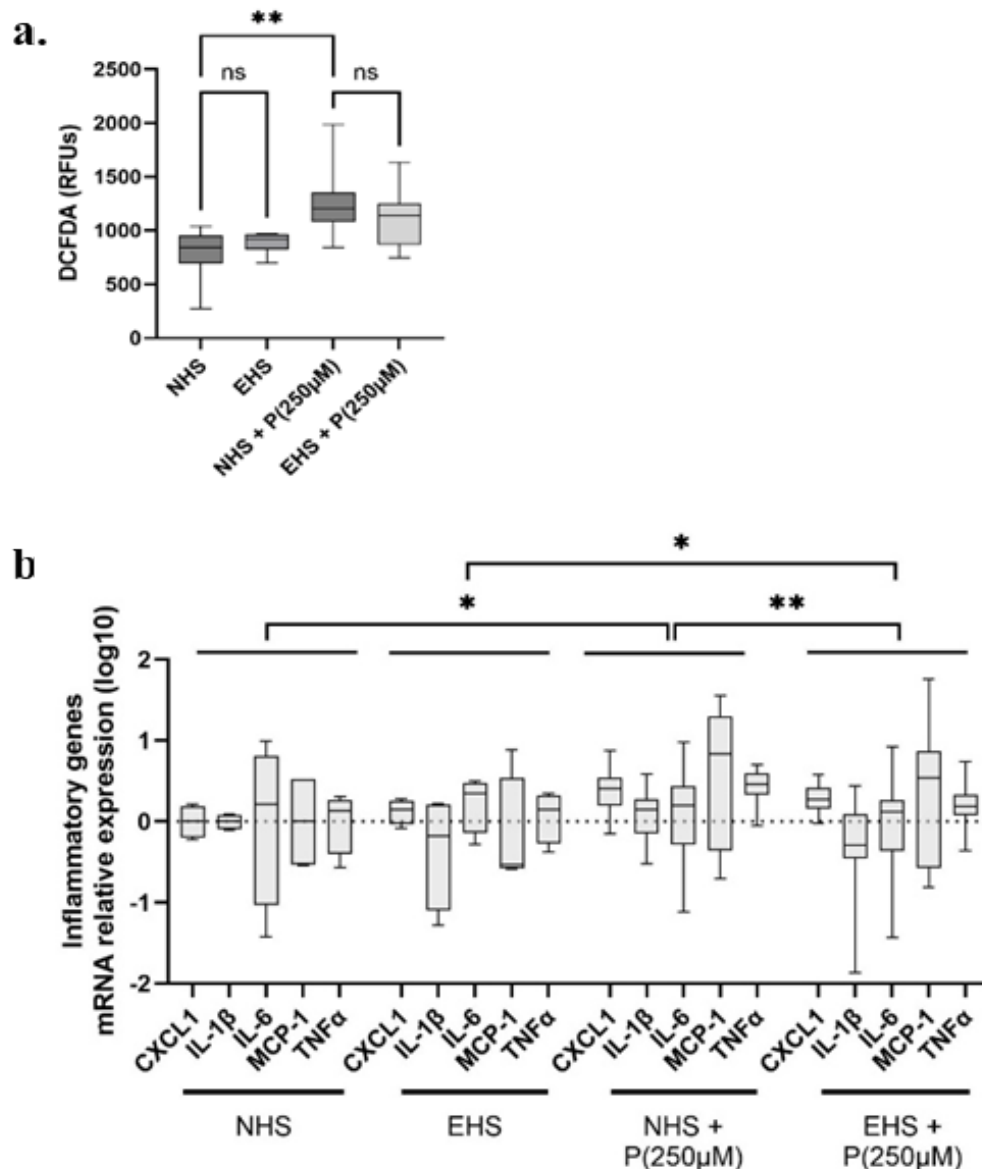


Figure 4. Influence of TOTUM-448 human metabolites on redox and inflammatory status in human hepatocytes HepG2.

A: DCFDA staining (quantification expressed as the mean green pixel value); B: mRNA relative expression of CXCL1 IL-1 β , IL-6, MCP-1 and TNF α . NHS: Naïve human serum; EHS: Enriched human serum (containing circulating metabolites resulting from TOTUM-448 ingestion); P(250 μ M): palmitate 250 μ M. The control vehicle was set according to the palmitate preparation, a 10% w/w BSA solution was added to an equivalent volume of ethanol to match the final palmitate solution. Measurements were realized in triplicate for each volunteer (n=10 human volunteers).

Boxes indicate median and interquartile range (lower and upper), while whiskers indicate minimum and maximum *: p < 0.05; **: p < 0.01; ns: p > 0.05.

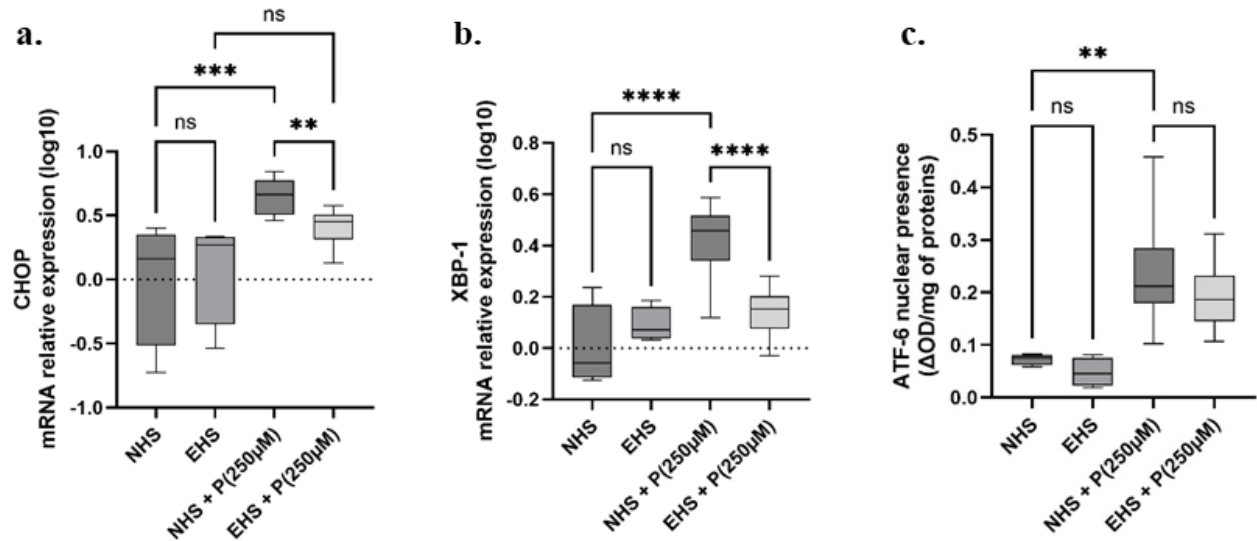


Figure 5. Influence of TOTUM-448 human metabolites on ER stress level and UPR markers in a lipotoxic environment.

A and B. mRNA relative expression of CHOP and XBP-1, respectively. C. ATF-6 nuclear presence. NHS: Naïve human serum; EHS: Enriched human serum (containing circulating metabolites resulting from TOTUM-448 ingestion); P(250µM): palmitate 250µM. The control vehicle was set according to the palmitate preparation, a 10% w/w BSA solution was added to an equivalent volume of ethanol to match the final palmitate solution. Measurements were realized in triplicate for each volunteer (n=10 human volunteers). Boxes indicate median and interquartile range (lower and upper), while whiskers indicate minimum and maximum **: p < 0.01; ***: p < 0.001; ****: p < 0.0001; ns: p > 0.05.

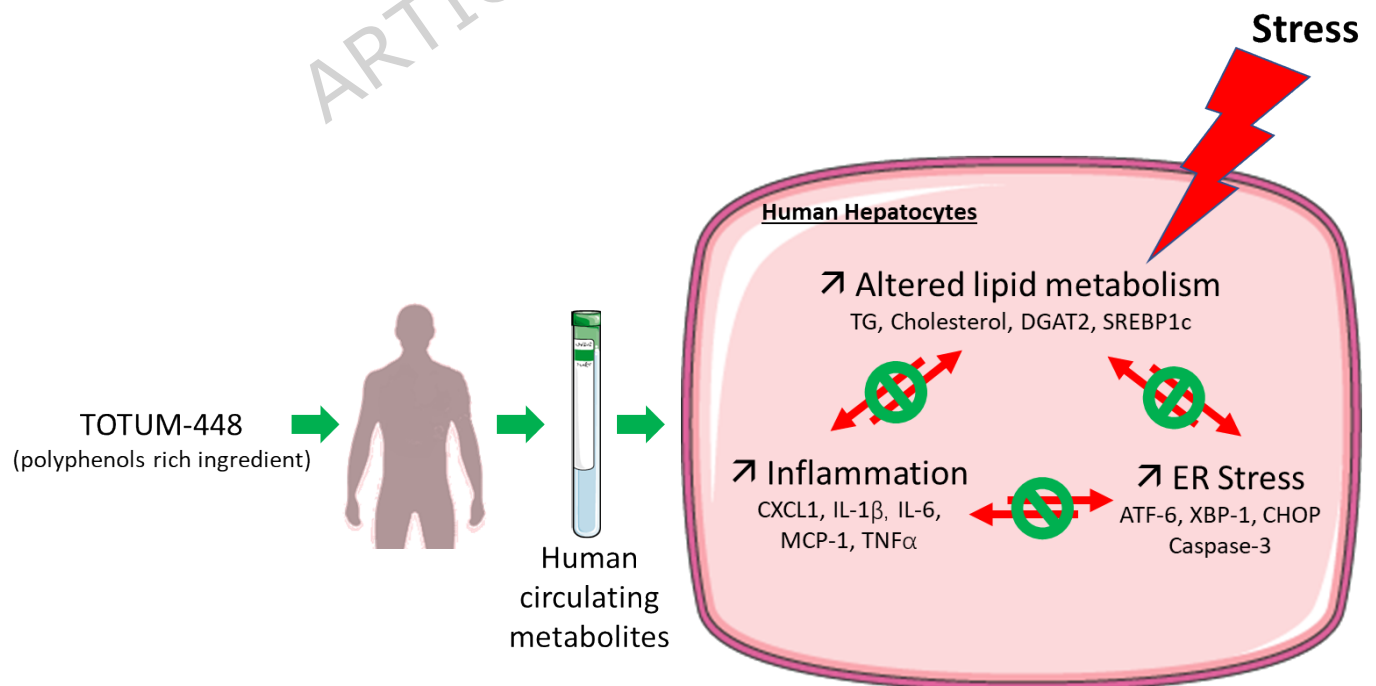


Figure 6. Bioavailable Human Metabolites from TOTUM-448 (Plant-Based, Polyphenol-Rich Ingredient) Maintain Liver Cell Functionality in a Lipotoxic Context that Drives MASLD Onset.

ARTICLE IN PRESS