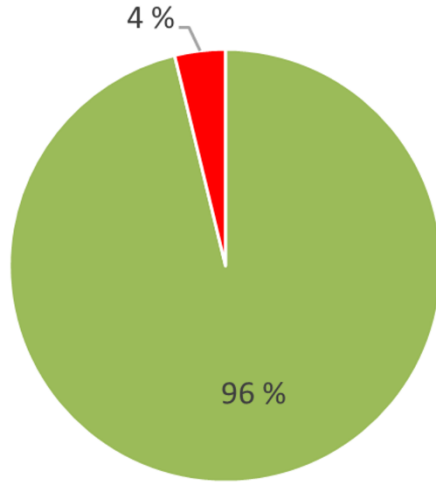
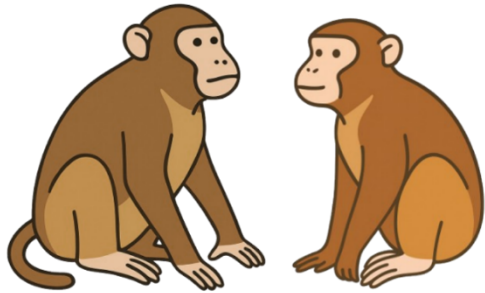


Impact of social and personalized video-based enrichment on stereotypic behaviors in rhesus macaque monkeys in the laboratory

DOI 10.60675/yrr0-6e39/sn20251202-5r/short-notes

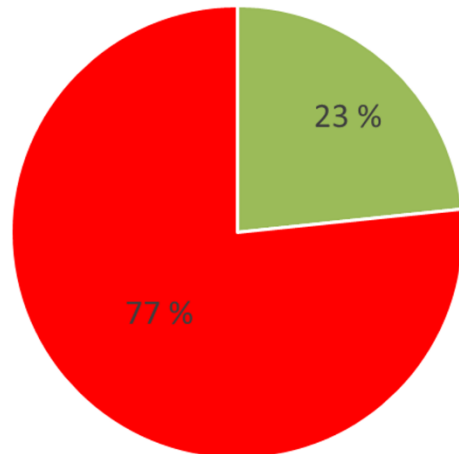


Monkey N with monkey G

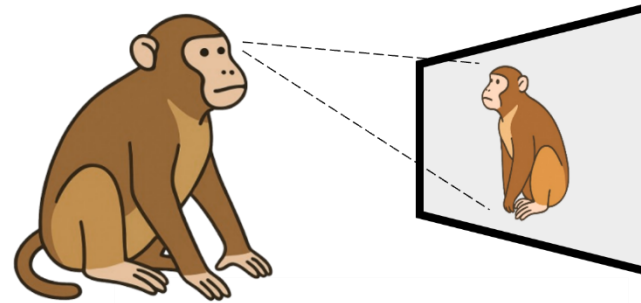


time budget of monkey N
stereotypic vs. **non stereotypic** behaviors

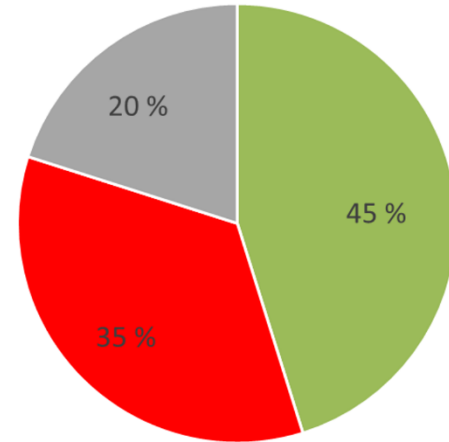
Monkey N alone



Monkey N alone

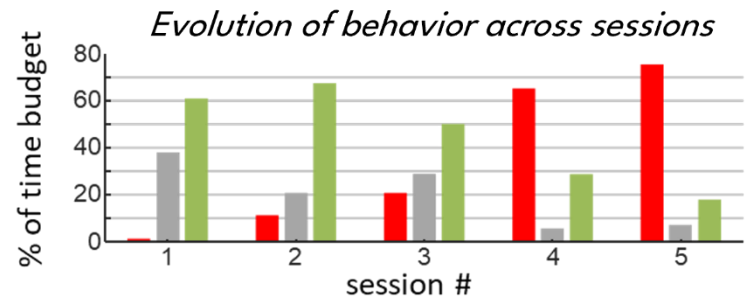


with a video
of monkey G



time budget of monkey N
(average across 5 sessions)

- **stereotypic** behaviors
- **non stereotypic** behaviors
- **look at the video enrichment**



→ habituation