



HAL
open science

Mercury trophic transfer and biomagnification in food webs within a tropical embayment as evidenced by nitrogen and carbon stable isotope analysis

Suriyapong Kumsopar, Chawalit Charoenpong, Shaoneng He, Paco Bustamante, Bernie Wee, Xianfeng Wang, Narainrit Chinfak, Kiattipong Kamdee, Penjai Sompongchaiyakul

► To cite this version:

Suriyapong Kumsopar, Chawalit Charoenpong, Shaoneng He, Paco Bustamante, Bernie Wee, et al.. Mercury trophic transfer and biomagnification in food webs within a tropical embayment as evidenced by nitrogen and carbon stable isotope analysis. *Environmental Research*, 2025, 278, pp.121599. <10.1016/j.envres.2025.121599>. <hal-05063114>

HAL Id: hal-05063114

<https://hal.science/hal-05063114v1>

Submitted on 11 May 2025

HAL is a multi-disciplinary open access archive for the deposit and dissemination of scientific research documents, whether they are published or not. The documents may come from teaching and research institutions in France or abroad, or from public or private research centers.

L'archive ouverte pluridisciplinaire HAL, est destinée au dépôt et à la diffusion de documents scientifiques de niveau recherche, publiés ou non, émanant des établissements d'enseignement et de recherche français ou étrangers, des laboratoires publics ou privés.



HAL Authorization

Mercury trophic transfer and biomagnification in food webs within a tropical embayment as evidenced by nitrogen and carbon stable isotope analysis

Suriyapong Kumsopar¹, Chawalit Charoenpong^{1,*}, Shaoneng He², Paco Bustamante^{3,4}, Bernie Wee⁵, Xianfeng Wang^{2,5}, Narainrit Chinfak¹, Kiattipong Kamdee⁶, Penjai Sompongchaiyakul¹

¹Department of Marine Science, Faculty of Science, Chulalongkorn University, Bangkok 10330, Thailand

² Earth Observatory of Singapore, Nanyang Technological University, Singapore 639798, Singapore

³Littoral Environnement et Sociétés (LIENSs), UMR7266 CNRS-La Rochelle Université, 2 rue Olympe de Gouges, 17000 La Rochelle, France

⁴Institut Universitaire de France (IUF), Paris 75005, France

⁵Asian School of the Environment, Nanyang Technological University, Singapore 639798, Singapore

⁶Thailand Institute of Nuclear Technology, Nakonnayok 26120, Thailand

* Corresponding authors. E-mail address: chawalit.cha@chula.ac.th (Chawalit Charoenpong)

Abstract: Mercury (Hg) contamination in marine ecosystems poses a significant environmental threat due to its high toxicity, persistence in the environment, and tendency to bioaccumulate in organisms and biomagnify in food webs. Understanding how Hg moves through these food webs is essential for assessing its ecological and health impacts. To investigate the trophic dynamics of Hg in Rayong Bay, Gulf of Thailand, we collected marine organisms from the pelagic and benthic food webs during 2022–2023 and analyzed the total mercury content (THg) in plankton (phytoplankton, zooplankton, and fish larvae) and in 81 marine animal species. Furthermore, the stable nitrogen and carbon isotope values ($\delta^{15}\text{N}$ and $\delta^{13}\text{C}$) were measured to establish their trophic levels (TLs) and potential food sources in the food web. Based on these analyses, we calculated the biomagnification factor using TL-adjusted ratios (BMF_{norm}) and trophic magnification factor (TMF) for the different TLs. BMF_{norm} values exceeded 1.0 in over 40 % of cases for both the pelagic and benthic food webs, indicating THg biomagnification from prey to predator. Notably, the pelagic food web exhibited a markedly higher TMF value (TMF = 6.68) compared to that of the benthic food web (TMF = 2.06), suggesting stronger Hg biomagnification within the pelagic food web. Our findings also highlight the consumption risk of Hg in some fish species in the Rayong Bay food webs, emphasizing the need for continued monitoring and mitigation strategies to safeguard both human and ecological health.

Keyword: Trophic magnification factor; Biomagnification factor; Pelagic food web; Benthic food web; Rayong bay; Gulf of Thailand

1. Introduction

In recent years, aquatic environments have been affected by climate change, overfishing, aquaculture, eutrophication, and pollution, leading to substantial food web changes (du Pontavice et al., 2020; Yan et al., 2019). In particular, mercury (Hg) pollution poses a major environmental threat due to its toxicity, persistence, and accumulation in aquatic organisms (Qu et al., 2022). It is also a global concern, reaching even the most remote oceanic regions (Eagles-Smith et al., 2018), which has led to growing awareness of Hg bioaccumulation in aquatic systems (Dang and Wang, 2010). Several studies (e.g., Cordoba-Tovar et al., 2022; Hilgendag et al., 2022; Lavoie et al., 2013) have shown an increasing trend of Hg along the food webs. This trend is primarily driven by the biomagnification of methylmercury (MeHg), which accounts for over 90 % of total mercury (THg) in most marine fish tissues (e.g., Bloom, 1992; Kehrig et al., 2009; Windom and Cranmer, 1998). However, exceptions to this paradigm exist, such as in microplankton (Seixas et al., 2014), bivalves (Briant et al., 2017), and benthic macroinvertebrates (Bradford et al., 2023). These deviations are due to metabolism, absorption, and excretion pertaining to specific animal species (Bradley et al., 2017). As a bioavailable form of Hg, MeHg is much more extensively and rapidly absorbed than inorganic mercuric ion (Hg(II)) in the gastrointestinal tract (Clarkson and Magos, 2006). MeHg can easily be absorbed into the body and accumulates over time in soft tissues, making it the dominant form of Hg in marine food webs. MeHg poses risks to the nervous system, genetic material, reproductive systems, and various physiological processes in both marine organisms and humans, and can even cause death (Ackerman et al., 2016; Byczkowski, 2005; de Almeida Rodrigues et al., 2019; Scheuhammer et al., 2007, 2015). In a comprehensive review of 20 studies on human dietary exposure to seafood, Bradley et al. (2017) estimated that the bioaccessibility of MeHg is higher than that of Hg(II). As a result, MeHg is considered the most toxic form of Hg (Manceau et al., 2021).

Hg bioavailability, bioaccumulation, and biomagnification are influenced by various factors, including the chemical form of Hg, environmental and physical conditions, ecological factors (e.g., food web structure and size, population density), and biological factors (e.g., trophic level, food structure, and body size) (Dang and Wang, 2012; Gentès et al., 2021; Hosseini et al., 2013, 2014). Over 90 % of Hg ingested by most fish comes from their diet, which mostly consists of Hg in its organic forms (Murillo-Cisneros et al., 2019). Therefore, structural variations in food webs can affect the pathways of bioavailable Hg in aquatic systems. Understanding trophic

ecology and food web dynamics allows for the approximation of the Hg found in members of varying trophic levels (TLs) and enables direct estimation of biomagnification (Cai et al., 2007; Ferriss and Essington, 2014; Murillo-Cisneros et al., 2019).

To elucidate Hg biomagnification, it is necessary to determine the TLs of the organisms, which are commonly estimated using bulk stable isotope analysis. This approach can reveal food sources, foraging environments, and the effectiveness of pollutant transport throughout food webs (Hobson et al., 2002; Hobson and Welch, 1992; Jardine et al., 2006). Since nitrogen isotopes ($\delta^{15}\text{N}$) increase predictably with each trophic step, typically enriched by 3 ‰ – 4 ‰ relative to the diet, they are frequently used to assess the trophic position (DeNiro and Epstein, 1981; Minagawa and Wada, 1984; Peterson and Fry, 1987). As such, $\delta^{15}\text{N}$ can be used to calculate biomagnification metrics, linking trophic position to Hg concentrations. In contrast, carbon isotopes ($\delta^{13}\text{C}$) hardly change as carbon moves through food webs (DeNiro and Epstein, 1978; France and Peters, 1997; Rounick and Winterbourn, 1986). Therefore, $\delta^{13}\text{C}$ is typically used to evaluate the diet sources for an organism when the isotopic signatures of these sources are sufficiently different (Post, 2002).

Over the past few decades, rapid economic development and population growth in Southeast and South Asia (Oanh and Huy, 2024; Tsui et al., 2025) have increased human activities, contributing to elevated environmental contamination by heavy metals in these regions (Safiur Rahman et al., 2019), including Hg in the Gulf of Thailand (GOT) (Ubonyaem et al., 2023). Hg in the GOT originates from various anthropogenic activities (Ritonga et al., 2022), including coastal erosion, deforestation, untreated domestic waste (Cheevaporn and Menasveta, 2003; Worakhunpiset, 2018), gold mining activities in different areas along Mekong River (Udomchoke et al., 2010), irrigation runoff from agricultural practices utilizing Hg-bearing pesticides, notably along the lower Mekong River Basin (Guédron et al., 2014), coal-fired power plants (Mahavong et al., 2017; Pham et al., 2015; Thepanondh and Tunlathorntham, 2020), untreated wastewater from industrial estates and petrochemical complexes (Cheevaporn and Menasveta, 2003), oil and gas exploration in the GOT (Le et al., 2023; Pojtanabuntoeng et al., 2011; Sompongchaiyakul et al., 2018; Yod-In-Lom & Doyle, 2002).

Several studies have assessed the levels of Hg in marine organisms in Rayong Bay (e.g., Agusa et al., 2007; Thongra-ar & Parkpian, 2002) and in the GOT region (e.g., Prabakaran et al., 2024; Ritonga et al., 2022; Windom and Cranmer, 1998). However, research on Hg biomagnification in Thai water food webs using stable isotopic techniques is still lacking.

Moreover, Hg biomagnification studies in tropical areas are significantly less documented than in temperate or polar regions (Lavoie et al., 2013). Thus, there is a pressing need for more research such as this current study to fill in the gaps in this subject.

In this study, marine organisms were collected from the pelagic and benthic food webs of Rayong Bay, Thailand. We analyzed THg along with $\delta^{15}\text{N}$ and $\delta^{13}\text{C}$ values to elucidate food web structure and quantify THg biomagnification. This study aimed to: (1) investigate THg accumulation across various marine organisms and (2) assess THg magnification in the marine food web by calculating trophic magnification slopes (TMSs) and trophic magnification factors (TMFs) for the study area. By addressing this knowledge gap, we hope to contribute to the global understanding of THg bioaccumulation and to inform strategies for mitigating its detrimental effects on marine systems and human health.

2. Materials and methods

2.1 Sampling location

Rayong is situated in Thailand's Eastern Economic Corridor (EEC) and contains numerous industrial estates. Notably, Map Ta Phut is the largest industrial zone, encompassing five industrial estates, one deep-sea port, and 151 major factories (Burnett et al., 2019). Industrial activities in this area have sparked significant environmental concerns, including air and water pollution, industrial accidents, and potentially illegal hazardous waste releases (Saengsupavanich et al., 2009; Sillapapiromsuk et al., 2022; Soyong and Perera, 2017).

Rayong Bay, situated south of Rayong, serves multiple purposes, including fisheries, tourism, and natural conservation, and is also the coastal area near urban centers, fertile agricultural land, and export-oriented manufacturing and industry (Janmaimool, 2016; Kawichai et al., 2024; Kumar et al., 2023). Despite this, Rayong Bay remains a vital center for fisheries (both wild-capture fisheries and aquaculture) and tourism. Our sampling area was located on the eastern side of the deep-sea port (Fig. 1).

2.2 Sample collection and preparation

Plankton (phytoplankton, zooplankton, and fish larvae) were sampled from 18 stations during three campaigns: May 2022, August 2022, and February 2023. Fish and shellfish were

collected from three trawling stations during four sampling campaigns: March 2022, May 2022, August 2022, and February 2023. Additionally, fish and shellfish were taken from the fishing gears of four nearby small-scale fishing communities, namely Kao Yod (KY), Laem Rung Rueang (LRR), Khlong Kacher (KKC), and Suan Son Beach (SS), during February 2022, July 2022, September 2022, November 2022, January 2023, and March 2023 (Fig. 1).

2.3.1 Plankton

Plankton samples were collected using pumping or trawling methods, depending on the target size. Phytoplankton were sampled from surface waters (1-m depth) using a submersible pump (DEXZON®, HP-550S) equipped with an 8-cm diameter tube and a nominal pumping rate of 60 L/min (e.g., Chouvelon et al., 2019). The pump was connected to a combined filtration system consisting of a 100- μ m mesh net (T. Science®) to screen out any plankton larger than 100 μ m (including most zooplankton). In turn, the targeted phytoplankton samples (n =13) were collected in a 20- μ m mesh plankton net (T. Science®). Microscopy examination identified the dominant species during sampling as *Chaetoceros* spp., *Bacteriastrum* spp., and *Rhizosolenia* spp.

To account for the patchy distribution and vertical movement of zooplankton, we conducted integrated vertical hauls from near-bottom depth to the surface using a 100- μ m plankton net (T. Science®), following the method described by De Bernardi (1984). This approach specifically targeted zooplankton (n = 8). The dominant groups identified were copepod nauplii, calanoid copepods, and cyclopoid copepods.

Fish larvae or larger plankton (n = 6) were collected through 15-min surficial horizontal hauls using a 300- μ m mesh plankton net (T. Science ®) at a speed of 2.3-2.5 knots (e.g., Tesan-Onrubia et al., 2023). Apart from fish larvae, this so-called ichthyoplankton fraction contained harpacticoid copepods, *Lucifer* sp., and siphonophores.

All plankton samples were collected using bottles pre-cleaned with 10 % HNO₃ (v/v). To prevent contamination, powder-free latex gloves were worn during sampling. The collected samples were stored in ultraclean, acid-washed containers and promptly transported to the laboratory for processing. They were frozen, freeze-dried, and stored in a desiccator until chemical analyses, all of which were performed in triplicate.

2.3.2 Fish and shellfish

Fish and shellfish were collected using an otter trawl with double cod ends (4.0 and 2.5 cm mesh sizes) arranged in a stacked configuration to sort the catch by size. The otter trawl was towed parallel to the shoreline at a speed of 2.3-2.5 knots for 1 h (e.g., Phaksopa et al., 2021). Additionally, we collected samples from various small-scale fishing gears varied by target species, seasons, and community preferences. These gears included crab sinking nets and shrimp floating nets.

A total of 315 specimens were sampled for chemical analysis (Table S1), including two species of bivalves (n = 23), two species of gastropods (n = 6), three species of crabs (n = 5), two species of shrimps (n = 4), six species of squids (n = 34), 24 species of pelagic fishes (n = 46), and 41 species of demersal fishes (n = 197). All fish and shellfish samples were placed in clean zip-lock bags and frozen. In the laboratory, they were thawed, measured, weighed, and dissected under contamination-free conditions. The edible muscle tissue was then cut into smaller pieces and homogenized. These samples were divided into two portions: one frozen at -20°C for Hg analysis and another freeze-dried and stored in a desiccator for stable isotope analysis.

Samples were classified into pelagic and benthic food webs based on ecological characteristics and taxonomic identification using the FAO Species Identification Guides (Carpenter and Niem, 1998a, 1998b, 1999a, 1999b, 2001a, 2001b) while isotopic data were solely used to establish the trophic relationships within the pre-determined food webs.

2.3 Analytical methods

2.3.1 Mercury contents in marine organisms

THg content in marine organisms was analyzed via thermal decomposition, amalgamation, and cold-vapor atomic absorption spectrophotometry (DTD-AAS) following US-EPA method 7473 (US EPA, 2007). Briefly, dry plankton and wet marine animal samples (weighed by Sartorius® AX-224 balance) were introduced into a NIC® MA-3000 Mercury Analyzer. The samples were first heated to 150°C to remove moisture, and then to 850°C to convert all Hg to volatilized Hg⁰. Oxygen gas (>99 %) at a flow rate of 0.2 L/min carried the Hg⁰ to a gold-coated sand amalgamator, while other gases were directed to a waste filter. The amalgamator was then

heated to 200°C, releasing Hg⁰, which was transported to the measurement cell where its vapor attenuated monochromatic light at 253.7 nm, following the Beer-Lambert Law.

Performance metrics, such as the limit of detection (LOD), the limit of quantification (LOQ), recovery, and precision, were used to validate the analytical procedures. The LOD and LOQ, computed by multiplying the standard deviation by 3 and 10, were 0.0016 µg/kg and 0.0050 µg/kg respectively. Dry and homogenized certified reference material, DORM-4 (marine fish protein), from the National Research Council of Canada was used for quality assurance/quality control (QA/QC) standard for each batch. The recovery for DORM-4 was 99.81 ± 4.37 % based on 25 repeated measurements.

All THg values were reported on a µg/kg wet-weight basis. Wet weight basis THg concentrations for dry samples (e.g., plankton) were calculated by assuming 95 % water content for microseston (0.2-200 µm size class), as suggested by Hammerschmidt et al. (2013) and 90 % in zooplankton larger than 200 µm based on Knauer and Martin (1972).

2.3.2 Carbon and nitrogen stable isotopes

Stable isotope analysis was conducted at the Asian School of the Environment/Earth Observatory of Singapore, Nanyang Technological University and Thailand Institute of Nuclear Technology, using a Thermo Scientific® Flash Elemental Analyzer (EA) coupled with a Delta V Advantage Isotope Ratio Mass Spectrometer (IRMS). Approximately 400 µg of freeze-dried and homogenized samples were weighed using a Mettler Toledo® XP6 microbalance and packed into pre-weighed Elemental Microanalysis® tin capsules (pressed 9 × 5 mm). The capsules were introduced into the EA via the autosampler and combusted at 1000°C in the presence of oxygen, producing carbon dioxide (CO₂) and nitrogen oxide (N₂) gases, which were carried by helium (He) gas into the IRMS for isotopic analysis. Results were reported in δ notation (Eq. (1)), relative to the international reference standards: V-Pee Dee Belemnite (VPDB) for carbon isotopes and atmospheric N₂ for nitrogen isotopes.

$$\delta(\text{‰}) = \left[\left(\frac{R_{\text{sample}}}{R_{\text{standard}}} \right) - 1 \right] \times 1000 \quad \text{Eq. 1}$$

where δ is the δ value for the isotope (in this case $\delta^{15}\text{N}$ or $\delta^{13}\text{C}$), R_{sample} is the ratio of heavy to light isotopes in the sample, and $R_{standard}$ is the ratio of heavy to light isotopes in the international standard.

In each run, two USGS reference standards (USGS-40 and USGS-41) were analyzed along with the samples to calibrate the raw data for the delta values of isotopes. Additionally, an in-house standard (L-glutamic acid) was included as a QA/QC measure to assess the quality of the analysis and to apply drift and size effect corrections. Based on the long-term analysis of this QA/QC standard, the analytical precision is 0.3 ‰ for $\delta^{15}\text{N}$ and 0.2 ‰ for $\delta^{13}\text{C}$.

2.4 Data treatment

2.4.1 Biomagnification factor

Biomagnification factor (BMF) represents the ratio of the chemical concentration in the predator (numerator) to that of the prey (denominator) as shown in Eq. (2) (Conder et al., 2012; Gobas et al., 2009). However, BMFs are highly sensitive to errors in TL assignment, particularly when complex feeding groups, such as omnivores, are classified into binary categories (Sinclair et al., 2024). In this study, we applied a normalized BMF (BMF_{norm}) using TL-adjusted ratios (Eq. (3)), as done in numerous previous studies (e.g., Murillo-Cisneros et al., 2019; Pethybridge et al., 2012; Vainio et al., 2022). By using this TL-adjusted method, we can more accurately assess the true extent of BMF_{norm} by accounting for the expected increase in THg with increasing TLs (Franklin, 2016; Vainio et al., 2022). The BMF_{norm} was normalized by TL to standardize it to an exact TL difference of 1.0 between predator and prey. This adjustment is necessary when the actual TLs, as determined by $\delta^{15}\text{N}$ analysis, deviate from 1.0, either exceeding or falling short of this value (Franklin, 2016). If BMF_{norm} exceeds 1.0, THg is considered a potential bio-accumulator (Gobas et al., 2009).

$$\text{BMF} = \frac{[(\text{THg})_{\text{Predator}} / (\text{THg})_{\text{Prey}}]}{\quad} \quad \text{Eq. 2}$$

$$\text{BMF}_{\text{norm}} = \frac{[(\text{THg})_{\text{Predator}} / (\text{THg})_{\text{Prey}}]}{[\text{TL}_{\text{Predator}} - \text{TL}_{\text{Prey}}]} \quad \text{Eq. 3}$$

where $\text{THg}_{\text{Predator}}$ is predator's THg, THg_{Prey} is prey's THg, $\text{TL}_{\text{Predator}}$ is predator's TLs from Eq. (4) (below), and TL_{Prey} is prey's TLs from Eq. (4) (below).

2.4.2 Trophic magnification factor

Biomagnification of THg can lead to potentially toxic levels of Hg in aquatic animals (Burgess and Meyer, 2008). THg biomagnification was assessed using a linear relationship between TLs and logarithm-transformed THg ($\log_{10}[\text{THg}]$) (Matias et al., 2022; Vainio et al., 2022). The trophic magnification slope (TMS) and trophic magnification factor (TMF) were calculated for the food webs using the following formulas:

$$TL = [(\delta^{15}N_{consumer} - \delta^{15}N_{producer}) / \Delta \delta^{15}N] + \lambda \quad \text{Eq. 4}$$

$$\log_{10}[\text{THg}] = a + b TL \quad \text{Eq. 5}$$

$$\text{TMF} = 10^b \quad \text{Eq. 6}$$

where TL represents the trophic level for each consumer species, $\delta^{15}N_{consumer}$ is the $\delta^{15}N$ value for each consumer species, and $\delta^{15}N_{producer}$ is the $\delta^{15}N$ value for the baseline organism. For the pelagic food web, phytoplankton was used as the baseline ($\lambda = 1$; primary producers), while filter-feeding Asian moon scallops (*Amusium pleuronectes*, $\delta^{15}N = 3.59 \text{ ‰}$) were treated as primary consumers ($\lambda = 2$) for the benthic food web. The trophic enrichment factor ($\Delta^{15}N$) of 3.4 ‰ , commonly used in marine studies (e.g., Borgå et al., 2012; DeNiro and Epstein, 1981; Minagawa and Wada, 1984) was used in this study. In Eq. (5), the parameter “ a ” represents the intercept indicating the baseline concentration in a specific ecosystem and “ b ” is the slope of the linear relationship between the $\log_{10}[\text{THg}]$ and TL values, also known as the TMS.

A positive slope for TMS ($\text{TMS} > 0$) indicates the potential for biomagnification, where Hg concentration increases with each TLs (Gao et al., 2021; Monferran et al., 2016; Saidon et al., 2024). Meanwhile, TMF for Hg represents the average increase in Hg concentration per TLs and is calculated for each food web as the antilog of the regression slope (Eq. (6)) (Borgå et al., 2012; Hilgendag et al., 2022; Lavoie et al., 2013). A TMF of 1 indicate that the chemical of interest does not biomagnify through the food web. When $\text{TMF} > 1$, the biomagnification occurs, with an average factor of TMF per TLs. Conversely, a $\text{TMF} < 1$ suggests that the decrease in chemical of interest with an average factor of TMF per each TLs in the food web (Valladolid-Garnica et al., 2023). TMF values are commonly compared across different ecosystems or chemicals of interest to understand variation in biomagnification (Borgå et al., 2012). The intercept, a in Eq. (5), at the baseline variability among ecosystems caused by different inputs of contaminants to the base of

food webs, such as between different pelagic or benthic food webs. This allows the "rate of increase" per TL in the food web to be studied independently of the original exposure level.

2.5 Statistical analysis

Statistical analyses were conducted using Microsoft® Excel 2021 and IBM® SPSS®. The data's normality was tested to choose between parametric and non-parametric tests. Non-parametric results were compared using the Kruskal-Wallis test, whereas parametric results were compared using ANOVA to assess differences in THg among different marine organisms.

Generalized linear mixed models (GLMMs) are an extension of generalized linear models that allow for the inclusion of both fixed effects and random effects, and can handle non-normally distributed dependent variables (Dean and Nielsen, 2007). Fixed effects represent influences that are constant across all observations in a study. They are typically categorical variables, but can also be continuous. On the other hand, Random effects capture variability that is not explained by the fixed effects. They are often associated with grouping factors or individual differences. More details on GLMMs can be found in McCullagh and Nelder (2019).

In this study, GLMMs with a gamma distribution and a log link function were defined as follows: $g(\mu) = a + X_i B + Z_i b_i + a_i + e_i$ (Linder et al., 2017) where g is the link function relating the linear predictor to the expected value (μ) of the exponential family distribution function and $X_i B$ represents fixed-effects independent variables in the model. X_i is the design matrix for the predictor variables, and B is the matrix of predictor variables. $Z_i b_i$ represents the random effects component of a GLMM. In this specific case, the random effects component in the equation represents the different species. Z_i is the design matrix for the random effects, and b_i is the subject i . The term a_i is the random intercept and e_i is the error term.

$\text{Log}_{10}[\text{THg}]$ data were applied when necessary to meet normality assumptions. The absolute values of normalized regression coefficients (β) were used to evaluate the relative importance of different variables.

3. Results and Discussions

3.1. Stable nitrogen and carbon isotopes and food web descriptors

The trophic structure and food web dynamics of marine organisms in Rayong Bay were characterized using $\delta^{15}\text{N}$ and $\delta^{13}\text{C}$. The values of $\delta^{15}\text{N}$, $\delta^{13}\text{C}$, and calculated TLs for all species were tabulated in Table S2 and shown in the $\delta^{15}\text{N} - \delta^{13}\text{C}$ biplot space in Fig. 2. The range of fish $\delta^{13}\text{C}$ values (-21.6 ‰ to -14.3 ‰) and $\delta^{15}\text{N}$ values (4.75 ‰–12.7 ‰) from pelagic and benthic food webs in this study is in line with a previous study done in fish of Rayong Bay, which reported $\delta^{13}\text{C}$ from -19.0 ‰ to -14.5 ‰ and $\delta^{15}\text{N}$ from 6.5 ‰ to 12.6 ‰ (Udom et al., 2017). This suggests that the overall interactions among key species remain relatively stable over time.

3.1.1. Pelagic food web

In the pelagic food web, the $\delta^{13}\text{C}$ values for all species ranged from -22.7 ± 2.35 ‰ in the zooplankton to -12.2 ± 2.57 ‰ in the bluetail mullet (*Crenimugil buechanani*, CB). The $\delta^{15}\text{N}$ values ranged from 4.81 ± 1.25 ‰ in the phytoplankton to 11.4 ± 0.84 ‰ in the pickhandle barracuda (*Sphyraena jello*, SLE). Overall, plankton (i.e., phytoplankton, zooplankton, and fish larvae) exhibited lower $\delta^{13}\text{C}$ and $\delta^{15}\text{N}$ values compared to invertebrates and finfish (Fig. 2a) reflecting their role as the base of the pelagic food web. The $\delta^{13}\text{C}$ values in phytoplankton from Rayong Bay in this study ranged from -24.1 ‰ to -18.8 ‰, which falls well within the range of those observed in other natural populations (-30 ‰ to -9 ‰) (Kroopnick, 1985; Sackett et al., 1965; Williams and Gordon, 1970). In fact, open-ocean values can vary from -35 ‰ at high latitudes to -16 ‰ at low-mid latitudes (Goericke and Fry, 1994). Gearing et al. (1984) revealed that $\delta^{13}\text{C}$ of phytoplankton communities fluctuates throughout the year, reflecting the dominant phytoplankton species during different seasons. Additionally, temperature (Fontugne and Duplessy, 1981; Sackett et al., 1965) and the $\delta^{13}\text{C}$ of the inorganic carbon source used for photosynthesis (Deuser, 1970; Parker, 1964; Smith and Kroopnick, 1981), which often change seasonally, have also been demonstrated to influence the $\delta^{13}\text{C}$ signature of phytoplankton (Goering et al., 1990).

In the ocean surface layer, the $\delta^{15}\text{N}$ of small organic particles is significantly influenced by how phytoplankton assimilate nitrogen from the seawater (Goering et al., 1990). This initial $\delta^{15}\text{N}$ signature is then passed on through the food web. In this study, the $\delta^{15}\text{N}$ value in phytoplankton (4.81 ± 1.25 ‰) is the lowest in the pelagic food web, followed by zooplankton (5.34 ± 1.24 ‰),

fish larvae (6.10 ± 0.90 ‰), cephalopods (9.68 ± 0.86 ‰), and fishes (9.85 ± 1.54 ‰), respectively. This pattern indicates that $\delta^{15}\text{N}$ becomes progressively higher as it moves up the pelagic food web (Fig. 2a).

Organic matter in our pelagic food web is passed from plankton all the way up to the apex species such as barracuda (*Sphyraena putnamae*, SP and *Sphyraena obtusata*, SOC), whose $\delta^{13}\text{C}$ and $\delta^{15}\text{N}$ values were enriched relative to cephalopods and other fishes (Fig. 2a). It is important to note that the bluetail mullet (*Crenimugil buehanani*, CB) is isotopically distinct from the rest of the food web in terms of carbon isotopes. CB is a species commonly found in estuaries and rivers (Roshith et al., 2022) and frequents these habitats, ascending rivers and coastal creeks as juveniles (Blaber and Whitfield, 1977). They feed primarily on detritus (Whitfield and Durand, 2023). As a result, they exhibit distinct $\delta^{13}\text{C}$ values (-12.2 ± 2.57 ‰).

Based on $\delta^{15}\text{N}$, the TLs in the pelagic food web ranged from 1.61 ± 0.37 in phytoplankton to 4.07 in obtuse barracuda (*Sphyraena obtusata*, SOC). In principle, phytoplankton should have a TL of 1 as primary producer. However, in this study, phytoplankton were collected by filtering seawater through 20- μm nets, with a 100- μm screen used to exclude larger particles and plankton. Consequently, this fraction may contain various particles ranging from 20 μm to 100 μm in size, including phytoplankton, particulate organic matter (POM), and detritus. As a result, the sample may have included POM containing detritus and microheterotrophs (Kopprio et al., 2023; Minor and Nallathamby, 2004; Wang et al., 2024), which could influence the $\delta^{15}\text{N}$ value and potentially lead to an overestimation of the TL of this fraction (e.g., Kopprio et al., 2015). As expected, the obtuse barracuda (*Sphyraena* spp.) occupy high TLs, consistent with their classification as apex predators in marine ecosystems (D'Alessandro et al., 2011; O'Toole et al., 2010). This aligns with the established principle that top predators tend to have high $\delta^{15}\text{N}$ values (Moteki et al., 2001; Richert et al., 2015).

3.1.2 Benthic food web

In the benthic food web, the $\delta^{13}\text{C}$ values for all species ranged from -20.0 ‰ in the razorfish (*Aeoliscus strigatus*, AS) to -13.9 ± 0.81 ‰ in the pink ear emperor (*Lethrinus lentjan*, LL). In addition, the $\delta^{15}\text{N}$ values in the benthic food web for all species ranged from 3.59 ± 1.23 ‰ in the Asian moon scallop (*Amusium pleuronectes*, APL) to 12.6 ‰ in the tigertooth croaker (*Otolithes*

ruber, OR). As expected, finfish showed higher $\delta^{15}\text{N}$ values than invertebrates similar to other previous studies (e.g., Murillo-Cisneros et al., 2019).

The shifts in $\delta^{13}\text{C}$ (0 – 1 ‰) and $\delta^{15}\text{N}$ (3 – 4 ‰) per TL, following widely-accepted values in previous literature (DeNiro and Epstein, 1981; Minagawa and Wada, 1984; Peterson and Fry, 1987) allow us to track matter moves through the food web as evidenced in isotopic enrichments. Udom (2015) reported sediment organic matter (SOM) collected from Rayong Bay in October 2014 to have $\delta^{13}\text{C}$ values of -19.5 ± 1.09 ‰ and $\delta^{15}\text{N}$ values of 1.75 ± 0.77 ‰. Following this shift in trophic enrichment, APL ($\delta^{13}\text{C} = -19.6 \pm 0.98$ ‰ and $\delta^{15}\text{N} = 3.59 \pm 1.23$ ‰) showed enrichment of approximately 0.07 ‰ ($\delta^{13}\text{C}$) and 1.84 ‰ ($\delta^{15}\text{N}$) relative to SOM. He et al. (2019) studied the feeding habit of APL from South China Sea and found their main diet (as determined by gut content) to be mostly diatoms. Hence, we used APL as a primary consumer (TL =2) for this benthic food web.

The TLs of APL acts as the basis species in the benthic food web, was 2.72 ± 0.36 , while move up to invertebrate (e.g, *Penaeus merguensis* and *Portunus pelagicus*) and fishes (e.g., *Chiloscyllium hasseltii*, *Terapon jarbua*, and *Terapon theraps*) and at the same time food source for top consumers (Fig. 2b). However, exceptions to this pattern exist for $\delta^{13}\text{C}$. The Indian volute (*Melo melo*, MME) is recognized as a specialized predator of other predatory gastropods (Morton, 1986). The shift in $\delta^{13}\text{C}$ to less negative values (-15.2 ± 0.64 ‰) suggests that MME derives its energy from different carbon sources. MME's diet of other predatory gastropods could be enriched with $\delta^{13}\text{C}$ derived from different sources, such as detritus or estuarine organic matter.

While not explicitly discussed or explored in this study, decomposers are essential contributors to the benthic food web (Bongiorni, 2012). Bacteria and fungi break down detritus and release nutrients back into the system, making them available for primary producers like microphytobenthos (Christianen et al., 2017). The different components and interactions within the benthic food web help us gain a deeper appreciation for the complex ways organisms obtain energy and nutrients in this environment.

A high degree of niche overlap is evident within the benthic food web. Compared to the pelagic food web (Fig. 2a), the benthic food web exhibits a broader range of carbon sources, greater trophic redundancy, and larger niche sizes (Fig. 2b). These results align with the relatively high complexity of coastal marine benthic food webs observed in previous studies (e.g., McMeans et al., 2013; Rooney et al., 2006; Sokołowski et al., 2012). In terms of trophic redundancy, multiple

species in the benthic food web occupy similar trophic positions, potentially enhancing ecosystem stability by providing functional redundancy in energy transfer pathways (Schlenker et al., 2024). This redundancy is thought to buffer the system against environmental fluctuations such as climate and land-use changes (Cardinale et al., 2002; Price et al., 2019; Sanders et al., 2018), as the loss of one species could be compensated by others fulfilling a similar ecological role. In fact, Hilgendag et al. (2022) found that the greater trophic diversity and trophic redundancy in the benthic food web appeared to reduce the efficiency by which Hg was transferred between TLs, resulting in lower trophic magnification of Hg compared to the pelagic food web. These findings highlight the importance of understanding the complexities and redundancy within the benthic food web in maintaining ecosystem function and resilience.

3.1.3. Coupling between the two food webs

The overlap in the isotopic values between the benthic and pelagic food webs (Fig. 2a and b) suggests that some species may utilize carbon sources from both food webs. This reflects potential dietary plasticity or movement between habitats, highlighting the coupling between pelagic and benthic food webs, particularly in shallow coastal ecosystems and well-mixed waters (e.g., Briand et al., 2016; Giraldo et al., 2024; Giraldo et al., 2017; Nagata et al., 2015; Timmerman et al., 2021). In fact, most of our samples were collected at depths of less than 20 m (Fig. 1), further supporting this connection.

In coastal ecosystems, pelagic food webs primarily rely on phytoplankton (Reynolds, 2008), whereas benthic food webs are supported by a diverse range of carbon sources (Hilgendag et al., 2022), including phytodetritus (Tamelander et al., 2006), benthic macrophytes (Bode et al., 2006), and terrestrial organic matter (Marcelina et al., 2018; Vinagre et al., 2019). The overlap between pelagic and benthic food webs is likely due to the diverse carbon sources utilized by benthic organisms, including those derived from pelagic inputs (e.g., Hilgendag et al., 2022; Iken et al., 2010).

The classification of species into pelagic or benthic groups in this study followed FAO guidelines (Carpenter and Niem, 1998a, 1998b, 1999a, 1999b, 2001a, 2001b), which provide a meaningful framework for initial ecological classification. However, as some species exhibit mixed feeding strategies, future research integrating complementary approaches—such as compound-specific isotope analysis of amino acids or bulk sulfur isotope analysis—could offer

deeper insights into trophic interactions and resource use (e.g., Gongora et al., 2018; Kim et al., 2023; Lacombe et al., 2024; Trifari et al., 2024) beyond what was revealed using bulk nitrogen and carbon isotope analysis in this study. By employing these additional approaches, researchers could better delineate the actual food web to which each sample belongs or assess the degree of overlap between the two food webs.

3.2. THg levels in marine organisms

We analyzed plankton, shellfish, crustaceans, cephalopods, and pelagic and demersal fishes for THg ($n = 342$). The THg in these organisms ranged from $0.45 \pm 0.16 \mu\text{g/kg}$ in fish larvae to $708 \pm 318 \mu\text{g/kg}$ in Hasselt's bambooshark (*Chiloscyllium hasseltii*, CH) (Table S2). Apart from plankton, considering all invertebrate and fish species together, the median, mean, and geometric mean of THg in the pelagic food web ($n = 69$) are 25.5, 49.4, and $25.9 \mu\text{g/kg}$, respectively. Similarly, in the benthic food web ($n = 246$), THg concentrations are 52.0, 113, and $55.5 \mu\text{g/kg}$ for both invertebrates and fish. In both invertebrate and fish species, THg values in the pelagic food web are approximately half of those in the benthic food web.

Animal size is one of the most significant factors affecting Hg in muscle tissues (Wren, 1986). In the GLMMs analysis, THg was modeled as a function of two predictors: total length and weight. This model, the fixed effect coefficient for total length was 0.065, indicating a significant positive relationship between THg and total length ($p < 0.001$), with increasing Hg concentration with greater total length. In contrast, weight has a non-significant effect on THg ($p > 0.05$). This size-dependent Hg accumulation is likely influenced by various biokinetic parameters, such as dietary assimilation efficiency, growth rate, and efflux rate (Dang and Wang, 2012). Furthermore, the model shares the random effect revealed significant difference among species ($p < 0.05$), suggesting that species-specific factors are important determinants of Hg accumulation in marine animals, in addition to total length and weight.

In the pelagic food web (Fig. 3a), THg increased progressively from fish larvae ($0.45 \pm 0.16 \mu\text{g/kg}$) to zooplankton ($0.72 \pm 0.19 \mu\text{g/kg}$), phytoplankton ($2.00 \pm 1.25 \mu\text{g/kg}$), and then to cephalopods ($24.2 \pm 17.3 \mu\text{g/kg}$) and to fishes ($61.9 \pm 168 \mu\text{g/kg}$). The Kruskal-Wallis test revealed that fish larvae, zooplankton, and phytoplankton have significantly lower THg than cephalopods and fishes ($p < 0.001$), while squids and fishes did not show any significant difference in THg ($p = 0.153$). Furthermore, there were no significant differences between fish larvae, zooplankton, and

phytoplankton ($p > 0.05$). Similarly, the benthic food web (Fig. 3b) shows increasing THg levels from bivalves ($8.17 \pm 3.39 \mu\text{g/kg}$) to shrimp ($24.7 \pm 2.21 \mu\text{g/kg}$), gastropods ($38.4 \pm 17.8 \mu\text{g/kg}$), cephalopods ($45.5 \pm 14.7 \mu\text{g/kg}$), crabs ($70.1 \pm 28.9 \mu\text{g/kg}$), and finally fishes ($134 \pm 200 \mu\text{g/kg}$). ANOVA revealed that bivalves have significantly lower THg than cephalopods, crabs, and fishes ($p < 0.001$), while cephalopods, crabs, and fishes did not show any significant difference in THg ($p > 0.05$). Furthermore, there were no significant differences between bivalves, gastropods, and shrimps ($p > 0.05$). These results indicate a potential for Hg biomagnification within certain marine food webs, particularly within fish populations. Considering the significant role of fish in the Thai diet, this finding emphasizes the critical need for continued monitoring of Hg levels in seafood to ensure consumer safety (Prabakaran et al., 2024, 2025; Ritonga et al., 2022; Windom and Cranmer, 1998).

3.2.1. Hg accumulation at the base of the food web

Hg in aquatic ecosystems are influenced by various factors, including trophic status and plankton density. The extent of biomagnification can vary depending on specific ecosystem characteristics. Indeed, phytoplankton generally accumulates lower Hg than other groups marine organisms (Wu and Wang, 2014). As zooplankton consume phytoplankton, it concentrates the Hg in their bodies (Watras and Bloom, 1992). This biomagnification continues at higher TLs, such as fish consuming zooplankton, leading to higher Hg in each successive TL (Morel et al., 1998). In some cases, higher plankton densities (i.e., during bloom events) are associated with lower Hg in phytoplankton, zooplankton, and fish (Chen and Folt, 2005). This phenomenon is called biodilution (Sun et al., 2020).

It is surprising that THg in fish larvae, zooplankton, and phytoplankton from this study are not significantly different (Fig. 3a) possibly through several plausible mechanisms. Firstly, small phytoplankton have high surface area-to-volume ratios, and subsequently high Hg uptake efficiencies, contributing to the relatively high concentrations (Fisher, 1985; Lee and Fisher, 2016; Wu et al., 2020), consistent with Koski (2024) who reported the lowest THg was observed in the $>200 \mu\text{m}$ size fraction ($18 \pm 3.51 \mu\text{g/kg}$) and the highest concentration in the size fraction of $50 - 200 \mu\text{m}$ ($25.5 \pm 3.7 \mu\text{g/kg}$). Furthermore, Tesan-Onrubia et al. (2023) also found higher THg in phytoplankton ($0.7 - 20 \mu\text{m}$ in size) than in the zooplankton of size classes from 60 to 200 to $>2000 \mu\text{m}$ in size. Secondly, in quickly expanding populations, growth rates may outpace rates of

metal uptake leading to lower mass-specific Hg concentrations at high biomass, known as growth dilution (Sunda and Huntsman, 1998).

In eutrophic and hypereutrophic systems, Hg uptake by phytoplankton tends to be lower, and trophic magnification factors are reduced compared to less productive lakes (Poste et al., 2015) as a result of biodilution as discussed above. On the other hand, oligotrophy likely drives the higher Hg bioaccumulation in the food web (Chouvelon et al., 2018). Other factors such as dissolved organic carbon (DOC) and plankton community composition can affect Hg bioaccumulation (Long et al., 2018). Coastal and offshore waters differ in their DOC and composition. Taki and Suzuki (2001) posited that offshore waters of the subtropical and equatorial Pacific typically have lower DOC concentrations and this DOC pool is more biologically derived and less degraded DOC compared to coastal and shelf environments. This difference likely leads to weaker binding of Hg and MeHg in these waters compared to terrestrial-derived and humic-rich organic matter, thereby increasing Hg bioavailability to plankton (Gosnell and Mason, 2015). Understanding these complex interactions is crucial for predicting Hg concentrations in aquatic food webs and assessing potential risks to higher TL organisms, including humans.

THg in primary producers (i.e., phytoplankton) provides crucial insights into how much Hg enters the food web. Here we compiled THg concentration in plankton from this study and those from other regions (Table 1). Although regional variations in Hg levels exist, we need to recognize that different size classes and analytical techniques for Hg may indeed prevent a direct comparison. We attempted to convert all different reported units to $\mu\text{g}/\text{kg}$ and found samples in our study had lower THg than most other studies.

3.2.1. Hg in fish and shellfish

Both invertebrate and fish species in the pelagic food web from this study have average THg concentrations ($49.3 \pm 139 \mu\text{g}/\text{kg}$) that were approximately half of those found in the benthic food web ($113 \pm 84.0 \mu\text{g}/\text{kg}$), similar to the findings reported by Le Croizier et al. (2019) conducted in fish residing in tropical water along the Senegalese coast of West Africa and Hilgendag et al. (2022) conducted in Arctic marine food webs of Frobisher Bay in Canada. Additionally, pelagic fish collected were lower in THg than benthic, bottom-feeding fish, which exhibited the highest THg of all fish species collected. This is consistent with other previous work in the nearby areas such as the Lower GOT (Windom and Cranmer, 1998) and GOT (Prabakaran et al., 2024).

Furthermore, pelagic fish collected in the Upper GOT were reported to have approximately half of those found in the THg concentrations than demersal fish (Chongprasith and Wilairatanadilok, 1999).

Several factors such as feeding habits and methylation may contribute to the lower THg levels in the pelagic food web compared to the benthic food web. Benthic organisms, such as bivalves and crustaceans, often exhibit more diverse diets and feeding strategies than pelagic organisms (Hilgendorf et al., 2022; McMeans et al., 2013; Renaud et al., 2011). This diversity in diets and feeding strategies affects how much Hg organisms can accumulate. Many bottom-dwelling invertebrates, such as bivalves and crustaceans, can absorb Hg in two ways: via food ingestion and via seawater through their gills (Gagnon and Fisher, 1997; Gray, 2002; Pan and Wang, 2011). In the case of fish, the former pathway accounts for most Hg intake (Murillo-Cisneros et al., 2019).

Another factor is methylation that is more prevalent in benthic environments especially in anoxic sediments compared to the water column (Compeau and Bartha, 1985; Merritt and Amirbahman, 2009), suggesting that the base of the benthic food web may be more enriched in MeHg relative to the pelagic food web. In addition, differences in seawater conditions between pelagic and benthic environments may lead to varying Hg exposure for different marine organisms. Indeed, the different chemical and physical conditions between pelagic and benthic environments lead to variations in Hg exposure, particularly in its most readily absorbed form, MeHg (Hilgendorf et al., 2022). In oxygen-depleted zones of pelagic environments, MeHg formation is believed to be driven by the heterotrophic organic matter remineralization (Bowman et al., 2016; Kim et al., 2017) stemming from the growth of phytoplankton (primary production) associated with subsurface chlorophyll maxima (Bowman et al., 2015; Bratkić et al., 2016; Wang et al., 2022).

Both oxidized and reduced sediments have the capacity to retain Hg. However, changes in redox conditions within the bottom water and upper sediment layers can trigger the release of Hg species into the water column. Conditions such as eutrophication or limited vertical mixing promote reducing environments, which enhance the formation of MeHg in sediments, with periodic releases into the water column (Pakhomova et al., 2018). Conversely, the oxygenation of previously anoxic waters can also result in the mobilization of Hg species into the water, increasing their bioavailability and potential uptake by organisms, thereby introducing Hg into the food web (Pakhomova et al., 2018). Throughout the study period, the area under investigation experienced

no hypoxia in the water column. Therefore, any MeHg entering the base of the pelagic food web might originate from the underlying sediments or perhaps in the settling particles (e.g., Monperrus et al., 2007; Sunderland et al., 2009).

In benthic environments, bottom-dwelling organisms (i.e., benthic biota) experience variable MeHg exposure. The types of microbes present in the sediments can influence MeHg production while the amount of organic matter can act as a chelating agent of MeHg, thus reducing its bioavailability for organisms (Lawrence and Mason, 2001; Tomczyk et al., 2018). The wider range of THg observed in benthic food webs compared to pelagic one's stems from three key factors. Firstly, bottom-dwelling organisms have more diverse food sources, potentially leading to a broader range of Hg exposure. Secondly, they likely have unique mechanisms for accumulating and eliminating Hg compared to open water organisms. Finally, the varied seawater chemistry conditions experienced by bottom-dwellers throughout their habitat can contribute to more variable Hg exposure.

Most THg in the studied invertebrates and fish species (n =315, Table S2) fell below the guideline levels established by international organizations (e.g., EC, 2023; UNEP, 2002) and national regulations (e. g., Bugang and Woolsey, 2010; Canada, 2007; FSANZ, 2024; Jinadasa et al., 2021; MPH, 2020) (500 µg/kg wet weight). However, some exceptions were found in some fish species. In the pelagic food web (n =96), one pickhandle barracuda (*Sphyraena jello*, SJE; n =1) exceeded the limit. Similarly, the benthic food web (n =246) contained 10 samples (five species) that surpassed the guideline levels: lattice monocle bream (*Scolopsis taenioptera*, STA; n =1), large scaled terapon (*Terapon theraps*, TT; n =5), jarbua terapon (*Terapon jarbua*, TJ, n =1), butterfly whiptail (*Pentapodus setosus*, PS; n =1), and Hasselt's bambooshark (*Chiloscyllium hasseltii*, CH; n =2). These species exceeding the guideline levels are thought to occupy higher or intermediate TLs compared to most organisms in this study based on the $\delta^{15}\text{N}$ values (Table S2).

The highest THg in the pelagic food web was found in pickhandle barracuda (*Sphyraena jello*, SJE), a fast-swimming and long-lived carnivorous fish, with high energy demands due to its active lifestyle (Dananjanie et al., 2009; Hajisamae et al., 2003). Its high consumption rate makes it more susceptible to accumulating pollutants like Hg in its organs and tissues (e.g., Ritonga et al., 2023). In this study, the average THg in SJE is 595 ± 576 µg/kg, higher than those reported in Port Moresby (61 µg/kg) (Sorentino, 1979) and the artisanal fisheries of Seychelles (360 ± 31 µg/kg) (Robinson and Shroff, 2020). Several previous studies showed a strong correlation between

SJE length and Hg concentration (e.g., Saei-Dehkordi et al., 2010; Shalini et al., 2021). These studies highlight regional variations in Hg concentrations and the potential for bioaccumulation in larger predatory fish species. Also, it is important to note that the two SJE in this study had drastically different lengths (i.e., 12.8 vs 59.0 cm) resulting in varying THg therein (i.e., 18.3 vs 1171 $\mu\text{g}/\text{kg}$). The regional variations in Hg concentrations observed in SJE emphasize the need for targeted monitoring and management strategies to protect human health and marine ecosystems from Hg contamination. By understanding the factors driving Hg accumulation in SJE, we can develop effective measures to reduce Hg exposure and mitigate its negative impacts.

In contrast, the benthic food web shows the highest THg in Hasselt's bambooshark (*Chiloscyllium hasseltii*, CH) at $708 \pm 318 \mu\text{g}/\text{kg}$, followed by jarbua terapon (*Terapon jarbua*, TJ, $663 \pm 523 \mu\text{g}/\text{kg}$) and large scaled terapon (*Terapon theraps*, TT, $470 \pm 370 \mu\text{g}/\text{kg}$). *Terapon* spp., typically found in Indo-West Pacific coastal waters, brackish areas, and even freshwater, have higher THg and exhibit interesting life stages. Adults prefer the near-shore environment, while juveniles hitch rides on floating weeds, venturing far out to sea (Lim, 2015; Russell and Houston, 1989). Their omnivorous diet includes invertebrates, algae, decomposing matter, and also small fish (Nagarani and Kumaraguru, 2012). They are not only nutritious for human consumption but also serve as valuable indicators of environmental contamination of Hg (e.g., Nagarani et al., 2011). In this study, the average concentration of THg in TT and TJ is lower than the *Terapon* spp. In the GOT ($1050 \pm 721 \mu\text{g}/\text{kg}$) (Prabakaran et al., 2024). The THg in TT was lower than that reported for Buru Island ($970 \mu\text{g}/\text{kg}$) (Reichelt-Brushett et al., 2017). Conversely, the concentration in TJ was higher than those reported for Dapeng Bay ($48.4 \pm 18.3 \mu\text{g}/\text{kg}$) (Pan et al., 2014), the South China Sea ($417 \mu\text{g}/\text{kg}$) (Liu et al., 2014), and the Talawaan watershed, Indonesia ($175 \mu\text{g}/\text{kg}$) (Kaunang et al., 2018).

This study highlights that some predatory fish (i.e., *Sphyraena jello* sp. and *Chiloscyllium hasseltii*) and some demersal fish (*Terapon* spp.) tend to accumulate higher levels of Hg due to their higher position in the food web. As a result, it is recommended to limit the consumption of fish occupying high TLs. To effectively mitigate the potential health impacts of Hg on humans, further research on its uptake and depuration mechanisms is essential. This knowledge could be used to create targeted guidance, such as recommendations on which fish species, age groups, or body parts to avoid consuming, and even contribute to the development of safer food practices.

3.3. Prey-predator dynamics impact on THg biomagnification

Over 46 % of BMF_{norm} values in the pelagic food web (Fig. S1) and over 40 % in the benthic food web exceeded 1.0 (Fig. S2), indicating Hg biomagnification (Borgå et al., 2012; Vainio et al., 2022). The pelagic food web exhibited a BMF_{norm} range of 1.015 to 1285 (28.2 ± 19.6), while the benthic food web ranged from 1.001 to 476 (13.9 ± 32.9). Equation (3) considers a TLs to account for differences in how THg accumulates at different TLs. In some cases, however, BMF_{norm} values can be lower than one or even negative (shown as white boxes in Figs. S1 and S2). This is due to the predator's TL values being lower than those of its supposed prey (e.g., Vainio et al., 2022).

In the pelagic food web (Fig. S1), the three barracuda species, including the *Sphyraena jello* (SJE) exhibits the highest BMF_{norm} values, indicating the greatest Hg accumulation from prey ($BMF_{norm} = 188 \pm 30.4$, range: 12.7 to 1285), followed by the *Sphyraena putnamae* (SP) ($BMF_{norm} = 27.3 \pm 48.9$, range: 1.0 to 243) and the *Sphyraena obtusata* (SOC) ($BMF_{norm} = 14.2 \pm 27.1$, range: 1.8 to 135). Given this, SJE is likely a top predator within this pelagic food web, while SP and SOC may occupy upper TLs. Similarly, in the benthic food web (Fig. S2), the *Chiloscyllium hasseltii* (CH) demonstrates the highest BMF_{norm} values, implying the most substantial Hg uptake from prey ($BMF_{norm} = 68.8 \pm 82$, range: 7.6 to 364), with the *Terapon jarbua* (TJ) ($BMF_{norm} = 40.4 \pm 73.7$, range: 2.9 to 476) and the *Terapon theraps* (TT) ($BMF_{norm} = 26.8 \pm 22.2$, range: 4.2 to 87.7) following. The range of BMF_{norm} values in marine organisms in this study is higher than those reported by Vainio et al. (2022) for homeotherms ($BMFs = 4.40$ to 508) and poikilotherms ($BMFs = 0.44$ to 33.5), as well as for pelagic predators ($BMFs = 1.61$ to 9.35) and benthic predators ($BMFs = 0.44$ to 30.9) in the Archipelago Sea a Baltic Sea basin at the southwestern coast of Finland. This discrepancy could be attributed to variations in ecosystem characteristics. GOT might represent a different marine environment with distinct food web structures and prey composition compared to the Baltic Sea. Additionally, environmental factors like salinity, seawater temperature, organic matter content, and sediment characteristics can all influence Hg bioavailability and bioaccumulation in organisms (Bradford et al., 2024; Lawrence and Mason, 2001). Together, these factors likely contribute to the observed differences in BMF and BMF_{norm} values.

While the BMF and BMF_{norm} values provide insights into how contaminant concentrations increase up the food web, they have limitations particularly because they do not account for the variations observed in real-world ecosystems. Different species have unique food source and body

temperature regulation strategy. Both of which can significantly influence the contaminant accumulation, making BMF and BMF_{norm} values less precise for some organisms (Vainio et al., 2022; Van den Brink et al., 2013). To improve our understanding of contaminant movement in food webs, models that incorporate these ecological and physiological differences are needed.

3.4. THg biomagnification in pelagic vs benthic food webs

Trophic indicators (BMF_{norm} , TMS, and TMF) can be used to explore the dynamics of THg in the Rayong Bay tropical food web. The BMF_{norm} values characterize the increase in contaminant concentration between adjacent TLs, while the TMF values represent the average BMF_{norm} across multiple TLs, potentially encompassing the entire food web (Franklin, 2016).

Varying degrees of THg biomagnification were observed in different habitats. Our GLMM analysis revealed a significant positive relationship between TLs and THg concentrations with a fixed effect coefficient of 0.352 ($p < 0.05$). This result indicates that organisms at higher TLs tend to accumulate greater Hg. The TMF values of 6.68 for the pelagic food web and 2.06 for the benthic food web further support this trend, demonstrating that THg biomagnifies more effectively in the pelagic food web (TMS = 0.83, Fig. 4a) compared to the benthic food web (TMS = 0.31, Fig. 4b). This highlights the significance of investigating THg pathways in various environmental environments. Consistent with previous findings that pelagic food webs generally exhibiting higher biomagnification rates than benthic food webs (e.g., Hilgendag et al., 2022; Vainio et al., 2022), our study confirms that THg biomagnification occurs in both Rayong Bay food webs, with greater TMF and TMS values indicating higher levels of Hg biomagnification. Consequently, consumers at higher TLs are more likely to accumulate significant amounts of Hg, posing a risk to human health (Scheuhammer et al., 2007).

Both pelagic and benthic food webs with TMF values exceeding 1.0 indicate that THg entered organisms at the base of the food web and biomagnified through trophic transfers. Our TMF values align with previous studies, which reported higher TMFs in the pelagic food web compared to the benthic one in the Gulf of St. Lawrence, Canada (Lavoie et al., 2010), the Archipelago Sea (Vainio et al., 2022) and Frobisher Bay (Hilgendag et al., 2022) (Table 2). The biomagnification of the same contaminant differs among food webs, influenced by the unique characteristics of each web (Wang et al., 2021). The distinct TMF values observed in both food webs could be linked to differences in THg bioavailability (Bisi et al., 2012). In fact, simpler food

webs in our study, such as the pelagic system, appeared to rely on fewer carbon sources and exhibited higher rates of Hg biomagnification consistent with other previous studies (e.g., Hilgendorf et al., 2022; Muto et al., 2014). Notably, the factors driving Hg biomagnification in marine food webs appear consistent across diverse environments, from polar to temperate to tropical regions (Campbell et al., 2005; Lavoie et al., 2013).

A comprehensive overview of TMF values, calculated by taking the antilogarithm of the slope ($\text{Log}_{10}\text{THg vs } \delta^{15}\text{N}/\text{Log}_{10}\text{THg vs TL}$) from the estimated regression with base 10, for Hg across various marine food webs globally is presented (Table 2). TMF values exhibit even greater variability, ranging from 1.10 to 13.39, highlighting significant differences in TMF values across marine food webs. This variability is further evidenced by discrepancies between our findings and those of previous studies, some of which involved seabirds (e.g., Jæger et al., 2009; Lavoie et al., 2010; Ruus et al., 2015). These discrepancies may primarily arise from variations in the quantity of Hg entering the base of the food web (Thera and Rumbold, 2014), as well as differences in the structure and complexity of the food web. Geographical differences can also influence the quantity of bioavailable Hg generated (Murillo-Cisneros et al., 2019). However, trophic contaminant dynamics within food webs are specific to each system due to variations in the physiochemical characteristics of the environment and instance and the intrinsic variety in the contamination pathways that arise (Vainio et al., 2022). Our findings highlight the critical importance of examining variations in the trophic transmission of Hg along distinct food web pathways to gain a deeper comprehension of contaminants dynamics.

4. Conclusion

This study integrated food web structure analysis with biomagnification estimations to explore dietary Hg pathways in the marine environment of Rayong Bay, a relatively unexplored area within the GOT. To our knowledge, this is the first investigation into THg biomagnification in Thai waters. Our results revealed a significant positive relationship between THg and total length and TLs in marine animals. This relationship indicates that THg levels increase as organisms ascend the food web. Larger predators, including fish such as *Sphyraena* sp., *Chiloscyllium* sp., and certain demersal fish (*Terapon* spp.), exhibit significantly higher concentrations than smaller organisms. Although most THg levels were well below established safety guidelines, the presence of biomagnification warrants further exploration.

This research utilized three trophic indicators (BMF_{norm} , TMS, and TMF) to assess THg movements within the food webs in Rayong Bay. Over 40 % of the BMF_{norm} values in the pelagic and benthic food webs exceed one, indicating that THg increase as organisms moves up the food web in these ecosystems. Additionally, the TMF values show that THg biomagnifies more effectively in the pelagic food web than in the benthic food web in Rayong Bay. This finding aligns with the comparison of food web structure and computed biomagnification values (TMFs and TMSs) between the two food webs.

Overall, the findings emphasize the occurrence of Hg biomagnification in Rayong Bay. While plankton exhibits minimal enrichment, predators at higher TLs accumulate substantial amounts of Hg. The higher biomagnification in the pelagic system also necessitates further investigation into the specific factors driving this pattern.

CRedit authorship contribution statement

Suriyapong Kumsopar: Writing – review & editing, Writing – original draft, Visualization, Project administration, Methodology, Investigation, Formal analysis, Data curation, Conceptualization. Chawalit Charoenpong: Writing – review & editing, Writing – original draft, Validation, Supervision, Resources, Project administration, Methodology, Investigation, Funding acquisition, Formal analysis, Conceptualization. Shaoneng He: Writing – review & editing, Methodology, Investigation. Paco Bustamante: Writing – review & editing. Bernie Wee: Writing – review & editing, Methodology, Investigation. Xianfeng Wang: Writing – review & editing, Methodology, Investigation. Narainrit Chinfak: Writing – review & editing, Investigation. Kiattipong Kamdee: Writing – review & editing, Investigation. Penjai Sompongchaiyakul: Writing – review & editing, Supervision, Resources, Project administration, Funding acquisition, Conceptualization.

Declaration of competing interest

The authors declare the following financial interests/personal relationships which may be considered as potential competing interests: Suriyapong Kumsopar reports financial support was provided by Chulalongkorn University. Suriyapong Kumsopar reports financial support was provided by Thailand Institute of Nuclear Technology. Chawalit Charoenpong reports financial support was provided by Thailand Institute of Nuclear Technology. Chawalit Charoenpong reports financial support was provided by Star Petroleum Refining Public Company Limited (SPRC).

Penjai Sompongchaiyakul reports financial support was provided by Star Petroleum Refining Public Company Limited (SPRC). Xianfeng Wang reports financial support was provided by Government of Singapore Ministry of Education. If there are other authors, they declare that they have no known competing financial interests or personal relationships that could have appeared to influence the work ported in this paper.

Acknowledgments. This research was supported by Star Petroleum Refining Public Company Limited, the 90th Anniversary of Chulalongkorn University, Rachadapisek Sompote Fund, and the Thailand Institute of Nuclear Technology. Xianfeng Wang acknowledges financial support from the Singapore Ministry of Education under grant number RT22/21. We thank colleagues at the Asian School of the Environment/Earth Observatory, Nanyang Technological University, Singapore and the Chemical Oceanography Laboratory, Chulalongkorn University for their assistance with the sampling and laboratory analyses. We are indebted to the captain and crew of R/V Pramong-16, operated by the Eastern Marine Fisheries Research and Development Center in Rayong, for their assistance during our field campaigns. Additionally, we acknowledge the contributions of Itchika Sivaipram and her team for plankton identification. Lastly, we thank the editor and six anonymous reviewers whose suggestions helped to improve this manuscript.

Reference

- Ackerman, J. T., Eagles-Smith, C. A., Herzog, M. P., Hartman, C. A., Peterson, S. H., Evers, D. C., Jackson, A. K., Elliott, J. E., Vander Pol, S. S., & Bryan, C. E. (2016). Avian mercury exposure and toxicological risk across western North America: A synthesis. *Science of the total environment*, 568, 749-769. <https://doi.org/10.1016/j.scitotenv.2016.03.071>
- Agusa, T., Kunito, T., Sudaryanto, A., Monirith, I., Kan-Atireklap, S., Iwata, H., Ismail, A., Sanguansin, J., Muchtar, M., Tana, T. S., & Tanabe, S. (2007). Exposure assessment for trace elements from consumption of marine fish in Southeast Asia. *Environmental Pollution*, 145(3), 766-777. <https://doi.org/10.1016/j.envpol.2006.04.034>
- Allen, G. R. (1991). Field guide to the freshwater fishes of New Guinea.
- Bełdowska, M., Mudrak-Cegiołka, S., 2017. Mercury concentration variability in the zooplankton of the southern Baltic coastal zone. *Prog. Oceanogr.* 159, 73–85. <https://doi.org/10.1016/j.pocean.2017.09.009>.
- Bisi, T.L., Lepoint, G., Azevedo, A.d.F., Dorneles, P.R., Flach, L., Das, K., Malm, O., Lailson-Brito, J., 2012. Trophic relationships and mercury biomagnification in Brazilian tropical coastal food webs. *Ecol. Indic.* 18, 291–302. <https://doi.org/10.1016/j.ecolind.2011.11.015>.

- Blaber, S.J.M., Whitfield, A.K., 1977. The feeding ecology of juvenile mullet (Mugilidae) in south-east African estuaries. *Biol. J. Linn. Soc.* 9 (3), 277–284. <https://doi.org/10.1111/j.1095-8312.1977.tb00270.x>.
- Bloom, N.S., 1992. On the chemical form of mercury in edible fish and marine invertebrate tissue. *Can. J. Fish. Aquat. Sci.* 49 (5), 1010–1017. <https://doi.org/10.1139/f92-113>.
- Bode, A., Alvarez-OssorioBisi, T. L., Lepoint, G., Azevedo, A. d. F., Dorneles, P. R., Flach, L., Das, K., Malm, O., & Lailson-Brito, J. (2012). Trophic relationships and mercury biomagnification in Brazilian tropical coastal food webs. *Ecological Indicators*, 18, 291-302. <https://doi.org/10.1016/j.ecolind.2011.11.015>
- Bongiorni, L. (2012). Thraustochytrids, a Neglected Component of Organic Matter Decomposition and Food Webs in Marine Sediments. In C. Raghukumar (Ed.), *Biology of Marine Fungi* (pp. 1-13). Springer Berlin Heidelberg. https://doi.org/10.1007/978-3-642-23342-5_1
- Borgå, K., Kidd, K. A., Muir, D. C. G., Berglund, O., Conder, J. M., Gobas, F. A. P. C., Kucklick, J., Malm, O., & Powell, D. E. (2012). Trophic magnification factors: Considerations of ecology, ecosystems, and study design. *Integrated Environmental Assessment and Management*, 8(1), 64-84. <https://doi.org/10.1002/ieam.244>
- Bowman, K. L., Hammerschmidt, C. R., Lamborg, C. H., & Swarr, G. (2015). Mercury in the North Atlantic Ocean: The U.S. GEOTRACES zonal and meridional sections. *Deep Sea Research Part II: Topical Studies in Oceanography*, 116, 251-261. <https://doi.org/10.1016/j.dsr2.2014.07.004>
- Bowman, K. L., Hammerschmidt, C. R., Lamborg, C. H., Swarr, G. J., & Agather, A. M. (2016). Distribution of mercury species across a zonal section of the eastern tropical South Pacific Ocean (U.S. GEOTRACES GP16). *Marine Chemistry*, 186, 156-166. <https://doi.org/10.1016/j.marchem.2016.09.005>
- Bradford, M. A., Mallory, M. L., & O'Driscoll, N. J. (2023). Mercury bioaccumulation and speciation in coastal invertebrates: Implications for trophic magnification in a marine food web. *Marine Pollution Bulletin*, 188, 114647. <https://doi.org/10.1016/j.marpolbul.2023.114647>
- Bradford, M. A., Mallory, M. L., & O'Driscoll, N. J. (2024). Ecology and environmental characteristics influence methylmercury bioaccumulation in coastal invertebrates. *Chemosphere*, 346, 140502. <https://doi.org/10.1016/j.chemosphere.2023.140502>
- Bradley, M.A., Barst, B.D., Basu, N., 2017. A review of mercury bioavailability in humans and fish. *Int. J. Environ. Res. Publ. Health* 14 (2), 169. <https://doi.org/10.3390/ijerph14020169>.
- Bratkič, A., Vahčić, M., Kotnik, J., Obu Vazner, K., Begu, E., Woodward, E. M. S., & Horvat, M. (2016). Mercury presence and speciation in the South Atlantic Ocean along the 40°S transect. *Global Biogeochemical Cycles*, 30(2), 105-119. <https://doi.org/10.1002/2015GB005275>
- Briand, M.J., Bonnet, X., Guillou, G., Letourneur, Y., 2016. Complex food webs in highly diversified coral reefs: insights from $\delta^{13}\text{C}$ and $\delta^{15}\text{N}$ stable isotopes. *Food Webs* 8, 12–22. <https://doi.org/10.1016/j.fooweb.2016.07.002>.
- Briant, N., Chouvelon, T., Martinez, L., Brach-Papa, C., Chiffolleau, J.F., Savoye, N., Sonke, J., Knoery, J., 2017. Spatial and temporal distribution of mercury and methylmercury in bivalves from the French coastline. *Mar. Pollut. Bull.* 114 (2), 1096–1102. <https://doi.org/10.1016/j.marpolbul.2016.10.018>.

- Bugang, W., & Woolsey, M. (2010). National Food Safety Standard-Maximum Levels of Contaminants in Foods (GB 2762-2010). *Global Agricultural Information Network, USDA. Washington DC*, 2-7.
- Burgess, N. M., & Meyer, M. W. (2008). Methylmercury exposure associated with reduced productivity in common loons. *Ecotoxicology*, 17(2), 83-91. 10.1007/s10646-007-0167-8
- Burnett, W. C., Sola, P., Chanyotha, S., Bidorn, B., Kritsanawanat, R., & Chinfak, N. (2019). Tracing underground sources of pollution to coastal waters off Map Ta Phut, Rayong, Thailand. *Marine Pollution Bulletin*, 148, 75-84. <https://doi.org/10.1016/j.marpolbul.2019.07.071>
- Byczkowski, J. Z. (2005). Methyl mercury toxicity: pharmacokinetics and toxicodynamic aspects. In *Reviews in Food and Nutrition Toxicity, Volume 3* (pp. 61-84). CRC Press.
- Cai, Y., Rooker, J. R., Gill, G. A., & Turner, J. P. (2007). Bioaccumulation of mercury in pelagic fishes from the northern Gulf of Mexico. *Canadian Journal of Fisheries and Aquatic Sciences*, 64(3), 458-469. <https://doi.org/10.1139/f07-017>
- Campbell, L. M., Norstrom, R. J., Hobson, K. A., Muir, D. C. G., Backus, S., & Fisk, A. T. (2005). Mercury and other trace elements in a pelagic Arctic marine food web (Northwater Polynya, Baffin Bay). *Science of the total environment*, 351-352, 247-263. <https://doi.org/10.1016/j.scitotenv.2005.02.043>
- Canada, H. (2007). Human health risk assessment of mercury in fish and health benefits of fish consumption. *Bureau of Chemical Safety, Minister of Health*.
- Cao, L., Liu, J., Dou, S., & Huang, W. (2020). Biomagnification of methylmercury in a marine food web in Laizhou Bay (North China) and associated potential risks to public health. *Marine Pollution Bulletin*, 150, 110762. <https://doi.org/10.1016/j.marpolbul.2019.110762>
- Cardinale, B.J., Palmer, M.A., Collins, S.L., 2002. Species diversity enhances ecosystem functioning through interspecific facilitation. *Nature* 415 (6870), 426–429. <https://doi.org/10.1038/415426a>.
- Carpenter, K. E., & Niem, V. H. (Eds.). (1998a). *The living marine resources of the Western Central Pacific. Seaweeds, corals, bivalves and gastropods* (Vol. 1). Food and Agriculture Organization of the United Nations.
- Carpenter, K. E., & Niem, V. H. (Eds.). (1998b). *The living marine resources of the Western Central Pacific. Cephalopods, crustaceans, holothurians and sharks* (Vol. 2). Food and Agriculture Organization of the United Nations.
- Carpenter, K. E., & Niem, V. H. (Eds.). (1999a). *The living marine resources of the Western Central Pacific. Batoid fishes, chimaeras and bony fishes part 1 (Elopidae to Linophrynidae)* (Vol. 3). Food and Agriculture Organization of the United Nations.
- Carpenter, K. E., & Niem, V. H. (Eds.). (1999b). *The living marine resources of the Western Central Pacific. Bony fishes part 2 (Mugilidae to Carangidae)* (Vol. 4). Food and Agriculture Organization of the United Nations.
- Carpenter, K. E., & Niem, V. H. (Eds.). (2001a). *The living marine resources of the Western Central Pacific. Bony fishes part 3 (Menidae to Pomacentridae)* (Vol. 5). Food and Agriculture Organization of the United Nations.
- Carpenter, K. E., & Niem, V. H. (Eds.). (2001b). *The living marine resources of the Western Central Pacific. Bony fishes part 4 (Labridae to Latimeriidae), estuarine crocodiles, sea turtles, sea snakes and marine mammals* (Vol. 6). Food and Agriculture Organization of the United Nations.

- Cheevaporn, V., & Menasveta, P. (2003). Water pollution and habitat degradation in the Gulf of Thailand. *Marine Pollution Bulletin*, 47(1), 43-51. [https://doi.org/10.1016/S0025-326X\(03\)00101-2](https://doi.org/10.1016/S0025-326X(03)00101-2)
- Cheevaporn, V., Velasquez, I., Menasveta, P., 2000. Amplification of mercury concentrations in the marine food chain of the East Coast of Thailand. *Int. J. Sci. Technol. Thammasat* 5, 24–33. <https://www.thaiscience.info/journals/Article/TSTJ/10480637.pdf>.
- Chen, C. Y., & Folt, C. L. (2005). High Plankton Densities Reduce Mercury Biomagnification. *Environmental Science & Technology*, 39(1), 115-121. 10.1021/es0403007
- Chen, J., Liu, Y., Chao, L., Hou, L., Wang, Y., Chu, J., Sun, J., 2024. Distribution, trophic magnification and risk of trace metals and perfluoroalkyl acids in marine organisms from Haizhou Bay. *Environ. Res.* 261, 119746. <https://doi.org/10.1016/j.envres.2024.119746>.
- Chongprasith, P., Wilairatanadilok, W., 1999. Are Thai waters really contaminated with mercury. In: *Proceedings of the Fourth ASEAN-Canada Technical Conference on Marine Science*. Langkawi, Malaysia.
- Chouvelon, T., Cresson, P., Bouchoucha, M., Brach-Papa, C., Bustamante, P., Crochet, S., Marco-Miralles, F., Thomas, B., Knoery, J., 2018. Oligotrophy as a major driver of mercury bioaccumulation in medium-to high-trophic level consumers: a marine ecosystem-comparative study. *Environ. Pollut.* 233, 844–854. <https://doi.org/10.1016/j.envpol.2017.11.015>.
- Chouvelon, T., Strady, E., Harmelin-Vivien, M., Radakovitch, O., Brach-Papa, C., Crochet, S., Knoery, J., Rozuel, E., Thomas, B., Tronczynski, J., Chiffolleau, J.-F., 2019. Patterns of trace metal bioaccumulation and trophic transfer in a phytoplankton-zooplankton-small pelagic fish marine food web. *Mar. Pollut. Bull.* 146, 1013–1030. <https://doi.org/10.1016/j.marpolbul.2019.07.047>.
- Christianen, M. J. A., Middelburg, J. J., Holthuijsen, S. J., Jouta, J., Compton, T. J., van der Heide, T., Piersma, T., Sinninghe Damsté, J. S., van der Veer, H. W., Schouten, S., & Olf, H. (2017). Benthic primary producers are key to sustain the Wadden Sea food web: stable carbon isotope analysis at landscape scale. *Ecology*, 98(6), 1498-1512. <https://doi.org/10.1002/ecy.1837>
- Christianen, M.J.A., Middelburg, J.J., Holthuijsen, S.J., Jouta, J., Compton, T.J., van der Heide, T., Piersma, T., Sinninghe Damsté, J.S., van der Veer, H.W., Schouten, S., Olf, H., 2017. Benthic primary producers are key to sustain the Wadden Sea food web: stable carbon isotope analysis at landscape scale. *Ecology* 98 (6), 1498–1512. <https://doi.org/10.1002/ecy.1837>.
- Clarkson, T.W., Magos, L., 2006. The toxicology of mercury and its chemical compounds. *Crit. Rev. Toxicol.* 36 (8), 609–662. <https://doi.org/10.1080/10408440600845619>.
- Clayden, M.G., Arsenault, L.M., Kidd, K.A., O'Driscoll, N.J., Mallory, M.L., 2015. Mercury bioaccumulation and biomagnification in a small Arctic polynya ecosystem. *Sci. Total Environ.* 509–510, 206–215. <https://doi.org/10.1016/j.scitotenv.2014.07.087>.
- Compeau, G.C., Bartha, R., 1985. Sulfate-Reducing bacteria: principal methylators of Mercury in Anoxic Estuarine sediment. *Appl. Environ. Microbiol.* 50 (2), 498–502. <https://doi.org/10.1128/aem.50.2.498-502.1985>.
- Conder, J.M., Gobas, F.A.P.C., Borgå, K., Muir, D.C.G., Powell, D.E., 2012. Use of trophic magnification factors and related measures to characterize bioaccumulation potential of chemicals. *Integrated Environ. Assess. Manag.* 8 (1), 85–97. <https://doi.org/10.1002/ieam.216>.

- Córdoba-Tovar, L., Marrugo-Negrete, J., Barón, P. R., & Díez, S. (2022). Drivers of biomagnification of Hg, As and Se in aquatic food webs: A review. *Environmental Research*, 204, 112226. <https://doi.org/10.1016/j.envres.2021.112226>
- D'Alessandro, E. K., Sponaugle, S., Llopiz, J. K., & Cowen, R. K. (2011). Larval ecology of the great barracuda, *Sphyraena barracuda*, and other sphyraenids in the Straits of Florida. *Marine Biology*, 158(12), 2625-2638. 10.1007/s00227-011-1771-y
- Dananjanie, K., De Croos, M., & Dissanayake, D. (2009). Gillnet selectivity and food and feeding habits of *Sphyraena obtusata* and *Sphyraena jello* in the coastal waters off Negombo, Sri Lanka.
- Dang, F., & Wang, W.-X. (2010). Subcellular controls of mercury trophic transfer to a marine fish. *Aquatic Toxicology*, 99(4), 500-506. <https://doi.org/10.1016/j.aquatox.2010.06.010>
- Dang, F., & Wang, W.-X. (2012). Why mercury concentration increases with fish size? Biokinetic explanation. *Environmental Pollution*, 163, 192-198. <https://doi.org/10.1016/j.envpol.2011.12.026>
- de Almeida Rodrigues, P., Ferrari, R. G., dos Santos, L. N., & Conte Junior, C. A. (2019). Mercury in aquatic fauna contamination: A systematic review on its dynamics and potential health risks. *Journal of Environmental Sciences*, 84, 205-218. <https://doi.org/10.1016/j.jes.2019.02.018>
- De Bernardi, R. (1984). Methods for the estimation of zooplankton abundance. *A manual on methods for the assessment of secondary productivity in fresh waters*, 2.
- Dean, C.B., Nielsen, J.D., 2007. Generalized linear mixed models: a review and some extensions. *Lifetime Data Anal.* 13 (4), 497–512. <https://doi.org/10.1007/s10985-007-9065-x>.
- DeNiro, M. J., & Epstein, S. (1978). Influence of diet on the distribution of carbon isotopes in animals. *Geochimica et Cosmochimica Acta*, 42(5), 495-506. [https://doi.org/10.1016/0016-7037\(78\)90199-0](https://doi.org/10.1016/0016-7037(78)90199-0)
- Deniro, M. J., & Epstein, S. (1981). Influence of diet on the distribution of nitrogen isotopes in animals. *Geochimica et Cosmochimica Acta*, 45(3), 341-351. [https://doi.org/10.1016/0016-7037\(81\)90244-1](https://doi.org/10.1016/0016-7037(81)90244-1)
- Deuser, W. G. (1970). Isotopic Evidence for Diminishing Supply of Available Carbon during Diatom Bloom in the Black Sea. *Nature*, 225(5237), 1069-1071. 10.1038/2251069a0
- Di Benedetto, A.P.M., Bittar, V.T., Camargo, P.B., Rezende, C.E., Kehrig, H.A., 2012. Mercury and Nitrogen isotope in a marine species from a tropical coastal food web. *Arch. Environ. Contam. Toxicol.* 62 (2), 264–271. <https://doi.org/10.1007/s00244-011-9701-z>.
- du Pontavice, H., Gascuel, D., Reygondeau, G., Maureaud, A., Cheung, W.W.L., 2020. Climate change undermines the global functioning of marine food webs. *Glob. Change Biol.* 26 (3), 1306–1318. <https://doi.org/10.1111/gcb.14944>.
- Eagles-Smith, C.A., Silbergeld, E.K., Basu, N., Bustamante, P., Diaz-Barriga, F., Hopkins, W.A., Kidd, K.A., Nyland, J.F., 2018. Modulators of mercury risk to wildlife and humans in the context of rapid global change. *Ambio* 47 (2), 170–197. <https://doi.org/10.1007/s13280-017-1011-x>.
- EC, 2023. Commission Regulation (EU) 2023/915 of 25 April 2023 on maximum levels for certain contaminants in food and repealing Regulation (EC) no 1881/2006. *Off. J. Eur. Union* 103–157. Retrieved from. <http://data.europa.eu/eli/reg/2023/915/oj>.
- Fang, T.H., Chang, F.W., 2024. Temporal variation of mercury and methyl mercury in water and accumulation by phytoplankton in the eutrophic estuary, northern Taiwan. *Mar. Pollut. Bull.* 205, 116624. <https://doi.org/10.1016/j.marpolbul.2024.116624>.

- Ferriss, B. E., & Essington, T. E. (2014). Does trophic structure dictate mercury concentrations in top predators? A comparative analysis of pelagic food webs in the Pacific Ocean. *Ecological Modelling*, 278, 18-28. <https://doi.org/10.1016/j.ecolmodel.2014.01.029>
- Fisher, N. S. (1985). Accumulation of metals by marine picoplankton. *Marine Biology*, 87(2), 137-142. 10.1007/BF00539421
- Fontugne, M., & Duplessy, J. (1981). Organic carbon isotopic fractionation by marine plankton in the temperature range -1 to 31°C. *Oceanologica Acta*, 4(1), 85-90. <https://archimer.ifremer.fr/doc/00121/23239/>
- Foster, K.L., Stern, G.A., Pazerniuk, M.A., Hickie, B., Walkusz, W., Wang, F., Macdonald, R.W., 2012. Mercury biomagnification in Marine Zooplankton food webs in Hudson Bay. *Environ. Sci. Technol.* 46 (23), 12952–12959. <https://doi.org/10.1021/es303434p>.
- Fox, A.L., Trefry, J.H., Trocine, R.P., Dunton, K.H., Lasorsa, B.K., Konar, B., Ashjian, C.J., Cooper, L.W., 2017. Mercury biomagnification in food webs of the northeastern Chukchi Sea, Alaskan Arctic. *Deep Sea Res. Part II Top. Stud. Oceanogr.* 144, 63–77. <https://doi.org/10.1016/j.dsr2.2017.04.020>.
- France, R., & Peters, R. (1997). Ecosystem differences in the trophic enrichment of ¹³C in aquatic food webs. *Canadian Journal of Fisheries and Aquatic Sciences*, 54(6), 1255-1258. <https://doi.org/10.1139/f97-044>
- Franklin, J. (2016). How reliable are field-derived biomagnification factors and trophic magnification factors as indicators of bioaccumulation potential? Conclusions from a case study on per- and polyfluoroalkyl substances. *Integrated Environmental Assessment and Management*, 12(1), 6-20. <https://doi.org/10.1002/ieam.1642>
- FSANZ. (2007). Australia New Zealand food standards code. In: Secondary Australia New Zealand food standards code.
- Gagnon, C., & Fisher, N. S. (1997). Bioavailability of Sediment-Bound Methyl and Inorganic Mercury to a Marine Bivalve. *Environmental Science & Technology*, 31(4), 993-998. 10.1021/es960364k
- Gao, Y., Wang, R., Li, Y., Ding, X., Jiang, Y., Feng, J., & Zhu, L. (2021). Trophic transfer of heavy metals in the marine food web based on tissue residuals. *Science of the total environment*, 772, 145064. <https://doi.org/10.1016/j.scitotenv.2021.145064>
- Gearing, J. N., Gearing, P. J., Rudnick, D. T., Requejo, A. G., & Hutchins, M. J. (1984). Isotopic variability of organic carbon in a phytoplankton-based, temperate estuary. *Geochimica et Cosmochimica Acta*, 48(5), 1089-1098. [https://doi.org/10.1016/0016-7037\(84\)90199-6](https://doi.org/10.1016/0016-7037(84)90199-6)
- Gentès, S., Löhner, B., Legeay, A., Mazel, A.F., Anschutz, P., Charbonnier, C., Tessier, E., Maury-Brachet, R., 2021. Drivers of variability in mercury and methylmercury bioaccumulation and biomagnification in temperate freshwater lakes. *Chemosphere* 267, 128890. <https://doi.org/10.1016/j.chemosphere.2020.128890>.
- Giraldo, C., Cresson, P., MacKenzie, K., Fontaine, V., Loots, C., Delegrange, A., Lefebvre, S., 2024. Insights into planktonic food-web dynamics through the lens of size and season. *Sci. Rep.* 14 (1), 1684. <https://doi.org/10.1038/s41598-024-52256-4>.
- Giraldo, C., Ernande, B., Cresson, P., Kopp, D., Cachera, M., Travers-Trolet, M., Lefebvre, S., 2017. Depth gradient in the resource use of a fish community from a semi-enclosed sea. *Limnol. Oceanogr.* 62 (5), 2213–2226. <https://doi.org/10.1002/lno.10561>.
- Gobas, F.A.P.C., de Wolf, W., Burkhard, L.P., Verbruggen, E., Plotzke, K., 2009. Revisiting bioaccumulation criteria for POPs and PBT assessments. *Integrated Environ. Assess. Manag.* 5 (4), 624–637. https://doi.org/10.1897/IEAM_2008-089.1.

- Goericke, R., & Fry, B. (1994). Variations of marine plankton $\delta^{13}\text{C}$ with latitude, temperature, and dissolved CO_2 in the world ocean. *Global Biogeochemical Cycles*, 8(1), 85-90. <https://doi.org/10.1029/93GB03272>
- Goering, J., Alexander, V., & Haubenstock, N. (1990). Seasonal variability of stable carbon and nitrogen isotope ratios of organisms in a North Pacific Bay. *Estuarine, Coastal and Shelf Science*, 30(3), 239-260. [https://doi.org/10.1016/0272-7714\(90\)90050-2](https://doi.org/10.1016/0272-7714(90)90050-2)
- Gongora, E., Braune, B.M., Elliott, K.H., 2018. Nitrogen and sulfur isotopes predict variation in mercury levels in Arctic seabird prey. *Mar. Pollut. Bull.* 135, 907–914. <https://doi.org/10.1016/j.marpolbul.2018.07.075>.
- Gosnell, K. J., Balcom, P. H., Tobias, C. R., Gilhooly Iii, W. P., & Mason, R. P. (2017). Spatial and temporal trophic transfer dynamics of mercury and methylmercury into zooplankton and phytoplankton of Long Island Sound. *Limnology and Oceanography*, 62(3), 1122-1138. <https://doi.org/10.1002/lno.10490>
- Gosnell, K. J., & Mason, R. P. (2015). Mercury and methylmercury incidence and bioaccumulation in plankton from the central Pacific Ocean. *Marine Chemistry*, 177, 772-780. <https://doi.org/10.1016/j.marchem.2015.07.005>
- Gray, J. S. (2002). Biomagnification in marine systems: the perspective of an ecologist. *Marine Pollution Bulletin*, 45(1), 46-52. [https://doi.org/10.1016/S0025-326X\(01\)00323-X](https://doi.org/10.1016/S0025-326X(01)00323-X)
- Guédron, S., Tisserand, D., Garambois, S., Spadini, L., Molton, F., Bounvilay, B., Charlet, L., & Polya, D. A. (2014). Baseline investigation of (methyl)mercury in waters, soils, sediments and key foodstuffs in the Lower Mekong Basin: The rapidly developing city of Vientiane (Lao PDR). *Journal of Geochemical Exploration*, 143, 96-102. <https://doi.org/10.1016/j.gexplo.2014.03.020>
- Hajisamae, S., Chou, L. M., & Ibrahim, S. (2003). Feeding habits and trophic organization of the fish community in shallow waters of an impacted tropical habitat. *Estuarine, Coastal and Shelf Science*, 58(1), 89-98. [https://doi.org/10.1016/S0272-7714\(03\)00062-3](https://doi.org/10.1016/S0272-7714(03)00062-3)
- Hammerschmidt, C. R., Finiguerra, M. B., Weller, R. L., & Fitzgerald, W. F. (2013). Methylmercury Accumulation in Plankton on the Continental Margin of the Northwest Atlantic Ocean. *Environmental Science & Technology*, 47(8), 3671-3677. [10.1021/es3048619](https://doi.org/10.1021/es3048619)
- Hardy, A., Skrabal, S.A., Addison, L., Emslie, S.D., 2024. Biomagnification of mercury in an estuarine food web. *Mar. Pollut. Bull.* 205, 116604. <https://doi.org/10.1016/j.marpolbul.2024.116604>.
- He, X., Zhu, D., Zhao, C., Yunrong, Y., Kang, B., 2019. Feeding habit of Asian Moon scallop (*Amusium pleuronectes*) and as an isotopic baseline indicator in the beibu Gulf, South China Sea. *J. Shellfish Res.* 38 (2), 245–252. <https://doi.org/10.2983/035.038.0204>, 248.
- Hilgendag, I. R., Swanson, H. K., Lewis, C. W., Ehrman, A. D., & Power, M. (2022). Mercury biomagnification in benthic, pelagic, and benthopelagic food webs in an Arctic marine ecosystem. *Science of the total environment*, 841, 156424. <https://doi.org/10.1016/j.scitotenv.2022.156424>
- Hobson, K. A., Fisk, A., Karnovsky, N., Holst, M., Gagnon, J.-M., & Fortier, M. (2002). A stable isotope ($\delta^{13}\text{C}$, $\delta^{15}\text{N}$) model for the North Water food web: implications for evaluating trophodynamics and the flow of energy and contaminants. *Deep Sea Research Part II: Topical Studies in Oceanography*, 49(22), 5131-5150. [https://doi.org/10.1016/S0967-0645\(02\)00182-0](https://doi.org/10.1016/S0967-0645(02)00182-0)

- Hobson, K. A., & Welch, H. E. (1992). Determination of trophic relationships within a high Arctic marine food web using $\delta^{13}\text{C}$ and $\delta^{15}\text{N}$ analysis. *Marine Ecology Progress Series*, 84(1), 9-18. <http://www.jstor.org/stable/24829721>
- Hosseini, M., Nabavi, S. M. B., & Parsa, Y. (2013). Bioaccumulation of Trace Mercury in Trophic Levels of Benthic, Benthopelagic, Pelagic Fish Species, and Sea Birds from Arvand River, Iran. *Biological Trace Element Research*, 156(1), 175-180. 10.1007/s12011-013-9841-2
- Hosseini, M., Nabavi, S. M. B., Parsa, Y., & Ardashir, R. A. (2014). Mercury accumulation in selected tissues of shrimp *Penaeus merguensis* from Musa estuary, Persian Gulf: variations related to sex, size, and season. *Environmental Monitoring and Assessment*, 186(9), 5439-5446. 10.1007/s10661-014-3793-7
- Hosseini, S., Jamili, S., Valinassab, T., Vosoghi, G., & Fatemi, S. (2009). Feeding and spawning of *Sphyrna jello* in the North-West of Persian Gulf. *Journal of Fisheries and Aquatic Science*, 4(1), 57-62.
- Hu, C., Ma, Y., Liu, Y., Wang, J., Li, B., Sun, Y., Shui, B., 2024. Trophodynamics and potential health risk assessment of heavy metals in the mangrove food web in Yanpu Bay, China. *Sci. Total Environ.* 920, 171028. <https://doi.org/10.1016/j.scitotenv.2024.171028>.
- Ikemoto, T., Tu, N.P.C., Okuda, N., Iwata, A., Omori, K., Tanabe, S., Tuyen, B.C., Takeuchi, I., 2008. Biomagnification of trace elements in the aquatic food web in the Mekong Delta, south Vietnam using stable carbon and Nitrogen isotope analysis. *Arch. Environ. Contam. Toxicol.* 54 (3), 504–515. <https://doi.org/10.1007/s00244-007-9058-5>.
- Iken, K., Bluhm, B., Dunton, K., 2010. Benthic food-web structure under differing water mass properties in the southern Chukchi Sea. *Deep Sea Res. Part II Top. Stud. Oceanogr.* 57 (1), 71–85. <https://doi.org/10.1016/j.dsr2.2009.08.007>.
- Jæger, I., Hop, H., Gabrielsen, G.W., 2009. Biomagnification of mercury in selected species from an Arctic marine food web in Svalbard. *Sci. Total Environ.* 407 (16), 4744–4751. <https://doi.org/10.1016/j.scitotenv.2009.04.004>.
- Janmaimool, P. (2016). The establishment of a community-based mangrove Forest management plan: Lessons learned from mangrove Forest conservation in the Nernkhor sub-district, Rayong Province, Thailand. *Applied Environmental Research*, 38(3), 59-76.
- Jardine, T. D., Kidd, K. A., & Fisk, A. T. (2006). Applications, Considerations, and Sources of Uncertainty When Using Stable Isotope Analysis in Ecotoxicology. *Environmental Science & Technology*, 40(24), 7501-7511. 10.1021/es061263h
- Jinadasa, B. K. K., Jayasinghe, G. D. T. M., Pohl, P., & Fowler, S. W. (2021). Mitigating the impact of mercury contaminants in fish and other seafood—A review. *Marine Pollution Bulletin*, 171, 112710. <https://doi.org/10.1016/j.marpolbul.2021.112710>
- Kaunang, S. T., Rompas, R. M., Tumbol, R. A., & Lasut, M. T. (2018). The occurrence of fish diseases in mercury (Hg)-using artisanal gold mining area of the Talawaan watershed, North Sulawesi Province, Indonesia. *Bioflux*, 11(5), 1525-1563. <http://www.bioflux.com.ro/docs/2018.1525-1536.pdf>
- Kawichai, S., Bootdee, S., Chantara, S., 2024. Health risk assessments and source apportionment of PM2.5-bound heavy metals in the initial eastern economic corridor (EEC): a case study of Rayong Province, Thailand. *Atmos. Pollut. Res.* 15 (9), 102205. <https://doi.org/10.1016/j.apr.2024.102205>.
- Kehrig, H. d. A., Seixas, T. G., Palermo, E. A., Baêta, A. P., Castelo-Branco, C. W., Malm, O., & Moreira, I. (2009). The relationships between mercury and selenium in plankton and fish

- from a tropical food web. *Environmental Science and Pollution Research*, 16(1), 10-24. 10.1007/s11356-008-0038-8
- Kim, D., Won, E.-J., Cho, H.-E., Lee, J., Shin, K.-H., 2023. New insight into biomagnification factor of mercury based on food web structure using stable isotopes of amino acids. *Water Res.* 245, 120591. <https://doi.org/10.1016/j.watres.2023.120591>.
- Kim, H., Soerensen, A. L., Hur, J., Heimbürger, L.-E., Hahm, D., Rhee, T. S., Noh, S., & Han, S. (2017). Methylmercury Mass Budgets and Distribution Characteristics in the Western Pacific Ocean. *Environmental Science & Technology*, 51(3), 1186-1194. 10.1021/acs.est.6b04238
- Knauer, G. A., & Martin, J. H. (1972). MERCURY IN A MARINE PELAGIC FOOD CHAIN1. *Limnology and Oceanography*, 17(6), 868-876. <https://doi.org/10.4319/lo.1972.17.6.0868>
- Kopprio, G.A., Lara, R.J., Martínez, A., Fricke, A., Graeve, M., Kattner, G., 2015. Stable isotope and fatty acid markers in plankton assemblages of a saline lake: seasonal trends and future scenario. *J. Plankton Res.* 37 (3), 584–595. <https://doi.org/10.1093/plankt/fbv023>.
- Kopprio, G.A., Martínez, A., Fricke, A., Hupfer, M., Lara, R.J., Graeve, M., Gärdes, A., 2023. Towards the outwelling hypothesis in a Patagonian estuary: first support from lipid markers and bacterial communities. *Sci. Total Environ.* 854, 158670. <https://doi.org/10.1016/j.scitotenv.2022.158670>.
- Koski, M. (2024). Concentration and tolerance of mercury (Hg) and methylmercury (MeHg) in Arctic zooplankton. 22. *Danske Havforskermede*,
- Kroopnick, P. M. (1985). The distribution of ^{13}C of ΣCO_2 in the world oceans. *Deep Sea Research Part A. Oceanographic Research Papers*, 32(1), 57-84. [https://doi.org/10.1016/0198-0149\(85\)90017-2](https://doi.org/10.1016/0198-0149(85)90017-2)
- Kumar, A., Pal, I., Roy, J., Benjachat, N., & Pimpakhun, K. (2023). Chapter 22 - Critical infrastructure resilience in Eastern Economic Corridor of Thailand—a review. In I. Pal & R. Shaw (Eds.), *Multi-Hazard Vulnerability and Resilience Building* (pp. 363-382). Elsevier. <https://doi.org/https://doi.org/10.1016/B978-0-323-95682-6.00021-8>
- Lacombe, R. M., Martigny, P., Pelletier, D., Barst, B. D., Guillemette, M., Amyot, M., Elliott, K. H., & Lavoie, R. A. (2024). Exploring the spatial variation of mercury in the Gulf of St. Lawrence using northern gannets as fish samplers. *Science of the total environment*, 927, 172152. <https://doi.org/10.1016/j.scitotenv.2024.172152>
- Lavoie, R. A., Hebert, C. E., Rail, J.-F., Braune, B. M., Yumvihoze, E., Hill, L. G., & Lean, D. R. S. (2010). Trophic structure and mercury distribution in a Gulf of St. Lawrence (Canada) food web using stable isotope analysis. *Science of the total environment*, 408(22), 5529-5539. <https://doi.org/10.1016/j.scitotenv.2010.07.053>
- Lavoie, R. A., Jardine, T. D., Chumchal, M. M., Kidd, K. A., & Campbell, L. M. (2013). Biomagnification of Mercury in Aquatic Food Webs: A Worldwide Meta-Analysis. *Environmental Science & Technology*, 47(23), 13385-13394. 10.1021/es403103t
- Lawrence, A. L., & Mason, R. P. (2001). Factors controlling the bioaccumulation of mercury and methylmercury by the estuarine amphipod *Leptocheirus plumulosus*. *Environmental Pollution*, 111(2), 217-231. [https://doi.org/10.1016/S0269-7491\(00\)00072-5](https://doi.org/10.1016/S0269-7491(00)00072-5)
- Le Croizier, G., Schaal, G., Point, D., Le Loc'h, F., Machu, E., Fall, M., Munaron, J.-M., Boyé, A., Walter, P., Laë, R., Tito De Morais, L., 2019. Stable isotope analyses revealed the influence of foraging habitat on mercury accumulation in tropical coastal marine fish. *Sci. Total Environ.* 650, 2129–2140. <https://doi.org/10.1016/j.scitotenv.2018.09.330>.

- Le, D.Q., Tanaka, K., Dung, L.V., Siau, Y.F., Lachs, L., Kadir, S.T.S.A., Sano, Y., Shirai, K., 2017. Biomagnification of total mercury in the mangrove lagoon foodweb in east Coast of Peninsula, Malaysia. *Reg. Stud. Mar. Sci.* 16, 49–55. <https://doi.org/10.1016/j.rsma.2017.08.006>.
- Le, H. T., Punurai, W., Zawawi, N. A. W., Yaakob, O. B., Nguyen, N. T. P., Le, T. T., Van Nguyen, K., Amelia, S., Kamarudin, N. A., & Kang, H.-S. (2023). A review of mercury waste management in the ASEAN oil and gas industry. *Journal of Hazardous, Toxic, and Radioactive Waste*, 27(1), 04022044. [https://doi.org/10.1061/\(ASCE\)HZ.2153-5515.0000737](https://doi.org/10.1061/(ASCE)HZ.2153-5515.0000737)
- Lee, C.-S., & Fisher, N. S. (2016). Methylmercury uptake by diverse marine phytoplankton. *Limnology and Oceanography*, 61(5), 1626-1639. <https://doi.org/10.1002/lno.10318>
- Lim, L. H. S. (2015). Teraplectanum n. g. (Monogenea: Diplectanidae) from the banded grunter fish, *Terapon theraps* Cuvier (Perciformes: Terapontidae), off Peninsular Malaysia. *Journal of Helminthology*, 89(3), 307-316. 10.1017/S0022149X1400008X
- Linder, H.L., Horne, J.K., Ward, E.J., 2017. Modeling baseline conditions of ecological indicators: marine renewable energy environmental monitoring. *Ecol. Indic.* 83, 178–191. <https://doi.org/10.1016/j.ecolind.2017.07.015>.
- Liu, J., Xu, X., Yu, S., Cheng, H., Hong, Y., & Feng, X. (2014). Mercury pollution in fish from South China Sea: Levels, species-specific accumulation, and possible sources. *Environmental Research*, 131, 160-164. <https://doi.org/10.1016/j.envres.2014.03.004>
- Long, S.-X., Hamilton, P.B., Yang, Y., Wang, S., Huang, W.-d., Chen, C., Tao, R., 2018. Differential bioaccumulation of mercury by zooplankton taxa in a mercury- contaminated reservoir Guizhou China. *Environ. Pollut.* 239, 147–160. <https://doi.org/10.1016/j.envpol.2018.04.008>.
- Mahavong, K., Pataranawat, P., & Chinwetkitvanich, S. (2017). Mercury contamination in environment surrounding coal-fired power plant. *GEOMATE Journal*, 12(33), 71-77. <http://dx.doi.org/10.21660/2017.33.2581>
- Manceau, A., Azemard, S., H´edouin, L., Vassileva, E., Lecchini, D., Fauvelot, C., Swarzenski, P.W., Glatzel, P., Bustamante, P., Metian, M., 2021. Chemical forms of Mercury in blue Marlin Billfish: implications for human exposure. *Environ. Sci. Technol. Lett.* 8 (5), 405–411. <https://doi.org/10.1021/acs.estlett.1c00217>.
- Marcelina, Z., Adam, S., Pierre, R., 2018. Spatial and temporal variability of organic matter sources and food web structure across benthic habitats in a low diversity system (southern Baltic Sea). *J. Sea Res.* 141, 47–60. <https://doi.org/10.1016/j.seares.2018.05.007>.
- Matias, R. S., Gu´ımaro, H. R., Bustamante, P., Seco, J., Chipev, N., Frago, J., Tavares, S., Ceia, F. R., Pereira, M. E., Barbosa, A., & Xavier, J. C. (2022). Mercury biomagnification in an Antarctic food web of the Antarctic Peninsula. *Environmental Pollution*, 304, 119199. <https://doi.org/10.1016/j.envpol.2022.119199>
- McCullagh, P., Nelder, J.A. (Eds.), 2019. *Generalized Linear Models*, 2 ed. Routledge. <https://doi.org/10.1201/9780203753736>.
- McMeans, B.C., Rooney, N., Arts, M.T., Fisk, A.T., 2013. Food web structure of a coastal Arctic marine ecosystem and implications for stability. *Mar. Ecol. Prog. Ser.* 482, 17–28. <https://www.int-res.com/abstracts/meps/v482/p17-28>.
- Merritt, K.A., Amirbahman, A., 2009. Mercury methylation dynamics in estuarine and coastal marine environments — a critical review. *Earth Sci. Rev.* 96 (1), 54–66. <https://doi.org/10.1016/j.earscirev.2009.06.002>.

- Minagawa, M., Wada, E., 1984. Stepwise enrichment of $\delta^{15}\text{N}$ along food chains: further evidence and the relation between $\delta^{15}\text{N}$ and animal age. *Geochem. Cosmochim. Acta* 48 (5), 1135–1140. [https://doi.org/10.1016/0016-7037\(84\)90204-7](https://doi.org/10.1016/0016-7037(84)90204-7). Minagawa, M., & Wada, E. (1984). Stepwise enrichment of $\delta^{15}\text{N}$ along food chains: Further evidence and the relation between $\delta^{15}\text{N}$ and animal age, *Geochim. Cosmochim. Ac.*, 48, 1135–1140. In.
- Minor, E.C., Nallathamby, P.S., 2004. “Cellular” vs. “detrital” POM: a preliminary study using fluorescent stains, flow cytometry, and mass spectrometry. *Mar. Chem.* 92 (1), 9–21. <https://doi.org/10.1016/j.marchem.2004.06.015>.
- Monferrán, M. V., Garnero, P., de los Angeles Bistoni, M., Anbar, A. A., Gordon, G. W., & Wunderlin, D. A. (2016). From water to edible fish. Transfer of metals and metalloids in the San Roque Reservoir (Córdoba, Argentina). Implications associated with fish consumption. *Ecological Indicators*, 63, 48-60. <https://doi.org/10.1016/j.ecolind.2015.11.048>
- Monperrus, M., Tessier, E., Amouroux, D., Leynaert, A., Huonnic, P., Donard, O.F.X., 2007. Mercury methylation, demethylation and reduction rates in coastal and marine surface waters of the Mediterranean Sea. *Mar. Chem.* 107 (1), 49–63. <https://doi.org/10.1016/j.marchem.2007.01.018>.
- Morel, F.M., Kraepiel, A.M., Amyot, M., 1998. The chemical cycle and bioaccumulation of mercury. *Annu. Rev. Ecol. Systemat.* 29 (1), 543–566. <https://doi.org/10.1146/annurev.ecolsys.29.1.543>.
- Morton, B., 1986. The diet and prey capture mechanism of melo melo (PROSOBRANCHIA: VOLUTIDAE). *J. Molluscan Stud.* 52 (2), 156–160. <https://doi.org/10.1093/mollus/52.2.156>.
- Moteki, M., Arai, M., Tsuchiya, K., Okamoto, H., 2001. Composition of piscine prey in the diet of large pelagic fish in the eastern tropical Pacific Ocean. *Fish. Sci.* 67 (6), 1063–1074. <https://doi.org/10.1046/j.1444-2906.2001.00362.x>.
- MPH. (2020). *Issued by virtue of Food Act B.E. 2522. Re: standards for contaminants in food.* Ministry of Public Health, Notification of Ministry of Public Health
- Murillo-Cisneros, D. A., O’Hara, T. M., Elorriaga-Verplancken, F. R., Sánchez-González, A., Marín-Enríquez, E., Marmolejo-Rodríguez, A. J., & Galván-Magaña, F. (2019). Trophic Structure and Biomagnification of Total Mercury in Ray Species Within a Benthic Food Web. *Archives of Environmental Contamination and Toxicology*, 77(3), 321-329. [10.1007/s00244-019-00632-x](https://doi.org/10.1007/s00244-019-00632-x)
- Muto, E.Y., Soares, L.S.H., Sarkis, J.E.S., Hortellani, M.A., Petti, M.A.V., Corbisier, T.N., 2014. Biomagnification of mercury through the food web of the Santos continental shelf, subtropical Brazil. *Mar. Ecol. Prog. Ser.* 512, 55–69. <https://www.int-res.com/abstracts/meps/v512/p55-69/>.
- Nagarani, N., Devi, V.J., Kumaraguru, A.K., 2011. Mercuric chloride induced proteotoxicity and structural destabilization in marine fish (Therapon jarbua). *Toxicol. Environ. Chem.* 93 (2), 296–306. <https://doi.org/10.1080/02772248.2010.512812>.
- Nagarani, N., & Kumaraguru, A. K. (2012). Influence of marine alga against mercury-induced biochemical changes, structural destabilization, and genotoxicity in marine tiger fish, Therapon jarbua. *Toxicological & Environmental Chemistry*, 94(7), 1383-1400. [10.1080/02772248.2012.698850](https://doi.org/10.1080/02772248.2012.698850)
- Nagata, R.M., Moreira, M.Z., Pimentel, C.R., Morandini, A.C., 2015. Food web characterization based on $\delta^{15}\text{N}$ and $\delta^{13}\text{C}$ reveals isotopic niche partitioning between fish and jellyfish in a

- relatively pristine ecosystem. *Mar. Ecol. Prog. Ser.* 519, 13–27. <https://doi.org/10.3354/meps11071>.
- Nfon, E., Cousins, I. T., Järvinen, O., Mukherjee, A. B., Verta, M., & Broman, D. (2009). Trophodynamics of mercury and other trace elements in a pelagic food chain from the Baltic Sea. *Science of the total environment*, 407(24), 6267-6274. <https://doi.org/10.1016/j.scitotenv.2009.08.032>
- O'Toole, A. C., Danylchuk, A. J., Suski, C. D., & Cooke, S. J. (2010). Consequences of catch-and-release angling on the physiological status, injury, and immediate mortality of great barracuda (*Sphyraena barracuda*) in The Bahamas. *ICES Journal of Marine Science*, 67(8), 1667-1675. 10.1093/icesjms/fsq090
- Oanh, N.T.K., Huy, L.N., 2024. Atmospheric emissions from electricity generation in Southeast Asia: development trend and Policy responses. *Curr. Pollut. Rep.* 10 (1), 54–69. <https://doi.org/10.1007/s40726-023-00289-0>.
- Pakhomova, S., Yakushev, E., Protsenko, E., Rigaud, S., Cossa, D., Knoery, J., Couture, R.- M., Radakovitch, O., Yakubov, S., Krzeminska, D., 2018. Modeling the influence of eutrophication and redox conditions on mercury cycling at the sediment-water Interface in the Berre Lagoon. *Front. Mar. Sci.* 5, 291. <https://doi.org/10.3389/fmars.2018.00291>.
- Pan, K., Chan, H., Tam, Y. K., & Wang, W.-X. (2014). Low mercury levels in marine fish from estuarine and coastal environments in southern China. *Environmental Pollution*, 185, 250-257. <https://doi.org/10.1016/j.envpol.2013.11.004>
- Pan, K., & Wang, W.-X. (2011). Mercury accumulation in marine bivalves: Influences of biodynamics and feeding niche. *Environmental Pollution*, 159(10), 2500-2506. <https://doi.org/10.1016/j.envpol.2011.06.029>
- Pantoja-Echevarría, L.M., Marmolejo-Rodríguez, A.J., Galv'an-Magaña, F., Elorriaga-Verplancken, F.R., Tripp-Valdéz, A., Tamburin, E., Lara, A., Jonathan, M.P., Sujitha, S.B., Delgado-Huertas, A., Arreola-Mendoza, L., 2023. Trophic structure and biomagnification of cadmium, mercury and selenium in brown smooth hound shark (*Mustelus henlei*) within a trophic web. *Food Webs* 34, e00263. <https://doi.org/10.1016/j.fooweb.2022.e00263>.
- Parker, P. L. (1964). The biogeochemistry of the stable isotopes of carbon in a marine bay. *Geochimica et Cosmochimica Acta*, 28(7), 1155-1164. [https://doi.org/10.1016/0016-7037\(64\)90067-5](https://doi.org/10.1016/0016-7037(64)90067-5)
- Parker, S. R., Poulson, S. R., Gammons, C. H., & DeGrandpre, M. D. (2005). Biogeochemical Controls on Diel Cycling of Stable Isotopes of Dissolved O₂ and Dissolved Inorganic Carbon in the Big Hole River, Montana. *Environmental Science & Technology*, 39(18), 7134-7140. 10.1021/es0505595
- Peterson, B. J., & Fry, B. (1987). STABLE ISOTOPES IN ECOSYSTEM STUDIES. *Annual Review of Ecology, Evolution, and Systematics*, 18(Volume 18, 1987), 293-320. <https://doi.org/10.1146/annurev.es.18.110187.001453>
- Pethybridge, H., Butler, E.C.V., Cossa, D., Daley, R., Boudou, A., 2012. Trophic structure and biomagnification of mercury in an assemblage of deepwater chondrichthyans from southeastern Australia. *Mar. Ecol. Prog. Ser.* 451, 163–174. <https://www.int-res.com/abstracts/meps/v451/p163-174/>.
- Phaksopa, J., Sukhsangchan, R., Keawsang, R., Tanapivattanukul, K., Thamrongnawasawat, T., Worachananant, S., Sreesamran, P., 2021. Presence and characterization of microplastics in coastal fish around the eastern coast of Thailand. *Sustainability* 13 (23), 13110. <https://doi.org/10.3390/su132313110>.

- Pham, T. T. B., Junpen, A., & Garivait, S. (2015). An investigation of atmospheric mercury from power sector in Thailand. *Atmosphere*, 6(4), 490-502.
- Pojtanabuntoeng, T., Saiwan, C., Sutthiruangwong, S., & Gallup, D. L. (2011). Effect of mercury on corrosion in production wells in Gulf of Thailand. *Corrosion Engineering, Science and Technology*, 46(4), 547-553. 10.1179/147842209X12579401586609
- Post, D. M. (2002). USING STABLE ISOTOPES TO ESTIMATE TROPHIC POSITION: MODELS, METHODS, AND ASSUMPTIONS. *Ecology*, 83(3), 703-718. [https://doi.org/10.1890/0012-9658\(2002\)083\[0703:USITET\]2.0.CO;2](https://doi.org/10.1890/0012-9658(2002)083[0703:USITET]2.0.CO;2)
- Poste, A.E., Muir, D.C.G., Guildford, S.J., Hecky, R.E., 2015. Bioaccumulation and biomagnification of mercury in African lakes: the importance of trophic status. *Sci. Total Environ.* 506–507, 126–136. <https://doi.org/10.1016/j.scitotenv.2014.10.094>.
- Prabakaran, K., Charoenpong, C., Bureekul, S., Wang, X., Sompongchaiyakul, P., 2025. Heavy metal contamination in marine fish from the Andaman sea: influence of habitat and health risk assessment. *Mar. Pollut. Bull.* 210, 117299. <https://doi.org/10.1016/j.marpolbul.2024.117299>.
- Prabakaran, K., Sompongchaiyakul, P., Bureekul, S., Wang, X., & Charoenpong, C. (2024). Heavy metal bioaccumulation and risk assessment in fishery resources from the Gulf of Thailand. *Marine Pollution Bulletin*, 198, 115864. <https://doi.org/10.1016/j.marpolbul.2023.115864>
- Price, E.L., Sertić Perić, M., Romero, G.Q., Kratina, P., 2019. Land use alters trophic redundancy and resource flow through stream food webs. *J. Anim. Ecol.* 88 (5), 677–689. <https://doi.org/10.1111/1365-2656.12955>.
- Qu, P., Pang, M., Wang, P., Ma, X., Zhang, Z., Wang, Z., & Gong, Y. (2022). Bioaccumulation of mercury along continuous fauna trophic levels in the Yellow River Estuary and adjacent sea indicated by nitrogen stable isotopes. *Journal of hazardous materials*, 432, 128631. <https://doi.org/10.1016/j.jhazmat.2022.128631>
- Reichert-Brushett, A. J., Stone, J., Howe, P., Thomas, B., Clark, M., Male, Y., Nanlohy, A., & Butcher, P. (2017). Geochemistry and mercury contamination in receiving environments of artisanal mining wastes and identified concerns for food safety. *Environmental Research*, 152, 407-418. <https://doi.org/10.1016/j.envres.2016.07.007>
- Renaud, P. E., Tessmann, M., Evenset, A., & Christensen, G. N. (2011). Benthic food-web structure of an Arctic fjord (Kongsfjorden, Svalbard). *Marine Biology Research*, 7(1), 13-26. 10.1080/17451001003671597
- Reynolds, C.S., 2008. A changing paradigm of pelagic food webs. *Int. Rev. Hydrobiol.* 93 (4–5), 517–531. <https://doi.org/10.1002/iroh.200711026>.
- Richert, J. E., Galván-Magaña, F., & Klimley, A. P. (2015). Interpreting nitrogen stable isotopes in the study of migratory fishes in marine ecosystems. *Marine Biology*, 162(5), 1099-1110. 10.1007/s00227-015-2652-6
- Ritonga, I. R., Bureekul, S., Luadnakrob, P., & Sompongchaiyakul, P. (2023). Status Level of Total Mercury (T-Hg) in Barracuda (*Sphyraena putnamae*) from the Gulf of Thailand. *Trends in Sciences*, 20(8), 5353-5353.
- Ritonga, I. R., Bureekul, S., Ubonyaem, T., Chanrachkij, I., & Sompongchaiyakul, P. (2022). Mercury content and consumption risk of 8 species threadfin bream (*Nemipterus* spp.) caught along the Gulf of Thailand. *Marine Pollution Bulletin*, 175, 113363. <https://doi.org/10.1016/j.marpolbul.2022.113363>

- Robinson, J., & Shroff, J. (2020). Observations on the levels of total mercury (Hg) and selenium (Se) in species common to the artisanal fisheries of Seychelles. *NeuroToxicology*, *81*, 277-281. <https://doi.org/10.1016/j.neuro.2020.09.017>
- Rooney, N., McCann, K., Gellner, G., Moore, J.C., 2006. Structural asymmetry and the stability of diverse food webs. *Nature* *442* (7100), 265–269. <https://doi.org/10.1038/nature04887>.
- Roshith, C., Manna, R., Samanta, S., Suresh, V., Kumar, L., Sibinamol, S., Sharma, S., Choudhury, A.R., Vijayakumar, M., Das, B., 2022. Fish diversity and assemblage structure along the river-estuary continuum in the River Cauvery, India. *Aquat. Ecosys. Health Manag.* *25* (2), 53–61. <https://doi.org/10.14321/ae hm.025.02.53>.
- Rounick, J. S., & Winterbourn, M. J. (1986). Stable Carbon Isotopes and Carbon Flow in Ecosystems. *BioScience*, *36*(3), 171-177. 10.2307/1310304
- Russell, B. C., & Houston, W. (1989). Offshore fishes of the Arafura Sea [Journal Article]. *The Beagle: Records of the Museums and Art Galleries of the Northern Territory*, *6*, 69-84. <https://search.informit.org/doi/10.3316/informit.941910625031493>
- Ruus, A., Øverjordet, I. B., Braaten, H. F. V., Evenset, A., Christensen, G., Heimstad, E. S., Gabrielsen, G. W., & Borgå, K. (2015). Methylmercury biomagnification in an Arctic pelagic food web. *Environmental Toxicology and Chemistry*, *34*(11), 2636-2643. <https://doi.org/10.1002/etc.3143>
- Sackett, W. M., Eckelmann, W. R., Bender, M. L., & Bé, A. W. (1965). Temperature dependence of carbon isotope composition in marine plankton and sediments. *Science*, *148*(3667), 235-237. 10.1126/science.148.3667.235
- Saei-Dehkordi, S. S., Fallah, A. A., & Nematollahi, A. (2010). Arsenic and mercury in commercially valuable fish species from the Persian Gulf: Influence of season and habitat. *Food and Chemical Toxicology*, *48*(10), 2945-2950. <https://doi.org/10.1016/j.fct.2010.07.031>
- Saengsupavanich, C., Coowanitwong, N., Gallardo, W.G., Lertsuchatavanich, C., 2009. Environmental performance evaluation of an industrial port and estate: ISO14001, port state control-derived indicators. *J. Clean. Prod.* *17* (2), 154–161. <https://doi.org/10.1016/j.jclepro.2008.04.001>.
- Safiur Rahman, M., Khan, M. D. H., Jolly, Y. N., Kabir, J., Akter, S., & Salam, A. (2019). Assessing risk to human health for heavy metal contamination through street dust in the Southeast Asian Megacity: Dhaka, Bangladesh. *Science of the total environment*, *660*, 1610-1622. <https://doi.org/10.1016/j.scitotenv.2018.12.425>
- Saidon, N. B., Szabó, R., Budai, P., & Lehel, J. (2024). Trophic transfer and biomagnification potential of environmental contaminants (heavy metals) in aquatic ecosystems. *Environmental Pollution*, *340*, 122815. <https://doi.org/10.1016/j.envpol.2023.122815>
- Sanders, D., Thébault, E., Kehoe, R., Frank van Veen, F.J., 2018. Trophic redundancy reduces vulnerability to extinction cascades. *Proc. Natl. Acad. Sci.* *115* (10), 2419–2424. <https://doi.org/10.1073/pnas.1716825115>.
- Scheuhammer, A., Braune, B., Chan, H. M., Frouin, H., Krey, A., Letcher, R., Loseto, L., Noël, M., Ostertag, S., Ross, P., & Wayland, M. (2015). Recent progress on our understanding of the biological effects of mercury in fish and wildlife in the Canadian Arctic. *Science of the total environment*, *509-510*, 91-103. <https://doi.org/10.1016/j.scitotenv.2014.05.142>
- Scheuhammer, A. M., Meyer, M. W., Sandheinrich, M. B., & Murray, M. W. (2007). Effects of environmental methylmercury on the health of wild birds, mammals, and fish. *AMBIO: a*

- Journal of the Human Environment*, 36(1), 12-19. [https://doi.org/10.1579/0044-7447\(2007\)36\[12:EOEMOT\]2.0.CO;2](https://doi.org/10.1579/0044-7447(2007)36[12:EOEMOT]2.0.CO;2)
- Schlenker, A., Brauns, M., Fink, P., Lorenz, A.W., Weitere, M., 2024. Long-term recovery of benthic food webs after stream restoration. *Sci. Total Environ.* 923, 171499. <https://doi.org/10.1016/j.scitotenv.2024.171499>.
- Seixas, T.G., Moreira, I., Kehrig, H.A., 2015. Mercury and selenium in seston, marine plankton and fish (*Sardinella brasiliensis*) as a tool for understanding a tropical food web. *Mar. Pollut. Bull.* 101 (1), 366–369. <https://doi.org/10.1016/j.marpolbul.2015.10.016>.
- Seixas, T.G., Moreira, I., Siciliano, S., Malm, O., Kehrig, H.A., 2014. Mercury and selenium in tropical marine plankton and their trophic successors. *Chemosphere* 111, 32–39. <https://doi.org/10.1016/j.chemosphere.2014.03.003>.
- Shalini, R., Jeyasekaran, G., Shakila, R. J., & Arisekar, U. (2021). Trace element concentrations in the organs of fish along the southeast coast of India. *Marine Pollution Bulletin*, 162, 111817. <https://doi.org/10.1016/j.marpolbul.2020.111817>
- Sillapapiromsuk, S., Koontoop, G., & Bootdee, S. (2022). Health Risk Assessment of Ambient Nitrogen Dioxide Concentrations in Urban and Industrial Area in Rayong Province, Thailand. *Trends in Sciences*, 19(11), 4476. 10.48048/tis.2022.4476
- Sinclair, C.A., Garcia, T.S., Eagles-Smith, C.A., 2024. A meta-analysis of Mercury biomagnification in freshwater Predatory invertebrates: community diversity and dietary exposure drive variability. *Environ. Sci. Technol.* 58 (43), 19429–19439. <https://doi.org/10.1021/acs.est.4c05920>.
- Smith, S. V., & Kroopnick, P. (1981). Carbon-13 isotopic fractionation as a measure of aquatic metabolism. *Nature*, 294(5838), 252-253. 10.1038/294252a0
- Sokołowski, A., Wołowicz, M., Asmus, H., Asmus, R., Carlier, A., Gasiunait'ė, Z., Gr'ėmare, A., Hummel, H., Lesutien'ė, J., Razinkovas, A., Renaud, P.E., Richard, P., Kędra, M., 2012. Is benthic food web structure related to diversity of marine macrobenthic communities? *Estuar. Coast Shelf Sci.* 108, 76–86. <https://doi.org/10.1016/j.ecss.2011.11.011>.
- Sompongchaiyakul, P., Bureekul, S., & Sombatjinda, S. (2018). Impact of natural gas exploration and production on mercury concentrations in surface sediment of the Gulf of Thailand. Abu Dhabi International Petroleum Exhibition and Conference,
- Sorrentino, C. (1979). Mercury in Marine and Freshwater Fish of Papua New Guinea. *Marine and Freshwater Research*, 30(5), 617-623. <https://doi.org/10.1071/MF9790617>
- Soytong, P., & Perera, R. (2017). Spatial analysis of the environmental conflict between state, society and industry at the Map Ta Phut-Rayong conurbation in Thailand. *Environment, Development and Sustainability*, 19(3), 839-862. 10.1007/s10668-016-9768-9
- Sun, T., Wu, H., Wang, X., Ji, C., Shan, X., Li, F., 2020. Evaluation on the biomagnification or biodilution of trace metals in global marine food webs by meta- analysis. *Environ. Pollut.* 264, 113856. <https://doi.org/10.1016/j.envpol.2019.113856>.
- Sunda, W. G., & Huntsman, S. A. (1998). Processes regulating cellular metal accumulation and physiological effects: Phytoplankton as model systems. *Science of the total environment*, 219(2), 165-181. [https://doi.org/10.1016/S0048-9697\(98\)00226-5](https://doi.org/10.1016/S0048-9697(98)00226-5)
- Sunderland, E.M., Krabbenhoft, D.P., Moreau, J.W., Strode, S.A., Landing, W.M., 2009. Mercury sources, distribution, and bioavailability in the North Pacific Ocean: insights from data and models. *Glob. Biogeochem. Cycles* 23 (2). <https://doi.org/10.1029/2008GB003425>.

- Taki, M., Suzuki, Y., 2001. Accumulation and export of dissolved organic carbon in surface waters of subtropical and tropical Pacific Ocean. *J. Oceanogr.* 57 (6), 631–646. <https://doi.org/10.1023/A:1021267922702>.
- Tamelaender, T., Renaud, P.E., Hop, H., Carroll, M.L., Ambrose Jr, W.G., Hobson, K.A., 2006. Trophic relationships and pelagic–benthic coupling during summer in the Barents Sea Marginal Ice Zone, revealed by stable carbon and nitrogen isotope measurements. *Mar. Ecol. Prog. Ser.* 310, 33–46. <https://doi.org/10.3354/meps310033>.
- Tesán-Onrubia, J. A., Heimbürger-Boavida, L.-E., Dufour, A., Harmelin-Vivien, M., García-Arévalo, I., Knoery, J., Thomas, B., Carlotti, F., Tedetti, M., & Bănar, D. (2023). Bioconcentration, bioaccumulation and biomagnification of mercury in plankton of the Mediterranean Sea. *Marine Pollution Bulletin*, 194, 115439. <https://doi.org/10.1016/j.marpolbul.2023.115439>
- Thepanondh, S., & Tunlathorntham, V. (2020). Appropriate scenarios for mercury emission control from coal-fired power plant in Thailand: emissions and ambient concentrations analysis. *Heliyon*, 6(6). <https://doi.org/10.1016/j.heliyon.2020.e04197>
- Thera, J.C., Rumbold, D.G., 2014. Biomagnification of mercury through a subtropical coastal food web off Southwest Florida. *Environ. Toxicol. Chem.* 33 (1), 65–73. <https://doi.org/10.1002/etc.2416>.
- Thongra-ar, W., & Parkpian, P. (2002). Total mercury concentrations in coastal areas of Thailand: a review. *Science Asia*, 28, 301-312.
- Timmerman, C.-A., Giraldo, C., Cresson, P., Ernande, B., Travers-Trolet, M., Rouquette, M., Denamiel, M., Lefebvre, S., 2021. Plasticity of trophic interactions in fish assemblages results in temporal stability of benthic-pelagic couplings. *Mar. Environ. Res.* 170, 105412. <https://doi.org/10.1016/j.marenvres.2021.105412>.
- Tomczyk, N. J., Parr, T. B., Gray, E., Iburg, J., & Capps, K. A. (2018). Trophic Strategies Influence Metal Bioaccumulation in Detritus-Based, Aquatic Food Webs. *Environmental Science & Technology*, 52(20), 11886-11894. [10.1021/acs.est.8b04009](https://doi.org/10.1021/acs.est.8b04009)
- Trifari, M.P., Wooller, M.J., Rea, L., O’Hara, T.M., Lescord, G.L., Parnell, A.C., Barst, B. D., 2024. Compound-specific stable isotopes of amino acids reveal influences of trophic level and primary production sources on mercury concentrations in fishes from the Aleutian Islands, Alaska. *Sci. Total Environ.* 908, 168242. <https://doi.org/10.1016/j.scitotenv.2023.168242>.
- Tsui, M.T.-K., Wang, S., Cheng, M.L.-H., 2025. Review of mercury pollution research in Southeast Asian marine environments. *Mar. Pollut. Bull.* 212, 117462. <https://doi.org/10.1016/j.marpolbul.2024.117462>.
- Ubonyaem, T., Bureekul, S., Charoenpong, C., Luadnakrob, P., Sompongchaiyakul, P., 2023. Preindustrial levels and temporal enrichment trends of mercury in sediment cores from the Gulf of Thailand. *Environ. Geochem. Health* 45 (7), 4243–4256. <https://doi.org/10.1007/s10653-022-01465-9>.
- Udom, K., 2015. Trophic Level Study with Stable Isotope Analysis of Set–Net Catch Species in Rayong, Thailand [Tokyo University of Marine Science and Technology]. Tokyo, Japan.
- Udom, K., Phuttharaksa, K., Arimoto, T., Yoshikawa, T., Kon, K., Okamoto, Y., Ishikawa, S., Munprasit, A., & Arnupapboon, S. (2017). Trophic Level Study with Stable Isotope Analysis of Set-net Catch Species in Rayong, Thailand. The International RIHN Final Seminar on Coastal Area Capability Enhancement in Southeast Asia,

- Udomchoke, V., Sunthornranun, P., Songsasen, A., Phanwichien, K., Jiwapornkupt, P., Homchan, U., Lauhachinda, N., Sakultantimetha, A., Bangkedphol, S., & Torrance, K. (2010). The ecological complexity of the Thai-Laos Mekong River: I. Geology, seasonal variation and human impact assessment on river quality. *Journal of Environmental Science and Health Part A*, 45(13), 1661-1673. <https://doi.org/10.1080/10934529.2010.513207>
- UNEP. (2002). Global mercury assessment. *UNEP Chemicals, Geneva*, 1-270.
- US EPA. (2007). *SW-846 Test Method 7473: Mercury in Solids and Solutions by Thermal Decomposition, Amalgamation, and Atomic Absorption Spectrophotometry* (Washington, DC: Environmental Protection Agency, Issue. <https://www.epa.gov/hw-sw846/sw-846-test-method-7473-mercury-solids-and-solutions-thermal-decomposition-amalgamation>
- Vainio, R. K., Jormalainen, V., Dietz, R., Laaksonen, T., Schulz, R., Sonne, C., Søndergaard, J., Zubrod, J. P., & Eulaers, I. (2022). Trophic Dynamics of Mercury in the Baltic Archipelago Sea Food Web: The Impact of Ecological and Ecophysiological Traits. *Environmental Science & Technology*, 56(16), 11440-11448. 10.1021/acs.est.2c03846
- Valladolid-Garnica, D.E., Jara-Marini, M.E., Torres-Rojas, Y.E., Soto-Jiménez, M.F., 2023. Distribution, bioaccumulation, and trace element transfer among trophic levels in the southeastern Gulf of California. *Mar. Pollut. Bull.* 194, 115290. <https://doi.org/10.1016/j.marpolbul.2023.115290>
- Van den Brink, P. J., Baird, D. J., Baveco, H., & Focks, A. (2013). The use of traits-based approaches and eco(toxico)logical models to advance the ecological risk assessment framework for chemicals. *Integrated Environmental Assessment and Management*, 9(3), e47-e57. <https://doi.org/10.1002/ieam.1443>
- Van den Brink, P.J., Baird, D.J., Baveco, H., Focks, A., 2013. The use of traits-based approaches and eco(toxico)logical models to advance the ecological risk assessment framework for chemicals. *Integrated Environ. Assess. Manag.* 9 (3), e47–e57. <https://doi.org/10.1002/ieam.1443>.
- van der Velden, S., Dempson, J.B., Evans, M.S., Muir, D.C.G., Power, M., 2013. Basal mercury concentrations and biomagnification rates in freshwater and marine food webs: effects on Arctic charr (*Salvelinus alpinus*) from eastern Canada. *Sci. Total Environ.* 444, 531–542. <https://doi.org/10.1016/j.scitotenv.2012.11.099>.
- Vinagre, C., Madeira, C., Dias, M., Narciso, L., Mendonça, V., 2019. Reliance of coastal intertidal food webs on river input – current and future perspectives. *Ecol. Indic.* 101, 632–639. <https://doi.org/10.1016/j.ecolind.2019.01.064>.
- Wang, K., Liu, G., & Cai, Y. (2022). Possible pathways for mercury methylation in oxic marine waters. *Critical Reviews in Environmental Science and Technology*, 52(22), 3997-4015. 10.1080/10643389.2021.2008753
- Wang, Y.-y., Zhai, W.-d., Wu, C., Yang, S., Gong, X.-z., 2024. Exploring contribution of phytoplankton cell death to settleable particulate organic carbon in the East China Sea in spring. *Mar. Pollut. Bull.* 201, 116197. <https://doi.org/10.1016/j.marpolbul.2024.116197>.
- Wang, X., Xie, Q., Wang, Y., Lü, H., Fu, M., Wang, D., & Li, J. (2023). Hg bioaccumulation in the aquatic food web from tributaries of the Three Gorges Reservoir, China and potential consumption advisories. *Journal of hazardous materials*, 458, 131902. <https://doi.org/10.1016/j.jhazmat.2023.131902>
- Watras, C.J., Bloom, N.S., 1992. Mercury and methylmercury, in individual zooplankton: implications for bioaccumulation. *Limnol. Oceanogr.* 37 (6), 1313–1318. <https://doi.org/10.4319/lo.1992.37.6.1313>.

- Whitfield, A.K., Durand, J.-D., 2023. An overview of grey mullet (Mugilidae) global occurrence and species-rich ecoregions, with indications of possible past dispersal routes within the family. *J. Fish. Biol.* 103 (2), 202–219. <https://doi.org/10.1111/jfb.15450>.
- Williams, P.M., Gordon, L.I., 1970. Carbon-13: carbon-12 ratios in dissolved and particulate organic matter in the sea. *Deep Sea Res. Oceanogr. Abstr.* 17 (1), 19–27. [https://doi.org/10.1016/0011-7471\(70\)90085-9](https://doi.org/10.1016/0011-7471(70)90085-9).
- Windom, H. L., & Cranmer, G. (1998). Lack of observed impacts of gas production of bongkot field, Thailand on marine biota. *Marine Pollution Bulletin*, 36(10), 799-807. [https://doi.org/10.1016/S0025-326X\(98\)00060-5](https://doi.org/10.1016/S0025-326X(98)00060-5)
- Worakhunpiset, S. (2018). Trace elements in marine sediment and organisms in the Gulf of Thailand. *International Journal of Environmental Research and Public Health*, 15(4), 810. <https://doi.org/10.3390/ijerph15040810>
- Wren, C.D., 1986. A review of metal accumulation and toxicity in wild mammals: I. Mercury. *Environ. Res.* 40 (1), 210–244. [https://doi.org/10.1016/S0013-9351\(86\)80098-6](https://doi.org/10.1016/S0013-9351(86)80098-6).
- Wu, P., Zakem, E. J., Dutkiewicz, S., & Zhang, Y. (2020). Biomagnification of Methylmercury in a Marine Plankton Ecosystem. *Environmental Science & Technology*, 54(9), 5446-5455. 10.1021/acs.est.9b06075
- Wu, Y., Wang, W.-X., 2014. Intracellular speciation and transformation of inorganic mercury in marine phytoplankton. *Aquat. Toxicol.* 148, 122–129. <https://doi.org/10.1016/j.aquatox.2014.01.005>.
- Yan, H., Li, Q., Yuan, Z., Jin, S., & Jing, M. (2019). Research Progress of Mercury Bioaccumulation in the Aquatic Food Chain, China: A Review. *Bulletin of Environmental Contamination and Toxicology*, 102(5), 612-620. 10.1007/s00128-019-02629-7
- Yod-In-Lom, W., Doyle, B.A., 2002. Deep well injection of mercury contaminated sludge in the Gulf of Thailand. In: SPE International Conference on Health, Safety and Environment in Oil and Gas Exploration and Production. <https://doi.org/10.2118/73964-MS>.

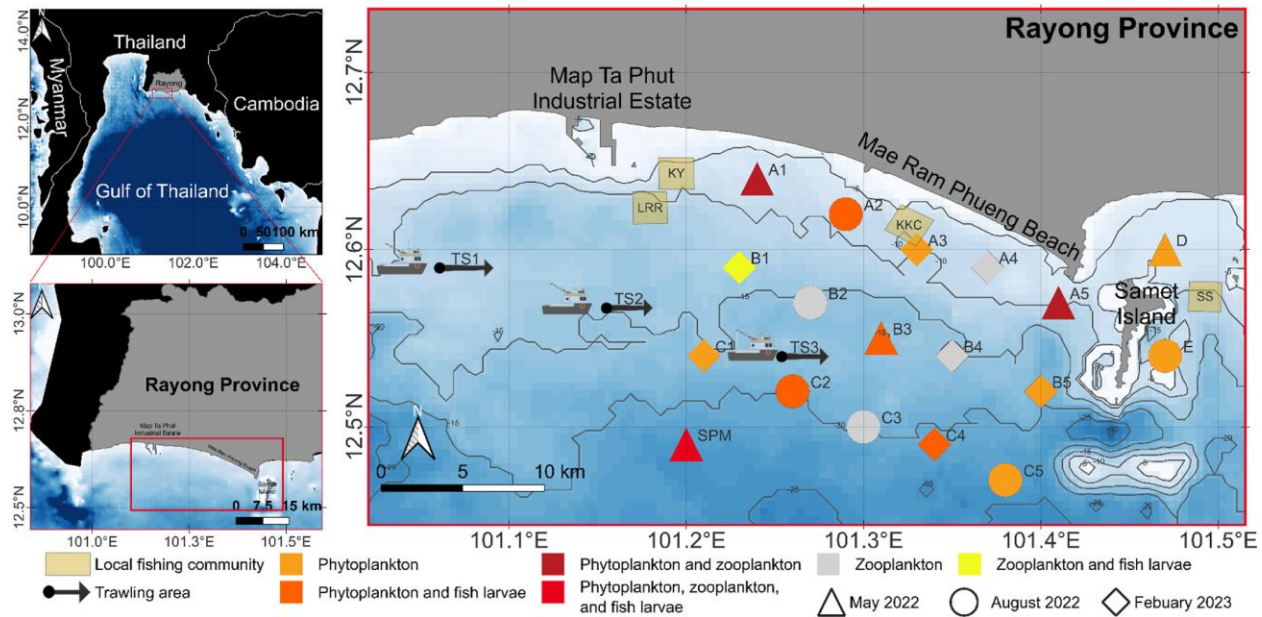


Figure 1. Location of the Gulf of Thailand and Rayong Province (left) and Rayong Bay sampling stations (right). Bathymetric data were obtained from the General Bathymetric Chart of the Oceans (GEBCO) 2023 dataset, with depth contour intervals displayed at 5-m increments.

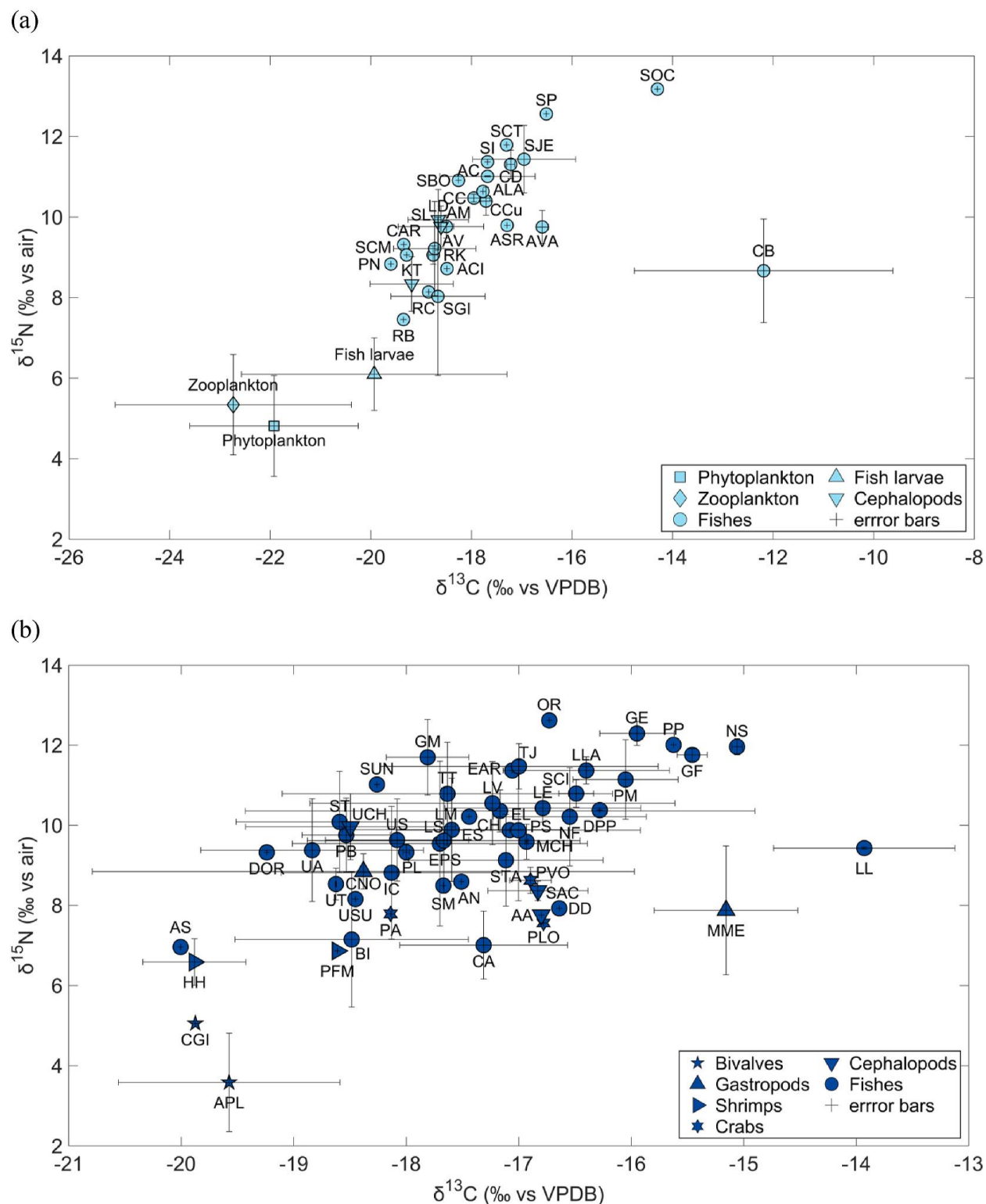


Figure 2. The relationship between $\delta^{13}\text{C}$ and $\delta^{15}\text{N}$ values for organisms from Rayong Bay: (a) pelagic food web and (b) benthic food web. Refer to Table S1 for detailed information on the corresponding codes.

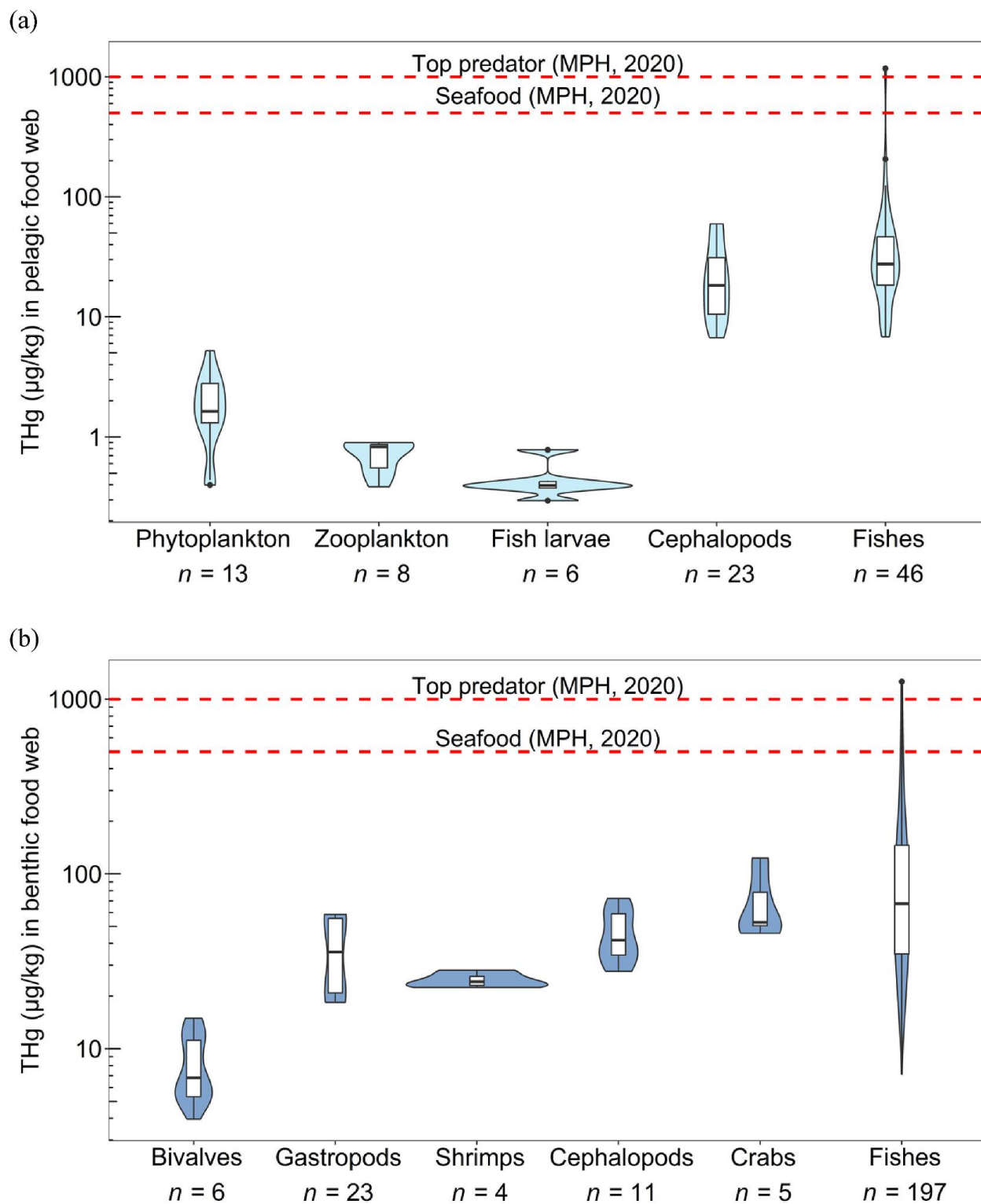


Figure 3. Distributions of Hg levels (THg, $\mu\text{g}/\text{kg}$ wet weight) in marine organisms from (a) the pelagic food web and (b) the benthic food web of Rayong Bay. Levels of 500 and 1000 $\mu\text{g}/\text{kg}$ indicate the upper permissible level for Hg in seafood and top predators, respectively (MPH, 2020).

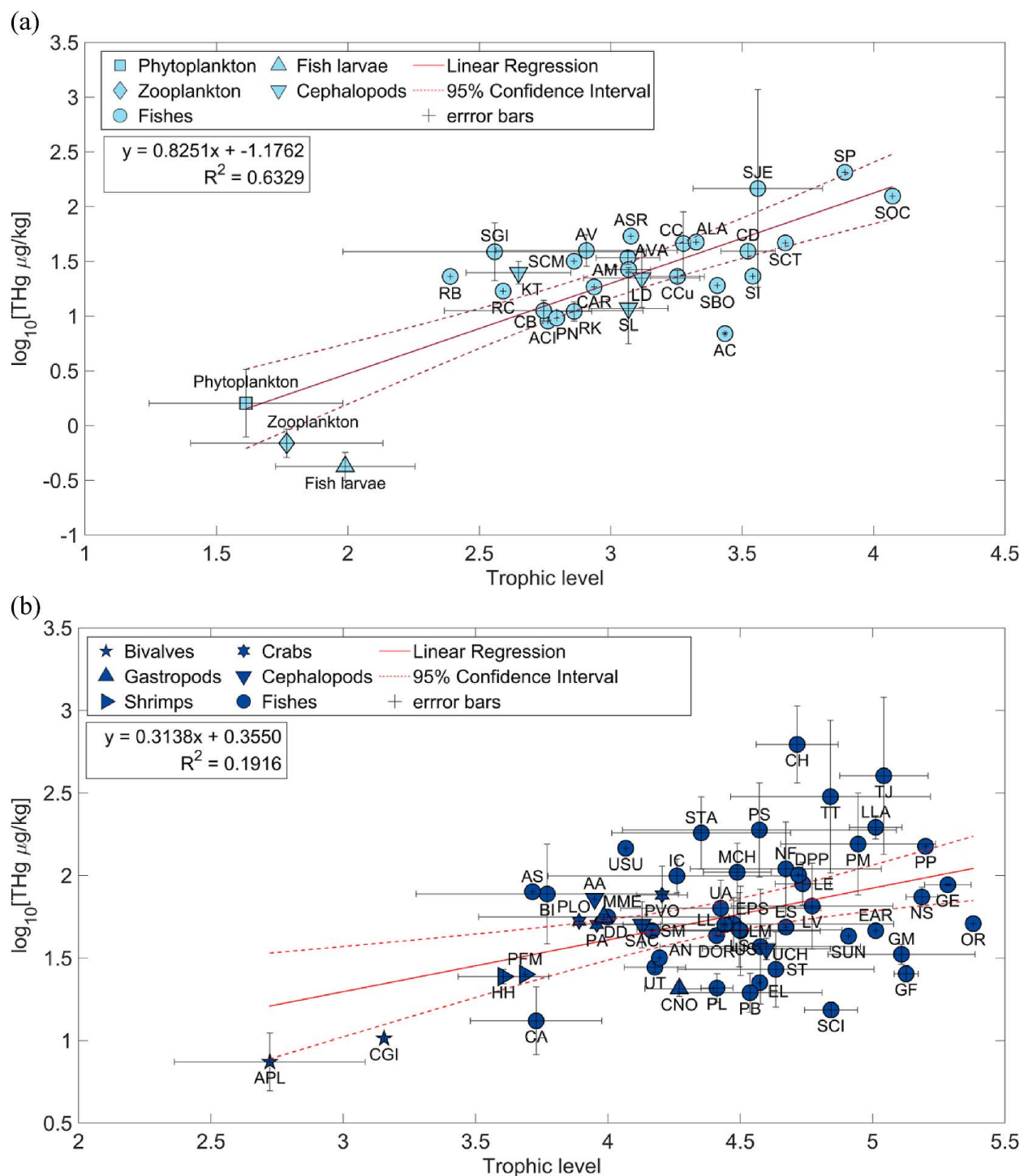


Figure 4. Linear regressions between $\log_{10}[\text{THg}, \mu\text{g}/\text{kg wet weight}]$ and trophic levels for (a) the pelagic food web and (b) the benthic food web in Rayong Bay. Refer to Table S1 for detailed information on the corresponding code.

Table 1. Compiled THg concentrations ($\mu\text{g}/\text{kg}$ wet weight) in plankton by size fractions.

Location	Size (μm)	THg	Reference
East Coast of Thailand	N/A	0.1	Cheevaporn et al. (2000)
Guanabara Bay	70–290	0.80–2.01	Kehrig et al. (2009)
	≥ 290	4.01–18.05	
Northwest Atlantic Ocean	0.2–200	1.41–15.24	Hammerschmidt et al. (2013)
	200–500	0.90–10.83	
	500–1000	1.36–13.84	
	1000–2000	1.22–12.44	
	>2000	1.32–6.82	
Ilha Grande Bay	25	$0.15^a \pm 0.02^a$	Seixas et al. (2014)
Ilha Grande Bay	1.2–70	$1.25^a \pm 0.60^a$	Seixas et al. (2015)
	70–290	$0.15^a \pm 0.06^a$	
	290–500	$0.66^b \pm 0.41^b$	
	≥ 500	$0.88^b \pm 0.57^b$	
Central Pacific Ocean	<5	0.26–6.30	Gosnell and Mason (2015)
	5–20	4.07–166.49	
	>20	11.63–288.25	
	200–500, 500–1000, 1000–2000, and >2000	1.00–27.08	
Long Island Sound	0.2–5, 5–20, and 20–200	<0.30	Gosnell et al. (2017)
Southern Baltic Sea	>50	$3.3^{a,c} - 3.9^{a,c}$	Bełdowska and Mudrak-Cegiolka (2017)
Mediterranean Sea	0.7–2.7	$4.30^a \pm 1.55^a$	Tesán-Onrubia et al. (2023)
	2.7–20	$2.10^a \pm 1.35^a$	
	60–200	$1.10^a \pm 0.50^a$	
	200–500	$2.4^b \pm 0.7^b$	
	500–1000	$2.6^b \pm 0.1^b$	
	1000–2000	$4.5^b \pm 4.4^b$	
	>2000	$2.1^b \pm 1.8^b$	
Danshuei Estuary, northern Taiwan.	35–75	$10.0^a - 207.5^a$	Fang and Chang (2024)
	75–125	$5.5^a - 381.0^a$	
	125–212	$7.5^a - 535.0^a$	
	>212	$9.0^b - 1040.0^b$	
Rayong Bay, Thailand	20–100	2.00 ± 1.25	This study
	>100	0.72 ± 0.19	
	>300	0.45 ± 0.16	

Note.

^a Calculated from 95 % water content for microseston (size class of 0.2–200 μm : bacteria, phytoplankton, microzooplankton, and suspended particulate organic matter) as suggested by Hammerschmidt et al. (2013).

^b Calculated from 90 % water content in zooplankton larger than 200 μm based on Knauer and Martin 1972

^c Median value

Table 2. Compiled previously published trophic magnification slopes (TMSs) and trophic magnification factors (TMFs) of Hg.

Location	Food web	Samples	Data analysis	TEF	TMSs	TMFs	Reference
Mekong Delta, South Vietnam	Not specified	Phytoplankton – Fishes	Log ₁₀ THg vs δ ¹⁵ N	–	0.114	1.30	Ikemoto et al. (2008)
Kongsfjorden, Svalbard	Pelagic	Seabirds	Log ₁₀ THg vs TLe	3.4	0.14	3.02	Jæger et al. (2009)
	Pelagic	Fishes – seabirds			NA	4.87	
Baltic Sea	Pelagic	Phytoplankton – fishes	Log ₁₀ THg vs δ ¹⁵ N	3.5	0.175	1.50	Nfon et al. (2009)
Gulf of St. Lawrence	Pelagic	Zooplankton – seabirds	Log ₁₀ THg vs TLe	3.4	0.697	4.98	Lavoie et al. (2010)
	Benthopelagic	Invertebrates – seabirds			0.649	4.46	
	Benthic	Invertebrates – fishes			0.416	2.60	
Sevetiba Bay, Norway	Not specified	Invertebrates – fishes	Log ₁₀ THg vs δ ¹⁵ N	–	NA	1.71–1.91	Bisi et al. (2012)
Guanabara Bay, Norway					NA	1.51–1.55	
Ilha Grande Bay, Norway					NA	1.63–1.67	
Hudson Bay, Canada	Not specified	Zooplankton	Log ₁₀ THg vs δ ¹⁵ N	3.8	NA	1.1–1.9	Foster et al. (2012)
Northern Rio de Janeiro State, southeastern Brazil	Not specified	Phytoplankton – fishes	Log ₁₀ THg vs TLe	3.4	0.835	6.84	Di Benedetto et al. (2012)
Southeastern Australia	Whole community	Zooplankton – fishes	Log ₁₀ THg vs TLe	3.4	1.13	13.39	Pethybridge et al. (2012)
	Benthic	Fishes			0.89	7.70	
Nain Bay, Canada	Not specified	Algae (<i>Fucus</i> sp.) – fishes	Log ₁₀ THg vs TLe	3.4	0.37 ± 0.06	2.35	van der Velden et al. (2013)
Okak Bay, Canada		Algae (<i>Fucus</i> sp.) – fishes			0.37 ± 0.06	2.33	
Saglek Bay, Canada		Algae (<i>Fucus</i> sp.) – fishes			0.20 ± 0.05	1.59	
Dry Bay, Canada		Algae (<i>Fucus</i> sp.) – fishes			0.22 ± 0.04	1.65	
Iqaluit, Canada		Plankton – fishes			0.44 ± 0.03	2.77	
Pond Inlet, Canada		Algae (<i>Fucus</i> sp.) – fishes			0.45 ± 0.03	2.82	
Southwest Florida, USA	Not specified	Invertebrates – fishes	Log ₁₀ THg vs TLe	3.4		5.05	Thera and Rumbold (2014)
Santo shelf, São Paulo, Brazil	Pelagic	Zooplankton – Fishes	Log ₁₀ THg vs δ ¹⁵ N	–	0.26	1.82	Muto et al. (2014)
	Benthic	Bivalves – Fishes			0.13	1.35	
Nasaruvaalik Island, Nunavut, Canada	Not specified	<i>C. hyperboreus</i> – fishes	Log ₁₀ THg vs TLe	3.8	0.036	1.37	Clayden et al. (2015)
		<i>C. hyperboreus</i> – seabirds			0.095	2.13	
Kongsfjorden, Svalbard, Norwegian Arctic	Pelagic	Zooplankton – seabirds	Log ₁₀ THg vs TLe	3.8	NA	8.8	Ruus et al. (2015)
		Zooplankton – seabirds (without krill)			NA	8.7	
East coast of Peninsula, Malaysia	Not specified	Sediment – fishes	Log ₁₀ THg vs δ ¹⁵ N	2.2*	0.163	1.5	Le et al. (2017)
Chukchi Sea	Not specified	Phytoplankton – whelk	Log ₁₀ THg vs TLe	3.4	0.05	1.5	Fox et al. (2017)
			Log ₁₀ MMHg vs TLe	3.4	0.15	3.2	
Bahia Tortugas, Mexico	Benthic	Zooplankton – fishes	Log ₁₀ THg vs TLe	3.4	0.8051	6.38	Murillo-Cisneros et al. (2019)
Laizhou Bay, China	Not specified	Phytoplankton – fishes	Log ₁₀ THg vs TLe	3.4	0.23	1.69	Cao et al. (2020)
Frobisher Bay	Pelagic	Zooplankton – fishes	Log ₁₀ MeHg vs δ ¹⁵ N	–	0.183	1.52	Hilgendag et al. (2022)
	Benthopelagic	Invertebrates – fishes			0.201	1.59	
	Benthic	Invertebrates – fishes			0.079	1.20	
Archipelago Sea	Pelagic	Zooplankton – fishes	Log ₁₀ THg vs TLe	3.4	0.55–0.60	3.58–4.02	Vainio et al. (2022)
	Benthic	Bivalves – fishes			0.32–0.37	2.11–2.34	
Gulf of Ulloa, Mexico	Not specified	Zooplankton – fishes	Log ₁₀ THg vs TLe	3.4	NA	3.4	Pantoja-Echevarría et al. (2023)
Yanpu Bay, China	Not specified	POM – fishes	Log ₁₀ THg vs δ ¹⁵ N	–	NA	1.42	Hu et al. (2024)
Lower Cape Fear River and the Pamlico Sound	Not specified	Sediment – seabirds	Log ₁₀ THg vs δ ¹⁵ N	3.4	NA	2.96–3.92	Hardy et al. (2024)
Haizhou Bay, China	Not specified	Gastropods – fishes	Log ₁₀ THg vs TLe	3.4	NA	1.64	Chen et al. (2024)
Rayong Bay, Thailand	Pelagic	Phytoplankton – fishes	Log ₁₀ THg vs TLe	3.4	0.88	6.68	This study
	Benthic	Bivalves – fishes			0.31	2.06	

Note: TEF stands for trophic enrichment factor. Le et al. (2017)'s TEF values *for invertebrates and ** for fishes. Meanwhile, POM stands for particulate organic matter, and NA is not available.

Supplementary Material

Mercury Trophic Transfer and Biomagnification in Food Webs within a Tropical Embayment as Evidenced by Nitrogen and Carbon Stable Isotope Analysis

Suriyapong Kumsopar¹, Chawalit Charoenpong^{1,*}, Shaoneng He², Paco Bustamante^{3,4},
Bernie Wee Wei Ken⁵, Xianfeng Wang^{2,5}, Narainrit Chinfak¹, Kiattipong Kamdee⁶,
Penjai Sompongchaiyakul¹

¹Department of Marine Science, Faculty of Science, Chulalongkorn University, Bangkok 10330, Thailand

² Earth Observatory of Singapore, Nanyang Technological University, Singapore 639798, Singapore

³Littoral Environnement et Sociétés (LIENSs), UMR7266 CNRS-La Rochelle Université, 2 rue Olympe de Gouges, 17000 La Rochelle, France

⁴Institut Universitaire de France (IUF), Paris 75005, France

⁵Asian School of the Environment, Nanyang Technological University, Singapore 639798, Singapore

⁶Thailand Institute of Nuclear Technology, Nakonnayok 26120, Thailand

* Corresponding authors. E-mail address: chawalit.cha@chula.ac.th (Chawalit Charoenpong)

Table S1. List of species studied in Rayong Bay, Thailand, with their ecological characteristics.

Common name	Scientific name	Code	Climate	Types of diets	Major diet items
Pelagic food web					
Cephalopods					
Beka squid	<i>Nipponololigo beka</i>	KT	Tropical	Carnivores	Zooplankton, nekton, finfish, and small invertebrates
Indian squid	<i>Loligo duvaucelii</i>	LD	Tropical	Carnivores	Zooplankton, nekton, finfish, and small invertebrates
Bigfin reef squid	<i>Sepioteuthis lessoniana</i>	SL	Tropical	Carnivores	Zooplankton, nekton, finfish, and small invertebrates
Fishes					
Chacunda gizzard shad	<i>Anodontostoma chacunda</i>	AC	Tropical	Herbivores	Phytoplankton, zooplankton, nekton, and plants
Indian threadfish	<i>Alectis indicus</i>	ACI	Tropical	Carnivores	Zooplankton, nekton, and finfish
Hardyhead silverside	<i>Atherinomorus lacunosus</i>	ALA	Subtropical	Carnivores	Zooplankton and invertebrates
Yellowtail scad	<i>Atule mate</i>	AM	Tropical	Carnivores	Nekton and zoobenthos
Stellate puffer	<i>Arothron stellatus</i>	ASR	Tropical	Carnivores	Small fish and crustaceans
Herring scad	<i>Alepes vari</i>	AV	Tropical	Carnivores	Zooplankton, small fish, and crustaceans
Indo-Pacific sergeant	<i>Abudefduf vaigiensis</i>	AVA	Tropical	Omnivores	Algae, zooplankton, small invertebrates, and organic detritus
Longfin trevally	<i>Carangoides armatus</i>	CAR	Tropical	Carnivores	Nekton and finfish
Bluetail mullet	<i>Crenimugil buechanani</i>	CB	Tropical	Omnivore	Detritus, plants, zooplankton, algae, and invertebrates
Blue and gold fusilier	<i>Caesio caerulaurea</i>	CC	Tropical	Carnivores	Zooplankton and invertebrates
Redbelly yellowtail fusilier	<i>Caesio cunning</i>	CCu	Tropical	Carnivores	Zooplankton and small fish
Dorab wolf-herring	<i>Chirocentrus dorab</i>	CD	Tropical	Carnivores	Zooplankton, nekton, cephalopods, and finfish
Black pomfret	<i>Parastromateus niger</i>	PN	Tropical	Omnivore	Phytoplankton, zooplankton, zoobenthos, and fish larvae
Short mackerel	<i>Rastrelliger brachysoma</i>	RB	Tropical	Omnivore	Phytoplankton, zooplankton, and invertebrates
Cobia	<i>Rachycentron canadum</i>	RC	Subtropical	Carnivores	Nekton and zoobenthos
Indian mackerel	<i>Rastrelliger kanagurta</i>	RK	Tropical	Carnivores	Zooplankton, small fish, detritus, and finfish
Oxeye scad	<i>Selar boops</i>	SBO	Subtropical	Carnivores	Zooplankton, small fish, detritus, and finfish
Narrow-barred Spanish mackerel	<i>Scomberomorus commerson</i>	SCM	Tropical	Carnivores	Zooplankton, nekton, and finfish
Needlescaled queenfish	<i>Scomberoides tol</i>	SCT	Tropical	Carnivores	Zooplankton, nekton, and finfish
Goldstripe sardinella	<i>Sardinella gibbosa</i>	SGI	Tropical	Omnivore	Phytoplankton and zooplankton
Indian anchovy	<i>Stolephorus indicus</i>	SI	Tropical	Carnivores	Zooplankton, nekton, and finfish
Pickhandle barracuda	<i>Sphyraena jello</i>	SJE	Tropical	Carnivores	Zooplankton, nekton, finfish, and cephalopods
Obtuse barracuda	<i>Sphyraena obtusata</i>	SOC	Tropical	Carnivores	Zooplankton, nekton, finfish, and cephalopods
Sawtooth barracuda	<i>Sphyraena putnamae</i>	SP	Tropical	Carnivores	Zooplankton, nekton, finfish, and cephalopods
Benthic food web					
Bivalves					
Asian moon scallop	<i>Amusium pleuronectes</i>	APL	Tropical	Filter feeders	Phytoplankton and other suspended particles from water
Giant cupped oyster	<i>Crassostrea gigas</i>	CGI	Subtropical	Filter feeders	Phytoplankton and other suspended particles from water

Table S1. (Cont.)

Common name	Scientific name	Code	Climate	Types of diets	Major diet items
Benthic food web					
Gastropods					
Noble volute	<i>Cymbiola nobilis</i>	CNO	Tropical	Carnivores	Mollusks, crustaceans, and small invertebrates ^a
Indian volute	<i>Melo melo</i>	MME	Tropical	Carnivores	Gastropods and worms ^b
Shrimps					
Robber harpiosquillid mantis shrimp	<i>Harpiosquilla harpax</i>	HH	Tropical	Carnivores	Zooplankton, nekton, finfish, and cephalopods
Banana prawn	<i>Penaeus merguensis</i>	PFM	Tropical	Carnivores	Zoobenthos, nekton, finfish, and echinoderms
Cephalopods					
Sandbird octopus	<i>Amphioctopus aegina</i>	AA	Tropical	Carnivores	Crustaceans and bivalves ^c
Needle cuttlefish	<i>Sepia aculeata</i>	SAC	Tropical	Carnivores	Zooplankton and zoobenthos
Mitre squid	<i>Photololigo chinensis</i>	UCH	Tropical	Carnivores	Zooplankton, nekton, zoobenthos, and finfish
Crabs					
Blue swimming crab	<i>Portunus pelagicus</i>	PA	Tropical	Carnivores	Zoobenthos, nekton, finfish, and detritus
White long-armed crab	<i>Parthenope longimanus</i>	PLO	Subtropical	Omnivores	Detritus, algae, small invertebrates, and plant
Periscope crab	<i>Podophthalmus vigil</i>	PVO	Tropical	Omnivores	Detritus, algae, small invertebrates, and plant
Fishes					
Cardinalfish	<i>Apogonichthyoides niger</i>	AN	Tropical	Carnivores	Zooplankton, zoobenthos, and invertebrates
Razorfish	<i>Aeoliscus strigatus</i>	AS	Tropical	Carnivores	Zooplankton, nekton, and finfish
Bengal whipray	<i>Brevitrygon imbricata</i>	BI	Tropical	Carnivores	Zoobenthos, mollusks, and invertebrates
Largescale tonguesole	<i>Cynoglossus arel</i>	CA	Tropical	Carnivores	Zoobenthos, nekton, finfish, and detritus
Hasselt's bamboo shark	<i>Chiloscyllium hasseltii</i>	CH	Tropical	Carnivores	Zoobenthos and invertebrates
Fingered dragonet	<i>Dactylopus dactylopus</i>	DD	Tropical	Carnivores	Zoobenthos, mollusks, and benthic invertebrates
Oriental flying gurnard	<i>Dactyloptena orientalis</i>	DOR	Tropical	Carnivores	Zoobenthos, nekton, and finfish
Painted sweetlips	<i>Diagramma picta</i>	DPP	Tropical	Carnivores	Zoobenthos, nekton, and finfish
Areolate grouper	<i>Epinephelus areolatus</i>	EAR	Tropical	Carnivores	Zoobenthos, nekton, and finfish
Ornate ponyfish	<i>Equulites lineolatus</i>	EL	Tropical	Carnivores	Zoobenthos, nekton, finfish, and benthic invertebrates
Sixbar grouper	<i>Epinephelus sexfasciatus</i>	EPS	Tropical	Carnivores	Zoobenthos, crustaceans, and benthic invertebrates
Oblong slipmouth	<i>Photolateralis stercorarius</i>	ES	Tropical	Carnivores	Zoobenthos, crustaceans, and benthic invertebrates
Deep-bodied mojarra	<i>Gerres erythrourus</i>	GE	Tropical	Carnivores	Zoobenthos, nekton, finfish, invertebrates, and detritus
Whipfin silver-biddy	<i>Gerres filamentosus</i>	GF	Tropical	Carnivores	Zoobenthos, nekton, finfish, invertebrates, and detritus
Toothpony	<i>Gazza minuta</i>	GM	Tropical	Carnivores	Zoobenthos, nekton, finfish, and invertebrates
Longsnout stinger	<i>Inimicus cuvieri</i>	IC	Tropical	Carnivores	Zoobenthos, nekton, finfish, and small fish
Common ponyfish	<i>Leiognathus equulus</i>	LE	Tropical	Omnivores	Phytoplankton, zooplankton, invertebrates, and detritus
Pink ear emperor	<i>Lethrinus lentjan</i>	LL	Tropical	Carnivores	Zoobenthos, nekton, finfish, and invertebrates
Lunartail puffer	<i>Lagocephalus lunaris</i>	LLA	Tropical	Carnivores	Small fish, finfish, and bivalves ^d
Indian snapper	<i>Lutjanus madras</i>	LM	Tropical	Carnivores	Zoobenthos, nekton, finfish, and crustaceans
Suez Puffer	<i>Lagocephalus suezensis</i>	LS	Temperate	Carnivores	Fishes, gastropods, and cephalopods ^e

Table S1. (Cont.)

Common name	Scientific name	Code	Climate	Types of diets	Major diet items
<i>Benthic food web</i>					
Fishes					
Brownstripe red snapper	<i>Lutignus vitta</i>	LV	Tropical	Carnivores	Zoobenthos, nekton, finfish, and crustaceans
Fan-bellied leatherjacket	<i>Monacanthus chinensis</i>	MCH	Tropical	Carnivores	Zoobenthos
Fork-tailed threadfin bream	<i>Nemipterus furcosus</i>	NF	Tropical	Carnivores	Zoobenthos, nekton, finfish, and crustaceans
Soldier croaker	<i>Nibea soldado</i>	NS	Tropical	Carnivores	Zoobenthos, nekton, finfish, crustaceans, and benthic invertebrates
Tigertooth croaker	<i>Otolithes ruber</i>	OR	Tropical	Carnivores	Zoobenthos, nekton, finfish, and cephalopods
Longfin mojarra	<i>Pentaprion longimanus</i>	PL	Tropical	Carnivores	Zoobenthos, detritus, and benthic invertebrates
Saddle grunt	<i>Pomadasyus maculatus</i>	PM	Tropical	Carnivores	Zoobenthos, nekton, finfish, and benthic invertebrates
Peacock sole	<i>Pardachirus pavoninus</i>	PP	Tropical	Carnivores	Zoobenthos
Butterfly whiptail	<i>Pentapodus setosus</i>	PS	Tropical	Carnivores	Zoobenthos and benthic invertebrates
Saw-jawed monocle bream	<i>Scolopsis ciliata</i>	SCI	Tropical	Omnivores	Algae, zoobenthos and benthic invertebrates
Monogrammed monocle bream	<i>Scolopsis monogramma</i>	SM	Tropical	Carnivores	Zoobenthos, nekton, finfish, benthic invertebrates, and mollusks
Greater lizardfish	<i>Saurida tumbil</i>	ST	Tropical	Carnivores	Zoobenthos, nekton, finfish, and benthic invertebrates
Lattice monocle bream	<i>Scolopsis taenioptera</i>	STA	Tropical	Carnivores	Zoobenthos, nekton, finfish, and mollusks
Brushtooth lizardfish	<i>Saurida undosquamis</i>	SUN	Subtropical	Carnivore	Zoobenthos, nekton, finfish, and crustaceans
Jarbua terapon	<i>Terapon jarbua</i>	TJ	Tropical	Omnivores	Algae, detritus, zoobenthos, nekton, finfish, and benthic invertebrates
Largescaled terapon	<i>Terapon theraps</i>	TT	Tropical	Omnivores	Algae, detritus, zoobenthos, nekton, finfish, and benthic invertebrates
Asymmetrical goatfish	<i>Upeneus asymmetricus</i>	UA	Subtropical	Carnivore	Zoobenthos and benthic invertebrates
Ochre-banded goatfish	<i>Upeneus sundaicus</i>	US	Tropical	Carnivore	Zoobenthos and benthic invertebrates
Sulphur goatfish	<i>Upeneus sulphureus</i>	USU	Tropical	Carnivore	Zoobenthos, detritus, and benthic invertebrates
Freckled goatfish	<i>Upeneus tragula</i>	UT	Tropical	Carnivore	Zoobenthos and benthic invertebrates

Note: Climate, types of diets and major diet items are from FishBase and SeaLifeBase.

^a Swennen et al. (1997)

^b Morton (1986)

^c Nabhitabhata (2014)

^d Mohamad and Isa (2013)

^e Gomes V.C et al. (2025)

Table S2. Species morphometric measurements, isotope values ($\delta^{13}\text{C}$ and $\delta^{15}\text{N}$), calculated trophic levels (TLs), and total mercury concentration in marine organisms (THg in $\mu\text{g}/\text{kg}$ wet weight). Refer to [Table S1](#) for the corresponding code names.

Code	n	Total length (cm)	Total weight (g)	$\delta^{13}\text{C}$ (‰ vs VPDB)	$\delta^{15}\text{N}$ (‰ vs air)	Trophic levels	THg ($\mu\text{g}/\text{kg}$)
<i>Pelagic food web</i>							
Plankton							
Phytoplankton	13			-21.93 ± 1.67 (-24.06 to -18.83)	4.81 ± 1.25 (2.73 to 6.14)	1.61 ± 0.37 (1.00 to 2.50)	2.00 ± 1.25 (0.40 to 5.21)
Zooplankton	8			-22.74 ± 2.35 (-25.88 to -19.02)	5.34 ± 1.24 (3.36 to 7.28)	1.77 ± 0.37 (1.19 to 2.34)	0.72 ± 0.19 (0.38 to 0.90)
Fish larvae	6			-19.93 ± 2.64 (-21.83 to -14.28)	6.10 ± 0.90 (4.99 to 7.77)	1.99 ± 0.27 (1.66 to 2.48)	0.45 ± 0.16 (0.30 to 0.78)
Cephalopods							
KT	3	26.70 ± 8.62 (26.00 to 27.40)	21.23 ± 1.95 (18.52 to 22.99)	-19.19 ± 0.83 (-19.84 to -18.02)	8.34 ± 0.68 (7.86 to 9.30)	2.65 ± 0.20 (2.51 to 2.93)	25.62 ± 5.85 (18.27 to 32.57)
LD	14	29.88 ± 9.89 (18.00 to 45.50)	43.66 ± 31.66 (16.49 to 115.19)	-18.66 ± 0.60 (-19.93 to -17.51)	9.93 ± 0.75 (8.11 to 11.42)	3.12 ± 0.22 (2.58 to 3.56)	26.97 ± 17.50 (10.21 to 59.44)
SL	6	17.53 ± 8.53 (10.00 to 36.00)	29.51 ± 44.78 (6.69 to 58.03)	-18.60 ± 0.85 (-19.41 to -16.83)	9.76 ± 0.51 (9.39 to 10.84)	3.07 ± 0.15 (2.96 to 3.38)	17.04 ± 18.46 (6.69 to 58.03)
Fishes							
AC	2	13.10 ± 0.10 (13.00 to 13.20)	27.88 ± 1.90 (25.98 to 29.78)	-17.68 ± 0.95 (-18.63 to -16.73)	11.01 ± 0.01 (11.00 to 11.02)	3.43 ± 0.00 (3.43 to 3.44)	6.92 ± 0.13 (6.79 to 7.06)
ACI	1	8.60	16.59	-18.49	8.72	2.76	9.03
ALA	1	8.83	5.97	-17.77	10.64	3.32	47.47
AM	2	15.29 ± 0.71 (14.58 to 16.00)	36.34 ± 3.02 (33.32 to 39.36)	-18.50 ± 0.15 (-18.64 to -18.35)	9.76 ± 0.29 (9.48 to 10.05)	3.07 ± 0.08 (2.98 to 3.15)	26.65 ± 1.13 (25.52 to 27.77)
ASR	1	32.50	1252.44	-17.29	9.79	3.08	53.75
AV	7	25.93 ± 3.25 (20.60 to 28.60)	147.31 ± 43.10 (72.49 to 186.53)	-18.73 ± 0.82 (-20.68 to -17.99)	9.22 ± 1.17 (6.42 to 10.24)	2.91 ± 0.34 (2.08 to 3.21)	42.03 ± 14.12 (26.37 to 67.71)
AVA	2	13.95 ± 0.13 (13.82 to 14.07)	51.74 ± 0.19 (51.55 to 51.92)	-16.59 ± 0.12 (-16.71 to -16.47)	9.75 ± 0.41 (9.34 to 10.17)	3.07 ± 0.12 (2.94 to 3.19)	34.51 ± 4.86 (29.66 to 39.37)
CAR	1	8.01	8.61	-19.35	9.32	2.94	18.50

Table S2. (Cont.)

Code	n	Total length (cm)	Total weight (g)	$\delta^{13}\text{C}$ (‰ vs VPDB)	$\delta^{15}\text{N}$ (‰ vs air)	Trophic levels	THg ($\mu\text{g}/\text{kg}$)
<i>Pelagic food web</i>							
Fishes							
CB	3	27.03 \pm 2.15 (24.00 to 28.80)	201.76 \pm 32.23 (160.86 to 239.62)	-12.19 \pm 2.57 (-15.82 to -10.33)	8.67 \pm 1.29 (7.63 to 10.48)	2.75 \pm 0.38 (2.44 to 3.28)	11.50 \pm 2.51 (8.65 to 14.76)
CC	3	18.30 \pm 1.70 (15.90 to 19.70)	83.58 \pm 22.11 (52.67 to 103.11)	-17.95 \pm 0.32 (-18.40 to -17.69)	10.47 \pm 0.10 (10.39 to 10.61)	3.28 \pm 0.03 (3.25 to 3.32)	55.21 \pm 26.37 (18.03 to 76.30)
CCu	3	19.10 \pm 0.36 (18.60 to 19.40)	101.67 \pm 4.44 (98.06 to 107.92)	-17.71 \pm 0.11 (-17.86 to -17.62)	10.40 \pm 0.35 (9.91 to 10.66)	3.25 \pm 0.10 (3.11 to 3.33)	23.24 \pm 3.01 (19.55 to 26.93)
CD	3	40.40 \pm 0.88 (39.20 to 41.30)	208.09 \pm 15.11 (194.73 to 229.21)	-17.22 \pm 0.08 (-17.30 to -17.10)	11.31 \pm 0.35 (10.31 to 11.67)	3.52 \pm 0.10 (3.38 to 3.63)	39.67 \pm 6.28 (33.67 to 48.35)
PN	1	7.90	6.78	-19.60	8.83	2.79	9.60
RB	1	23.00	13.25	-19.35	7.46	2.39	23.02
RC	1	22.20	53.62	-18.85	8.14	2.59	16.93
RK	2	14.70 \pm 0.90 (13.80 to 15.60)	31.03 \pm 8.47 (22.56 to 39.50)	-18.76 \pm 0.10 (-18.85 to -18.66)	9.06 \pm 0.23 (8.83 to 9.29)	2.86 \pm 0.07 (2.79 to 2.93)	11.28 \pm 2.25 (9.02 to 13.53)
SBO	1	17.50	63.29	-18.26	10.91	3.41	19.05
SCM	1	17.20	38.46	-19.29	9.06	2.86	31.73
SCT	1	17.00	28.85	-17.30	11.79	3.66	46.61
SJI	4	15.05 \pm 2.67 (12.80 to 19.60)	34.50 \pm 25.73 (17.04 to 78.97)	-18.67 \pm 0.94 (-20.24 to -17.88)	8.03 \pm 1.96 (4.75 to 9.96)	2.56 \pm 0.58 (1.59 to 3.13)	46.95 \pm 30.34 (19.28 to 97.16)
SI	1	11.47	11.85	-17.68	11.37	3.54	23.15
SJE	2	35.90 \pm 23.10 (12.80 to 59.00)	486.70 \pm 19.75 (18.32 to 1171.03)	-16.95 \pm 1.03 (-17.98 to -15.93)	11.43 \pm 0.84 (10.60 to 12.27)	3.56 \pm 0.25 (3.31 to 3.81)	594.67 \pm 576.35 (18.32 to 1171.03)
SOC	1	69.80	124.75	-14.30	13.18	4.07	124.75
SP	1	37.80	249.80	-16.51	12.56	3.89	206.00

Table S2. (Cont.)

Code	n	Total length (cm)	Total weight (g)	$\delta^{13}\text{C}$ (‰ vs VPDB)	$\delta^{15}\text{N}$ (‰ vs air)	Trophic levels	THg ($\mu\text{g}/\text{kg}$)
<i>Benthic food web</i>							
Bivalves							
APL	22	7.83* \pm 1.06* (5.67 to 9.70)*	29.26 \pm 10.04 (12.91 to 44.27)	-19.57 \pm 0.98 (-21.45 to -18.44)	3.59 \pm 1.23 (1.13 to 5.32)	2.72 \pm 0.36 (2.00 to 3.23)	8.08 \pm 3.43 (3.96 to 14.93)
CGI	1	5.97*	53.28	-19.88	5.06	3.15	10.29
Gastropods							
CNO	3	9.62* \pm 1.57* (7.40 to 10.83)*	412.92 \pm 161.83 (184.19 to 533.87)	-18.38 \pm 2.41 (-21.68 to -15.99)	8.85 \pm 0.44 (5.60 to 9.06)	4.27 \pm 0.13 (4.16 to 4.45)	20.71 \pm 2.26 (18.40 to 23.79)
MME	3	12.41* \pm 2.45* (9.40 to 15.14)*	390.63 \pm 92.12 (293.56 to 514.41)	-15.16 \pm 0.64 (-15.85 to -14.31)	7.88 \pm 1.61 (5.60 to 9.06)	3.98 \pm 0.47 (3.32 to 4.33)	56.13 \pm 2.05 (53.55 to 58.56)
Shrimps							
HH	3	10.47** \pm 0.59** (10.00 to 11.30)**	14.18 \pm 3.40 (11.29 to 18.95)	-19.88 \pm 0.46 (-20.35 to -19.26)	6.59 \pm 0.58 (5.83 to 7.24)	3.61 \pm 0.17 (3.38 to 3.80)	24.54 \pm 2.53 (22.37 to 28.09)
PFM	1	12.50**	27.06	-18.61	6.86	3.69	25.16
Cephalopods							
AA	1	21.70	39.43	-16.80	7.76	3.95	72.67
SAC	4	16.58 \pm 3.16 (13.00 to 21.60)	39.67 \pm 21.13 (8.30 to 55.56)	-16.83 \pm 0.45 (-17.35 to -16.24)	8.37 \pm 0.24 (7.97 to 8.54)	4.13 \pm 0.07 (4.01 to 4.19)	52.65 \pm 13.86 (28.93 to 63.44)
UCH	6	40.53 \pm 6.88 (28.20 to 51.40)	76.41 \pm 29.69 (29.17 to 123.90)	-18.50 \pm 0.93 (-19.67 to -17.46)	9.97 \pm 0.82 (98.85 to 10.92)	4.60 \pm 0.24 (4.27 to 4.88)	36.29 \pm 5.21 (27.74 to 41.75)
Crabs							
PA	1	12.70***	116.92	-18.14	7.79	3.96	50.51
PLO	1	3.29***	31.15	-16.78	7.56	3.89	52.79
PVO	3	3.25*** \pm 0.18*** (3.10 to 3.50)***	30.34 \pm 7.52 (22.52 to 40.50)	-16.90 \pm 0.18 (-17.15 to -16.72)	8.63 \pm 0.33 (8.16 to 8.88)	4.20 \pm 0.10 (4.07 to 4.28)	82.43 \pm 31.76 (45.70 to 123.18)
Fishes							
AN	1	7.30	7.39	-17.51	8.59	4.19	31.74
AS	1	15.10	5.38	-20.01	6.96	3.72	79.75

Table S2. (Cont.)

Code	n	Total length (cm)	Total weight (g)	$\delta^{13}\text{C}$ (‰ vs VPDB)	$\delta^{15}\text{N}$ (‰ vs air)	Trophic levels	THg ($\mu\text{g}/\text{kg}$)
<i>Benthic food web</i>							
Fishes							
BI	5	17.08 ± 1.42 (15.00 to 19.40)	191.19 ± 42.75 (110.65 to 226.73)	-18.49 ± 1.04 (-19.69 to -17.04)	7.15 ± 1.68 (5.70 to 9.86)	3.77 ± 0.50 (3.34 to 4.58)	99.73 ± 77.17 (29.55 to 248.97)
CA	3	24.00 ± 1.56 (22.70 to 26.20)	90.76 ± 23.83 (72.80 to 124.44)	-17.31 ± 0.75 (-17.93 to -16.26)	7.01 ± 0.84 (6.16 to 8.16)	3.73 ± 0.25 (3.48 to 4.07)	14.62 ± 6.27 (7.12 to 22.46)
CH	3	71.00 ± 10.16 (62.70 to 85.30)	1707.24 ± 852.37 (842.73 to 2867.00)	-17.17 ± 2.27 (-20.33 to -15.15)	10.36 ± 0.53 (9.92 to 11.10)	4.71 ± 0.15 (4.59 to 4.93)	708.18 ± 318.22 (299.62 to 1075.88)
DD	1	11.40	17.71	-16.64	7.93	4.00	56.02
DOR	1	15.55	45.82	-19.24	9.33	4.41	43.29
DPP	1	28.90	303.63	-16.28	10.38	4.72	100.97
EAR	1	20.70	124.03	-17.06	11.37	5.01	46.37
EL	1	7.36	5.09	-17.08	9.88	4.57	22.41
EPS	4	12.18 ± 2.80 (7.60 to 15.10)	31.38 ± 17.20 (5.88 to 53.93)	-17.70 ± 1.31 (-19.47 to -16.40)	9.54 ± 2.06 (6.58 to 12.39)	4.47 ± 0.60 (3.60 to 5.31)	53.94 ± 15.88 (26.96 to 66.88)
ES	1	9.20	8.83	-17.44	10.22	4.67	48.65
GE	2	16.45 ± 0.05 (16.40 to 16.45)	56.86 ± 0.88 (55.98 to 57.74)	-15.95 ± 0.33 (-16.28 to -15.62)	12.30 ± 0.30 (12.00 to 12.60)	5.28 ± 0.09 (5.20 to 5.37)	87.86 ± 0.97 (86.90 to 88.83)
GF	2	14.41 ± 0.01 (14.39 to 14.42)	48.80 ± 1.60 (47.20 to 50.39)	-15.46 ± 0.13 (-15.59 to -15.32)	11.76 ± 0.15 (11.61 to 11.92)	5.13 ± 0.05 (5.08 to 5.17)	25.56 ± 2.99 (22.57 to 28.55)
GM	4	10.58 ± 1.29 (8.51 to 11.80)	18.98 ± 5.87 (12.41 to 25.00)	-17.81 ± 0.37 (-18.42 to -17.44)	11.70 ± 0.94 (10.12 to 12.48)	5.11 ± 0.28 (4.64 to 5.34)	33.63 ± 4.33 (26.16 to 36.68)
IC	3	12.67 ± 1.94 (11.10 to 15.40)	31.84 ± 18.27 (18.62 to 57.67)	-18.13 ± 0.98 (-19.31 to -16.91)	8.82 ± 1.66 (6.50 to 10.30)	4.26 ± 0.49 (3.58 to 4.70)	102.46 ± 26.07 (83.75 to 139.33)
LE	4	12.40 ± 0.57 (11.53 to 13.08)	35.48 ± 2.01 (32.87 to 38.51)	-16.79 ± 0.87 (-17.79 to -15.86)	10.43 ± 0.35 (10.13 to 11.04)	4.74 ± 0.10 (4.65 to 4.91)	92.73 ± 23.35 (53.63 to 112.30)
LL	3	17.63 ± 0.12 (17.50 to 17.80)	99.27 ± 7.77 (93.01 to 110.22)	-13.93 ± 0.81 (-15.06 to -13.22)	9.43 ± 0.02 (9.40 to 9.45)	4.44 ± 0.01 (4.43 to 4.45)	50.54 ± 4.60 (44.13 to 54.67)
LLA	2	21.00 ± 5.80 (15.20 to 26.80)	243.19 ± 163.53 (79.66 to 406.71)	-16.40 ± 0.74 (-17.14 to -15.66)	11.37 ± 0.34 (11.03 to 11.71)	5.01 ± 0.10 (4.91 to 5.11)	198.34 ± 31.95 (166.39 to 230.30)
LM	6	11.65 ± 3.10 (8.03 to 16.80)	26.61 ± 20.82 (7.08 to 66.85)	-17.60 ± 0.97 (-18.97 to -16.44)	9.89 ± 1.29 (8.33 to 11.81)	4.58 ± 0.38 (4.12 to 5.14)	49.86 ± 35.19 (11.97 to 97.06)

Table S2. (Cont.)

Code	n	Total length (cm)	Total weight (g)	$\delta^{13}\text{C}$ (‰ vs VPDB)	$\delta^{15}\text{N}$ (‰ vs air)	Trophic levels	THg ($\mu\text{g}/\text{kg}$)
<i>Benthic food web</i>							
Fishes							
LM	6	11.65 ± 3.10 (8.03 to 16.80)	26.61 ± 20.82 (7.08 to 66.85)	-17.60 ± 0.97 (-18.97 to -16.44)	9.89 ± 1.29 (8.33 to 11.81)	4.58 ± 0.38 (4.12 to 5.14)	49.86 ± 35.19 (11.97 to 97.06)
LS	9	10.18 ± 1.80 (7.35 to 13.55)	17.16 ± 14.47 (4.84 to 55.67)	-17.67 ± 1.21 (-19.21 to -15.24)	9.62 ± 1.32 (7.25 to 12.15)	4.50 ± 0.39 (3.80 to 5.24)	54.12 ± 33.15 (19.12 to 139.09)
LV	10	15.87 ± 4.36 (8.37 to 21.60)	66.71 ± 48.25 (6.81 to 141.72)	-17.23 ± 1.62 (-20.88 to -14.73)	10.55 ± 1.04 (8.99 to 12.64)	4.77 ± 0.31 (4.31 to 5.39)	76.47 ± 37.38 (23.93 to 126.94)
MCH	2	20.40 ± 1.30 (19.10 to 21.70)	125.75 ± 18.34 (107.41 to 144.08)	-16.93 ± 0.01 (-16.94 to -16.92)	9.59 ± 0.43 (9.16 to 10.03)	4.49 ± 0.13 (4.36 to 4.62)	113.32 ± 43.39 (69.93 to 156.71)
NF	7	16.97 ± 3.43 (11.90 to 21.40)	64.86 ± 34.48 (19.45 to 121.80)	-16.55 ± 0.68 (-17.09 to -15.09)	10.22 ± 1.23 (8.77 to 12.66)	4.67 ± 0.36 (4.25 to 5.39)	133.84 ± 81.62 (40.41 to 304.16)
NS	2	17.40 ± 0.60 (16.80 to 18.00)	63.86 ± 6.36 (57.50 to 70.22)	-15.06 ± 0.05 (-15.11 to -15.01)	11.96 ± 0.20 (11.76 to 12.16)	5.19 ± 0.06 (5.13 to 5.25)	74.82 ± 10.27 (64.55 to 85.08)
OR	1	20.10	81.40	-16.73	12.62	5.38	51.14
PL	3	8.20 ± 0.16 (7.99 to 8.39)	6.56 ± 0.28 (6.30 to 6.95)	-18.00 ± 0.03 (-18.02 to -17.96)	9.33 ± 0.21 (9.04 to 9.51)	4.41 ± 0.06 (4.33 to 4.46)	21.25 ± 4.48 (17.63 to 27.56)
PM	5	15.57 ± 2.48 (13.35 to 19.80)	69.86 ± 32.81 (44.37 to 127.58)	-16.05 ± 0.47 (-16.76 to -15.43)	11.14 ± 0.99 (9.88 to 12.27)	4.95 ± 0.29 (4.57 to 5.28)	192.69 ± 106.36 (65.19 to 307.51)
PP	1	17.20	82.75	-15.62	12.01	5.20	150.31
PS	6	15.84 ± 0.78 (14.99 to 17.40)	45.17 ± 8.91 (29.00 to 57.63)	-17.00 ± 1.08 (-18.73 to -15.56)	9.88 ± 1.76 (7.02 to 12.94)	4.57 ± 0.52 (3.73 to 5.47)	233.95 ± 153.55 (75.75 to 504.42)
SCI	2	16.12 ± 0.98 (15.14 to 17.10)	78.84 ± 0.88 (77.95 to 79.72)	-16.49 ± 0.15 (-16.64 to -16.34)	10.80 ± 0.34 (10.45 to 11.14)	4.84 ± 0.10 (4.74 to 4.94)	15.42 ± 1.71 (13.71 to 17.14)
SM	1	13.41	30.85	-17.67	8.50	4.17	46.35
ST	6	14.63 ± 3.26 (10.00 to 18.20)	24.97 ± 16.64 (5.04 to 46.53)	-18.59 ± 0.92 (-19.97 to -17.71)	10.09 ± 1.26 (8.36 to 12.10)	4.63 ± 0.37 (4.13 to 5.23)	30.46 ± 13.14 (11.71 to 44.44)
STA	28	16.06 ± 3.42 (9.50 to 22.80)	61.23 ± 36.48 (12.83 to 152.14)	-17.11 ± 0.86 (-19.41 to -15.81)	9.13 ± 1.15 (6.10 to 11.25)	4.35 ± 0.34 (3.46 to 4.98)	206.34 ± 112.16 (65.12 to 523.45)
SUN	1	18.80	51.45	-18.26	11.02	4.91	56.02
TJ	4	20.85 ± 5.14 (15.10 to 28.30)	157.38 ± 97.64 (52.67 to 269.08)	-17.00 ± 1.24 (-18.64 to -15.50)	11.47 ± 0.57 (10.52 to 11.85)	5.04 ± 0.17 (4.76 to 5.19)	662.52 ± 523.37 (108.25 to 1207.17)

Table S2. (Cont.)

Code	n	Total length (cm)	Total weight (g)	$\delta^{13}\text{C}$ (‰ vs VPDB)	$\delta^{15}\text{N}$ (‰ vs air)	Trophic levels	THg ($\mu\text{g}/\text{kg}$)
<i>Benthic food web</i>							
Fishes							
TT	10	16.62 ± 1.85 (14.40 to 19.20)	78.34 ± 31.44 (41.90 to 139.72)	-17.63 ± 1.47 (-21.57 to -16.29)	10.79 ± 1.28 (8.27 to 12.64)	4.84 ± 0.38 (4.10 to 5.39)	469.58 ± 369.58 (43.38 to 1260.98)
UA	18	11.78 ± 0.85 (10.20 to 13.20)	17.72 ± 3.88 (11.78 to 24.88)	-18.84 ± 0.99 (-20.27 to -16.52)	9.38 ± 1.28 (6.94 to 11.40)	4.43 ± 0.38 (3.71 to 5.02)	68.74 ± 30.76 (33.43 to 153.80)
US	14	12.78 ± 2.04 (10.17 to 16.20)	27.07 ± 13.54 (13.07 to 47.98)	-18.08 ± 0.64 (-19.47 to -17.00)	9.63 ± 1.02 (8.29 to 11.86)	4.50 ± 0.30 (4.10 to 5.16)	58.99 ± 51.47 (22.81 to 205.77)
USU	1	19	55.67	-18.45	8.16	4.07	146.12
UT	2	14.35 ± 0.75 (13.60 to 15.10)	40.19 ± 9.36 (30.82 to 49.55)	-18.63 ± 0.00 (-18.63 to -18.62)	8.53 ± 0.39 (8.14 to 8.93)	4.18 ± 0.12 (4.06 to 4.29)	27.90 ± 2.03 (25.87 to 29.93)

Note: * Thickness of bivalve and snail shell (cm)
 ** Total length of shrimp (cm), measured from rostrum tip to telson tip
 *** Carapace width of crab (cm), measured at the widest point of the carapace

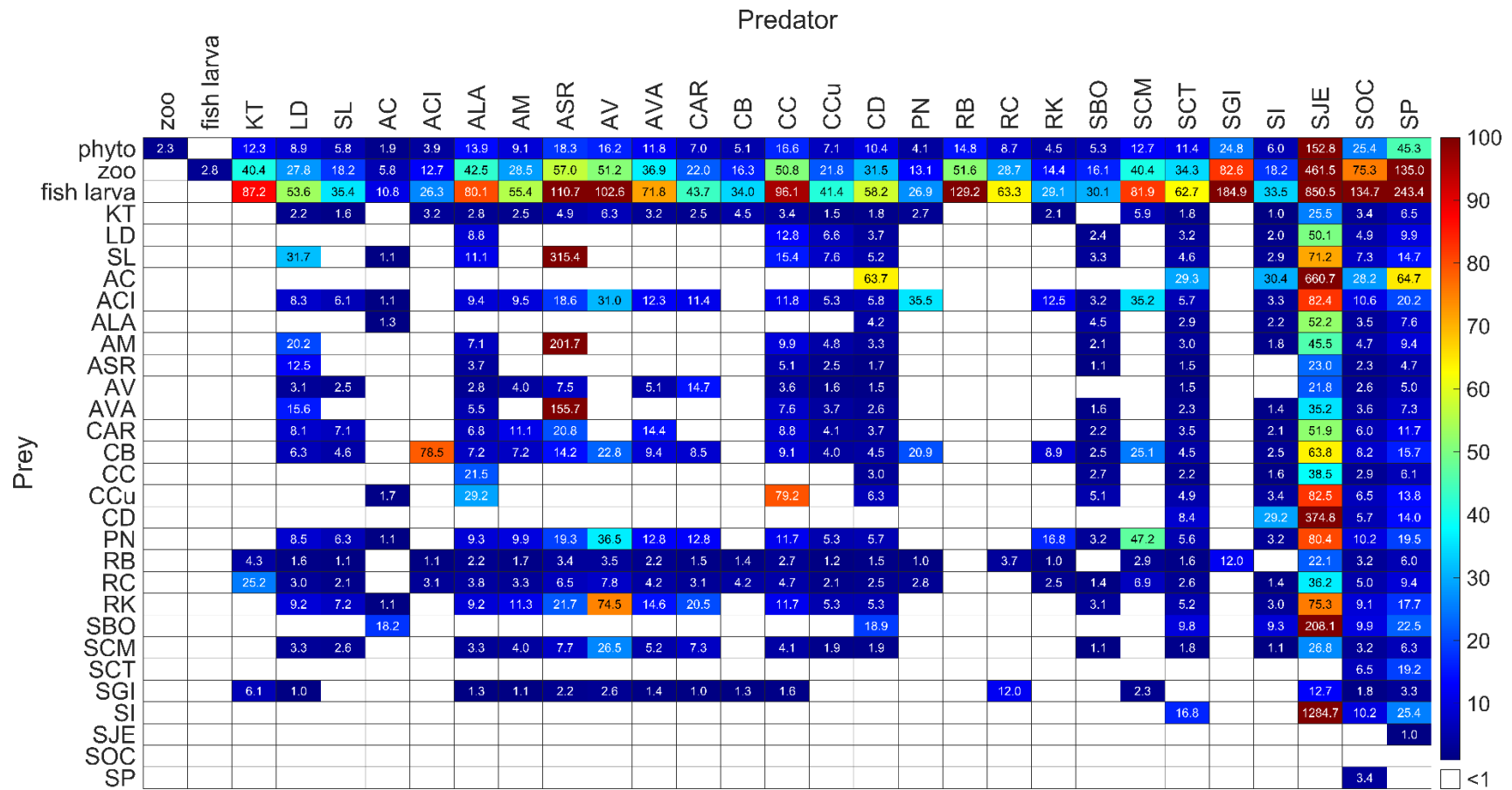


Figure S1. Heatmap of biomagnification factor values (BMF_{norm}) for relevant predator-prey pairs from the pelagic food web in Rayong Bay. BMF_{norm} values less than one (i.e., lack of biomagnification) were removed. Refer to [Table S1](#) for the corresponding code names.

References

- Gomes V.C, R., Christidis, G., Peristeraki, P., Somarakis, S., & Tserpes, G. (2025). The diet and feeding habits of *Lagocephalus sceleratus* in the eastern Mediterranean: A case study carried out off the island of Crete (southern Greece). *Mediterranean Marine Science*, 26(1), 97-114. <https://doi.org/10.12681/mms.38444>
- Mohamad, S., & Isa, F. I. (2013). Morphology and Stomach Content Analysis of Green Rough-backed Puffer Fish, *Lagocephalus lunaris* from Kuching, Sarawak. *Borneo Journal of Resource Science and Technology*, 2(2), 67-70.
- Morton, B. (1986). The diet and prey capture mechanism of *Melo melo* (prosobranchia : volutidae). *Journal of Molluscan Studies*, 52(2), 156-160. <https://doi.org/https://doi.org/10.1093/mollus/52.2.156>
- Nabhitabhata, J. (2014). *Amphioctopus aegina*. In J. Iglesias, L. Fuentes, & R. Villanueva (Eds.), *Cephalopod Culture* (pp. 349-363). Springer Netherlands. https://doi.org/10.1007/978-94-017-8648-5_18
- Swennen, C., Ruttanadakul, N., Ardseungnern, S., Singh, H. R., Mensink, B. P., & ten Hallers-Tjabbes, C. C. (1997). Imposex in Sublittoral and Littoral Gastropods from the Gulf of Thailand and Strait of Malacca in Relation to Shipping. *Environmental Technology*, 18(12), 1245-1254. <https://doi.org/https://doi.org/10.1080/09593331808616646>