



HAL
open science

Cerambycidae (Coleoptera) from South America: new species, notes, and new records

Josef Vlasak, Antonio Santos Silva

► **To cite this version:**

Josef Vlasak, Antonio Santos Silva. Cerambycidae (Coleoptera) from South America: new species, notes, and new records. *Faunitaxys*, 2025, 13 (19), pp.1-14. <10.57800/faunitaxys-13(19)>. <hal-05031502>

HAL Id: hal-05031502

<https://hal.science/hal-05031502v1>

Submitted on 11 Apr 2025

HAL is a multi-disciplinary open access archive for the deposit and dissemination of scientific research documents, whether they are published or not. The documents may come from teaching and research institutions in France or abroad, or from public or private research centers.

L'archive ouverte pluridisciplinaire **HAL**, est destinée au dépôt et à la diffusion de documents scientifiques de niveau recherche, publiés ou non, émanant des établissements d'enseignement et de recherche français ou étrangers, des laboratoires publics ou privés.



Distributed under a Creative Commons CC BY-NC-ND 4.0 - Attribution - Non-commercial use - No Derivative Works - International License

Faunitaxys

*Revue de Faunistique, Taxonomie et Systématique
morphologique et moléculaire*



Volume 13
Numéro 19

Avril 2025

ISSN (Print) : 2269 - 6016
ISSN (Online) : 2970 - 4960
Dépôt légal : Avril 2025

Faunitaxys

*Revue de Faunistique, Taxonomie et Systématique
morphologique et moléculaire*

ZooBank : <https://zoobank.org/79A36B2E-F645-4F9A-AE2B-ED32CE6771CC>

Directeur de la publication, rédacteur, conception graphique et PAO:

Lionel Delaunay

Cette revue ne peut pas être vendue

Elle est distribuée par échange aux institutions (version papier)

et sur simple demande aux particuliers (format PDF)

à l'adresse suivante:

AFCFF (Association française de Cartographie de la Faune et de la Flore)

28, rue Voltaire, F- 42100 Saint Etienne

E-mail: faunitaxys.journal@gmail.com

Elle est disponible librement au téléchargement à partir du site:

<https://faunitaxys.fr/>

La parution de *Faunitaxys* est apériodique

Faunitaxys est indexé dans / *Faunitaxys* is indexed in:

- **Zoological Record**

Articles and nomenclatural novelties are referenced by:

- **ZooBank** (<https://zoobank.org>)

Online Archives:

- **HAL** (<https://hal.archives-ouvertes.fr>)

- **Internet Archive** (<https://archive.org/details/faunitaxys>)

Imprimée sur les presses de SPEED COPIE, 6, rue Tréfilerie, F- 42100 Saint-Etienne

Imprimé le 10 04 2025

Cerambycidae (Coleoptera) from South America: new species, notes, and new records

JOSEF VLASAK (1, *) & ANTONIO SANTOS-SILVA (2)

(1) 207 Silverbrook Drive, Schwenksville, PA 19473, U.S.A.

- josef_vlasak@merck.com - Orcid: <https://orcid.org/0000-0001-7514-0305>

- ZooBank: <https://zoobank.org/064F4AA8-377F-44ED-9879-F9238B65301A>

(2) Museu de Zoologia, Universidade de São Paulo, Avenida Nazaré # 481, 04263-000, São Paulo, SP, Brazil.

- toncriss@uol.com.br - Orcid: <https://orcid.org/0000-0001-7128-1418>

- ZooBank: <https://zoobank.org/8E7804F2-4315-4D23-9FA5-2E5D13841364>

* Corresponding author

Keywords:

Coleoptera;
Cerambycidae;
Lamiinae;
Cerambycinae;
Longhorned beetles;
description;
taxonomy;
new species;
Brazil.

Abstract. – New Brazilian state records are provided for *Lepturdrys capixaba* Monné, Botero, Olivier & Santos-Silva, 2024, and *Eupogonius petulans* Melzer, 1933. Four new species are described: *Rosalba nona* sp. nov. (Lamiinae, Apomecynini), *Giesbertectipta variicollis* sp. nov., *Giesbertectipta abbreviata* sp. nov., from Ecuador, and *Eclipta moleiroi* sp. nov., from Brazil (Bahia) (Cerambycinae, Rhinotragini). An updated key to species of *Giesbertectipta* Santos-Silva, Bezark & Martins, 2012 is provided.

Vlasak J. & Santos-Silva A., 2025. – Cerambycidae (Coleoptera) from South America: new species, notes, and new records. *Faunitaxys*, 13(19) : 1 – 14.

DOI: [https://doi.org/10.57800/faunitaxys-13\(19\)](https://doi.org/10.57800/faunitaxys-13(19))

ZooBank: <https://zoobank.org/F8D6FD64-6907-4A67-BB59-6CB276D03EC3>

Received: 13/03/2025 – Revised: 20/03/2025 – Accepted: 21/03/2025

Introduction

It has been quite common to identify Brazilian specimens of Cerambycidae that represent new state records for the species. Here, we add records of two species for states in which they were not formally known.

Rosalba Thomson, 1864 is a large genus of Apomecynini (Lamiinae) including 62 species distributed from Central America, including the Caribbean, to southern South America (Tavakilian & Chevillotte 2024). Herein, we described a new species from South America.

Although it is relatively easy to recognize new species of Rhinotragini, it is particularly difficult to allocate them to a genus. This is because the general form of the species within this tribe is extremely polymorphic, which makes it difficult to define the genera. Consequently, generic descriptions are sometimes questionable and generic allocation are often artificial. Herein, we describe three new species from South America.

Materials and Methods

Photographs were taken with a Canon EOS Rebel T3i DSLR camera or Canon EOS R8 mirrorless camera, both equipped with Canon MP-E 65mm f/2.8 1-5X macro lens; specimens were illuminated with Dome of light (RK Science Factory, Brazil). The specimens were examined with a stereomicroscope at 30x magnification. Measurements were taken in “mm.”

The references on species with new records are restricted to the original description. For full references see Monné (2024) and

Tavakilian & Chevillotte (2024). In material examined of known species, only the specimen used to establish the new record is listed.

The collection acronyms used in the text are as follows:

– **JVCO**: Josef Vlasak Collection, Schwenksville, Pennsylvania, U.S.A.

– **MPEG**: Museu Paraense Emilio Goeldi, Belém, Brazil.

– **MZSP**: Museu de Zoologia, Universidade de São Paulo, São Paulo, Brazil.

Results

New records

CERAMBYCIDAE Latreille, 1802

LAMIINAE Latreille, 1825

ACANTHOCININI Blanchard, 1845

Lepturdrys Gilmour, 1960

Lepturdrys capixaba Monné, Botero, Olivier & Santos-Silva, 2024
(Fig. 1)

Lepturdrys capixaba Monné et al, 2024: 261.

Remarks. – This species was recently described and remains known from Brazil (Bahia, Minas Gerais, Espírito Santo, São Paulo, and Santa Catarina) (Monné 2024; Tavakilian & Chevillotte 2024).

Material examined. – BRAZIL, *Paraná* (new state record): Parque do Iguaçu, 1 female (MZSP 67357), 25.IX.2024, C. Moreno & R.F. Silva leg. (MZSP).

Reviewer:

Larry G. Bezark (USA) - ZooBank: <https://zoobank.org/25C35904-2035-4416-9534-8641C1551196>



This is an open access article under the terms of the Creative Commons Attribution-NonCommercial-NoDerivs License, which permits use and distribution in any medium, provided the original work is properly cited, the use is non-commercial and no modifications or adaptations are made.

Copyright 2025. The Authors. *Faunitaxys* published by Lionel Delaunay on behalf of the AFCFF (Association française de Cartographie de la Faune et de la Flore).

DESMIPHORINI Thomson, 1860

Eupogonius LeConte, 1852

Eupogonius petulans Melzer, 1933

(Fig. 2)

Eupogonius petulans Melzer, 1933: 378.

Remarks. – This species was described from Brazil (Paraná and Rio Grande do Sul) and Argentina (Tucumán). Currently, it is known from Brazil (Paraná, Santa Catarina, and Rio Grande do Sul), Argentina (Tucumán, Entre Ríos, and Buenos Aires), and Uruguay (Monné 2024; Tavakilian & Chevillotte 2024).

Material examined. – BRASIL, *São Paulo* (new state record): São Paulo, Museu de Zoologia, 23°35'17"S 46°36'37"W, 780 m, 1 male (MZSP 67361), 31.X.2024, T. Polizei leg. (MZSP).

New species

CERAMBYCIDAE

LAMIINAE

APOMECCYNINI Thomson, 1860

Rosalba Thomson, 1864

Rosalba nona sp. nov.

(Fig. 3-6)

ZooBank: <https://zoobank.org/D3CF7A3A-37D0-43E7-A3F8-871DA57D7CF4>

Holotype, ♂, ECUADOR, *Pichincha*: El Septimo Paraiso Hotel, 1600 m, Mindo, 4 Jul 2023, J. Vlasak leg. (MZSP, formerly JVCO).

Description of the holotype (Fig. 3-6)

Coloration. – Head capsule dark brown; ventral mouthparts mostly dark orangish brown, except lighter apices of palpomeres; anterior half of labrum light brown; scape dark brown; pedicel brown; antennomere III orangish brown, slightly darker on apical third, except dark-brown dorsal area on

posterior quarter; antennomeres IV-VII light orangish brown, except brownish apical third; antennomeres VII-X orangish brown on basal quarter, dark brown on remaining surface; antennomere XI orangish brown on basal sixth, dark brown on remaining surface. Mandibles black. Prothorax dark brown, except prosternal process with irregular dark orangish-brown areas. Mesoventrite, mesanepisterna, and mesepimera dark brown. Mesoventral process orangish brown. Metanepisterna dark brown, except dark orangish brown posterior third. Metaventrite orangish brown, except dark orangish brown central area with two irregular blackish maculae on each side of metathoracic discimen, and narrow dark-brown area close to meso- and metacoxal cavities. Scutellum orangish brown centrally, dark brown on remaining surface. Elytra dark brown on anterior sixth, this area projected backward close to suture and gradually narrowed toward epipleural margin; remaining anterior third orangish brown, more reddish brown in punctures, except narrow brown area close to suture; remaining elytral surface brown, gradually lighter toward apex, with irregular orangish areas on posterior third. Coxae mostly dark brown, procoxae with black area anteromedially. Trochanters mostly orangish. Profemora dark brown; mesofemora orangish basally, this area slightly longer ventrally, dark brown on remaining surface; metafemora orangish basally, about basal half of dorsal surface, most of basal half of sides, and apical area of dorsal surface, dark brown on remaining surface. Pro- and mesotibiae dark orangish brown about basal third, dark brown on remaining surface; metatibiae orange on basal 3/4, mostly dark brown on apical quarter. Tarsomeres I dark brown; II orangish brown with dark-brown apex; protarsomeres III orangish brown; meso- and metatarsomeres III irregularly, both dark brown and orangish brown; IV orangish brown; V orangish brown on basal 4/5, dark brown on apical fifth; claws orangish brown, gradually dark brown on apical quarter. Abdominal ventrites light yellowish brown with irregular dark-brown maculae.

Head. – Frons somewhat sparsely and coarsely punctate; with abundant yellowish pubescence not obscuring integument, except dense pale-yellow pubescence close to eyes and glabrous median groove; with a few long, erect dark-brown setae close to eyes. Area between antennal tubercles with dense pale-yellow pubescence, except glabrous median groove. Area close to eyes, dorsally and laterally with dense light yellowish-brown pubescent band; remaining surface of vertex and behind eyes with abundant brown pubescence not obscuring integument, except transverse light yellowish-brown pubescent band close to prothorax and on each side of median groove, and glabrous median groove; with a few long, erect dark-brown



Fig. 1-2. Lamiinae spp.

1. *Lepturdrys capixaba* Monné *et al.*, 2024, female (MZSP 67357) from Brazil (Paraná). 2. *Eupogonius petulans* Melzer, 1933, male (MZSP 67361) from Brazil (São Paulo, São Paulo).



Fig. 3-6. *Rosalba nona* sp. nov., holotype male.

3. Dorsal habitus. 4. Ventral habitus. 5. Lateral habitus. 6. Head, frontal view.

setae interspersed on brown pubescent area behind lower eye lobes. Genae 0.27 times as long as lower eye lobe in frontal view; with abundant light yellowish-brown pubescence partially obscuring integument, except apex partially glabrous; with a few long, erect dark-brown setae interspersed laterally. Postclypeus with abundant yellowish pubescence partially obscuring integument, except sides partially glabrous; with long, erect dark-brown setae interspersed on wide central area, setae slightly lighter toward their apices. Labrum glabrous on posterior third, with abundant yellowish-white pubescence not obscuring integument about central third, glabrous about anterior third, except short fringe of golden setae on anterior margin; with long, erect dark-brown setae interspersed on pubescent area. About basal half of outer surface of mandibles with dense light yellowish-brown pubescence, with a few long, erect dark-brown setae interspersed; remaining surface glabrous. Distance between upper eye lobes 0.05 times distance between outer margins of eyes; in frontal view, distance between lower eye lobes 0.46 times distance between outer margins of eyes. Antennae 2.2 times elytral length, reaching elytral apex at apical third of antennomere VII. Scape with abundant light yellowish-brown pubescence not obscuring integument; with a few long, erect dark-brown setae intersperse on apical third of ventral surface. Pedicel with abundant yellowish-white pubescence not obscuring integument; with long, erect dark-brown setae interspersed ventrally. Antennomeres III-VI with somewhat abundant yellowish-white pubescence not obscuring integument; with long, erect dark-brown setae interspersed ventrally, setae moderately abundant on III; with sparse short, erect yellowish setae interspersed throughout. Antennomeres VII-XI with moderately abundant yellowish-white pubescence not obscuring integument on light integumental area and somewhat abundant dark-brown pubescence on dark integumental area, this area with short, decumbent yellowish-white setae interspersed; VII-VIII with a few long, erect dark-brown setae interspersed ventrally; IX-X with one long, erect dark-brown seta on ventral apex; XI with long, erect pale-yellow setae directed backward on apex.

Antennal formula (ratio) based on length of antennomere III:

– Scape = 0.96. – Pedicel = 0.20. – IV = 1.40. – V = 1.20. – VI = 1.16. – VII = 1.00. – VIII = 0.96. – IX = 0.96. – X = 0.80. – XI = 0.88.

Thorax. – Prothorax slightly wider than long; anterior and posterior constrictions narrow, well marked; sides subparallel-sided on anterior third, slightly widened centrally, without a distinct tubercle, then slightly concave toward posterolateral angles. Pronotum abundantly, coarsely punctate; with three longitudinal, narrow pale-yellow pubescent bands between constrictions, one centrally, another on each side, not close to sides of prothorax; with dense pale-yellow pubescence on anterior third close to sides of prothorax and irregular, longitudinal, narrow pale-yellow pubescent band laterocentrally; remaining surface with abundant dull yellowish-brown pubescence not obscuring integument; with a few long, erect dark-brown setae on sides. Sides of prothorax somewhat abundantly, coarsely punctate; with dense pale-yellow pubescence partially obscuring integument close to pronotum on anterior 2/3, somewhat abundant dull yellowish-brown pubescence not obscuring integument on remaining surface, except glabrous anterior and posterior sulci. Prosternum somewhat abundantly and finely punctate laterally, punctures sparser and coarser centrally; with abundant pale-yellow pubescence not obscuring integument laterally and sparse pubescence of same color centrally. Prosternal process sparsely, coarsely punctate; with abundant pale-yellow pubescence not obscuring integument, pubescence more yellowish white close to apex; narrowest area 0.26 times procoxal width. Mesoventrite with sparse yellowish-white pubescence except abundant light yellowish-brown pubescence laterally. Mesanepisterna and mesepimera with abundant dark-brown pubescence not obscuring integument, with yellowish pubescence interspersed. Mesoventral process with abundant pale-yellow pubescence not

obscuring integument; sides slightly concave; apex widely, slightly concave; narrowest area 0.39 times mesocoxal width; apex 0.52 times mesocoxal width. Metanepisterna and metaventrite with abundant pale-yellow pubescence partially obscuring integument, except center of metaventrite with pubescence slightly sparser and paler. Scutellum with longitudinal pale-yellow pubescent band centrally, somewhat abundant light yellowish-brown pubescence not obscuring integument on sides of posterior half, and sparse, both brown and light yellowish-brown pubescence on remaining surface.

Elytra. – Subparallel-sided on anterior 3/4, convergent on posterior quarter; apex obliquely truncate; moderately sparsely, coarsely punctate on anterior half, punctures gradually sparser, finer toward apex on posterior half; dark anterior integumental area with somewhat abundant brownish pubescence not obscuring integument, except yellowish pubescence not reaching humerus basally, three short, longitudinal yellow pubescent bands, innermost not reaching base and the two outermost starting on base, and abundant pale-yellow pubescence not obscuring integument close to suture; orangish-brown area with dense yellowish-white pubescence, dorsal pubescence slightly yellower on three longitudinal pubescent bands and anterolaterally; remaining dark integumental area on anterior third with somewhat sparse yellowish-brown pubescence, except abundant pale-yellow pubescence close to suture; area close to suture on posterior 2/3 with abundant pale-yellow pubescence partially obscuring integument; inner area of posterior 2/3 of dorsal surface with dense pale-yellow pubescence, except two large areas with brownish pubescence not obscuring integument, one about middle of elytra, the other on posterior third, and subglabrous, very narrow band near suture, this area widened on posterior sixth, and irregular areas with brownish pubescence on remaining posterior sixth; remaining sides of surface with longitudinal dashed pale-yellow pubescent bands. With sparse, long, erect yellowish setae, especially on epipleural margin, and a few long, erect dark-brown setae on apical sixth.

Legs. – Coxae, trochanters, and femora with abundant yellowish pubescence not obscuring integument. Tibiae with abundant yellowish pubescence not obscuring integument on light integumental area and abundant light-brown pubescence on dark integumental area, except denser and bristly dark-brown pubescence on ventral surface of protibiae, yellowish-brown pubescence on ventral surface of meso- and metatibiae, dense and bristly light-brown pubescence on dorsal surface of mesotibiae, and partially yellowish pubescence on sides of metatibiae; protibiae with long, erect, thick dark-brown setae on apical 2/3 of dorsal surface and sides of apical quarter; meso- and metatibiae with moderately short, erect dark-brown setae on apical 2/3 of ventral surface; metatibiae with moderately short, erect dark-brown setae on dorsal surface. Dorsal surface of tarsomeres with moderately abundant yellowish-white pubescence not obscuring integument, pubescence sparser on IV-V, and appearing to be darker on some areas due to integumental color of tarsomere; tarsomeres V about as long as I-III together.

Abdomen. – Ventrites with abundant yellowish-white pubescence not obscuring integument; apex of ventrite 5 concave centrally.

Dimensions (mm).

- Total length, 7.15;
- Prothoracic length, 1.25;
- Anterior prothoracic width, 1.30;
- Posterior and maximum prothoracic width, 1.40;
- Humeral width, 2.00;
- Elytral length, 5.15.

R. nona sp. nov. can be included in the alternative of couplet “31” from Santos-Silva *et al.* (2018) (modified)

31(26).	Elytra without transverse pubescent band on posterior half of elytra before apex	31'
—	Elytra with transverse, oblique, concave or convex pubescent band on posterior half of elytra before apex	32
31'(31).	Sides of pronotum with wide longitudinal yellowish pubescent band reaching sides of prothorax; elytral apex rounded. Brazil (Espírito Santo, Rio de Janeiro, São Paulo, Santa Catarina, Rio Grande do Su	<i>R. cordigera</i> (Aurivillius, 1920)
—	Sides of pronotum with narrow longitudinal pubescent band not reaching sides of prothorax; elytral apex obliquely truncate. Ecuador	<i>R. nona</i> sp. nov.

Etymology. – The specific epithet “nona” (Latin, meaning ninth) is inspired by the fact that this is the ninth species of *Rosalba* found in Ecuador.

Remarks. – *Rosalba nona* sp. nov. is similar to *R. alcidionoides* Thomson, 1864 (see photographs on Bezark (2025) and in Santos-Silva *et al.* (2018)), but differs as follows: elytra about 4.0 times longer than prothorax; and humeral width about 1.45 posterior width of prothorax. In *R. alcidionoides*, the elytra is about 4.9 times longer than the prothorax and the humeral width is about 1.7 the posterior width of the prothorax. Additionally, the prothorax in *R. alcidionoides* has distinct lateral tubercles (absent in the new species) and the elytral pubescent pattern is considerably different on the posterior 2/3. According to Thomson (1864), the prosternal and mesoventral processes in *Rosalba* are laminiform (*R. alcidionoides* was the only species included in the original description of the genus). Since we have not examined specimens of *R. alcidionoides*, we do not know whether this information is correct. However, in the other species of *Rosalba* these processes cannot be described as laminiform, since they are considerably wide. *Rosalba nona* is also similar to *R. digna* (Melzer, 1934) (see photographs on Bezark (2025) and in Santos-Silva *et al.* (2018)) but differs especially by the scutellum with longitudinal pubescent band centrally (absent in *R. digna*) and by the elytral pubescent pattern on the posterior 3/4 of elytra. As well as the type species, *R. nona* has sparse erect setae on the elytra, especially laterally and apically, which are absent in the other *Rosalba* species examined by us. Therefore, the separation between *Rosalba* and *Amphicnaeia* Bates, 1866 becomes somewhat problematic, although the erect setae appear to be always more abundant in the latter.

RHINOTRAGINI Thomson, 1861

Giesbertectipta Santos-Silva, Bezark & Martins, 2012

Giesbertectipta variicollis sp. nov.

(Fig. 7-14)

ZooBank: <https://zoobank.org/E9A8A018-D8ED-4570-B6A4-8DF1773A5909>

Holotype, ♂, ECUADOR, *Napo*: Pacto Sumaco, 1500 m, 0°40'10"S 77°35'52"W, 23 Nov 2022, J. Vlasak leg. (MZSP, formerly JVCO).

Paratypes, same data as holotype, 1 ♂ (JVCO), 2 ♀ (MZSP), 2 ♀ (JVCO).

Description of the holotype (Fig. 7-10)

Coloration. – Head capsule blackish; postclypeus blackish except dark-brown sides; anteclypeus brown close to postclypeus, dark brown on remaining surface; labrum blackish on posterior half, light reddish brown on anterior half; genae dark brown close to eye and on apex, brown on remaining frontal region, and dark yellowish brown on remaining lateral region; mentum dark brown; remaining ventral mouthparts light reddish brown, except palpomeres blackish with reddish-brown apex; scape, pedicel, and antennomeres III-IV dark brown; antennomere V dark reddish brown basally, dark brown on remaining surface; antennomere VI light reddish brown basally, dark brown on remaining surface; antennomere VII orangish brown basally, dark brown on remaining surface; antennomeres VIII-X pale yellow about basal quarter, dark brown on remaining surface; antennomere XI orangish brown on basal quarter, dark brown on remaining surface. Pronotum dark brown on wide central area, reddish brown laterally. Sides of prothorax reddish brown, except dark-brown area close to anterior and posterior margins. Ventral surface of prothorax reddish brown, lighter on posterior 2/3 of central area of prosternum and basal half of prosternal process, except dark-brown longitudinal band on sides of posterior 2/3 of prosternum, mostly dark-brown area close to anterior margin of prosternum, and orangish posterior half of prosternal process. Ventral surface of meso- and metathorax blackish, except mesoventral process orangish brown with dark-brown sides. Scutellum mostly dark brown. Elytra metallic dark blue. Coxae dark brown, except dark yellowish-brown area close to trochanter. Trochanters dark brown. Femora and tibiae dark brown. Basal region of tarsomeres I-II orangish brown, this area wider on I, dark brown on

remaining surface; tarsomeres III-V dark brown. Abdominal ventrites blackish, except dark-brown apex of ventrites 1-4, and orangish-brown intercoxal process.

Head. – Frons somewhat abundantly and coarsely punctate; with abundant yellowish-white pubescence partially obscuring integument, pubescence whiter depending on light intensity; with a few long, erect dark-brown setae close to eyes. Area between antennal tubercles and upper eye lobes abundantly, coarsely punctate; with abundant yellowish-white pubescence not obscuring integument, pubescence whiter depending on light intensity; remaining surface of vertex abundantly, coarsely punctate, with sparse brown pubescence, and a few long, erect dark-brown setae. Area behind upper eye lobes somewhat abundantly, coarsely punctate; with sparse brown pubescence and a few long, erect dark-brown setae. Area behind lower eye lobes somewhat abundantly coarsely punctate toward upper eye lobe, rugose-punctate toward ventral surface; with yellowish-white pubescence close to eye on inferior half, almost entirely glabrous on remaining surface; with long, erect dark-brown setae close to eye. Genae abundantly, finely punctate, except smooth apex; with sparse brown pubescence close to eye, glabrous on remaining surface. Antennal tubercles sparsely, finely punctate, except smooth apex; with sparse yellowish-white pubescence, except glabrous apex. Wide central area of postclypeus abundantly, coarsely punctate; with moderately abundant yellowish-white pubescence not obscuring integument, pubescence whiter depending on light intensity; with one long, erect dark-brown seta on each side. Sides of postclypeus smooth, glabrous. Labrum with sparse yellowish-white pubescence on posterior half, glabrous on anterior half, except short fringe of yellowish-brown setae on anterior margin. Gulamentum smooth, glabrous on posterior third; anterior 2/3 abundantly, coarsely punctate, except subsmooth central area; with sparse, both short and long, erect yellowish setae. Distance between upper eye lobes 0.32 times distance between outer margins of eyes; in frontal view, distance between lower eye lobes 0.20 times distance between outer margins of eyes. Antennae 1.45 times elytral length, reaching elytral apex at middle of antennomere XI. Scape sparsely, somewhat finely punctate, with sparse, bristly, short dark-brown setae, except smooth and glabrous posterior half of dorsal surface; with both, long and moderately short, erect dark-brown setae, setae more abundant on posterior half of dorsal surface and absent on smooth area. Pedicel with sparse dark-brown pubescence, absent on apex, both long and moderately long dark-brown setae interspersed dorsally, and long, erect dark-brown setae interspersed ventrally. Antennomeres III-IV with abundant dark-brown pubescence not obscuring integument; III with long, erect dark-brown setae interspersed dorsally and ventrally, setae more abundant ventrally; IV with a few long, erect dark-brown setae on dorsal apex, a few short, erect yellowish setae interspersed dorsally, and long, erect dark-brown setae interspersed ventrally. Antennomere V with abundant, both dark-brown and dark yellowish-brown pubescence not obscuring integument; with a few moderately short, erect yellowish setae interspersed throughout, a few long, erect dark-brown setae on dorsal apex, and sparse, long, erect dark-brown setae interspersed ventrally. Antennomere VI with abundant, mostly dark yellowish-brown pubescence not obscuring integument; with sparse, moderately short, erect yellowish setae interspersed; with a few moderately short, erect dark-brown setae interspersed ventrally and short, moderately short dark-brown setae directed backward on entire apex. Antennomeres VIII-XI with very sparse whitish pubescence on light integumental area and abundant yellowish pubescence not obscuring integument on remaining surface, yellowish pubescence appearing to be darker on some areas depending on light source; with sparse, short, erect yellowish setae interspersed on dark integumental area; VIII-IX with a few short dark-brown setae directed backward on dorsal apex.

Antennal formula (ratio) based on length of antennomere III:

– Scape = 0.72. – Pedicel = 0.22. – IV = 0.76. – V = 0.92. – VI = 0.90. – VII = 0.78. – VIII = 0.68. – IX = 0.68. – X = 0.60. – XI = 0.74.

Thorax. – Prothorax longer than wide; anterior constriction well marked; posterior constriction narrow, distinct; sides divergent on anterior third, widely rounded toward posterior sixth, then parallel-sided toward posterolateral angles. Pronotum with five gibbosities, one oblique on each side slightly before middle, one on each side on posterior third, almost transverse, and one longitudinal, located centrally from slightly before middle to posterior quarter; abundantly, coarsely punctate, punctures denser on posterior quarter, except smooth gibbosities and area close to anterior margin; with sparse yellowish-white pubescence, except abundant pubescence partially obscuring integument laterally on anterior third,



Fig. 7-10. *Giesbertectipta variicollis* **sp. nov.**, holotype male.

7. Dorsal habitus. 8. Ventral habitus. 9. Lateral habitus. 10. Head, frontal view.



Fig. 11-14. *Giesbertectipta variicollis* sp. nov., paratypes female.
11-13. Specimen 1. **11.** Dorsal habitus. **12.** Ventral habitus. **13.** Head, frontal view. **14.** Specimen 2, dorsal habitus



somewhat abundant yellowish-white pubescence on remaining lateral surfaces, and glabrous smooth areas; with long, erect dark-brown setae. Sides of prothorax somewhat abundantly, coarsely punctate; with abundant whitish pubescence not obscuring integument, pubescence sparser close to anterior sulcus, except almost glabrous area close to anterior and posterior margins. Prosternum somewhat sparsely, coarsely punctate on posterior 2/3 and slightly rugose-punctate on anterior third; with abundant whitish pubescence on posterior 2/3 and a few long, erect yellowish-white setae on anterior third. Prosternal process with abundant whitish pubescence on anterior third, subglabrous on remaining surface; narrowest area 0.15 times procoxal width. Mesoventrite abundantly, coarsely punctate; with somewhat abundant whitish pubescence not obscuring integument, pubescence denser posterolaterally. Mesanepisterna moderately abundantly, coarsely punctate; with sparse whitish pubescence close to mesoventrite, pubescence denser close to elytra and mesepimeron. Mesepimeron with dense whitish pubescence. Mesoventral process slightly widened toward apex; apex strongly notched centrally; with abundant, both whitish and yellowish-white pubescence not

obscuring integument; narrowest area 0.71 times mesocoxal width; posterior width as wide as mesocoxal width. Metanepisterna sparsely, coarsely punctate; with somewhat sparse whitish pubescence, denser close to margins, and long, erect yellowish-white setae interspersed. Metaventricle somewhat sparsely and coarsely punctate laterally, punctures sparser and finer centrally, except smooth metathoracic discrimen; sides, anterior quarter, and posterior third close to metathoracic discrimen with abundant whitish pubescence not obscuring integument, pubescence more yellowish on some areas, and long, erect yellowish setae interspersed; remaining surface with a few short, decumbent yellowish-white setae and a few long, erect yellowish-white setae; except glabrous metathoracic discrimen. Scutellum with very sparse whitish pubescence on basal 2/3, and abundant dark yellowish-brown pubescence on posterior third.

Elytra. – Almost reaching apex of abdominal ventrite 4; abundantly, coarsely punctate, punctures distinctly coarser than on pronotum, moderately rugose laterally and on posterior half of dorsal surface, except smooth humeri; with sparse, moderately short, erect light yellowish-brown setae on anterior half, setae more abundant on posterior half, except apex with dense pale-

yellow pubescence and glabrous humeri; with long, erect dark-brown setae interspersed, erect setae sparser dorsally on posterior half.

Legs. – Coxae partially with abundant whitish pubescence not obscuring integument and partially glabrous. Pro- and mesotrochanters with whitish pubescence ventrally, glabrous on remaining surface; metatrochanters with abundant whitish pubescence not obscuring integument. Profemora ventrally with dense whitish pubescence on peduncle and glabrous on club; sides with abundant whitish pubescence close to ventral surface and apical quarter, subglabrous on remaining surface; dorsal surface subglabrous on basal 3/4 and with sparse brownish pubescence on apical quarter; with long, erect yellowish-white setae on pubescent areas, and long, erect, thick dark-brown setae on posterior half of dorsal surface. Meso- and metafemora with somewhat abundant, both short and long, erect, both white and yellowish setae, short setae denser on ventral surface of mesofemoral peduncle, except glabrous ventral surface of posterior 2/3 of club; with long, erect dark-brown setae interspersed. Protibiae subglabrous dorsally, with sparse yellowish-brown pubescence on sides and ventral surface of basal quarter, abundant yellowish-brown pubescence not obscuring integument on apical 2/3 of sides, and dense, bristly yellowish-brown pubescence on apical 2/3 of ventral surface, pubescence appearing to be lighter depending on light intensity and source and darker apically; with long, erect dark-brown setae interspersed dorsally and superior area of sides. Mesotibiae with sparse, suberect, both short and long yellowish-white setae dorsally, most lateral surfaces, and basal third of ventral surface, and abundant, bristly dark yellowish-brown pubescence on remaining ventral surface, pubescence denser on apical third; with long, erect dark-brown setae interspersed, except on apical third of ventral surface. Metatibiae with sparse, bristly, both white and yellowish setae, and long, erect dark-brown setae, except apical quarter of ventral surface with dense, bristly yellowish-brown pubescence. Dorsal surface of tarsomeres with moderately sparse yellowish-brown pubescence not obscuring integument; with sparse, moderately long, erect, both whitish and yellowish setae interspersed, almost absent on some tarsomeres, absent on IV; with long, erect dark-brown setae interspersed laterally, absent on IV; metatarsomere V about as long as II-III together.

Abdomen. – Ventrite 1 with abundant whitish pubescence laterally not obscuring integument, pubescence almost absent centrally, except close to abdominal process, absent close to apex; with long, erect yellowish-white setae interspersed. Ventrites 2-4 with dense whitish pubescence laterally, abundant whitish pubescence centrally on basal half, sparse whitish pubescence on remaining surface, except glabrous apex; with long, erect whitish setae interspersed. Ventrite 5 with dense whitish pubescence laterally on anterior half, abundant whitish pubescence not obscuring integument on center of anterior half, and dense pale-yellow pubescence on posterior half; with long, erect, both whitish and light yellowish-brown setae interspersed; apex truncate, slightly concave centrally.

Female (Fig. 11-14)

– Similar to males, differing: antennae shorter, 1.15 times elytral length, reaching about posterior fifth of elytra;
– Distance between lower eye lobes in frontal view 0.4 times distance between outer margins of eye.

Chromatic variation. – Head capsule dark brown; ventral mouthparts irregularly, both dark brown and light reddish brown, except palpomeres dark brown with yellowish apex; antennomere VI entirely dark brown; antennomere VII entirely dark brown; apical quarter of antennomere XI orangish brown; pronotum entirely orangish brown, more light reddish brown depending on light intensity; pronotum entirely dark brown. Sides of prothorax entirely dark brown or entirely light reddish brown; ventral surface of prothorax entirely dark brown, with prosternal process partially dark reddish brown, or entirely reddish brown. Ventral surface of meso- and metathorax entirely blackish. Elytra with irregular, large brown areas dorsally and laterally. Coxae and trochanters partially reddish

brown. Tarsomeres I with short orangish-brown area on base; tarsomeres II entirely dark brown.

Dimensions (mm) (holotype ♂ / paratype ♂ / paratypes ♀).

- Total length, 7.90/7.80/7.40-8.75;
- Prothoracic length, 1.40/1.45/1.35-1.50;
- Anterior prothoracic width, 0.90/0.90/0.85-1.05;
- Posterior prothoracic width, 1.05/1.05/1.05-1.25;
- Maximum prothoracic width, 1.20/1.25/1.15-1.30;
- Humeral width, 1.40/1.40/1.35-1.65;
- Elytral length, 4.80/4.80/4.85-5.50.

Etymology. – The name “*variicollis*” (from Latin “*variabilis*” (variable) and “*collum*” (neck)) refers to the variable color of prothorax.

Remarks. – *Giesbertecleipta variicollis* sp. nov. is similar to *G. unicolor* Vlasak & Santos-Silva, 2020 (see photographs on Bezark (2025) and in Vlasak & Santos-Silva (2020)), but differs as follows: antennae longer in males, reaching elytral apex; antennomeres VI-XI bicolorous; antennomeres VII-XI filiform and longer; and tarsomeres I or I-II bicolorous. In *G. unicolor*, the antennae are shorter in males, not reaching the elytral apex, the antennomeres VI-XI are unicolorous, antennomeres VII-X distinctly stouter and shorter in males (females remain unknown), and the tarsomeres I-II are unicolorous. The new species is also similar to *G. costipennis* (Giesbert, 1991) (see photographs on Bezark (2025) and in Santos-Silva *et al.* (2012)), but differs by antennomere VII distinctly shorter than III in males (slightly longer than III in males of *G. costipennis*), the elytral apex with dense pubescence (absent in *G. costipennis*), distal antennomeres not pale in females (pale in females of *G. costipennis*), elytra in males not reaching the apex of abdomen (reaching or almost reaching in males of *G. costipennis*), and at least the tarsomeres I bicolorous (entirely dark in *G. costipennis*).

***Giesbertecleipta abbreviata* sp. nov.**

(Fig. 15-21)

ZooBank: <https://zoobank.org/36E3B6C8-EABD-4E4E-ACFF-58E3CB82D9D8>

Holotype, ♀, ECUADOR, *Napo*: Pacto Sumaco, 1500 m, 0°40'10"S 77°35'52"W, 23 Nov 2022, J. Vlasak leg. (MZSP, formerly JVCO).

Paratypes, 1 ♂ and 1 ♀, same data as holotype (JVCO).

Description of the holotype (Fig. 15-18)

Coloration. – Head, prothorax, and ventral surface of mesothorax orange; scape orangish brown, except dark-brown apex; pedicel and antennomeres III-VI blackish, except dark orangish-brown base of VI; VII-X orangish brown about basal quarter, dark brown on remaining surface; XI orangish brown on basal and apical quarters, dark brown on remaining surface; mandibles orange, except dark-brown apical quarter. Ventral surface of metathorax blackish, except partially orange intercoxal process. Scutellum orangish brown. Elytra orangish brown on anterior quarter, except dark-brown sutural area, blackish on remaining surface. Pro- and mesocoxae orange; trochanters orange; metacoxae dark orangish brown, except anterior area partially dark brown. Profemora orange, except apex slightly brownish; mesofemora orange on peduncle and basal half of club, gradually dark brown toward apex on apical half of club; basal half of metafemoral peduncle orange, remaining femoral surface dark brown. Protibiae orange on basal fifth, dark brown on remaining surface; meso- and metatibiae orangish on short basal area, dark brown on remaining surface. Tarsomeres dark brown, except dark orangish-brown base of I-II, and tarsal claws mostly orangish-brown. Abdominal ventrites blackish, except orange intercoxal process and part of anterocentral region of ventrite 1.

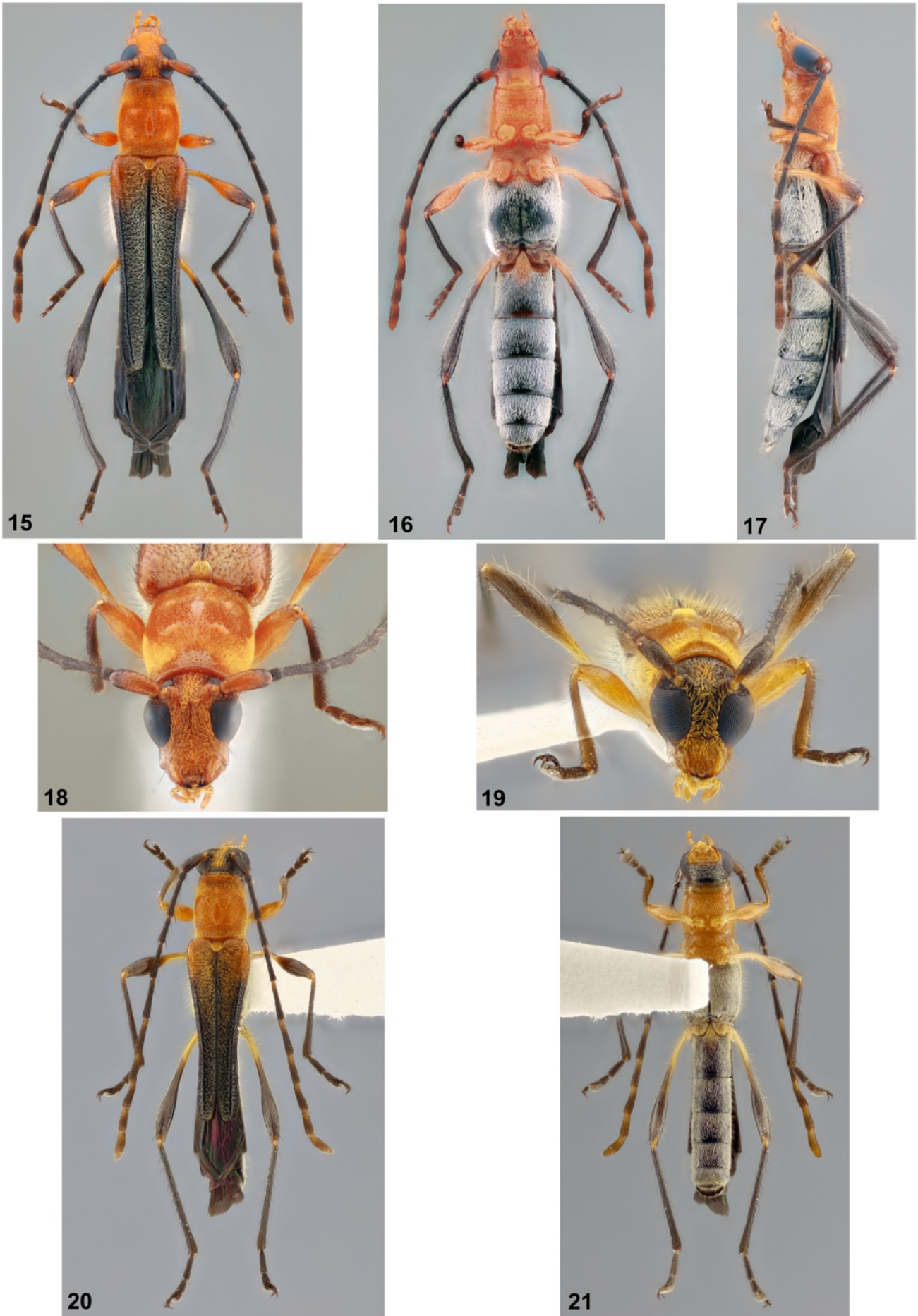


Fig. 15-21. *Giesberteclipta abbreviata* sp. nov.

15-18. Holotype female. **15.** Dorsal habitus. **16.** Ventral habitus. **17.** Lateral habitus. **18.** Head, frontal view. **19-21.** Paratype male. **19.** Head, frontal view. **20.** Dorsal habitus. **21.** Ventral habitus.

Head. – Frons somewhat abundantly and coarsely punctate; with abundant orangish-golden pubescence not obscuring integument; with one long, erect dark-brown seta close to eyes. Area between antennal tubercles and posterior margin of upper eye lobes abundantly, coarsely punctate; with abundant orangish-golden pubescence partially obscuring integument; remaining surface of vertex mostly glabrous. Area behind upper eye lobes abundantly, coarsely punctate, mostly glabrous. Area behind lower eye lobes abundantly, coarsely punctate close to eye, shallowly rugose-punctate close to prothorax; mostly glabrous. Genae 0.5 times lower eye lobe in frontal view; somewhat sparsely, finely, shallowly punctate, except smooth apex; with sparse orangish-golden pubescence, except glabrous smooth area; with a few long, erect dark-brown setae laterally. Antennal tubercles sparsely, finely punctate, except smooth apex; with sparse orangish-golden pubescence, except glabrous apex. Wide central area of postclypeus with sculpturing and pubescence as on frons; with one long, erect dark-brown seta on each side. Sides of postclypeus smooth, glabrous. Labrum with a few short, decumbent orangish-golden setae, except anterolateral region with long yellowish setae directed forward and apex with fringe of short yellowish-brown setae. Gula mentum smooth, glabrous on posterior half; anterior half abundantly, coarsely punctate, punctures shallower and sparser centrally, with a few short, decumbent yellowish setae and sparse, long, erect setae laterally, erect setae mostly dark brown anteriorly, yellowish toward posterior region of eyes. Distance between upper eye lobes 0.34 times distance between outer margins of eyes; in frontal view, distance between lower eye lobes 0.38 times distance between outer margins of eyes. Antennae 1.4 times elytral length, reaching elytral apex at apex of antennomere XI. Scape with abundant dark-brown pubescence not obscuring integument on sides and apex of ventral surface, sparse dark-brown pubescence on basal third of dorsal surface, almost glabrous on apical 2/3 of dorsal surface and on entire ventral surface; with a few long, erect dark-brown setae dorsally and short, erect dark-brown setae interspersed on basal half of dorsal surface, sides, and apex of ventral surface. Pedicel with somewhat abundant blackish pubescence not obscuring integument, and a few long, erect blackish setae interspersed. Antennomeres III-VI with abundant dark-brown pubescence not obscuring integument, with short, both decumbent and erect yellowish setae interspersed throughout, and long, erect blackish setae interspersed ventrally, dark setae gradually sparser toward VI. Antennomeres VII-XI with moderately abundant yellowish pubescence on light integumental area and abundant dark-brown pubescence not obscuring integument on dark integumental area; with short, erect yellowish setae interspersed on dark integumental area.

Antennal formula (ratio) based on length of antennomere III:

– Scape = 0.82. – Pedicel = 0.20. – IV = 0.67. – V = 0.92. – VI = 0.92. – VII = 0.82. – VIII = 0.67. – IX = 0.64. – X = 0.56. – XI = 0.77.

Thorax. – Prothorax longer than wide; anterior and posterior constrictions slightly distinct; sides divergent on anterior third, widely rounded toward posterior sixth, then parallel-sided toward posterolateral angles. Pronotum with five gibbosities, one oblique on each side slightly before middle, one almost transverse on each side on posterior third, and one longitudinal, located centrally from slightly before middle to posterior quarter; abundantly, coarsely punctate, punctures denser on posterior quarter, except smooth gibbosities and area close to anterior margin; with dense orangish-golden pubescence on sides of anterior third, not reaching anterior margin, and abundant orangish-golden pubescence not obscuring integument on remaining surface, slightly distinct depending on viewing angle, pubescence yellower close to anterior margin of posterolateral gibbosities and laterally on posterior sixth, pubescence absent on anterocentral region, on gibbosities, and close to anterior margin; anterocentral area with short, erect dark-brown setae; with moderately long, yellow setae interspersed on sides of anterior third; with long, erect dark-brown setae on sides of central gibbosity, and a few long, erect dark-brown setae interspersed on sides. Sides of prothorax abundantly, coarsely punctate, except sparser punctures on area close to anterior margin, this area gradually widened toward prosternum; with moderately abundant yellow pubescence not obscuring integument, except subglabrous area with sparse punctures. Prosternum somewhat abundantly, coarsely punctate on posterior 2/3, mostly smooth on anterior third; with abundant yellow pubescence on posterior 2/3, almost glabrous on anterior third. Prosternal process with a few short, decumbent yellowish setae;

longitudinally depressed centrally, depressed area widened on posterior third; narrowest area 0.16 times procoxal width. Mesoventrite somewhat abundantly, coarsely punctate; with sparse yellowish pubescence centrally, pubescence almost absent close to mesoventral process, abundant, both yellowish-white and whitish pubescence anterolaterally, and dense whitish pubescence posterolaterally. Mesanepisterna coarsely, abundantly punctate; with dense whitish pubescence, except sparser pubescence close to prothorax. Mesepimera with dense whitish pubescence. Mesoventral process somewhat abundantly and coarsely punctate; subglabrous on anterior half, with abundant yellowish-white pubescence not obscuring integument on posterior half; sides slightly concave on anterior third, slightly divergent on remaining surface; apex strongly notched centrally; narrowest area 0.71 times mesocoxal width; apex 0.90 times mesocoxal width. Metanepisterna with dense whitish pubescence, and long, erect setae of same color interspersed. Sides of metaventrite with dense whitish pubescence, this pubescent region concave about middle, central region with abundant yellowish-white pubescence not obscuring integument, except glabrous metathoracic discrimen and large, irregular subglabrous area on each side about middle; with a few, both long and moderately short, erect, both yellowish-white and yellowish-brown setae interspersed. Scutellum with abundant orangish-golden pubescence not obscuring integument, except dense pubescence close to margins on posterior half.

Elytra. – Reaching base of abdominal ventrite 3; abundantly, coarsely punctate, except smooth humeri and dorsal carina; area between suture and humeral carina with abundant yellowish pubescence not obscuring integument on light integumental area, pubescence absent basally and on sides, and abundant yellowish-white pubescence not obscuring integument on dark integumental area, pubescence sparser close to humeral carina, with long, erect yellowish-brown setae interspersed basally and long, erect dark-brown setae interspersed on remaining surface, especially close to humeral carina; area between epipleural margin and humeral carina with somewhat abundant, erect dark-brown setae; apex with fringe of short yellowish-white setae between suture and humeral carina and fringe of short dark-brown setae between humeral carina and epipleural margin.

Legs. – Coxae and trochanters partially with somewhat abundant yellowish-white pubescence and partially glabrous. Profemora with sparse yellowish-white pubescence, denser ventrally on peduncle and sides of club, absent on center of club; with sparse, long, erect yellowish-white setae interspersed laterally and on part of ventral surface and long, erect dark-brown setae interspersed on apical half of dorsal surface of club, especially on apical third. Mesofemora with abundant yellowish pubescence not obscuring integument, sparser on sides of ventral surface of club, absent centrally on club, with long, erect yellowish setae interspersed laterally and ventrally and long, erect dark-brown setae on apical half of dorsal surface of club. Metafemora with pubescence and erect setae as on mesofemora but pubescence slightly denser. Protibiae with abundant dark-brown pubescence not obscuring integument dorsally and laterally, except sparse yellowish pubescence basally, pubescence denser, bristly, and yellowish brown on apical third; ventral surface subglabrous basally, with abundant, bristly dark-brown pubescence on remaining surface, pubescence gradually denser toward apex; with long, erect dark-brown setae dorsally. Mesotibiae with sparse dark-brown pubescence on dorsal and lateral surfaces of anterior 3/4, pubescence denser on apical quarter; with abundant, bristly dark-brown pubescence ventrally, gradually denser toward apex; with long, erect dark-brown setae interspersed on dorsal surface. Metatibiae without pubescence dorsally, laterally, and basal 3/4 of ventral surface and dense, bristly dark-brown pubescence on apical quarter of ventral surface; with long, erect dark-brown setae interspersed, except on apical quarter of ventral surface. Dorsal surface of tarsi with somewhat abundant dark-brown pubescence not obscuring integument, pubescence partially more yellowish brown on some areas; with long, erect dark-brown setae interspersed laterally; metatarsomere V slightly longer than II-III together.

Abdomen. – Ventrites 1-4 with abundant whitish pubescence, denser laterally, except glabrous posterocentral area, and long, erect yellowish-white setae interspersed; ventrite 5 with dense whitish pubescence laterally, abundant yellowish-white pubescence not obscuring integument centrally, fringe of yellowish setae apically, and long, erect yellowish-white setae interspersed. Apex of ventrite 5 slightly rounded.

Male (Fig. 19-21)

- Similar to female, differing: antennae longer, 1.8 times elytral length, reaching elytral apex at apex of antennomere IX;
- Distance between lower eye lobes in frontal view 0.25 times distance between outer margins of eye;
- Elytra almost reaching middle of abdominal ventrite 3.

Dimensions (mm) (holotype ♀ / paratype ♂ / paratype ♀).

- Total length, 9.50/6.30/6.85;
- Prothoracic length, 1.70/1.20/1.25;
- Anterior prothoracic width, 1.10/0.80/0.90;
- Posterior prothoracic width, 1.25/0.95/0.95;
- Maximum prothoracic width, 1.40/1.00/1.10;
- Humeral width, 1.65/1.15/1.25;
- Elytral length, 4.75/3.30/3.50.

Etymology. – The name "abbreviata" (from Latin "abbreviatus" (shortened) refers to the shorter elytra, not covering the entire abdomen in either sex.

Remarks. – According to Santos-Silva *et al.* (2012), the elytra in *Giesbertectipta* are long and cover or almost cover the entire abdomen. Although the elytra distinctly do not cover the entire abdomen in both sexes of *G. abbreviata*, all other features of *Giesbertectipta* are present in this new species. Therefore, we reason that the species truly belongs in this genus. This feature allows separating the new species from all other species of the genus.

Eclipta Bates, 1873

Eclipta moleiroi sp. nov.

(Fig. 22-25)

ZooBank: <https://zoobank.org/A9F65AC7-AD43-48E0-A7CD-B4DCE7625F5F>

Holotype, ♀ (MZSP 67362), BRAZIL, *Bahia*: Utinga (Bairro Cajueiro), Área de Caatinga, Chapada Diamantina, 11°58'18.2"S 41°04'09.0"W, Malaise, 10-17.XI.2022, H.P. Moleiro leg. (MZSP).

Description of the holotype (Fig. 22-25)

Coloration. – Head capsule black; ventral mouthparts orange, except yellowish-white apex of palpomeres; postclypeus black; anteclypeus dark brown; labrum brown with anterior fifth yellowish brown; scape orange on basal third, irregularly brownish on remaining surface, except dark-brown apex; pedicel and antennomere III black; antennomeres IV-VI light

orange on basal quarter, dark brown on remaining surface; antennomeres VII-X dull orange on basal quarter, brown on remaining surface; antennomere XI mostly brown. Prothorax orange, except narrow brownish area close to anterior margin and wide, longitudinal, sinuous black band on center of pronotum, from posterior margin to near anterior margin. Ventral surface of meso- and metathorax orange, with irregular, both dark orange and brownish areas interspersed. Scutellum black. Elytra orange on humeral area, black on remaining anterior half, gradually brown toward apex on posterior half, more reddish brown depending on light intensity, except dark-brown punctures. Coxae and trochanters mostly light orange; femoral peduncles pale yellow, slightly orangish depending on light intensity; pro- and mesofemoral clubs light orange; metafemoral club brown; protibiae and protarsi light orange; mesotibiae light orange on basal quarter, orangish brown close to apex, brown on remaining surface; metatibiae orangish brown on basal fifth, black on remaining surface, except dark-brown apex; mesotarsi mostly orangish brown; metatarsomeres I mostly brown; metatarsomeres II-V mostly light brown. Abdomen orange, with irregular light orange areas on ventrites, except black apical 3/4 of last visible tergite, black apical third of ventrite 5 and light-brown remaining surface of apical half.

Head. – Frons sparsely, coarsely punctate, punctures slightly more abundant superiorly; with a few short, bristly yellowish-white setae, slightly more abundant close to superior and inferior or eyes. Vertex sparsely, coarsely punctate, punctures coarser and more abundant close to prothorax; some punctures with short, erect yellowish-white seta, some with long, erect yellowish seta, and some close to prothorax without seta. Area behind upper eye lobes coarsely, partially confluent punctate; glabrous. Area behind lower eye lobes partially smooth close to upper eye lobe, abundantly, coarsely, confluent punctate on remaining surface; with a few, both short and long, erect yellowish setae close to eye. Genae 0.43 times frontal length of lower eye lobe; abundantly, coarsely, confluent punctate laterally, somewhat abundantly, coarsely punctate frontally, except smooth apex; with sparse, short, erect yellowish-white setae, absent on apex, almost absent laterally, and long, erect yellowish setae laterally. Antennal tubercles with a few, somewhat coarse punctures anteriorly and posteriorly, smooth dorsally, punctures with short, bristly yellowish-white seta. Area between antennae and eyes with moderately sparse, erect, both short and yellowish-white and long and yellowish setae. Wide central area of postclypeus abundantly, coarsely punctate; with sparse, short, bristly yellowish-white setae and one long, erect, thick light yellowish-brown seta on each side. Sides of postclypeus smooth, glabrous. Labrum with a few short yellowish-white setae near anteclypeus, absent on remaining surface, except fringe of yellowish-white setae on anterior margin; sides with long, erect, thick light yellowish-brown setae. Gulamentum almost entirely coarsely rugose-punctate; with a few short, bristly yellowish-white setae and a few long, erect light yellowish-brown setae laterally. Distance between upper eye lobes 0.39 times distance between outer margins of eyes; in frontal view, distance between lower

Updated key to species of *Giesbertectipta*

- | | | |
|-------|-----------------------------------------------------------------------------------------------------------------------------------|---------------------------------------------------|
| 1. | Integument of prothorax not contrasting with that of the elytra. Ecuador | <i>G. unicolor</i> Vlasak & Santos-Silva, 2020 |
| — | General integument of prothorax distinctly contrasting with that of the elytra or at least with most of the elytral surface | 2 |
| 2(1) | Femora entirely dark | 3 |
| — | At least meso- and metafemora bicolorous | 5 |
| 3(2). | Elytra with pubescence very conspicuous. Ecuador | <i>G. morrisoni</i> (Bezark & Santos-Silva, 2016) |
| — | Elytral pubescence indistinct or mostly absent | 4 |
| 4(3). | Antennomere VII in males shorter than III; elytral apex with narrow pubescent band in both sexes. Ecuador | <i>G. variicollis</i> sp. nov. |
| — | Antennomere VII in males longer than III; elytral apex without narrow pubescent band in both sexes. Panama | <i>G. costipennis</i> (Giesbert, 1991) |
| 5(2). | Pronotum with dark central macula; elytra unicolorous. Costa Rica | <i>G. monteverdensis</i> (Giesbert, 1991) |
| — | Pronotum without dark central macula; elytra bicolorous. Ecuador | <i>G. abbreviata</i> sp. nov. |



Fig. 22-25. *Eclipta moleiroi* sp. nov., holotype female (MZSP 67362).
22. Dorsal habitus. 23. Ventral habitus. 24. Lateral habitus. 25. Head, frontal view.

eye lobes 0.24 times distance between outer margins of eyes. Antennae 1.1 times elytral length, reaching beginning of posterior third of elytra. Scape sparsely, somewhat coarsely punctate; abundantly, minutely striate on apical 2/3; with a few short, decumbent yellowish-white setae, a few long, erect yellowish setae dorsally, and a few long, erect brown setae on apical third of ventral surface. Pedicel with a few short, bristly dark-brown setae and long, erect dark-brown setae interspersed throughout. Antennomere III filiform; with moderately long, erect, both brown and yellowish-white setae dorsally and laterally, and long, erect, thick dark-brown setae ventrally. Antennomeres IV-X widened from base to apex; IV-V with sparse yellowish pubescence on light integumental area, somewhat sparse dark-brown pubescence not obscuring integument on dark integumental area, with long, erect yellowish setae interspersed dorsally and laterally, and long, erect dark-brown setae interspersed ventrally. Antennomeres VI-X with sparse yellowish-white pubescence on light integumental area, abundant dark-brown pubescence with short decumbent yellowish-white setae interspersed on dark integumental area; with moderately short, erect yellowish setae interspersed dorsally and laterally; VI with a few long, erect dark-brown setae interspersed ventrally. Antennomere XI with abundant, both brownish and yellowish-white pubescence not obscuring integument.

Antennal formula (ratio) based on length of antennomere III:

– Scape = 0.77. – Pedicel = 0.28. – IV = 0.57. – V = 0.74. – VI = 0.68. – VII = 0.57. – VIII = 0.51. – IX = 0.48. – X = 0.40. – XI = 0.46.

Thorax. – Prothorax longer than wide; anterior constriction narrow, distinct; sides rounded from anterior constriction to posterior sixth, then subparallel-sided toward posterolateral angles. Pronotum sparsely, coarsely punctate, punctures distinctly coarser than on vertex, denser, partially confluent centrally close to posterior margin, dense, confluent, finer laterally close to posterior margin, absent centrally from about middle to posterior sixth; with sparse, long, erect both yellowish and yellowish-brown setae, except posterior sixth with sparse whitish pubescence with long, erect yellowish-brown setae interspersed. Sides of prothorax sparsely, coarsely punctate, except smooth area close to anterior margin; with sparse, long, erect yellowish-brown setae. Prosternum sparsely, coarsely punctate on posterior 3/4, smooth on anterior quarter; with sparse, erect, both short and long yellowish setae on posterior 3/4, glabrous on anterior quarter. Prosternal process strongly narrowed centrally and strongly widened posteriorly; narrowest area 0.19 times procoxal width; with sparse yellowish-white pubescence. Procoxal cavities closed posteriorly. Mesoventrite with abundant yellowish pubescence not obscuring integument centrally, sparse yellowish-white pubescence anterolaterally, and abundant whitish pubescence not obscuring integument on remaining surface. Mesanepisterna and mesepimera with abundant whitish pubescence not obscuring integument, pubescence denser on mesepimera. Mesoventral process truncate apically; apex 0.52 times mesocoxal width. Metanepisterna with moderately abundant yellowish pubescence not obscuring integument. Metaventrite with moderately abundant whitish pubescence close to meso- and metacoxal cavities, and sparse, long, erect yellowish setae throughout, except close to metathoracic discrimen. Scutellum moderately finely and abundantly punctate; glabrous anteriorly, with abundant orangish-golden pubescence not obscuring integument on remaining surface.

Elytra. – Reaching posterior third of abdominal ventrite 3; slightly divergent from middle; apex almost truncate, with outer angle rounded and sutural angle slightly projected; abundantly, coarsely punctate; punctures on anterior half with erect, long light yellowish-brown seta or short, erect light yellowish-brown seta; punctures on posterior half with short, erect yellowish-brown seta.

Legs. – Coxae and trochanters with a few yellowish-white setae. Femora with moderately sparse, long, erect yellowish setae. Apical 2/3 of sides of protibiae with abundant yellowish-white pubescence not obscuring integument; apical 2/3 of ventral surface with dense, bristly yellowish-white pubescence; dorsal and lateral surfaces and basal third of ventral surface with long, erect yellowish-brown setae. Meso- and metatibiae with erect, both long and moderately short yellowish-brown setae, and dense, bristly yellowish pubescence on posterior third of ventral surface. Dorsal surface of tarsomeres with sparse, subdecumbent yellowish setae and long, erect dark-brown setae interspersed; metatarsomere I 1.3 times longer than II-III together.

Abdomen. – Ventrites with sparse, long, erect yellowish setae, slightly denser laterally; apex of ventrite 5 slightly rounded.

Dimensions (mm)

- Total length, 5.00;
- Prothoracic length, 0.90;
- Anterior prothoracic width, 0.60;
- Posterior prothoracic width, 0.70;
- Maximum prothoracic width, 0.75;
- Humeral width, 0.85;
- Elytral length, 2.70.

Etymology. – The species is dedicated to Henrique Pereira Moleiro (MZSP), researcher of Hymenoptera, who collected the holotype.

Remarks. – *Eclipta* is a very problematic genus that includes species with very different morphological features (body shape, prothorax shape, antennal shape and length, pronotal sculpture, elytral length and shape, etc.). However, without a complete revision of the genus, it is not possible to exclude the new species from it. This forces us to include in the description some characters that should be generic (e.g. shape of the procoxal cavities).

Eclipta moleiroi is similar to *E. notatipes* (Tavakilian & Peñaherrera-Leiva, 2005) but differs especially by the pronotum with longitudinal dark band (transverse in *E. notatipes*), and elytra with distinct orange humeral area (dark in *E. notatipes*).

Acknowledgments

We express our thanks to Thiago Polizei (MZSP) for donating the specimen of *Eupogonius petulans*; to Carlos Moreno (MZSP) and Ruan Felipe da Silva (MPEG) for donating the specimen of *Lepturdrys capixaba*; and to Henrique Pereira Moleiro (MZSP) for donating the holotype of *Eclipta moleiroi*.

References

- Bezark L.G., 2025. – A photographic Catalog of the Cerambycidae of the World. New World Cerambycidae Catalog. Available from: <http://bezbycids.com/byciddb/wdefault.asp?w=n/> (Last accessed 2 March 2025).
- Melzer J., 1933. – Cerambycideos neotrópicos, novos ou pouco conhecidos. *Revista de Entomologia*, 3(3): 367-382.
- Monné M.A., 2024. – Catalogue of the Cerambycidae (Coleoptera) of the Neotropical region. Part II. Subfamily Lamiinae. Available from: <https://cerambycids.com/catalog/> (Last accessed 2 March 2025).
- Monné M.A., Botero J.P., Olivier R.S. & Santos-Silva A., 2024. – South American Acanthocinini (Coleoptera, Cerambycidae, Lamiinae): new species, synonymy, description of females and notes. *Zootaxa*, 5519(3): 345-383.
- Santos-Silva A., Bezark L.G. & Martins U.R., 2012. – New genera and species of Neotropical Rhinotragini (Coleoptera, Cerambycidae, Cerambycinae). *Zootaxa*, 3571: 66-80.
- Santos-Silva A., Galileo M.H.M., Joly L.J. & Tavakilian G.L., 2018. – The genus *Rosalba* Thomson, 1864 (Coleoptera, Cerambycidae, Lamiinae, Apomecynini). *Zootaxa*, 4387(2), 201-258.
- Tavakilian G.L. & Chevillotte H., 2024. – Titan: base de données internationales sur les Cerambycidae ou Longicornes. Available from: <http://titan.gbif.fr/> (Last accessed 2 March 2025).

Thomson J., 1864. – *Systema cerambycidarum ou exposé de tous les genres compris dans la famille des cérambycides et familles limitrophes*. H. Dessain, Liège, pp. 1-352.

Vlasak J. & Santos-Silva A., 2020. – New species of Cerambycinae and Lamiinae from Ecuador and Honduras, with transference of a species of Rhinotragini (Coleoptera, Cerambycidae). *Zootaxa*, 4748(3): 455-470.

Authors contribution ¹

Publisher Correspondence. – JV

Writing the article. – SS

Article proofreading. – JV & SS

Descriptions. – SS

Bibliographic work. – SS

Material study. – JV & SS

Author of the figures. – JV & SS

¹ JV = Josef Vlasak – SS = Antonio Santos-Silva

Résumé

Vlasak J. & Santos-Silva A., 2025. – Cerambycidae (Coleoptera) d'Amérique du Sud : nouvelles espèces, notes et nouveaux signalements. *Faunitaxys*, 13(19) : 1 – 14.

De nouvelles mentions d'État pour le Brésil sont fournies pour *Lepturdrys capixaba* Monné, Botero, Olivier & Santos-Silva, 2024, et *Eupogonius petulans* Melzer, 1933. Quatre nouvelles espèces sont décrites : *Rosalba nona* sp. nov. (Lamiinae, Apomecynini), *Giesbertectipta variicollis* sp. nov., *Giesbertectipta abbreviata* sp. nov., d'Équateur, et *Eclipta moleiroi* sp. nov., du Brésil (Bahia) (Cerambycinae, Rhinotragini). Une clé mise à jour des *Giesbertectipta* Santos-Silva, Bezark & Martins, 2012 est fournie.

Mots-clés. – Coleoptera, Cerambycidae, Lamiinae, Cerambycinae, longicorne, description, taxonomie, nouvelles espèces, Brésil.

Derniers articles publiés

Vives E., 2024. – Lepturinae nuevos o interesantes del sudeste asiático (Coleoptera, Cerambycidae). Notes on Lepturinae (22). *Faunitaxys*, 12(50) : 1 – 9. [https://doi.org/10.57800/faunitaxys-12\(50\)](https://doi.org/10.57800/faunitaxys-12(50))

Lapèze J., 2024. – Synthèse des connaissances sur les membracides et les aetalions de Guyane Française (Hemiptera : Auchenorrhyncha : Membracidae, Aetalionidae). Partie I : historique et liste des espèces recensées. *Faunitaxys*, 12(51) : 1 – 35. [https://doi.org/10.57800/faunitaxys-12\(51\)](https://doi.org/10.57800/faunitaxys-12(51))

Gereys B., 2024. – Examen critique des synonymies des Vespidae sociaux de France métropolitaine (Hymenoptera : Vespidae) – Partie 2 (Vespinae). *Faunitaxys*, 12(52) : 1 – 39. [https://doi.org/10.57800/faunitaxys-12\(52\)](https://doi.org/10.57800/faunitaxys-12(52))

Santos-Silva A., Bezark L. G. & Tejada Hurtado G., 2024. – New records of South American Cerambycidae (Coleoptera), with notes on the authorship of *Homogenes* and corrections in the species-group names of some species. *Faunitaxys*, 12(53) : 1 – 8. [https://doi.org/10.57800/faunitaxys-12\(53\)](https://doi.org/10.57800/faunitaxys-12(53))

Keith D., 2024. – Redécouverte d'*Anomala papuna* Arrow, 1917, espèce orientale méconnue (Coleoptera: Scarabaeoidea, Scarabaeidae, Rutelinae). *Faunitaxys*, 12(54) : 1 – 3. [https://doi.org/10.57800/faunitaxys-12\(54\)](https://doi.org/10.57800/faunitaxys-12(54))

Vincent B., 2024. – Description de trois nouvelles espèces d'altitude appartenant au genre *Amastus* Walker, 1865 (Lepidoptera: Erebidae, Arctiinae). *Faunitaxys*, 12(55) : 1 – 7. [https://doi.org/10.57800/faunitaxys-12\(55\)](https://doi.org/10.57800/faunitaxys-12(55))

Lourenço W. R. & Velten J., 2024. – The remarkable diversity of the genus *Chaerilobothus* Lourenço & Beigel, 2011 with the description of one more new species (Scorpiones: Chaerilobothidae). *Faunitaxys*, 12(56) : 1 – 5. [https://doi.org/10.57800/faunitaxys-12\(56\)](https://doi.org/10.57800/faunitaxys-12(56))

Hui Wen, Xin-Yuan Zhang, Shu-Tong Zhang & Hao Xu, 2024. – Distribution of the flower beetle *Pseudodicerus nigrocyaneus* (Bourgoin, 1917) (Coleoptera: Scarabaeidae: Cetoniinae) in Asia with biological notes. *Faunitaxys*, 12(57) : 1 – 15. [https://doi.org/10.57800/faunitaxys-12\(57\)](https://doi.org/10.57800/faunitaxys-12(57))

Cumming R. T., Engel M. S., Lian Z. & Ulitzka M. R., 2024. – Small, intricate, and beautiful; a new species of lophioneurid from the Cretaceous (Insecta: Thripida: †Lophioneurida). *Faunitaxys*, 12(58) : 1 – 10. [https://doi.org/10.57800/faunitaxys-12\(58\)](https://doi.org/10.57800/faunitaxys-12(58))

Ythier E. & Lourenço W. R., 2024. – A new species of *Hadrurochactas* Pocock, 1893 (Scorpiones: Chactidae) from the Mitaraka Massif in French Guiana. *Faunitaxys*, 12(59) : 1 – 9. [https://doi.org/10.57800/faunitaxys-12\(59\)](https://doi.org/10.57800/faunitaxys-12(59))

Háva J., 2024. – *Mycetophagus* (s. str.) *lenkae* sp. nov. from India: Arunachal Pradesh (Coleoptera: Mycetophagidae), along with new records for *Mycetophagus* (*Mycetophagoides*) *alni* Champion in two states in India. *Faunitaxys*, 12(60) : 1 – 3. [https://doi.org/10.57800/faunitaxys-12\(60\)](https://doi.org/10.57800/faunitaxys-12(60))

Herbin D., Giusti A. & Mielke C. G. C., 2024. – Taxonomic revision of the genera *Tamphana* Schaus and *Tuyvae* Orlandin, Piovesan & Carneiro with description of eleven new species (Lepidoptera, Apatelodidae). *Faunitaxys*, 12(61) : 1 – 31. [https://doi.org/10.57800/faunitaxys-12\(61\)](https://doi.org/10.57800/faunitaxys-12(61))

Niisato T. & Tichý T., 2024. – A new species of the genus *Microdebilissa* Pic, 1925 from West Kalimantan (Coleoptera, Cerambycidae, Cerambycinae, Stenopterini). *Faunitaxys*, 12(62) : 1 – 4. [https://doi.org/10.57800/faunitaxys-12\(62\)](https://doi.org/10.57800/faunitaxys-12(62))

Moret P., 2024. – Description of new Platynini from the montane cloud forest of Ecuador, with a redefinition of the genera *Glyptolenus* Bates and *Glyptolenoides* Perrault (Coleoptera, Carabidae). *Faunitaxys*, 12(63) : 1 – 23. [https://doi.org/10.57800/faunitaxys-12\(63\)](https://doi.org/10.57800/faunitaxys-12(63))

Cerda J.-A., 2024. – Corrigenda de *Butlerius* et *Guerinius* (Lepidoptera, Noctuoidea, Erebidae, Arctiinae, Arctiini, Ctenuchina). Quinzième note. *Faunitaxys*, 12(64) : 1. [https://doi.org/10.57800/faunitaxys-12\(64\)](https://doi.org/10.57800/faunitaxys-12(64))

Vives E., 2024. – Un nuevo género de Strogylurini de las islas Filipinas. New or interesting Cerambycidae from Philippines (Col.: Cerambycidae; Cerambycinae) (Pars 31). *Faunitaxys*, 12(65) : 1 – 4. [https://doi.org/10.57800/faunitaxys-12\(65\)](https://doi.org/10.57800/faunitaxys-12(65))

Vlasak J., Santos-Silva A. & Bezark L. G., 2024. – South American Acanthocini (Coleoptera, Cerambycidae, Lamiinae): description of a new species; transfer of a species from *Urgleptes* to *Lepturges* (*Lepturges*); designation of a lectotype; and corrections. *Faunitaxys*, 12(66) : 1 – 11. [https://doi.org/10.57800/faunitaxys-12\(66\)](https://doi.org/10.57800/faunitaxys-12(66))

- Bollino M. & Racheli T., 2025. – A new taxon of the *Pterourus menatius* complex from West Ecuador (Lepidoptera: Papilionidae). *Faunitaxys*, 13(01): 1 – 6. [https://doi.org/10.57800/faunitaxys-13\(01\)](https://doi.org/10.57800/faunitaxys-13(01))
- Lourenço W. R. & Velten J., 2025. – One more new species for the genus *Cretaceoushormiops* Lourenço, 2018 from Cretaceous Burmite (Scorpiones: Protoischnuridae). *Faunitaxys*, 13(02): 1 – 6. [https://doi.org/10.57800/faunitaxys-13\(02\)](https://doi.org/10.57800/faunitaxys-13(02))
- Lourenço W. R. & Velten J., 2025. – A new species for the genus *Archaeoananteroides* Lourenço, 2016, fossil scorpion from Burmite (Scorpiones: Buthoidea: Buthidae). *Faunitaxys*, 13(03): 1 – 6. [https://doi.org/10.57800/faunitaxys-13\(03\)](https://doi.org/10.57800/faunitaxys-13(03))
- Lourenço W. R. & Ythier E., 2025. – A new cave species of *Isometrus* Ehrenberg 1828 from Myanmar (Scorpiones: Buthidae). *Faunitaxys*, 13(04): 1 – 6. [https://doi.org/10.57800/faunitaxys-13\(04\)](https://doi.org/10.57800/faunitaxys-13(04))
- Platia G. & Pedroni G., 2025. – Five new species and new records of click beetles from Saudi Arabia with an updated catalogue (Coleoptera, Elateridae). *Faunitaxys*, 13(05): 1 – 12. [https://doi.org/10.57800/faunitaxys-13\(05\)](https://doi.org/10.57800/faunitaxys-13(05))
- Háva J. & Hodeček J., 2025. – Two additional new species of *Cryptorhopalum* (Coleoptera: Dermestidae: Megatominae) from the Dominican Republic. *Faunitaxys*, 13(06): 1 – 5. [https://doi.org/10.57800/faunitaxys-13\(06\)](https://doi.org/10.57800/faunitaxys-13(06))
- Vitali F., 2025. – The genus *Epicasta* Thomson, 1864 and the limits of the morphological systematics in the study of Lamiinae (Coleoptera Cerambycidae). *Faunitaxys*, 13(07): 1 – 5. [https://doi.org/10.57800/faunitaxys-13\(07\)](https://doi.org/10.57800/faunitaxys-13(07))
- Ythier E., Sadine S. E., Alioua Y. & Lourenço W. R., 2025. – A new species of *Androctonus* Ehrenberg, 1828 from the Tassili n'Ajjer, Algeria (Scorpiones: Buthidae). *Faunitaxys*, 13(08): 1 – 8. [https://doi.org/10.57800/faunitaxys-13\(08\)](https://doi.org/10.57800/faunitaxys-13(08))
- Strümpher W. P. & Stals R., 2025. – A world list of known cave- and bat guano-associated Trogidae (Coleoptera: Scarabaeoidea), and further range extension of *Omorgus lindemanna* (Petrovitz). *Faunitaxys*, 13(09): 1 – 11. [https://doi.org/10.57800/faunitaxys-13\(09\)](https://doi.org/10.57800/faunitaxys-13(09))
- Lourenço W. R. & Velten J., 2025. – Description of a second species for the genus *Serratochaerilobuthus* Lourenço, 2024 (Scorpiones: Chaerilobuthidae). *Faunitaxys*, 13(10): 1 – 6. [https://doi.org/10.57800/faunitaxys-13\(10\)](https://doi.org/10.57800/faunitaxys-13(10))
- Jarzabek-Müller A., 2025. – A new *Idolus* Desbrochers des Loges, 1875 for the Caucasus region (Coleoptera, Elateridae, Pomachiliini). *Faunitaxys*, 13(11): 1 – 6. [https://doi.org/10.57800/faunitaxys-13\(11\)](https://doi.org/10.57800/faunitaxys-13(11))
- Laguerre M., 2025. – New species of Arctiinae east of the Canal Zone, Panama (Lepidoptera, Erebiidae, Arctiinae, Arctiini). *Faunitaxys*, 13(12): 1 – 17. [https://doi.org/10.57800/faunitaxys-13\(12\)](https://doi.org/10.57800/faunitaxys-13(12))
- Vlasak J., Botero J. P. & Santos-Silva A., 2025. – Cerambycidae and Disteniidae (Coleoptera) from Ecuador: new genus, new species, new records, and correction in species-group names. *Faunitaxys*, 13(13) : 1 – 14. DOI: [https://doi.org/10.57800/faunitaxys-13\(13\)](https://doi.org/10.57800/faunitaxys-13(13))
- Vives E., 2025. – Una nueva especie de *Pseudelasma* Breuning, 1968 (Coleoptera, Cerambycidae: Lamiinae). Cerambycidae de Vietnam (Pars 12). *Faunitaxys*, 13(14) : 1 – 2. [https://doi.org/10.57800/faunitaxys-13\(14\)](https://doi.org/10.57800/faunitaxys-13(14))
- Audureau A., 2025. – A propos de quelques Hemilophini nouveaux ou peu connus (Coleoptera, Cerambycidae, Lamiinae). *Faunitaxys*, 13(14): 1 – 6. [https://doi.org/10.57800/faunitaxys-13\(15\)](https://doi.org/10.57800/faunitaxys-13(15))
- Coache A., Dierkens M., Rainon B., Delaunay L., Josso J.-F. & Deschamps P., 2025. – Première évaluation de la faune des Scarabaeidae de la République du Bénin (Coleoptera, Scarabaeidae). *Faunitaxys*, 13(16): 1 – 119. [https://doi.org/10.57800/faunitaxys-13\(16\)](https://doi.org/10.57800/faunitaxys-13(16))
- Moret P. & Allegro G., 2025. – Illustrated checklist of the carabid beetles (Coleoptera, Carabidae) of the Otonga Nature Reserve in NW Ecuador, with ecological and biogeographic comments. *Faunitaxys*, 13(17) : 1 – 21. [https://doi.org/10.57800/faunitaxys-13\(17\)](https://doi.org/10.57800/faunitaxys-13(17))
- Huchet J.-B. & Mapile D.O.R., 2025. – A new species of *Nothochodaeus* Nikolajev, 2005 from Luzon Island, Philippines (Coleoptera: Scarabaeoidea: Ochodaecidae). *Faunitaxys*, 13(18) : 1 – 8. [https://doi.org/10.57800/faunitaxys-13\(18\)](https://doi.org/10.57800/faunitaxys-13(18))

Faunitaxys est échangée avec les revues suivantes (« print versions ») :

- Annali del Museo Civico di Storia Naturale G. Doria (Italie)
- Boletín de la Asociación española de Entomología (Espagne)
- Boletín de la Sociedad Andaluza de Entomología (Espagne)
- Bollettino del Museo di Storia Naturale di Venezia (Italie)
- Bulletin de la Société linnéenne de Lyon (France)
- Bulletin of Insectology (Italie)
- Heteropterus Rev. Entomol. (Espagne)
- Integrative Systematics (Allemagne)
- Israel Journal of Entomology (Israël)
- Klapalekiana (République Tchèque)
- Koleopterologische Rundschau (Allemagne)
- Memorie del Museo Civico di Storia Naturale di Verona (Italie)
- Nova Supplementa Entomologica (Allemagne)
- Proceedings of the Entomological Society of Washington (USA)
- Revue suisse de Zoologie (Suisse)
- Spixiana (Allemagne)
- Zoosystematica Rossica (Russie)

Faunitaxys

Volume 13, Numéro 19, Avril 2025

SOMMAIRE

Cerambycidae (Coleoptera) d'Amérique du Sud : nouvelles espèces, notes et nouveaux signalements.

Josef Vlasak & Antonio Santos-Silva 1 – 14

CONTENTS

Cerambycidae (Coleoptera) from South America: new species, notes, and new records.

Josef Vlasak & Antonio Santos-Silva 1 – 14



Illustration de la couverture :
Laguna de Cuicocha, Ecuador.

Crédits:

Antonio Santos-Silva : Fig. 1-18 & 22-25.

Josef Vlasak : Fig. 19-21.

Katerina Vlasakova : couverture.