



HAL
open science

Mapping Evapotranspiration and Water Stress of Mediterranean Forests from Remote Sensed Vegetation Fraction Cover and Water Balance modelling

Albert Oliosio, Chloé Ollivier, Samuel Mwangi, Hugo Desrutins, Nicolas Martin-Stpaul, Guillaume Simioni, Arsène Druel, Marie Weiss, Olivier Marloie, Simon Damien Carrière, et al.

► To cite this version:

Albert Oliosio, Chloé Ollivier, Samuel Mwangi, Hugo Desrutins, Nicolas Martin-Stpaul, et al.. Mapping Evapotranspiration and Water Stress of Mediterranean Forests from Remote Sensed Vegetation Fraction Cover and Water Balance modelling. RAQRS 2024, Sep 2024, Torrent (Valencia), Spain. hal-04952994

HAL Id: hal-04952994

<https://hal.science/hal-04952994v1>

Submitted on 17 Feb 2025

HAL is a multi-disciplinary open access archive for the deposit and dissemination of scientific research documents, whether they are published or not. The documents may come from teaching and research institutions in France or abroad, or from public or private research centers.

L'archive ouverte pluridisciplinaire **HAL**, est destinée au dépôt et à la diffusion de documents scientifiques de niveau recherche, publiés ou non, émanant des établissements d'enseignement et de recherche français ou étrangers, des laboratoires publics ou privés.

Mapping Evapotranspiration and Water Stress of Mediterranean Forests from Remote Sensed Vegetation Fraction Cover and Water Balance modelling

Olioso A.¹, Ollivier C.², Mwangi S.^{1,3}, Desrutins, H.⁴
 Martin-StPaul N.¹, Simioni G.¹, Druel A.¹
 Weiss M.⁴, Marloie O.¹, Carrière S.⁵, Boulet G.^{3,6}
 Contact : albert.oliioso@inrae.fr and chloe.ollivier@ird.fr

1 - Ecologie des Forêts Méditerranéenne (URFM) INRAE, Avignon, France
 2 - HydroScience Montpellier (HSM) Univ. Montpellier-CNRS-IMT-IRD, France
 3 - CESBIO, Univ. Toulouse, CNES, CNRS, IRD, UT3, INRAE, Toulouse, France
 4 - Environnement Méditerranéen et Modélisation des Agro-Hydrosystèmes (EMMAH), INRAE-Avignon Univ., France
 5 - METIS, Sorbonne Université, UMR, 4 place Jussieu, 75005 Paris.
 6 - Indo-French Cell for Water Science, ICWaR, Indian Institute of Science, Bangalore, India

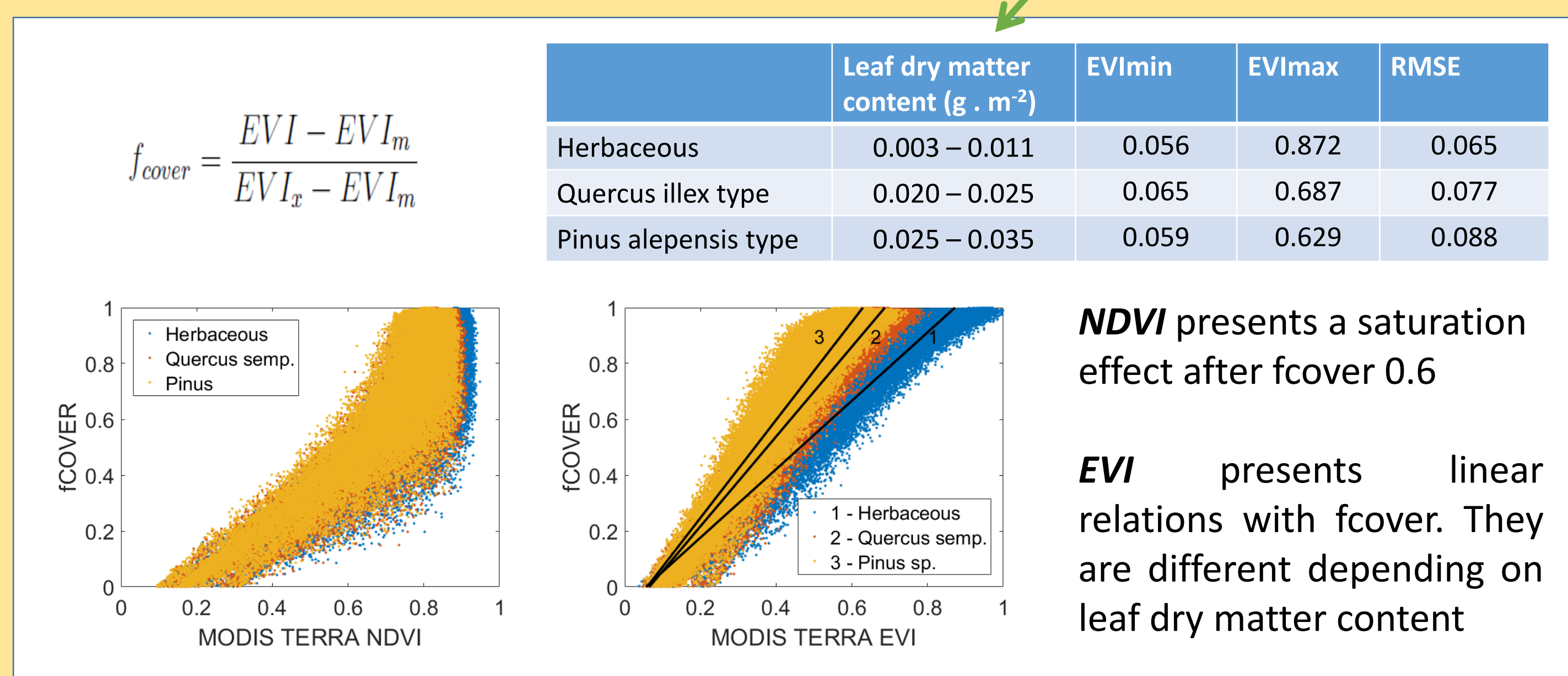
Evapotranspiration (ET), which is a fundamental variable of the hydrological cycle, is still not known with precision over forested area in Mediterranean areas. Remote sensing data, that inform on vegetation coverage and meteorological reanalysis can be used to improve our knowledge on the distribution of ET in space and time.

A simple model using remote sensed fraction cover, meteorological data and soil AWC from various source is presented. When considering spatially available information, uncertainties in model inputs (fcover, ETo, precipitation and soil information) strongly impact the simulation of evapotranspiration

Fraction of Vegetation Cover fcover

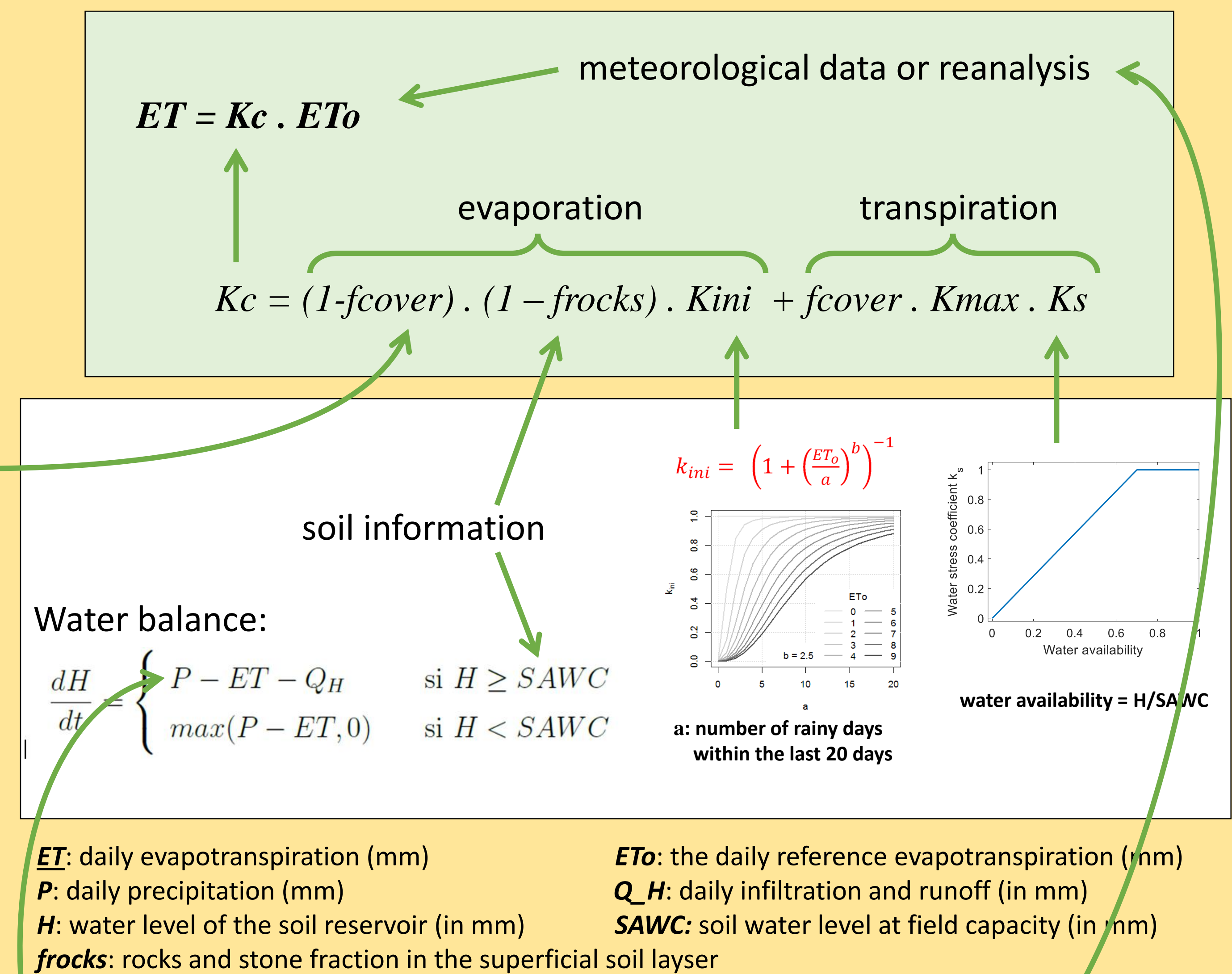
fcover was obtained from remote sensing data:

1. Copernicus fcover products at 1 km (1999-2018) and 300 m (2014-2018). [fcover derived from SPOT-VEGETATION and PROBA-V using a neural network model]
2. fcover from MODIS VI using a linear model established on PROSAIL simulations (varying LAI, leaf inclination, leaf chlorophyll, leaf dry matter and leaf water content).



ET Model

SimpKcET was developed as a simplified form of the crop coefficient – reference evapotranspiration approach that is classically used for monitoring evapotranspiration and water requirements for agricultural covers (ex: FAO56)



Precipitation and reference evapotranspiration ETo

ETo calculated with the Penman-Monteith model (assuming albedo 0.2 and rs = 60 m.s⁻¹). Meteorological data from SAFRAN reanalysis (MétéoFrance), ERA5 reanalysis (ECMWF) and MSWEP precipitation product.

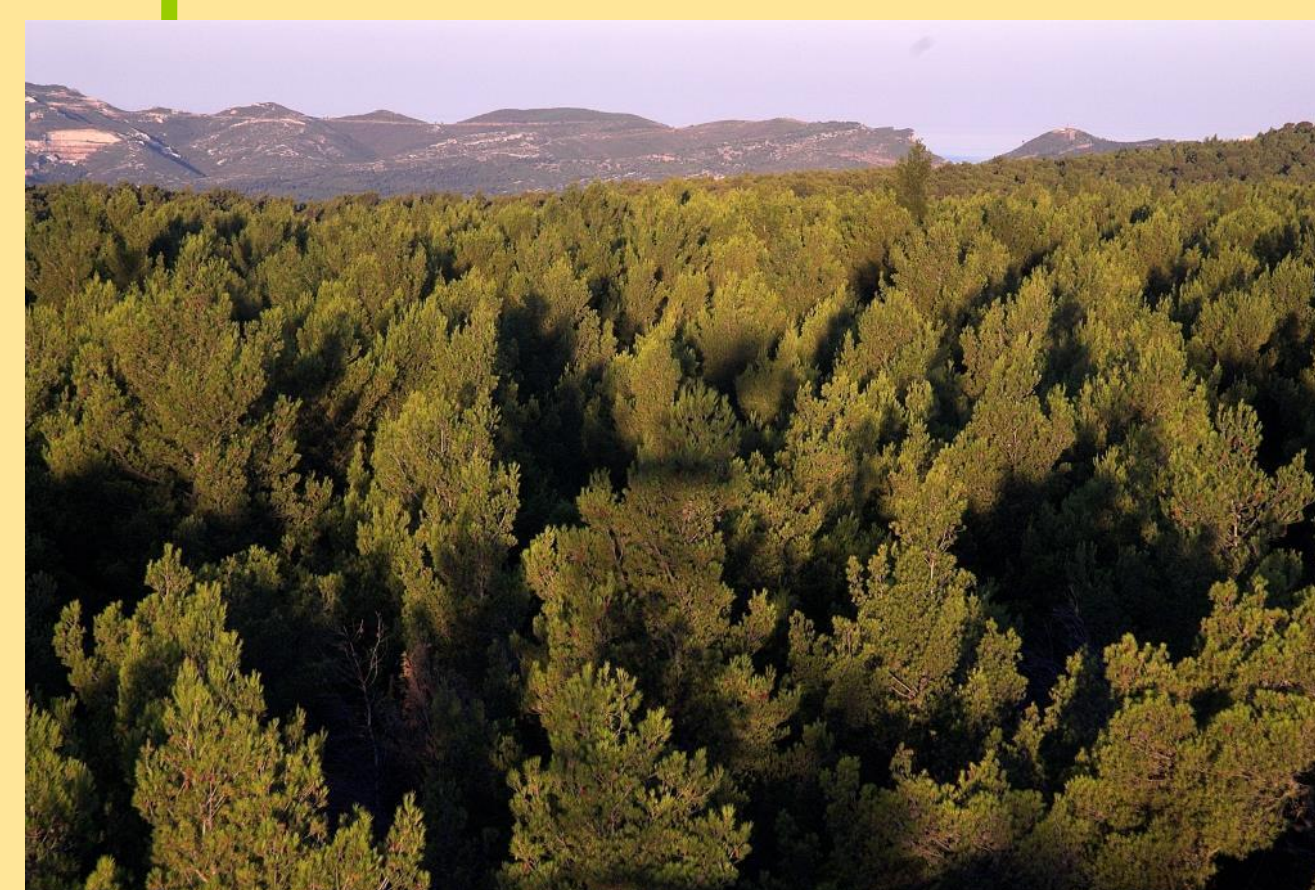
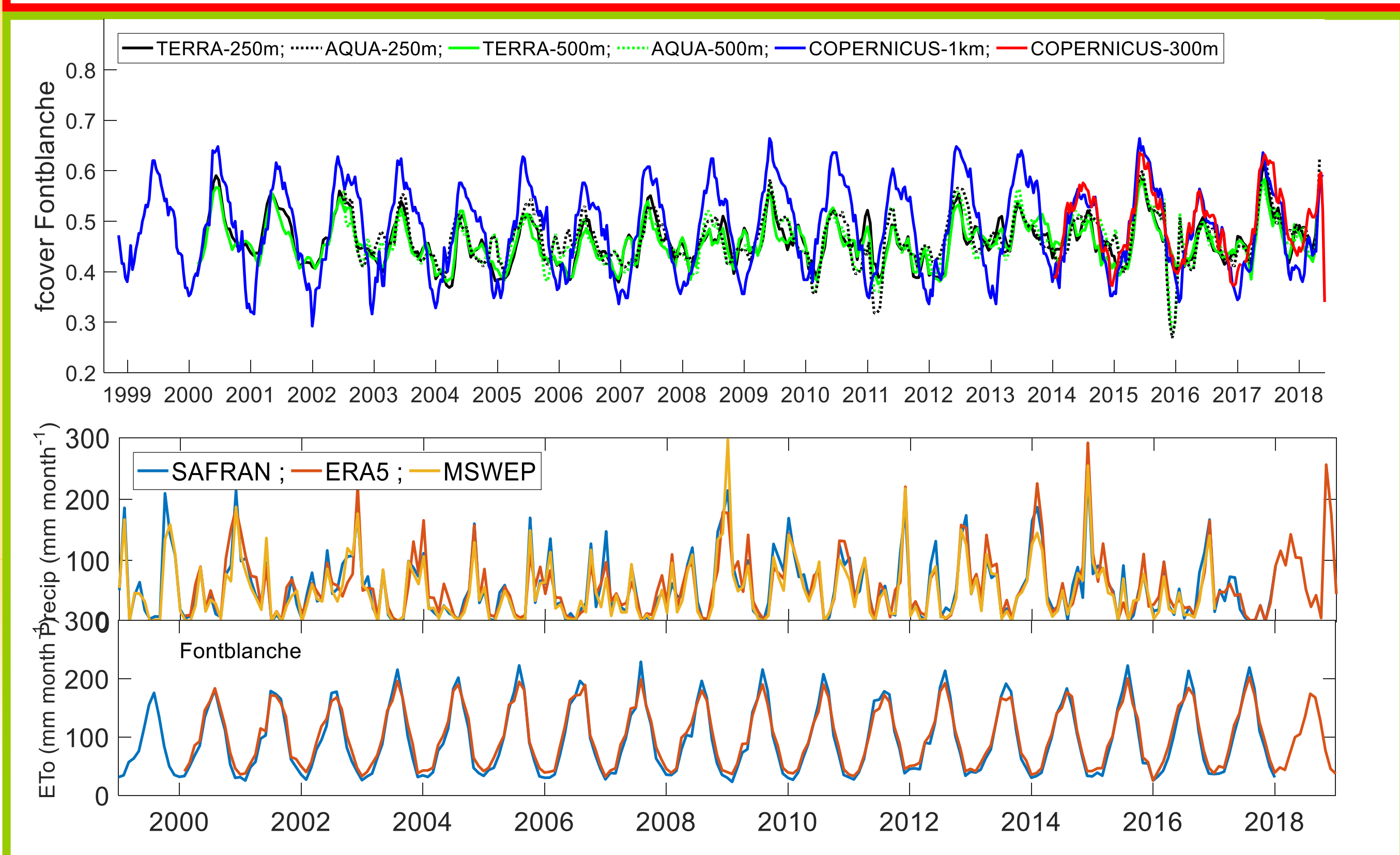
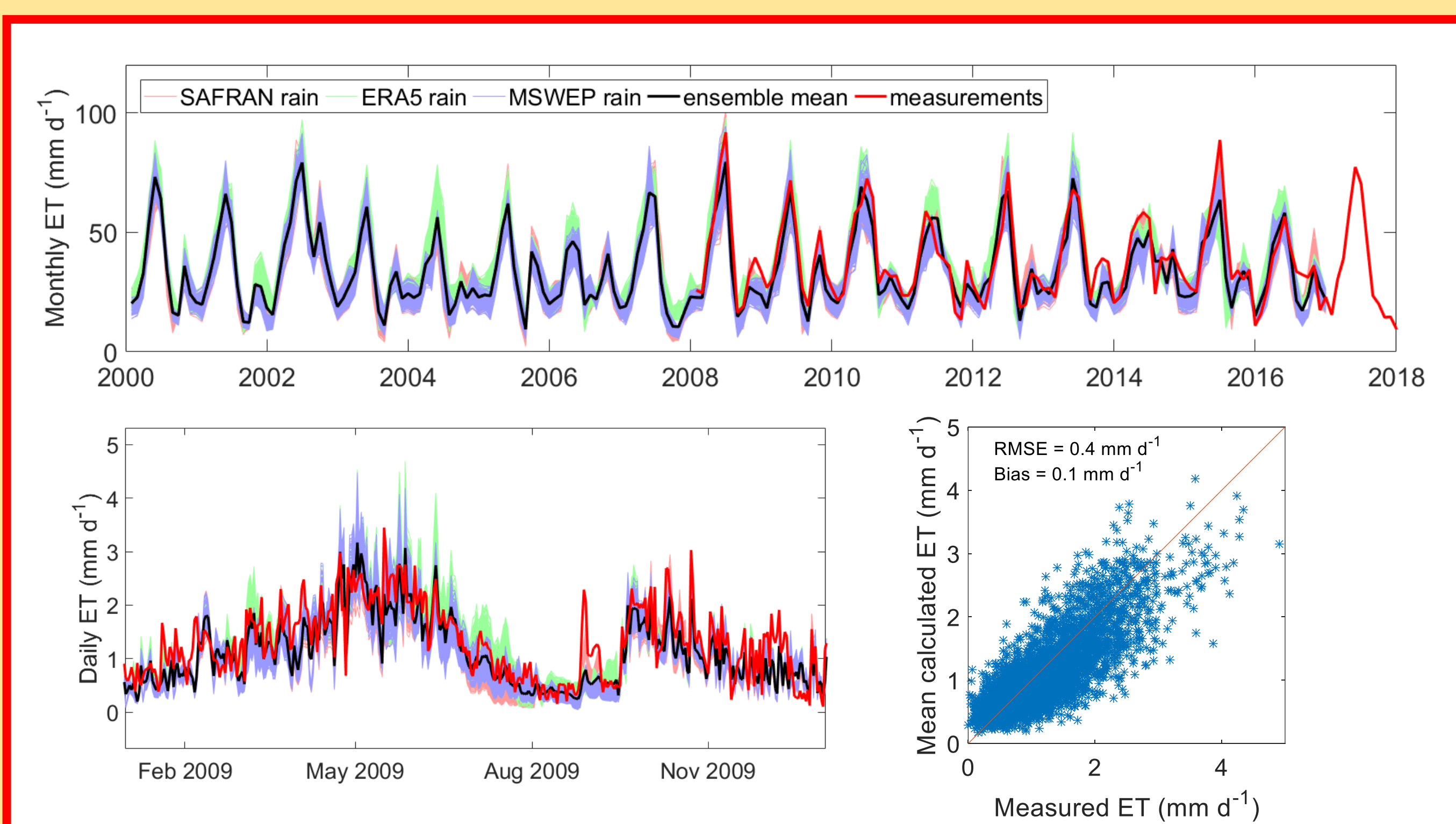
Fontblanche experimental site:

Pinus halepensis – Q. illex mixed forest, 20 km east of Marseille, France. 50 % rocks in top soil layers. Maximum available water content around 150 mm.

Simulations: from random values of *Kmax*, *b*, *frocks* and *SAWC* around local values (+/- 20% to +/- 100% depending on the level of knowledge), all different *fcover* estimations, ERA5, SAFRAN and MSWEP reanalysis data

Results

- mean simulated ET are in good agreement with measurements;
- variability in simulations is mainly driven by rain products followed by *Kmax*, *fcover* and soil maximum available water content *SAWC*
- *frocks* has a strong impact on soil evaporation, whis is particularly visible in winter

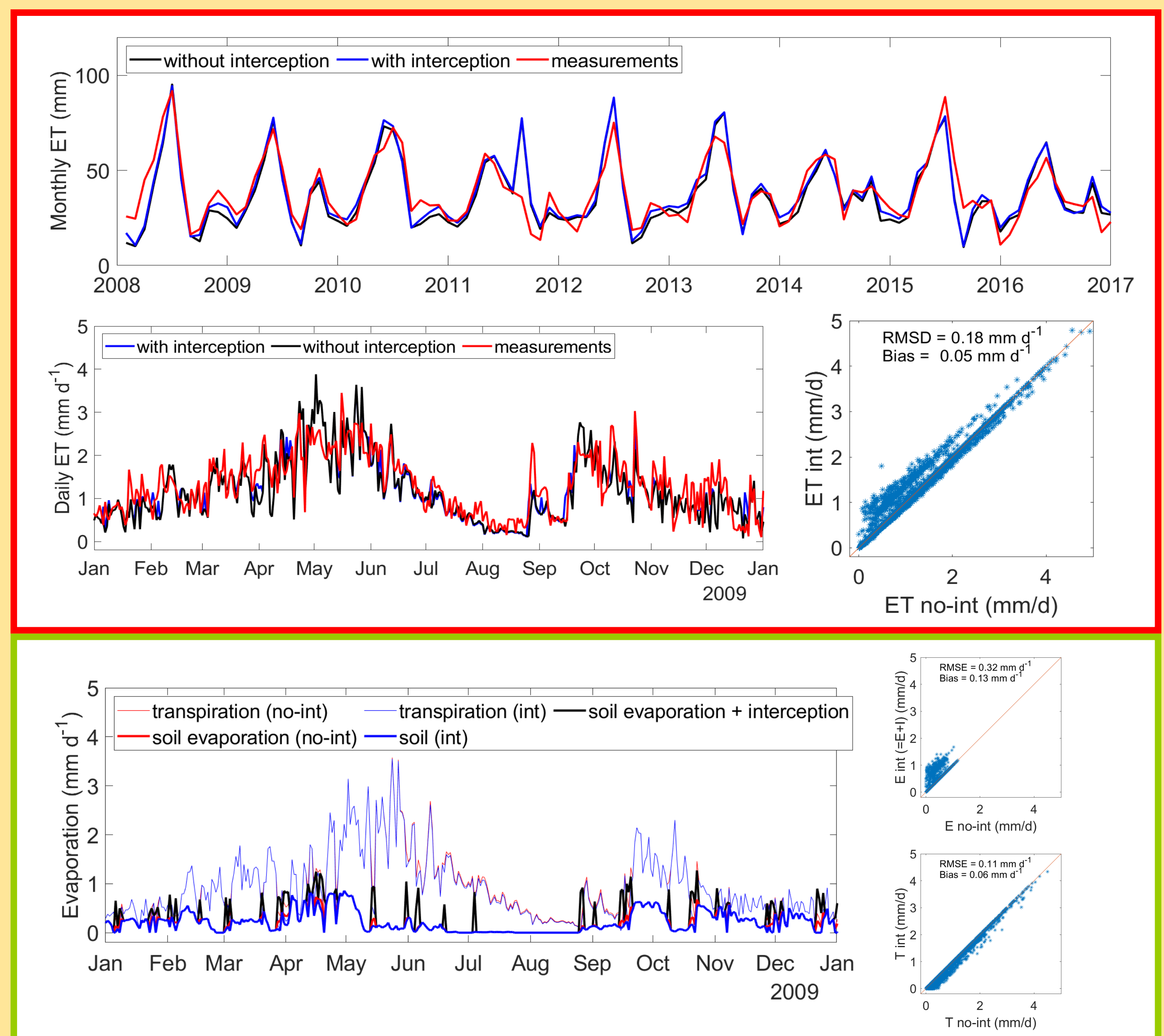


Accounting for rain interception:

Interception of rain by the plants is calculated using an adaptation of the Gash model for defining the interception reservoir from fcover. When water is present in the reservoir, *EL*, the evaporated flux from the leaf, is considered at the reference rate *ETo* till exhaustion. At the same time the reference rate for transpiration and evaporation flux is reduced by the evaporated flux *EL*.

Results

- introducing interception only slightly affects the simulated evapotranspiration after rain
- there is a compensation between evaporation which increases and transpiration which decreases during rainy events



Concluding remarks

- SimpKcET is described in Ollivier et al. 2021 doi: 10.1016/j.scitotenv.2021.146706
- It is well adapted for simulating ET over karstic and semi-arid environment where the soil evaporation has a limited impact on evapotranspiration
- It is implemented at the regional and national levels for mapping karst aquifer recharge