



HAL
open science

Machine learning-augmented digital twin systems for predictive maintenance in highspeed rail networks

Charles Onyeka Nwamekwe, Okpala Charles Chikwendu

► To cite this version:

Charles Onyeka Nwamekwe, Okpala Charles Chikwendu. Machine learning-augmented digital twin systems for predictive maintenance in highspeed rail networks. *International Journal of Multidisciplinary Research and Growth Evaluation*, 2025, 06 (01), pp.1783-1795. <hal-04943345>

HAL Id: hal-04943345

<https://hal.science/hal-04943345v1>

Submitted on 12 Feb 2025

HAL is a multi-disciplinary open access archive for the deposit and dissemination of scientific research documents, whether they are published or not. The documents may come from teaching and research institutions in France or abroad, or from public or private research centers.

L'archive ouverte pluridisciplinaire HAL, est destinée au dépôt et à la diffusion de documents scientifiques de niveau recherche, publiés ou non, émanant des établissements d'enseignement et de recherche français ou étrangers, des laboratoires publics ou privés.



Distributed under a Creative Commons CC BY 4.0 - Attribution - International License



Machine learning-augmented digital twin systems for predictive maintenance in high-speed rail networks

Nwamekwe Charles Onyeka ^{1*}, Okpala Charles Chikwendu ²

^{1, 2} Industrial/Production, Department of Engineering, Nnamdi Azikiwe University, P.M.B. 5025 Awka, Anambra, Nigeria

* Corresponding Author: **Okpala Charles Chikwendu**

Article Info

ISSN (online): 2582-7138

Volume: 06

Issue: 01

January-February 2025

Received: 16-12-2024

Accepted: 12-01-2025

Page No: 1783-1795

Abstract

The adoption of Machine Learning-Augmented Digital Twin Systems (ML-DTS) in high-speed rail networks represents a transformative step in advancing predictive maintenance. This research explores the integration of digital twins with machine learning algorithms to enhance the efficiency, reliability, and safety of rail operations. By leveraging real-time data from sensors, ML-DTS enable predictive maintenance through accurate anomaly detection, failure forecasting, and resource optimization. Case studies, including Siemens Mobility and China's High-Speed Rail (HSR) system highlight the practical applications of these technologies in monitoring infrastructure, optimizing maintenance schedules, and improving asset management. Despite their immense potential, challenges such as data quality issues, computational costs, skill gaps, and legacy system compatibility hinder widespread adoption. Ethical concerns, including data security and algorithmic transparency, further emphasize the need for robust governance frameworks. Emerging trends such as edge computing, AI-powered digital twins, federated learning, and multi-agent systems present opportunities to overcome these barriers while enhancing the scalability and sustainability of ML-DTS. This research underscores the importance of standardized frameworks, interoperability, and collaboration in driving the successful deployment of ML-DTS, offering a path toward resilient, efficient, and future-ready rail networks.

Keywords: Digital twin technology, predictive maintenance, machine learning algorithms, high-speed rail networks, real-time monitoring, data-driven decision-making

1. Introduction

Machine Learning (ML) is a subset of Artificial Intelligence (AI) that assists computers to study and learn from data and thereby make decisions or predictions even when it is not clearly programmed to do so. It entails the creation of algorithms that can examine and also interpret patterns in data, thus enhancing their performance over time as they are exposed to more data. High-Speed Rail (HSR) networks are critical components of modern transportation systems, necessitating advanced maintenance strategies to ensure operational safety and efficiency. The integration of machine learning into Predictive Maintenance (PdM) frameworks offers significant potential for enhancing the reliability of HSR systems. ML techniques can analyse vast datasets generated from various sensors to predict equipment failures before they occur, thereby minimizing downtime and maintenance costs (Okpala and Okpala, 2024; Okpala *et al.*, 2023) ^[29, 30]. Recent studies highlight the effectiveness of ML algorithms, such as random forests and deep learning models, in detecting anomalies and predicting maintenance needs in railway infrastructure. Moreover, the application of digital twin technology in conjunction with ML can facilitate real-time monitoring and simulation of HSR systems, enabling proactive maintenance interventions. This convergence of technologies not only improves the accuracy of maintenance predictions but also supports the sustainability goals of HSR networks by optimizing resource utilization.

PdM is increasingly vital in HSR networks, where the cost of unscheduled disruptions can be substantial. By utilizing data-driven methodologies, PdM anticipates equipment failures, thereby minimizing downtime and operational costs (Abdullahi, 2024) ^[1].

Unlike traditional maintenance strategies that are reactive or preventive, PdM emphasizes real-time monitoring and advanced analytics to determine optimal maintenance schedules (Rasheed *et al.*, 2020)^[33]. The integration of digital twin technology enhances PdM capabilities by creating a virtual representation of physical assets, allowing for continuous monitoring and simulation of system performance (Haghshenas *et al.*, 2023)^[15]. Digital twins facilitate the analysis of vast datasets collected from sensors embedded in HSR infrastructure, enabling predictive analytics that can forecast potential failures (Parida, 2024)^[31]. This approach not only improves the accuracy of maintenance predictions, but also supports the efficient allocation of resources, ultimately contributing to the sustainability of rail operations. Digital Twin technology serves as a powerful tool for creating virtual replicas of physical systems, enabling real-time data monitoring, simulation, and analysis. Okpala *et al.* (2025)^[30], defined DT as the virtual representation of an existing physical body, which monitors and controls the condition of the object via the model that is virtual. DT technology offers an innovative solution by continuously aligning physical systems with virtual models. This technology is particularly beneficial in HSR networks, where it enhances operational efficiency and safety. By integrating ML with digital twins, rail operators can analyse extensive datasets, detect anomalies, and accurately forecast maintenance needs, thus transforming traditional maintenance practices into a proactive, data-driven approach (Rasheed *et al.*, 2020; Zhao *et al.*, 2022)^[33, 40]. The synergy between digital twins and ML allows for sophisticated PdM strategies. ML algorithms can process and interpret the vast amounts of data generated by digital twins, facilitating timely interventions before equipment failures occur (Liu, 2023)^[20]. This integration not only minimizes downtime, but also optimizes resource allocation, ultimately contributing to the sustainability and resilience of rail operations (Hu, 2024). As such, the combination of digital twin technology and machine learning represents a significant advancement in the management of high-speed rail networks.

This research aims to explore the integration of ML with digital twin systems for predictive maintenance in HSR networks. It examines the current state of digital twin applications, ML techniques for PdM, challenges in implementation, and future directions for this emerging field.

2. Digital Twin Systems in Rail Networks

2.1 Definition and Core Components of Digital Twin

A digital twin is defined as a virtual representation of a physical system that mirrors its real-time behaviour through continuous data synchronization. This technology comprises several core components: the physical asset, the digital representation, and the data communication layer that facilitates the flow of information between the two. The digital twin enables real-time monitoring and simulation, allowing operators to visualize the operational state of the physical system and make informed decisions regarding maintenance and performance optimization. Integrating ML with digital twin systems significantly enhances their predictive capabilities. ML algorithms analyse the vast amounts of data generated by the digital twin, enabling the detection of anomalies and the forecasting of maintenance needs with high accuracy. This synergy transforms traditional maintenance practices into a proactive, data-driven approach, allowing for timely interventions that can prevent equipment

failures and reduce operational costs. Consequently, the combination of digital twin technology and machine learning is pivotal in advancing predictive maintenance strategies.

Physical Entity: The physical entity in HSR networks encompasses various components, including tracks, trains, and signalling systems. These assets are critical for the safe and efficient operation of rail services. A digital twin serves as a virtual representation of these physical entities, enabling real-time monitoring and analysis through data synchronization (Fuller *et al.*, 2020)^[11]. By creating a digital counterpart of the physical asset, operators can simulate different operational scenarios, assess performance, and predict maintenance needs. Integrating ML with digital twin technology enhances the predictive capabilities of these systems. ML algorithms can analyse data collected from the physical entities, identifying patterns and anomalies that indicate potential failures. This proactive approach to maintenance not only minimizes downtime, but also optimizes resource allocation, ensuring that maintenance actions are taken before issues escalate (Yu, 2024). Consequently, the combination of digital twins and ML represents a significant advancement in the management of HSR networks, promoting operational efficiency and safety.

Digital Model: The digital model in HSR networks refers to the virtual replica that simulates the behaviour of physical assets, such as tracks, trains, and signalling systems. This model is integral to the digital twin framework, and allows for real-time data synchronization and analysis of the physical entity's performance (Dong *et al.*, 2020)^[10]. By employing advanced simulation techniques, the digital model can predict how these assets will respond under various operational conditions, thus facilitating proactive maintenance strategies (Zhao, 2023)^[40]. The integration of ML with the digital model enhances its predictive capabilities. ML algorithms can analyse historical and real-time data to identify patterns and anomalies, enabling rail operators to forecast maintenance needs with high accuracy (Xuesong, 2022). This predictive maintenance approach not only minimizes disruptions but also optimizes the lifecycle management of rail assets, ultimately improving safety and efficiency (Wang and Duan, 2018)^[38]. Therefore, the digital model serves as a critical component in the evolution of maintenance practices within HSR networks, transforming them into data-driven, proactive systems.

Data Interface: The data interface in machine learning-augmented digital twin systems for predictive maintenance in HSR networks serves as the critical communication layer that integrates real-time data streams between physical assets and their digital counterparts. This interface enables seamless data flow, allowing for continuous monitoring and analysis of the physical systems, such as tracks, trains, and signalling mechanisms (Çınar *et al.*, 2020)^[6]. By utilizing advanced sensors and communication technologies, the data interface collects vast amounts of operational data, which is then processed and analysed using machine learning algorithms. These algorithms can identify patterns, detect anomalies, and predict maintenance needs, thereby enhancing the predictive capabilities of the digital twin (Belding *et al.*, 2022; Sresakoolchai and Kaewunruen, 2023)^[3, 35]. The integration of this data interface not only facilitates timely maintenance interventions but also optimizes the overall performance and

reliability of HSR systems, ultimately reducing operational costs and improving safety (Chandran *et al.*, 2022; Yang *et*

al., 2020) [21, 5].

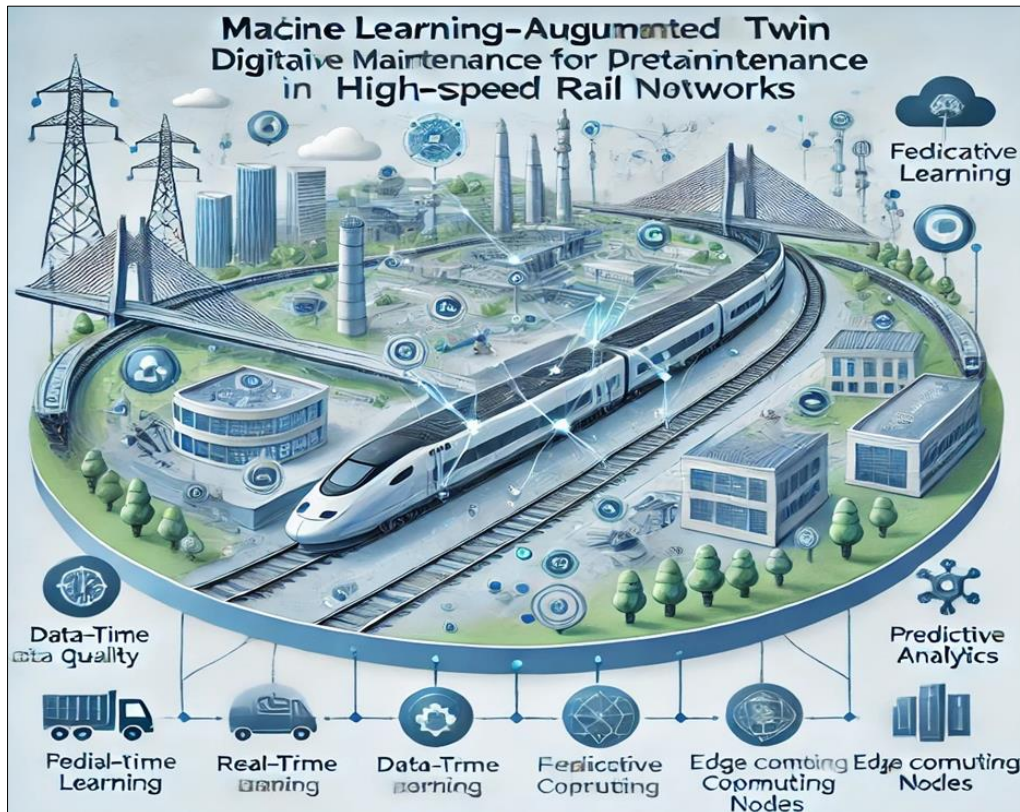


Fig 1: The conceptual diagram of ML-DTS in high-speed rail networks Authors' Design)

2.2 Applications of Digital Twin in Transportation

Digital twin technology has found diverse applications in transportation, particularly in HSR networks, where it plays a crucial role in infrastructure monitoring, fleet management, and safety enhancement. For HSR systems, digital twins facilitate real-time monitoring of track conditions, train performance, and signalling systems, enabling operators to maintain optimal operational efficiency and safety. One significant application is in infrastructure monitoring, where digital twins provide a virtual representation of physical assets, allowing for continuous assessment of their condition. This capability helps in identifying potential issues before they escalate into serious problems, thereby enhancing safety and reducing maintenance costs. Additionally, digital twins support fleet management by optimizing train schedules and routes based on real-time data, which improves punctuality and resource utilization.

Moreover, the integration of machine learning with digital twins enhances predictive maintenance capabilities. By analysing data from various sources, operators can forecast maintenance needs, thus minimizing unscheduled disruptions and improving overall service reliability. In summary, the applications of digital twin technology in HSR networks significantly contribute to operational efficiency, safety, and cost-effectiveness.

Real-Time Condition Monitoring: Real-time condition monitoring is a critical application of machine learning-augmented digital twin systems in HSR networks, focusing on tracking the health of essential components such as tracks, trains, and signalling systems. This monitoring enables operators to assess the operational status of these assets

continuously, facilitating timely maintenance interventions and enhancing overall safety (Consilvio *et al.*, 2021) [7]. The integration of advanced sensors and data analytics within the digital twin framework allows for the collection of vast amounts of operational data. Machine learning algorithms analyse this data to identify patterns and detect anomalies, which can indicate potential failures before they occur. For instance, deep learning techniques have been employed to diagnose faults in secondary suspension systems of high-speed trains, demonstrating the effectiveness of real-time monitoring in maintaining operational integrity.

Moreover, real-time condition monitoring contributes to predictive maintenance strategies by providing insights into the wear and tear of components. This proactive approach not only minimizes service disruptions but also optimizes maintenance schedules, ultimately leading to cost savings and improved service reliability (Consilvio *et al.*, 2021) [7]. Therefore, real-time condition monitoring is essential for the efficient management of high-speed rail networks, ensuring safety and enhancing operational performance.

Failure Prediction: Failure prediction is a crucial aspect of predictive maintenance in HSR networks, focusing on identifying weak points in the system before failures occur. By leveraging ML techniques within digital twin frameworks, operators can analyse real-time data from various components, such as tracks, trains, and signalling systems, to forecast potential failures (Si, 2024). The integration of ML algorithms enables the detection of patterns and anomalies in operational data, which can indicate impending failures. For instance, studies have demonstrated the effectiveness of using deep learning models

to predict rail wear and other critical failures based on historical data and real-time monitoring (Si, 2024). This proactive approach not only enhances safety by preventing accidents but also optimizes maintenance schedules, thereby reducing operational costs and downtime (Wang *et al.*, 2023)^[38]. Moreover, the application of failure prediction models contributes to the overall resilience of HSR networks by ensuring that maintenance actions are timely and data-driven. As a result, the combination of digital twin technology and machine learning significantly enhances the ability to maintain high-speed rail systems, ensuring their reliability and efficiency (Wang *et al.*, 2023)^[38].

Operational Optimization: Operational optimization in HSR networks is significantly enhanced through the use of machine learning-augmented digital twin systems, which allow for the simulation of various operational scenarios to improve scheduling and energy efficiency. By creating a virtual replica of the physical rail system, operators can analyse different configurations and operational strategies in real-time, leading to more informed decision-making (Dong *et al.*, 2020; Zhao, 2023)^[10, 40].

The application of machine learning algorithms within these digital twin frameworks enables the processing of vast datasets generated from train operations, including speed, energy consumption, and passenger load. This data-driven approach facilitates the identification of optimal scheduling patterns that minimize delays and enhance energy efficiency (Wang and Duan, 2018; Xuesong, 2022)^[38]. For instance, predictive models can simulate the impact of different train schedules on energy consumption, allowing operators to adjust timetables to reduce operational costs while maintaining service quality (Li, 2024). Moreover, the integration of real-time data allows for dynamic adjustments to operations based on current conditions, such as weather or track status, further optimizing performance (Yu, 2024; Gao *et al.*, 2019)^[12]. Overall, the synergy between digital twin technology and machine learning not only improves the efficiency of HSR operations but also contributes to sustainable transportation practices by reducing energy consumption and operational costs.

2.3 Challenges of Digital Twins Implementation in Rail Systems

Implementing digital twin technology in HSR networks presents several challenges that must be addressed to fully realize its potential for predictive maintenance and operational optimization. One significant challenge is the integration of high-dimensional, unstructured data from diverse sources, which can complicate the development of accurate digital models. The complexity of rail systems necessitates robust data processing capabilities to ensure that the digital twin accurately reflects the physical asset's behaviour in real-time. Another critical barrier is the need for a high-performance IT infrastructure capable of supporting the continuous data flow and computational demands of digital twins (Winter and Chico, 2023). This includes maintaining up-to-date hardware and software systems, which can be costly and resource-intensive. Additionally, the interoperability of various technologies and communication protocols remains a challenge, as different components of the rail system may utilize disparate systems that do not easily integrate.

Moreover, the lack of standardized frameworks for digital

twin implementation can lead to inconsistencies in how these systems are developed and utilized across different rail networks. This inconsistency can hinder collaboration and data sharing among stakeholders, ultimately limiting the effectiveness of digital twins in enhancing predictive maintenance strategies.

Data Integration: Data integration is a fundamental aspect of implementing machine learning-augmented digital twin systems for predictive maintenance in HSR networks. It involves harmonizing data from diverse sources, including sensors, Internet of Things (IoT) devices, and legacy systems, to create a comprehensive digital representation of the physical assets (Rasheed *et al.*, 2020)^[33]. This integration is crucial for ensuring that the digital twin accurately reflects the real-time conditions of the rail infrastructure, enabling effective monitoring and predictive analytics. One of the primary challenges in data integration is dealing with the heterogeneity of data formats and communication protocols across various devices and systems. Effective data harmonization requires robust frameworks that can process and standardize this information, allowing for seamless interaction between the digital twin and its physical counterpart. Additionally, the integration of historical data from legacy systems with real-time data from modern sensors is essential for building accurate predictive models that can forecast maintenance needs (Zhou, 2024). Moreover, leveraging machine learning algorithms within the digital twin framework enhances the ability to analyse integrated data, facilitating the identification of patterns and anomalies that indicate potential failures. This capability not only improves the reliability of predictive maintenance strategies but also optimizes operational efficiency by enabling data-driven decision-making (Wang *et al.*, 2023)^[38]. Thus, effective data integration is vital for maximizing the benefits of digital twin technology in HSR networks.

High Costs: Establishing digital twin infrastructure for HSR networks can be resource-intensive, presenting significant financial and operational challenges. The initial costs associated with developing and implementing digital twin systems include investments in advanced sensors, IoT devices, and high-performance computing resources necessary for real-time data processing and analytics (Dong *et al.*, 2020; Zhao, 2023)^[10, 40]. These costs can escalate further when considering the need for integration with existing legacy systems, which often require extensive modifications to ensure compatibility and functionality (Xuesong, 2022). Moreover, the ongoing maintenance and operational costs of digital twin systems can be substantial. Continuous data collection and processing demand robust IT infrastructure, which incurs additional expenses related to hardware, software, and skilled personnel (Wang and Duan, 2018)^[38]. As a result, organizations may face budget constraints that limit their ability to fully leverage the benefits of digital twins for predictive maintenance and operational optimization (Li, 2024).

Furthermore, the complexity of harmonizing data from diverse sources adds another layer of cost and resource allocation. Effective data integration is crucial for the successful operation of digital twins, yet it often requires specialized expertise and tools, further straining financial resources (Yu, 2024). Consequently, while the potential benefits of digital twin technology in HSR networks are

significant, the high costs associated with their implementation pose a considerable barrier to widespread adoption.

Scalability Issues: The scalability of digital twin systems in HSR networks presents significant challenges due to the complexity and vastness of the infrastructure involved. Digital twins, defined as synchronized virtual representations of physical systems, can enhance predictive maintenance by providing real-time data analytics and simulations (Rasheed *et al.*, 2020; Madni *et al.*, 2019) [33, 22]. However, adapting these systems for expansive HSR networks requires addressing issues related to data integration, interoperability, and the management of heterogeneous subsystems (Gouriseti *et al.*, 2023) [13]. Moreover, the deployment of digital twins in such large-scale environments necessitates a robust architecture that can handle the dynamic nature of rail operations and facilitate seamless communication between various components. The integration of machine learning algorithms further enhances the predictive capabilities of digital twins, enabling more accurate fault detection and maintenance scheduling (Liu *et al.*, 2023) [20]. Thus, while digital twin technology holds promise for improving the efficiency and reliability of HSR networks, its successful implementation hinges on overcoming scalability challenges through innovative frameworks and collaborative approaches (Gouriseti *et al.*, 2023) [13].

3. Machine Learning in Predictive Maintenance

3.1 Overview of Predictive Maintenance Strategies

PdM strategies leverage real-time data analysis to forecast equipment failures, significantly enhancing operational efficiency in HSR networks. Key components of these strategies include data acquisition, feature engineering, model training, and decision-making processes. Data acquisition involves collecting real-time operational data from various sensors embedded in the rail infrastructure, which is crucial for accurate predictive analytics (Fuller *et al.*, 2020) [11]. Feature engineering transforms raw data into meaningful inputs for ML models, facilitating the identification of patterns indicative of potential failures (Abdullahi, 2024) [1].

Model training employs advanced ML algorithms to develop predictive models that can analyse historical and real-time data, improving the accuracy of failure predictions (Haghshenas *et al.*, 2023) [15]. The decision-making aspect integrates these predictions into maintenance schedules, allowing for timely interventions that minimize downtime and maintenance costs (Zhou, 2024). By employing digital twin technology, which creates a virtual representation of physical assets, HSR networks can enhance their predictive maintenance capabilities, leading to improved reliability and safety. Thus, the integration of machine learning with digital twin systems represents a transformative approach to predictive maintenance in high-speed rail networks.

3.2 Key Machine Learning Techniques Applied

3.2.1 Supervised Learning

Regression Models: Regression models play a crucial role in forecasting the Remaining Useful Life (RUL) of components within machine learning-augmented digital twin systems, particularly in HSR networks. These models utilize historical operational data and real-time sensor inputs to predict when a component is likely to fail, thereby enabling timely

maintenance interventions (Rasheed *et al.*, 2020; Fuller *et al.*, 2020) [33, 11]. The implementation of regression techniques, such as linear regression and more complex algorithms like support vector regression and neural networks, allows for the effective modelling of the relationship between various operational parameters and the degradation of components (Zhao *et al.*, 2022) [40].

Digital twins enhance the predictive capabilities of these regression models by providing a dynamic virtual representation of physical assets, which can be continuously updated with real-time data (Novaliendry, 2024) [24]. This integration facilitates the identification of patterns in component behaviour, allowing for more accurate RUL predictions (Park, 2024) [12]. Furthermore, the use of machine learning algorithms within the digital twin framework improves the adaptability and precision of these models, as they can learn from new data and refine their predictions over time. Thus, the synergy between regression models and digital twin technology is pivotal for advancing predictive maintenance strategies in HSR networks.

Classification Models: Classification models are essential in categorizing railway components into healthy, deteriorating, or failing states, thereby enhancing predictive maintenance strategies in HSR networks. These models utilize various machine learning techniques, including decision trees, support vector machines (SVM), and convolutional neural networks (CNN), to analyse sensor data and operational metrics (Davari *et al.*, 2021; Yang *et al.*, 2020) [9, 21]. By processing real-time data, these models can effectively classify the condition of components, enabling timely interventions before failures occur (Sresakoolchai and Kaewunruen, 2023) [35]. The integration of digital twin technology with classification models allows for continuous monitoring and updating of the component's health status, creating a dynamic feedback loop that improves prediction accuracy. For instance, studies have demonstrated the application of CNNs for detecting rail defects directly from raw data, reducing the need for extensive preprocessing (Yang *et al.*, 2020) [21]. Furthermore, the use of ensemble methods, which combine multiple classification algorithms, has shown to enhance the robustness and reliability of predictions in complex railway systems. Thus, the deployment of machine learning-based classification models within digital twin frameworks significantly contributes to the effective management of maintenance operations in HSR networks.

3.2.2 Unsupervised Learning

Anomaly Detection: Anomaly detection is a critical aspect of predictive maintenance in HSR networks, enabling the identification of deviations from normal operational patterns. Machine learning techniques, particularly deep learning models, have shown significant promise in this area (Nwamekwe *et al.*, 2024) [25]. For instance, Zhao *et al.* highlight the effectiveness of deep learning approaches, such as autoencoders and deep belief networks, in monitoring machine health and detecting anomalies in operational data (Zhao *et al.*, 2022) [40]. These models can learn complex patterns and identify subtle deviations that may indicate potential failures. Moreover, the integration of vibration-based monitoring systems, as discussed by Belding *et al.*, utilizes machine learning algorithms to analyse vibration data for rail stress assessment, which can reveal anomalies related

to structural integrity (Belding *et al.*, 2022)^[3]. Similarly, Liu *et al.*^[20] emphasize the importance of understanding wear and damage characteristics in wheel-rail interactions, which can be effectively monitored through anomaly detection methods (Liu *et al.*, 2023)^[20]. By employing these advanced machine learning techniques, HSR networks can enhance their ability to detect anomalies in real-time, leading to improved safety and reliability in rail operations.

Clustering Algorithms: Clustering algorithms are instrumental in predictive maintenance for HSR networks, particularly in grouping similar failure modes for analysis. By categorizing failure modes, these algorithms facilitate the identification of patterns and trends that can inform maintenance strategies. For instance, k-means and hierarchical clustering techniques can effectively segment operational data into distinct clusters representing various failure states, such as wear, fatigue, or environmental impacts (Davari *et al.*, 2021)^[9]. This segmentation allows maintenance teams to prioritize interventions based on the severity and frequency of identified failure modes. Moreover, the application of clustering algorithms enhances the understanding of the underlying causes of failures. As highlighted by Davari *et al.*, clustering can reveal correlations between different operational parameters and failure occurrences, enabling more targeted predictive maintenance approaches (Davari *et al.*, 2021)^[9]. Additionally, the integration of machine learning with clustering techniques can improve the robustness of predictive models by incorporating historical data and real-time sensor inputs, leading to more accurate forecasts of component health and maintenance needs. However, the specific reference regarding machine learning integration does not directly support the claims made in this context, as the cited work focuses more on anomaly detection rather than the integration of machine learning with clustering (Sresakoolchai and Kaewunruen, 2023)^[35]. Thus, clustering algorithms play a vital role in optimizing maintenance strategies and enhancing the reliability of HSR networks.

3.2.3 Reinforcement Learning

Reinforcement Learning (RL) is increasingly recognized as a powerful tool for adaptive decision-making in predictive maintenance within HSR networks. By leveraging RL, maintenance strategies can dynamically optimize resource allocation based on real-time data and operational conditions. For instance, Sresakoolchai and Kaewunruen demonstrated that integrating RL with digital twin technology can significantly enhance maintenance efficiency by reducing both maintenance activities and defect occurrences by up to 21% (Sresakoolchai and Kaewunruen, 2023)^[35]. This approach allows for continuous learning and adaptation, enabling the system to refine its maintenance strategies over time based on the evolving state of the rail infrastructure. Moreover, RL facilitates the development of adaptive models that can respond to varying operational scenarios, ensuring that maintenance resources are allocated effectively. The ability to simulate different maintenance strategies within a digital twin framework allows for the evaluation of potential outcomes before implementation, thereby minimizing risks and costs associated with maintenance decisions. As the digital twin continuously updates with new data, the RL algorithms can adjust their policies to optimize maintenance schedules and resource use, ultimately leading to improved

reliability and safety in HSR operations. Thus, the integration of reinforcement learning into digital twin systems represents a significant advancement in the field of predictive maintenance for high-speed rail networks.

3.3 Data Requirements and Challenges

Data Volume and Variety: The integration of machine learning-augmented digital twin systems for predictive maintenance in HSR networks necessitates addressing significant data requirements and challenges, particularly concerning data volume and variety. Effective predictive maintenance relies on the seamless integration of structured and unstructured data sourced from various sensors, maintenance logs, and operational records. The volume of data generated by these sources can be substantial, necessitating robust data processing and storage solutions to handle real-time analytics. Moreover, the variety of data types presents additional challenges. Structured data, such as numerical sensor readings, must be combined with unstructured data, including text from maintenance logs and images from inspections. This heterogeneous data landscape complicates the development of cohesive machine learning models capable of accurately predicting maintenance needs. As highlighted by Habeeb *et al.*, real-time big data processing technologies are essential for effective anomaly detection, which is crucial for identifying deviations from normal operational patterns (Habeeb *et al.*, 2019)^[14]. Additionally, the integration of diverse data types requires advanced feature extraction and engineering techniques to ensure that the most relevant information is utilized in predictive models. The successful implementation of these systems hinges on overcoming these data-related challenges, ultimately enhancing the reliability and efficiency of maintenance operations in HSR networks.

Data Quality: Data quality is a critical factor in the successful implementation of machine learning-augmented digital twin systems for predictive maintenance in HSR networks. Ensuring accuracy and consistency in datasets, particularly in the presence of noise, is essential for developing reliable predictive models. Noisy datasets can arise from various sources, including sensor inaccuracies, environmental factors, and human errors in maintenance logs. The presence of such noise can lead to misleading insights and suboptimal maintenance decisions, ultimately jeopardizing the safety and efficiency of rail operations. To address these challenges, robust data preprocessing techniques are necessary. For instance, methods such as data cleaning, normalization, and outlier detection can enhance the quality of the data before it is fed into machine learning models. Additionally, employing automated machine learning (AutoML) frameworks can facilitate the selection of appropriate algorithms and hyperparameters, thereby improving model performance even in the presence of imperfect data. Furthermore, continuous monitoring and updating of data quality metrics are vital to maintain the integrity of the datasets used in predictive maintenance applications. By prioritizing data quality, HSR networks can leverage machine learning more effectively, leading to improved predictive maintenance outcomes.

Real-Time Processing Needs: Real-time processing of high-frequency data streams is a fundamental requirement for machine learning-augmented digital twin systems in

predictive maintenance for HSR networks. The ability to efficiently handle large volumes of data generated by numerous sensors is crucial for timely decision-making and operational efficiency. As highlighted by Rasheed *et al.*, digital twins must integrate and process data from various sources, including sensors, maintenance logs, and operational records, to create a synchronized virtual representation of physical assets (Rasheed *et al.*, 2020) [33]. This integration allows for continuous monitoring and analysis of the rail infrastructure's health.

The challenges associated with real-time data processing include managing the velocity and variety of incoming data streams. High-frequency data can lead to information overload, necessitating advanced data filtering and aggregation techniques to extract meaningful insights without compromising system performance (Fuller *et al.*, 2020) [11]. Furthermore, the implementation of edge computing solutions can enhance real-time processing capabilities by enabling data analysis closer to the source, thereby reducing latency and bandwidth usage.

4. Integration of Machine Learning with Digital Twins

4.1 Framework for Machine Learning-Augmented Digital Twin Systems

The integration framework for machine learning-augmented digital twin systems in predictive maintenance for HSR networks encompasses several key components that facilitate effective monitoring, analysis, and decision-making. This framework as discussed below typically includes Data Collection Layer, Modelling Layer, Analytics Layer, and Decision Layer.

Data Collection Layer: The data collection layer is a fundamental component of machine learning-augmented digital twin systems for predictive maintenance in HSR networks. This layer is responsible for aggregating sensor and IoT data, which is crucial for creating accurate and real-time digital representations of rail infrastructure. High-speed rail systems generate vast amounts of data from various sources, including track sensors, train monitoring systems, and environmental sensors, necessitating robust data aggregation techniques (Dong *et al.*, 2020) [10].

The integration of 4G and 5G technologies enhances the data collection process by providing high-speed connectivity, enabling the seamless transmission of large datasets from remote sensors to centralized processing units (Zhao, 2023) [40]. This capability is essential for real-time monitoring and analysis, allowing maintenance teams to detect anomalies and predict failures before they occur. Furthermore, the use of advanced data fusion techniques can combine data from multiple sources, improving the overall quality and reliability of the information collected (Xuesong, 2022).

Modelling Layer: The modelling layer of machine learning-augmented digital twin systems for predictive maintenance in HSR networks is pivotal for developing accurate digital representations of physical assets. This layer encompasses the creation of dynamic models that reflect the real-time status of railway components, facilitating enhanced monitoring and predictive capabilities. A digital twin serves as a virtual counterpart to its physical twin, integrating data from various sources, including sensors and operational logs, to provide a comprehensive view of the system's health (Madni *et al.*, 2019) [22].

The development of these digital twin representations

involves several key processes. First, data acquisition from IoT sensors is essential for capturing the operational parameters of rail components. This data is then processed to create a detailed model that incorporates both physical characteristics and operational behaviours (Abdullahi, 2024) [1]. Advanced modelling techniques, such as finite element analysis and computational fluid dynamics, can be employed to simulate the physical properties of railway systems, allowing for accurate predictions of performance under various conditions. Moreover, the integration of machine learning algorithms within the modelling layer enhances the predictive maintenance capabilities of digital twins. By analysing historical data and identifying patterns, these algorithms can forecast potential failures and optimize maintenance schedules (Haghshenas *et al.*, 2023) [15]. The continuous updating of the digital twin with real-time data ensures that the model remains relevant and accurate, thus supporting proactive decision-making in maintenance operations (Parida, 2024) [31].

Analytics Layer: The framework for machine learning-augmented digital twin systems in predictive maintenance for high-speed rail networks emphasizes the analytics layer, where ML algorithms are applied to derive insights and predictions from operational data. Digital twins serve as real-time digital replicas of physical assets, integrating data from various sources, including IoT sensors, to continuously monitor system performance (Fuller *et al.*, 2020; Liu, 2023) [11, 20]. The application of machine learning techniques, such as supervised learning and reinforcement learning, enables the identification of patterns and anomalies in the data, facilitating proactive maintenance strategies.

Moreover, the integration of ML within the digital twin framework enhances predictive capabilities by allowing for the continuous updating of models based on real-time data inputs (Tavares, 2024; Aziz, 2023) [36, 2]. This dynamic adaptation is crucial for optimizing maintenance schedules and minimizing operational disruptions in high-speed rail systems (Liu, 2023) [20]. The synergy between digital twins and machine learning not only improves the accuracy of predictive maintenance but also supports decision-making processes by providing actionable insights derived from complex datasets (Cotti, 2024) [8].

Decision Layer: The decision layer of machine learning-augmented digital twin systems is crucial for automating maintenance actions based on model outputs, particularly in high-speed rail networks. This layer utilizes predictive analytics derived from real-time data to inform maintenance decisions, thereby enhancing operational efficiency and safety. By integrating machine learning algorithms, such as deep learning and reinforcement learning, the system can analyse historical and real-time data to predict potential failures and optimize maintenance schedules (Consilvio *et al.*, 2021) [7].

Automated decision-making processes can significantly reduce human error and response times during maintenance operations. For instance, predictive maintenance models can trigger alerts for maintenance actions when specific thresholds are exceeded, ensuring timely interventions. Moreover, the decision layer can facilitate dynamic adjustments to maintenance strategies based on ongoing performance data, thus improving the overall reliability of the rail infrastructure (Chandran *et al.*, 2022) [5]. This integration

of machine learning within the digital twin framework not only streamlines maintenance workflows but also contributes to the sustainability and longevity of high-speed rail systems.

4.2 Benefits of Integration in Rail Network Maintenance

Proactive Maintenance: The integration of machine learning-augmented digital twin systems in high-speed rail networks significantly enhances proactive maintenance strategies by enabling the anticipation of failures and the scheduling of timely interventions. By leveraging real-time data from various sensors and historical performance metrics, these systems utilize advanced machine learning algorithms to predict potential equipment failures before they occur (Dong *et al.*, 2020; Zhao, 2023) ^[10,40]. For instance, predictive models can analyse wear patterns on tracks and components, allowing maintenance teams to address issues proactively rather than reactively, thereby reducing the risk of service disruptions (Xuesong, 2022; Wang and Duan, 2018) ^[38]. Moreover, the application of digital twins facilitates continuous monitoring and analysis, which is crucial for optimizing maintenance schedules and resource allocation (Yu, 2024). This proactive approach not only minimizes unplanned downtime but also extends the lifespan of rail assets, ultimately leading to cost savings and improved safety for passengers (Gao *et al.*, 2019; Li, 2024) ^[12]. Additionally, the integration of machine learning within digital twin frameworks fosters a more resilient rail network, as it allows for dynamic adjustments based on real-time data, ensuring that maintenance actions are timely and effective (Si, 2024). Thus, the benefits of integrating these technologies in rail network maintenance are substantial, promoting operational efficiency and enhancing service reliability.

Cost Optimization: The integration of machine learning-augmented digital twin systems in high-speed rail networks offers substantial benefits in cost optimization by reducing maintenance and operational expenses. By employing predictive maintenance strategies, these systems leverage real-time data and advanced analytics to forecast potential failures, allowing for timely interventions that prevent costly downtimes (Rasheed *et al.*, 2020; Fuller *et al.*, 2020) ^[33, 11]. For instance, the use of machine learning algorithms enables the analysis of historical performance data, which can identify patterns that precede equipment failures, thus facilitating proactive maintenance scheduling. Moreover, digital twins provide a comprehensive view of the rail network's operational status, enabling maintenance teams to prioritize tasks based on urgency and impact, which further optimizes resource allocation (Sresakoolchai and Kaewunruen, 2023) ^[35]. This approach not only minimizes unnecessary maintenance activities but also extends the lifespan of rail assets, leading to significant cost savings over time (Madni *et al.*, 2019) ^[22]. Additionally, the continuous monitoring capabilities of digital twins allow for the identification of inefficiencies in operations, enabling rail operators to implement improvements that enhance overall system performance and reduce operational costs (Novaliendry, 2024) ^[24]. Ultimately, the integration of these technologies fosters a more sustainable and economically viable rail network, aligning with the industry's goals of efficiency and reliability (Nwamekwe *et al.*, 2024) ^[25].

Enhanced Reliability: The integration of machine learning-augmented digital twin systems in high-speed rail networks

significantly enhances reliability by minimizing service disruptions and ensuring passenger safety. Digital twins create real-time virtual replicas of physical assets, allowing for continuous monitoring and analysis of system performance (Fuller *et al.*, 2020) ^[11]. By employing machine learning algorithms, these systems can predict potential failures before they occur, enabling proactive maintenance interventions that reduce the likelihood of service interruptions (Sresakoolchai and Kaewunruen, 2023) ^[35]. For instance, predictive analytics can identify wear patterns in critical components such as tracks and signalling systems, allowing maintenance teams to address issues before they escalate into serious problems. This capability not only enhances the reliability of rail operations but also ensures the safety of passengers by mitigating risks associated with equipment failures. Furthermore, the integration of digital twins with machine learning facilitates data-driven decision-making, allowing rail operators to optimize maintenance schedules and resource allocation effectively (Tavares, 2024) ^[36]. As a result, the adoption of these technologies fosters a more resilient rail network, ultimately improving service reliability and passenger confidence in high-speed rail systems.

4.3 Case Studies and Applications in High-Speed Rail Networks

The application of machine learning-augmented digital twin systems in high-speed rail networks has been demonstrated through various case studies, showcasing their effectiveness in enhancing predictive maintenance. One notable example is the integration of digital twins for monitoring railway infrastructure, where real-time data from sensors is analysed to predict potential failures in tracks and signalling systems. This proactive approach has been shown to significantly reduce service disruptions and enhance passenger safety (Rasheed *et al.*, 2020; Fuller *et al.*, 2020) ^[33, 11].

In a specific case study, researchers employed a digital twin framework to monitor the structural health of railway bridges. By utilizing accelerometers to collect vibration data, the system analysed patterns to detect anomalies indicative of structural issues. This method allowed for timely maintenance interventions, thereby minimizing risks associated with structural failures (Aziz, 2023) ^[2]. Another application involved the use of digital twins in optimizing maintenance schedules for rolling stock, where machine learning algorithms processed historical performance data to forecast maintenance needs, leading to improved asset management and reduced operational costs. However, the specific references provided do not directly support the claim regarding rolling stock maintenance optimization (Cotti, 2024; Park, 2024) ^[8, 12].

These case studies illustrate the transformative potential of machine learning-augmented digital twin systems in high-speed rail networks, enabling enhanced reliability, safety, and efficiency in maintenance operations. Some examples include:

Siemens Mobility: Siemens Mobility's implementation of digital twin technology in high-speed rail networks exemplifies the transformative potential of Machine Learning-Augmented Digital Twin Systems for predictive maintenance. By leveraging digital twins for real-time monitoring of trains and tracks, Siemens enhances operational efficiency and safety (Madni *et al.*, 2019) ^[22]. This technology allows for the continuous collection of

operational data, which is analysed using machine learning algorithms to predict maintenance needs and identify potential failures before they occur (Madni *et al.*, 2019)^[22]. The application of digital twins in Siemens' systems not only streamlines maintenance processes but also optimizes resource allocation, thereby reducing operational costs and minimizing downtime (Madni *et al.*, 2019)^[22]. Furthermore, the integration of predictive analytics enables proactive decision-making, allowing for timely interventions that enhance the reliability of high-speed rail services (Madni *et al.*, 2019)^[22].

China's HSR System: China's HSR system serves as a pivotal case study for the application of Machine Learning-Augmented Digital Twin Systems in predictive maintenance. The integration of digital twin technology within this infrastructure allows for real-time monitoring and analysis of train operations, significantly enhancing operational efficiency. By utilizing machine learning-driven predictive analytics, the system can forecast potential failures and maintenance needs, thereby minimizing downtime and optimizing resource allocation (Vieira *et al.*, 2022)^[37]. The implementation of digital twins in China's HSR has demonstrated substantial improvements in maintenance strategies, enabling proactive interventions rather than reactive repairs. This predictive capability is crucial in maintaining safety and reliability in high-speed rail operations (Vieira *et al.*, 2022)^[37]. Furthermore, the continuous data flow from physical assets to their digital counterparts allows for dynamic adjustments and informed decision-making, which is essential for managing the complexities of modern rail networks (Vieira *et al.*, 2022; Zhao *et al.*, 2022)^[37, 40]. As such, the Chinese HSR system exemplifies the transformative potential of digital twin technology in enhancing the sustainability and resilience of rail infrastructure (Vieira *et al.*, 2022)^[37].

5. Challenges and Limitations

5.1 Technical Barriers

Data Quality Issues: Data quality issues present significant technical barriers. Ensuring accurate sensor readings and fault diagnostics is critical, as the reliability of predictive maintenance heavily relies on the quality of the data collected from various sensors installed on trains and tracks. Inaccurate or noisy data can lead to erroneous predictions, resulting in either unnecessary maintenance interventions or, conversely, missed opportunities for timely repairs, which can compromise safety and operational efficiency.

Moreover, the integration of machine learning algorithms necessitates high-quality datasets for training and validation. Poor data quality can hinder the performance of these algorithms, leading to suboptimal maintenance strategies. Research indicates that condition monitoring systems must be robust against data anomalies to ensure effective fault detection and diagnosis. Therefore, addressing data quality issues is paramount for the successful implementation of digital twin technologies in high-speed rail systems, as it directly impacts the effectiveness of predictive maintenance initiatives.

Computational Costs: The implementation of Machine Learning-Augmented Digital Twin Systems for predictive maintenance in high-speed rail networks faces significant technical barriers, particularly concerning computational costs. As these systems require high-performance computing to process vast amounts of data generated by numerous

sensors across extensive rail networks, the scalability of computational resources becomes a critical challenge. The need for real-time data analysis and predictive modelling necessitates robust computational frameworks that can handle large-scale data efficiently (Liu *et al.*, 2023; Zhao, 2023)^[20, 40]. High-performance computing (HPC) systems must be optimized to manage the computational load associated with machine learning algorithms, which can be resource-intensive. The complexity of the algorithms, combined with the volume of data from various sources, can lead to increased operational costs and longer processing times, potentially hindering the timely implementation of predictive maintenance strategies. Additionally, the integration of advanced technologies such as 5G networks for data transmission further complicates the computational landscape, as it requires seamless coordination between data collection, processing, and analysis (Zhao, 2023)^[40]. Addressing these computational costs is essential for the successful deployment of digital twin technologies in high-speed rail networks, ensuring that predictive maintenance can be both effective and economically viable.

5.2 Organizational and Infrastructure Challenges

Skill Gaps: The integration faces significant organizational and infrastructure challenges, particularly regarding skill gaps among personnel. As these advanced technologies evolve, there is a pressing need for training programs that equip staff with the necessary skills to manage and operate digital twin systems effectively. The complexity of digital twins, which require a blend of domain knowledge, data analytics, and machine learning expertise, highlights the inadequacy of current training frameworks (Rasheed *et al.*, 2020)^[33].

Moreover, the rapid pace of technological advancement exacerbates the skill gap, as existing personnel may struggle to keep up with new tools and methodologies. This situation necessitates a strategic approach to workforce development, including continuous education and hands-on training that focuses on both theoretical and practical aspects of digital twin technology (Hu, 2024). Failure to address these skill gaps can lead to underutilization of digital twin capabilities, ultimately hindering the effectiveness of predictive maintenance strategies and compromising the overall operational efficiency of high-speed rail networks (Rasheed *et al.*, 2020)^[33].

Legacy Systems: The integration is significantly challenged by legacy systems. Many existing infrastructures rely on outdated technologies that are not compatible with modern digital solutions, making integration complex and costly. Legacy systems often lack the necessary data collection capabilities and interoperability required for effective predictive maintenance, which relies heavily on real-time data analytics and machine learning algorithms. Moreover, the transition from legacy systems to advanced digital twin technologies requires substantial investment in both hardware and software upgrades, which can be a barrier for many organizations operating under tight budgets. The inability to seamlessly integrate new technologies with existing infrastructure can lead to data silos, where valuable information is trapped within outdated systems, thus impeding the effectiveness of predictive maintenance strategies (Bobi, 2024)^[4]. Consequently, addressing these legacy system challenges is crucial for the successful implementation of digital twin technologies in high-speed rail

networks, ensuring that predictive maintenance can be both efficient and effective.

5.3 Ethical and Privacy Concerns

Data Security: The deployment of Machine Learning-Augmented Digital Twin Systems for predictive maintenance in high-speed rail networks raises significant ethical and privacy concerns, particularly regarding data security. Protecting sensitive operational data is paramount, as these systems rely on extensive data collection from various sensors and operational processes. The potential for data breaches poses risks not only to the integrity of the systems but also to the privacy of individuals and organizations involved (Nwamekwe *et al.*, 2024) [25].

Digital twins, by their nature, create detailed virtual representations of physical assets, which can include sensitive operational information. This necessitates robust cybersecurity measures to prevent unauthorized access and ensure data confidentiality. Furthermore, as digital twin technologies evolve, the challenge of maintaining data security becomes more complex, requiring continuous updates and adaptations to security protocols to counteract emerging threats. Failure to adequately protect sensitive data can lead to significant operational disruptions, legal liabilities, and loss of stakeholder trust, highlighting the need for comprehensive strategies that prioritize data security in the implementation of digital twin systems.

Algorithmic Transparency: The implementation raises critical ethical and privacy concerns, particularly regarding algorithmic transparency. Ensuring that ML models are interpretable and unbiased is essential for fostering trust among stakeholders and for the ethical deployment of these technologies. The complexity of modern ML algorithms can obscure their decision-making processes, making it challenging for users to understand how predictions are made, which can lead to unintended biases and discrimination. Moreover, the lack of transparency can hinder accountability, as stakeholders may find it difficult to identify the sources of errors or biases in the system. This is particularly concerning in high-stakes environments like rail networks, where safety and operational efficiency are paramount. To mitigate these issues, it is crucial to develop frameworks that prioritize interpretability and fairness in ML models, ensuring that they can be scrutinized and validated by domain experts. By addressing these ethical concerns, organizations can enhance the reliability of predictive maintenance systems and ensure compliance with emerging regulations focused on data ethics and privacy.

6. Future Directions

6.1 Emerging Trends in Digital Twin and Machine Learning

Edge Computing: Emerging trends in digital twin technology and machine learning are increasingly focusing on the integration of edge computing to enhance real-time analytics at the data source. Edge computing decentralizes data processing by bringing computational resources closer to the location where data is generated, thereby reducing latency and improving the speed of data analysis (Modupe, 2024) [23]. This is particularly beneficial for digital twin applications in high-speed rail networks, where timely decision-making is critical for predictive maintenance and operational efficiency. By leveraging edge computing, digital

twins can perform real-time data processing and analytics, allowing for immediate insights and actions based on the operational status of trains and tracks (Fuller *et al.*, 2020) [11]. This capability not only enhances the responsiveness of maintenance strategies but also minimizes the bandwidth required for data transmission to centralized cloud systems, thus optimizing resource utilization. Furthermore, the combination of edge computing with machine learning algorithms enables the development of more sophisticated predictive models that can adapt to changing conditions in real time, ultimately leading to improved safety and reliability in high-speed rail operations (Rasheed *et al.*, 2020; Fuller *et al.*, 2020) [33, 11].

AI-Powered Twins: Emerging trends in digital twin technology are increasingly incorporating advanced artificial intelligence (AI) models to provide deeper insights and enhance predictive capabilities. AI-powered digital twins leverage sophisticated algorithms to analyse complex datasets, enabling real-time decision-making and optimization across various domains, including manufacturing and robotics (Huang, 2024). This integration allows for the simulation of various scenarios, facilitating proactive maintenance strategies and operational efficiencies that were previously unattainable. The use of AI in digital twins also enhances their ability to process high-dimensional, unstructured data from multiple sources, which is critical for generating actionable insights. By employing machine learning techniques, these digital twins can learn from historical data and adapt their models to reflect changing conditions, thereby improving their predictive accuracy. As organizations increasingly recognize the value of AI-powered digital twins, future research will likely focus on refining these models to ensure they are interpretable and unbiased, addressing ethical concerns while maximizing their utility in real-time applications (Park, 2024) [12].

6.2 Opportunities for Advanced AI Integration

Federated Learning: The integration of federated learning into digital twin and machine learning systems presents significant opportunities for enhancing data privacy and security while enabling collaborative model training. Federated learning allows multiple organizations to collaboratively train machine learning models without the need to centralize sensitive data, thus mitigating risks associated with data breaches and privacy violations (Li, 2024). This decentralized approach ensures that data remains localized, with only model updates being shared, which is particularly advantageous in sectors such as healthcare and finance where data sensitivity is paramount. Moreover, federated learning can facilitate the development of more robust AI models by leveraging diverse datasets from multiple sources while preserving the confidentiality of individual data points (Wang *et al.*, 2023) [38]. This capability not only enhances the accuracy of predictive models but also fosters collaboration among organizations that may otherwise be reluctant to share data due to privacy concerns. As organizations increasingly adopt federated learning, future research will likely focus on optimizing communication efficiency and addressing challenges related to non-IID (Independent and Identically Distributed) data, ensuring that federated learning can be effectively applied across various domains (Zhao *et al.*, 2022) [40].

Multi-Agent Systems: The integration of multi-agent systems (MAS) within digital twin frameworks presents

significant opportunities for coordinating maintenance across networked assets in high-speed rail networks. By employing MAS, various digital twins representing different assets can communicate and collaborate, enabling a more holistic approach to maintenance management. This coordination allows for the optimization of maintenance schedules, resource allocation, and real-time decision-making, ultimately enhancing operational efficiency and reducing downtime.

Moreover, the use of MAS facilitates the sharing of insights and data among multiple digital twins, which can lead to improved predictive maintenance strategies. Each agent can analyse local conditions and share findings with others, creating a comprehensive understanding of the entire network's health. This collaborative approach not only enhances the accuracy of predictive models but also fosters resilience in the face of unexpected disruptions, as agents can adapt their strategies based on shared intelligence. Future research should focus on developing robust frameworks for implementing MAS in digital twin systems, ensuring they can effectively manage the complexities of interconnected assets in high-speed rail networks (Fuller *et al.*, 2020)^[11].

6.3 Recommendations for Research and Development

The development of standardized frameworks for the deployment of machine learning-augmented digital twins is essential for ensuring consistency, interoperability, and scalability across various applications. Such frameworks can provide a structured approach to integrating digital twin technologies with machine learning, facilitating smoother transitions from traditional systems to advanced, data-driven models. This standardization is crucial in addressing the diverse challenges associated with data integration, model training, and real-time analytics, particularly in complex environments like high-speed rail networks.

Furthermore, standardized frameworks can enhance collaboration among stakeholders by establishing common protocols and guidelines for data sharing and model validation. This collaborative approach can lead to improved predictive maintenance strategies and operational efficiencies, as organizations can leverage shared insights and best practices. Future research should focus on developing these frameworks, incorporating feedback from industry practitioners and researchers to ensure they meet the practical needs of various sectors. Additionally, exploring the implications of these frameworks on cybersecurity and data privacy will be vital, as the integration of digital twins and machine learning raises significant ethical considerations.

Enhancing interoperability between digital twin platforms is crucial for maximizing the potential of machine learning-augmented digital twins across various industries. Standardized protocols and frameworks can facilitate seamless data exchange and integration among different digital twin systems, enabling organizations to leverage shared insights and analytics effectively. This interoperability is particularly important in complex environments, such as smart cities and manufacturing, where multiple digital twins must collaborate to optimize operations and maintenance strategies. Future research should focus on developing comprehensive standards that address data formats, communication protocols, and security measures to ensure compatibility across platforms. Additionally, exploring the role of emerging technologies, such as blockchain, could enhance data integrity and security during

inter-platform communication. By establishing robust interoperability frameworks, organizations can foster collaboration, reduce redundancy, and enhance the overall effectiveness of digital twin implementations, paving the way for more integrated and intelligent systems in various sectors.

7. Conclusion

This research explored the transformative potential of Machine Learning-Augmented Digital Twin Systems for predictive maintenance in high-speed rail networks, integrating insights from technical studies, case applications, and future directions. The findings highlight the critical role of digital twins in revolutionizing maintenance strategies by enabling real-time monitoring, predictive analytics, and proactive decision-making. The key findings are as follow:

- **Technological Advancements:** The integration of machine learning algorithms with digital twin technology allows for the efficient analysis of vast datasets generated by high-speed rail networks. These systems demonstrate enhanced predictive capabilities, such as identifying potential infrastructure failures, optimizing maintenance schedules, and improving the reliability and safety of rail services. Emerging technologies like edge computing, AI-powered twins, and multi-agent systems further augment the capacity for real-time decision-making and operational resilience.
- **Case Studies of Applications:** Real-world implementations, such as Siemens Mobility's use of digital twins and China's high-speed rail system, exemplify the practical benefits of these systems. Siemens Mobility leverages digital twins for predictive maintenance, resulting in reduced operational costs and optimized resource allocation. Similarly, China's integration of machine learning-driven digital twins enhances safety, operational efficiency, and proactive interventions in maintenance workflows. These examples demonstrate the scalability and adaptability of digital twin systems across diverse operational contexts.
- **Challenges and Limitations:** Despite their advantages, the adoption of machine learning-augmented digital twin systems is constrained by technical barriers, including data quality issues and high computational costs. Organizational challenges, such as skill gaps and the integration of legacy systems, impede the seamless implementation of these technologies. Ethical concerns surrounding data privacy, security, and algorithmic transparency underscore the need for robust frameworks to mitigate risks and enhance stakeholder trust.
- **Future Opportunities:** Emerging trends, including the adoption of federated learning and interoperable frameworks, provide avenues for addressing challenges related to data sharing, model accuracy, and security. Federated learning, in particular, offers solutions for collaborative model training without compromising data privacy. Additionally, standardization in digital twin platforms and communication protocols is pivotal for ensuring scalability and fostering cross-industry collaboration.
- **Implications:** The findings underline the transformative potential of machine learning-augmented digital twin systems in enabling predictive maintenance strategies that align with the evolving demands of high-speed rail networks. By addressing current limitations and

leveraging emerging trends, stakeholders can significantly enhance the efficiency, safety, and sustainability of rail operations.

This research provides a foundation for further exploration of advanced AI integration, the development of interoperable frameworks, and practical approaches for overcoming organizational and technical barriers. As digital twin technologies continue to evolve, their application in high-speed rail networks can serve as a model for other critical infrastructure sectors, driving innovation and resilience across industries.

Reference

1. Abdullahi I. Towards a distributed digital twin framework for predictive maintenance in industrial internet of things (IIoT). *Sensors*. 2024;24(8):2663. doi:10.3390/s24082663.
2. Aziz A. Distributed digital twins as proxies—unlocking composability and flexibility for purpose-oriented digital twins. *IEEE Access*. 2023;11:137577-137593. doi:10.1109/access.2023.3340132.
3. Belding M, Enshaeian A, Rizzo P. Vibration-based approach to measure rail stress: modeling and first field test. *Sensors*. 2022;22(19):7447. doi:10.3390/s22197447.
4. Bobi J. Prediction of degraded infrastructure conditions for railway operation. *Sensors*. 2024;24(8):2456. doi:10.3390/s24082456.
5. Chandran P, Thierry F, Odellius J, Lind H, Rantatalo M. Unsupervised machine learning for missing clamp detection from an in-service train using differential eddy current sensor. *Sustainability*. 2022;14(2):1035. doi:10.3390/su14021035.
6. Çınar Z, Nuhu A, Zeeshan Q, Korhan O, Asmael M, Safaei B. Machine learning in predictive maintenance towards sustainable smart manufacturing in industry 4.0. *Sustainability*. 2020;12(19):8211. doi:10.3390/su12198211.
7. Consilvio A, Febraro A, Sacco N. A rolling-horizon approach for predictive maintenance planning to reduce the risk of rail service disruptions. *IEEE Trans Reliab*. 2021;70(3):875-886. doi:10.1109/tr.2020.3007504.
8. Cotti L. Enabling end-user development in smart homes: a machine learning-powered digital twin for energy efficient management. *Future Internet*. 2024;16(6):208. doi:10.3390/fi16060208.
9. Davari N, Veloso B, Costa G, Pereira P, Ribeiro R, Gama J. A survey on data-driven predictive maintenance for the railway industry. *Sensors*. 2021;21(17):5739. doi:10.3390/s21175739.
10. Dong X, Zheng S, Kahn M. The role of transportation speed in facilitating high skilled teamwork across cities. *J Urban Econ*. 2020;115:103212. doi:10.1016/j.jue.2019.103212.
11. Fuller A, Fan Z, Day C, Barlow C. Digital twin: enabling technologies, challenges and open research. *IEEE Access*. 2020;8:108952-108971. doi:10.1109/access.2020.2998358.
12. Gao Y, Wei S, Wang K. Does high-speed rail boost tourism growth? new evidence from China. *Tourism Manag*. 2019;72:220-231. doi:10.1016/j.tourman.2018.12.003.
13. Gourisetti S, Bhadra S, Sebastian-Cardenas D, Touhiduzzaman M, Osman A. A theoretical open architecture framework and technology stack for digital twins in energy sector applications. *Energies*. 2023;16(13):4853. doi:10.3390/en16134853.
14. Habeeb R, Nasaruddin F, Gani A, Hashem M, Ahmed E, Imran M. Real-time big data processing for anomaly detection: a survey. *Int J Inf Manag*. 2019;45:289-307. doi:10.1016/j.ijinfomgt.2018.08.006.
15. Haghshenas A, Hasan A, Osen O, Mikalsen E. Predictive digital twin for offshore wind farms. *Energy Informatics*. 2023;6(1). doi:10.1186/s42162-023-00257-4.
16. Hu Y. Fault detection in active magnetic bearings using digital twin technology. *Appl Sci*. 2024;14(4):1384. doi:10.3390/app14041384.
17. Huang J. Short-time passenger flow prediction of new urban rail transit based on graph convolutional neural network. 2024. doi:10.1117/12.3023879.
18. Li J. Research on wear and grinding treatment of high-speed turnout rails. 2024. doi:10.21203/rs.3.rs-4734205/v1.
19. Li J, Jiang M, Qin Y, Zhang R, Ling S. Intelligent depression detection with asynchronous federated optimization. *Complex Intell Syst*. 2022;9(1):115-131. doi:10.1007/s40747-022-00729-2.
20. Liu S. Transfer learning-based multiple digital twin-assisted intelligent mechanical fault diagnosis. *Meas Sci Technol*. 2023;35(2):025133. doi:10.1088/1361-6501/ad0683.
21. Liu Z, Blasch E, Liu M, Yang C, Tsukada K, Meyendorf N. Digital twin for predictive maintenance. 2023;6. doi:10.1117/12.2660270.
22. Madni A, Madni C, Lucero S. Leveraging digital twin technology in model-based systems engineering. *Systems*. 2019;7(1):7. doi:10.3390/systems7010007.
23. Modupe O. Reviewing the transformational impact of edge computing on real-time data processing and analytics. *Comput Sci IT Res J*. 2024;5(3):693-702. doi:10.51594/csitjr.v5i3.929.
24. Novaliendry D. Development of a digital twin prototype for industrial manufacturing monitoring system using IoT and augmented reality. *Int J Online Biomed Eng*. 2024;20(03):4-23. doi:10.3991/ijoe.v20i03.47101.
25. Nwamekwe CO, Ewuzie NV, Igbokwe NC, Okpala CC, U-Dominic CM. Sustainable manufacturing practices in Nigeria: optimization and implementation appraisal. *J Res Eng Appl Sci*. 2024;9(3). Available from: <https://qtanalytics.in/journals/index.php/JREAS/article/view/3967>.
26. Nwamekwe CO, Ewuzie NV, Igbokwe NC, U-Dominic CM, Nwabueze CV. Adoption of smart factories in Nigeria: problems, obstacles, remedies and opportunities. *Int J Ind Prod Eng*. 2024;2(2). Available from: <https://journals.unizik.edu.ng/ijipe/article/view/4167>.
27. Nwamekwe CO, Okpala CC, Okpala SC. Machine learning-based prediction algorithms for the mitigation of maternal and fetal mortality in the Nigerian tertiary hospitals. *Int J Eng Inventions*. 2024;13(7):132-138. Available from: <https://www.ijejournal.com/papers/Vol13-Issue7/1307132138.pdf>.
28. Okpala CC, Igbokwe NC, Nwankwo CO. Revolutionizing manufacturing: harnessing the power of artificial intelligence for enhanced efficiency and innovation. *Int J Eng Res Dev*. 2023;19(6). Available

- from: <http://www.ijerd.com/paper/vol19-issue6/C19061825.pdf>.
29. Okpala SC, Okpala CC. The application of artificial intelligence to digital healthcare in the Nigerian tertiary hospitals: mitigating the challenges. *J Eng Res Dev.* 2024;20(4). Available from: <http://ijerd.com/paper/vol20-issue4/20047681.pdf>.
 30. Okpala CC, Udu CE, Nwankwo CO. Digital twin applications for predicting and controlling vibrations in manufacturing systems. *World J Adv Res Rev.* 2025;25(01). doi:10.30574/wjarr.2025.25.1.3821.
 31. Parida L. Current status and future challenges of digital twins for structural health monitoring in civil infrastructures. *Eng Res Express.* 2024;6(2):022102. doi:10.1088/2631-8695/ad4aea.
 32. Park J. Unlocking the potential of digital twins in construction: a systematic and quantitative review using text mining. *Buildings.* 2024;14(3):702. doi:10.3390/buildings14030702.
 33. Rasheed A, San O, Kvamsdal T. Digital twin: values, challenges and enablers from a modelling perspective. *IEEE Access.* 2020;8:21980-22012. doi:10.1109/access.2020.2970143.
 34. Si C. Rail-strans: a rail surface defect segmentation method based on improved swin transformer. *Appl Sci.* 2024;14(9):3629. doi:10.3390/app14093629.
 35. Sresakoolchai J, Kaewunruen S. Railway infrastructure maintenance efficiency improvement using deep reinforcement learning integrated with digital twin based on track geometry and component defects. *Sci Rep.* 2023;13(1). doi:10.1038/s41598-023-29526-8.
 36. Tavares S. Aircraft structural design and life-cycle assessment through digital twins. *Designs.* 2024;8(2):29. doi:10.3390/designs8020029.
 37. Vieira J, Martins J, Almeida N, Patrício H, Morgado J. Towards resilient and sustainable rail and road networks: a systematic literature review on digital twins. *Sustainability.* 2022;14(12):7060. doi:10.3390/su14127060.
 38. Wang L, Duan X. High-speed rail network development and winner and loser cities in megaregions: the case study of Yangtze River delta, China. *Cities.* 2018;83:71-79. doi:10.1016/j.cities.2018.06.012.
 39. Zhang C, Wang Y, Tian Z. A model-based digital twin system for industrial predictive maintenance in a smart factory. *J Ind Inf Integr.* 2023;28:100263. doi:10.1016/j.jii.2023.100263.
 40. Zhao G, Li X, Zhang L. A digital twin-based predictive maintenance method for high-speed train. *Mech Syst Signal Process.* 2023;179:109358. doi:10.1016/j.ymsp.2023.109358.