



HAL
open science

Restless Legs Syndrome Shows Increased Silent Postmortem Cerebral Microvascular Disease With Gliosis

Arthur Walters, Paisit Pauksakon, Charles Adler, Michael Moussouttas, Leonard Weinstock, Karen Spruyt, Kanika Bagai

► **To cite this version:**

Arthur Walters, Paisit Pauksakon, Charles Adler, Michael Moussouttas, Leonard Weinstock, et al.. Restless Legs Syndrome Shows Increased Silent Postmortem Cerebral Microvascular Disease With Gliosis. *Journal of the American Heart Association*, 2021, 10 (11), pp.433. <10.1161/JAHA.120.019627>. <hal-04927086>

HAL Id: hal-04927086

<https://hal.science/hal-04927086v1>

Submitted on 1 Jun 2025

HAL is a multi-disciplinary open access archive for the deposit and dissemination of scientific research documents, whether they are published or not. The documents may come from teaching and research institutions in France or abroad, or from public or private research centers.

L'archive ouverte pluridisciplinaire **HAL**, est destinée au dépôt et à la diffusion de documents scientifiques de niveau recherche, publiés ou non, émanant des établissements d'enseignement et de recherche français ou étrangers, des laboratoires publics ou privés.



HAL Authorization

ORIGINAL RESEARCH

Restless Legs Syndrome Shows Increased Silent Postmortem Cerebral Microvascular Disease With Gliosis

Arthur S. Walters , MD; Paisit Pauksakon, MD; Charles H. Adler , MD, PhD; Michael Moussouttas, MD; Leonard B. Weinstock , MD; Karen Spruyt , PhD; Kanika Bagai, MD, MSCI

BACKGROUND: Patients with restless legs syndrome (RLS) have increased silent microvascular disease by magnetic resonance imaging. However, there has been no previous autopsy confirmation of these magnetic resonance imaging findings. RLS is also frequently associated with inflammatory and immunologically mediated medical disorders. The postmortem cortex in patients with RLS was therefore evaluated for evidence of microvascular and immunological changes.

METHODS AND RESULTS: Ten microvascular injury samples of precentral gyrus in 5 patients with RLS (3 men, 2 women; mean age, 81 years) and 9 controls (2 men, 7 women; mean age, 90 years) were studied by hematoxylin and eosin stains in a blinded fashion. None of the subjects had a history of stroke or neurologic insults. In a similar manner, the following immunohistochemistry stains were performed: (1) glial fibrillary acidic protein (representing gliosis, reactive change of glial cells in response to damage); (2) CD3 (a T-cell marker); (3) CD19 (a B-cell marker); (4) CD68 (a macrophage marker); and (5) CD117 (a mast cell marker). Patients with RLS had significantly greater silent microvascular disease ($P=0.015$) and gliosis ($P=0.003$). T cells were increased in RLS compared with controls ($P=0.009$) and tended to colocalize with microvascular disease ($P=0.003$). Other markers did not differ. There was no correlation between microvascular lesion load and RLS severity or duration.

CONCLUSIONS: Patients with RLS had statistically significantly more silent cerebral microvascular disease and gliosis than controls compatible with previous magnetic resonance imaging studies and with studies showing a link between RLS and hypertension, clinical stroke, and cardiovascular disease. T-cell invasion may be a secondary phenomenon.

Key Words: cortex ■ gliosis ■ microvascular disease ■ restless legs syndrome ■ T cells

Numerous studies over the past decade and more have suggested that restless legs syndrome (RLS) is associated with hypertension, heart disease, and stroke.^{1,2} Magnetic resonance images, for example, have shown that RLS and its accompanying periodic limb movements in sleep are characterized by greater levels of silent cerebral microvascular disease, a known risk factor for stroke.^{3,4} However, there has been no previous autopsy confirmation of these magnetic resonance imaging findings, which is one of the goals of the current study.

Another trajectory of research has been an investigation into the relationship of RLS with inflammatory and immunologic disorders. Many of the comorbid disorders more frequently associated with RLS have an inflammatory or autoimmune diathesis, including multiple sclerosis, rheumatoid arthritis, celiac disease, Crohn disease, inflammatory bowel disease, small intestinal bacterial overgrowth, and, most recently, mast cell activation syndrome.^{5–9} Mast cells play a role in allergy, anaphylaxis, wound healing, angiogenesis, immune tolerance, and defense against pathogens.⁹ The primary goal of the current study is to document with

Correspondence to: Arthur S. Walters, MD, Division of Sleep Medicine, Vanderbilt University School of Medicine, Medical Center North A-0118, 1161 21st Ave South, Nashville, TN 37232-2551. E-mail: art.walters@vumc.org

Supplementary Material for this article is available at <https://www.ahajournals.org/doi/suppl/10.1161/JAHA.120.019627>

For Sources of Funding and Disclosures, see page 8.

© 2021 The Authors. Published on behalf of the American Heart Association, Inc., by Wiley. This is an open access article under the terms of the Creative Commons Attribution-NonCommercial-NoDerivs License, which permits use and distribution in any medium, provided the original work is properly cited, the use is non-commercial and no modifications or adaptations are made.

JAHA is available at: www.ahajournals.org/journal/jaha

CLINICAL PERSPECTIVE

What Is New?

- Previous work has shown that patients with restless legs syndrome (RLS) and its frequently co-occurring periodic limb movements in sleep have more silent cerebral microvascular disease by magnetic resonance imaging; RLS has also been associated with inflammation and autoimmunity.
- To our knowledge there has been no autopsy confirmation of the magnetic resonance imaging findings and no autopsy study looking for autoimmune markers in RLS; in this autopsy study of the cerebral cortex, we show that there is more silent microvascular disease and accompanying gliosis in patients with RLS versus controls.
- T-cell invasion reflective of cellular autoimmunity is also more prominent, and there is no upregulation of CD19 (a B-cell marker), CD68 (a macrophage marker), or CD117 (a mast cell marker).

What Are the Clinical Implications?

- This study is compatible with previous magnetic resonance imaging studies and with studies showing a link between RLS and hypertension, clinical stroke, and cardiovascular disease.
- This study is also compatible with our previous study showing that the treatment of RLS with RLS medications lowers the associated cardiovascular risk.
- Upregulated T-cell levels in patients with RLS could be predisposing factors for development of microvascular disease or a secondary phenomenon.

Nonstandard Abbreviations and Acronyms

AZSAND	Arizona Study of Aging and Neurodegenerative Disorders
RLS	restless legs syndrome

postmortem examination the degree of silent cerebral microvascular disease and gliosis in RLS. The precentral gyrus (motor cortex) was chosen, as neurophysiologic studies have used it as a focus of interest in showing that suprasegmental disinhibition is a major feature of RLS.¹⁰ A secondary goal, based on previous studies demonstrating links between RLS and inflammatory and autoimmunity mechanisms, was to determine if inflammatory markers are also present in RLS cortex, and third, to see if microvascular lesions and inflammatory markers colocalize.

METHODS

Data, Materials, and Code Disclosure Statement

The data that support the findings of this study are available from Paisit Pauksakon, MD, Professor, Associate Director Division of Renal Pathology/ Electron Microscopy and Renal Pathology Fellowship, Division of Neuropathology, Department of Pathology, Microbiology, and Immunology, Vanderbilt University Medical Center (C-23188 Medical Center North, 1161 21st Ave South, Nashville, TN 37232, Tel: 615-322-1350; FAX, 615-322-4840; E-mail: Paisit.Pauksakon@VUMC.org).

A review of the protocol for this study was done by the Vanderbilt University Medical Center Institutional Review Board and was declared “nonresearch” from an Institutional Review Board point of view, and no informed consent was required.

Precentral gyrus (motor cortex) samples were obtained from 5 patients with RLS and 9 controls from the AZSAND (Arizona Study of Aging and Neurodegenerative Disorders) and the Banner Sun Health Research Institute Brain and Body Donation Program.¹¹ Subjects were defined as having RLS if they met the 4 basic clinical criteria for RLS: (1) an urge to move the legs, (2) worsening of symptoms later in the day or at night, (3) worsening of symptoms when lying or sitting, and (4) at least partial and temporary relief by activity. Those who did not meet the criteria for RLS qualified as controls.

All subjects completed a movement disorders examination with questions regarding RLS as well as the Mayo Sleep Questionnaire.¹¹ The subjects chosen all had a long-standing history of RLS. The severity of RLS was rated within ≈3 years of death by the International Restless Legs Severity Scale. Subjects had to meet the criteria above for RLS to be administered the International Restless Legs Severity Scale. The International Restless Legs Severity Scale is a previously validated instrument consisting of 10 questions, where each question is rated from 0 (no RLS symptoms) to 4 (maximum RLS severity), and then the scores for each individual question are added to obtain a total score (0=no RLS symptoms to 40=maximum RLS symptoms).¹²

Exclusion Criteria

In a first round of exclusions, subjects and controls with a known clinical history of previous stroke or a history of Alzheimer disease, dementia, head trauma, Parkinson disease, brain tumor, multiple sclerosis, or other neurodegenerative disorders were excluded from the study. In a second round of exclusions, subjects and controls who had neuropathologic evidence

of stroke, Alzheimer disease, other dementia, head trauma, Parkinson disease, brain tumor, multiple sclerosis, or other neurodegenerative disease were excluded, and at this stage, 1 subject was excluded because of intraparenchymal hemorrhage.

Studies performed on specimens:

1. Microvascular injuries (such as intimal fibrosis of arteries, which correlates with vascular smooth muscle hyperplasia) with hematoxylin and eosin stain.
2. Glial fibrillary acidic protein to look for gliosis, which is a response to brain injury and is a proliferation or hypertrophy of the glial cells, which are supporting cells to the neurons.
3. CD3—look for increase in T cells (cellular immunity).
4. CD19—look for increase in B cells (humoral immunity or antibodies).
5. CD68—look for increase in macrophages (first-line immunologic attack cells).
6. CD 117—look for increase in mast cells (play multiple roles in immunologic mechanisms).
7. Amyloid beta-peptide and tau protein to look for neuritic plaques and neurofibrillary tangles to exclude past brain injury from Alzheimer disease.
8. Ten areas of precentral gyrus of cortex (the motor cortex) were examined in a blinded fashion for each subject and rated 0 to 3+ for each entity of interest by previously described methods.¹³ The total of ratings for each of 10 areas per patient were added to get the sum score and then divided by 10 to get the average. In the above system, 0= no markers of interest; 1=1 marker of interest; 2=2 to 5 markers of interest; and 3=>5 markers of interest. If an immunologic marker showed a statistically significant difference between subjects with RLS and controls, colocalization of immunologic markers and microvascular disease was determined by the number of immunologic markers per vascular cross section by the same methodology.

A detailed description of tissue processing and immunohistochemistry including light microscopy and immunohistochemical studies can be found in Data S1.

Statistical Analysis

A stepwise analytic approach was conducted. Primary variables were microvascular lesion load and gliosis. Secondary variables were inflammatory markers. Tertiary variables were RLS duration and severity and past medical history. The Mann-Whitney *U* test was applied to assess group differences for continuous variables, and Fisher's exact test was applied for categorical variables. The correlation of RLS duration and

RLS severity to microvascular lesion load was performed by Spearman's rho. Post hoc, we calculated the Hedges' *g*, which is an effect-size measure, and calculated the power of that effect size.

Statistical analyses were performed with Statistica version 13 (TIBCO Software Inc, Palo Alto, CA).

RESULTS

We evaluated 5 RLS patients (3 men and 2 women; mean age, 81 years; range, 65–93 years) and 9 controls (2 men and 7 women; mean age, 90.2 years; range, 78–99 years). Table 1 gives the demographic information for subjects and controls in the study. There was no statistically significant difference in age or sex between patients and controls (Table 1). Of the 5 subjects who had RLS, 1 subject was on hydrocodone, 1 on clonazepam, 1 on both ropinirole and tramadol for treatment of RLS, and 2 subjects were on no RLS treatment (Table 1).

Primary Variables

Table 2 gives individual subject information for the markers of interest. There was a significant difference in the extent of silent cerebral microvascular disease ($P=0.015$) (Figure 1 and Table 3) and the level of gliosis ($P=0.003$) (Figure 2 and Table 3) in patients with RLS compared with controls. All patients and controls were negative for amyloid beta-protein and tau protein (Tables 2 and 3).

Secondary Variables

T cells were also increased in RLS compared with controls ($P=0.009$) (Figure 3 and Table 3). T cells tended to colocalize with microvascular disease, and the colocalization was significantly greater in patients with RLS than controls ($P=0.003$) (Table 3).

By Mann-Whitney *U* test there was no significant difference between patients and controls in CD68 ($U=22$; $Z=0$; $P=1.0$) or CD117 ($U=18$; $Z=-0.21958$; $P=0.825$) (Table 3). There was no evidence of CD19 B-cell antibody production in patients or controls (Tables 2 and 3).

Tertiary Variables

Given the small sample size and the fact that not all the secondary variables differed significantly between groups, further analysis should be considered exploratory. There was no significant correlation by Spearman's rho between RLS duration ($r_s=0.72$; $P=0.17$) or severity ($r_s=-0.41$; $P=0.49$) and microvascular lesion load (Table 1). Chi-square analysis did not find a significant imbalance of cardiovascular disease (myocardial infarction, congestive heart

Table 1. Clinical Characteristics of the Patients With RLS and Controls

Patient No.	Age, y	Sex	RLS Duration, y	RLS Severity Score	Time From IRLS Score to Autopsy	RLS Treatment
1	93	F	2	4	3 mo	None
2	79	M	8	12	39 mo	Hydrocodone
3	80	M	13	15	5 mo	Clonazepam
4	65	M	3	28	24 mo	Ropinirole tramadol
5	88	F	27	9	16 mo	None
Control no.	Age, y	Sex
1	88	F
2	78	F
3	87	F
4	91	M
5	84	F
6	96	M
7	99	F
8	93	F
9	96	F

RLS severity score is the IRLS, a previously validated scale in which 10 questions are each rated from 0 (no RLS symptoms) to 4 (maximum RLS symptoms) and then totaled (range, 0–40). RLS treatment is indicated as treatment at the time of death. There is no statistically significant difference in age ($U=11$; $P=0.14$) or sex ($P=0.2657$ by 2-tailed Fisher's exact test) between patients and controls. There was not a statistically significant correlation by Spearman's rho between RLS duration ($r_s=-0.72$; $P=0.17$) or severity ($r_s=-0.41$; $P=0.49$) and microvascular lesion load. IRLS indicates International Restless Legs Syndrome Severity Scale; and RLS, restless legs syndrome.

failure, coronary artery disease, cardiac valve disease, cardiac arrhythmia, cardiomegaly) between the RLS group (3/5 subjects) and the control group (8/9 subjects) group. By chi-square there was also no significant difference in other types of cardiovascular risk factors between the groups such as diabetes mellitus (1/5 versus 1/9), hypertension (2/5 versus 7/9), or hyperlipidemia (2/5 versus 6/9). In addition, chi-square did not show an imbalance of cancer between the RLS group (3/5 subjects) and the controls (3/9 subjects).

DISCUSSION

The major finding in this autopsy-based study was that in subjects without a previous history of stroke or any other neurologic disease, silent ischemic cerebrovascular disease and gliosis in the motor cortex were more common in RLS subjects than controls. These findings support previous magnetic resonance imaging findings of an increase in leukoarteriopathy in patients with RLS and its allied condition periodic limb movements in sleep compared with controls.^{3,4}

Additionally, T-cell infiltration was more common in subjects with RLS than in controls. These findings also support previous findings of a link between RLS and inflammation.⁵ The immunologic alteration in the current study suggests that cellular immunity may be altered in RLS, given the increased T-cell invasion (CD3) we found as opposed to humoral

or antibody immunity (CD19—B cells), the first line immunologic attack system (CD68—macrophages), or allergy/anaphylaxis (CD117—mast cells). On the other hand, these data are also compatible with the normal response of the brain to ischemia. At the lesion border in acutely ischemic areas, there is initially an invasion of polymorphonuclear leukocytes followed soon after by T lymphocytes, B lymphocytes, mast cells, and activation of microglia. Over the next few days there is an invasion of macrophages that eventually become the predominant inflammatory cell, but evidence also exists that T cells are the leukocytic lineage that may persist for the longest time after ischemia.^{14–19} Leukocytic activity during acute cerebral ischemia may contribute to the inflammatory process and to neuronal injury but may also later provide protective and reparative functions to the damaged area. Increased T-cell activation in our patients with RLS may simply be compatible with the increased microvascular lesion load in these subjects, and may represent a secondary adaptive neuroprotective response to prior ischemia. On the other hand, we cannot exclude the possibility that the T-cell presence represents an immune manifestation of RLS. One would assume that the microvascular lesions have been present for some time, long after one would expect macrophage and mast cell invasion. Macrophages and mast cells were present in both our patients with RLS and controls, but no difference was noted in the degree to which these cell types were present between the 2 groups. The

Table 2. Average Scores per Subject for Microvascular Injury, CD3, CD3 Microvascular Colocalization Score, CD19, CD68, CD117, GFAP, Amyloid Beta Peptide, Tau Protein in Subjects With RLS and Control Subjects

Patients With RLS	Microvascular Injury Score	CD3 Score	CD3 Microvascular Colocalization Score	CD19 Score	CD68 Score	CD117 Score	GFAP Score	Amyloid Beta-Peptide Score	Tau Protein Score
1	3.0	0.5	1.1	0	0.1	2.3	3.0	0	0
2	3.0	0.2	2.1	0	0.1	2.1	2.3	0	0
3	0.4	0.1	1.1	0	0.1	0.9	1.8	0	0
4	2.9	0.2	2.3	0	1.1	2.0	2.2	0	0
5	2.0	0.5	2.1	0	0.1	1.2	2.2	0	0
Avg	2.26	0.3	1.7	0	0.3	1.7	2.3	0	0
Control Subjects	Microvascular Injury Score	CD3 Score	CD3 Microvascular Colocalization Score	CD19 Score	CD68 Score	CD117 Score	GFAP Score	Beta-Peptide Score	Tau Protein Score
1	0	0	0.4	0	0.1	1.5	0	0	0
2	0.1	0	0.3	0	0.1	1.5	0	0	0
3	0.2	0	0.2	0	0.1	2.0	0.2	0	0
4	1.9	0.2	0.9	0	0.1	2.1	1.5	0	0
5	0	0.2	0.9	0	0.1	1.9	0.2	0	0
6	0.9	0	0.9	0	0.2	1.8	0.4	0	0
7	0.1	0	1.0	0	0.1	1.6	0	0	0
8	1.9	0	0.6	0	0.8	1.9	1.6	0	0
9	1.1	0	0.3	0	0.1	...	0.9	0	0
Avg	0.688	0.044	0.470	0	0.188	1.788	0.533	0	0

Ten areas of precentral gyrus of cortex (the motor cortex) were examined in a blinded fashion for each subject and rated 0 to 3+ for each entity of interest. The total of ratings for each of 10 areas per patient were added to get the sum score. Each number in the table is average, that is, the sum score divided by 10. GFAP indicates glial fibrillary acidic protein; and RLS, restless legs syndrome.

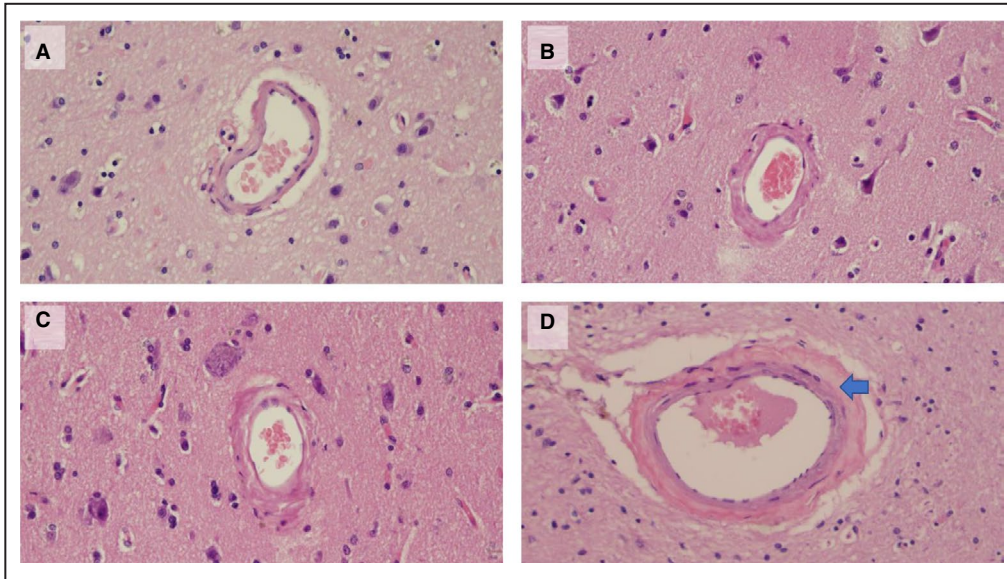


Figure 1. Examples of level of microvascular injury score in controls (A and B) and patients with restless legs syndrome (RLS) (C and D). A, Score 0; B, score 1; C, score 2; and D, score 3. There is marked increase in microvascular injury in patients with RLS characterized by intimal fibrosis of artery (arrow). Hematoxylin and eosin stain, ×200. Patients with RLS had significantly greater silent microvascular disease than controls ($P=0.015$). See details in Tables 2 and 3.

fact that T cells are more prominent in the subjects than the controls suggest that the microvascular lesions observed are chronic rather than acute since T cells persist in the context of vascular insult long after other cell types have diminished or disappeared.^{14–19} Other cell types may have diminished to the point that previous differences between subjects and controls, in the degree to which these cell types were present, are no longer detectable.

The major limitation to this study was the small sample size. Autopsy cases of subjects with RLS having little to no other neurologic abnormality clinically or neuropathologically is very rare. As our methodology excluded subjects with other neurologic insults, our sample size was of necessity small. Another limitation was the possibility that RLS treatment could cause the microvascular disease, but this is unlikely given a previous study showing that treatment ameliorates

Table 3. Statistical Comparison Between RLS and Control Group

	RLS		Control		Test Statistic	Hedges' g	Power, %
	M±SD	Mdn (QR)	M±SD	Mdn (QR)			
Microvascular injury score	2.3±1.1	2.9 (1)	0.7±0.8	0.2 (1.0)	$U=4, P=0.015$	1.6±0.6	77.2
CD3 score	0.3±0.2	0.2 (0.3)	0.0±0.1	0.0 (0.0)	$U=4, P=0.009$	2.0±0.6	90.4
CD3 MC score	1.7±0.6	2.1 (1)	0.6±0.3	0.6 (0.6)	$U=0, P=0.003$	2.4±0.7	97.8
CD19 score	0	0	0	0			
CD68 score	0.3±0.4	0.1 (0)	0.2±0.2	0.1 (0.0)	$U=22, P=1$	0.3±0.5	8.5
CD117 score	1.7±0.6	2.0 (0.9)	1.8±0.2	1.9 (0.4)	$U=18, P=0.825$	-0.2±0.5	6.9
GFAP score	2.3±0.4	2.2 (0.1)	0.5±0.6	0.2 (0.9)	$U=0, P=0.003$	3.1±0.8	99.9
Amyloid beta-peptide score	0	0	0	0			
Tau protein score	0	0	0	0			

Patients with RLS had significantly greater silent microvascular disease ($P=0.015$) and gliosis as demonstrated by GFAP ($P=0.003$). T cells, as demonstrated by CD3, were increased in RLS compared with controls ($P=0.009$) and tended to colocalize with microvascular disease ($P=0.003$). Other markers did not differ. The Hedges' g statistic indicates the effect size for the difference between means. Power=1-β error probability, for 2-tailed α. CD3 MC score indicates T cell (CD3) microvascular colocalization; GFAP, glial fibrillary acidic protein; M, mean; Mdn, median; QR, quartile range; and RLS, restless legs syndrome.

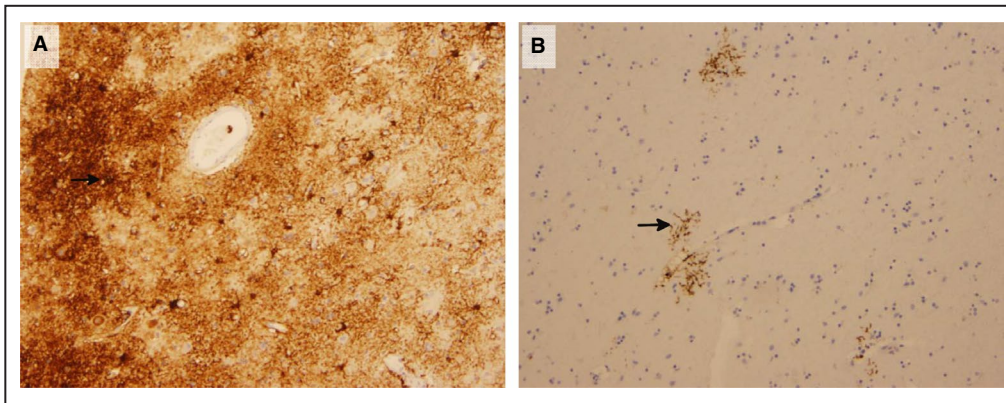


Figure 2. There is a marked increase in gliosis as demonstrated by GFAP (glial fibrillary acidic protein) in patients with restless legs syndrome (RLS) (A) compared with controls (B) ($P=0.003$). The arrow points to perivascular astrocytes (anti-GFAP stain, $\times 200$). See details in Tables 2 and 3.

the likelihood of developing future cardiovascular disease.²⁰

Considerations for future research into the immunopathogenesis of RLS include flow cytometry to look for differences in the T-cell subtypes between subjects with RLS and controls as well as RNA sequencing relevant to T-cell functioning.

CONCLUSIONS

Patients with RLS had statistically significantly more silent cerebral microvascular disease and gliosis than controls, compatible with previous magnetic resonance imaging studies and with studies showing a link between RLS/periodic limb movements in

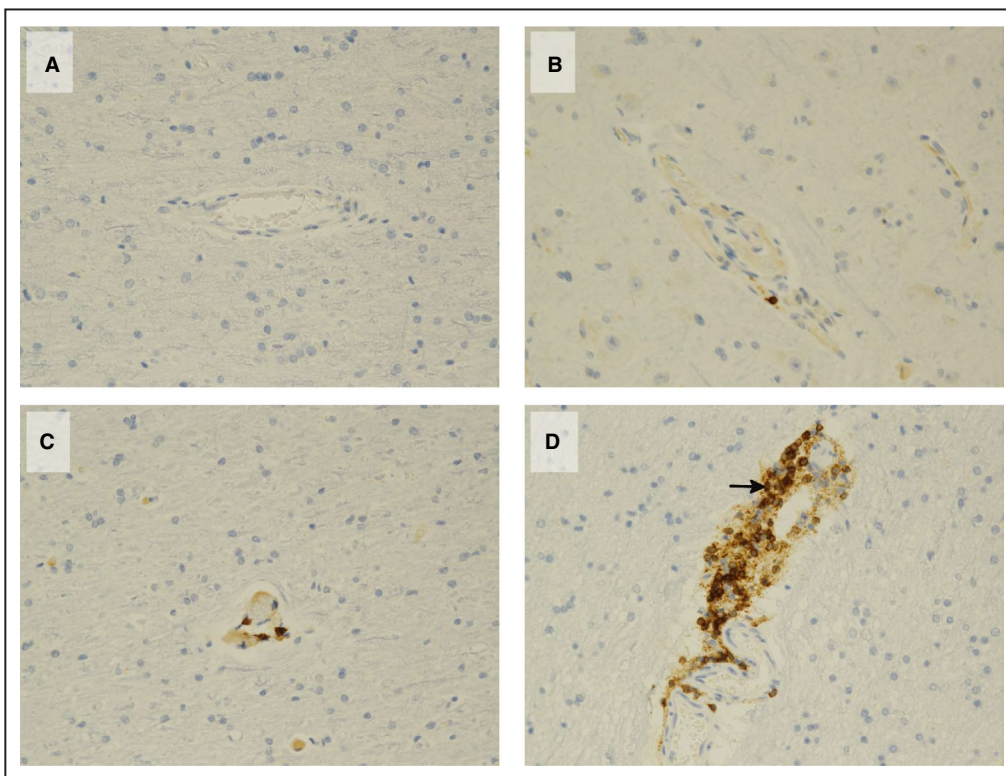


Figure 3. Examples of level of T-cell (CD3) staining score in controls (A and B) and patients with restless legs syndrome (RLS) (C and D).

A, Score 0; B, score 1; C, score 2; and D, score 3. There is marked increase in CD3 staining in patients with RLS (arrow). Anti-CD3 stain, $\times 200$. T cells, as demonstrated by CD3, were increased in RLS compared with controls ($P=0.009$) and tended to colocalize with microvascular disease ($P=0.003$). See details in Tables 2 and 3.

sleep and hypertension, clinical stroke, and cardiovascular disease. Upregulated T-cell levels in patients with RLS could be predisposing factors for development of microvascular disease or a secondary phenomenon.

ARTICLE INFORMATION

Received December 8, 2020; accepted April 1, 2021.

Affiliations

Sleep Division, Department of Neurology (A.S.W., K.B.); and Department of Pathology, Microbiology, and Immunology (P.P.), Vanderbilt University Medical Center, Nashville, TN; Department of Neurology, Mayo Clinic College of Medicine, Scottsdale, AZ (C.H.A.); Cerebrovascular Division, Department of Neurology, Rutgers Medical School, New Brunswick, NJ (M.M.); Specialists in Gastroenterology and Washington University, Saint Louis, MO (L.B.W.); and INSERM Neurocampus, Lyon, France (K.S.).

Acknowledgments

The authors thank Thomas G. Beach, MD, PhD, and Geidy E. Serrano, PhD, of Banner Sun Health Research Institute, Sun City, Arizona, for supplying the postmortem tissue for this study.

Sources of Funding

This study was funded by a Sleep Research in Neurology grant to Dr Walters from Vanderbilt University Medical Center. The authors acknowledge the Translational Pathology Shared Resource supported by NCI/NIH Cancer Center Support Grant 5P30 CA68485-19 and the Vanderbilt Mouse Metabolic Phenotyping Center Grant 2 U24 DK059637-16. The Shared Instrumentation Grant S10 OD023475-01A1 for the Leica Bond RX. This is not an industry-sponsored study.

Disclosures

Dr Walters reports recent research grant support from MundiPharma and Xenoport/Arbor, and grant support from the USA National Institutes of Health. Dr Adler received funding from the National Institute of Neurological Disorders and Stroke (U24 NS072026 National Brain and Tissue Resource for Parkinson's Disease and Related Disorders), the Arizona Biomedical Research Commission (contracts 4001, 0011, 05-901 and 1001 to the Arizona Parkinson's Disease Consortium), the Michael J. Fox Foundation for Parkinson's Research, and Mayo Clinic Foundation. Dr Weinstock is on the speaker's bureau for Salix Pharmaceuticals and the volunteer unpaid medical advisory board for MC Sciences. The remaining authors have no disclosures to report.

Supplementary Material

Data S1

REFERENCES

- Walters AS, Rye DB. Review of the relationship of restless legs syndrome/periodic limb movements in sleep to hypertension, heart disease and stroke. *Sleep*. 2009;32:589–597. DOI: 10.1093/sleep/32.5.589.
- Ferini-Strambi L, Walters AS, Sica D. The relationship among restless legs syndrome (Willis-Ekbom disease), hypertension, cardiovascular disease and cerebrovascular disease. *J Neurol*. 2014;261:1051–1068. DOI: 10.1007/s00415-013-7065-1.
- Boulos MI, Murray BJ, Muir RT, Gao F, Szilagyi GM, Huroy M, Kiss A, Walters AS, Black SE, Lim AS, et al. Periodic limb movements in sleep and white matter hyperintensities in first-ever minor stroke or high risk TIA. *Sleep*. 2017;40:zsw080. DOI: 10.1093/sleep/zsw080.
- Ferri R, Consentino FI, Moussouttas M, Lanuzza B, Arico D, Bagai K, Wang L, McLaughlin B, Walters AS. Silent cerebral microvascular ischemic disease in restless legs syndrome. *Sleep*. 2016;39:1371–1377. DOI: 10.5665/sleep.5966.
- Weinstock LB, Walters AS, Pauksakon P. Restless legs syndrome— theoretical roles of inflammatory and immune mechanisms: a review of the literature. *Sleep Med Rev*. 2012;16:341–354. DOI: 10.1016/j.smrv.2011.09.003.
- Weinstock LB, Walters AS, Mullin GE, Duntley SP. Celiac disease is associated with restless legs syndrome. *Dig Dis Sci*. 2010;55:1667–1673. DOI: 10.1007/s10620-009-0943-9.
- Weinstock LB, Bosworth BP, Scherl EJ, Li E, Iroku U, Munsell MA, Mullin GE, Walters AS. Crohn's disease is associated with restless legs syndrome. *Inflamm Bowel Dis*. 2010;16:275–279. DOI: 10.1002/ibd.20992.
- Weinstock LB, Walters AS. Restless legs syndrome is associated with irritable bowel syndrome and small intestinal bacterial overgrowth. *Sleep Med*. 2011;12:610–613. DOI: 10.1016/j.sleep.2011.03.007.
- Weinstock LB, Walters AS, Brook JB, Kaleem Z, Afrin LB, Molderings GJ. Restless legs syndrome is associated with mast cell activation syndrome. *J Clin Sleep Med*. 2020;16:401–408. DOI: 10.5664/jcsm.8216.
- Magalhães SC, Kaelin-Lang A, Sterr A, do Prado GF, Eckeli AL, Conforto AB. Transcranial magnetic stimulation for evaluation of motor cortical excitability in restless legs syndrome/Willis-Ekbom disease. *Sleep Med*. 2015;16:1265–1273. DOI: 10.1016/j.sleep.2015.03.018.
- Beach TG, Adler CH, Sue LI, Serrano G, Shill HA, Walker DG, Lue L, Rohrer AE, Dugger BN, Maarouf C, et al. Arizona study of aging and neurodegenerative disorders and brain and body donation program. *Neuropathology*. 2015;35:354–389. DOI: 10.1111/neup.12189.
- Walters AS, LeBrocq C, Dhar A, Hening W, Rosen R, Allen RP, Trenkwalder C; International Restless Legs Syndrome Study Group. Validation of the International Restless Legs Syndrome Study Group rating scale for restless legs syndrome. *Sleep Med*. 2003;4:121–132. DOI: 10.1016/s1389-9457(02)00258-7.
- Rubinstein S, Cornell RF, Du L, Concepcion B, Goodman S, Harrell S, Horst S, Lenihan D, Slosky D, Fogo A, et al. Novel pathologic scoring tools predict end-stage kidney disease in light chain (AL) amyloidosis. *Amyloid*. 2017;24:205–211. DOI: 10.1080/13506129.2017.1360272.
- Wite OW, Stoll G. Delayed and remote effects of focal cortical infarctions: secondary damage and reactive plasticity. *Adv Neurol*. 1997;73:203–207.
- Anrather J, Iadecola C. Inflammation and stroke: an overview. *Neurotherapeutics*. 2016;13:661–670. DOI: 10.1007/s13311-016-0483-x.
- Planas AM. Role of immune cells migrating to the ischemic brain. *Stroke*. 2018;49:2261–2267. DOI: 10.1161/STROKEAHA.118.021474.
- Parrrella E, Porrini V, Benarese M, Pizzi M. The role of mast cells in stroke. *Cells*. 2019;8:437. DOI: 10.3390/cells8050437.
- Gelderblom M, Leyboldt F, Steinbach K, Behrens D, Choe C-U, Siler DA, Arumugam TV, Orthey E, Gerloff C, Tolosa E, et al. Temporal and spatial dynamics of cerebral immune cell accumulation in stroke. *Stroke*. 2009;40:1849–1857. DOI: 10.1161/STROKEAHA.108.534503.
- Stubbe T, Ebner F, Richter D, Engel O, Klehmet J, Royl G, Meisel A, Nitsch R, Meisel C, Brandt C. Regulatory T cells accumulate and proliferate in the ischemic hemisphere for up to 30 days after MCAO. *J Cereb Blood Flow Metab*. 2013;33:37–47. DOI: 10.1038/jcbfm.2012.128.
- Gao X, Ba DM, Bagai K, Liu G, Ma C, Walters AS. Treating restless legs syndrome was associated with low risk of cardiovascular disease: a cohort study with 3.4 years of follow up. *J Am Heart Assoc*. 2021;10:e018674. DOI: 10.1161/JAHA.120.018674.

SUPPLEMENTAL MATERIAL

Data S1.

Supplemental Methods

Tissue processing and Immunohistochemistry

Light microscopy

Briefly, brain tissues were fixed in buffered formaldehyde, dehydrated in graded alcohols, and embedded in paraffin using standard techniques. Serial 5 μm -thick sections were cut and stained with hematoxylin and eosin reagent.

Immunohistochemical studies

For CD3 detection, 5 μm -thick paraffin-embedded sections were cut, deparaffinized, rehydrated. Slides were placed on the Leica Bond Max IHC stainer. All steps besides dehydration, clearing and coverslipping are performed on the Bond Max. Slides were deparaffinized. Heat induced antigen retrieval was performed on the Bond Max using their Epitope Retrieval 2 solution for 20 minutes. Slides were incubated with Ready-To-Use anti-CD3 (Cat# MM150-10, StatLab McKinney, TX) for one hour. The Bond Polymer Refine system was used for visualization. Slides were the dehydrated, cleared and coverslipped.

For CD19, CD68, and CD117 detection, 5 μm -thick paraffin-embedded sections were cut, deparaffinized, rehydrated. Slides were placed on the Leica Bond Max IHC stainer. All steps besides dehydration, clearing and coverslipping were performed on the Bond

Max. Slides are deparaffinized. Heat induced antigen retrieval was performed on the Bond Max using their Epitope Retrieval 1 solution for 20 minutes. Slides were incubated with Ready-To-Use anti-CD19 (PA0843, Leica Biosystems, Newcastle, Tyne, NE, UK), Ready-To-Use anti-CD68 (MM36-10, StatLab, McKinney, TX), and Ready-To-Use anti-CD117 (PA0007, Leica Biosystems, Newcastle, Tyne, NE, UK) for 15minutes. The Bond Polymer Refine detection system was used for visualization. Slides were the dehydrated, cleared and coverslipped.

For GFAP detection, 5 µm-thick paraffin-embedded sections were cut, deparaffinized, rehydrated. Slides were placed on the Leica Bond Max IHC stainer. All steps besides dehydration, clearing and coverslipping are performed on the Bond Max. Slides were deparaffinized. Heat induced antigen retrieval was performed on the Bond Max using their Epitope Retrieval 2 solution for 5 minutes. Slides were incubated with Ready-To-Use anti-GFAP (PA0026, Leica Biosystems, Newcastle, Tyne, NE, UK) for 15minutes. The Bond Polymer Refine detection system was used for visualization. Slides were the dehydrated, cleared and coverslipped.

Normal lymphoid tissue was used as a positive control for CD3, CD19, and CD68.

Normal gastric tissue was used as a positive control for CD117. Brain tissue with reactive gliosis was used as a positive control for GFAP. Negative controls were done omitting primary antibody.