



HAL
open science

Early shape divergence of developmental trajectories in the jaw of galeomorph sharks

Faviel A López-Romero, Fidji Berio, Daniel Abed-Navandi, Jürgen Kriwet

► To cite this version:

Faviel A López-Romero, Fidji Berio, Daniel Abed-Navandi, Jürgen Kriwet. Early shape divergence of developmental trajectories in the jaw of galeomorph sharks. *Frontiers in Zoology*, 2022, 19, 10.1186/s12983-022-00452-1 . hal-04894891

HAL Id: hal-04894891

<https://hal.science/hal-04894891v1>

Submitted on 17 Jan 2025

HAL is a multi-disciplinary open access archive for the deposit and dissemination of scientific research documents, whether they are published or not. The documents may come from teaching and research institutions in France or abroad, or from public or private research centers.

L'archive ouverte pluridisciplinaire **HAL**, est destinée au dépôt et à la diffusion de documents scientifiques de niveau recherche, publiés ou non, émanant des établissements d'enseignement et de recherche français ou étrangers, des laboratoires publics ou privés.




Distributed under a Creative Commons Attribution 4.0 International License

RESEARCH

Open Access



Early shape divergence of developmental trajectories in the jaw of galeomorph sharks

Faviel A. López-Romero^{1*} , Fidji Berio^{2,3}, Daniel Abed-Navandi⁴ and Jürgen Kriwet¹

Abstract

Background: The onset of morphological differences between related groups can be tracked at early stages during embryological development. This is expressed in functional traits that start with minor variations, but eventually diverge to defined specific morphologies. Several processes during this period, like proliferation, remodelling, and apoptosis for instance, can account for the variability observed between related groups. Morphological divergence through development is often associated with the hourglass model, in which early stages display higher variability and reach a conserved point with reduced variability from which divergence occurs again to the final phenotype.

Results: Here we explored the patterns of developmental shape changes in the lower jaw of two shark species, the bamboo shark (*Chiloscyllium punctatum*) and the catshark (*Scyliorhinus canicula*). These two species present marked differences in their foraging behaviour, which is reflected in their adult jaw morphology. By tracing the developmental sequence of the cartilage condensation, we identified the onset of cartilage for both species at around stage 31. Other structures that developed later without a noticeable anlage were the labial cartilages, which appear at around stage 33. We observed that the lower jaw displays striking differences in shape from the earliest moments, without any overlap in shape through the compared stages.

Conclusions: The differences observed are also reflected in the functional variation in feeding mechanism between both species. Likewise, the trajectory analysis shows that the main differences are in the magnitude of the shape change through time. Both species follow a unique trajectory, which is explained by the timing between stages.

Keywords: Jaw development, Geometric morphometrics, Sharks, Phenotypic trajectory, Elasmobranchs, Catshark, Bamboo shark

Introduction

From an evolutionary perspective, changes in morphology through development are of utmost importance in shaping diversity, either by allowing variation to be displayed or by constraining the possible developmental paths [1–4]. Evidence from molecular and morphological data simultaneously support and question the assumption of common points in development of all vertebrates at which the variation is conserved (i.e., phylotypic stage

[5–9]. Undoubtedly, specific changes at various levels during development can influence and determine the specific morphology and variation [9–12]. Nevertheless, the variation is also constrained within limits that might be imposed to counteract other deleterious effects [9, 11].

Phenotypic divergence in ontogeny between species is a highly dynamic process throughout their comparable stages. In terms of shape changes over time, it is possible to observe distinct patterns: (i) similar trajectories with equal magnitude, (ii) overlapping trajectories differing in magnitude, (iii) parallel trajectories with equal magnitude, or (iv) different starting points that converge over time [13, 14]. The differences in the trajectories can be used to establish whether common moments

*Correspondence: faviel.l.r@gmail.com

¹ Department of Palaeontology, University of Vienna, Althanstraße 14, Geocenter, 1090 Vienna, Austria

Full list of author information is available at the end of the article

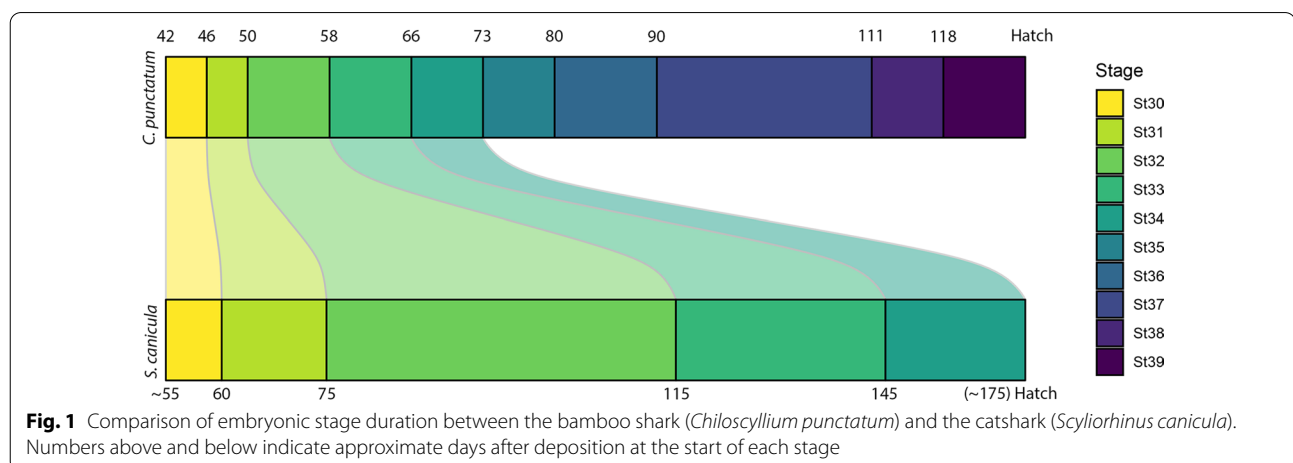


of convergence exist during ontogeny, and if eventual divergences in shape arise from a common point. For instance, the external morphology of embryos across different amniote classes displays a reduced period of constrained variation from which divergence towards the specific morphologies of the different groups arises [9]. Some of the changes also affect the internal morphology, as developmental mechanisms are acting to determine the final phenotypic outcome. Since some embryonic developmental traits might be regarded as recent adaptive modifications, the selection of traits to be compared among species should consider such biases [15]. An ubiquitous shared trait among jawed vertebrates is the Meckel's cartilage, whose origin has been suggested either as modification of the first pharyngeal arch of jawless fish, or, conversely, to represent a novelty [16–22]. The developmental function, and eventual fate of the Meckel's cartilage among vertebrates varies, with some groups retaining it as a functional unit (lower jaw), while in others it represents a transient structure later replaced by dermal bone [23].

Among elasmobranchs, nearly 300 species have been described within the Galeomorph sharks [24, 25], comprising four orders (Heterodontiformes, Orectolobiformes, Lamniformes, and Carcharhiniformes). Within the Orectolobiformes (carpet sharks), the family Hemiscylliidae has two genera: *Hemiscyllium* and *Chiloscyllium*. This family is sister to the nurse sharks (Ginglymostomatidae) and whale shark (Rhincodontidae) [23, 26]. Several families among Orectolobiformes display a particular feeding mechanism of suction feeding, as seen in wobbegongs and notably among the bamboo sharks (*Chiloscyllium* spp.) [27–29], but also filter feeding in the whale shark, for instance [30]. On the other hand, Carcharhiniformes (ground sharks) comprise the most speciose group of galeomorph sharks [25]. Among

Carcharhiniformes, the catsharks represent a group with still unresolved phylogenetic relationships [31, 32], however molecular and morphological phylogenetic analyses indicate the family Scyliorhinidae is possibly the basal member within Carcharhiniformes [33]. The family Scyliorhinidae is one of the most speciose groups within Carcharhiniformes with nearly 160 species [24, 25, 34]. In particular, *Scyliorhinus canicula* (hereafter referred to as catshark), is considered a model species in experimental biology [35]. Recently, the orectolobiform bamboo shark has been used in many developmental [36–38], and bio-mechanical studies [39, 40]. Both species have similar trophic ecologies, although with noticeable differences in their behaviours [35, 41]. Some of these adaptations are expressed in the jaw suspension, which highlights the specialisation of the bamboo shark as suction feeder [41, 42], while the catshark performs mostly grasping assisted with suction prey capture (Pers. Obs. F.B.). Furthermore, the shape difference of the mandibular apparatus between both species is evident in their adult forms [42, 43]. A major difference is also expressed in their early development with the bamboo shark developing at a faster rate than the catshark [37, 44]. Additional developmental stages were described for the bamboo shark, while the later stages in catshark usually last longer, resulting ultimately in the bamboo shark hatching several weeks earlier than the catshark (Fig. 1). However, all comparisons have been based on external features only up to date, which might hinder tracing the development of other skeletal features.

The goal of the present study was to quantify the changes in the lower jaw shape in the bamboo shark and catshark throughout their embryological development to identify similarities and dissimilarities in the timing of trait development. To achieve this, we present here descriptions of the overall developmental sequence of the



cartilage formation from the moment of lower jaw condensation at stage 31, until stage 34. We further analysed the shape changes and differences in shape developmental sequences with geometric morphometrics, and with a phenotypic trajectory analysis, respectively. The assessment of shape differences of the different developmental stages highlights the specific morphology of both sharks originating before the cartilage condensation.

Materials and methods

Shark embryos

Bamboo shark embryos were obtained from the “Haus des Meeres—Aqua Terra Zoo” in Vienna (Austria). Catshark embryos of different developmental stages were kindly provided by the “Ozeaneum Aquarium” in Stralsund (Germany), the “Musée Océanographique de Monaco” in Monaco (principauté de Monaco), and the University of Montpellier (France). The embryos were fixed in 4% formalin (bamboo sharks) or 4% paraformaldehyde in phosphate buffered saline (PBS) (catsharks) overnight. The fixation was rinsed, and the bamboo shark embryos were transferred through an Ethanol/100 mM Tris pH 7.5 series (25%, 50% and 80%, with 25 mM MgCl₂), while the catsharks were transferred directly to Ethanol 100%. To estimate the developmental stage, the external morphology was compared with available defined stage tables for each species [33, 40].

Alcian blue staining

The fixed embryos subsequently were processed in acid-free alcian blue staining following Walker and Kimmel [45] with slight modifications. Prior to staining, the bamboo shark embryos were treated with acetone (100%) to degrease the tissue, while a couple of catsharks at stage 31 were stained with alcian blue/acetic acid/ethanol (Ethanol 80%/ Acetic acid 20%) prior to degrease treatment with trypsin. After staining, the bamboo shark embryos were rehydrated through an Ethanol series up to 25%/100 mM Tris pH 7.5, and for the catsharks in a series of Ethanol 25%/PBS. Afterwards, the specimens were bleached in H₂O₂ 3%/KOH 0.5% to remove pigments. Finally, muscles were macerated in 0.5% trypsin/35% sodium borate. The processed embryos were stored in 75% glycerol/0.1% KOH for further studies. All specimens were photographed in ventral view with a Zeiss Discovery V20 stereomicroscope equipped with a Zeiss AxioCam 506 digital camera.

Landmark and shape analysis

We analyzed a total of 27 embryos of both species, 11 embryos of *C. punctatum* (Stage 31: 1; Stage 32: 3; Stage 33: 3; Stage 34: 4) and 16 embryos of *S. canicula* (Stage 31: 5; Stage 32: 4; Stage 33: 5; Stage 34: 2), ranging from

stages 31 to 34. A configuration of landmark coordinates was defined to capture the overall shape of the right Meckel’s cartilage resulting in four landmarks and 21 semilandmarks (Fig. 2), which were digitised using the software tpsDIG2 v.2.18 [46]. The coordinates were then subjected to a generalised Procrustes analysis (GPA) to remove differences in size, position, and orientation [47]. The GPA was performed allowing the semilandmarks to slide to minimise the bending energy [48]. The aligned coordinates were then used for a principal component analysis (PCA) to assess the shape variation for all specimens. The shape variations from the PCA were interpreted by using thin-plate spline deformation grids, which allow observing the shape changes from the mean along the main axes of variation. To determine the number of PCs to be analysed, we used the function get-MeaningfulPCs implemented in the Morpho R package [49]. With this method only the first two PCs (accounting for 83.2% of the variance) were deemed meaningful. Another PCA was performed with the shape variables and considering the centroid size to construct a size-shape space [13]. To assess the differences in the mean shapes, while accounting for the size as a covariate and the developmental stage and their taxonomic assignment, we implemented an ANOVA using residuals permutation (999 permutations). Additionally, a phenotypic trajectory analysis was performed on the shape coordinates to estimate changes between species in the path distances, their orientation (measured as angles differences) and the shape changes as the differences in Procrustes distances [50]. The trajectory points were defined by the developmental stages, the earliest ones (stages 31 and 32) were pooled together because of the reduced number of embryos available for those stages, while the remaining (stages 33 and 34) were considered separately.

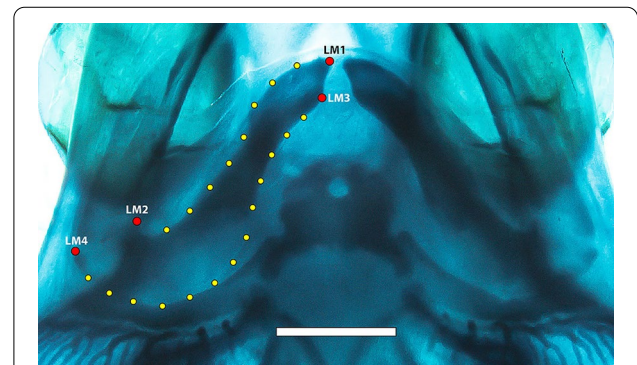


Fig. 2 Landmark and semilandmarks coordinates captured on the jaw of *Scyliorhinus canicula* (Stage 33). Red dots represent landmarks, yellow dots represent the semi landmarks to capture the curve shape of the lower jaw. Scale bar = 2 mm

All analyses were performed in the R package geomorph (ver. 4.0.0) [51].

Results

Development of the mandibular apparatus

The earliest stage at which any cartilage condensation was possible to detect by alcian blue staining was stage 31 (Fig. 3). All the descriptions are in ventral view.

Stage 31

Bamboo shark At this stage, the overall shape of the oral opening is beyond the diamond shape, which occurs at around stage 27 in both species [37, 44], with the rostrum protruding and the mouth commissures pointing backwards. The Meckel's cartilage in the bamboo shark is slender and very acute at the symphysis, while the palatoquadrate is barely starting to condense (Fig. 3). The ceratohyal is formed and articulates medially to the basihyal.

Catshark In the catshark, the Meckel's cartilage already is more developed and is "S"-shaped in ventral view, with a broader posterior portion, while the symphysis is slender. The palatoquadrate is already formed and the joints to the Meckel's cartilage are already present. The ceratohyal also is present and the basihyal has a circular shape.

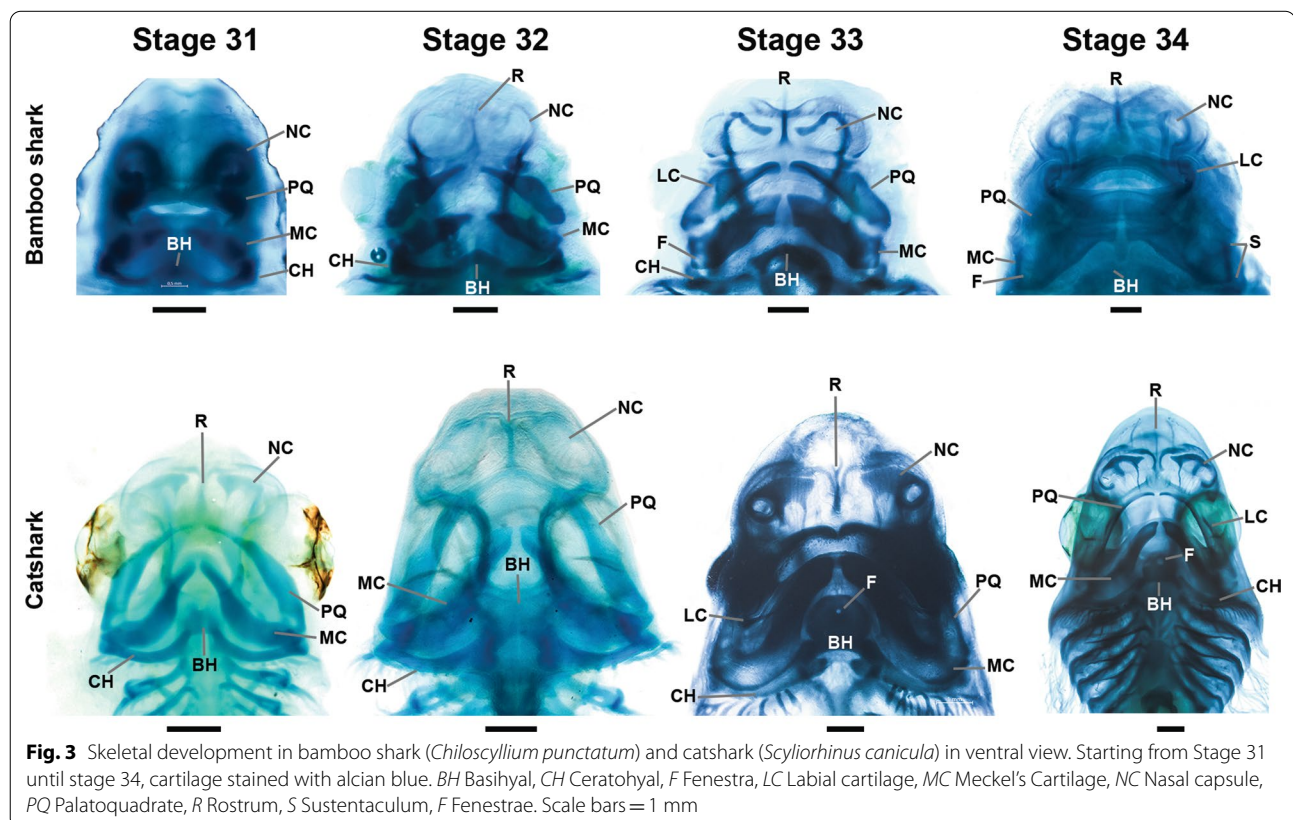
Stage 32

Bamboo shark The Meckel's cartilage of the bamboo shark becomes more rectangular in shape (Fig. 3), with the anterior portion of the symphysis displaying a sharp end. The palatoquadrate is more evident with a slender symphysis, and the articulation with the lower jaw becomes more prominent. Additionally, a slight condensation of the rostrum is noticeable. The ceratohyal at this stage is more condensed and it becomes more straightened, while the basihyal starts to take a triangular shape.

Catshark The lower jaws are protruding more anteriorly in the catshark, and the symphysis becomes broader antero-posteriorly. Likewise, the palatoquadrate protrudes anteriorly and the rostral cartilage is present. The basihyal at this stage becomes broader compared to the previous stage.

Stage 33

Bamboo shark At this stage, the lower jaw becomes more rectangular in shape with a broader symphysis, the posterior part also becomes broader and appears to bend outward and two fenestrae are noticeable in this region, which later are completely closed in adults. The left and right palatoquadrates get closer together medially. Some



condensations near the mouth opening are observable at this stage that ultimately will form the labial cartilages. The rostral bar also is now more evident.

Catshark During this stage, the catshark displays a broadening of the posterior part of the Meckel’s cartilage, also the joints to the palatoquadrate become more firmly attached and the symphyseal gap is narrower medially. In the palatoquadrates the symphyseal gap is narrower as well, and strikingly some teeth start to develop both in the palatoquadrate and Meckel’s cartilage. The labial cartilages start to develop as well. The rostrum is now more protruded. The ceratohyal starts to take its position posterior to the Meckel’s cartilage and the basihyal has now a disc shape with a fenestra that is slightly positioned anteriorly.

Stage 34

This is the last stage at which we compared both species (Fig. 3), since it is nearly at the hatching time for the catshark, while the bamboo shark still goes through stage 39 in a shorter time span. It is interesting to note that the developmental stages, which are defined by the appearance of specific morphological traits (e.g., yolk reduction, pigment appearance, reduction of median fin folds, gills

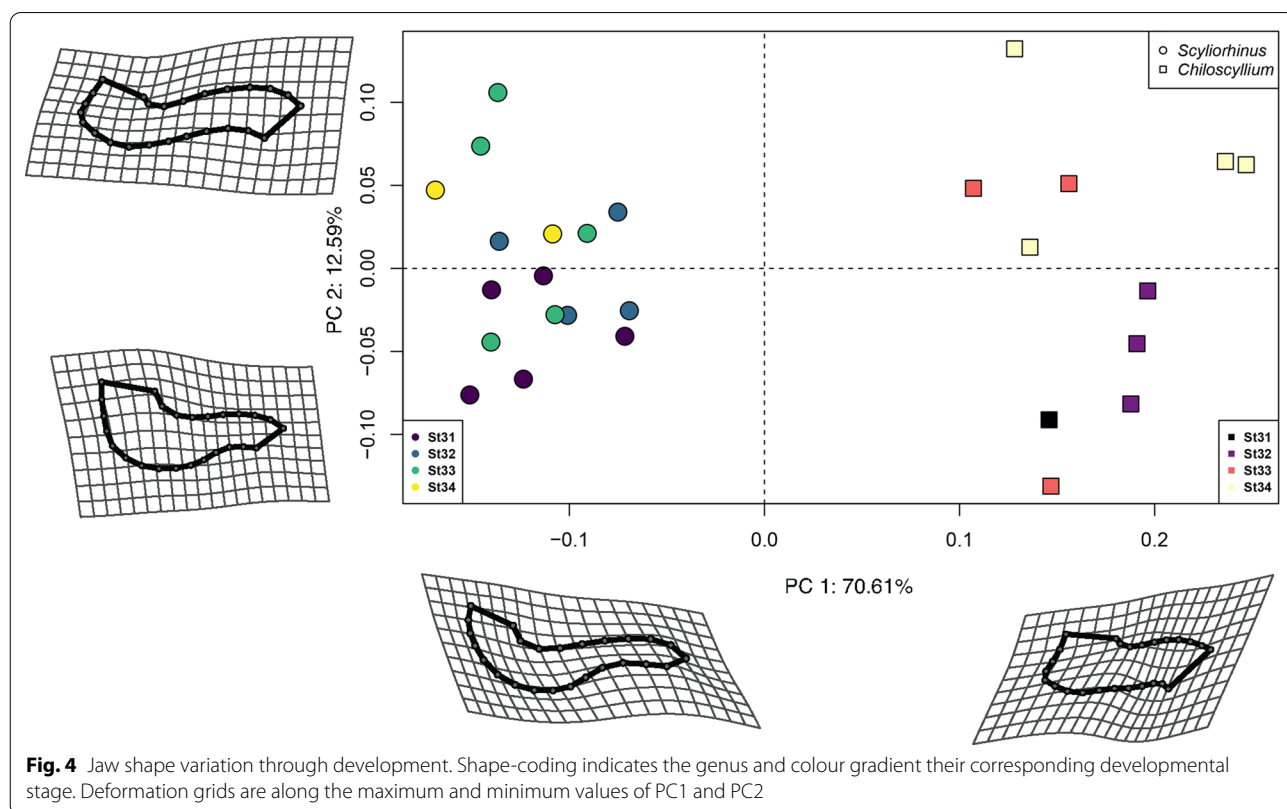
internalization), are lasting longer in the catsharks than in the bamboo sharks [37].

Bamboo shark At this stage, the symphysis is almost closed (both antimeres meet along the symphysis) in the bamboo shark and the Meckel’s cartilage is now even more rectangular in shape. The posterior part is also now showing sharp angles and the fenestrae perforating the wing-like posterior flanges are still present, making a marked groove forming the sustentaculum. The articulations to the palatoquadrate are now firmly established, and development of teeth also is evident. All three sections (dorsal, medial, and ventral) of the labial cartilages are completely developed.

Catshark In the catshark, the jaws appear now more elongated, with the palatoquadrate extending further to its final dorsal position. Both antimeres of Meckel’s cartilages and palatoquadrates meet medially. The labial cartilages are also evident and finally the basihyal keeps its rounded shape up to this stage.

Shape variation of the developing lower jaws

The PCA remarkably shows both species completely separated in the morphospace occupations during each of the developmental stages analysed (Fig. 4). Along the



first principal component PC1 (70.61% of the variance) the separation of both species is easily noticeable. In the positive scores, all bamboo sharks are grouped, while the catshark specimens are arranged along the negative scores. Along PC2 (12.59% of the variance) the pattern is less clear, in the negative scores the extreme shapes of the bamboo sharks at early stages are found, while most later stages specimens of the catsharks are in the positive scores. The main differences in shape along PC1 and PC2 are depicted by the deformation grids, which illustrate the marked rectangular shape of the Meckel's cartilage and deep symphysis in the bamboo shark. In the catshark, the shape changes illustrate that the jaws are more elongated and posteriorly curved in all analyzed stages compared to the bamboo shark. To explore shape changes related to size as the embryos continue developing, the Procrustes coordinates were regressed on the centroid size to obtain a size-shape PCA plot (Fig. 5). Under this scheme, PC1 (82.33% of the variance) shows a more marked separation of the embryos according to their developing stage. In some cases, there are outliers, which correspond to earlier stages plotting ahead of the defined last stage. The PC2 (13.32% of the variance) completely separates both species, with the catshark in the

positive scores and the bamboo shark exclusively in the negative scores. The main changes in shape along PC1 for both species are related to the relatively straighter jaws in the negative scores, and subsequently the protrusion of the jaws with a deeper symphysis at the later stages.

To further explore the shape changes during ontogeny between both species, a Procrustes ANOVA was performed with size, genus, and developmental stage as factors. Interestingly, the simplest model of shape and size as covariant is not significant for the shape variation ($R^2=0.08224$, $F=2.2404$, $Z=1.2217$, $p=0.122$). Likewise, the ANOVA for the interaction of size and stage is not significant ($R^2=0.10782$, $F=1.1271$, $Z=0.35357$, $p=0.369$). Most of the differences are evident when genus is considered in the model. In this case, most of the variance is explained by genus as a factor, while its interaction with size also is significant (Genus: $R^2=0.66541$, $F=49.719$, $Z=4.0072$, $p=0.001$; $\log(\text{Csize}) \times \text{Genus}$: $R^2=0.03014$, $F=2.9352$, $Z=2.3831$, $p=0.008$). A linear regression of the Procrustes coordinates on the logarithm of centroid size shows differences in the shape of the smaller sized bamboo shark, and as the embryos grow, both species follow a unique slope ($r=0.3864$, $p=0.014$) (Fig. 6). Finally, the shape

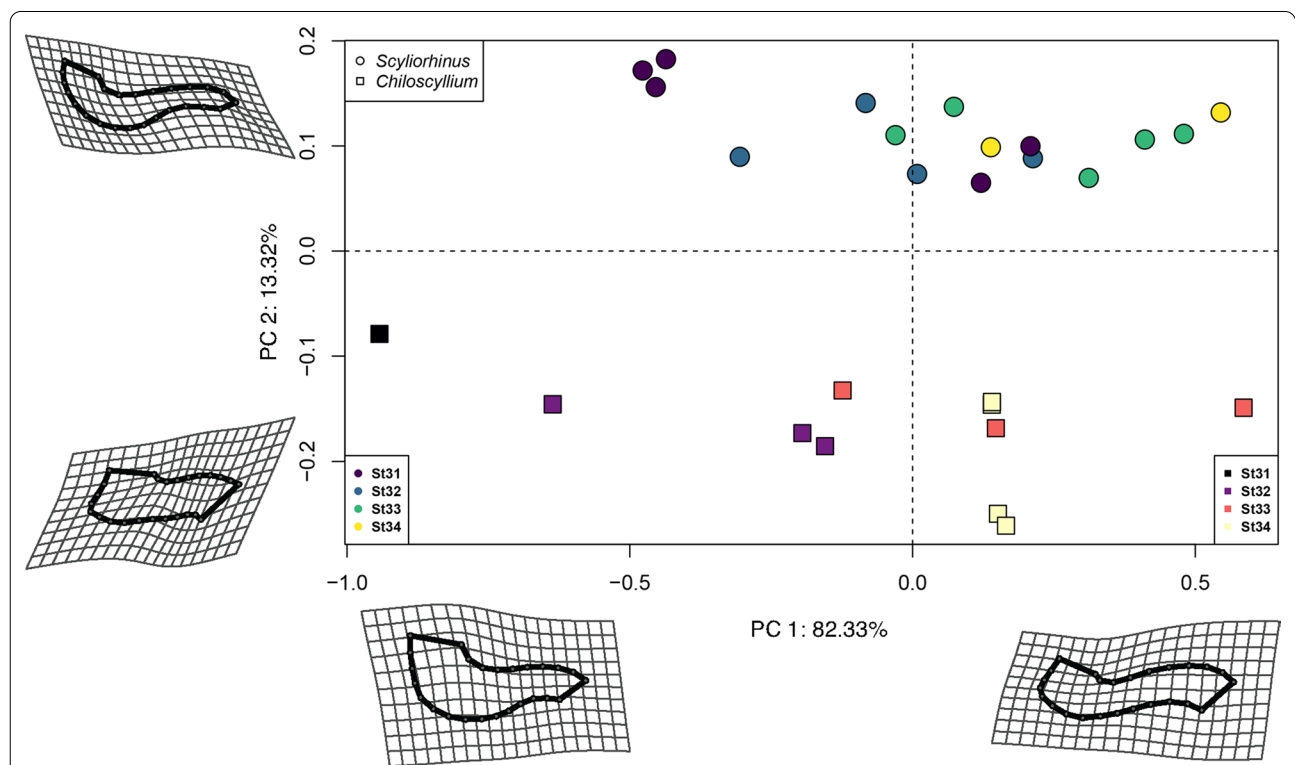
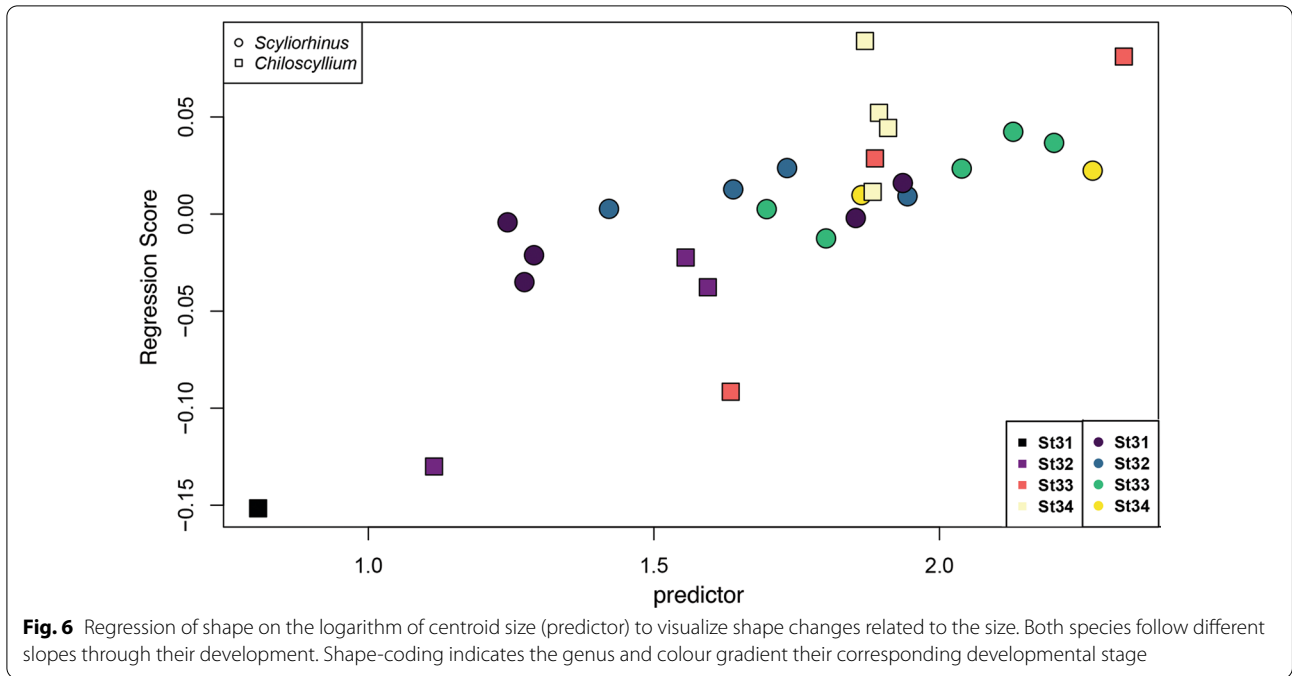
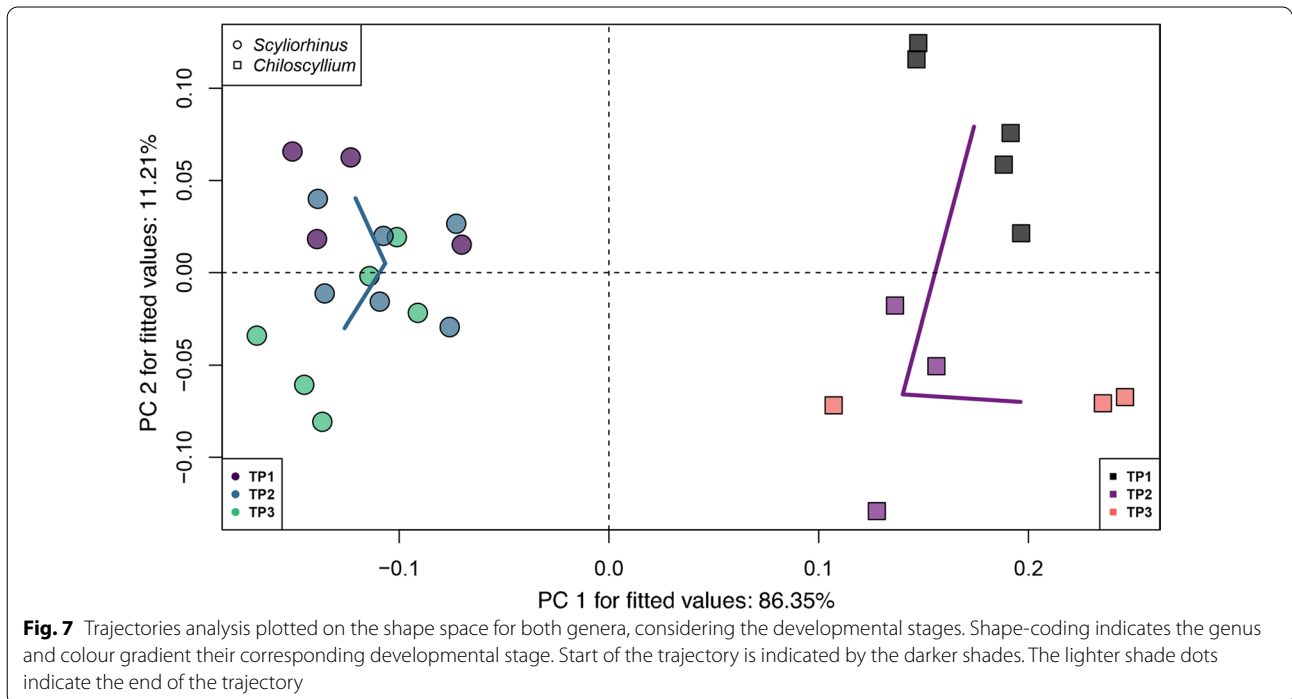


Fig. 5 Principal component analysis considering the centroid size regression. Larger embryos are separated along the PC1 at the maximum values, while at PC2 the separation is mainly related by differences from each genus. Shape-coding indicates the genus and colour gradient their corresponding developmental stage



variation between both species was assessed by a phenotypic trajectories analysis to compare the differences in path distance, angles, and correlation of shape differences. The analysis shows that the main differences

are in the magnitude distance between trajectories ($Z=2.25517$, $p=0.007$). As evident by the PCA of the trajectories analysis (Fig. 7), both species present differences from the earliest stages in development, with no overlap during any analyzed developmental stage.



Discussion

The ontogenetic shape change comparison between species can occur at various points at comparable stages, with outcomes that suggest shared or divergent trajectories [13, 14, 50]. Overall, our results show a pattern of completely different starting shapes, followed by differences in magnitude of shape change in the trajectories as the development progresses. This suggests that underlying differences between both species are strongly established probably from very early in their development. By observing the embryonic development among elasmobranchs, the external morphology is similar up to specific stages, when divergent features (e.g., pectoral fin expansion in batoids) become more noticeable [37, 44, 52–55]. Differences in developmental timing and trajectories contribute to establish the marked morphological features of the lower jaw in the bamboo shark and catshark. A clear difference among both species is the time span between developmental stages until hatching. Development proceeds in the bamboo shark faster than in the catshark, however, from stage 9 in both species the duration between stages is not so different (ca. 1–2 days), until stage 25 in the catshark when the duration between stages becomes longer compared to the bamboo shark [37]. Meanwhile, the time elapsed between stages 33 and 34 in the catshark for instance, is about four weeks, whereas it is about 8 days in the bamboo shark [44]. Further comparisons beyond stage 34 might be difficult, since in the bamboo shark additional stages are described which does not match the catshark staging table [37]. Another clear difference between both species is the rearing temperature, the catshark in laboratory conditions is reared at 16°C, whereas the bamboo shark is kept at 25 °C [37, 44]. Although both species face seasonal temperature changes during development in nature, it has been shown that increased rearing temperature directly affects growth rate and survival [56, 57]. The variability in the developmental time among elasmobranchs is noteworthy as some of the species, like the frilled shark, are estimated to have gestation periods between one up to 3.5 years [58].

The developmental sequence of the mandibular arch in the bamboo shark and catshark highlights adaptive differences for prey capture that already are fixed early during development. The jaws, however, not only reflect adaptations in the feeding apparatus, but also other properties correlated to their body plan as in batoids [53]. In other galeomorph groups for instance, different regions of the lower jaw display differences in the extent of mineralization and physical properties related to crushing hard prey during ontogeny [59–61]. Regarding the diet, the bamboo shark species we studied (*Chiloscyllium punctatum*) is considered a generalist with a wide prey spectrum,

ranging from fish to crustaceans, and annelids [62]. Prey capture is accomplished by several adaptations in their jaw musculature, and even special modifications in the dentition, as seen in *C. plagiosum* [42]. A noticeable trait difference between *C. punctatum* and *S. canicula* is the sharp bending of the posterior margin of the lower jaw, which forms the sustentaculum in bamboo shark species, but which is not so prominent in the catshark [42, 43]. This is probably a consequence of the specialisation for suction feeding, which is characteristic for Orectolobiformes [27, 28]. Nevertheless, suction feeding also was reported in some catshark species, such as *S. retifer* [63]. To date, the feeding biomechanics of only a single other scyliorhinid, *Cephaloscyllium ventriosum*, has been studied, which was described as a ram feeder [64]. *S. canicula* is often considered a generalist feeder on a wide array of prey items as well [65], although a specific behavior of prey capture has not yet been recorded.

Among amniotes, the craniofacial shape development shows reduced variation early in development, at least in the external morphology, while selecting against morphospace exploration by induced disruptions [9]. In tetrapods like duck, chicken, and quail, the two more closely related (chicken and quail) display a shared static allometry, while the duck shows a divergent pattern of allometry, which accounts for some of the differences among the species [66]. Interestingly, in Smith and collaborators' study [66], the developmental trajectories between the three bird species reveal that variation at earlier stages is also present before the stages they sampled. The differences in size and shape during development of the Meckel's cartilage in birds were demonstrated to be under control of the neural crest mesenchyme [67], which impacts the timing of developmental events. Another important feature that accounts for the differences in size is the proliferation of neural crest cells, in which the time between developmental stages of the duck and quail can account for the differences in the size between the species [68]. Additionally, it was observed that mechanical stress during development underlies the morphology of the mandibular apparatus in birds [69]. Meanwhile, in bony fish, gene expression for cartilage formation and re-modelling of the extracellular matrix are mainly responsible for the changes in jaw shape during the ontogeny of morphotypes of the arctic charr *Salvelinus alpinus* [70, 71]. Additionally, the changes in the development rate of the lower jaw were also previously associated with innovations in belonoid fishes [72]. The modulation of Wnt signaling also plays an important role in the development of specialised morphologies in the jaws and craniofacial features in cichlids, while following a conserved ontogenetic trajectory [73, 74].

Other factors like the frequency at which buccal pumping occurs in bony fish is a determinant of the jaw morphology as well [75]. Several studies have documented the onset of morphological specialisations in the skeleton of elasmobranchs during embryological development (e.g., [76–80]). Specifically, regarding cartilage development, the mesenchymal condensations are differentiated into cartilage at stage 31 in catshark [81]. At this stage, cartilage is also detected in our study in bamboo shark. This marks a common moment in mandibular development for both species, which also is shared with another elasmobranch, the little skate *Leucoraja erinacea* [76], and holocephalans [82]. Nevertheless, the shape of the mandibular arch already differs even at this common moment of cartilage condensation between the species we studied, as well as in *Leucoraja* and *Callorhinchus*. We hypothesize that the onset of the differences in shape takes place before cartilage condensation, which is not possible to detect with alcian blue staining. Thus, the spatiotemporal changes in lower jaw morphology are the result of heterotopic and heterochronic changes.

Conclusions

Our results highlight the importance of the timing in developmental processes among elasmobranchs, and the divergence in shape, which occur even before cartilage differentiation, as a contribution to mandibular arch shape diversity. A period of early shape convergence was not detected by comparing the cartilage development between the species we studied. This pattern can also be seen in other groups such as birds, where despite similarities in trajectories, variation at earlier stages has an evolutionary significance. Among elasmobranchs, investigating other aspects during development can help in understanding trait evolution, particularly in relation to the origin of their body plans.

Acknowledgements

We are thankful to the staff at Haus des Meeres Aqua Terra Zoo, Vienna, Austria; Ozeaneum Aquarium, Stralsund, Germany, the Musée Océanographique de Monaco, principauté de Monaco; and the University of Montpellier, France. Dr. John J. Cawley (University of Vienna) for kindly proofreading the English manuscript.

Authors' contributions

F.A.L-R. and J.K. conceived the project. F.A.L-R. and F.B. processed the samples for staining. F.B. and D.A-N acquired and provided samples. F.A.L-R. and J.K. drafted the manuscript. F.A.L-R. performed data analysis. All authors contributed equally to the interpretation of results. All authors read and approved the final manuscript.

Funding

This research was funded in part, by the Austrian Science Fund (FWF) [P33820] to J.K. For the purpose of open access, the author has applied a CC BY public copyright license to any Author Accepted Manuscript version arising from

this submission. F.A.L-R is supported by the PhD Completion Grant from the Vienna Doctoral School of Ecology and Evolution.

Availability of data and materials

Raw landmark coordinates, classifiers variables, and code are available from the corresponding author on reasonable request.

Declarations

Ethics approval and consent to participate

According to the Directive 2010/63/EU, the shark embryos are not considered in regulatory framework for animal experimentation.

Consent for publication

Not applicable.

Competing interests

The authors declare that they have no competing interests.

Author details

¹Department of Palaeontology, University of Vienna, Althanstraße 14, Geocenter, 1090 Vienna, Austria. ²ISEM, CNRS, IRD, EPHE, Univ. Montpellier, Montpellier, France. ³University of Lyon, Ecole Normale Supérieure de Lyon, Centre National de la Recherche Scientifique, Institut de Génomique Fonctionnelle de Lyon, UMR5242, 46 Allée d'Italie, Lyon, France. ⁴Haus des Meeres - Aqua Terra Zoo, Fritz Gruenbaumpl. 1, 1060 Wien, Austria.

Received: 19 November 2021 Accepted: 26 January 2022

Published online: 05 February 2022

References

- Alberch P. Developmental constraints in evolutionary processes. In: Bonner JT, editor. *Development in evolution*. Berlin and New York: Springer; 1982. p. 313–32.
- Maynard Smit J, Burian R, Kaufmann S, Alberch P, Campbell J, Goodwin B, et al. Developmental constraints and evolution. *Q Rev Biol*. 1985;60:265–87.
- Klingenberg CP. Developmental constraints, modules, and evolvability. In: Hallgrímsson B, Hall BK, editors. *Variation*. San Diego: Academic Press; 2005. p. 219–47.
- Goswami A, Randau M, Polly PD, Weisbecker V, Bennett CV, Hautier L, Sánchez-Villagra MR. Do developmental constraints and high integration limit the evolution of the marsupial oral apparatus? *Integr Comp Biol*. 2016;56:404–15.
- Domazet-Lošo T, Tautz D. A phylogenetically based transcriptome age index mirrors ontogenetic divergence patterns. *Nature*. 2010;468:815–8.
- Schmidt K, Starck JM. Developmental plasticity, modularity, and heterochrony during the phylotypic stage of the zebra fish, *Danio rerio*. *J Exp Zool Part B*. 2010;314:166–78.
- Richardson MK. A phylotypic stage for all animals? *Dev Cell*. 2012;22:903–4.
- Irie N, Kuratani S. The developmental hourglass model: a predictor of the basic body plan? *Development*. 2014;141:4649–55.
- Young NM, Hu D, Lainoff AJ, Smith FJ, Diaz R, Tucker AS, et al. Embryonic bauplans and the developmental origins of facial diversity and constraint. *Development*. 2014;141:1059–63.
- Bhullar BAS, Morris ZS, Sefton EM, Tok A, Tokita M, Namkoong B, et al. A molecular mechanism for the origin of a key evolutionary innovation, the bird beak and palate, revealed by an integrative approach to major transitions in vertebrate history. *Evolution*. 2015;69:1665–77.
- Hu D, Young NM, Li X, Xu Y, Hallgrímsson B, Marcucio RS. A dynamic Shh expression pattern, regulated by SHH and BMP signaling, coordinates fusion of primordia in the amniote face. *Development*. 2015;142:567–74.
- Marcucio R, Hallgrímsson B, Young NM. Facial morphogenesis: physical and molecular interactions between the brain and the face. *Curr Top Dev Biol*. 2015;115:299–320.

13. Mitteroecker P, Gunz P, Bernhard M, Schaefer K, Bookstein FL. Comparison of cranial ontogenetic trajectories among great apes and humans. *J Hum Evol.* 2004;46:679–98.
14. Sheets HD, Zelditch ML. Studying ontogenetic trajectories using resampling methods and landmark data. *Hystrix.* 2013;24:67–73.
15. von Abzhanov A. Baer's law for the ages: lost and found principles of developmental evolution. *Trends Genet.* 2013;29:712–22.
16. Forey P, Janvier P. Agnathans and the origin of jawed vertebrates. *Nature.* 1993;361(6408):129–34.
17. Janvier P. Early vertebrates. New York: Oxford Scientific Publications; 1996.
18. Hall BK. Evolutionary developmental biology. Dordrecht: Kluwer; 1999.
19. Olsson L, Ericsson R, Cerny R. Vertebrate head development: segmentation, novelties, and homology. *Theory Biosci.* 2005;124:145–63.
20. Mallatt J. The origin of the vertebrate jaw: neoclassical ideas versus newer, development-based ideas. *Zool Sci.* 2008;25:990–8.
21. Kuratani S. Evolution of the vertebrate jaw from developmental perspectives. *Evol Dev.* 2012;14:76–92.
22. Miyashita T. Fishing for jaws in early vertebrate evolution: a new hypothesis of mandibular confinement. *Biol Rev.* 2016;91:611–57.
23. Svandova E, Anthwal N, Tucker AS, Matalova E. Diverse fate of an enigmatic structure: 200 years of Meckel's cartilage. *Front Cell Dev Biol.* 2020;8:66.
24. Compagno LJV. Checklist of living Chondrichthyes. In: Hamlett WC, editor. Reproductive biology and phylogeny of Chondrichthyes. New Hampshire: Science Publishers, Inc.; 2005. p. 503–48.
25. Weigmann S. Annotated checklist of the living sharks, batoids and chimaeras (Chondrichthyes) of the world, with a focus on biogeographical diversity. *J Fish Biol.* 2016;88:837–1037.
26. Boyd BM, Seitz JC. Global shifts in species richness have shaped carpet shark evolution. *BMC Ecol Evo.* 2021;21:192.
27. Wu EH. Kinematic analysis of jaw protrusion in orectolobiform sharks: a new mechanism for jaw protrusion in elasmobranchs. *J Morphol.* 1994;222:175–90.
28. Motta PJ, Hueter RE, Tricas TC, Summers AP. Kinematic analysis of suction feeding in the nurse shark, *Ginglymostoma cirratum* (Orectolobiformes, Ginglymostomatidae). *Copeia.* 2002;2002:24–38.
29. Wilga CD, Motta PJ, Sanford CP. Evolution and ecology of feeding in elasmobranchs. *Integr Comp Biol.* 2007;47:55–69.
30. Motta PJ, Maslanka M, Hueter RE, Davis RL, De la Parra R, Mulvany SL, et al. Feeding anatomy, filter-feeding rate, and diet of whale sharks *Rhincodon typus* during surface ram filter feeding off the Yucatan Peninsula, Mexico. *Zoology.* 2010;113:199–212.
31. Human BA, Owen EP, Compagno LJ, Harley EH. Testing morphologically based phylogenetic theories within the cartilaginous fishes with molecular data, with special reference to the catshark family (Chondrichthyes: Scyliorhinidae) and the interrelationships within them. *Mol Phylogenet Evol.* 2006;39:384–91.
32. Moreira RA, Gomes UL, de Carvalho MR. Systematic implications of the caudal fin skeletal anatomy in ground sharks, order Carcharhiniformes (Chondrichthyes: Elasmobranchii). *Zool J Linn Soc.* 2019;185:193–211.
33. Amaral CR, Pereira F, Silva DA, Amorim A, de Carvalho EF. The mitogenomic phylogeny of the Elasmobranchii (Chondrichthyes). *Mitochondrial DNA A.* 2018;29:867–78.
34. Soares KD, de Carvalho MR. Phylogenetic relationship of catshark species of the genus *Scyliorhinus* (Chondrichthyes, Carcharhiniformes, Scyliorhinidae) based on comparative morphology. *Zoosyst Evol.* 2020;96:345.
35. Coolen M, Menuet A, Chassoux D, Compagnucci C, Henry S, Lévêque L, et al. The dogfish *Scyliorhinus canicula*: a reference in jawed vertebrates. *CSH Protoc.* 2008. <https://doi.org/10.1101/pdb.emo111>.
36. Hara Y, Yamaguchi K, Onimaru K, Kadota M, Koyanagi M, Keeley SD, et al. Shark genomes provide insights into elasmobranch evolution and the origin of vertebrates. *Nat Ecol Evol.* 2018;2:1761–71.
37. Onimaru K, Motone F, Kiyatake I, Nishida K, Kuraku S. A staging table for the embryonic development of the brownbanded bamboo shark (*Chiloscyllium punctatum*). *Dev Dyn.* 2018;247:712–23.
38. Onimaru K, Tatsumi K, Tanegashima C, Kadota M, Nishimura O, Kuraku S. Developmental hourglass and heterochronic shifts in fin and limb development. *Elife.* 2021;10:e62865.
39. Wilga CD, Sanford CP. Suction generation in white-spotted bamboo sharks *Chiloscyllium plagiosum*. *J Exp Biol.* 2008;211:3128–38.
40. Scott B, Wilga CA, Brainerd EL. Skeletal kinematics of the hyoid arch in the suction-feeding shark *Chiloscyllium plagiosum*. *J Exp Biol.* 2019;222:jeb193573.
41. Lowry D, Motta PJ. Ontogeny of feeding behavior and cranial morphology in the whitespotted bambooshark *Chiloscyllium plagiosum*. *Mar Biol.* 2007;151:2013–23.
42. Ramsay JB, Wilga CD. Morphology and mechanics of the teeth and jaws of white-spotted bamboo sharks (*Chiloscyllium plagiosum*). *J Morphol.* 2007;268:664–82.
43. Dearden RP, Mansuit R, Cuckovic A, Herrel A, Didier D, Tafforeau P, et al. The morphology and evolution of chondrichthyan cranial muscles: A digital dissection of the elephantfish *Callorhynchus milii* and the catshark *Scyliorhinus canicula*. *J Anat.* 2021. <https://doi.org/10.1111/joa.13362>.
44. Ballard WW, Mellinger J, Lechenault H. A series of normal stages for development of *Scyliorhinus canicula*, the lesser spotted dogfish (Chondrichthyes: Scyliorhinidae). *J Exp Zool.* 1993;267:318–36.
45. Walker MB, Kimmel CB. A two-color acid-free cartilage and bone stain for zebrafish larvae. *Biotech Histochem.* 2007;82:23–8.
46. Rohlf FJ. tpsDig, digitize landmarks and outlines, version 2.05. Stony Brook: Department of Ecology and Evolution, State University of New York at Stony Brook; 2005.
47. Rohlf FJ, Slice D. Extensions of the Procrustes method for the optimal superimposition of landmarks. *Syst Biol.* 1990;39:40–59.
48. Gunz P, Mitteroecker P. Semilandmarks: a method for quantifying curves and surfaces. *Hystrix.* 2013;24:103–9.
49. Schlager S. Morpho and Rvcg—shape analysis in R. In: Zheng G, Li S, Szekely G, editors. Statistical shape and deformation analysis. London: Academic Press; 2017. p. 217–56.
50. Collyer ML, Adams DC. Phenotypic trajectory analysis: comparison of shape change patterns in evolution and ecology. *Hystrix.* 2013;24:75–83.
51. Baken EK, Collyer ML, Kaliontzopoulou A, Adams DC. geomorph v4.0 and gmShiny: enhanced analytics and a new graphical interface for a comprehensive morphometric experience. *Methods Ecol Evol.* 2021. <https://doi.org/10.1111/2041-210X.13723>.
52. Didier DA, LeClair EE, Vanbuskirk DR. Embryonic staging and external features of development of the chimaeroid fish, *Callorhynchus milii* (Holocephali, Callorhynchidae). *J Morphol.* 1998;236:25–47.
53. Maxwell EE, Fröbisch NB, Heppleston AC. Variability and conservation in late chondrichthyan development: ontogeny of the winter skate (*Leucoraja ocellata*). *Anat Rec.* 2008;291:1079–87.
54. Rodda KR, Seymour RS. Functional morphology of embryonic development in the Port Jackson shark *Heterodontus portusjacksoni* (Meyer). *J Fish Biol.* 2008;72:961–84.
55. López-Romero FA, Klimpfänger C, Tanaka S, Kriwet J. Growth trajectories of prenatal embryos of the deep-sea shark *Chlamydoselachus anguineus* (Chondrichthyes). *J Fish Biol.* 2020;97:212–24.
56. Rosa R, Baptista M, Lopes VM, Pegado MR, Ricardo Paula J, Trübenbach K, et al. Early-life exposure to climate change impairs tropical shark survival. *Proc R Soc B Biol Sci.* 2014;281:20141738.
57. Musa SM, Ripley DM, Moritz T, Shiels HA. Ocean warming and hypoxia affect embryonic growth, fitness and survival of small-spotted catsharks, *Scyliorhinus canicula*. *J Fish Biol.* 2020;97:257–64.
58. Tanaka S, Shiobara Y, Hioki S, Abe H, Nishi G, Yano K, et al. The reproductive biology of the filled shark, *Chlamydoselachus anguineus*, from Suruga Bay, Japan. *Jpn J Ichthyol.* 1990;37:273–91.
59. Summers AP, Ketcham RA, Rowe T. Structure and function of the horn shark (*Heterodontus francisci*) cranium through ontogeny: development of a hard prey specialist. *J Morphol.* 2004;260:1–12.
60. Kolmann MA, Huber DR. Scaling of feeding biomechanics in the horn shark *Heterodontus francisci*: ontogenetic constraints on durophagy. *Zoology.* 2009;112:351–61.
61. Wilga CA, Diniz SE, Steele PR, Sudario-Cook J, Dumont ER, Ferry LA. Ontogeny of feeding mechanics in smoothhound sharks: morphology and cartilage stiffness. *Integr Comp Biol.* 2016;56:442–8.
62. Gauthier AR, Whitehead DL, Tibbetts IR, Bennett MB. Comparative morphology of the electrosensory system of the epaulette shark *Hemiscyllium ocellatum* and brown-banded bamboo shark *Chiloscyllium punctatum*. *J Fish Biol.* 2019;94:313–9.
63. Ajemian MJ, Sanford CP. Food capture kinematics in the deep-water chain catshark *Scyliorhinus retifer*. *JMBA.* 2007;87:1277–86.

64. Ferry-Graham L. Feeding kinematics of juvenile swellsharks *Cephaloscyllium ventriosum*. *J Exp Biol.* 1997;200:1255–69.
65. Kousteni V, Karachle PK, Megalofonou P. Diet of the small-spotted catshark *Scyliorhinus canicula* in the Aegean Sea (eastern Mediterranean). *Mar Biol Res.* 2017;13:161–73.
66. Smith FJ, Percival CJ, Young NM, Hu D, Schneider RA, Marcucio RS, Hallgrímsson B. Divergence of craniofacial developmental trajectories among avian embryos. *Dev Dyn.* 2015;244:1158–67.
67. Eames BF, Schneider RA. The genesis of cartilage size and shape during development and evolution. *Development.* 2008;135:3947–58.
68. Fish JL, Sklar RS, Woronowicz KC, Schneider RA. Multiple developmental mechanisms regulate species-specific jaw size. *Development.* 2014;141:674–84.
69. Solem RC, Eames BF, Tokita M, Schneider RA. Mesenchymal and mechanical mechanisms of secondary cartilage induction. *Dev Biol.* 2011;356:28–39.
70. Ahi EP, Kapralova KH, Pálsson A, Maier VH, Gudbrandsson J, Snorrason SS, et al. Transcriptional dynamics of a conserved gene expression network associated with craniofacial divergence in Arctic charr. *EvoDevo.* 2014;5:1–19.
71. Kapralova KH, Jónsson ZO, Pálsson A, Franzdóttir SR, le Deuff S, Kristjánsson BK, et al. Bones in motion: ontogeny of craniofacial development in sympatric arctic charr morphs. *Dev Dyn.* 2015;244:1168–78.
72. Gunter HM, Koppermann C, Meyer A. Revisiting de Beer's textbook example of heterochrony and jaw elongation in fish: calmodulin expression reflects heterochronic growth, and underlies morphological innovation in the jaws of belonoid fishes. *EvoDevo.* 2014;5:1–13.
73. Parsons KJ, Taylor AT, Powder KE, Albertson RC. Wnt signalling underlies the evolution of new phenotypes and craniofacial variability in Lake Malawi cichlids. *Nat Comm.* 2014;5:1–11.
74. Powder KE, Milch K, Asselin G, Albertson RC. Constraint and diversification of developmental trajectories in cichlid facial morphologies. *EvoDevo.* 2015;6:1–14.
75. Hu Y, Albertson RC. Baby fish working out: an epigenetic source of adaptive variation in the cichlid jaw. *Proc R Soc B Biol Sci.* 2017;284:20171018.
76. Gillis JA, Dahn RD, Shubin NH. Chondrogenesis and homology of the visceral skeleton in the little skate, *Leucoraja erinacea* (Chondrichthyes: Batoidae). *J Morphol.* 2009;270:628–43.
77. Gillis JA, Dahn RD, Shubin NH. Shared developmental mechanisms pattern the vertebrate gill arch and paired fin skeletons. *PNAS.* 2009;106:5720–4.
78. Nakamura T, Klomp J, Pieretti J, Schneider I, Gehrke AR, Shubin NH. Molecular mechanisms underlying the exceptional adaptations of batoid fins. *PNAS.* 2015;112:15940–5.
79. O'Shaughnessy KL, Dahn RD, Cohn MJ. Molecular development of chondrichthyan claspers and the evolution of copulatory organs. *Nat Comm.* 2015;6:1–8.
80. Pfaff C, Kriwet J, Martin K, Johanson Z. Ontogenetic development of the otic region in the new model organism, *Leucoraja erinacea* (Chondrichthyes; Rajidae). *Earth Environ Sci Trans R Soc Edinb.* 2018;109:105–14.
81. Gillis JA, Modrell MS, Baker CVH. A timeline of pharyngeal endoskeletal condensation and differentiation in the shark, *Scyliorhinus canicula*, and the paddlefish, *Polyodon spathula*. *J Appl Ichthyol.* 2012;28:341–5.
82. Grogan ED, Lund R, Didier D. Description of the chimaerid jaw and its phylogenetic origins. *J Morphol.* 1999;239:45–59.

Publisher's Note

Springer Nature remains neutral with regard to jurisdictional claims in published maps and institutional affiliations.

Ready to submit your research? Choose BMC and benefit from:

- fast, convenient online submission
- thorough peer review by experienced researchers in your field
- rapid publication on acceptance
- support for research data, including large and complex data types
- gold Open Access which fosters wider collaboration and increased citations
- maximum visibility for your research: over 100M website views per year

At BMC, research is always in progress.

Learn more biomedcentral.com/submissions

