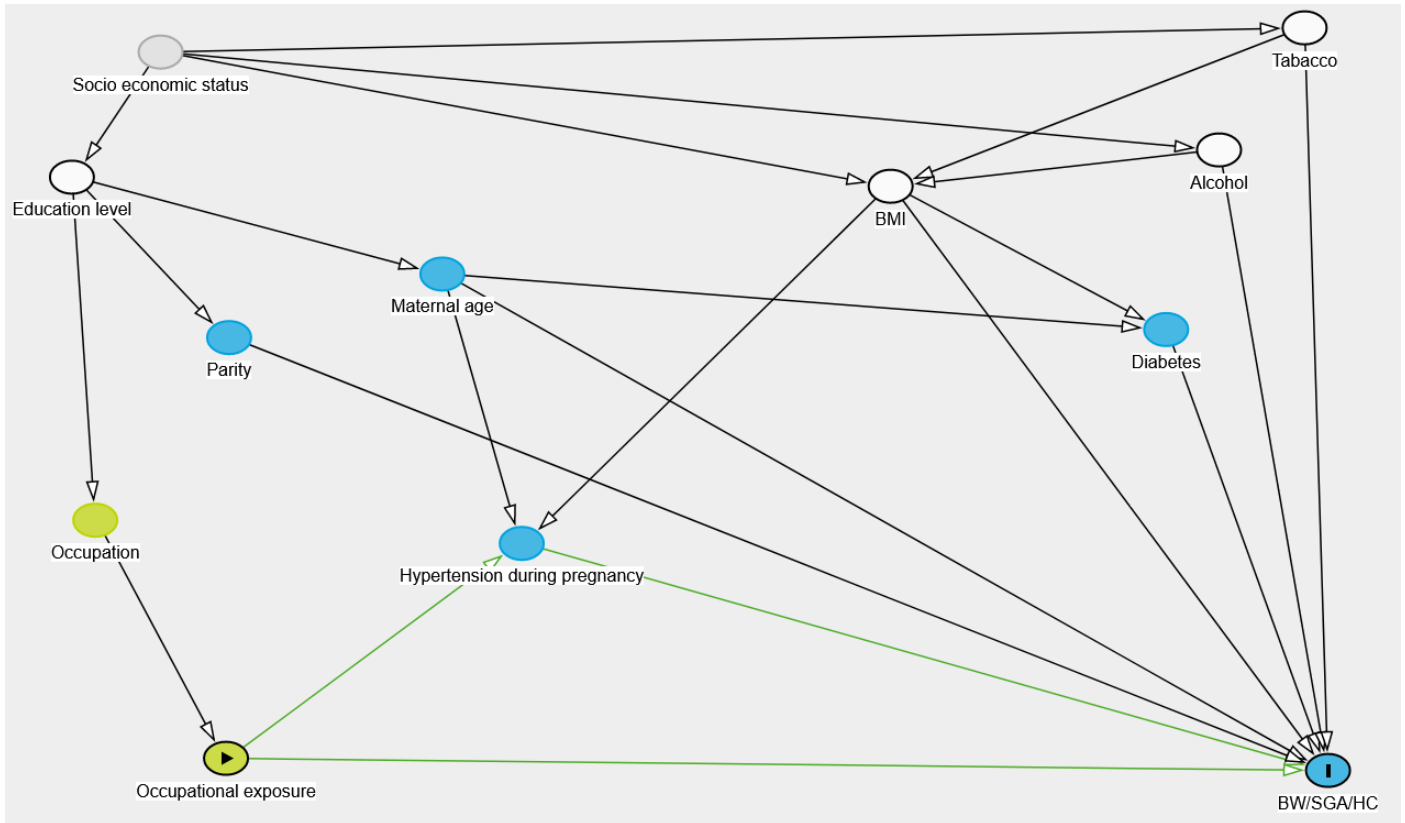


**Profiles of maternal occupational exposome during pregnancy and association with intrauterine growth: analysis of the French Longitudinal Study of Children – ELFE study**

**APPENDICES**

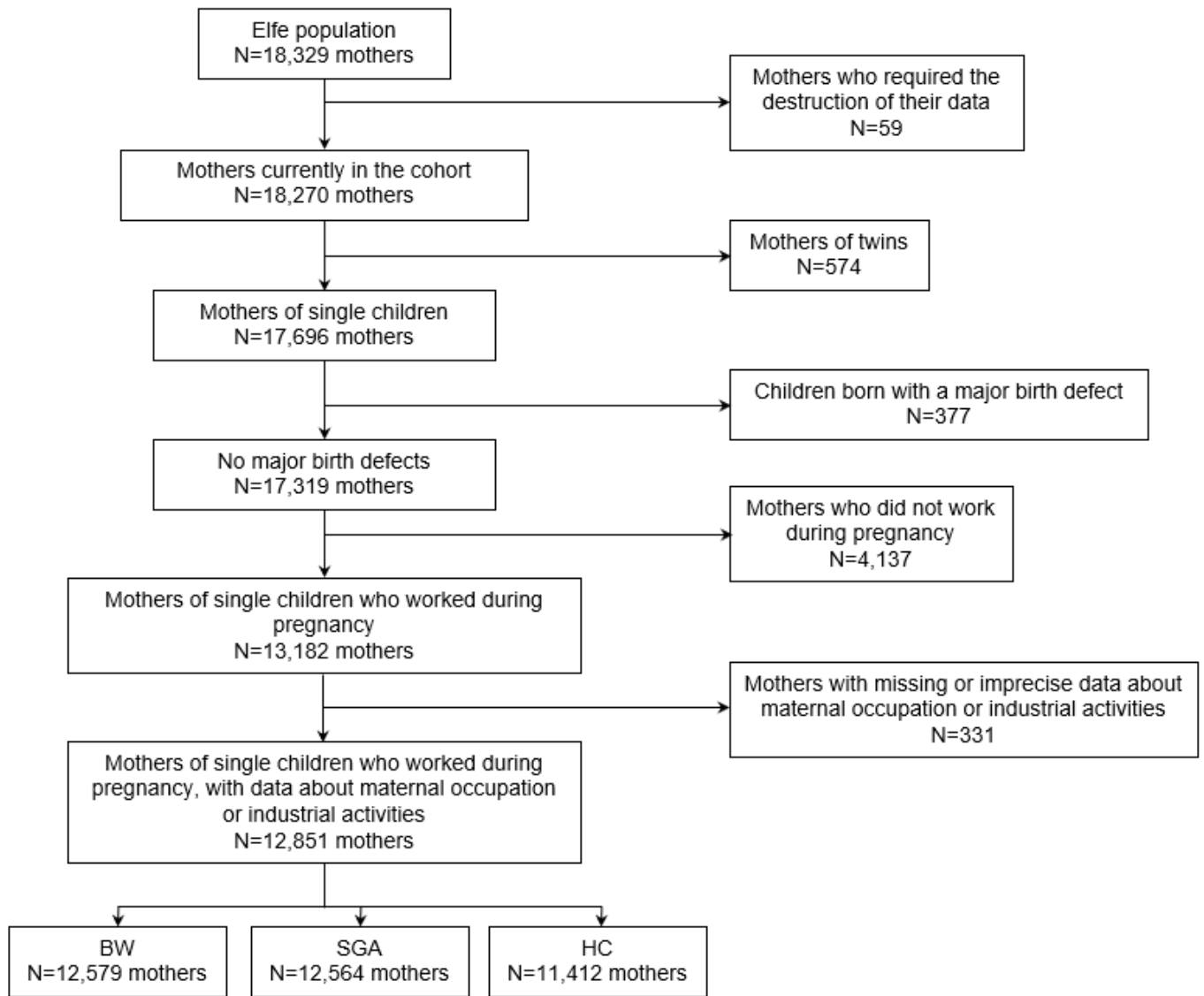
Appendix A. Directed acyclic graph representing the causal assumptions used for covariate selection. The DAG was created with DAGitty version 3.1 (<http://dagitty.net/>).



**Legend:**

- exposure
- outcome
- ancestor of exposure
- ancestor of outcome
- ancestor of exposure *and* outcome
- adjusted variable
- unobserved (latent)
- other variable
- causal path
- biasing path

Appendix B. Flow chart. ELFE study, France.



BW: birthweight

SGA: small for gestational age

HC: head circumference

## Appendix C. Description of women excluded and included in the study.

	Population			
	Excluded N=5,478		Included N=12,851	
	N (%)	Mean (SD*)	N (%)	Mean (SD*)
<b>Socio economic</b>				
Maternal age (years)		29.6 (5.7)		31.1 (4.7)
Unknown	146		52	
Mother's nationality				
French	4,373 (82.7)		12,161 (95.5)	
Foreign	915 (17.3)		571 (4.5)	
Stateless	2 (0.0)		4 (0.0)	
Unknown	188		115	
Maternal education level #				
Low	648 (12.2)		249 (1.9)	
High school	2,628 (49.3)		3,692 (28.8)	
University	2,056 (38.6)		8,863 (69.2)	
Unknown	146		47	
In a relationship	4,761 (89.7)		12,287 (96.5)	
Unknown	169		120	
Marital statut				
Celibate	2,288 (43.8)		4,474 (35.6)	
Partner	389 (7.4)		2,221 (17.7)	
Married	2,470 (47.3)		5,733 (45.7)	
Divorced	73 (1.4)		116 (0.9)	
Widow	6 (0.1)		13 (0.1)	
Unknown	252		294	
Monthly household income (euros)				
< 2500	2,085 (49.9)		2,289 (18.9)	
2500 - 4000	1,394 (33.3)		6,713 (55.5)	
> 4000	703 (16.8)		3,095 (25.6)	
Unknown	1,296		754	
<b>Before pregnancy</b>				
Body mass index (kg/m <sup>2</sup> )				
<18.5	475 (9.1)		932 (7.4)	
[18.5-25.0[	3,020 (57.8)		8,604 (67.9)	
[25.0-30.0[	738 (14.1)		2,085 (16.5)	
>30	994 (19.0)		1,052 (8.3)	
Unknown	251		178	
Diabetes (type 1 or 2)	51 (1.0)		115 (0.9)	
Unknown	262		371	
Chronic high blood pressure	130 (2.5)		284 (2.3)	
Unknown	235		268	
<b>During pregnancy</b>				
Parity				
Primiparous	2,089 (39.3)		6,153 (48.3)	
Multiparous	3,221 (60.7)		6,587 (51.7)	
Unknown	168		111	
Number of deliveries		1.8 (1.1)		1.4 (0.7)
Unknown	2,523		6,857	
Hypertensive disorders	211 (4.0)		405 (3.2)	
Unknown	268		360	
Preeclampsia	108 (2.1)		149 (1.2)	

	Population			
	Excluded N=5,478		Included N=12,851	
	N (%)	Mean (SD*)	N (%)	Mean (SD*)
Unknown	268		360	
Smoking	1,345 (25.5)		2,279 (17.9)	
Unknown	197		136	
Alcohol consumption				
No	3,375 (85.7)		9,024 (81.3)	
< 1 glass per month	434 (11.0)		1,637 (14.7)	
≥ 1 glass per month	127 (3.2)		440 (4.0)	
Unknown	1,542		1,750	
Hospitalization	1,112 (21.1)		1,857 (14.6)	
Unknown	207		130	
<b>Childbirth</b>				
Gestational age (weeks of gestation)		38.9 (1.7)		39.3 (1.4)
Unknown	192		200	
Mode of delivery				
Caesarean	1,186 (22.7)		2,141 (17.1)	
Vaginal delivery	4,031 (77.3)		10,376 (82.9)	
Unknown	261		334	
Infant's sex				
Female	2,492 (46.9)		6,283 (49.3)	
Male	2,822 (53.1)		6,458 (50.7)	
Unknown	164		110	
Birthweight (in grams)		3,237.3 (554.2)		3,338.8 (471.3)
Unknown	229		272	
Small for gestational age <sup>&amp;</sup>	878 (16.7)		1,084 (8.6)	
Severe small for gestational age <sup>&amp;</sup>	453 (8.6)		407 (3.2)	
Unknown	234		287	
Head circumference (in centimetres)		34.3 (1.5)		34.4 (1.4)
Unknown	796		1,439	

\*SD: standard deviation

<sup>#</sup>Lower defined as never attended school, primary and middle school; High school defined as certificate of vocational aptitude, professional qualifications, high school; University defined as higher education

<sup>&</sup>Small for gestational age defined as a birthweight under the 10th percentile for gestational age and sex, by using the WHO curves. Severe small for gestational age, was defined as a birthweight under the third percentile for gestational age and sex.

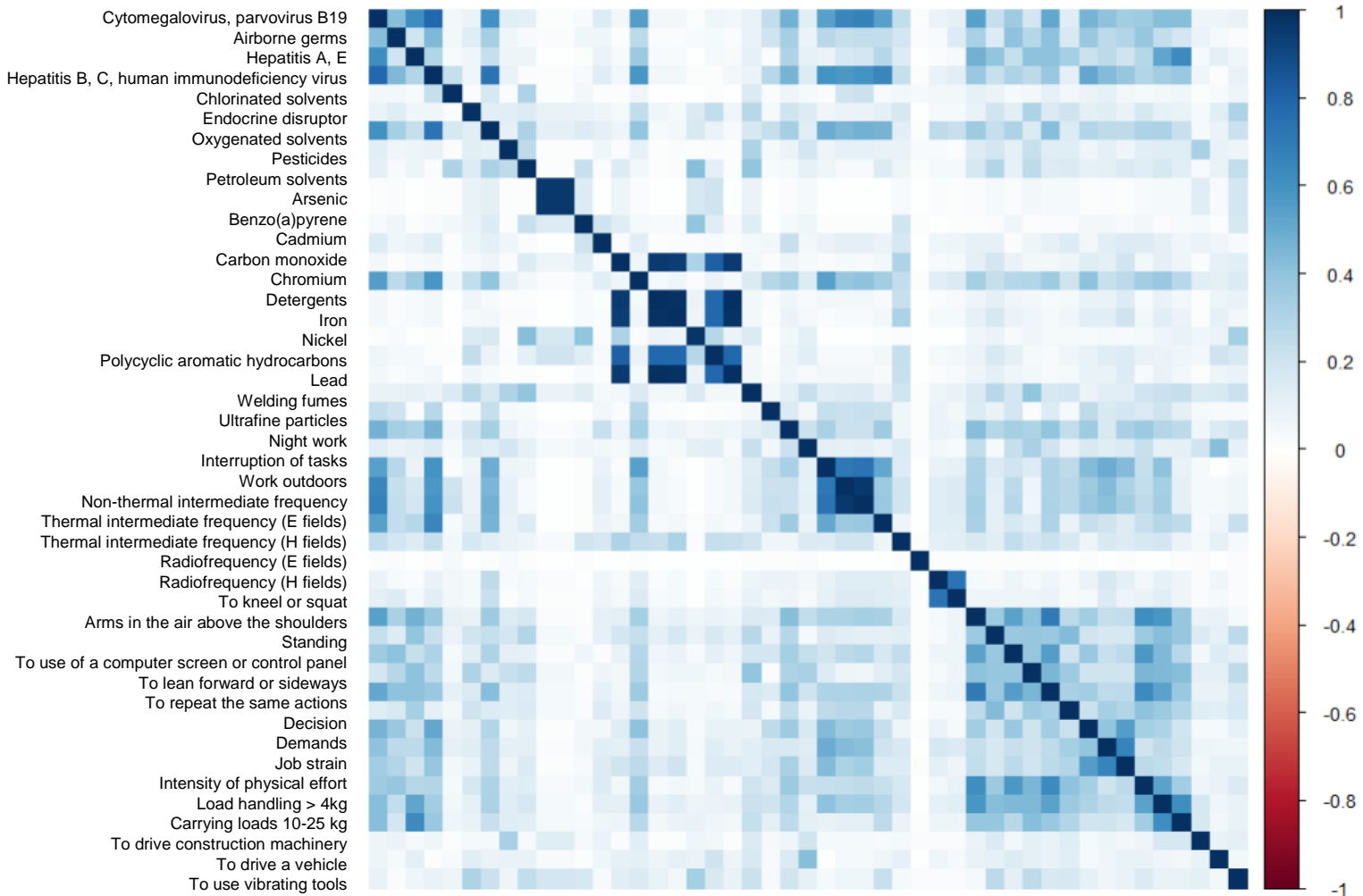
Appendix D. Occupations of mothers during pregnancy. ELFE study, France, n=12,851.

Table 1. Occupations of mothers during pregnancy. ELFE study, France, n=12,851.

	N=12,851 n (%)
<b>Professional, technical, and related workers</b>	<b>5,289 (41.2)</b>
Medical, dental, veterinarians, pharmacists	678 (5.3)
Nurses, midwives, medical x ray technicians	897 (7.0)
Architects, engineers, and related technicians	377 (2.9)
Statisticians, mathematicians, systems analysts	33 (0.3)
Teachers	1,402 (10.9)
Preschool, primary, specialized	884 (6.9)
Secondary, higher education	497 (3.9)
Unknown	21 (0.2)
Social workers	500 (3.9)
Chemists, biologists, and related workers	183 (1.4)
Jurists, journalists, and related workers	655 (5.1)
Other professional and technical workers	564 (4.4)
<b>Managerial workers</b>	<b>457 (3.6)</b>
<b>Clerical and related workers</b>	<b>3,063 (23.9)</b>
Stenographers, typists	515 (4.0)
Bookkeepers, cashiers	870 (6.8)
Computing machine operators	48 (0.4)
Other clerical and related workers	1,630 (12.7)
<b>Sales workers</b>	<b>1,415 (11.1)</b>
Technical saleswomen, commercial travellers	205 (1.6)
Saleswomen, shop assistants	688 (5.4)
Other sales workers	522 (4.1)
<b>Service workers</b>	<b>2,132 (16.6)</b>
Cleaners and helpers	718 (5.6)
Nurses' aides	493 (3.8)
Hairdressers, beauticians	228 (1.8)
Other service workers	693 (5.4)
<b>Agricultural workers</b>	<b>99 (0.8)</b>
<b>Production workers</b>	<b>396 (3.1)</b>
Textile workers	33 (0.3)
Food and beverage processors	128 (1.0)
Electronic or metal processors	20 (0.2)
Material handlers and related equipment operators	57 (0.4)
Other production workers	158 (1.2)

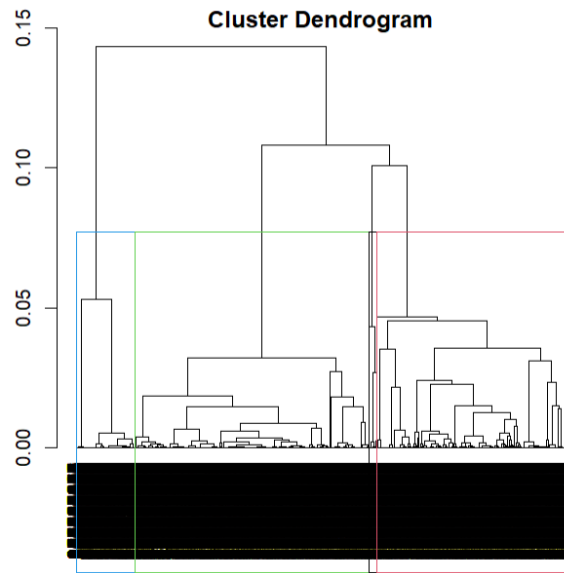
# Appendix E. Correlations between occupational exposures.

Cytomegalovirus, parvovirus B19  
 Airborne germs  
 Hepatitis A, E  
 Hepatitis B, C, human immunodeficiency virus  
 Chlorinated solvents  
 Endocrine disruptor  
 Oxygenated solvents  
 Pesticides  
 Petroleum solvents  
 Arsenic  
 Benzo(a)pyrene  
 Cadmium  
 Carbon monoxide  
 Chromium  
 Detergents  
 Iron  
 Nickel

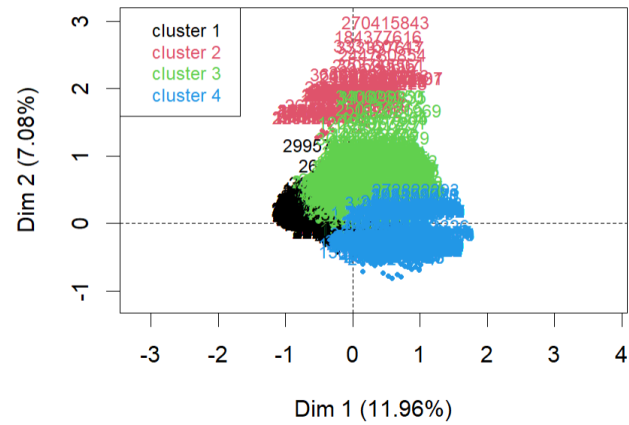


Appendix F. Dendrogram (A), projection of the profiles on the factorial plane (B), hierarchical tree on the factorial plane (C), inertia gain (D). ELFE study, France, n=12,851.

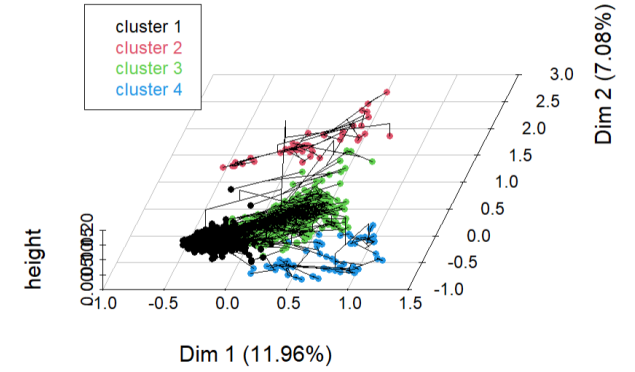
A



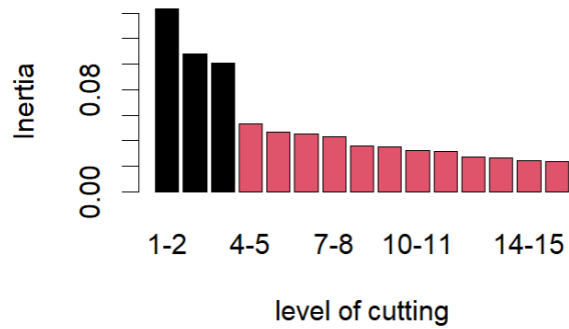
B



C



D



Appendix G. Occupational profiles characteristics of women during pregnancy. ELFE study, France, n=12,851.

Characteristics	Low exposure, stress at work N = 6,602 n (%*/%\$)	Strenuous, high organization, low decision N = 199 n (%*/%\$)	Postural constraints, psychosocial factor N = 4,460 n (%*/%\$)	Postural and strength constraints, chemical, and biological factors N = 1,590 n (%*/%\$)	Overall N = 12,851 n (%)
<b>Before pregnancy</b>					
Maternal education level					
Low	38 (0.6 / 15.3)	2 (1.0 / 0.8)	190 (4.3 / 76.3)	19 (1.2 / 7.6)	249 (1.9)
High school	945 (14.3 / 25.5)	99 (49.7 / 2.7)	2,243 (50.3 / 60.6)	415 (26.1 / 11.2)	3,702 (28.8)
University	5,619 (85.1 / 63.1)	98 (49.2 / 1.1)	2,027 (45.4 / 22.8)	1,156 (72.7 / 13.0)	8,900 (69.3)
<b>During pregnancy</b>					
Stopping the professional activity					
First trimester	450 (7.0 / 35.1)	37 (19.5 / 2.9)	599 (13.8 / 46.7)	197 (12.6 / 15.4)	1,283 (10.2)
Second trimester	1,628 (25.2 / 40.0)	51 (26.8 / 1.3)	1,626 (37.5 / 39.9)	769 (49.4 / 18.9)	4,074 (32.5)
Third trimester	4,370 (67.8 / 60.9)	102 (53.7 / 1.4)	2,115 (48.7 / 29.5)	592 (38.0 / 8.2)	7,179 (57.3)
Unknown	154	9	120	32	315
Duration of work (weeks)	29.1 (7.0)	26.4 (10.1)	25.8 (8.5)	24.8 (7.7)	27.4 (7.9)
Unknown	178	7	151	40	376
Workplace adjustments	627 (10.8 / 37.7)	27 (18.9 / 1.6)	771 (21.1 / 46.4)	238 (16.8 / 14.3)	1,663 (15.1)
Unknown	788	56	811	173	1,828
<b>Childbirth</b>					
Maternal age (years)	31.9 (4.3)	31.6 (5.0)	30.0 (5.0)	30.6 (4.6)	31.1 (4.7)
< 27	799 (12.2 / 32.4)	42 (21.1 / 1.7)	1,272 (28.6 / 51.6)	351 (22.2 / 14.2)	2,464 (19.3)
[27 ; 30[	1,408 (21.4 / 48.6)	45 (22.6 / 1.6)	1,029 (23.1 / 35.5)	415 (26.2 / 14.3)	2,897 (22.6)
[30 ; 34[	2,369 (36.0 / 58.6)	48 (24.1 / 1.2)	1,165 (26.2 / 28.8)	461 (29.1 / 11.4)	4,043 (31.6)
≥ 34	1,997 (30.4 / 58.8)	64 (32.2 / 1.9)	979 (22.0 / 28.8)	355 (22.4 / 10.5)	3,395 (26.5)
Unknown	29	0	15	8	52
<b>Occupations</b>					
<b>Professional, technical, and related workers</b>					
Medical, dental, veterinarians, pharmacists	171 (2.6 / 25.2)	0 (0.0 / 0.0)	281 (6.3 / 41.4)	226 (14.2 / 33.3)	678 (5.3)
Nurses, midwives, medical x ray technicians	3 (0.0 / 0.3)	0 (0.0 / 0.0)	24 (0.5 / 2.7)	870 (54.7 / 97.0)	897 (7.0)
Architects, engineers, and related technicians	366 (5.5 / 97.1)	1 (0.5 / 0.3)	10 (0.2 / 2.7)	0 (0.0 / 0.0)	377 (2.9)
Statisticians, mathematicians, systems analysts	25 (0.4 / 75.8)	0 (0.0 / 0.0)	8 (0.2 / 24.2)	0 (0.0 / 0.0)	33 (0.3)
Teachers					
Pre-school, primary and specific	132 (2.0 / 14.9)	1 (0.5 / 0.1)	751 (16.8 / 85.0)	0 (0.0 / 0.0)	884 (6.9)
Secondary and higher	365 (5.5 / 73.4)	7 (3.5 / 1.4)	125 (2.8 / 25.2)	0 (0.0 / 0.0)	497 (3.9)
Unknown	18 (0.3 / 85.7)	0 (0.0 / 0.0)	3 (0.1 / 14.3)	0 (0.0 / 0.0)	21 (0.2)
Social workers	264 (4.0 / 52.8)	0 (0.0 / 0.0)	236 (5.3 / 47.2)	0 (0.0 / 0.0)	500 (3.9)



Characteristics	Low exposure, stress at work N = 6,602 n (% <sup>*</sup> /% <sup>§</sup> )	Strenuous, high organization, low decision N = 199 n (% <sup>*</sup> /% <sup>§</sup> )	Postural constraints, psychosocial factor N = 4,460 n (% <sup>*</sup> /% <sup>§</sup> )	Postural and strength constraints, chemical, and biological factors N = 1,590 n (% <sup>*</sup> /% <sup>§</sup> )	Overall N = 12,851 n (%)
Chemists, biologists, and related workers	63 (1.0 / 34.4)	1 (0.5 / 0.5)	119 (2.7 / 65.0)	0 (0.0 / 0.0)	183 (1.4)
Jurists, journalists, and related workers	655 (9.9 / 100.0)	0 (0.0 / 0.0)	0 (0.0 / 0.0)	0 (0.0 / 0.0)	655 (5.1)
Other professional and technical workers	428 (6.5 / 75.9)	5 (2.5 / 0.9)	130 (2.9 / 23.0)	1 (0.1 / 0.2)	564 (4.4)
<b>Managerial workers</b>	451 (6.8 / 98.7)	1 (0.5 / 0.1)	5 (0.1 / 1.1)	0 (0.0 / 0.0)	457 (3.6)
<b>Clerical and related workers</b>					
Stenographers, typists	515 (7.8 / 100.0)	0 (0.0 / 0.0)	0 (0.0 / 0.0)	0 (0.0 / 0.0)	515 (4.0)
Bookkeepers, cashiers	667 (10.1 / 76.7)	0 (0.0 / 0.0)	203 (4.6 / 23.3)	0 (0.0 / 0.0)	870 (6.8)
Computing machine operators	25 (0.4 / 52.1)	0 (0.0 / 0.0)	23 (0.5 / 47.9)	0 (0.0 / 0.0)	48 (0.4)
Other clerical and related workers	1,456 (22.1 / 89.3)	0 (0.0 / 0.0)	174 (3.9 / 10.7)	0 (0.0 / 0.0)	1,630 (12.7)
<b>Sales workers</b>					
Technical saleswomen, commercial travelers	188 (2.8 / 91.7)	2 (1.0 / 1.0)	15 (0.3 / 7.3)	0 (0.0 / 0.0)	205 (1.6)
Saleswomen, shop assistants	143 (2.2 / 20.8)	3 (1.5 / 0.4)	542 (12.2 / 78.8)	0 (0.0 / 0.0)	688 (5.4)
Other sales workers	305 (4.6 / 58.4)	153 (76.9 / 29.3)	64 (1.4 / 12.3)	0 (0.0 / 0.0)	522 (4.1)
<b>Service workers</b>					
Cleaners and helpers	4 (0.1 / 0.6)	0 (0.0 / 0.0)	714 (16.0 / 99.4)	0 (0.0 / 0.0)	718 (5.6)
Nurses' aides	0 (0.0 / 0.0)	0 (0.0 / 0.0)	0 (0.0 / 0.0)	493 (31.0 / 100.0)	493 (3.8)
Hairdressers, beauticians	41 (0.6 / 18.0)	0 (0.0 / 0.0)	187 (4.2 / 82.0)	0 (0.0 / 0.0)	228 (1.8)
Other service workers	159 (2.4 / 22.9)	1 (0.5 / 0.1)	533 (12.0 / 76.9)	0 (0.0 / 0.0)	693 (5.4)
<b>Agricultural workers</b>	3 (0.0 / 3.0)	0 (0.0 / 0.0)	96 (2.2 / 97.0)	0 (0.0 / 0.0)	99 (0.8)
<b>Production workers</b>					
Textile workers	5 (0.1 / 15.2)	0 (0.0 / 0.0)	28 (0.6 / 84.8)	0 (0.0 / 0.0)	33 (0.3)
Food and beverage processors	65 (1.0 / 50.8)	3 (1.5 / 2.3)	60 (1.3 / 46.9)	0 (0.0 / 0.0)	128 (1.0)
Electronic or metal processors	9 (0.1 / 45.0)	3 (1.5 / 15.0)	8 (0.2 / 40.0)	0 (0.0 / 0.0)	20 (0.2)
Material handlers and related equipment operators	5 (0.1 / 8.8)	0 (0.0 / 0.0)	52 (1.2 / 91.2)	0 (0.0 / 0.0)	57 (0.4)
Other production workers	71 (1.1 / 44.9)	18 (9.0 / 11.4)	69 (1.5 / 43.7)	0 (0.0 / 0.0)	158 (1.2)

\*% in column

§% in line

&Small for gestational age defined as a birthweight under the 10th percentile for gestational age and sex, by using the OMS curves. Severe small for gestational age, was defined as a birthweight under the third percentile for gestational age and sex.

Appendix H. Sensitive analysis with adjustment on mode of delivery for the head circumference. ELFE study, France, n=11,412.

Table 2. Association between profiles and head circumference. ELFE study, France, n=11,412.

	Crude $\beta$ (95% CI <sup>&amp;</sup> )	P-value	a $\beta$ <sup>*</sup> (95% CI)	P-value
Low exposure, stress at work	ref		ref	
Arduousness, high organization, low decision	-0.130 (-0.340 ; 0.079)	0.222	-0.11 (-0.321 ; 0.097)	0.293
Postural constraints, psychosocial factor	<b>-0.065 (-0.122 ; -0.008)</b>	<b>0.023</b>	-0.03 (-0.094 ; 0.020)	0.207
Postural and strength constraints, chemical, and biological factors	-0.047 (-0.128 ; 0.034)	0.255	-0.01 (-0.091 ; 0.068)	0.781

<sup>&</sup>CI, confidence interval

<sup>\*</sup>Adjusted for tobacco use, alcohol consumption, BMI, gestational age, infant's sex, and mode of delivery

Appendix I. Additional analysis for the severe small for gestational age. ELFE study, France, n=12,579.

Table 3. Association between maternal occupational profiles and severe small for gestational age. ELFE study, France, n=12,579.

	Crude OR (95% CI <sup>§</sup> )	P-value	aOR <sup>*</sup> (95% CI)	P-value
Low exposure, stress at work	ref		ref	
Arduousness, high organization, low decision	0.84 (0.34; 2.08)	0.713	0.92 (0.37; 2.28)	0.856
Postural constraints, psychosocial factor	1.21 (0.98; 1.50)	0.079	1.10 (0.87; 1.39)	0.432
Postural and strength constraints, chemical, and biological factors	0.99 (0.72; 1.37)	0.950	0.90 (0.63; 1.28)	0.546

<sup>§</sup>CI, confidence interval

<sup>\*</sup>OR: odds ratio; adjusted for BMI, tobacco use, and alcohol consumption

Table 4. Association between profiles and severe small for gestational age, according to the trimester when mothers stopped working during pregnancy. ELFE study, France, n=12,579.

	Stopped during first trimester N=1,267				Stopped during second trimester N=4,024				Stopped during third trimester N=7,085			
	Crude OR (95% CI <sup>§</sup> )	P-value	aOR <sup>*</sup> (95% CI)	P-value	Crude OR (95% CI)	P-value	aOR <sup>*</sup> (95% CI)	P-value	Crude OR (95% CI)	P-value	aOR <sup>*</sup> (95% CI)	P-value
Low exposure, stress at work	ref		ref		ref		ref		ref		ref	
Arduousness, high organization, low decision	0.59 (0.08 ; 4.52)	0.610	0.81 (0.10; 6.45)	0.842	0.86 (0.21 ; 3.62)	0.84	0.93 (0.22; 3.98)	0.923	0.86 (0.21 ; 3.54)	0.836	0.91 (0.22; 3.79)	0.899
Postural constraints, psychosocial factor	1.41 (0.81 ; 2.47)	0.225	1.48 (0.77; 2.85)	0.245	0.79 (0.56 ; 1.12)	0.186	0.69 (0.47; 1.01)	0.056	1.30 (0.94 ; 1.72)	0.113	1.23 (0.87; 1.74)	0.251

Postural and strength constraints, chemical, and biological factors	0.91 (0.39 ; 2.11)	0.829	0.99 (0.39; 2.49)	0.978	0.73 (0.46 ; 1.15)	0.176	0.70 (0.43; 1.15)	0.157	0.96 (0.53 ; 1.72)	0.883	0.72 (0.36; 1.43)	0.346
---	--------------------	-------	-------------------	-------	--------------------	-------	-------------------	-------	--------------------	-------	-------------------	-------

---

\*CI: confidence interval

\*OR: odds ratio; adjusted for tobacco use, alcohol consumption, and BMI

---

Appendix J. Sensitivity analysis with adjustment on education level. ELFE study, France, n=12,851.

Table 5. Association between profiles and small for gestational age. ELFE study, France, n=12,579.

	Crude OR (95% CI <sup>&amp;</sup> )	P-value	aOR <sup>*</sup> (95% CI)	P-value
Low exposure, stress at work	ref		ref	
Arduousness, high organization, low decision	0.84 (0.47; 1.48)	0.541	0.80 (0.44; 1.45)	0.456
Postural constraints, psychosocial factor	<b>1.24 (1.08; 1.42)</b>	<b>0.002</b>	1.04 (0.88; 1.22)	0.653
Postural and strength constraints, chemical, and biological factors	1.17 (0.97; 1.43)	0.107	1.05 (0.85; 1.30)	0.636

<sup>&</sup>CI, confidence interval

<sup>\*</sup>OR: odds ratio; adjusted for BMI, tobacco use, alcohol consumption, and education level

Table 6. Association between profiles and severe small for gestational age. ELFE study, France, n=12,579.

	Crude OR (95% CI <sup>&amp;</sup> )	P-value	aOR <sup>*</sup> (95% CI)	P-value
Low exposure, stress at work	ref		ref	
Arduousness, high organization, low decision	0.84 (0.34; 2.08)	0.713	0.82 (0.33; 2.04)	0.669
Postural constraints, psychosocial factor	1.21 (0.98; 1.50)	0.079	0.95 (0.74; 1.23)	0.721
Postural and strength constraints, chemical, and biological factors	0.99 (0.72; 1.37)	0.950	0.86 (0.60; 1.23)	0.417

<sup>&</sup>CI, confidence interval

<sup>\*</sup>OR, odds ratio; adjusted for BMI, tobacco use, alcohol consumption, and education level

Table 7. Association between profiles and birthweight. ELFE study, France, n=12,564.

	Crude $\beta$ (95% CI <sup>&amp;</sup> )	P-value	a $\beta$ <sup>*</sup> (95% CI)	P-value
Low exposure, stress at work	ref		ref	
Arduousness, high organization, low decision	-15.802 (-82.205; 51.294)	0.656	-21.856 (-83.634; 39.922)	0.488
Postural constraints, psychosocial factor	-5.686 (-23.795; 12.423)	0.538	<b>20.142 (1.983; 38.299)</b>	<b>0.029</b>
Postural and strength constraints, chemical, and biological factors	-14.342 (-40.384; 11.700)	0.280	6.153 (-17.371; 29.677)	0.608

<sup>&</sup>CI, confidence interval

<sup>\*</sup>Adjusted for BMI, tobacco use, alcohol consumption, gestational age at birth, infant's sex, and education level

Table 8. Association between profiles and head circumference. ELFE study, France, n=11,412.

	Crude $\beta$ (95% CI <sup>&amp;</sup> )	P-value	a $\beta$ <sup>*</sup> (95% CI)	P-value
Low exposure, stress at work	ref		ref	

Arduousness, high organization, low decision	-0.130 (-0.340; 0.079)	0.222	-0.110 (-0.321; 0.100)	0.306
Postural constraints, psychosocial factor	<b>-0.065 (-0.122; -0.008)</b>	<b>0.023</b>	-0.022 (-0.084; 0.039)	0.479
Postural and strength constraints, chemical, and biological factors	-0.047 (-0.128; 0.034)	0.255	-0.015 (-0.095; 0.064)	0.711

---

<sup>a</sup>CI, confidence interval

\* Adjusted for BMI, tobacco use, alcohol consumption, gestational age at birth, infant's sex, and education level

Appendix K. Sensitivity analysis excluding gestational diabetes and gestational hypertension. ELFE study, France, n=11,036.

	Small for gestational age				Birthweight				Head circumference			
	Crude OR (95% CI <sup>&amp;</sup> )	P-value	aOR (95% CI)	P-value	Crude $\beta$ (95% CI)	P-value	a $\beta^{\#}$ (95% CI)	P-value	Crude $\beta$ (95% CI)	P-value	a $\beta^{\#}$ (95% CI)	P-value
Low exposure, stress at work	ref		ref		ref		ref		ref		ref	
Strenuous, high organization, low decision	0.89 (0.48, 1.66)	0.72	0.91 (0.44, 1.66)	0.8	-21.59 (-93.94, 50.74)	0.55	-28.65 (-95.51, 38.19)	0.40	-0.20 (-0.42, 0.02)	0.08	-0.19 (-0.42, 0.03)	0.08
Postural constraints, psychosocial factors	<b>1.33 (1.15, 1.54)</b>	<b>&lt;0.001</b>	<b>1.22 (1.04, 1.44)</b>	<b>0.01</b>	-18.05 (-37.34, 1.22)	0.06	10.38 (-8.76, 29.53)	0.28	<b>-0.09 (-0.15, -0.03)</b>	<b>0.001</b>	-0.05 (-0.11, 0.01)	0.13
Postural and strength constraints, chemical, and biological factors	1.16 (0.94, 1.44)	0.164	1.08 (0.85, 1.35)	0.5	-23.28 (-50.97, 4.40)	0.09	0.68 (-24.26, 25.64)	0.95	-0.05 (-0.14, 0.03)	0.20	-0.02 (-0.10, 0.06)	0.63

<sup>&</sup>CI: confidence interval

<sup>\*</sup>OR: odds ratio; adjusted for BMI, tobacco use, and alcohol consumption

<sup>#</sup>Adjusted for BMI, tobacco use, alcohol consumption, gestational age at birth, and infant's sex