



HAL
open science

Has taxonomic vandalism gone too far? A case study, the rise of the pay-to-publish model and the pitfalls of *Morchella* systematics

Michael Loizides, Pablo Alvarado, Pierre-Arthur Moreau, Boris Assyov, Viktorie Halasů, Marc Stadler, Andrea Rinaldi, Guilhermina Marques, Georgios I Zervakis, Jan Borovička, et al.

► To cite this version:

Michael Loizides, Pablo Alvarado, Pierre-Arthur Moreau, Boris Assyov, Viktorie Halasů, et al.. Has taxonomic vandalism gone too far? A case study, the rise of the pay-to-publish model and the pitfalls of *Morchella* systematics. *Mycological Progress*, 2022, 21 (1), pp.7-38. 10.1007/s11557-021-01755-z . hal-04864734

HAL Id: hal-04864734

<https://hal.science/hal-04864734v1>

Submitted on 5 Jan 2025

HAL is a multi-disciplinary open access archive for the deposit and dissemination of scientific research documents, whether they are published or not. The documents may come from teaching and research institutions in France or abroad, or from public or private research centers.

L'archive ouverte pluridisciplinaire **HAL**, est destinée au dépôt et à la diffusion de documents scientifiques de niveau recherche, publiés ou non, émanant des établissements d'enseignement et de recherche français ou étrangers, des laboratoires publics ou privés.

Has taxonomic vandalism gone too far? A case study, the rise of the pay-to-publish model and the pitfalls of *Morchella* systematics

Michael Loizides¹ · Pablo Alvarado² · Pierre-Arthur Moreau³ · Boris Assyov⁴ · Viktorie Halasu⁵ · Marc Stadler⁶ · Andrea Rinaldi⁷ · Guilhermina Marques⁸ · Georgios I. Zervakis⁹ · Jan Borovička¹⁰ · Nicolas Van Vooren¹¹ · Tine Grebenc¹² · Franck Richard¹³ · Hatira Taşkin¹⁴ · Matthias Gube¹⁵ · Carmel Sammut¹⁶ · Carlo Agnello¹⁷ · Timothy J. Baroni¹⁸ · Pedro Crous¹⁹ · Vassiliki Fryssouli⁹ · Zacharoula Gonou²⁰ · Urbano Guidori²¹ · Gro Gulden²² · Karen Hansen²³ · Roy Kristiansen²⁴ · Thomas Læssøe²⁵ · Javier Mateos²⁶ · Andrew Miller²⁷ · Gabriel Moreno²⁸ · Branislav Perić²⁹ · Elias Polemis⁹ · Joan Carles Salom³⁰ · José Leonardo Siquier³⁰ · Martin Snabl³¹ · Øyvind Weholt³² · Jean-Michel Bellanger¹³

Abstract

The genus *Morchella* has gone through turbulent taxonomic treatments. Although significant progress in *Morchella* systematics has been achieved in the past decade, several problems remain unresolved and taxonomy in the genus is still in flux. In late 2019, a paper published in the open-access journal *Scientific Reports* raised serious concerns about the taxonomic stability of the genus, but also about the future of academic publishing. The paper, entitled “High diversity of *Morchella* and a novel lineage of the esculenta clade from the north Qinling Mountains revealed by GCPSR-based study” by Phanpadith and colleagues, suffered from gross methodological errors, included false results and artifactual phylogenies, had misapplied citations throughout, and proposed a new species name invalidly. Although the paper was eventually retracted by *Scientific Reports* in 2021, the fact that such an overtly flawed and scientifically unsound paper was published in a high-ranked Q1 journal raises alarming questions about quality controls and safekeeping procedures in scholarly publishing. Using this paper as a case study, we provide a critical review on the pitfalls of *Morchella* systematics followed by a series of recommendations for the delimitation of species, description of taxa, and ultimately for a sustainable taxonomy in *Morchella*. Problems and loopholes in the academic publishing system are also identified and discussed, and additional quality controls in the pre- and post-publication stages are proposed.

Keywords Cryptic species · Genealogical Concordance Phylogenetic Species Recognition · Integrative taxonomy · Methodology · Phylogenetics · Morels · Nomenclature · Species delimitation · Systematics

Introduction

Species of *Morchella* Dill. ex Pers. (Ascomycota, Pezizomycetes) are highly sought after and prized edible fungi, but taxonomic arrangements in the genus have been chronically unstable due to considerable morphological overlap among taxa and inherent difficulties in the delimitation of species (O'Donnell et al. 2011; Taşkin et al. 2010, 2012;

Du et al. 2012a, 2012b). Over 80 species-level lineages of *Morchella* have been inferred by molecular phylogenetics in recent years, mostly distributed in temperate latitudes of the Northern Hemisphere. So far, about 58 of these have been linked to classical or newly proposed Linnaean binomials and a number of synonymies have been established (Richard et al. 2015; Du et al. 2019b; Weholt et al. 2020; Loizides et al. 2021). However, several taxonomic issues remain to be resolved and systematic arrangements in the genus are still in flux. Much of the instability can be attributed to a number of problems, such as (i) the absence of a uniformly applied methodology in species delimitation; (ii) insufficient sampling efforts; (iii) a shortage of integrative taxonomical approaches; (iv) unresolved synonymies

and misapplied names; (v) occasional hybridization among species; (vi) poor or inaccurate morphological descriptions of taxa; (vii) a fragmented or incomplete understanding of their distributional patterns and ecological niches; (viii) lack of molecular data from early-described taxa; and (ix) lack of a common language in descriptive terminology (Du et al. 2012b, 2019a, 2020; Loizides et al. 2015, 2016, 2021; Loizides 2017; Clowez and Moreau 2018a, 2018b; Baroni et al. 2018; Petrželová and Sochor 2019).

In December 2019, a paper entitled “High diversity of *Morchella* and a novel lineage of the esculenta clade from the north Qinling Mountains revealed by GCPSR-based study” by Phanpadith and colleagues was published in the open-access journal *Scientific Reports*. This journal was reported to be the 7th most cited in the world with 2 million viewers per month and has an impact factor (IF) of 3.998 (Journal Citation Reports, Clarivate Analytics 2020). A “rigorous, objective and constructive peer review” is promised by the journal, which claims to publish “scientifically robust, original, and of the highest quality research” (<https://www.nature.com/srep/about>). The publication by Phanpadith et al. (2019) falls profoundly short of such standards. This paper, which has been subsequently retracted by the journal, suffered from an array of methodological deficiencies and fallacious claims, presented false results and artifactual phylogenies, and introduced a new species name invalidly. Because it was published in a high-ranked Q1 journal, a post-publication review of this paper was deemed necessary to debunk the numerous errors and false claims, and prevent contamination to other studies. Indeed, by the time the present review had been completed, another paper by Lagrange and Vernoux (2020) had already cited Phanpadith et al. (2019) reproducing some of their fallacious claims. A point-by-point rebuttal of this study was therefore drafted and an open letter asking for the retraction of the paper was submitted to *Scientific Reports* for publication.

Besides this obvious urgency, the present review was initiated to also address other ongoing problems in *Morchella*, including opposing views with regard to the delimitation of species. These are, on one hand, expressed by multilocus approaches employing a “merging” method based on the concept introduced by O’Donnell et al. (2011) and, on the other hand, by approaches advocating for strict application of Genealogical Concordance Phylogenetic Species Recognition (GCPSR) with polygenic differentiation as a prerequisite, as recently proposed by Petrželová and Sochor (2019). In an effort to stabilize taxonomy within the genus, the current pitfalls in *Morchella* systematics are here further debated and a unified methodology for the circumscription of taxa, including a glossary of descriptive terminology, is proposed. A global up-to-date phylogeny and an overview of confirmed and doubtful species of *Morchella* are also included, to serve as guidelines for future studies. Following

the deeply flawed publication by Phanpadith et al. (2019), problems and loopholes in the current academic publishing system are also identified and discussed, and recommendations for additional quality controls in the pre- and post-publication stages are offered.

Methods and concepts

For the purpose of this review, “species” are broadly understood as separately evolving and potentially interbreeding populations or metapopulations isolated by irreversible reproductive barriers (following, e.g., Mayr 1942; Wiley 1978; Coyne and Orr 2004; de Queiroz 2005; Butlin and Stankowski 2020). “Cryptic species” are defined as phenotypically, ecologically, and biogeographically indistinguishable species. The term “semicryptic” is reserved for species with subtle or unstable discriminating traits and considerable phenotypic overlap with other evolutionary isolated taxa. The term “pseudocryptic” is applied to species that have at some point been regarded as “cryptic,” but have reasonably reliable diagnostic traits that had been previously overlooked (see, e.g., Sáez et al. 2003; Mann and Evans 2007; Lajus et al. 2015). An extended analysis of the inconsistencies of species concepts and species delimitation in *Morchella* is provided below. Definition of GCPSR is based on Taylor et al. (2000). A list of taxonomically resolved and unresolved lineages of *Morchella* is provided in Table 1, with brief notes on the current status and distribution for each species. A glossary of descriptive terminology, along with notes on the taxonomic significance of each morphoanatomical character, are provided in Table 2. Phylogenetic analyses in this work were based on methods described in Richard et al. (2015) and Loizides et al. (2016, 2021). A point-by-point critique of the Phanpadith et al. (2019) paper is available in [Supplemental information](#).

The Phanpadith et al. (2019) paper

A detailed analysis of the paper by Phanpadith et al. (2019) demonstrates that this study suffers from serious methodological, phylogenetic, taxonomical, nomenclatural, and conceptual problems. The phylogenetic grounds of this paper, in particular, are far from sound and include basic errors such as duplicate, poorly amplified, and erroneously aligned sequences, inappropriate use of cladograms and artifactual phylogenies. As an example, in one of the phylogenetic trees (Suppl. Figure 2, Phanpadith et al. 2019), a *Tuber* species (*T. taiyuanense* B. Liu) nests in the same clade as *Morchella* species, with no attempt by the authors to explain this outstanding anomaly. Furthermore, the name of the new species introduced in this paper is invalid, as

Table 1 Overview of phylogenetically and taxonomically resolved and unresolved phylospecies of *Morchella*, including typification details, known distribution range based on molecularly verified collections and current status for each species

Linnaean name	Phylospecies	Typification details	Phylogeography	Status
Rufobrunnea clade (section <i>Rufobrunnea</i>)				
<i>Morchella anatolica</i> = <i>M. lanceolata</i> nom. inval.	–	Described from Turkey (Işiloğlu et al. 2010); sequence attached to the isotype K(M)157099 (Taşkın et al. 2012)	Cyprus, Greece, Spain, Turkey	Resolved and uncontested
<i>Morchella rufobrunnea</i>	–	Described from Mexico (Guzmán and Tapia 1998); sequence attached to the holotype XAL 31565 (O'Donnell et al. 2011)	Australia, Cyprus, Israel, Malta, Mexico, Spain, Switzerland, USA; cultivated	Resolved and uncontested
Esculenta clade (section <i>Morchella</i>)				
<i>Morchella americana</i> = <i>M. americana</i> var. <i>elongata</i> = <i>M. californica</i> = <i>M. claviformis</i> = <i>M. esculentoides</i> = <i>M. populina</i>	Mes-4	Described from Western USA (Clowez 2012); sequence attached to the holotype LIP 0900091 (Richard et al. 2015)	Canada, Czech Republic, France, Germany, Spain, Switzerland, Turkey, USA	Not conclusively resolved because it appears to encompass two biogeographically supported clades and an earlier name probably exists for at least the European clade should the two clades be split in the future; until further clarified, the usage of the current name is provisionally recommended for the inclusive clade
<i>Morchella castaneae</i> = <i>M. brunneorosea</i> = <i>M. brunneorosea</i> var. <i>sordida</i>	–	Described from Spain (Clowez 2012); sequence attached to the holotype PhC114 (Richard et al. 2014)	Portugal, Spain	Resolved and uncontested
<i>Morchella clivicola</i>		Described from China; sequence attached to the holotype FCNU1021 (Du et al. 2019a, 2019b)	China	Resolved and uncontested
<i>Morchella diminutiva</i>	Mes-2	Described from Eastern USA; sequence attached to the holotype F 05030404 (Kuo et al. 2012)	USA	Resolved and uncontested
<i>Morchella dunensis</i> ≡ <i>M. esculenta</i> f. <i>dunensis</i> = <i>M. andalusiae</i>	Mes-17	Described from Spain as <i>M. esculenta</i> f. <i>dunensis</i> (Castañera et al. 1996) and later elevated to species by Clowez (2012); sequence attached to the isoparatype AH18336 (Loizides et al. 2016)	China, Cyprus, England, France, Italy, Norway, Pakistan, Spain, Turkey	Not conclusively resolved; displays no or weakly supported reciprocal monophyly relative to <i>M. vulgaris</i> , while recent collections from Italy (Snabl et al. 2019) and China (Du et al. 2019a, 2019b) unveiled higher levels of ITS polymorphism than previously anticipated, reducing the phylogenetic distance between <i>M. dunensis</i> and <i>M. vulgaris</i> to 2 fixed SNPs in the ITS1; based on European collections, the two species seem to display ecological and subtle morpho-anatomical apomorphies (Loizides et al. 2016), perhaps supporting some sort of (infraspecific?) autonomy; until further clarified, the usage of the two names is provisionally recommended

Table 1 (continued)

Linnaean name	Phylospecies	Typification details	Phylogeography	Status
<i>Morchella esculenta</i> ≡ <i>Phallus esculentus</i> = <i>M. esculenta</i> var. <i>aurantiaca</i> = <i>M. esculenta</i> var. <i>brunnea</i> = <i>M. esculenta</i> var. <i>ruboris</i> = <i>M. ochraceoviridis</i> = <i>M. ovalis</i> var. <i>minor</i> = <i>M. pseudoumbrina</i> nom. inval = <i>M. pseudoviridis</i> nom. inval	Mes-8	Described from Italy as <i>Phallus esculentus</i> (Micheli 1729; Linnaeus 1753) and transferred to <i>Morchella</i> by Persoon (1801); sequence attached to the epitype LIP 0900051 (Richard et al. 2014)	Belgium, China, Czech Republic, France, Germany, India, Netherlands, Norway, Poland, Slovakia, Spain, Sweden, Switzerland, Turkey, Ukraine	Resolved and uncontested, this is the type species of the genus
<i>Morchella fluvialis</i>	Mes-18	Described from Spain; sequence attached to the holotype LIP 0900033 (Clowez et al. 2014)	Spain, Turkey	Resolved and uncontested
<i>Morchella galilaea</i>	Mes-16	Described from Israel; sequence attached to the holotype MS1-52 (Richard et al. 2014)	China, Egypt, France (La Reunion), India, Indonesia, Israel, Java, New Zealand, Rwanda, Spain, Turkey, USA (Hawaii)	Resolved and uncontested
<i>Morchella gracilis</i>	Mes-14	Described from the Dominican Republic; sequence attached to the holotype CORT013766 (Baroni et al. 2018)	Dominican Republic, Ecuador, Venezuela	Resolved and uncontested
<i>Morchella palazonii</i>	–	Described from Spain; sequence attached to the holotype LIP 0900177 (Clowez et al. 2015)	China, Spain	Resolved, but the Chinese collection slightly deviates from Spanish sequences; more collections and sequences of other loci from Spanish collections are needed to better assess conspecificity with the Chinese collections
<i>Morchella peruviana</i>	–	Described from Peru; sequence attached to the holotype NY02861412 (Baroni et al. 2018)	Peru	Resolved and uncontested
<i>Morchella prava</i>	Mes-7	Described from Eastern USA; sequence attached to the holotype F 05100602 (Kuo et al. 2012)	Canada, USA	Resolved and uncontested
<i>Morchella sceptriformis</i> = <i>M. virginiana</i>	Mes-3	Described from Eastern USA; sequence attached to the holotype LIP 0900110 (Richard et al. 2015)	USA	Resolved and uncontested
<i>Morchella steppicola</i>	Mes-1	Described from Ukraine (Zerova 1941); sequence attached to the epitype CWU-D0208 (Yatsiuk et al. 2016)	Croatia, Germany, Hungary, Kazakhstan, Serbia, Slovakia, Ukraine, Uzbekistan	Resolved and uncontested
<i>Morchella ulmaria</i> = <i>M. cryptica</i>	Mes-11	Described from Quebec (Canada); sequence attached to the holotype LIP 0900152 (Richard et al. 2015)	Canada, USA	Resolved and uncontested

Table 1 (continued)

Linnaean name	Phylopecies	Typification details	Phylogeography	Status
<i>Morchella vulgaris</i> ≡ <i>M. esculenta</i> f. <i>vulgaris</i> = <i>M. acerina</i> = <i>M. anthracina</i> = <i>M. conica</i> var. <i>pygmaea</i> = <i>M. lepida</i> = <i>M. robiniae</i> = <i>M. spongiola</i> = <i>M. vulgaris</i> var. <i>aucupariae</i>	Probably <i>Mes-5</i>	Described from Italy as <i>M. esculenta</i> f. <i>vulgaris</i> (Micheli 1729; Persoon 1801) and elevated to species by Gray (1821); sequence attached to the epitype LIP 0900044 (Richard et al. 2015)	Armenia, Czech Republic, Denmark, Estonia, France, Germany, India, Norway, Pakistan, Slovakia, Ukraine	Not conclusively resolved as it is yet unclear whether <i>M. dumensis</i> is conspecific, a distinct species, or perhaps a variant of <i>M. vulgaris</i> (see comments under <i>M. dumensis</i>); until further clarified, the usage of the two names is provisionally recommended
<i>Morchella yangii</i>	–	Described from China; sequence attached to the holotype FCNU1012 (Du et al. 2019a, 2019b)	China	Resolved and uncontested
<i>Morchella yishuica</i>	–	Described from China; sequence attached to the holotype FCNU1016 (Du et al. 2019a, 2019b)	China	Resolved and uncontested
Unnamed	<i>Mes-6</i>	Not typified; phylopecies identified in O'Donnell et al. (2011)	China	Yet to be formally described or linked to an existing binomial
Unnamed	<i>Mes-9</i>	Not typified; phylopecies identified in O'Donnell et al. (2011)	China, Japan, South Korea	Yet to be formally described or linked to an existing binomial
Unnamed	<i>Mes-10</i>	Not typified; phylopecies identified in O'Donnell et al. (2011)	China	Yet to be formally described or linked to an existing binomial
Unnamed	<i>Mes-12</i>	Not typified; phylopecies identified in O'Donnell et al. (2011)	China, Japan	Yet to be formally described or linked to an existing binomial
Unnamed	<i>Mes-13</i>	Not typified; phylopecies identified in O'Donnell et al. (2011)	China	Yet to be formally described or linked to an existing binomial
Unnamed	<i>Mes-15</i>	Not typified; phylopecies identified in O'Donnell et al. (2011)	China	Yet to be formally described or linked to an existing binomial
Unnamed	<i>Mes-19</i>	Not typified; phylopecies identified in Du et al. (2012b)	China	Yet to be formally described or linked to an existing binomial
Unnamed	<i>Mes-20</i>	Not typified; phylopecies identified in Du et al. (2012b)	China	Yet to be formally described or linked to an existing binomial
Unnamed	<i>Mes-21</i>	Not typified; phylopecies identified in Du et al. (2012b)	China	Yet to be formally described or linked to an existing binomial
Unnamed	<i>Mes-22</i>	Not typified; phylopecies identified in Du et al. (2012b)	China	Yet to be formally described or linked to an existing binomial
Unnamed	<i>Mes-23</i>	Not typified; phylopecies identified in Du et al. (2012b)	China	Yet to be formally described or linked to an existing binomial
Unnamed	<i>Mes-24</i>	Not typified; phylopecies identified in Du et al. (2012b)	China	Yet to be formally described or linked to an existing binomial
Unnamed	<i>Mes-25</i>	Not typified; phylopecies identified in Du et al. (2012b)	China	Yet to be formally described or linked to an existing binomial

Table 1 (continued)

Linnaean name	Phylospecies	Typification details	Phylogeography	Status
Unnamed	<i>Mes-26</i>	Not typified; phylospecies identified in Du et al. (2012b)	China	Yet to be formally described or linked to an existing binomial
Unnamed	<i>Mes-27</i>	Not typified; phylospecies identified in Du et al. (2012b)	China	Yet to be formally described or linked to an existing binomial
Unnamed	<i>Mes-28</i>	Not typified; phylospecies identified in Loizides et al. (2016)	Cyprus	Yet to be formally described or linked to an existing binomial
Elata clade (section <i>Distantes</i>)				
<i>Morchella angusticeps</i>	<i>Mel-15</i>	Described from Eastern USA (Peck 1879); sequence attached to the epitype F 04090601 (Kuo et al. 2012)	Canada, USA	Resolved, but its autonomy from <i>M. eximioides</i> has been contested by Petrželová and Sochor (2019), based on strictly phylogenetic grounds; integrative taxonomy, however, supports this species as closely related but distinct from <i>M. eximioides</i> , <i>M. confusa</i> , and a yet-to-be described lineage from the Czech Republic (see also "Discussion")
<i>Morchella arbutiphila</i>	<i>Mel-30</i>	Described from Cyprus; sequence attached to the holotype LIP 0000366 (Loizides et al. 2016)	Cyprus, Turkey	Resolved and uncontested
<i>Morchella australiana</i>	<i>Mel-35</i>	Described from Australia; sequence attached to the holotype Trappe 35077 (Elliott et al. 2014)	Australia	Resolved and uncontested
<i>Morchella brunnea</i>	<i>Mel-22</i>	Described from Western USA; sequence attached to the holotype OSC 138686 (Kuo et al. 2012)	Canada, USA	Resolved and uncontested
<i>Morchella confusa</i>	–	Described from China; sequence attached to the holotype FCNU1027 (Du et al. 2019a, 2019b)	China	Resolved and uncontested

Table 1 (continued)

Linnaean name	Phylospecies	Typification details	Phylogeography	Status
<i>Morchella conifericola</i>	<i>Mel-32</i>	Described from Turkey; sequence attached to the holotype ANK Taşkın 110 (Taşkın et al. 2016)	Norway, Turkey	Not conclusively resolved; the autonomy of this species from its closest relatives, supported in part by its assumed endemism in Turkey, has recently been challenged by its occurrence in Norway (Weholt et al. 2020), and by a multilocus analysis of broad biogeographical sampling, suggesting that this species may be better merged into a wider concept including also <i>M. pulchella</i> , <i>M. septentrionalis</i> , <i>M. inamoena</i> ss Clowez and <i>Mel-23</i> (Petrželová and Sochor 2019); considering the taxonomic and nomenclatural implications of such move and the need for more conclusive data (both molecular and morpho-ecological) to support it, we recommend provisionally maintaining the usage of these names; should an inclusive clade be considered, <i>M. pulchella</i> would be the priority name, though an earlier European name probably exists
<i>Morchella deliciosa</i> = <i>M. conica</i> var. <i>flexuosa</i> = <i>M. conica</i> var. <i>nigra</i> = <i>M. conica</i> var. <i>violipes</i>	<i>Mel-26 + Mel-13</i>	Not typified by Fries (1822) but lectotypified by Richard et al. (2015) by an iconotype from Germany. No epitype designated yet, the current interpretation as <i>Mel-26</i> follows Richard et al. (2015)	Czech Republic, China, Estonia, France, Germany, India, Norway, Poland, Sweden, Turkey	Not conclusively resolved because species limits may extend beyond <i>Mel-26</i> so as to include also <i>Mel-13</i> (Du et al. 2012a, b, 2019a, b; Taskin et al. 2012; Petrželová and Sochor 2019) and because an epitype is needed for this early-described taxon; further synonyms probably exist but until further clarified, the usage of the current name is provisionally recommended for the inclusive clade
<i>Morchella disparilis</i>	–	Described from Cyprus; sequence attached to the holotype LIP 0400220 (Loizides et al. 2016)	Cyprus, Greece, Spain	Resolved and uncontested
<i>Morchella dunalii</i> = <i>M. fallax</i>	<i>Mel-25</i>	Described from France (Boudier 1887) and lectotypified by Moreau et al. (2011); sequence attached to the epitype MBT 177741 (Richard et al. 2015)	Cyprus, France, Israel, Spain, Turkey	Resolved and uncontested

Table 1 (continued)

Linnaean name	Phylospecies	Typification details	Phylogeography	Status
<i>Morchella eximia</i> = <i>M. anthracophila</i> = <i>M. carbonaria</i> ? = <i>M. septimelata</i>	<i>Mel-7</i>	Described from France (Boudier 1909); sequence attached to the epitype LIP 0900129 (Richard et al. 2015)	Argentina, Australia, Canada, China, Cyprus, France, Mexico, Spain, Portugal, Turkey, USA; cultivated	Not conclusively resolved because <i>M. septimelata</i> forms a distinct clade, warranting further investigation to confirm or reject its conspecificity with <i>M. eximia</i> ; until further clarified, the usage of the current name for the inclusive clade is provisionally recommended
<i>Morchella eximioides</i>	<i>Mel-16</i>	Invalidly described from Norway by Jacquetant (1955) but later validated by Kristiansen (1990); sequence attached to the holotype (Weholt et al. 2020)	China, Norway, Sweden	Resolved, but its autonomy from <i>M. angusticeps</i> has been contested by Petrželová and Sochor (2019); since this species is both reciprocally monophyletic and morphologically distinct from <i>M. angusticeps</i> , its proposed synonymy with the latter taxon is not endorsed here (see also comments above and in the main review)
<i>Morchella exuberans</i> = <i>M. capitata</i>	<i>Mel-9</i>	Described from Western USA; sequence attached to the holotype LIP 0900012 (Richard et al. 2015)	Canada, China, Cyprus, Norway, Spain, Sweden, Turkey, USA	Resolved and uncontested
<i>Morchella fekeensis</i>	<i>Mel-28</i>	Described from Turkey; sequence attached to the holotype ANK Taşkın 101 (Taşkın et al. 2016)	Turkey	Resolved and uncontested
<i>Morchella hispaniolensis</i>	<i>Mel-18</i>	Described from the Dominican Republic; sequence attached to the holotype NY02861410 (Baroni et al. 2018)	Dominican Republic	Resolved and uncontested
<i>Morchella iberica</i>	–	Described from Spain; sequence attached to the holotype LIP 0001675 (Clowez et al. 2020)	Spain, Turkey	Resolved and uncontested although initially overlooked and lumped in an inclusive <i>M. semilibera</i> species concept (Taşkın et al. 2012)
<i>Morchella importuna</i>	<i>Mel-10</i>	Described from Western USA; sequence attached to the holotype F 04130401 (Kuo et al. 2012)	Canada, China, Cyprus, Czech Republic, Estonia, Finland, France, Germany, Israel, Italy, Lithuania, Norway, Poland, Portugal, Spain, Switzerland, Turkey, USA; cultivated	Not conclusively resolved because most European collections belong to a clade distinct from that of the American type, suggesting two species may be involved, and because several old European names, incl. the seminal <i>M. elata</i> , are candidate priority synonyms for at least the European clade; until further clarified, the usage of the current name is provisionally recommended for the inclusive clade

Table 1 (continued)

Linnaean name	Phylospecies	Typification details	Phylogeography	Status
<i>Morchella inamoena</i> ss Clowez	–	Described from France (Boudier 1897) but type lost; not epitypified	France, Spain	Yet to be formally epitypified and linked to Boudier's species; the autonomy of this lineage within the <i>M. pulchella</i> complex is further challenged by recent multilocus analyses (Petrželová and Sochor 2019), suggesting that <i>M. conifericola</i> , <i>M. pulchella</i> , <i>M. septentrionalis</i> , <i>Mel-23</i> , and this taxon should probably be merged into a single species
<i>Morchella kaibabensis</i>	–	Described from Western USA; sequence attached to the holotype ARIZ AN043595 (Baroni et al. 2018)	USA	Resolved and uncontested
<i>Morchella kakiicolor</i> ≡ <i>M. quercus-ilicis</i> f. <i>kakiicolor</i>	<i>Mel-11</i>	Described from Spain as a form of <i>M. quercus-ilicis</i> (Clowez 2012) and later recombined as a species by Loizides et al. (2015); sequence attached to the holotype LIP 0900146 (Richard et al. 2015, as "f. <i>kakiicolor</i> ")	Spain (incl. Canary Islands)	Resolved and uncontested, although the holotype of this taxon was at first erroneously ascribed to <i>M. quercus-ilicis</i> , the latter now a synonym of <i>M. tridentina</i> and genetically unrelated to <i>M. kakiicolor</i>
<i>Morchella laurentiana</i>	<i>Mel-36</i>	Described from Canada; sequence attached to the holotype DAOM 574925 (Voitk et al. 2016)	Canada	Resolved and uncontested
<i>Morchella magnispora</i>	<i>Mel-29</i>	Described from Turkey; sequence attached to the holotype ANK Taşkın 104 (Taşkın et al. 2016)	Turkey	Resolved and uncontested
<i>Morchella mediterraneensis</i>	<i>Mel-27</i>	Described from Turkey; sequence attached to the holotype ANK Taşkın 98 (Taşkın et al. 2016)	Turkey	Resolved and uncontested
<i>Morchella norvegiensis</i> = <i>M. eohespera</i>	<i>Mel-19</i>	Invalidly described from Norway by Jacquetant (1955) but later validated by Kristiansen (1990); sequences attached to the holotype O-72835 (Richard et al. 2015) and epitype O-255619 (Weholt et al. 2020)	Canada, China, Czech Republic, France, Netherlands, Norway, Slovakia, Sweden, Switzerland, USA	Resolved and uncontested

Table 1 (continued)

Linnaean name	Phylospecies	Typification details	Phylogeography	Status
<i>Morchella odonnellii</i>	–	Described from China; sequence attached to the holotype FCNU1024 (Du et al. 2019a , 2019b)	China	Not conclusively resolved because the phylogenetic relationships of this species to <i>M. tridentina</i> are still unclear; the latter species, as currently defined, is phylogenetically organized into distinct subclades reflecting biogeography; therefore, <i>M. odonnellii</i> may simply represent slightly divergent Chinese populations of <i>M. tridentina</i> ; the few sequence differences between <i>M. odonnellii</i> and the Eurasian <i>M. tridentina</i> , all restricted to the <i>rpb1</i> locus with questionable, if any, morphological differences between the two taxa, support this hypothesis and link the taxonomic status of <i>M. odonnellii</i> to that of current geographical clades within <i>M. tridentina</i> ; until this complex is further clarified, the current name is provisionally recommended for this clade
<i>Morchella oweri</i>	<i>Mel-39</i>	Described from China; sequence attached to the holotype FCNU1026 (Du et al. 2019a , 2019b)	China, Czech Republic, Germany, Norway; cultivated	Resolved and uncontested
<i>Morchella pakistanica</i>	–	Described from Pakistan; sequence attached to the holotype LAH35075 (Hernández-Restrepo et al. 2016)	Pakistan	Not conclusively resolved; poorly described from a single collection and only from the ITS locus; additional sequences are needed to confirm its status and phylogenetic position within the genus
<i>Morchella populiphila</i>	<i>Mel-5</i>	Described from Western USA; sequence attached to the holotype F 03240401 (Kuo et al. 2012)	North America, Portugal, Spain	Resolved and uncontested

Table 1 (continued)

Linnaean name	Phylospecies	Typification details	Phylogeography	Status
<i>Morchella pulchella</i>	<i>Mel-31</i>	Described from France (Clowez 2012); sequence attached to the holotype (Richard et al. 2015)	China, Czech Republic, France, Pakistan, Turkey	Not conclusively resolved because the autonomy of this species from <i>M. septentrionalis</i> has never been supported phylogenetically (Du et al. 2019a, 2019b); Taskin et al. 2012; Richard et al. 2015) and was mostly extrapolated from presumed disjunct distributions; however, a recent multilocus analysis of a broad biogeographical sampling in this complex suggests that this species may be better merged into a wider concept also including <i>M. conifericola</i> , <i>M. septentrionalis</i> , <i>M. inamoena</i> ss Clowez, and <i>Mel-23</i> (Petrželová and Sochor 2019); considering the taxonomic and nomenclatural consequences of such move and the need of additional data to support it, we recommend to maintain the usage of these names for the time being, but should the inclusive clade be considered, <i>M. pulchella</i> would be the priority name, though an earlier European name for this widespread taxon most likely exists
<i>Morchella punctipes</i>	<i>Mel-4</i>	Described from Eastern USA by Peck (1903); sequence attached to the epitype F 05020502 (Kuo et al. 2012)	Canada, USA	Resolved and uncontested

Table 1 (continued)

Linnaean name	Phylospecies	Typification details	Phylogeography	Status
<p><i>Morchella purpurascens</i> ≡ <i>M. elata</i> var. <i>purpurascens</i> = <i>M. conicopapyracea</i></p>	<i>Mel-20 + Mel-34</i>	Described from France and Bohemia (Czech Rep.) as <i>M. elata</i> var. <i>purpurascens</i> (Boudier 1897) and elevated to species by Jacquetant and Bon (1985); sequence linked to the epitype LIP 0900018 (Richard et al. (2012)	China, Czech Republic, Denmark, France, Norway, Spain (Canary Islands), Sweden, Taiwan, Turkey	Not conclusively resolved because of uncertain/poorly supported phylogenetic limits (Du et al. 2012a, 2012b, 2019a, 2019b; Taskin et al. 2012; Petrželová and Sochor 2019) and because early priority synonyms may exist (i.e., <i>M. rielana</i>); close phylogenetic vicinity and possible co-occurrence with <i>M. norvegiensis</i> and <i>Mel-38</i> necessitate careful analysis of an extended multilocus dataset to confirm species assignment of any novel collection; the autonomy of <i>Mel-34</i> from this species, initially proposed based on a single and very peculiar sequence (Du et al. 2012a, 2012b), is no longer supported by a recent multilocus analysis of a broader biogeographical sampling (Petrželová and Sochor 2019); since no description of this lone lineage is currently available and at least until additional sequences of <i>Mel-34</i> are available, the usage of <i>M. purpurascens</i> is provisionally recommended to designate the <i>Mel-20/Mel-34</i> inclusive clade
<p><i>Morchella semilibera</i> nam. cons ≡ <i>Mitrophora semilibera</i> = <i>Phallus crassipes</i> nom. rej = <i>Phallus gigas</i> nom. rej = <i>Phallus undosus</i> nom. rej = <i>Morchella hybrida</i> = <i>Morchella varisiensis</i></p>	<i>Mel-3</i>	Described from France (Lamarck and Candolle 1805); sequence attached to the neotype LIP 0900126 (Moreau et al. 2014)	Czech Republic, France, Germany, India, Italy, Japan, Kazakhstan, Netherlands, Spain, Sweden	Resolved and uncontested; conserved against earlier synonyms (Moreau et al. 2014)

Table 1 (continued)

Linnaean name	Phylospecies	Typification details	Phylogeography	Status
<i>Morchella septentrionalis</i>	<i>Mel-24</i>	Described from Eastern USA; sequence attached to the holotype F 05110405 (Kuo et al. 2012)	Canada, USA	Not conclusively resolved because the autonomy of this species from <i>M. pulchella</i> has never been properly supported (Du et al. 2012a, 2012b; Taşkın et al. 2012; Richard et al. 2015) and was hypothesized from putatively disjunct distributions; recent multilocus analyses (Petrželová and Sochor 2019) suggest this species may be better merged into a broader concept to include <i>M. conifericola</i> , <i>M. pulchella</i> , <i>M. inamoena</i> ss Clowez, and <i>Mel-23</i> (see also comments under <i>M. pulchella</i>); until fully resolved, we recommend the usage of the current name for North American collections belonging in this clade
<i>Morchella sextelata</i>	<i>Mel-6</i>	Described from Western USA; sequence attached to the holotype F 07130403 (Kuo et al. 2012)	China, Mexico, USA; cultivated	Not conclusively resolved because as currently delineated, the species encompasses two well-delimited and quite distant (19 SNPs) clades; careful examination of sequenced collections in the two groups should allow identifying diagnostic features
<i>Morchella snyderi</i>	<i>Mel-12</i>	Described from Western USA; sequence attached to the holotype OSC 139277 (Kuo et al. 2012)	China, USA	Resolved and uncontested

Table 1 (continued)

Linnaean name	Phylospecies	Typification details	Phylogeography	Status
<p><i>Morchella tridentina</i> = <i>M. quercus ilicis</i> = <i>M. frustrata</i> = <i>Morchella conica</i> var. <i>pseudoeximia</i> = <i>M. elatooides</i> nom. inval = <i>M. elatooides</i> var. <i>elegans</i> nam. inval</p>	<i>Mel-2</i>	Described from Northern Italy (Bresadola 1898); repeated attempts to sequence original material have failed (Richard et al. 2015; Loizides et al. 2015). Not epitypified	Argentina, Armenia, Canada, Chile, Cyprus, France, India, Israel, Mexico, Spain, Turkey, USA	Not conclusively resolved because currently available sequences delineate distinct clades according to their geographical origins (Eurasian, North American, South American), but with no apparent morphological differences suggesting either (1) the presence of several cryptic species or (2) that subpopulations of this widespread species are phylogenetically continentalized; careful integrative analyses of collections from different continents are necessary to assign the most suitable taxonomic rank, if any, to each clade, with possible consequences on the taxonomic status of <i>M. odonnellii</i> (see comments above); a sequenced epitype from Northern Italy further needs to be designated to definitively stabilize the usage of this classical name
<i>Morchella tomentosa</i>	<i>Mel-1</i>	Described from Western USA (Kuo 2008); sequence attached to the holotype MDCP 06150405 (O'Donnell et al. 2011)	Canada, USA	Resolved and uncontested
Unnamed	<i>Mel-8</i>	Not typified; phylospecies identified in O'Donnell et al. (2011)	USA	So far represented by a single sequence, yet to be formally described or linked to an existing binomial
Unnamed	<i>Mel-14</i>	Not typified; phylospecies identified in O'Donnell et al. (2011)	China	Yet to be formally described or linked to an existing binomial
Unnamed	<i>Mel-17</i>	Not typified; phylospecies identified in O'Donnell et al. (2011)	China	So far represented by a single sequence, yet to be formally described or linked to an existing binomial
Unnamed	<i>Mel-21</i>	Not typified; phylospecies identified in O'Donnell et al. (2011)	China, Japan	Yet to be formally described or linked to an existing binomial

Table 1 (continued)

Linnaean name	Phylospecies	Typification details	Phylogeography	Status
Unnamed	<i>Mel-23</i>	Not typified; phylospecies identified in O'Donnell et al. (2011)	Denmark, Norway	Yet to be formally described or linked to an existing binomial; the obscure <i>M. distans</i> , type species of the section, has been suggested as a Linnean name for this lineage (Weholt et al. 2020), but this hypothesis needs further investigation; the autonomy of this lineage within the <i>M. pulchella</i> complex is further challenged by recent multilocus analyses (Petrželová and Sochor 2019), suggesting that <i>M. conifericola</i> , <i>M. pulchella</i> , <i>M. septentrionalis</i> , <i>M. inamoena</i> ss Clowez, and <i>Mel-23</i> should probably be merged into a single species (see comments above)
Unnamed	<i>Mel-33</i>	Not typified; phylospecies identified in Du et al. (2012b)	China	Yet to be formally described or linked to an existing binomial
Unnamed	<i>Mel-37</i>	Not typified; phylospecies identified in Pildain et al. (2014)	Argentina	Yet to be formally described or linked to an existing binomial
Unnamed	<i>Mel-38</i>	Not typified; phylospecies identified in Loizides et al. (2016)	Cyprus	Yet to be formally described or linked to an existing binomial; more sequences are needed to confirm its exclusivity from <i>M. purpurascens</i> (see notes above and "Discussion")

the authors have neglected to designate a holotype and thus failed to fulfill the criteria of Articles 40.1 and 40.6 of the International Code of Nomenclature of Algae, Fungi and Plants (Turland et al. 2018; Aime et al. 2021). Also disturbing is the fact that many citations throughout the paper have been intentionally or unintentionally misapplied, and are often unrelated to, or directly contradict the context in which they have been used. In a point-by-point analysis of the paper Phanpadith et al. (2019) (Point-by-point critique of Phanpadith et al. (2019), [Supplemental Information](#)) a total of 71 false, erroneous, or inaccurate statements have been identified, including extraordinary claims that only 315 species of fungi are recorded in fungal databases and only four species of *Morchella* have been given Latin binomials. Considering the status and high visibility of the journal, but also the amount of misinformation disseminated and taxonomic instability brought upon the genus by potential citations of this paper (e.g., Lagrange and Vernoux 2020), a full retraction of Phanpadith et al. (2019) was deemed necessary. An open letter asking for the retraction of this paper was therefore drafted by the authors (Open Letter to the Editor of Scientific Reports, [Supplemental Information](#)) and submitted for publication to *Scientific Reports* on 5 May 2021. The journal refused to publish the letter, but eventually retracted the paper with the following note: “Several errors were discovered in the data-sets used to construct the phylogenetic trees, including duplicate sequences, incorrect accession numbers, and the inadvertent inclusion of a bacterial sequence. In addition, the *EF1- α* and *RPB2* sequences cited in Table 2 were poorly amplified and sequenced, reducing the reliability of their application in tree constructions. As a result, the phylogenetic trees reported in the paper cannot be replicated.” (<https://www.nature.com/articles/s41598-021-93655-1>). While the retraction of the paper is certainly welcome, several unanswered questions remain as to how such an outstandingly flawed paper, claiming among other things that 10–15-nm sections were made by hand, has evaded the attention of the editor-in-chief, the senior editorial board members, the section editor, and an unknown number of reviewers to be published in a Q1 journal. Concerns are also raised about quality controls and safekeeping procedures in *Scientific Reports* (and other pay-to-publish journals), but also with regard to the non-transparent retraction procedure itself, which in this case has resulted in a short editorial note not accurately conveying the enormity of malpractice that has taken place.

The system of binomial nomenclature and the *Mel/Mes* designators

The Linnaean system of binomial nomenclature (Linnaeus 1758) has been fundamental for biological sciences (Russell et al. 2007; Paterlini 2007; Polaszek 2010; Patterson

et al. 2010). Up to 2010, a great deal of confusion had persisted over the number of species present in *Morchella* and the binomials applicable to them, with some authors accepting as few as three species (Groves and Hoare 1953; Dennis 1978) and others as many as 34 (Jacquetant 1984; Clowez 2012). While molecular phylogenetics have since clarified the species richness debate, early phylogenetic assessments were faced with the daunting task of matching the numerous phylogenetic clades (phylopecies) inferred through molecular tools to the several dozens of Linnaean binomials available, many of which type material were not available for or, if it existed, were too old to yield useful DNA data. To tackle this problem, the system of informal *Mel/Mes* designators for each phylospecies was introduced by Taşkın et al. (2010) and O'Donnell et al. (2011), and widely adopted in subsequent studies (Du et al. 2012a, b; Pildain et al. 2014; Richard et al. 2015; Loizides et al. 2016; Petrželová and Sochor 2019). This system, which used the prefix “*Mel*” for the */Elata* clade and “*Mes*” for the */Esculenta* clade followed by a serial number for each species, did not intend to replace binomial nomenclature (as falsely assumed by Phanpadith et al. 2019), but was introduced as a temporary solution until the phylogenetic identity of early published binomials could be clarified. For precisely this reason, unambiguous clades such as those of *Morchella anatolica* and *Morchella rufobrunnea* were not assigned informal designators, because the phylogenetic identity of these taxa had been conclusively resolved via sequencing of original material (O'Donnell et al. 2011; Taşkın et al. 2012). Since then, the genetic identity of many classical names has also been clarified through lecto- and epitypification (Richard et al. 2015), while further synonymies have been established (Richard et al. 2015; Loizides et al. 2015; Weholt et al. 2020), and several new taxa were proposed (Clowez et al. 2014, 2015, 2020; Loizides et al. 2016; Voitk et al. 2016; Taşkın et al. 2016; Baroni et al. 2018; Du et al. 2019a). To date, 58 classical or recently proposed binomials are linked to known phylogenetic clades (see Fig. 1, Table 1).

The conceptual and methodological difficulties of linking a DNA sequence to an early-described binomial are by no means unique to morels. In the absence of DNA data from the holotype or other original material, attaching a sequence to an old binomial is challenging and essentially relies on correct interpretation of phenotypic, ecological, chorological, and other data (Ariyawansa et al. 2014; Dayarathne et al. 2016). Similar problems are in fact widespread throughout basidiomycete and ascomycete genera, not least *Caloboletus* (Loizides et al. 2019), *Cortinarius* (Limatainen et al. 2014a, 2017), *Ganoderma* (Fryssouli et al. 2020), *Gyromitra* (Miller et al. 2020), *Helvella* (Nguyen et al. 2013), *Hydnellum* (Parfitt et al. 2007; Ainsworth et al. 2010), *Hydnum* (Grebenc et al. 2009; Niskanen et al. 2018), *Inocybe* (Larsson et al. 2009; Matheny and Swenie 2018),

Lyophyllum (Bellanger et al. 2015; Bellanger 2016), or *Otidea* (Hansen and Olariaga 2015), to name a few. Although radical views to bypass some of these difficulties have occasionally been put forward, such as the controversial PhyloCode advocating for a system of rankless phylotaxonomy (de Queiroz and Gauthier 1990, 1992, 1994), or calls to abandon binomial nomenclature altogether (Money 2013), these have been widely rejected by the academic community and Linnaean binomial nomenclature continues to form the basis of scientific communication (e.g., Nixon and Carpenter 2000; Carpenter 2003; Wheeler 2004; Will et al. 2005; Korf 2005; Schoch et al. 2014; Minnis 2015; Dayarathne et al. 2016; Zamora et al. 2018). Therefore, genetic characterization of early-described taxa through sequencing of original material and/or designation of sequenced epitypes remains the most cautious, widely accepted, and least disruptive method of solving complex taxonomic problems and stabilizing taxonomy and nomenclature within critical genera (Hyde and Zhang 2008; Ariyawansa et al. 2014; Liimatainen et al. 2014b; Vesterholt et al. 2014; Borovička et al. 2015; Olariaga et al. 2015; Vizzini et al. 2016, 2020; Richard et al. 2015; Dima et al. 2016; Skrede et al. 2017; Moreau et al. 2018; Lombard et al. 2018; Turland et al. 2018; Van Vooren et al. 2019; Loizides et al. 2020; Van Vooren 2020). Powerful new technologies such as next-generation sequencing, able to produce useful DNA sequences from old and contaminated material, are expected to be decisive in decrypting the genetic identity of early-described taxa in the years to come (Wibberg et al. 2020; Bellanger et al. 2021; Bidaud et al. 2021). Against this backdrop, the persistence of Phanpadith et al. (2019), but also other recent studies (e.g., Petrželová and Sochor 2019; Lagrange and Vernoux 2020) to ignore, sideline, or dismiss phylogenetically resolved binomials in favor of a permanent *Mel/Mes* coding system is unfortunate, inexplicable, and perpetuates taxonomic and nomenclatural instability within the genus.

The pitfalls of single-method approaches in taxonomy

The view expressed by Phanpadith et al. (2019) and others that molecular phylogenetics should be used “instead of morphology to identify cryptic species” is both simplistic and misguided, because it is based on the fallacious assumptions that (1) DNA is the only valuable source of diagnostic information; (2) DNA analyses have zero failure rate in delimiting species; and (3) all so-called cryptic species are truly cryptic. For all the profound impact molecular phylogenetics have had in fungal taxonomy, Sanger sequencing of specific DNA regions is not foolproof and, much like other methods, relies on a series of simplified assumptions (Nixon and Carpenter 2000; Will et al. 2005; Carstens et al. 2013; Li et al. 2017). Considering that full genomic sequencing of each and every collection will be neither practical nor cost-effective anytime soon, the

accuracy of species delimitation by present DNA techniques inevitably rests with the choice of loci analyzed, the method of analysis, the number and quality of sequences, their correct alignment, and ultimately personal interpretation of the data (Sung et al. 2007; Philippe et al. 2011; Leliaert et al. 2014). In a recent study by Wei et al. (2016), for example, two lichenized ascomycetes with apparently distinct reproductive modes, *Hypogymnia hypotrypa* (Nyl.) Rass. and *H. flavida* McCune & Obermayer (Parmeliaceae), received strong support when analyzed by the multispecies coalescent approach (BPP) and Bayes factor delimitation, but failed to resolve in Automatic Barcode Gap Discovery (ABGD), Bayesian implementation of Poisson tree process model (bPTP), and general mixed Yule coalescent (GMYC), which delineated either one or multiple species, instead. It is in fact not uncommon for support (or lack of it) for a group of sequences to be spurious and by modifying the number of sequences, loci analyzed, or method of analysis, support values might change, sometimes drastically (Knowles and Carstens 2007; Ballenghien et al. 2017; Wilson et al. 2018; Thines et al. 2018). Other confounding factors such as horizontal gene transfer, intragenomic polymorphism of rDNA cistrons, recent diversification and incomplete lineage sorting, or hybridization and introgression may further complicate or obscure taxonomical conclusions (Philippe et al. 2011; Kiss 2012; Leliaert et al. 2014; Mailund et al. 2014; Stewart et al. 2014; Chan et al. 2020; Stadler et al. 2020).

In *Morchella*, the pitfalls of single-method approaches are exemplified by another recent study by Petrželová and Sochor (2019), focusing on molecular phylogenetics. While the authors of this study are correct to point out that many problems in the genus stem from the application of different methods of analysis and in some cases over-splitting, some of their proposals are unlikely to help. Specifically, Petrželová and Sochor (2019) advocate for the introduction of an additional prerequisite in species delimitation in *Morchella*: polygenic differentiation. This inference method, originally introduced by Taylor et al. (2000) as “GCPSR,” is useful in delimiting morphologically reduced fungi or species that permanently exhibit their asexual stages and has been widely applied in fungal systematics (Nguyen et al. 2015). However, this method is also based on the precarious assumption that all species differ *equally* (or at least *sufficiently*) in *all* loci. By strictly applying this method as the sole criterion of species delimitation in *Morchella*, therefore, two phylogenetically supported, reciprocally monophyletic, and morphologically distinct species, *M. eximoides* Jacquet. ex R. Kristiansen (supported by Bayesian posterior probability of 1 and with spores up to 24–26 µm long) and *M. angusticeps* Peck (supported by Bayesian posterior probability of 1 and with spores up to 30–34 µm long), are lumped into a single species by Petrželová and Sochor (2019) because they are separated by only two of the four loci tested. We consider this a particularly dubious

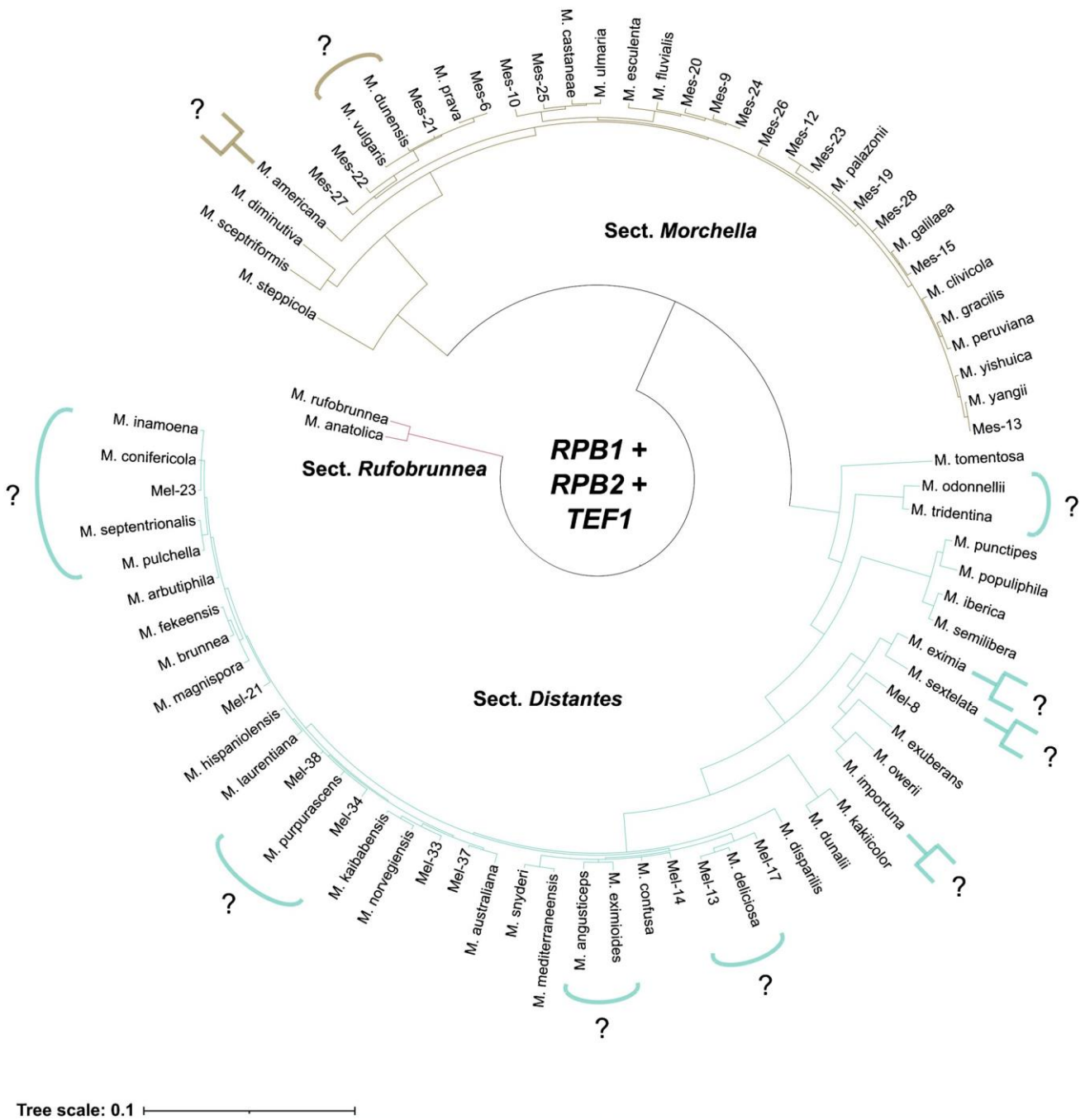


Fig. 1 Radial multilocus phylogeny of *Morchella*: genus-wide Bayesian inference analysis of a multilocus (*RPB1* + *RPB2* + *TEF1*) sequence dataset including the 81 published species and *Mel/Mes* phylospecies, excluding *M. pakistanica*, for which only ITS sequence is available. Note that a few additional lineages have been identified

but not formally described nor been assigned a phylospecies number. Lineages not conclusively resolved or contested are marked by question bars and bracket or branching symbol, for possible lumping or splitting, respectively (see Table 1 for details)

conclusion, not just because the lack of apomorphies in two of the tested loci does not in this case conflict with the monophyly of the two species, but also because phenotypic differences between them have been entirely ignored. It is unrealistic to expect the evolutionary history of all species

to be symmetrically imprinted in all loci (Maddison 1997; O'Donnell and Cigelnik 1997; Hudson and Coyne 2002; Crous and Groenewald 2005; Knowles and Carstens 2007; Harder et al. 2013; Altermann et al. 2014; Zamora et al. 2018) and, as shown by Du et al. (2012a), the LSU, *TEF1*,

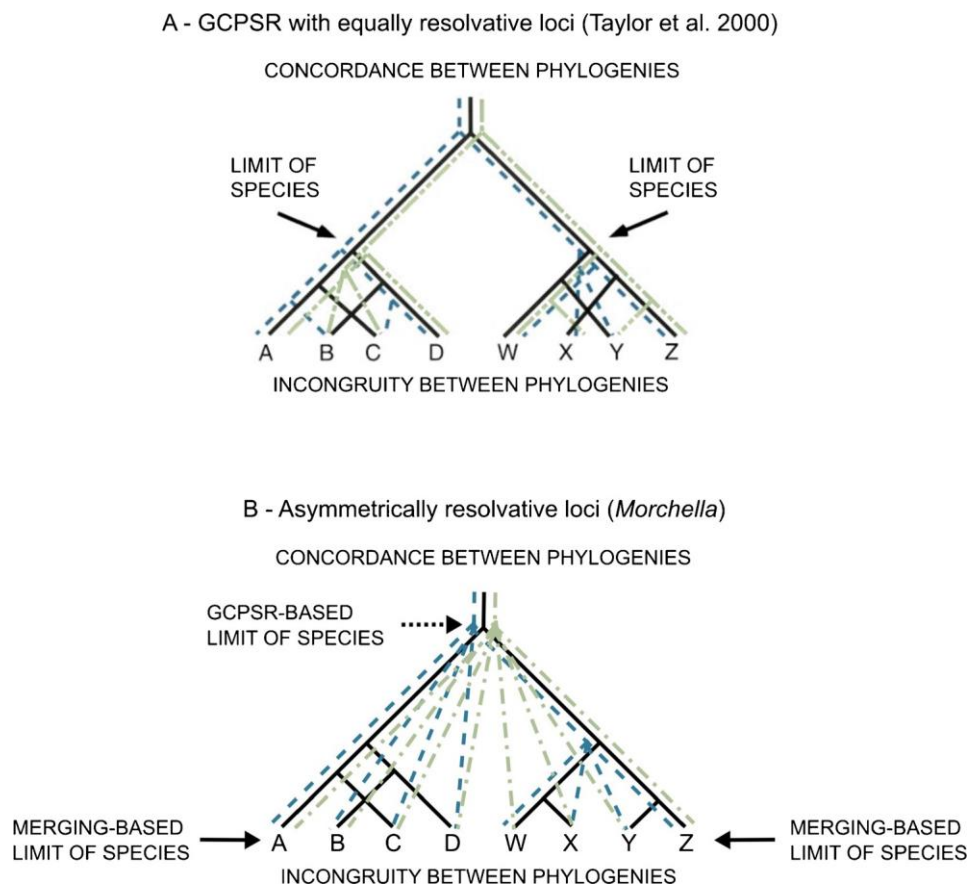
RPB1, and *RPB2* loci are indeed less variable than ITS in the majority of morels. Such radical lumping, therefore, is bound to create more problems than it solves and ultimately disqualifies genuine evolutionary units in favor of an uninformative, methodologically biased, and largely artificial taxonomical model.

Combined multigene phylogeny vs classic GCPSR

GCPSR, as originally defined by Taylor et al. (2000), is a multilocus method designed to detect cryptic speciation by identifying the transition from concordance to incongruity between phylogenies inferred from several loci, which evolve at their own pace (lineage sorting, genetic drift). This concordance is then interpreted as reflecting reproductive barriers to gene flow between populations, which ultimately lead to speciation (Taylor et al. 2000). Although generally regarded as a powerful method of species delimitation, GCPSR still assumes vertical heredity, which makes it unsuitable for representing, for instance, reticulate evolution. Moreover, GCPSR does not take into account incomplete lineage sorting and may be just as limited as other phylogenetic approaches in resolving recently evolved species (Liu et al. 2016). Being sensitive to sampling, GCPSR will

convey different messages depending on the quality of the dataset. In an ideal scenario (such as the one depicted in Taylor et al. 2000, reproduced in Fig. 2A), phylogenetic markers are all sufficiently and equally polymorphic to resolve all terminal clades. But what if this is not the case? Strictly applying the principles underlying GCPSR in such cases of asymmetric phylogenies would lead to define species limits at the deepest node in the multilocus phylogeny, where incongruity between each individual phylogeny switches to concordance (as depicted by the dotted arrow in Fig. 2B, this node being the one where this transition occurs with the least polymorphic marker). Applying the GCPSR method in such cases results in following the most conservative individual phylogeny at each node and identifying species limits at the most inclusive clade of each possible option. Thus, it can be argued that GCPSR is a conservative inference method, which *subtracts* phylogenetic information from the most variable markers rather than *adding* information from each locus. An alternative approach would be to acknowledge that the chosen loci display different resolution power and opt to combine their phylogenetic information, as depicted in Fig. 2B (plain arrows). In this case, relevant nodes can be inferred following the most polymorphic marker, and species limits would contrastingly be defined by the least inclusive clade of each phylogeny. This approach, though, abandons the bases of GCPSR and should probably be referred to as

Fig. 2 GCPSR vs multilocus phylogenies: the GCPSR method with three equally polymorphic loci (A, reproduced from Taylor et al. 2000) or with three asymmetrically resolving loci (B). The GCPSR-based delineation of species limits identifies the node in the multilocus phylogeny where individual phylogenies switch from incongruity to concordance. Note that this approach does not consider some of the phylogenetic signal from individual, more polymorphic loci, and delineates species by the most inclusive clade among the three phylogenies. In contrast, a merging-based (multilocus) approach combines the phylogenetic signal conveyed by the three loci and delineates species by the least inclusive clades among the three phylogenies



“additive-” or “combined multilocus analysis,” rather than GCPSR. Given the above shortcomings, it is perhaps not surprising that some of the authors of the original Taylor et al. (2000) paper appear to have subsequently revised their views and abandoned the requirement for polygenic differentiation (see Dettman et al. 2003).

The phylogenetic methodology introduced a decade ago by Kerry O’Donnell and collaborators (Taşkın et al. 2010; O’Donnell et al. 2011) to unravel the extent of *Morchella* diversity, and widely applied in the genus since (Taşkın et al. 2012; Du et al. 2012a, b, 2019b; Pildain et al. 2014; Richard et al. 2015; Loizides et al. 2016; Baroni et al. 2018), is based on such a combination of asymmetric phylogenetic markers (Fig. 2B). Indeed, it had become apparent from the first extensive analyses that the ITS rDNA locus has much more resolution than the LSU rDNA, *RPB1*, *RPB2*, and *REF1* loci (Du et al. 2012b), although in the *Mel-17* to *Mel-38* subclades (often called the *Elata* subclade) this asymmetry is much less obvious, therefore, applying GCPSR might still be possible with the five selected loci. This, however, has never been the case in *Morchella* and a clear “merging” strategy has been applied to infer clades and species, rather than a search for the deepest node where concordance to incongruity of individual phylogenies occurs. As an example, *Morchella norvegiensis* Jacquet. ex R. Kristiansen (*Mel-19*) and *M. purpurascens* (Krombh. ex Boud.) Jacquet. (*Mel-20*) should not be recognized as distinct species following a strict GCPSR approach, because they are not resolved by the ITS phylogeny and the node where concordance to incongruity is taking place between the different phylogenies is the inclusive clade encompassing the two phylopecies. Likewise, *M. brunnea* M. Kuo (*Mel-22*) and *M. fekeensis* H.H. Doğan, Taşkın & Büyükalaca (*Mel-28*) should not be distinguished at species level by GCPSR, since they are not resolved by *RPB1* and *RPB2*, neither should be *Mel-23* from *M. conifericola* Taşkın, Büyükalaca & H.H. Doğan (*Mel-32*) which are not distinguished by *RPB2*. Semantics aside, it becomes obvious from the above examples that the multilocus phylogenetic method introduced to unravel more diversity a decade ago is not founded on the exact same evolutionary grounds as classic GCPSR (as originally outlined in Taylor et al. 2000 and advocated by Petrželová and Sochor 2019), but rather adds or combines the information derived from the different loci analyzed.

It must be stressed that the above examples are not intended to dismiss or belittle the usage of the current multilocus method widely applied in *Morchella*, or even the classic GCPSR method, but simply to temper overconfidence in the *Mel/Mes* clades delineated and call for caution when phylogenies need to translate into a meaningful taxonomy. It is precisely because of such intrinsic limitations that a broader spectrum of analyses

is necessary in the delimitation of species, expressed in multidisciplinary approaches broadly termed as “integrative,” “multisource,” or “polyphasic” taxonomy (Dayrat 2005; Will et al. 2005; Stadler et al. 2014). Rather than relying on a single tool or a single source of information, integrative taxonomical approaches utilize multi-source data to reach taxonomic conclusions, complementing multilocus analyses with population genetics, morphological, developmental, and behavioral analyses, chemotaxonomy, cytology, and ultrastructural and reproductive studies, as well as analysis of distributional patterns, ecological niches, and host associations (Will et al. 2005; Padial et al. 2010; Schlick-Steiner et al. 2010; Barrett and Freudenstein 2011; Stech et al. 2013; Carstens et al. 2013; Zervakis et al. 2014; Zamora et al. 2015; Wei et al. 2016; Kuhnert et al. 2017; Haelewaters et al. 2018; Sochorová et al. 2019; Liu et al. 2020; Samarakoon et al. 2020; Wittstein et al. 2020; Zamora and Ekman 2020; Maharachchikumbura et al. 2021). It is only by the use of such integrative approaches and carefully evaluating all lines of evidence that a number of closely related and insufficiently clarified lineages in *Morchella*, such as the *M. angusticeps*/*M. eximoides* pair, the *M. norvegiensis*/*M. purpurascens*/*M. laurentiana*/*Mel-38* complex, or the *M. pulchella*/*M. septentrionalis*/*M. conifericola*/*Mel-23* cluster, can be satisfactorily resolved (see Table 1).

Cryptic, semicryptic, or pseudocryptic?

Empirical data provide the foundations on which species hypotheses are formed (Sites and Marshall 2004). Yet, despite the wealth of information that can be obtained from long-term observations and multisource analyses, integrative assessments of *Morchella* are few. This has all too often resulted in superficially circumscribed and poorly described taxa, and has been the root of much confusion and instability within the genus. Because many species are nowadays randomly detected through DNA sampling rather than long-term observations and hypothesis-driven approaches, important morpho-ecological information is lost in the process (Koukol and Delgado 2021). This lack of information in turn results in a poor or incomplete understanding of the morphological, behavioral, and ecological traits of the described taxa which, following unsuccessful attempts to reconstruct their profiles and identify diagnostic traits in vitro, are dismissed as “cryptic.” Truly cryptic (or “sibling species” as once termed by Mayr 1942), however, are probably less common in nature than assumed, and many taxa often labeled “cryptic” are in fact *pseudocryptic*, or in other words species whose diagnostic traits have been overlooked (Knowlton 1993; Sáez et al. 2003; Will et al. 2005; Sáez and

Lozano 2005; Lajus et al. 2015; Karanovic et al. 2016; Westrop et al. 2018).

Crypticism has been overestimated in *Morchella*, where the majority of species are perhaps best defined as *semicryptic* (having subtle or unstable morpho-ecological traits and considerable phenotypic overlap with other taxa), or *pseudocryptic* (having reasonably reliable diagnostic traits that have been largely overlooked), rather than genuinely cryptic. A number of species, such as *Morchella anatolica* Işiloğlu, Spooner, Allı & Solak, *M. rufobrunnea* Guzmán & F. Tapia, *M. tridentina* Bres., *M. disparilis* Loizides & P.-A. Moreau, *M. steppicola* Zerova, or *M. exuberans* Clowez, Hugh Sm. & S. Sm. are in fact very well-delimited and so morphologically distinct they can be instantly recognized in the field or even directly from photographs (Zerova 1941; Kuo 2008; Loizides et al. 2015). Other species such as *M. arbutiphila* Loizides, Bellanger & P.-A. Moreau, so far exclusively associated with *Arbutus*, or the autumnal *M. galilaea* Masaphy & Clowez are ecologically or phenologically distinct and can also be reliably identified by non-molecular methods (Taşkın et al. 2015; Loizides et al. 2016). The situation becomes more complicated when it comes to semicryptic taxa, due to high inter-individual plasticity of their sporocarps and absence of clear-cut (dichotomous) diagnostic traits. Because many characters in semicryptic species are unstable and largely overlap with those of other taxa, their morphological identification based on a single dichotomous character (monothetic model) is not really feasible. To overcome this problem, a polythetic system of identification was introduced in recent years (Loizides et al. 2015, 2016, 2021), in which a larger set of traits are taken into consideration, none in themselves a strict prerequisite, but rather complementing each other in the identification process. Thus, by increasing the number of potentially informative traits, identification is often possible on a “best match” basis rather than consistently occurring dichotomous characters, which may or may not be present. Several macromorphological and developmental features have been shown to be of taxonomic value in morels, such as the process of maturation of ascocarps from pale to dark or vice versa (see Table 2). The orientation and darkening (or non-darkening) process of the sterile ridges, together with the shape and alignment of the pits, are important, as is any rufescence and the stipe color, surface, and its length proportionately to the pileus. The attachment of the pileus to the stipe (*sinus*) is also a taxonomically useful character and occasionally diagnostic (e.g., *M. disparilis*). Microscopically, a number of often neglected features can provide valuable taxonomic information, such as the acroparaphyses, the ectal excipulum and hyphoid hairs of the stipe, the apices, number and orientation of the septa of the paraphyses, or the ornamentation, shape, and average size of the ascospores (see Kuo et al. 2012; Loizides et al.

2015, 2016, 2021; Baroni et al. 2018; Clowez and Moreau 2018a, 2018b; Table 2).

Still, in the absence of adequate field data and comprehensive morphoanatomical analyses, many of these taxonomically important characters are frequently ignored. For instance, a new species recently published in the FUSE series of *Sydowia* (Hernández-Restrepo et al. 2016), *Morchella pakistanica* S. Jabeen & A. N. Khalid, has been described from a single collection of what looks like a deformed ascocarp (fig. 14A of Hernández-Restrepo et al. 2016). Not only taxonomically important features (including the process of maturation, stipe, spore ornamentation, acroparaphyses, stipe hairs, and ectal excipulum) are all absent from the original description, but ascospores appear to be grossly immature, as the dimensions of $7.5\text{--}10 \times 4.5\text{--}6.5 \mu\text{m}$ given are unrealistically small for a morel. Moreover, even though this species nests in the */Semilibera* clade accommodating species with a pileus that is only partially attached to the stipe (“half-free morels”), no information on the *sinus* of the new species is provided. Other critical features like the acroparaphyses and the hyphoid hairs of the stipe are repeatedly ignored in contemporary descriptions or emendations of taxa (e.g., Yatsiuk et al. 2016; Baran and Boroń 2017; Pinzón-Osorio and Pinzón-Osorio 2017; Badshah et al. 2018; Du et al. 2020), despite being arguably the most informative microanatomical characters in morels (Kuo et al. 2012; Loizides et al. 2015, 2016, 2021; Clowez and Moreau 2018a; Baroni et al. 2018). The same is true for the macromorphological profile of many taxa and the process of maturation of their ascocarps, which are rarely reported due to lack of sufficient in situ observations. Imagery and photographs, when provided, are often of poor quality or depict a single ascocarp, sometimes dried ascocarps, or even the wrong species. All these lead to a proliferation of poorly circumscribed and dubiously described taxa, which in turn results in their dismissal as “cryptic,” followed by an overreliance on molecular tools and eventually in an uninformative and chronically unstable taxonomy.

How can phylogenies translate into a meaningful taxonomy?

The phylopecies concept pioneered and propelled in *Morchella* by O’Donnell et al. (2011) and widely endorsed in subsequent studies (Taşkın et al. 2012; Du et al. 2012a, 2012b, 2019b; Pildain et al. 2014; Richard et al. 2015; Loizides et al. 2015, 2016, 2021; Baroni et al. 2018) continues to provide a sound basis for species delimitation at the molecular level. Phylogenetic data, however, should be carefully compared to and complemented with morpho-ecological, chorological, and

other data that can be critical in inferring recent speciation events and building robust species concepts.

- We agree with the “criterion of minimal sampling” proposed by Petrželová and Sochor (2019) and urge prospective authors to refrain from proposing new taxa based on single finds, insufficiently represented collections, or in the absence of a robust morpho-ecological understanding of the described taxa, especially if the differences with other species are below the average in that group. While it is technically possible to quickly put a name on a putatively undescribed lineage randomly detected by DNA sampling, poorly circumscribed and superficially described taxa do not provide taxonomy a good service, but lead to a proliferation of “ghost taxa” and synonyms. In order to correct such mistakes and restabilize taxonomy, considerable time, effort, and resources are then diverted from other original research (Koukol and Delgado 2021). To discourage the opportunistic introduction of poorly circumscribed taxa, we recommend that several (3+) collections from two or more different localities should be rigorously analyzed using a multisource approach before proposing a new taxon. Including three or more collections in the analysis allows for a better assessment of infraspecific (both genetic and phenotypic) variability and consequently reduces the margin of error in inferring interspecific limits.
- Phylogenetic criteria requiring all species to differ equally in all loci, such as the criterion of “polygenic differentiation” proposed by Petrželová and Sochor (2019), are considered unreasonably conservative and rejected, because they can lead to artificial taxonomic arrangements not accurately reflecting evolutionary history.
- We also call for caution in the introduction of any absolute quantitative threshold in gene divergence, as barcoding thresholds may fluctuate depending on a given dataset. Such automated application of an artificial cutoff point could on one hand deny the status of species to recently isolated lineages, while on the other hand may lead to allelic heterogeneity being misinterpreted as speciation (Stadler et al. 2020).
- The informal *Mel/Mes* designators have served well as a temporary coding system for phylopecies detected by molecular tools; therefore, their usage for lineages lacking sufficient data to be formally described or linked to an existing binomial is appropriate. However, for phylospecies whose taxonomic identity has been conclusively resolved (either through the proposal of a new name or typification of an old one), we strongly urge for the pertinent use of Linnaean binomials, in order to normalize and stabilize taxonomy and nomenclature in the genus (Table 1).

Equally importantly, deciphering the phylogenetic identity of a number of classical, yet to be clarified binomials such as *M. crassipes* (Vent.) Pers., *M. elata* Fr., *M. hortensis* Boud., *M. intermedia* Boud., *M. ovalis* (Wallr.) Boud., *M. rielana* Boud., *M. rigida* (Krombh.) Boud., *M. rotunda* (Pers.) Boud., and *M. umbrina* Boud., should constitute a high priority, as epitypification of early-described taxa will significantly reduce the risk of further synonymies in the future.

- For species descriptions and taxonomically informative morphoanatomical analyses, we recommend following the polythetic model and methodology outlined in Loizides et al. (2016) and further expanded in Clowez and Moreau (2018a, b), Baroni et al. (2018), and Loizides et al. (2021).
- Ascospores are very late (and unevenly) maturing in morels and measurements from dried specimens are often unreliable (see also Baral 1992); therefore, spores should be measured from naturally ejected prints obtained on a glass slide. To work out meaningful averages (Me, Q, Qm), ascospores from at least three or four different ascocarps should be measured in water, with a minimum of 30 spores measured from each ascocarp. Spore ornamentation must be carefully evaluated through scanning electron microscopy, when possible, or at least in the appropriate staining medium in light microscopy (see Chen and Liu 2005; Loizides et al. 2016; and Clowez and Moreau 2018b for suitable stains).
- Additional taxonomically informative characters, such as the paraphyses and acroparaphyses (including their apices and the number and orientation of their septa), as well as the ectal excipulum and hyphoid hairs (terminal elements) of the stipe, should all be included in the description and adequately depicted.
- The process of maturation and developmental stages of ascocarps, the alignment and discolouration of their ridges, the shape and arrangement of primary and secondary pits, and the *sinus*, as well as the color and surface of the stipe and its average length proportionate to the pileus, are all important features that must also be thoroughly documented from fresh ascocarps at various stages of maturity.
- Accurate information of ecological and distributional patterns, substrate preferences, and putative plant associations/specificities is critical and can often clinch the diagnosis among semicryptic taxa.

For the purpose of adopting a uniform and intelligible descriptive terminology, a glossary of morphoanatomical characters and their taxonomic usage is provided in Table 2.

Table 2 Glossary of descriptive terminology of morphoanatomical characters in *Morchella*

Acroparaphyses: A term introduced by Loizides et al. (2016) for the paraphysoid elements of the sterile ridges. These are morphologically and topologically distinct from the paraphyses, the latter found intermingled with the asci in the fertile pits. Acroparaphyses are typically fasciculate, shorter than the paraphyses, and sometimes of critical taxonomic importance: some morels have shorter and more thick-walled acroparaphyses than others, while a number of species have capitate elements and others not. The sterile ridges often become eroded in overmature specimens and acroparaphyses collapse or become obscured by extraparietal pigment, therefore are best observed in younger specimens where the ridges are intact	Lacunose: From <i>lacuna</i> , referring to a gap, cavity, or depression in tissue (Stearn 1985). In stipitate ascomycetes, it is usually used to describe the external surface of the stipe when it is covered with ribs, ridges, and depressions (e.g., Kuo et al. 2012; Nguyen et al. 2013; Loizides et al. 2016)
Alveoli: The fertile pit-like cavities, effectively the hymenium of the fungus, formed by the network of interconnecting ridges on the pileus. The depth and especially the shape and alignment of the alveoli are usually important taxonomic features. Some morel species have ±regularly arranged ridges forming rectangular, oblong, angular, or rounded alveoli, while others have highly irregular or labyrinthoid alveoli. In many species, smaller secondary alveoli can form inside the primary alveoli	Lipids or lipid bodies: See <i>extrapolar lipid bodies</i>
Asci: The spore-bearing sac-like cells in the fertile pits. In morels, they often appear flexuous or somewhat contorted, can be monoseriate or irregularly biseriata, are inamyloid, and typically simple septate at the base. Depending on whether they are located at the base or the sides of the pits, they can be centrally or laterally attached at the base. Of limited or no taxonomic value; previous reports of croziers in some morel species (Clowez et al. 2014) are spurious	Maturation process: See <i>developmental process</i>
Ascogonia: The “female” gametangia before fertilization by “male” gametangia (sometimes also called antheridia). After fertilization, the ascogonium becomes the first dikaryotic cell of the ascome, from which arise dikaryotic ascogenous hyphae. Although Kirschner (2019, fig. 9) cited <i>Morchella “conica”</i> (with a picture likely illustrating <i>M. importuna</i>) as an example of loss of ascogonia and antheridia, Clowez and Moreau (2018a, 2020) observed and illustrated frequent, broad, and thick-walled cells in the subhymenium of all studied species of <i>Morchella</i> , emitting ascogenous hyphae interpreted as ascogonia	Mitra: The part of the ascocarp that incorporates the hymenium. Also referred to as <i>pileus</i> , <i>cap</i> , or <i>apothecium</i>
Apothecium: Another term for <i>mitra</i> or <i>pileus</i>	Opiumorphous: A characteristic “snakehead” shape seen in the apices of paraphyses and acroparaphyses of many morel species (see, e.g., Loizides et al. 2016, 2021)
Ascospores: See <i>spores</i>	Paraphyses: The sterile hyphal elements of the hymenium, usually bifurcate or less often trifurcate and typically intermingled with the asci or occurring in small fasciculate groups. Some species have multiseptated (3–4) paraphyses that sometimes become inflated and constricted at the septa (moniliform), while others have paraphyses with fewer septa (1–2) on average that are usually confined to the lower third or at the base. Although variable in shape and size, the paraphyses apices and their septation can sometimes provide useful taxonomic clues
Cap: See <i>mitra</i>	Pileus: See <i>mitra</i>
Chambers: Refers to the channels, cavities, and chambers formed internally in ascocarps of some morel species. Although the vast majority of morel ascocarps are hollow, at least two species, <i>M. exuberans</i> and <i>M. steppicola</i> , have internal chambers visible when the ascocarp is sectioned longitudinally	Pits: See <i>alveoli</i>
Crests: Another term for <i>ridges</i>	Ridges: The sterile rib-like interconnecting structures on the pileus that give morels their honeycomb appearance. Ridges are a key diagnostic feature and are further distinguished in <i>primary</i> (longitudinal) and <i>secondary</i> (transversal or interconnecting). Species of the /Esculenta clade (sect. <i>Morchella</i>) typically have ±irregular ridges, while species of the /Elata (sect. <i>Distantes</i>) and /Rufobrunnea (sect. <i>Rufobrunnea</i>) clades have regularly arranged or sinuous ridges and usually interconnecting secondary ridges. The color and process of maturation of the ridges are important: a number of <i>Distantes</i> species have ridges that are initially pale but gradually darken at maturity, sometimes acquiring pinkish or purplish tinges in the process
Developmental process: An important behavioral feature in morels referring to the process of maturation of ascocarps, i.e., from pale to dark or vice versa. Some species of the /Elata clade can be confused with species of the /Esculenta clade when immature because their ascocarps have initially pale colors but then gradually darken. Conversely, <i>M. tridentina</i> , both species of the /Rufobrunnea clade and several species of the /Esculenta clade produce ascocarps that are initially darker and gradually become paler at maturity. Similarly, the stipe can in some species be short proportionately to the pileus when young, but as the ascocarp matures, it becomes elongated and often longer than the pileus, contrary to other taxa where the stipe remains relatively short	Rufescence: The tendency of the ascocarps of a species to stain reddish or orange. Both species of the /Rufobrunnea clade, several species of the /Esculenta clade, and a couple of species of the /Elata clade produce ascocarps that are often rufescent
Ectal excipulum: A term used for the outer layer of the sterile surface of ascocarps. In morels, the <i>ectal excipulum</i> refers to the hyphal system of the outer layer of the stipe that typically gives rise to variously shaped terminal elements (<i>hyphoid hairs</i>), often an important taxonomic trait (see, e.g., Loizides et al. 2015, 2016, 2021)	Sinus: Also referred to as <i>sulcus</i> or <i>vallécule</i> , the sinus is the cavity formed by the inward bent of the pileus at its point of attachment to the stipe, somewhat equivalent to the way lamellae are attached to the stipe in basidiomycetes. An important taxonomic trait, the sinus can be deep, shallow, abrupt, rounded, wide, or altogether absent. It is best observed in younger ascocarps, as in overripe specimens, it may sometimes shrink or disappear as the stipe becomes inflated. In “half-free” morels of the /Semilibera clade, the sinus is exceptionally deep and the stipe is attached to the pileus approximately halfway up, leaving the pileal margin completely detached from the stipe
	Spores: The microscopic units by which fungi reproduce either sexually or asexually. In morels, spores are typically ellipsoid to broadly ellipsoid and appear smooth under a light microscope, but in reality are ornamented when viewed under SEM or in the appropriate staining medium. Six basic types of ornamentation were identified by Clowez and Moreau (2018b), though the spore measurements given by them were taken mostly from exsiccata and might not always be representative of the true range for each species. Because morel spores are very variable and late maturing, measurements from exsiccata can often produce grossly misleading readings; therefore, morel spores should always be measured from a print
	Lanceolate: A “sword-like” shape of paraphyses and acroparaphyses of several morel species
	Stem: See <i>stipe</i>

Table 2 (continued)

Extrapolar lipid bodies: The *gutules* often externally attached to the poles of naturally ejected *Morchella* spores. These are hardly ever observable in exsiccata material or in KOH preparations and are of no diagnostic value as far as the identity of the species is concerned

Guttules: See *extrapolar lipid bodies* above

Hairs: See *hyphoid hairs*

Heteroparaphyses: A term introduced by Jacquetant (1984) for some highly irregular structures sometimes seen in the hymenium and sterile ridges that appear to be contorted or deformed paraphyses and acroparaphyses. Such malformations are more often observed in the transitional zone between the hymenium and the ridges and are nowadays considered to be of no taxonomic value

Hyphoid hairs: The terminal hyphal elements of the *ectal excipulum* of the stipe, also referred to as *hairs* or *terminal elements*. These are taxonomically important microscopic structures that can range from long and slender, to clavate, fusiform, catenulate, capitate, or are sometimes irregular and poorly differentiated. They are typically hyaline, although intraparietal pigment and incrustations can sometimes be present in different stages of growth

Stipe: The sterile stalk-like part of the ascocarp supporting the spore-bearing portion (pileus). In morels, the average length of the stipe proportionately to the pileus varies from species to species and can give valuable clues as to the species' identity. The stipe in species of the /*Rufobrunnea* clade is initially covered in a distinct gray pruinescence, a key diagnostic feature for this clade. At least two species, *M. steppicola* and *M. exuberans*, produce ascocarps with a stipe that is extensively chambered internally

Sulcus: Another term for *sinus* or *vallécule*

Terminal elements: See *hyphoid hairs*

Vallécule: A term introduced by Boudier (1897) for what is now referred to as a *sinus* or a *sulcus*

Final thoughts and recommendations

According to Wheeler (2004), the “causes for the decimation of morphology and taxonomy include misunderstandings that stem from the non-experimental nature of taxonomy, preferential support for new technologies and a cynical equation of success with money.” Up to now, methodologically flawed, scientifically unsound, and taxonomically compromised papers often referred to as “taxonomic vandalism” (Jäch (2007a, 2007b; Kaiser et al. 2013; Páll-Gergely et al. 2020) had been confined to predatory or non-peer-reviewed journals and self-published outlets. The paper by Phanpadith et al. (2019) is the first, to the best of our knowledge, gross taxonomic malpractice of such extraordinary magnitude to be published in such a “high-profile” and highly impacted Q1 journal. Certainly, an exhaustive discussion on the crisis in taxonomy and exploitative publishing lies beyond the scope of this review and the paper by Phanpadith et al. (2019) may or may not constitute a paradigm shift in scholarly publishing. But in an ever-increasing demand for citations, publications in highly impacted journals and fast, hassle-free publishing, the proliferation of generalist pay-to-publish journals, disassociated from academic societies and operating on corporate profit-driven models, is alarming (Beall 2013, 2021; Cobey et al. 2018; Teixeira da Silva et al. 2019). Indeed, in a recent analysis of the impact pay-to-publish has on research quality, van Vlokhoven (2019) concluded that “moving to APC [article processing charge]-based open access makes journals, including the top journals, more lenient” and lower-quality articles could thus be “an unintended consequence of open-access publishing.” In theory, these negative effects could be compensated by

the publishing market itself if lower-quality articles were scarcely cited, as this would eventually lower the impact factor and demand for publishing services in a given journal, therefore prompting an incentive for the journal to offer high-quality papers. In reality, this is seldom the case, as low-quality publications can also be heavily cited if they are accepted without critics, or even negatively cited by critics themselves, still contributing to a high impact factor. An alternative system to criticize and eventually retract works without rewarding the criticized paper and journal with citations could mitigate some of these problems in the post-publication stage.

In this newly emerging landscape, the overwhelming burden for prepublication quality control falls on editors' and reviewers' shoulders, as there seems to be no easy way to ensure pay-to-publish journals will retain the high-quality standards most of their readership would expect and require (Brembs 2018). Careful selection of the appropriate specialist reviewers in each field is crucial but not always easy, as specialists are few and have little time to spare. Fair rewards for their services, either in the form of financial compensation and/or direct academic acknowledgement in an open review process, along with editors' and reviewers' names and comments to be published together with the published article, could provide both an incentive and share some accountability on the validity of the published works. A modified system of academic evaluation, taking into account the reviews undertaken by each researcher other than just published papers and citations, could be a step in the right direction reinforcing the crucial role of the peer-review process (<https://plos.org/resource/open-peer-review/>). Additional quality controls on taxonomic novelties could be provided by external

academic institutions, which have no conflict of interest between the social purpose of science and the commercial purpose of publishing. The International Association for Plant Taxonomy, which publishes the International Code of Nomenclature for algae, fungi, and plants, already operates through committees voting on nomenclatural issues, a system which could be modified to also oversee the quality of works when taxonomic novelties are published, while further supervision could be provided by the International Commission on the Taxonomy of Fungi (<https://www.fungaltaxonomy.org>).

Considering the critical role DNA phylogenies play in fungal taxonomy, making sequence alignments available on Treebase (<https://treebase.org/treebase-web/home.html;jsessionid=D7417F487C513B1B2991D0B42BCC9EF4>) and/or directly to reviewers upon submission, as some journals have already introduced (e.g., *Mycologia*, *Mycological Progress*), must become a prerequisite for the admission of new papers. These could then become part of supplemental information upon acceptance of the paper, so they are openly accessible to ensure reproducibility of the published works. Precisely because DNA sequencing is such a powerful tool, it has all too often been used to mask methodological deficiencies and substandard taxonomy, creating a false sense of security for authors, editors, and reviewers alike. We cannot emphasize enough the need for patient and careful field work, sound sampling methodologies, and multisource approaches in the circumscription of taxa. As is becoming increasingly evident, the integrative model is not only more robust than any single-method approach in delimiting species, but can ultimately lead to a deeper understanding of biodiversity (Pante et al. 2015; Sheth and Thaker 2017; Haelewaters et al. 2018; Sochorová et al. 2019; Lücking et al. 2020; Stadler et al. 2020; Vinarski 2020; Wibberg et al. 2020; Maharachchikumbura et al. 2021). DNA-based phylogenies and morphology are inherently intertwined and can both fail if used single-handedly, uncritically, or out of context to delimit species. Much like morphological and morphometric approaches have in the past failed to recognize species or have misinterpreted infraspecific polymorphism as speciation, DNA-based phylogenies can equally over- or under-split lineages, especially if employed without minimal technical training, overall experience in the studied group, and external controls in the pre- and post-publication stages. Overconfidence in new technologies and dismissal of other valuable sources of information can lead to simplistic approaches that deviate both from the critical thinking and methodology that characterize rigorous scientific thought.

Acknowledgements We are grateful to all those who expressed their encouragement and support from the conceptualization to the drafting and completion of this review.

Author contribution ML conceptualized and initiated this review with the help of MS and BA. ML wrote the first draft of the manuscript together with JMB who wrote the first draft of the phylogenetic part. JMB also designed Figs. 1 and 2. PA contributed significant edits and additions to the entire manuscript, especially the phylogenetic part and recommendations. ML, JMB, BA, VH, PA, GM, and GZ contributed to the point-by-point critique of Phanpadith et al. (2019). ML, JMB, and PAM compiled and edited the taxonomic, nomenclatural, phylogenetic, and phylogeographic information provided in Table 1. ML drafted Table 2 with significant help from PAM and GZ on key terminology. All other authors provided useful edits, suggestions, and support the recommendations proposed in this review. All authors are unanimous in their demand for more stringent quality controls in academic publishing.

Funding The contribution of TG was supported by research project J4-1766 "Methodology approaches in genome-based diversity and ecological plasticity study of truffles from their natural distribution areas" and the Research Program in Forest Biology, Ecology and Technology (P4-0107), all of the Slovenian Research Agency.

Declarations

Competing interests The authors declare no competing interests.

References

- Aime MC, Miller AN, Aoki T, Bensch K, Cai L, Crous PW, Hawksworth DL, Hyde KD, Kirk PM, Lücking R, May TW, Malossov E, Redhead SA, Rossman AY, Stadler M, Thines M, Yurkov AM, Zhang N, Schoch CL (2021) How to publish a new fungal species, or name, version 3.0. *IMA Fungus* 3:12(1):11. <https://doi.org/10.1186/s43008-021-00063-1>
- Ainsworth AM, Parfitt D, Rogers HJ, Boddy L (2010) Cryptic taxa within European species of *Hydnellum* and *Phellodon* revealed by combined molecular and morphological analysis. *Fungal Ecol* 3:65–80. <https://doi.org/10.1016/j.funeco.2009.07.001>
- Altermann S, Leavitt SD, Goward T, Nelsen MP, Lumbsch HT (2014) How do you solve a problem like *Letharia*? A new look at cryptic species in lichen-forming fungi using Bayesian clustering and SNPs from multilocus sequence data. *PLoS ONE* 9:e97556. <https://doi.org/10.1371/journal.pone.0097556>
- Ariyawansa HA, Hawksworth DL, Hyde KD, Jones EBG, Maharachchikumbura SS, Manamgoda DS, Thambugala KM, Udayanga D, Camporesi E, Daranagama A, Jayawardena RS, Liu J, McKenzie EH, Phookamsak R, Senanayake IC, Shivas RG, Tian Q, Xu J (2014) Epitypification and neotypification: guidelines with appropriate and inappropriate examples. *Fungal Divers* 69:57–91. <https://doi.org/10.1007/s13225-014-0315-4>
- Badshah H, Ali B, Shah SA, Alam MM, Aly HI, Mumtaz AS (2018) First record of *Morchella pulchella* from Pakistan. *Mycotaxon* 133:201–207. <https://doi.org/10.5248/133.201>
- Baral H-O (1992) Vital versus herbarium taxonomy: morphological differences between living and dead cells of Ascomycetes, and their taxonomic implications. *Mycotaxon* 44:333–390
- Baran J, Boroń P (2017) Two species of true morels (the genus *Morchella*, Ascomycota) recorded in the Ojców National Park (south Poland). *Acta Mycologica* 52:1094. <https://doi.org/10.5586/am.1094>

- Barrett CF, Freudenstein JV (2011) An integrative approach to delimiting species in a rare but widespread mycoheterotrophic orchid. *Mol Ecol* 20:2771–2786. <https://doi.org/10.1111/j.1365-294X.2011.05124.x>
- Baroni TJ, Beug MW, Cantrell SA, Clements TA, Iturriaga T, Læssøe T, Holgado Rojas ME, Aguilar FM, Quispe MO, Lodge DJ, O'Donnell K (2018) Four new species of *Morchella* from the Americas. *Mycologia* 110:1205–1221
- Beall J (2013) The open-access movement is not really about open access. *tripleC*:589–597. <https://doi.org/10.31269/tripleC.v11i2.525>
- Beall J (2021) Open Access, research communities and a defense against predatory journals. *Cent Asian J Med Hypotheses Ethics* 2:14–17. <https://doi.org/10.47316/cajmhe.2021.2.1.02>
- Bellanger J-M, Moreau P-A, Corriol G, Bidaud A, Chalange R, Dudova Z, Richard F (2015) Plunging hands into the mushroom jar: a phylogenetic framework for Lyophyllaceae (Agaricales, Basidiomycota). *Genetica* 143:169–194. <https://doi.org/10.1007/s10709-015-9823-8>
- Bellanger J-M (2016) Les 'Lyophyllaceae.' *Bull Fed Assoc Mycol Mediterr* 49:31–47
- Bellanger J-M, Bidaud A, Moreau P-A (2021) *Cortinarius subturibulosus*: "illumina"-tion d'un champion de l'adaptation. *Journal des JEC* 23: 3–15
- Ballenghien M, Faivre N, Galtier N (2017) Patterns of cross-contamination in a multispecies population genomic project: detection, quantification, impact, and solutions. *BMC Biol* 15:25. <https://doi.org/10.1186/s12915-017-0366-6>
- Bidaud A, Loizides M, Armada F, Reyes JD, Carteret X, Corriol G, Consiglio G, Remaux P, Bellanger J-M (2021) *Cortinarius* subgen. *Leproclybe* in Europe: expanded Sanger and Next Generation Sequencing unveil unexpected diversity in the Mediterranean. *Persoonia* 46:188–215. <https://doi.org/10.3767/persoonia.2021.46.07>
- Borovička J, Oborník M, Stříbrný J, Noordeloos ME, Parra Sánchez LA, Gryndler M (2015) Phylogenetic and chemical studies in the potential psychotropic species complex of *Psilocybe atrobrunnea* with taxonomic and nomenclatorial notes. *Persoonia* 34:1–9. <https://doi.org/10.3767/003158515X685283>
- Brembs B (2018) Prestigious science journals struggle to reach even average reliability. *Front Hum Neurosci* 12:37. <https://doi.org/10.3389/fnhum.2018.00037>
- Bresadola G (1898) *Fungi Tridentini* 2(11–13):47–81
- Butlin RK, Stankowski S (2020) Is it time to abandon the biological species concept? No. *National Science Review* 7(8):1400–1401. <https://doi.org/10.1093/nsr/nwaa109>
- Castañera V, Moreno G (1996) Una *Morchella* (*Morchella esculenta* forma *dunensis* f. nov.) frecuente en las dunas de Cantabria. *Revista De Micología Yesca - Sociedad Micológica Cántabra* 8:27–31
- Carpenter JM (2003) Critique of pure folly. *Bot Rev* 69(1):79–92
- Carstens BC, Pelletier TA, Reid N, Satler JD (2013) How to fail at species delimitation. *Mol Ecol* 22:4369–4383. <https://doi.org/10.1111/mec.12413>
- Chan KO, Hutter CR, Wood PL Jr, Grismer LL, Das I, Brown RM (2020) Gene flow creates a mirage of cryptic species in a Southeast Asian spotted stream frog complex. *Mol Ecol* 29:3970–3987. <https://doi.org/10.1111/mec.15603>
- Chen J, Liu PG (2005) A new species of *Morchella* (Pezizales, Ascomycota) from southwestern China. *Mycotaxon* 93:89–93
- Clowez P [2010] (2012) Les morilles: Une nouvelle approche mondiale du genre *Morchella*. *Bull Soc mycol Fr* 126:199–376
- Clowez P, Alvarado P, Becerra M, Bilbao T, Moreau P-A (2014) *Morchella fluvialis* sp. nov. (Ascomycota, Pezizales): a new but widespread morel in Spain. *Bol Soc Micol Madrid* 38:251–260
- Clowez P, Bellanger J-M, de la Osa LK, Moreau P-A (2015) *Morchella palazonii* sp. nov. (Ascomycota, Pezizales): une nouvelle morille méditerranéenne. Clé des *Morchella* sect. *Morchella* en Europe. *Doc Mycol* 36:71–84
- Clowez P, Moreau P-A (2018a) Nouvelles colorations microscopiques: application à quelques éléments de l'hyménium des morilles. *Doc Mycol* 37:15–22
- Clowez P, Moreau P-A (2018b) Les spores de morilles en microscopie optique. *Doc Mycol* 37:23–38
- Clowez P, Moreau P-A (2020) Morilles de France et d'Europe. Cap Régions Editions, Noyon, 370 p. ISBN 978–2–918956–29–7
- Clowez P, Marcos Martinez J, Sanjaume R, Marques G, Bellanger J-M, Moreau P-A (2020) A survey of half-free morels in Spain reveals a new species: *Morchella iberica* sp. nov. (Ascomycota, Pezizales). *Ascomycete.org* 12:11–18. <https://doi.org/10.25664/art-0291>
- Cobey KD, Lalu MM, Skidmore B, Ahmadzai N, Grudniewicz A, Moher D (2018) What is a predatory journal? A scoping review. *F1000Res.* 7:1001. <https://doi.org/10.12688/f1000research.15256>
- Coyne J, Orr H (2004) *Speciation*. Sinauer Associates, Sunderland
- Crous PW, Groenewald JZ (2005) Hosts, species and genotypes: opinions versus data. *Australas Plant Path* 34:463–470. <https://doi.org/10.1071/AP05082>
- Dayrat B (2005) Towards integrative taxonomy. *Biol J Linn Soc* 85:407–415. <https://doi.org/10.1111/j.1095-8312.2005.00503.x>
- Dayarathne MC, Boonmee S, Braun U, Crous PW, Daranagama DA, Dissanayake AJ, Ekanayaka H, Jayawardena RS, Jones E, Maharachchikumbura SS, Perera RH, Phillips AJ, Stadler M, Thambugala KM, Wanasinghe DN, Zhao Q, Hyde KD, Jeewon R (2016) Taxonomic utility of old names in current fungal classification and nomenclature: conflicts, confusion & clarifications. *Mycosphere* 7:1622–1648. <https://doi.org/10.5943/mycosphere/7/11/2>
- Dennis RWG (1978) *British Ascomycetes*. Cramer, Vaduz
- Dettman JR, Jacobson DJ, Taylor JW (2003) A multilocus genealogical approach to phylogenetic species recognition in the model eukaryote *Neurospora*. *Evolution* 57:2703–2720. <https://doi.org/10.1111/j.0014-3820.2003.tb01514.x>
- de Queiroz K, Gauthier J (1990) Phylogeny as a central principle in taxonomy: phylogenetic definitions of taxon names. *Syst Zool* 39:307–322. <https://doi.org/10.2307/2992353>
- de Queiroz K, Gauthier J (1992) Phylogenetic taxonomy. *Annu Rev Ecol Evol S* 23:449–480. <https://doi.org/10.1146/annurev.es.23.110192.002313>
- de Queiroz K, Gauthier J (1994) Toward a phylogenetic system of biological nomenclature. *Trends Ecol Evol* 9:27–31. [https://doi.org/10.1016/0169-5347\(94\)90231-3](https://doi.org/10.1016/0169-5347(94)90231-3)
- de Queiroz K (2005) Ernst Mayr and the modern concept of species. *Proc Natl Acad Sci USA* May 3, 2005;102 Suppl 1(Suppl 1):6600–7. <https://doi.org/10.1073/pnas.0502030102>
- Dima B, Lindström H, Liimatainen K, Olson A, Soop K, Kytövuori I, Dahlberg A, Niskanen T (2016) Typification of Friesian names in *Cortinarius* sections *Anomali*, *Spilomei*, and *Bolares*, and description of two new species from northern Europe. *Mycol Prog* 15:903–919. <https://doi.org/10.1007/s11557-016-1217-5>
- Du XH, Zhao Q, O'Donnell K, Rooney AP, Yang ZL (2012a) Multi-gene molecular phylogenetics reveals true morels (*Morchella*) are especially species-rich in China. *Fungal Genet Biol* 49:455–469. <https://doi.org/10.1016/j.fgb.2012.03.006>
- Du XH, Zhao Q, Yang ZL, Hansen K, Taşkın H, Büyükalaca S, Dewsbury D, Moncalvo J-M, Douhan GW, Robert VARG, Crous PW, Rehner SA, Rooney AP, Sink S, O'Donnell K (2012b) How well do ITS rDNA sequences differentiate species of true morels (*Morchella*)? *Mycologia* 104:1351–1368. <https://doi.org/10.3852/12-056>

- Du XH, Wang HC, Sun JJ, Xiong LY, Yu JJ (2019a) Hybridization, characterization and transferability of SSRs in the genus *Morchella*. *Fungal Biol* 123:528–538. <https://doi.org/10.1016/j.funbio.2019.05.005>
- Du XH, Wu DM, He GQ, Wei W, Xu N, Li TL (2019b) Six new species and two new records of *Morchella* in China using phylogenetic and morphological analyses. *Mycologia* 111:857–870. <https://doi.org/10.1080/00275514.2019.1640012>
- Du XH, Wu D, Kang H, Wang H, Xu N, Li T, Chen K (2020) Heteroallism and potential hybridization events inferred for twenty-two yellow morel species. *IMA Fungus* 11:4. <https://doi.org/10.1186/s43008-020-0027-1>
- Elliott TF, Bougher NL, O'Donnell K, Trappe JM (2014) *Morchella australiana* sp. nov., an apparent Australian endemic from New South Wales and Victoria. *Mycologia* 106:113–118. <https://doi.org/10.3852/13-065>
- Fries EM (1822) *Systema Mycologicum* II (1). *Officina Berlingiana, Lundae*
- Fryssouli V, Zervakis GI, Polemis E, Typas MA (2020) A global meta-analysis of ITS rDNA sequences from material belonging to the genus *Ganoderma* (Basidiomycota, Polyporales) including new data from selected taxa. *MycKeys* 75:71–143. <https://doi.org/10.3897/mycokeys.75.59872>
- Grebenc T, Martín MP, Kraigher H (2009) Ribosomal ITS diversity among the European species of the genus *Hydnum* (Hydnaceae). *An Jardín Bot Madrid* 66:121–132. <https://doi.org/10.3989/ajbm.2221>
- Groves JW, Hoare SC (1953) The *Helvellaceae* of the Ottawa district, CA. *Canadian Field-Naturalist* 67:95–102
- Guzmán G, Tapia F (1998) The known morels in Mexico, a description of a new blushing species, *Morchella rufobrunnea* and new data on *M. guatemalensis*. *Mycologia* 90:705–714. <https://doi.org/10.2307/3761230>
- Haelewaters D, De Kesel A, Pfister DH (2018) Integrative taxonomy reveals hidden species within a common fungal parasite of ladybirds. *Sci Rep* 8:15966. <https://doi.org/10.1038/s41598-018-34319-5>
- Hansen K, Olariaga I (2015) Species limits and relationships within *Otidea* inferred from multiple gene phylogenies. *Persoonia* 35:148–165. <https://doi.org/10.3767/003158515X687993>
- Harder CB, Læssøe T, Frøslev TB, Ekelund F, Rosendahl S, Kjølner R (2013) A three-gene phylogeny of the *Mycena pura* complex reveals 11 phylogenetic species and shows ITS to be unreliable for species identification. *Fungal Biol* 11:764–775. <https://doi.org/10.1016/j.funbio.2013.09.004>
- Hernández-Restrepo M, Schumacher RK, Wingfield MJ, Ahmad I, Cai L, Duong TA, Edwards J, Gené J, Groenewald JZ, Jabeen S, Khalid AN, Lombard L, Madrid H, Marin-Felix Y, Marincowitz S, Miller AN, Rajeshkumar KC, Rashid A, Sarwar S, Stchige AM, Taylor PWJ, Zhou N, Crous P (2016) Fungal Systematics and Evolution: FUSE 2. *Sydowia* 68:193–230. <https://doi.org/10.12905/0380.sydowia68-2016-0193>
- Hughes KW, Tulloss RH, Petersen RH (2018) Intragenomic nuclear RNA variation in a cryptic *Amanita* taxon. *Mycologia* 110:93–103. <https://doi.org/10.1080/00275514.2018.1427402>
- Hudson RR, Coyne JA (2002) Mathematical consequences of the genealogical species concept. *Evolution* 56:1557–1565. <https://doi.org/10.1111/j.0014-3820.2002.tb01467.x>
- Hyde KD, Zhang Y (2008) Epitypification: should we epitypify? *J Zhejiang Univ-Sc B* 9:842–846. <https://doi.org/10.1631/jzus.B0860004>
- Işiloğlu M, Alli H, Spooner BM, Solak MH (2010) *Morchella anatolica* (Ascomycota), a new species from southwestern Anatolia, Turkey. *Mycologia* 102:455–468. <https://doi.org/10.3852/09-186>
- Jacquetant E (1984) *Les Morilles*. La Bibliothèque des Arts, Paris
- Jacquetant E, Bon M. [1984] (1985) Typifications et mises au point nomenclaturales dans l'ouvrage "Les morilles" (de E. Jacquetant), *Nature-Piantanida* 1984. Documents Mycologiques 14:1
- Jäch MA (2007a) Vandalism in Taxonomy *Koleopterologische Rundschau* 77:38
- Jäch MA (2007b) Vandalism in taxonomy (continued). *Koleopterologische Rundschau* 77:146
- Journal Citation Reports. *Journal Citation Reports Science Edition* (2020) Clarivate Analytics. Available from: <https://clarivate.com/webofsciencelibrary/solutions/journal-citation-reports/>
- Kaiser H, Crother BJ, Kelly CMR, Luiselli L, O'Shea M, Ota H, Passos P, Schleip WD, Wüster W (2013) Best practices: in the 21st century, taxonomic decisions in herpetology are acceptable only when supported by a body of evidence and published via peer-review. *Herpetological Review* 44:8–23
- Karanovic T, Djuracic M, Eberhard SM (2016) Cryptic species or inadequate taxonomy? Implementation of 2D geometric morphometrics based on integumental organs as landmarks for delimitation and description of copepod taxa. *Syst Biol* 65:304–327. <https://doi.org/10.1093/sysbio/syv088>
- Kiss L (2012) Limits of nuclear ribosomal DNA internal transcribed spacer (ITS) sequences as species barcodes for fungi. *Proc Natl Acad Sci USA* 109:E1811. <https://doi.org/10.1073/pnas.1207143109>
- Knowles LL, Carstens BC (2007) Delimiting species without monophyletic gene trees. *Syst Biol* 56:887–895. <https://doi.org/10.1080/10635150701701091>
- Korf RP (2005) Reinventing taxonomy: a curmudgeon's view of 250 years of fungal taxonomy, the crisis in biodiversity, and the pitfalls of the phylogenetic age. *Mycotaxon* 93:407–415
- Knowlton N (1993) Sibling species in the sea. *Annu Rev Ecol Syst* 24:189–216. <https://doi.org/10.1146/annurev.es.24.110193.001201>
- Kristiansen R (1990) Nye arter for vitenskapen, originalbeskrevet fra Østfold. *Agarica* 10(11):6–12
- Kuhnert E, Sir EB, Lambert C, Hyde KD, Hladki AI, Romero AI, Rohde M, Stadler M (2017) Phylogenetic and chemotaxonomic resolution of the genus *Annulohypoxylon* (Xylariaceae) including four new species. *Fungal Divers* 85:1–43. <https://doi.org/10.1007/s13225-016-0377-6>
- Kuo M (2008) *Morchella tomentosa*, a new species from western North America and notes on *M. rufobrunnea*. *Mycotaxon* 105:441–446
- Kuo M, Dewsbury DR, O'Donnell K, Carter MC, Rehner SA, Moore JD, Moncalvo J-M, Canfield SA, Stephenson SL, Methven AS, Volk TJ (2012) Taxonomic revision of true morels (*Morchella*) in Canada and the United States. *Mycologia* 104:1159–1177
- Koukol O, Delgado G (2021) Why morphology matters: the negative consequences of hasty descriptions of putative novelties in asexual ascomycetes. *IMA Fungus* 12:26. <https://doi.org/10.1186/s43008-021-00073-z>
- Lajus D, Sukhikh N, Alekseev V (2015) Cryptic or pseudocryptic: can morphological methods inform copepod taxonomy? An analysis of publications and a case study of the *Eurytemora affinis* species complex. *Ecol Evol* 5:2374–2385. <https://doi.org/10.1002/ece3.1521>
- Lamarck JB, de Candolle AP (1805) *Flore française: ou, Descriptions succinctes de toutes les plantes qui croissent naturellement en France, disposées selon une nouvelle méthode d'analyse, et précédées par un exposé des principes élémentaires de la botanique*. Edn 3 (Paris) 2: 662 p
- Lagrange E, Vernoux JP (2020) Warning on false or true morels and button mushrooms with potential toxicity linked to hydrazinic toxins: an update. *Toxins* 12:482. <https://doi.org/10.3390/toxin12080482>

- Larsson E, Ryberg M, Moreau P-A, Mathiesen ÅD, Jacobsson S (2009) Taxonomy and evolutionary relationships within species of section *Rimosae* (*Inocybe*) based on ITS, LSU and mtSSU sequence data. *Persoonia* 23:86–98. <https://doi.org/10.3767/003158509X475913>
- Leliaert F, Verbruggen H, Vanormelingen P, Steen F, López-Bautista JM, Zuccarello GC, de Clerck O (2014) DNA-based species delimitation in algae. *Eur J Phycol* 49:179–196. <https://doi.org/10.1080/09670262.2014.904524>
- Li Y, Jiao L, Yao YJ (2013) Non-concerted ITS evolution in fungi, as revealed from the important medicinal fungus *Ophiocordyceps sinensis*. *Mol Phylogenet Evol* 68:373–379. <https://doi.org/10.1016/j.ympev.2013.04.010>
- Li Y, Yang RH, Jiang L, Hu XD, Wu ZJ, Yao YJ (2017) rRNA pseudogenes in filamentous ascomycetes as revealed by genome data. *G3* 7:2695–2703. <https://doi.org/10.1534/g3.117.044016>
- Liimatainen K, Niskanen T, Ammirati JF, Kytövuori I, Dima B (2014a) *Cortinarius*, subgenus *Telamonina*, section *Disjungiendi*, cryptic species in North America and Europe. *Mycol Prog* 14:1016. <https://doi.org/10.1007/s11557-014-1016-9>
- Liimatainen K, Niskanen T, Dima B, Kytövuori I, Ammirati JF, Frøslev TG (2014b) The largest type study of Agaricales species to date: bringing identification and nomenclature of *Phlegmacium* (*Cortinarius*) into the DNA era. *Persoonia* 33:98–140. <https://doi.org/10.3767/003158514X684681>
- Liimatainen K, Carteret X, Dima B, Kytövuori I, Bidaud A, Reumaux P, Niskanen T, Ammirati JF, Bellanger J-M (2017) *Cortinarius* section *Bicolores* and section *Saturnini* (Basidiomycota, Agaricales), a morphogenetic overview of European and North American species. *Persoonia* 39:175–200. <https://doi.org/10.3767/persoonia.2017.39.08>
- Lindner DL, Banik MT (2011) Intra-genomic variation in the ITS rDNA region obscures phylogenetic relationships and inflates estimates of operational taxonomic units in genus *Laetiporus*. *Mycologia* 103:731–740. <https://doi.org/10.3852/10-331>
- Linnaeus C (1758) *Systema naturae per regna tria naturae, secundum classes, ordines, genera, species, cum characteribus, differentiis, synonymiis, locis*. Edn. 10, Stockholm.
- Liu F, Wang M, Damm U, Crous PW, Cai L (2016) Species boundaries in plant pathogenic fungi: a *Colletotrichum* case study. *BMC Evol Biol* 16(81):1–14. <https://doi.org/10.1186/s12862-016-0649-5>
- Liu J, Haelewaters D, Pfliegler WP, Page RA, Dick CW, Aime MC (2020) A new species of *Gloeandromyces* from Ecuador and Panama revealed by morphology and phylogenetic reconstruction, with a discussion of secondary barcodes in *Laboulbeniomyces* taxonomy. *Mycologia* 112(6):1192–1202. <https://doi.org/10.1080/00275514.2020.1781496>
- Loizides M (2017) Morels: the story so far. *Field Mycol* 18:42–53. <https://doi.org/10.1016/j.fldmyc.2017.04.004>
- Loizides M, Alvarado P, Clowez P, Moreau P-A, Romero L, Palazón A (2015) *Morchella tridentina*, *M. rufobrunnea* and *M. kakiicolor*: a study of three poorly known Mediterranean morels, with nomenclatural updates in section *Distantes*. *Mycol Prog* 14:13. <https://doi.org/10.1007/s11557-015-1030-6>
- Loizides M, Bellanger J-M, Clowez P, Richard F, Moreau P-A (2016) Combined phylogenetic and morphological studies of true morels (Pezizales, Ascomycota) in Cyprus reveal significant diversity, including *Morchella arbutiphila* and *M. disparilis* spp. nov. *Mycol Prog* 15:39. <https://doi.org/10.1007/s11557-016-1180-1>
- Loizides M, Bellanger J-M, Assyov B, Moreau P-A, Richard F (2019) Present status and future of boletoid fungi (Boletaceae) on the island of Cyprus: cryptic and threatened diversity unraveled by 10-year study. *Fungal Ecol* 41:65–81. <https://doi.org/10.1016/j.funeco.2019.03.008>
- Loizides M, Alvarado P, Polemis E, Zervakis G, Dimou D, Thine M, Telle S, Konstantinou G, Gube M (2020) Multiple evolutionary origins of sequestrate species in the agaricoid genus *Cnurophylum*. *Mycologia* 112:400–422. <https://doi.org/10.1080/00275514.2020.1712179>
- Loizides M, Gonou Z, Fransuas G, Drakopoulos P, Sammut C, Martinis A, Bellanger J-M (2021) Extended phylogeography of the ancestral *Morchella anatolica* supports preglacial presence in Europe and Mediterranean origin of morels. *Mycologia* 113(3):559–573. <https://doi.org/10.1080/00275514.2020.1869489>
- Lombard L, Sandoval-Denis M, Lamprecht SC, Crous PW (2018) Epitypification of *Fusarium oxysporum*—clearing the taxonomic chaos. *Persoonia* 43:1–47. <https://doi.org/10.3767/persoonia.2019.43.01>
- Lücking R, Aime MC, Robbertse B, Miller AN, Ariyawansa HA, Aoki T, Cardinali G, Crous PW, Druzhinina IS, Geiser DM, Hawksworth DL, Hyde KD, Irinyi L, Jeewon R, Johnston PR, Kirk PM, Malosso E, May TW, Meyer W, Öpik M, Robert V, Stadler M, Thines M, Vu D, Yurkov AM, Zhang N, Schoch CL (2020) Unambiguous identification of fungi: where do we stand and how accurate and precise is fungal DNA barcoding? *IMA Fungus* 11:14. <https://doi.org/10.1186/s43008-020-00033-z>
- Maddison WP (1997) Gene trees in species trees. *Syst Biol* 46:523–536. <https://doi.org/10.1093/sysbio/46.3.523>
- Maharachchikumbura SSN, Chen Y, Ariyawansa HA, Hyde KD, Haelewaters D, Perera RH, Samarakoon MC, Wanasinghe DN, Bustamante DE, Liu JK, Lawrence DP, Cheewangkoon R, Stadler M (2021) Integrative approaches for species delimitation in Ascomycota. *Fungal Divers* 109:155–179. <https://doi.org/10.1007/s13225-021-00486-6>
- Mailund T, Munch K, Schierup MH (2014) Lineage sorting in apes. *Annu Rev Genet* 48:519–535. <https://doi.org/10.1146/annurev-genet-120213-092532>
- Mann DG, Evans K (2008) The species concept and cryptic diversity. In: Moestrup et al. (Eds) *Proceedings of the 12th International Conference on Harmful Algae*. International Society for the Study of Harmful Algae and Intergovernmental Oceanographic Commission of UNESCO.
- Matheny PB, Swenie R (2018) The *Inocybe geophylla* group in North America: a revision of the lilac species surrounding *I. lilacina*. *Mycologia* 110:618–634. <https://doi.org/10.1080/00275514.2018.1469880>
- Mayr E (1942) *Systematics and the origin of species*. Columbia University Press, New York
- Micheli PA (1729) *Nova plantarum genera juxta Tournefortii methodum disposita*. Florence
- Miller AN, Yoon A, Gulden G, Stensholt Ø, Van Vooren N, Ohenoja E, Methven AS (2020) Studies in *Gyromitra* I: the *Gyromitra gigas* species complex. *Mycol Prog* 19:1459–1473
- Minnis AM (2015) The shifting sands of fungal naming under the ICN and the one name era for fungi. In: McLaughlin D, Spatafora J (Eds) *Systematics and evolution. The mycota (a comprehensive treatise on fungi as experimental systems for basic and applied research)*, vol 7B. Springer, Berlin, Heidelberg: 179–203
- Money NP (2013) Against the naming of fungi. *Fungal Biol* 117:463–465
- Moreau P-A, Hériveau P, Bourgade V, Bellanger J-M, Courtecuisse R, Fons F, Rapior S (2011) Redécouverte et typification des champignons de la région de Montpellier illustrés par Michel-Félix Dunal et Alire Raffeneau-Delile. *Cryptogam Mycologie* 32:255–276
- Moreau P-A, Bellanger J-M, Clowez P, Courtecuisse R, Hansen K, Knudsen H, O'Donnell K, Richard F (2014) (2289) Proposal to conserve the name *Morchella semilibera* against *Phallus crassipes*, *P. gigas* and *P. undosus* (Ascomycota). *Taxon* 63:677–678. <https://doi.org/10.12705/633.20>
- Moreau P-A, Bellanger J-M, Lebeuf R, Athanasiou Z, Athanasiadis A, Lambert H, Schwarz C, Larsson E, Loizides M (2018)

- Hidden diversity uncovered in *Hygrophorus* sect. *Aurei* (Hygrophoraceae), including the Mediterranean *H. meridionalis* and the North American *H. boyeri* spp. nov. *Fungal Biol* 122:817–836. <https://doi.org/10.1016/j.funbio.2018.04.009>
- Nguyen NH, Landeros F, Garibay-Orijel R, Hansen K, Vellinga EC (2013) The *Helvella lacunosa* species complex in western North America: cryptic species, misapplied names and parasites. *Mycologia* 105:1275–1286. <https://doi.org/10.3852/12-391>
- Nguyen HDT, Jančík S, Meijer M, Tanney JB, Zalar P, Gunde-Cimerman N, Seifert KA (2015) Application of the phylogenetic species concept to *Wallemia sebi* from house dust and indoor air revealed by multi-locus genealogical concordance. *PLoS ONE* 10:e0120894. <https://doi.org/10.1371/journal.pone.0120894>
- Niskanen T, Liimatainen K, Nuytinck J, Kirk P, Olariaga I, Garibay-Orijel R, Norvell L, Huhtinen S, Kytövuori I, Ruotsalainen J, Niemelä T, Ammirati JF, Tedersoo L (2018) Identifying and naming the currently known diversity of the genus *Hydnum*, with an emphasis on European and North American taxa. *Mycologia* 110:890–918. <https://doi.org/10.1080/00275514.2018.1477004>
- Nixon KC, Carpenter JM (2000) On the other “phylogenetic systematics.” *Cladistics* 16:298–318. <https://doi.org/10.1111/j.1096-0031.2000.tb00285.x>
- O’Donnell K, Cigelnik E (1997) Two divergent intragenomic rDNA ITS2 types within a monophyletic lineage of the fungus *Fusarium* are nonorthologous. *Mol Phylogenet Evol* 1:1–14. <https://doi.org/10.1006/mpev.1996.0376>
- O’Donnell K, Rooney AP, Mills GL, Kuo M, Weber NS, Rehnere SA (2011) Phylogeny and historical biogeography of true morels (*Morchella*) reveals an early Cretaceous origin and high continental endemism and provincialism in the Holarctic. *Fungal Genet Biol* 48:252–265. <https://doi.org/10.1016/j.fgb.2010.09.006>
- Olariaga I, Van Vooren N, Carbone M, Hansen K (2015) A monograph of *Oideia* (Pyronemataceae, Pezizomycetes). *Persoonia* 35:166–229. <https://doi.org/10.3767/003158515X688000>
- Padial JM, Miralles A, De la Riva I, Vences M (2010) The integrative future of taxonomy. *Front Zool* 7:16. <https://doi.org/10.1186/1742-9994-7-16>
- Pante E, Schoelincq C, Puillandre N (2015) From integrative taxonomy to species description: one step beyond. *Syst Biol* 64:152–160. <https://doi.org/10.1093/sysbio/syu083>
- Parfitt D, Ainsworth AM, Simpson D, Rogers HJ, Boddy L (2007) Molecular and morphological discrimination of stipitate hydroids in the genera *Hydnellum* and *Phellodon*. *Mycol Res* 111:761–777. <https://doi.org/10.1016/j.mycres.2007.05.003>
- Paterlini M (2007) There shall be order. The legacy of Linnaeus in the age of molecular biology. *EMBO Rep* 8:814–816. <https://doi.org/10.1038/sj.embor.7401061>
- Patterson DJ, Cooper J, Kirk PM, Pyle RL, Remsen DP (2010) Names are key to the big new biology. *Trends Ecol Evol* 25:686–691. <https://doi.org/10.1016/j.tree.2010.09.004>
- Páll-Gergely B, Hunyadi A, Auffenberg K (2020) Taxonomic vandalism in malacology: comments on molluscan taxa recently described by N. N. Thach and colleagues (2014–2019). *Folia Malacol* 28(1):35–76. <https://doi.org/10.12657/folmal.028.002>
- Peck CH (1879) Report of the botanist. Annual Report of the Trustees of the State Museum of Natural History 32:17–72
- Peck CH (1903) New species of fungi. *Bull Torrey Bot Club* 30:95–101
- Persoon CH (1801) *Synopsis Methodica Fungorum* 2. Göttingen: Henricum Dieterich: 241–706
- Petrželová I, Sochor M (2019) How useful is the current species recognition concept for the determination of true morels? Insights from the Czech Republic. *MycKeys* 52:17–43. <https://doi.org/10.3897/mycokeys.52.32335>
- Phanpaum P, Yu Z, Li L (2019) High diversity of *Morchella* and a novel lineage of the *Esculenta* clade from the north Qinling Mountains revealed by GCPSR-based study. *Sci Rep* 9:19856
- Pildain MB, Visnovsky SB, Barroetavena C (2014) Phylogenetic diversity of true morels (*Morchella*), the main edible non-timber product from native Patagonian forests of Argentina. *Fungal Biol* 118:755–763. <https://doi.org/10.1016/j.funbio.2014.03.008>
- Pinzón-Osorio CA, Pinzón-Osorio J (2017) Primer registro de la familia Morchellaceae (Ascomycota: Pezizales) para Colombia. *Rev Peru Biol* 24:105–110. <https://doi.org/10.15381/rpb.v24i1.12481>
- Philippe H, Brinkmann H, Lavrov DV, Littlewood DT, Manuel M, Wörheide G, Baurain D (2011) Resolving difficult phylogenetic questions: why more sequences are not enough. *PLoS Biol* 9:e1000602. <https://doi.org/10.1371/journal.pbio.1000602>
- Polaszek A [Ed] (2010) *In Systema naturae 250—the Linnaean ark*. CRC Press, Boca Raton.
- Richard F, Bellanger J-M, Clowez P, Hansen K, O’Donnell K, Urban A, Sauve M, Courtecuisse R, Moreau P-A (2015) True morels (*Morchella*, Pezizales) of Europe and North America: evolutionary relationships inferred from multilocus data and a unified taxonomy. *Mycologia* 107:359–382. <https://doi.org/10.3852/14-166>
- Russell PJ, Wolfe ST, Hertz PE, Starr C (2007) Species concepts and speciation. *The Linnaean system of taxonomy, volume 2*. Cengage Learning.
- Sáez AG, Probert I, Geisen M, Quinn P, Young JR, Medlin LK (2003) Pseudo-cryptic speciation in coccilithophores. *Proc Natl Acad Sci USA* 100(12):7163–7168. <https://doi.org/10.1073/pnas.1132069100>
- Sáez AG, Lozano E (2005) Body doubles. *Nature* 433:111. <https://doi.org/10.1038/433111a>
- Samarakoon MC, Thongbai B, Hyde KD, Brönstrup M, Beutling U, Lambert C, Miller AN, Liu JK, Promputtha I, Stadler M (2020) Elucidation of the life cycle of the endophytic genus *Muscodora* and its transfer into the genus *Induratia* in Induratiaceae fam. nov., based on a polyphasic taxonomic approach. *Fungal Divers* 101:177–210. <https://doi.org/10.1007/s13225-020-00443-9>
- Schlick-Steiner BC, Steiner FM, Seifert B, Stauffer C, Christian E, Crozier RH (2010) Integrative taxonomy: a multisource approach to exploring biodiversity. *Annu Rev Entomol* 55:421–438. <https://doi.org/10.1146/annurev-ento-112408-085432>
- Schoch CL, Robbertse B, Robert V, Vu D, Cardinali G, Irinyi L, Meyer W, Nilsson RH, Hughes K, Miller AN, Kirk PM, Abarenkov K, Aime MC, Ariyawansa HA, Bidartondo M, Boekhout T, Buyck B, Cai Q, Chen J, Crespo A, Crous PW, Damm U, De Beer ZW, Dentinger BT, Divakar PK, Dueñas M, Feau N, Fliegerova K, García MA, Ge ZW, Griffith GW, Groenewald JZ, Groenewald M, Grube M, Gryzenhout M, Gueidan C, Guo L, Hambleton S, Hamelin R, Hansen K, Hofstetter V, Hong SB, Houbakken J, Hyde KD, Inderbitzin P, Johnston PR, Karunarathna SC, Kõljalg U, Kovács GM, Kraichak E, Krizsan K, Kurtzman CP, Larsson KH, Leavitt S, Letcher PM, Liimatainen K, Liu JK, Lodge DJ, Luangsa-Ard JJ, Lumbsch HT, Maharachchikumbura SS, Manamgoda D, Martín MP, Minnis AM, Moncalvo JM, Mulè G, Nakasone KK, Niskanen T, Olariaga I, Papp T, Petkovits T, Pino-Bodas R, Powell MJ, Raja HA, Reeder D, Sarmiento-Ramirez JM, Seifert KA, Shrestha B, Stenroos S, Stielow B, Suh SO, Tanaka K, Tedersoo L, Telleria MT, Udayanga D, Untereiner WA, Diéguez Uribeondo J, Subbarao KV, Vágvolgyi C, Visagie C, Voigt K, Walker DM, Weir BS, Weiß M, Wijayawardene NN, Wingfield MJ, Xu JP, Yang ZL, Zhang N, Zhuang WY, Federhen S (2014) Finding needles in haystacks: linking scientific names, reference specimens and molecular data for Fungi. *Database (Oxford)* 2014, bau061. <https://doi.org/10.1093/database/bau061>

- Sheth BP, Thaker VS (2017) DNA barcoding and traditional taxonomy: an integrated approach for biodiversity conservation. *Genome* 60:618–628. <https://doi.org/10.1139/gen-2015-0167>
- Sites JW, Marshall JC (2004) Operational criteria for delimiting species. *Annu Rev Ecol Evol S* 35:199–227. <https://doi.org/10.1146/annurev.ecolsys.35.112202.130128>
- Skrede I, Carlsen T, Schumacher T (2017) A synopsis of the saddle fungi (*Helvella*: Ascomycota) in Europe—species delimitation, taxonomy and typification. *Persoonia* 39:201–253. <https://doi.org/10.3767/persoonia.2017.39.09>
- Sochorová Z, Döbbeler P, Sochor M, van Rooy J (2019) *Octospora conidiophora* (Pyrenomataceae)—a new species from South Africa and the first report of anamorph in bryophilous Pezizales. *MycKeys* 54:49–76. <https://doi.org/10.3897/mycokeys.54.34571>
- Stadler M, Læssøe T, Fournier J, Decock C, Schmieschek B, Tichy HV, Peršoh D (2014) A polyphasic taxonomy of *Daldinia* (Xylariaceae). *Stud Mycol* 15:1–143. <https://doi.org/10.3114/sim0016>
- Stadler M, Lambert C, Wibberg D, Kalinowski J, Cox RJ, Kolařík M (2020) Intra-genomic polymorphisms in the ITS region of high-quality genomes of the Hypoxylaceae (Xylariales, Ascomycota). *Mycol Progr* 19:235–245. <https://doi.org/10.1007/s11557-019-01552-9>
- Stearn WT (1985) *Botanical Latin. History, grammar, syntax, terminology and vocabulary*. Ed. 3. David & Charles: Newton Abbot - London-North Pomfret. 546 p
- Stech M, Veldman S, Larrain J, Muñoz J, Quandt D, Hassel K, Kruijer H (2013) Molecular species delimitation in the *Racomitrium canescens* complex (Grimmiaceae) and implications for DNA barcoding of species complexes in Mosses. *PLoS ONE* 8:e15614. <https://doi.org/10.1371/journal.pone.0053134>
- Stewart JE, Timmer LW, Lawrence CB, Pryor BM, Peever TL (2014) Discord between morphological and phylogenetic species boundaries: incomplete lineage sorting and recombination results in fuzzy species boundaries in an asexual fungal pathogen. *BMC Evol Biol* 14:38–38. <https://doi.org/10.1186/1471-2148-14-38>
- Sung G-H, Sung J-M, Hywel-Jones NL, Spatafora JW (2007) A multi-gene phylogeny of Clavicipitaceae (Ascomycota, Fungi): identification of localized incongruence using a combinational bootstrap approach. *Mol Phylogenet Evol* 44:1204–1223. <https://doi.org/10.1016/j.ympev.2007.03.011>
- Taşkın H, Büyükalaca S, Hüseyin H, Rehner S, O'Donnell K (2010) A multigene molecular phylogenetic assessment of true morels (*Morchella*). *Fungal Genet Biol* 47:672–682. <https://doi.org/10.1016/j.fgb.2010.05.004>
- Taşkın H, Büyükalaca S, Hansen K, O'Donnell K (2012) Multilocus phylogenetic analysis of true morels (*Morchella*) reveals high levels of endemics in Turkey relative to other regions of Europe. *Mycologia* 104:446–461. <https://doi.org/10.3852/11-180>
- Taşkın H, Doğan H, Büyükalaca S, Hüseyin H (2015) *Morchella galilaea*, an autumn species from Turkey. *Mycotaxon* 130:215–221. <https://doi.org/10.5248/130.215>
- Taşkın H, Doğan H, Büyükalaca S, Clowez P, Moreau P-A, O'Donnell K (2016) Four new morel (*Morchella*) species in the *elata* sub-clade (*M. sect. Distantes*) from Turkey. *Mycotaxon* 131:467–482. <https://doi.org/10.5248/131.467>
- Taylor JW, Jacobson DJ, Kroken S, Kasuga T, Geiser DM, Hibbett DS, Fisher MC (2000) Phylogenetic species recognition and species concepts in fungi. *Fungal Genet Biol* 31:21–32. <https://doi.org/10.1006/fgbi.2000.1228>
- Teixeira da Silva JA, Dobránszki J, Tsigaris P, Al-Khatib A (2019) Predatory and exploitative behaviour in academic publishing: an assessment. *J Acad Libr* 45:102071. <https://doi.org/10.1016/j.acalib.2019.102071>
- Thines M, Crous PW, Aime MC, Aoki T, Cai L, Hyde KD, Miller AN, Zhang N, Stadler M (2018) Ten reasons why a sequence-based nomenclature is not useful for fungi anytime soon. *IMA Fungus* 9:177–183. <https://doi.org/10.5598/imafungus.2018.09.01.11>
- Iuriana NJ, Wiersma JH, Barrie FK, Greuter W, Hawksworth DL, Herendeen PS (eds.) (2018) *International Code of Nomenclature for algae, fungi, and plants (Shenzhen Code) adopted by the Nineteenth International Botanical Congress Shenzhen, China, July 2017*. Regnum Vegetabile 159. Glashütten: Koeltz Botanical Books. <https://doi.org/10.12705/Code.2018>
- van Vlokhoven H (2019) The effect of open access on research quality. *J Informetr* 13:2751–2756. <https://doi.org/10.1016/j.joi.2019.04.001>
- Van Vooren N (2020) Reinstatement of old taxa and publication of new genera for naming some lineages of the Pezizaceae (Ascomycota). *Ascomycete.org* 12:179–192. <https://doi.org/10.25664/art-0305>
- Van Vooren N, Carbone M, Sammut C, Grupe AC (2019) Preliminary notes on the genus *Tarzetta* (Pezizales) with typifications of some species and description of six new species. *Ascomycete.org* 11:309–334. <https://doi.org/10.25664/art-0288>
- Vesterholt J, Eberhardt U, Beker HJ (2014) Epitypification of *Hebeloma Crustuliniforme*. *Mycol Progr* 13:553–562. <https://doi.org/10.1007/s11557-013-0938-y>
- Vinarski MV (2020) The roots of the taxonomic impediment: is the 'integrativeness' a remedy? *Integr Zool* 15:2–15. <https://doi.org/10.1111/1749-4877.12393>
- Vizzini A, Lantieri A, Medardi G, Ercole E, Caciagli G (2016) Phylogeny and morphology of the *Peziza ammophila* complex (Pezizales, Ascomycota), with description of two new species and a new form. *Mycol Progr* 15:883–901. <https://doi.org/10.1007/s11557-016-1213-9>
- Vizzini A, Medardi G, Tamm H, Forin N, Voyron S, Ercole E (2020) Study and clarification of *Peziza petersii* and *P. proteana* (Ascomycota, Pezizaceae), and *Underwoodia campbellii* resurrected for the “cabbage-head fungus” (formerly *P. proteana* f. *sparassoides*). *Mycol Progr* 19:505–523. <https://doi.org/10.1007/s11557-020-01575-7>
- Voitk A, Beug MW, O'Donnell K, Burzynski M (2016) Two new species of true morels from Newfoundland and Labrador: cosmopolitan *Morchella eohespera* and parochial *M. laurentiana*. *Mycologia* 108:31–37. <https://doi.org/10.3852/15-149>
- Weholt Ø, Alvarado P, Kristiansen R, Gulden G (2020) The genus *Morchella* section *Distantes* in Norway and new information on three *Morchella* species described from Norway. *Agarica* 39:7–30
- Wei X, McCune B, Lumbsch HT, Li H, Leavitt S, Yamamoto Y, Tshabanenko S, Wei J (2016) Limitations of species delimitation based on phylogenetic analyses: a case study in the *Hypogymnia hypotrypa* group (Parmeliaceae, Ascomycota). *PLoS ONE* 11:e0163664. <https://doi.org/10.1371/journal.pone.0163664>
- Westrop SR, Landing E, Dengler AA (2018) Pseudocryptic species of the Middle Cambrian trilobite *Eodiscus* Hartt, in Walcott, 1884, from Avalonian and Laurentian Newfoundland. *Can J Earth Sci* 55:997–1019. <https://doi.org/10.1139/cjes-2018-0027>
- Wheeler QD (2004) Taxonomic triage and the poverty of phylogeny. *Philos T Roy Soc B* 359:571–583. <https://doi.org/10.1098/rstb.2003.1452>
- Wibberg D, Stadler M, Lambert C, Bunk B, Spröer C, Rückert C, Kalinowski J, Cox RJ, Kuhnert E (2020) High quality genome sequences of thirteen *Hypoxylaceae* (Ascomycota) strengthen the phylogenetic family backbone and enable the discovery of new taxa. *Fungal Divers* 106:7–28. <https://doi.org/10.1007/s13225-020-00447-5>
- Wiley EO (1978) The evolutionary species concept reconsidered. *Syst Zool* 27:17–26. <https://doi.org/10.2307/2412809>
- Will KW, Mishler BD, Wheeler QD (2005) The perils of DNA barcoding and the need for integrative taxonomy. *Syst Biol* 54:844–851. <https://doi.org/10.1080/10635150500354878>
- Wilson CG, Nowell RW, Barraclough TG (2018) Cross-contamination explains “inter and intraspecific horizontal genetic transfers”

- between asexual bdelloid rotifers. *Curr Biol* 28:2436–2444. <https://doi.org/10.1016/j.cub.2018.05.070>
- Wittstein K, Cordsmeier A, Lambert C, Wendt L, Sir EB, Weber J, Wurzler N, Petrini LE, Stadler M (2020) Identification of *Rosellinia* species as producers of cyclodepsipeptide PF1022 A and resurrection of the genus *Dematophora* as inferred from polythetic taxonomy. *Stud Mycol* 96:1–16. <https://doi.org/10.1016/j.simyco.2020.01.001>
- Yatsiuk I, Saar I, Kalamees K, Sulaymonov S, Gafforov Y, O' Donnell K (2016) Epitypification of *Morchella steppicola* (Morchellaceae, Pezizales), a morphologically, phylogenetically and biogeographically distinct member of the *Esculenta* clade from central Eurasia. *Phytotaxa* 284:31–40. <https://doi.org/10.11646/phytotaxa.284.1.3>
- Zamora JC, Calonge FD, Martín M (2015) Integrative taxonomy reveals an unexpected diversity in *Geastrum* section *Geastrum* (Geastrales, Basidiomycota). *Persoonia* 34:130–165. <https://doi.org/10.3767/003158515X687443>
- Zamora JC, Svensson M, Kirschner R, Olariaga I, Ryman S, Parra LA, Geml J et al (2018) Considerations and consequences of allowing DNA sequence data as types of fungal taxa. *IMA Fungus* 9:167–175. <https://doi.org/10.5598/ima fungus.2018.09.01.10>
- Zamora JC, Ekman S (2020) Phylogeny and character evolution in the *Dacrymycetes*, and systematics of Unilacrymaceae and Dacryonaemataceae fam. nov. *Persoonia* 44:161–205. <https://doi.org/10.3767/persoonia.2020.44.07>
- Zerova MI (1941) Новый зморшок із цілиного степу (*Morchella steppicola* Zerova sp. nov.) [A new morel from Tselina steppe (*Morchella steppicola* Zerova sp. nov.)] (in Ukrainian). *Ботанічний журнал АН УРСР* [J. bot. Acad. Sci. Ukr.] 2:155–159
- Zervakis GI, Ntougias S, Gargano ML, Besi MI, Polemis E, Typas MA, Venturella G (2014) A reappraisal of the *Pleurotus eryngii* complex—new species and taxonomic combinations based on the application of a polyphasic approach, and an identification key to *Pleurotus* taxa associated with Apiaceae plants. *Fungal Biol* 118:814–834. <https://doi.org/10.1016/j.funbio.2014.07.001>

Authors and Affiliations

Michael Loizides¹ · Pablo Alvarado² · Pierre-Arthur Moreau³ · Boris Assyov⁴ · Viktorie Halasu⁵ · Marc Stadler⁶ · Andrea Rinaldi⁷ · Guilhermina Marques⁸ · Georgios I. Zervakis⁹ · Jan Borovička¹⁰ · Nicolas Van Vooren¹¹ · Tine Grebenc¹² · Franck Richard¹³ · Hatira Taşkın¹⁴ · Matthias Gube¹⁵ · Carmel Sammut¹⁶ · Carlo Agnello¹⁷ · Timothy J. Baroni¹⁸ · Pedro Crous¹⁹ · Vassiliki Fryssouli⁹ · Zacharoula Gonou²⁰ · Urbano Guidori²¹ · Gro Gulden²² · Karen Hansen²³ · Roy Kristiansen²⁴ · Thomas Læssøe²⁵ · Javier Mateos²⁶ · Andrew Miller²⁷ · Gabriel Moreno²⁸ · Branislav Perić²⁹ · Elias Polemis⁹ · Joan Carles Salom³⁰ · José Leonardo Siquier³⁰ · Martin Snabl³¹ · Øyvind Weholt³² · Jean-Michel Bellanger¹³

¹ Limassol, Cyprus

² ALVALAB, Av. Bruselas 2-3B, 33011 Oviedo, Spain

³ Faculté de Pharmacie Lille, Université de Lille, EA 4483 IMPECS, F-59000 Lille, France

⁴ Institute of Biodiversity and Ecosystem Research, Bulgarian Academy of Sciences, 2 Gagarin St, 1113 Sofia, Bulgaria

⁵ Olomouc, Czech Republic

⁶ Department Microbial Drugs, Helmholtz Centre for Infection Research (HZI), and German Centre for Infection Research (DZIF), Partner Site Hannover-Braunschweig, Inhoffenstraße 7, 38124 Brunswick, Germany

⁷ Department of Biomedical Sciences, University of Cagliari, 09042 Monserrato, CA, Italy

⁸ Department of Agronomy, CITAB, University of Trás-Os-Montes and Alto Douro, 5000-801 Vila Real, Portugal

⁹ Laboratory of General and Agricultural Microbiology, Agricultural University of Athens, Iera Odos 75, 11855 Athens, Greece

¹⁰ Institute of Geology of the Czech Academy of Sciences, Prague 6-Lysolaje, Czech Republic

¹¹ Tassin-la-Demi-Lune, France

¹² Slovenian Forestry Institute, Večna pot 2, 1000 Ljubljana, Slovenia

¹³ CEFÉ, CNRS, Université de Montpellier, EPHE, IRD, INSERM, 1919 route de Mende, F-34293 Montpellier, Cedex 5, France

¹⁴ Department of Horticulture, Faculty of Agriculture, Çukurova University, 01330 Adana, Turkey

¹⁵ Soil Science of Temperate Ecosystems, Georg-August University Göttingen, Büsgenweg 2, 37077 Goettingen, Germany

¹⁶ Gzira, Malta

¹⁷ Mesagne, Italy

¹⁸ Department of Biological Sciences, State University of New York College at Cortland, PO Box 2000, Cortland, NY 13045, USA

¹⁹ Westerdijk Fungal Biodiversity Institute, P.O. Box 85167, 3508 AD Utrecht, The Netherlands

²⁰ Department of Ecology and Systematics, Faculty of Biology, National and Kapodistrian University of Athens, 15784 Athens, Greece

- ²¹ Cervia, Italy
- ²² Natural History Museum, University of Oslo, Blindern, PO Box 1172, NO-0318 Oslo, Norway
- ²³ Department of Botany, Swedish Museum of Natural History, P.O. Box 50007, 104 05 Stockholm, Sweden
- ²⁴ Sellebakk, Norway
- ²⁵ Natural History Museum of Denmark/Department of Biology, University of Copenhagen, 2100 Copenhagen Ø, Denmark
- ²⁶ Villamañan, Spain
- ²⁷ Illinois Natural History Survey, University of Illinois Urbana-Champaign, Champaign, IL, USA
- ²⁸ Departamento de Ciencias de La Vida (Botánica), Facultad de Ciencias, Universidad de Alcalá, Alcalá de Henares, 28805 Madrid, Spain
- ²⁹ Podgorica, Montenegro
- ³⁰ Interdisciplinary Ecology Group, University of the Balearic Islands, ctra. Valldemossa km 7,5 - E07122 Palma de Mallorca, Illes Balears, Spain
- ³¹ Italian Mycological Society (UMI), viale Fanin 44, 40127 Bologna, Italy
- ³² Torp, Norway

Point-by-point critique of Phanpadith et al. (2019)

¹ Michael Loizides* · ² Pablo Alvarado · ³ Pierre-Arthur Moreau · ⁴ Boris Assyov · ⁵ Viktorie Halasů ·
⁶ Marc Stadler · ⁷ Andrea Rinaldi · ⁸ Guilhermina Marques · ⁹ Georgios I. Zervakis · ¹⁰ Jan Borovička ·
¹¹ Nicolas Van Vooren · ¹² Tine Grebenc · ¹³ Franck Richard · ¹⁴ Hatira Taşkin · ¹⁵ Matthias Gube ·
¹⁶ Carmel Sammut · ¹⁷ Carlo Agnello · ¹⁸ Timothy J. Baroni · ¹⁹ Pedro Crous · ²⁰ Vassiliki Fryssouli ·
²¹ Zacharoula Gonou · ²² Urbano Guidori · ²³ Gro Gulden · ²⁴ Karen Hansen · ²⁵ Roy Kristiansen ·
²⁶ Thomas Læssøe · ²⁷ Javier Mateos · ²⁸ Andrew Miller · ²⁹ Gabriel Moreno · ³⁰ Branislav Perić ·
³¹ Elias Polemis · ³² Joan Carles Salom · ³³ José Leonardo Siquier · ³⁴ Martin Snabl ·
³⁵ Øyvind Weholt · ³⁶ Jean-Michel Bellanger

¹ P.O. Box 58499, Limassol 3734, Cyprus

² ALVALAB, Av. Bruselas 2-3B, 33011 Oviedo, Spain

³ Faculté de Pharmacie Lille, Université de Lille, EA 4483 IMPECS, F-59000 Lille, France

⁴ Institute of Biodiversity and Ecosystem Research, Bulgarian Academy of Sciences, 2 Gagarin St, 1113 Sofia, Bulgaria

⁵ Václava III. 10, 779 00 Olomouc, Czech Republic

⁶ Department Microbial Drugs, Helmholtz Centre for Infection Research (HZI), and German Centre for Infection Research (DZIF), partner site Hannover-Braunschweig, Inhoffenstraße 7, 38124 Brunswick, Germany

⁷ Department of Biomedical Sciences, University of Cagliari, I-09042 Monserrato (CA), Italy

⁸ CITAB, University of Trás-os-Montes and Alto Douro, Department of Agronomy, 5000-801 Vila Real, Portugal

^{9, 20, 31} Agricultural University of Athens, Laboratory of General and Agricultural Microbiology, Iera Odos 75, 11855 Athens, Greece

¹⁰ Institute of Geology of the Czech Academy of Sciences

¹¹ 13 chemin du Bois Ponard, 69160 Tassin-la-Demi-Lune, France

¹² Slovenian Forestry Institute, Večna pot 2, SI-1000 Ljubljana, Slovenia

^{13, 36} CEFE, CNRS, Université de Montpellier, EPHE, IRD, INSERM, 1919 route de Mende, F-34293 Montpellier Cedex 5, France

¹⁴ Department of Horticulture, Faculty of Agriculture, Çukurova University, 01330 Adana, Turkey

¹⁵ Soil Science of Temperate Ecosystems, Georg-August University Göttingen, Bûsgenweg 2, 37077 Göttingen, Germany

¹⁶ 216/1, St. Joseph Flats, Rue d'Argens, Gzira, GZR1367, Malta

¹⁷ Via Antonio Gramsci 11-72023 Mesagne, Italy

¹⁸ Department of Biological Sciences, PO Box 2000, State University of New York-College at Cortland, Cortland, New York 13045

¹⁹ Westerdijk Fungal Biodiversity Institute, P.O. Box 85167, 3508 AD Utrecht, The Netherlands

²¹ Department of Ecology and Systematics, Faculty of Biology, National and Kapodistrian University of Athens, 15784 Athens, Greece

²² Via Copernico 3 - 48015 - Cervia (RA) Italia

²³ Natural History Museum, University of Oslo, PO Box 1172 Blindern, NO-0318 Oslo, Norway

²⁴ Swedish Museum of Natural History, Department of Botany, P.O. Box 50007, SE-104 05 Stockholm, Sweden

²⁵ PO Box 32, N-1650, Seldebakk, Norway

²⁶ Natural History Museum of Denmark/Department of Biology, University of Copenhagen, Copenhagen Ø, DK-2100, Denmark

²⁷ el Molino nº7 24234 Villamañan (Leon) España

²⁸ Illinois Natural History Survey, University of Illinois Urbana-Champaign, Champaign, IL, USA

²⁹ Dpto.Ciencias de la Vida (Botánica), Facultad de Ciencias, Univ. de Alcalá, Alcalá de Henares, 28805 Madrid, Spain

³⁰ 81000 Podgorica, Đulje Jovanova 16, Montenegro

^{32, 33} Interdisciplinary Ecology Group, University of the Balearic Islands, ctra. Valldemossa km 7,5 - E07122 Palma de Mallorca (Illes Balears).

³⁴ Italian Mycological Society (UMI), viale Fanin 44, 40127 Bologna, Italy

³⁵ Høyåslia 9, N-1657 Torp, Norway

*Correspondence: michael.loizides@yahoo.com

This is a point-by-point rebuttal of the paper entitled “*High diversity of Morchella and a novel lineage of the esculenta clade from the north Qinling Mountains revealed by GCPSR-based study*” by Phanpadith et al. (2019), published in the Open-Access journal Scientific Reports (2019, 9:19856). The present critique is published as supplementary to the main review by Loizides et al. (2022), entitled: “*Has taxonomic vandalism gone too far? A case study, the rise of the pay-to-publish model and the pitfalls of Morchella systematics*”.

Abstract:

- 1) “*China is a mainland country rich in natural morel recourses, having records of half of the worldwide 61 morel phylospecies*”.

This is an inaccurate statement. Worldwide *Morchella* diversity detected by molecular analyses was by the end of 2019 approximating 80 phylospecies, not 61. In a review by Loizides (2017, not cited by Phanpadith et al.), Europe and the Mediterranean region combined were shown to harbor more or less the same number of species (~34) as Asia (~32). New records from China have since been reported by Du et al. (effectively published 15.8.2019), but the authors seem to have been unaware of that study because they do not cite it, even though the Phanpadith et al. (2019) paper was published several months later (27.12.2019). The opening phrase “China is a mainland country” is also linguistically incorrect.

- 2) “*A total of five phylogenetic species were found among the 38 collections, namely Morchella sp. Mes-8, Mes-9, Mes-13, and Mes-25, and Morchella chensiensis (IF556780), in addition to the false morel (Verpa bohemica)*”.

If we count “*Morchella sp.*”, then the species detected are 6, not 5. It is therefore assumed that the words “*Morchella sp.*” are used as a prefix for all 5 species detected, which is both superfluous and incorrect because the abbreviation “sp.” is singular. Moreover, although a Linnaean binomial (“*Morchella chensiensis*”) is given to the new species proposed in this paper, the authors inexplicably refrain from referring to the remaining taxonomically resolved species by their legitimate Latin binomials, even in cases these have been recently described or epitypified. For instance, *Mes-8* is *M. esculenta*, the type species of the genus and was epitypified in Richard et al. (2015), therefore the taxonomic identity of this lineage is fixed.

- 3) “*The identification of cultivated Morchella sp. Mel-2, Mel-6, Mel-10, and Mel-12 coincided with that of the commercial farms*”.

Farms do not identify species, they cultivate them; hence they should know *a priori* which species they are cultivating. Same problem with the informal *Mel-Mes* designators used instead of Linnaean binomials: *Mel-2* is *M. tridentina* (= *M. frustrata*, = *M. quercus-ilicis*, ss. Richard et al. 2015; ss. Loizides et al. 2015, 2016); *Mel-6* is *M. sextelata* (Kuo et al. 2012); *Mel-10* is *M. importuna* (Kuo et al. 2012); and *Mel-12* is *M. snyderi* (Kuo et al. 2012). With the exception of *M. tridentina*, all these binomials were recently described and sequences from their holotypes are available and deposited in public databases.

- 4) “*All collections from this study showed continental endemism, and all Qinling Mountains collections were grouped together in rDNA phylogenetic trees*”.

This is a false claim not supported by any data, because *Morchella esculenta* (Mes-8), *M. importuna* (Mel-10), *M. sextelata* (Mel-6), *M. tridentina* (Mel-2) and *Verpa bohemica* are all present in several continents. The presence of *Morchella tridentina* has in fact been molecularly documented in no less than 10 countries in four continents, while the presence of *M. importuna* has been molecularly confirmed in at least 12 countries in three continents, making them arguably the most widespread and cosmopolitan morel species (Pildain et al. 2014; Richard et al. 2015; Loizides et al. 2015; Loizides 2017). Remarkably, this claim is contradicted by the authors themselves in Table 1, where only two of the 11 species reported appear to be confined in China. It is in fact impossible for the collections from Qinling Mountains to have “grouped together in rDNA phylogenetic trees”, because they belong to different clades and one of the species included in the analysis (*Verpa bohemica*) belongs to a different genus altogether.

Introduction:

- 5) “True morel (*Morchella* spp.), one of estimated 1.5 million species of fungi, is a popular edible mushroom that is highly valuable because of its nutritional, medicinal, and economic values”.

“True morel” is singular. “*Morchella* spp.” is plural. If we assume that this phrase refers to the genus *Morchella* as a whole, then *Morchella* is certainly not one of the “estimated 1.5 million species of fungi” (incidentally now estimated between 2.2 and 6 million, not 1.5 million; see Taylor et al. 2014; Hawksworth & Lücking 2018). If on the other hand we assume this phrase refers to all morel species phylogenetically detected so far, then the number should be about 80, not one. The nutritional, medicinal and economic value of morels is moreover not supported by any references.

- 6) “Mycophiles and gourmets around the world collect *Morchella* species, and unfortunately, these anthropic activities have caused the vegetative destruction and disappearance of some *Morchella* species before they are formally described”.

This is an unfounded claim that defies the criterion of testability (Popper 2002; Sagan 1997). Given no fossil of an extinct morel species has ever been discovered, then (1) how is it concluded that such hypothetical extinctions actually occurred; (2) on what grounds is it concluded that it is anthropic activities that caused such alleged extinctions; and (3) how can this entire claim be verified or falsified? Even more inappropriate is that this unfalsifiable claim is included in the introduction as a factual statement, without any references (none exist, obviously).

- 7) “Although mycologists and farms have recently strived to show that morels can be commercially harvested in China, Europe, North America, and other morel-rich regions, many species are still in danger of extinction”.

Cultivation farms cultivate morels, they do not “strive to show” others how or where to harvest them, neither do mycologists who study fungi. Which species are in danger of extinction and why? Again, no references to substantiate claims.

- 8) “Some studies have classified *Morchella* spp. using morphological species recognition (MSR) into as many as 50 species, whereas other studies have classified the genus into 3–5, 30, and 50 species”.

This sentence makes no sense. Who classified the genus into 50 species? Clowe (2012) did not classify the genus into 50 species, but 34 species in addition to several varieties and forms. If the first mention of “50 species” (without reference) also refers to Clowe (2012), then the sentence is both erroneous and incomprehensible because Clowe is mentioned again in the next phrase following the words “whereas other studies...”.

- 9) “Nevertheless, binomials have been adequately proposed for only four species and only during the last 10 years”.

This is an astonishing statement! The type species of the genus, *Morchella esculenta*, was first published by Linnaeus (as “*Phallus esculentus*”) as early as 1753 and dozens of *Morchella* taxa have been validly described in the past centuries. These include well-known names such as *M. vulgaris* (Gray 1821), *M. elata* (Fries 1822), *M. deliciosa* (Fries 1822), *M. dunalii* (Boudier 1887), and *M. eximia* (Boudier 1910), to name but a few. It is actually the phylogenetic identity of most of these early-described taxa that remained unclear, until Richard et al. (2015) designated epitypes for several of them linking 30 phylogenetic lineages to existing Linnaean binomials and clarifying many synonymies.

- 10) “There are currently 315 nomenclatural species of fungi, including subspecies and varieties, recorded in the fungi index database”.

There is no such thing as a “nomenclatural species”. More importantly, there are certainly not 315 species of fungi, subspecies and varieties recorded in fungal databases (e.g., IndexFungorum), but over 500,000 described taxa. Even if we assume the sentence is erroneously formulated and this number actually refers specifically to morel species, the number still does not add up because by 31.12.2019, there were 344 valid names listed in genus *Morchella* (<http://www.indexfungorum.org/Names/Names.asp>).

- 11) “A total of 30 phylotypes and fewer than five morphospecies have been recorded from China, while most MSR were named by Europeans and applied in North American and Asian collections”.

Another incoherent and misleading statement. “MSR” is an operational species concept (Taylor et al. 2000), not a ‘type’ of species “named by Europeans”. Most taxa prior to the advent of molecular phylogenetics were described based on morphological concepts. What the authors have probably read (but misunderstood), is that many Linnaean binomials of species described from Europe were in the past misapplied to North American and Asian collections.

- 12) “Nevertheless, molecular phylogenetic studies have indicated that many epithets may be synonymous species, homonymous species, or incorrectly named species, given that the majority of morel species appear to exhibit high continental endemism and provincialism in the Northern hemisphere, which is consistent with their proposed evolutionary origin in Laurasia”.

Epithets cannot not be “synonymous”, “homonymous” or “incorrectly named species”. Some binomials have indeed revealed to be synonyms to others because they have described the same species more than once, but this has nothing to do with “high continental endemism and provincialism in the Northern hemisphere”, nor with the genus’ “proposed evolutionary origin in Laurasia”. The authors seem unable to distinguish between species (taxonomy), binomials (nomenclature), distribution (biogeography) and evolutionary history (evolution).

- 13) “Although ITS sequences were useful for identifying 77.4% of the known phylotypes, at least 66% of the named *Morchella* sequences in GenBank were misidentified. Thus, the use of multilocus DNA sequence datasets and phylogenetic species recognition based on genealogical concordance and nondiscordance was initiated and accepted by academia”.

Another incorrect and misleading statement. Sequences of ITS (and other loci) are not employed to directly assign Linnaean binomials. They are useful in inferring species limits between lineages and these species limits are in turn used to infer the names applicable to each lineage. A sequence, therefore, still has to be correctly processed in order to be linked to a lineage and a lineage has to be correctly interpreted in order to be linked to a binomial. If no sequence of the type, epitype, neotype, isotype or paratype is available, the application of a Linnaean binomial to a sequence remains a matter of interpretation and is inevitably based

on phenotypic and other data (see, e.g., Zamora et al. 2018 and accompanying review), hence the large number of misidentified sequences in GenBank (a 2019 paper by Hofstetter et al. estimated the percentage of sequences applied to the wrong binomial in GenBank to be around 30%).

- 14) “Currently, 61 phylopecies, including 30, 22, and 19 from China, Europe, and North America, respectively, have been resolved by employing maximum parsimony and maximum-likelihood frameworks based on genealogical concordance phylogenetic species recognition (GCPSR)”.

The sum of 30+22+19 equals 71, not 61. This is because some lineages occur in two or more continents and therefore have been included more than once, but this important detail is not explained by the authors (who probably reproduced these numbers from an earlier study without trying to make sense of them), resulting in a confusing and misleading statement. Moreover, these numbers (presumably taken out of Du et al. 2012a) were already outdated by the time of the Phanpadith et al. paper, as subsequent publications have added new lineages and new continental records. In the review by Loizides (2017), 32 lineages were actually shown to be present in Asia (including China), 34 in Europe and 21 in North America, so it is obvious that the authors did not review the available literature thoroughly.

- 15) “Moreover, a *Morchella* Multilocus Sequence Typing (MLST) internet database (<http://www.cbs.knaw.nl/morchella/>) was constructed for querying *Morchella* identification based on multilocus ITS + LSU + EF1-a + RPB1 + RPB2 datasets. In this database, instead of a morphospecies name, the phylospecies names within *Distance Esculenta* and *Distance Elata* are informally named using codes starting with *Mes* (for the *Esculenta* clade) or *Mel* (for the *Elata* clade) followed by a unique Arabic number. Since 2012, this terminology has been widely applied for *Morchella* spp. nomenclature”.

There are no such terms as “Distance Esculenta” and “Distance Elata” (misspelled as “Eleta”). There is the /Esculenta Clade and the /Elata Clade, taxonomically arranged as sections *Esculenta* and *Distantes* (Clwez 2012), respectively. Moreover, the informal *Mes/Mel* designators were not introduced to replace binomial nomenclature erroneously suggested, but as a temporary solution until the taxonomic identity of these lineages could be clarified (see further comments in the accompanying review).

- 16) “*Mes-1–27* and *Mel-1–34* are the 61 currently identified species of the genus, and the third clade of *Rufobrunnea* currently comprises three MSR species but without phylospecies”.

How can a phylogenetic clade exist without containing any phylospecies? The /*Rufobrunnea* clade consists of two strongly supported lineages and not three as the authors erroneously claim, respectively corresponding to *M. anatolica* and *M. rufobrunnea*. These two binomials are entirely uncontested and firmly tied to the relevant phylogenetic lineages, not just because of their distinctive morphology but also because the holotype of *M. rufobrunnea* [XAL 31565] and the isotype of *M. anatolica* [K(M)157099] have been sequenced (O’Donnell et al. 2011; Taşkın et al. 2012). Moreover, in the period between the publications of Du et al. (2012a,b) and Phanpadith et al. (2019), several new *Morchella* lineages have been detected and assigned informal *Mel/Mes* designators, such as *Mel-35* (Elliott et al. 2014), *Mel-36* (Richard et al. 2015), *Mel-37* (Pildain et al. 2014), *Mes-28* and *Mel-38* (Loizides et al. 2016), and *Mel-39* (Petrželová & Sochor 2019), but the authors seem to be oblivious of their existence.

- 17) “The Qinling Mountains are connected with the Sino-Himalayan forest subkingdom and Sino-Japanese forest subkingdom, where 17 yellow morel and 13 black morel of the total 30 *Morchella* species from China have been reported, respectively”.

The word “morel” is singular, the sentence should read “17 yellow morels and 13 black morels”, or “17 yellow morel species and 13 black morel species”. As shown in point [1],

these numbers (presumably taken out of Du et al. 2012a), were already outdated by the time of the Phanpadith et al. publication.

- 18) “*The study aimed to help discover the diversity of Morchella, and help biodiversity conservation and sustainable exploration of this famous fungus in the key ecological central of China, the Qinling Mountain*”.

The term often used is “sustainable exploitation”, not “sustainable exploration” which does not make sense in the context used. Again, *Morchella* is a genus comprised of dozens of species, not a single “famous fungus”. The phrase “ecological central of China” is grammatically and linguistically incorrect. Even if we assume the authors meant “ecological center”, this is also incorrect because China is not the “ecological center” of morels. It has been claimed that China is the biodiversity center of *Morchella* (Du et al. 2012a), but even this is debatable because if we compare species richness per standard area, then the island of Cyprus harbors the highest concentration of morel species in the world (see Loizides et al. 2016, 2021a).

Results:

- 19) “*The PCR products of the 38 collections were successfully amplified, generating 1.1-kb and 0.9-kb sequence regions of ITS rDNA and 28 S LSU rDNA, respectively*”.

In *Morchella*, the length of the ITS region varies quite substantially between lineages, from 0.7 kb in sect. *Distantes* (/Elata) to up to 1.3 kb in some species of sect. *Morchella* (/Esculenta). Therefore, it makes no sense to indicate 1.1 kb for the amplified ITS rDNA, without additional information.

- 20) “*Based on the phylogenetic analysis using the ITS marker (152 sequences and 1805 characters), with *Verpa bohemica* to root the tree, the 38 collections from the present study were initially classified into two main clades: yellow morel and black morel*”.

Aligning ITS sequences across the whole genus *Morchella*, especially if including outgroup sequences outside the genus, yields multiple sequence alignments (MSA) which are basically useless for phylogenetic purposes due to the extent of ambiguously aligned regions. Running phylogenetic analyses on such dataset is at best uninformative, and at worst biased or misleading. Removing these misaligned regions, either manually or with dedicated algorithms (e.g., GBLOCKS, Castresana 2000), results in a 5.8S alignment which does not fix the problem. The authors do not mention any editing of their ITS MSA (only for coding genes: exclusion of gaps and ambiguously aligned regions), but the number of characters suggests they simply used it raw.

- 21) “*As the ITS marker is an intron that cannot robustly differentiate cryptic species of Morchella, ten collections formed an ambiguous sister clade including yellow morel (QL-Y02, QL-Y04-3, QL-Y04-4, QL-Y09-1, QL-Y21, QL-Y24) and black morel (QL-Y25, QL-Y29, QL-Y30, and QL-Y31) collections (100% bootstrap support (BS); Fig. 1)*”.

The ITS marker is not an intron, it is a ribosomal DNA region coding for the small RNA subunit of the ribosome (5.8S) and for two flanking transcribed sequences (ITS-1 and -2). Of all tested markers, ITS is by far the one with the highest resolution power in *Morchella* and has allowed for the delineation of several species in both sections. Therefore, this statement makes no sense and the reported “ambiguous sister clade” likely reflects the poor MSA and biased resulting analysis (see above). The /*Morchella* sp? clade depicted in Fig. 1 is then a pure artefact putting together sequences belonging in /*Esculenta* and sequences belonging in /*Elata*, as is later revealed in the 3-gene analysis (*Mes-8*, *Mes-13*, *M. chensiensis* and *Mel-2* + *Mel-6*, respectively). This whole Fig. 1 is in fact entirely artefactual and single-handedly demonstrates that the phylogenetic grounds of this paper are not sound. A simple split of the unique dataset in two datasets based on sequence similarity, would have reassigned the 4 + 5 sequences of

/Morchella sp? to their correct lineage, and fixed most oddities of this Figure when compared to previous studies on the genus.

- 22) “Nine taxa, which included 24 of the 38 collections of yellow morel (*Esculenta* clade), were identified”.

We get lost in these numbers. The authors state that they analyzed 38 collections in total and we learn a few lines below that 3 belong to the /Elata clade, which means that 35 collections should belong to the /Esculenta clade. Which is correct?

- 23) “All were coincided with their commercial names”.

It is ironic that the authors reject nearly all Linnaean binomials throughout the entire paper, but are happy to accept commercial names as validation of their identifications.

- 24) “The phylogenetic tree based on LSU rDNA and ITS + LSU rDNA was not robust as ITS tree to differentiate the *Esculenta* clade from the *Elata* clade, but they both show collections from the Qinling Mountains endemic and revaluated independently (Suppl. Figs. 2 & 3)”.

This is a bizarre observation since in *Morchella* the LSU marker is much less variable than ITS, and an LSU MSA should yield much more reliable results than an ITS MSA. It seems the authors have misinterpreted branch supports of the ITS phylogeny as evidence for robustness. A 5.8S alignment across the genus will certainly yield a phylogeny with good nodal supports, but the information of such a phylogeny will be limited and much more biased than an LSU analysis. Moreover, the above conclusion makes absolutely no sense. What is the link of such an observation with endemism?

Figures:

- 25) “Figures 1, 2 and 3”.

These 3 figures are cladograms, not phylograms. This highly unorthodox choice for a study aiming at introducing a new species, is neither explained nor mentioned in Materials and Methods. It is highly inappropriate in the context of an alpha-taxonomy paper, because the reader has no means of appreciating the phylogenetic distance of the new species *M. chensiensis* to its closest relatives. In Fig. 3, branch supports are lacking. Also, it is unclear what this figure illustrates that is not also included in Fig. 2.

Morphological descriptions of the Qinling Mountains lineage:

- 26) “Typification. CHINA. SHAANXI PROVINCE: Guanghuojie county, alt. 1,500 m, on soil under diverse forest of *Juglans regia*, *Populus* sp., and *Quercus aliena*, 15 May 2017. A new name of *Morchella chensiensis* was registered in the *Index Fungorum* (IF556780)”.

The newly proposed name is invalid (<https://www.mycobank.org/page/Simple%20names%20search>; <http://www.indexfungorum.org/Names/NamesRecord.asp?RecordID=556780>). The authors fail to designate a type and thus fail to meet the criteria of Articles 40.1 and 40.6 of the International Code of Nomenclature of Algae, Fungi and Plants [ICNAPF] (Shenzhen Code, Turland et al. 2018). The statement “the sample of the Qinling lineage was deposited in the Herbarium of Institute of Microbiology, Chinese Academy of Science, under the voucher number HMAS2556256” does not qualify as holotype designation as again does not fulfil Art. 40.6. In addition, the description deviates from the recommendations of the Code (particularly Rec. 38B.1 and 38B.2) and widely accepted standards (Aime et al. 2021), as neither a diagnosis nor an etymology for the epithet are provided and paratypes are not designated. Further, the introduction of the new name does not follow current standards practiced in fungal taxonomy

and nomenclature, which is the proper introduction of the new name with the ascription of its author(s), followed by the usual designation “*sp. nov.*” to indicate the rank of the new taxon (see Rec. 32A1, ref). In fact, the taxonomic rank of the newly proposed taxon is far from clear throughout the paper, as the authors mostly refer to it as “lineage” or “putative lineage”. Whilst the lack of authorship ascription is not an issue and it is to be resolved in accordance with the provisions of the Code, it certainly deviates from good practice and from Recommendation 46D of the ICN.

- 27) “*The fruit body is generally similar to that of M. esculenta in colour of the pits, ridges, edges, and dimensions. Fruit body height is 4.09–9.10 (6.88) cm. Ascocarps are brown-whitish cream to pale-yellowish brown with irregularly arranged pits. The ridge edges are usually lighter in colour than the pits, sometimes directly cone-shaped with a rounded top or more elongated. Ascocarps are spongy and attached to the stem, 1.99–5.23 (3.78) cm long × 1.23–4.97 (2.34) cm wide. The stipe is whitish to yellowish or cream coloured, hollow inside, and straight with a club-shaped base; general dimensions: 2.24–8.21 (8.36) cm long × 2.22–5.54 (2.31) cm thick.*”

It is unclear whether the new species was described from a single ascocarp (to judge from the singular noun used and dimensions given to a bizarre 0.1 mm precision), or whether this is a composite description of several ascocarps or several collections, since no studied collections are listed anywhere. The remarks in the opening sentence are entirely redundant, as the traits mentioned are non-specific and more or less apply to all members of the /*Esculenta* clade. The reference to Richard et al. (2015) is intentionally or unintentionally misplaced, as no detailed description of *M. esculenta* is provided in that paper. In the fourth sentence, the ridge edges are described as “cone-shaped with a rounded top or more elongated” probably referring to the entire pileus instead, while in the next sentence the ascocarps are said to be “attached to the stem”, which is obviously a superfluous comment. This is an extremely poor description providing no useful information whatsoever. No information is given on the developmental stages of the fungus and the morphological differences between young and old ascocarps, no information is given on whether ascocarps are rufescent or not, no information is given on the shape and size of the pits, on the sinus, or how the pileus is attached to the stipe, no information is given about the stipe surface or its length proportionately to the pileus.

- 28) “*Ascospores with gelatinous coat, parrelled in ascus, with thin-smooth walls and egg-shaped, average dimension of 16.32–19.39 (17.39) μm long × 8.66–16.21 (12.18) μm wide. Each ascus with an open cap at the apex containing eight ascospores of long cylindrical shape, with dimensions of 130.08–193.53 (156.66) μm long × 10.72–17.71 (14.29) μm wide. Paraphyses are cylindrical, 2-septate at the base, and thin in diameter, 80.34–123.11 μm long × 4.34–10.13 μm wide; some apical paraphyses are enlarged.*”

Morel spores are not known to have a gelatinous coating, but lipid bodies (guttules) often attached to the poles. The word “parelled” is obviously a misspelling, but it is unclear what the authors mean because their images depict monoseriate spores inside the asci and thus not parallel. Even in cases spores are biseriate inside the asci, they are always irregularly arranged in morels and never parallel. Ascospores are described as “egg-shaped” in the first sentence, but “long-cylindrical” in the second sentence. In fact, they are neither, and in the images appear to be typically ellipsoid or broadly ellipsoid as in most morel species. Moreover, spores appear to have been measured from exsiccatæ or even from inside the asci and are probably immature (see further comments under Legends and in the accompanying review). As a result, measurements are probably not representative and indeed the dimensions given seem far too small for the genus (see, e.g., Loizides et al. 2016; Clowez & Moreau 2018). Asci do not have an “open cap”, but an operculum. Paraphyses cannot be 2-septate at the base unless the base is bifurcated, but no bifurcate bases are depicted or mentioned anywhere. Elements in fig. 4E likely represent acroparaphyses, not paraphyses. The term ‘apical paraphyses’ was introduced for hypocreaceous fungi (Luttrell 1965) and is not applicable to morels. Descriptions of other critical features, such as the spore ornamentation, the terminal elements

(hyphoid hairs) of the stipe cortex, the ectal excipulum, and the acroparaphyses are entirely lacking.

Discussion:

- 29) “The evaluation of *Morchella* species diversity is often complicated by the plasticity of macro- and micromorphological characteristics. Multigenes are therefore important for aiding in species recognition, and they are often used instead of the morphology to identify these cryptic species. However, phylopecies are still commonly confused with those identified using MSR. For instance, *Mel-10* from different regions, defined using phylogenetic tools, were assigned the MSR names *M. elata* and *M. importuna*, respectively. Within the *Esculenta* clade, the phylogenetic species corresponding to *Morchella* sp. *Mes-4* were assigned to the same species, whereas its MSR names included *M. rigida*, *M. esculentoides*, and *M. Americana*”.

This is a distorted and fallacious assessment of the situation based on misinterpreted data and false conclusions. Molecular phylogenetic analyses are not a magic wand. They are a powerful tool that should be utilized in combination with morphological and other analyses, not in order to replace them (see Loizides et al. 2021b). The name *Morchella importuna* was not assigned to *Mel-10* following a “morphological species recognition” as falsely claimed. It was newly proposed by Kuo et al. (2012) to accommodate the phylogenetic lineage previously coded as “*Mel-10*” in Taşkın et al. (2010) and O’Donnell et al. (2011). Because continental endemism in the genus was overestimated and early described binomials were not excluded, it is likely that the name *M. importuna* is a later synonym of an older European taxon yet to be epitypified, with *M. elata*, *M. vaporaria*, *M. hortensis* and *M. pragensis* all being candidate earlier names. This, of course, is not indicative of “confusion” caused between phylospecies and morphologically identified species as the authors conclude, but of a possible synonymy of a newly proposed binomial with an earlier binomial or binomials. Even more disturbing is the fact that several references evoked by the authors in support of their fallacious claims have evidently been misplaced, and are often unrelated to, or even directly contradict their claims. For instance, the taxonomic treatment of Clwez (2012) was solely based on a morpho-ecological approach and did not include any molecular phylogenetic analyses as the authors imply by the placement of this citation. In addition, *Mes-4* was not assigned to *M. rigida* by Kuo et al. (2012), as the authors again falsely imply by the placement of this citation, but the latter taxon was newly described in that paper with the name *M. esculentoides*. The latter binomial was later found to be synonymous to *M. americana* by Richard et al. (2015), who did not assign the name *M. esculentoides* based on ‘MSR’ (as the authors again falsely imply by the placement of this citation), but simply detected this synonymy following phylogenetic analyses from both ends of the Atlantic. Most astounding however, is the citation of Taylor et al. (2000) for the application of the name *M. americana*. A detail the authors seem to have overlooked is that the Taylor et al. study (published in 2000), predates the description of *M. americana* (published by Kuo et al. in 2012) by a good dozen of years and does not include a single mention of *Morchella* in the entire paper. It becomes abundantly clear from this paragraph, that the authors not only neglected to properly review the available literature, but have intentionally misplaced and manipulated citations to make their unsubstantiated claims seem attested by others.

- 30) “Morel species diversity across China was recently reported, and many nonaccepted species were resolved using GCPSR methods. Only four species and one subspecies, from Europe and America, had been previously identified using MSR and given Latin names”.

The claim (repeated without reference) that “only four species and one subspecies from Europe and America had been previously identified using MSR and given Latin names”, is truly astounding. As stated in point [10], by the end of 2019, 344 names were listed in genus *Morchella*, which a simple search on Index Fungorum would have revealed. Most of these taxa were described from Europe on the basis of morphology and far predate molecular studies, some of them by decades or even centuries. Following extensive systematic revisions in recent

years, ~58 *Morchella* binomials have been firmly linked to phylogenetic lineages (Clowez et al. 2014, 2015; Richard et al. 2015; Loizides et al. 2015, 2016; Taşkın et al. 2016; Baroni et al. 2018; Du et al. 2019b). There are not any “non-accepted species” resolved by “GCPSR” methods, as again falsely stated. The simple truth is that molecular phylogenetic analyses detected several phylogenetic lineages in China, many of which are assumed to represent undescribed species (Du et al. 2012a, b).

- 31) “We recorded nine new phylogenetic species exclusively a false morel (*Verpa bohemica*) from around the Qinling Mountains, five yellow morels, and four black morels; namely, Mes-8, Mes-9, Mes-13, Mes-25, and *Morchella chensiensis* in Distant Esculenta, and Mel-2, Mel-6, Mel-10, Mel-12 in Distant Elata. Mel-13, Mes-13, Mes-21, and Mes-19 were not found in the north Qinling Mountains, although they were represented in Shaanxi from different collection sites”.

There is hardly anything in this sentence that makes sense grammatically, linguistically or taxonomically and the authors certainly did not “record nine new phylogenetic species”, which is yet another fabricated result. Other than that, the improvised terms “Distance Esculenta” and “Distance Elata” used elsewhere, have now been renamed “Distant Esculenta” and “Distant Elata”.

- 32) “However, based on the descriptions of the morphological characteristics, we found almost no difference among our yellow morel collections. Mes-8 and Mes-9 presented very small differences in their morphologies, and they were regarded as conspecies when the GCPSR method was applied, species boundaries between them is still ambiguous”.

The correct term is “conspecific” not “conspecies”, and the linking verb should be “are” not “is”, since the word “boundaries” is plural. The Kanwal et al. (2011) reference is unfortunate as most binomials in that study are misapplied and correspond to classical European names that had been erroneously applied to Asian lineages. Moreover, if species boundaries between Mes-8 (*M. esculenta*) and Mes-9 are still ambiguous, as the authors claim, then why are they regarded conspecific?

- 33) “The morphology of *Morchella chensiensis* is highly similar to that of Mes-9 regarding as the size of the fruit body, pileus, stipe, asci, and ascospore, which are mostly the same or the former is slightly smaller than the latter, however, the multigene phylogenetic analysis revealed them as different monophyletic lineages. Both Mes-13 and Mes-25 have been reported in China with paraphyses of three to five septa, more than those of Mes-9 and *Morchella chensiensis*; the latter usually has paraphyses with one or two septa at the basal level”.

Again, a dubious statement, because O’ Donnell et al. (2011), Du et al. (2012b), and Taşkın et al. (2012) cited by the authors in support of the above argument, identified Mes-13 and Mes-25 by molecular methods and did not include any morphological analyses nor did they report the number of septa in the paraphyses. It is highly unlikely that Phanpadith et al. actually studied these species themselves, because those are not listed under “Collections Studied” or “Comparative Material” in the taxonomic part, nor anywhere described or depicted in the paper. The phrase “regarding as the size of the fruit body” is also linguistically incorrect.

- 34) “Within the Elata clade, the morphology of *M. sextelata* had been previously described and corresponded to the phylogenetic species Mel-6, which was best represented by collections QL-Y25 and QL-Y27 in the single gene and multigene trees”.

Actually, it is the other way round: The phylopecies was first detected by molecular studies in O’Donnell et al. (2011), where it was given the temporary designator “Mel-6”, and then was formally described in Kuo et al. (2012) under the name *M. sextelata*. It is unclear what is meant by the phrase “best represented”, which does not make sense in the context used.

- 35) “The phylospecies Mel-10 was found again and represented by collection QL-Y28 in this study”.

Mel-10 was formally described as *M. importuna* (Kuo et al. 2012), therefore this clade has a Linnaean binomial and a sequence of the holotype is available. Since the phylogenetic identity of possible earlier synonyms is yet to be clarified (see comments above), the name *M. importuna* is still provisionally applied to this lineage (see Richard et al. 2015; Loizides et al. 2016; Loizides 2017; Du et al. 2019), yet again the authors seem to be unaware of this. It is in fact obvious throughout the paper that the authors are somehow under the false impression that only four morel species had been previously described and that the *Mel-Mes* designators were introduced to permanently replace Linnaean binomials. Which begs the obvious question as to why, following the same logic, they have decided to describe their new species with a Linnaean binomial instead of designating a *Mes* code to it.

- 36) “*The Mel-2 was previously reported in the USA and Turkey, and was first represented by collections QL-Y29, QL-Y30, QL-Y31 in China*”.

As already pointed out, this claim is entirely false. Prior to the publication of Phanpadith et al. (2019), *M. tridentina* (*Mel-2*) was already known from at least 10 countries and not two: Argentina, Armenia, Chile, Cyprus, France, India, Israel, Spain, Turkey and the USA (Loizides et al. 2015; Loizides 2017). Remarkably, at least 3 publications (Pildain et al. 2014; Richard et al. 2015; Loizides et al. 2015) in which molecularly confirmed collections of *M. tridentina* in several countries other than Turkey and the USA are listed, are in fact cited by Phanpadith et al., but it appears the authors have either not read or not understood the papers.

- 37) “*The Mel-12 had not been previously reported from China, only from the USA and Turkey, and was first represented by collection QL-Y26*”.

Mel-12 is *M. snyderi*. This name is also tightly linked to the corresponding clade, since it was recently described and a sequence of the holotype is available (Kuo et al. 2012). The report of this species in Turkey is entirely fictitious and, once again, the citation provided in support of this false claim has been padded as it refers to an unrelated paper on *M. galilaea* (Taşkın et al. 2015), in which no mention of *M. snyderi* exists.

- 38) “*Verpa bohémica* (false morel) was also firstly described in China”.

Verpa bohémica was not “firstly described in China” but in Europe (Prague), in what is now the Czech Republic (Krombholz 1828, as “*Morchella bohémica*”). What the authors might be trying to say is that the fungus is first reported in China, but this is not true either because this species has already been reported in Wu et al. (effectively published 6.7.2019). Nor does this explain why the authors cite two unrelated works from North America (O’Donnell et al. 1997 and Kuo 2008, the first one erroneously listed as “Weber et al. 1997”), which again appear to have been randomly placed there.

- 39) “*Interestingly, all collections from the north Qinling Mountains were endemic and formed a big clade separated from the other yellow morels from Europe and North America in LSU rDNA tree and ITS + LSU rDNA tree*”.

Another fabricated result as only two of the 10 species reported in this paper (*M. chensiensis*, *Mes-25*) are putatively endemic to China. Outstandingly, the authors directly contradict their own claims in Table 1 of the same paper. This conclusion also suggests that the LSU sequences generated for the present study are more related to each-other than to any other species outside Qinling Mountains, including other Chinese morel species, but also to *Verpa* and *Tuber* species! This remarkable observation should have led the authors to conclude either one of the following: (1) that some *Verpa* and *Tuber* species are in fact morels; (2) that their collections are not morels; or (3) that something went wrong with their LSU MSA. Instead, the authors have ignored these outstanding anomalies to conclude that their region is a hidden hotspot of morel endemism. Looking at Supplementary Figs. 2 and 3, it is obvious that newly

generated LSU sequences included in the MSA have been misaligned with other sequences, or maybe forcibly aligned as reversed complemented sequences. In any case, it is incredible that such basic error escaped the authors' (and reviewers', if existing) attention. This conclusion is also in total contradiction with that from Figs. 2 & 3, without any comments by the authors whatsoever or any attempt to explain this extraordinary anomaly.

- 40) “Among the 30 phylospecies of *Morchella* spp. in China, 20 are distributed in the Sino-Japanese forest subkingdom region. A total of 13 of the 17 yellow morel species and 7 of the 13 black morel species were found in this subkingdom region; however, only at the Qinling Mountains area, four new recorded species of yellow morels were discovered, and a new lineage, *Morchella chensiensis*, was resolved”.

This entire statement is incomprehensible and directly contradicts the one above.

- 41) “The Qinling Mountains hosts a high diversity of *Morchella* spp. conclusively”.

Regrettably, no result provided in this paper can be described as even remotely reliable, let alone “conclusive”.

Materials and Methods:

- 42) “Morphological description. A small portion of pileus from each sample was removed and placed on a slip glass for 4–5 min, immersed in 100 μ L of water, and then sliced to 10–15 nm thickness particle size by hand”.

A nanometer (nm) is one millionth of a millimeter. State-of-the-art laser microtomes can make sections between 10,000 and 100,000 nm. It is safe to surmise that the authors did not make 10–15 nm sections by hand.

- 43) “The morphological assessment was focused on paraphyses, septate orientation, spore, asci and number of ascospores, and aspic. Images were taken with an Olympus microscope (Olympus Ltd., Nanjing China) at 40 \times and 100 \times magnifications”.

As stated above, critical features such as spore ornamentation, the ectal excipulum and its terminal hyphae or the acroparaphyses are entirely ignored. Orientation cannot be “septate”, it is the paraphyses that are septate. “Aspic” is a jelly terrine made with meat broth, not a microscopic feature of morels.

- 44) “Amplicons were analysed in 1% agarose gel electrophoresis by using 0.05 \times TBE”

TBE buffer is usually used at 0.5X in electrophoresis, not 0,05X.

Tables:

- 45) “Table 1”

The claimed distribution of species in Table 1 is almost entirely fictitious and self-contradicts earlier claims that “all collections from the north Qinling Mountains are endemic”. *Morchella snyderi* (Mel-12) and *M. sextelata* (Mel-6) have never been reported from Turkey as falsely claimed. At the time of publication of Phanpadith et al., *M. tridentina* (Mel-2) had also been molecularly verified in Argentina, Armenia, Chile, Cyprus, France, India, Israel and Spain; *M. importuna* (Mel-10) in Canada, Cyprus, Finland, France, Germany, Spain and Switzerland; and *M. esculenta* (Mes-8) in Belgium, the Czech Republic, France, the Netherlands, Norway, Spain, Sweden and Switzerland (Taşkın et al. 2010, 2012; Du et al. 2012a; O’Donnell et al. 2011; Pildain et al. 2014; Richard et al. 2015; Loizides et al. 2015, 2016; Loizides 2017; Petrželová & Sochor 2019), yet none of these countries are listed in Table 1.

Also, *Mes-13* had not been reported from USA and Turkey as again falsely stated, but from China (O'Donnell et al. 2011; Du et al. 2012a), while *Mes-9* is known from Japan (O'Donnell et al. 2011), China (Du et al. 2012a) and South Korea (JN043314, GenBank) and not from USA and Turkey as again falsely claimed. The extent of the misinformation provided in this Table suggests that the authors were simply fabricating the data rather than carefully consulting the literature and GenBank/UNITE entries. Other than that, taxonomically resolved binomials such as *M. importuna*, *M. snyderi* and the type species of the genus *M. esculenta*, are all ignored and species are again listed by their informal *Mel/Mes* designators with the notable exception of the binomial the authors propose themselves, which is invalid.

46) “Table 3”

“*Annelation*” should be “*Annealing temperature*”. “PBB1-A F primer” should be “RPB1-A F primer”.

Legends:

47) “Figure 1. Phylogenetic tree based on ITS-rDNA. Note: The tree covered 152 sequences (56 phylospcies of true morels) were constructed by the maximum-likelihood (ML) method. Bootstrap values $\geq 50\%$ were shown on branches. Collections of *Morchella* spp. spcies, inclusive of a *Verpa bohemica* from Qinling Mt. were marked with red dots. Phylospcies were assigned according to [12,13,16,17] *Verpa* sp. was used as the outgroup”.

***Morchella* species are erroneously referred to as “*Morchella* spp. spcies”. A group of sequences, including MH423878 elsewhere identified by the authors as “*Verpa bohemica*” and deposited in GenBank under that name (<https://www.ncbi.nlm.nih.gov/nuccore/MH423878>), are here annotated as “*Verpa* sp.” Sequence JQ618815, annotated as “*Mes-9*” by the authors, is actually a bacterium (*Polaribacter* sp., <https://www.ncbi.nlm.nih.gov/nuccore/JQ618815>).**

48) “Figure 2. Phylogenetic tree based on *EF1-a* + *RPB1* + *RPB2*. Note: The tree covered 138 sequences (62 phylospcies of true morels, *Verpa* sp) were constructed by maximum-likelihood (ML) method. Bootstrap values $\geq 50\%$ were shown on branches. Collections of *Morchella* spp. species, inclusive of a *Verpa bohemica* from Qinling Mt. were marked with red dots. Phylogenetic species were assigned according to [12,13,16,17]. *Verpa* sp. was used as outgroup.”.

Same as above, the authors seem to be unaware that “spp.” is the abbreviation of the plural word “species”.

49) “Figure 3. Phylogenetic tree of subclade *M. chensiensis* based on *EF1-a* + *RPB1* + *RPB2*. Note: The tree covered 47 sequences (10 phylospcies of true morels, and a *Verpa* sp) were constructed by maximum-likelihood (ML) method. Collections of *Morchella* spp. species, inclusive of a *Verpa bohemica* from Qinling mountain were marked with red dots. Phylogenetic species were assigned according to references [12,13,16,17]. *Verpa* sp. was used as the outgroup”.

Same as above. Furthermore, no *Verpa bohemica* sequence “from Qiuling mountain” exists in Figure 3, the only *Verpa* sequences in this tree originate from USA.

50) “Figure 4. Morphology of *Morchella chensiensis*. (A) Ascocarp, (B) Young asci full of plasma, (C) Spores with gelatinous coat, (D) Ascospores and an open cap at the apical ascus, (E) Paraphyses with 2 septals and swollen at the top, (F) Eight parrelled ascospores in each matured ascus, (G) asci and paraphyses, the later is shorter”.

Asci are not “full of plasma” but eiplasm (or ascoplasm). The gelatinous coating (not “coat”) surrounding the spores in Fig. 4C suggests they were forcibly ejected from the asci by the use of external pressure and are probably immature. There is no such thing as an “apical ascus”. The operculum is again erroneously referred to as “apical cap”. Septa are misspelled as

“septa”. Ascospores in Fig. 4G are evidently monoseriate inside the asci, therefore by default cannot be parallel.

References:

- 51) “2. Pilz, D. et al. *Ecology and Management of Morels Harvested From the Forests of Western North America. Usda, 170 (2007)*”.

Acronyms are written with all capital letters (USDA stands for the “U.S. Department of Agriculture”) and the correct number of pages is 161 (170 is the number of pages in the PDF format including cover etc).

- 52) “4. Kuo, M. *Morchella tomentosa, a new species from western North America, and notes on M. rufobrunnea. Mycotaxon 105, 441–446 (2008a)*”.

Following the journal’s guidelines, references are cited by their respective number, not author and year, therefore it is superfluous to append letters to the publication date.

- 53) “5. Ower, R., Mills, G. L. & Malachowski, M. J. *Cultivation of Morchella. US patent 4594809 (1986)*”.

Correct initials of the authors are “Ower, R. D., Mills, G. L. & Malachowski, J. A.”.

- 54) “6. Zhao, Q., Xu, Z. Z., Cheng, Y. H., Qi, S. W. & Hou, Z. J. *Bionic cultivation of Morchella conica. Southwest China. Journal of Agricultural Science 22, 1690–1693 (2009)*”.

The words “Southwest China” belong to the name of the journal, i.e.: “Southwest China Journal of Agricultural Sciences”. Italic typeface is being used inconsistently for the names of genera and species throughout the references, e.g., “*Morchella galilaea*”, “*Morchella conica*”, “*Inocybe*”.

- 55) “9. Jacquetant, E. L M. *La Bibliotheque des Arts, 7–114 (1984)*”.

The title of the book is inexplicably abbreviated to initial letters only, the correct citation is: “Jacquetant, E. Les morilles (La Bibliothèque des Arts, 1984)”.

- 56) “10. Clowez, P. L. M. *Une nouvelle approche mondiale du genre Morchella. Bulletin de la Société Mycologique de France 126, 199–376 (2012)*”.

Similar case as above, the correct author and title are: “Clowez, P. Les morilles. Une nouvelle approche mondiale du genre *Morchella*”.

- 57) “21. Vilgalys, R. & Hester, M. *Rapid genetic identification and mapping of enzymatically amplified DNA from several Cryptococcus species. Journal of Bacteriology 172, 4238–4246 (1990)*”.

There is one word missing from the title, “ribosomal DNA” instead of only “DNA”.

- 58) “22. Masaphy, S. *Diversity of Fruiting Patterns of Wild Black Morel Mushroom. 165–169 (2011)*”.

The title of the whole publication is missing: “In: Proceedings of the 7th International Conference on Mushroom Biology and Mushroom Products (ICMBMP7) 2011 (eds. Savoie, J.-M., Foulongne-Oriol, M., Largeteau, M. & Barroso, G.), Vol. I, 165–169 (INRA, 2011)”.

- 59) “23. Nocybe, I. et al. *U Sing Rpb1 Sequences To Improve Phylogenetic. 89, 688–698 (2002)*”.

Again, the journal name is missing and the proper citation is: “Matheny, P. B., Liu, Y. J., Ammirati, J. F. & Hall, B. D. Using RPB1 sequences to improve phylogenetic inference among mushrooms (*Inocybe*, *Agaricales*). *American Journal of Botany* 89, 688–698 (2002).” Using the name of the studied genus as the name of the first author is an astounding error hardly ever seen before.

- 60) “27. Taşkın, H., Doğan, H., Büyükalaca, S. & Hüseyin, H. *Morchella galilaea*, an autumn species from Turkey. *Mycotaxon* 130, 215–221 (2015)”.

“Hüseyin” is not a surname but one of the first names of the second author, therefore the authors should be cited as: “Taşkın, H., Doğan, H. H. & Büyükalaca, S.”.

- 61) “28. Weber, N. S. & Trappe, J. M. *Phylogenetic relationships among ascomycetous truffles and the true and false morels inferred from 18S and 28S ribosomal DNA sequence analysis. Mycologia* 89, 48–65 (1997)”.

The names of the first two authors, K. O’Donnell and E. Cigelnik are missing (O’Donnell et al. 1997).

- 62) “29. Kuo, M. M. *University of Michigan Press. Ann Arbor* 923 (2008)”.

As in other cases, the title is shortened to a single letter. The correct citation is: “Kuo, M. *Morels (University of Michigan Press, 2005)*”. It is unclear what the number “923” refers to as it does not correspond to the actual number of pages (216).

- 63) “32. Loizides, M., Bellanger, J. M., Clowez, P., Richard, P. & Moreau, P. A. *Combined phylogenetic and morphological studies of true morels (Pezizales, Ascomycota) in Cyprus reveal significant diversity, including *Morchella arbutiphila* and *M. disparilis* spp. nov. Mycological Progress*, 15–39, <https://doi.org/10.1007/s11557-016-1180-1> (2016)”.

The journal should be cited as: “*Mycological Progress* 15, 39; <https://doi.org/10.1007/s11557-016-1180-1> (2016)”.

- 64) “33. Hall, T. *A user-friendly biological sequence alignment editor and analysis program for Windows 95/98NT. Nucleic Acids Symposium Series* 41, 95–98 (1999)”.

The name of the program is missing from the title: “Hall, T. A. *BioEdit: a user-friendly biological sequence alignment editor and analysis program for Windows 95/98NT*”.

- 65) “34. Pildain, M. B., Visnovsky, S. B. & Barroetaveña, C. *Phylogenetic diversity of true morels (Morchella), the main edible non-timber product from native Patagonian forests of Argentina. Fungal. Biology* 118, 755–763 (2014)”.

The name of the journal is “*Fungal Biology*”, adding a full stop between the words caused incorrect italicization (the same as above).

- 66) “35. Clowez, P., Alvarado, P., Becerra, M. & Bilbao, T. *Morchella fluvialis* sp. nov. (Ascomycota, Pezizales): a new but widespread morel in Spain. *Boletín de la Sociedad Micológica de Madrid* 38, 251–260 (2014)”.

The last author, P.-A. Moreau, is missing and the article actually ends on page 262, not 260. The correct spelling of the journal is “*Boletín de la Sociedad Micológica de Madrid*”.

- 67) “37. Kumar, S., Stecher, G. & Tamura, K. *MEGA7: Molecular Evolutionary Genetics Analysis Version 7.0 for Bigger Datasets. Molecular biology and evolution* 33, 1870–4 (2016)”.

According to the journal's submission guidelines, capitalizing the initial letter in every word is required only for the book titles, not journal articles, and page numbers should be written in full.

- 68) “38. Posada, D. ModelTest Server: A web-based tool for the statistical selection of models of nucleotide substitution online. *Nucleic Acids Research* 34, 700–703 (2006)”.

The page numbers should be cited as “W700–W703” (as they appear in the original) because this article was published in a special issue devoted to web servers (“Volume 34, Issue suppl_2”), whereas the pages 700–703 are part of the regular “Volume 34, Issue 2”.

Supplementary figures:

- 69) “Supplementary figure 1: (A) asci, double wall, (B-C) asci and paraphysis, paraphysis with more than 3 septals is longer than the ascus (D) two ascospores in each ascus, and thicken at the spore apic”.

The first phrase is linguistically incorrect and inaccurate: it should be “asci thick-walled” not “asci, double-wall”. The second phrase is also linguistically incorrect and inaccurate, it should be paraphyses (plural), not paraphysis (singular) and the correct term is septa, not “septals”. The third phrase is hardly comprehensible: What the authors are probably trying to say is “thickened at the spore apex”, but this is also an incorrect interpretation of the image because what is visible at the pole of the ascospore is plasma detachment, not thickening.

- 70) “Supplementary figure 2: Tree covered 157 sequences (contained 56 phylospecies of true morels, *Verpa* sp) were constructed by Maximum likelihood (ML) method. Bootstrap values 50% were shown on branches. Collections of *Morchella* spp. species, inclusive of a *Verpa bohemica* from Qinling mountain were marked with red dots were the putative Qinling linkage and four unidentified collections. Phylospecies were assigned according to Du et al. (2012a, 2012b); O'Dennet al. (2011) and Taşkın et al. (2012)”.

The entire legend is grammatically incorrect and incomprehensible. Both the word “species” and its abbreviation “spp.” are again used together. O'Donnell is misspelled as “O'Dennet”. “Lineage” is misspelled as “linkage”. Remarkably, the new lineage from China is here referred to as “putative”, contradicting the authors' conclusions elsewhere in the paper. Why are the authors proposing a new name if the lineage is “putative” and thus unconfirmed? The figure itself, as well as Suppl. Fig. 3, are clearly artefactual (shift or reversion of newly generated LSU sequences, cf. point [39] above).

- 71) “Tree covered 156 sequences (contained 56 phylospecies of true morels, *Verpa* sp were constructed by Maximum likelihood (ML) method. Bootstrap values 350% were shown on branches. Collections of *Morchella* spp. species, inclusive of a *Verpa bohemica* from Qinling mountain were marked with red dots were the putative Qinling linkage and four unidentified collections. Phylospecies were assigned according to Du et al. (2012a, 2012b); O'Dennet al. (2011) and Taşkın et al. (2012)”.

Also grammatically incorrect and incomprehensible. The abbreviation “spp.” is again used together with the word “species”. *Verpa bohemica* is again annotated as “*Verpa* sp.” O'Donnell is again misspelled as “O'Dennet”.

References:

- Aime MC, Miller AN, Aoki T, Bensch K, Cai L, Crous PW, Hawksworth DL, Hyde KD, Kirk PM, Lücking R, May TW, Malosso E, Redhead SA, Rossman AY, Stadler M, Thines M, Yurkov AM, Zhang N, Schoch CL (2021) How to publish a new fungal species, or name, version 3.0. IMA Fungus 3;12(1): 11. doi: 10.1186/s43008-021-00063-1
- Baroni TJ, Beug MW, Cantrell SA, Clements TA, Iturriaga T, Læssøe T, Holgado Rojas ME, Aguilar FM, Quispe MO, Lodge DJ, O'Donnell K (2018) Four new species of *Morchella* from the Americas. Mycologia 110: 1205–1221
- Baroni TJ, Beug MW, Cantrell SA, Clements TA, Iturriaga T, Læssøe T, Holgado Rojas ME, Aguilar FM, Quispe MO, Lodge DJ, O'Donnell K (2018) Four new species of *Morchella* from the Americas. Mycologia 110: 1205–1221
- Boudier J-LE (1887) Notice sur les discomycètes figurés dans les dessins inédits de Dunal. Bulletin de la Société mycologique de France 3: 88–96
- Boudier J-LE (1910) Icones mycologicae ou iconographie des champignons de France principalement discomycètes avec texte descriptif. Tome II, pl. 194–421. Librairie des Sciences Naturelles, Paris
- Castresana J (2000) Selection of conserved blocks from multiple alignments for their use in phylogenetic analysis. Molecular Biology and Evolution 17: 540–552
- Clowez P [‘2010’] (2012) Les morilles: Une nouvelle approche mondiale du genre *Morchella*. Bulletin de la Société mycologique de France 126: 199–376
- Clowez P, Alvarado P, Becerra M, Bilbao T, Moreau P-A (2014) *Morchella fluvialis* sp. nov. (Ascomycota, Pezizales): a new but widespread morel in Spain. Boletín de la Sociedad Micológica de Madrid 38: 251–260
- Clowez P, Bellanger J-M, de la Osa LR, Moreau P-A (2015) *Morchella palazonii* sp. nov. (Ascomycota, Pezizales): une nouvelle morille méditerranéenne. Clé des *Morchella* sect. *Morchella* en Europe. Documents Mycologiques 36: 71–84
- Clowez P, Moreau P-A (2018) Les spores de morilles en microscopie optique. Documents Mycologiques, 37: 23–38
- Du XH, Zhao Q, O'Donnell K, Rooney AP, Yang ZL (2012a) Multigene molecular phylogenetics reveals true morels (*Morchella*) are especially species-rich in China. Fungal Genetics & Biology 49: 455–469
- Du XH, Zhao Q, Yang ZL, Hansen K, Taşkın H, Büyükalaca S, Dewsbury D, Moncalvo J-M, Douhan GW, Robert VARG, Crous PW, Rehner SA, Rooney AP, Sink S, O'Donnell K (2012b) How well do ITS rDNA sequences differentiate species of true morels (*Morchella*)? Mycologia 104: 1351–1368
- Du XH, Wang HC, Sun JJ, Xiong LY, Yu JJ (2019a) Hybridization, characterization and transferability of SSRs in the genus *Morchella*. Fungal Biology 123: 528–538
- Du XH, Wu DM, He GQ, Wei W, Xu N, Li TL (2019b) Six new species and two new records of *Morchella* in China using phylogenetic and morphological analyses. Mycologia 111: 857–870
- Elliott TF, Bougher NL, O'Donnell K, Trappe JM (2014) *Morchella australiana* sp. nov., an apparent Australian endemic from New South Wales and Victoria. Mycologia 106: 113–118
- Fries EM (1822) Systema Mycologicum II (1). Officina Berlingiana, Lundae
- Gray SF (1821) A natural arrangement of British plants 1: 1–824
- Hawksworth DL, Lücking R (2018) Fungal Diversity Revisited: 2.2 to 3.8 Million Species. In: The Fungal Kingdom (eds Heitman J, Howlett BJ, Crous PW, Stukenbrock EH, James TY, Gow NAR). doi:10.1128/9781555819583.ch4
- Hofstetter V, Buyck B, Eyssartier G, Schneel S, Gindro K (2019) The unbearable lightness of sequenced-based identification. Fungal Diversity 96: 243–284
- Kanwal HK, Acharya K, Ramesh G, Reddy MS (2011) Molecular characterization of *Morchella* species from the Western Himalayan region of India. Current Microbiology 62:1245–1252
- Krombholz JV von (1828) Ueber eine neue Morchelart. Monatsschrift der Gesellschaft des Vaterländischen Museums in Böhmen. 2: 478–484
- Kuo M (2008) *Morchella tomentosa*, a new species from western North America and notes on *M. rufobrunnea*. Mycotaxon 105: 441–446
- Kuo M, Dewsbury DR, O'Donnell K, Carter MC, Rehner SA, Moore JD, Moncalvo J-M, Canfield SA, Stephenson SL, Methven AS, Volk TJ (2012) Taxonomic revision of true morels (*Morchella*) in Canada and the United States. Mycologia 104: 1159–1177
- Linnaeus C (1753) Species Plantarum, exhibentes plantas rite cognitatas, ad genera relatas, cum differentiis specificis, nominibus trivialibus, synonymis selectis, locis natalibus, secundum systema sexuale digestas. Holmiae, Impensis Laurentii Salvii. Vols. 1 & 2. 1231 p
- Loizides M (2017) Morels: the story so far. Field Mycology 18: 42–53
- Loizides M, Alvarado P, Clowez P, Moreau P-A, Romero L, Palazón A (2015) *Morchella tridentina*, *M. rufobrunnea* and *M. kakiicolor*: A study of three poorly known Mediterranean morels, with nomenclatural updates in section *Distantes*. Mycological Progress 14: 13
- Loizides M, Bellanger J-M, Clowez P, Richard F, Moreau P-A (2016) Combined phylogenetic and morphological studies of true morels (Pezizales, Ascomycota) in Cyprus reveal significant diversity, including *Morchella arbutiphila* and *M. disparilis* spp. nov. Mycological Progress 15: 39

- Loizides M, Gonou Z, Fransuas G, Drakopoulos P, Sammut C, Martinis A, Bellanger J-M (2021a) Extended phylogeography of the ancestral *Morchella anatolica* supports preglacial presence in Europe and Mediterranean origin of morels. *Mycologia* 113(3): 559–573
- Loizides M, Alvarado P, Moreau P-A, Assyov B, Halasů V, Stadler M, Rinaldi A, Marques G, Zervakis GI, Borovička J, Van Vooren N, Grebenc T, Richard F, Taşkın H, Gube M, Sammut C, Agnello C, Baroni TJ, Crous P, Fryssouli V, Gonou Z, Guidori U, Gulden G, Hansen K, Kristiansen R, Læssøe T, Mateos J, Miller A, Moreno G, Perić B, Polemis E, Salom JC, Siquier JL, Snabl M, Weholt Ø, Bellanger JM (2022) Has taxonomic vandalism gone too far? A case study, the rise of the pay-to-publish model, and the pitfalls of *Morchella* systematics. *Mycological Progress*, in press.
- Luttrell ES (1965) Paraphysoids, pseudoparaphyses, and apical paraphyses. *Transactions of the British Mycological Society* 48: 135–144
- O'Donnell K, Cigelnik E, Weber NS, Trappe JM (1997) Phylogenetic relationships among ascomycetous truffles and the true and false morels inferred from 18S and 28S ribosomal DNA sequence analysis. *Mycologia* 89: 48–65
- O'Donnell K, Rooney AP, Mills GL, Kuo M, Weber NS, Rehnere SA (2011) Phylogeny and historical biogeography of true morels (*Morchella*) reveals an early Cretaceous origin and high continental endemism and provincialism in the Holarctic. *Fungal Genetics & Biology* 48: 252–265
- Petrželová I, Sochor M (2019) How useful is the current species recognition concept for the determination of true morels? Insights from the Czech Republic. *MycKeys* 52: 17–43
- Phanpadith P, Yu Z, Li T (2019) High diversity of *Morchella* and a novel lineage of the *Esculenta* clade from the north Qinling Mountains revealed by GCPSR-based study. *Scientific Reports* 9: 19856
- Pildain MB, Visnovsky SB, Barroetavena C (2014) Phylogenetic diversity of true morels (*Morchella*), the main edible non-timber product from native Patagonian forests of Argentina. *Fungal Biology* 118: 755–763
- Popper K [1959] (2002) *The logic of scientific discovery*. Abingdon-on-Thames: Routledge. 66 p. ISBN 0-41527843-0
- Richard F, Bellanger J-M, Clowez P, Hansen K, O'Donnell K, Urban A, Sauve M, Courtecuisse R, Moreau P-A (2015) True morels (*Morchella*, Pezizales) of Europe and North America: Evolutionary relationships inferred from multilocus data and a unified taxonomy. *Mycologia* 107: 359–382
- Sagan C (1997) *The Demon-Haunted World: Science as a Candle in the Dark* (Paperback ed.). Ballantine Books. 426 p
- Taşkın H, Büyükalaca S, Hüseyin H, Rehner S, O'Donnell K (2010) A multigene molecular phylogenetic assessment of true morels (*Morchella*). *Fungal Genetics and Biology* 47: 672–682
- Taşkın H, Büyükalaca S, Hansen K, O'Donnell K (2012) Multilocus phylogenetic analysis of true morels (*Morchella*) reveals high levels of endemics in Turkey relative to other regions of Europe. *Mycologia* 104: 446–461
- Taşkın H, Doğan H, Büyükalaca S, Hüseyin H (2015) *Morchella galilaea*, an autumn species from Turkey. *Mycotaxon* 130: 215–221
- Taşkın H, Doğan H, Büyükalaca S, Clowez P, Moreau P-A, O'Donnell K (2016). Four new morel (*Morchella*) species in the *elata* subclade (*M. sect. Distantes*) from Turkey. *Mycotaxon* 131: 467–482
- Taylor JW, Jacobson DJ, Kroken S, Kasuga T, Geiser DM, Hibbett DS, Fisher MC (2000) Phylogenetic species recognition and species concepts in fungi. *Fungal Genetics and Biology* 31: 21–32
- Taylor D, Hollingsworth TN, McFarland JW, Lennon NJ, Nussbaum C, Ruess RW (2014) A first comprehensive census of fungi in soil reveals both hyperdiversity and fine-scale niche partitioning. *Ecological Monographs* 84: 3–20
- Turland NJ, Wiersema JH, Barrie FR, Greuter W, Hawksworth DL, Herendeen PS (eds.) (2018) International Code of Nomenclature for algae, fungi, and plants (Shenzhen Code) adopted by the Nineteenth International Botanical Congress Shenzhen, China, July 2017. *Regnum Vegetabile* 159. Glashütten: Koeltz Botanical Books. DOI <https://doi.org/10.12705/Code.2018>
- Wu F, Zhou LW, Yang ZL, Bau T, Li T-H, Dai YC (2019) Resource diversity of Chinese macrofungi: edible, medicinal and poisonous species. *Fungal Diversity* 98: 1–76
- Zamora JC, Svensson M, Kirschner R, Olariaga I, Ryman S, Parra LA, Geml J et al. (2018) Considerations and consequences of allowing DNA sequence data as types of fungal taxa. *IMA Fungus* 9: 167–175