



**HAL**  
open science

# LoggingLab: an R package to simulate reduced-impact selective logging in tropical forests using forest inventory data

Vincyane Badouard, Sylvain Schmitt, Guillaume Salzet, Thomas Gaquiere, Margaux Rojat, Caroline Bedeau, Olivier Brunaux, Géraldine Derroire

## ► To cite this version:

Vincyane Badouard, Sylvain Schmitt, Guillaume Salzet, Thomas Gaquiere, Margaux Rojat, et al.. LoggingLab: an R package to simulate reduced-impact selective logging in tropical forests using forest inventory data. 2025. hal-04862574

**HAL Id: hal-04862574**

**<https://hal.science/hal-04862574v1>**

Preprint submitted on 3 Jan 2025

**HAL** is a multi-disciplinary open access archive for the deposit and dissemination of scientific research documents, whether they are published or not. The documents may come from teaching and research institutions in France or abroad, or from public or private research centers.

L'archive ouverte pluridisciplinaire **HAL**, est destinée au dépôt et à la diffusion de documents scientifiques de niveau recherche, publiés ou non, émanant des établissements d'enseignement et de recherche français ou étrangers, des laboratoires publics ou privés.

1 Title: *LoggingLab*: an R package to simulate reduced-impact selective  
2 logging in tropical forests using forest inventory data

### 3 Authors, Affiliations

4 Vincyane Badouard<sup>a,b</sup>, Sylvain Schmitt<sup>c,d</sup>, Guillaume Salzet<sup>e,f</sup>, Thomas Gaquiere<sup>g</sup>, Margaux Rojat<sup>a</sup>,  
5 Caroline Bedeau<sup>h</sup>, Olivier Brunaux<sup>h</sup>, Géraldine Derroire<sup>a</sup>.

6

7 <sup>a</sup> Cirad, UMR EcoFoG (AgroParisTech, CNRS, INRAE, Université des Antilles, Université de la Guyane),  
8 Campus Agronomique, Kourou, French Guiana

9 <sup>b</sup> AMAP, Univ Montpellier, ADEME, CIRAD, CNRS, INRAE, IRD, Montpellier, France

10 <sup>c</sup> CNRS, UMR EcoFoG (Agroparistech, Cirad, INRAE, Université des Antilles, Université de la Guyane),  
11 Campus Agronomique, 97310 Kourou, French Guiana

12 <sup>d</sup> CIRAD, Université de Montpellier, UR Forêts & Sociétés, Montferrier-sur-Lez, France

13 <sup>e</sup> UMR BETA, Université de Lorraine, Université de Strasbourg, AgroParisTech, CNRS, INRAE, Nancy,  
14 France

15 <sup>f</sup> INRAE, UMR EcoFoG (AgroParisTech, CIRAD, CNRS, INRAE, Université des Antilles), Campus  
16 Agronomique, Kourou, French Guiana

17 <sup>g</sup> Université de la Guyane, UMR EcoFoG (AgroParisTech, CIRAD, CNRS, INRAE, Université des Antilles),  
18 Campus Agronomique, Kourou, French Guiana

19 <sup>h</sup> Office National des Forêts - RDI - Recherche, développement et innovation (1153317), Cayenne,  
20 french Guiana

21

22 E-mail address of each author: Vincyane Badouard : [vincyane.badouard@gmail.com](mailto:vincyane.badouard@gmail.com)

23 Sylvain Schmitt : [sylvain.m.schmitt@gmail.com](mailto:sylvain.m.schmitt@gmail.com)

24 Guillaume Salzet : [guillaume.salzet@gmail.com](mailto:guillaume.salzet@gmail.com)

25 Thomas Gaquiere : [gaquiere.thomas@yahoo.com](mailto:gaquiere.thomas@yahoo.com)

26 Margaux Rojat : [margaux.rojat@gmail.com](mailto:margaux.rojat@gmail.com)

27 Caroline Bedeau : [caroline.bedeau@onf.fr](mailto:caroline.bedeau@onf.fr)

28 Olivier Brunaux : [olivier.brunaux@onf.fr](mailto:olivier.brunaux@onf.fr)

29 Géraldine Derroire : [geraldine.derroire@cirad.fr](mailto:geraldine.derroire@cirad.fr)

30

31 Orcids:

32 Vincyane Badouard : <https://orcid.org/0009-0007-7054-4010>

33 Sylvain Schmitt : <https://orcid.org/0000-0001-7759-7106>  
34 Guillaume Salzet : <https://orcid.org/0000-0003-4548-5673>  
35 Thomas Gaquiere : <https://orcid.org/0000-0002-8046-5718>  
36 Margaux Rojat : <https://orcid.org/0009-0005-5094-0070>  
37 Caroline Bedeau : <https://orcid.org/0000-0002-6988-6685>  
38 Olivier Brunaux : <https://orcid.org/0000-0002-3392-0423>  
39 Géraldine Derroire : <https://orcid.org/0000-0001-7239-2881>

40

41 Highlights (see attached files)

## 42 Abstract

43 Even where Reduced-Impact Logging (RIL) practices are applied, selective logging causes substantial  
44 damage to tropical forests. To further reduce selective logging damage, the practices that cause the  
45 most damage need to be identified and alternatives tested. To this end, we developed the R package  
46 *LoggingLab*, a spatially-explicit and individual tree-based selective logging simulator and  
47 demonstrated its functions using data from French Guiana. *LoggingLab* explicitly simulates damage  
48 during each stage of the selective logging process taking into account topography and hydrography,  
49 which are main constraints on logging. Most *LoggingLab* parameters can be easily adjusted to a wide  
50 range of local contexts. *LoggingLab* can also be coupled with forest dynamics models to simulate the  
51 long- term effects of different selective logging scenarios.

52

53 Graphical abstract (see attached files)

## 54 Keywords

55 Timber production; Sustainable forest management; Logging damage; Spatially explicit individual-  
56 based simulator; Selective logging; French Guiana.

## 57 1. Introduction

58 Tropical forests carry the highest terrestrial biodiversity in the world (Barlow et al., 2018) and play an  
59 important role in the mitigation of climate change (Malhi et al., 2008) as well as the maintain of food  
60 security and health for many people (Brandon, 2014). They cover 1,834 million hectares (45% of the

61 world's forests; FAO, 2021), of which over 400 million hectares (c.a. 20%) are classified as production  
62 forests (Asner et al., 2009; Blaser et al., 2011). Timber extraction and logging are identified as the main  
63 causes of tropical forest degradation, and account for 53% of its emissions (Hosonuma et al., 2012;  
64 Pearson et al., 2017). Beyond the few trees harvested per hectare (Gräfe et al., 2021), selective logging  
65 impacts are mostly due to collateral damage (Derroire et al., 2021). Selective logging can lead to a  
66 substantial reduction in biomass: usually between 10 and 30%, the biomass loss can reach around 60%  
67 under high logging intensity, as found by Pinard & Putz (1996) in Malaysia and Rutishauser et al.,  
68 (2015) in the Amazon. The recovery of pre-logging biomass can take a few decades to more than a  
69 century, that depend on the logging intensity (Derroire et al., 2021; Pinard & Cropper, 2000;  
70 Rutishauser et al., 2015).

71  
72 Practices to reduce selective logging impacts have therefore been proposed under the name of  
73 Reduced-Impact Logging (RIL). RIL practices already existed in temperate regions to optimise  
74 exploitation (Dykstra, 2003; Sist, 2000), and have been promoted in tropical countries from the 1980s-  
75 90s (Esteve & Lepitre, 1980; Krzeszkiewicz, 1959). In contrast to conventional selective logging, RIL  
76 relies on pre-harvesting planning to optimise logging operation (Boltz et al., 2003; Johns et al., 1996;  
77 Pinard & Putz, 1996). As a result, RIL practices considerably reduce the environmental impacts  
78 compared to conventional selective logging (CL) (Ellis et al., 2019; Vidal et al., 2016). Pinard & Putz  
79 (1996) showed that 23% less biomass is lost with RIL than with CL, and RIL damages 26% fewer  
80 unharvested trees than CL. According to Boltz et al. (2003), RIL results in 90-129% less canopy area  
81 loss and up to 4 times less ground disturbance than CL. But RIL practices as currently applied still lead  
82 to significant damage with, for example, up to 37% biomass loss with RIL even at a very low intensity  
83 of 10.7 m<sup>3</sup> per hectare (Bryan et al., 2010). Even with RIL, selective logging also changes forest  
84 composition, with an increase in the abundance of smaller light-demanding species (Arets et al., 2003;  
85 Huth & Ditzer, 2001). The impact on the volume of commercial species is also important. With typically  
86 used logging intensities (~20 m<sup>3</sup>/ha) and logging cycles (30-40 years), the rate of timber recovery in  
87 logged natural forests is not sufficient to recover the amount logged by the end of a logging cycle  
88 (Huth & Ditzer, 2001; Pioniot et al., 2019; Putz et al., 2012; Shearman et al., 2012). In their best-case  
89 scenario, Sist & Ferreira (2007) observed a recovery of only 50% of the initial commercial volume 30  
90 years after RIL at 21 m<sup>3</sup>/ha in Indonesia. The composition of communities of large (≥50 cm) and, even  
91 more so, very large trees (≥110 cm) is more affected than the composition of communities of smaller  
92 trees, by the selective logging of trees from 35 cm DBH. The maximum cutting diameter should  
93 therefore be considered and reduced (Bousfield et al., 2023). There is therefore an urgent need to  
94 assess the efficiency of RIL practices to reduce logging impacts, in order to further improve logging  
95 practices, increase economic performance and preserve the ecosystem and associated services

96 (Hiltner et al., 2017; Putz et al., 2022; Sist & Ferreira, 2007). The disaggregation of the contribution of  
97 each operation to overall damage and the experimentation of different practices can help to identify  
98 the most effective ways to reduce damage.

99

100 The assessment of logging damage has evolved over time to be less costly and more accurate. Initially,  
101 and still today, post-harvest diagnostics are carried out in the field in order to quantify logging damage  
102 and lost timber volumes (Guitet, 2005). However, these field assessments are relatively expensive and  
103 are therefore applied to limited areas (Gond & Guitet, 2009). The development of remote sensing has  
104 made it possible to quantify canopy changes on a large scale by identifying tree gaps and trails  
105 produced by logging (Asner et al., 2002). Thus, remote sensing can facilitate post-harvest diagnostics  
106 by identifying highly impacted areas and reduce human and time costs of post-harvest diagnostics.  
107 However, remote sensing has difficulty to detect degradation that does not alter the canopy (Asner  
108 et al., 2002; Grace et al., 2014; Pearson et al., 2014). Moreover, remote sensing does not provide a  
109 detailed analysis of the practices that cause this damage and is therefore of limited interest to identify  
110 effective new practices (Gond & Guitet, 2009). The combination of field measurements and remote  
111 sensing has however allowed substantial improvements to the assessment of logging damage. This  
112 approach, together with the development of standardised indices of carbon emissions caused by  
113 logging made it possible, for example, to diagnose and compare the carbon impact of logging  
114 practices. This enabled the identification of a subset of RIL practices that promote the reduction of  
115 greenhouse gas emissions, an approach called RIL-C (Reduced-Impact Logging for Climate Change  
116 Mitigation) (Pearson et al., 2014; Griscom et al., 2014). Assessment of logging damage, either on the  
117 ground or by remote sensing, is usually carried out in logging concessions, and is therefore limited to  
118 logging practices already implemented. Foresters have set up experimental plots to test a new set of  
119 practices. Some of these plots have become permanent inventory plots on which periodical re-census  
120 of trees allow to study the logging impact on the forest structure, productivity, biodiversity and carbon  
121 fluxes over time (Bertault et al., 1999; Finegan & Camacho, 1999; Gourlet-Fleury et al., 2004; Sist et  
122 al., 2015). Experimental plots therefore allow us to study the long-term impacts of logging (Hérault &  
123 Pioniot, 2018; Mirabel et al., 2020; Pioniot et al., 2016). However, they usually do not explicitly  
124 quantify and spatialize damage, such as the harvested trees, areas affected by skid trails and logging  
125 decks, and volume of collateral damage (*i.e.* trees killed by trails and secondary windfall).

126

127 Logging simulators are developed to address the limitations of field-based and remote-sensing  
128 assessment of damage and to help the development of better harvesting practices. At lower human  
129 costs and in less time, logging simulators can test many scenarios (*i.e.* combination of parameters and

130 technical instructions that constitute a particular experiment). They can generate virtual data and  
131 perform virtual experiments under conditions beyond those of current field experiments. They also  
132 allow to simulate large-scale experiments with a diversity of treatments over a large area and with a  
133 large number of replicas (Maréchaux et al., 2021). When coupled to forest dynamics simulators,  
134 logging simulators can help predict long term dynamics of forest after logging. Logging simulators have  
135 been developed to describe conventional, selective and/or reduced-impact logging, in tropical or  
136 temperate contexts. They have different degrees of realism and accuracy, based on the objectives for  
137 which they were designed (Table S1). Some simulators do not model individual trees explicitly and  
138 may therefore lack (i) the explicit definition of harvesting intensity (FATES Huang et al., 2020), (ii) the  
139 choice of harvestable species (FORMIX Bossel & Krieger, 1991; FATES Huang et al., 2020), or (iii) the  
140 definition of a minimum cut diameter (GuyaSim Rossi et al., 2015). Yet, these three logging parameters  
141 are of primary importance to diagnose the selective logging practices that have the greatest impact.  
142 In addition, all the current simulators of tropical logging ignore the topography and the hydrographic  
143 network, which are important spatial constraints to the machines that spatially structure the logging  
144 operations and the damage they cause. Few tropical logging simulators spatially and explicitly simulate  
145 skid trails and felling gaps, the SYMFOR model being the only known example within our knowledge  
146 (E. J. M. M. Arets, 2005). In contrast, simulators that do not take into account the spatial structure of  
147 trails and felling have to consider damage as an input of the simulator. These logging simulators do  
148 not quantify the damage caused by each logging practice and cannot be used to identify, compare and  
149 propose ways to limit the consequences of these practices. In summary, to date there is a need for a  
150 logging simulator that includes topography and offers enough parameters to allow a fine optimisation  
151 of current practices.

152

153 Here, we present a new individual-based and spatially-explicit selective logging simulator: *LoggingLab*.  
154 In particular, we are proposing RIL practices in this simulator, as a way to assess and demonstrate the  
155 efficiency of these practices to reduce the impact of logging. *LoggingLab* was developed as an R  
156 package because R is a widely used programming language in ecology (Atkins et al., 2022; Lai et al.,  
157 2019), which allows the connection with other tools, through the R packages ecosystem. *LoggingLab*  
158 was developed to diagnose and quantify in a spatially explicit manner the impacts of selective logging,  
159 so that the reported damage is a consequence of the simulated logging and not an *a priori* choice of  
160 the user. It simulates the different selective logging stages taking into account the topography and the  
161 hydrographic network, the main spatial constraints for mechanisation. *LoggingLab* can be used  
162 together with any individual-based and spatially explicit forest dynamics simulator like TROLL  
163 (Maréchaux & Chave, 2017) or SEIB–DGVM (Sato et al., 2007) to observe the effects of selective

164 logging over time on the forest stand and the resilience of each forest to different selective logging  
165 scenarios. It was developed in partnership with the French National Forest Office to realistically  
166 describe selective logging practices implemented in French Guiana, while proposing a large number  
167 of parameters to be a flexible tool that can be adapted to a variety of selective logging practices.  
168

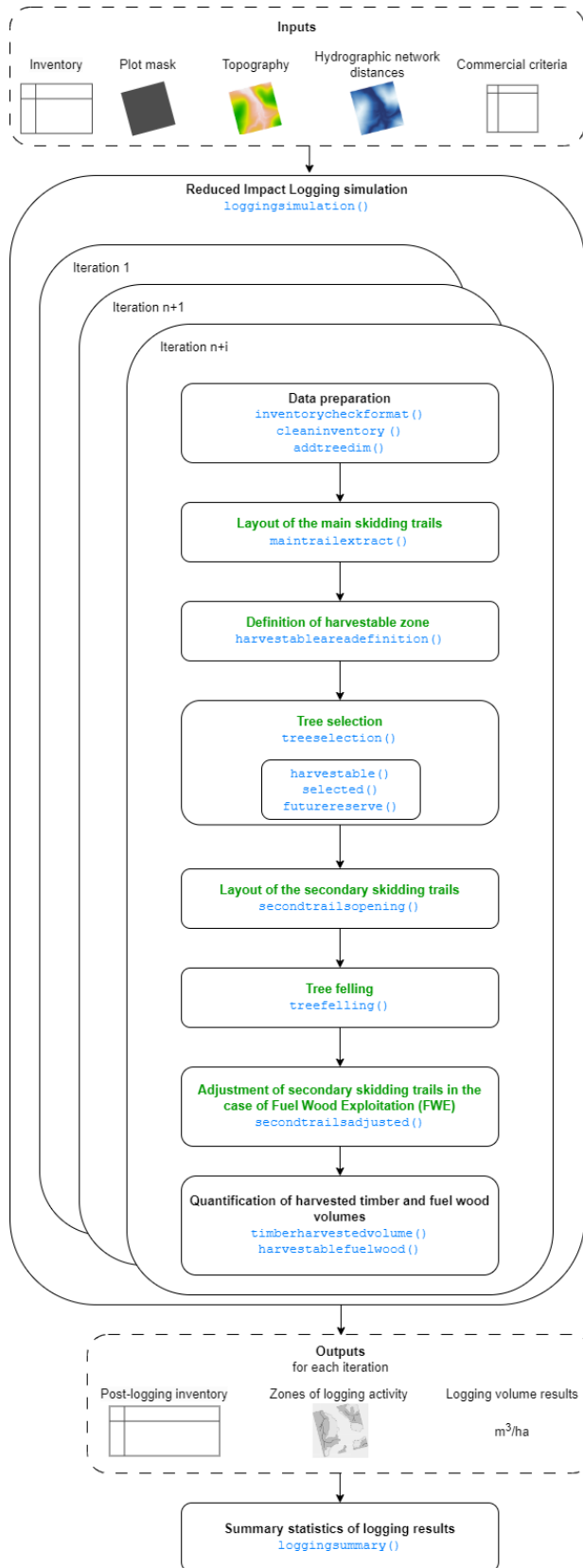
## 169 2. Methods

### 170 2.1. Reduced-Impact Logging

171 RIL is implemented in various ways around the world, in response to economic and environmental  
172 constraints. The most commonly used practices are: (i) pre-harvest inventory of trees of commercial  
173 species and above the minimum exploitable diameter (map and measurement), which allows a  
174 selection of trees to be harvested and the design of an optimised trail network to collect these logs,  
175 with a minimum length of the trail network, (ii) topography-based planning (slopes, hydrographic  
176 network) that allows the optimal location of infrastructure (roads, trails, logging decks) and thus to  
177 reduce the impacted area, (iii) directional tree felling to limit damage due to secondary tree fall,  
178 especially on trees of interest (those to be exploited in the next campaign (Future Crop Trees (FCTs)),  
179 and trees chosen for reproduction (seed trees)) (Dykstra, 2003; Sist, 2000).

### 180 2.2. Simulations of the different steps of selective logging in 181 LoggingLab

182 *LoggingLab* simulates timber harvesting according to Reduced-Impact Logging (RIL) practices in a  
183 forest plot, that require a spatialised census as well as the plot's geographic features. *LoggingLab* also  
184 includes the possibility to harvest fuel wood as a by-product of timber production (detailed in S4). It  
185 covers the different logging steps, from the definition of harvestable zones to the tree felling, and  
186 returns a quantification of timber volume harvested and logging collateral damage (*i.e.* trees killed by  
187 trails and secondary windfall). It proposes a function to simulate the whole selective logging process:  
188 `loggingsimulation()` but is also intended to be modular as each function that simulates a given stage  
189 of the selective logging process (described below) can be used independently (Figure 1).



190  
191



192                                Figure 1: Flowchart of the *LoggingLab* R package. In green the Reduced-Impact  
193                                Logging steps realised in reality, in black the added steps in the simulator and in blue  
194                                the names of the functions that perform these steps.

#### 195                                2.2.1.    Layout of the main skid trails

196    *LoggingLab* does not aim to model the main skid trails and the damage they cause, as these trails are  
197    located outside the few hectare forest inventory plots that provide the data for simulation. In real  
198    conditions, the main trails would be located between these plots. These trails however need to be  
199    simulated as they provide access to the zones to harvest. In the absence of information on the position  
200    of the main trail, the simulator randomly draws a single entry point per harvestable zone, on the edge  
201    of the plot adjacent to an harvestable zone (`maintrailextract ()`) (Figure 6). However, the user can  
202    provide a shapefile with the main trail network, that *LoggingLab* will use to get the entry point.

#### 203                                2.2.2.    Definition of the harvestable zone

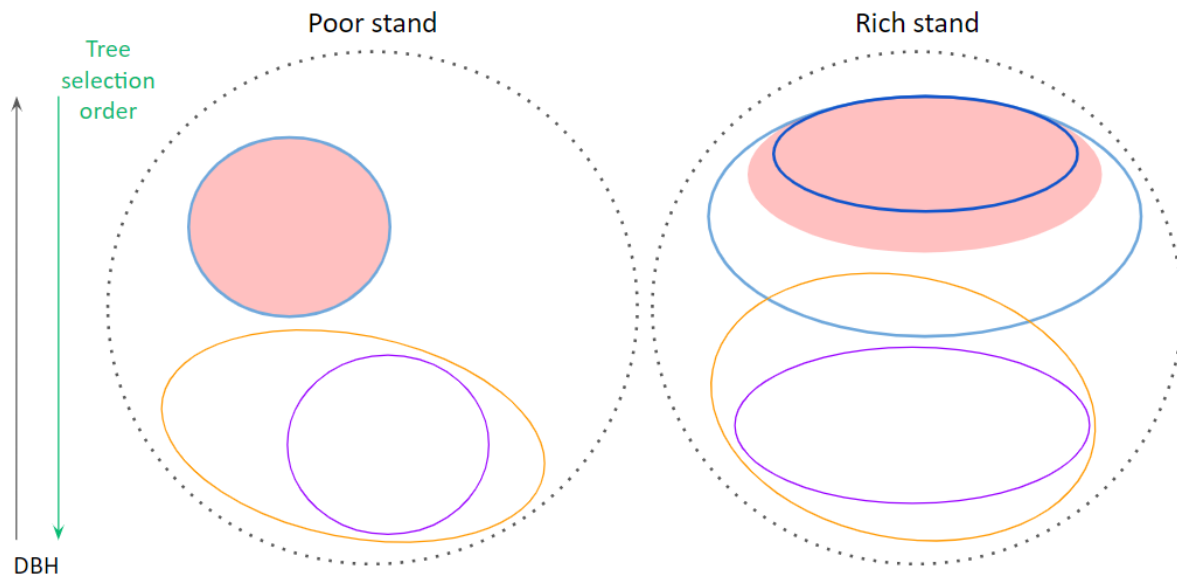
204    The harvestable zone is defined under certain conditions linked to the technical constraints of the  
205    machines used. Topography is the main limitation. It is only possible to log on a slope inferior to a  
206    certain threshold (See S3: for the default values of slopes and distances thresholds). The bottomlands,  
207    the hydrographic network and the riparian buffer zones must be avoided (See S3: for the default  
208    values taken into account to define riparian buffer zones). The function `harvestableareadefinition`  
209    defines the harvestable zones and machine-accessible zones within the plot. The harvestable zone  
210    may be larger than the machine-accessible zone if a skid cable is used: the machine will only circulate  
211    on the machine zone but the cable may collect a tree in a buffer zone around the machine zone, thus  
212    extending the harvestable zone beyond the machine zone (Figure 6).

#### 213                                2.2.3.    Tree selection

214    The tree selection consists to identify the harvestable trees (`harvestable()`), trees that will be  
215    harvested in the next campaigns: Future Crop Trees (FCTs) (*future trees*), and trees that should be  
216    protected from harvest as they were chosen as seed trees (*i.e.* trees kept for reproduction) (*reserve*  
217    *trees*) (`futurereserve()`). The function `treeselection` implements the selection process. A tree is  
218    harvestable if it meets all the following criteria: it (1) is in the harvestable zone, (2) belongs to a  
219    commercial species, (3) has a diameter above the harvestable diameter, and (4) has no visible defect  
220    (holes, broken crowns, deformed trunks). In addition, if the considered tree belongs to an aggregative  
221    species (*i.e.* forming clusters of conspecific individuals), the tree must be less than a maximum distance  
222    from other conspecific individuals to be considered harvestable (`IsolateTreeMinDistance`), to keep

223 single individuals of this species as seed trees (See S3: for the default value of the  
224 *IsolateTreeMinDistance* and other advanced logging parameters). The trees that will actually be  
225 harvested are selected among the harvestable trees (*selected()*), in ascending order of their  
226 commercial interest (1<sup>st</sup>, 2<sup>nd</sup> or more economic ranks entered in the *speciescriteria* argument, see  
227 section 2.3.), and in descending order of harvestable volume of the tree until the target volume  
228 (*objective*) is reached. If the total harvestable volume of the plot is higher than the target volume  
229 (*objective*), the Minimum Felling Diameter (*MinFD*) is increased (*UpMinFD*) in order to harvest the  
230 largest trees preferentially. If the harvestable volume is too low, the user can choose between: (1) to  
231 increase the commercial species list (diversification) to reach the objective, (2) to harvest without  
232 having reached its target volume, or (3) do not harvest the plot. A proportion of the designated trees  
233 will be found to be hollow when surveyed by the logger. If the simulated scenario (Table 1) only  
234 includes timber production, hollow trees are not harvested and additional healthy harvestable trees  
235 are chosen to meet the target volume. If the simulated scenario (Table 1) only includes timber  
236 production, hollow trees are not harvested and additional healthy harvestable trees are chosen to  
237 meet the target volume. The Future Crop Trees (FCTs) (*future trees*) belong only to species of the first  
238 economic rank (*i.e.* strongest economic interest), with a diameter between the minimum diameter  
239 threshold chosen for the FCTs (*FutureTreesMinDiameter*), and the minimum harvestable diameter of  
240 the species (*MinFD* or *UpMinFD*) (See S3: for the default value of the *FutureTreesMinDiameter* and  
241 other advanced logging parameters). The FCTs (*future trees*) are preserved if this practice is selected  
242 by the user and if possible (alternative orientation of the treefall, alternative passage for the trail)  
243 during harvesting. Among the FCTs, a number of *reserve trees* equal to the number of harvested trees  
244 is randomly selected. By default, protection of *reserve trees* is favoured over the FCTs when skid trails  
245 are laid out (Figure 2) (See S3: for default values of the advanced logging parameters).

246



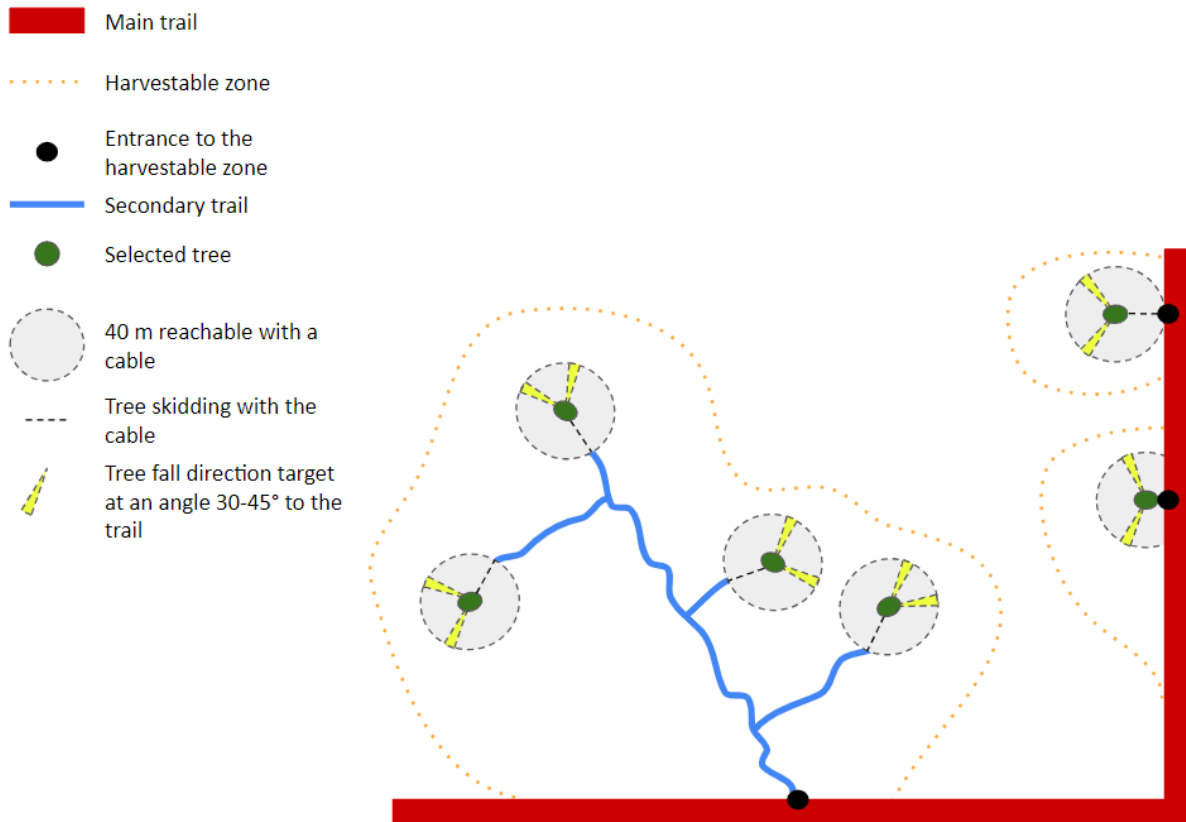
247

248 Figure 2: The tree selection in Reduced-Impact Logging (RIL). Black circles: all trees in the plot; Light  
249 blue: the harvestable trees; Dark blue: the harvestable trees with raised minimum DBH (*MinDBH*).  
250 Tree selection: Red area: selected trees for logging. Orange circles: Future Crop Trees (FCTs) (*future*  
251 *trees*); Purple: reserve trees, both chosen among 1st economic rank species only. Dotted lines: all  
252 species; Solid lines: commercial species.

#### 253 2.2.4. Layout of secondary skid trails

254 Secondary trails join the main trails and the selected trees through zones accessible to the machines  
255 (`secondtrailsopening()`). The trails do not necessarily have to reach every tree, as the machines  
256 have a synthetic cable to pull them (Figure 3). The trails are therefore designed to pass between the  
257 trees, approaching them at the maximum cable or grapple length. For one of the parameters proposed  
258 in *LoggingLab* (`winching = "2"`), the grapple is preferred to the cable, however, when the slope does  
259 not allow the grapple to access the tree, the cable is used (See S3: for functions arguments description)  
260 (See S3 Figure 1). This simulation choice is aimed to test situation when grapple is favoured over cable  
261 as it is less costly and time consuming, but this do not mean that we recommend the use of grapple  
262 over cable, as the grapple cause more damage because it requires the machine to go closer to the  
263 cutted tree to harvest it (Putz et al., 2022). The design of secondary trails layout uses a Dijkstra  
264 algorithm with directed spatial weights (Sales et al., 2019) in order to minimise their length, according  
265 to RIL principles, while respecting longitudinal and transverse slope thresholds for reasons of human  
266 and mechanical safety. The allocation of a width to the trails allows to account for the mortality of all  
267 the trees situated on the trails. If a weight is given to them, large trees can be avoided to reduce the  
268 impacted biomass and because they would push over and leave holes on the trail. The secondary trail

269 layout is computed sequentially so as to integrate, at each step of the algorithm, already designed  
 270 trails and reuse them preferentially. This specific approach aims to harvest several trees with the same  
 271 trail and thus allow a reduced trail area compared to a unique minimization step (Picard et al., 2006).  
 272  
 273



274  
 275 Figure 3: Trail design when winching is done with a cable.

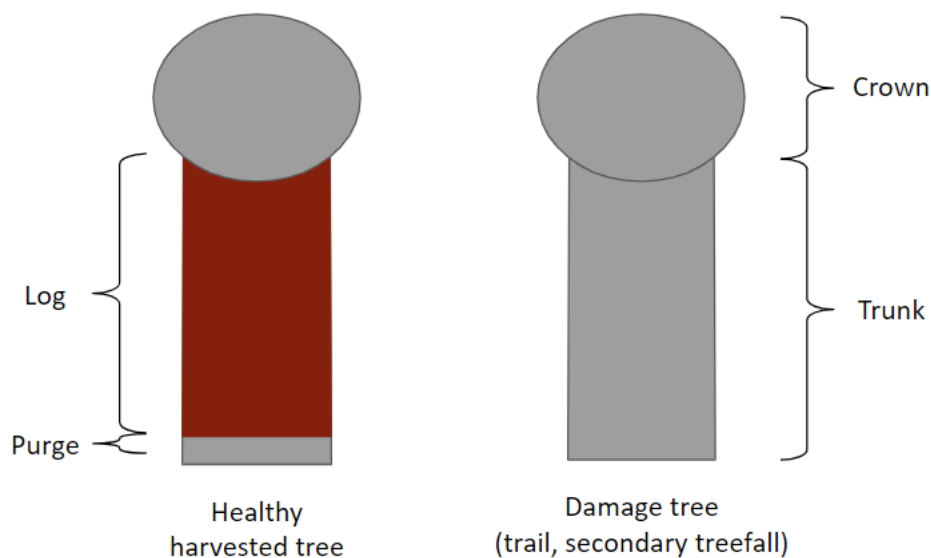
276 2.2.5. Tree felling

277 Three felling orientation rules are proposed to the user: (i) the tree is felled foot towards the nearest  
 278 trail (main or secondary), (ii) in addition to this condition, tree felling avoids FCTs (*future trees*) and  
 279 reserve trees, (iii) in addition to these two previous conditions, the tree is angled towards the trail, to  
 280 optimise the skidding of the tree. When the angle to optimise skidding is chosen between 30° and 45°,  
 281 it produces a branched structure that allows easier skidding, and thus reduces skidding damage  
 282 (Hendrison, 1990). The orientation of tree felling can fail and in this case the angle of fall depends on  
 283 the natural orientation of the tree, its crown and the topography. In *LoggingLab*, the failure of the  
 284 felling direction is simulated with a probability chosen by the user, and results in a random orientation.  
 285 In the simulator, `treefelling()` simulates all these felling possibilities according to the user's choice

286 (See S3: for the description of the functions arguments and of the advanced logging parameters)  
287 (Figure 6).

### 288 2.2.6. Quantify harvested timber

289 When harvest planning is complete, the simulator quantifies the production. The timber harvested  
290 volume (`timberharvestedvolume()`) includes the log of healthy trees harvested for timber, and the  
291 healthy part of the log of hollow trees ( $\frac{2}{3}$  of the tree trunk) if they are also harvested (Figure 4).  
292



293

294 Figure 4: Part of the tree valuable for timber (brown) and tree parts not harvested (grey). The  
295 unused part (*i.e.* defects, decay and buttresses) of the trunk of the healthy harvested trees (named  
296 "purge" within the simulator) (default value:  $0.14 \text{ m}^3/\text{m}^3$  of volume of timber harvested).  
297

297

### 298 2.3. Data requirement and input

299 The main input data is a tree census (*inventory*) for which trees are (i) measured (Diameter at Breast  
300 Height, DBH), (ii) spatialised and (iii) botanically identified (in the case of logging inventory using  
301 vernacular/commercial name, a correspondence with botanical name will have to be made). The data  
302 requirements for the input inventory can be adjusted to the data availability and to the expectation  
303 of the user. The more comprehensive the input data are, the more detailed and informative the output  
304 will be. As the main objective of *LoggingLab* is to assess logging damage, we recommend that the  
305 whole tree community is provided in the inventory. If the inventory covers only a subset of the whole  
306 tree community, the user will have to take this into account to interpret the outcomes. In particular,

307 (i) for the DBH cut-off, we recommend to include inventory with a minimum DBH as little as possible.  
308 10 or 20 cm DBH is a common threshold used in forest inventory, and inventory with a similar  
309 minimum DBH will allow comparison with other contexts; (ii) the spatial coordinates (x, y) of all trees  
310 that are considered in the inventory need to be provided for *LoggingLab* to be able to simulate the  
311 fate of the tree after logging. (iii) the botanical identification of the commercial species needs to be  
312 provided, at least for trees big enough to be harvested, as the botanical identification is a criterion  
313 used to choose harvestable trees. The botanical identification of the other trees is optional, but not  
314 providing it would restrict the outputs to indices that do not need botanical identification. To simulate  
315 a realistic logging operation, the topography is taken into account from a Digital Terrain Model (DTM)  
316 of the inventoried plot (*topography*). The hydrographic network also represents a major constraint for  
317 logging, so the definition of the zone to harvest takes into account the relative vertical and horizontal  
318 distances from the nearest channel network (*creekdistances*). In case the user does not already have  
319 a map of these hydrological features, we propose a script to generate them using a raster of the Digital  
320 Elevation Model (<https://vincyanebadouard.github.io/LoggingLab/articles/CreekDistancesRmd.html>).  
321 In order to ensure the correct delimitation of the plot, a mask (*i.e.* spatialised polygon) of the plot  
322 (*plotmask*) is required. The table of species criteria (*speciescriteria*) allows the user to specify the  
323 commercial species, the species commercial interest (1<sup>st</sup>, 2<sup>nd</sup> or more economic ranks) and species  
324 harvestable diameters (*MinFD*, *UpMinFD*, *MaxFD*). A table for volume parameters  
325 (*volumeparameters*) allows to compute the harvestable volume of each tree. Different parameter  
326 values can be given for different geographic zones when the volume allometry differs from one study  
327 site to another (See S3: for the description of the functions arguments).

### 328 2.3.1. Parameterisation of *LoggingLab*

329 *LoggingLab* proposes predefined Reduced-Impact Logging scenarios (Table 1) based on practices  
330 applied in French Guiana, or a manual mode to choose between all possible combinations of practices.  
331 The practices are the volume to extract (*objective*), the economic rank of the species to harvest  
332 (*diversification*), the maximum distance at which trees can be retrieved from the trail (*winching*), the  
333 type of directional felling (different objectives of directional felling that condition the angle of felling,  
334 *directionalfelling*) (See S3 for functions arguments description). Note that the *LoggingLab* includes a  
335 possibility to harvest fuel wood as a by-product of logging. As this practice may not be very common  
336 outside of our study site, we only present its implementation in detail in S4.

<b>Scenario</b>	<b>RIL2 experimental</b>	<b>RIL2</b>	<b>RIL3</b>
<b>Objective (m<sup>3</sup>/ha)</b>	25	25	30
<b>Diversification</b>	No	No	<b>Yes</b>
<b>Winching</b>			
Grapple (6m)	No, skid trail to tree foot	No	<b>Yes</b>
Cable (40m)		<b>Yes</b>	<b>Yes</b>
<b>Direction felling</b>			
Orientation angle to the trail	No	No	<b>Yes</b>
Avoid future crop trees and reserve trees	No	No	<b>Yes</b>

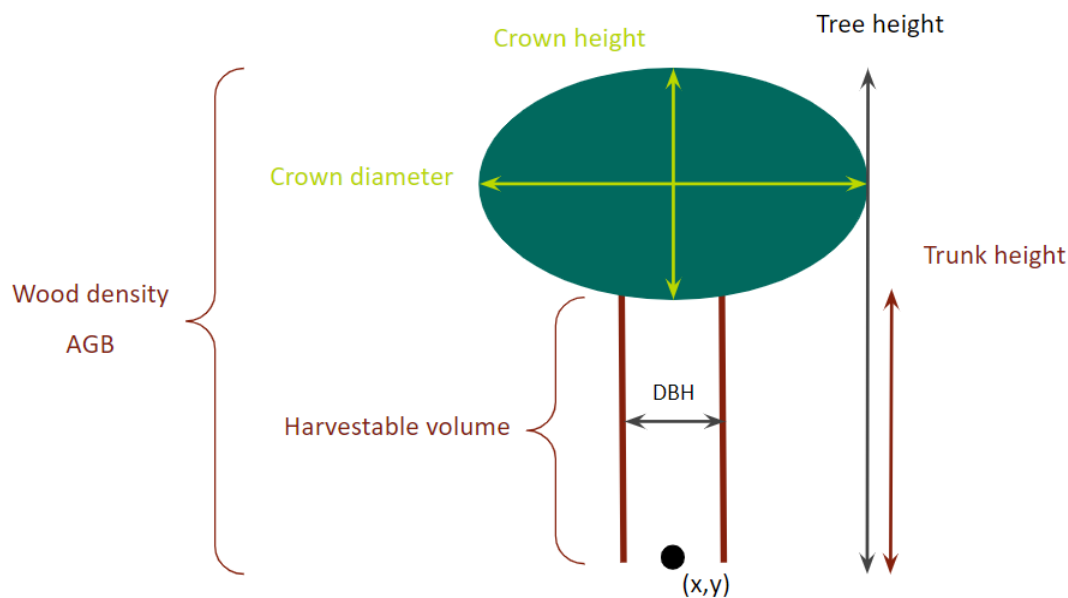
337 Table 1: Description of the default parameters of the Reduced-Impact Logging (RIL) predefined  
338 scenarios proposed in the *LoggingLab* R package (See S3: for details and S4 for additional scenarios  
339 that include use of logging by-products for fuel wood).

340

341 It is possible to use a predefined scenario and change only one or a few parameters, by specifying only  
342 the parameters that differ from those of the predefined scenario. The user can also access and modify  
343 all the numerical values (e.g. slopes limits, trail width, cable length) and models (eg. volume, crown  
344 allometries, tree defects probability, probability to die under a felled tree) to define a custom selective  
345 logging operation (*advancedloggingparameters*) (See S3: for the default values of the  
346 *advancedloggingparameters*). *LoggingLab* allows the user to integrate repetitions over several  
347 iterations (*iter*) to explore the uncertainties of the different selective logging steps, whose computing  
348 time can be reduced with the built-in parallelisation of the simulations (*cores*).

349 2.3.2. Data preparation

350 Before the simulation, the data format is checked (`inventorycheckformat()`) and “cleaned”  
351 (`cleaninventory()`): only alive trees larger than the minimum inventory diameter (`MinDBHValue`),  
352 within the inventoried plot are kept. The dimensions of each tree (tree, trunk and crown heights,  
353 crown diameter, harvestable volume, wood density, and AboveGround Biomass (AGB)) are computed  
354 from their Diameter at Breast Height (DBH) using the `addtreedim()` function (See S3: for the  
355 description of the allometries and their sources) (Figure 5).  
356



357  
358 Figure 5: Tree dimensions computed in *LoggingLab* from the input DBH (Diameter at Breast Height).

359 3. Example application of *LoggingLab*

360 3.1. Command line

361 In the following example 30 iterations of a manual scenario (equivalent to scenario **RIL3 with fuelwood**  
362 **& hollow trees** in Table 1) are run on the example data of Plot 6 in Paracou, with other parameters set  
363 to default values.

```
364  
365 Rslt <- loggingsimulation(  
366   inventory = Paracou6_2016,  
367   plotmask = PlotMask, topography = DTMParacou,  
368   creekverticaldistance = CreekDistances$distvert,  
369   creekhorizontaldistance = CreekDistances$disthorz,  
370   speciescriteria = SpeciesCriteria,  
371   volumeparameters = ForestZoneVolumeParametersTable,  
372   scenario = "manual", objective = 30,
```



```

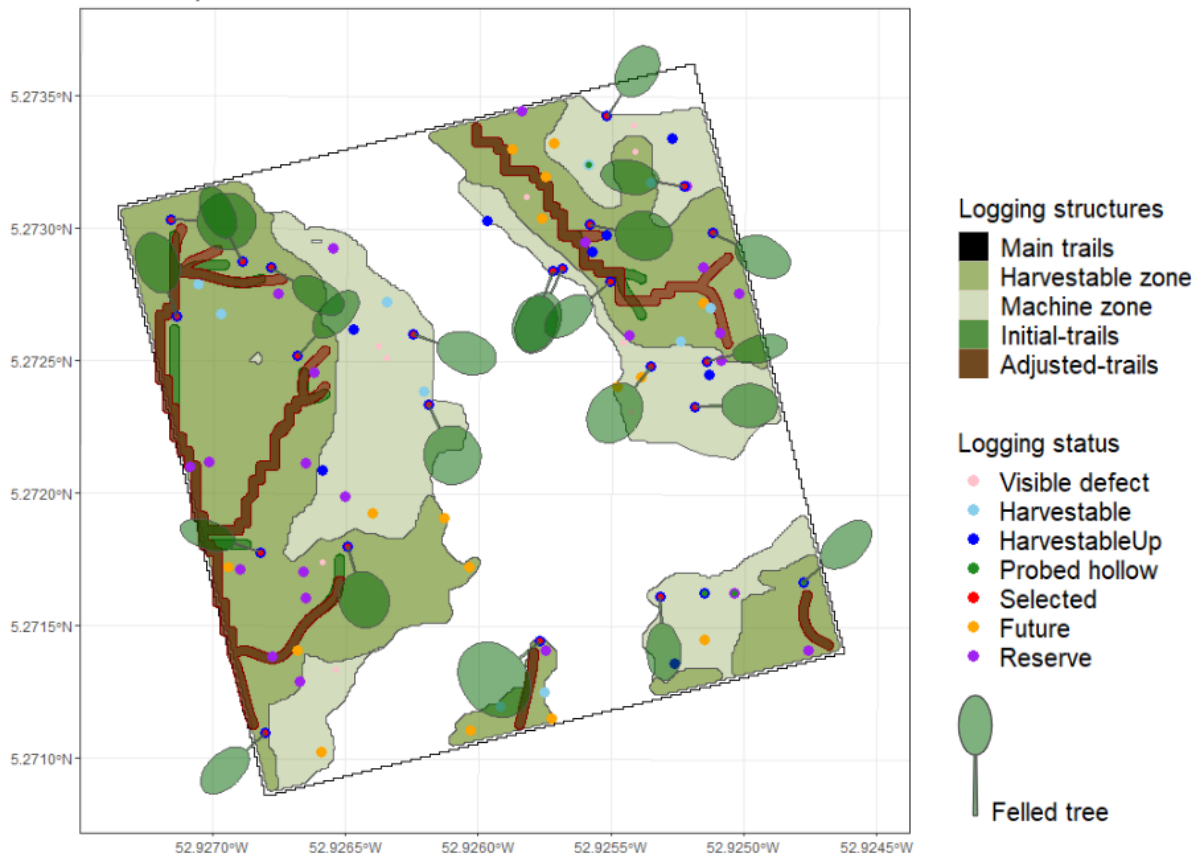
373 fuel = "2", winching = "2", directionalfelling = "2",
374 diversification = TRUE, specieslax = FALSE,
375 objectivelax = TRUE,
376 crowndiameterparameters = ParamCrownDiameterAllometry,
377 advancedloggingparameters = loggingparameters(),
378 iter = 30, cores = 30)

```

### 379 3.2. Package outputs

380 `loggingsimulation()` returns the forest inventory with new columns that include the tree
381 dimensions, the logging status (“harvestable”, “non-harvestable”, “future”, “reserve”, or “selected”),
382 the death cause (trails opening, under a felled tree, harvested), and a column with the coordinates of
383 the felled trees silhouettes (Figure 6) for each iteration (See Table S2: for the metadata of the
384 *LoggingLab* output inventory). Each simulation produces spatial objects such as the harvestable zones
385 (*HarvestablePolygons*) and the trail layout (Figure 6). The simulator also returns the collected timber,
386 as well as several values related to logging operation and short-term damage (harvestable area,
387 volume of collateral damage, trails density etc...). The numeric outputs of each simulation can then be
388 summarised with `loggingsummary()`, which provides summary statistics of volume production and
389 damage across iterations (Table 2).

Paracou plot 6 - RIL3 with fuelwood & hollow trees



390

391 Figure 6: Summary plot of *LoggingLab* outputs with the simulation presented in example simulation,  
392 for one iteration.

	Unit	Mean	Sd	Q1 (25%)	Median	Q3 (75%)
Harvestable area	ha	3.7	0.0	4.0	3.7	4.0
Objective volume	m <sup>3</sup>	112.4	0.0	112.0	112.4	112.0
Initial harvestable volume	m <sup>3</sup>	182.2	8.7	178.0	181.8	187.0
	m <sup>3</sup> /ha	49.2	0.0	44.5	49.1	46.8
Timber logged volume	m <sup>3</sup>	106.6	2.8	105.0	107.3	109.0
	m <sup>3</sup> /ha	28.8	0.0	26.3	29.0	27.3
No hollow timber logged volume	m <sup>3</sup>	96.6	8.4	92.0	98.3	103.0
	m <sup>3</sup> /ha	26.1	0.0	23.0	26.6	25.8
Timber extracted volume (timber volume after purge)	m <sup>3</sup>	93.1	1.6	92.0	93.6	94.0
	m <sup>3</sup> /ha	25.2	0.0	23.0	25.3	23.5
Fuel wood biomass	ton	151.5	8.8	148.0	151.3	155.0
	ton/ha	40.9	0.0	37.0	40.9	38.8
Logging residual biomass	ton	71.6	6.1	68.0	71.2	75.0
	ton/ha	19.4	0.0	17.0	19.2	18.8
Total forest biomass lost	ton	296.5	14.7	290.0	296.6	304.0

Trails density	m/ha	104.7	10.0	101.0	104.2	111.0
Adjusted trails density (for fuel wood recovery)	m/ha	107.2	9.3	105.0	109.1	112.0

394 Table 2: Summary of the numeric outputs of iterations of the simulation example (see section 3.1.)  
395 computed with `loggingsummary()`, which provides summary statistics of volume production and  
396 damage across 30 iterations. Please note that all volumes in m<sup>3</sup>/ha and biomass in ton/ha are per  
397 exploitable hectare, not per plot hectare. “Total forest biomass lost” is the total forest biomass lost  
398 due to logging (the sum of the AGB of all dead trees, whatever the death cause. For “Adjusted trails  
399 density” definition see S4: for details.

## 400 4. *LoggingLab* evaluation

### 401 4.1. *Validation of LoggingLab outputs*

402 Practitioners from the National Forestry Office of French Guiana validated the realism of the  
403 simulations on the basis of numerical outputs (timber, and collateral damage volumes, trail density,  
404 proportion of dead trees by category) and graphical outputs (spatialisation of exploitable areas and  
405 trails). In addition, following a RIL2 scenario at 20 m<sup>3</sup>/ha with data from French Guiana, *LoggingLab*  
406 determined a collateral damage volume (*i.e.* trees killed by trails and secondary windfall) of 47.67  
407 m<sup>3</sup>/ha [28.33,62.47] in agreement with values obtained by statistical model using data from the same  
408 region: 41.54 m<sup>3</sup>/ha [13.55,90.25] (Derroire et al., 2021).

### 409 4.2. *Limitations and perspectives of development*

410 Several further developments could be implemented in a future version of *LoggingLab*. (1) The current  
411 version of *LoggingLab* requires an important computational time to perform several iterations.  
412 Despite the parallelisation of the code, the informatic resources remains important (e.g. 22 minutes  
413 of computing time for the 30 iterations of the simulation presented in the example simulation (see  
414 section 3.1.), for 30 cores) and a computing cluster may be required. It would be interesting in a future  
415 version of *LoggingLab* to translate the most time-consuming part of the code (the spatialised part)  
416 into C++ to reduce computation time, and integrate it into the main R code. (2) *LoggingLab* has been  
417 developed to test different RIL practices and therefore does not allow to simulate a non-optimised  
418 trail design to describe Conventional Logging (CL). As there is no planning phase in CL, the trees to  
419 harvest are not mapped before logging. The logger therefore collects trees from one to the next,

420 without optimised trail design, that result in a higher trail density. Conventional secondary trails can  
421 be provided by the user because *LoggingLab* is modular (each function simulate a given stage of the  
422 selective logging process can be used independently). An algorithm to simulate tree to tree collection  
423 could be implemented in a future version of *LoggingLab*. Other CL practises (non-directional felling,  
424 to collect trees at their base, no particular intention to avoid FCTs and reserve trees) are already  
425 implemented in *LoggingLab*. (3) *LoggingLab* does not simulate main trails and logging decks. The  
426 reason for this is that the simulator has been designed to work on inventory plots that include all  
427 species and a large range of size classes, to be able to assess the impacts on the whole tree community.  
428 Such plots generally only cover a few hectares. Large-scale structures as main trails and logging decks  
429 would therefore be located outside the plot. In case the user would like to use *LoggingLab* on large  
430 logging plots (several hundred hectares), the user could provide *LoggingLab* with the main trails and  
431 logging decks generated by another tool, and *LoggingLab* would calculate the collateral damage  
432 (`mortalityunderpolygon()`). The algorithms to create main trails and logging decks may be  
433 implemented in a future version of *LoggingLab*.

## 434 5. Discussion

435 *LoggingLab* was designed on the basis of past, current and future Reduced-Impact Logging practices  
436 in French Guiana. However, the simulator has been designed to be as accessible and flexible as  
437 possible, in order to simulate local selective logging practices in other contexts. Flexibility was made  
438 possible by offering the possibility to change all default numerical parameters and allometries, and by  
439 proposing an open tool, with code accessible online. *LoggingLab* can be widely used for ecological  
440 studies of the short-term impacts of RIL on the forest ecosystem, such as impacts on floristic diversity  
441 or carbon stock. *LoggingLab* can also be coupled with a Dynamic Vegetation Model (DVM) to study  
442 the long-term effects of selective logging, and the resilience of the forest ecosystem to this  
443 disturbance in interaction with other ones such as climate change. As the simulation of selective  
444 logging implemented in *LoggingLab* is much more detailed than the one implemented in most forest  
445 dynamics simulators, this coupled use would improve long-term predictions and widen the range of  
446 tested logging practices. This coupling can be done by using the forest inventory returned by  
447 *LoggingLab* with the life status of each spatialised tree after logging as an input of individual-based  
448 and spatially explicit forest dynamics simulators. *LoggingLab* can also be used as a planning tool for  
449 selective logging operations by forest managers, to define the harvestable zone, identify the trees to  
450 harvest according to the logging objectives, and design the optimal trail layout to collect these trees  
451 (but see *Limitations* part).

452 In conclusion, the ambition of *LoggingLab* is to provide a simple method to test a wide range of  
453 selective logging practices and better assess the quantity and sources of logging damage in a wide  
454 range of ecological and wood production contexts in tropical forests. Its *in silico* approach allows the  
455 assessment of selective logging at no cost beyond the cost of forest inventories, and is therefore  
456 particularly useful for the design of less destructive logging practices.

## 457 6. Software availability

458 *LoggingLab* is an R package for all operating systems (Windows, Linux, Mac OS). It is a free and open  
459 source tool (version 1.0.0 with GPL-3 licence, requiring R >= 4.1) available on GitHub  
460 (<https://github.com/VincianeBadouard/LoggingLab>), and can be installed within the R environment  
461 using the command `devtools::install_github("VincianeBadouard/LoggingLab")`. The code is  
462 available at <https://github.com/VincianeBadouard/LoggingLab>, and a vignette (i.e. a tutorial) is  
463 available for this package (<https://vincyanebadouard.github.io/LoggingLab/index.html>). *LoggingLab* is  
464 automatically tested and controlled under CRAN criteria for all operating systems. To facilitate its  
465 portability, we also integrated *LoggingLab* into a singularity container:  
466 <https://github.com/sylvainschmitt/singularity-LoggingLab>.

467  
468 We encourage users to report any issues and/or desired extensions on our active issues page  
469 (<https://github.com/VincianeBadouard/LoggingLab/issues>).

## 471 Author contributions

472 G.D., S.S. and V.B. conceptualised the study. O.B. and C.B. provided information on logging practices  
473 in French Guiana and checked the realism of the algorithm and its outputs. V.B. designed the  
474 architecture of the package, created the R package and managed its collaborative development, with  
475 inputs from G.D., S.S., G.S. and T.G. V.B., G.S. and T.G. wrote the code. V.B. and M.R. developed some  
476 of the models implemented in the package. V.B. wrote the package documentation and the unit tests.  
477 S.S. supervised the development of the package and checked the code. G.D. checked the package  
478 documentation. M.R. beta tested the package under development. V.B. led the writing of the  
479 manuscript, with inputs from G.D. and S.S.. All authors contributed critically to the manuscript and  
480 gave final approval for publications.

## 481 Acknowledgements

482 This work has benefited from a grant [*ManagForRes* project] from Office Français de la Biodiversité  
483 (OFB) and 'Centre Méditerranéen de l'Environnement et de la Biodiversité', an 'Investissements  
484 d'Avenir' grant managed by Agence Nationale de la Recherche [CeMEB, ref. ANR-10-LABX-04-01], and  
485 from an "Investissement d'Avenir" grant managed by Agence Nationale de la Recherche [CEBA, ref.  
486 ANR-10-LABX-25-01]. We thank Eric Marcon for checking the good practices in the development of  
487 the R package, and for his extensive and precious advice, Stéphane Traissac for its participation in  
488 discussions, for its opinions and advice guided by its forestry expertise, Méline Aubry-Kientz for the  
489 development of a crown diameter allometry, and Nino Page, Bruno Hérault and Stéphane Traissac for  
490 previous work on a selective logging simulator that led to the development of *LoggingLab*.

## 491 Declaration of competing interest

492 The authors declare that they have no known competing financial interests or personal relationships  
493 that could have appeared to influence the work reported in this paper.

## 494 Appendix A. Supplementary data (see attached files)

## 495 References

- 496 Arets, E., Hout, P., & Zagt, R. (2003). Responses of tree populations and forest composition to  
497 selective logging in Guyana. In *Long-term changes in tropical tree diversity. Studies from the*  
498 *Guiana Shield, Africa, Borneo and Melanesia* (pp. 31–56). Tropenbos International.  
499 <https://www.cabdirect.org/cabdirect/abstract/20056704144>
- 500 Arets, E. J. M. M. (2005). Long-term responses of populations and communities of trees to selective  
501 logging in tropical rain forests in Guyana. In *Tropenbos-Guyana series;13* (Utrecht University).  
502 Tropenbos-Guyana Series 13. <https://dspace.library.uu.nl/handle/1874/1274>
- 503 Asner, G. P., Keller, M., Pereira, R., & Zweede, J. C. (2002). Remote sensing of selective logging in  
504 Amazonia: Assessing limitations based on detailed field observations, Landsat ETM+, and  
505 textural analysis. *Remote Sensing of Environment*, *80*(3), 483–496.  
506 [https://doi.org/10.1016/S0034-4257\(01\)00326-1](https://doi.org/10.1016/S0034-4257(01)00326-1)
- 507 Asner, G. P., Rudel, T. K., Aide, T. M., Defries, R., & Emerson, R. (2009). A contemporary assessment  
508 of change in humid tropical forests. *Conservation Biology*, *23*(6), 1386–1395.  
509 <https://doi.org/10.1111/j.1523-1739.2009.01333.x>
- 510 Atkins, J. W., Stovall, A. E. L., & Alberto Silva, C. (2022). Open-Source tools in R for forestry and forest  
511 ecology. *Forest Ecology and Management*, *503*(August 2021), 119813.  
512 <https://doi.org/10.1016/j.foreco.2021.119813>

513 Barlow, J., França, F., Gardner, T. A., Hicks, C. C., & Lennox, G. D. (2018). The future of hyperdiverse  
514 tropical ecosystems. *Nature*, 559(7715), 517–526.

515 Bertault, J.-G., Miezan, K., Dupuy, B., Durrieu de Madron, L., & Amsallem, I. (1999). Croissance et  
516 productivité en forêt dense humide après incendie : le dispositif de La Téné - Côte d'Ivoire  
517 (1978-1993). In *CIRAD-Forêts / FORAFRI* (CIRAD-Forêt).

518 Blaser, J., Sarre, A., Poore, D., & Johnson, S. (2011). Status of tropical forest management 2011. In  
519 *International Tropical Timber Organization* (ITTO, Vol. 38, Issue 38). International Tropical  
520 Timber Organization.

521 Boltz, F., Holmes, T. P., & Carter, D. R. (2003). Economic and environmental impacts of conventional  
522 and reduced-impact logging in tropical South America: A comparative review. *Forest Policy and  
523 Economics*, 5(1), 69–81. [https://doi.org/10.1016/S1389-9341\(01\)00075-2](https://doi.org/10.1016/S1389-9341(01)00075-2)

524 Bossel, H., & Krieger, H. (1991). Simulation model of natural tropical forest dynamics. *Ecological  
525 Modelling*, 59(1–2), 37–71. [https://doi.org/10.1016/0304-3800\(91\)90127-M](https://doi.org/10.1016/0304-3800(91)90127-M)

526 Bousfield, C. G., Massam, M. R., Peres, C. A., & Edwards, D. P. (2023). Large-scale impacts of selective  
527 logging on canopy tree beta-diversity in the Brazilian Amazon. *Journal of Applied Ecology*, 60(6),  
528 1181–1193. <https://doi.org/10.1111/1365-2664.14403>

529 Brandon, K. (2014). Ecosystem Services from Tropical Forests: Review of Current Science. *Center for  
530 Global Development Working Paper*, 380(October 2014). <https://doi.org/10.2139/ssrn.2622749>

531 Bryan, J., Shearman, P., Ash, J., & Kirkpatrick, J. B. (2010). Impact of logging on aboveground biomass  
532 stocks in lowland rain forest, Papua New Guinea. *Ecological Applications*, 20(8), 2096–2103.  
533 <https://doi.org/10.1890/09-1818.1>

534 Derroire, G., Pioniot, C., Descroix, L., Bedeau, C., Traissac, S., Brunaux, O., & Hérault, B. (2021).  
535 Prospective carbon balance of the wood sector in a tropical forest territory using a temporally-  
536 explicit model. *Forest Ecology and Management*, 497, 119532.  
537 <https://doi.org/10.1016/j.foreco.2021.119532>

538 Dykstra, D. P. (2003). RILSIM: A financial simulation modelling system for reduced- impact logging.  
539 *Proceedings of 2nd Forest Engineering Conference: Decision Support System/Tools, May*, 12–21.

540 Ellis, P. W., Gopalakrishna, T., Goodman, R. C., Putz, F. E., Roopsind, A., Umunay, P. M., Zalman, J.,  
541 Ellis, E. A., Mo, K., Gregoire, T. G., & Griscom, B. W. (2019). Reduced-impact logging for climate  
542 change mitigation (RIL-C) can halve selective logging emissions from tropical forests. *Forest  
543 Ecology and Management*, 438(February), 255–266.  
544 <https://doi.org/10.1016/j.foreco.2019.02.004>

545 Esteve, J., & Lepitre, C. (1980). Conditions, techniques et tendances d'exploitation en forêt tropicale  
546 africaine (suite et fin). *Bois & Forêts Des Tropiques*, 189, 55–71.  
547 <https://doi.org/https://doi.org/10.19182/bft1979.188.a19370>

548 FAO. (2021). *Évaluation des ressources forestières mondiales 2020: Rapport principal*. Rome.  
549 <https://doi.org/https://doi.org/10.4060/ca9825fr>

550 Finegan, B., & Camacho, M. (1999). Stand dynamics in a logged and silviculturally treated Costa Rican  
551 rain forest, 1988-1996. *Forest Ecology and Management*, 121(3), 177–189.  
552 [https://doi.org/https://doi.org/10.1016/S0378-1127\(98\)00550-7](https://doi.org/https://doi.org/10.1016/S0378-1127(98)00550-7)

553 Gond, V., & Guitet, S. (2009). Elaboration d'un diagnostic post-exploitation par télédétection spatiale  
554 pour la gestion des forêts de Guyane. *Bois & Forêts Des Tropiques*, 299(1), 5–13.  
555 <https://doi.org/10.19182/bft2009.299.a20423>



556 Gourlet-Fleury, S., Guehl, J.-M., & Laroussinie, O. (2004). *Ecology and Management of a Neotropical*  
557 *Rainforest. Lessons drawn from Paracou, a long-term experimental research site in French*  
558 *Guiana* (Elsevier). <https://agritrop.cirad.fr/522004/>

559 Grace, J., Mitchard, E., & Gloor, E. (2014). Perturbations in the carbon budget of the tropics. *Global*  
560 *Change Biology*, 20(10), 3238–3255. <https://doi.org/10.1111/gcb.12600>

561 Gräfe, S., Köhl, M., Eckelmann, C. M., Bremner, Q., Oatham, M., Pacheco, R., Playfair, M., & Shono, K.  
562 (2021). Sustainable management of logged tropical forests in the Caribbean to ensure long-  
563 term productivity. In *Food and Agriculture Organization of the United Nations* (FAO, Vol. 27).  
564 <https://doi.org/https://doi.org/10.4060/cb5484en>

565 Griscom, B., Ellis, P., & Putz, F. E. (2014). Carbon emissions performance of commercial logging in  
566 East Kalimantan, Indonesia. *Global Change Biology*, 20(3), 923–937.  
567 <https://doi.org/10.1111/gcb.12386>

568 Guitet, S. (2005). Mieux valoriser les ressources en bois et réduire les impacts sur l’environnement:  
569 deux objectifs convergents pour une exploitation forestière durable en Guyane française.  
570 *Rendez-Vous Techniques de l’Office National Des Forêts*, 9(January 2005), 65–69.  
571 [https://www.researchgate.net/publication/292875473\\_Mieux\\_valoriser\\_les\\_ressources\\_en\\_b](https://www.researchgate.net/publication/292875473_Mieux_valoriser_les_ressources_en_bois_et_reduire_les_impacts_sur_l’environnement_deux_objectifs_convergents_pour_une_exploitation_forestiere_durable_en_Guyane_francaise)  
572 [ois\\_et\\_reduire\\_les\\_impacts\\_sur\\_l’environnement\\_deux\\_objectifs\\_convergents\\_pour\\_une\\_exp](https://www.researchgate.net/publication/292875473_Mieux_valoriser_les_ressources_en_bois_et_reduire_les_impacts_sur_l’environnement_deux_objectifs_convergents_pour_une_exploitation_forestiere_durable_en_Guyane_francaise)  
573 [loitation\\_forestiere\\_durable\\_en\\_Guyane\\_francaise](https://www.researchgate.net/publication/292875473_Mieux_valoriser_les_ressources_en_bois_et_reduire_les_impacts_sur_l’environnement_deux_objectifs_convergents_pour_une_exploitation_forestiere_durable_en_Guyane_francaise)

574 Hendrison, J. (1990). *Damage-controlled logging in managed tropical rain forest in Suriname*  
575 [Internal PhD, WU, Wageningen University and Research]. <https://edpot.wur.nl/202887>

576 Hérault, B., & Pioniot, C. (2018). Key drivers of ecosystem recovery after disturbance in a  
577 neotropical forest: Long-term lessons from the Paracou experiment, French Guiana. *Forest*  
578 *Ecosystems*, 5(1). <https://doi.org/10.1186/s40663-017-0126-7>

579 Hiltner, U., Bräuning, A., Gebrekirstos, A., Huth, A., & Fischer, R. (2017). *Simulation of resource-*  
580 *effective management strategies in tropical forests development of an innovative tool for*  
581 *decision-making. November 2017*. <https://doi.org/10.13140/RG.2.2.31547.46880>

582 Hosonuma, N., Herold, M., De Sy, V., De Fries, R. S., Brockhaus, M., Verchot, L., Angelsen, A., &  
583 Romijn, E. (2012). An assessment of deforestation and forest degradation drivers in developing  
584 countries. *Environmental Research Letters*, 7(4). [https://doi.org/10.1088/1748-](https://doi.org/10.1088/1748-9326/7/4/044009)  
585 [9326/7/4/044009](https://doi.org/10.1088/1748-9326/7/4/044009)

586 Huang, M., Xu, Y., Longo, M., Keller, M., Knox, R. G., Koven, C. D., & Fisher, R. A. (2020). Assessing  
587 impacts of selective logging on water, energy, and carbon budgets and ecosystem dynamics in  
588 Amazon forests using the Functionally Assembled Terrestrial Ecosystem Simulator.  
589 *Biogeosciences*, 17(20), 4999–5023. <https://doi.org/https://doi.org/10.5194/bg-17-4999-2020>

590 Huth, A., & Ditzer, T. (2001). Long-term impacts of logging in a tropical rain forest - A simulation  
591 study. *Forest Ecology and Management*, 142(1–3), 33–51. [https://doi.org/10.1016/S0378-](https://doi.org/10.1016/S0378-1127(00)00338-8)  
592 [1127\(00\)00338-8](https://doi.org/10.1016/S0378-1127(00)00338-8)

593 Johns, J. S., Barreto, P., & Uhl, C. (1996). Logging damage during planned and unplanned logging  
594 operations in the eastern Amazon. *Forest Ecology and Management*, 89(1–3), 59–77.  
595 [https://doi.org/10.1016/S0378-1127\(96\)03869-8](https://doi.org/10.1016/S0378-1127(96)03869-8)

596 Krzeszkiewicz, S. (1959). Quelques observations sur l’organisation de l’exploitation forestière en pays  
597 tropical. *Bois et Forêts Des Tropiques*, 66, 29–40.  
598 <https://doi.org/https://doi.org/10.19182/bft1959.66.a18750>

599 Lai, J., Lortie, C. J., Muenchen, R. A., Yang, J., & Ma, K. (2019). Evaluating the popularity of R in  
600 ecology. *Ecosphere*, 10(1), 1–7. <https://doi.org/10.1002/ecs2.2567>

601 Malhi, Y., Roberts, J. T., Betts, R. A., Killeen, T. J., Li, W., & Nobre, C. A. (2008). Climate Change,  
602 Deforestation, and the Fate of the Amazon. *Science*, *319*(5860), 169–172.  
603 <https://www.science.org>

604 Maréchaux, I., & Chave, J. (2017). An individual-based forest model to jointly simulate carbon and  
605 tree diversity in Amazonia: description and applications. *Ecological Monographs*, *87*(4), 632–  
606 664. <https://doi.org/10.1002/ecm.1271>

607 Maréchaux, I., Langerwisch, F., Huth, A., Bugmann, H., Morin, X., Reyer, C. P. O., Seidl, R., Collalti, A.,  
608 Dantas de Paula, M., Fischer, R., Gutsch, M., Lexer, M. J., Lischke, H., Rammig, A., Rödig, E.,  
609 Sakschewski, B., Taubert, F., Thonicke, K., Vacchiano, G., & Bohn, F. J. (2021). Tackling  
610 unresolved questions in forest ecology: The past and future role of simulation models. *Ecology*  
611 *and Evolution*, *11*(9), 3746–3770. <https://doi.org/10.1002/ece3.7391>

612 Mirabel, A., Héroult, B., & Marcon, E. (2020). Diverging taxonomic and functional trajectories  
613 following disturbance in a Neotropical forest. *Science of the Total Environment*, *720*.  
614 <https://doi.org/10.1016/j.scitotenv.2020.137397>

615 Pearson, T. R. H., Brown, S., & Casarim, F. M. (2014). Carbon emissions from tropical forest  
616 degradation caused by logging. *Environmental Research Letters*, *9*(3), 34017–34028.  
617 <https://doi.org/10.1088/1748-9326/9/3/034017>

618 Pearson, T. R. H., Brown, S., Murray, L., & Sidman, G. (2017). Greenhouse gas emissions from tropical  
619 forest degradation: An underestimated source. *Carbon Balance and Management*, *12*(1).  
620 <https://doi.org/10.1186/s13021-017-0072-2>

621 Picard, N., Gazull, L., & Freycon, V. (2006). Finding Optimal Routes for Harvesting Tree Access.  
622 *International Journal of Forest Engineering*, *17*(2), 35–50.  
623 <https://doi.org/10.1080/14942119.2006.10702534>

624 Pinard, M. A., & Cropper, W. P. (2000). Simulated effects of logging on carbon storage in dipterocarp  
625 forest. *Journal of Applied Ecology*, *37*(2), 267–283. <https://doi.org/10.1046/j.1365-2664.2000.00488.x>

626  
627 Pinard, M. A., & Putz, F. E. (1996). Retaining Forest Biomass by Reducing Logging Damage.  
628 *Biotropica*, *28*(3), 278–295. <https://doi.org/https://doi.org/10.2307/2389193>

629 Piponiot, C., Rödig, E., Putz, F. E., Rutishauser, E., Sist, P., Ascarrunz, N., Blanc, L., Derroire, G.,  
630 Descroix, L., Guedes, M. C., Coronado, E. H., Huth, A., Kanashiro, M., Licona, J. C., Mazzei, L.,  
631 D’Oliveira, M. V. N., Peña-Claros, M., Rodney, K., Shenkin, A., ... Héroult, B. (2019). Can timber  
632 provision from Amazonian production forests be sustainable? *Environmental Research Letters*,  
633 *14*(6). <https://doi.org/10.1088/1748-9326/ab195e>

634 Piponiot, C., Sist, P., Mazzei, L., Peña-Claros, M., Putz, F. E., Rutishauser, E., Shenkin, A., Ascarrunz,  
635 N., de Azevedo, C. P., Baraloto, C., França, M., Guedes, M., Coronado, E. N. H., d’Oliveira, M. V.  
636 N., Ruschel, A. R., da Silva, K. E., Sotta, E. D., de Souza, C. R., Vidal, E., ... Héroult, B. (2016).  
637 Carbon recovery dynamics following disturbance by selective logging in amazonian forests.  
638 *ELife*, *5*, e21394. <https://doi.org/10.7554/eLife.21394>

639 Putz, F. E., Romero, C., Sist, P., Schwartz, G., Thompson, I., Roopsind, A., Ruslandi, R., Medjibe, V., &  
640 Ellis, P. (2022). Sustained Timber Yield Claims, Considerations, and Tradeoffs for Selectively  
641 Logged Forests. *PNAS Nexus*. <https://doi.org/10.1093/pnasnexus/pgac102>

642 Putz, F. E., Zuidema, P. A., Synnott, T., Peña-Claros, M., Pinard, M. A., Sheil, D., Vanclay, J. K., Sist, P.,  
643 Gourlet-Fleury, S., Griscom, B., Palmer, J., & Zagt, R. (2012). Sustaining conservation values in  
644 selectively logged tropical forests: The attained and the attainable. *Conservation Letters*, *5*(4),  
645 296–303. <https://doi.org/10.1111/j.1755-263X.2012.00242.x>

646 Rossi, V., Dolley, T., Cornu, G., Guitet, S., & Hérault, B. (2015). GuyaSim, a decision-support tool for  
647 forest planning: Application in French Guiana. *Bois et Forêts Des Tropiques*, 326(4), 67–78.  
648 <https://doi.org/10.19182/bft2015.326.a31285>

649 Rutishauser, E., Hérault, B., Baraloto, C., Blanc, L., Descroix, L., Sotta, D., Ferreira, J., Kanashiro, M.,  
650 Mazzei, L., D'oliveira, M. V. N., De Oliveira, L. C., Peña-Claros, M., Putz, F. E., Ruschel, A. R.,  
651 Rodney, K., Roopsind, A., Shenkin, A., Da Silva, K. E., De Souza, C. R., ... Sist, P. (2015). Rapid tree  
652 carbon stock recovery in managed Amazonian forests. *Current Biology*, 25(18), R787–R788.  
653 <https://doi.org/https://doi.org/10.1016/j.cub.2015.07.034>

654 Sales, A., Gonzáles, D. G. E., Guilherme Vaz Martins, T., Silva, G. C. C., Spletozer, A. G., de Almeida  
655 Telles, L. A., Siviero, M. A., & Lorenzon, A. S. (2019). Optimization of skid trails and log yards on  
656 the Amazon Forest. *Forests*, 10(3). <https://doi.org/10.3390/f10030252>

657 Sato, H., Itoh, A., & Kohyama, T. (2007). SEIB-DGVM: A new Dynamic Global Vegetation Model using  
658 a spatially explicit individual-based approach. *Ecological Modelling*, 200(3–4), 279–307.  
659 <https://doi.org/10.1016/j.ecolmodel.2006.09.006>

660 Shearman, P., Bryan, J., & Laurance, W. F. (2012). Are we approaching ‘peak timber’ in the tropics?  
661 *Biological Conservation*, 151(1), 17–21.  
662 <https://doi.org/https://doi.org/10.1016/j.biocon.2011.10.036>

663 Sist, P. (2000). Les techniques d'exploitation à faible impact. *Bois et Forêts Des Tropiques*, 265(3),  
664 31–43. <https://agritrop.cirad.fr/476683/>

665 Sist, P., & Ferreira, F. N. (2007). Sustainability of reduced-impact logging in the Eastern Amazon.  
666 *Forest Ecology and Management*, 243(2–3), 199–209.  
667 <https://doi.org/10.1016/j.foreco.2007.02.014>

668 Sist, P., Rutishauser, E., Peña-Claros, M., Shenkin, A., Hérault, B., Blanc, L., Baraloto, C., Baya, F.,  
669 Benedet, F., da Silva, K. E., Descroix, L., Ferreira, J. N., Gourlet-Fleury, S., Guedes, M. C., Bin  
670 Harun, I., Jalonen, R., Kanashiro, M., Krisnawati, H., Kshatriya, M., ... Yamada, T. (2015). The  
671 Tropical managed forests Observatory: A research network addressing the future of tropical  
672 logged forests. *Applied Vegetation Science*, 18(1), 171–174.  
673 <https://doi.org/10.1111/avsc.12125>

674 Vidal, E., West, T. A. P., & Putz, F. E. (2016). Recovery of biomass and merchantable timber  
675 volumes twenty years after conventional and reduced-impact logging in Amazonian Brazil.  
676 *Forest Ecology and Management*, 376, 1–8. <https://doi.org/10.1016/j.foreco.2016.06.003>  
677