



HAL
open science

A finite volume scheme for the local sensing chemotaxis model

Maxime Herda, Ariane Trescases, Antoine Zurek

► **To cite this version:**

Maxime Herda, Ariane Trescases, Antoine Zurek. A finite volume scheme for the local sensing chemotaxis model. 2024. hal-04844328

HAL Id: hal-04844328

<https://hal.science/hal-04844328v1>

Preprint submitted on 17 Dec 2024

HAL is a multi-disciplinary open access archive for the deposit and dissemination of scientific research documents, whether they are published or not. The documents may come from teaching and research institutions in France or abroad, or from public or private research centers.

L'archive ouverte pluridisciplinaire **HAL**, est destinée au dépôt et à la diffusion de documents scientifiques de niveau recherche, publiés ou non, émanant des établissements d'enseignement et de recherche français ou étrangers, des laboratoires publics ou privés.

A FINITE VOLUME SCHEME FOR THE LOCAL SENSING CHEMOTAXIS MODEL

MAXIME HERDA, ARIANE TRESCASES, AND ANTOINE ZUREK

ABSTRACT. In this paper we design, analyze and simulate a finite volume scheme for a cross-diffusion system which models chemotaxis with local sensing. This system has the same gradient flow structure as the celebrated minimal Keller-Segel system, but unlike the latter, its solutions are known to exist globally in 2D. The long-time behavior of solutions is only partially understood which motivates numerical exploration with a reliable numerical method. We propose a linearly implicit, two-point flux finite volume approximation of the system. We show that the scheme preserves, at the discrete level, the main features of the continuous system, namely mass, non-negativity of solution, entropy, and duality estimates. These properties allow us to prove the well-posedness, unconditional stability and convergence of the scheme. We also show rigorously that the scheme possesses an asymptotic preserving (AP) property in the quasi-stationary limit. We complement our analysis with thorough numerical experiments investigating convergence and AP properties of the scheme as well as its reliability with respect to stability properties of steady solutions.

Mathematics Subject Classification (2020): 35Q92, 35K51, 65M12, 65M08, 92C17.

Keywords: finite volume scheme, entropy preserving, asymptotic preserving, Keller-Segel, local sensing, chemotaxis.

CONTENTS

1. Introduction	2
1.1. Presentation of the system	2
1.2. Description and novelty of our main results	4
1.3. Outline of the paper	5
2. Insight from the continuous level	6
2.1. Notions of solution	6
2.2. Key estimates at the continuous level	7
3. Numerical scheme and main results	11
3.1. Meshes and discrete functional framework	11
3.2. Numerical scheme	12
3.3. Main results	13
4. Existence proof and entropy diminishing property of the scheme	15
5. Uniform estimates	18
6. Proof of convergence of the scheme	22
6.1. Compactness properties	22
6.2. Identification of the limit	22
7. Asymptotic preserving property of the scheme	25
8. Numerical experiments	28

Date: December 17, 2024.

8.1. Implementation	28
8.2. Testcase 1. Convergence and entropy decay	28
8.3. Testcase 2. AP property in the quasi-stationary limit	29
8.4. Testcase 3. Instabilities in 2D	30
8.5. Testcase 4. Aggregation in large domain	33
Appendix A. Auxiliary results	35
Appendix B. On the continuity of the discrete projection	36
Acknowledgements	38
References	38

1. INTRODUCTION

1.1. Presentation of the system. In some bounded domain $\Omega \subset \mathbb{R}^d$ ($d \geq 1$) and for some time interval $(0, T)$ we consider the following system

$$(1) \quad \partial_t u = \Delta(\gamma(v)u), \quad \text{in } Q_T = \Omega \times (0, T),$$

$$(2) \quad \varepsilon \partial_t v = \delta \Delta v - \beta v + u, \quad \text{in } Q_T = \Omega \times (0, T),$$

with ε a nonnegative constant, β and δ some positive constants and where the function γ is given by

$$(3) \quad \gamma(s) = e^{-s}, \quad \forall s \geq 0.$$

The system is complemented by the following boundary and initial conditions

$$(4) \quad \nabla[\gamma(v)u] \cdot \nu = \nabla v \cdot \nu = 0, \quad \text{on } \partial\Omega \times (0, T),$$

$$(5) \quad u(0) = u^0, \quad \varepsilon v(0) = \varepsilon v^0, \quad \text{in } \Omega,$$

where ν is the exterior unit normal vector to $\partial\Omega$, and where u^0 and v^0 are nonnegative functions.

The system (1)–(2) is a subclass of the class of systems introduced by Keller and Segel in their seminal papers [42, 43] in order to model chemotactic aggregation in cell colonies. This particular subclass corresponds to *local sensing*, that is, the cell is not able to perceive a gradient in the concentration of chemoattractant by comparing the concentrations at two different locations (*gradient sensing*) and instead relies only on the concentration at the point it is located to direct itself: for a modelling discussion on the subject see [22, 43, 56]. The nonnegative quantities u and v correspond respectively to the cell density and the chemical concentration, the parameter δ is the diffusivity of the chemical, the parameter β is its degradation rate, and the parameter ε indicates a typical relative order of magnitude of the time evolution of the source terms in (2) over the time evolution of v : when ε vanishes, the system is called quasi-stationary (or sometimes parabolic-elliptic). Finally, the nonnegative function γ represents the cell motility.

Beside the modelling perspective, the problem of existence of global solutions to the system (1)–(2) with (4)–(5) has attracted much attention over the past decade, with the exciting outcome that solutions do exist globally for rather generic relevant motilities γ in any dimension, see for example [33, 39] when $\varepsilon = 0$ and [34, 40, 32, 23] when $\varepsilon > 0$. In particular, for γ given by (3), existence of global solutions is known in any dimension: see [33, 39] when $\varepsilon = 0$ and [34, 40, 32] when $\varepsilon > 0$ for a theory of classical solutions and see [15] for a theory of weak solutions.

In fact, the choice (3) is motivated by the studies [33, 15, 34, 41] where it is shown that in bi-dimensional domains for this specific choice of γ the system (1)–(5) exhibits a critical mass phenomenon somewhat reminiscent of the behavior of the minimal Keller-Segel system. For subcritical initial cell masses, solutions exist globally and remain bounded uniformly in time, and for supercritical initial cell masses, solutions exist globally and may blow up at infinite time. While the behavioral change happens at the exact same critical mass for the system (1)–(5) as for the minimal Keller-Segel system, one noteworthy difference with the latter is that here the blow-up is delayed to infinity. We also note that in bi-dimensional domains the decaying exponential motility (3) seems critical, in the sense that for a positive-valued motility function γ nonincreasing and decaying to zero at infinity with

$$\lim_{s \rightarrow \infty} e^{\alpha s} \gamma(s) = \infty, \quad \forall \alpha > 0,$$

the global solutions of (1)–(2) are uniformly bounded and the blow-up is therefore ruled out [31, 40].

This similarity with the minimal Keller-Segel system in dimension two is not a mere coincidence and reflects a structural similarity (in any space dimension), that translates at the minimum into a common entropy functional for the two systems [15, 34, 41]. This entropy functional will be used in the present analysis. Another similitude is that both systems share the same set of steady states. For this reason, the existence of non-homogeneous steady states as well as their qualitative and asymptotic behaviour have been extensively studied for about forty years, see for example [63] in one-dimensional domains, [66, 64, 21, 20, 11] in bi-dimensional domains, [7, 57, 1, 10, 9] in higher-dimensional domains, and references therein.

Beyond well-posedness and boundedness results, and the construction of special blowing-up solutions in the supercritical regime, little is known about the qualitative behavior of the evolutionary system. We are aware of two qualitative studies, both in the case $\varepsilon > 0$. In dimension one, the existence and stability of monotone steady states with boundary spike has been explored in [68] using bifurcation theory and numerical simulations. The formation of patterns has been studied numerically and theoretically in [19] for a porous-medium type generalization of the system (1)–(2) with $\varepsilon > 0$. In particular for the exponential motility (3), a linear stability analysis around the homogeneous steady state $\left(\mu, \frac{\mu}{\beta}\right)$ for a given $\mu > 0$ (see also [22, proof of Theorem 3.1]) suggests that pattern formation has to be expected under the condition

$$(6) \quad \mu > \beta + \delta \lambda_1(\Omega),$$

where $\lambda_1(\Omega)$ is the principal eigenvalue of the Laplace operator $-\Delta$ on Ω with homogeneous Neumann boundary conditions. Furthermore, bi-dimensional numerical experiments, supplemented by heuristic arguments based on the study of the excitable density set, might suggest that under this condition we can expect formation of peaks.

To go further in the study of the qualitative behavior of this system, the development of efficient and accurate numerical methods is essential.

In the last two decades a literature has emerged on the design and analysis of numerical schemes for the minimal Keller-Segel system and some of its variants [4]. The focus has been put on many aspects including preservation of the conservative and entropy diminishing nature of the equation, stability analysis, the possibility of handling non-structured meshes as well as high-order discretizations. Finite difference schemes have been investigated in

[62, 60, 51]. Finite volume schemes have been proposed starting with the seminal contribution [29], followed by many authors [18, 3, 6, 71, 2]. Finite element method [52, 59, 14, 61, 65, 69], discontinuous Galerkin [26, 25, 70, 49, 37] and alternative numerical strategies [13, 8, 24, 17, 27] have been analysed as well. However, the previous numerical schemes do not concern chemotactic systems with local sensing as the one considered in the present manuscript.

Some methods have been proposed very recently in order to study the system (1)–(2) and its variant with logistic-type growth, that is, when (1) is replaced with

$$(7) \quad \partial_t u = \Delta(\gamma(v) u) + r u(1 - u), \quad \text{in } Q_T = \Omega \times (0, T),$$

with $r \geq 0$. In [38], a meshless method based on Generalized Finite Difference is developed to approximate the quasi-stationary case ($\varepsilon = 0$) for a quite broad range of motilities γ , including in particular (3). It is shown that this method is convergent when the growth parameter r is large enough, a condition under which the solutions are known to relax towards the homogeneous steady state. We also mention the work [12] where computer-assisted proofs are developed to study the steady states of the system (2) and (7) for one dimensional domains and with $r \geq 0$ (for quite arbitrary motilities γ): with this method the authors obtain at once the existence of non-homogeneous steady states and the validation of their numerical approximation, and provide bifurcation diagrams.

Our goal here is to propose a numerical scheme for the evolutionary system (1)–(3) providing a faithful approximation of the solutions in various regimes, including away from the homogeneous stabilization regime. To achieve this goal we aim for a scheme that preserves the main structural features of the equation (mass conservation, entropy dissipation, non-negativity of solutions), in order to ensure good stability properties, with a computational cost that is as low as possible.

1.2. Description and novelty of our main results. In this work, we introduce a two-point flux approximation (TPFA) finite volume scheme in space together with a one step implicit/explicit (IMEX) Euler scheme in time for the system (1)–(2). This IMEX strategy, which was already used in [51] for the minimal Keller-Segel system, allows us to decouple at the discrete level the equations (1) and (2) and yields an efficient, w.r.t. computational cost, numerical scheme. This efficiency is particularly important in order to numerically explore the infinite-time blow-up phenomenon satisfied by the solutions to the system (1)–(5).

Let us now introduce the main hypothesis and results of our study. In all this paper, we will work under the following hypothesis:

- (H1) Domain: $\Omega \subset \mathbb{R}^d$ is a bounded and polyhedral domain ($d = 1, 2, \text{ or } 3$).
- (H2) Parameters: ε is a nonnegative constant and β and δ are positive constants.
- (H3) Cell motility: The function γ is defined by (3).
- (H4) Initial data: The functions u^0 and εv^0 are nonnegative and belong respectively to $L^2(\Omega)$ and $H^1(\Omega)$.

Let us precise that the scheme that we propose can be used for other cell motilities than (3) (see Section 8.5 for an example), but the numerical analysis is limited to the exponential motility prescribed in (H3). Under these hypothesis, we first prove in Theorem 4 that the scheme admits a unique positive solution at each time step. We also show that the solutions of the scheme satisfy a discrete counterpart of the entropy estimate (see (14) below) established in [15, 34, 41]. The proof of Theorem 4 strongly relies on the linearly implicit structure of our scheme. More precisely, this structure allows us to rewrite the scheme as linear systems of equations. Then, we prove that the associated matrices are invertible and admit

some monotonicity properties ensuring the nonnegativity of the solutions. The fact that the scheme is entropy diminishing is proved by adapting at the discrete level the computations done in [15, 34, 41].

Our second main result, exposed in Theorem 6, is the (subsequential) convergence of the scheme when $\varepsilon > 0$. As often with finite volume methods [28] for nonlinear PDEs, the convergence proof is done through a compactness argument which relies on some uniform estimates with respect to the size of the meshes in space and time. If our strategy is quite classical we need to establish an unusual (to our best knowledge) discrete duality estimate. In order to establish such estimate we introduce a convenient discrete H^1 dual norm and we adapt at the discrete level the computations of [15], see Section 2.2 and Proposition 13 for more details. Then, thanks to this uniform estimate adequately combined with the entropy and mass estimates, we are able to prove the (subsequential) convergence of the scheme towards weak solutions to (1)–(5) in the sense of Definition 1 below.

Our third main result, Theorem 8, concerns the asymptotic preserving (AP) property of our scheme in the quasi-stationary limit $\varepsilon \rightarrow 0$. For this purpose, we consider a family of initial data (u^0, v^0) indexed in $\varepsilon \geq 0$ and we introduce an additional hypothesis:

(H5) Well-prepared initial data: The ε -family of functions (u^0, v^0) is uniformly bounded in $L^2(\Omega) \times H^1(\Omega)$, it is such that u^0 converges a.e. as $\varepsilon \rightarrow 0$ towards a limit still denoted u^0 , and it satisfies the condition

$$(8) \quad \langle u^0 \rangle - \beta \langle v^0 \rangle = O(\sqrt{\varepsilon}).$$

The latter hypothesis is intimately connected to the initial layer in the limit $\varepsilon \rightarrow 0$. More precisely, one can easily show that (8) is equivalent to $\|\langle \partial_t v \rangle\|_{L^2(0,T)} = O(1)$, where $\langle \cdot \rangle$ denotes the space average. We refer to Section 2 for details, and to Section 8.3 for numerical illustrations of the initial layer.

Then, under assumption **(H5)**, we show in Theorem 8 that when both the size of the meshes and the parameter ε in (2) go to zero the solutions of the scheme converge up to a subsequence towards the weak solutions of the quasi-stationary system in the sense of Definition 1. A by-product of Theorem 8 is the (subsequential) convergence of the scheme when $\varepsilon = 0$ (without the additional assumption **(H5)** which becomes irrelevant in the quasi-stationary case, see Remark 9).

Finally, for space dimensions one and two, and under further regularity assumptions for the initial data, Corollary 10 states a stronger AP property in the sense that the whole sequence of numerical approximations converges (and not only a subsequence).

We have implemented the scheme in one and two space dimensions on unstructured meshes (see Section 8.1 for details) and performed thorough numerical experiments to illustrate and complement our theoretical results, through four testcases. In the first testcase we illustrate the second order convergence in space of the scheme. In the second testcase, we are interested in the asymptotic preserving property and we show the effect of the well-preparedness of the initial data in the sense of **(H5)** and in a stronger sense. In the third testcase, we investigate stability properties of stationary solutions. We show that linear stability properties of homogeneous equilibrium are preserved by the scheme. Finally we demonstrate the applicability of our scheme for motilities which do not enter our theoretical framework.

1.3. Outline of the paper. The paper is organized as follows. In Section 2, we recall and develop some key notions and estimates for the continuous system. We introduce the

numerical scheme and present the main results in Section 3. We prove that the scheme is well-defined and satisfy some first properties (mass conservation, entropy dissipation) in Section 4, while in Section 5 we establish some uniform estimates. Then, we show the convergence of the scheme in Section 6. Section 7 is dedicated to the AP property of the scheme. Finally, in Section 8 we present the aforementioned numerical experiments.

2. INSIGHT FROM THE CONTINUOUS LEVEL

2.1. Notions of solution. The notion of weak solutions for the system (1)–(5) is defined as follows:

Definition 1 (Weak solutions to (1)–(5)). *Assume **(H1)**–**(H4)**. Let $T > 0$ and let (u, v) nonnegative with*

$$u \in L^\infty(0, T; L^1(\Omega)), \quad v \in L^\infty(0, T; H^1(\Omega)), \quad \varepsilon v \in H^1(0, T; L^2(\Omega)), \quad u\gamma(v) \in L^2(Q_T).$$

We call (u, v) a weak solution of (1)–(5) on $(0, T)$ if for all $\varphi \in C_c^\infty(\bar{\Omega} \times [0, T])$ satisfying $\nabla\varphi \cdot \nu = 0$ on $\partial\Omega \times [0, T)$, we have

$$(9) \quad \int_{Q_T} u \partial_t \varphi \, dxdt + \int_{\Omega} u^0(x) \varphi(x, 0) \, dx + \int_{Q_T} u\gamma(v) \Delta\varphi \, dxdt = 0,$$

and

$$(10) \quad \varepsilon \int_{Q_T} v \partial_t \varphi \, dxdt + \varepsilon \int_{\Omega} v^0(x) \varphi(x, 0) \, dx = \delta \int_{Q_T} \nabla v \cdot \nabla \varphi \, dxdt + \int_{Q_T} (\beta v - u) \varphi \, dxdt.$$

In particular when $\varepsilon = 0$, (u, v) is called a weak solution of the quasi-stationary system.

Remark 1. *Under the regularity assumptions of the above definition, the distributional formulation (9)–(10) is equivalent to the formulation (1.4)–(1.6) given in [15, Definition 1.1]. Indeed, starting from (9) and first testing with φ homogeneous in space, we obtain that $\langle u(\cdot, t) \rangle = \langle u^0 \rangle$ for a.e. $t \in [0, T)$. Then for ψ in $C_c^\infty(\bar{\Omega} \times [0, T])$ we use (9) with $\varphi = (-\Delta)^{-1}(\psi - \langle \psi \rangle)$, where $(-\Delta)^{-1}$ has to be understood with homogeneous Neumann boundary conditions, and we get*

$$\begin{aligned} & - \int_{Q_T} (u\gamma(v) - \langle u\gamma(v) \rangle) \psi \, dxdt \\ &= \int_{Q_T} u \partial_t (-\Delta)^{-1} (\psi - \langle \psi \rangle) \, dxdt + \int_{\Omega} u^0 (-\Delta)^{-1} (\psi(\cdot, 0) - \langle \psi(\cdot, 0) \rangle) \, dx \\ &= \int_{Q_T} (u - \langle u \rangle) (-\Delta)^{-1} \partial_t (\psi - \langle \psi \rangle) \, dxdt \\ & \quad + \int_{\Omega} (u^0 - \langle u^0 \rangle) (-\Delta)^{-1} (\psi(\cdot, 0) - \langle \psi(\cdot, 0) \rangle) \, dx \\ &= \int_{Q_T} (-\Delta)^{-1} (u - \langle u \rangle) \partial_t \psi \, dxdt + \int_{\Omega} (-\Delta)^{-1} (u^0 - \langle u^0 \rangle) \psi(x, 0) \, dx. \end{aligned}$$

A density argument together with the regularity of $u\gamma(v)$ and u^0 allow to conclude that (1.4) and the first equality of (1.6) in [15, Definition 1.1] hold. The reverse direction of the equivalence follows from the same computations, and the treatment of the equation for the evolution of v is standard. Here, we chose to use the distributional formulation (9)–(10) which appears naturally in the asymptotics of the numerical scheme.

The proof of the AP property of the scheme relies on some uniform estimates with respect to the size of the meshes and the parameter ε . While some of these estimates are a direct by-product of the estimates established for the convergence proof, an extra uniform estimate has to be obtained on the L^2 norm of $\partial_t v$. We first present this estimate in Section 2.2 where for pedagogical purpose we establish it formally at the continuous level, highlighting the role of **(H5)**. We then adapt it at the discrete level in Proposition 18. Finally, the proof of the AP property relies on a compactness approach. However, the compactness properties of the solutions do not ensure that the whole sequence of solutions to the scheme converges toward the weak solutions of the quasi-stationary system. Therefore, we propose to consider a more restrictive class of solutions for the quasi-stationary system in which uniqueness can be proven. Following [15], we then consider a slightly stronger notion of solution, namely the weak-strong solution:

Definition 2 (Weak-strong solution for the quasi-stationary system). *Assume **(H1)**–**(H4)** and $\varepsilon = 0$. Let $T > 0$, and let (u, v) nonnegative. Then, (u, v) is called a weak-strong solution of the quasi-stationary system on $(0, T)$ if (u, v) is a weak solution of the quasi-stationary system in the sense of Definition 1 which additionally satisfies*

$$\delta\Delta v - \beta v + u = 0, \quad \text{in } L^2(Q_T).$$

Of course, one needs to derive sufficient conditions ensuring the existence of such weak-strong solutions. The answer is (partially) given in [15]. Indeed, we have the following result:

Proposition 2 (Existence and uniqueness of weak-strong solutions). *Assume **(H1)**–**(H4)** with $d = 1$ or 2 and $\varepsilon = 0$. Assume furthermore that $u^0 \in L^\infty(\Omega)$. Then there exists at most one weak-strong solution of the quasi-stationary system in the sense of Definition 2 such that*

$$(11) \quad u \in L^\infty(0, T; L^q(\Omega)), \quad \text{for } q > 2.$$

Remark 3. *In [15], the existence and uniqueness of the weak-strong solution is obtained for the system (1)–(5) for $\varepsilon > 0$ and not for the quasi-stationary system. Besides, this property is only proved for a smooth bounded domain Ω in \mathbb{R}^d while in this work we consider only polygonal (or polyhedron) domains. We therefore explain here how to adapt the arguments of [15] in our framework. First, under the regularity assumption (11) one can readily adapt the proof of uniqueness for the quasi-stationary system, see the proof of [15, Theorem 1.6]. Besides, in order to construct a weak-strong solution it is sufficient to improve the regularity of the weak solutions. The arguments given in the proof of [15, Proposition 1.7] to improve the regularity of the weak solution of (1)–(5) for one dimensional domains can be easily adapted for the quasi-stationary system in order to obtain that u and v belong to $L^\infty(Q_T)$. However, in bi-dimensional domains, due to the regularity of $\partial\Omega$, we need to modify more deeply the arguments of [15, Section 4.3]. For this purpose, noting that u belongs to $L^\infty(0, T; L \log L)$ (this is a consequence of the entropy inequality (14) with $\varepsilon = 0$), we apply the result in [36] which ensures that $v \in L^\infty(Q_T)$. Then, using the duality estimate we deduce that $u \in L^2(Q_T)$ and we conclude thanks to [35, Theorem 4.3.1.4] that $v \in L^2(0, T; H^2(\Omega))$. Then, by a slight adaptation of the proof of [15, Lemma 4.2] we conclude that $u \in L^\infty(0, T; L^q(\Omega))$ for any $q \geq 2$.*

2.2. Key estimates at the continuous level. As previously exposed, the proofs of our main theorems rely on the adaptation at the discrete level of some uniform estimates that are for most of them rigorously established for the continuous system in [15], namely mass, entropy, and duality estimates. The study of the limit $\varepsilon \rightarrow 0$ with the proof of the AP property also requires additional estimates that are uniform in ε . As far as we are aware of,

the limit $\varepsilon \rightarrow 0$ has not been established rigorously for the continuous system (1)–(2) (see however [58, 50, 67, 53, 44, 45, 46, 47, 55, 54] for a similar limit for related systems, mainly focusing on the minimal Keller-Segel system; see as well [51, 48] for numerical experiments and methods in the quasi-stationary asymptotics for the minimal Keller-Segel system). Therefore we establish some ε -uniform estimates for the time derivative of v , that are apparently new, though inspired by the treatment of the quasi-stationary system in [15]. To give a flavor of our proofs, we use this section to present these estimates formally at the continuous level. Let us then consider (u, v) nonnegative such that (u, v) is a strong solution of (1)–(5) and assume that (u, v) is as smooth as needed for the computations performed in this section. For the sake of simplicity we assume in this section $\varepsilon > 0$, though the case $\varepsilon = 0$ can be treated similarly with minor adaptations.

Mass and entropy. Let us first state the mass estimates. For this purpose, we recall that $\langle w \rangle$ denotes the mean value of w on Ω :

$$\langle w \rangle := \frac{1}{m(\Omega)} \int_{\Omega} w(x) \, dx, \quad \forall w \in L^1(\Omega),$$

where m denotes the Lebesgue measure (in any space dimension). Then, the system preserves the nonnegativity of u and by integrating (1) over the domain Q_t for $t > 0$ we get the preservation of its mean value along time, i.e.,

$$(12) \quad \langle u(t) \rangle = \frac{1}{m(\Omega)} \|u(t)\|_{L^1(\Omega)} = \langle u^0 \rangle, \quad \text{for } t > 0.$$

Besides, v is also a nonnegative function and by integrating (2) over the domain Ω we have

$$\frac{d}{dt} \left(\langle v(t) \rangle - \frac{\langle u^0 \rangle}{\beta} \right) = -\frac{\beta}{\varepsilon} \left(\langle v(t) \rangle - \frac{\langle u^0 \rangle}{\beta} \right),$$

so that its mean value verifies

$$(13) \quad \langle v(t) \rangle = \frac{\langle u^0 \rangle}{\beta} + e^{-\beta t/\varepsilon} \left(\langle v^0 \rangle - \frac{\langle u^0 \rangle}{\beta} \right), \quad \text{for } t > 0.$$

Now, as for the minimal Keller-Segel model, one can notice that (1)–(3) admits a formal gradient flow structure given by the functional:

$$H(u, v) = \int_{\Omega} \left[u \log u - u + 1 + \frac{\beta}{2} |v|^2 - uv + \frac{\delta}{2} |\nabla v|^2 \right] dx.$$

Following [15], and thanks to the specific choice of γ in (3), this functional is a Lyapunov functional for the system (1)–(5) which satisfies the following dissipation equality

$$(14) \quad H(u(t), v(t)) + 4 \int_0^t \int_{\Omega} \left| \nabla \sqrt{ue^{-v}} \right|^2 dx ds + \varepsilon \int_0^t \int_{\Omega} |\partial_t v|^2 dx ds = H(u^0, v^0), \quad \text{for } t > 0.$$

However, let us emphasize that by itself this dissipation equality is of limited use, for example it does not directly give *a priori* estimates of v in $L^\infty((0, T); H^1(\Omega))$. This is due to the nonpositive quadratic term $-uv$ in the definition of H . In order to circumvent this issue the main idea is to make use of a duality estimate, in a strategy that we now describe.

Combination of duality and entropy. Let us introduce some notations here: let $(H^1)'(\Omega)$ denote the dual space of $H^1(\Omega)$, let $H^1_\diamond(\Omega)$ denote the set of all functions in $H^1(\Omega)$ with mean value zero, let $(H^1_\diamond)'(\Omega)$ denote its dual space, and finally let us introduce the operator $\mathcal{K} = (-\Delta)^{-1} : (H^1_\diamond)'(\Omega) \rightarrow H^1_\diamond(\Omega)$ which inverts the Laplace operator with homogeneous Neumann boundary conditions.

Following [15] by applying \mathcal{K} to (1) and testing the result with $u - \langle u^0 \rangle$ (which is of zero mean thanks to the mass conservation (12)) we obtain,

$$(15) \quad \begin{aligned} \frac{1}{2} \sup_{[0, T]} \|u - \langle u^0 \rangle\|_{(H^1)'(\Omega)}^2 + \int_0^T \int_\Omega \gamma(v) u^2 \, dx dt \\ \leq \frac{1}{2} \|u^0 - \langle u^0 \rangle\|_{(H^1)'(\Omega)}^2 + m(\Omega) \langle u^0 \rangle^2 T. \end{aligned}$$

Then, denoting by $C_T > 0$ the constant such that

$$\|u(t) - \langle u^0 \rangle\|_{(H^1)'(\Omega)} \leq C_T, \quad \text{for } t \in (0, T),$$

we have, for $t \in (0, T)$,

$$\begin{aligned} - \int_\Omega u v \, dx &= - \int_\Omega (u - \langle u^0 \rangle) v \, dx - \int_\Omega \langle u^0 \rangle v \, dx \\ &= \int_\Omega v \Delta \mathcal{K}(u - \langle u^0 \rangle) \, dx - \int_\Omega \langle u^0 \rangle v \, dx \\ &= - \int_\Omega \nabla \mathcal{K}(u - \langle u^0 \rangle) \cdot \nabla v \, dx - \int_\Omega \langle u^0 \rangle v \, dx \\ &\geq - \frac{C_T^2}{\delta} - \frac{\delta}{4} \int_\Omega |\nabla v|^2 \, dx - \frac{m^2}{\beta} - \frac{\beta}{4} \int_\Omega |v|^2 \, dx. \end{aligned}$$

This yields, for $t \in (0, T)$,

$$(16) \quad H(u, v) \geq - \frac{C_T^2}{\delta^2} - \frac{\langle u^0 \rangle^2}{\beta} + \int_\Omega \left[u \log u - u + 1 + \frac{\beta}{4} |v|^2 + \frac{\delta}{4} |\nabla v|^2 \right] \, dx.$$

Thus combining (14) and (16) one can deduce an upper bound on the $H^1(\Omega)$ norm of v and on the logarithmic entropy of u , which is uniform over any finite time interval $(0, T)$. These estimates (in their discretized versions, and established rigorously), will be at the cornerstone of our convergence proof, see Theorem 6. Besides, contrary to the minimal Keller-Segel model, these estimates also imply that if a blow-up phenomenon occurs it has to be postponed to the infinite time limit.

Estimate in the quasi-stationary relaxation. As already exposed, we intend in our final main result, see Theorem 8, to consider the limit $\varepsilon \rightarrow 0$. For this purpose we need to establish some estimates that are uniform with respect to ε . However, we notice that the entropy dissipation equality (14) (combined with (16)) yields a $L^2(Q_T)$ estimate on $\sqrt{\varepsilon} \partial_t v$ only. In order to derive an estimate on $\partial_t v$ uniform in ε , we first differentiate (2) w.r.t. time and get

$$\varepsilon \partial_{tt} v + \beta \partial_t v = \partial_t u + \delta \Delta \partial_t v.$$

Note that the right-hand-side having zero-mean (thanks to the mass conservation (12)) we can apply the operator $\mathcal{K} = (-\Delta)^{-1}$ to the equality above so that, after testing the result

with $(\partial_t v - \langle \partial_t v \rangle)$ we obtain

$$\begin{aligned}
& \int_{\Omega} (\partial_t v - \langle \partial_t v \rangle) \mathcal{K} [\varepsilon \partial_{tt} v + \beta \partial_t v] \, dx \\
&= \int_{\Omega} (\partial_t v - \langle \partial_t v \rangle) \mathcal{K} [\partial_t u] \, dx + \delta \int_{\Omega} (\partial_t v - \langle \partial_t v \rangle) \mathcal{K} [\Delta \partial_t v] \, dx \\
&= - \int_{\Omega} (\partial_t v - \langle \partial_t v \rangle) (u \gamma(v) - \langle u \gamma(v) \rangle) \, dx - \delta \int_{\Omega} (\partial_t v - \langle \partial_t v \rangle)^2 \, dx \\
&\leq - \frac{\delta}{2} \int_{\Omega} (\partial_t v - \langle \partial_t v \rangle)^2 \, dx + \frac{1}{2\delta} \int_{\Omega} (u \gamma(v) - \langle u \gamma(v) \rangle)^2 \, dx,
\end{aligned}$$

where we have used the equation (1) for the second equality, and Young's inequality for the last inequality. We furthermore compute the left-hand-side as

$$\begin{aligned}
& \int_{\Omega} (\partial_t v - \langle \partial_t v \rangle) \mathcal{K} [\varepsilon \partial_{tt} v + \beta \partial_t v] \, dx \\
&= \varepsilon \int_{\Omega} (\partial_t v - \langle \partial_t v \rangle) \mathcal{K} [\partial_{tt} v - \langle \partial_{tt} v \rangle] \, dx + \beta \int_{\Omega} (\partial_t v - \langle \partial_t v \rangle) \mathcal{K} [\partial_t v - \langle \partial_t v \rangle] \, dx \\
&= \varepsilon \int_{\Omega} \nabla \mathcal{K} [\partial_t v - \langle \partial_t v \rangle] \cdot \nabla \mathcal{K} [\partial_{tt} v - \langle \partial_{tt} v \rangle] \, dx + \beta \int_{\Omega} |\nabla \mathcal{K} [\partial_t v - \langle \partial_t v \rangle]|^2 \, dx \\
&= \frac{\varepsilon}{2} \frac{d}{dt} \int_{\Omega} |\nabla \mathcal{K} [\partial_t v - \langle \partial_t v \rangle]|^2 \, dx + \beta \int_{\Omega} |\nabla \mathcal{K} [\partial_t v - \langle \partial_t v \rangle]|^2 \, dx,
\end{aligned}$$

where we have used the definition of \mathcal{K} (including the associated boundary conditions). Summing up, we have that

$$\begin{aligned}
(17) \quad & \frac{\delta}{2} \int_{\Omega} (\partial_t v - \langle \partial_t v \rangle)^2 \, dx + \frac{\varepsilon}{2} \frac{d}{dt} \int_{\Omega} |\nabla \mathcal{K} [\partial_t v - \langle \partial_t v \rangle]|^2 \, dx + \beta \int_{\Omega} |\nabla \mathcal{K} [\partial_t v - \langle \partial_t v \rangle]|^2 \, dx \\
& \leq \frac{1}{2\delta} \int_{\Omega} (u \gamma(v) - \langle u \gamma(v) \rangle)^2 \, dx.
\end{aligned}$$

Using that $u \gamma(v)$ is bounded in $L^2(Q_T)$ thanks to the duality estimate (15) and the fact that γ in (3) is uniformly bounded, we finally get that, for any $T > 0$,

$$\int_0^T \int_{\Omega} (\partial_t v - \langle \partial_t v \rangle)^2 \, dx dt \leq C'_T.$$

In order to estimate the L^2 norm of $\langle \partial_t v \rangle$, we differentiate (13) with respect to time to get,

$$(18) \quad \langle \partial_t v \rangle = \frac{\langle u^0 \rangle - \beta \langle v^0 \rangle}{\varepsilon} e^{-\frac{\beta}{\varepsilon} t},$$

so that

$$\int_0^T \int_{\Omega} \langle \partial_t v \rangle^2 \, dx dt = \frac{m(\Omega)}{2\beta} \left(\frac{\langle u^0 \rangle - \beta \langle v^0 \rangle}{\sqrt{\varepsilon}} \right)^2 \left(1 - e^{-\frac{2\beta}{\varepsilon} T} \right).$$

Therefore we conclude that $\partial_t v$ is bounded in $L^2(Q_T)$ uniformly in ε exactly under the assumption **(H5)**.

3. NUMERICAL SCHEME AND MAIN RESULTS

3.1. Meshes and discrete functional framework. From now on $d = 1, 2$ or 3 . For presentation purposes we present the discretization of the domain $Q_T = \Omega \times (0, T)$ and our results for bi-dimensional domains only. Unless stated otherwise, the generalization to other space dimensions is straightforward.

Let then $\Omega \subset \mathbb{R}^2$ be a bounded, polygonal domain. An admissible mesh of Ω is given by (i) a family \mathcal{T} of open polygonal control volumes (or cells), (ii) a family \mathcal{E} of edges, and (iii) a family \mathcal{P} of points $(x_K)_{K \in \mathcal{T}}$ associated to the control volumes and satisfying Definition 9.1 in [28]. This definition implies that the straight line $\overline{x_K x_L}$ between two centers of neighboring cells is orthogonal to the edge $\sigma = K|L$ between two cells. For instance, Voronoï meshes satisfy this condition [28, Example 9.2]. The size of the mesh is denoted by $\Delta x = \max_{K \in \mathcal{T}} \text{diam}(K)$. The family of edges \mathcal{E} is assumed to consist of interior edges \mathcal{E}_{int} satisfying $\sigma \in \Omega$ and boundary edges $\sigma \in \mathcal{E}_{\text{ext}}$ satisfying $\sigma \subset \partial\Omega$. For a given $K \in \mathcal{T}$, \mathcal{E}_K is the set of edges of K , and it splits into $\mathcal{E}_K = \mathcal{E}_{\text{int},K} \cup \mathcal{E}_{\text{ext},K}$ and $\mathcal{N}(K)$ the set of its neighbouring control volumes (i.e. the cell L such that $\overline{L} \cap \overline{K}$ is an edge of the discretization). For any $\sigma \in \mathcal{E}$, there exists at least one cell $K \in \mathcal{T}$ such that $\sigma \in \mathcal{E}_K$. Moreover, for $\sigma \in \mathcal{E}$, we introduce the distance

$$d_\sigma = \begin{cases} \text{dist}(x_K, x_L) & \text{if } \sigma = K|L \in \mathcal{E}_{\text{int},K}, \\ \text{dist}(x_K, \sigma) & \text{if } \sigma \in \mathcal{E}_{\text{ext},K}, \end{cases}$$

where dist is the Euclidean distance in \mathbb{R}^2 , and the transmissibility coefficient

$$(19) \quad \tau_\sigma = \frac{m(\sigma)}{d_\sigma}.$$

The mesh is assumed to satisfy the following regularity assumption: There exists $\zeta > 0$ such that for all $K \in \mathcal{T}$ and $\sigma \in \mathcal{E}_K$,

$$(20) \quad \text{dist}(x_K, \sigma) \geq \zeta d_\sigma.$$

We also introduce suitable function spaces for the numerical scheme. The space of piecewise constant functions is defined by

$$(21) \quad \mathcal{H}_\mathcal{T} = \left\{ w : \Omega \rightarrow \mathbb{R} : \exists (w_K)_{K \in \mathcal{T}} \subset \mathbb{R}, w(x) = \sum_{K \in \mathcal{T}} w_K \mathbf{1}_K(x) \right\},$$

where $\mathbf{1}_K$ is the characteristic function on K . In the sequel, we will identify each $w \in \mathcal{H}_\mathcal{T}$ with its associated sequence $(w_K)_{K \in \mathcal{T}}$ and for any element $w \in \mathcal{H}_\mathcal{T}$, we will write (as at the continuous level)

$$\langle w \rangle = \frac{1}{m(\Omega)} \sum_{K \in \mathcal{T}} m(K) w_K.$$

Besides, in order to define a norm on the space $\mathcal{H}_\mathcal{T}$, we first introduce the notation

$$w_{K,\sigma} = \begin{cases} w_L & \text{if } \sigma = K|L \in \mathcal{E}_{\text{int}}, \\ w_K & \text{if } \sigma \in \mathcal{E}_{\text{ext},K}, \end{cases}$$

for $K \in \mathcal{T}$, $\sigma \in \mathcal{E}_K$ and the discrete operators

$$D_{K,\sigma} w := w_{K,\sigma} - w_K, \quad D_\sigma w := |D_{K,\sigma} w|.$$

Let $q \in [1, \infty)$ and $w \in \mathcal{H}_{\mathcal{T}}$. The discrete $W^{1,q}$ seminorm and discrete $W^{1,q}$ norm on $\mathcal{H}_{\mathcal{T}}$ are given by

$$|w|_{1,q,\mathcal{T}}^q = \sum_{\sigma \in \mathcal{E}} m(\sigma) d_{\sigma} \left| \frac{D_{\sigma} w}{d_{\sigma}} \right|^q, \quad \|w\|_{1,q,\mathcal{T}}^q = |w|_{1,q,\mathcal{T}}^q + \|w\|_{L^q(\Omega)}^q,$$

respectively, and $\|w\|_{L^q(\Omega)}$ denotes the L^q norm i.e. $\|w\|_{L^q(\Omega)} = (\sum_{K \in \mathcal{T}} m(K) |w_K|^q)^{1/q}$.

We finally define the space-time discrete framework. Let $T > 0$, let $N_T \in \mathbb{N}$ be the number of time steps. We introduce the step size $\Delta t = T/N_T$ as well as the time steps $t_n = n\Delta t$ for $n = 0, \dots, N_T$. We denote by \mathcal{D} the admissible space-time discretization of Q_T composed of an admissible mesh \mathcal{T} and the values $(\Delta t, N_T)$. We introduce the space $\mathcal{H}_{\mathcal{D}}$ of piecewise constant in time functions with values in $\mathcal{H}_{\mathcal{T}}$,

$$\mathcal{H}_{\mathcal{D}} = \left\{ w : \bar{\Omega} \times [0, T] \rightarrow \mathbb{R} : \exists (w^n)_{n=1, \dots, N_T} \subset \mathcal{H}_{\mathcal{T}}, \quad w(x, t) = \sum_{n=1}^{N_T} w^n(x) \mathbf{1}_{(t_{n-1}, t_n]}(t) \right\},$$

equipped, for $1 \leq p, q < \infty$, with the discrete $L^p(0, T; W^{1,q}(\Omega))$ norm

$$\left(\sum_{n=1}^{N_T} \Delta t \|w^n\|_{1,q,\mathcal{T}}^p \right)^{1/p}.$$

3.2. Numerical scheme. We first discretize the initial conditions as

$$(22) \quad u_K^0 = \frac{1}{m(K)} \int_K u^0(x) dx, \quad v_K^0 = \frac{1}{m(K)} \int_K v^0(x) dx, \quad \forall K \in \mathcal{T}.$$

Now for a given $n \geq 1$ and a given $(u^{n-1}, v^{n-1}) \in \mathbb{R}^{2\text{Card}(\mathcal{T})}$, the numerical scheme is defined as

$$(23) \quad m(K) \frac{u_K^n - u_K^{n-1}}{\Delta t} = \sum_{\sigma \in \mathcal{E}_K} \tau_{\sigma} D_{K,\sigma} u^n \gamma(v^n), \quad \forall K \in \mathcal{T},$$

$$(24) \quad \varepsilon m(K) \frac{v_K^n - v_K^{n-1}}{\Delta t} = \delta \sum_{\sigma \in \mathcal{E}_K} \tau_{\sigma} D_{K,\sigma} v^n + m(K) (u_K^{n-1} - \beta v_K^n), \quad \forall K \in \mathcal{T}.$$

We notice that the scheme (23)–(24) is linear and it can be rewritten as

$$(25) \quad \mathbb{M}_v v^n = b_v^{n-1}, \quad \mathbb{M}_u^n u^n = b_u^{n-1},$$

where $b_v^{n-1} = (m(K)(\varepsilon v^{n-1} + \Delta t u^{n-1}))_{K \in \mathcal{T}}$, $b_u^{n-1} = (m(K) u_K^{n-1})_{K \in \mathcal{T}}$ and \mathbb{M}_v and \mathbb{M}_u^n are squared matrices of size $\text{Card}(\mathcal{T}) \times \text{Card}(\mathcal{T})$ with entries

$$(26) \quad \begin{cases} (\mathbb{M}_v)_{K,K} = m(K)(\varepsilon + \Delta t \beta) + \delta \Delta t \sum_{\sigma \in \mathcal{E}_{\text{int},K}} \tau_{\sigma}, & \forall K \in \mathcal{T}, \\ (\mathbb{M}_v)_{K,L} = -\delta \Delta t \tau_{\sigma}, & \forall K \in \mathcal{T}, \forall L \in \mathcal{N}(K), \sigma = K|L, \\ (\mathbb{M}_v)_{K,L} = 0, & \forall K \in \mathcal{T}, \forall L \notin \mathcal{N}(K), \end{cases}$$

and

$$(27) \quad \begin{cases} (\mathbb{M}_u^n)_{K,K} = m(K) + \Delta t \sum_{\sigma \in \mathcal{E}_{\text{int},K}} \tau_{\sigma} \gamma(v_K^n), & \forall K \in \mathcal{T}, \\ (\mathbb{M}_u^n)_{K,K} = -\Delta t \tau_{\sigma} \gamma(v_L^n), & \forall K \in \mathcal{T}, \forall L \in \mathcal{N}(K), \sigma = K|L, \\ (\mathbb{M}_u^n)_{K,L} = 0, & \forall K \in \mathcal{T}, \forall L \notin \mathcal{N}(K). \end{cases}$$

3.3. Main results. Our first main result deals with the existence of a unique solution to the scheme (22)–(24) at each time step. But first let us introduce the definition of the discrete entropy functional

$$(28) \quad H(u^n, v^n) = \sum_{K \in \mathcal{T}} m(K) \left(h(u_K^n) + \frac{\beta}{2} |v_K^n|^2 - u_K^n v_K^n \right) + \frac{\delta}{2} \sum_{\sigma \in \mathcal{E}} \tau_\sigma (D_\sigma v^n)^2,$$

where $h(x) = x(\log(x) - 1) + 1$. We also introduce the corresponding discrete entropy dissipation functional as follows

$$(29) \quad D(u^n, v^n, v^{n-1}) = 4 \sum_{\sigma \in \mathcal{E}} \tau_\sigma \left(D_\sigma \sqrt{u^n \gamma(v^n)} \right)^2 + \varepsilon \sum_{K \in \mathcal{T}} m(K) \left| \frac{v_K^n - v_K^{n-1}}{\Delta t} \right|^2.$$

Theorem 4 (Well-posedness of the scheme). *Assume (H1)–(H4). Then, for any $1 \leq n \leq N_T$, there exists a unique positive solution (u^n, v^n) to the scheme (22)–(24). Moreover this solution satisfies the following properties:*

- *Mass estimates: for all $n \in \{1, \dots, N_T\}$ we have*

$$(30) \quad \langle u^n \rangle = \langle u^0 \rangle = \frac{1}{m(\Omega)} \int_{\Omega} u^0(x) \, dx,$$

and

$$(31) \quad \langle v^n \rangle = \frac{\langle u^0 \rangle}{\beta} + \left(\frac{\varepsilon}{\varepsilon + \beta \Delta t} \right)^n \left(\langle v^0 \rangle - \frac{\langle u^0 \rangle}{\beta} \right).$$

- *Entropy dissipation inequality: for all $n \in \{1, \dots, N_T\}$ it holds*

$$(32) \quad H(u^n, v^n) + \Delta t D(u^n, v^n, v^{n-1}) \leq H(u^{n-1}, v^{n-1}),$$

where H and D are defined in (28) and (29).

Remark 5. *Let us emphasize that the statement of Theorem 4 holds in the quasi-stationary regime $\varepsilon = 0$. It actually also holds in the asymptotic regime $\delta = 0$. Let us precise nonetheless that the regime $\delta = 0$ is very degenerate and the convergence of the scheme as well as the well-posedness of the continuous system are far from being granted in this case.*

The next main result deals with the convergence of the scheme. We first need to introduce some notation. For $K \in \mathcal{T}$ and $\sigma \in \mathcal{E}_K$, we define the cell $T_{K,\sigma}$ of the dual mesh:

- If $\sigma = K|L \in \mathcal{E}_{\text{int},K}$, then $T_{K,\sigma}$ is that cell (“diamond”) whose vertices are given by x_K, x_L , and the end points of the edge σ .
- If $\sigma \in \mathcal{E}_{\text{ext},K}$, then $T_{K,\sigma}$ is that cell (“triangle”) whose vertices are given by x_K and the end points of the edge σ .

The cells $T_{K,\sigma}$ define a partition of Ω . Then, the approximate gradient of $w \in \mathcal{H}_{\mathcal{D}}$ is defined by

$$(33) \quad \nabla^{\mathcal{D}} w(x, t) = \frac{m(\sigma)}{m(T_{K,\sigma})} (D_{K,\sigma} w^k) \nu_{K,\sigma} \quad \text{for } x \in T_{K,\sigma}, \, t \in (t_{k-1}, t_k],$$

where $\nu_{K,\sigma}$ is the unit vector that is normal to σ and points outwards of K .

Finally, we introduce a family $(\mathcal{D}_m)_{m \in \mathbb{N}}$ of admissible space-time discretizations of Q_T indexed by the size $\eta_m = \max\{\Delta x_m, \Delta t_m\}$ of the mesh, satisfying $\eta_m \rightarrow 0$ as $m \rightarrow \infty$. We denote by \mathcal{T}_m the corresponding meshes of Ω and by Δt_m the corresponding time step sizes. Finally, we set $\nabla^m := \nabla^{\mathcal{D}_m}$.

Theorem 6 (Convergence of the scheme). *Assume **(H1)**–**(H4)** and $\varepsilon > 0$. Let $(\mathcal{D}_m)_{m \in \mathbb{N}}$ be a family of admissible meshes satisfying (20) uniformly in $m \in \mathbb{N}$ and such that $\eta_m \rightarrow 0$ as $m \rightarrow \infty$. Let $(u_m, v_m)_{m \in \mathbb{N}}$ be a family of finite volume solutions to (22)–(23) obtained in Theorem 4. Then, there exists two nonnegative functions $u \in L^\infty(0, T; L^1(\Omega))$ and $v \in L^\infty(0, T; H^1(\Omega)) \cap H^1(0, T; L^2(\Omega))$ such that, up to a subsequence, as $m \rightarrow \infty$ we have*

$$\begin{aligned} u_m &\rightharpoonup u && \text{weakly in } L^1(Q_T), \\ v_m &\rightarrow v && \text{strongly in } L^2(Q_T), \\ \nabla^m v_m &\rightharpoonup \nabla v && \text{weakly in } L^2(Q_T). \end{aligned}$$

Moreover, (u, v) is a weak solution of (1)–(5) in the sense of Definition 1.

Remark 7. *When comparing this result with the existence result from [15], we observe that in **(H4)** the condition $u^0 \in L^2(\Omega)$ is slightly stronger than the ones imposed in [15]. This stronger assumption arises when establishing a discretized version of (15), see Remark 14 for more details.*

Eventually, we will prove that the scheme (22)–(24) is uniformly, w.r.t. ε and the size of the meshes, asymptotic preserving.

Theorem 8 (AP property). *Assume **(H1)**–**(H5)**, and let $(\mathcal{D}_m)_{m \in \mathbb{N}}$ be a family of admissible meshes satisfying (20) uniformly in $m \in \mathbb{N}$ and such that $\eta_m \rightarrow 0$ as $m \rightarrow \infty$. Consider a sequence $(\varepsilon_m)_{m \in \mathbb{N}} \subset [0, \infty)$ such that $\varepsilon_m \rightarrow 0$ as $m \rightarrow \infty$ and an associated sequence $(u_m, v_m)_{m \in \mathbb{N}}$ of finite volume solutions to (22)–(24) obtained in Theorem 4. Then, there exists (u, v) such that, as $(\varepsilon_m, \eta_m)_{m \in \mathbb{N}}$ converges to $(0, 0)$, we have, up to a subsequence,*

$$\begin{aligned} u_m &\rightharpoonup u && \text{weakly in } L^1(Q_T), \\ v_m &\rightarrow v && \text{strongly in } L^2(Q_T), \\ \nabla^m v_m &\rightharpoonup \nabla v && \text{weakly in } L^2(Q_T), \\ \varepsilon \partial_t v_m &\rightharpoonup 0 && \text{weakly in } L^2(Q_T). \end{aligned}$$

Furthermore, (u, v) is a weak solution to the quasi-stationary system in the sense of Definition 1.

Remark 9. *Note that a by-product of Theorem 8 is the convergence (up to a subsequence) of the numerical scheme for $\varepsilon = 0$ under assumptions **(H1)**–**(H4)**. Indeed, taking $(\varepsilon_m)_{m \in \mathbb{N}} = 0$ and some initial data u^0 in $L^2(\Omega)$, and defining v^0 as the solution of (2) with $\varepsilon = 0$ and u replaced by u^0 , we have that assumption **(H5)** is automatically verified. In fact, noting that when $\varepsilon = 0$ no initial data for v is needed, see (5), assumption **(H5)** becomes irrelevant.*

As a direct consequence of Theorem 8 and Proposition 2 with Remark 3 we obtain the

Corollary 10. *Let the assumptions of Theorem 8 hold, with $d = 1$ or 2 . Furthermore, assume that u^0 belongs to $L^\infty(\Omega)$. Then, there exists (u, v) such that the convergences in Theorem 8 hold for the whole sequence $(u_m, v_m)_{m \in \mathbb{N}}$ (and not only subsequences), and such that (u, v) is a weak-strong solution of the quasi-stationary system in the sense of Definition 2.*

4. EXISTENCE PROOF AND ENTROPY DIMINISHING PROPERTY OF THE SCHEME

This section is devoted to the proof of Theorem 4. Our strategy is the following. For $\omega \in (0, 1)$ given, let us first define the regularized initial data

$$(34) \quad u_K^{0,\omega} := u_K^0 + \omega, \quad \forall K \in \mathcal{T}.$$

Then, starting from $(u^{0,\omega}, v^0)$ we establish the existence of a (unique) positive solution $(u^{n,\omega}, v^{n,\omega})$ to the scheme (23)–(24), for which we can show mass and entropy estimates. In order to conclude the proof, it will remain to prove some uniform w.r.t. ω estimates and to pass to the limit $\omega \rightarrow 0$ both in the scheme and in the entropy estimate. Finally, we will use this later inequality to prove that the solutions to the scheme (22)–(24) are positive. First, our results on the scheme with regularized initial data are presented in the following lemma.

Lemma 11. *Assume (H1)–(H4), and for $\omega \in (0, 1)$ let $u_K^{0,\omega}$ be defined by (34). Then, for any $1 \leq n \leq N_T$, there exists a unique positive solution $(u^{n,\omega}, v^{n,\omega})$ to the scheme (23)–(24) with initialization $(u_K^{0,\omega}, v_K^0)$. Moreover it satisfies the following properties:*

- *Mass estimates: for all $n \in \{1, \dots, N_T\}$ we have*

$$(35) \quad \langle u^{n,\omega} \rangle = \langle u^{0,\omega} \rangle = \langle u^0 \rangle + \omega,$$

and

$$(36) \quad \langle v^{n,\omega} \rangle = \frac{\langle u^0 \rangle + \omega}{\beta} + \left(\frac{\varepsilon}{\varepsilon + \beta \Delta t} \right)^n \left(\langle v^0 \rangle - \frac{\langle u^0 \rangle + \omega}{\beta} \right).$$

- *Entropy dissipation inequality: for all $n \in \{1, \dots, N_T\}$ it holds*

$$(37) \quad H(u^{n,\omega}, v^{n,\omega}) + \Delta t \sum_{\substack{\sigma \in \mathcal{E}_{\text{int}} \\ \sigma = K|L}} \tau_\sigma D_{K,\sigma}(u^{n,\omega} \gamma(v^{n,\omega})) D_{K,\sigma} \log(u^{n,\omega} \gamma(v^{n,\omega})) \\ + \varepsilon \Delta t \sum_{K \in \mathcal{T}} m(K) \left| \frac{v_K^{n,\omega} - v_K^{n-1,\omega}}{\Delta t} \right|^2 \leq H(u^{n-1,\omega}, v^{n-1,\omega}),$$

where H is defined in (28).

Proof. We divide the proof into three steps.

Step 1. Well-posedness of the scheme. In the following we argue by induction. If $n = 1$, we notice that all the diagonal entries of \mathbb{M}_v are strictly positive, whereas the extra-diagonal coefficients are nonpositive. Besides, for a given $K \in \mathcal{T}$ it holds

$$\sum_{L \in \mathcal{T}} (\mathbb{M}_v)_{K,L} = m(K)(\varepsilon + \Delta t \beta) > 0.$$

Therefore the matrix \mathbb{M}_v is strictly diagonally dominant with respect to its rows and we conclude that \mathbb{M}_v is a M-matrix. In particular \mathbb{M}_v is invertible and, since all the components of the vectors b_v^0 are positive, we deduce that there exists a unique vector $v^{1,\omega}$ with positive components satisfying (24). Similarly, one can show that \mathbb{M}_u^1 is strictly diagonally dominant with respect to its columns. Since in \mathbb{M}_u^1 all the diagonal entries are strictly positive, whereas the extra-diagonal coefficients are nonpositive, we conclude that \mathbb{M}_u^1 is also a M-matrix. This implies the existence of a unique positive vector $u^{1,\omega}$ solution to (23). Finally, arguing recursively we obtain the existence of a unique positive solution $(u^{n,\omega}, v^{n,\omega})$ to the scheme (23)–(24)

for all $1 \leq n \leq N_T$.

Step 2. Mass estimates. Now, we observe that by summing (23) over $K \in \mathcal{T}$ we have by construction

$$\sum_{K \in \mathcal{T}} m(K) u_K^{n,\omega} = \sum_{K \in \mathcal{T}} m(K) u_K^{n-1,\omega},$$

such that (35) holds. Similarly, we sum the equation (24) over $K \in \mathcal{T}$ and we obtain

$$\begin{aligned} \varepsilon m(\Omega) \langle v^{n,\omega} \rangle - \varepsilon m(\Omega) \frac{\langle u^0 \rangle + \omega}{\beta} &= \varepsilon m(\Omega) \langle v^{n-1,\omega} \rangle \\ &\quad - \varepsilon m(\Omega) \frac{\langle u^0 \rangle + \omega}{\beta} + \Delta t \beta \left(m(\Omega) \frac{\langle u^0 \rangle + \omega}{\beta} - m(\Omega) \langle v^{n,\omega} \rangle \right), \end{aligned}$$

so that

$$(\varepsilon + \Delta t \beta) \left(\langle v^{n,\omega} \rangle - \frac{\langle u^0 \rangle + \omega}{\beta} \right) = \varepsilon \langle v^{n-1,\omega} \rangle - \varepsilon \frac{\langle u^0 \rangle + \omega}{\beta}.$$

Hence

$$\langle v^{n,\omega} \rangle - \frac{\langle u^0 \rangle + \omega}{\beta} = \frac{\varepsilon}{\varepsilon + \beta \Delta t} \left(\langle v^{n-1,\omega} \rangle - \frac{\langle u^0 \rangle + \omega}{\beta} \right),$$

and we conclude (36) by a direct induction.

Step 3. Entropy dissipation inequality. Let $1 \leq n \leq N_T$ be fixed, we multiply (23) by $\Delta t \log(u_K^{n,\omega} \gamma(v_K^{n,\omega})) = \Delta t (\log(u_K^{n,\omega}) - v_K^{n,\omega})$, we sum over $K \in \mathcal{T}$ and we use a discrete integration by parts to obtain

$$\begin{aligned} \sum_{K \in \mathcal{T}} m(K) (u^{n,\omega} - u^{n-1,\omega}) (\log(u_K^{n,\omega}) - v_K^{n,\omega}) \\ + \Delta t \sum_{\substack{\sigma \in \mathcal{E}_{\text{int}} \\ \sigma = K|L}} \tau_\sigma D_{K,\sigma} (u^{n,\omega} \gamma(v^{n,\omega})) D_{K,\sigma} \log(u^{n,\omega} \gamma(v^{n,\omega})) = 0. \end{aligned}$$

Using the convexity of the function $h(x) = x(\log(x) - 1) + 1$ we get

$$\begin{aligned} (38) \quad \sum_{K \in \mathcal{T}} m(K) \left(h(u_K^{n,\omega}) - h(u_K^{n-1,\omega}) \right) - \sum_{K \in \mathcal{T}} m(K) (u_K^{n,\omega} - u_K^{n-1,\omega}) v_K^{n,\omega} \\ + \Delta t \sum_{\substack{\sigma \in \mathcal{E}_{\text{int}} \\ \sigma = K|L}} \tau_\sigma D_{K,\sigma} (u^{n,\omega} \gamma(v^{n,\omega})) D_{K,\sigma} \log(u^{n,\omega} \gamma(v^{n,\omega})) \leq 0. \end{aligned}$$

Now, we multiply the equation (24) by $(v_K^{n,\omega} - v_K^{n-1,\omega})$, we sum over $K \in \mathcal{T}$ and we use a discrete integration by parts to get

$$\begin{aligned} \varepsilon \sum_{K \in \mathcal{T}} m(K) \frac{(v_K^{n,\omega} - v_K^{n-1,\omega})^2}{\Delta t} + \delta \sum_{\substack{\sigma \in \mathcal{E}_{\text{int}} \\ \sigma = K|L}} \tau_\sigma D_{K,\sigma} v^{n,\omega} D_{K,\sigma} (v^{n,\omega} - v^{n-1,\omega}) \\ + \beta \sum_{K \in \mathcal{T}} m(K) v_K^{n,\omega} (v_K^{n,\omega} - v_K^{n-1,\omega}) - \sum_{K \in \mathcal{T}} m(K) u_K^{n-1,\omega} (v_K^{n,\omega} - v_K^{n-1,\omega}) = 0. \end{aligned}$$

Applying the classical inequality $a^2 - b^2 \leq 2a(a - b)$ for all a and $b \in \mathbb{R}$ to the second and third terms of the l.h.s. yields

$$(39) \quad \varepsilon \sum_{K \in \mathcal{T}} m(K) \frac{(v_K^{n,\omega} - v_K^{n-1,\omega})^2}{\Delta t} + \frac{\delta}{2} \sum_{\substack{\sigma \in \mathcal{E}_{\text{int}} \\ \sigma = K|L}} \tau_\sigma ((D_\sigma v^{n,\omega})^2 - (D_\sigma v^{n-1,\omega})^2) \\ + \frac{\beta}{2} \sum_{K \in \mathcal{T}} m(K) (|v_K^{n,\omega}|^2 - |v_K^{n-1,\omega}|^2) - \sum_{K \in \mathcal{T}} m(K) u_K^{n-1,\omega} (v_K^{n,\omega} - v_K^{n-1,\omega}) \leq 0.$$

It remains to sum (38) and (39) and we end up with (37). \square

It now remains to pass to the limit $\omega \rightarrow 0$ and to show the positivity of the limit in order to prove Theorem 4.

Proof of Theorem 4. For $\omega \in (0, 1)$, we consider the regularized solution $(u^{n,\omega}, v^{n,\omega})$ built in Lemma 11. Since $\omega \in (0, 1)$, we deduce thanks to (35) and (36), that there exists a constant $C > 0$ independent of ω (but which depends on \mathcal{T}) such that

$$0 < u_K^{n,\omega}, v_K^{n,\omega} \leq C, \quad \forall K \in \mathcal{T}, n = 1, \dots, N_T.$$

Thereby, for any $1 \leq n \leq N_T$, there exists (u^n, v^n) such that, up to a subsequence, as $\omega \rightarrow 0$ we have

$$u_K^{n,\omega}, v_K^{n,\omega} \rightarrow u_K^n, v_K^n \geq 0, \quad \forall K \in \mathcal{T}.$$

We conclude that (u^n, v^n) is a solution to the scheme (23)–(24). Besides, the linear structure of the scheme allows us to deduce that (u^n, v^n) is the unique solution to the scheme and that in fact, as $\omega \rightarrow 0$, the whole sequence $(u^{n,\omega}, v^{n,\omega})$ converges toward (u^n, v^n) . We now pass to the limit in (35) and (36) in order to obtain the mass estimates (30) and (31). Moreover, a first consequence of (37), using the nonnegativity of all terms appearing in the sum, is that for all $\sigma \in \mathcal{E}_{\text{int}}$ with $\sigma = K|L$, we have

$$\limsup_{\omega \rightarrow 0} \left\{ (u_K^{n,\omega} \gamma(v_K^{n,\omega}) - u_L^{n,\omega} \gamma(v_L^{n,\omega})) (\log(u_K^{n,\omega} \gamma(v_K^{n,\omega})) - \log(u_L^{n,\omega} \gamma(v_L^{n,\omega}))) \right\} \leq H(u^{n-1}, v^{n-1}).$$

This implies that u^n is positive. Indeed, by contradiction let us assume that there exists $K \in \mathcal{T}$ with $u_K^n = 0$. Then, the previous inequality implies that any cell $L \in \mathcal{N}(K)$ should satisfy $u_L^n = 0$. Then, repeating this argument over all $K \in \mathcal{T}$ we conclude that $u_K^n = 0$ for all $K \in \mathcal{T}$. This contradicts the mass estimate (30). Hence, u^n is a positive vector for all $1 \leq n \leq N_T$ and since \mathbb{M}_v is a M-matrix we deduce that v^n is also a positive vector for all $1 \leq n \leq N_T$.

We can finally pass to the limit $\omega \rightarrow 0$ in (37) and obtain

$$H(u^n, v^n) + \Delta t \sum_{\substack{\sigma \in \mathcal{E}_{\text{int}} \\ \sigma = K|L}} \tau_\sigma D_{K,\sigma}(u^n \gamma(v^n)) D_{K,\sigma} \log(u^n \gamma(v^n)) \\ + \varepsilon \Delta t \sum_{K \in \mathcal{T}} m(K) \left| \frac{v_K^n - v_K^{n-1}}{\Delta t} \right|^2 \leq H(u^{n-1}, v^{n-1}).$$

We then apply the elementary inequality $4(\sqrt{a} - \sqrt{b}) \leq (a - b)(\log(a) - \log(b))$ for all $a, b > 0$ and we obtain the desired entropy inequality (32). \square

5. UNIFORM ESTIMATES

In this section we establish some uniform estimates on the solutions to the scheme (23)–(24). The main idea, as exposed formally in Section 2.2, is to combine the entropy inequality (32) together with a duality estimate. Following [15, Section 2.1], we first bound from below the term $-uv$ appearing in the definition of the entropy functional. Roughly speaking, this is done by estimating the $(H^1)'(\Omega)$ norm of $u - \langle u \rangle$ thanks to the relation

$$\|f\|_{(H^1)'(\Omega)} = \|\nabla(-\Delta)^{-1}f\|_{L^2(\Omega)},$$

for some f with $\int_{\Omega} f(x) dx = 0$.

Thereby, we need to adapt this approach at the discrete level. For this purpose, we introduce some discrete counterpart N of the norm $\|\cdot\|_{(H^1)'(\Omega)}$. We first define the subset $\tilde{\mathcal{H}}_{\mathcal{T}}$ of $\mathcal{H}_{\mathcal{T}}$ as

$$\tilde{\mathcal{H}}_{\mathcal{T}} = \{w \in \mathcal{H}_{\mathcal{T}} : \langle w \rangle = 0\}.$$

We then define the map $N : \tilde{\mathcal{H}}_{\mathcal{T}} \rightarrow \mathbb{R}_+$ by

$$N(w) = \left(\sum_{\sigma \in \mathcal{E}} \tau_{\sigma} (\mathbf{D}_{\sigma} z)^2 \right)^{1/2} = |z|_{1,2,\mathcal{T}},$$

where the vector z is the unique solution in $\tilde{\mathcal{H}}_{\mathcal{T}}$ to

$$(40) \quad - \sum_{\sigma \in \mathcal{E}_K} \tau_{\sigma} \mathbf{D}_{K,\sigma} z = m(K) w_K, \quad \forall K \in \mathcal{T}.$$

The existence and uniqueness of such z are guaranteed by [16, Theorem 2.5]. One can easily check that N is a norm on $\tilde{\mathcal{H}}_{\mathcal{T}}$. More precisely, we have the

Lemma 12. *Let \mathcal{T} be an admissible mesh of Ω . Then, for all $w \in \tilde{\mathcal{H}}_{\mathcal{T}}$, we have*

$$N(w) = \sup \left\{ \int_{\Omega} w \theta dx : \theta \in \tilde{\mathcal{H}}_{\mathcal{T}}, |\theta|_{1,2,\mathcal{T}} = 1 \right\}.$$

Proof. Let $w \in \tilde{\mathcal{H}}_{\mathcal{T}}$ and $\theta \in \tilde{\mathcal{H}}_{\mathcal{T}}$. We multiply the equation (40) by θ_K , we sum over $K \in \mathcal{T}$, we apply a discrete integration by parts and Cauchy-Schwarz inequality to obtain

$$\int_{\Omega} w \theta dx = \sum_{K \in \mathcal{T}} m(K) w_K \theta_K = \sum_{\substack{\sigma \in \mathcal{E}_{\text{int}} \\ \sigma = K|L}} \tau_{\sigma} \mathbf{D}_{K,\sigma} z \mathbf{D}_{K,\sigma} \theta \leq N(w) |\theta|_{1,2,\mathcal{T}}.$$

Then, picking $\theta_K = z_K / N(w)$ for all $K \in \mathcal{T}$, we have that $\theta \in \tilde{\mathcal{H}}_{\mathcal{T}}$, $|\theta|_{1,2,\mathcal{T}} = 1$ and

$$\int_{\Omega} w \theta dx = \frac{1}{N(w)} \sum_{\sigma \in \mathcal{E}} \tau_{\sigma} (\mathbf{D}_{\sigma} z)^2 = N(w).$$

This concludes the proof of Lemma 12. \square

Equipped with this norm, we now prove the following estimate, which can be seen as the discrete counterpart of (15).

Proposition 13 (Duality estimate). *Assume (H1)–(H4) and let \mathcal{D} be an admissible mesh satisfying (20). Then, there exists a constant $C > 0$ only depending on Ω and ζ such that*

$$(41) \quad \begin{aligned} \max_{1 \leq n \leq N_T} N(u^n - \langle u^0 \rangle)^2 + 2 \sum_{n=1}^{N_T} \Delta t \|u^n \sqrt{\gamma(v^n)}\|_{L^2(\Omega)}^2 \\ \leq C \|u^0 - \langle u^0 \rangle\|_{L^2(\Omega)}^2 + 2T \mathfrak{m}(\Omega) \langle u^0 \rangle^2. \end{aligned}$$

Proof. We consider the term

$$I = \frac{1}{2} \sum_{K \in \mathcal{T}} \left((u_K^n - \langle u^0 \rangle) z_K^n - (u_K^{n-1} - \langle u^0 \rangle) z_K^{n-1} \right),$$

where the vectors z^n and z^{n-1} are the unique solutions to (40) associated to $u^n - \langle u^0 \rangle$ and $u^{n-1} - \langle u^0 \rangle$ respectively. Thanks to (40) and a summation by parts, we first observe that we can rewrite I as

$$(42) \quad I = \frac{1}{2} \sum_{\substack{\sigma \in \mathcal{E}_{\text{int}} \\ \sigma = K|L}} \tau_\sigma \left((D_\sigma z^n)^2 - (D_\sigma z^{n-1})^2 \right) = \frac{1}{2} [N(u^n - \langle u^0 \rangle)^2 - N(u^{n-1} - \langle u^0 \rangle)^2].$$

On the other hand, applying the inequality $(a^2 - b^2) \leq 2a(a - b)$ for $a, b \in \mathbb{R}$, we obtain

$$\begin{aligned} I &\leq \frac{1}{2} \sum_{\substack{\sigma \in \mathcal{E}_{\text{int}} \\ \sigma = K|L}} \tau_\sigma \left((D_\sigma z^n)^2 - (D_\sigma z^{n-1})^2 \right) \leq \sum_{\substack{\sigma \in \mathcal{E}_{\text{int}} \\ \sigma = K|L}} \tau_\sigma (D_{K,\sigma} z^n - D_{K,\sigma} z^{n-1}) D_{K,\sigma} z^n \\ &= - \sum_{K \in \mathcal{T}} \sum_{\sigma \in \mathcal{E}_K} \tau_\sigma (D_{K,\sigma} z^n - D_{K,\sigma} z^{n-1}) z_K^n. \end{aligned}$$

Using the equations (40) and (23) and some discrete integration by parts we get

$$\begin{aligned} I &\leq \sum_{K \in \mathcal{T}} \mathfrak{m}(K) \left((u_K^n - \langle u^0 \rangle) - (u_K^{n-1} - \langle u^0 \rangle) \right) z_K^n = -\Delta t \sum_{\substack{\sigma \in \mathcal{E}_{\text{int}} \\ \sigma = K|L}} \tau_\sigma D_{K,\sigma} (u^n \gamma(v^n)) D_{K,\sigma} z^n \\ &= \Delta t \sum_{K \in \mathcal{T}} \sum_{\sigma \in \mathcal{E}_K} \tau_\sigma D_{K,\sigma} z^n u_K^n \gamma(v_K^n). \end{aligned}$$

It remains to apply once more (40) and the inequality $\gamma(v_K^n) \leq 1$ for all $K \in \mathcal{T}$ together with (30) and we end up with

$$(43) \quad \begin{aligned} I &\leq -\Delta t \sum_{K \in \mathcal{T}} \mathfrak{m}(K) (u_K^n - \langle u^0 \rangle) u_K^n \gamma(v_K^n) = -\Delta t \|u^n \sqrt{\gamma(v^n)}\|_{L^2(\Omega)}^2 + \Delta t \langle u^0 \rangle \|u^n \gamma(v^n)\|_{L^1(\Omega)} \\ &\leq -\Delta t \|u^n \sqrt{\gamma(v^n)}\|_{L^2(\Omega)}^2 + \Delta t \mathfrak{m}(\Omega) \langle u^0 \rangle^2. \end{aligned}$$

Gathering (42) and (43) we obtain

$$N(u^n - \langle u^0 \rangle)^2 + 2\Delta t \|u^n \sqrt{\gamma(v^n)}\|_{L^2(\Omega)}^2 \leq N(u^{n-1} - \langle u^0 \rangle)^2 + 2\Delta t \mathfrak{m}(\Omega) \langle u^0 \rangle^2.$$

We sum over n the above inequality, such that, it holds:

$$\max_{1 \leq n \leq N_T} N(u^n - \langle u^0 \rangle)^2 + 2 \sum_{n=1}^{N_T} \Delta t \|u^n \sqrt{\gamma(v^n)}\|_{L^2(\Omega)}^2 \leq N(u^0 - \langle u^0 \rangle)^2 + 2T \mathfrak{m}(\Omega) \langle u^0 \rangle^2.$$

We now apply the Cauchy-Schwarz inequality, Lemma 21 in Appendix A and the discrete Poincaré-Wirtinger inequality (see [5, Proposition 1]) and we have

$$(44) \quad \begin{aligned} N(u^0 - \langle u^0 \rangle)^2 &= |z^0|_{1,2,\mathcal{T}}^2 = \sum_{K \in \mathcal{T}} \mathfrak{m}(K) (u_K^0 - \langle u^0 \rangle) z_K^0 \\ &\leq \left(\sum_{K \in \mathcal{T}} \mathfrak{m}(K) |u_K^0 - \langle u^0 \rangle|^2 \right)^{1/2} \|z^0\|_{L^2(\Omega)} \leq C \|u^0 - \langle u^0 \rangle\|_{L^2(\Omega)} |z^0|_{1,2,\mathcal{T}}, \end{aligned}$$

for some C depending only on Ω and ζ . Thereby, combining (44) with the previous inequality we deduce (41). \square

Remark 14. *The counterpart of Proposition 13 in a continuous setting, given by the equation (15), only requires the $(H^1)'$ norm of the initial data (minus its mean) while here the obtained inequality depends on its L^2 norm. To discuss this divergence, let us first introduce the zero-mean L^2 set*

$$L_{\diamond}^2(\Omega) := \{w \in L^2(\Omega) : \langle w \rangle = 0\}.$$

In the proof of Proposition 13, the L^2 norm of the initial data arises in (44), where we obtain the continuity of the discrete projection given by (22) and (21),

$$(45) \quad \pi_{\mathcal{T}} : w \in L_{\diamond}^2(\Omega) \mapsto \sum_{K \in \mathcal{T}} \mathbf{1}_K \frac{1}{\mathfrak{m}(K)} \int_K w \, dx \in \tilde{\mathcal{H}}_{\mathcal{T}},$$

when $\tilde{\mathcal{H}}_{\mathcal{T}}$ is endowed with the norm N , and $L_{\diamond}^2(\Omega)$ is naturally endowed with the L^2 norm. However, one cannot hope in general to obtain the continuity of the discrete projection $\pi_{\mathcal{T}}$ when extended and seen as an operator from $((H^1)'(\Omega), \|\cdot\|_{(H^1)'(\Omega)})$ to $(\tilde{\mathcal{H}}_{\mathcal{T}}, N)$, as showed in the counter-example given in Appendix B. Actually, while N seen as a dual norm (see Lemma 12) and the norm $\|\cdot\|_{(H^1)'(\Omega)}$ share formal similarities, they are quite delicate to compare. One reason is that the intersection of the dual sets $\tilde{\mathcal{H}}_{\mathcal{T}}$ and $H^1(\Omega)$ is trivial.

We could however slightly weaken the assumption $u^0 \in L^2(\Omega)$ by $u^0 \in L^p(\Omega)$ for some convenient $p < 2$. Indeed, it is sufficient in the estimate (44) to apply Hölder's inequality as follows

$$\sum_{K \in \mathcal{T}} \mathfrak{m}(K) (u_K^0 - \langle u^0 \rangle) z_K^0 \leq \|u^0 - \langle u^0 \rangle\|_{L^p(\Omega)} \|z^0\|_{L^q(\Omega)},$$

with $1/p + 1/q = 1$. Then, depending on the space dimension $d = 1, 2$ or 3 , one can readily obtain the convenient exponent $p < 2$.

Corollary 15. *Assume (H1)–(H4) and let \mathcal{D} be an admissible mesh satisfying (20). Then, there exists a constant $C > 0$ which depends on $u^0, v^0, \beta, \delta, T, \Omega$ and ζ such that*

$$(46) \quad \begin{aligned} \max_{1 \leq n \leq N_T} \sum_{K \in \mathcal{T}} \mathfrak{m}(K) h(u_K^n) + 4 \sum_{n=1}^{N_T} \Delta t |\sqrt{u^n \gamma(v^n)}|_{1,2,\mathcal{T}}^2 \\ + \max_{1 \leq n \leq N_T} \|v^n\|_{1,2,\mathcal{T}} + \varepsilon \sum_{n=1}^{N_T} \Delta t \left\| \frac{v^n - v^{n-1}}{\Delta t} \right\|_{L^2(\Omega)}^2 \leq C. \end{aligned}$$

Proof. As already mentioned, in order to establish (46), the main idea is to use the entropy inequality (32). For this purpose we need to bound from below the term $-u_K^n v_K^n$ appearing

in the definition (28) of the functional H . In the sequel we denote by z^n the unique solution to (40) associated to $u^n - \langle u^0 \rangle$. We have the following relations

$$\begin{aligned} \sum_{K \in \mathcal{T}} m(K) u_K^n v_K^n &= \sum_{K \in \mathcal{T}} m(K) (u_K^n - \langle u^0 \rangle) v_K^n + \sum_{K \in \mathcal{T}} m(K) \langle u^0 \rangle v_K^n \\ &= - \sum_{K \in \mathcal{T}} \sum_{\sigma \in \mathcal{E}_K} \tau_\sigma D_{K,\sigma} z^n v_K^n + \langle u^0 \rangle \sum_{K \in \mathcal{T}} m(K) v_K^n \\ &= \sum_{\substack{\sigma \in \mathcal{E}_{\text{int}} \\ \sigma = K|L}} \tau_\sigma D_{K,\sigma} z^n D_{K,\sigma} v^n + \langle u^0 \rangle \sum_{K \in \mathcal{T}} m(K) v_K^n. \end{aligned}$$

Applying Young's inequality we obtain

$$- \sum_{K \in \mathcal{T}} m(K) u_K^n v_K^n \geq - \frac{N(u^n - \langle u^0 \rangle)^2}{\delta} - \frac{\delta}{4} |v^n|_{1,2,\mathcal{T}}^2 - \frac{\langle u^0 \rangle^2}{\beta} - \frac{\beta}{4} \|v^n\|_{L^2(\Omega)}^2.$$

Therefore, thanks to Proposition 13 we deduce that there exists a constant $C > 0$ only depending on u^0 , T , Ω and ζ such that

$$H(u^n, v^n) \geq - \frac{C}{\delta} - \frac{\langle u^0 \rangle^2}{\beta} + \sum_{K \in \mathcal{T}} m(K) \left(h(u_K^n) + \frac{\beta}{4} |v_K^n|^2 \right) + \frac{\delta}{4} \sum_{\sigma \in \mathcal{E}} \tau_\sigma (D_\sigma v^n)^2.$$

Hence, the inequality (46) is a simple consequence of the above estimate, the entropy production inequality (32), Lemma 21 and Lemma 22. \square

Proposition 16. *Assume (H1)–(H4) with $\varepsilon > 0$ and let \mathcal{D} be an admissible mesh satisfying (20). Then there exists a constant $C > 0$ only depending on u^0 , v^0 , β , ε , δ , T , Ω and ζ , which blows-up as $\varepsilon \rightarrow 0$, such that*

$$(47) \quad \|v(\cdot, \cdot + \tau) - v(\cdot, \cdot)\|_{L^2(\Omega \times (0, T-\tau))}^2 \leq C \tau, \quad \tau \in (0, \Delta t),$$

where $v \in \mathcal{H}_{\mathcal{D}}$ denotes the piecewise constant in time function associated to the solutions v^n of (24) for $1 \leq n \leq N_T$.

Proof. Following, for instance [28], we first notice that it holds

$$\int_0^{T-\tau} \int_{\Omega} (v(x, t + \tau) - v(x, t))^2 dx dt \leq \sum_{n=1}^{N_T} \int_0^{T-\tau} \chi_n(t, t + \tau) dt \sum_{K \in \mathcal{T}} m(K) (v_K^n - v_K^{n-1})^2,$$

where

$$\chi_n(t, t + \tau) = \begin{cases} 1 & \text{if } n\Delta t \in (t, t + \tau], \\ 0 & \text{if } n\Delta t \notin (t, t + \tau]. \end{cases}$$

Let us observe that by construction we have

$$\int_0^{T-\tau} \chi_n(t, t + \tau) dt \leq \tau.$$

Thus

$$\int_0^{T-\tau} \int_{\Omega} (v(x, t + \tau) - v(x, t))^2 dx dt \leq \tau \sum_{n=1}^{N_T} \sum_{K \in \mathcal{T}} m(K) (v_K^n - v_K^{n-1})^2.$$

Thanks to Corollary 15 we deduce that there exists a constant $C > 0$ only depending on u^0 , v^0 , β , ε , δ , T , Ω and ζ such that (47) holds. \square

6. PROOF OF CONVERGENCE OF THE SCHEME

6.1. Compactness properties. Let the discrete time derivative of a function $w \in \mathcal{H}_{\mathcal{D}_m}$ be given by

$$\partial_t^m w(x, t) = \frac{w^n(x) - w^{n-1}(x)}{\Delta t_m} \quad \text{for } (x, t) \in \Omega \times (t_{n-1}, t_n].$$

Proposition 17. *Assume (H1)–(H4) and $\varepsilon > 0$. Let $(\mathcal{D}_m)_{m \in \mathbb{N}}$ be a family of admissible meshes satisfying (20) uniformly in $m \in \mathbb{N}$. Let $(u_m, v_m)_{m \in \mathbb{N}}$ be a family of finite volume solutions to (22)–(23) obtained in Theorem 4. Then, there exists $u \in L^\infty(0, T; L^1(\Omega))$ and $v \in L^\infty(0, T; H^1(\Omega)) \cap H^1(0, T; L^2(\Omega))$ two nonnegative functions such that, up to a subsequence, as $m \rightarrow \infty$ we have*

$$(48) \quad u_m \overset{*}{\rightharpoonup} u \quad \text{weakly in } L^\infty(0, T; L^1(\Omega)),$$

$$(49) \quad u_m \rightharpoonup u \quad \text{weakly in } L^1(Q_T),$$

$$(50) \quad v_m \rightarrow v \quad \text{strongly in } L^2(Q_T),$$

$$(51) \quad \nabla^m v_m \rightharpoonup \nabla v \quad \text{weakly in } L^2(Q_T),$$

$$(52) \quad \partial_t^m v_m \rightharpoonup \partial_t v \quad \text{weakly in } L^2(Q_T),$$

$$(53) \quad u_m \gamma(v_m) \rightharpoonup u \gamma(v) \quad \text{weakly in } L^2(Q_T).$$

Proof. All the convergence properties stated below occur up to the extraction of a subsequence when $m \rightarrow \infty$. The existence of a nonnegative function $u \in L^1(Q_T)$ such that the convergence result (49) holds, is a direct consequence of (46) and the Dunford-Pettis theorem. Moreover, the mass estimate (30) implies (48). Now, the existence of a function $v \in L^2(Q_T)$ satisfying (50) is a consequence of Corollary 15 and Proposition 16 in conjunction with a Kolmogorov compactness theorem in L^2 , see [28, Theorem 3.9, Theorem 4.2]. This convergence implies that $v_m \rightarrow v$ a.e. in Q_T , so that v is a nonnegative function. Moreover, Corollary 15 yields the existence of a function w such that $\nabla^m v_m \rightharpoonup w$ weakly in $L^2(Q_T)$. Then, we readily show that in the sense of distribution it holds $w = \nabla v$. The fact that $v \in L^\infty(0, T; H^1(\Omega))$ is a consequence of the entropy inequality (32) and the l.s.c. of the L^2 norm. Applying once more Corollary 15 allows us to observe that the sequence $(\partial_t^m v_m)_{m \in \mathbb{N}}$ is uniformly bounded in $L^2(Q_T)$, which yields the convergence result (52). Finally, for (53), we first notice that $u_m \rightharpoonup u$ weakly in $L^1(Q_T)$. Besides, since the sequence of nonnegative functions $(v_m)_{m \in \mathbb{N}}$ converge a.e. in Q_T and since the function γ is continuous then

$$\gamma(v_m) \rightarrow \gamma(v) \quad \text{a.e. in } Q_T \quad \text{and} \quad \sup_{m \in \mathbb{N}} \|\gamma(v_m)\|_{L^\infty(Q_T)} \leq 1.$$

Hence, thanks to Lemma 23 we conclude that $u_m \gamma(v_m) \rightharpoonup u \gamma(v)$ weakly in $L^1(Q_T)$. Finally, using again the uniform bound on $\gamma(v_m)$ we deduce from Proposition 13 that the sequence $(u_m \gamma(v_m))_{m \in \mathbb{N}}$ is uniformly bounded in $L^2(Q_T)$. We can then improve its weak convergence and obtain (53). \square

6.2. Identification of the limit. We can finally prove the convergence of the scheme.

Proof of Theorem 6. It remains to show that the functions u and v obtained in Proposition 17 are weak solutions to (1)–(5) in the sense of Definition 1. In order to prove that v satisfies (10) we refer for instance to [28, Theorem 4.2]. Now, let $\varphi \in C_c^\infty(\bar{\Omega} \times [0, T])$ with $\nabla \varphi \cdot \nu = 0$ on

$\partial\Omega \times [0, T)$, we multiply (23) by $\Delta t_m \varphi_K^{n-1}$ where $\varphi_K^{n-1} = \varphi(x_K, t_{n-1})$, we sum over $K \in \mathcal{T}_m$ and $1 \leq n \leq N_T$, and we obtain $F_1^m + F_2^m = 0$ where

$$F_1^m = \sum_{n=1}^{N_T} \sum_{K \in \mathcal{T}_m} m(K) (u_K^n - u_K^{n-1}) \varphi_K^{n-1} = \sum_{n=1}^{N_T} \sum_{K \in \mathcal{T}_m} m(K) u_K^n (\varphi_K^{n-1} - \varphi_K^n) - \sum_{K \in \mathcal{T}_m} m(K) u_K^0 \varphi_K^0,$$

and

$$F_2^m = - \sum_{n=1}^{N_T} \Delta t_m \sum_{K \in \mathcal{T}_m} \sum_{\sigma \in \mathcal{E}_K} \tau_\sigma (D_{K,\sigma} u^n \gamma(v^n)) \varphi_K^{n-1}.$$

Let $\psi_m(x, t) = (\varphi_K^n - \varphi_K^{n-1})/\Delta t_m$ for all $x \in K$, $K \in \mathcal{T}_m$ and $t \in (t_{n-1}, t_n]$ and $\varphi_m^0(x) = \varphi_K^0$ for all $x \in K$. Then, since $\psi_m \rightarrow \partial_t \varphi$ in $L^\infty(Q_T)$ and $\varphi_m^0 \rightarrow \varphi(\cdot, 0)$ in $L^\infty(\Omega)$, using the convergence results of Proposition 17 one obtains that, up to a subsequence,

$$\begin{aligned} & F_1^m + \int_{Q_T} u \partial_t \varphi \, dx dt + \int_{\Omega} u^0(x) \varphi(x, 0) \, dx \\ &= \int_{Q_T} (u \partial_t \varphi - u_m \psi_m) \, dx dt + \int_{\Omega} (u^0(x) \varphi(x, 0) - u_m^0(x) \varphi_m^0(x)) \, dx \rightarrow 0 \quad \text{as } m \rightarrow \infty. \end{aligned}$$

Now, we rewrite F_2^m as

$$F_2^m = - \frac{1}{2} \sum_{n=1}^{N_T} \Delta t_m \sum_{\sigma \in \mathcal{E}} m(\sigma) (u_{K,\sigma}^n \gamma(v_{K,\sigma}^n) - u_K^n \gamma(v_K^n)) \frac{\varphi_K^{n-1} - \varphi_{K,\sigma}^{n-1}}{d_\sigma}.$$

Let us now introduce the following quantity

$$\begin{aligned} F_{21}^m &= \sum_{n=1}^{N_T} \Delta t_m \int_{\Omega} u_m \gamma(v_m) \Delta \varphi(x, t_{n-1}) \, dx \\ &= \sum_{n=1}^{N_T} \Delta t_m \sum_{K \in \mathcal{T}_m} u_K^n \gamma(v_K^n) \int_K \Delta \varphi(x, t_{n-1}) \, dx \\ &= \frac{1}{2} \sum_{n=1}^{N_T} \Delta t_m \sum_{\sigma \in \mathcal{E}} (u_K^n \gamma(v_K^n) - u_{K,\sigma}^n \gamma(v_{K,\sigma}^n)) \int_{\sigma} \nabla \varphi(s, t_{n-1}) \cdot \nu_{K,\sigma} \, ds. \end{aligned}$$

Thanks to the weak convergence, up to a subsequence, in $L^2(Q_T)$ of $(u_m \gamma(v_m))_{m \in \mathbb{N}}$ towards $u \gamma(v)$ we obtain

$$F_{21}^m \rightarrow \int_{Q_T} u \gamma(v) \Delta \varphi \, dx dt \quad \text{as } m \rightarrow \infty.$$

Besides, we notice that the term $F_2^m + F_{21}^m$ can be rewritten as

$$F_2^m + F_{21}^m = \frac{1}{2} \sum_{n=1}^{N_T} \Delta t_m \sum_{\sigma \in \mathcal{E}} m(\sigma) (u_K^n \gamma(v_K^n) - u_{K,\sigma}^n \gamma(v_{K,\sigma}^n)) R_\sigma^{n-1},$$

where

$$R_\sigma^{n-1} := \frac{1}{m(\sigma)} \int_{\sigma} \nabla \varphi(s, t_{n-1}) \cdot \nu_{K,\sigma} \, ds - \frac{\varphi_{K,\sigma}^{n-1} - \varphi_K^{n-1}}{d_\sigma}.$$

Using the regularity of φ we deduce that there exists a constant $C > 0$ only depending on φ such that

$$|R_\sigma^{n-1}| \leq C \eta_m.$$

This yields

$$\begin{aligned} |F_2^m + F_{21}^m| &\leq C \eta_m \sum_{n=1}^{N_T} \Delta t_m \sum_{\substack{\sigma \in \mathcal{E}_{\text{int}} \\ \sigma = K|L}} m(\sigma) \left| \left(\sqrt{u_K^n \gamma(v_K^n)} + \sqrt{u_L^n \gamma(v_L^n)} \right) \right. \\ &\quad \left. \times \left(\sqrt{u_K^n \gamma(v_K^n)} - \sqrt{u_L^n \gamma(v_L^n)} \right) \right|. \end{aligned}$$

Now, thanks to Cauchy-Schwarz inequality and the discrete entropy estimate (32) we obtain the existence of a constant, still denoted C , independent of η_m such that

$$|F_2^m + F_{21}^m| \leq C \eta_m \left(\sum_{n=1}^{N_T} \Delta t_m \sum_{\substack{\sigma \in \mathcal{E}_{\text{int}} \\ \sigma = K|L}} m(\sigma) d_\sigma \left(\sqrt{u_K^n \gamma(v_K^n)} + \sqrt{u_L^n \gamma(v_L^n)} \right)^2 \right)^{1/2}.$$

We estimate the remaining term as follows

$$\begin{aligned} &\sum_{n=1}^{N_T} \Delta t_m \sum_{\substack{\sigma \in \mathcal{E}_{\text{int}} \\ \sigma = K|L}} m(\sigma) d_\sigma \left(\sqrt{u_K^n \gamma(v_K^n)} + \sqrt{u_L^n \gamma(v_L^n)} \right)^2 \\ &\leq 2 \sum_{n=1}^{N_T} \Delta t_m \sum_{\substack{\sigma \in \mathcal{E}_{\text{int}} \\ \sigma = K|L}} m(\sigma) d(x_K, x_L) (u_K^n \gamma(v_K^n) + u_L^n \gamma(v_L^n)) \\ &\leq 2 \sum_{n=1}^{N_T} \Delta t_m \sum_{K \in \mathcal{T}_m} u_K^n \gamma(v_K^n) \sum_{\sigma \in \mathcal{E}_{\text{int}, K}} m(\sigma) d(x_K, x_L), \end{aligned}$$

where, using furthermore the regularity assumption (20), we observe that in two space dimensions we have

$$\sum_{\sigma \in \mathcal{E}_{\text{int}, K}} m(\sigma) d(x_K, x_L) \leq \frac{1}{\zeta} \sum_{\sigma \in \mathcal{E}_{\text{int}, K}} m(\sigma) d(x_K, \sigma) \leq \frac{2}{\zeta} m(K),$$

so that

$$\sum_{n=1}^{N_T} \Delta t_m \sum_{\substack{\sigma \in \mathcal{E}_{\text{int}} \\ \sigma = K|L}} m(\sigma) d_\sigma \left(\sqrt{u_K^n \gamma(v_K^n)} + \sqrt{u_L^n \gamma(v_L^n)} \right)^2 \leq \frac{4}{\zeta} \sum_{n=1}^{N_T} \Delta t_m \sum_{K \in \mathcal{T}_m} m(K) u_K^n \gamma(v_K^n).$$

Applying once more the Cauchy-Schwarz inequality and the estimate $\gamma(v_K^n) \leq 1$ for all $K \in \mathcal{T}_m$, we obtain

$$\begin{aligned} \sum_{n=1}^{N_T} \Delta t_m \sum_{\substack{\sigma \in \mathcal{E}_{\text{int}} \\ \sigma = K|L}} m(\sigma) d_\sigma \left(\sqrt{u_K^n \gamma(v_K^n)} + \sqrt{u_L^n \gamma(v_L^n)} \right)^2 \\ \leq \frac{4\sqrt{T m(\Omega)}}{\zeta} \left(\sum_{n=1}^{N_T} \Delta t_m \|u_m \sqrt{\gamma(v_m)}\|_{L^2(\Omega)}^2 \right)^{1/2}. \end{aligned}$$

We end up with the following estimate

$$|F_2^m + F_{21}^m| \leq \frac{2C(T m(\Omega))^{1/4}}{\zeta^{1/2}} \left(\sum_{n=1}^{N_T} \Delta t_m \|u_m \sqrt{\gamma(v_m)}\|_{L^2(\Omega)}^2 \right)^{1/4} \eta_m.$$

Finally, the discrete duality estimate (41) allows us to conclude that

$$F_2^m + F_{21}^m \rightarrow 0 \quad \text{as } m \rightarrow \infty.$$

This finishes the proof of Theorem 6. \square

7. ASYMPTOTIC PRESERVING PROPERTY OF THE SCHEME

This section is dedicated to the proof of Theorem 8. For this purpose we will first adapt at the discrete level the estimate (17). We define for every $0 \leq n \leq N_T - 1$,

$$(54) \quad w_K^n = \frac{v_K^{n+1} - v_K^n}{\Delta t}, \quad \forall K \in \mathcal{T}.$$

Then, using the equation (24), we deduce that w_K^n satisfies for all $1 \leq n \leq N_T - 1$,

$$(55) \quad \varepsilon m(K) \frac{w_K^n - w_K^{n-1}}{\Delta t} + \beta m(K) w_K^n = \delta \sum_{K \in \mathcal{E}_K} \tau_\sigma D_{K,\sigma} w^n + m(K) \frac{u_K^n - u_K^{n-1}}{\Delta t}, \quad \forall K \in \mathcal{T}.$$

Throughout this section, for each $0 \leq n \leq N_T - 1$, we introduce the unique element $z^n \in \tilde{\mathcal{H}}_{\mathcal{T}}$ such that

$$- \sum_{\sigma \in \mathcal{E}_K} \tau_\sigma D_{K,\sigma} z^n = m(K) (w_K^n - \langle w^n \rangle), \quad \forall K \in \mathcal{T}.$$

Proposition 18 (Discrete counterpart of (17)). *Assume (H1)–(H4). Then, for each $1 \leq n \leq N_T - 1$, the following estimate hold*

$$(56) \quad \begin{aligned} \frac{\delta}{2} \sum_{K \in \mathcal{T}} m(K) (w_K^n - \langle w^n \rangle)^2 + \frac{\varepsilon}{2} \sum_{\sigma \in \mathcal{E}} \tau_\sigma \frac{(D_\sigma z^n)^2 - (D_\sigma z^{n-1})^2}{\Delta t} \\ + \beta \sum_{\sigma \in \mathcal{E}} \tau_\sigma (D_\sigma z^n)^2 \leq \frac{1}{2\delta} \sum_{K \in \mathcal{T}} m(K) (u_K^n \gamma(v_K^n) - \langle u^n \gamma(v^n) \rangle)^2. \end{aligned}$$

Proof. First, we rewrite for every $K \in \mathcal{T}$ the equation (55) as

$$\begin{aligned} \varepsilon m(K) \frac{w_K^n - w_K^{n-1}}{\Delta t} + \beta m(K) w_K^n \\ = \delta \sum_{K \in \mathcal{E}_K} \tau_\sigma D_{K,\sigma} (w^n - \langle w^n \rangle) + \sum_{\sigma \in \mathcal{E}_K} \tau_\sigma D_{K,\sigma} (u^n \gamma(v^n) - \langle u^n \gamma(v^n) \rangle), \end{aligned}$$

multiplying this relation by z_K^n and summing over $K \in \mathcal{T}$ we obtain the equation $I_1 = I_2$ where

$$\begin{aligned} I_1 &= \varepsilon \sum_{K \in \mathcal{T}} m(K) \frac{w_K^n - w_K^{n-1}}{\Delta t} z_K^n + \beta \sum_{K \in \mathcal{T}} m(K) w_K^n z_K^n, \\ I_2 &= \delta \sum_{K \in \mathcal{T}} \sum_{\sigma \in \mathcal{E}_K} \tau_\sigma \mathbf{D}_{K,\sigma} (w^n - \langle w^n \rangle) r_K^n + \sum_{K \in \mathcal{T}} \sum_{\sigma \in \mathcal{E}_K} \tau_\sigma \mathbf{D}_{K,\sigma} (u^n \gamma(v^n) - \langle u^n \gamma(v^n) \rangle) z_K^n. \end{aligned}$$

For I_1 , since $\langle z^n \rangle = 0$ we have

$$\begin{aligned} I_1 &= \varepsilon \sum_{K \in \mathcal{T}} m(K) \frac{(w_K^n - \langle w^n \rangle) - (w_K^{n-1} - \langle w^{n-1} \rangle)}{\Delta t} z_K^n + \beta \sum_{K \in \mathcal{T}} m(K) (w_K^n - \langle w^n \rangle) z_K^n \\ &= -\frac{\varepsilon}{\Delta t} \sum_{K \in \mathcal{T}} \left(\sum_{\sigma \in \mathcal{E}_K} \tau_\sigma (\mathbf{D}_{K,\sigma} z^n - \mathbf{D}_{K,\sigma} z^{n-1}) \right) z_K^n - \beta \sum_{K \in \mathcal{T}} \left(\sum_{\sigma \in \mathcal{E}_K} \tau_\sigma \mathbf{D}_{K,\sigma} z^n \right) z_K^n. \end{aligned}$$

Therefore, thanks to a summation by parts we have

$$I_1 = \frac{\varepsilon}{\Delta t} \sum_{\substack{\sigma \in \mathcal{E}_{\text{int}} \\ \sigma = K|L}} \tau_\sigma (\mathbf{D}_{K,\sigma} z^n - \mathbf{D}_{K,\sigma} z^{n-1}) \mathbf{D}_{K,\sigma} z^n + \beta \sum_{\substack{\sigma \in \mathcal{E}_{\text{int}} \\ \sigma = K|L}} \tau_\sigma (\mathbf{D}_\sigma z^n)^2.$$

It remains to apply the elementary inequality $2a(a-b) \geq a^2 - b^2$ for every a and $b \in \mathbb{R}$ and we get

$$(57) \quad I_1 \geq \frac{\varepsilon}{2} \sum_{\sigma \in \mathcal{E}} \tau_\sigma \frac{(\mathbf{D}_\sigma z^n)^2 - (\mathbf{D}_\sigma z^{n-1})^2}{\Delta t} + \beta \sum_{\sigma \in \mathcal{E}} \tau_\sigma (\mathbf{D}_\sigma z^n)^2.$$

Now, for I_2 we use two discrete integration by parts to obtain

$$\begin{aligned} I_2 &= \delta \sum_{K \in \mathcal{T}} (w_K^n - \langle w^n \rangle) \sum_{\sigma \in \mathcal{E}_K} \tau_\sigma \mathbf{D}_{K,\sigma} z^n + \sum_{K \in \mathcal{T}} (u_K^n \gamma(v_K^n) - \langle u^n \gamma(v^n) \rangle) \sum_{\sigma \in \mathcal{E}_K} \tau_\sigma \mathbf{D}_{K,\sigma} z^n \\ &= -\delta \sum_{K \in \mathcal{T}} m(K) (w_K^n - \langle w^n \rangle)^2 - \sum_{K \in \mathcal{T}} m(K) (u_K^n \gamma(v_K^n) - \langle u^n \gamma(v^n) \rangle) (w_K^n - \langle w^n \rangle). \end{aligned}$$

Hence, thanks to Young's inequality we end up with

$$(58) \quad I_2 \leq -\frac{\delta}{2} \sum_{K \in \mathcal{T}} m(K) (w_K^n - \langle w^n \rangle)^2 + \frac{1}{2\delta} \sum_{K \in \mathcal{T}} m(K) (u_K^n \gamma(v_K^n) - \langle u^n \gamma(v^n) \rangle)^2.$$

Thus, combining (57) and (58) yields (56). \square

Proposition 19. *Assume (H1)–(H4). Then, the following estimates hold: when $\varepsilon > 0$,*

$$(59) \quad \begin{aligned} \sum_{n=0}^{N_T-1} \Delta t \sum_{K \in \mathcal{T}} m(K) |w_K^n|^2 &\leq \frac{m(\Omega)}{\beta} \left(\frac{\langle u^0 \rangle - \beta \langle v^0 \rangle}{\sqrt{\varepsilon}} \right)^2 \left(1 - \left(\frac{1}{1 + \frac{\beta \Delta t}{\varepsilon}} \right)^{2N_T} \right) \\ &\quad + \frac{2}{\delta^2} \sum_{n=0}^{N_T} \Delta t \|u^n \gamma(v^n) - \langle u^n \gamma(v^n) \rangle\|_{L^2(\Omega)}^2, \end{aligned}$$

and when $\varepsilon = 0$,

$$(60) \quad \sum_{n=0}^{N_T-1} \Delta t \sum_{K \in \mathcal{T}} m(K) |w_K^n|^2 \leq \frac{2}{\delta^2} \sum_{n=0}^{N_T} \Delta t \|u^n \gamma(v^n) - \langle u^n \gamma(v^n) \rangle\|_{L^2(\Omega)}^2.$$

Proof. Thanks to the estimate (56) and Young's inequality we have for each $0 \leq n \leq N_T - 1$

$$\frac{\delta}{4} \sum_{K \in \mathcal{T}} m(K) |w_K^n|^2 \leq \frac{\delta}{2} m(\Omega) \langle w^n \rangle^2 + \frac{1}{2\delta} \sum_{K \in \mathcal{T}} m(K) (u_K^n \gamma(v_K^n) - \langle u^n \gamma(v^n) \rangle)^2,$$

so that

$$(61) \quad \begin{aligned} & \sum_{n=0}^{N_T-1} \Delta t \sum_{K \in \mathcal{T}} m(K) |w_K^n|^2 \\ & \leq 2m(\Omega) \sum_{n=0}^{N_T-1} \Delta t \langle w^n \rangle^2 + \frac{2}{\delta^2} \sum_{n=0}^{N_T} \Delta t \|u^n \gamma(v^n) - \langle u^n \gamma(v^n) \rangle\|_{L^2(\Omega)}^2. \end{aligned}$$

Let us now estimate the first term in the right hand side of (61). For this purpose, we use (55) and the mass conservation (30) to compute for any $1 \leq n \leq N_T - 1$,

$$(\varepsilon + \beta \Delta t) \langle w^n \rangle = \varepsilon \langle w^{n-1} \rangle.$$

When $\varepsilon = 0$ we get that $\langle w^n \rangle = 0$ for any $1 \leq n \leq N_T - 1$, so that (60) is a straightforward consequence of (61). Now when $\varepsilon > 0$, a direct induction leads to, for $1 \leq n \leq N_T - 1$,

$$\langle w^n \rangle = \frac{\langle w^0 \rangle}{(1 + \xi)^n},$$

where $\xi := \frac{\beta \Delta t}{\varepsilon}$. Besides, by definition of w and using (31) at $n = 1$ we have

$$\langle w^0 \rangle = \frac{1}{\Delta t} \left(\frac{\langle u^0 \rangle}{\beta} + \frac{1}{1 + \xi} \left(\langle v^0 \rangle - \frac{\langle u^0 \rangle}{\beta} \right) - \langle v^0 \rangle \right) = \frac{\langle u^0 \rangle - \beta \langle v^0 \rangle}{\varepsilon} \frac{1}{1 + \xi}.$$

Thus, we can compute

$$\sum_{n=0}^{N_T-1} \Delta t \langle w^n \rangle^2 = \frac{(\langle u^0 \rangle - \beta \langle v^0 \rangle)^2}{\varepsilon^2} \Delta t \sum_{n=0}^{N_T-1} \frac{1}{(1 + \xi)^{2n+2}},$$

where

$$\Delta t \sum_{n=0}^{N_T-1} \frac{1}{(1 + \xi)^{2n+2}} = \frac{\Delta t}{(1 + \xi)^2} \frac{1 - \frac{1}{(1 + \xi)^{2N_T}}}{1 - \frac{1}{(1 + \xi)^2}} = \frac{\Delta t}{2\xi} \frac{1 - \frac{1}{(1 + \xi)^{2N_T}}}{1 + \frac{\xi}{2}} = \frac{\varepsilon}{2\beta} \frac{1 - \frac{1}{(1 + \xi)^{2N_T}}}{1 + \frac{\xi}{2}}.$$

Hence, it holds

$$(62) \quad 2m(\Omega) \sum_{n=0}^{N_T-1} \Delta t \langle w^n \rangle^2 \leq \frac{m(\Omega)}{\beta} \left(\frac{\langle u^0 \rangle - \beta \langle v^0 \rangle}{\sqrt{\varepsilon}} \right)^2 \left(1 - \left(\frac{1}{1 + \frac{\beta \Delta t}{\varepsilon}} \right)^{2N_T} \right).$$

Now, we combine the estimates (61) and (62) and we obtain (59). \square

Corollary 20. *Assume (H1)–(H5) and let \mathcal{D} be an admissible mesh satisfying (20). Then, there exists a constant $C > 0$ only depending on δ , β , T , Ω and ζ such that*

$$(63) \quad \sum_{n=0}^{N_T-1} \Delta t \sum_{K \in \mathcal{T}} m(K) \left| \frac{v_K^{n+1} - v_K^n}{\Delta t} \right|^2 \leq C (O(1) + 1).$$

Proof. The result is a direct consequence of Proposition 19, the definition (54), the duality estimate (41) and assumption (H5). \square

We can now make use of these uniform estimates to show the AP property of the scheme.

Proof of Theorem 8. The result is a direct consequence of the previous uniform estimates and a slight adaptation of the computations done in Section 6.2 in order to identify the limit functions as weak solutions to the quasi-stationary system in the sense of Definition 1. \square

8. NUMERICAL EXPERIMENTS

8.1. Implementation. The scheme was implemented in dimension $d = 1$ and $d = 2$ using Matlab. The code is available at <https://gitlab.inria.fr/herda/fvlocsens>. For bi-dimensional simulations, we use unstructured triangular meshes generated by Gmsh with a Delaunay algorithm, interfaced with Matlab through the code available at <https://gitlab.inria.fr/herda/fvmeshes>. As the scheme is linearly implicit it involves one resolution of linear system per species per time step. The matrix for the equation on u depends on the second species and must be reassembled at each time step. In order to optimize the computational cost, the mass and the stiffness matrices should be preassembled outside of the time loop.

8.2. Testcase 1. Convergence and entropy decay. In this first testcase we illustrate and complement our theoretical convergence result with an experimental convergence test in dimension $d = 1$. The domain is taken to be the segment $\Omega = [0, 1]$, on which we consider the system (1)-(5) endowed with the parameters

$$\varepsilon = 10^{-3}, \quad \delta = 10^{-3}, \quad \beta = 0.1,$$

and the initial conditions

$$u^0(x) = 15x^2(1-x)^2, \quad v^0(x) = 0.$$

We solve the scheme (23)-(24) to compute an approximate solution of the initial system at final time $T = 20$. We run the scheme for a sequence of decreasing space steps. More precisely the number of points is $N_k = 50 \cdot 2^k$ for $k = 0, \dots, 6$. The time step $\Delta t = 10^{-4}$ has been experimentally chosen small enough so that spatial errors dominate. As we do not know the analytical solution for this system, we take as reference solution the computed solution on the finest mesh (3200 cells). Then the error for the k -th mesh is taken to be the L^2 or L^∞ distance between the k -th solution and the reference solution projected on the k -th mesh. The results are reported in Table 1. Convergence in the space variable is experimentally observed. This illustrates the result of Theorem 6 and suggests, as expected, a second order accuracy in space.

On the same testcase, for the finest mesh, we report on Figure 1 the time evolution of the entropy and each term in the sum composing it. This illustrates in particular the decay of the entropy as predicted in Theorem 4. It also highlights that the decay of the entropy does not imply a decay for the sum of the Boltzmann entropy for u and the H^1 norm of

k	N_k	L^2 error	order	L^∞ error	order
0	50	$6.4 \cdot 10^{-2}$		$1.0 \cdot 10^{-1}$	
1	100	$1.5 \cdot 10^{-2}$	2.1	$2.3 \cdot 10^{-2}$	2.2
2	200	$3.7 \cdot 10^{-3}$	2.0	$6.7 \cdot 10^{-3}$	1.8
3	400	$9.1 \cdot 10^{-4}$	2.0	$1.7 \cdot 10^{-3}$	2.0
4	800	$2.2 \cdot 10^{-4}$	2.1	$4.0 \cdot 10^{-4}$	2.1

TABLE 1. Testcase 1. Estimated errors and orders of convergence in space at final time $T = 20$. Reference solution is for 3200 cells and $\Delta t = 10^{-4}$.

v , but is instead associated with a large compensation between that sum and the negative term $-\int_{\Omega} uv \, dx$. Finally it illustrates that the problem of establishing a lower bound for the entropy is far from artificial.

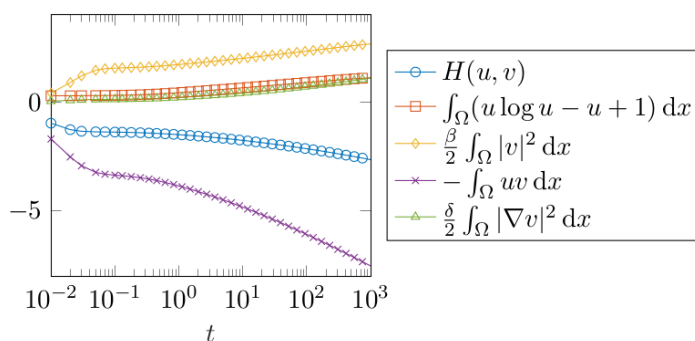


FIGURE 1. Testcase 1. Time evolution of the entropy and related quantities. The mesh is taken as $N = 3200$ and $\Delta t = 10^{-2}$.

8.3. Testcase 2. AP property in the quasi-stationary limit. In this testcase, we investigate the limit $\varepsilon \rightarrow 0$. We start again from the domain $\Omega = [0, 1]$ and the parameters are taken as $\delta = 10^{-3}$ and $\beta = 0.1$. We consider three different initial conditions which are more or less well-prepared with respect to the limit equation. The first initial condition, which we refer to as the *strongly well-prepared* (SWP) initial condition, is given by

$$(64) \quad u^0(x) = 15x^2(1-x)^2, \quad -\delta\Delta v^0(x) + \beta v^0(x) = u^0, \quad \beta\langle v^0 \rangle = \langle u^0 \rangle.$$

It satisfies assumption **(H5)** and moreover v^0 and u^0 satisfy the limit Poisson equation. The second initial condition, which we shall refer to as the *well-prepared* (WP) initial condition is

$$(65) \quad u^0(x) = 15x^2(1-x)^2, \quad \beta v^0(x) = \langle u^0 \rangle.$$

Once again assumption **(H5)** is satisfied, however $-\delta\Delta v^0(x) + \beta v^0(x) \neq u^0$. The third initial condition is referred to as the *ill-prepared* (IP) initial condition and coincides with that of the previous convergence test case, namely

$$(66) \quad u^0(x) = 15x^2(1-x)^2, \quad v^0(x) = 0.$$

In this case assumption **(H5)** is not satisfied. We simulate the equation on a uniform one dimensional mesh composed of 3200 cells with final time $T = 100$. As we want to emphasize the initial layer at $t = 0$ which may arise depending on the compatibility of u^0 and v^0 with

the limit equation, the time step is taken of the order of 10^{-8} until time 10^{-2} . Then, on the time interval $[10^{-2}, T]$ the time step is taken to be $\Delta t = 10^{-2}$.

On Figure 2, we show the evolution of the approximate solution at different times, in the cases $\varepsilon = 10^{-1}$ and $\varepsilon = 0$, for the ill-prepared initial condition (66).

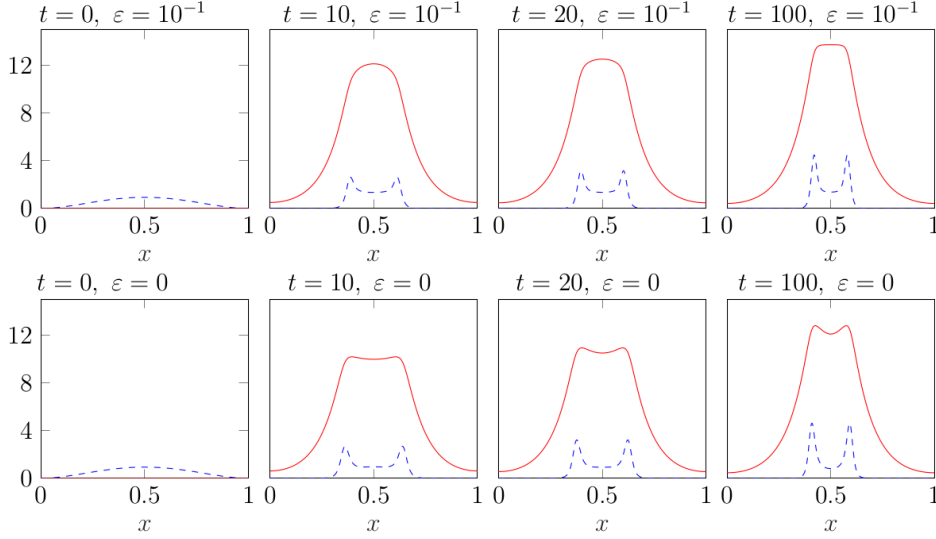


FIGURE 2. Testcase 2. Snapshots of the chemoattractant v (red), and the density u (dashed blue), at time $t \in \{0, 10, 20, 100\}$ for $\varepsilon = 10^{-1}$ (top line) and $\varepsilon = 0$ (bottom line). The initial condition is $u^0(x) = 15x^2(1-x)^2$, $v^0(x) = 0$.

On Figure 3, we show $\|\langle \partial_t v \rangle\|_{L^2(0,T)}$ with respect to ε for the different initial data. This is an illustration of (18) and its discrete counterpart (62). Whenever the well-preparedness assumption **(H5)** is not satisfied then $\|\langle \partial_t v \rangle\|_{L^2(0,T)}$ tends to $+\infty$ as $\varepsilon \rightarrow 0$.

On Figure 4 we plot the evolution of the error between the solution to the scheme and the solution of the limit ($\varepsilon = 0$) scheme as $\varepsilon \rightarrow 0$ with respect to time for different values of ε and different initial data. Even if this does not per se illustrate the conclusion Theorem 8 (as the time and step size are fixed here), the interesting point is that convergence in $L^2(Q_T)$ norm is satisfied under **(H5)**. However it is not necessarily satisfied in $L^\infty(0, T; L^2(\Omega))$ norm under the same hypothesis. It holds only for the strongly well-posed initial data (64) where the limit equation is enforced on the initial data which prevents an initial boundary layer. A more surprising observation is that the $L^2(Q_T)$ convergence is also satisfied for the ill-prepared initial condition. This suggests that our assumption **(H5)** might be weakened.

8.4. Testcase 3. Instabilities in 2D. In this testcase, we investigate numerically the linear stability of homogeneous steady states in a bi-dimensional domain. Given $\mu > 0$, consider the homogeneous steady state

$$(67) \quad (u_*, v_*) = (\mu, \mu/\beta).$$

A straightforward adaptation of the linear stability analysis performed in [22, proof of Theorem 3.1] and [19, Theorem 3.2] yields that (67) is asymptotically linearly stable if and only if

$$(68) \quad \mu < \mu_c^s \quad \text{with} \quad \mu_c^s = \beta + \lambda_1(\Omega)\delta,$$

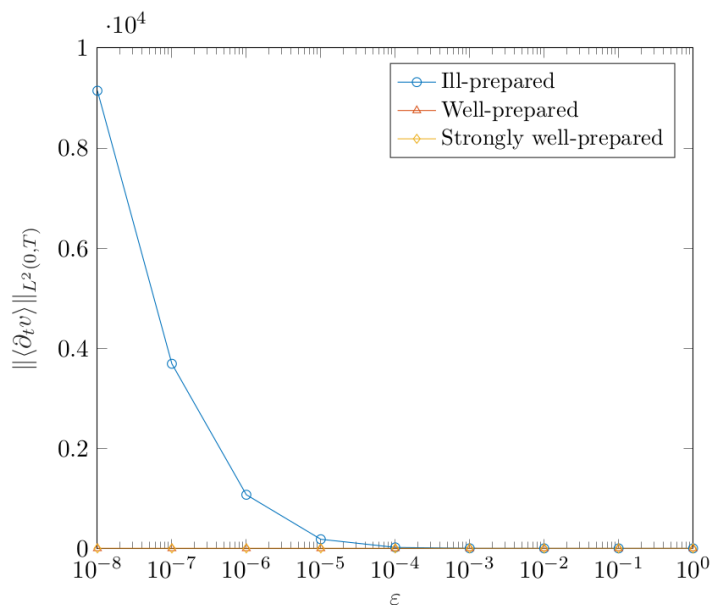


FIGURE 3. Testcase 2. Time derivative of the chemoattractant concentration in the quasi-stationary limit for ill-prepared (66), well-prepared (65), and strongly well-prepared (64) initial conditions.

where $\lambda_1(\Omega) > 0$ is the first non-zero eigenvalue of the Laplacian $(-\Delta)$ in Ω with homogeneous Neumann boundary conditions. This linear stability analysis can be transposed in the fully discrete setting. This yields, independently of $\Delta t > 0$, the same stability condition as (68) where $\lambda_1(\Omega)$ is replaced with the first non-zero eigenvalue of the finite volume Laplacian \mathbb{L} associated with the mesh, defined by

$$(69) \quad \begin{cases} \mathbb{L}_{K,K} = \sum_{\sigma \in \mathcal{E}_{\text{int},K}} \frac{\tau_\sigma}{m(K)}, & \forall K \in \mathcal{T}, \\ \mathbb{L}_{K,L} = -\frac{\tau_\sigma}{m(K)}, & \forall K \in \mathcal{T}, \forall L \in \mathcal{N}(K), \sigma = K|L, \\ \mathbb{L}_{K,L} = 0, & \forall K \in \mathcal{T}, \forall L \notin \mathcal{N}(K). \end{cases}$$

The space domain Ω is taken as a (polygonal approximation of) a circle of radius $R = 1$ centered at the origin. In a disk domain of radius R the principal eigenvalue of the Laplacian is $\lambda_1(\Omega) = (j'_{1,1}/R)^2$ with $j'_{1,1} \approx 1.8412$ the first non-zero root of J'_1 , with J_1 the first Bessel function. The parameters are taken to be $R = \delta = \varepsilon = 1$ and $\beta = \lambda_1(\Omega)/R^2 \approx 3.39$. This yields $\mu_c^s = 2\beta \approx 6.78$.

The initial data is taken to be a perturbation of (u_*, v_*) . In polar coordinates with origin at the center of the disk, we set either a perturbation with the first non-trivial mode of the Neumann Laplacian

$$(70) \quad u^0(r, \theta) = \mu, \quad v^0(r, \theta) = \mu \left(1 + \frac{\cos(\theta)}{10} J_1 \left(\sqrt{\lambda_1(\Omega)} \frac{r}{R} \right) \right),$$

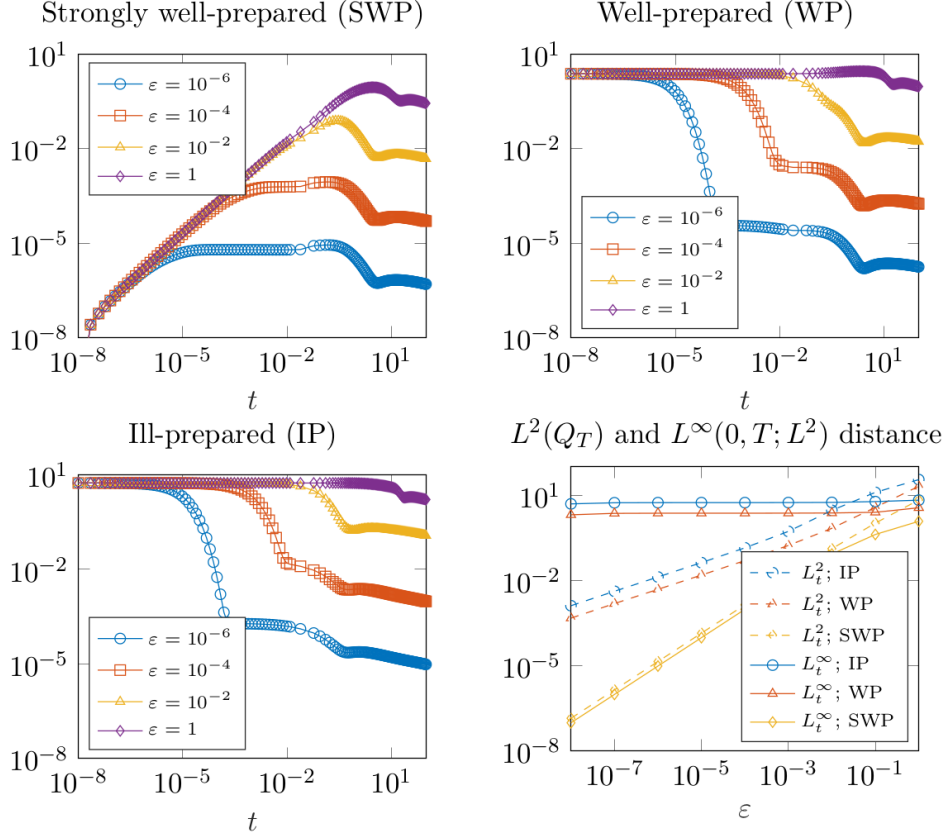


FIGURE 4. Testcase 2. Time evolution of the error (in log-log scale) between the chemoattractant density v for a given ε and the quasi-stationary case $\varepsilon = 0$. (Top left) $L^2(\Omega)$ distance vs time for the strongly well-prepared (SWP) initial data (64), (top right) $L^2(\Omega)$ distance vs time for the well-prepared (WP) initial data (65) and (bottom left) $L^2(\Omega)$ distance vs time for the ill-prepared (IP) initial data (66). On the bottom right plot we show the corresponding $L^2(Q_T)$ and $L^\infty(0, T; L^2(\Omega))$ errors with respect to ε for the three initial data.

or the third non-trivial mode of the Neumann Laplacian (which is a radially symmetric function)

$$(71) \quad u^0(r, \theta) = \mu, \quad v^0(r, \theta) = \mu \left(1 + \frac{1}{10} J_0 \left(\sqrt{\lambda_3(\Omega)} \frac{r}{R} \right) \right).$$

We test several values of μ that are

$$(a) \mu = 0.9\mu_c^s, \quad (b) \mu = 1.1\mu_c^s, \quad (c) \mu = 4\mu_c^s.$$

For the initial data (70), linear instability is expected in cases (b) and (c) since $\mu > \mu_c^s$. For the second initial data (71), linear instability of the corresponding third eigenmode of the Neumann Laplacian is expected only in case (c) where one has $4\mu_c^s > \beta + \lambda_3(\Omega)\delta$ with our parameters. Here $\lambda_3(\Omega) = (j'_{0,1}/R)^2$ with $j'_{0,1} \approx 3.8317$ the first non-zero root of J'_0 .

The domain is meshed with 11790 triangles, the time step is taken to be $\Delta t = 0.1$ and the final time of simulation is $T = 50000$. Let us precise that the mesh does not preserve any sort of radial symmetry of the domain.

On Figure 5 and Figure 6, we report snapshots of the solution at different times for the initial data (70) and (71) in the case (c) $\mu = 4\mu_c^s$, so that both cases are linearly unstable with a different perturbation. As expected, the solution deviates largely from the homogeneous equilibrium and tends to localize in parts of the domain.

On Figure 7 we show the evolution of global quantities. In the stable case (70) (a), we plot the time evolution of the (discrete counterpart of the) relative entropy with respect to the homogeneous steady state

$$\mathcal{H}((u, v); (u_*, v_*)) = \int_{\Omega} \left[(u - u_*) \log \left(\frac{u}{u_*} \right) + \frac{\beta}{2} |v - v_*|^2 - (u - u_*)(v - v_*) + \frac{\delta}{2} |\nabla v|^2 \right] dx.$$

We observe exponential decay of this quantity which illustrates the exponential asymptotic stability of the homogeneous steady state for this set of parameters. In the unstable cases, namely (70) (b), (70) (c) and (71) (c), we show the time evolution of the L^∞ norms with respect to time. The L^∞ norm of u is monotonically increasing for all three simulations. In fact, we recall that the literature [33, 15, 34, 41] predicts a dichotomy between uniformly bounded solutions and infinite-time blow-up. However from our observations it is challenging in practice to judge whether a blow-up phenomenon is actually detected for a given set of parameters. Indeed on simulations that we do not report here we have investigated separately regimes of parameters where the L^∞ norm is theoretically bounded globally in time while the homogeneous steady state is linearly unstable and regimes where infinite-time blow-up is expected. The aggregation phenomena that are observed in these two regimes appear similar. A thorough numerical investigation will be the subject of a forthcoming work.

8.5. Testcase 4. Aggregation in large domain. We reproduce here the testcase of [22, Section 4.2.2] in order to illustrate the use of the scheme for a non-exponential cell motility. The latter is taken to be

$$\gamma(v) = \frac{1}{c + v^k},$$

with $c = 1$ and $k = 2$. The space domain Ω is taken as a square with edge of length $R = 10$. The parameters are taken to be $\varepsilon = \beta = 1$ and $\delta = 3/(5 \times 14.6819)$. The initial data is taken to be a perturbation of the homogeneous steady state (u_*, v_*) defined in (67) with $\mu = 4$

$$u^0(x, y) = \mu, \quad v^0(x, y) = \mu (0.5 + X(x, y)),$$

where $0 < X(x, y) < 1$ is the realisation of a random variable with uniform distribution. The value of the parameter δ has been chosen in order for the homogeneous steady state to be linearly unstable as in the previous section. The domain is meshed with 14788 triangles, the time step is taken to be $\Delta t = 0.1$ and the final time of simulation is $T = 20000$. Let us point out that compared to [22, Section 4.2.2], we can handle a non-uniform mesh and a coarser time step. For the latter point, we recall that our semi-implicit scheme is unconditionally stable, unlike the explicit scheme used in [22, Section 4.2.2]. On Figure 8, we show the evolution of the density with respect to time. As pointed out in [22, Section 4.2.2], we observe aggregation in spots which tend to merge in time.

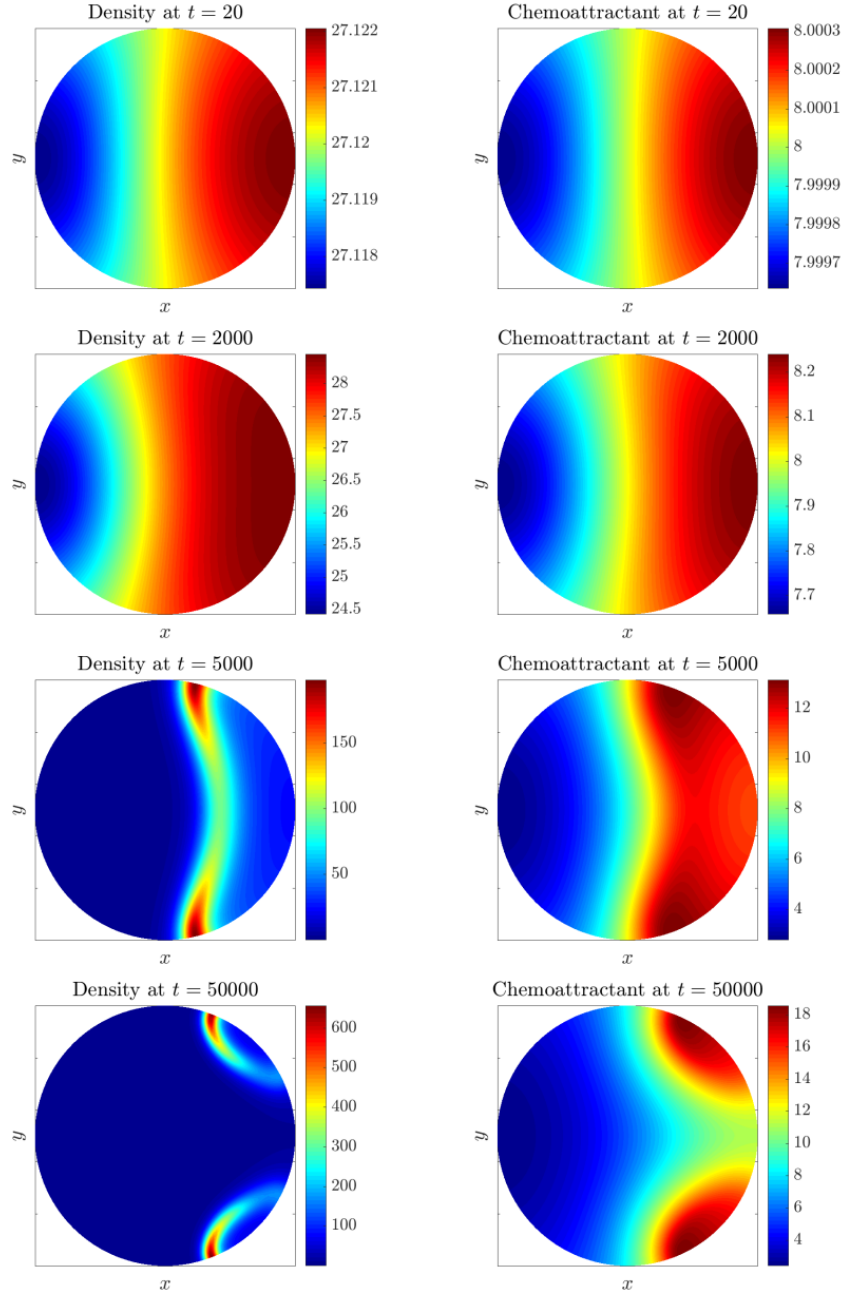


FIGURE 5. Testcase 3. Snapshots of the solution density u (left) and chemoattractant v (right) at different times $t = 20, 2000, 5000, 50000$ (top to bottom). Initial data is (70) with (c) $\mu = 4\mu_c^s$. The color scale varies between each subfigure.

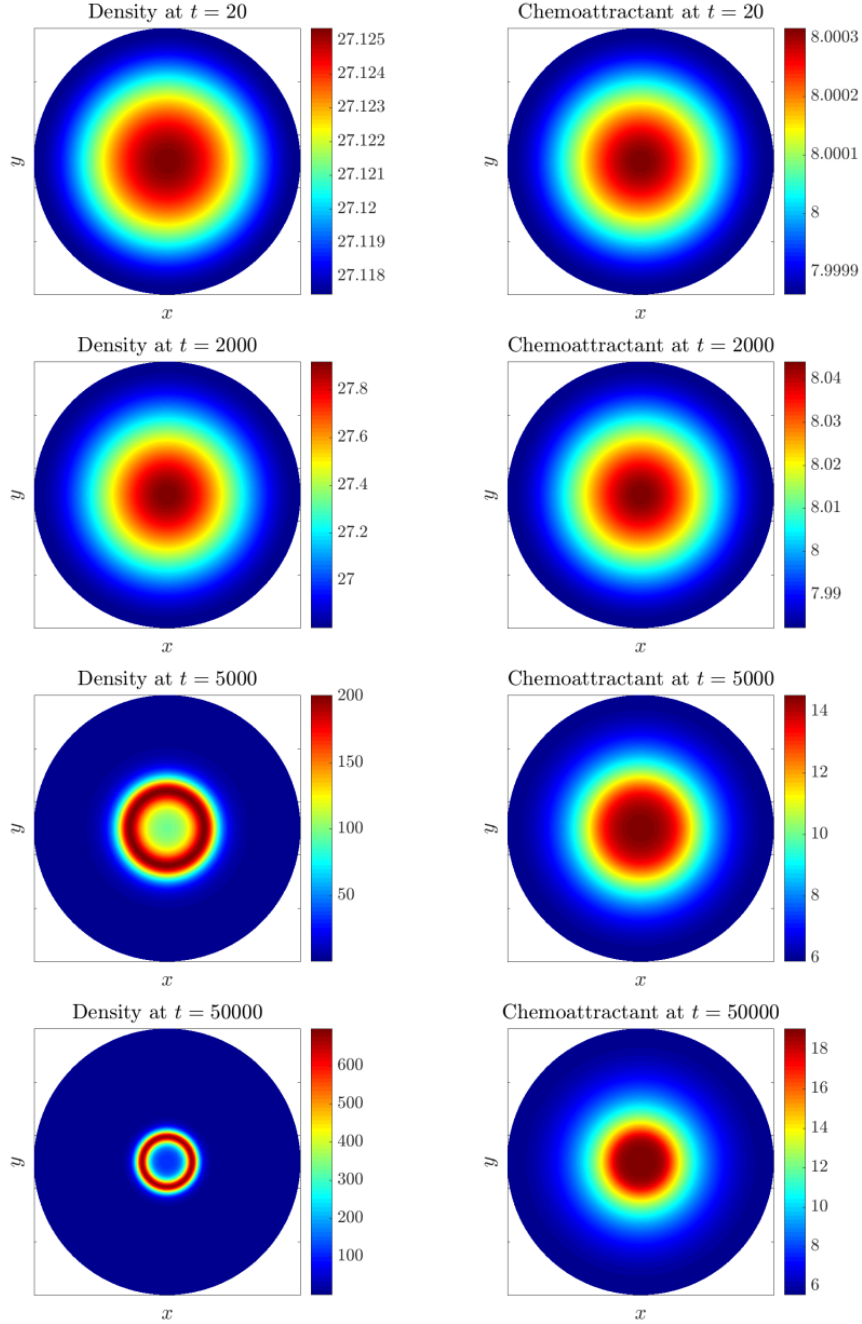


FIGURE 6. Testcase 3. Snapshots of the solution density u (left) and chemoattractant v (right) at different times $t = 20, 2000, 5000, 50000$ (top to bottom). Initial data is (71) with (c) $\mu = 4\mu_c^s$. The color scale varies between each subfigure.

APPENDIX A. AUXILIARY RESULTS

Lemma 21. *Let \mathcal{T} be an admissible mesh of Ω satisfying (20) and $w \in H^1(\Omega)$. Then, the vector $(w_K)_{K \in \mathcal{T}} \in \mathcal{H}_{\mathcal{T}}$ with $w_K = m(K)^{-1} \int_K w(x) dx$ satisfies*

$$\sum_{K \in \mathcal{T}} m(K) |w_K|^2 \leq \int_{\Omega} |w(x)|^2 dx.$$

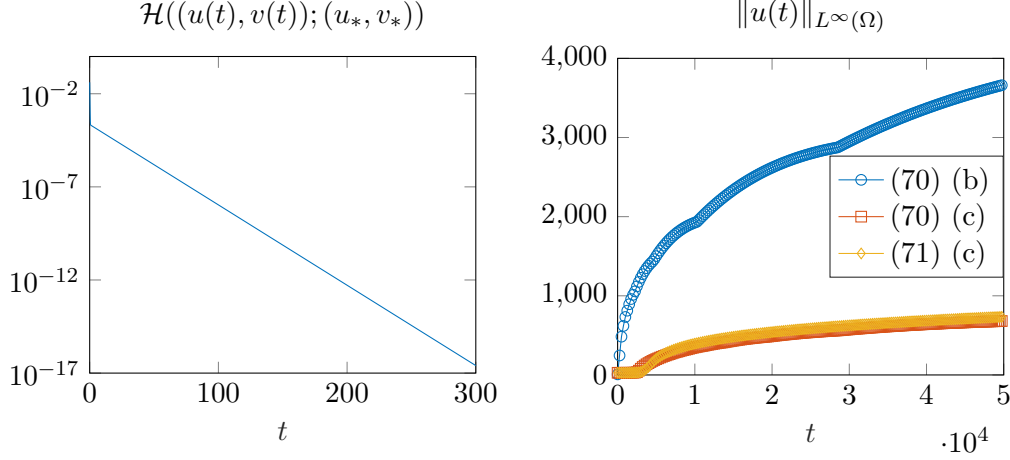


FIGURE 7. Testcase 3. (Left) In the stable case (70) (a): time evolution of the relative entropy between the solution and the homogeneous steady state. (Right) In the unstable cases (70) (b), (70) (c) and (71) (c): L^∞ norm of u versus time.

Proof. Thanks to Jensen's inequality we have

$$\begin{aligned}
 \sum_{K \in \mathcal{T}} m(K) |w_K|^2 - \int_{\Omega} |w(x)|^2 dx &= \sum_{K \in \mathcal{T}} \left(\frac{1}{m(K)} \left(\int_K w(x) dx \right)^2 - \int_K |w(x)|^2 dx \right) \\
 &= \sum_{K \in \mathcal{T}} \left(m(K) \left(\int_K w(x) \frac{dx}{m(K)} \right)^2 - \int_K |w(x)|^2 dx \right) \\
 &\leq \sum_{K \in \mathcal{T}} \left(m(K) \int_K |w(x)|^2 \frac{dx}{m(K)} - \int_K |w(x)|^2 dx \right) = 0.
 \end{aligned}$$

This finishes the proof of Lemma 21. \square

Lemma 22 (see Lemma 3.4 in [28]). *Let \mathcal{T} be an admissible mesh of Ω satisfying (20) and $w \in H^1(\Omega)$. Then, there exists a constant $C > 0$ only depending on Ω and ζ such that the vector $(w_K)_{K \in \mathcal{T}} \in \mathcal{H}_{\mathcal{T}}$ with $w_K = m(K)^{-1} \int_K w(x) dx$ satisfies*

$$\sum_{\sigma \in \mathcal{E}} \tau_{\sigma} (D_{\sigma} w)^2 \leq C \|w\|_{H^1(\Omega)}^2.$$

Lemma 23 (see Proposition 2.61 in [30]). *Let (X, \mathcal{M}, μ) be a measurable space with μ finite. If $u_n \rightharpoonup u$ weakly in $L^1(X)$, $v_n \rightarrow v$ pointwise for μ a.e. $x \in X$, and $\sup_n \|v_n\|_{L^\infty(X)} < \infty$, then $u_n v_n \rightharpoonup uv$ weakly in $L^1(X)$.*

APPENDIX B. ON THE CONTINUITY OF THE DISCRETE PROJECTION

Proposition 24 (Continuity of the projection, counter-example). *Let $\Omega = (-1, 1)$ and, for $m \geq 2$, let \mathcal{T} be given by the regular grid, $\mathcal{T} = \left\{ \left(\frac{k}{m}, \frac{k+1}{m} \right), -m \leq k \leq m-1 \right\}$. Then,*

$$(72) \quad \sup_{u \in (H^1)'(\Omega)} \frac{N(\pi_{\mathcal{T}} u)}{\|u\|_{(H^1)'(\Omega)}} = \infty.$$

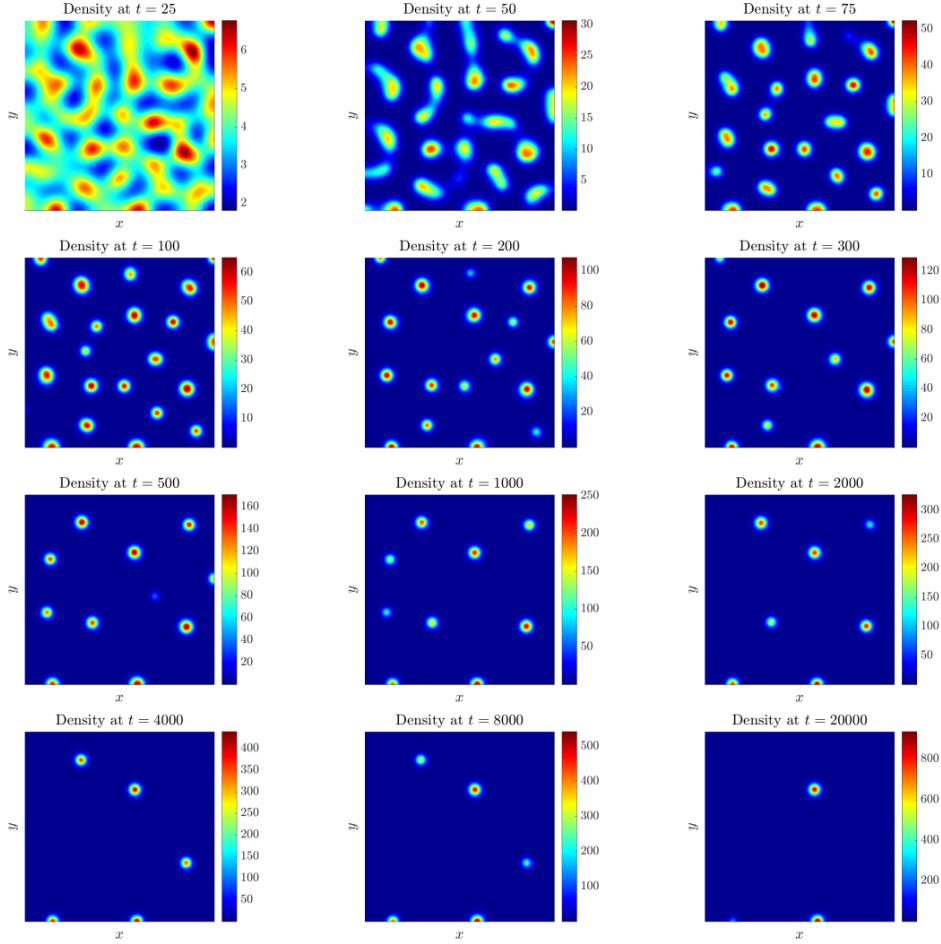


FIGURE 8. Testcase 4. Snapshots of the density at times (left to right, top to bottom) $t = 25, 50, 75, 100, 200, 300, 500, 1000, 2000, 4000, 8000, 20000$. The color scale varies between each subfigure.

Proof. Let $r \geq m$ and $u = \delta_{\frac{1}{r}} - \delta_{-\frac{1}{r}}$. Clearly $\langle u \rangle = 0$ and for any $\varphi \in H^1(\Omega)$, we have

$$\langle u, \varphi \rangle = \varphi\left(\frac{1}{r}\right) - \varphi\left(-\frac{1}{r}\right) = \int_{-\frac{1}{r}}^{\frac{1}{r}} \varphi' \leq \frac{\sqrt{2}}{\sqrt{r}} \|\varphi'\|_2,$$

so that $u \in (H^1)'(\Omega)$ with $\|u\|_{(H^1)'(\Omega)} \leq \frac{\sqrt{2}}{\sqrt{r}}$.

On the other hand, when projecting u on the grid \mathcal{T} , using that $r \geq m$ we get that $\pi_{\mathcal{T}}u = m\mathbf{1}_{(0, \frac{1}{m})} - m\mathbf{1}_{(\frac{-1}{m}, 0)}$. We then pick the test function $\theta = \frac{1}{2\sqrt{m}}(\mathbf{1}_{(0,1)} - \mathbf{1}_{(-1,0)})$ and verify that $\theta \in \tilde{\mathcal{H}}_{\mathcal{T}}$ with $|\theta|_{1,2,\mathcal{T}} = 1$, so that, using Lemma 12, we get

$$N(\pi_{\mathcal{T}}u) \geq \left| \int_{-1}^1 \pi_{\mathcal{T}}u \theta \, dx \right| = \frac{1}{\sqrt{m}}.$$

Taking $r = Am^2$ with $A > 1$, we obtain

$$\frac{N(\pi_{\mathcal{T}}u)}{\|u\|_{(H^1)'}} \geq \sqrt{\frac{Am}{2}},$$

and we conclude by letting A tend to infinity. \square

ACKNOWLEDGEMENTS

M.H. acknowledges support from the LabEx CEMPI (ANR-11-LABX0007). A.Z. acknowledges support from the Research Department of UTC as part of the Young Lecturers Call for Proposals. The premises of this work were discussed during the workshop MoDiS 2023: Modelling Diffusive Systems at ICMS, Edinburgh.

REFERENCES

- [1] Oscar Agudelo and Angela Pistoia. Boundary concentration phenomena for the higher-dimensional Keller-Segel system. *Calc. Var. Partial Differ. Equ.*, 55(6):31, 2016. Id/No 132.
- [2] Mohammed Akhmouch and Mohammed Benzakour Amine. A time semi-exponentially fitted scheme for chemotaxis-growth models. *Calcolo*, 54(2):609–641, 2017.
- [3] Boris Andreianov, Mostafa Bendahmane, and Mazen Saad. Finite volume methods for degenerate chemotaxis model. *J. Comput. Appl. Math.*, 235(14):4015–4031, 2011.
- [4] Gurusamy Arumugam and Jagmohan Tyagi. Keller-Segel chemotaxis models: a review. *Acta Appl. Math.*, 171:82, 2021. Id/No 6.
- [5] Marianne Bessemoulin-Chatard, Claire Chainais-Hillairet, and Francis Filbet. On discrete functional inequalities for some finite volume schemes. *IMA J. Numer. Anal.*, 35(3):1125–1149, 2015.
- [6] Marianne Bessemoulin-Chatard and Ansgar Jüngel. A finite volume scheme for a Keller-Segel model with additional cross-diffusion. *IMA J. Numer. Anal.*, 34(1):96–122, 2014.
- [7] Piotr Biler. Local and global solvability of some parabolic systems modelling chemotaxis. *Adv. Math. Sci. Appl.*, 8(2):715–743, 1998.
- [8] Adrien Blanchet, Vincent Calvez, and José A. Carrillo. Convergence of the mass-transport steepest descent scheme for the subcritical Patlak-Keller-Segel model. *SIAM J. Numer. Anal.*, 46(2):691–721, 2008.
- [9] Denis Bonheure, Jean-Baptiste Casteras, and Juraj Foldes. Singular radial solutions for the Keller-Segel equation in high dimension. *J. Math. Pures Appl. (9)*, 134:204–254, 2020.
- [10] Denis Bonheure, Jean-Baptiste Casteras, and Benedetta Noris. Multiple positive solutions of the stationary Keller-Segel system. *Calc. Var. Partial Differ. Equ.*, 56(3):35, 2017. Id/No 74.
- [11] Denis Bonheure, Jean-Baptiste Casteras, and Carlos Román. Unbounded mass radial solutions for the Keller-Segel equation in the disk. *Calc. Var. Partial Differ. Equ.*, 60(5):30, 2021. Id/No 198.
- [12] Maxime Breden and Maxime Payan. Computer-assisted proofs for the many steady states of a chemotaxis model with local sensing. *Physica D*, 466:18, 2024. Id/No 134221.
- [13] C. J. Budd, R. Carretero-González, and R. D. Russell. Precise computations of chemotactic collapse using moving mesh methods. *J. Comput. Phys.*, 202(2):463–487, 2005.
- [14] Martin Burger, José A. Carrillo, and Marie-Therese Wolfram. A mixed finite element method for nonlinear diffusion equations. *Kinet. Relat. Models*, 3(1):59–83, 2010.
- [15] Martin Burger, Philippe Laurençot, and Ariane Trescases. Delayed blow-up for chemotaxis models with local sensing. *J. Lond. Math. Soc., II. Ser.*, 103(4):1596–1617, 2021.
- [16] Claire Chainais-Hillairet and Jérôme Droniou. Finite-volume schemes for noncoercive elliptic problems with Neumann boundary conditions. *IMA J. Numer. Anal.*, 31(1):61–85, 2011.
- [17] Alina Chertock, Yekaterina Epshteyn, Hengrui Hu, and Alexander Kurganov. High-order positivity-preserving hybrid finite-volume-finite-difference methods for chemotaxis systems. *Adv. Comput. Math.*, 44(1):327–350, 2018.
- [18] Alina Chertock and Alexander Kurganov. A second-order positivity preserving central-upwind scheme for chemotaxis and haptotaxis models. *Numer. Math.*, 111(2):169–205, 2008.
- [19] Kyunghan Choi and Yong-Jung Kim. Chemotactic cell aggregation viewed as instability and phase separation. *Nonlinear Anal., Real World Appl.*, 80:15, 2024. Id/No 104147.

- [20] Manuel del Pino, Angela Pistoia, and Giusi Vaira. Large mass boundary condensation patterns in the stationary Keller-Segel system. *J. Differ. Equations*, 261(6):3414–3462, 2016.
- [21] Manuel del Pino and Juncheng Wei. Collapsing steady states of the Keller-Segel system. *Nonlinearity*, 19(3):661–684, 2006.
- [22] Laurent Desvillettes, Yong-Jung Kim, Ariane Trescases, and Changwook Yoon. A logarithmic chemotaxis model featuring global existence and aggregation. *Nonlinear Anal. Real World Appl.*, 50:562–582, 2019.
- [23] Laurent Desvillettes, Philippe Laurençot, Ariane Trescases, and Michael Winkler. Weak solutions to triangular cross diffusion systems modeling chemotaxis with local sensing. *Nonlinear Anal., Theory Methods Appl., Ser. A, Theory Methods*, 226:26, 2023. Id/No 113153.
- [24] Yekaterina Epshteyn. Upwind-difference potentials method for Patlak-Keller-Segel chemotaxis model. *J. Sci. Comput.*, 53(3):689–713, 2012.
- [25] Yekaterina Epshteyn and Ahmet Izmirliglu. Fully discrete analysis of a discontinuous finite element method for the keller-segel chemotaxis model. *J. Sci. Comput.*, 40(1-3):211–256, 2009.
- [26] Yekaterina Epshteyn and Alexander Kurganov. New interior penalty discontinuous Galerkin methods for the Keller-Segel chemotaxis model. *SIAM J. Numer. Anal.*, 47(1):386–408, 2009.
- [27] Yekaterina Epshteyn and Qing Xia. Efficient numerical algorithms based on difference potentials for chemotaxis systems in 3d. *J. Sci. Comput.*, 80(1):26–59, 2019.
- [28] Robert Eymard, Thierry Gallouët, and Raphaële Herbin. Finite volume methods. In *Solution of equations in \mathbb{R}^n (Part 3). Techniques of scientific computing (Part 3)*, pages 713–1020. Amsterdam: North-Holland/Elsevier, 2000.
- [29] Francis Filbet. A finite volume scheme for the Patlak-Keller-Segel chemotaxis model. *Numer. Math.*, 104(4):457–488, 2006.
- [30] Irene Fonseca and Giovanni Leoni. *Modern methods in the calculus of variations. L^p spaces*. Springer Monogr. Math. New York, NY: Springer, 2007.
- [31] Kentaro Fujie and Jie Jiang. Boundedness of classical solutions to a degenerate Keller-Segel type model with signal-dependent motilities. *Acta Appl. Math.*, 176:36, 2021. Id/No 3.
- [32] Kentaro Fujie and Takasi Senba. Global existence and infinite time blow-up of classical solutions to chemotaxis systems of local sensing in higher dimensions. *Nonlinear Anal., Theory Methods Appl., Ser. A, Theory Methods*, 222:7, 2022. Id/No 112987.
- [33] Kentarou Fujie and Jie Jiang. Global existence for a kinetic model of pattern formation with density-suppressed motilities. *J. Differ. Equations*, 269(6):5338–5378, 2020.
- [34] Kentarou Fujie and Jie Jiang. Comparison methods for a Keller-Segel-type model of pattern formations with density-suppressed motilities. *Calc. Var. Partial Differ. Equ.*, 60(3):37, 2021. Id/No 92.
- [35] Pierre Grisvard. *Elliptic problems in nonsmooth domains*, volume 69 of *Class. Appl. Math.* Philadelphia, PA: Society for Industrial and Applied Mathematics (SIAM), reprint of the 1985 hardback ed. edition, 2011.
- [36] Konrad Gröger. Boundedness and continuity of solutions to linear elliptic boundary value problems in two dimensions. *Math. Ann.*, 298(4):719–727, 1994.
- [37] Li Guo, Xingjie Helen Li, and Yang Yang. Energy dissipative local discontinuous Galerkin methods for Keller-Segel chemotaxis model. *J. Sci. Comput.*, 78(3):1387–1404, 2019.
- [38] Federico Herrero-Hervás, Mihaela Negreanu, and Antonio Manuel Vargas. Convergence of a meshless numerical method for a chemotaxis system with density-suppressed motility. *Comput. Math. Appl.*, 148:293–301, 2023.
- [39] Jie Jiang and Philippe Laurençot. Global existence and uniform boundedness in a chemotaxis model with signal-dependent motility. *J. Differ. Equations*, 299:513–541, 2021.
- [40] Jie Jiang, Philippe Laurençot, and Yanyan Zhang. Global existence, uniform boundedness, and stabilization in a chemotaxis system with density-suppressed motility and nutrient consumption. *Commun. Partial Differ. Equations*, 47(5):1024–1069, 2022.
- [41] Hai-Yang Jin and Zhi-An Wang. Critical mass on the Keller-Segel system with signal-dependent motility. *Proc. Am. Math. Soc.*, 148(11):4855–4873, 2020.
- [42] Evelyn F. Keller and Lee A. Segel. Initiation of slime mold aggregation viewed as an instability. *J. Theoret. Biol.*, 26(3):399–415, 1970.
- [43] Evelyn F. Keller and Lee A. Segel. Model for chemotaxis. *J. Theoret. Biol.*, 30:225–234, 1971.
- [44] Masaki Kurokiba and Takayoshi Ogawa. Singular limit problem for the Keller-Segel system and drift-diffusion system in scaling critical spaces. *J. Evol. Equ.*, 20(2):421–457, 2020.

- [45] Masaki Kurokiba and Takayoshi Ogawa. Singular limit problem for the two-dimensional Keller-Segel system in scaling critical space. *J. Differential Equations*, 269(10):8959–8997, 2020.
- [46] Masaki Kurokiba and Takayoshi Ogawa. Maximal regularity and a singular limit problem for the Patlak-Keller-Segel system in the scaling critical space involving *BMO*. *Partial Differ. Equ. Appl.*, 3(1):Paper No. 3, 56, 2022.
- [47] Pierre Gilles Lemarié-Rieusset. Small data in an optimal Banach space for the parabolic-parabolic and parabolic-elliptic Keller-Segel equations in the whole space. *Adv. Differential Equations*, 18(11-12):1189–1208, 2013.
- [48] Min Li, Zhaoyin Xiang, and Guanyu Zhou. The stability analysis of a 2D Keller-Segel-Navier-Stokes system in fast signal diffusion. *European J. Appl. Math.*, 34(1):160–209, 2023.
- [49] Xingjie Helen Li, Chi-Wang Shu, and Yang Yang. Local discontinuous Galerkin method for the Keller-Segel chemotaxis model. *J. Sci. Comput.*, 73(2-3):943–967, 2017.
- [50] Friedrich Lippoth. On the justification of the quasistationary approximation of several parabolic moving boundary problems—Part I. *Nonlinear Anal. Real World Appl.*, 17:1–22, 2014.
- [51] Jian-Guo Liu, Li Wang, and Zhennan Zhou. Positivity-preserving and asymptotic preserving method for 2D Keller-Segel equations. *Math. Comp.*, 87(311):1165–1189, 2018.
- [52] Americo Marrocco. Numerical simulation of chemotactic bacteria aggregation via mixed finite elements. *M2AN, Math. Model. Numer. Anal.*, 37(4):617–630, 2003.
- [53] Masaaki Mizukami. The fast signal diffusion limit in a Keller-Segel system. *J. Math. Anal. Appl.*, 472(2):1313–1330, 2019.
- [54] Toru Nogayama and Yoshihiro Sawano. Singular limit problem for the Keller-Segel system and drift-diffusion system in scaling critical Besov-Morrey spaces. *J. Math. Anal. Appl.*, 529(2):Paper No. 127207, 51, 2024.
- [55] Takayoshi Ogawa and Takeshi Suguro. Maximal regularity of the heat evolution equation on spatial local spaces and application to a singular limit problem of the Keller-Segel system. *Math. Ann.*, 387(1-2):389–431, 2023.
- [56] Hans G. Othmer and Angela Stevens. Aggregation, blowup, and collapse: the ABCs of taxis in reinforced random walks. *SIAM J. Appl. Math.*, 57(4):1044–1081, 1997.
- [57] Angela Pistoia and Giusi Vaira. Steady states with unbounded mass of the Keller-Segel system. *Proc. R. Soc. Edinb., Sect. A, Math.*, 145(1):203–222, 2015.
- [58] Andrzej Raczyński. Stability property of the two-dimensional Keller-Segel model. *Asymptot. Anal.*, 61(1):35–59, 2009.
- [59] Norikazu Saito. Conservative upwind finite-element method for a simplified Keller-Segel system modelling chemotaxis. *IMA J. Numer. Anal.*, 27(2):332–365, 2007.
- [60] Norikazu Saito. Conservative numerical schemes for the Keller-Segel system and numerical results. *RIMS Kôkyûroku Bessatsu*, B15:125–146, 2009.
- [61] Norikazu Saito. Error analysis of a conservative finite-element approximation for the Keller-Segel system of chemotaxis. *Commun. Pure Appl. Anal.*, 11(1):339–364, 2012.
- [62] Norikazu Saito and Takashi Suzuki. Notes on finite difference schemes to a parabolic-elliptic system modelling chemotaxis. *Appl. Math. Comput.*, 171(1):72–90, 2005.
- [63] Renate Schaaf. Stationary solutions of chemotaxis systems. *Trans. Am. Math. Soc.*, 292:531–556, 1985.
- [64] Takasi Senba and Takashi Suzuki. Some structures of the solution set for a stationary system of chemotaxis. *Adv. Math. Sci. Appl.*, 10(1):191–224, 2000.
- [65] Robert Strehl, Andriy Sokolov, Dmitri Kuzmin, Dirk Horstmann, and Stefan Turek. A positivity-preserving finite element method for chemotaxis problems in 3d. *J. Comput. Appl. Math.*, 239:290–303, 2013.
- [66] Guofang Wang and Jun-Cheng Wei. Steady state solutions of a reaction-diffusion system modeling chemotaxis. *Math. Nachr.*, 233-234:221–236, 2002.
- [67] Yulan Wang, Michael Winkler, and Zhaoyin Xiang. The fast signal diffusion limit in Keller-Segel(-fluid) systems. *Calc. Var. Partial Differential Equations*, 58(6):Paper No. 196, 40, 2019.
- [68] Zhi-An Wang and Xin Xu. Steady states and pattern formation of the density-suppressed motility model. *IMA J. Appl. Math.*, 86(3):577–603, 2021.
- [69] Jiansong Zhang, Jiang Zhu, and Rongpei Zhang. Characteristic splitting mixed finite element analysis of Keller-Segel chemotaxis models. *Appl. Math. Comput.*, 278:33–44, 2016.

- [70] Rongpei Zhang, Jiang Zhu, Abimael F. D. Loula, and Xijun Yu. Operator splitting combined with positivity-preserving discontinuous Galerkin method for the chemotaxis model. *J. Comput. Appl. Math.*, 302:312–326, 2016.
- [71] Guanyu Zhou and Norikazu Saito. Finite volume methods for a Keller-Segel system: discrete energy, error estimates and numerical blow-up analysis. *Numer. Math.*, 135(1):265–311, 2017.

UNIV. LILLE, CNRS, INRIA, UMR 8524–LABORATOIRE PAUL PAINLEVÉ, 59000 LILLE
Email address: `maxime.herda@inria.fr`

INSTITUT DE MATHÉMATIQUES DE TOULOUSE; UMR5219 - UNIVERSITÉ DE TOULOUSE ; CNRS - UPS,
F-31062 TOULOUSE CEDEX 9, FRANCE
Email address: `ariane.trescases@math.univ-toulouse.fr`

CNRS – UNIVERSITÉ DE MONTRÉAL CRM – CNRS, MONTRÉAL, CANADA AND UNIVERSITÉ DE TECH-
NOLOGIE DE COMPIÈGNE, LMAC, 60200 COMPIÈGNE, FRANCE
Email address: `antoine.zurek@utc.fr`