



**HAL**  
open science

**South American Acanthocinini (Coleoptera, Cerambycidae, Lamiinae): description of a new species; transfer of a species from Ungleptes to Lepturges (Lepturges); designation of a lectotype; and corrections.**

Josef Vlasak, Antonio Santos Silva, Larry G Bezark

► **To cite this version:**

Josef Vlasak, Antonio Santos Silva, Larry G Bezark. South American Acanthocinini (Coleoptera, Cerambycidae, Lamiinae): description of a new species; transfer of a species from Ungleptes to Lepturges (Lepturges); designation of a lectotype; and corrections.. *Faunitaxys*, 2024, 12 (66), pp.1-11. 10.57800/faunitaxys-12(66) . hal-04839167

**HAL Id: hal-04839167**

**<https://hal.science/hal-04839167v1>**

Submitted on 15 Dec 2024

**HAL** is a multi-disciplinary open access archive for the deposit and dissemination of scientific research documents, whether they are published or not. The documents may come from teaching and research institutions in France or abroad, or from public or private research centers.

L'archive ouverte pluridisciplinaire **HAL**, est destinée au dépôt et à la diffusion de documents scientifiques de niveau recherche, publiés ou non, émanant des établissements d'enseignement et de recherche français ou étrangers, des laboratoires publics ou privés.



Distributed under a Creative Commons Attribution - NonCommercial - NoDerivatives 4.0 International License

# Faunitaxys

*Revue de Faunistique, Taxonomie et Systématique  
morphologique et moléculaire*



Volume 12  
Numéro 66

Décembre 2024

ISSN (Print) : 2269 - 6016  
ISSN (Online) : 2970 - 4960  
Dépôt légal : Décembre 2024

# Faunitaxys

*Revue de Faunistique, Taxonomie et Systématique  
morphologique et moléculaire*

ZooBank : <https://zoobank.org/79A36B2E-F645-4F9A-AE2B-ED32CE6771CC>

Directeur de la publication, rédacteur, conception graphique et PAO:

*Lionel Delaunay*

Cette revue ne peut pas être vendue

Elle est distribuée par échange aux institutions (version papier)

et sur simple demande aux particuliers (format PDF)

à l'adresse suivante:

AFCFF (Association française de Cartographie de la Faune et de la Flore)

28, rue Voltaire, F- 42100 Saint Etienne

E-mail: [faunitaxys.journal@gmail.com](mailto:faunitaxys.journal@gmail.com)

Elle est disponible librement au téléchargement à partir du site:

<https://faunitaxys.fr/>

La parution de *Faunitaxys* est apériodique

*Faunitaxys* est indexé dans / *Faunitaxys* is indexed in:

- **Zoological Record**

Articles and nomenclatural novelties are referenced by:

- **ZooBank** (<https://zoobank.org>)

Online Archives:

- **HAL** (<https://hal.archives-ouvertes.fr>)

- **Internet Archive** (<https://archive.org/details/faunitaxys>)

Imprimée sur les presses de SPEED COPIE, 6, rue Tréfilerie, F- 42100 Saint-Etienne

**Imprimé le 12 12 2024**

# South American Acanthocinini (Coleoptera, Cerambycidae, Lamiinae): description of a new species; transfer of a species from *Urgleptes* to *Lepturges* (*Lepturges*); designation of a lectotype; and corrections

JOSEF VLASAK (1, \*), ANTONIO SANTOS-SILVA (2) & LARRY G. BEZARK (3)

(1) 207 Silverbrook Drive, Schwenksville, PA 19473, U.S.A.

- [josef\\_vlasak@merck.com](mailto:josef_vlasak@merck.com) - Orcid: <https://orcid.org/0000-0001-7514-0305>

- ZooBank: <http://zoobank.org/DAAADDC5-8B0E-49FE-925B-F9E481973E10>

(2) Museu de Zoologia, Universidade de São Paulo, Avenida Nazaré # 481, 04263-000, São Paulo, SP, Brazil.

- [toncriss@uol.com.br](mailto:toncriss@uol.com.br) - Orcid: <https://orcid.org/0000-0001-7128-1418>

- ZooBank: <http://zoobank.org/147209A1-FA0E-4AE3-8F10-A5CADAB6EE98>

(3) 521 46th Street, Sacramento, California, 95819, USA.

- [bezbycids@gmail.com](mailto:bezbycids@gmail.com) - Orcid: <https://orcid.org/0000-0003-0165-552X>

- ZooBank: <http://zoobank.org/25C35904-2035-4416-9534-8641C1551196>

\* Corresponding author

## Keywords:

Coleoptera;  
Cerambycidae;  
*Leptocometes*;  
*rectangulus*;  
*Lophopoeum*;  
*Lepturges*;  
*Aegomorphus*;  
Longhorned beetles;  
taxonomy;  
new species;  
South America.

**Abstract.** – A new species of *Leptocometes* Bates, 1881 is described from Ecuador: *L. rectangulus* sp. nov. A provisional key to species of *Leptocometes* is provided. The existence of the holotype for *Leptocometes nubilus* (Melzer, 1934) is reported. A lectotype is designated for *Lophopoeum virescens* Melzer, 1931. *Urgleptes prolixus* (Melzer, 1931) is transferred to *Lepturges* (*Lepturges*) Bates, 1863. Incorrect illustrations of *Lepturges melzeri* Gilmour, 1959 are reported. The incorrect sex of a specimen of *Aegomorphus longitarsis* (Bates, 1880) illustrated in a recent work is reported.

Vlasak J., Santos-Silva A. & Bezark L. G., 2024. – South American Acanthocinini (Coleoptera, Cerambycidae, Lamiinae): description of a new species; transfer of a species from *Urgleptes* to *Lepturges* (*Lepturges*); designation of a lectotype; and corrections. *Faunitaxys*, 12(66) : 1 – 11.

DOI: [https://doi.org/10.57800/faunitaxys-12\(66\)](https://doi.org/10.57800/faunitaxys-12(66))

ZooBank: <https://zoobank.org/62855513-E2C5-4BB7-9916-FA3D852F2346>

Received: 31/10/2024 – Revised: 04/12/2024 – Accepted: 05/12/2024

## Introduction

Ecuador is a relatively small country with 256,370 km<sup>2</sup> but, even so, has a tremendous amount of species diversity (Pazmiño-Palomino & Troya 2022). In fact, the first author's frequent collections in this country have revealed a large number of new species, as well as a considerable number of new records.

The genus *Leptocometes* Bates, 1881 was last revised by Monné (1990) and appears to be polyphyletic. This is because there are species with different body shapes, different shapes of the elytral apices and, most importantly, species with or without a humeral carina. The definition of what is a true humeral carina is somewhat controversial. In some species (regardless of the genus of Acanthocinini) a humeral carina is completely absent. However, in some species it is more or less distinct, although it does not form an obvious keel. In fact, what has been called a “humeral carina” should be called a “humeral keel.” This is the concept that really expresses the definition of a humeral carina in various works and keys. Even so, we

continue using the established term humeral carina herein. We examined the elytra of 13 species of *Leptocometes*. The elytral carina is well marked and keel shaped in the following species: *L. acutispinis* (Bates, 1863) (Fig. 14-15); *L. pallidus* (Melzer, 1934) (Fig. 16-17); *L. virescens* (Melzer, 1931) (Fig. 20-22); and *L. zikani* (Martins & Monné, 1974) (Fig. 23-25). It is absent or not keel shaped in the following species: *L. antonkozlovi* Monné et al., 2019; *L. barbiscapus* (Bates, 1872); *L. brevicornis* Vlasak et al., 2020; *L. hispidus* Bates, 1881; *L. nubilus* (Melzer, 1934); *L. spitzii* (Melzer, 1934) (Fig. 18-19); *L. umbrosus* (Thomson, 1864); *L. volxemi* (Lameere, 1894) (Fig. 26-27); and *L. wappesi* Botero & Santos-Silva, 2023.

Herein, a new species of *Leptocometes* is described from Ecuador and a provisional key to species of the genus is provided. Additionally, a lectotype is designated for *Lophopoeum virescens* Melzer, 1931. *Urgleptes prolixus* (Melzer, 1931) is transferred to *Lepturges* (*Lepturges*) Bates, 1863, and some incorrect information in previous works is reported and corrected. The existence of a holotype for *Leptocometes nubilus* (Melzer, 1934) is confirmed.

## Reviewer :

Juan Pablo Botero (*Instituto de Ciencias Naturales, Universidad Nacional de Colombia, Colombia*)

- <https://zoobank.org/463CA17F-AC2C-44DF-85AB-2AEA79684A12> - <https://orcid.org/0000-0002-5547-7987>



This is an open access article under the terms of the Creative Commons Attribution-NonCommercial-NoDerivs License, which permits use and distribution in any medium, provided the original work is properly cited, the use is non-commercial and no modifications or adaptations are made.

Copyright 2024. The Authors. *Faunitaxys* published by Lionel Delaunay on behalf of the AFCFF (Association française de Cartographie de la Faune et de la Flore).

## Material and Methods

Photographs were taken with a Canon EOS Rebel T3i DSLR camera, Canon MP-E 65mm f/2.8 1-5X macro lens. Specimens were illuminated with Dome of light (RK Science Factory, Brazil). The specimens were examined with a stereomicroscope at 30x magnification. Measurements were taken in “mm.” The acronyms used in the text are as follows:

- **CSCA**: California State Collection of Arthropods Sacramento, California, U.S.A.
- **JVCO**: Josef Vlasak Collection, Schwenksville, Pennsylvania, U.S.A.
- **LGBC**: Larry G. Bezark Collection, Sacramento, California, U.S.A.
- **MZSP**: Museu de Zoologia, Universidade de São Paulo, São Paulo, Brazil.

## Results

**CERAMBYCIDAE** Latreille, 1802

**LAMIINAE** Latreille, 1825

**ACANTHOCININI** Blanchard, 1845

*Leptocometes* Bates, 1881

*Leptocometes rectangulus* sp. nov.

(Fig. 1-10)

ZooBank: <https://zoobank.org/E4B9C5F6-6076-4463-93CF-5BA9F64F5900>

**Holotype**, ♂, ECUADOR, *Pichincha*: Bellavista Cloud Forest Lodge (Tandayapa), 2300 m, 2-3 Jul 2023, J. Vlasak leg. (MZSP, formerly JVCO).

**Paratypes**, ECUADOR

- *Pichincha*: 1 ♂ & 8 ♀, same data as holotype (1 ♀ MZSP, 1 ♂ and 7 ♀ JVCO);
- *Imbabura*: 1 ♂ & 1 ♀, Cabañas Intag Colibri, Intag, 1900 m, 17-19 Jun 2023, J. Vlasak leg. (JVCO);
- *Pichincha*: 1 ♂, El Septimo Paraiso hotel, Mindo, 1600 m, 4 Jul 2023, J. Vlasak leg. (JVCO);
- *Napo*: 2 ♂, El Reventador, 7 April 2000, R. L. Penrose leg. (LGBC, CSCA).

### Description of the holotype (Fig. 1-5)

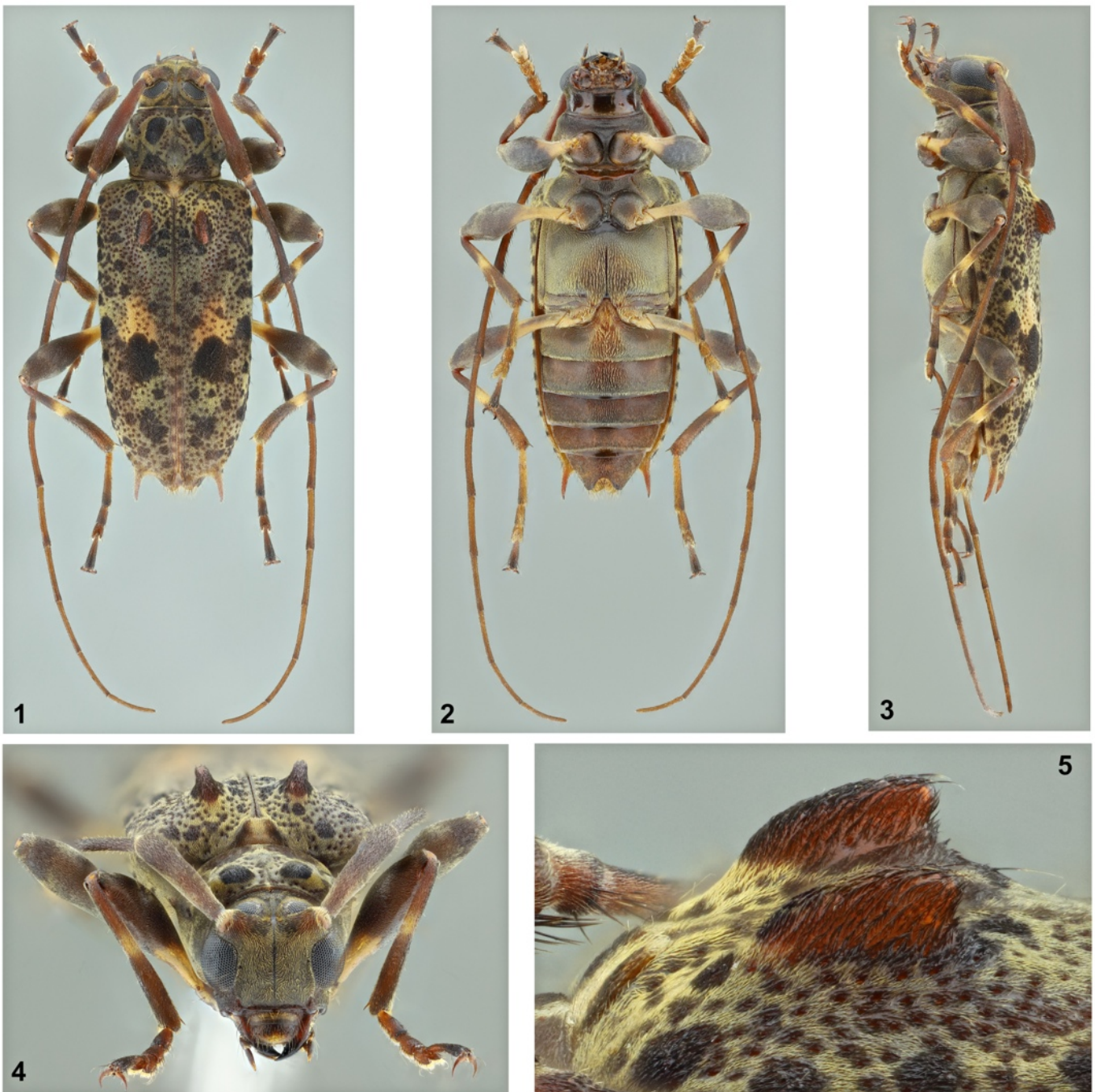
**Coloration.** – Head capsule dark brown, except light-brown area on each side of ventral surface close to prothorax and apex of antennal tubercles; ventral mouthparts reddish brown with irregular dark-brown areas, except palpomeres mainly dark brown with yellowish-brown apex; anteclypeus with wide dark yellowish-brown macula centrally, dark brown on remaining surface; labrum dark brown on posterior half, yellowish brown on anterior half; scape reddish brown, gradually darker toward apex; pedicel orangish basally, mostly reddish brown on remaining surface; antennomeres III-IV reddish brown on basal half, gradually darker toward blackish apex on remaining surface; antennomeres V-X orangish brown except dark-brown apex; antennomere XI orangish brown. Prothorax dark brown, slightly lighter on some areas, especially on pronotum, except pronotum with one oblique, black macula on each side of anterior half and irregular black macula on each side of posterior half, these latter fused anteriorly to a narrow zig-zag dark-brown band, and light-brown apex of prosternal process. Ventral surface of meso- and metathorax dark brown. Scutellum somewhat dark brown laterally, light yellowish brown centrally. Elytra dark brown anteriorly, slightly, gradually lighter toward apex, with abundant, irregular black maculae, largest one located dorsally just after middle, except reddish-brown macula about middle of dorsal surface and centrobasal crest reddish brown with base of dorsal surface black. Coxae dark brown with irregular orange areas; trochanters and femoral peduncles orange, except inner surface of metafemoral peduncle with longitudinal brown band; femoral clubs dark brown, slightly lighter on irregular areas; basal third of tibiae dark reddish brown; apical half of tibiae dark brown with irregular dark reddish-brown areas; remaining basal half of tibiae yellow; tarsomeres I-II reddish brown with blackish apex; tarsomeres III-IV reddish brown; tarsomere V reddish brown on basal half, blackish on apical half. Abdominal ventrites mostly reddish brown, except anterocentral area of ventrite 1 orangish brown, central apex of ventrites 2-4 dark brown, and apex of ventrite 5 blackish.

**Head.** – Frons densely, minutely punctate; with abundant yellowish-brown pubescence not obscuring integument, except glabrous median groove; with one long, erect seta close to eyes, seta blackish on basal half, gradually yellowish-brown toward apex. Area between antennal tubercles with abundant yellowish-brown pubescence not obscuring integument, except glabrous median groove and dark-brown pubescence not obscuring integument close to base of antennal tubercles. Area close to upper eye lobes on vertex and behind them with dense yellowish-brown pubescence; remaining surface on vertex and area behind upper eye lobes with oblique brownish pubescent band, from middle of area behind upper eye lobe to middle of dorsal area between eyes, abundant dark-brown pubescence and moderately abundant brownish pubescence not obscuring integument on central area of vertex close to prothorax, abundant yellowish pubescence centrally between eyes, except glabrous median groove, and dense yellowish-brown pubescence toward prothorax between brownish pubescent areas. Area behind lower eye lobes with dense yellowish-brown pubescence close to eye, pubescence gradually sparser and lighter toward glabrous area close to prothorax; with a few long, erect yellowish-brown setae close to eye. Genae with abundant yellowish-brown pubescence not obscuring integument, except glabrous apex; with a few long, erect setae interspersed toward ventral surface, setae dark brown basally, gradually yellowish toward apex. Antennal tubercles with abundant yellowish-brown pubescence not obscuring integument frontally, and moderately abundant yellowish-white pubescence not obscuring integument on remaining surface, except abundant pale-yellow pubescence on apex. Wide central area of postclypeus with sparse yellowish-white pubescence, except glabrous middle area, with long, suberect yellowish setae interspersed, and distinctly long, erect dark-brown setae interspersed laterally. Sides of postclypeus mostly glabrous. Labrum with sparse yellowish-white pubescence on posterior half, pubescence sparser centrally, glabrous on anterior half, except sparse short yellowish setae on anterior margin; with long, erect setae interspersed, especially on sides of posterior 2/3, setae dark brown basally, gradually yellowish-brown toward their apices. Gula mentum smooth, glabrous, except moderately abundant yellowish-white pubescence not obscuring integument on intermaxillary process. Distance between upper eye lobes 0.16 times distance between outer margins of eyes; in frontal view, distance between lower eye lobes 0.51 times distance between outer margins of eyes. Antennae 2.3 times elytral length, reaching elytral apex at middle of antennomere VI. Antennae with abundant yellowish pubescence not obscuring integument, more yellowish white dorsally and laterally on basal segments; with short, erect yellowish setae interspersed throughout; with moderately sparse, long, erect dark-brown setae on ventral apex of scape, ventral apical half of pedicel, and entire ventral surface of antennomeres III-IV, setae on III more abundant than on IV.

Antennal formula (ratio) based on length of antennomere III:

– Scape = 0.96. – Pedicel = 0.08. – IV = 0.80. – V = 0.69. – VI = 0.62. – VII = 0.57. – VIII = 0.53. – IX = 0.51. – X = 0.48. – XI = 0.46.

**Thorax.** – Prothorax wider than long; anterior and posterior constrictions narrow, well marked; sides divergent from anterior constriction to lateral tubercles, convergent from lateral tubercles to posterior fifth, then parallel sided toward posterolateral angles; lateral tubercles located on middle, moderately large, conical, slightly directed backward and upward. Pronotum with distinct, oblique gibbosity on each side of anterior half, corresponding to area of black anterior maculae, and slightly elevated gibbosity on center of posterior half; moderately sparsely punctate close to anterior and outer margin of anterior gibbosities, between anterior and posterior gibbosities, laterally, and near posterior constriction, punctures coarse, except finer punctures centrally between gibbosities; with narrow, short, longitudinal pale-yellow pubescent band anterocentrally, pale-yellow pubescence posterocentrally, narrow, longitudinal yellowish-white pubescent band centrally between the pale-yellow central areas, slightly whiter about middle of pronotum, abundant black pubescence on black integumental areas, surrounded with band of dense yellowish-brown pubescence, this band more pale-yellow close to inner margin of anterolateral gibbosities, irregular, large yellowish-brown pubescent macula on sides of anterior half, fused to pubescence close to anterolateral gibbosities, irregular, oblique light yellowish-brown pubescent band on each side of posterior half, and remaining surface mostly with abundant brownish pubescence not obscuring integument. Sides of prothorax with abundant, mostly pale yellowish-brown pubescence not obscuring integument, except dense pale-yellow pubescence on postcoxal process. Prosternum with moderately abundant yellowish-white pubescence not obscuring integument, except glabrous anterior sulcus. Prosternal process with sparse yellowish-white



**Fig. 1-5.** *Leptocometes rectangularus* sp. nov., holotype male. 1. Dorsal habitus. 2. Ventral habitus. 3. Lateral habitus. 4. Head, frontal view. 5. Elytral centrobasal crest.

pubescence on anterior half, pubescence gradually sparser toward apex on posterior half; narrowest area 0.11 times procoxal width. Mesoventrite with moderately abundant whitish pubescence not obscuring integument centrally; sides with abundant yellowish-brown pubescence, except whitish pubescence close to mesocoxal cavity. Mesanepisterna and mesepimera with abundant yellowish-brown pubescence, pubescence denser on some areas, appearing to be yellower depending on light intensity and source. Mesoventral process with sides convergent on anterior half, subparallel-sided on apical half; apical width 0.17 times mesocoxal width. Metanepisterna and metaventrite with abundant yellowish-brown pubescence partially obscuring integument, except glabrous metathoracic discrimen. Scutellum with abundant yellow pubescence partially obscuring integument, except sparser dark-brown pubescence on sides of anterior half.

**Elytra.** – Subparallel-sided on anterior 2/3, gradually rounded toward apex on posterior third; apex wide, descending obliquely from outer angle to sutural angle, with outer angle forming long spiniform projection and sutural angle forming short, moderately wide projection with blunt apex;

centrobasal crest elevated, slightly projected backward posteriorly (Fig. 5), with a few moderately long, decumbent setae on apex of dorsal surface, setae black on about basal half, yellowish on remaining surface; abundantly, coarsely punctate on anterior half, punctures sparser, shallower toward apex on posterior half; humeral carina absent; blackish maculae with abundant blackish pubescence not obscuring integument; circum-scutellar area with abundant yellowish-brown pubescence not obscuring integument; area close to anterior margin of largest black integumental macula with dense yellow pubescence, not obscuring punctures, distinctly paler toward epipleural margin; remaining anterior half mostly with abundant greenish-yellow pubescence not obscuring integument; remaining posterior half mostly with abundant yellowish pubescence not obscuring integument; with sparse, long, erect setae interspersed, setae mostly blackish with paler apical region; with moderately short, erect pale-yellow setae interspersed on outer spiniform projection.

**Legs.** – Femora with abundant yellowish-white pubescence not obscuring integument. Basal half of tibiae with moderately abundant yellowish-white pubescence not obscuring integument, pubescence

appearing to be whiter on light area due to the integument color, with sparse, short, erect pale-yellow setae interspersed; dorsal and lateral surfaces of apical half with moderately sparse, mostly brown pubescence not obscuring integument, except mesotibiae with part of dorsal sulcus with dense, bristly pale-yellow pubescence and remaining dorsal surface with short, bristly, both dark-brown and yellowish-brown pubescence; ventral surface of apical half with bristly yellowish-brown pubescence, denser on protibiae; apical half of ventral surface of mesotibiae with sparse, short, erect dark-brown setae interspersed; apical half of metatibiae with moderately abundant, short, erect dark-brown setae interspersed throughout. Dorsal surface of tarsi with moderately abundant yellowish-white pubescence not obscuring integument, pubescence appearing to be dark on dark integumental areas due to the integument color; apex of lobes of tarsomere III and apex of V with long setae bent backward apically, setae dark brown on their basal half, gradually paler toward apex on remaining surface; metatarsomere V 1.6 times longer than II-III together.

**Abdomen.** – Ventrites with abundant yellowish pubescence not obscuring integument, except longer, yellower pubescence on central area of ventrite 1 and glabrous apical area of ventrites 2-4. Ventrite 5 slightly longer than ventrite 4; with a few long dark setae interspersed near margins; apex with U-shaped notch.

**Female** (Fig. 6-10)

– Antennae shorter, 2.0 times elytral length, reaching elytral apex at base of antennomere VII;

– Ventrite 5 distinctly longer than ventrite 4, distinctly narrowed apically, with V-shaped notch on apex.

**Variation.** – Black anterior and posterior maculae on pronotum fused; antennomeres VI-X dark brown about apical half; antennomere XI dark brown on apical 2/3.

**Dimensions** (mm) (holotype male / paratype males / paratype females).

- Total length, 12.85/7.95-11.40/9.10-11.50;
- Prothoracic length, 2.10/1.45-2.10/1.45-2.00;
- Anterior prothoracic width, 2.25/1.40-2.10/1.70-2.05;
- Posterior prothoracic width, 2.60/1.75-2.45/2.05-2.50;
- Maximum prothoracic width, 3.45/2.05-3.15/2.25-2.95;
- Humeral width, 4.35/2.70-3.95/3.25-4.20;
- Elytral length, 9.15/5.75-8.10/6.70-8.45.

**Etymology.** – The specific epithet “*rectangulus*” (Latin, shaped like a rectangle) refers to the almost rectangular shape of the elytra.

**Remarks.** – *Leptocometes rectangulus* sp. nov. is similar to *L. nubilus* (Melzer, 1934) (Fig. 11-13), but differs as follows: prothoracic tubercles distinctly acute apically; elytra subparallel-sided on anterior 2/3; pronotum and elytra with black maculae; and sides of apical margin of abdominal ventrite 5 not spiniform. In *L. nubilus*, the lateral tubercles of the prothorax are not distinctly acute apically, sides of elytra are convergent from humerus, pronotum and elytra without black maculae, and the sides of the apical margin of the abdominal ventrite 5 are spiniform.

*Leptocometes nubilus* (Melzer, 1934)

(Fig. 11-13)

*Lophopoeum nubilum* Melzer, 1934: 231.

**Remarks.** – According to Tavakilian & Chevillotte (2024) and Monné (2024) *Leptocometes nubilus* was described based on syntypes from Brazil (Minas Gerais). However, according to Melzer (1934): “Long. 8-10 mm. 6 ex. Hab. Estado de Minas Gerais: Passa Quatro, Fazenda dos Campos, J. F. Zikán e E. Jaeger leg. Tipo na minha coleção [Length 8-10 mm. 6 specimens. From the state of Minas Gerais: Passa Quatro, Campos Farm, J. F. Zikán and E. Jaeger leg. Type in my collection].” Therefore, the species has a holotype (ICZN 1999: 73.1.1), which is a female, and five paratypes. Monné *et al.* (2017) already reported that the species has a holotype (female).

*Leptocometes zikani* (Martins & Monné, 1974)

(Fig. 23-25)

*Lophopoeum zikani* Martins & Monné, 1974: 16.

**Remarks.** – According to Martins & Monné (1974), *L. zikani* differs from *L. virescens* (Fig. 20-21) by the presence of more conspicuous granulations on the base of elytra, lateral tubercle of the prothorax more developed, posterior half of elytra with white oblique pubescent band (not yellowish), and larger dimensions. Comparing the lectotype (Fig. 20-21) and paralectotype of *L. virescens* with the holotype and paratype of *L. zikani*, we could not find any reliable difference in the sculpturing of the anterior region of the elytra, they appear to be identical in all specimens examined of both species. The other differences pointed out are clearly present. However, due to the extreme similarity in all other features (including integumental and pubescence colors), it is possible that these differences are just extreme variations of *L. virescens*. Although we examined 20 specimens identified as *L. virescens* (all smaller than the types of *L. zikani* and all with an oblique yellow pubescent band on the posterior half of elytra), the small number of specimens of *L. zikani* examined does not allow confirming if they are really different from *L. virescens*.

*Leptocometes virescens* (Melzer, 1931)

(Fig. 20-22)

*Lophopoeum virescens* Melzer, 1931: 64.

**Remarks.** – According to Monné *et al.* (2017) on *Leptocometes virescens*: “Holotype: Brazil, São Paulo: São Paulo, 12.I.1924, W. Melzer.” However, there is no information in the original description that indicates that a holotype was designated. Therefore, we are designating a lectotype (Fig. 20-22) herein, which have the following labels (Fig. 22):

1. Red (printed): Typus;
2. White (handwriting): Typus;
3. White (front): 12.I.1924 (handwriting) / Brasil – S. Paulo (printed) / Est. S. Paulo (printed);
- (verse, handwriting): Santo Amaro / W. Melzer;
4. White (handwriting): *Lophopoeum virescens* Melz.
5. Yellow (printed): Lectotype [added by us];
6. White (printed): MZSP 62630 [added by us].

The species was described based on five specimens. According to Melzer (1931), all of them collected by himself: “Bosque da Saude e Matto do Governo, perto da Capital, Santo Amaro.” The four paralectotypes belong to the MZSP collection: one from São Paulo (São Paulo State); São Paulo, Jabaquara (São Paulo State); one from Mata do Governo, currently, Parque Estadual Fontes do Ipiranga (São Paulo State); and São Paulo, Saúde (São Paulo State).

*Lepturges (Lepturges)* Bates, 1863

*Lepturges (Lepturges) melzeri* Gilmour, 1959

*Lepturges humilis* Melzer, 1934: 201 (preoccupied).

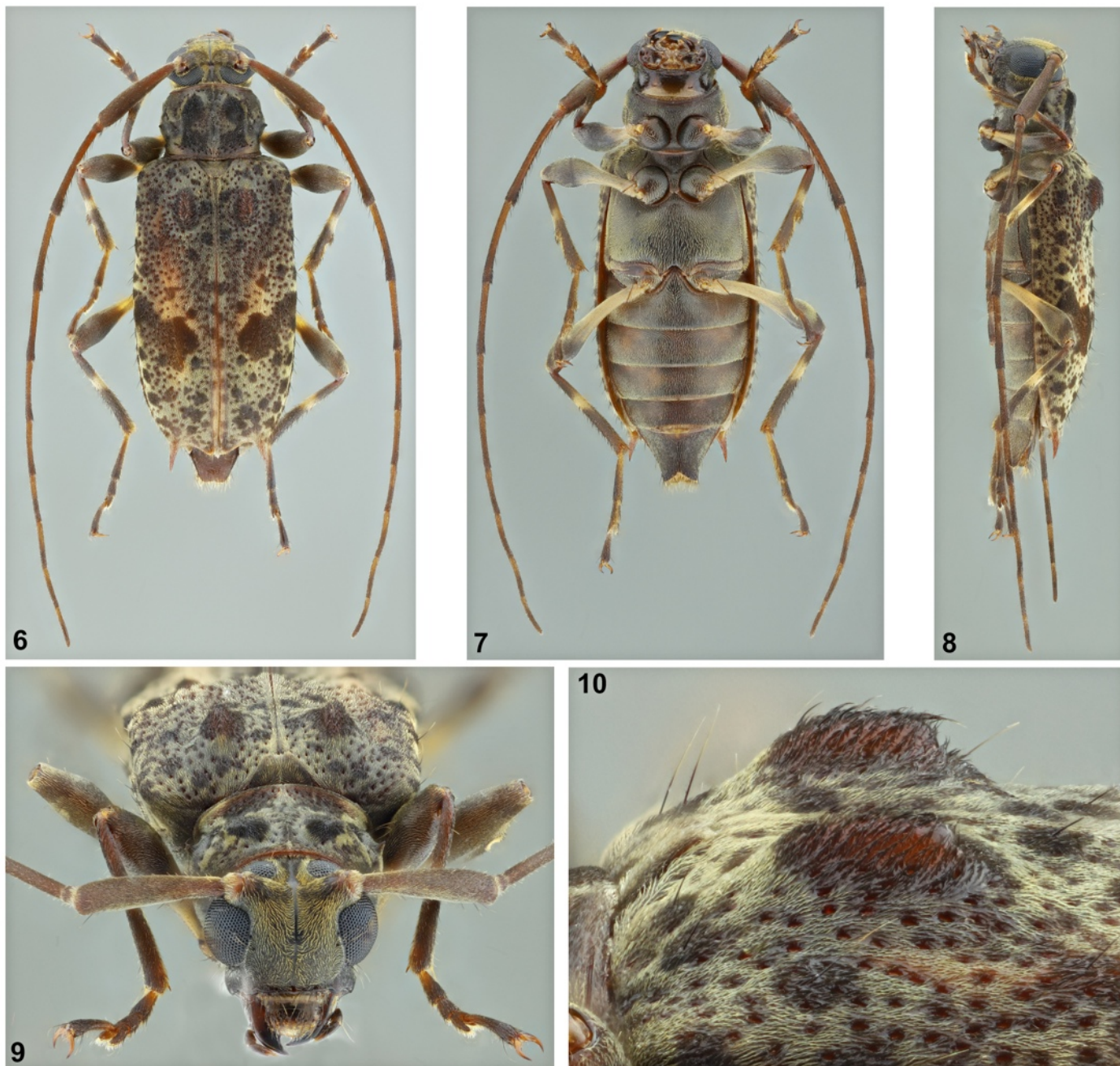
*Lepturges melzeri* Gilmour, 1959: 606.

*Urgleptes melzeri*; Monné, 1976: 357.

*Lepturges (Lepturges) melzeri*; Olivier *et al.*, 2024: 473.

Note: for full references, see Monné (2024) and Tavakilian & Chevillotte (2024). See photographs on Bezark (2024) and in Monné *et al.* (2024).

**Remarks.** – Recently, Olivier *et al.* (2024) transferred *Urgleptes melzeri* (Gilmour, 1959) to *Lepturges (Lepturges)* Bates, 1863. Although the transfer was correct, the figures included in the work do not correspond to the holotype of *Lepturges humilis* (= *L. (L.) melzeri*): they are of the lectotype of *Urgleptes prolixus* (Melzer, 1931). Monné *et al.*



**Fig. 6-10.** *Leptocometes rectangulus* sp. nov., paratype female. 6. Dorsal habitus. 7. Ventral habitus. 8. Lateral habitus. 9. Head, frontal view. 10. Elytral centrobasal crest.

(2024) illustrated the true holotype of *L. (L.) humilis*. Therefore, the following corrections must be made:

– *Lepturges (Lepturges) melzeri*; Olivier *et al.*, 2024: Fig. 38-40 = *Lepturges prolixus* (= *Urgleptes prolixus*). All other information on *L. (L.) melzeri* in Olivier *et al.* (2024) and Monné *et al.* (2024) actually correspond to this species. Therefore, the species belongs to *Lepturges (Lepturges)* and not to *Urgleptes*.

***Lepturges (Lepturges) prolixus* Melzer, 1931**

*Lepturges prolixus* Melzer, 1931: 69.

*Urgleptes prolixus*; Monné, 1976: 457.

*Lepturges (Lepturges) melzeri*; Olivier *et al.*, 2024: Fig. 38-40.

Note: for full references, see Monné (2024) and Tavakilian & Chevillotte (2024). See photographs on Bezark (2024) and Olivier *et al.* (2024), as *L. (L.) melzeri*.

**Remarks.** – Monné (1976) transferred *Lepturges prolixus* to *Urgleptes* (translated): “Due to the position of the lateral spines

of the prothorax, away from the posterior angles, and the continuous basal [posterior] row of pronotal punctures behind the tubercles [following toward sides of the prothorax], we transferred the following species to the genus *Urgleptes*: *Urgleptes melzeri* (Gilmour, 1959), **comb. n.**; *U. miser* (Bates, 1863), [*sic*, semicolon] **comb. n.**; *U. prolixus* (Melzer, 1931), **comb. n.** and [*sic*, semicolon + and] *U. puerulus* (Melzer, 1932), **comb. n.**” However, there are species in *Lepturges (Lepturges)* with the lateral tubercles of the prothorax not close to or coinciding with the posterolateral angles. Even more importantly, the row of punctures on the posterior region of the pronotum does not continue toward the sides of the prothorax (see photographs in Olivier *et al.* (2024)). Therefore, as the most important feature of *Urgleptes*, the row of punctures on the posterior region of the pronotum continuing toward the sides of the prothorax, in fact the only character that can currently be used to separate it from *Lepturges (Lepturges)*, is not present in *U. prolixus*, the species has to be transferred to the genus in which it was described.



**Provisional key to species of *Leptocometes***

- |         |  |   |
|---------|--|---|
| 1.      | Outer apical angle of elytra projected, projection often spiniform, always longer than pedicel .....   | 2   |
| —       | Outer apical angle of elytra not or slightly projected, when present, projection at most as long as pedicel .....  | 9   |
| 2(1).   | Metafemora not pedunculate-clavate; metafemoral club more slender than mesofemoral club .....  | 3   |
| —       | Metafemora pedunculate-clavate; width of metafemoral club often similar to that of mesofemoral club .....  | 5   |
| 3(2).   | Metatarsomere I about twice as long as II-III together. Colombia .....   | <i>L. antonkozlovi</i> Monné <i>et al.</i> , 2019   |
| —       | Metatarsomere I distinctly shorter than twice as long as II-III together .....   | 4   |
| 4(3).   | Elytra with humeral carina keel shaped (Fig. 14-15). Mexico (Chiapas), Nicaragua, Costa Rica, Panama, Ecuador, Colombia, Bolivia, French Guiana, Brazil (Amazonas, Pará) .....   | <i>L. acutispinis</i> (Bates, 1863)                 |
| —       | Elytra without humeral carina (Fig. 18-19). French Guiana, Brazil (Bahia, Minas Gerais, Espírito Santo, Rio de Janeiro, São Paulo) .....   | <i>L. spitzi</i> (Melzer, 1934)                     |
| 5(2).   | Elytral apex distinctly obliquely truncate, making the outer angle triangularly projected .....  | 6   |
| —       | Elytral apex not obliquely truncate, with outer angle distinctly spiniform .....   | 8   |
| 6(5).   | Pronotum with two longitudinal dark-brown pubescent bands. Ecuador .....   | <i>L. longilineatus</i> Nascimento & McClarin, 2018 |
| —       | Pronotum without longitudinal dark-brown pubescent bands .....   | 7   |
| 7(6).   | Centrobasal crest of elytra distinctly elevated; elytra without dark-brown pubescent maculae. Brazil (Minas Gerais, Rio de Janeiro, São Paulo) .....   | <i>L. nubilus</i> (Melzer, 1934)                    |
| —       | Centrobasal crest of elytra slightly elevated; elytra with small dark-brown pubescent maculae. Colombia .....  | <i>L. obscurus</i> (Monné, 1990)                    |
| 8(5).   | Elytra with abundant, distinctly long dark erect setae; without yellowish-brown pubescent area about middle. Panama .....  | <i>L. spinipennis</i> (Bates, 1885)                 |
| —       | Elytra with sparse, moderately long erect setae; with large, irregular yellowish-brown pubescent area about middle. Ecuador .....  | <i>L. rectangulus</i> sp. nov.                      |
| 9(1).   | Femoral peduncles with transverse zig-zag yellow macula dorsally. Bolivia .....  | <i>L. wappesi</i> Botero & Santos-Silva, 2023       |
| —       | Femoral peduncles without transverse yellow macula dorsally .....  | 10  |
| 10(9).  | Femora with long, erect setae. Saint Vincent and the Grenadines (Saint Vincent) .....  | <i>L. luneli</i> (Chalumeau & Touroult, 2005)       |
| —       | Femora without long, erect setae .....   | 11  |
|         | Note: <i>L. luneli</i> probably belongs to <i>Trichotithonus</i> Monné, 1990.  |   |
| 11(10). | Elytra with dense white pubescent macula about middle (Fig. 26-27). Brazil (Minas Gerais, Espírito Santo, Rio de Janeiro, Paraná) .....  | <i>L. volxemi</i> (Lameere, 1884)                   |
| —       | Elytra without dense white pubescent macula about middle .....   | 12  |
| 12(11). | Elytra with large dark-brown pubescent area laterodorsally about middle .....  | 13  |
| —       | Elytra without large dark-brown pubescent area laterodorsally about middle .....   | 15  |
| 13(12). | Scutellum with longitudinal whitish pubescent band centrally, not expanded apically; elytra with narrow, short, longitudinal whitish pubescent band adjacent to apex of centrobasal crest. Ecuador .....   | <i>L. brevicornis</i> Vlasak <i>et al.</i> , 2020   |
| —       | Scutellum without longitudinal pubescent band centrally, if present, expanded apically; elytra without narrow, longitudinal whitish pubescent band adjacent to apex of centrobasal crest .....   | 14  |
| 14(13). | Ventral surface of antennomeres III-IV with long, erect setae; pubescence on anterior fifth of elytra not contrasting with that on remaining anterior third. Mexico (Veracruz), El Salvador, Guatemala, Nicaragua, Costa Rica .....  | <i>L. hispidus</i> (Bates, 1881)                    |
| —       | Ventral surface of antennomeres III-IV with sparse, moderately short erect setae; pubescence on anterior fifth of elytra distinctly contrasting with that on remaining anterior third. Brazil (Rio de Janeiro, São Paulo, Paraná, Santa Catarina, Rio Grande do Sul), Argentina (Misiones), Paraguay ..... | <i>L. umbrosus</i> Thomson, 1864                    |
| 15(11). | Ventral surface of antennomeres I-IV with dense, erect setae. Guatemala, Honduras, Nicaragua, Costa Rica, Panama .....   | <i>L. barbiscapus</i> (Bates, 1872)                 |
| —       | Ventral surface of antennomeres I-IV with sparse, moderately short erect setae .....   | 16  |
| 16(15). | Pronotum without dark pubescent maculae (Fig. 16-17). Brazil (Minas Gerais) .....  | <i>L. pallidus</i> (Melzer, 1934)                   |
| —       | Pronotum with dark pubescent maculae .....   | 17  |
| 17(16). | Oblique pubescent band on posterior half of elytra yellow (Fig. 20-21). Brazil (São Paulo, Santa Catarina, Rio Grande do Sul), Uruguay .....   | <i>L. virescens</i> (Melzer, 1931)                  |
| —       | Oblique pubescent band on posterior half of elytra whitish (Fig. 23-25). Brazil (Minas Gerais, Rio de Janeiro) .....   | <i>L. zikani</i> (Martins & Monné, 1974)            |



**Fig. 11-15.** 11-13. *Leptocometes nubilus* (Melzer, 1934), holotype female (MZSP 62588). 11. Dorsal habitus. 12. Head and pronotum. 13. Ventral habitus. 14-15. *Leptocometes acutispinis* (Bates, 1863), male (MZSP 62634) from Brazil (Pará). 14. Dorsal habitus. 15. Oblique habitus.

## ACANTHODERINI

*Aegomorphus* Haldeman, 1847*Aegomorphus longitarsis* (Bates, 1880)*Acanthoderes longitarsis* Bates, 1880: 58.

**Remarks.** – The specimen in the figure “2B” in Heffern *et al.* (2022), listed as a male, in fact, is a female.

## On the work published by Julius Melzer in 1934

According to Tavakilian & Chevillotte (2024) this work was published in 1935. However, there is no evidence in the magazine that volume 5 was published in 1935. According to the magazine, volume 5 was published in 1934. Furthermore, we examined a “separate” (reprint) with the following information: “Dado à publicidade em dezembro de 1934 [Published in December 1934].” Additionally, according to Rebouças *et al.* (2003:11) on the pages of the work by Julius Melzer: “v.5, p.213-244, 1934.” Therefore, the following taxa were published in 1934, and not 1935 (all described by Melzer): *Neoeme vittipennis*; *Merionoedopsis brevipennis*; *Merionoeda bicolor*; *Ommata (Rhopalessa) demissa*; *Ommata (Eclipta) amabilis*; *Ommata (Eclipta) socia*; *Ommata (Eclipta) brevipennis*; *Ommata (Eclipta) nigriventris*; *Ommata (Eclipta) bipunctata*; *Ommata (Ecliptophanes)*; *Ommata (Ecliptophanes) bucki*; *Odontocera lineatocollis*; *Odontocera malleri*; *Odontocera scabricollis*; *Dihammaphora meissneri*; *Neoclytus discretus*; *Mecometopus ludicrus*; *Stereomerus*; *Stereomerus pachyzeoides*; *Anisopeplus*; *Anisopeplus perplexus*; *Dorcasta implicata*; *Tithonus glaucus*; *Aldidion bruchi*; *Lophopoeum nubilum*; *Lophopoeum pallidum*; *Lophopoeum spitzii*; *Anisolophia*; *Anisolophia glauca*; *Ozineus inexpectatus*; *Leiopus convexus*; *Lepturges recki*; *Probatius albosparsus*; *Pentheochaetes apicalis*; *Pentheochaetes turbidus*; *Nyssodrys vittata*; *Nyssodrys basalis*; and *Phaea schildi*.

## Acknowledgments

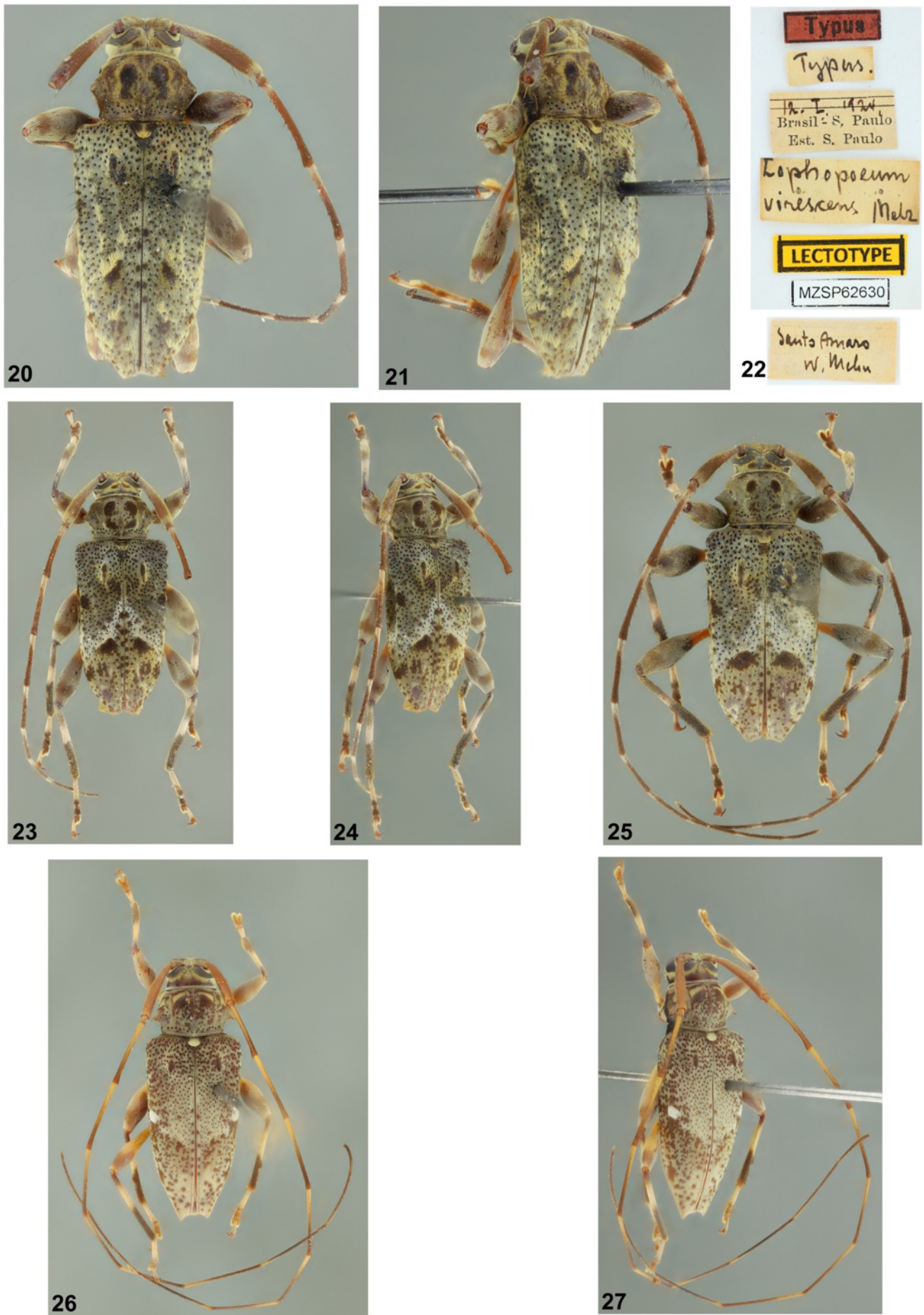
We express our sincere thanks to the anonymous reviewers for improving the original manuscript. Thanks to Alexey Tishechkin (CSCA) for providing data for the paratype of the new *Leptocometes*.

## References

- Bezark L.G., 2024. – A photographic Catalog of the Cerambycidae of the World. New World Cerambycidae Catalog. Available from: <http://bezbycids.com/byciddb/wdefault.asp?w=n/> (Last accessed 22 October 2024).
- Heffern D., Santos-Silva A. & Botero J.P., 2022. – Two new species and taxonomical and geographical notes on *Aegomorphus* Haldeman (Coleoptera, Cerambycidae, Lamiinae). *Papéis Avulsos de Zoologia*, 62(e202262021): 1-12.
- Gilmour E.F., 1959. – On the Neotropical Acanthocinini V (Coleoptera, Cerambycidae, Lamiinae). New species of *Lepturges* Bates and *Urgleptes* Dillon. *Opuscula Zoologica*, 28: 1-10.
- ICZN [International Commission on Zoological Nomenclature]. 1999. – *International Code of Zoological Nomenclature. 4th Edition*. International Trust for Zoological Nomenclature, London, xxx + 306 pp.
- Melzer J., 1931. – Longicórneos americanos, principalmente do Brasil, novos ou pouco conhecidos (Coleoptera, Cerambycidae) III. *Archivos do Instituto Biológico*, 4: 51-82.
- Melzer J., 1934. – Longicórneos americanos, principalmente do Brasil, novos ou pouco conhecidos IV. *Arquivos do Instituto Biológico*, 5: 213-244.
- Monné M.A., 1976. – O gênero *Lepturges* (s. str.) Bates, 1863 no Leste e Sul do Brasil (Coleoptera, Cerambycidae, Lamiinae, Acanthocinini). *Revista Brasileira de Biologia*, 36(2): 357-376.
- Monné M.A., 1990. – Sinopse dos gêneros de Acanthocinini neotropicais. I. Gêneros com setas e crista centro-basal nos élitros (Coleoptera, Cerambycidae, Lamiinae). *Revista Brasileira de Biologia*, 50(1): 249-278.
- Monné M.A., 2024. – Catalogue of the Cerambycidae (Coleoptera) of the Neotropical region. Part II. Subfamily Lamiinae. Available from: <https://cerambycids.com/catalog/> (Last accessed 22 October 2024).
- Monné M.A., Santos-Silva A., Casari S.A. & Monné M.L., 2017. – Checklist of Cerambycidae, Disteniidae and Vesperidae (Coleoptera) primary types of the Museu de Zoologia, Universidade de São Paulo, São Paulo, Brazil. *Zootaxa*, 4249(1): 1-104.
- Monné M.A., Botero J.P., Olivier R.S. & Santos-Silva A., 2024. – South American Acanthocinini (Coleoptera, Cerambycidae, Lamiinae): new species, synonymy, description of females, and notes. *Zootaxa*, 5519(3): 345-383.
- Olivier R.S., Santos-Silva A., Monné M.L. & Costa-Pinto P.J., 2024. – Notes, new records, and transference in South American Cerambycidae (Insecta, Coleoptera). *Zootaxa*, 5496(4): 451-499.
- Pazmiño-Palomino A. & Troya A., 2022. – Ants of Ecuador: new species records for a megadiverse country in South America. *Revista Brasileira de Entomologia*, 66(2)e20210089: 1-15.
- Rebouças M.M., Santiago M.R., Vitiello N., D’Agostini S., Silva M.L.F., Pizolato S.F., Oliveira M.M. & Rosa E.C., 2003. – Palavras-chave: um meio para identificar assuntos relativos aos trabalhos publicados na revista “Arquivos do Instituto Biológico”, no período de 1928 a 2002. *Arquivos do Instituto Biológico*, 70 (Supl. 1): 1-42.
- Tavakilian G.L. & Chevillotte H., 2024. – Titan: base de données internationales sur les Cerambycidae ou Longicornes. Available from: <http://titan.gbif.fr/> (Last accessed 22 October 2024).



Fig. 16-19. 16-17. *Leptocometes pallidus* (Melzer, 1934), holotype male (MZSP 62633). 16. Dorsal habitus. 17. Oblique habitus. 18-19. *Leptocometes spitzii* (Melzer, 1934), holotype female (MZSP 62635). 18. Dorsal habitus. 19. Oblique habitus.



**Fig. 20-27.** 20-22. *Leptocometes virescens* (Melzer, 1931), lectotype male (MZSP 62630). 20. Dorsal habitus. 21. Oblique habitus. 22. Labels. 23-24. *Leptocometes zikani* (Martins & Monné, 1974), holotype male (MZSP 62631). 23. Dorsal habitus. 24. Oblique habitus. 25. *Leptocometes zikani*, paratype male (MZSP 62632), dorsal habitus. 26-27. *Leptocometes volxemi* (Lameere, 1884), female (MZSP 62636) from Brazil (Espírito Santo, Linhares). 26. Dorsal habitus. 27. Oblique habitus.

## Résumé

Vlasak J., Santos-Silva A. & Bezark L. G., 2024. – Acanthocinini d'Amérique du Sud (Coleoptera, Cerambycidae, Lamiinae) : description d'une nouvelle espèce ; transfert d'une espèce du genre *Urgleptes* au genre *Lepturges* (*Lepturges*) ; désignation d'un lectotype et corrections. *Faunitaxys*, 12(66) : 1 – 11.

Une nouvelle espèce du genre *Leptocometes* Bates, 1881 est décrite en Équateur : *L. rectangulus* **sp. nov.** Une clé provisoire des *Leptocometes* est fournie. L'existence de l'holotype de *Leptocometes nubilus* (Melzer, 1934) est signalée. Un lectotype est désigné pour *Lophopoeum virescens* Melzer, 1931. *Urgleptes prolixus* (Melzer, 1931) est transféré dans *Lepturges* (*Lepturges*) Bates, 1863. Des illustrations incorrectes de *Lepturges melzeri* Gilmour, 1959 sont signalées. Le sexe incorrect d'un spécimen d'*Aegomorphus longitarsis* (Bates, 1880) illustré dans un ouvrage récent est signalé.

Mots-clés. – Coleoptera, Cerambycidae, *Leptocometes*, *rectangulus*, *Lophopoeum*, *Lepturges*, *Aegomorphus*, longicorne, taxonomie, nouvelles espèces, Amérique du Sud.

---

## Derniers articles publiés

Hui Wen, Xin-Yuan Zhang, Shu-Tong Zhang & Hao Xu, 2024. – Distribution of the flower beetle *Pseudodicerus nigrocyaneus* (Bourgoin, 1917) (Coleoptera: Scarabaeidae: Cetoniinae) in Asia with biological notes. *Faunitaxys*, 12(57): 1 – 15. [https://doi.org/10.57800/faunitaxys-12\(57\)](https://doi.org/10.57800/faunitaxys-12(57))

Cumming R. T., Engel M. S., Lian Z. & Ulitzka M. R., 2024. – Small, intricate, and beautiful; a new species of lophioneurid from the Cretaceous (Insecta: Thripida: †Lophioneurida). *Faunitaxys*, 12(58): 1 – 10. [https://doi.org/10.57800/faunitaxys-12\(58\)](https://doi.org/10.57800/faunitaxys-12(58))

Ythier E. & Lourenço W. R., 2024. – A new species of *Hadrurochactas* Pocock, 1893 (Scorpiones: Chactidae) from the Mitaraka Massif in French Guiana. *Faunitaxys*, 12(59): 1 – 9. [https://doi.org/10.57800/faunitaxys-12\(59\)](https://doi.org/10.57800/faunitaxys-12(59))

Háva J., 2024. – *Mycetophagus* (s. str.) *lenkae* **sp. nov.** from India: Arunachal Pradesh (Coleoptera: Mycetophagidae), along with new records for *Mycetophagus* (*Mycetophagoides*) *alni* Champion in two states in India. *Faunitaxys*, 12(60) : 1 – 3. [https://doi.org/10.57800/faunitaxys-12\(60\)](https://doi.org/10.57800/faunitaxys-12(60))

Herbin D., Giusti A. & Mielke C. G. C., 2024. – Taxonomic revision of the genera *Tamphana* Schaus and *Tuyvae* Orlandin, Piovesan & Carneiro with description of eleven new species (Lepidoptera, Apatelodidae). *Faunitaxys*, 12(61): 1 – 31. [https://doi.org/10.57800/faunitaxys-12\(61\)](https://doi.org/10.57800/faunitaxys-12(61))

Niisato T. & Tichý T., 2024. – A new species of the genus *Microdebilissa* Pic, 1925 from West Kalimantan (Coleoptera, Cerambycidae, Cerambycinae, Stenopterini). *Faunitaxys*, 12(62): 1 – 4. [https://doi.org/10.57800/faunitaxys-12\(62\)](https://doi.org/10.57800/faunitaxys-12(62))

Moret P., 2024. – Description of new Platynini from the montane cloud forest of Ecuador, with a redefinition of the genera *Glyptolenus* Bates and *Glyptolenoides* Perrault (Coleoptera, Carabidae). *Faunitaxys*, 12(63): 1 – 23. [https://doi.org/10.57800/faunitaxys-12\(63\)](https://doi.org/10.57800/faunitaxys-12(63))

Cerda J.-A., 2024. – Corrigenda de *Butlerius* et *Guerinius* (Lepidoptera, Noctuoidea, Erebidae, Arctiinae, Arctiini, Ctenuchina). Quinzième note. *Faunitaxys*, 12(64) : 1. [https://doi.org/10.57800/faunitaxys-12\(64\)](https://doi.org/10.57800/faunitaxys-12(64))

Vives E., 2024. – Un nuevo género de Strogylurini de las islas Filipinas. New or interesting Cerambycidae from Philippines (Col.: Cerambycidae; Cerambycinae) (Pars 31). *Faunitaxys*, 12(65) : 1 – 4. [https://doi.org/10.57800/faunitaxys-12\(65\)](https://doi.org/10.57800/faunitaxys-12(65))

## Faunitaxys est échangée avec les revues suivantes (« print versions ») :

- Annali del Museo Civico di Storia Naturale G. Doria (Italie)
- Boletín de la Asociación española de Entomología (Espagne)
- Boletín de la Sociedad Andaluza de Entomología (Espagne)
- Bollettino del Museo di Storia Naturale di Venezia (Italie)
- Bulletin de la Société linnéenne de Lyon (France)
- Bulletin of Insectology (Italie)
- Heteropterus Rev. Entomol. (Espagne)
- Integrative Systematics (Allemagne)
- Israel Journal of Entomology (Israël)
- Klapalekiana (République Tchèque)
- Koleopterologische Rundschau (Allemagne)
- Memorie del Museo Civico di Storia Naturale di Verona (Italie)
- Nova Supplementa Entomologica (Allemagne)
- Proceedings of the Entomological Society of Washington (USA)
- Revue suisse de Zoologie (Suisse)
- Spixiana (Allemagne)
- Zoosystematica Rossica (Russie)

# Faunitaxys

Volume 12, Numéro 66, Décembre 2024

## SOMMAIRE

Acanthocinini d'Amérique du Sud (Coleoptera, Cerambycidae, Lamiinae) : description d'une nouvelle espèce ; transfert d'une espèce du genre *Urgleptes* au genre *Lepturges* (*Lepturges*) ; désignation d'un lectotype et corrections.

*Josef Vlasak, Antonio Santos-Silva & Larry G. Bezark* ..... 1 – 11

## CONTENTS

South American Acanthocinini (Coleoptera, Cerambycidae, Lamiinae): description of a new species; transfer of a species from *Urgleptes* to *Lepturges* (*Lepturges*); designation of a lectotype; and corrections.

*Josef Vlasak, Antonio Santos-Silva & Larry G. Bezark* ..... 1 – 11



### *Illustration de la couverture :*

The Andes above Papallacta, Ecuador.

Crédits:

**Antonio Santos-Silva:** Fig. 1-5, 6-10, 11-15, 16-19 & 20-27.

**Katerina Vlasakova:** couverture.