



HAL
open science

Discrete harmonics for stream function-vorticity Stokes problem

François Dubois, Michel Salaün, Stéphanie Salmon

► **To cite this version:**

François Dubois, Michel Salaün, Stéphanie Salmon. Discrete harmonics for stream function-vorticity Stokes problem. *Numerische Mathematik*, 2002, 92 (4), pp.711-742. 10.1007/s002110100369. hal-04834729

HAL Id: hal-04834729

<https://hal.science/hal-04834729v1>

Submitted on 12 Dec 2024

HAL is a multi-disciplinary open access archive for the deposit and dissemination of scientific research documents, whether they are published or not. The documents may come from teaching and research institutions in France or abroad, or from public or private research centers.

L'archive ouverte pluridisciplinaire **HAL**, est destinée au dépôt et à la diffusion de documents scientifiques de niveau recherche, publiés ou non, émanant des établissements d'enseignement et de recherche français ou étrangers, des laboratoires publics ou privés.

Discrete harmonics for stream function-vorticity Stokes problem

François Dubois, Michel Salaün, Stéphanie Salmon

*IAT / CNAM UPRES EA n°2140
15, rue Marat, F-78210 Saint-Cyr-L'Ecole.*

April 17, 2001 *

Abstract

We consider the bidimensional Stokes problem for incompressible fluids in stream function-vorticity. For this problem, the classical finite elements method of degree one converges only in $\mathcal{O}(\sqrt{h})$ for the L^2 -norm of the vorticity. We propose to use harmonic functions to approach the vorticity along the boundary. Discrete harmonics are functions that are used in practice to derive a new numerical method. We prove that we obtain with this numerical scheme an error of order $\mathcal{O}(h)$ for the L^2 -norm of the vorticity.

Keywords : Stokes problem, mixed finite elements, harmonic functions, boundary layer.

AMS (MOS) classification : 65N30.

* Published in *Numerische Mathematik*, volume 92, number 4, pages 711-742, October 2002.
Edition 12 December 2024.

1 Introduction

1.1 Motivations

Let Ω be a bounded convex polygonal open set in \mathbb{R}^2 . We denote $\Gamma = \partial\Omega$ the boundary of Ω . Modelization of the equilibrium of an incompressible and viscous fluid leads to the Navier-Stokes problem (Landau-Lifschitz [24]). But, when viscosity is sufficiently important or velocity of the fluid sufficiently small, we can neglect the convection terms and we obtain the stationary Stokes problem which is, in primitive variables (velocity \mathbf{u} and pressure p) :

$$\begin{cases} -\nu\Delta\mathbf{u} + \nabla p &= \mathbf{f} & \text{in } \Omega \\ \operatorname{div} \mathbf{u} &= 0 & \text{in } \Omega \\ \mathbf{u} &= 0 & \text{on } \Gamma \end{cases}$$

where ν is the kinematic viscosity and \mathbf{f} a field of given external forces.

As velocity is divergence free, this two dimensional problem is often rewritten with stream function and vorticity. Velocity is the curl of some stream function and vorticity is the curl of the velocity. Let us remark that, classically, in stream function-vorticity formulation, the velocity is assumed to be zero on the whole boundary : for more general boundary conditions, we refer to [7], [20] and [11]. Then, a usual way of discretizing the Stokes problem, according to this formulation, is to choose a finite element method with polynomials of degree one. The stream function and the vorticity are searched in $H^1(\Omega)$, but it is well-known that the problem is not mathematically well-posed (see for example Girault-Raviart [21]). Nevertheless, it can be shown that the scheme is convergent (Scholz [29], [21]), the convergence for the L^2 -norm of the vorticity is in \sqrt{h} , where h is the maximum diameter of triangles in the triangulation and $h^{1-\varepsilon}$ for the H^1 -norm of the stream function. There exists a variational formulation of the Stokes problem which is well-posed but difficult to use numerically (Bernardi-Girault-Maday [10]). We propose in this paper to study this well-posed formulation in order to obtain a numerical scheme convergent in at least $\mathcal{O}(h)$ for the L^2 -norm of the vorticity. In the last part of the paper, we also give results of numerical experiments.

1.2 Notation

We shall consider the following spaces (see for example [3]). We denote $\mathcal{D}(\Omega)$ the space of all indefinitely differentiable functions from Ω to \mathbb{R} with compact support and $L^2(\Omega)$ the space of all classes of functions which are square integrable. For any integer $m \geq 0$ and any real number p satisfying $1 \leq p \leq \infty$, $W^{m,p}(\Omega)$ consists of those functions $v \in L^p(\Omega)$ for which all partial derivatives $\partial^\alpha v$ (in the distribution sense) with $|\alpha| \leq m$ belong to the space $L^p(\Omega)$:

$$W^{1,2}(\Omega) = H^1(\Omega) = \left\{ \varphi \in L^2(\Omega) , \forall i \in \{1, 2\} , \frac{\partial \varphi}{\partial x_i} \in L^2(\Omega) \right\}$$

$$W^{2,2}(\Omega) = H^2(\Omega) = \left\{ \varphi \in H^1(\Omega) , \forall i \in \{1, 2\} , \frac{\partial \varphi}{\partial x_i} \in H^1(\Omega) \right\} .$$

Symbols $\| \bullet \|_{j,\Omega}$ (respectively $|\bullet|_{j,\Omega}$) denote norms (respectively semi-norms) in Sobolev spaces $H^j(\Omega)$, $j = 1, 2$. The Sobolev space $H_0^1(\Omega)$ (respectively $H_0^2(\Omega)$) is the closure of $\mathcal{D}(\Omega)$ in the sense of the norm $\| \bullet \|_{1,\Omega}$ (respectively $\| \bullet \|_{2,\Omega}$). In the sequel, (\bullet, \bullet) denotes the standard inner product in $L^2(\Omega)$ and $\langle \bullet, \bullet \rangle_{-1,1}$, the duality product between $H_0^1(\Omega)$ and its topological dual space $H^{-1}(\Omega)$. Finally, γ shall denote the trace operator from $H^1(\Omega)$ onto $H^{1/2}(\Gamma)$, or from $H^2(\Omega)$ onto $H^{3/2}(\Gamma)$ (see Lions-Magenes [26]).

2 The Stokes problem

Let \mathbf{f} be a field of given forces and suppose that \mathbf{f} belongs to $(L^2(\Omega))^2$ and $\text{rot } \mathbf{f} = \frac{\partial f_1}{\partial x_2} - \frac{\partial f_2}{\partial x_1}$ belongs to $L^2(\Omega)$. The stationary Stokes problem consists in finding a stream function ψ and a vorticity field ω solutions of :

$$\begin{aligned} (1) \quad & \omega + \Delta \psi = 0 \quad \text{in } \Omega \\ (2) \quad & -\Delta \omega = \text{rot } \mathbf{f} \quad \text{in } \Omega \\ (3) \quad & \psi = 0 \quad \text{on } \Gamma \\ (4) \quad & \frac{\partial \psi}{\partial \mathbf{n}} = 0 \quad \text{on } \Gamma . \end{aligned}$$

Indeed, it consists in finding a velocity field \mathbf{u} that is divergence free and can be written by means of a stream function ψ :

$$\mathbf{u} = \text{rot } \psi \quad \text{in } \Omega .$$

Equation (1) means that the vorticity is the curl of the velocity. Equation (2) is the equilibrium equation for a viscous fluid, with kinematic viscosity equal to 1, and where convection terms are neglected. The boundary conditions (3) and (4) are consequences of ;

$$\mathbf{u} = 0 \quad \text{on } \Gamma .$$

For more details about this problem, we refer to [21].

It is natural to discretize the problem (1)-(4) with a linear and continuous finite element method. As Ω is supposed to be polygonal, we exactly cover it with a mesh \mathcal{T} composed of triangular elements. The mesh \mathcal{T} is supposed to be regular (in the sense defined in Ciarlet [14]). The set $H_{\mathcal{T}}^1$ denotes the space of continuous functions defined on $\overline{\Omega}$, polynomial of degree 1 in each triangle of \mathcal{T} and $H_{0,\mathcal{T}}^1 = H_{\mathcal{T}}^1 \cap H_0^1(\Omega)$:

$$H_{\mathcal{T}}^1 = \{ \varphi \in \mathcal{C}^0(\overline{\Omega}) , \forall K \in \mathcal{E}_{\mathcal{T}} , \varphi|_K \in \mathbb{P}^1(K) \} ,$$

where $\mathcal{E}_{\mathcal{T}}$ is the set of triangles in \mathcal{T} and \mathbb{P}^1 the space of all polynomials of total degree ≤ 1 . The discretization of the problem (1)-(4) consists in finding $\omega_{\mathcal{T}}$ and $\psi_{\mathcal{T}}$:

$$(5) \quad \psi_{\mathcal{T}} \in H_{0,\mathcal{T}}^1 \text{ (boundary condition (3) is then satisfied)}$$

$$(6) \quad \omega_{\mathcal{T}} \in H_{\mathcal{T}}^1$$

in the following way. We first multiply (1) by a scalar function $\varphi \in H^1_\tau$ and integrate by parts $(\Delta\psi, \varphi)$. Taking the boundary condition (4) into account, we obtain :

$$(7) \quad (\omega_\tau, \varphi) - (\nabla\psi_\tau, \nabla\varphi) = 0 \quad , \quad \forall \varphi \in H^1_\tau \quad .$$

Then, we multiply (2) by a test function ξ in $H^1_{0,\tau}$, and integrate by parts both sides. As ξ vanishes on the boundary, we obtain :

$$(8) \quad (\nabla\omega_\tau, \nabla\xi) = (\mathbf{f}, \mathbf{rot} \xi) \quad , \quad \forall \xi \in H^1_{0,\tau} \quad .$$

This formulation (5)-(8) has been studied for a long time (see for example Ciarlet-Raviart [16], Glowinski-Pironneau [22], [21] among others). But results are not optimal. On the one hand, the continuous formulation associated is not well-posed for any \mathbf{f} in $(L^2(\Omega))^2$. Indeed, the Stokes problem could be seen as a biharmonic problem for the stream function :

$$\begin{aligned} \psi &\in H^2_0(\Omega) \\ \Delta^2\psi &= \mathbf{rot} \mathbf{f} \quad . \end{aligned}$$

In a variational form, this problem can be rewritten as follows :

$$(\Delta\psi, \Delta\mu) = (\mathbf{f}, \mathbf{rot} \mu) \quad , \quad \forall \mu \in H^2_0(\Omega) \quad .$$

This problem is well-posed in $H^2_0(\Omega)$ (see Ciarlet [14]) but vorticity cannot be more regular than square integrable. On the other hand, it is impossible to obtain polynomial functions of degree 1 which really satisfy both boundary conditions (3) and (4) without being identically zero on elements K in contact with Γ (*i.e* $\partial K \cap \Gamma$ nor empty, nor reduced to one point). Numerically, the Neumann condition (4) is never satisfied because weakly written. Moreover, error estimates derived for this scheme are not optimal. The bound is in $h_\tau^{1/2}$ for the L^2 -norm of vorticity, where h_τ is the maximum diameter of the elements of the triangulation [29], [21] (see Figure 11 at the end of the article). Nevertheless, it is possible to stabilize the numerical scheme by adding jumps at interfaces and prove convergence, see [6].

A different weak formulation was proposed by Bernardi, Girault and Maday [10], who introduced the space :

$$M(\Omega) = \{ \varphi \in L^2(\Omega) \quad , \quad \Delta\varphi \in H^{-1}(\Omega) \} \quad .$$

It consists in finding (ω, ψ) in $M(\Omega) \times H^1_0(\Omega)$ with the following method. We test the first equation (1) with a function $\varphi \in M(\Omega)$ and the second one (2) with a function $\xi \in H^1_0(\Omega)$. It is then necessary to integrate twice by parts the term $\langle \Delta\psi, \varphi \rangle_{-1,1}$ in order to include boundary conditions (3) and (4). Then, we get :

$$(9) \quad \begin{cases} (\omega, \varphi) + \langle \Delta\varphi, \psi \rangle_{-1,1} &= 0 & \forall \varphi \in M(\Omega) \\ \langle -\Delta\omega, \xi \rangle_{-1,1} &= (\mathbf{f}, \mathbf{rot} \xi) & \forall \xi \in H^1_0(\Omega) \end{cases} \quad .$$

This formulation (9) leads to a well-posed problem [10].

Remark 1. *The space $M(\Omega)$ is a Hilbert space for the norm:*

$$\| \varphi \|_M = \sqrt{\| \varphi \|_{0,\Omega}^2 + \| \Delta \varphi \|_{-1,\Omega}^2}.$$

Proposition 1. *The Sobolev space $H^1(\Omega)$ is contained in $M(\Omega)$ with continuous imbedding. Moreover, we have :*

$$\forall \varphi \in H^1(\Omega) \quad , \quad \| \varphi \|_M \leq \| \varphi \|_{1,\Omega} \quad .$$

Finally, if φ belongs to $M(\Omega) \cap H_0^1(\Omega) = H_0^1(\Omega)$, the M -norm is equivalent to the H^1 -norm.

Proof

First, we remark that the laplacian of a function in $H^1(\Omega)$ belongs to $H^{-1}(\Omega)$. Then, to prove the continuity of the imbedding, we write the definition of the H^{-1} -norm. For all $\varphi \in H^1(\Omega)$, we have :

$$(10) \quad \| \Delta \varphi \|_{-1,\Omega} = \sup_{\chi \in H_0^1(\Omega)} \frac{\langle \Delta \varphi, \chi \rangle_{-1,1}}{|\chi|_{1,\Omega}} = \sup_{\chi \in H_0^1(\Omega)} \frac{-(\nabla \varphi, \nabla \chi)}{\| \nabla \chi \|_{0,\Omega}} \quad ,$$

because φ is in $H^1(\Omega)$ and $\chi|_{\Gamma} = 0$. Using the Cauchy-Schwarz inequality, we obtain :

$$\| \Delta \varphi \|_{-1,\Omega} \leq \| \nabla \varphi \|_{0,\Omega} \quad ,$$

and then :

$$\| \varphi \|_M \leq \| \varphi \|_{1,\Omega} \quad .$$

Finally, if φ belongs to $H_0^1(\Omega)$, it suffices to take $\chi = \varphi$ in (10) and we obtain : $\| \varphi \|_M = \| \varphi \|_{1,\Omega}$. So the M -norm is equivalent to the H_0^1 -norm. \blacksquare

The analysis of (9), conducted in [10], is straightforward with arguments of Brezzi [12]. We introduce the kernel $\mathcal{H}(\Omega)$ of the bilinear form $\langle \Delta, \cdot \rangle_{-1,1}$:

$$\mathcal{H}(\Omega) = \{ \varphi \in M(\Omega) \quad , \quad \langle \Delta \varphi, \xi \rangle_{-1,1} = 0 \quad \forall \xi \in H_0^1(\Omega) \} \quad .$$

Proposition 2. *Characterization of the space $\mathcal{H}(\Omega)$.*

Let Ω be a bounded Lipschitz open subset of \mathbb{R}^2 . Then, we have :

$$\mathcal{H}(\Omega) = \{ \varphi \in L^2(\Omega) \quad , \quad \Delta \varphi = 0 \text{ in } L^2(\Omega) \} \quad ,$$

and there exists a trace operator, still denoted by γ , from $\mathcal{H}(\Omega)$ on $H^{-1/2}(\Gamma)$.

Proof

• It is obvious that the space $\mathcal{H}(\Omega)$ is a subset of the space :

$$D(\Delta, L^2(\Omega)) = \{ \varphi \in L^2(\Omega) \quad , \quad \Delta \varphi \in L^2(\Omega) \} \quad .$$

This space was extensively studied by Grisvard [23] when Ω is a bounded polygonal open subset of \mathbb{R}^2 , who recalled that the space $H^2(\Omega)$ is dense in $D(\Delta, L^2(\Omega))$. For completeness

of our study, the proof of this result is given below.

• It is based on the following property : a subspace \mathcal{S} of a Hilbert space M is dense in M if and only if every element of M' that vanishes on \mathcal{S} also vanishes on M . Let \widehat{u} belong to $(D(\Delta, L^2(\Omega)))'$. As it is a Hilbert space, the Riesz theorem proves that there exists a function, denoted by u , in $D(\Delta, L^2(\Omega))$ such that :

$$\langle \widehat{u}, \varphi \rangle_{(D(\Delta, L^2(\Omega)))', D(\Delta, L^2(\Omega))} = (u, \varphi)_{D(\Delta, L^2(\Omega))} \quad , \quad \forall \varphi \in D(\Delta, L^2(\Omega)) \quad .$$

Using the expression of the $D(\Delta, L^2(\Omega))$ scalar product, we have for all φ in $D(\Delta, L^2(\Omega))$:

$$(u, \varphi)_{D(\Delta, L^2(\Omega))} = (u, \varphi) + (\Delta u, \Delta \varphi) \quad .$$

We suppose now that \widehat{u} vanishes on $H^2(\Omega)$. Then, we obtain :

$$(u, \varphi) + (\Delta u, \Delta \varphi) = 0 \quad , \quad \forall \varphi \in H^2(\Omega) \quad .$$

Let us now introduce \tilde{u} and ψ the extensions to \mathbb{R}^2 , by zero outside Ω , of functions u and Δu . Moreover, let us notice that, for all function $\tilde{\varphi} \in \mathcal{D}(\mathbb{R}^2)$, its restriction on Ω , say φ , belongs to $H^2(\Omega)$. Then, the above formula leads to the following relations :

$$\begin{aligned} 0 &= (u, \varphi) + (\Delta u, \Delta \varphi) \\ &= (\tilde{u}, \varphi) + (\psi, \Delta \varphi) \\ &= (\tilde{u}, \tilde{\varphi})_{L^2(\mathbb{R}^2)} + (\psi, \Delta \tilde{\varphi})_{L^2(\mathbb{R}^2)} \quad \forall \tilde{\varphi} \in \mathcal{D}(\mathbb{R}^2) \quad . \end{aligned}$$

This equality implies that in the distributions sense :

$$\tilde{u} + \Delta \psi = 0 \text{ in } \mathcal{D}'(\mathbb{R}^2) \quad .$$

Thus, $\Delta \psi$ belongs to $L^2(\mathbb{R}^2)$ since \tilde{u} belongs to $L^2(\mathbb{R}^2)$. Moreover, ψ belongs to $L^2(\mathbb{R}^2)$ as, by definition, Δu belongs to $L^2(\Omega)$. Then, we deduce that ψ belongs to $H^2(\mathbb{R}^2)$ (use the characterization of the space $H^2(\mathbb{R}^2)$ with the Fourier transform). As ψ is identically zero outside Ω , we deduce that ψ belongs to $H_0^2(\Omega)$ (see [21]). Using the density of $\mathcal{D}(\Omega)$ in $H_0^2(\Omega)$, we introduce a sequence $(\psi_k)_{k \geq 1}$ of $\mathcal{D}(\Omega)$ that tends to ψ in $H_0^2(\Omega)$. Then, we have the following relations :

$$\begin{aligned} \psi_k &\xrightarrow{k \rightarrow \infty} \psi \text{ in } L^2(\Omega) \quad , \\ \Delta \psi_k &\xrightarrow{k \rightarrow \infty} \Delta \psi = -u \text{ in } L^2(\Omega) \quad . \end{aligned}$$

Using the above convergences, we obtain for all $\varphi \in D(\Delta, L^2(\Omega))$:

$$\begin{aligned} (u, \varphi)_{D(\Delta, L^2(\Omega))} &= (u, \varphi) + (\Delta u, \Delta \varphi) \\ &= (u, \varphi) + (\psi, \Delta \varphi) \\ &= \lim_{k \rightarrow \infty} [-(\Delta \psi_k, \varphi) + (\psi_k, \Delta \varphi)] \\ &= \lim_{k \rightarrow \infty} [-\langle \varphi, \Delta \psi_k \rangle_{\mathcal{D}'(\Omega), \mathcal{D}(\Omega)} + \langle \Delta \varphi, \psi_k \rangle_{\mathcal{D}'(\Omega), \mathcal{D}(\Omega)}] = 0 \quad . \end{aligned}$$

Then we obtain : $(u, \varphi)_{D(\Delta, L^2(\Omega))} = 0$ for any φ in $D(\Delta, L^2(\Omega))$ which implies that u is zero and finishes to prove the density of $H^2(\Omega)$ in $D(\Delta, L^2(\Omega))$.

• Now, let us recall the Green's formula, which is valid in any bounded Lipschitz domain (see Nečas [27]) :

$$\int_{\Omega} (u \Delta v - v \Delta u) dx = \int_{\Gamma} (\gamma u \frac{\partial v}{\partial n} - \gamma v \frac{\partial u}{\partial n}) d\Gamma \quad ,$$

for all u and v in $H^2(\Omega)$; $\frac{\partial u}{\partial n}$ is the normal derivative of u along Γ . Then, due to the density of $H^2(\Omega)$ in $D(\Delta, L^2(\Omega))$, the Green's formula permits to define a trace operator from $\mathcal{H}(\Omega)$ on $H^{-1/2}(\Gamma)$. ■

So, when we restrict the first equation of (9) to functions in $\mathcal{H}(\Omega)$, this new problem is well-posed according to Lax-Milgram's lemma [25], as :

Proposition 3. *The L^2 -scalar product :*

$$\mathcal{H}(\Omega) \times \mathcal{H}(\Omega) \ni (\omega, \varphi) \longmapsto \int_{\Omega} \omega \varphi dx \in \mathbb{R}$$

is elliptic on $\mathcal{H}(\Omega)$.

Proof

For ω in $\mathcal{H}(\Omega)$, it is obvious that : $\| \omega \|_M^2 = \| \omega \|_{0,\Omega}^2$. ■

Proposition 4. *Decomposition of space $M(\Omega)$.*

We have :

$$M(\Omega) = H_0^1(\Omega) \oplus \mathcal{H}(\Omega) \quad .$$

Proof

We split $\varphi \in M(\Omega)$ into two parts : $\varphi = \varphi^0 + \varphi^\Delta$. One the one hand, since $\Delta \varphi \in H^{-1}(\Omega)$, the component φ^0 is uniquely defined in $H_0^1(\Omega)$ by the Dirichlet problem :

$$\begin{cases} \Delta \varphi^0 = \Delta \varphi & \text{in } \Omega \\ \gamma \varphi^0 = 0 & \text{on } \Gamma \end{cases} .$$

On the other hand, we define the function φ^Δ by $\varphi^\Delta = \varphi - \varphi^0$. Then it satisfies :

$$\Delta \varphi^\Delta = 0 \quad \text{in } \Omega \quad .$$

So φ^Δ belongs to $\mathcal{H}(\Omega)$ and moreover :

$$\gamma \varphi^\Delta = \gamma \varphi \quad \text{on } \Gamma \quad ,$$

with $\gamma \varphi$ well defined in $H^{-1/2}(\Gamma)$ (see Proposition 2). ■

3 Harmonic discretization of Stokes problem

3.1 Harmonic lifting

We recall that Ω being polygonal allows to cover it entirely with a mesh \mathcal{T} . We denote $\mathcal{E}_{\mathcal{T}}$ the set of triangles in \mathcal{T} , $\mathcal{S}_{\mathcal{T}}$ the set of vertices of \mathcal{T} and $h_{\mathcal{T}} = \sup(\text{diam } K ; K \in \mathcal{E}_{\mathcal{T}})$.

Definition 1. *Family \mathcal{U}_{σ} of regular meshes.*

We suppose that \mathcal{T} belongs to the set \mathcal{U}_{σ} of triangulations satisfying :

$$\exists \sigma > 0, \forall K \in \mathcal{E}_{\mathcal{T}}, \quad \frac{h_K}{\rho_K} \leq \sigma, \quad ,$$

where $h_K = \text{diam } K$ and ρ_K is the diameter of the circle inscribed in K .

We define the space $\Gamma_{\mathcal{T}}$ of all traces of functions in $H^1_{\mathcal{T}}$. Dimension of $\Gamma_{\mathcal{T}}$ is exactly the number $NS(\mathcal{T}, \Gamma)$ of vertices of the mesh \mathcal{T} on the boundary Γ .

$$\Gamma_{\mathcal{T}} = \left\{ \begin{array}{l} \lambda : \partial\Omega = \Gamma \longrightarrow \mathbb{R}, \lambda \text{ continuous on } \Gamma \\ \lambda \text{ linear on each edge of the mesh} \end{array} \right\} .$$

Definition 2. *Harmonic lifting.*

$$\mathcal{H}_{\mathcal{T}, \infty} = \{ \varphi \in H^1(\Omega), \exists \lambda \in \Gamma_{\mathcal{T}}, \gamma\varphi = \lambda, \Delta\varphi = 0 \text{ in } H^{-1}(\Omega) \} .$$

The discrete space $\mathcal{H}_{\mathcal{T}, \infty}$ is finite-dimensional and it is clear that $\mathcal{H}_{\mathcal{T}, \infty}$ and $\Gamma_{\mathcal{T}}$ have the same dimension. We define the following harmonic lifting operator Z_{∞} :

$$Z_{\infty} : \Gamma_{\mathcal{T}} \ni \lambda \longmapsto Z_{\infty}(\lambda) \in \mathcal{H}_{\mathcal{T}, \infty}$$

by the Dirichlet problem :

$$(11) \quad \begin{cases} \Delta Z_{\infty}(\lambda) = 0 & \text{in } \Omega \\ \gamma Z_{\infty}(\lambda) = \lambda & \text{on } \Gamma \end{cases} .$$

Remark 2. *It is useful to remark that $\mathcal{H}_{\mathcal{T}, \infty}$ is included in $\mathcal{H}(\Omega) \subset M(\Omega)$.*

Definition 3. *Harmonic discretization of $H^1(\Omega)$.*

We set :

$$(12) \quad H^1_{\mathcal{T}, \infty} = H^1_{0, \mathcal{T}} \oplus \mathcal{H}_{\mathcal{T}, \infty} .$$

The dimension of $H^1_{\mathcal{T}, \infty}$ is the same as $H^1_{\mathcal{T}}$ but, on the boundary, we replace piecewise linear continuous functions by harmonic functions, whose support is spread over the entire domain but whose values decrease rapidly.

Lemma 1. *Property of $\mathcal{H}_{\mathcal{T}, \infty}$.*

$$(13) \quad \forall \varphi \in \mathcal{H}_{\mathcal{T}, \infty}, \forall \xi \in H^1_{0, \mathcal{T}}, \quad (\nabla\varphi, \nabla\xi) = 0 .$$

Remark 3. *The splitting $\varphi = \varphi^0 + \varphi^{\Delta}$ described in Proposition 4 remains valid for functions in $H^1_{\mathcal{T}, \infty}$. Indeed, for all function φ of $H^1_{\mathcal{T}, \infty}$, $\gamma\varphi$ belongs to $\Gamma_{\mathcal{T}}$. Then $\varphi^{\Delta} = Z_{\infty}(\gamma\varphi)$ is in $\mathcal{H}_{\mathcal{T}, \infty}$, and, by construction, $\varphi^0 = \varphi - \varphi^{\Delta}$ belongs to space $H^1_{0, \mathcal{T}}$.*

3.2 Formulation

We propose the following harmonic variational formulation of the Stokes problem :

$$(14) \quad \begin{aligned} & \text{Find } \psi_\tau \in H_{0,\tau}^1 \text{ and } \omega_\tau \in H_\tau^{1,\infty} \text{ such that :} \\ & \begin{cases} (\omega_\tau, \varphi) - (\nabla \psi_\tau, \nabla \varphi) = 0 & \forall \varphi \in H_\tau^{1,\infty} \\ (\nabla \omega_\tau, \nabla \xi) = (\mathbf{f}, \mathbf{rot} \xi) & \forall \xi \in H_{0,\tau}^1 \end{cases} . \end{aligned}$$

As $H_\tau^{1,\infty}$ is included in $H^1(\Omega)$, $\nabla \omega_\tau$ is well defined. The method, proposed here, is a natural discretization of problem (9) since, as it was said in Remark 2, $H_\tau^{1,\infty}$ is a subset of $M(\Omega)$.

Proposition 5. *Existence and uniqueness of a solution to problem (14).*

If $\mathbf{f} \in (L^2(\Omega))^2$, the problem (14) has a unique solution (ψ_τ, ω_τ) in the space $H_{0,\tau}^1 \times H_\tau^{1,\infty}$ which depends continuously on the datum \mathbf{f} . There exists a strictly positive constant C independent of the mesh such that :

$$(15) \quad \|\omega_\tau\|_M + \|\nabla \psi_\tau\|_{0,\Omega} \leq C \|\mathbf{f}\|_{0,\Omega} .$$

Proof

• We split all functions in $H_\tau^{1,\infty}$ into two parts as explicited in (12) and we rewrite the problem (14) using such a splitting for $\omega_\tau = \omega_\tau^0 + \omega_\tau^\Delta$ and for the test function $\varphi = \varphi^0 + \varphi^\Delta$. Discrete functions ω_τ^0 and φ^0 belong to the space $H_{0,\tau}^1$ while ω_τ^Δ and φ^Δ lie in the space $\mathcal{H}_{\tau,\infty}$:

$$\begin{cases} \psi_\tau \in H_{0,\tau}^1, \omega_\tau^0 \in H_{0,\tau}^1, \omega_\tau^\Delta \in \mathcal{H}_{\tau,\infty} \\ (\omega_\tau^0, \varphi^0) + (\omega_\tau^\Delta, \varphi^0) - (\nabla \psi_\tau, \nabla \varphi^0) = 0 & \forall \varphi^0 \in H_{0,\tau}^1 \\ (\omega_\tau^0, \varphi^\Delta) + (\omega_\tau^\Delta, \varphi^\Delta) - (\nabla \psi_\tau, \nabla \varphi^\Delta) = 0 & \forall \varphi^\Delta \in \mathcal{H}_{\tau,\infty} \\ (\nabla \omega_\tau^0, \nabla \xi) + (\nabla \omega_\tau^\Delta, \nabla \xi) = (\mathbf{f}, \mathbf{rot} \xi) & \forall \xi \in H_{0,\tau}^1 \end{cases} .$$

Due to Lemma 1, we obtain :

$$(16) \quad (\omega_\tau^0, \varphi^0) + (\omega_\tau^\Delta, \varphi^0) - (\nabla \psi_\tau, \nabla \varphi^0) = 0 \quad \forall \varphi^0 \in H_{0,\tau}^1$$

$$(17) \quad (\omega_\tau^0, \varphi^\Delta) + (\omega_\tau^\Delta, \varphi^\Delta) = 0 \quad \forall \varphi^\Delta \in \mathcal{H}_{\tau,\infty}$$

$$(18) \quad (\nabla \omega_\tau^0, \nabla \xi) = (\mathbf{f}, \mathbf{rot} \xi) \quad \forall \xi \in H_{0,\tau}^1 .$$

The way of studying problem (16)-(18) follows ideas of [22], Achdou, Glowinski, Pironneau [2] and Ruas [28].

• Problem (18) is well-posed according to Lax-Milgram's lemma, and Poincaré's inequality. As Ω is bounded, if C_p denotes the Poincaré constant :

$$\forall \chi \in H_0^1(\Omega) \quad , \quad \|\chi\|_{0,\Omega} \leq C_p |\chi|_{1,\Omega} \quad ,$$

there exists a unique $\omega_\tau^0 \in H_{0,\tau}^1$ satisfying (take $\xi = \omega_\tau^0$ in (18)) :

$$\|\nabla \omega_\tau^0\|_{0,\Omega}^2 = \|\mathbf{rot} \omega_\tau^0\|_{0,\Omega}^2 \leq \|\mathbf{f}\|_{0,\Omega} \|\mathbf{rot} \omega_\tau^0\|_{0,\Omega} \quad .$$

The M -norm of ω_τ^0 is equivalent to its H^1 -norm, as $\omega_\tau^0 \in H_0^1(\Omega)$ (see Proposition 1), and we obtain :

$$(19) \quad \|\omega_\tau^0\|_M \leq \sqrt{1 + C_p^2} \|\mathbf{f}\|_{0,\Omega} \quad .$$

• We study now equation (17) where the function ω_τ^0 is given. Using the ellipticity of the L^2 -scalar product on $\mathcal{H}_{\tau,\infty}$ (see Proposition 3), the problem :

$$(\omega_\tau^\Delta, \varphi^\Delta) = -(\omega_\tau^0, \varphi^\Delta) \quad , \quad \forall \varphi^\Delta \in \mathcal{H}_{\tau,\infty} \quad ,$$

has a unique solution ω_τ^Δ , which verifies (take $\varphi^\Delta = \omega_\tau^\Delta$) :

$$(20) \quad \|\omega_\tau^\Delta\|_M = \|\omega_\tau^\Delta\|_{0,\Omega} \leq \|\omega_\tau^0\|_{0,\Omega} \leq \sqrt{1 + C_p^2} \|\mathbf{f}\|_{0,\Omega} \quad .$$

• Finally, equation (16) is formally identical to (18), so there exists (Lax-Milgram's lemma and Poincaré's inequality) $\psi_\tau \in H_{0,\tau}^1$ such that :

$$(\nabla\psi_\tau, \nabla\varphi^0) = (\omega_\tau^0, \varphi^0) + (\omega_\tau^\Delta, \varphi^0) \quad , \quad \forall \varphi^0 \in H_{0,\tau}^1 \quad .$$

Then, using (19) and (20), we deduce that :

$$(21) \quad \|\nabla\psi_\tau\|_{0,\Omega} \leq C_p \|\omega_\tau^0\|_{0,\Omega} + C_p \|\omega_\tau^\Delta\|_{0,\Omega} \leq C' \|\mathbf{f}\|_{0,\Omega} \quad .$$

Combining (19),(20) and (21), we obtain (15). ■

Proposition 6. *Regularity of harmonic liftings.*

Let ε be a strictly positive real number. We have :

$$(22) \quad \mathcal{H}_{\tau,\infty} \subset H^{2-\varepsilon}(\Omega) \quad , \quad \forall \varepsilon > 0 \quad .$$

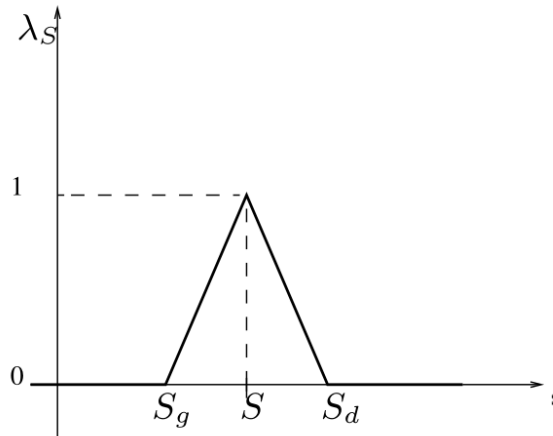


Figure 1: A basis function.

Proof

For a given vertex S of \mathcal{T} on the boundary Γ ($S \in \mathcal{S}_\tau \cap \Gamma$), a basis function λ_S of Γ_τ is represented on Figure 1 where s is the curvilinear abscissa along Γ . Thus, the gradient of such a function is a combination of Heaviside functions, so belongs to $H^{1/2-\varepsilon}(\Gamma)$ for any $\varepsilon > 0$ but not to $H^{1/2}(\Gamma)$ [3], [26]. A basis function of space $\mathcal{H}_{\mathcal{T},\infty}$ is defined by finding $\varphi_S : \Omega \rightarrow \mathbb{R}$ such that $\varphi_S \in H^1(\Omega)$, $\Delta\varphi_S = 0$, $\gamma\varphi_S = \lambda_S$ i.e $\varphi_S = Z_\infty(\lambda_S)$. Then, the imbedding (22) is thus a consequence of regularity of the laplacian operator on a convex domain [23]. \blacksquare

To obtain error estimates and thus convergence, we need a stability result (Proposition 10) and an interpolation error (Proposition 9).

3.3 Interpolation error

Let $\Pi_\tau : H^2(\Omega) \rightarrow H_\tau^1$ be the Lagrange interpolation operator associated with the mesh \mathcal{T} , and $\Pi_\tau^\Gamma : H^1(\Gamma) \rightarrow \Gamma_\tau$ the analogous interpolation operator on the boundary Γ . Let h_τ be the maximum diameter of triangles in \mathcal{T} .

Proposition 7. *Property of the interpolation operator Π_τ^Γ on the boundary.*

If \mathcal{T} belongs to a family \mathcal{U}_σ of regular meshes, the interpolation operator Π_τ^Γ is defined from $H^{3/2}(\Gamma)$ on $H^{1/2}(\Gamma) \cap \Gamma_\tau$ and we have :

$$(23) \quad \|\mu - \Pi_\tau^\Gamma \mu\|_{1/2,\Gamma} \leq C(\sigma) h_\tau \|\mu\|_{3/2,\Gamma} \quad , \quad \forall \mu \in H^{3/2}(\Gamma) \quad .$$

To prove this result, we need the following theorem [26] :

Theorem 1. *Interpolation between Sobolev spaces.*

Let s_i and t_i be two couples of positive real numbers for $i = 0$ or $i = 1$ and $p \in \mathbb{R}$ such that $1 \leq p < \infty$. Let Π be an operator of $\mathcal{L}(W^{s_0,p}(\Omega); W^{t_0,p}(\Omega)) \cap \mathcal{L}(W^{s_1,p}(\Omega); W^{t_1,p}(\Omega))$ (\mathcal{L} is the space of all linear and continuous functions). Then, for all $\theta \in \mathbb{R} \cap [0, 1]$, operator Π belongs to the interpolate space

$\mathcal{L}_\theta = \mathcal{L}(W^{(1-\theta)s_0+\theta s_1,p}(\Omega); W^{(1-\theta)t_0+\theta t_1,p}(\Omega))$ and we have :

$$\|\Pi\|_{\mathcal{L}_\theta} \leq \|\Pi\|_{\mathcal{L}_0}^{1-\theta} \|\Pi\|_{\mathcal{L}_1}^\theta \quad .$$

Proof of Proposition 7

As $H^{3/2}(\Gamma)$ is contained in $\mathcal{C}^0(\Gamma)$, Π_τ^Γ is well defined and, moreover, $\Pi_\tau^\Gamma \mu \in \Gamma_\tau$ if $\mu \in H^{3/2}(\Gamma)$. The difference $I - \Pi_\tau^\Gamma$ is continuous from $H^2(\Gamma)$ to $L^2(\Gamma)$ and its norm is bounded by $C_1(\sigma) h_\tau^2$ [15]. It is also continuous from $H^1(\Gamma)$ to $H^1(\Gamma)$, its norm being bounded by a constant $C_2(\sigma)$. The interpolation theorem 1 concludes (with $\theta = 1/2$) that $I - \Pi_\tau^\Gamma$ is continuous from $H^{3/2}(\Gamma)$ to $H^{1/2}(\Gamma)$ with its norm bounded by $\sqrt{C_1(\sigma) h_\tau^2} \sqrt{C_2(\sigma)} = C'(\sigma) h_\tau$. \blacksquare

Proposition 8. *Regularity of components of functions in $M(\Omega)$.*

Let us recall that the domain Ω is supposed to be convex. Let φ be in $M(\Omega) \cap H^2(\Omega) = H^2(\Omega)$, splitted into : $\varphi = \varphi^0 + \varphi^\Delta$ (see Proposition 4). Then φ^0 and φ^Δ belong to $H^2(\Omega)$.

Proof

We recall that $\varphi^0 \in H_0^1(\Omega)$ is the solution of :

$$\begin{cases} \Delta \varphi^0 = \Delta \varphi & \text{in } \Omega \\ \gamma \varphi^0 = 0 & \text{on } \Gamma \end{cases} .$$

If φ belongs to $H^2(\Omega)$, its laplacian belongs to $L^2(\Omega)$ and, by the regularity of the laplacian operator on a convex domain, φ^0 belongs to $H^2(\Omega)$. By difference, $\varphi^\Delta = \varphi - \varphi^0$ belongs also to $H^2(\Omega)$. \blacksquare

Definition 4. *Interpolation operators.*

The interpolation operator $\phi_\tau^\infty : \mathcal{H}(\Omega) \longrightarrow \mathcal{H}_{\tau,\infty}$ is defined by $\phi_\tau^\infty \varphi^\Delta = \zeta$, where $\zeta \in H^1(\Omega)$ is the solution of the Dirichlet problem :

$$\begin{cases} \Delta \zeta = 0 & \text{in } \Omega \\ \gamma \zeta = \Pi_\tau^\Gamma(\gamma \varphi) & \text{on } \Gamma \end{cases} .$$

We define the interpolation operator \mathcal{P}_τ from $M(\Omega) \cap H^2(\Omega) = H^2(\Omega)$ to $H_\tau^{1,\infty} = H_{0,\tau}^1 \oplus \mathcal{H}_{\tau,\infty}$ by the relations :

$$\mathcal{P}_\tau : H^2(\Omega) \ni \varphi = \varphi^0 + \varphi^\Delta \longmapsto \mathcal{P}_\tau \varphi = \Pi_\tau \varphi^0 + \phi_\tau^\infty \varphi^\Delta \in H_\tau^{1,\infty} .$$

Proposition 9. *Error estimates.*

For $\mathcal{T} \in \mathcal{U}_\sigma$, we have the following estimates :

$$(24) \quad \|\varphi^0 - \Pi_\tau \varphi^0\|_M \leq C(\sigma) h_\tau \|\varphi^0\|_{2,\Omega}$$

$$(25) \quad \|\varphi^\Delta - \phi_\tau^\infty \varphi^\Delta\|_M \leq C(\sigma) h_\tau \|\varphi\|_{2,\Omega} .$$

Proof

• As $H^2(\Omega) \subset \mathcal{C}^0(\overline{\Omega})$, we can use a classical interpolation operator and we have the following interpolation error results [15] :

$$\|\varphi^0 - \Pi_\tau \varphi^0\|_{1,\Omega} \leq C h_\tau |\varphi^0|_{2,\Omega} .$$

But $\|\varphi^0 - \Pi_\tau \varphi^0\|_M$ is equivalent to $\|\varphi^0 - \Pi_\tau \varphi^0\|_{1,\Omega}$ because $\varphi^0 - \Pi_\tau \varphi^0$ belongs to $H_0^1(\Omega)$ (see Proposition 1). So :

$$\|\varphi^0 - \Pi_\tau \varphi^0\|_M \leq C h_\tau |\varphi^0|_{2,\Omega} ,$$

and relation (24) is established.

• We now interpolate the harmonic part φ^Δ of $\varphi \in M(\Omega)$. As φ is supposed to be in $H^2(\Omega)$, its trace $\gamma \varphi$ belongs to $H^{3/2}(\Gamma)$. Let $\lambda = \Pi_\tau^\Gamma(\gamma \varphi)$, $\lambda \in \Gamma_\tau$ and we have (Proposition 7) :

$$(26) \quad \|\gamma \varphi - \Pi_\tau^\Gamma(\gamma \varphi)\|_{1/2,\Gamma} = \|\gamma \varphi - \lambda\|_{1/2,\Gamma} \leq C h_\tau \|\gamma \varphi\|_{3/2,\Gamma} .$$

Let $\zeta \in H^1(\Omega)$ be such that :

$$\begin{cases} \Delta\zeta &= 0 \text{ in } \Omega \\ \gamma\zeta &= \lambda \text{ on } \Gamma \end{cases} .$$

Thus, C being various constants independent of h_τ but varying with σ , we obtain :

$$\begin{aligned} \|\varphi^\Delta - \zeta\|_M &= \|\varphi^\Delta - \zeta\|_{0,\Omega} \text{ because } \varphi^\Delta \text{ and } \zeta \text{ are harmonic} \\ &\leq \|\varphi^\Delta - \zeta\|_{1,\Omega} \\ &\leq C \|\gamma\varphi^\Delta - \gamma\zeta\|_{1/2,\Gamma} \text{ because trace controls harmonics} \\ &\leq C \|\gamma\varphi - \lambda\|_{1/2,\Gamma} \text{ as } \gamma\varphi^\Delta = \gamma\varphi \text{ on } \Gamma \text{ and } \gamma\zeta = \lambda \\ &\leq Ch_\tau \|\gamma\varphi\|_{3/2,\Gamma} \text{ by relation (26)} \\ &\leq Ch_\tau \|\varphi\|_{2,\Omega} \text{ by continuity of the trace [26]} \quad , \end{aligned}$$

which gives the announced result. ■

3.4 Error estimates

We define an auxiliary problem :

$$(27) \quad \begin{aligned} &\text{Find } (\theta_\tau, \eta_\tau) \in H_{0,\tau}^1 \times H_\tau^{1,\infty} \text{ such that :} \\ &\begin{cases} (\theta_\tau, \varphi) - (\nabla\eta_\tau, \nabla\varphi) &= (g, \varphi) + \langle \Delta\varphi, m \rangle_{-1,1} & \forall \varphi \in H_\tau^{1,\infty} \\ (\nabla\theta_\tau, \nabla\xi) &= \langle l, \xi \rangle_{-1,1} & \forall \xi \in H_{0,\tau}^1 \end{cases} . \end{aligned}$$

Proposition 10. *Stability of discrete formulation (14).*

Let $g \in L^2(\Omega)$, $m \in H_0^1(\Omega)$, $l \in H^{-1}(\Omega)$ and $(\theta_\tau, \eta_\tau) \in H_{0,\tau}^1 \times H_\tau^{1,\infty}$ be the unique solution of problem (27). We have stability in the following sense. There exists a constant C only dependent on σ such that the following stability inequality holds :

$$\|\theta_\tau\|_M + \|\nabla\eta_\tau\|_{0,\Omega} \leq C \{ \|g\|_{0,\Omega} + \|\nabla m\|_{0,\Omega} + \|l\|_{-1,\Omega} \} .$$

Proof

• As in Proposition 5, three steps are required. We split each function of $H_\tau^{1,\infty}$ into two parts : $\theta_\tau = \theta_\tau^0 + \theta_\tau^\Delta \in H_{0,\tau}^1 \oplus \mathcal{H}_{\tau,\infty}$. And we obtain :

$$(28) \quad (\theta_\tau^0, \varphi^0) + (\theta_\tau^\Delta, \varphi^0) - (\nabla\eta_\tau, \nabla\varphi^0) = (g, \varphi^0) - \langle \Delta\varphi^0, m \rangle_{-1,1} \quad \forall \varphi^0 \in H_{0,\tau}^1$$

$$(29) \quad (\theta_\tau^0, \varphi^\Delta) + (\theta_\tau^\Delta, \varphi^\Delta) = (g, \varphi^\Delta) \quad \forall \varphi^\Delta \in \mathcal{H}_{\tau,\infty}$$

$$(30) \quad (\nabla\theta_\tau^0, \nabla\xi) = \langle l, \xi \rangle_{-1,1} \quad \forall \xi \in H_{0,\tau}^1 .$$

As $m \in H_0^1(\Omega)$, notice that :

$$-\langle \Delta\varphi^0, m \rangle_{-1,1} = (\nabla\varphi^0, \nabla m) \quad , \quad \forall \varphi^0 \in H_{0,\tau}^1 .$$

In the following, C will denote various constants.

• **First step.** In the last equation (30), we take $\xi = \theta_\tau^0$ and, as θ_τ^0 belongs to $H_0^1(\Omega)$, we obtain :

$$\| \nabla \theta_\tau^0 \|_{0,\Omega} \leq C \| l \|_{-1,\Omega} \quad ,$$

because of the Poincaré's inequality. Then, the equivalence of H_0^1 -norm and M -norm for functions in $H_0^1(\Omega)$ leads to :

$$\| \theta_\tau^0 \|_M \leq C \| l \|_{-1,\Omega} \quad .$$

• **Second step.** In the equation (29), we take $\varphi^\Delta = \theta_\tau^\Delta$. As $\Delta \theta_\tau^\Delta = 0$ and θ_τ^0 is fixed by the previous step, we obtain :

$$\| \theta_\tau^\Delta \|_M = \| \theta_\tau^\Delta \|_{0,\Omega} \leq \| g \|_{0,\Omega} + \| \theta_\tau^0 \|_{0,\Omega} \leq C (\| g \|_{0,\Omega} + \| l \|_{-1,\Omega})$$

• **Third step.** Finally, in the first equation (28), θ_τ^0 and θ_τ^Δ being known, we take $\varphi^0 = \eta_\tau$ and obtain :

$$\| \nabla \eta_\tau \|_{0,\Omega} \leq C (\| \theta_\tau^0 \|_{0,\Omega} + \| \theta_\tau^\Delta \|_{0,\Omega} + \| g \|_{0,\Omega}) + \| \nabla m \|_{0,\Omega} \quad .$$

By combining the three steps, Proposition 10 is proved. ■

Proposition 11. *Interpolation error majorates the error.*

Let (ω, ψ) be the solution of the continuous problem (9) and (ω_τ, ψ_τ) the solution of (14). We have :

$$\| \omega - \omega_\tau \|_M + \| \psi - \psi_\tau \|_{1,\Omega} \leq C (\| \omega - \mathcal{P}_\tau \omega \|_M + \| \psi - \Pi_\tau \psi \|_{1,\Omega}) \quad .$$

Proof

• The continuous problem (9) can be written with a test function φ in $H_\tau^{1,\infty}$ since $H_\tau^{1,\infty} \subset M(\Omega)$ and with $\xi \in H_{0,\mathcal{T}}^1 \subset H_0^1(\Omega)$:

$$(31) \quad \begin{cases} (\omega, \varphi) + \langle \Delta \varphi, \psi \rangle_{-1,1} = 0 & \forall \varphi \in H_\tau^{1,\infty} \\ \langle -\Delta \omega, \xi \rangle_{-1,1} = (\mathbf{f}, \mathbf{rot} \xi) & \forall \xi \in H_{0,\mathcal{T}}^1 \end{cases}$$

We subtract (31) and (14) :

$$(32) \quad \begin{cases} (\omega - \omega_\tau, \varphi) + \langle \Delta \varphi, \psi \rangle_{-1,1} + (\nabla \psi_\tau, \nabla \varphi) = 0 & \forall \varphi \in H_\tau^{1,\infty} \\ \langle -\Delta \omega, \xi \rangle_{-1,1} - (\nabla \omega_\tau, \nabla \xi) = 0 & \forall \xi \in H_{0,\mathcal{T}}^1 \end{cases}$$

We introduce $\Pi_\tau \psi$ that interpolates ψ on the mesh \mathcal{T} and $\mathcal{P}_\tau \omega$ that interpolates $\omega \in M(\Omega)$ on \mathcal{T} (these interpolants, both in $H^1(\Omega)$, are defined in Proposition 9).

• Let us begin with the first equation of problem (32). We add and subtract $\mathcal{P}_\tau \omega$ and $\Pi_\tau \psi$ and obtain, for all φ in $H_\tau^{1,\infty}$:

$$(\omega - \mathcal{P}_\tau \omega, \varphi) + (\mathcal{P}_\tau \omega - \omega_\tau, \varphi) + \langle \Delta \varphi, \psi - \Pi_\tau \psi \rangle_{-1,1}$$

$$+ \langle \Delta \varphi, \Pi_\tau \psi \rangle_{-1,1} + (\nabla(\psi_\tau - \Pi_\tau \psi), \nabla \varphi) + (\nabla \Pi_\tau \psi, \nabla \varphi) = 0 \quad ,$$

or else :

$$\begin{aligned} (\mathcal{P}_\tau \omega - \omega_\tau, \varphi) - (\nabla(\Pi_\tau \psi - \psi_\tau), \nabla \varphi) &= -(\omega - \mathcal{P}_\tau \omega, \varphi) \\ &\quad - \underbrace{\langle \Delta \varphi, \psi - \Pi_\tau \psi \rangle_{-1,1} - \langle \Delta \varphi, \Pi_\tau \psi \rangle_{-1,1} - (\nabla \Pi_\tau \psi, \nabla \varphi)}_{=0} \quad . \end{aligned}$$

Finally, the first equation becomes :

$$(33) \quad \begin{aligned} (\mathcal{P}_\tau \omega - \omega_\tau, \varphi) - (\nabla(\Pi_\tau \psi - \psi_\tau), \nabla \varphi) \\ = -(\omega - \mathcal{P}_\tau \omega, \varphi) - \langle \Delta \varphi, \psi - \Pi_\tau \psi \rangle_{-1,1} \quad . \end{aligned}$$

- Using the same techniques for the second equation, we obtain, for all ξ in $H_{0,\tau}^1$:

$$\begin{aligned} \langle -\Delta(\omega - \mathcal{P}_\tau \omega), \xi \rangle_{-1,1} + \langle -\Delta \mathcal{P}_\tau \omega, \xi \rangle_{-1,1} \\ - (\nabla(\omega_\tau - \mathcal{P}_\tau \omega), \nabla \xi) - (\nabla \mathcal{P}_\tau \omega, \nabla \xi) = 0 \quad , \end{aligned}$$

and then :

$$(34) \quad \begin{aligned} (\nabla(\mathcal{P}_\tau \omega - \omega_\tau), \nabla \xi) &= \underbrace{(\nabla \mathcal{P}_\tau \omega, \nabla \xi) - \langle -\Delta \mathcal{P}_\tau \omega, \xi \rangle_{-1,1}}_{=0} \\ &\quad - \langle -\Delta(\omega - \mathcal{P}_\tau \omega), \xi \rangle_{-1,1} \quad . \end{aligned}$$

- Equations (33) and (34) lead to the following problem :

$$\left\{ \begin{aligned} (\mathcal{P}_\tau \omega - \omega_\tau, \varphi) - (\nabla(\Pi_\tau \psi - \psi_\tau), \nabla \varphi) \\ &= -(\omega - \mathcal{P}_\tau \omega, \varphi) - \langle \Delta \varphi, \psi - \Pi_\tau \psi \rangle_{-1,1} \quad , \quad \forall \varphi \in H_\tau^{1,\infty} \\ (\nabla(\mathcal{P}_\tau \omega - \omega_\tau), \nabla \xi) &= \langle \Delta(\omega - \mathcal{P}_\tau \omega), \xi \rangle_{-1,1} \quad , \quad \forall \xi \in H_{0,\tau}^1 \end{aligned} \right.$$

It is the auxiliary problem (27) with : $g = \mathcal{P}_\tau \omega - \omega \in L^2(\Omega)$, $m = \Pi_\tau \psi - \psi \in H_0^1(\Omega)$, $l = \Delta(\omega - \mathcal{P}_\tau \omega) \in H^{-1}(\Omega)$. The triangular inequality and Proposition 10 lead to :

$$\begin{aligned} \|\omega - \omega_\tau\|_M + \|\psi - \psi_\tau\|_{1,\Omega} &\leq \underbrace{\|\omega - \mathcal{P}_\tau \omega\|_M + \|\psi - \Pi_\tau \psi\|_{1,\Omega}}_{\text{interpolation error}} \\ &\quad + \|\mathcal{P}_\tau \omega - \omega_\tau\|_M + \|\Pi_\tau \psi - \psi_\tau\|_{1,\Omega} \\ &\leq \|\omega - \mathcal{P}_\tau \omega\|_M + \|\psi - \Pi_\tau \psi\|_{1,\Omega} \\ &\quad + C (\|\mathcal{P}_\tau \omega - \omega\|_{0,\Omega} + \|\Delta(\omega - \mathcal{P}_\tau \omega)\|_{-1,\Omega} + \|\nabla(\psi - \Pi_\tau \psi)\|_{0,\Omega}) \end{aligned}$$

and finally :

$$\|\omega - \omega_\tau\|_M + \|\psi - \psi_\tau\|_{1,\Omega} \leq C (\|\omega - \mathcal{P}_\tau \omega\|_M + \|\psi - \Pi_\tau \psi\|_{1,\Omega})$$

which achieves the proof. ■

The previous Proposition and the interpolation error lead to the following result.

Theorem 2. *Convergence result.*

If $\text{rot } \mathbf{f}$ belongs to $L^2(\Omega)$ and \mathcal{T} belongs to a regular family of triangulation \mathcal{U}_σ , the discrete problem (14) has a unique solution (ψ_τ, ω_τ) in $H_{0,\tau}^1 \times H_\tau^{1,\infty}$, associated with a stable discretization of the Stokes problem (1)-(4). If $(\psi, \omega) \in H^2(\Omega) \cap H_0^1(\Omega) \times H^2(\Omega)$, there exists a strictly positive constant $C(\sigma)$ such that, for all \mathcal{T} in \mathcal{U}_σ , we have :

$$\| \omega - \omega_\tau \|_M + \| \psi - \psi_\tau \|_{1,\Omega} \leq C(\sigma) h_\tau (\| \omega \|_{2,\Omega} + \| \psi \|_{2,\Omega}) \quad .$$

Proof

Let us recall that, due to Proposition 4, ω^0 is such that :

$$\begin{cases} \Delta \omega^0 = \Delta \omega = \text{rot } \mathbf{f} \text{ in } \Omega \\ \gamma \omega^0 = 0 \text{ on } \Gamma \end{cases} .$$

As Ω is a convex polygon, and as $\text{rot } \mathbf{f}$ belongs to $L^2(\Omega)$, ω^0 belongs to $H^2(\Omega)$ [23] and we have :

$$(35) \quad \| \omega^0 \|_{2,\Omega} \leq C \| \Delta \omega \|_{0,\Omega} \leq C \| \omega \|_{2,\Omega} \quad .$$

So, by the help of Proposition (11), C denoting various constants, we obtain :

$$\begin{aligned} \| \omega - \omega_\tau \|_M + \| \psi - \psi_\tau \|_{1,\Omega} &\leq C (\| \omega - \mathcal{P}_\tau \omega \|_M + \| \psi - \Pi_\tau \psi \|_{1,\Omega}) \\ &\leq C (\| \omega^0 + \omega^\Delta - \Pi_\tau \omega^0 - \phi_\tau^\infty \omega^\Delta \|_M + h_\tau \| \psi \|_{2,\Omega}) \\ &\leq C (\| \omega^0 - \Pi_\tau \omega^0 \|_M + \| \omega^\Delta - \phi_\tau^\infty \omega^\Delta \|_M + h_\tau \| \psi \|_{2,\Omega}) \\ &\leq Ch_\tau (\| \omega^0 \|_{2,\Omega} + \| \omega \|_{2,\Omega} + \| \psi \|_{2,\Omega}) \text{ by Proposition 9} \\ &\leq Ch_\tau (\| \omega \|_{2,\Omega} + \| \omega \|_{2,\Omega} + \| \psi \|_{2,\Omega}) \text{ by (35)} \\ &\leq Ch_\tau (\| \omega \|_{2,\Omega} + \| \psi \|_{2,\Omega}) \quad , \end{aligned}$$

which gives the announced result. ■

Remark 4.

- *The theorem 2 is important because it shows that using a space of harmonic functions along the boundary gives an error of order $\mathcal{O}(h_\tau)$ when $\omega \in H^2(\Omega)$. It is now necessary to approach this space numerically **without losing optimality**, i.e error between discrete harmonic functions and real harmonic functions must be bounded by h_τ . We propose in this paper a way of approaching $\mathcal{H}_{\tau,\infty}$ by use of mesh refinements but other possibilities are in progress ([1], [28]).*
- *It seems possible to reduce hypothesis on the regularity of the vorticity and to obtain convergence of order $\mathcal{O}(h_\tau)$ for ω only in $H^1(\Omega)$.*

4 Discrete harmonic functions

4.1 Formulation

Let $\mathcal{T} \in \mathcal{U}_\sigma$ be a given mesh. Then, the family of meshes \mathcal{T}_k ($k \in \mathbb{N}$) is defined recursively as follows :

- (i) $\mathcal{T}_0 = \mathcal{T}$;
- (ii) $\mathcal{T}_{k+1} \subset \mathcal{T}_k$ is obtained from \mathcal{T}_k by dividing each triangle in four homothetic ones (see Figure 2).

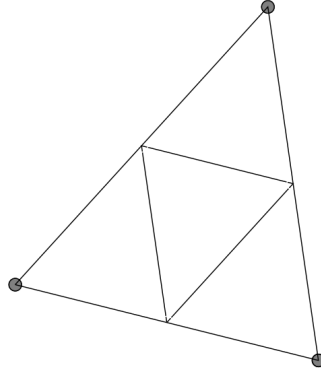


Figure 2: Division of a triangle of \mathcal{T}_k .

It is clear that $(\mathcal{T}_k)_{k \in \mathbb{N}}$ belong to \mathcal{U}_σ defined above. We denote $H_{\mathcal{T}_k}^1$ the space of all continuous functions on $\overline{\Omega}$, polynomial of degree 1 in each triangle of \mathcal{T}_k and $H_{0,\mathcal{T}_k}^1 = H_{\mathcal{T}_k}^1 \cap H_0^1(\Omega)$.

Definition 5. *Discrete harmonics.*

We define the space $\mathcal{H}_{\mathcal{T},k}$ of discrete harmonic functions by :

$$\mathcal{H}_{\mathcal{T},k} = \left\{ \varphi \in H_{\mathcal{T}_k}^1, \exists \lambda \in \Gamma_{\mathcal{T}} \quad \gamma\varphi = \lambda \text{ on } \Gamma, (\nabla\varphi, \nabla\xi) = 0 \quad \forall \xi \in H_{0,\mathcal{T}_k}^1 \right\} .$$

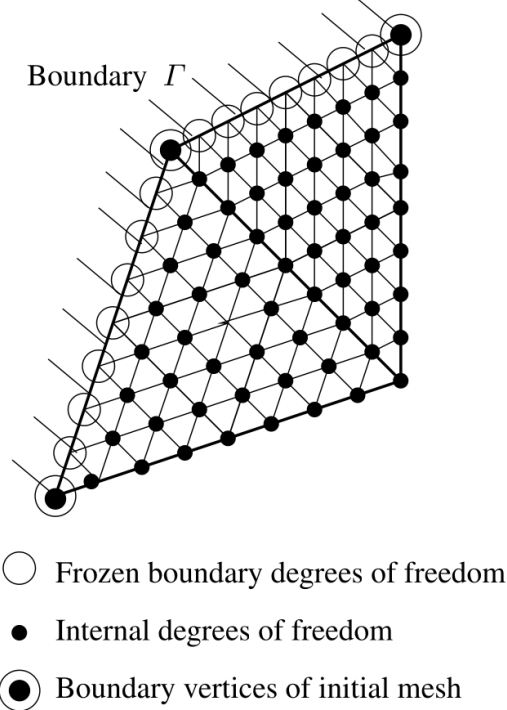
We define the following lifting operator Z_k of order k :

$$Z_k : \Gamma_{\mathcal{T}} \ni \lambda \mapsto Z_k(\lambda) \in \mathcal{H}_{\mathcal{T},k} \quad ,$$

by the relations :

$$\begin{cases} (\nabla Z_k(\lambda), \nabla\xi) = 0 \quad \forall \xi \in H_{0,\mathcal{T}_k}^1 \\ \gamma Z_k(\lambda) = \lambda \quad \text{on } \Gamma \end{cases} .$$

The space $\mathcal{H}_{\mathcal{T},k}$ is finite-dimensional and $\dim \mathcal{H}_{\mathcal{T},k} = \dim \Gamma_{\mathcal{T}}$. The nodal values on $\mathcal{T}_k \cap \Gamma$ are obtained by linear interpolation from values at the vertices of the initial mesh $\mathcal{T}_0 = \mathcal{T}$. Internal values of function $Z_k(\lambda)$ are obtained by solving a discrete Laplace equation in space H_{0,\mathcal{T}_k}^1 with boundary values from the previous step.


 Figure 3: Mesh for discrete harmonics at level $k = 3$.

Proposition 12. *Continuous decomposition of space $\mathcal{H}_{\tau,k}$.*

For all $\lambda \in \Gamma_{\tau}$, we have the following decomposition :

$$Z_k(\lambda) = Z_k(\lambda)^0 + Z_{\infty}(\lambda) \quad ,$$

where $Z_{\infty}(\lambda)$, which is independent of k , is defined in Section 3.1 and $Z_k(\lambda)^0$ belongs to $H_0^1(\Omega)$. Moreover, we have :

$$(36) \quad \|\Delta Z_k(\lambda)\|_{-1,\Omega} = \|\nabla Z_k(\lambda)^0\|_{0,\Omega} \quad .$$

Proof

- Let $Z_{\infty}(\lambda) \in \mathcal{H}_{\tau,\infty}$ be such that $\gamma Z_{\infty}(\lambda) = \lambda$ on Γ (see problem (11)). So, $\gamma(Z_k(\lambda) - Z_{\infty}(\lambda)) = 0$ on Γ . Then, the field $Z_k(\lambda)^0 = Z_k(\lambda) - Z_{\infty}(\lambda)$ belongs to $H_0^1(\Omega)$.
- By definition, we have :

$$\|\Delta Z_k(\lambda)\|_{-1,\Omega} = \sup_{\xi \in H_0^1(\Omega) \setminus \{0\}} \frac{\langle \Delta Z_k(\lambda), \xi \rangle_{-1,1}}{\|\nabla \xi\|_{0,\Omega}} \quad .$$

As $Z_k(\lambda)$ belongs to $H^1(\Omega)$, we may rewrite the duality product :

$$\|\Delta Z_k(\lambda)\|_{-1,\Omega} = \sup_{\xi \in H_0^1(\Omega) \setminus \{0\}} \frac{(\nabla Z_k(\lambda), \nabla \xi)}{\|\nabla \xi\|_{0,\Omega}} = \sup_{\xi \in H_0^1(\Omega) \setminus \{0\}} \frac{(\nabla Z_k(\lambda)^0, \nabla \xi)}{\|\nabla \xi\|_{0,\Omega}} \quad .$$

Finally, as $Z_k(\lambda)^0$ belongs to $H_0^1(\Omega)$, we can choose $\xi = Z_k(\lambda)^0$ in the above relation and the equality (36) is established. \blacksquare

To illustrate the non-harmonic part $Z_k(\lambda)^0$ of functions in $\mathcal{H}_{\mathcal{T},k}$, we made some numerical experiments. Let \mathcal{T} be the mesh named A described in Figure 5, S be a vertex of $\mathcal{S}_{\mathcal{T}} \cap \Gamma$ and $h_S \in \mathcal{H}_{\mathcal{T},0}$ be a discrete harmonic function of level 0, used *e.g.* in Glowinski-Pironneau [22], and defined by :

$$\begin{cases} (\nabla h_S, \nabla \xi) = 0 & \forall \xi \in H_{0,\mathcal{T}}^1 \\ h_S(T) = \delta_{ST} & \text{on } \Gamma \end{cases} .$$

It means $\gamma h_S = \lambda_S$ where λ_S is the corresponding basis function (see Figure 1). The previous proposition gives the following decomposition :

$$h_S = Z_0(\lambda_S)^0 + Z_\infty(\lambda_S) \quad .$$

Let $\eta_{S,k} \in H_{0,\mathcal{T}_k}^1$ be an approximation of the non harmonic part $Z_0(\lambda_S)^0$ of h_S , defined on the mesh \mathcal{T}_k by :

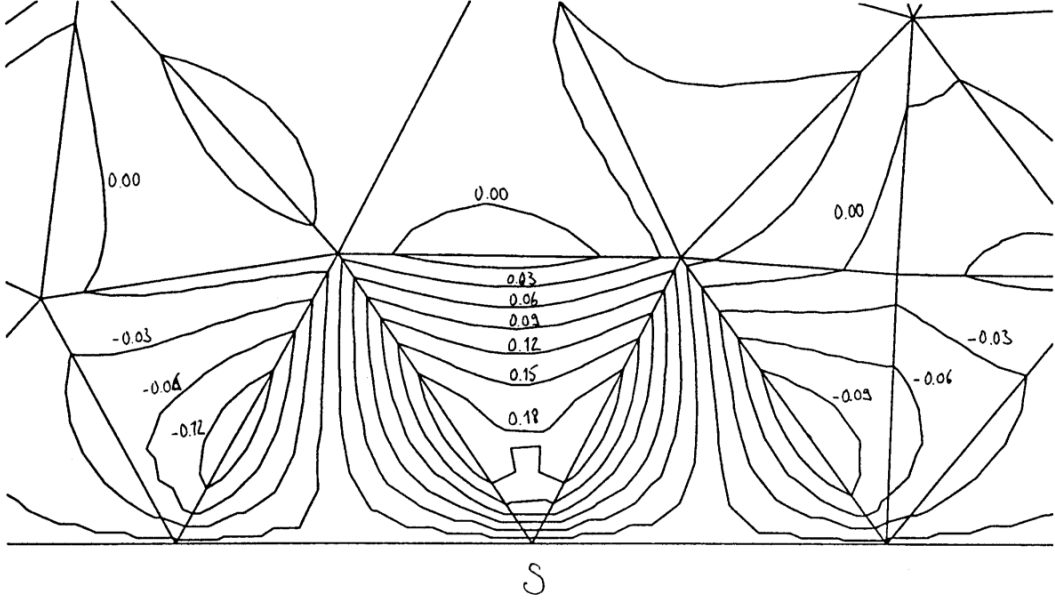
$$\begin{cases} (\nabla \eta_{S,k}, \nabla \chi) = (\nabla h_S, \nabla \chi) & \forall \chi \in H_{0,\mathcal{T}_k}^1 \\ \eta_{S,k} = 0 & \text{on } \Gamma \end{cases} .$$

As $Z_0(\lambda_S)^0$ verifies :

$$(\nabla Z_0(\lambda_S)^0, \nabla \chi) = (\nabla h_S, \nabla \chi) \quad , \quad \forall \chi \in H_0^1(\Omega) \quad ,$$

we have : $\eta_{S,k} \xrightarrow{k \rightarrow \infty} Z_0(\lambda_S)^0$.

The complete shape of $\eta_{S,k}$ is well described, as we will prove further, after the **third** refinement ($k = 3$). The next figure (Figure 4) is a visualisation of the function $\eta_{S,3}$ on the initial mesh $\mathcal{T} = \mathcal{T}_0$. We observe that all the "structure" of the function (minimum value = -0.12, maximum value = 0.19) is confined inside the three triangles containing the vertex S .


 Figure 4: Vizualisation of $\eta_{S,3}$ (smiling function)

Proposition 13. *Interpolation error in the family of recursive meshes.*

If \mathcal{T} belongs to a regular family of triangulation \mathcal{U}_σ , let $\Pi_{\mathcal{T}}\varphi$ be the Lagrange interpolate on \mathcal{T} , which is well defined on $H^{1+\eta}(\Omega)$ for $\eta > 0$. Then, we have :

$$(37) \quad \forall \varepsilon \in]0, 1[, \forall \eta \in]0, 1 - \varepsilon[, \forall \varphi \in H^{2-\varepsilon}(\Omega) , \exists \theta \in [\varepsilon, 1] , \\ \exists C(\sigma, \eta, \varepsilon) > 0 \text{ such that } \|\varphi - \Pi_{\mathcal{T}}\varphi\|_{1,\Omega} \leq C h_{\mathcal{T}}^{1-\theta} \|\varphi\|_{2-\varepsilon,\Omega}$$

Remark 5. *This proposition looks technical because the needed "classical" interpolation result : $\|\varphi - \Pi_{\mathcal{T}}\varphi\|_{1,\Omega} \leq C h_{\mathcal{T}} \|\varphi\|_{2,\Omega}$ is not correct as functions in $\mathcal{H}_{\mathcal{T},\infty}$ are not in $H^2(\Omega)$ but only in $H^{2-\varepsilon}(\Omega)$ (see Proposition 6). Nevertheless, it would be possible to use the Scott and Zhang regularization for which functions only need to be in $H^1(\Omega)$ (see [30]).*

Proof

Because $H^{2-\varepsilon}(\Omega) \subset C^0(\overline{\Omega})$, it is possible to define the classical interpolate of φ on the mesh \mathcal{T} . But φ belongs only to $H^{2-\varepsilon}(\Omega)$. For the real number $2 - \varepsilon$, we can find a parameter θ such that : $2 - \varepsilon = \theta(1 + \eta) + 2(1 - \theta)$. Indeed θ is such that $0 < \theta < 1$, if $1 + \eta < 2 - \varepsilon$, and is defined by :

$$(38) \quad \theta = \frac{\varepsilon}{1 - \eta} .$$

Then, we have the following imbeddings : $H^1(\Omega) \subset H^{1+\eta}(\Omega) \subset H^{2-\varepsilon}(\Omega) \subset C^0(\overline{\Omega})$. The difference $I - \Pi_{\mathcal{T}}$ is continuous from $H^2(\Omega)$ to $H^1(\Omega)$ with its norm bounded by $C_1(\sigma)h_{\mathcal{T}}$. It is also continuous from $H^{1+\eta}(\Omega)$ to $H^1(\Omega)$ with its norm bounded by a constant $C_2(\sigma, \eta)$. So, for θ chosen as in (38), $I - \Pi_{\mathcal{T}}$ is continuous from $H^{2-\varepsilon}(\Omega)$ to $H^1(\Omega)$ and its norm is bounded by $(C_1(\sigma)h_{\mathcal{T}})^{1-\theta}(C_2(\sigma, \eta))^{\theta} = (C(\sigma, \eta, \varepsilon)h_{\mathcal{T}})^{1-\theta}$, which leads to (37). ■

Theorem 3. *Stability of discrete harmonics.*

Let δ be in $]0; +\infty[$. For any mesh \mathcal{T} of the family \mathcal{U}_σ , there exists an integer $K(\delta, \mathcal{T})$, such that :

$$(39) \quad \forall k \geq K(\delta, \mathcal{T}), \quad \forall \varphi \in \mathcal{H}_{\mathcal{T},k} : \|\varphi\|_{0,\Omega} \geq \delta \|\Delta\varphi\|_{-1,\Omega} \quad .$$

Remark 6. *Theorem 3 means that if k is large enough ($k \geq 3$ as observed previously with the structure of functions $\eta_{S,3}$), the L^2 -norm is sufficient to control the M -norm of the vorticity. In other words, the laplacian of discrete harmonic functions, which are not rigorously harmonic, goes to zero as k becomes large enough.*

Proof

We study the ratio $\frac{\|\Delta\varphi\|_{-1,\Omega}}{\|\varphi\|_{0,\Omega}}$ for φ arbitrary in $\mathcal{H}_{\mathcal{T},k}$. First, we can write $\varphi = Z_k(\lambda)$ for an arbitrary discrete boundary function $\lambda \in \Gamma_{\mathcal{T}}$ and we set $\rho(\lambda) = \frac{\|\Delta Z_k(\lambda)\|_{-1,\Omega}}{\|Z_k(\lambda)\|_{0,\Omega}}$.

- We first bound the numerator of $\rho(\lambda)$:

$$\begin{aligned} \|\Delta Z_k(\lambda)\|_{-1,\Omega} &= \|\nabla Z_k(\lambda)^0\|_{0,\Omega} \text{ by relation (36)} \\ &\leq \frac{1}{\sqrt{1+C_p^2}} \|Z_k(\lambda)^0\|_{1,\Omega} \text{ (} C_p \text{ is the Poincaré's constant)} \\ &\leq \frac{1}{\sqrt{1+C_p^2}} \|Z_\infty(\lambda) - Z_k(\lambda)\|_{1,\Omega} \quad . \end{aligned}$$

We have used : $Z_k(\lambda) = Z_k(\lambda)^0 + Z_\infty(\lambda)$ (see Proposition 12), where $Z_k(\lambda) \in \mathcal{H}_{\mathcal{T},k}$ is solution of :

$$\begin{cases} (\nabla Z_k(\lambda), \nabla \xi) = 0 & \forall \xi \in H_{0,\mathcal{T}_k}^1 \\ \gamma Z_k(\lambda) = \lambda & \text{on } \Gamma \quad , \end{cases}$$

and $Z_\infty(\lambda) \in \mathcal{H}_{\mathcal{T},\infty}$ verifies :

$$\begin{cases} \Delta Z_\infty(\lambda) = 0 & \text{in } \Omega \\ \gamma Z_\infty(\lambda) = \lambda & \text{on } \Gamma \quad . \end{cases}$$

- Second, $Z_k(\lambda)$ is an approximation of the continuous harmonic function $Z_\infty(\lambda)$ on the mesh \mathcal{T}_k . Céa's lemma [14] insures that :

$$\|Z_\infty(\lambda) - Z_k(\lambda)\|_{1,\Omega} \leq C \|\Pi_{\mathcal{T}_k} Z_\infty(\lambda) - Z_\infty(\lambda)\|_{1,\Omega} \quad .$$

We fix $\varepsilon > 0$, independent of $\mathcal{T} \in \mathcal{U}_\sigma$. We have extended classical result of [15] to problems with less regularity in Proposition 13, as $Z_\infty(\lambda)$ only belongs to $H^{2-\varepsilon}(\Omega)$ (see imbedding (22)). Then, we choose $0 < \eta < 1 - \varepsilon$ and $\theta \geq \varepsilon$ is given by relation (38). So, we obtain :

$$\|\Delta Z_k(\lambda)\|_{-1,\Omega} \leq C \|Z_\infty(\lambda) - Z_k(\lambda)\|_{1,\Omega} \leq C h_k^{1-\theta} \|Z_\infty(\lambda)\|_{2-\varepsilon,\Omega} \quad ,$$

where $h_k \equiv h_{\tau_k} = \frac{h_{\mathcal{T}}}{2^k}$. Finally, as $\mathcal{H}_{\tau, \infty}$ is finite-dimensional, all the norms are equivalent. In particular, the $H^{2-\varepsilon}$ -norm is equivalent to the L^2 -norm, the constant involved depending on space dimension thus on $h_{\mathcal{T}}$:

$$\| \Delta Z_k(\lambda) \|_{-1, \Omega} \leq C \| Z_{\infty}(\lambda) - Z_k(\lambda) \|_{1, \Omega} \leq C h_k^{1-\theta} \| Z_{\infty}(\lambda) \|_{0, \Omega} \quad .$$

• Third, we bound below $\| Z_k(\lambda) \|_{0, \Omega}$:

$$\begin{aligned} \| Z_k(\lambda) \|_{0, \Omega} &\geq \| Z_{\infty}(\lambda) \|_{0, \Omega} - \| Z_{\infty}(\lambda) - Z_k(\lambda) \|_{0, \Omega} \\ &\geq \| Z_{\infty}(\lambda) \|_{0, \Omega} - \| Z_{\infty}(\lambda) - Z_k(\lambda) \|_{1, \Omega} \\ &\geq \| Z_{\infty}(\lambda) \|_{0, \Omega} - C h_k^{1-\theta} \| Z_{\infty}(\lambda) \|_{0, \Omega} \quad . \end{aligned}$$

• Thus, if h_k is sufficiently small or k sufficiently large in order to have : $1 - Ch_k^{1-\theta}$ positive, we have :

$$\begin{aligned} \rho(\lambda) = \frac{\| \Delta Z_k(\lambda) \|_{-1, \Omega}}{\| Z_k(\lambda) \|_{0, \Omega}} &\leq \frac{Ch_k^{1-\theta} \| Z_{\infty}(\lambda) \|_{0, \Omega}}{(1 - Ch_k^{1-\theta}) \| Z_{\infty}(\lambda) \|_{0, \Omega}} \\ &\leq \frac{Ch_{\mathcal{T}}^{1-\theta} (2^{-k})^{1-\theta}}{(1 - Ch_{\mathcal{T}}^{1-\theta} (2^{-k})^{1-\theta})} \leq \frac{1}{\delta} \quad , \end{aligned}$$

which is independent of λ when $k \rightarrow +\infty$. ■

By now, δ is taken equal to 1.

Definition 6. *Discrete harmonic formulation of the Stokes problem.*

For all mesh $\mathcal{T} \in \mathcal{U}_{\sigma}$ and all integer $k \geq 0$, we set :

$$H_{\mathcal{T}}^{1, k} = H_{0, \mathcal{T}}^1 \oplus \mathcal{H}_{\tau_k} \quad .$$

The discrete harmonic formulation of the Stokes problem consists in finding :

$$(40) \quad \psi_{\mathcal{T}, k} \in H_{0, \mathcal{T}}^1, \quad \omega_{\mathcal{T}, k} \in H_{\mathcal{T}}^{1, k} \quad \text{such that :}$$

$$(41) \quad (\omega_{\mathcal{T}, k}, \varphi) - (\nabla \psi_{\mathcal{T}, k}, \nabla \varphi) = 0 \quad \forall \varphi \in H_{\mathcal{T}}^{1, k}$$

$$(42) \quad (\nabla \omega_{\mathcal{T}, k}, \nabla \xi) = (\mathbf{f}, \mathbf{rot} \xi) \quad \forall \xi \in H_{0, \mathcal{T}}^1$$

Remark 7. Notice that ψ and ω^0 are discretized on the initial mesh \mathcal{T} and not on \mathcal{T}_k . Notice also that $H_{0, \mathcal{T}}^1 \subset H_{0, \mathcal{T}_k}^1$ because meshes are embedded.

This formulation coincides with (14) when $k = +\infty$, and with (5)-(8) when $k = 0$. The next proposition shows that if k is chosen sufficiently large, system (40)-(42) has a solution which depends continuously on the datum.

Proposition 14. *Existence and uniqueness of a solution to (40)-(42).*

If $\mathbf{f} \in (L^2(\Omega))^2$, if $\mathcal{T} \in \mathcal{U}_{\sigma}$ and if $k \geq K(1, \mathcal{T})$, with K defined in Theorem 3, the problem (40)-(42) has a unique solution $(\psi_{\mathcal{T}, k}, \omega_{\mathcal{T}, k})$ in the space $H_{0, \mathcal{T}}^1 \times H_{\mathcal{T}}^{1, k}$ which depends continuously on the datum \mathbf{f} :

$$\exists C > 0 \quad , \quad \| \omega_{\mathcal{T}, k} \|_M + \| \nabla \psi_{\mathcal{T}, k} \|_{0, \Omega} \leq C \| \mathbf{f} \|_{0, \Omega} \quad .$$

Proof

The proof is not different from the one of Proposition 5. We first split functions of $H_{\mathcal{T},k}^1$ in a function $\varphi^{0,k}$ of $H_{0,\mathcal{T}}^1$ plus a function $\varphi^{\Delta,k}$ in $\mathcal{H}_{\mathcal{T},k}$:

$$\varphi = \varphi^{0,k} + \varphi^{\Delta,k} \quad .$$

Using that each function φ in $\mathcal{H}_{\mathcal{T},k}$ verifies :

$$(\nabla\varphi, \nabla\xi) = 0 \quad , \quad \forall \xi \in H_{0,\mathcal{T}}^1 \subset H_{0,\mathcal{T}_k}^1 \quad ,$$

we rewrite the system (41)-(42) and obtain :

$$(43) \quad (\omega_{\mathcal{T}}^{0,k}, \varphi^{0,k}) + (\omega_{\mathcal{T}}^{\Delta,k}, \varphi^{0,k}) - (\nabla\psi_{\mathcal{T},k}, \nabla\varphi^{0,k}) = 0 \quad \forall \varphi^{0,k} \in H_{0,\mathcal{T}}^1$$

$$(44) \quad (\omega_{\mathcal{T}}^{0,k}, \varphi^{\Delta,k}) + (\omega_{\mathcal{T}}^{\Delta,k}, \varphi^{\Delta,k}) = 0 \quad \forall \varphi^{\Delta,k} \in \mathcal{H}_{\mathcal{T},k}$$

$$(45) \quad (\nabla\omega_{\mathcal{T}}^{0,k}, \nabla\xi) = (\mathbf{f}, \mathbf{rot} \xi) \quad \forall \xi \in H_{0,\mathcal{T}}^1.$$

Notice that functions in $\mathcal{H}_{\mathcal{T},k}$ are not harmonic, so the M -norm is no more the L^2 -norm. We need Theorem 3 to conclude that, if $k \geq K(1, \mathcal{T})$, we have :

$$\forall \varphi \in \mathcal{H}_{\mathcal{T},k} \quad , \quad \|\varphi\|_M \geq \sqrt{2} \|\Delta\varphi\|_{-1,\Omega} \quad ,$$

which implies that the L^2 -product $(\omega_{\mathcal{T}}^{\Delta,k}, \varphi^{\Delta,k})$ is elliptic on $\mathcal{H}_{\mathcal{T},k}$ for the M -norm. Then, the same arguments as in the proof of Proposition 5 can be used here, and we obtain the expected inequality. \blacksquare

Remark 8. *Do not confuse :*

$$H_{\mathcal{T}}^{1,k} \ni \varphi = \underbrace{\varphi^0}_{\in H_0^1(\Omega)} + \underbrace{\varphi^{\Delta}}_{\in \mathcal{H}_{\mathcal{T},\infty}(\Omega)} = \underbrace{\varphi^{0,k}}_{\in H_{0,\mathcal{T}}^1} + \underbrace{\varphi^{\Delta,k}}_{\in \mathcal{H}_{\mathcal{T},k}} \quad .$$

4.2 Interpolation error

Proposition 15. *Interpolation error.*

Under the same assumptions as in Proposition 9, there exists an interpolation operator $\phi_{\mathcal{T}}^k$ from $\mathcal{H}(\Omega) \cap H^2(\Omega)$ to $\mathcal{H}_{\mathcal{T},k}$ such that :

$$\|\varphi - \phi_{\mathcal{T}}^k \varphi\|_M \leq C h_{\mathcal{T}}^{1-\theta} \|\varphi\|_{2,\Omega} \quad ,$$

where θ is an arbitrary real number such that $0 < \theta < 1$ and C a constant independent of k but dependent on θ .

Definition 7.

Let define $\mathcal{P}_{\mathcal{T}}^k : M(\Omega) \cap H^2(\Omega) = H^2(\Omega) \longrightarrow H_{\mathcal{T}}^{1,k} = H_{0,\mathcal{T}}^1 \oplus \mathcal{H}_{\mathcal{T},k}$:

$$\mathcal{P}_{\mathcal{T}}^k : H^2(\Omega) \ni \varphi = \varphi^0 + \varphi^{\Delta} \longmapsto \mathcal{P}_{\mathcal{T}}^k \varphi = \Pi_{\mathcal{T}} \varphi^0 + \phi_{\mathcal{T}}^k \varphi^{\Delta} \in H_{\mathcal{T}}^{1,k} \quad .$$

Proof

We have supposed that φ belongs to $H^2(\Omega)$. From Proposition 9, $\zeta = \phi_{\mathcal{T}}^{\infty} \varphi^{\Delta}$ is an approximation of φ^{Δ} and verifies by definition :

$$\begin{cases} \Delta \zeta = 0 & \text{in } \Omega \\ \gamma \zeta = \Pi_{\mathcal{T}}^{\Gamma}(\gamma \varphi) & \text{on } \Gamma \end{cases} .$$

As $\lambda \in H^{3/2-\varepsilon}(\Gamma)$, for all $\varepsilon > 0$, and as Ω is a convex polygon, ζ belongs to $H^{2-\varepsilon}(\Omega)$ [4], [23]. We can interpolate ζ on the k times refined mesh \mathcal{T}_k because $H^{2-\varepsilon}(\Omega) \subset C^0(\overline{\Omega})$. We choose $\varepsilon \leq \theta$ in order to satisfy (38) and we obtain :

$$\|\zeta - \Pi_{\mathcal{T}_k} \zeta\|_{1,\Omega} \leq C h_k^{1-\theta} \|\zeta\|_{2-\varepsilon,\Omega} .$$

So, we have successively :

$$\begin{aligned} \|\zeta - \Pi_{\mathcal{T}_k} \zeta\|_M &\leq \|\zeta - \Pi_{\mathcal{T}_k} \zeta\|_{1,\Omega} \text{ by Proposition 1,} \\ &\leq C h_k^{1-\theta} \|\zeta\|_{2-\varepsilon,\Omega} \\ &\leq C h_k^{1-\theta} \|\lambda\|_{3/2-\varepsilon,\Gamma} \text{ by continuity of the lifting,} \\ &\leq C h_k^{1-\theta} \|\gamma \varphi\|_{3/2-\varepsilon,\Gamma} \\ &\leq C h_k^{1-\theta} \|\gamma \varphi\|_{3/2,\Gamma} \text{ by continuity of the trace operator} \\ &\quad \text{from } H^{3/2-\varepsilon}(\Gamma) \text{ to } H^{3/2}(\Gamma), \\ &\leq C h_k^{1-\theta} \|\varphi\|_{2,\Omega} \text{ by continuity of the trace.} \end{aligned}$$

Thus, we define $\phi_{\mathcal{T}}^k \varphi = \Pi_{\mathcal{T}_k} \zeta = \Pi_{\mathcal{T}_k}(\phi_{\mathcal{T}}^{\infty} \varphi)$ and we obtain :

$$\begin{aligned} \|\varphi - \phi_{\mathcal{T}}^k \varphi\|_M &= \|\varphi - \Pi_{\mathcal{T}_k} \zeta\|_M \\ &\leq \|\varphi - \phi_{\mathcal{T}}^{\infty} \varphi\|_M + \underbrace{\|\phi_{\mathcal{T}}^{\infty} \varphi - \Pi_{\mathcal{T}_k}(\phi_{\mathcal{T}}^{\infty} \varphi)\|_M}_{=\zeta} \\ &\leq C h_{\mathcal{T}} \|\varphi\|_{2,\Omega} + \|\zeta - \Pi_{\mathcal{T}_k} \zeta\|_M \text{ by Proposition 9} \\ &\leq C h_{\mathcal{T}} \|\varphi\|_{2,\Omega} + C h_k^{1-\theta} \|\varphi\|_{2,\Omega} \\ &\leq C (h_{\mathcal{T}} + h_{\mathcal{T}}^{1-\theta} (2^{-k})^{1-\theta}) \|\varphi\|_{2,\Omega} . \end{aligned}$$

As $h_k \leq h_{\mathcal{T}}$, Proposition 15 is proved. ■

Remark 9. Notice that the interpolation error is independent of k when k is large enough, because $h_k \leq h_{\mathcal{T}}$. If we need k sufficiently large, it is for existence (Proposition 14) and stability (Proposition 16).

4.3 Error estimates

Proposition 16. Stability of problem (40)-(42).

Let $\delta = 1$, \mathcal{T} be a mesh of the regular family \mathcal{U}_{σ} , and $K(1, \mathcal{T})$ chosen as in Theorem 3. Let

$(\eta_{\mathcal{T},k}, \theta_{\mathcal{T},k}) \in H_{0,\mathcal{T}}^1 \times H_{\mathcal{T}}^{1,k}$ be the solution of the auxiliary problem :

$$(46) \quad \begin{cases} (\theta_{\mathcal{T},k}, \varphi) - (\nabla \eta_{\mathcal{T},k}, \nabla \varphi) = (g, \varphi) + \langle \Delta \varphi, m \rangle_{-1,1} & \forall \varphi \in H_{\mathcal{T}}^{1,k} \\ (\nabla \theta_{\mathcal{T},k}, \nabla \xi) = \langle l, \xi \rangle_{-1,1} & \forall \xi \in H_{0,\mathcal{T}}^1 \end{cases}$$

where $g = \mathcal{P}_{\mathcal{T}}^k \omega - \omega \in L^2(\Omega)$, $m = \Pi_{\mathcal{T}} \psi - \psi \in H_0^1(\Omega)$ and $l = \Delta(\omega - \mathcal{P}_{\mathcal{T}}^k \omega) \in H^{-1}(\Omega)$. $\mathcal{P}_{\mathcal{T}}^k$ is the interpolation operator from $M(\Omega)$ to $H_{\mathcal{T}}^{1,k}$, defined in Definition 7 and $\Pi_{\mathcal{T}}$ the classical interpolation operator on \mathcal{T} . Then, if $k \geq K(1, \mathcal{T})$, there exists a constant C independent of σ and k such that :

$$\| \theta_{\mathcal{T},k} \|_M + \| \nabla \eta_{\mathcal{T},k} \|_{0,\Omega} \leq C (\| g \|_{0,\Omega} + \| \nabla m \|_{0,\Omega} + \| l \|_{-1,\Omega}) \quad .$$

Proof

The auxiliary problem is obtained by the same techniques used in Proposition 11 and arguments are identical to those in Proposition 10. But, for $\theta_{\mathcal{T}}^{\Delta,k} \in \mathcal{H}_{\mathcal{T},k}$, the L^2 -norm is no more the M -norm. We need Theorem 3 to conclude that if $k \geq K(1, \mathcal{T})$, we have :

$$\| \theta_{\mathcal{T}}^{\Delta,k} \|_{0,\Omega} \geq \| \Delta \theta_{\mathcal{T}}^{\Delta,k} \|_{-1,\Omega} \quad .$$

■

The previous stability (Proposition 16) and interpolation errors (relation (24) for the H_0^1 -part of the vorticity and for the stream function; Proposition 15 for the harmonic part) gives the following result :

Theorem 4. Convergence result.

Problem (41-42) has a unique solution $(\psi_{\mathcal{T},k}, \omega_{\mathcal{T},k}) \in H_{0,\mathcal{T}}^1 \times H_{\mathcal{T}}^{1,k}$. If (ψ, ω) , belonging to $(H^2(\Omega) \cap H_0^1(\Omega)) \times H^2(\Omega)$, are solution of the continuous problem (9), we have :

$$\forall \theta \in]0, 1[, \exists C = C(\theta) > 0 , \forall \mathcal{T} \in \mathcal{U}_{\sigma} , \exists K(1, \mathcal{T}) , \text{ if } k \geq K(1, \mathcal{T})$$

$$\| \omega - \omega_{\mathcal{T},k} \|_M + \| \psi - \psi_{\mathcal{T},k} \|_{1,\Omega} \leq C h_{\mathcal{T}}^{1-\theta} (\| \omega \|_{2,\Omega} + \| \psi \|_{2,\Omega}) \quad .$$

5 Numerical results

Numerical experiments have been performed on a unit square with an analytical solution (test of Bercovier-Engelman [8]).

$$\begin{aligned} f_1(x, y) &= 256 (x^2(x-1)^2(12y-6) + y(y-1)(2y-1)(12x^2-12x+2)) \\ &\quad + (y-0.5) \\ f_2(x, y) &= -f_1(y, x) \\ \psi(x, y) &= -128(y^2(y-1)^2x^2(x-1)^2) \\ \omega(x, y) &= 256(y^2(y-1)^2(6x^2-6x+1) + x^2(x-1)^2(6y^2-6y+1)). \end{aligned}$$

As it is said in Theorem 3, K depends on the mesh, so we have worked with three different unstructured meshes obtained with EMC2, mesh generator of Modulef (Bernadou and al. [9]). Notice that structured meshes give good results without any stabilization (see [18], [21]). The uncoupled algorithm is the following :

$$\begin{aligned}
 \text{Find } \omega_{\mathcal{T}}^{0,k} \in H_{0,\mathcal{T}}^1 \text{ such that } & (\nabla \omega_{\mathcal{T}}^{0,k}, \nabla \xi) = (\mathbf{f}, \mathbf{rot} \xi) & \forall \xi \in H_{0,\mathcal{T}}^1 \\
 \text{Find } \omega_{\mathcal{T},k}^{\Delta,k} \in \mathcal{H}_{\mathcal{T}_k} & \text{ such that } & (\omega_{\mathcal{T},k}^{\Delta,k}, \chi) = -(\omega_{\mathcal{T}}^{0,k}, \chi) & \forall \chi \in \mathcal{H}_{\mathcal{T}_k} \\
 \text{Find } \psi_{\mathcal{T},k} \in H_{0,\mathcal{T}}^1 & \text{ such that } & (\nabla \psi_{\mathcal{T},k}, \nabla \xi) = (\omega_{\mathcal{T}}^{0,k} + \omega_{\mathcal{T},k}^{\Delta,k}, \xi) & \forall \xi \in H_{0,\mathcal{T}}^1 .
 \end{aligned}$$

An advantage of this algorithm is to avoid the well-known difficulties related to the resolution of mixed linear systems (see *e.g.* [13], [19]).

Remark 10. *It is clear that $\omega_{\mathcal{T}}^{0,k}$ does not depend on k .*

The longer and expensive step is the second one. By the way, we have to calculate **all** the discrete harmonic functions (as many as edges of the initial triangulation on the boundary) **on the refined meshes**. We present the three different initial meshes used in those examples Figures 5, 6 and the number of vertices of each refined meshes (Table 1).

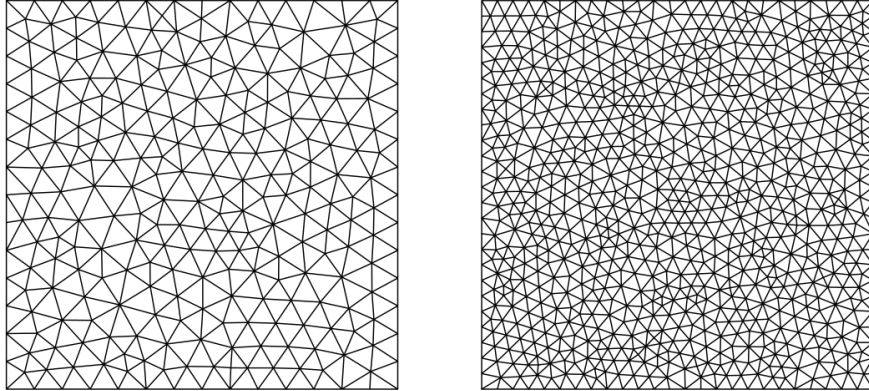


Figure 5: Meshes A and B

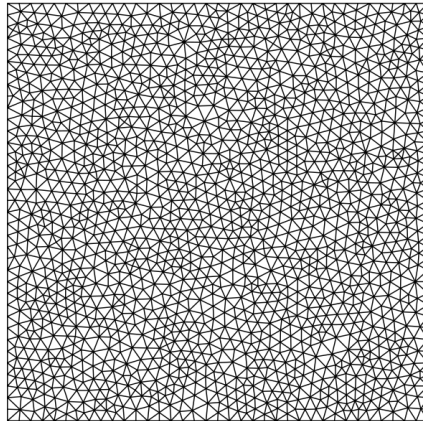


Figure 6: Mesh C

Mesh	$k = 0$	$k = 1$	$k = 2$	$k = 3$	$k = 4$
A	270	1021	3969	15649	62145
B	832	3225	12697	50385	200737
C	1667	6521	25793	102593	409217

 Table 1: Number of vertices of the k times refined meshes.

The analytical vorticity attains its extremum on the middle of each edge of the square and its value is then $+16.00$ (see Figure 7). In fact, without any stabilization, extrema of the vorticity exploded on the boundary. Table 2 gives extrema of the vorticity obtained after 0 (corresponds to the non-stabilized scheme), 1, 2, 3 and 4 refinements of the mesh. The Figure 7 gives the values of the vorticity along the boundary. Let us recall that the number of discrete harmonic functions is equal to the number of vertices on the boundary.

Vorticity on the boundary

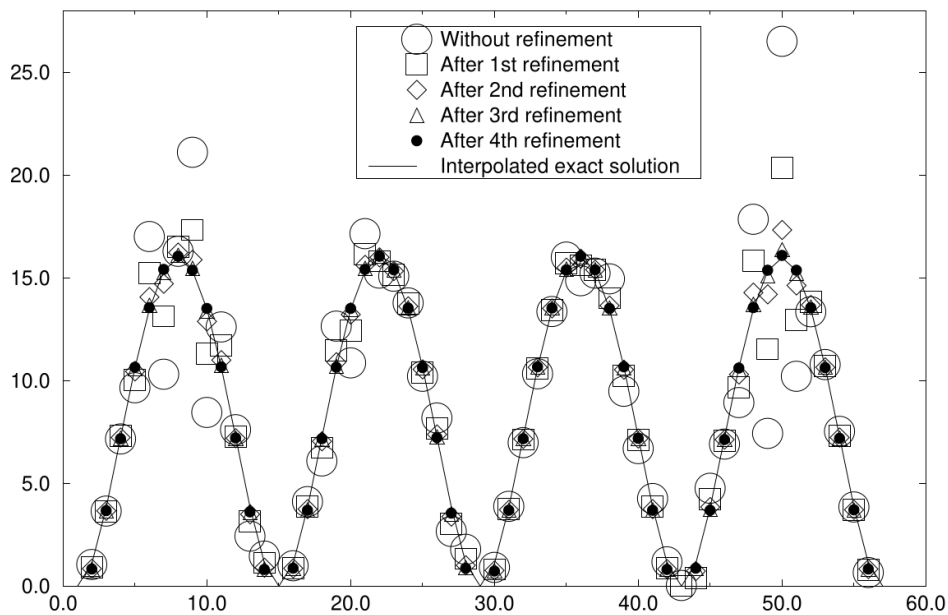


Figure 7: Value of the vorticity on the boundary (mesh A).

We observe that 4 refinements seem sufficient to obtain satisfying results. This number of necessary refinements is confirmed by Figures 8, 9, 10, which give the relative error on the two fields (stream function and vorticity) versus the number of refinements. Error is no more reduced between fourth and fifth refinement, so we can estimate that $k = 4$ shall be enough and that stability of the scheme is reached.

Mesh	Number of discrete harmonics	$k = 0$	1	2	3	4
A : 482 elements	56	26.52	20.37	17.34	16.37	16.10
B : 1562 elements	100	27.08	20.78	17.41	16.34	16.05
C : 3188 elements	144	31.77	22.94	18.20	16.60	16.15

Table 2: Extremum of the vorticity after k refinements.

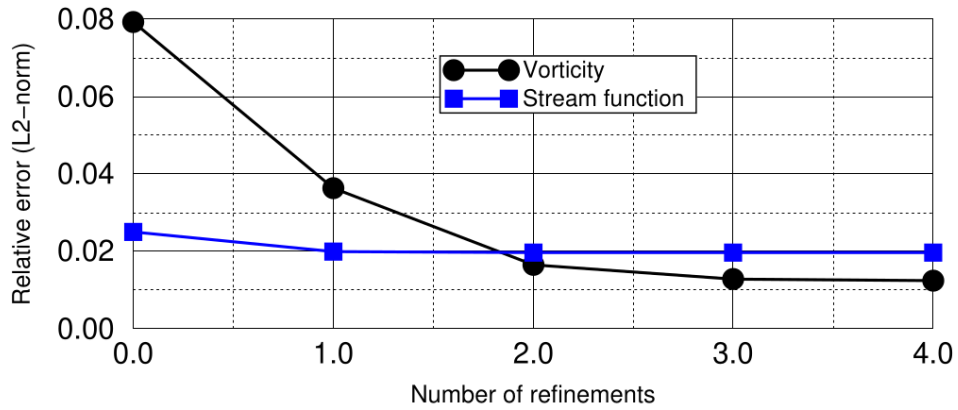


Figure 8: Relative error in L^2 -norm versus mesh size on mesh A.

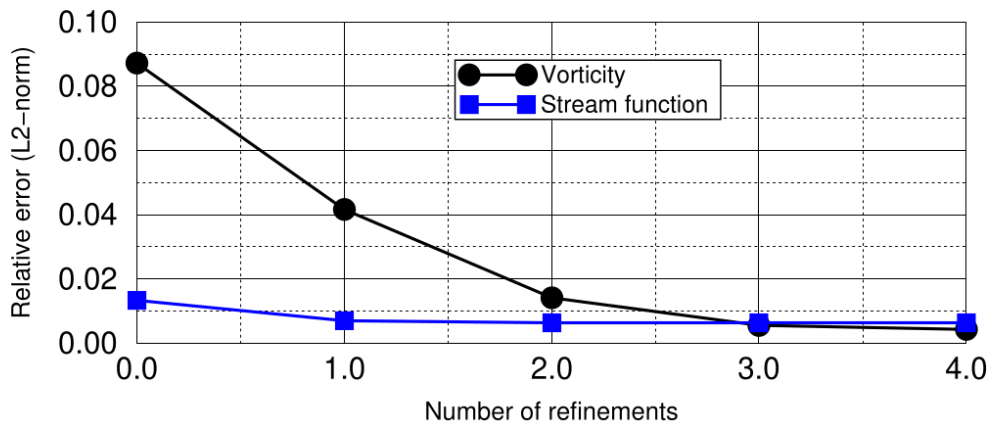


Figure 9: Relative error in L^2 -norm versus mesh size on mesh B.

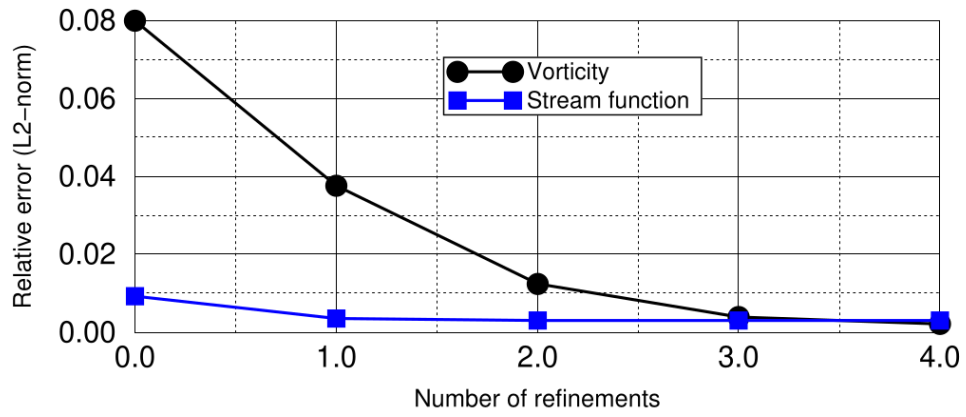


Figure 10: Relative error in L^2 -norm versus mesh size on mesh C.

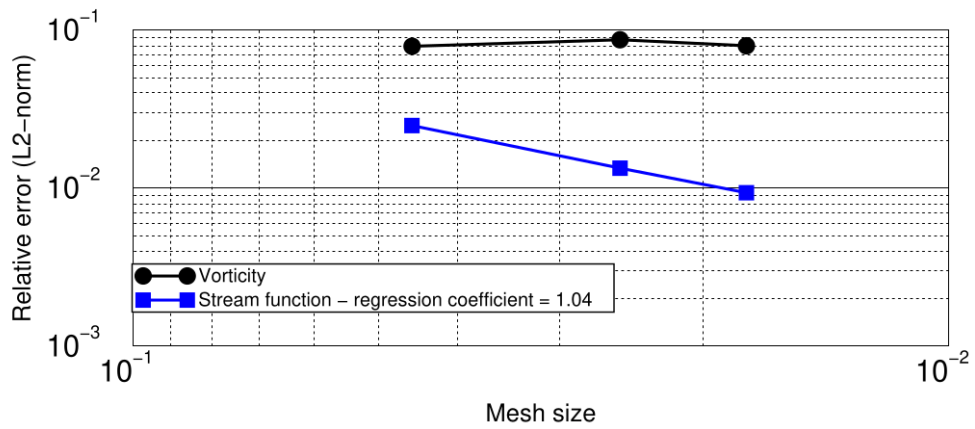


Figure 11: Convergence order without stabilization.

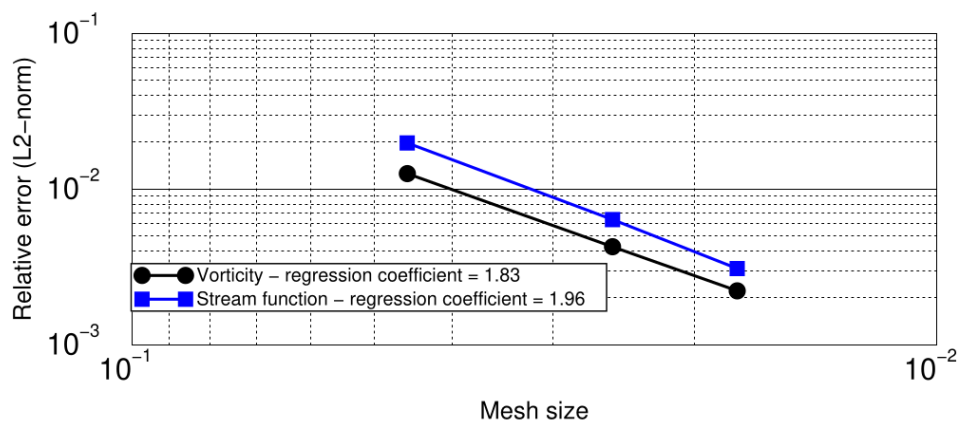


Figure 12: Convergence order after 4 refinements.

We recall that problem (5)-(8) is not stable and error bounds are in $h_\tau^{1/2}$ for the L^2 -norm of the vorticity and $h_\tau^{1-\varepsilon}$ for the H^1 -norm of the stream function (see Figure 11 or [21]). With techniques described in this paper, we obtain a convergence of order 1 (see Theorem 4). Notice that numerical results, given on Figure 12, are better than expected : almost $\mathcal{O}(h_\tau^2)$ for the L^2 -norm of the vorticity and of the stream function !

6 Conclusion

We have studied the well-posed Stokes problem in stream function and vorticity formulation. We have shown that using a space of **real** harmonic functions is sufficient to obtain convergence with better estimations than the previous ones. Then, we have proposed a way of approaching numerically the space of real harmonic functions by refining the initial mesh. We have shown theoretically that, by this way, we keep convergence with order 1. Numerically, it seems that convergence is obtained with order 2 on the L^2 -norm of the vorticity.

We are actually studying how to prove the convergence with order 2 and how to use the same technique for the vorticity-velocity-pressure formulation of the Stokes problem, introduced in [17], which is an alternative in three-dimensional domain to recent work of Amara and al. [5].

Acknowledgements

The authors thank Benoît Desjardins and Emmanuel Grenier for helpful discussions during summer 1998, and the referees for their precise remarks and suggestions that have been introduced in this corrected version.

References

- [1] T. Abboud, M. Salaün, S. Salmon, “Integral equation method for stream function-vorticity Stokes problem”, Internal Report IAT/CNAM, number 343/01, 2001.
- [2] Y. Achdou, R. Glowinski, O. Pironneau, “Tuning the mesh of a mixed method for the stream function - vorticity formulation of the Navier-Stokes equations”, *Numerische Mathematik*, volume 63, pages 145-163, 1992.
- [3] R.A. Adams, *Sobolev spaces*, Pure and Applied Mathematics, volume 65, Academic Press, New York-London, 1975.
- [4] S. Agmon, A. Douglis, L. Nirenberg, “Estimates near the boundary for solutions in elliptic partial differential equations satisfying general boundary conditions I”, *Comm. Pure and Appl. Math.*, volume 12, pages 623-727, 1959.
- [5] M. Amara, H. Barucq, M. Duloué, “Une formulation mixte convergente pour le système de Stokes tridimensionnel”, *C. R. Acad. Sci. Paris*, Série 1, volume 328, pages 935-938, 1999.
- [6] M. Amara and C. Bernardi, “Convergence of a finite element discretization of the Navier-Stokes equations in vorticity and stream function formulation”, *Mathematical Modelling and Numerical Analysis*, volume 33, pages 1033-1056, 1999.

- [7] C. Bègue, C. Conca, F. Murat, O. Pironneau, “À nouveau sur les équations de Stokes et de Navier-Stokes avec des conditions aux limites sur la pression”, *C. R. Acad. Sc. Paris*, volume 304, série 1, numéro 1, pages 23-28, 1987.
- [8] M. Bercovier and M. Engelman, “A finite element for the numerical solution of viscous incompressible flows”, *J. of Comp. Physics*, volume 30, pages 181-201, 1979.
- [9] M. Bernadou, P.L. George, A. Hassim, P. Joly, P. Laug, B. Muller, A. Perronnet, E. Saltel, D. Steer, G. Vanderborck, M. Vidrascu, *MODULEF : Une bibliothèque modulaire d’éléments finis*, INRIA, 1988.
- [10] C. Bernardi, V. Girault, Y. Maday, “Mixed spectral element approximation of the Navier-Stokes equations in stream function and vorticity formulation”, *IMA Journal Numer. Anal.*, volume 12, pages 565-608, 1992.
- [11] J.H. Bramble, P. Lee, “On variational formulations for the Stokes equations with non-standard boundary conditions”, *ESAIM: Mathematical Modelling and Numerical Analysis*, volume 28, number 7, pages 903-919, 1994.
- [12] F. Brezzi, “On the existence, uniqueness and approximation of saddle point problems arising from Lagrange multipliers”, *Revue française d’automatique, informatique, recherche opérationnelle. Analyse numérique*, volume 8, pages 129-151, 1974.
- [13] F. Brezzi, J. Douglas, L.D. Marini, “Two families of mixed finite element for second order elliptic problems”, *Numerische Mathematik*, volume 47, pages 217-235, 1985.
- [14] P.G. Ciarlet, *The finite element methods for elliptic problems*, North-Holland, 1987.
- [15] P. Ciarlet and P.A. Raviart, “General Lagrange and Hermite interpolation in \mathbb{R}^n with applications to finite element methods”, *Arch. Rational Mech. Anal.*, volume 46, pages 177-199, 1972.
- [16] P. Ciarlet and P.A. Raviart, “A mixed finite element method for the biharmonic equation, in *Mathematical Aspects of Finite Elements in Partial Differential Equations*, pages 125-145, Editor C. de Boor, Academic Press, New York, 1974.
- [17] F. Dubois, “Une formulation tourbillon-vitesse-pression pour le problème de Stokes”, *C. R. Acad. Sc. Paris*, Série 1, volume 314, pages 277-280, 1992.
- [18] F. Dubois, M. Salaün, S. Salmon, “Méthode MAC en triangles et formulation fonction courant-tourbillon pour le problème de Stokes”, *Actes du 30^{ème} Congrès National d’Analyse Numérique*, page 278, Canum’98, Arles, 18-22 May 1998.
- [19] H. Elman and D. Silvester, “Fast nonsymmetric iterations and preconditioning for Navier- Stokes equations”, Special issue on iterative methods in numerical linear algebra, *SIAM J. Sci. Comput.*, volume 17, pages 33-46, 1996.
- [20] V. Girault, “Incompressible finite element methods for Navier-Stokes equations with nonstandard boundary conditions in \mathbb{R}^3 ”, *Mathematics of Computation*, volume 51, number 183, pages 55-74, 1988.
- [21] V. Girault and P-A. Raviart, *Finite element methods for Navier-Stokes equations*, Springer Series in Computational Mathematics, volume 5, Springer-Verlag, Berlin, 1986.

- [22] R. Glowinski and O. Pironneau, “Numerical methods for the first biharmonic equation and for the two-dimensional Stokes problem”, *SIAM Review*, volume 21, pages 167-211, 1979.
- [23] P. Grisvard, *Elliptic problems in nonsmooth domains*, Pitman (Advanced Publishing Program), Boston, Mass., 1985.
- [24] L. Landau, E. Lifchitz, *Mécanique des fluides*, Physique théorique, volume VI, Editions Mir, 1971.
- [25] P. Lax and N. Milgram, “Parabolic equations”, in *Contributions to the theory of partial differential equations*, pages 167-190, Annals of Mathematics Studies, volume 33, Princeton University Press, 1954.
- [26] J.-L. Lions and E. Magenes, *Problèmes aux limites non homogènes et applications*, volume 2, Dunod, Paris, 1968.
- [27] J. Nečas, *Les méthodes directes en théorie des équations elliptiques*, Masson, Paris, 1967.
- [28] V. Ruas, “Approximating harmonic bases for a decoupled solution of viscous flow problems in $\psi - \omega$ formulation”, *Z. Angew. Math. Mech.*, volume 75, pages 407-408, 1995.
- [29] R. Scholz, “A mixed method for 4th order problems using linear finite elements”, *R.A.I.R.O. Numerical Analysis*, volume 12, number 1, pages 85-90, 1978.
- [30] L.R. Scott and S. Zhang, “Finite element interpolation of non-smooth functions satisfying boundary conditions”, *Math. Comp.*, volume 54, pages 483-493, 1990.