



HAL
open science

Urban Air Quality Management at Low Cost Using Micro Air Sensors: A Case Study from Accra, Ghana

Collins Gameli Hodoli, Iq Mead, Frederic Coulon, Cesunica Ivey, Victoria Owusu Tawiah, Garima Raheja, James Nimo, Allison Hughes, Achim Haug, Anika Krause, et al.

► To cite this version:

Collins Gameli Hodoli, Iq Mead, Frederic Coulon, Cesunica Ivey, Victoria Owusu Tawiah, et al.. Urban Air Quality Management at Low Cost Using Micro Air Sensors: A Case Study from Accra, Ghana. ACS ES&T Air, 2024, 10.1021/acsestair.4c00172 . hal-04831822

HAL Id: hal-04831822

<https://hal.science/hal-04831822v1>

Submitted on 12 Dec 2024

HAL is a multi-disciplinary open access archive for the deposit and dissemination of scientific research documents, whether they are published or not. The documents may come from teaching and research institutions in France or abroad, or from public or private research centers.

L'archive ouverte pluridisciplinaire **HAL**, est destinée au dépôt et à la diffusion de documents scientifiques de niveau recherche, publiés ou non, émanant des établissements d'enseignement et de recherche français ou étrangers, des laboratoires publics ou privés.



Distributed under a Creative Commons Attribution - NonCommercial 4.0 International License

Urban Air Quality Management at Low Cost Using Micro Air Sensors: A Case Study from Accra, Ghana

Collins Gameli Hodoli,* Iq Mead, Frederic Coulon, Cesunica E. Ivey, Victoria Owusu Tawiah, Garima Raheja, James Nimo, Allison Hughes, Achim Haug, Anika Krause, Selina Amoah, Maxwell Sunu, John K. Nyante, Esi Nerquaye Tetteh, Véronique Riffault, and Carl Malings



Cite This: <https://doi.org/10.1021/acsestair.4c00172>



Read Online

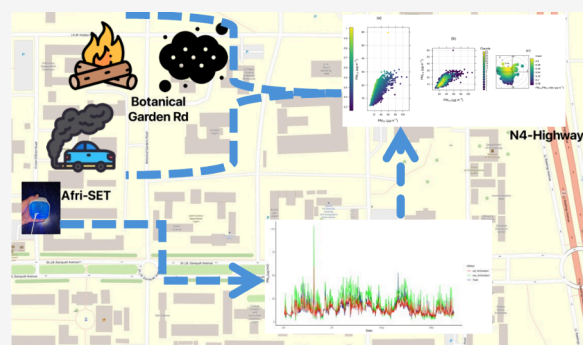
ACCESS |

Metrics & More

Article Recommendations

Supporting Information

ABSTRACT: Urban air quality management is dependent on the availability of local air pollution data. In many major urban centers of Africa, there is limited to nonexistent information on air quality. This is gradually changing in part due to the increasing use of micro air sensors, which have the potential to enable the generation of ground-based air quality data at fine scales for understanding local emission trends. Regional literature on the application of high-resolution data for emission source identification in this region is limited. In this study a micro air sensor was colocated at the Physics Department, University of Ghana, with a reference grade instrument to evaluate its performance for estimating $PM_{2.5}$ pollution accurately at fine scales and the value of these data in identification of local sources and their behavior over time. For this study, 15 weeks of data at hourly resolution with approximately 2500 data pairs were generated and analyzed (June 1, 2023, to September 15, 2023). For this time period a coefficient of determination (r^2) of 0.83 was generated with a mean absolute error (MAE) of $5.44 \mu\text{g m}^{-3}$ between the pre local calibration micro air sensor (i.e., out of the box) and the reference-grade instrument. Following currently accepted best practice methods (see, e.g., PAS4023) a domain specific (i.e., local) calibration factor was generated using a multilinear regression model, and when this factor is applied to the micro air sensor data, a reduction, i.e. improvement, in MAE to $1.43 \mu\text{g m}^{-3}$ was found. Daily variation was calculated, a receptor model was applied, and time series plots as a function of wind direction were generated, including $PM_{2.5}/PM_{10}$ ratio scatter and count plots, to explore the utility of this observational approach for local source identification. The 3 data sets were compared (out of the box, domain calibrated, and reference-grade) and it was found that although there were variations in the data reported, source areas highlighted based on these data were similar, with input from local sources such as traffic emissions and biomass burning. As the temporal resolution of observational data associated with these micro air sensors is higher than for reference grade instruments (primarily due to costs and logistics limitations), they have the potential to provide insight into the complex, often hyperlocalized sources associated with urban areas, such as those found in major African cities.



KEYWORDS: High-resolution data, Ghana, Africa, Micro air sensors, $PM_{2.5}$, Source apportionment

1. INTRODUCTION

Air pollution is a significant and pressing issue worldwide, with severe consequences for human health and the environment.^{1–3} It is especially problematic in Africa, where it has resulted in over 1.1 million annual premature deaths, according to recent reports.^{1,4,5} This highlights the urgent need for effective air quality monitoring and mitigation measures to protect people from the adverse health effects of air pollution.² However, to be able to best mitigate the impact of air pollution on public health, it is crucial to have reliable, meaningful, open-source, and quantitative air quality data in line with Giles-Corti and group's assertion "what gets measured, gets done".⁶ A limited number of governments worldwide carry out routine and relatively widespread air quality monitoring based on networks of reference grade instruments operated using

accepted standards and protocols. This approach is expensive to initiate and operate, is logistically challenging, and is limited in terms of expansion for these same reasons.

In relatively high-income countries like the US and the UK, regulatory monitors are typically distributed across urban areas, with one monitoring station covering 100000 to 600000 residents and there are often dozens of regulatory monitoring

Received: July 23, 2024

Revised: October 24, 2024

Accepted: October 25, 2024

Published: November 6, 2024

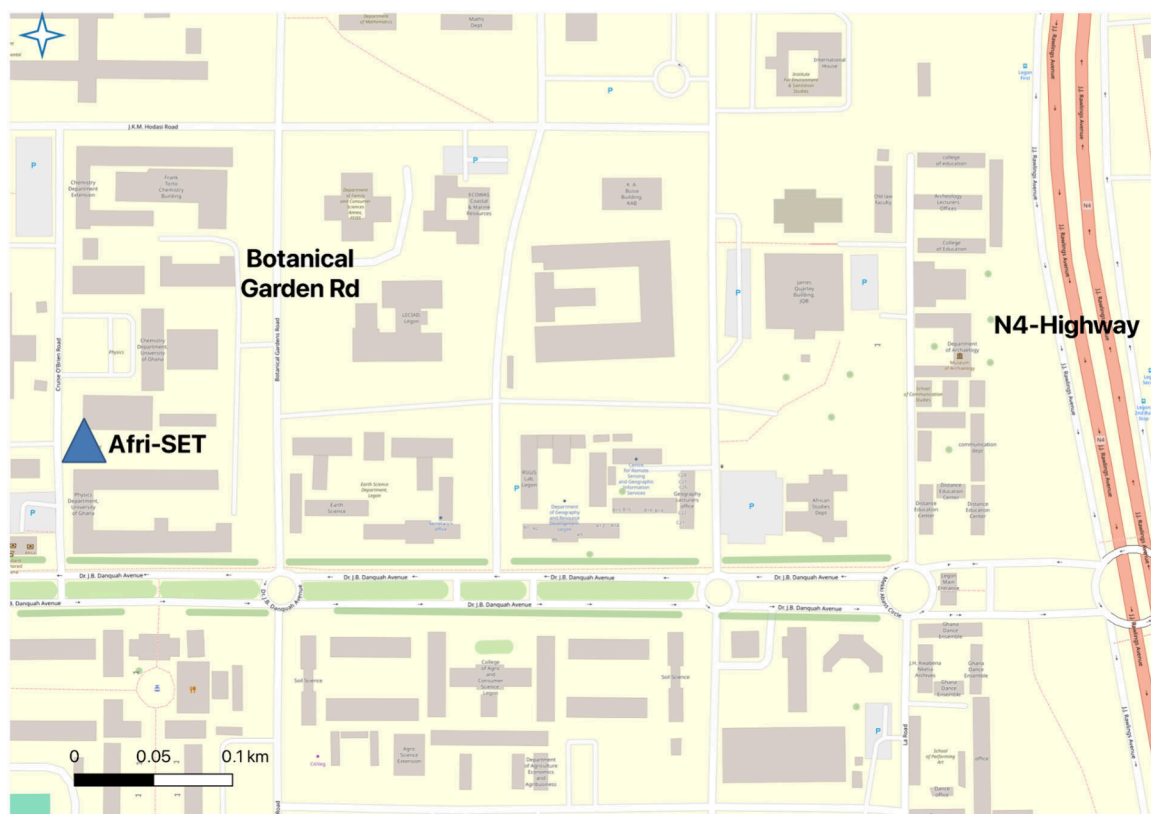


Figure 1. Map showing the study area with the blue triangle labeled Afri-SET indicating the study site highlighting the N4-Highway and Botanical Garden Road developed using QGIS version 3.32.0-Lima.

stations in larger cities.⁷ These regulatory air quality monitoring stations and networks have been instrumental in enabling the scientific and regulatory communities to collect reliable and accurate data, which is essential for developing effective air pollution management and control policies to safeguard public health.^{8,9} The data obtained from these monitoring stations also play a critical role in developing long-term air quality management plans.⁸ These data are used to identify areas where air quality is below identified targets or limits and to determine the individual or general sources of pollution, which can then be targeted with policies to reduce pollution levels and protect public health. By analyzing trends in air pollution data over time, policymakers can determine whether their policies and regulations are effective in reducing air pollution levels and protecting public health.⁸ In contrast, in low- and middle-income countries (LMICs), air quality monitoring is sporadic due to limited logistics, the cost associated with procuring and operating regulatory monitors, and limited local expertise.¹⁰ Air quality monitoring programs in LMICs where they exist tend to focus on $PM_{2.5}$ monitoring due to three key factors. First, exposure to $PM_{2.5}$ is a key driver for the disease burden associated with outdoor air pollution.² Second, $PM_{2.5}$ is globally recognized as a crucial indicator of urban air quality and is used to establish national air quality standards (see ref 11). Finally, there are limited resources, capabilities, and expertise in LMICs for running different technologies to monitor other key air pollutants such as gaseous pollutants.¹⁰

Micro air sensors (defined in this study as smaller air sensors due to their size and minimal logistical demands for installation and operation), or low-cost sensors, have the potential to

revolutionize air quality monitoring in urban settings, especially in regions where more traditional monitoring methods based on reference grade instrumentation are sparse or absent. In high-income countries, micro air sensors have been used for various purposes, including raising awareness of air quality issues,¹² identifying hot spots of atmospheric emissions,¹³ and complementing regulatory monitoring.¹⁴ These applications have been supported by research institutions, regulatory bodies, and community science organizations, which have validated and calibrated local data from micro air sensors for PM monitoring to support air pollution research and mitigation.^{15,16}

One of the main challenges in use of this class of PM sensor as part of regulatory or compliance monitoring is the lack of accepted standard calibration methodologies for micro PM air sensors, which makes it difficult to use the fine scale data for developing site-specific mitigation policies and estimating the health burden of air pollution.^{13,14,17–21} Micro air sensors are also known to respond differently to particles of different size fractions^{22,23} or compositions.²⁴ Accounting for these differences requires careful calibration across a variety of particle size and composition regimes, which is challenging in practice.²⁵ In addition, there are no specific standards for selecting and using PM sensors to supplement sparsely distributed air quality monitoring stations with relatively poor spatial and temporal resolution air quality data.^{19,26–28} For example, reference stations operated by the Ghana Environmental Protection Agency rely on conventional gravimetric methods for reporting data for PM at six-day resolution, generating ~ 5 data points per month (Personal Communication, EPA Ghana). This poor temporal resolution

limits our understanding of local trends in PM pollution. Thus, integrating data from micro air sensors is a potentially promising new approach for source identification,²⁹ though micro air sensor use has some challenges highlighted above.

In this study, we demonstrate the suitability of high-resolution data from a selected micro air sensor when coupled with a receptor model approach for identifying sources of PM_{2.5} in an urban setting typical of the geographic region to help develop, implement, and track clean air solutions.

2. METHODS

2.1. Study Area. As shown in previous studies for calibrating micro air sensor data, a crucial factor is collocating the micro air sensors with regulatory or reference grade monitors in the same environment.^{14,21,30–32} Sampling the same air over time generates the paired micro air sensor and reference grade monitor data required for calibration. In this study, the Department of Physics, University of Ghana, Legon (now known as the Afri-SET reference site), was selected as it routinely measures PM with a reference-grade PM mass monitor and is representative of the Greater Accra Region (GAR). An AirGradient Open Air PM monitor was colocated with a Teledyne API PM Mass Monitor at the site for ~3 months for this case study. The University of Ghana is approximately 8.4 km north of Accra Central and 4.8 km from the N4-Highway South (a major regional route, see Figure 1). The GAR has a population of approximately 5.5 million inhabitants.³³ Weather patterns across Ghana are not uniform, with significant variation between coastal and maritime influenced zones and more inland areas. The climate of the GAR is characterized by seasonal harmattan winds, which blow from the northern part of the country between late December and February, as well as the southern rainy season that peaks in August and September, with heavy rainfall occurring from April to June. Annual rainfall is 1250 mm in the northern part of the country and 2150 mm in southern Ghana. The GAR climate is tropical, predominantly warm and humid with an annual mean temperature between 26 and 29 °C.³⁴ Prevailing climatic conditions in the GAR are typically affected by dry tropical continental winds that mainly originate from the northeast and cross the Sahara. Conditions at the Afri-SET site are characterized by complex sources of PM_{2.5}. To the east there is the N4-Highway and to the northeast and southeast of the site is the campus road network, including the Botanical Garden Road that routinely experiences major levels of traffic. On-campus transportation and other background activities such as open burning in the local area are also a factor.

A wind rose plot presented in Figure 2 shows that the dominant wind direction at this site for the period of the deployment was almost exclusively from the southwest sector.

2.2. Instrumentation and Data Acquisition. The micro air sensor used in this study is the AirGradient Open Air PM (AirGradient, Chiang Mai, Thailand). This micro air sensor was deployed at the Afri-SET reference site following a protocol similar to that used by the Raheja group.³² It was collocated with an Afri-SET reference PM Mass Monitor (Teledyne API, San Diego, California, USA). Both the micro air sensor and Teledyne API PM Mass Monitor were placed at a height of approximately 5 m above ground. The AirGradient Open Air PM uses a Plantower PMS5003T sensor element and reports data via the Open Air platform (AirGradient, Manual). Figure 3 shows how the PMS5003T is mounted within the AirGradient Open Air PM monitor. The PMS5003T is widely

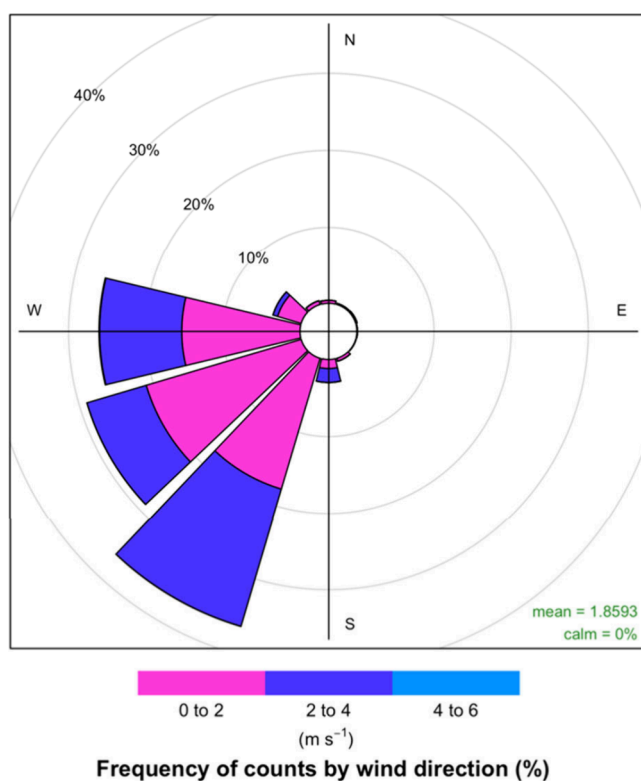


Figure 2. Wind rose plot showing wind speed/direction frequencies for the Physics Department at the University of Ghana (Afri-SET), where the study was conducted for the period of deployment, based on hourly wind data from the weather station at the site.

used by micro air sensor manufacturers (e.g., QuantAQ, AirQo, Clarity Movement, and PurpleAir). The PMS5003T uses light scattering to measure PM (i.e., by employing a laser to estimate particle concentrations with manufacturer-defined algorithms, which convert the scattered light into particle concentrations). A number of manufacturers using the PMS5003T report data for PM₁, PM_{2.5}, and PM₁₀; however, emerging evidence shows that the PMS5003T is only suitable for measuring PM_{2.5}.^{22,35} Current best practice for use of micro sensors under real world conditions is to apply a domain specific calibration to improve the data representativeness (e.g. refs 35–38). To generate calibration factors, sensors are collocated with an accepted reference instrument that is being operated according to appropriate operational protocols (e.g., Federal Reference Method and/or Federal Equivalence Methods) for a representative period (where representative refers to both the expected range of pollutants as well as climatological conditions). Uncorrected PM_{2.5} data from the micro air sensor are then compared with the reference data and an analysis is undertaken to generate comparative statistics and correction factors which, when applied to the uncorrected data, bring them into line with the reference data. Methods to generate these factors include regression analysis and increasingly machine learning tools (see e.g., refs 13, 14, 25, 30, and 37). As a part of this process, a correction to account for temperature and humidity can be applied based on locally reported temperature and relative humidity.^{13,14,25,30,37} The reference PM instrument has the ability to provide 1 min time resolution data but, as operated at the Afri-SET site, reports hourly processed data via the Ghana EPA.

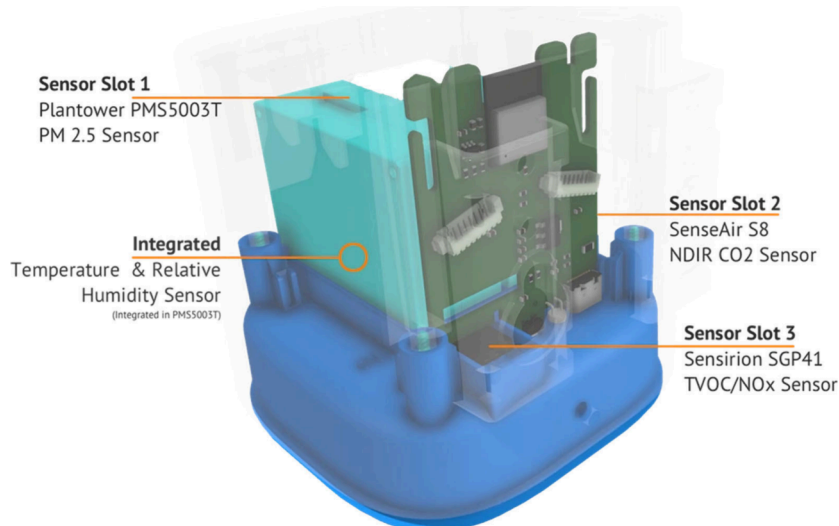


Figure 3. AirGradient Open Air PM_{2.5} Monitor. Image adapted from AirGradient.

2.3. Data Cleaning and Calibration. Standard quality control and assurance measures were employed to clean the 5 min resolution data from the AirGradient Open Air monitor. Following the same quality control procedure as shown in ref 30 for Plantower devices, all zeros and spurious values above 1000 $\mu\text{g m}^{-3}$ were removed and we ensured that the time stamp was representative of the local time zone. A common time stamp was selected for calibration with the two sets of data in the same resolution. Simply put, the 5 min data were converted into hourly average data to match the resolution of the Teledyne API PM Mass Monitor PM_{2.5} data sets. For this study, this resulted in 2544 paired data points over the 107-day deployment.

Prior studies on micro air sensors in Ghana have used different types of micro air sensors and multiple types of correction factor algorithms with varying degrees of complexity depending on the objectives of the study (e.g., the Gaussian Mixture Regression model by refs 30 and 39) and inbuilt calibration protocols (e.g., refs 22 and 40). Previous studies, such as that in ref 41, have demonstrated that multiple linear regression (MLR) is a useful tool for improving raw PM_{2.5} data quality and can be applied to improve micro air sensor data to meet regulatory recommendations (e.g., refs 14, 21, and 30). Its application for improving air sensor data is suitable for extracting source features of pollutants.⁴² This is particularly important in technologically lagging environments with limited regulatory monitoring mechanisms and expertise. Thus, a MLR model was used to calibrate the AirGradient Open Air PM_{2.5} data sets with internal temperature and relative humidity measurements from the same instrument. The linear equation developed to calibrate the reported data is

$$[\text{calibrated PM}_{2.5}]_{\text{AirGradient}} = \alpha_0 + \alpha_1 \times \text{raw PM}_{2.5} + \alpha_2 \times \text{Temp} + \alpha_3 \times \text{RH} \quad (1)$$

where α_0 = intercept from the statistical summary of the model, α_1 = coefficient of raw AirGradient PM_{2.5} data, α_2 = coefficient of temperature, and α_3 = coefficient of relative humidity.

We withheld a randomly selected 20% of the reported data to test and validate the correction model while using 80% to

develop the model by identifying suitable values for the coefficients using a linear regression package implemented in the R-programming language and environment such that the linear model summary generated values for each of the coefficients α_0 , α_1 , α_2 , and α_3 . We then present a case for the 3 sets of data (raw, calibrated, and reference grade) to identify the potential sources of PM_{2.5} as shown in the rest of the analysis.

2.4. Data Analytical Approach. We based all analysis on the “openair” package for air pollution data analysis using the functions windRose, timePlot, scatterPlot, timeVariation, polarPlot, calendarPlot, and timeProp for wind rose, time series, scatter, daily variation, bivariate polar, calendar, and temporal variation plots, respectively,⁴³ in the R-programming language and environment version 2024.09.0+375. For source apportionment, we employed a receptor model.⁴³ Source apportionment studies using this approach are not new,^{44,45} but this approach with air sensor data is relatively new. Reference 29 attempted to identify sources of PM in an urban setting in Ghana using high temporal resolution data from air sensors. A recent study in Birmingham, UK has also shown that micro air sensor data is useful for inferring sources of PM in a quarry setting.⁴⁶ We introduced a relatively new concept using the PM_{2.5}/PM₁₀ ratio in bivariate polar, scatter, and count plots as shown in refs 47 and 48 to provide insights into the constituents of the reported PM_{2.5} using calibrated PM_{2.5} data and PM₁₀ measurements from the Teledyne API PM Mass Monitor.

3. RESULTS

3.1. Linearity and Precision of the Air Sensor. By comparing the AirGradient and T640 PM_{2.5} data sets, we observed that the AirGradient overestimated the PM_{2.5} concentrations by 34% with a mean absolute error (MAE) of 5.44 $\mu\text{g m}^{-3}$ and r^2 of 0.85. The following equation was developed using the MLR model to improve out of the box PM_{2.5} values from the AirGradient monitor, as discussed in Section 2.3.

$$\begin{aligned}
 & [\text{calibrated PM}_{2.5}]_{\text{AirGradient}} \\
 & = 23.25 + 0.53 \times \text{raw PM}_{2.5} + (-0.34) \times \text{Temp} \\
 & \quad + (-0.16) \times \text{RH} \quad (2)
 \end{aligned}$$

Using this MLR model, we calibrated the AirGradient $\text{PM}_{2.5}$ data and achieved an improved MAE to $1.43 \mu\text{g m}^{-3}$ (Table 1). The nearness of the MAE to zero indicates the accuracy of

Table 1. Regression Model, Average Time, r^2 , and MAE Statistics for Raw and Calibrated $\text{PM}_{2.5}$ Data

data type	model	average time (h)	r^2	MAE ($\mu\text{g m}^{-3}$)
AirGradient_raw	none	1	0.83	5.44
AirGradient_cal	MLR	1	0.85	1.43

the model used for calibrating the PM air sensor data. This observation compounds the growing body of evidence on the need for calibration when using air sensor data in these types of environments, particularly since environmental agencies are now turning to these types of approaches for estimating air pollution. Reported mean values were $19.03 \mu\text{g m}^{-3}$ for raw air sensor data and $14.17 \mu\text{g m}^{-3}$ for calibrated air sensor and reference-grade data, representing a 34% overestimate by the raw data. Figure 4 shows that calibrated and reference data agree well with each other, and raw overestimates but also follows the same trends, as reflected in the high r^2 .

Also, we observed that the impact of relative humidity on the observed $\text{PM}_{2.5}$ was significant at a higher relative humidity. A scatter plot is presented in Figure 5 for the raw (Figure 5A) and calibrated (Figure 5B) data against the reference grade data sets. Both the raw and calibrated data have a strong linear relationship with the reference data. The AirGradient (raw) overestimated $\text{PM}_{2.5}$ at higher relative humidity (>70%), which was largely accounted for using the calibration factor in Figure 5B.

3.2. Sources of $\text{PM}_{2.5}$. Fine scale data from air sensors are useful for understanding trends in local pollution that have previously been unachievable. We employed a timeVariation function as a source feature tool to understand the impacts of anthropogenic activities on the observed $\text{PM}_{2.5}$ data. We

observed a similar pattern in peak periods with caveats when comparing the raw to the calibrated and reference-grade $\text{PM}_{2.5}$ data sets. It was observed that $\text{PM}_{2.5}$ pollution was influenced by human activities such as vehicular emissions and biomass burning, considering background activities and hours of the day of observed peaks. For example, we observed hourly peaks of $20 \mu\text{g m}^{-3}$ around 07:00 h for calibrated and reference grade data but $\sim 32 \mu\text{g m}^{-3}$ for the raw data (Figure 6). This was due to the overestimation as flagged above, but the raw data do provide a clue on sources, especially by linking the observed concentrations to hours of the day and prevailing human activities.

Daily variation for $\text{PM}_{2.5}$ using the high-resolution data showed peaks in concentration associated with the morning rush hour around 07:00 h and evening rush hour at around 18:00 h (left bottom panel, Figure 6). We also observed that the concentrations do not drop overnight, which could be due to prevailing meteorological conditions and potentially cooking and/or biomass burning. Reduced background activities between 12:00 h and 15:00 h caused drops in the reported levels (left bottom panel, Figure 6). Monthly, lower concentrations were observed in September due to the heavy rains which might have washed down $\text{PM}_{2.5}$, though this was only for the first 15 days of the month (middle bottom panel, Figure 6).

Also, we adapted bivariate polar plots to identify sources of $\text{PM}_{2.5}$, which provides a clear graphical representation of the observed PM in relation to wind speed and direction. Graphically, we observed that the NW quadrant (Figure 7) is a major source of $\text{PM}_{2.5}$, which comprises campus road networks and commercial activities where food cooking and vending is based on a mixture of energy sources (charcoal, liquified petroleum gas) and open burning. Also, we observed that the highest concentrations in the raw data are linked to the SW wind direction but do not appear in the calibrated data. Although an overestimation of concentrations in the raw data was observed, this indicates that the overestimate is not purely systematic but has some dependence on wind direction, possibly due to different meteorological factors (e.g., high humidity) being associated with certain wind directions. This is an important confounding factor to note when using

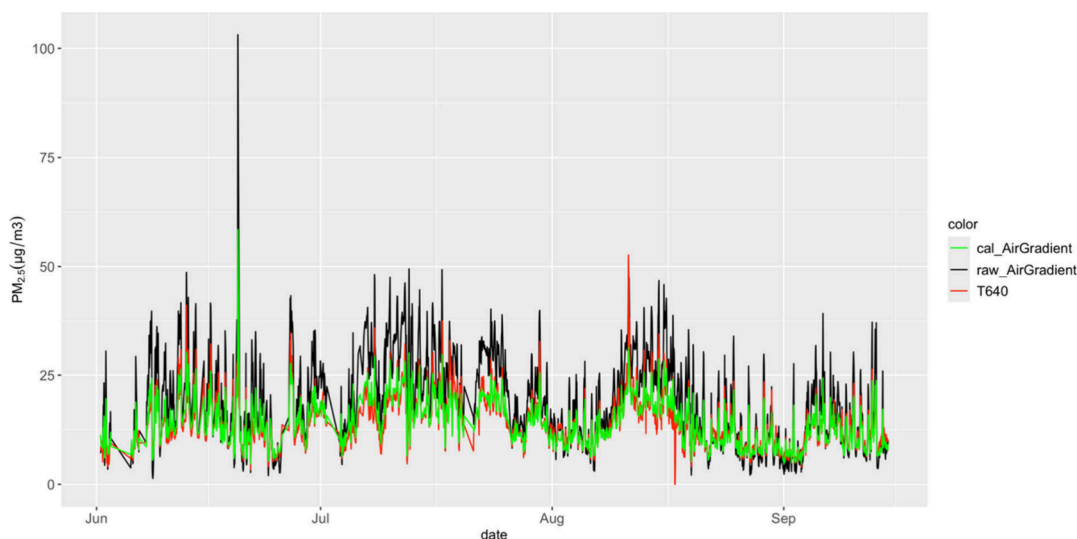


Figure 4. Time series plot for $\text{PM}_{2.5}$ showing AirGradient raw (black), calibrated (green), and T640 (red) on hourly data sets.

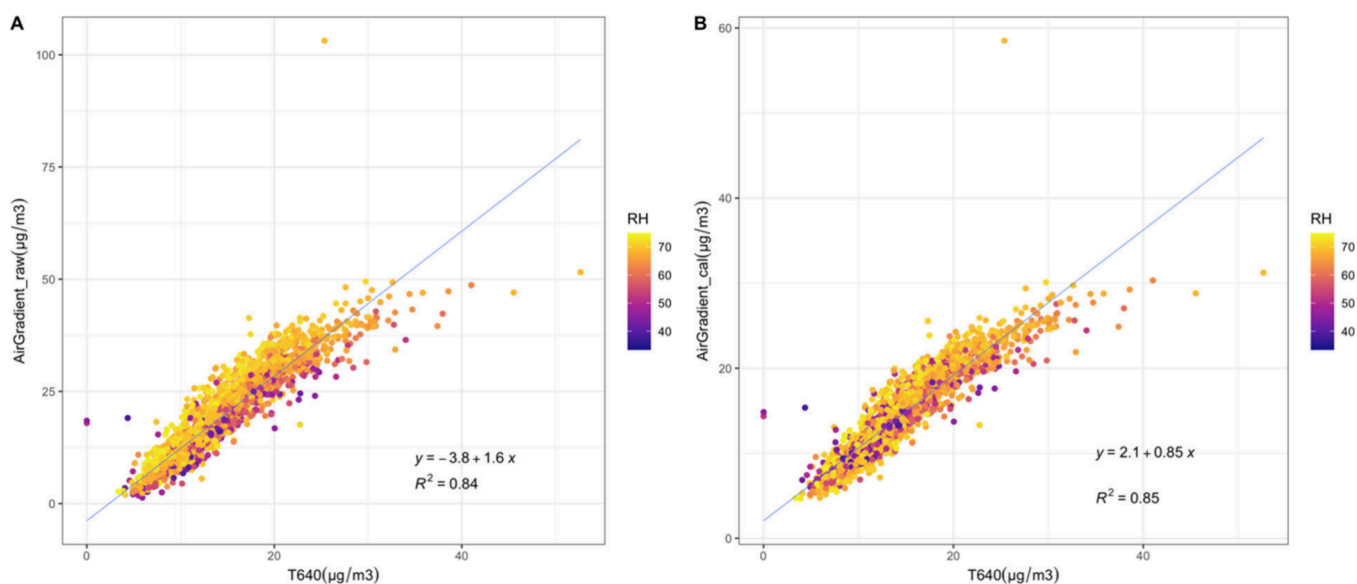


Figure 5. Scatter plot for PM_{2.5} as a function of RH for raw (A) and calibrated (B) data against T640 data.

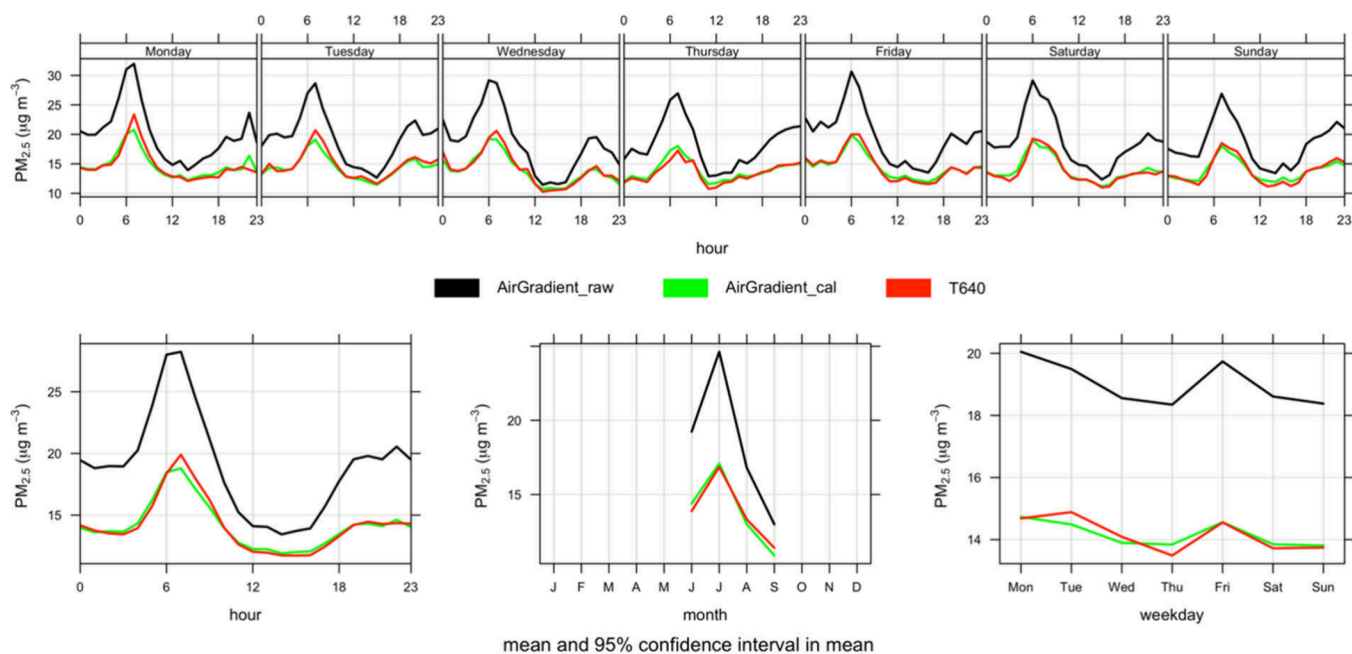


Figure 6. Daily variation of PM_{2.5} using raw (black), calibrated (green), and T640 (red) data sets.

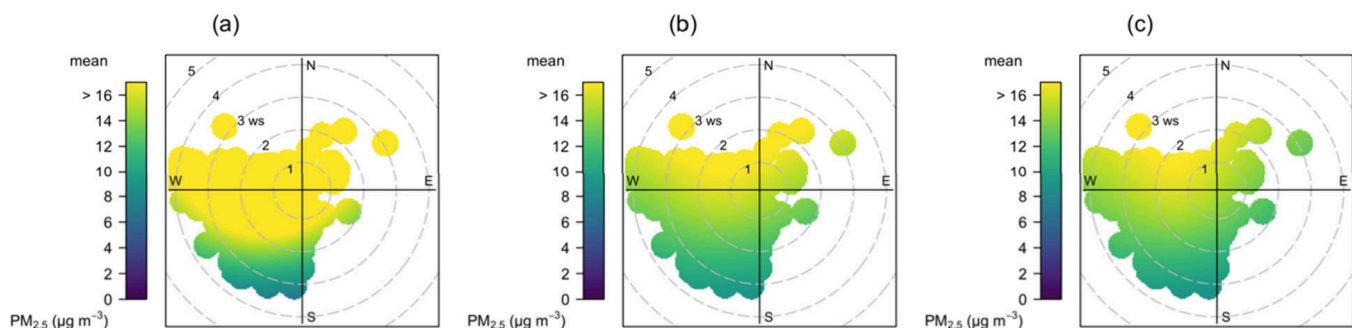


Figure 7. Hourly bivariate polar plot for PM_{2.5} using AirGradient raw (a) and calibrated (b) and T640 (c) data sets.

uncalibrated micro air sensor data to conduct source identification. A bivariate polar plot of the reported data is

presented in the Supporting Information (Figure S1, at the levels of relative humidity, and Figure S2, at the levels of

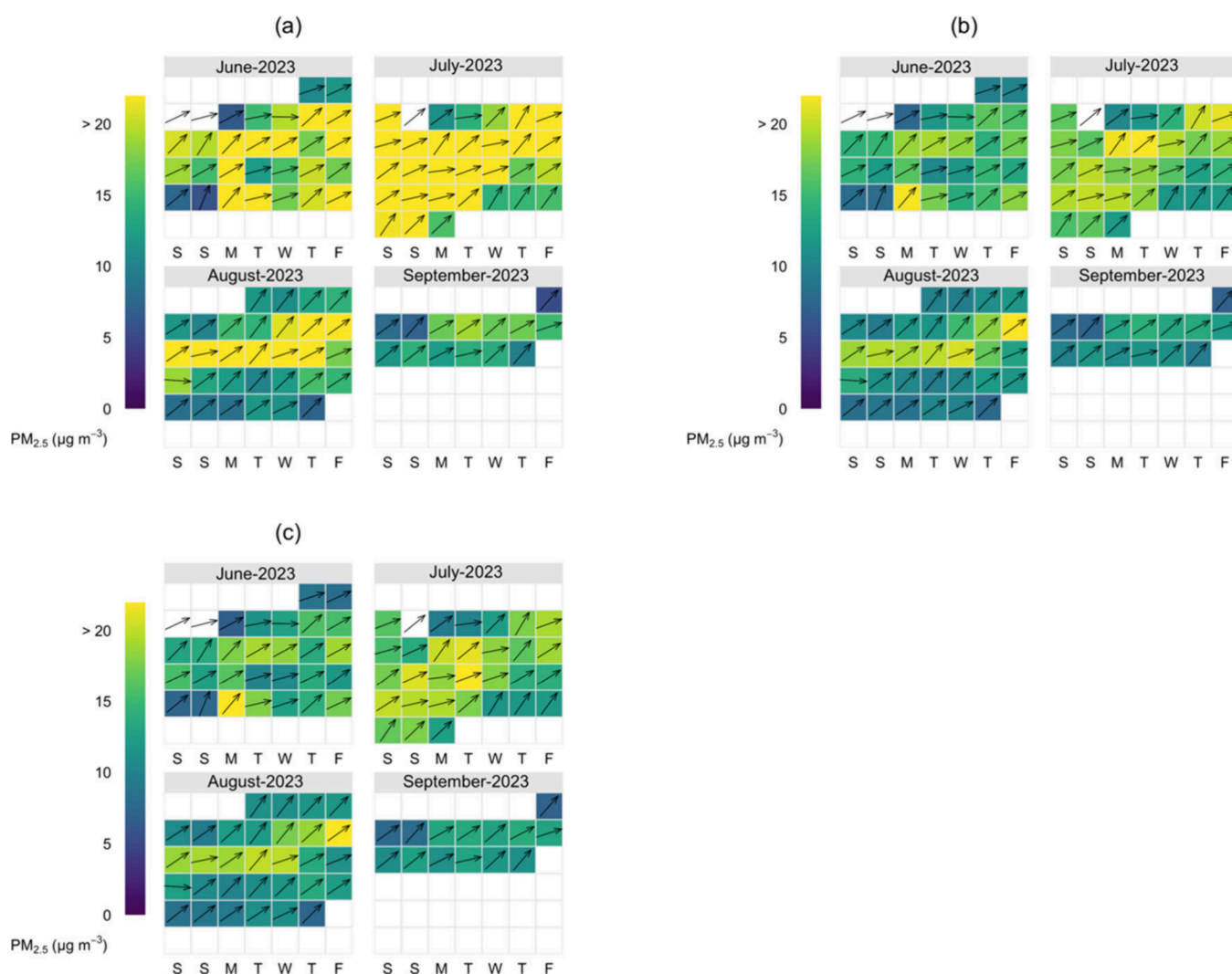


Figure 8. Calendar plot for $\text{PM}_{2.5}$ as a function of wind direction showing AirGradient raw (a) and calibrated (b) and T640 (c) data sets.

temperature). Relative humidities were grouped into four levels; first 33.4–56.7% ($\text{PM}_{2.5}$ was mostly from NW, W, and S for the raw and NW for the calibrated and reference-grade), 56.7–66.8% ($\text{PM}_{2.5}$ was mostly from all quadrants for the raw and NE, NW, and SW for the calibrated and reference-grade); 66.8–69.6% ($\text{PM}_{2.5}$ was mostly from all wind sectors for the raw except that toward the W sectors and higher sources were observed at winds speeds $>3 \text{ ms}^{-1}$; a similar observation was made for the calibrated and reference-grade data but the graphical representation shows a smaller margin toward the SW), and 69.6–74.9% (higher local sources for $\text{PM}_{2.5}$ from all wind sectors with a slightly bigger margin toward the N as compared to the observations at 66.8–69.6% for the raw data set; NE, N, and NW sources for the calibrated and the reference-grade data showing lower levels, below $12 \mu\text{g m}^{-3}$ from the NW quadrant) (Figure S1). In Figure S2, similar observations were made except in the opposite such that the sources at lower temperature levels, e.g., 21.5–24.3 °C, corresponded to the observations at higher relative humidity levels, i.e., 69.6–74.9%, which is expected due to the inverse relationship between temperature and relative humidity in atmospheric observations.

Further to the above analysis, we employed the calendar plot to provide a graphical picture of wind direction on the

observed daily $\text{PM}_{2.5}$ concentrations. These plots revealed common wind direction for the 3 sets of data with varying mean values. Daily average winds were exclusively from the W or SW; therefore, it was impossible to identify other wind directions which might have contributed to the $\text{PM}_{2.5}$ pollution for this period at the site using this daily average data alone (Figure 8).

To understand the impacts of wind direction on hourly observations, we plotted the observed $\text{PM}_{2.5}$ levels (3 sets of data) as a function of wind direction. We observed that W, NW, and SW winds contributed to higher $\text{PM}_{2.5}$ but NW winds were patchy and associated with higher concentrations ($35 \mu\text{g m}^{-3}$ for the raw and $23 \mu\text{g m}^{-3}$ for both the calibrated and reference-grade $\text{PM}_{2.5}$ data sets) (Figure 9). This was followed by W winds ($35 \mu\text{g m}^{-3}$ for the raw and $23 \mu\text{g m}^{-3}$ for both the calibrated and reference-grade $\text{PM}_{2.5}$ data sets) and SW ($30 \mu\text{g m}^{-3}$ for the raw, $20 \mu\text{g m}^{-3}$ for the corrected, and $18 \mu\text{g m}^{-3}$ for the reference-grade $\text{PM}_{2.5}$ data sets) (Figure 9). It is noteworthy that these observations were not shown in the bivariate polar and calendar plots, which shows the limitations of relying solely on bivariate polar and calendar plots for extracting the source features of pollutants. Though the dominant wind source was from the SW direction (Figure 2), higher observed concentrations were associated with the NW

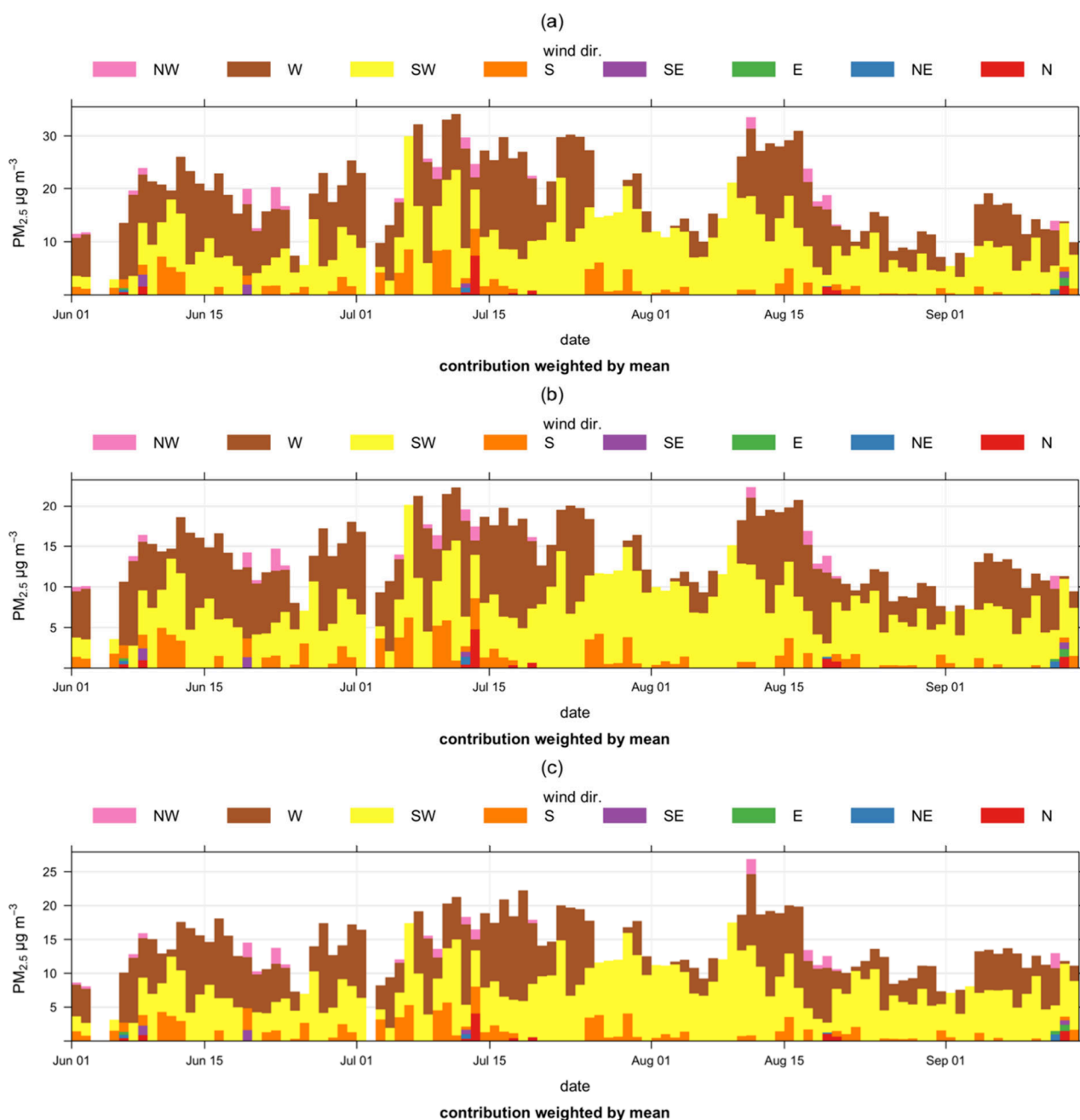


Figure 9. Time series plot for $PM_{2.5}$ as a function of wind direction raw AirGradient (a), calibrated AirGradient (b), and T640 (c) on hourly data sets.

winds, indicating a potential major source in this direction (local), which were influenced by a mixture of background activities including vehicular emissions, windblown dust, and biomass burning. This plot also revealed that there were multiple sources of $PM_{2.5}$ pollution at this site, but identified sectors with higher sources need to be further investigated.

Using PM_{10} data from the Teledyne API PM Mass Monitor, a scatter plot using the hourly data of $PM_{2.5}$ against PM_{10} with the $PM_{2.5}/PM_{10}$ ratio is presented in Figure 10a showing three main categories of ratios: ratios in blue (i.e., <0.3), green (i.e., between 0.3 and 0.9) and yellow (i.e., between 0.9 and 1). In Figure 10b, the scatter plot of $PM_{2.5}$ and PM_{10} concentrations is drawn based on the ratios. The $PM_{2.5}/PM_{10}$ ratio in the bivariate polar plot in Figure 10c reaffirms a potential source of

fine aerosol in the NW wind sector from vehicular activities and biomass burning.

4. DISCUSSION

We used a 15-week data set to compound emerging evidence on the usefulness of micro air sensor data for source identification of $PM_{2.5}$ in an environment where this information will be more readily available. The analysis presented in this work is unachievable using conventional gravimetric monitoring in Ghana, which generates only 5 data points per month depending on the availability of consumables. It is however important to note that, as demonstrated in previous studies and highlighted in the introductory part of this study, the use of micro air sensors does come with some disbenefits, specifically the impacts of temperature and relative

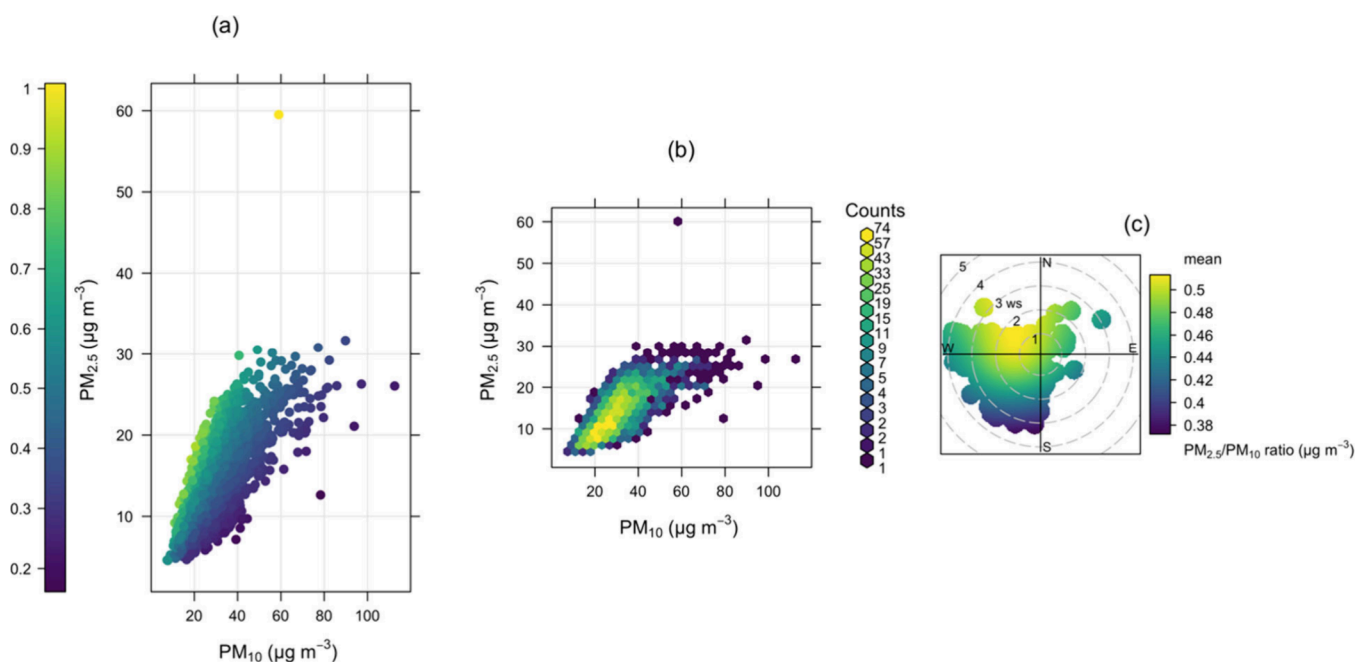


Figure 10. Scatter plot of $PM_{2.5}/PM_{10}$ ratio (a), particle count ($PM_{2.5}$ vs PM_{10}) (b), and bivariate polar plot for $PM_{2.5}/PM_{10}$ (c) ratio in color code on hourly data for June 1 to September 15, 2023.

humidity on the reported data, hence the need for domain-specific calibration (see previous studies from this site and similar environments^{30,31}). Reference 29 published the first-ever work on low-cost source identification using micro air sensor data in Africa at an urban area in Central Ghana with relative concentrations of $PM_{2.5}$. A recent publication from Westervelt and his group⁴² re-echoed this evidence that micro air sensor data are useful for tracking sources of air pollutants and⁴⁶ also inferred sources of $PM_{2.5}$ at a quarry using fine scale air sensor data. In this specific work, we initially evaluated the performance of an AirGradient micro air sensor in a tropical environment with complex and high sources of $PM_{2.5}$. We then make a case to support emerging evidence on micro air sensor use for source identification of pollutants, $PM_{2.5}$ in this case. The results have shown that wind speed–direction data can provide a useful tool for inferring sources of $PM_{2.5}$ when combined with high-resolution micro air sensor data. A further investigation of the identified wind sectors would generate added value for $PM_{2.5}$ emission control at and around the urban environment at the University of Ghana. This work contributes to the growing body of knowledge on the use of high resolution data from air sensors for cost-efficient identification of sources of air pollution in major parts of Africa with limited air quality monitoring capabilities. It is a useful reference for developing, implementing, and tracking air pollution mitigation strategies in these types of environments by regulatory bodies and other relevant stakeholders.

4.1. Linearity and Precision of the Air Sensor. The AirGradient monitor overestimated $PM_{2.5}$ measurements by 34% but the trends follow the same pattern as compared to the referenced grade reported data. Similar findings were observed in previous studies using air sensors in Africa.^{30,31,42} This shows that raw air sensor data are useful for understanding local PM trends, but to support local mitigation strategies, community engagement, and emission source identification, data improvement via local collocation with reference instruments is required.

4.2. Sources of $PM_{2.5}$. Reference 49 showed that PM pollution in Accra neighborhoods is linked to charcoal and fuelwood burning and traffic. In this study, bivariate polar, calendar, time series, $PM_{2.5}/PM_{10}$ ratio scatter, and count plots as a function of wind speed–direction were used to identify the sources of $PM_{2.5}$ at the University of Ghana. The aim was to verify if relative measurements from air sensors could provide useful insights for source feature extraction, as previously shown in ref 29, which is linked to background activities as echoed by ref 49. We found that emissions were mainly from the NW sector (vehicular emissions from campus road networks and commercial activities, which includes use of solid fuel and burning of waste). These findings align with past studies using similar sensors,⁴⁰ although long-term data would be needed for further verification at the University of Ghana.

It is worth noting that protocols for assessing air sensor data for source identification depend on the investigator's purpose, but previous studies have shown that a $\pm 50\%$ data quality from air sensors is sufficient for extracting source features of atmospheric pollutants in highly polluted environments.^{50,51} The findings as presented in this study using the raw, calibrated, and regulatory data to identify the sources of $PM_{2.5}$ pollution using the receptor model compounds emerging evidence on the usefulness of micro air sensor data to support source feature extraction, a low capital cost approach for source identification (e.g., refs 29, 42, and 46). The calendar plot was used to achieve this objective and indicated that high $PM_{2.5}$ pollution was driven by southwesterly winds. A limitation of the calendar plots presented is that, for the daily average data, there is little variability in wind direction (as noted previously, throughout the study period, winds tended to originate from the southwest). This makes it difficult to distinguish the potential influences of different sources. On the other hand, the high temporal frequency data available from the air sensors allows for finer distinctions to be made based on more frequent changes to wind speed and direction, as evidenced by the polar plots and time series plots

in wind direction. However, micro air sensors do not measure wind speed–direction, indicating the need for site specific wind component data using auxiliary instrumentation or modeled data as demonstrated in ref 29. This study also highlighted that the use of polar plots for understanding the sources of pollutants has limitations and that understanding meteorological factors, such as wind direction and speed, is crucial for air pollution management and control. To account for this, we used the $PM_{2.5}/PM_{10}$ ratio as shown in ref 47 to provide core insights into the potential components of the observed PM. The results demonstrate the potential usefulness of micro air sensor data for managing and controlling air pollution in LMIC with limited air quality monitoring capabilities at low cost. Furthermore, it was observed in this study that the identified source of PM pollution was slightly different across all data sets in the bivariate polar plot noting the difference in the raw hourly data as compared to the calibrated and reference-grade data sets but similar in the time series plot in wind direction. This shows that relative concentrations of $PM_{2.5}$ measured from micro air sensors can be used to develop and track mitigation strategies for air pollution management and control. While the AirGradient monitor is not filter-based to support speciation, the approaches applied here give stakeholders, especially the environment agencies in Africa that are now turning to lower-cost air quality monitoring approaches, a toolkit for further investigation of background activities.

4.3. Hourly Bivariate Polar Plot Sources and Time Series in Wind Direction of $PM_{2.5}$. A limitation of the polar plot is that the graphical identification of source of pollutants is influenced by the capabilities of the investigator and these plots only group mean concentrations by wind speed and direction,⁴³ making it difficult to specifically match wind sectors with sources of pollutants. To provide a clearer picture that is only achievable with high-resolution data, we introduced the time series plot as a function of wind direction (Figure 9). For example, in ref 29, a cluster analysis was introduced to group sources from the same wind speed–directions to augment the findings in the bivariate polar plots. By way of observation, multiple and the same wind directions contributed to the reported PM regardless of the data quality but concentrations varied. Comparatively, in the bivariate polar plot for example, higher sources were associated with the NW, W, and SW winds for all sets of the data (Figure 7). However, in the raw data sets, the SW wind speed–direction was noticeable as compared to calibrated and reference-grade data sets (Figure 7). The time series plot in wind–direction shows sources are similar but higher concentrations were associated with NW sector followed by the W and SW. The contribution from the NW were however patchy though associated with high concentration indicating a major source; winds from the W were dominant and similar to those from SW but with concentration below $30 \mu\text{g m}^{-3}$ for the raw, $20 \mu\text{g m}^{-3}$ for the corrected, and $18 \mu\text{g m}^{-3}$ for the reference data sets. This finding echoed previous findings on the usefulness of fine scale relative concentrations from micro air sensors to identify sources of pollutants in urban settings. This is however not achievable with the filter-based monitoring regime currently operated by the Ghana EPA, since there are only ~ 5 data points per month. However, filters do provide a useful tool for source apportionment following laboratory analysis, which can support the findings in this study if combined. The laboratory analysis of these filters requires expertise and is associated with

high operational costs, making them expensive to run. In essence, micro air sensors provide a low-cost alternative, where the higher time resolution allows for the detection of shorter-lived sources or of sources from wind directions which are only prevalent for a short part of the day.

Further to the above, in many cases, it will not be possible to perform a local calibration of the micro air sensors, and so examining and emphasizing the advantages and limitations of the raw versus calibrated sensor data can be valuable for those trying to replicate this work. In Figure 6, the hourly, daily, and monthly patterns are basically the same in the raw data as in the calibrated data, just with a different magnitude; this might indicate that even uncalibrated data could be useful for distinguishing between local sources with likely short-term impacts and more regional sources that have longer-term impacts or for comparing the relative impacts of sources at different times of the day. However, in Figure 7, the uncalibrated data show the highest concentrations associated with winds from the SW, while the calibrated data do not; this is potentially a major limitation of using uncalibrated data when relying only on bivariate polar plots using raw values of air sensors for source identification.

4.4. $PM_{2.5}/PM_{10}$ Ratio. The ratios below 0.3, represented in blue in Figure 10a,c, indicate that PM_{10} is the primary pollutant originating from windblown and resuspended dust due to traffic. A higher ratio of $PM_{2.5}/PM_{10}$ (>0.5), represented in yellow in Figure 10a,c, shows a higher fraction of fine ($PM_{2.5}$) than of coarse ($PM_{2.5-10}$) mass which is either emitted from direct burning of biomass or vehicular emissions or by the reactions of nitrogen oxides and sulfur oxides with oxidants such as OH radicals and ozone to form secondary nitrate and sulfate aerosols, considering the background activities.⁵² Most of the data represent a ratio of about 0.5, with a typically strong correlation between $PM_{2.5}$ and PM_{10} (Figure 10b). Since micro air sensors are not filter-based but can generate fine scale PM data as highlighted in the sections above, the $PM_{2.5}/PM_{10}$ ratio in scatter, particle count, and bivariate polar plots using the concentrations of the reported $PM_{2.5}$ (calibrated) and PM_{10} (e.g., from the Teledyne API PM Mass Monitor) is a useful model to classify sources of the reported PM tied to the wind speed–direction and background activities. This is useful for signals linked to the potential components of the reported PM classification. Existing works have shown that $PM_{2.5}/PM_{10}$ ratios >0.5 signify sources of particulate matter characteristic of fine aerosols and secondary particulates: namely, NO_3^- , NH_4^+ , and organics. In other words, lower ratios are indicative of coarse particles.^{53,54} The suitability of distinguishing between $PM_{2.5}$ and PM_{10} sources using this approach is echoed in ref 47. This is useful and applicable for extracting source features of $PM_{2.5}$ with fine scale data from micro air sensors if combined with PM_{10} measurements. By way of demonstration, we used the calibrated $PM_{2.5}$ and the Teledyne API PM Mass Monitor PM_{10} data from the same site because the AirGradient Open Air micro air sensor is not suitable for measuring PM_{10} as mentioned in the introductory part of this work. It is noteworthy that the $PM_{2.5}/PM_{10}$ ratio analysis presented in this work is unachievable without the PM_{10} data from the reference grade Teledyne PM Mass Monitor data. However, other micro air sensor technologies suitable for reporting PM_{10} data such as those offered by QuantaQ which combine different technologies (i.e., Plantower and Alphasense OPC-N3 for $PM_{2.5}$ and PM_{10} , respectively) may provide this valuable

information for these types of analysis. Per the background activities at this study site for this period, we infer that vehicular emissions and biomass burning are major sources of observed $PM_{2.5}$. This information is desirable in major parts of Africa for clean air solutions considering the increasing use of different micro air sensor technologies for air quality campaigns. Also, the capability of using fine scale micro air sensor data for understanding local sources of $PM_{2.5}$ are useful for regulatory bodies to mitigate air pollution in these types of environments.^{48,55,56} As mentioned, lower ratios point to mainly natural sources such as sand, resuspended dust, and long-range transport (windblown) of dust, a major source of air pollution in Africa and linked to harmattan in Western Africa.³⁰ As noted in ref 57, NO_3^- is associated with sources such as soil dust, coal combustion, shipping emissions, sea salt, industrial emissions, biomass burning, and vehicle emissions.

5. CONCLUSIONS

We compound emerging evidence on the usefulness of air sensor data to support air pollution mitigation in environments where this information will be more desirable. We first compared raw $PM_{2.5}$ data from a micro AirGradient PM monitor to a reference grade monitor Teledyne API PM Mass Monitor T640. The AirGradient overestimated $PM_{2.5}$ values with an r^2 of 0.83 and mean absolute error (MAE) of $5.44 \mu\text{g m}^{-3}$. We improved the raw data using an MLR model, reducing the MAE to $1.43 \mu\text{g m}^{-3}$. We leverage the 3 sets of reported $PM_{2.5}$ data (raw, calibrated, and reference grade) to provide insights into $PM_{2.5}$ sources. The results show that out-of-the-box measurements are useful for source identification, with caveats highlighting the need for calibration. Due to the complexity of the site and the limitation of air sensors, we were only able to link the observed dominant wind speed-directions to prevailing background activities such as vehicles and biomass burning from dominant northwesterly winds. This study has shown that the raw high-resolution data from air sensors are useful for source identification and relying on bivariate polar plots has some degree of limitation, especially if these are carried out in an environment with no capabilities of calibrating the air sensor data. To account for this, we recommend a time series plot as a function of wind-direction as shown in this study. We also observed multiple sources at this site for this period, although concentrations vary from each wind sector. We have shown in this study the usefulness of a simplified calibration methodology for improving out-of-the-box measurements from low-cost PM air sensors to provide meaningful insights for source identification. We recommend long-term data collection at this site to provide an overview of long-term wind component data on the distribution of $PM_{2.5}$. Furthermore, in this study, we only make use of hourly data from the micro air sensors, as this is the time resolution for which reference data were available for calibration. However, the sensors are capable of higher (5 min) temporal resolution, which might provide further insights into local sources with short-duration impacts. Further study is needed to evaluate the usefulness of such even higher temporal resolution data.

■ ASSOCIATED CONTENT

SI Supporting Information

The Supporting Information is available free of charge at <https://pubs.acs.org/doi/10.1021/acsestair.4c00172>.

Bivariate polar plots for $PM_{2.5}$ in the function of relative humidity and temperature on hourly raw, calibrated, and reference grade data sets as reported in this study (PDF)

■ AUTHOR INFORMATION

Corresponding Author

Collins Gameli Hodoli – School of Environmental, Civil, Agricultural and Mechanical Engineering, College of Engineering, University of Georgia, Athens, Georgia 30602-6113, United States; School of Sustainable Development, University of Environment and Sustainable Development, PMB, Somanya, Eastern Region, Ghana; Clean Air One Atmosphere, Accra, Ghana; orcid.org/0000-0002-2671-8331; Phone: 1-706-240-4356; Email: collins.hodoli@uga.edu

Authors

- Iq Mead** – MRC Centre for Environment and Health, Environmental Research Group, Imperial College London, London W12 0BZ, U.K.
- Frederic Coulon** – Cranfield University, School of Water, Energy and Environment, Cranfield MK43 0AL, U.K.; orcid.org/0000-0002-4384-3222
- Cesunica E. Ivey** – Civil and Environmental Engineering, University of California, Berkeley, Berkeley, California 94720-1234, United States; orcid.org/0000-0002-4740-2627
- Victoria Owusu Tawiah** – Kwame Nkrumah University of Science and Technology, KNUST, Kumasi, Ghana
- Garima Raheja** – Lamont Doherty Earth Observatory, Columbia University, Palisades, New York 10027, United States; orcid.org/0000-0002-5037-7979
- James Nimo** – Department of Physics, University of Ghana, Accra, Ghana
- Allison Hughes** – Department of Physics, University of Ghana, Accra, Ghana
- Achim Haug** – AirGradient Ltd, Chiang Mai 50180, Thailand
- Anika Krause** – AirGradient Ltd, Chiang Mai 50180, Thailand; orcid.org/0000-0002-2212-0252
- Selina Amoah** – Environmental Protection Agency, Accra, Ghana
- Maxwell Sunu** – Environmental Protection Agency, Accra, Ghana
- John K. Nyante** – Environmental Protection Agency, Accra, Ghana
- Esi Nerquaye Tetteh** – Environmental Protection Agency, Accra, Ghana
- Véronique Riffault** – IMT Nord Europe, Institut Mines-Télécom, Univ. Lille, Centre for Energy and Environment, 59000 Lille, France; orcid.org/0000-0001-5572-0871
- Carl Malings** – Morgan State University, Baltimore, Maryland 21251, USA & NASA Global Modelling and Assimilation Office, Goddard Space Flight Center, Greenbelt, Maryland 20771, United States; orcid.org/0000-0002-2242-4328

Complete contact information is available at: <https://pubs.acs.org/doi/10.1021/acsestair.4c00172>

Author Contributions

C.G.H.: Conceptualization, Writing - Original Draft, Methodology, Validation, Writing - Editing and Reviewing, Validation, Formal Analysis, Data Curation, and Visualization. I.M.:

Writing - Editing and Reviewing. F.C.: Writing - Editing and Reviewing. V.O.T.: Writing - Editing and Reviewing. G.R.: Writing - Editing and Reviewing. J.M.: Writing - Editing and Reviewing. A.H.: Writing - Editing and Reviewing. A.H.: Data Curation, Writing - Editing and Reviewing. A.K.: Data Curation, Writing - Editing and Reviewing. S.A.: Data Curation, Writing - Editing and Reviewing. M.S.: Data Curation, Writing - Editing and Reviewing. J.K.N.: Data Curation, Writing - Editing and Reviewing. E.N.T.: Data Curation, Writing - Editing and Reviewing. V.R.: Writing - Editing and Reviewing. C.M.: Writing - Editing and Reviewing.

Notes

Reference to any companies or specific commercial products does not constitute the promotion of their environmental sensing tools.

The authors declare no competing financial interest.

ACKNOWLEDGMENTS

This work was unfunded. It is considered a contribution to knowledge from Clean Air One Atmosphere to support clean air solutions in logistically difficult environments using science and micro air sensors based on result-oriented collaboration and team science. IMT Nord Europe acknowledges financial support from the Labex CaPPA project (ANR-11-LABX-0005-01), which is funded by the French National Research Agency (ANR) through the Programme d'Investissement d'Avenir (PIA), the Regional Council "Hauts-de-France", and the European Regional Development Fund (ERDF). C.G.H. acknowledges knowledge transfer from Professor Daniel M. Westervelt, Columbia University, New York, USA via the Clean Air Monitoring and Solutions Network training held in Accra, Ghana, in collaboration with the Ghana EPA and US Department of State, a National Science Foundation funded project.

REFERENCES

- (1) World Health Organization. Air Pollution Impact. https://www.who.int/health-topics/air-pollution#tab=tab_2 (accessed July 20, 2024).
- (2) Cohen, A. J.; Brauer, M.; Burnett, R.; Anderson, H. R.; Frostad, J.; Estep, K.; Balakrishnan, K.; Brunekreef, B.; Dandona, L.; Dandona, R.; Feigin, V.; Freedman, G.; Hubbell, B.; Jobling, A.; Kan, H.; Knibbs, L.; Liu, Y.; Martin, R.; Morawska, L.; Forouzanfar, M. H.; et al. Estimates and 25-year trends of the global burden of disease attributable to ambient air pollution: An analysis of data from the Global Burden of Diseases Study 2015. *Lancet* **2017**, *389* (10082), 1907–1918.
- (3) Melamed, M. L.; Schmale, J.; von Schneidmesser, E. Sustainable policy—key considerations for air quality and climate change. *Current opinion in environmental sustainability* **2016**, *23*, 85–91.
- (4) Murray, C. J. L.; Aravkin, A. Y.; Zheng, P.; Abbafati, C.; Abbas, K. M.; Abbasi-Kangevari, M.; Abd-Allah, F.; Abdelalim, A.; Abdollahi, M.; Abdollahpour, I.; Abegaz, K. H.; Abolhassani, H.; Aboyans, V.; Abreu, L. G.; Abrego, M. R. M.; Abualhasan, A.; Abu-Raddad, L. J.; Abushouk, A. I.; Adabi, M.; Lim, S. S.; et al. Global burden of 87 risk factors in 204 countries and territories, 1990–2019: A systematic analysis for the Global Burden of Disease Study 2019. *Lancet* **2020**, *396* (10258), 1223–1249.
- (5) Mead, M. I.; Okello, G.; Mbandi, A. M.; Pope, F. D. Spotlight on air pollution in Africa. *Nature Geoscience* **2023**, *16* (11), No. 930.
- (6) Giles-Corti, B.; Moudon, A. V.; Lowe, M.; Adlakh, D.; Cerin, E.; Boeing, G.; Sallis, J. F.; et al. Creating healthy and sustainable cities: what gets measured, gets done. *Lancet Global Health* **2022**, *10* (6), e782–e785.
- (7) World Health Organization. Air Quality Database: Update 2018. <https://www.who.int/data/gho/data/themes/air-pollution/who-air-quality-database/2018> (accessed July 20, 2024).
- (8) Pinder, R. W.; Klopp, J. M.; Kleiman, G.; Hagler, G. S. W.; Awe, Y.; Terry, S. Opportunities and challenges for filling the air quality data gap in low- and middle-income countries. *Atmos. Environ.* **2019**, *215*, No. 116794.
- (9) Hesenkopf, C.; Sharma, N.; Kazi, F.; Mukerjee, P.; Greenstone, M. EPIC 2023 Report: The Case for Closing Global Air Quality Data Gaps with Local Actors—A Golden Opportunity for Philanthropic Community. <https://epic.uchicago.edu/wp-content/uploads/2023/12/The-Case-for-Closing-Global-Air-Quality-Data-Gaps-with-Local-Actors.pdf> (accessed July 21, 2024).
- (10) Petkova, E. P.; Jack, D. W.; Volavka-Close, N. H.; Kinney, P. L. Particulate matter pollution in African cities. *Air Quality, Atmosphere & Health* **2013**, *6* (3), 603–614.
- (11) Valavanidis, A.; Fiotakis, K.; Vlachogianni, T. Airborne Particulate Matter and Human Health: Toxicological Assessment and Importance of Size and Composition of Particles for Oxidative Damage and Carcinogenic Mechanisms. *Journal of Environmental Science and Health, Part C* **2008**, *26* (4), 339–362.
- (12) Raheja, G.; Harper, L.; Hoffman, A.; Gorby, Y.; Freese, L.; O'Leary, B.; Westervelt, D. M.; et al. Community-based participatory research for low-cost air pollution monitoring in the wake of unconventional oil and gas development in the Ohio River Valley: Empowering impacted residents through community science. *Environmental Research Letters* **2022**, *17* (6), No. 065006.
- (13) Mead, M. I.; Popoola, O. A. M.; Stewart, G. B.; Landshoff, P.; Calleja, M.; Hayes, M.; Baldovi, J. J.; McLeod, M. W.; Hodgson, T. F.; Dicks, J.; Lewis, A.; Cohen, J.; Baron, R.; Saffell, J. R.; Jones, R. L. The use of electrochemical sensors for monitoring urban air quality in low-cost, high-density networks. *Atmos. Environ.* **2013**, *70*, 186–203.
- (14) Malings, C.; Tanzer, R.; Haurlyliuk, A.; Saha, P. K.; Robinson, A. L.; Presto, A. A.; Subramanian, R. Fine particle mass monitoring with low-cost sensors: Corrections and long-term performance evaluation. *Aerosol Sci. Technol.* **2020**, *54* (2), 160–174.
- (15) Williams, R.; Conner, T.; Clements, A.; Foltescu, V.; Nthusi, V.; Jabbour, J.; Nash, D.; Rice, J.; Kaufman, A.; Rourk, A.; Srivastava, M. *Performance Evaluation of the United Nations Environment Programme Air Quality Monitoring Unit*; U.S. Environmental Protection Agency: 2017; EPA/600/R-17/171.
- (16) Jiao, W.; Hagler, G.; Williams, R.; Sharpe, R.; Brown, R.; Garver, D.; Buckley, K.; et al. Community Air Sensor Network (CAIRSENSE) project: evaluation of low-cost sensor performance in a suburban environment in the southeastern United States. *Atmospheric measurement techniques* **2016**, *9* (11), 5281–5292.
- (17) Lewis, A. C.; Lee, J. D.; Edwards, P. M.; Shaw, M. D.; Evans, M. J.; Moller, S. J.; Smith, K. R.; Buckley, J. W.; Ellis, M.; Gillot, S. R.; White, A. Evaluating the performance of low cost chemical sensors for air pollution research. *Faraday Discuss.* **2016**, *189* (0), 85–103.
- (18) Cross, E. S.; Williams, L. R.; Lewis, D. K.; Magoon, G. R.; Onasch, T. B.; Kaminsky, M. L.; Worsnop, D. R.; Jayne, J. T. Use of electrochemical sensors for measurement of air pollution: Correcting interference response and validating measurements. *Atmospheric Measurement Techniques* **2017**, *10* (9), 3575–3588.
- (19) Castell, N.; Dauge, F. R.; Schneider, P.; Vogt, M.; Lerner, U.; Fishbain, B.; Bartonova, A.; et al. Can commercial low-cost sensor platforms contribute to air quality monitoring and exposure estimates? *Environ. Int.* **2017**, *99*, 293–302.
- (20) Hagan, D. H.; Isaacman-VanWertz, G.; Franklin, J. P.; Wallace, L. M. M.; Kocar, B. D.; Heald, C. L.; Kroll, J. H. Calibration and assessment of electrochemical air quality sensors by co-location with regulatory-grade instruments. *Atmospheric Measurement Techniques* **2018**, *11* (1), 315–328.
- (21) Malings, C.; Tanzer, R.; Haurlyliuk, A.; Kumar, S. P. N.; Zimmerman, N.; Kara, L. B.; Presto, A. A.; Subramanian, R. Development of a general calibration model and long-term performance evaluation of low-cost sensors for air pollutant gas monitoring. *Atmospheric Measurement Techniques* **2019**, *12* (2), 903–920.

- (22) Ouimette, J. R.; Malm, W. C.; Schichtel, B. A.; Sheridan, P. J.; Andrews, E.; Ogren, J. A.; Arnott, W. P. Evaluating the PurpleAir monitor as an aerosol light scattering instrument. *Atmospheric Measurement Techniques* **2022**, *15* (3), 655–676.
- (23) Ouimette, J.; Arnott, W. P.; Laven, P.; Whitwell, R.; Radhakrishnan, N.; Dhaniyala, S.; Volckens, J.; et al. Fundamentals of low-cost aerosol sensor design and operation. *Aerosol Sci. Technol.* **2024**, *58* (1), 1–15.
- (24) Jaffe, D. A.; Thompson, K.; Finley, B.; Nelson, M.; Ouimette, J.; Andrews, E. An evaluation of the US EPA's correction equation for PurpleAir sensor data in smoke, dust, and wintertime urban pollution events. *Atmospheric Measurement Techniques* **2023**, *16* (5), 1311–1322.
- (25) Giordano, M. R.; Malings, C.; Pandis, S. N.; Presto, A. A.; McNeill, V. F.; Westervelt, D. M.; Beekmann, M.; Subramanian, R. From low-cost sensors to high-quality data: A summary of challenges and best practices for effectively calibrating low-cost particulate matter mass sensors. *J. Aerosol Sci.* **2021**, *158*, No. 105833.
- (26) Rai, A. C.; Kumar, P.; Pilla, F.; Skouloudis, A. N.; Di Sabatino, S.; Ratti, C.; Yasar, A.; Rickerby, D. End-user perspective of low-cost sensors for outdoor air pollution monitoring. *Science of The Total Environment* **2017**, *607–608*, 691–705.
- (27) Morawska, L.; Thai, P. K.; Liu, X.; Asumadu-Sakyi, A.; Ayoko, G.; Bartonova, A.; Williams, R.; et al. Applications of low-cost sensing technologies for air quality monitoring and exposure assessment: How far have they gone? *Environ. Int.* **2018**, *116*, 286–299.
- (28) Duvall, R.; Clements, A.; Hagler, G.; Kamal, A.; Kilaru, V.; Goodman, L.; Dye, T., et al. *Performance testing protocols, metrics, and target values for fine particulate matter air sensors: use in ambient, outdoor, fixed site, non-regulatory supplemental and informational monitoring applications*. US EPA Office of Research and Development: 2021.
- (29) Hodoli, C. G.; Coulon, F.; Mead, M. I. Source identification with high-temporal resolution data from low-cost sensors using bivariate polar plots in urban areas of Ghana. *Environ. Pollut.* **2023**, *317*, No. 120448.
- (30) Raheja, G.; Sabi, K.; Sonla, H.; Gbedjangni, E. K.; McFarlane, C. M.; Hodoli, C. G.; Westervelt, D. M. A Network of Field-Calibrated Low-Cost Sensor Measurements of PM_{2.5} in Lomé, Togo, Over One to Two Years. *ACS Earth and Space Chemistry* **2022**, *6* (4), 1011–1021.
- (31) Raheja, G.; Nimo, J.; Appoh, E. K.-E.; Essien, B.; Sunu, M.; Nyante, J.; Amegah, M.; Quansah, R.; Arku, R. E.; Penn, S. L.; Giordano, M. R.; Zheng, Z.; Jack, D.; Chillrud, S.; Amegah, K.; Subramanian, R.; Pinder, R.; Appah-Sampong, E.; Tetteh, E. N.; Westervelt, D. M.; et al. Low-Cost Sensor Performance Intercomparison, Correction Factor Development, and 2+ Years of Ambient PM_{2.5} Monitoring in Accra, Ghana. *Environ. Sci. Technol.* **2023**, *57* (29), 10708–10720.
- (32) Raheja, G.; Nimo, J.; Appoh, E. K.-E.; Essien, B.; Sunu, M.; Nyante, J.; Amegah, M.; Quansah, R.; Arku, R. E.; Penn, S. L.; Giordano, M. R.; Zheng, Z.; Jack, D.; Chillrud, S.; Amegah, K.; Subramanian, R.; Pinder, R.; Appah-Sampong, E.; Tetteh, E. N.; Westervelt, D. M.; et al. Low-Cost Sensor Performance Intercomparison, Correction Factor Development, and 2+ Years of Ambient PM_{2.5} Monitoring in Accra, Ghana. *Environ. Sci. Technol.* **2023**, *57* (29), 10708–10720.
- (33) Ghana Statistical Service. *Population by Regions Greater Accra*. <https://www.statsghana.gov.gh/regionalpopulation.php?population=MTM0NTk2MjQzOS4yMDE1&&Greater%20Accra®id=3> (accessed July 23, 2024).
- (34) ITA. Ghana Climate. https://photius.com/countries/ghana/climate/ghana_climate_climate.html (accessed July 23, 2024).
- (35) Molina Rueda, E.; Carter, E.; L'Orange, C.; Quinn, C.; Volckens, J. Size-resolved field performance of low-cost sensors for particulate matter air pollution. *Environmental Science & Technology Letters* **2023**, *10* (3), 247–253.
- (36) PAS 4023. *2023 Selection, deployment and quality control of low-cost air quality sensor systems in outdoor ambient air – Code of Practice*. <https://www.bsigroup.com/siteassets/pdf/en/insights-and-media/insights/brochures/pas-4023.pdf> (accessed July 20, 2024).
- (37) Crilley, L. R.; Shaw, M.; Pound, R.; Kramer, L. J.; Price, R.; Young, S.; Pope, F. D.; et al. Evaluation of a low-cost optical particle counter (Alphasense OPC-N2) for ambient air monitoring. *Atmospheric Measurement Techniques* **2018**, *11* (2), 709–720.
- (38) Baron, R.; Saffell, J. Amperometric gas sensors as a low cost emerging technology platform for air quality monitoring applications: A review. *ACS sensors* **2017**, *2* (11), 1553–1566.
- (39) McFarlane, C.; Isevulambire, P. K.; Lumbuenamo, R. S.; Ndinga, A. M. E.; Dhammapala, R.; Jin, X.; McNeill, V. F.; Malings, C.; Subramanian, R.; Westervelt, D. M. First Measurements of Ambient PM_{2.5} in Kinshasa, Democratic Republic of Congo and Brazzaville, Republic of Congo Using Field-calibrated Low-cost Sensors. *Aerosol and Air Quality Research* **2021**, *21* (7), No. 200619.
- (40) Gameli Hodoli, C.; Coulon, F.; Mead, M. I. Applicability of factory calibrated optical particle counters for high-density air quality monitoring networks in Ghana. *Heliyon* **2020**, *6* (6), No. e04206.
- (41) Romero, Y.; Velásquez, R. M. A.; Noel, J. Development of a multiple regression model to calibrate a low-cost sensor considering reference measurements and meteorological parameters. *Environmental Monitoring and Assessment* **2020**, *192* (8), 498.
- (42) Westervelt, D. M.; Isevulambire, P. K.; Yombo Phaka, R.; Yang, L. H.; Raheja, G.; Milly, G.; Konde, J. N.; et al. Low-Cost Investigation into Sources of PM_{2.5} in Kinshasa, Democratic Republic of the Congo. *ACS ES&T Air* **2024**, *1* (1), 43–51.
- (43) Carlaw, D. C.; Ropkins, K. *openair*—An R package for air quality data analysis. *Environmental Modelling & Software* **2012**, *27–28*, 52–61.
- (44) Ashbaugh, L. L.; Malm, W. C.; Sadeh, W. Z. A residence time probability analysis of sulfur concentrations at grand Canyon National Park. *Atmospheric Environment* (1967) **1985**, *19* (8), 1263–1270.
- (45) Uria-Tellaetxe, I.; Carlaw, D. C. Conditional bivariate probability function for source identification. *Environmental modelling & software* **2014**, *59*, 1–9.
- (46) Bousiotis, D.; Allison, G.; Beddows, D. C. S.; et al. Towards comprehensive air quality management using low-cost sensors for pollution source apportionment. *npj Clim Atmos Sci.* **2023**, *6*, 122.
- (47) Bamola, S.; Goswami, G.; Dewan, S.; Goyal, I.; Agarwal, M.; Dhir, A.; Lakhani, A. Characterising temporal variability of PM_{2.5}/PM₁₀ ratio and its correlation with meteorological variables at a sub-urban site in the Taj City. *Urban Climate* **2024**, *53*, No. 101763.
- (48) Sugimoto, N.; Shimizu, A.; Matsui, I.; Nishikawa, M. A method for estimating the fraction of mineral dust in particulate matter using PM_{2.5}-to-PM₁₀ ratios. *Particulology* **2016**, *28*, 114–120.
- (49) Rooney, M. S.; Arku, R. E.; Dionisio, K. L.; Paciorek, C.; Friedman, A. B.; Carmichael, H.; Zhou, Z.; Hughes, A. F.; Vallarino, J.; Agyei-Mensah, S.; Spengler, J. D.; Ezzati, M. Spatial and temporal patterns of particulate matter sources and pollution in four communities in Accra, Ghana. *Science of The Total Environment* **2012**, *435–436*, 107–114.
- (50) Williams, R.; Vasu Kilaru, E.; Snyder, A.; Kaufman, T.; Dye, A.; Rutter, A.; Russel, Hafner, H. *Air sensor guidebook*; United States Environmental Protection Agency: 2014. https://cfpub.epa.gov/si/si_public_file_download.cfm?p_download_id=519616.
- (51) Williams, R.; Duvall, R.; Kilaru, V.; Hagler, G.; Hassinger, L.; Benedict, K.; Rice, J.; Kaufman, A.; Judge, R.; Pierce, G.; et al. Deliberating performance targets workshop: Potential paths for emerging PM_{2.5} and O₃ air sensor progress. *Atmos. Environ.* **2019**, *2*, No. 100031.
- (52) Liu, P.; Ye, C.; Xue, C.; Zhang, C.; Mu, Y.; Sun, X. Formation mechanisms of atmospheric nitrate and sulfate during the winter haze pollution periods in Beijing: gas-phase, heterogeneous and aqueous-phase chemistry. *Atmospheric Chemistry and Physics* **2020**, *20* (7), 4153–4165.
- (53) Blanco-Becerra, L. C.; Gáfarro-Rojas, A. I.; Rojas-Roa, N. Y. Influencia del efecto barrido en la relación PM_{2.5}/PM₁₀ en la localidad de Kennedy de Bogotá, Colombia. *Revista Facultad De Ingeniería Universidad De Antioquia* **2015**, No. 76, 58–65.

(54) Speranza, A.; Caggiano, R.; Margiotta, S.; Trippetta, S. A novel approach to comparing simultaneous size-segregated particulate matter (PM) concentration ratios by means of a dedicated triangular diagram using the Agri Valley PM measurements as an example. *Natural Hazards and Earth System Sciences* **2014**, *14* (10), 2727–2733.

(55) Munir, S. Analysing Temporal Trends in the Ratios of PM_{2.5}/PM₁₀ in the UK. *Aerosol Air Qual. Res.* **2017**, *17*, 34–48.

(56) Filonchyk, M.; Yan, H.; Yang, S.; Hurynovich, V. A study of PM_{2.5} and PM₁₀ concentrations in the atmosphere of large cities in Gansu Province, China, in summer period. *Journal of Earth System Science* **2016**, *125*, 1175–1187.

(57) Xu, G.; Jiao, L.; Zhang, B.; Zhao, S.; Yuan, M.; Gu, Y.; Liu, J.; Tang, X. Spatial and Temporal Variability of the PM_{2.5}/PM₁₀ Ratio in Wuhan, Central China. *Aerosol Air Qual. Res.* **2017**, *17*, 741–751.

■ NOTE ADDED AFTER ASAP PUBLICATION

This paper was published November 6, 2024. The links in References 9, 33, 34, and 36 have been corrected. The revised version was reposted on November 15, 2024.