



HAL
open science

Fast pick-freeze estimation of Sobol' sensitivity maps using basis expansions

Yuri Sao, Olivier Roustant, Geraldo de Freitas Maciel

► **To cite this version:**

Yuri Sao, Olivier Roustant, Geraldo de Freitas Maciel. Fast pick-freeze estimation of Sobol' sensitivity maps using basis expansions. 2024. hal-04829814

HAL Id: hal-04829814

<https://hal.science/hal-04829814v1>

Preprint submitted on 10 Dec 2024

HAL is a multi-disciplinary open access archive for the deposit and dissemination of scientific research documents, whether they are published or not. The documents may come from teaching and research institutions in France or abroad, or from public or private research centers.

L'archive ouverte pluridisciplinaire **HAL**, est destinée au dépôt et à la diffusion de documents scientifiques de niveau recherche, publiés ou non, émanant des établissements d'enseignement et de recherche français ou étrangers, des laboratoires publics ou privés.

Highlights

Fast pick-freeze estimation of Sobol' sensitivity maps using basis expansions

Yuri Taglieri São, Olivier Roustant, Geraldo de Freitas Maciel

- Fast computations of Sobol' sensitivity maps (SMs) based on a general basis expansion;
- Closed-form expression of SMs using pick-freeze formulas directly in the basis coefficients (*basis-derived* approach);
- Computational gain analysis of the *basis-derived* approach over the *dimension-wise* approach;
- Application to an analytical test-case (Campbell2D function) and to a non-Newtonian fluid mechanics data-driven case.

Fast pick-freeze estimation of Sobol' sensitivity maps using basis expansions

Yuri Taglieri São^{a,b}, Olivier Roustant^a, Geraldo de Freitas Maciel^b

^a*Institut de Mathématiques de Toulouse, Université de Toulouse, INSA, 135, Avenue de
Rangueil, Toulouse, 31077, Occitanie, France*

^b*Engineering College of Ilha Solteira, Civil Engineering Department, São Paulo State
University "Júlio de Mesquita Filho" (UNESP), Av. Brasil, 56, Ilha
Solteira, 15385-000, São Paulo, Brazil*

Abstract

Global sensitivity analysis (GSA) aims at quantifying the contribution of input variables over the variability of model outputs. In the frame of functional outputs, a common goal is to compute *sensitivity maps* (SM), i.e. sensitivity indices at each output dimension (e.g. time step for time series, or pixels for spatial outputs). In specific settings, some works have shown that the computation of Sobol' SM can be speeded up by using basis expansions employed for dimension reduction. However, how to efficiently compute such SM in a general setting has not received too much attention in the GSA literature.

In this work, we propose fast computations of Sobol' SM using a general basis expansion, with a focus on statistical estimation. First, we write a closed-form expression of SM in function of the matrix-valued Sobol' index of the vector of basis coefficients. Secondly, we consider pick-freeze (PF) estimators, which have nice statistical properties (in terms of asymptotical efficiency) for Sobol' indices of any order. We provide similar *basis-derived* formulas for the PF estimator of Sobol' SM in function of the matrix-valued PF estimator of the vector of basis coefficients. We give the computational cost, and show that, compared to a *dimension-wise* approach, the computational gain is substantial and allows to calculate both SM and their associated bootstrap confidence bounds in a reasonable time. Finally, we illustrate the whole methodology on an analytical test case and on an application in non-Newtonian hydraulics, modelling an idealized dam-break flow.

Keywords:

1. Introduction

Global Sensitivity Analysis (GSA) consists of numerous techniques that apportion the uncertainty of a model output to uncertainties in its inputs (Saltelli et al., 2008). We can understand as “model” a computational code that receives input variables (or *factor* or *parameter*) and produces outputs, which may be scalars or vectors, that correspond to real phenomena. GSA has remarkable importance in any study that requires knowing which input variables contributes the most to the variability of outputs, such as in model validation, model calibration and decision-making processes (Morris, 1991; Sobol, 2001; Saltelli et al., 2008). In general, but not limited to, GSA aims to identify non-influential and important inputs, to rank the importance of such parameters and to understand the model based on the interactions of the parameters (Da Veiga et al., 2021; Iooss and Lemaître, 2015). Therefore, GSA stands itself as an invaluable tool for studying any uncertainty-related subject.

An important group of GSA techniques relies on quantifying the variance as uncertainty measure, the so-called “variance-based methods”. Since the variance quantifies the dispersion of data around the mean, it represents itself as an adequate metric to evaluate the uncertainty of input variables over outputs (Saltelli et al., 2010; Borgonovo and Plischke, 2016). The variance also presents convenient statistical properties, which allow us to perform a variance-decomposition procedure (Sobol-Hoeffding decomposition) and obtain the Sobol’ indices, which are intuitive sensitivity indices capable of measuring the influence of input variables and their interaction over the variability of the outputs (Sobol, 2001; Saltelli et al., 2008).

However, closed analytical formulas for calculating the Sobol’ indices exist just for some classes of models, such as Polynomial Chaos Expansion (PCE) (Sudret, 2008), and some simple and explicit models, generally used as benchmark cases (Becker, 2020). In the majority of practical cases, the Sobol’ indices are estimated by sampling-based estimators, which consists of obtaining a finite sample of model evaluations, typically with size on the order of thousands, and applying a discrete estimation technique (Helton et al., 2006; Saltelli et al., 2008). This kind of technique is called a “pick-freeze”

(PF) scheme (Sobol, 1993; Saltelli, 2002; Gamboa et al., 2016). Its main advantage is that it is a very general scheme, whose only assumption is the square-integrability of the model with respect to the probability distributions of input variables (Da Veiga et al., 2021). Some works were dedicated to improve the accuracy and efficiency of PF schemes by adopting different sampling strategies (Devroye, 1986; McKay, 1995; Tissot and Prieur, 2015); others studied their asymptotic properties for purely Monte-Carlo sampling (Janon et al., 2014; Gamboa et al., 2016).

Although very general, PF schemes were primarily developed to perform GSA of scalar outputs. However, many practical cases study temporal and/or spatial outputs, i.e. functional outputs, high-dimensional by definition. This high-dimensionality characteristic means that performing GSA produces results in the form of series or maps of Sobol’ indices. Herein, we call this series/map as *Sensitivity Map* (SM). Therefore, the PF scheme may not be readily applicable, requiring some type of pre-GSA approach to deal with the high dimensionality of outputs. The most direct approach consists in discretizing the domain with a finite number of coordinates, where each coordinate produces a scalar value (Terraz et al., 2017). Then, the model is evaluated on the order of thousand times and the PF scheme is performed on each coordinate, ultimately producing SMs. Although very informative and capable of providing sensitivity indices maps to analysts, two problems may arise from this approach: 1) computational storage may be prohibitive; and 2) the model can be computationally expensive to produce enough realizations for an accurate Sobol’ indices estimation through PF schemes. The first problem can be addressed by using dimension-reduction techniques, such as basis expansions (e.g. Principal Component Analysis, B-splines, wavelets), to reduce output dimensionality, consequently reducing memory storage (Abdi and Williams, 2010; Hawchar et al., 2017; Nagel et al., 2020). The second problem requires the construction of a metamodel (also called surrogate model or emulator), which approximates accurately the model and is fast to evaluate. Famous families of metamodels include Gaussian process regression (Williams and Rasmussen, 1995), polynomial chaos expansion (Sudret, 2008), artificial neural networks (Zou et al., 2009; Fonseca et al., 2003).

In this context, by applying a basis-expansion technique and by meta-modeling and predicting the basis coefficients through the metamodels, the original high-dimensional outputs can be decoded from the reduced-space variables, i.e. the basis components and coefficients, using a scalar product operation. Marrel et al. (2011) chose Principal Component Analysis (PCA)

as a basis-expansion technique and used Gaussian Process Regression (GPR) to metamodel the PCA coefficients and to perform GSA using the PF scheme directly in each output dimension, obtaining the SMs. In this work, we name this approach as *dimension-wise* approach, since the PF scheme is performed in each output dimension separately. However, this methodology overlooks the fact that basis coefficients and components could be used for a more efficient GSA framework. In this direction, Nagel et al. (2020) also chose PCA, but used Polynomial Chaos Expansion (PCE) to metamodel the PCA coefficients. By leveraging the orthogonality properties of PCE, the Sobol' indices of the PCA coefficients are calculated analytically and, therefore, no PF scheme is needed. By decoding the Sobol' indices from the reduced space to the original space, SMs were obtained. Herein, we name this approach as *basis-derived* approach, since the SMs are estimated directly from the basis coefficients and components. Although efficient, it is not general: the analytical treatment of Sobol' indices makes the framework limited only to PCE. The application of other metamodeling techniques, e.g. ANN (Artificial Neural Networks) and Gaussian Process Regression (GPR), would not be possible since they require a closed expression for the Sobol' indices. In a similar framework as Nagel et al. (2020), using PCA and GPR metamodeling, Li et al. (2020) compute the Sobol' indices by using the basis coefficients. Eventually, notice that the aforementioned works do not explore the statistical estimation of the Sobol' indices computed with basis coefficients.

In this work, we investigate the *basis-derived* approach to obtain SMs for general basis expansions. First, we obtain a closed-form expression of SM in function of the matrix-valued Sobol' index of the vector of basis coefficients (Prop. 1). Then, we focus on statistical estimation. We show that the same formula remains true when we replace the Sobol' indices by their PF estimators (Prop. 2). This remarkable property is due to the fact that usual PF estimators are quadratic form of the two samples used in PF schemes (Remark 3). We assess the computational cost (or numerical complexity) of the *basis-derived* and *dimension-wise* approaches (Prop. 3). It appears that the *basis-derived* approach is much less computationally demanding and allows to estimate both the SMs and their bootstrap confidence bounds in a reasonable time. We illustrate the performance of the *basis-derived* approach on an analytical test-case (Campbell2D function), which has spatial maps as outputs, and on an idealized gradual dam-break flow of non-Newtonian fluid flow, which produces Sobol' indices time series.

The work is organized as follows. Section 2 presents theoretical back-

ground and concepts of GSA. Section 3 presents our contribution to the study of PF schemes. Section 4 shows the applications chosen for this work, i.e. the Campbell2D function and the gradual dam-break problem of non-Newtonian fluids. Finally, Section 5 closes with the conclusions and future works.

2. Background

In this section, we present the theoretical ground of the variance decomposition and the concepts of sensitivity indices for variance-based GSA. Except for Section 2.3, functions are scalar-valued. Most of the material is standard, and can be found e.g. in Da Veiga et al. (2021).

2.1. Sobol-Hoeffding decomposition and Sobol' indices for (scalar-valued case)

We represent X as the vector of input variables $X = (X_1, \dots, X_d) \in \mathbb{R}^d$ and d the number of input variables. Each input variable has uncertainties associated to it and we model them as random variables, denoting μ_X as the probability distribution of X . The components X_i are assumed to be independent, probability distribution μ_{X_i} . The corresponding model output, here assumed to be scalar, is a random variable written as

$$Y = f(X). \quad (2.1)$$

We assume that $E(Y^2) < +\infty$. Equivalently, f belongs to the Hilbert space $\mathbb{L}^2(\mu_X)$. We denote by $\langle \cdot, \cdot \rangle$ its inner product : $\langle f, g \rangle = \int fg d\mu_X$. According to the Sobol-Hoeffding decomposition (see e.g. Sobol, 1993), $f(X)$ can be uniquely decomposed as a sum of terms with increasing complexity (Eq. 2.2).

$$f(X) = \sum_{I \in \mathcal{P}_d} f_I(X_I) \quad (2.2)$$

such that for all $I \in \mathcal{P}_d$ and all strict subset $J \subsetneq I$, $\mathbb{E}[f_I(X_I)|X_J] = 0$ (with the convention $\mathbb{E}[\cdot|X_\emptyset] = \mathbb{E}[\cdot]$).

Two properties hold for the terms in Eq. 2.2. First, the zero-mean property or centered-mean property, where $\mathbb{E}[f_I(X_I)] = 0$. Second, the orthogonality property in $\mathbb{L}^2(\mu_X)$, i.e. $\langle f_I, f_{I'} \rangle = \mathbb{E}[f_I(X_I)f_{I'}(X_{I'})] = 0$. This leads to the variance decomposition formula (Eq. 2.3):

$$\mathbb{V}\text{ar}(f(X)) = \sum_{I \in \mathcal{P}_d, I \neq \emptyset} \mathbb{V}\text{ar}(f_I(X_I)) \quad (2.3)$$

Equation 2.3 allows us to account quantitatively the sensitivity of each input and their interaction over the outputs. The influence of the group of input variables X_I can be quantified by the variance explained by $f_I(X_I)$. We call this quantity *Sobol' index*: if normalized by the total variance, we represent it as $S_{(\cdot)}$; otherwise, we represent the unnormalized index (also called partial variance) as $D_{(\cdot)}$. The overall variance is represented by D , without any subscript. Definition 1 provides the expressions of Sobol' indices and the different types of indices (first-order, closed, total and second-order). A brief interpretation follows.

Definition 1 ((Unnormalized) Sobol' indices). *Let $I \subseteq \{1, \dots, d\}$ and subscript $(\cdot)_{\sim I}$ to indicate that variables from the subset I were excluded from the whole set. The following equations are associated to the group variables X_I .*

- *First-order Sobol' index: $D_I = \mathbb{V}\text{ar}(f_I(X_I))$.*
- *Closed Sobol' index: $D_I^c = \mathbb{V}\text{ar}(\mathbb{E}[f(X)|X_I])$.*
- *Total Sobol' index (see Remark 1): $D_I^{\text{tot}} = D - D_{\sim I}^c$.*
- *Second-order Sobol' index (see Remark 2): $D_{\{i,j\}} = D_{\{i,j\}}^c - D_i - D_j$, where $i, j \in \{1, \dots, d\}$.*

For simplicity, let us choose $I = \{i\}$, $I' = \{i, j\}$ and consider unnormalized indices. The first-order Sobol' index of input variable X_i , given by D_i , is the isolated contribution of X_i , or main effect of X_i . The closed Sobol' index of $X_{I'}$, given by $D_{i,j}^c$, contains the isolated effects of X_i and X_j and the interaction between both variables; therefore $D_{i,j}^c = D_i + D_j + D_{ij}$. If $I' = I = \{i\}$, we have $D_i^c = D_i$. The total Sobol' index of input variables X_i and X_j , given by $D_{I'}^{\text{tot}}$, represents the main effect of both variables and the interaction of $\{X_i, X_j\}$ with the remaining ones $X_{\sim I'}$. Lastly, the second-order Sobol' index of input variables X_i and X_j , given by $D_{i,j}$, is the interaction between both of them.

Remark 1. *The total Sobol' index is related to the law of total variance:*

$$\mathbb{V}\text{ar}(f(X)) = \mathbb{V}\text{ar}(\mathbb{E}[f(X)|X_{\sim I}]) + \mathbb{E}[\mathbb{V}\text{ar}(f(X)|X_{\sim I})]$$

which gives another interpretation of it as $D_I^{\text{tot}} = \mathbb{E} [\text{Var} (f(X)|X_{\sim I})]$.

Remark 2. For all set I , each term of the Sobol-Hoeffding decomposition is given by the recursion formula

$$f_I(X_I) = \mathbb{E}[f(X)|X_I] - \sum_{J \subsetneq I} f_J(X_J)$$

This can be used to derive all Sobol' indices recursively from the closed Sobol' indices associated to subsets of variables. For instance, using the orthogonality of the decomposition, the second-order Sobol' index is written

$$\begin{aligned} \text{Var} (f_{ij}(X_{ij})) &= \text{Var} (\mathbb{E} [f(X)|X_i, X_j]) - \text{Var} (f_i(X_i)) - \text{Var} (f_j(X_j)) \\ &= D_{i,j}^c - D_i^c - D_j^c \end{aligned}$$

For most problems, there are no closed formulas for the exact calculation of Sobol' indices, except for simple explicit models and for some classes of models, such as PCE-derived models (Sudret, 2008). In practice, the indices are estimated through sampling-based methods, where a finite sample of evaluations is employed for the estimation. In the sequel, we focus on pick-freeze ("PF") schemes or estimators (Sobol, 1993; Saltelli et al., 2008; Gamboa et al., 2013), which have nice statistical properties and are applicable to general sets I .

2.2. Pick-freeze estimators for scalar-valued functions

Let $f : \mathbb{R}^d \rightarrow \mathbb{R}$ be a scalar-valued function in $\mathbb{L}^2(\mu_X)$. In the PF scheme, one considers two independent random vectors X and Z drawn from μ_X . The model output is evaluated twice: firstly, by computing $Y = f(X)$; and secondly, by fixing (freezing) the coordinates of X in I and choosing (picking) the other coordinates (denoted $(\cdot)_{\sim I}$) in Z , leading to $Y^* = f(X_I, Z_{\sim I})$. By definition of X and Z , we can see that Y and Y^* have the same probability distribution. But they are now dependent and their correlation is proved to be equal to the closed Sobol' index:

$$S_I^c = \frac{\text{Cov}(Y, Y^*)}{\text{Var}(Y)} \quad (2.4)$$

This formula can be rewritten such that the first two moments of the model output involve the two copies X and Z . Indeed, as $\mu_X = \mu_Z$, the first moment is written $f_0 = \mathbb{E}[Y] = \mathbb{E}[Y^*] = \mathbb{E}\left[\frac{Y+Y^*}{2}\right]$. The latter expression is preferable for estimation, as the associated empirical estimator has a smaller quadratic risk. Similarly, the second moment is rewritten $\mathbb{E}[Y^2] = \mathbb{E}\left[\frac{Y^2+(Y^*)^2}{2}\right]$. Finally, using that $\text{Cov}(Y, Y^*) = \mathbb{E}[YY^*] - f_0^2$ and $\text{Var}(Y) = \mathbb{E}[Y^2] - f_0^2$, Eq. 2.4 is rewritten:

$$S_I^c = \frac{\mathbb{E}[YY^*] - (\mathbb{E}\left[\frac{Y+Y^*}{2}\right])^2}{\mathbb{E}\left[\frac{Y^2+(Y^*)^2}{2}\right] - (\mathbb{E}\left[\frac{Y+Y^*}{2}\right])^2} \quad (2.5)$$

In practice, an empirical estimator must be computed. We consider independent samples $X^{(1)}, \dots, X^{(N)}$ and $Z^{(1)}, \dots, Z^{(N)}$ drawn from μ_X . The empirical versions of Y and Y^* are then given by the random variables

$$Y_{(k)} = f(X^{(k)}), \quad Y_{(k)}^* = f(X_I^{(k)}, Z_{\sim I}^{(k)}) \quad (k = 1, \dots, N). \quad (2.6)$$

Definition 2 (Pick-freeze estimator of closed Sobol' indices for scalar-valued functions). *The empirical estimator of the closed Sobol' index $\widehat{S}_I^{\text{c, pf}}$ corresponding to Eq. (2.5), called Janon-Monod pick-freeze estimator (Monod et al., 2006; Janon et al., 2014), is given by*

$$\widehat{S}_I^{\text{c, pf}} = \frac{\widehat{D}_I^{\text{c, pf}}}{\widehat{\text{Var}}^{\text{pf}}} \quad (2.7)$$

with

$$\widehat{D}_I^{\text{c, pf}} = \frac{1}{N} \sum_{k=1}^N Y_{(k)} Y_{(k)}^* - \left(\widehat{f}_0^{\text{pf}}\right)^2 \quad (2.8)$$

$$\widehat{\text{Var}}^{\text{pf}} = \frac{1}{N} \sum_{k=1}^N \left[\frac{Y_{(k)}^2 + (Y_{(k)}^*)^2}{2} \right] - \left(\widehat{f}_0^{\text{pf}}\right)^2 \quad (2.9)$$

and

$$\widehat{f}_0^{\text{pf}} = \frac{1}{N} \sum_{k=1}^N \left[\frac{Y_{(k)} + Y_{(k)}^*}{2} \right]. \quad (2.10)$$

The PF estimator (2.7) has nice statistical properties: it is consistent, asymptotically normally distributed, and asymptotically efficient among a class of exchangeable variables, meaning that it has the smallest variance in this class when N tends to infinity. We refer to Janon et al. (2014) for more details.

Following Remark 2, one can deduce a natural PF estimator for a Sobol' index associated to a set of variables I , from the (Janon-Monod) PF estimators of the closed Sobol' indices associated to subsets of I . For instance, for second-order indices, one can set

$$\widehat{D}_{i,j}^{\text{pf}} := \widehat{D}_{i,j}^{\text{c}} - \widehat{D}_i^{\text{c}} - \widehat{D}_j^{\text{c}}, \quad \widehat{S}_{i,j}^{\text{pf}} = \frac{\widehat{D}_{i,j}^{\text{pf}}}{\widehat{\text{Var}}^{\text{pf}}}$$

Similarly, from Definition 1, a natural candidate for a PF estimator of total Sobol' indices is written

$$\widehat{S}_I^{\text{tot pf}} = 1 - \widehat{S}_{\sim I}^{\text{c pf}} \quad (2.11)$$

A second option explores Jansen's formula (Jansen, 1999), which is recommended to evaluate total Sobol' indices (Saltelli et al., 2010; Da Veiga et al., 2021). The expression is given by Eq. 2.12.

$$\widehat{S}_I^{\text{tot pf}} = \frac{\widehat{D}_I^{\text{tot pf}}}{\widehat{\text{Var}}^{\text{pf}}}, \quad \widehat{D}_I^{\text{tot pf}} = \frac{1}{2N} \sum_{k=1}^N (Y_{(k)} - Y_{(k)}^*)^2 \quad (2.12)$$

Indeed, the numerator is non-negative and has the same statistical properties as Janon-Monod estimator: consistency, asymptotic normality and asymptotic efficiency (Fruth et al., 2014).

Actually, many PF estimators can be produced by combining different methods (Saltelli et al., 2010; Owen, 2013; Azzini et al., 2021) for the numerator (partial variance) and denominator (overall variance). Here, we will focus on the Monod-Janon estimator (2.7) and Jansen estimator (2.12) for the estimation of first-order and total Sobol' indices respectively. Nevertheless, we will see in the next section that our main result also applies to other PF estimators, as soon as they can be expressed with quadratic forms in the variables $Y_{(1)}, \dots, Y_{(N)}, Y_{(1)}^*, \dots, Y_{(N)}^*$ (see Remark 3).

2.3. Pick-freeze estimators for vector-valued functions

Here, we define natural extensions of the PF estimators to vector-valued functions. They will be useful in the sequel.

Definition 3 (Unnormalized closed Sobol' index for vector-valued functions). *Let $I \in \mathcal{P}_d$, $f \in \mathbb{L}^2(\mu)$, and X be a random vector with law μ . The unnormalized closed Sobol' index of $f(X) = Y$, denoted $D_I^c(Y)$, is defined as the covariance matrix of the random vector $\mathbb{E}[Y|X_I]$:*

$$D_I^c(Y) = \text{Cov}(\mathbb{E}[Y|X_I])$$

The PF estimators of the unnormalized closed or total Sobol' index and the overall variance are immediately extended for vector-valued function, by replacing products by dot products in Definition 2. However, some care is needed to define a ratio between such quantities, as they are now matrices. Actually, we will not pursue in this way, as we will not need it.

Definition 4 (Pick-freeze estimator for vector-valued functions). *The pick-freeze estimator of the unnormalized closed Sobol' index, total Sobol' index and the covariance matrix of a vector-valued function, are defined by the matrices*

$$\begin{aligned} \widehat{D}_I^{c \text{ pf}} &= \frac{1}{N} \sum_{k=1}^N Y_{(k)} (Y_{(k)}^*)^\top - \widehat{f}_0^{\text{ pf}} \left(\widehat{f}_0^{\text{ pf}} \right)^\top \\ \widehat{D}_I^{\text{ tot pf}} &= \frac{1}{2N} \sum_{k=1}^N (Y_{(k)} - Y_{(k)}^*) (Y_{(k)} - Y_{(k)}^*)^\top \\ \widehat{\text{Cov}}^{\text{ pf}} &= \frac{1}{N} \sum_{k=1}^N \left[\frac{Y_{(k)} Y_{(k)}^\top + Y_{(k)}^* (Y_{(k)}^*)^\top}{2} \right] - \widehat{f}_0^{\text{ pf}} \left(\widehat{f}_0^{\text{ pf}} \right)^\top \end{aligned}$$

with

$$\widehat{f}_0^{\text{ pf}} = \frac{1}{N} \sum_{k=1}^N \left[\frac{Y_{(k)} + Y_{(k)}^*}{2} \right]$$

3. Contributions

The contributions of this work are focused on applications that employ basis expansions to reduce dimensionality. Let us consider that output data $y_\ell(X)$ are expanded in a functional basis of dimension m , where $(\cdot)_\ell$ represents the index of each output dimension, as follows:

$$y_\ell(X) = \sum_{i=1}^m c_i(X) v_{i,\ell} \quad (3.1)$$

where $(c_1(X), \dots, c_m(X))$ are basis coefficients and $(v_{1,\ell}, \dots, v_{m,\ell})$ are basis components. We set $c(X) = (c_1(X), \dots, c_m(X))^\top$ and $v_{\cdot,\ell} = (v_{1,\ell}, \dots, v_{m,\ell})^\top$ the corresponding vectors.

The following proposition develops the expression of closed Sobol' indices considering the basis coefficients.

Proposition 1 (Expression of closed Sobol' indices with basis coefficients). *Let $y_\ell(X) = v_{\cdot,\ell}^\top c(X)$ and, for all $I \subseteq \{1, \dots, d\}$,*

$$S_I^c(y_\ell(X)) = \frac{v_{\cdot,\ell}^\top D_I^c(c(X)) v_{\cdot,\ell}}{v_{\cdot,\ell}^\top \text{Cov}(c(X)) v_{\cdot,\ell}} \quad (3.2)$$

Proof. We should recall that if Y is a square integrable random vector of size m , and A is a (deterministic) $p \times m$ matrix, then $\text{Cov}(AY) = A \text{Cov}(Y) A^\top$. For the numerator, by linearity of the conditional expectation, we have

$$\mathbb{E}[y_\ell(X)|X_I] = v_{\cdot,\ell}^\top \mathbb{E}[c(X)|X_I]$$

Applying the covariance formula with $A = v_{\cdot,\ell}^\top$ and $Y = \mathbb{E}[c(X)|X_I]$ gives the expression of the numerator:

$$D_I^c(y_\ell(X)) = v_{\cdot,\ell}^\top D_I^c(c(X)) v_{\cdot,\ell}$$

Using the same logic for the denominator, we have immediately:

$$\text{Var}(y_\ell(X)) = v_{\cdot,\ell}^\top \text{Cov}(c(X)) v_{\cdot,\ell}$$

This concludes the proof. \square

Proposition 1 shows that the closed Sobol' index of $y_\ell(X)$ can be computed directly from the random vector of its coefficients $c(X)$ in the basis $v_{\cdot,\ell}$. Following Remark 2, formula (3.2) can be extended to Sobol' indices of any order and total Sobol indices, as they can be expressed as linear combinations of closed Sobol indices. Notice further that (3.2) is similar to formula (11) of (Li et al., 2020) written in the context of PCA for first-order Sobol' indices. Therein, a matrix P is used, whose row ℓ contain the first PCA eigenvectors corresponding to $v_{\cdot,\ell}^\top$ in our framework. With that notation, the numerator

(resp. denominator) of (3.2) is equal to the coefficient (ℓ, ℓ) of the diagonal matrix $\text{diag}(PD_I^c P^\top)$ (resp. $\text{diag}(PCov(c(X))P^\top)$), and we retrieve their expression.

We now focus on estimation of Sobol' indices. The next proposition shows that Proposition 1 remains valid when we replace the theoretical quantities by their PF estimator, providing a formula to estimate the SMs.

Proposition 2 (Expression of pick-freeze estimators with basis coefficients). *For all $I \subseteq \{1, \dots, d\}$ and all $\ell \in \{1, \dots, L\}$, we have, with the notations of Definition 2 and Definition 4,*

$$\widehat{S}_I^{\text{c, pf}}(y_\ell(X)) = \frac{v_{\cdot, \ell}^\top \widehat{D}_I^{\text{c, pf}}(c(X)) v_{\cdot, \ell}}{v_{\cdot, \ell}^\top \widehat{Cov}^{\text{c, pf}}(c(X)) v_{\cdot, \ell}} \quad (3.3)$$

Proof. Consider the same random vectors X and Z from Subsec. 2.2 and let $Y = y_\ell(X) = v_{\cdot, \ell}^\top c(X)$ and $Y^* = v_{\cdot, \ell}^\top c(X_I, Z_{\sim I})$. Let us denote $\mathcal{C} = c(X)$ and $\mathcal{C}^* = c(X_I, Z_{\sim I})$, similarly to Definition 2 for $f(X)$.

Let us first consider the PF estimator of the partial variance of $y_\ell(X)$. By substituting it in Definition 2, we have

$$\widehat{D}_I^{\text{c, pf}}(y_\ell(X)) = Q(Y_{(1)}, \dots, Y_{(N)}, Y_{(1)}^*, \dots, Y_{(N)}^*)$$

where Q is the quadratic form in the variables $Y_{(1)}, \dots, Y_{(N)}, Y_{(1)}^*, \dots, Y_{(N)}^*$

$$Q(Y_{(1)}, \dots, Y_{(N)}, Y_{(1)}^*, \dots, Y_{(N)}^*) = \frac{1}{N} \sum_{k=1}^N Y_{(k)} Y_{(k)}^* - \left(\frac{1}{N} \sum_{k=1}^N \frac{Y_{(k)} + Y_{(k)}^*}{2} \right)^2$$

Notice that the definition of Q can be extended to vectors by replacing products with dot products:

$$\begin{aligned} Q(Y_{(1)}, \dots, Y_{(N)}, Y_{(1)}^*, \dots, Y_{(N)}^*) &= \frac{1}{N} \sum_{k=1}^N Y_{(k)} (Y_{(k)}^*)^\top \\ &\quad - \left(\frac{1}{N} \sum_{k=1}^N \frac{Y_{(k)} + Y_{(k)}^*}{2} \right) \left(\frac{1}{N} \sum_{k=1}^N \frac{Y_{(k)} + Y_{(k)}^*}{2} \right)^\top \end{aligned}$$

With this extended definition, we have, from Definition 4,

$$\widehat{D}_I^{\text{c, pf}}(c(X)) = Q(\mathcal{C}_{(1)}, \dots, \mathcal{C}_{(N)}, \mathcal{C}_{(1)}^*, \dots, \mathcal{C}_{(N)}^*)$$

Furthermore, as Q is a quadratic form, a direct computation shows that

$$\begin{aligned} Q(Y_{(1)}, \dots, Y_{(N)}, Y_{(1)}^*, \dots, Y_{(N)}^*) &= Q(v_{\cdot, \ell}^\top \mathcal{C}_{(1)}, \dots, v_{\cdot, \ell}^\top \mathcal{C}_{(N)}, v_{\cdot, \ell}^\top \mathcal{C}_{(1)}^*, \dots, v_{\cdot, \ell}^\top \mathcal{C}_{(N)}^*) \\ &= v_{\cdot, \ell}^\top Q(\mathcal{C}_{(1)}, \dots, \mathcal{C}_{(N)}, \mathcal{C}_{(1)}^*, \dots, \mathcal{C}_{(N)}^*) v_{\cdot, \ell} \end{aligned}$$

Finally, we obtain:

$$\widehat{D}_I^{\text{c pf}}(y_\ell(X)) = v_{\cdot, \ell}^\top \widehat{D}_I^{\text{c pf}}(c(X)) v_{\cdot, \ell}$$

The same method can be used for the PF estimator of the overall variance of $y_\ell(X)$, remarking that it is also defined as a quadratic form in the variables $Y_{(1)}, \dots, Y_{(N)}, Y_{(1)}^*, \dots, Y_{(N)}^*$. This leads to the announced formula. \square

Remark 3 (Extension to other pick-freeze estimators). *Looking at the proof of Proposition 2, we see that the result can be extended to all PF estimators that can be expressed with quadratic forms in the variables of the two samples. For instance, for the estimator 2.12 of total Sobol' indices, we have, with the notations of Definition 2 and Definition 4:*

$$\widehat{S}_I^{\text{tot pf}}(y_\ell(X)) = \frac{v_{\cdot, \ell}^\top \widehat{D}_I^{\text{tot pf}}(c(X)) v_{\cdot, \ell}}{v_{\cdot, \ell}^\top \widehat{\text{Cov}}^{\text{pf}}(c(X)) v_{\cdot, \ell}} \quad (3.4)$$

Proposition 2 allow to estimate the SMs of closed Sobol' indices in two approaches and obtain the exact same result, either using the Definition 3 for each output dimension (*dimension-wise* approach) or using formula (3.3) (*basis-derived* approach). This also applies for the SMs of Sobol' indices and total Sobol' indices, following Remark 2 and Remark 3. In the *dimension-wise* approach, only scalar-valued functions are considered, but the computation of Sobol' indices must be done for each pixel ℓ . In the *basis-derived* approach, a matrix containing the Sobol' index of the vector of coefficients is first computed. As this matrix does not depend on ℓ , it can be stored and reused to compute the SM by simple vector-matrix multiplications. Furthermore, as this matrix is generally of small size, equal to the number of basis functions, we can expect a substantial gain in the computational time.

To confirm this intuition, we now quantify the computational cost of the two approaches. We will assume the same cost for additions and multiplications.

Proposition 3 (Computational cost to compute $S_I^c(y_\ell(X))$). Assume that the PF samples $X^{(1)}, \dots, X^{(N)}, Z^{(1)}, \dots, Z^{(N)}$ and the corresponding output values $c(X^{(k)})$ and $c(X_I^{(k)}, Z_{\sim I}^{(k)})$ have been computed for $k = 1, \dots, N$, with $N \gg 1$. Let $H(x_1, x_2) = \frac{2x_1x_2}{x_1+x_2}$ be the harmonic mean of two positive real numbers x_1, x_2 . Then the ratio of computational costs between the dimension-wise (DW) and basis-derived (BD) approaches is equal to

$$\frac{(2m+4)NL}{4m^2N + mN + m^2 + mL(m+1)} > \frac{H(2N, L)}{3m} \quad (3.5)$$

Proof. The *dimension-wise* approach first requires obtaining L scalar output values by decoding the basis coefficients (Eq. 3.1) and then performing scalar-valued pick-freeze estimation over the L output dimensions through Definition 2, using $Y = y_\ell(X) = v_{\cdot, \ell}^\top c(X)$ and $Y^* = v_{\cdot, \ell}^\top c(X_I, Z_{\sim I})$. Next, the *basis-derived* approach performs the vector-valued pick-freeze estimation (Definition 4) considering the m -sized vectors $Y = c(X)$ and $Y^* = c(X_I, Z_{\sim I})$. Then Proposition 2 is applied. Tables 1 and 2 summarize the computational costs related to each mathematical expression calculated in each approach. For the last two operations of Table 2, we expanded the expression of form $x^\top Ax$ as follows

$$x^\top Ax = \sum_{i=1}^m x_i^2 A_{i,i} + 2 \sum_{1 \leq i < j \leq m} x_i x_j A_{i,j}.$$

where A is a symmetric matrix of size (m, m) and x is a vector of length m . The computation of $x^\top Ax$ can be done with approximately $\frac{3}{2}m(m+1)$ operations.

The ratio of computational costs is immediately deduced, using that $3m^2$ can be neglected relatively to $2m(3m+1)N$ as $N \gg 1$. The lower bound in (3.5) is due to the following inequalities (which are sharp when m is large)

$$\frac{2m(3m+1)}{m+2} < 6m, \quad \frac{3m(m+1)}{m+2} < 3m,$$

which implies

$$\frac{\text{Cost}_{\text{DW}}}{\text{Cost}_{\text{BD}}} \approx \frac{4(m+2)NL}{2m(3m+1)N + 3m(m+1)L} > \frac{4NL}{6mN + 3mL} = \frac{H(2N, L)}{3m}$$

□

<i>Dimension-wise</i> approach	Cost
Set $Y = y_\ell(X) = \sum_{i=1}^m c_i(X)v_{i,\ell}$	
Compute $Y_{(k)}, Y_{(k)}^*, \quad k = 1, \dots, N$	$4mN$
Compute $\alpha := \frac{1}{N} \sum_{k=1}^N Y_{(k)} Y_{(k)}^*$	$2N$
Compute $\beta := \frac{1}{2N} \sum_{k=1}^N \left(Y_{(k)}^2 + (Y_{(k)}^*)^2 \right)$	$4N$
Compute $\gamma := \frac{1}{2N} \sum_{k=1}^N \left(Y_{(k)} + Y_{(k)}^* \right)$	$2N$
Deduce $\widehat{S}_I^{\text{c, pf}}(y_\ell(X)) = \frac{\alpha - \gamma^2}{\beta - \gamma^2}$	-
Total Cost (ℓ fixed)	$4(m + 2)N$
Total Cost (for $\ell = 1, \dots, L$)	$\text{Cost}_{\text{DW}} = 4(m + 2)NL$

Table 1: *Dimension-wise* approach expressions and respective computational costs in function of number of basis components m , length of PF samples N and number of output dimensions L .

<i>Basis-derived approach</i>	Cost
Set $Y = c(X) = (c_1(X), \dots, c_m(X))^\top$	
Compute $A := \frac{1}{N} \sum_{k=1}^N Y_{(k)} (Y_{(k)}^*)^\top$	$2m^2N$
Compute $B := \frac{1}{2N} \sum_{k=1}^N [Y_{(k)} Y_{(k)}^\top + Y_{(k)}^* (Y_{(k)}^*)^\top]$	$4m^2N$
Compute $\gamma := \frac{1}{2N} \sum_{k=1}^N [Y_{(k)} + Y_{(k)}^*]$	$2mN$
Deduce $C = \gamma \gamma^\top$, $\widehat{D}_I^{\text{c,pf}}(c(X)) = A - C$ and $\widehat{\text{Cov}}^{\text{pf}}(c(X)) = B - C$	$3m^2$
Store $\widehat{D}_I^{\text{c,pf}}(c(X))$ and $\widehat{\text{Cov}}^{\text{pf}}(c(X))$	
For $\ell = 1, \dots, L$, compute $v_{\cdot,\ell}^\top \widehat{D}_I^{\text{c,pf}}(c(X)) v_{\cdot,\ell}$	$\approx \frac{3}{2}m(m+1)L$
For $\ell = 1, \dots, L$, compute $v_{\cdot,\ell}^\top \widehat{\text{Cov}}^{\text{pf}}(c(X)) v_{\cdot,\ell}$	$\approx \frac{3}{2}m(m+1)L$
<hr/>	
Total Cost: $\text{Cost}_{\text{BD}} \approx 2m(3m+1)N + 3m(m+1)L$	

Table 2: *Basis-derived* approach expressions and respective computational costs in function of number of basis components m , length of PF samples N and number of output dimensions L .

Proposition 3 shows that the ratio $\frac{\text{Cost}_{\text{DW}}}{\text{Cost}_{\text{BD}}}$ increases with L and decreases with m . This is expected since Cost_{DW} requires iterating over the output dimensions L whereas Cost_{BD} depends on the vector of basis coefficients of size m . In practice, if the dimension reduction is effective, we may expect that $m \ll L$. We may also choose N such that $m \ll N$. Then, $H(2N, L) > \min(2N, L)$, implying that

$$\frac{\text{Cost}_{\text{DW}}}{\text{Cost}_{\text{BD}}} > \frac{\min(2N, L)}{3m} \gg 1$$

This confirms the intuition of substantial computational gain of the *basis-derived* approach over the *dimension-wise* approach while obtaining the same exact result.

4. Applications

In this section, we present applications of GSA in cases with high dimensional outputs (time series and maps) using the contribution described in this work, i.e. PF scheme applied directly in basis components. The goal is to obtain the *Sensitivity Maps* (SMs). The treatment of functional outputs follows a general methodology, explained extensively in Marrel et al. (2011); Nagel et al. (2020); Li et al. (2020); Perrin et al. (2021). Basically, two steps are followed. First, output data are expanded in a functional basis (Eq. 3.1), which allows us to represent data with few m dimensions instead of L dimensions. Second, a metamodel is trained for each basis coefficient, enabling the fast and reasonably accurate prediction of coefficients. Therefore, the PF scheme becomes feasible with low computational resources. If one wants to predict the functional data represented in high-dimension L , the coefficients can be predicted by the metamodels and then original high-dimensional data can be recovered through a scalar product operation with the basis components.

In the following applications, we employed the Principal Component Analysis (PCA) and Gaussian Process Regression (GPR) methods as the basis-expansion and metamodeling techniques, respectively. The implementation was done in Python language, using the “scikit-learn” (Pedregosa et al., 2011) and “gpflow” (Matthews et al., 2017) libraries for the PCA and the GPR procedures, respectively. The scripts are publicly available in https://osf.io/njgzt/?view_only=9d7d6f02c1e447059bf2792aa34e1db0.

To verify the accuracy of the metamodels' predictions, we employed the Q^2 metric (Marrel et al., 2011) as indicated by Eq. 4.1.

$$Q^2 = 1 - \frac{\mathbb{E}_\ell\{\mathbb{E}_X[(y_\ell(X) - \hat{y}_\ell(X))^2]\}}{\mathbb{E}_\ell\{\text{Var}_X[y_\ell(X)]\}} \quad (4.1)$$

where \hat{y}_ℓ are metamodels' predictions. Here \mathbb{E}_ℓ denotes the expectation for the uniform probability distribution on $\{1, \dots, L\}$, equal to the average on ℓ . In practice \mathbb{E}_X and Var_X are approximated by computing the average on a sample drawn from the probability distribution of X . If $Q^2 > 0$, the metamodels' prediction is a better prediction than the average value of the observation. The closest to 1, the better the prediction accuracy.

Finally, since this work deals with high-dimensional output models, sensitivity indices are distributed along the domain (space or time series). To assess the global influence of each input variable in a single concise index, we employed the Generalized Sensitivity Index (GSI) (Lamboni et al., 2011; Perrin et al., 2021), indicated by Eq. 4.2.

$$\text{GSI}_I^c = \frac{\sum_{k=1}^m \lambda_k S_{I,k}^c}{\sum_{k=1}^m \lambda_k} \quad (4.2)$$

where λ_k is the eigenvalue of the k-th basis component and $S_{I,k}^c$ is the closed Sobol' index of the k-th basis coefficient. The GSI index is defined in a similar way for total Sobol' indices, replacing $S_{I,k}^c$ by $S_{I,k}^{\text{tot}}$ in (4.2).

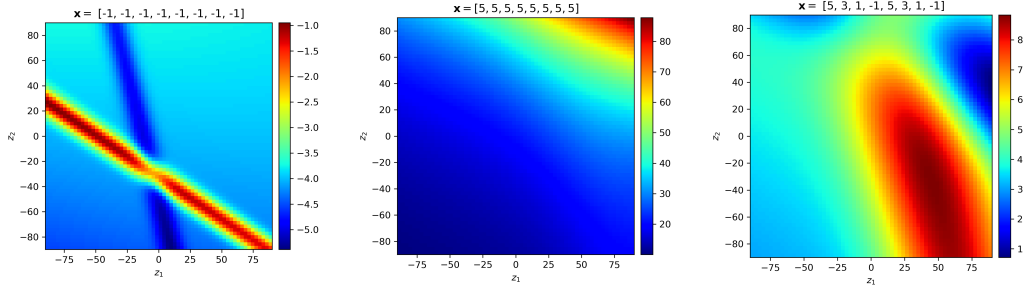
The following Subsection 4.1 details the application of GSA in an analytical function (Campbell2D function). Then, Subsection 4.2 describes the case of an idealized gradual dam-break flow case of non-Newtonian fluids, where GSA is applied to the observed time series - the maximum position of the wave (runout) over time.

4.1. Analytical case - Campbell2D function

The analytical test case presented here is the Campbell2D function (Marrel et al., 2011). The function has 8 inputs ($d = 8$), which can range from -1 to 5 , and produces a spatial map $y_\ell(X)$ as output. Equation 4.1 shows the mapping of inputs to spatial outputs. Figures 1a, 1b, 1c shows Campbell2D outputs for different input values, where the spatial domain is discretized on an uniform grid of size 64×64 .

$$\begin{aligned}
f: \quad & [-1, 5]^2 \longrightarrow \mathbf{L}^2 \left([-90, 90]^2 \right) \\
X = (x_1, \dots, x_8) \mapsto & y_\ell(X)
\end{aligned} \tag{4.3}$$

where $z = (z_1, z_2) \in [-90, 90]^2$.



(a) $X = [-1, -1, -1, -1, -1, -1, -1, -1]$.

(b) $X = [5, 5, 5, 5, 5, 5, 5, 5]$.

(c) $X = [5, 3, 1, -1, 5, 3, 1, -1]$.

Figure 1: Examples of Campbell2D spatial outputs.

Using the Latin Hypercube Sampling (LHS) technique, a Design of Experiment (DoE) of size 200 was generated considering uniform probability distributions for input variables. For the basis expansion, PCA was applied using $m = 7$ basis components, which account for 99.24% of the total variance. Then, each basis coefficient was metamodeled by a GPR using the Matérn 5/2 kernel and the “L-BFGS-B” optimizer for Maximum Likelihood Estimation. To evaluate the accuracy of the metamodels, the Q^2 metric (Eq. 4.1) was employed considering a validation set of size 50. Figure 2 shows $Q^2 > 0.95$, which implies good predictions from the metamodels. Therefore, we can ensure reasonably accurate predictions for the basis coefficients using the trained metamodels.

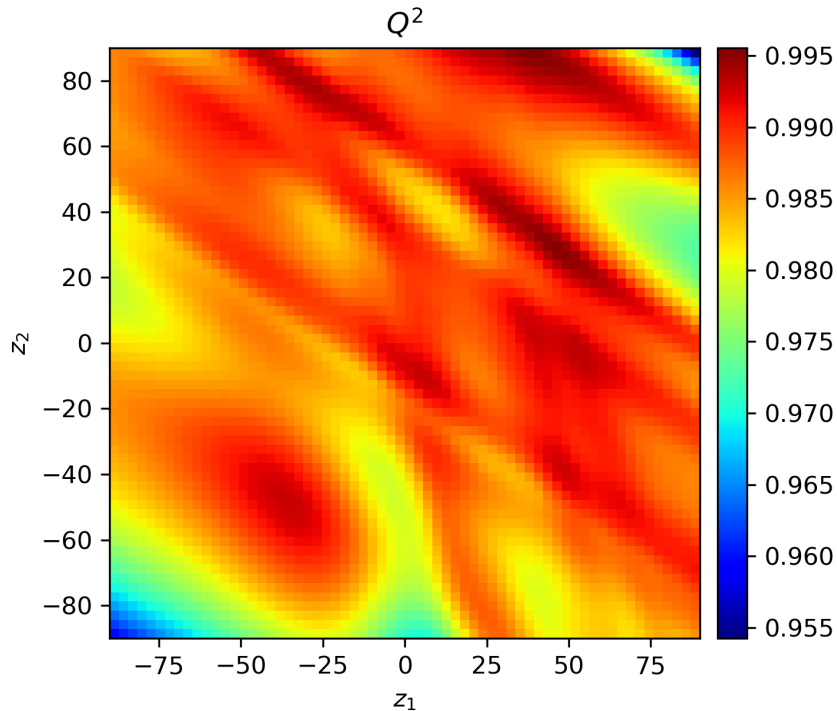


Figure 2: Q^2 metrics for evaluation of metamodels' accuracy.

To estimate the SMs, two methods were employed: the direct method and the *basis-derived* method. For the direct method, the outputs $y_\ell(X)$ of Campbell2D function were calculated using the theoretical equation and applied directly in Definition 2 for each output dimension. For the *basis-derived* solution, the predictions of basis coefficients from GPR metamodels were generated and applied in Definition 4. Both of them were computed using PF samples of size 5 000. The bootstrap method was employed to evaluate the mean result and the correspondent standard deviation, using 50 bootstrap replicates. Figures 3 and 4 show the first-order SMs for input variables x_2 and x_6 , both referring to the direct and *basis-derived* methods. In the same direction, Figs. 5 and 6 show the total order SMs for input variables x_4 and x_8 , respectively. The results of the *basis-derived* method present a

good agreement with those of the direct method, with errors mostly ranging from 5 to 15%. We can notice some zones with larger errors (50% for Fig. 3 and 30% for Fig. 4), associated with low-value Sobol' indices. Since we are considering the predicted SM with bootstrap mean, the error can be sensitive to the standard deviation around the mean due to the low-value indices.

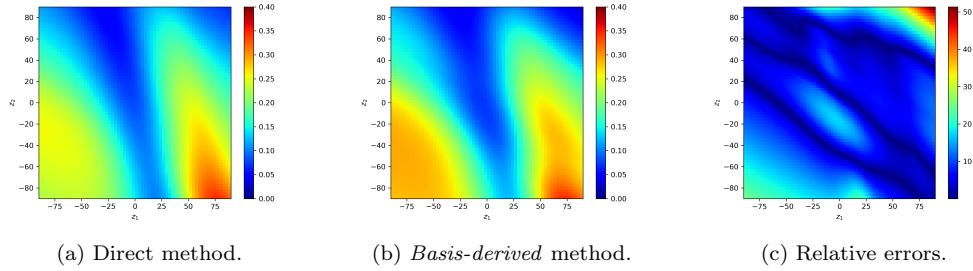


Figure 3: Comparison of the first-order SMs for x_2 obtained with the direct and *basis-derived* methods. In (c), the color scale values correspond to percentages of the direct method result represented in (a).

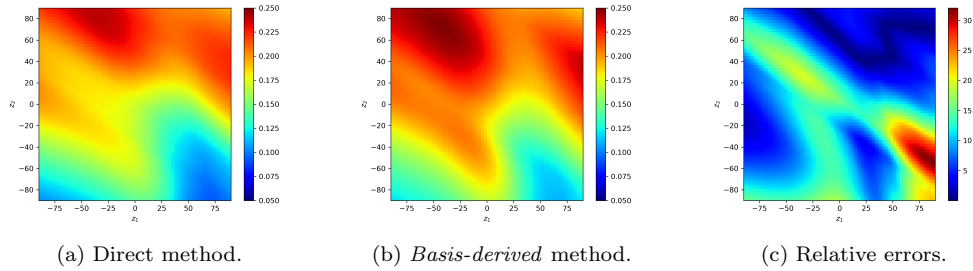


Figure 4: Comparison of the first-order SMs for x_6 obtained with the direct and *basis-derived* methods. In (c), the color scale values correspond to percentages of the direct method result represented in (a).

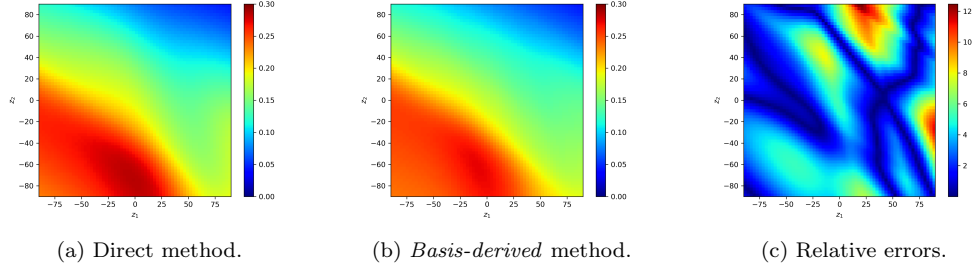


Figure 5: Comparison of the total order SMs for x_4 obtained with the direct and *basis-derived* methods. In (c), the color scale values correspond to percentages of the direct method result represented in (a).

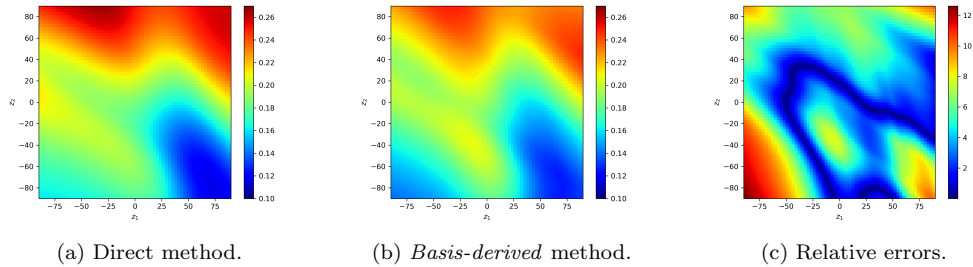


Figure 6: Comparison of the total order SMs for x_8 obtained with the direct and *basis-derived* methods. In (c), the color scale values correspond to percentages of the direct method result represented in (a).

To summarize the contribution of each input variable over the variance of outputs, the Generalized Sensitivity Index (GSI) can also be calculated (Eq. 4.2). Figure 7 shows the first-order and total indices, where the bootstrap method was also employed. Averaging through all the output domain, it is possible to make some remarks. First, the variables x_6 and x_8 are the most influential due to their high total index. Second, x_3 and x_5 are influential just while interacting with other variables; otherwise their main effects are negligible. On the other hand, x_2 , x_4 , x_7 and x_8 are defined almost completely by their main effect. Finally, x_1 is not influential, neither in its main effect nor in its interactions with other variables. The same results were obtained by Perrin et al. (2021).

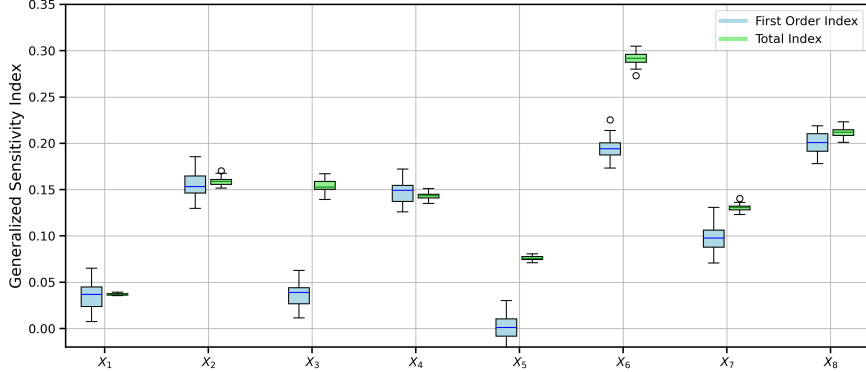


Figure 7: Generalized Sensitivity Indices of input variables.

Using Proposition 3 considering the given parameters ($N = 5\,000$, $m = 7$ and $L = 4096$), the theoretical gain is $\text{Cost}_{\text{DW}}/\text{Cost}_{\text{BD}} = 330$, i.e. the *basis-derived* approach is approximately 330 times faster than the *dimension-wise* approach. The practical computational gain was measured and is approximately 30 times faster for the *basis-derived* approach. Two factors can explain this 10-fold difference, especially those related to the implementation of the code: the specificity of the coding language and the hardware. About coding, some operations were executed in native Python and others in functions based on lower-level and more efficient languages (such as C and FORTRAN), which can degrade performance. For example, the “decoding” procedure in the *dimension-wise* approach is supposed to be, in theory, the most dominant term in Cost_{DW} (cost of $4mNL$, compared to the pick-freeze cost of $8NL$). However, using a highly efficient scalar product function (`numpy.dot`), it corresponds to half of the practical Cost_{DW} at maximum. Since the other terms cannot perform as efficiently, some disparities of practice with theory may occur. About the hardware, the simulations were performed in two setups: 1) AMD Ryzen 7 6800H 3.2 GHz with 16 logical processors; and 2) Apple M3 with 8 cores (used in all simulations). The first setup provided a cost ratio 2 times greater (approximately 60) than the second setup, although the second setup was faster in absolute computational time. It shows that the hardware can also affect the practical computational costs.

4.2. Idealized gradual dam-break flows of non-Newtonian fluids

This section presents the GSA study of the idealized case of gradual dam-break flow of non-Newtonian fluids. An idealized gradual dam-break flow consists of a known volume of material inside a reservoir delimited by the walls and a gate, which is lifted with a finite velocity and the material flows downstream a horizontal plane or channel (Fig. 8) (Matson and Hogg, 2007; Ancey and Cochard, 2009; Liu et al., 2016).

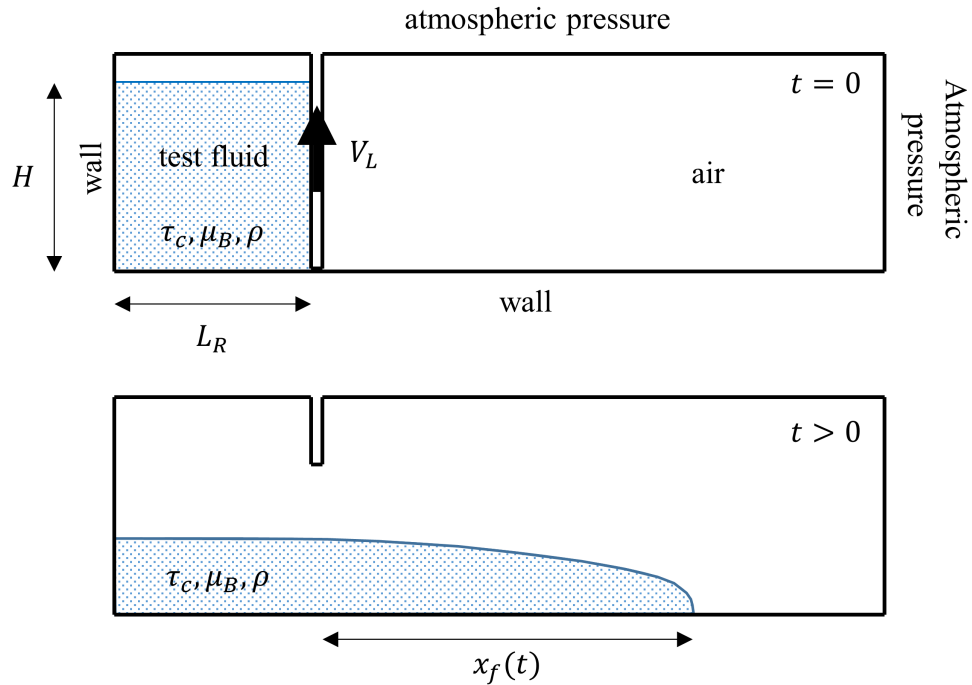


Figure 8: Schematic of the idealized gradual dam-break case with boundary conditions and input variables.

This application is relevant to many areas of engineering in the context of evaluating rheological properties and physical characteristics of non-Newtonian materials, such as fresh concrete, mud, gels, food, etc. We refer to Chhabra and Richardson (2011); Irgens (2014); Balmforth et al. (2014) for further details of non-Newtonian behavior of fluids. While rheological properties are usually assessed by equipment called “rheometers”, alternative techniques have been developed and studied, providing acceptable results

with less costs (Clayton et al., 2003; Pereira and Maciel, 2021; São et al., 2021; Gao and Fourie, 2015b; Balmforth et al., 2007). For each technique, particular geometric characteristics (e.g. maximum distance and/or maximum fluid height) are related to rheological properties through empirical correlations or analytical models (Pashias et al., 1996; Pereira et al., 2022). In this context, the case presented herein is important since it consists on the physical basis of relevant alternative rheometry techniques, such as the “slump test” (Clayton et al., 2003; Pereira and Maciel, 2021; Pereira et al., 2022), “mini-slump test” (Pashias et al., 1996; Gao and Fourie, 2015a) and the “Bostwick consistometer” (Balmforth et al., 2007; Minussi and Maciel, 2012).

We aim to apply the contribution of this work to study the influence of input variables (initial height, fluid properties and lifting dynamics) of the problem over a chosen quantity of interest: the position of the wavefront over time. In that way, we can obtain sensitivity indices along the entire time series, allowing us to have insights about the phenomena considering lifting dynamics, fluid characteristics and initial geometry.

4.2.1. Data acquisition

Data obtained in this work was produced by 2D numerical simulations using ANSYS Fluent r20.0, which employs the Finite Volume Method to discretize and solve the system of equations of continuity and momentum from fluid mechanics. Figure 8 shows the computational domain and boundary conditions. Structured quadrangular meshes with $\Delta x = 5 \times 10^{-4} m$ of resolution were used and the Layering technique was applied to address the moving boundary (lifting gate) (Gao and Fourie, 2015a; Pereira et al., 2022). The multiphasic model Volume of Fluid (VoF) was used to model different phases by introducing the variable Volume Fraction $\alpha_{(\cdot)}$ ($\alpha_1 = 0$ for air, $\alpha_2 = 1$ for test fluid, where $\alpha_1 + \alpha_2 = 1$) and to track the free surface of the test fluid ($0 < \alpha_2 < 1$) (Gopala and Van Wachem, 2008). To model the non-Newtonian fluid rheology, the regularized Bingham model was employed (Bird et al., 1983; Balmforth et al., 2014; Gao and Fourie, 2015a), whose constitutive equation in apparent viscosity η form is given by:

$$\eta = \begin{cases} \frac{\tau_c}{\dot{\gamma}_c} \left(2 - \frac{\dot{\gamma}}{\dot{\gamma}_c} \right) + \mu_B & \text{if } \dot{\gamma} \leq \dot{\gamma}_c \\ \frac{\tau_c}{\dot{\gamma}} + \mu_B & \text{if } \dot{\gamma} > \dot{\gamma}_c \end{cases} \quad (4.4)$$

where τ_c is the yield stress, μ_B is the plastic viscosity, $\dot{\gamma}$ is the shear rate and $\dot{\gamma}_c$ is the critical shear rate. We considered $\dot{\gamma}_c = 10^{-3} s^{-1}$, which is

sufficient to regularize the viscosity (Gao and Fourie, 2015a; Pereira et al., 2022).

Five input variables were considered: rheological properties τ_c and μ_B , density ρ , initial height H and lifting velocity V_L . The variables were considered uniformly distributed as shown in Tab. 3. The minimum and maximum values of rheological properties and density are based on the literature (O’Brien and Julien, 1988; Major and Pierson, 1992; Sosio et al., 2007; Blight, 2009; Sarsby, 2000). For lifting dynamics and initial height, we explored very low/high velocities and low/high aspect ratios given the fixed unitary volume of 0.26 m^3 and the prototypical dimensions of the domain.

Variable	Distribution
τ_c	$\mathcal{U}(0.1, 200) \text{ Pa}$
μ_B	$\mathcal{U}(0.01, 15) \text{ Pa.s}$
ρ	$\mathcal{U}(1000, 2650) \text{ Kg.m}^{-3}$
V_L	$\mathcal{U}(0.01, 1) \text{ m.s}^{-1}$
H	$\mathcal{U}(0.2, 1) \text{ m}$

Table 3: Input variables and their distributions.

A pure Monte-Carlo approach was used to generate an initial DoE of size 130. Then, the DoE was enriched with a Latin Hypercube sample, producing a final sample of size 226. The sample size was limited by the computational cost of each simulation. The simulations were performed and the quantity of interest evaluated was the wavefront position (runout) over time, or $x_f \times t$. Each output is composed of a sequence of x_f data points irregularly spread over time. To make this sequence regular, a linear interpolation was applied to each output. Finally, 226 curves were produced, formed by regular sequences of 5 000 interpolated points over time. Therefore, in this case, the number of output dimensions is $L = 5\,000$.

4.2.2. Results and discussion

The same procedure applied in Subsec. 4.1 was employed herein: outputs of the DoE were expanded through PCA ($m = 10$ accounting for more than 99.9% of the total variance) and the resulting basis coefficients were meta-modeled using GPR. To evaluate the accuracy of the predictions provided by metamodels, we defined 11 DoEs ($100 \leq n_T \leq 200$, in steps of 10) and calculated the respective Q^2 metrics (Eq. 4.1), as Figure 9 shows. The curves

refer to the bootstrap median (20 bootstrap replicates) and only the most accurate set of metamodels ($n_T = 200$) presents the 1st and 3rd quartiles area, for visualization reason. It is observable that the Q^2 score increases by increasing the size of the DoE, until approximately $n_T = 170$. For $n_T > 170$, the Q^2 score curves remain without significant variation. These score curves present $Q^2 \approx 0.8$ in early instants of time because of large variation of data in these instants; then, they increase to $Q^2 \approx 0.92$, showing these values during the entire remaining time series. We consider it as an acceptable prediction score and we chose $n_T = 200$ to carry out the analysis.

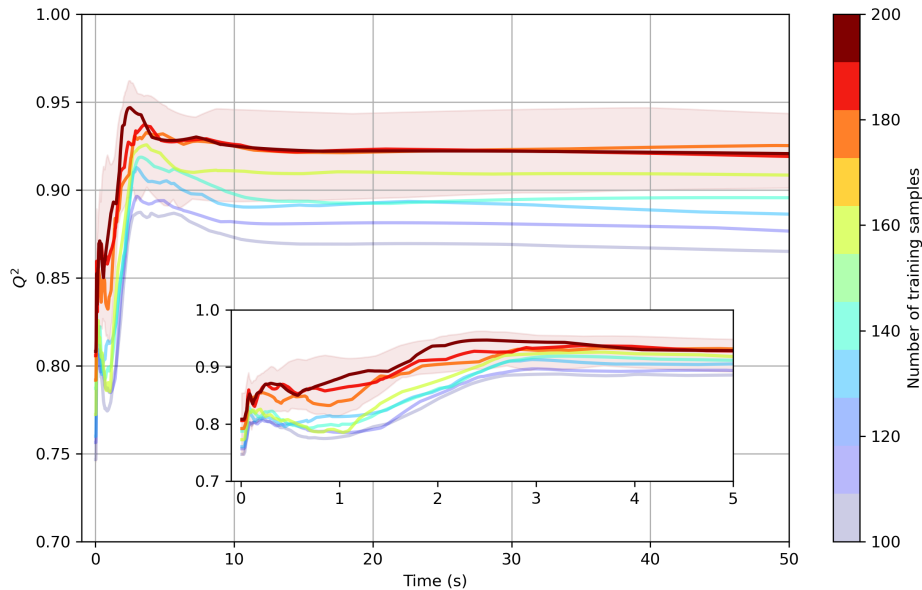


Figure 9: Accuracy of the prediction according to the Q^2 metric. The curves correspond to the bootstrap median and the shaded region is the area between the 1st and 3rd quartiles of the bootstrapping set (20 bootstrap replicates). A zoomed plot from times $t = 0$ and $t = 5$ s is presented for better visualization of initial time instants. For visualization reasons, the shaded region is shown just for the DoE of size 200.

For the GSA, PF samples of size 5 000 were generated and the Sobol' indices were computed using Definition 4, i.e. using the *basis-derived* approach. The bootstrap method was used to quantify the uncertainty related to the PF sample size. For this, 50 replicates were used, allowing us to obtain the

median and standard deviation of each SM. Figure 10 shows the entire time series of first-order (dashed lines) and total Sobol' indices (continuous lines) for each input variable over the runout x_f . It is globally observed that the plastic viscosity μ_B is most influential variable in most of the time series, followed by the yield stress τ_c , initial height H , density ρ and finally the lifting velocity V_L . It shows that the rheological properties of the fluid are, in fact, important for the runout, which shows the link between the dam-break flow and estimation of rheological properties.

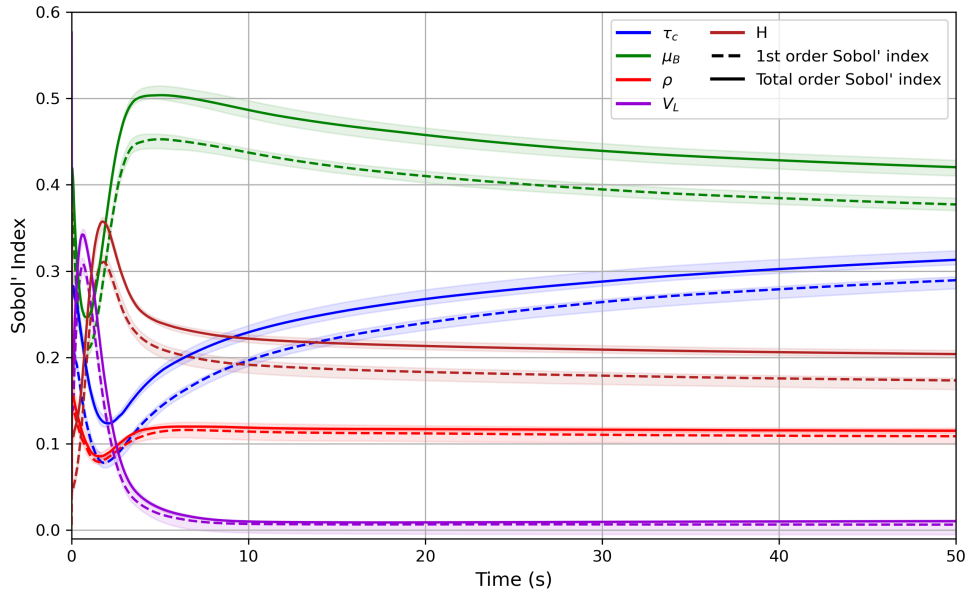


Figure 10: Total and first-order SMs of all input variables. Total Sobol' indices are represented by solid lines, whereas first-order Sobol' indices are represented by dashed lines. The estimation error is assessed by bootstrap with 50 replicates: lines correspond to the mean and shaded regions to the first and third bootstrap quartiles.

However, it is clear that the sensitivity of each input variable depends on time: in the beginning of the time series, V_L and H are more influential than in the end of the time series; conversely, τ_c becomes increasingly more influential later in the time series. Evaluating τ_c considering $t \rightarrow \infty$, its increasing influence is coherent with non-Newtonian fluid mechanics, since in steady regime the material remains static and the yield stress is perfectly coun-

terbalanced by hydrostatic pressure (Pashias et al., 1996; Gao and Fourie, 2015b; Pereira and Maciel, 2021). It means that the equilibrium position depends strongly on the yield stress, which is corroborated by our analysis.

To evaluate the initial times, Fig. 11 shows the Sobol' indices for $0 < t < 5$ s. The behavior of V_L and H makes physical sense. For V_L , a fast lifting of the gate releases more material, which ultimately affects the runout position x_f in the beginning of the time series; in later instants, this effect is counter-balanced by viscous forces (μ_B and τ_c) and V_L influence disappears. For H , a higher value means more gravitational potential energy, also affecting x_f , but its influence in later instants is only partially counter-balanced by viscous forces.

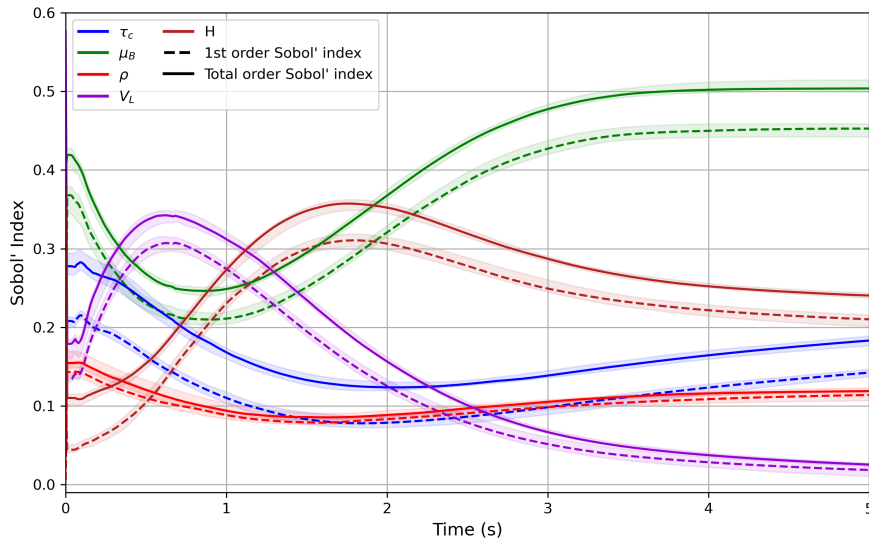


Figure 11: A zoomed plot of Fig. 10 on the initial time instants of the time series.

The global influence of each input variable can be described by the Generalized Sensitivity Indices (GSI) using Eq. 4.2, as Fig. 12 shows. The GSI values confirm that, indeed, μ_B and τ_c are the most influential parameters, followed by H , ρ and V_L . The slight difference between GSI and total GSI indicate that interactions between variables are not strong; the same can be concluded by checking the first-order and total SMs from Figs. 10 and 11. We should note that the GSI analysis is not able to interpret locally (or in-

stantaneously) the influence of each input variable, although it possesses a clear advantage which is producing a concise index to describe globally the influences.

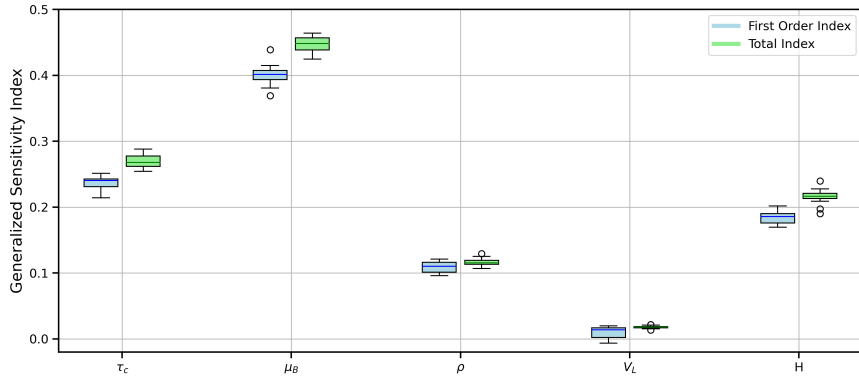


Figure 12: Comparison between first-order Generalized Sensitivity Indices (GSI) and Total GSI for each input variable.

The theoretical computational gain for the parameters given in this case is $\text{Cost}_{\text{DW}}/\text{Cost}_{\text{BD}} = 252$, whereas the practical computational gain is approximately 35 faster for the *basis-derived* approach. The same observations made for the computational costs of Campbell2D function can be applied here.

5. Conclusion and future works

In this work, we employed a fast PF estimator of Sobol’ indices in the context of high-dimensional output models with basis-expanded data, aiming to compute *Sensitivity Maps* (SMs), called herein *basis-derived* approach. Statistical estimation of Sobol’ indices was explored and formulas for closed Sobol’ indices were given, with an immediate extension to Sobol’ indices of any order and total Sobol’ indices. This estimator uses directly the basis coefficients and basis components, instead of using the original form of data output (*dimension-wise* approach). It was proven that the *basis-derived* approach involves much fewer operations in comparison with the *dimension-wise* approach, hence “fast”, which allows to calculate both SM and their associated bootstrap confidence bounds in a reasonable time. This advantage also impacts the calculation of other quantities, such as the Generalized

Sensitivity Index (GSI), which uses the covariance matrices calculated by the method. Furthermore, this estimator is general and can be applied with any basis expansion (e.g. wavelets, b-splines) and metamodeling techniques (e.g. neural networks, Polynomial Chaos Expansion).

We applied the estimator in two applications, using the Principal Component Analysis (PCA) and Gaussian Process Regression (GPR) techniques: the analytical Campbell2D function and the idealized gradual dam-break flow of non-Newtonian fluid. Overall, the coupled procedure of dimension-reduction with metamodeling was capable of reducing the dimensionality of outputs and of producing accurate results with less computational resources. Moreover, the procedure worked with limited DoE size, in the order of 200, which is particularly useful for high-cost simulations. The procedure allowed us to apply the *basis-derived* PF estimator using a PF sample of sufficient size to make reasonable analyses.

For the first application, the *basis-derived* PF method showed to be capable of recovering the theoretical SMs with an acceptable accuracy, while performing less operations. For the second application, the method provided the continuous time series of Sobol' indices, which allowed us to better understand the phenomena by checking the sensitivity of each input variable over the output data. It was found that the influence of input variables change considerably in function of time, which reflects the transient nature of the phenomena. Non-newtonian characteristics of the fluid (plastic viscosity and yield stress) represented the major source of contribution over the total variance and the lifting dynamics of the gate only contributed in initial times of the flow.

Acknowledgments

We would like to acknowledge the Fundação de Amparo à Pesquisa do Estado de São Paulo (FAPESP) for the Ph.D. scholarship funding (processes 2022/05184-1 and 2023/08472-0) of the first author. Part of the research has been done in the frame of the Chair PILearnWater, part of the AI Cluster ANITI, funded by the French National Research Agency.

References

Abdi, H., Williams, L.J., 2010. Principal component analysis. Wiley interdisciplinary reviews: computational statistics 2, 433–459.

- Ancey, C., Cochard, S., 2009. The dam-break problem for herschel–bulkley viscoplastic fluids down steep flumes. *Journal of Non-Newtonian Fluid Mechanics* 158, 18–35.
- Azzini, I., Mara, T.A., Rosati, R., 2021. Comparison of two sets of monte carlo estimators of sobol’indices. *Environmental Modelling & Software* 144, 105167.
- Balmforth, N., Craster, R., Perona, P., Rust, A., Sassi, R., 2007. Viscoplastic dam breaks and the bostwick consistometer. *Journal of non-newtonian fluid mechanics* 142, 63–78.
- Balmforth, N.J., Frigaard, I.A., Ovarlez, G., 2014. Yielding to stress: recent developments in viscoplastic fluid mechanics. *Annual review of fluid mechanics* 46, 121–146.
- Becker, W., 2020. Metafunctions for benchmarking in sensitivity analysis. *Reliability Engineering & System Safety* 204, 107189.
- Bird, R.B., Dai, G., Yarusso, B.J., 1983. The rheology and flow of viscoplastic materials. *Reviews in chemical engineering* 1, 1–70.
- Blight, G.E., 2009. *Geotechnical engineering for mine waste storage facilities*. CRC press.
- Borgonovo, E., Plischke, E., 2016. Sensitivity analysis: A review of recent advances. *European Journal of Operational Research* 248, 869–887.
- Chhabra, R.P., Richardson, J.F., 2011. *Non-Newtonian flow and applied rheology: engineering applications*. Butterworth-Heinemann.
- Clayton, S., Grice, T., Boger, D., 2003. Analysis of the slump test for on-site yield stress measurement of mineral suspensions. *International journal of mineral processing* 70, 3–21.
- Da Veiga, S., Gamboa, F., Iooss, B., Prieur, C., 2021. *Basics and trends in sensitivity analysis: Theory and practice in R*. SIAM.
- Devroye, L., 1986. Sample-based non-uniform random variate generation, in: *Proceedings of the 18th conference on Winter simulation*, pp. 260–265.

- Fonseca, D.J., Navarrese, D.O., Moynihan, G.P., 2003. Simulation meta-modeling through artificial neural networks. *Engineering applications of artificial intelligence* 16, 177–183.
- Fruth, J., Roustant, O., Kuhnt, S., 2014. Total interaction index: A variance-based sensitivity index for second-order interaction screening. *Journal of Statistical Planning and Inference* 147, 212–223.
- Gamboa, F., Janon, A., Klein, T., Lagnoux, A., 2013. Sensitivity indices for multivariate outputs. *Comptes Rendus. Mathématique* 351, 307–310.
- Gamboa, F., Janon, A., Klein, T., Lagnoux, A., Prieur, C., 2016. Statistical inference for sobol pick-freeze monte carlo method. *Statistics* 50, 881–902.
- Gao, J., Fourie, A., 2015a. Spread is better: An investigation of the mini-slump test. *Minerals Engineering* 71, 120–132.
- Gao, J., Fourie, A., 2015b. Using the flume test for yield stress measurement of thickened tailings. *Minerals Engineering* 81, 116–127.
- Gopala, V.R., Van Wachem, B.G., 2008. Volume of fluid methods for immiscible-fluid and free-surface flows. *Chemical Engineering Journal* 141, 204–221.
- Hawchar, L., El Soueidy, C.P., Schoefs, F., 2017. Principal component analysis and polynomial chaos expansion for time-variant reliability problems. *Reliability Engineering & System Safety* 167, 406–416.
- Helton, J.C., Johnson, J.D., Sallaberry, C.J., Storlie, C.B., 2006. Survey of sampling-based methods for uncertainty and sensitivity analysis. *Reliability Engineering & System Safety* 91, 1175–1209.
- Iooss, B., Lemaître, P., 2015. A review on global sensitivity analysis methods. *Uncertainty management in simulation-optimization of complex systems: algorithms and applications* , 101–122.
- Irgens, F., 2014. *Rheology and non-newtonian fluids. volume 1*. Springer.
- Janon, A., Klein, T., Lagnoux, A., Nodet, M., Prieur, C., 2014. Asymptotic normality and efficiency of two sobol index estimators. *ESAIM: Probability and Statistics* 18, 342–364.

- Jansen, M.J., 1999. Analysis of variance designs for model output. *Computer Physics Communications* 117, 35–43.
- Lamboni, M., Monod, H., Makowski, D., 2011. Multivariate sensitivity analysis to measure global contribution of input factors in dynamic models. *Reliability engineering & system safety* 96, 450–459.
- Li, M., Wang, R.Q., Jia, G., 2020. Efficient dimension reduction and surrogate-based sensitivity analysis for expensive models with high-dimensional outputs. *Reliability Engineering & System Safety* 195, 106725.
- Liu, Y., Balmforth, N., Hormozi, S., Hewitt, D., 2016. Two-dimensional viscoplastic dambreaks. *Journal of Non-Newtonian Fluid Mechanics* 238, 65–79.
- Major, J.J., Pierson, T.C., 1992. Debris flow rheology: Experimental analysis of fine-grained slurries. *Water resources research* 28, 841–857.
- Marrel, A., Iooss, B., Jullien, M., Laurent, B., Volkova, E., 2011. Global sensitivity analysis for models with spatially dependent outputs. *Environmetrics* 22, 383–397.
- Matson, G., Hogg, A., 2007. Two-dimensional dam break flows of herschel-bulkley fluids: the approach to the arrested state. *Journal of non-newtonian fluid mechanics* 142, 79–94.
- Matthews, A.G.d.G., van der Wilk, M., Nickson, T., Fujii, K., Boukouvalas, A., León-Villagra, P., Ghahramani, Z., Hensman, J., 2017. GPflow: A Gaussian process library using TensorFlow. *Journal of Machine Learning Research* 18, 1–6. URL: <http://jmlr.org/papers/v18/16-537.html>.
- McKay, M.D., 1995. Evaluating prediction uncertainty. Technical Report. Nuclear Regulatory Commission.
- Minussi, R.B., Maciel, G.d.F., 2012. Numerical experimental comparison of dam break flows with non-newtonian fluids. *Journal of the Brazilian Society of Mechanical Sciences and Engineering* 34, 167–178.
- Monod, H., Naud, C., Makowski, D., 2006. Uncertainty and sensitivity analysis for crop models. *Working with dynamic crop models: Evaluation, analysis, parameterization, and applications* 4, 55–100.

- Morris, M.D., 1991. Factorial sampling plans for preliminary computational experiments. *Technometrics* 33, 161–174.
- Nagel, J.B., Rieckermann, J., Sudret, B., 2020. Principal component analysis and sparse polynomial chaos expansions for global sensitivity analysis and model calibration: Application to urban drainage simulation. *Reliability Engineering & System Safety* 195, 106737.
- O’Brien, J.S., Julien, P.Y., 1988. Laboratory analysis of mudflow properties. *Journal of hydraulic engineering* 114, 877–887.
- Owen, A.B., 2013. Better estimation of small sobol’sensitivity indices. *ACM Transactions on Modeling and Computer Simulation (TOMACS)* 23, 1–17.
- Pashias, N., Boger, D., Summers, J., Glenister, D., 1996. A fifty cent rheometer for yield stress measurement. *Journal of rheology* 40, 1179–1189.
- Pedregosa, F., Varoquaux, G., Gramfort, A., Michel, V., Thirion, B., Grisel, O., Blondel, M., Prettenhofer, P., Weiss, R., Dubourg, V., Vanderplas, J., Passos, A., Cournapeau, D., Brucher, M., Perrot, M., Duchesnay, E., 2011. Scikit-learn: Machine learning in Python. *Journal of Machine Learning Research* 12, 2825–2830.
- Pereira, J., Maciel, G., 2021. Automated slump test: An effective alternative in predicting rheological properties and an efficient tool for providing the quality control of materials. *Measurement* 178, 109384.
- Pereira, J.B., Sáó, Y.T., de Freitas Maciel, G., 2022. Numerical and experimental application of the automated slump test for yield stress evaluation of mineralogical and polymeric materials. *Rheologica Acta* 61, 163–182.
- Perrin, T., Roustant, O., Rohmer, J., Alata, O., Naulin, J., Idier, D., Pedreros, R., Moncoulon, D., Tinarid, P., 2021. Functional principal component analysis for global sensitivity analysis of model with spatial output. *Reliability Engineering & System Safety* 211, 107522.
- Saltelli, A., 2002. Making best use of model evaluations to compute sensitivity indices. *Computer physics communications* 145, 280–297.
- Saltelli, A., Annoni, P., Azzini, I., Campolongo, F., Ratto, M., Tarantola, S., 2010. Variance based sensitivity analysis of model output. *design and*

- estimator for the total sensitivity index. *Computer physics communications* 181, 259–270.
- Saltelli, A., Ratto, M., Andres, T., Campolongo, F., Cariboni, J., Gatelli, D., Saisana, M., Tarantola, S., 2008. *Global sensitivity analysis: the primer*. John Wiley & Sons.
- Sáo, Y.T., Pereira, J.B., Fiorot, G.H., Maciel, G.d.F., 2021. Obtaining flow curve for viscoplastic fluids through inclined open-channel apparatus. *Journal of the Brazilian Society of Mechanical Sciences and Engineering* 43, 278.
- Sarsby, R.W., 2000. *Environmental geotechnics*. Thomas Telford.
- Sobol, I., 1993. Sensitivity estimates for nonlinear mathematical models. *Math. Model. Comput. Exp.* 1, 407.
- Sobol, I.M., 2001. Global sensitivity indices for nonlinear mathematical models and their monte carlo estimates. *Mathematics and computers in simulation* 55, 271–280.
- Sosio, R., Crosta, G., Frattini, P., 2007. Field observations, rheological testing and numerical modelling of a debris-flow event. *Earth Surface Processes and Landforms* 32, 290–306.
- Sudret, B., 2008. Global sensitivity analysis using polynomial chaos expansions. *Reliability engineering & system safety* 93, 964–979.
- Terraz, T., Ribes, A., Fournier, Y., Iooss, B., Raffin, B., 2017. Melissa: large scale in transit sensitivity analysis avoiding intermediate files, in: *Proceedings of the international conference for high performance computing, networking, storage and analysis*, pp. 1–14.
- Tissot, J.Y., Prieur, C., 2015. A randomized orthogonal array-based procedure for the estimation of first-and second-order sobol’indices. *Journal of Statistical Computation and Simulation* 85, 1358–1381.
- Williams, C., Rasmussen, C., 1995. Gaussian processes for regression. *Advances in neural information processing systems* 8.
- Zou, J., Han, Y., So, S.S., 2009. Overview of artificial neural networks. *Artificial neural networks: methods and applications* , 14–22.