



**HAL**  
open science

## Long-term monitoring reveals topographical features and vegetation that explain winter habitat use of an Arctic rodent

Xaver von Beckerath, Gita Benadi, Olivier Gilg, Benoît Sittler, Glenn Yannic, Alexandra-Maria Klein, Bernhard Eitzinger

### ► To cite this version:

Xaver von Beckerath, Gita Benadi, Olivier Gilg, Benoît Sittler, Glenn Yannic, et al.. Long-term monitoring reveals topographical features and vegetation that explain winter habitat use of an Arctic rodent. *Arctic Science*, 2022, 8 (2), pp.349-361. 10.1139/as-2021-0010 . hal-04827635

**HAL Id: hal-04827635**

**<https://hal.science/hal-04827635v1>**

Submitted on 6 Jan 2025

**HAL** is a multi-disciplinary open access archive for the deposit and dissemination of scientific research documents, whether they are published or not. The documents may come from teaching and research institutions in France or abroad, or from public or private research centers.

L'archive ouverte pluridisciplinaire **HAL**, est destinée au dépôt et à la diffusion de documents scientifiques de niveau recherche, publiés ou non, émanant des établissements d'enseignement et de recherche français ou étrangers, des laboratoires publics ou privés.

## 1 Title

2 Long-term monitoring reveals topographical features and vegetation explain winter habitat  
3 use of an Arctic rodent

## 4 Abstract

5 Collapsing lemming cycles have been observed across the Arctic, presumably due to global  
6 warming creating less favorable winter conditions. The quality of wintering habitats, such as  
7 depth of snow cover, plays a key role in sustaining population dynamics of arctic lemmings.  
8 However, few studies so far investigated habitat use during the arctic winter. Here, we used  
9 a unique long-term time series to test whether lemmings are associated with topographical  
10 and vegetational habitat features for their winter refugium. We examined yearly numbers and  
11 distribution of 22,769 winter nests of the collared lemming *Dicrostonyx groenlandicus* from  
12 an ongoing long-term research on Traill Island, Northeast Greenland, collected between  
13 1989 and 2019, and correlated this information with data on dominant vegetation types,  
14 elevation and slope. We specifically asked if lemming nests were more frequent at sites with  
15 preferred food plants such as *Dryas octopetala x integrifolia* and at sites with increased snow  
16 cover. We found that the number of lemming nests was highest in areas with a high  
17 proportion of *Dryas* heath, but also correlated with other vegetation types which suggest  
18 some flexibility in resource use of wintering lemmings. Conversely, they showed a distinct  
19 preference for sloped terrain, probably as it enhances the formation of deep snow drifts  
20 which increases the insulative characteristics of the snowpack and protection from  
21 predators. With global warming, prime lemming winter habitats may become scarce through  
22 alteration of snow physical properties, potentially resulting in negative consequence for the  
23 whole community of terrestrial vertebrates.

## 24 Key words

25 Arctic tundra, climate change, *Dicrostonyx groenlandicus*, Greenland, habitat use, population  
26 dynamics

## 27 Authors

28 Name: Xaver von Beckerath  
29 ORCID: 0000-0002-1560-0178  
30 Mail: xaver.von.beckerath@mail.nature.uni-freiburg.de  
31 Address: Chair of Nature Conservation and Landscape Ecology  
32 University of Freiburg  
33 Tennenbacher Straße 4  
34 79106 Germany

35 Name: Gita Benadi  
36 ORCID: 0000-0002-5263-422X  
37 Mail: gita.benadi@biom.uni-freiburg.de  
38 Address: Biometry & Environmental System Analysis  
39 University of Freiburg  
40 Tennenbacher Straße 4  
41 79106 Germany

42 Name: Olivier Gilg  
43 ORCID 0000-0002-9083-4492  
44 Mail: olivier.gilg@gmail.com  
45 Address: UMR 6249 Chrono-environnement  
46 Université de Bourgogne Franche-Comté  
47 16 route de Gray, Besançon  
48 25000 France

49 Groupe de Recherche en Ecologie Arctique,  
50 16 Rue de Vernot, Francheville  
51 21440 France

52 Name: Benoît Sittler  
53 ORCID -  
54 Mail: benoit.sittler@nature.uni-freiburg.de  
55 Address: Chair of Nature Conservation and Landscape Ecology  
56 University of Freiburg  
57 Tennenbacher Straße 4  
58 79106 Germany

59 Groupe de Recherche en Ecologie Arctique,  
60 16 Rue de Vernot, Francheville  
61 21440 France

62

63

64

65

66

67 Name: Glenn Yannic  
68 ORCID: 0000-0002-6477-2312  
69 Mail: glenn.yannic@univ-smb.fr  
70 Address: Laboratoire d'Ecologie Alpine  
71 Université Savoie Mont Blanc  
72 2233 Rue de la Piscine, Gières  
73 38610 France  
74  
75 Le centre national de la recherche scientifique  
76 Université Grenoble Alpes  
77 25 Avenue des Martyrs, Grenoble  
78 38000 France  
79 Groupe de Recherche en Ecologie Arctique,  
80 16 Rue de Vernot, Francheville  
81 21440 France  
82 Name: Alexandra-Maria Klein  
83 ORCID: 0000-0003-2139-8575  
84 Mail: alexandra.klein@nature.uni-freiburg.de  
85 Address: Chair of Nature Conservation and Landscape Ecology  
86 University of Freiburg  
87 Tennenbacher Straße 4  
88 79106 Germany  
89 Name: Bernhard Eitzinger  
90 ORCID: 0000-0001-5903-4887  
91 Mail: bernhard.eitzinger@mail.nature.uni-freiburg.de  
92 Address: Chair of Nature Conservation and Landscape Ecology  
93 University of Freiburg  
94 Tennenbacher Straße 4  
95 79106 Germany  
96

97

98

99

100

101

102

103

104

## 105 Introduction

106 Climate change is impacting the Earth's ecological and biological systems. According to the  
107 Intergovernmental Panel on Climate Change (IPCC), the Arctic surface temperature has  
108 increased twice as fast as the global average over the last 20 years, with alterations in  
109 precipitation, snow cover and permafrost temperature (Pörtner et al. 2019). Environmental  
110 change has triggered measurable shifts in performance and distributions of plant and animal  
111 species, translating into ecosystem-wide changes (Post et al. 2009). Arctic ecosystems are  
112 hypothesized to have little functional redundancy (Wookey et al. 2009) and changes in  
113 phenology, distribution and behavior of species may therefore have disproportional impacts  
114 on the structure and functioning of their communities and ecosystems (Gilg et al. 2012).  
115 Among vertebrates, lemmings play a key role in the High Arctic tundra food web (Batzli et al.  
116 1980). They are year-round residents and thus have to survive on local primary production  
117 throughout the year (Soininen et al. 2015). In addition, they show little migratory behavior  
118 which emphasizes the importance of local vegetation for their survival (Gilg 2002). As a key  
119 prey for many terrestrial arctic predators, lemmings impact reproduction and abundance of  
120 those, which in turn creates feedbacks on lemming cyclic dynamics (Sittler et al. 2000, Gilg et  
121 al. 2003, 2006, Therrien et al. 2014). Lemmings also influence the dynamics of other  
122 vertebrate prey such as geese (Bêty et al. 2001) and other incidental prey species (Mckinnon  
123 et al. 2013). Lemmings are well-known for their regular, large-amplitude population cycles  
124 (Ims and Fuglei 2005), climaxing every three to five years (Gilg et al. 2003, Gruyer et al. 2008,  
125 Ehrich et al. 2020). Although predator-prey interactions are commonly argued to be the  
126 cause of the lemming cycles (Gilg et al. 2003, Fauteux et al. 2016), the role of the  
127 environment in the modulation of such dynamics is only poorly understood (Kausrud et al.  
128 2008). For example, population cycles of the Norwegian lemming *Lemmus lemmus* have  
129 been found to be driven by the availability of food plants (Turchin et al. 2000), however,  
130 recent studies have challenged this assumption (Ims et al. 2011, Soininen et al. 2015).

131 Collapsing lemming cycles have been observed at different sites in the Arctic, including  
132 Northeast Greenland (Kausrud et al. 2008, Gilg et al. 2009, Schmidt et al. 2012b, Ehrich et al.  
133 2020). The most prevailing explanation for these disruptions is the impact of changing snow  
134 characteristics due to climate change (Ims et al. 2008, Kausrud et al. 2008, Gilg et al. 2009).  
135 Thick snow cover insulates wintering lemmings from low ambient air temperatures and

136 increases their protection from predators (Reid et al. 2012). Thus, a thin snowpack appears  
137 to be a strong limiting factor for recruitment and lemming survival, that may maintain  
138 lemming at low densities (Reid and Krebs 1996). Moreover, habitat selection studies suggest  
139 that climate-induced landscape change may be beneficial for some lemming species and  
140 detrimental for others (Morris et al. 2011). The detrimental effect of global warming is  
141 supported by a paleogenomics study that shows previous climate warming events to have  
142 strongly reduced the population size of arctic lemmings *Dicrostonyx torquatus* (Prost et al.  
143 2010). Furthermore, according to ecological niche modeling, arctic lemmings lost  
144 approximately 80% of their suitable habitat since the last glacial period, 21,000 years ago  
145 (Prost et al. 2013).

146 The collared lemming *Dicrostonyx groenlandicus* is found in High Arctic ecosystems of  
147 northern Canada, Alaska and Greenland. Dry dwarf-shrub heath and herb slopes, which are  
148 rich in *Salix arctica* and *Dryas spp.*, are the preferred summer habitats of the collared  
149 lemming (Batzli et al. 1983, Schmidt 2000, Predavec and Krebs 2000, Morris et al. 2011, Ale  
150 et al. 2011). However, habitat use during winter remains poorly known due to the challenges  
151 involved in studying them beneath the snow in the harsh winter arctic conditions (Soininen  
152 et al. 2015). Yet, successful reproduction during the winter season plays a key role in  
153 lemming population dynamics (Ims et al. 2011, Bilodeau et al. 2013a) and it is even  
154 considered a necessary condition for the occurrence of a population outbreak (Fauteux et al.  
155 2015). Lemmings build subnivean nests (i.e. nests under the snow) made of vegetation,  
156 which are assumed to provide insulation against low temperatures and to protect litters  
157 from predation (Sittler 1995, Duchesne et al. 2011, Domine et al. 2018).

158 Winter nests are generally built on the ground or within the snowpack. After snowmelt,  
159 these nests can be found lying on the ground with no signs of connection to the vegetation  
160 below. Winter nests are often clumped and connected through tunnels, suggesting some  
161 social relationship between their inhabitants (Sittler 1995). Collared lemmings stay in their  
162 winter quarters until the snowpack is soaked with melt water and collapses. By that time,  
163 lemmings seek their summer habitats in dry and early snow free heath lands (Fauteux et al.  
164 2018). So far, surprisingly few studies have investigated these nests to identify habitat usage  
165 during winter, even though winter nests are easily spotted after snowmelt in the Arctic  
166 tundra.

167 To date, the most comprehensive study exploring the effects of snow cover and habitat  
168 features on the distributions and reproduction of winter nests took place on Bylot Island,  
169 Canada (Duchesne et al. 2011). Here, collared lemming nests, sampled over two consecutive  
170 years, were mainly located in areas with high micro-topography heterogeneity, steep slopes,  
171 deep snow and a high cover of mosses (Duchesne et al. 2011). Other studies focused solely  
172 on the relationship between snow cover and winter nests. These studies noted a  
173 concentration of winter nests in areas of greatest winter snow accumulation (Reid and Krebs  
174 1996, Reid et al. 2012, Bilodeau et al. 2013a), in particular on sloped terrain, which provides  
175 shelter for the deposition of wind-blown snow in drifts (Reid et al. 2012). An alternative  
176 approach to analyzing winter habitat preferences of lemmings is to identify plant fragments  
177 in their stomach contents or faecal pellets. Such studies documented that collared lemmings  
178 feed mostly on dicots during the arctic winter (Batzli et al. 1983, Rodgers and Lewis 1985,  
179 Bergman and Krebs 1993), specifically *Dryas spp.* and *S. arctica* (Berg 2003). Winter diets of  
180 lemmings were dominated by different species of *Salix* in a more recent study based on  
181 environmental DNA metabarcoding of faecal pellets, and mosses, which are the most  
182 dominant plants in locations with many lemming nests, are of minor importance (Soininen et  
183 al. 2015). However, several older studies found that the lemming's diet varied between sites,  
184 which suggests some flexibility in food choice (Rodgers and Lewis 1985, Bergman and Krebs  
185 1993).

186 Collectively, these studies demonstrate that no clear pattern has been detected to explain  
187 how lemmings choose their winter habitat. This could be due to the fact that past studies  
188 exclusively captured individual population phases (Duchesne et al. 2011, Reid et al. 2012,  
189 Soininen et al. 2015), possibly ignoring the effect of a cycling population on habitat use, i.e. a  
190 potential density-dependent effect. The assumption is that lemmings undergo density-  
191 dependent dispersal as a result of intraspecific competition in the subnivean space and may  
192 be forced to emigrate to less optimal habitats, as preferred sites are thought to be limited.  
193 This study is the first to examine the long-term determinants of winter habitat use of  
194 lemmings by analyzing data collected over 30 years. Using this unique time series, we were  
195 able to define characteristics of lemming winter habitats at an unprecedented scale. The  
196 objective of our study is to determine the ecological factors influencing the spatial  
197 distribution of winter nests of collared lemmings, allowing to identify areas of frequent  
198 habitat use. Habitat use is defined as the way an animal consumes a collection of physical

199 and biological components in a habitat, while habitat selection takes into account the  
200 availability of resources (Hall et al. 1997), which we were not able to consider in our analysis.  
201 We hypothesize that lemmings mainly use areas providing a deep snow cover and a rich  
202 plant food source. As *Dryas* heath hosts the highest abundance of preferred food plants, we  
203 predict that, (1) sites with a greater abundance of *Dryas* heath and greater vegetation cover  
204 have a positive effect on nest counts. Furthermore, since snow depth is highest at the  
205 bottom of steep slopes, we predict that (2) the number of lemming winter nests is higher on  
206 sites with increased slopes.

## 207 Material and Methods

### 208 Study area

209 This study was carried out as part of the joint French-German research project  
210 “Karupelv Valley Project” (<https://www.karupelv-valley-project.de/english>;  
211 <http://www.grearctique.org/karupelv>). The core research area covers approximately 15 km<sup>2</sup>  
212 and is located on the southwestern coast of Traill Island, Northeast-Greenland (72.5°N;  
213 24°W, Fig. 1). The study area is bordered by the Karupelv river to the south and the Eskdal  
214 river to the east (Fig. 1). The northern border follows small streams and geomorphological  
215 structures towards the coast (Rau 1995). The region is part of the Northeast Greenland  
216 National Park and offers a study site with minimal human impact for long-term surveys  
217 (Sittler 1995). Mean summer temperature in July is 5.8°C and mean winter temperature in  
218 February -22.4°C. Annual precipitation is 261 mm with relatively dry summers as most falls  
219 as snow in winter (Hansen et al. 2008). Snow cover is usually present from September to  
220 June or July (Gilg et al. 2009). The study area covers lowlands and sloped terrain of different  
221 scales, the maximum slope gradient is 67° and the area spans elevation ranges from 0 to 122  
222 m a.s.l. (Porter et al. 2018).

223 The site is classified as High Arctic tundra (Walker et al. 2005), and has five dominating  
224 vegetation types (Rau 1995). *Cassiope* Heath consists of pure stands of *Cassiope tetragona*  
225 and *Dryas* Heath is dominated by *Dryas octopetala x integrifolia*. Spot tundra is a sparse  
226 vegetation with sporadically occurring vegetation islands of *Cassiope* heath and *Dryas* heath.  
227 In areas with wet conditions during the whole vegetation period such as streams and fens, a  
228 tundra-typical wet vegetation occurs, dominated by mosses and relatively tall sedges



229 (*Carex* spp., *Eriophorum scheuchzeri*). Characteristics of the recent floodplains are various  
230 species of rockfoils (e.g. *Saxifraga aizoides*). The vegetation-free areas resemble the semi-  
231 polar deserts in the North and are characterized by sand dunes (Rau 1995). The dominant  
232 mammal species is the collared lemming, which forms the main prey for arctic fox  
233 *Vulpes lagopus*, stoat *Mustela erminea*, snowy owl *Bubo scandiacus* and, during peak years,  
234 also for long-tailed skua *Stercorarius longicaudus* (Gilg et al. 2006, Andreassen et al. 2017).

### 235 [Winter nest survey](#)

236 To document lemming cycles in a long-term perspective, the research project opted for a  
237 yearly monitoring based on the non-invasive and easily replicable census of winter nests.  
238 These nests are obligate indicators for the prolonged stay of the lemmings in the subnivean  
239 environment and can therefore provide information on their habitat use in the Arctic  
240 Tundra.

241 Although several lemmings can inhabit the same nest (Rodgers and Lewis 1986), winter  
242 nests are a good proxy of lemming population densities (Gilg et al. 2006). Winter nests were  
243 recorded by the same person (BS) from 1988 to 2019. The census took place between the  
244 end of June and the beginning of August, i.e. for about four weeks after snowmelt. Winter  
245 nests are easily detectable after snow melt in the High Arctic tundra and can thus be  
246 counted accurately over a larger area (Sittler 1995). Since nests need to be destroyed upon  
247 recording to avoid double counting in the following years, the first year of data assessment  
248 was omitted. Hence, this study includes 31 years of data (1989-2019). Nests were recorded  
249 while walking 30 m-wide transects on flat terrain, and 20 m-wide in rugged topography. High  
250 quality aerial photography was used to divide the study region into grid cells and ensure that  
251 the same census effort was devoted to each cell (Sittler 1995). The same aerial photography  
252 was then used to assign nest records to a specific cell. For that, the study region was divided  
253 into squares of ca. 250 × 250 m. This methodology gives indices on relative abundance,  
254 habitat use and spacing patterns during winter (Sittler 1995).

### 255 [Data processing](#)

256 Answering our research questions required the revision of the nest data (see Supporting  
257 information) and the creation of a digital version of the above-mentioned grid. GIS-based  
258 data management and extraction was implemented with ArcMap 10.7.1. First, all aerial

259 photographs were georeferenced with a high-resolution (10 m) satellite image (see  
260 Supporting information) from the Copernicus Mission (Copernicus Sentinel data 2017). Next,  
261 a new digital grid was created with the fishnet tool that matched the analogue one in a best-  
262 fit scenario. As the aerial photographs did not align perfectly, some deviation was expected.  
263 Many of the contiguous aerial photographs slightly overlapped with each other (see  
264 Supporting information), thus it was necessary to manually merge certain cells and create a  
265 new grid identification system (see Supporting information). Nest counts were translated to  
266 the new identification system and assigned to the digital grid. Single cells, which were  
267 located outside the core study area and did not contain any nest recordings, were erased.  
268 Therefore, the new grid consists of 274 cells of 250 × 250 m (62,500 m<sup>2</sup>) in size, with a total  
269 extent of approximately 15 km<sup>2</sup>.

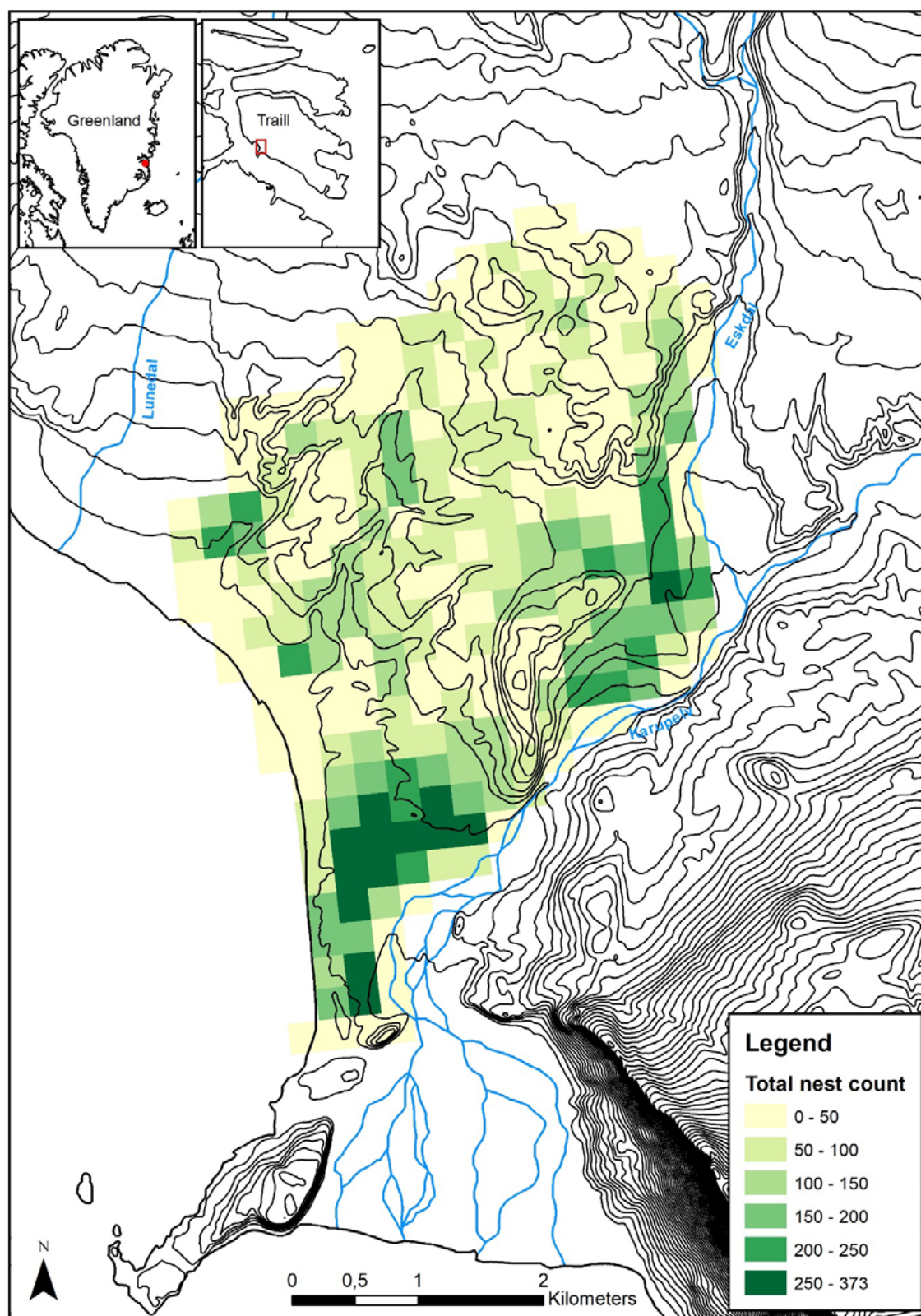
270 Elevation (m a.s.l.) and slope (degrees) were extracted from a digital elevation model (5 m  
271 resolution) supplied by the ArcticDem project (Porter et al. 2018). Elevation units are  
272 referenced to the WGS84 ellipsoid by the ArcticDem project (Porter et al. 2018). We used  
273 the EGM2008 geoid undulation model to convert ellipsoidal height to mean sea level by  
274 using the coordinates of the research area (72.5°N; 24°W) as input variables (Pavlis et al.  
275 2012). With the elevation and the digital grid in place we could extract topographic and  
276 vegetation data for each patch using common GIS tools. Slope was calculated using the  
277 Spatial Analyst toolbar and the digital elevation model. Elevation and slope were then  
278 calculated for each patch by taking the mean of all raster cells in that patch (see Supporting  
279 information). Vegetation data was derived from a geo-ecological study of the study region  
280 (Rau 1995)(Supporting information). This study analyzed vegetation types at the end of the  
281 growing season in early August. It classified 13 different vegetation types throughout the  
282 core research area. For a more detailed description of the vegetation types see Supporting  
283 information. Given the slow changes in vegetation in the region (Schmidt et al. 2012a), we  
284 considered that this dataset was relevant to use for the entire study period.

## 285 **Statistical analysis**

286 Due to the high inter-annual fluctuations in winter nest numbers, the proportion of empty  
287 cells varied greatly between years (see Supporting information for a complete list of nest  
288 presence and empty cells). We first fitted a Generalized Linear Model (GLM) with Poisson  
289 errors and log link to the data, but since diagnostic tests indicated significant overdispersion

290 and zero-inflation, we used a zero-inflated negative binomial GLM as our final model, with  
291 only an intercept fitted to account for the excess number of zeros. Additionally, we  
292 accounted for possible non-independence of data points by testing for spatial  
293 autocorrelation of model residuals separately for each year and for temporal autocorrelation  
294 separately for each grid cell. Since spatial autocorrelation was detected in 23 of 31 years and  
295 temporal autocorrelation in 20 of 274 grid cells (see Supporting information), we  
296 subsequently applied a Matérn covariance structure to account for spatial autocorrelation  
297 and an autoregression structure (AR1) to account for temporal autocorrelation. In the  
298 model, the number of lemming winter nests per grid cell was the response variable and  
299 mean elevation per cell, mean slope per cell and the area of each vegetation type in the cell  
300 were explanatory variables. All variables are continuous. To test for density-effects on  
301 habitat use, we also calculated separate models for years with low (< 2 lemmings/ha) and  
302 high (> 2 lemmings/ha) lemming densities (Gilg et al. 2019).

303 Due to the large number of different vegetation types, only the six dominant ones (spot  
304 tundra, moss-sedges tundra, *Dryas* heath, *Cassiope* heath and Sand Dunes) were included in  
305 this study (see Supporting information). All predictors were standardized to a mean value of  
306 0 and a standard deviation of 1, to facilitate model convergence and enable us to compare  
307 the explanatory contributions of each independent variable regardless of units. Testing all  
308 predictors for correlation produced correlation coefficients smaller than 0.41. Simulation-  
309 based standardized residuals were used to check for patterns in the residuals against fitted  
310 values and predictors. All statistical analyses were performed with R 4.0 (R Core Team 2020)  
311 and the packages glmmTMB (Brooks et al. 2017) and DHARMA (Hartig 2017).



312

313 *Figure 1. Cumulated number of lemming winter nest censused between 1989 and 2019 on 274 grids of ca. 250×250 m in the*

314 *Karupelv valley on Traill Island, Northeast-Greenland.*

## 315 Results

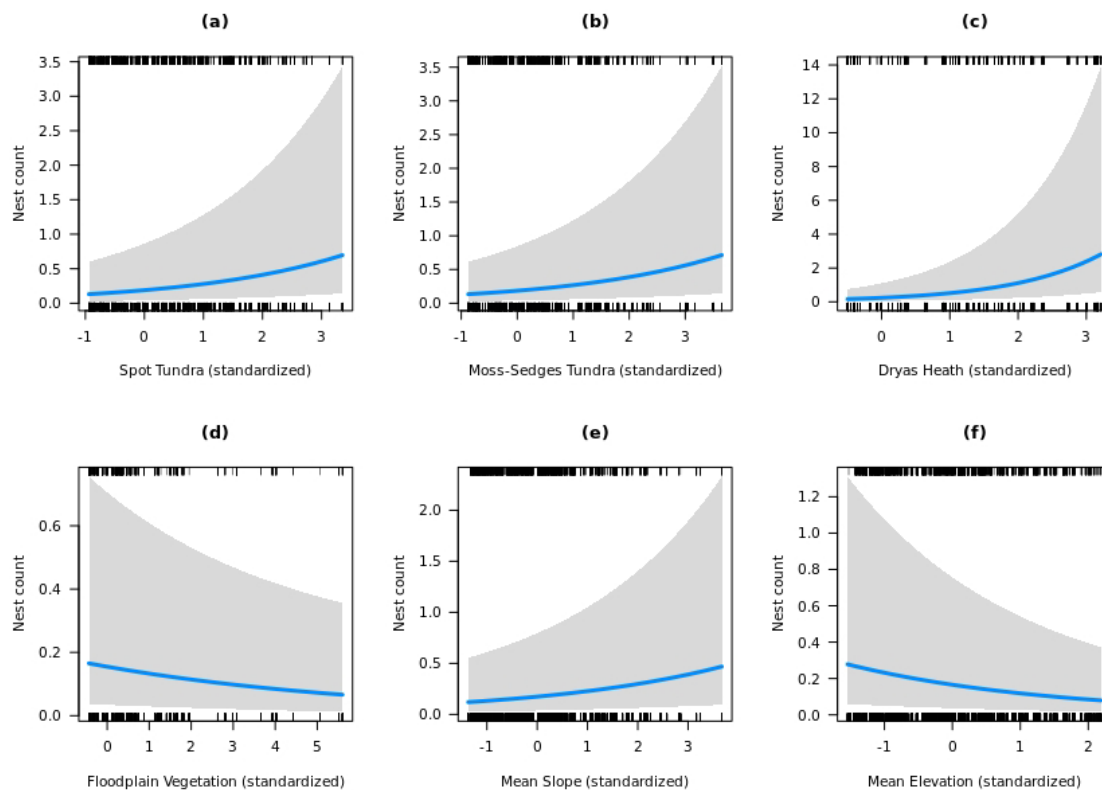
316 In total, 22,769 individual nests were counted on 274 grid cells during 31 years. Seven of  
317 these cells (2.5%) did not host any nests at any time, while the highest cumulative number  
318 recorded in one cell reached 373 nests. We found no noteworthy difference of habitat use  
319 between years of low and high lemming density (Supporting information). Therefore, we  
320 here present the results of the model including all years, despite the large difference in total  
321 lemming density (Table 1). Six of eight factors in our model had a significant effect on  
322 lemming nest numbers. The number of nests was positively related to three vegetation  
323 types: Spot tundra (Fig. 2a), moss-sedges tundra (Fig. 2b) and *Dryas* heath (Fig. 2c).  
324 Conversely, the number of lemming nests declined with an increase in floodplain vegetation  
325 (Fig. 2d), while we found no effect for *Cassiope* heath and sand dunes. Regarding  
326 geophysical variables, slope (mean: 4.21 %  $\pm$  0.161 SE) increased the number of nests (Fig.  
327 2e) while elevation (mean for all grids: 50 m; range: 0-119 m) had a negative effect (Fig. 2f),  
328 meaning that fewer nests were found at high elevation.

329 *Table 1. Summary table of negative binomial generalized linear model of the effect of vegetation type, elevation and slope*  
330 *on total lemming nest number for all years (1989-2019). Significant results are highlighted in bold.*

Fixed Factors	Estimate	Std. Error	Z-value	P-value
Intercept	-0.39752	0.22342	-1.779	0.0752
<b>Spot tundra</b>	<b>0.38838</b>	<b>0.07608</b>	<b>5.105</b>	<b>&lt;0.001</b>
<b>Moss-sedges tundra</b>	<b>0.36903</b>	<b>0.06975</b>	<b>5.291</b>	<b>&lt;0.001</b>
<b>Dryas heath</b>	<b>0.76331</b>	<b>0.08507</b>	<b>8.972</b>	<b>&lt;0.001</b>
Cassiope heath	0.06993	0.06196	1.129	0.2591
Sand dunes	-0.03833	0.06954	-0.551	0.5815
<b>Floodplain vegetation</b>	<b>-0.15149</b>	<b>0.06853</b>	<b>-2.211</b>	<b>0.0271</b>
<b>Mean slope</b>	<b>0.26964</b>	<b>0.06755</b>	<b>3.992</b>	<b>&lt;0.001</b>
<b>Mean elevation</b>	<b>-0.33578</b>	<b>0.08084</b>	<b>-4.154</b>	<b>&lt;0.001</b>

331

332



333

334 *Figure 2: Effect plots for all significant predictors (see Table 1) across all years (1989-2019). Nest counts are shown per grid.*

335 *Shaded area represents 95% confidence intervals.*

336

337

338

339

340

341

342

343

344

## 345 Discussion

346 This study is the first to examine the long-term determinants of winter habitat use of  
347 lemmings by analyzing data collected over 30 years. Corroborating results from recent short-  
348 term studies (Duchesne et al. 2011, Reid et al. 2012, Soininen et al. 2015), we found that  
349 both, vegetation types and geomorphological structures play a significant role in driving  
350 habitat use of collared lemmings. In addition, we found no evidence for shifts in habitat use  
351 between years of high and low population size, suggesting that lemmings are not  
352 constrained by habitat resources. Below, we will examine each finding in turn.

353 Our study shows that collared lemmings are not restricted to one vegetation type during the  
354 winter months, but instead use multiple vegetation types. However, we found indirect  
355 support for the hypothesis that lemmings mainly use areas with deep snow cover,  
356 characterized by higher topographic heterogeneity. Winter nests were more abundant at  
357 locations with a greater proportion of *Dryas* heath than in places that were dominated by  
358 spot tundra or moss-sedges tundra, which all host a different plant species composition  
359 (Supporting information). We can thus accept the first hypothesis that lemming cluster at  
360 sites with *Dryas* heath and key food plant species (e.g. *S. arctica*, *D. octopetala x integrifolia*)  
361 therein. This fits into a series of studies across the Arctic that document a preference of  
362 *Dryas* but also some flexibility in the use of food resources by lemmings, as diets vary  
363 depending on the dominance of different plant species: *Dryas* was preferred by lemmings at  
364 Pearce Point (Northwest Territories, Canada), based on faecal pellets collected in early  
365 spring (Bergman and Krebs 1993) and in Igloodik (Nunavut, Canada), based on live-trapping in  
366 the snowpack (Rodgers and Lewis 1985). By contrast, in regions with low abundance of  
367 *Dryas*, *Salix* was found to be dominant food plant as indicated by the location of nests,  
368 associated latrine sites and faecal pellets in Northern Greenland (Klein and Bay 1994) and  
369 percentage of shoots clipped after snowmelt in Alaska, respectively (Batzli et al. 1983).  
370 These past findings are consistent with the most recent study on Bylot Island (Nunavut,  
371 Canada) analyzing faeces of co-existing brown lemmings and collared lemmings (Soininen et  
372 al. 2015). Although the winter diet of *D. groenlandicus* was generally dominated by *Salix*,  
373 most plant taxa that were identified as forage were consumed in proportion to their  
374 availability.

375 In our study, *Cassiope* heath cover did not affect winter site use by lemmings, although past  
376 research identified *C. tetragona* as non-food plant for lemmings in the winter months that  
377 was avoided (Soininen et al. 2015). In fact, lemmings were only observed to eat the flowers  
378 of *Cassiope* which are available during summer (Berg 2003). Conversely, we expected  
379 *Cassiope* heath to be attractive for lemmings as an indicator for snow-beds (Pedersen et al.  
380 2016). However, as *Cassiope* only covers 4% of the total area, we were unable to detect  
381 positive or negative effects on lemming densities.

382 The most comparable study so far listed areas with a low abundance of lichens and a high  
383 abundance of mosses as preferred sites for winter nests (Duchesne et al. 2011). Collared  
384 lemmings have also been found to consume a greater proportion of mosses during the  
385 winter than during the summer (Rodgers and Lewis 1986), possibly because mosses contain  
386 fatty acids keeping body temperature at a high level in cold climates (Prins 1982). Although  
387 our study also identified lemming nests on grids with a dominant “moss-sedges tundra”  
388 vegetation, they were less strongly favored than *Dryas* heath. We found indication that  
389 winter nest site use on Traill Island is mostly linked to *Dryas* heath and to a lesser extent to  
390 mosses, sedges and spot tundra. The positive correlation with spot tundra (surface coverage  
391 between 31% and 60%) suggests that a low vegetation cover does not affect lemming winter  
392 site selection at a certain level. However, habitat types with less than 10% vegetation cover  
393 are less likely to be inhabited by lemmings: Floodplain vegetation, which is also  
394 characterized by a low biomass and low plant species diversity are being avoided by  
395 wintering lemmings, while we also found only low winter use of sand dunes habitat.

396 Previous studies noted heterogeneity of micro-topography as the most important factor  
397 determining both summer habitat (Morris et al. 2000) and winter habitat of lemmings  
398 (Duchesne et al. 2011). In line with these studies, slope had a positive effect in our model,  
399 and the increased usage of topographic features by wintering lemmings is an indirect effect  
400 of habitat configuration in the study region. Indeed, in contrast to the relatively flat plateaus  
401 and dunes, the steep slopes of gullies and terraces enhance the formation of deep snow  
402 drifts (Bilodeau et al. 2013b). Additionally, the hiemal threshold may be reached faster on  
403 wind-protected slopes than in less protected areas after the initial winter storms (Reid et al.  
404 2012). Consequently, as the greatest winter snow accumulation attracts lemmings, this has  
405 been connected to a concentration of winter nests (Duchesne et al. 2011, Reid et al. 2012,  
406 Bilodeau et al. 2013a).



407 Deeper snow will provide higher and more stable subnivean temperatures (Duchesne et al.  
408 2011), thus reducing the physiological stress that lemmings undergo during winter (Bilodeau  
409 et al. 2013c). A high thermal resistance was found in snow drifts and in willow shrubs, thus  
410 explaining their suitability as a habitat for subnivean life (Domine et al. 2016). Additionally,  
411 snow offers small mammals some mechanical protection against many predators, although  
412 the amount of protection depends on the predator species (Berteaux et al. 2017). For  
413 example, snow can effectively protect lemmings from Arctic foxes (Duchesne et al. 2011) but  
414 less so from stoats (Bilodeau et al. 2013b), probably because their small size allows them to  
415 move under the snow through tunnels created by their small rodent prey (Berteaux et al.  
416 2017). Ground depressions with snow accumulations may however also be disadvantageous  
417 as melt-freeze events in spring can form hard refrozen crusts or even ice layers near the  
418 ground, thereby destroying the subnivean microhabitat (Berteaux et al. 2017). In addition,  
419 rain-on-snow events during autumn can harden the basal snow layer causing the same effect  
420 (Domine et al. 2018). Thus, weather conditions during the establishment of the snow-bed  
421 largely determine the physical properties of the bottom snow layer (Berteaux et al. 2017).  
422 These initial conditions could have a lasting impact on the quality of the subnivean space for  
423 the whole winter (Domine et al. 2016). The persistent pattern of snow-depth distribution  
424 mainly controlled the spatial distribution of vegetation in a snow modelling experiment in  
425 Zackenberg, Northeast-Greenland (Pedersen et al. 2016). Here, *Dryas* Heath occurred at  
426 significantly lower snow depth than observed for the remaining four other vegetation types  
427 (Pedersen et al. 2016). In addition, a snow fencing experiment on Herschel Island (Canadian  
428 Arctic) documented that the winter nest density intensified in areas with an artificially  
429 increased snow depth. After removing the fences, snow depth and winter nest density in the  
430 treatment area returned to pre-intervention conditions (Reid et al. 2012). The duration of  
431 the experiment on Herschel Island (one winter) would not have allowed for a shift in  
432 vegetation, emphasizing the dominant role of snow conditions in habitat use of lemmings.  
433 Winter nest site counts significantly dropped with higher elevations in our study. Here, lower  
434 snow accumulation due to greater exposition to wind and lower vegetation cover most likely  
435 forbid the establishment of amenable conditions necessary for survival of lemming in winter.

436 We found no evidence that nest counts are connected to different habitat features in years  
437 with high and low lemming population sizes. Our results however indicate, that by using a  
438 wide array of different and abundant vegetation types, lemmings find enough winter nesting

439 sites which are able to support even high lemming populations in peak years. Similarly, the  
440 study area provides an abundance of geomorphologic features providing thick snow covers  
441 needed for thermal insulation and protection of predators. Lemmings populations, including  
442 *Dicrostonyx* on Traill Island, are assumed to be top-down controlled by specialist predators  
443 such as the ermine (Sittler 1995, Gilg et al. 2003). However, the ongoing warming of the  
444 Arctic and coupled shifts in habitat quantity and quality, along with changes in snow quality,  
445 are considered to be the prime factors to explain crash of lemming cycles and reduced  
446 overall population numbers (Kausrud et al. 2008, Post et al. 2009, Gilg et al. 2009). While the  
447 study region of Northeast Greenland has experienced only moderate shifts in vegetation  
448 cover (Schmidt et al. 2012a), recent weather extremes (Schmidt et al. 2019) suggest that  
449 alterations in snow regime could strongly impact lemming winter habitat use in the future.

450

451

452

453

454

455

456

457

458

459

460

461

462

463

464

465

466

467

## 468 Conclusion

469 The results of this study highlight the importance of both, vegetation and geomorphological  
470 structures as determinants of the spatial distribution of wintering lemming populations. As  
471 warming in the Arctic proceeds, lemmings will be confronted with significant changes in  
472 quality and quantity of their (still) abundant winter nesting sites. Shifts in vegetation, rain-  
473 on-snow events during autumn and melt-freeze events in spring may alter the quality of  
474 these refugia and could decrease the survival of lemmings in winter and be responsible for  
475 the recent distortions of population dynamics (Domine et al. 2018), which could potentially  
476 affect the whole tundra ecosystem (Gilg et al. 2012). Although lemmings do not decline on a  
477 global scale, regional disruptions may be the result of large geographical variability in  
478 climate, snow physical properties and community composition across the Arctic (Ehrich et al.  
479 2020). Future studies should aim to further investigate the relation of snow properties and  
480 lemming winter habitats. This could e.g. be done by applying high resolution local snow  
481 models to look at dynamic (snow) versus rather slowly changing (vegetation) environmental  
482 parameters. This would allow us to scrutinize where lemmings would be more likely to  
483 persist with climate changes, and finally to assess broader impacts on the structure and  
484 functioning of polar ecosystems.

485

486

487

488

489

490

491

492

493

494

495

## 496 References

- 497 Ale, S. B. et al. 2011. Habitat selection and the scale of ghostly coexistence among Arctic rodents. -  
498 *Oikos* 120: 1191–1200.
- 499 Andreassen, P. N. S. et al. 2017. Gastrointestinal parasites of two populations of Arctic foxes (*Vulpes*  
500 *lagopus*) from north-east Greenland. - *Polar Res.* 36: 13.
- 501 Batzli, G. et al. 1980. The herbivore-based trophic system. An arctic ecosystem: the coastal tundra at  
502 Barrow, Alaska Dowden. - Hutchinson & Ross.
- 503 Batzli, G. et al. 1983. Habitat use by lemmings near Barrow, Alaska. - *Holarct. Ecol.* 6: 255–262.
- 504 Berg, T. 2003. The collared lemming (*Dicrostonyx groenlandicus*) in Greenland: Population dynamics  
505 and habitat selection in relation to food quality.
- 506 Bergman, C. and Krebs, C. 1993. Diet overlap of collared lemmings and tundra voles at Pearce-Point,  
507 Northwest-Territories. - *Can. J. Zool.-Rev. Can. Zool.* 71: 1703–1709.
- 508 Berteaux, D. et al. 2017. Effects of changing permafrost and snow conditions on tundra wildlife:  
509 critical places and times. - *Arct. Sci.* 3: 65–90.
- 510 Bêty, J. et al. 2001. Are goose nesting success and lemming cycles linked? Interplay between nest  
511 density and predators. - *Oikos* 93: 388–400.
- 512 Bilodeau, F. et al. 2013a. Demographic response of tundra small mammals to a snow fencing  
513 experiment. - *Oikos* 122: 1167–1176.
- 514 Bilodeau, F. et al. 2013b. Effect of snow cover on the vulnerability of lemmings to mammalian  
515 predators in the Canadian Arctic. - *J. Mammal.* 94: 813–819.
- 516 Bilodeau, F. et al. 2013c. The effect of snow cover on lemming population cycles in the Canadian High  
517 Arctic. - *Oecologia* 172: 1007–1016.
- 518 Brooks, M. E. et al. 2017. glmmTMB Balances Speed and Flexibility Among Packages for Zero-inflated  
519 Generalized Linear Mixed Modeling. - *R J.* 9: 378–400.
- 520 Copernicus Sentinel data 2017. For Sentinel data. Tile: S2A\_tile\_20170731\_26XNF\_0.

- 521 Domine, F. et al. 2016. Seasonal evolution of the effective thermal conductivity of the snow and the  
522 soil in high Arctic herb tundra at Bylot Island, Canada. - *Cryosphere* 10: 2573–2588.
- 523 Domine, F. et al. 2018. Snow physical properties may be a significant determinant of lemming  
524 population dynamics in the high Arctic. - *Arct. Sci.* 4: 813–826.
- 525 Duchesne, D. et al. 2011. Habitat selection, reproduction and predation of wintering lemmings in the  
526 Arctic. - *Oecologia* 167: 967–980.
- 527 Ehrich, D. et al. 2020. Documenting lemming population change in the Arctic: Can we detect trends? -  
528 *Ambio* 49: 786–800.
- 529 Fauteux, D. et al. 2015. Seasonal demography of a cyclic lemming population in the Canadian Arctic. -  
530 *J. Anim. Ecol.* 84: 1412–1422.
- 531 Fauteux, D. et al. 2016. Top-down limitation of lemmings revealed by experimental reduction of  
532 predators. - *Ecology* 97: 3231–3241.
- 533 Fauteux, D. et al. 2018. Evaluation of invasive and non-invasive methods to monitor rodent  
534 abundance in the Arctic. - *Ecosphere* 9: e02124.
- 535 Gilg, O. 2002. The summer decline of the collared lemming, *Dicrostonyx groenlandicus*, in high arctic  
536 Greenland. - *Oikos* 99: 499–510.
- 537 Gilg, O. et al. 2003. Cyclic dynamics in a simple vertebrate predator-prey community. - *Science* 302:  
538 866–868.
- 539 Gilg, O. et al. 2006. Functional and numerical responses of four lemming predators in high arctic  
540 Greenland. - *Oikos* 113: 193–216.
- 541 Gilg, O. et al. 2009. Climate change and cyclic predator-prey population dynamics in the high Arctic. -  
542 *Glob. Change Biol.* 15: 2634–2652.
- 543 Gilg, O. et al. 2012. Climate change and the ecology and evolution of Arctic vertebrates. - In: Ostfeld,  
544 R. S. and Schlesinger, W. H. (eds), *Year in Ecology and Conservation Biology*. Blackwell  
545 Science Publ, pp. 166–190.
- 546 Gilg, O. et al. 2019. Are gastrointestinal parasites associated with the cyclic population dynamics of  
547 their arctic lemming hosts? - *Int. J. Parasitol.-Parasites Wildl.* 10: 6–12.

- 548 Gruyer, N. et al. 2008. Cyclic dynamics of sympatric lemming populations on Bylot Island, Nunavut,  
549 Canada. - *Can. J. Zool.-Rev. Can. Zool.* 86: 910–917.
- 550 Hall, L. S. et al. 1997. The Habitat Concept and a Plea for Standard Terminology. - *Wildl. Soc. Bull.*  
551 1973-2006 25: 173–182.
- 552 Hansen, B. U. et al. 2008. Present-Day Climate at Zackenberg. - In: *Advances in Ecological Research.*  
553 *High-Arctic Ecosystem Dynamics in a Changing Climate.* Academic Press, pp. 111–149.
- 554 Hartig, F. 2017. DHARMA: Residual Diagnostics for Hierarchical (Multi-Level / Mixed) Regression  
555 Models. R package version 0.1.5. <https://CRAN.R-project.org/package=DHARMA>.
- 556 Ims, R. A. and Fuglei, E. 2005. Trophic interaction cycles in tundra ecosystems and the impact of  
557 climate change. - *Bioscience* 55: 311–322.
- 558 Ims, R. A. et al. 2008. Collapsing population cycles. - *Trends Ecol. Evol.* 23: 79–86.
- 559 Ims, R. A. et al. 2011. Determinants of lemming outbreaks. - *Proc. Natl. Acad. Sci. U. S. A.* 108: 1970–  
560 1974.
- 561 Kausrud, K. L. et al. 2008. Linking climate change to lemming cycles. - *Nature* 456: 93-U3.
- 562 Klein, D. and Bay, C. 1994. Resource partitioning by mammalian herbivores in the high arctic. -  
563 *Oecologia* 97: 439–450.
- 564 Mckinnon, L. et al. 2013. Predator-mediated interactions between preferred, alternative and  
565 incidental prey in the arctic tundra. - *Oikos* 122: 1042–1048.
- 566 Morris, D. W. et al. 2000. Measuring the ghost of competition: Insights from density-dependent  
567 habitat selection on the co-existence and dynamics of lemmings. - *Evol. Ecol. Res.* 2: 41–67.
- 568 Morris, D. W. et al. 2011. Forecasting ecological and evolutionary strategies to global change: an  
569 example from habitat selection by lemmings. - *Glob. Change Biol.* 17: 1266–1276.
- 570 Pavlis, N. K. et al. 2012. The development and evaluation of the Earth Gravitational Model 2008  
571 (EGM2008). - *J. Geophys. Res. Solid Earth* 117: 1–38.
- 572 Pedersen, S. H. et al. 2016. Spatiotemporal Characteristics of Seasonal Snow Cover in Northeast  
573 Greenland from in Situ Observations. - *Arct. Antarct. Alp. Res.* 48: 653–671.
- 574 Porter, C. et al. 2018. ArcticDEM Release 5. Tile: 23\_47\_2\_1\_5m\_v2.0\_reg\_dem.

- 575 Pörtner, H.-O. et al. 2019. IPCC Special Report on the Ocean and Cryosphere in a Changing Climate. -  
576 IPCC.
- 577 Post, E. et al. 2009. Ecological Dynamics Across the Arctic Associated with Recent Climate Change. -  
578 Science 325: 1355–1358.
- 579 Predavec, M. and Krebs, C. J. 2000. Microhabitat utilisation, home ranges, and movement patterns of  
580 the collared lemming (*Dicrostonyx groenlandicus*) in the central Canadian Arctic. - Can. J.  
581 Zool.-Rev. Can. Zool. 78: 1885–1890.
- 582 Prins, H. H. Th. 1982. Why Are Mosses Eaten in Cold Environments Only? - Oikos 38: 374–380.
- 583 Prost, S. et al. 2010. Influence of Climate Warming on Arctic Mammals? New Insights from Ancient  
584 DNA Studies of the Collared Lemming *Dicrostonyx torquatus*. - Plos One 5: e10447.
- 585 Prost, S. et al. 2013. Losing ground: past history and future fate of Arctic small mammals in a  
586 changing climate. - Glob. Change Biol. 19: 1854–1864.
- 587 R Core Team 2020. R: A Language and Environment for Statistical Computing. - R Foundation for  
588 Statistical Computing.
- 589 Rau, F. 1995. Geoökologische und hydrologische Untersuchungen in einem hocharktischen  
590 Tundrenökosystem auf Traill Ø, Nordost-Grönland. Unpublished diploma thesis. Albert  
591 Ludwig Universität Freiburg, Germany.
- 592 Reid, D. G. and Krebs, C. J. 1996. Limitations to collared lemming population growth in winter. - Can.  
593 J. Zool.-Rev. Can. Zool. 74: 1284–1291.
- 594 Reid, D. G. et al. 2012. Lemming winter habitat choice: a snow-fencing experiment. - Oecologia 168:  
595 935–946.
- 596 Rodgers, A. and Lewis, M. 1985. Diet selection in arctic lemmings (*lemmus-Sibericus* and *Dicrostonyx-*  
597 *Groenlandicus*) - food preferences. - Can. J. Zool.-Rev. Can. Zool. 63: 1161–1173.
- 598 Rodgers, A. and Lewis, M. 1986. Diet selection in arctic lemmings (*lemmus-Sibericus* and *Dicrostonyx-*  
599 *Groenlandicus*) - demography, home range, and habitat use. - Can. J. Zool.-Rev. Can. Zool. 64:  
600 2717–2727.
- 601 Schmidt, N. M. 2000. Spatiotemporal distribution and habitat use of the collared lemming,  
602 *Dicrostonyx groenlandicus* Traill, in high arctic Northeast Greenland.

- 603 Schmidt, N. et al. 2012a. High Arctic plant community responses to a decade of ambient warming. -  
604 Biodiversity 13: 191–199.
- 605 Schmidt, N. M. et al. 2012b. Response of an arctic predator guild to collapsing lemming cycles. - Proc.  
606 R. Soc. B-Biol. Sci. 279: 4417–4422.
- 607 Schmidt, N. M. et al. 2019. An ecosystem-wide reproductive failure with more snow in the Arctic. -  
608 PLOS Biol. 17: e3000392.
- 609 Sittler, B. 1995. Response of stoats (*Mustela erminea*) to a fluctuating lemming (*Dicrostonyx*-  
610 *Groenlandicus*) population in North-East Greenland - Preliminary results from a long-term  
611 study. - Ann. Zool. Fenn. 32: 79–92.
- 612 Sittler, B. et al. 2000. Low abundance of king eider nests during low lemming years in northeast  
613 Greenland. - Arctic 53: 53–60.
- 614 Soininen, E. M. et al. 2015. Highly overlapping winter diet in two sympatric lemming species revealed  
615 by DNA metabarcoding. - Plos One 10: e0115335.
- 616 Therrien, J. F. et al. 2014. Predation pressure by avian predators suggests summer limitation of small-  
617 mammal populations in the Canadian Arctic. - Ecology 95: 56–67.
- 618 Turchin, P. et al. 2000. Are lemmings prey or predators? - Nature 405: 562–565.
- 619 Walker, D. A. et al. 2005. The Circumpolar Arctic vegetation map. - J. Veg. Sci. 16: 267–282.
- 620 Wookey, P. A. et al. 2009. Ecosystem feedbacks and cascade processes: understanding their role in  
621 the responses of Arctic and alpine ecosystems to environmental change. - Glob. Change Biol.  
622 15: 1153–1172.
- 623