



HAL
open science

Residential exposure to ambient fine particulate matter (PM(2.5)) and nitrogen dioxide (NO(2)) and incident breast cancer among young women in Ontario, Canada

Blandine Le Provost, Marie-Elise Parent, Paul J Villeneuve, Claudia M Waddingham, Jeffrey R Brook, Eric Lavigne, Rose Dugandzic, Shelley A Harris

► To cite this version:

Blandine Le Provost, Marie-Elise Parent, Paul J Villeneuve, Claudia M Waddingham, Jeffrey R Brook, et al.. Residential exposure to ambient fine particulate matter (PM(2.5)) and nitrogen dioxide (NO(2)) and incident breast cancer among young women in Ontario, Canada. *Cancer Epidemiology*, 2024, 92, pp.102606. 10.1016/j.canep.2024.102606 . hal-04823249

HAL Id: hal-04823249

<https://hal.science/hal-04823249v1>

Submitted on 6 Dec 2024

HAL is a multi-disciplinary open access archive for the deposit and dissemination of scientific research documents, whether they are published or not. The documents may come from teaching and research institutions in France or abroad, or from public or private research centers.

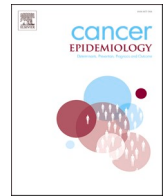
L'archive ouverte pluridisciplinaire **HAL**, est destinée au dépôt et à la diffusion de documents scientifiques de niveau recherche, publiés ou non, émanant des établissements d'enseignement et de recherche français ou étrangers, des laboratoires publics ou privés.



Distributed under a Creative Commons Attribution - NonCommercial - NoDerivatives 4.0 International License

Contents lists available at [ScienceDirect](https://www.sciencedirect.com)

Cancer Epidemiology

journal homepage: www.elsevier.com/locate/canep

Residential exposure to ambient fine particulate matter (PM_{2.5}) and nitrogen dioxide (NO₂) and incident breast cancer among young women in Ontario, Canada

Blandine Le Provost^{a,b}, Marie-Élise Parent^{c,d,e}, Paul J. Villeneuve^{a,*},
 Claudia M. Waddingham^a, Jeffrey R. Brook^{f,g}, Eric Lavigne^{h,i}, Rose Dugandzic^j, Shelley
 A. Harris^f

^a Department of Neuroscience, Carleton University, Ottawa, Ontario, Canada

^b Institut de Santé Publique, d'Épidémiologie et de Développement (ISPED), École de Santé Publique, Université de Bordeaux, Bordeaux, France

^c Epidemiology and Biostatistics Unit, Centre Armand-Frappier Santé Biotechnologie, Institut national de la recherche scientifique, Université du Québec, Laval, Québec, Canada

^d Department of Social and Preventive Medicine, School of Public Health, Université de Montréal, Montreal, Quebec, Canada

^e Centre de recherche du CHUM, Montréal, Québec, Canada

^f Divisions of Epidemiology and Occupational and Environmental Health, Dalla Lana School of Public Health, University of Toronto, Toronto, Ontario, Canada

^g Department of Civil and Mineral Engineering, University of Toronto, Toronto, Ontario, Canada

^h School of Epidemiology and Public Health, University of Ottawa, Ottawa, Ontario, Canada

ⁱ Population Studies Division, Health Canada, Ottawa, Ontario, Canada

^j Office of Environmental Health, Health Canada, Ottawa, Ontario, Canada

ARTICLE INFO

Keywords:

Breast cancer

Air pollution

Fine particulate matter (PM_{2.5})Nitrogen dioxide (NO₂)

Case-control study

ABSTRACT

Background: Air pollution has been classified as a human carcinogen based largely on findings for respiratory cancers. Emerging, but limited, evidence suggests that it increases the risk of breast cancer, particularly among younger women. We characterized associations between residential exposure to ambient fine particulate matter (PM_{2.5}) and nitrogen dioxide (NO₂) and breast cancer. Analyses were performed using data collected in the Ontario Environmental Health Study (OEHS).

Methods: The OEHS, a population-based case-control study, identified incident cases of breast cancer in Ontario, Canada among women aged 18–45 between 2013 and 2015. A total of 465 pathologically confirmed primary breast cancer cases were identified from the Ontario Cancer Registry, while 242 population-based controls were recruited using random-digit dialing. Self-reported questionnaires were used to collect risk factor data and residential histories. Land-use regression and remote-sensing estimates of NO₂ and PM_{2.5}, respectively, were assigned to the residential addresses at interview, five years earlier, and at menarche. Logistic regression was used to estimate odds ratios (OR) and their 95 % confidence intervals (CI) in relation to an interquartile range (IQR) increase in air pollution, adjusting for possible confounders.

Results: PM_{2.5} and NO₂ were positively correlated with each other ($r = 0.57$). An IQR increase of PM_{2.5} (1.9 µg/m³) and NO₂ (6.6 ppb) at interview residence were associated with higher odds of breast cancer and the adjusted ORs and 95 % CIs were 1.37 (95 % CI = 0.98–1.91) and 2.33 (95 % CI = 1.53–3.53), respectively. An increased odds of breast cancer was observed with an IQR increase in NO₂ at residence five years earlier (OR = 2.16, 95 % CI: 1.41–3.31), while no association was observed with PM_{2.5} (OR = 0.96, 95 % CI 0.64–1.42).

Conclusions: Our findings support the hypothesis that exposure to ambient air pollution, especially those from traffic sources (i.e., NO₂), increases the risk of breast cancer in young women.

* Correspondence to: Department of Neuroscience, Carleton University, Health Sciences Building, Room 6307, 1125 Colonel By Drive, Ottawa, ON K1S 5B6, Canada.

E-mail address: Paul.Villeneuve@carleton.ca (P.J. Villeneuve).

<https://doi.org/10.1016/j.canep.2024.102606>

Received 18 January 2024; Received in revised form 10 June 2024; Accepted 23 June 2024

Available online 9 July 2024

1877-7821/© 2024 The Authors. Published by Elsevier Ltd. This is an open access article under the CC BY-NC-ND license (<http://creativecommons.org/licenses/by-nc-nd/4.0/>).

1. Introduction

Breast cancer is the most commonly diagnosed cancer among women worldwide [1] and its incidence is increasing [2,3], particularly among younger women [4,5]. Breast cancers detected before menopause are often associated with more aggressive tumor subtypes and less favorable outcomes [6,7]. While some risk factors are shared for both pre- and postmenopausal breast cancer, the etiologies are recognized to be different [8]. Shared established risk factors across all ages include reproductive history, age at menarche, cigarette smoking, alcohol and diet, while obesity is recognized to increase the risk of postmenopausal, but not premenopausal, breast cancer [8].

Environmental exposures play a prominent role in the etiology of breast cancer with increased risks reported for organophosphate insecticides [9], polycyclic aromatic hydrocarbons [10,11], artificial light at night [12], dioxin [13–15], and ionizing radiation [16]. These exposures are more strongly associated with premenopausal breast cancer [17] and, from a timing perspective, exposures that occur around the time of birth or puberty are particularly relevant [17–19].

The possibility that air pollution increases the risk of breast cancer warrants further scrutiny given the ubiquity of this exposure, and because it is the most diagnosed cancer in woman. Fine particulate matter (PM_{2.5}) has been classified as a human carcinogen based on experimental evidence, and epidemiological studies of respiratory cancers [20]. PM_{2.5}, consisting of particles with an aerodynamic median diameter of less than 2.5 microns, can penetrate deep into lung passageways and enter the bloodstream [21]. Laboratory animal and toxicological data suggest a link between several carcinogens present in ambient air pollution and breast cancer [22]. While the exact mechanisms remain uncertain, components of air pollution may interact with estrogen receptors, impacting hormonal balance, and induce oxidative stress and inflammation [23].

In addition to the experimental evidence, findings from a series of case-control and cohort studies suggest that air pollution increases the risk of breast cancer [24]. Moreover, results suggest that the effects are strongest among younger women [25–28]. Some studies reported a positive association between NO₂, a marker of traffic pollution [29], and premenopausal breast cancer [24,30–40]. With respect to exposure to ambient PM_{2.5}, both null [33,35,37,39,41] and positive [27,28] associations have been reported. Two studies in the United States [33,34] and one in Spain [39] found no association between breast cancer and air pollution (i.e., B[a]P proxy for traffic emissions exposures, Particulate matter (PM₁₀, PM_{2.5–10}, and PM_{2.5}) and measures of distance to roadway and NO₂) in premenopausal women. However, Canadian [28] and Danish [35] studies reported that a 10 µg/m³ rise in PM_{2.5} resulted in a hazard ratio of 1.37 (95 % CI = 1.09–1.73) while a 3.21 µg/m³ increase was linked to an odds ratio of 1.09 (95 % CI = 1.03–1.16) for premenopausal breast cancer, respectively. Another Canadian cohort study reported no association between air pollution and breast cancer risk [42]. The discrepancies in these findings may be explained by several factors including: differences in the methods to characterize exposure, exposures measured at different periods relative to disease onset, differences in study design, and differences in the ability to control for confounders.

In this context, our objective was to evaluate the relationship between ambient residential concentrations of PM_{2.5} and NO₂ and the risk of breast cancer among young women (ages 18–45). Our study addresses important gaps in the literature by focusing on a younger population where the impact of air pollution on breast cancer risk is not well understood. This study also explored differences in risk related to the timing of the exposure. By doing so, we sought to provide valuable insights on the relevance of the timing of exposure for early onset breast cancer.

2. Methods

We analyzed data from the Ontario Environmental Health Study (OEHS), a case-control study focusing on environmental, dietary, and occupational risk factors for breast cancer among Ontario women aged 18–45. Eligible cases consisted of women diagnosed with primary cancer between 2013 and 2015 who were identified through the Ontario Cancer Registry ePATH system. This registry captures all newly diagnosed cancer cases in the province of Ontario [41]. Women with breast cancer were recruited within 6 months of diagnosis. Controls were identified by York University's Institute of Social Research (ISR) using random-digit dialing (RDD). These recruitment methods incorporated frequency-matching of the control to the case series by 5-year age-groups. Invitations to participate were sent by mail and email, and participants completed online consent and questionnaire forms in English. The estimated response rates for the case and control series were 70 % and 47 %, respectively.

2.1. Data collection

A web-based Environmental Health Questionnaire (EHQ) was used to collect data at interview on sociodemographic, lifestyle, anthropometric, reproductive factors and occupational histories. Residential histories, including street address, six-character postal code and duration of residency, were collected for participant's current residence, previous residence, residence of the longest duration between the ages of 10–17, and place of residence at birth. In Canada, six-character postal codes in urban areas correspond to one side of a street between intersecting streets or a single apartment building, while in rural areas, they tend to cover larger areas such as entire towns [43].

2.2. PM_{2.5} and NO₂ exposures

Participants' residential annual average exposure to PM_{2.5} (µg/m³) was estimated using satellite instrument measurements of aerosol optical depth, and the Goddard Earth Observing System chemical transport model (GEOS-Chem) for atmospheric dispersion simulation [44,45]. The calibration of satellite data to ground-based observations was performed using Geographically Weighted Regression to refine estimates based on local conditions. These estimates were derived annually at a spatial resolution of 0.01° × 0.01° (~1 km) for each year between 2000 and 2018. Missing data before 2000 were imputed using the average annual concentration values from 2000 at the postal code level. Spatiotemporal estimates for NO₂ (annual average) were obtained through a national surface Land Use Regression (LUR) model [46] that integrated fixed-site monitoring data, satellite-derived NO₂ estimates, and geographical factors, including road length, and industrial land use. This method was used to generate estimates for 1984–2015 across Canada at 30-meter resolution and this dataset was made available by the Canadian Urban Environmental Health Research Consortium (CANUE) [46–48]. The gridded estimates of NO₂ and PM_{2.5}, created by Hystad and collaborators for NO₂ and by Van Donkelaar and collaborators for PM_{2.5}, were assigned to the geographical centroids of all Canadian postal codes by CANUE [49]. We provided CANUE with a list of the postal codes from the OEHS participants, including the years of residency, and they, in turn, provided us with the corresponding exposure data. The annual air pollution estimates correspond to the participants' residential postal code at the time of interview, five years prior, and at the time of menarche.

2.3. Other risk factors

The OEHS gathered data for a comprehensive set of breast cancer risk factors. We accounted for a large number of established or potential risk factors for premenopausal breast cancer, which encompassed age, ethnicity, education level, household income, body mass index (BMI),

smoking status, alcohol consumption, age at menarche, family history, parity, age at first pregnancy, personal history of benign breast disease, and oral contraceptive use. Potential confounders were determined based on prior knowledge and through guidance provided by Directed Acyclic Graphs (DAGs) (Supplementary Figure 1).

2.4. Statistical analysis

Descriptive analyses were undertaken to provide an overview of sociodemographic characteristics, key covariates and the estimated exposures at residence during the different time points captured. We also calculated Pearson correlation coefficients between the pollutants as well as the Canadian Index of Marginalization (CAN-Marg) and the Normalized Difference Vegetation Index (NDVI). We presented Pearson rather than Spearman correlations as these independent variables were linearly related to each other. The NDVI and CAN-Marg were measured at a neighborhood level. The CAN-Marg [50,51], derived at the census dissemination area (~400–700 residents), provides measures of four dimensions of marginalization: residential instability, material deprivation, ethnic concentration, and dependency. We calculated a summary measure of marginalization by consolidating the quintile rank scores for these four dimensions into a summary measure (1 – least marginalized to 5 – most marginalized) according to a methodology described elsewhere [52]. The 2006 version of the CAN-Marg Index was utilized. The NDVI is a commonly used, remote-sensing based measure of greenness that ranges between 0 (no vegetation) to 1 (full vegetation) [53]. This is an objectively-defined measure of greenness that is less prone to bias arising from self-reported measures of proximal greenness. Similar to air pollution, the CAN-Marg and NDVI measures at participant's residential postal codes were supplied to us by CANUE [49].

Unconditional logistic regression was used to estimate the odds ratios (ORs) of breast cancer in relation to an interquartile range (IQR) increase in air pollution concentrations. These odds ratios were estimated for exposures at three time points (interview, 5 years before interview, and at menarche). We chose to model the exposures using an IQR to facilitate comparisons of the odds ratios between the two pollutants (measured on difference scales), and at different time periods. The use of the IQR in this manner assumes of linearity between exposure and the logit of the probability of breast cancer. This assumption was formally tested, and satisfied, using second-order fractional polynomials. We also verified linearity by evaluating the shape of the exposure-response curve for both pollutants at each exposure period by fitting restricted cubic splines with 4 knots (at the 5th, 35th, 65th, and 95th percentiles) (Supplementary Figure 2). We selected the knots at these percentiles based on previously described methodology [54].

To comprehensively evaluate the impact of confounding variables, we fitted and presented the results for three separate regression models. The initial model (M1) was only adjusted for age at interview. The second model (M2) integrated additional confounding factors identified through the DAG, i.e., ethnicity (White, Asian or other), educational level (bachelor's and above, trade or certificate, high school and below), household income (in \$CDN) (\$50,000, \$50,000 to \$99,999, \$100,000 to \$149,999 or \$150,000 or more), BMI two years prior interview (in kg/m^2), and smoking status two years prior interview (categorized as never, former or current smoker). The third model (M3) further extended the second model to incorporate various lifestyle risk factors related to breast cancer. These factors were: alcohol consumption two years prior interview (never drinker, non-heavy drinker, heavy drinker), age at menarche (< 12, 12–14, \geq 14 years) for descriptive analyses and modelled in years), family history of breast cancer (yes or no), parity (no, 1–2, or \geq 3 pregnancies) for descriptive analyses and modelled as number of children), age at first pregnancy (< 30 or \geq 30 years for descriptive analyses and modelled in years), history of benign breast disease (yes or no), and ever oral contraceptive use (yes or no).

We undertook a sensitivity analysis to assess the influence of residential mobility on the measures of association between air pollution

and breast cancer. This was motivated by the knowledge that there is likely less exposure measurement error when assigning air pollution exposures to women who were more residentially stable. These analyses were done by fitting separate models for those who had lived in their residence at the time of interview for >7 and ≤ 7 years. This cut-point was chosen based on the median length of residency observed in the control series.

All analyses were conducted using R software version 4.2.0 [55].

3. Results

Selected characteristics of the 465 breast cancer cases and 242 controls are summarized in Table 1. Relative to controls, cases were less likely to be Caucasian and to be obese, were more likely to have smoked, while also having lower parity, younger age at first childbirth, and no longer be menstruating (i.e., menopausal). A similar proportion of cases (86 %) and controls (83 %) resided in urban areas at the time of interview.

Fig. 1 displays the frequency distribution in ambient $\text{PM}_{2.5}$ and NO_2 concentrations between cases and controls at three-time intervals (time of interview, 5 years before interview, and at menarche). $\text{PM}_{2.5}$ concentrations averaged around $7.7 \mu\text{g}/\text{m}^3$ across the different periods. For NO_2 , the mean exposure was of 8.1 ppb at interview; 10.5 ppb five years prior interview and 23.1 ppb at menarche. Concentrations of $\text{PM}_{2.5}$ and NO_2 at the time of interview were positively correlated with each other ($r = 0.57$) (Table 2). In contrast, both measures of pollution were inversely correlated with residential proximity to greenness. Specifically, the correlations between the NDVI and $\text{PM}_{2.5}$ and between the NDVI and NO_2 , were -0.36 and -0.54 , respectively. The Can-Marg index was positively correlated with pollution suggesting that concentrations of air pollution were higher in areas that were more marginalized ($r = 0.21$ for $\text{PM}_{2.5}$ and $r = 0.26$ for NO_2 at interview).

An increased odds of breast cancer was observed for $\text{PM}_{2.5}$ and NO_2 at the time of interview (Table 3). Specifically, in a fully adjusted model (Model 3), an IQR increase in NO_2 was found to more than double the risk of breast cancer (OR = 2.33, 95 % CI: 1.53–3.53). The corresponding estimate for $\text{PM}_{2.5}$ was 1.37 (95 % CI: 0.98–1.91). Using estimates of exposures at the residence five years before interview, an increased odds ratio was found for NO_2 but not for $\text{PM}_{2.5}$. No clear association was found for exposure at the age at menarche for either NO_2 or $\text{PM}_{2.5}$ (p-value = 0.14 for $\text{PM}_{2.5}$ and 0.99 for NO_2). These analyses are based on a substantially smaller number of participants due to missing data on the place of residence for a larger proportion of subjects ($n = 206$ cases and 120 controls for $\text{PM}_{2.5}$ and $n = 191$ cases and 112 controls for NO_2). Our sensitivity analyses, based on the duration of residency, revealed a stronger association for those who lived in their homes for less than seven years compared to those who lived longer at the same residence (Supplementary Table 1).

4. Discussion

In this case-control study of Ontario women, we found evidence that supports the hypothesis that ambient NO_2 and $\text{PM}_{2.5}$ increase the risk of breast cancer in pre-menopausal women. The positive associations with NO_2 , a marker of traffic-related pollution, were more compelling given we found stronger associations relative to $\text{PM}_{2.5}$, and these were consistently observed across different exposure periods except for at time of menarche. Our findings align with recent findings from other case-control studies [25–28], and suggest that air pollution, even at the relatively low levels of concentrations that are observed in Canada, represents an important etiological risk factor.

We observed that a 6.6 ppb increase in annual concentration of NO_2 more than doubled the risk of breast cancer. Several studies conducted in the US, Canada, Denmark, and France have observed stronger associations between ambient air pollution, particularly NO_2 , and breast cancer in younger women compared to older women [25–28,31,32–36].

Table 1
Descriptive characteristics for selected risk factors of early-onset breast cancer for cases and controls in the Ontario Environmental Health Study.

Characteristics	Cases N = 465	Controls N = 242	aOR (95 % CI) *	p- value**
Socio-demographics factors				
Age at interview (years), median [Q1-Q3]	40 [37–43]	38 [34–41]	1.5(1.3,1.8)	< 0.001
Ethnicity, n (%)				0.032
Caucasian	362 (77.9)	207 (85.5)	1.0	
Asian	56(12.0)	24(9.9)	1.36 (0.81,2.29)	
Other ^a	47(10.1)	11(4.5)	4.45 (1.26,15.74)	
Educational level, n (%)				0.040
Bachelor's and above	58(12.5)	25 (10.33)	1.0	
Trade/certificate	144 (31.0)	86(35.5)	0.81 (0.57,1.14)	
High school and below	263 (56.6)	131 (54.1)	1.19 (0.70,2.02)	
Household income (CAD), n (%)				0.842
< \$50,000	57(12.3)	28(11.6)	1.0	
\$50,000 to \$99,999	121 (26.0)	69(28.5)	0.74 (0.42,1.30)	
\$100,000 to \$149,999	103 (22.2)	48(19.8)	0.84 (0.46,1.53)	
\$150,000 or more	103 (22.2)	54(22.3)	0.73 (0.41,1.32)	
Missing	81(17.4)	43(17.8)	-	
Behavior-related factors				
BMI ^b (kg/m ²), n (%)				< 0.001
<25	290 (62.4)	111 (45.9)	1.0	
[25–30[107 (23.0)	59(24.4)	0.70 (0.47,1.04)	
≥30	64(13.8)	63(26.0)	0.39 (0.24,0.66)	
Missing	4(0.9)	9(3.7)	-	
Smoking status, n (%)				0.002
Never	292 (62.8)	167 (69.0)	1.0	
Former	138 (29.7)	43(17.8)	1.74 (1.17,2.58)	
Current	25(5.4)	20(8.3)	0.68 (0.36,1.28)	
Missing	10(2.2)	12(5.0)	-	
Alcohol consumption, n (%) ¹²⁹				0.081
Never ^c	229 (49.2)	129 (53.3)	1.0	
Non-heavy drinker ^d	175 (37.6)	87(36.0)	1.17 (0.83,1.65)	
Heavy drinker ^e	53(11.4)	15 (6.2)	1.85 (1.00,3.45)	
Missing	8(1.7)	11(4.5)	-	
Reproductive history and other hormonal factors				
Age at menarche (years), n (%)				0.057
< 12	80(17.2)	58(24.0)	0.68 (0.45,1.02)	
[12–14[292 (62.8)	131 (54.1)	1.0	
≥ 14	88(18.9)	43(17.8)	0.88 (0.58,1.35)	
Missing	5(1.1)	10(4.1)	-	
Hormonal contraception use, n (%)				0.435
Yes	372 (80.0)	199 (82.2)	1.0	
No	92(19.8)	199 (82.2)	0.82 (0.54,1.25)	
Missing	1(0.2)	2(0.8)	-	
Parity ^f , n (%)				0.003
No pregnancy	135 (29.0)	46(19.0)	1.0	
1 or 2 pregnancies	245 (52.7)	132 (54.5)	0.41 (0.26,0.65)	

Table 1 (continued)

Characteristics	Cases N = 465	Controls N = 242	aOR (95 % CI) *	p- value**
≥ 3 pregnancies	76(16.3)	59(24.4)	0.27 (0.16,0.46)	
Missing	9(1.9)	5(2.1)	-	
Age at first pregnancy (years), n (%)				0.083
< 30	115 (24.7)	41(19.4)	1.0	
≥ 30	231 (49.7)	140 (57.9)	1.12 (0.76,1.66)	
Nulliparous	114 (24.5)	55(22.7)	2.26(1.45,3.5)	
Missing	5(1.1)	6(2.5)	-	
Menstrual status, n (%)				< 0.001
Still having menstrual period	345 (74.2)	222 (91.7)	1.0	
Menstrual period stopped ⁱ	118 (25.4)	18(7.4)	3.74 (2.20,6.36)	
Missing	2(0.4)	2(0.8)	-	
Medical History				
Family history of breast cancer ^j , n (%)				< 0.001
Yes	186 (40.0)	58(24.0)	2.07 (1.45,2.97)	
No	272 (58.5)	175 (72.3)	1.0	
Missing	7(1.5)	9(3.7)	-	
History of benign breast disease, n (%)				< 0.001
Yes	41(8.8)	4(1.7)	5.26 (1.85,14.97)	
No	407 (87.5)	233 (96.3)	1.0	
Missing	17(3.7)	5(2.1)	-	
Mammography, n (%)				< 0.001
Yes	449 (96.6)	172 (71.1)	-	
No	14(3.0)	65(26.9)	-	
Missing	2(0.4)	5(2.1)	-	

Notes - CI, confidence interval; *aOR age adjusted odds ratio from unconditional logistic regression; **P-values were calculated using the following tests: Student's t-test for continuous variables (Age at interview), Chi-square test for categorical variables; min, minimum; max, maximum; sd, standard error; AFP, Age at First Pregnancy; Q1, First Quartile; Q3, Third Quartile.

a Other include Black, Latin, Jewish, Indigenous, etc.

b Body Mass Index two years before interview.

c someone who did not regularly consume at least one alcoholic beverage per week.

d (<10 drinks per week).

e (>10 drinks per week).

f Parity is determined by the total number of pregnancies completed (after 20 weeks) in a woman's lifetime, whether single or multiple.

i Women were asked if they still have their menstrual period or not and the reason why menstrual period stopped could be natural, following radiation/chemotherapy or surgery (hysterectomy or ovaries removed).

j Breast cancer occurring in parents, brothers, sisters or grandparents.

For instance, Goldberg et al. [26], in a cohort study of approximately 80,000 Canadians, reported a 17 % increase in premenopausal breast cancer in relation to a 9.7 ppb increase in NO₂, but found no association among postmenopausal women. In another Canadian case-control study, Hystad et al. [25], reported between 19 % and 32 % increased odds in relation to a 10 ppb increase in NO₂ for premenopausal, while a 7 % and 20 % increased odds among postmenopausal women. Although our estimates are higher than those observed in these two other Canadian studies, they are more similar to those reported in other case-control studies [25,28,32,34]. The mentioned cohort study was reliant on a single measure of exposure that was assigned to a woman's place of residence at baseline at the beginning of a twenty-year follow-up period [26]. This potential non-differential exposure measurement error may have attenuated their estimates. Our findings suggest that capturing exposures at recent places of residence are important to understanding environmental breast cancer risks in young women. It is also important

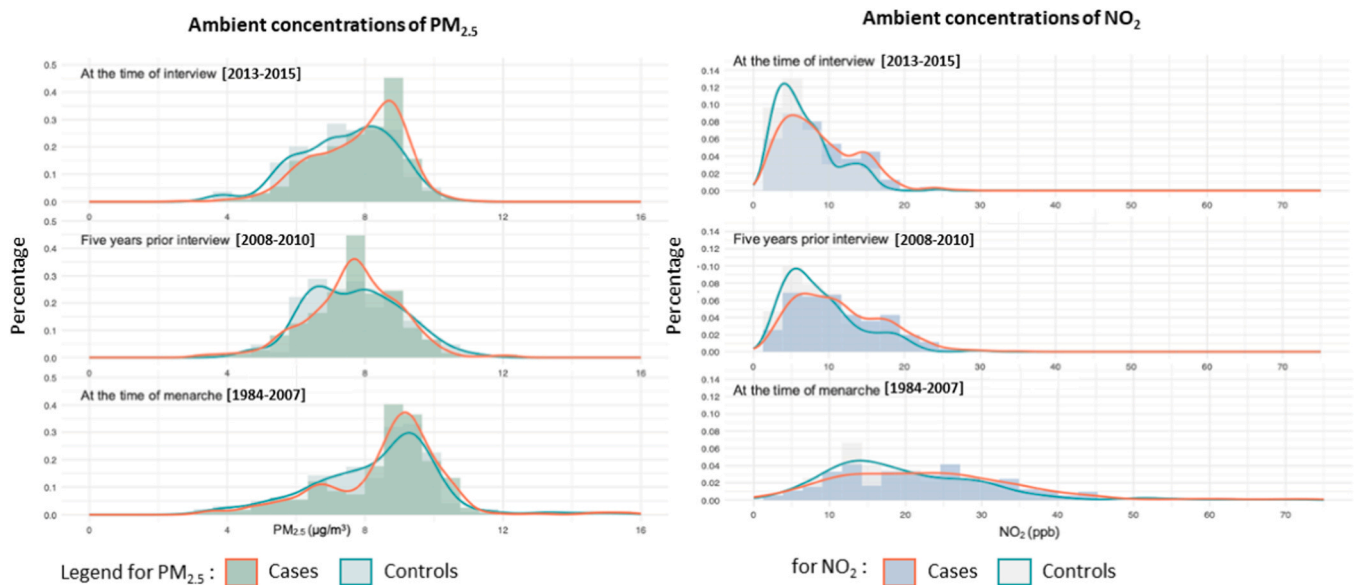


Fig. 1. Frequency distribution of PM_{2.5} (µg/m³) and NO₂ exposure (ppb) at the time of the interview, 5 years before the interview, and for cases and controls in the Ontario Environmental Health Study. Notes: PM = Particulate Matter, NO₂ = Nitrogen Dioxide.

Table 2

Pearson correlations between PM_{2.5}, NO₂ and NDVI and Canadian Marginalization Index at interview, five years before the interview and at menarche among participants of the Ontario Environmental Health Study.

	At interview				Five years before interview				At menarche			
	PM _{2.5}	NO ₂	NDVI	Can Marg Index	PM _{2.5}	NO ₂	NDVI	Can Marg Index	PM _{2.5}	NO ₂	NDVI	Can Marg Index
At interview												
PM _{2.5}	1.00	0.57 (n = 703)	-0.36 (n = 706)	0.21 (n = 703)	0.78 (n = 519)	0.59 (n = 519)	-0.41 (n = 519)	0.01 (n = 519)	0.52 (n = 473)	0.07 (n = 449)	-0.21 (n = 448)	0.07 (n = 456)
NO ₂		1.00	-0.54 (n = 703)	0.26 (n = 700)	0.39 (n = 518)	0.93 (n = 518)	-0.59 (n = 518)	0.06 (n = 516)	0.33 (n = 472)	0.19 (n = 448)	-0.36 (n = 448)	0.12 (n = 455)
NDVI			1.00	-0.31 (n = 703)	-0.19 (n = 519)	-0.57 (n = 519)	0.84 (n = 519)	-0.04 (n = 519)	-0.25 (n = 473)	-0.24 (n = 449)	0.30 (n = 449)	-0.10 (n = 456)
Can-Marg*				1.00	0.21 (n = 516)	0.28 (n = 516)	-0.28 (n = 516)	-0.00 (n = 519)	0.02 (n = 472)	-0.01 (n = 449)	-0.16 (n = 449)	0.20 (n = 456)
Five years before interview												
PM _{2.5}					1.00	0.46 (n = 520)	-0.21 (n = 520)	0.06 (n = 516)	0.47 (n = 356)	-0.03 (n = 338)	-0.11 (n = 338)	0.09 (n = 343)
NO ₂						1.00	-0.61 (n = 520)	0.07 (n = 516)	0.35 (n = 356)	0.21 (n = 338)	-0.35 (n = 338)	0.14 (n = 343)
NDVI							1.00	-0.02 (n = 516)	-0.29 (n = 356)	-0.19 (n = 338)	0.35 (n = 338)	-0.08 (n = 343)
Can-Marg								1.00	0.02 (n = 355)	0.04 (n = 338)	-0.06 (n = 338)	0.07 (n = 343)
At menarche												
PM _{2.5}									1.00	0.39 (n = 448)	-0.41 (n = 448)	0.15 (n = 455)
NO ₂										1.00	-0.23 (n = 449)	0.14 (n = 444)
NDVI											1.00	-0.29 (n = 444)
Can-Marg												1.00

Notes: Can-Marg = Canadian Marginalization Index; PM = Particulate Matter; NDVI = Normalized Difference Vegetation Index; NO₂ = Nitrogen Dioxide.

Table 3

Adjusted odds ratios and 95 % CIs in relation to an interquartile range increase in ambient concentrations of NO₂ and PM_{2.5} at interview, five years prior interview, at menarche and the risk of early-onset breast cancer among participants of the Ontario Environmental Health Study.

Variables	Median [Q1-Q3]	Case-Controls	Model 1 ^a aOR (95 % CI)	Case-Controls	Model 2 ^b aOR (95 % CI)	Case-Controls	Model 3 ^c aOR (95 % CI)
<i>Exposure estimates at interview for an increase equal to the IQR^d</i>							
PM _{2.5} (µg/m ³)	7.9 [6.8–8.7]	<u>464–242</u>	1.56 [1.24, 1.97]	<u>381–196</u>	1.64 [1.24–2.16]	<u>272–151</u>	1.37 [0.98–1.91]
NO ₂ (ppb)	7.0 [4.3–10.9]	<u>462–241</u>	1.93 [1.49, 2.49]	<u>379–195</u>	2.25 [1.61–3.14]	<u>270–150</u>	2.33 [1.53–3.53]
<i>Exposure estimates 5 years prior interview for an increase equal to the IQR at interview</i>							
PM _{2.5} (µg/m ³)	7.7[6.8–8.6]	<u>332–188</u>	1.09[0.84-1.41]	<u>272–147</u>	1.07[0.78–1.49]	<u>196–109</u>	0.96[0.64–1.42]
NO ₂ (ppb)	9.5[5.8–14.5]	<u>332–188</u>	1.81[1.42, 2.31]	<u>272–147</u>	2.10[1.51–2.91]	<u>205-110205–110</u>	2.16[1.41–3.31]
<i>Exposure estimates at menarche for an increase equal to the IQR at interview</i>							
PM _{2.5} (µg/m ³)	8.5[7.5–9.5]	<u>297–176</u>	1.15[0.94-1.41]	<u>271–157</u>	1.11[0.88–1.38]	<u>206–120</u>	1.18[0.90–1.54]
NO ₂ (ppb)	23.1 [13.5–28.9]	<u>282–167</u>	1.09[0.99-2.12]	<u>256–150</u>	1.01[0.91–1.12]	<u>191–112</u>	1.02[0.89–1.16]

CI, confidence interval; aOR adjusted odds ratio from unconditional logistic regression; ppb = particles per billion

^a adjusted for age at interview (in years modelled for an increase of 5 years).

^b further adjusted for ethnicity (Caucasian, Asian or other), educational level (High school or below, Trade or certificate, Bachelor's degree or above), household income (< \$50,000), [\$50,000 to \$99,999], [\$100,000 to \$149,999], [\$150,000 or more]), BMI at two years prior interview (in kg/m²) and tobacco consumption (never, former or current smoker).

^c adjusted for Model 2 + alcohol consumption (never drinker, non-heavy drinker, heavy drinker), age at menarche (in years), family history of breast cancer (yes or no), parity (in number of children), age at first pregnancy (in years), personal history of BBD (yes or no) and oral contraceptive use (yes or no).

^d IQR at interview for PM_{2.5} = 1.9 µg/m³ and NO₂ = 6.615 ppb.

to note that differences to those of other studies may be influenced by regional differences in the air pollution mix. Past research has shown there is substantial variability in the oxidative potential of PM_{2.5} across Canada [56]. Moreover, it is worth noting that our study population was largely based in Southern Ontario, and therefore, these women would be more highly exposed to air pollution than those living in other parts of Canada.

The elevated risk for NO₂ might indicate that exposure to specific pollutants in vehicle exhaust, including PAHs, increase the risk of breast cancer, notably during critical periods like puberty and pregnancy [17, 32]. Although this study was able to examine ambient air pollution exposure at menarche and found only slight suggestive positive associations, the results should be interpreted carefully due to the limited number of participants with residential information at time of menarche. Understanding the effect of air pollution exposures during susceptibility windows is crucial for comprehending the possible etiological role of air pollution on breast cancer. However, characterizing past environmental exposures in epidemiological studies is challenging. Most studies are unable to characterize lifetime patterns of exposure due to practical limitations such as the difficulty for participants to recall their residential history accurately. Moreover, for air pollution, there is a lack of historical spatiotemporal air pollution data from prior decades. Consequently, statistical analyses often focus on average exposure intensity or cumulative exposure dose over a more restrictive time window. To better understand how exposures during windows of susceptibility could affect the risk of developing breast cancer, future studies should work on estimating the association between exposure to air pollutants and breast cancer risk using a life course approach.

The air pollution and breast cancer odds ratios were higher for women who lived less than seven years at the interview address when compared to those who lived there longer. However, caution should be taken when interpreting these estimate differences due to the low number of observations and because it may be an artifact of potential participation bias (i.e., those who live at interview residence for a shorter period of time are less likely to be participating controls).

An important limitation of our study was the relatively small study size due to the original study objective to assess associations between

Polybrominated Diphenyl Ethers (PBDEs) and breast cancer, and the requirement for urine and blood biomonitoring data from participants. Moreover, the number of study subjects was determined to have sufficient power to evaluate the relationship between PBDEs and breast cancer in young women. This small sample size limited the types of analyses we could pursue. For example, other studies have shown that tumour receptor status may modify the air pollution and breast cancer relationship [37–41,43,44,45,57,46–54,58,55,56,59]. In both Lemarchand et al. [37] and Reding et al. study [59], there was a stronger association between NO₂ exposure and hormone-receptor positive breast tumor subtypes (ER+/PR+) than there was for hormone-receptor negative tumors (ER-/PR-). We were unable to carry out similar analyses in our study due to small sample sizes and the lack of receptor subtype status for most of cases.

NO₂ was strongly related to breast cancer in our study. NO₂ is not a recognized carcinogen, but is often modelled in epidemiological studies to represent a complex mixture of traffic related pollution. While we also observed a positive association for PM_{2.5}, we chose not to model both exposures simultaneously in two pollutant models. Goldberg et al. has argued against modelling multiple pollutants in the same model because of the challenges involved in identifying the causal components of air pollution, or complex mixtures in general [60]. Others hold the view that multivariate regression models should incorporate mutual adjustments for other pollutants (i.e., multi-pollutant modelling) [61]. However, we reason that this may cause over adjustment because NO₂ and PM_{2.5}, while being different markers of air pollution, are both impacted by vehicular exhaust [60]. In general, NO₂ is more specific to vehicle emissions, particularly diesel exhaust and diesel particles which are known carcinogens (IARC) [20].

Our study had relatively low participation rates among both case and control series (70 and 47 % respectively). In the case series, the lower participation rates were in part due to changes in the recruitment of cases in the province that required individuals to be contacted initially by the Ontario Cancer Registry to first provide consent to be subsequently contacted by the OEHS Study PI. Potential controls were identified by the York University's ISR via RDD and indicated that they were interested in participation, but only 47 % consented and completed

questionnaire information. These rates of participation may have introduced a form of selection bias. However, it is worth noting that for widely recognized risk factors such as parity, obesity, alcohol consumption and family history of breast cancer, we observed patterns of risk in the OEHS study population that are consistent with the published literature [62]. This suggests that this form of selection bias in the control series did not unduly bias the risk estimates.

5. Conclusion

Our findings suggest that ambient exposure to air pollution may represent an important risk factor among young women. While our study provides valuable insights, it is important to consider the limitations inherent in our sample size and methodology. Future research, involving larger and more diverse samples, should further investigate the specific periods of susceptibility over a woman's life course and look into the components of PM_{2.5}, as well as associations with specific types of breast cancer. This will enhance our understanding of the temporal dynamics and cumulative impacts of air pollution, enabling more effective and targeted public health interventions.

Funding

This study was funded by the Canadian Institutes of Health Research (CIHR), Canada [DAE 184336] and the original OEHS study by the Canadian Cancer Society, Canada [700865].

CRedit authorship contribution statement

Shelley A. Harris: Writing – review & editing, Funding acquisition, Data curation, Conceptualization. **Rose Dugandzic:** Writing – review & editing. **Eric Lavigne:** Writing – review & editing, Funding acquisition. **Jeffrey R. Brook:** Writing – review & editing, Funding acquisition, Data curation. **Claudia M. Waddingham:** Writing – review & editing, Investigation, Data curation. **Paul J. Villeneuve:** Writing – review & editing, Supervision, Methodology, Funding acquisition, Conceptualization. **Marie-Élise Parent:** Writing – review & editing, Supervision, Methodology, Funding acquisition, Conceptualization. **Blandine Le Provost:** Writing – review & editing, Writing – original draft, Methodology, Investigation, Formal analysis.

Declaration of Competing Interest

The authors declare the following financial interests/personal relationships which may be considered as potential competing interests: Paul J. Villeneuve reports financial support was provided by The Canadian Institutes of Health Research. If there are other authors, they declare that they have no known competing financial interests or personal relationships that could have appeared to influence the work reported in this paper.

Acknowledgments

The Ontario Health Environmental Study (OEHS) provided the case-control data. The following built environmental exposures were provided by the Canadian Urban Environmental Health Research Consortium (CANUE): i) Nitrogen dioxide data were indexed to DMTI Spatial Inc. postal codes; ii) PM_{2.5} metrics, indexed to DMTI Spatial Inc. postal codes; iii) NDVI metrics, indexed to DMTI Spatial Inc. postal codes; and iv) Canadian Marginalization Index (CAN-Marg), indexed to DMTI Spatial Inc. postal codes.

Appendix A. Supporting information

Supplementary data associated with this article can be found in the online version at [doi:10.1016/j.canep.2024.102606](https://doi.org/10.1016/j.canep.2024.102606).

References

- [1] M. Arnold, E. Morgan, H. Rumgay, A. Mafra, D. Singh, M. Laversanne, J. Vignat, J. R. Gralow, F. Cardoso, S. Siesling, I. Soerjomataram, Current and future burden of breast cancer: Global statistics for 2020 and 2040, *Breast* 66 (2022) 15–23, <https://doi.org/10.1016/j.breast.2022.08.010>.
- [2] H. Sung, J. Ferlay, R.L. Siegel, M. Laversanne, I. Soerjomataram, A. Jemal, F. Bray, Global Cancer Statistics 2020: GLOBOCAN Estimates of Incidence and Mortality Worldwide for 36 Cancers in 185 Countries, *CA: A Cancer J. Clin.* 71 (3) (2021) 209–249, <https://doi.org/10.3322/caac.21660>.
- [3] R.H. Johnson, F.L. Chien, A. Bleyer, Incidence of breast cancer with distant involvement among women in the United States, 1976 to 2009, *JAMA* 309 (8) (2013) 800–805.
- [4] Canadian Cancer Society, Breast cancer statistics, 2023(May). <https://cancer.ca/en/cancer-information/cancer-types/breast/statistics>.
- [5] International Agency for Research on Cancer, Cancer over time. <https://geo.iarc.fr/overtime/en>. (Accessed 13 October 2023).
- [6] L. Dartois, G. Fagherazzi, L. Baglietto, M.C. Boutron-Ruault, S. Delalage, S. Mesrine, F. Clavel-Chapelon, Proportion of premenopausal and postmenopausal breast cancers attributable to known risk factors: estimates from the <sc>E3N-EPIC</sc> cohort, *Int. J. Cancer* 138 (10) (2016) 2415–2427, <https://doi.org/10.1002/ijc.29987>.
- [7] A.A. Kirkham, K.J. Jerzak, Prevalence of breast cancer survivors among Canadian Women, *J. Natl. Compr. Cancer Netw.* 20 (9) (2022) 1005–1011, <https://doi.org/10.6004/jnccn.2022.7028>.
- [8] World Cancer Research Fund International, Breast cancer. <https://www.wcrf.org/diet-activity-and-cancer/cancer-types/breast-cancer/>. (Accessed 13 October 2023).
- [9] L.S. Engel, E. Werder, J. Satagopan, A. Blair, J.A. Hoppin, S. Koutros, C.C. Lerro, D. P. Sandler, M.C. Alavanja, L.E. Beane Freeman, Insecticide use and breast cancer risk among farmers' wives in the agricultural health study, *Environ. Health Perspect.* 125 (9) (2017) 097002, <https://doi.org/10.1289/ehp1295>.
- [10] P.V. Parikh, Y. Wei, PAHs and PM_{2.5} emissions and female breast cancer incidence in metro Atlanta and rural Georgia, *Int. J. Environ. Health Res.* 26 (4) (2016) 458–466, <https://doi.org/10.1080/09603123.2016.1161178>.
- [11] X. Niu, S.S.H. Ho, K.F. Ho, Y. Huang, J. Sun, Q. Wang, Y. Zhou, Z. Zhao, J. Cao, Atmospheric levels and cytotoxicity of polycyclic aromatic hydrocarbons and oxygenated-PAHs in PM_{2.5} in the Beijing-Tianjin-Hebei region, *Environ. Pollut.* 231 (2017) 1075–1084. (<https://www.sciencedirect.com/science/article/pii/S0269749117310126>).
- [12] T. Urbano, M. Vinceti, L.A. Wise, T. Filippini, Light at night and risk of breast cancer: a systematic review and dose–response meta-analysis, *Int. J. Health Geogr.* 20 (1) (2021), <https://doi.org/10.1186/s12942-021-00297-7>.
- [13] A.M. Danjou, B. Fervers, M.-C. Boutron-Ruault, T. Philip, F. Clavel-Chapelon, L. Dossus, Estimated dietary dioxin exposure and breast cancer risk among women from the French E3N prospective cohort, *Breast Cancer Res.* 17 (1) (2015) 39, <https://doi.org/10.1186/s13058-015-0536-9>.
- [14] T.T. Schug, A. Janesick, B. Blumberg, J.J. Heindel, Endocrine disrupting chemicals and disease susceptibility, *J. Steroid Biochem. Mol. Biol.* 127 (3–5) (2011) 204–215, <https://doi.org/10.1016/j.jsbmb.2011.08.007>.
- [15] R. Baan, Y. Grosse, K. Straif, B. Secretan, F. El Ghissassi, V. Bouvard, L. Benbrahim-Tallaa, N. Guha, C. Freeman, L. Galichet, V. Cogliano, A review of human carcinogens—Part F: chemical agents and related occupations, *Lancet Oncol.* 10 (12) (2009) 1143–1144, [https://doi.org/10.1016/S1470-2045\(09\)70358-4](https://doi.org/10.1016/S1470-2045(09)70358-4).
- [16] C.M. Ronckers, C.A. Erdmann, C.E. Land, Radiation and breast cancer: a review of current evidence, *Breast Cancer Res.* 7 (1) (2004), <https://doi.org/10.1186/bcr970>.
- [17] M.B. Terry, K.B. Michels, J.G. Brody, C. Byrne, S. Chen, D.J. Jerry, K.M.C. Malecki, M.B. Martin, R.L. Miller, S.L. Neuhausen, K. Silk, A. Trentham-Dietz, Environmental exposures during windows of susceptibility for breast cancer: a framework for prevention research, *Breast Cancer Res.* 21 (1) (2019), <https://doi.org/10.1186/s13058-019-1168-2>.
- [18] R. Natarajan, D. Aljaber, D. Au, C. Thai, A. Sanchez, A. Nunez, C. Resto, T. Chavez, M.M. Jankowska, T. Benmarhnia, J.-A. Yang, V. Jones, J. Tomsic, J.S. McCune, C. Sistrunk, S. Doan, M. Serrano, R.D. Cardiff, E.C. Dietze, V.L. Seewaldt, Environmental exposures during puberty: window of breast cancer risk and epigenetic damage, *Int. J. Environ. Res. Public Health* 17 (2) (2020) 493, <https://doi.org/10.3390/ijerph17020493>.
- [19] M.D. Gammon, R.M. Santella, A.I. Neugut, S.M. Eng, S.L. Teitelbaum, A. Paykin, B. Levin, M.B. Terry, T.L. Young, L.W. Wang, Q. Wang, J.A. Britton, M.S. Wolff, S. D. Stellman, M. Hatch, G.C. Kabat, R. Senie, G. Garbowski, C. Maffeo, P. Montalvan, G. Berkowitz, M. Kemeny, M. Citron, F. Schnabel, A. Schuss, S. Hajdu, V. Vinceguerra, Environmental toxins and breast cancer on Long Island. I. Polycyclic aromatic hydrocarbon DNA adducts, *Cancer Epidemiol. Biomark. Prev.* 11 (8) (2002) 677–685.
- [20] Loomis D., Grosse Y., Lauby-Secretan B., El Ghissassi F., Bouvard V., Benbrahim-Tallaa L., Guha N., Baan R., Mattock H., Straif K.; International Agency for Research on Cancer Monograph Working Group IARC. The carcinogenicity of outdoor air pollution. *Lancet Oncol.* 2013 Dec;14(13):1262-3. doi: 10.1016/s1470-2045(13)70487-x. PMID: 25035875.
- [21] K. Fongsodri, S. Chamnanchanunt, V. Desakorn, V. Thanachartwet, D. Sahassananda, P. Rojnuckarin, T. Umemura, Particulate matter 2.5 and hematological disorders from dust to diseases: a systematic review of available evidence, *Front. Med.* 8 (2021), <https://doi.org/10.3389/fmed.2021.692008>.
- [22] J.G. Brody, K.B. Moysich, O. Humblet, K.R. Attfield, G.P. Beehler, R.A. Rudel, Environmental pollutants and breast cancer, *Cancer* 109 (S12) (2007) 2667–2711, <https://doi.org/10.1002/cncr.22655>.

- [23] P. Thangavel, D. Park, Y.-C. Lee, Recent insights into particulate matter (PM_{2.5})-mediated toxicity in humans: an overview, *Int. J. Environ. Res. Public Health* 19 (12) (2022) 7511, <https://doi.org/10.3390/ijerph19127511>.
- [24] S. Gabet, C. Lemarchand, P. Guénel, R. Slama, Breast cancer risk in association with atmospheric pollution exposure: a meta-analysis of effect estimates followed by a health impact assessment, *Environ. Health Perspect.* 129 (5) (2021) 057012. (<https://ehp.niehs.nih.gov/doi/abs/10.1289/EHP8419>).
- [25] P. Hystad, P.J. Villeneuve, M.S. Goldberg, D.L. Crouse, K. Johnson, Exposure to traffic-related air pollution and the risk of developing breast cancer among women in eight Canadian provinces: a case-control study, *Environ. Int.* 74 (2015) 240–248. (<https://ehp.niehs.nih.gov/doi/abs/10.1289/EHP8419>).
- [26] M.S. Goldberg, P.J. Villeneuve, D. Crouse, T. To, S.A. Weichenthal, C. Wall, A. B. Miller, Associations between incident breast cancer and ambient concentrations of nitrogen dioxide from a national land use regression model in the Canadian National Breast Screening Study, *Environ. Int.* 133 (Pt B) (2019) 105182. (<https://www.ncbi.nlm.nih.gov/pubmed/31648153>).
- [27] A.H. Poulsen, U.A. Hvidtfeldt, M. Sørensen, J.E. Pedersen, M. Ketzel, J. Brandt, C. Geels, J.H. Christensen, O. Raaschou-Nielsen, Air pollution with NO₂, PM_{2.5}, and elemental carbon in relation to risk of breast cancer: a nationwide case-control study from Denmark, *Environ. Res.* 216 (Pt 3) (2023) 114740, <https://doi.org/10.1016/j.envres.2022.114740>.
- [28] P.J. Villeneuve, M.S. Goldberg, D.L. Crouse, T. To, S.A. Weichenthal, C. Wall, A. B. Miller, Residential exposure to fine particulate matter air pollution and incident breast cancer in a cohort of Canadian women, *Environ. Epidemiol.* 2 (3) (2018) e021. (https://journals.lww.com/enviroepidem/fulltext/2018/09000/residential_exposure_to_fine_particulate_matter.2.aspx).
- [29] C.E. Restrepo, Nitrogen Dioxide, Greenhouse gas emissions and transportation in urban areas: lessons from the covid-19 pandemic, *Front. Environ. Sci.* 9 (2021), <https://doi.org/10.3389/fenvs.2021.689985>.
- [30] A. Amadou, D. Praud, T. Coudon, F. Deygas, L. Grassot, M. Dubuis, E. Faure, F. Couvidat, J. Caudeville, B. Bessagnet, P. Salizzoni, K. Leffondré, J. Gulliver, G. Severi, F.R. Mancini, B. Fervers, Long-term exposure to nitrogen dioxide air pollution and breast cancer risk: a nested case-control within the French E3N cohort study, *Environ. Pollut.* 317 (2023) 120719. (<https://www.ncbi.nlm.nih.gov/pubmed/36435283>).
- [31] M.R. Bonner, D. Han, J. Nie, P. Rogerson, J.E. Vena, P. Muti, M. Trevisan, S. B. Edge, J.L. Freudenheim, Breast cancer risk and exposure in early life to polycyclic aromatic hydrocarbons using total suspended particulates as a proxy measure, *Cancer Epidemiol. Biomark. Prev.* 14 (1) (2005) 53–60, <https://doi.org/10.1158/1055-9965.53.14.1>.
- [32] J. Nie, J. Beyea, M.R. Bonner, D. Han, J.E. Vena, P. Rogerson, D. Vito, P. Muti, M. Trevisan, S.B. Edge, J.L. Freudenheim, Exposure to traffic emissions throughout life and risk of breast cancer: the Western New York Exposures and Breast Cancer (WEB) study, *Cancer Causes Control* 18 (9) (2007) 947–955, <https://doi.org/10.1007/s10552-007-9036-2>.
- [33] J.E. Hart, K.A. Bertrand, N. Dupre, P. James, V.M. Vieira, R.M. Tamimi, F. Laden, Long-term particulate matter exposures during adulthood and risk of breast cancer incidence in the nurses' health study II prospective cohort, *Cancer Epidemiol., Biomark. Prev.* 25 (8) (2016) 1274–1276, <https://doi.org/10.1158/1055-9965.epi-16-0246>.
- [34] I. Mordukhovich, J. Beyea, A.H. Herring, M. Hatch, S.D. Stellman, S.L. Teitelbaum, D.B. Richardson, R.C. Millikan, L.S. Engel, S. Shantakumar, S.E. Steck, A.I. Neugut, P. Rossner, R.M. Santella, M.D. Gammon, Vehicular traffic-related polycyclic aromatic hydrocarbon exposure and breast cancer incidence: the long island breast cancer study project (LIBCSP), *Environ. Health Perspect.* 124 (1) (2016) 30–38, <https://doi.org/10.1289/ehp.1307736>.
- [35] Z.J. Andersen, L. Ravnskjaer, K.K. Andersen, S. Loft, J. Brandt, T. Becker, M. Ketzel, O. Hertel, E. Lyng, E.V. Bräuner, Long-term exposure to fine particulate matter and breast cancer incidence in the Danish nurse cohort study, *Cancer Epidemiol., Biomark. Prev.* 26 (3) (2017) 428–430, <https://doi.org/10.1158/1055-9965.epi-16-0578>.
- [36] S. Shmuel, A.J. White, D.P. Sandler, Residential exposure to vehicular traffic-related air pollution during childhood and breast cancer risk, *Environ. Res.* 159 (2017) 257–263, <https://doi.org/10.1016/j.envres.2017.08.015>.
- [37] C. Lemarchand, S. Gabet, S. Cenee, N. Tvardik, R. Slama, P. Guénel, Breast cancer risk in relation to ambient concentrations of nitrogen dioxide and particulate matter: results of a population-based case-control study corrected for potential selection bias (the CECILE study), *Environ. Int.* 155 (2021) 106604. (<https://www.ncbi.nlm.nih.gov/pubmed/34030067>).
- [38] A.J. White, Invited perspective: air pollution and breast cancer risk: current state of the evidence and next steps, *Environ. Health Perspect.* 129 (5) (2021) 51302, <https://doi.org/10.1289%2FEHP9466>.
- [39] I. Terre-Torras, M. Recalde, Y. Díaz, J. de Bont, M. Bennett, M. Aragón, M. Cirach, C. O'Callaghan-Gordo, M.J. Nieuwenhuijsen, T. Duarte-Salles, Air pollution and green spaces in relation to breast cancer risk among pre and postmenopausal women: a mega cohort from Catalonia, *Environ. Res.* 214 (Pt 1) (2022) 113838.
- [40] F. Deygas, A. Amadou, T. Coudon, L. Grassot, F. Couvidat, B. Bessagnet, E. Faure, P. Salizzoni, J. Gulliver, J. Caudeville, G. Severi, F.R. Mancini, K. Leffondré, B. Fervers, D. Praud, Long-term atmospheric exposure to PCB153 and breast cancer risk in a case-control study nested in the French E3N cohort from 1990 to 2011, *Environ. Res.* 195 (2021) 110743, <https://doi.org/10.1016/j.envres.2021.110743>.
- [41] Cancer Care Ontario, Ontario Cancer Registry. <https://www.cancercaresontario.ca/en/cancer-care-ontario/programs/data-research/ontario-cancer-registry>. (Accessed May 2023).
- [42] L. Bai, S. Shin, R.T. Burnett, J.C. Kwong, P. Hystad, A. Van Donkelaar, M. S. Goldberg, E. Lavigne, S. Weichenthal, R.V. Martin, R. Copes, A. Kopp, H. Chen, Exposure to ambient air pollution and the incidence of lung cancer and breast cancer in the Ontario Population Health and Environment Cohort, *Int. J. Cancer* 146 (9) (2020) 2450–2459, <https://doi.org/10.1002/ijc.32575>.
- [43] Canada Post, Addressing guidelines. <https://www.canadapost-postescanada.ca/cpc/en/support/articles/addressing-guidelines/postal-codes.page>. (Accessed May 2023).
- [44] I. Bey, D.J. Jacob, R.M. Yantosca, J.A. Logan, B.D. Field, A.M. Fiore, Q. Li, H.Y. Liu, L.J. Mickley, M.G. Schultz, Global modeling of tropospheric chemistry with assimilated meteorology: model description and evaluation, *J. Geophys. Res.: Atmos.* 106 (D19) (2001) 23073–23095, <https://doi.org/10.1029/2001jd000807>.
- [45] M.S. Hammer, A. van Donkelaar, C. Li, A. Lyapustin, A.M. Sayer, N.C. Hsu, R. C. Levy, M.J. Garay, O.V. Kalashnikova, R.A. Kahn, M. Brauer, J.S. Apte, D. K. Henze, L. Zhang, Q. Zhang, B. Ford, J.R. Pierce, R.V. Martin, Global estimates and long-term trends of fine particulate matter concentrations (1998–2018), *Environ. Sci. Technol.* 54 (13) (2020) 7879–7890, <https://doi.org/10.1021/acs.est.0c01764>.
- [46] P. Hystad, E. Setton, A. Cervantes, K. Poplawski, S. Deschenes, M. Brauer, A. van Donkelaar, L. Lamsal, R. Martin, M. Jerrett, P. Demers, Creating national air pollution models for population exposure assessment in Canada, *Environ. Health Perspect.* 119 (8) (2011) 1123–1129, <https://doi.org/10.1289%2FEhp.1002976>.
- [47] S. Weichenthal, L.L. Pinault, R.T. Burnett, Impact of Oxidant Gases on the Relationship between Outdoor Fine Particulate Air Pollution and Nonaccidental, Cardiovascular, and Respiratory Mortality, *Sci. Rep.* 7 (1) (2017), <https://doi.org/10.1038/s41598-017-16770-y>.
- [48] CanMap Postal Code Suite v2015.3. [computer file] Markham: DMTI Spatial Inc., 2015.
- [49] The Canadian Urban Environmental Health Research Consortium, CANUE data portal. <https://www.canuedata.ca/index.php>. (Accessed May 2023).
- [50] CanMap Postal Code Suite v2016.3. [Computer file] Markham: DMTI Spatial Inc., 2016.
- [51] F.I. Matheson, J.R. Dunn, K.L.W. Smith, R. Moineddin, R.H. Glazier, Development of the Canadian marginalization index: a new tool for the study of inequality, *Can. J. Public Health* 103 (8 Suppl 2) (2012) S12–S16, <https://doi.org/10.1007/bf03403823>.
- [52] F. Matheson, J. Dunn, K. Smith, R. Moineddin, R. Glazier: Canadian Marginalization Index User Guide Version 1.0, 2012. https://canue.ca/wp-content/uploads/2018/07/CANMARG_user_Guide_2012.pdf. (Accessed April 2023).
- [53] N. Robinson, B. Allred, M. Jones, A. Moreno, J. Kimball, D. Naugle, T. Erickson, A. Richardson, A dynamic landsat derived normalized difference vegetation index (NDVI) product for the conterminous United States, *Remote Sens.* 9 (8) (2017) 863, <https://doi.org/10.3390/rs9080863>.
- [54] S. Durrleman, R. Simon, Flexible regression models with cubic splines, *Stat. Med.* 8 (5) (1989) 551–561, <https://doi.org/10.1002/sim.4780080504>.
- [55] R Core Team, R: A language and environment for statistical computing, 2023. <https://www.R-project.org/>.
- [56] Toyib O., Lavigne E., Traub A., Umbrio D., You H., Ripley S., Pollitt K., Shin T., Kulka R., Jessiman B., Tjepkema M., Martin R., Stieb D.M., Hatzopoulos M., Evans G., Burnett R.T., Weichenthal S. Long-term Exposure to Oxidant Gases and Mortality: Effect Modification by PM_{2.5} Transition Metals and Oxidative Potential. *Epidemiology*. 2022 Nov 1;33(6):767-776. doi: 10.1097/EDE.0000000000001538. Epub 2022 Sep 27. PMID: 36165987; PMCID: PMC9531968.
- [57] CanMap Postal Code Suite (various years). [computer files] Markham, ON: DMTI Spatial Inc.
- [58] World Health Organization, A healthy lifestyle - WHO recommendations. <https://www.who.int/europe/news-room/fact-sheets/item/a-healthy-lifestyle—who-recommendations>. (Accessed 21 November 2023).
- [59] K.W. Reding, M.T. Young, A.A. Szpiro, C.J. Han, L.A. DeRoo, C. Weinberg, J.D. Kaufman, D.P. Sandler, Breast Cancer Risk in Relation to Ambient Air Pollution Exposure at Residences in the Sister Study Cohort, *Cancer epidemiology, biomarkers & prevention: a publication of the American Association for Cancer Research, cosponsored by the American Society of Preventive Oncology* 24(12) (2015) 1907-1909. <https://doi.org/10.1158/1055-9965.EPI-15-0787>.
- [60] M.S. Goldberg, On the interpretation of epidemiological studies of ambient air pollution, *J. Expo. Sci. Environ. Epidemiol.* 17 (Suppl 2) (2007) S66–S70, <https://doi.org/10.1038/sj.jes.7500629>.
- [61] Stafoggia, S. Breitner, R. Hampel, X. Basagaña, Statistical approaches to address multi-pollutant mixtures and multiple exposures: the state of the science, *Curr. Environ. Health Rep.* 4 (4) (2017) 481–490, <https://doi.org/10.1007/s40572-017-0162-z>.
- [62] Y.S. Sun, Z. Zhao, Z.N. Yang, F. Xu, H.J. Lu, Z.Y. Zhu, W. Shi, J. Jiang, P.P. Yao, H. P. Zhu, Risk factors and preventions of breast cancer, *Int. J. Biol. Sci.* 13 (11) (2017) 1387–1397, <https://doi.org/10.7150/ijbs.21635>. PMID: 29209143; PMCID: PMC5715522.