



HAL
open science

Improving Neural Network Surface Processing with Principal Curvatures

Josquin Harrison, James Benn, Maxime Sermesant

► **To cite this version:**

Josquin Harrison, James Benn, Maxime Sermesant. Improving Neural Network Surface Processing with Principal Curvatures. Neurips 2024 - 38th Annual Conference on Neural Information Processing Systems, Dec 2024, Vancouver, Canada. hal-04820475

HAL Id: hal-04820475

<https://hal.science/hal-04820475v1>

Submitted on 5 Dec 2024

HAL is a multi-disciplinary open access archive for the deposit and dissemination of scientific research documents, whether they are published or not. The documents may come from teaching and research institutions in France or abroad, or from public or private research centers.

L'archive ouverte pluridisciplinaire **HAL**, est destinée au dépôt et à la diffusion de documents scientifiques de niveau recherche, publiés ou non, émanant des établissements d'enseignement et de recherche français ou étrangers, des laboratoires publics ou privés.

Improving Neural Network Surface Processing with Principal Curvatures

Josquin Harrison

Inria
Sophia Antipolis
josquin.harrison@inria.fr

James Benn

Inria
Sophia Antipolis
james.benn@inria.fr

Maxime Sermesant

Inria
Sophia Antipolis
maxime.sermesant@inria.fr

Abstract

The modern study and use of surfaces is a research topic grounded in centuries of mathematical and empirical inquiry. From a mathematical point of view, curvature is an invariant that characterises the intrinsic geometry and the extrinsic shape of a surface. Yet, in modern applications the focus has shifted away from finding expressive representations of surfaces, and towards the design of efficient neural network architectures to process them. The literature suggests a tendency to either overlook the representation of the processed surface, or use overcomplicated representations whose ability to capture the essential features of a surface is opaque. We propose using curvature as the input of neural network architectures for surface processing, and explore this proposition through experiments making use of the *shape operator*. Our results show that using curvature as input leads to significant increase in performance on segmentation and classification tasks, while allowing far less computational overhead than current methods.

1 Introduction

Surfaces are a natural representation for many real world objects ranging from organs and organisms to archaeological artefacts. They are also a central tool in virtual environments such as computer games, or computer-aided design. This ubiquity has resulted in a large body of work dedicated to mathematical methods developed for the efficient use of surfaces, as well as their analysis.

The goal of *traditional* computational surface analysis is to find a representation of a surface that is expressive enough to capture details relevant for the problem or task at hand, while being computationally light-weight. However, the effectiveness of Convolutional Neural Network (CNN) in image processing opened new doors to surface processing. The design of efficient convolution-like operations to adapt neural networks (NN) to surfaces alleviated the need for complex and detailed representations, to the point where most state of the art architectures use extrinsic vertex coordinates as input, letting the NN models learn the surface structure at multiple scales. While some attempts were made to use well known representations as inputs, yielding some increase in performance [38, 35], the general consensus is that the model should be able to learn it by itself [25]. While it is true that neural networks are efficient at capturing surface features at multiple scales, the use of a local surface representation that is more expressive and more natural to interpret than extrinsic coordinates should naturally improve the performance of the network. The optimal choice of representation should be somewhere between coarse extrinsic vertex coordinates, and more complex representations.

In Riemannian geometry, the *shape operator* is the main tool linking the intrinsic geometry of a surface with its bending and curving in ambient space. Its eigenvalues are the principal curvatures. Their product and evenly divided sum give precisely the Gauss and mean curvature of the surface, respectively. We hypothesize that the optimal choice for a local surface representation that meets the requirements of surface processing is the set of principal curvatures: they characterize the surface up to isometry (location and orientation in space); they are purely local, which allows the neural network to decide on more general surface features; and they are lightweight, leaving very little computational overhead in any scenario. This work tests our hypothesis against two widely used representations of surfaces in three state of the art NN architectures.

In the next section we give an overview of surface processing, and introduce shape representations and learning methods. In section 3 we give an introduction to the Shape Operator, although we should remark now that this is *not* the first appearance of the shape operator in the surface processing literature. The shape operator has already become an efficient tool in surface processing and is, among other things, used to define local tangent frames and compute surface *features* like creases [31]. Following these introductions, we then conduct extensive experiments in section 4, comparing principal curvature with three other representations in conjunction with three different NN architectures, on two segmentation datasets and one classification dataset, that shows how principal curvature enhances any state of the art model in different tasks. In addition to outperforming other methods, we show that this more concise representation is faster to compute, leaving minimal computational overhead when added to a pipeline.

2 Related work

The first step to surface processing is usually its discretisation as a mesh or point cloud, which is particularly useful for visualisation or rendering. From this starting point, novel representations have been derived in an effort to provide tools for different surface related tasks. These tasks include surface matching, semantic segmentation, classification, or even shape retrieval.

Historically, the general trend has been to find compact descriptors of a shape which could be then compared within a dataset. A long list of such descriptors exist, among them signature-based descriptors, such as Heat Kernel Signature (HKS) [42] or wave kernel signature [4], proved to be particularly efficient. Closely related are histogram methods, which are often combined with signatures to provide expressive representations such as the SHOT [37] or the Echo [26] descriptors. Geometric measure theory has also been a source of inspiration for developing efficient representations, such as geometric currents [5] leveraging on finite elements, or kernel-based currents [43] and varifolds [10] tailored for shape deformation. Such representations can be used in conjunction with classical statistical analysis tools, e.g [26, 37, 5], although they are often building blocks for specialised methods on surfaces such as LDDMM [49], functional maps [29] or spectral-based analysis [45].

With the advent of deep learning, many methods previously stated were re-written with the help of neural networks resulting in Deep functional maps [20], and ResNet-LDDMM [2], to name but a few. Representations of surfaces themselves were proposed as neural networks, such as DeepSDF [32] or DeepCurrents [30]. As convolutions proved particularly effective when learning on images, i.e structured grids, some work proposed voxel-based solutions to the study of surfaces [23]. Others suggested representing surfaces as geometric images [40], on which convolutions can be applied. A second generation of *geometric deep learning* has focused on building network architecture specifically tailored to work directly on surfaces, i.e meshes or point clouds. From a point cloud perspective, Point Net [34] and its extension Point Net ++ [35] consider the surface as a set of points by applying set operations on them. Among others, DGCNN [46] applies a convolution-like operation on *dynamic graphs* constructed layer-wise. MeshCNN [16] on the other hand fully leverages the mesh structure to develop operation unique to triangulations. Transformer based architectures have also appeared for the specific purpose of surface processing [18]. Among them, and in a similar vein as before, GaTr [8] proposes to represent geometric data in an algebra of choice and designs an architecture with operations belonging to this algebra. An effort to have efficient generalisation of convolutions on surfaces was proposed by [22], although the lack of global coordinates creates ambiguity in local operations. To alleviate this problem, a large body of work has proposed *rotation equivariant* operations, namely GemCNN [12], augmenting graph NNs, or field convolutions [25]. Finally, recent models propose to bypass the problem of generalising convolutions by focusing

on well defined operations on surfaces, such as discrete exterior calculus in Hodge Net [41], heat diffusion in Diffusion Net [38] or a suit of known operators in Delta Net [48].

As model architectures include more and more knowledge of shapes, the need for a better representation of the input to these models has decreased. Outside of models that contain operations proper to the structure of choice (e.g [16, 8]), most models naturally accept as input the coordinates at every point. Some papers propose to augment the model by inputting higher dimensional descriptors initially designed for a more *direct* analysis, such as the ones previously mentioned (e.g HKS, WKS, SHOT). Such proposals can be seen in [38], where HKS interacts well with the diffusion part of the architecture, or [35] where they combine HKS, WKS, Gaussian curvature through concatenation and PCA. However, recent work has dismissed this idea [25], citing the results of Diffusion Net [38] which show no great improvement when moving from coordinates to HKS.

As methods for learning on surfaces have evolved, we suggest that a better input representation is a simpler one, yet is more expressive than coordinates. We suggest that we can scale back to the simplest differentiable invariant of a surface: its curvature.

3 The Shape Operator

Here we give a conceptual introduction to the Shape Operator and describe how its eigenvalues completely characterize the surface to which it belongs (section 3.1). In section 3.2 we describe an explicit calculation of the Shape Operator which igl’s implementation of the principal curvatures is based on – this is the implementation we use in our experiments (see section 4.1). Those already familiar with the differential geometry of curves and surfaces may skip ahead to section 4; for others this section serves as a concise introduction – although, we do rely on a basic understanding of functions of several variables and their derivatives, and surfaces and their tangent spaces.

Surfaces in \mathbb{R}^3 will be denoted by S and \bar{S} , points in surfaces by p ’s and q ’s, and the tangent space to S at a point $p \in S$ by $T_p S$. Maps from \mathbb{R}^3 to itself will be denoted by $F : \mathbb{R}^3 \rightarrow \mathbb{R}^3$, and their derivatives at a point p by DF_p – the Jacobian matrix. A parameterisation X of a smooth surface S is a diffeomorphism between an open set $U \subset \mathbb{R}^2$ and an open set $V \subset S$, and provides a mathematical description of S as it lies in \mathbb{R}^3 . The standard Euclidean inner product on \mathbb{R}^3 will be signified by $\langle \cdot, \cdot \rangle$, and its restriction to a surface S and its tangent bundle $TS = \coprod_{p \in S} T_p S$ by $g_S(\cdot, \cdot)$, which we call the induced metric. A normal vector to S at p is one which is orthogonal to every vector v in $T_p S$ (measured in $\langle \cdot, \cdot \rangle$) and will be denoted by N_p ; if we have a field of normal vectors in an open set around p then this field will be denoted simply by N .

The *Shape Operator* of a surface S at a point $p \in S$ measures the rate at which surface normal vectors N separate around p , which is precisely the bending of the surface in space:

Definition 1 *Given a point p on a surface $S \subset \mathbb{R}^3$, and the unit normal vector N defined on a neighbourhood U of p , the shape operator is the linear map*

$$\begin{aligned} \mathbf{S}_p : T_p S &\longrightarrow T_p S \\ v &\longmapsto -\nabla_v N, \end{aligned}$$

where $T_p S$ denotes the tangent space of S at point p

In other words, the shape operator \mathbf{S}_p tells us how the normal vector changes as we move in S , in the direction of v from p . One possible way to visualise the shape operator is through the Gauss map, which identifies each point $p \in S \subset \mathbb{R}^3$ with its unit normal vector N_p , now thought of as a point in \mathbb{S}^2 . The shape operator is then the differential of the Gauss map at p and is a tangent vector to \mathbb{S}^2 at the image N_p of p , as illustrated in figure 1.

The operator \mathbf{S}_p is linear for each $p \in S$, and self-adjoint in the Euclidean inner product $\langle \cdot, \cdot \rangle$:

$$\langle \mathbf{S}_p(v), w \rangle = \langle v, \mathbf{S}_p(w) \rangle. \quad (1)$$

It can therefore be represented by a symmetric 2×2 matrix $[\mathbf{S}_p] : T_p S \rightarrow T_p S$ at each point $p \in S$. It is well-known that symmetric matrices admit a complete system of orthonormal eigenvectors (e_1, e_2) spanning the space on which they act. The matrix representation $[\mathbf{S}_p]$ with respect to the basis (e_1, e_2) has the simple form:

$$[\mathbf{S}_p] = \begin{pmatrix} \kappa_1 & 0 \\ 0 & \kappa_2 \end{pmatrix}. \quad (2)$$

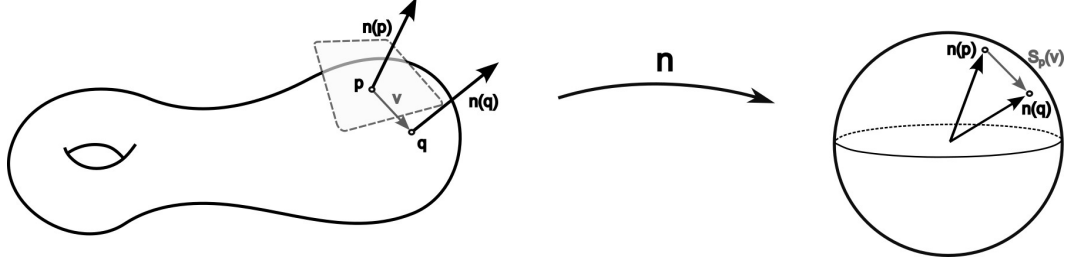


Figure 1: The shape operator may be visualised via the Gauss map.

Where κ_1 and κ_2 are the eigenvalues of S_p .

Definition 2 Let S be a surface in \mathbb{R}^3 , p a point in S , S_p the shape operator at p and $[S_p]$ its matrix representation.

1. The eigenvalues $\kappa_1(p)$ and $\kappa_2(p)$ of $[S_p]$ at p are the principal curvatures of S at p , and their corresponding eigenvectors e_1 and e_2 are the principal directions;
2. The Gauss curvature κ of S at p is the product $\kappa_1(p) \cdot \kappa_2(p)$ of the principal curvatures;
3. The mean curvature H_p is the average $\frac{\kappa_1(p) + \kappa_2(p)}{2}$ of the principal curvatures

The Gauss and mean curvatures can be equivalently interpreted as the determinant and half the trace of $[S_p]$, respectively.

The importance of these quantities is two-fold: (1) two surfaces differ only in location and orientation in space if and only if they have the same principal curvatures (Theorems 9.1 and 9.2 in [28]) – that is, the shape operator completely characterizes the shape of a surface; and (2) the Gauss and mean curvature generate all possible differential invariants of a surface (see Guggenheim [15], Olver [27]) – in particular, Gauss and mean curvature are fundamental characteristics of the shape of a surface, and the inclusion of the higher order invariants they generate into a representation could even improve the results shown here.

3.1 Congruence

To explain how Gauss and mean curvature completely describe the shape of a surface we need a few more definitions.

An *isometry* of \mathbb{R}^3 is a map $F : \mathbb{R}^3 \rightarrow \mathbb{R}^3$ whose differential preserves the angles between tangent vectors at every point of \mathbb{R}^3 :

$$\langle v, w \rangle_p = \langle DF_p \cdot v, DF_p \cdot w \rangle_p, \quad \forall v, w \in T_p \mathbb{R}^3. \quad (3)$$

If g_S is the Riemannian inner product induced on TS by the Euclidean inner product $\langle \cdot, \cdot \rangle$ then an isometry between two surfaces is a map $\eta : S \rightarrow \bar{S}$ whose differential preserves the angles between tangent vectors to S :

$$g_S(v, w) = g_{\bar{S}}(D\eta \cdot v, D\eta \cdot w). \quad (4)$$

Every isometry F of \mathbb{R}^3 restricts to an isometry of surfaces $F|_S = \eta : S \rightarrow F(S)$, but the converse need not be true, unless an additional hypothesis on the shape operators is satisfied.

Two surfaces S and \bar{S} are *congruent* if there exists an isometry $F : \mathbb{R}^3 \rightarrow \mathbb{R}^3$ such that $F(S) = \bar{S}$; that is, congruent surfaces are surfaces which differ only in their location and orientation in space. It is clear that the shape operators S and \bar{S} of two congruent surfaces are related by

$$DF_p \cdot S_p(v) = \bar{S}_{F(p)}(DF_p \cdot v), \quad \forall v \in T_p S; \quad (5)$$

in particular, the matrices $[S_p]$ and $[\bar{S}_p]$ are conjugate to one another via $[DF_p]$. As per Theorem 9.2 of [28], if there exists an isometry $\eta : S \rightarrow \bar{S}$ such that

$$D\eta_p \cdot S_p(v) = \bar{S}_{\eta(p)}(D\eta_p \cdot v), \quad \forall v \in T_p S, \quad (6)$$

i.e. such that the matrices $[\mathbf{S}_p]$ and $[\overline{\mathbf{S}}_p]$ are conjugate to one another via the matrix representation $[D\eta_p]$, then there exists an isometry $F : \mathbb{R}^3 \rightarrow \mathbb{R}^3$ such that $F|_S(S) = \eta(S) = \overline{S}$, and the two surfaces are congruent. The conclusion of this brief mathematical digression is that two congruent surfaces have the same intrinsic geometry and shape in space, and two surfaces with the same intrinsic geometry and shape in space are congruent. This is what is sought after when representing shapes with intrinsic quantities.

3.2 Discrete curvature

As well as being an important theoretical tool, curvature is a central notion in mesh processing. A large body of work has been dedicated to estimating its discrete counterpart. Among them, many methods propose to infer Gaussian curvature directly, such as in [24], or involve the use of geometric measure theory [13], as in [11, 17]. Interestingly, many efficient methods propose to first discretize the shape operator in order to compute the Gaussian curvature from it. This is done either directly on the mesh triangles, such as in [36], or by first locally fitting a function to the surface, and then computing explicitly the shape operator. To get a better feel for why this is a natural construction of the shape operator, consider a surface S , given a point $p \in S$. Then the surface around p can be parameterized as $X(u, v)$ with $(u, v) \in \mathbb{R}^2$. The inner product at $T_p S$, also called the first fundamental form, is then given for any two tangent vectors v, w by:

$$(v, w)_p = v^T \begin{pmatrix} E & F \\ F & G \end{pmatrix} w, \quad (7)$$

where $E = \langle \partial_u X, \partial_u X \rangle$, $F = \langle \partial_u X, \partial_v X \rangle$ and $G = \langle \partial_v X, \partial_v X \rangle$. And the surface normal at p can be defined as

$$n = \frac{\partial_u X(u, v) \times \partial_v X(u, v)}{|\partial_u X(u, v) \times \partial_v X(u, v)|}. \quad (8)$$

We can now define the second partial derivatives of X in the normal direction n , a quantity called the second fundamental form, noted \mathbb{I} :

$$\mathbb{I} = \begin{pmatrix} L & M \\ M & N \end{pmatrix} \quad (9)$$

where $L = \langle \partial_{uu} X, n \rangle$, $M = \langle \partial_{uv} X, n \rangle$, and $N = \langle \partial_{vv} X, n \rangle$. The partial derivatives of the surface normal can then be expressed via the Weingarten equations, in terms of the components of the first and second fundamental form:

$$\begin{aligned} \partial_u n &= \frac{FM - GL}{EG - F^2} \partial_u X + \frac{FL - EM}{EG - F^2} \partial_v X \\ \partial_v n &= \frac{FN - GM}{EG - F^2} \partial_u X + \frac{FM - EN}{EG - F^2} \partial_v X. \end{aligned}$$

This enables us to write the matrix form of the shape operator at p as:

$$[\mathbf{S}_p] = (EG - F^2)^{-1} \begin{pmatrix} LG - MF & ME - LF \\ ME - LF & NE - MF \end{pmatrix} \quad (10)$$

From these derivations, it becomes interesting to find good local parametrisation of surfaces, that is, a bi-variate scalar function f such that:

$$X(u, v) = (u, v, f(u, v)) \quad (11)$$

The shape operator can then be easily derived from the first and second derivatives of f . An efficient way to find such functions is via osculating jets, proposed in [9]. For the following experiments, we use a multi-scale version of this, proposed in [31], in which the shape operator is computed by using neighbourhoods of varying size around a point, yielding a robust method for estimating curvature on a mesh.

4 Experiments

We test the representation of surfaces by the principal curvatures κ_1, κ_2 and Gaussian curvature κ against the three most commonly used representations: the **HKS** [42], the **SHOT** descriptor [37], and

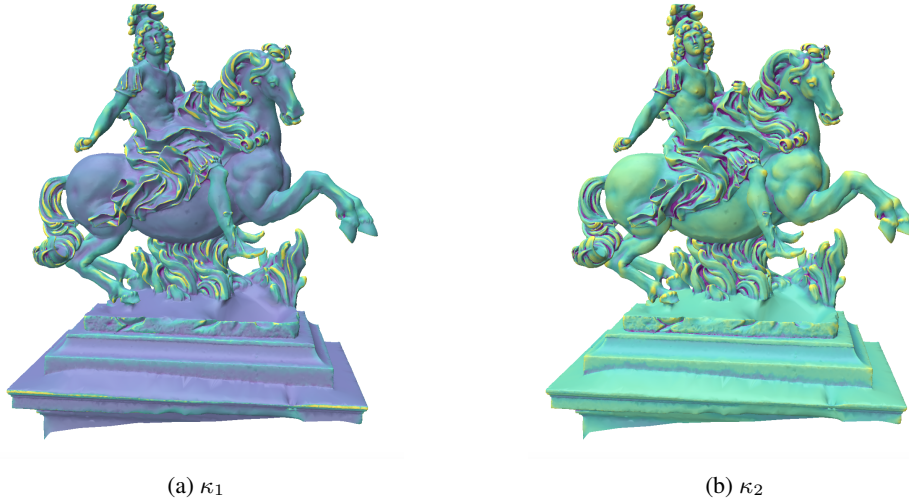


Figure 2: Principal curvature visualisation of a Louis XIV statue.

the **extrinsic coordinates**. The HKS is a purely intrinsic representation derived from the Laplace operator, and constitutes the most widely used signature-based method to represent shapes. The SHOT representation is a descriptor mixing signature and histogram-based methods to describe shapes, and is therefore an extrinsic representation. As they belong to two different classes of surface representations we believe they are the most adequate for benchmarking our proposed curvature representation.

All representations are tested with three different architectures. We regard **Diffusion Net** [38] as the state of the art in NN architectures, as it shows the most promising results on general benchmark tasks. In addition, it shows very little difference in performance when changing the input from coordinates to HKS, making it the *hardest* test for our representation. **Point Net ++** [35] has been designed as a general method to process shapes arising in many situations, including controlled environments – as in our case – but also from segmented images encountered in the autonomous driving field [35]. As such **Point Net ++** uses the least geometric structure to describe a surface: all one needs is a point set. We believe that in this case, using better surface information for the input will greatly enhance the performance of the model. The authors of PointNet++ have already touched on this subject, recommending a linear combination of HKS, WKS and Gaussian curvature, followed by a PCA projection, leading to a 64 dimensional feature per point. We aim to show that a 2d (or even 1d) input of curvature information is more relevant for a smaller computational cost. **Delta Net** [48] proposes an architecture intrinsic to surfaces by design, by combining four operators defined on the surface: Laplacian, divergence, curl and norm. Most papers that propose other surface descriptors rather than coordinates as input, do it solely to have an intrinsic representation of the surface. Curvature gives isometry invariance (section 3), and we further believe it is also more robust, numerically. Better performance from a curvature based representation in this architecture would support this belief.

Finally, we pick three tasks of varying complexity to measure the impact of each method: human segmentation [21], molecular segmentation [6], and shape classification [19]. Examples from each dataset are shown in figure 3.

4.1 Implementation

The performance of each representation is strongly dependent on the chosen implementation. We have tried to be as fair as possible by not developing our own implementations of existing work and instead using implementations which have already been tried, tested, and validated in the literature. For calculating the discrete principal curvatures via quadratic surface fitting, we have used `igl`'s implementation with a fixed neighbourhood radius of 5; the Gaussian curvature κ is then computed directly as the product of κ_1, κ_2 . HKS depends on the Laplacian, and we have used the method implemented in `robust-laplacian` based on [39] - this is also consistent with what is used in `Diffusion Net`. The eigendecomposition of the Laplacian is then performed with `scipy`. For the

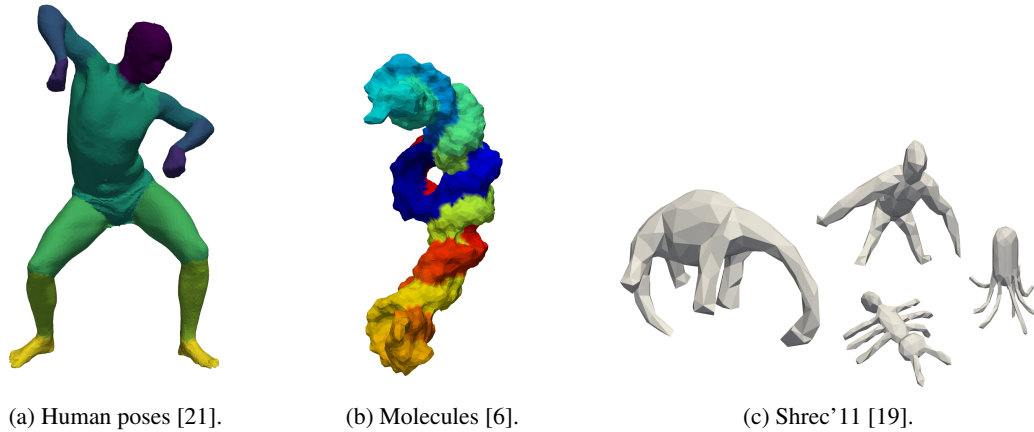


Figure 3: Samples of the segmentation and classification datasets used for experiments.

SHOT representation, we use the implementation in the `pc1` library, which computes 352 features per vertex, in this case we normalise all shapes and use a ball of radius `.1`; all other parameters are left untouched.

Regarding the neural networks, we use the implementations made publicly available by the authors, modifying only when needed to accommodate more than just coordinates as input. We also use the same parameters proposed in each paper when they are known, which we detail for every task below. We make all our code and experiments available at <https://github.com/Inria-Asclepios/shape-nets>

4.2 Time Complexity

As a first experiment, we compute¹ for each representation method, the computation time as a function of the number of points in a surface. The performances are reported in figure 4. HKS and curvature are both efficient for meshes with up to 100k points. However, curvature is consistently faster, even for larger meshes (up to 500k points), displaying the very small overhead incurred by the use of curvature in surface models.

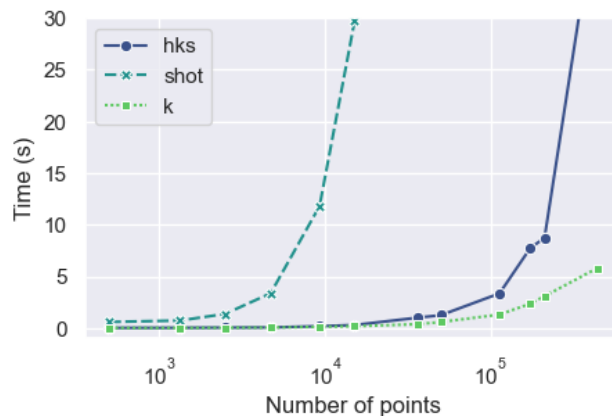


Figure 4: Time of computation for each representation with respect to the number of points in a mesh.

¹Computed on an Apple M2 chip

4.3 Human Anatomy segmentation

We first segment the human parts from the composite dataset proposed in [21], containing samples from other human dataset, namely FAUST [7], SCAPE [3], Adobe [1], MIT [44], and SHREC07 [14]. As in the original paper, we use the SHREC07 dataset as test set. Similar to [47], we differ from [21] by evaluating on vertices rather than faces. For Point Net ++ and Delta Net we resample each shape to 1024 points, and we leave the meshes untouched for Diffusion Net, as per the experiments conducted in each paper. We optimise the negative log-likelihood for 100 epochs, with the ADAM optimiser and a scheduler step every 20 epochs. We ran the experiment 5 times and have reported the mean test accuracy in table 1.

	xyz	$shot_{16}$	$shot_{64}$	hks	κ_1, κ_2	κ
Point Net ++	69.6	71.4	72.4	78.1	80.6	74.5
Delta Net	72.4	58.1	66.2	68.9	86.8	60.0
Diffusion Net	94.7	95.0	95.0	95.1	97.4	95.4

Table 1: Test accuracies (%) on the Human part segmentation task.

The results highlight the assumption that better representations lead to better performance. PointNet++ showed the greatest improvement when moving away from coordinates: this is due to its architecture having the least amount of geometric information at baseline. The better results come from the principal curvatures, and show how expressive this representation is. The effects of the principal curvatures are even more pronounced in the Delta Net experiment, where κ_1, κ_2 greatly outperform all other methods. It’s interesting to note that in this experiment the coordinate representation performs better than the other more complex representations. Diffusion Net may show that it is more robust to the type of input, as long as it loosely describes the shape, however the improvement brought by the principal curvature is still significant. To further demonstrate the impact of a good representation, even in the case of Diffusion Net, we show in 5 the worst cases for xyz and κ_1, κ_2 inputs. The clear improvement in this case may be even more important than general accuracy in some cases, e.g with human-in-the-loop type corrections.

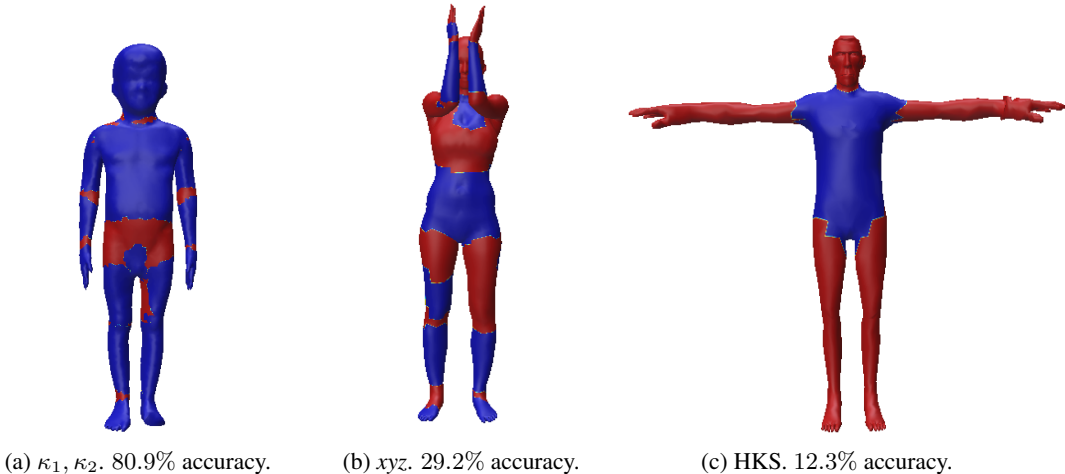


Figure 5: Human part segmentation with Diffusion Net. Worst cases for different representations, blue shows the correct prediction, red the error.

4.4 Molecular segmentation

The molecular dataset made available by [6] and first proposed in [33], can be considered a harder segmentation task than the Human part dataset: it proposes a wider range of shapes in the form of RNA molecules, and a 260-way part segmentation task. We resample all meshes to 2048 points, except in the case of Diffusion Net where we kept the original discretisation. We evaluate all our baselines on 5 random splits with a train-test ratio of 80-20. We run the models for 200 epochs, and report the mean test accuracies in table 2.

	xyz	$shot_{16}$	$shot_{64}$	hks	κ_1, κ_2	κ
Point Net ++	35.4	70.9	71.9	70.2	72.4	69.0
Delta Net	29.2	45.6	56.5	49.6	55.5	29.2
Diffusion Net	82.6	88.4	89.1	85.6	89.4	84.0

Table 2: Test accuracies (%) on the Molecular segmentation task.

Again, we see a significant improvement when using a better representation of the surface in the case of PointNet++, going from failing in the case of coordinates to outperforming Delta Net – with principal curvatures giving the best performances. Diffusion Net shows a non-negligible jump in performance as well. Although the SHOT descriptor outperforms other representations in the case of Delta Net, the general performance of this architecture is underwhelming. We believe this is due to the accumulation of errors in the discretisation of surface operators used. Indeed, one layer computes a chain of 6 operators on the surface: since the RNA shapes are very irregular, the error for each operator could be significant.

4.5 Classification

In addition to segmentation tasks, we propose to compare representations in the context of classification. This experiment should show whether or not geometrically informative inputs interact well with pooling-type operations. We choose the widely adopted baseline Shrec11, proposed in [19]. It is a 30-way classification dataset with 20 shapes per category. We choose the simplified mesh dataset and the harder version of training, using only 10 samples per class and evaluating on the test. We perform our experiments on 5 random splits. We train our baselines for 100 epochs with a scheduler step at epoch 50 and optimise the cross-entropy loss with a label smoothing factor of 0.2. Resulting mean test accuracies are shown in table 3.

	xyz	$shot_{16}$	$shot_{64}$	hks	κ_1, κ_2	κ
Point Net ++	71.5	69.8	60.7	60.8	85.7	96.2
Delta Net	75.7	54.9	60.4	98.6	90.1	98.8
Diffusion Net	80.3	52.6	67.4	98.9	94.2	99.1

Table 3: Test accuracies (%) on the Shrec11 classification task.

Yet again we observe a significant improvement when turning to better representations, even more so when using Gaussian curvature κ . Additionally, figure 6 shows that all geometric representations yield less variability across each folds. In addition, HKS, Gaussian curvature κ , and principal curvature κ_1, κ_2 converge much faster than all others.

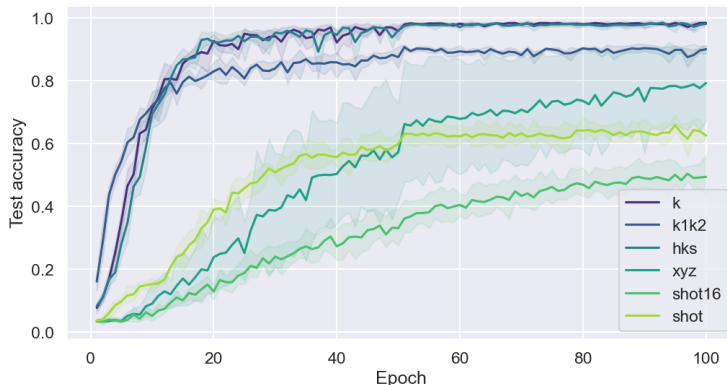


Figure 6: Evolution of the test accuracy with 95% confidence interval by epochs per representations across folds, for the Shrec07 dataset using Diffusion Net.

The fact that gaussian curvature, closely followed by HKS outperform principal curvature in this classification task seems to indicate that Gaussian curvature interacts better with pooling operations present in classification architectures. Interestingly, all three architectures tested here have different

ways of performing the pooling operation. Although it is hard to give any analytical reasoning to this behavior, we believe it is simply the fact that gaussian curvature is already an aggregation of the principal curvatures, that it shows better performance in classification tasks.

For each experiment, additional metrics can be found in Appendix A.1.

4.6 Noisy data

We propose one final experiment to highlight the robustness of input features to noisy data. We focus on three representations: HKS, known to be robust to noise as it computes a representation at multiple scale; extrinsic coordinates that are directly impacted by the noise; and principal curvatures, known to be less robust to noise as a purely local descriptor. To compare these representations we pick the diffusion net trained on the human pose dataset, and we add noise to the dataset at inference time. Specifically, we add gaussian noise with a standard deviation of 1%, 3%, 5%, 7% and 10% of the diagonal length of the bounding box of each shape. Examples of the noisy data can be seen in Appendix A.2. Results show that the accuracy for all three features worsen at the same rate, as shown in figure 7, showing that principal curvature can be a viable choice even in the presence of noisy data.

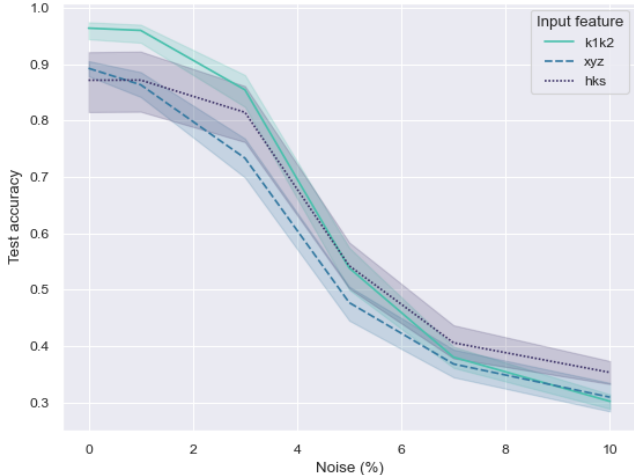


Figure 7: Evolution of the test accuracy on the human pose segmentation task for inputs (k_1, k_2) , HKS and the extrinsic coordinates when noise is added to the shapes.

5 Conclusion

In this work we have shown that curvature should be the representation of choice when it comes to processing surfaces with neural networks. In almost all experiments the principal and Gaussian curvatures performed better than any other choice of input, both qualitatively and quantitatively. In particular, this representation can be obtained with minimal computational overhead. Its combination with PointNet++, the architecture that has the least prior information about the surface, showed that it can help the network better understand the surface structure. When combined with Delta Net, which contains only intrinsic operations, the improvement indicates that curvature gives more than just a rigid transformation invariance. Even in the case of Diffusion Net, where the diffusion operation seems to interact nicely with any representation, curvature as input showed significant amelioration. For these reasons, we believe curvature should become the standard practice when using models to learn on surfaces. Finally, although experiments have shown that gaussian curvature outperforms principal curvatures on classification tasks, we would like to further define those guidelines in future work, as well as compare representations in a wider range of tasks and architectures.

6 Acknowledgements

This Work has been funded by PARIS - ERACoSysMed grant number 15087, by G-Statistics - ERC grant number 786854 and has been supported by the French government through the National Research Agency (ANR) Investments in the 3IA Côte d'Azur (ANR-19-P3IA-000). The authors are grateful to the OPAL infrastructure from Université Côte d'Azur for providing computing resources and support.

References

- [1] Adobe. Adobe mixamo 3d characters. *Retrieved from Mixano.com*, 2016.
- [2] Boulbaba Ben Amor, Sylvain Arguillère, and Ling Shao. Resnet-lddmm: advancing the lddmm framework using deep residual networks. *IEEE Transactions on Pattern Analysis and Machine Intelligence*, 45(3):3707–3720, 2022.
- [3] Dragomir Anguelov, Praveen Srinivasan, Daphne Koller, Sebastian Thrun, Jim Rodgers, and James Davis. Scape: shape completion and animation of people. In *ACM SIGGRAPH 2005 Papers*, pages 408–416. 2005.
- [4] Mathieu Aubry, Ulrich Schlickewei, and Daniel Cremers. The wave kernel signature: A quantum mechanical approach to shape analysis. In *2011 IEEE international conference on computer vision workshops (ICCV workshops)*, pages 1626–1633. IEEE, 2011.
- [5] James Benn, Stephen Marsland, Robert I McLachlan, Klas Modin, and Olivier Verdier. Currents and finite elements as tools for shape space. *Journal of Mathematical Imaging and Vision*, 61:1197–1220, 2019.
- [6] Helen M Berman, John Westbrook, Zukang Feng, Gary Gilliland, Talapady N Bhat, Helge Weissig, Ilya N Shindyalov, and Philip E Bourne. The protein data bank. *Nucleic acids research*, 28(1):235–242, 2000.
- [7] Federica Bogo, Javier Romero, Matthew Loper, and Michael J Black. Faust: Dataset and evaluation for 3d mesh registration. In *Proceedings of the IEEE conference on computer vision and pattern recognition*, pages 3794–3801, 2014.
- [8] Johann Brehmer, Pim De Haan, Sönke Behrends, and Taco S Cohen. Geometric algebra transformer. *Advances in Neural Information Processing Systems*, 36, 2024.
- [9] Frédéric Cazals and Marc Pouget. Estimating differential quantities using polynomial fitting of osculating jets. *Computer aided geometric design*, 22(2):121–146, 2005.
- [10] Nicolas Charon and Alain Trouvé. The varifold representation of nonoriented shapes for diffeomorphic registration. *SIAM journal on Imaging Sciences*, 6(4):2547–2580, 2013.
- [11] David Cohen-Steiner and Jean-Marie Morvan. Restricted delaunay triangulations and normal cycle. In *Proceedings of the nineteenth annual symposium on Computational geometry*, pages 312–321, 2003.
- [12] Pim De Haan, Maurice Weiler, Taco Cohen, and Max Welling. Gauge equivariant mesh cnns: Anisotropic convolutions on geometric graphs. *arXiv preprint arXiv:2003.05425*, 2020.
- [13] Herbert Federer. Curvature measures. *Transactions of the American Mathematical Society*, 93(3):418–491, 1959.
- [14] Daniela Giorgi, Silvia Biasotti, and Laura Paraboschi. Shape retrieval contest 2007: Watertight models track. *SHREC competition*, 8(7):7, 2007.
- [15] Heinrich W Guggenheimer. *Differential geometry*. Courier Corporation, 2012.
- [16] Rana Hanocka, Amir Hertz, Noa Fish, Raja Giryes, Shachar Fleishman, and Daniel Cohen-Or. Meshcnn: a network with an edge. *ACM Transactions on Graphics (ToG)*, 38(4):1–12, 2019.
- [17] J-O Lachaud, Pascal Romon, Boris Thibert, and David Coeurjolly. Interpolated corrected curvature measures for polygonal surfaces. In *Computer Graphics Forum*, volume 39, pages 41–54. Wiley Online Library, 2020.
- [18] Jean Lahoud, Jiale Cao, Fahad Shahbaz Khan, Hisham Cholakkal, Rao Muhammad Anwer, Salman Khan, and Ming-Hsuan Yang. 3d vision with transformers: A survey. *arXiv preprint arXiv:2208.04309*, 2022.

- [19] Z Lian, A Godil, B Bustos, M Daoudi, J Hermans, S Kawamura, Y Kurita, G Lavoua, P Dp Suetens, et al. Shape retrieval on non-rigid 3d watertight meshes. In *Eurographics workshop on 3d object retrieval (3DOR)*. Citeseer, 2011.
- [20] Or Litany, Tal Remez, Emanuele Rodola, Alex Bronstein, and Michael Bronstein. Deep functional maps: Structured prediction for dense shape correspondence. In *Proceedings of the IEEE international conference on computer vision*, pages 5659–5667, 2017.
- [21] Haggai Maron, Meirav Galun, Noam Aigerman, Miri Trope, Nadav Dym, Ersin Yumer, Vladimir G Kim, and Yaron Lipman. Convolutional neural networks on surfaces via seamless toric covers. *ACM Trans. Graph.*, 36(4):71–1, 2017.
- [22] Jonathan Masci, Davide Boscaini, Michael Bronstein, and Pierre Vandergheynst. Geodesic convolutional neural networks on riemannian manifolds. In *Proceedings of the IEEE international conference on computer vision workshops*, pages 37–45, 2015.
- [23] Daniel Maturana and Sebastian Scherer. Voxnet: A 3d convolutional neural network for real-time object recognition. In *2015 IEEE/RSJ international conference on intelligent robots and systems (IROS)*, pages 922–928. IEEE, 2015.
- [24] Mark Meyer, Mathieu Desbrun, Peter Schröder, and Alan H Barr. Discrete differential-geometry operators for triangulated 2-manifolds. In *Visualization and mathematics III*, pages 35–57. Springer, 2003.
- [25] Thomas W Mitchel, Vladimir G Kim, and Michael Kazhdan. Field convolutions for surface cnns. In *Proceedings of the IEEE/CVF International Conference on Computer Vision*, pages 10001–10011, 2021.
- [26] Thomas W Mitchel, Szymon Rusinkiewicz, Gregory S Chirikjian, and Michael Kazhdan. Echo: Extended convolution histogram of orientations for local surface description. In *Computer Graphics Forum*, volume 40, pages 180–194. Wiley Online Library, 2021.
- [27] Peter J Olver. Differential invariants of surfaces. *Differential Geometry and Its Applications*, 27(2):230–239, 2009.
- [28] Barrett O’neill. *Elementary differential geometry*. Elsevier, 2006.
- [29] Maks Ovsjanikov, Mirela Ben-Chen, Justin Solomon, Adrian Butscher, and Leonidas Guibas. Functional maps: a flexible representation of maps between shapes. *ACM Transactions on Graphics (ToG)*, 31(4):1–11, 2012.
- [30] David Palmer, Dmitriy Smirnov, Stephanie Wang, Albert Chern, and Justin Solomon. Deepcurrents: Learning implicit representations of shapes with boundaries. In *Proceedings of the IEEE/CVF Conference on Computer Vision and Pattern Recognition*, pages 18665–18675, 2022.
- [31] Daniele Panozzo, Enrico Puppo, and Luigi Rocca. Efficient multi-scale curvature and crease estimation. *Proceedings of Computer Graphics, Computer Vision and Mathematics (Brno, Czech Republic)*, 1(6), 2010.
- [32] Jeong Joon Park, Peter Florence, Julian Straub, Richard Newcombe, and Steven Lovegrove. DeepSDF: Learning continuous signed distance functions for shape representation. In *Proceedings of the IEEE/CVF conference on computer vision and pattern recognition*, pages 165–174, 2019.
- [33] Adrien Poulenc, Marie-Julie Rakotosaona, Yann Ponty, and Maks Ovsjanikov. Effective rotation-invariant point cnn with spherical harmonics kernels. In *2019 International Conference on 3D Vision (3DV)*, pages 47–56. IEEE, 2019.
- [34] Charles R Qi, Hao Su, Kaichun Mo, and Leonidas J Guibas. Pointnet: Deep learning on point sets for 3d classification and segmentation. In *Proceedings of the IEEE conference on computer vision and pattern recognition*, pages 652–660, 2017.
- [35] Charles Ruizhongtai Qi, Li Yi, Hao Su, and Leonidas J Guibas. Pointnet++: Deep hierarchical feature learning on point sets in a metric space. *Advances in neural information processing systems*, 30, 2017.
- [36] Szymon Rusinkiewicz. Estimating curvatures and their derivatives on triangle meshes. In *Proceedings. 2nd International Symposium on 3D Data Processing, Visualization and Transmission, 2004. 3DPVT 2004.*, pages 486–493. IEEE, 2004.
- [37] Samuele Salti, Federico Tombari, and Luigi Di Stefano. Shot: Unique signatures of histograms for surface and texture description. *Computer Vision and Image Understanding*, 125:251–264, 2014.

- [38] Nicholas Sharp, Souhaib Attaiki, Keenan Crane, and Maks Ovsjanikov. Diffusionnet: Discretization agnostic learning on surfaces. *ACM Transactions on Graphics (TOG)*, 41(3):1–16, 2022.
- [39] Nicholas Sharp and Keenan Crane. A Laplacian for Nonmanifold Triangle Meshes. *Computer Graphics Forum (SGP)*, 39(5), 2020.
- [40] Ayan Sinha, Jing Bai, and Karthik Ramani. Deep learning 3d shape surfaces using geometry images. In *Computer Vision–ECCV 2016: 14th European Conference, Amsterdam, The Netherlands, October 11–14, 2016, Proceedings, Part VI 14*, pages 223–240. Springer, 2016.
- [41] Dmitriy Smirnov and Justin Solomon. Hodgenet: Learning spectral geometry on triangle meshes. *ACM Transactions on Graphics (TOG)*, 40(4):1–11, 2021.
- [42] Jian Sun, Maks Ovsjanikov, and Leonidas Guibas. A concise and provably informative multi-scale signature based on heat diffusion. In *Computer graphics forum*, volume 28, pages 1383–1392. Wiley Online Library, 2009.
- [43] Marc Vaillant and Joan Glaunes. Surface matching via currents. In *Biennial international conference on information processing in medical imaging*, pages 381–392. Springer, 2005.
- [44] Daniel Vlastic, Ilya Baran, Wojciech Matusik, and Jovan Popović. Articulated mesh animation from multi-view silhouettes. In *Acm Siggraph 2008 papers*, pages 1–9. 2008.
- [45] Yu Wang and Justin Solomon. Intrinsic and extrinsic operators for shape analysis. In *Handbook of numerical analysis*, volume 20, pages 41–115. Elsevier, 2019.
- [46] Yue Wang, Yongbin Sun, Ziwei Liu, Sanjay E Sarma, Michael M Bronstein, and Justin M Solomon. Dynamic graph cnn for learning on point clouds. *ACM Transactions on Graphics (tog)*, 38(5):1–12, 2019.
- [47] Ruben Wiersma, Elmar Eisemann, and Klaus Hildebrandt. Cnns on surfaces using rotation-equivariant features. *ACM Transactions on Graphics (ToG)*, 39(4):92–1, 2020.
- [48] Ruben Wiersma, Ahmad Nasikun, Elmar Eisemann, and Klaus Hildebrandt. Deltaconv: anisotropic operators for geometric deep learning on point clouds. *ACM Transactions on Graphics (TOG)*, 41(4):1–10, 2022.
- [49] Laurent Younes. *Shapes and diffeomorphisms*, volume 171. Springer, 2010.

A Appendix

A.1 Segmentation and classification detailed results

We present below the complete results for each experiment. For each dataset, and each neural network architecture, we show the Accuracy, Balanced accuracy, F1 score, and Specificity. They were all measured using 5-fold cross validation, and we give the results on the test sets in the form of *mean ± standard deviation*.

	Accuracy	Balanced accuracy	F1 score	Specificity
xyz	.696±.306	.804±.393	.662±.293	.957±.49
shot ₁₆	.714±.061	.815±.15	.689±.061	.959±.234
shot ₆₄	.724±.034	.827±.13	.693±.035	.961±.201
hks	.781±.07	.865±.159	.754±.08	.969±.203
κ_1, κ_2	.806±.079	.871±.14	.799±.089	.972±.196
κ	.745±.165	.826±.227	.714±.148	.964±.32

Table 4: **Human pose segmentation** - Point Net ++ results.

	Accuracy	Balanced accuracy	F1 score	Specificity
xyz	.724±.265	.223±.076	.223±.076	.724±.265
shot ₁₆	.581±.095	.215±.05	.215±.05	.581±.095
shot ₆₄	.662±.075	.302±.084	.302±.084	.662±.075
hks	.689±.14	.303±.043	.303±.043	.689±.14
κ_1, κ_2	.868±.128	.299±.114	.299±.114	.868±.128
κ	.6±.087	.163±.054	.163±.054	.6±.087

Table 5: **Human pose segmentation** - Delta Net results.

	Accuracy	Balanced accuracy	F1 score	Specificity
xyz	.947±.013	.943±.015	.943±.015	.947±.013
shot ₁₆	.95±.017	.946±.018	.946±.018	.95±.017
shot ₆₄	.95±.018	.944±.021	.944±.021	.95±.018
hks	.951±.04	.969±.055	.947±.039	.993±.07
κ_1, κ_2	.975±.014	.971±.015	.971±.015	.975±.014
κ	.954±.014	.951±.016	.951±.016	.954±.014

Table 6: **Human pose segmentation** - Diffusion Net results.

	Accuracy	Balanced accuracy	F1 score	Specificity
xyz	.354±.008	.202±.001	.202±.001	.354±.008
shot ₁₆	.709±.004	.592±.016	.592±.016	.709±.004
shot ₆₄	.719±.009	.602±.01	.602±.01	.719±.009
hks	.703±.017	.574±.003	.574±.003	.703±.017
κ_1, κ_2	.724±.013	.597±.013	.597±.013	.724±.013
κ	.69±.008	.572±.008	.572±.008	.69±.008

Table 7: **RNA molecules segmentation** - PointNet++ results.

	Accuracy	Balanced accuracy	F1 score	Specificity
xyz	.292±.018	.182±.012	.182±.012	.292±.018
shot ₁₆	.456±.008	.352±.016	.352±.016	.456±.008
shot ₆₄	.565±.010	.299±.008	.299±.008	.565±.010
hks	.496±.017	.392±.008	.392±.008	.496±.017
κ_1, κ_2	.555±.023	.496±.013	.496±.013	.555±.023
κ	.292±.008	.142±.008	.142±.008	.292±.008

Table 8: **RNA molecules segmentation** - Delta Net results.

	Accuracy	Balanced accuracy	F1 score	Specificity
xyz	.826±.001	.851±.106	.704±.003	.999±.129
shot ₁₆	.884±.002	.765±.008	.765±.008	.874±.002
shot ₆₄	.891±.001	.781±.008	.781±.008	.879±.001
hks	.856±.596	.873±.622	.758±.536	.999±.697
κ_1, κ_2	.894±.008	.873±.064	.783±.025	.999±.082
κ	.84±.008	.862±.113	.718±.011	.999±.12

Table 9: **RNA molecules segmentation** - Diffusion Net results.

	Accuracy	Balanced accuracy	F1 score	Specificity
xyz	.715±.037	.852±.019	.709±.034	.99±.001
shot ₁₆	.698±.035	.844±.018	.694±.036	.99±.001
shot ₆₄	.607±.031	.797±.016	.594±.038	.986±.001
hks	.608±.181	.797±.093	.602±.184	.986±.006
κ_1, κ_2	.857±.007	.926±.004	.852±.007	.995±.0
κ	.962±.011	.98±.006	.961±.011	.999±.0

Table 10: **Shrec classification** - Point Net ++ results.

	Accuracy	Balanced accuracy	F1 score	Specificity
xyz	.757±.027	.753±.031	.753±.031	.757±.028
shot ₁₆	.549±.029	.533±.026	.532±.026	.549±.029
shot ₆₄	.604±.026	.597±.019	.597±.019	.604±.026
hks	.986±.005	.985±.006	.986±.006	.986±.005
κ_1, κ_2	.887±.020	.881±.019	.881±.019	.887±.020
κ	.988±.004	.988±.004	.988±.004	.988±.004

Table 11: **Shrec classification** - Delta Net results.

	Accuracy	Balanced accuracy	F1 score	Specificity
xyz	.803±.159	.898±.082	.791±.169	.993±.005
shot ₁₆	.526±.054	.755±.028	.513±.053	.984±.002
shot ₆₄	.674±.033	.831±.017	.668±.036	.989±.001
hks	.989±.006	.994±.003	.989±.006	1.0±.0
κ_1, κ_2	.922±.009	.96±.004	.919±.008	.997±.0
κ	.991±.003	.995±.001	.991±.003	1.0±.0

Table 12: **Shrec classification** - Diffusion Net results.

A.2 Noisy data examples

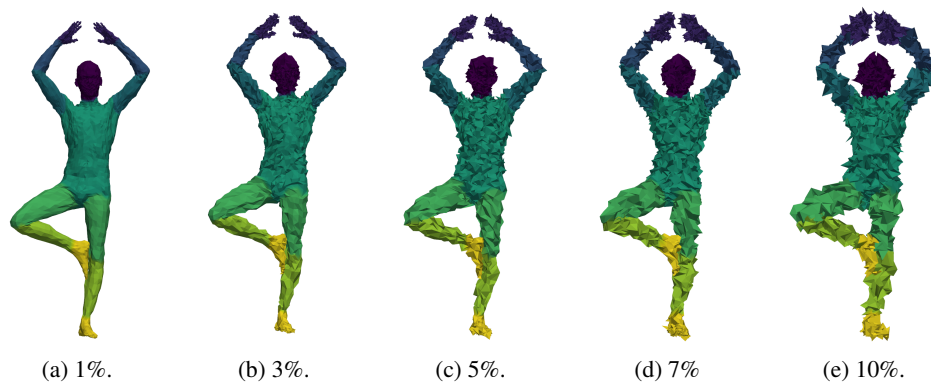


Figure 8: Different quantity of noise added to a shape from the human pose dataset, from 1% to 10% of the diagonal of the bounding box of the shape.

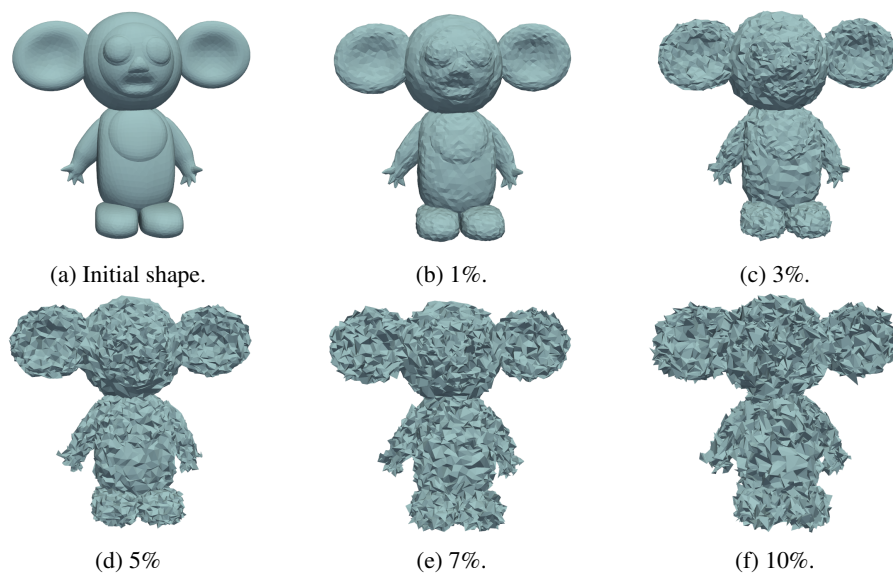


Figure 9: Different quantity of noise added to a shape, from 1% to 10% of the diagonal of the bounding box of the shape.