



HAL
open science

Association of Lipopolysaccharide-Type Endotoxins with Retinal Neurodegeneration: The Alienor Study

Petra P Larsen, Catherine Feart, Jean-Paul Pais de Barros, Laure Gayraud, Marie-Noelle Delyfer, Jean-Francois Korobelnik, Cedric Schweitzer, Cecile Delcourt

► To cite this version:

Petra P Larsen, Catherine Feart, Jean-Paul Pais de Barros, Laure Gayraud, Marie-Noelle Delyfer, et al.. Association of Lipopolysaccharide-Type Endotoxins with Retinal Neurodegeneration: The Alienor Study. *Ophthalmology Science*, 2024, 5 (1), pp.100610. 10.1016/j.xops.2024.100610 . hal-04819201

HAL Id: hal-04819201

<https://hal.science/hal-04819201v1>

Submitted on 4 Dec 2024

HAL is a multi-disciplinary open access archive for the deposit and dissemination of scientific research documents, whether they are published or not. The documents may come from teaching and research institutions in France or abroad, or from public or private research centers.

L'archive ouverte pluridisciplinaire **HAL**, est destinée au dépôt et à la diffusion de documents scientifiques de niveau recherche, publiés ou non, émanant des établissements d'enseignement et de recherche français ou étrangers, des laboratoires publics ou privés.



Distributed under a Creative Commons Attribution - NonCommercial - NoDerivatives 4.0 International License



Association of Lipopolysaccharide-Type Endotoxins with Retinal Neurodegeneration: The Alienor Study

Petra P. Larsen, MD,¹ Catherine Féart, PhD,¹ Jean-Paul Pais de Barros, PhD,² Laure Gayraud, MSc,¹ Marie-Noëlle Delyfer, MD, PhD,^{1,3} Jean-François Korobelnik, MD,^{1,3} Cédric Schweitzer, MD, PhD,^{1,3} Cécile Delcourt, PhD¹

Purpose: Lipopolysaccharide (LPS)-type endotoxins are naturally found in the gut microbiota and there is emerging evidence linking gut microbiota and neuroinflammation leading to retinal neurodegeneration. Thinning of the retinal nerve fiber layer (RNFL) is a biomarker of retinal neurodegeneration, and a hallmark of glaucoma, the second leading cause of blindness worldwide. We assessed the association of a blood biomarker of LPS with peripapillary RNFL thickness (RNFLT) and its longitudinal evolution up to 11 years.

Design: The Alienor study is a single center prospective population-based cohort study.

Subjects: The studied sample of this study includes 1062 eyes of 548 participants receiving ≥ 1 gradable RNFL measurement.

Methods: Plasma esterified 3-hydroxy fatty acids (3-OH FAs) were measured as a proxy of LPS burden. Retinal nerve fiber layer thickness was acquired using spectral-domain OCT imaging every 2 years from 2009 to 2020 (up to 5 visits).

Main Outcome Measures: Associations of plasma esterified 3-OH FAs with RNFLT were assessed using linear mixed models.

Results: Mean age of the included 548 participants was 82.4 ± 4.3 years and 62.6% were women. Higher plasma esterified 3-OH FAs was significantly associated with thinner RNFLT at baseline (coefficient beta = -1.42 microns for 1 standard deviation-increase in 3-OH FAs, 95% confidence interval $[-2.56; -0.28]$, $P = 0.02$). This association remained stable after multivariate adjustment for potential confounders. No statistically significant association was found between 3-OH FAs and longitudinal RNFLT change.

Conclusions: Higher plasma esterified 3-OH FAs were associated with thinner RNFLT at baseline, indicating an involvement of LPS in the early processes of optic nerve neurodegeneration and highlighting the potential importance of the human microbiota in preserving retinal health.

Financial Disclosure(s): Proprietary or commercial disclosure may be found in the Footnotes and Disclosures at the end of this article. *Ophthalmology Science* 2025;5:100610 © 2024 by the American Academy of Ophthalmology. This is an open access article under the CC BY-NC-ND license (<http://creativecommons.org/licenses/by-nc-nd/4.0/>).



Supplemental material available at www.ophtalmologyscience.org.

Glaucoma comprises a heterogeneous group of diseases characterized by irreversible progressive loss of retinal ganglion cells (RGCs). Data from population-based surveys indicate that globally $>3.5\%$ of adults aged 40 to 80 years are affected by glaucoma, which equates to >95 million people.^{1,2}

All forms of glaucoma are characterized by RGC loss, retinal nerve fiber layer (RNFL) thinning, and cupping of the optic disc. The anatomy of the anterior chamber angle defines open-angle and angle-closure glaucoma. Glaucoma is further classified into primary or secondary, where primary cannot be contributed to any known cause and secondary glaucoma develops due to other disease or injury. Several other forms of glaucoma exist, including developmental glaucoma.

In people with European, Hispanic, and African ancestry, the most common form of glaucoma is primary open-angle glaucoma (POAG), whereas angle-closure glaucoma is more common in Asia.³ The most important risk factors (both for open-angle and angle-closure glaucoma) are age, elevated intraocular pressure, and positive family history. For open-angle glaucoma, myopia has been consistently reported as a risk factor.

As early-stage glaucoma is mostly asymptomatic, diagnosis is frequently delayed. In the last decades, spectral-domain OCT (SD-OCT) has facilitated noninvasively characterizing changes in the RNFL more distinctly, enabling quantification of progression already at a very early stage of disease by providing reproducible measurements of

peripapillary RNFL thickness (RNFLT) with an axial resolution of 5 μm .⁴

Although to date many different types of medication and surgery exist for glaucoma, their common aim is to prevent further damage as no treatment for irreversible damage to the optic nerve exists. Indeed, the multifactorial nature of POAG so far prevents the modeling of this disease in vitro and in vivo and thus the exact pathogenesis remains unclear.

Several human and animal studies indicate inflammatory changes in the RGC layer and the optic nerve head. In particular, a wide range of oxidative stress-related markers were found in glaucomatous patients, which may contribute to damage in the optic nerve. In recent years the “gut-eye” axis, a link between gut microbiota, diet, and micronutrients, has been described in ophthalmic pathologies, including glaucoma.^{5,6} Growing evidence also indicates the role of oral microbiota in glaucoma pathophysiology. Altered microbiota may impair the integrity of surface barriers allowing pathogens, bacterial endotoxins like lipopolysaccharide (LPS)-type endotoxins, cytokines, and other proinflammatory substances to pass into circulation, resulting in systemic inflammation, potential impairment of the immune response, and/or local ocular inflammation.

As component of the outer membrane of Gram-negative bacteria, LPS-type endotoxins are naturally found in the human microbiota. Mounting evidence indicates the involvement of LPS in the development of many chronic diseases, including glaucoma.⁷ In the eye, proinflammatory signaling via LPS occurs in microglia, perivascular macrophages, dendritic cells, photoreceptors, and retinal pigment epithelium cells and has been implicated in retinopathy of prematurity, diabetic retinopathy, age-related macular degeneration, and glaucoma (Fig 1). Low-dose LPS administration in glaucoma animal models resulted in enhancement of axonal degeneration and neuronal loss.⁸ Also, increased neuronal apoptosis and evidence of microglial activation after LPS exposure has been reported.⁹

Thus, this study was conducted to further investigate the role of a serum biomarker of LPS exposure with peripapillary RNFLT in the framework of a population-based cohort study of older adults.

Methods

Study Cohort

The Alienor study is a prospective population-based cohort study initiated in 2006 to assess the epidemiology of age-related eye diseases. Subjects of the Alienor study were recruited from the population-based Three City (3C) study cohort of Bordeaux (France).¹⁰ The 3C study is a multicenter population-based prospective cohort study initiated in 1999 to assess the vascular risk factors of dementia. The 3C study included community-dwelling individuals aged >65 years randomly drawn from electoral rolls. Between 1999 and 2001, 9294 subjects were recruited in 3 French cities: Bordeaux (n = 2104), Dijon (n = 4931), and Montpellier (n = 2259).

During the third follow-up of the 3C study (2006–2008), an ophthalmic examination was offered to all subjects of the 3C Bordeaux cohort, which marks the baseline of the Alienor study. A

total of 963 subjects were enrolled at baseline and have been examined every 2 years ophthalmically in parallel with the 3C study. In 2024, the sixth and final follow-up visit of the Alienor cohort was completed, which correlates to up to 18 years of ophthalmic follow-up (<http://www.alienor-study.com/langue-english-1.html>, accessed on July 30, 2024). More details on both the 3C study cohort and the Alienor study cohort have been already published elsewhere.^{10,11}

The Alienor study followed the tenets of the Declaration of Helsinki and was approved prospectively by the Ethical Committee of Bordeaux (Comité de Protection des Personnes Sud-Ouest et Outre-Mer III, code 2006/10) in May 2006. Informed consent of all participants of the Alienor study was obtained after explanation of the nature and possible consequences of the study.

Ophthalmic Examination and Imaging

The initial Alienor study protocol includes visual acuity, refraction, intraocular pressure, and 45° nonmydriatic high-resolution color retinal photographs (TRC NW6S).¹¹ Starting from the first follow-up visit (2009–2011), SD-OCT examinations of the macula and the optic nerve were included to the Alienor study protocol (Spectralis; Heidelberg Engineering). Thus, SD-OCT examinations are available at 5 time points from 2009 to 2020. The same OCT device was used at all follow-up visits.

For the peripapillary SD-OCT RNFL acquisition, the high-resolution protocol was employed. Retinal nerve fiber layer examinations were performed using 1536 A-scans of low coherence near-infrared (840 nm) light beam. Thickness measurements of peripapillary RNFL were calculated using the circle scan provided by the machine, which consisted of a 3.45-mm diameter circle scan centered on the optic disc. Global peripapillary RNFLT was automatically segmented and calculated (Fig S2, available at www.ophtalmologyscience.org). All images were acquired and reviewed by specially trained technicians and manual corrections were performed if necessary. Correction for fovea-disc orientation is incorporated in the software and a real-time eye tracking system is used to compensate for eye movements. Signal strength <15 decibels (range, 0–40) or acquisitions with artifacts were excluded from the analysis.¹²

Assessment of LPS-Type Endotoxins

All plasma measurements were assessed using blood samples collected during the 3C baseline visit (1999–2001).

Plasma esterified 3-hydroxy fatty acids (3-OH FAs) were quantified as a proxy of total plasma LPS burden using liquid chromatography tandem mass spectrometry. This method was previously described by Pais de Barros et al and quantifies plasma esterified 3-OH-FAs serve as a proxy for total plasma LPS burden.¹³ The detailed protocol can be found in [Supplementary Methods 1](#) (available at www.ophtalmologyscience.org).

Covariates

Sociodemographic data, lifestyle characteristics, and medical variables were collected at 3C baseline.¹¹

Medical variables including diabetes (fasting blood glucose ≥ 7 mmol/L or diabetes medication), hypertension (blood pressure >140/90 mm Hg or antihypertensive medication), self-reported cardiovascular history, and systemic lipid-lowering drugs were also assessed at 3C baseline. Fasting plasma lipids were measured at the Biochemistry Laboratory of the University Hospital of Dijon, France using routine enzymatic techniques.

Family history of glaucoma and axial length measurement were collected at Alienor baseline. Intraocular pressure was noted at time of first RNFL measurement.

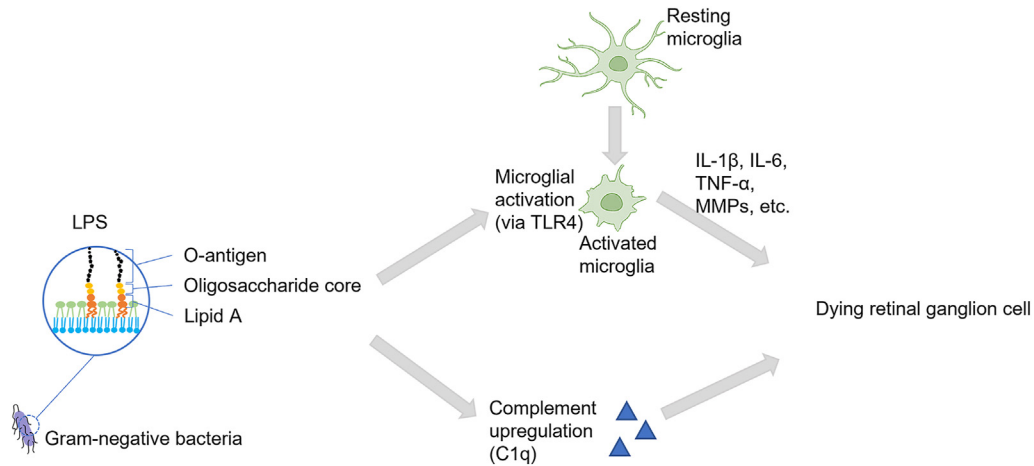


Figure 1. Potential impact of LPS on retinal ganglion cell death: impaired gut microbiota leads to translocation of proinflammatory signaling including bacterial LPS into systemic circulation. LPS induces an upregulation of TLR4 and the complement system in the retina. Microglia are among the first cells to be activated via TLR4, which in turn triggers the release of inflammatory cytokines activating apoptotic pathways leading to retinal ganglion cell death. IL-1 β = interleukin 1 β ; IL-6 = interleukin 6; LPS = lipopolysaccharide; MMPs = matrix metalloproteinases; TLR4 = Toll-like receptor 4; TNF- α = tumor necrosis factor- α .

The Mediterranean diet score is based on the MEDI-LITE score, which measures adherence to Mediterranean diet based on the literature and was developed by Sofi et al.¹⁴ This score is based on a 148-items validated food frequency questionnaire and reflects the level of adherence to the Mediterranean diet, ranging from 0 (poor adherence) to 18 (highest adherence).

The social deprivation index, a socioeconomic index based on the French European deprivation index adapted to elderly people, was calculated at the 3C baseline residential address.¹⁵

Statistical Analyses

Associations of plasma esterified 3-OH FAs with peripapillary RNFLT were estimated using linear mixed models, with the eye as the unit of analysis, as described previously.¹⁶ Interaction between 3-OH FAs and time was used to account for longitudinal effects.

All conditions for the application of the linear mixed model were verified. The linearity of quantitative variables was investigated using restricted cubic spline functions. Z score standardization was applied to the exposure variable 3-OH FAs.

Multivariate imputation by chained equations was performed to impute missing covariates, assuming that missing data were Missing At Random; more details can be found here.^{17,18} The fraction of missing/imputed data can be found in [Table S1](#) and [S2](#) (available at www.ophtalmologyscience.org). Multivariate adjustment was performed after imputation. Model 1 was adjusted for age and sex. Model 2 was further adjusted for the most relevant potential confounders identified from the literature and with a directed acyclic graph.

R software version 4.3.3 (R Foundation for Statistical Computing) was used for statistical analyses.

Results

Characteristics of the Studied Sample

Peripapillary RNFLT examinations were included to the Alienor study protocol at the first follow-up visit. Thus, the studied sample comprises all examinations beginning with the first follow-up visit of the Alienor study. Of the

examined 888 participants, 411 eyes of 225 participants had no gradable RNFLT scan ([Fig 3](#)). Another 303 eyes of 155 participants were excluded because of missing data for plasma esterified 3-OH-FA levels, leaving 1062 eyes of 548 subjects for further analyses. In total, 2497 RNFLT examinations of 548 subjects were analyzed.

Among the 548 included participants, mean age at first RNFLT measurement was 82.4 years (± 4.3), of which 343 (62.6%) were female ([Table 3](#)). Almost two-thirds of the study sample were never smokers, 15.3% were obese (body mass index >30 kg/m²), and the most common comorbidity was hypertension (72.3%). The average number of drugs consumed by each participant was 3.9 (± 2.6). In particular, 15.5% of the participants took anti-inflammatory medication and 33.0% lipid-lowering medication, respectively. Included participants tended to be slightly younger and were less likely to have hypertension. No significant difference was observed for other sociodemographic, lifestyle, or medical data ([Table 3](#)). A total of 180 (32.8%) participants received 1 RNFLT examination, 147 (26.8%) received 2, 103 (18.8%) received 3, 64 (11.7%) received 4, and 54 (9.9%) received 5. For the 368 participants receiving >1 RNFLT examination, the average follow-up time was 4.7 years (range 1.0–10.3).

Multivariate Analysis

3-Hydroxy fatty acids were standardized using the formula $Z = (x - \mu) / \sigma$, where Z is the standard score, μ the mean, and σ the standard deviation of 3-OH FAs, respectively. Measured concentration of 3-OH FAs as well as the standardized values together with a Gaussian overlay can be found in [Figure 4](#).

Associations between esterified 3-OH FAs and RNFLT are shown in [Table 4](#). Using linear mixed model analysis, higher exposure to esterified 3-OH FAs was significantly associated with reduced RNFLT after adjustment for age and gender (model 1: coefficient beta [β] = -1.42 microns

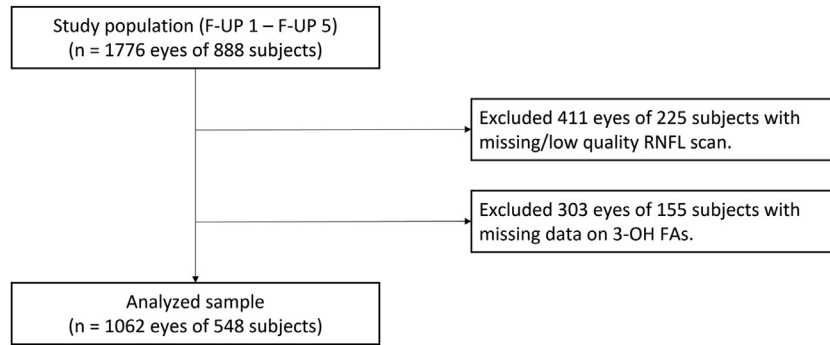


Figure 3. Flow chart showing selection of participants for analyses. Data from the Alienor study, follow-up 1 to follow-up 5; 2009 to 2020. 3-OH FAs = 3-hydroxy fatty acids; F-UP = follow-up examination; RNFL = retinal nerve fiber layer.

for 1 SD-increase in 3-OH FAs, 95% confidence interval [CI] [−2.56; −0.28], $P = 0.02$).

Further multivariate adjustment showed consistently a statistically significant association of exposure to 3-OH FAs with RNFLT (model 2: $\beta = -1.44$, CI [−2.56; −0.33], $P = 0.01$).

Mean decrease of RNFLT over time derived from both model 1 and 2 was $0.56 \pm 0.05 \mu\text{m}/\text{year}$ ($P < 0.001$). However, the longitudinal follow-up of participants with higher exposure to esterified 3-OH FAs did not show any statistical association to RNFLT change during the follow-up

Table 3. Description of the Study Population at Baseline RNFL Measurement (Mean \pm SD or n [%])

Characteristics	Included (n = 548)		Nonincluded (n = 340)		P Value
	Mean \pm SD or n (%)		Mean \pm SD or n (%)		
Age	82.4 \pm 4.3		84.4 \pm 5.0		<0.001
Sex					0.05
Male	205 (37.4%)		105 (30.9%)		
Female	343 (62.6%)		235 (69.1%)		
Smoking (pack-years)	n = 543		n = 332		0.13
Never smoked	352 (64.8%)		233 (70.2%)		
<20	98 (18.0%)		48 (14.5%)		
≥ 20	93 (17.1%)		51 (15.4%)		
BMI (kg/m ²)	n = 548		n = 331		0.84
[0, 18.5)	3 (0.5%)		5 (1.5%)		
[18.5,25)	212 (38.7%)		133 (40.2%)		
[25, 30)	249 (45.4%)		133 (40.2%)		
[30, 59]	84 (15.3%)		60 (18.1%)		
Social deprivation index	0.6 \pm 2.2		0.7 \pm 2.2		0.57
Plasma lipids (mmol/L)					
LDL cholesterol	3.7 \pm 0.8		3.5 \pm 0.8		0.08
HDL cholesterol	1.6 \pm 0.4		1.6 \pm 0.4		0.55
Triglycerides	1.2 \pm 0.6		1.3 \pm 0.7		0.27
Diabetes	40 (7.3%)		30 (8.8%)		0.12
Hypertension	396 (72.3%)		267 (78.5%)		0.03
Cardiovascular diseases	43 (7.8%)		35 (10.3%)		0.25
Mediterranean diet score	10.6 \pm 2.1		10.6 \pm 2.0		0.88
Lipid-lowering medication	181 (33.0%)		102 (30.0%)		0.40
Family history of glaucoma	n = 537		n = 203		
Yes	73.0 (13.6%)		21.0 (10.3%)		0.29
Axial length	n = 321		n = 119		
Right eye	23.5 \pm 1.2		23.8 \pm 1.9		0.09
Left eye	23.4 \pm 1.1		23.7 \pm 1.7		0.16
Intraocular pression	n = 542		n = 330		
Right eye	13.4 \pm 2.3		13.3 \pm 2.3		0.40
Left eye	13.6 \pm 2.4		13.4 \pm 2.2		0.21
Global peripapillary RNFL thickness (μm)	n = 1062 eyes 89.8 \pm 14.5		-		-

BMI = body mass index; HDL = high-density lipoprotein; LDL = low-density lipoprotein; RNFL = retinal nerve fiber layer; SD = standard deviation. Alienor study, 2009 to 2020.

Bold values represent statistically significant results.

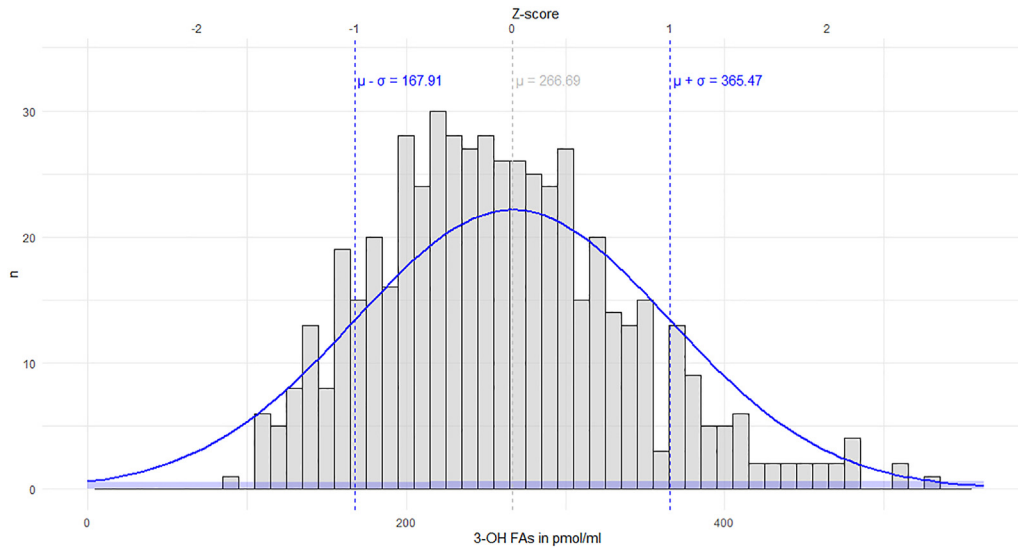


Figure 4. Distribution of measured concentration of the plasma esterified 3-OH FA with Gaussian curve overlay. 3-OH FA = 3-hydroxy fatty acid; Z-score = standard score, μ = mean, σ = standard deviation.

of the study (model 1: $\beta = 0.03$, CI $[-0.08; 0.13]$, $P = 0.60$, model 2: $\beta = 0.03$, CI $[-0.08; 0.14]$, $P = 0.58$).

The evolution of RNFLT over the follow-up predicted by model 2 is presented in Figure 5. This graphical representation of model 2 shows a clear association of higher exposure of esterified 3-OH FAs with thinner RNFLT at baseline, comparing $Z = 1$ to $Z = -1$ (i.e., a difference of 2 standard deviations in 3-OH FAs). Figure 5 also illustrates the mean decrease of RNFLT over time and reveals an almost parallel RNFLT evolution of participants with and without higher exposure to esterified 3-OH FAs, corresponding to the lack of interaction with time.

Discussion

In this cohort, higher levels of 3-OH FAs, a proxy of plasma LPS exposure, were significantly associated with thinner peripapillary RNFLT at baseline. This significant association remained stable after multivariate-adjustment for potential confounders.

To our knowledge, this is the first study analyzing the association between plasma-endotoxin exposure and RNFLT. However, emerging research suggests a potential link between alterations in human microbiota composition, leading to higher plasma-endotoxin exposure, and glaucoma.^{7,8}

Looking into human data, Collins et al found an association between POAG and mitochondrial DNA variants, which were also associated with alterations in the gut microbiome in an earlier association study of mitochondrial variation.^{19,20} Recently, differences in certain human gut microbial taxa between patients with POAG and controls have been described.^{21,22} Also a positive correlation of *Streptococcus* in fecal samples with RNFL has been reported.²¹ Recently, a Mendelian randomization analysis assessed the causal links between gut microbiota taxa and POAG.⁶ Using single-nucleotide polymorphisms associated with human gut microbiome from a multiethnic cohort of 18 340 individuals, and data for POAG including 133 492 cases and 90 939 controls, they reported that with high statistical powers of the causal

Table 4. Associations between Esterified 3-Hydroxy Fatty Acids and Peripapillary Retinal Nerve Fiber Layer Thickness

	Baseline		Longitudinal Change ($\mu\text{m}/\text{yr}$)	
	β (95% CI)	P value	β (95% CI)	P value
Model 1*	-1.42 [-2.56; -0.28]	0.02	0.03 [-0.08; 0.13]	0.60
Model 2 [†]	-1.44 [-2.56; -0.33]	0.01	0.03 [-0.08; 0.14]	0.58

CI = confidence interval.

Alienor study, 2009 to 2020 (n = 548; 2497 examinations).

*Model 1 was adjusted for age and sex.

[†]Model 2 was adjusted for age, sex, social deprivation index, family history of glaucoma, axial length, intraocular pressure, high-density lipoprotein cholesterol, low-density lipoprotein cholesterol, triglycerides, diet quality, body mass index, and lipid-lowering medication (after imputation of missing covariates).

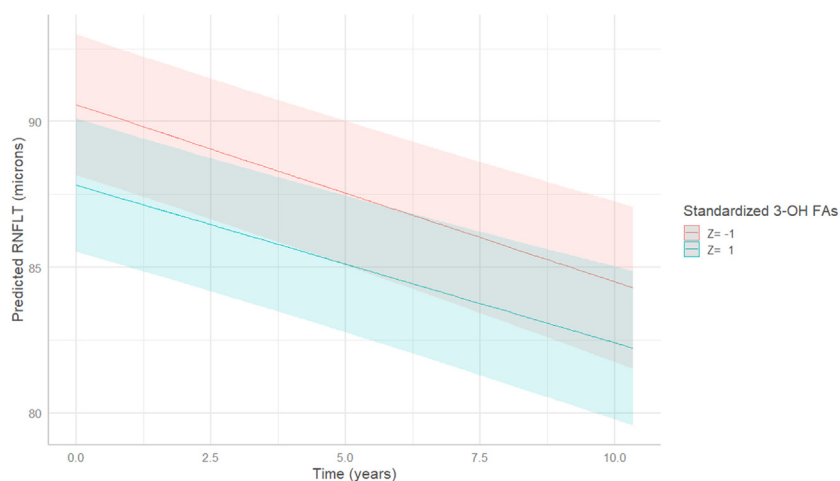


Figure 5. Longitudinal evolution of the mean RNFLT according to 3-OH FAs exposure, predicted by multivariate linear mixed model (model 2). 3-OH FAs were standardized using the formula $Z = (x-\mu)/\sigma$, where Z is the standard score, μ the mean, and σ the standard deviation of 3-OH FAs, respectively. Data from the Alienor study, follow-up 1 to follow-up 5; 2009 to 2020. 3-OH FAs = 3-hydroxy fatty acids; RNFLT = retinal nerve fiber layer thickness.

estimates (power >0.8) *Odoribacter* genus, *Ruminiclostridium9* genus, and *Eubacterium rectale* group, were associated with an increased risk of POAG.^{6,23} The authors found that intraocular pressure, central corneal thickness, and vertical cup-to-disc ratio played mediation effects between genus *Ruminiclostridium9*, genus *Alloprevotella*, phylum *Euryarchaeota*, and POAG, respectively, suggesting an impact of specific taxa on the pathogenesis of POAG.

Mechanistically, a mouse study showed that mice raised in absence of commensal microflora do not develop glaucomatous T-cell responses or associated neurodegeneration, indicating that glaucomatous neurodegeneration is mediated in part by T cells that are presensitized by exposure to commensal microflora.²⁴ Another animal study showed that reducing glaucoma-specific gut microbiota significantly reduced RGC loss by alleviating the activation of retinal microglia cells and overproduction of inflammatory cytokines.²² Furthermore, they highlighted that fecal microbiome transplantation from glaucoma patients compared with healthy subjects significantly increased retinal inflammation in mice.

The oral cavity is another important habitat of human microbiota, and dysbiosis of oral microbiome has been described to affect glaucoma progression.²⁵ In a case-control study, subjects with glaucoma showed significantly higher oral bacterial loads and fewer teeth.⁸ Using an animal model of glaucoma, low-dose LPS injected subcutaneously led to enhancement of axonal degeneration and neuronal loss and was accompanied by microglial activation in the optic nerve and retina as well as upregulation of Toll-like receptor 4 signaling and the complement system.⁸ Another case-control study by the same research group found *Streptococci* load to be higher in the saliva of patients with POAG than in controls.²⁶ Using machine learning prediction models, Yoon et al revealed significant depletion of the genus *Lactococcus*, whereas the genus *Faecalibacterium* was enriched in the oral

microbiome of patients with glaucoma.²⁷ Taken together, the data of both human and animal studies underline that the oral and gut microbiome in patients with glaucoma was different from control participants, indicating an impact of microbiome dysbiosis on the pathogenesis of glaucoma.

The strengths of this study include a large and well-defined cohort, a detailed standardized ophthalmic examination, and long follow-up time. Our results show a cross-sectional association of higher plasma esterified 3-OH FAs and RNFLT, potentially linking human microbiota with pathophysiological processes leading to optic nerve degeneration. The lack of association on the longitudinal analysis might be related to the single blood draw conducted approximately 8 years before the initial RNFL examination and to the increasing age of the cohort. Another limitation concerns the quantification of LPS: to date, no standard exists and the commonly used limulus amoebocyte lysate assay measures only the reactive portion of LPS and is not suitable for complex matrices as plasma. Here, we employed a proxy method to estimate LPS exposure by analyzing esterified 3-OH FAs through liquid chromatography tandem mass spectrometry. However, under specific conditions, esterified 3-OH FAs in plasma may indicate the presence of lipid A without acyloxyacyl structures, crucial for bioactive signaling. Therefore, the analysis of 3-OH FAs might have led to misclassification of the exposure. However, a differential misclassification of 3-OH FAs related to RNFLT is highly unlikely, thus misclassification of LPS exposure would tend to bias the associations with RNFLT toward the null. Moreover, a risk of selection bias cannot be excluded, as included and nonincluded participants differed in age and diagnosis of hypertension. However, included and nonincluded participants were comparable for all other characteristics.

Summarized, an association between higher plasma esterified 3-OH FAs and RNFLT at baseline was observed in our cohort, suggesting that LPS exposure may be involved in the pathophysiological processes of optic nerve

neurodegeneration. This study adds to the available literature on RNFLT and LPS, and more generally oral and gut microbiomes, underlining the inflammatory component of

neurodegeneration. However, future studies are warranted to explore this complex relation and to better understand the underlying mechanisms.

Footnotes and Disclosures

Originally received: June 28, 2024.

Final revision: August 20, 2024.

Accepted: August 21, 2024.

Available online: August 28, 2024. Manuscript no. XOPS-D-24-00220.

¹ University of Bordeaux, INSERM, BPH, U1219, F-33000 Bordeaux, France.

² Plateforme de Lipidomique, INSERM UMR1231, Université de Bourgogne Franche Comté, Dijon, France.

³ CHU de Bordeaux, Service d'Ophtalmologie, F-33000, Bordeaux, France.

These data were presented in part at the ARVO Meeting in Seattle, WA, USA, in 2024.

Disclosures:

All authors have completed and submitted the ICMJE disclosures form.

The authors have made the following disclosures:

P.P.L.: Grants – German Research Foundation.

C.F.: Consultant – Synadiet, SYNPA; Travel expenses – Laboratoire Lescuyer, Société Française de Nutrition.

M.N.D.: Honoraria – AbbVie, Bayer, Novartis, Roche, Horus Pharma; Travel expenses – AbbVie, Bayer, Novartis, Roche, Horus Pharma; Consultant – Abbvie, Bayer, Horus Pharma, Novartis, Roche, Théa.

J.F.K.: Consultant – Abbvie, Allergan, Apellis, Bayer, Eyepoint Pharma, Janssen, NanoRetina, Ocuphire, Roche, Thea, Carl Zeiss Meditec; Participation on a Data Safety Monitoring Board or Advisory Board – Alexion, Novonordisk and Opthea.

C.S.: Consultant – Alcon, Elios, Glaukos, Horus, Nicox, Santen, Théa.

C.D.: Grants – Fondation de France; Consultant – Allergan, Bausch + Lomb, Laboratoires Théa, Novartis; Travel expenses – Laboratoires Théa; Patents planned, issued or pending – WO 2021/0589914 A1.

German Research Foundation grant PL 5077/1-1, Théa Pharma, Fondation Voir et Entendre, University of Bordeaux, Agence Nationale de la Recherche (ANR 2010-PRSP-011 VISA), Club Francophone des

Spécialistes de la Rétine, French Ministry of Health (PHRC, 2012, PHRC12_157 ECLAIR), FRAILOMIC Initiative (FP7-HEALTH-2012-Proposal No. 305483–2), ITMO Santé Publique—Alliance nationale pour les sciences de la vie et de la santé (ISP05 2014).

HUMAN SUBJECTS: Human subjects were included in this study. The study was approved prospectively by the Ethical Committee of Bordeaux (Comité de Protection des Personnes Sud-Ouest et Outre-Mer III, code 2006/10) in May 2006. All research adhered to the tenets of the Declaration of Helsinki. All participants provided informed consent.

No animal subjects were used in this study.

Author Contributions:

Conception and design: Larsen, Delcourt

Data collection: Larsen, Féart, Pais de Barros, Gayraud, Delyfer, Korobelnik, Schweitzer, Delcourt

Analysis and interpretation: Larsen, Gayraud, Delcourt

Obtained funding: Larsen, Féart, Korobelnik, Delcourt

Overall responsibility: Larsen, Delcourt

Abbreviations and Acronyms:

3C = Three City; **3-OH FA** = 3-hydroxy fatty acid; **β** = beta; **CI** = confidence interval; **LPS** = lipopolysaccharide; **POAG** = primary open-angle glaucoma; **RGC** = retinal ganglion cell; **RNFL** = retinal nerve fiber layer; **RNFLT** = retinal nerve fiber layer thickness; **SD-OCT** = spectral-domain OCT.

Keywords:

Clinical (human) or epidemiologic studies: risk factor assessment, LPS, Microbiota, Systemic inflammation.

Correspondence:

Dr Petra P. Larsen, University of Bordeaux, INSERM, BPH, U1219, 146 rue Léo Saignat, 33076 Bordeaux, France. E-mail: petra.larsen@u-bordeaux.fr.

References

- Jayaram H, Kolko M, Friedman DS, Gazzard G. Glaucoma: now and beyond. *Lancet*. 2023;402:1788–1801.
- Tham YC, Li X, Wong TY, et al. Global prevalence of glaucoma and projections of glaucoma burden through 2040: a systematic review and meta-analysis. *Ophthalmology*. 2014;121:2081–2090.
- Jonas JB, Aung T, Bourne RR, et al. Glaucoma. *Lancet*. 2017;390:2183–2193.
- van Velthoven MEJ, Faber DJ, Verbraak FD, et al. Recent developments in optical coherence tomography for imaging the retina. *Prog Retin Eye Res*. 2007;26:57–77.
- Chen J, Chen DF, Cho KS. The role of gut microbiota in glaucoma progression and other retinal diseases. *Am J Pathol*. 2023;193:1662–1668.
- Zhou X, Xu J, Zhang X, et al. Causal relationships between Gut microbiota and primary open-angle Glaucoma: a Mendelian randomization and mediation analysis of Glaucoma endophenotypes. *Exp Eye Res*. 2024;240:109788.
- Huang L, Hong Y, Fu X, et al. The role of the microbiota in glaucoma. *Mol Aspects Med*. 2023;94:101221.
- Astafurov K, Elhawry E, Ren L, et al. Oral microbiome link to neurodegeneration in glaucoma. *PLoS One*. 2014;9:e104416.
- Bauer PM, Zalis MC, Abdshill H, et al. Inflamed in vitro retina: cytotoxic neuroinflammation and galectin-3 expression. *PLoS One*. 2016;11:1–20.
- Alpérovitch A, Amouyel P, Dartigues JF, et al. Vascular factors and risk of dementia: design of the three-city study and baseline characteristics of the study population. *Neuro-epidemiology*. 2003;22:316–325.
- Delcourt C, Korobelnik JF, Barberger-Gateau P, et al. Nutrition and age-related eye diseases: The Alienor (Antioxydants, lipides essentiels, nutrition et maladies oculaires) study. *J Nutr Health Aging*. 2010;14:854–861.
- Schweitzer C, Korobelnik JF, Le Goff M, et al. Diagnostic performance of peripapillary retinal nerve fiber layer thickness for detection of glaucoma in an elderly population: the ALIENOR study. *Invest Ophthalmol Vis Sci*. 2016;57:5882.
- Pais de Barros JP, Gautier T, Sali W, et al. Quantitative lipopolysaccharide analysis using HPLC/MS/MS and its

- combination with the limulus amoebocyte lysate assay. *J Lipid Res.* 2015;56:1363–1369.
14. Sofi F, Dinu M, Pagliai G, et al. Validation of a literature-based adherence score to Mediterranean diet: the MEDILITE score. *Int J Food Sci Nutr.* 2017;68:757–762.
 15. Letellier N, Gutierrez LA, Carrière I, et al. Sex-specific association between neighborhood characteristics and dementia: the Three-City cohort. *Alzheimer's Dementia.* 2018;14:473–482.
 16. Gayraud L, Mortamais M, Schweitzer C, et al. Association of long-term exposure to ambient air pollution with retinal neurodegeneration: the prospective Alienor study. *Environ Res.* 2023;232:116364.
 17. Azur MJ, Stuart EA, Frangakis C, Leaf PJ. Multiple imputation by chained equations: what is it and how does it work? *Int J Methods Psychiatr Res.* 2011;20:40–49.
 18. Larsen PP, Féart C, Pais de Barros JP, et al. Association of age-related macular degeneration with a blood biomarker of lipopolysaccharide, a gut bacterial proinflammatory toxin. *Invest Ophthalmol Vis Sci.* 2023;64:47.
 19. Collins DW, Gudiseva HV, Trachtman B, et al. Association of primary open-angle glaucoma with mitochondrial variants and haplogroups common in African Americans. *Mol Vis.* 2016;22:454–471.
 20. Ma J, Coarfa C, Qin X, et al. MtDNA haplogroup and single nucleotide polymorphisms structure human microbiome communities. *BMC Genom.* 2014;15:1–14.
 21. Gong H, Zhang S, Li Q, et al. Gut microbiota compositional profile and serum metabolic phenotype in patients with primary open-angle glaucoma. *Exp Eye Res.* 2020;191:107921.
 22. Chen S, Wang Y, Liu Y, et al. Dysbiosis of gut microbiome contributes to glaucoma pathogenesis. *MedComm.* 2022;1.
 23. Craig JE, Han X, Qassim A, et al. Multitrait analysis of glaucoma identifies new risk loci and enables polygenic prediction of disease susceptibility and progression. *Nat Genet.* 2020;52:160–166.
 24. Chen H, Cho KS, Vu THK, et al. Commensal microflora-induced T cell responses mediate progressive neurodegeneration in glaucoma. *Nat Commun.* 2018;9:3209.
 25. Hou K, Wu ZX, Chen XY, et al. Microbiota in health and diseases. *Signal Transduct Target Ther.* 2022;7.
 26. Polla D, Astafurov K, Hawy E, et al. A pilot study to evaluate the oral microbiome and dental health in primary open-angle glaucoma. *J Glaucoma.* 2017;26:320–327.
 27. Yoon BW, Lim SH, Shin JH, et al. Analysis of oral microbiome in glaucoma patients using machine learning prediction models. *J Oral Microbiol.* 2021;13:1962125.