



HAL
open science

On the importance of flux-driven turbulence regime to address tokamak plasma edge dynamics

Olivier Panico, Y Sarazin, P Hennequin, Ö D Gürcan, R Bigué, G Dif-Pradalier, X Garbet, P Ghendrih, R Varennes, L Vermare

► To cite this version:

Olivier Panico, Y Sarazin, P Hennequin, Ö D Gürcan, R Bigué, et al.. On the importance of flux-driven turbulence regime to address tokamak plasma edge dynamics. *Journal of Plasma Physics*, In press. hal-04812476

HAL Id: hal-04812476

<https://hal.science/hal-04812476v1>

Submitted on 30 Nov 2024

HAL is a multi-disciplinary open access archive for the deposit and dissemination of scientific research documents, whether they are published or not. The documents may come from teaching and research institutions in France or abroad, or from public or private research centers.

L'archive ouverte pluridisciplinaire **HAL**, est destinée au dépôt et à la diffusion de documents scientifiques de niveau recherche, publiés ou non, émanant des établissements d'enseignement et de recherche français ou étrangers, des laboratoires publics ou privés.



Distributed under a Creative Commons Attribution 4.0 International License

On the importance of flux-driven turbulence regime to address tokamak plasma edge dynamics

*O. Panico^{*1,2}, Y. Sarazin², P. Hennequin¹, Ö.D. Gürçan¹, R. Bigué^{2,3}, G. Dif-Pradalier², X. Garbet^{2,4},
P. Ghendrih², R. Varennes⁴, and L. Vermare¹*

¹*LPP, CNRS, Ecole Polytechnique, Sorbonne Université, Institut Polytechnique de Paris, 91128
Palaiseau, France*

²*CEA, IRFM, F-13108 Saint-Paul-lez-Durance, France*

³*PIIM Laboratory, UMR 6633 CNRS-University of Provence, Marseille*

⁴*Nanyang Technological University 637371 Singapore*

Abstract

Turbulence self-organization is studied in the flux driven regime by means of the reduced model Tokam1D. Derived in the electrostatic and isothermal limit but keeping finite electron and ion temperatures, it features two instabilities that are suspected to dominate turbulent transport at the edge of L-mode tokamak plasmas: interchange (a reduced version of the resistive ballooning modes) and collisional drift waves, governed respectively by an effective gravity parameter g and the adiabaticity parameter C . The usual properties of these two instabilities are recovered in the linear regime. The nonlinear study focuses on the self organization of collisional drift wave turbulence at $g = 0$. It is found that the energy stored in zonal flows (ZFs) decreases smoothly at small C due to the reduction of both electric and diamagnetic stresses. Conversely to gradient driven simulations, no sharp collapse is observed due to the self-consistent evolution of the equilibrium density profile. ZFs are found to structure into staircases at small and large C . These structures exhibit a rich variety of dynamics but are found robust to large perturbations. Their nucleation is found to be critically governed by the phase dynamics. Last, staircase structures are lost in the gradient driven regime, when the system is prevented to store turbulent energy into the equilibrium density (pressure) profile.

*corresponding author: olivier.panico@lpp.polytechnique.fr

Introduction

Improving confinement in fusion plasmas is crucial in order to achieve viable fusion power plants. In tokamaks, cross-field transport is mainly driven by turbulence, with a wide range of instabilities that can tap energy out of the gradients to drive it. These instabilities can be distinguished based on their properties, in terms of fluctuations amplitude, cross-phase and non-linear behavior. Dominant contributions to cross-field transport in an L-mode edge are likely caused by micro-instabilities at the ion scale [Liewer \(1985\)](#). Those can be organized in two main classes of instabilities. First, the interchange, which requires an inhomogeneous magnetic field, such as the resistive ballooning modes (RBM), which bears analogy with the Rayleigh-Bénard instability in neutral fluids. Then, the drift-wave instability (DW), that results from a non-adiabatic electron response, which manifests itself as a finite phase shift between density and electric potential fluctuations [Hasegawa & Wakatani \(1983\)](#), whose wave dynamics is similar to Rossby waves in the atmosphere. While the interchange tends to favour structures with zero parallel wave-vectors $k_{\parallel} \approx 0$, the DW requires non-vanishing $k_{\parallel} \neq 0$. Both RBM and DW have been found dominant in a broad range of tokamak edge conditions [Bonanomi et al. \(2019\)](#).

In tokamaks, turbulent structures develop a strong anisotropy due to the strong magnetic field with variations primarily in the perpendicular direction to the magnetic field. In turn, turbulence is often considered as a quasi 2-dimensional problem, similarly to planetary atmospheres [Boffetta & Ecke \(2012\)](#). In neutral fluids obeying Navier-Stokes equations, turbulence in two dimensions presents a dual-cascade picture with a forward cascade of enstrophy accompanied by an inverse cascade of energy [Kraichnan \(1971\)](#). This singular behavior arises due to the fact that, in such fluids, 2D turbulence is characterized by two nonlinear inviscid invariants, energy and enstrophy, while only the former is conserved in 3D. This leads to a self-organization of micro-turbulence at large scales into minimum enstrophy states through a mechanism of selective decay. In the case of turbulence with large background inhomogeneities, this leads to generation of large scale motions named zonal flows (ZFs). In planetary atmospheres, these flows exhibit an azimuthal symmetry and have long been considered important contributors to large scale circulation [Rossby \(1947\)](#). In magnetic fusion devices ZFs are poloidally and toroidally symmetric, varying only across magnetic surfaces. Note that in magnetic fusion plasmas, 2D does not necessarily mean that enstrophy is conserved. As a consequence, inverse energy cascade is not always active. However, this does not preclude the excitation of ZFs which are usually generated by non-local interactions in the Fourier space: a non-vanishing flux-surface averaged Reynolds stress is driven by the nonlinear coupling of small scale fluctuations. While electric Reynolds stress, i.e. coupling of electric velocity fluc-

tuations $\Pi_E = \langle \tilde{v}_{E_y} \tilde{v}_{E_x} \rangle$, with $\mathbf{v}_E = \mathbf{E} \times \mathbf{B}/B^2$, has long been deemed central in the generation processes [Diamond & Kim \(1991\)](#). The diamagnetic component, $\Pi_* = \langle \tilde{v}_{E_y} \tilde{v}_{i_x}^* \rangle$, through the diamagnetic velocity, $\mathbf{v}_* = \mathbf{B} \times \nabla p / (enB^2)$ now also appears as an important mechanism for the dynamics [Smolyakov et al. \(2000\)](#), [Hallatschek \(2004\)](#), [McDevitt et al. \(2010\)](#), [Sarazin et al. \(2021\)](#), ?.

Turbulence-generated zonal flows are crucial for the self-regulation of turbulent transport. Through their back-reaction to turbulence, and their involvement in the ensuing predator-prey dynamics, they play a dominant role in its saturation [Lin et al. \(1998\)](#). They act as a sink for turbulent energy, and constitute, together with the mean background flow, the flow shear that decorrelates radially elongated eddies [Biglari et al. \(1990\)](#), [Terry \(2000\)](#). Detailed reviews of physics and formation of ZFs as well as their role on self-regulating turbulent transport can be found in literature [Diamond et al. \(2005\)](#), [Gürçan & Diamond \(2015\)](#). ZFs are also regulators of linear instability mechanisms [Sugama & Wakatani \(1991\)](#) and have been put forward as a possible mechanism to explain density limits in tokamaks [Hajjar et al. \(2018\)](#). However, the experimental measurement of ZFs and Reynolds stress remains a challenge, and sophisticated methods of data analysis are usually required to infer their existence, both for ZFs [Fujisawa \(2008\)](#), [Pedrosa et al. \(2008\)](#) and for the role of Reynolds stress [Tynan et al. \(2006\)](#).

Additionally, ZFs organize naturally into staircases, which are persistent radially localized sheared layers associated with corrugations in radial gradients of density or pressure [Kosuga et al. \(2013\)](#), [Dif-Pradalier et al. \(2015, 2017a\)](#). Staircases are also quite difficult to observe experimentally: the flow pattern has to be sufficiently stable and large scale so that a diagnostic system can resolve its radial structure [Hornung et al. \(2016\)](#), [Hillesheim et al. \(2016\)](#), [Liu et al. \(2021\)](#). Thus, identifying regimes where staircases are likely to occur, and providing signatures of the turbulence-flow interactions that can be used to identify them, would be extremely useful to guide experimental observations.

A significant effort has been devoted to study the generation and impact of Zfs on turbulent transport both analytically and in direct numerical simulations using both gyrokinetic simulations as well as fluid models [Scott \(2005b\)](#). Reduced models are also common in the study of turbulence/ZF interactions. They allow large parameter scans on confinement times while resolving turbulence scales. Also, they are usefool tools for understanding key physics mechanisms that are often confounded with other effects in first principle simulations. Among those, the pioneering work of Hasegawa-Mima [Hasegawa & Mima \(1978\)](#), who developed a turbulence model for drift waves and the work of Hasegawa-Wakatani [Wakatani & Hasegawa \(1984\)](#) that expanded it to include an intrinsic instability, named collisional drift-wave (CDW), due to the non-adiabatic response of electron density fluctuations, can be cited. In the latter, the

finite phase shift is caused by parallel electron-ion collisions and the instability is controlled by the adiabaticity parameter C that scales as the square of the parallel wave vector divided by the electron-ion collision frequency. Since then, many models have been built on the same principle, [Camargo et al. \(1995\)](#), [Numata et al. \(2007\)](#), [Majda et al. \(2018a\)](#). Note that these models usually evolve the electron density together with the vorticity and often assume cold ions. Therefore, the role of the diamagnetic drift in the Reynolds stress is overlooked. Some reduced models have also been dedicated to the interchange instability [Benkadda et al. \(1994\)](#), [Sarazin & Ghendrih \(1998\)](#) with some including the diamagnetic contribution to the Reynolds stress [Ivanov et al. \(2020\)](#). In these models, the linear instability is controlled by the mean curvature of the magnetic field, g that scales with the Larmor radius divided by the major radius of the tokamak. A few include both interchange and drift waves [Scott \(2005a\)](#), [Ghendrih et al. \(2022\)](#).

Many of these reduced models are formulated in a gradient driven form, meaning that a constant pressure gradient is imposed throughout the simulation domain. In addition, one usually assumes a scale separation between the background gradients and the turbulence. While this has the advantage of providing a simpler local linear structure, it lacks crucial mechanisms for turbulence saturation. Indeed, three main saturation mechanisms can be identified: nonlinear mode-mode coupling leading to the transfer of energy from linearly unstable to linearly stable modes, nonlinear transfer of turbulent energy to large scale flows (ZFs) that do not contribute to transport and / or profile relaxation as a result of turbulent fluxes. The second and third mechanisms are either neglected or present at reduced magnitude (see [Section 4.2](#)) because of the scale separation assumption in a local formulation. These non-local interactions indeed pose a challenge, because both micro-scale turbulence and large scale profiles and flows have to be described self-consistently. This means that the simulations require good spatial and temporal resolution over extended spatial domains as well as over long time, which comes with numerical costs. In the edge of tokamaks, especially just inside the last closed flux surface, multi-scale interactions are of particular importance. Large gradients are usually present – even more so when the plasma is in H-mode – together with large radial electric fields, which requires a proper description of the interactions between equilibrium profiles, flows and turbulence. Flux-driven models are able to capture this dynamics, with the profiles evolving self-consistently as a balance between the sources, and transport.

Here, we present a minimal flux-driven model of tokamak edge turbulence, called Tokam1D, with self-generated flows and profile interactions, featuring simple versions of both interchange (which is an analogue of the resistive ballooning mode RBM instability in the framework of the model) and CDW instabilities, and a constant ion temperature in order to include the diamagnetic component of the Reynolds stress. Since the present version does not account for electro-

magnetic effects, it is restricted to L-mode regimes only (cf. [Section 1](#)). The model is reduced to 1-dimension (radial) by retaining a single parallel and poloidal wave-number for the fluctuations – possibly the linearly most unstable one. By doing so, nonlinear mode-mode couplings are discarded in the dynamics of the fluctuations, hence also possible energy and enstrophy cascades. Yet, nonlinear terms are retained in the dynamics of the density and poloidal flow equilibrium profiles via the particle turbulent flux and the Reynolds stresses. Turbulence saturation is therefore governed by profile relaxation and the generation of zonal flows. The compressibility terms in the density equation are also included and prove important for the stabilization of interchange at large scale. The two instability parameters are found to have a destabilizing or stabilizing role depending on the regime. Also, they govern the phase shift between the density and electrostatic potential fluctuations, hence the strength of the turbulent transport at prescribed fluctuation amplitude. Finally, turbulence self organization is studied in the CDW instability regime at $g = 0$ (the study of the competition and/or synergy between CDW and interchange turbulence self organization will be addressed in a forthcoming paper). It is shown that having a flux-driven model greatly influences the radial flow structure and the energy partition of the system. In particular, the "ZFs energy collapse" previously observed when C is lowered [Numata et al. \(2007\)](#) is not recovered. Although the same trend is observed, the transition appears to be more gradual.

The paper is organized as follows. In [Section 1](#), the model is derived together with its energetic properties. In [Section 2](#), the linear analysis of CDW and interchange instabilities is performed and the importance of compressibility terms is highlighted. The remainder of the paper restricts the analysis of the nonlinear regime to $g = 0$ cases, featuring only CDW turbulence. In [Section 3](#), the generation of flows is studied in the CDW regime. ZFs are shown to act as a reservoir for turbulence energy, even more so at large C . Finally, in [Section 4](#), flow radial structure is studied. The role of the phase during a staircase nucleation is emphasized and the importance of profile relaxation is pointed out.

1 Tokam1D: a reduced flux-driven interchange-CDW model

The governing fluid equations of the model rely on a certain number of simplifications that are detailed below. Their derivation proceeds in the standard systematic way (see e.g. [Scott \(1997\)](#), [Beyer et al. \(2000\)](#), [Chôné et al. \(2014a\)](#)) by considering the adiabatic regime where the time and spatial scales of the plasma dynamics are much larger than the ones of the cyclotron motion, namely the gyro-frequency and the sound Larmor radius ρ_s . In this framework, velocity drifts retained up to the second order in the small expanding parameter, typically the ratio between ρ_s

and the gradient length R (also the tokamak major radius) of the magnetic field $\rho_* \sim \rho_s/R \ll 1$. These velocities are the electric and diamagnetic drifts at first order, and the ion polarization drift at second order. Other finite Larmor radius effects than the polarization drift are not retained.

We consider a magnetized plasma of constant (in time and spatially uniform) ion T_i and electron T_e temperatures (with $\tau = T_i/T_e$) in a stationary magnetic field \mathbf{B} . We focus on the tokamak edge, just inside the last closed flux surface. The plasma is assumed to be in L-mode so that one can neglect electromagnetic effects. Indeed, when approaching the H-mode, the pressure gradient length L_p decreases strongly, so that the effective beta parameter $\beta_{eff} = (qR/L_p)^2 \beta$ – with $\beta = 2\mu_0 p/B^2$ the ratio of plasma pressure to magnetic pressure, q the safety factor and R the major radius – can exceed unity. In this case, as early noticed in [Catto et al. \(1974\)](#) and further detailed in [Scott \(1997\)](#), magnetic induction can no longer be ignored since it controls the linear response of the parallel current to parallel gradients in the three state variables (electric field, density and electron temperature). The geometry can be approximated as cylindrical, using Cartesian coordinates as if the toroidal axis were unwrapped onto a Cartesian plane, with the unit vectors $(\mathbf{e}_x, \mathbf{e}_y, \mathbf{e}_\parallel)$, where x is the radial, y is the poloidal (now vertical) and z is the parallel (along the field lines) directions.

The magnetic field magnitude decreases as the inverse of the major radius, $\mathbf{B}(R) = \frac{B_0 R_0}{R} \mathbf{e}_\parallel$. Considering that later on the system will be reduced to 1d by keeping only one mode for the fluctuations ([Section 1.5](#)), terms that are linked to the magnetic inhomogeneity such as compressibility terms (divergence of the electric drift and diamagnetic flux) can be written as:

$$\nabla \cdot \left(\frac{\mathbf{B} \times \nabla h}{B^2} \right) = \nabla h \cdot \left(\frac{\nabla \times \mathbf{B}}{B^2} + \frac{2\mathbf{B} \times \nabla B}{B^3} \right) \approx -\frac{2}{RB} \partial_y h \quad (1)$$

with $h = n$ the density or $h = \Phi$ the electrostatic potential. Note that both the curvature and the amplitude variation lead to the magnetic inhomogeneity. Note that while the first term on the right hand side relates to Ampere-Maxwell's law, which is small for tokamaks at low β , the second term comes from the variation of \mathbf{B} along the major radius of the tokamak and should be kept. We call this term linked to the inhomogeneity of \mathbf{B} as g , the 'curvature term':

$$g = 2 \frac{\rho_s}{R}. \quad (2)$$

It controls the interchange instability. In the framework of the model, this instability is analogous to the more familiar resistive ballooning modes (RBM), which have already received much attention in the electrostatic [Guzdar et al. \(1993\)](#), [Beyer et al. \(2000\)](#), [Chôné et al. \(2014a\)](#)

and electromagnetic [Scott \(1997\)](#), [Dominici et al. \(2019\)](#) regimes. More recently, their interplay with Drift-Wave turbulence at the edge of tokamak plasmas has been investigated with the GBS code [Giacomin & Ricci \(2022\)](#).

Tokam1D then considers the flux-driven dynamics of the density and vorticity in a 1-dimensional radial plasma. It can be derived from the electron continuity and charge balance equations where the $E \times B$, diamagnetic and polarization drifts are considered. A generalized Ohm's law closes the system by relating the parallel current to the electric field and the electron pressure gradient.

First, the model is derived in 3 dimensions. Then, it is reduced to 1 dimension by keeping only one fluctuating mode for the poloidal (\mathbf{e}_y) and parallel (\mathbf{e}_\parallel) directions. Its assumptions and limitations are discussed. Finally, an energy principle is calculated and energy channels for the profile, flows and turbulence are clarified.

1.1 Electron continuity equation

The particle conservation equation, Eq 3, evolves the electron density n taking into account the $E \times B$ and diamagnetic drifts, \mathbf{v}_E and \mathbf{v}_\star , the electron parallel current $\mathbf{j}_{\parallel,e}$ and the source of particle S_n . The polarization drift \mathbf{v}_{pol} , proportional to the mass of the species, is neglected for the electrons.

$$\partial_t n + \mathbf{v}_E \cdot \nabla n + n \nabla \cdot \mathbf{v}_E + \nabla \cdot (n \mathbf{v}_\star) - \nabla_\parallel (j_{\parallel,e}/e) = S_n \quad (3)$$

Owing to the large inertia of the ions, the total parallel current is approximated by the electron parallel current: $j_{\parallel,e} = -en v_{\parallel,e} \approx j_{\parallel}$. The compressibility terms, $\nabla \cdot \mathbf{v}_E$ and $\nabla \cdot (n \mathbf{v}_\star)$ are kept as derived from Eq. 1. They are crucial in the linear behavior of the instabilities as they stabilize the interchange instability at large scale, see [Section 2](#). Also, they will prove essential in the energy budget equation [Section 1.6](#) and in the nonlinear analysis. In this framework, Eq. 3 reads as follows,

$$\partial_t n + \frac{1}{B} \{\Phi, n\} - \frac{2nT_e}{eRB} \left[\partial_y \left(\frac{e\Phi}{T_e} \right) - \partial_y \ln \frac{n}{n_0} \right] - \frac{1}{e} \nabla_\parallel j_{\parallel} = S_n$$

With n_0 a constant reference density used for normalization and Φ the electric potential. The advection of density due to the electric drift is contained in Poisson brackets $\{\Phi, n\} = (\nabla \Phi \times \nabla n) \cdot \mathbf{e}_\parallel$.

1.2 Charge conservation equation

With the quasi-neutrality assumption, charge conservation reduces to $\nabla \cdot \mathbf{j} = 0$. Taking both the diamagnetic current $\mathbf{j}_\star = (en\mathbf{v}_{\star i} - en\mathbf{v}_{\star e})$ and the polarization current $\mathbf{j}_{pol} = en\mathbf{v}_{pol}$ into account, it takes the form:

$$\nabla_\perp \cdot \mathbf{j}_\star + \nabla_\perp \cdot \mathbf{j}_{pol} + \nabla_\parallel j_\parallel = 0. \quad (4)$$

Divergence of diamagnetic current can be written directly as:

$$\nabla_\perp \cdot \mathbf{j}_\star = \nabla_\perp \cdot (-en\mathbf{v}_{\star e} + en\mathbf{v}_{\star i}) = -(1 + \tau) \frac{2T_e}{RB} \partial_y n, \quad (5)$$

with $\tau = T_i/T_e$ the temperature ratio. The polarization current can be computed from the ion polarization drift, which can be written as

$$\mathbf{v}_{pol} = -\frac{m_i}{eB^2} [\partial_t + \mathbf{v}_E \cdot \nabla] (\mathbf{v}_E + \mathbf{v}_{\star i}) \times \mathbf{B}, \quad (6)$$

where the parallel advection has been neglected assuming that the parallel gradient length remains small as compared to the transverse ones. This expression of the drift results from the partial cancellation of the advection by the diamagnetic velocity with the anisotropic part of the pressure tensor, which is usually referred to as the diamagnetic cancellation [Hinton & Horton \(1971\)](#), [Smolyakov \(1998\)](#). Finally, the Boussinesq approximation is used for the polarization current allowing us to commute the density with the divergence and avoid dealing with time derivatives of different quantities. To keep track of the origin of this density term, we name it n_Ω hereafter:

$$\nabla_\perp \cdot \mathbf{j}_{pol} \approx -\frac{n_\Omega m_i}{B^2} \partial_t \nabla_\perp^2 \left(\Phi + \frac{\tau T_e}{e} \ln \frac{n}{n_0} \right) - \frac{n_\Omega m_i}{B^2} \left(\mathbf{v}_E \cdot \nabla \nabla_\perp^2 \Phi + \nabla \cdot \left(\mathbf{v}_E \cdot \nabla \left(\frac{\tau T_e}{e} \nabla_\perp \ln \frac{n}{n_0} \right) \right) \right). \quad (7)$$

Boussinesq assumption is considered valid whenever density gradient length is large with respect to that of the electric potential and is routinely used in fluid models to simplify computation. Note that depending on the model, the choice is made to commute either a constant density $n_\Omega = n_0$ such as in [Tamain et al. \(2016\)](#), [Dudson & Leddy \(2017\)](#), [Stegmeir et al. \(2018\)](#) or to commute the full density $n_\Omega = n$ [Yu et al. \(2006\)](#), [Angus & Umansky \(2014\)](#), [Ghendrih et al. \(2022\)](#). Although it is usually considered correct in the core, its validity is debated for simulations including the scrape-off layer as the density fluctuations tend to be larger relatively to the background density, see dedicated contributions [Yu et al. \(2006\)](#), [Angus & Umansky \(2014\)](#),

Ross et al. (2018). The validity of the Boussinesq assumption can be verified at the end of the simulation by comparing $\nabla_{\perp} n \cdot \nabla_{\perp} (\Phi + \tau \ln(n/n_0))$ and $n \nabla_{\perp}^2 (\Phi + \tau \ln(n/n_0))$. In the simulations performed, the mismatch proved to be of a few percent. Also, the magnetic field is assumed to commute with the ∇ operator. It is acceptable as the B field is large and decays as $1/R$ which is on much larger scales than the density and electric potential inhomogeneities. Eq. 4 then reads as follows,

$$\frac{-n \Omega m_i T_e}{e B^2} \partial_t \Omega - \frac{n \Omega m_i T_e^2}{B^3 e^2} \nabla_{\perp, i} \left\{ \frac{e \Phi}{T_e}, \nabla_{\perp, i} \left(\frac{e \Phi}{T_e} + \tau \ln \frac{n}{n_0} \right) \right\} - \frac{2 T_e}{R B} (1 + \tau) \partial_y n + \nabla_{\parallel} j_{\parallel} = 0. \quad (8)$$

Where $\nabla_{\perp, i} \{., \nabla_{\perp, i}(\cdot)\}$ represents Poisson brackets that can be developed assuming Einstein's notation, $\partial_x \{., \partial_x(\cdot)\} + \partial_y \{., \partial_y(\cdot)\}$. Here, the generalized vorticity is defined as follows,

$$\Omega = \nabla_{\perp}^2 \left(\frac{e \Phi}{T_e} + \tau \ln \frac{n}{n_0} \right). \quad (9)$$

With $\nabla_{\perp}^2 = (\partial_x^2 + \partial_y^2)$ the perpendicular Laplacian.

1.3 Ohm's law

Finally, the Ohm's law is derived using the electron parallel momentum conservation equation,

$$n m_e [\partial_t + (\mathbf{v}_E + \mathbf{v}_{\star i}) \cdot \nabla] v_{\parallel e} + T_e \nabla_{\parallel} n = e n \nabla_{\parallel} \Phi + \frac{m_e \nu_{ei}}{e} j_{\parallel} \quad (10)$$

Due to the small electron inertia, the first term proportional to m_e drops. In this case, the generalized Ohm's law reduces to a balance between parallel current, parallel Coulomb force and parallel pressure. One is left with an explicit relationship between the parallel current on the one hand, and density and electric potential on the other,

$$j_{\parallel} = \frac{e n T_e}{m_e \nu_{ei}} \nabla_{\parallel} \left(\ln \frac{n}{n_0} - \frac{e \Phi}{T_e} \right) \quad (11)$$

The parallel current depends on the electron-ion collision frequency that itself depends directly on the density and temperature: $\nu_{ei} \propto n/T_e^{3/2}$. The temperature is taken constant in the present model but the density has to be made explicit so that we can deal with the pre-factor as a constant. Then, we define $\nu_{ei,0} = \nu_{ei} n_0/n_{\nu}$, the electron-ion collision frequency taken at reference density n_0 with the density labelled n_{ν} to keep track of its origin.

In this case, the divergence of the parallel current reads as follows:

$$\nabla_{\parallel} j_{\parallel} = \frac{en_0 T_e}{m_e \nu_{ei,0}} \frac{n}{n_v} \nabla_{\parallel}^2 \left(\ln \frac{n}{n_0} - \frac{e\Phi}{T_e} \right) \quad (12)$$

The parallel current is then introduced into the electron density and charge conservation equations to close the system.

1.4 3d-Model

The 3d system of equations then involves the logarithm of the electron density $N = \ln n/n_0$ and the generalized vorticity $\Omega = \nabla_{\perp}^2 (\phi + \tau N)$ with the electric potential normalized to the electron temperature $\phi = e\Phi/T_e$. The dimensionless 3d system can be written as follows,

$$\partial_t N + \{\phi, N\} = g \partial_y (\phi - N) + \sigma_0 \nabla_{\parallel}^2 (N - \phi) + D \nabla_{\perp}^2 N + S_N \quad (13)$$

$$\partial_t \Omega + \nabla_{\perp, i} \{\phi, \nabla_{\perp, i} (\phi + \tau N)\} = -(1 + \tau) g \partial_y N + \sigma_0 \nabla_{\parallel}^2 (N - \phi) + \nu \nabla_{\perp}^2 \Omega \quad (14)$$

Regarding normalizations, time is normalized to the ion cyclotron frequency $\omega_{cs} = (eB)/m_i$ and the lengths to the sound larmor radius $\rho_s = (m_i c_s)/(eB)$ with $c_s = \sqrt{T_e/m_i}$. The magnetic curvature parameter is defined as $g = (2\rho_s)/R$, with R the major radius of the tokamak. The parallel conductivity is considered constant and is defined as the electron cyclotron frequency to the electron-ion collision frequency taken at n_0 , $\sigma_0 = \omega_{ce}/\nu_{ei,0}$. The system is flux-driven with a source of particles S_N and the damping of small scales is ensured by the diffusive terms D and ν .

As a last remark, note that equations (13-14) derive from eqs. (3) and (8) divided by n and n_{Ω} , respectively. When doing so, the density dependencies of the parallel current terms should read $(n_0/n_v)\sigma_0$ in eq.(13) and $(n_0/n_v)(n/n_{\Omega})\sigma_0$ in eq.(14). The simplifications done in eqs.(13-14) are then to replace (n_0/n_v) and (n/n_{Ω}) by one. This amounts to performing the Boussinesq approximation with the total density $n_{\Omega} = n$, and to neglect the density dependence of the collision frequency $n_v = n_0$ ¹. The latter dependency may reveal particularly important when looking for plasma bifurcations as density increases, such as the density limit. Its effect will be investigated in a forthcoming paper. For the time being, the normalized parallel conductivity is taken constant and equal to σ_0 .

¹Assuming $n_v = n_0$ would imply an added term for Equation 12. This term proportional to $\nabla_{\parallel} n \nabla_{\parallel} (\ln(n/n_0) - e\phi/T_e)$ is however not retained in the Tokam1D framework. In Section 1.5, a single poloidal and parallel mode is kept, such that terms involving several k_{\parallel} (nonlinearities) are removed.

1.5 Semi-spectral formulation: from 3d to 1d

In order to keep track of nonlinear dynamics while dealing with a more tractable system, each field is decomposed into a flux-surface averaged and a fluctuating component (Eq 15). In the spirit of previous similar models [Sarazin et al. \(2000\)](#), [Benkadda et al. \(2001\)](#), [Bian et al. \(2003\)](#), the fluctuating components are Fourier transformed and projected onto a single parallel and poloidal wave vectors (k_{\parallel}, k_y) , so that $(\nabla_{\parallel}, \partial_y) \rightarrow i(k_{\parallel}, k_y)$. Here cc stands for the complex conjugate.

$$\begin{pmatrix} N \\ \phi \end{pmatrix} = \begin{pmatrix} N_{eq} \\ \phi_{eq} \end{pmatrix}(x, t) + \begin{pmatrix} N_k \\ \phi_k \end{pmatrix}(x, t) \exp[i(k_y y + k_{\parallel} z)] + cc \quad (15)$$

As a caveat, note that the “eq” subscript should not be misunderstood. Here, what is meant by “equilibrium” only refers to the flux-surface average of the considered quantity. This zonal component is not at all assumed to represent any steady-state of the system. When discussing about N_{eq} and ϕ_{eq} in the remainder of this article, we shall loosely refer to them as equilibrium quantities, bearing in mind the caveats mentioned above.

The implications of this choice call for further discussion. In particular, retaining a single poloidal wavenumber k_y implies that, in the time evolution of the fluctuating modes N_k and ϕ_k , the model cannot consider the nonlinear terms that arise due to mode-mode coupling. Indeed, these terms involve other modes $k'_y \neq k_y$ which are by essence outside the model. One of the consequences is that possible energy (and enstrophy) cascade processes cannot be accounted for. Three important remarks can be done at this point:

1. A refinement of the model would consist in adding a nonlinear saturation mechanism to the fluctuations of the form $\partial_t N_k = \dots - D_{NL} |N_k|^2 N_k$ with D_{NL} some positive coefficient [Sarazin et al. \(2000\)](#). It would account for part of the physics contained in the missing nonlinear interactions, namely nonlinear energy transfer into dissipative scales as one of the routes towards turbulence saturation. We have performed a number of simulations with such a term present, and found that the resulting dynamics was qualitatively analogous to simulations with stronger diffusion. So as to keep the number of free parameters to a minimum, we therefore decided not to include such a nonlinearity in the present study.
2. Even with $D_{NL} = 0$, the model still retains important nonlinearities. The main ones are the turbulent flux and the Reynolds stresses that govern respectively the time evolution of the equilibrium density N_{eq} and poloidal flow V_{eq} profiles (see eqs.(16-17) and eqs.(20-21)). Note also that, since these radial profiles enter the time dynamics of fluctuating

modes, they result in nonlinear couplings between different radial wave vectors k_x (cf. all terms in eqs.(18-19) of the form $F(A_{eq})G(B_k)$, where F and G stand for linear operators and $A, B \in \{N, V, \Omega\}$). This latter point is not explicit in the equations since they are not written in the Fourier space in k_x but in the configuration space x .

3. In the absence of *ad-hoc* nonlinear term in the dynamics of fluctuating fields (i.e. when taking $D_{NL} = 0$), turbulence saturation in Tokam1D therefore relies mainly on two mechanisms: (i) nonlinear transfer of turbulent energy to large scale flows (ZFs) that do not contribute to transport and (ii) the relaxation of mean profiles – as a result of turbulent fluxes – leading to a reduction of the turbulence drive (lower gradients, i.e. thermodynamical forces). The last one is often overlooked since absent from gradient-driven models. We argue these two mechanisms play a key role close to marginal stability. As a matter of fact, this regime is likely to be relevant in fusion reactor plasmas. Indeed, given the expected large volume of reactor devices, they will likely be weakly driven – low power density – so that the strong efficiency of turbulent transport – as attested by the stiffness of the experimental temperature profiles in tokamak plasmas (see e.g. [Ryter et al. \(2000\)](#)) – should maintain the gradients close to marginality. Note that since all the modes are kept along x direction, ZFs can further contribute to turbulence saturation through wave coupling: (i) through turbulence vortex shearing, they can lead to the generation of large k_x wave vectors which are linearly stable [Diamond et al. \(2005\)](#); also, (ii) they can mediate energy transfer to damped eigenmodes, as highlighted e.g. in [Hatch et al. \(2011\)](#). Last, (iii) they can also trap waves [Garbet et al. \(2021\)](#), further leading to the possible filamentation of distribution functions in the velocity space and the subsequent collisional dissipation.

The final system of equations involves 4 fields. Two real fields for the equilibrium components (Eq 16, 17), and two complex fields for the fluctuating parts (Eq 18, 19). It is solved using a 4th order Runge-Kutta scheme in time and centered 4th order finite differences in the radial direction. Note that the dissipation terms are treated to the second order in the present version of the code, equally limiting the order of the scheme. Appendix D details the numerical scheme and the successful verification tests. Different values for the diffusion and viscosity can

parameter	τ	g	C
expression	$\frac{T_i}{T_e}$	$2\frac{\rho_s}{R}$	$(k_{\parallel}\rho_s)^2\sigma_0$
dependencies	$\propto \frac{T_i}{T_e}$	$\propto \frac{T_e^{1/2}}{RB}$	$\propto k_{\parallel}^2 \frac{T_e^{5/2}}{n_0 B}$
values WEST	1	2.3×10^{-4}	5×10^{-4}

Table 1: Main parameters of the model and their typical values for the WEST tokamak.

be chosen for the equilibrium (D_0, ν_0) and the fluctuations (D_1, ν_1) .

$$\partial_t N_{eq} = -\partial_x \Gamma_{turb} + D_0 \partial_x^2 N_{eq} + S_N \quad (16)$$

$$\partial_t V_{eq} = -\partial_x \Pi_{RS} + \nu_0 \partial_x^2 V_{eq} - \mu V_{eq} \quad (17)$$

$$\partial_t N_k = ik_y (\phi_k \partial_x N_{eq} - V_{eq} N_k) + igk_y (\phi_k - N_k) + C(\phi_k - N_k) + D_1 \nabla_{\perp}^2 N_k \quad (18)$$

$$\begin{aligned} \partial_t \Omega_k = & -ik_y g(1 + \tau)N_k - ik_y V_{eq} \Omega_k + ik_y \partial_x [\phi_k \partial_x (V_{eq} + \tau \partial_x N_{eq})] \\ & - ik_y \partial_x V_{eq} \partial_x (\phi_k + \tau N_k) + C(\phi_k - N_k) + \nu_1 (\partial_x^2 - k_y^2) \Omega_k \end{aligned} \quad (19)$$

with $\Omega_k = (\partial_x^2 - k_y^2)(\phi_k + \tau N_k)$. The adiabaticity parameter is defined as $C = \sigma_0 k_{\parallel}^2$. It is equivalent to the C_1 parameter initially derived by Hasegawa and Wakatani [Wakatani & Hasegawa \(1984\)](#). Typically, the parallel wave number is estimated considering a connection length, $L_q = 2\pi qR$, which gives $k_{\parallel} = 2\pi/L_q = 1/(qR)$. Taking a typical edge plasma of the WEST tokamak, major radius $R = 2.5$ m, minor radius $a = 0.5$ m, magnetic field at separatrix $B_{sep} \approx 3T$, and considering a density of $n_0 = 10^{-19} m^{-3}$, a temperature of $T_e \approx 70$ eV and a safety factor $q_{95} = 5$, the main parameters of the model can be estimated. Their typical values are given in [Table 1](#).

It appears from the parameter dependencies that the strong variation of density and temperature profiles at the edge of tokamak plasmas translates into a wide range of g and C values. Nevertheless, one has to keep in mind that [Eq.11](#) assumes a large electron-ion collision frequency as compared to the electron inertial term. Therefore, the model loses its validity if T_e is too large or n too small. Also, C decreases with increasing density. This density dependence, although not retained in the current version of Tokam1D, is deemed important for the turbulence-flows energy partition as highlighted in [Section 3.2](#). Finally, we can note that $g = 2\rho_s/R = 2\rho_{\star}a/R$, with $\rho_{\star} = \rho_s/a$. It follows that g is expected to increase for smaller aspect ratio machines operating at the same temperature and magnetic field.

The turbulent particle flux results from the advection of density by the radial $E \times B$ drift:

$$\Gamma_{turb} = \langle nv_{Ex} \rangle = -2k_y \Im(N_k \phi_k^*) = -2k_y |\phi_k| |N_k| \sin \Delta\varphi \quad (20)$$

With $*$ denoting the complex conjugate and $\Delta\varphi = \varphi_k^N - \varphi_k^\phi$ the cross-phase between density and electric potential fluctuations defined as the difference between the phases of the density, $N_k = |N_k| e^{i\varphi_k^N}$ and of the electrostatic potential. This quantity can be estimated through a linear analysis, see [Section 2](#).

The equilibrium flow $V_{eq} = \partial_x \phi_{eq}$ is generated by the Reynolds stress, which is the sum of two components: $E \times B$ and diamagnetic [Smolyakov et al. \(2000\)](#), [Sarazin et al. \(2021\)](#),

$$\Pi_{RS} = \Pi_E + \Pi_\star = \langle \tilde{v}_{Ey} \tilde{v}_{Ex} \rangle + \langle \tilde{v}_{Ey} \tilde{v}_{\star ix} \rangle = -2k_y \Im[(\phi_k^* + \tau N_k^*) \partial_x \phi_k] \quad (21)$$

Finally, a friction μ is added to the equilibrium velocity equation in order to account for neoclassical damping of the poloidal flow. The code allows for the friction to be estimated through neoclassical assumptions such as in Ref. [Gianakon et al. \(2002\)](#), but we kept it constant in this study. Additionally, the code allows for a relaxation of the poloidal flow towards the radial force balance equilibrium, $\partial_t V_{eq} = \dots - \mu(V_{eq} - V_{eq}^{FB})$, as prescribed in [Chôné et al. \(2015\)](#). If the toroidal rotation is neglected, the force balanced $E \times B$ velocity reads $V_{eq}^{FB} = v_\theta - \partial_x p_i / n$, with p_i the ion pressure and $v_\theta = K(\nu_\star, \epsilon) \frac{\nabla_r T_i}{eB}$ if one assumes that the poloidal velocity is governed by neoclassical theory. Here, ν_\star accounts for the collisionality and ϵ for the inverse aspect ratio. In the case of Tokam1D, due to the isothermal assumption, the velocity from radial force balance would reduce to $V_{eq}^{FB} = -\tau \partial_x N_{eq}$. The coupling of the $E \times B$ flow to density gradient through radial force balance has already been shown to be able to trigger and sustain edge transport barriers in resistive ballooning mode turbulence simulations [Gianakon et al. \(2002\)](#), [Chôné et al. \(2015\)](#), [Giacomin & Ricci \(2020\)](#). Since our present study aims primarily at investigating how turbulence self-organizes in the presence of self-generated flows, we have decided to drop this radial force balance self-consistency in our study. In this framework, the mean radial electric field in the Tokam1D simulations reported here is only set by the balance between the Reynolds force and the flow damping terms controlled by the friction μ and viscosity ν_0 coefficients. As a consequence, in particular, the present simulations cannot address possible transitions towards improved confinement regimes such as the H-mode, which is long known to be associated with a strong modification of the mean radial electric field in the vicinity of the separatrix, in response to the steepening of the pressure profile [R. J. Groebner & Seraydarian \(1990\)](#). The impact of the radial force balance will be addressed in a future dedicated work.

1.6 Energetics

Here we consider the energetics of the system of Eqs. (13, 14), which provides a consistency check in order to prevent the appearance of spurious instabilities. Also, partitioning the energy into distinct channels gives insight into the energy transfer between turbulence, flows and profiles in the nonlinear regime. As it should, the model obeys an energy conservation principle, which states that energy is conserved in the absence of source (particle source S_N here) and sinks (due to dissipative and viscous terms). In other words, linear and nonlinear energy transfer terms are conservative.

To formulate the energy balance equation, we multiply Eq. 13 and Eq. 14 by $(1 + \tau)N$ and $(\phi + \tau N)$, respectively. After integrating by parts, and summing the two equations, the interchange terms, proportional to the g parameter, are found to vanish. Such a cancellation requires to keep compressibility terms in the density continuity equation. The drift wave terms can be reorganized in the form of a parallel current $j_{\parallel} = \sigma n \nabla_{\parallel}(N - \phi)$. The conservation of energy then takes the following form,

$$\frac{d\mathcal{E}_{tot}}{dt} = P_{\mathcal{E}} - D_{\mathcal{E}} \quad (22)$$

With \mathcal{E}_{tot} the total energy, $P_{\mathcal{E}}$ the production term and $D_{\mathcal{E}}$ the dissipation term.

$$\mathcal{E}_{tot} = \int E_{tot} d\mathcal{V} = \int \frac{1}{2} \left\{ (1 + \tau)N^2 + [\nabla_{\perp}(\phi + \tau N)]^2 \right\} d\mathcal{V} \quad (23)$$

$$P_{\mathcal{E}} = (1 + \tau) \int NS_N d\mathcal{V} \quad (24)$$

$$D_{\mathcal{E}} = \int \frac{j_{\parallel}^2}{\sigma_0} d\mathcal{V} + D(1 + \tau) \int (\nabla_{\perp} N)^2 d\mathcal{V} + \nu \int [\nabla_{\perp}^2(\phi + \tau N)]^2 d\mathcal{V} \quad (25)$$

With $\int d\mathcal{V}$ being the integration on the whole volume (x, y, z) . It can be verified that the advection terms, linked to Poisson brackets, vanish upon integration. The production term involves the source of particles injected in the system. The dissipation term contains the parallel plasma resistivity, the dissipation and the viscosity. The total energy E_{tot} involves two terms. The second one scales like the kinetic energy associated to both electric and diamagnetic drifts, while the first one involves both electron and ion pressures. Notice its somewhat peculiar structure already found in Scott (1997), neither proportional to $(1 + \tau^2)N^2$ nor to $(1 + \tau)^2N^2$. Note that the final result, ensuring that the sum is strictly negative, directly results from σ depending only on radial direction and time. Therefore, if one chooses to include a non-constant electron-ion collision frequency in the model, it is necessary to consider a flux-surface averaged quantity.

The energy conservation terms can be decomposed in equilibrium and fluctuating components, following the same method used to derive Eqs. (16, 17, 18, 19). Noticing that linear terms vanish after the volume integration, the pressure energy can be restricted to:

$$(1 + \tau)N^2 \rightarrow (1 + \tau)(N_{eq}^2 + 2|N_k|^2). \quad (26)$$

The factor 2 in front of $|N_k|^2$ comes from the definition of (Eq.15). The generalized vorticity energy reads:

$$\begin{aligned} (\nabla_{\perp}(\phi + \tau N))^2 \rightarrow & \left\{ (V_{eq} + \tau \partial_x N_{eq})^2 + 2|\partial_x \phi_k|^2 + 4\tau \Re(\partial_x \phi_k \partial_x N_k^*) + 2|\tau \partial_x N_k|^2 \right. \\ & + 2k_y^2 \left[|\phi_k|^2 + |\tau N_k|^2 + 2\tau \Re(\phi_k N_k^*) \right] \\ & \left. - 2k_y \Im \left[\phi_k \partial_x \phi_k^* + \tau N_k \partial_x \phi_k^* + \tau \phi_k \partial_x N_k^* + \tau^2 N_k \partial_x N_k^* \right] \right\} \end{aligned} \quad (27)$$

The total energy can then be organized into different channels: the equilibrium profiles of density (Eq. 28) and velocity (Eq. 29) on the one hand, and in between fluctuating components on the other hand. The latter can be split into electron and ion (terms proportional to τ) components but for the sake of simplicity, only a turbulent energy that takes all the fluctuations into account (Eq. 30) is considered. Finally, a term corresponding to the interaction between the density and the flows is also obtained (Eq. 31). Its role is still unclear; it remains small in all simulations.

$$E_{Neq} = (1 + \tau)N_{eq}^2 + (\tau \partial_x N_{eq})^2 \quad (28)$$

$$E_{Veq} = V_{eq}^2 \quad (29)$$

$$E_{turb} = 2|N_k|^2 + 2|\partial_x \phi_k|^2 + 2k_y^2 |\phi_k|^2 - 2k_y \Im [\phi_k \partial_x \phi_k^*] \quad (30)$$

$$2\tau |N_k|^2 + 4\tau \Re(\partial_x \phi_k \partial_x N_k^*) + 2|\tau \partial_x N_k|^2 + 2k_y^2 \left[|\tau N_k|^2 + 2\tau \Re(\phi_k N_k^*) \right]$$

$$- 2k_y \Im \left[\tau N_k \partial_x \phi_k^* + \tau \phi_k \partial_x N_k^* + \tau^2 N_k \partial_x N_k^* \right]$$

$$E_{Neq-Veq} = 2\tau V_{eq} N_{eq} \quad (31)$$

The total energy E_{tot} , whose volume integral evolves according to Eqs. (23-25), can then be recast as

$$E_{tot} = E_{Neq} + E_{Veq} + E_{turb} + E_{Neq-Veq}. \quad (32)$$

It allows one to study the transfer of energy between the density, flows and turbulence. The dy-

namics between the flow and turbulence energies typically follows a predator-prey behaviour. First the energy of turbulence increases, until ZFs are created and pump out energy from turbulence. This well-established behavior has been studied in specific models such as in [Malkov & Diamond \(2001\)](#) and in experiments [Schmitz et al. \(2012\)](#). It will be shown that the energy ratio between flows and turbulence greatly changes when scanning the (g, C) parameters of the model: some domains in the parameter space are characterized by large flows to turbulence energy ratio.

2 Linear behavior of interchange-CDW instabilities

In the absence of any *ad-hoc* nonlinear dissipative coefficient, i.e. for $D_{NL} = 0$, Eqs.(18-19) are already in their linear form: they do not involve any coupling of the chosen wave vectors at k_y and k_{\parallel} with other wave vectors. To derive the linear dispersion relation, the last step consists in assuming a scale separation between equilibrium and fluctuation radial scales, the former evolving on larger spatial and temporal scales. As a result, equilibrium gradients – and possibly higher order derivatives of N_{eq} and V_{eq} – can be considered constant on the scale of the fluctuations. These derivatives are then considered as prescribed parameters, and each radial Fourier mode k_x of the fluctuations is then independent from the others – linear regime. The analytical calculations are performed in Fourier space:

$$(N_k, \phi_k) = (\hat{N}_k, \hat{\phi}_k) \exp[i(k_x x - \omega t)]. \quad (33)$$

In this case, each Fourier mode is an eigenmode of the linear system. For the sake of simplicity and because the weight of high order derivatives is expected to be small within the scale separation assumption, all derivatives higher than one are neglected in the analysis (in particular, N''_{eq} and N'''_{eq} are assumed to be vanishingly small, with the prime denoting the derivative along x). The derivative of the velocity terms, V'_{eq} and V''_{eq} are also neglected. We introduce the electron diamagnetic frequency $\omega_{*e} = -k_y N'_{eq}$. The equilibrium velocity leads to a Doppler shift on the frequency, therefore we solve for $\bar{\omega} = \omega - k_y V_{eq}$. The determinant then reads

$$D(k, \bar{\omega}) = \begin{vmatrix} \bar{\omega} + \mathcal{A} & \mathcal{B} \\ \bar{\omega} k_{\perp}^2 \tau + \mathcal{C} & \bar{\omega} k_{\perp}^2 + \mathcal{D} \end{vmatrix} \quad (34)$$

With the following notations:

$$\mathcal{A} = -gk_y + i \left(C + k_{\perp}^2 D_1 \right) \quad (35)$$

$$\mathcal{B} = -\omega_{*e} + gk_y - iC \quad (36)$$

$$\mathcal{C} = (1 + \tau)gk_y + i \left(-C + \nu_1 \tau k_{\perp}^4 \right) \quad (37)$$

$$\mathcal{D} = i \left(C + \nu_1 k_{\perp}^4 \right) \quad (38)$$

The linear growth rate and frequency are solutions of $D(k, \bar{\omega}) = 0$. The linear phase shift between density and electric potential fluctuations corresponds to the phase of the complex response function $F(k, \bar{\omega}) = N_k / \phi_k$:

$$F(k, \bar{\omega}) = \left| \frac{N_k}{\phi_k} \right| e^{i(\varphi_k^N - \varphi_k^{\phi})} = \frac{\bar{\omega} - gk_y + i(C + k_{\perp}^2 D_1)}{gk_y - \omega_{*e} - iC}. \quad (39)$$

The turbulent particle flux scales like the sine of the cross phase $\Delta\varphi_k$. Its linear expression is given by

$$\sin(\Delta\varphi_k) = \sin(\varphi_k^N - \varphi_k^{\phi}) = \frac{\Im(F(k, \bar{\omega}))}{|F(k, \bar{\omega})|} \quad (40)$$

The growth rate, frequency and phase are studied as a function of the three plasma parameters, g , C and τ by performing parameter scans. First the interchange and CDW cases will be studied, then the general dispersion relation is considered with a particular focus on the compressibility terms.

2.1 Specific cases: interchange only or CDW only

Setting $\tau = C = 0$ eliminates the drift instability, leaving only the interchange. Consider no dissipation $D = \nu = 0$ for simplicity. The dispersion relation then reduces to,

$$\bar{\omega}^2 - \bar{\omega}gk_y - \frac{gk_y}{k_{\perp}^2} [gk_y - \omega_{*e}] = 0. \quad (41)$$

The instability develops above the density gradient threshold:

$$\omega_{*e}^{crit} = gk_y \left(1 + \frac{k_{\perp}^2}{4} \right). \quad (42)$$

In particular, the instability disappears for negative density gradients, recovering the asymmetric nature of the interchange instability with respect to the magnetic field inhomogeneity [Liewer \(1985\)](#). Also, the largest scales (small k_{\perp}) are found to be destabilized first. Interestingly, the instability threshold increases with g . This effect results from the compressibility terms, as will be discussed in the following.

Then, let us consider the purely drift instability case, with finite C and τ but with $g = 0$, assuming the same simplifications. The dispersion relation then reads as follows:

$$\bar{\omega}^2 + \bar{\omega} \left[iC(1 + \tau + k_{\perp}^{-2}) + \tau\omega_{*e} \right] - i\frac{\omega_{*e}C}{k_{\perp}^2} = 0. \quad (43)$$

In the cold ion limit, $\tau = 0$, one is left with the Hasegawa-Wakatani system [Wakatani & Hasegawa \(1984\)](#), for which two limits can be distinguished. The case $C \rightarrow 0$ corresponds to the hydrodynamic, highly collisional, regime while $C \rightarrow +\infty$ corresponds to the adiabatic regime. Keeping only the leading order terms, the solution in the hydrodynamic case reads

$$\bar{\omega}_{\pm} \approx \pm \frac{1+i}{\sqrt{2}} \left(\frac{C\omega_{*e}}{k_{\perp}^2} \right)^{1/2} \quad (44)$$

One effectively recovers the resistive drift instability, mostly unstable at large scales ($k_{\perp} \approx 0$), with the instability growth rate increasing with both the density gradient and the adiabaticity parameter. It exhibits no threshold in the absence of dissipation coefficients, and the instability develops whatever the sign of the density gradient. In the collisionless regime $C \rightarrow +\infty$, the system reduces to the Hasegawa-Mima equation and one is left with stable drift waves,

$$\bar{\omega}_{+} = \frac{\omega_{*e}}{1 + k_{\perp}^2}, \quad (45)$$

where $\bar{\omega}_{+}$ corresponds to the Doppler shifted drift wave frequency as given in [Hasegawa & Mima \(1978\)](#). The system is stable and oscillates at the drift frequency. Also notice that, as expected, the turbulent flux eq.(20) is strictly zero in this case since the phase shift $\Delta\varphi$ between density and electric potential fluctuations is vanishing.

It appears from the asymptotic analysis that the drift waves instability is stable at both small and large C . The interchange instability exhibits a threshold in density gradient and is then stabilized at very large g , as further detailed in the following sections.

Also, the two instabilities ($C = 0, g = 0$) can be distinguished from their linear cross phase. On the one hand interchange displays a much larger sine of the cross phase, typically close to

$\Delta\varphi_k \approx \pi/2$. This is verified taking $C = 0$ and neglecting the compressibility terms in both Eq.41 and Eq.39. One is left with $F(k, \bar{\omega}) = \bar{\omega}/\omega_{*e}$ with $\bar{\omega} = i (gk_y\omega_{*e}/k_\perp^2)^{1/2}$. Then, the phase relation is purely imaginary and the corresponding cross phase reads $\sin \Delta\varphi_k = -1$. On the other hand, the drift waves instability exhibits a lower cross-phase which further decreases as C increases. At large C , the adiabatic regime forces $N_k \sim \phi_k$. It leads to a vanishing phase shift $\sin \Delta\varphi = 0$ implying a vanishing quasi-linear transport. Taking the limit at large C one can replace $\bar{\omega}$ with the drift waves solution in Eq.39. This leads to $\Im F(k, \bar{\omega}) = 0$ and thus $\sin \Delta\varphi_k = 0$. At low C using Eq.44, the phase relation at leading order reads $F(k, \bar{\omega}) \approx -(1+i)(C/2k_\perp^2\omega_{*e})^{1/2}$ which implies $\sin \Delta\varphi_k = -1/\sqrt{2}$.

2.2 General case: coupling CDW and interchange instabilities

Both CDW and interchange instabilities are expected to coexist in the edge of tokamak plasmas. Understanding their coupling is therefore essential. While drift waves are stabilized at both small and large C , we show that the interchange instability does not take over in these regimes in the Tokam1D model. Indeed, interchange is also stabilized as the adiabaticity parameter is increased. Recall that the sine of the cross phase gives an indication of the efficiency of the transport. Thus, predicting its linear value together with the growth rate helps us understand which regimes are expected to yield stronger transport. Finally, we analyze the role of the compressibility terms in the general case, and show that they stabilize the largest scale at very large g . The role of τ is considered in Appendix A. We show that it can be stabilizing or destabilizing depending on the instability at play. Also, it is shown that having a single k_y is detrimental to the study of τ . Therefore, the choice is made to keep $\tau = 1$ for the rest of the study.

In the following, the dispersion relation is solved for different cases with fixed equilibrium parameters. Whenever used, the density gradient is fixed to $-N'_{eq} = \rho_s/L_N = 1/100$, L_N being the gradient length. The diffusion parameters are set to $D_1 = \nu_1 = 10^{-2}$. The size of the radial domain is $L_x = 400$ (this constrains $\min(k_x)$). The radial wavenumber is defined as $k_x = m \frac{2\pi}{L_x}$, with m the radial mode number and L_x the size of the simulation domain.

The growth rate is plotted as a function of k_x and k_y for $C = 10^{-3}$ and $g = 2 \times 10^{-3}$ in Figure 1a. The white contour corresponds to the linear threshold $\gamma(k_x, k_y) = 0$ with these parameters. The white crosses note the position of the maxima for positive and negative poloidal wavenumbers. In Figure 1b, the effect of C and g on the growth rate is explored. Here, the wavenumbers are fixed: $(k_x, k_y) = (0.06, 0.3)$. Three cases are shown: a CDW only case with $g = 0$, an interchange only with $C = 0$ and a case 'both' with $g = C$.

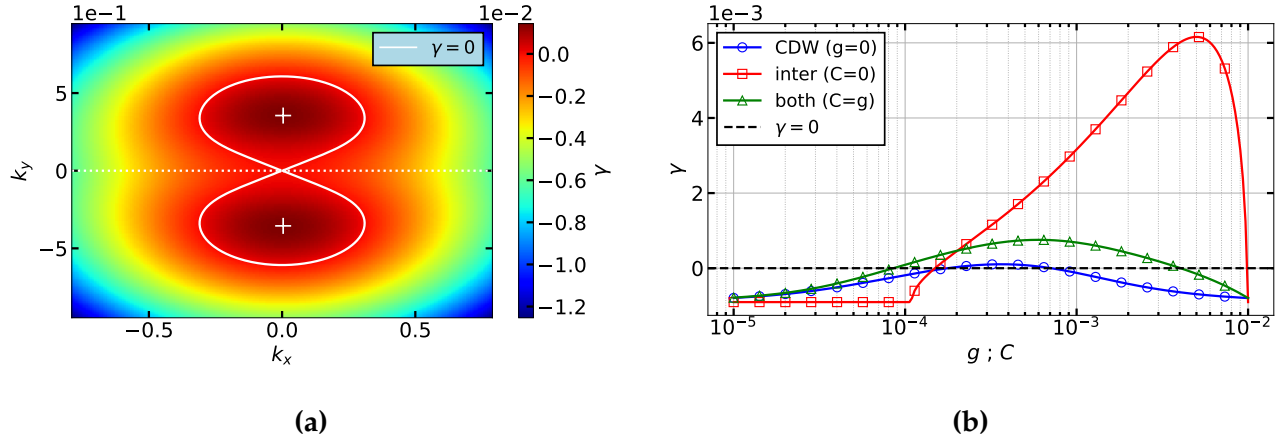


Figure 1: (a) Growth rate without equilibrium flows as a function of k_x and k_y for $g = 2 \times 10^{-3}$, $C = 10^{-3}$. White crosses correspond to maxima in positive and negative k_y . White contour denotes the threshold $\gamma(k_x, k_y) = 0$. (b) Growth rate for the case drift waves (CDW) $g = 0$, interchange (inter) $C = 0$ and coupled CDW-inter $C = g$, as a function of C and g for $k_x = 2\pi/400$ and $k_y = 0.3$. Both figures are computed considering: $1/L_N = 1/100$, $D_1 = \nu_1 = 10^{-2}$.

In [Figure 1a](#), the growth rate is maximum for the largest radial scale achievable for the system: $k_x = 2\pi/L_x$, and finite poloidal scale: $k_y \sim 0.35$. Note that in practice the solution $k_x = 0$, although given by the linear analysis, would correspond to a constant fluctuation along x direction which is imposed to zero by the Dirichlet boundary condition on both boundaries. The growth rate displays a symmetric pattern for positive and negative poloidal and radial wavenumbers. Also, it decays like $-k_\perp^2$ due to small scale dissipation governed by the D and ν coefficients. In [Figure 1b](#), the growth rate of the $(k_x = 2\pi/400, k_y = 0.3)$ mode is plotted as a function of g and C parameters. The case interchange only leads to a larger growth rate, with γ increasing rapidly with g . It is abruptly stabilized at $g = 10^{-2}$ due to compressibility terms. CDW are found to be stable, as expected, in both small and large C limits. For the chosen equilibrium parameters, the CDW only case ($g = 0$) exhibits a smaller growth rate as compared to interchange. When both instabilities are taken into account, the growth rate stays relatively small. CDW then proves to have a stabilizing effect on the interchange instability when $C = g$ with the growth rate being barely above the pure drift wave case.

A more thorough analysis is provided by studying the full parameter space (C, g) while scanning the values of k_x and k_y . The radial and poloidal wavenumbers of interest here are those that maximize the growth rate. The result is shown in [Figure 2](#) as a function of C and g . The white contour corresponds to the threshold $\gamma(g, C) = 0$. This figure displays the growth rate γ , the absolute value of the sine of the cross phase $|\sin \Delta\phi|$ and k_y corresponding to the maximum

growth rate. The radial wavenumber that maximizes γ is always equal to $k_x = 2\pi/L_x$.

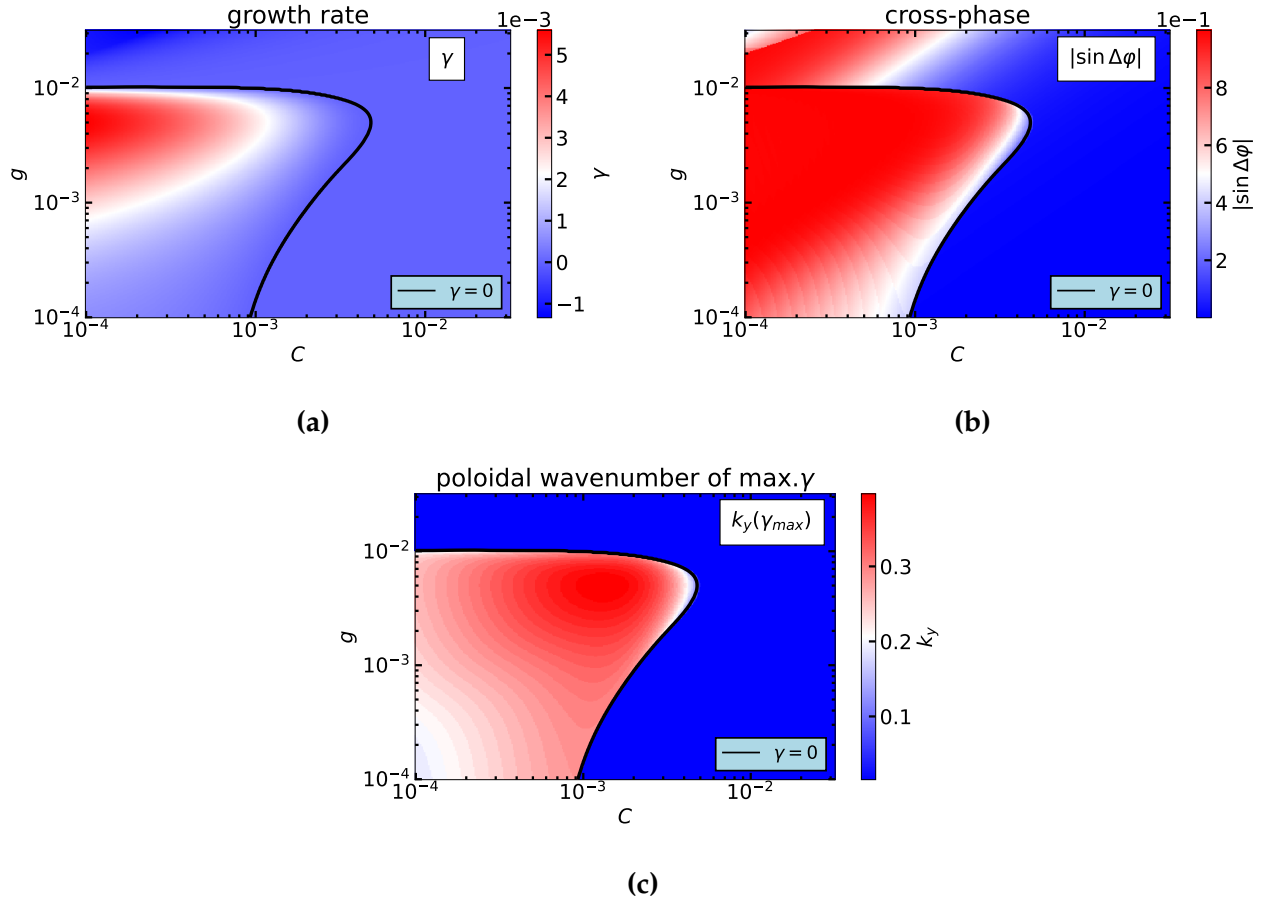


Figure 2: Linear analysis of the system without equilibrium flows as a function of C and g for a fixed density gradient. (a) Growth rate γ . (b) Sine of the cross-phase between density and electric potential fluctuations. (c) Poloidal wavenumber k_y corresponding to the maximum growth rate. The radial and poloidal wavenumbers (k_x, k_y) are chosen such that the growth rate is maximal.

The growth rate governed by the two coupled instabilities, in Figure 2a, is maximal at large g and small C : the interchange instability alone leads to a larger growth rate. The drift C parameter acts as a stabilization to the interchange instability. At large g , the growth rate is always negative whatever the value of C . This is due to the compressibility terms and will be detailed in the next section.

In Figure 2b, the sine of the cross-phase is maximal for interchange dominated cases, at large g for a fixed C , consistently with the analytical developments performed in Section 2.1. Indeed, the case interchange only is expected to yield $\sin \Delta\phi = -1$ when the compressibility terms are neglected. In the case of Figure 2b, the compressibility terms do not seem to change this be-

havior. The cross-phase decreases with C at fixed g . That is also expected from the asymptotic analysis performed earlier. The growth rate is negative at high C whatever the value of g . In other word, drift waves dominate at large C while interchange takes over at low C . Finally, the most unstable poloidal wavenumber varies from 0.15 to 0.4 in the studied parameter domain. The variation remains marginal considering g and C are changed over two decades each.

Remember that Tokam1D considers a constant and unique poloidal wavenumber k_y ($k_y = 0.3$ in the simulations). In turn, this can lead to spurious effects such as the stabilisation of the interchange instability at very large gradients. Indeed, since the instability shifts towards higher values of k_y as the gradient increases, the retained k_y may become linearly stable while larger k_y modes get excited. In such regimes, Tokam1D will then consider the system as linearly stable while it is actually still unstable, but at smaller scale (larger k_y). However, note that, for physics-relevant parameters, the stabilization does not occur as the density profile stays close to marginality. Moreover, the density starts from a flat profile and slowly builds up with the source. Therefore, there is little chance that the profile suddenly stiffens to reach stabilisation. Also, we note that taking a single k_y leads to a stabilisation of the interchange instability at very low values of C and g , $C < 10^{-7}$ and $g < 10^{-5}$, which is out of the scanned parameter space. Other than these specific cases, we expect the role of k_y to be marginal on the linear results, and no strong qualitative changes have been observed. A possible upgrade of the reduced model Tokam1D would consist in considering a non constant poloidal wave vector k_y , that would depend on the equilibrium gradients. Such a refinement has not been retained in the present study.

2.3 Compressibility terms stabilize interchange instability at large scales

The compressibility terms, due to the divergence of the electric velocity and diamagnetic flux in the particle balance equation (Eq 3), involve the magnetic curvature $g\partial_y(\phi - N)$ (Eq 13). Those terms stabilize the interchange instability at large scales. Taking the same case as in Figure 2 and turning off the compressibility terms, one obtains the growth rate Figure 3a. In that case the interchange instability is not stabilized and the growth rate diverges with g . Additionally, one can look for the minimum gradient needed to destabilize the system Figure 3b. Similarly, due to compressibility terms, this critical gradient increases at large magnetic curvature. Note that there is a threshold for both cases at low g due to the dissipation terms D and ν .

The stabilization due to compressibility terms can be obtained analytically. A simplified system with, $C = 0$, $\tau = 0$ and no dissipation or viscosity $D = \nu = 0$ leads to the interchange instability. In order to distinguish the compressibility terms coming from the diamagnetic and

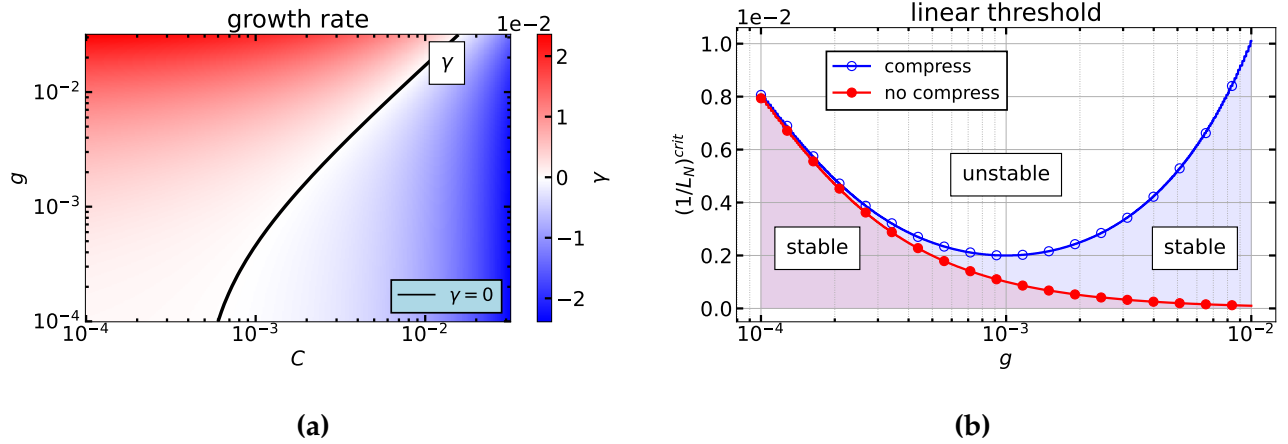


Figure 3: (a) Growth rate computed using parameters of Figure 2 without the compressibility terms. (b) First density gradient R/L_n to destabilize the system as a function of g . The red and blue shaded regions corresponds the stable parts of the red and blue curves respectively.

$E \times B$ terms, the interchange parameter is written as g_\star and g_E respectively, even though both are actually equal to g as they come from the same curvature term. The threshold can be written as:

$$\omega_{*e}^{crit} = g_E k_y \left[1 + \frac{g_\star^2 k_\perp^2}{4g g_E} \right], \quad (46)$$

where it seems that the interchange instability threshold is linearly proportional to compressibility. In their absence and without dissipation or viscosity, there is no threshold and $\omega_{*e}^{crit} = 0$.

3 Nonlinear regime: ZFs generation

The linear properties of the system change with the parameters C and g . Moreover, turbulence self-organization and saturation mechanisms are fundamentally different depending on the type and intensity of the system's forcing. The objective here is to characterize the self-organization by analyzing the generation of zonal flows and staircases as a function of C and forcing. Choice is made to restrict to the $g = 0$ cases to simplify the analysis. The interplay between CDW and interchange turbulence, requiring finite g values, will be thoroughly investigated in a future contribution. First, the generation of ZFs is analyzed in terms of the ratio of the zonal flow to turbulence energy and Reynolds stress. Then the generation of a staircase is studied.

We analyze a set of flux-driven simulations in the drift-waves regime, at $g = 0$ and C ranging from 3×10^{-4} to 8×10^{-1} . Simulations are performed on $L_x = 400 \rho_s$ using a grid of $N_x = 1024$ radial points and using time steps $dt_{num} = 0.1$. The dissipation coefficients are constant, $D = \nu = 10^{-2}$ and the equilibrium velocity friction is set to $\mu = 10^{-4}$. The poloidal wavenumber and the ion to electron temperature ratio are chosen constant for every simulation at $k_y = 0.3$ and $\tau = 1$. Finally, Neumann boundary conditions with vanishing gradients are used for the density at $x = 0$ and for the velocity at both ends. The density is taken equal to $N_{eq} = 0.1$ at $x = L_x$ and the fluctuations are set to zero at the boundaries. Simulations are run until the particle confinement time, τ_p , reaches a statistical steady state. It is computed from the density profile and the source,

$$\tau_p = \frac{\int N_{eq} dx}{\int S_N dx} \quad (47)$$

The source is chosen to be a Gaussian, with the maximum located at the left boundary of the simulation domain. The amplitude is adjusted for each simulation, such that the "target profile" is 6 times the critical gradient for each value of C . The target profile is defined as the gradient in the absence of turbulence such that the dissipative flux of particles equals the integral of the particle source. The diffusive gradient is shown [Figure 4](#) together with the critical gradient for each value of C . Constraining the source with the critical gradient ensures that the steady-state gradient will be above but not too far from the threshold. Proceeding this way, the distance to marginality can be controlled. The steady-state gradient is shown in the same figure. Due to the flux-driven characteristics, the simulations now evolve in a 2d space where different gradients are accessible for each value of C depending on forcing and dissipation.

As shown on [Figure 4](#), the critical gradient increases with C . To keep the target profile at a constant relative distance to the critical gradient the source amplitude is increased from $S_N(0) = 1.5 \cdot 10^{-5}$ at $C = 2 \cdot 10^{-4}$ to $S_N(0) = 4.3 \cdot 10^{-4}$ at $C = 8 \cdot 10^{-1}$. The poloidal wave number corresponding to the maximum growth rate stays close to the chosen value $k_y = 0.3$ for the considered values of C^2 . The steady-state gradient moves closer to the diffusive gradient as C increases. This results from the fact that the contribution of turbulence to the total flux is reduced: the system is better confined at large C .

It should be emphasized that the variation of C only is not enough to conclude on the transition from an hydrodynamic to an adiabatic regime. Instead one considers the transition to

²One may legitimately argue that, in the saturated nonlinear regime, the turbulence spectrum may well peak at another value of k_y . In this case, choosing for k_y the value that maximizes the linear growth rate might not be the optimal option. This is however the only reliable prediction in hand for this broad parameter scan.

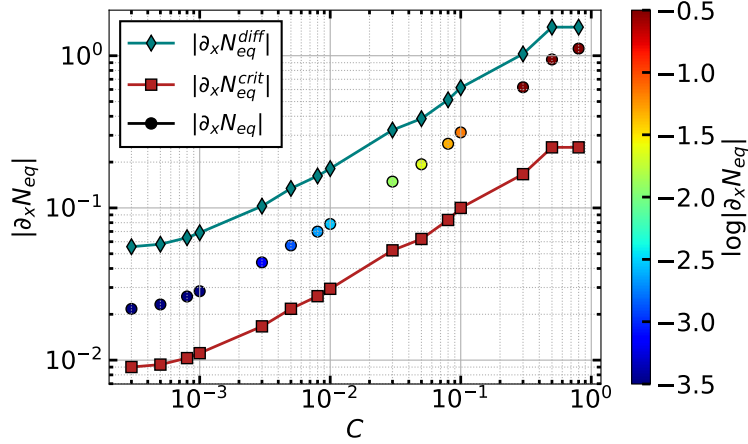


Figure 4: Absolute critical density gradient indicating the instability threshold, corresponding diffusive gradient ($|\partial_x N_{eq}^{diff}| = 6|\partial_x N_{eq}^{crit}|$) and steady-state gradient as a function of the adiabatic parameter C .

adiabatic regime when C/κ is large, with $\kappa = \partial_x N_{eq}$ the logarithmic derivative Özgür D. Gürçan (2024). For flux-driven simulations, the density gradient evolves together with the adiabaticity parameter. In particular, the density gradient increases with C resulting in a smoother evolution of C/κ . In the simulations performed, for C scanned from 3×10^{-4} to 8×10^{-1} the corresponding C/κ evolves from 10^{-2} to 8×10^{-1} . However, this calculation is performed using the root-mean square value of the density gradient and does not take into account possible corrugations due to staircase generation. It is not obvious whether one should take into account only the large scale gradients or also include small scale structures in the adiabaticity estimation. Therefore, C alone is used as the control parameter in the following sections and the gradient is indicated wherever deemed necessary.

3.1 Rich dynamics & flow patterns

In the present model, zonal flows are generated nonlinearly by the Reynolds stresses. The action of these sheared flows on the fluctuations then regulate turbulence and therefore the transport. In fact, it is not the amplitude of these flows but whether or not they organize into well defined sheared layers, leading to corrugations of density or pressure profiles, called staircases, the determining factor. It may critically impact the resulting turbulence saturation and therefore the overall quality of confinement. A strong shear may be expected to tilt and elongate turbulent structures, leading to their decorrelation, provided that the shear persists longer

than the lifetime of the turbulent structure.

On [Figure 5](#) are presented four different velocity patterns as a function of time and radial coordinate x for $C = 8 \times 10^{-4}$, 10^{-2} , 5×10^{-2} and 5×10^{-1} . Each case is taken when profiles have reached steady state and plotted for 1.2×10^4 time steps, corresponding to 1.2×10^5 cyclotron periods ω_{cs}^{-1} . Note that the scale of the color bars is different for each case.

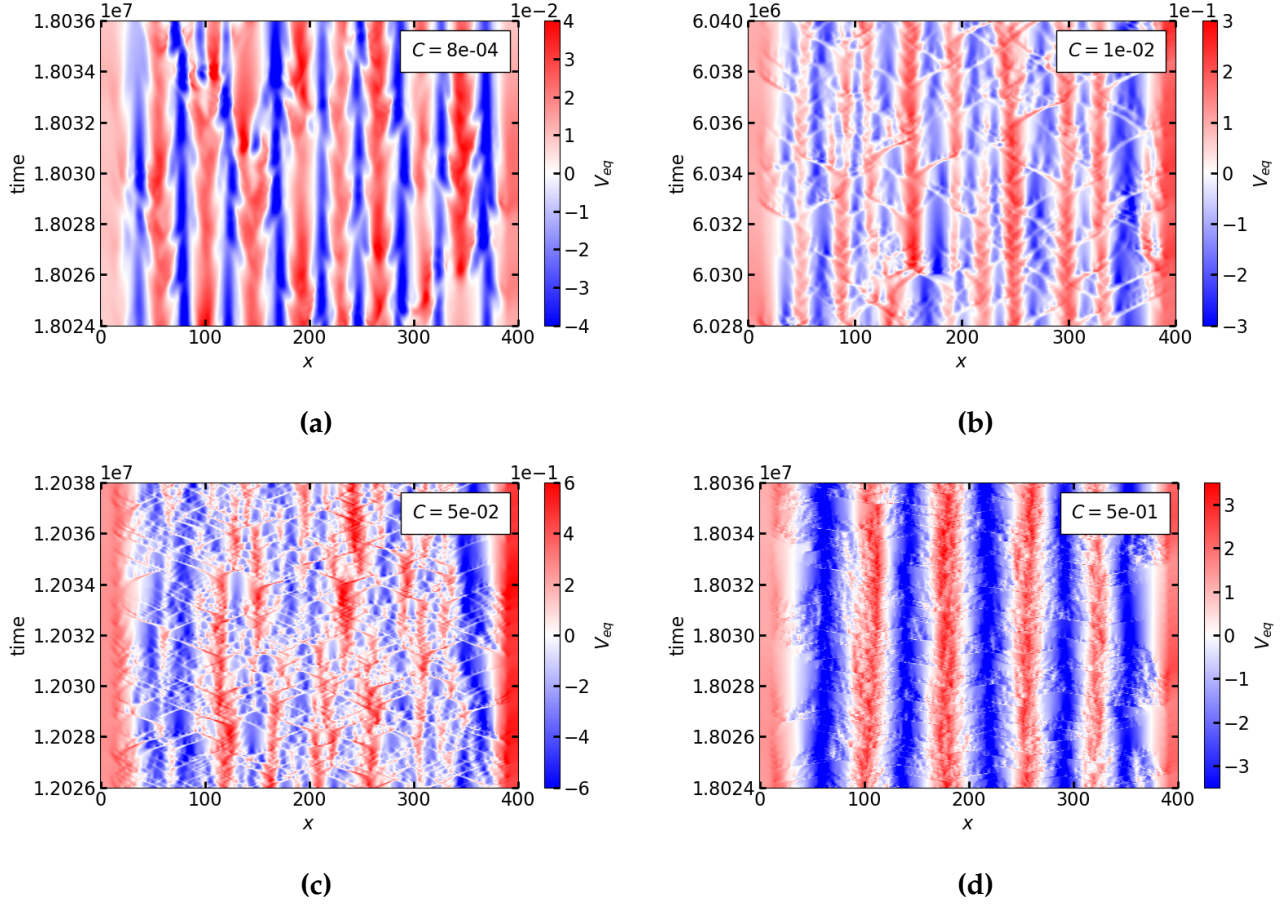


Figure 5: Four examples of equilibrium velocity $V_{eq} = -\langle E_r \rangle$ at equilibrium ($\tau > \tau_p$). (a) $C = 8 \times 10^{-4}$. (b) $C = 10^{-2}$. (c) $C = 5 \times 10^{-2}$. (d) $C = 5 \times 10^{-1}$.

In all simulations, ZFs are active and prove crucial to mitigate turbulence. When the flows are artificially switched off by removing the Reynolds stress drive, a large, system-size radial mode develops. In those cases, the system enters a quasi-periodic regime where a large density gradient builds up and relaxes through a strong transport event. An example of this regime is given [Appendix B](#). When flows are present, they can be radially structured and stable, as in [Figure 5d](#) or intermittent as in [Figure 5c](#). For the other cases, (a) and (b) the system exhibits intermediate structuration with meandering, splitting and merging events. An example of splitting

appears in case (a) at $x = 100$ with a fork-like pattern of the flow. Merging occurs on case (b) at $x \approx 220$. The radial structure of the flow also depends on damping. An example is shown [Appendix C](#), for the case of [Figure 5b](#), where greater flow time stability is obtained when the dissipation coefficients on fluctuations D_1 and ν_1 are increased.

The dynamics depends on the adiabaticity parameter: at low C , the system develops smooth structures that evolve slowly. When C increases, the dynamics of turbulence and flows is faster. Moreover, diagonal stripes are visible for cases (b) and (c), associated to ballistic transport events of particles called avalanches. It is known that staircases can act as micro-barriers for these avalanches, efficiently limiting their radial extension [Kosuga et al. \(2014\)](#). In general, the flows can either stop the avalanches or, if the avalanches are strong enough, they can travel through the shear layer, perturbing it in the process. In the observed cases, when the flows are radially structured, they always manage to recover their radial structure after an avalanche. Importantly, it is found that the radial size of the zonal flow is an emergent property independent of the box size L_x . For simulations performed at very low $L_x \approx 10$, a single zonal flow can fill up all the simulation domain.

In the confined region of tokamak plasmas, one expects an additional radial electric field that exists alongside this turbulence-driven flow (remember that $V_{eq} \sim -\langle E_r \rangle$ in dimensionless variables). Indeed, the radial force balance relates the mean E_r to the ion pressure gradient and the Lorentz force. This physics is ignored in the present version of Tokam1D, the focus being on the self-regulation of turbulence by self-generated zonal flows. Therefore, the flows here are mostly sinusoidal and symmetric around zero.

The diagonal stripes are also visible on the amplitude of density fluctuations. [Figure 6a](#) shows the amplitude of density fluctuations for $C = 10^{-2}$, corresponding to flows in [Figure 5b](#). Density fluctuations are propagating both in and outward at similar speed. The associated turbulent particle flux is always positive, resulting in an outward transport. For the case shown, the typical avalanche length is comparable to the radial size of the velocity structures. The right hand side features the form of the turbulence in the (x,y) plane for $t = 6.03 \cdot 10^6$. It is computed using the complex density fluctuation field and the definition [Eq.15](#). On top of the density fluctuation is shown the equilibrium velocity after being coarse-grained on a few time and radial points. The tilt of the turbulent structures in the (x,y) plane corresponds to velocity direction, indicating that flows are efficiently elongating turbulent structures in the poloidal direction. Noticeably, the phase of the fluctuations can exhibit quasi profile discontinuities, as visible e.g. at $x \sim 160$.

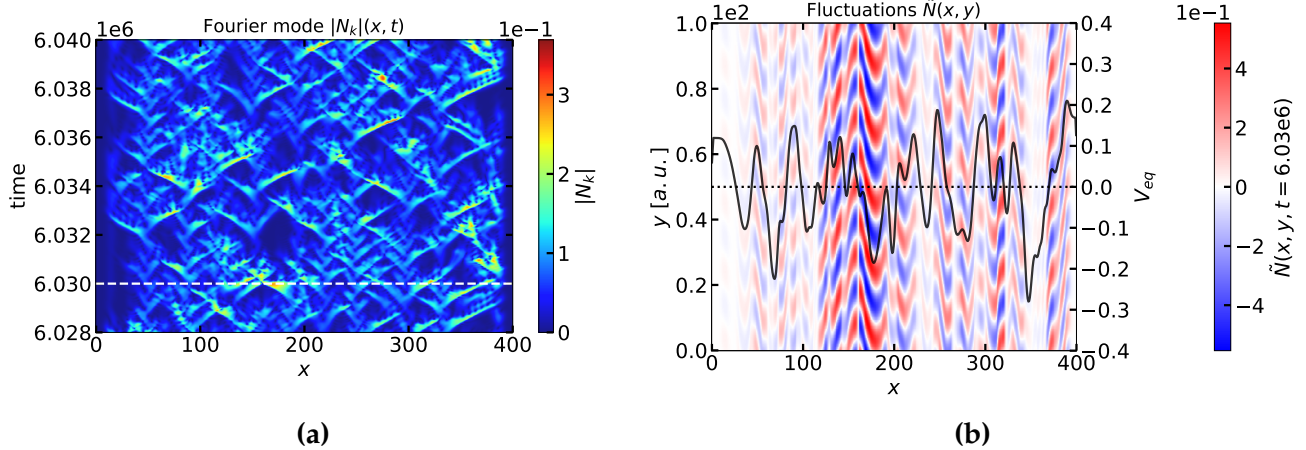


Figure 6: Density fluctuation for case $C = 10^{-2}$. (a) Amplitude of the Fourier component N_k as a function of time and space, the white line notes the snapshot for which is plotted the fluctuation field. (b) Two-dimensional fluctuating density field $\tilde{N}(x, y, t) = N_k(x, t) \exp(ik_y y) + cc$ taken at $z = 0$ (cf. eq.(15)) for $t = 6.03 \cdot 10^6$. The black line shows the equilibrium velocity around the same time snapshot.

3.2 Transition from turbulence to flows dominated regime at large C

ZFs act as a repository for the energy of the system. The more energy is stored inside the ZFs, the less is available for turbulence to generate transport. Numata et. al have shown that there was a collapse of relative energy stored into the flows at low C Numata et al. (2007). Here we show that in flux-driven regimes, the density gradient also adapts to the presence of flows and turbulence. Therefore, the transition from turbulence dominated regime to flow dominated regime is much smoother. This is in agreement with previous work Numata et al. (2007), provided one accounts for the gradient evolution together with the flows.

Using the energy channels defined Eqs. (28-31), we can evaluate whether the free energy is captured by turbulence or is stored in the flows. Flows and turbulence energy E_{Veq} and E_{turb} are coarse-grained on a few turbulence auto-correlation times. Then, the root-mean-square (rms) radial profiles are computed

$$E_{turb}^{rms}(x) = \sqrt{\langle E_{turb}^2(x, t) \rangle_t} \quad (48)$$

with $\langle \dots \rangle_t$ a time average. To get a single value per simulation, the radial average of the energy partition is performed, $\langle E_{Veq}^{rms} / (E_{Veq}^{rms} + E_{turb}^{rms}) \rangle_x$. The flow and turbulence energy channels are shown Figure 7b as a function of C and their partition ratio is shown Figure 7a. The color of the points corresponds to the steady-state density gradient, already shown in Figure 4.

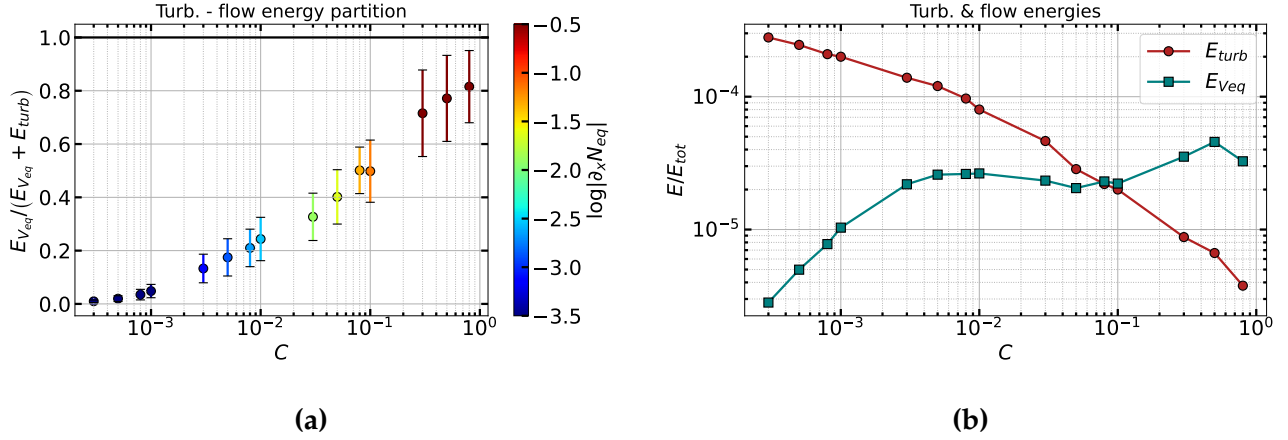


Figure 7: (a) Flow to turbulence energy partition ratio as a function of C with the color indicating the absolute value of the density gradient in log scale. Error bars represent the standard deviation of the rms profiles. (b) Corresponding normalized flow and turbulence energies.

The flow to turbulence energy partition ratio increases with the adiabaticity parameter, [Figure 7a](#). At low C the system is dominated by turbulence with about 0.001% of the energy stored in the flows. In the adiabatic regime, at large C , flows account for 80 % of the total energy. Consistently, the density gradient increases with C . It is illuminating to look at each channel separately. In [Figure 7b](#) the turbulence and velocity channels computed using [Equation 48](#) and divided by the total energy are shown. Most of the energy variation is carried by turbulence: it evolves from 3×10^{-4} of the total energy at low C to 4×10^{-6} at large C .

On the basis of these observations, we focus on the expected impact of density on ZF and turbulence dynamics. Although taken constant in the present simulations, the adiabaticity parameter $C = (k_{\parallel} \rho_s)^2 \omega_{cs} / v_{ei}$ should actually scale like $1/N_{eq}$. High density plasma are then characterized by small C values (assuming constant $k_{\parallel} \rho_s$). In this case, on the basis of [Figure 7a](#), one expects a low zonal flow to turbulence energy ratio. This suggests that the turbulent transport should increase when density increases or respectively when C decreases. The trend is qualitatively similar to results in Ref. [Numata et al. \(2007\)](#) but not quantitatively. More precisely, the ZF magnitude decreases rather monotonously at large density (collisionality) and does not exhibit the collapse reported in Ref. [Numata et al. \(2007\)](#). The difference results from the self-consistent evolution of N_{eq} in flux-driven simulations. In the absence of NL mode-mode coupling, the system has two ways to saturate turbulence: by profile relaxation (transport) and ZFs generation. In low C cases for which the energy stored in ZFs is minimal, the former mechanism is favoured. The richness of the saturation channels permitted by flux-driven sim-

ulations thus leads to a less abrupt transition of the system. It should be noted that [Figure 7a](#) is consistent with the ZF collapse reported in [Numata et al. \(2007\)](#) provided one also moves from one density gradient to another when decreasing C (green and red curves in fig.5 of [Numata et al. \(2007\)](#)). A steep increase of ZFs energy has also been found in gyrofluid modified Hasegawa-Wakatani simulations including warm ions [Grander et al. \(2024\)](#). In this latter contribution, mode-mode interactions are retained leading to a self-consistent turbulent cascade, but the background density gradient is imposed, limiting the liberty of the system to explore the $(C, \partial_x N_{eq})$ parameter space.

A few experiments have reported the strong reduction of ZFs - or proxies for ZFs - when approaching the density limit in L-mode tokamak plasmas [Xu et al. \(2011\)](#), [Hong et al. \(2017\)](#), [Long et al. \(2019\)](#). In this context, the ZF collapse at large density in gradient-driven simulations of Hasegawa-Wakatani turbulence [Numata et al. \(2007\)](#) has recently been put forward as a possible explanation to these observations [Hajjar et al. \(2018\)](#), [Singh & Diamond \(2022\)](#). Our simulations suggest however that, in the flux-driven regime relevant to tokamak plasmas, this reduction of ZF could be much more gradual. Although not discarding the physics as a possible explanation to the issue of density limit in L-mode, these new results advocate for a renewed exploration of the link between ZF reduction and density limit in a self-consistent flux-driven regime. Whether these findings may explain the reason why ZFs are found to play a secondary role in the density limit mechanism reported in [Giacomin et al. \(2022\)](#) remains an interesting yet open question. Last, note that the above analysis has only focused on the impact of density on the adiabaticity parameter C , that governs the transition from the adiabatic to the hydrodynamic regime in H-W turbulence. However, increasing density also increases the friction coefficient acting on the poloidal flow, hence on ZFs (μ parameter in Eq.17). Reference [Gianakon et al. \(2002\)](#) provides a heuristic expression for this neoclassical coefficient. This density dependency has already been proven key to the modelling of L-H like bifurcations in flux-driven simulations of resistive ballooning turbulence [Chôné et al. \(2014b, 2015\)](#). This improvement of the model is left for future work.

4 Staircase dynamics

The amplitude and the energy of the zonal flows and hence the zonal to total energy ratio are large at large C . However, the radial structure does not depend directly on C as structures are observed at both small and large C values. Here, we focus on the formation of staircases and on the importance of the feedback loop between density gradient and flows, still in the CDW

turbulence regime at $g = 0$. In particular, we observe that the staircases disappear when we break this feedback loop.

4.1 Staircase nucleation

Staircases are robust structures. We have found that they always manage to recover after a perturbation. Here, we look at the nucleation of a staircase when restarting a steady-state simulation after having smoothed out the corrugation in N_{eq} and V_{eq} and damped out the fluctuations N_k, Ω_k . The system then has no memory of the past structures. The chosen simulation corresponds to $C = 5 \times 10^{-4}$, with the steady state flows shown [Figure 5a](#). The nucleation of the flow pattern is shown in [Figure 8\(a\)](#) together with the dynamics of the density profile in [Figure 8\(b\)](#). The black rectangle indicates the time window of the nucleation process which is studied in the following.

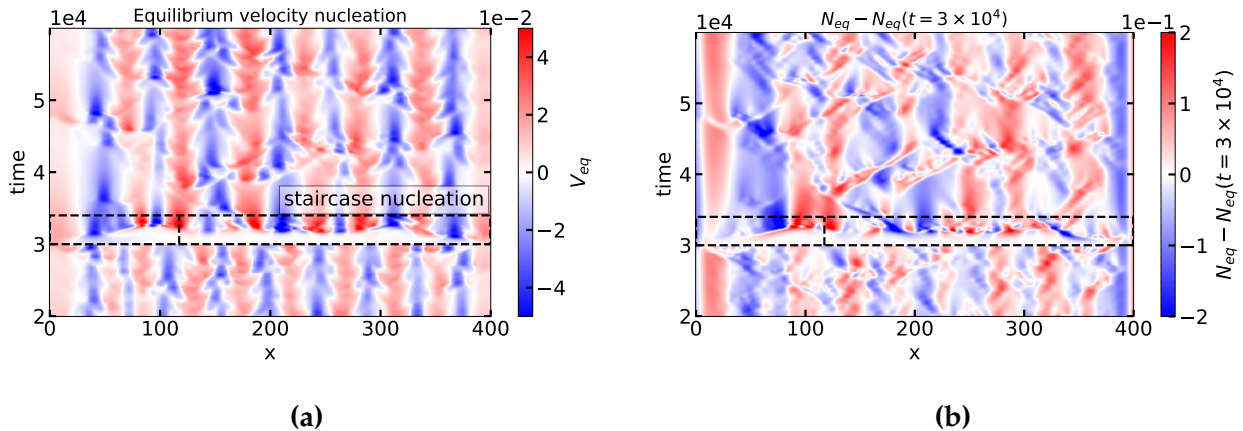


Figure 8: (a) Equilibrium velocity after being smoothed out at $t = 3 \times 10^4$. Nucleation is indicated with dotted lines. (b) Evolution of the equilibrium density as compared to its value at the restart: $N_{eq} - N_{eq}(t = 3 \times 10^4)$.

Upon restart, at $t = 3 \times 10^4$ in [Figure 8](#), the equilibrium density gradient is above the linear threshold. Therefore, instability and flows appear directly on the whole domain after a short growth time. Qualitatively, a similar staircase structure is recovered. However, there is about 7 structures in [Figure 8](#), as compared to the initial 9 structures.

Focusing on the nucleation of a particular staircase step located at $x = 123$, which is indicated with a vertical dashed line, the time evolution of the flows and Reynolds stress at this location are shown in [Figure 9](#).

An exponential growth of both electric and diamagnetic components of the Reynolds stress is

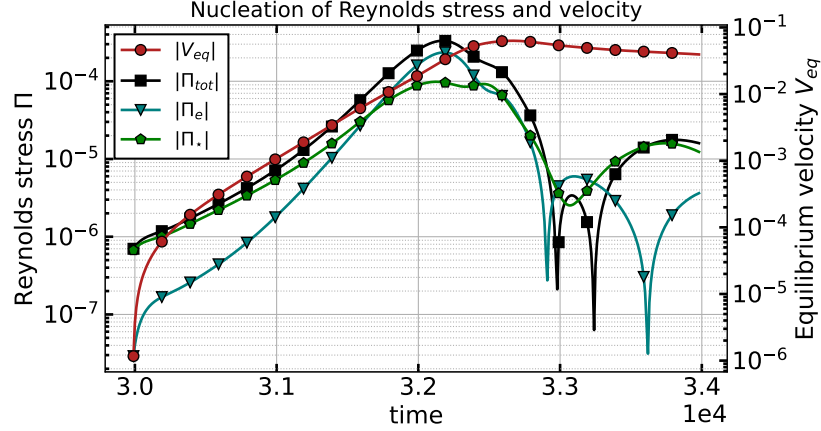


Figure 9: Energy of the equilibrium flow, total Reynolds stress and its components as a function of time for $x = 123$.

observed. The flows result from a secondary instability [Diamond et al. \(2005\)](#) and are governed by the Reynolds stress components. For this simulation, both components of the Reynolds stress are important for the generation of the flows, with the diamagnetic one being slightly larger at initial times.

The dynamics of the phase is essential in the generation of both components. Bearing in mind that fluctuations can be decomposed into amplitude and phase, $\phi_k = |\phi_k|e^{i\phi_k^\phi}$, the electric component of the Reynolds stress can be recast as:

$$\Pi_E = \langle \tilde{v}_{Ex} \tilde{v}_{Ey} \rangle = -2k_y |\phi_k|^2 \partial_x \phi_k^\phi \quad (49)$$

ZFs dynamics is governed by the divergence of the Reynolds stress. The separate role of the phase and of the amplitude clearly appears when computing the logarithmic derivative of Π_E .

$$\frac{\partial_x \Pi_E}{\Pi_E} = -2k_y \frac{2\partial_x |\phi_k|}{|\phi_k|} + \frac{\partial_x^2 \phi_k^\phi}{\partial_x \phi_k^\phi} \quad (50)$$

Π_E is displayed [Figure 10a](#) together with its decomposition. The Reynolds force is detailed [Figure 10b](#).

In [Figure 10a](#), it appears that both the amplitude and the phase are important for Π_E growth. When computing the Reynolds force, [Figure 10b](#), the phase itself dominates the dynamics. The key role of the phase was already pointed out in [Guo & Diamond \(2016\)](#) and in [Sarazin et al. \(2021\)](#). It shows that it is essential for a reduced model to retain the complete fluctuations as

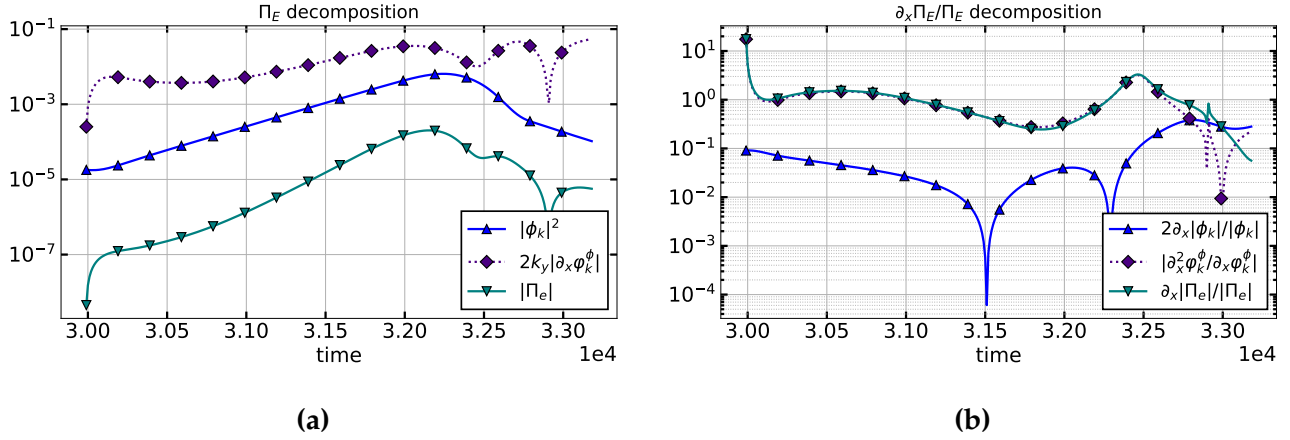


Figure 10: Electric Reynolds stress decomposition as a function of time for $x = 123$. (a) Reynolds stress. (b) Logarithmic derivative of the Reynolds stress, relating to the Reynolds force. The phase jumps have been removed by “unwrapping” the phase in the post-processing.

both amplitude and phase play a role in the generation of flows.

The diamagnetic component of the Reynolds stress, Equation 21, can be decomposed in the same way. Considering the conjugate of density fluctuations as $N_k^* = |N_k|e^{-i\varphi_k^N}$, the tensor reads,

$$\begin{aligned} \Pi_\star &= -2k_y\tau\Im(N_k^*\partial_x\phi_k) \\ &= -2k_y\tau|N_k||\phi_k|\left[\partial_x\varphi_k^\phi\cos\Delta\varphi + \frac{\partial_x|\phi_k|}{|\phi_k|}\sin\Delta\varphi\right] \end{aligned} \quad (51)$$

With $\Delta\varphi = \varphi_k^\phi - \varphi_k^N$ the cross-phase between density and electric potential fluctuations. The first term on the right hand side is proportional to the electrostatic component of the Reynolds stress while the second relates to the turbulent flux of particles. It writes,

$$\Pi_\star = \tau\frac{|N_k|}{|\phi_k|}\cos\Delta\varphi\Pi_E + \tau\partial_x(\log|\phi_k|)\Gamma_{turb} \quad (52)$$

The correlation between these two components of the total Reynolds stress ultimately depends on the relative weight of the second term with respect to the first. If it is negligible, then the two tensors appear correlated. In this case, the sign of the phase coupling ($\cos\Delta\varphi$) then determines whether Π_\star and Π_E are in or out of phase. For CDW turbulence, the two tensors appear correlated and in phase ($\mathcal{C}(\Pi_e, \Pi_\star) \approx 0.7$ for $C = 3 \times 10^{-4}$), which is even stronger at large C ($\mathcal{C}(\Pi_e, \Pi_\star) \approx 0.98$ for $C = 8 \times 10^{-1}$). This is expected, since the phase between density and

electrostatic potential fluctuations decreases approaching the adiabatic limit. The diamagnetic contribution is also larger than the electrostatic contribution with $\Pi_\star > 1.5\Pi_E$ for $C < 10^{-2}$, then slowly decreasing towards $\Pi_\star \approx 1.1\Pi_E$ at large C . As a matter of fact, turbulence in the CDW regime is carried mostly by density fluctuations which results in $|N_k|/|\phi_k| > 1$.

4.2 Profile relaxation crucial to self-organisation

Profile relaxation is an important saturation mechanism for the turbulence in tokamaks. It is thus crucial to allow this mechanism for studying turbulence saturation and turbulence-zonal flow interactions in these systems. In order to assess the importance of this mechanism, in this section we artificially prevent any profile relaxation by fixing the density gradient and perform a restart of a steady-state flux-driven (FD) simulation in a gradient-driven (GD) framework. Note that the flux-surface averaged density gradient does not evolve in time at all in these restarted simulations. This is in marked contrast with the more common GD simulations of the Hasegawa-Wakatani system that one can find in the published literature (see e.g. [Majda et al. \(2018b\)](#)). Indeed, in these latter cases, the density fluctuations contain a zonal component ($k_y = 0$) whose time evolving gradient adds up algebraically to the one (constant in time) set by the background density. Yet, a restoring force prevents this back-reaction from balancing the initial gradient – and therefore to annihilate it – so that the self-consistent dynamics of the system gets frustrated. Another difference with respect to more standard simulations – apart from the absence of nonlinear mode-mode coupling in Tokam1D (cf. [Section 1.5](#)) – is that fluctuations are not assumed to be periodic in x in Tokam1D.

We choose the case $C = 5 \times 10^{-4}$ and continue the simulation while fixing the gradient. The density profile has been smoothed so that the corrugations are removed, as exemplified on [Figure 11\(b\)](#). In [Figure 11\(a\)](#), the equilibrium velocity V_{eq} and the density fluctuation amplitude $|N_k|$ are shown as a function of space and time. The first half of the simulation is the steady state FD simulation. At $t = 3 \times 10^4$, the equilibrium density profile is smoothed using a Savitzky-Golay filter of order 3 on a 301 points window size. The second half of the simulation corresponds to the GD regime using the smoothed density profile.

[Figure 11\(a\)](#) shows that the flows exhibit roughly the same amplitude in both FD and GD settings. However, their radial structure is very different. The chosen case is radially structured in the steady-state FD case, while no clear layering emerges in the GD case. The flow layers are still present just after the restart but this configuration cannot be sustained in the GD regime. These observations suggest that the system – at least in the regimes explored – must be able to store energy in the density (pressure) profile in addition to the flows in order to develop well-

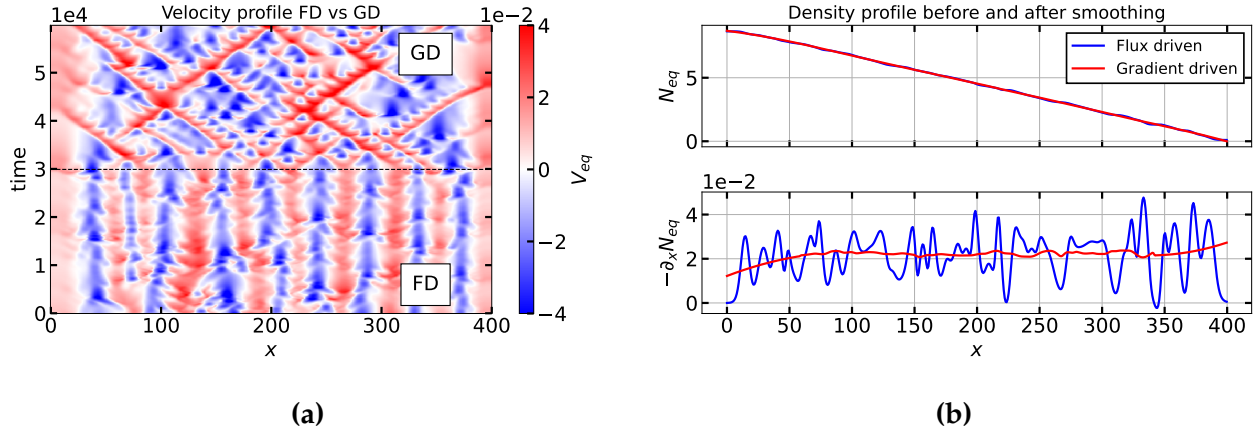


Figure 11: (a) Equilibrium velocity from gradient driven restart of steady-state simulation at $C = 5 \times 10^{-4}$: switch from FD to GD is made at $t = 3 \times 10^4$. (b) Density gradient and its radial derivative before and after the gradient driven restart. The density profile before the restart is taken at $t = 2.9 \times 10^4$.

localized flow layers. In other words, the staircase structure requires two critical ingredients: localized shear flow layers in association with large density (pressure) gradients, which appear to reinforce each other. The loss of one of these ingredients prevents the appearance of the whole structure. In the GD regime, the density gradient is frozen in time so that this mechanism is absent. This symbiotic relationship between flow layers and pressure corrugations appears to be instrumental in the staircase dynamics³. The electrostatic potential fluctuations, plotted on [Figure 12a](#), exhibit a slightly larger magnitude in the GD regime as compared to the FD regime. Also, their dynamics looks similar to the one of the equilibrium flow in the GD regime, from $t = 3 \times 10^4$ onwards. In particular, the radial distance of propagation of avalanches is much larger in the GD regime, sometimes reaching the system size.

The presence of avalanches itself may appear surprising. Indeed, avalanches are often understood, by analogy with sandpiles, as resulting from a domino-like effect [Diamond & Hahm \(1995\)](#): a localized strong flux tends to flatten the profile locally and steepens it on both sides due to conservation laws. The strong gradients on both sides then lead to strong local fluxes, further leading to local flattening. The process can repeat over long distances, resulting in the formation of voids and bumps that propagate radially up and down hill, respectively. Local

³As explained earlier, to prevent the complete relaxation of initial profiles, any GD local model inevitably includes a restoring force that aims at clamping – in a controlled manner – the mean gradients to their initial values. In the present numerical experiment, the restoring force can be considered infinite from $t = 3 \times 10^4$ onwards, since the mean profile is not allowed to evolve at all. Less critical conditions are usually applied. In any case, the consequence is that freedom is lost, at least partially, by imposing an additional and experimentally irrelevant constraint to the mean profile.

profile relaxation then appears to be key to the whole dynamics. In GD simulations where the density gradient is frozen in time, this mechanism is absent and cannot therefore explain the existence of avalanches on V_{eq} . Interestingly, it appears that the magnitude of the electric potential fluctuations $|\phi_k|$ and its phase gradient $\partial_x \phi_k^\phi$ exhibit an avalanche dynamics, as can be seen on [Figure 12](#). They both govern the electric component of the Reynolds stress, Eq. 49. It is so far unclear whether one or the other – or both – is the main drive for the dynamics of V_{eq} , the other quantity being slaved to it via the back-reaction of the flow shear. Note that both terms, the phase gradient and the fluctuation magnitude, are contributors to the turbulent energy. Therefore, discriminating one scenario with respect to the other is not obvious solely from an energetics standpoint. This remains an open issue for future works.

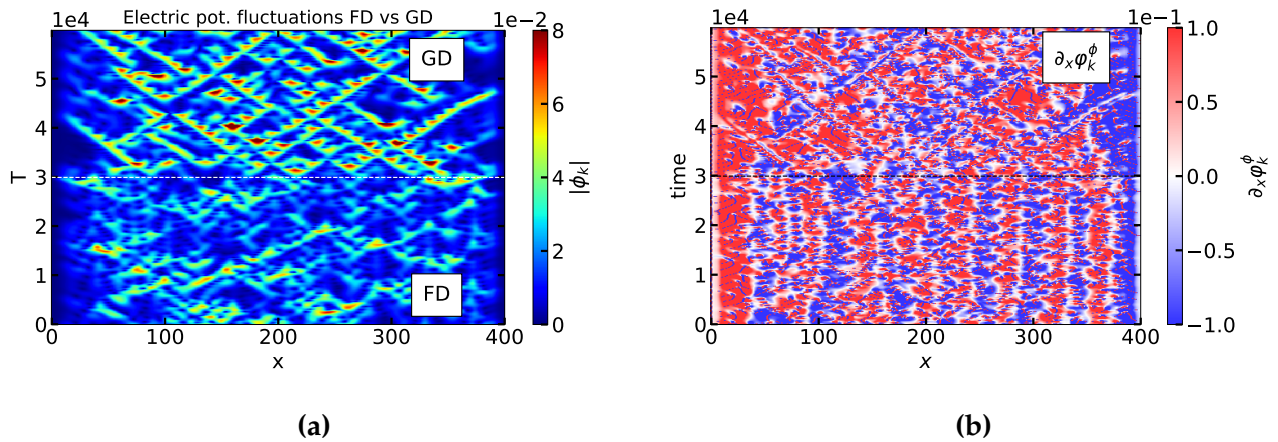


Figure 12: (a) Electric potential fluctuations for the gradient driven restart of the steady-state simulation $C = 8 \cdot 10^{-4}$. (b) Radial derivative of electric potential fluctuations phase.

5 Conclusion

The primary goal of this paper was to understand how turbulence and zonal flows (ZFs) interact in a flux driven formulation, resulting in a redistribution of the turbulent energy and its effect on turbulent transport. In order to achieve this, a reduced, nonlinear model, called Tokam1D, that captures the dynamics of the two key instabilities, namely the collisional drift waves (CDW) and the interchange (or resistive ballooning modes in 3D) is proposed. The model, which includes both an electric and a diamagnetic Reynolds stress nonlinearities, is derived in some detail, first in a general form and then the underlying assumptions leading to the reduction are clearly presented. It was noted that the total energy can be defined for the

full flux driven system, and shown to be conserved. A linear study shows that both instabilities are well captured by this model, showing that with a given value of viscosity, the drift instability is saturated at both large and small values of the adiabaticity parameter C , while the interchange exhibits a threshold in density gradient but is stabilized at very large g due to the effect of compressibility terms.

These two instabilities, are possibly the key players in the physics of turbulent transport in tokamak edge especially in density-limits and L -mode plasmas, and the reduced model allows a detailed study of the competition and the interaction between on the one hand the two instabilities, and on the other hand the zonal flows and the underlying turbulence, while allowing a self-consistent evolution of both the density and the poloidal flow profiles.

Unlike gradient-driven simulations that impose a constant pressure gradient, the flux-driven Tokam1D model enables self-consistent evolution of equilibrium profiles. This allows for a more natural representation of how turbulence interacts with background profiles, leading to more realistic saturation mechanisms, including profile relaxation, sometime through avalanching and flow self-organization, which leads to self-organized criticality. It makes the dynamics primarily near marginal, even if it was initially far from it, possibly linked to the experimental phenomenon of profile stiffness [Mantica et al. \(2009\)](#).

Being a reduced 1D model, where the fluctuation dynamics is mainly linearized and projected on a fixed poloidal k_y and parallel k_{\parallel} mode, the model focuses mainly on the interplay with zonal flows and profile relaxation due to its flux-driven nature. One can further add a non-linear saturation term to account for mode-mode coupling, but in the absence of this proxy for nonlinear coupling, the primary saturation mechanism is that of the density profile relaxation - in the spirit of quasilinear theory - and the storage of turbulent energy into equilibrium poloidal flows. These two mechanisms play important roles in weakly forced systems that remain close to marginality.

One of the issues that are considered in some detail in this paper is the dynamics and structuring of the equilibrium flow V_{eq} at vanishing g , which corresponds to the Hasegawa-Wakatani limit, where the effects of magnetic field inhomogeneity are neglected. We have scanned the so-called adiabaticity parameter C to study its impact on flow self-organization in this regime. The scans are usually performed with adapted magnitudes of the particle source, so that the steady state equilibrium density gradient remains close to the linear threshold regardless of the C value (cf Figure 4). Note that even though the role of the competition between CDW and interchange in zonal flow formation will be explored in a future work, several key results have already emerged from the current analysis.

First, unlike previous numerical observations based on fixed gradient simulations that reported a sharp collapse of the zonal flows at low C , with a threshold that is proportional to the fixed gradient parameter, our results show that the energy stored in ZFs decreases smoothly as the adiabaticity parameter C is reduced. In our flux-driven model, the absence of such a collapse can be attributed to the simultaneous adjustment of the equilibrium density profile, which provides a self organized distribution of local gradients and therefore a distribution of local thresholds for the C parameter to compete against. This underscores the importance of self-consistent profile evolution in flux-driven models and suggests that such models may provide a more accurate representation of tokamak edge turbulence compared to their gradient-driven counterparts. It was also observed that the electric and diamagnetic components of the Reynolds stress are large and organized in such a way that they add up at large C . Unfortunately, since our model also suppresses fluctuation-fluctuation interactions, the standard dual cascade picture of two dimensional turbulence can not be activated for any value of C , it is difficult to disentangle the two effects. Our results provide a clear opportunity for a 2D, flux-driven model to resolve this issue.

Second, we observe that the ZFs organize themselves into staircases at both small and large C values. The steps in these staircases can be characterized by well localized flow layers, that act as micro (particle) transport barriers leading to increased density gradients. These structures are well-known in the study of plasma turbulence, and they were previously observed in flux driven, gyrokinetic simulations of ion temperature gradient driven turbulence [Dif-Pradalier et al. \(2017b\)](#), however, the dynamics observed in our simulations - such as meandering, merging, and splitting of staircase layers - underlines the complex, nontrivial dynamics of these structures.

Third, the staircases are found to be robust and to recover after a natural - or artificial - perturbation. This suggests that staircases may survive in the presence of additional physics, and mechanisms that our model lacks and therefore they may have relevance even in realistic conditions of a tokamak edge turbulence.

At last, one of the key findings of this study is the numerical observation of the role that phase dynamics play in the formation of staircases. The cross-phase between density and potential fluctuations coincides with the localization and strength of the steps of the staircase, underlining the importance of properly retaining phase dynamics in turbulence models. Importantly, the ability of ZFs to develop radial structures - i.e. well organized steady layers that are localized radially - looks bound to the capacity of the system to store energy in the mean density (pressure) profile: in other words, the staircase pattern of the pressure profile does not appear to be the mere consequence, a simple signature of the sheared layers, but more critically a key

ingredient of their generation and sustainment. These observations could be used in order to interpret, and direct experimental efforts to identify these structures in real tokamak plasmas, where they are very difficult to observe.

In conclusion, this study has introduced Tokam1D, as a reduced model of turbulence capable of capturing essential aspects of flux-driven turbulence in tokamak edge plasmas, demonstrating the key role of ZFs in regulating turbulent transport and underlining the importance of self-consistent profile evolution in flux-driven simulations, offering new insights that could guide both theoretical and experimental efforts to better understand and control turbulence in fusion plasmas. Future work will extend this analysis to include the interplay between CDW and interchange instabilities and explore the implications for confinement and transport in more complex plasma regimes.

Acknowledgments

The authors would like to thank the Isaac Newton Institute for Mathematical Sciences, Cambridge, for support and hospitality during the programme “Anti-diffusive dynamics: from sub-cellular to astrophysical scales”, where work on this paper was undertaken. This work was supported by EPSRC grant EP/R014604/1. GDP, YS and OP acknowledge that this work was partially supported by a grant from the Simons Foundation.

This work has been carried out within the framework of the EUROfusion Consortium, partially funded by the European Union via the Euratom Research and Training Programme (Grant Agreement No 101052200 — EUROfusion). The French contribution to this work has been partially funded by the Research Federation Fusion par Confinement Magnétique (FRFCM). Views and opinions expressed are however those of the author(s) only and do not necessarily reflect those of the European Union, the European Commission or SERI. Neither the European Union nor the European Commission nor FRFCM can be held responsible for them.

This work was supported by the EUROfusion Theory and Advanced Simulation Coordination (E-TASC) initiative under the TSVV (Theory, Simulation, Verification, and Validation) “Physics of the L-H Transition and Pedestals” (2021–2025)

Declaration of interests

The authors report no conflict of interest.

Data availability

The data that support the findings of this study are available upon reasonable request.

Authors ORCID

O. Panico, <https://orcid.org/0000-0002-2322-2306> ; Y. Sarazin, <https://orcid.org/0000-0003-2479-563X> ; P. Hennequin, <https://orcid.org/0000-0002-4848-4898> ; G. Dif-Pradalier, <https://orcid.org/0000-0003-4869-7049> ; X. Garbet, <https://orcid.org/0000-0001-5730-1259> ; R. Varnes, <https://orcid.org/0000-0001-7509-7810>

References

- Angus, J. R. & Umansky, M. V. (2014), 'Modeling of large amplitude plasma blobs in three-dimensions', *Physics of Plasmas* **21**(1).
- Benkadda, S., Beyer, P., Bian, N., Figarella, C., Garcia, O., Garbet, X., Ghendrih, P., Sarazin, Y. & Diamond, P. (2001), 'Bursty transport in tokamak turbulence: Role of zonal flows and internal transport barriers', *Nuclear fusion* **41**(8), 995.
- Benkadda, S., Garbet, X. & Verga, A. (1994), 'Interchange instability turbulence model in edge tokamak plasma', *Contributions to Plasma Physics* **34**(2-3), 247–252.
- Beyer, P., Benkadda, S., Garbet, X. & Diamond, P. (2000), 'Nondiffusive Transport in Tokamaks: Three-Dimensional Structure of Bursts and the Role of Zonal Flows', *Phys. Rev. Lett.* **85**, 4892.
- Bian, N., Benkadda, S., Garcia, O., Paulsen, J.-V. & Garbet, X. (2003), 'The quasilinear behavior of convective turbulence with sheared flows', *Physics of Plasmas* **10**(5), 1382–1388.
- Biglari, H., Diamond, P. & Terry, P. (1990), 'Influence of sheared poloidal rotation on edge turbulence', *Physics of Fluids B: Plasma Physics* **2**(1), 1–4.
- Boffetta, G. & Ecke, R. E. (2012), 'Two-dimensional turbulence', *Annual review of fluid mechanics* **44**, 427–451.
- Bonanomi, N., Angioni, C., Crandall, P., Di Siena, A., Maggi, C., Schneider, P., Contributors, J., Team, A. U., Team, E. M. et al. (2019), 'Effect of the isotope mass on the turbulent transport at the edge of l-mode plasmas in asdex upgrade and jet-ilw', *Nuclear Fusion* **59**(12), 126025.

- Camargo, S. J., Biskamp, D. & Scott, B. D. (1995), 'Resistive drift-wave turbulence', *Physics of Plasmas* **2**(1), 48–62.
- Casati, A., Bourdelle, C., Garbet, X. & Imbeaux, F. (2008), 'Temperature ratio dependence of ion temperature gradient and trapped electron mode instability thresholds', *Physics of Plasmas* **15**(4).
- Catto, P., Elnadi, A., Liu, C. S. & Rosenbluth, M. (1974), 'Stability of a finite-beta inhomogeneous plasma in a sheared magnetic field', *Nucl. Fusion* **14**, 405.
- Chôné, L., Beyer, P., Sarazin, Y., Fuhr, G., Bourdelle, C. & Benkadda, S. (2014a), 'L-H transition dynamics in fluid turbulence simulations with neoclassical force balance', *Phys. Plasmas* **21**, 070702.
- Chôné, L., Beyer, P., Sarazin, Y., Fuhr, G., Bourdelle, C. & Benkadda, S. (2014b), 'Lh transition dynamics in fluid turbulence simulations with neoclassical force balance', *Physics of Plasmas* **21**(7).
- Chôné, L., Beyer, P., Sarazin, Y., Fuhr, G., Bourdelle, C. & Benkadda, S. (2015), 'Mechanisms and dynamics of the external transport barrier formation in non-linear plasma edge simulations', *Nuclear Fusion* **55**(7), 073010.
- Diamond, P. H. & Hahm, T. (1995), 'On the dynamics of turbulent transport near marginal stability', *Physics of Plasmas* **2**(10), 3640–3649.
- Diamond, P. H., Itoh, S.-I., Itoh, K. & Hahm, T. S. (2005), 'Zonal flows in plasma—a review', *Plasma Physics and Controlled Fusion* **47**(5), R35.
URL: <https://dx.doi.org/10.1088/0741-3335/47/5/R01>
- Diamond, P. & Kim, Y.-B. (1991), 'Theory of mean poloidal flow generation by turbulence', *Physics of Fluids B: Plasma Physics* **3**(7), 1626–1633.
- Dif-Pradalier, G., Hornung, G., Garbet, X., Ghendrih, P., Grandgirard, V., Latu, G. & Sarazin, Y. (2017a), 'The $E \times B$ staircase of magnetised plasmas', *Nuclear Fusion* **57**(6), 066026.
- Dif-Pradalier, G., Hornung, G., Garbet, X., Ghendrih, P., Grandgirard, V., Latu, G. & Sarazin, Y. (2017b), 'The $e \times b$ staircase of magnetised plasmas', *Nuclear Fusion* **57**(6), 066026.
- Dif-Pradalier, G., Hornung, G., Ghendrih, P., Sarazin, Y., Clairet, F., Vermare, L., Diamond, P., Abiteboul, J., Cartier-Michaud, T., Ehrlacher, C. et al. (2015), 'Finding the elusive $e \times b$ staircase in magnetized plasmas', *Physical Review Letters* **114**(8), 085004.

- Dominici, G. D., Fuhr, G., Bourdelle, C., Beyer, P., Garbet, X., Sarazin, Y., Falchetto, G. L. & Contributors, J. (2019), 'Quasilinear nature of L-mode edge turbulent transport in fluid nonlinear simulations', *Nuclear Fusion* **59**, 126019.
- Dudson, B. D. & Leddy, J. (2017), 'Hermes: global plasma edge fluid turbulence simulations', *Plasma Physics and Controlled Fusion* **59**(5), 054010.
- Fujisawa, A. (2008), 'A review of zonal flow experiments', *Nuclear Fusion* **49**(1), 013001.
- Garbet, X., Panico, O., Varennes, R., Gillot, C., Dif-Pradalier, G., Sarazin, Y., Grandgirard, V., Ghendrih, P. & Vermare, L. (2021), 'Wave trapping and $e \times b$ staircases', *Physics of Plasmas* **28**(4).
- Ghendrih, P., Dif-Pradalier, G., Panico, O., Sarazin, Y., Bufferand, H., Ciraolo, G., Donnel, P., Fedorczak, N., Garbet, X., Grandgirard, V., Hennequin, P., Serre, E. & Tamain, P. (2022), 'Role of avalanche transport in competing drift wave and interchange turbulence', *Journal of Physics: Conference Series* **2397**(1), 012018.
URL: <https://dx.doi.org/10.1088/1742-6596/2397/1/012018>
- Giacomin, M., Pau, A., Ricci, P., Sauter, O., Eich, T., the ASDEX Upgrade team, Contributors, J. & the TCV team (2022), 'First-Principles Density Limit Scaling in Tokamaks Based on Edge Turbulent Transport and Implications for ITER', *Phys. Rev. Lett.* **128**, 185003.
- Giacomin, M. & Ricci, P. (2020), 'Investigation of turbulent transport regimes in the tokamak edge by using two-fluid simulations', *J. Plasma Phys.* **86**, 905860502.
- Giacomin, M. & Ricci, P. (2022), 'Turbulent transport regimes in the tokamak boundary and operational limits', *Physics of Plasmas* **29**, 062303.
- Gianakon, T., Kruger, S. & Hegna, C. (2002), 'Heuristic closures for numerical simulations of neoclassical tearing modes', *Physics of Plasmas* **9**(2), 536–547.
- Grander, F., Locker, F. & Kendl, A. (2024), 'Hysteresis in the gyrofluid resistive drift wave turbulence to zonal flow transition', *Physics of Plasmas* **31**(5).
- Guo, Z. & Diamond, P. (2016), 'Zonal flow patterns: How toroidal coupling induces phase jumps and shear layers', *Physical Review Letters* **117**(12), 125002.
- Gürçan, Ö. D. & Diamond, P. H. (2015), 'Zonal flows and pattern formation', *Journal of Physics A: Mathematical and Theoretical* **48**(29), 293001.

- Guzdar, P., Drake, J. F., McCarthy, D., Hassam, A. B. & Liu, C. S. (1993), 'Three-dimensional fluid simulations of the nonlinear drift-resistive ballooning modes in tokamak edge plasmas', *Phys. Fluids B* **5**, 3712.
- Hajjar, R., Diamond, P. & Malkov, M. (2018), 'Dynamics of zonal shear collapse with hydrodynamic electrons', *Physics of Plasmas* **25**(6).
- Hallatschek, K. (2004), 'Turbulent saturation of tokamak-core zonal flows', *Physical review letters* **93**(6), 065001.
- Hasegawa, A. & Mima, K. (1978), 'Pseudo-three-dimensional turbulence in magnetized nonuniform plasma', *The Physics of Fluids* **21**(1), 87–92.
- Hasegawa, A. & Wakatani, M. (1983), 'Plasma edge turbulence', *Physical Review Letters* **50**(9), 682.
- Hatch, D., Terry, P., Jenko, F., Merz, F. & Nevins, W. (2011), 'Saturation of gyrokinetic turbulence through damped eigenmodes', *Physical Review Letters* **106**(11), 115003.
- Hillesheim, J., Delabie, E., Meyer, H., Maggi, C., Meneses, L., Poli, E., Contributors, J., Consortium, E. et al. (2016), 'Stationary zonal flows during the formation of the edge transport barrier in the jet tokamak', *Physical review letters* **116**(6), 065002.
- Hinton, F. & Horton, C. (1971), 'Amplitude Limitation of a Collisional Drift Wave Instability', *Phys. Fluids* **14**, 116.
- Hong, R., Tynan, G., Diamond, P., Nie, L., Guo, D., Long, T., Ke, R., Wu, Y., Yuan, B., Xu, M. et al. (2017), 'Edge shear flows and particle transport near the density limit of the hl-2a tokamak', *Nuclear Fusion* **58**(1), 016041.
- Hornung, G., Dif-Pradalier, G., Clairet, F., Sarazin, Y., Sabot, R., Hennequin, P. & Verdoolaege, G. (2016), 'staircases and barrier permeability in magnetised plasmas', *Nuclear Fusion* **57**(1), 014006.
- Ivanov, P. G., Schekochihin, A., Dorland, W., Field, A. & Parra, F. (2020), 'Zonally dominated dynamics and dimitis threshold in curvature-driven itg turbulence', *Journal of Plasma Physics* **86**(5), 855860502.
- Kosuga, Y., Diamond, P. & Gürçan, Ö. D. (2013), 'How the propagation of heat-flux modulations triggers $e \times b$ flow pattern formation', *Physical review letters* **110**(10), 105002.

- Kosuga, Y., Diamond, P. H., Dif-Pradalier, G. & Gürcan, D. (2014), 'E × B shear pattern formation by radial propagation of heat flux waves', *Physics of Plasmas* **21**(5), 055701.
 URL: <https://doi.org/10.1063/1.4872018>
- Kraichnan, R. H. (1971), 'Inertial-range transfer in two- and three-dimensional turbulence', *Journal of Fluid Mechanics* **47**(3), 525–535.
- Liewer, P. C. (1985), 'Measurements of microturbulence in tokamaks and comparisons with theories of turbulence and anomalous transport', *Nuclear Fusion* **25**(5), 543.
- Lin, Z., Hahm, T. S., Lee, W., Tang, W. M. & White, R. B. (1998), 'Turbulent transport reduction by zonal flows: Massively parallel simulations', *Science* **281**(5384), 1835–1837.
- Liu, W., Chen, Y., Ke, R., McKee, G., Yan, Z., Fang, K., Yang, Z., Gao, Z., Tan, Y. & Tynan, G. R. (2021), 'Evidence of $e \times b$ staircase in hl-2a l-mode tokamak discharges', *Physics of Plasmas* **28**(1).
- Long, T., Diamond, P., Xu, M., Ke, R., Nie, L., Li, B., Wang, Z., Xu, J., Duan, X. et al. (2019), 'Studies of Reynolds stress and the turbulent generation of edge poloidal flows on the hl-2a tokamak', *Nuclear Fusion* **59**(10), 106010.
- Majda, A. J., Qi, D. & Cerfon, A. J. (2018a), 'A flux-balanced fluid model for collisional plasma edge turbulence: Model derivation and basic physical features', *Physics of Plasmas* **25**(10), 102307.
- Majda, A., Qi, D. & Cerfon, A. (2018b), 'A flux-balanced fluid model for collisional plasma edge turbulence: Model derivation and basic physical features', *Phys. Plasmas* **25**, 102307.
- Malkov, M. & Diamond, P. (2001), 'Bifurcation and scaling of drift wave turbulence intensity with collisional zonal flow damping', *Physics of Plasmas* **8**(9), 3996–4009.
- Mantica, P., Strintzi, D., Tala, T., Giroud, C., Johnson, T., Leggate, H., Lerche, E., Loarer, T., Peeters, A., Salmi, A. et al. (2009), 'Experimental study of the ion critical-gradient length and stiffness level and the impact of rotation in the jet tokamak', *Physical review letters* **102**(17), 175002.
- McDevitt, C., Diamond, P., Gürcan, Ö. D. & Hahm, T. (2010), 'Poloidal rotation and its relation to the potential vorticity flux', *Physics of Plasmas* **17**(11).
- Numata, R., Ball, R. & Dewar, R. L. (2007), 'Bifurcation in electrostatic resistive drift wave turbulence', *Physics of Plasmas* **14**(10).

- Pedrosa, M., Silva, C., Hidalgo, C., Carreras, B., Orozco, R., Carralero, D. et al. (2008), 'Evidence of long-distance correlation of fluctuations during edge transitions to improved-confinement regimes in the tj-ii stellarator', *Physical review letters* **100**(21), 215003.
- R. J. Groebner, K. H. B. & Seraydarian, R. P. (1990), "", *Phys. Rev. Lett.* **64**, 3015.
- Ross, A., Stegmeir, A. & Coster, D. (2018), 'Effect of the boussinesq approximation: Turbulence studies with grillix in slab geometry', *Contributions to Plasma Physics* **58**(6-8), 478–483.
- Rosby, C.-G. (1947), 'On the distribution of angular velocity in gaseous envelopes under the influence of large-scale horizontal mixing processes', *Bulletin of the American Meteorological Society* **28**(2), 53–68.
- Ryter, F., Leuterer, F., Pereverzev, G., Fahrbach, H.-U., Stober, J., Suttrop, W. & Team, A. U. (2000), 'Experimental evidence for gradient length-driven electron transport in tokamaks', *Phys. Rev. Lett.* **86**, 2325.
URL: <https://doi.org/10.1103/PhysRevLett.86.2325>
- Sarazin, Y., Dif-Pradalier, G., Garbet, X., Ghendrih, P., Berger, A., Gillot, C., Grandgirard, V., Obrejan, K., Varennes, R., Vermare, L. et al. (2021), 'Key impact of phase dynamics and diamagnetic drive on reynolds stress in magnetic fusion plasmas', *Plasma Physics and Controlled Fusion* **63**(6), 064007.
- Sarazin, Y., Garbet, X., Ghendrih, P. & Benkadda, S. (2000), 'Transport due to front propagation in tokamaks', *Physics of Plasmas* **7**(4), 1085–1088.
- Sarazin, Y. & Ghendrih, P. (1998), 'Intermittent particle transport in two-dimensional edge turbulence', *Physics of Plasmas* **5**(12), 4214–4228.
- Schmitz, L., Zeng, L., Rhodes, T., Hillesheim, J., Doyle, E., Groebner, R., Peebles, W., Burrell, K. & Wang, G. (2012), 'Role of zonal flow predator-prey oscillations in triggering the transition to h-mode confinement', *Physical review letters* **108**(15), 155002.
- Scott, B. (1997), 'Three-dimensional computation of drift alfvén turbulence', *Plasma Physics and Controlled Fusion* **39**(10), 1635.
- Scott, B. D. (2005a), 'Drift wave versus interchange turbulence in tokamak geometry: Linear versus nonlinear mode structure', *Physics of Plasmas* **12**(6), 062314.
- Scott, B. D. (2005b), 'Energetics of the interaction between electromagnetic exb turbulence and zonal flows', *New Journal of Physics* **7**(1), 92.

- Singh, R. & Diamond, P. (2022), 'Zonal shear layer collapse and the power scaling of the density limit: old lh wine in new bottles', *Plasma Physics and Controlled Fusion* **64**(8), 084004.
- Smolyakov, A. (1998), 'Gyroviscous forces in a collisionless plasma with temperature gradients', *Can. J. Phys.* **76**, 321–331.
- Smolyakov, A., Diamond, P. & Medvedev, M. (2000), 'Role of ion diamagnetic effects in the generation of large scale flows in toroidal ion temperature gradient mode turbulence', *Physics of Plasmas* **7**(10), 3987–3992.
- Stegmeir, A., Coster, D., Ross, A., Maj, O., Lackner, K. & Poli, E. (2018), 'Grillix: a 3d turbulence code based on the flux-coordinate independent approach', *Plasma Physics and Controlled Fusion* **60**(3), 035005.
- Sugama, H. & Wakatani, M. (1991), 'Radial electric field effect on resistive interchange modes', *Physics of Fluids B: Plasma Physics* **3**(4), 1110–1112.
URL: <https://doi.org/10.1063/1.859839>
- Tamain, P., Bufferand, H., Ciraolo, G., Colin, C., Galassi, D., Ghendrih, P., Schwander, F. & Serre, E. (2016), 'The tokam3x code for edge turbulence fluid simulations of tokamak plasmas in versatile magnetic geometries', *Journal of Computational Physics* **321**, 606–623.
- Terry, P. (2000), 'Suppression of turbulence and transport by sheared flow', *Reviews of Modern Physics* **72**(1), 109.
- Tynan, G., Holland, C., Yu, J., James, A., Nishijima, D., Shimada, M. & Taheri, N. (2006), 'Observation of turbulent-driven shear flow in a cylindrical laboratory plasma device', *Plasma physics and controlled fusion* **48**(4), S51.
- Wakatani, M. & Hasegawa, A. (1984), 'A collisional drift wave description of plasma edge turbulence', *The Physics of fluids* **27**(3), 611–618.
- Xu, Y., Carralero, D., Hidalgo, C., Jachmich, S., Manz, P., Martines, E., van Milligen, B., Pedrosa, M., Ramisch, M., Shesterikov, I. et al. (2011), 'Long-range correlations and edge transport bifurcation in fusion plasmas', *Nuclear fusion* **51**(6), 063020.
- Yu, G., Krasheninnikov, S. & Guzdar, P. (2006), 'Two-dimensional modelling of blob dynamics in tokamak edge plasmas', *Physics of Plasmas* **13**(4), 042508.

Özgür D. Gürçan (2024), Internally driven β -plane plasma turbulence using the hasegawa-wakatani system. arXiv: <https://arxiv.org/abs/2403.09911>.

URL: <https://arxiv.org/abs/2403.09911>

A Dual role of ion to electron temperature ratio

The role of the ion to electron temperature ratio, $\tau = T_i/T_e$, on the linear instabilities is studied in the framework of Tokam1D. A more complete contribution on the role of τ can be found in ref. [Casati et al. \(2008\)](#) for ITG and TEM instabilities. The case of Tokam1D is peculiar: a single poloidal wavenumber k_y is chosen. Therefore, in the following we will treat both the case $k_y = cte$ and the case where k_x and k_y are chosen such that they maximize the growth rate, dubbed $k_y(\gamma_{max})$. We will show that τ can be either stabilizing or destabilizing depending on the instability at play. Also, it will appear that fixing a single k_y can lead to very different results as compared to the full 2D case.

First, let us study the case with both CDW and interchange instabilities. In [Figure 13a](#), we plot the growth rate as a function of τ for 4 different density gradients. The interchange parameter is fixed at $g = 2 \times 10^{-3}$ and the adiabatic parameter at $C = 10^{-3}$. The growth rate is shown for the case $k_y = 0.3$ in full lines and $k_y(\gamma_{max})$ in dotted lines. In [Figure 13b](#), the k_y leading to the maximal γ is indicated for each τ and gradient. The horizontal dotted line indicates $k_y = 0.3$, as chosen for Tokam1D.

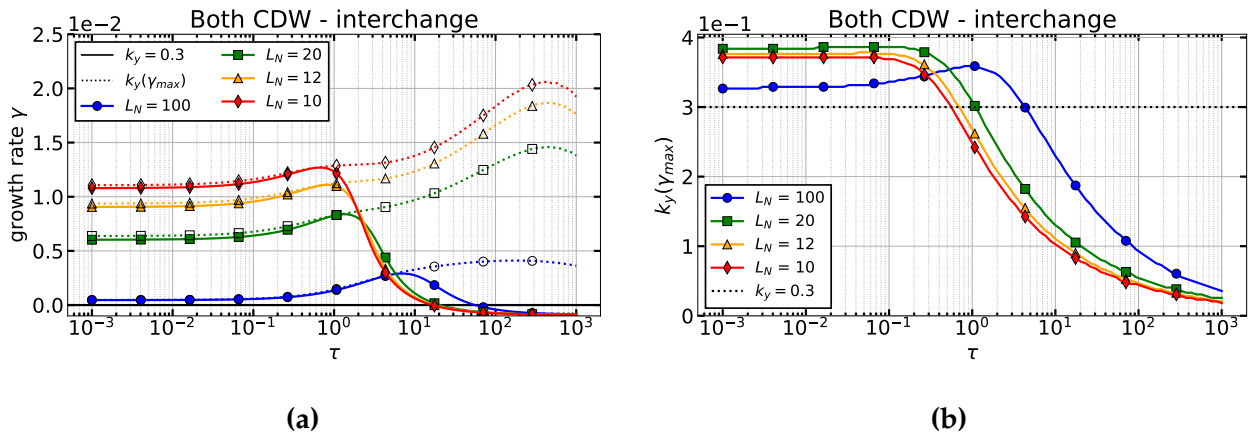


Figure 13: (a) growth rate as a function of τ for different density gradients, $C = 10^{-3}$, $g = 2 \times 10^{-3}$. The case at fixed k_y is indicated in full lines. (b) k_y corresponding to the maximum growth rate (dotted lines in (a)). Other parameters: $D_1 = \nu_1 = 10^{-2}$.

For small τ , the effect on the growth rate is limited. The most prominent effect is visible for small density gradients where the growth rate increases from $\gamma \approx 0$ at $\tau = 10^{-3}$ to $\gamma = 2.5 \times 10^{-3}$ at $\tau \approx 6$. At larger τ , there is a large discrepancy between the cases at fixed k_y , and the cases $k_y(\gamma_{max})$. When several k_y are allowed, τ appears to be destabilizing whereas it is stabilizing in the fixed k_y case. This is a result of the ion to electron temperature ratio shifting the k_y of maximum growth rate from $k_y \approx 0.35$ to $k_y \approx 0.1$, see Figure 13b. This highlights that Tokam1D is not suited to study the role of large ion to electron temperature ratios on the linear and non-linear dynamics since it requires several k_y to be described. For $\tau = 1$, the growth rate for the case at fixed k_y and $k_y(\gamma_{max})$ have been observed similar for most of the tested equilibrium parameters. It is considered relevant.

τ is stabilizing as it tends towards infinity. What happens between $\tau = 1$ and $\tau \rightarrow +\infty$ depends on the instability at play. Displaying the same analysis as in Figure 13, for the case interchange only and CDW only, one obtains the figures 14.

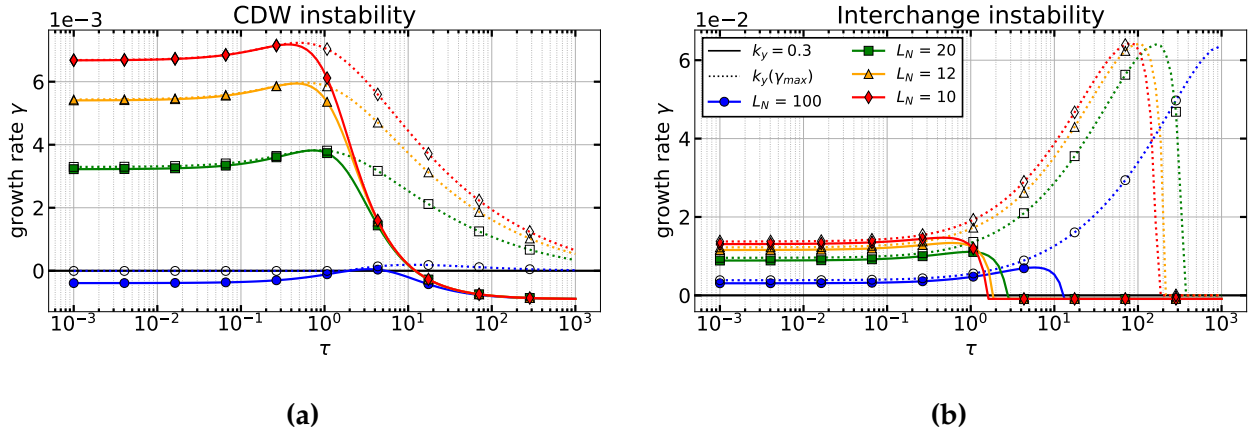


Figure 14: (a) growth rate as a function of τ for different density gradients, $C = 10^{-3}$, $g = 0$. (b) Same as (a) with $C = 0$ and $g = 2 \times 10^{-3}$. Other parameters: $D_1 = \nu_1 = 10^{-2}$.

For both CDW and interchange instabilities, τ is slightly destabilizing when small. Note that it can be enough to destabilize the system, see case drift waves at $1/L_N = 10^{-2}$ which displays a positive growth rate at $\tau = 3$. When larger, τ is always stabilizing for the Tokam1D case at fixed k_y but can be stabilizing or destabilizing depending on the instability at play for the general $k_y(\gamma_{max})$ case. At large τ , for the CDW case, in Figure 14a, τ is stabilizing. For interchange, τ appears as destabilizing for the general case and stabilizing for the fixed k_y case. The behavior of the general case with coupled instabilities displayed Figure 13 then depends on which instability is dominant.

We can conclude that τ exerts a dual effect on both the instabilities, depending on the dom-

inant instability, density gradient and value of τ . More importantly, it is made clear that Tokam1D is not suited for the study of large τ since the growth rate exhibits a maximum at a poloidal wavenumber that significantly evolves with τ .

B Artificially switching off ZFs

It has been clear that ZFs play a role in stabilizing the turbulence for more than 20 years now, [Lin et al. \(1998\)](#). Here we show that they are essential, even in the case where they are shown to be very small. We take a case with a low flows to turbulence energy ratio, at $C = 2 \cdot 10^{-4}$ and $g = 10^{-4}$. In this simulation the flows account for $\approx 0.1\%$ of the turbulence energy. We show that by artificially suppressing them, the simulation diverges and a large radial mode fill in the simulation box. The results are shown [Figure 15](#).

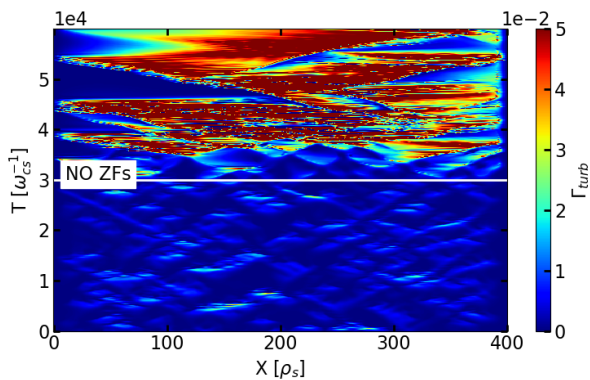


Figure 15: Turbulent flux Γ_{turb} as a function of time and radius. ZFs are artificially switched off at $T = 3 \cdot 10^4$.

A large relaxation mode occurs when ZFs are switched off due to the gradient being large. The profile relaxes until it gets below the linear threshold. Then the system enters a periodic state where the gradient builds up, a large radial mode appears and the profile gets relaxed.

C Larger dissipation leads to more structured flows

What lead to the radial structure of the flows? In the presented simulations, structured flows can appear both at low and large C , with no clear dependence on linear properties or turbulence parameters. Flows are shown to lose their structure when switching from flux driven

to gradient driven simulations. The source and dissipation also appear as key player when it comes to the radial structure.

We take the case $C = 10^{-2}$, shown [Figure 5b](#) and we vary the dissipation coefficients on the fluctuation equations while keeping the source constant. Doing so, the linear threshold is modified as it depends directly on the dissipation. Since the source is kept constant, the distance to the linear threshold is also modified. Two cases are performed, at $D_1 = \nu_1 = 2 \cdot 10^{-2}$ and $D_1 = \nu_1 = 5 \cdot 10^{-3}$. The results in terms of flows and density fluctuations are shown [Figure 16](#).

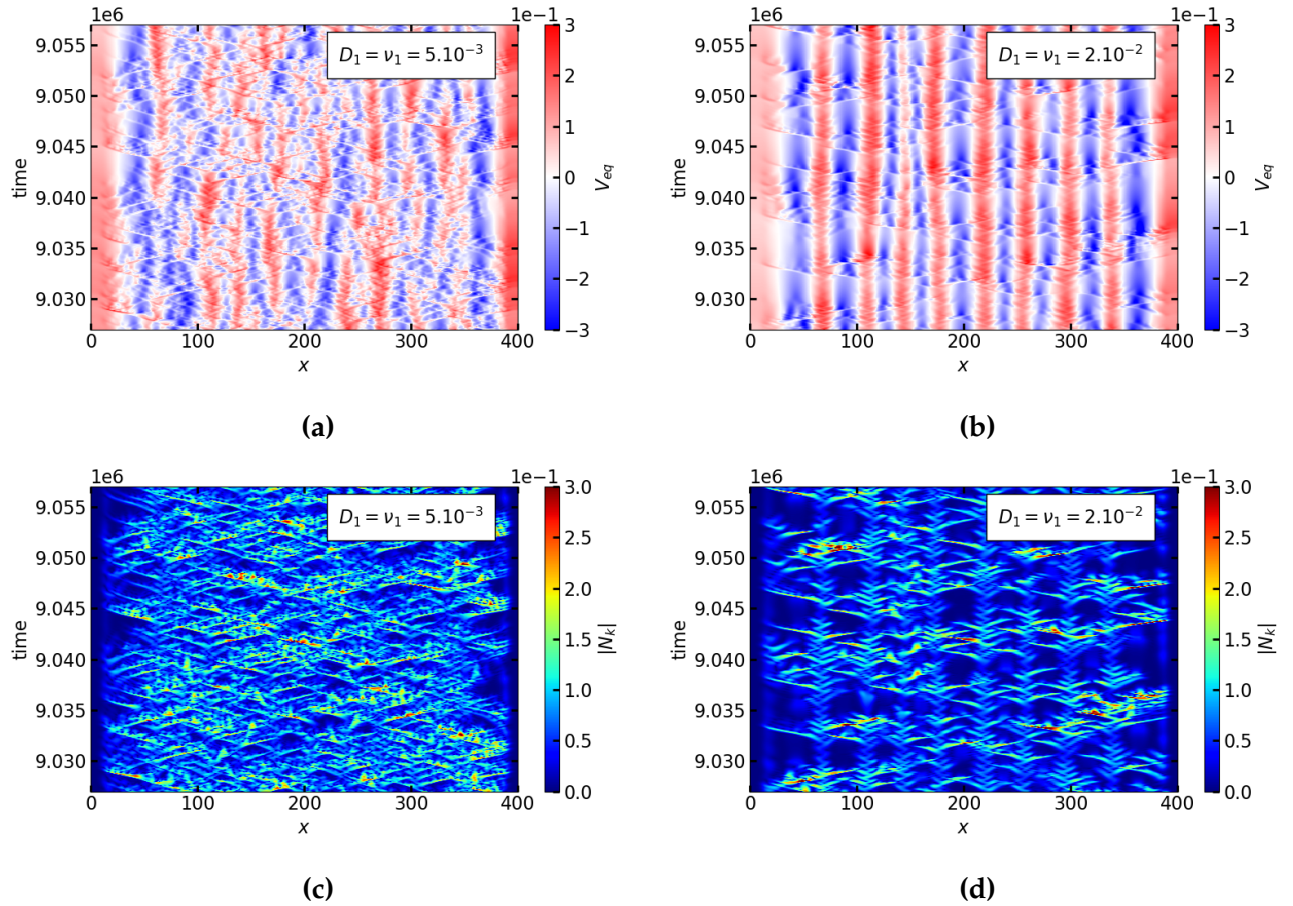


Figure 16: Variation of fluctuation dissipation coefficient D_1 and ν_1 . (a,c) $D_1 = \nu_1 = 5 \cdot 10^{-3}$. (b,d) $D_1 = \nu_1 = 2 \cdot 10^{-2}$. The equilibrium velocity is displayed in (a) and (b) while the density fluctuation amplitude is shown in (c) and (d).

In [Figure 16a](#) and [16b](#) are shown the equilibrium flows for both cases. Both ZFs have similar amplitude with the latter being more structured and stable in time. In [Figure 16c](#) and [16d](#) are displayed the corresponding density fluctuation amplitudes. The low dissipation case leads to

larger fluctuations. The size of the turbulent structures does not seem to vary much in between the two cases.

It is apparent that a larger dissipation leads to more stable flow structures. Distance to linear threshold seem to play a role, case $D_1 = \nu_1 = 2 \cdot 10^{-2}$ evolves very close to its linear threshold, with its gradient being only 1.1 times the linear threshold. Case $D_1 = \nu_1 = 5 \cdot 10^{-3}$ stands far from threshold with its gradient being 2.6 times the linear threshold. The underlying linear characteristics of the system are similar, for high dissipation case $\omega = 0.02$, $\gamma = 0.005$ and $\sin \Delta\varphi = -0.35$. For the low dissipation case, $\omega = 0.017$, $\gamma = 0.0044$ and $\sin \Delta\varphi = -0.3$. However it should be noted that these characteristics are computed with the smoothed steady-state gradient and do not take into account the corrugations. Possibly, the bifurcation occurs as a result of small scale effects. Link between corrugation, radial structure and stiffness of the system (in terms of variation of turbulent flux with density gradient) should also be explored.

D Numerical implementation and verification

The 1D-radial system of equations is written in FORTRAN90 and solved using a fourth order Runge-Kutta scheme in time and centered fourth order finite differences in space. The dissipation terms are treated to the second order using the semi-implicit Crank-Nicolson scheme. A basic sketch of the workflow used in Tokam1D is given in [Figure 17](#).

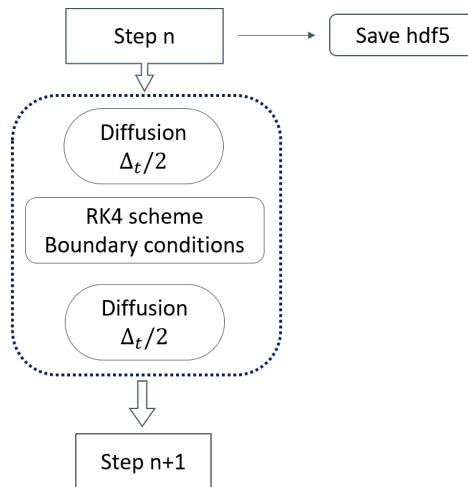


Figure 17: Tokam1D numerical workflow.

The numerical scheme is symmetric. Dissipation is applied 2 times on $\Delta t/2$, before and after the equation evolution. The arrays are saved every $X_d = 2 dx$ and $T_d = 100 dt$ points into HDF5

files. Neumann boundary conditions with vanishing gradients are used for the density at $x = 0$ and for the velocity at both ends. Dirichlet is used for the density imposed to $N_{eq} = 0.1$ at $x = L_x$ and the fluctuations set to zero at both boundaries. Finally, at the end of a restart, a file is written containing arrays, parameters and boundary conditions to the maximum accuracy. A subsequent simulation can then restart from this file.

The time step, dt , needs to be small with respect to the typical time involved in the system. In the present case, it should be compared to the growth rate γ and the real frequency ω of the instabilities. One needs to ensure that $\gamma dt \ll 1$ and $\omega dt \ll 1$. As shown in [Figure 2](#), these inequalities are well fulfilled since the growth rate and frequencies are respectively of the order of 10^{-3} and 10^{-2} for typical values of the parameters. When the equilibrium density profile is corrugated, it can locally develop large gradients, leading to larger values of γ . The conservative choice $dt = 0.1$ then leaves a comfortable margin to ensure proper convergence even in these large γ regions.

In addition, one can compute the Courant-Friedrichs-Lewy (CFL) condition of numerical stability:

$$v_{max} \leq \frac{dx}{dt}$$

Here v_{max} is the maximum characteristic speed of waves or information propagation in the simulation. In the reported simulations, the grid step size is $dx = 400/1024 \rho_s$ and the time step is $\omega_{cs} dt = 0.1$, where ρ_s is the sound Larmor radius and ω_{cs} the ion cyclotron pulsation. The condition leads to $v_{max} < 4 \rho_{cs} \omega_{cs} \approx 4v_{th}$, where v_{th} is the thermal velocity of the particles. In the framework of this reduced fluid model, we deal with drift velocities of the order of $\rho_* v_{th} \ll v_{th}$ where $\rho_* = \rho_s/a \ll 1$ is the sound Larmor radius normalized by the minor radius of the tokamak. It results that the CFL condition is well fulfilled with this time step $\omega_{cs} dt = 0.1$. Tests with smaller and larger time steps have shown that the simulations were actually well converged. For post-processing purposes, data are saved every $100 dt$. The compromise is to have a sufficiently small diagnostic time step so that physical quantities exhibit a continuous dynamics, while not saving an unnecessary too large amount of data. The actual retained value ensures that the physical processes of interest are well captured even after this coarse-graining in time.

The model is first verified in the linear regime during the exponential growth of the fluctuations. To this aim, simulations are initialized with single modes $k_x = m_k 2\pi/L_x$, with m_k the radial mode number and L_x the radial size of the simulation. When scanning the launched

modes m_k , one can check whether the exponential growth is in agreement with the linear prediction. These tests have been performed by launching gradient-driven simulations with no flows and parameters $(C, g, \tau) = (4 \times 10^{-3}, 10^{-3}, 1)$. A total of 9 simulations are launched, with modes $m_k = 1, 3, 5, 7, 9, 11, 15, 30, 60$. The resulting growth rate is successfully compared to the linear prediction in [Figure 18](#).

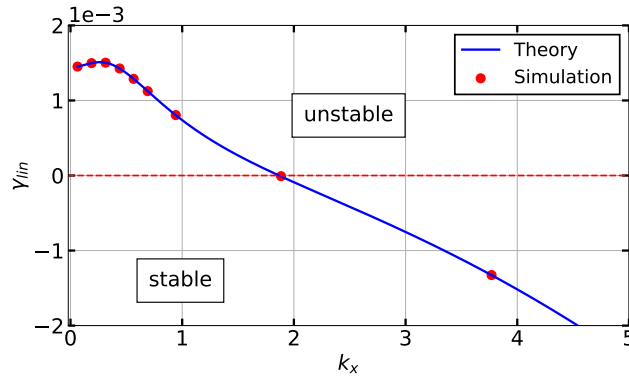


Figure 18: Agreement of the fluctuations exponential growth between simulation and linear analysis. Performed on case: $(C, g, \tau) = (4 \times 10^{-3}, 10^{-3}, 1)$. Initial density profile gradient length $L_N = 50$.

The nonlinear saturated regime of the simulations is also verified to be well-resolved. Typical k_x spectra of the fluctuations are shown to span on several orders of magnitude, as shown in [Figure 19](#).

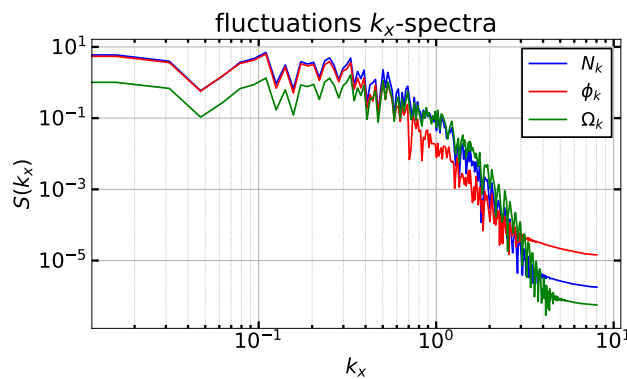


Figure 19: Fluctuations k_x -spectra for the fluctuations of density N_k , electric potential ϕ_k and vorticity Ω_k . Performed on the case $C = 3 \times 10^{-3}$ at statistical steady-state.