



HAL
open science

Associative plasticity of granule cell inputs to cerebellar Purkinje cells

Rossella Conti, Céline Auger

► **To cite this version:**

Rossella Conti, Céline Auger. Associative plasticity of granule cell inputs to cerebellar Purkinje cells. *eLife*, 2024, <10.7554/eLife.96140.2>. <hal-04806968>

HAL Id: hal-04806968

<https://hal.science/hal-04806968v1>

Submitted on 19 Dec 2024

HAL is a multi-disciplinary open access archive for the deposit and dissemination of scientific research documents, whether they are published or not. The documents may come from teaching and research institutions in France or abroad, or from public or private research centers.

L'archive ouverte pluridisciplinaire **HAL**, est destinée au dépôt et à la diffusion de documents scientifiques de niveau recherche, publiés ou non, émanant des établissements d'enseignement et de recherche français ou étrangers, des laboratoires publics ou privés.



Distributed under a Creative Commons CC BY 4.0 - Attribution - International License

Associative plasticity of granule cell inputs to cerebellar Purkinje cells.

Rossella Conti and Céline Auger*

Université Paris Cité, CNRS, Saints-Pères Paris Institute for the Neurosciences

F-75006 PARIS FRANCE

* corresponding author

Abstract

Granule cells of the cerebellum make up to 175 000 excitatory synapses on a single Purkinje cell, encoding the wide variety of information from the mossy fibre inputs into the cerebellar cortex. The granule cell axon is made of an ascending portion and a long parallel fibre extending at right angles, an architecture suggesting that synapses formed by the two segments of the axon could encode different information. There are controversial indications that ascending axon (AA) and parallel fibre (PF) synapse properties and modalities of plasticity are different. We tested the hypothesis that AA and PF synapses encode different information, and that association of these distinct inputs to Purkinje cells might be relevant to the circuit and trigger plasticity, similarly to the coincident activation of PF and climbing fibre inputs. Here, by recording synaptic currents in Purkinje cells from either proximal or distal granule cells (mostly AA and PF synapses respectively), we describe a new form of associative plasticity between these two distinct granule cell inputs. We show for the first time that synchronous AA and PF repetitive train stimulation, with inhibition intact, triggers long term potentiation (LTP) at AA synapses specifically. Furthermore, the timing of presentation of the two inputs controls the outcome of plasticity and induction requires NMDAR and mGluR1 activation. The long length of the PFs allows us to preferentially activate the two inputs independently, and despite a lack of morphological reconstruction of the connections, these observations reinforce the suggestion that AA and PF synapses have different coding capabilities and plasticity that is associative, enabling effective association of information transmitted via granule cells.

Introduction

The ability to discriminate self generated from external stimuli is essential to apprehend the world as movement itself activates sensory receptors. In fish, discrimination of self from external stimuli has been shown to rely on associating motor command and sensory feedback in cerebellar-like structures (Montgomery & Bodznick, 1994; Sawtell, 2017). This is achieved by modifying the motor inputs to generate a negative image of the associated sensory inputs, effectively subtracting the predictable sensory inputs. This way, only unpredicted inputs are output by the principal cells. While in most cases the role of the cerebellum in sensory information processing is still unclear, theoretical models and work on plasticity suggest that it might similarly be involved in cancellation of predictable sensory inputs, but distinct sensory and motor synapses have yet to be identified in the cerebellum. The role of the cerebellum in motor learning and coordination has been well documented, but it is now clear that it is also involved in a number of higher cognitive functions (Schmahmann & Sherman, 1998; Stoodley & Schmahmann, 2010). An intriguing possibility, in the wider context of the cerebellum, is that receptive field and contextual inputs are encoded differentially by the granule cell AA and PF synapses. These inputs might be functionally associated based on relative timing to subtract predictable inputs, and output only unpredicted inputs, as observed for motor and sensory inputs in cerebellar-like structures.

Sensorimotor information is delivered to the cerebellar cortex by mossy fibres and relayed by granule cells (GCs) to the Purkinje cells (PCs) and inhibitory network for integration. Anatomically, the axon of a GC first extends through the PC layer and into the molecular layer, making up the ascending portion of the axon (AA), then bifurcates at a right angle, forming a PF that extends several millimetres along the folium in both directions. As a consequence, an AA can form multiple synapses with a few overlying PCs in the same sagittal plane as the GC soma, distributing information to a restricted number of cells, whereas PFs course through the dendritic trees of hundreds of PCs along the lobule (Napper & Harvey, 1988), distributing information widely to other microzones. This morphology and functional data have suggested that PC activity might be principally driven by local GCs via AA synapses (Cohen & Yarom, 1998), while distant GCs might modulate its activity via the PF system to provide the PC with less specific contextual information.

In the adult rat, an estimated 175k excitatory PF synapses encode information on the dendritic tree of a single PC (Napper & Harvey, 1988). We previously identified two PF synaptic populations with different molecular signatures (Devi et al., 2016). However, PF synapses have usually been treated as a uniform

population, and we know little about the way the variety of information received by PCs is encoded at synaptic level. Isope and Barbour (Isope & Barbour, 2002) estimated that 85% of PF synapses are silent, as suggested by in vivo data (Ekerot & Jörntell, 2001), however that proportion was significantly lower for local GCs and presumably AA synapses. In this study and that by Walter (Walter et al., 2009), properties of AA synapses were found to be indistinguishable from PF synapses. On the other hand, a study by Sims and Hartell (2005), has shown that AA and PF synaptic properties and susceptibility to plasticity are different. AA synapses were shown to be refractory to plasticity with well described protocols. Neither associative CF-mediated long term depression (LTD) nor LTP could be induced (Sims & Hartell, 2005; Sims & Hartell, 2006). These observations, together with the anatomical properties of the GC axon, suggest that AA and PF synapses can transmit different types of information and play different roles in cerebellar computation.

In this study we asked whether coincident activation of synapses formed by proximal and distal GCs (mostly AA and PF synapses respectively) might trigger specific synaptic plasticity of GC inputs. We show that a protocol pairing stimulation of AAs and PFs, with inhibition preserved, results in LTP of the AA inputs, while PF inputs are depressed although not significantly. AA-LTP is timing-dependent and relies on NMDAR and mGluR1 activation, bringing together these two pathways. GABA_AR activation was also required for efficient induction and maintenance of plasticity. Finally we show that the different plasticity found for AA and PF inputs is not merely due to the differential spatial distribution of their synapses on the dendritic tree.

Results

Associative plasticity of AA synapses. To test for associative plasticity between ascending axon and parallel fibre inputs we positioned two separate stimulating electrodes to achieve activation of different GC inputs onto a recorded PC (Fig. 1A top panel). To stimulate PFs, a stimulation pipette was positioned in the molecular layer, 100 to 200 μm away from the dendritic tree of the recorded cell. The average length of a PF is between 4.2 and 4.7 mm (Pichitpornchai et al., 1994). If we assume that only granule cells located within the 50 μm thick layer of the PC dendritic tree can make AA synapses, and take the average length of a parallel fibre, they represent only 1 to 2 % of granule cells or parallel fibres. Therefore the vast majority of fibres stimulated locally in the molecular layer belong to GCs distant from the recorded cell and only 1 to 2% are likely to originate from that 50 μm layer and make AA synapses.

To stimulate AAs, a second stimulation pipette was positioned in the GC layer, within a narrow window centred on the PC somato-dendritic plane. The GCs stimulated in this position have a high probability of making AA synapses onto the dendritic tree of the PC, although a small proportion could also make synapses from the proximal portion of PFs after bifurcation. For the sake of simplicity, we will use the terms AA and PF synapses thereafter although the terms proximal and distal synapses (with respect to GC soma) might be more appropriate.

The EPSC amplitude of AA and PF pathways were sampled with a pair of stimulations each (Fig 1A middle panel). On average, the amplitude of the AA-EPSC during baseline recordings was 110 ± 12 pA (median 90 pA) and PF-EPSC 480 ± 100 pA (median 288 pA, $n = 25$), and the paired pulse ratio (PPR) was $PPR_{AA} 1.93 \pm 0.08$ and $PPR_{PF} 1.89 \pm 0.07$. Inhibitory inputs were preserved, and EPSCs were often followed by outward IPSCs. After baseline recording, a protocol aimed at inducing plasticity was applied (synchronous stimulation of both inputs by a train of 15 pulses at 100 Hz, every 3 s, 100 times, in Current clamp, see Fig. 1A bottom panel). Test of the AA and PF amplitude was then resumed. Figure 1A middle panel shows a sample experiment with average traces of the AA-PSC, in blue, and the PF-PSC, in orange, 5 min before (continuous line) the plasticity induction protocol, and 25-30 min after the protocol (dotted line). Subtraction traces (25-30 min - last 5 min) are shown in grey to highlight changes. The AA-EPSC amplitude is increased while the PF-EPSC amplitude is decreased. Figure 1B top panel shows the time course of 25 such experiments for the AA pathway and 26 for the PF pathway with amplitude normalised to the last 5 minutes of control before plasticity induction. It shows that on average, following the induction protocol, we observed a long term change of opposite sign of the two inputs. The AA peak EPSC amplitude increased to $162 \pm 15\%$ of baseline immediately after the induction protocol and then slowly decayed within 15 mins to stabilise at a value of $131 \pm 7\%$ 25 to 30 minutes after induction, significantly larger than the baseline ($p=7e-5$ one-tailed T-test, $n=24$). The PF-EPSC on the other hand was almost unchanged immediately after the protocol ($91 \pm 9\%$) and decreased to $65 \pm 5\%$ of baseline at 25-30 min, significantly smaller than the baseline ($p=1e-7$ one-tailed T-test, $n=25$).

Figure 1B also reveals a rundown of the EPSC amplitude during the baseline period, potentially obscuring long term changes induced by plasticity. A series of control experiments was conducted to quantify the rundown (No Stim experiments, see Figure 1-figure supplement 1). After the baseline period, recording was switched to Iclamp for 5 min, but no stimulation was delivered during that period. Continuous lines Figure 1B top panel show the average time course for 17 No Stim experiments for the AA- (blue) and PF-EPSCs (orange). On average, 25 to 30 minutes after the Iclamp period, the AA-EPSC

was $80 \pm 6\%$ of baseline ($n = 16$, significantly smaller than baseline $p = 0.0004$, and significantly smaller than synchronous stimulation protocol $p = 10e-7$) and the PF-EPSC was $81 \pm 8\%$ of baseline ($N = 17$, not significantly smaller than baseline $p = 0.062$, and not significantly larger than synchronous stimulation protocol $p = 0.106$), indicating a rundown of the amplitude for both pathways during experimental time, independent of the induction protocol. The extent of AA- and PF-EPSC rundown was not significantly different ($n = 16$ and 17 respectively, $p = 0.82$). These values can be used to correct long term changes. When compensating for rundown, the plasticity protocol caused a long lasting effective increase of the AA-EPSC to 164% of baseline and a decrease of the PF-EPSC to 80% of baseline on average.

Fig 1B middle panel shows the ratio of normalised AA and PF peak amplitudes (AA/PF). This measure highlights the relative amplitude change of AA and PF inputs, or relative plasticity, and eliminates changes common to both pathways, such as the rundown of synaptic responses. On average the normalised amplitude of the AA-EPSC more than doubles compared to that of the PF-EPSC, due to both the increase of the AA peak amplitude and the concomitant decrease of the PF, and this is sustained (AA/PF = 2.5 ± 0.4 with $N = 24$, $p = 3e-4$ after 25-30 mins of induction). Figure 1B bottom panel shows the paired pulse ratio of normalised amplitudes (PPR) for both pathways. While the peak amplitude of the first response in the pair of stimulations showed a progressive decrease, the peak amplitude of the second response of both AA and PF underwent either potentiation or depression respectively, and was relatively stable thereafter. As a result, the normalised PPRs is transiently decreased following induction, but returns to its original value within 25-30 minutes (PPR_{AA} 1.03 ± 0.03 , PPR_{PF} 0.99 ± 0.03 , $N = 24$, $p = 0.81$). Changes of the PPR have been linked to a change of the presynaptic release probability (Zucker and Regehr, 2002). This suggests a transient presynaptic effect on release probability following induction and likely explains the progressive effects on AA and PF responses, but there was no significant long term change of the PPR, suggesting that the long term effects observed are linked to postsynaptic changes.

Additionally, the level of plasticity measured in a given input pathway did not depend on the amplitude of the synaptic response of that input nor on the sum of the amplitudes of the two pathways (see Figure 1-figure supplement 2B), showing that even relatively small inputs can trigger plasticity. We analysed the average number of spikes and the time to the first spike during the first 5 trains of stimulation of the induction protocol. All cells except one did spike, even those with relatively weak synaptic currents for the first evoked response. The plastic change for the AA-EPSC only slightly correlated with the number of spikes ($Pr = 0.48$) and the time to the first spike ($Pr = 0.4$), and no correlation was observed for PFs

(see Figure 1-figure supplement 2C).

To test whether the plasticity observed is due to the co-activation of AA and PF inputs or the specific properties of the stimulated inputs, we performed a series of experiments in which only one of the pathways was stimulated during the induction protocol. Figure 1C depicts the average behaviour in 8 experiments where only the AA pathway was stimulated during induction. The average amplitude of the AA-EPSC progressively decreased to $72 \% \pm 7\%$ ($N = 8$) of control 25-30 minutes after the protocol, similarly to the PF-EPSC ($64 \% \pm 6\%$ of control, $N = 8$), not different from No Stim experiments ($p = 0.49$ and $p = 0.48$ respectively). The normalised amplitude of the AA-EPSC was not significantly different from that of the PF-EPSC following induction (AA/PF: 1.2 ± 0.2 after 25-30 min, $p = 0.58$, $N = 8$, Fig. 1C bottom panel). This shows that stimulation of the AA pathway alone is not sufficient to trigger AA-LTP. Figure 1D shows the average time course of 13 experiments where only the PF pathway was stimulated during induction. In this case, the AA pathway showed a decrease ($84\% \pm 7\%$ of baseline after 25-30 min, $N = 12$), whereas the PF pathway developed a larger depression over time ($64\% \pm 6\%$ of baseline), but not different from No Stim experiments ($p = 0.63$ and $p = 0.25$ respectively). The relative amplitude of the normalised AA-EPSC (AA/PF) increased slowly after induction and was significant after 25-30 min (AA/PF = $140\% \pm 11\%$ of baseline, $N = 12$, $p = 0.01$), in line with the progressive depression of the PF pathway. In these experiments, the PPR of the AA and PF pathways were transiently modified after induction, as in control, but only for the pathway stimulated during the protocol (see Fig. 1C and 1D bottom panel).

Individual and average data are also presented Figure 2C for control, No Stim and AA and PF stimulation only for comparison. Stimulation of either pathway independently did not induce AA-LTP, showing that co-activation of AA and PF inputs is necessary, and AA-LTP is associative. The PF-EPSC decreased following the induction protocol but this was not significantly different from control No Stim experiments.

Timing dependence of plasticity. The relative timing of inputs might be relevant to functional association, as observed for CF-mediated LTD (Safo & Regehr, 2008). We tested whether the relative timing of stimulation of the AA and PF pathways affects plasticity. During the induction protocol, the AA input was stimulated 150 ms after or 150 ms before the PF input. Figure 2A shows that when stimulating AAs 150 ms after PFs, the amplitude of the AA- and PF-EPSCs was depressed to a similar extent (AA was $53 \% \pm 15\%$ and PF $50 \% \pm 20\%$ of baseline, $n = 8$, not significantly different from each other $p = 0.84$), transforming AA-LTP into LTD. These changes were significantly different from experiments with

synchronous stimulation ($p = 8e-5$ for AA and $p = 0.022$ for PF). The relative amplitude of the AA to PF pathway increased but not significantly (AA/PF was $224 \% \pm 75 \%$ of baseline, $n = 8$, $p = 0.2$). On the other hand, when stimulating AAs 150 ms before PFs (see Fig. 2B), the amplitude of the AA-EPSC was first facilitated and declined back to baseline (AA after 25-30 min was $97\% \pm 26\%$, $n = 7$, significantly smaller than synchronous stimulation $p = 0.011$), and the amplitude of the PF-EPSC was now close to baseline ($84 \% \pm 12 \%$, $n = 7$, not significantly larger than synchronous stimulation, $p = 0.062$). The relative amplitude of the AA to PF pathway was not facilitated significantly (AA/PF was $126 \% \pm 31 \%$ of baseline, $p = 0.35$), while the PPR slightly increased ($PPR_{AA} = 114 \% \pm 6 \%$, $p = 0.008$, and $PPR_{PF} = 107 \% \pm 5\%$, $N = 7$ and $p = 0.09$ respectively).

In summary (Figure 2C), following the induction protocol the AA-EPSC was $131\% \pm 7\%$ ($N = 24$) of baseline when AA and PF stimulation was synchronous; it was $53\% \pm 15\%$ when AA stimulation was given 150 ms after PF stimulation ($N = 8$), and $97 \% \pm 26 \%$ ($N = 7$) when the PF stimulation was started 150 ms after AA stimulation. The PF-EPSC was $65 \% \pm 5 \%$ of baseline ($N = 25$, significantly different from AA, $p = 6e^{-11}$) when stimulation was synchronous, $50\% \pm 20\%$ when AA stimulation was delayed by 150 ms ($N = 8$), and $84 \% \pm 12 \%$ when PF stimulation was delayed by 150 ms ($N = 7$).

These experiments show that the relative timing of the AA and PF input stimulation determines the extent of plasticity of both GC synapses, sometimes in opposite directions. The AA-EPSC was either facilitated or depressed significantly when stimulation was synchronous or delayed with respect to PF-EPSC during the induction protocol.

Plasticity induction mechanism. PF-LTD and LTP have been linked to mGluR1 (Daniel et al., 1992; Konnerth et al., 1992; Hémart et al., 1995) and/or NMDAR activation (Casado et al., 2002; Bidoret et al., 2009; Bouvier et al., 2016; Kono et al., 2019), and KOs of either receptor show defects in cerebellar learning (Aiba et al., 1994; Nakao et al., 2019; Kono et al., 2019; Schonewille et al., 2021). mGluR1s are highly expressed by PCs and located postsynaptically at GC to PC synapses. mGluR1s activation requires PF train stimulation, and it has not been observed when stimulating sparse GC synapses (Marcaggi & Attwell, 2005). NMDARs on the other hand are expressed by molecular layer interneurons (Glitsch & Marty, 1999; Duguid & Smart, 2004) and GCs (Bidoret et al., 2009; Bidoret et al., 2015), where they are located on dendrites and presynaptic varicosities. NMDAR are not present postsynaptically at granule cell to Purkinje cell synapses (Llano et al., 1991; Piochon et al., 2007). We investigated the requirement for mGluR1 and NMDAR activation in induction of associative plasticity of the AA and PF pathways.

In figure 3A and B, mGluR1s were blocked using the competitive mGluR1 antagonist CPCCOEt (50 μ M). Figure 3A shows a sample experiment in which both the EPSCs and the delayed IPSCs decreased following induction. In these conditions, on average the AA-EPSC increased transiently following induction, but there was a long term decrease within 25-30 minutes (AA was $72\% \pm 13\%$ of baseline, statistically smaller than control synchronous stimulation, $p=0.0004$, $N=7$ and $N=24$), and the PF-EPSC was also decreased (PF was $54\% \pm 8\%$, $N=7$, not significantly smaller than control synchronous stimulation, $p=0.12$, $N=7$). The transient decrease in PPR was present also in these conditions and for both inputs, indicating no involvement of the mGluR1 in this process.

Figure 3C shows the effect of inhibiting NMDARs with the NMDAR competitive antagonist APV (50 μ M) on associative AA and PF plasticity induction. With NMDARs blocked, AA-LTP observed after synchronous stimulation was completely suppressed. The AA- and PF-EPSCs were on average $50\% \pm 8\%$ and $40\% \pm 9\%$ of baseline 25 to 30 minutes after induction ($n = 6$, significantly smaller than control $p = 2e-6$, and $n = 7$, $p = 0.027$ respectively). When compared to the PF pathway, depression was not significantly different at AA synapses and there was no relative amplitude change (AA/PF = $109\% \pm 22\%$, $n = 5$, $p = 0.34$) at 30 min. APV did not affect the transient depression of the PPRs. These data show that NMDAR activation is required for the associative AA-LTP described here.

These results show the concomitant involvement of both mGluR1s and NMDARs in the induction of plasticity at GC synapses.

Role of inhibition. PCs receive GABAergic inhibition from molecular layer interneurons directly recruited by GCs. GABA_ARs are also present on GCs, including presynaptically on the GC axon (Stell et al., 2007). These presynaptic GABA_ARs are activated by synaptic release of GABA and affect the axonal Cl⁻ concentration and synaptic release (Stell et al., 2007; Astorga et al., 2015; Berglund et al., 2016). Several recent studies have shown that plasticity of PF-EPSCs is affected by GABAergic inhibition. Binda et al. (2016) showed that PF-LTP in mice relies on GABA_AR activation to hyperpolarize PC dendrites and allow recruitment of T-type Ca²⁺ channels. Rowan et al. (2018) also showed that the recruitment of molecular layer interneuron mediated inhibition can modify CF-mediated Ca²⁺ signals and LTD induction.

The role of GABA_ARs-mediated inhibition was tested during plasticity induction. To this end, a series of experiments was performed with the GABA_AR antagonist SR95531 (3 μ M) in the bath throughout the recording, and the AA and PF pathways were stimulated simultaneously (Fig. 4). The sample experiment in Figure 4A shows that the AA-EPSC was slightly increased, while the PF-EPSC was decreased. On

average with GABA_ARs blocked, the AA-EPSC was initially facilitated after induction ($170\% \pm 30\%$, N=9), but that potentiation decreased with time and it was $117\% \pm 24\%$ of baseline after 25-30 minutes. The outcome of induction on the AA pathway was highly variable, and in 2 out of 9 cells, the AA-EPSC was strongly depressed at 25-30 min. On average, AA-LTP was smaller than in control experiments, but given the variability observed, it was not significantly different from control experiments ($p=0.1$). The decrease of the PF-EPSC at 25-30 min ($56\pm 10\%$, N=9) was not significantly smaller than control values ($p=0.19$). The relative plasticity of AA and PF inputs was stable following induction (AA/PF = $330\% \pm 130\%$ at 25-30 min after induction N=9). The PPR of both pathways was transiently decreased. GABA_AR activation therefore seems to be required for efficient induction and maintenance of this type of associative plasticity.

Role of synaptic inputs distribution. We have shown that paired stimulation of AA and PF triggers AA-LTP. AAs can make several synapses per axon, and these are sparsely distributed on the vertical axis of the PC dendritic tree. On the other hand, because PFs are stimulated in the molecular layer, they are stimulated as a dense beam of fibres and therefore a dense patch of synapses. We asked whether induction of AA-LTP is due to the sparse distribution of AA synapses rather than the specific properties of AA inputs.

To test for the role of the sparse distribution of the inputs, a series of experiments was performed substituting local AA stimulation with GC layer stimulation at a distance of 100 to 180 μm from the recorded PC. In this configuration, GC layer stimulation recruits PF synapses sparsely distributed on the PC dendrites and cannot involve AA synapses. The induction protocol was then applied to the sparse PF pathway (PF-sparse), together with the dense pathway stimulated in the molecular layer (PF-dense) (see Fig. 5A). Figure 5B shows an example of an experiment. Traces show the PF-sparse and -dense EPSCs before and after the induction protocol and subtractions (grey) to highlight changes. 25 to 30 minutes after induction, both the sparse and dense EPSCs are reduced. Fig. 5C shows the average time course of 10 experiments. Both the sparse and dense inputs are reduced on average to $88\% \pm 13\%$ of baseline (significantly smaller than control AA, $p = 0.0024$, $n = 10$ PF-sparse and $n = 24$ AA control) and $54\% \pm 10\%$ of baseline (significantly smaller than control PF, $p = 0.017$, $n = 10$ PF-dense and $n = 25$ PF control) after 25-30 minutes respectively. When AA stimulation was replaced by sparse PF stimulation, the amplitude of the PF-sparse input was not increased as seen for AA inputs, but depressed. There was initially no change of the ratio of normalised amplitudes of the two pathways, although with time, the dense PF input stimulated in the molecular layer was more strongly depressed than the sparse input, and the

relative plasticity of PF-sparse increased (PF-sparse/PF-dense = 182 % ± 24 %).

These experiments suggest that associative LTP of the AA input is not due to the sparse distribution of stimulated AA synapses on PC dendrites, but to the stimulation of a population of synapses prone to a specific form of plasticity.

Discussion

We show for the first time that stimulating AA and PF inputs simultaneously triggers LTP of the stimulated AA inputs specifically. AA-LTP is associative as it is not observed with stimulation of either pathway alone and it is timing-dependent. AA-LTP is weakly dependent on GABAergic inhibition, but most interestingly also, it depends on the activation of both mGluR1s and NMDARs. It is linked to the identity of AA synapses rather than their sparse distribution on PC dendrites, as it is not observed for sparse PF inputs. Below we discuss these findings and potential consequences for cerebellar physiology.

Identification of AA synapses. We have shown that the difference in plasticity observed between the AA and PF inputs is not linked to the distribution of synapses on the dendritic tree but to different properties of the synapses. We have argued earlier that our approach for stimulating fibres recruits mainly PF synapses, for molecular layer stimulation, and mainly AA synapses, for local GC layer stimulation. However, we have no morphological identification to verify that all stimulated synapses are strictly AA or PF synapses. Strictly speaking, GC layer stimulation close to the PC soma will recruit synapses from local GCs, formed by the initial portion of the axons, including some formed by the PF close to the bifurcation point, whereas molecular layer stimulation will recruit mostly synapses from distal GCs and formed by the distal portion of the axons. The observed associative plasticity could thus alternatively be due to a gradient of properties of synapses from proximal to distal sites along the GCs axon. If there is a gradient however, it is limited to short distances compared to the total fibre length, as this effect was not observed when stimulating PFs in the GC layer 100-180 μm from the recorded cell (4 to 5% of the total fibre length, Fig. 5). If the plasticity described here applies to a gradient along the GC axon rather than to AAs and PFs, this would not impact the mechanisms identified nor the consequences for cerebellar physiology.

AA plasticity. We have observed AA-LTP with synchronous stimulation and AA-LTD when AAs were stimulated 150 ms after PFs (Fig. 2). To our knowledge, only Sims and Hartell (2005, 2006) examined plasticity at AA synapses and reported the absence of both LTP and LTD associated with CF conjunctive stimulation.

For both AA and PF pathways, the PPR transiently decreased following the induction protocol. Changes of the PPR have been linked to a change of the presynaptic release probability (Zucker and Regehr, 2002). This suggests a transient presynaptic effect following induction, which likely explains the progressive changes of AA and PF responses. Presynaptic GABA_B and CB1 receptors have been shown to modulate the presynaptic release probability at granule cell to Purkinje cell synapses, but they decrease release and increase the PPR (Dittman and Regehr, 1997; Safo and Regehr, 2005). Also, endocannabinoid release is triggered by mGluR1 activation, but mGluR1 block did not affect the transient decrease of the PPR. Therefore activation of these receptors cannot account for the transient presynaptic effect we observed. However, there was no significant long term change of the PPR, suggesting that AA-LTP is due to postsynaptic changes.

Activation of both mGluR1s and NMDARs was required for AA-LTP induction (see Fig. 3). This is interesting in view of the past involvement of these receptors, mostly independently, in postsynaptic forms of cerebellar PF LTD and LTP, both linked to PF stimulation (Daniel et al., 1992; Konnerth et al., 1992; Hémart et al., 1995; Lev-Ram et al., 1997; Casado et al., 2002; Safo and Regehr, 2005; Bidoret et al., 2009; Bouvier et al., 2016). The difference with previous reports lies with the simultaneous stimulation of AA with a PF beam. The conjunctive requirement for NMDAR and mGluR1 activation could be explained based on the dependence of plasticity on the concentrations of both NO and postsynaptic calcium (Coesman et al., 2004; Safo and Regehr, 2005; Bouvier et al., 2016; Piochon et al., 2016). NO production has been linked to the activation of NMDARs in granule cell presynaptic boutons (Casado et al., 2002; Bidoret et al., 2009; Bidoret et al., 2015; Bouvier et al., 2016), or occasionally in molecular layer interneurons (Kono et al., 2019). NO is a diffusible messenger and it activates the Guanylate Cyclase in the postsynaptic Purkinje cell. On the other hand, mGluR1s in Purkinje cells are strongly linked to Ca²⁺ signalling. They activate several downstream pathways, including IP₃-mediated Ca²⁺ release from stores (Finch & Augustine, 1998; Takechi et al., 1998), a slow EPSC mediating calcium entry (Canepari et al., 2004; Canepari and Ogden, 2006) and regulate voltage activated Ca²⁺ channels (Hildebrand et al., 2009; Otsu et al., 2014; Ait Ouares et al., 2020)), all leading to an increase of the postsynaptic calcium concentration. NMDARs and mGluR1s could cooperate to control postsynaptic plasticity (see Diagram

1A).

Presynaptic NMDAR and postsynaptic mGluR1 activation could take place at AA and PF synapses independently. However, the need for coincident activation of the two synaptic inputs suggests either spatial overlap or a requirement for crosstalk between the two synaptic territories. Our experiments used horizontal slices, where PC dendrites dip into the slice, so we have no indication whether the two synaptic territories overlap. Given the size of the synaptic currents (Suppl. Fig. 2) however, they represent a small number of synapses compared to the total number formed by granule cells on a PC. The median PF-EPSC (288 pA, $n = 25$) corresponds to approximately 34 active synapses (unitary amplitude for distal GC to PC connection is 8.4pA (Isope and Barbour, 2002)). Taking into account that 85% of the synapses formed by PFs onto GCs are silent, our stimulation likely recruits about 230 synapses, active and silent, put together. For a similar unitary synaptic size, the median AA-EPSC (90 pA) would correspond to 11 active synapses and a total of 22 synapses (50% of local GC to PC connections are silent (Isope and Barbour, 2002)). These numbers represent less than 0.2% of the 175 000 excitatory synapses present on the dendritic tree of a PC (Napper and Harvey, 1988). Given that we placed the PF stimulating electrode at variable depths and distances from the recorded Purkinje cell, there is statistically little chance of reproducible overlap between the territories of PF and AA recruited. Moreover, AA synapses will be spread in the vertical axis of the dendrites whereas PF synapses will form a dense patch on the PC dendrites. Spatial overlap is therefore unlikely to happen in a significant proportion of experiments, suggesting that for interaction to occur a signal needs to propagate from PF to AA synapses to explain associative AA-LTP.

Crosstalk might be required because a receptor is absent from AA synapses or a pathway fails to activate. The specific localisation of receptors at AA vs PF synapses is unknown. If mGluR1 is present at AA synapses, stimulation could activate the mGluR1 slow EPSC or mGluR1 mediated presynaptic endocannabinoid inhibition. However, this is not observed at sparse PF inputs unless glutamate transporters are blocked (Marcaggi and Attwell, 2005), which is thought to reflect insufficient glutamate buildup, and makes it difficult to localise the receptors. mGluR1 mediated Ca^{2+} release from stores shows a higher sensitivity to glutamate (Canepari and Ogden, 2006) and might take place with sparse inputs, but Ca^{2+} signals have not been investigated in this configuration, and we do not know if mGluR1s are present at AA synapses. Similarly, we do not know whether presynaptic NMDARs are present.

A crosstalk mechanism would require propagation of a signal between synaptic territories. mGluR1-

mediated Ca^{2+} signals in Purkinje cells are not expected to propagate across the PC dendritic tree, because both Ca^{2+} and IP_3 are quickly buffered. On the other hand, mGluR1-mediated Ca^{2+} release from stores is known to require priming by depolarisation (Canepari and Ogden, 2006). It is possible that mGluR1s are present at AA synapses, but Ca^{2+} release fails to activate because the local depolarisation is insufficient. The PF beam stimulated forms a dense patch of synapses which will be very efficient at depolarising the membrane potential locally, and this depolarisation might spread to AA synapses if it reaches threshold for active conductances. Fluctuations of the dendritic membrane potential triggered by the PF-EPSC might enable mGluR1-mediated Ca^{2+} signals at AA synapses. The isolation of AA synapses in fine dendritic branches (Lu et al., 2009) might make them more prone to depolarisation. mGluR1 activation also triggers the production of endocannabinoids (EC; Maejima et al., 2001; Brown et al., 2003), and presynaptic CB1Rs have been involved in PF-LTD (P. K. Safo & Regehr, 2005; Carey et al., 2011). Similarly, NO is released by the activation of presynaptic NMDARs. EC and NO are both diffusible messengers and potential substrates for crosstalk between AA and PF synapses. Activation of PF synapses might be required for NO or EC production and diffusion to AA synapses (See Diagram 1 for potential crosstalk mechanisms). Further experiments will be required to test whether EC or NO are sufficient to induce AA-LTP when stimulating AA inputs on their own.

PF synapses. In the experimental conditions used here, the induction protocol had no significant effect on the amplitude of the PF-EPSC although we observed a tendency to decrease. This was unexpected because the induction protocol we used, when applied to PF only and with inhibition preserved, was previously shown to induce PF-LTP (Binda et al., 2016; Jörntell & Ekerot, 2002), although not always (Gonzalez-Calvo et al., 2021). But Binda et al. (2016) also showed that PF-LTP was not sustained when inhibition was blocked during induction, contradicting other studies performed with inhibition blocked (Bouvier et al., 2016; Piochon et al., 2016; Schonewille et al., 2021) with Picrotoxin or Bicuculline (a blocker of SK channels, Khawaled et al., 1999). Moreover, PF-LTP either relied on mGluR1 activation (Binda et al., 2016), or NMDAR activation (Bidoret et al., 2009; Bouvier et al., 2016; Schonewille et al., 2021). Therefore, we do not have an explanation for the lack of PF-LTP, but the literature shows multiple contradictions, likely indicating that the processes involved are sensitive to the experimental conditions. Noticeable experimental differences with the study of Binda (2016) are the use of mice rather than rats, differences in the orientation of cut of the slices, which might have resulted in the study of different cerebellar lobules, but importantly also, we used a low internal Cl^- concentration, reproducing the concentration estimated in PCs (Chavas & Marty, 2003), and the recording solution was supplemented

with 10 μM of the Ca^{2+} buffer EGTA.

Role of inhibition. Experiments were performed with inhibition preserved and GABA_A Rs activation was shown to secure efficient induction of AA-LTP (see Fig. 4). Block of GABA_A Rs did not suppress the initial increase in amplitude, but under these conditions plasticity was not sustained, highly variable and not significant when compared to control experiments. Inhibition indeed seems to interfere with plasticity induction (Binda et al., 2016; Rowan et al., 2018). At this stage, we have no detail on the mechanism of influence of GABAergic inhibition in AA-LTP induction. Binda et al. (2016) showed that hyperpolarisation by IPSCs relieves inactivation of T-type Ca^{2+} channels, themselves regulated by mGluR1, boosting Ca^{2+} signals and triggering PF-LTP. That mechanism would seem compatible with our results at AA synapses although we do not know whether it requires NMDARs activation. On the other hand, the work by Rowan (2018) indicated that inhibition decreased Ca^{2+} entry, and as a result converted LTD into LTP. In this study, inhibition was recruited using optogenetics rather than synaptic excitation, and it is possible that the pattern of inhibition generated was less physiological, both with respect to the number of molecular layer interneurons stimulated and timing. This might explain the different results.

Cerebellar physiology.

We argued in the introduction that, as a consequence of morphology, AAs can only form synapses with a few PCs, while PFs course through and synapse with the dendrites of hundreds of PCs. AA synapses are suited to encode precise and selective information from the receptive field, while PF synapses could efficiently represent context. This work is consistent with the idea that they are functionally different and might fulfil distinct roles with respect to the computation performed by the cerebellar cortex. The associative form of plasticity we describe, together with the time dependence, is expected to reinforce AA signals presented conjointly with PF, or within a pertinent time window, while attenuating signals presented in isolation. This would lead to strengthening of the inputs linked to activity in other receptive fields.

This work shows that associative plasticity in PCs can be triggered by granule cell inputs independently of the climbing fibre, requiring only moderate inputs, in contrast with the powerful CF, which triggers widespread depolarisation and Ca^{2+} increase. The climbing fibre is classically associated with error signals and learning (Albus, 1971; Ito and Kano, 1982; Marr, 1969; Medina and Lisberger, 2008; Yang and Lisberger, 2014). However, both climbing fibre (Kostadinov et al., 2019) and granule cells (Wagner et al., 2017) have been shown to encode reward signals, which might be important in driving plasticity.

Acknowledgements. We would like to dedicate this work to the memory of David Ogden, who was influential in placing the cerebellum at the centre of this work. We thank Brandon Stell and Alain Marty for discussions on the manuscript. We thank the Animal Housing and Breeding facility and the Prototyping facility of BioMedTech facilities (INSERM US36, CNRS UAR2009, Université Paris Cité) for providing the animals used in this study and assistance with technical developments. The work was funded by ANR grants ANR-19-CE37-011-01 SpinoCereLoco and ANR-18-CE16-0010-01 RewardInhib.

Methods

Ethical approval: Sprague Dawley rats were provided by Janvier (St Berthevin, France) or bred and subsequently housed at the Animal Housing and Breeding facility of BioMedTech facilities (INSERM US36, CNRS UAR2009, Université Paris Cité) in agreement with the European Directive 2010/63/UE regarding the protection of animals used for experimental and other scientific purposes. Experimental procedures were approved by the French Ministry of Research and the ethical committee for animal experimentation of Paris Cité.

Slice preparation: Experiments were performed on horizontal slices 300 μm thick cut from the cerebellum of 19-25 day-old Sprague-Dawley male or female rats. Briefly, rats were killed by decapitation under general anaesthesia following inhalation of the volatile anaesthetic isoflurane at a concentration of 3-4% in accordance with the Directive 2010/63/UE, and the cerebellum was quickly removed. After removal of the brainstem, the tissue was glued to the stage of a vibratome (Leica VT1200S, Germany). Slices were cut at a temperature of 34° C and subsequently kept in a vessel bubbled with 95% O₂ / 5% CO₂ at this temperature. Slice preparation and recordings were made in a bicarbonate buffered solution containing in mM: 115 NaCl, 2.5 KCl, 1.3 NaH₂PO₄, 26 NaHCO₃, 2mM CaCl₂, 1mM MgSO₄, 0.1mM Ascorbic Acid, and 25 glucose.

Patch-clamp recording of synaptic currents: Whole-cell patch-clamp recordings were made from PCs, identified by their size and location at the edge of the molecular and GC layers, with an EPC10 amplifier (HEKA, Germany) and PatchMaster acquisition software. Bath temperature was kept at 30-32° C The internal solution contained in mM: 135 KGlucuronate, 10 K₂ Creatine Phosphate, 10 HEPES, 0.01 EGTA, 2.5 MgCl₂, 2 ATPNa₂ and 0.4 GTPNa, pH adjusted to 7.3 with KOH and osmolarity to 295 mOsm/kg. When filled with the internal solution, recording pipettes had a resistance between 3 and 4 M Ω . Membrane

currents were recorded at a pipette potential of -60 mV (not corrected for junction potential of approximately -12 mV pipette-bath). Series resistance was 80-90 % compensated. During experiments, the preparation was visualised on an upright microscope (Olympus BFX51; 60x 0.9 NA water dipping objective) and the bath was continuously perfused at a rate of 5 ml/min (5 bath volumes per min) with solution equilibrated with 95% O₂ / 5% CO₂ to maintain pH and solution recirculated.

Plasticity of GC to PC synapses was studied in horizontal cerebellar slices as these slices better preserve PFs running in the plane of cut. At this age, GC synapses are well established (Ichikawa et al., 2016). AAs and PFs were stimulated with patch pipettes slightly larger than those used for recordings filled with a HEPES-buffered external solution and positioned either in the molecular (lower two thirds) or the GC layer, as discussed in the result section. The baseline amplitude of both AA and PF pathways were sampled with a pair of suprathreshold pulses at 50 ms interval, delivered every 10 s (Fig 1A top panel, stimulation was biphasic, 100-180 μ s duration, 5 to 15V). The AA and PF test stimuli were separated by 0.5 s. Stimulation strength was adjusted between 5 and 15V to stimulate AA- and PF-EPSCs reliably. PF stimulation was usually very efficient as fibres are densely packed in the molecular layer and PF-EPSC amplitude typically increased smoothly with stimulation intensity. Although we originally worked with large amplitude PF-EPSCs (up to about 1nA), we aimed at amplitudes of a few hundred pA, closer to the amplitude of stimulated AA-EPSCs, by adjusting stimulation intensity. Granule cell somas and axons are more sparse in the granule cell layer and stimulation intensity was adjusted to activate EPSCs a few hundred pA when possible, but increasing stimulation intensity did not necessarily recruit larger EPSCs. Care was taken to avoid stimulating the local Purkinje cell axon and climbing fibre. Once a stable input was obtained, stimulation intensity was raised by one Volt to increase reliability. In most of the experiments AAs were tested first to avoid possible interference from mGluR1s activation and the release of endocannabinoid by PFs stimulation. No antagonist of the inhibitory inputs was applied. Evoked responses consisted of excitatory postsynaptic currents (EPSCs) that were often quickly followed by inhibitory postsynaptic currents (IPSCs) (mixed EPSC/IPSC, see Appendix 1). The low Cl⁻ concentration in the intracellular solution ensured the reversal potential for Cl⁻ was close to the value determined for PCs (-85 mV, (Chavas & Marty, 2003)), and IPSCs were outward at the recording potential of -60 mV. After recording a baseline period of at least 10 minutes, we applied a stimulation protocol aimed at inducing plasticity. The recording configuration was switched to Current clamp and the potential set and maintained near -65 mV. The protocol applied (see Fig. 1A bottom panel) consisted in the synchronous stimulation of both inputs by a train of 15 pulses at 100 Hz repeated every 3 s a total of 100 times.

Following the induction protocol, the recording configuration was returned to Voltage clamp and test of alternate AA- and PF-EPSC amplitude resumed.

Data were excluded from analysis if synaptic stimulation became unstable and resulted in loss of the synaptic response or unstable responses. In the result section the number of cells sometimes differ for the two pathways for a given set of experiments, because one of the inputs was sometimes lost during the 30 minutes following induction. Because the protocol was properly applied, the data for the remaining input were included in the results. Occasionally, stimulation of an input started stimulating the Climbing fibre or the Purkinje cell itself during the course of an experiment. Climbing fibre stimulation precludes measurement of the EPSC and could trigger plasticity. Stimulation intensity of that input was reduced to avoid recruiting the fibre or Purkinje cell, and the input was excluded from analysis.

Analysis of evoked EPSCs: For the analysis of synaptic currents, raw current traces were exported to Igor Pro (Wavemetrics) and peak excitatory current amplitudes were measured as the minimum of the synaptic response (mixed EPSC/IPSC) over a time window overlapping the peak and spanning a few sampling points of the average EPSC. Since the plasticity protocol might affect EPSCs and IPSCs differently, and might therefore affect our estimate of the peak EPSC and its long term changes, we conducted a set of experiments to measure the IPSCs and EPSCs separately and confirmed that measuring the minimum of the mixed EPSC/IPSC gives a good estimate of EPSC amplitude and its long term changes (see Appendix 1).

Chemicals: 2-(3-Carboxypropyl)-3-amino-6-(4methoxyphenyl)pyridazinium bromide (SR 95531), D-(-)-2-Amino-5-phosphonopentanoic acid (D-AP5) and 7-(Hydroxyimino)cyclopropa[b]chromen-1a-carboxylate ethyl ester (CPCCOEt) were purchased from Tocris Bioscience or from HelloBio (UK). CPCCOEt was dissolved in DMSO at a concentration of 100mM. All other stocks were prepared in water. Drugs were diluted in saline just before use. All other chemicals were purchased from Sigma.

Statistical significance was tested with non-parametric methods for most of the data sets. These do not require assumptions about the nature of the distribution of the variables (as parametric tests do); we used either the Wilcoxon signed rank test (non-parametric, for paired samples) or the Wilcoxon Mann Whitney test (non-parametric, for unpaired samples). The T-test was used for control data only, where N was big enough to show a normal distribution of the variables (see Figure 1-figure supplement 2). Tests were conducted using Igor Pro (Wavemetrics). All values given are mean \pm SEM.

Data availability Raw data for all figures and some of the analysis data are available on Dryad DOI: [10.5061/dryad.zs7h44jk0](https://doi.org/10.5061/dryad.zs7h44jk0)

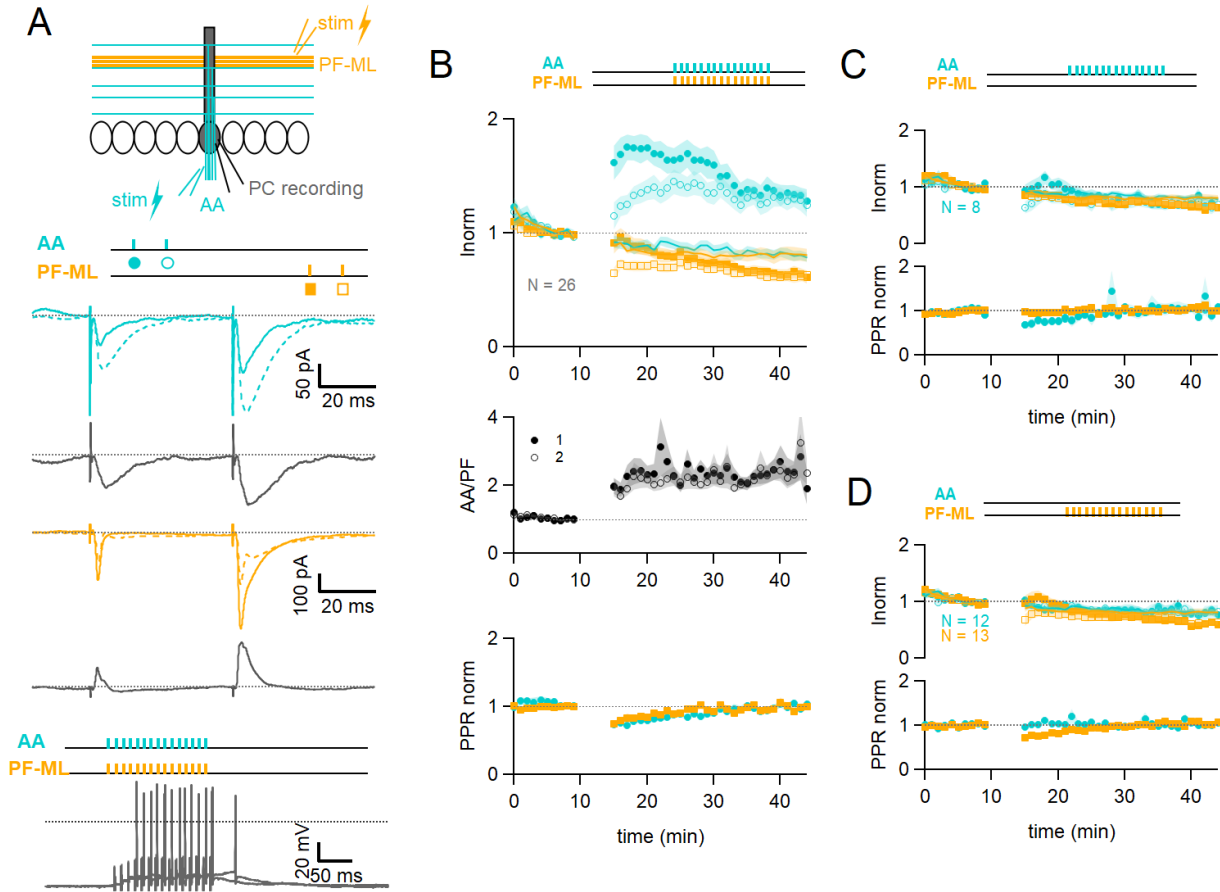


Figure 1: Associative plasticity of AA and PF inputs. **A, top.** Whole cell recording in a PC. Two stimulation electrodes are used to activate GC inputs: one in the molecular layer to stimulate PFs (orange), and one in the GC layer to stimulate AAs (blue). The test stimulation protocol is depicted with colors and symbols as used in the plots in the following sections for the first (closed) and the second EPSCs (open). **Middle,** AA- and PF-PSCs sampled with a pair of pulses (dt = 50 ms), every 10 s. Traces from one experiment: average AA-PSC (blue) and PF-PSC (orange), before (5-10 min, continuous line) and after the induction protocol (25-30 min, dotted line). Subtraction in grey. AA-EPSC amplitude increased while PF-EPSC amplitude decreased. No antagonist was applied. Evoked responses consisted of an EPSC often followed by an IPSC. **Bottom,** induction protocol. Recording switched to current clamp, $V_H = -65$ mV. AAs and PFs are stimulated synchronously by a train of 15 pulses at 100 Hz every 3 s for 5 min. Grey traces, responses to the first two trains of stimulation. **B Top,** plot of the average AA- and PF-EPSC amplitude normalised to baseline for synchronous stimulation (5-10min, n = 26, colours and symbols as in A) and control No Stim experiments (continuous lines). Following induction, a long term change of the inputs was observed. The amplitude of the AA-EPSC increased to $131\% \pm 7\%$ (N = 24) of

baseline 25-30 min after induction. The PF-EPSC on the other hand decreased slowly to $65\% \pm 5\%$ ($N = 25$) of baseline. Continuous lines show the average time course of AA- and PF-EPSC amplitudes during control No Stim experiments where no stimulation was performed during the Iclamp period ($N = 17$, see Figure 1- figure supplement 1), showing the extent of EPSC rundown during the course of the recordings. **Middle**, the average ratio of the normalised amplitudes of AA- and PF-EPSCs (AA/PF), highlighting the relative change of the inputs, doubles. **Bottom**, the average normalised paired pulse ratio (AA2/AA1 and PF2/PF1) is transiently decreased following induction. **C**. Average of 8 experiments with stimulation of the AA pathway only during induction (labels, colours and symbols as in A), and No Stim experiments overlaid (continuous lines). **Top**, the normalised amplitudes of AA- and PF-EPSCs progressively decreased to $72\% \pm 7\%$ ($N = 8$) and $64\% \pm 6\%$ ($N = 8$) of baseline respectively, not significantly different from No Stim experiments. Stimulation of the AA pathway alone is not sufficient to trigger AA-LTP. **D**. Average of 13 experiments with stimulation of the PF pathway only during induction (labels), and No Stim experiments overlaid (continuous lines). **Top**, the normalised AA-EPSCs showed a small and steady depression ($84\% \pm 7\%$ of baseline after 25-30 min) whereas the PF-EPSC depressed over time ($64\% \pm 6\%$), not significantly different from No Stim experiments. Stimulation of the PF pathway on its own is not sufficient to trigger plasticity. **C and D bottom**, the PPR of the AA and PF pathways transiently decreased only for the pathway stimulated during induction. Values given are mean \pm SEM. SEM represented by shading.

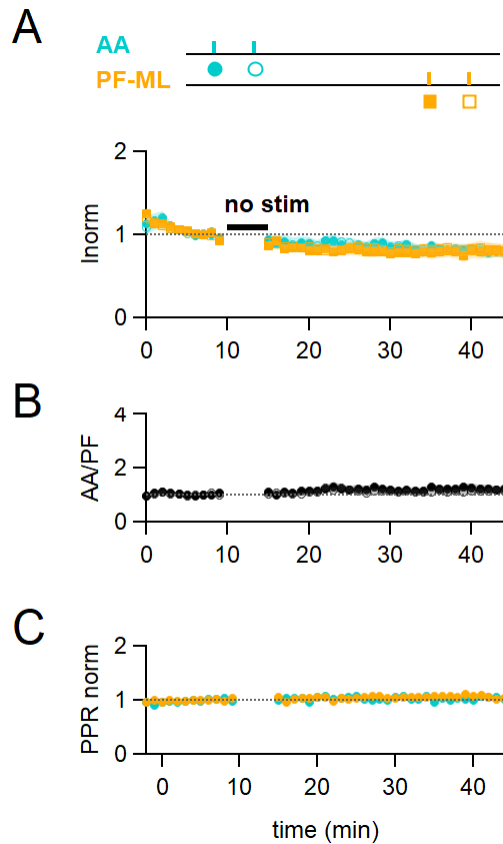


Figure 1 - figure supplement 1: Control No Stim experiments. **A**, plot of the average AA- and PF-EPSC amplitude normalised to baseline ($n = 17$, colours and symbols shown on the experimental protocol). No stimulation was applied during the 5 min IClamp period. Rundown of the AA- and PF-EPSCs peak amplitude was observed throughout the experiments. On average, the amplitude of the AA-EPSC and PF-EPSC decreased to $80 \pm 6\%$ ($n = 16$, significantly smaller than baseline $p = 0.0004$) and $81 \pm 8\%$ ($N = 17$, not significantly smaller than baseline $p = 0.062$) of baseline 25-30 min after induction respectively, indicating a rundown of the amplitude for both pathways during experimental time, independent of the induction protocol. **B**, average ratio of the normalised amplitudes of AA- and PF-EPSCs showing relative stability of the inputs following the No Stim protocol. **C**, average normalised paired pulse ratio (AA2/AA1 and PF2/PF1) is unchanged.

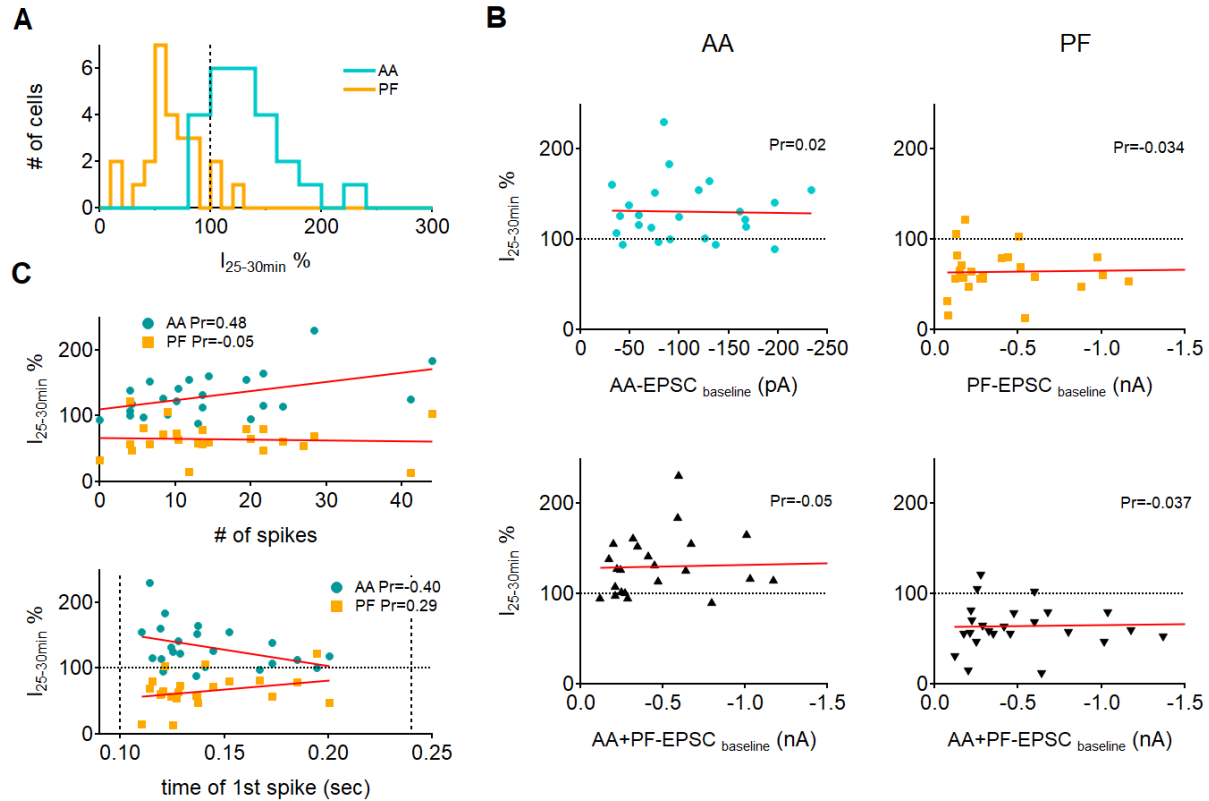


Figure 1 – figure supplement 2: Effect of EPSC amplitude and spiking of the Purkinje cell on plasticity.

A. Histogram showing the distribution of long term changes of AA- and PF-EPSCs for all control cells. Data is normally distributed. **B.** Top: plots of long term changes of AA- and PF-EPSCs amplitudes for control cells as a function of the baseline EPSC amplitude ($n = 24$ for AA and $n=25$ for PF). The red line represents the linear fit of the data. No correlation was observed between plastic changes and the initial amplitude of the response, as indicated by the Pearson's coefficients of linear regression (Pr). Bottom: long term changes plotted as a function of the sum of baseline AA and PF amplitudes to check for a cooperative effect of the inputs. Again, no correlation was found between the long term plasticity outcome and the total amplitude of synaptic currents, as indicated by the linear fits and regression coefficients. **C.** Plots of long term changes in AA and PF amplitudes as a function of the number of spikes evoked by synchronous stimulation during induction (top) and the time at which the first spike was fired (bottom, dotted vertical bars indicate the beginning and end of the stimulus train). For each cell the number of spikes and the time of the first spike are averaged over the first 5 trains of stimulation. The decrease of PF responses was independent of the number of spikes evoked or the time at which the first spike was fired (Pr:Pearson's coefficient of linear regression). For AA responses instead, there was a moderate positive correlation between the level of LTP and the number of spikes, and a moderate

negative correlation between the level of LTP and the time at which the first spike was fired, indicating a weak dependence of AA plasticity on spiking during induction.

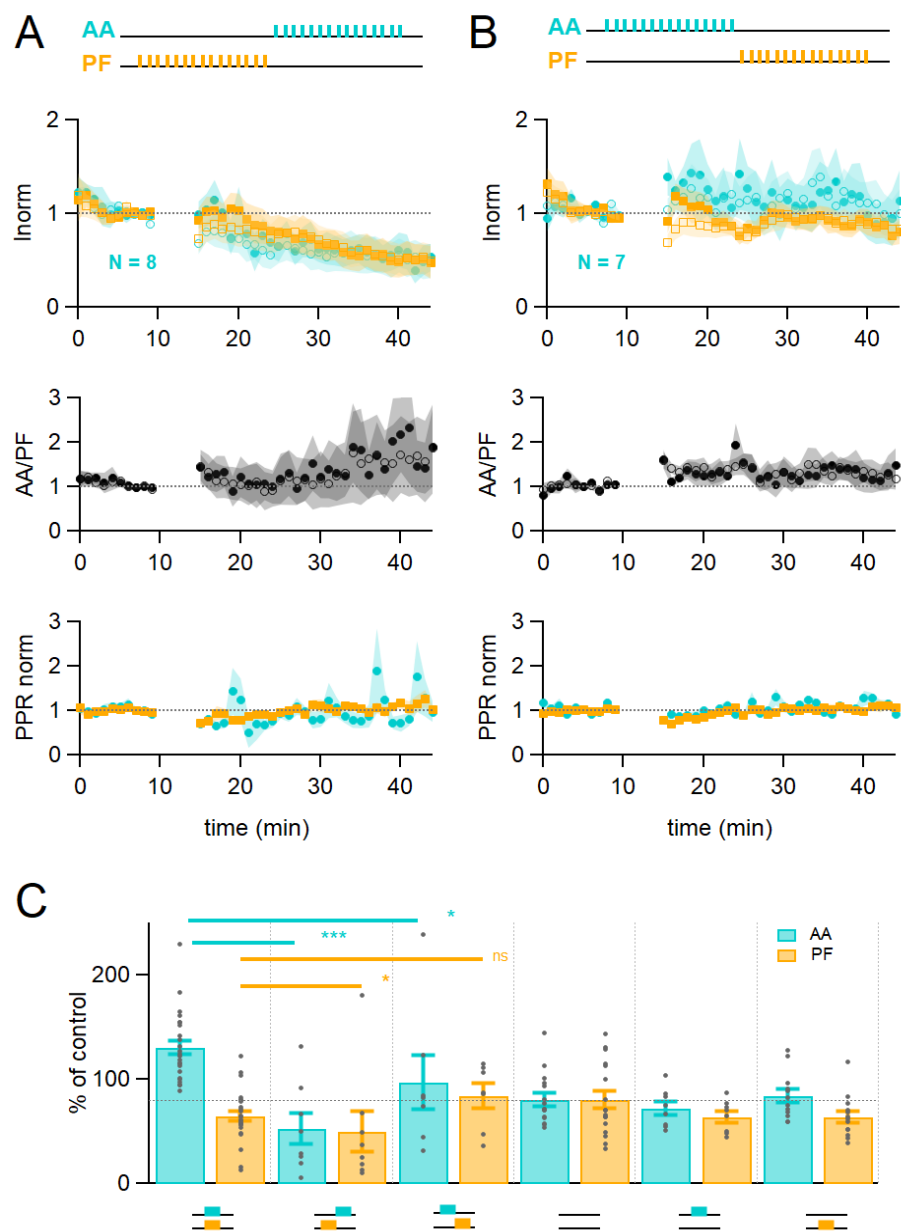


Figure 2: Time dependence of plasticity. A. On average, when stimulating AAs 150 ms after PFs, the AA- and PF-EPSCs decreased by a similar extent (AA was $53\% \pm 15\%$, PF $50\% \pm 20\%$ of control, $n = 8$). The relative normalised amplitude of the AA pathway increased but not significantly (AA/PF was $224\% \pm 75\%$ of control, $n = 7$). Colour coding for AA and PF input pathways. Closed symbols for the first and open symbols for the second EPSCs. **B.** When stimulating AAs 150 ms before PFs, the AA-EPSC facilitated, but declined back to baseline (AA was $97\% \pm 26\%$ of control, $n = 7$), and the PF-EPSC was maintained close to baseline (PF $84\% \pm 12\%$ of control, $n = 7$). The relative normalised amplitude of the AA pathway and the

PPR were not affected significantly (AA/PF was $126 \% \pm 31\%$ of control, and $PPR_{AA} = 114.4 \% \pm 6.4 \%$, $PPR_{PF} = 107.1 \% \pm 4.6\%$, $N = 7$). **C.** Average amplitude at 25-30 min as a percentage of baseline for various timing of stimulation, control No Stim, AA only and PF only stimulation. Individual data points are overlaid for each type of experiment. The AA-EPSC was $131\% \pm 7\%$ of baseline ($N = 24$) 25 to 30 min after induction when AA and PF stimulation was synchronous. It was $53\% \pm 15\%$ ($N = 8$) when AA stimulation was delayed by 150 ms, and $97 \% \pm 26 \%$ ($N = 7$) when PF stimulation was delayed by 150 ms. The PF-EPSC was $65 \% \pm 5 \%$ of baseline ($N = 25$) when stimulation was synchronous, $50\% \pm 20\%$ ($N = 8$) when AA stimulation was delayed by 150 ms, and $84 \% \pm 12 \%$ ($N = 7$) when PF stimulation was delayed by 150 ms. The horizontal dotted line indicates EPSC amplitude at the end of No Stim experiments. (** $p \leq 0.001$, * $p \leq 0.05$, ns: not significant). Values given are mean \pm SEM. SEM represented by shading.

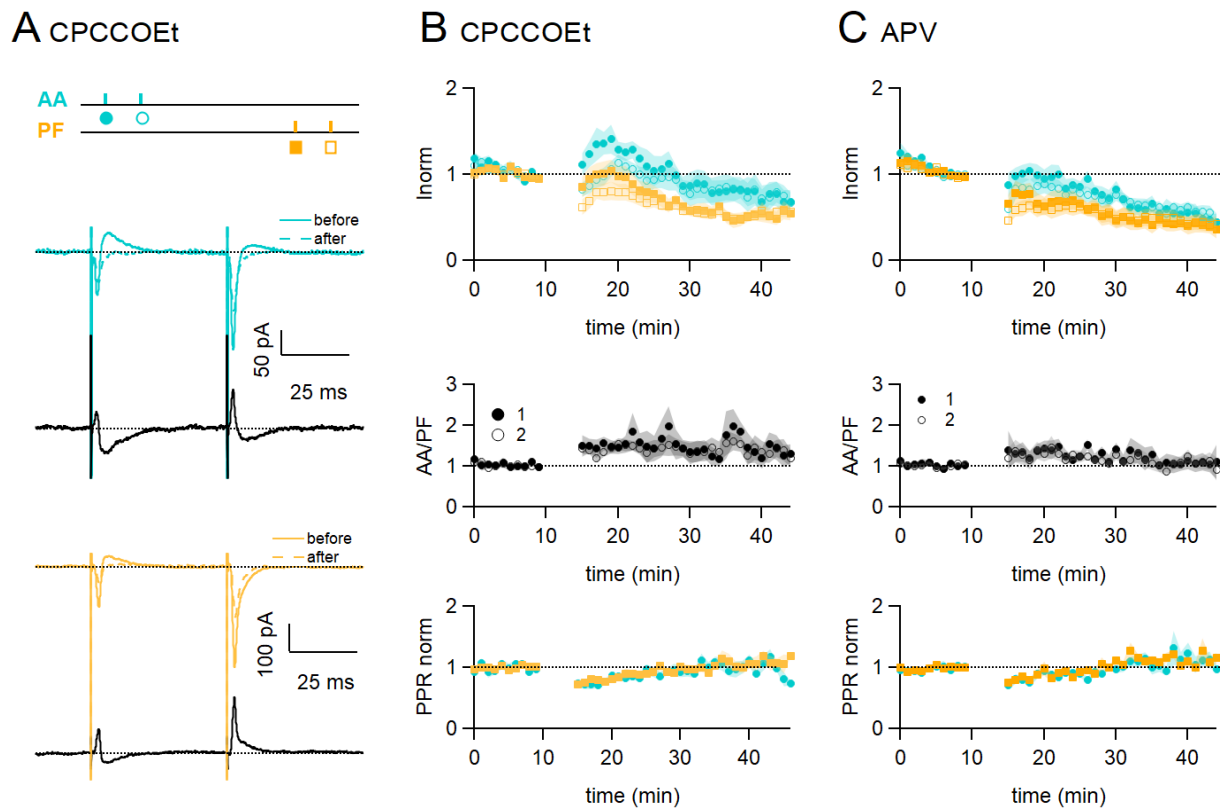


Figure 3: Role of NMDARs and mGlu1s. A. Bath application of CPGCOEt ($50 \mu\text{M}$), a selective blocker of mGlu1Rs, strongly inhibits LTP of AA-EPSCs. Sample recordings from one experiment. Traces are the average of the AA (blue) and PF (orange) synaptic responses, before (5-10 min, continuous line) and after induction (25-30 min, dotted line). Subtraction traces (25-30 min - 5-10min) in black. A decrease of the AA-EPSC and PF-EPSC is observed. The test stimulation protocol is depicted with colours and symbols as used in the plots in the following sections for the first (closed) and the second EPSCs (open). **B. Top:** Average time course of the normalised AA- and PF-EPSCs ($N = 8$). mGlu1 receptor block impairs AA-LTP. **Middle:** a small sustained increase of the ratio of normalised amplitudes (AA/PF) is observed. **Bottom:** Plot of the normalised PPR of both inputs. **C. Top:** Average time course of the normalised AA- and PF-EPSCs (colours and symbols as in A) in the presence of APV ($50 \mu\text{M}$) ($N = 7$). Both AA and PF pathways are depressed, showing that NMDAR activation is necessary for AA-LTP induction. **Middle:** The ratio of normalised amplitudes (AA/PF) is slightly increased, reflecting a slower depression of the AA inputs. **Bottom:** Plot of the normalised PPR of both inputs. Values given are mean \pm SEM. SEM represented by shading.

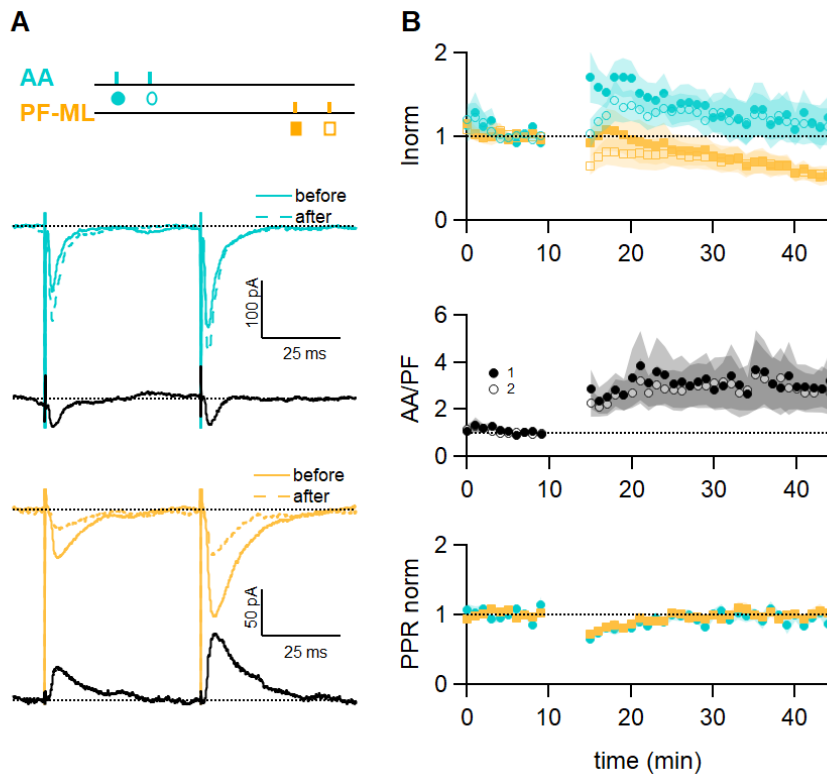


Figure 4: GABA_A receptor block affects long term plastic changes. **A.** Sample recordings from an experiment in the presence of the GABA_AR antagonist SR (3 μM). Paired EPSCs evoked before and after induction, together with subtraction traces (black), are shown for the AA (blue) and PF (orange) pathways. The AA-EPSC is increased after induction and the PF-EPSC is strongly decreased in this experiment. The test stimulation protocol is depicted with colours and symbols as used in the plots in the following section for the first (closed) and the second EPSCs (open). **B.** Average time course of the normalised AA- and PF-EPSCs (N = 9). The big errors in AA peak amplitude observed after induction are due to the large variability of the outcome of the protocol on this pathway (AA 117%± 24 % ; PF 56%± 10%, n = 9). The ratio of the normalised AA and PF amplitude shows the same variability, while the normalised PPR displays the same relative error and time course as control experiments. Values given are mean ± SEM. SEM represented by shading.

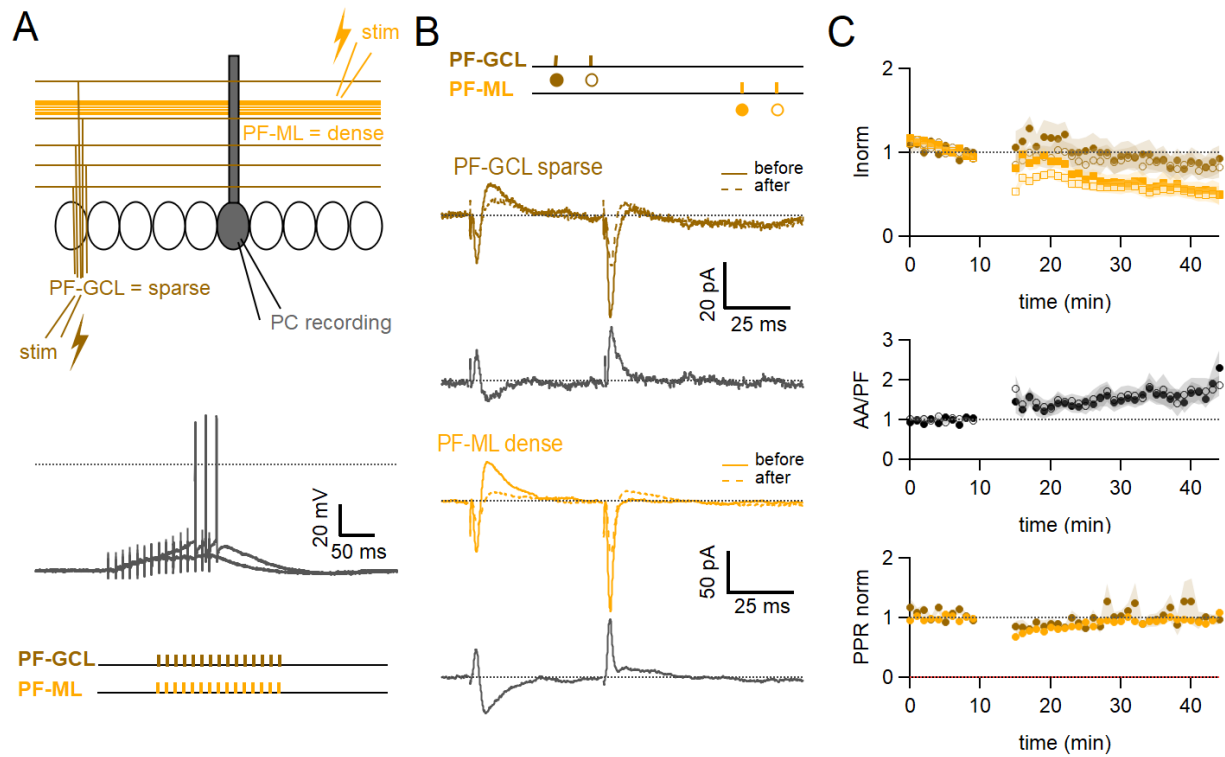


Figure 5: Role of the sparse input distribution. **A.** To test the role of the sparse input distribution, a stimulation electrode was positioned in the GC layer, stimulating only PF synapses sparsely distributed on the PC dendrites. The induction protocol was applied to the sparse PF pathway (PF-sparse), together with the dense PF pathway stimulated in the molecular layer (PF-dense). **B.** Example experiment. Traces show the PF-sparse and -dense EPSCs before and after induction, and subtractions (grey) to highlight changes. The test stimulation protocol is depicted with colours and symbols as used in the plots in the following section for the first (closed) and the second EPSCs (open). 25 to 30 minutes after induction, both the sparse and dense EPSCs are reduced. **Bottom left,** IClamp responses to the first two trains of stimulation. **C.** Average time course of the normalised EPSC amplitudes ($N = 10$). Both sparse and dense inputs are reduced on average to $88\% \pm 13\%$ (significantly smaller than control AA, $p = 0.0024$, $n = 10$ PF-sparse and $n = 24$ AA control) and $54\% \pm 10\%$ of baseline (significantly smaller than control PF, $p = 0.017$, $n = 10$ PF-dense and $n = 25$ PF control) after 25-30 min respectively. With time, the dense PF input was more strongly depressed, and the ratio of normalised amplitudes (PF-sparse/PF-dense) increased to $182\% \pm 24\%$ of control. Values given are mean \pm SEM. SEM represented by shading.

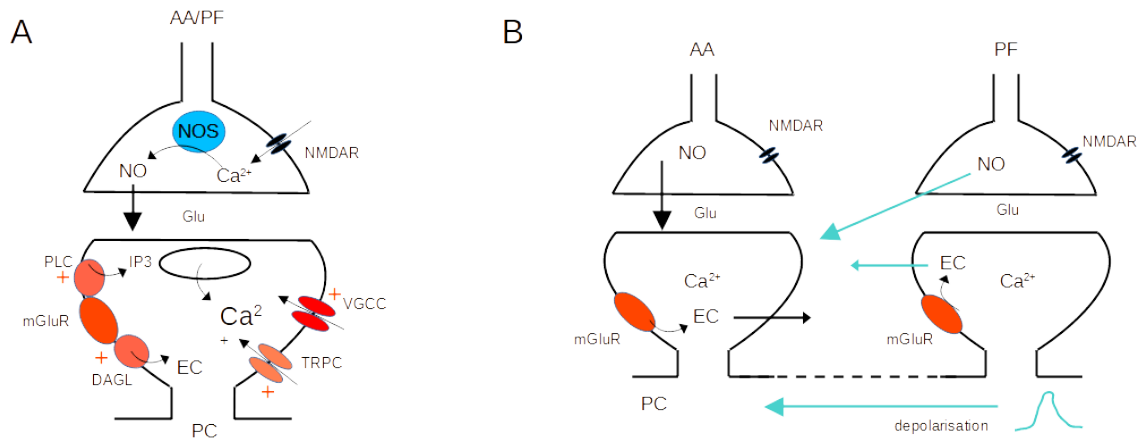


Diagram 1: Molecular pathways and potential crosstalk mechanisms involved in AA-LTP. A. Activation of presynaptic NMDARs triggers Ca²⁺ entry, activation of NOS and production of NO. NO diffuses to the postsynaptic compartment where it triggers Guanylate Cyclase activation and regulation of AMPAR number. Activation of postsynaptic mGluR1s in the PC activates PLC, DAGL, TRPC and a modulation of VGCC, triggering an increase of the Ca²⁺ concentration and EC production. NO and Ca²⁺ concentration control plasticity (Bouvier et al., 2016). **B.** The dendritic depolarisation triggered by activation of the dense patch of PF synapses might prime Ca²⁺ release from stores linked to mGluR1 activation. Alternatively, NO or EC produced at PF synapses might diffuse to AA synapses. Potential sources of crosstalk are highlighted in blue.

AA ascending axon, DAGL Diacylglycerol lipase, EC Endocannabinoids, Glu glutamate, NO Nitric Oxide, NOS Nitric Oxide Synthase, PC Purkinje cell, PF parallel fibre, PLC phospholipase C, TRPC Transient receptor potential canonical channel, VGCC voltage gated calcium channels.

References

- Aiba, A., Kano, M., Chen, C., Stanton, M. E., Fox, G. D., Herrup, K., Zwingman, T. A., & Tonegawa, S. (1994). Deficient cerebellar long-term depression and impaired motor learning in mGluR1 mutant mice. *Cell*, *79*(2), 377–388.
- Albus JS. (1971). A theory of cerebellar function. *Mathematical Biosciences* *10*:25–61. DOI: [https://doi.org/10.1016/0025-5564\(71\)90051-4](https://doi.org/10.1016/0025-5564(71)90051-4)
- Astorga, G., Bao, J., Marty, A., Augustine, G. J., Franconville, R., Jalil, A., Bradley, J., & Llano, I. (2015). An excitatory GABA loop operating in vivo. *Frontiers in Cellular Neuroscience*, *9*, 275. <https://doi.org/10.3389/fncel.2015.00275>
- Berglund, K., Wen, L., Dunbar, R. L., Feng, G., & Augustine, G. J. (2016). Optogenetic Visualization of Presynaptic Tonic Inhibition of Cerebellar Parallel Fibers. *The Journal of Neuroscience: The Official Journal of the Society for Neuroscience*, *36*(21), 5709–5723. <https://doi.org/10.1523/JNEUROSCI.4366-15.2016>
- Bidoret, C., Ayon, A., Barbour, B., & Casado, M. (2009). Presynaptic NR2A-containing NMDA receptors implement a high-pass filter synaptic plasticity rule. *Proceedings of the National Academy of Sciences of the United States of America*, *106*(33), 14126–14131. <https://doi.org/10.1073/pnas.0904284106>
- Bidoret, C., Bouvier, G., Ayon, A., Szapiro, G., & Casado, M. (2015). Properties and molecular identity of NMDA receptors at synaptic and non-synaptic inputs in cerebellar molecular layer interneurons. *Frontiers in Synaptic Neuroscience*, *7*, 1. <https://doi.org/10.3389/fnsyn.2015.00001>
- Binda, F., Dorgans, K., Reibel, S., Sakimura, K., Kano, M., Poulain, B., & Isope, P. (2016). Inhibition promotes long-term potentiation at cerebellar excitatory synapses. *Scientific Reports*, *6*, 33561. <https://doi.org/10.1038/srep33561>
- Brown, S. P., Brenowitz, S. D., & Regehr, W. G. (2003). Brief presynaptic bursts evoke synapse-specific retrograde inhibition mediated by endogenous cannabinoids. *Nature Neuroscience*, *6*(10), 1048–1057. <https://doi.org/10.1038/nn1126>
- Bouvier, G., Higgins, D., Spolidoro, M., Carrel, D., Mathieu, B., Léna, C., Dieudonné, S., Barbour, B., Brunel, N., & Casado, M. (2016). Burst-Dependent Bidirectional Plasticity in the Cerebellum Is Driven by Presynaptic NMDA Receptors. *Cell Reports*, *15*(1), 104–116. <https://doi.org/10.1016/j.celrep.2016.03.004>
- Canepari, M., Auger, C., & Ogden, D. (2004). Ca²⁺ ion permeability and single-channel properties of the metabotropic slow EPSC of rat Purkinje neurons. *The Journal of Neuroscience: The Official Journal of the Society for Neuroscience*, *24*(14), 3563–3573. <https://doi.org/10.1523/JNEUROSCI.5374-03.2004>

- Canepari, M., & Ogden, D. (2006). Kinetic, pharmacological and activity-dependent separation of two Ca²⁺ signalling pathways mediated by type 1 metabotropic glutamate receptors in rat Purkinje neurones. *The Journal of Physiology*, 573(Pt 1), 65–82. <https://doi.org/10.1113/jphysiol.2005.103770>
- Carey, M. R., Myoga, M. H., McDaniels, K. R., Marsicano, G., Lutz, B., Mackie, K., & Regehr, W. G. (2011). Presynaptic CB1 receptors regulate synaptic plasticity at cerebellar parallel fiber synapses. *Journal of Neurophysiology*, 105(2), 958–963. <https://doi.org/10.1152/jn.00980.2010>
- Casado, M., Isope, P., & Ascher, P. (2002). Involvement of presynaptic N-methyl-D-aspartate receptors in cerebellar long-term depression. *Neuron*, 33(1), 123–130. [https://doi.org/10.1016/s0896-6273\(01\)00568-2](https://doi.org/10.1016/s0896-6273(01)00568-2)
- Chavas, J., & Marty, A. (2003). Coexistence of excitatory and inhibitory GABA synapses in the cerebellar interneuron network. *The Journal of Neuroscience: The Official Journal of the Society for Neuroscience*, 23(6), 2019–2031.
- Coesmans, M., Weber, J. T., De Zeeuw, C. I., & Hansel, C. (2004). Bidirectional parallel fiber plasticity in the cerebellum under climbing fiber control. *Neuron*, 44(4), 691–700. <https://doi.org/10.1016/j.neuron.2004.10.031>
- Cohen, D., & Yarom, Y. (1998). Patches of synchronized activity in the cerebellar cortex evoked by mossy-fiber stimulation: Questioning the role of parallel fibers. *Proceedings of the National Academy of Sciences of the United States of America*, 95(25), 15032–15036. <https://doi.org/10.1073/pnas.95.25.15032>
- Daniel, H., Hemart, N., Jaillard, D., & Crepel, F. (1992). Coactivation of metabotropic glutamate receptors and of voltage-gated calcium channels induces long-term depression in cerebellar Purkinje cells in vitro. *Experimental Brain Research*, 90(2), 327–331. <https://doi.org/10.1007/BF00227245>
- Devi, S. P. S., Howe, J. R., & Auger, C. (2016). Train stimulation of parallel fibre to Purkinje cell inputs reveals two populations of synaptic responses with different receptor signatures. *The Journal of Physiology*, 594(13), 3705–3727. <https://doi.org/10.1113/JP272415>
- Duguid, I. C., & Smart, T. G. (2004). Retrograde activation of presynaptic NMDA receptors enhances GABA release at cerebellar interneuron-Purkinje cell synapses. *Nature Neuroscience*, 7(5), 525–533. <https://doi.org/10.1038/nn1227>
- Ekerot, C. F., & Jörntell, H. (2001). Parallel fibre receptive fields of Purkinje cells and interneurons are climbing fibre-specific. *The European Journal of Neuroscience*, 13(7), 1303–1310. <https://doi.org/10.1046/j.0953-816x.2001.01499.x>
- Finch, E. A., & Augustine, G. J. (1998). Local calcium signalling by inositol-1,4,5-trisphosphate in Purkinje cell dendrites. *Nature*, 396(6713), 753–756. <https://doi.org/10.1038/25541>
- Glitsch, M., & Marty, A. (1999). Presynaptic effects of NMDA in cerebellar Purkinje cells and interneurons. *The Journal of Neuroscience: The Official Journal of the Society for Neuroscience*, 19(2), 511–519. <https://doi.org/10.1523/JNEUROSCI.19-02-00511.1999>

- González-Calvo, I., Iyer, K., Carquin, M., Khayachi, A., Giuliani, F. A., Sigoillot, S. M., Vincent, J., Séveno, M., Veleanu, M., Tahraoui, S., Albert, M., Vigy, O., Bosso-Lefèvre, C., Nadjar, Y., Dumoulin, A., Triller, A., Bessereau, J.-L., Rondi-Reig, L., Isope, P., & Selimi, F. (2021). Sushi domain-containing protein 4 controls synaptic plasticity and motor learning. *ELife*, *10*, e65712. <https://doi.org/10.7554/eLife.65712>
- Hémart, N., Daniel, H., Jaillard, D., & Crépel, F. (1995). Receptors and second messengers involved in long-term depression in rat cerebellar slices in vitro: A reappraisal. *The European Journal of Neuroscience*, *7*(1), 45–53. <https://doi.org/10.1111/j.1460-9568.1995.tb01019.x>
- Hildebrand, M. E., Isope, P., Miyazaki, T., Nakaya, T., Garcia, E., Feltz, A., Schneider, T., Hescheler, J., Kano, M., Sakimura, K., Watanabe, M., Dieudonné, S., & Snutch, T. P. (2009). Functional coupling between mGluR1 and Cav3.1 T-type calcium channels contributes to parallel fiber-induced fast calcium signaling within Purkinje cell dendritic spines. *The Journal of Neuroscience: The Official Journal of the Society for Neuroscience*, *29*(31), 9668–9682. <https://doi.org/10.1523/JNEUROSCI.0362-09.2009>
- Ichikawa, R., Hashimoto, K., Miyazaki, T., Uchigashima, M., Yamasaki, M., Aiba, A., Kano, M., & Watanabe, M. (2016). Territories of heterologous inputs onto Purkinje cell dendrites are segregated by mGluR1-dependent parallel fiber synapse elimination. *Proceedings of the National Academy of Sciences of the United States of America*, *113*(8), 2282–2287. <https://doi.org/10.1073/pnas.1511513113>
- Isope, P., & Barbour, B. (2002). Properties of unitary granule cell—>Purkinje cell synapses in adult rat cerebellar slices. *The Journal of Neuroscience: The Official Journal of the Society for Neuroscience*, *22*(22), 9668–9678. <https://doi.org/10.1523/JNEUROSCI.22-22-09668.2002>
- Ito, M., & Kano, M. (1982). Long-lasting depression of parallel fiber-Purkinje cell transmission induced by conjunctive stimulation of parallel fibers and climbing fibers in the cerebellar cortex. *Neuroscience Letters*, *33*(3), 253–258. [https://doi.org/10.1016/0304-3940\(82\)90380-9](https://doi.org/10.1016/0304-3940(82)90380-9)
- Jörntell, H., & Ekerot, C.-F. (2002). Reciprocal bidirectional plasticity of parallel fiber receptive fields in cerebellar Purkinje cells and their afferent interneurons. *Neuron*, *34*(5), 797–806. [https://doi.org/10.1016/s0896-6273\(02\)00713-4](https://doi.org/10.1016/s0896-6273(02)00713-4)
- Konnerth, A., Dreesen, J., & Augustine, G. J. (1992). Brief dendritic calcium signals initiate long-lasting synaptic depression in cerebellar Purkinje cells. *Proceedings of the National Academy of Sciences of the United States of America*, *89*(15), 7051–7055. <https://doi.org/10.1073/pnas.89.15.7051>
- Kono, M., Kakegawa, W., Yoshida, K., & Yuzaki, M. (2019). Interneuronal NMDA receptors regulate long-term depression and motor learning in the cerebellum. *The Journal of Physiology*, *597*(3), 903–920. <https://doi.org/10.1111/JP276794>
- Kostadinov, D., Beau, M., Blanco-Pozo, M., & Häusser, M. (2019). Predictive and reactive reward signals conveyed by climbing fiber inputs to cerebellar Purkinje cells. *Nature Neuroscience*, *22*(6), 950–962. <https://doi.org/10.1038/s41593-019-0381-8>

- Lev-Ram, V., Jiang, T., Wood, J., Lawrence, D. S., & Tsien, R. Y. (1997). Synergies and coincidence requirements between NO, cGMP, and Ca²⁺ in the induction of cerebellar long-term depression. *Neuron*, *18*(6), 1025–1038. [https://doi.org/10.1016/s0896-6273\(00\)80340-2](https://doi.org/10.1016/s0896-6273(00)80340-2)
- Llano, I., Marty, A., Armstrong, C. M., & Konnerth, A. (1991). Synaptic- and agonist-induced excitatory currents of Purkinje cells in rat cerebellar slices. *The Journal of Physiology*, *434*, 183–213. <https://doi.org/10.1113/jphysiol.1991.sp018465>
- Lu, H., Esquivel, A. V., & Bower, J. M. (2009). 3D electron microscopic reconstruction of segments of rat cerebellar Purkinje cell dendrites receiving ascending and parallel fiber granule cell synaptic inputs. *The Journal of Comparative Neurology*, *514*(6), 583–594. <https://doi.org/10.1002/cne.22041>
- Maejima, T., Hashimoto, K., Yoshida, T., Aiba, A., & Kano, M. (2001). Presynaptic inhibition caused by retrograde signal from metabotropic glutamate to cannabinoid receptors. *Neuron*, *31*(3), 463–475. [https://doi.org/10.1016/s0896-6273\(01\)00375-0](https://doi.org/10.1016/s0896-6273(01)00375-0)
- Marcaggi, P., & Attwell, D. (2005). Endocannabinoid signaling depends on the spatial pattern of synapse activation. *Nature Neuroscience*, *8*(6), 776–781. <https://doi.org/10.1038/nn1458>
- Marr, D. (1969). A theory of cerebellar cortex. *The Journal of Physiology*, *202*(2), 437–470. <https://doi.org/10.1113/jphysiol.1969.sp008820>
- Medina, J. F., & Lisberger, S. G. (2008). Links from complex spikes to local plasticity and motor learning in the cerebellum of awake-behaving monkeys. *Nature Neuroscience*, *11*(10), 1185–1192. <https://doi.org/10.1038/nn.2197>
- Montgomery, J. C., & Bodznick, D. (1994). An adaptive filter that cancels self-induced noise in the electrosensory and lateral line mechanosensory systems of fish. *Neuroscience Letters*, *174*(2), 145–148. [https://doi.org/10.1016/0304-3940\(94\)90007-8](https://doi.org/10.1016/0304-3940(94)90007-8)
- Nakao, H., Kishimoto, Y., Hashimoto, K., Kitamura, K., Yamasaki, M., Nakao, K., Watanabe, M., Kano, M., Kirino, Y., & Aiba, A. (2019). MGluR1 in cerebellar Purkinje cells is essential for the formation but not expression of associative eyeblink memory. *Scientific Reports*, *9*(1), 7353. <https://doi.org/10.1038/s41598-019-43744-z>
- Napper, R. M., & Harvey, R. J. (1988). Number of parallel fiber synapses on an individual Purkinje cell in the cerebellum of the rat. *The Journal of Comparative Neurology*, *274*(2), 168–177. <https://doi.org/10.1002/cne.902740204>
- Otsu, Y., Marcaggi, P., Feltz, A., Isope, P., Kollo, M., Nusser, Z., Mathieu, B., Kano, M., Tsujita, M., Sakimura, K., & Dieudonné, S. (2014). Activity-dependent gating of calcium spikes by A-type K⁺ channels controls climbing fiber signaling in Purkinje cell dendrites. *Neuron*, *84*(1), 137–151. <https://doi.org/10.1016/j.neuron.2014.08.035>
- Pichitpornchai, C., Rawson, J. A., & Rees, S. (1994). Morphology of parallel fibres in the cerebellar cortex of the rat: An experimental light and electron microscopic study with biocytin. *The Journal of Comparative Neurology*, *342*(2), 206–220. <https://doi.org/10.1002/cne.903420205>

- Piochon, C., Irinopoulou, T., Bruscianno, D., Bailly, Y., Mariani, J., & Levenes, C. (2007). NMDA receptor contribution to the climbing fiber response in the adult mouse Purkinje cell. *The Journal of Neuroscience: The Official Journal of the Society for Neuroscience*, 27(40), 10797–10809. <https://doi.org/10.1523/JNEUROSCI.2422-07.2007>
- Piochon, C., Titley, H. K., Simmons, D. H., Grasselli, G., Elgersma, Y., & Hansel, C. (2016). Calcium threshold shift enables frequency-independent control of plasticity by an instructive signal. *Proceedings of the National Academy of Sciences of the United States of America*, 113(46), 13221–13226. <https://doi.org/10.1073/pnas.1613897113>
- Rowan, M. J. M., Bonnan, A., Zhang, K., Amat, S. B., Kikuchi, C., Taniguchi, H., Augustine, G. J., & Christie, J. M. (2018). Graded Control of Climbing-Fiber-Mediated Plasticity and Learning by Inhibition in the Cerebellum. *Neuron*, 99(5), 999-1015.e6. <https://doi.org/10.1016/j.neuron.2018.07.024>
- Safo, P. K., & Regehr, W. G. (2005). Endocannabinoids control the induction of cerebellar LTD. *Neuron*, 48(4), 647–659. <https://doi.org/10.1016/j.neuron.2005.09.020>
- Safo, P., & Regehr, W. G. (2008). Timing dependence of the induction of cerebellar LTD. *Neuropharmacology*, 54(1), 213–218. <https://doi.org/10.1016/j.neuropharm.2007.05.029>
- Sawtell, N. B. (2017). Neural Mechanisms for Predicting the Sensory Consequences of Behavior: Insights from Electrosensory Systems. *Annual Review of Physiology*, 79, 381–399. <https://doi.org/10.1146/annurev-physiol-021115-105003>
- Schmahmann, J. D., & Sherman, J. C. (1998). The cerebellar cognitive affective syndrome. *Brain: A Journal of Neurology*, 121 (Pt 4), 561–579. <https://doi.org/10.1093/brain/121.4.561>
- Schonewille, M., Girasole, A. E., Rostaing, P., Mailhes-Hamon, C., Ayon, A., Nelson, A. B., Triller, A., Casado, M., De Zeeuw, C. I., & Bouvier, G. (2021). NMDARs in granule cells contribute to parallel fiber-Purkinje cell synaptic plasticity and motor learning. *Proceedings of the National Academy of Sciences of the United States of America*, 118(37), e2102635118. <https://doi.org/10.1073/pnas.2102635118>
- Sims, R. E., & Hartell, N. A. (2005). Differences in transmission properties and susceptibility to long-term depression reveal functional specialization of ascending axon and parallel fiber synapses to Purkinje cells. *The Journal of Neuroscience: The Official Journal of the Society for Neuroscience*, 25(12), 3246–3257. <https://doi.org/10.1523/JNEUROSCI.0073-05.2005>
- Sims, R. E., & Hartell, N. A. (2006). Differential susceptibility to synaptic plasticity reveals a functional specialization of ascending axon and parallel fiber synapses to cerebellar Purkinje cells. *The Journal of Neuroscience: The Official Journal of the Society for Neuroscience*, 26(19), 5153–5159. <https://doi.org/10.1523/JNEUROSCI.4121-05.2006>
- Stell, B. M., Rostaing, P., Triller, A., & Marty, A. (2007). Activation of presynaptic GABA(A) receptors induces glutamate release from parallel fiber synapses. *The Journal of Neuroscience: The Official Journal of the Society for Neuroscience*, 27(34), 9022–9031. <https://doi.org/10.1523/JNEUROSCI.1954-07.2007>

- Stoodley, C. J., & Schmammann, J. D. (2010). Evidence for topographic organization in the cerebellum of motor control versus cognitive and affective processing. *Cortex; a Journal Devoted to the Study of the Nervous System and Behavior*, 46(7), 831–844. <https://doi.org/10.1016/j.cortex.2009.11.008>
- Takechi, H., Eilers, J., & Konnerth, A. (1998). A new class of synaptic response involving calcium release in dendritic spines. *Nature*, 396(6713), 757–760. <https://doi.org/10.1038/25547>
- Wagner, M. J., Kim, T. H., Savall, J., Schnitzer, M. J., & Luo, L. (2017). Cerebellar granule cells encode the expectation of reward. *Nature*, 544(7648), 96–100. <https://doi.org/10.1038/nature21726>
- Walter, J. T., Dizon, M.-J., & Khodakhah, K. (2009). The functional equivalence of ascending and parallel fiber inputs in cerebellar computation. *The Journal of Neuroscience: The Official Journal of the Society for Neuroscience*, 29(26), 8462–8473. <https://doi.org/10.1523/JNEUROSCI.5718-08.2009>
- Yang, Y., & Lisberger, S. G. (2014). Purkinje-cell plasticity and cerebellar motor learning are graded by complex-spike duration. *Nature*, 510(7506), 529–532. <https://doi.org/10.1038/nature13282>
- Zucker, R. S., & Regehr, W. G. (2002). Short-term synaptic plasticity. *Annual Review of Physiology*, 64, 355–405. <https://doi.org/10.1146/annurev.physiol.64.092501.114547>

APPENDIX 1

Analysis of the excitatory and inhibitory components of the mixed response shows no bias due to overlapping inhibition. Our experiments were performed with inhibition intact and with a Cl^- reversal potential close to the value estimated in PCs (-85 mV, (Chavas & Marty, 2003)). Because GCs also synapse on molecular layer interneurons, most of the time AA and PF stimulation recruits monosynaptic excitation and disynaptic inhibition to PCs, generating a mixed synaptic response with excitatory and inhibitory currents of opposite signs, where inhibition comes with a short delay. As a result, the time course of the recorded mixed PSC can be complex. Also, the plasticity protocol might affect EPSCs and IPSCs differently, and the estimate of the peak EPSC and its long term changes might be affected by the overlapping inhibitory currents. To control for possible errors in the estimate of the excitatory peak amplitude, in a set of experiments we made short applications of the GABA_AR antagonist SR95531 (SR) before and after induction, to isolate the excitatory from the inhibitory component of the synaptic response. We assumed that the mixed PSCs is the arithmetic sum of two synaptic functions: an EPSC and a delayed IPSC. For the EPSC we used a function of the form:

$$f(x)=0 \text{ for } x < x_{d1}$$

$$f(x) = A (1 - \exp(x - x_{d1}) / tr1)^3 \exp(x - x_{d1}) / td1 \text{ for } x > x_{d1}$$

where x represents time, and A , x_{d1} , $td1$ and $tr1$ are the fitting parameters. A is the amplitude, x_{d1} the delay after stimulus onset, $tr1$ the rise time constant of the third power exponential rise and $td1$ the decay time constant of the EPSC. We used a third power exponential rise as it best fitted the data compared to a single or quadratic exponential rise.

For the IPSC we used a function of the form:

$$f(x)=0 \text{ for } x < x_{d2}$$

$$f(x) = B (1 - \exp(x - x_{d2}) / tr2)^2 \exp(x - x_{d2}) / td2 \text{ for } x > x_{d2}$$

where x is time, and B , x_{d2} , $td2$ and $tr2$ are the fitting parameters. B is the amplitude, x_{d2} the delay after stimulus onset, $tr2$ the rise time constant of the second power exponential rise and $td2$ the decay time constant of the IPSC. For the IPSC a quadratic exponential rise gave a good fit.

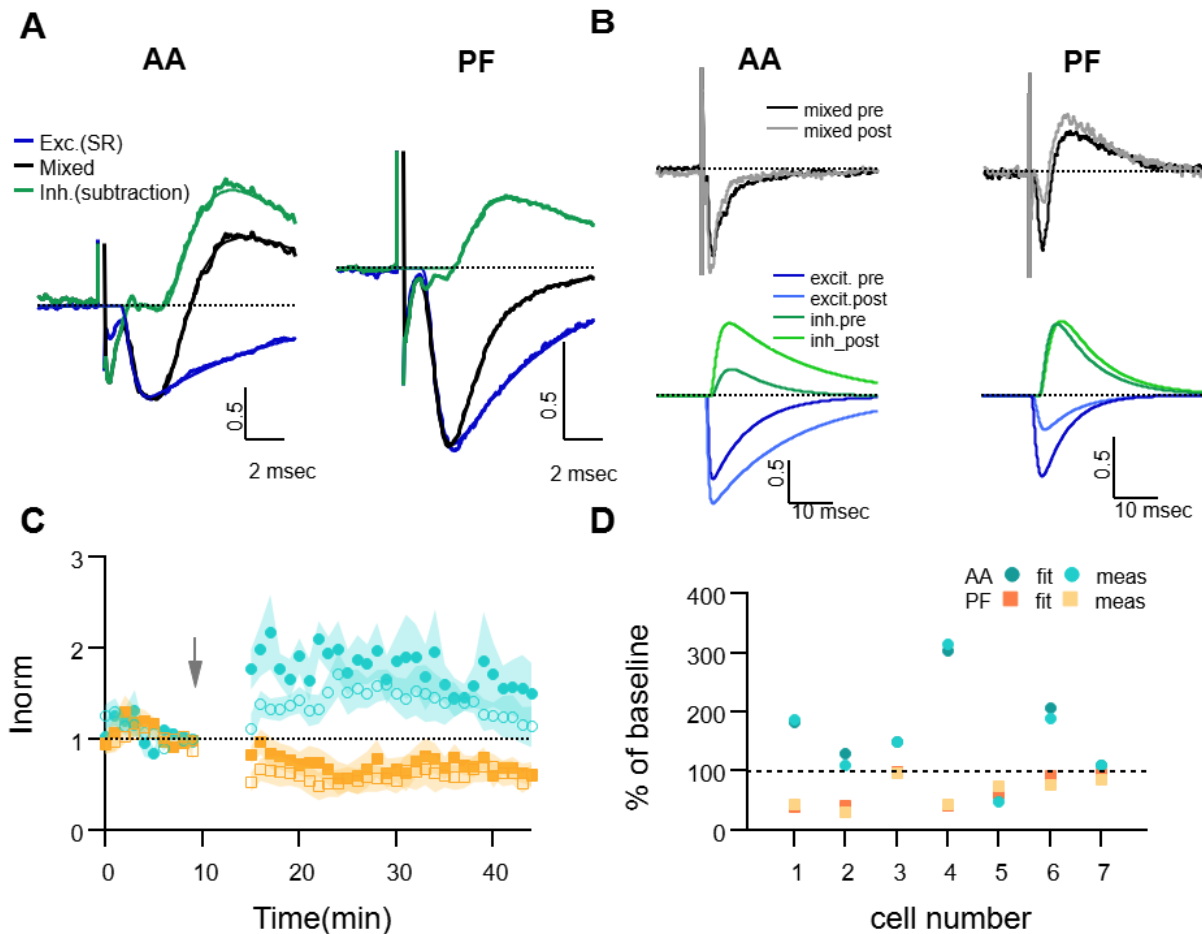
The pharmacologically-isolated EPSCs (measured between 2 to 3 min after SR perfusion) were used to

characterise the kinetic parameters of the excitatory responses, and were well described by the fitting function. The fitting EPSC function was then subtracted from the recorded mixed PSC to extract the IPSC component of the response. Since we observed an effect of SR application on the amplitude of EPSCs (presynaptic GABA_ARs are known to modulate release probability (Stell et al., 2007)), the EPSC fitting function was first rescaled to match the rise of the mixed response before subtraction. The resulting inhibitory component of the response was well fitted by the IPSC function and allowed us to estimate its kinetic parameters. Appendix 1 Figure 1A shows the average time course of the mixed response normalised to the peak EPSC for both AA and PF, and the extracted excitatory and inhibitory components, during baseline for all cells (n=7). The average delays and decay time parameters estimated were: tau-decay: 5±1 msec for excitatory (N=7), 6.5±1.6 msec for inhibitory (N=6) responses for AA stimulation and 4.4±0.6 msec for excitatory (N=7) and 5±1 msec for inhibitory (N=4) responses for PF stimulation; average delay between inhibitory and excitatory current onset: 1.51±0.15 msec for AA stimulation (n=6), and 1.7±0.3 msec for PF stimulation (n=4).

To measure the excitatory and inhibitory components of the evoked mixed EPSC/IPSC before and after the induction protocol, we first recorded the AA- and PF- mixed PSCs for a short control period and then applied the GABA_A receptor antagonist SR95531 (3µM) for 3-4 mins. SR was then washed off the slice for 15 to 20 min, the induction protocol was applied, and the synaptic response was monitored for a further 30 min. SR was applied again to monitor the isolated EPSCs at the end of the experiment. For each experiment, the EPSC fitting functions obtained during the first application of SR were used to calculate the amplitude of the two synaptic components during the period preceding induction (10 min), and those obtained from the second SR application at the end of the recordings, to calculate the amplitudes after induction (30 min). Appendix 1 Figure 1B shows an example of analysis of excitatory and inhibitory components before and after the induction protocol, with mixed PSCs and corresponding excitatory and inhibitory fitting functions, which shows an increase of the AA-EPSC and a decrease of the PF-EPSC, together with an increase of the IPSC in both pathways. In these experiments, the inhibitory disynaptic component evoked by both AA and PF stimulations had a tendency to increase after the pairing protocol, indicating that excitation and inhibition do not necessarily change in the same direction. However, due to the small sample and the absence of an inhibitory component in some of the experiments, long term changes in the inhibitory synaptic components were not significantly different from baseline (average change in peak IPSC: 130± 50 % for the AA pathway, p=0.4 of being bigger than baseline N=5; and 150± 50 % for the PF pathway, p=0.2 of being bigger than baseline, N=4). When

measured at the end of the plasticity experiments, the decay time of the excitatory responses estimated were: tau-decay: 7 ± 2 msec (N=7, not significantly different from baseline, $p = 0.14$) for AA stimulation and 6.0 ± 0.7 msec (N=7, significantly different from baseline, $p = 0.026$) for PF stimulation.

On average, the plasticity of the AA- and PF-EPSC (measured by the usual method of amplitude of the minimum of the PSC response) in these experiments was not significantly different from that in control experiments (AA pathway: 160 ± 30 %, as compared to 131 ± 7 % in control, $p=0.4$, N=7 et N=24 and PF pathway 65 ± 9 %, as compared to 65 ± 5 % in control, $p=1$, N=7 et N=25 for SR and control respectively; ratio of normalised AA/PF responses: 3 ± 1 , $p=0.76$, N=7 et N=24), showing that the short applications of GABA_AR antagonist did not influence the plasticity outcome (Appendix 1 Figure 1C). We thus analysed the change in amplitude of the stimulated pathways using the two separated EPSC/IPSC components obtained by the fitting method before and after the induction protocol to check for differences with respect to the standard method used in all other experiments. Appendix 1 Figure 1D compares, for each cell, the AA- and PF-EPSCs relative amplitudes obtained by direct measure of the mixed PSC minimum with those obtained with the fitting method. The two methods of measurements are equivalent. The delayed onset of the inhibitory component limits its impact on the EPSC amplitude.



Appendix 1 Figure 1: Dissecting excitation and inhibition shows that EPSC amplitude and long term changes are well estimated with the direct measure method. A. Fitting procedure used to extract the excitatory and inhibitory components of the recorded mixed PSCs (EPSC + IPSC). Traces recorded during the baseline period were normalised to the peak excitatory response and then averaged over all cells. The mixed evoked PSC (black thick line) is shown together with the excitatory response recorded during SR application (blue thick line). The inhibitory trace (green thick line) is the difference between the mixed PSC and the fit of the excitatory response. The EPSC and IPSC fitting functions as well as the mixed fitting function resulting from the sum of the two are overlaid (thinner lines, same colour), showing good agreement with the data. On average, inhibition was delayed and relatively smaller than excitation for both AA and PF pathways. **B** Sample traces for an experiment where the excitatory and inhibitory components were extracted from the mixed PSC for both the baseline and 25-30 mins after induction; top: mixed PSCs for AA (left) and PF (right) before and after induction; below are the corresponding

excitatory (blue, dark and light for pre and post-induction respectively) and inhibitory components (green, dark and light for pre and post-induction respectively). The AA-EPSC increased and the PF-EPSC decreased, while both AA- and PF-IPSCs increased in this example. **C.** Average time course of the EPSCs relative amplitude (measured with the standard minimum amplitude method) for 7 experiments in which gabazine (SR) was applied transiently 20 min before and 30 min after LTP induction. Peak EPSCs amplitudes of the first and second evoked responses in the pair for both AA (blue, closed circles: first response in the pair, open circles: second response) and PF (orange, closed squares: first response in the pair, open squares: second response) stimulation. Short and long term plastic changes are not different from control experiments. **D.** The normalised EPSC amplitude 25-30 mins after induction is compared for the two analysis methods for each cell, either measured directly as the minimum of the recorded response (meas) or that of the excitatory fitting function (fit). Disynaptic inhibition only slightly affected the measure of the real excitatory peak, both for AA- (blue triangles) and PF-EPSC (orange circles) (AA measured: $160 \pm 30\%$, from fit: $160 \pm 30\%$ and PF measured: $65 \pm 9\%$, from fit: $70 \pm 10\%$).