



HAL
open science

Yeast cell responses and survival during periodic osmotic stress are controlled by glucose availability

Fabien Duveau, Céline Cordier, Lionel Chiron, Matthias Le Bec, Sylvain Pouzet, Julie Séguin, Artémis Llamosi, Benoit Sorre, Jean-Marc Di Meglio, Pascal Hersen

► To cite this version:

Fabien Duveau, Céline Cordier, Lionel Chiron, Matthias Le Bec, Sylvain Pouzet, et al.. Yeast cell responses and survival during periodic osmotic stress are controlled by glucose availability. *eLife*, 2024, 12, pp.RP88750. 10.7554/eLife.88750 . hal-04799234

HAL Id: hal-04799234

<https://hal.science/hal-04799234v1>

Submitted on 6 Jan 2025

HAL is a multi-disciplinary open access archive for the deposit and dissemination of scientific research documents, whether they are published or not. The documents may come from teaching and research institutions in France or abroad, or from public or private research centers.

L'archive ouverte pluridisciplinaire **HAL**, est destinée au dépôt et à la diffusion de documents scientifiques de niveau recherche, publiés ou non, émanant des établissements d'enseignement et de recherche français ou étrangers, des laboratoires publics ou privés.

Yeast cell responses and survival during periodic osmotic stress are controlled by glucose availability

Reviewed Preprint

Published from the original preprint after peer review and assessment by eLife.

About eLife's process

Reviewed preprint posted


July 26, 2023 (this version)

Sent for peer review

May 18, 2023

Posted to bioRxiv

February 17, 2023

Fabien Duveau, Céline Cordier, Lionel Chiron, Matthias LeBec, Sylvain Pouzet, Julie Séguin, Artémis Llamosi, B. Sorre, Jean-Marc Di Meglio, Pascal Hersen 

Laboratoire Matière et Systèmes Complexes, UMR 7057 CNRS & Université Paris Diderot, 10 rue Alice Domon et Léonie Duquet, 75013 Paris, France • Laboratoire de Biologie et Modélisation de la Cellule, Ecole Normale Supérieure de Lyon, CNRS, UMR 5239, Inserm, U1293, Université Claude Bernard Lyon 1, 46 allée d'Italie F-69364 Lyon, France • Laboratoire Physico Chimie Curie, UMR168, Institut Curie, 16 rue Pierre et Marie Curie, 75005 Paris, France

 https://en.wikipedia.org/wiki/Open_access

 <https://creativecommons.org/licenses/by/4.0/>

Abstract

Natural environments of living organisms are often dynamic and multifactorial, with multiple parameters fluctuating over time. To better understand how cells respond to dynamically interacting factors, we quantified the effects of dual fluctuations of osmotic stress and glucose deprivation on yeast cells using microfluidics and time-lapse microscopy. Strikingly, we observed that cell proliferation, survival and signaling depend on the phasing of the two periodic stresses. Cells divided faster, survived longer and showed decreased transcriptional response when fluctuations of hyperosmotic stress and glucose deprivation occurred in phase than when the two stresses occurred alternatively. We also found that mutants with impaired osmotic stress response were better adapted to alternating stresses than wild-type cells, showing that genetic mechanisms of adaptation to a persistent stress factor can be detrimental under dynamically interacting conditions. Taken together, we demonstrate that glucose availability regulates yeast responses to dynamic osmotic stress. We anticipate that our approach can be extended to other stress responsive pathways to further elucidate the key role of metabolic fluctuations in the dynamics of cellular responses to stress.

eLife assessment

This study provides **valuable** insights into the dynamic interplay between the starvation and hyper-osmotic stress responses in budding yeast, where the presence of one stress can impact the concurrent effects of another perturbation. Using microfluidic devices and extensive quantitative analyses of time-series responses, the authors applied concurrent (in-phase) or alternate (anti-phase) stresses. Their **compelling** analyses reveal some unexpected behaviors that could not have been guessed from simpler experimental designs, revealing that investigating complex environmental inputs can reveal new biological insights, even for well-studied systems.

Introduction

Cells have evolved to survive in a broad range of environmental conditions with multiple factors (e.g., temperature, nutrients, light, humidity, pathogens...) varying in space and time. They can monitor their environment and constantly adapt their physiology to stress caused by environmental fluctuations. Experiments in which cells are dynamically probed with time-varying stress signals are required to obtain a quantitative understanding of how signaling pathways and gene regulatory networks confer cellular adaptability to environmental changes¹. The development of microfluidics systems to study the frequency responses of cellular functions^{2–5} (e.g., signaling pathways, gene regulatory networks) has been instrumental in the adoption of the concepts of dynamic systems and information processing in biology. More recent methodological developments in the field of control theory have enabled time-varying perturbations to be used to control cellular gene expression or signaling pathways via computer-based external feedback loops^{6–11}. In short, methods are now mature to study cells as dynamical systems.

Most studies of cellular stress responses have focused on a single environmental stress in an otherwise maintained environment. However, how cells respond to stress often depends on the interaction between several environmental factors. For instance, changing the metabolic environment (e.g., carbon source type and concentration) can profoundly affect cell physiology (e.g., respiration and fermentation in yeast) and alter stress responses^{12,13}. More generally, resource allocation (i.e., how cellular resources are shared between several cellular functions) is an important fundamental^{14,15} (e.g., understanding growth laws) and applied topic¹⁶ (e.g., design of robust synthetic gene circuits and bioproduction). Specifically, cells face decision-making problems when exposed to stress and to variation in their metabolic environment. Routing resources towards stress response mechanisms may deprive other important processes (e.g., cellular maintenance, proliferation) and decrease competitive fitness in an environment periodically scarce of metabolic resources. Conversely, routing resources towards cell proliferation may reduce survival in stressful conditions and therefore also reduce fitness. The tradeoff between proliferation and stress responses can be an important determinant of cell fitness in a dynamic environment^{14,15,17,18}. Yet, the extent to which what is known in rich, constant metabolic conditions, remains valid under low or fluctuating nutrient availability remains an open question. Here, we address this broad question by studying the synergistic and antagonistic effects of time-varying osmotic stress and glucose deprivation on the growth of budding yeast cells.

The adaptation to hyperosmotic stress in the budding yeast *S. cerevisiae* involves an adaptive pathway—the HOG pathway—that has been extensively described at the molecular level¹⁹ as well as biophysical and integrative levels through mathematical and computational models^{20–26}. Quantitative descriptions of the dynamics of osmotic stress responses were achieved using microfluidics to generate time-varying perturbation of the osmolarity of the environment while observing signaling activity and the transcriptional responses of key players in the HOG pathway at the single-cell resolution via time-lapse microscopy^{4,5,27}.

When external osmolarity increases, accumulation of intracellular glycerol is required to restore the cellular osmotic balance (Hohmann 2002). At the molecular level, osmotic stress signaling is orchestrated by a mitogen activated protein kinase (MAPK) cascade, which culminates in double phosphorylation and nuclear accumulation of the MAPK protein Hog1p and differential regulation of hundreds of genes^{28,29}. In particular, GPD1 (NAD-dependent glycerol-3-phosphate dehydrogenase), a key enzyme involved in production of glycerol from glucose, is upregulated after hyperosmotic stress (**Figure 1a**). Phosphorylated Hog1p also triggers several processes in the cytoplasm that are essential for osmoregulation^{21,22}, including cell-cycle arrest^{30–32}.

Dynamically, the HOG pathway behaves as a low pass filter that drives (perfect) adaptation through at least two layers of feedback loops that allow for deactivation of the pathway²¹ (transcriptionally and within the cytoplasm). Notably, the HOG pathway can be overactivated when stimulated at high frequencies, which drastically slows down the cell cycle²⁷. Although very informative—and an excellent example of how biological and physical concepts can be combined to obtain a comprehensive description of gene regulatory network dynamics—these studies were carried out in a glucose-rich environment, which insulates metabolic needs from osmotic stress adaptation requirements. Glucose is not only needed for growth, but also for production of glycerol and the transcriptional feedback loop that deactivates the HOG pathway^{12,21}; thus, cells may employ a decision mechanism to share glucose internally between these processes, particularly when glucose is scarce, or its availability fluctuates. **More generally, despite the known importance of the metabolic state in cellular adaptation to stress, the systemic interactions between cellular maintenance, growth and stress responses remain unexplored.**

We address this question by monitoring the growth of yeast cells subjected to periodic variations in both osmolarity and glucose availability. To determine how resource allocation impacted cell growth, we compared two regimes of dual fluctuations that differed in the phasing of hyperosmotic stress and glucose deprivation. We showed that cell division rates, death rates and biological responses at the signaling and transcription levels are different when cells are exposed simultaneously (in-phase stresses) or alternatively (alternating stresses) to glucose deprivation and hyperosmotic stress. Therefore, yeast responses to osmotic stress are regulated by the presence of external glucose, indicating that the metabolic environment is a key factor when quantitatively assessing stress response dynamics. More globally, our study suggests that applying dual periodic perturbations is a powerful method to probe cellular dynamics at the system level and, more specifically, to clarify the role of the metabolic environment in the dynamics of cellular decision making.

Results

A microfluidic system to study the interaction between two environmental dynamics

We used a custom microfluidic device to monitor the growth of yeast cells exposed to periodic environmental fluctuations for up to 24 hours. Cells were imaged every 6 minutes in microfluidic chips containing five independent sets of channels connected to five growth chambers (**Figure 1b**; **Figure S1**), allowing five different conditions per experimental run, with five technical replicates for each condition. Computer-controlled fluidic valves were programmed to generate temporal fluctuations of the media dispensed to cells with rapid transitions (< 2 minutes) from one medium to another (**Figure S1**). The rate of cell division was then quantified using automated image analyses (see STAR Methods). With this experimental system it is possible to determine not only how temporal fluctuations of individual parameters of the environment (e.g., a repeated stress or carbon source fluctuations) impact cell proliferation but also what are the impacts of the dynamic interactions of two environmental parameters. Here, we specifically study how periodic fluctuations of a metabolic resource (glucose concentration switching between 0% and either 2% or 0.1% w/v) and osmotic stress (sorbitol concentration switching between 0 M and 1 M) interact to alter the proliferation of yeast cells (**Figure 1**).

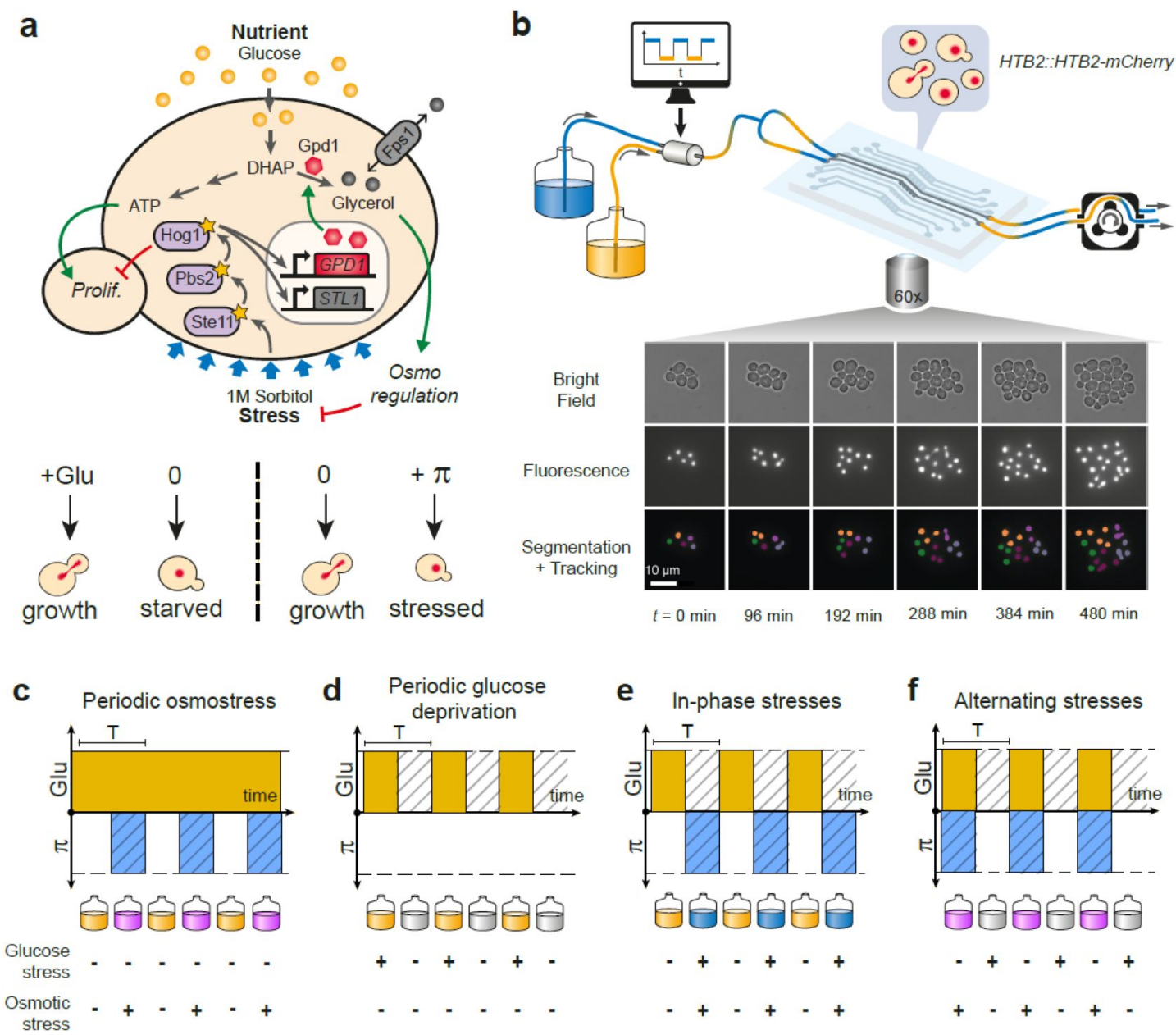


Figure 1.

Live imaging of yeast cells grown in periodically fluctuating environments.

(a) Overview of the hyperosmotic response in yeast. Both glucose deprivation and osmotic stress lead to cell cycle arrest—through different molecular mechanisms. (b) Sketch of the microfluidic setup used to generate a time-varying environment and achieve timelapse imaging of yeast cells. Bright field and fluorescence images are captured every 6 minutes at 25 positions for 12–24 hours depending on the experiment. Nuclei expressing HTB2-mCherry fusion protein are segmented and tracked over time to compute the cell division rate as a function of time. (c–f) The four periodically varying environments used in this study. (c) Periodic osmotic stress: Cells are periodically exposed to hyperosmotic stress (1 M sorbitol) in a constant glucose environment (2% or 0.1%). (d) Periodic glucose deprivation: environment alternates between presence and absence of glucose. (e) In-phase stresses (IPS): periodic exposure to glucose in absence of hyperosmotic stress followed by glucose depletion with hyperosmotic stress (1 M sorbitol). (f) Alternating stress (AS): periodic exposure to glucose with hyperosmotic stress (1 M sorbitol), followed by glucose depletion without hyperosmotic stress. (c–f). Hatching represents stress, blue indicates presence of sorbitol; orange, presence of glucose.

Division rate correlates negatively with the frequency of osmotic stress but positively with the frequency of glucose availability

To determine how the temporal dynamics of osmotic stress altered cell proliferation, we first measured the division rate of yeast cells exposed to fluctuations between 1 M sorbitol and no sorbitol at periods ranging from 12 minutes to 480 minutes. In these experiments the time-averaged osmotic concentration was constant (i.e., cells were exposed to 1 M sorbitol half of the time in all conditions), which is important when studying the effects of the *frequency*, and not *intensity*, of osmotic stress on cell dynamics. The division rate strongly decreased as the frequency of osmotic shock increased (**Figure 2a**), both in 2% glucose (2.2-fold reduction of division rate between periods of fluctuation $T = 192$ minutes and $T = 12$ minutes) and in 0.1% glucose (3.8-fold reduction of division rate between periods of fluctuation $T = 192$ minutes and $T = 12$ minutes). This result is consistent with findings from W. Lim and colleagues²⁷ who attributed the drastic decrease in cellular growth observed at high frequency of osmotic shocks to overactivation of the HOG pathway. However, we also observed a clear negative relationship between the frequency of hyperosmotic stress and the division rate of HOG pathway mutants (**Figure S4d-f**), indicating that the growth slowdown was not only explained by overactivation of the HOG pathway. The temporary reduction of division rate observed in response to a hyperosmotic shock in wild-type (**Figure S2**) and mutant (**Figure S4b,c**) cells could also contribute to the negative relationship between division rate and frequency of osmotic stress. This negative relationship and the fact that cellular growth can rapidly recover after exposure to high osmolarity (**Figure S2**) both indicate that yeast cells are more sensitive to *repeated* than *persistent* hyperosmotic stress.

Next, we wondered whether the frequency of a different type of environmental fluctuation would also affect cell division rate. To answer this question, we quantified the division rate of cells exposed to periodic transitions between a medium without carbon source and the same medium complemented with either 0.1% or 2% glucose at periods ranging from 12 to 480 minutes. In contrast to the negative effect of osmotic stress frequency, we observed a positive relationship between the frequency of glucose availability and division rate (**Figure 2b**): cells divided faster when glucose availability fluctuated rapidly (0.0051 division/min at a fluctuation period $T = 12$ min) than slowly (0.0027 division/min at a fluctuation period $T = 192$ min). However, this behavior was only observed in 2% glucose: the *frequency* of glucose availability did not significantly impact the division rate in 0.1% glucose (**Figure 2b**). The effect of the *frequency* of glucose availability on the division rate in 2% glucose may be due to a delay between glucose removal and growth arrest or between glucose addition and recovery of cell growth, or both.

Overall, we observed two opposing patterns of cell proliferation when we varied the temporal dynamics of the metabolic environment and external osmolarity. The division rates were highest for low-frequency sorbitol fluctuations (0.0064 division/min at a fluctuation period $T = 384$ min) and high-frequency 2% glucose fluctuations (0.0051 division/min at a fluctuation period $T = 12$ min); both of these values are close to the division rate in constant 2% glucose (0.0066 division/min). Therefore, with respect to their division rate, cells behave as a low-pass filter for osmotic stress but as a high-pass filter for glucose fluctuations. Moreover, the division rate is similar when the frequencies of glucose availability and sorbitol exposure are both equal to 0.039 min^{-1} (intersection of the two curves on **Figure 2c**), corresponding to a period of 26 minutes and a division rate of 0.004 division/min. Since current models of the hyperosmotic stress response do not consider interactions with glucose metabolism, whether simultaneous fluctuations of glucose availability and osmotic stress affect cell growth additively or synergistically remains an open question. More generally, characterizing how cells respond to the dynamic phasing of two environmental components is fundamental for understanding how a living system can adapt to complex environmental changes. For these reasons, we next used our microfluidic system to quantify the division rate of cells exposed to *dual* periodic fluctuations of glucose availability and osmotic stress.

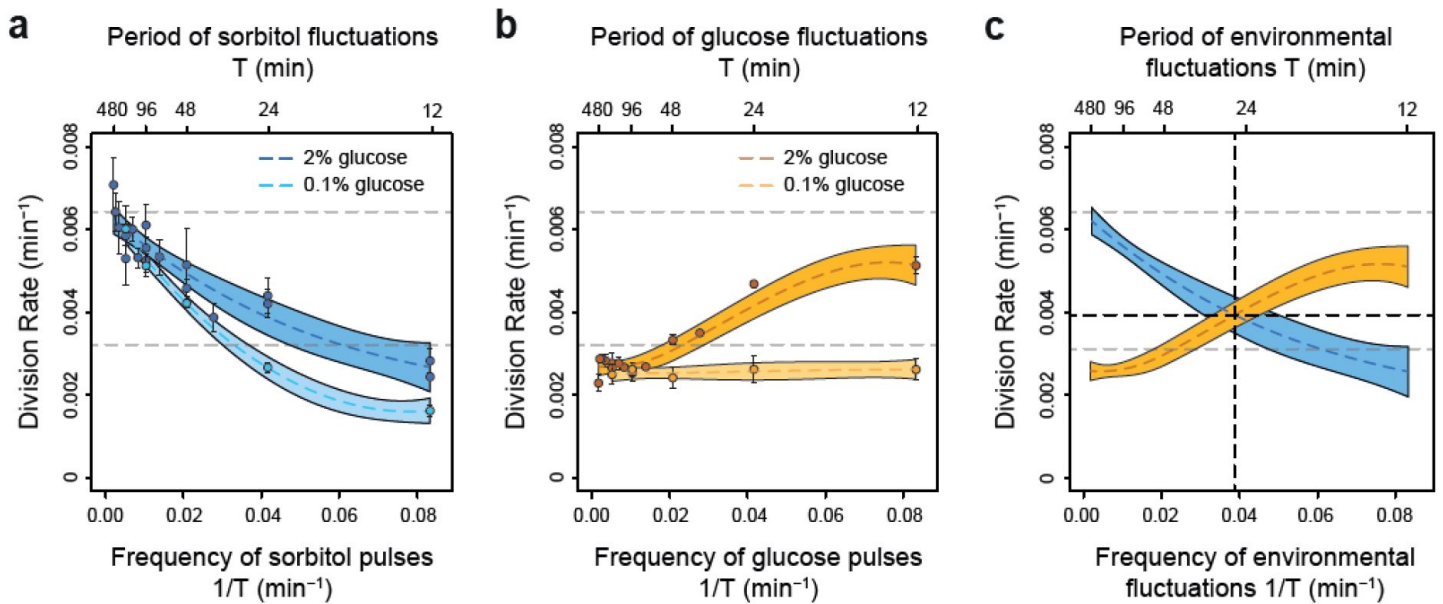


Figure 2.

The frequencies of osmotic stress and glucose availability impact cell division rates in opposite ways.

(a,b) Impact of the frequency of periodic osmotic stress (a) and glucose deprivation (b) on the average division rate. Each dot shows the mean division rate measured in different growth chambers of the microfluidic chip. Error bars are 95% confidence intervals of the mean. Colored dotted lines are Loess regressions obtained using a smoothing parameter of 0.66. Colored areas represent 95% confidence intervals of the regression estimates. Gray dotted lines show the average division rate in the absence of sorbitol (no osmotic stress) in 2% glucose (top line), or half this average division rate (bottom line). (c) Overlay of the Loess regressions shown in (a) and (b) at 2% glucose. The frequency and division rate at which the two regression curves intersect are highlighted by vertical and horizontal black dotted lines.

Division rate depends on the phasing of the two stresses

To determine whether glucose availability during hyperosmotic stress impacted cell growth in dynamic conditions, we compared cell division rates under two regimes of dual periodic fluctuations that only differed in the phasing of glucose and sorbitol fluctuations. In the “in-phase stresses” (IPS) regime, glucose depletion and 1 M sorbitol stresses were applied simultaneously for half a period followed by the addition of 2% (or 0.1%) glucose and the removal of sorbitol for the other half of each period of fluctuations (**Figure 1e**). In the “alternating stresses” (AS) regime, glucose depletion and 1 M sorbitol were applied alternatively for half a period each (**Figure 1f**). We first subjected cells to dual fluctuations at a period of 24 minutes with 2% glucose, corresponding approximately to the period at which the division rate was the same when we only varied glucose availability *or* osmolarity (**Figure 2c**). Under both IPS and AS conditions, the division rate was more than 2-fold lower than under periodic fluctuations of only glucose or sorbitol (**Figure 3a**), showing that dual environmental fluctuations have a non-additive, synergistic impact on cell growth. Strikingly, cells divided about twice as fast under IPS condition (1.67×10^{-3} division/min) than under AS condition (9.4×10^{-4} division/min) when the fluctuation period was 24 minutes (*t*-test, $P = 1.35 \times 10^{-5}$; **Figure 3a**, **Figure S3a,b**) or 96 minutes (2.98×10^{-3} division/min in IPS vs 1.83×10^{-3} division/min in AS; $P = 4.10 \times 10^{-5}$; **Figure 3b**). A similar pattern of faster growth was observed under IPS and AS conditions when we used 0.1% glucose instead of 2% glucose, for both a fluctuation period of 24 minutes (0.84×10^{-3} division/min under IPS vs 0.54×10^{-3} division/min under AS; *t*-test, $P = 8.03 \times 10^{-5}$; **Figure S3c**) and 96 minutes (2.24×10^{-3} division/min under IPS vs 1.17×10^{-3} division/min under AS; *t*-test, $P = 6.80 \times 10^{-3}$; **Figure S3d**). Cells also displayed strikingly different temporal dynamics of division rates under IPS and AS conditions (**Figure 3c,d**). Under IPS condition, the division rate fluctuated largely over time: after the transition to 2% glucose, the division rate quickly increased to reach a plateau (4.86×10^{-3} divisions/min on average during the half-period with 2% glucose); after the transition to 1 M sorbitol in the absence of glucose, cell division nearly stopped (1.34×10^{-3} divisions/minute during the half-period without glucose). In contrast, the division rate remained much more constant over time under AS condition: the average division rate was 1.69×10^{-3} divisions/min during the half-period with 2% glucose and 1 M sorbitol and 1.89×10^{-3} divisions/min during the half-period without glucose and sorbitol. Therefore, cells appear to use glucose more efficiently for growth under IPS than AS conditions. Collectively, these results further demonstrate that the timing of both glucose availability and osmotic stress matters: cells grow more slowly when constantly facing a single stress that changes over time (AS) than when facing two simultaneous stresses half of the time (IPS).

The slower cell division rate observed under AS when compared to IPS could be explained by the allocation of intracellular glucose to the osmotic stress response under AS when cells are exposed to glucose and sorbitol simultaneously, leaving less glucose available for growth. Indeed, in response to hyperosmotic stress glycerol is synthesized from a glycolysis intermediate (DHAP) derived from glucose³³. Under this hypothesis, glucose would only be fully allocated to growth in absence of hyperosmotic stress, which occurred under IPS but not AS.

Slowdown of cell proliferation under alternating stresses is independent of HOG pathway activity

To test the hypothesis that the allocation of glucose toward glycerol synthesis explained the slower division rate observed under AS relative to IPS, we compared the division rate of mutants with impaired glycerol regulation under IPS and AS conditions. These mutant strains carried deletions of *HOG1* (HOG pathway MAPK), *PBS2* (MAPKK upstream of Hog1p), *STE11* (MAPKKK upstream of Pbs2p), *FPS1* (aquaglyceroporin regulated by Hog1p), *GPD1* (glycerol-3-phosphate dehydrogenase regulated transcriptionally and post-transcriptionally by the HOG pathway) or *GPD2* (paralog of *GPD1*). As expected, these mutants showed no growth defect in the absence of hyperosmotic stress and most mutants showed decreased division rates when exposed to constant hyperosmotic stress (**Figure S4a-c**). At a fluctuation period of 24 minutes, the division rate was significantly lower

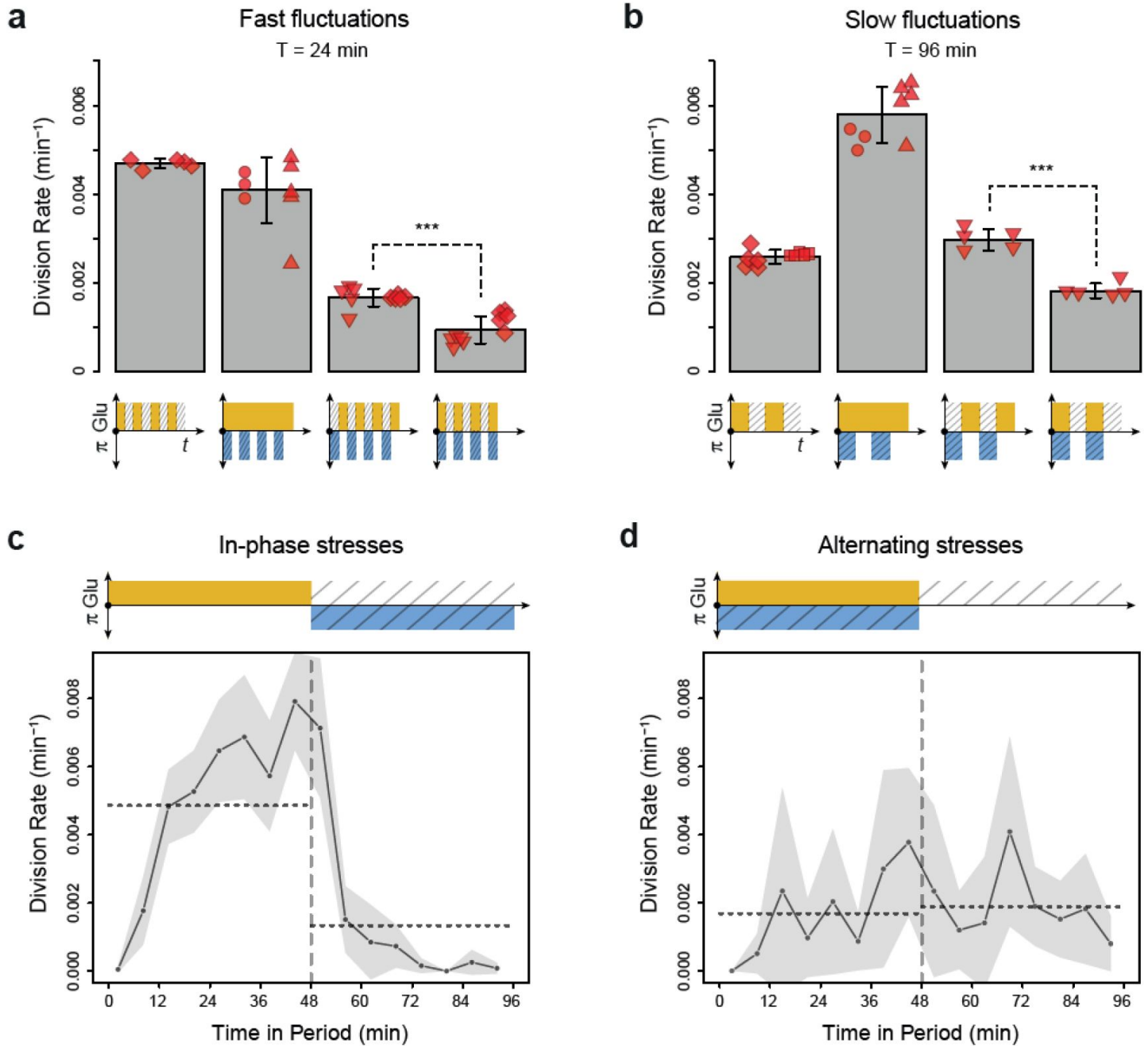


Figure 3.

Cell division rate depends on the phasing of hyperosmotic stress and glucose availability.

(a,b) Division rates measured in four fluctuating conditions with a period of 24 minutes and a glucose concentration of 2% (2 g/l). The four conditions are periodic glucose deprivation, periodic osmstress, in-phase stresses (IPS) and alternating stresses (AS). Bars represent mean division rates among different growth chambers. Error bars are 95% confidence intervals of the mean. Red symbols show the average division rate in each growth chamber, with different symbols representing experiments performed on different days with different microfluidic chips. Mean division rates were compared between IPS and AS conditions using *t*-tests (***P* < 0.001). (c, d) Temporal dynamics of division rate during a period of 96 minutes in (c) IPS and (d) AS conditions for wild-type cells. Each dot shows the division rate during a 6-minute window centered on that dot and averaged for all fields of view sharing the same condition and all periods in the experiment. Gray areas are 95% confidence intervals of the mean division rate. Horizontal dotted lines show the mean division rate for all data collected in each half period. The colored bars represent the periodic fluctuations in glucose (orange) and/or sorbitol (blue); hatching represents stress. (a-d) Cells were grown under fluctuations of 2% glucose and 1 M sorbitol.

under AS than IPS for almost all mutants (*hog1Δ*, *pbs2Δ*, *gpd1Δ*, *gpd2Δ*, *gpd1Δ*; *gpd2Δ* and *fps1Δ*) both with fluctuations of 2% glucose (Figure 4a) and 0.1% glucose (Figure S5a). However, the *ste11Δ* mutant exhibited similar division rates under AS and IPS (Figure 5a). At a fluctuation period of 96 minutes, the division rates of the two mutants we tested, *ste11Δ* and *pbs2Δ*, were significantly lower under AS than IPS (Figure S5b,c). In addition, the temporal dynamics of division rate were similar for the wild-type strain, *pbs2Δ* mutant (Figure 4b,c) and *ste11Δ* mutant (Figure S5d,e). In conclusion, mutations known to reduce intracellular accumulation of glycerol did not attenuate the growth differences that we observed in the wild-type strain between IPS and AS conditions. Therefore, allocation of glucose toward glycerol synthesis during hyperosmotic stress is not responsible for the lower division rate observed under AS than IPS.

Cell death depends on the dynamics of the two stresses

We noticed a high proportion of wild-type cells dying under AS (Figure 5a): some cells suddenly burst with their nucleus staying in the growth chamber, others became opaque and stopped growing with their nucleus remaining completely still (the nucleus of living cells wobbled over time). These death events mostly occurred within minutes of the transition from medium containing 2% glucose and 1 M sorbitol to medium without glucose and sorbitol (Figure S6d), suggesting cell lysis occurred due to hypo-osmotic shock following removal of 1 M sorbitol. Cell death was less frequent under IPS than AS conditions for the wild-type strain (Figure 5a-c), even though the frequency of hypo-osmotic shock was the same in the two conditions (Figure S6c,d). We reasoned this could be due to lower intracellular accumulation of glycerol under IPS, when hyperosmotic stress is applied in the absence of glucose. Under AS, the presence of glucose during hyperosmotic stress could lead to faster intracellular accumulation of glycerol, resulting in stronger hypo-osmotic shock and cell lysis when the sorbitol concentration suddenly drops. Several pieces of evidence support this hypothesis. First, the rate of cell death should be reduced in mutants with lower glycerol synthesis. Indeed, we observed significantly lower rates of cell death for all mutants tested (*ste11Δ*, *hog1Δ*, *pbs2Δ*, *gpd1Δ*, *gpd2Δ* and *gpd1Δ*; *gpd2Δ*) relative to the wild-type strain under AS, but not under IPS for which glycerol synthesis is frustrated even in wild type cells due to the absence of glucose during hyperosmotic stress (Figure 5c). In particular, the death rate decreased from $2.4 \times 10^{-3} \text{ min}^{-1}$ for wild-type to 5.2×10^{-5} , 3.4×10^{-4} and $3.5 \times 10^{-4} \text{ min}^{-1}$, respectively, for the *hog1Δ*, *pbs2Δ* and *gpd1Δ*; *gpd2Δ* mutants under AS when the fluctuation period was 24 minutes. A similar pattern was observed for the *pbs2Δ* mutant when the fluctuation period was 96 minutes (Figure S6a), although the reduction in the death rate was less pronounced than for the period of 24 minutes. Conversely, we observed a higher death rate for the *fps1Δ* mutant (3.5×10^{-3} per minute) under AS (Figure 5c), which is consistent with higher intracellular accumulation of glycerol in this mutant lacking the Fps1 aquaglyceroporin channel involved in glycerol export. Over a 10-hour AS experiment with a fluctuation period of 24 minutes, the death rate was lowest at the beginning of the experiment and was maximal during the last five hours of the experiment (Figure S6e). However, when the AS fluctuation period was 96 minutes, the maximum death rate occurred earlier (and stopped increasing after the second period) and the dynamics of cell death remained constant over multiple periods of osmotic fluctuation (Figure S6f). Again, these observations are consistent with cell death being due to glycerol accumulation, since it takes time for cells to accumulate an amount of glycerol sufficient to cause bursting after hypo-osmotic shock.

HOG pathway mutants are fitter than wild-type cells under fast alternating stresses

The rates of cell division and cell death both contribute to fitness (*i.e.*, the adaptive value) of a genotype in a particular environment. Since Hog pathway mutants exhibited different cell division and death rates compared to the wild-type genotype under AS, we calculated the population growth rate (division rate minus death rate) as a fitness estimate. Under IPS, the population growth rates of most mutant strains and of the wild-type strain were not significantly different;

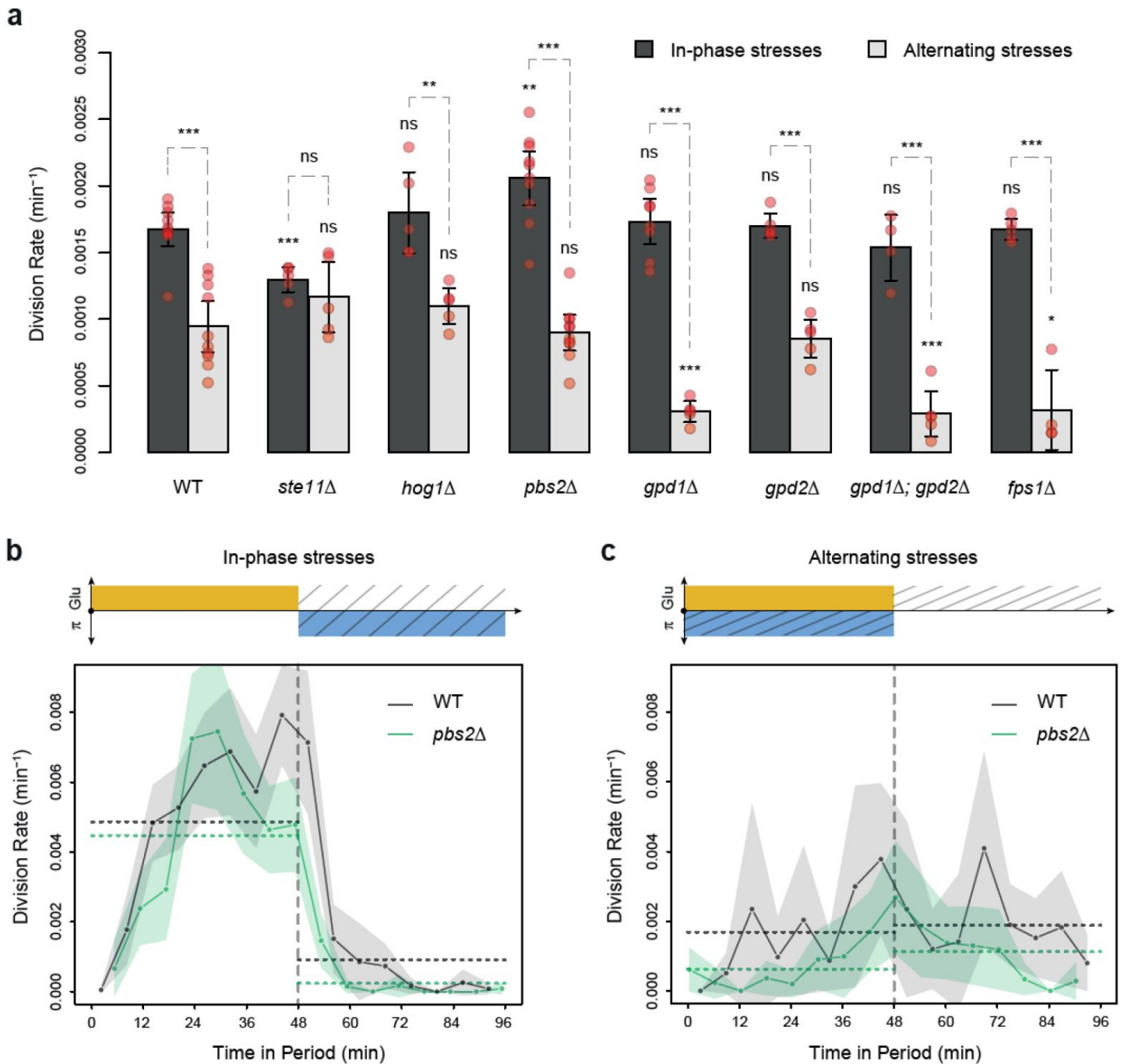


Figure 4.

HOG pathway mutants grow faster under in-phase stresses than under alternating stresses.

(a) Division rates measured during growth in IPS and AS conditions with 2% glucose and a fluctuation period of 24 minutes. Bars show the mean division rate measured in different growth chambers of the microfluidic chip. Error bars are 95% confidence intervals of the mean. Red symbols show the average division rate in each growth chamber. Results of *t*-tests comparing the wild-type and mutant strains under the same condition are indicated above each pair of bars; results comparing the same strain under different conditions are shown above each pair of bars (ns: $P > 0.05$; * $0.01 < P < 0.05$; ** $0.001 < P < 0.01$; *** $P < 0.001$). (b, c) Temporal dynamics of division rate during a period of 96 minutes in (b) IPS and (c) AS conditions for wild-type (black) and *pbs2* Δ mutant (green) cells. Each dot shows the division rate during a 6-minute window centered on that dot and averaged for all fields of view sharing the same condition and all periods in the experiment. Gray and green areas are 95% confidence intervals of the mean division rate. Horizontal dotted lines show the mean division rate for all data collected in each half period. The colored bars represent the periodic fluctuations in glucose (orange) and/or sorbitol (blue); hatching represents stress.

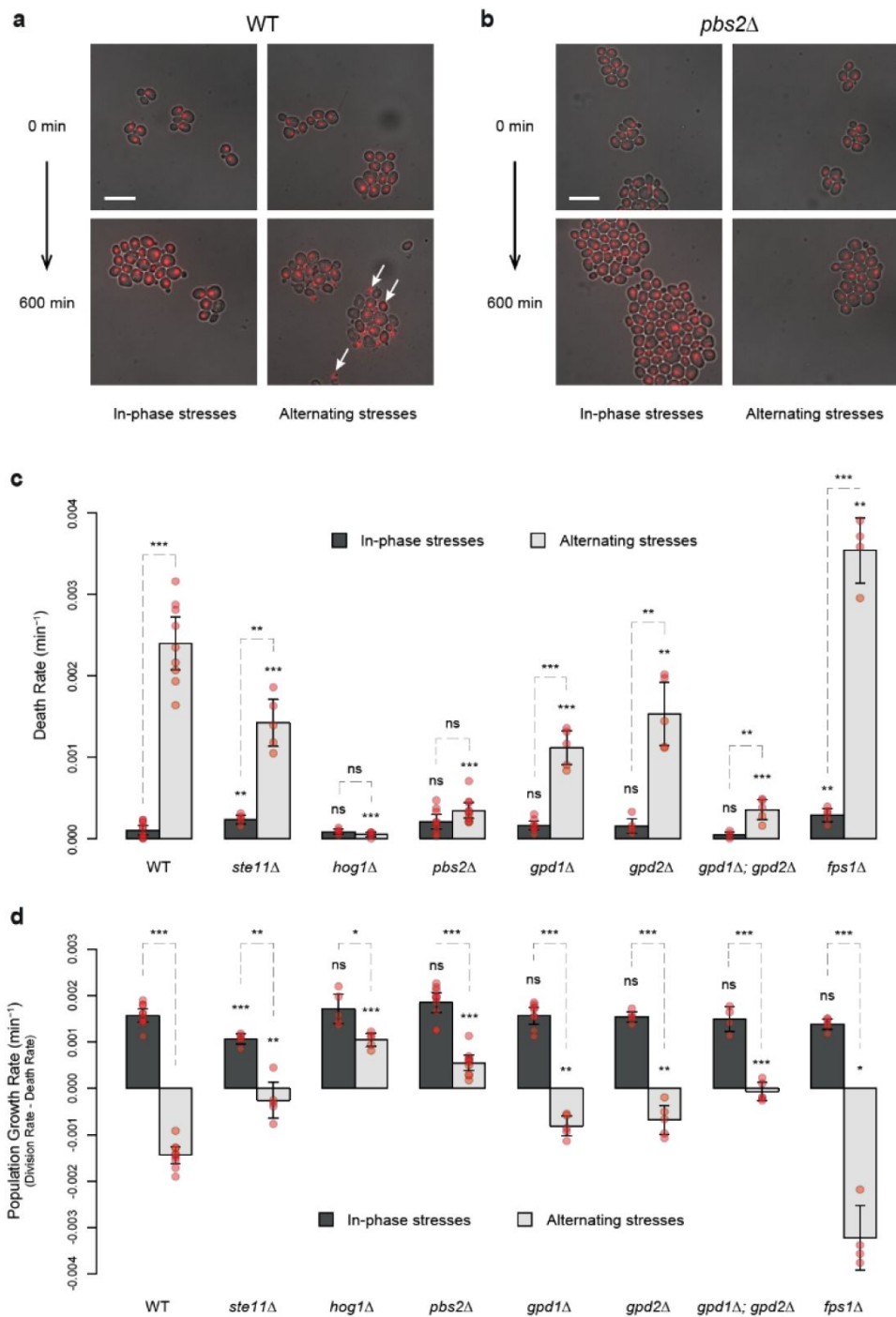


Figure 5.

HOG pathway mutants exhibit a lower death rate and an increased population growth rate under in-phase stresses.

(a, b) Images of wild-type (a) and *pbs2Δ* mutant (b) cells before ($t = 0$ min) and after ($t = 600$ min) growth in IPS (left) and AS (right) conditions. Fluorescence and bright field images were merged to visualize nuclei marked with HTB2-mCherry. Scale bar represents 10 μm . White arrows indicate nuclei of representative dead cells. (c, d) Death rates (c) and population growth rates (d) of the reference strain and seven deletion mutants under IPS and AS conditions. Population growth rates were calculated as the difference between division rates (Figure 4b) and death rates (Figure 5c). Bars show mean rates measured in different growth chambers. Error bars are 95% confidence intervals of the mean. Red symbols show the average rate for each field of view. Results of t -tests comparing the wild-type and mutant strains under the same conditions are indicated above each pair of bars (ns $P > 0.05$; * $0.01 < P < 0.05$; ** $0.001 < P < 0.01$; *** $P < 0.001$). (a-d) Cells were grown under fluctuations of 2% glucose and 1 M sorbitol at a period of 24 minutes.

the only exception being the slightly lower growth rate of the *ste11Δ* mutant (Figure 5d). However, under AS with a fluctuation period of 24 minutes, several mutants had higher population growth rates than the wild-type strain (Figure 5d). In fact, the population growth rate was negative for the wild-type strain ($-1.4 \times 10^{-3} \text{ min}^{-1}$) as cells died faster than they divided and positive for the *hog1Δ* mutant ($1.0 \times 10^{-3} \text{ min}^{-1}$) and *pbs2Δ* mutant ($5.5 \times 10^{-4} \text{ min}^{-1}$). These differences are clear in the microscopy images, as the population of wild-type cells visually shrank over time under AS (Figure 5a), while the population of *pbs2Δ* cells clearly expanded (Figure 5b). Thus, the *hog1Δ* and *pbs2Δ* genotypes are better adapted and would quickly outcompete wild-type cells under these dynamic conditions. However, this is only true when the frequency of environmental fluctuations is sufficiently high, since we did not observe significant differences in the population growth rate between the wild-type and *pbs2Δ* mutant under AS when the fluctuation period was 96 minutes (Figure S6b). We conclude that mutants that were first characterized by an inability to adapt to prolonged hyperosmotic stress can be well adapted when hyperosmotic stress rapidly fluctuates in antiphase with glucose availability. Therefore, the genetic mechanisms that contribute to adaptation under steady-state conditions could be detrimental under dynamic conditions, highlighting the importance of investigating how organisms adapt to dynamically changing environments.

Osmoregulation is impaired under in-phase stresses but not under alternating stresses

The ability of cells to sense environmental fluctuations and to execute an adaptive response has been mainly studied using fluctuations of one stress cue at a time. How cells sense and respond to dual fluctuations of two interacting stresses remains a fundamental open question to understand how cells cope with complex environmental dynamics. Our findings suggest that the cell response to dual stress fluctuations can be very different depending on the phasing of the two stresses. Indeed, yeast cells appear to accumulate more glycerol under alternating stresses (AS) than under in-phase stresses (IPS). This could be either because of an impaired ability of cells to sense hyperosmotic shocks in absence of glucose or because of an impaired capacity to respond to hyperosmotic shocks in absence of glucose. Glycerol synthesis is regulated by the HOG pathway; thus, we investigated whether the activity of this pathway differed under IPS and AS conditions. In presence of glucose, activation of the HOG pathway in response to hyperosmotic shock triggers phosphorylation and nuclear translocation of Hog1, which regulates transcription of multiple genes. A negative feedback loop dephosphorylates Hog1, which leaves the nucleus in less than 15 minutes even if hyperosmotic stress is maintained^{4,21}. To track HOG pathway activity, we quantified the nuclear enrichment of Hog1 over time by monitoring the subcellular location of Hog1 protein fused to a fluorescent marker (Hog1-GFP) in cells that also expressed the nuclear marker Htb2-mCherry. We did not detect any enrichment of Hog1-GFP in nuclei when only glucose fluctuated over time (Figure S7a), showing cells did not perceive glucose fluctuations as a significant osmotic cue. In contrast, enrichment of Hog1-GFP fluorescence in nuclei was observed within minutes after exposure to 1 M sorbitol under both AS (Figure 6a) and IPS (Figure 6b). Therefore, cells can sense hyperosmotic shock, activate the HOG MAPK cascade and phosphorylate Hog1 MAP kinase both in the presence (AS) and absence (IPS) of glucose. However, the adaptation dynamics of Hog1 (*i.e.*, its exit from the nucleus) were remarkably different (Figure 6a-c): under AS, nuclear enrichment of Hog1-GFP peaked at 6 minutes following hyperosmotic shock and then quickly decayed and became undetectable after 30 minutes (Figure 6a,c)—essentially the same dynamics observed under periodic fluctuations of osmotic stress without glucose fluctuations (Figure S7a). Under IPS conditions, nuclear enrichment also peaked 6 minutes after hyperosmotic shock, but Hog1-GFP returned to the cytosol much more slowly; strong nuclear enrichment was still observed 48 minutes after exposure to hyperosmotic stress in the absence of glucose (Figure 6b,c). When the hyperosmotic stress was released, Hog1-GFP returned to the cytosol in less than 12 minutes. To determine whether Hog1-GFP eventually returns to the cytoplasm during hyperosmotic stress in the absence of glucose, we applied a single pulse of 1 M sorbitol without glucose for 4 hours. Nuclear enrichment of Hog1-GFP reached basal levels about two hours after

the onset of hyperosmotic stress (**Figure S7b**). The delayed exit of Hog1-GFP out of the nucleus under IPS suggests the activity of the feedback loop regulating Hog1 dephosphorylation is impaired in the absence of glucose. We hypothesized that delayed nuclear export of Hog1-GFP under IPS could be due to impaired osmoregulation. In support of this hypothesis, we observed no recovery of cell size during hyperosmotic stress under IPS conditions (**Figure 6d**). Cells only returned to their initial size when sorbitol was removed and glucose was added back to the medium, which also corresponded to the moment when Hog1-GFP returned to the cytosol. In contrast, under AS, both the recovery of cell size and nuclear export of Hog1-GFP occurred while cells were still exposed to hyperosmotic stress (**Figure 6c**), showing that osmoregulation was not impaired under these conditions. These results suggest glucose is necessary for the rapid osmoregulation that usually occurs in the first 20 minutes following hyperosmotic stress. This fast osmoregulation has been proposed to rely on the induction of glycerol synthesis via Hog1-dependent post-translational mechanisms²⁶. Since glucose is a metabolic precursor of glycerol, the absence of glucose may redirect metabolic fluxes against glycerol synthesis, and thereby prevent fast osmoregulation. Further work will be necessary to test this hypothesis and study how glucose stored in the cell is used (or not) for glycerol production.

Transcriptional response is impacted by the interaction between two environmental dynamics

Temporal fluctuations of two different stresses may have different or even opposite effects on gene expression, raising the question of how dual fluctuations of these two stresses would affect gene expression. Fast periodic fluctuation of osmotic stress was previously shown to cause hyperactivation of the *STL1* promoter (P_{STL1}) regulated by Hog1²⁷, while glucose depletion is known to inhibit transcription³⁴ and translation initiation^{35,36}. We therefore asked whether dual fluctuations of glucose depletion and osmotic stress had additive effects on P_{STL1} expression or whether one of the dynamic cues had a dominant effect. To address this question, we quantified the expression dynamics of a P_{STL1} -*mCitrine* fluorescent reporter gene under IPS and AS conditions. As expected, we observed transient expression of P_{STL1} -*mCitrine* in response to both short (48 min) and long (10 h) pulses of 1 M sorbitol (**Figure 7c**): the mean fluorescence level peaked at a 2.8-fold change 115 minutes after exposure to a short sorbitol pulse and 2.4-fold change 122 minutes after a long sorbitol pulse; then, fluorescence gradually returned to basal levels, even when osmotic stress was maintained. This expression pattern is consistent with previous quantifications of P_{STL1} transcriptional activity during hyperosmotic stress^{37,38}. When hyperosmotic shocks were periodically applied for 48 minutes every 96 minutes, P_{STL1} -*mCitrine* expression constantly increased to reach 10.2-fold change after 11 hours (**Figure 7b**), suggesting that osmoadaptation never occurred under this condition. Interestingly, the HOG pathway also seemed to be overactivated under AS, since P_{STL1} -*mCitrine* expression reached a maximum of 4.1-fold change after 413 minutes and remained as high as 3.1-fold-change after 11 hours under the AS regime with a fluctuation period of 96 minutes (**Figure 7a,b**). Conversely, we observed much weaker and slower induction of P_{STL1} -*mCitrine* expression under IPS: the maximal fold change was 0.7 after 11 hours of IPS with a fluctuation period of 96 minutes (**Figure 7a,b**). We observed a similar pattern (*i.e.*, faster, stronger induction of P_{STL1} -*mCitrine* under AS than IPS) when the fluctuation period was 24 minutes (**Figure 7c**). Therefore, the *STL1* promoter is not activated by hyperosmotic stress in the absence of glucose, despite nuclear translocation of the MAP kinase Hog1. This result suggests that the global repression of expression in response to abrupt glucose starvation is dominant over the hyper-activation of P_{STL1} transcriptional activity induced by periodic osmotic stress.

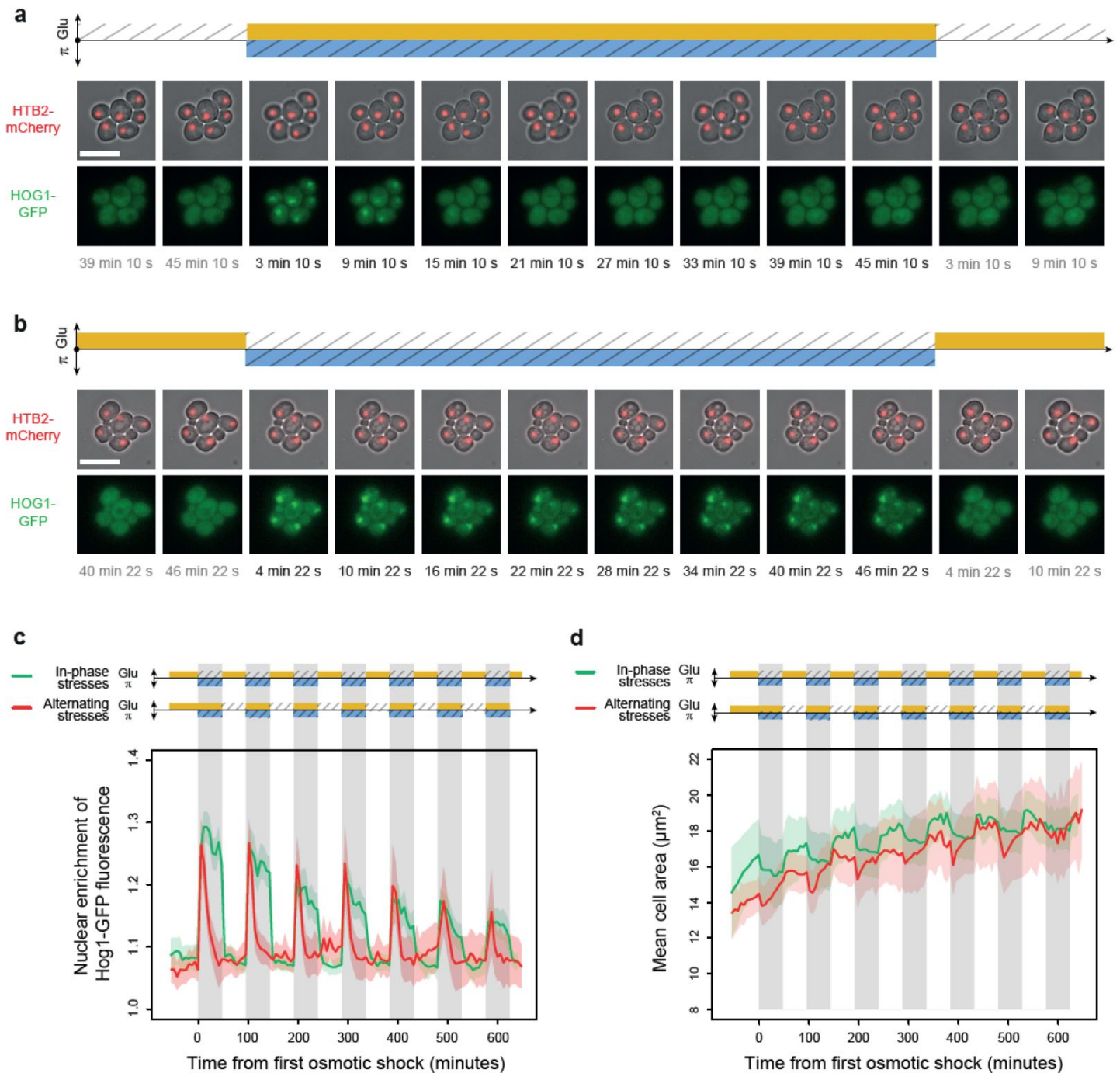


Figure 6.

Osmoregulation is delayed after hyperosmotic stress under in-phase stresses but not under alternating stresses.

(a-b) Timelapse images of cells expressing Htb2-mCherry and Hog1-GFP under AS (a) and IPS conditions (b) for periods of 96 minutes, showing cellular localization of Hog1p during the second osmotic shock in each experiment. Top: fluorescence and brightfield images merged to visualize cell nuclei tagged with histone HTB2-mCherry. Bottom: fluorescence images showing Hog1-GFP localization. The time since the last environmental change is indicated below each image. Scale bars represent 10 μm . (c) Temporal dynamics of the enrichment of Hog1-GFP fluorescence in cell nuclei under IPS (red curve) and AS (green curve) conditions. Colored areas indicate 95% confidence intervals. (d) Temporal dynamics of cell size (area) in IPS (green) and AS (red) conditions for the same cells as in panel (c). Each curve shows the mean area measured among cells. Colored areas indicate 95% confidence intervals of the mean. (c-d) Each curve shows the mean nuclear enrichment or mean cell size for 11 to 25 cells in one or two fields of view. The colored graphs represent the periodic fluctuations of glucose (orange) and/or sorbitol (blue); hatching represents stress; gray indicates exposure to 1 M sorbitol. (a-d) Cells were grown under fluctuations of 2% glucose and 1 M sorbitol at a period of 96 minutes.

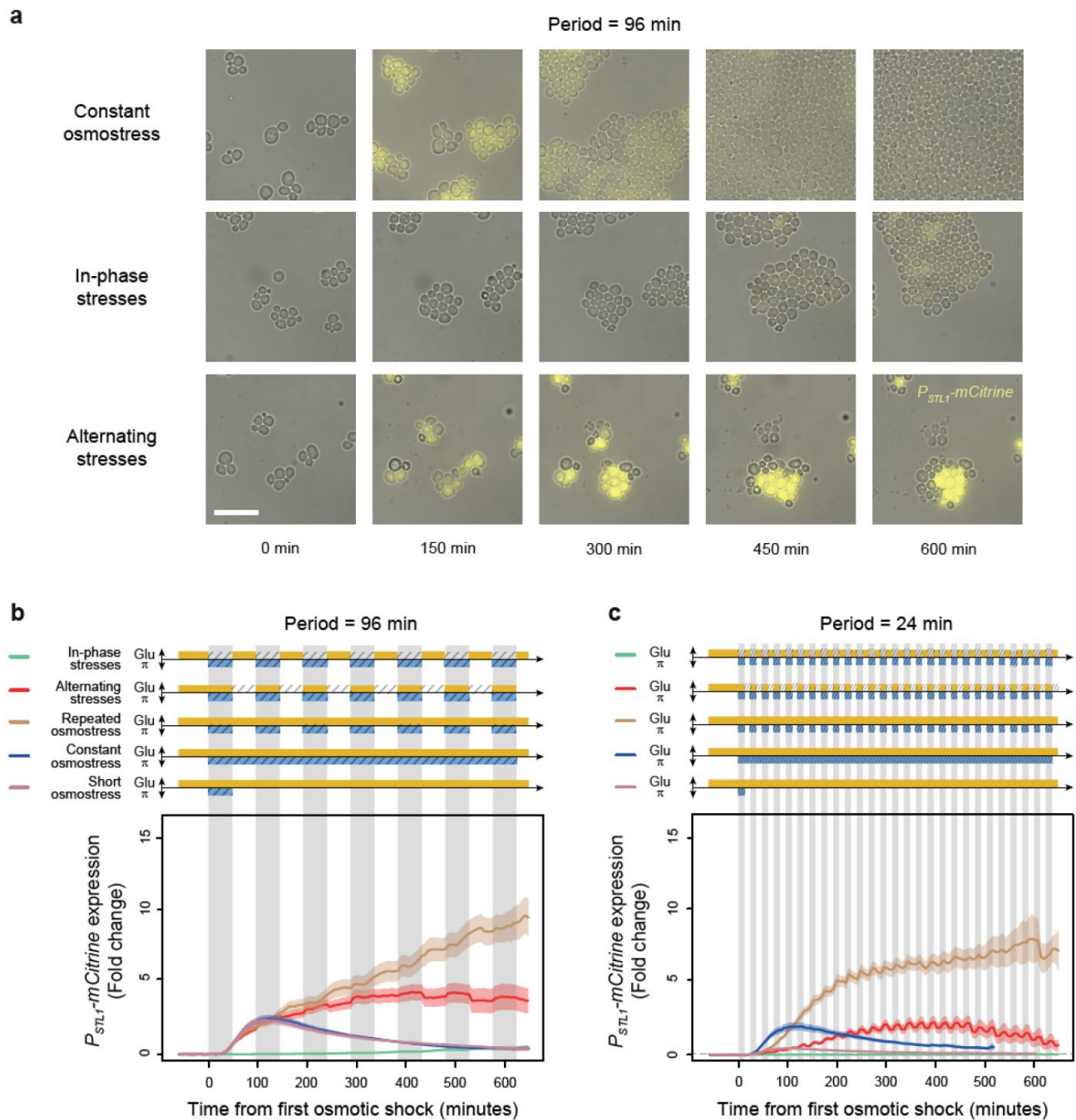


Figure 7.

A transcriptional target of the HOG pathway is under-expressed during in-phase stresses and over-expressed during alternating stresses.

(a) Images of cells expressing a fluorescent reporter (mCitrine) under control of the *STL1* promoter known to be regulated by the HOG pathway. Rows correspond to different conditions (as indicated on the left) and columns correspond to different time points after transitioning from complete medium to each condition. Bright field and fluorescence images are overlaid. The scale bar represents 20 μm . (b-c) Temporal dynamics of P_{STL1} -mCitrine expression in five conditions: IPS (green curves), AS (red curve), periodic osmotic stress with constant glucose (brown curve), a single transition to constant osmotic stress with glucose for 10 hours (blue curve), and a short pulse of osmotic stress with constant glucose (purple curve). The fluctuation period is 96 minutes in (b) and 24 minutes in (c) for the first three conditions. 2% glucose was used in all conditions. Each curve shows the mean fold change of fluorescence intensity measured for 30–65 cells from four or five fields of view. Colored areas indicate 95% confidence intervals of the mean. The colored graphs represent the periodic fluctuations of glucose (orange) and/or sorbitol (blue); hatching represents stress; gray indicates exposure to 1 M sorbitol.

Discussion

Using microfluidics and time lapse microscopy, we studied how yeast cells behave when confronted with two dynamic stresses that were applied either simultaneously (in-phase) or alternatively (in antiphase). We found that dual fluctuations of glucose deprivation and osmotic stress had synergistic (non-additive) effects on cell proliferation that could not be easily predicted from the effects of fluctuating each stress separately. The phasing of the two stresses had a striking impact on several cell phenotypes, including division rate, death rate, osmoregulation and transcriptional activation of a gene regulated by osmotic stress. The quantitative measurements of fitness that we collected for diverse genotypes under dynamic conditions with different glucose (main carbon source) concentrations can be used to further constrain mathematical models of yeast stress responses by adding two important features: resource allocation and regulation based on the presence of glucose. Moreover, our results indicate that the classic picture of yeast adaptation to osmotic stress cannot fully explain the behavior of yeast cells under fluctuating conditions. Indeed, by making glucose available for only short durations, we produced an environment in which the dynamics of the osmotic signaling pathway and its interaction with the glucose sensing pathway and glycolysis are critical. While the HOG signaling pathway was activated under all conditions, transcription of the target genes and inactivation of the HOG pathway were only detected when glucose and hyperosmotic stress were applied simultaneously, but not when hyperosmotic stress occurred in the absence of glucose. Therefore, if glucose is not available in the environment, cells are unable to commit to classical transcriptional/translational responses after osmotic stress. This finding shed lights on the importance of including different types of metabolic environment fluctuations when describing stress responses and probing gene regulatory networks with time varying signals to constrain both mathematical and biological models of stress responses.

Importantly, in contrast to the well-known proliferative defects of osmo-sensitive mutants under constant hyperosmotic conditions, we show that periodically varying osmotic stress is not always detrimental to the growth of osmo-sensitive yeast cells. Indeed, HOG pathway mutants can grow and are even fitter than wild-type cells under fast alternating fluctuations of glucose deprivation and hyperosmotic stress. In this condition, osmo-sensitive mutant cells survive better than wild-type cells to repeated hypo-osmotic shocks, probably because they do not accumulate glycerol in response to hyperosmotic shocks and thus are less sensitive to fluctuations in the osmolarity of their environment. This also suggests cells can be killed by exploiting their adaptive response. Forcing cells to repeatedly express their osmoadaptation program makes them very sensitive to osmotic rupture of the cell wall. Hence, periodically stressing cells (and their metabolic state) may be an efficient strategy to kill yeast cells. We further imagine that varying the timescale of fluctuations may even prevent cells from finding an evolutionary escape route.

Overall, we anticipate the importance of extending our study of the interaction of metabolic resources with other critical stresses, including antibiotic or mechanical stress, to higher eukaryotes. We propose that sending periodically a metabolic resource combined or alternating with a stressing agent allows to study the interplay between stress response and cell metabolism. We anticipate that such study could open novel research areas by revisiting the questions of stress response dynamics, within a systems view of cells homeostasis, in which metabolic activity regulates or interferes with multiple important cellular processes.

Acknowledgements

The authors would like to thank their team members for their critical reading of this manuscript. We also thank Williams Brett who helped us design the microfluidic control system. This work was supported by the European Research Council grant SmartCells (724813) and received support from

Author Contributions

FD, CC, AL performed experiments; FD, CC, AL, MLB, JS performed strain construction; FD, BS, SP, MLB, CC, LC, JMdM, PH analyzed the data and wrote the manuscript; FD and PH designed the project.

Supplementary Information

Supplementary information contains 7 supplementary figures and detailed methods for strain construction and data analysis.

References

1. Paliwal S., Wang C. J., Levchenko A. (2008) **Pulsing cells: how fast is too fast?** *HFSP J* **2**:251–256
2. Bennett M. R., Hasty J. (2009) **Microfluidic devices for measuring gene network dynamics in single cells** *Nat. Rev. Genet* **10**:628–638
3. Kaiser M., et al. (2018) **Monitoring single-cell gene regulation under dynamically controllable conditions with integrated microfluidics and software** *Nat. Commun* **9**
4. Hersen P., McClean M. N., Mahadevan L., Ramanathan S. (2008) **Signal processing by the HOG MAP kinase pathway** *Proc. Natl. Acad. Sci* **105**:7165–7170
5. Mettetal J. T., Muzzey D., Gómez-Uribe C., van Oudenaarden A. (2008) **The Frequency Dependence of Osmo-adaptation in *Saccharomyces cerevisiae*** *Science* **319**:482–484
6. Harrigan P., Madhani H. D., El-Samad H. (2018) **Real-Time Genetic Compensation Defines the Dynamic Demands of Feedback Control** *Cell* **175**:877–886
7. Miliás-Argeitis A., Rullan M., Aoki S. K., Buchmann P., Khammash M. (2016) **Automated optogenetic feedback control for precise and robust regulation of gene expression and cell growth** *Nat. Commun* **7**
8. Lugagne J.-B., et al. (2017) **Balancing a genetic toggle switch by real-time feedback control and periodic forcing** *Nat. Commun* **8**
9. Uhlendorf J., et al. (2012) **Long-term model predictive control of gene expression at the population and single-cell levels** *Proc. Natl. Acad. Sci* **109**:14271–14276
10. Rullan M., Benzinger D., Schmidt G. W., Miliás-Argeitis A., Khammash M. (2018) **An Optogenetic Platform for Real-Time, Single-Cell Interrogation of Stochastic Transcriptional Regulation** *Mol. Cell* **70**:745–756
11. Banderas A., Le Bec M., Cordier C., Hersen P. (2020) **Autonomous and Assisted Control for Synthetic Microbiology** *Int. J. Mol. Sci* **21**
12. Babazadeh R., et al. (2017) **The yeast osmostress response is carbon source dependent** *Sci. Rep* **7**
13. Rodaki A., et al. (2009) **Glucose promotes stress resistance in the fungal pathogen *Candida albicans*** *Mol. Biol. Cell* **20**:4845–4855
14. Weiße A. Y., Oyarzún D. A., Danos V., Swain P. S. (2015) **Mechanistic links between cellular trade-offs, gene expression, and growth** *Proc. Natl. Acad. Sci* **112**:E1038–E1047
15. MetzI-Raz E., et al. (2017) **Principles of cellular resource allocation revealed by condition-dependent proteome profiling** *eLife* **6**
16. Ceroni F., et al. (2018) **Burden-driven feedback control of gene expression** *Nat. Methods* **15**:387–393

17. Granados A. A., et al. (2017) **Distributing tasks via multiple input pathways increases cellular survival in stress** *eLife* **6**
18. Reimers A.-M., Knoop H., Bockmayr A., Steuer R. (2017) **Cellular trade-offs and optimal resource allocation during cyanobacterial diurnal growth** *Proc. Natl. Acad. Sci* **114**:E6457–E6465
19. de Nadal E., Posas F. (2022) **The HOG pathway and the regulation of osmoadaptive responses in yeast** *FEMS Yeast Res* **22**
20. Klipp E., Nordlander B., Krüger R., Gennemark P., Hohmann S. (2005) **Integrative model of the response of yeast to osmotic shock** *Nat. Biotechnol* **23**:975–982
21. Muzzey D., Gómez-Uribe C. A., Mettetal J. T., van Oudenaarden A. (2009) **A Systems-Level Analysis of Perfect Adaptation in Yeast Osmoregulation** *Cell* **138**:160–171
22. Petelenz-Kurziel E., et al. (2013) **Quantitative Analysis of Glycerol Accumulation, Glycolysis and Growth under Hyper Osmotic Stress** *PLoS Comput. Biol* **9**
23. Sharifian H., et al. (2015) **Parallel feedback loops control the basal activity of the HOG MAPK signaling cascade** *Integr. Biol* **7**:412–422
24. Krantz M., et al. (2009) **Robustness and fragility in the yeast high osmolarity glycerol (HOG) signal-transduction pathway** *Mol. Syst. Biol* **5**
25. Zi Z., Liebermeister W., Klipp E. (2010) **A Quantitative Study of the Hog1 MAPK Response to Fluctuating Osmotic Stress in *Saccharomyces cerevisiae*** *PLOS ONE* **5**
26. Schaber J., Baltanas R., Bush A., Klipp E., Colman-Lerner A. (2012) **Modelling reveals novel roles of two parallel signalling pathways and homeostatic feedbacks in yeast** *Mol. Syst. Biol* **8**
27. Mitchell A., Wei P., Lim W. A. (2015) **Oscillatory stress stimulation uncovers an Achilles heel of the yeast MAPK signaling network** *Science* **350**:1379–1383
28. Saito H., Posas F. (2012) **Response to hyperosmotic stress** *Genetics* **192**:289–318
29. Gasch A. P., et al. (2000) **Genomic expression programs in the response of yeast cells to environmental changes** *Mol. Biol. Cell* **11**:4241–4257
30. Escoté X., Zapater M., Clotet J., Posas F. (2004) **Hog1 mediates cell-cycle arrest in G1 phase by the dual targeting of Sic1** *Nat. Cell Biol* **6**:997–1002
31. Clotet J., et al. (2006) **Phosphorylation of Hsl1 by Hog1 leads to a G2 arrest essential for cell survival at high osmolarity** *EMBO J* **25**:2338–2346
32. Duch A., et al. (2013) **Coordinated control of replication and transcription by a SAPK protects genomic integrity** *Nature* **493**:116–119
33. Norbeck J., Pählman A.-K., Akhtar N., Blomberg A., Adler L. (1996) **Purification and Characterization of Two Isoenzymes of DL-Glycerol-3-phosphatase from *Saccharomyces cerevisiae*** *J. Biol. Chem* **271**:13875–13881

34. Jona G., Choder M., Gileadi O. (2000) **Glucose starvation induces a drastic reduction in the rates of both transcription and degradation of mRNA in yeast** *Biochim. Biophys. Acta BBA - Gene Struct. Expr* **1491**:37–48
35. Ashe M. P., De Long S. K., Sachs A. B. (2000) **Glucose depletion rapidly inhibits translation initiation in yeast** *Mol. Biol. Cell* **11**:833–848
36. Janapala Y., Preiss T., Shirokikh N. E. (2019) **Control of Translation at the Initiation Phase During Glucose Starvation in Yeast** *Int. J. Mol. Sci* **20**
37. Wosika V., Pelet S. (2020) **Single-particle imaging of stress-promoters induction reveals the interplay between MAPK signaling, chromatin and transcription factors** *Nat. Commun* **11**
38. Ben Meriem Z., Khalil Y., Hersen P., Fabre E. (2019) **Hyperosmotic Stress Response Memory is Modulated by Gene Positioning in Yeast** *Cells* **8**

Author information

Fabien Duveau

Laboratoire Matière et Systèmes Complexes, UMR 7057 CNRS & Université Paris Diderot, 10 rue Alice Domon et Léonie Duquet, 75013 Paris, France, Laboratoire de Biologie et Modélisation de la Cellule, Ecole Normale Supérieure de Lyon, CNRS, UMR 5239, Inserm, U1293, Université Claude Bernard Lyon 1, 46 allée d'Italie F-69364 Lyon, France

Céline Cordier

Laboratoire Physico Chimie Curie, UMR168, Institut Curie, 16 rue Pierre et Marie Curie, 75005 Paris, France

Lionel Chiron

Laboratoire Physico Chimie Curie, UMR168, Institut Curie, 16 rue Pierre et Marie Curie, 75005 Paris, France

Matthias LeBec

Laboratoire Physico Chimie Curie, UMR168, Institut Curie, 16 rue Pierre et Marie Curie, 75005 Paris, France

Sylvain Pouzet

Laboratoire Physico Chimie Curie, UMR168, Institut Curie, 16 rue Pierre et Marie Curie, 75005 Paris, France

Julie Séguin

Laboratoire Matière et Systèmes Complexes, UMR 7057 CNRS & Université Paris Diderot, 10 rue Alice Domon et Léonie Duquet, 75013 Paris, France

Artémis Llamosi

Laboratoire Matière et Systèmes Complexes, UMR 7057 CNRS & Université Paris Diderot, 10 rue Alice Domon et Léonie Duquet, 75013 Paris, France

B. Sorre

Laboratoire Matière et Systèmes Complexes, UMR 7057 CNRS & Université Paris Diderot, 10 rue Alice Domon et Léonie Duquet, 75013 Paris, France, Laboratoire Physico Chimie Curie, UMR168,

Jean-Marc Di Meglio

Laboratoire Matière et Systèmes Complexes, UMR 7057 CNRS & Université Paris Diderot, 10 rue Alice Domon et Léonie Duquet, 75013 Paris, France

Pascal Hersen

Laboratoire Matière et Systèmes Complexes, UMR 7057 CNRS & Université Paris Diderot, 10 rue Alice Domon et Léonie Duquet, 75013 Paris, France, Laboratoire Physico Chimie Curie, UMR168, Institut Curie, 16 rue Pierre et Marie Curie, 75005 Paris, France

For correspondence: pascal.hersen@curie.fr

ORCID iD: [0000-0003-2379-4280](https://orcid.org/0000-0003-2379-4280)

Editors

Reviewing Editor

Luis Larrondo

Pontificia Universidad Católica de Chile, Chile

Senior Editor

Jonathan Cooper

Fred Hutchinson Cancer Research Center, United States of America

Reviewer #1 (Public Review):

In this study, the authors aimed to investigate how cells respond to dynamic combinations of two stresses compared to dynamic inputs of a single stress. They applied the two stresses - carbon stress and hyperosmotic stress - either in or out of phase, adding and removing glucose and sorbitol.

Both a strength and a weakness, as well as the main discovery, is that the cells' hyperosmotic response strongly requires glucose. For in-phase stress, cells are exposed to hyperosmotic shock without glucose, limiting their ability to respond with the well-studied HOG pathway; for anti-phase stress, cells do have glucose when hyperosmotically shocked, but experience a hypo-osmotic shock when both glucose and sorbitol are simultaneously removed. Responding with the HOG pathway and so amassing intracellular glycerol amplifies the impact of this hypo-osmotic shock. Counterintuitively then, it is the presence of glucose rather than the stress of its absence that is deleterious for the cells.

The bulk of the paper supports these conclusions with clean, compelling time-lapse microscopy, including extensive analysis of gene deletions in the HOG network and measurements of both division and death rates. The methodology the authors develop is powerful and widely applicable.

Some discussion of the value of applying periodic inputs would be helpful. Cells are unlikely to have previously seen such inputs, and periodic stimuli may reveal behaviours that are rarely relevant to selection.

The authors' findings demonstrate the tight links that can exist between metabolism and the ability to respond to stress. Their study appears to have parted somewhat from their original aim because of the HOG pathway's reliance on glucose. It would be interesting to see if the cells behaviour is simpler in periodically varying sorbitol and a stress where there is little known connection to the HOG network, such as nitrogen stress.

Reviewer #2 (Public Review):

The authors have used microfluidic channels to study the response of budding yeast to variable environments. Namely, they tested the ability of the cells to divide when the medium was repeatedly switched between two different conditions at various frequencies. They first characterized the response to changes in glucose availability or in the presence of hyper-osmotic stress via the addition of sorbitol to the medium. Subsequently, the two stresses were combined by applying the alternatively or simultaneously (in-phase). Interestingly, they observed that the in-phase stress pattern allowed more divisions and low levels of cell mortality compared to the alternating stresses where cells were dividing slowly and many cells died. A number of mutants in the HOG pathway were tested in these conditions to evaluate their responses. Moreover, the activation of the MAPK Hog1 and the transcriptional induction of the hyper-osmotic stress promoter STL1 were quantified by fluorescence microscopy.

Overall, the manuscript is well structured and data are presented in a clear way. The time-lapse experiments were analyzed with high precision. The experiments confirm the importance of performing dynamic analysis of signal transduction pathways. While the experiments reveal some unexpected behavior, I find that the biological insights gained on this system remain relatively modest.

In the discussion section, the authors mention two important behaviors that their data unveil: resource allocation (between glycolysis and HOG-driven adaptation) and regulation of the HOG-pathway based on the presence of glucose. These behaviors had been already observed in other reports (Sharifan et al. 2015 or Shen et al. 2023, for instance). I find that this manuscript does not provide a lot of additional insights into these processes. One clear evidence that is presented, however, is the link between glycerol accumulation during the sorbitol treatment and the cell death phenotype upon starvation in alternating stress condition. However, no explanations or hypothesis are formulated to explain the mechanism of resource allocation between glycolysis and HOG response that could explain the poor growth in alternating stresses or the lack of adaptation of Hog1 activity in absence of glucose.

Another key question is to what extent the findings presented here can be extended to other types of perturbations. Would the use of alternative C-source or nitrogen starvation change the observed behaviors in dynamic stresses? If other types of stresses are used, can we expect a similar growth pattern between alternating versus in-phase stresses?