



**HAL**  
open science

## A French multicenter analytical evaluation of the automated Lumipulse G sNfL blood assay (Fujirebio®) and its comparison to four other immunoassays for serum neurofilament light chain assessment in clinical settings

Etienne Mondésert, Susanna Schraen-Maschke, Isabelle Quadrio, Olivier Bousiges, Damien Bouvier, Constance Delaby, Aurélie Bedel, Sylvain Lehmann, Anthony Fourier

### ► To cite this version:

Etienne Mondésert, Susanna Schraen-Maschke, Isabelle Quadrio, Olivier Bousiges, Damien Bouvier, et al.. A French multicenter analytical evaluation of the automated Lumipulse G sNfL blood assay (Fujirebio®) and its comparison to four other immunoassays for serum neurofilament light chain assessment in clinical settings. *Clinica Chimica Acta*, 2025, 565, pp.120007. 10.1016/j.cca.2024.120007. hal-04796015

**HAL Id: hal-04796015**

**<https://hal.science/hal-04796015v1>**

Submitted on 24 Jan 2025

**HAL** is a multi-disciplinary open access archive for the deposit and dissemination of scientific research documents, whether they are published or not. The documents may come from teaching and research institutions in France or abroad, or from public or private research centers.

L'archive ouverte pluridisciplinaire **HAL**, est destinée au dépôt et à la diffusion de documents scientifiques de niveau recherche, publiés ou non, émanant des établissements d'enseignement et de recherche français ou étrangers, des laboratoires publics ou privés.



Distributed under a Creative Commons Attribution 4.0 International License



Contents lists available at ScienceDirect

Clinica Chimica Acta

journal homepage: [www.elsevier.com/locate/cca](http://www.elsevier.com/locate/cca)

Research Paper

## A French multicenter analytical evaluation of the automated Lumipulse G sNfL blood assay (Fujirebio®) and its comparison to four other immunoassays for serum neurofilament light chain assessment in clinical settings

Etienne Mondésert<sup>a,b,\*</sup>, Susanna Schraen-Maschke<sup>c</sup>, Isabelle Quadrio<sup>d,e</sup>, Olivier Bousiges<sup>f</sup>, Damien Bouvier<sup>g</sup>, Constance Delaby<sup>a,h</sup>, Aurélie Bedel<sup>i,j</sup>, Sylvain Lehmann<sup>a</sup>, Anthony Fourier<sup>d,e</sup>

<sup>a</sup> Laboratoire de Biochimie Protéomique Clinique (LBPC), Université de Montpellier, CHU de Montpellier, Institut des Neurosciences de Montpellier (INM), INSERM, Montpellier, France

<sup>b</sup> Département de Biochimie, Université de Montpellier, CHU de Montpellier, Montpellier, France

<sup>c</sup> Univ. Lille, Inserm, CHU Lille, UMR-S-U1172, LiCEND, Lille Neuroscience & Cognition, LabEx DISTALZ, Lille, France

<sup>d</sup> Biochimie et Biologie Moléculaire-LBMM, Unité de diagnostic des pathologies dégénératives, Centre de Biologie et Pathologie Est, Groupement Hospitalier Est, Lyon, France

<sup>e</sup> Equipe BIORAN, Centre de Recherche en Neurosciences de Lyon, CNRS UMR 5292, INSERM U1028, Université Lyon 1, Bron, France

<sup>f</sup> Laboratoire de biochimie et biologie moléculaire (LBBM), Pôle de biologie Hôpital de Hautepierre-CHU de Strasbourg, CNRS, laboratoire ICube UMR 7357 et FMTS (Fédération de Médecine Translationnelle de Strasbourg), équipe IMIS, Strasbourg, France

<sup>g</sup> Service de Biochimie et Génétique Moléculaire, CHU de Clermont-Ferrand, Clermont-Ferrand, France

<sup>h</sup> Hospital de la Santa Creu i Sant Pau, Biomedical Research Institute Sant Pau, Universitat Autònoma de Barcelona, Barcelona, Spain

<sup>i</sup> Université de Bordeaux, INSERM BRIC U1312, Eq 8 BioGO, France

<sup>j</sup> Service de Biochimie, CHU Bordeaux, France



## ARTICLE INFO

## Keywords:

Neurofilament light chain

Immunoassay

Neurological and neurodegenerative diseases

## ABSTRACT

**Objectives:** Measurement of serum neurofilament light chain (sNfL) protein is becoming a key biomarker for many neurological diseases. Several immunoassays have been developed to meet these clinical needs, revealing significant differences in terms of variability and results. Here, we propose a French multicenter comparison of 5 sNfL assays.

**Methods:** 6 replicates of 3 pools with low (10 pg/mL), medium (30 pg/mL) and high (100 pg/mL) sNfL values and one replicate of 12 samples with growing sNfL values were analyzed by six independent French clinical laboratories. The analytical performances of the sNfL blood assay (Fujirebio®) on Lumipulse G were first evaluated then compared to four other immunoassays: NF-light V2 (Quanterix®) on SiMOA HD-X, Human NF-L (Bio-techne®) on Ella, R-Plex Human Neurofilament L (MSD®) on Sector 2400; manual ELISA test using Uman Diagnostic/Quanterix®.

**Results:** Inter-center comparison of the Lumipulse blood assay revealed limited but significant differences in the mean sNfL values across low, medium, and high pools between each city ( $p < 0.001$ ) and between the two different batches used. Coefficients of variation of pools ranged from 2.0 to 16.9%. Z-score of sNfL results of the 12 samples ranged from  $-1.70$  to  $+1.71$ . Inter-technique comparison showed a systematic difference of sNfL values, with a overestimation of MSD and Ella over other tests. Nonetheless, results were all significantly correlated ( $p < 0.001$ ).

**Conclusion:** The automated Lumipulse assay produced comparable sNfL values across laboratories; but further adjustments are needed to harmonize sNfL results. Biologists and physicians should be aware of the variability in results between different immunoassay suppliers.

\* Corresponding author at: Department of Biochemistry, Lapeyronie Hospital, F34295 Montpellier, France.

E-mail address: [e-mondesert@chu-montpellier.fr](mailto:e-mondesert@chu-montpellier.fr) (E. Mondésert).

<https://doi.org/10.1016/j.cca.2024.120007>

Received 23 September 2024; Received in revised form 14 October 2024; Accepted 16 October 2024

Available online 23 October 2024

0009-8981/© 2024 The Author(s). Published by Elsevier B.V. This is an open access article under the CC BY license (<http://creativecommons.org/licenses/by/4.0/>).

## 1. Introduction

Serum neurofilament light chain (sNfL) protein emerged as a key biomarker in neurological disorders. Being a component of the neuronal skeleton, an increase in its soluble form in fluids like cerebrospinal fluid (CSF) or blood indicates axonal damage, making it a specific biomarker of neuronal injury. [1,2]. As non-etiological biomarker of neurological diseases, the determination of sNfL was assessed and appeared to be relevant in many indications [3–6]. The latter includes diagnostic strategies for degenerative disorders [7,8] or the presence of brain metastases [9]. Prognostic performances of sNfL were also assessed in various conditions including amyotrophic lateral sclerosis [10], multiple sclerosis [11,12] and ischemic stroke [13]. Finally, treatment response was also evaluated by sNfL determination in different diseases [14,15], promising personalized treatment decisions for patients.

Pending complete implementation of sNfL in clinical laboratory practice, different problematics need to be resolved. The final step will be the determination of a range of specific normal and pathological values concerning the multiple contexts of use of sNfL determination [16]. The determination of such cut-off values relies on a good understanding of pre-analytical factors (i.e. type of biological sample, sampling procedures, conservation), analytical factors and post-analytical factors that may modify sNfL concentrations leading to possible misinterpretations of results. Laboratories performing sNfL assays can currently rely on a several international studies to answer some of these questions [17–22]. Most sNfL measurements are based on immunoassays [23], although other modes of quantification have also been described such as mass-spectrometry [24]. Ultra-sensitive single-molecule array (SiMOA) remains the most popular technique to quantify serum sNfL amongst immunoassays in publications since it provided the first proofs of the utility of this circulating biomarker in neurological conditions [12–25]. There are currently a number of other immunoassay

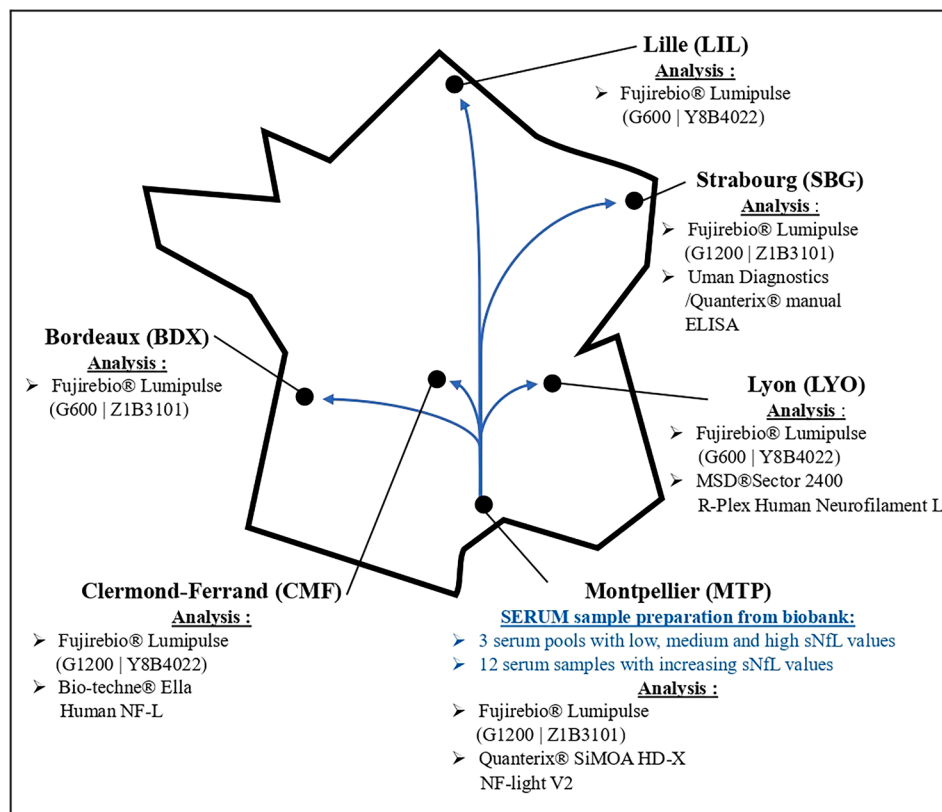
suppliers for the analysis of this biomarker, each with its own specific analytical and technical characteristics. When blood sNfL will enter into clinical practice in the near future, each laboratory will have to adopt the technique that best meets its needs in terms of organization, patient recruitment and contexts of use. Importantly, it will be crucial for medical biologists and clinicians to fully know and control analytical characteristics and limits of the chosen method.

The present multi-center study evaluates the analytical performances of the on-demand automated Lumipulse G sNfL blood assay (Fujirebio®), comparing the within-run variability and correlations between six French clinical laboratories, using a set of samples with various sNfL concentrations. On a second part, these performances are compared to four other immunoassays available in these laboratories using the same set of samples: NF-light V2 SIMOA (Quanterix®), Human NF-L (Ella®), NF-light Serum ELISA (UmanDiagnostics®) and R-Plex Human Neurofilament L (MSD®). Results show intra- and inter-technique variability, highlighting the need of results interpretation with caution and standardization.

## 2. Material and methods

### 2.1. Experimental design

Six French university hospital clinical laboratories were involved in this study (Fig. 1), located in cities of Montpellier (MTP), Bordeaux (BDX), Strasbourg (SBG), Lille (LIL), Lyon (LYO) and Clermont-Ferrand (CMF). Assays were carried out in 2023 on five analytical systems (Table 1). The same samples were analysed independently on six different Lumipulse® (Fujirebio, Tokyo, Japan) (LMP) apparatus currently implemented in each laboratory and once with three other reagents on three apparatus and with one manual ELISA test.



**Fig. 1.** Experimental design of the study. All centers performed analysis on Fujirebio® Lumipulse either instrument model G600 or G1200 and with either G sNfL blood reagent batch Z1B3101 or Y8B4022. kit was used on Lumipulse analyzer. Other assays were performed once, center location, equipment / supplier and kits are precised. Main characteristics of equipments are detailed Table 1.

## 2.2. Sample preparation

Samples were all prepared in MTP and conserved in biobank sera stored at  $-80^{\circ}\text{C}$  of patients followed in neurology departments of Montpellier university hospital with a concomitant routine sNfL determination on SIMOA. Written informed consent was obtained for all patients, and the study was part of the approved protocol on sNfL use approved by the local institutional review board (number of declarations: IRB-MTP\_2021\_04\_202100783). This study was conducted in accordance with the declaration of Helsinki as revised in 2013. Samples were pooled into three serum pools with low, medium and high values as well as 12 serum samples with increasing sNfL values were divided into aliquots and sent in each laboratory for analysis. Pools were designed to have mean values on SIM around 10 pg/mL (Pool Low), 30 pg/mL (Pool Medium) and 100 pg/mL (Pool High). Six aliquots of each pool and one aliquot of each sample were assayed on the ten apparatus.

## 2.3. Pre-analytical and analytical steps

Blood samples were collected on BD® vacutainer SST II tubes with clot activator additive (silica particles) without gel separator. After centrifugation at 10000g for 5 min, serum was separated into 500  $\mu\text{L}$  aliquots in Eppendorf® protein lobind tubes and immediately stored at  $-80^{\circ}\text{C}$  in a storage facility with continuous temperature management. The whole biobanking activity is accredited by an independent organism according to the ISO20387 quality norm. A first defrost/freezing cycle was needed for the constitution of the three pools. A subcontractor company assured samples transportation in dry ice at  $-80^{\circ}\text{C}$ . Before analysis, tubes were thawed on ice, gently homogenized and centrifuged again following the established protocol in each laboratory. Briefly, all assays consisted in immunoassay involving one capture and one detection antibody with various detection principles (Table 1). BDX, LIL and LYO used G600 LMP model while MTP, SBG and CMF used the G1200 model. Two LMP sNfL Blood reagent batches were studied: Z1B3101 batch for MTP, BDX and SBG and Y8B4022 batch for LIL, LYO and CMF. Three other used reagents were used on semi-automated apparatus: NF-light V2® (Quanterix, Billerica, USA) on SiMOA HD-X® (SIM) in MTP, Human NF-L® (Biotechne, Minneapolis, USA) on Ella (ELL) in CMF, R-Plex Human Neurofilament L® (MSD, Rockville, USA) on Sector 2400 (MSD) in LYO. At last, one the fully manual ELISA assay Uman Diagnostic/Quanterix® (Quanterix, Billerica, USA) (UMA) was used in SBG.

## 2.4. Statistical analysis

All values of sNfL are expressed in pg/mL and as mean  $\pm$  standard deviation (SD) in text. Data analysis was separated into two sections: 1) inter-center comparison of sNfL measured on the 6 individual Fujirebio® Lumipulse (LMP) instruments and 2) inter-technique comparison

of sNfL measured on the Fujirebio® LMP (using only values of MTP) and the four others platforms. Mean, SD and coefficient of variation (CV) were determined for each pool and on each instrument, with values outside lower and upper limits of quantification systematically excluded. For inter-technique comparison, only the data of MTP were used because the CV was the closest of median CV value of the LMP for the six French centers. Classical one-way analysis of variance (ANOVA) followed by Tukey-Kramer post-hoc test were performed to compare the concentrations for the three pools obtained on LMP instrument by the six laboratories. A two-way analysis of variance was performed to estimate the combined roles of both reagent batches (Z1B3101 and Y8B4022) and LMP analyser versions (G600 and G1200) on results. For all comparisons, p-value under 0.05 was considered as statistically significant.

sNfL values of the 12 samples were expressed as Z-scores for the inter-center comparison, calculated with the following formula: Z-Score =  $(x-\mu)/\sigma$ , with x: sNfL value,  $\mu$  and  $\sigma$ : mean and standard deviation of sNfL. Lin's concordance correlation coefficient ( $\rho_c$ ) was determined to evaluate precision as well as accuracy between the different methods. Correlations between sNfL values of the different analytical systems were performed using Passing-Bablok linear regression analysis and Pearson correlation coefficient (r).

## 3. Results

### 3.1. sNfL values

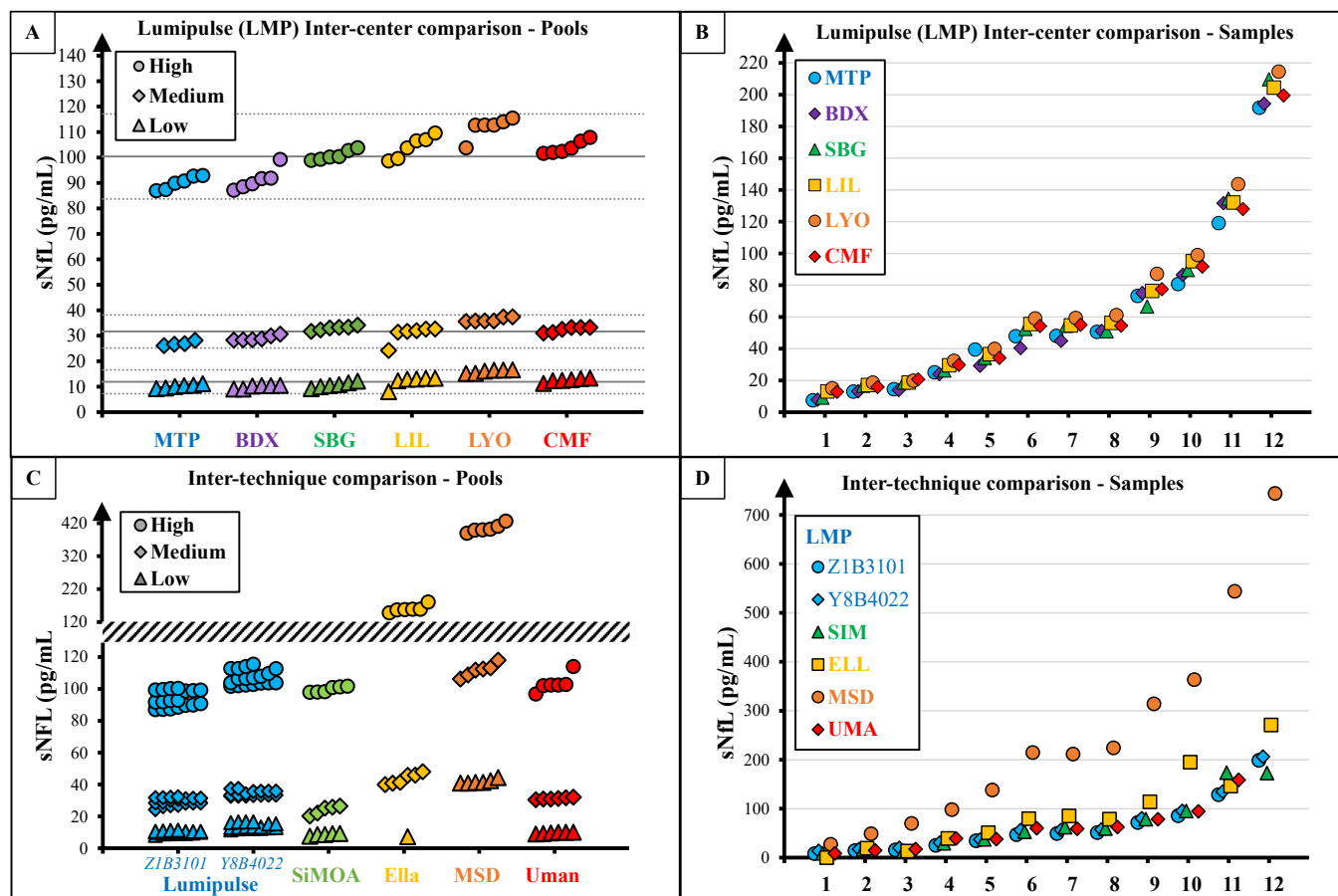
sNfL raw values are presented in supplementary Table 1 and are graphically summarized in Fig. 2. 4 out 296 (1.35 %) sNfL values were missing following sample shortage (2 concentrations for Pool Medium on LMP, 1 concentration for Pool Medium on SIM and 1 value for Pool Low on SIM). 7 out 296 (2.36 %) values were excluded from analysis: 6 ELL sNfL values (for sample 1 and 5 Pool Low values) were below lower limit of quantification and one UMA sNfL value (sample 12) was above upper limit of quantification.

### 3.2. Inter-center comparison of sNfL measurements on Fujirebio® Lumipulse (LMP)

For the three pools (low medium and high), sNfL values of LMP inter-center comparison are represented in Fig. 2A and analysis is presented in Table 2. Coefficients of variation (CV) ranged from 2.0 % (SBG – Pool High) to 16.9 % (LIL – Pool Low). The highest CV were obtained for the pool with low concentrations, decreasing with higher sNfL concentrations. Mean concentrations of sNfL were statistically different between the 6 centers for all pools ( $p < 0.001$ ). Pairwise comparison showed specific differences in mean between centers. Of note, LYO sNfL mean values were statistically different from every other center for the three different pools. To explore these differences, we analyzed the results

**Table 1**  
Analytical characteristics of the different immunoassays evaluated in this study.

Instrument   Kit	Company	Detection	Analytical range (pg/mL)	Specimen	Sample uptake	Measure
Lumipulse G   NfL Blood	Fujirebio®	Chemiluminescence	2 – 5000	Blood	100 $\mu\text{L}$	Automated On-demand test
SiMOA HD-X   NF-light V2	Quanterix®	Fluorescence/Digital	1.38 – 1440	Blood   CSF	25 $\mu\text{L}$	Semi-automated 96-well plate
Ella   Human NF-L	Bio-techne®	Fluorescence	2.70 – 10,290	Blood   CSF	35 $\mu\text{L}$	Semi-automated 96-well plate
Sector 2400   R-Plex Human Neurofilament L	MSD®	Electro-chemiluminescence	11 – 100,000	Blood   CSF	25 $\mu\text{L}$	Semi-automated 96-well plate
NA   NF-light Serum ELISA	Uman Diagnostics / Quanterix®	Absorbance	2 – 160	Blood	50 $\mu\text{L}$	Manual 96-well plate



**Fig. 2.** Inter-center and inter-technique comparisons of pools and samples. **A.** Serum neurofilament light chain (sNfL) levels on Lumipulse (LMP) for the 3 different pool levels (mean is represented by gray lines and 2\*standard deviation is represented by gray dotted lines) according to each laboratory (MTP: Montpellier, BDX: Bordeaux, SBG: Strasbourg, LIL: Lille, LYO: Lyon, CMF: Clermont-Ferrand). **B.** sNfL levels on LMP for the 12 different samples according to each laboratory. **C.** sNfL levels for the 3 different pool levels according to each immunoassay; LMP G sNfL blood assay is separated into two groups according to both reagent batches. **D.** sNfL levels for the 12 different samples according to each instrument; LMP G sNfL blood assay is separated into two groups according to both reagent batches.

regarding the reagent batch and the instrument type. A significant difference was observed between sNfL mean values according to LMP reagent batches: batch Y8B4022 used by LIL, LYO and CMF yielded higher values than batch Z1B3101 used by MTP, BDX and SBG (Pool Low:  $13.6 \pm 2.2$  vs  $10.3 \pm 0.8$  pg/mL, Pool Medium:  $33.2 \pm 3$  vs  $30 \pm 2.7$  pg/mL, Pool High:  $105.4 \pm 5.8$  vs  $94.1 \pm 5.7$  pg/mL). No difference was observed between LMP G600 (used by BDX, LIL and LYO) and LMP G1200 (used by MTP, SBG, CMF) analyzers (Pool Low:  $12.7 \pm 2.9$  vs  $11.1 \pm 1.3$  pg/mL, p-value = 0.350, Pool Medium:  $32.0 \pm 3.7$  vs  $31.3 \pm 2.7$  pg/mL, p-value = 0.838, Pool High:  $102.5 \pm 9.6$  vs  $98.3 \pm 6.5$  pg/mL, p-value = 0.981).

Regarding samples values of LMP inter-center comparison (Fig. 2B and 3), Z-scores were all comprised between  $-2$  and  $+2$  regardless of the sample sNfL value, from  $11.0 \pm 3.1$  pg/mL for sample 1 to  $202.4 \pm 8.9$  pg/mL for sample 12. It is worth noting that average Z-score was negative for all centers using reagent batch Z1B3101 (MTP:  $-0.85$ , BDX:  $-0.98$ , SBG:  $-0.11$ ) and that average Z-score was positive for all centers using reagent batch Y8B4022 (LIL:  $+0.42$ , LYO:  $+1.32$ , CMF:  $+0.21$ ).

### 3.3. Inter-technique comparison of sNfL measurements

Fig. 2C illustrates sNfL values obtained for the three pools according to the different immunoassays and the statistical analysis of the inter-technique comparison is presented in Table 3. Pool Low of sNfL values obtained with ELL were excluded from analysis as 5/6 values were below quantification limit. Coefficient of variations ranged from 1.8 %

(SIM- Pool High) to 11.2 % (SIM- Pool Medium). For low concentrations, the lowest CV was obtained for MSD whereas the highest CV was obtained for SIM (3.2 % and 8.0 % respectively). For medium concentrations, the best CV was obtained for UMA whereas the highest CV was obtained for SIM (1.9 % and 11.2 % respectively). Finally, the lowest CV was obtained for SIM for high concentrations whereas the highest CV was obtained for ELL (1.8 % and 6.8 % respectively). Mean concentrations of sNfL were statistically different between the five different immunoassays for all pools tested ( $p < 0.001$ ). Pairwise comparison showed specific differences in mean between centers. MSD and ELL concentrations were systematically different from other immunoassays, other differences were noted but remained limited to particular sNfL ranges of concentration. As examples, SIM and LMP were different for low concentrations; SIM and UMA were different for medium concentrations.

sNfL values are shown in Fig. 2D for the comparison of the 12 samples while correlation results between techniques are depicted in Fig. 4. Lin's concordance correlation coefficient revealed a strong concordance between most of the techniques ( $\rho_c = 0.735$  to  $0.967$ ), except for MSD presenting lower values ( $\rho_c = 0.266$  to  $0.378$ ). However, a strong correlation was obtained between the five techniques ( $p < 0.0001$  in all cases), with Pearson correlation coefficient  $r$  ranging from 0.836 (between UMA and ELL) to 0.996 (between LMP and MSD). Correlation coefficients between Lumipulse and other techniques was systematically above 0.9. The immunoassay that showed the weakest correlation with the others was the ELLA technique ( $r = 0.836$  with UMA,  $r = 0.885$  with

**Table 2**

Inter-center comparison of sNfL measured on the 6 individual Fujirebio® Lumipulse (LMP) instruments (MTP: Montpellier, BDx: Bordeaux, SBG: Strasbourg, LIL: Lille, LYO: Lyon, CMF: Clermont-Ferrand). \*\*\* p-value < 0.05.

Center	MTP	BDX	SBG	LIL	LYO	CMF	MTP-BDX-SBG	LIL-LYO-CMF	BDX-LIL-LYO	MTP-SBG-CMF
Reagent batch   model	Z1B3101   G1200	Z1B3101   G600	Z1B3101   G1200	Y8B4022   G600	Y8B4022   G600	Y8B4022   G1200	Z1B3101	Y8B4022	G600	G1200
<b>Serum pool Low</b>										
sNfL (pg/mL), mean	10.2	9.9	10.7	12.1	16	12.5	10.3	13.6	12.7	11.1
sNfL (pg/mL), SD	0.7	0.7	1.1	2.0	0.6	0.7	0.8	2.2	2.9	1.3
CV (%)	7.0	6.8	10.0	16.9	4.0	5.8	8.2	16.0	22.5	11.8
<b>p-value</b>	<b>&lt;0.001***</b>						<b>&lt;0.001***</b>		<b>0.350</b>	
<b>Different from</b>	LIL-LYO-CMF	LIL-LYO-CMF	LYO	MTP-BDX-LYO	All centers	MTP-BDX-LYO				
<b>Serum pool Medium</b>										
sNfL (pg/mL), mean	27.0	29.1	33	30.8	32.4	23.9	30.0	33.2	32.0	31.3
sNfL (pg/mL), SD	0.9	1.0	0.9	3.2	0.9	1.0	2.7	3.0	3.7	2.3
CV (%)	3.3	3.4	2.6	10.5	2.6	4.3	8.9	9.2	11.5	8.7
<b>p-value</b>	<b>&lt;0.001***</b>						<b>0.005***</b>		<b>0.838</b>	
<b>Different from</b>	SBG-LIL-LYO-CMF	SBG-LYO-CMF	MTP-BDX-LYO	MTP-LYO	All centers	MTP-BDX-LYO				
<b>Serum pool High</b>										
sNfL (pg/mL), mean	100.4	91.4	100.9	104.2	104	99.6	94.1	105.4	102.5	98.3
sNfL (pg/mL), SD	2.6	4.3	2.0	4.4	4.1	2.6	5.7	5.8	9.6	6.5
CV (%)	2.5	4.7	2.0	4.2	4.0	2.6	6.1	5.5	9.4	6.6
<b>p-value</b>	<b>&lt;0.001***</b>						<b>&lt;0.001***</b>		<b>0.981</b>	
<b>Different from</b>	SBG-LIL-LYO-CMF	SBG-LIL-LYO-CMF	MTP-BDX-LYO	MTP-BDX-LYO	All centers	MTP-BDX-LYO				

**Table 3**

Inter-technique comparison of sNfL measured on SIMOA NF-light V2 (SiMOA), Ella Human NF-L (Ella), Human Neurofilament L R-Plex (MSD), NF-light Serum ELISA (Uman) and Lumipulse G sNfL blood assay (LMP). n.a: not applicable (five values of six below lower limit of quantification). \*\*\* p-value < 0.05.

Instrument	SiMOA	Ella	MSD	Uman	LMP
Center	MTP	CMF	LYO	SBG	MTP
<b>Serum pool Low</b>					
sNfL (pg/mL), mean	8.6	n.a	41.8	9.6	10.2
sNfL (pg/mL), SD	0.7	n.a	1.3	0.5	0.7
CV (%)	8.0	n.a	3.2	5.0	7.0
<b>p-value</b>	<b>&lt;0.001***</b>				
<b>Different from</b>	MSD-LMP	n.a	All instruments	MSD	SiMOA-MSD
<b>Serum pool Medium</b>					
sNfL (pg/mL), mean	23.9	43.6	111.7	31.1	27.0
sNfL (pg/mL), SD	2.7	3.3	4.0	0.6	0.9
CV (%)	11.2	7.6	3.6	1.9	3.3
<b>p-value</b>	<b>&lt;0.001***</b>				
<b>Different from</b>	Ella-MSD-Uman	All instruments	All instruments	SiMOA-Ella-MSD	Ella-MSD
<b>Serum pool High</b>					
sNfL (pg/mL), mean	99.6	160.3	404.6	103.4	90.1
sNfL (pg/mL), SD	1.8	10.9	12.5	5.7	2.6
CV (%)	1.8	6.8	3.1	5.5	2.8
<b>p-value</b>	<b>&lt;0.001***</b>				
<b>Different from</b>	Ella-MSD	All instruments	All instruments	Ella-MSD	Ella-MSD

SIM).

#### 4. Discussion

For the first time, we propose a multi-center study that investigates the analytical performance of Lumipulse G sNfL blood assay (Fujirebio®) technology for serum sNfL determination and compares 5 methods for assaying this biomarker.

First, within-run variability of the automated Lumipulse G sNfL blood assay (Fujirebio®) was satisfactory for all centers (Fig. 2A and Table 2). Coefficients of variation (CV) ranged from 4.0 % to 16.9 % for pool low, from 2.6 % to 10.5 % for pool medium and from 2.0 % to 4.7 % for pool high (concentrations of sNfL around 12 pg/mL, 30 pg/mL and 100 pg/mL respectively). As expected, variability was higher for the lowest values of sNfL, which were close to the limit of quantification. These results are in line with other sNfL immunoassays' variability [26–28]. When analyzing the set of 12 samples with various concentrations (Fig. 2B), the correlation of this assay was excellent between the six centers with Person's correlation coefficient  $r$  ranging from 0.995 to 0.9997 (data not shown). For these 12 samples, all the concentrations measured by the six laboratories could be considered as equivalent, as no concentration was above +2 or below -2 z-score (see Fig. 3): 47 values (65 %) were between -1 and +1 z-score and 25 values (35 %) were between -2 and +2 z-score. This allows to use the cut-offs determined in research studies in a center for the other centers. Nevertheless, differences could be seen between centers, although they were not clinically relevant. A systematic difference was present between reagent batches Z1B3101 and Y8B4022 for the three pools (Table 2). On the contrary, no difference was observed comparing both Lumipulse G600 and G1200 instruments. Finally, statistical differences between centers were also observed when analyzing samples with the same instrument and the same reagent batch (as examples between MTP and SBG with Lumipulse G1200 and reagent batch Z1B3101 or between LIL and LYO with Lumipulse G600 and reagent batch Y8B4022). This heterogeneity of results could be partly due to the variability in test calibration. These results highlight the necessity for laboratories to have procedures for the quantification of this inaccuracy [29,30]. The latter should include the laboratory's own internal quality controls alongside those provided by the manufacturer and the participation to external quality control programs, making it possible to monitor longitudinal

drifts and variations linked to regular calibrations.

In addition, the use of the same pools and samples in this study permitted the parallel determination of sNfL concentrations in 4 other immunoassays: SIMOA NF-light V2 (Quanterix®), Ella Human NF-L (Biotechne®), NF-light Serum ELISA (UmanDiagnostics®/Quanterix®) and Human Neurofilament L R-Plex (MesoScaleDiscovery®). The coefficients of variation obtained with the five immunoassays were acceptable for a clinical application of these tests (Table 3). SIMOA NF-light V2 (SIM) assay exhibited the highest CV for low and medium pools (8.0 % and 11.2 % respectively) but the lowest CV for pool high (1.8 %) whereas Human Neurofilament L R-Plex (MSD) assay's variability appeared to be the most constant across the different concentrations (3.2 %, 3.6 % and 3.1 % respectively). Within-run variability observed for NF-light Serum ELISA kit (UMA), which was the sole assay performed fully in a manual way in this study, was also optimal for a clinical use of sNfL (CVs ranging from 1.9 % to 5.5 %). Differences in average concentrations were observable for the three pools, some of them appearing to be systematic (Fig. 2C). These differences were also highlighted by the values of the Lin's concordance correlation coefficient presented in Fig. 4. Indeed, concentrations were the highest when measuring sNfL with MSD assay. The concentrations obtained with ELL were lower than those obtained on MSD, but higher than those obtained with the SIM, UMA and LMP tests for the medium and high pools. SIM, UMA et LMP assays gave equivalent sNfL concentrations with a few exceptions (between SIM and LMP for pool low and between SIM and UMA for pool medium). The same differences were also observable comparing the 12 samples with increasing sNfL values (Fig. 2D). Our results are in line with previous studies. Indeed, Uldreaj et al. reported that absolute sNfL concentrations acquired using MSD's R-PLEX were on average 3–4 times higher than the levels quantitated using SIMOA [31]. Some studies already reported mean sNfL concentrations measured by ELLA significantly higher than the one obtained by SIMOA [25,28,32]. Moreover, as in our study, a very high agreement was found between SIMOA and Lumipulse concentrations in the study of Vecchio et al. These discrepancies are mainly due to the lack of standardization of the calibrators and antibodies used by the different companies [28,30]. Despite the different concentrations obtained between tests, all the techniques showed very good correlations, with Pearson correlation coefficients ( $r$ ) above 0.836 (Fig. 4).

Many factors need to be taken into account when choosing a sNfL

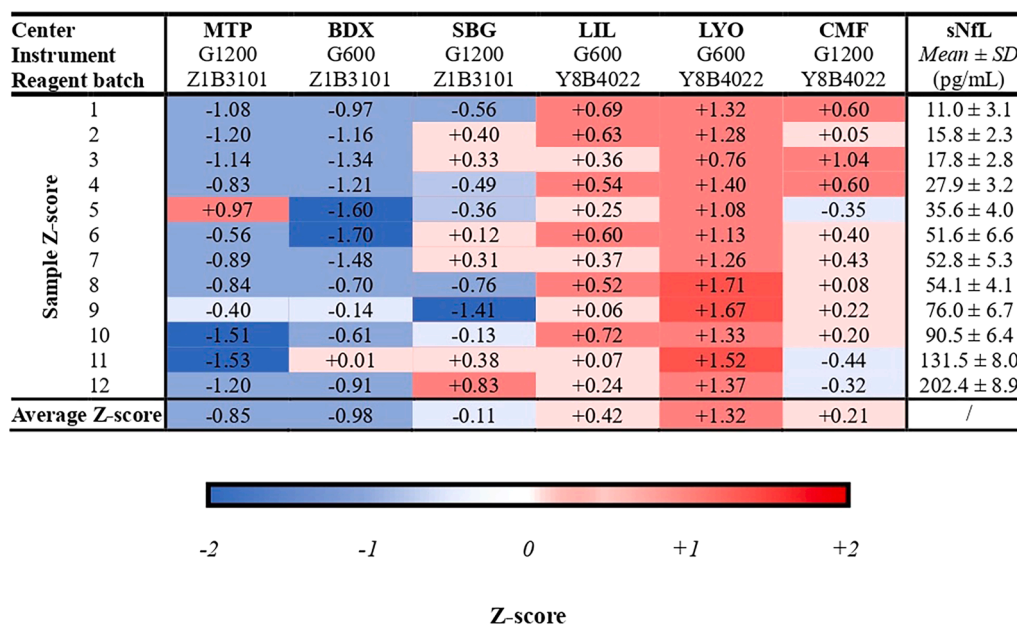


Fig. 3. Heatmap of sNfL (pg/mL) Z-scores of the 12 samples measured on the 6 individual Fujirebio® Lumipulse (LMP) analyzers (MTP: Montpellier, BDX: Bordeaux, SBG: Strasbourg, LIL: Lille, LYO: Lyon, CMF: Clermont-Ferrand). Mean and standard deviation (SD) of each sample is indicated in the right column.

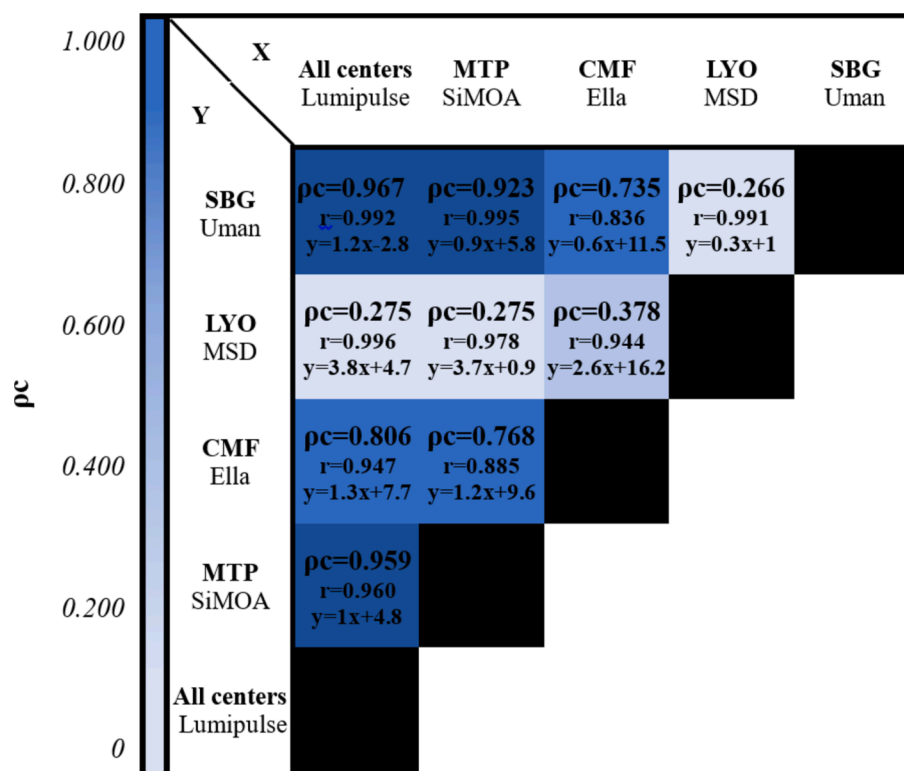


Fig. 4. Heatmap representing the Lin's concordance correlation coefficient ( $\rho c$ ). Pearson correlation coefficients ( $r$ ) and Passing-Bablok regression equation ( $y = ax + b$ ) between different techniques (MTP: Montpellier, BDX: Bordeaux, SBG: Strasbourg, LIL: Lille, LYO: Lyon, CMF: Clermont-Ferrand) of the 12 different samples.  $x$  values correspond to the first row of the table while  $y$  values correspond to the first column.

immunoassay for clinical application. The first of all depends on the accessibility of analyzers and the cost of reagents for the laboratory. So far, most studies used the SIMOA ultrasensitive method to quantify sNfL however its cost often limits its widespread availability in clinical laboratories [26,30]. Manual ELISAs are cheaper but require qualified personnel [33]. Fully automated assays with minimal pre-analytical procedures are likely to be the preferred choice of laboratories, especially when In-Vitro Diagnostic Regulation (IVDR) labels will be obtained. In this study, Lumipulse G sNfL blood assay showed good analytical performances. Other on-demand sNfL immunoassays exist such as Roche's Elecsys® sNfL or Siemens Atellica® Neurofilament Light (NFL) assay. Recently, the study from Ashrafzadeh-Kian *et al.* was the first to compare these three fully automated immunoassays to SIMOA [34]. Further real-life cohort studies should now be performed to evaluate their performances in everyday use. Other aspects to take into account include pre-analytical and analytical criteria. Sampling type (serum or plasma) will influence sNfL concentrations [27,35]. In this study, Ella immunoassay failed to accurately quantify low concentration's sample of sNfL (sample 1 and 5 on 6 measurements of pool low), which may compromise longitudinal follow-up of pre-symptomatic patients with neurodegenerative conditions [36–38]. On the contrary, the low upper limit of quantification of Uman diagnostics/Quanterix® NF-light Serum ELISA kit (160 pg/mL, Table 1) would lead to frequent dilutions for samples from patients with pathologies for which high sNfL concentrations are expected, such as amyotrophic lateral sclerosis [38]. As systematic differences concerning absolute sNfL values exist between the different immunoassays, laboratories will have to rely on or realize their own specific reference values in order to be able to interpret their data. To our knowledge, such normal values exist so far for SIMOA technology only [39,40]. Finally, once the analytical process has been adopted by the laboratory, it should be borne in mind that confounding factors such as age, body mass index and renal insufficiency might influence sNfL concentrations [12,19,41]. Further studies with inclusion

of repeated samples with physiopathological, environmental or nyctemeral variations are needed to investigate intra-individual variability of sNfL.

## 5. Conclusion

The automated LMP yielded overall comparable inter-laboratory sNfL values and is well correlated to MSD, Uman, Simoa and Ella assays. However, further adjustments are needed to harmonize sNfL results and determine cut-offs for clinical application. Biologists and physicians must be aware of result variability between the different immunoassay suppliers.

## CRedit authorship contribution statement

**Etienne Mondésert:** Writing – original draft, Resources, Data curation. **Susanna Schraen-Maschke:** Writing – review & editing, Resources, Data curation. **Isabelle Quadrio:** Writing – review & editing, Resources. **Olivier Bousiges:** Writing – review & editing, Resources. **Damien Bouvier:** Writing – review & editing, Resources. **Constance Delaby:** Writing – review & editing, Resources. **Aurélie Bedel:** Writing – review & editing, Supervision, Resources, Conceptualization. **Sylvain Lehmann:** Writing – review & editing, Supervision, Resources, Data curation, Conceptualization. **Anthony Fourier:** Writing – original draft, Resources, Data curation.

## Declaration of Competing Interest

The specific evaluation of Lumipulse G sNfL blood assay (Fujirebio®) was carried out by the six French laboratories using kits supplied free of charge by Fujirebio® (1 calibration pack, 1 quality control pack and 1 reagent pack per laboratory). The authors declare that they have no other known competing financial interests or personal relationships that



could have appeared to influence the work reported in this paper.

## Appendix A. Supplementary data

Supplementary data to this article can be found online at <https://doi.org/10.1016/j.cca.2024.120007>.

## Data availability

Raw data are presented in [supplementary Table 1](#).

## References

- [1] L. Gaetani, K. Blennow, P. Calabresi, M. Di Filippo, L. Parnetti, H. Zetterberg, Neurofilament light chain as a biomarker in neurological disorders, *J Neurol Neurosurg Psychiatry*. 90 (8) (2019 Aug) 870–881, <https://doi.org/10.1136/jnnp-2018-320106>.
- [2] G. Disanto, C. Barro, P. Benkert, Y. Naegelin, S. Schädelin, A. Giardiello, et al., Serum Neurofilament light: A biomarker of neuronal damage in multiple sclerosis, *Ann Neurol*. 81 (6) (2017 Jun) 857–870, <https://doi.org/10.1002/ana.24954>.
- [3] C. Delaby, O. Bousiges, D. Bouvier, C. Fillée, A. Fourier, E. Mondésert, et al., Neurofilaments contribution in clinic: state of the art, *Front Aging Neurosci*. 1 (14) (2022 Nov) 1034684, <https://doi.org/10.3389/fnagi.2022.1034684>.
- [4] A. Yuan, R.A. Nixon, Neurofilament Proteins as Biomarkers to Monitor Neurological Diseases and the Efficacy of Therapies, *Front Neurosci*. 27 (15) (2021 Sep) 689938.
- [5] B.A. Gordon, Neurofilaments in disease: what do we know? *Curr Opin Neurobiol*. 61 (2020 Apr) 105–115, <https://doi.org/10.1016/j.conb.2020.02.001>.
- [6] E. Zucchi, V. Bonetto, G. Sorarù, I. Martinelli, P. Pardi, R. Liguori, et al., Neurofilaments in motor neuron disorders: towards promising diagnostic and prognostic biomarkers, *Mol Neurodegener*. 15 (1) (2020 Oct 15) 58, <https://doi.org/10.1186/s13024-020-00406-3>.
- [7] L.M. Forgrave, M. Ma, J.R. Best, M.L. DeMarco, The diagnostic performance of neurofilament light chain in CSF and blood for Alzheimer's disease, frontotemporal dementia, and amyotrophic lateral sclerosis: A systematic review and meta-analysis, *Alzheimers Dement (amst)*. 4 (11) (2019 Nov) 730–743, <https://doi.org/10.1016/j.dadm.2019.08.009>.
- [8] N.J. Ashton, S. Janelidze, A. Al Khleifat, A. Leuzy, E.L. van der Ende, T.K. Karikari, et al., A multicentre validation study of the diagnostic value of plasma neurofilament light, *Nat Commun*. 12 (1) (2021 Jun 7) 3400, <https://doi.org/10.1038/s41467-021-23620-z>.
- [9] A. Winther-Larsen, C.V.B. Hviid, P. Meldgaard, B.S. Sorensen, B. Sandfeld-Paulsen, Neurofilament Light Chain as A Biomarker for Brain Metastases, *Cancers (basel)*. 12 (10) (2020 Oct 2) 2852, <https://doi.org/10.3390/cancers12102852>.
- [10] K. Poesen, P. Van Damme, Diagnostic and Prognostic Performance of Neurofilaments in ALS, *Front Neurol*. 18 (9) (2019 Jan) 1167, <https://doi.org/10.3389/fneur.2018.01167>.
- [11] G. Dalla Costa, V. Martinelli, F. Sangalli, L. Moiola, B. Colombo, M. Radaelli, et al., Prognostic value of serum neurofilaments in patients with clinically isolated syndromes, *Neurology*. 92 (7) (2019 Feb 12) e733–e741, <https://doi.org/10.1212/WNL.0000000000006902>.
- [12] M.S. Freedman, S. Gnanapavan, R.A. Booth, P.A. Calabresi, M. Khalil, J. Kuhle, et al., Guidance for use of neurofilament light chain as a cerebrospinal fluid and blood biomarker in multiple sclerosis management, *EBioMedicine*. 101 (2024 Mar) 104970, <https://doi.org/10.1016/j.ebiom.2024.104970>.
- [13] J. Wu, D. Wu, Y. Liang, Z. Zhang, L. Zhuang, Z. Wang, Plasma neurofilament light chain: A biomarker predicting severity in patients with acute ischemic stroke, *Medicine (baltimore)*. 101 (26) (2022 Jul 1) e29692.
- [14] J. Kuhle, H. Kropshofer, D.A. Haering, U. Kundu, R. Meinert, C. Barro, et al., Blood neurofilament light chain as a biomarker of MS disease activity and treatment response, *Neurology*. 92 (10) (2019 Mar 5) e1007–e1015, <https://doi.org/10.1212/WNL.0000000000007032>.
- [15] T. Meyer, P. Schumann, P. Weydt, S. Petri, Y. Koc, S. Spittel, et al., Neurofilament light-chain response during therapy with antisense oligonucleotide tofersen in SOD1-related ALS: Treatment experience in clinical practice, *Muscle Nerve*. 67 (6) (2023 Jun) 515–521, <https://doi.org/10.1002/mus.27818>.
- [16] G. Palermo, S. Mazzucchi, A. Della Vecchia, G. Siciliano, U. Bonuccelli, C. Azuar, et al., Different Clinical Contexts of Use of Blood Neurofilament Light Chain Protein in the Spectrum of Neurodegenerative Diseases, *Mol Neurobiol*. 57 (11) (2020 Nov) 4667–4691, <https://doi.org/10.1007/s12035-020-02035-9>.
- [17] B. Arslan, H. Zetterberg, Neurofilament light chain as neuronal injury marker - what is needed to facilitate implementation in clinical laboratory practice? *Clin Chem Lab Med*. 61 (7) (2023 Mar 7) 1140–1149, <https://doi.org/10.1515/cclm-2023-0036>.
- [18] L. Fialová, L. Nosková, M. Kalousová, T. Zima, T. Uher, A. Bartoš, Analytical and pre-analytical aspects of neurofilament light chain determination in biological fluids, *Cesk Slov Neurol N*. 118 (1) (2022) 11–16, <https://doi.org/10.48905/ccsnn202211>.
- [19] A. Ladang, S. Kovacs, L. Lengel, M. Locquet, J.Y. Reginster, O. Bruyère, et al., Neurofilament light chain concentration in an aging population, *Aging Clin Exp Res*. 34 (2) (2022 Feb) 331–339, <https://doi.org/10.1007/s40520-021-02054-z>.
- [20] A. Manouchehrinia, F. Piehl, J. Hillert, J. Kuhle, L. Alfredsson, T. Olsson, et al., Confounding effect of blood volume and body mass index on blood neurofilament light chain levels, *Ann Clin Transl Neurol*. 7 (1) (2020 Jan) 139–143, <https://doi.org/10.1002/acn3.50972>.
- [21] M. Khalil, C.E. Teunissen, S. Lehmann, M. Otto, F. Piehl, T. Ziemssen, et al., Neurofilaments as biomarkers in neurological disorders - towards clinical application, *Nat Rev Neurol*. 20 (5) (2024 May) 269–287, <https://doi.org/10.1038/s41582-024-00955-x>.
- [22] I.M.W. Verberk, E.O. Misdorp, J. Koelewijn, A.J. Ball, K. Blennow, J.L. Dage, et al., Characterization of pre-analytical sample handling effects on a panel of Alzheimer's disease-related blood-based biomarkers: Results from the Standardization of Alzheimer's Blood Biomarkers (SABB) working group, *Alzheimers Dement*. 18 (8) (2022 Aug) 1484–1497, <https://doi.org/10.1002/alz.12510>.
- [23] U. Andreasson, J. Gobom, V. Delatour, G. Auclair, Y. Noam, S. Lee, et al., Assessing the commutability of candidate reference materials for the harmonization of neurofilament light measurements in blood, *Clin Chem Lab Med*. 61 (7) (2023 Jan 31) 1245–1254, <https://doi.org/10.1515/cclm-2022-1181>.
- [24] M.M. Budelier, Y. He, N.R. Barthelemy, H. Jiang, Y. Li, E. Park, et al., A map of neurofilament light chain species in brain and cerebrospinal fluid and alterations in Alzheimer's disease, *Brain Commun*. (2022), <https://doi.org/10.1093/braincomms/fcac045>, Feb 22;4(2):fcac045.
- [25] M. Truffi, M. Garofalo, A. Ricciardi, M. Cotta Ramusino, G. Perini, S. Scaranzin, et al., Neurofilament-light chain quantification by Simoa and Ella in plasma from patients with dementia: a comparative study, *Sci Rep*. 13 (1) (2023 Mar 10) 4041, <https://doi.org/10.1038/s41598-023-29704-8>.
- [26] K.Z. Revendova, D. Zeman, R. Bunganic, K. Karasova, O. Volny, M. Bar, et al., Serum neurofilament levels in patients with multiple sclerosis: A comparison of SIMOA and high sensitivity ELISA assays and contributing factors to ELISA levels, *Mult Scler Relat Disord*. 67 (2022 Nov) 104177, <https://doi.org/10.1016/j.msard.2022.104177>.
- [27] P. Altmann, M. Ponleitner, P.S. Rommer, H. Haslacher, P. Mucher, F. Leutmezer, et al., Seven day pre-analytical stability of serum and plasma neurofilament light chain, *Sci Rep*. 11 (1) (2021 May 26) 11034, <https://doi.org/10.1038/s41598-021-90639-z>. Erratum. In: *Sci Rep*. 2022 Apr 20;12(1):6514. doi: 10.1038/s41598-022-10916-3.
- [28] A. Gauthier, S. Viel, M. Perret, G. Brocard, R. Casey, C. Lombard, et al., Comparison of Simoa™ and Ella™ to assess serum neurofilament-light chain in multiple sclerosis, *Ann Clin Transl Neurol*. 8 (5) (2021 May) 1141–1150, <https://doi.org/10.1002/acn3.51355>.
- [29] Y. Luo, M. Pehrsson, L. Langholm, M. Karsdal, A.C. Bay-Jensen, S. Sun, Lot-to-Lot Variance in Immunoassays-Causes, Consequences, and Solutions, *Diagnostics (basel)*. 13 (11) (2023 May 24) 1835, <https://doi.org/10.3390/diagnostics13111835>.
- [30] S. Thompson, D. Chesher, Lot-to-Lot Variation, *Clin Biochem Rev*. 39 (2) (2018 May) 51–60.
- [31] A. Ulndreaj, D. Sohaei, S. Thebault, O.D. Pons-Belda, A. Fernandez-Urriarte, C. Campbell, et al., Quantitation of neurofilament light chain protein in serum and cerebrospinal fluid from patients with multiple sclerosis using the MSD R-PLEX sNfL assay, *Diagnosis (berl)*. 10 (3) (2023 Feb 15) 275–280, <https://doi.org/10.1515/dx-2022-0125>.
- [32] D. Vecchio, C. Puricelli, S. Malucchi, E. Virgilio, S. Martire, S. Perga, et al., Serum and cerebrospinal fluid neurofilament light chains measured by SIMOA™, Ella™, and Lumipulse™ in multiple sclerosis naïve patients, *Mult Scler Relat Disord*. 82 (2024 Feb) 105412, <https://doi.org/10.1016/j.msard.2023.105412>.
- [33] A. Ramirez-Reveco, G. Velásquez, C. Aros, G. Navarrete, F. Villarroel-Espíndola, M. Navarrete, et al., Performance estimation of two in-house ELISA assays for COVID-19 surveillance through the combined detection of anti-SARS-CoV-2 IgA, IgM, and IgG immunoglobulin isotypes, *PLoS One*. 18 (2) (2023 Feb 6) e0270388.
- [34] S. Ashrafzadeh-Kian, D. Figdore, B. Larson, R. Deters, C. Abou-Diwan, J. Bornhorst, et al., Head-to-head comparison of four plasma neurofilament light chain (NfL) immunoassays, *Clin Chim Acta*. 15 (561) (2024 Jul) 119817, <https://doi.org/10.1016/j.cca.2024.119817>.
- [35] P. Shahim, G. Norato, N. Sinaii, H. Zetterberg, K. Blennow, L. Chan, et al., Neurofilaments in Sporadic and Familial Amyotrophic Lateral Sclerosis: A Systematic Review and Meta-Analysis, *Genes (basel)*. 15 (4) (2024 Apr 16) 496, <https://doi.org/10.3390/genes15040496>.
- [36] G.M. Parkin, J. Corey-Bloom, C. Snell, J. Castleton, E.A. Thomas, Plasma neurofilament light in Huntington's disease: A marker for disease onset, but not symptom progression, *Parkinsonism Relat Disord*. 87 (2021 Jun) 32–38, <https://doi.org/10.1016/j.parkreldis.2021.04.017>.
- [37] X.Y. Li, Y.F. Bao, J.J. Xie, B. Gao, S.X. Qian, Y. Dong, et al., Application Value of Serum Neurofilament Light Protein for Disease Staging in Huntington's Disease, *Mov Disord*. 38 (7) (2023 Jul) 1307–1315, <https://doi.org/10.1002/mds.29430>.
- [38] A.G. Thompson, E. Gray, N. Verber, Y. Bobeva, V. Lombardi, S.R. Shephard, et al., Multicentre appraisal of amyotrophic lateral sclerosis biofluid biomarkers shows primacy of blood neurofilament light chain, *Brain Commun*. (2022), <https://doi.org/10.1093/braincomms/fcac029>, Feb 9;4(1):fcac029.
- [39] Simrén J, Andreasson U, Gobom J, Suarez Calvet M, Borroni B, Gillberg C, et al. Establishment of reference values for plasma neurofilament light based on healthy

- individuals aged 5-90 years. *Brain Commun.* 2022 Jul 4;4(4):fcac174. doi: 10.1093/braincomms/fcac174.
- [40] M. Khalil, L. Pirpamer, E. Hofer, M.M. Voortman, C. Barro, D. Leppert, et al., Serum neurofilament light levels in normal aging and their association with morphologic brain changes, *Nat Commun.* 11 (1) (2020 Feb 10) 812, <https://doi.org/10.1038/s41467-020-14612-6>.
- [41] M. Koini, L. Pirpamer, E. Hofer, A. Buchmann, D. Pinter, S. Ropele, et al., Factors influencing serum neurofilament light chain levels in normal aging, *Aging (alban NY)*. 13 (24) (2021 Dec 18) 25729–25738, <https://doi.org/10.18632/aging.203790>.