

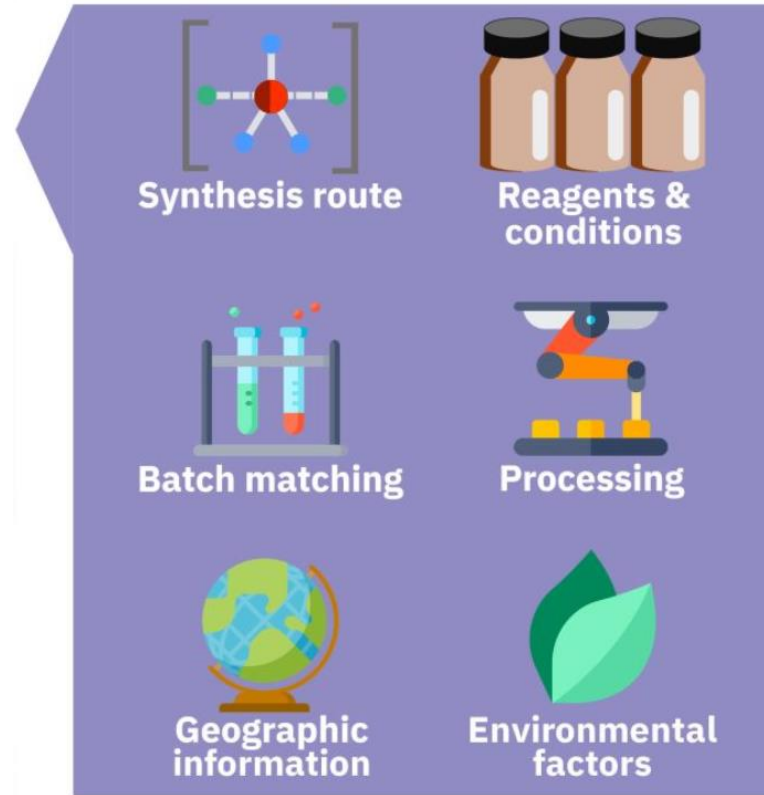
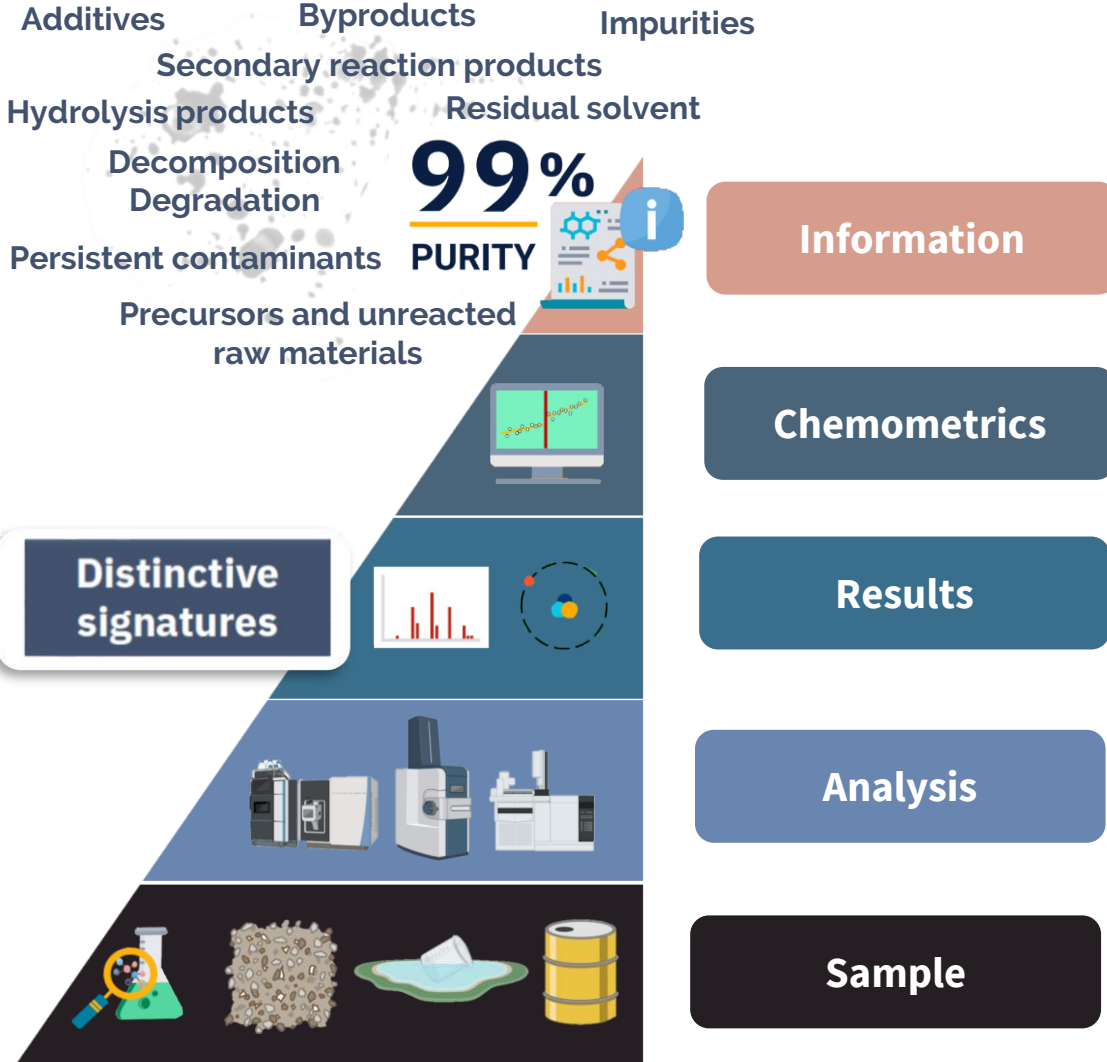


➤ High-resolution mass spectrometry-based untargeted approach

A cutting-edge analytical technique for the detection and identification of organophosphorus synthesis sources

Carla ORLANDI
carla.orlandi@inrae.fr

➤ Sourcing and impurity profile



**Chemical
Attribution
Signature**

Distinctive signatures can reveal well-founded findings about a chemical's production history, to strengthen forensic investigations.

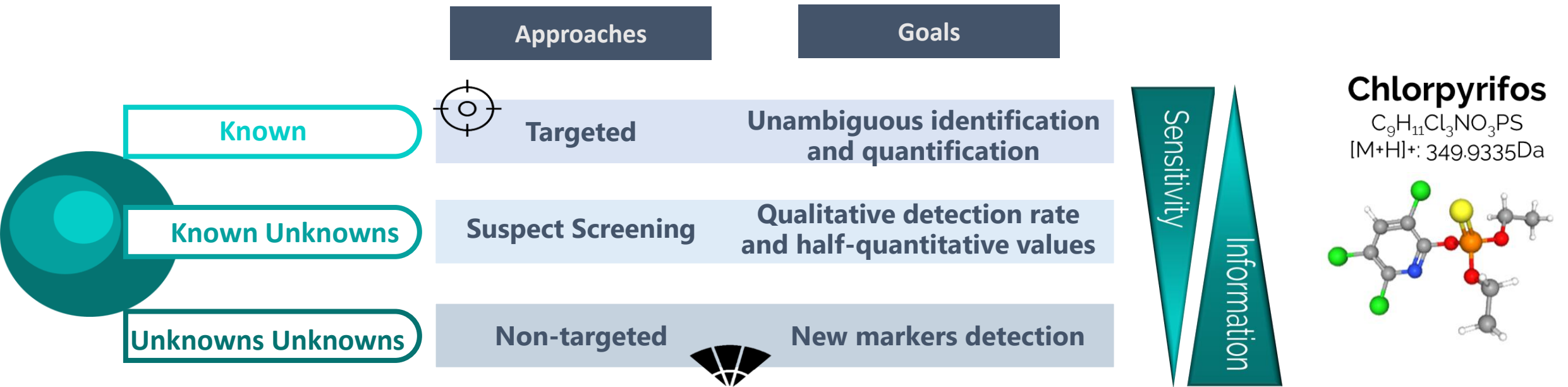


INRAE

ACS FALL 2024

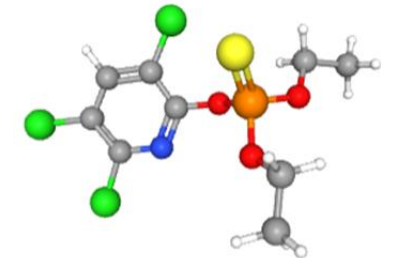
August 18-22 | DENVER, CO | Carla ORLANDI

➤ Metabolomics-based CAS discovery strategies

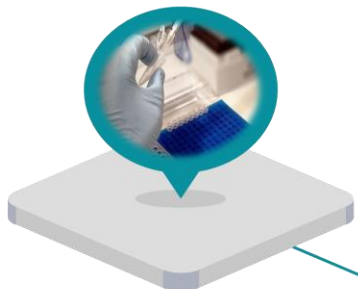


Chlorpyrifos

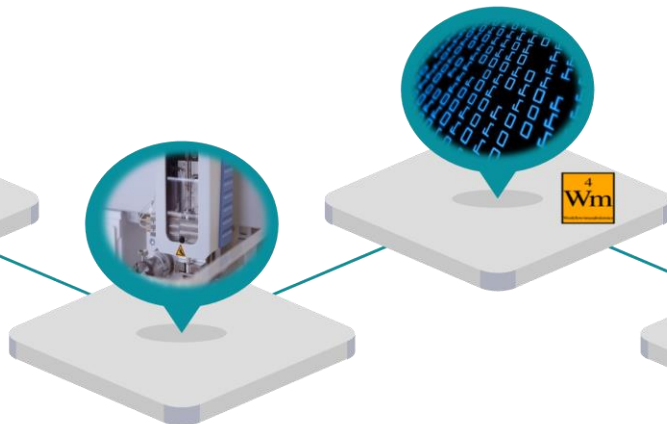
$C_9H_{11}Cl_3NO_3PS$
 $[M+H]^+$: 349.9335Da



Sample Preparation



Data Processing and Curation



Features detection



RT, accurate mass, isotopic pattern, ion mobility

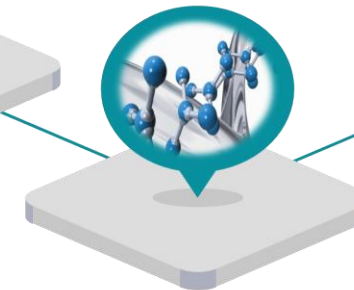
Chemical Attribution Signature



Chemometrics

Multivariate analysis

MS/MS identification



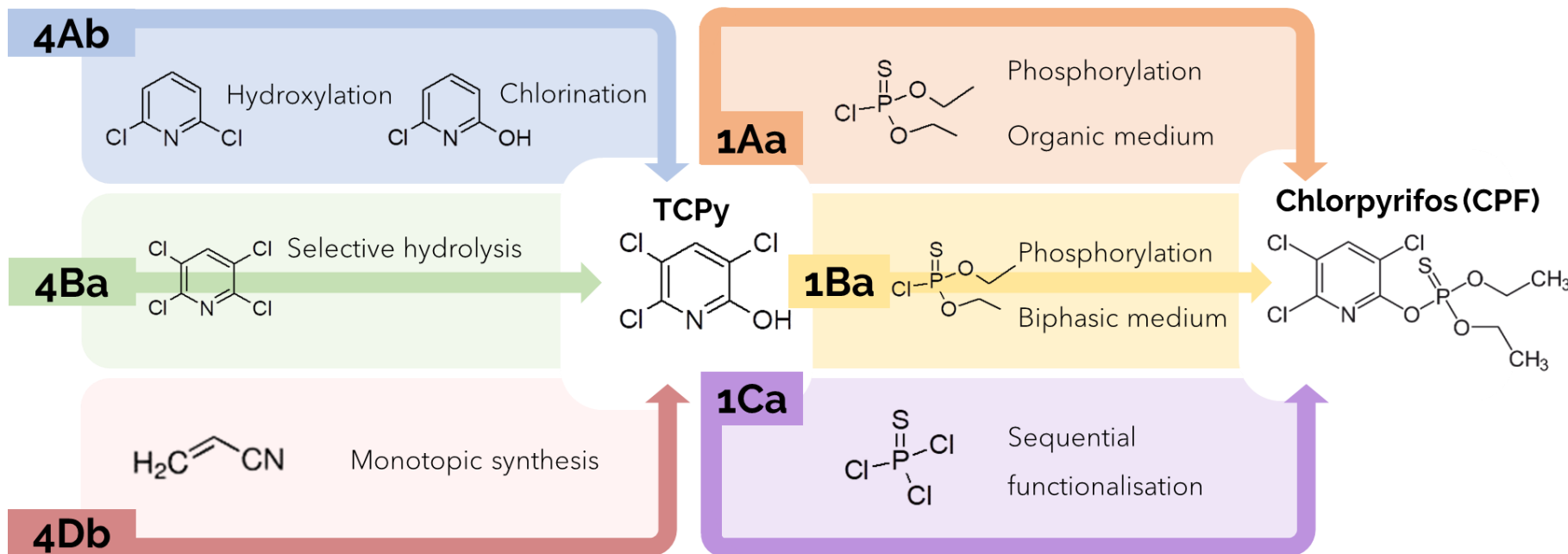
INRAE

ACS FALL 2024

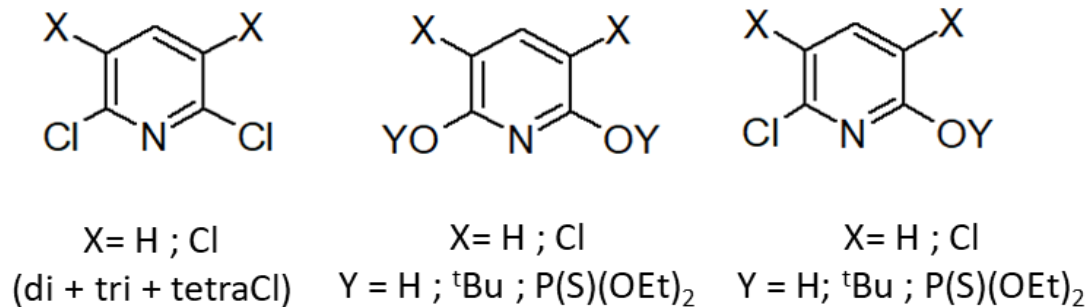
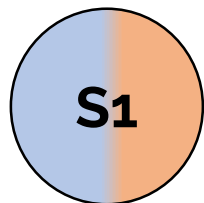
August 18-22 | DENVER, CO | Carla ORLANDI

UHPLC-HRMS

➤ Our use-case: chlorpyrifos (various synthetic routes)



Synthesis	Precursor	Reactant
S1	4Ab	1Aa
S2	4Ab	1Ba
S3	4Ba	1Aa
S4	4Ba	1Ba
S5	4Ba	1Ca
S6	4Db	1Aa
S7	4Db	1Ba



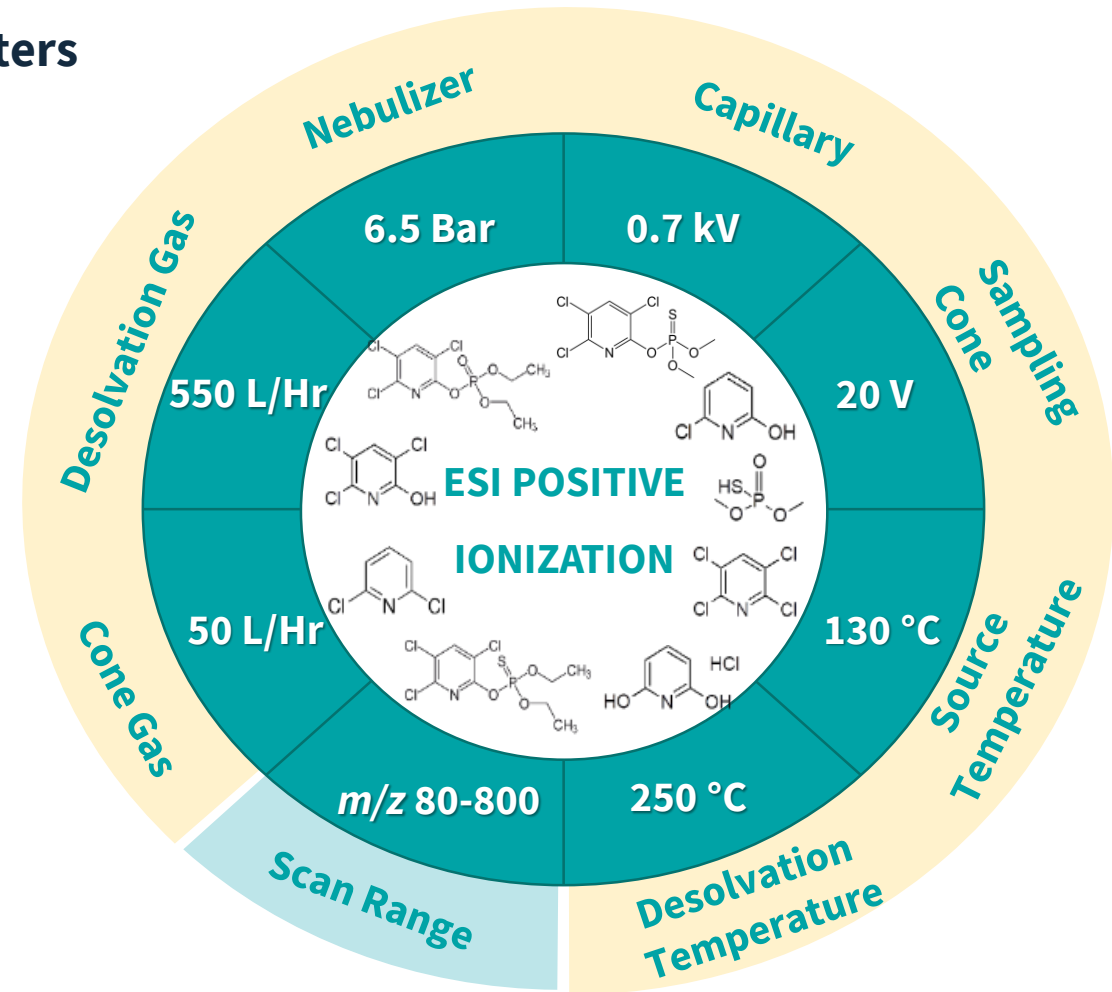
Wide range of compounds and possible impurities combinations

➤ Analytical LC-HRMS conditions



ACQUITY UPLC I Class
QToF Synapt G2-Si HRMS Waters

Column	Hypersil Gold C18 (100 x 2.1mm, 1.9µm)
Mobile phase	A) H ₂ O/CH ₃ OH/AcOH (95/5/0.1) B) CH ₃ OH/AcOH (100/0.1)
Flow rate and Oven temperature	0.3mL/min at 40°C
Injection volume	10µL



• MS Resolution : ~ 15000

➤ Untargeted data processing



Workflow4metabolomics



Analytical and blank noise
RSD pool features

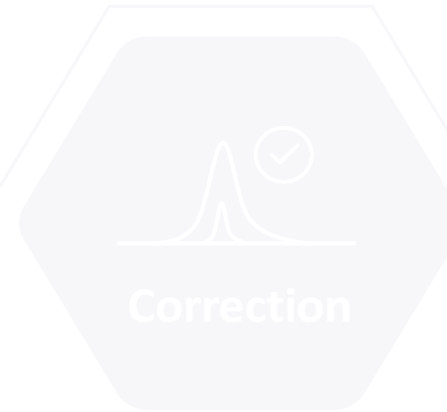
Univariate and multivariate



Universal data format (mzML)



Peak detection and grouping
Retention time alignment
Integrating missing data



Batch and analytical drift
Standardization



Data matrix

	Samples
Features (m/z + RT)	Intensity

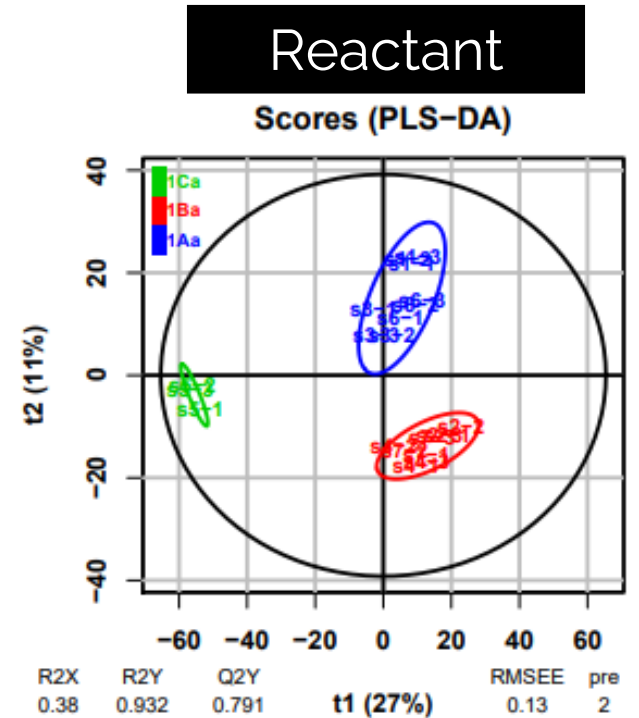
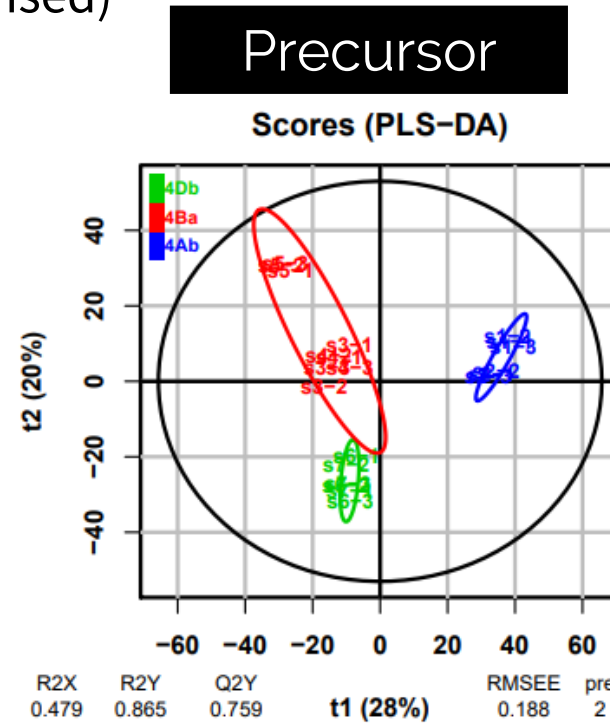
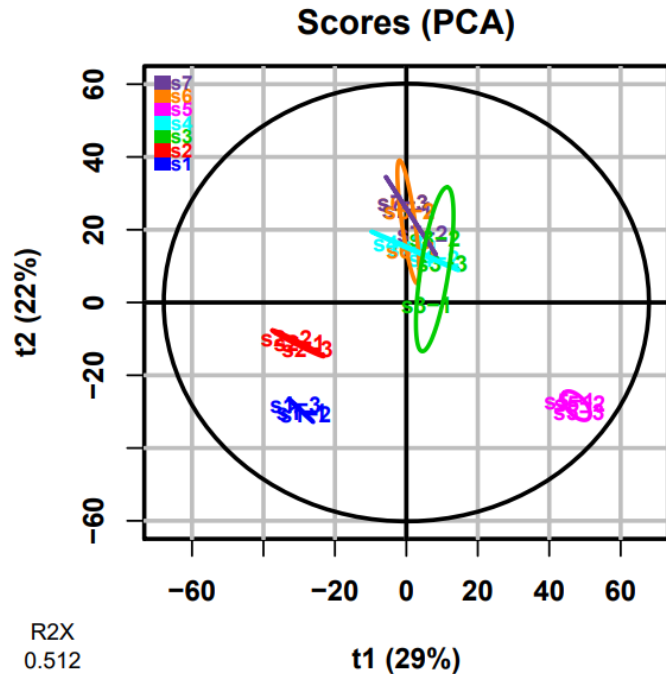


Chemometrics

Multivariate methods suitable to provide a more complete description of studied phenomena

- Major sources of variability → PCA (unsupervised)
- Specific sources of variability → PLS (supervised)

Synthesis	Precursor	Reactant
S1	4Ab	1Aa
S2	4Ab	1Ba
S3	4Ba	1Aa
S4	4Ba	1Ba
S5	4Ba	1Ca
S6	4Db	1Aa
S7	4Db	1Ba



PCA: First overview of variability between samples and correlation between features

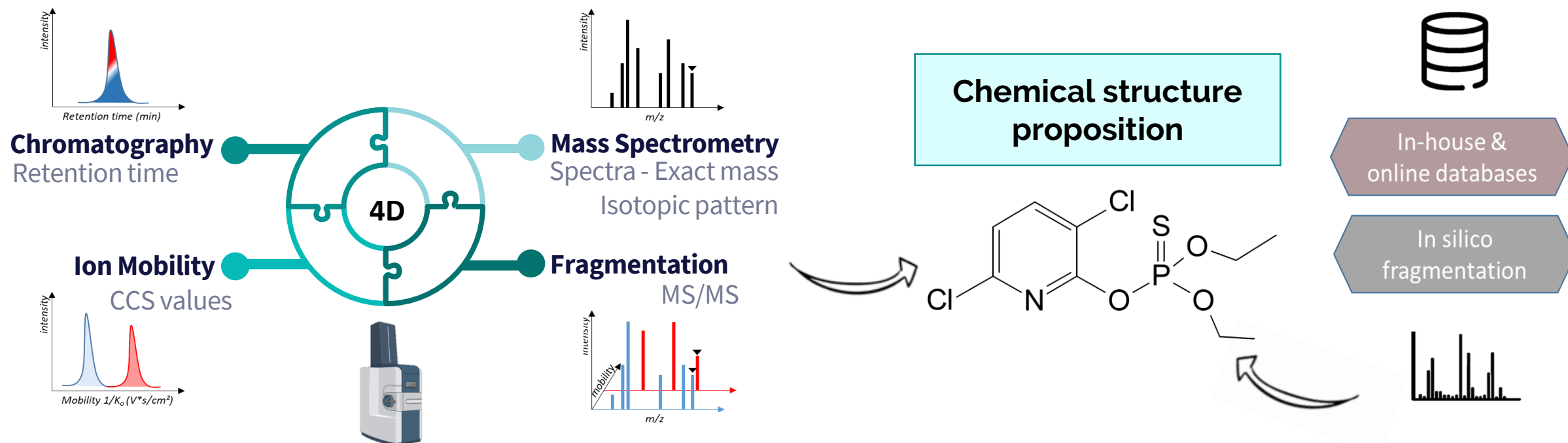
PLS-DA: Discrimination of various used synthetic sources

Quality of the model assessed with $Q^2Y > 0.4$ and permutation test

➤ Annotation Challenges

HRMS: sensitive and selective detection of discriminating impurities

- Features (PLS-DA; VIP>1) annotated using LC (RT), HRMS, MS/MS and IMS data to propose a putative structure
- MS/MS → characteristic fragments for structural elucidation



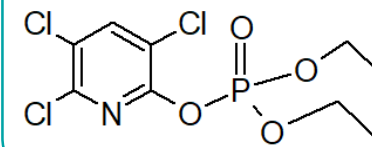
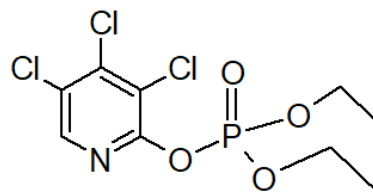
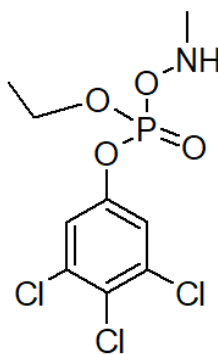
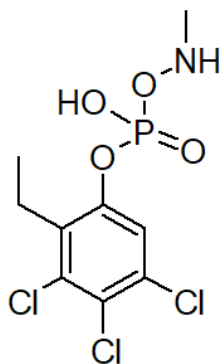
[1] Confirmed Structure	[2] Probable Structure	[3] Tentative Candidate	[4] Unknown
5	72	36	9

➤ Ion mobility spectrometry: a valuable aid for annotation



m/z 333.9468
Rt: 20 min
 $C_9H_{11}Cl_3NO_4P$

CCS measurement: 162.7 Å²



**Chlorpyrifos-oxon
identified with
standard MSMS**

Predicted CCS	166.1 Å ²	165.5 Å ²	165.1 Å ²	165.5 Å ²
----------------------	----------------------	----------------------	----------------------	----------------------

5% accuracy acceptance

CCS: close values between structure proposals
Support to annotation → remove hypothesis, putative information of structure

➤ Analysis of unknown samples

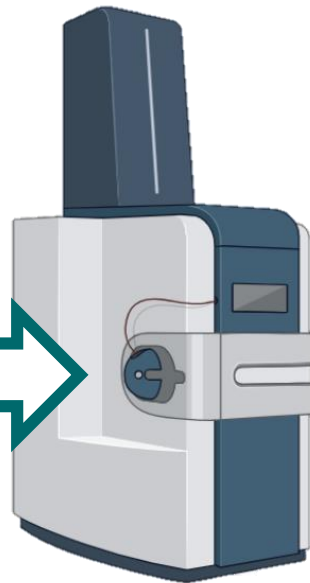
4D

RT, accurate mass, MS/MS, ion mobility



Coupled separation technique (LC)

Annotation with database (RT)



Methodology validation

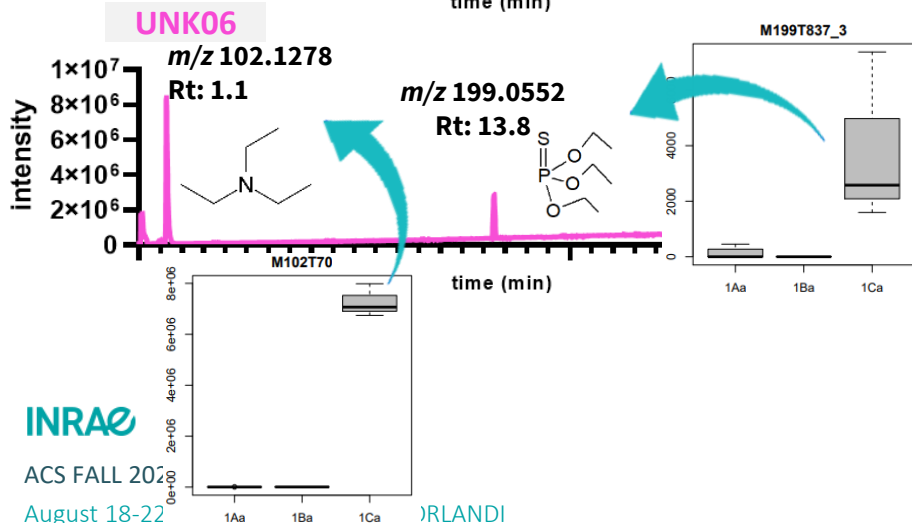
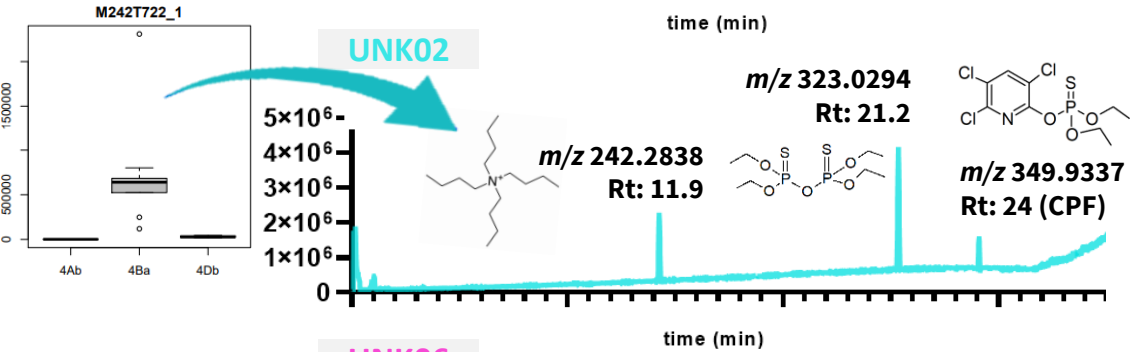
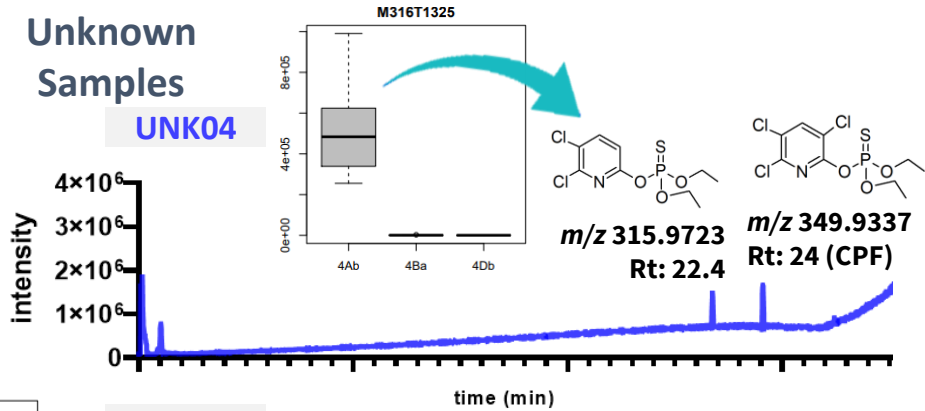


Blind analysis of new unknown samples to **classify** their **synthesis route** according to their **discriminating impurities** with the **constructed model**

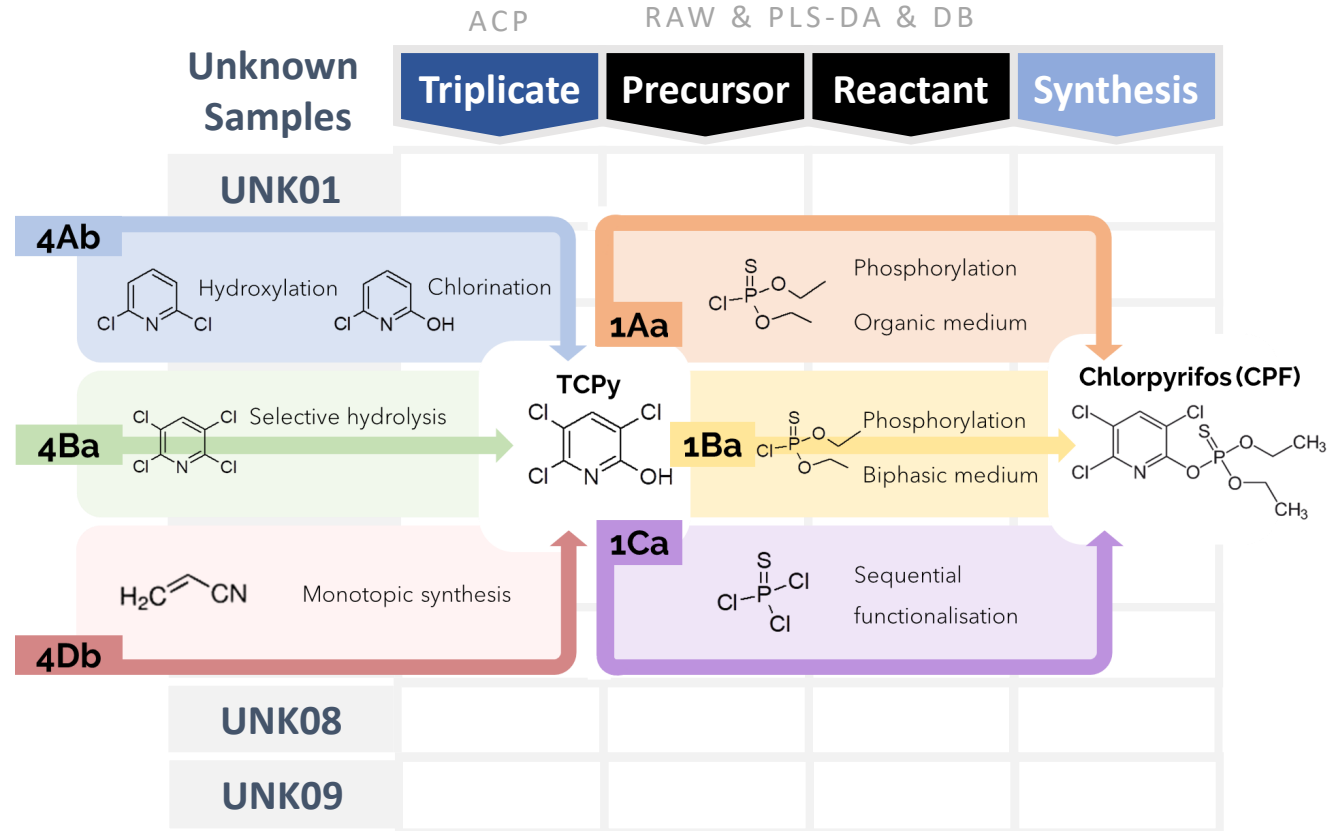
Analysis of unknown samples



Unknown Samples



Methodology validation



Synthesis	Precursor	Reactant
S1	4Ab	1Aa
S2	4Ab	1Ba
S3	4Ba	1Aa
S4	4Ba	1Ba
S5	4Ba	1Ca
S6	4Db	1Aa
S7	4Db	1Ba

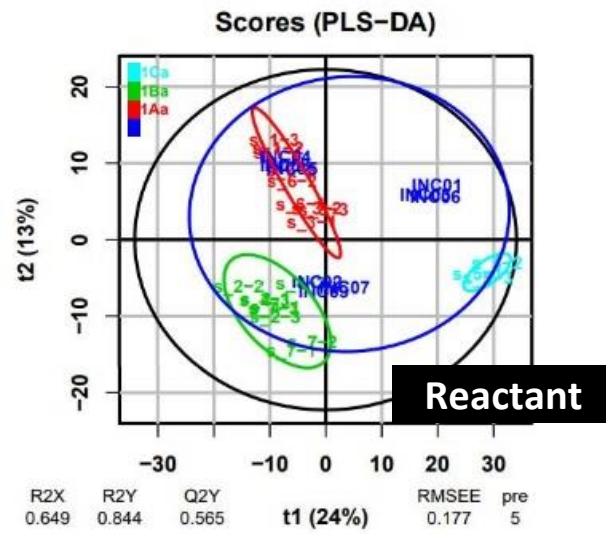
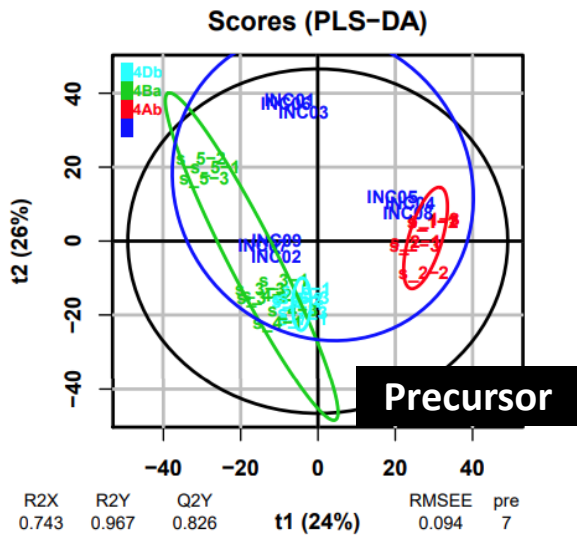
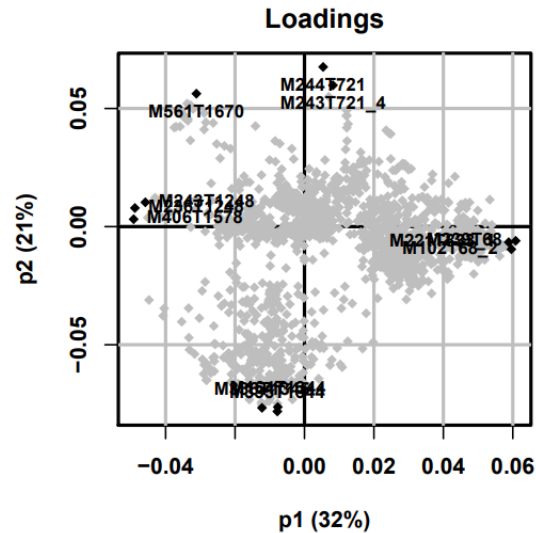
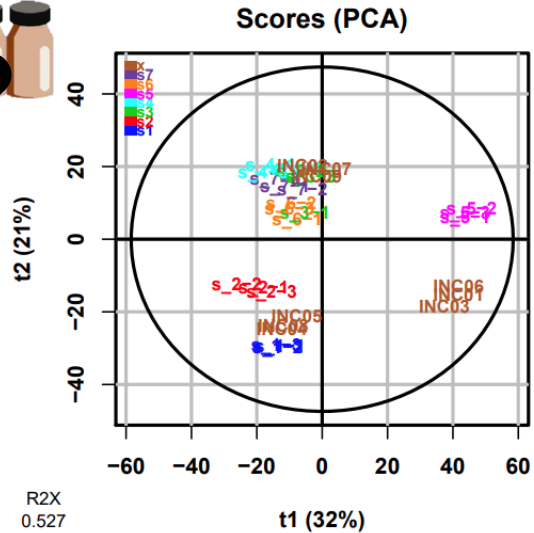
INRAE

ACS FALL 2022

August 18-22

IRLANDI

Analysis of unknown samples



Methodology validation

Unknown Samples	ACP	RAW & PLS-DA & DB		
	Triplicate	Precursor	Reactant	Synthesis
UNK01	♥		1Ca	
UNK02	♣	4Ba ^{4Ba}	1Ba	S4
UNK03	♥		1Ca	
UNK04	♦	4Ab ^{4Ab}	1Aa	S1
UNK05	♦	4Ab	1Aa	S1
UNK06	♥		1Ca ^{1Ca}	
UNK07	♣	4Ba	1Ba	S4
UNK08	♦	4Ab	1Aa	S1
UNK09	♣	4Ba	1Ba	S4

Synthesis	Precursor	Reactant
S1	4Ab	1Aa
S2	4Ab	1Ba
S3	4Ba	1Aa
S4	4Ba	1Ba
S5	4Ba	1Ca
S6	4Db	1Aa
S7	4Db	1Ba

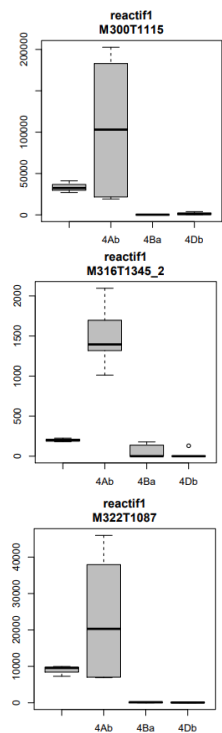
➤ What about UNK01,03,06 « Precursor »?



Methodology validation

Targeted Approach

Discriminant features		Presence?
Precursor 4Ab	m/z 299.9963 rt 18.5min	YES
	m/z 315.9736 rt 22.4min	YES
	m/z 321.9771 rt 17.6min	YES
	m/z 287.9421 rt 12.7min	YES
Precursor 4Ba	m/z 242.2849 rt 12min	NO
Precursor 4Db	m/z 554.7456 rt 27.5min	NO
	m/z 504.8106 rt 26.6min	NO
	m/z 532.8596 rt 26.2min	NO
	m/z 424.9442 rt 21.9min	NO



Unknown Samples

Unknown Samples	ACP	Raw & DB	PLS-DA & DB	Synthesis
	Triplicate	Precursor	Reactant	
UNK01	♥	4Ab	1Ca	S8
UNK02	♣	4Ba ^{4Ba}	1Ba	S4
UNK03	♥	4Ab	1Ca	S8
UNK04	♦	4Ab ^{4Ab}	1Aa	S1
UNK05	♦	4Ab	1Aa	S1
UNK06	♥	4Ab	1Ca ^{1Ca}	S8
UNK07	♣	4Ba	1Ba	S4
UNK08	♦	4Ab	1Aa	S1
UNK09	♣	4Ba	1Ba	S4

Synthesis	Precursor	Reactant
S1	4Ab	1Aa
S2	4Ab	1Ba
S3	4Ba	1Aa
S4	4Ba	1Ba
S5	4Ba	1Ca
S6	4Db	1Aa
S7	4Db	1Ba
S8	4Ab	1Ca

New combination of synthesis pathways discovered

➤ Conclusions

Methodology to support **attribution of the origin** of a **toxic threat agent** according to the **chemical signature of substances** resulting from its **production pathway**

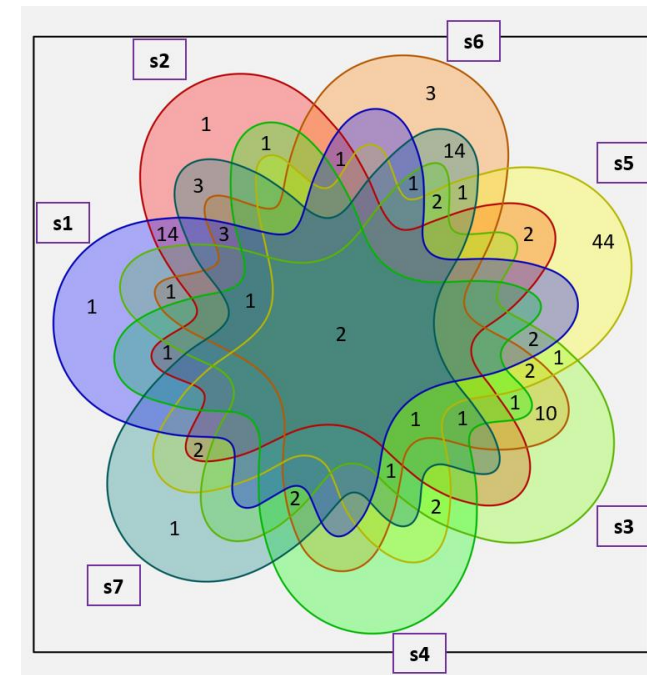
- ⊕ Chemical footprints were linked to a manufacturing process from synthetic raw materials
- ⊕ Methodology validated under blinded conditions with unknown new samples

Untargeted Approach

Discriminant impurities

Targeted Approach

Shotgun and specific analysis



Applicable to others scientific fields: biomarkers of chemical exposure on health and sourcing of toxic treat agents

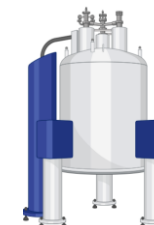
« *Better understand how it is produced, better understand how it works!* »

➤ Perspectives

⊕ **Ruggedness:** Apply the methodology to complex samples



⊕ **Structural Elucidation:** Trap and isolate impurities (2D-LC-HRMS) to complete elucidation by NMR



Acknowledgements

Supervisors

Emilien JAMIN

Laurent DEBRAUWER



Genotoul
Metatoul

Collaborators and funders

DGA NRBC

Grégoire DELAPORTE

Anne BOSSEE

Emmanuel JOUBERT

Christine ALBARET



Grant DGA
N° 22470120



AGENCE
INNOVATION
DÉFENSE

Grant AID
N° 2022 65 0036

Thank you for your attention

ACS FALL 2024

ELEVATING CHEMISTRY

AUGUST 18-22 | DENVER, CO

