



HAL
open science

microGalaxy SIG: microbial data analysis resources in Galaxy

Paul Zierep, Engy Nasr, Saim Momin, Pratik D Jagtap, Debjyoti Ghosh,
Nicola Soranzo, Kimberly Metris, Nedeljka Rosic, Bérénice Batut

► **To cite this version:**

Paul Zierep, Engy Nasr, Saim Momin, Pratik D Jagtap, Debjyoti Ghosh, et al.. microGalaxy SIG: microbial data analysis resources in Galaxy. GCB 2024 - German Conference of Bioinformatics 2024, Sep 2024, Bielefeld, Germany. hal-04763659

HAL Id: hal-04763659

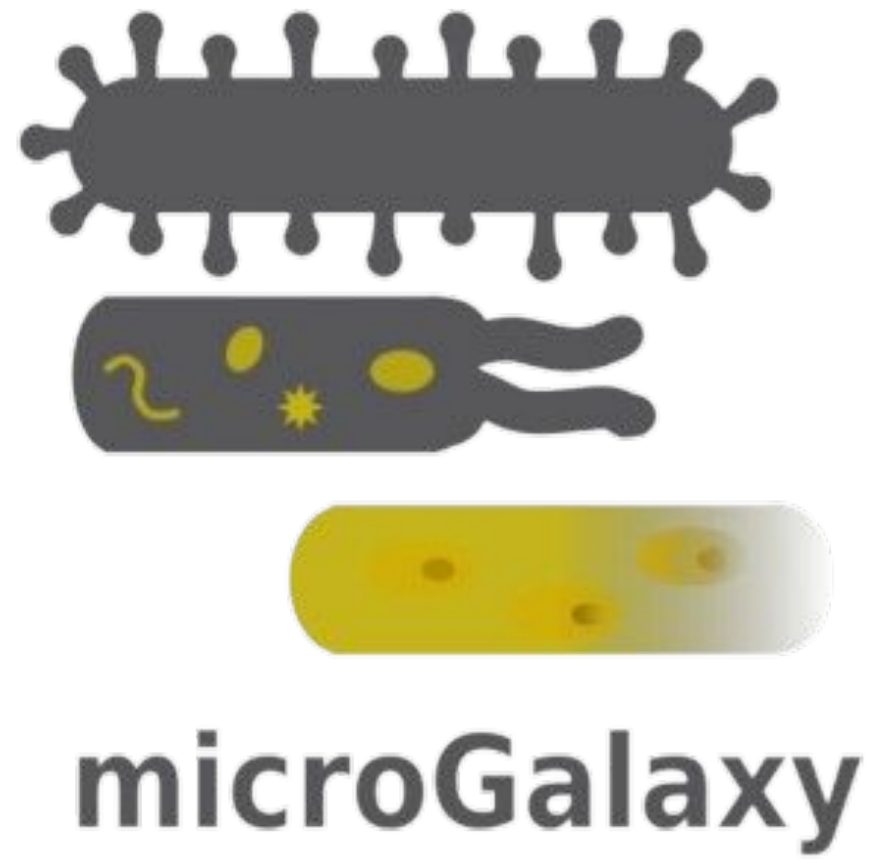
<https://hal.science/hal-04763659v1>

Submitted on 2 Nov 2024

HAL is a multi-disciplinary open access archive for the deposit and dissemination of scientific research documents, whether they are published or not. The documents may come from teaching and research institutions in France or abroad, or from public or private research centers.

L'archive ouverte pluridisciplinaire **HAL**, est destinée au dépôt et à la diffusion de documents scientifiques de niveau recherche, publiés ou non, émanant des établissements d'enseignement et de recherche français ou étrangers, des laboratoires publics ou privés.

microGalaxy SIG: microbial data analysis resources in Galaxy



Paul Zierep¹, Engy Nasr¹, Saim Momin¹, Pratik Jagtap², Debjyoti Ghosh³, Nicola Soranzo⁴, Kimberly Metris⁵, Nedeljka Rosic⁶, Bérénice Batut^{7*}



¹European Galaxy Team, Albert-Ludwigs-Universität Freiburg, Freiburg, Germany, ²Galaxy-P Team, University of Minnesota, Minneapolis, USA, ³Helmholtz Centre for Environmental Research (UFZ), Leipzig, Germany, ⁴Earlham Institute, Norwich, UK, ⁵Department of Genetics and Biochemistry, Clemson University, Clemson, SC, USA, ⁶Southern Cross University, Faculty of Health, Gold Coast, QLD, Australia, ⁷CNRS, Institut Français de Bioinformatique, Université Clermont Auvergne, France
Contact: berenice.batut@france-bioinformatique.fr, zierep@informatik.uni-freiburg.de



Introduction

Microbiology research involving microbiomes, meta*omics, and targeted microbial data analysis requires advanced programming skills, specialized tools, and significant computing power. Autonomous handling of these tasks can impede researchers' progress. The microGalaxy Scientific Interest Group (SIG) is here to help! The microGalaxy SIG maintains the Galaxy Community Hub page and a dedicated microbial Galaxy subdomain: <https://microgalaxy.usegalaxy.eu>.

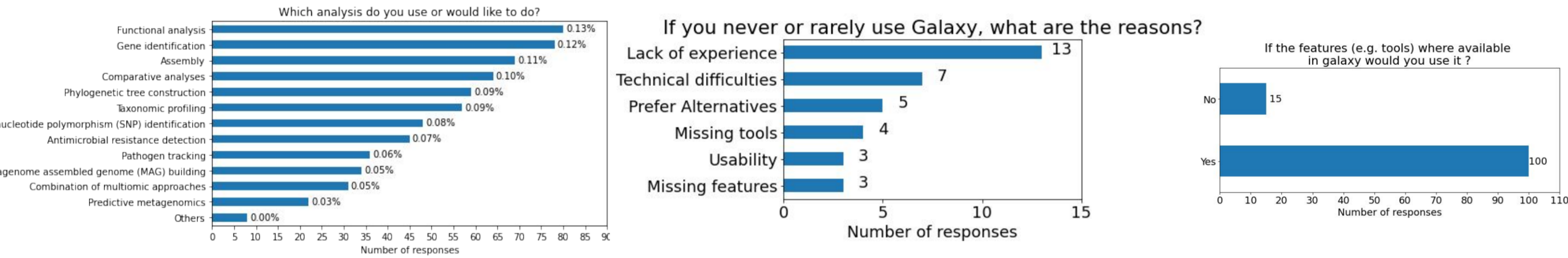
Mission of microGalaxy SIG

1. Develop and maintain microbial data analysis tools in Galaxy.
2. Establish standardized "best practices."
3. Expand documentation and training resources.
4. Coordinate collaborative efforts to avoid redundancy.
5. Outreach to the microbiology research communities.

Latest Achievements

Community outreach

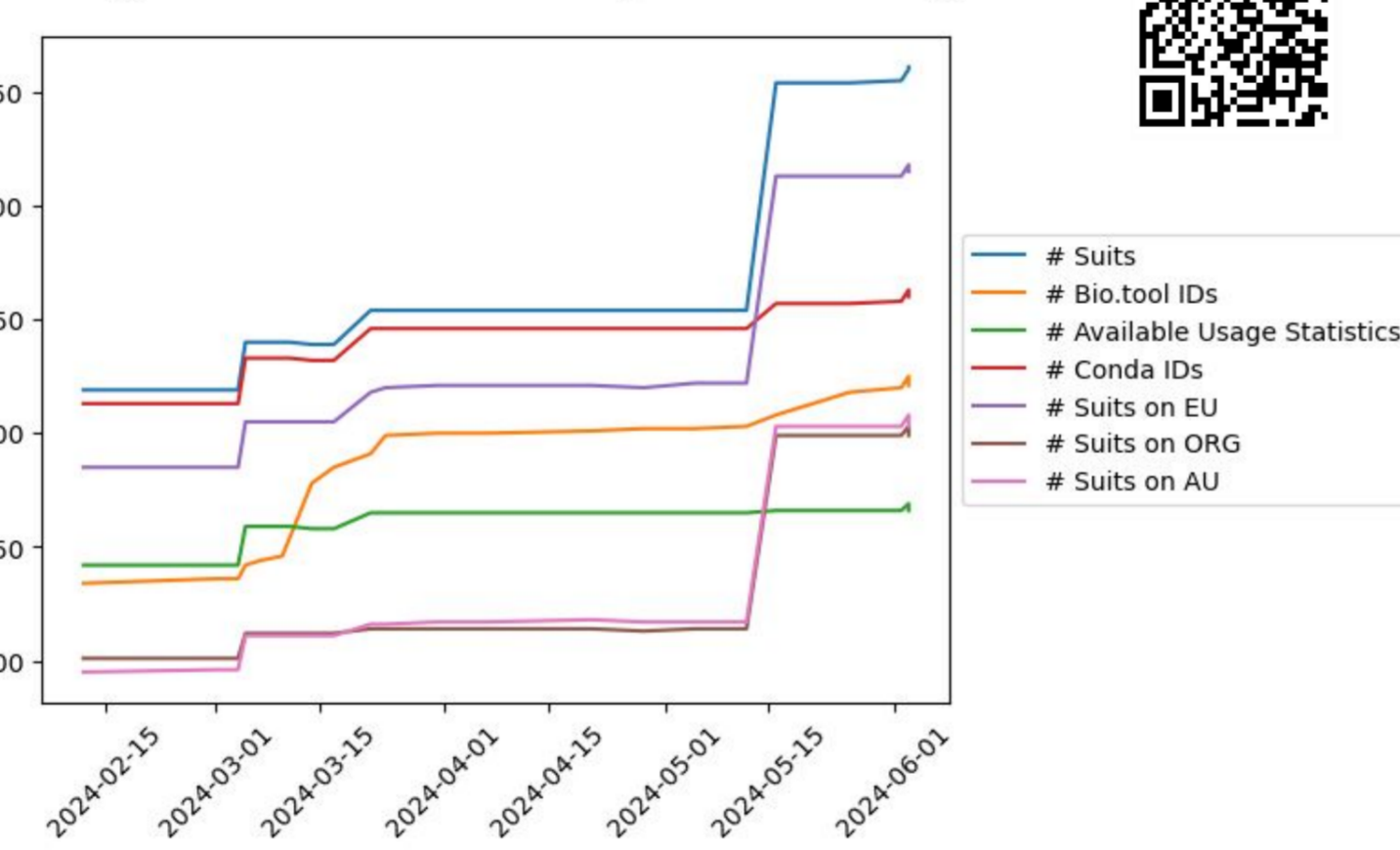
Survey with **100+** participants to evaluate the current usage and future needs of Galaxy for microbial data analysis.
Collection of **63** use cases to be selected for a use-case oriented research article.



Tool metadata curation

- 40+ tools added to the bio.tools registry
- 100+ Galaxy tool suites linked to corresponding bio.tools entries
- 40+ bio.tools with improved EDAM ontology annotations
- 30+ tutorials annotated with EDAM

Progress of microGalaxy tool catalog



Galaxy CoDex



Workflows and Training added in the last year

Amplicon analysis with

- MGnify (IWC)
- dada2 (IWC, GTN)
- QIIME2 (GTN)

Binning of metagenomic sequencing data (GTN)

Pathogen detection from (direct Nanopore) sequencing data (Public on usegalaxy.eu, IWC, GTN)

Clinical metaproteomics workflow (GTN)

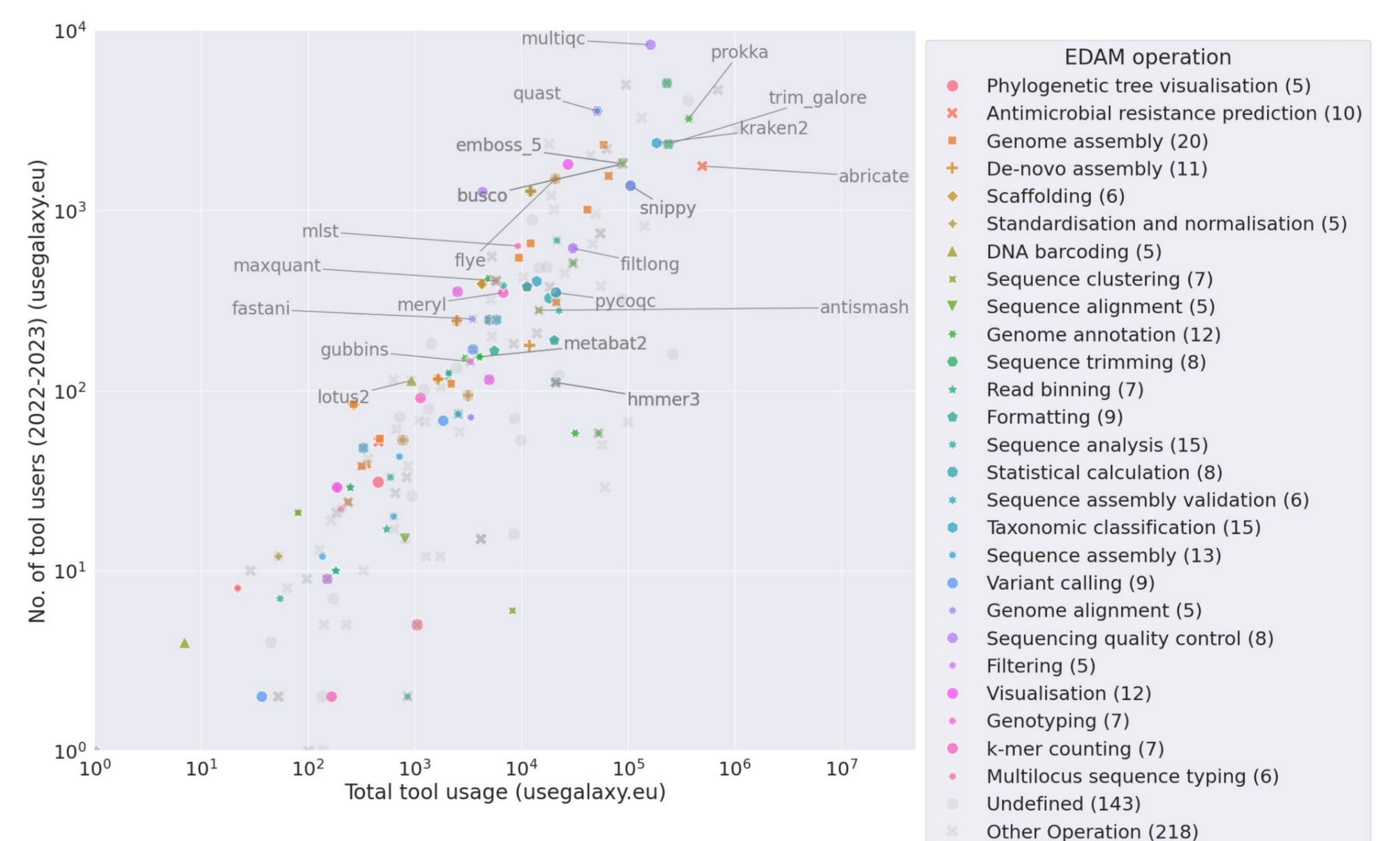
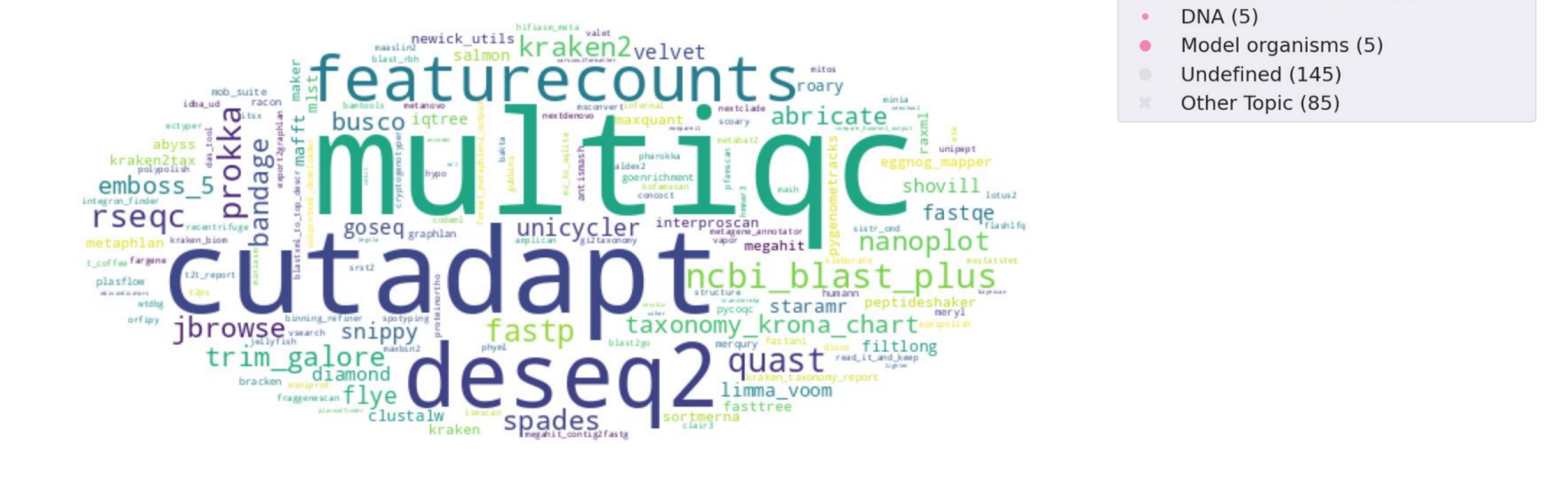
metaQuantome workflow for quantitative and statistical analysis of microbial taxonomy and functions (GTN)

Integrated meta-omics on short-read sequences for metagenomics/-transcriptomics (Public on usegalaxy.eu)

Bacterial genome annotation and AMR gene detection (Public on usegalaxy.fr, IWC, GTN)

microGalaxy Catalog

260+ Tool Suites: Taxonomic profiling, genome annotation, metaproteomics, AMR detection, and more
50+ Workflows: Customizable workflows for various analyses
30+ Tutorials: Learning pathways from basic navigation to advanced analyses via the Galaxy Training Network (GTN)



Visualization of the curated tool catalog of the microGalaxy community. Number of tool users and tool usage on the usegalaxy.eu server. Grouped by EDAM operation and topic. The tools with the highest usage are shown for each EDAM group.

Join us

galaxyproject/microGalaxy
 microgalaxy@lists.galaxyproject.org

Quarterly 2-hour meetings
2 working groups: Tool, Paper(s)



Partners

ELIXIR Microbiome Community
Seq4AMR - JPIAMR / jbioinfo Slack