



HAL
open science

Imbalanced motivated behaviors according to motor sign asymmetry in drug-naïve Parkinson's disease

Matthieu Béreau, Anna Castrioto, Mathieu Servant, Eugénie Lhommée, Maxime Desmarests, Amélie Bichon, Pierre Pélissier, Emmanuelle Schmitt, Hélène Klinger, Nadine Longato, et al.

► To cite this version:

Matthieu Béreau, Anna Castrioto, Mathieu Servant, Eugénie Lhommée, Maxime Desmarests, et al.. Imbalanced motivated behaviors according to motor sign asymmetry in drug-naïve Parkinson's disease. Scientific Reports, 2023, 13 (1), pp.21234. 10.1038/s41598-023-48188-0 . hal-04759623

HAL Id: hal-04759623

<https://hal.science/hal-04759623v1>

Submitted on 30 Oct 2024

HAL is a multi-disciplinary open access archive for the deposit and dissemination of scientific research documents, whether they are published or not. The documents may come from teaching and research institutions in France or abroad, or from public or private research centers.

L'archive ouverte pluridisciplinaire **HAL**, est destinée au dépôt et à la diffusion de documents scientifiques de niveau recherche, publiés ou non, émanant des établissements d'enseignement et de recherche français ou étrangers, des laboratoires publics ou privés.



Distributed under a Creative Commons Attribution 4.0 International License



OPEN

Imbalanced motivated behaviors according to motor sign asymmetry in drug-naïve Parkinson's disease

Matthieu Béreau^{1,2}✉, Anna Castrioto³, Mathieu Servant², Eugénie Lhommée³, Maxime Desmarests⁴, Amélie Bichon³, Pierre Pélissier³, Emmanuelle Schmitt³, Hélène Klinger^{5,6,7}, Nadine Longato⁸, Clélie Phillipps⁸, Thomas Wirth^{8,9,10}, Valérie Fraix³, Isabelle Benatru^{11,12}, Franck Durif^{13,14}, Jean-Philippe Azulay¹⁵, Elena Moro³, Emmanuel Broussolle^{5,6,7}, Stéphane Thobois^{5,6,7}, Christine Tranchant⁸, Paul Krack¹⁶ & Mathieu Anheim^{8,9,10}

Few studies have considered the influence of motor sign asymmetry on motivated behaviors in de novo drug-naïve Parkinson's disease (PD). We tested whether motor sign asymmetry could be associated with different motivated behavior patterns in de novo drug-naïve PD. We performed a cross-sectional study in 128 de novo drug-naïve PD patients and used the Ardouin Scale of Behavior in Parkinson's disease (ASBPD) to assess a set of motivated behaviors. We assessed motor asymmetry based on (i) side of motor onset and (ii) MDS-UPDRS motor score, then we compared right hemibody Parkinson's disease to left hemibody Parkinson's disease. According to the MDS-UPDRS motor score, patients with de novo right hemibody PD had significantly lower frequency of approach behaviors ($p=0.031$), including nocturnal hyperactivity ($p=0.040$), eating behavior ($p=0.040$), creativity ($p=0.040$), and excess of motivation ($p=0.017$) than patients with de novo left hemibody PD. Patients with de novo left hemibody PD did not significantly differ from those with de novo right hemibody PD regarding avoidance behaviors including apathy, anxiety and depression. Our findings suggest that motor sign asymmetry may be associated with an imbalance between motivated behaviors in de novo drug-naïve Parkinson's disease.

Parkinson's disease (PD) is a neuropsychiatric condition that combines a broad range of motor and non-motor signs, even in the early stages of the disease¹⁻³. Among non-motor signs, behavioral syndromes including apathy and impulse control disorders (ICD) are frequently encountered and have a substantial impact on patient and caregiver quality of life⁴⁻⁶. These behavioral disorders result from a complex interplay between dopaminergic denervation within nigrostriatal and mesocorticolimbic pathways, dopamine replacement therapy (DRT), and limbic and executive fronto-striatal circuits^{4,6}.

Some clinical and neurophysiological studies in healthy subjects or patients with brain diseases have reported frontal lobe lateralization in reward and punishment processing and motivated behaviors⁷⁻¹⁰. Overall, these

¹Neurology Department, University Hospital of Besançon, CHRU de Besançon, 3 Bd Alexandre Fleming, 25030 Besançon Cedex, France. ²Laboratoire de Recherches Intégratives en Neurosciences et Psychologie Cognitive - UR LINC, Université Bourgogne Franche-Comté, Besançon, France. ³Inserm, U1216, Grenoble Institut Neurosciences, CHU Grenoble Alpes, University Grenoble Alpes, 38000 Grenoble, France. ⁴Unité de Méthodologie, CIC INSERM 1431, CHU de Besançon, Besançon, France. ⁵Movement Disorders Unit, Neurology Department, Hospices Civils de Lyon, Lyon, France. ⁶Faculté de Médecine Lyon Sud, Université Claude Bernard Lyon 1, University of Lyon, Lyon, France. ⁷CNRS, Institut des Sciences Cognitives Marc Jeannerod, UMR 5229, Bron, France. ⁸Service de Neurologie, Hôpitaux Universitaires de Strasbourg, Strasbourg, France. ⁹Institut de Génétique et de Biologie Moléculaire et Cellulaire (IGBMC), INSERM-U964/CNRS-UMR7104, Université de Strasbourg, Illkirch, France. ¹⁰Fédération de Médecine Translationnelle de Strasbourg (FMTS), Université de Strasbourg, Strasbourg, France. ¹¹Neurology Department, University Hospital of Poitiers, Poitiers, France. ¹²INSERM, CHU de Poitiers, Centre d'Investigation Clinique CIC1402, University of Poitiers, Poitiers, France. ¹³EA7280 NPsy-Sydo, Université Clermont Auvergne, Clermont-Ferrand, France. ¹⁴Neurology Department, Clermont-Ferrand University Hospital, Clermont-Ferrand, France. ¹⁵Movement Disorders Unit, Neurology Department, University Hospital of Marseille, Marseille, France. ¹⁶Department of Neurology, Movement Disorders Center, University Hospital of Bern, Bern, Switzerland. ✉email: mbereau@chu-besancon.fr; matthieu.bereau@univ-fcomte.fr

studies demonstrated greater activation of the left prefrontal cortex in reward processing and approach behaviors and greater activation of the right prefrontal cortex in punishment processing and avoidance behaviors^{7–10}. Most evidence comes from unilateral stroke lesions, which have demonstrated approach behaviors including inappropriate euphoria or mania in cases of right frontal damage and avoidance behaviors including depression or the so called “catastrophic reaction” in cases of left hemisphere lesions^{11,12}. Importantly, authors have assumed that avoidance and approach behaviors are inversely related to each other, such that loss of one motivated behavior may lead to an imbalance in favor of the other¹¹. This hypothesis is also supported by previous studies in healthy subjects and patients with behavioral-variant frontotemporal dementia (bv-FTD), which have shown better approach learning in healthy subjects with larger reward responses in the left ventral striatum, and behavioral disinhibition in bv-FTD patients with right-sided asymmetric orbitofrontal grey matter pathology^{13,14}.

PD is characterized by asymmetric motor symptoms, which reflect asymmetric loss of dopaminergic neurons within motor circuits^{15–18}. It has therefore been hypothesized that asymmetric dopaminergic denervation within non-motor fronto-striatal circuits in PD may contribute to different patterns of motivated behaviors¹⁹. Previous studies that have examined the relationship between side of onset of motor signs and the occurrence of motivated behavior disorders in PD have reported conflicting results^{20–23}. Disease duration and dopamine replacement therapy (DRT) may also have been confounding factors. Moreover, two studies in de novo PD failed to demonstrate the influence of motor sign asymmetry on the occurrence of behavioral manifestations^{19,24}. These discrepancies may be related to the definition of PD asymmetry, the heterogeneity of PD populations and the size of the sample. We present a cross-sectional study of 128 patients with drug-naïve de novo PD, aiming to examine various aspects of motivated behaviors to test whether motor sign asymmetry is associated with an imbalance between approach and avoidance behaviors.

Materials and methods

Patient population

We included patients diagnosed with PD according to UK Brain Bank criteria for less than two years without significant cognitive impairment, defined as a score on the Mattis dementia rating scale (MDRS) > 130/144 or on the frontal assessment battery (FAB) > 15/18²⁵. We excluded patients undergoing treatment with levodopa and/or dopamine agonists, as well as MAO-B inhibitors, and/or psychotropic drugs including anxiolytics and antidepressants²⁵.

Study design

This cross-sectional study was ancillary to the “Honeymoon” study, a French prospective multicenter trial. Detailed methodology of the “Honeymoon” study has been described elsewhere²⁵.

PD asymmetry

Right hemibody PD (RPD) and left hemibody PD (LPD) were distinguished based on (i) the declarative hemibody side of onset of motor symptoms²³; (ii) the lateralized items of the Movement Disorder Society-Unified Parkinson’s Disease Rating Scale (MDS-UPDRS) part III (items 3b–e, 4–8, 15–16, 17a–d) at the time of examination²⁶. We calculated a laterality index adapted from Foster et al. using the following formula: $2 \times (\text{MDS-UPDRS right} - \text{MDS-UPDRS left}) / (\text{MDS-UPDRS right} + \text{MDS-UPDRS left})$ ²⁷. A score within the range [-2; 0] indicated LPD whereas a score within the range]0; 2] indicated RPD²⁷. Participants with indeterminable right or left hemibody PD were excluded from the corresponding analyses.]0;2]

Clinical assessment

We used the Ardouin Scale of Behavior in Parkinson’s Disease (ASBPD) to assess the whole behavioral spectrum of PD²⁸. The ASBPD is a semi-structured clinical interview in which trained psychologist assesses the severity of each hypodopaminergic and hyperdopaminergic item. It consists of 21 items, each of which are rated from 0 (no change) to 4 (severe change). For hypodopaminergic items, we considered scores ≥ 2 , which indicate a moderate behavioral impairment, as clinically relevant in early-stage unmedicated PD patients²⁹. We added the number of items with a score ≥ 2 for apathy, anxiety and depression to calculate the avoidance behavior composite score (AvCS). For hyperdopaminergic items, de novo unmedicated PD patients are unlikely to exhibit ICD, which appears during progression of PD with chronic exposure to DRT, especially dopamine agonists³⁰. We therefore considered scores ≥ 1 , which indicates slight but clinically significant behavioral impairment, as the relevant cut-off to account for motivational imbalance in drug-naïve PD patients. We added together the number of items with a score ≥ 1 for nocturnal hyperactivity, eating behavior, creativity, hobbyism, punning, risk taking behavior, compulsive shopping, pathological gambling, hypersexuality and excess in motivation to calculate the approach composite score (AppCS)²³. All patients underwent neuropsychological assessment including global cognitive efficiency and executive function using the MDRS and the FAB, respectively.

Statistical analyses

We compared the LPD and RPD groups using the chi-squared test for categorical variables and the Student’s t-test for quantitative variables. All statistical tests were two sided with a significance threshold of 0.05.

Ethical approval

The “Honeymoon” study was approved by the Ethics Committee of Grenoble, authorized by the National Agency for the Safety of Medicines and Health Products (AFSSAPS), and registered as NCT02786667. All patients

included in the study gave written informed consent in accordance with local legislation. All methods were performed in accordance with the relevant guidelines and regulations.

Results

Patient characteristics are described in detail in Table 1 and the relationship between laterality index, AppCS and AvCS is presented in Fig. 1.

Of the 198 de novo PD patients initially enrolled in the “honeymoon” study, we excluded 46 patients receiving IMAO-B, 21 patients taking psychotropic drugs including anxiolytics and/or antidepressants, and 3 patients taking both IMAO-B and psychotropic drugs. Moreover, four patients who reported bilateral side of motor onset and three patients for whom right and left UPDRS part III subscores were equal were ruled out of the corresponding analyses. Finally, six patients classified as RPD according to MDS-UPDRS-III score reported left hemibody disease onset. Conversely, four patients classified as LPD according to MDS-UPDRS-III score reported right hemibody disease onset.

We first examined whether motor symptom laterality, determined from MDS-UPDRS motor score, modulated the approach (AppCS) and avoidance (AvCS) composite scores derived from the ASBPD. RPD patients exhibited significantly lower frequency than LPD patients on AppCS ($p = 0.031$) while RPD and LPD patients did not differ on AvCS. Analyses of score components showed that RPD patients exhibited significantly lower frequency on the ASBPD for nocturnal hyperactivity ($p = 0.040$), eating behavior ($p = 0.040$), creativity ($p = 0.040$) and excess in motivation ($p = 0.017$) than LPD patients. The results of these score component analyses did not survive False Discovery Rate (FDR) correction for multiple comparisons. Statistical findings were similar when using motor symptom laterality based on the side of motor onset, with the exception of creativity.

| | Laterality based on side of onset (N = 124*) | | | Laterality based on MDS-UPDRS III (N = 125*) | | |
|------------------------------------|---|--------------|---------|---|--------------|---------|
| | LPD (n = 58) | RPD (n = 66) | p value | LPD (n = 60) | RPD (n = 65) | p value |
| Socio demographic variables | | | | | | |
| Mean age (years, mean, SD) | 58.5 (8.1) | 59.1 (9.8) | 0.702 | 58.5 (8.5) | 59.3 (9.6) | 0.661 |
| Disease duration (years, mean, SD) | 2.2 (1.5) | 2.3 (1.3) | 0.777 | 2.3 (1.4) | 2.2 (1.2) | 0.583 |
| Sex (male/female) | 35/23 | 45/21 | 0.363 | 35/25 | 45/20 | 0.205 |
| Motor (mean, SD) | | | | | | |
| UPDRS-III total score | 23.8 (9.4) | 25.2 (9.6) | 0.412 | 25.1 (9.6) | 24.3 (9.6) | 0.659 |
| UPDRS-III left subscore | 13.2 (5.4) | 6.1 (5.2) | <0.001 | 14.4 (4.8) | 5.0 (3.8) | <0.001 |
| UPDRS-III right subscore | 4.5 (4.3) | 12.7 (5.5) | <0.001 | 4.3 (4.0) | 13.1 (5.2) | <0.001 |
| Cognition (mean, SD) | | | | | | |
| MDRS | 139.1 (3.4) | 139.3 (3.4) | 0.784 | 139.2 (3.1) | 139.0 (3.7) | 0.722 |
| FAB | 16.7 (1.0) | 16.7 (1.1) | 0.841 | 16.7 (0.9) | 16.7 (1.1) | 0.761 |
| Avoidance behaviors (n ≥ 2,%) | | | | | | |
| Avoidance behavior composite score | 20 (34.5) | 18 (27.3) | 0.385 | 18 (30.0) | 18 (27.7) | 0.776 |
| Depressed mood | 10 (17.2) | 7 (10.6) | 0.284 | 10 (16.7) | 7 (10.8) | 0.337 |
| Anxiety | 16 (27.6) | 10 (15.1) | 0.090 | 14 (23.3) | 10 (15.4) | 0.260 |
| Irritability, aggressiveness | 2 (3.4) | 1 (1.5) | 0.493 | 2 (3.3) | 1 (1.6) | 0.521 |
| Hypermotivity | 10 (17.2) | 10 (15.1) | 0.752 | 8 (13.3) | 11 (16.9) | 0.576 |
| Apathy | 12 (20.7) | 10 (15.1) | 0.420 | 10 (16.7) | 11 (16.9) | 0.969 |
| Approach behaviors (n ≥ 1,%) | | | | | | |
| Approach behavior composite score | 19 (32.8) | 9 (13.6) | 0.011 | 19 (31.7) | 10 (15.4) | 0.031 |
| Nocturnal hyperactivity | 6 (10.3) | 1 (1.5) | 0.033 | 6 (10.0) | 1 (1.5) | 0.040 |
| Eating behavior | 6 (10.3) | 1 (1.5) | 0.033 | 6 (10.0) | 1 (1.5) | 0.040 |
| Creativity | 5 (8.6) | 1 (1.5) | 0.066 | 6 (10.0) | 1 (1.5) | 0.040 |
| Hobbyism | 6 (10.3) | 4 (6.1) | 0.382 | 6 (10.0) | 5 (7.7) | 0.649 |
| Punding | 0 (0) | 0 (0) | NA | 0 (0) | 0 (0) | NA |
| Risk-taking behavior | 2 (3.4) | 0 (0) | 0.128 | 2 (3.3) | 0 (0) | 0.138 |
| Compulsive shopping | 1 (1.7) | 1 (1.5) | 0.927 | 2 (3.3) | 1 (1.5) | 0.512 |
| Pathological gambling | 2 (3.4) | 1 (1.5) | 0.484 | 2 (3.3) | 1 (1.5) | 0.512 |
| Hypersexuality | 2 (3.4) | 0 (0) | 0.128 | 2 (3.3) | 0 (0) | 0.138 |
| Excess in motivation | 5 (8.8) | 0 (0) | 0.014 | 5 (8.5) | 0 (0) | 0.017 |

Table 1. Patient characteristics. LPD Left Parkinson’s Disease, RPD Right Parkinson’s Disease, UPDRS Unified Parkinson’s Disease Rating Scale, MDRS Mattis Dementia Rating Scale, FAB Frontal Assessment Battery, NA not applicable. *Of the 128 patients included, 4 patients with indistinguishable hemibody onset and 3 patients with symmetric right and left UPDRS motor subscores were excluded from the corresponding analyses.

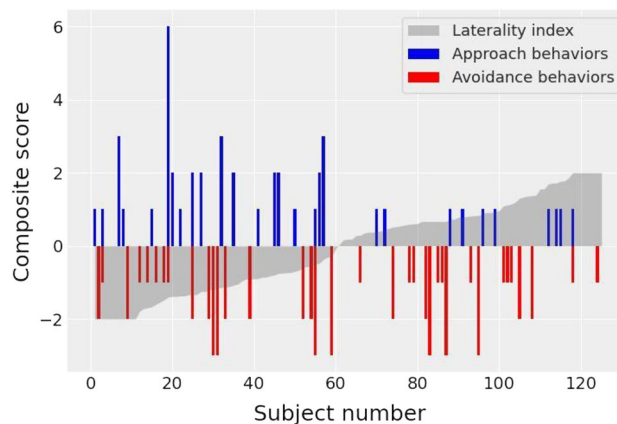


Figure 1. Approach and avoidance composite scores according to laterality index in de novo unmedicated Parkinson's disease (PD). From left to right, patients are ranked from the lowest (LPD) to the highest (RPD) laterality index score. LPD: left hemibody onset PD, RPD: right hemibody onset PD.

Discussion

In this study, we demonstrated that patients with de novo drug-naïve PD had different motivated behavior patterns according to motor sign asymmetry regarding approach behaviors but not avoidance behaviors. These results raise questions about the role of PD asymmetry in motivational imbalance and the occurrence of behavioral disorders in PD.

Motor sign asymmetry and approach behaviors

For the approach behaviors, we found lower frequency of AppCS score, nocturnal hyperactivity, eating behavior, and excess in motivation in de novo drug-naïve RPD compared to de novo drug-naïve LPD regardless of the method used to assess PD asymmetry. Moreover, we found lower frequency of creativity in de novo drug-naïve RPD according to the MDS-UPDRS motor score dichotomy and a trend toward significance when considering the side of motor onset. These results are consistent with previous neuropsychological studies in PD, which highlighted lesser reward sensitivity and approach behaviors in the “OFF-medication” state in RPD compared to LPD, in line with our working hypothesis^{31,32}. Interestingly, these studies also emphasized a reversed pattern in reward sensitivity in PD patients in the “ON-medication” state, with greater gain sensitivity in RPD than in LPD^{31,32}. These later results are in line with a recent study dedicated to more advanced PD patients receiving pulsatile DRT, which has shown higher eating behavior, creativity, and AppCS scores, and more impulse control disorders (ICD) for RPD compared to LPD²³. Taken together, all these data are relevant and illustrate the close interaction between frontal lobe lateralization in reward processing, PD asymmetry, and DRT in motivated behavior disorders. We showed that asymmetric motor signs in PD may independently contribute to motivational imbalance, resulting in subtle but clinically significant distinct approach behavior patterns in LPD and RPD, irrespective of disease duration and DRT. In de novo RPD, dopaminergic denervation predominates within the left fronto-striatal circuits, which leads to an imbalance that may disfavor reward processing and approach behaviors. According to both the behavioral sensitization and overdose hypotheses, this imbalance could be reversed in patients with advanced RPD who are taking DRT^{23,33–35}. Consequently, RPD patients taking DRT seem to experience an excess of approach behaviors compared to LPD patients taking DRT²³. Regarding the sensitization hypothesis, non-physiological pulsatile stimulation of dopamine receptors in advanced RPD could favor molecular changes within the more denervated left hemisphere, promoting an exaggerated long-term potentiation, reward processing, and the occurrence of ICD³³. This is in line with levodopa-induced dyskinesia pathophysiology, which embodies motor sensitization and usually predominates in the most affected side of PD³⁶. When considering the dopamine overdose hypothesis, which assumes an inverted U-shaped relationship between dopamine levels and behavioral performances, DRT could restore dopamine level and optimal functioning within the most denervated hemisphere but with a relative “overdosing” effect of the other hemisphere accordingly³⁴. In both cases, it could lead, under DRT, to a reverse pattern of motivated behaviors in favor of the most denervated hemisphere^{34,35}.

PD asymmetry and avoidance behaviors

Conflicting results have been reported regarding avoidance behaviors and PD lateralization, with either no difference or opposite patterns in LPD and RPD^{19–22,24}. Our results revealed that de novo drug-naïve LPD did not differ from RPD regarding avoidance behaviors, which raises questions about the link between motivational imbalance and these behaviors. Apathy, anxiety and depression have been previously characterized as a reward deficiency syndrome embodied by the so-called neuropsychiatric triad of PD^{6,37}. This amotivational syndrome has been linked to combined and widespread dopaminergic and serotonergic denervation within the mesocorticolimbic pathway^{4,38,39}. However, some data challenge this view and outline the role of other brain circuits and neurotransmitter systems in apathy, which may involve cognitive functions and executive control in addition to

motivation^{40,41}. Lastly, anxiety may be considered to be partly independent of reward processing but related to dysfunction within the fear circuit involving the amygdala among other structures⁴².

Limitations

Even though it is based on a relatively large cohort compared with previous work, our study has some limitations. We did not use striatal dopamine transporter imaging to confirm asymmetric dopaminergic denervation, even though our hypothesis was based on motor sign asymmetry. Moreover, our results related to score components for approach behaviors did not persist after FDR correction for multiple comparisons. Thus, these results, albeit consistent with other data in advanced PD on DRT, should be considered as exploratory and viewed as hypothesis generating.

Finally, we used the ASBPD to consider the behavioral spectrum in PD by dividing these manifestations into avoidance (hypodopaminergic) and approach (hyperdopaminergic) behaviors. Although this division is clinically relevant, it is an oversimplification, since other neurotransmitter systems are also involved in these neuropsychiatric signs⁴.

In summary, our results support the hypothesis that asymmetric motor signs are associated with imbalanced motivated behaviors in de novo drug-naïve PD. If confirmed in larger studies, these results should be taken into account for the personalized choice of dopaminergic treatment and its adjustment over the course of the disease.

Data availability

Anonymized data of this study will be available from the corresponding author on reasonable request from any qualified researcher, following the EU General Data Protection Regulation. The study protocol and statistical analysis plan will be shared upon request.

Received: 19 April 2023; Accepted: 23 November 2023

Published online: 01 December 2023

References

- Rodriguez-Oroz, M. C. *et al.* Initial clinical manifestations of Parkinson's disease: Features and pathophysiological mechanisms. *Lancet Neurol.* **8**, 1128–1139. [https://doi.org/10.1016/S1474-4422\(09\)70293-5](https://doi.org/10.1016/S1474-4422(09)70293-5) (2009).
- Weintraub, D. & Burn, D. J. Parkinson's disease: The quintessential neuropsychiatric disorder. *Mov. Disord.* **26**, 1022–1031. <https://doi.org/10.1002/mds.23664> (2011).
- Pont-Sunyer, C. *et al.* The onset of nonmotor symptoms in Parkinson's disease (the ONSET PD study). *Mov. Disord.* **30**, 229–237. <https://doi.org/10.1002/mds.26077> (2015).
- Castrioto, A., Thobois, S., Carnicella, S., Mailliet, A. & Krack, P. Emotional manifestations of PD: Neurobiological basis. *Mov. Disord.* **31**, 1103–1113. <https://doi.org/10.1002/mds.26587> (2016).
- Voon, V. *et al.* Impulse control disorders and levodopa-induced dyskinesias in Parkinson's disease: An update. *Lancet Neurol.* **16**, 238–250. [https://doi.org/10.1016/S1474-4422\(17\)30004-2](https://doi.org/10.1016/S1474-4422(17)30004-2) (2017).
- Pagonabarraga, J., Kulisevsky, J., Strafella, A. P. & Krack, P. Apathy in Parkinson's disease: Clinical features, neural substrates, diagnosis, and treatment. *Lancet Neurol.* **14**, 518–531. [https://doi.org/10.1016/S1474-4422\(15\)00019-8](https://doi.org/10.1016/S1474-4422(15)00019-8) (2015).
- Reuter-Lorenz, P. & Davidson, R. J. Differential contributions of the two cerebral hemispheres to the perception of happy and sad faces. *Neuropsychologia* **19**, 609–613. [https://doi.org/10.1016/0028-3932\(81\)90030-0](https://doi.org/10.1016/0028-3932(81)90030-0) (1981).
- Davidson, R. J. What does the prefrontal cortex “do” in affect: Perspectives on frontal EEG asymmetry research. *Biol. Psychol.* **67**, 219–233. <https://doi.org/10.1016/j.biopsycho.2004.03.008> (2004).
- Demaree, H. A., Everhart, D. E., Youngstrom, E. A. & Harrison, D. W. Brain lateralization of emotional processing: Historical roots and a future incorporating “dominance”. *Behav. Cogn. Neurosci. Rev.* **4**, 3–20. <https://doi.org/10.1177/1534582305276837> (2005).
- Ross, E. D. Differential hemispheric lateralization of emotions and related display behaviors: Emotion-type hypothesis. *Brain Sci.* **11**, 1034. <https://doi.org/10.3390/brainsci11081034> (2021).
- Harciarek, M. & Mańkowska, A. Hemispheric stroke: Mood disorders. *Handb. Clin. Neurol.* **183**, 155–167. <https://doi.org/10.1016/B978-0-12-822290-4.00007-4> (2021).
- Cotovio, G. & Oliveira-Maia, A. J. Functional neuroanatomy of mania. *Transl. Psychiatry* **12**, 29. <https://doi.org/10.1038/s41398-022-01786-4> (2022).
- Aberg, K. C., Doell, K. C. & Schwartz, S. Hemispheric asymmetries in striatal reward responses relate to approach-avoidance learning and encoding of positive-negative prediction errors in dopaminergic midbrain regions. *J. Neurosci.* **35**, 14491–14500. <https://doi.org/10.1523/JNEUROSCI.1859-15.2015> (2015).
- Irwin, D. J. *et al.* Asymmetry of post-mortem neuropathology in behavioural-variant frontotemporal dementia. *Brain* **141**, 288–301. <https://doi.org/10.1093/brain/awx319> (2018).
- Djaldetti, R., Ziv, I. & Melamed, E. The mystery of motor asymmetry in Parkinson's disease. *Lancet Neurol.* **5**, 796–802. [https://doi.org/10.1016/S1474-4422\(06\)70549-X](https://doi.org/10.1016/S1474-4422(06)70549-X) (2006).
- Riederer, P. *et al.* Lateralisation in Parkinson disease. *Cell Tissue Res.* **373**, 297–312. <https://doi.org/10.1007/s00441-018-2832-z> (2018).
- Kempster, P. A., Gibb, W. R., Stern, G. M. & Lees, A. J. Asymmetry of substantia nigra neuronal loss in Parkinson's disease and its relevance to the mechanism of levodopa related motor fluctuations. *J. Neurol. Neurosurg. Psychiatry* **52**, 72–76. <https://doi.org/10.1136/jnnp.52.1.72> (1989).
- Wang, J. *et al.* MRI evaluation of asymmetry of nigrostriatal damage in the early stage of early-onset Parkinson's disease. *Parkinsonism Relat. Disord.* **21**, 590–596. <https://doi.org/10.1016/j.parkreldis.2015.03.012> (2015).
- Pellicano, C. *et al.* Neuropsychiatric and cognitive symptoms and body side of onset of parkinsonism in unmedicated Parkinson's disease patients. *Parkinsonism Relat. Disord.* **21**, 1096–1100. <https://doi.org/10.1016/j.parkreldis.2015.07.002> (2015).
- Erro, R. *et al.* Anxiety is associated with striatal dopamine transporter availability in newly diagnosed untreated Parkinson's disease patients. *Parkinsonism Relat. Disord.* **18**, 1034–1038. <https://doi.org/10.1016/j.parkreldis.2012.05.022> (2012).
- Foster, P. S. *et al.* Mood disturbances and cognitive functioning in Parkinson's disease: The effects of disease duration and side of onset of motor symptoms. *J. Clin. Exp. Neuropsychol.* **35**, 71–82. <https://doi.org/10.1080/13803395.2012.753037> (2013).
- Modestino, E. J., Amenechi, C., Reinhofer, A. & O'Toole, P. Side-of-onset of Parkinson's disease in relation to neuropsychological measures. *Brain Behav.* **7**, e00590. <https://doi.org/10.1002/brb3.590> (2017).
- Phillipps, C. *et al.* Is motor side onset of Parkinson's disease a risk factor for developing impulsive-compulsive behavior? A cross-sectional study. *Mov. Disord.* **35**, 1080–1081. <https://doi.org/10.1002/mds.28053> (2020).

24. Erro, R. *et al.* Side of onset does not influence cognition in newly diagnosed untreated Parkinson's disease patients. *Parkinsonism Relat. Disord.* **19**, 256–259. <https://doi.org/10.1016/j.parkrel.2012.10.020> (2013).
25. Castrioto, A. *et al.* A randomized controlled double-blind study of rotigotine on neuropsychiatric symptoms in de novo PD. *NPJ Parkinsons Dis.* **6**, 41. <https://doi.org/10.1038/s41531-020-00142-x> (2020).
26. Voruz, P. *et al.* Motor symptom asymmetry predicts non-motor outcome and quality of life following STN DBS in Parkinson's disease. *Sci. Rep.* **12**, 3007. <https://doi.org/10.1038/s41598-022-07026-5> (2022).
27. Foster, E. R., Black, K. J., Antenor-Dorsey, J. A. V., Perlmutter, J. S. & Hershey, T. Motor asymmetry and substantia nigra volume are related to spatial delayed response performance in Parkinson disease. *Brain Cogn.* **67**, 1–10. <https://doi.org/10.1016/j.bandc.2007.10.002> (2008).
28. Rieu, I. *et al.* International validation of a behavioral scale in Parkinson's disease without dementia. *Mov. Disord.* **30**, 705–713. <https://doi.org/10.1002/mds.26223> (2015).
29. Ardouin, C. *et al.* Assessment of hyper- and hypodopaminergic behaviors in Parkinson's disease. *Rev. Neurol. (Paris)* **165**, 845–856. <https://doi.org/10.1016/j.neuro.2009.06.003> (2009).
30. Béreau, M. *et al.* Hyperdopaminergic behavioral spectrum in Parkinson's disease: A review. *Rev. Neurol. (Paris)* **174**, 653–663. <https://doi.org/10.1016/j.neuro.2018.07.005> (2018).
31. Maril, S., Hassin-Baer, S., Cohen, O. S. & Tomer, R. Effects of asymmetric dopamine depletion on sensitivity to rewarding and aversive stimuli in Parkinson's disease. *Neuropsychologia* **51**, 818–824. <https://doi.org/10.1016/j.neuropsychologia.2013.02.003> (2013).
32. Porat, O., Hassin-Baer, S., Cohen, O. S., Markus, A. & Tomer, R. Asymmetric dopamine loss differentially affects effort to maximize gain or minimize loss. *Cortex* **51**, 82–91. <https://doi.org/10.1016/j.cortex.2013.10.004> (2014).
33. Castrioto, A. *et al.* Reversing dopaminergic sensitization. *Mov. Disord.* **32**, 1679–1683. <https://doi.org/10.1002/mds.27213> (2017).
34. Vaillancourt, D. E., Schonfeld, D., Kwak, Y., Bohnen, N. I. & Seidler, R. Dopamine overdose hypothesis: Evidence and clinical implications. *Mov. Disord.* **28**, 1920–1929. <https://doi.org/10.1002/mds.25687> (2013).
35. Meder, D., Herz, D. M., Rowe, J. B., Lehericy, S. & Siebner, H. R. The role of dopamine in the brain - lessons learned from Parkinson's disease. *Neuroimage* **190**, 79–93. <https://doi.org/10.1016/j.neuroimage.2018.11.021> (2019).
36. Bastide, M. F. *et al.* Pathophysiology of L-dopa-induced motor and non-motor complications in Parkinson's disease. *Prog. Neurobiol.* **132**, 96–168. <https://doi.org/10.1016/j.pneurobio.2015.07.002> (2015).
37. Béreau, M. *et al.* Fatigue in de novo Parkinson's disease: Expanding the Neuropsychiatric Triad?. *J. Parkinsons Dis.* **12**, 1329–1337. <https://doi.org/10.3233/JPD-213116> (2022).
38. Mailliet, A. *et al.* The prominent role of serotonergic degeneration in apathy, anxiety and depression in de novo Parkinson's disease. *Brain* **139**, 2486–2502. <https://doi.org/10.1093/brain/aww162> (2016).
39. Mailliet, A. *et al.* Serotonergic and dopaminergic lesions underlying Parkinsonian neuropsychiatric signs. *Mov. Disord.* **36**, 2888–2900. <https://doi.org/10.1002/mds.28722> (2021).
40. Béreau, M. *et al.* Motivational and cognitive predictors of apathy after subthalamic nucleus stimulation in Parkinson's disease. *Brain* <https://doi.org/10.1093/brain/awad324> (2023).
41. Béreau, M. *et al.* Apathy in Parkinson's disease: Clinical patterns and neurobiological basis. *Cells* **12**, 1599. <https://doi.org/10.3390/cells12121599> (2023).
42. Carey, G. *et al.* Neuroimaging of anxiety in Parkinson's disease: A systematic review. *Mov. Disord.* **36**, 327–339. <https://doi.org/10.1002/mds.28404> (2021).

Acknowledgements

We thank all participants for taking part in this study. We thank Jennifer Dobson for proofreading this manuscript.

Author contributions

M.B.—Conception, Organization, Execution, Writing of the first draft, Manuscript review and critique, A.C.—Conception, Organization, Execution, Writing of the first draft, Manuscript review and critique, M.S.—Conception, Organization, Execution, Writing of the first draft, Manuscript review and critique, E.L.—Conception, Organization, Execution, Writing of the first draft, Manuscript review and critique, M.D.—Conception, Organization, Execution, Writing of the first draft, Manuscript review and critique, A.B.—Execution, Manuscript review and critique, P.P.—Execution, Manuscript review and critique, E.S.—Execution, Manuscript review and critique, H.K.—Execution, Manuscript review and critique, N.L.—Execution, Manuscript review and critique, C.P.—Execution, Manuscript review and critique, T.W.—Execution, Manuscript review and critique, V.F.—Execution, Manuscript review and critique, I.B.—Execution, Manuscript review and critique, F.D.—Execution, Manuscript review and critique, J.P.A.—Execution, Manuscript review and critique, E.M.—Execution, Manuscript review and critique, E.B.—Execution, Manuscript review and critique, S.T.—Execution, Manuscript review and critique, C.T.—Execution, Manuscript review and critique, P.K.—Conception, Organization, Execution, Writing of the first draft, Manuscript review and critique, M.A.—Conception, Organization, Execution, Writing of the first draft, Manuscript review and critique.

Funding

This study was ancillary to the “Honeymoon” study, for which UCB provided financial support. The sponsor had no role in the study design, data analysis and interpretation, or in writing the manuscript.

Competing interests

Dr. Béreau reports reimbursement of travel expenses to scientific meetings from ELIVIE, Medtronic and Boston Scientific, honoraria from Merz Pharma and Allergan for lecturing outside the submitted work. Dr. Castrioto reports research grants from France Parkinson Foundation and Medtronic, honoraria from ELIVIE for lecturing outside the submitted work. Dr. Wirth reports research grant from the French Society of Neurology, the APTES and the Fondation Planiol organizations and travels reimbursement from LVL medical outside the submitted work. Dr. Fraix reports reimbursement of travel expenses from Merz, AbbVie, honoraria for scientific counselling from AbbVie outside the submitted work. Dr. Azulay reports honoraria for consultancies and advisory boards from AbbVie, Merz, Allergan, Medtronic, Ever Pharma outside the submitted work. Dr. Moro reports honorarium from Medtronic and Newronica for lecturing, and an educational grant from Boston outside the

submitted work. Dr. Thobois reports grants from France Parkinson, FRM, ANR, PHRC, UCB, Neurodis, personal fees from Aguetant, Boston Scientific, Novartis, non-financial support from Zambon, Abbvie, Elivie outside the submitted work. Dr. Tranchant reports reimbursement of travel expenses from Merz, and honoraria from Allergan for lecturing outside the submitted work. Dr. Krack reports a research grant from UCB for the present study, research grants from Swiss National Science Foundation, ROGER DE SPOELBERCH Foundation, Bertarelli Foundation, Annemarie Opprecht Foundation, Parkinson Schweiz, Boston Scientific, and Aleva, lecturing fees paid to employing institution (Inselspital) from Boston Scientific, as well as reimbursement of travelling expenses to scientific meeting by Zambon outside the submitted work. Dr. Anheim reports travel grants and/or honoraria from Actelion Pharmaceuticals, Johnson and Johnson, Teva, LVL, Aguetant, Orkyn, AbbVie and Merz outside the submitted work. Mathieu Servant, Eugénie Lhommée, Maxime Desmarets, Amélie Bichon, Pierre Péliissier, Emmanuelle Schmitt, Hélène Klinger, Nadine Longato, Clélie Phillipps, Isabelle Benatru, Frank Durif, Emmanuel Broussolle declare no competing interest.

Additional information

Correspondence and requests for materials should be addressed to M.B.

Reprints and permissions information is available at www.nature.com/reprints.

Publisher's note Springer Nature remains neutral with regard to jurisdictional claims in published maps and institutional affiliations.



Open Access This article is licensed under a Creative Commons Attribution 4.0 International License, which permits use, sharing, adaptation, distribution and reproduction in any medium or format, as long as you give appropriate credit to the original author(s) and the source, provide a link to the Creative Commons licence, and indicate if changes were made. The images or other third party material in this article are included in the article's Creative Commons licence, unless indicated otherwise in a credit line to the material. If material is not included in the article's Creative Commons licence and your intended use is not permitted by statutory regulation or exceeds the permitted use, you will need to obtain permission directly from the copyright holder. To view a copy of this licence, visit <http://creativecommons.org/licenses/by/4.0/>.

© The Author(s) 2023