



HAL
open science

A comparative study of muscle activity and synergies during walking in baboons and humans

François Druelle, Marco Ghislieri, Pablo Molina-Vila, Brigitte Rimbaud, Valentina Agostini, Gilles Berillon

► **To cite this version:**

François Druelle, Marco Ghislieri, Pablo Molina-Vila, Brigitte Rimbaud, Valentina Agostini, et al.. A comparative study of muscle activity and synergies during walking in baboons and humans. *Journal of Human Evolution*, 2024, 189, pp.103513. 10.1016/j.jhevol.2024.103513 . hal-04756506

HAL Id: hal-04756506

<https://hal.science/hal-04756506v1>

Submitted on 28 Oct 2024

HAL is a multi-disciplinary open access archive for the deposit and dissemination of scientific research documents, whether they are published or not. The documents may come from teaching and research institutions in France or abroad, or from public or private research centers.

L'archive ouverte pluridisciplinaire **HAL**, est destinée au dépôt et à la diffusion de documents scientifiques de niveau recherche, publiés ou non, émanant des établissements d'enseignement et de recherche français ou étrangers, des laboratoires publics ou privés.

Copyright

A comparative study of muscle activity and synergies during walking in baboons and humans

François Druelle^{a, b, c, 1, *}, Marco Ghislieri^{d, e, 1}, Pablo Molina Vila^b, Brigitte Rimbaud^b,
Valentina Agostini^{d, e}, Gilles Berillon^{a, b}

^a *Histoire Naturelle de l'Homme Préhistorique, UMR 7194, CNRS-MNHN-UPVD, Musée de l'Homme, 17 place du Trocadéro, 75116 Paris, France*

^b *Primatology Station of the CNRS, UAR 846, 2230 route des quatre tours, 13790 Rousset, France*

^c *Functional Morphology Laboratory, University of Antwerp, Campus Drie Eiken (Building D), Universiteitsplein 1, 2610 Antwerp, Belgium*

^d *Department of Electronics and Telecommunications, Politecnico di Torino, Corso Duca degli Abruzzi, 24, 10129 Turin, Italy*

^e *PoliTo^{BIO}Med Lab, Politecnico di Torino, Corso Duca degli Abruzzi, 24, 10129 Turin, Italy*

¹ These authors contributed equally to this work

*** Corresponding author.**

E-mail address: francois.druelle@mnhn.fr (F. Druelle).

Abstract

Bipedal locomotion was a major functional change during hominin evolution, yet, our understanding of this gradual and complex process remains strongly debated. Based on fossil discoveries, it is possible to address functional hypotheses related to bipedal anatomy, however, motor control remains intangible with this approach. Using comparative models which occasionally walk bipedally has proved to be relevant to shed light on the evolutionary transition toward habitual bipedalism. Here, we explored the organization of the neuromuscular control using surface electromyography (sEMG) for six extrinsic muscles in two baboon individuals when they walk quadrupedally and bipedally on the ground. We compared their muscular coordination to five human subjects walking bipedally. We extracted muscle synergies from the sEMG envelopes using the non-negative matrix factorization algorithm which allows decomposing the sEMG data in the linear combination of two non-negative matrixes (muscle weight vectors and activation coefficients). We calculated different parameters to estimate the complexity of the sEMG signals, the duration of the activation of the synergies, and the generalizability of the muscle synergy model across species and walking conditions. We found that the motor control strategy is less complex in baboons when they walk bipedally, with an increased muscular activity and muscle coactivation. When comparing the baboon bipedal and quadrupedal pattern of walking to human bipedalism, we observed that the baboon bipedal pattern of walking is closer to human bipedalism for both baboons, although substantial differences remain. Overall, our findings show that the muscle activity of a non-adapted biped effectively fulfills the basic mechanical requirements (propulsion and balance) for walking bipedally, but substantial refinements are possible to optimize the efficiency of bipedal locomotion. In the evolutionary context of an expanding reliance on bipedal behaviors, even minor morphological alterations, reducing muscle coactivation, could have faced strong selection pressure, ultimately driving bipedal evolution in hominins.

Keywords: Bipedalism, Electromyography; Motor control; Muscle synergy; *Papio anubis*.

1. Introduction

While bipedal locomotion is seen as a major functional change during the course of hominin evolution, our understanding of the adjustments that occurred in the motor control to make bipedal walking possible for long periods of time remains very speculative (e.g., Stern and Susman, 1981; Vilensky, 1987; Dominici et al., 2011). Based on the intriguing association of anatomical traits pointing toward bipedal behavior, recent paleontological discoveries (e.g., *Orrorin tugenensis*, *Sahelanthropus tchadensis*) allow addressing whether bipedalism might have been habitually used very early in the hominin lineage (e.g., Senut et al., 2001; White et al., 2015; Daver et al., 2022), and also possibly before the emergence of hominins (in a few specific Miocene hominoids, i.e., 23–6 Ma, such as in *Oreopithecus bambolii* and *Danuvius guggenmosi*; Rook et al., 1999; Böhme et al., 2019). In early hominins, bipedalism might have been habitually used in combination with other locomotor modes, including (arboreal) quadrupedal behaviors (Rose, 1991; Senut, 2007; Green and Alemseged, 2012; DeSilva et al., 2018; Alméjija et al., 2021; Daver et al., 2022; Meyer et al., 2023; Stamos and Alemseged, 2023; Urciuoli and Alba, 2023).

Catarrhines have a 'quadrupedal bauplan' generally adapted to arboreal locomotion (e.g., Cartmill, 1972; Rose, 1973; Cartmill et al., 2002; Schmitt et al., 2006; Granatosky et al., 2017; Cartmill et al., 2020). They can cope with important balance and maneuverability requirements, and they may rely on increased and continuous sensory feedback compared to other mammals (Eidelberg et al., 1981). Locomotor control has been hypothesized to be organized differently in these species compared to other mammals (Eidelberg et al., 1981; Vilensky, 1987; Courtine et al., 2005; Larson and Stern, 2007). One can also consider that non-human primates are freed, in some respects, from the (anatomical) constraints related to strict quadrupedal locomotion and coordination as they develop complex locomotor repertoires (Hunt et al., 1996). Catarrhines are also able to stand and occasionally walk bipedally (e.g., baboon: Rose, 1976; Druelle et al., 2017; chimpanzee: Stanford, 2006; Carvalho et al., 2012; Pernel et al., 2021; langur: Workmann and Schmitt, 2011; colobe: Morbeck, 1977; Gebo and Chapman, 1995; macaques: Wells and Turnquist, 2001; orangutans: Thorpe et al., 2007; and for a review, see Druelle and Berillon, 2014) despite anatomies that do not bear the skeletal traits usually understood as bipedal locomotor adaptations in hominins. Their anatomy allows bipedal walking in the so-called 'bent-hip, bent-knee' posture, which acknowledges that they do not use extended limb postures as observed in humans (Alexander, 2004; Hirasaki et al., 2004; Ogihara et al., 2010; Demes and O'Neill, 2013; Pontzer et al., 2014; Demes et al., 2015; Thompson et al., 2015; O'Neill et al., 2018; Blickhan et al., 2021; Thompson et al., 2021). As recently shown in a comparative study in

captivity, extant catarrhines (i.e., bonobos, chimpanzees, gorillas, orangutans, hylobatids, siamangs, baboons, and mandrills in this study) are using bipedal walking for very short bouts during their daily activities (Rosen et al., 2022; see also Rose 1976; Sanford 2006; Hunt 1994; Thorpe 2007; Druelle et al. 2016), but the evolutionary transition toward habitual bipedalism obviously required a stronger involvement into this mode. As a result, such a widespread behavior observed in many extant species let us suggest that it was also the case in Miocene hominoids. The most parsimonious hypothesis remains that they were already using bipedalism, at least occasionally, which involves motor control mechanisms similar to extant non-human primate species.

Terrestrial bipedal walking requires the central nervous system to modulate and coordinate the contraction of many muscles and greater balance adjustments are needed compared to quadrupedal walking. In a bipedal posture, the body center of mass needs to be balanced on two legs and lies above the hip joints within a small support polygon; in a quadrupedal posture, the body center of mass is positioned between four legs and anterior to the hip joints in a large support polygon (Kimura, 1996; Raichlen et al., 2009; Druelle et al., 2019). Bipedal walking in non-human primates may thus require to achieve a different muscle coordination toward higher muscle coactivation than during quadrupedal walking (Higurashi et al., 2019). In humans, a modular organization of the neuromuscular control, the so-called 'muscle synergies', have been suggested (Grillner, 1985; Ivanenko et al., 2004; Dominici et al., 2011; Torricelli et al., 2016) that would make this locomotor task simplified at the level of the motor control strategy (Dominici et al., 2011; Lacquaniti et al., 2012). Each synergy defines a group of coactivated muscles that are expected to work together as a single functional unit. Based on the analysis of muscle synergies, the existence of four basic activation patterns have been shown to be shared, in some respects, in rats, cats, macaques, guineafowl, and humans during walking (Dominici et al., 2011). This analysis does not contradict the potential specificities within primate neural networks but highlights the conservation of a common ancestral neural network for the execution of stepping. The application of this approach in various species and in different tasks has revealed that complex muscle patterns are commonly reconstructed with only a few muscle synergies. This approach has also been widely used for the assessment and rehabilitation of neuromotor diseases in humans (Safavynia et al., 2011; Taborri et al., 2018). Understanding the affinities between locomotor modes in primates can significantly contribute to the development of evolutionary scenarios for the transition toward locomotor specializations (e.g., Fleagle et al., 1981; Stern and Susman, 1981; Aerts et al., 2000; Berillon et al., 2011; Granatosky et al., 2016; Granatosky and Schmitt, 2019; Aerts et al., 2023). For instance, it can help to understand the link between

quadrupedal and bipedal locomotion in primates in general (see Vangor and Wells, 1983; Vilensky, 1987; Shapiro and Jungers, 1994; Balter and Zehr, 2007; Zehr et al., 2009; Higurashi et al., 2019; Aerts et al., 2023) and to explore, in a comparative and evolutionary framework, what has to be resolved to specialize for bipedal locomotion (e.g., hip joint stabilization, propulsion generation, controlling the trunk position, controlling foot clearance). Therefore, understanding the motor affinities between locomotor modes in primates is likely to provide important insights into the (evolutionary) process of transitioning from a locomotor repertoire based on quadrupedalism to a repertoire based on bipedalism (e.g., Taylor and Rowntree, 1973; Foster et al., 2013; Kozma et al., 2018; Raichlen and Pontzer, 2021).

Here, we study motor control strategies through the muscle synergy theory of a quadrupedal primate, the olive baboon, *Papio anubis*, when walking quadrupedally and bipedally on the ground in comparison to those of humans. Undoubtedly, the morphology of baboons is specialized for quadrupedal walking, and their musculoskeletal system differs significantly from what is expected and observed in early hominins or Miocene apes. However, despite its specificities (see D'Août et al., 2014), this comparative model can offer valuable insights into how a quadrupedal primate naturally addresses the challenge of walking bipedally during its daily activities (e.g., Rose, 1976; Berillon et al., 2011; Druelle et al., 2022). By specifically studying baboons, along with other extant primates, we can enhance our comprehension of the intricate relationships between form and function, which encompass the intrinsic mechanisms involved in the evolutionary transition toward bipedalism. First, we hypothesize that a non-human primate with a quadrupedally-oriented locomotor repertoire should use common muscle synergies in both quadrupedal and bipedal locomotion. Nevertheless, because bipedal walking is an occasional locomotor mode in which keeping balance is a greater challenge than walking quadrupedally, a higher muscle coactivation is expected (as seen in macaques; Higurashi et al., 2019) and, hence, a less complex motor control scheme. Second, the stereotyped pattern observed in humans when walking bipedally (Dominici et al., 2011) should be shared, in some respects, with the one of the baboons walking quadrupedally, at least to deal with the major biomechanical functions inherent to walking.

2. Material and methods

2.1. Study site and subjects

The olive baboons, *Papio anubis*, were housed at the Primatology Station of the Centre National de la Recherche Scientifique (Rousset-sur-Arc, France). The experiments presented

in this study were conducted inside the primatology center. All the procedures that are described in this study were evaluated by the ethical committee on animal experimentation n°14 (Projet 68-19112012, CEEA-14 Marseille) and approved by the Ministère de l'Enseignement Supérieur, de la Recherche et de l'Innovation.

Prior to the experiments, primates were trained using positive reinforcement techniques (Schapiro et al., 2003; Prescott and Buchanan-Smith, 2003) over a period of 18 months and the two trainers, P.M.V. and B.R., focused on the habituation and desensitization of individuals to the whole experimental setup. The initial training period took place in a spacious indoor cage, where the two individuals were paired and housed together for a duration of 18 months. During this phase, the focus was primarily on familiarizing the individuals with the presence of trainers and establishing basic behaviors such as target training and parking training. Over a span of 6 months (consisting of approximately 46 training sessions, each lasting around 30-45 minutes), the individuals progressively learned to cooperate in order to exit their enclosure while leashed, and to walk alongside the trainer using quadrupedal locomotion on the experimental setup. Subsequently, they were relocated to a larger indoor/outdoor enclosure. This training process enabled us to guide the baboons towards the technical platform for data collection. The training sessions started when the baboons were 1.5 and 2 years old. Importantly, the baboons were not specifically trained to walk bipedally. They naturally adopt this posture when the trainer provides a food reward at an elevated position, above their heads. The trainer then takes steps backward, encouraging the animals to walk on their hindlimbs until they reach the food reward. More detailed information about the training protocol is published in Druelle and Molina (2021). This training allowed us to lead the baboons to the technical platform for biomechanics (motion analysis of primates [MAP]) that is permanently installed in an outdoor enclosure of the primatology center (Berillon et al., 2011). The collection of the data presented in this study was performed during two recording sessions for individual 1 (ID1), the 31st of July 2013 and the 15th of December 2017, and one recording session for individual 2 (ID2), the 3rd of December 2013 (Druelle et al., 2021).

The human dataset comes from five healthy adult individuals of 24.6 years (SD = 0.8) on average and having a body weight of 55.6 kg (SD = 2.1) on average. We retrospectively analyzed gait data acquired at the PoliTo^{BIO}Med Lab of Politecnico di Torino (Turin, Italy) during five different recording sessions. None of the individuals had lower limb injuries or neurological or musculoskeletal disorders potentially affecting their gait performance. All the human individuals walked overground at a self-selected speed, back and forth on a 10-m straight walkway.

2.2. Data collection

Baboons Muscle activity was recorded at 2000 Hz using surface electromyography (sEMG) and a wireless Zerowire system (Aurion Srl, Milan) with the MyoResearch XP Master Edition v. 1.08.17 software (Noraxon U.S.A. Inc., Scottsdale). We focused on six hindlimb muscles that play an important role in locomotion by acting as actuators for the primary joints of the hindlimb: the hip, knee, and ankle. These specific muscles were selected due to their surface-level visibility on baboons, as previously evaluated through muscular topography assessments on olive baboon cadavers. The muscles we focused on are gluteus medius (hip extensor and rotator), biceps femoris (hip extensor and knee flexor), rectus femoris (hip flexor and knee extensor), tibialis anterior (dorsiflexion of the foot and inversion), lateral gastrocnemius (plantar flexion and knee flexion), and peroneus longus (foot eversion), all located on the right side (Swindler and Wood, 1973; Boyer et al., 2007). Baboons were instrumented during a short period of anesthesia (ca. 60 minutes) that is short and light enough to reduce the recovery period. The skin was locally prepared (shaving, cleaning, and degreasing), and the surface probes (sEMG) were taped at the level of the muscles' belly (approximately at mid-length of each muscle and electrode pairs were always positioned parallel to fibers direction; see Fig. 1). The experiments started after the baboons were totally recovered from the anesthesia (i.e., they were fully active and able to climb and run), between 60 to 90 minutes after their arrival in the enclosure. Bipedal behavior was elicited by the trainer using a food reward positioned above and in front of the animal (Fig. 2). Detailed information about the full procedure is available in Druelle et al. (2021). The movement of the animals was video captured using an integrated multicamera system (running at 200 fps, Norpix Inc.; see Berillon et al., 2011 for a general description of the experimental setup) to visually identify the locomotor events, i.e., touch-down and lift-off of the hindfeet. Surface electromyography and video recordings were synchronized using an external digital signal; in addition, a lateral video camera (running at 60 fps) was driven by the MyoResearch XP software and thus software-synchronized with the sEMG recording. We first qualitatively selected appropriate quadrupedal and bipedal strides during which the individual was walking steadily, behind the trainer, along a straight and horizontal walkway. The strides were defined from a right hindlimb touchdown to the next right hindlimb touchdown. We used the distance covered by the tip of the right foot to measure the stride length, stride duration and speed. The dataset included in the present analysis is composed of 25 quadrupedal walking strides and 18 bipedal walking

strides for ID1, and 19 quadrupedal walking strides and 11 bipedal walking strides for ID2 (ID1 and ID2 are the same as in Druelle et al., 2021).

Humans Muscle activity was recorded at 2000 Hz using sEMG acquired through a multichannel acquisition system for clinical gait analysis (STEP32, Medical Technology, Turin, Italy). The probes were placed over twelve lower limb and trunk muscles of the dominant side (Fig. 1; Rimini et al., 2017) in accordance with the SENIAM recommendations for probe placement over muscles' bellies (Surface ElectroMyoGraphy for the Non-Invasive Assessment of Muscles – European concerted action in the Biomedical Health and Research Program, BIOMED II; <https://www.seniam.org/>). Before electrode placement, the skin was shaved and cleaned with ethyl alcohol to reduce impedance. For the sake of comparability, the following six lower-limb muscles of the dominant side (right side) were selected from the human sEMG dataset: gluteus medius, biceps femoris, rectus femoris, tibialis anterior, lateral gastrocnemius, and peroneus longus. Foot-floor contact sequences were detected through foot switches placed bilaterally beneath the heel, the first, and the fifth metatarsal head. The strides were automatically defined from a heel contact event to the next one of the same foot (Agostini et al., 2013). The walking task of the humans was synchronously video captured using an integrated camera. Detailed information about the acquisition system and the full experimental procedure are available in Rimini et al. (2017). The dataset included in the present analysis is composed of 20 bipedal walking strides per individual.

2.3. Muscle synergy extraction

We first visually checked the signals to ensure the absence of abnormalities and artifacts. We used MATLAB v. R2019a (The MathWorks Inc., Natick) to pre-process the sEMG signals and extract sEMG envelopes. To ensure comparable datasets, the same pre-processing steps were applied to both the baboons and the humans: band-pass filtering through a 4th order Butterworth digital filter (from 5 Hz to 500 Hz), demeaning, rectification (full-wave), low-pass filtering through a 4th order Butterworth digital filter (10 Hz). This provides an envelope of the muscular activity patterns on which we can then calculate the muscle synergies (see below).

To time-normalize the walking cycles and to avoid biases due to different stride durations, we applied a cubic spline interpolation over a time base with 600 points for the stance phase and 400 points for the swing phase. Accordingly, each stride was time-normalized to 1000-time samples. Muscle activity amplitude was normalized, per muscle, based on the maximum value

observed among the gait cycles studied, separately for humans and baboons (walking quadrupedally and bipedally).

Muscle synergies were then extracted from the sEMG envelopes through the non-negative matrix factorization (NNMF) algorithm. According to the original definition by Lee and Seung (1999), the NNMF algorithm decomposes the original sEMG data in the linear combination of two non-negative matrixes: muscle weight vectors (W) and activation coefficients (C). More specifically, W are time-independent vectors that describe the contribution of each observed muscle to a specific synergy. Matrix C , instead, represents time-dependent vectors that describe the temporal modulation of the muscles enrolled in each synergy. The MATLAB function 'nnmf' was used to apply the NNMF algorithm and extract the muscle synergies. Detailed information about the full procedure for muscle synergy extraction is available in Ghislieri et al. (2020).

To explore the different solutions of the NNMF algorithm, the factorization process was run several times on the same sEMG envelopes, changing the factorization rank (i.e., the number of muscle synergies) between 1 and the total number of muscles acquired (i.e., 6). The selection of the optimal number of muscle synergies was performed by plotting the fraction of data variance accounted for (VAF) by the model vs. the factorization rank and by selecting the number of synergies at which the VAF curve achieves the highest curvature (Tresch et al. 2006).

Muscle synergies were then sorted in the same order for each locomotor condition and species through a k-means algorithm (MATLAB function 'kmeans') applied to the W matrix considering the optimal number of muscle synergies as the number of k-means clusters (Steele et al. 2015b).

To quantitatively assess the motor control strategies adopted by the central nervous system during different locomotor tasks, we calculated the fraction of data variance accounted for by the muscle synergy model considering 1 muscle synergy (called VAF1) to estimate the complexity of the original sEMG signals (Steele et al. 2015a). The VAF1 values range between 0% and 100%. When VAF1 is high, it means that a single synergy can explain most of the variance in muscle activation, which indicates a reduction in the complexity of motor control.

Moreover, the full width at half maximum (FWHM) was calculated on the activation coefficients for each stride cycle as the number of time samples exceeding half of the curve's maximum, after subtracting the minimum within the respective stride cycle (Janshen et al., 2020; Janshen et al., 2021). This value was computed to estimate the duration of the activation of each muscle

synergy. Activation coefficients characterized by long activation intervals (i.e., neural commands less selective in time) will be described by high FWHM values, while activation coefficients characterized by small activation intervals (i.e., neural commands more selective in time) will be described by low FWHM values. The generalizability of the muscle synergy model across the different species and walking conditions was assessed through the cross-variance. Cross-variance accounted for (cross-VAF) parameter was defined as in the study by Ghislieri et al. (2020). Cross-variance accounted for values range between 0% (low generalizability) and 100% (high generalizability).

2.4. Statistics

The full width at half maximum and cross-VAF are compared between species and locomotor modes using exact (nonparametric) tests: the Permutation tests for independent samples. Additionally, we employed the same tests to compare the speed and stride duration between the two baboons among the locomotor modes. We used the software for exact nonparametric inference StatXact v. 3.1 (Cytel, Inc., Cambridge). The significance threshold was set at $p < 0.05$ for the permutation tests.

3. Results

Surface electromyography signals from six muscles were recorded during terrestrial bipedal and quadrupedal walking in two female baboons and during overground bipedal walking in five healthy humans. A detailed description of the sEMG profiles obtained for individuals is provided in the Supplementary Online Material (SOM) Figures S1 (baboons) and S2 (humans; see also SOM S1). In baboons, bipedal walking generally requires higher levels of muscular activity than quadrupedal walking (Fig. 3A; SOM Fig. S1). The bursting sEMG profiles are also relatively longer in time during bipedal walking compared to quadrupedal walking. Table 1 presents the average values per individual for the speed and stride duration observed during bipedal and quadrupedal walking at comfort speed on the ground. ID1 exhibits significantly longer stride duration than ID2 when walking quadrupedally (permutation tests $=-2.52$, $p = 0.0097$), but the speed is not significantly different. There is no difference between the two individuals when walking bipedally.

Table 1

Basic parameters of steady bipedal and quadrupedal walking in baboons (mean \pm SD) and humans per individual.

Species	Locomotor mode	Individual	Speed (m/s)	Stride duration (s)	<i>n</i>
<i>Papio anubis</i>	Bipedal walking	ID1	0.84 \pm 0.38	0.65 \pm 0.19	18
<i>Papio anubis</i>	Quadrupedal walking	ID1	0.80 \pm 0.16	0.88 \pm 0.11 ^a	25
<i>Papio anubis</i>	Bipedal walking	ID2	0.86 \pm 0.19	0.77 \pm 0.09	11
<i>Papio anubis</i>	Quadrupedal walking	ID2	0.85 \pm 0.10	0.95 \pm 0.04 ^a	19
<i>Homo sapiens</i>	Bipedal walking	Subj1	1.08	1.08	20
<i>Homo sapiens</i>	Bipedal walking	Subj2	1.21	1.16	20
<i>Homo sapiens</i>	Bipedal walking	Subj3	1.20	1.08	20
<i>Homo sapiens</i>	Bipedal walking	Subj4	1.20	1.08	20
<i>Homo sapiens</i>	Bipedal walking	Subj5	1.01	1.13	20
Mean \pm SD					
<i>Papio anubis</i>	Bipedal walking		0.85 \pm 0.01	0.71 \pm 0.06	29
<i>Papio anubis</i>	Quadrupedal walking		0.83 \pm 0.03	0.92 \pm 0.04	44
<i>Homo sapiens</i>	Bipedal walking		1.14 \pm 0.08	1.11 \pm 0.03	100

Abbreviations: ID = individual; Subj = subject.

^a Significant differences between the baboon individuals using permutation tests for independent sample.

Note that Standard Deviation (SD) for human subjects is unavailable as the average speed was defined as the total distance walked along the straight path divided by the total time required to go through it. Thus, the speed at each gait cycle was not recorded in humans. Nevertheless, considering the protocol applied to humans, it is expected that the SD will be lower than that observed in baboons.

3.1. Muscle synergy model

The number of muscle synergies extracted is the same between locomotor modes and species. Three muscle synergies describe the motor control strategies of baboons (during both bipedal and quadrupedal walking) and humans (Fig. 3B, C). The VAF is 92.1% (SD = 2.2%) in baboons walking bipedally, 88.9% (SD = 1.5%) in baboons walking quadrupedally, and 92.2% (SD = 2.2%) in humans (walking bipedally). We ordered the synergies to obtain the best match between species and individuals and thus compare the synergies which are more alike (see below).

The VAF1 is 74.6% (SD = 3.7%) in baboons walking bipedally, 65.3% (SD = 1.7%) in baboons walking quadrupedally, and 69.4% (SD = 2.0%) in humans (walking bipedally). According to VAF1, we can observe that the baboons walking bipedally show the least complex motor control.

3.2. Connecting the synergies in humans to potential biomechanical functions during walking

The first synergy (Syn 1) is deputed to the transition between the swing and the stance phases, particularly during the load acceptance phase. Additionally, it may contribute to decelerating the leg at the end of the swing phase. The first synergy mainly involves the gluteus medius and the rectus femoris, which act as antagonists around touch-down (Fig. 3B, C). The second synergy (Syn 2) manages the latter half of the stance phase. It is likely to be closely associated with generating propulsion and primarily involves the gastrocnemius and peroneus muscles. The third synergy (Syn 3) encompasses the coordinated action of the tibialis anterior (primarily) and biceps femoris muscles (to a lesser extent) during the swing phase and until the beginning of the stance phase. Hence, it appears to control the knee and ankle joints, as well as maintaining appropriate foot posture. While the biceps femoris contributes to knee flexion and thus prepares the limb for the load acceptance phase, the tibialis anterior muscle performs dorsiflexion of the foot and provides stability to the ankle joint during load acceptance. It is important to emphasize that determining the precise contribution of each of these muscles to the biomechanical functions proposed in this context is not a straightforward task and cannot be solely deduced from sEMG data. A careful interpretation of this relationship is imperative.

3.3. Connecting the synergies in baboons to potential biomechanical functions during walking

During bipedal walking, Syn 1 and Syn 2 are relatively alike across individuals. The first synergy involves the biceps femoris, the gluteus medius, the rectus femoris, and the peroneus longus muscles, which are generally coactivated during the stance phase. This synchronised activation likely contributes to weight-bearing and overall postural stability of the limb and body. The second synergy primarily involves the gastrocnemius muscle, exhibiting prolonged activation throughout the stance phase, as well as at the beginning and end of the swing phase. Its prominent role is likely associated with significant functions such as propulsion, ankle stabilization, and load acceptance. During quadrupedal walking, the results across individuals are similar for Syn1: it is more related to the first half of the stance phase and involves the biceps femoris, the peroneus, the gastrocnemius muscles, and, to a lesser extent the gluteus medius muscle. The contribution of these muscles during the early stance phase may be associated with load acceptance, postural stability and hindlimb retraction. The results are different between individuals for Syn 2. In ID1, it mainly involves the gastrocnemius muscle and, to a lesser extent, the rectus femoris muscle. These muscles are activated during the

stance phase and towards the end of the swing phase (darker color in Fig. 3). In ID2 (lighter color in Fig. 3), Syn2 predominantly encompasses the latter half of the stance phase and mainly involves the rectus femoris muscle. In contrast, Syn 3 is very similar across individuals and locomotor modes (Fig. 3B, C). It mainly engages the tibialis anterior muscle during the swing phase, hence controlling foot dorsiflexion and potentially providing stability to the ankle joint during load acceptance.

3.4. Muscle synergy analysis

From the activation coefficients, FWHM is extracted for each muscle synergy and each stride cycle. Figure 4 represents the distributions of the FWHM values for each extracted muscle synergy across species and locomotor modes. Increased FWHM is hypothesized to be a compensatory mechanism adopted by the central nervous system to cope with internal and/or external postural instabilities. Compared to humans, the baboons walking bipedally show a significant increase in the FWHM for the two first synergies extracted (Syn 1: permutation tests = 6.453, $p < 0.0001$; Syn 2: permutation tests = 5.355, $p < 0.0001$) and a decrease of the FWHM for the third synergy (permutation tests = -4.557, $p < 0.0001$; Fig. 4). The baboons walking quadrupedally show a significant decrease of the FWHM for the first and third synergies compared to humans and an increase of the FWHM for the second synergy (Syn 1: permutation tests = -4.922, $p = 0.0001$; Syn 2: permutation tests = 3.316, $p = 0.0007$; Syn 3: permutation tests = -3.613, $p = 0.0003$; Fig. 4). When comparing baboons walking bipedally and quadrupedally, the FWHM values are significantly higher for the two first synergies (Syn 1: permutation tests = 6.886, $p < 0.0001$; Syn 2: permutation tests = 2.439, $p = 0.0139$; Fig. 4) and significantly lower for the third synergy when walking bipedally (Syn 3: permutation tests = -2.532, $p = 0.0109$; Fig. 4).

The calculation of the cross-VAF parameter allows us to estimate the overall effectiveness of the muscle synergy model across the different locomotor conditions and species studied. Figure 5A shows the average cross-VAF values for each condition and individual. There is a significant difference between the two baboons, i.e., the bipedal and quadrupedal patterns observed in ID1 are more similar to each other than the bipedal and quadrupedal patterns are in ID2 (permutation tests = -3.151, $p = 0.0011$; Fig. 5). There is no significant difference when the two baboons are compared across the same locomotor mode, i.e., the similarity of the bipedal pattern between the two baboons is alike the similarity of the quadrupedal pattern between the two baboons. There is a significant difference between the locomotor modes for

each baboon when compared to humans. Specifically, the bipedal pattern is more similar to humans than the quadrupedal pattern, and this result holds for both baboon individuals considered separately (ID1: permutation tests = 2.132, $p = 0.0329$; ID2: permutation tests = 4.728, $p < 0.0001$; Fig. 5A) and when both individuals are analyzed as a group (permutation tests = 4.317, $p < 0.0001$; Fig. 5B).

4. Discussion

4.1. Affinities in the modular control of bipedal and quadrupedal locomotion in baboons

We hypothesized that baboons, a non-adapted biped species, should rely on the same modular control of its quadrupedal locomotion for moving bipedally as humans. Our results in part support this hypothesis as few differences related to the stance phase can be emphasized. First, the baboons walking bipedally show a synergistic control with the same number of synergies as for quadrupedal walking and the synergy corresponding to the swing phase (Syn 3) is similar (in terms of both neural command and muscles' contribution) across locomotor modes. Second, the stance phase appears to be a more variable phase (Syn 1 and Syn 2). Interestingly, both baboon individuals show very similar synergies during bipedal walking suggesting that they respond in the same way to this occasional motor task. The motor control is less complex during bipedal walking (i.e., higher VAF1 values) than during the quadrupedal progression and the activation coefficients show a longer period of activation (i.e., higher FWHM values) during the stance phase, thus supporting our prediction of more coactivated muscles in this locomotor mode, as previously observed in macaques (Higurashi et al., 2019). Bipedal walking remains an occasional locomotor mode in baboons and macaques and keeping balance is likely to represent a greater challenge than walking quadrupedally. A longer period of muscle coactivation during the stance phase can help in this task as it would benefit in stabilizing the degrees of freedom at the hip and knee joints (see also Druelle et al., 2022). Third, with regard to quadrupedal walking, it appears that one synergy (Syn 2) shows clear differences between individuals, while the other two synergies (Syn 1 and Syn 3) are very similar. The difference thus arises from a neural command covering the stance phase for ID1 (Syn 2, dark color) in which the gastrocnemius muscle contributes significantly (as during bipedal walking), while the equivalent neural command for ID2 (Syn 2, light color) is focused on the second half of the stance phase and mainly involves the rectus femoris muscle. Interindividual variability of the sEMG profiles can be expected according to various parameters, such as differences in body built and inertial properties as well as differences in motivation during the experimental sessions (see Winter and Yack, 1987;

Courtine et al., 2005). Also, we observed significant differences in the stride duration between individuals during quadrupedal walking, thus pointing out to different speed-related strategies (see also Druelle et al., 2021). Individual 1 exhibits shorter stride duration (i.e., higher stride frequency) than ID2 while moving at the same speed. In addition, an important flexibility of the neuromotor control has been suggested in primates as it allows to cope with the different substrates encountered during daily activities, such as the ground, trees, and cliff faces. Development and individual experiences can also play a significant role for building up locomotor strategies. A flexible nature of the neuromotor command during quadrupedalism would fit with the tight evolutionary relationship of primates in general, and baboons in particular, with the complex arboreal environment (Vangor and Wells, 1983; Vilensky, 1987; Vilensky and Larson, 1989; Young, 2012; Chadwell and Young, 2015; Patel et al., 2015; Young et al., 2016; Druelle et al., 2021). Interestingly, Syn 1 in quadrupedal walking presents the lowest FWHM values (see Fig. 4), thus suggesting that the early period of the stance phase (potentially related to the stability of foot positioning and the load acceptance function) is particularly effective in baboons. In summary, occasional bipedal walking in baboons elicits remarkably similar synergies, as they respond to the same challenging mechanical requirements. However, when it comes to habitual quadrupedal walking, we can expect to observe more interindividual variations. This variation arises not despite their specialization but rather because of it as they are much more experienced in practicing this mode.

4.2. Baboons and humans share only a few aspects of their muscle synergies

Since bipedalism and quadrupedalism represent the habitual locomotor mode of humans and baboons, respectively, and a (neuromotor) relationship between the two locomotor modes has been previously established (Aerts et al., 2000; D'Août et al., 2004; Balter and Zehr, 2007; Zehr et al., 2009; Berillon et al., 2011; Higurashi et al., 2019; Aerts et al., 2023), we hypothesized that the patterns observed in humans should be shared, in some respects, with the ones of the baboons walking quadrupedally. Our results partially support this hypothesis. Although the number of synergies is alike, the shape of the neural commands and the muscle contributions show significant variations between the two species. The most similar synergy is the one activated during the swing phase (Syn 3), where the tibialis anterior (greater extent) and the biceps femoris (lesser extent) muscles contribute significantly in humans, while the tibialis anterior is the main contributor to this synergy in baboons (as commonly observed in quadrupedal mammals; Rasmussen et al., 1978; Kimura et al., 1979; Vilensky, 1987). It is worth noting that the important differences observed can also directly result from the way the

two species touch the ground, i.e., semi-plantigrady in baboons with no heel contact during the stance phase (Berillon et al., 2010) *versus* plantigrady in humans with a clear heel-strike at touch-down (see Oku et al., 2021 for explorations of this influence in macaques). For instance, this clear kinematic difference makes the biceps femoris muscle working in a very different way in baboons compared to humans, i.e., initiating its activity just before touch-down in baboons and during all the stance phase, while it is primarily active at the end of the swing phase during the transition between the swing and the stance phase in humans. Furthermore, we observe that baboons' bipedal walking is more similar to human bipedal walking than baboon quadrupedal walking is to human walking (see cross-VAF analyses). Interestingly, the swing phase appears to require less muscle activity in baboons walking bipedally compared to humans (FWHM values are significantly lower in baboons for the synergy related to the swing phase). The swing phase is managed in a relatively simple and efficient way in baboons. Therefore, concerning the possible biomechanical functions related to the stance phase, i.e., load acceptance, weight-bearing and propulsion, it appears plausible that they could constitute the foremost mechanical prerequisites for a baboon engaged in bipedal walking, as opposed to focusing on foot clearance and positioning. Interestingly, the recent study by O'Neill et al. (2022) on the three-dimensional joint mechanics during bipedal walking of the chimpanzee (another non-adapted biped) draws similar conclusions. They showed that during the stance phase, significant differences in work and power output exist between chimpanzees and humans, while the human limb structure does not specifically reduce positive work and power during limb swing. Additionally, their results reveal a shift of positive mechanical work and power output toward the distal joints in humans during the stance phase, contrasting with the more proximal distribution of limb work in bipedal chimpanzees. Although the angle of attack differs between the study of O'Neill et al. (2022) and this study and despite the data sources differ (inverse dynamics and EMG), both findings highlight the most significant distinctions between an adapted and a non-adapted biped at the stance phase level.

4.3. Toward evolutionary implications

In sum, a quadrupedally-adapted non-human primate does not control its bipedal and quadrupedal locomotion the same way that an adapted biped controls its bipedal locomotion. From an evolutionary perspective, this observation may imply that important rearrangements of the muscle coordination occurred during hominin evolution. Whether these changes can be attributed to shifts in neuromotor control, variations in musculoskeletal structure associated with adopting an upright posture, or a combination of both, remains an open question (e.g.,

Goto et al., 2023). Although a non-adapted biped can walk bipedally, this mode requires increased muscular activity and muscle coactivation to respond to an increased loading regime as well as to control its impaired balance. Similar observations have been made in macaques when walking quadrupedally and bipedally on a treadmill (Higurashi et al., 2019) and in other non-human primates (Ishida et al., 1974; Stern and Susman, 1981; Vangor and Wells, 1983). These observations are particularly relevant in the context of the process of the evolutionary transition toward bipedalism, as they highlight some possible mechanical requirements that could be refined to improve bipedal locomotion in non-adapted bipeds (see also O'Neill et al., 2022). In a baboon model, from the muscular perspective, the stance phase poses significant challenges compared to humans. In humans, the contribution of the rectus femoris, gluteus medius and biceps femoris is reduced during this phase, corresponding to a minimal amount of positive mechanical work performed at the hip (O'Neill et al., 2022). Although the morphology of a baboon differs considerably from that of early hominins or Miocene apes, the mechanical requirements during bipedal walking should be similar. Indeed, despite ensuring the basic mechanical requirements of propulsion, balance, and stability for bipedal walking, these functions are not efficiently guaranteed. As a result, even slight morphological changes that reduce muscle coactivation could have faced strong selection pressure in early hominins where bipedal locomotion played a greater role in their positional repertoire than in extant non-human primate species (e.g., Rose, 1991; Daver et al., 2022).

Interestingly, the early hominin fossil record provides evidence of subtle and gradual morphological changes. For instance, a combination of features such as anteroposterior curvature, subtrochanteric platymeria, the presence of a calcar femorale, thicker cortical bone laterally and in general proximally, and potential anteversion of the femoral neck have been identified in the femoral shaft of *Sahelanthropus tchadensis* and could be related to a greater reliance on bipedal locomotion (Daver et al., 2022; contra opinion expressed by Macchiarelli et al., 2020). Similarly, the derived nature of the proximal femur of *Orrorin tugenensis* characterized by traits such as a spherical head and a long neck, has been noted (Senut et al., 2001; Pickford et al., 2002; Richmond and Jungers, 2008; Almécija et al., 2013; but find controversial aspects in Gibbons 2002; Ohman et al. 2005; Kuperavage et al., 2010). Additionally, the broad and sagittally facing iliac blades of *Ardipithecus ramidus* represent further morphological traits possibly associated with the refinement of bipedal movement and the ability to withstand higher and more repetitive compressive forces on the ground, thus possibly by reducing the coactivation of hamstring, quadriceps and gluteus muscles (Lovejoy et al., 2009). Interestingly, O'Neill et al. (2022) suggest a greater dependence on non-muscular

tissues for mechanical energy dissipation during hominin evolution. This would directly contribute to fatigue resistance during more extended periods of bipedal walking.

In any case, the activation of muscles plays a pivotal role in determining an organism's movement abilities, influencing factors such as range of motion, energy expenditure, and work and power output. Reviving a fossil in terms of its movement necessitates the development of appropriate musculoskeletal models, involving the skeletal structure and the attached muscles (e.g., Wang et al., 2004; Wiseman, 2023; O'Neill et al., in press). However, having a model in place does not grant the individual the ability to move; a comprehensive theory of motor control is also required. This involves understanding the coordinated activation of muscles, including muscle synergies in adapted and non-adapted bipeds, to approach optimal motor control strategies. This understanding is particularly important in early hominins, where a locomotor repertoire with a greater reliance on bipedal behaviors is considered.

4.4. Potential limitations and conclusions

The study presented here poses several inherent challenges as conducting motor control analysis on non-human primates involves striking a delicate balance between the scientific inquiry, animal welfare considerations, accessibility to the animals and statistical requirements. Regarding our experimental protocol on baboons, we have tried to refine it as much as possible to minimize the duration of the anesthesia required for skin preparation and electrode positioning. Furthermore, with regard to baboon morphology, the accessibility of the muscles from the skin using surface probes differs significantly from that of humans. The smaller size of baboons compared to humans introduces inherent spatial limitations when positioning the surface probes. Therefore, we were only able to select six muscles that are accessible from the skin in baboons. Although in muscle synergy analyses, the outcomes of non-negative matrix factorization can be sensitive to the number of muscles considered (Steele et al., 2013), previous studies based on five and six muscles have successfully applied muscle synergy analyses, yielding results comparable to studies that utilized a larger muscle set (Steele et al., 2015b; Kim et al., 2018; Steele et al., 2019; Hu et al., 2019; Oudenhoven et al., 2019; Vandekerckhove et al., 2020). Essential aspects of the muscle synergy analysis thus appear to remain consistent across studies using different number of muscles. Therefore, focusing on 6 muscles that contribute to crucial flexion and extension movements of the hindlimb (agonist and antagonist muscles acting on the ankle, knee and hip) represents a compromise that enables us to work effectively with baboons and to perform a comprehensive

muscle synergy analysis that can be meaningfully compared to human data. Nevertheless, gathering data from a broader set of muscles would undoubtedly enable a more comprehensive muscle synergy analysis, shedding further light on the shared characteristics and distinctions between bipedal and quadrupedal locomotion. The cross-VAF, overall commonalities, and differences between baboons and humans might be further refined with additional muscle data. Specifically, extracting muscle synergies from an increased number of muscles could provide additional insights.

The exploration of the muscle synergies related to bipedal locomotion in a quadrupedal non-human primate can be a relevant and complementary approach to tackle the mechanisms of the gradual and complex evolutionary shift toward habitual bipedalism in hominins. A better understanding of the neuromotor circuitry, through muscle synergies, and how it is likely to be connected to the different biomechanical functions during locomotor modes among and between primate species is required. This study, while informative, has necessitated speculation in this regard. Consequently, future studies on the muscular activity of non-human primates are promising to propose a refined scenario, including the neuromotor control, for the evolution of bipedalism in hominins.

Competing Interest Statement: The authors declare no competing interests

Acknowledgments

We are very grateful to Romain Lacoste and Thomas Brochier, the director and the scientific director, respectively, of the Primatology Station of the CNRS at the time the data were collected. They have provided access to the animals and facilities. We are very grateful to Christophe Arnoult and Alexia Cermolacce, the current director and operational director, respectively, of the Primatology Station of the CNRS, for their continuous support in the pursuit of this project. We also express our gratitude to the three anonymous reviewers whose valuable feedback significantly enhanced the initial version of our manuscript. Additionally, we extend our appreciation to the associate editor of JHE and the co-editor-in-chief, Clément Zanolli. The Technical Platform was funded by the Centre National de la Recherche Scientifique-Institut écologie et environnement (CNRS-INEE), the sEMG material was funded by the IBISA platform of the Centre National de la Recherche Scientifique (Exploration Fonctionnelle Primates). This project is funded by the Agence Nationale de la Recherche (ANR-18-CE27-0010-01) and Centre National de la Recherche Scientifique-Institut écologie et environnement (CNRS-INEE) International Research Network (IRN-GDRI0870).

References

- Aerts, P., Van Damme, R., Van Elsacker, L., Duchene, V., 2000. Spatio-temporal gait characteristics of the hind-limb cycles during voluntary bipedal and quadrupedal walking in bonobos (*Pan paniscus*). *Am. J. Phys. Anthropol.* 111, 503-517.
- Aerts, P., Goyens, J., Berillon, G., D'Août, K., Druelle, F., 2023. From quadrupedal to bipedal walking 'on the fly': the mechanics of dynamical mode transition in primates. *J. Exp. Biol.* 226, jeb244792.
- Agostini, V., Balestra, G., Knaflitz, M., 2013. Segmentation and classification of gait cycles. *IEEE Trans. Neural Syst. Rehabil. Eng.* 22, 946-952.
- Alexander, R.M., 2004. Bipedal animals, and their differences from humans. *J. Anat.* 204, 321-330.
- Almécija, S., Hammond, A.S., Thompson, N.E., Pugh, K.D., Moyà-Solà, S., Alba, D.M., 2021. Fossil apes and human evolution. *Science* 372, 6542.
- Almécija, S., Tallman, M., Alba, D.M., Pina, M., Moyà-Solà, S., Jungers W.L., 2013. The femur of *Orrorin tugenensis* exhibits morphometric affinities with both Miocene apes and later hominins. *Nature Com.* 4, 2888.
- Balter, J.E., Zehr, E.P., 2007. Neural coupling between the arms and legs during rhythmic locomotor-like cycling movement. *J. Neurophysiol.* 97, 1809-1818.
- Berillon, G., Daver, G., D'Août, K., Nicolas, G., de la Villetanet, B., Multon, F., Digrandi, G., Dubreuil, G., 2010. Bipedal versus quadrupedal hind limb and foot kinematics in a captive sample of *Papio anubis*: Setup and preliminary results. *Int. J. Primatol.* 31, 159-180.
- Berillon, G., D'Août, K., Daver, G., Dubreuil, G., Multon, F., Nicolas, G., Villetanet, B., Vereecke, E.E., 2011. In what manner do quadrupedal primates walk on two legs? Preliminary results on olive baboons (*Papio anubis*). In: Barrett, L. (Ed), *Primate Locomotion*. Springer, New York, pp. 61-82.
- Blickhan, R., Andrada, E., Hirasaki, E., Ogihara, N., 2021. Trunk and leg kinematics of grounded and aerial running in bipedal macaques. *J. Exp. Biol.* 224, jeb225532.
- Böhme, M., Spassov, N., Fuss, J., Tröscher, A., Deane, A.S., Prieto, J., Kirscher, U., Lechner, T., Begun, D.R., 2019. A new Miocene ape and locomotion in the ancestor of great apes and humans. *Nature* 575, 489-493.
- Böhme, M., Spassov, N., DeSilva, J.M., Begun, D.R., 2020. Reply to: Reevaluating bipedalism in *Danuvius*. *Nature* 586, E4-E5.
- Boyer, D.M., Patel, B.A., Larson, S.G., Stern, Jr J.T., 2007. Telemetered electromyography of peroneus longus in *Varecia variegata* and *Eulemur rubriventer*. Implications for the functional significance of a large peroneal process. *J. Hum. Evol.* 53, 119-134.

- Bramble, D.M., Lieberman, D.E., 2004. Endurance running and the evolution of *Homo*. *Nature* 432, 345-352.
- Cartmill, M., 1972. Arboreal adaptations and the origin of the order Primates. In: Tuttle, R.H. (Ed), *The Functional and Evolutionary Biology of Primates*. Aldine, Chicago, pp. 97-122.
- Cartmill, M., Lemelin, P., Schmitt, D., 2002. Support polygons and symmetrical gaits in mammals. *Zool J. Linn. Soc. Lond.* 136, 401-420.
- Cartmill, M., Brown, K., Atkinson, C., Cartmill, E.A., Findley, E., Gonzalez-Socoloske, D., Hartstone-Rose, A., Mueller, J., 2020. The gaits of marsupials and the evolution of diagonal-sequence walking in primates. *Am. J. Phys. Anthropol.* 171, 182-197.
- Carvalho, S., Biro, D., Cunha, E., Hockings, K., McGrew, W.C., Richmond, B.G., Matsuzawa, T., 2012. Chimpanzee carrying behaviour and the origins of human bipedality. *Curr. Biol.* 22, R180-R181.
- Chadwell, B.A., Young, J.W., 2015. Angular momentum and arboreal stability in common marmosets (*Callithrix jacchus*). *Am. J. Phys. Anthropol.* 156, 565-576.
- Courtine, G., Roy, R.R., Hodgson, J., McKay, H., Raven, J., Zhong, H., Yang, H., Tuszynski, M.H., Edgerton, V.R., 2005. Kinematic and EMG determinants in quadrupedal locomotion of a non-human primate (Rhesus). *J. Neurophysiol.* 93, 3127-3145.
- D'Août, K., Vereecke, E., Schoonaert, K., De Clercq, D., Van Elsacker, L., Aerts, P., 2004. Locomotion in bonobos (*Pan paniscus*): Differences and similarities between bipedal and quadrupedal terrestrial walking, and a comparison with other locomotor modes. *J. Anat.* 204, 353-361.
- Daver, G., Guy, F., Mackaye, H., Likius, A., Boisserie, J.-R., Moussa, A., Pallas, L., Vignaud, P., Clarisse, N., 2022. Postcranial evidence of late Miocene hominin bipedalism in Chad. *Nature* 609, 94-100.
- Demes, B., O'Neill, M.C., 2013. Ground reaction forces and center of mass mechanics of bipedal capuchin monkeys: Implications for the evolution of human bipedalism. *Am. J. Phys. Anthropol.* 150, 76-86.
- Demes, B., Thompson, N.E., O'Neill, M.C., Umberger, B.R., 2015. Center of mass mechanics of chimpanzee bipedal walking. *Am. J. Phys. Anthropol.* 156, 422-433.
- DeSilva, J.M., Gill, C.M., Prang, T.C., Bredella, M.A., Alemseged, Z., 2018. A nearly complete foot from Dikika, Ethiopia and its implications for the ontogeny and function of *Australopithecus afarensis*. *Science Adv.* 4, eaar7723.
- Dominici, N., Ivanenko, Y.P., Cappellini, G., D'Avella, A., Mondì, V., Cicchese, M., Fabiano, A., Silei, T., Di Paolo, A., Giannini, C., Poppele, R.E., Lacquaniti, F., 2011. Locomotor primitives in newborn babies and their development. *Science* 334, 997-999.

- Druelle, F., Berillon, G., 2014. Bipedalism in non-human primates: a comparative review of behavioural and experimental explorations on catarrhines. *Bull. Mém. Soc. Anthropol. Paris* 26, 1-10.
- Druelle, F., Molina-Vila, P., 2021. A baboon walking on a treadmill: the use of positive reinforcement techniques to study bipedal walking in non-human primates. *Rev. Primatol.* 12.
- Druelle, F., Aerts, P., Berillon, G., 2017. The origin of bipedality as the result of a developmental by-product: The case study of the olive baboon (*Papio anubis*). *J. Hum. Evol.* 113, 155-161.
- Druelle, F., Berthet, M., Quintard, B., 2019. The body center of mass in primates: Is it more caudal than in other quadrupedal mammals? *Am. J. Phys. Anthropol.* 169, 170-178.
- Druelle, F., Supiot, A., Meulemans, S., Schouteden, N., Molina-Vila, P., Rimbaud, B., Aerts, P., Berillon, G., 2021. The quadrupedal walking gait of the olive baboon, *Papio anubis*: an exploratory study integrating kinematics and EMG. *J. Exp. Biol.* 224, jeb242587.
- Druelle, F., Özçelebi, J., Marchal, F., Berillon, G., 2022. Development of bipedal walking in olive baboons, *Papio anubis*: A kinematic analysis. *Am. J. Phys. Anthropol.* 177, 719-734.
- Eidelberg, E., Walden, J.G., Nguyen, L.H., 1981. Locomotor control in macaque monkeys. *Brain* 104, 647-663
- Fleagle, J.G., Stern, J.T., Jungers, W.L., Susman, R.L., Vangor, A.K., Wells, J.P., 1981. Climbing: a biomechanical link with brachiation and with bipedalism. In: Ashton, E., Holmes, R. (Eds), *Symposium of the Zoological Society of London*. Academic Press, London, pp. 359-375.
- Foster, A.D., Raichlen, D.A., Pontzer, H., 2013. Muscle force production during bent-knee, bent-hip walking in humans. *J. Hum. Evol.* 65, 294-302.
- Gebo, D.L., Chapman, C.A., 1995. Positional behavior in five sympatric old world monkeys. *Am. J. Phys. Anthropol.* 97, 49-76.
- Ghislieri, M., Agostini, V., Knaflitz, M., 2020. Muscle synergies extracted using principal activations: improvement of robustness and interpretability. *IEEE Trans. Neural Syst. Rehabil. Eng.* 28, 453-460.
- Gibbons, A., 2002. In search of the first hominids. *Science* 295, 1214-1219.
- Goto, R., Grider-Potter, N., Shitara, T., Kinoshita, Y., Oka, K., Nakano, Y. 2023. Coordination within paraspinal muscles during bipedalism in humans, a white-handed gibbon, and a Japanese macaque. *J. Hum. Evol.* 179, 103356.
- Granatosky, M.C., Schmitt, D., 2019. The mechanical origins of arm-swinging. *J. Hum. Evol.* 130, 61-71.

- Granatosky, M.C., Tripp, C.H., Fabre, A.-C., Schmitt, D., 2016. Patterns of quadrupedal locomotion in a vertical clinging and leaping primate (*Propithecus coquereli*) with implications for understanding the functional demands of primate quadrupedal locomotion. *Am. J. Phys. Anthropol.* 160, 644-652.
- Granatosky, M.C., Fitzsimons, A., Zeininger, A., Schmitt, D., 2017. Mechanisms for the functional differentiation of the propulsive and braking roles of the forelimbs and hindlimbs during quadrupedal walking in primates and felines. *J. Exp. Biol.* 221, jeb162917.
- Green, D.J., Alemseged, Z., 2012. Australopithecus afarensis scapular ontogeny, function, and the role of climbing in human evolution. *Science* 338, 514-517.
- Grillner, S., 1985. Neurobiological bases of rhythmic motor acts in vertebrates. *Science* 228, 143-149.
- Higurashi, Y., Maier, M.A., Nakajima, K., Morita, K., Fujiki, S., Aoi, S., Mori, F., Murata, A., Inase, M., 2019. Locomotor kinematics and EMG activity during quadrupedal versus bipedal gait in the Japanese macaque. *J. Neurophysiol.* 122, 398-412.
- Hirasaki, E., Ogihara, N., Hamada, Y., Kumakura, H., Nakatsukasa, M., 2004. Do highly trained monkeys walk like humans? A kinematic study of bipedal locomotion in bipedally trained Japanese macaques. *J. Hum. Evol.* 46, 739-750.
- Hu, Z., Xu, S., Hao, M., Xiao, Q., Lan, N., 2019. The impact of evoked cutaneous afferents on voluntary reaching movement in patients with Parkinson's disease. *J. Neural Eng.* 16, 036029.
- Hunt, K.D., Cant, J., Gebo, D., Rose, M., Walker, S., Youlatos, D., 1996. Standardized descriptions of primate locomotor and postural modes. *Primates* 37, 363-387.
- Ishida, H., Kimura, T., Okada, M., 1974. Patterns of bipedal walking in anthropoid primates. In: Kondo, S., Kawai, M., Ehara, A., Kawamura, S. (Eds.); *Proceedings from the Symposia of the Fifth Congress of the International Primatological Society, Japan*. Science Press, Tokyo, pp. 287-301.
- Ivanenko, Y.P., Poppele, R.E., Lacquaniti, F., 2004. Five basic muscle activation patterns account for muscle activity during human locomotion. *J. Physiol.* 556, 267-282.
- Janshen, L., Santuz, A., Ekizos, A., Arampatzis, A., 2020. Fuzziness of muscle synergies in patients with multiple sclerosis indicates increased robustness of motor control during walking. *Sci. Rep.* 10, 7249.
- Janshen, L., Santuz, A., Arampatzis, A., 2021. Muscle synergies in patients with multiple sclerosis reveal demand-specific alterations in the modular organization of locomotion. *Front. Hum. Neurosci.* 14, 593365.

- Kim, Y., Bulea, T.C., Damiano, D.L., 2018. Children with cerebral palsy have greater stride-to-stride variability of muscle synergies during gait than typically developing children: Implications for motor control complexity. *Neurorehabil. Neural Repair* 32, 834-844.
- Kimura, T., 1996. Centre of gravity of the body during the ontogeny of chimpanzee bipedal walking. *Folia Primatol.* 66, 126-136.
- Kimura, T., Okada, M., Ishida, H., 1979. Kinesiological characteristics of primate walking: its significance in human walking. In: Morbeck, M.E., Preuschoft, H., Gomberg, N. (Eds), *Environment, Behavior, and Morphology: Dynamic Interactions in Primates*. Gustav Fischer New York, Stuttgart, pp. 297-311.
- Kozma, E.E., Webb, N.M., Harcourt-Smith, W.E., Raichlen, D.A., D'Août, K., Brown, M.H., Finestone, E.M., Ross, S.R., Aerts, P., Pontzer, H., 2018. Hip extensor mechanics and the evolution of walking and climbing capabilities in humans, apes, and fossil hominins. *Proc. Natl. Acad. Sci. USA* 115, 4134-4139.
- Kuperavage, A., Sommer, H., Eckhardt R., 2010. Moment coefficients of skewness in the femoral neck cortical bone distribution of BAR 1002-00. *Homo* 61, 244-252.
- Lacquaniti, F., Ivanenko, Y.P., Zago, M., 2012. Development of human locomotion. *Curr. Opin. Neurobiol.* 22, 822-828.
- Larson, S.G., Stern, J.T., 2007. Humeral retractor EMG during quadrupedal walking in primates. *J. Exp. Biol.* 210, 1204-1215.
- Lee, D.D., Seung, H.S., 1999. Learning the parts of objects by non-negative matrix factorization. *Nature* 401, 788-791.
- Lovejoy, C.O., Suwa, G., Simpson, S.W., Matternes, J.H., White, T.D., 2009. The great divides: *Ardipithecus ramidus* reveals the postcrania of our last common ancestors with African apes. *Science* 326, 73-106.
- Macchiarelli, R., Bergeret-Medina, A., Marchi, D., Wood, B., 2020. Nature and relationships of *Sahelanthropus tchadensis*. *J. Hum. Evol.* 149, 102898.
- McAllister, M.J., Blair, R.L., Donelan, J.M., Selinger, J.C., 2021. Energy optimization during walking involves implicit processing. *J. Exp. Biol.* 224, jeb242655.
- Meyer, M.R., Jung, J.P., Spear, J.K., Araiza, I.F., Galway-Witham, J., Williams, S.A. 2023. Knuckle-walking in *Sahelanthropus*? Locomotor inferences from the ulnae of fossil hominins and other hominoids. *J. Hum. Evol.* 179, 103355.
- Morbeck, M.E., 1977. Positional behavior, selective use of habitat substrate and associated non-positional behavior in free-ranging *Colobus guereza*. *Primates* 18, 35-58.
- O'Neill, M.C., Demes, B., Thompson, N.E., Umberger, B.R., 2018. Three-dimensional kinematics and the origin of the hominin walking stride. *J. R. Soc. Interface* 15, 20180205.

- O'Neill, M.C., Demes, B., Thompson, N.E., Larson, S.G., Stern, Jr J.T., Umberger, B.R. 2022. Adaptations for bipedal walking: Musculoskeletal structure and three-dimensional joint mechanics of humans and bipedal chimpanzees (*Pan troglodytes*). *J. Hum. Evol.* 168, 103195.
- O'Neill, M.C., Nagano, A., Umberger, B.R. in press. A three-dimensional musculoskeletal model of the pelvis and lower limb of *Australopithecus afarensis*. *Am. J. Biol. Anthropol.* <https://doi.org/10.1002/ajpa.24845>.
- Ogihara, N., Makishima, H., Nakatsukasa, M., 2010. Three-dimensional musculoskeletal kinematics during bipedal locomotion in the Japanese macaque, reconstructed based on an anatomical model-matching method. *J. Hum. Evol.* 58, 252-261.
- Ohman, J.C., Lovejoy, C.O., White, T.D., 2005. Questions about Orrorin femur. *Science* 307, 845-845.
- Oku, H., Ide, N., Ogihara, N., 2021. Forward dynamic simulation of Japanese macaque bipedal locomotion demonstrates better energetic economy in a virtualised plantigrade posture. *Commun. Biol.* 4, 1-11.
- Oudenhoven, L.M., van der Krogt, M.M., Romei, M., van Schie, P.E.M., van de Pol, L.A., van Ouwkerk, W.J.R., 2019. Factors associated with long-term improvement of gait after selective dorsal rhizotomy. *Arch. Phys. Med. Rehabil.* 100, 474–480.
- Patel, B.A., Wallace, I.J., Boyer, D.M., Granatosky, M.C., Larson, S.G., Stern, J.T., 2015. Distinct functional roles of primate grasping hands and feet during arboreal quadrupedal locomotion. *J. Hum. Evol.* 88, 79-84.
- Pernel, L., Senut, B., Gommery, D., Okimat, J.P., Asalu, E., Krief, S., 2021. Etude de cas: la bipédie des chimpanzés de la communauté de Sebitoli, Ouganda. *Rev. Primatol.* 12.
- Pickford, M., Senut, B., Gommery, D., Treil, J., 2002. Bipedalism in Orrorin tugenensis revealed by its femora. *C. R. Palevol* 1, 191-203.
- Pontzer, H., 2012. Ecological energetics in early *Homo*. *Curr. Anthropol.* 53, S346-S358.
- Pontzer, H., 2017. Economy and endurance in human evolution. *Curr. Biol.* 27, R613-R621.
- Pontzer, H., Raichlen, D.A., Rodman, P.S., 2014. Bipedal and quadrupedal locomotion in chimpanzees. *J. Hum. Evol.* 66, 64-82.
- Prescott, M.J., Buchanan-Smith, H.M., 2003. Training Nonhuman Primates Using Positive Reinforcement Techniques. *Appl. Anim. Welf. Sci.* 6, 157-161.
- Raichlen, D.A., Pontzer, H., 2021. Energetic and endurance constraints on great ape quadrupedalism and the benefits of hominin bipedalism. *Evol. Anthropol.* 30, 253-261.

- Raichlen, D.A., Pontzer, H., Shapiro, L.J., Sockol, M.D., 2009. Understanding hind limb weight support in chimpanzees with implications for the evolution of primate locomotion. *Am. J. Phys. Anthropol.* 138, 395-402.
- Rasmussen, S., Chan, A., Goslow, G., 1978. The cat step cycle: electromyographic patterns for hindlimb muscles during posture and unrestrained locomotion. *J. Morphol.* 155, 253-269.
- Richmond, B.G., Jungers, W.L., 2008. *Orrorin tugenensis* femoral morphology and the evolution of hominin bipedalism. *Science* 319, 1662-1665.
- Rimini, D., Agostini, V., Knaflitz, M., 2017. Intra-subject consistency during locomotion: similarity in shared and subject-specific muscle synergies. *Front. Hum. Neurosci.* 11, 586
- Rook, L., Bondioli, L., Kohler, M., Moya-Sola, S., Macchiarelli, R., 1999. *Oreopithecus* was a bipedal ape after all: evidence from the iliac cancellous architecture. *Proc. Natl. Acad. Sci. USA* 96, 8795-8799.
- Rose, M., 1973. Quadrupedalism in primates. *Primates* 14, 337-357.
- Rose, M., 1976. Bipedal behavior of olive baboons (*Papio anubis*) and its relevance to an understanding of the evolution of human bipedalism. *Am. J. Phys. Anthropol.* 44, 247-261.
- Rose, M., 1991. The process of bipedalization in hominids. In: Coppens, Y., Senut, B. (Eds), *Origine(s) de la Bipédie chez les Hominidés*. Editions du Centre National de la Recherche Scientifique, Paris, pp. 37-48.
- Rosen, K.H., Jones, C.E., DeSilva, J.M., 2022. Bipedal locomotion in zoo apes: Revisiting the hylobatian model for bipedal origins. *Evol. Hum. Sci.* 4.
- Safavynia, S., Torres-Oviedo G., Ting L., 2011. Muscle synergies: implications for clinical evaluation and rehabilitation of movement. *Top. Spinal Cord Inj. Rehabil.* 17, 16-24.
- Schapiro, S.J., Bloomsmith, M.A., Laule, G.E., 2003. Positive reinforcement training as a technique to alter nonhuman primate behavior: quantitative assessments of effectiveness. *J. Appl. Anim. Welf. Sci.* 6, 175-187.
- Schmitt, D., Cartmill, M., Griffin, T.M., Hanna, J.B., Lemelin, P., 2006. Adaptive value of ambling gaits in primates and other mammals. *J. Exp. Biol.* 209, 2042-2049.
- Senut, B., 2007. The earliest putative hominids. In: Henke, W., Tattersall, I. (Eds.), *Handbook of Paleoanthropology, Vol. III : Phylogeny of Hominines*. Springer Berlin, Heidelberg, pp. 1519-1538.
- Senut, B., Pickford, M., Gommery, D., Mein, P., Cheboi, K., Coppens, Y., 2001. First hominid from the Miocene (Lukeino Formation, Kenya). *C.R. Acad. Sci. II A* 332, 137-144.

- Shapiro, L.J., Jungers, W.L., 1994. Electromyography of back muscles during quadrupedal and bipedal walking in primates. *Am. J. Phys. Anthropol.* 93, 491-504.
- Stamos, P.A., Alemseged, Z. 2023. Hominin locomotion and evolution in the Late Miocene to Late Pliocene. *J. Hum. Evol.* 178, 103332.
- Stanford, C.B., 2006. Arboreal bipedalism in wild chimpanzees: Implications for the evolution of hominid posture and locomotion. *Am. J. Phys. Anthropol.* 129, 225-231.
- Steele, K.M., Tresch, M.C., Perreault, E.J., 2013. The number and choice of muscles impact the results of muscle synergy analyses. *Front. Comput. Neurosci.* 7, 105.
- Steele, K.M., Rozumalski, A., Schwartz, M.H., 2015a. Muscle synergies and complexity of neuromuscular control during gait in cerebral palsy. *Dev. Med. Child. Neurol.* 57, 1176-1182.
- Steele, K.M., Tresch, M.C., Perreault, E.J., 2015b. Consequences of biomechanically constrained tasks in the design and interpretation of synergy analyses. *J. Neurophysiol.* 113, 2102-2113.
- Steele, K.M., Mungler, M.E., Peters, K.M., Shuman, B.R., Schwartz, M.H., 2019. Repeatability of electromyography recordings and muscle synergies during gait among children with cerebral palsy. *Gait Posture* 67, 290-295.
- Stern, J.T., Susman, R.L., 1981. Electromyography of the gluteal muscles in *Hylobates*, *Pongo*, and *Pan*: Implications for the evolution of hominid bipedality. *Am. J. Phys. Anthropol.* 55, 153-166.
- Swindler, D.R., Wood, C.D., 1973. *Atlas of Primate Gross Anatomy*. University of Washington Press, Seattle and London.
- Taborri, J., Agostini, V., Artemiadis, P.K., Ghislieri, M., Jacobs, D.A., Roh, J., Rossi, S., 2018. Feasibility of muscle synergy outcomes in clinics, robotics, and sports: a systematic review. *App. Bionics Biomech.* 2018.
- Taylor, C.R., Rowntree, V.J., 1973. Running on two or on four legs: Which consumes more energy? *Science* 179, 186-187.
- Thompson, N.E., Demes, B., O'Neill, M.C., Holowka, N.B., Larson, S.G., 2015. Surprising trunk rotational capabilities in chimpanzees and implications for bipedal walking proficiency in early hominins. *Nat. Commun.* 6, 8416.
- Thompson, N.E., Rubinstein, D., Parrella-O'Donnell, W., Brett, M.A., Demes, B., Larson, S.G., O'Neill, M.C., 2021. The loss of the 'pelvic step' in human evolution. *J. Exp. Biol.* 224, jeb240440.
- Thorpe, S.K.S., Holder, R.L., Crompton, R.H., 2007. Origin of human bipedalism as an adaptation for locomotion on flexible branches. *Science* 316, 1328-1331

- Toricelli, D., Barroso, F., Coscia, M., Alessandro, C., Lunardini, F., Bravo Esteban, E., d'Avella, A., 2016. Muscle synergies in clinical practice: Theoretical and practical implications. In: Pons, J.L., Raya, R., González, J. (Eds.), *Emerging Therapies in Neurorehabilitation II*. Springer, Cham, pp. 251-272.
- Tresch, M.C., Cheung, V.C., d'Avella, A., 2006. Matrix factorization algorithms for the identification of muscle synergies: evaluation on simulated and experimental data sets. *J. Neurophysiol.* 95, 2199-2212.
- Urciuoli, A., Alba, D.M., 2023. Systematics of Miocene apes: State of the art of a neverending controversy. *J. Hum. Evol.* 175, 103309.
- Vandekerckhove, I., De Beukelaer, N., Van den Hauwe, M., Shuman, B.R., Steele, K.M., Van Campenhout, A., 2020. Muscle weakness has a limited effect on motor control of gait in Duchenne muscular dystrophy. *PLoS One* 15, e0238445.
- Vangor, A., Wells, J., 1983. Muscle recruitment and the evolution of bipedality: evidence from telemetered electromyography of spider, woolly and patas monkeys. *Ann. Sci. Nat. Zool.* 5, 125-135.
- Venkadesan, M., Yawar, A., Eng, C.M., Dias, M.A., Singh, D.K., Tommasini, S.M., Haims, A.H., Bandi, M.M., Mandre, S. 2020. Stiffness of the human foot and evolution of the transverse arch. *Nature* 579, 97-100.
- Vilensky, J.A., 1987. Locomotor behavior and control in human and non-human primates: Comparisons with cats and dogs. *Neurosci. Biobehavior. Rev.* 11, 263-274.
- Vilensky, J.A., Larson, S.G., 1989. Primate locomotion: utilization and control of symmetrical gaits. *Ann. Rev. Anthropol.* 18, 17-35.
- Wang, W., Crompton, R.H., Carey, T.S., Günther, M.M., Li, Y., Savage, R., Sellers, W.I. 2004. Comparison of inverse-dynamics musculo-skeletal models of AL 288-1 *Australopithecus afarensis* and KNM-WT 15000 *Homo ergaster* to modern humans, with implications for the evolution of bipedalism. *J. Hum. Evol.* 47, 453-478.
- Ward, C.V., 2013. Postural and locomotor adaptations of *Australopithecus* species. In: Reed, K.E., Fleagle, J.G., Leakey, R.E. (Eds.), *The Paleobiology of Australopithecus*. Springer, Dordrecht pp. 235-245.
- Ward, C.V., Kimbel, W.H., Johanson, D.C., 2011. Complete fourth metatarsal and arches in the foot of *Australopithecus afarensis*. *Science* 331, 750-753.
- Wells, J.P., Turnquist, J.E., 2001. Ontogeny of locomotion in rhesus macaques (*Macaca mulatta*): II. Postural and locomotor behavior and habitat use in a free-ranging colony. *Am. J. Phys. Anthropol.* 115, 80-94.

- White, T.D., Lovejoy, C.O., Asfaw, B., Carlson, J.P., Suwa, G., 2015. Neither chimpanzee nor human, *Ardipithecus* reveals the surprising ancestry of both. Proc. Natl. Acad. Sci. USA 112, 4877-4884.
- Winter, D.A., Yack, H., 1987. EMG profiles during normal human walking: stride-to-stride and inter-subject variability. Electroencephalogr. Clin. Neurophysiol. 67, 402-411.
- Wiseman, A.L. 2023. Three-dimensional volumetric muscle reconstruction of the *Australopithecus afarensis* pelvis and limb, with estimations of limb leverage. Royal Soc. Open Sci. 10, 230356.
- Workman, C., Schmitt, D., 2011. Positional Behavior of Delacour's Langurs (*Trachypithecus delacouri*) in Northern Vietnam. Int. J. Primatol. 33, 19-37.
- Young, J.W., 2012. Gait selection and the ontogeny of quadrupedal walking in squirrel monkeys (*Saimiri boliviensis*). Am. J. Phys. Anthropol. 147, 580-592.
- Young, J.W., Stricklen, B.M., Chadwell, B.A., 2016. Effects of support diameter and compliance on common marmoset (*Callithrix jacchus*) gait kinematics. J. Exp. Biol. 219, 2659-2672.
- Zehr, E.P., Hundza, S.R., Vasudevan, E.V., 2009. The quadrupedal nature of human bipedal locomotion. Exerc. Sport Sci. Rev. 37, 102-108

FIGURES

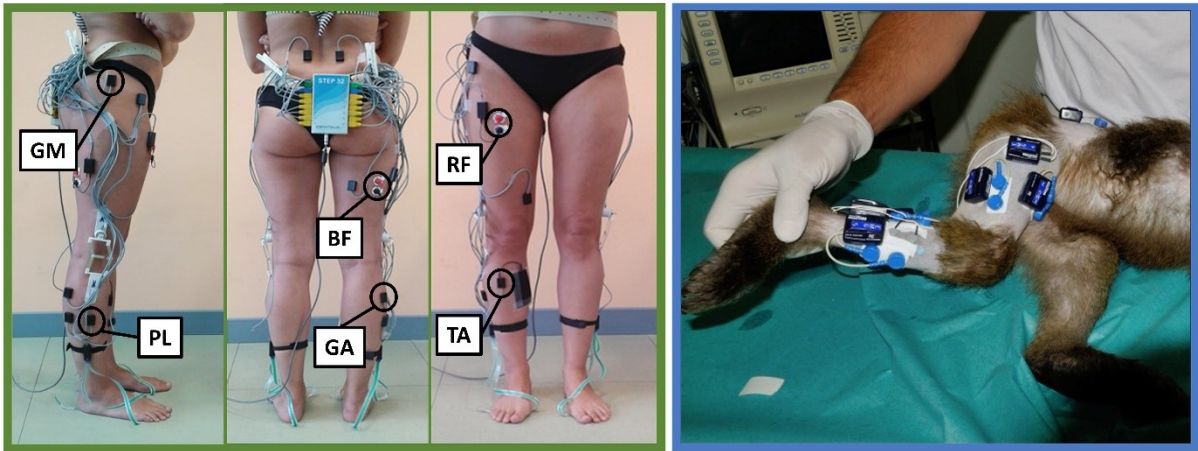


Figure 1. The images depict the placement of sEMG probes on a human subject (lateral, back and front) and a baboon individual, providing visual reference for electrode positioning. Abbreviations: BF = biceps femoris; GM = gluteus medius; GA = lateral gastrocnemius; PL = peroneus longus; RF = rectus femoris; TA = tibialis anterior.

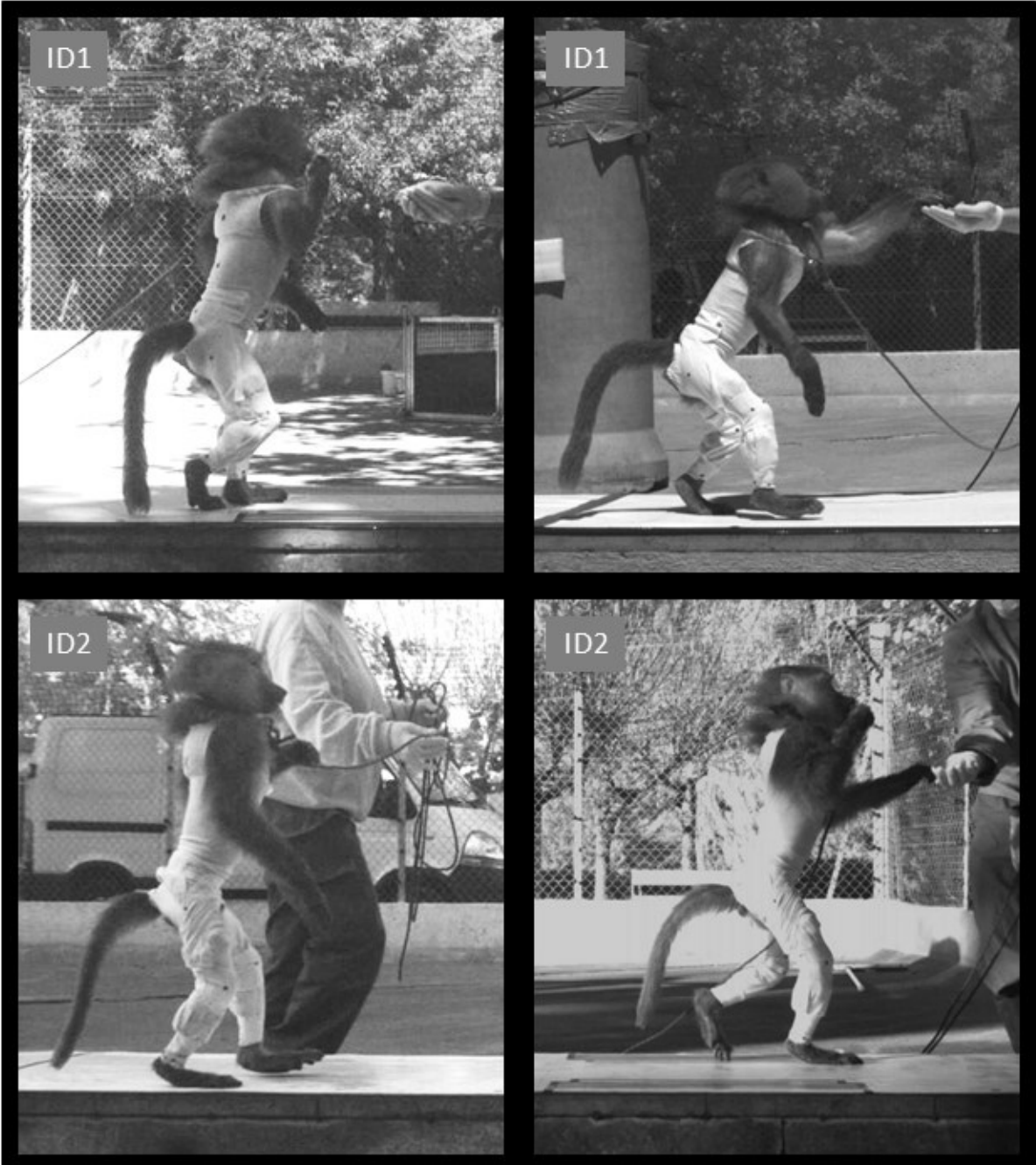


Figure 2. Illustration stills of diverse bipedal postures adopted by Id1 and Id2 during data collection at the CNRS primatology station's biomechanics technical platform. The animals moved forward, guided by the trainer holding a food reward.

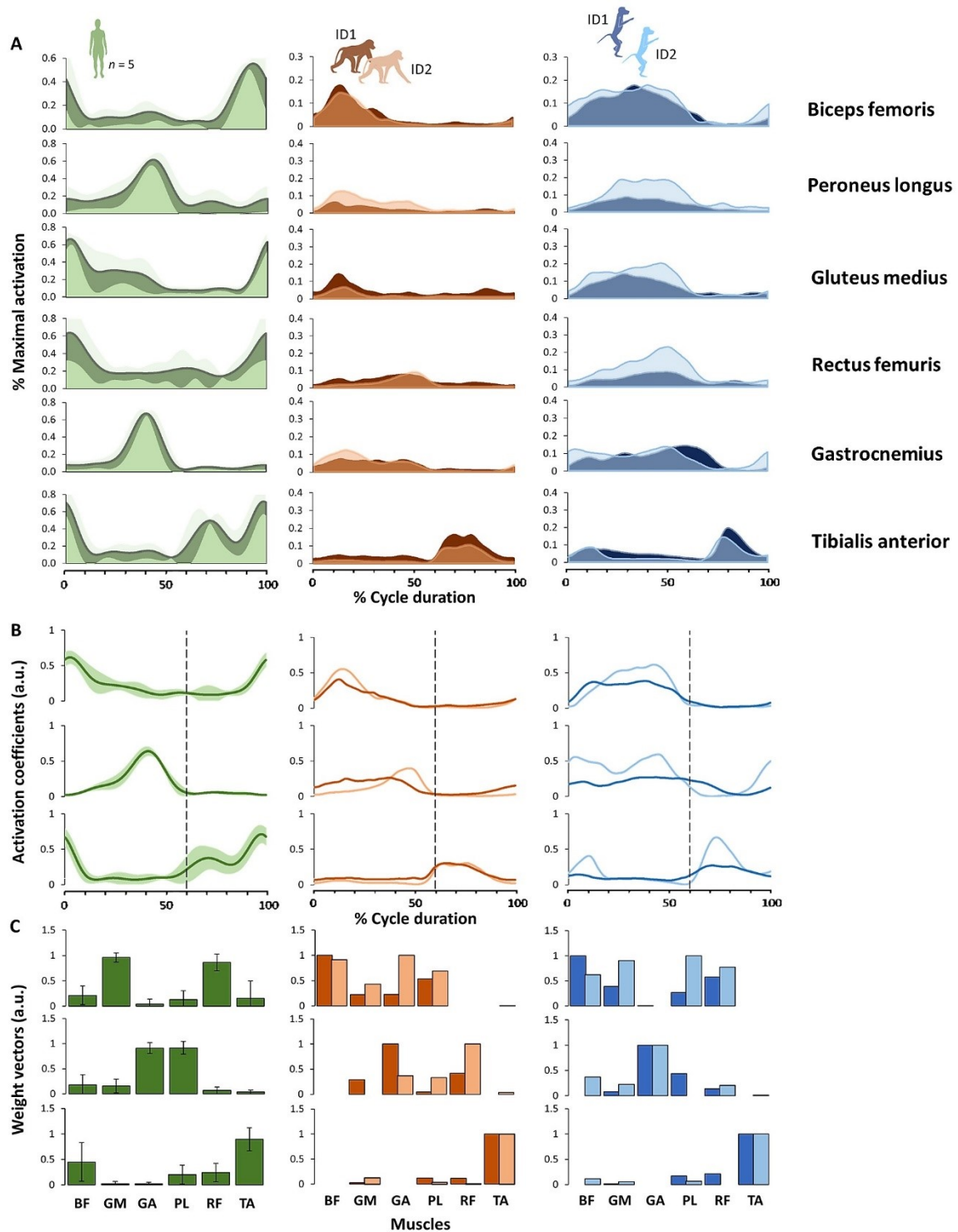


Figure 3. A) Average ($\pm 95\%$ confidence intervals) surface electromyography (sEMG) profiles of the six hindlimb muscles considered for the human sample (five subjects) during bipedal walking (green) and the two baboon individuals (ID1: dark colors, ID2: light colors), during quadrupedal walking (brown) and bipedal walking (blue). The activity patterns were stride-normalized to 1000-time samples (represented from 0% to 100% of the gait cycle) and averaged across strides. Surface electromyography activity was recorded on the right

hindlimb. B) Average (\pm SD) activation coefficients of the three synergies extracted from sEMG profiles in five human subjects (green) and activation coefficients from sEMG profiles in two baboons (ID1: dark colors, ID2: light colors) when walking quadrupedally (brown) and bipedally (blue). The dashed vertical line indicates the transition from the stance to the swing phases and it is positioned at 60% following stance and swing normalization. C) Average (\pm SD) weight vectors in humans and individual weight vectors in baboons are represented, respectively. Abbreviations: a. u. = arbitrary units; BF = biceps femoris; GM = gluteus medius; GA = lateral gastrocnemius; PL = peroneus longus; RF = rectus femoris; TA = tibialis anterior.

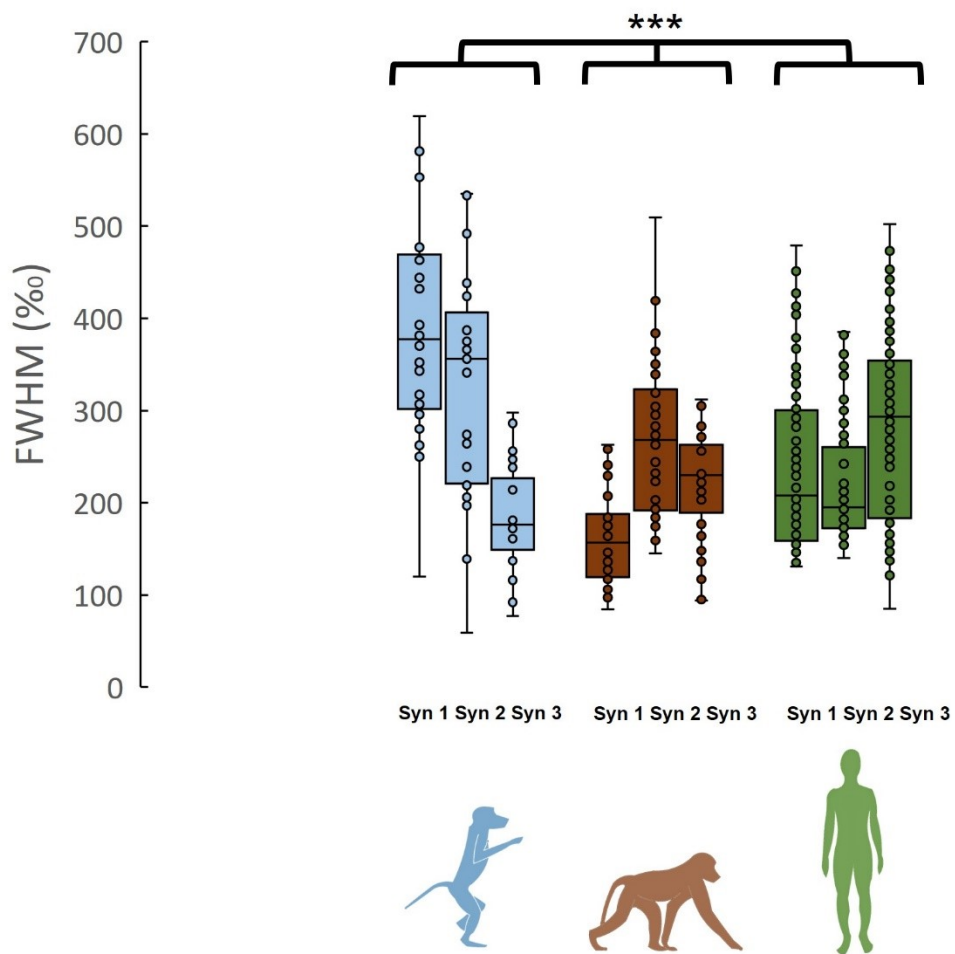


Figure 4. Boxplots of full width at half maximum (FWHM) values for each extracted muscle synergy across species and locomotor modes. Box shows 25th and 75th percentiles with median; whiskers are minimum and maximum values. The comparison of each synergy (Syn) with its respective synergy number across species and locomotor modes is significant.

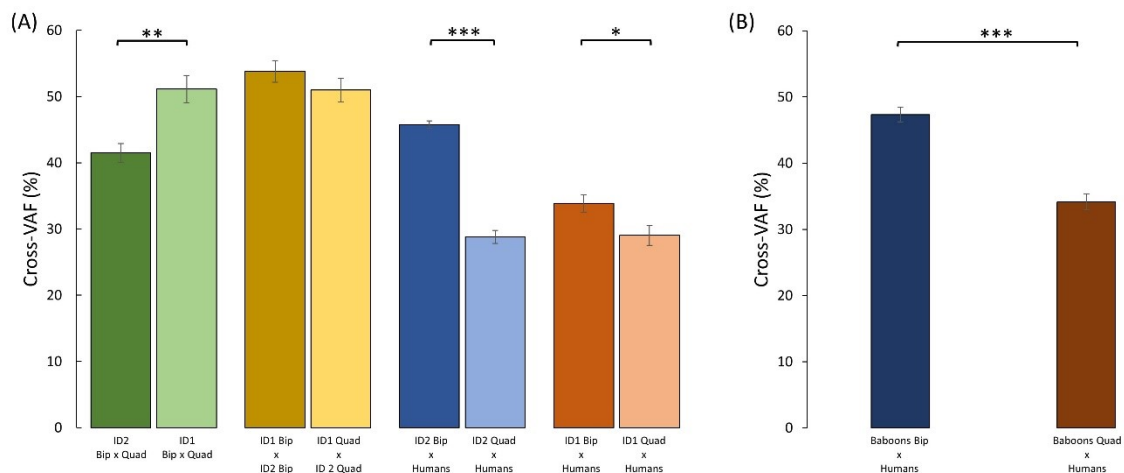


Figure 5. A) Average cross-variance accounted for (cross-VAF) values (means and SD) for each condition and each baboon individual. Higher values indicate conditions that are more alike to each other. Comparison is shown between baboon individuals 1 (ID1) and 2 (ID2) in green, between locomotor modes within individuals in yellow, between ID1 and humans in blue, and between ID2 and humans in brown. B) Comparison between humans as a group and baboons as a group with bipedal baboons and humans in dark blue and quadrupedal baboons and humans in brown. Note that due to the variability between the two baboon individuals, averaging their EMG signals generally results in higher cross-VAF values. Asterisk indicates a significant difference: single asterisk stands for $p < 0.05$; double asterisk stands for $p < 0.01$; triple asterisk stands for $p < 0.001$. Abbreviations: Bip = Bipedal walking; Quad = Quadrupedal walking.