



**HAL**  
open science

## Fe-S biogenesis by SMS and SUF pathways: A focus on the assembly step

Macha Dussouchaud, Frédéric Barras, Sandrine Ollagnier de Choudens

### ► To cite this version:

Macha Dussouchaud, Frédéric Barras, Sandrine Ollagnier de Choudens. Fe-S biogenesis by SMS and SUF pathways: A focus on the assembly step. *Biochimica et Biophysica Acta - Molecular Cell Research*, 2024, 1871 (7), pp.119772. 10.1016/j.bbamcr.2024.119772 . hal-04748488

HAL Id: hal-04748488

<https://hal.science/hal-04748488v1>

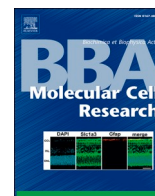
Submitted on 22 Oct 2024

**HAL** is a multi-disciplinary open access archive for the deposit and dissemination of scientific research documents, whether they are published or not. The documents may come from teaching and research institutions in France or abroad, or from public or private research centers.

L'archive ouverte pluridisciplinaire **HAL**, est destinée au dépôt et à la diffusion de documents scientifiques de niveau recherche, publiés ou non, émanant des établissements d'enseignement et de recherche français ou étrangers, des laboratoires publics ou privés.



Distributed under a Creative Commons Attribution - NonCommercial 4.0 International License



## Review

## Fe-S biogenesis by SMS and SUF pathways: A focus on the assembly step

Macha Dussouchaud<sup>a</sup>, Frédéric Barras<sup>a</sup>, Sandrine Ollagnier de Choudens<sup>b,\*</sup><sup>a</sup> Institut Pasteur, Université Paris Cité, CNRS UMR6047, Department of Microbiology, Unit Stress Adaptation and Metabolism in enterobacteria, Paris, France<sup>b</sup> CNRS, CEA, IRIG, Laboratoire de Chimie et Biologie des Métaux, Univ. Grenoble Alpes, Grenoble, France

## ARTICLE INFO

## Keywords:

Fe-S cluster biosynthesis

SUF

SMS

*E. coli**S. aureus**B. subtilis**M. tuberculosis**E. faecalis**P. falciparum**Blastocystis*

## ABSTRACT

Fe-S clusters are prosthetic groups present in all organisms. Proteins with Fe-S centers are involved in most cellular processes. ISC and SUF are machineries necessary for the formation and insertion of Fe-S in proteins. Recently, a phylogenetic analysis on more than 10,000 genomes of prokaryotes have uncovered two new systems, MIS and SMS, which were proposed to be ancestral to ISC and SUF. SMS is composed of SmsBC, two homologs of SufBC(D), the scaffolding complex of SUF. In this review, we will specifically focus on the current knowledge of the SUF system and on the new perspectives given by the recent discovery of its ancestor, the SMS system.

## 1. Introduction

Iron-sulfur clusters (Fe-S) are polynuclear combinations of iron and sulfur atoms and are among the most conserved cofactors in prokaryotes and eukaryotes. As an example, *Escherichia coli* synthesizes more than 180 different proteins containing Fe-S clusters [1]. Fe-S cluster binding proteins are involved in a wide variety of biological processes, allowing redox chemistry and Lewis acid-type catalysis, from respiration to photosynthesis, and from metabolism to regulation of gene expression or genomic stability [2–6]. The most common Fe-S cluster types are [2Fe–2S] and cubane [4Fe–4S] clusters containing ferric iron (Fe<sup>3+</sup>) or ferrous iron (Fe<sup>2+</sup>) and sulfide (S<sup>2-</sup>) [3]. Usually, the thiolate of cysteine coordinates with the iron ion of the cluster [7–9], but histidine [10–13] and arginine [14] (nitrogen coordination) as well as aspartic acid [15], glutamic acid [16] and tyrosine [17] (oxygen coordination) can also act as Fe-S clusters ligands [18]. Occasionally, cofactors, water molecules or enzyme substrates are also involved in the coordination [3]. The most widely accepted hypothesis for the appearance of Fe-S clusters on Earth is their spontaneous assembly in the anaerobic environment of early life, which was rich in ferrous iron and sulfide [19].

Fe-S proteins have been exploited during evolution for their versatile biochemical properties and multiprotein systems catalyzing Fe-S cluster formation and delivery emerged in the Last Universal Common Ancestor (LUCA) [20]. To date, five Fe-S biogenesis systems that

catalyse Fe-S cluster acquisition by apo-proteins have been described, namely NIF, ISC, SUF, MIS and SMS. Biogenesis of Fe-S clusters by these systems proceeds in two main steps: (i) the Fe-S cluster assembly step, during which a cysteine desulfurase/sulfurtransferase system removes sulfur from L-cysteine and transfers it to a scaffold protein, which also receives Fe and electrons to build an Fe-S cluster, (ii) the Fe-S cluster delivery step, during which the Fe-S cluster is transferred to apoprotein cellular targets either directly or via carrier proteins targeting apo forms of Fe-S proteins [4–6,21–27]. In this review, we will restrict ourselves to the assembly step catalyzed by the SUF and its ancestor SMS systems. We will cover mostly the biochemical, structural and mechanistic aspects of it as the genetic aspects have been the subject of several excellent reviews [6,23,28–30]. We will not discuss the SUF system from plants which is covered elsewhere in this issue.

## 2. From SMS to SUF: A brief evolutionary point of view

Exhaustive homology searches along with genomic context and phylogeny analysis of 10,865 archaeal and bacterial genomes, representative of the diversity of prokaryotes, led to the discovery of SMS [20]. SMS was proposed to be present in LUCA, the last universal common ancestor, and is conserved in Archaea and a restricted set of Bacteria [20]. SMS was the ancestral minimal system, which subsequently went through different events of complexification,

\* Corresponding author.

E-mail address: [sandrine.ollagnier@cea.fr](mailto:sandrine.ollagnier@cea.fr) (S.O. de Choudens).

incorporating additional functions yielding eventually SUF (Fig. 1). Constraints that guided the evolution from SMS to SUF are likely to be associated with increasing levels of oxygen in the atmosphere. In the present situation, SUF is the most distributed, by far, in the bacterial world although some clades contain SMS. Reciprocally in Archaea, SMS is more frequently found than SUF [20]. Presumably, the current distribution of SMS and SUF has been shaped by horizontal gene transfers, gene losses, matching with cellular proteome and ecological adaptations such as the emergence of aerobic lifestyles. Noticeably, some archaeal SMS systems were transferred to a few anaerobic bacteria, while some bacterial SUF systems were transferred to aerobic archaea.

The SUF machinery from *E. coli* is the most extensively studied and serves as a model for Gram negative bacteria. It is encoded by the *sufABCDSE* operon that comprises: a homodimeric cysteine desulfurase, SufS, a sulfurtransferase, SufE, an Fe—S assembly complex, SufB, SufC, SufD, wherein SufC is an ATPase, and a Fe—S carrier, SufA (Fig. 1) [6,31]. The SUF system, or a variant of it, also occurs in archaea and cyanobacteria, as well as in many Gram-positive pathogenic (*Staphylococcus aureus*, *Mycobacterium tuberculosis* and *Enterococcus faecalis*) and nonpathogenic (*Bacillus subtilis*) bacteria where it is the sole Fe—S assembly system. Both the SMS and the SUF systems can be found in parasites, such as *Blastocystis* and *Plasmodium falciparum*, respectively.

### 3. The gram-negative SUF system

#### 3.1. Sulfur mobilization by the SufS-SufE proteins

Inorganic sulfide encountered in Fe—S clusters results from L-cysteine desulfurization by the SufS-SufE system (Fig. 2), whose current structural and functional knowledge derives mainly from the Gram negative *E. coli* system.

##### 3.1.1. Biochemical, biophysical and enzymological analyses

SufS is a dimer in solution while SufE can form monomers at low protein concentrations and homodimers at higher protein concentrations [32]. SufE and SufS proteins can associate as shown by two-hybrid and affinity chromatography with a 1:1 stoichiometry for SufS:SufE interaction [32,33]. A dissociation constant of 0.26  $\mu\text{M}$  was determined by ITC [34].

SufS is a pyridoxal 5'-phosphate (PLP) containing cysteine desulfurase that mobilizes sulfur from the L-cysteine substrate, acting as the initial step in the sulfur mobilization pathway for the synthesis of Fe—S clusters (Fig. 2). L-Cysteine desulfurization reaction gives rise to a persulfide intermediate bound to the conserved Cys<sub>364</sub>, located in a short

and rigid loop of the protein [35]. The persulfide (Cys<sub>364</sub>-SSH) is protected from external oxidants/reductants due to key structural elements (see below) [36,37].

Recent enzymatic and biophysical studies have provided significant insights into the SufS cysteine desulfurization mechanism with the direct observation of intermediates, revealing functional roles of conserved active site residues [23]. From these studies a roughly complete view of the reaction is now available (Fig. 3). PLP begins in an internal aldimine conformation with an absorption feature of 422 nm with a binding mode with the Lys226 base [23,38]. After L-cysteine binding, the PLP cysteine form the ketoenamine and enolimine tautomers of the external Cys-aldimine, with absorbance features at 424 nm and 343 nm respectively. Cys-aldimine is transformed to Cys-ketimine that absorbs at 351 nm, likely through a spectroscopically undetected quinonoid species, which would be predicted to absorb around 500 nm. After generation of the Cys-ketimine, the cysteine desulfurase mechanism proceeds by Cys364 attacking the Cys-ketimine sulfhydryl to break the C-S bond, resulting in the formation of an Ala-eneamine species and the persulfide Cys364-SSH [23]. Following formation of Ala-eneamine, the intermediates Ala-ketimine, Ala-quinonoid, and the Ala-aldimine are likely produced, although there is a lack of spectroscopic and structural data illustrating these intermediates [39]. Finally, regeneration of the PLP internal aldimine species with Lys226 returns the enzyme to its resting state ready for another mechanistic cycle. This work has highlighted the crucial role of His123 in a) the stabilization of the ketoenamine and enolimine tautomers through  $\pi$ - $\pi$  stacking interactions with PLP, b) Cys-ketimine- Ala-eneamine transformation acting as an acid-base catalyst (deprotonating the thiol group of Cys364) [23].

Cysteine desulfuration by SufS is inefficient due to the sluggish attack of Cys<sub>364</sub> to C—S bond of L-cysteine substrate [39], but it is accelerated 8 to 150-fold by binding of SufE, depending on the excess of SufE added and the reducing agent used [32,33,38,40] (Table 1). This stimulation is due to the transpersulfidation between SufS-Cys<sub>364</sub>-SSH and the conserved Cys<sub>51</sub> of SufE (Fig. 2) [32,41]. SufE can accept *in vitro* up to 4 sulfur atoms on the Cys<sub>51</sub> residue [38,41]. The limited reduction of the persulfide on SufE by thiols emphasizes that the transpersulfidation reaction is confined and largely excluded from solvent [38]. SufS exhibits a ping-pong mechanism for cysteine desulfurization [38] using SufE as a co-substrate [38,40]. Interestingly, the rate of sulfur transfer from SufS to SufE depends on the sulfuration state of the SufE. When SufE is in its thiolated form, it promotes nucleophilic attack on the terminal sulfur persulfide of SufS, thereby increasing the turnover rate. However, when SufE is in its persulfurated form, there is a decrease in the catalytic turnover rate, suggesting that sulfur accumulation on SufE

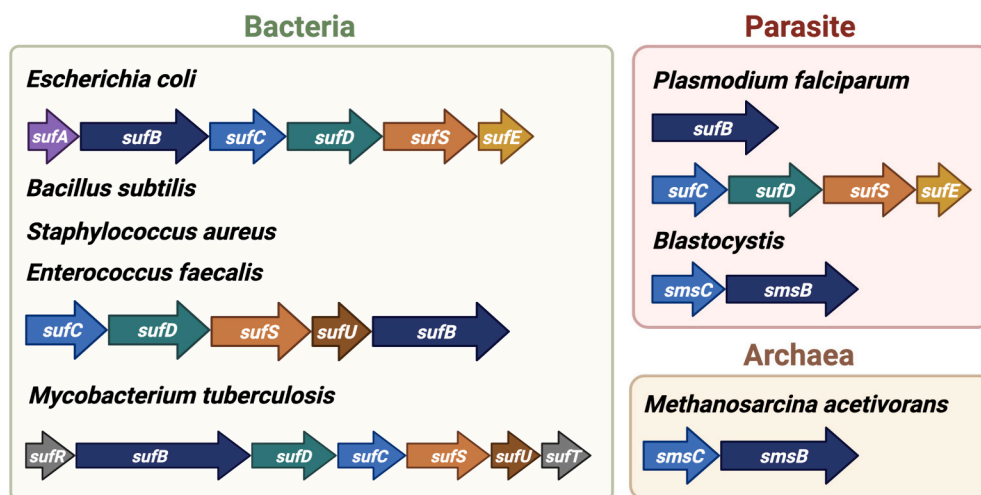
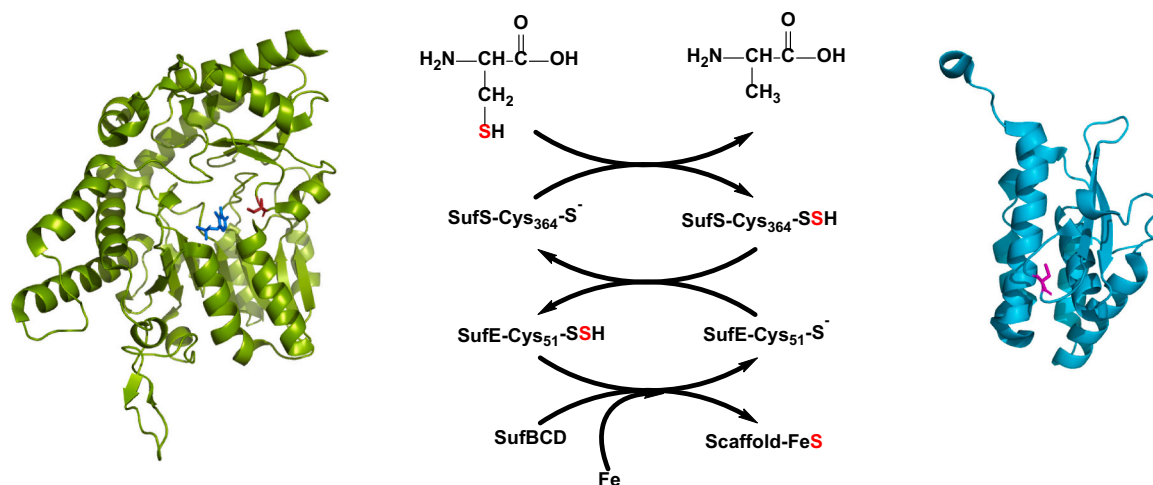
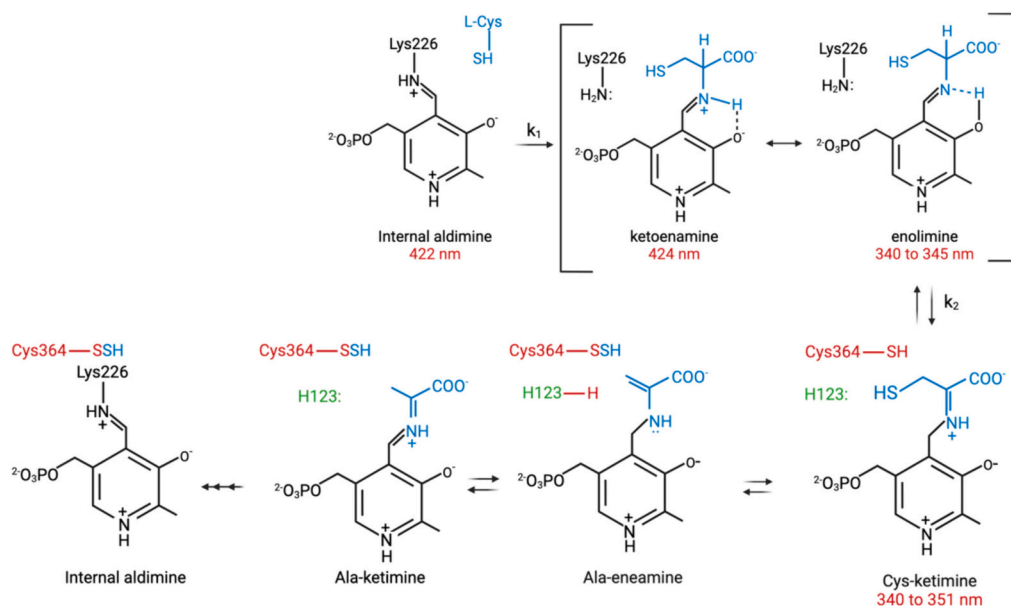


Fig. 1. Schematic representation of the *sms* and *suf* locus in archaea, bacteria and parasites. Genes having homologous sequences or similar functions are colour-coded.



**Fig. 2. Sulfur mobilization by SufS-SufE system.** L-cysteine desulfurization mechanism involving SufS and SufE (middle); structure of SufS (left) showing PLP cofactor (blue) and catalytic Cys<sub>364</sub> residue (red) (PDB: 1jf9); structure of SufE (right) showing conserved sulfur acceptor Cys<sub>51</sub> residue (PDB: 1mzg).



**Fig. 3. Scheme for the mechanism of SufS cysteine desulfurase.** PLP is in black, substrate cysteine is blue, active site Cys<sub>364</sub> is red, and His123 acid/base catalyst in green. Adapted from [23].

**Table 1**

Cysteine desulfurase activity of SufS enzymes in the presence of their sulfurtransferase (SufE or SufU).

Organism	Sulfurtransferase	Cysteine desulfurase enhancement	References
<i>Escherichia coli</i>	SufE	40–200 fold	[38,40]
<i>Erwinia chrysanthemi</i>	SufE	40 fold	[33]
<i>Bacillus subtilis</i>	SufU	35–200	[69,76,97]
<i>Staphylococcus aureus</i>	SufU	1.5 fold	[72]
<i>Enterococcus faecalis</i>	SufU	37 fold	[71]
<i>Mycobacterium tuberculosis</i>	SufU	180 fold	[70]
<i>Plasmodium falciparum</i>	SufE	17 fold	[91]

negatively regulates SufS responsiveness, thereby preventing futile cycling [38]. In the presence of SufBC<sub>2</sub>D complex, SufE can further transfer sulfur from its Cys<sub>51</sub>-SSH to the complex on the SufB subunit [42], allowing SufE to initiate another cycle of catalysis. The persulfide on SufB (within SufBCD) is used for Fe—S cluster assembly when suitable Fe ions and electrons are available (Fig. 2).

### 3.1.2. Structural analyses

The crystal structure of SufS shows that the catalytic Cys<sub>364</sub> is located in a short and rigid loop (Fig. 2) and that the persulfide is protected from solvent [35–37,43]. The SufE X-ray structure shows that Cys<sub>51</sub> is located at the tip of a loop, where its side-chain is buried from solvent exposure in a hydrophobic cavity (Fig. 2) [44]. Therefore, to make the transpersulfidation reaction possible, from SufS Cys<sub>364</sub> to SufE Cys<sub>51</sub>, conformational changes in SufS and SufE are necessary. Hydrogen-Deuterium-Exchange mass spectrometry (HDX-MS) experiments on SufS-SufE combined with X-ray crystallography of SufS (wild-type and variants) have provided information on conformational changes in both

proteins, that help to dissect the sulfur mobilization mechanism by SufS-SufE. SufE binds near the SufS active site and interacts *via* two peptides (peptide 38–56 (containing Cys<sub>51</sub>) and peptide 66–83), which undergo conformational changes upon complex formation [34]. An important one concerns the Cys<sub>51</sub> loop whose solvent accessibility is increased upon SufS binding [34]. The increase of dynamics and solvent accessibility of the Cys<sub>51</sub> loop in SufE improves the use of Cys<sub>51</sub> as sulfur acceptor and the binding to SufS [45]. Dynamic changes in SufS were also observed both in active site regions (peptides 225–236 and 356–366) and in peptides covering the dimer interface (88–100 and 243–255) [34,45,46]. The cross talk between these two regions of SufS was demonstrated by mutagenesis of the dimer-interface residues followed by kinetics measurements and X-ray structures of mutants [36]. Indeed, these experiments with interface protein variants revealed that movements of the dimer interface induce a global rotation of the SufS monomers and a movement of the beta-hairpin (aa 254–272) of one monomer away from Cys<sub>364</sub>-SSH of the other SufS monomer, yielding a more open conformation of the active site [36]. In 2020, a structure of *E. coli* SufS was solved as a dimer (PDB: 6uy5), both monomers being in a persulfide form [47]. In comparison with previous structures of *E. coli* SufS, the two monomers are rotated relative to their resting state, some electrostatic interactions at the dimer interface are lost, and the beta-hairpin is rotated into an open position. These observations have highlighted the role of the beta-hairpin in the sulfur mobilization mechanism, especially in the active site accessibility containing the persulfide. More recently, structural analyses suggested a more complex regulation of the beta-hairpin dynamics by adjacent conserved structural elements ( $\alpha_6$  helix, a glycine-rich loop preceding the beta-hairpin and a cis-proline residue following the beta-hairpin) [47]. With the beta-hairpin they form the “beta-latch motif” which plays a role in forming a close approach of SufS-SufE complex to promote persulfide transfer [37]. The beta-latch motif is broadly conserved in the structures of type 2 cysteine desulfurases from different organisms [47]. In conclusion, our knowledge on the sulfur mobilization has greatly advanced in the recent years and a schematized representation is given in Fig. 4. Nonetheless, resolving the SufS-SufE X-ray structure, with snapshots after reaction with L-cysteine substrate, should unravel the precise sequence of events of this complex mechanism.

### 3.2. Fe—S cluster assembly by the SufBC<sub>2</sub>D scaffold

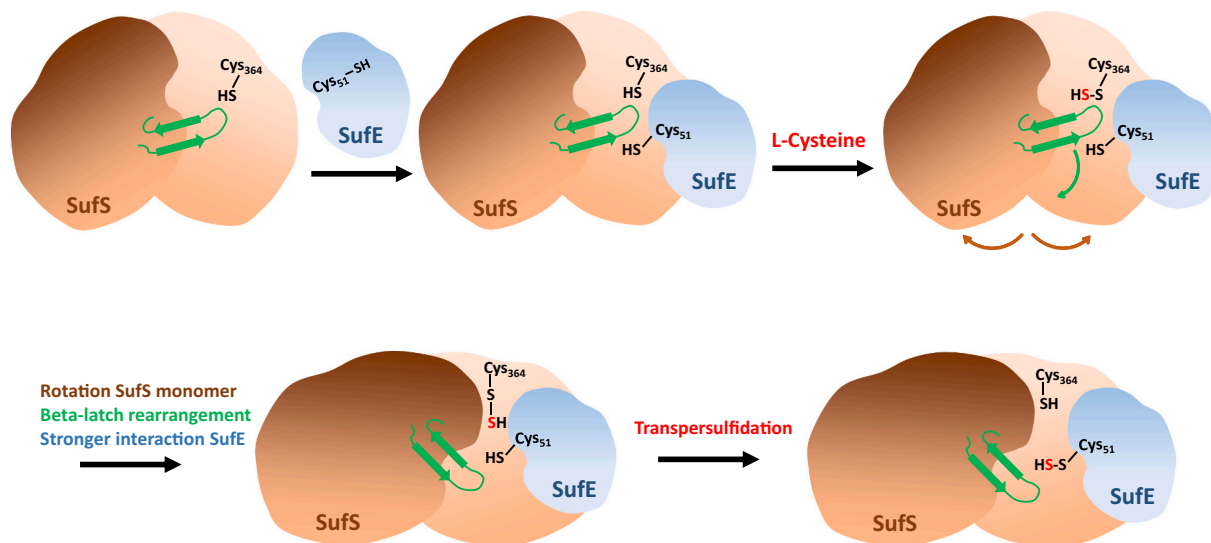
Our understanding of the SufBC<sub>2</sub>D scaffold derives specifically from studies on *E. coli* system described hereafter.

#### 3.2.1. General features of the isolated SufB, SufC and SufD proteins

SufB is a soluble protein that exists in solution as a mixture of monomer, dimer, trimers that are not very stable [42 and Blanc et al. unpublished results]. There are no structures of *E. coli* SufB alone, but the structure predicted by alpha-fold (AF-P7752-F1) shows five alpha helices and three beta-strands. There are several regions with a low scoring prediction (amino-acids 1 to 30, 94 to 119, 126 to 140, 227 to 233 and 255 to 260) (Fig. 5). As purified, SufB is devoid of any cofactor. After *in vitro* reconstitution with iron and sulfide under reducing conditions, SufB can assemble transiently a [2Fe—2S] and/or [4Fe—4S] cluster(s) [42,48]. SufB primary sequence contains a N-terminal C<sub>96</sub>XXC<sub>99</sub>XXXC<sub>103</sub> motif, which could qualify as Fe—S binding site [42]. However, a variant lacking all three cysteine residues can still assemble a Fe—S cluster *in vitro* after chemical reconstitution and a functional role for these residues was not supported by mutagenesis analysis [49]. Since SufB protein has a great tendency to form aggregates, this has precluded further structural and biochemical studies.

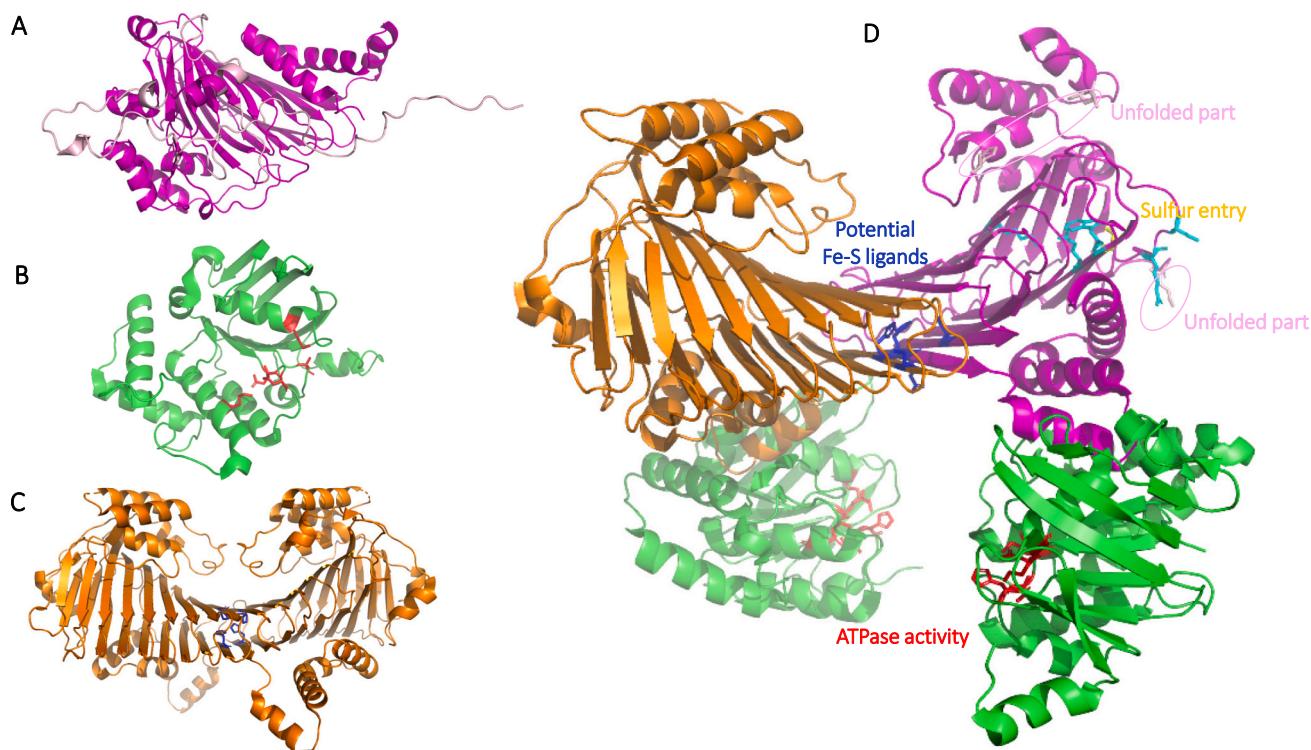
SufD is a paralog of SufB (17 % identity and 37 % similarity), deriving from a duplication of an ancestral SufB sequence [19,20]. SufD contains no known predicted motifs and no cofactor or prosthetic group. Several observations *in vivo* tend to support a link between SufD and iron [50–52], yet *in vitro* study showing that SufD binds iron is lacking. SufD is stable as-purified and homogeneous in its dimeric form. Its structure (PDB number: 1VH4) displays a fattened right-handed beta-helix of nine turns with two strands per turn; the N- and C-termini form helical subdomains (Fig. 5). Homodimerization of SufD doubles the length of the beta-helix (to 80 Å) and two highly conserved residues, Pro<sub>347</sub> and His<sub>360</sub>, interact at the dimer interface [53]. Interestingly, Tyr<sub>374</sub>, Arg<sub>378</sub>, Gly<sub>379</sub>, Ala<sub>385</sub> and Phe<sub>393</sub> are highly conserved residues in the C-terminal subdomain and all these residues are conserved in SufB.

SufC is mainly monomeric in solution and possesses an ATPase activity that requires Mg [23,54]. Structure of the monomeric form (PDB 2D3W, Fig. 5) shows that SufC has two domains, including a helical domain specific to ABC ATPases containing an ABC signature motif and a catalytic alpha/beta domain that contains the nucleotide-binding



**Fig. 4. Proposed mechanism of sulfur mobilization by SufS-SufE.** SufE interacts with SufS leading to solvent accessible Cys<sub>51</sub> loop. Persulfuration of Cys<sub>364</sub> of SufS triggers monomers rotation, beta-latch (in green) rearrangement (open conformation of beta-hairpin) resulting in a stronger interaction between SufS and SufE. Transpersulfidation between Cys<sub>364</sub>-SSH and Cys<sub>51</sub> can occur. The illustration comprises a SufS dimer with a Cys<sub>364</sub>-SSH located on one SufS monomer and the beta-hairpin in the adjacent monomer. For sake of clarity, only one SufE monomer is represented, but a symmetric situation may occur.





**Fig. 5.** Structures of SufB, SufC, SufD and SufBC<sub>2</sub>D and functionally critical residues. (A): Predicted structure of SufB (AF-P77522-F1) with unfolded parts (lightpink); (B) structure of SufC monomer (2D3W) with important residues for ATPase activity (in red); (C) Structure of the SufD homodimer with interface interacting residues (in blue); (D) structure of SufBC<sub>2</sub>D (5AWF) showing unfolded parts (lightpink) in SufB, important residues for SufC ATPase activity (in red), potential Fe—S ligands in SufB and SufD (in blue), sulfur entry (in yellow), residues involved in sulfur trafficking in SufB (in cyan).

Walker A and Walker B motifs [55]. These two domains are connected by a Q-loop that contains a strictly conserved glutamate residue (Glu<sub>171</sub>) [55]. An atypical nucleotide binding conformation at the end of the Walker B motif forms a 3<sub>10</sub> helix, which is not observed in other ABC ATPases. Due to this 3<sub>10</sub> helix, the conserved Glu<sub>171</sub> involved in ATP hydrolysis is flipped out and although this unusual conformation is unfavorable for ATP hydrolysis, it is stabilized by several interactions around the 3<sub>10</sub> helix [55]. Glu<sub>171</sub> and Asp<sub>173</sub> form salt-bridges with a Lys<sub>152</sub> and several water molecules that form a strong hydrogen bond network. Moreover, a significant displacement occurs at a linker region between the ABC alpha/beta domain and the alpha-helical domain (displacement of the Q-loop) [55]. The linker conformation is stabilized by hydrophobic interactions between conserved residues around the Q loop. The ATPase activity of SufC is low but significantly enhanced by 180-fold when associated with SufB and five-fold with SufD [54]. SufC Lys<sub>40</sub>, Lys<sub>152</sub>, Glu<sub>171</sub>, Asp<sub>173</sub> and H<sub>203</sub> residues were identified as important for ATPase activity [52,54,56]. Still, the role of ATP hydrolysis remains unclear as it is dispensable for *in vitro* Fe—S binding and transfer, yet essential *in vivo* [51,57,58]. At least, as-purified inactive His<sub>6</sub>-SufBC<sub>2</sub>D-SufC (Lys<sub>40</sub>Arg) variant displays an 8-fold reduction of iron content relative to the wild-type His<sub>6</sub>-SufBC<sub>2</sub>D opening the possibility that the ATPase activity is necessary for iron acquisition [52].

### 3.2.2. Biochemical and spectroscopic properties of the SufBC<sub>2</sub>D complex

SufBC<sub>2</sub>D is the predominant complex formed after aerobic purification from *E. coli* cells expressing SufABCDSE proteins [32,59]. As purified this complex contains no iron and no sulfide. When purified anaerobically, it contains one flavin (FADH<sub>2</sub>) per complex [52,59]. After chemical reconstitution, the aerobically purified SufBC<sub>2</sub>D complex binds either a [2Fe—2S] or a [4Fe—4S] cluster [52,59,60]. It has been suggested for a long time that the cluster is localized on SufB subunit since, *in vitro*, SufB protein (not SufC or SufD) assembles an Fe—S cluster (either [2Fe—2S] or [4Fe—4S]) resembling that of the SufBC<sub>2</sub>D complex

[42,48]. However, anaerobically isolated His<sub>6</sub>-SufBC<sub>2</sub>D complex possesses a Fe—S cluster with optical spectroscopic features assigned as a [2Fe—2S] and/or a linear [3Fe—4S] cluster [52]. All spectroscopic studies performed on SufB alone or SufBC<sub>2</sub>D could not determine the nature of the cluster ligands, even though Mössbauer spectroscopy likely suggested thiolate coordination [42]. Moreover, SufBC<sub>2</sub>D bound Fe—S cluster ([2Fe—2S] or [4Fe—4S]) can be transferred to apotargets proteins such as aconitase, SufA or ferredoxin [52,59,60]. Apo-SufBC<sub>2</sub>D complex (containing no cofactor) displays an ATPase activity [56] and also enhances the SufSE activity between 2 and 10-fold by being the final sulfur acceptor [32,38,42]. Mass spectrometry and biochemical studies showed that SufBC<sub>2</sub>D complex, in the presence of SufSE and L-cysteine, accumulates nearly 5 sulfur atoms per complex, located within the SufB subunit [42,49].

### 3.2.3. Structural analysis of the SufBC<sub>2</sub>D complex

Two structures of SufBC<sub>2</sub>D were solved by crystallography, one free of metal and cofactor (PDB number: 5AWF, 2.96 Å, Fig. 5), one containing 2 mercuric ions (PDB 5AWG). One Hg<sup>2+</sup> is coordinated by Cys<sub>405</sub> of SufB subunit, the other by Cys<sub>358</sub> of SufD subunit [56]. For both structures, the core domains of SufB and SufD consist of long strands arranged in a helical architecture. These domains are associated by anti-parallel beta-strands to form a new heterodimeric structure [56]. By using a disulfide crosslinking approach, it was shown that SufC can form dimers in the presence of ATP [56]. The structures of SufB and SufD are similar, with an N-terminal helical domain, a central domain consisting of a right-handed parallel beta-helix, and a C-terminal helical domain that contains the SufC binding site [56]. The N-terminal part of the central beta-helix domain of SufB and the SufB-SufD interface are connected by a tunnel within the central domain of the beta-helix of SufB through which the sulfur moiety is transferred from SufB Cys<sub>254</sub> to SufB Cys<sub>405</sub> [49]. SufC subunits bind to SufB and SufD subunits *via* a conserved interaction called the “transmission interface” [56]. These are

spatially separated (more than 40 Å) with their ATP binding motifs facing each other [56]. SufC-SufB and SufC-SufD sub-complexes have almost identical structures. The structure of the SufD subunit in the SufBC<sub>2</sub>D complex was almost identical to that of the previously reported SufD homodimer crystallized alone [53], even though some structural difference was observed around the interaction site with SufC. In the SufBC<sub>2</sub>D complex, the catalytic pocket of SufC is subject to a reorganization suitable for ATP binding and hydrolysis. In particular, the salt bridge observed in monomeric SufC between Glu<sub>171</sub> and Lys<sub>152</sub> is cleaved in the complex, causing the Glu<sub>171</sub> side chain to rotate toward the ATP-binding pocket, and the His<sub>203</sub> residue is shifted by approximately 4 Å toward Glu<sub>171</sub> in the complex [55,56]. There is some evidence that a physical interaction of SufC protomers exists, forming a head to tail dimer, in the presence of ATP using a disulfide crosslinking approach [56]. SufC dimerization is proposed to result in enormous structural changes of the SufB-SufD heterodimer, leading to exposure of Cys<sub>405</sub> of SufB inside the heterodimer interface (and probably H<sub>360</sub> of SufD). These proposed structural rearrangements have to be demonstrated in the future using biochemical or structural studies.

### 3.2.4. Genetic analysis of the SufBC<sub>2</sub>D complex

Genetic analysis identified important residues for SufBC<sub>2</sub>D function. The *E. coli* strain UT109, which is a  $\Delta(\text{iscUA-hscBA}) \Delta\text{sufABCDS E MG1655}$  derivative was used [49]. This strain cannot grow because the isoprenoid biosynthetic pathway that depends upon the Fe-S proteins IspG and IspH, is not functional. However, bringing in the eukaryotic isoprenoid biosynthesis pathway that is independent of Fe-S proteins, and depends upon the sole presence of exogenously added mevalonate (MVA), can rescue the UT109 strain. A UT109 strain carrying *sufCDSE* genes on a plasmid and *sufAB* genes on a separate plasmid was used to screen for mutations in *sufB* or *sufD*. Loss of function of such mutations could be identified as giving rise to MVA-dependent growth. A series of residues in SufB were selected for mutation based on their conservation among SufB orthologs. Accordingly, variants SufB (triple Cys<sub>96</sub>-Cys<sub>99</sub>-Cys<sub>103</sub> to Ala, Cys<sub>254</sub> to Ala, Cys<sub>405</sub> to Ala, Arg<sub>226</sub> to Ala, Asn<sub>228</sub> to Ala, Gln<sub>285</sub> to Ala, Trp<sub>287</sub> to Ala, Lys<sub>303</sub> to Ala or Glu<sub>434</sub> to Ala) as well as SufD (His<sub>360</sub> to Ala) were unable to complement the *E. coli* strain UT109 for growth in the absence of MVA [49]. Interestingly, although the single substitution Asp<sub>406</sub> to Ala, Glu<sub>432</sub> to Ala, His<sub>433</sub> to Ala (SufB) or Cys<sub>358</sub> to Ser (SufD) had no significant effect on their own, combination of Asp<sub>406</sub> to Ala, Glu<sub>432</sub> to Ala and His<sub>433</sub> to Ala of SufB elicited slow-growth phenotypes in the absence of MVA. The combination of Glu<sub>432</sub> to Ala, His<sub>433</sub> to Ala and Cys<sub>358</sub> to Ser also prevented complementation. Altogether, these results highlight Cys<sub>254</sub>, Cys<sub>405</sub>, Glu<sub>432</sub>, His<sub>433</sub>, Glu<sub>434</sub>, Arg<sub>226</sub>, Asn<sub>228</sub>, Gln<sub>285</sub>, Trp<sub>287</sub>, and Lys<sub>303</sub> of SufB as well as His<sub>360</sub> and Cys<sub>358</sub> of SufD as functionally important (Fig. 5). These residues are conserved, excepted for Cys<sub>358</sub> which is absent in *B. subtilis* [49].

From structural and genetic studies, the location of the cluster binding site in SufBC<sub>2</sub>D is currently proposed to be at the SufD-SufB interface [49], involving Cysteine, Histidine and/or Glutamate residues meaning sulfur, nitrogen and/or oxygen atoms from both SufD and SufB subunits. All spectroscopies used so far to characterize Fe-S containing SufBC<sub>2</sub>D did not provide a clear-cut answer regarding Fe-S cluster ligands. Therefore, for the moment the question of the cluster ligands is still opened.

### 3.2.5. Flavin is bound by the SufBC<sub>2</sub>D complex

A remarkable and still unexplained feature of the entire SufBC<sub>2</sub>D complex concerns its ability to bind flavin (FADH<sub>2</sub>) during anaerobic purification [52,59]. The complex does not bind the oxidized form of flavin (FAD) and exhibits rapid loss of flavin when exposed to oxygen [59]. It is possible to reload the apo-SufBC<sub>2</sub>D with FADH<sub>2</sub> under anaerobic conditions with good yield (0.8–1 FADH<sub>2</sub>/complex) and a dissociation constant for the binding of FADH<sub>2</sub> to SufBC<sub>2</sub>D could be determined (12 μM) [59]. SufB alone or SufB in the presence of SufC is

able to bind FADH<sub>2</sub>, albeit to a lesser extent (0.1–0.3 mol of FADH<sub>2</sub> per mol of protein, respectively). SufC and SufD alone are not capable to bind the Flavin [59]. The reduced flavin in the SufBC<sub>2</sub>D complex is sufficiently accessible and reactive to donate its electrons to iron-binding proteins (CyaY-Fe), suggesting that the SufBC<sub>2</sub>D complex may serve as a flavin-dependent system to reduce ferric iron from an unknown iron source [59]. A role of the FADH<sub>2</sub> for the reduction of the persulfide on SufB during Fe-S assembly is also possible. Concerning the FADH<sub>2</sub> binding site, Wollers et al. proposed three motifs which are present in the SufB amino-acid sequence: the GXXL motif, the P(X)<sub>6</sub>G(A)XN motif and the R(X)<sub>6</sub>EXXYXXXXXG(X)<sub>8</sub>Y motif. These motifs are characteristic of the flavin-binding motif found in the p-cresol-methylhydroxylase family [61]. The crystal structure of the SufBC<sub>2</sub>D complex does not help to determine whether these motifs could be involved in FADH<sub>2</sub> binding, as the N-term (amino-acids 1 to 33 and 80 to 156) of SufB, that contain the P(X)<sub>6</sub>G(A)XN motif, is not properly folded. It is important to note that although the three motifs are present in some SufB proteins (*Salmonella* and *Yersinia* for example), they are not all well conserved among all SufB proteins. Moreover, substitution of some residues in the R(X)<sub>6</sub>EXXYXXXXXG(X)<sub>8</sub>Y motif, (R237A or E244A) does not affect SufBC<sub>2</sub>D function *in vivo* [49]. Hence, the assignment of the FADH<sub>2</sub> binding site requires further studies and it is not excluded that FADH<sub>2</sub> is bound to SufBC<sub>2</sub>D through residues from different subunits. Yet, the exact role and function of flavin in the SufBC<sub>2</sub>D complex is not fully understood.

### 3.2.6. A model for SufBC<sub>2</sub>D-mediated assembly of a Fe-S cluster

The two crystal structures of the SufBC<sub>2</sub>D complex, combined with the *in vivo* experiments led to a proposed mechanism for the Fe-S cluster assembly on SufBC<sub>2</sub>D. After extraction of sulfur from the substrate L-cysteine by the action of SufS and its delivery *via* SufE to SufB Cys<sub>254</sub>, the bound S<sup>0</sup> is reduced to S<sup>2-</sup>, released from SufB Cys<sub>254</sub>, and migrates through the hydrophilic tunnel that traverses the beta-helix core domain of SufB to reach SufB Cys<sub>405</sub>. In the presence of iron, the cluster is assembled using Cys<sub>405</sub>, Glu<sub>434</sub> of SufB and His<sub>360</sub> of SufD as essential ligands in combination with a fourth ligand that can be either Glu<sub>432</sub>, His<sub>433</sub> of SufB or Cys<sub>358</sub> of SufD. Interestingly, in the SufBC<sub>2</sub>D structure with Hg<sup>2+</sup> ions, as already mentioned, one Hg<sup>2+</sup> is bound to Cys<sub>405</sub> (SufB), and the other to Cys<sub>358</sub> (SufD) that is adjacent to His<sub>360</sub> (SufD). Therefore, residues Cys<sub>405</sub>, Glu<sub>434</sub> in SufB, His<sub>360</sub> and Cys<sub>358</sub> in SufD appear as good candidates for Fe-S cluster ligation [49]. However, the side chains of SufB Cys<sub>405</sub> and SufD His<sub>360</sub> are buried inside the beta-helix, whereas Glu<sub>434</sub> protrudes outside making the binding of the cluster impossible [49]. Glu<sub>432</sub> or His<sub>433</sub> in SufB could be the fourth ligand, with a preference for the more conserved His<sub>433</sub>. Only the use of advanced spectroscopies such as XAS, Hyscore and ENDOR or crystallography carried out on the native Fe-S containing SufBC<sub>2</sub>D complex will enable the determination of the cluster ligands. We cannot exclude that the cluster at the SufB-SufD interface in SufBC<sub>2</sub>D is a transient binding site within SufBC<sub>2</sub>D complex and that the final cluster binding site is located somewhere in SufB subunit. Therefore, for the nature of the cluster ligands remains unknown. SufC dimerization and ATP could initiate important structural changes of the SufBC<sub>2</sub>D complex, allowing Fe-S delivery, probably initiated by the transmission interface created by the dimerization of the two SufC subunits. A schematized mechanism of Fe-S assembly on the SufBC<sub>2</sub>D scaffold is proposed Fig. 6A. Before to close, it might be worth reporting that another complex, a SufB<sub>2</sub>C<sub>2</sub> complex, could be isolated after anaerobic purification from *E. coli* cells overexpressing SufBCD proteins [52]. This complex contains 3.2 iron and 4.2 sulfur/complex likely organized as a [4Fe-4S] and no flavin [52,62]. *In vitro* studies indicated that SufB<sub>2</sub>C<sub>2</sub> is more efficient in *de novo* assembly of clusters in the ferredoxin target protein than the SufBC<sub>2</sub>D complex [62]. The location of the Fe-S cluster within this complex is not known [62]. Although it is still unclear whether such a sub-complex occurs *in vivo*, knowledge derived from its analysis might prove useful to decipher the functioning of minimal SmsCB complex (see

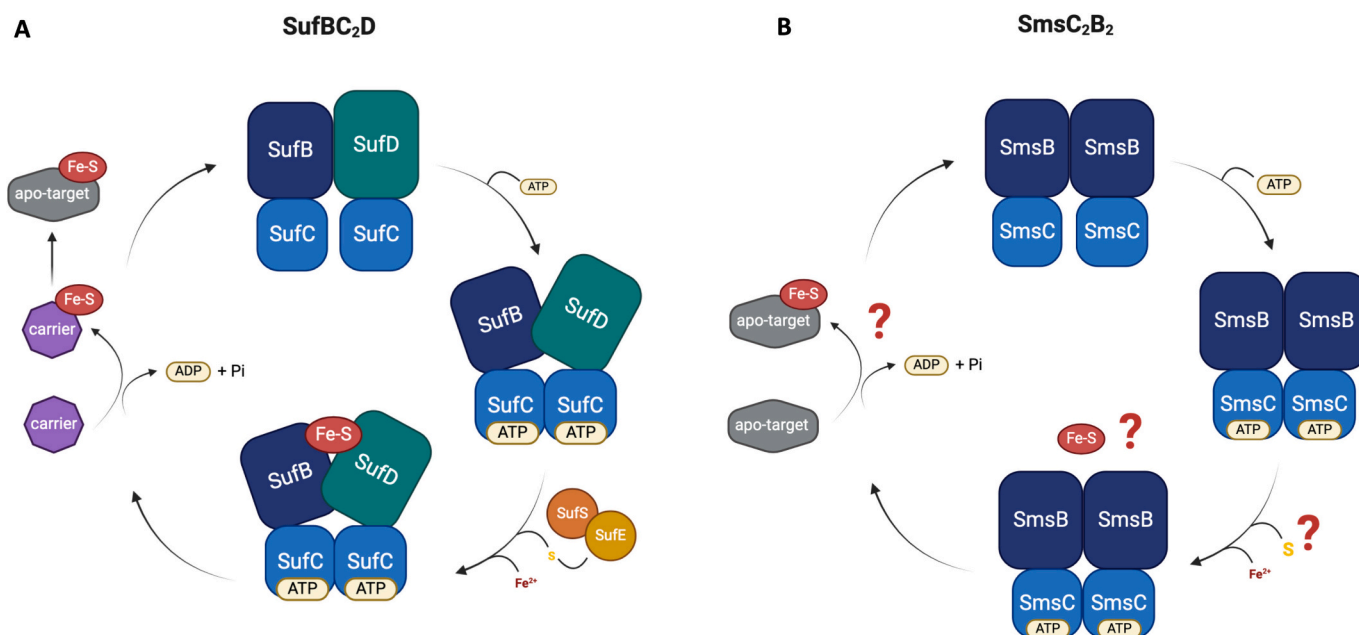


Fig. 6. Simplified proposed mechanisms of Fe—S cluster assembly by the SufBC<sub>2</sub>D complex and the ancestral minimal SMS system.

below).

(A) SufC binds ATP inducing a conformational change of SufB and SufD leading to a transmission interface. Then, using sulfur obtained from the two-component cysteine desulfurase SufS-SufE, and iron (unknown source) the Fe—S cluster is built at the interface of SufB and SufD. Finally, the Fe—S cluster is transferred to the carrier of the SUF system, the ATP is hydrolyzed, leading to the initial state of conformation of the complex. (B) For SMS system, there is no identified sulfur donor (X) and carrier. The ATPase activity of SmsC has not been described. For both systems, the iron source is unknown.

#### 4. The gram-positive SUF system referred to SUF-like system

##### 4.1. Physiology

Gram-positive bacteria such as *Bacillus subtilis* and *Staphylococcus aureus*, *Mycobacterium tuberculosis* and *Enterococcus faecalis* possess only SUF Fe—S biogenesis systems (Fig. 1). These systems very much resemble the *E. coli* SUF, except SufE that is substituted by SufU, referring to them as SUF-like systems. *M. tuberculosis* (*Mtb*) is the causative agent of tuberculosis while *S. aureus* is a human commensal that causes morbidity and mortality worldwide. *E. faecalis* is responsible for 80–90 % of clinical isolates in nosocomial infections [63] including infections of the urinary tract, wounds, bloodstream and endocardium. The SUF system is essential for viability of *Mtb* [64–66] and *S. aureus* [67,68] and therefore constitute a potential target for therapeutic treatments, as humans have no SUF.

##### 4.2. Sulfur acquisition: Structure-function of SufS and SufU

In SUF-like systems, sulfur acquisition is performed by the SufS and SufU proteins. Gram (+) SufS is, like Gram (–) SufS, a dimeric type II cysteine desulfurase enzyme displaying a low cysteine desulfurase activity dependent on the conserved cysteine residue (*B. subtilis* Cys<sub>361</sub>, *Mtb* Cys<sub>373</sub>, *S. aureus* Cys<sub>389</sub>, *E. faecalis* Cys<sub>153</sub>) [69–72]. Gram (+) SufS is characterized by a half-site reactivity (still not fully demonstrated for Gram(–) SufS), defined by one active site functional at a time [69,70,73], meaning that the active site of each monomer operate alternately.; In the case of SufS enzymes, there is no evidence for either case. Structural studies showed that the catalytic loop of SufS is adjacent

to the PLP in the resting state and undergoes a small structural conformational change in orientation (by 3°) of α-Cβ-Sγ of the Cys<sub>361</sub> during catalysis. Such a small rotation of the side chain is necessary for nucleophilic attack toward the PLP-L-cysteine [74]. This loop of *B. subtilis* SufS lacks structural flexibility and solvent accessibility (like Gram (–) SufS, which likely explains its low cysteine desulfurase activity. Several crystallographic studies, including X-ray crystallography, were carried out on *B. subtilis* SufS during catalysis with L-cysteine [74,75]. In particular, two intermediate external aldimines were trapped: a) PLP-L-cysteine intermediate, which was modeled as an Cys-aldimine intermediate like in *E. coli* SufS system [23], b) the PLP-L-alanine aldimine (ala-eneamine) with Cys361-SSH which was derived from the first catalytic conversion of L-cysteine to L-alanine.

Biochemical studies have unveiled that SufU, a monomeric protein of 16 kDa, interacts in solution with SufS forming a complex with a 2:2 stoichiometry for the SufS:SufU interaction [69,70,76]. Surprisingly, SufU shares more similarity with NifU and IscU scaffolds than with SufE and, in fact, *B. subtilis* SufU can accommodate Fe—S cluster after *in vitro* chemical reconstitution and transfer it [71,76]. Therefore, *B. subtilis* SufU was initially proposed to act as a scaffold. However, several arguments do not favor this view. (i) the LPPVK motif present on NifU/IscU scaffolds, which permits interaction with HscA, is absent in SufU proteins. (ii) a 19-amino acid insertion is present between the second and third conserved cysteine residues, which discriminates SufU from IscU. (iii) on the N-terminal side of the third conserved cysteine lies a conserved lysine in SufU, which is a conserved histidine in IscU. (iv) attempts to characterize the SufU-FeS cluster by Mössbauer and EPR spectroscopies were unsuccessful, strongly suggesting that binding of Fe—S in SufU is aspecific [73]. (v) heterologous complementation studies using *B. subtilis* and *E. coli* mutants showed that *B. subtilis* SufSU is interchangeable with *E. coli* SufSE but not with IscSU [77]. (vi) *Mtb* Zn-SufU was shown not to be an intermediate during Fe—S formation and apo-SufU does not bind an Fe—S cluster [70,73]. Altogether, these observations support the notion that SufU is involved in sulfur mobilization with SufS rather than acting as a Fe—S assembly scaffold.

In fact, SufU as-purified binds a zinc ion (affinity constant of 10<sup>16</sup> M<sup>-1</sup>·10<sup>17</sup> M<sup>-1</sup>), which is coordinated *via* conserved residues, three cysteines (Cys<sub>35</sub>, Cys<sub>41</sub> and Cys<sub>128</sub> in *B. subtilis*) and an aspartate (Asp<sub>43</sub> in *B. subtilis*) [69,72,73,78]. Enzymology experiments revealed that SufU is a co-substrate of SufS (with L-cysteine) explaining the ping-pong



mechanism [69,70]. SufU is a sulfurtransferase that enhances the activity of SufS (Table 1) [70,72,73], and the zinc ion is important for the sulfur transfer reaction between SufS and SufU [69,70]. Interestingly, *E. coli* SufE that does not contain any metal is not able to enhance the Gram(+) SufS activity [70]. Moreover, a strictly conserved His residue of SufS (His<sub>354</sub> in *Mtb* SufS, His<sub>342</sub> in *B. subtilis*) plays an essential role in the sulfur transfer reaction [70,79]. This residue is absent in Gram-negative SufS proteins associated with SufE. These observations show a specificity in the sulfur transfer between Gram(+) and Gram(-) bacteria [70].

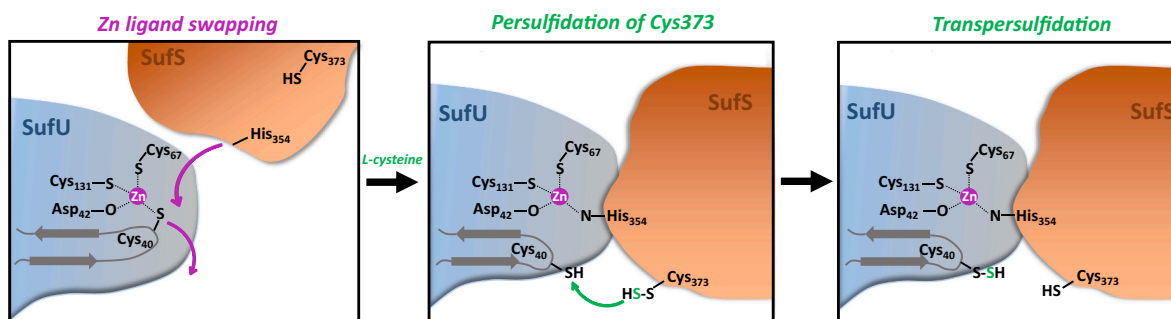
The crystal structure of *Mtb* and *B. subtilis* Zn-SufU-SufS complexes were solved at 1.65 Å and at 2.3 Å resolution, respectively (PDB 8ODQ and PDB 5XT5) [70,79]. In these structures, the SufS-SufU complex is in the (SufS)<sub>2</sub>-(SufU)<sub>2</sub> state. These crystal structures revealed the importance of Zn<sup>2+</sup> for both the SufU-SufS binding and the sulfur transfer from SufS to SufU. These studies unveiled a Zn ligand exchange reaction upon SufS-SufU complexation; the first conserved Cys (*B. subtilis* Cys<sub>41</sub> or *Mtb* Cys<sub>40</sub>) is exchanged with the SufS conserved histidine residue (*B. subtilis* His<sub>342</sub>, *Mtb* His<sub>354</sub>). Consistently, changing this His to tyrosine resulted in a significant loss of desulfurase activity of the SufS-SufU complex [79]. The structural studies of the complex show also that the histidine (*Mtb* His<sub>354</sub>), which is located at the extremity of an alpha-helix and points out of the surface of SufS, is inserted between the Zn ion and the second conserved Cys<sub>40</sub> in SufU [70]. Therefore, Zn ligand swapping provides a free thiol from a Cys of SufU to act as a sulfur acceptor. The sulfur transfer mechanism between SufS and SufU was beautifully demonstrated *in crystallo* using SufS-SufU from *B. subtilis* with several trapped catalytic intermediates (persulfide on SufS and then transfer to SufU) [79]. The *Mtb* SufS-SufU structure has provided in addition new insight regarding the conformational changes that SufU undergoes upon docking to SufS, in particular regarding the loop containing the conserved Cys<sub>40</sub> residue. A comparative analysis of the *Mtb* SufU unit (as it is in complex) extracted from *Mtb* SufS-SufU with SufU from *B. subtilis* (PDB 6JZV) revealed that the hairpin loop of SufU, including Cys<sub>40</sub>, undergoes a major reorientation when docking to SufS. From this analysis, a sequential molecular mechanism was proposed (Fig. 7): (1) SufU docks onto SufS; (2) Zn swaps its ligand from Cys<sub>40</sub> to His<sub>354</sub>; (3) the released SufU hairpin loop undergoes a major movement from a closed to an open conformation; (4) His<sub>354</sub> stabilizes the hairpin in the open state (through a hydrogen bond with the Cys<sub>40</sub> carbonyl oxygen) and creates a projection inside SufS; (5) the Cys<sub>40</sub> side-chain flips into the cavity of SufS to position Cys<sub>40</sub> close to Cys<sub>373</sub> (6 Å). In this position, Cys<sub>40</sub> can accept sulfur atom(s) from SufS Cys<sub>373</sub>. In the *Mtb* SufS-SufU structure, the electron density map at Cys<sub>40</sub> revealed an extra density that could be modeled as Cys<sub>40</sub> persulfide (Cys<sub>40</sub>-SSH).

Differences in cysteine-oxidation patterns were noted between the *Mtb* SufSU and *E. coli* SufSE systems [78]. Indeed, in the presence of H<sub>2</sub>O<sub>2</sub>, SufE homodimers formed whether SufS was present or not. In contrast, in the same oxidizing conditions SufS-SufU heterodimers

formed. These differences might explain the better cysteine desulfurase activity measured of *Mtb* SufSU in the presence of oxidative stress [70]. In this regard, it is tempting to propose that Zn ion protects the SufU sulfur shuttle conserved cysteine residue from oxidation. In comparing the sulfur mobilization mechanism by SufSU and SufSE, it seems that SufSU has a specificity which consists in making its sulfur shuttle cysteine free for sulfur transfer only upon interaction with SufS.

#### 4.3. Fe—S cluster assembly by the SufBCD scaffold

The SufBCD scaffold of Gram-positive bacteria received specific focus in *Mtb* as it is essential and exhibits original features. Indeed *Mtb* SufB possesses an intein from residues 253–611 (over a total of 846 aa). SufB, SufC, and SufD have been shown to interact *in cellulo* [64] and SufB splicing appears to have a critical role in modulating interaction with SufC and SufD [80,81]. The SufB intein could act as a sensor for oxidative and nitrosative stress in *Mtb* [81]. After splicing, *Mtb* SufB is around 54 kDa in size, like other SufB proteins. *Mtb* SufB primary sequence contains residues identified as functionally important *in vivo* for *E. coli* SufB such as the conserved sulfur entry Cys<sub>253</sub> (Cys<sub>254</sub> in *E. coli*) and terminal sulfur acceptor Cys<sub>397</sub> (Cys<sub>405</sub> in *E. coli*) sites, the potential Fe—S ligands His<sub>425</sub> (His<sub>433</sub> in *E. coli*), Glu<sub>426</sub> (Glu<sub>434</sub> in *E. coli*), and the sulfur production and/or sulfur channeling residues Gln<sub>284</sub> residue (Gln<sub>285</sub> in *E. coli*), Lys<sub>296</sub> (Lys<sub>303</sub> in *E. coli*) and Trp<sub>286</sub> (Trp<sub>287</sub> in *E. coli*) [49]. *Mtb* SufC displays 50 % amino-acid sequence identity with *E. coli* SufC, including Walker A and Walker B domain, ABC signature as well as key amino-acids for ATPase activity such as the Lys residue in the Walker A motif (corresponding to the Lys<sub>40</sub> in *E. coli* SufC), the Glu<sub>176</sub> residue immediately following the Walker B motif (the Glu<sub>171</sub> in *E. coli* SufC), and the His<sub>209</sub> residue in the characteristic ABC ATPase H-motif (the His<sub>203</sub> in *E. coli* SufC) [56]. Surprisingly, *Mtb* SufD displays only 23 % sequence identity with *E. coli* SufD. However, its sequence contains the His<sub>327</sub> residue (His<sub>360</sub> in *E. coli*), proposed to be functionally important [49,56,82]. The prediction is that SufB, SufD and SufC proteins interact to assemble the Fe—S cluster before transfer to targets. However, these three proteins as well as their interaction remain to be functionally and structurally characterized. SufBCD was also studied within the context of development of a new anti-bacterial compound. Likewise, a small inhibitory molecule, “882”, was identified as targeting *S. aureus* SufBCD [83]. Pull-down experiments from cellular lysate using biotin-conjugated 882, showed that “882” molecule interacts with SufBCD proteins and subsequent biolayer interferometry (BLI) experiments revealed that the inhibitor interacts directly with SufC (K<sub>d</sub> = 4 μM) [83].



**Fig. 7.** Proposed mechanism of sulfur mobilization by Suf-like system (with *Mtb* system). SufU zinc (Zn) coordinated by Cys<sub>65</sub>, Cys<sub>40</sub>, Cys<sub>131</sub> and Asp<sub>67</sub> interacts with SufS. Upon interaction, Zn atom swaps its ligand from Cys<sub>40</sub> to His<sub>354</sub>. SufU hairpin loop (grey) undergoes a reorientation movement from a closed to an open conformation. Cys<sub>40</sub> side-chain flips into the dedicated cavity of SufS close to Cys<sub>373</sub>. Cys<sub>40</sub> can accept sulfur atom from SufS Cys<sub>373</sub>.

## 5. The SUF system in parasites: *Plasmodium falciparum*

### 5.1. Physiology

Malaria is responsible for around 500,000 deaths each year and is caused by the parasite *Plasmodium falciparum*. The plastid (apicoplast) of *P. falciparum*, essential for parasite survival [84], houses several important biochemical pathways such as type II fatty acid biosynthesis, non-mevalonate pathway of isoprenoid synthesis and biosynthesis of heme [85–87]. The existence of a SUF pathway (Fig. 1) in apicoplast has been initially suggested by bioinformatics studies [88,89]. One protein (SufB/YCF24) is predicted to be encoded by the apicoplast genome itself, while SufC, SufD, SufS and SufE proteins are nuclear encoded proteins with N-terminal bipartite apicoplast targeting elements [85]. A SufA-like protein has been predicted to be apicoplast-targeted. The SUF pathway was reported to be essential for apicoplast maintenance and parasite survival [58,90] and therefore constitutes a potential target for antimalarial drug discovery. Discovery of inhibitors requires biochemical and structural characterization of its components.

### 5.2. Sulfur acquisition: The structure-function of *P. falciparum* SufS and SufE

Although *P. falciparum* SufS and *P. falciparum* SufE proteins have low overall sequence identity with their *E. coli* counterparts, they carry conserved domains and residues that are critical for cofactor binding and function. *P. falciparum* SufS contains a PLP-binding motif (SGHK) with a conserved Lys residue that forms an internal aldimine with PLP. *P. falciparum* SufS has the conserved Cys<sub>497</sub> residue (corresponding to *E. coli* Cys<sub>364</sub>) in a typical consensus region, RXGHHCA, found in the group II cysteine desulfurases. *P. falciparum* SufE is predicted to have a 102-aa N-terminal apicoplast targeting leader sequence and carries a conserved Cys<sub>154</sub> residue (corresponding to Cys<sub>51</sub> in *E. coli* SufE) that is predicted to receive sulfur from SufS. Purified *P. falciparum* SufS and SufE proteins were studied *in vitro* [91]. SufS forms a complex with SufE and exhibits a low cysteine desulfurase activity, which is greatly enhanced by SufE in a concentration-dependent manner (up to 17-fold) (Table 1). Moreover, SufS Cys<sub>497</sub> is the critical residue involved in sulfur mobilization from the cysteine substrate. Structural modelling of the *P. falciparum* SufS-SufE interaction revealed that Cys<sub>497</sub> of SufS is only 8.4 Å from Cys<sub>154</sub> of SufE, a distance which would be further reduced by persulfide on SufS, making a sulfur transfer possible between these two residues. *P. falciparum* SufE is able to activate also *E. coli* SufS and *P. falciparum* SufS can complement *in vivo* the loss of *E. coli* SufS [58]. *P. falciparum* SufS does not have the conserved Histidine residue (His<sub>354</sub> in *Mtb*, His<sub>342</sub> in *B. subtilis*) confirming that *P. falciparum* SufS works in tandem with a SufE protein. D-cycloserine, a PLP binding drug, was shown to inhibit *P. falciparum* SufS *in vitro* (IC<sub>50</sub>: 29 µM) [91].

### 5.3. Fe—S cluster assembly by the *P. falciparum* SufBCD scaffold

*P. falciparum* SufC exhibits 44 % sequence identity with its *E. coli* counterpart. The unprocessed protein has a predicted mass of 40 kDa containing a 96 amino acid extension at the N-terminus that is predicted to contain the bipartite element for apicoplast targeting [85,92]. *P. falciparum* SufC carries Walker A and Walker B motifs together with a conserved ATP binding cassette (ABC) signature [93]. Accordingly, it is endowed with an ATPase activity [94].

*P. falciparum* SufB is a 54 kDa protein that exhibits 37 % primary sequence identity with *E. coli* SufB. Interaction between purified *P. falciparum* SufC ATPase and scaffold component *P. falciparum* SufB was observed *in vitro* and further confirmed by a pull-down assay [94]. Unlike *E. coli* SufB, but similar to *Arabidopsis* plastid SufB, *P. falciparum* SufB exhibits an ATPase activity, which is however 3-fold lower than SufC activity [94–96]. *In vitro* interaction experiments and *in vivo* crosslinking showed that apicoplast-targeted SufD (21 % identity with

its *E. coli* homolog) interacts with apicoplast-encoded *P. falciparum* SufB and apicoplast-targeted *P. falciparum* SufC forming a complex with a 1:1:2 stoichiometry [96]. *P. falciparum* SufD, but not SufB, enhances the SufC ATPase activity by two-fold [96]. The SufBC<sub>2</sub>D complex can function as a scaffold to assemble [4Fe—4S] clusters *in vitro* [96]. In a structural model of SufBC<sub>2</sub>D, Cys<sub>379</sub> in SufB (Cys<sub>405</sub> in SufB *E. coli*) and His<sub>1396</sub> of SufD (His<sub>360</sub> in *E. coli* SufD) are well oriented and positioned for cluster ligation [96]. The knowledge of other SUF proteins, particularly those constituting the Fe—S scaffold, will provide the opportunity for identifying drugs that would target SUF system and thus inhibit parasite growth [91].

## 6. The SMS system: Ancestor of the SUF system

### 6.1. The SMS in archaea

SMS is composed of two homologs of the SUF scaffold proteins SufBC, called SmsCB. Surprisingly no cysteine desulfurase, carrier or homolog of SufD encoding gene was found in the vicinity of the *smsCB* genes or even in the genome of multiple species carrying *smsCB* (Fig. 1). SMS was experimentally validated as a *bona fide* Fe—S cluster biogenesis scaffold [20]. Interactions between SmsC and SmsB proteins of *M. jannaschii* and *M. acetivorans* were shown by two-hybrid technique and copurification in anaerobiosis of SmsB with 6His-tagged SmsC, suggesting that SmsCB act as a complex. As purified SmsCB proteins of *M. jannaschii* and *M. acetivorans* were shown to bind Fe and sulfur by UV-visible spectroscopic analysis and iron and sulfur analyses [20]. *M. acetivorans* SmsCB proteins display great amount of iron and sulfur as purified (4 Fe and S per SmsC<sub>2</sub>B<sub>2</sub>) while *in vitro* reconstitution of the Fe—S cluster was necessary for SmsCB of *M. jannaschii* that contains substoichiometric amount of Fe and S (0.1 nd 0.2/per complex). After reconstitution it binds around 4 Fe and 4 S per SmsC<sub>2</sub>B<sub>2</sub>. Moreover, both as purified and reconstituted SmsCB were able to transfer their Fe—S cluster to *E. coli* aconitase and reactivate it, showing that the SmsCB complex can promote both formation and transfer of a Fe—S of a cellular apo target [20].

Crystal structure of SmsB homodimers from *Methanosarcina mazei* Go1 is available (PDB 4DN7). Interestingly, the structure reveals the existence of a tunnel similar to that observed in SufB, ranging from Cys<sub>177</sub> (corresponds to *E. coli* SufB Cys<sub>254</sub>) to Cys<sub>319</sub> (corresponds to *E. coli* SufB Cys<sub>405</sub>). Recently, a first attempt to analyze the contribution of SMS to Fe—S biogenesis *in vivo* was reported in the methanogenic archaeon *Methanosarcina acetivorans* [98]. This methanogen has two predicted SMS systems, referred to as SmsC1B1 and SmsC2B2. Authors utilized genetic methods to repress or delete the *smsC1B1* and *smsC2B2* genes, and the results revealed that neither dual repression nor deletion of both operons affected the organism's growth under various conditions, including diazotrophy. Moreover, the deletion of *smsC1B1* and/or *smsC2B2* did not affect the total Fe—S cluster content in *M. acetivorans* cells. However, the deletion of only *smsC1B1* led to a delayed-growth phenotype. The study concluded that the SMS systems are not required for Fe—S cluster biogenesis in *M. acetivorans* and raised questions about the *in vivo* function of SmsCB in methanogens.

### 6.2. The SMS in blastocystis

*Blastocystis* (*Bh*) is a unicellular anaerobic parasite, part of the genus of unicellular protozoa of the stramenopile group, which includes algae, diatoms and oomycetes. It can be found in the intestinal tract of animals and humans, leading to infections. It harbors a ISC system and a SmsCB system that was previously misannotated as SufBC [99,100] (Fig. 1). Curiously, SmsC and B are actually fused, forming a single polypeptide, in which both domains interact. Immunofluorescence and immunoelectron microscopy have revealed that the *Blastocystis* SMS system is localized in the cytoplasm [99]. *Bh* SmsCB exhibits ATPase activity (V<sub>max</sub> value: 0.049 µmol Pi/min/mg; Km ATP: 196 µM). These values are

comparable to those of the *E. coli* SufBC<sub>2</sub>D complex [99]. *Bh* SmsCB enhances the cysteine desulfurase activity of the SufSE complex from *E. coli*, similar to the SufBC<sub>2</sub>D complex [99]. Last, *Bh* SmsCB was found to contain an average of 4.2 Fe atoms and 4.5 sulfur atoms per dimer, upon reconstitution [99]. Thus, despite it underwent a fusion event, the *Bh* SmsCB protein exhibits biochemical features similar to the *E. coli* SufBC<sub>2</sub>D complex. Interestingly, SmsBC was likely acquired through horizontal gene transfer from an archaea [99].

## 7. Perspectives

Despite progress on the SUF system, notably through structural studies, much remains to be learned. Obtaining the structure of the SufSE complex will be crucial for elucidating the mechanism of sulfur mobilization in Gram negative bacteria. Similarly, structural data on SufBC<sub>2</sub>D with flavin and the Fe—S cluster are eagerly awaited, and combined with biochemical studies will enable us to determine the nature of the Fe—S cluster ligands and to understand the role of flavin in the complex. In particular, it would be interesting to determine whether flavin is a specific cofactor of the Gram-negative SUF machinery, or whether it also occurs in Gram-positive SUF systems and certain parasites. The study of Gram-positive SUF systems has made great strides in recent years and should soon make it possible to find inhibitors of this machinery as antibacterials.

The ancestral and minimal SMS system, composed of only simple SmsCB scaffold raises different questions. The first one is the source of sulfur, as this minimal system has no cysteine desulfurase (Fig. 3B). One possibility is that environmental exogenous sulfide is used as sulfur source instead of L-cysteine [101,102]. Another possibility, proposed by Boyd and collaborators, is that pyrite is the sulfur source of methanogens. Indeed, anaerobic methanogens have the ability to reduce FeS<sub>2</sub> and release Fe and S for their nutritional needs [103]. A third possibility for organisms living in non-sulfide-rich environments, is that MIS, the minimal machinery of Fe—S clusters, ancestral of the ISC system could provide sulfur to SMS through its cysteine desulfurase MisS (as it is the case between *csdAE* and *sufBCD* in *E. coli* [104]). Indeed, MIS and SMS largely co-occur (even if they are never side-by-side in the genomes) and this co-existence was largely retained in the archaea, possibly linked to their more limited range of lifestyles (strictly anaerobic) with respect to bacteria.

The SMS system has no homolog of SufD. We discussed above that the existence of sub-complex SufB<sub>2</sub>C<sub>2</sub>. If it occurs at all *in vivo*, a possibility put forward by Outten et al. is that it would be the terminal scaffold complex once SufD has been released from it [19,62]. In that sense, SmsC<sub>2</sub>B<sub>2</sub> could simply act as the principal assembly and donor platform of Fe—S clusters in an environment rich in iron (Fig. 3B) [62]. The other possibility is that the SmsB protein could play both the role of SufB and SufD.

## CRediT authorship contribution statement

**Macha Dussouchaud:** Writing – review & editing, Data curation. **Frédéric Barras:** Writing – review & editing, Writing – original draft, Validation, Supervision, Investigation, Funding acquisition, Conceptualization. **Sandrine Ollagnier de Choudens:** Writing – review & editing, Writing – original draft, Validation, Supervision, Funding acquisition, Data curation, Conceptualization.

## Declaration of competing interest

The authors declare the following financial interests/personal relationships which may be considered as potential competing interests.

Ollagnier Sandrine reports was provided by National Centre for Scientific Research. Ollagnier Sandrine reports a relationship with National Centre for Scientific Research that includes: employment, funding grants, and non-financial support. If there are other authors, they

declare that they have no known competing financial interests or personal relationships that could have appeared to influence the work reported in this paper.

## Data availability

Data will be made available on request.

## Acknowledgements

We thank members of the SAME unit for discussion. This work was supported by the French National Agency for Research (Agence Nationale de la Recherche) ANR-22-CE44-0043-First-FeS, the ANR through the LabEx ARCANÉ program (ANR-11-LABX-0003-01), the ANR-10-LABX- 62-IBEID, the LabEx GRAL, the Grenoble Alliance for Integrated Structural and Cell Biology, a program of the Graduate School of Chemistry, Biology, and Health at the University Grenoble Alpes CBH-EUR-GS (ANR-17-EURE-0003), the Institut Pasteur, the CNRS and the Paris-Cité Université. This work is also supported by the European Cooperation in Science and Technology (COST), and all authors acknowledge support from COST Action, FeSimmChemNet. This article is based upon work from COST Action FeSimmChemNet, CA21115, supported by COST (European Cooperation in Science and Technology).

## References

- [1] M. Lenon, R. Arias-Carín, F. Barras, The Fe—S proteome of *Escherichia coli*: prediction, function, and fate, *Metallomics* 14 (2022) mfac022.
- [2] H. Beinert, Iron-sulfur proteins: ancient structures, still full of surprises. *J. Biol. Inorg. Chem. JBIC Publ. Soc. Biol. Inorg. Chem.* 5 (2000) 2–15.
- [3] M. Fontecave, Iron-sulfur clusters: ever-expanding roles, *Nat. Chem. Biol.* 2 (2006) 171–174.
- [4] R. Lill, Function and biogenesis of iron-sulfur proteins, *Nature* 460 (2009) 831–838.
- [5] B. Py, P.L. Moreau, F. Barras, Fe-S clusters, fragile sentinels of the cell, *Curr. Opin. Microbiol.* 14 (2011) 218–223.
- [6] B. Roche, L. Aussel, B. Ezraty, P. Mandin, B. Py, F. Barras, Iron/sulfur proteins biogenesis in prokaryotes: formation, regulation and diversity, *Biochim. Biophys. Acta* 2013 (1827) 455–469.
- [7] S. Watanabe, A. Kita, K. Kobayashi, K. Miki, Crystal structure of the [2Fe-2S] oxidative-stress sensor SoxR bound to DNA, *Proc. Natl. Acad. Sci.* 105 (2008) 4121–4126.
- [8] V. Larosa, C. Remacle, Insights into the respiratory chain and oxidative stress, *Biosci. Rep.* 38, BSR20171492 (2018).
- [9] J.M. Dias, M.E. Than, A. Humm, R. Huber, G.P. Bourenkov, H.D. Bartunik, S. Bursakov, J. Calvete, J. Caldeira, C. Carneiro, J.J. Moura, I. Moura, M. J. Romão, Crystal structure of the first dissimilatory nitrate reductase at 1.9 Å solved by MAD methods, *Structure* 7 (1999) 65–79.
- [10] Y. Zu, J.A. Fee, J. Hirst, Complete thermodynamic characterization of reduction and protonation of the bc(1)-type Rieske [2Fe-2S] center of *Thermus thermophilus*, *J. Am. Chem. Soc.* 123 (2001) 9906–9907.
- [11] Y. Zu, M.M. Couture, D.R. Kolling, A.R. Crofts, L.D. Eltis, J.A. Fee, J. Hirst, Reduction potentials of Rieske clusters: importance of the coupling between oxidation state and histidine protonation state, *Biochemistry* 42 (2003) 12400–12408.
- [12] A. Kounosu, Z. Li, N.J. Cosper, J.E. Shokes, R.A. Scott, T. Imai, A. Urushiyama, T. Iwasaki, Engineering a three-cysteine, one-histidine ligand environment into new Hyperthermophilic archaeal Rieske-type [2Fe-2S] ferredoxin from *Sulfolobus solfataricus*, *J. Biol. Chem.* 279 (2004) 12519–12528.
- [13] H. Li, D.T. Mapolelo, N.N. Dingra, G. Keller, P.J. Riggs-Gelasco, D.R. Winge, M. K. Johnson, C.E. Outten, Histidine 103 in Fra2 is an Iron-sulfur cluster ligand in the [2Fe-2S] Fra2-Grx3 complex and is required for *in vivo* Iron signaling in yeast, *J. Biol. Chem.* 286 (2011) 867–876.
- [14] R.B. Broach, J.T. Jarrett, Role of the [2Fe-2S]<sub>2</sub> cluster in biotin synthase: mutagenesis of the atypical metal ligand arginine 260, *Biochemistry* 45 (2006) 14166–14174.
- [15] I. Gruner, C. Frädrich, L.H. Böttger, A.X. Trautwein, D. Jahn, E. Härtig, Aspartate 141 is the fourth ligand of the oxygen-sensing [4Fe-4S]<sub>2</sub> cluster of *Bacillus subtilis* transcriptional regulator Fnr, *J. Biol. Chem.* 286 (2011) 2017–2021.
- [16] A. Volbeda, M.T.P. Martinez, J.C. Crack, P. Amara, O. Gigarel, J.T. Munnich, M. I. Hutchings, C. Darnault, N.E. Le Brun, J.C. Fontecilla-Camps, Crystal structure of the transcription regulator RsrR reveals a [2Fe-2S] cluster coordinated by Cys, Glu, and his residues, *J. Am. Chem. Soc.* 141 (2019) 2367–2375.
- [17] S.A. Freibert, M.T. Boniecki, C. Stimpfing, V. Schulz, N. Krapoth, D.R. Winge, U. Mühlenhoff, O. Stehling, M. Cygler, R. Lill, N-terminal tyrosine of ISCU2 triggers [2Fe-2S] cluster synthesis by ISCU2 dimerization, *Nat. Commun.* 12 (2021) 6902.



- [18] D.W. Bak, S.J. Elliott, Alternative FeS cluster ligands: tuning redox potentials and chemistry, *Curr. Opin. Chem. Biol.* 19 (2014) 50–58.
- [19] E.S. Boyd, K.M. Thomas, Y. Dai, J.M. Boyd, F.W. Outten, Interplay between oxygen and Fe-S cluster biogenesis: insights from the Suf pathway, *Biochemistry* 53 (2014) 5834–5847.
- [20] P.S. Garcia, F. D'Angelo, S. Ollagnier de Choudens, M. Dussouchaud, E. Bouveret, S. Gribaldo, F. Barras, An early origin of iron-sulfur cluster biosynthesis machineries before earth oxygenation, *Nat. Ecol. Evol.* 6 (2022) 1564–1572.
- [21] R. Lill, S.-A. Freibert, Mechanisms of mitochondrial iron-sulfur protein biogenesis, *Annu. Rev. Biochem.* 89 (2020) 471–499.
- [22] J. Pérard, S. Ollagnier de Choudens, Iron-sulfur clusters biogenesis by the SUF machinery: close to the molecular mechanism understanding, *J. Biol. Inorg. Chem. JBIC Publ. Soc. Biol. Inorg. Chem.* 23 (2018) 581–596.
- [23] M. Blahut, E. Sanchez, C.E. Fisher, F.W. Outten, Fe-S cluster biogenesis by the bacterial Suf pathway, *Biochim. Biophys. Acta Mol. Cell Res.* 1867 (2020) 118829.
- [24] J.J. Braymer, S.A. Freibert, M. Rakwalska-Bange, R. Lill, Mechanistic concepts of iron-sulfur protein biogenesis in biology, *Biochim. Biophys. Acta Mol. Cell Res.* 1868 (2021) 118863.
- [25] J. Balk, M. Pilon, Ancient and essential: the assembly of iron-sulfur clusters in plants, *Trends Plant Sci.* 16 (2011) 218–226.
- [26] C. Baussier, S. Fakroun, C. Aubert, S. Dubrac, P. Mandin, B. Py, F. Barras, Making iron-sulfur cluster: structure, regulation and evolution of the bacterial ISC system, *Adv. Microb. Physiol.* 76 (2020) 1–39.
- [27] B. Blanc, C. Gerez, S. Ollagnier de Choudens, Assembly of Fe/S proteins in bacterial systems: biochemistry of the bacterial ISC system, *Biochim. Biophys. Acta* 1853 (2015) 1436–1447.
- [28] M. Fontecave, B. Py, S. Ollagnier de Choudens, F. Barras, From Iron and cysteine to Iron-sulfur clusters: the biogenesis protein machineries, *EcoSal Plus* 3 (2008).
- [29] F.W. Outten, Recent advances in the Suf Fe-S cluster biogenesis pathway: beyond the Proteobacteria, *Biochim. Biophys. Acta* 2015 (1853) 1464–1469.
- [30] K. Esquelin-Lebron, S. Dubrac, F. Barras, J.M. Boyd, Bacterial approaches for assembling Iron-sulfur proteins, *mBio* 12 (2021) e0242521.
- [31] Y. Takahashi, U. Tokumoto, A third bacterial system for the assembly of iron-sulfur clusters with homologs in archaea and plastids, *J. Biol. Chem.* 277 (2002) 28380–28383.
- [32] F.W. Outten, M.J. Wood, F.M. Munoz, G. Storz, The SufE protein and the SufBCD complex enhance SufS cysteine desulfurase activity as part of a sulfur transfer pathway for Fe-S cluster assembly in *Escherichia coli*, *J. Biol. Chem.* 278 (2003) 45713–45719.
- [33] L. Loiseau, S. Ollagnier-de-Choudens, L. Nachin, M. Fontecave, F. Barras, Biogenesis of Fe-S cluster by the bacterial Suf system: SufS and SufE form a new type of cysteine desulfurase, *J. Biol. Chem.* 278 (2003) 38352–38359.
- [34] H. Singh, Y. Dai, F.W. Outten, L.S. Busenlehner, *Escherichia coli* SufE sulfur transfer protein modulates the SufS cysteine desulfurase through allosteric conformational dynamics, *J. Biol. Chem.* 288 (2013) 36189–36200.
- [35] H. Mihara, T. Fujii, S. Kato, T. Kurihara, Y. Hata, N. Esaki, Structure of external aldimine of *Escherichia coli* CsdB, an IscS/NifS homolog: implications for its specificity toward selenocysteine, *J. Biochem. (Tokyo)* 131 (2002) 679–685.
- [36] J.A. Dunkle, M.R. Bruno, F.W. Outten, P.A. Frantom, Structural evidence for dimer-interface-driven regulation of the type II cysteine Desulfurase, SufS, *Biochemistry* 58 (2019) 687–696.
- [37] R.K. Gogar, F. Carroll, J.V. Conte, M. Nasef, J.A. Dunkle, P.A. Frantom, The  $\beta$ -latch structural element of the SufS cysteine desulfurase mediates active site accessibility and SufE transsulfurase positioning, *J. Biol. Chem.* 299 (2023) 102966.
- [38] B.P. Selbach, P.K. Pradhan, P.C. Dos Santos, Protected sulfur transfer reactions by the *Escherichia coli* Suf system, *Biochemistry* 52 (2013) 4089–4096.
- [39] Tirupati, B., Vey, J. L., Drennan, C. L., Bollinger, J. M. Kinetic and structural characterization of Slr0077/SufS, the essential cysteine desulfurase from *Synechocystis* sp. PCC 6803, *Biochemistry* 43, (2004) 12210–12219.
- [40] Y. Dai, F.W. Outten, E. The, *Coli* SufS-SufE sulfur transfer system is more resistant to oxidative stress than IscS-IscU, *FEBS Lett.* 586 (2012) 4016–4022.
- [41] S. Ollagnier-de-Choudens, D. Lascoux, L. Loiseau, F. Barras, E. Forest, M. Fontecave, Mechanistic studies of the SufS-SufE cysteine desulfurase: evidence for sulfur transfer from SufS to SufE, *FEBS Lett.* 555 (2003) 263–267.
- [42] G. Layer, S.A. Gaddam, C.N. Ayala-Castro, S. Ollagnier-de Choudens, D. Lascoux, M. Fontecave, F.W. Outten, SufE transfers sulfur from SufS to SufB for iron-sulfur cluster assembly, *J. Biol. Chem.* 282 (2007) 13342–13350.
- [43] C.D. Lima, Analysis of the *E. Coli* NifS CsdB protein at 2.0 Å reveals the structural basis for perselenide and persulfide intermediate formation, *J. Mol. Biol.* 315 (2002) 1199–1208.
- [44] S. Goldsmith-Fischman, A. Kuzin, W.C. Edstrom, J. Benach, R. Shastry, R. Xiao, T. B. Acton, B. Honig, G.T. Montelione, J.F. Hunt, The SufE sulfur-acceptor protein contains a conserved core structure that mediates interdomain interactions in a variety of redox protein complexes, *J. Mol. Biol.* 344 (2004) 549–565.
- [45] Y. Dai, D. Kim, G. Dong, L.S. Busenlehner, P.A. Frantom, F.W. Outten, SufE D74R substitution alters active site loop dynamics to further enhance SufE interaction with the SufS cysteine Desulfurase, *Biochemistry* 54 (2015) 4824–4833.
- [46] D. Kim, H. Singh, Y. Dai, G. Dong, L.S. Busenlehner, F.W. Outten, P.A. Frantom, Changes in protein dynamics in *Escherichia coli* SufS reveal a possible conserved regulatory mechanism in type II cysteine Desulfurase systems, *Biochemistry* 57 (2018) 5210–5217.
- [47] J.A. Dunkle, M.R. Bruno, P.A. Frantom, Structural evidence for a latch mechanism regulating access to the active site of SufS-family cysteine desulfurases, *Acta Crystallogr. Sect. Struct. Biol.* 76 (2020) 291–301.
- [48] B. Blanc, M. Clémancey, J.-M. Latour, M. Fontecave, S. Ollagnier de Choudens, Molecular investigation of iron-sulfur cluster assembly scaffolds under stress, *Biochemistry* 53 (2014) 7867–7869.
- [49] E. Yuda, N. Tanaka, T. Fujishiro, N. Yokoyama, K. Hirabayashi, K. Fukuyama, K. Wada, Y. Takahashi, Mapping the key residues of SufB and SufD essential for biosynthesis of iron-sulfur clusters, *Sci. Rep.* 7 (2017) 9387.
- [50] D. Expert, A. Boughammoura, T. Franza, Siderophore-controlled iron assimilation in the enterobacterium *Erwinia chrysanthemi*: evidence for the involvement of bacterioferritin and the Suf iron-sulfur cluster assembly machinery, *J. Biol. Chem.* 283 (2008) 36564–36572.
- [51] L. Nachin, L. Loiseau, D. Expert, F. Barras, SufC: an unorthodox cytoplasmic ABC/ATPase required for [Fe-S] biogenesis under oxidative stress, *EMBO J.* 22 (2003) 427–437.
- [52] A. Saini, D.T. Mapolelo, H.K. Chahal, M.K. Johnson, F.W. Outten, SufD and SufC ATPase activity are required for iron acquisition during in vivo Fe-S cluster formation on SufB, *Biochemistry* 49 (2010) 9402–9412.
- [53] J. Badger, J.M. Sauder, J.M. Adams, S. Antonyamy, K. Bain, M.G. Bergseid, S. G. Buchanan, M.D. Buchanan, Y. Batiyenko, J.A. Christopher, S. Emtage, A. Eroshkina, I. Feil, E.B. Furlong, K.S. Gajiyala, X. Gao, D. He, J. Hendle, A. Huber, K. Hoda, P. Kearins, C. Kissinger, B. Laubert, H.A. Lewis, J. Lin, K. Loomis, D. Lorimer, G. Louie, M. Maletic, C.D. Marsh, I. Miller, J. Molinari, H. J. Muller-Dieckmann, J.M. Newman, B.W. Noland, B. Pagarigan, F. Park, T. S. Peat, K.W. Post, S. Radojicic, A. Ramos, R. Romero, M.E. Rutter, W. E. Sanderson, K.D. Schwinn, J. Tressler, J. Winhoven, T.A. Wright, L. Wu, J. Xu, T. J. Harris, Structural analysis of a set of proteins resulting from a bacterial genomics project, *Proteins* 60 (2005) 787–796.
- [54] A. Petrovic, C.T. Davis, K. Rangachari, B. Clough, R.J. Wilson, J.F. Eccleston, Hydrodynamic characterization of the SufBC and SufCD complexes and their interaction with fluorescent adenosine nucleotides, *Protein Sci. Publ. Protein Soc.* 17 (2008) 1264–1274.
- [55] S. Kitaoka, K. Wada, Y. Hasegawa, Y. Minami, K. Fukuyama, Y. Takahashi, Crystal structure of *Escherichia coli* SufC, an ABC-type ATPase component of the Suf iron-sulfur cluster assembly machinery, *FEBS Lett.* 580 (2006) 137–143.
- [56] K. Hirabayashi, E. Yuda, N. Tanaka, S. Katayama, K. Iwasaki, T. Matsumoto, G. Kurisu, F.W. Outten, K. Fukuyama, Y. Takahashi, K. Wada, Functional dynamics revealed by the structure of the SufBCD complex, a novel ATP-binding cassette (ABC) protein that serves as a scaffold for Iron-sulfur cluster biogenesis, *J. Biol. Chem.* 290 (2015) 29717–29731.
- [57] X.M. Xu, S.G. Møller, AtNAP7 is a plastidic SufC-like ATP-binding cassette/ATPase essential for Arabidopsis embryogenesis, *Proc. Natl. Acad. Sci. USA* 101 (2004) 9143–9148.
- [58] J.E. Gisselberg, T.A. Dellibovi-Ragheb, K.A. Matthews, G. Bosch, S.T. Prigge, The Suf iron-sulfur cluster synthesis pathway is required for apicoplast maintenance in malaria parasites, *PLoS Pathog.* 9 (2013) e1003655.
- [59] S. Wollers, G. Layer, R. Garcia-Serres, L. Signor, M. Clémancey, J.M. Latour, M. Fontecave, S. Ollagnier de Choudens, Iron-sulfur (Fe-S) cluster assembly: the SufBCD complex is a new type of Fe-S scaffold with a flavin redox cofactor, *J. Biol. Chem.* 285 (2010) 23331–23341.
- [60] H.K. Chahal, Y. Dai, A. Saini, C. Ayala-Castro, F.W. Outten, The SufBCD Fe-S scaffold complex interacts with SufA for Fe-S cluster transfer, *Biochemistry* 48 (2009) 10644–10653.
- [61] O. Dym, D. Eisenberg, Sequence-structure analysis of FAD-containing proteins, *Protein Sci. Publ. Protein Soc.* 10 (2001) 1712–1728.
- [62] H.K. Chahal, F.W. Outten, Separate Fe-S scaffold and carrier functions for SufB2C2 and SufA during in vitro maturation of [2Fe-2S] Fdx, *J. Inorg. Biochem.* 116C (2012) 126–134.
- [63] P.M. Tendolkar, A.S. Baghdayan, N. Shankar, Pathogenic enterococci: new developments in the 21st century, *Cell. Mol. Life Sci. CMLS* 60 (2003) 2622–2636.
- [64] G. Huet, M. Daffé, I. Saves, Identification of the mycobacterium tuberculosis Suf machinery as the exclusive mycobacterial system of [Fe-S] cluster assembly: evidence for its implication in the pathogen's survival, *J. Bacteriol.* 187 (2005) 6137–6146.
- [65] C.M. Sassetti, D.H. Boyd, E.J. Rubin, Genes required for mycobacterial growth defined by high density mutagenesis, *Mol. Microbiol.* 48 (2003) 77–84.
- [66] B. Bosch, M.A. DeJesus, N.C. Poulton, W. Zhang, C.A. Engelhart, A. Zaveri, S. Lavalette, N. Ruecker, C. Trujillo, J.B. Wallach, S. Li, S. Ehrt, B.T. Chait, D. Schnappinger, J.M. Rock, Genome-wide gene expression tuning reveals diverse vulnerabilities of *M. Tuberculosis*, *Cell* 184 (2021) 4579–4592.e24.
- [67] C.A. Roberts, H.M. Al-Tameemi, A.A. Mashruwala, Z. Rosario-Cruz, U. Chauhan, W.E. Sause, V.J. Torres, W.J. Belden, J.M. Boyd, The Suf Iron-sulfur cluster biosynthetic system is essential in *Staphylococcus aureus*, and decreased Suf function results in global metabolic defects and reduced survival in human neutrophils, *Infect. Immun.* 85 (2017) e00100–e00117.
- [68] A.A. Mashruwala, Y.Y. Pang, Z. Rosario-Cruz, H.K. Chahal, M.A. Benson, L. A. Mike, E.P. Skaar, V.J. Torres, W.M. Nauseef, J.M. Boyd, Nfu facilitates the maturation of iron-sulfur proteins and participates in virulence in *Staphylococcus aureus*, *Mol. Microbiol.* 95 (2015) 383–409.
- [69] B. Selbach, E. Earles, P.C. Dos Santos, Kinetic analysis of the bisubstrate cysteine desulfurase SufS from *Bacillus subtilis*, *Biochemistry* 49 (2010) 8794–8802.
- [70] I. Elchenwawi, P. Carpentier, C. Caux, M. Ponge, S. Ollagnier de Choudens, Structural and biochemical characterization of mycobacterium tuberculosis zinc SufU-SufS complex, *Biomolecules* 13 (2023) 732.
- [71] G.P. Riboldi, J.S. de Oliveira, J. Frazzon, *Enterococcus faecalis* SufU scaffold protein enhances SufS desulfurase activity by acquiring sulfur from its cysteine-153, *Biochim. Biophys. Acta* 2011 (1814) 1910–1918.



- [72] J.D. Hudspeth, A.E. Boncella, E.T. Sabo, T. Andrews, J.M. Boyd, C.N. Morrison, Structural and biochemical characterization of *Staphylococcus aureus* cysteine Desulfurase complex SufSU, *ACS Omega* 7 (2022) 44124–44133.
- [73] B.P. Selbach, A.H. Chung, A.D. Scott, S.J. George, S.P. Cramer, P.C. Dos Santos, Fe-S cluster biogenesis in gram-positive bacteria: SufU is a zinc-dependent sulfur transfer protein, *Biochemistry* 53 (2014) 152–160.
- [74] R. Nakamura, M. Hikita, S. Ogawa, Y. Takahashi, T. Fujishiro, Snapshots of PLP-substrate and PLP-product external aldimines as intermediates in two types of cysteine desulfurase enzymes, *FEBS J.* 287 (2020) 1138–1154.
- [75] B. Blauenburg, A. Mielcarek, F. Altegoer, C.D. Fage, U. Linne, G. Bange, M. A. Marahiel, Crystal structure of *Bacillus subtilis* cysteine Desulfurase SufS and its dynamic interaction with Frataxin and scaffold protein SufU, *PLoS One* 11 (2016) e0158749.
- [76] A.G. Albrecht, D.J. Netz, M. Miethke, A.J. Pierik, O. Burghaus, F. Peuckert, R. Lill, M.A. Marahiel, SufU is an essential Iron-sulfur cluster scaffold protein in *Bacillus subtilis*, *J. Bacteriol.* 192 (2010) 1643–1651.
- [77] N. Yokoyama, C. Nonaka, Y. Ohashi, M. Shioda, T. Terahata, W. Chen, K. Sakamoto, C. Maruyama, T. Saito, E. Yuda, N. Tanaka, T. Fujishiro, T. Kuzuyama, K. Asai, Y. Takahashi, Distinct roles for U-type proteins in iron-sulfur cluster biosynthesis revealed by genetic analysis of the *Bacillus subtilis* *sufCDSUB* operon, *Mol. Microbiol.* 107 (2018) 688–703.
- [78] G.J. Kornhaber, D. Snyder, H.N.B. Moseley, G.T. Montelione, Identification of zinc-ligated cysteine residues based on <sup>13</sup>C<sub>alpha</sub> and <sup>13</sup>C<sub>beta</sub> chemical shift data, *J. Biomol. NMR* 34 (2006) 259–269.
- [79] T. Fujishiro, T. Terahata, K. Kunichika, N. Yokoyama, C. Maruyama, K. Asai, Y. Takahashi, Zinc-ligand swapping mediated complex formation and sulfur transfer between SufS and SufU for Iron-sulfur cluster biogenesis in *Bacillus subtilis*, *J. Am. Chem. Soc.* 139 (2017) 18464–18467.
- [80] G. Huet, J.-P. Castaing, D. Fournier, M. Daffé, I. Saves, Protein splicing of SufB is crucial for the functionality of the mycobacterium tuberculosis Suf machinery, *J. Bacteriol.* 188 (2006) 3412–3414.
- [81] N.I. Topilina, C.M. Green, P. Jayachandran, D.S. Kelley, M.J. Stanger, C.L. Piazza, S. Nayak, M. Belfort, SufB in iron-sulfur cluster biogenesis in mycobacterium tuberculosis as a sensor for oxidative and nitrosative stresses, *Proc. Natl. Acad. Sci. USA* 112 (2015) 10348–10353.
- [82] K. Wada, N. Sumi, R. Nagai, K. Iwasaki, T. Sato, K. Suzuki, Y. Hasegawa, S. Kitaoka, Y. Minami, F.W. Outten, Y. Takahashi, K. Fukuyama, Molecular dynamism of Fe-S cluster biosynthesis implicated by the structure of the SufC(2)-SufD(2) complex, *J. Mol. Biol.* 387 (2009) 245–258.
- [83] J.E. Choby, L.A. Mike, A.A. Mashruwala, B.F. Dutter, P.M. Dunman, G. A. Sulikowski, J.M. Boyd, E.P. Skaar, A small-molecule inhibitor of Iron-sulfur cluster assembly uncovers a link between virulence regulation and metabolism in *Staphylococcus aureus*, *Cell Chem. Biol.* 23 (2016) 1351–1361.
- [84] M.E. Fichera, D.S. Roos, A plastid organelle as a drug target in apicomplexan parasites, *Nature* 390 (1997) 407–409.
- [85] B.J. Foth, G.I. McFadden, The apicoplast: a plastid in plasmodium falciparum and other apicomplexan parasites, *Int. Rev. Cytol.* 224 (2003) 57–110.
- [86] S.A. Ralph, G.G. van Dooren, R.F. Waller, M.J. Crawford, M.J. Fraunholz, B. J. Foth, C.J. Tonkin, D.S. Roos, G.I. McFadden, Tropical infectious diseases: metabolic maps and functions of the plasmodium falciparum apicoplast, *Nat. Rev. Microbiol.* 2 (2004) 203–216.
- [87] R.J.M.I. Wilson, Parasite plastids: approaching the endgame, *Biol. Rev. Camb. Philos. Soc.* 80 (2005) 129–153.
- [88] K.E. Ellis, B. Clough, J.W. Saldanha, R.J. Wilson, Nifs and Sufs in malaria, *Mol. Microbiol.* 41 (2001) 973–981.
- [89] K. Rangachari, C.T. Davis, J.F. Eccleston, E.M. Hirst, J.W. Saldanha, M. Strath, R. J. Wilson, SufC hydrolyzes ATP and interacts with SufB from *Thermotoga maritima*, *FEBS Lett.* 514 (2002) 225–228.
- [90] J.M. Haussig, K. Matuschewski, T.W.A. Kooij, Identification of vital and dispensable sulfur utilization factors in the plasmodium apicoplast, *PLoS One* 9 (2014) e89718.
- [91] M. Charan, N. Singh, B. Kumar, K. Srivastava, M.I. Siddiqi, S. Habib, Sulfur mobilization for Fe-S cluster assembly by the essential Suf pathway in the plasmodium falciparum apicoplast and its inhibition, *Antimicrob. Agents Chemother.* 58 (2014) 3389–3398.
- [92] Zuegge, J., Ralph, S., Schmuker, M., McFadden, G. I., Schneider, G. Deciphering apicoplast targeting signals—feature extraction from nuclear-encoded precursors of Plasmodium falciparum apicoplast proteins. *Gene* 280 (2001) 19–26.
- [93] J.B. Koenderink, R.A. Kavishe, S.R. Rijpmma, F.G.M. Russel, The ABCs of multidrug resistance in malaria, *Trends Parasitol.* 26 (2010) 440–446.
- [94] B. Kumar, S. Chaubey, P. Shah, A. Tanveer, M. Charan, M.I. Siddiqi, S. Habib, Interaction between Sulphur mobilisation proteins SufB and SufC: evidence for an iron-sulfur cluster biogenesis pathway in the apicoplast of plasmodium falciparum, *Int. J. Parasitol.* 41 (2011) 991–999.
- [95] X.M. Xu, S. Adams, N.-H. Chua, S.G. Møller, AtNAP1 represents an atypical SufB protein in Arabidopsis plastids, *J. Biol. Chem.* 280 (2005) 6648–6654.
- [96] M. Charan, H.H. Choudhary, N. Singh, M. Sadik, M.I. Siddiqi, S. Mishra, S. Habib, [Fe-S] cluster assembly in the apicoplast and its indispensability in mosquito stages of the malaria parasite, *FEBS J.* 284 (2017) 2629–2648.
- [97] A.G. Albrecht, F. Peuckert, H. Landmann, M. Miethke, A. Seubert, M.A. Marahiel, Mechanistic characterization of sulfur transfer from cysteine desulfurase SufS to the iron-sulfur scaffold SufU in *Bacillus subtilis*, *FEBS Lett.* 585 (2011) 465–470.
- [98] J. Saini, T.M. Deere, D.J. Lessner, The minimal Suf system is not required for Fe-S cluster biogenesis in the methanogenic archaeon Methanosarcina acetivorans, *Sci. Rep.* 13 (2023) 15120.
- [99] A.D. Tsaousis, S. Ollagnier de Choudens, E. Gentekaki, S. Long, D. Gaston, A. Stechmann, D. Vinella, B. Py, M. Fontecave, F. Barras, J. Lukeš, A.J. Roger, Evolution of Fe/S cluster biogenesis in the anaerobic parasite Blastocystis, *Proc. Natl. Acad. Sci. USA* 109 (2012) 10426–10431.
- [100] A.D. Tsaousis, E. Gentekaki, L. Eme, D. Gaston, A.J. Roger, Evolution of the cytosolic iron-sulfur cluster assembly machinery in Blastocystis species and other microbial eukaryotes, *Eukaryot. Cell* 13 (2014) 143–153.
- [101] Y. Liu, M. Sieprawska-Lupa, W.B. Whitman, R.H. White, Cysteine is not the sulfur source for iron-sulfur cluster and methionine biosynthesis in the methanogenic archaeon Methanococcus marisaludis, *J. Biol. Chem.* 285 (2010) 31923–31929.
- [102] W.B. Whitman, E. Ankwanda, R.S. Wolfe, Nutrition and carbon metabolism of Methanococcus voltae, *J. Bacteriol.* 149 (1982) 852–863.
- [103] R.L. Spietz, D. Payne, R. Szilagyi, E.S. Boyd, Reductive biomining of pyrite by methanogens, *Trends Microbiol.* 30 (2022) 1072–1083.
- [104] V. Trotter, D. Vinella, L. Loiseau, S. Ollagnier de Choudens, M. Fontecave, F. Barras, The CsdA cysteine desulfurase promotes Fe/S biogenesis by recruiting Suf components and participates to a new Sulphur transfer pathway by recruiting CsdL (ex-YgdL), a ubiquitin-modifying-like protein, *Mol. Microbiol.* 74 (2009) 1527–1542.