



HAL
open science

How local constraints influence network diameter and applications to LCL generalizations

Nicolas Bousquet, Laurent Feuilloley, Théo Pierron

► **To cite this version:**

Nicolas Bousquet, Laurent Feuilloley, Théo Pierron. How local constraints influence network diameter and applications to LCL generalizations. 2024. hal-04737718

HAL Id: hal-04737718

<https://hal.science/hal-04737718v1>

Preprint submitted on 15 Oct 2024

HAL is a multi-disciplinary open access archive for the deposit and dissemination of scientific research documents, whether they are published or not. The documents may come from teaching and research institutions in France or abroad, or from public or private research centers.

L'archive ouverte pluridisciplinaire **HAL**, est destinée au dépôt et à la diffusion de documents scientifiques de niveau recherche, publiés ou non, émanant des établissements d'enseignement et de recherche français ou étrangers, des laboratoires publics ou privés.

How local constraints influence network diameter and applications to LCL generalizations

Nicolas Bousquet

CNRS, INSA Lyon, UCBL, LIRIS, UMR5205, F-69622 Villeurbanne, France

Laurent Feuilloley

CNRS, INSA Lyon, UCBL, LIRIS, UMR5205, F-69622 Villeurbanne, France

Théo Pierron

CNRS, INSA Lyon, UCBL, LIRIS, UMR5205, F-69622 Villeurbanne, France

Abstract

In this paper, we investigate how local rules enforced at every node can influence the topology of a network. More precisely, we establish several results on the diameter of trees as a function of the number of nodes, as listed below. These results have important consequences on the landscape of locally checkable labelings (LCL) on *unbounded* degree graphs, a case in which our lack of knowledge is in striking contrast with that of *bounded degree graphs*, that has been intensively studied recently.

First, we show that the diameter of a tree can be controlled very precisely by a local checker (that is, a distributed decision algorithm that accepts a graph iff all nodes accept locally), granted that its checkability radius is allowed to be at least 2 (and that the target diameter is not too close to n). As a corollary, we prove that the gaps in the landscape of LCLs (in bounded-degree graphs) basically disappear in unbounded degree graphs.

Second, we prove that for checkers at distance 1, the maximum diameter can only be trivial (constant or linear), while the minimum diameter can in addition be $\Theta(\log n)$ and $\Theta(n^{1/k})$ for $k \in \mathbb{N}$. These functions interestingly coincide with the known regimes for LCLs.

Third, we explore computational restrictions of local checkers. In particular, we introduce a class of checkers, that we call *degree-myopic*, that cannot distinguish perfectly the degrees of their neighbors. With these checkers, we show that the maximum diameter can only be $O(1)$, $\Theta(\sqrt{n})$, $\Theta(\log n / \log \log n)$, $\Theta(\log n)$, or $\Omega(n)$. Since gaps do appear in the maximum diameter, one can hope that an interesting LCL landscape exists for restricted local checkers.

In addition to the LCL motivation, we hope that our distributed lenses can help give a new point of view on how global structures, such as living beings, can be maintained by local phenomena; understanding the trade-off between the power of the checking and the possible resulting shapes.

2012 ACM Subject Classification Theory of computation → Distributed algorithms

Keywords and phrases Locally checkable labelings, network diameter, local checkers, LOCAL model, unbounded-degree graphs

1 Introduction

1.1 Questions and motivations

A general question in distributed computing is: how well can we control global parameters of a system if we can only check it partially and in a distributed manner? Here, we are interested in the following graph-oriented version of this question: How do local constraints influence the shape of a network? More precisely, if we define a set of rules to be satisfied at every node of the network, what are the networks that satisfy these rules? What properties do they have? And conversely, if we want to ensure a given global property, can we obtain it by only enforcing local constraints?

In this paper, we focus on a concrete version of the question, where the networks are (colored) graphs, and in particular *trees*, and the global parameter studied is the *diameter*. Before we discuss our motivations and how our perspective differs from previous work, let us introduce some vocabulary. A *local checker* is a local algorithm run at every node of the network, that outputs a binary decision

accept/reject, only based on a neighborhood at constant distance around itself. A network (or equivalently a graph) is globally accepted if every node locally accepts. For example, a local checker that checks if the number of neighbors of the node at hand is at most Δ accepts exactly all the graphs of maximum degree at most Δ .

Main motivation: Going beyond bounded-degree for LCLs

The most popular problems in the study of locality, in the sense of the LOCAL model, are called *locally checkable labelings* or LCLs for short, introduced in the 90s [15]. The main characteristic of these problems is that their outputs can be checked locally. For example, to verify that a coloring is correct, every node simply checks that the color it has received as output is different from the ones of its neighbors. There are also three finiteness requirements: the number of possible outputs, of possible inputs, and the maximum degree Δ must be bounded by a constant (*i.e.* independent of the number of nodes n). Therefore, an LCL can be described by a finite list of correct neighborhoods. In the case of coloring, this list is made of the following neighborhoods: a node of color c with at most Δ neighbors, each of them being of a color different from c .

After a decade of intense research, we now have a good understanding of the complexity of computing a solution of an LCL problem in the LOCAL model. More precisely, we know the landscape of complexities for these problems: roughly, we know what are the functions f for which there exists an LCL whose optimal algorithm has complexity $f(n, \Delta)$. For example, we know that there is no LCL whose complexity in the LOCAL model lies between $\omega(\log^* n)$ and $o(\log n)$ [8].

A natural question is: can we generalize this theory by relaxing the finiteness requirements? The case of bounded degree and unbounded number of labels has been explored in [11], with the fractional coloring problem¹. Here we are interested in the other direction: going beyond bounded degree. (This question was very recently tackled by [13] as we discuss later.)

Let us now illustrate why the diameter of the network plays a key role in the context of LCL complexities. In the bounded-degree case, two key complexities for deterministic algorithms are $\Theta(n)$ and $\Theta(\log n)$. The problems of complexity $\Theta(n)$ are called *global problems*; they are generally the ones where, in a path, the two endpoints have to coordinate their outputs, which requires them to run for $\Omega(n)$ rounds (and $O(n)$ is enough for any problem in the LOCAL model). The problems of complexity $\Theta(\log n)$ are typically the ones where the hardest instances locally look like complete regular trees, and intuitively each node needs to see a leaf to be able to decide its output. Therefore, what dictates the complexity for these two cases is, respectively, the maximum and the minimum diameter of trees of bounded degree, which are respectively order of n and $\log n$. Note that for these observations, restricting to trees is not problematic, since everything holds in trees. In general, trees are essential in the LCL theory, which justifies why we focus on these graphs; for example, the key technique of round elimination (see [17] and references therein) basically works only in trees.²

By understanding the diameters of trees accepted by local checkers that are not simply checking that the degree is below Δ , we want to pave the way of a complexity landscape beyond bounded degree. Hence, the first type of questions we want to investigate is the following.

► **Question 1.** *For a given local checker, what is the minimum and maximum diameter of the accepted graphs, as a function of n ?*

¹ There are actually two definitions of fractional coloring, the second one enforcing a bounded number of labels, see e.g. [5, 4].

² Another motivations for restricting to trees is that, under some restrictions, if some graph accepted by our generalization of LCL's contains cycles, then the resulting diameters are trivial, as proved at the end of the paper.

Also, since it seems too optimistic to hope for a nice landscape in general graphs, we want to explore which restrictions are worth studying in the future. For example, restrictions for which there are gaps in the possible maximum and minimum diameter.

► **Question 2.** *What are natural classes of local checkers such that there are gaps in the landscape of maximum and/or the minimum diameter of graphs accepted by such checkers (e.g. diameters that are impossible to obtain)?*

Let us now quickly summarize the approach and results of [13], on this question of understanding complexity landscape beyond bounded-degree. First, the authors sketch how one can create problems of arbitrary complexity between constant and $\Theta(\log n)$, when the degree is unbounded, by using a problem of complexity $O(\log_{\Delta} n)$ and then ignoring a specific number of adjacent edges at each node to artificially reduce the degree Δ . Second, they restrict the scope in two ways: (1) they study only binary labeling problems (that consist in selecting edges, like in the matching problem), where (2) the constraints are *structurally simple* (roughly, in a proper labeling, the number of selected (resp. non-selected) edges around every node has to be either smaller than a constant, or polynomially large in the degree). In this setting, they can characterize precisely what happens in the logarithmic regime, thanks to a degree-aware variant of the rake-and-compress technique. Our approach is quite orthogonal, as we study the structure of the graphs and do not discuss what are the problems that are solved or the generic algorithms that could be used. Nevertheless, the general story has a similar flavor: we will show in a different, more general and precise way how arbitrary complexities can be obtained, and then restrict to a setting where gaps reappear.

Second motivation: Maintaining global structure locally

Our second motivation is a more exploratory one. We would like to propose a new perspective on how structures can be maintained without centralized monitoring. In other words, we want to explore how simple local rules on small-scale entities shape larger-scale objects. One can think of a crude modeling of living beings, or of self-organizing swarm of robots.

From this perspective, our motivation for studying the diameter is that it is maybe the most basic characteristic of a shape, and the one for studying trees is that these are simple shape that appear in Nature.

Now, instead of starting from a checker and analyzing the possible diameters, we want to start from some target diameter (as a function of n), e.g. one that would have benefits for the global entity, and ask whether we can have a local checker that maintains this diameter.

► **Question 3.** *Given some function f , can we design a local checker such that the accepted n -vertex graphs have diameter $f(n)$?*

Also, since it is unrealistic in Nature or in robots to have unlimited local computation, we refine Question 3, by considering the complexity of the local checking.

► **Question 4.** *Given some function f , can we design a local checker with limited computational capabilities, such that the accepted n -vertex graphs have diameter $f(n)$?*

The rest of the introduction is organized as follows: in Subsection 1.2 we introduce the precise definitions, in Subsections 1.3 and 1.4 we review our results and techniques for general and restricted checkers, respectively. In Subsection A, we review additional related work.

1.2 Model and definitions

The graphs/trees considered in this paper are simple and loopless. They can be vertex colored, with a constant number of colors. Remember that the diameter of a graph is the length of the largest

shortest path between two nodes, in terms of number of edges. Inspired by the definition of LCLs and by our biological motivation, we consider anonymous networks, e.g. the nodes do not have identifiers.

► **Definition 1** (View of a node). *The view at distance d of a node v in a graph G is the subgraph of G , that contains all nodes at distance at most d from v , and all the edges with at least one endpoint at distance at most $d - 1$ from v , and where v is marked as the center.*

► **Definition 2** (Local checker ; $\mathcal{L}_{c,d}$; checkability radius). *A local checker at distance d and with c colors is a local algorithm that is used on a c -colored graph, such that, applied to a vertex v , it takes the neighborhood at distance d around v and chooses an output: accept or reject. We denote by $\mathcal{L}_{c,d}$ the set of all local checkers at distance d with c colors. The distance d is called the checkability radius.*

For short, we sometimes simply use *checker* instead of *local checker*. The definition of a degree-myopic local checker is given in Subsection 1.4, along with the discussion of its origin.

► **Definition 3** (Class accepted/recognized by a local checker). *Given a local checker L , the class of (colored) trees accepted (or equivalently recognized) by this checker, denoted by $\mathcal{C}(L)$, is the set of trees such that on every node the checker L accepts.*

► **Definition 4** (Generalized-LCL). *Let a generalized-LCL be a problem where each node has to choose an output from a finite set, such that the correct output configurations can be recognized by a local checker.*

Intuitively, a checker has maximum (resp. minimum) diameter $f(n)$ if all trees recognized by this checker have diameter at most (resp. at least) $f(n)$, when n is the number of nodes, and this bound is tight. The proper definitions given below, use infimum/supremum instead of maximum/minimum, but we keep the names maximum/minimum, since they are more intuitive.

- **Definition 5** (Exact/minimum/maximum diameter of a checker). *Let L be a local checker.*
- L has exact diameter f if for all $n, \forall G \in \mathcal{C}(L), |V(G)| = n, \text{Diam}(G) = f(n)$.
 - L has maximum diameter f if, for all $n, \sup_{k \geq n} \{ \text{Diam}(G) / f(k) \text{ for all } G \text{ such that } |V(G)| = k \text{ and } G \in L \} = 1$.
 - L has minimum diameter f if, for all $n, \inf_{k \geq n} \{ \text{Diam}(G) / f(k) \text{ for all } G \text{ such that } |V(G)| = k \text{ and } G \in L \} = 1$.

1.3 Discussion, results and techniques for general checkers

Let us first review our results about local checkers without restriction on the computation power of the nodes.

Warm up for maximum and exact diameter

Let us start by introducing some basic intuitions for maximum and exact diameter. First, let us consider a local checker L at distance 1, without colors. Such a checker is basically of the following form: if the degree of the node belongs to some specific set of integers S , then accept, otherwise reject. Necessarily, 1 belongs to S because we need to allow leaves, if we want to accept finite trees. Let us informally prove that the maximum diameter of L is $\Omega(n)$. Consider a tree T accepted by L , and two of its edges uv and wz . The deletion of these edges leaves three connected components: T_{middle} which is the part of the tree between uv and wz , and T_u and T_z , the connected components of u and z , respectively. Then, we can define new trees by replacing T_{middle} by an arbitrary number of copies of T_{middle} organized into a chain (identifying copies of wz in one copy with uv in the

next one). The set of degrees in the new tree is the same as in the original tree. Hence, all these new trees are also accepted, and they have asymptotic linear diameter. The key point is that we can use the fact that the neighborhoods were indistinguishable to make the graph path-like. We refer to this "pumping" technique as *grafting* and will be formally defined in full generality in Section 2 for any possible distance and number of colors.

Now, for a positive result, consider a checker at distance 2 (again without colors). It basically manipulates the degree of its neighbors. Then it is possible to have a checker that recognizes exactly the graphs of the following form: take path of length i , choose one endpoint u , and attach i leaves to the node of the path at distance i from u . Indeed, the nodes can check that they are either leaves or that their non-leaf neighbors follow the increasing degree sequence. This leads to a local checker that accept trees of maximum diameter $\Omega(\sqrt{n})$.

An important aspect of the previous argument is that all nodes had different degrees. This actually works with a weaker condition, namely, there is no repeated pair of degrees of adjacent vertices. Indeed, if a pair is repeated, then we can use pumping to prove that the checker accepts trees of linear diameter. By using a longer degree sequence without such repetitions (inspired by de Bruijn sequences), one can actually improve the previous bound to $n^{2/3}$. Moreover, if we want to target a diameter that is much larger than $n^{2/3}$, we would necessarily get some repeated chunks, yielding linear diameter. In some sense, carrying the information about the distance from an extremity uses some quantity of nodes, and at some point we run out of nodes. If we want to go further, then there is some repetition and the maximum diameter moves to the boring linear regime.

But one can also wonder if we can obtain smaller diameters. Suppose that we want to target a diameter that is smaller than $n^{2/3}$. One can show that with the same kind of construction, except that we truncate the main path and attach enough leaves to the last node to get exactly the diameter we want, we can obtain any function of n which is $O(n^{2/3})$ as a diameter. This can be recognized by a local checker, because the last node can check that the number of leaves it has is consistent with the degree of the second-to-last node, which measures the diameter. We refer to this technique as *padding*.

Our results on maximum and exact diameters, stated in the next paragraph, are generalizations of these constructions.

Formal results and more techniques on maximum and exact diameter

Let us now review our formal results. First, we prove that, for each possible distance d and every number of colors, there is a threshold function $S_{c,d}(n)$ such that local checkers accept trees of linear diameter or trees of diameter at most $O(S_{c,d}(n))$. In other words, not all the maximum diameters can be obtained with local checkers. More formally, we prove in Section 2 that the following holds:

► **Theorem 6.** *Every local checker in $\mathcal{L}_{c,d}$ has maximum diameter at most $(4d^2 + 4d + 1) \cdot S_{c,d}(n)$ or $\Theta(n)$, where $S_{c,1}(n) = c^2/9$, $S_{c,2}(n) = (cn^c)^{2/(2c+1)}$, $S_{c,3}(n) = 36n/\log^2 n$ and $S_{c,d}(n) = 4n/g_d(\log n)$ if $d > 3$.*

For large values of d , the threshold function depends on the inverse g_d of the function $x \mapsto x/\log^{(d-3)} x$, where the log is iterated $d - 3$ times. Note that one can think of the growth of g_d as slightly super-linear, so the last case of the following theorem is roughly $\Theta(n/\log n)$.

We moreover provide constructions reaching these upper bounds. To do so, we generalize the idea of paths with a prescribed degree sequence by defining a class of checkers that accept only trees of specific shapes. This allows to get a correspondence between the accepted trees and the strings over a given alphabet. In that correspondence, each checker is associated with a language, where the membership of a string in the language depends only on bounded-size infixes. We then use this machinery on languages to provide tight examples for Theorem 6.

We finally provide a generic construction that ensures that it is possible to build a local checker that accept trees whose diameters is precisely any function which is a $O(S_{c,d}(n))$. In other words, there is no gap in the set of diameters that can be recognized below $S_{c,d}(n)$ by local checkers since all the possible diameters can be recognized. More formally, we prove in Section 3 that the following holds:

► **Theorem 7.** *For every function $f(n) = O(S_{c,d}(n))$, there exists a local checker in $\mathcal{L}_{c,d}$ of exact diameter $f(n)$.*

Note that Theorems 6 and 7 give fine-grained versions of the intuitions given in the warm-up for distance 1 and 2. For distance 1, because of the colors, pumping works above some constant depending on the colors, while for distance 2, the threshold is polynomial in n . Then for larger distance we get nearly linear thresholds, which means that we can target almost any diameter.

From this theorem, we can derive the following corollary, which proves that the landscape for generalized-LCLs (as defined earlier) has basically no gaps.

► **Corollary 8.** *For every function $f(n) = O(S_{c,d}(n))$, there exists a generalized-LCL at distance $d + 4$ of complexity $f(n)$.*

We prove this corollary in Appendix D. The main idea consists in mixing the checkers of Theorem 7 with a global problem, namely 2-coloring, forcing the complexity to be of the same order as the diameter. This is more complicated than it looks at first sight, because the very specific constructions we use for the theorem are such that the nodes can know exactly where they are in the path. In particular, they know the parity of their distance to the first node of the path, hence 2-coloring is *not* a global problem in these graphs. We modify slightly the construction by subdividing some edges to introduce some uncertainty, which fixes this issue (which is possible only by increasing a bit the checking radius and with a precise understanding on the local checkers of Theorem 7).

To finish this part on maximum diameter, let us mention that in Appendix G, we show that if we were to allow cycles, then at distance 1, the behavior would be the same as for trees: the maximum diameter is either constant or linear.

Results on minimum diameter

We now turn our attention to minimum diameter. Note that all the results obtained for exact diameter also hold in the case of minimum diameter. In particular, Theorem 7 ensures that for every $d \geq 2$, we can construct a local checker accepting trees whose minimum diameter is almost everything. Therefore, these results leave as open the behavior of the minimum diameter in the range $\omega(S_{c,d}(n))$ to $o(n)$. We devote Section 4 to study the particular case $d = 1$ where the dichotomy we obtained for maximum diameter leaves a wide range of possibilities for minimum diameter. In this case, we show that the landscape is quite different since the minimum diameter is either constant, logarithmic or $\Theta(n^{1/k})$ for some values of k which are at most c^2 .

► **Theorem 9.** *Let c be an integer. The minimum diameter of any $L \in \mathcal{L}_{c,1}$ is either constant, logarithmic or $\Theta(n^{1/k})$ for some values of $k \leq c^2$.*

We note that these are well-known regimes for (bounded-degree) LCLs. In particular, the $n^{1/k}$ regime has been identified precisely in [9, 7] and the graphs at the core of both their proof and our proof are the same. For example, for $k = 2$, these are the graphs made of a path of length \sqrt{n} , where we attach a path of length \sqrt{n} to every node. For $k = 3$, we take the same construction but with $n^{1/3}$ instead of $n^{1/2}$, and add one more level to the recursion etc. In a nutshell, the graphs of the construction are recursive rake-like graphs, where all the levels are balanced. Now the two proofs

are pretty different. In [9, 7] the arguments are algorithmic: they show that via rake-and-compress, that every tree can be framed as such a rake-like graph, and that the hardest instances are the balanced ones. In our proof, the spirit is that there is some underlying hierarchy of colors, that leads to the hierarchical structure of the graph, and in order to get a minimum diameter we want to balance all the levels, and we show this is always possible, by doing some subtle pumping argument (based on a non-trivial partial order on the pair of colors).

Intriguingly, we do not know whether the results on LCLs and our minimum diameter result are related, in the sense that one would imply the other. Clarifying this relation would be very interesting.

1.4 Discussion, results, and techniques on restricted checkers

From the viewpoint of our original motivations, the results we get for general checkers are not very satisfying: they give a pessimistic answer for LCL generalization (no hope to find gaps in the general unbounded-degree case) and the constructions are too contrived to give insights about natural structures, such as living beings. Therefore, we want to consider a restricted model, that will hopefully reveal some gaps for the maximum diameter (hence avoid statements such as Corollary 8) and forbid unnatural constructions.

We start by discussing what conditions such a restricted model should satisfy and propose our model, *degree-myopic checkers*. Then we discuss the maximum diameter landscape for these checkers, and our proof techniques.

Discussions of the flaws of general checkers

Three elements in our general checker construction feel unnatural. First, in many proofs we use padding: the last node of a path-like structure can observe the neighborhood of the preceding node to deduce the diameter-size ratio of the rest of the graph, and then check that it has been given the right number of leaves to modify this ratio in the right way. One expects that in a more natural construction, the graph is more homogeneous, and no node should compute an explicit complicated function. Second, we map integers to neighborhoods in some arbitrary way, using a generalization of De Bruijn words. To get the full power of this construction, we need that adjacent nodes can have arbitrarily different degrees, and that they can identify these degree perfectly. In some sense, the nodes should be able to manipulate arbitrarily large and different numbers. Third, also needed for the integer to neighborhood mapping: the checking of a node v depends on the full view of the nodes, and cannot be decomposed as a series of simple checks between adjacent nodes. In some sense, we are abusing the fact that we allowed constant checkability radius, instead of the radius 1.

Degree-myopic checkers

We propose a restricted setting for checkers, called *degree-myopic*, which boils down to two ideas.

First, we enforce that a node cannot distinguish perfectly between all its possible neighborhoods, by making some kind of equivalence classes. More precisely, since we will use checkers at distance two (without colors), the crux is that a node is not able to distinguish arbitrarily many possible degrees for its neighbors. We make this appear concretely by saying that a node will first put its neighbors' degree in a few categories, and later will only be allowed to use these categories, not the actual degree. Here there is some freedom in how we choose these categories. We decide to consider that a node can only manage degrees that are close to its degree and leaves, hence the name of *degree-myopic*. Other meaningful variants could be considered.

Formally, let d be the degree of the node at hand, and d' the degree of the neighbor considered. The *types* of the neighbors are:

- **Leaf:** $d' = 1$
- **Degree-1:** $d' = d - 1$
- **Equal-degree:** $d' = d$
- **Degree+1:** $d' = d + 1$

Hence, at that point, the knowledge that a node has of its neighborhood is a 4-tuple of integers: how many neighbors are of each type. Note that the degree difference between neighbors is very limited: graphs with two non-leaf neighbors of very different degree will be rejected from the start.

Second, we decide to restrict the model further, to avoid complex manipulations of the integers of these 4-tuples. For example, we want to avoid checking that the number of leaves is related to the number of neighbors of equal degree by an arbitrarily complicated function. More precisely, the non-leaf nodes checks that a property C of the following form is satisfied: for every type i , we are given two quantities $a_i \in \mathbb{N}$ and $b_i \in \mathbb{N} \cup \{\infty\}$ such that $a_i \leq b_i$, and the number of neighbors of type i is in $[a_i, b_i]$. To avoid issues around the leaves of the tree, the nodes of degree $a_{Degree-1}$ or less are not required to have at least $a_{Degree-1}$ neighbors of type $Degree-1$. Beyond the technical reasons, this is justified by the fact that we are interested in what happens in the core of the trees, where the degrees will be large.

By construction, this model avoids the three issues mentioned earlier. Indeed, thanks to the type equivalence, we cannot use padding, only similar degrees can be compared, and thanks to the shapes of the property C , the checking is very constrained. (We will see that it is not useful to have arbitrarily large a_i, b_i , hence there is no tricks on this side either.)

Landscape result and technique

Our main result about degree-myopic checkers is the following.

► **Theorem 10.** *The possible maximum diameter function for degree-myopic local checkers are $O(1)$, $\Theta(\sqrt{n})$, $\Theta(\log n / \log \log n)$, $\Theta(\log n)$ or $\Omega(n)$.*

This result is nice from the viewpoint of our LCL motivation: it shows that for restricted checkers, we do have an interesting landscape. In particular, we get $\Theta(\log n / \log \log n)$ which does not appear in the LCL landscape for trees, since there is a gap between $O(\log^* n)$ and $\Omega(\log n)$ [8]. This is also exciting from the viewpoint of our second motivation: we get that simple maximum diameter functions can be obtained by relatively natural checkers.

The proof (deferred to Appendix F) consists in first showing that if a degree-myopic checker does not accept trees of linear diameter, then the accepted trees must be very well-behaved: roughly speaking, we can root the tree, in such a way that all paths from leaves to root are monotone in terms of degrees. Then we do a short case analysis, where it appears that basically the non-trivial extremal behaviors for trees can only be of the following types:

- A caterpillar, where the i -th node of the path has degree i , which leads to $\Theta(\sqrt{n})$.
- A complete k -ary tree (for constant k), with some pending leaves, which leads to $\Theta(\log n)$.
- A tree, where if the depth is d , then the nodes at depth i have degree $d - i + 1$, which leads to $\Theta(\log n / \log \log n)$.

Further related work

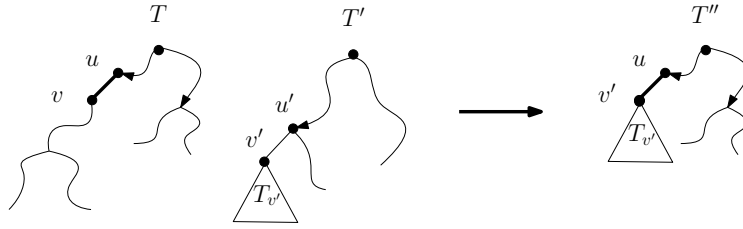
Relating local and global structures of graphs is obviously not a new topic. In Appendix A, we review various research areas touching on this topic (network science, graph theory, and distributed computing), and highlight the differences and similarities with our perspective.

2 Gap results for maximum diameter

The goal of this section is to prove that Theorem 6 holds.

► **Theorem 6.** *Every local checker in $\mathcal{L}_{c,d}$ has maximum diameter at most $(4d^2 + 4d + 1) \cdot S_{c,d}(n)$ or $\Theta(n)$, where $S_{c,1}(n) = c^2/9$, $S_{c,2}(n) = (cn^c)^{2/(2c+1)}$, $S_{c,3}(n) = 36n/\log^2 n$ and $S_{c,d}(n) = 4n/g_d(\log n)$ if $d > 3$.*

Intuitively, we show that if a checker accepts a tree containing a sufficiently large path, we can find very similar nodes, and fool them by “pumping” on the path to obtain more trees that are still accepted by the checker, but with various diameters. This pumping relies on an operation called *grafting* (illustrated on Figure 1).



■ **Figure 1** The tree T'' is the graft of T' in T at $(uv, u'v')$.

► **Definition 11** (Grafting). *Let T be a (colored) tree and uv be an edge of T . We denote by T_u^{uv} (or T_u when u is clear from context) the connected component of u in $T \setminus uv$. Consider two trees T and T' , with edges uv and $u'v'$ respectively. The tree T'' which is the graft of T' in T at $(uv, u'v')$ is the tree obtained from T by replacing the T_v by T'_v . In other words, we remove all the vertices of T_v and replace them by the vertices of T'_v and the edge uv' .*

Note that, given a tree T and two edges $uv, u'v'$ such that $u'v'$ belongs to T_v^{uv} , we can graft T into itself in two ways: we can graft T in T at $(uv, u'v')$ or in $(u'v', uv)$. Note that both operations are not the same: one of them will reduce the size and the diameter of the tree while the other will increase them.

Let $d \geq 2$. We first show that the grafting operation preserves acceptance by a local checker provided that the graft happens on similar edges. More precisely, define the *view* at distance d from an edge uv in a graph G as the subgraph of G , that contains all nodes at distance at most $d - 1$ from at least one of the two vertices u or v and all the edges with at least one endpoint at distance at most $d - 2$ from u or v , and where uv is marked as the center. One can easily check that views are not modified when grafting on edges with the same view. More formally, we prove the following in appendix.

► **Lemma 12.** *Let $L \in \mathcal{L}_{c,d}$ accepting two trees T, T' , each containing an edge $uv \in E(T)$, $u'v' \in E(T')$ with the same view at distance d . Then L also accepts the graft of T' in T at $(uv, u'v')$.*

If a local checker accepts a tree T containing two edges with the same view at distance d , one can then graft T into itself at these edges and get a new tree, still accepted by L , and with a third edge with the same view. Iterating this argument yields the following (the formal proof being postponed to the appendix).

► **Lemma 13.** *Let c, d be integers and L be a local checker in $\mathcal{L}_{c,d}$. If L accepts a c -colored tree T that contains a path going through two edges uv, xy (in this order) such that uv and xy have the same view at distance d . Then, L has linear maximum diameter.*

Observe that at distance 1, the view of an edge is intuitively just the color of its endpoints. In other words, given an edge uv , the color of the neighbors of v has no impact on the fact that u accepts or not. So if we can find a path with two edges colored alike, we will be able to increase the diameter via grafting using Lemma 13.

► **Corollary 14.** *Let c be an integer. The maximum diameter of any $L \in \mathcal{L}_{c,1}$ is either at most c^2 or linear.*

Proof. Let $L \in \mathcal{L}_{c,1}$ be a local checker accepting a tree T whose diameter is larger than c^2 . Let P be a path shortest path of T of length $c^2 + 1$. By pigeonhole principle, P has two edges colored similarly and we can apply Lemma 13 to conclude. ◀

At distance at least 2, the view of each edge consists in a pair of c -colored rooted trees of height d . These may contain arbitrarily many vertices, leading to an unbounded number of possible views. To overcome this issue, we adapt the proof technique by first finding a lot of edges (on a path) whose views contain only few vertices. Denote by $t(d, k)$ the number of k -vertices trees of height d .

► **Theorem 15** ([16]). *The following holds:*

- $\log t(3, k) \sim \pi\sqrt{2k}/3$
- for $d > 3$, $\log t(d, k) \sim \frac{\pi^2}{6} \cdot \frac{k}{\log^{(d-3)}(k)}$.

We are now ready to conclude the proof of Theorem 6.

Proof of Theorem 6. Let $L \in \mathcal{L}_{c,d}$ and T be a c -colored n -vertex tree accepted by L with diameter more than $(4d^2 + 4d + 1) \cdot S_{c,d}(n)$. Let P be a path of length more than $(4d^2 + 4d + 1) \cdot S_{c,d}(n)$ in T .

Consider the trees obtained when removing the edges of P . Less than $2d \cdot S_{c,d}(n)$ of them contain at least $n/2d \cdot S_{c,d}(n)$ vertices. Moreover, each such tree intersects the view of at most $2d + 2$ edges of P . In particular, P contains more than $S_{c,d}(n)$ edges whose view consists of $2d$ trees hanging from P , all of size less than $n/2d \cdot S_{c,d}(n)$. In particular, their view at distance d contain at most $n/S_{c,d}(n)$ vertices.

When $d = 2$, there are at most c choices for the color of each vertex v , and at most $\deg^c(v)$ choices for the colors of its neighbors. In particular, we found more than $S_{c,2}(n)$ edges on P that can have $c^2 \cdot n^{2c}/S_{c,2}(n)^{2c} = S_{c,2}(n)$ different views. We can thus find two edges with the same view and conclude using Lemma 13.

When $d > 2$, the view of each endpoint of our edges is a tree of height d with $k := n/S_{c,d}(n)$ nodes, whose k nodes are colored with c colors, hence there are at most $k^c \cdot t(d, k)$ such views. Therefore, the number of views of our edges is at most $k^{2c} \cdot t(d, k)^2$. Using Theorem 15, we get (for large enough k) that $k^{2c+1} \cdot t(3, k)^2 \leq e^{6\sqrt{k}} \leq n$ since $k = \log^2 n/36$ in that case. Similarly, for $d > 3$, we get $k^{2c+1} \cdot t(d, k)^2 \leq n$ since $k = g_d(\log n)/4$ in that case. Therefore, in both cases, we get $k^{2c} \cdot t(d, k)^2 \leq n/k = S_{c,d}(n)$, and we can again conclude using Lemma 13. ◀

3 Construction of local checkers of prescribed exact diameter for $d \geq 2$

The goal of this section is to prove Theorem 7.

► **Theorem 7.** *For every function $f(n) = O(S_{c,d}(n))$, there exists a local checker in $\mathcal{L}_{c,d}$ of exact diameter $f(n)$.*

The case of distance 1 is very easy: one can easily construct a local checker in $\mathcal{L}_{2,1}$ recognizing stars, which have constant exact diameter. So in the rest of the section, we focus on the case $d \geq 2$. We will actually prove that the statement holds even restricted to a class of local checkers that will

allow to associate the trees they recognize with strings over some alphabet. Then we will provide local checkers whose maximum diameter is precisely $S_{c,d}(n)$. We will finally explain how we can adapt our construction using a general tool to accept only trees of diameter $f(n)$ for any function $f(n) = O(S_{c,d}(n))$.

3.1 Encoding sequences and locally testable languages.

A *caterpillar* is a tree T such that the removal of the leaves of T yields a path P , called *the backbone* of T . A *d-caterpillar* is a tree T such that if we iteratively remove all the leaves d times then the remaining graph is a path. Equivalently, all the vertices of T are at distance at most d from P . Note that a caterpillar is a 1-caterpillar.

Let us now explain how we can encode a word (with an infinite alphabet) into a d -caterpillar and conversely. Let $\Sigma = (a_n)_{n \in \mathbb{N}}$ be an infinite alphabet together with an ordering on the letters. Let d be an integer and f be a bijection associating a colored rooted tree of depth at most d to each letter. Given a string $s = s_1 \cdots s_p$ over the alphabet Σ , the tree $T[s]$ is obtained by taking the trees $f(s_1), \dots, f(s_p)$, adding an edge between the root of $f(s_i)$ and the root of $f(s_{i+1})$ for $i \in [0, p]$, where by convention $f(s_0)$ and $f(s_{p+1})$ are paths of length $d + 1$ (rooted at a leaf). Note then that $T[s]$ is a d -caterpillar whose backbone is formed by the roots of $f(s_0) \dots, f(s_{p+1})$. For every vertex of the backbone, we say that a_i is *associated* to it if $f(a_i)$ is attached on it. Also note that every d -caterpillar can be seen as $T[s]$ for some choice of s since f is bijective.

In order to fully control the word, we would like to enforce that we read it in the right direction. And with the caterpillar defined above, both s and its mirror provide the same caterpillar. Moreover, vertices of the middle of backbone of T have a priori no reason to know in which direction they are supposed to "read" the word. To enforce one direction of reading, we actually slightly change the definition of $T[s]$: instead of creating a copy of $f(s_i)$ for each s_i , we create three of them, identify their roots, and add $i \bmod 3$ pending leaves to the root. (Note that this only changes the number of vertices by a constant multiplicative factor, and the diameter is not affected since $d \geq 1$). Now, the numbers of neighbors outside the backbone of vertices in the backbone mod 3 yields the sequence $0, 1, 2, 0, 1, 2, \dots$. We say that a caterpillar is *special* if this property is satisfied and paths of length $d + 1$ are attached to the first and last vertices of the backbone. In particular, since f is bijective, each special caterpillar can be uniquely written as $T[s]$ for some string s over A .

We are interested in local checkers, called *special checkers* (or d -special checkers), that only accept special d -caterpillars. These can be easily enforced as shown by the following lemma, whose proof is deferred to the appendix.

► **Lemma 16.** *A local checker at distance $d + 1$ can check:*

- *if a tree is a special d -caterpillar and,*
- *every vertex can determine if it is on the backbone or not as well as its neighbors on the backbone and,*
- *every vertex can determine if it is an endpoint of the backbone and,*
- *every vertex can determine the letter associated to it as well as the letter associated to its neighbors on the backbone.*

We denote by $\mathcal{L}_{c,d+1}^*$ the set of local checkers that only accept special d -caterpillars. We may now associate with each $L \in \mathcal{L}_{c,d+1}^*$ the language of strings s such that $T[s]$ is accepted by L . Observe that the membership of a string in such languages depends only on its set of substrings of size at most $2d - 1$. Such languages are said to be *locally testable* (or *d -testable*). In particular, for every possible encoding f and every locally testable language, there is a local checker in $\mathcal{L}_{c,d}^*$ accepting exactly the trees $T[s]$ for $s \in L$. In the rest of this section we will need two simple locally testable languages. Let $\Sigma = (a_n)_{n \in \mathbb{N}}$ be a (possibly infinite) alphabet where letters are ordered.

Then one can easily check that the following language is locally testable for every $d \geq 2$ (since a substring of $2d - 1$ characters has to be a consecutive sequence of letters in Σ):

► Remark 17. The language L_1 of prefixes of the infinite word $a_1 a_2 \dots$ is 2-testable.

Let us denote by W_1 the word $a_1 a_2$ and by W_i for every $i \geq 2$ the word $a_1 a_p \dots a_{p-1} a_p$. We denote by L_2 the language of all words $W_1 \dots W_p$ for every p (that is L_2 contains the concatenations of the the p first words W_i for all integer p). Observe that strings in L_2 are exactly the ones starting with $a_1 a_2$, ending with $a_{p-1} a_p$, and whose subsequences of length 3 are of the following shape:

- $a_{k-1} a_\ell a_k$ for some $k < \ell$
- $a_\ell a_k a_\ell$ for some $1 < k < \ell$
- $a_{\ell-1} a_1 a_\ell$ for some $1 < \ell$
- $a_{k-1} a_k a_1$ for some $1 < k$

► Remark 18. The language L_2 is 2-testable.

3.2 Constructions reaching the bound $\Theta(S_{c,d}(n))$.

The goal of this part is to provide a local checker whose maximum diameter is exactly the one of Theorem 7. We distinguish two cases depending the value of d .

Case $d \geq 3$. We start with the easier case $d \geq 3$. Since L_1 is locally testable, for every possible encoding f , there is a special local checker in $\mathcal{L}_{c,d}^*$ accepting exactly the trees $T[s]$ for $s \in L$.

To obtain the bound of Theorem 7, it remains to describe f . Consider an enumeration of all trees of height $d - 1$ by increasing number of vertices, and define $f(a_i)$ as the i -th such tree. By construction, the number of vertices of $f(a_i)$ is the smallest k such that $i \leq t(d - 1, k)$. By Theorem 15, the size of $f(a_i)$ is $k = \Theta(\log^2 i)$ if $d = 3$ and $k = \Theta(g_d(\log i))$ otherwise. Now let T be an accepted tree. By Lemma 16 it is a d -caterpillar and by construction of the local checker, the nodes of the backbone are associated to the sequence of letters $a_1 \dots a_p$ of L_1 for some integer p . Now observe that $T[a_i]$ has diameter at most d and contains at most $3 \cdot f(a_p) + 2$ vertices (since we attach on each vertex three copies of the same tree plus at most 2 leaves). Thus T has diameter $\Theta(p + d)$ and its number of vertices is $\Theta(p \cdot |f(a_p)|)$. Plugging in the estimates for $|f(a_p)|$ concludes.

Case $d = 2$. Since L_2 is locally testable, and for every choice of f , there is a local checker in $\mathcal{L}_{c,2}^*$ accepting exactly the trees $T[s]$ for $s \in L_2$.

To obtain the bound from Theorem 7, it remains to describe the encoding f of each letter and to prove that it gives the required bound.

Let us start with the colorless case $c = 1$. We define $f(a_p)$ as the star on $p + 1$ vertices, rooted at its center. Consider the word $s_p = W_1 \dots W_p$. Observe that since s_p has length $p(p - 1)$, $T[s_p]$ is a tree of diameter $\Theta(p^2)$. Moreover, each letter a_i appears $(p - 1)$ times in s_p , hence $T[s_p]$ has $\Theta((p - 1) \cdot (1 + \dots + p)) = \Theta(p^3)$ vertices. In particular, our local checker has exact diameter $n^{2/3}$, as expected.

To extend this result to the colored case $c > 1$, we just have to adapt the encoding of each letter. We define $f(a_i)$ as a star whose center gets color 1, and with x_j leaves of color j for $j \in [1, c]$, where (x_1, \dots, x_c) is the i -th (in lexicographic order) c -tuple whose entries are non-increasing. Observe that the number of such tuples whose first element is at most p is $\binom{p+c}{c} = \Theta(p^c)$, hence each letter in s_{p^c} is encoded with at most cp leaves. In particular, the trees accepted by our local checker have diameter $\Theta(p^{2c})$ and $\Theta(cp \cdot p^{2c})$ nodes, yielding the bound $\Theta(n^{2c/(2c+1)})$ as required.

3.3 Extension to exact diameter $O(S_{c,d}(n))$

The goal of this part is to prove Theorem 7 that is to obtain a checker of exact diameter $D(n)$ for every function $D(n) = O(S_{c,d}(n))$. The case $d = 1$ being trivial, we will assume in the rest of this

section that $d \geq 2$.

Let D be any function such that $D(n) = O(S_{c,d}(n))$. We consider a slightly modified version of the local checkers $L \in \mathcal{L}_{c,d}^*$ constructed in Section 3.2. Roughly speaking, all the nodes have exactly the same behavior but the last node of the backbone, corresponding to the last letter of the word. This node will be allowed to have arbitrarily many leaves (as long as the modulo 3 condition stays satisfied), and will carry an additional verification. Namely it will check that we added the right amount of leaves to get the correct dependency between diameter and number of nodes. Unfortunately, such a modification does not work directly, and we need to slightly modify our checkers to make it work.

For a node of the backbone corresponding to a letter a , we create six copies of $f(a)$ instead of three. This at most doubles the total number of vertices. Now, we link the last node u of the backbone with the center of three stars of the same size. (And we moreover add 0, 1 or 2 leaves as before depending on the position on the backbone).

Note that all the nodes must have degree equal to 0, 1 or 2 modulo 6 except the last node of the backbone which can have degree 3, 4 or 5 modulo 6. And all the nodes of the backbone can check the validity of their degree. Moreover, all the nodes can indeed recover their own letter as well as the letter of their neighbors as in the proof of Lemma 16. Indeed, since we add to the last node of the backbone only three copies of the same star, this star will be ignored by the penultimate node of the backbone when it reconstructs the subtree. In the case $d = 2$, the argument is a bit more subtle: indeed the neighbor on the backbone does not fully see the subtree attached on the last vertex of the backbone but sees that the number of vertices attached to it is 3 more than what it should be and does not reject in that case.

To conclude, let us explain when the last vertex of the backbone accepts (the acceptance rule is not modified for the other vertices). The goal is to artificially increase the number of vertices of the trees $T[w]$ for $w \in L_2$, without changing their diameter, in order to reach the target diameter D . Note that, in both languages L_1 and L_2 , the last node of the path is able to determine the length of the path by simply knowing the last two letters. So the last node of the backbone computes the diameter δ of $T[w]$ and the number k of vertices in the tree before it. It then accepts when its number r of leaves satisfies $D(r + k) = \delta$.

4 Minimum diameter at distance 1 – Proof of Theorem 9

► **Theorem 9.** *Let c be an integer. The minimum diameter of any $L \in \mathcal{L}_{c,1}$ is either constant, logarithmic or $\Theta(n^{1/k})$ for some values of $k \leq c^2$.*

A first idea consists in just applying our pumping argument similarly to the proof of Lemma 13, but in reverse, in order to shorten long enough paths until they get constant size. However, this may actually decrease a lot the total number of vertices at the same time, impeding us to construct an infinite family of trees with the claimed diameter. To solve this issue, we have to get more control on which subtrees we remove while de-pumping. More precisely, we will only de-pump subtrees that are almost paths. To ensure that long enough paths exist, we first prove that local checkers accepting trees of arbitrarily large degree have constant minimum diameter. We then consider local checkers L accepting trees of bounded degree (which already have super-logarithmic diameter), and investigate the edges with a given view to exhibit some structure in the trees accepted by L . We then use this structure to show that L must accept trees with a very specific shape, namely that look like complete binary trees or rakes (defined below).

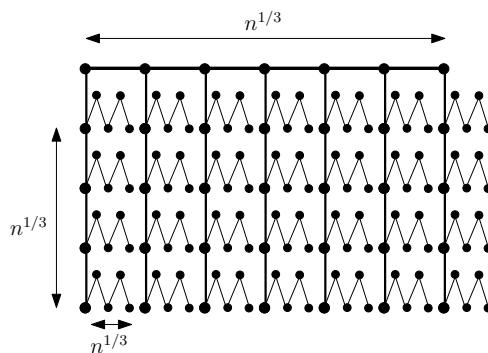
4.1 Constructions

Before diving into the proof, we will prove that Theorem 9 is essentially tight, meaning that we can obtain local checkers that accept trees of constant diameter, linear diameter or diameter $\Theta(n^{1/k})$ for every $2 \leq k \leq c/3$.

Linear diameter. The local checker in $\mathcal{L}_{1,1}$ where every node accepts whenever its degree is at most 2 accepts exactly the class of paths, hence has linear exact (and then minimum) diameter.

Constant diameter. The local checker in $\mathcal{L}_{1,1}$ that where every node accepts regardless of its neighborhood accepts trees of diameter at most 2 for every possible size of trees.

Logarithmic diameter. The local checker in $\mathcal{L}_{1,1}$ where a node accepts if and only if its degree is 1 or 3 accepts exactly binary trees. Hence its minimum diameter is logarithmic (even if its maximum diameter is linear) since the minimum diameter of such a tree is reached when the tree is complete.



■ **Figure 2** A 3-rake on n vertices of diameter $\Theta(n^{1/3})$. The deletion of the top path leaves $n^{1/3}$ 2-rakes.

Polynomial diameter. For each integer k , let us introduce the class of k -rakes. The 1-rakes are paths, and k -rakes are trees T containing a path P whose removal yields a forest whose connected components are $(k-1)$ -rakes and such that each vertex of P is attached to at most one connected component of $T \setminus P$ (see Figure 2 for an illustration). We prove the following in the appendix.

► **Lemma 19.** *The class of k -rakes has minimum diameter $\Theta(n^{1/k})$ and is accepted by a local checker in $\mathcal{L}_{3k,1}$.*

4.2 Proof of Theorem 9

We now proceed with the proof of Theorem 9, and first take care of trees of arbitrary large degree.

► **Lemma 20.** *Let c be an integer and $L \in \mathcal{L}_{c,1}$ accepting trees of arbitrary large degree. Then the minimum diameter of L is constant.*

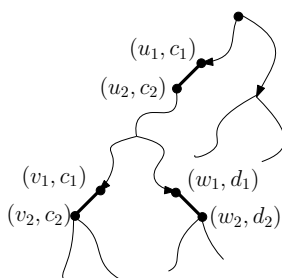
Proof. Given two colors a, b , define $T_{a,b}$ as a minimum-sized tree accepted by L containing an edge $v_a v_b$ such that v_a has color a and v_b has color b (if such a tree exists). Denote by α the largest size of $T_{a,b}$ when a, b run across all possible colors.

By hypothesis, L accepts an infinite family of c -colored trees $(T_n)_n$ such that each T_n contains a vertex u_n of degree at least n . Root each T_n at u_n . Now, for each edge $u_n u$ of T_n , let a be the color of u_n and b the color of u , and successively graft $T_{a,b}$ in T_n at $(u u_n, v_a v_b)$. By Lemma 12, the resulting tree T'_n is accepted by L . Moreover, every tree T'_n has at least n nodes and diameter at most 2α , which concludes. ◀

We may now assume that each local checker accepts only graphs of bounded degree Δ . In particular, each accepted tree T satisfies $|T| \leq \Delta^{\text{diam}(T)}$, hence the diameter is at least logarithmic (and at most linear) with respect to the size³. To prove the remaining parts of Theorem 9, we study the structure of the edges with the same view, and get a criterion proving that L accepts trees that look like complete binary trees or k -rakes for some k , and thus must have minimum diameter $O(\log n)$ or $O(n^{1/k})$.

Given a local checker L , we say that a pair of colors (c_1, c_2) is *useful* if L accepts some tree containing a path u_1, \dots, u_p ($p \geq 4$) where u_1, u_{p-1} have color c_1 and u_2, u_p have color c_2 .

We define the binary relation $<_L$ on the useful pairs of colors as follows: $(c_1, c_2) <_L (d_1, d_2)$ if L accepts a c -colored tree T that can be rooted such that, when orienting the edges towards the leaves, there are three arcs u_1u_2, v_1v_2 and w_1w_2 such that u_2 is an ancestor of v_1 and w_1, v_2 is not an ancestor of w_2 , both u_i, v_i have color c_i for $i = 1, 2$, and w_i has color d_i for $i = 1, 2$. When this condition is satisfied, we moreover say that the rooted tree T *witnesses* that $(c_1, c_2) <_L (d_1, d_2)$. (In other words, it means that u_1, u_2 are ancestors of the four other vertices while v_1v_2 and w_1w_2 lie in different subtrees and are incomparable in T) (see Figure 3 for an illustration).



■ **Figure 3** A tree T witnessing $(c_1, c_2) <_L (d_1, d_2)$. Vertices are labeled with their name and color.

One can easily check that $<_L$ is transitive (a proof of this statement is given in Appendix E.2). To get the remaining cases of Theorem 9, we prove in Appendix E.3 that if $<_L$ is not a strict partial order, then L has minimum diameter $\Theta(\log n)$. Otherwise, we claim that L has minimum diameter $\Theta(n^{1/k})$ where k is the length of the longest chain for $<_L$ (in particular $k \leq c^2$). This is a consequence of the two following results, whose proofs are deferred to the appendix.

► **Lemma 21.** *If $<_L$ has a chain of size k , then the minimum diameter of L is $O(n^{1/k})$.*

► **Lemma 22.** *If L accepts an n -vertex tree of diameter at most $n^{1/k} / \Delta^{(1+1/k)c^2}$, then $<_L$ has a chain of size $k + 1$.*

References

- 1 Karine Altisen, Stéphane Devismes, Swan Dubois, and Franck Petit. *Introduction to Distributed Self-Stabilizing Algorithms*. Synthesis Lectures on Distributed Computing Theory. Morgan & Claypool Publishers, 2019.
- 2 Alkida Balliu, Sebastian Brandt, Yi-Jun Chang, Dennis Olivetti, Jan Studený, Jukka Suomela, and Aleksandr Tereshchenko. Locally checkable problems in rooted trees. *Distributed Comput.*, 36(3):277–311, 2023.

³ Note that even if we restrict to the case of bounded degree, we cannot directly use the LCL machinery since the context is not exactly the same. We are looking at possible diameters of accepted trees and not looking at the checking of some property.

- 3 Alkida Balliu, Sebastian Brandt, Fabian Kuhn, Dennis Olivetti, and Gustav Schmid. On the node-averaged complexity of locally checkable problems on trees. In *37th International Symposium on Distributed Computing, DISC 2023*, volume 281 of *LIPICs*, pages 7:1–7:21, 2023.
- 4 Alkida Balliu, Fabian Kuhn, and Dennis Olivetti. Improved distributed fractional coloring algorithms. In *25th International Conference on Principles of Distributed Systems, OPODIS 2021*, volume 217, pages 18:1–18:23, 2021.
- 5 Nicolas Bousquet, Louis Esperet, and François Pirot. Distributed algorithms for fractional coloring. In *Structural Information and Communication Complexity - 28th International Colloquium, SIROCCO 2021*, volume 12810, pages 15–30. Springer, 2021.
- 6 Nicolas Bousquet, Laurent Feuilloley, and Sébastien Zeitoun. Local certification of local properties: Tight bounds, trade-offs and new parameters. In *41st International Symposium on Theoretical Aspects of Computer Science, STACS 2024*, volume 289 of *LIPICs*, pages 21:1–21:18, 2024.
- 7 Yi-Jun Chang. The complexity landscape of distributed locally checkable problems on trees. In Hagit Attiya, editor, *34th International Symposium on Distributed Computing, DISC 2020*, volume 179 of *LIPICs*, pages 18:1–18:17, 2020.
- 8 Yi-Jun Chang, Tsvi Kopelowitz, and Seth Pettie. An exponential separation between randomized and deterministic complexity in the LOCAL model. *SIAM J. Comput.*, 48(1):122–143, 2019.
- 9 Yi-Jun Chang and Seth Pettie. A time hierarchy theorem for the LOCAL model. *SIAM J. Comput.*, 48(1):33–69, 2019.
- 10 Laurent Feuilloley. Introduction to local certification. *Discret. Math. Theor. Comput. Sci.*, 23(3), 2021.
- 11 Henning Hasemann, Juho Hirvonen, Joel Rybicki, and Jukka Suomela. Deterministic local algorithms, unique identifiers, and fractional graph colouring. *Theor. Comput. Sci.*, 610:204–217, 2016.
- 12 Ted G Lewis. *Network science: Theory and applications*. John Wiley & Sons, 2011.
- 13 Henrik Lievonen, Timothé Picavet, and Jukka Suomela. Distributed binary labeling problems in high-degree graphs. In *Structural Information and Communication Complexity - 31st International Colloquium, SIROCCO 2024*, volume 14662, pages 402–419, 2024.
- 14 George B. Mertzios, Othon Michail, George Skretas, Paul G. Spirakis, and Michail Theofilatos. The complexity of growing a graph. In *Algorithmics of Wireless Networks - 18th International Symposium on Algorithmics of Wireless Networks, ALGOSENSORS 2022*, volume 13707, pages 123–137. Springer, 2022.
- 15 Moni Naor and Larry J. Stockmeyer. What can be computed locally? In *Proceedings of the Twenty-Fifth Annual ACM Symposium on Theory of Computing*, pages 184–193. ACM, 1993.
- 16 Péter Pál Pach, Gabriella Pluhár, András Pongrácz, and Csaba Szabó. The number of rooted trees of given depth. *the electronic journal of combinatorics*, pages P38–P38, 2013.
- 17 Jukka Suomela. Using round elimination to understand locality. *SIGACT News*, 51(3):63–81, 2020.

A Further related work

Network science perspective

Network science has a long history of linking local and global properties of networks. A typical example are scale-free networks where the power-law degree distribution is related to clustering and small world phenomenon, and for which generative models have been introduced (such as preferential attachment). We refer to the book [12] for an introduction to the topic. In general, this perspective differs from ours in two ways: the properties considered are global (e.g. the degree distribution) thus cannot be checked locally, and the generative models are dynamic processes, while we study static processes (in other words, we are interested in maintaining a structure, not in creating it). Papers outside of network science also consider processes to “grow a graph”, see in particular [14].

Graph theory perspective

Graph theory also studies relations between local conditions and global behavior, in a more combinatorial way. For example, there is a wealth of works showing that forbidding small structures in a graph implies the existence of nice decompositions, of bounds on the coloring number etc. Another related direction are theorems à la Dirac: if all nodes have degree at least some function of the number of nodes, then the graph is Hamiltonian or connected. Again, this is quite different from our direction, in particular the diameter is not a topic of interest in this area.

Distributed computing perspective

We have already mentioned several works on LCLs, and how they are related to our paper. For completeness, let us also mention that the complexity landscape has also been studied in rooted trees [2] and in trees for node-averaged complexity [3]. The topic of checking the configuration of a network is central in self-stabilization [1], where it is essential to be able to detect inconsistencies in the computed data-structure, but not in the network topology, which differs from our work. A related field, that does study the network itself is local certification, where one considers labels helping the nodes to check given properties. (We refer to [10] for an introduction to the topic, and to [6] for a recent paper surveying the works related to graph structure.)

B Proofs of Section 2

B.1 Proof of Lemma 12

Using the notations of the definition, suppose that T and T' are accepted by L , and consider the graft T'' of T' in T at $(uv, u'v')$. We claim that each node w of T'' has the same view as its copy in T or T' . Assume by symmetry that w was in T , and root T'' at w . Then its neighborhood at distance d in T'' consists in a copy of its neighborhood at distance d in T , except if it contains v' . In that case, the subtree rooted at v' is $T'_{v'}$. Recall that uv (in T) and $u'v'$ (in T') have the same view at distance d , hence the view of v' in $T'_{v'}$ and of v in T_v at distance $d - 1$ are the same. Thus the view of w in the subtree rooted at v' (in T'') is the same as the view of subtree rooted at v (in T), hence it accepts. Therefore, T'' is accepted by L .

B.2 Proof of Lemma 13

Let us denote by C_1, C_2 and C_3 the connected components of $T \setminus \{uv, xy\}$ containing respectively u for C_1 , v and x for C_2 and y for C_3 .

Let us now define an infinite collection of trees $(T_i)_{i \in \mathbb{N}}$ such that, for every i , the diameter of T_{i+1} is larger than the one of T_i and the size of T_{i+1} is the size of T_i plus the size of C_2 .

We set $T_1 = T$. We define T_2 as the tree obtained by grafting T in T at (xy, uv) . Note that, abusing notations, the resulting tree T_2 contains the three following edges: uv (in one of the trees T), xv (corresponding to x in the first T and v in the second) and xy (in the second tree). We denote by x_2y_2 the edge xy . Now let $i \geq 3$. and we define T_{i+1} as the tree obtained by grafting T in T_i at (x_2y_2, uv) . Observe that this operation creates a new copy of xy in T_{i+1} that we denote by $x_{i+1}y_{i+1}$ (lying in the part of T that is added to T_i). By Lemma 12, each T_i is accepted by L .

The conclusion follows from the fact that T_i has at most $|T| + (i - 1) \cdot |C_2|$ nodes and diameter at least $i \cdot d_T(x, v)$.

C Proof of Lemma 16

Consider a local checker that can see at distance $d + 1$. In particular, a vertex u can see all the neighbors of all its neighbors at distance at most d . The vertex u can then iteratively remove all the leaves d times. After all these deletions, if the vertex is not eliminated, it should have at most 2 neighbors (otherwise it rejects) which are its (at most) two neighbors on the backbone. This proves the first and second points.

Let us denote by T_u the view of u rooted at u where the subtrees rooted on the neighbors of u in the backbone are removed. The vertex u first checks its degree in T_u and checks that it is coherent with the degree of its neighbors on the backbone (if it has degree $1 \pmod 3$, its two neighbors must have degree 0 and 2).

After removing leaves attached to u in T_u in order to reach a degree $0 \pmod 3$, the vertex u can check that its pending subtrees can be partitioned into three copies of the same forest in order to determine its letter. Since it sees at distance $d + 1$ it can run a similar process to determine the letter of its neighbor. Note that this is not completely immediate since, even if it sees the trees of depth d rooted on its neighbors it cannot check that leaves are indeed leaves. However, after the removal of 0, 1 or 2 attached leaves on its neighbor, the attached trees must consist of three times the same forest plus an additional tree that corresponds to the beginning of the subtree attached on the neighbor at distance 2 on the backbone. In particular the degree is equal to 1 modulo 3. So after grouping the trees three by three, it only remains one tree which corresponding to the rest of the backbone. Removing it allows u to know the tree associated with its neighbor, and thus its letter, which completes the proof of the fourth point.

For the endpoints of the backbone, there is only one long path attached to them, which can indeed be easily determined. This proves the third point.

D Consequences on generalized LCL – Proof of Corollary 8

► **Corollary 8.** *For every function $f(n) = O(S_{c,d}(n))$, there exists a generalized-LCL at distance $d + 4$ of complexity $f(n)$.*

Let us first discuss slight modifications of the checkers we have manipulated to get our upper bounds in Section 3.3. We will prove that we can modify checkers to ensure that if our original special checker L accepts a tree $T[w]$, then the modified checker accepts all the trees $T[w']$ where w' is obtained from w by repeating a constant number of times some letters.

Let $k \geq 1$. A word W' is a k -subdivision of $W = a_1 \cdots a_n$ if it is a subword of $a_1^k \cdots a_n^k$ and it contains W as a subword. The k -subdivision of a language S is the language of all the k -subdivisions of words of S . (Note that S is the 1-subdivision of S). Corollary 8 relies on the fact that k -subdivision preserves recognition by special local checkers, up to increasing the checkability radius.

▷ **Claim 23.** Let $r \geq k \geq 2$ and $L \in \mathcal{L}_{c,d}^*$ accepting a r -testable language S such that no word of S has identical consecutive letters. Then there is a special local checker L^* in $\mathcal{L}_{c,d+rk}^*$ accepting the k -subdivision of S .

Proof. We consider the same checker L with slight modifications. Each node u now can recover all letters at distance $kr - 1$, and remove all the repetitions it sees. Since no word of S has identical consecutive letters, and each can be repeated at most k times in the subdivision, u now has access to the letters at distance $r - 1$ from it in the un-subdivided word and run the verification process from L (since S is r -testable). ◀

We may now proceed with the proof of Corollary 8.

Proof of Corollary 8. Let us now consider the languages L_1 and L_2 of the previous sections which are 2-testable. Note that there is no repetition of letters in neither L_1 nor L_2 . By Claim 23, there is a special checker that can recognize their 2-subdivisions.

Now, we define a generalized-LCL, which is a generalization of 2-coloring, in the following way. Each node must choose an output that is either 0, 1, or empty. The verification algorithm checking the correctness of the output is the following. On a node v ,

- The output of all the vertices that are not in the backbone is empty while all the vertices in the backbone should output 0 or 1.
- If v outputs 0 or 1, it cannot have a neighbor with the same output (i.e. the non-empty output labels define a 2-coloring.)

We claim that in the trees accepted by the modified local checker, this is a global problem. Consider two nodes at the endpoints of the maximum path, and suppose they have a view asymptotically smaller than the diameter. Now, these nodes cannot recover the middle of the word encoded by the tree. In this middle part of the word, either delete a letter that was repeated or delete a repetition. This leads to a new tree, where the endpoints of the backbone have still the same view, hence should output the same. The 2-colorings of one of the two trees must be incorrect, which is a contradiction. ◀

Finally note that in the proof above, we have decided to increase a bit the checkability radius of the local checker. If we allow ourselves to have two input colors, then we can keep the same radius. In the instances we consider, all nodes will have input 0, except possibly the first node of the backbone which can have either 0 or 1. Then we enforce that first node should have the same input and output label. Since the nodes on the other side of the tree do not know about this input, 2-coloring is again a global problem.

E Proofs of Section 4

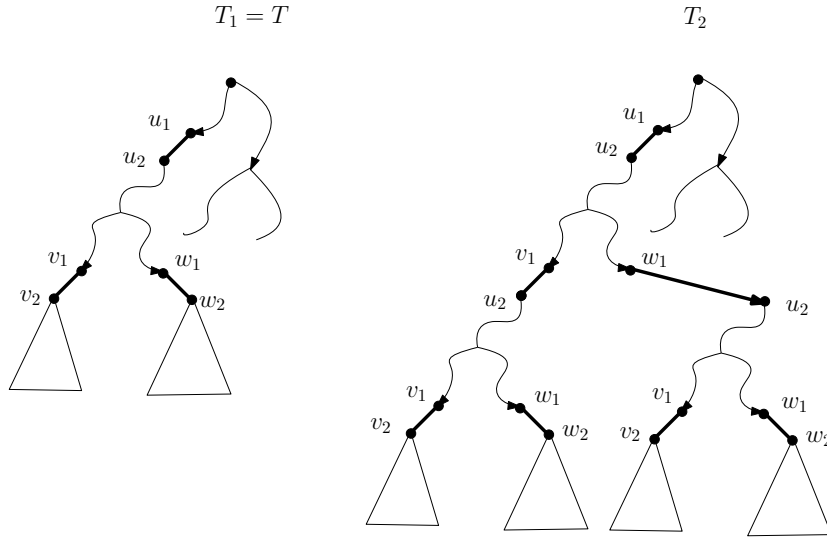
E.1 Proof of Lemma 19

Constructing inductively a k -rake by choosing each time a path P on ℓ vertices, we obtain a k -rake with ℓ^k vertices and of diameter $k\ell$. Hence the class of k -rakes has minimum diameter $O(n^{1/k})$. This bound is actually tight: this is clear for 1-rakes. For $k \geq 2$, let R be a k -rake and P be a path whose deletion leaves a collection of $(k-1)$ -rakes. If P has length at least $n^{1/k}$, the conclusion follows. So we can assume that $|P| < n^{1/k}$. Since $R \setminus P$ contains at most $|P|$ connected components, one of the $(k-1)$ -rakes has size at least $n^{(k-1)/k}$. And by induction hypothesis, such a $(k-1)$ -rake has diameter at least $n^{1/k}$.

Let us now prove that for every $k > 0$, there exists a local checker $L \in \mathcal{L}_{3k,1}$ accepting exactly the class of k -rakes as long as $c \geq 3k$. The $3k$ colors will be represented as pairs of integers (i, j) with $1 \leq i \leq k$ and $j \in \{1, 2, 3\}$. Each node checks that it has degree at most three. Moreover each node of color (i, j) checks that it has a neighbor $(i+1, 1)$ (if $i < k$) and that its other neighbors have colors either $(i, j-1 \bmod 3)$ and $(i, j+1 \bmod 3)$, or $(i, j+1 \bmod 3)$ and $(i-1, *)$ or only $(i, j-1 \bmod 3)$.

E.2 $<_L$ is transitive

Assume that $(c_1, c_2) <_L (d_1, d_2)$ and $(d_1, d_2) <_L (e_1, e_2)$. Denote by T, T' the (rooted) trees that witness the relation $(c_1, c_2) <_L (d_1, d_2)$ (resp. $(d_1, d_2) <_L (e_1, e_2)$). In particular, T contains two arcs u_1u_2, v_1v_2 of colors (c_1, c_2) and an arc w_1w_2 of colors (d_1, d_2) , and T' contains the arcs



■ **Figure 4** Illustration of the proof of Appendix E.3. The trees T_1 and T_2 are depicted.

x_1x_2, y_1y_2 of colors (d_1, d_2) and z_1z_2 of color (e_1, e_2) with the ancestor relation of the definition of $<_L$.

Construct the tree T'' by grafting T' in T at (x_1x_2, w_1w_2) . By Lemma 12, T'' is accepted by L . Moreover, by construction of T'' , the copy of u_2 is an ancestor of z_1 but not v_2 , hence $(c_1, c_2) <_L (e_1, e_2)$.

E.3 The logarithmic case

If $<_L$ is not a strict partial order, since it is transitive, there must be a pair of colors (c_1, c_2) such that $(c_1, c_2) <_L (c_1, c_2)$. In particular there is a rooted tree T with three arcs u_1u_2, v_1v_2, w_1w_2 , all of colors (c_1, c_2) such that u_2 is an ancestor of v_1 and w_1 but v_2, w_2 are not ancestors of each other.

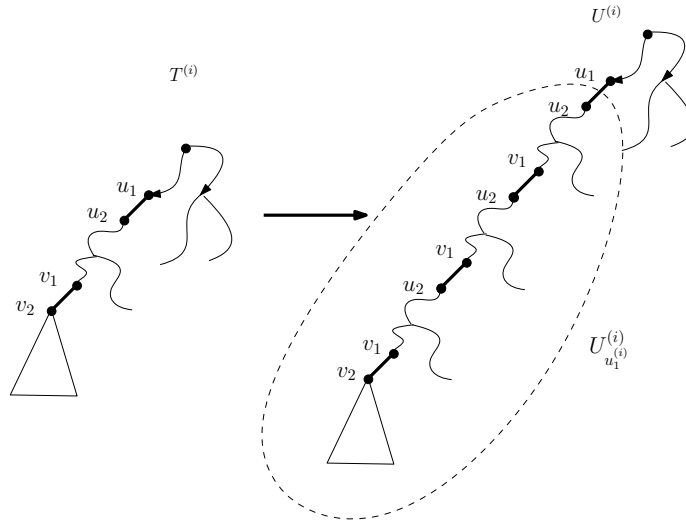
From T , we construct a sequence of trees $(T_i)_i$ that look like binary complete trees. Each T_i will contain 2^i copies of the subtrees of T rooted at u_2 . Let $T_1 = T$ and define T_{i+1} by successively grafting T in T_i at (xy, u_1u_2) , where xy runs across all 2^i copies of v_1v_2 or w_1w_2 in T_i . Observe that L accepts each T_i by Lemma 12 (see Figure 4 for an illustration). Moreover, the diameter of T_i increases by a constant (at least one and at most the diameter of T) compared to T_{i-1} and the number of nodes increases by at least 2^i and at most $|T|2^i$. Thus T_i has diameter $\Theta(i)$ and $\Theta(2^i)$ nodes, which concludes.

E.4 Proof of Lemma 21

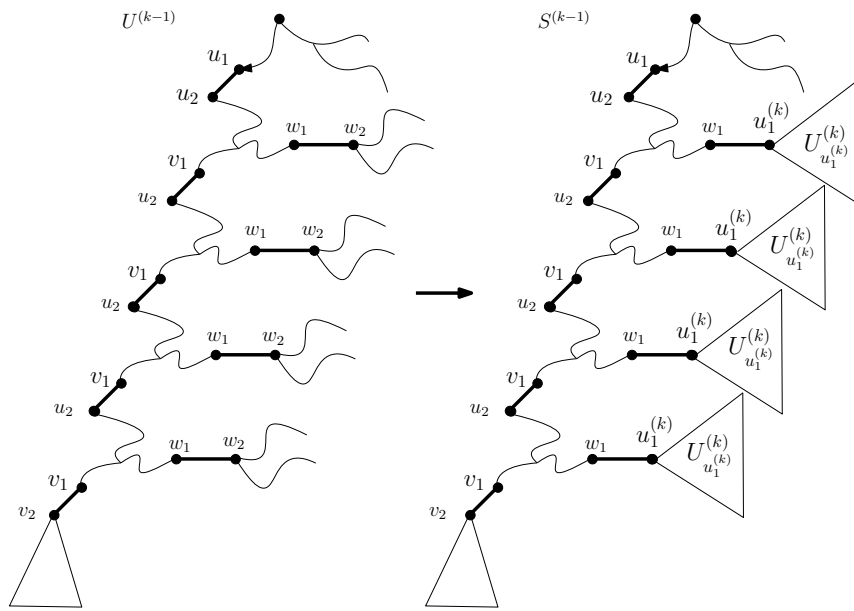
We basically show that if $<_L$ has a chain of size k , then L accepts trees with a k -rake-like structure, hence its minimum diameter is $O(n^{1/k})$.

Consider a chain of k pairs of colors $(c_1, c'_1) <_L \dots <_L (c_k, c'_k)$. Denote by $T^{(i)}$ a rooted tree and $u_1^{(i)}u_2^{(i)}, v_1^{(i)}v_2^{(i)}, w_1^{(i)}w_2^{(i)}$ its vertices witnessing that $(c_i, c'_i) <_L (c_{i+1}, c'_{i+1})$. Finally, let $T^{(k)}$ be a tree witnessing that (c_k, c'_k) is useful, that is $T^{(k)}$ contains a path between two edges $u_1^{(k)}u_2^{(k)}$ and $v_1^{(k)}v_2^{(k)}$ of colors (c_k, c'_k) .

Let $N > 0$. For every i , we start by grafting $T^{(i)}$ in $T^{(i)}$ at $(v_1^{(i)}v_2^{(i)}, u_1^{(i)}u_2^{(i)})$ N times, as in the proof of Lemma 13 (see Figure 5). This yields a tree $U^{(i)}$ containing a copy of the edge $u_1^{(i)}u_2^{(i)}$ of $T^{(i)}$ and N copies of $w_1^{(i)}w_2^{(i)}$, that is still accepted by L by Lemma 12.



■ **Figure 5** The construction of $U^{(i)}$ from $T^{(i)}$ (some exponents have been removed for readability).



■ **Figure 6** The graph $S^{(k-1)}$ built from $S^{(k)}$. The graph $U_{u_1}^{(k)}$ is the one of Figure 5.

Set $S^{(k)} := U^{(k)}$ and for $i = k - 1$ down to 1 define $S^{(i)}$ as the tree obtained by successively grafting $S^{(i+1)}$ in $U^{(i)}$ at $(u_1^{(i+1)}, u_2^{(i+1)})$, xy where xy ranges across the N copies of $w_1^{(i)}w_2^{(i)}$ in $U^{(i)}$ (see Figure 6. By Lemma 12, all these trees are accepted by L .

For large enough N , each $U^{(i)}$ has diameter and size $\Theta(N)$. Therefore, when constructing $S^{(i)}$ from $S^{(i+1)}$, the number of nodes is multiplied by $\Theta(N)$ while the diameter increases by an additional $\Theta(N)$. In particular, $S^{(i)}$ has diameter $\Theta((k - i + 1) \cdot N)$ and contains $\Theta(N^{k-i+1})$ vertices. Taking $i = 1$ proves that L has minimum diameter at most $O(n^{1/k})$.

E.5 Proof of Lemma 22

We prove by induction a slightly stronger and technical statement: if L accepts an arbitrarily tree with an n -vertex (possibly non-rooted) subtree T of diameter less than $n^{1/k}/\Delta^{(1+1/k)c^2}$, then T contains an edge whose pair of colors is smaller than k other useful pairs (for $<_L$).

Assume that there is a tree accepted by L with an n -vertex subtree T of diameter less than $n^{1/k}/\Delta^{(1+1/k)c^2}$. Root T arbitrarily. We construct an auxiliary tree T_f , starting with $T_f := T$ and successively modifying it as follows. For each pair of colors (c_1, c_2) (by increasing order of $<_L$), while there exists a branch going through two arcs u_1u_2 and v_1v_2 with u_i, v_i colored with c_i , we assume that u_1u_2 and v_1v_2 are respectively the closest and furthest to the root among all arcs of the branch with these colors, and we graft at u_1 in T the subtree of T rooted at v_1 . Observe that each time this operation is applied, some vertices, namely the descendants of u_1 but not of v_1 , are deleted from T . Denote by T_f the tree obtained after this process is finished, and observe that T_f has height at most c^2 since no two pairs of colors can repeat on edges of the same branch. In particular, T_f has at most Δ^{c^2} nodes.

Since we considered the pairs of colors by increasing order of $<_L$, due to the choice of u_1u_2 as closest to the root, all the vertices chosen as u_1 and u_2 at some point during this process are chosen only once, and moreover they cannot be deleted afterwards. In other words, each deleted vertex of T can be associated with an arc u_1u_2 of T_f . By the pigeonhole principle, there is one arc u_1u_2 associated with at least n/Δ^{c^2} deleted nodes.

Consider the branch b and its arc v_1v_2 chosen when u_1u_2 was selected. Observe that the distance between u_2 and v_1 is less than $n^{1/k}/\Delta^{(1+1/k)c^2}$, hence one of the trees T' pending from b whose root is between u_2 and v_1 has size more than $n' = n^{1-1/k} \cdot \Delta^{c^2/k}$.

First assume that $k > 1$. Note that T' has diameter less than $n^{1/k}/\Delta^{(1+1/k)c^2} \leq n^{1/(k-1)}/\Delta^{(1+1/(k-1))c^2}$. By induction, T' contains an arc w_1w_2 whose pair of colors (d_1, d_2) is smaller than $k - 1$ other pairs. Denoting by (c_1, c_2) the colors of u_1u_2 , we get that $(c_1, c_2) <_L (d_1, d_2)$, hence (c_1, c_2) is smaller than k other useful pairs, which concludes the induction.

We may thus assume that $k = 1$. Since $n' \geq \Delta^{c^2}$, T' must have depth at least c^2 . On a longest branch, some pair of colors (d_1, d_2) must be repeated. Hence (d_1, d_2) is useful and $(c_1, c_2) <_L (d_1, d_2)$, which concludes.

F Restricting the expressivity: degree-myopic local checkers

This section is devoted to the proof of Theorem 10.

► **Theorem 10.** *The possible maximum diameter function for degree-myopic local checkers are $O(1)$, $\Theta(\sqrt{n})$, $\Theta(\log n / \log \log n)$, $\Theta(\log n)$ or $\Omega(n)$.*

The proof follows a two-step approach: first, we restrict the possible values for the parameters a_i, b_i 's, by discarding values that either yield degree-myopic checkers with constant or linear maximum diameter or can be modified without changing the maximum diameter. For example, each tree contains leaves, hence we must have $b_{leaves} \geq 1$. Then, we classify the possible diameter depending on the remaining free parameters.

F.1 Structural properties

First, we note that similarly to what happened earlier in the paper, the regimes $O(1)$ and $\Omega(n)$ are uninteresting. It is easy to find degree-myopic local checkers in these regimes: a checker where non-leaf nodes can only see leaves leads to stars; and a checker where every non-leaf node accepts only two neighbors of equal-degree leads to paths. Therefore, we focus on the set of degree-myopic

local checkers whose maximum diameter lies between $\omega(1)$ and $o(n)$, that we denote by \mathcal{M} . And prove a series of claims on that set.

▷ Claim 24. For any local checker in \mathcal{M} , we must have $a_{Degree+1} = 0$.

Proof. Consider a tree accepted by a local checker with $a_{Degree+1} > 0$. Since it is finite, then there is a node v of maximum degree Δ . If $\Delta = 1$, then the tree has only leaves, thus it has one or two nodes. Since the local checker is in \mathcal{M} there must be trees with $\Delta > 1$. In that case, v should have at least $a_{Degree+1} \geq 1$ neighbors of degree $\Delta + 1$, a contradiction. ◀

The following results make great use of the grafting operation (Definition 11 in Section 2). In our restricted setting, Lemmas 12 and 13 still hold, where the view of an edge is given by the degrees of its endpoints. Note that in particular, the trees recognized by local checkers in \mathcal{M} cannot contain any path between edges with the same view. We first use this idea to get rid of the *equal-degree* type.

▷ Claim 25. There cannot be a path $u_1, u_2, \dots, v_1, v_2$ with $\deg(u_1) = \deg(u_2)$ and $\deg(v_1) = \deg(v_2)$ in a tree accepted by some $L \in \mathcal{M}$.

Proof. Assume that a tree T accepted by L contains such a path. Now graft T in T at (v_1v_2, v_2v_1) . By Lemma 12, the new tree T' is accepted by L . Moreover, T' contains two copies of the edge u_1u_2 , call the second one $u'_1u'_2$. These two edges have the same view, hence one can apply Lemma 13 to construct trees of linear diameter accepted by L , a contradiction. ◀

Using this result, we can already restrict the study to checkers $L \in \mathcal{M}$ with $a_{Equal-degree} = b_{Equal-degree} = 0$. Indeed, by Claim 25, all accepted trees only use the equal-degree case at most once, hence necessarily $a_{Equal-degree} = 0$. Then for every such tree T , we cut the equal-degree edge, keep only half of the tree (the one with largest diameter), and fix it in the following way. We replace the cut edge by an edge to a leaf, and create T' . Observe that T' is accepted by the checker L' which is the same as L , except that b_{leaves} is increased by 1, and $b_{Equal-degree} = 0$. It is thus sufficient to prove Theorem 10 for L' .

From now on, we consider only checkers in \mathcal{M} with $a_{Equal-degree} = b_{Equal-degree} = 0$.

▷ Claim 26. For any local checker in \mathcal{M} , $b_{Degree-1} \geq 1$ and $b_{Degree+1} \geq 1$.

Proof. Since the checker is in \mathcal{M} , there must be at least two non-leaf nodes in at least one accepted tree. Consider two such non-leaf nodes u and v , and w.l.o.g. take them to be adjacent. Since in our restricted setting, we only allow two adjacent non-leaf nodes to have a degree difference of exactly 1, it must be that, up to symmetry, v is categorizing u as Degree+1, and u is categorizing v as Degree-1. Hence, we must allow at least one neighbor of each type. ◀

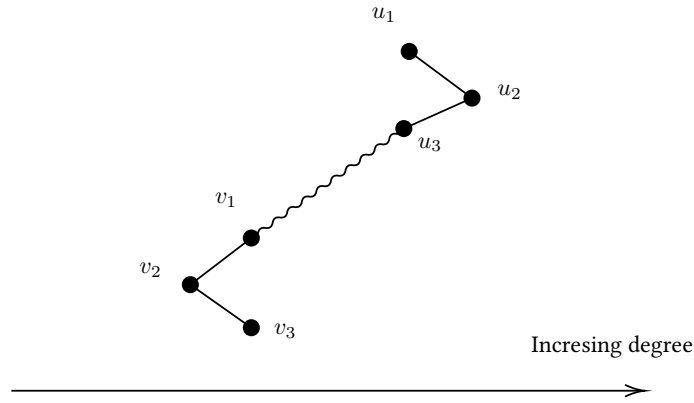
Let a *zigzag* in a tree be six nodes u_1, u_2, u_3 and v_1, v_2, v_3 , such that there exists a path in which they appear in this order, and $\deg(u_1) = \deg(u_3) = \deg(u_2) - 1$ and $\deg(v_1) = \deg(v_3) = \deg(v_2) + 1$. See Figure 7.

Working similarly as Claim 25, we prove that zigzags cannot appear.

▷ Claim 27. Let L be a checker in \mathcal{M} . The trees accepted by L have no zigzag.

Proof. By contradiction, suppose we have a checker in \mathcal{M} accepting a tree T with a zigzag $u_1, u_2, u_3, v_1, v_2, v_3$ as in the definition. By Lemma 12, the tree T' obtained by grafting T_{v_1} in T at (v_2v_3, v_2v_1) is still accepted by L .

The new tree T' contains the original vertices u_1, u_2, u_3 from T and also a copy of those from the grafted copy of T_{v_1} , that we call u'_1, u'_2, u'_3 . In particular, T' contains a path $u_1, u_2, \dots, u'_3, u'_2$, where u_1u_2 has the same view as $u'_3u'_2$. We can thus apply Lemma 13 to construct trees of linear diameter accepted by L and reach a contradiction. ◀



■ **Figure 7** A zigzag in a (not fully depicted) tree, where the nodes are ordered by increasing degree from left to right. The curvy line represents a path in the tree. On this picture the degree of the v_i is smaller than the degrees of the u_i , but this is not necessary. Note that the path in the middle could itself contain zigzags.

Forbidding zigzags basically proves that paths in accepted trees can be split in two parts, each monotonous in degree (up to vertices of degree at most $a_{Degree-1}$). This allows us to restrict the values of a_{leaves} and $b_{Degree+1}$ without changing much the maximum diameter.

▷ **Claim 28.** Let L be a myopic local checker with $a_{leaves} > 0$ and maximum diameter $D(n)$. Let L' be the same checker except that $a_{leaves} = 0$. The maximum diameter function $D'(n)$ for L' is at most $D(a_{leaves} \cdot n)$.

Proof. Let T' be an n -vertex tree of diameter $D'(n)$ accepted by L' . By adding a_{leaves} pending leaves to each non-leaf vertex, we get a tree T accepted by L , with at most $a_{leaves} \cdot n$ nodes and whose diameter is still D' . In particular, we get $D'(n) \leq D(a_{leaves} \cdot n)$. ◀

Since every tree accepted by L is also accepted by L' , we also get $D \leq D'$. Therefore, given the diameter functions D we target, we have $D'(n) = \Theta(D(n))$, hence we can assume that $a_{leaves} = 0$ in the context of the theorem. Using slightly more involved arguments, we get that we may also assume that $b_{Degree+1} = 1$.

▷ **Claim 29.** Let L be a myopic local checker with $b_{Degree+1} > 1$ and maximum diameter D . Let L' be the same checker except that $b_{Degree+1} = 1$. The maximum diameter function D' for L' is at least $D/2$.

Proof. Consider an n -vertex tree T accepted by L . And take a path P that is maximum, that is, its length is $D(n)$. Because of Claim 27, this path either is monotone in terms of the degree of the nodes visited, or the degree sequence changes slope at most once. If it is monotone or is minimum on the endpoints, then for every node having more than one neighbor of larger degree, we prune all such neighbors except the ones used by the path P . This is possible because $a_{Degree+1} = 0$ by Claim 24. This tree is accepted by L' and it has the same diameter as T' , and at most the same number of nodes. If the degree sequence is maximum on both endpoints, then we do the same operation, leaving exactly one node with two neighbors of larger degree. Then, we take this node and prune its shortest "forward branch". The diameter has at most halved, while the number of nodes has not increased.

In both cases, we obtained a tree accepted by L' with $n' \geq D(n)$ vertices and diameter at least $D(n)/2 \geq D(n')/2$. In particular, we get an infinite sequence of trees accepted by L' with diameter at least $D/2$, which proves the claim. ◀

F.2 Establishing the classification

The claims above show that we may only prove Theorem 10 for degree-myopic local checkers in \mathcal{M} satisfying:

- $a_{leaves} = 0$ and $b_{leaves} \geq 1$
- $b_{Degree-1} \geq 1$
- $a_{Equal-degree} = b_{Equal-degree} = 0$
- $a_{Degree+1} = 0$ and $b_{Degree+1} \geq 1$

We now proceed to the proof of Theorem 10, by distinguishing some cases based on the values of b_{leaves} and $a_{Degree-1}$. In each case, we provide a lower bound on the maximum diameter by constructing trees with a specific shape that are accepted. Then we provide a complementary upper bound by proving that the same kind of structure necessarily appears in the accepted trees.

▷ Claim 30. If $L \in \mathcal{M}$ satisfies $b_{leaves} = \infty$ and $a_{Degree-1} \leq 1$, then its maximum diameter is $\Theta(\sqrt{n})$.

Proof. Let $L \in \mathcal{M}$ such that $b_{leaves} = \infty$ and $a_{Degree-1} \leq 1$. For every integer i , consider the caterpillar T_i whose backbone has i nodes, and its degree sequence is $1, 2, \dots, i$. Observe that T_i is accepted by L and moreover, T_i has diameter $\Theta(i)$ and $\Theta(i^2)$ vertices. Therefore, L has maximum diameter at least $\Omega(\sqrt{n})$.

To conclude, we show that every n -vertex tree T accepted by L has diameter at most $O(\sqrt{n})$. Take a maximum path P in T , of length D . Since there is no zigzag in the tree, the degree sequence of any maximum path changes slope at most once, so up to halving P (similarly to Claim 29), one can assume that P has a monotone degree sequence, from a vertex of degree $a_{Degree-1}$ to a vertex of degree $a_{Degree-1} + D/2$. In particular, there are at least $\sum_{i=0}^{D/2} (a_{Degree-1} + i) = \Theta(D^2)$ vertices at distance at most one from P , so $D = O(\sqrt{n})$. ◀

▷ Claim 31. If $L \in \mathcal{M}$ satisfies $b_{leaves} = \infty$ and $a_{Degree-1} \geq 2$, then its maximum diameter is $\Theta(\log n)$.

Proof. Let $L \in \mathcal{M}$ such that $b_{leaves} = \infty$ and $a_{Degree-1} \geq 2$. For every integer i , denote by T_i the complete $a_{Degree-1}$ -ary tree of height i (where each internal node has $a_{Degree-1}$ children). Construct T'_i from T_i by attaching j leaves to every vertex at distance $j+1$ from the leaves. Observe that T'_i is accepted by L , because (1) all the leaves and their parents (which have degree $a_{Degree-1}$) accept, and (2) all the other nodes have $a_{Degree-1}$ children (whose degree is precisely one less).

The tree T'_i has diameter $\Theta(i)$ and a number of nodes $\Theta(\sum_{j=0}^i (j+1) \cdot a_{Degree-1}^{i-j}) = \Theta(a_{Degree-1}^i)$ vertices, hence L has maximum diameter $\Omega(\log n)$.

Let T be an n -vertex tree of diameter D accepted by L . Orient its edges from u to v if $\deg(v) > \deg(u)$. One can easily prove by induction on k that if T contains a vertex u of degree $k + a_{Degree-1}$, then the subtree rooted at u contains at least $a_{Degree-1}^k$ nodes (it actually contains a copy of T_k). Since any maximal path of T contains a vertex of degree at least $D/2$, T has at least $a_{Degree-1}^{D/2-1}$ nodes so $D = O(\log n)$. ◀

▷ Claim 32. If $L \in \mathcal{M}$ satisfies $b_{leaves} < \infty$, then its maximum diameter is $\Theta(\log n / \log \log n)$.

Proof. Let $L \in \mathcal{M}$ with $b_{leaves} < \infty$. Let us prove that necessarily $b_{Degree-1} = \infty$. Suppose that this is not the case, then L accepts only trees of maximum degree Δ at most $b_{leaves} + b_{Degree-1} + 1$. If T is accepted by L , it contains no zigzag, hence any path in T has length at most 2Δ . Hence, L has maximum diameter $O(1)$, a contradiction with the definition of \mathcal{M} . From now on, assume that $b_{Degree-1} = \infty$.

For every integer $i \geq a_{Degree-1} - 1$, we define inductively a rooted tree T_i . Let $T_{a_{Degree-1}-1}$ be the subdivided star whose root has degree $a_{Degree-1} - 1$ and each branch is subdivided once. Then, construct T_{i+1} by attaching $i+1$ copies of T_i to a new root. Note that T_i has diameter $\Theta(i)$ and $\Theta(i!)$ nodes. We check that L accepts all the trees T_i , and has maximum diameter $\Omega(\log n / \log \log n)$ (the asymptotic inverse function of factorial).

Let T be an n -vertex tree of diameter D accepted by L , so in particular T contains a vertex of degree at least $D/2$. Orient each edge of T towards its endpoint of largest degree. Again, one can easily show by induction on k that each vertex u with $k + b_{leaves}$ children has at least $k!$ descendants. In particular, T contains at least $(D/2 - b_{leaves})!$ nodes, hence $D = O(\log n / \log \log n)$. ◀

G Towards graphs with cycles

Up to now, we have focused on trees, because they are central for LCLs, and make sense for our second motivation. A natural question at that point is what happens if we go beyond trees. We leave this for further work. We just prove now that if there is a cycle in the graph, but no node can see it (i.e, the girth is large in comparison with the checkability radius) the maximum diameter is linear. Basically, we show that we can do pumping via a crossing argument.

Consider a local checker that accepts some graph with a cycle. We claim that it also accepts arbitrarily large graphs of linear diameter, relying on the so-called *duplication* operation. Given a colored graph G and an edge $uv \in E(G)$, the duplication of G along uv is the colored graph G^{uv} obtained by taking two copies of G , deleting the two copies u_1v_1 and u_2v_2 of uv and adding u_1v_2 and u_2v_1 . It is easy to see that if u and v are at distance at least $2d$ from each other in $G \setminus uv$, then u_1 and u_2 (resp. v_1 and v_2) both have the same view at distance d in G^{uv} as u (resp. v) in G . In particular, we get the following.

► **Lemma 33.** *Let c, d be integers, G be a c -colored graph containing two adjacent vertices u, v at distance at least $2d$ in $G \setminus uv$. Then every $L \in \mathcal{L}_{c,d}$ accepting G also accepts G^{uv} .*

The following structural result shows that this operation creates long paths, which is the main ingredient for constructing graphs of linear diameter.

► **Lemma 34.** *Let uv be an edge of a graph G . Denote by $u'v'$ the edge between copies of u and v in G^{uv} . Then $d_{G^{uv} \setminus u'v'}(u', v') = 2d_{G \setminus uv}(u, v) + 1$.*

Using these two results, we can conclude that iterating this duplication operation starting from a nice enough graph G yields an infinite sequence of graphs of linear diameter, all accepted by every local checker accepting G .

► **Theorem 35.** *Let c, d be integers and $L \in \mathcal{L}_{c,d}$ accepting a c -colored graph G containing two adjacent vertices u, v at distance at least $2d$ in $G \setminus uv$. Then L has maximum diameter $\Theta(n)$.*

Proof. Consider the sequence defined by $G_0 = G$, $u_0 = u$, $v_0 = v$ and for every i , $G_{i+1} = G_i^{u_i v_i}$, and $u_{i+1} v_{i+1}$ is an edge in G_{i+1} between the copies of u_i and v_i . By Lemma 33, all the graphs G_i are accepted by L . Moreover, $|G_i| = 2^i \cdot |G|$ and by Lemma 34, the distance between u_i and v_i in $G_i \setminus u_i v_i$ is at least $2^i \cdot d$. Therefore, there are two vertices in G_i at distance at least $2^{i-1} \cdot d$ hence $\text{diam}(G_i) = \Theta(|G_i|)$, which concludes. ◀