



HAL
open science

“ “We just need to locate the geopark”. Analyse de la place de l’activité minière dans un espace protégé (projet du geoparc de Gondwana, Namibie) ”

Antoine Latarge, Hugo Quemin, Marie Forget, Mélanie Duval

► To cite this version:

Antoine Latarge, Hugo Quemin, Marie Forget, Mélanie Duval. “ “We just need to locate the geopark”. Analyse de la place de l’activité minière dans un espace protégé (projet du geoparc de Gondwana, Namibie) ”. Colloque international “ Ressources du sous-sol en tension. Protection et extraction dans les territoires de montagne ”, Oct 2024, Bourget du Lac, France. hal-04733237

HAL Id: hal-04733237

<https://hal.science/hal-04733237v1>

Submitted on 14 Oct 2024

HAL is a multi-disciplinary open access archive for the deposit and dissemination of scientific research documents, whether they are published or not. The documents may come from teaching and research institutions in France or abroad, or from public or private research centers.

L’archive ouverte pluridisciplinaire **HAL**, est destinée au dépôt et à la diffusion de documents scientifiques de niveau recherche, publiés ou non, émanant des établissements d’enseignement et de recherche français ou étrangers, des laboratoires publics ou privés.



Distributed under a Creative Commons Attribution - NonCommercial - ShareAlike 4.0 International License

“We just need to locate the geopark”.

Analysis of the artisanal mining activity within a protected area : the Gondwanaland geopark project, Namibia

Antoine LATARGE : Université Savoie Mont-Blanc – EDYTEM

Hugo QUEMIN : Université Savoie Mont-Blanc – EDYTEM

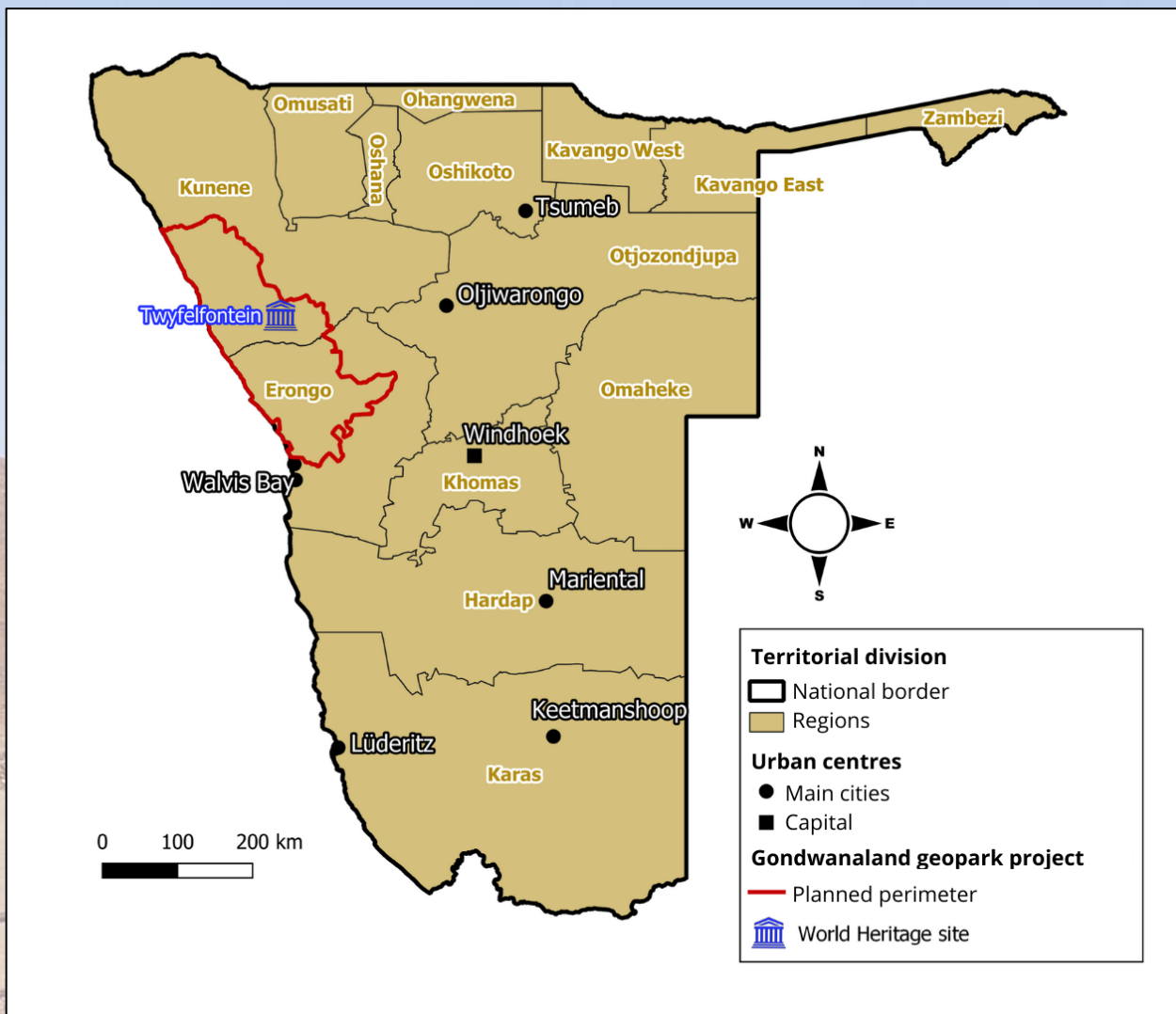
Marie FORGET : Université Savoie Mont-Blanc – EDYTEM

**Mélanie DUVAL : Université Savoie Mont-Blanc - EDYTEM,
Rock Art Research Institute, South Africa**

« This research was funded in whole or in part by the Agence Nationale de la Recherche (ANR) under project ANR-21-CE27-0011. In the interest of open access publication, the author/rights holder applies a CC-BY open access license to any article/manuscript accepted for publication (AAM) resulting from this submission. »

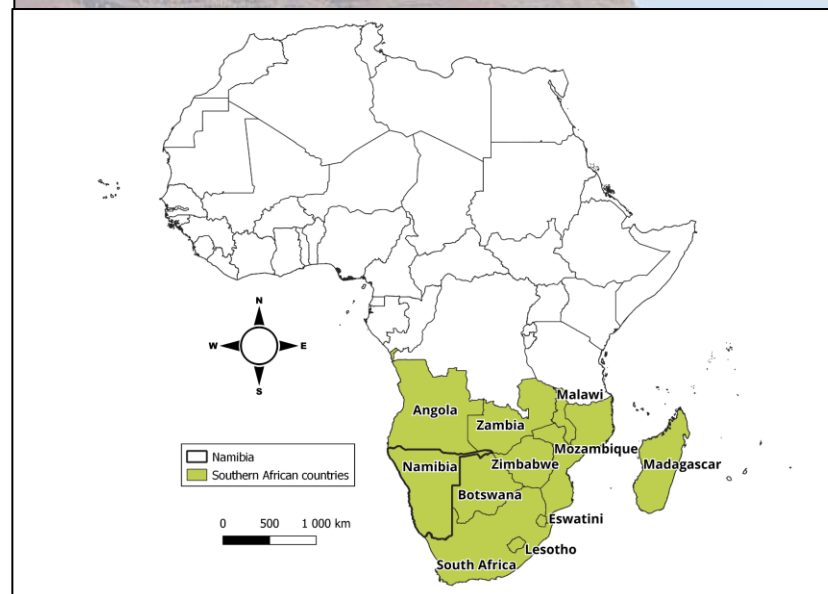


INTRODUCTION



The Gondwanaland Geopark project, in the north-west part of the country

A.Latarge, 2024. Source : OpenAfrica, Namibia GeoPortal



I. INTRODUCTION

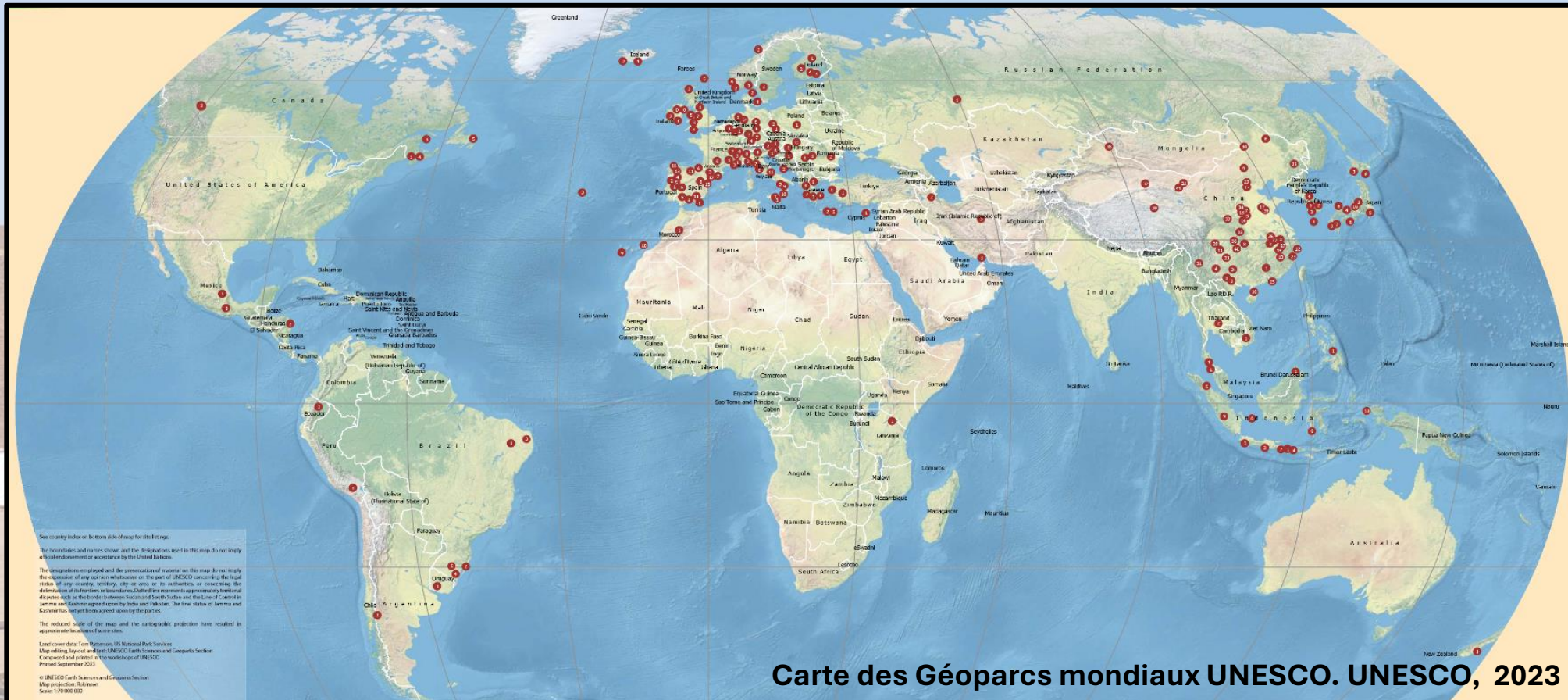
II. GONDWANALAND
GEOPARK

III. MINING ACTIVITIES

IV. COEXISTING
VISIONS

V. CONCLUSION

II. The Gondwanaland geopark: a project lacking success on the African continent



unesco
Global Geopark

Carte des Géoparcs mondiaux UNESCO. UNESCO, 2023

I. INTRODUCTION

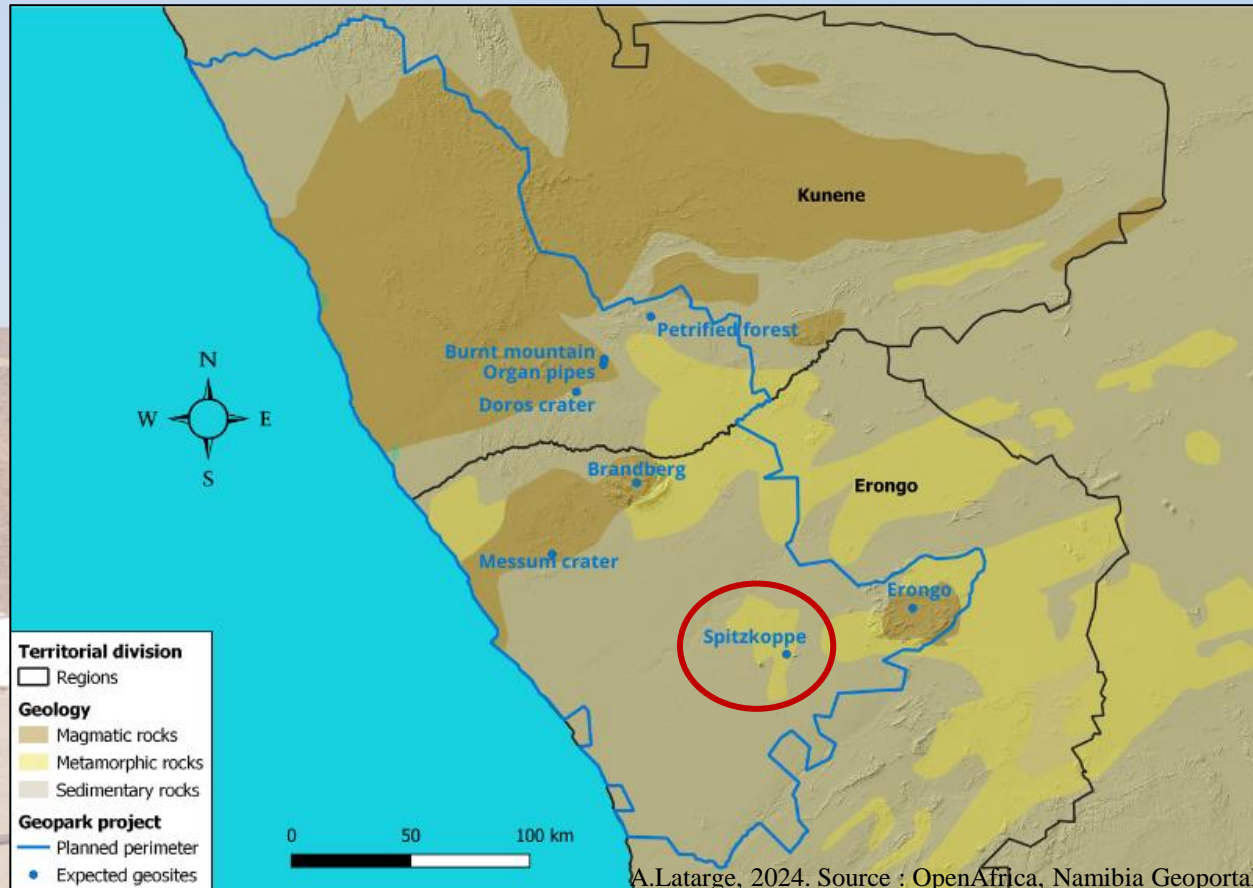
II. GONDWANALAND
GEOPARK

III. MINING ACTIVITIES

IV. COEXISTING
VISIONS

V. CONCLUSION

Spitzkoppe, expected geosite



I. INTRODUCTION

II. GONDWANALAND
GEOPARK

III. MINING ACTIVITIES

IV. COEXISTING
VISIONS

V. CONCLUSION

**Tools and mining holes, nearby
Xoboxobos**



I. INTRODUCTION

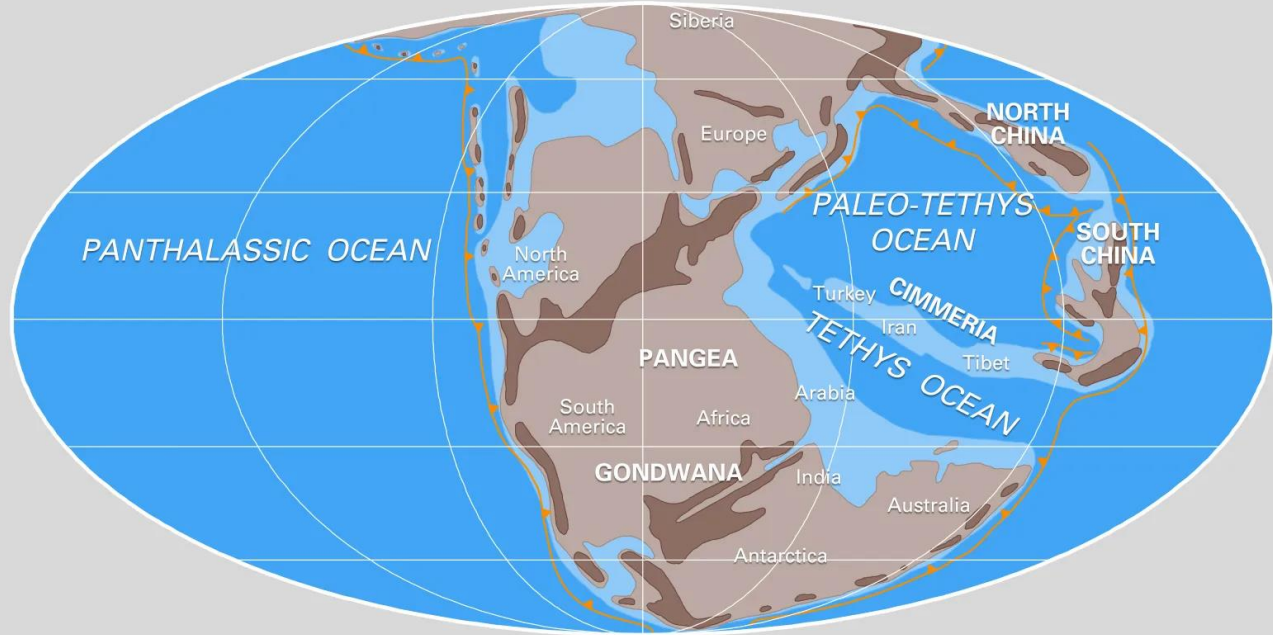
II. GONDWANALAND
GEOPARK

III. MINING ACTIVITIES

IV. COEXISTING
VISIONS

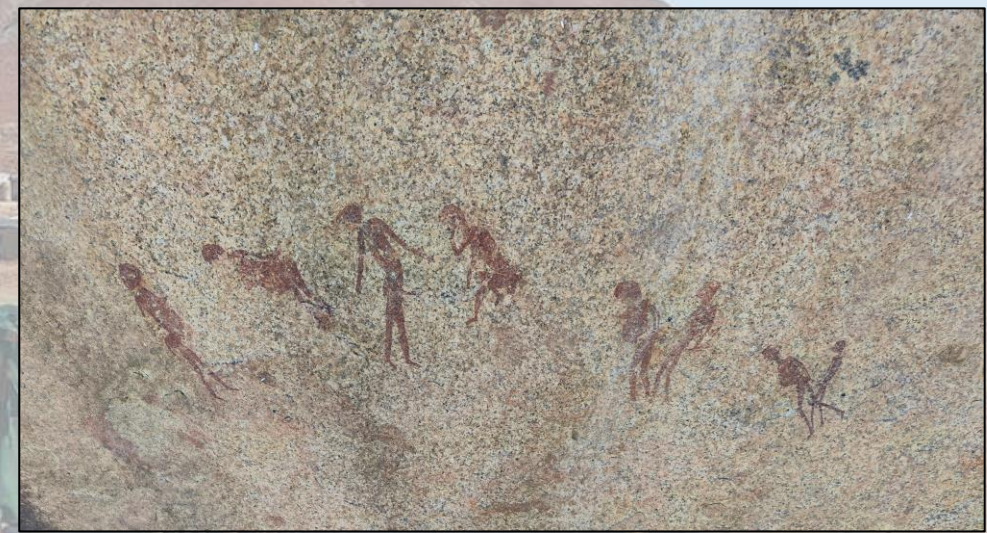
V. CONCLUSION

Early Triassic 237 million years ago



SOURCE: © 2001 C.R. Scotese, PALEOMAP Project

© Encyclopædia Britannica, Inc.



I. INTRODUCTION

II. GONDWANALAND
GEOPARK

III. MINING ACTIVITIES

IV. COEXISTING
VISIONS

V. CONCLUSION



**A case that is going
to be more and more
frequent in the
future ?**

Western Brandberg mine, soon to reopen
for copper exploitation





antoine.latarge@etu.univ-smb.fr