



**HAL**  
open science

“ “We just need to locate the geopark”. Analyse de la place de l’activité minière dans un espace protégé (projet du geoparc de Gondwana, Namibie) ”

Antoine Latarge, Hugo Quemin, Marie Forget, Mélanie Duval

► To cite this version:

Antoine Latarge, Hugo Quemin, Marie Forget, Mélanie Duval. “ “We just need to locate the geopark”. Analyse de la place de l’activité minière dans un espace protégé (projet du geoparc de Gondwana, Namibie) ”. Colloque international “ Ressources du sous-sol en tension. Protection et extraction dans les territoires de montagne ”, Oct 2024, Bourget du Lac, France. hal-04733237

HAL Id: hal-04733237

<https://hal.science/hal-04733237v1>

Submitted on 14 Oct 2024

**HAL** is a multi-disciplinary open access archive for the deposit and dissemination of scientific research documents, whether they are published or not. The documents may come from teaching and research institutions in France or abroad, or from public or private research centers.

L’archive ouverte pluridisciplinaire **HAL**, est destinée au dépôt et à la diffusion de documents scientifiques de niveau recherche, publiés ou non, émanant des établissements d’enseignement et de recherche français ou étrangers, des laboratoires publics ou privés.



Distributed under a Creative Commons Attribution - NonCommercial - ShareAlike 4.0 International License



# “We just need to locate the geopark”.

## Analysis of the artisanal mining activity within a protected area : the Gondwanaland geopark project, Namibia

**Antoine LATARGE : Université Savoie Mont-Blanc – EDYTEM**

**Hugo QUEMIN : Université Savoie Mont-Blanc – EDYTEM**

**Marie FORGET : Université Savoie Mont-Blanc – EDYTEM**

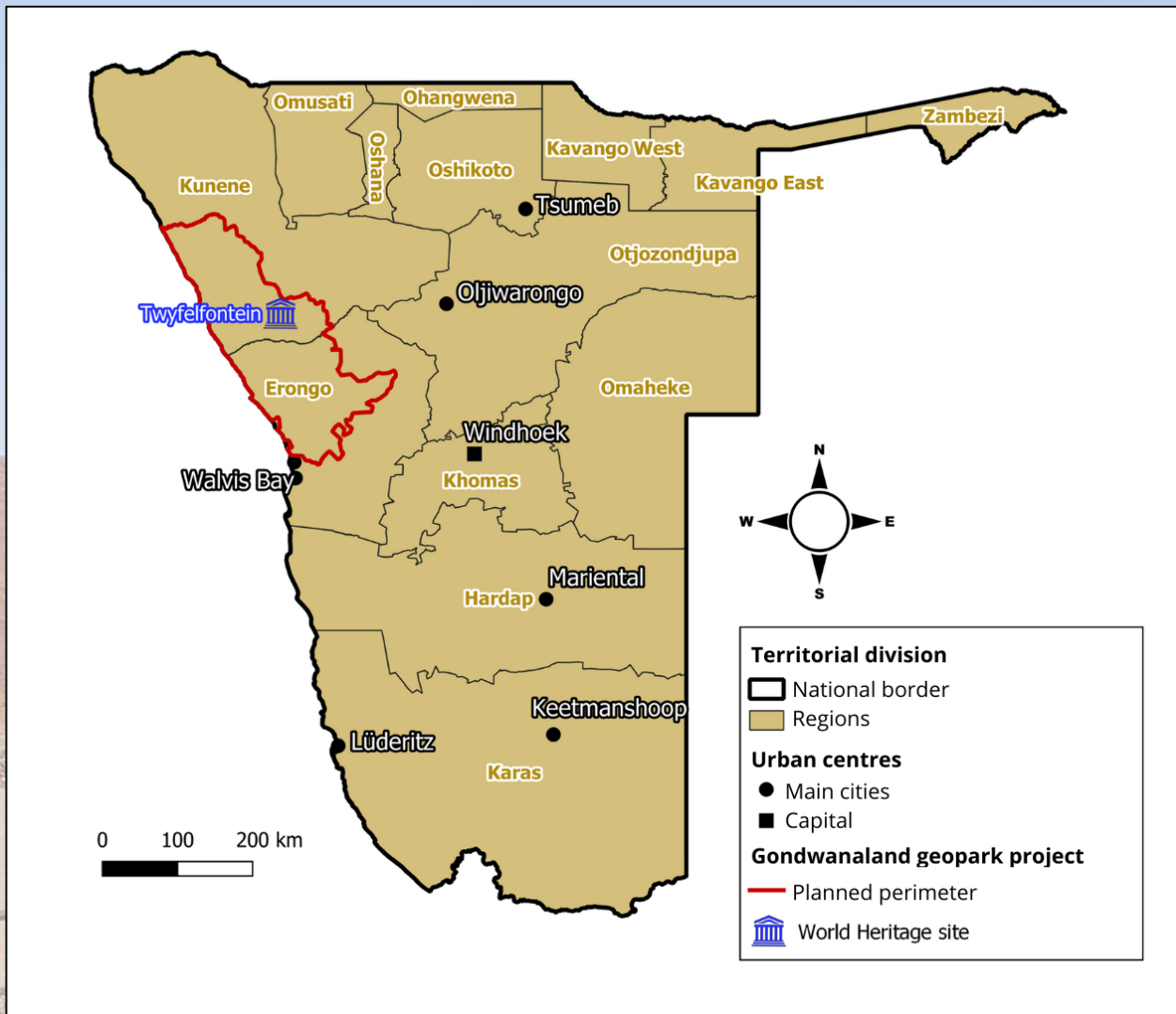
**Mélanie DUVAL : Université Savoie Mont-Blanc - EDYTEM,  
Rock Art Research Institute, South Africa**

*« This research was funded in whole or in part by the Agence Nationale de la Recherche (ANR) under project ANR-21-CE27-0011. In the interest of open access publication, the author/rights holder applies a CC-BY open access license to any article/manuscript accepted for publication (AAM) resulting from this submission. »*



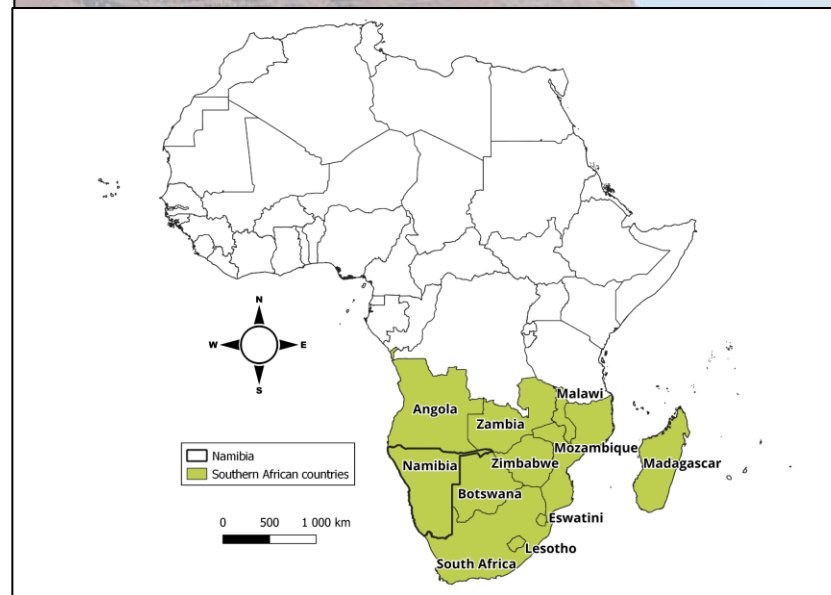


# INTRODUCTION



The Gondwanaland Geopark project, in the north-west part of the country

A.Latarge, 2024. Source : OpenAfrica, Namibia GeoPortal



I. INTRODUCTION

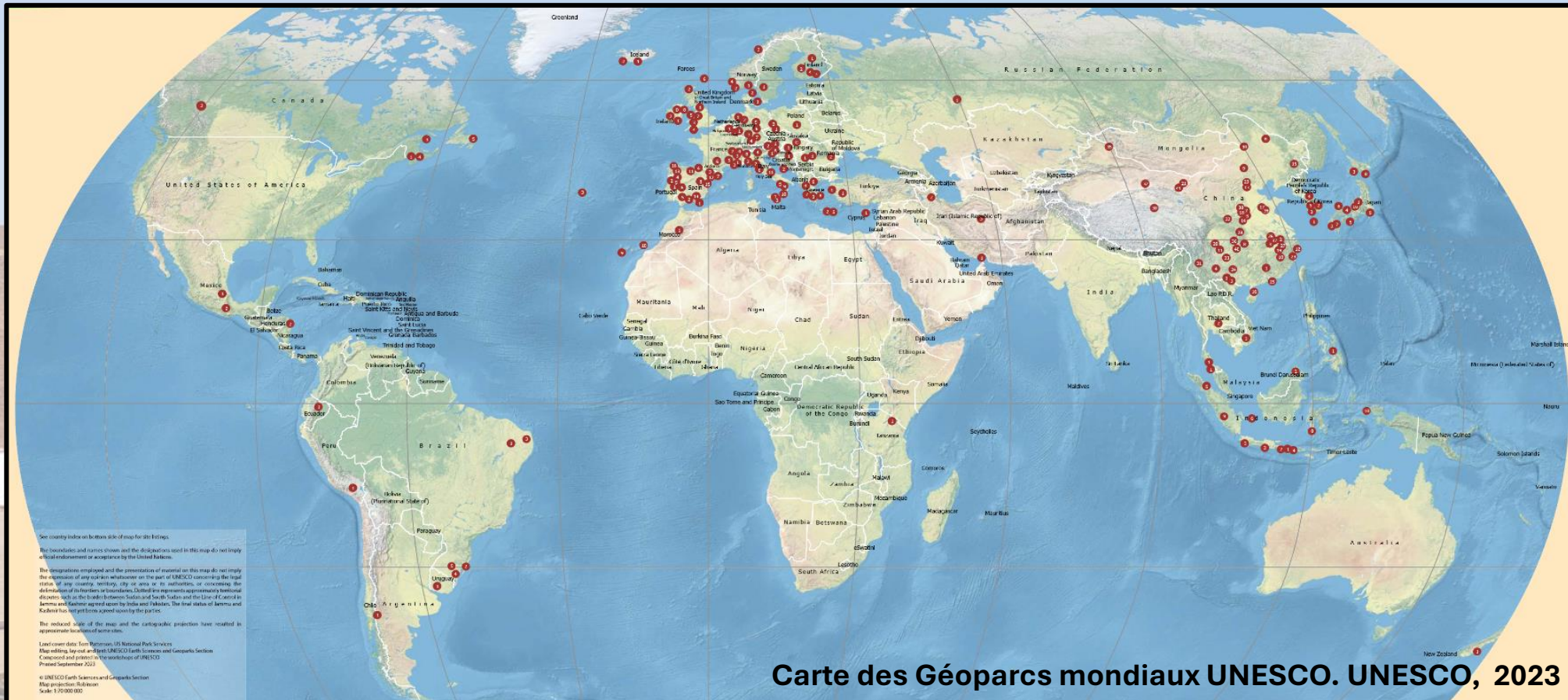
II. GONDWANALAND  
GEOPARK

III. MINING ACTIVITIES

IV. COEXISTING  
VISIONS

V. CONCLUSION

## II. The Gondwanaland geopark: a project lacking success on the African continent



**unesco**  
Global Geopark



I. INTRODUCTION

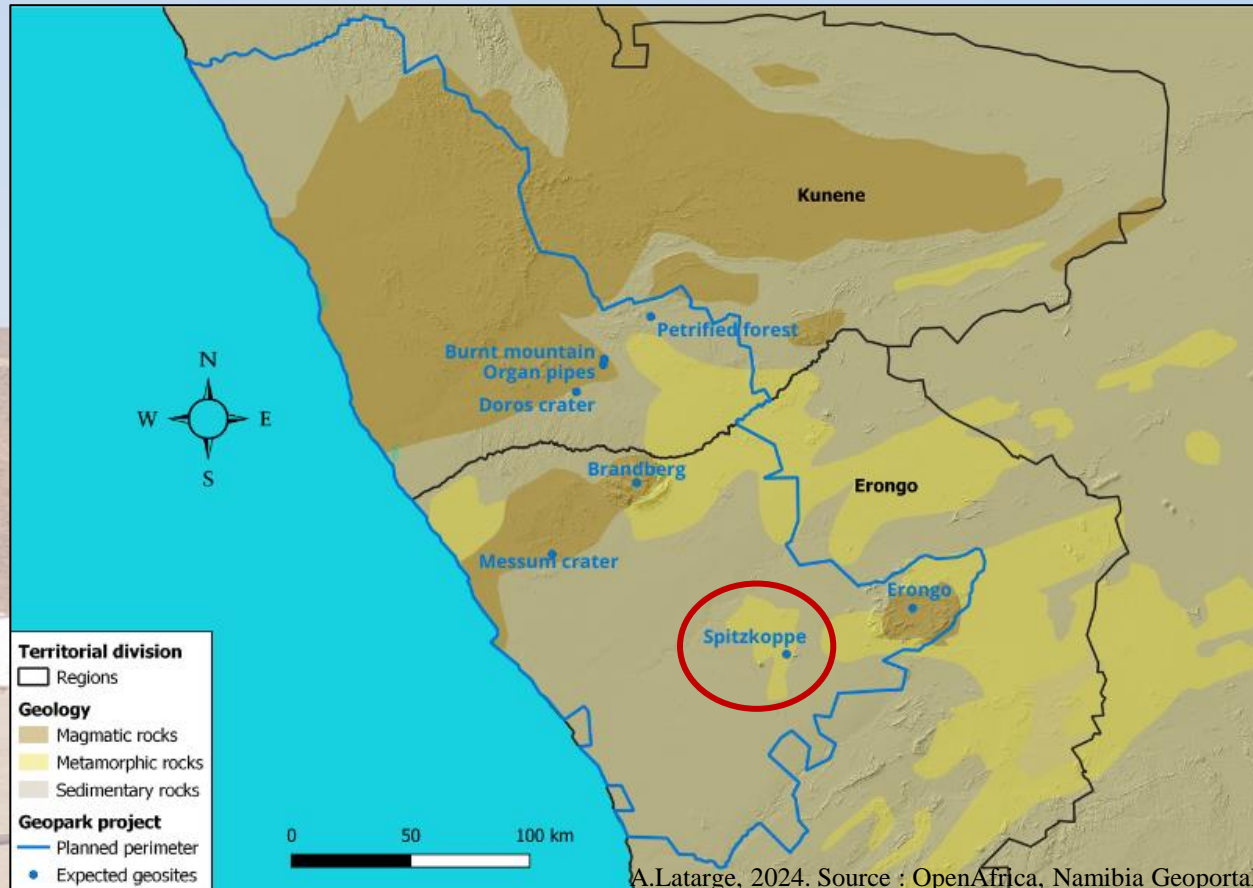
II. GONDWANALAND  
GEOPARK

III. MINING ACTIVITIES

IV. COEXISTING  
VISIONS

V. CONCLUSION

### Spitzkoppe, expected geosite





I. INTRODUCTION

II. GONDWANALAND  
GEOPARK

III. MINING ACTIVITIES

IV. COEXISTING  
VISIONS

V. CONCLUSION

**Tools and mining holes, nearby  
Xoboxobos**





I. INTRODUCTION

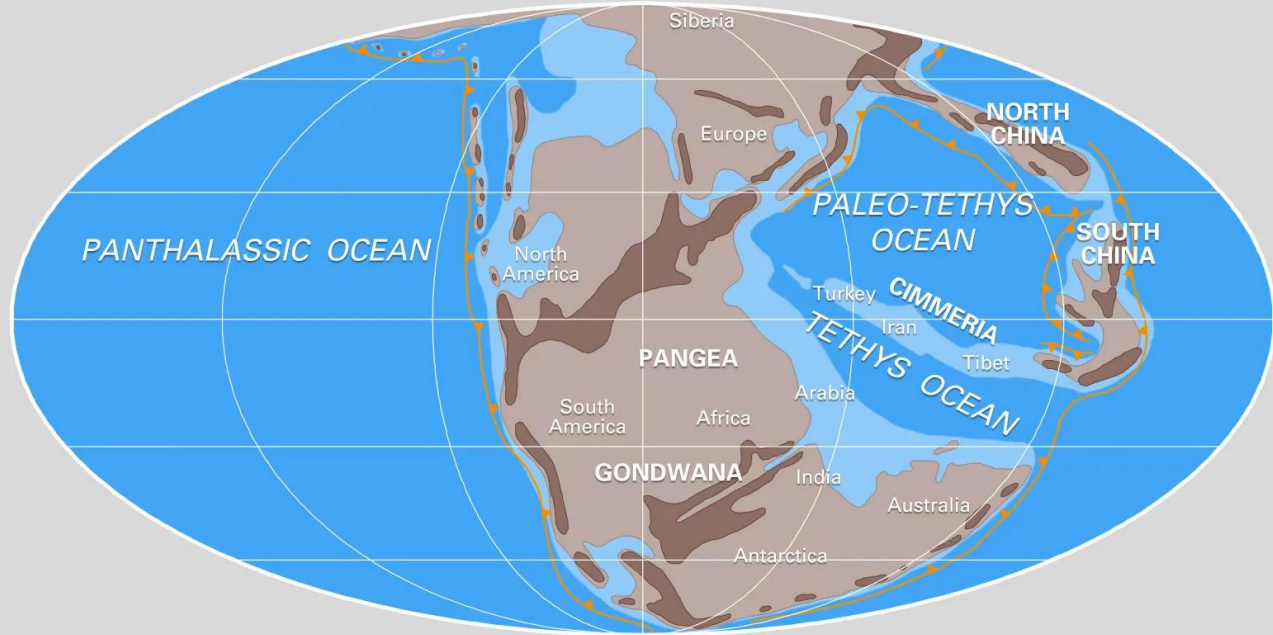
II. GONDWANALAND  
GEOPARK

III. MINING ACTIVITIES

IV. COEXISTING  
VISIONS

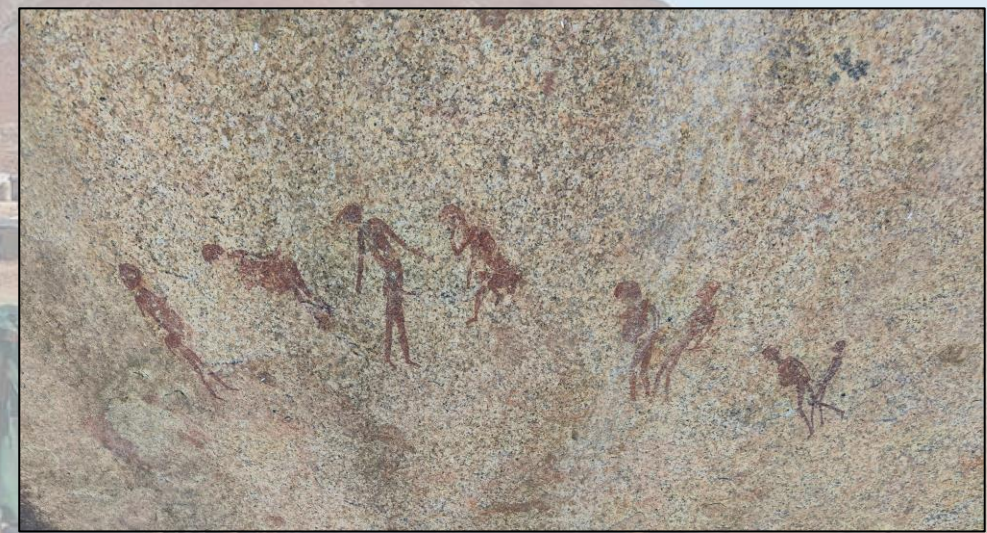
V. CONCLUSION

Early Triassic 237 million years ago



SOURCE: © 2001 C.R. Scotese, PALEOMAP Project

© Encyclopædia Britannica, Inc.





I. INTRODUCTION

II. GONDWANALAND  
GEOPARK

III. MINING ACTIVITIES

IV. COEXISTING  
VISIONS

V. CONCLUSION



**A case that is going  
to be more and more  
frequent in the  
future ?**

Western Brandberg mine, soon to reopen  
for copper exploitation







[antoine.latarge@etu.univ-smb.fr](mailto:antoine.latarge@etu.univ-smb.fr)