



HAL
open science

Mechanical strengthening of cell-cell adhesion during mouse embryo compaction

Ludmilla de Plater, Julie Firmin, Jean-Léon Maître

► **To cite this version:**

Ludmilla de Plater, Julie Firmin, Jean-Léon Maître. Mechanical strengthening of cell-cell adhesion during mouse embryo compaction. *Biophysical Journal*, 2024, 10.1016/j.bpj.2024.03.028 . hal-04732034

HAL Id: hal-04732034

<https://hal.science/hal-04732034v1>

Submitted on 11 Oct 2024

HAL is a multi-disciplinary open access archive for the deposit and dissemination of scientific research documents, whether they are published or not. The documents may come from teaching and research institutions in France or abroad, or from public or private research centers.

L'archive ouverte pluridisciplinaire **HAL**, est destinée au dépôt et à la diffusion de documents scientifiques de niveau recherche, publiés ou non, émanant des établissements d'enseignement et de recherche français ou étrangers, des laboratoires publics ou privés.

Mechanical strengthening of cell-cell adhesion during mouse embryo compaction

Ludmilla de Plater¹, Julie Firmin^{1,2} and Jean-Léon Maître¹

¹ Institut Curie, Université PSL, CNRS UMR3215, INSERM U934, 75005 Paris, France.

² Service de Biologie de la Reproduction - CECOS, Paris Centre Hospital, APHP centre, Université Paris Cité, 75014 Paris, France

Abstract

Compaction is the first morphogenetic movement of the eutherian mammals and involves a developmentally regulated adhesion process. Previous studies investigated cellular and mechanical aspects of compaction. During mouse and human compaction, cells spread onto each other as a result of a contractility-mediated increase in surface tension pulling at the edges of their cell-cell contacts. However, how compaction may affect the mechanical stability of cell-cell contacts remains unknown. Here, we used a dual pipette aspiration assay on cell doublets to quantitatively analyze the mechanical stability of compacting mouse embryos. We measured increased mechanical stability of contacts with rupture forces growing from 40 to 70 nN, which was highly correlated with cell-cell contact expansion. Analyzing the dynamic molecular reorganization of cell-cell contacts, we find minimal recruitment of the cell-cell adhesion molecule Cdh1 (also known as E-cadherin) to contacts but we observe its reorganization into a peripheral adhesive ring. However, this reorganization is not associated with increased effective bond density, contrary to previous reports in other adhesive systems. Using genetics, we reduce the levels of Cdh1 or replace it with a chimeric adhesion molecule composed of the extracellular domain of Cdh1 and the intracellular domain of Cdh2 (also known as N-cadherin). We find that reducing the levels of Cdh1 impairs the mechanical stability of cell-cell contacts due to reduced contact growth, which nevertheless show higher effective bond density than WT contacts of similar size. On the other hand, chimeric adhesion molecules cannot form large or strong contacts indicating that the intracellular domain of Cdh2 is unable to reorganize contacts and/or is mechanically weaker than the one of Cdh1 in mouse embryos. Together, we find that mouse embryo compaction mechanically strengthens cell-cell adhesion via the expansion of Cdh1 adhesive rings that maintain pre-compaction levels of effective bond density.

Introduction

During preimplantation development, mammalian embryos form the blastocyst, a structure sharing many conserved features among mammals that, in eutherians and some marsupials, is required for implantation (1–4). The eutherian blastocyst forms after a series of morphogenetic movements, the first one being compaction. Compaction is a developmentally regulated adhesion process during which cells of the mammalian embryo come into close contact (5). Before compaction, cells of mammalian embryos appear loosely attached to one another and cell-cell contacts do not grow substantially between cleavage divisions. In the mouse, compaction takes place at the 8-cell stage within 8–10 h of the 3rd round of cleavage divisions (6). Some of the cellular and mechanical mechanisms underlying compaction have been characterized. Compaction requires the cell-cell adhesion molecule Cdh1, also known as E-cadherin and initially called *uvomorulin* after it was discovered in compacting mouse embryos (7). After this striking discovery, changes in Cdh1-mediated cell-cell adhesion were proposed to drive compaction and multiple components of adherens junctions were investigated during

compaction (8–11). Changes in adhesion molecules were thought to drive compaction by increasing adhesion energy, in a way similar to what takes place in contacting soap bubbles (12). Assuming cells of compacting embryos behave as liquid droplets, increasing adhesion energy reduces the tension at cell-cell contacts γ_{cc} and lowers the ratio of tensions at the cell-cell and cell-medium interfaces $\gamma_{cc} / \gamma_{cm}$ (13, 14). Following the Young-Dupré equation $\cos(\theta/2) = \gamma_{cc} / 2\gamma_{cm}$, this increases the external angle of contact θ and drives compaction (15). However, estimations of the adhesion energy provided by cadherin adhesion molecules, such as Cdh1, were found to be too weak when compared to another powerful morphogenetic engine in animal cells: actomyosin contractility (16, 17). In mouse and human embryos, actomyosin contractility is also required for compaction (6, 18, 19). Actomyosin contractility raises the surface tension at the cell-medium interface γ_{cm} , which changes the ratio of surface tensions between the cell-cell and cell-medium interfaces $\gamma_{cc} / \gamma_{cm}$ (6, 19). This increases the contact angle θ between cells and compacts the embryo. In maternal Cdh1 mutants (20), which lack Cdh1 at the time of compaction, cells do not expand their

cell-cell contacts (6). Despite the absence of Cdh1, contractility increases the surface tension at the cell-medium interface γ_{cm} . However, contrary to wildtype embryos, contractile forces cannot be transmitted between cells without Cdh1. Therefore, compaction results from increased contractile forces that pull cells together via Cdh1 mechanical anchors (5).

During compaction, mechanical coupling between cells is expected to strengthen. Indeed, cell-cell contacts become larger and should lead to an increased number of bonds connecting cells, provided that bond density remains at least at the same level. In fact, when forming a cell-cell contact, cadherin adhesion molecules become enriched and bond density often increases (21). In some cases, cadherin adhesion molecules cluster at the edges of the cell-cell contact, which, in doublet of cells, forms a ring of adhesion molecules where it can engage with the cytoskeleton and modulates the effective bond density (16, 22). Therefore, the relationship between cell-cell contact area and the number of adhesion molecules holding cells together may not be trivial. Adhesion rings are thought to act as a scaffold on which actomyosin contractility can effectively pull and extend the cell-cell contact area. Pulling on adhesion complexes at the edges of cell-cell contacts can also lead to mechanosensitive reinforcement of adherens junctions. Mechanosensitive strengthening can occur via the recruitment of adhesion molecules (22–24) and/or via their anchoring to the cytoskeleton (25, 26). Cadherin adhesion molecules are connected to the actin cytoskeleton via several proteins including α -catenin, which can unfold when stretched (25, 27). This leads to increased connections with the actin cytoskeleton and mechanically strengthens cell-cell contacts by changing the effective bond density. Therefore, during compaction, cell-cell contacts could be mechanically stabilized by increased contact surface, increased adhesion molecule recruitment, adhesion molecule reorganization at the contact rims, and/or increased coupling of individual adhesion complexes. Each of these parameters are susceptible to modulate the effective bond density and to determine the mechanical stability of cell-cell contacts. Taken together, while the mechanics of cell-cell contact spreading are well studied, how mechanical coupling may change during compaction is not.

Assessing the mechanical coupling of cell-cell adhesion can be done by separating cells while measuring the force necessary to do so (14, 28). This is typically performed in doublets of cells forming a single cell-cell contact. Assays based

on atomic force microscopes (AFM) have measured adhesive coupling between cells up to tens of nN, which are typically reached within a few minutes of contact (29, 30). While AFM allows for highly accurate measurements, stronger cell-cell contacts can be difficult to separate using AFM (14, 28). To measure adhesive coupling up to hundreds of nN, dual pipette aspiration (DPA) assays can be used (31, 32). Also, DPA is easily compatible with light microscopy, which allows one to obtain information about how contacts reorganize during separation. Notably, separation of cell doublets often leads to the formation of membrane tethers connecting separated cells (16, 24). This indicates that some adhesion complexes remain attached in trans and rather detach intracellularly. The weakest link of the adhesion complex may be located at the level of α -catenin or of the actin cytoskeleton, depending on the cellular context (16, 24). In fact, modifying the intracellular binding of cadherins to the cytoskeleton directly affects mechanical coupling (16, 32). This can also be measured when comparing the intracellular domains of different cadherin adhesion molecules, with Cdh1 intracellular domain showing stronger coupling than that of Cdh7 as shown, for example, using chimeric adhesion molecules (33). Interestingly, in mouse embryos, replacing Cdh1 by a chimeric adhesion molecule, called EcNc, composed of the extracellular domain of Cdh1 and the intracellular domain of Cdh2, also known as N-cadherin, affects preimplantation development (34). However, the precise effect on compaction and in particular on the mechanical coupling of cells expressing an EcNc chimeric adhesion molecule has not been characterized.

Finally, another function of adhesion molecules is to signal to reorganize the underlying cytoskeleton (35). This can have multiple effects on contacting cells such as contact inhibition of locomotion in migratory cells (36, 37). In particular, cadherin signaling via small GTPases leads to the downregulation of actomyosin contractility at the cellular level (38) or locally at cell-cell contacts (39, 40). During compaction, this is key to reduce or maintain contact contractility and associated tension γ_{cc} at low levels, as seen in mouse or human embryos with impaired Cdh1-based adhesion (6, 19). The ability of different cadherin adhesion molecules to signal to the actomyosin cytoskeleton is mostly unknown and it is for example unclear how an EcNc chimeric adhesion molecule would affect contact expansion during compaction as compared to Cdh1.

Here, we set out to study the mechanical coupling of cells during mouse embryo compaction. Using a DPA assay, we measured the mechanical coupling of compacting blastomeres and analyzed its relationship to contact size, adhesion molecule recruitment and reorganization. We find that mechanical coupling increases during compaction and can be almost entirely explained by contact growth. We further measure that adhesion molecules do not increase in concentration at the growing cell-cell contacts but become enriched in a ring located at their periphery. This reorganization of adhesion molecule is not associated with increased mechanical coupling. Instead, using mice expressing lower levels of Cdh1 or an EcNc chimeric adhesion molecules knocked in the Cdh1 locus, we find that both contact expansion and mechanical coupling are impacted by the intracellular binding of adhesion molecules. Together, this study of compaction provides valuable insights into the regulation of mechanical coupling during physiological increase in cell-cell adhesion.

Material and methods

Embryo work

Recovery and culture

All animal work is performed in the animal facility at the Institut Curie, with permission by the institutional veterinarian overseeing the operation (APAFIS #11054-2017082914226001 and APAFIS #39490-2022111819233999 v2). The animal facilities are operated according to international animal welfare rules.

Embryos are isolated from superovulated female mice mated with male mice. Superovulation of female mice is induced by intraperitoneal injection of 5 international units (IU) pregnant mare's serum gonadotropin (Ceva, Syncro-part), followed by intraperitoneal injection of 5 IU human chorionic gonadotropin (MSD Animal Health, Chorulon) 44-48 hours later. Embryos are recovered at E1.5 by flushing oviducts with 37°C FHM (Millipore, MR-122-D) using a modified syringe (Acufirm, 1400 LL 23).

Embryos are handled using an aspirator tube (Sigma, A5177-5EA) equipped with a glass pipette pulled from glass micropipettes (Blaubrand intraMark or Warner Instruments).

Embryos are placed in KSOM (Millipore, MR-107-D) or FHM supplemented with 0.1 % BSA (Sigma, A3311) in 10 μ L droplets covered in mineral oil (Acros Organics). Embryos are cultured in an incubator with a humidified atmosphere supplemented with 5% CO₂ at 37°C. To remove the Zona Pellucida (ZP), embryos are incubated for 45-60 s in pronase (Sigma, P8811) at the 2- or 4-cell stage.

To dissociate blastomeres, 4-cell stage embryos without ZP are aspirated 1-3 times into a glass pipette of size larger than a 4-cell stage blastomere and smaller than the whole embryo (i.e. ~50-80 μ m in diameter).

For imaging, embryos, dissociated 4-cell stage blastomeres or 8-cell stage doublets are placed in 3.5 or 5 cm glass-bottom dishes (MatTek).

Mouse lines

Mice are used from 5 weeks old on.

(C57BL/6xC3H) F1 hybrid strain is used for wild type (WT).

To remove LoxP sites specifically in oocytes, Zp3-cre (Tg(Zp3-cre)93Kw) mice are used (41). To generate mCdh1^{+/-} embryos, Cdh1^{tm2kem} mice are used (42) to breed Cdh1^{tm2kem/tm2kem}; Zp3^{Cre/+} mothers with WT fathers.

To generate mCdh1^{EcNc/-} embryos, Cdh1^{tm2kem} mice are used (42) to breed Cdh1^{tm2kem/tm2kem}; Zp3^{Cre/+} mothers with Cdh1^{tm3.1Mps1/+} fathers (34). To genotype EcNc embryos, we used antibodies recognizing the extra- or intra-cellular domains of Cdh1, or the HA tag added to the EcNc (34).

Immunostaining

Embryos or doublets are fixed in 2% PFA (Euromedex, 2000-C) for 10 min at 37°C, washed in PBS and permeabilized in 0.01% Triton X-100 (Euromedex, T8787) in PBS (PBT) at room temperature before being placed in blocking solution (PBT with 3% BSA) at 4°C for 2-4 h. Primary antibodies are applied in blocking solution at 4°C overnight. After washes in PBT at room temperature, embryos are incubated with secondary antibodies, DAPI and/or phalloidin in blocking solution at room temperature for 1 h. Embryos are washed in PBT and imaged immediately after.

Primary antibody	Dilution	Provider	RRID
Cdh1 (DECMA-1) Rat monoclonal	1:200	eBioscience, 14-3249-82	AB_1210458
Cdh1 (24E10) Rabbit monoclonal	1:200	Cell Signaling 3195	AB_2291471
Anti-HA.11 Tag mouse monoclonal	1:200	Biolegend 901513	AB_2565336

Secondary antibodies and dyes	Dilution	Provider	RRID
Alexa Fluor Plus 488 Goat anti-mouse	1:200	Invitrogen, A32723	AB_2633275
Alexa Fluor 546 Goat anti-mouse	1:200	Invitrogen, A11003	AB_2534071
Alexa Fluor Plus 488 Goat anti-rabbit	1:200	Invitrogen, A32731	AB_2633280
Alexa Fluor Plus 546 Goat anti-rabbit	1:200	Invitrogen, A11010	AB_2534077
Alexa Fluor 546 Goat anti-rat	1:200	Invitrogen, A11081	AB_141738
Alexa Fluor 633 phalloidin	1:200	Invitrogen, A22284	
4',6-diamidino-2-phenylindole (DAPI)	1:1000	Invitrogen, D1306	AB_2629482

Microscopy

Time lapse imaging of dissociated 4-cell stage blastomeres and separation of 8-cell stage doublets are performed on a Leica DMI6000 B inverted microscope equipped with a 40x/0.8 DRY HC PL APO Ph2 (11506383) objective. A 0.7x lens is mounted in front of a Retina R3 camera. The microscope is equipped with a custom incubation chamber (EMBLEM) to keep the sample at 37°C and maintain the atmosphere at 5% CO₂.

Time lapse imaging of dissociated 4-cell stage blastomeres without separation at the 8-cell stage are performed on a Celldiscoverer 7 (Zeiss) equipped with a 20x/0.95 objective. A 2x tubelens in front of an Axiovert (Zeiss) camera. The microscope is equipped with an incubation chamber keeping the sample at 37°C and maintaining the atmosphere at 5% CO₂.

Immunostainings are imaged on an inverted Zeiss Observer Z1 microscope with a CSU-X1 spinning disc unit (Yokogawa). Excitation is achieved using 405, 488, 561 and 642 nm laser lines through a 63x/1.2 C Apo Korr water immersion objective; emission is collected through 450/50 nm, 525/50 nm, 595/50 band pass or 610 nm low pass filters.

Micropipette aspiration

Micropipettes preparation

To forge the micropipettes, glass capillaries (World Precision Instruments TW100-3) are pulled using a P-97 Flaming Brown needle puller (Sutter Instrument) with the following settings: Ramp +5, Pull 50, Velocity 50, Time 50 and Pressure 500.

Using a microforge (Narishige, MF-900), needles are cut to form a blunt opening of radius 6-9 μm and bent 80-100 μm away from the tip at a 20° angle.

Dual pipette aspiration setup

Micropipettes are mounted on a micromanipulator (Leica AM6000) using a grip head and capillary holder (Eppendorf, 920007392 and 9200077414). The micropipettes are connected to PBS-filled intermediate reservoirs of which the height are controlled

using a 50 mm microscale translating stage (Newport) to generate positive and negative pressures (43). The intermediate reservoirs are connected to a microfluidic pump (Fluigent, MFCS-EZ) delivering negative pressures with a 2.5 Pa resolution. The pressure is controlled using Maesflow software (Fluigent). The output pressure is calibrated by finding the height of the intermediate reservoir at which no flow in the micropipette is observed (using floating particles found in the dish, 'no flow' is considered achieved when the position of the particle inside the micropipette is stable for ~10 s and, if slow drift can be reverted with 10 Pa).

The separation force F_s is determined as previously described (31, 43). A doublet is grabbed by two glass micropipettes (holding and probing pipettes) on the opposite sides of the cell-cell contact. The holding micropipette is used to firmly hold one cell with a fixed pressure ranging from 100-550 Pa. The probing micropipette is used to apply stepwise increasing pressures ranging from 10-1000 Pa with step-ranges between 10 and 100 Pa to the other cell. After each pressure step, micropipettes are pulled apart at 60 μm/s using MetaMorph 7.10.2.240 (Molecular Devices) in an attempt to separate the contacting cells. Once the applied pressure in the probing pipette is sufficiently high to separate the contacting cells, F_s is calculated from the final pressure and the pressure of the last failed separation using $F_s = \pi R_p^2 (P_{n-1} + P_n)/2$, with R_p being the micropipette radius, P_n the pressure applied by the probing micropipette during the separating step, and P_{n-1} the pressure applied by the probing micropipette during the pulling step preceding the separating step. Doublets that separate during their first pull are not considered since they lack a lower bound to calculate their separation force. The mean duration of separation of the WT doublets included in this study was 33 ± 1 s (mean \pm SEM of 85 doublets).

Data analysis

Pipette size, contact size and shape

Doublets are synchronized using the 3rd cleavage division from 4- to 8-cell stage. For the whole

embryos obtained previously (44) that are used in this study, the first and last 3rd cleavage divisions occur between 0 and 2 h from each other. To compare the timing of whole embryos and doublets, we used the mean delay between cleavage divisions of whole embryos as the time after 3rd cleavage.

We use FIJI (45) to measure the contact angle of cell-cell contacts in whole embryos and doublets. Using the angle tool, the equatorial plane in which two contacting cells are observed is chosen to manually measure the external contact angle. Data of compacting whole WT embryos are taken from freely available time lapse images obtained previously (44).

To measure the size of contacts on doublets, the line tool of FIJI is used to manually measure length of contact at its equatorial plane.

To measure the size of micropipettes, the line tool of FIJI is used to manually measure the inner diameter near the tip.

Immunostaining

Doublets are imaged and synchronized using the 3rd cleavage division from 4- to 8-cell stage before being fixed and stained.

We use FIJI (45) to measure the intensity of Cdh1 and filamentous actin (phalloidin) in doublets to determine their distribution (i) at the cell-cell contact vs the cell-medium interfaces and (ii) at the contact rim vs central disc.

(i) To determine the intensity ratio between the contact and cell-medium interface, we measured the intensity I_{cc} at cell-cell contacts and intensities I_{cm1} and I_{cm2} at the free surface of contacting cells 1 and 2. A 1 μm thick segmented line is manually drawn at the equatorial plane of the cell doublet to measure the mean intensities I_{cc} , I_{cm1} and I_{cm2} at the corresponding interfaces.

(ii) To determine the intensity ratio between the contact rim and central disc, we measured the intensities I_{disc} and I_{ring} , with the latter one defined as a 1 μm thick circle at the rim of the contact. A 4 μm wide rectangle is drawn along the cell-cell contact to project it along the z axis using 3D project and interpolation functions of FIJI. On the projection, a circle is manually drawn around the entire cell-cell contact to measure its total intensity and area. A 2 μm smaller circle is then positioned onto the center of the cell-cell contact to measure its total intensity and area. To calculate the mean intensity I_{disc} , the total intensity of the small circle is divided by its area. To calculate the mean intensity I_{ring} , the total intensity of the small circle is subtracted to the one of the large circle, the resulting intensity is divided by the area of the large circle to which the area of the small circle is subtracted.

Statistics

Mean, standard deviation, standard error of the mean (SEM), are calculated using Excel (Microsoft). Pearson's correlation statistical significance is determined on the corresponding table. Statistical significance is considered when $p < 10^{-2}$.

The sample size was not predetermined and simply results from the repetition of experiments. No sample was excluded. No randomization method was used. The investigators were not blinded during experiments.

Results

Cell doublets as a simplified model for studying mouse embryo compaction

To study compaction in mouse embryos, we simplified the embryo into a minimal adhesive system. As used previously in other contexts (16, 22, 31, 32, 46, 47), cell doublets allow controlling the duration of contact, offer a simple geometry for shape analysis and for understanding the mechanical forces involved in setting the adhesive interface. Importantly, previous studies of dissociated mouse embryos suggested that doublets of mouse blastomeres faithfully and quantitatively recapitulate most aspects of the development of complete embryos such as compaction (6, 48), apicobasal polarization, fate specification, cell internalization (48–51), as well as lumen formation (52, 53).

To quantitatively characterize the compaction of doublets, we dissociated mouse embryos at the 4-cell stage, which, after division to the 8-cell stage, led to the formation of four doublets of 8-cell stage blastomeres per dissociated embryo (Fig 1A). After division, doublets of sister cells formed a cell-cell contact that grew over time, as observed in whole embryos during compaction (Fig 1B, Movie 1, time lapse of whole embryo obtained from (44)). Measuring the external angle of contact of compacting doublets and whole embryos (on images of whole embryos obtained from (44)), we noted similar dynamics and magnitude in the growth of contact angles (Fig 1C), as measured previously (6). Similarly, the radius of contact of doublets increased throughout the 8-cell stage (Fig 1D). In fact, the contact angle and contact radius of doublets follow an identical trend and these were highly correlated (Pearson correlation $R = 0.965$ for 182 measurements on 41 doublets, $p < 10^{-2}$, Fig 1E), as expected from the geometry of doublets that keep constant volume (6).

Since doublets of 8-cell stage blastomeres quantitatively recapitulate compaction of whole embryos while offering a simpler geometry, we conclude that they constitute an ideal ex vivo

system to study physiological changes in cell-cell adhesion.

Mechanical coupling between cells during compaction

Another advantage of cell doublets is the possibility to separate them to probe the strength of an individual cell-cell contact. To do so, we used a DPA assay, which allows measuring separation forces F_s of adhering cells up to hundreds of nanonewtons (31, 32).

Doublets were separated at different times after divisions to measure their separation force F_s (Fig 2A, Movie 2). Binning doublets into groups of 2 h after division, we measured that the force required to separate doublets increased from ~40 nN to ~70 nN throughout the 8-cell stage (Fig 2C). Therefore, during compaction, cell-cell contacts increase their mechanical stability. As observed previously (Fig 1), the contact angles and radii of doublets increased throughout the 8-

cell stage before we separated them (Fig 2B). In fact, contact angles, radii and separation forces F_s seem to follow identical dynamics, as confirmed by high correlations between F_s and contact length or angle (Pearson correlation $R = 0.774$ and 0.737 respectively for 88 doublets, $p < 10^{-2}$, Fig 2D and Fig S1). Therefore, increased contact size could largely explain the increased mechanical stability of cell-cell contacts during compaction.

Molecular organization of adherens junctions during compaction

In addition to increased contact size, molecular reorganization of adherens junctions could contribute to the mechanical strengthening of cell-cell contacts. To gain further insights into what explains increased mechanical stability of cell-cell contacts during compaction, we considered different scenarios. In the simplest case, increased contact size allows for more

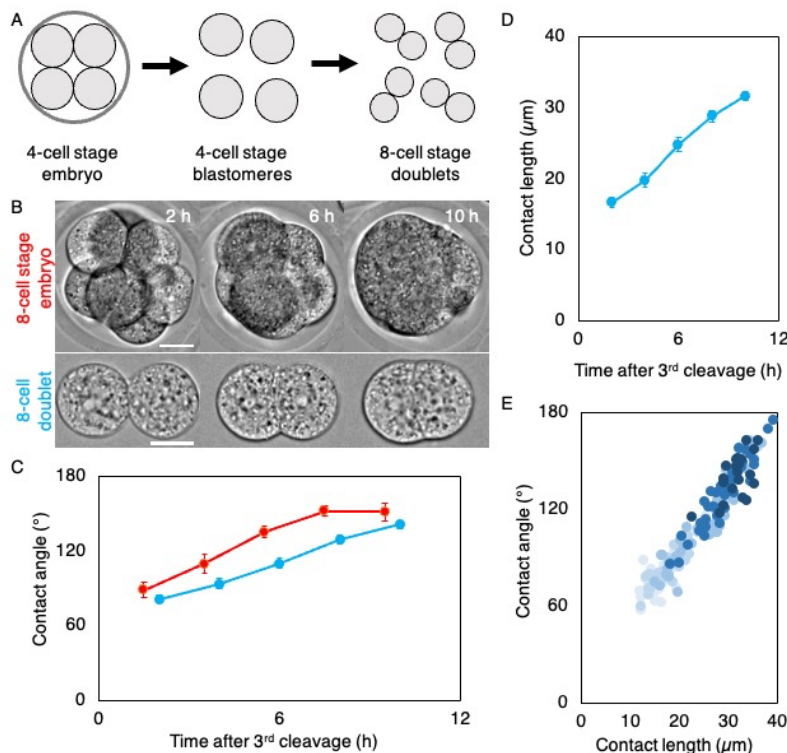


Figure 1: compaction of 8-cell stage doublets. **A)** Schematic diagram of doublet preparation. 4-cell stage mouse embryos are stripped from their zona pellucida and dissociated into individual blastomeres, which then divide into 8-cell stage doublets. **B)** Time lapse images of 8-cell stage embryo and doublet during their compaction (Movie 1). Images of whole embryo from (44). Time after third cleavage is indicated, scale bars are 20 μm . **C)** External contact angle of whole embryos (red) and doublets (blue) during the 8-cell stage. Doublets are synchronized using their 3rd cleavage division. To account for the asynchronous divisions of whole embryos, the time of the last 4-cell stage blastomere to undergo its 3rd cleavage is taken and the mean duration of division to 8-cell stage is added. Mean \pm SEM of 20 whole embryos from (44) and of 41 doublets from 11 embryos are shown. **D)** Contact length of 8-cell stage doublet over time after the 3rd cleavage. Mean \pm SEM of 41 doublets from 11 embryos are shown. **E)** Contact angle as a function of contact length of 182 measurements throughout the 8-cell stage of 41 doublets from 11 embryos (Pearson correlation $R = 0.965$, $p < 10^{-2}$). Shades of blue indicate the timing of measurement going darker from 2 to 10 h after 3rd cleavage.

adhesion molecules to engage into adhesive bonds and, with a circular contact with homogeneous adhesive bond density, we would expect mechanical stability to scale with the area of contact. The scaling of mechanical stability with the area of contact may not be linear since in addition to growing in size, cell-cell contacts could recruit and increase the density of adhesion molecules. Furthermore, as measured in other contexts (16, 22), adhesive bonds may become enriched at the rim of cell-cell contacts, where they can more efficiently engage with the actin cytoskeleton and strengthen the mechanical coupling between cells by increasing the effective bond density. In this case, we would expect mechanical stability to scale linearly with the perimeter of cell-cell contacts rather than with the contact area. When comparing the correlations of F_s with the perimeter or the surface area of contacts, both yield similarly high correlations (Pearson correlation values $R = 0.774$ and 0.773 for 88 doublets, respectively, $p < 10^{-2}$), which does not allow us to discriminate between those scenarios. Therefore, we

decided to look into the molecular and structural organizations of adherens junctions during compaction.

To investigate the localization of adhesive bonds during compaction, we labelled Cdh1 using immunostaining and filamentous actin using phalloidin on doublets of increasing age (Fig 3A). We measured that actin becomes strongly reduced at cell-cell contacts as compared to the contact-free interface of cells when contacts grow larger during compaction, while Cdh1 shows

limited change (Pearson correlation values $R = -0.742$ and 0.329 for 45 doublets, $p < 10^{-2}$ and $> 10^{-2}$ between contact angles and actin or Cdh1, respectively, Fig 3B-C, S2A, S2C). This is similar to previous measurements on mouse and human whole embryos (6, 19). Furthermore, we measured a progressive enrichment of Cdh1, but not of actin, at the periphery as compared to the inside of the contact disc when contacts grow larger during compaction (Pearson correlation values $R = 0.266$ and 0.496 for 45 doublets, $p > 10^{-2}$ and $< 10^{-2}$ between contact angles and actin or Cdh1, respectively Fig 3D, S2B, S2D), as observed in other doublets (16, 22). Therefore, while Cdh1 does not seem to be further recruited to cell-cell contacts during their expansion, adhesion complexes reorganize to form a ring at the contact edges where the remaining actin cytoskeleton is found. We conclude that, in addition to contact growth, increased mechanical stability may be associated with the accumulation of adhesive bonds at the contact rim.

To test the potential influence of the structural reorganization of adhesion complexes during compaction without the contribution of contact expansion, we normalized the separation force to the radius of contact R_c . This gives a rupture tension F_s/R_c , which may reflect an effective bond density (16). We observed no change in rupture tension F_s/R_c during compaction (Fig 2E), indicating that the enrichment of Cdh1 at the contact rim is not associated with stronger effective bond density during mouse embryo compaction. Instead, increased mechanical stability during compaction is primarily explained by increased contact size.

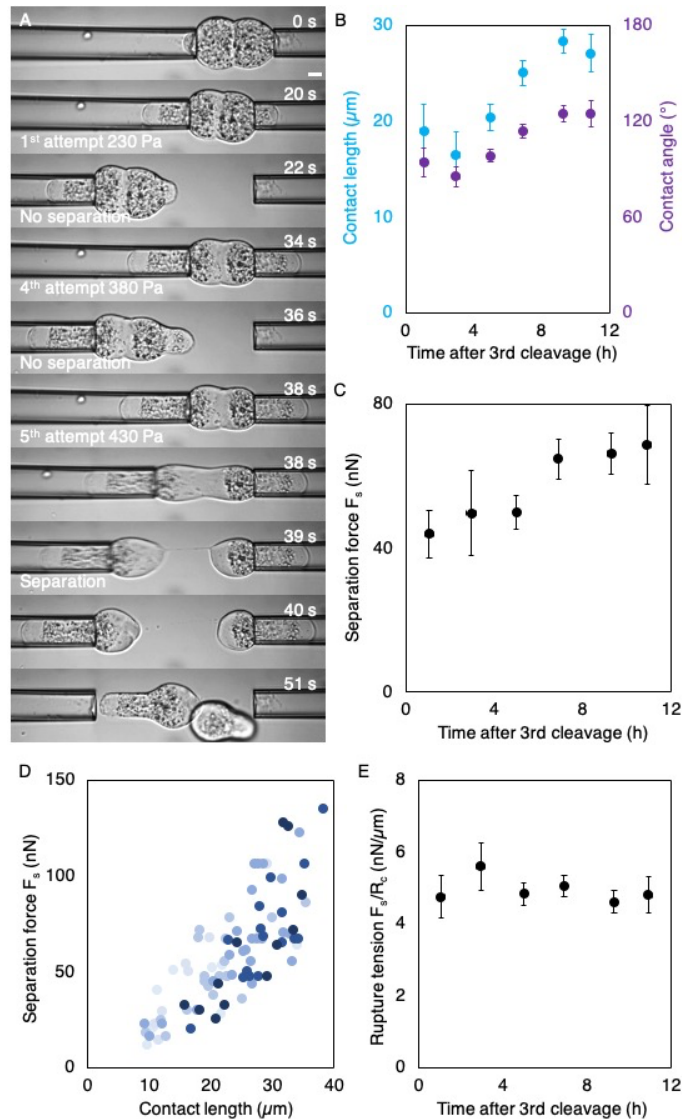


Figure 2: Mechanical coupling of compacting 8-cell stage doublets. **A)** Time lapse images of a doublet separation using dual pipette aspiration (Movie 2). Scale bar, $10 \mu\text{m}$. **B)** Contact length (blue) and contact angle (purple) of 8-cell stage doublets just before their separation. Mean \pm SEM of doublets in 2 h bins from 0 to 12 h after their 3rd cleavage ($n = 9/7/19/25/15/13$). **C)** Separation force F_s of 8-cell stage doublets. Mean \pm SEM of doublets in 2 h bins from 0 to 12 h after their 3rd cleavage ($n = 9/7/19/25/15/13$). **D)** Separation force as a function of contact length of 88 measurements throughout the 8-cell stage (Pearson correlation $R = 0.774$, $p < 10^{-2}$). Shades of blue indicate the timing of measurement going darker from 0 to 12 h after 3rd cleavage. **E)** Rupture tension F_s/R_c of 8-cell stage doublets. Mean \pm SEM of doublets in 2 h bins from 0 to 12 h after their 3rd cleavage ($n = 9/7/19/25/15/13$).

Reduced mechanical coupling in embryos lacking Cdh1-mediated adhesion

Since Cdh1 mediates cell-cell adhesion during compaction, we reasoned that reducing its levels, should reduce the mechanical stability of cell-cell contacts. Maternal heterozygous Cdh1 mutant ($mCdh1^{+/-}$) embryos should have less Cdh1 at the time of compaction since they lack maternal Cdh1 and can only rely on zygotic expression from their paternal allele. Lower levels of Cdh1 should likely decrease the mechanical stability cell-cell contacts and potentially their effective bond density. Moreover, compaction is impaired in $mCdh1^{+/-}$ embryos, which form smaller cell-cell contacts than WT embryos

(6). With both smaller contacts and fewer adhesion molecules, the effective bond density of $mCdh1^{+/-}$ embryos is difficult to predict.

To characterize this, we generated doublets from $mCdh1^{+/-}$ embryos (Fig 4A, Movie 3). Binning doublets over groups of 4 h after division, we found that $mCdh1^{+/-}$ doublets start with smaller contacts than WT and compact less (Fig 4B), as observed previously in whole embryos (6). As expected from the smaller contacts, we also measured lower separation forces F_s in $mCdh1^{+/-}$ doublets than in WT ones (Fig 4C). Nevertheless, $mCdh1^{+/-}$ doublets could grow from ~ 30 to ~ 40

nN during the 8-cell stage (Fig 4C). Therefore, $mCdh1^{+/-}$ doublets reach, at the end of their 8-cell stage, a level of mechanical coupling comparable to WT doublets at the start of their 8-cell stage (Fig 4D). This could be explained by $mCdh1^{+/-}$ doublets catching up to contact sizes of WT doublets. However, when measuring the rupture tension F_s/R_c for $mCdh1^{+/-}$ doublets at the beginning of the 8-cell stage, we found that it is higher than in WT (Fig 4E). Then, as $mCdh1^{+/-}$ contacts enlarge and reach the levels of WT at the start of compaction, the rupture tension F_s/R_c decreases to reach WT levels. This suggests that

the smallest contacts of $mCdh1^{+/-}$ mutants may have higher effective bond density than contacts formed by WT. Therefore, at low level of expression, the relationship between Cdh1 levels and effective bond density appears complex.

Together, we conclude that reducing the levels of Cdh1 leads to decreased mechanical coupling of cell-cell contacts, which cannot be explained solely by the reduced contact size.

The intracellular domain of Cdh2 is less effective than that of Cdh1

In addition to the levels of adhesion molecules, their individual mechanical stability is likely to influence the overall mechanical stability of cell-cell contacts. The mechanical stability of adherens junctions is limited by their intracellular coupling rather than the extracellular binding of cadherin adhesion molecules (16, 32). Indeed, as observed in other contexts (16), separating doublets of 8-cell stage blastomeres leads to the formation of long membrane tethers connecting separated cells, indicating that some cadherin adhesion molecules were not separated (Movie 2, Fig 2A). To test the role of intracellular coupling, we took advantage of a transgenic mouse in which the endogenous locus of Cdh1 has been replaced with the cDNA encoding a chimeric protein consisting of the extracellular and transmembrane domains of Cdh1 and the intracellular domain of Cdh2 called EcNc (34). To generate embryos expressing only the chimeric protein at the stage of compaction, we removed Cdh1 maternally and provided the EcNc allele paternally using heterozygous fathers $Cdh1^{EcNc/+}$. To distinguish between $mCdh1^{+/-}$ and $mCdh1^{EcNc/-}$ embryos, we used immunostaining using antibodies targeting

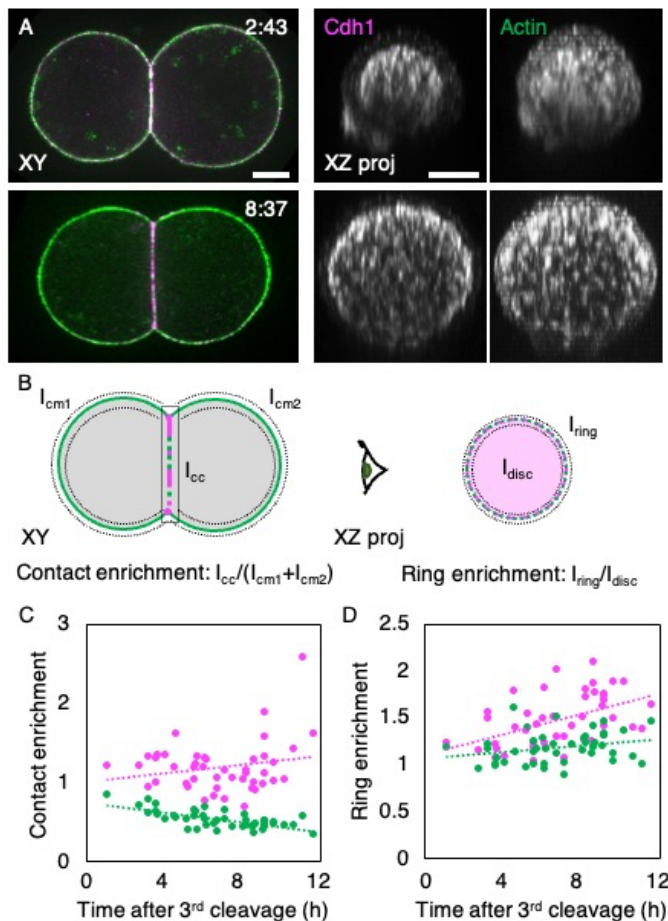


Figure 3: Structural organization of adherens junctions of 8-cell stage doublets. **A)** Immunostaining of early (top) and late (bottom) 8-cell stage doublets. Left shows the merged signals of Cdh1 (magenta) and Actin (green) seen through the equatorial confocal slice of doublets and right shows an orthogonal $4 \mu\text{m}$ projection of individual signals. Time after third cleavage is indicated, scale bars are $10 \mu\text{m}$. **B)** Schematic diagram of quantifications characterizing the molecular organization of doublets: contact (left) and ring (right) enrichments. Left shows the equatorial plane in which intensities are measured along the cell medium interfaces of both cells I_{cm1} and I_{cm2} as well as the intensity along the contact I_{cc} using a $1 \mu\text{m}$ thick segmented line. Contact enrichment is calculated as $I_{cc} / (I_{cm1} + I_{cm2})$. Right shows an en face view of the cell-cell contact on which the intensities of a $1 \mu\text{m}$ peripheral ring I_{ring} and of the inner disc I_{disc} are measured. Ring enrichment is calculated as I_{ring} / I_{disc} . **C-D)** Contact (C) and ring (D) enrichments of Cdh1 (magenta) and Actin (green) throughout the 8-cell stage of 45 doublets (Pearson correlations $R = 0.216$ ($p > 10^{-2}$) and 0.475 ($p < 10^{-2}$) for Cdh1; -0.680 ($p < 10^{-2}$) and 0.266 ($p > 10^{-2}$) for Actin).

either the extra- or intra-cellular domains of Cdh1, or the HA tag added to the EcNc (34). At the start of the 8-cell stage, the contacts of mCdh1^{EcNc/-} doublets are small, similar in size to the ones of mCdh1^{+/-} doublets (Fig 4A-B, Movie 4). However, unlike mCdh1^{+/-} doublets, mCdh1^{EcNc/-} doublets do not increase their contact size (Fig 4A-B). Therefore, expression of EcNc chimeric cadherin does not elicit compaction, which could be due to reduced signaling or mechanical coupling from the cytoplasmic domain of Cdh2 compared to Cdh1. As expected from their contacts remaining small, mCdh1^{EcNc/-} doublets display overall weak mechanical coupling, which does not increase during the 8-cell stage (Fig 4C). Finally, calculating the rupture tension F_s/R_c in mCdh1^{EcNc/-} doublets revealed that it is lower than

in mCdh1^{+/-} doublets at comparable contact size (Fig 4E). This suggests that the intracellular domain of Cdh2 may be less mechanically stable than the one of Cdh1. Together, we conclude that Cdh1 mediated cytoskeletal anchoring is key to elicit compaction and to build mechanically stable cell-cell contacts.

Discussion

The shaping of the eutherian embryo begins with compaction, a developmentally regulated adhesion process during which cells form a tighter structure. The mechanical characterization of compacting human and mouse embryos previously revealed the changes in surface tensions responsible for contact expansion (15, 54, 6, 19). Here, we studied the mechanical stability of cell-cell contacts

throughout compaction using an ex vivo reduced system of cell doublets (Fig 1, Movie 1). We found that, as compaction proceeds, cell-cell contacts require higher forces to be separated (Movie 2). This increased mechanical stability is primarily explained by the spreading of cell-cell contacts associated with compaction (Fig 2). While adherens junctions are remodeled during compaction (Fig 3), this does not seem to be associated with increased mechanical stability since the rupture tension, indicative of effective bond density, does not change (Fig 2E). However, when reducing the levels of adhesion molecules to a level that impairs the expansion of contacts, we measured an effect on contact mechanical stability, which also depends on the molecular nature of the intracellular coupling of adherens junctions (Fig 4). Together, our ex vivo analysis reveals the contributions of contact spreading and molecular reorganization to the mechanical strengthening of cell-cell contacts during compaction.

Compaction is the first morphogenetic movement in eutherian mammals, such as mice and humans (55, 56). In human embryos, weak or delayed compaction is associated with poorer prognosis (57, 58) but could be indicative of other developmental defects such as aneuploidy (59, 60). In fact, mutant mouse embryos, which lack maternal Cdh1 or maternal non-muscle myosin II but express these genes from their paternal alleles (20, 44), fail to compact but form blastocysts and viable mice. Therefore, compaction is not essential to mouse development and its

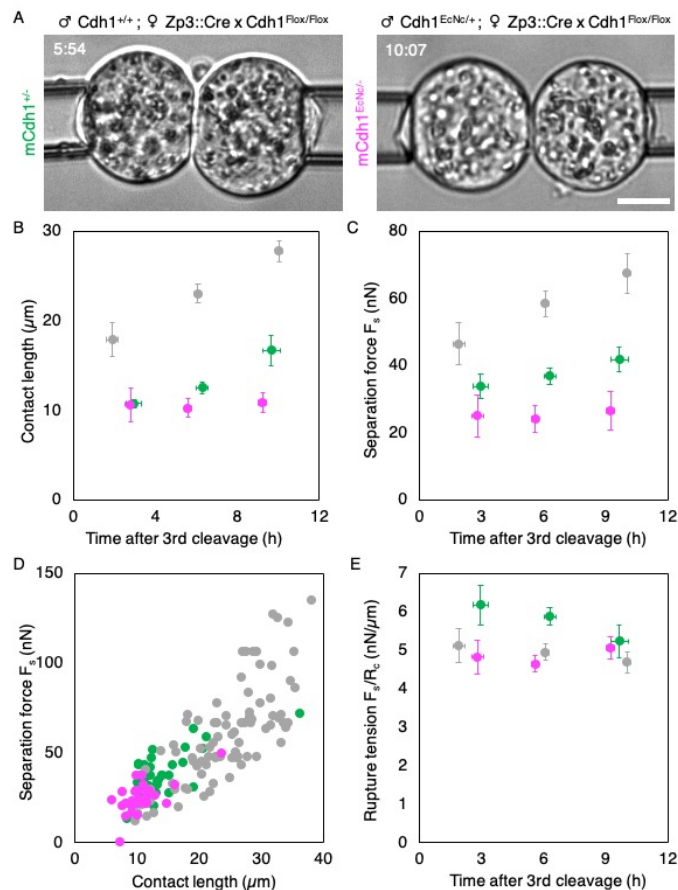


Figure 4: Mechanical coupling of 8-cell stage doublets from mCdh1^{+/-} and mCdh1^{EcNc/-} embryos. **A**) Images of mCdh1^{+/-} (left) and mCdh1^{EcNc/-} (right) 8-cell stage doublets. Time after third cleavage is indicated, scale bar is 10 μ m. **B-C**) Contact length (B) and separation force F_s (C) of WT (grey, n = 16/44/28), mCdh1^{+/-} (green, n = 9/16/14) and mCdh1^{EcNc/-} (magenta, n = 9/12/13) 8-cell stage doublets just before their separation. Mean \pm SEM of doublets in 4 h bins from 0 to 12 h after their 3rd cleavage. **D**) Separation force F_s (nN) as a function of contact length of WT (grey, n = 88), mCdh1^{+/-} (green, n = 39) and mCdh1^{EcNc/-} (magenta, n = 34) doublets throughout the 8-cell stage. **E**) Rupture tension F_s/R_c of WT (grey, n = 16/44/28), mCdh1^{+/-} (green, n = 9/16/14) and mCdh1^{EcNc/-} (magenta, n = 9/12/13) 8-cell stage doublets. Mean \pm SEM of doublets in 4 h bins from 0 to 12 h after their 3rd cleavage.

function is unclear. However, defective compaction in some cells of human embryos is associated with their exclusion from the embryo (60), which can eventually cause cells to detach from the compacted embryo, especially in the absence of egg shell (19). Here, we show that contact spreading associated with compaction provides increased mechanical coupling between cells (Fig 2). Therefore, compaction may simply prevent cells from detaching from the embryo.

Surface tension measurements revealed the prominent role of actomyosin contractility in controlling the surface tensions driving compaction in mouse and human embryos (6, 19). Increased contractility and associated surface tensions pulling on adherens junctions have been proposed to lead to their mechanosensitive strengthening in a variety of contexts (22, 25, 26, 61–63). This is associated with the relocation of adhesive bonds to the contact periphery, which forms a ring in doublets (22, 63), as well as *in vivo* (16). In compacting mouse embryos, for which contractility doubles the surface tensions applied at the edges of cell-cell contacts, we also observe the relocation of Cdh1 in a peripheral ring, without significant recruitment of Cdh1 to cell-cell contact from the remaining of the cell surface (Fig 3). However, this relocation is not associated by increased effective bond density, since the rupture tension F_s/R_c does not change during the formation of an adhesive ring (Fig 2E). We do not observe a significant relocation of the actin cytoskeleton to the adhesive ring (Fig 3), as observed in other systems (16, 22). Since increased actin recruitment is a hallmark of mechanical reinforcement of adherens junction via the mechanosensitive recruitment of junctional proteins such as vinculin (25, 61, 64), the lack of actin recruitment in compacted doublets further indicates the absence of reinforcement of the intracellular coupling of Cdh1 during mouse compaction. Taken together, our experimental results point at a simple explanation for the mechanical reinforcement of cell-cell contact stability during compaction: increased contact size leads to larger peripheral adhesive rings cumulating more adhesive bonds of constant effectiveness.

While effective bond density does not seem to change during compaction, the intracellular coupling of cadherin is essential to their function as a mechanical anchor (16, 32). Different cadherins have distinct mechanical coupling, as measured for example for type I Cdh1 and type II Cdh7 cadherin adhesion molecules using chimeric proteins (33). Here, we looked into the

difference between Cdh1 and Cdh2 cytoplasmic domains. A previous study looked into zygotic replacement of Cdh1 with a chimeric protein EcNc made of the extracellular domain of Cdh1 and the intracellular domain of Cdh2, which did not cause compaction defect (34). We eliminated the maternally provided Cdh1, zygotically expressed in its place the chimeric adhesion molecule EcNc and found that 8-cell stage doublets from these embryos do not compact (Fig 4). This indicates that in the initial characterization of zygotic EcNc mutants (34), maternally provided Cdh1 could most likely compensate for the presence of EcNc at the time of compaction. Since zygotically expressed Cdh1 elicits some compaction, the ability of EcNc to function as an adhesion molecule is unclear. EcNc adhesion molecules may fail at signaling to the actomyosin cytoskeleton to allow compact expansion and/or fail at mechanically coupling the cortices of adhering cells. Since we measured weaker rupture tensions when zygotically expressing EcNc than when expressing Cdh1 in maternal Cdh1 mutants (Fig 4), this suggests that EcNc cannot provide much adhesive coupling. Therefore, the intracellular coupling of Cdh2 is likely weaker than the one of Cdh1. Further studies into the specificities of cadherin adhesion molecules signaling and mechanical coupling will be needed to uncouple the distinct functions of cadherins in cell-cell adhesion.

Acknowledgements

We thank the imaging platform of the Genetics and Developmental Biology Unit at the Institut Curie (PICT-IBiSA@BDD, member of the French National Research Infrastructure France-BioImaging ANR-10-INBS-04) for their outstanding support, in particular Olivier Leroy for his help implementing micromanipulator control into Metamorph; the animal facility of the Institut Curie for their invaluable help. We thank David Rozema for critical reading of the manuscript.

Research in the lab of J.-L.M. is supported by the Institut Curie, the Centre National de la Recherche Scientifique (CNRS), the Institut National de la Santé Et de la Recherche Médicale (INSERM), and is funded by grants from the European Research Council Starting Grant ERC-2017-StG 757557, the European Molecular Biology Organization Young Investigator program (EMBO YIP), the INSERM transversal program Human Development Cell Atlas (HuDeCA), Paris Sciences Lettres (PSL) QLife (17-CONV-0005) grant and Labex DEEP (ANR-11-LABX-0044) which are part of the IDEX PSL (ANR-10-IDEX-0001-02).

Author contributions

L.P. performed experiments and prepared data for analyses. L.P. and J.-L.M. designed the project, analyzed the data and wrote the manuscript. J.F. helped with data analysis. J.-L.M. acquired funding.

Conflict of interest

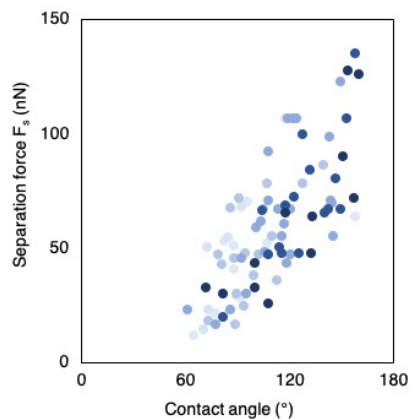
We declare no conflict of interest.

References

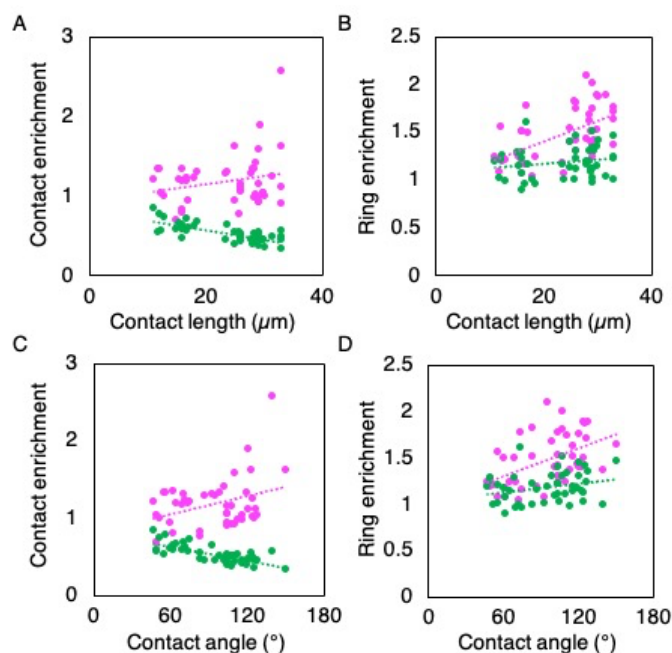
1. Frankenberg, S.R., F.R.O. de Barros, J. Rossant, and M.B. Renfree. 2016. The mammalian blastocyst. *Wiley Interdisciplinary Reviews: Developmental Biology*. 5:210–232.
2. Rossant, J. 2016. Making the Mouse Blastocyst: Past, Present, and Future. *Curr Top Dev Biol*. 117:275–288.
3. Chazaud, C., and Y. Yamanaka. 2016. Lineage specification in the mouse preimplantation embryo. *Development (Cambridge, England)*. 143:1063–1074.
4. Özgüç, Ö., and J.-L. Maitre. 2020. Multiscale morphogenesis of the mouse blastocyst by actomyosin contractility. *Current Opinion in Cell Biology*. 66:123–129.
5. Turlier, H., and J.-L. Maitre. 2015. Mechanics of tissue compaction. *Seminars in Cell & Developmental Biology*. 47–48:110–117.
6. Maitre, J.-L., R. Niwayama, H. Turlier, F. Nédélec, and T. Hiiragi. 2015. Pulsatile cell-autonomous contractility drives compaction in the mouse embryo. *Nature cell biology*. 17:849–855.
7. Hyafil, F., C. Babinet, and F. Jacob. 1981. Cell-cell interactions in early embryogenesis: a molecular approach to the role of calcium. *Cell*. 26:447–454.
8. Sefton, M., M.H. Johnson, and L. Clayton. 1992. Synthesis and phosphorylation of uvomorulin during mouse early development. *Development (Cambridge, England)*. 115:313–318.
9. Sefton, M., M.H. Johnson, L. Clayton, and J.M. McConnell. 1996. Experimental manipulations of compaction and their effects on the phosphorylation of uvomorulin. *Mol Reprod Dev*. 44:77–87.
10. Ohsugi, M., S.Y. Hwang, S. Butz, B.B. Knowles, D. Solter, and R. Kemler. 1996. Expression and cell membrane localization of catenins during mouse preimplantation development. *Developmental dynamics: an official publication of the American Association of Anatomists*. 206:391–402.
11. Pauken, C.M., and D.G. Capco. 1999. Regulation of cell adhesion during embryonic compaction of mammalian embryos: roles for PKC and beta-catenin. *Mol Reprod Dev*. 54:135–144.
12. Steinberg, M.S., and M. Takeichi. 1994. Experimental specification of cell sorting, tissue spreading, and specific spatial patterning by quantitative differences in cadherin expression. *Proc Natl Acad Sci U S A*. 91:206–209.
13. Manning, M.L., R.A. Foty, M.S. Steinberg, and E.-M. Schoetz. 2010. Coaction of intercellular adhesion and cortical tension specifies tissue surface tension. *Proceedings of the National Academy of Sciences of the United States of America*. 107:12517–12522.
14. Maitre, J.-L., and C.-P. Heisenberg. 2011. The role of adhesion energy in controlling cell–cell contacts. *Current Opinion in Cell Biology*. 23:508–514.
15. Goel, N.S., C.F. Doggenweiler, and R.L. Thompson. 1986. Simulation of cellular compaction and internalization in mammalian embryo development as driven by minimization of surface energy. *Bulletin of mathematical biology*. 48:167–187.
16. Maitre, J.-L., H. Berthoumieux, S.F.G. Krens, G. Salbreux, F. Julicher, E. Paluch, and C.-P. Heisenberg. 2012. Adhesion Functions in Cell Sorting by Mechanically Coupling the Cortices of Adhering Cells. *Science*. 338:253–256.
17. Chan, E.H., P. Chavadamane Shivakumar, R. Clément, E. Laugier, and P.-F. Lenne. 2017. Patterned cortical tension mediated by N-cadherin controls cell geometric order in the Drosophila eye. *eLife*. 6.
18. Zhu, M., C.Y. Leung, M.N. Shahbazi, and M. Zernicka-Goetz. 2017. Actomyosin polarisation through PLC-PKC triggers symmetry breaking of the mouse embryo. *Nature communications*. 1–16.
19. Firmin, J., N. Ecker, D.R. Danon, V.B. Lange, H. Turlier, C. Patrat, and J.-L. Maitre. 2022. Mechanics of human embryo compaction. *bioRxiv*. doi/10.1101/2022.01.09.475429.
20. Stephenson, R.O., Y. Yamanaka, and J. Rossant. 2010. Disorganized epithelial polarity and excess trophectoderm cell fate in preimplantation embryos lacking E-cadherin. *Development (Cambridge, England)*. 137:3383–3391.
21. Adams, C., Y. Chen, S. Smith, and W. Nelson. 1998. Mechanisms of epithelial cell-cell adhesion and cell compaction revealed by high-resolution tracking of E-cadherin-green fluorescent protein. *The Journal of cell biology*. 142:1105–1119.
22. Engl, W., B. Arasi, L.L. Yap, J.P. Thiery, and V. Viasnoff. 2014. Actin dynamics modulate mechanosensitive immobilization of E-cadherin at adherens junctions. *Nature cell biology*. 16:587–594.
23. Liu, Z., J.L. Tan, D.M. Cohen, M.T. Yang, N.J. Sniadecki, S.A. Ruiz, C.M. Nelson, and C.S. Chen. 2010. Mechanical tugging force regulates the size of cell-cell junctions. *Proceedings of the National Academy of Sciences of the United States of America*. 107:9944–9949.
24. Rozema, D., P. Lasko, and F. Fagotto. 2023. Dynamic remodelling of cadherin contacts in embryonic mesenchymal cells during differential cell migration. *Developmental Biology*.
25. Yonemura, S., Y. Wada, T. Watanabe, A. Nagafuchi, and M. Shibata. 2010. alpha-Catenin as a tension transducer that induces adherens junction development. *Nature cell biology*. 12:533–542.
26. le Duc, Q., Q. Shi, I. Blonk, A. Sonnenberg, N. Wang, D. Leckband, and J. de Rooij. 2010. Vinculin potentiates E-cadherin mechanosensing and is recruited to actin-anchored sites within adherens junctions in a myosin II-dependent manner. *The Journal of cell biology*. 189:1107–1115.
27. Charras, G., and A.S. Yap. 2018. Tensile Forces and Mechanotransduction at Cell–Cell Junctions. *Current Biology*. 28:R445–R457.
28. Kashef, J., and C.M. Franz. 2015. Quantitative methods for analyzing cell–cell adhesion in development. *Developmental Biology*. 401:165–174.
29. Puech, P.-H., K. Poole, D. Knebel, and D.J. Muller. 2006. A new technical approach to quantify cell–cell adhesion forces by AFM. *Ultramicroscopy*. 106:637–644.
30. Krieg, M., Y. Arboleda-Estudillo, P. Puech, J. Kafer, F. Graner, D. Muller, and C. Heisenberg. 2008. Tensile forces govern germ-layer organization in zebrafish. *Nature cell biology*. 10:429–436.
31. Daoudi, M., E. Lavergne, A. Garin, N. Tarantino, P. Debre, F. Pincet, C. Combadiere, and P. Deterre. 2004. Enhanced Adhesive Capacities of the Naturally Occurring Ile249-Met280 Variant of the Chemokine Receptor CX3CR1. *Journal of Biological Chemistry*. 279:19649–19657.
32. Chu, Y.-S., W.A. Thomas, O. Eder, F. Pincet, E. Perez, J.-P. Thiery, and S. Dufour. 2004. Force measurements in E-cadherin-mediated cell doublets reveal rapid adhesion strengthened by actin cytoskeleton remodeling through Rac and Cdc42. *The Journal of cell biology*. 167:1183–1194.

33. Chu, Y.-S., O. Eder, W.A. Thomas, I. Simcha, F. Pincet, A. Ben-Ze'ev, E. Perez, J.-P. Thiery, and S. Dufour. 2006. Prototypical type I E-cadherin and type II cadherin-7 mediate very distinct adhesiveness through their extracellular domains. *The Journal of biological chemistry*. 281:2901–2910.
34. Bedzhov, I., E. Liszewska, B. Kanzler, and M.P. Stemmler. 2012. Igf1r Signaling Is Indispensable for Preimplantation Development and Is Activated via a Novel Function of E-cadherin. *PLoS Genetics*. 8:e1002609.
35. Maître, J.-L., and C.-P. Heisenberg. 2013. Three Functions of Cadherins in Cell Adhesion. *Current Biology*. 23:R626–R633.
36. Scarpa, E., A. Szabó, A. Bibonne, E. Theveneau, M. Parsons, and R. Mayor. 2015. Cadherin Switch during EMT in Neural Crest Cells Leads to Contact Inhibition of Locomotion via Repolarization of Forces. *Developmental Cell*. 1–15.
37. Davis, J.R., A. Luchici, F. Mosis, J. Thackery, J.A. Salazar, Y. Mao, G.A. Dunn, T. Betz, M. Miodownik, and B.M. Stramer. 2015. Inter-Cellular Forces Orchestrate Contact Inhibition of Locomotion. *Cell*. 1–14.
38. Padmanabhan, A., and R. Zaidel-Bar. 2017. Non-junctional E-Cadherin Clusters Regulate the Actomyosin Cortex in the *C. elegans* Zygote. *Curr Biol*. 27:103–112.
39. Yamada, S., and W.J. Nelson. 2007. Localized zones of Rho and Rac activities drive initiation and expansion of epithelial cell-cell adhesion. *The Journal of cell biology*. 178:517–527.
40. Dohn, M.R., R.J. Coffey, and A.B. Reynolds. 2015. p120-catenin controls contractility along the vertical axis of epithelial lateral membranes. *Journal of Cell Science*. 129:jcs.177550.
41. Binns, L.T., K.S. Fancher, J. Dean, R. Moore, R. Kemler, and B.B. Knowles. 2000. Expression of Cre recombinase in mouse oocytes: a means to study maternal effect genes. *genesis*. 26:110–112.
42. Boussadia, O., S. Kutsch, A. Hierholzer, V. Delmas, and R. Kemler. 2002. E-cadherin is a survival factor for the lactating mouse mammary gland. *Mech Dev*. 115:53–62.
43. Biro, M., and J.-L. Maître. 2015. Dual pipette aspiration: a unique tool for studying intercellular adhesion. *Methods in cell biology*. 125:255–267.
44. Schliffka, M.F., A.-F. Tortorelli, Ö. Özgüç, L. de Plater, O. Polzer, D. Pelzer, and J.-L. Maître. 2021. Multiscale analysis of single and double maternal-zygotic Myh9 and Myh10 mutants during mouse preimplantation development. *eLife*. 10:e68536.
45. Schindelin, J., I. Arganda-Carreras, E. Frise, V. Kaynig, M. Longair, T. Pietzsch, S. Preibisch, C. Rueden, S. Saalfeld, and B. Schmid. 2012. Fiji: an open-source platform for biological-image analysis. *Nature Methods*. 9:676–682.
46. Cerchiari, A.E., J.C. Garbe, N.Y. Jee, M.E. Todhunter, K.E. Broaders, D.M. Peehl, T.A. Desai, M.A. LaBarge, M. Thomson, and Z.J. Gartner. 2015. A strategy for tissue self-organization that is robust to cellular heterogeneity and plasticity. *Proceedings of the National Academy of Sciences of the United States of America*. 112:2287–2292.
47. Canty, L., E. Zarour, L. Kashkooli, P. François, and F. Fagotto. 2017. Sorting at embryonic boundaries requires high heterotypic interfacial tension. *Nat Commun*. 8:157.
48. Anani, S., S. Bhat, N. Honma-Yamanaka, D. Krawchuk, and Y. Yamanaka. 2014. Initiation of Hippo signaling is linked to polarity rather than to cell position in the pre-implantation mouse embryo. *Development (Cambridge, England)*. 141:2813–2824.
49. Dietrich, J.-E., and T. Hiiragi. 2007. Stochastic patterning in the mouse pre-implantation embryo. *Development (Cambridge, England)*. 134:4219–4231.
50. Korotkevich, E., R. Niwayama, A. Courtois, S. Friese, N. Berger, F. Buchholz, and T. Hiiragi. 2017. The Apical Domain Is Required and Sufficient for the First Lineage Segregation in the Mouse Embryo. *Dev Cell*. 40:235–247.e7.
51. Maître, J.-L., H. Turlier, R. Illukkumbura, B. Eismann, R. Niwayama, F. Nédélec, and T. Hiiragi. 2016. Asymmetric division of contractile domains couples cell positioning and fate specification. *Nature*. 536:344–348.
52. Chan, C.J., M. Costanzo, T. Ruiz-Herrero, G. Mönke, R.J. Petrie, M. Bergert, A. Diz-Muñoz, L. Mahadevan, and T. Hiiragi. 2019. Hydraulic control of mammalian embryo size and cell fate. *Nature*. 571:112–116.
53. Schliffka, M.F., J.G. Dumortier, D. Pelzer, A. Mukherjee, and J.-L. Maître. 2023. Inverse blebs operate as hydraulic pumps during mouse blastocyst formation. *Developmental Biology*.
54. Le Guillou, L., N. Dard, J. Glisse, B. Maro, S. Louvet-Vallée, and B. Laforge. 2009. A 3D mechanical model of the early mammalian embryo. *Journal of Biological Physics and Chemistry*. 9.
55. Firmin, J., and J.-L. Maître. 2021. Morphogenesis of the human preimplantation embryo: bringing mechanics to the clinics. *Seminars in Cell & Developmental Biology*. S1084952121001920.
56. Gerri, C., A. McCarthy, G. Alanis-Lobato, A. Demtschenko, A. Bruneau, S. Loubersac, N.M.E. Fogarty, D. Hampshire, K. Elder, P. Snell, L. Christie, L. David, H. Van de Velde, A.A. Fouladi-Nashta, and K.K. Niakan. 2020. Initiation of a conserved trophectoderm program in human, cow and mouse embryos. *Nature*. 587:443–447.
57. Iwata, K., K. Yumoto, M. Sugishima, C. Mizoguchi, Y. Kai, Y. Iba, and Y. Mio. 2014. Analysis of compaction initiation in human embryos by using time-lapse cinematography. *J Assist Reprod Genet*. 31:421–426.
58. Mizobe, Y., Y. Ezono, M. Tokunaga, N. Oya, R. Iwakiri, N. Yoshida, Y. Sato, N. Onoue, and K. Miyoshi. 2017. Selection of human blastocysts with a high implantation potential based on timely compaction. *Journal of assisted reproduction and genetics*. 34:991–997.
59. Lagalla, C., G. Coticchio, R. Sciajano, N. Tarozzi, C. Zacà, and A. Borini. 2020. Alternative patterns of partial embryo compaction: prevalence, morphokinetic history and possible implications. *Reproductive BioMedicine Online*. 40:347–354.
60. Coticchio, G., K. Ezoë, C. Lagalla, K. Shimazaki, K. Ohata, M. Ninomiya, N. Wakabayashi, T. Okimura, K. Uchiyama, K. Kato, and A. Borini. 2021. Perturbations of morphogenesis at the compaction stage affect blastocyst implantation and live birth rates. *Human Reproduction*. 36:918–928.
61. Yap, A.S., K. Duszyc, and V. Viasnoff. 2017. Mechanosensing and Mechanotransduction at Cell-Cell Junctions. *Cold Spring Harbor Perspectives in Biology*.
62. Taguchi, K., T. Ishiuchi, and M. Takeichi. 2011. Mechanosensitive EPLIN-dependent remodeling of adherens junctions regulates epithelial reshaping. *The Journal of cell biology*. 194:643–656.
63. Slovákóvá, J., M. Sikora, F.N. Arslan, S. Caballero-Mancebo, S.F.G. Krens, W.A. Kaufmann, J. Merrin, and C.-P. Heisenberg. 2022. Tension-dependent stabilization of E-cadherin limits cell–cell contact expansion in zebrafish germ-layer progenitor cells. *Proc. Natl. Acad. Sci. U.S.A.* 119:e2122030119.
64. Thomas, W.A., C. Boscher, Y.-S. Chu, D. Cuvelier, C. Martinez-Rico, R. Seddiki, J. Heysch, B. Ladoux, J.-P. Thiery, R.-M. Mège, and S. Dufour. 2013. α -Catenin and Vinculin Cooperate to Promote High E-cadherin-based Adhesion Strength. *Journal of Biological Chemistry*. 288:4957–4969.

Supplementary figures



Supplementary figure 1: Relationship between separation force and contact angle of 8-cell stage doublets. Separation force as a function of contact angle of 88 measurements throughout the 8-cell stage (Pearson correlation $R = 0.737$, $p < 10^{-2}$). Shades of blue indicate the timing of measurement going darker from 0 to 12 h after 3rd cleavage.



Supplementary figure 2: Structural organization of adherens junctions of growing doublets. A-D) Contact (A, C) and ring (B, D) enrichments of Cdh1 (magenta) and Actin (green) as a function of contact length (A, B) and angle (C, D) of 45 doublets (Pearson correlations (A) $R = 0.223$ ($p > 10^{-2}$) for Cdh1 and -0.747 ($p < 10^{-2}$) for Actin; (B) $R = 0.543$ ($p < 10^{-2}$) for Cdh1 and 0.196 ($p > 10^{-2}$) for Actin; (C) $R = 0.329$ ($p > 10^{-2}$) for Cdh1 and -0.742 ($p < 10^{-2}$) for Actin; (D) $R = 0.496$ ($p < 10^{-2}$) for Cdh1 and 0.266 ($p > 10^{-2}$) for Actin.

Movie legends

Movie 1: Time lapse of a compacting whole embryo and of a doublet. Images of a whole embryo (left) and of a doublet (right) undergoing their 3rd cleavage division and compacting. Images are acquired every 30 min, scale bar 20 μm .

Movie 2: Time lapse of separation of a WT doublet using dual pipette aspiration. Images of a WT doublet being separated using two pipettes. The left pipette is set to 400 Pa and is moved to the left at 60 $\mu\text{m/s}$ after the right pipette is placed in contact with the right hand side cell of the doublet. The pressure of the right pipette is increased to 230, 280, 330, 380 and finally 430 Pa between pulls. Images are acquired every 100 ms, scale bar 10 μm .

Movie 3: Time lapse of separation of a mCdh1^{+/-} doublet using dual pipette aspiration. Images of a mCdh1^{+/-} doublet being separated using two pipettes. The right pipette is set to 210 Pa and is moved to the right at 60 $\mu\text{m/s}$ after the left pipette is placed in contact with the left hand side cell of the doublet. The pressure of the left pipette is increased to 60, 110, 150, and finally 200 Pa between pulls. Images are acquired every 100 ms, scale bar 10 μm .

Movie 4: Time lapse of separation of a mCdh1^{EcNc/-} doublet using dual pipette aspiration. Images of a mCdh1^{EcNc/-} doublet being separated using two pipettes. The right pipette is set to 245 Pa. The left pipette is moved to the left at 60 $\mu\text{m/s}$ after the right pipette is placed in contact with the right hand side cell of the doublet. The pressure of the left pipette is increased to 100, 150, 200 and finally 250 Pa between pulls. Images are acquired every 100 ms, scale bar 10 μm .