

Revisiting the OBS seafloor compliance signal removal with a stationarity and stacking-based approach: the BRUIT-FM toolbox

Simon Rebeyrol^{1*}, Stéphan ker¹, Laurent Duval^{2,3}, Wayne C. Crawford⁴

¹ Geo-Ocean UMR 6538 CNRS – Ifremer – UBO – UBS, 1625 route de Sainte-Anne CS 10070 - 29280 Plouzané, France

² ESIEE-Paris, Université Gustave Eiffel, F-77454 Marne-la-Vallée, France

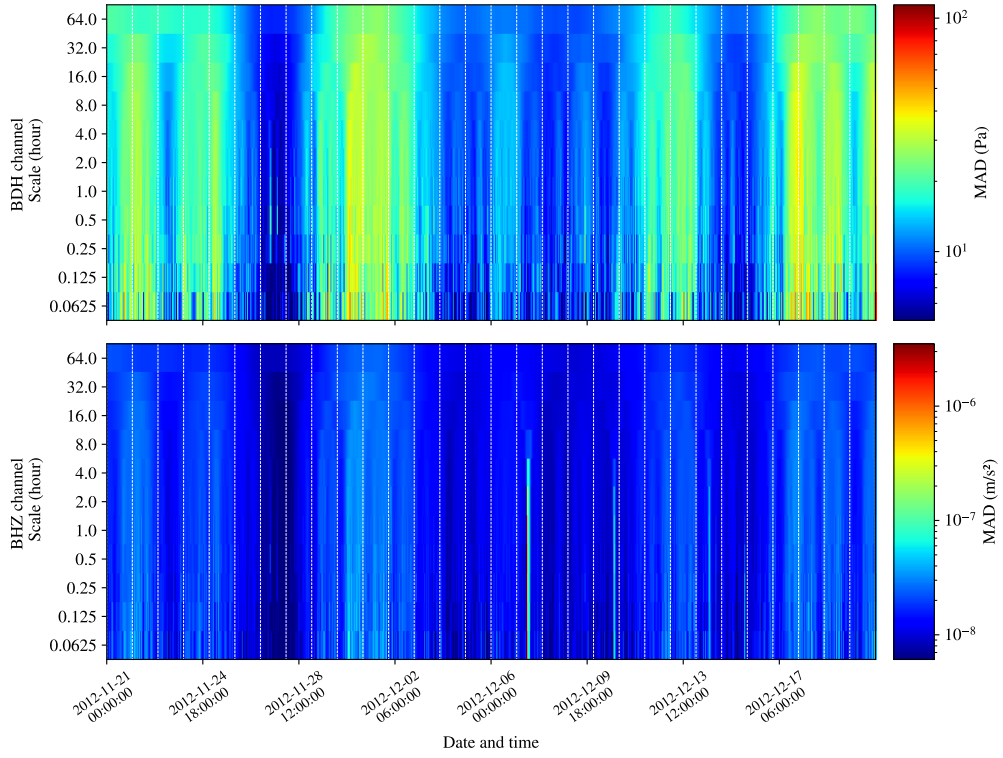
³ IFP Energies nouvelles, 1-4 avenue du Bois-Préau, Rueil-Malmaison, 92852, France

⁴ Géosciences marines, Institut de Physique du Globe de Paris, Paris, France

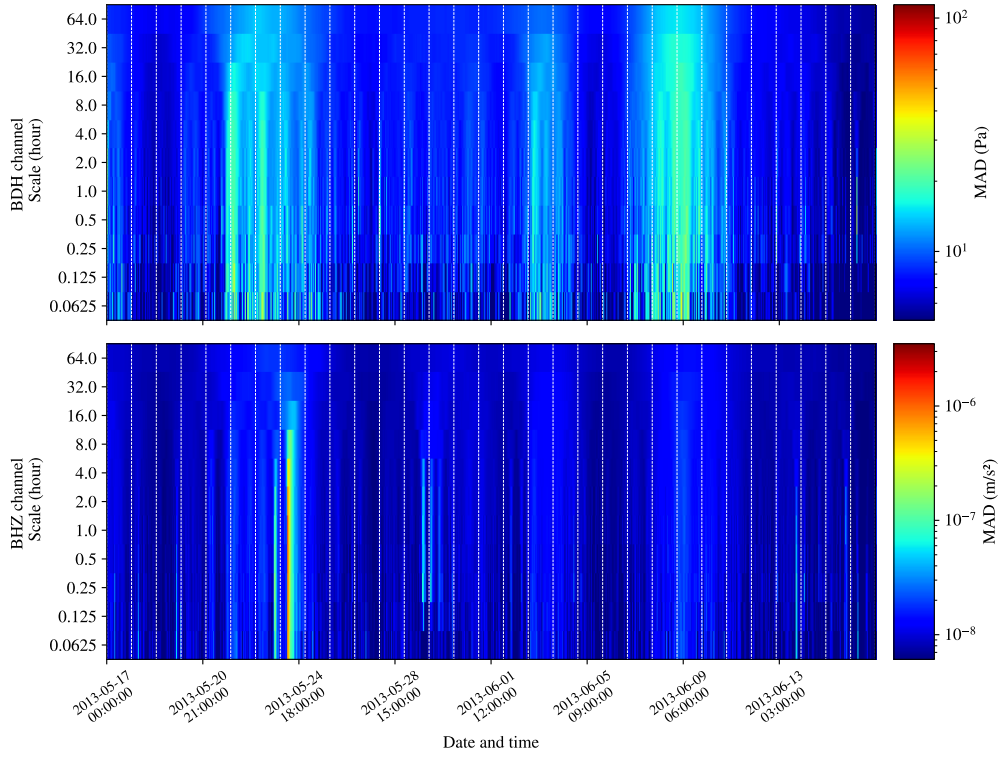
List of Figures

S1	Multiscale sliding MAD of station 7D.G02B. The deviations were computed on bandpassed time-series between 1 and 50 mHz. (a): deviations values for the autumn data set. (b): deviation values for the spring data set. The dotted white lines are spaced every 24 hr.	2
S2	Multiscale sliding MAD of station 7D.G02B. The deviations were computed on bandpassed time-series between 1 and 50 mHz. (a): deviations values for the autumn data set. (b): deviation values for the spring data set. The dotted white lines are spaced every 2 hr.	3
S3	Multiscale sliding MAD of station 7D.J09B. The deviations were computed on bandpassed time-series between 1 and 50 mHz. (a): deviations values for the autumn data set. (b): deviation values for the spring data set. The dotted white lines are spaced every 24 hr.	4
S4	Multiscale sliding MAD of station 7D.J09B. The deviations were computed on bandpassed time-series between 1 and 50 mHz. (a): deviations values for the autumn data set. (b): deviation values for the spring data set. The dotted white lines are spaced every 2 hr.	5

*Corresponding author - simon.rebeyrol@murena.io

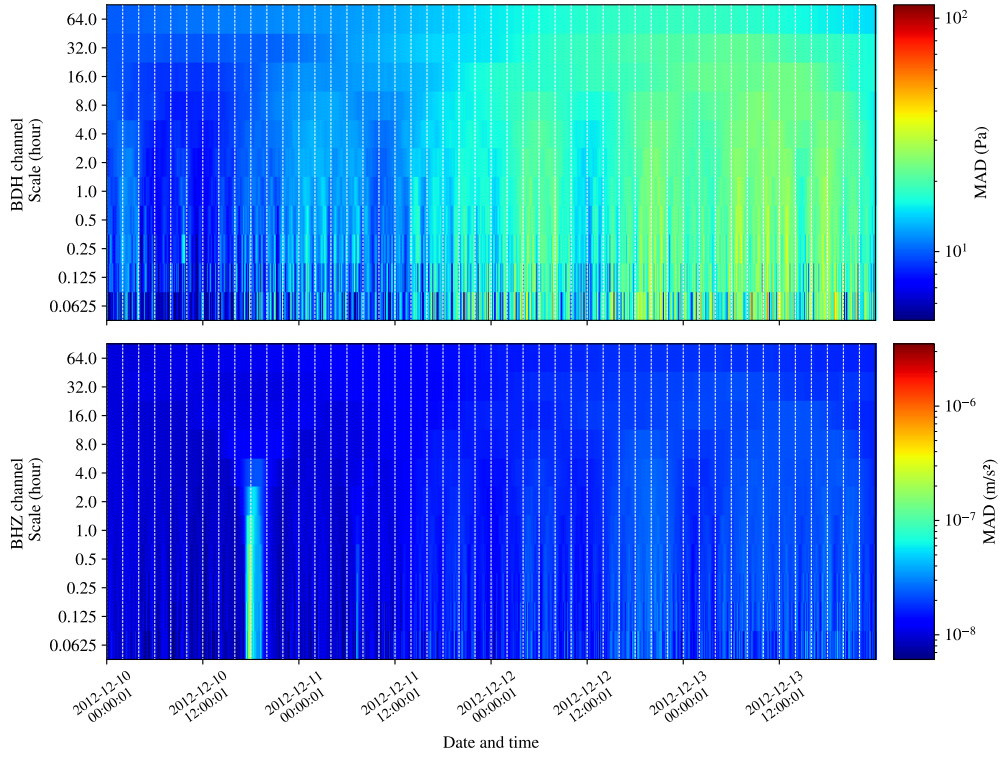


(a)

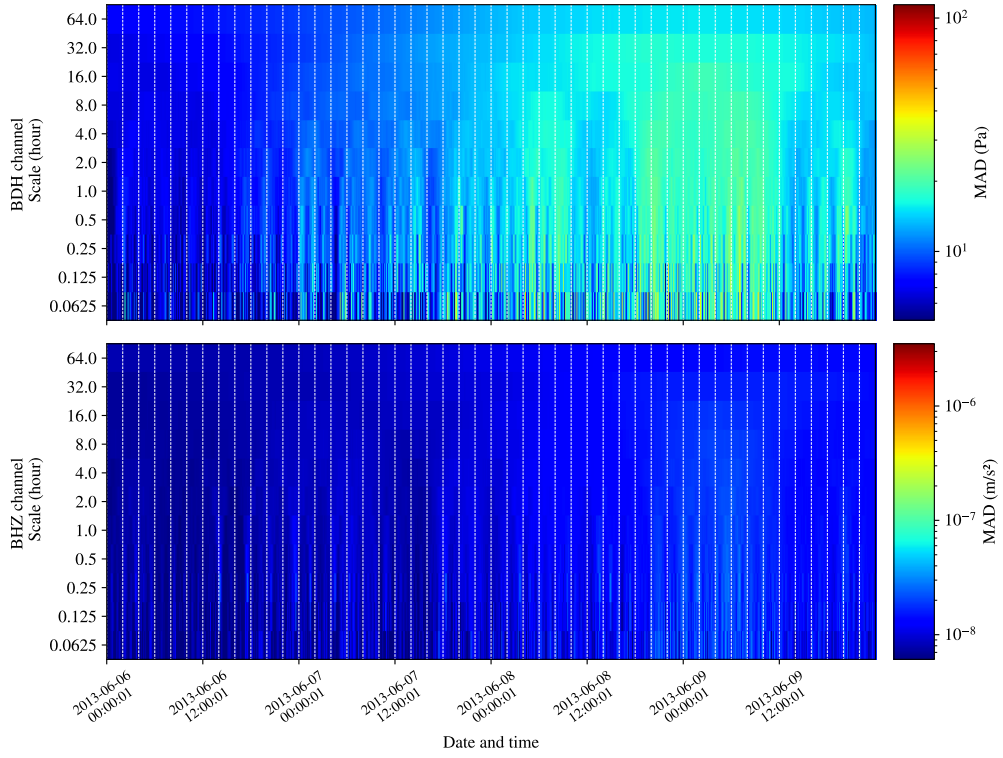


(b)

Figure S1: Multiscale sliding MAD of station 7D.G02B. The deviations were computed on bandpassed time-series between 1 and 50 mHz. (a): deviations values for the autumn data set. (b): deviation values for the spring data set. The dotted white lines are spaced every 24 hr.

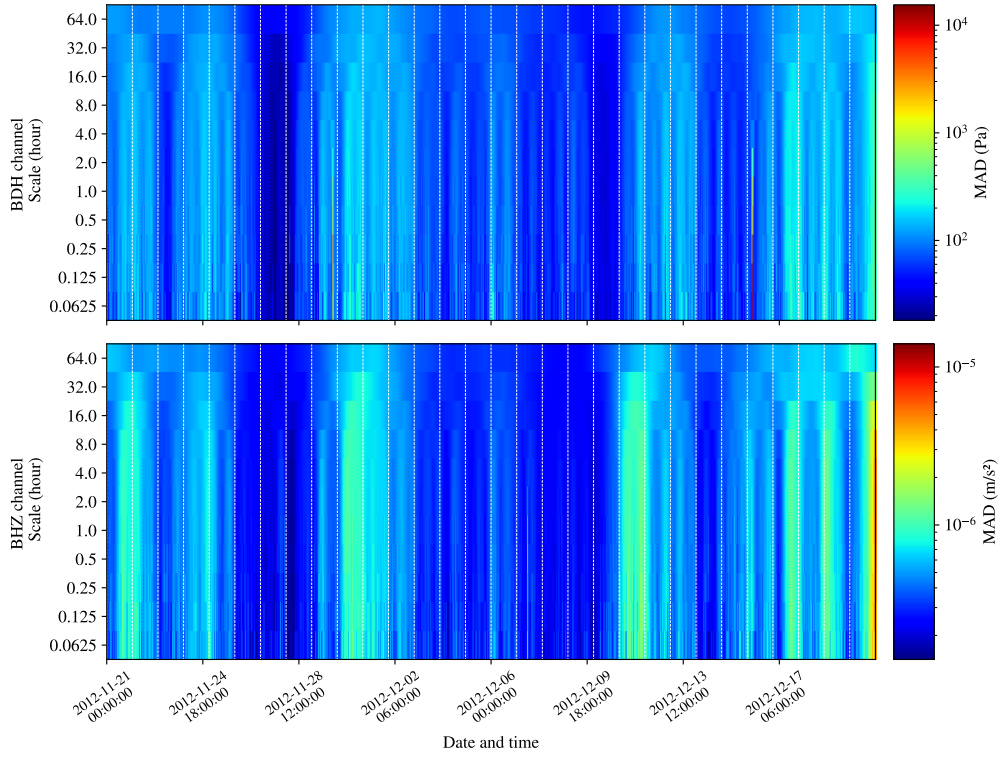


(a)

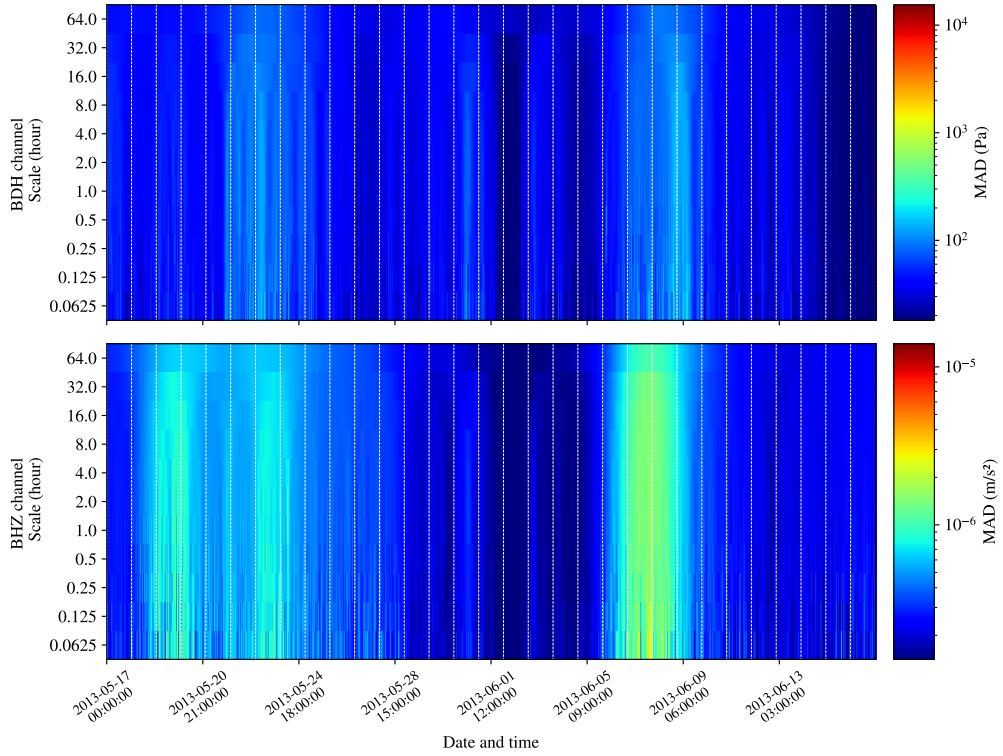


(b)

Figure S2: Multiscale sliding MAD of station 7D.G02B. The deviations were computed on bandpassed time-series between 1 and 50 mHz. (a): deviations values for the autumn data set. (b): deviation values for the spring data set. The dotted white lines are spaced every 2 hr.

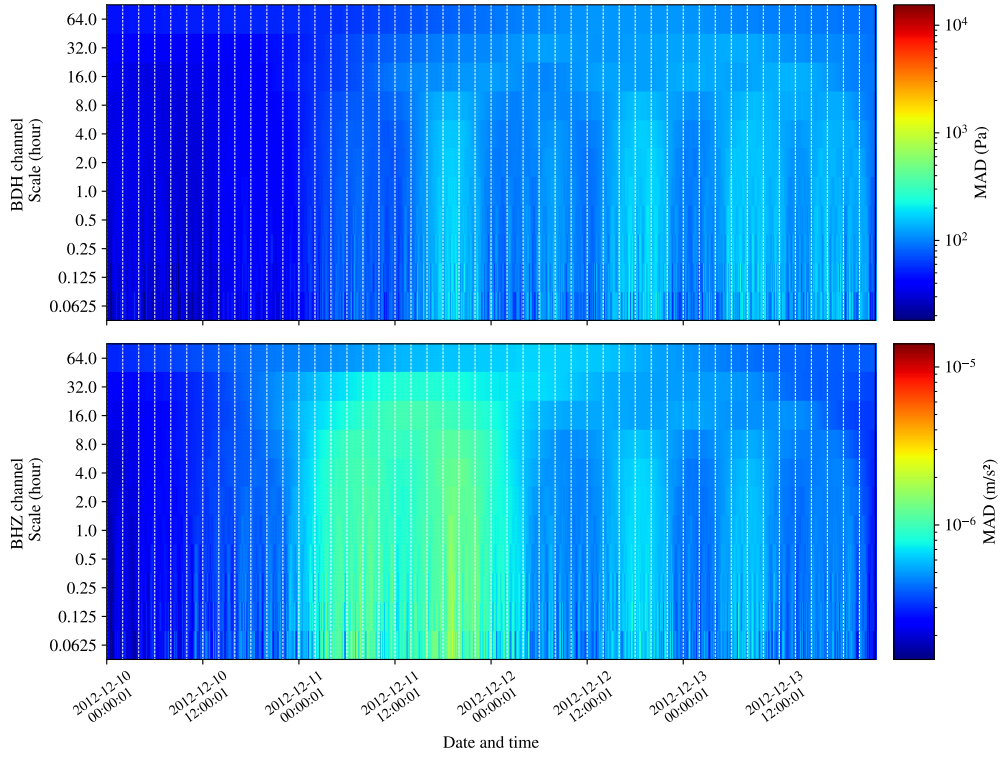


(a)

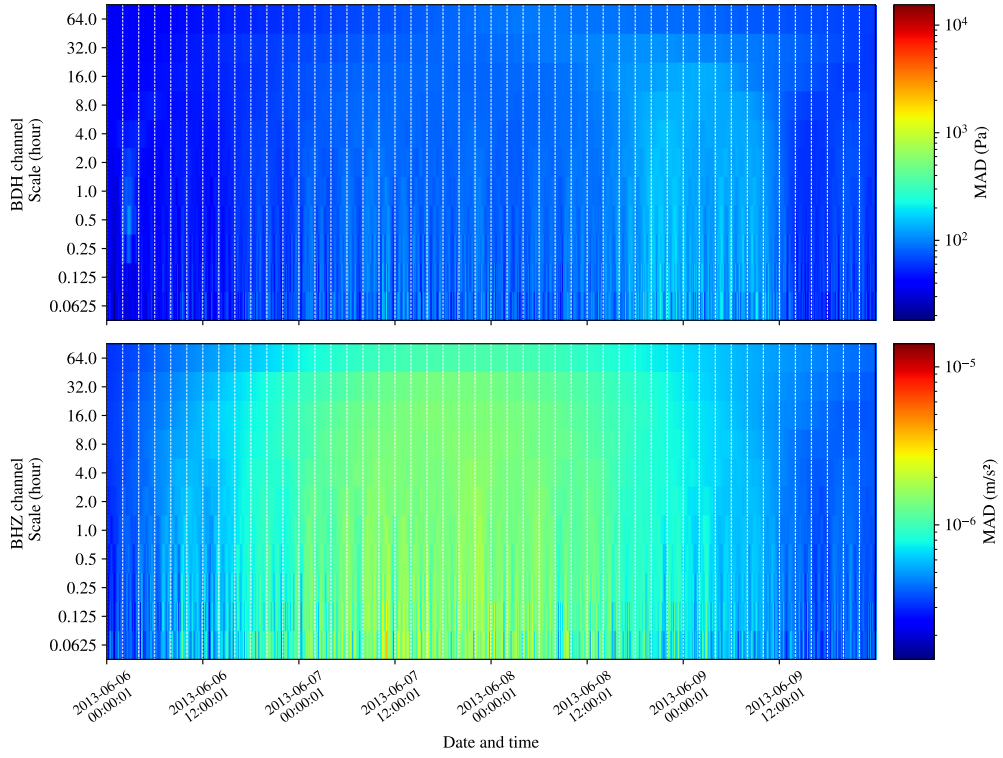


(b)

Figure S3: Multiscale sliding MAD of station 7D.J09B. The deviations were computed on bandpassed time-series between 1 and 50 mHz. (a): deviations values for the autumn data set. (b): deviation values for the spring data set. The dotted white lines are spaced every 24 hr.



(a)



(b)

Figure S4: Multiscale sliding MAD of station 7D.J09B. The deviations were computed on bandpassed time-series between 1 and 50 mHz. (a): deviations values for the autumn data set. (b): deviation values for the spring data set. The dotted white lines are spaced every 2 hr.