



**HAL**  
open science

## Development of transparent nanowire array technology for high resolution electrophysiology of brain-on-chip

Emilie Belot, Blatche Marie-Charline, Fabrice Mathieu, Bardie Frank, Laurent Mazonq, Aurélie Lecestre, Duenki Tomoya, Ikeuchi Yoshiho, Guilhem Larrieu

### ► To cite this version:

Emilie Belot, Blatche Marie-Charline, Fabrice Mathieu, Bardie Frank, Laurent Mazonq, et al.. Development of transparent nanowire array technology for high resolution electrophysiology of brain-on-chip. Journées Nationales Nanofils Semiconducteurs, Jun 2024, Palaiseau, France. hal-04730546

**HAL Id: hal-04730546**

**<https://hal.science/hal-04730546v1>**

Submitted on 10 Oct 2024

**HAL** is a multi-disciplinary open access archive for the deposit and dissemination of scientific research documents, whether they are published or not. The documents may come from teaching and research institutions in France or abroad, or from public or private research centers.

L'archive ouverte pluridisciplinaire **HAL**, est destinée au dépôt et à la diffusion de documents scientifiques de niveau recherche, publiés ou non, émanant des établissements d'enseignement et de recherche français ou étrangers, des laboratoires publics ou privés.

## Development of transparent ~~nanoprobe~~ ~~Nnanowire~~ array technology for high resolution electrophysiology of brain-on-chip.

Emilie BELOT<sup>1,2</sup>, Marie-Charline BLATCHE<sup>1</sup>, Fabrice MATHIEU<sup>1</sup>, Frank BARDIE<sup>1</sup>, Laurent MAZENQ<sup>1</sup>, Aurélie LECESTRE<sup>1</sup>, Tomoya DUENKI<sup>3</sup>, Yoshiho IKEUCHI<sup>3</sup>, Guilhem LARRIEU<sup>1,3</sup>

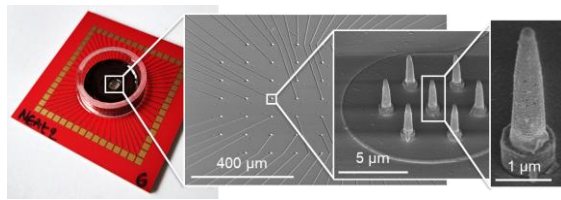
<sup>1</sup> CNRS, LAAS, 7 avenue du colonel Roche, 31400 Toulouse, France

<sup>2</sup> Université Toulouse III - Paul Sabatier, 118 Rte de Narbonne, 31400 Toulouse

<sup>3</sup> Institute of Industrial Science, The University of Tokyo, 4-6-1 Komaba, Meguro, Tokyo 153-8505

Neurodegenerative disorders represent a major and growing global health challenge, mainly due to the complexity of the human brain. Continuous advancements in tools to improve their functional analysis, particularly in electrophysiology, are needed to accelerate the development of safe and more effective treatments. Over the past few years, remarkable progress has been made in that regard, notably in the field of *in vitro* microelectrode arrays: the size of the sensors has been reduced and hybridised to 3D structures, such as nanowires, to promote the engulfment-like behaviour at the cell-electrode interface<sup>1,2</sup>. By their configuration, this new generation of 3D nano~~wire~~ electrode arrays (~~NEAs~~) allows to record the activity of a large number of neurons in an extended network with a higher throughput and higher signal resolution.

Here we present the latest development of our ~~Nanowire Electrode Arrays (NEAs)~~ ~~NEA~~ technology, composed of an array of electrodes with core-shell metal nanowires, which aims to provide an efficient platform dedicated to the study of neuronal activity of two-dimensional, as well as three-dimensional, cell culture systems. Most technologies involving 3D ~~nanoprobes~~ ~~nanoelectrodes~~ are typically fabricated on opaques substrates. To address this limitation and ~~facilitate~~ ~~provide~~ optical characterization with devices conventionally used by biologists (e.g. inverted microscope), ~~as well as~~ ~~and~~ open the possibility to couple ~~functional characterization with morphological insight~~ ~~our technology with electrophysiological imaging techniques (e.g. calcium imaging)~~, we have developed a process on a transparent substrate. We will describe the process that allows us to create these NEAs with ~~high aspect ratio~~ core-shell glass-metal ~~nanoprobes~~ ~~nanowires~~ (Fig. 1) ~~using a large-scale and cost-effective top-down approach~~, as well as detail their electrical and optical characteristic. Finally, we will demonstrate ~~for the first time~~ their functionality on ~~human brain organoids (both 2D and 3D cell cultures based on human cells)~~.



a mis en forme : Haut : 1,75 cm

a mis en forme : Non Exposant/ Indice

a mis en forme : Centré

Fig. 1: Complete device, SEM images of the electrode arrays and zoom on unitary microelectrode and nanoprobe.

[1] [L. Bettamin et al. Small 2024](#) & A. Casanova *et al*, J. Phys.: Condens. Matter **30**, 464001 (2018)

[2] R. Liu *et al.*, Nano Letters **17** (5), 2757-2764 (2017)

*This work was supported by the University of Tokyo / CNRS Joint Research Program by the EU H2020 NEUREKA project and by the International project Team MiNanoBio*