



The role of Territorial Food Projects (PAT) in promoting coordination between stakeholders : evidences from the Clermont-Livradois Forez PAT

Julia BARBET, Etienne POLGE, Salma LOUDIYI

ERSA Congress 2024 - 27 August 2024



Introduction

The emergence of local food governance through :

- Short distribution channels (Chiffolleau et al, 2017), new relationships with the territory and new references for public action (Prévost, 2014)
- Emergence of territorialised food systems (Lamine and Chiffolleau, 2012) and new forms of coordination between stakeholders (Billion, 2017)

Territorial Food Projects (PAT): levers for setting up cross-functional food governance and facilitating territorial coordination?

- The 2014 Law on the Future and the introduction of PAT (Loudiyi, 2020)
- PAT to facilitate local coordination and develop a cross-functional food policy (Chiffolleau et al., 2025, forthcoming)
- A diversity of PAT with different dynamics (Loudiyi et al. 2023)

Mixed results for PAT due to a deficit of :

- A cross-functional approach to food (RNPAT, 2020; Chiffolleau et al., 2025, forthcoming)
- Involvement on the part of a number of stakeholders (Chiffolleau et al, forthcoming; RNPAT, 2020)
- Evaluation of PAT, particularly in terms of their role in coordinating and bringing together local stakeholders

To what extent can a Territorial Food Project (PAT) unite local stakeholders around a cross-cutting vision of agricultural and food issues, leading to the structuring of territorialised food systems?

A federation of players analysed through the prism of the network analysis framework

Quantified narratives :

- Objective: to understand social processes by identifying the stages and sequences of access to resources, and to qualify and quantify the influence of different stakeholders on modes of access to resources (Akermann and Coeurquetin, 2021; Polge and Pagès, 2022).
- A mixed method (quantitative and qualitative) based on cross interviews (Grossetti et al., 2011; Gillerot, 2023)

Resource access chains

Complete networks :

- Objective: To understand how collective action works through the system of interdependence in which stakeholders are involved (Gillerot, 2023; Eloire et al, 2011; Pachoud et al., 2019).
- Sociometric questionnaire to collect individual and relationship data (Eloire et al, 2011)
- Requires definition of a finite set of stakeholders for analysis constraints (Eloire et al., 2011)

Networks and resources

The benefits of combining these two approaches:

Complementarity, making it possible to analyse the social/institutional environment of the system and to analyse the 'internal' functioning, the relationships between stakeholders within the system (Polge, 2024)

Methodological approach

Phase 1 of the survey : collective trajectory of the PAT, quantified narrative approach

Individual interviews with members of the coordination team and an elected representative (4)

Narrative of the PAT's trajectory with specific follow-up questions on the resources and access methods used



Identifying the phases of the collective trajectory

3 periods identified in connection with the deployment phases of the PAT



Identification of resources and modes of access for each phase

Diagramming relational chains, coding the narrative in terms of resources and access modes using Excel



Creation of a typology of resources and access methods



Analysis of the types of resources and players mobilised by the TAP
Quantifying the resources mobilised

Focus of the analysis on events carried out by PAT holders



Diagram of relational chains

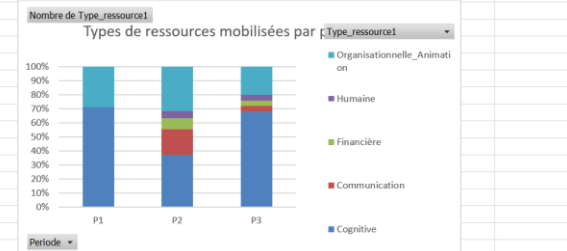


| Verbatim | Periode | Date | Ressource | Type_ressource1 | Mode_acces1 | Mode_acces2 | Mode_acces3 |
|--|---------|-----------|--|-----------------------------|--------------------|-----------------------|-------------|
| Année, il y avait déjà dans ce SCoT des préconisations générales pour conforter la filière agricole, essayer d'aller vers des modèles plus vertueux. | P1 | | Ressources pour préserver les filières locales | Cognitive | PADD | SCoT | PETR |
| Un autre grand objectif du SCoT résidait dans la préservation des terres agricoles de l'urbanisation. | P1 | 2010 | Protections à la parcelle | Organisationnelle_Anima | PADD | SCoT | INAO |
| Aussi, au même moment, en août 2016, le PNR vient également de terminer un travail de rédaction de monographie agricole au cours duquel des débats autour de la question des circuits de proximité ont émergé, sur leur capacité à faire vivre les | P1 | 2016 | Monographie agricole | Cognitive | PNR | | |
| Plusieurs acteurs agricoles, notamment la Chambre d'agriculture et des agriculteurs, ont poussé le PNR dans ses retranchements sur sa vision des circuits de proximité en pointant le risque encouru de se faire enfermer sur le territoire à travers cette vision de circuits d'hyper proximité. A la suite de ces échanges, la question d'ouverture aux métropoles est | P1 | 2016 | Ouverture du PNR aux métropoles | Cognitive | Producteurs | CA63 | PNR |
| Le PNR a été sollicité par ces élus à travers un outil, le réseau foncier, qui avait été mis en place par le PNR. Dans ce réseau, plusieurs élus étaient assez impliqués et se posaient la question de répondre à l'appel à projets du PNA, comme par exemple Pierre Rose, Maire de Volore-Ville. Il y avait pour projet de porter un Projet Alimentaire Territorial à l'échelle de la Communauté de Communes de Courpière mais, assez vite, le réseau s'est rapproché du PNR en disant qu'ils n'avaient pas forcément vocation à porter un tel projet mais que le PNR, lui, | P1 | 2016 | Pré projet territoire | Cognitive | Réseau foncier | PNR | |
| A partir de 2016, le Grand-Clermont reprend la question alimentaire à travers le projet PSDR, dans lequel il s'implique, notamment avec le PNR Livraisons Forez. | P1 | 2015-2016 | Reflexions sur la question alimentaire | Cognitive | Projet PSDR | | |
| En 2016, Jérôme Prouhèze découvre l'appel à projets national du Programme national de l'alimentation (PNA) et en discute avec Etienne Clair, c'est l'occasion de constater leur réflexion autour de l'alimentation et de sa relocalisation sur le territoire. En 2016, le PNR et Grand Clermont candidatent donc pour un projet commun à l'appel à projet du PNA. | P1 | 2016 | Projet commun pour l'APP | Organisationnelle_Anima | PETR | PNR | |
| En 2016, une convention tripartite est signée entre le PNR, le Grand Clermont et la Chambre d'Agriculture à la suite des échanges pour une durée de 5-6 ans. | P2 | 2018 | Convention collective | Organisationnelle_Animation | Equipe d'animation | CA63 | |
| L'appel à projet permet alors, dans un premier temps, de financer l'élaboration et l'émergence du PAT. | P2 | mars-17 | Financement APP PNA | Financière | APP | | |
| Grâce aux fonds de l'appel à projet, une personne en apprentissage, Cécile Poussard en formation sur le développement local et transition des territoires, est recrutée pour accompagner le PAT dans son Alévation | P2 | | Recrutement Cécile poussard | Humaine | Financement APP | Processus recrutement | |

Coding the narrative in Excel



| Étiquettes de lignes | Cognitive | Communication | Financière | Humaine | Organisationnelle_Animation | Total général |
|----------------------|-----------|---------------|------------|---------|-----------------------------|---------------|
| P1 | 71,43% | 0,00% | 0,00% | 0,00% | 28,57% | 100,00% |
| P2 | 36,84% | 18,42% | 7,89% | 5,26% | 31,58% | 100,00% |
| P3 | 68,00% | 4,00% | 4,00% | 4,00% | 20,00% | 100,00% |
| Total général | 51,43% | 11,43% | 5,71% | 4,29% | 27,14% | 100,00% |



Quantitative visualisation of resources and modes of access on histograms

Methodological approach

Phase 2 of the survey :

Defining the system under study: selection of organisations and their representatives (28 people interviewed)

Based on :

- *Their involvement and participation in PAT events*
- *Sector representativeness, to ensure a cross-functional approach*



Phase 2b: Interviews and sociometric questionnaire with selected stakeholders
Identification of 10 types of links
According to the 3 periods identified above

Phase 2a: Individual trajectories of organisations, quantified narrative approach

Coding of actor attributes and interactions identified by period
Creation of square adjacency matrices (0 absence of relationship, 1 presence of relationship)

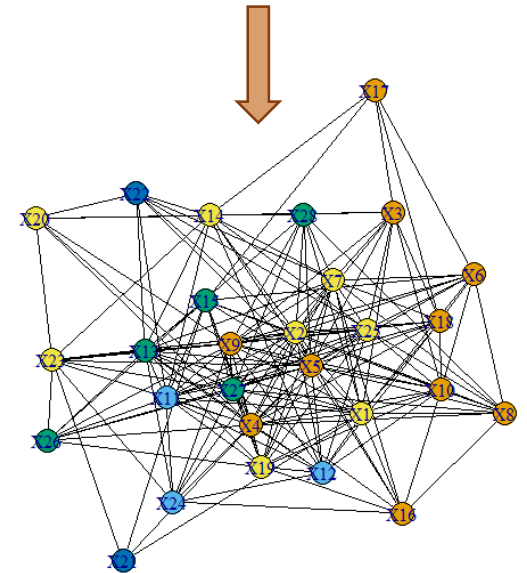
Creating graphs and measuring structural properties



Analysis of the development of links between different structures in the area and evaluation of the role of the PAT in this network of stakeholders

| | X10 | X9 | X8 | X1 | X13 | X12 | X16 | X17 | X15 | X14 | X28 | X25 | X19 | X1 | X18 | X24 | X26 | X3 | X2 | X27 | X23 | X6 | X7 | X22 | X20 | X5 | X4 | X21 | | |
|-----|-----|----|----|----|-----|-----|-----|-----|-----|-----|-----|-----|-----|----|-----|-----|-----|----|----|-----|-----|----|----|-----|-----|----|----|-----|---|---|
| X10 | 0 | 1 | 1 | 0 | 0 | 1 | 1 | 0 | 1 | 0 | 0 | 1 | 1 | 1 | 1 | 0 | 0 | 1 | 1 | 0 | 0 | 1 | 0 | 0 | 1 | 1 | 0 | | | |
| X9 | 0 | 0 | 0 | 1 | 1 | 1 | 0 | 0 | 0 | 0 | 1 | 1 | 1 | 1 | 1 | 1 | 1 | 0 | 1 | 1 | 1 | 1 | 1 | 1 | 0 | 1 | 1 | 0 | | |
| X8 | 0 | 0 | 0 | 0 | 0 | 0 | 1 | 0 | 0 | 0 | 0 | 0 | 0 | 1 | 0 | 0 | 0 | 0 | 1 | 1 | 0 | 0 | 1 | 1 | 0 | 0 | 1 | 1 | 0 | |
| X11 | 0 | 1 | 0 | 0 | 1 | 1 | 0 | 0 | 1 | 0 | 0 | 0 | 1 | 1 | 1 | 1 | 1 | 0 | 1 | 0 | 0 | 0 | 0 | 1 | 0 | 1 | 1 | 0 | | |
| X13 | 0 | 1 | 0 | 1 | 0 | 1 | 0 | 0 | 1 | 1 | 1 | 0 | 1 | 1 | 0 | 1 | 1 | 1 | 1 | 0 | 1 | 1 | 0 | 0 | 0 | 0 | 1 | 1 | 0 | |
| X12 | 1 | 1 | 0 | 1 | 1 | 0 | 0 | 0 | 0 | 0 | 0 | 0 | 1 | 0 | 0 | 1 | 0 | 0 | 1 | 0 | 0 | 0 | 0 | 0 | 0 | 0 | 1 | 1 | 0 | |
| X16 | 0 | 0 | 1 | 0 | 0 | 0 | 0 | 0 | 0 | 0 | 0 | 0 | 1 | 1 | 0 | 1 | 0 | 0 | 1 | 1 | 0 | 1 | 1 | 0 | 0 | 0 | 1 | 0 | 0 | |
| X17 | 0 | 0 | 0 | 0 | 0 | 0 | 0 | 0 | 1 | 1 | 0 | 0 | 0 | 0 | 0 | 1 | 0 | 0 | 1 | 0 | 0 | 0 | 1 | 0 | 0 | 0 | 0 | 0 | 0 | |
| X15 | 1 | 0 | 0 | 1 | 1 | 0 | 0 | 1 | 0 | 0 | 0 | 0 | 0 | 0 | 0 | 0 | 0 | 1 | 0 | 1 | 1 | 0 | 1 | 0 | 0 | 0 | 0 | 1 | 1 | |
| X14 | 0 | 0 | 0 | 1 | 1 | 1 | 0 | 1 | 0 | 0 | 1 | 0 | 0 | 0 | 0 | 0 | 0 | 0 | 0 | 1 | 1 | 0 | 0 | 1 | 1 | 1 | 1 | 0 | 0 | |
| X28 | 0 | 0 | 1 | 0 | 1 | 0 | 0 | 0 | 0 | 1 | 0 | 0 | 0 | 1 | 0 | 0 | 0 | 0 | 1 | 1 | 0 | 0 | 1 | 0 | 0 | 1 | 0 | 0 | 0 | |
| X25 | 1 | 1 | 1 | 1 | 0 | 1 | 0 | 0 | 0 | 1 | 0 | 0 | 1 | 0 | 0 | 0 | 0 | 0 | 1 | 1 | 1 | 0 | 1 | 1 | 1 | 0 | 1 | 1 | 0 | |
| X19 | 1 | 1 | 0 | 1 | 1 | 0 | 1 | 0 | 1 | 0 | 0 | 1 | 0 | 1 | 0 | 1 | 0 | 1 | 0 | 1 | 1 | 0 | 1 | 0 | 0 | 1 | 0 | 1 | 1 | |
| X1 | 1 | 1 | 1 | 1 | 1 | 1 | 1 | 0 | 0 | 0 | 0 | 0 | 1 | 0 | 1 | 0 | 0 | 1 | 1 | 0 | 0 | 1 | 0 | 0 | 1 | 0 | 0 | 1 | 1 | |
| X18 | 1 | 1 | 0 | 1 | 0 | 1 | 0 | 0 | 0 | 0 | 0 | 0 | 0 | 1 | 0 | 0 | 0 | 0 | 1 | 1 | 0 | 0 | 0 | 0 | 0 | 0 | 1 | 1 | 0 | |
| X24 | 0 | 1 | 0 | 1 | 1 | 1 | 1 | 0 | 0 | 0 | 0 | 0 | 0 | 0 | 0 | 0 | 0 | 0 | 0 | 1 | 1 | 0 | 0 | 0 | 0 | 0 | 0 | 1 | 0 | |
| X26 | 0 | 1 | 0 | 1 | 1 | 0 | 0 | 0 | 1 | 0 | 0 | 0 | 1 | 0 | 0 | 0 | 0 | 0 | 0 | 0 | 1 | 0 | 0 | 0 | 0 | 0 | 1 | 1 | 0 | |
| X3 | 1 | 1 | 0 | 0 | 0 | 0 | 0 | 1 | 0 | 1 | 0 | 0 | 0 | 1 | 1 | 0 | 0 | 0 | 1 | 0 | 0 | 0 | 1 | 0 | 1 | 0 | 1 | 1 | 0 | |
| X2 | 1 | 1 | 0 | 1 | 1 | 1 | 1 | 0 | 1 | 1 | 1 | 1 | 1 | 1 | 1 | 1 | 1 | 0 | 1 | 0 | 1 | 0 | 1 | 1 | 1 | 1 | 1 | 1 | 0 | |
| X27 | 0 | 1 | 1 | 0 | 1 | 0 | 1 | 0 | 1 | 0 | 1 | 1 | 1 | 1 | 0 | 1 | 1 | 0 | 1 | 1 | 0 | 1 | 0 | 1 | 0 | 1 | 1 | 1 | 0 | |
| X23 | 0 | 1 | 0 | 0 | 1 | 0 | 0 | 0 | 0 | 1 | 0 | 1 | 0 | 0 | 0 | 1 | 1 | 0 | 1 | 0 | 1 | 0 | 0 | 0 | 0 | 0 | 1 | 1 | 1 | |
| X6 | 1 | 1 | 1 | 0 | 0 | 0 | 0 | 0 | 1 | 0 | 0 | 1 | 0 | 1 | 0 | 1 | 1 | 0 | 0 | 0 | 1 | 0 | 0 | 1 | 0 | 0 | 1 | 0 | 0 | |
| X7 | 0 | 1 | 0 | 0 | 1 | 0 | 1 | 0 | 0 | 1 | 1 | 1 | 1 | 1 | 1 | 0 | 0 | 0 | 1 | 1 | 1 | 0 | 1 | 1 | 0 | 1 | 0 | 1 | 1 | |
| X22 | 0 | 0 | 0 | 1 | 1 | 0 | 0 | 0 | 0 | 1 | 0 | 0 | 0 | 0 | 0 | 0 | 0 | 0 | 0 | 1 | 0 | 0 | 1 | 0 | 1 | 0 | 0 | 0 | 0 | |
| X20 | 0 | 1 | 0 | 0 | 0 | 0 | 0 | 0 | 1 | 0 | 0 | 0 | 0 | 0 | 0 | 0 | 0 | 0 | 0 | 0 | 0 | 0 | 0 | 0 | 0 | 0 | 0 | 0 | 0 | |
| X5 | 1 | 1 | 0 | 1 | 1 | 1 | 1 | 0 | 1 | 1 | 1 | 0 | 1 | 1 | 1 | 1 | 0 | 1 | 1 | 1 | 0 | 1 | 1 | 1 | 1 | 0 | 0 | 1 | 0 | |
| X4 | 1 | 1 | 1 | 1 | 1 | 1 | 0 | 0 | 0 | 0 | 1 | 1 | 1 | 1 | 1 | 0 | 1 | 1 | 0 | 1 | 1 | 1 | 0 | 1 | 0 | 1 | 1 | 0 | 1 | |
| X21 | 0 | 0 | 0 | 0 | 0 | 0 | 0 | 0 | 1 | 0 | 0 | 0 | 0 | 1 | 0 | 0 | 0 | 0 | 0 | 0 | 0 | 0 | 0 | 0 | 0 | 0 | 0 | 0 | 1 | 0 |

Square adjacency matrix to code the presence (1) or absence (0) of relationships between players



Graph showing the links between players

Case study: PAT Grand-Clermont PNR Livradois Forez

➔ Set up in 2017 and supported by the Grand-Clermont PETR and the Livradois Forez Regional Nature Park (PNR)



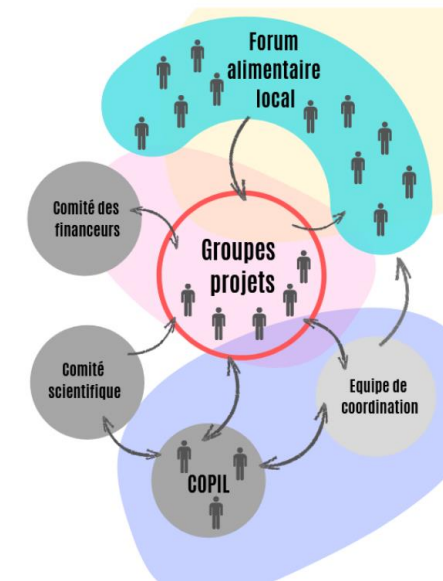
Two complementary areas:

- PETR: urbanised and under the influence of the metropolis, characterised by arable (Limagne) and livestock farming activities.
- PNR : a rural area characterised by livestock farming activities

Various challenges in the region: production shortfalls (vegetables, pulses, fruit, poultry), soil artificialisation, etc.

➔ At the origin of the definition of the **6 strategic axes of the PAT**

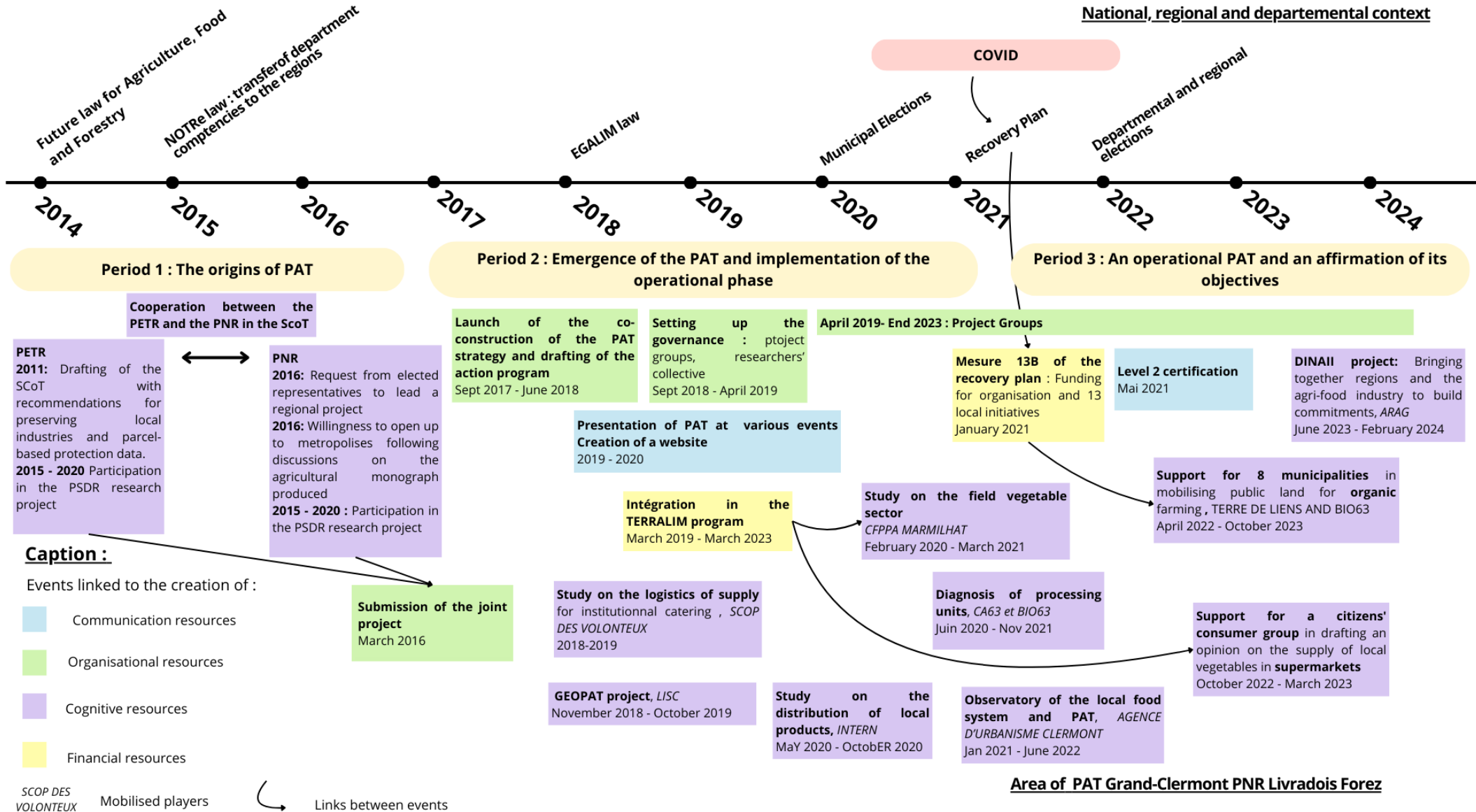
A governance system based on 5 bodies: a coordination team, a steering committee, researchers' collective, 6 project groups and annual local food forums.



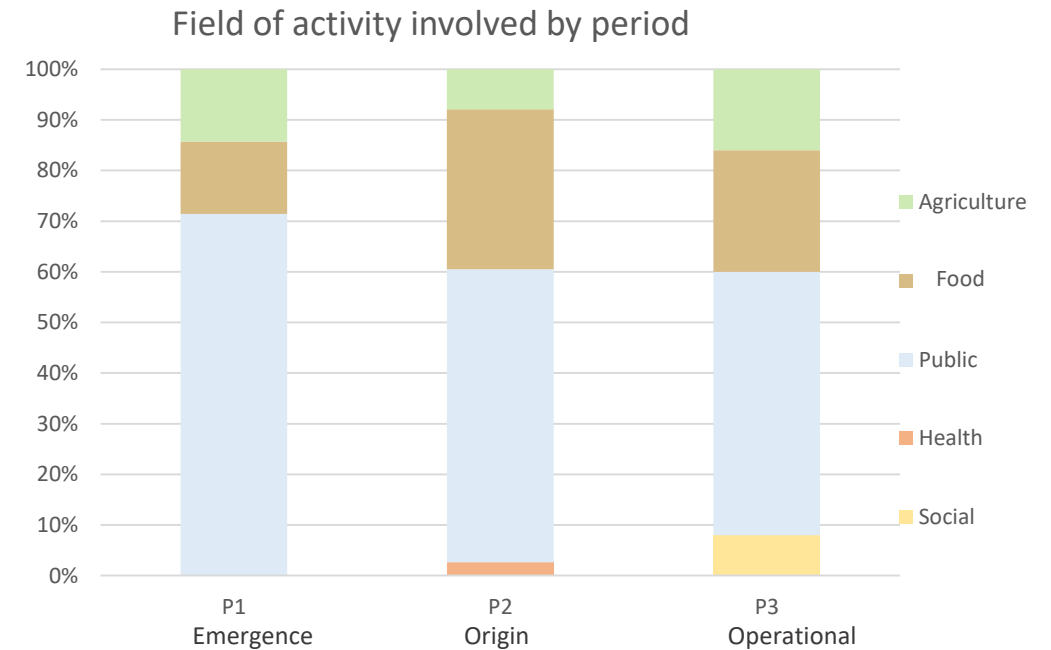
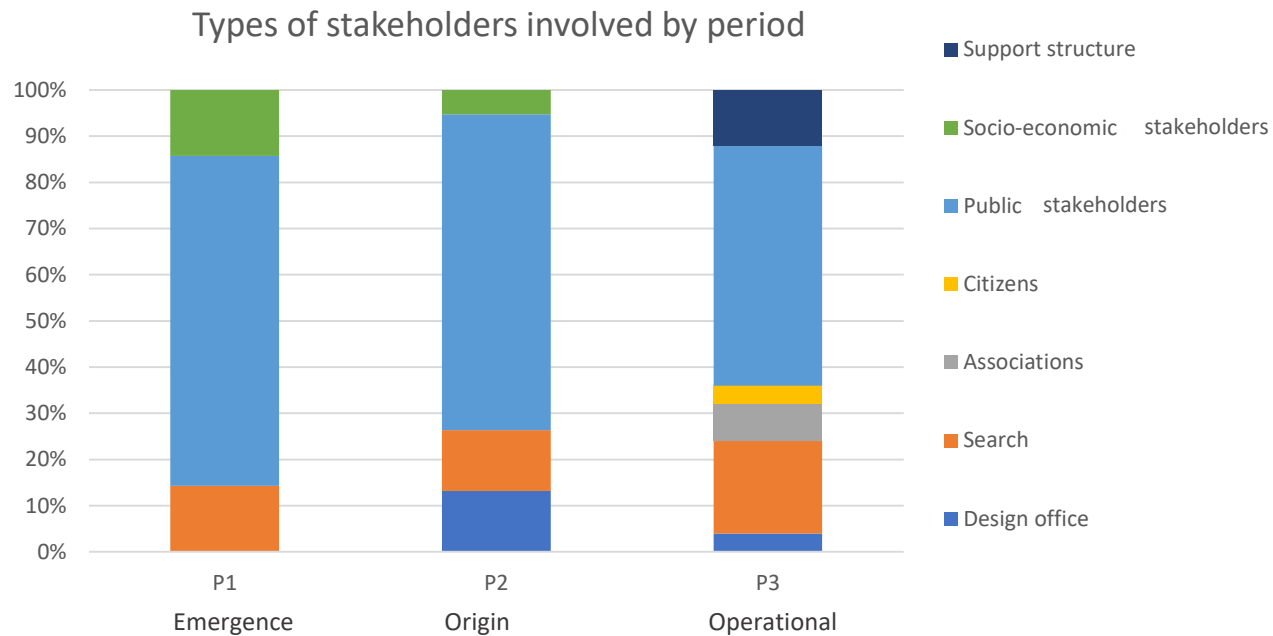
Source : <https://pat-grand-clermont-parc-livradois-forez.fr/>

Source : <https://pat-grand-clermont-parc-livradois-forez.fr/>

Results: The 3 PAT deployment phases

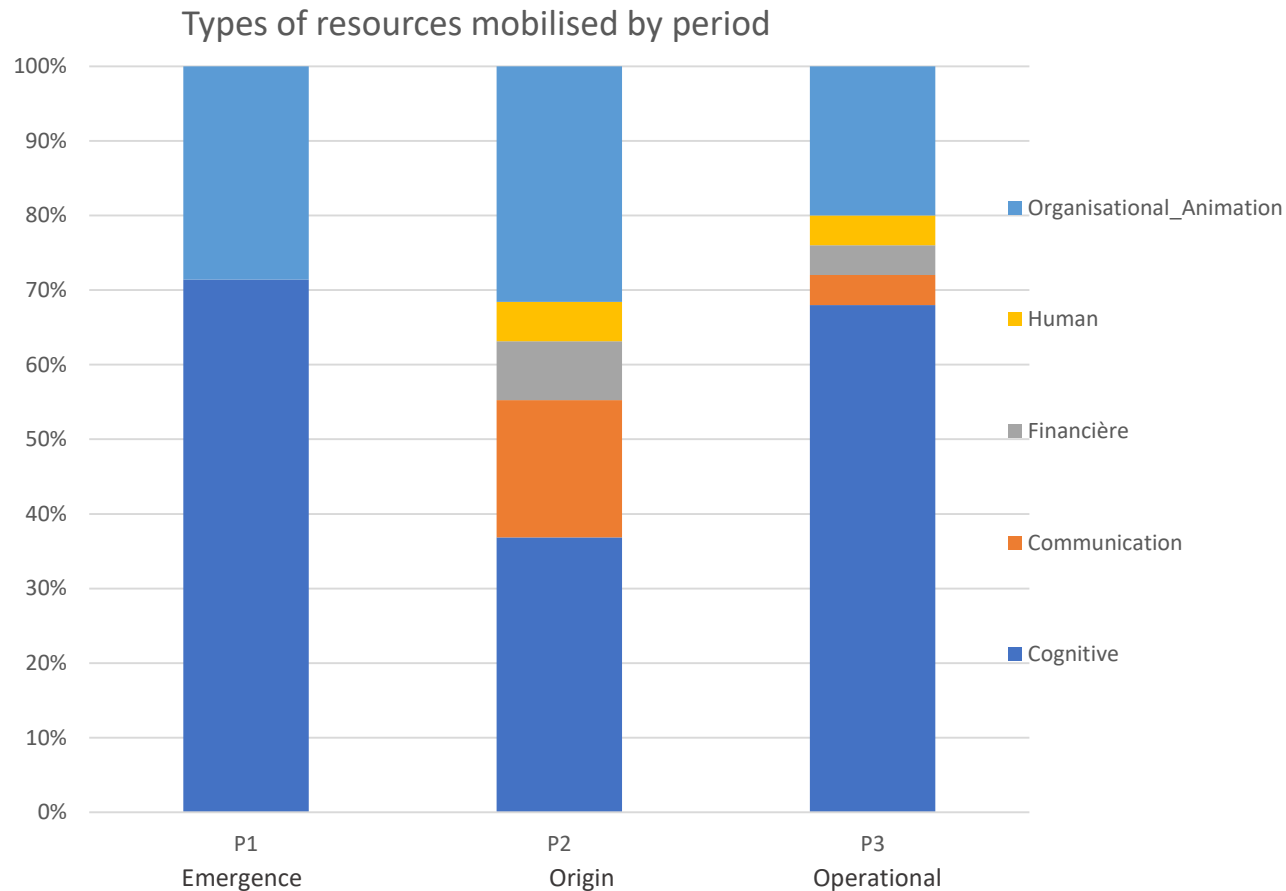


Results: Mobilised modes of access



- **A predominance of public stakeholders** : PAT holders who were already working together and the PAT coordination team, a preferred mode of accessing resources
- **An almost constant research presence over the 3 periods**: PSDR project, researchers' collective, etc.
- **A greater diversity of stakeholders mobilised for period 3**: Mobilisation of various service providers to carry out studies and diagnoses
- **A predominance of the Public, Agriculture and Food sectors**: the health sector is present but not perennial, the emergence of the post-COVID social sector, and an environmental sector that is absent.

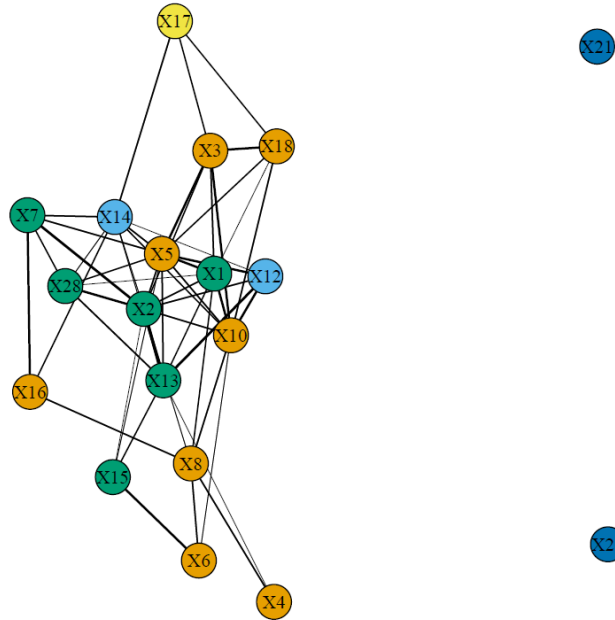
Results: Mobilised resources



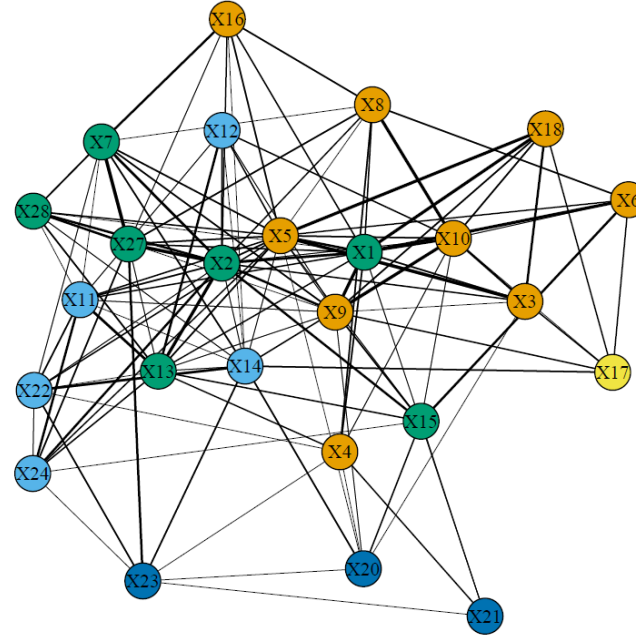
- **In period 1, cognitive resources to build a shared vision**
- **At the emergence stage (P2), most of the resources are organisational and communication-based:** the need to co-construct the food strategy, the need to make PAT known
- **Financial resources that enable us to maintain a human resource for coordination (P2 and P3) and to finance local projects (P3).**
- **In period 3, an increase in cognitive resources and a decrease in organisational resources:** cognitive resources so that the stakeholders can grasp the different themes

Results: first view of the network of aggregated links

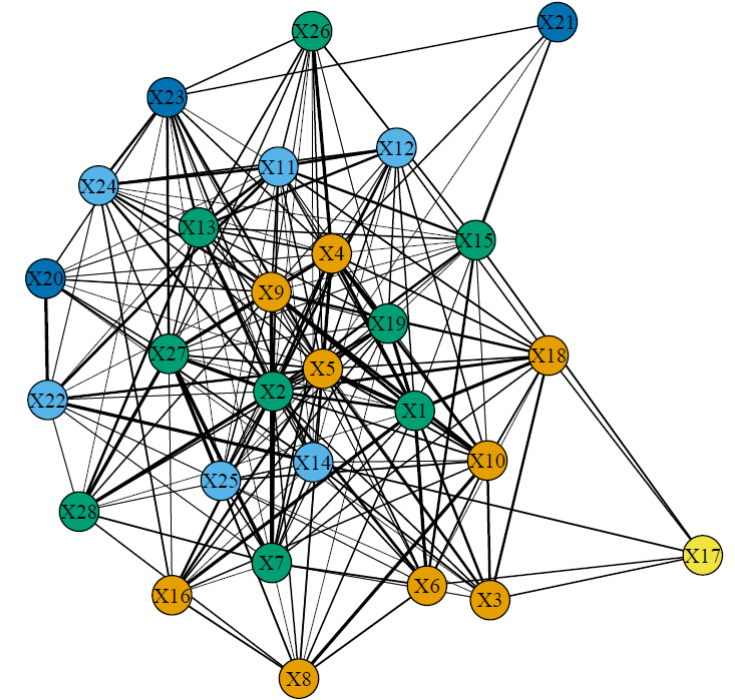
P1 : 2014-2016



P2 : 2017-2020



P3 : 2021-2024



Field of activity :

- Public
- Food
- Agriculture
- Health
- Social

Caractéristiques des relations

- Existence d'une lien entre deux acteurs
- Existence de plusieurs liens entre deux acteurs

- A pre-existing stakeholder network
- An increase in the number of links (from 96 to 353) and the density (from 0.28 to 0.47) of the network between P1 and P3
- 9 organisations emerge between P1 and P3
- 2 central stakeholders throughout the 3 periods: X5 (CD63) and X2 (GAB63) and the appearance of new ones in P3 : X9 (Coordination team) and X4 (Metropolis)
- A lack of cross-functionality: stakeholders mainly from the agricultural and public sector at the centre of the network

Discussion

Discussion of the results :

- Mobilisation of a wide range of local resources and stakeholders
- The results show a federation of stakeholders : networks are becoming denser
- Cross-sector approach: predominance of agricultural and territorial sector, emergence of new sectors (social sector in post-COVID)

Methodological discussion :

- Coding of the most important access modes → interest in reconstructing the entire relational chain
- A collective trajectory focused on the activities carried out by the PAT holders and not all the partners
- Stakeholder networks dependent on the system studied and the relationships studied

Perspective (in progress) :

- Complete networks: to take account of the interactions actually maintained and the place of the PAT within these interactions
- Quantified narratives at individual level: to extend the analysis of the PAT's trajectory to the partners who contribute to the PAT through their activities
- Will give only first elements on how PAT can participate in structuring territorialised food systems

Bibliography

- Billion, C. (2017). La gouvernance alimentaire territoriale au prisme de l'analyse de trois démarches en France. *Géocarrefour*, 91(4), Article 4. <https://doi.org/10.4000/geocarrefour.10288>
- Chiffolleau, Y. (2017). Dynamique des identités collectives dans le changement d'échelle des circuits courts alimentaires. *Revue Française de Socio-Economie*, 18(1), 123-141.
- Chiffolleau Y., Loudiyi S., Wallet F., Baritoux V., Barataud F., Dourian T., Duvernoy I., Gonçalves A., Lamine C., Melot R., Morel K., Perrin C., Sanz Sanz E., Schott C. (2025, A paraître). Des actions collectives pour l'alimentation locale aux projets alimentaires territoriaux : entre innovations et déceptions
- Eloire, F., Penalva Icher, É., & Lazega, E. (2011). Application de l'analyse des réseaux complets à l'échelle interorganisationnelle. Apports et limites. *Terrains & travaux*, 19(2), 77-98. <https://doi.org/10.3917/tt.019.0077>
- Gillerot, A. (2023). Les modes de coordination mis en œuvre par les collectifs d'agriculteurs porteurs de filières territorialisées : Un levier pour la transition agroécologique? | *Theses.fr* [Thesis, Université Clermont Auvergne (2021-...)]. <https://theses.fr/s363195>
- Grossetti, M., Barthe, J.-F., & Chauvac, N. (2011). Studying Relational Chains from Narrative Material. *Bulletin of Sociological Methodology/Bulletin de Méthodologie Sociologique*, 110. <https://doi.org/10.1177/0759106311399553>
- Lamine, C., & Chiffolleau, Y. (2012). Reconnecter agriculture et alimentation dans les territoires : Dynamiques et défis. *Pour*, 215216(3), 85-92. <https://doi.org/10.3917/pour.215.0085>
- Loudiyi, S. (2020). Construire une gouvernance des politiques alimentaires intégrées : Acteurs, échelles et gouvernance.
- Loudiyi, S. (2023). Transition des systèmes alimentaires aux échelles territoriales : Enjeux, acteurs et trajectoires. Séminaire annuel RADAR, Lyon.
- Ministère de l'agriculture et de la souveraineté alimentaire. (2024). *Plus de 430 Projets Alimentaires Territoriaux (PAT) reconnus par le ministère au 1er janvier 2024*. Ministère de l'Agriculture et de la Souveraineté alimentaire. <https://agriculture.gouv.fr/plus-de-430-projets-alimentaires-territoriaux-pat-reconnus-par-le-ministere-au-1er-janvier-2024>
- Pachoud, C., Labeyrie, V., & Polge, E. (2019). Collective action in Localized Agrifood Systems : An analysis by the social networks and the proximities. Study of a Serrano cheese producers' association in the Campos de Cima da Serra/Brazil. *Journal of Rural Studies*, 72, 58-74. <https://doi.org/10.1016/j.jrurstud.2019.10.003>
- Polge, E., & Pagès, H. (2022). Relational drivers of the agroecological transition : An analysis of farmer trajectories in the Limagne plain, France. *Agricultural Systems*, 200, 103430. <https://doi.org/10.1016/j.agsy.2022.103430>
- Prevost, B. (2014). Des circuits courts à la reterritorialisation de l'agriculture et de l'alimentation. *Revue internationale de l'économie sociale*, 331. <https://www.erudit.org/en/journals/recma/2014-n331-recma01239/1023483ar.pdf>
- RnPAT. (2021). Les principaux enseignements du premier cycle de PAT (2014-2020). <https://france-pat.fr/wp-content/uploads/rnpat-publications-exports/rnpat-patnorama-n2off-juin2021-pap.pdf>

The 6 strategic priorities of the TAP



Methodological approach

Phase 2a of the interviews : Individual trajectories of local food system organisations,
quantified narrative approach

Selecting interviewees

Sampling linked to the complete networks approach



Individual interviews

Entry by recounting important, structuring events in the integration of the themes of "sustainable and local agriculture and food" in the interviewed organisation



Identification of resources and access methods for each phase

Diagramming relational chains, coding the story in terms of resources and access modes using Excel



Creation of a typology of resources and access methods



Identification of important/ structuring events linked to the integration of the themes of "sustainable and local agriculture and food" and evaluation of the role of the PAT.

Complementing the previous quantified narrative approach: extending the trajectory study to the local food system