



HAL
open science

ECT2 peptide sequences outside the YTH domain regulate its m⁶A-RNA binding

Daphné Seigneurin-Berny, Claire Karczewski, Elise Delaforge, Karen Yaacoub,
Celso Gaspar Litholdo, Jean-Jacques Favory, Malene Ringkjøbing Jensen,
Cécile Bousquet-Antonelli, André Verdel

► To cite this version:

Daphné Seigneurin-Berny, Claire Karczewski, Elise Delaforge, Karen Yaacoub, Celso Gaspar Litholdo, et al.. ECT2 peptide sequences outside the YTH domain regulate its m⁶A-RNA binding. *RNA Biology*, 2024, 21 (1), pp.1-13. 10.1080/15476286.2024.2399914 . hal-04727927

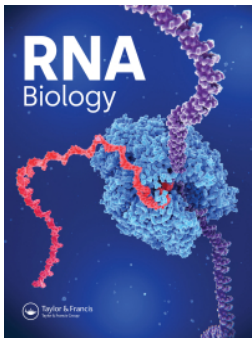
HAL Id: hal-04727927

<https://hal.science/hal-04727927v1>

Submitted on 9 Oct 2024

HAL is a multi-disciplinary open access archive for the deposit and dissemination of scientific research documents, whether they are published or not. The documents may come from teaching and research institutions in France or abroad, or from public or private research centers.

L'archive ouverte pluridisciplinaire **HAL**, est destinée au dépôt et à la diffusion de documents scientifiques de niveau recherche, publiés ou non, émanant des établissements d'enseignement et de recherche français ou étrangers, des laboratoires publics ou privés.



ECT2 peptide sequences outside the YTH domain regulate its m⁶A-RNA binding

Daphné Seigneurin-Berny, Claire Karczewski, Elise Delaforge, Karen Yaacoub, Celso Gaspar Litholdo Jr., Jean-Jacques Favory, Malene Ringkjøbing Jensen, Cécile Bousquet-Antonelli & André Verdel

To cite this article: Daphné Seigneurin-Berny, Claire Karczewski, Elise Delaforge, Karen Yaacoub, Celso Gaspar Litholdo Jr., Jean-Jacques Favory, Malene Ringkjøbing Jensen, Cécile Bousquet-Antonelli & André Verdel (2024) ECT2 peptide sequences outside the YTH domain regulate its m⁶A-RNA binding, *RNA Biology*, 21:1, 1-13, DOI: [10.1080/15476286.2024.2399914](https://doi.org/10.1080/15476286.2024.2399914)

To link to this article: <https://doi.org/10.1080/15476286.2024.2399914>



© 2024 The Author(s). Published by Informa UK Limited, trading as Taylor & Francis Group.



[View supplementary material](#)



Published online: 12 Sep 2024.



[Submit your article to this journal](#)



[View related articles](#)






[View Crossmark data](#)

RESEARCH PAPER



ECT2 peptide sequences outside the YTH domain regulate its m⁶A-RNA binding

Daphné Seigneurin-Berny ^a, Claire Karczewski^a, Elise Delaforge^b, Karen Yaacoub^a, Celso Gaspar Litholdo Jr.^{c,d}, Jean-Jacques Favory^{c,d}, Malene Ringkjøbing Jensen^b, Cécile Bousquet-Antonelli ^{c,d}, and André Verdel ^a

^aUniversité Grenoble Alpes, INSERM U 1209, CNRS UMR 5309, Institut pour l'Avancée des Biosciences, Grenoble, France; ^bUniversité Grenoble Alpes, CNRS, CEA, Institut de Biologie Structurale, Grenoble, France; ^cCNRS-LGDP-UMR5096, Université de Perpignan, Perpignan, France; ^dUniversité de Perpignan Via Domitia, Perpignan, France

ABSTRACT

The m⁶A epitranscriptomic mark is the most abundant and widespread internal RNA chemical modification, which through the control of RNA acts as an important factor of eukaryote reproduction, growth, morphogenesis and stress response. The main m⁶A readers constitute a super family of proteins with hundreds of members that share a so-called YTH RNA binding domain. The majority of YTH proteins carry no obvious additional domain except for an Intrinsically Disordered Region (IDR). In *Arabidopsis thaliana* IDRs are important for the functional specialization among the different YTH proteins, known as Evolutionarily Conserved C-Terminal region, ECT 1 to 12. Here by studying the ECT2 protein and using an *in vitro* biochemical characterization, we show that full-length ECT2 and its YTH domain alone have a distinct ability to bind m⁶A, conversely to previously characterized YTH readers. We identify peptide regions outside of ECT2 YTH domain, in the N-terminal IDR, that regulate its binding to m⁶A-methylated RNA. Furthermore, we show that the selectivity of ECT2 binding for m⁶A is enhanced by a high uridine content within its neighbouring sequence, where ECT2 N-terminal IDR is believed to contact the target RNA *in vivo*. Finally, we also identify small structural elements, located next to ECT2 YTH domain and conserved in a large set of YTH proteins, that enhance its binding to m⁶A-methylated RNA. We propose from these findings that some of these regulatory regions are not limited to ECT2 or YTH readers of flowering plants but may be widespread among eukaryotic YTH readers.

ARTICLE HISTORY

Revised 16 August 2024
Accepted 28 August 2024

KEYWORDS

YTH protein; YTH domain; *Arabidopsis thaliana*; m⁶A; RNA binding; IDR; EMSA

Introduction

N⁶-Methyladenosine (m⁶A) is the most prevalent and evolutionarily conserved messenger RNA internal chemical modifications in eukaryotes. Present in 1–1.5% of adenosines, this mark contributes to mRNA fate control at all steps of their lives including transcription termination, polyadenylation, splicing, nuclear and cytoplasmic storage, export, stability and translation [1–3]. m⁶A is a mark that is deposited by ‘writers’, removed by ‘erasers’ and decoded by ‘readers’. The consensus methylated sequence imposed by the writer methylase is DRACH (D = A, G, U; R = A, G; H = A, C, U). The downstream molecular and cellular effects of m⁶As are conferred by their interaction with reader proteins that are anchored to mRNA by the chemical modification. The YTH-containing protein family constitutes the largest set of m⁶A readers.

The YTH (YT521 Homology) domain is a 100–150 amino acid region, shared by hundreds of eukaryotic proteins, that evolved into two main clades named DF and DC [4–6]. The obtention of 3D structures of YTH domains from yeast [7,8],

human [4,8,9], rat [10] and *Arabidopsis* [11] proteins further defined the core structure of the YTH domain as a β-barrel formed of three α-helices (α1-3) that stack against six β-strands (β1-6) which form a hydrophobic pocket that tightly and specifically accommodates the m⁶A around three aromatic residues (WW(W/L/Y), with two tryptophan aromatic rings contacting the methyl group. In several instances, the N- and C-terminal extended YTH domains were used in biophysical studies that revealed the presence of additional upstream and downstream helices, named α0 and α4 [8,9,11]. From these studies emerged the general view that YTH domains act as autonomous m⁶A-binding entities, not only necessary but also sufficient to form a functionally competent complex with m⁶A-RNAs. However, the contribution of the α0 and α4 helices, in addition to the core YTH domain, to m⁶A-RNA binding has never been addressed.

Noticeably, the characterized YTH domains of the yeast Mrb1 and Pho92 proteins do not contain these additional α helices, questioning the importance of these two helices acquired during evolution. Furthermore, an earlier report

CONTACT Daphné Seigneurin-Berny  daphne.berny@univ-grenoble-alpes.fr; André Verdel  andre.verdel@univ-grenoble-alpes.fr  Université Grenoble Alpes, INSERM U 1209, CNRS UMR 5309, Institut pour l'Avancée des Biosciences, Site Santé, Allée des Alpes, La Tronche, Grenoble 38700, France; Cécile Bousquet-Antonelli  cecile.bousquet-antonelli@cnrs.fr  Institut de Biologie Moléculaire des Plantes (IBMP), CNRS, Université de Strasbourg, Strasbourg, France  Supplemental data for this article can be accessed online at <https://doi.org/10.1080/15476286.2024.2399914>

© 2024 The Author(s). Published by Informa UK Limited, trading as Taylor & Francis Group. This is an Open Access article distributed under the terms of the Creative Commons Attribution License (<http://creativecommons.org/licenses/by/4.0/>), which permits unrestricted use, distribution, and reproduction in any medium, provided the original work is properly cited. The terms on which this article has been published allow the posting of the Accepted Manuscript in a repository by the author(s) or with their consent.

that the YTH domain of the fly YTHDC1 is unable to form a stable complex alone with m⁶A-RNA *in vitro* [12] suggested that the YTH domain may not necessarily behave as an autonomous m⁶A-binding entity and thus shall require one or more additional peptide sequences, from the same protein or another protein, to stably bind m⁶A-methylated RNA. In addition, in plants, the number of YTH-containing proteins has dramatically expanded, reaching 13 different YTH proteins in the model plant *Arabidopsis thaliana* [5] and up to 39 in the wheat crop *Triticum aestivum* [13]. This large number of YTH proteins capable of binding to the same m⁶A raises the question of possible selectivity in their binding to specific subsets of m⁶A-methylated RNAs, a selectivity that, again, may be brought by one or more additional peptide sequences, from the YTH protein itself or by another protein.

In angiosperms (flowering plants), the YTH domains of the DF clade cluster into four subclades tagged as DF-A (comprising *Arabidopsis* ECT1–4), DF-B (comprising *Arabidopsis* ECT5, 9–10), DF-C (comprising *Arabidopsis* ECT8, 11) and DF-D (comprising *Arabidopsis* ECT6, 7) [5,14]. The *Arabidopsis* ECT2 and 3, which are among the most studied plant YTH proteins, accumulate in dividing cells of organ primordia and exhibit genetic redundancy in the stimulation of stem cell proliferation during organogenesis. Simultaneous loss of ECT2–3 leads to a delay in the emergence of the first true leaves, an aberrant leaf morphology and trichome branching, and a delay in root growth and directionality [5,15–17]. ECT2 also plays, together with ECT3 and ECT5, a role in the plant's antiviral defence, and spreading of infection, at least against Alfalfa Mosaic Virus (AMV) [18]. Importantly, both the developmental and antiviral roles of ECT2 directly rely on the ability of its YTH domain to bind m⁶A residues to messenger RNAs (mRNAs) [5,17,19]. However, there is no report in the literature that demonstrates the ability of ECT2 YTH domain to be a self-autonomous m⁶A-binding entity.

The regions outside the YTH domain of the DF-type proteins from angiosperms are Intrinsically Disordered Regions (IDRs), and the IDR of *Arabidopsis* ECT2 protein was recently reported to contribute to its *in vivo* RNA binding activity through iCLIP experiments and RNA co-immunoprecipitation [14,19]. At the same time, ECT2 IDR has been divided into subdomains that carry distinct *in vivo* molecular functions. Indeed, the N-terminal domain N3 of ECT2 mediates leaf developmental functions by encompassing a conserved Short Linear Motif (SLiM) that mediates a direct physical interaction with a poly(A) binding protein [20], while the domain N5 is involved in ECT2 antiviral functions [18]. Nevertheless, a possible relationship between these IDR subdomains and the regulation of ECT2 binding to m⁶A RNA yet remains to be explored.

Here, we uncover that the ECT2 YTH domain alone is not sufficient to bind m⁶A-methylated RNA with a high affinity *in vitro*, compared to ECT2 full-length protein or other YTH domains from *Arabidopsis* or human readers. We show that the N-terminal IDR of ECT2, as well as structural elements located in the vicinity of the YTH domain (among which the α 0 and α 4 helices), positively or negatively impact the formation of a stable, high affinity m⁶A-specific complex with RNA. In addition, by studying the importance of the sequence bias

of ECT2's natural m⁶A-methylated RNA targets, we demonstrate that the uridine content, surrounding the m⁶A DRACH motif, further inclines ECT2's binding towards the m⁶A-methylated form of its target RNAs. This work, combined with the recently published *in vivo* studies on ECT2, sheds light on how regulation and selectivity of ECT2 binding to m⁶A RNA might be achieved. Furthermore, based on these findings and AlphaFold structural modelling of other YTH proteins, we propose that this m⁶A-binding regulation and selectivity might apply in a similar way to other YTH proteins from plants and other eukaryotes.

Material & methods

Construction of ECT2 truncated and deletion mutants, YTH domains of CPSF30L and hYTHDC1

To construct all the ECT2 truncated mutants described in this study, we used the recombinant plasmids p817 (containing ECT2 coding DNA sequence (CDS)) and p883 (a mutated version of ECT2 CDS in which the three tryptophans at positions 464, 521 and 526 in the YTH domain were substituted to alanines) as previously described [5]. The constructs ECT2–108/667, 204/667, 303/667, 376/667, 424/610 and 444/580 (respectively, named ECT2–108, –204, –303, –376, –424 and –444) were obtained by PCR amplification using primers listed in Suppl. Table S1. Primers were designed to introduce a *Bam*HI restriction site in 5' and a *Xho*I restriction site in 3' of the DNA fragment. The amplified fragments were digested with *Bam*HI and *Xho*I and inserted into the expression vector pETM11-SUMO3-eGFP (from EMBL) previously digested with *Bam*HI and *Xho*I (this digestion removes eGFP CDS). The resulting expression plasmids allow the expression of N-terminal His-SUMO tagged versions of the ECT2 protein. For the production of His-tagged proteins, the truncated forms ECT2–303/667 and ECT2–424/610 were obtained after PCR amplification with primers containing *Nde*I restriction site in 5' and *Bam*HI restriction site in 3' of the DNA fragment (Suppl. Table S1). After digestion with *Nde*I and *Bam*HI, the inserts were ligated into the expression vector pNEA-3 H previously digested with *Nde*I and *Bam*HI. For the production of proteins with a cleavable His-SUMO tag, the pETM11SS vector (from Ramesh Pillai lab, Geneva University) was used and the cDNA inserted between *Bam*HI and *Xho*I restriction sites. This vector allows the production of recombinant proteins with a His-Strep-SUMO tag in N-terminal that is cleavable with a TEV protease.

The deletion mutants Δ 376–386, Δ 419–427 and Δ 591–627 were obtained from the pETM11-SUMO3_ECT2 recombinant plasmid by site-directed mutagenesis (Q5 Site-Directed Mutagenesis Kit, BioLabs) using the primers listed in Suppl. Table S1.

The construct CPSF30L 220–400 and YTHDC1 345–507 were obtained by PCR amplification from, respectively, pBSK plasmid containing the *Arabidopsis* CDS of CPSF30L (ordered from Biomatik) and a pCI-neo-hYTHDC1 plasmid already produced [21] using primers listed in Suppl. Table S1. Primers were designed to introduce a *Bam*HI restriction site in 5' and a *Xho*I restriction site in 3' of the DNA fragment. The

amplified fragments were digested with *Bam*HI and *Xho*I and inserted into the expression vector pETM11-SUMO3-eGFP previously digested with *Bam*HI and *Xho*I. All the constructs obtained were validated by sequencing.

Production in *E. coli* and purification of the recombinant proteins

Recombinant plasmids were transformed into *Escherichia coli* strain BL-21(DE3) competent cells. The *E. coli* cells were grown at 37°C to an OD600 of 0.6, and recombinant protein expression was then induced with 1 mM IPTG overnight (16 h) at 20°C. The pellet from 500 mL culture was collected by centrifugation 15 min at 2220 g at 4°C and resuspended in 20 mL of Lysis buffer (20 mM Tris-HCl, pH 7.5, 150 mM NaCl, 10 mM imidazole, 1 mM PMSF) containing 1% Triton X-100 and incubated 10 min on ice. The suspension was sonicated for 2 min (30" on, 30" off) using a probe sonicator (Active motif), at 85% amplitude. The sample was centrifuged at 20,800 g for 20 min at 4°C, and the supernatant collected. The supernatant was then incubated with Ni-NTA agarose (Qiagen, 500 µL of agarose for 500 mL of bacteria culture) that had been preequilibrated in the lysis buffer (without Triton). After 1 h of incubation at 4°C on a rotating shaker, the agarose/sample mixture was loaded onto a column. The resin was then washed with four volumes of Lysis buffer, six volumes of Wash buffer 1 (20 mM Tris-HCl, pH 7.5, 150 mM NaCl, 40 mM imidazole), one volume of Wash buffer 2 (20 mM Tris-HCl, pH 7.5, 500 mM NaCl, 40 mM imidazole) and one more volume of Wash buffer 1. The bound proteins were eluted with four volumes of Elution buffer (20 mM Tris-HCl, pH 7.5, 300 mM NaCl, 200 mM imidazole) and collected by 500 µL fractions. The purified proteins were desalted against 20 mM Tris-HCl, pH 7.5, 150 mM NaCl (PD-10 column, Merck), concentrated using centrifugal filter unit and stored at -80°C after addition of 5% glycerol. Purified recombinant proteins were quantified using the BIORAD protein assay reagent [22] before SDS-PAGE analyses and EMSA assays.

For cleavage reactions, 600 µg of fusion protein was used. Reactions were conducted in 300 µL with the following reagents added to the final concentrations of 1 mM DTT, 0.5 mM EDTA in 20 mM Tris-HCl, pH 7.5, 150 mM NaCl, and 10 µL of commercial TEV (Biolabs). After incubation overnight at 4°C, the suspension was diluted 4 times and incubated for 1 hour at 4°C with 200 µL of Ni-NTA agarose (Qiagen) preequilibrated in the lysis buffer. The flow through was recovered, concentrated using centrifugal filter unit and stored at -80°C after addition of 5% glycerol. For NMR analyses, cleavage was done from 10 mg of tagged proteins, the cleaved proteins were desalted against NaCl 50 mM, sodium phosphate 50 mM pH7, concentrated and flash-frozen without glycerol before storage at -80°C.

NMR measurements

The YTH-ECT2 buffer contained 50 mM sodium phosphate pH 7, 50 mM NaCl and 10% (v/v) D2O. A one-dimensional ¹H NMR spectrum of YTH-ECT2 at 270 µM was recorded

using a Bruker spectrometer operating at a ¹H frequency of 600 MHz, equipped with a cryoprobe. The spectrum was processed using Topspin 4.1.4.

Analysis of in vitro RNA binding by electrophoretic mobility shift assay (EMSA)

RNA probes were labelled with the 6-FAM fluorophore and synthesized by IBA Lifesciences (for probe I), and LGC Biosearch technologies for the other ones. The probe sequences are listed in Suppl. Table S1. The final RNA probe concentration was 10 nM, and the concentration of the purified recombinant proteins ranged from 0 to 500 nM in most assays (in some cases up to 1000 nM). The probe was heated to 65°C for 10 min, and then slowly cooled down to room temperature. The purified recombinant proteins were diluted to concentration series (10, 5, 2.5, 2, 1, 0.5 and 0.25 µM in most cases) in binding buffer (10 mM HEPES, pH 8.0, 50 mM KCl, 1 mM EDTA, 0.05% Triton-X-100, 5% glycerol, 10 µg/mL Salmon DNA, 1 mM DTT and 40 U/mL RNasin). For the reaction, 4 µL of RNA probe (at 25 nM) and 2 µL of protein dilution were added in a final reaction volume of 10 µL. After 20 min incubation on ice, 9 µL of the mixture was loaded onto a native 8% acrylamide TBE gel and run at 4°C for 5 min at 100 V and then 90 min at 80 V. Fluorescent signals were detected using a ChemiDocMP system (BioRad) and quantification done with the ImageLab software (BioRad). The apparent K_d's (dissociation constant) were calculated with nonlinear curve fitting using the PRISM software (nonlinear regression method).

3D structure prediction

AlphaFold was used to obtain the predicted 3D structure of Arabidopsis ECT2, ECT5, ECT8, and CPSF30L proteins, human YTH proteins (YTHDF1-3, DC1-2), Drosophila and rat YTHDC1 proteins and yeast Mrb1, Pho92 YTH proteins (<https://alphafold.ebi.ac.uk/> [23]). The predicted structures were then analysed using the Chimera software.

Results

ECT2 YTH domain binding to m⁶A-methylated RNA does not form a stable complex in vitro

To characterize ECT2 binding to m⁶A-methylated RNA, we performed Electrophoretic Mobility Shift Assays (EMSAs) using a full-length protein or an extended ECT2 YTH domain (ECT2-424) encompassing the YTH domain (as defined in UniProt, Suppl. Figure S1A, Suppl. Table S2) plus 20 and 30 amino acid extensions, respectively, at its N- and C-termini (Figure 1A). As shown previously [17], the full-length ECT2 (Fl) forms a slow migrating complex with m⁶A-methylated RNA probes, while no complex formation is observed with an identical non-methylated probe (Figure 1B). Noticeably, the RNA-ECT2 Fl complex migrates as a doublet suggesting the possible formation of a dimeric complex. Both the binding of ECT2 to m⁶A-RNA and the formation of a higher-order complex require an intact aromatic pocket within the YTH

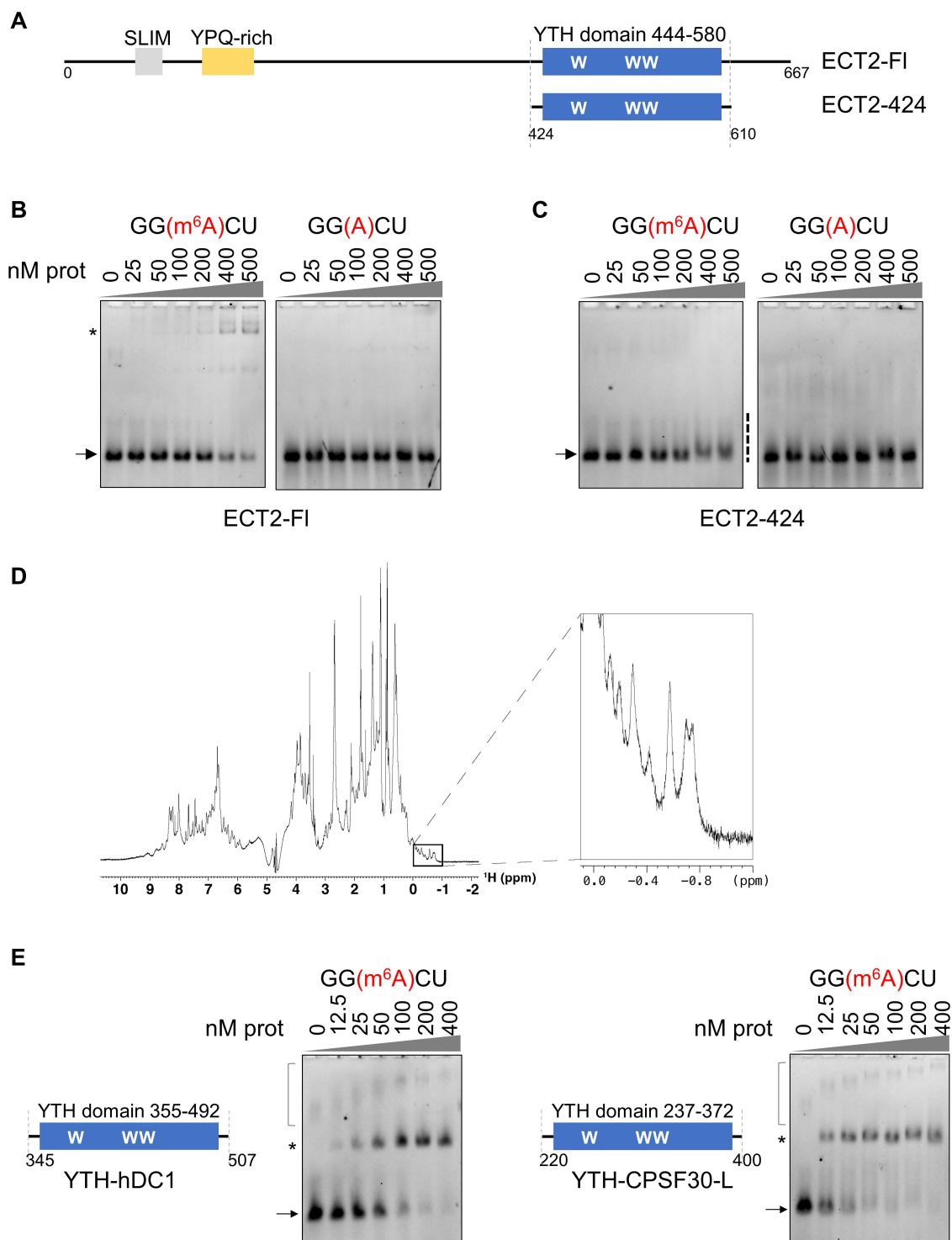


Figure 1. ECT2 YTH domain binding to m^6A -methylated RNA does not form a stable complex *in vitro*. (A). Graphical representation of the full-length ECT2 protein (ECT2-fl) and its extended YTH domain 'ECT2-424', aa 424-610, with the core YTH spanning aa 444 to 580 (in blue) as described in UniProt. The N-terminal part of ECT2 contains a short linear motif (SLiM enriched in tyrosines, in grey) [20] and a ypq-rich motif (in yellow) [5]. (B) & (C). EMSA gels representing the binding capacity of ECT2-fl (B) and ECT2-424 (C) to methylated and non-methylated RNA probes. Purified non-tagged proteins (from 0 to 500 nM) were incubated with 10 nM of Fam-labelled RNA probes and loaded onto a native acrylamide gel. Detection of the free and bound probes was done using ChemiDocMP system (BioRad). RNA probe I: 5'-AUGGGCCGUUCAUCUGCUAAAA(GGXCU)GCUUUUGGGGUUGU-3', X = m^6A/A . Only 5 residues are shown on the figure. The arrows indicate the free probe, the stars the probe/protein complexes, the dashed line, the smear in the case of the ECT2-424 construct. (D). 1H NMR spectrum of ECT2-424 showing that the recombinant protein is folded in solution. Amide resonances (7-9.5 ppm) are widely dispersed and several side-chain methyl resonances are found below 0 ppm, both characteristic of folded proteins [24]. (E). EMSA gels performed with extended YTH domains of proteins from the DC family. The purified his-sumo tagged domains of the human YTHDC1 (hDC1) protein (aa 345 to 507) and the Arabidopsis CPSF30-L protein (aa 220 to 400) were incubated with 10 nM of methylated RNA probe I. The protein concentration range was from 0 to 400 nM. The arrows indicate the free probe, the stars the probe/protein complexes. Non-specific signal is shown by the square bracket.

domain, as substitution of the three tryptophans with alanine blocks the formation of any RNA-protein complex (Suppl. Figure S1B [17]). In contrast, the extended YTH domain ECT2-424 is unable to form a slow-migrating RNA-protein complex despite a clear reduction in the amount of the free m^6A probe, as shown by signal intensity decrease (Figure 1C, left panel; Suppl. Figure S1C). Such decrease in the free probe levels is not observed when using the non-methylated version of the RNA probe (Figure 1C, right panel). This suggests that m^6A -dependent binding of ECT2-424 to RNA forms an unstable complex. The one-dimension 1H NMR spectrum of the ECT2-424 construct shows that this is not because of folding issues of the recombinant protein fragment (Figure 1D). Importantly, the extended YTH domains of human YTHDC1 and Arabidopsis CPSF30-L do form a complex with the m^6A -RNA probe that resists gel electrophoresis migration, as published [9,11] (Figure 1E, Suppl. Figure S1A, S1D). To eliminate the possibility of a negative impact of amino acids surrounding the YTH domain in the case ECT2-424 construct, we also performed EMSA with the core ECT2 YTH domain (ECT2-444, aa 444–580, without the predicted $\alpha 0$ and $\alpha 4$ helices). No binding was observed with this YTH construct (Suppl. Figures S1E, S1F). Taken together, these results show that, unlike most of the characterized YTH domains, the YTH domain of ECT2 alone or together with the surrounding $\alpha 0$ and $\alpha 4$ helices does not form a complex with m^6A -methylated RNA that resists gel migration and that one or more domains of ECT2 located further outside of the YTH are required for such stabilization.

The N-terminal IDR of ECT2 modulates the binding of its YTH domain to m^6A

The N-terminal part of ECT2 before its YTH domain forms a long Intrinsically Disordered Region (IDR, Figure 2A), which is also the case for most of the readers from the YTHDF family of flowering plants [14]. IDRs have the potential to govern the specificity and affinity of structured RNA binding modules [26]. In addition, *in vivo* data from iCLIP experiments have indicated that, in addition to its YTH domain, the IDR of ECT2 also contacts ECT2 target mRNAs, suggesting that the IDR-dependent binding may influence ECT2 YTH domain binding to m^6A [19]. Based on the sequence comparison of YTHDFA proteins from angiosperms (Suppl. Figure S2A, Suppl. Table S3) combined with the prediction of ordered and disordered regions (Figure 2A), we expressed and purified four truncated versions of ECT2, cutting from its N-terminus towards the YTH domain, approximately every 100 amino acids and outside potentially small-ordered peptides, successively eliminating the different unstructured regions of the IDR (Figure 2B, Suppl. Figures S2B, S2C). We also prepared for each of these four truncated versions (namely, ECT2-108, ECT2-204, ECT2-303 and ECT2-376), a mutant version with the triple Trp to Ala substitution that inactivates the binding of the YTH pocket to m^6A .

Interestingly, EMSAs show that ECT2-108, ECT2-204 and ECT2-303 recombinant proteins all bind to the RNA-methylated probe, while ECT2-376 does not (Figure 2C). As

seen for ECT2-424, EMSAs of ECT2-376 show a decrease in the free probe signal and the appearance of a smear above, supporting again that the RNA-protein complex may form but that it is not stable enough to resist gel electrophoresis. This indicates that the ECT2 region encompassing amino acids 303 to 375 is necessary to stabilize the complex formed by ECT2 YTH domain binding to the m^6A -methylated RNA. As expected, EMSAs conducted with the non-methylated version of the RNA probe and/or the tryptophan point mutant versions of the YTH pocket do not show a slow migrating complex nor reduction in the levels of free probes for the ECT2-108 and ECT2-303 constructs (Figure 2C, lower panels).

We then quantified the RNA-binding affinities of full-length ECT2 and its truncated forms (Figure 2D). Our results show that the ECT2-303 construct possesses the highest apparent affinity and that domains located at its N-terminal side influence either negatively or positively

ECT2 YTH domain affinity for m^6A -methylated RNA. Indeed, addition of the 204–302 regions to ECT2-303 construct leads to a fivefold decrease in the complex dissociation constant, Kd. Further addition of the 108 to 203 regions did not affect the affinity compared to that of ECT2-204 construct, whereas the final addition of the domain 1–107 improved the affinity by approximately threefold, as compared to ECT2-108 or ECT2-204 constructs. Noticeably, similar differences in binding properties were observed independently of the presence of the tag used to purify the recombinant proteins (Suppl. Figure S2D-G). We also observed that although ECT2-108, ECT2-204 and ECT2-303 constructs stably bind methylated RNA, the RNA-protein complex doublet observed with the full-length ECT2 protein is no longer formed (Figure 2C, upper panels). This suggests that the region encompassing the first 108 amino-acids may also contain an ECT2 dimerization domain. Altogether, these results show that the domain ‘303–375’ of ECT2, which contains several conserved amino acids shared among YTHDFA proteins in angiosperm, is required to stabilize the complex formed by ECT2 YTH domain binding to m^6A -methylated RNA and that the domains ‘1–108’ and ‘204–302’ may play a regulatory role by controlling the binding affinity.

Binding of ECT2 to the m^6A -methylated DRACH motif is enhanced by the surrounding RNA sequence

Biochemical characterizations of YTH domains binding to RNA were conducted with short RNA probes, from 5 to 11 nucleotides (*i.e.* 5, 9 or 11 nt long probes for human YTHDC1 [8,27]; 10 nt for Arabidopsis CPSF30-L [11]) supporting the fact that the DRACH motif can be sufficient for the binding of YTH domains to m^6A -methylated RNA. Furthermore, the binding of YTH domains to m^6A -methylated DRACH motif has been reported to implicate at most ribonucleotides spanning positions +2 to –2 [8] relative to the methylated adenosine, thus within the DRACH motif itself. However, this only relies on assays conducted with self-sufficient YTH domains that form *per se* a stable RNA-protein complex *in vitro*. Our EMSAs from Figures 1 and 2 show that the YTH domain

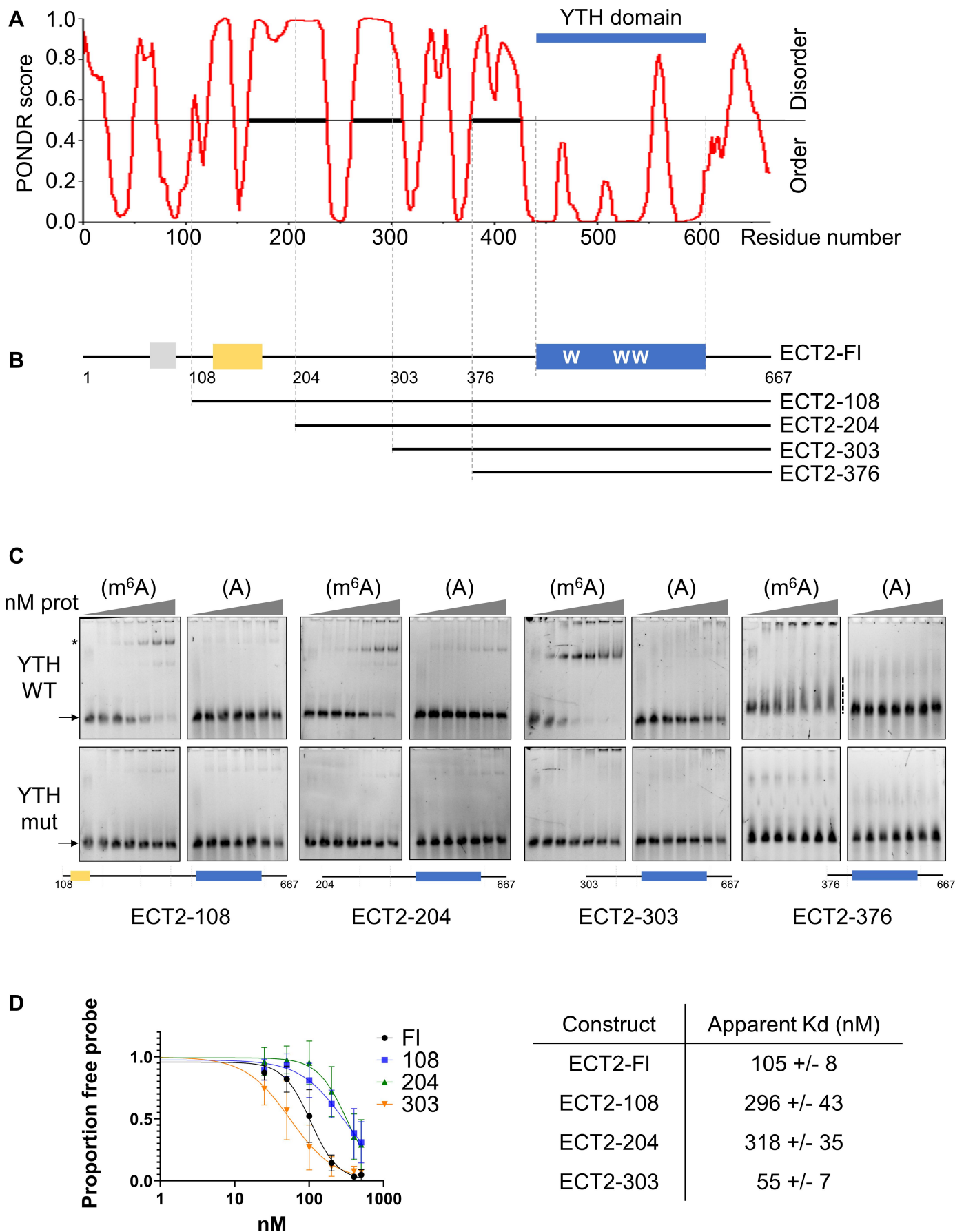


Figure 2. ECT2 N-terminal IDR modulates YTH binding to m⁶A. (A). Diagram showing the distribution of disordered and ordered regions along the full-length ECT2 protein using the PONDNR[®] VL-XT software [25]. (B). Graphical representation of ECT2. The SLiM and ypq-rich regions are shown respectively in grey and yellow, the YTH domain in blue (with the tryptophans required for m⁶A recognition). The truncated forms of ECT2 used for EMSA assays are presented below the full-length

from ECT2 is necessary but not sufficient to form a complex with m⁶A-methylated RNA that resists gel migration and that peptide sequences located N-terminally to the YTH domain are required for stabilization of the complex. Importantly, *in vivo*, the IDR of ECT2 is directly contacting RNA sequences located near to the DRACH motif [19,20]. We therefore assessed *in vitro* whether the length of the RNA plays a role in the formation or stability of an m⁶A-dependent RNA-protein complex. Figures 1 and 2 show that EMSAs conducted with a 42 nt-long RNA probe (probe I) were reported to form a high-affinity complex with the full-length ECT2 protein [17]. Here, we designed a shorter 11 nt-long RNA probe (probe II) containing the DRACH (GGACU) motif either methylated or not (Figure 3A). We then performed EMSAs with probe II and full-length and truncated forms of ECT2 (Figure 3B). Strikingly, all protein constructs lost their ability to form a stable complex with m⁶A-RNA when incubated with probe II. Nevertheless, for each construct, the signal of the free methylated short probe decreased (probe II m⁶A, Figure 3B, Suppl. Figure S3). These findings show that ECT2 YTH domain is self-sufficient for the recognition of m⁶A methylated DRACH, while the formation of RNA-protein complexes that resist the gel migration also requires extra-RNA sequences near the DRACH motif.

A U-rich content in the RNA sequence around the DRACH motif reduces ECT2 m⁶A-independent binding to RNA

To further characterize the importance of the RNA sequence around the DRACH motif, we performed EMSAs with long RNA probes of equal lengths but of distinct sequence contents. We based their design on results from *in vivo* iCLIP experiments indicating that various U-rich motifs contacted by ECT2's N-terminal IDR may promote ECT2 binding to m⁶A-methylated mRNAs [19]. We designed two new 42 nt-long probes in which either every uridine was replaced by adenosine or the U-rich motifs identified by Arribas-Hernandez and colleagues were added (respectively, probe III and IV, Figure 4A). For each probe, methylated and non-methylated versions were also tested (Figure 4A). All of the ECT2 constructs containing the first 302 amino-acids of ECT2 form RNA-protein complexes with every methylated RNA probe (Figure 4B). Quantification of the m⁶A RNA-binding affinities shows that they are similar for probes I and IV, and slightly higher for probe III (Figure 4C, Suppl. Figures S4A and S4B). Hence, the content in ribonucleotide U, identified as potentially promoting ECT2 m⁶A-dependent binding to RNA [19], only modestly influence *in vitro* the binding affinity of ECT2 for m⁶A-methylated RNA, and not the ability to form m⁶A-methylated RNA-protein complexes that resist gel migration. Quite unexpectedly, the EMSAs performed with the

non-methylated probes repeatedly showed that the ECT2-FI protein and its truncated versions 108 and 204 now form stable complexes, albeit with low affinity, when the non-methylated probe lacks U residues (Figure 4A,B, compare the three non-methylated probes). This effect is unlikely to be due to differences in the structure of the RNA probes (Suppl. Figure S4D) since a rapid versus slow cooling of the probes (after its heating at 65°C) leads to identical EMSA results. The formation of m⁶A-independent complexes is lost when domain '204 to 302' is deleted (EMSA with ECT2-303). Finally, as already shown for the smaller constructs ECT2-376 and ECT2-424, no stable complex was observed irrespective of the probe sequence or m⁶A-methylation status (Suppl. Figure S4C). These results show that the ribonucleotide content around the DRACH motif mostly influences the m⁶A-independent binding of ECT2 to RNA, with the presence of uridines that seemingly reduces this m⁶A-independent binding and, as a consequence, might disfavour ECT2 binding to its *in vivo* mRNA targets when they are not m⁶A-methylated.

Structural elements next to ECT2 YTH domain impact on its binding to m⁶A

The YTH domain was first defined more than 20 years ago based on peptide sequence alignment homology search [6]. The subsequent 3D structures of YTH domains demonstrated that evolutionarily distant YTH domain sequences share the same 3D structure that consists in a β -barrel formed by three α helices and six β strands (β 1 α 1 β 2 α 2 β 3 β 4 β 5 β 6 α 4), defined as the core YTH domain, and revealed the presence of upstream and downstream additional α helices, named α 0 and α 4, that are present in some but not all of the studied YTH domains. Our previous work based on secondary structure prediction suggested the presence of α 0 and α 4 helices next to the YTH domains of the angiosperm YTHDF proteins [5]. AlphaFold modelling [23] further supports the putative existence of these additional structural elements in ECT2 (Suppl. Figure S5). It predicts a 3_{10} helix for the α 0 element (D419-D427), a second 3_{10} helix (D376-R386) located N-terminally of α 0, and a very long α helix at the C-terminus of the ECT2 protein (D591-A627) (Suppl. Figure S5A). The first 3_{10} helix which locates some 70 amino-acids upstream of the YTH domain is well conserved at the primary sequence level among the YTHDFA proteins from angiosperms (Suppl. Figures S2A and S5A, in magenta). We named this 10 amino-acid long region the SH domain (for Small Helix). The second 3_{10} helix, named α 0 (Suppl. Figure S5A, in blue) and the C-terminal helix (in beige) are reminiscent of the α 0 and α 4 helices found in the extended YTH domain of the human YTHDF1 [8]. Furthermore, AlphaFold predicts the existence of several hydrogen bonds between the α 4/C-terminal helix and the α 0 or SH domain, and between the core YTH and the SH domains or α 4/C-terminal helix (Suppl. Figures

sequence of ECT2. The drawing of ECT2 in B can be directly compared to the diagram in A, as identical scales used were. (C). EMSA gels performed with various concentrations of the purified his-sumo tagged truncated forms of ECT2 (from 0 to 500 nM; 0-25-50-100-200-400-500 nM) in the presence of 10 nM of methylated (m⁶A) or non-methylated (A) 42 nt RNA probe I. For each construct, a mutated version of the YTH domain (the three tryptophans required for m⁶A binding mutated into alanines, 'YTH mut') was analysed. Drawings of each construct are shown under the EMSA gels. The arrows indicate the free probe, the star the probe/protein complexes, and the dashed line, the smear in the case of non-stable complex (for the ECT2-376). (D). Signals of the free probe were quantified with the ImageLab software (biorad). Graphs show the mean and standard deviation of at least three independent experiments. The curve fittings and the apparent *k*_{ds} were obtained using the PRISM software.

A

Probe I (m⁶A/A): 5'-FAM-AUGGGCCGUUCAUCUGCUAAAAGG (m⁶A/A) CUGCUUUUGGGGCUU*G*U-3'

Probe II (m⁶A/A): 5'-FAM-AAAGG (m⁶A/A) CUG*C*U-3'

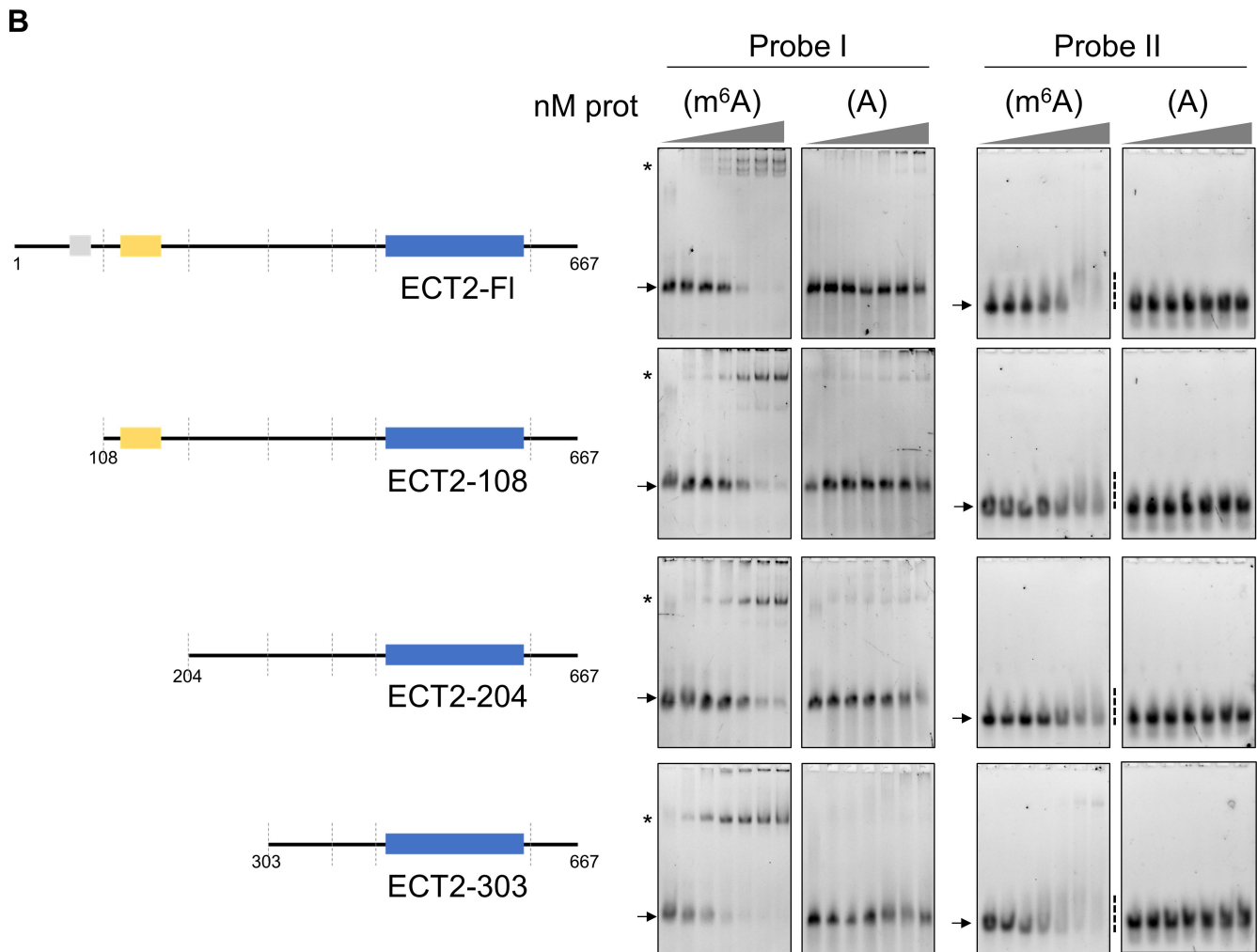


Figure 3. Binding of ECT2 to the m⁶A-methylated DRACH motif is enhanced by the surrounding RNA. A. Sequence of the RNA probes I and II used for the EMSA assays. The asterisks indicate thiol-protected bases to avoid 3'-degradation of the RNA. The DRACH motif is shown in bold with the methylated or non-methylated adenosine. Probe I (m⁶A/A) was the one used in the study by Wei and collaborators [17] and in assays of Figures 1 and 2. B. EMSA gels obtained with his-sumo tagged full-length and truncated ECT2 proteins. In each assay, 10 nM of methylated (m⁶A) or non-methylated (A) probes were incubated with increasing concentrations of purified proteins (from 0 to 500 nM). A schematic representation of the various constructs is shown on the left hand-side. The arrows indicate the free probe, the stars the probe/protein complexes, and the dashed line, the smear in the case of unstable complex with the probe II.

S5B, S5C), further suggesting that these structural elements are spatially located in close proximity to each other and to the ECT2 YTH domain.

Based on these observations, we hypothesized that one or more of these elements might contribute to ECT2 YTH domain binding to m⁶A-RNA. We therefore produced recombinant ECT2 proteins lacking either the SH domain, $\alpha 0$ or $\alpha 4$ helices (Figure 5A, Suppl. Figure S5D) and performed EMSAs. Deletion of the $\alpha 4$ helix or the SH domain triggers a clear decrease in binding affinity to m⁶A-RNA (Figures 5B, 5D). For the Δ SH (Δ 376-386) mutant, a complex with m⁶A-methylated RNA is still visible conversely to the $\Delta\alpha 4$

mutant (Figures 5B and 5D-E, note that here the range of protein concentration used is higher than in other EMSAs). The $\Delta\alpha 0$ (Δ 419-427) mutant mostly behaves as the full-length ECT2 protein (Figure 5C), with only a slight difference in the affinities (Figures 5D right panel and 5E). Of note, deletion of $\alpha 0$ does not affect the formation of an RNA-protein complex that migrates as a doublet, while loss of the SH domain does, suggesting that formation of a putative ECT2 dimer not only relies on the '1-108' domain but also on the SH domain. In summary, two domains outside the IDR, the $\alpha 4$ helix and the SH domain, also modulate ECT2 m⁶A-dependent binding to RNA *in vitro*.

A

Probe I (m⁶A/A): 5'-FAM-AUGGGCCGUUCAUCUGCUAAAAAGG (m⁶A/A) CUGCUUUUGGGGCUU*G*U-3'

Probe III (m⁶A/A): 5'-FAM-AAGGGCCGAACAACAGCAAAAAAGG (m⁶A/A) CUGCAAAAAGGGGCAA*G*A-3'

Probe IV (m⁶A/A): 5'-FAM-AUGUGUCUUUCAUGUACUAAAAAGG (m⁶A/A) CUGCUCUUGUGUCUU*G*U-3'

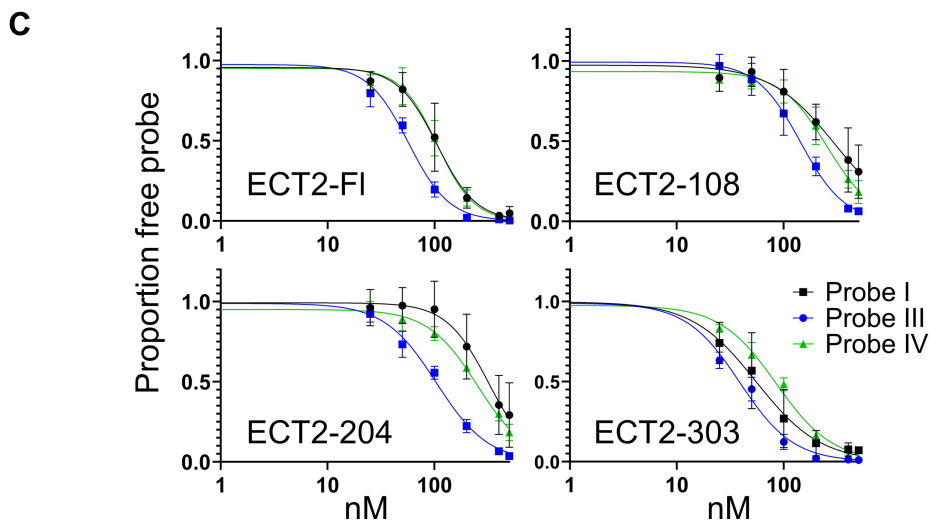
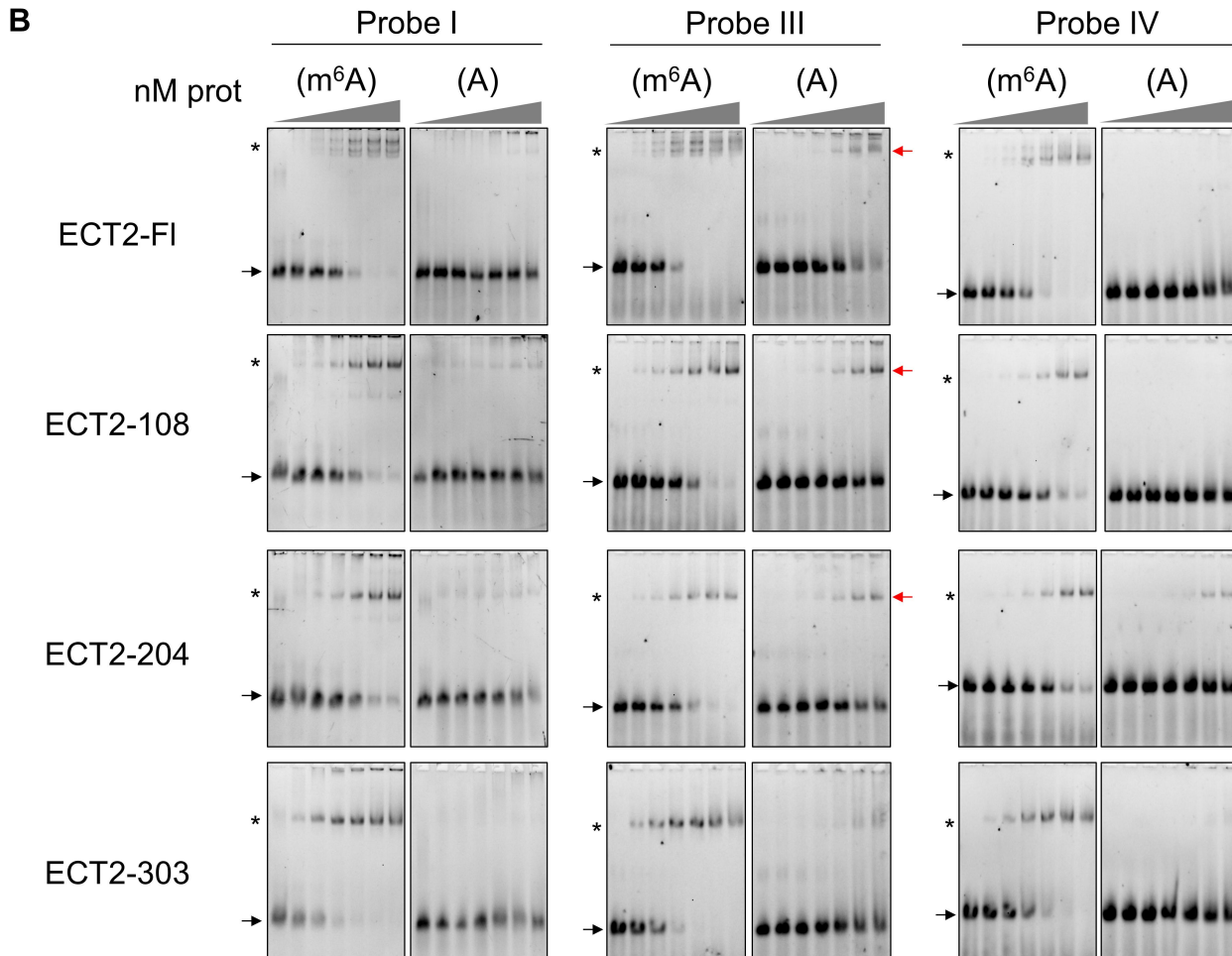


Figure 4. A U-rich ribonucleotide content in the sequence around the DRACH motif reduces m⁶A-independent ECT2 binding. (A). Sequence of the RNA probes I, III and IV. Each probe is labelled in 5' with the FAM6 fluorophore. The asterisks indicate thiol-protected bases to avoid degradation of the RNA. The DRACH motif is

Discussion

Biophysical and biochemical studies conducted with the YTH domains of human YTHDF and YTHDC proteins, rat YTHDC1, yeast Mrb1 and Pho92 and Arabidopsis CPSF30-L proteins indicated that YTH domains can be self-sufficient to recognize the m⁶A residue and bind m⁶A-methylated RNA. Here we show that Arabidopsis ECT2 YTH domain alone poorly binds to m⁶A *in vitro*, in comparison to human YTHDC1 and Arabidopsis CPSF30-L YTH domains and ECT2 full-length protein. Importantly, we identify regions in ECT2 N-terminal IDR as well as structural elements located in close proximity to its YTH domain that enhance its binding to m⁶A (see summary of finding in Suppl. Figure 6). Below, we discuss these findings in the light of the recent *in vivo* studies on ECT2, which proposed that ECT2 N-terminal IDR may regulate its binding to m⁶A-methylated mRNAs. Together, these *in vitro* and *in vivo* findings open new perspectives on the regulation of YTH domain binding to m⁶A and its biological relevance.

Every YTHDF proteins from angiosperms carry upstream of their YTH domain a long IDR, which in the case of ECT2 seems to contact the m⁶A-methylated target mRNAs *in vivo*, at U-rich motifs, located next to the methylated DRACH motif. The authors suggested that these contacts between the IDR and the RNA may stabilize the reader on the m⁶A residue [19]. Our results not only provide a direct demonstration that ECT2 IDR is key for the formation of a stable m⁶A complex but also map the region located between amino acids 300 and 375, as the putative mediator of this stabilization. Indeed, all the constructs that contain the 303–375 regions are able to form a stable RNA/protein complex with the m⁶A RNA probe, which is no longer observed with the ECT2–376 recombinant protein. With this later construct a clear decrease in the free probe signal and the appearance of a smear above is observed, suggesting the formation of an unstable RNA/protein complex that falls apart during gel electrophoresis. Noticeably, the role of IDRs in the stabilization of RNA/protein complexes has already been reported in the literature [28]. We also find that, conversely to the studied YTH readers from mammals and *Z. rouxii* and *S. cerevisiae* [7–10], ECT2 is not able to form a complex with a short 11 nt-long m⁶A-methylated RNA probe. This observation is again fully consistent with the *in vivo* data supporting that the ECT2 IDR directly binds RNA targets next to the m⁶A site [19]. Our work also suggests that ECT2 IDR may carry additional regulatory regions within the domains ‘1–107’ and ‘204–302’ that would, respectively, increase or decrease the binding affinity to the m⁶A RNA probe. Such RNA binding regulatory function is one of the reported properties of IDRs connecting to or surrounding RNA Binding Domains [26].

Considering that ECT2 IDR has been consistently found to be phosphorylated at several positions, in proteome-wide studies [29], a tempting hypothesis is that phosphorylation, and possibly other post-translational modifications, may regulate its YTH domain binding to m⁶A.

Our data also show that the uridine content around the DRACH motif plays a significant role in modulating the affinity of ECT2 to the non-methylated form of the RNA. Based on this finding, together with the *in vivo* iCLIP results showing that ECT2 IDR also contacts the m⁶A-methylated mRNA targets in close proximity to the DRACH motif [19], we propose a model where the combination of ECT2 YTH domain and ECT2 IDR bindings to RNA further increases the selectivity of ECT2 towards the m⁶A-methylated version of its mRNA targets. *In planta*, ECT2 target RNAs are enriched in uridine near the DRACH motif, while *in vitro* ECT2 binds preferentially to RNAs with poor uridine content, but only when they are non-methylated. Taken together, these results indicate that ECT2 *in vivo* has a propensity for not interacting with RNA sequences enriched in uridine, unless they possess a m⁶A-methylated DRACH motif.

From *in vivo* studies, two domains of the ECT2 N-terminus, tagged as N3.2/SLIM (aa 48–86) and N8 (aa 355–394), are required for its function in leaf emergence [20]. Interestingly, our study indicates that the N8 domain is potentially important for ECT2’s m⁶A RNA binding activity, since N8 covers the 20 last residues of region 303–376 plus the SH domain, which are both required for higher affinity binding *in vitro*. Together, these studies provide a possible explanation as to why N8 and N3.2 have additive physiological roles, with N8 that would mediate m⁶A-methylated RNA interaction, while N3.2/SLIM mediates ECT2 interaction with a poly(A) binding protein [20]. In addition, a very recent study concerning the *in vivo* characterization of the N8 domain [30] shows the existence of an interaction between ECT2 N8 and the ALBA RNA binding protein and suggests that ALBA may regulate ECT2 RNA binding *in vivo*. While our results show that *in vitro* the SH domain (which is a part of N8) significantly increases ECT2 affinity to m⁶A RNA, *in vivo* a more complex scenario is possible where ALBA proteins may also facilitate ECT2 binding to specific pyrimidine-rich m⁶A sites. Thus, ECT2 RNA binding may be subjected to both *cis* and *trans* regulations, and future experiments shall investigate this in more detail.

In addition to ECT2 IDR, we report on the importance of structural elements close to its YTH domain, some of which, like the $\alpha 0$ and $\alpha 4$ helices, have already been identified in other YTH proteins. AlphaFold predictions from ECT2 and sequence comparisons strongly suggest the presence of the $\alpha 0$ and $\alpha 4$

shown in bold with the methylated or non-methylated adenosine. Probe III was designed from probe I by replacing uridines with adenosines (except in the DRACH motif). Probe IV was also designed from probe I by inserting the motifs described in the work by Arribas-Hernandez and colleagues [19]. This probe contains two UNUNU motifs (in green), a URURU motif (in orange), a YYY motif (in violet) and the DRACH motif (in red and bold). (B). EMSA gels obtained with his-sumo tagged full-length and truncated ECT2 proteins. In each assay, 10 nM of methylated (m⁶A) or non-methylated (A) probes were incubated with increasing concentrations of purified proteins (from 0 to 500 nM). Different probes were used as indicated. Note that EMSA gels shown for probe I are the same in Figures 3B and 4B. The arrows indicate the free probe, and the stars the probe/protein complexes. The red arrows indicate the probe/protein complexes detected with the non-methylated probe III. (C). Signals of the m⁶A free probes were quantified with the ImageLab software. Graphs show the mean and standard deviation of at least three independent experiments. The curve fittings were obtained using the PRISM software. Each graph allows to compare the curve fittings obtained for one protein and the three different 42 nt methylated RNA probes.

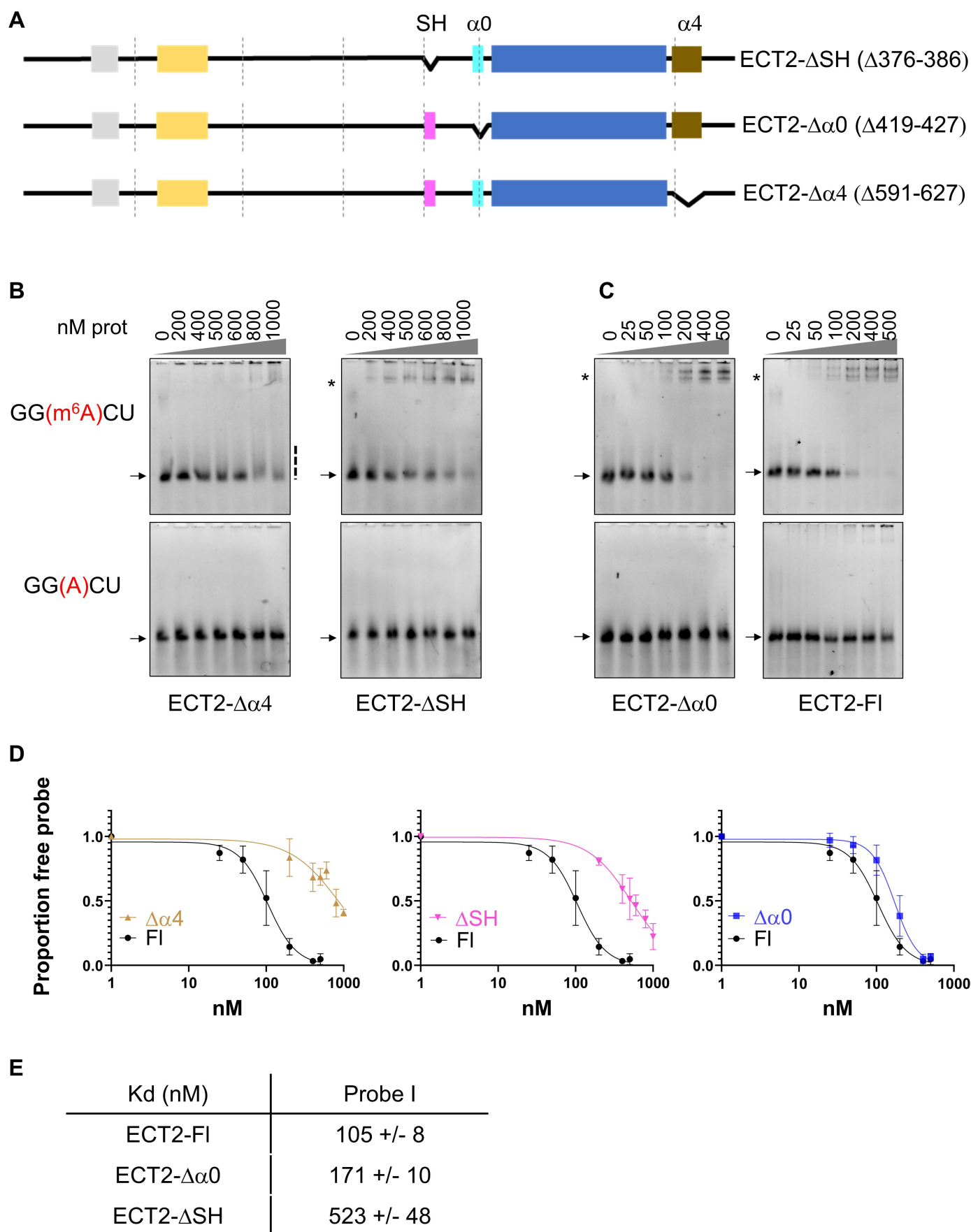


Figure 5. Structural elements next to ECT2 YTH domain impact on its binding to m⁶A. (A). Graphical representation of the ECT2 deletion mutants. The three structural elements detected through AlphaFold are represented in addition to the YTH domain: SH (3₁₀ helix, aa 376-386) in magenta, $\alpha 0$ helix (3₁₀ helix, aa 419-427) in blue and $\alpha 4$ /C-terminal helix (α helix, aa 591-627) in brown. (B-C). EMSA gels obtained with the different his-sumo tagged deletion mutants and the his-sumo tagged full-

helices that are located, respectively, on the N- and C-terminal sides of the YTH sequence, as well as a previously unrecognized 3_{10} helix (aa 376–386) that we named SH for Small Helix, located on the N-terminal part of ECT2's YTH sequence upstream of $\alpha 0$. These structural elements are not sufficient for ECT2 YTH domain to form a stable complex with m^6A -RNA in our EMSAs, as shown through the use of the ECT2–376 protein, yet both of them are necessary. The $\alpha 0$ helix seems to be dispensable and only has a moderate effect on the affinity regulation, whereas the SH strongly impacts on the affinity and the $\alpha 4$ helix is absolutely necessary for the formation of a m^6A -RNA protein complex that resists gel migration. Since the two upstream helices (SH and $\alpha 0$) and the downstream $\alpha 4$ are predicted to share hydrogen bonds and to fold back over ECT2 core, YTH domain (Suppl. Figure S5), this suggests that together they may form a unique structural element which contributes to ECT2 binding to m^6A . Noticeably, *in vivo*, deletion of ECT2 last 56 residues (aa 612–667) does not affect its physiological role in leaf emergence even though part of $\alpha 4$ appears to be deleted [20]. Yet, it cannot be concluded that the partially truncated $\alpha 4$ helix has no functional importance, since a large portion of the $\alpha 4$ helix (20 residues) remains expressed and this may be enough for its function in ECT2 RNA binding activity. Whatever is the exact *in vivo* relevance of ECT2 $\alpha 4$ helix, our study shows the importance of structural elements that are in close proximity to their YTH domain and that may form together a unique and functionally important structural element.

Among flowering plants, the joint presence of SH, $\alpha 0$ and $\alpha 4$ domains appears conserved only in the DFA and DFB clades. While an $\alpha 0$ is predicted to exist in all YTHDF angiosperm proteins [5], only members of the DFA and DFB share a well-conserved SH domain, indicating a possible difference in the mode of binding to m^6A -methylated RNAs for members of the DFC/D subclades (Suppl. Figures S2, and S7–8).

On a broader evolutionary perspective, the YTH domain of the fly YTHDC1 protein seems to behave like ECT2 YTH domain. Indeed, an $\alpha 0$ - $\alpha 4$ extended YTH domain of YTHDC1 fails to form a stable complex with an m^6A -RNA probe as tested by EMSA [12]. In contrast, YTH domains from the yeasts *Z. rouxii* Mrb1 protein and *S. cerevisiae* Pho92 protein, as well as human YTHDC2, lack the $\alpha 0$ and $\alpha 4$ helices (Suppl. Figure 8) yet they are self-sufficient to interact with a short (5–11nt) m^6A RNA *in vitro*, indicating that these YTH domains must present slight structural differences responsible for their differential capacity to bind, or not bind, m^6A -methylated RNA in a self-sufficient manner. The human YTHDF1-2-3 and YTHDC1, as well as rat YTHDC1 proteins possess $\alpha 0$ and $\alpha 4$ helices, according to structural studies [8–10] or AlphaFold prediction (Suppl. Figure 8). Self-sufficient binding to m^6A -methylated RNA has been demonstrated but only in

the case of their extended YTH domain (which includes the peripheral $\alpha 0$ and $\alpha 4$ helices), and not yet for their core YTH domain only. This is also the case for the Arabidopsis CPSF30-L YTH reader. Whatever the exact contribution of $\alpha 0$ and $\alpha 4$ helices are in these YTH proteins, these later observations illustrate that the existence of regulatory regions in proximity to the YTH domain might not be not limited to the readers of the flowering plants but might be widespread among eukaryotes. Furthermore, our results also show that regulatory regions might not be limited to the structural elements present in the close proximity of the YTH domain but also present in surrounding IDRs. Knowing that the vast majority of YTH proteins possess at least one large IDR, in addition to the $\alpha 0$ and $\alpha 4$ helices, a sizable proportion of YTH proteins may possess peptide sequences that regulate the binding of their YTH domains to m^6A -methylated RNA with *in vivo* relevance that remains to be explored.

Acknowledgments

We thank the EMBL (Heidelberg, Germany) for providing the expression vector pETM11-SUMO3-eGFP, and Ramesh Pillai for providing the expression vector pETM11SS. We thank Jean-Marc Deragon for providing the sequences of the angiosperm YTHDF proteins. We thank Andr es Palencia and Ramesh Pillai for their helpful comments. AV thanks the R egion Auvergne Rh one Alpes (Project R21105CC; allocation RPH21004CCA), Canceropole CLARA (Oncostarter), MSD-Avenir (ERiCAN) and MTREC (ANR-21-CE11-0021) in the frame of which this work was conducted in Grenoble, at the Institute for Advanced Biosciences. CBA thanks the “Laboratoires d’Excellences (LABEX)” TULIP (ANR-10-LABX-41) and of the “ cole Universitaire de Recherche (EUR)” TULIP-GS (ANR-18-EURE-0019), in the frame of which the work conducted at LGDP in Perpignan was set. This work used the platforms of the Grenoble Instruct-ERIC center (ISBG; UAR 3518 CNRS-CEA-UGA-EMBL) within the Grenoble Partnership for Structural Biology (PSB), supported by FRISBI (ANR-10-INSB-0005-02) and GRAL, financed within the University Grenoble Alpes graduate school (Ecoles Universitaires de Recherche) CBH-EUR-GS (ANR-17-EURE-0003). The Institut de Biologie Structurale acknowledges integration into the Interdisciplinary Research Institute of Grenoble. MRJ is laureate of the Impulsience  program of the Fondation Bettencourt Schueller.

Disclosure statement

No potential conflict of interest was reported by the author(s).

Funding

The study was supported by a grant from the French Agence Nationale pour la Recherche (ANR) “Heat-EpiRNA” (ANR-17-CE20-007-01) to CBA and AV.

Author contributions

DSB, CBA and AV conceived and designed the experiments. DSB, CK, KY, CGL, JFF did the cloning. DSB, CK, and KY did the production of

length ECT2 (ECT2-fl). Each purified protein was incubated with 10 nM of methylated RNA probe (probe I, see Figure 3A). The protein concentration ranged from 0 to 1000 nM for the ECT2- $\Delta\alpha 4$ and ECT2- Δ SH mutants (B), and from 0 to 500 nM for the ECT2- $\Delta\alpha 0$ mutant and ECT2-fl (C). The arrows and stars respectively indicate the free probe and the probe/protein complexes, and the dashed line, the smear observed when unstable complex. (D–E). Quantification of the signals of the m^6A free probes using the ImageLab software. Graphs show the mean and standard deviation of three independent experiments. The fitting curves (D) and apparent k_{ds} (E) were obtained using the PRISM software.

proteins in *E. coli*. DSB did protein purifications and EMSAs. ED and MRJ acquired the ^1H NMR spectrum.

DSB, CBA and AV analysed the data, and wrote the paper. All authors reviewed the results and approved the final version of the manuscript.

Data availability statement

Data sharing is not applicable to this article as no datasets were generated or analysed during the current study.

ORCID

Daphné Seigneurin-Berny  <http://orcid.org/0000-0002-7436-9885>

Cécile Bousquet-Antonelli  <http://orcid.org/0000-0002-3909-7976>

André Verdel  <http://orcid.org/0000-0001-6048-3794>

References

- Murakami S, Jaffrey SR. Hidden codes in mRNA: control of gene expression by m(6)A. *Mol Cell*. 2022;82(12):2236–2251. doi: 10.1016/j.molcel.2022.05.029
- Tang J, Chen S, Jia G. Detection, regulation, and functions of RNA N(6)-methyladenosine modification in plants. *Plant Commun*. 2023;4(3):100546. doi: 10.1016/j.xplc.2023.100546
- Flamand MN, Tegowski M, Meyer KD. The proteins of mRNA modification: writers, readers, and erasers. *Annu Rev Biochem*. 2023;92(1):145–173. doi: 10.1146/annurev-biochem-052521-035330
- Zhu T, Roundtree IA, Wang P, et al. Crystal structure of the YTH domain of YTHDF2 reveals mechanism for recognition of N6-methyladenosine. *Cell Res*. 2014;24(12):1493–1496. doi: 10.1038/cr.2014.152
- Scutenaire J, Deragon JM, Jean V, et al. The YTH Domain protein ECT2 is an m 6 a Reader required for normal trichome branching in arabidopsis. *Plant Cell*. 2018;30(5):986–1005. doi: 10.1105/tpc.17.00854
- Stoilov P, Rafalska I, Stamm S. YTH: a new domain in nuclear proteins. *Trends Biochem Sci*. 2002;27(10):495–497. doi: 10.1016/S0968-0004(02)02189-8
- Luo S, Tong L. Molecular basis for the recognition of methylated adenines in RNA by the eukaryotic YTH domain. *Proceedings of the National Academy of Sciences of the USA*; 2014. Vol. 111. p. 13834–13839.
- Xu C, Liu K, Ahmed H, et al. Structural basis for the discriminative recognition of N6-methyladenosine RNA by the human YT521-B homology domain family of proteins. *J Biol Chem*. 2015;290(41):24902–24913. doi: 10.1074/jbc.M115.680389
- Xu C, Wang X, Liu K, et al. Structural basis for selective binding of m6A RNA by the YTHDC1 YTH domain. *Nat Chem Biol*. 2014;10(11):927–929. doi: 10.1038/nchembio.1654
- Theler D, Dominguez C, Blatter M, et al. Solution structure of the YTH domain in complex with N6-methyladenosine RNA: a reader of methylated RNA. *Nucleic Acids Res*. 2014;42(22):13911–13919. doi: 10.1093/nar/gku1116
- Hou Y, Sun J, Wu B, et al. CPSF30-L-mediated recognition of mRNA m(6)A modification controls alternative polyadenylation of nitrate signaling-related gene transcripts in arabidopsis. *Mol Plant*. 2021;14(4):688–699. doi: 10.1016/j.molp.2021.01.013
- Hausmann IU, Bodi Z, Sanchez-Moran E, et al. m(6)A potentiates sxl alternative pre-mRNA splicing for robust drosophila sex determination. *Nature*. 2016;540(7632):301–304. doi: 10.1038/nature20577
- Sun J, Bie XM, Wang N, et al. Genome-wide identification and expression analysis of YTH domain-containing RNA-binding protein family in common wheat. *BMC Plant Biol*. 2020;20(1):351. doi: 10.1186/s12870-020-02505-1
- Flores-Tellez D, Tankmar MD, von Bulow S, et al. Insights into the conservation and diversification of the molecular functions of YTHDF proteins. *PLOS Genet*. 2023;19(10):e1010980. doi: 10.1371/journal.pgen.1010980
- Arribas-Hernandez L, Simonini S, Hansen MH, et al. Recurrent requirement for the m(6)A-ECT2/ECT3/ECT4 axis in the control of cell proliferation during plant organogenesis. *Development*. 2020;147(14):147. doi: 10.1242/dev.189134
- Arribas-Hernandez L, Bressendorff S, Hansen MH, et al. An m 6 A-YTH module controls developmental timing and morphogenesis in arabidopsis. *Plant Cell*. 2018;30(5):952–967. doi: 10.1105/tpc.17.00833
- Wei LH, Song P, Wang Y, et al. The m 6 a Reader ECT2 controls trichome morphology by affecting mRNA stability in arabidopsis. *Plant Cell*. 2018;30(5):968–985. doi: 10.1105/tpc.17.00934
- Martinez-Perez M, Aparicio F, Arribas-Hernandez L, et al. Plant YTHDF proteins are direct effectors of antiviral immunity against an N6-methyladenosine-containing RNA virus. *Embo J*. 2023;42(18):e113378. doi: 10.15252/embj.2022113378
- Arribas-Hernandez L, Rennie S, Koster T, et al. Principles of mRNA targeting via the Arabidopsis m(6)A-binding protein ECT2. *Elife*. 2021;10:10. doi: 10.7554/eLife.72375
- Due Tankmar M, Reichel M, Arribas-Hernandez L, et al. A YTHDF-PABP interaction is required for m 6 a -mediated organogenesis in plants. *EMBO Rep*. 2023;24(12):e57741. doi: 10.15252/embr.202357741
- Timcheva K, Dufour S, Touat-Todeschini L, et al. Chromatin-associated YTHDC1 coordinates heat-induced reprogramming of gene expression. *Cell Rep*. 2022;41(11):111784. doi: 10.1016/j.celrep.2022.111784
- Bradford MM. A rapid and sensitive method for the quantitation of microgram quantities of protein utilizing the principle of protein-dye binding. *Anal Biochem*. 1976;72(1-2):248–254. doi: 10.1016/0003-2697(76)90527-3
- Jumper J, Evans R, Pritzel A, et al. Highly accurate protein structure prediction with AlphaFold. *Nature*. 2021;596(7873):583–589. doi: 10.1038/s41586-021-03819-2
- Yao J, Dyson HJ, Wright PE. Chemical shift dispersion and secondary structure prediction in unfolded and partly folded proteins. *FEBS Lett*. 1997;419(2-3):285–289. doi: 10.1016/S0014-5793(97)01474-9
- Romero P, Obradovic Z, Li X, et al. Sequence complexity of disordered protein. *Proteins*. 2001;42(1):38–48. doi: 10.1002/1097-0134(20010101)42:1<38::AID-PROT50>3.0.CO;2-3
- Ottoz DSM, Berchowitz LE. The role of disorder in RNA binding affinity and specificity. *Open Biol*. 2020;10(12):200328. doi: 10.1098/rsob.200328
- Woodcock CB, Horton JR, Zhou J, et al. Biochemical and structural basis for YTH domain of human YTHDC1 binding to methylated adenine in DNA. *Nucleic Acids Res*. 2020;48(18):10329–10341. doi: 10.1093/nar/gkaa604
- Calabretta S, Richard S. Emerging roles of disordered sequences in RNA-Binding proteins. *Trends Biochem Sci*. 2015;40(11):662–672. doi: 10.1016/j.tibs.2015.08.012
- Van Leene J, Han C, Gadeyne A, et al. Capturing the phosphorylation and protein interaction landscape of the plant TOR kinase. *Nat Plants*. 2019;5(3):316–327. doi: 10.1038/s41477-019-0378-z
- Reichel M, Tankmar MD, Rennie S, et al. ALBA proteins facilitate cytoplasmic ythdf-mediated reading of m⁶A in plants. *bioRxiv*. 2024:2024.06.06.597704. 2024.