



HAL
open science

Novel biocompatible alloys via peptides surface engineering

Olivier Monasson, Alima Chali, Sonia Touharia, Adrien Mourgout, Farzin Arjmand, Souad Ammar, Guy Dirras, Michel Boissiere, Elisa Peroni

► **To cite this version:**

Olivier Monasson, Alima Chali, Sonia Touharia, Adrien Mourgout, Farzin Arjmand, et al.. Novel biocompatible alloys via peptides surface engineering. A decade of Peptide Materials, Oct 2023, Sorrento, Italy. . hal-04725375

HAL Id: hal-04725375

<https://hal.science/hal-04725375v1>

Submitted on 8 Oct 2024

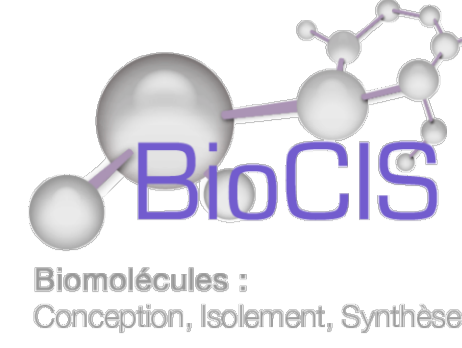
HAL is a multi-disciplinary open access archive for the deposit and dissemination of scientific research documents, whether they are published or not. The documents may come from teaching and research institutions in France or abroad, or from public or private research centers.

L'archive ouverte pluridisciplinaire **HAL**, est destinée au dépôt et à la diffusion de documents scientifiques de niveau recherche, publiés ou non, émanant des établissements d'enseignement et de recherche français ou étrangers, des laboratoires publics ou privés.

Novel biocompatible alloys via peptides surface engineering

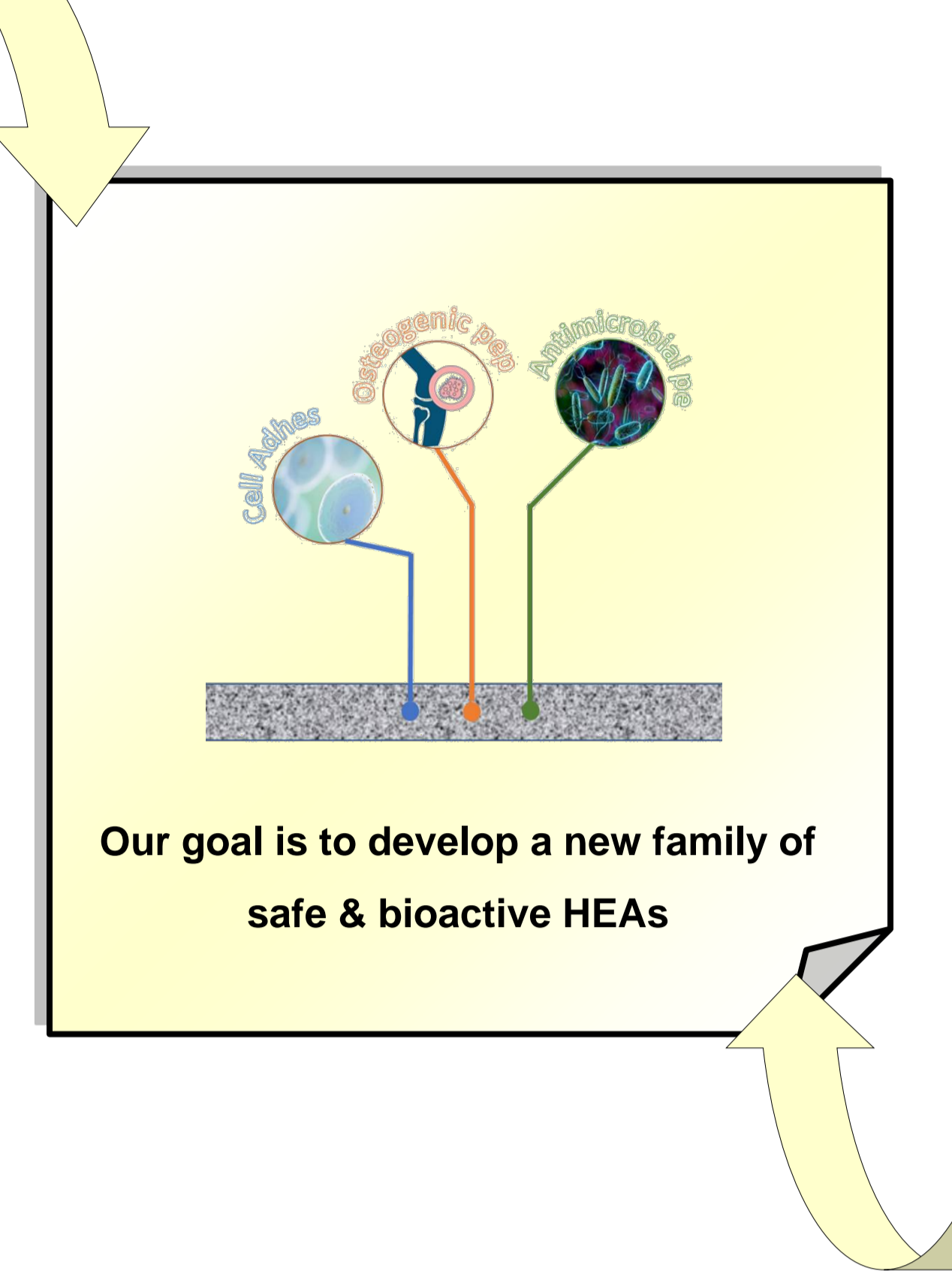
Alima Chali,^{1,2} Sonia Touharia,^{1,3} Olivier Monasson,¹ Adrien Mourgout,⁴ Farzin Arjmand,² Souad Ammar,² Guy Dirras,⁴ Michel Boissiere,³ Elisa Peroni¹

¹CY Cergy Paris Université, CNRS, BioCIS, 95000, Cergy Pontoise, France; ²Université Paris Cité, CNRS, ITODYS (UMR 7086), 15 rue Jean-Antoine de Baif 75205 Paris, France; ³CY Cergy Paris Université, ERRMECe, 95000, Cergy Pontoise, France; ⁴Université Sorbonne Paris Nord, LSPM, CNRS-UPR 3408, 99 avenue J.B. CLEMENT, 93430 VILLETANEUSE
Olivier.monasson@cyu.fr



Modern solutions in biomedical engineering imply innovative strategies at the frontier between chemistry, material science, and biology to develop biofunctionalized substitutes able to restore, maintain or improve tissue integrity. These substitutes are materials that are designed to positively interact with a living biological system for a therapeutic purpose while introducing mechanical, physical and/or chemical functions to the body. Commonly speaking, they are defined as biomaterials [1]. It is of paramount importance to enhance the bioactivity of materials scaffolds by combining biomaterials with biological cues to drive a particular tissue function [2]. In practice, biocompatibility can be achieved by first choosing bioinert solids and then coating them with bioactive molecules.

Interestingly, different biological effects may be targeted when implanting a biomaterial by combining peptides from diverse nature. In the field of bone regeneration, the use of BMP-2 derived peptides is of crucial importance to promote osteodifferentiation of mesenchymal stem cells (MSCs) and guide bone formation [3]. Peptides are easily modifiable for functionalization of surfaces, reaching, in some cases, similar biological activity to the total protein for a specific target [4]. A simple though useful approach to improve the performance of peptidic molecules is to combine peptide sequences with synergistic or complementary effects, enabling to address two or more biological effects. In this way, multifunctionality may be installed on biomaterials without using proteins

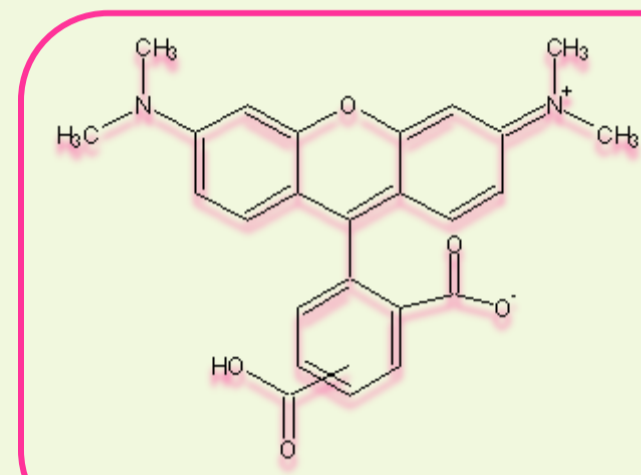


High-entropy alloys (HEAs) are a novel class of biocompatible materials known for their exceptional mechanical properties and corrosion resistance. These alloys generally consist of five or more principal elements in equimolar or non/near-equimolar ratios, with elemental concentrations ranging from 5% to 35%. Among these HEAs, some of them called BioHEAs have been specifically developed for biomedical applications. Notable examples include equiatomic and non-equiatomic alloys like TiZrNbTaHf, TiZrNbTaMo, which have attracted significant attention as a new generation of biomaterials. However the integration of such materials as implants into bone is only addressed as a passive process. In such an approach, the fixation is mainly mechanical, with anchorage failure. Therefore, the increase of the biointegration of the implant and the bone tissue is becoming a research hotspot. Such an active integration is usually achieved by grafting bioactive molecules on the surface of the metal implant.

Proadhesion and osteogenic peptides synthesis for multifunctional alloy coating

Peptide selection

	Peptide sequences	Description
P1	KIPKASSVPELSAISTLYL	These 2 peptides sequences are the BMP-2(73-92) fragment of the Bone morphogenetic proteins BMP-2, that is the most investigated and potent osteoinductive growth factors in bone regeneration[5].
P2	KIPKASSVPELSAISTLYL(TAMRA)PEG ₉ -NH ₂	
P3	TAMRA-GGCRGD	RGD peptide has been demonstrated to be able to increase the expression of osteogenic markers and mineralization in hMSCs culture[6]



Fluorescent Probe
5(6)-Carboxytetramethylrhodamine (TAMRA).
 $\lambda_{ex} = 555 \text{ nm}$ et $\lambda_{em} = 580 \text{ nm}$

Synthetic conditions:

Peptides were synthesized in solid-phase using a microwave-assisted protocol (MW-SPPS) on a Liberty Blue™ automated peptide synthesizer (CEM Corporation, Matthews, NC, United States), following the Fmoc/tBu strategy.

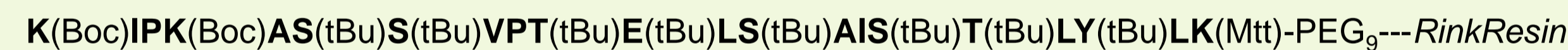
The introduction of an additional lysine (Lys⁹³) in the BPM-2(73-92) fragment allows the introduction of the fluorescent probe in C terminus by coupling of the carboxylic moiety of TAMRA to the amino function of the side chain through the formation of an amide bond. For this purpose, we chose 4-methyltrityl group (Mtt) which is removed in very weak acid conditions. In order to increase the peptide solubility and to facilitate the on resin TAMRA coupling, a PEG9 linker has been introduced in C terminus.

Peptide assembly was performed by repeating the standard MW-SPPS coupling cycle for each amino acid, using Fmoc-protected amino acids (5 equiv, 0.2 M in DMF), OxymaPure® (5 equiv, 1 M in DMF), and DIC (5 equiv, 0.5 M in DMF).

Polyethylene glycol-based spacer (PEG), containing 9-atoms chain (Fmoc-8-amino-3,6-dioxaoctanoic acid) (2.5 equiv) and TAMRA were coupled in C and N terminal position of peptide P2 and P3, respectively, as follows: Fmoc-8-amino-3,6-dioxaoctanoic acid (2.5 equiv) and TAMRA (2,5 equiv), TBTU (2,5 equiv) and DIPEA (3,5 equiv) were dissolved in DMF with a final dilution of 1 mL DMF for 100 mg of resin. Couplings were performed 45 min at room temperature

Mtt deprotection

After the Lys(Mtt) loading, the synthesis was carried out with MW-assisted SPPS strategy. The following peptidil-resin was then washed several times with DCM and dried under vacuum:



A satisfactory deprotection of Lys(Mtt) was accomplished in just three cycles of 1% TFA in DCM. The reaction was monitored by RP-HPLC from collected solutions.

Cleavage from the resin and side-chain deprotection were achieved by treatment with a TFA/TIS/water solution (95 : 2.5 : 2.5 v/v/v, 1ml/100mg of resin-bound peptide).

Lyophilized crude peptides were purified by semi-preparative Waters RP-HPLC (Milford, MA, USA) on a Phenomenex Jupiter C18 (10 μm, 250mm×10mm) column at 4 ml/min. The solvent systems used were 0.1% TFA in H₂O (A) and 0.1% TFA in CH₃CN (B), and the gradients used are presented in Table 1. All peptides were obtained with a purity >95%.

Characterization of the peptides was performed by analytical RP-UPLC ESI-MS (Waters Acquity UPLC coupled to a Waters 3100 ESI-SQD MS) supplied with an Aeris Widepore C1 200A (3.6 μm 250 × 4.6 mm) column at 25 °C at 0.6 mL/min with solvent systems A (0.1% TFA in H₂O) and B (0.1% TFA in CH₃CN). Data were acquired and processed using MassLynx software (Waters, Milford, MA, USA).

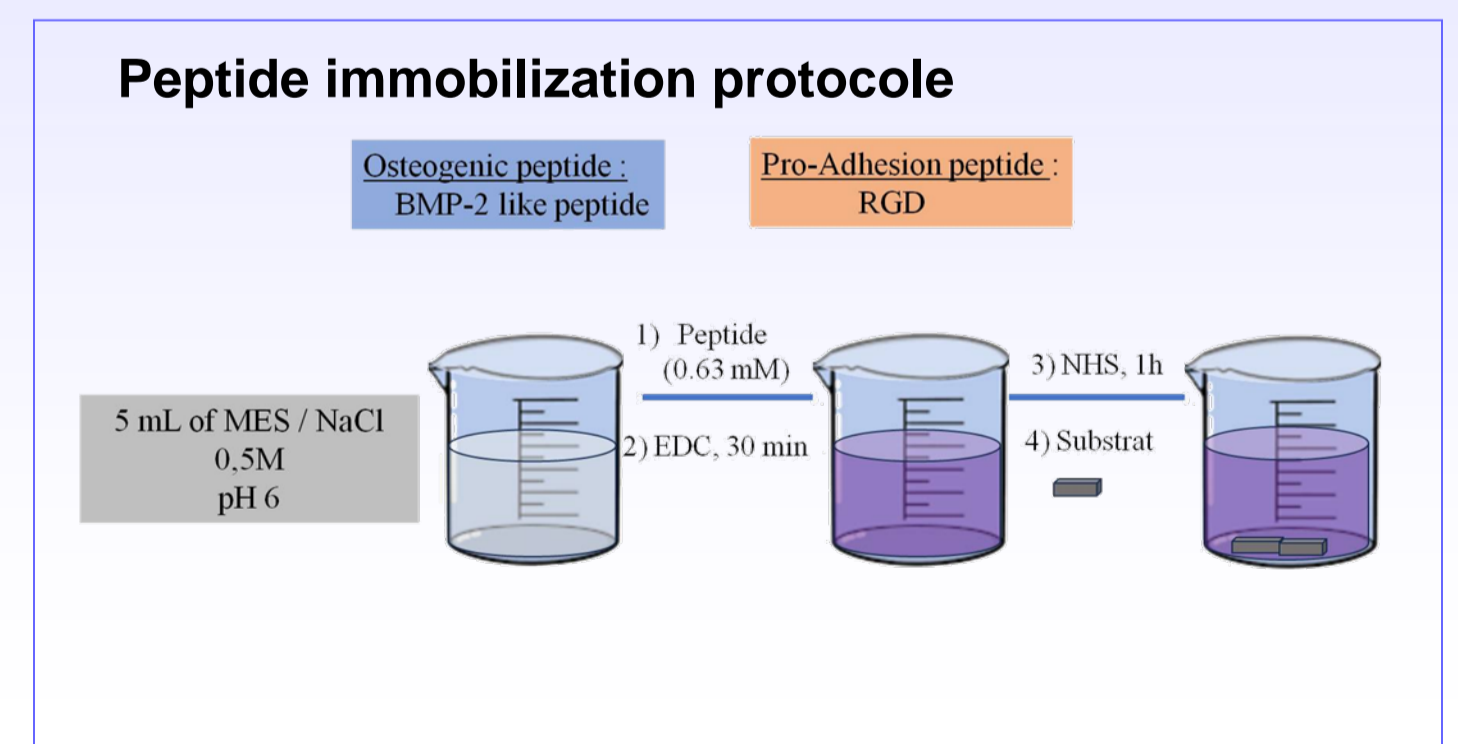
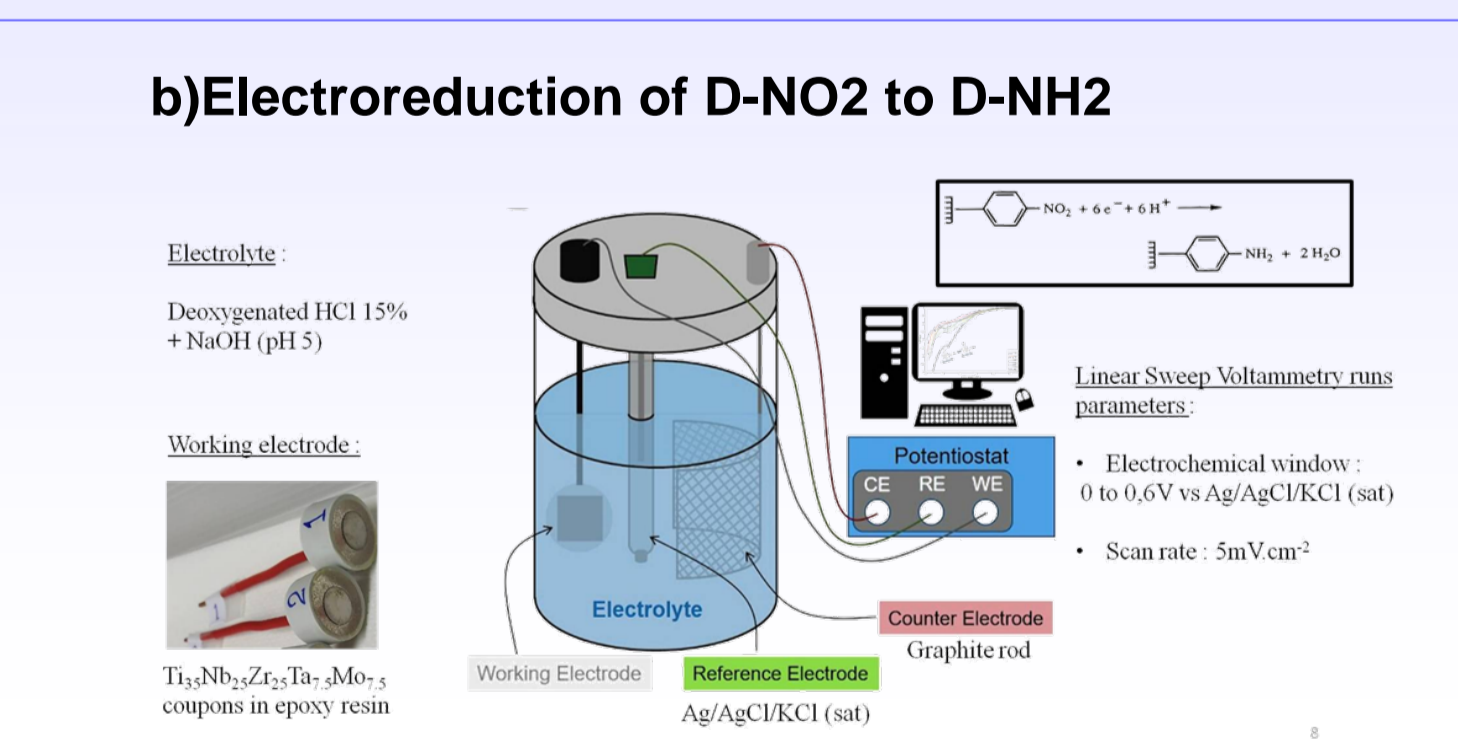
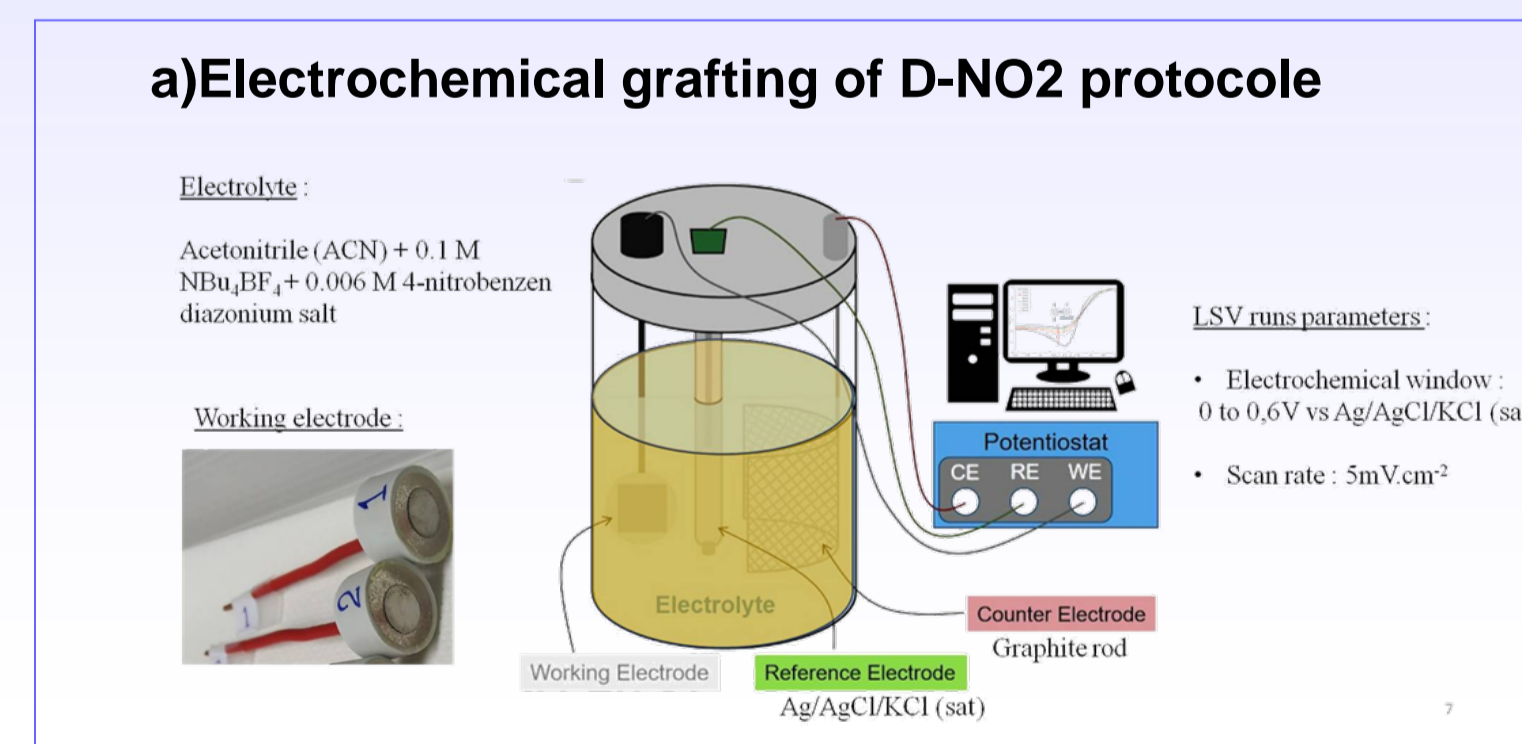
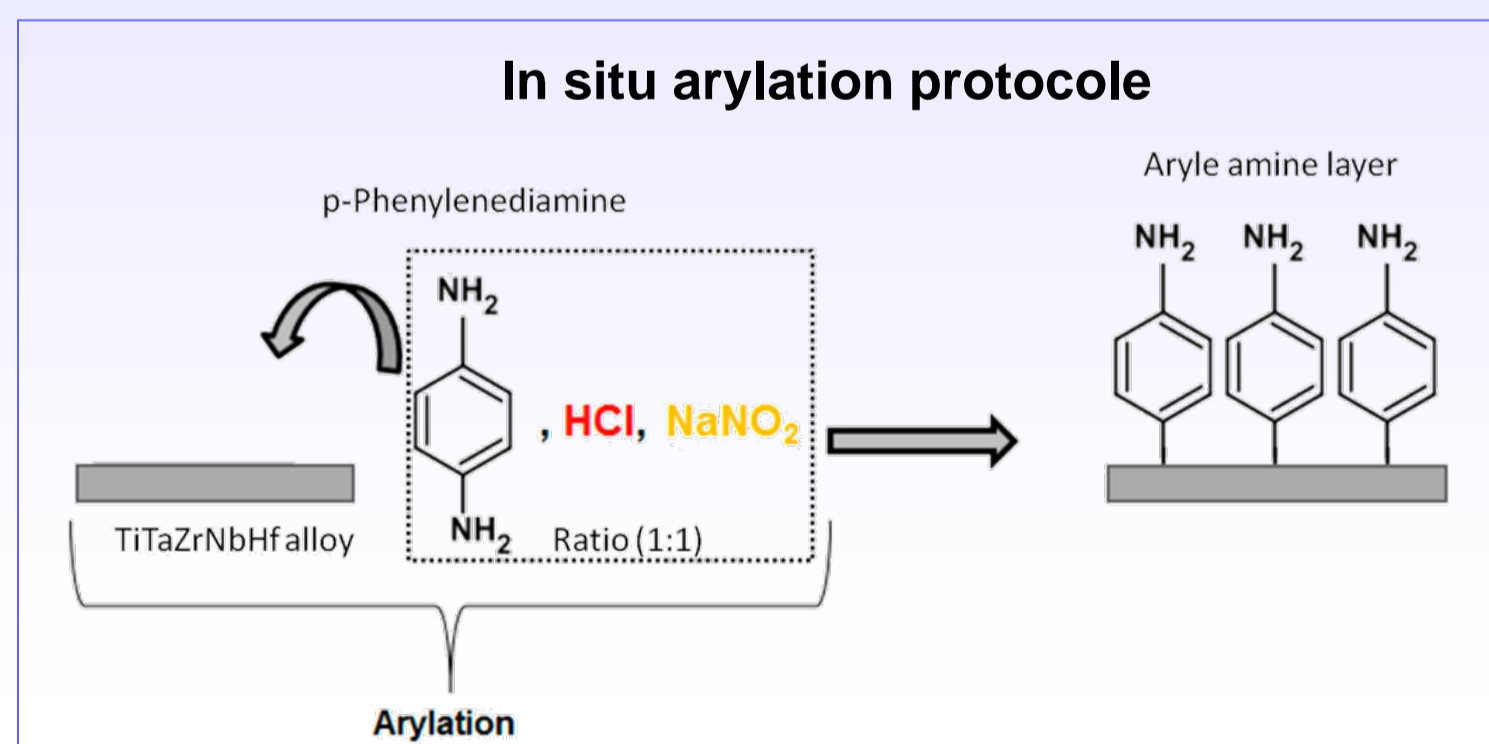
	HPLC Rt (min)	HPLC gradient (%)	ESI-MS found (calc)
P1	1min85	10 - 90	[M+H] ⁺ =2118,31 (2118,53)
P2	2min12	30 - 50	[M+H] ⁺ =2805,12 (2805,23)
P3	1min35	20-60	[M+H] ⁺ =979,96 (976,06)

HEAs Surface functionalization

The final goal of the project is the development of safe, non-destructive and biocompatible strategies to modify the surface of HEAs for applications in the field of medical implants. The main aim of this research is to enhance the osseointegration of two types of arc-melted and laser-based HEAs by immobilizing peptides providing a favorable medium to biological reactions on the alloy surface. This was accomplished by modification of the alloy surfaces by the aryl amine coating thanks to diazonium salt chemistry (in situ arylation or diazonium salt electrochemical grafting) and then covalent bonding of the peptide.

2 types of High Entropy Alloys :

TiTaZrNbHf
TiTaZrNbMo

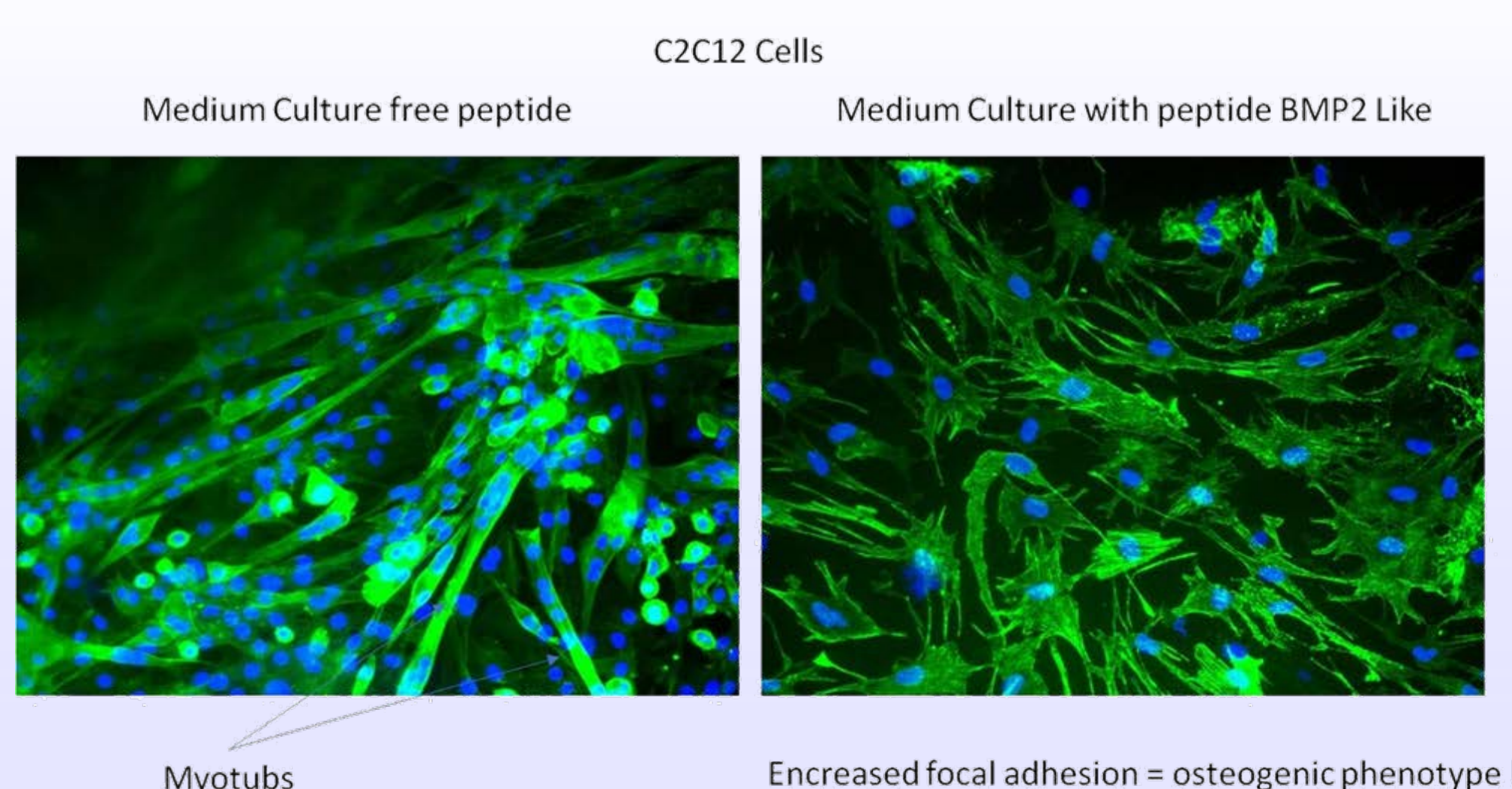


Preliminary Biological data

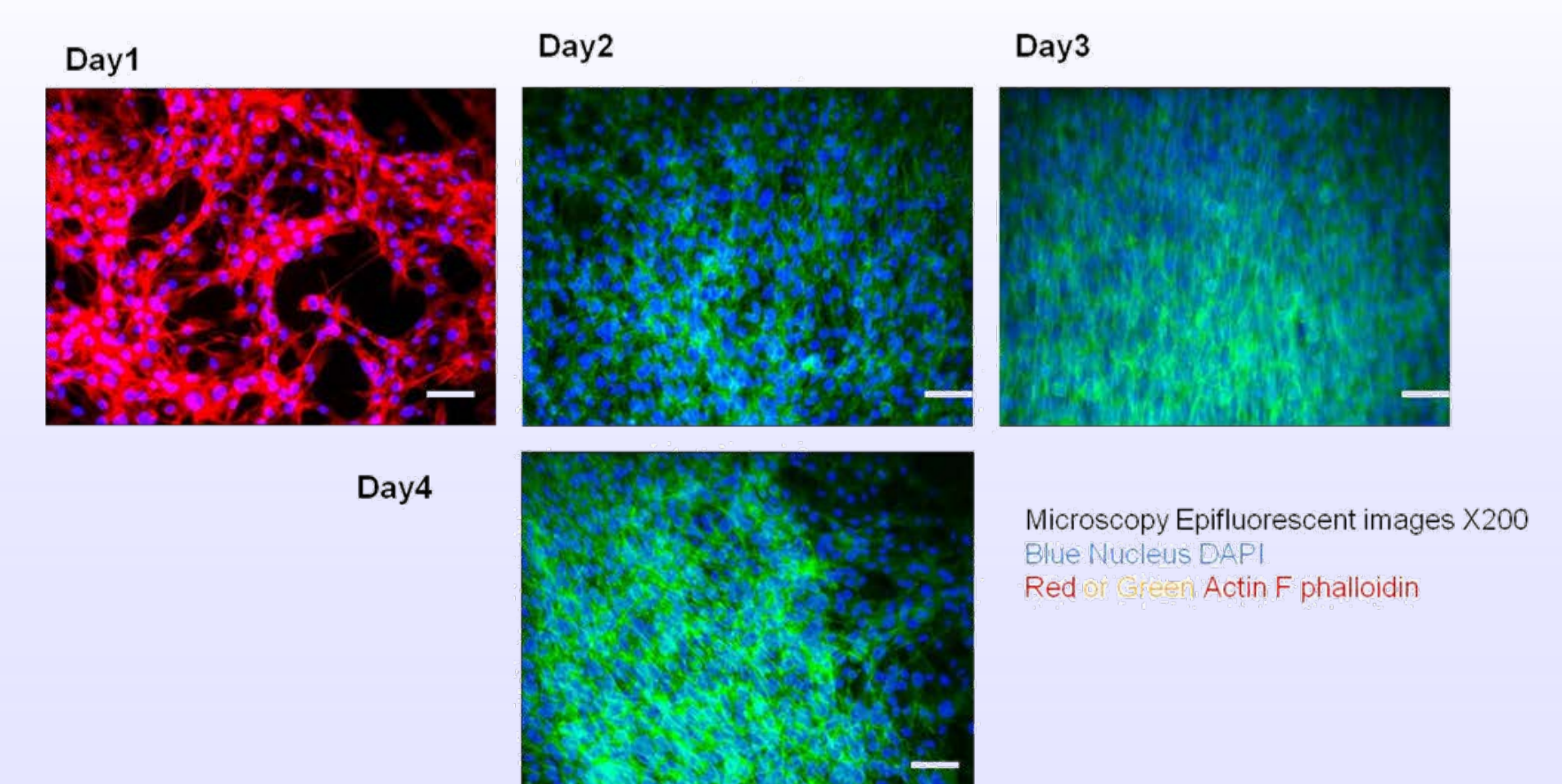
Assessment of the safety and biological activity of the BMP2 like peptides in cultured cell line models

In vitro cytotoxicity evaluation of bio-functionalized alloy surfaces and assessment of their biological performances toward osseointegration

BMP2 like peptide bioactivity → change in C2C12 morphology (21 days)



Morphology of cell incubated with the alloy



References:

- [1] Will Williams, D.F. *Biomaterials* **2009**, 30, 5897–5909. [2] Förster Y, Rentsch C, Schneiders W, et al. *Biomater*. **2012**; 2(3): 149- 157. [3] Mas-Moruno C, et al. *ACS Appl. Mater. Interfaces* **2014**, 6, 9, 6525–36. [4] Williams DF. *Biomaterials*. **2011**;32(18):4195-4197. [5]. A. Saito, et al. *J. Biomed. Mater. Res.* **2005**, 72 77–82 [6] A.K. Jha, et al *PLoS One* **2014**, 9, e98640