



HAL
open science

Amivantamab plus lazertinib versus osimertinib in first-line EGFR-mutant advanced non-small-cell lung cancer with biomarkers of high-risk disease: a secondary analysis from MARIPOSA

E. Felip, B. C. Cho, V. Gutiérrez, A. Alip, B. Besse, S. Lu, A. I. Spira, N. Girard, R. Califano, S. M. Gadgeel, et al.

► To cite this version:

E. Felip, B. C. Cho, V. Gutiérrez, A. Alip, B. Besse, et al.. Amivantamab plus lazertinib versus osimertinib in first-line EGFR-mutant advanced non-small-cell lung cancer with biomarkers of high-risk disease: a secondary analysis from MARIPOSA. *Annals of Oncology*, 2024, 35 (9), pp.805-816. 10.1016/j.annonc.2024.05.541 . hal-04724689

HAL Id: hal-04724689

<https://hal.science/hal-04724689v1>

Submitted on 6 Nov 2024

HAL is a multi-disciplinary open access archive for the deposit and dissemination of scientific research documents, whether they are published or not. The documents may come from teaching and research institutions in France or abroad, or from public or private research centers.

L'archive ouverte pluridisciplinaire **HAL**, est destinée au dépôt et à la diffusion de documents scientifiques de niveau recherche, publiés ou non, émanant des établissements d'enseignement et de recherche français ou étrangers, des laboratoires publics ou privés.



Distributed under a Creative Commons Attribution - NonCommercial - NoDerivatives 4.0 International License

ORIGINAL ARTICLE

Amivantamab plus lazertinib versus osimertinib in first-line *EGFR*-mutant advanced non-small-cell lung cancer with biomarkers of high-risk disease: a secondary analysis from MARIPOSA

E. Felip^{1*}, B. C. Cho², V. Gutiérrez³, A. Alip⁴, B. Besse⁵, S. Lu⁶, A. I. Spira⁷, N. Girard^{8,9}, R. Califano^{10,11}, S. M. Gadgeel¹², J. C.-H. Yang¹³, S. Yamamoto¹⁴, K. Azuma¹⁵, Y. J. Kim¹⁶, K.-H. Lee¹⁷, P. Danchaivijitr¹⁸, C. G. Ferreira¹⁹, Y. Cheng²⁰, M. A. N. Sendur²¹, G.-C. Chang^{22,23}, C.-C. Wang²⁴, K. Prabhash²⁵, Y. Shinno²⁶, D. Stroyakovskiy²⁷, L. Paz-Ares²⁸, J. R. Rodriguez-Cid²⁹, C. Martin³⁰, M. R. G. Campelo³¹, H. Hayashi³², D. Nguyen³³, P. Tomasini³⁴, M. Gottfried³⁵, C. Dooms³⁶, A. Passaro³⁷, M. Schuler³⁸, A. C. Z. Gelatti³⁹, S. Owen⁴⁰, K. Perdrietz⁴¹, S.-H. I. Ou⁴², J. C. Curtin⁴³, J. Zhang⁴³, M. Gormley⁴³, T. Sun⁴⁴, A. Panchal⁴⁵, M. Ennis⁴³, E. Fennema⁴⁶, M. Daksh⁴⁴, S. Sethi⁴³, J. M. Bauml⁴³ & S.-H. Lee⁴⁷

¹Medical Oncology Service, Vall d'Hebron Institute of Oncology (VHIO), Vall d'Hebron Barcelona Hospital Campus, Universitat Autònoma de Barcelona, Barcelona, Spain; ²Division of Medical Oncology, Yonsei Cancer Center, Yonsei University College of Medicine, Seoul, Republic of Korea; ³Medical Oncology Department, Hospital Regional Universitario de Málaga y Virgen de la Victoria, IBIMA, Málaga, Spain; ⁴Clinical Oncology Unit, Faculty of Medicine, University of Malaya, Kuala Lumpur, Malaysia; ⁵Paris-Saclay University, Gustave Roussy, Villejuif, France; ⁶Shanghai Lung Cancer Center, Shanghai Chest Hospital, School of Medicine, Shanghai Jiao Tong University, Shanghai, China; ⁷Virginia Cancer Specialists, Fairfax, VA, USA; ⁸Institut du Thorax Curie-Montsouris, Paris, France; ⁹Paris Saclay University, Université de Versailles Saint-Quentin-en-Yvelines, Versailles, France; ¹⁰Department of Medical Oncology, The Christie NHS Foundation Trust, Manchester, UK; ¹¹Division of Cancer Sciences, The University of Manchester, Manchester, UK; ¹²Department of Internal Medicine, Henry Ford Cancer Institute, Detroit, MI, USA; ¹³National Taiwan University Cancer Center and National Taiwan University Hospital, Taipei, Taiwan; ¹⁴Ehime University Hospital, Toon, Ehime; ¹⁵Kurume University School of Medicine, Kurume, Japan; ¹⁶Seoul National University Bundang Hospital, Seoul National University College of Medicine, Seongnam, Republic of Korea; ¹⁷Medical Department, Chungbuk National University Hospital, Cheongju, Republic of Korea; ¹⁸Division of Medical Oncology, Department of Medicine, Faculty of Medicine, Siriraj Hospital, Mahidol University, Bangkok, Thailand; ¹⁹Oncoclinicas&CO/MedSir, Rio de Janeiro, Brazil; ²⁰Jilin Cancer Hospital, Changchun, China; ²¹Department of Medical Oncology, Ankara Bilkent City Hospital and Ankara Yıldırım Beyazıt University, Ankara, Turkey; ²²School of Medicine and Institute of Medicine, Chung Shan Medical University, Taichung, Taiwan; ²³Division of Pulmonary Medicine, Department of Internal Medicine, Chung Shan Medical University Hospital, Taichung, Taiwan; ²⁴Division of Pulmonary & Critical Care Medicine, Kaohsiung Chang Gung Memorial Hospital, Kaohsiung, Taiwan; ²⁵Department of Medical Oncology, Tata Memorial Centre, HBNI, Mumbai, India; ²⁶Department of Thoracic Oncology, National Cancer Center Hospital, Tokyo, Japan; ²⁷Healthcare Department, Moscow City Oncology Hospital No. 62, Moscow, Russia; ²⁸CNIO-H120 Lung Cancer Unit, University Hospital 12 de Octubre, Universidad Complutense de Madrid and CIBERONC, Madrid, Spain; ²⁹Médica Sur, Ciudad de México, CDMX, Mexico; ³⁰Thoracic Oncology Unit and Clinical Research Unit, Department of Medical Oncology, Alexander Fleming Cancer Institute, Buenos Aires, Argentina; ³¹Medical Oncology, Hospital Universitario A Coruña, A Coruña, Spain; ³²Department of Medical Oncology, Kindai University Faculty of Medicine, Osaka, Japan; ³³City of Hope National Medical Center, Duarte, CA, USA; ³⁴Aix Marseille University, APHM, INSERM, NCRS, CRCM, Hôpital de la Timone, Multidisciplinary Oncology & Therapeutic Innovations Department, Marseille, France; ³⁵Meir Medical Center, Kfar-Sava, Israel; ³⁶Respiratory Oncology Unit, University Hospitals Leuven, Leuven, Belgium; ³⁷Division of Thoracic Oncology, European Institute of Oncology IRCCS, Milan, Italy; ³⁸West German Cancer Center, Department of Medical Oncology, University Hospital Essen, Essen, Germany; ³⁹Uniao Brasileira de Educação e Assistência-Hospital Sao Lucas da PUCRS, Porto Alegre-RS, Brazil; ⁴⁰Department of Oncology, McGill University, Montréal, QC, Canada; ⁴¹William Osler Health System, Brampton, ON, Canada; ⁴²Chao Family Comprehensive Cancer Center, University of California Irvine School of Medicine, Orange, CA, USA; ⁴³Janssen Research & Development, Spring House, PA, USA; ⁴⁴Janssen Research & Development, Raritan, NJ, USA; ⁴⁵Janssen Research & Development, High Wycombe, UK; ⁴⁶Janssen Research & Development, San Diego, CA, USA; ⁴⁷Samsung Medical Center, Sungkyunkwan University School of Medicine, Seoul, Republic of Korea



Available online 26 June 2024

Background: Amivantamab-lazertinib significantly prolonged progression-free survival (PFS) versus osimertinib in patients with epidermal growth factor receptor (*EGFR*)-mutant advanced non-small-cell lung cancer [NSCLC; hazard ratio (HR) 0.70; $P < 0.001$], including those with a history of brain metastases (HR 0.69). Patients with *TP53* co-mutations, detectable circulating tumor DNA (ctDNA), baseline liver metastases, and those without ctDNA clearance on treatment have poor prognoses. We evaluated outcomes in these high-risk subgroups.

Patients and methods: This analysis included patients with treatment-naïve, *EGFR*-mutant advanced NSCLC randomized to amivantamab-lazertinib ($n = 429$) or osimertinib ($n = 429$) in MARIPOSA. Pathogenic alterations were identified by next-generation sequencing (NGS) of baseline blood ctDNA with Guardant360 CDx. Ex19del and L858R ctDNA in blood was analyzed at baseline and cycle 3 day 1 (C3D1) with Biodesix droplet digital polymerase chain reaction (ddPCR).

*Correspondence to: Dr Enriqueta Felip, Medical Oncology Service, Vall d'Hebron Institute of Oncology, Vall d'Hebron Barcelona Hospital Campus, Universitat Autònoma de Barcelona, Barcelona, Spain. Tel: +34-932-38-16-61
E-mail: efelip@vhio.net (E. Felip).

0923-7534/© 2024 The Author(s). Published by Elsevier Ltd on behalf of European Society for Medical Oncology. This is an open access article under the CC BY-NC-ND license (<http://creativecommons.org/licenses/by-nc-nd/4.0/>).

Results: Baseline ctDNA for NGS of pathogenic alterations was available for 636 patients (amivantamab-lazertinib, $n = 320$; osimertinib, $n = 316$). Amivantamab-lazertinib improved median PFS (mPFS) versus osimertinib for patients with *TP53* co-mutations {18.2 versus 12.9 months; HR 0.65 [95% confidence interval (CI) 0.48-0.87]; $P = 0.003$ } and for patients with wild-type *TP53* [22.1 versus 19.9 months; HR 0.75 (95% CI 0.52-1.07)]. In patients with *EGFR*-mutant, ddPCR-detectable baseline ctDNA, amivantamab-lazertinib significantly prolonged mPFS versus osimertinib [20.3 versus 14.8 months; HR 0.68 (95% CI 0.53-0.86); $P = 0.002$]. Amivantamab-lazertinib significantly improved mPFS versus osimertinib in patients without ctDNA clearance at C3D1 [16.5 versus 9.1 months; HR 0.49 (95% CI 0.27-0.87); $P = 0.015$] and with clearance [24.0 versus 16.5 months; HR 0.64 (95% CI 0.48-0.87); $P = 0.004$]. Amivantamab-lazertinib significantly prolonged mPFS versus osimertinib among randomized patients with [18.2 versus 11.0 months; HR 0.58 (95% CI 0.37-0.91); $P = 0.017$] and without baseline liver metastases [24.0 versus 18.3 months; HR 0.74 (95% CI 0.60-0.91); $P = 0.004$].

Conclusions: Amivantamab-lazertinib effectively overcomes the effect of high-risk features and represents a promising new standard of care for patients with *EGFR*-mutant advanced NSCLC.

Key words: amivantamab, lazertinib, NSCLC, biomarkers, ctDNA, *TP53*

INTRODUCTION

Various characteristics of high-risk disease, including detectable circulating tumor DNA (ctDNA) at baseline and during treatment,^{1,2} baseline *TP53* co-mutations,³ and baseline brain or liver metastases,⁴⁻⁸ are common in advanced non-small-cell lung cancer (NSCLC). Overall, patients with these clinical features have poorer outcomes compared to those without high-risk features (i.e. those with wild-type *TP53*, ctDNA clearance, absence of baseline brain or liver metastases).¹⁻⁸ Because most patients with advanced NSCLC present with at least one high-risk feature, the ideal therapy should be efficacious for patients in these subgroups.

Detectable ctDNA at baseline,⁹ *TP53* co-mutations,¹⁰⁻¹² liver metastases,^{13,14} and brain metastases¹⁵ are poor prognostic factors for patients with epidermal growth factor receptor (*EGFR*)-mutant advanced NSCLC treated with the third-generation tyrosine kinase inhibitor (TKI) osimertinib. Even patients without high-risk features will develop resistance to third-generation TKIs,¹⁶ emphasizing the importance of using the most efficacious therapy first, particularly for patients with high-risk disease.

Amivantamab is an *EGFR*-MET bispecific antibody with immune cell-directing activity.¹⁷⁻²⁰ In clinical studies, amivantamab has shown efficacy alone and in combination with chemotherapy in various treatment settings, including as first-line therapy for patients with *EGFR* exon 20 insertions (Ex20ins) and for patients with *EGFR* exon 19 deletions (Ex19del) or L858R mutations after disease progression on osimertinib.²¹⁻²³ Lazertinib is a third-generation *EGFR* TKI with central nervous system (CNS) activity.^{24,25} In the phase III MARIPOSA study (ClinicalTrials.gov identifier, NCT04487080), amivantamab plus lazertinib demonstrated a statistically significant and clinically meaningful improvement in progression-free survival (PFS) versus osimertinib in patients with *EGFR*-mutant advanced NSCLC {median PFS, 23.7 versus 16.6 months; hazard ratio (HR) 0.70 [95% confidence interval (CI) 0.58-0.85]; $P < 0.001$ }. Improved durability of response among confirmed responders was

also seen for amivantamab-lazertinib versus osimertinib (25.8 versus 16.8 months). Additionally, in patients with a history of brain metastases, amivantamab-lazertinib prolonged PFS versus osimertinib [median PFS 18.3 versus 13.0 months; HR 0.69 (95% CI 0.53-0.92)].²⁶

Here, we present efficacy results from other high-risk subgroups, including those with detectable ctDNA at baseline and cycle 3 day 1 (C3D1; i.e. patients without ctDNA clearance at C3D1), *TP53* co-mutations, and baseline liver metastases, in patients from the MARIPOSA study who received amivantamab-lazertinib versus osimertinib.

PATIENTS AND METHODS

Patients

Details of the global, phase III MARIPOSA study (ClinicalTrials.gov identifier, NCT04487080) were previously reported.²⁶ In brief, eligible treatment-naïve adults (18 years of age or older) with Ex19del or Exon 21 L858R-mutated locally advanced or metastatic NSCLC with one or more measurable lesion according to RECIST v1.1 were enrolled. Patients with brain metastases were eligible if asymptomatic before study treatment. A total of 1074 patients were randomized 2 : 2 : 1 to receive amivantamab-lazertinib ($n = 429$), osimertinib ($n = 429$), or lazertinib ($n = 216$). The lazertinib monotherapy arm was included to evaluate the contribution of components in the amivantamab-lazertinib combination arm. The current analysis presents the results in high-risk patient subgroups who received amivantamab-lazertinib or osimertinib. A flow diagram of patient disposition among the high-risk subgroups is shown in Supplementary Figure S1, available at <https://doi.org/10.1016/j.annonc.2024.05.541>.

The study was conducted in accordance with the provisions of the Declaration of Helsinki, Good Clinical Practice guidelines (as defined by the International Council on Harmonisation), and applicable regulatory requirements, and approved by an independent ethics committee. All patients provided written informed consent.

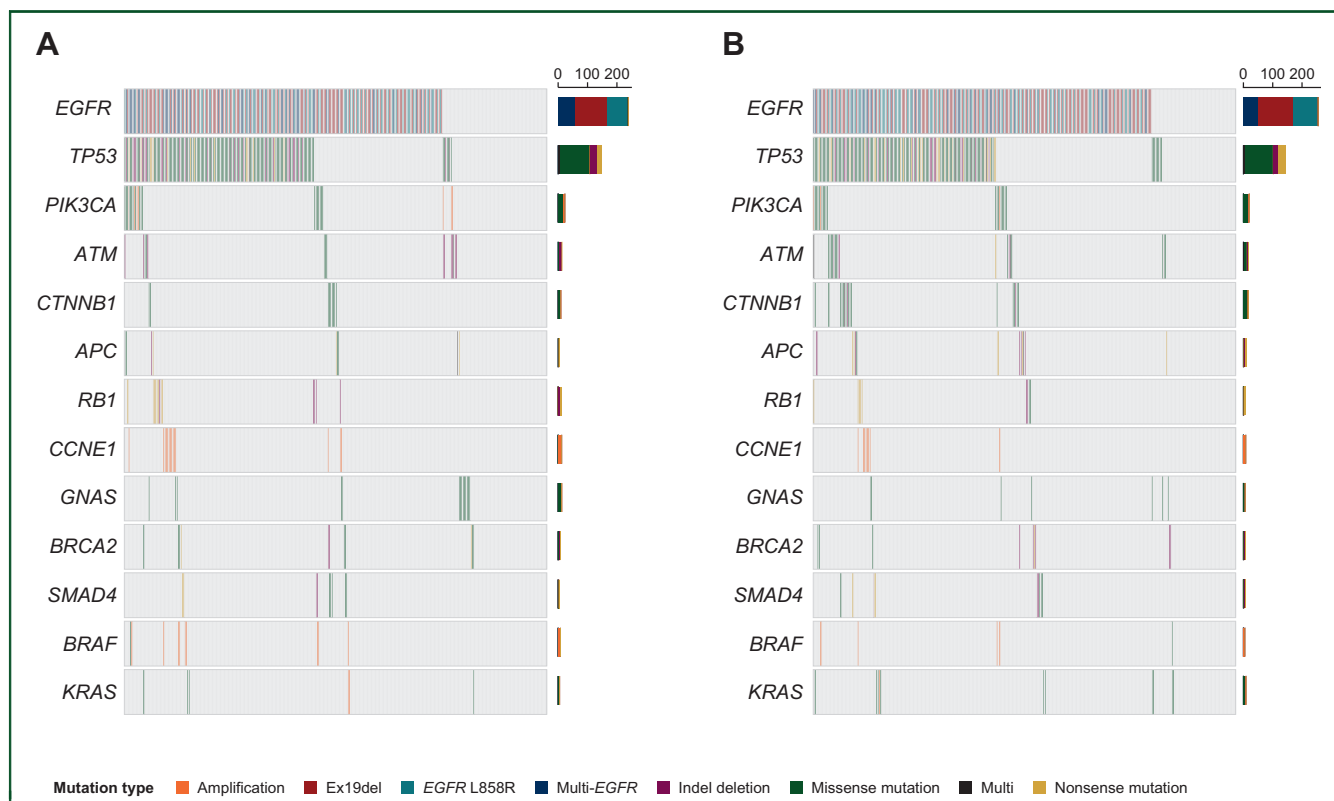


Figure 1. Baseline pathogenic mutation frequency and patterns. Shown here are the mutation variants observed in $\geq 2\%$ of patients who received amivantamab-lazertinib (A) and osimertinib (B). *EGFR* amplification occurred in 20% of patients with detectable ctDNA at baseline in the amivantamab + lazertinib arm and 19% in the osimertinib arm. *MET* amplification occurred in one patient in each arm (neither had high-level amplification). ctDNA, circulating tumor DNA; *EGFR*, epidermal growth factor receptor; Ex19del, exon 19 deletion; multi, multiple.

Sample collection

Patients were required to provide unstained tumor tissue (in quantity sufficient to allow for central analysis of *EGFR* mutation status) and blood [for ctDNA and droplet digital polymerase chain reaction (ddPCR) analysis] samples. When possible, the tumor tissue provided for central analysis was from the same biopsy used for local testing and identification of Ex19del or L858R and was obtained before randomization.

Assessments

Co-mutation status was analyzed using ctDNA by next-generation sequencing (NGS) of blood with Guardant360 CDx (Redwood City, CA) at baseline and within 30 days of progressive disease before next anticancer therapy. These samples were used to assess changes in the levels or types of genetic alterations observed over time and to monitor for the emergence of potential markers of resistance to study therapy. For patients with detectable ctDNA, defined as any identified pathogenic alteration, it was assumed that *TP53* co-mutations would be identified if present. Pathogenic loss-of-function *TP53* co-mutations were annotated using ClinVar (National Library of Medicine, Bethesda, MD), OncoKB (Memorial Sloan Kettering Cancer Center, New York, NY), Cancer Hotspots (Memorial Sloan Kettering Cancer Center, New York, NY), and Human Somatic Mutation Database (Qiagen, Redwood City, CA) and included for analysis in the clinical outcome association.²⁷⁻³⁰

Benign variants or variants of unknown significance (VUS) and other functionally unknown *TP53* variants were not included in this analysis, unless otherwise specified.

Detection and clearance of Ex19del and L858R ctDNA in the blood were analyzed with Bodesix ddPCR (Louisville, CO) at baseline and C3D1.

Details of the efficacy assessments have been previously described.²⁶

Statistical analysis

This exploratory analysis included all randomized patients who had one or more biomarker assessment. The association of biomarker positivity with clinical response or time-to-event endpoints was analyzed using statistical methods appropriate for each endpoint (e.g. categorical or survival models). Subgroup analyses of efficacy endpoints were carried out using statistical methods for the primary analysis of the general MARIPOSA population, which have been previously published.²⁶ *P* values for the subgroup analyses are all nominal.

RESULTS

Individual biomarker analysis

ctDNA analysis by Guardant360 NGS. As of the clinical cut-off of 11 August 2023, baseline ctDNA was analyzed by NGS for 636 patients (amivantamab-lazertinib, $n = 320$;

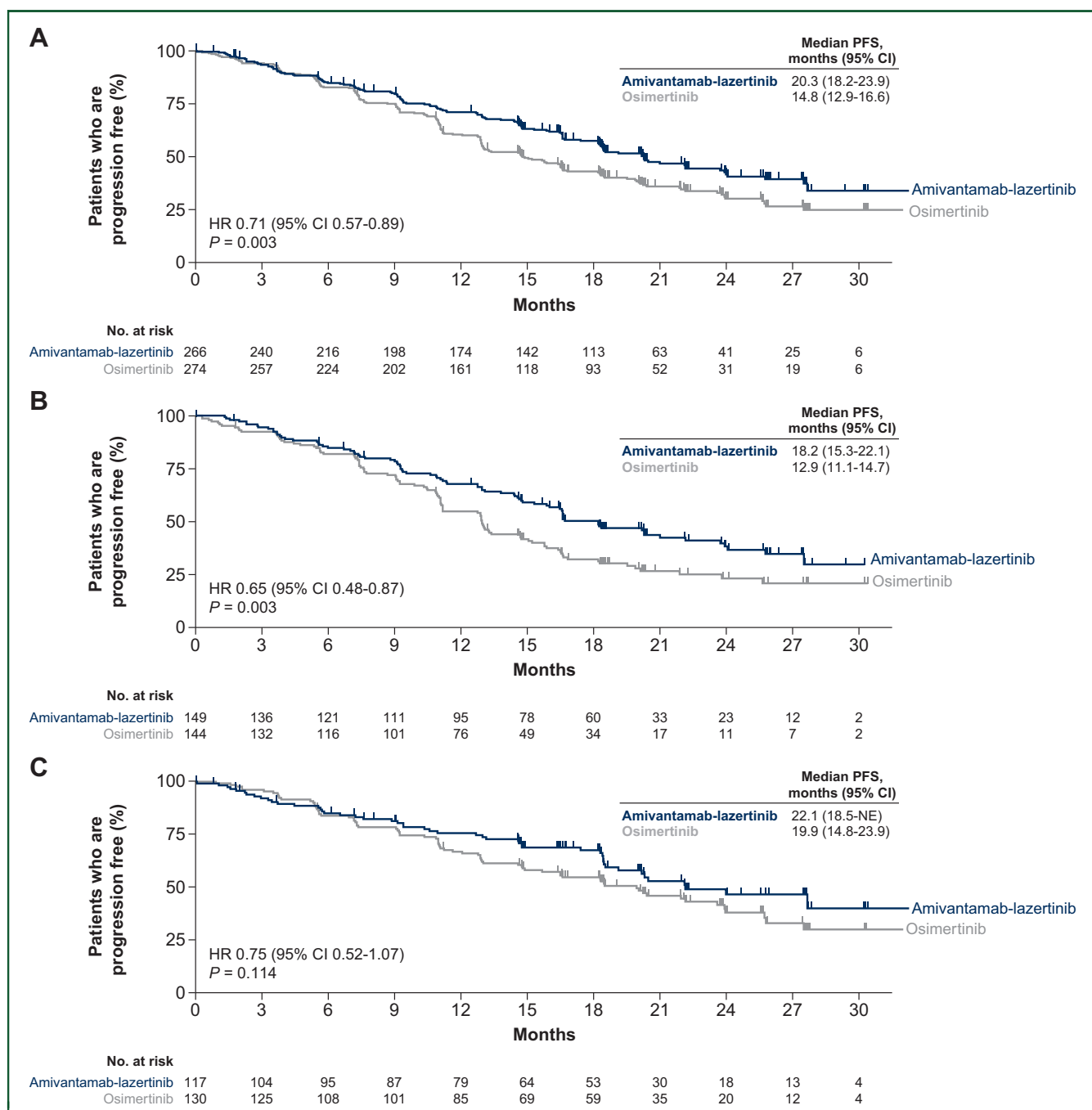


Figure 2. Progression-free survival for patient subgroups identified by NGS. Shown are Kaplan-Meier estimates of progression-free survival for subgroups of patients with detectable baseline ctDNA (A), with *TP53* co-mutations (B), and with wild-type *TP53* (C). Tick marks indicate censoring of data. CI, confidence interval; ctDNA, circulating tumor DNA; HR, hazard ratio; NGS, next-generation sequencing; PFS, progression-free survival.

osimertinib, $n = 316$). Baseline demographics for the NGS ctDNA analysis population were well balanced (Supplementary Table S1, available at <https://doi.org/10.1016/j.annonc.2024.05.541>). Among patients with detectable baseline pathogenic alterations by NGS (amivantamab-lazertinib, $n = 266$; osimertinib, $n = 274$), *TP53* co-mutations were detected in 149 patients in the amivantamab-lazertinib arm and 144 patients in the osimertinib arm (Figure 1). Baseline demographics were well balanced between the treatment arms, but more

patients with *TP53* co-mutations in both arms had brain and liver metastases at baseline (Supplementary Table S2, available at <https://doi.org/10.1016/j.annonc.2024.05.541>).

Among the 85% of patients with pathogenic alterations detected in ctDNA at baseline by NGS, PFS was significantly longer for patients receiving amivantamab-lazertinib versus osimertinib, with a median of 20.3 months (95% CI 18.2-23.9 months) and 14.8 months (95% CI 12.9-16.6 months), respectively [HR 0.71 (95% CI 0.57-0.89); $P = 0.003$; Figure 2A; Table 1]. Similarly, when both pathogenic

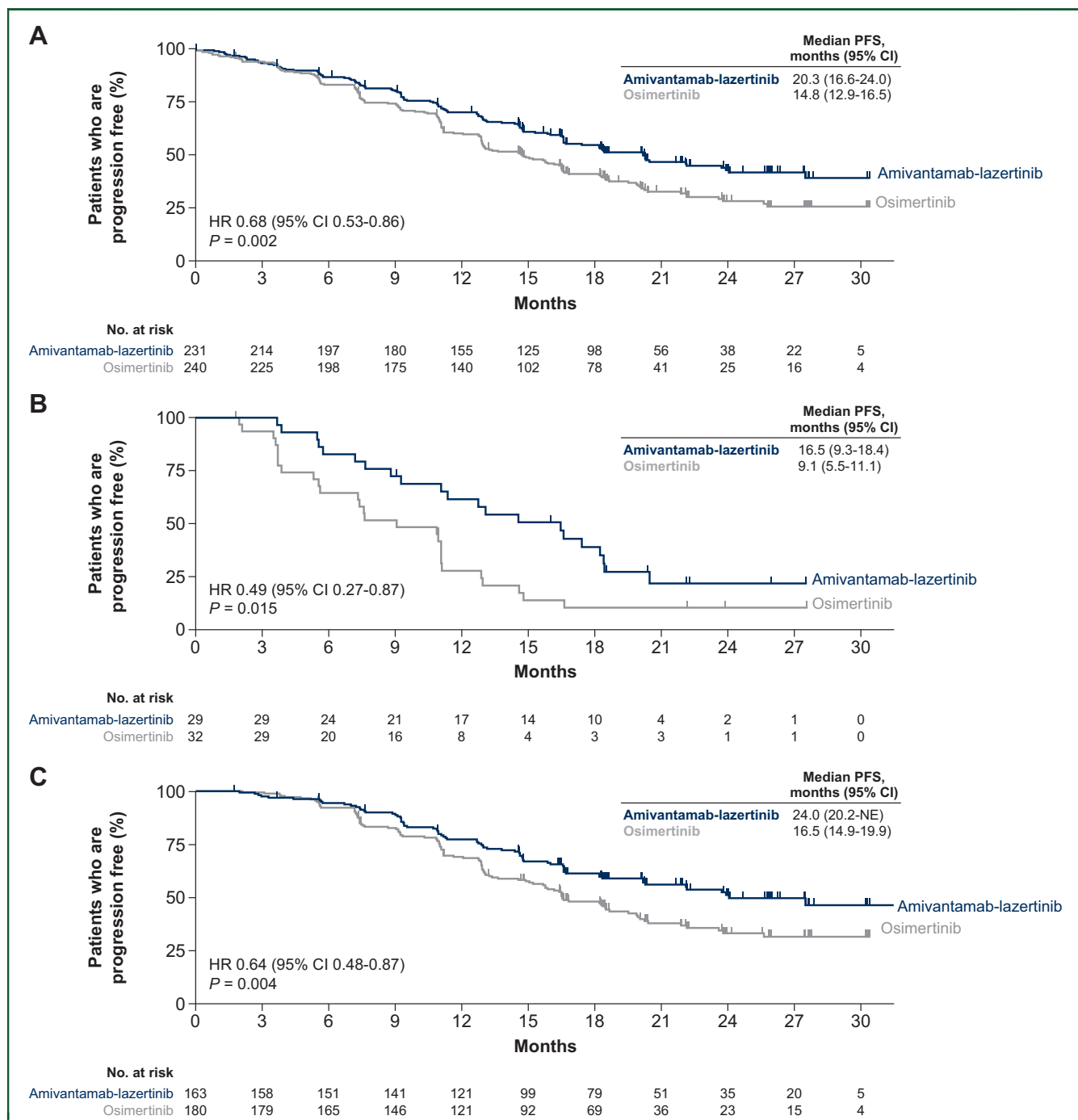


Figure 3. Progression-free survival for patient subgroups identified by ddPCR. Shown are Kaplan-Meier estimates of progression-free survival for subgroups of patients with detectable baseline ctDNA (A), without cleared ctDNA at C3D1 (B), and with cleared ctDNA at C3D1 (C). Tick marks indicate censoring of data. C, cycle; CI, confidence interval; ctDNA, circulating tumor DNA; D, day; ddPCR, droplet digital polymerase chain reaction; HR, hazard ratio; NE, not estimable; PFS, progression-free survival.

alterations and VUS in ctDNA at baseline were considered, amivantamab-lazertinib significantly prolonged PFS versus osimertinib (Supplementary Figure S2, available at <https://doi.org/10.1016/j.annonc.2024.05.541>). PFS with amivantamab-lazertinib was numerically longer but did not reach statistical significance ($P < 0.05$) in patients without detectable ctDNA at baseline by NGS (15% of patients; Supplementary Figure S3A, available at <https://doi.org/10.1016/j.annonc.2024.05.541>).

Among patients with *TP53* co-mutations detected in analyzable baseline ctDNA by NGS (54%), PFS was significantly improved for patients receiving amivantamab-lazertinib versus osimertinib, with a median of 18.2 months (95% CI 15.3-22.1 months) and 12.9 months (95% CI 11.1-14.7 months), respectively [HR 0.65 (95% CI 0.48-0.87); $P = 0.003$; Figure 2B; Table 1]. Among patients with wild-type *TP53* (46%), PFS was numerically longer but did not reach statistical significance ($P < 0.05$) for patients

Table 1. Progression-free survival for biomarker subgroups identified by NGS and ddPCR

Subgroups	Amivantamab-lazertinib, <i>n</i>	Osimertinib, <i>n</i>	Amivantamab-lazertinib, mPFS (95% CI), months	Osimertinib, mPFS (95% CI), months	HR (95% CI)	<i>P</i> value
Detectable baseline ctDNA by NGS	266	274	20.3 (18.2-23.9)	14.8 (12.9-16.6)	0.71 (0.57-0.89)	0.003
<i>TP53</i> co-mutation	149	144	18.2 (15.3-22.1)	12.9 (11.1-14.7)	0.65 (0.48-0.87)	0.003
<i>TP53</i> wild-type	117	130	22.1 (18.5-NE)	19.9 (14.8-23.9)	0.75 (0.52-1.07)	0.114
Detectable baseline <i>EGFR</i> -mutant ctDNA by ddPCR ^a	231	240	20.3 (16.6-24.0)	14.8 (12.9-16.5)	0.68 (0.53-0.86)	0.002
Not cleared at C3D1	29	32	16.5 (9.3-18.4)	9.1 (5.5-11.1)	0.49 (0.27-0.87)	0.015
Cleared at C3D1	163	180	24.0 (20.2-NE)	16.5 (14.9-19.9)	0.64 (0.48-0.87)	0.004
Liver metastases at baseline						
Present	64	72	18.2 (13.1-NE)	11.0 (7.4-12.8)	0.58 (0.37-0.91)	0.017
Absent	365	357	24.0 (20.3-NE)	18.3 (16.5-20.1)	0.74 (0.60-0.91)	0.004

C, cycle; CI, confidence interval; ctDNA, circulating tumor DNA; D, day; ddPCR, droplet digital polymerase chain reaction; *EGFR*, epidermal growth factor receptor; HR, hazard ratio; mPFS, median progression-free survival; NE, not estimable; NGS, next-generation sequencing; PFS, progression-free survival.

^aOf the 231 patients in the amivantamab-lazertinib arm and the 240 patients in the osimertinib arm, 192 and 212 patients, respectively, had matched samples at baseline and C3D1.

receiving amivantamab-lazertinib versus osimertinib, with a median of 22.1 months [95% CI 18.5 months-not estimable (NE)] and 19.9 months (95% CI 14.8-23.9 months), respectively [HR 0.75 (95% CI 0.52-1.07); *P* = 0.114; [Figure 2C](#)].

ctDNA analysis by Biodesix ddPCR. At baseline, 471 patients (amivantamab-lazertinib, *n* = 231; osimertinib, *n* = 240) had detectable *EGFR*-mutant ctDNA by ddPCR. Baseline demographics were well balanced between the treatment arms, but more patients with detectable ctDNA at baseline in both arms had brain and liver metastases at baseline versus those without detectable ctDNA at baseline ([Supplementary Table S3](#), available at <https://doi.org/10.1016/j.annonc.2024.05.541>). Among patients with detectable *EGFR*-mutant ctDNA by ddPCR, amivantamab-lazertinib significantly prolonged PFS versus osimertinib, with a median of 20.3 months (95% CI 16.6-24.0 months) versus 14.8 months (95% CI 12.9-16.5 months), respectively ([Figure 3A](#); [Table 1](#)). The HR for disease progression or death was 0.68 (95% CI 0.53-0.86) with a *P* value of 0.002. PFS was numerically longer but did not reach statistical significance with amivantamab-lazertinib for patients without detectable ctDNA at baseline by ddPCR (30% of patients; [Supplementary Figure S3B](#), available at <https://doi.org/10.1016/j.annonc.2024.05.541>).

In both arms, 85% of patients cleared ctDNA at C3D1. In patients without ctDNA clearance at C3D1, PFS was significantly prolonged with amivantamab-lazertinib versus osimertinib, with a median of 16.5 months (95% CI 9.3-18.4 months) and 9.1 months (95% CI 5.5-11.1 months), respectively [HR 0.49 (95% CI 0.27-0.87); *P* = 0.015; [Figure 3B](#)]. Similarly, PFS was also significantly prolonged among patients who cleared ctDNA at C3D1 for amivantamab-lazertinib versus osimertinib, with a median of 24.0 months (95% CI 20.2 months-NE) versus 16.5 months (95% CI 14.9-19.9 months), respectively [HR 0.64 (95% CI 0.48-0.87); *P* = 0.004; [Figure 3C](#)].

Liver metastases subgroup analysis

From the intention-to-treat population, a total of 136 patients (16%) had liver metastases at baseline

(amivantamab-lazertinib, *n* = 64; osimertinib, *n* = 72). Among these patients, amivantamab-lazertinib significantly prolonged PFS versus osimertinib, with a median of 18.2 months (95% CI 13.1 months-NE) versus 11.0 months (95% CI 7.4-12.8 months), respectively. The HR for disease progression or death was 0.58 (95% CI 0.37-0.91; *P* = 0.017) for amivantamab-lazertinib versus osimertinib ([Figure 4A](#); [Table 1](#)). Among patients without baseline liver metastases, amivantamab-lazertinib significantly prolonged PFS versus osimertinib, with a median of 24.0 months (95% CI 20.3 months-NE) versus 18.3 months (95% CI 16.5-20.1 months). The HR for disease progression or death was 0.74 (95% CI 0.60-0.91; *P* = 0.004) for amivantamab-lazertinib versus osimertinib ([Figure 4B](#)).

High-risk subgroup analysis

High-risk features at baseline, including detectable ctDNA, *TP53* co-mutations, or metastases in the liver or brain, were identified in 89% of patients with baseline ctDNA available for NGS of pathogenic alterations (*n* = 636). Among patients with any of these high-risk features (amivantamab-lazertinib, *n* = 280; osimertinib, *n* = 288), PFS was significantly longer for patients receiving amivantamab-lazertinib versus osimertinib, with a median of 20.3 months (95% CI 18.2-24.0 months) and 15.0 months (95% CI 13.0-16.8 months), respectively [HR 0.72 (95% CI 0.58-0.90); *P* = 0.004; [Figure 5](#)].

In general, overall response and duration of response were numerically higher for amivantamab-lazertinib versus osimertinib across high-risk subgroups ([Supplementary Table S4](#), [Supplementary Figures S4](#) and [S5](#), available at <https://doi.org/10.1016/j.annonc.2024.05.541>).

DISCUSSION

In the MARIPOSA study, 16% of patients had liver metastases, and 41% of patients had a history of brain metastases at baseline. Among patients with valid ctDNA NGS results, 85% of patients had detectable ctDNA at baseline and 54% had *TP53* co-mutations at baseline. Efficacy outcomes for amivantamab-lazertinib versus osimertinib based on other prognostic variables such as the

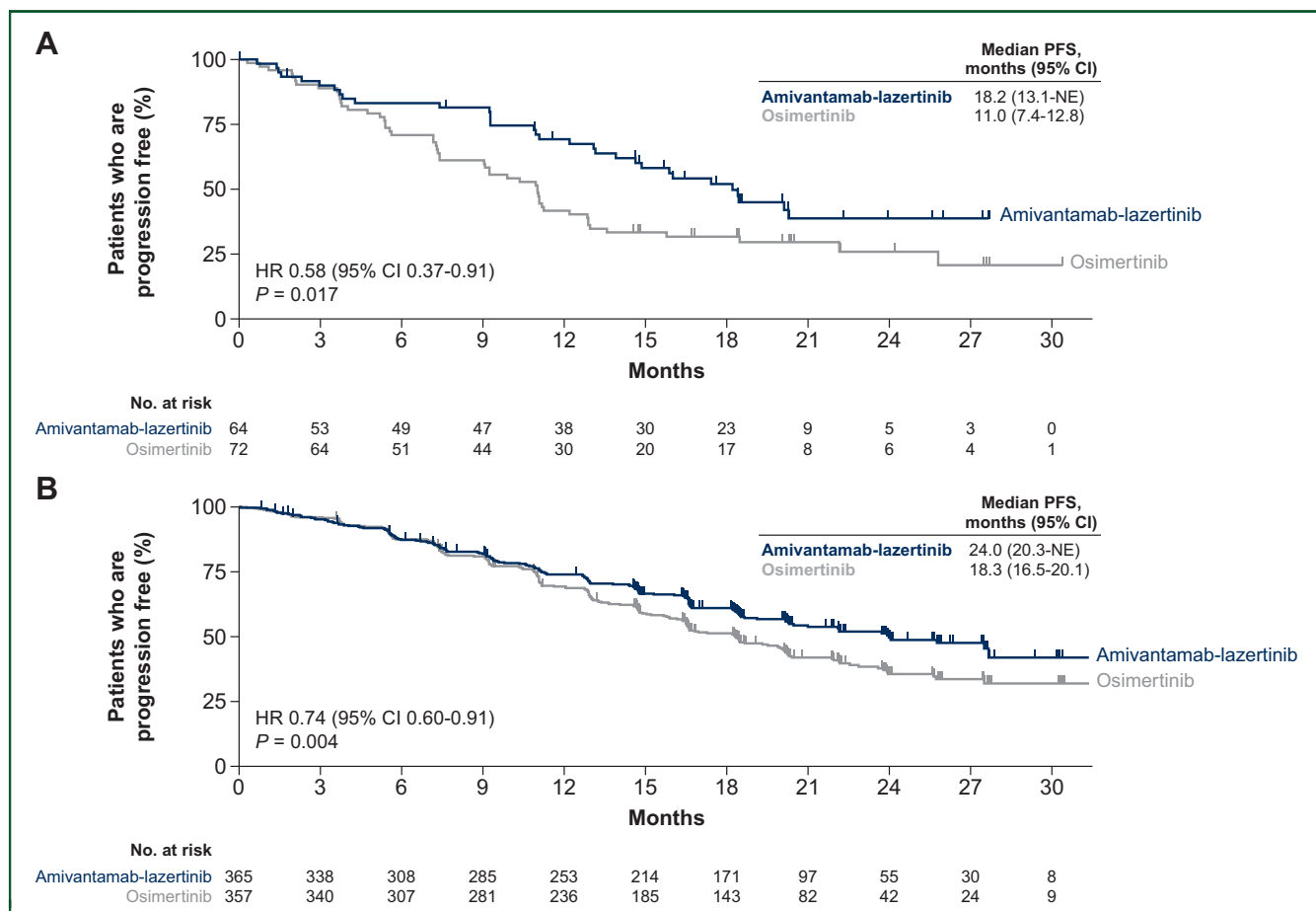


Figure 4. Progression-free survival for patients with and without baseline liver metastases. Shown are Kaplan-Meier estimates of progression-free survival for subgroups of patients with baseline liver metastases (A) and without baseline liver metastases (B). Tick marks indicate censoring of data. CI, confidence interval; HR, hazard ratio; PFS, progression-free survival.

type of *EGFR* mutation (Ex19del versus L858R) and race (Asian versus non-Asian) have been previously reported.²⁶ Consistent with the previously reported prevalence of high-risk features in NSCLC, 89% of patients with analyzable ctDNA by NGS in the amivantamab-lazertinib and osimertinib arms from MARIPOSA had at least one of the high-risk features at baseline. These high-risk features are associated with poor outcomes.³⁻⁸

Liver metastases can affect the metabolism and efficacy of drugs, which underscores the importance of using the most efficacious regimens in patients with liver metastases.^{4,6,31} Amivantamab has single-agent activity in patients with liver metastases,³² which may be due to amivantamab's MET activity with elevated MET expression observed in the liver.³³ We observed improved efficacy versus osimertinib in patients with liver metastases (median 18.2 versus 11.0 months; HR 0.58; $P = 0.017$).

Similarly, brain metastases are a frequent outcome for patients with *EGFR*-mutated NSCLC, and are associated with decreased survival and quality of life.^{5,8,34} While the CNS penetrance of third-generation *EGFR* TKIs, such as osimertinib and lazertinib, is excellent, patients treated with these agents can still experience intracranial disease progression.^{35,36} Amivantamab-chemotherapy prolonged

intracranial PFS versus chemotherapy alone (12.5 versus 8.3 months, respectively) in the MARIPOSA-2 study, which suggests that amivantamab may provide further intracranial activity. The CNS activity observed may be due to amivantamab's immune cell-directing activity or direct antitumor effects.²¹ We observed improved efficacy versus osimertinib in patients with brain metastases [median 18.3 versus 13.0 months; HR 0.69 (95% CI 0.53-0.92)].²⁶

TP53 co-mutations are also prevalent, occurring in up to 69% of patients with *EGFR*-mutant advanced NSCLC.³ *TP53* is one of the most commonly mutated genes in human cancer.³ The products of this gene play a critical role in tumor suppression, and, therefore, decreased function adds complexity to the signaling cascade typically seen with the constitutive *EGFR* activation triggered by an *EGFR* mutation.^{3,37} As a result, patients with *TP53* co-mutations have significantly worse PFS compared with patients with wild-type *TP53* when treated with *EGFR* TKIs.³ Amivantamab-lazertinib significantly improved PFS versus osimertinib in patients with *TP53* co-mutations (HR 0.65; $P = 0.003$).

Detectable ctDNA at baseline and during treatment are poor prognostic factors for patients with *EGFR*-mutant advanced NSCLC.^{1,2} However, amivantamab-lazertinib

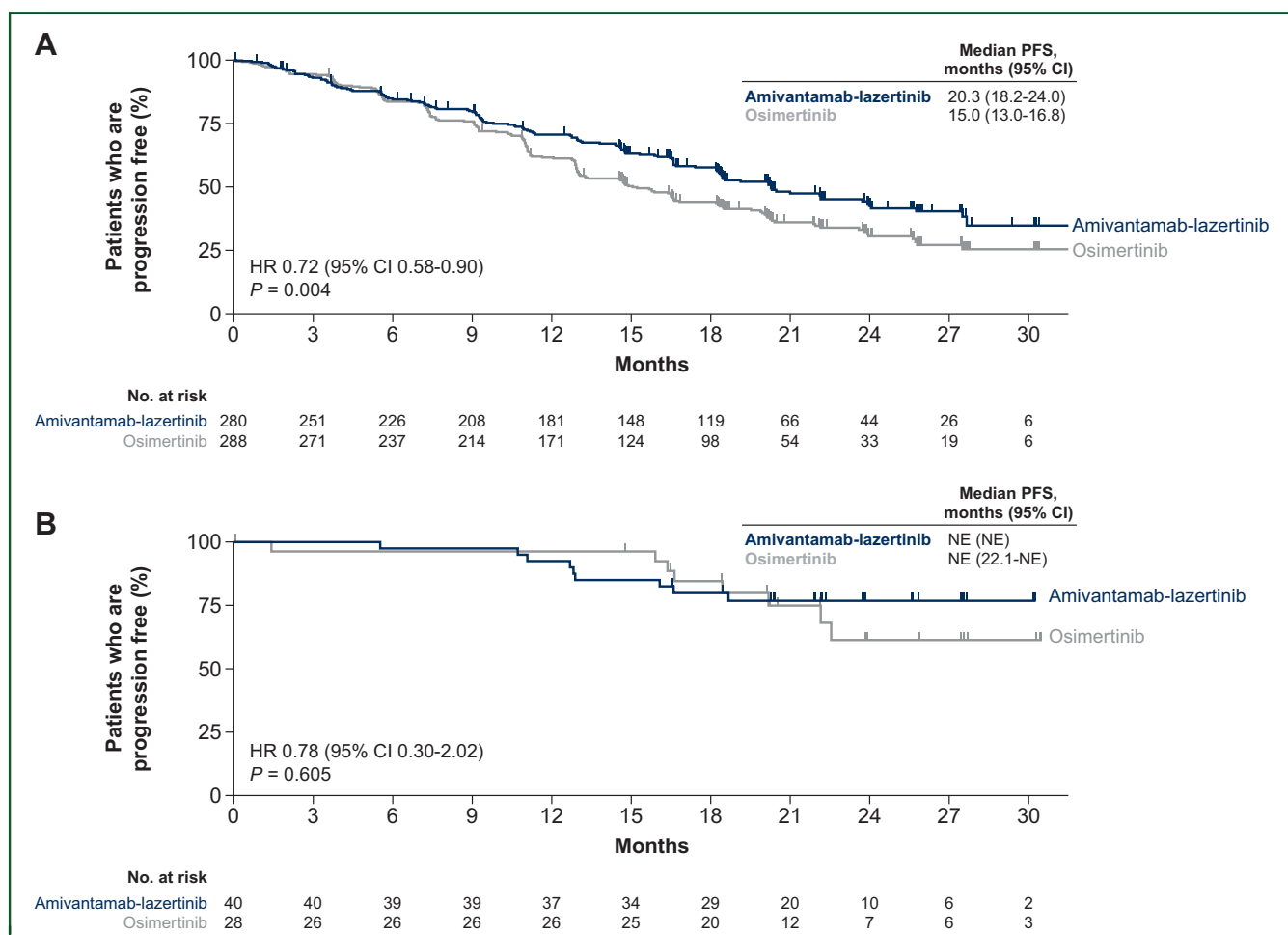


Figure 5. Progression-free survival for patients with and without high-risk features. Shown are Kaplan-Meier estimates of progression-free survival for subgroups of patients with high-risk features (A) and those without high-risk features (B). Patients with analyzable ctDNA at baseline were included in this pooled analysis. High-risk features include baseline detectable ctDNA or baseline metastases of the liver or brain. For patients with detectable ctDNA, it was assumed *TP53* co-mutations would be identified if present. Tick marks indicate censoring of data.

CI, confidence interval; ctDNA, circulating tumor DNA; HR, hazard ratio; PFS, progression-free survival.

significantly prolonged PFS for patients with *EGFR*-mutant ddPCR-detectable baseline ctDNA compared with osimertinib (HR 0.68; $P = 0.002$). Clearance of ctDNA with TKI monotherapy has been associated with improved therapeutic responses, while detectable ctDNA levels on treatment indicates incomplete disease eradication and possible treatment resistance.³⁸⁻⁴⁰ Among patients who did not clear ctDNA from the FLAURA study, TKI monotherapy led to unfavorable outcomes.⁴⁰ Data from MARIPOSA showed equal rates of clearance with amivantamab-lazertinib and osimertinib (~85% at C3D1), which was comparable to the clearance rates reported for osimertinib in FLAURA (~82% at week 6).⁴⁰ Patients in the osimertinib arm from MARIPOSA who did not clear ctDNA at C3D1 had a severely diminished median PFS of 9.1 months compared to 16.5 months for patients in the amivantamab-lazertinib arm. Patients in both arms without ctDNA clearance at C3D1 experienced the shortest PFS among all high-risk patient subgroups evaluated, indicating that the subgroup without clearance has an aggressive phenotype that remains difficult to fully suppress. However, amivantamab-lazertinib significantly improved PFS for patients without

clearance compared with osimertinib (HR 0.49; $P = 0.015$), further supporting the advantage of therapeutic regimens with multiple mechanisms of action in this high-risk subgroup.

In summary, the median PFS for osimertinib in high-risk subgroups (detectable ctDNA at baseline: 14.8 months; detectable ctDNA at C3D1: 9.1 months; *TP53* co-mutation: 12.9 months; liver metastases: 11.0 months) was shorter than that for the overall osimertinib-treated population from MARIPOSA (16.6 months) and FLAURA2 (16.7 months).⁴¹ It was also less than what was observed in the initial phase III FLAURA study, which reported an investigator-assessed median PFS for osimertinib of 18.9 months.¹⁵ The fact that patients with high-risk features have notably shorter PFS than what was seen previously highlights the critical need for new treatment regimens and the importance of giving the most efficacious therapy first. The PFS seen with osimertinib in high-risk subgroups is comparable to what was seen with gefitinib or erlotinib (first-generation *EGFR* TKIs) in the FLAURA trial.¹⁵

In conclusion, amivantamab-lazertinib significantly improved PFS versus osimertinib in patients with previously

untreated *EGFR*-mutant NSCLC, including those in high-risk subgroups. Amivantamab-lazertinib effectively overcomes the effect of these negative prognostic features and is thus a promising new standard-of-care option for patients.

ACKNOWLEDGEMENTS

We thank the patients who participated in the study and their families and caregivers, the physicians and nurses who cared for patients, and the staff members who supported this clinical trial. Medical writing and editorial support were provided by Claire E. Brady, PharmD, and Jessica Swanner, PhD, of Lumanity Communications Inc., and were funded by Janssen Global Services, LLC.

FUNDING

This study was supported by Janssen Research & Development, LLC (no grant number). Medical writing assistance was funded by Janssen Global Services, LLC (no grant number).

DISCLOSURE

EF: consulting or advisory role for Amgen, AstraZeneca, Bayer, Bristol Myers Squibb, Lilly, GSK, Janssen, Merck Serono, Novartis, Pfizer, Sanofi, Takeda, Peptomyc, Daiichi Sankyo Europe GmbH, F. Hoffman-La Roche, Merck Sharp & Dohme, BerGenBio, Turning Point Therapeutics; speakers' bureau for AstraZeneca, Bristol Myers Squibb, Lilly, Medscape, Merck Sharp & Dohme, PeerVoice, Pfizer, Takeda, Amgen, F. Hoffman-La Roche, Janssen, Medical Trends, Merck Serono, Sanofi, TouchONCOLOGY; other relationships with Grifols; research funding from Merck, Merck KGaA. BCC: consulting or advisory role for AstraZeneca, Boehringer Ingelheim, Roche, Bristol Myers Squibb, Pfizer, Yuhan Corporation, Janssen, Takeda, Merck Sharp & Dohme, Ono Pharmaceutical, Lilly, Medpacto, Blueprint Medicines, Cyrus Therapeutics, Guardant Health, Novartis, CJ Bioscience, Abion, BeiGene, CureLogen, Onogene Biotechnology, GI-Cell, HK, Imnewrun Biosciences Inc., RandBio, Hanmi, Kanaph Therapeutics, Bridgebio, Oscotec; leadership roles for Interpark Bio, J Ints Bio; patents, royalties, or other intellectual property for Champions Oncology, Crown Bioscience, Imagen; other relationships with DAAN Biotherapeutics; stock ownership or other ownership interests with Theravance, Gencurix, Bridgebio, Kanaph Therapeutics, Cyrus Therapeutics, Interpark Bio, J Ints Bio; research funding from Novartis, Bayer, AstraZeneca, Mogam Biotechnology Research Institute, Dong-A ST, Champions Oncology, Janssen, Yuhan Corporation, Ono Pharmaceutical, Dizal Pharma, Merck Sharp & Dohme, AbbVie, GI Innovation, Lilly, Blueprint Medicines, Interpark Bio, LG Chem, Oscotec, GI-Cell, Abion, Boehringer Ingelheim, CJ Bioscience, CJ Blossom Park, Cyrus Therapeutics, Genexine, Nuvalent Inc., Oncternal Therapeutics, Regeneron, Bridgebio, ImmuneOncia, Illumina, Kanaph Therapeutics, Therapex, J Ints Bio, Hanmi, CHA Bundang Medical Center. AA: consulting or advisory role for Boehringer Ingelheim, CIPLA Malaysia, Eisai Malaysia, Ipsen, Merck Sharp & Dohme; speakers'

bureau for Bristol Myers Squibb, Ipsen, AstraZeneca; research funding from Janssen, Merck Sharp & Dohme, Novartis, AstraZeneca. BB: consulting or advisory role for Chugai Pharma, Daiichi Sankyo, F. Hoffman-La Roche, PharmaMar, Sanofi/Aventis, AbbVie, Da Voltera, Lilly, Ellipses Pharma, Janssen, OSE Immunotherapeutics, Taiho Oncology, Turning Point Therapeutics, BioNTech SE, Bristol Myers Squibb, CureVac, Regeneron, Genmab, Immunocore, MSD Oncology, Owkin; honoraria from AbbVie, Roche, Janssen, Merck Sharp & Dohme, AstraZeneca, Chugai Pharma, Daiichi Sankyo, Hedera Dx, Sanofi/Aventis, Springer Healthcare Ltd.; research funding from AstraZeneca, AbbVie, Amgen, Sanofi, Daiichi Sankyo, Janssen Oncology, Roche/Genentech, Ellipses Pharma, GenMab, MSD Oncology, PharmaMar, Taiho Pharmaceutical, Nuvalent Inc., Enliven Therapeutics, Prelude Therapeutics, Takeda, BeiGene, GSK, OSE Immunotherapeutics, AnHeart Therapeutics. SL: consulting or advisory role for AstraZeneca, Pfizer, Boehringer Ingelheim, Hutchinson MediPharma, Simcere, Zai Lab, GenomiCare, Yuhan Corporation, Roche, Menarini, InventisBio Co. Ltd.; speakers' bureau for AstraZeneca, Roche, Hansoh Pharma, Hengrui Therapeutics, Hutchinson MediPharma, Bristol Myers Squibb, BeiGene, Lilly Suzhou Pharmaceutical Co. AIS: consulting or advisory role for Array BioPharma, Incyte, Amgen, Novartis, AstraZeneca/MedImmune, Mirati Therapeutics, Gritstone Bio, Jazz Pharmaceuticals, Merck, Bristol Myers Squibb, Takeda, Janssen Research & Development, Mersana, Blueprint Medicines, Daiichi Sankyo, Regeneron, Lilly, Black Diamond Therapeutics, Sanofi; leadership roles for Next Oncology; stock ownership or other ownership interests with Lilly; honoraria from CytomX Therapeutics, AstraZeneca/MedImmune, Merck, Takeda, Amgen, Janssen Oncology, Novartis, Bristol Myers Squibb, Bayer; research funding from Roche, AstraZeneca, Boehringer Ingelheim, Astellas Pharma, MedImmune, Novartis, Incyte, AbbVie, Ignyta, Takeda, MacroGenics, CytomX Therapeutics, LAM Therapeutics, Astex Pharmaceuticals, Bristol Myers Squibb, Loxo, Arch Therapeutics, Gritstone Bio, Plexikon, Amgen, Daiichi Sankyo, ADC Therapeutics, Janssen, Mirati Therapeutics, Rubius Therapeutics, Synthekine, Mersana, Blueprint Medicines, Regeneron, Alkermes, Revolution Medicines, Medikine, Black Diamond Therapeutics, BluPrint Oncology, Nalo Therapeutics, Scorpion Therapeutics, ArriVent Biopharma, Revolution Medicines. NG: consulting fees from AbbVie, Amgen, AstraZeneca, BeiGene, Boehringer Ingelheim, Bristol Myers Squibb, Daiichi Sankyo, Gilead, F. Hoffmann-La Roche, Janssen, Leo Pharma, Lilly, Merck Sharp & Dohme, Novartis, Sivan, Mirati Therapeutics, Pfizer, Sanofi, Takeda; payment or honoraria from AbbVie, Amgen, AstraZeneca, BeiGene, Boehringer Ingelheim, Bristol Myers Squibb, Daiichi Sankyo, Gilead, F. Hoffmann-La Roche, Janssen, Leo Pharma, Lilly, Merck Sharp & Dohme, Novartis, Sivan, Mirati Therapeutics, Pfizer, Sanofi, Takeda; support for attending meetings and/or travel from Janssen, Amgen, Bristol Myers Squibb; participation on a data safety monitoring board or advisory board for F. Hoffmann-La Roche. RC: grants or contracts from Merck Sharp & Dohme, Roche, PharmaMar, GSK; consulting

fees from Merck Sharp & Dohme, Roche, Bristol Myers Squibb, AstraZeneca, Janssen, GSK, Takeda; received payment or honoraria from Janssen, GSK, Takeda; support for attending meetings and/or travel from Janssen and Takeda; participation on a data safety monitoring board or advisory board for PharmaMar and Janssen; leadership or fiduciary role for European Society for Medical Oncology (ESMO), Educational Publication Working Group; stock or stock options for Supportive Care UK. SMG: honoraria from Merck; consulting or advisory role for AstraZeneca, Blueprint Medicines, Bristol Myers Squibb, Daiichi Sankyo, Eisai, Genentech/Roche, Gilead Sciences, GSK, Janssen Oncology, Lilly, Merck, Mirati Therapeutics, Novartis, Pfizer, Takeda; research funding from Amgen, Astellas Pharma, AstraZeneca, BioMed Valley Discoveries, Blueprint Medicines, Calithera Biosciences, Daiichi Sankyo, Dragonfly Therapeutics, EFFECTOR Therapeutics, Elevation Oncology, Erasca, Inc., Genentech/Roche, Helsinn Therapeutics, I-Mab, Incyte, InventisBio, Janssen Oncology, Merck, Mirati Therapeutics, Nektar, Numab, Pfizer, Regeneron, Turning Point Therapeutics, Verastem, Y-mAbs Therapeutics Inc.; travel, accommodations, or expenses from Mirati Therapeutics; other relationships with AstraZeneca. JCHY: honoraria from AstraZeneca, Boehringer Ingelheim, Bristol Myers Squibb, Lilly, Merck Sharp & Dohme, Novartis, Ono Pharmaceutical, Pfizer, Roche, Takeda; consulting or advisory role for AbbVie, Amgen, AstraZeneca, Bayer, Blueprint Medicines, Boehringer Ingelheim, Bristol Myers Squibb, Celgene, Clovis Oncology, Daiichi Sankyo, G1 Therapeutics, GSK, Hansoh, Incyte, Janssen, Lilly, Merck Serono, MSD Oncology, Novartis, Ono Pharmaceutical, Pfizer, Takeda, Yuhan; travel, accommodations, or expenses from Pfizer. KA: payment or honoraria from AstraZeneca K.K., Merck Sharp & Dohme K.K., Ono Pharmaceutical, Bristol Myers Squibb, Chugai Pharma. KHL: grants or contracts from Merck Serono; consulting fees from Merck Sharp & Dohme, Pfizer, Lilly, Yuhan, AstraZeneca, Bristol Myers Squibb. PD: honoraria from Roche, Bristol Myers Squibb, Merck Sharp & Dohme, Janssen, Astellas Pharma; consulting or advisory role for Roche, Bristol Myers Squibb, Merck Sharp & Dohme, Janssen, Astellas Pharma, Eisai; speakers' bureau for Roche, Bristol Myers Squibb, Merck Sharp & Dohme, Janssen, Astellas Amgen BioPharma, Eisai; research funding from Merck Sharp & Dohme, Roche, Janssen. CGF: advisory role for BeiGene NSCLC Disease Area Strategy Council; support for attending meetings and/or travel from American Society of Clinical Oncology (ASCO), International Association for the Study of Lung Cancer (IASLC); participation on a data safety monitoring board or advisory board from Novartis Global Precision Diagnostics Advisory Board; leadership role in ASCO International Affairs Committee, ASCO Scientific Program Committee, IASLC Career Development Committee, IASLC Governance Committee; stock in Grupo Oncoclinicas. MANS: consulting fees from Roche, AstraZeneca, Pfizer, Novartis, Astellas, Bristol Myers Squibb, Merck Sharp & Dohme, Lilly, Gilead, Takeda; payment or honoraria from Roche, AstraZeneca, Pfizer, Novartis, Astellas, Bristol Myers Squibb, Merck Sharp & Dohme, Lilly, Gilead, Takeda. GCC: honoraria from F. Hoffmann-La Roche, Ltd, Lilly Oncology, AstraZeneca,

Novartis, Pfizer, Boehringer Ingelheim, Bristol Myers Squibb, and Merck Sharp & Dohme. CCW: leadership role as Director for Taiwan Lung Cancer Society and President for Koahsiung Thoracic Cancer Society. KP: research funding from Biocon, Dr. Reddy's Laboratories, Fresenius Kabi, Alkem Laboratories, NATCO Pharma, BDR Pharmaceuticals, Roche. YS: grants or contracts from ONO Pharmaceutical, Janssen, Japan Clinical Research Operations, Taiho Pharmaceutical, Bayer, Gilead; payment or honoraria from AstraZeneca, Bristol Myers Squibb, Chugai Pharmaceutical, ONO Pharmaceutical, Lilly Japan; participation on an advisory board for Janssen. DS: consulting fees from AstraZeneca, Roche, Novartis; payment or honoraria from AstraZeneca, Roche, Novartis. LPA: consulting or advisory role for Roche, Merck Sharp & Dohme, Merck Serono, Bristol Myers Squibb, AstraZeneca, Lilly, Pfizer, PharmaMar, Bayer, Amgen, Janssen, GSK, Novartis, Takeda, Sanofi, Mirati, Beigene, Daiichi Sankyo, Medscape, PER; research funding from Daiichi Sankyo, AstraZeneca, Merck Sharp & Dohme, Bristol Myers Squibb, Janssen, Novartis, Roche, Sanofi, Amgen, Tesaro, Alkermes, Lilly, Takeda, Pfizer, PharmaMar; leadership role in Stab Therapeutics; other financial or non-financial interests in Altum Sequencing, Genomica, American Association for Cancer Research, ASCO, Spanish Association Against Cancer (AECC), Spanish Cancer Research Association (ASEICA), ESMO, ONCOSUR, Small Cell Lung Cancer Group. JRR: consulting fees from Novartis, Roche, AstraZeneca, Merck Sharp & Dohme, Bristol Myers Squibb, Teva; payment or honoraria from Amgen, Roche, Merck Sharp & Dohme, Bristol Myers Squibb, AstraZeneca, Janssen, Teva, Takeda, Novartis, Pfizer; travel, accommodations, or expenses from Amgen, Roche, Merck Sharp & Dohme, Bristol Myers Squibb, AstraZeneca, Janssen, Teva, Takeda, Novartis, Pfizer; other financial or non-financial interests in Amgen, Roche, Merck Sharp & Dohme, Bristol Myers Squibb, AstraZeneca, Janssen, Teva, Takeda, Novartis, Pfizer. CM: consulting fees from AstraZeneca, Bristol Myers Squibb, Merck Sharp & Dohme, Takeda; payment or honoraria from Pfizer, Merck Sharp & Dohme, AstraZeneca, Janssen, Takeda; support for attending meetings and/or travel from AstraZeneca, Takeda. MRGC: payment or honoraria from Pfizer, Novartis, Roche, Lilly, AstraZeneca, Takeda, Merck Sharp & Dohme; consulting or advisory role for Pfizer, Novartis, Roche, Lilly, AstraZeneca, Takeda, Merck Sharp & Dohme; speakers' bureau for Pfizer, Novartis, Roche, Lilly, AstraZeneca, Takeda, Merck Sharp & Dohme. HH: consulting or advisory role for AstraZeneca, Boehringer Ingelheim, Bristol Myers Squibb, Daiichi Sankyo/UCB Japan, Janssen; patents, royalties, or other intellectual property for Sysmex; honoraria from Ono Pharmaceutical, Bristol Myers Squibb Japan, Lilly, Boehringer Ingelheim, AstraZeneca Japan, Chugai Pharma, Pfizer, Merck Sharp & Dohme, Novartis, Merck Serono, Amgen, Daiichi Sankyo/UCB Japan, Guardant Health, Takeda, Janssen; research funding from Ono Pharmaceutical, Boehringer Ingelheim, AstraZeneca, AbbVie, AC Medical, Astellas Pharma, Bristol Myers Squibb, Daiichi Sankyo, Eisai, Lilly Japan, EPS Associates Co. Ltd., GSK, Japan Clinical Research Operations, Kyowa Kirin, Merck Serono, Novartis, Otsuka, PAREXEL, Pfizer, PPD-SNBL, Quintiles Inc.,

Taiho Pharmaceutical, Takeda, Yakult Honsha, Chugai Pharma, Sysmex, Japan Agency for Medical Research and Development. DN: payment or honoraria from Janssen; leadership or fiduciary role for GRYT Health. PT: payment or honoraria from AstraZeneca, Takeda, Bristol Myers Squibb, Roche, Janssen, Amgen; travel, accommodations, or expenses from Takeda, AstraZeneca, Bristol Myers Squibb. CD: consulting fees from Janssen. AP: consulting or advisory role for Roche/Genentech, Bristol Myers Squibb, AstraZeneca, MSD Oncology, Pfizer, Boehringer Ingelheim, Janssen, Novartis, Daiichi Sankyo Europe GmbH, Bayer; speakers' bureau for AstraZeneca, Janssen, Boehringer Ingelheim, Daiichi Sankyo Europe GmbH, MSD Oncology. MS: research grants (institution) from AstraZeneca, Bristol Myers Squibb, Janssen; invited speaker for Amgen, Bristol Myers Squibb, GSK, Janssen, Merck Sharp & Dohme, Roche; participation on a data safety monitoring board or advisory board for Amgen, AstraZeneca, Boehringer Ingelheim, Bristol Myers Squibb, GSK, Janssen, Merck Sharp & Dohme, Novartis, Roche, Sanofi, Tactylx; principal investigator and member of study steering committee for Amgen and Janssen. ACZG: payment or honoraria from Roche, Amgen, AstraZeneca, Boehringer Ingelheim, Bristol Myers Squibb, Merck Sharp & Dohme, Daiichi Sankyo, Janssen, Pfizer, Lilly, Novartis, Takeda; travel, accommodations, or expenses from Daiichi Sankyo, Amgen, Janssen; participation on a data safety monitoring board or advisory board for AstraZeneca, Merck Sharp & Dohme, Beigene, Pfizer, Amgen. SO: consulting fees from Janssen, Bristol Myers Squibb, Novocure, Roche. KP: payment or honoraria from AstraZeneca, Merck Sharp & Dohme, Amgen; participation on a data safety monitoring board or advisory board for Merck Sharp & Dohme, Takeda, Amgen, Bristol Myers Squibb, Knight Pharmaceuticals. SHIO: consulting or advisory role for Pfizer, Takeda, Janssen, Daiichi Sankyo, AnHeart Therapeutics; stock ownership or other ownership interests with Turning Point Therapeutics, Elevation Oncology, MBrace Therapeutics, BlossomHill Therapeutics, Lilly, Nuvalent Inc.; honoraria from Pfizer, Daiichi Sankyo, Janssen, DAVA Oncology, Bristol Myers Squibb; research funding from Pfizer, Roche Pharma AG, AstraZeneca/MedImmune, ARIAD, Revolution Medicines, Mirati Therapeutics, Janssen, Nuvalent Inc., Bristol Myers Squibb. JCC, JZ, MG, TS, AP, ME, EF, MD, SS, JMB: employees of Janssen and may hold stock in Johnson & Johnson. SHL: honoraria from AstraZeneca/MedImmune, Roche, Merck, Lilly, Amgen; consulting or advisory role for AstraZeneca, Roche, Merck, Pfizer, Lilly; research funding from Merck. All other authors have declared no conflicts of interest.

DATA SHARING

The data sharing policy of Janssen Pharmaceutical Companies of Johnson & Johnson is available at <https://www.janssen.com/clinical-trials/transparency>. As noted on this site, requests for access to the study data can be submitted through the Yale Open Data Access (YODA) Project site at <http://yoda.yale.edu>.

REFERENCES

- Mack PC, Miao J, Redman MW, et al. Circulating tumor DNA kinetics predict progression-free and overall survival in EGFR TKI-treated patients with EGFR-mutant NSCLC (SWOG S1403). *Clin Cancer Res*. 2022;28:3752-3760.
- Song Y, Hu C, Xie Z, et al. Circulating tumor DNA clearance predicts prognosis across treatment regimen in a large real-world longitudinally monitored advanced non-small cell lung cancer cohort. *Transl Lung Cancer Res*. 2020;9:269-279.
- Li XM, Li WF, Lin JT, et al. Predictive and prognostic potential of TP53 in patients with advanced non-small-cell lung cancer treated with EGFR-TKI: analysis of a phase III randomized clinical trial (CTONG 0901). *Clin Lung Cancer*. 2021;22:100-109.e103.
- Jiang T, Cheng R, Zhang G, et al. Characterization of liver metastasis and its effect on targeted therapy in EGFR-mutant NSCLC: a multi-center study. *Clin Lung Cancer*. 2017;18:631-639.e632.
- Kahraman S, Karakaya S, Kaplan MA, et al. Treatment outcomes and prognostic factors in patients with driver mutant non-small cell lung cancer and de novo brain metastases. *Sci Rep*. 2024;14:5820.
- Choi MG, Choi CM, Lee DH, et al. Different prognostic implications of hepatic metastasis according to front-line treatment in non-small cell lung cancer: a real-world retrospective study. *Transl Lung Cancer Res*. 2021;10:2551-2561.
- Wu KL, Tsai MJ, Yang CJ, et al. Liver metastasis predicts poorer prognosis in stage IV lung adenocarcinoma patients receiving first-line gefitinib. *Lung Cancer*. 2015;88:187-194.
- Kashima J, Okuma Y, Miwa M, et al. Survival of patients with brain metastases from non-small cell lung cancer harboring EGFR mutations treated with epidermal growth factor receptor tyrosine kinase inhibitors. *Med Oncol*. 2016;33:129.
- Ma S, Shi M, Chen X, et al. The prognostic value of longitudinal circulating tumor DNA profiling during osimertinib treatment. *Transl Lung Cancer Res*. 2021;10:326-339.
- Roeper J, Christopoulos P, Falk M, et al. TP53 co-mutations as an independent prognostic factor in 2nd and further line therapy-EGFR mutated non-small cell lung cancer IV patients treated with osimertinib. *Transl Lung Cancer Res*. 2022;11:4-13.
- Chen L, Mu X, Wu H, et al. Association between TP53 mutations and efficacy of osimertinib for brain metastasis from EGFR-mutant lung cancer. *Ann Oncol*. 2019;30:V149.
- Pérol M, Chouaid C, Bjerrum A, et al. Prognostic factors and outcomes of patients with advanced non-small cell lung cancer while on osimertinib treatment: a retrospective database study. Presented at: the European Lung Cancer Congress (ELCC); 20-23 March 2024; Prague, Czech Republic.
- Gen S, Tanaka I, Morise M, et al. Clinical efficacy of osimertinib in EGFR-mutant non-small cell lung cancer with distant metastasis. *BMC Cancer*. 2022;22:654.
- Takeyasu Y, Yoshida T, Masuda K, et al. Distinct progression and efficacy of first-line osimertinib treatment according to mutation subtypes in metastatic NSCLC harboring EGFR mutations. *JTO Clin Res Rep*. 2024;5:100636.
- Soria JC, Ohe Y, Vansteenkiste J, et al. Osimertinib in untreated EGFR-mutated advanced non-small-cell lung cancer. *N Engl J Med*. 2018;378:113-125.
- Passaro A, Janne PA, Mok T, et al. Overcoming therapy resistance in EGFR-mutant lung cancer. *Nat Cancer*. 2021;2:377-391.
- Moores SL, Chiu ML, Bushey BS, et al. A novel bispecific antibody targeting EGFR and cMet is effective against EGFR inhibitor-resistant lung tumors. *Cancer Res*. 2016;76:3942-3953.
- Vijayaraghavan S, Lipfert L, Chevalier K, et al. Amivantamab (JNJ-61186372), an Fc enhanced EGFR/cMet bispecific antibody, induces receptor downmodulation and antitumor activity by monocyte/macrophage trogocytosis. *Mol Cancer Ther*. 2020;19:2044-2056.
- Yun J, Lee SH, Kim SY, et al. Antitumor activity of amivantamab (JNJ-61186372), an EGFR-MET bispecific antibody, in diverse models of EGFR exon 20 insertion-driven NSCLC. *Cancer Discov*. 2020;10:1194-1209.

20. Cho BC, Simi A, Sabari J, et al. Amivantamab, an epidermal growth factor receptor (EGFR) and mesenchymal-epithelial transition factor (MET) bispecific antibody, designed to enable multiple mechanisms of action and broad clinical applications. *Clin Lung Cancer*. 2023;24:89-97.
21. Passaro A, Wang J, Wang Y, et al. Amivantamab plus chemotherapy with and without lazertinib in EGFR-mutant advanced NSCLC after disease progression on osimertinib: primary results from the phase III MARIPOSA-2 study. *Ann Oncol*. 2023;35:77-90.
22. Zhou C, Tang KJ, Cho BC, et al. Amivantamab plus chemotherapy in NSCLC with EGFR exon 20 insertions. *N Engl J Med*. 2023;389:2039-2051.
23. Park K, Haura EB, Leighl NB, et al. Amivantamab in EGFR exon 20 insertion-mutated non-small-cell lung cancer progressing on platinum chemotherapy: initial results from the CHRYSALIS phase I study. *J Clin Oncol*. 2021;39:3391-3402.
24. Cho BC, Han JY, Kim SW, et al. A phase 1/2 study of lazertinib 240 mg in patients with advanced EGFR T790M-positive NSCLC after previous EGFR tyrosine kinase inhibitors. *J Thorac Oncol*. 2022;17:558-567.
25. Ahn MJ, Han JY, Lee KH, et al. Lazertinib in patients with EGFR mutation-positive advanced non-small-cell lung cancer: results from the dose escalation and dose expansion parts of a first-in-human, open-label, multicentre, phase 1-2 study. *Lancet Oncol*. 2019;20:1681-1690.
26. Cho BC, Lu S, Felip E, et al. Amivantamab plus Lazertinib in Previously Untreated EGFR-mutated Advanced NSCLC. *N Engl J Med*. 2024. <https://doi.org/10.1056/NEJMoa2403614>.
27. Landrum MJ, Lee JM, Riley GR, et al. ClinVar: public archive of relationships among sequence variation and human phenotype. *Nucleic Acids Res*. 2014;42:D980-D985.
28. Chakravarty D, Gao J, Phillips SM, et al. OncoKB: a precision oncology knowledge base. *JCO Precis Oncol*. 2017;2017:PO.17.00011.
29. Chang MT, Asthana S, Gao SP, et al. Identifying recurrent mutations in cancer reveals widespread lineage diversity and mutational specificity. *Nat Biotechnol*. 2016;34:155-163.
30. QIAGEN. Human Somatic Mutation Database (HSMD). <https://digital.insights.qiagen.com/hsmd/>. Accessed March 27, 2024.
31. Xia H, Zhang W, Zhang Y, et al. Liver metastases and the efficacy of immune checkpoint inhibitors in advanced lung cancer: a systematic review and meta-analysis. *Front Oncol*. 2022;12:978069.
32. Choi DH, Jung HA, Park S, et al. Effectiveness and safety of amivantamab in EGFR exon 20 insertion (E20I) mutations in non-small cell lung cancer (NSCLC). *Transl Lung Cancer Res*. 2023;12:2448-2459.
33. Canadas I, Taus A, Gonzalez I, et al. High circulating hepatocyte growth factor levels associate with epithelial to mesenchymal transition and poor outcome in small cell lung cancer patients. *Oncotarget*. 2014;5:5246-5256.
34. Maschio M, Maialetti A, Giannarelli D, et al. Impact of epilepsy and its treatment on brain metastasis from solid tumors: a retrospective study. *Front Neurol*. 2022;13:967946.
35. Cho BC, Ahn MJ, Kang JH, et al. Lazertinib versus gefitinib as first-line treatment in patients with EGFR-mutated advanced non-small cell lung cancer (NSCLC): results from LASER301. *J Clin Oncol*. 2023;41(26):4208-4217.
36. Yang JCH, Kim SW, Kim DW, et al. Osimertinib in patients with epidermal growth factor receptor mutation-positive non-small-cell lung cancer and leptomeningeal metastases: the BLOOM study. *J Clin Oncol*. 2020;38:538-547.
37. Canale M, Andrikou K, Priano I, et al. The role of TP53 mutations in EGFR-mutated non-small-cell lung cancer: clinical significance and implications for therapy. *Cancers (Basel)*. 2022;14:1143.
38. Yang J, Hui Y, Zhang Y, et al. Application of circulating tumor DNA as a biomarker for non-small cell lung cancer. *Front Oncol*. 2021;11:725938.
39. Yang M, Topaloglu U, Petty WJ, et al. Circulating mutational portrait of cancer: manifestation of aggressive clonal events in both early and late stages. *J Hematol Oncol*. 2017;10:100.
40. Gray JE, Ahn MJ, Oxnard GR, et al. Early clearance of plasma epidermal growth factor receptor mutations as a predictor of outcome on osimertinib in advanced non-small cell lung cancer; exploratory analysis from AURA3 and FLAURA. *Clin Cancer Res*. 2023;29:3340-3351.
41. Planchard D, Janne PA, Cheng Y, et al. Osimertinib with or without chemotherapy in EGFR-mutated advanced NSCLC. *N Engl J Med*. 2023;389:1935-1948.