

Supporting Information

Intermetallic TiFe Particles Generation within Porous Monolithic Carbon Materials Arising from Paper Mill Waste and their Cooperative Hydrogen Storage Properties

*Romain Poupart^{1, 2, 3}, Christophe Cona², Christine Labrugère-Sarroste⁴, Hervé Deleuze¹ and
Réal Backov³, Jean-Louis Bobet^{2*}*

¹ Univ. Bordeaux, CNRS, Bordeaux INP, ISM, UMR 5255, F-33400 Talence, France

² Univ. Bordeaux, CNRS, Bordeaux INP, ICMCB, UMR 5026, F-33600 Pessac, France

³ Univ. Bordeaux, CNRS, CRPP, UMR 5031, F-33600 Pessac, France

⁴ Univ. Bordeaux, CNRS, PLACAMAT, UAR 3626, F-33600 Pessac, France

* corresponding author: jean-louis.bobet@icmcb.cnrs.fr

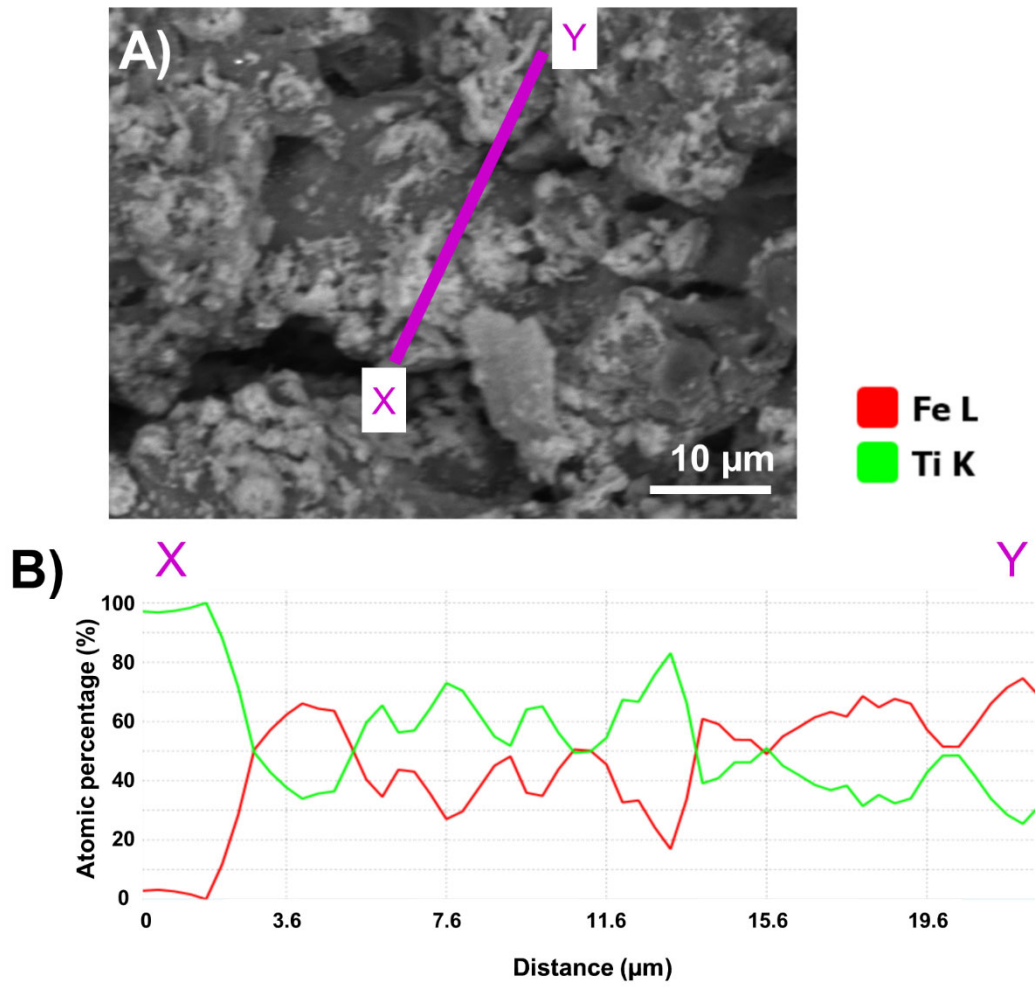


Figure S1: A) SEM image in BSE mode of the sample after reduction of the iron and titanium solution with sodium borohydride. B) The EDX analysis corresponding to the A-B line.

Table S1: All cycle sorptions performed for the TiFe@Carbo(HIPE) samples.

	Cycle 1	Cycle 2	Cycle 3	Average sorption
	sorption	sorption	sorption	(wt.%)
	(wt.%)	(wt.%)	(wt.%)	
25 °C	0.47	0.51	0.40	0.46 ± 0.06
150 °C	0.17	0.31	0.23	0.25 ± 0.07

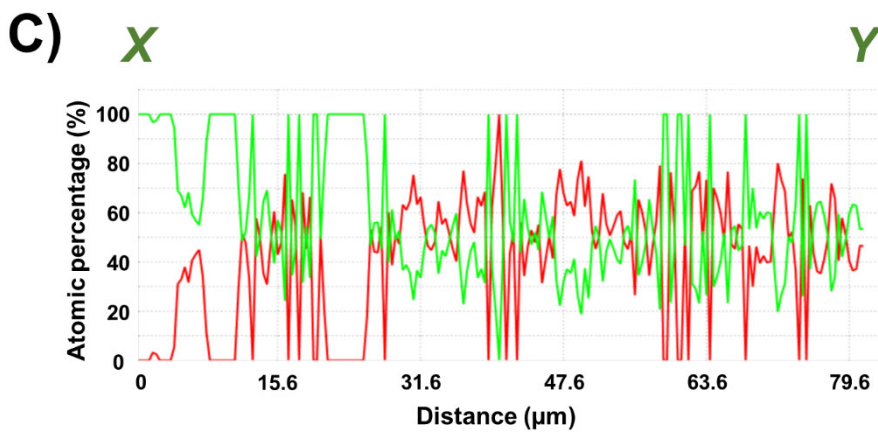
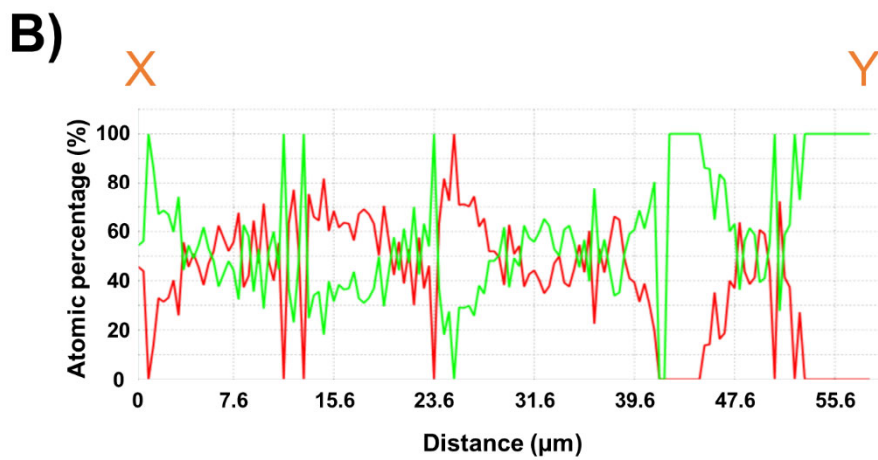
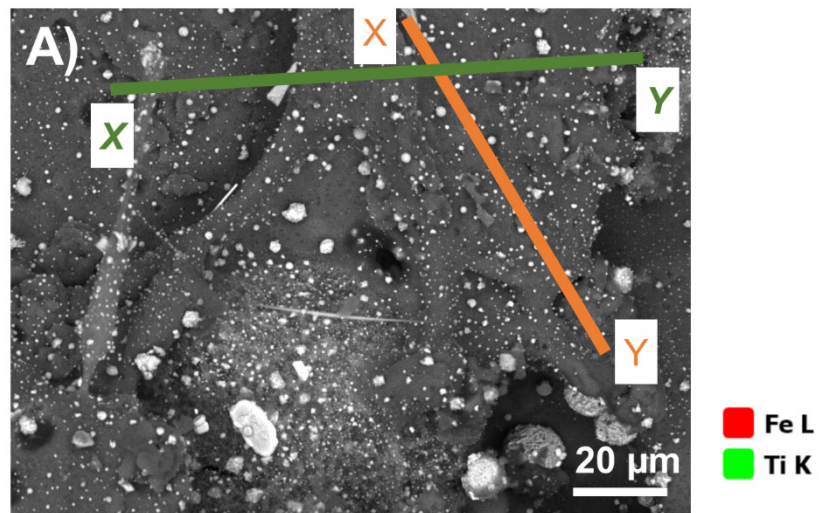


Figure S2: A) SEM picture of the sample “post-mortem” (*i.e.* after hydrogen absorption) recorded on BSE mode with enclosed B) and C) EDX study of the remnant structure at the surface, corresponding to their respective lines on the SEM image.