



**HAL**  
open science

## Application and implications of radiocarbon dating in forensic case work: when medicolegal significance meets archaeological relevance

Benoit Bertrand, Thibault Clauzel, Pascale Richardin, Anne Bécart, Philippe Morbidelli, Valery Hédouin, Carina Marques

### ► To cite this version:

Benoit Bertrand, Thibault Clauzel, Pascale Richardin, Anne Bécart, Philippe Morbidelli, et al.. Application and implications of radiocarbon dating in forensic case work: when medicolegal significance meets archaeological relevance. Forensic Sciences Research, 2024, <https://doi.org/10.1093/fsr/owae046> . hal-04711892

**HAL Id: hal-04711892**

**<https://hal.science/hal-04711892v1>**

Submitted on 27 Sep 2024

**HAL** is a multi-disciplinary open access archive for the deposit and dissemination of scientific research documents, whether they are published or not. The documents may come from teaching and research institutions in France or abroad, or from public or private research centers.

L'archive ouverte pluridisciplinaire **HAL**, est destinée au dépôt et à la diffusion de documents scientifiques de niveau recherche, publiés ou non, émanant des établissements d'enseignement et de recherche français ou étrangers, des laboratoires publics ou privés.

## **Application and implications of radiocarbon dating in forensic case work: when medico-legal significance meets archaeological relevance**

Benoit Bertrand<sup>1,2</sup>, Thibault Clauzel<sup>3</sup>, Pascale Richardin<sup>4</sup>, Anne Bécart<sup>1</sup>, Philippe Morbidelli<sup>1</sup>, Valery Hédouin<sup>1</sup>, Carina Marques<sup>5,6</sup>

<sup>1</sup> Univ. Lille, CHU Lille, ULR 7367 – UTML&A - Unité de Taphonomie Médico-Légale et Anatomie, F-59000 Lille, France

<sup>2</sup> Muséum National d'Histoire Naturelle, Département Homme et Environnement, UMR 7194 – HNHP, Institut de Paléontologie Humaine, Paris, France

<sup>3</sup> Laboratoire des Sciences du Climat et de l'Environnement, LSCE/IPSL, CEA-CNRS-UVSQ, Université Paris-Saclay, Orme des Merisiers, F-91191 Gif-sur- Yvette Cedex, France

<sup>4</sup> Centre de Recherche et de Restauration Des Musées de France (C2RMF), Palais du Louvre, F-75001 Paris, FRANCE /CNRS-UMR8068 Technologie et Ethnologie des Mondes Préhistoriques (TEMPS), Université Paris-Nanterre, France

<sup>5</sup> Research Centre for Anthropology and Health (CIAS), Department of Life Sciences, University of Coimbra, Portugal

<sup>6</sup> Department of Anthropology and School of Integrative Biological and Chemical Sciences, The University of Texas Rio Grande Valley, Texas, USA

## Corresponding author:

Benoit Bertrand – Forensic Institute, rue A. Verhaeghe, 59000 Lille, France;

benoit.bertrand@univ-lille.fr

ORCID: 0000-0001-7640-6929

## Abstract

The estimation of the postmortem interval for skeletal remains is a crucial aspect of forensic anthropology. This paper illustrates the importance of radiocarbon analysis for establishing medico-legal significance and supporting forensic identification, through the analysis of three case studies for which the years of both birth and death were investigated. In Audresselles, northern France, a partial skull was discovered with no contextual information or identity. Radiocarbon dating yielded an average calibrated calendar age of 4232 BCE (92.5% probability), indicating significant archaeological value but no forensic relevance. In the second case, skeletal remains were found in the flooded underground of a historical fort at Wimereux, northern France, also with no identity. Radiocarbon dating based on the bomb-pulse curve indicated a calibrated date of death in 1962 CE (37.3% probability) or 1974–1975 CE (58.1% probability), both surpassing the French statute of limitations. Lastly, a skeleton with a suspected identity was discovered near Valenciennes, northern France, and various biological tissues underwent radiocarbon dating. A bone sample suggested a calibrated date of death of 1998–2002 CE (84.6% probability), differing from a hair sample (2013–2018 CE, 83.3% probability) because of the slower bone tissue remodeling process. DNA analysis confirmed the person's identity, reported missing a decade prior to the discovery of the remains, following the alignment of the radiocarbon results with the individual's year of birth based on dental tissues and year of death. These case studies reveal that traditional radiocarbon dating and bomb-pulse dating are essential tools for estimating the postmortem interval, providing mutual benefits for archaeologists, forensic anthropologists, and the criminal justice system.

## Key points

- Traditional radiocarbon dating and bomb-pulse dating are essential tools to establish the archaeological relevance or medico-legal significance of human skeletal remains.
- Bomb-pulse dating enables assessment of an individual's years of birth and death.
- Bomb-pulse dating helps to narrow down the pool of candidates for identification.
- Radiocarbon analysis provides mutual benefits for archaeologists, forensic anthropologists, and the criminal justice system.

**Key words:**  $^{14}\text{C}$ ; bomb-pulse dating; post-mortem interval; forensic anthropology; identification

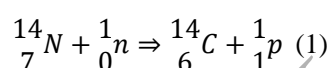
## Introduction

Estimating the postmortem interval (PMI), the time elapsed since death, is critical in any forensic investigation, assisting in the investigation of the death, the reconstruction of the surrounding events and timeline, and the identification of the decedent (1). The precision of PMI assessment decreases with increasing time since death. For a short PMI, forensic pathologists rely on a set of rapid biochemical changes of forensic significance that allow narrower PMI estimations, and a relatively large set of methodological approaches (2–5). There are fewer methodological approaches for a longer PMI, focusing on the examination of decomposition stages, sometimes using entomological, botanical, or biochemical methods. The efficacy and precision of these methods diminish as decomposition progresses (6–9).

The complexity escalates with skeletonized bodies, as visual examination of the bone degradation stages becomes insufficient, and the timing of skeletonization varies significantly depending on a wide range of extrinsic and intrinsic factors (9). As such, PMI estimation is one of the most challenging parameters in forensic anthropology (1). The stratigraphic sequence and circumstantial evidence may be pivotal for the PMI estimation of skeletonized remains. Various techniques have been explored to assess the PMI of skeletal remains, including chemiluminescent reactions (10–14), UV-Vis spectroscopy (15–17), UV-Vis-induced fluorescence (18), X-ray diffraction (XRD) (19), Fourier transform infrared (FTIR) spectroscopy (17,20–23), Raman spectroscopy (22–24), high-performance liquid chromatography-tandem mass spectrometry (HPLC/MS/MS) (25), metabolomics, lipidomics, and proteomics (1,26), microcomputed tomography (27), and digital imaging or stereomicroscopy (28) (see Wescott (2018) and Franceschetti et al. (2023) for reviews). While promising, most of these approaches are still being developed, or have not yet produced sufficiently robust results to meet medico-legal standards (29). The uncertainty associated with these methods, particularly when remains are extensively degraded, makes them inadequate for establishing whether remains are of archaeological origin or if there is medico-legal significance, which is critical for determining the following investigative process and for forensic identification (29,30).

In France, crimes carry a 20-year statute of limitations<sup>1</sup> on criminal legal proceedings, with some exceptions (30 years for terrorism-related offenses, organized drug trafficking, eugenics, and war crimes, and no statute of limitations for crimes against humanity). The discovery of human skeletal remains in areas of high archaeological potential triggers legal requirements under both the French Penal Code<sup>2</sup> and the Heritage Code<sup>3</sup>. Over 38 000 archaeological sites are known in northern France<sup>4</sup>, with an average of 350 archaeological interventions each year conducted by 14 archaeological organizations. Moreover, there are hundreds of thousands of fallen WWI soldiers with no known graves. Hence, law enforcement and forensic experts should consider all human skeletal remains without clear historical context as potentially relevant to medico-legal investigations until demonstrated otherwise.

In France, as in many other countries worldwide, the adoption of a technique to establish medico-legal significance or archaeological relevance is critical. The exclusion of medico-legal significance in areas with high archaeological potential will decrease the time and costs associated with other investigative procedures, including the identification process. Radiocarbon dating is a reliable and versatile tool to determine whether skeletonized remains are of archaeological or forensic significance (31–33) and can also estimate a year of death (34,35). However, although this method has been well-established for decades among geologists, archaeologists, and bioarchaeologists, radiocarbon dating is still underused in forensic anthropology. PMI estimation based on radiocarbon dating meets medico-legal requirements and adheres to various standards, including testability, internationally standardized protocols, long-established error rates, validation through abundant peer-reviewed publications, and broad acceptance within relevant scientific communities. The radiocarbon isotope ( $^{14}\text{C}$ ) forms naturally by neutron bombardment of stable  $^{14}\text{N}$  in the upper troposphere and stratosphere, following the reaction:



Upon formation, radiocarbon is oxidized and diluted in the atmosphere. It integrates into all living organisms in continental, freshwater, and marine ecosystems (36,37), which maintain  $^{14}\text{C}$  isotopic equilibrium with the atmosphere throughout their lifetime. Upon their death, the radiocarbon begins to decay radioactively following a  $\beta^-$  disintegration, such that:

$${}^{14}\text{C}(t) = {}^{14}\text{C}(t_0)e^{-\lambda t} \quad (2)$$

where  $t$  is the PMI,  $t_0$  is the time of death, and  $\lambda$  is the radioactive disintegration constant. Therefore, through measurement of  $^{14}\text{C}(t)$  with constraints on  $^{14}\text{C}(t_0)$  and  $\lambda$ , the PMI can be estimated.

Quantifying radiocarbon in samples is challenging because of its scarcity, with typical  $^{14}\text{C}/^{12}\text{C}$  ratios between  $10^{-12}$  and  $10^{-15}$  (38). Two main techniques are currently used:  $\beta^-$  counting estimates the number of particles emitted by radiocarbon isotopes using specific counters (39), while accelerator mass spectrometry (AMS) directly measures the number of  $^{14}\text{C}$  atoms in a sample and the  $^{14}\text{C}/^{12}\text{C}$  ratio. Currently, AMS is most often used, because of its efficiency and minimal sample requirements (40). For each sample, the percent Modern Carbon (pMC, %) can be calculated based on the ratio between the  $^{14}\text{C}$  content of the sample and the modern (1950 CE)  $^{14}\text{C}$  quantity, assessed from a standard included in the analytical protocol. Using equation [2], the pMC allows a radiocarbon age to be calculated for each sample. However, because of variations in the  $^{14}\text{C}$  concentration in the atmosphere over time and space, the relationship between the calculated radiocarbon age and the “true” calendar age of a sample is complex. To account for these variations, sinusoidal calibration

curves are regularly produced (41,42). The calibration curve used currently in the Northern Hemisphere is IntCal20 (43).

The  $^{14}\text{C}$  disintegration half-life period is  $5\,568 \pm 30$  radiocarbon years (44), and so traditional radiocarbon dating applies to samples ranging from 300–50 000 years (45), encompassing most archaeological material but less relevant for modern remains in forensic contexts. In these cases, the bomb-pulse dating method capitalizes on the temporary spike in atmospheric  $^{14}\text{C}$  around 1960, resulting from nuclear testing during the 1950s and early 1960s. The bomb-pulse curve is used to date recent samples, characterized by pMC > 100%, and is thus relevant for medico-legal inquiries (46). The bomb-pulse calibration curve currently used for the Northern Hemisphere is Bomb21NH1 (47).

Radiocarbon is assimilated by biological tissues throughout their development and remodeling, occurring at varying stages and rates throughout life. For samples characterized by pMC > 100%, analysis of tissues that undergo little-to-no remodeling throughout life, such as dental tissue, reveals the levels from their period of formation, allowing estimation of the year of birth (48,49). Tissues with rapid formation or remodeling, such as soft tissues, indicate the year of death (50,51).

Both traditional radiocarbon and bomb-pulse dating offer valuable insights into the medico-legal significance and identification of human remains, in both forensic and archaeological contexts. We illustrate this assertion here, by presenting three recent case studies from the Forensic Institute in Lille, France, in which this approach contributed to or excluded identification.

#### **Case study 1: Audresselles, France**

On June 17<sup>th</sup>, 2017, a partial human skull was discovered on the beach at Audresselles, Pas-de-Calais, Hauts-de-France, France, by law enforcement agents, lacking additional contextual information. The bones were cleaned, arranged anatomically, and photographed (Figure 1). The skeletal remains included the frontal bone, both parietal bones, the right temporal bone, the right maxilla with teeth #13, #14, #16, #17, and #18, and fragments of the sphenoid bone, all belonging to a single adult individual. The skull exhibited taphonomic alterations, including some breakage, abrasion, and striations evenly distributed across most areas of the skull. Black staining was visible on the endocranium and on the external cranial surface. There were some marine organismal adhesions in the external auditory meatus and adjacent areas. No signs of scavenger activity were detected, nor was there evidence of weathering patterns typical of terrestrial environments, such as sun bleaching or uneven weathering of the bone surface. We were unable to determine if the skull underwent immersion in a marine environment or if it was exposed to the shore environment for a

short time. However, the skull presented no taphonomic signs of long-term terrestrial surface exposure.



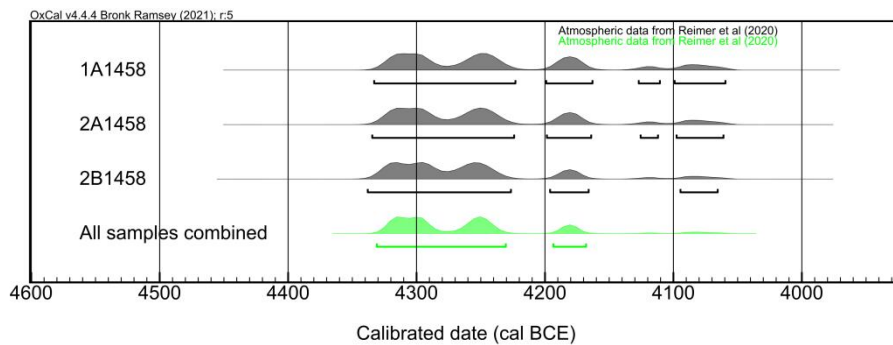
**Figure 1** Cranial remains discovered on the beach at Audresselles (France) with no contextual information.

The sex was estimated using morphological traits (52). The sharp supraorbital margin and the small volumes of the mastoid process and glabella indicated a possible female. The skull belonged to an adult individual, but a more precise age-at-death estimation was not possible. The Lamendin dental root method (53) was attempted and yielded an estimated age at death of  $40 \pm 6.9$  years, but this must be taken with caution because of the potential influence of taphonomic factors. No perimortem or antemortem changes were observed.

Considering the lack of circumstantial evidence and the rise in migrant deaths crossing the English Channel from France, the likelihood of medico-legal significance was high. Since none of the existing macroscopic methods allow a reliable and narrow PMI estimation, radioisotope examinations were conducted on a parietal bone sample. Sampling was performed using a mini-drill equipped with a diamond drill bit. Afterwards, the sample underwent a series of processing steps, including crushing, washing with Stakpure™ ultrapure water, and drying in a vacuum oven at  $60^{\circ}\text{C}$  for 24 hours. Finally, it was finely powdered using a Pulverisette 7™ planetary ball mill. Radiocarbon dating of bone samples typically targets the organic bone collagen fraction, requiring its extraction from the bulk sample. Bone collagen extraction was performed at the Centre de Recherche et de Restauration des Musées de France (C2RMF), following established protocols adapted from Longin (1971) and described in Richardin et al. (2017) and Clauzel et al. (2022) that involve successive acid and basic solution treatments to remove the bone mineral matrix, followed by filtration and freeze-drying of the collagen.







**Figure 2** Calibrated dates obtained for the sample from Audresselles (France) using the IntCal20 calibration curve (Reimer et al., 2020).

### Case study 2: Wimereux, France

In February 2019, human skeletal remains were discovered in the Fort de la Crèche in Wimereux, Pas-de-Calais, Hauts-de-France, France. This fortification has been instrumental for over two centuries because of its strategic location, used in numerous conflicts that faced this region. It was initially built in 1879 as a component of the defense network termed the Séré de Rivières system. The fort was also operational throughout WWI, underwent modernization to evolve into a significant battleground during WWII, and was finally integrated into the Atlantic Wall. It was decommissioned in 2002, but for decades has been frequently occupied by homeless people. The human skeletal remains, alongside non-human mammals (cattle and canids), were found in the flooded underground of the fort that had been locked for approximately 15 years. Recovery was carried out by law enforcement agents. Complete water removal was impractical because of the associated challenges and costs resulting from the extensive volume of the flooded rooms. The remains included a pelvis, right and left femurs, a right tibia, and an incomplete right foot (missing two middle and four distal phalanges). The minimum number of individuals was one adult with no identity (Figure 3). No antemortem or perimortem lesions were observed on the bones. The probabilistic sex estimation was based on metric analysis of the innominate bone (59), indicating a male (probability female (P(F)): 0.00; probability male (P(M)): 1.00). The age at death was assessed based on the morphology of the pubic symphysis following the method developed by Brooks and Suchey (1990), and indicated an age range of 19.8–27.0 years (mean, 23.4; standard deviation (SD), 3.6 years) (Phase II).



**Figure 3** Skeletal remains discovered at Wimereux (France).

The bones exhibited macroscopic postmortem modifications, including staining, consistent with prolonged exposure in stagnant water. Visual inspection for PMI estimation was influenced by the prolonged exposure to contaminated water, which altered the appearance. Although the bones appeared relatively recent based on subjective experience, the PMI could not be estimated based solely on these features. Since the site has a history of multiple occupations, from historical periods to contemporary times, the PMI could theoretically range from a few years to a century. To provide additional insights, radiocarbon dating was suggested to the investigating officer and to the magistrate, who approved and officially requested analysis. Femoral cortical bone sampling was performed by the forensic practitioner, and pretreatment and dating procedures were conducted by the C2RMF and the Artemis facility, following similar protocols to those described in the previous case study.

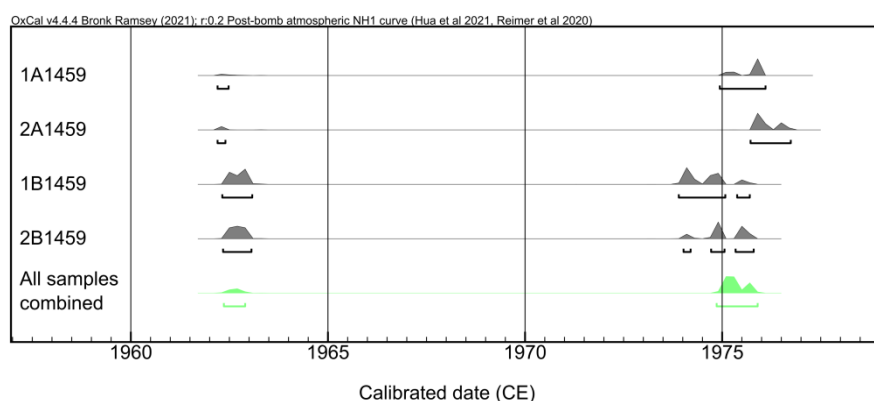
The sample exhibited a pMC value exceeding 100%, indicating a more recent date than 1950 and therefore suitability for bomb-pulse curve dating (Table 2, Figure 4). The calibrated dates indicated a year of death of either 1962–1963 (14.2% probability) or 1974–1975 (81.3% probability). Even considering a lag time—a difference between the actual year of death and the  $^{14}\text{C}$ -estimated year, dependent on the type of bone tissue and the age at death—this indicates that the individual likely died more than 20 years before the skeletal remains were found, precluding the initiation of a judicial procedure in the French legal system. Investigations performed on clothing and a plastic shopping bag found near the skeletal remains supported the likelihood that the individual died during 1970–

1980, consistent with the radiocarbon dating. Therefore, radiocarbon bomb-pulse dating of this modern sample indicated a recent PMI but a lack of medico-legal significance under the French judicial legal system. Although investigation for identification purposes may not be legally required after 20 years, radiocarbon dating could aid in narrowing down potential candidates for identification, and, even if not legally mandatory, a sample could still be sent to the Automated National DNA Data Bank. In this case, it was suggested that DNA analysis would be advisable, but no actions were taken by the legal authorities.

**Table 2.** Percent Modern Carbon (pMC) and calibrated dates for the human bone sample from the Wimereux fortification. The combination was checked for consistency by a chi-squared test, performed automatically by the OxCal™ system.

Sample	Nature	pMC (%)	Calibrated dates (2σ, 95.4% probability)
1A1459	Femoral cortical bone	137.630±0.280	1962 CE (5.2%) 1974 CE – 1976 CE (90.3%)
2A1459	Femoral cortical bone	136.700±0.290	1962 CE (7.2%) 1975 CE – 1976 CE (88.3%)
1B1459	Femoral cortical bone	140.956±0.298	1962 CE – 1963 CE (41.5%) 1973 CE – 1976 CE (53.9%)
2B1459	Femoral cortical bone	140.420±0.297	1962 CE – 1963 CE (45.9%) 1974 CE – 1976 CE (49.5%)
All samples combined			1962 CE – 1963 CE (14.2%) 1974 CE – 1976 CE (81.3%)

CE: Common Era.



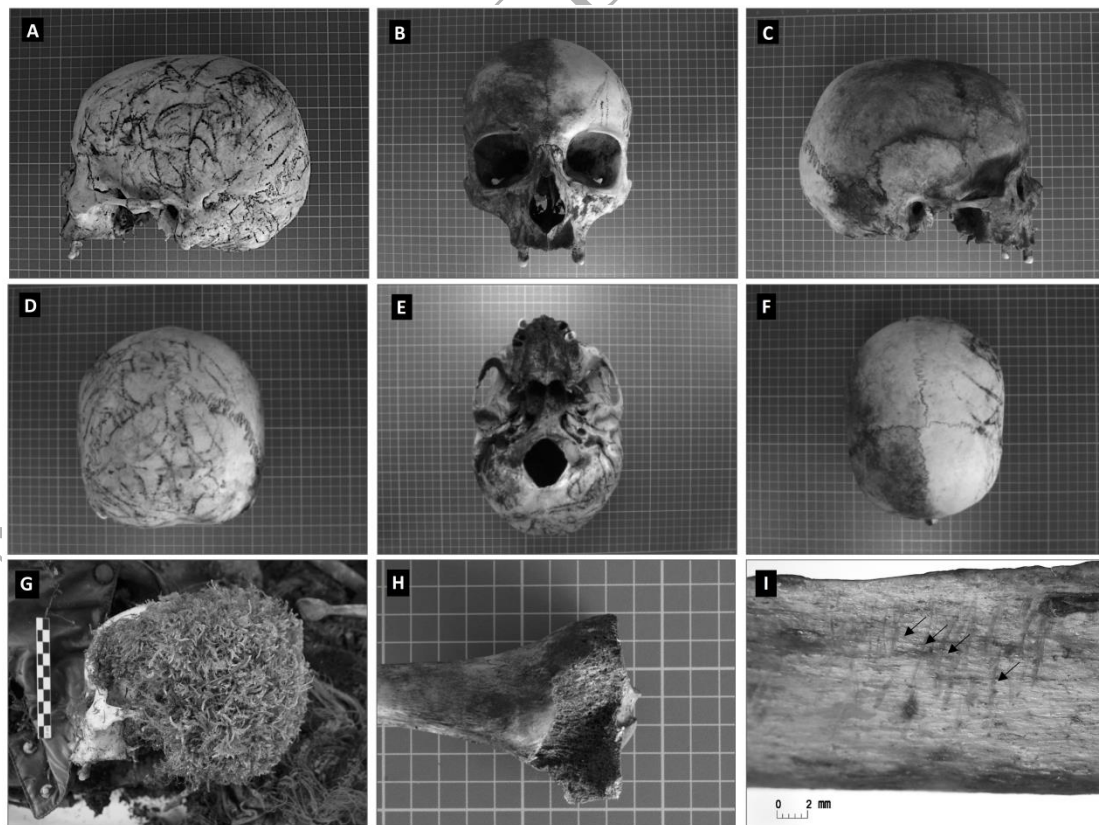
**Figure 4** Calibrated dates obtained for the sample from Wimereux (France) using the Bomb21NH1 bomb-pulse calibration curve (Hua et al., 2022; Reimer et al., 2020).

### Case study 3: Valenciennes, France

In 2022, human skeletal remains were discovered near Valenciennes, Nord, Hauts-de-France, France, during the clearance of overgrown vegetation near a residential area. A well-preserved and nearly complete skeleton was found alongside associated evidence, including clothing, a hair clip with preserved hair, personal belongings, and a health insurance card bearing the identity of a person reported missing in the area 10 years prior to the discovery of the remains.

Biological sex estimation was based on measurement of the innominate (59). The result indicated a female (DF: 13.02; DM: 35.05; P(F): 1.00; P(M): 0.00). This was supported by measurement of the proximal femur (PF, 0.70) (61) and examination of cranial morphological features (52). The age-at-death was assessed based on the pubic symphysis morphology following the method developed by Brooks and Suchey (1990). This indicated an age range between 27.3–49.1 years (mean, 38.2; SD, 10.9 years) (Phase IV). The age at death was refined by cementochronology using a lower canine (62), which estimated an age at death ranging from 48–58 years.

No antemortem or perimortem lesions were observed. Postmortem alterations included plant root etching, staining on the skull surface (Figure 5 A, D), and rodent and/or carnivore gnaw marks on long bones and ribs (Figure 5 H, I). The skull was whitened on the exposed surface and colonized by moss (Figure 5 B, G).



**Figure 5** Skull discovered near Valenciennes (France). (A) Left lateral view showing root etching and staining. (B) Anterior view. (C) Right lateral view. (D) Posterior view. (E) Inferior view. (F) Superior view. (G) Left lateral view of the skull showing colonization by moss. (H) Taphonomic alterations, showing gnaw marks in the tibia. (I) Taphonomic alterations, showing gnaw marks in the rib.

These observations suggested a PMI of a few years. Radiocarbon dating was then conducted on two biological tissues, hair and vertebral cancellous bone, to estimate the time since death. Radiocarbon analysis of two teeth was also performed to assess the year of birth.

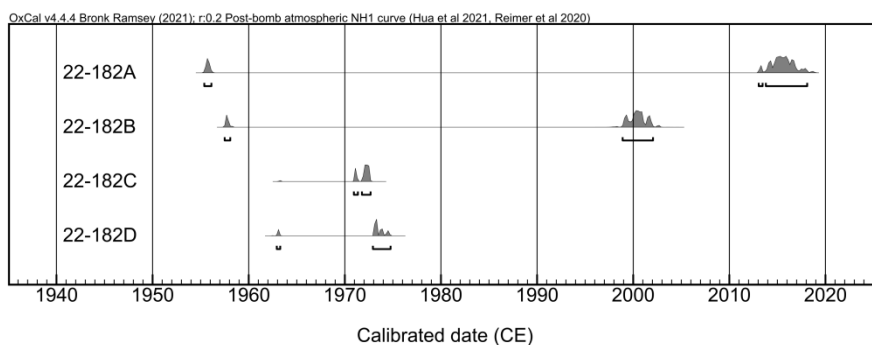
The samples were sent to Beta Analytics™ (Miami, USA), where they underwent AMS radiocarbon dating. The hair sample was submitted to an acid/alkali pretreatment, while soluble collagen extraction protocols were applied on both the tooth and bone samples. AMS measurements were conducted directly in the company laboratories.

As expected, the measured pMC exceeded 100% for all samples (Table 3, Figure 6), confirming their modern origin, and the different biological tissues yielded varying dates, reflecting the different time frames represented by each sample.

**Table 3.** Percent Modern Carbon (pMC) and calibrated dates for the human samples from Valenciennes. The numbers in brackets indicate the specific tooth, following the World Dental Federation notation.

Sample	Nature	pMC (%)	Calibrated dates (2σ, 95.4% probability)
22-182A	Hair	102.27±0.38	1955 CE – 1956 CE (12.1%) 2013 CE – 2018 CE (83.3%)
22-182B	Vertebral cancellous bone	109.24±0.41	1957 CE – 1958 CE (10.9%) 1998 CE – 2002 CE (84.6%)
22-182C	Lower canine (#43)	149.12±0.56	1970 CE – 1972 CE (95.4%)
22-182D	Upper canine (#13)	143.66±0.54	1962 CE – 1963 CE (11.1%) 1972 CE – 1974 CE (84.4%)

CE: Common Era.



**Figure 6** Calibrated dates for the samples from Valenciennes (France) using the Bomb21NH1 bomb-pulse calibration curve (Hua et al., 2022; Reimer et al., 2020).

The teeth samples yielded calibrated dates of 1970–1972 (95.4% probability) for the lower canine and 1972–1974 (84.4% probability) or 1962–1963 (11.1% probability) for the upper canine. In contrast to bone tissue, there is little-to-no remodeling of dentin (63), and none of enamel (64). Therefore, radiocarbon analysis reflects the timing of the mineralization of the dental tissue. Both teeth analyzed were canines, of which three-quarters of the root length are mineralized at 10.5 years (65). Therefore, the year of birth can be estimated as 1960–1964, based on the combination of the estimation obtained from the lower and upper canines.

The vertebral cancellous bone sample, selected following the recommendation of Ubelaker et al. (2015) and (2021), suggested a year of death of 1998–2002 (84.6% probability) and 1957–1958 (10.9% probability). The hair sample provided the most recent calibrated dates of 2013–2018 (83.3% probability) and 1955–1956 (12.1% probability).

This sampling strategy, involving a set of different biological tissues characterized by different developmental stages and rates of remodeling, enabled the assessment of both endpoints of the individual's lifespan: the year of birth and the year of death. The interval between these two dates is consistent with the age at death estimated by cementochronology.

By combining the radiocarbon information from the three biological tissues, we proposed that the female individual was born between 1960–1964, based on the dental samples, and that the year of death ranged between 2013–2018 based on the hair sample, and between 2006–2010 considering the vertebral cancellous bone (note that the results were 1998–2002, but an estimated 8.0-year lag time was added, considering the findings of Ubelaker et al. (2021)).

Here, the information provided by radiocarbon analysis was crucial not only for establishing the medico-legal significance, but also for narrowing down the pool of candidates for identification and scientifically supporting the initial leads from law enforcement agents. Based on these results, further identification protocols were initiated and bone samples were collected for DNA extraction

by the Forensic Police Department in Lille. DNA analysis successfully confirmed the identification, further supported by the radiocarbon dating results.

## Discussion

In their recent review, Franceschetti et al. (2023) delineated two overarching categories for the application of PMI estimation methods: those aiming to determine the archaeological or forensic significance of human remains, and those aiming to refine the PMI once medico-legal significance is established. In their flow chart, radioisotope techniques such as  $^{14}\text{C}$  analysis play a role in establishing the forensic interest; however, we argue that such analysis also serves a purpose in refining the PMI, and is a relevant approach for narrowing down the pool of candidates for identification purposes. Here, case studies 1 and 2 demonstrate that radiocarbon dating indeed serves as a reliable initial step to establish medico-legal or archaeological significance. While Franceschetti et al. (2023) do not include  $^{14}\text{C}$  analysis in their list of methods to apply once forensic significance is known, the radiocarbon method can extend beyond expectations, as shown in case study 3. This analysis was essential for scientifically supporting the initial leads from law enforcement agents regarding possible identification.

Case study 1 yielded a calibrated date range between 4332 and 4168 BCE, corresponding to the Neolithic period, and thus radiocarbon dating contributed to the preservation of original archaeological material. After the forensic investigation was officially endorsed by the legal authorities, the cranial remains were transferred to the archaeological authorities for curation. Neolithic occupations have been identified on the Channel and North Sea coasts of France (66). According to the local archaeologists (*pers. comm.*), no prehistoric occupation has been identified at this specific location, but the remains were likely carried by littoral sea currents. Future steps are now the responsibility of archaeologists. The Ministry of Culture, leading the policy of safeguarding and protecting cultural heritage, has well-established procedures for inadvertent discoveries<sup>5</sup>. However, no legal provisions are delineated for archaeological human remains found in the context of a forensic investigation. Also, since forensic investigations are guided by the Ministry of Justice, the investigating magistrate can order the destruction of skeletal remains lacking medico-legal significance, in total contrast with the Heritage Code. Hence, interaction and significant crosstalk are required between the legal and archaeological obligations.

Case studies 2 and 3 illustrate the relevance of modern bomb-pulse dating and the importance of the lag time (the difference between the actual and estimated dates of death) in different biological tissues when discussing the medico-legal significance, and the importance of considering bone remodeling rates in the sampling strategy. The lag time is tissue-specific (51), age-related (50,67), and possibly sex-specific (51), based on the timing of tissue modeling and the remodeling rate. These parameters must therefore be considered when sampling. Case study 2 yielded a radiocarbon date of 1974–1975 (81.3% probability), indicating a lack of medico-legal significance under the French judicial legal system 20-year statute of limitation. This date was estimated based on a

femoral cortical bone, for which the lag time reaches a median of 29.5 years (51) and a mean of 32.0 years (68). This brings the estimated year of death close to the 20-year statute of limitations. However, the biological profile showed that case study 2 was a young adult (19.8–27.0 years), with fast tissue remodeling and  $^{14}\text{C}$  values that can be considered close to atmospheric values (50). A case involving an older individual and, consequently, a slower rate of bone remodeling would lead to the consideration of a longer lag time, prompting a reassessment of the medico-legal significance. This case highlights the importance of the recommendations established by Ubelaker et al. (2015) to consider the age at death of the individual under study, and emphasizes the usefulness of this method, particularly in countries with longer or non-existent statutes of limitation for identification purposes.

Case study 3 yielded a year of birth falling within the range of 1960–1964, based on estimations from lower and upper canines of 1970–1972 (95.4% probability) and 1972–1974 (84.4% probability), respectively. The non-remodeling nature of dental tissues ensures the preservation of radiocarbon values from the time of their formation. Using the published stages of tooth formation (65,69), radiocarbon analysis allows the year of birth to be ascertained (49). Dental enamel is the preferred tissue (30,70) because of its precise and well-established developmental timeline. However, in this case, to ensure an adequate quantity of material for analysis, a sizable sample was taken and the analyses encompassed multiple biological tissues, resulting in wider lag times and reduced accuracy of the estimations. To sample only one tissue, such as enamel or primary dentin, at a precise location within the tooth root, would be necessary to refine the precision of the birth year estimate. Despite these constraints, the estimated year range overlaps the actual date of birth, demonstrating that tooth growth can reliably provide accurate chronological assessments.

Case study 3 also demonstrates that, when analyzing the radiocarbon bomb pulse, it is imperative to account for the lag time, which varies depending on the biological tissue being examined. The well-preserved remains in this case allowed hair to be sampled for analysis, and the completeness of the skeletal remains enabled us to select the vertebral cancellous bone for dating. Hair analysis provides information closer to the date of death (34,71,72), and bone turnover within the trabecular bone, particularly associated with hematopoietic marrow, is a suitable source for obtaining accurate chronological data (30,51,70). The ranges for the year of death based on the hair and vertebral cancellous bone were 2013–2018 (83.3% probability) and 1998–2002 (84.6% probability), respectively. Despite the caution used when sampling the biological tissues, the two intervals do not overlap. The individual's disappearance was reported in mid-2012, but the actual date of death remains unknown. Consequently, the range estimated based on the bone sample might be presumed to overestimate the PMI by 10 years, while the second range, derived from the hair sample, could potentially underestimate it by 1 year. This 1-year lag unquestionably falls within the acceptable range. We speculated whether environmental factors, such as pollution or hair dye, could have influenced this outcome. However, a recent study showed that the application of hair dye does not significantly impact the  $^{14}\text{C}$  concentration within samples (73). The 10-year lag calculated from the



vertebral cancellous bone closely aligns with the value reported by Ubelaker et al. (2021), which was the lowest average lag value (8 years) observed across all bone types tested.

These case studies demonstrate that, despite potential challenges, radiocarbon dating can yield reliable postmortem interval estimations, and is therefore a crucial tool in the initial stages of identification. The factors restraining the adoption of radiocarbon dating often include the cost and the implementation time, often overestimated by forensic practitioners (74). Radiocarbon dating is reasonable in terms of time and cost compared with toxicological and genetic analyses. The costs for a single sample preparation and AMS dating services may range between \$350–\$650. Practically, DNA analysis typically takes several months for standard cases, whereas radiocarbon dating using AMS can yield results in 2 weeks for standard processing, or within 1 week with priority processing. This allows a precise PMI estimation to be integrated into the further analysis strategy for identification.

Future research should prioritize investigations to quantify variations across different biological tissues, age groups, and sexes. Furthermore, it is imperative to assess the limitations of bomb-pulse dating for post-2010 forensic cases. This requires controlled investigations to evaluate the accuracy of radiocarbon dating for estimating the PMI in cases occurring within a short timeframe. Since the 2020s, the air radiocarbon concentration has returned to pre-bomb levels (47), resulting in modern samples with pMC values lower than 100%. Looking ahead, this decrease is expected to persist because of ongoing global emissions of radiocarbon-depleted fossil fuels (75). To provide reliable data and to help distinguish between ancient and future radiocarbon sources, additional analyses such as sequential sampling (47) or stable isotope analysis (75) will be essential.

## **Conclusion**

The case studies herein demonstrate the valuable insights that both traditional radiocarbon and bomb-pulse dating can provide for establishing the archaeological or medico-legal significance of human skeletal remains. This is paramount in areas of high archaeological potential, when contextual information may be lacking. Legal procedures cease once the archaeological relevance is established, saving both forensic practitioners and legal authorities valuable time and resources. Conversely, if medico-legal significance is established, radiocarbon assessments can help to narrow the pool of candidates for identification and to decide the best strategy for the identification process.

A sampling strategy involving different biological tissues, with varying developmental stages and remodeling rates, enables estimation of both the year of birth and the year of death, representing a valuable first step toward identification.

Radiocarbon dating has been firmly established for 70 years and complies with the principles of non-subjectivity, reliability, standardization, and reproducibility required in forensic sciences (76). In addition to fulfilling crucial requirements of the judicial system, it provides benefits to both

forensic scientists and archaeologists, and should be regularly incorporated into forensic investigation protocols.

### **Acknowledgments**

The authors would like to thank Frédéric Fèvre, General Prosecutor, Court of Appeal of Douai, France; Philippe Hanois and Jean-Luc Collart, Regional Curators, Regional Service of Archaeology, Directorate of Cultural Affairs of Hauts-de-France. This work was supported with funding from the Hauts-de-France Region (France) (Dispositif STIMuE - Volet Partenarial STIP).

### **Authors' contributions**

BB conceived and designed this study. CM participated in the design. BB, VH, PM and AB, contributed to the forensic anthropology and odontology analysis and interpretation. BB collected the samples. TC and PR performed pretreatment procedures and helped to conduct the interpretation of results. BB, CM and TC wrote the manuscript. BB, CM and TC revised the manuscript. All authors contributed to the final text and approved it.

### **Compliance with ethical standards**

In adherence to ethical principles, this investigation of the forensic cases strictly upholds confidentiality, respects the dignity of all individuals, and prioritizes the pursuit of truth and justice through rigorous methodology.

### **Conflict of interest statement**

The authors declare that they have no conflicts of interest.

### **Notes**

1. French Penal code - Art 133-2, modified by law n°2017-242 (27th Feb. 2017 - art. 2).
2. French Penal code - Art 74.
3. French Heritage code - Article L531-14
4. <https://www.culture.gouv.fr/Regions/DRAC-Hauts-de-France/Politique-et-actions-des-services/Pole-patrimoines-et-architecture/Service-regional-de-l-archeologie-SRA-des-Hauts-de-France/La-carte-archeologique>
5. French Heritage code - Article L531-14

## References

1. Bonicelli A, Mickleburgh HL, Chighine A, Locci E, Wescott DJ, Procopio N. The 'ForensOMICS' approach for postmortem interval estimation from human bone by integrating metabolomics, lipidomics, and proteomics. *Elife* 2022;11:1–22. <https://doi.org/10.7554/ELIFE.83658>.
2. Saukko P, Knight B. KNIGHT's: Forensic Pathology: Fourth Edition. Knight's: Forensic Pathology: Fourth Edition 2015;:1–649. <https://doi.org/10.1201/b13266>.
3. Rognum TO, Holmen S, Musse MA, Dahlberg PS, Stray-Pedersen A, Saugstad OD, et al. Estimation of time since death by vitreous humor hypoxanthine, potassium, and ambient temperature. *Forensic Sci Int* 2016;262:160–5. <https://doi.org/10.1016/J.FORSCIINT.2016.03.001>.
4. Stigter H, Krap T, Gelderman T, Dijkhuizen L, Duijst W. Technical note: Practical application of post-mortem mechanical stimulation of skeletal muscle, a field study. *Int J Legal Med* 2024;138(1):55–60. <https://doi.org/10.1007/S00414-022-02873-3>.
5. Englisch CN, Alrefai R, Lesan CM, Seitz B, Tschernig T. Postmortem sympathomimetic iris excitability. *Ann Anat* 2024;254. <https://doi.org/10.1016/J.AANAT.2024.152240>.
6. Megyesi MS, Nawrocki SP, Haskell NH. Using accumulated degree-days to estimate the postmortem interval from decomposed human remains. *J Forensic Sci* 2005;50(3):618–26.
7. Vass AA. The elusive universal post-mortem interval formula. *Forensic Sci Int* 2011;204(1):34–40.
8. Weisensee KE, Tica CI, Atwell MM, Ehrett C, Smith DH, Carbajales-Dale P, et al. geoFOR: A collaborative forensic taphonomy database for estimating the postmortem interval. *Forensic Sci Int* 2024;355(November 2023):111934. <https://doi.org/10.1016/j.forsciint.2024.111934>.
9. Wescott DJ. Recent advances in forensic anthropology: decomposition research. *Forensic Sci Res* 2018;3(4):327–42. <https://doi.org/10.1080/20961790.2018.1488571>.
10. Sarabia J, Pérez-Martínez C, Hernández del Rincón JP, Luna A, del Rincón JPH, Luna A. Study of chemiluminescence measured by luminometry and its application in the estimation of postmortem interval of bone remains. *Leg Med* 2018;33:32–5. <https://doi.org/10.1016/j.legalmed.2018.05.001>.
11. Ramsthaler F, Kreutz K, Zipp K, Verhoff MA. Dating skeletal remains with luminol-chemiluminescence. Validity, intra- and interobserver error. *Forensic Sci Int* 2009;187(1):47–50.
12. Cappella A, Gibelli D, Muccino E, Scarpulla V, Cerutti E, Caruso V, et al. The comparative performance of PMI estimation in skeletal remains by three methods (C-14, luminol test and

OHI): analysis of 20 cases. *Int J Legal Med* 2018;132(4):1215–24. <https://doi.org/10.1007/s00414-015-1152-z>.

13. Introna F, Di Vella G, Campobasso CP. Determination of Postmortem Interval from Old Skeletal Remains by Image Analysis of Luminol Test Results. *J Forensic Sci* 1999;44(3):14505J. <https://doi.org/10.1520/jfs14505j>.
14. Ramsthaler F, Ebach SC, Birngruber CG, Verhoff MA. Postmortem interval of skeletal remains through the detection of intraosseal hemin traces. A comparison of UV-fluorescence, luminol, Hexagon-OBTI®, and Combur® tests. *Forensic Sci Int* 2011;209(1–3):59–63. <https://doi.org/10.1016/j.forsciint.2010.12.011>.
15. Boaks A, Siwek D, Mortazavi F. The temporal degradation of bone collagen: a histochemical approach. *Forensic Sci Int* 2014;240:104–10.
16. Kanz F, Reiter C, Risser DU. Citrate content of bone for time since death estimation: results from burials with different physical characteristics and known PMI. *J Forensic Sci* 2014;59(3):613–20.
17. Schwarcz HP, Agur K, Jantz LM. A new method for determination of postmortem interval: Citrate content of bone. *J Forensic Sci* 2010;55(6):1516–22. <https://doi.org/10.1111/j.1556-4029.2010.01511.x>.
18. Sterzik V, Jung T, Jellinghaus K, Bohnert M. Estimating the postmortem interval of human skeletal remains by analyzing their optical behavior. *Int J Legal Med* 2016;130(6):1557–66. <https://doi.org/10.1007/s00414-016-1395-3>.
19. Prieto-Castelló MJ, del Rincón JPH, Pérez-Sirvent C, Álvarez-Jiménez P, Pérez-Cárceles MD, Osuna E, et al. Application of biochemical and X-ray diffraction analyses to establish the postmortem interval. *Forensic Sci Int* 2007;172(2–3):112–8. <https://doi.org/10.1016/j.forsciint.2006.12.014>.
20. Nagy G, Lorand T, Patonai Z, Montsko G, Bajnoczky I, Marcsik A, et al. Analysis of pathological and non-pathological human skeletal remains by FT-IR spectroscopy. *Forensic Sci Int* 2008;175(1):55–60. <https://doi.org/10.1016/J.FORSCIINT.2007.05.008>.
21. Wang Q, Zhang Y, Lin H, Zha S, Fang R, Wei X, et al. Estimation of the late postmortem interval using FTIR spectroscopy and chemometrics in human skeletal remains. *Forensic Sci Int* 2017;281:113–20.
22. Creagh D, Cameron A. Estimating the post-mortem interval of skeletonized remains: the use of infrared spectroscopy and raman spectro-microscopy. *Radiation Physics and Chemistry* 2017;137:225–9. <https://doi.org/10.1016/J.RADPHYSICHEM.2016.03.007>.
23. Woess C, Unterberger SH, Roider C, Ritsch-Marte M, Pemberger N, Cemper-Kiesslich J, et al. Assessing various Infrared (IR) microscopic imaging techniques for post-mortem interval

evaluation of human skeletal remains. *PLoS One* 2017;12(3):e0174552.  
<https://doi.org/10.1371/journal.pone.0174552>.

24. McLaughlin G, Lednev IK. Potential application of raman spectroscopy for determining burial duration of skeletal remains. *Anal Bioanal Chem* 2011;401(8):2511–8.
25. Pérez-Martínez C, Pérez-Cárceles MD, Legaz I, Prieto-Bonete G, Luna A. Quantification of nitrogenous bases, DNA and Collagen type I for the estimation of the postmortem interval in bone remains. *Forensic Sci Int* 2017;281:106–12.
26. Procopio N, Williams A, Chamberlain AT, Buckley M. Forensic proteomics for the evaluation of the post-mortem decay in bones. *J Proteomics* 2018. <https://doi.org/10.1016/j.jprot.2018.01.016>.
27. Le Garff E, Mesli V, Marchand E, Behal H, Demondion X, Becart A, et al. Is bone analysis with  $\mu$ CT useful for short postmortem interval estimation? *Int J Legal Med* 2018. <https://doi.org/10.1007/s00414-017-1696-1>.
28. Jellinghaus K, Urban PK, Hachmann C, Bohnert M, Hotz G, Rosendahl W, et al. Collagen degradation as a possibility to determine the post-mortem interval (PMI) of human bones in a forensic context – A survey. *Leg Med* 2019;36(July 2018):96–102. <https://doi.org/10.1016/j.legalmed.2018.11.009>.
29. Franceschetti L, Amadasi A, Bugelli V, Bolsi G, Tsokos M. Estimation of Late Postmortem Interval: Where Do We Stand? A Literature Review. *Biology (Basel)* 2023;12(6):1–18. <https://doi.org/10.3390/biology12060783>.
30. Ubelaker DH. Radiocarbon analysis of human remains: A review of forensic applications. *J Forensic Sci* 2014;59(6):1466–72. <https://doi.org/10.1111/1556-4029.12535>.
31. Blau S, Johnstone-Belford E, Rowbotham SK. Radiocarbon dating as tool to assist in triaging cases of unidentified human remains in Victoria, Australia: A case series. *J Forensic Sci* 2023;68(4):1372–8. <https://doi.org/10.1111/1556-4029.15301>.
32. O'Reilly RA, Ruffell A, Reimer PJ. Suspect graveyard burial (South Armagh, N. Ireland): Combined search, forensic anthropology and radiocarbon dating. *Science and Justice* 2023;63(1):1–8. <https://doi.org/10.1016/j.scijus.2022.10.002>.
33. Fournier NA, Ross AH. Radiocarbon dating: implications for establishing a forensic context. *Forensic Science Policy & Management: An International Journal* 2013;4(3–4):96–104.
34. Johnstone-Belford EC, Blau S. A Review of Bomb Pulse Dating and its Use in the Investigation of Unidentified Human Remains. *J Forensic Sci* 2020;65(3):676–85. <https://doi.org/10.1111/1556-4029.14227>.

35. Ubelaker DH, Buchholz BA, Stewart JEBB. Analysis of artificial radiocarbon in different skeletal and dental tissue types to evaluate date of death. *J Forensic Sci* 2006;51(3):484–8. <https://doi.org/10.1111/j.1556-4029.2006.00125.x>.
36. Harkness DD, Walton A. Carbon-14 in the biosphere and humans. *Nature* 1969;223(5212). <https://doi.org/10.1038/2231216a0>.
37. Levin I, Hesshaimer V. Radiocarbon - A unique tracer of global carbon cycle dynamics. *Radiocarbon*. 2000.
38. Bronk Ramsey C. Radiocarbon dating: Revolutions in understanding. *Archaeometry* 2008;50(2). <https://doi.org/10.1111/j.1475-4754.2008.00394.x>.
39. Taylor RE. Radiocarbon Dating. In: Taylor RE, Aitken MJ, editors. *Chronometric Dating in Archaeology*. Boston, MA: Springer US, 1997;65–96.
40. Hajdas I, Ascough P, Garnett MH, Fallon SJ, Pearson CL, Quarta G, et al. Radiocarbon dating. *Nature Reviews Methods Primers* 2021;1(1):62. <https://doi.org/10.1038/s43586-021-00058-7>.
41. Ramsey CB. Analysis of chronological information and radiocarbon calibration: the program OxCal. *Archaeological Computing Newsletter* 1994;41(e16).
42. Ramsey CB, Lee S, Bronk Ramsey C. Recent and Planned Developments of the Program OxCal. *Radiocarbon* 2013;55(2):720–730. <https://doi.org/10.1017/S0033822200057878>.
43. Reimer PJ, Austin WEN, Bard E, Bayliss A, Blackwell PG, Bronk Ramsey C, et al. The IntCal20 Northern Hemisphere Radiocarbon Age Calibration Curve (0-55 cal kBP). *Radiocarbon* 2020;62(4):725–57. <https://doi.org/10.1017/RDC.2020.41>.
44. Libby WF. Radiocarbon dates, II. *Science* (1979) 1951;114(2960). <https://doi.org/10.1126/science.114.2960.291>.
45. Guilderson TP, Reimer PJ, Brown TA. The boon and bane of radiocarbon dating. *Science*. 2005.
46. Buchholz BA, Alkass K, Druid H, Spalding KL. Chapter 16 - Bomb Pulse Radiocarbon Dating of Skeletal Tissues. In: Latham KE, Bartelink EJ, Finnegan M, editors. *New Perspectives in Forensic Human Skeletal Identification*. Academic Press, 2018;185–96.
47. Hua Q, Turnbull JC, Santos GM, Rakowski AZ, Ancapichún S, De Pol-Holz R, et al. Atmospheric Radiocarbon for the Period 1950-2019. *Radiocarbon* 2022;64(4):723–45. <https://doi.org/10.1017/RDC.2021.95>.
48. Alkass K, Buchholz BA, Ohtani S, Yamamoto T, Druid H, Spalding KL. Age Estimation in Forensic Sciences. *Molecular & Cellular Proteomics* 2010;9(5):1022–30. <https://doi.org/10.1074/mcp.M900525-MCP200>.

49. Spalding KL, Buchholz BA, Bergman LE, Druid H, Frisén J. Age written in teeth by nuclear tests. *Nature* 2005;437(7057):333–4. <https://doi.org/10.1038/437333a>.
50. Ubelaker DH, Thomas C, Olson JE. The impact of age at death on the lag time of radiocarbon values in human bone. *Forensic Sci Int* 2015;251:56–60. <https://doi.org/10.1016/j.forsciint.2015.03.024>.
51. Ubelaker DH, Plens CR, Soriano EP, Diniz MV, de Almeida Junior E, Junior ED, et al. Lag Time of Modern Bomb-Pulse Radiocarbon in Human Bone Tissues: New Data from Brazil. *Forensic Sci Int* 2021;331(111143):111143. <https://doi.org/10.1016/j.forsciint.2021.111143>.
52. Buikstra JE, Ubelaker DH. Standards for data collection from human skeletal remains. *Arkansas Archeological Survey*, 1994.
53. Lamendin H, Baccino E, Humbert JF, Tavernier JC, Nossintchouk RM, Zerilli A. A Simple Technique for Age Estimation in Adult Corpses: The Two Criteria Dental Method. *J Forensic Sci* 1992;37(5):13327J. <https://doi.org/10.1520/jfs13327j>.
54. Longin R. New method of collagen extraction for radiocarbon dating. *Nature* 1971. <https://doi.org/10.1038/230241a0>.
55. Richardin P, Porcier S, Ikram S, Louarn G, Berthet D. Cats, crocodiles, cattle, and more: Initial steps toward establishing a chronology of ancient Egyptian animal mummies. *Radiocarbon* 2017;59(2). <https://doi.org/10.1017/RDC.2016.102>.
56. Clauzel T, Richardin P, Ricard J, Prilaux G, Martin JE, Amiot R, et al. Geographic origin and social status of the Gallic warriors from Ribemont-sur-Ancre (France) studied through isotope systematics of bone remains. *Int J Osteoarchaeol* 2022;33(1). <https://doi.org/10.1002/oa.3172>.
57. Moreau C. Research and Development of the Artemis 14C AMS Facility: Status Report. *Radiocarbon* 2013;55(3–4). [https://doi.org/10.2458/azu\\_js\\_rc.55.16293](https://doi.org/10.2458/azu_js_rc.55.16293).
58. Ramsey CB. Methods for Summarizing Radiocarbon Datasets. *Radiocarbon* 2017;59(6):1809–1833. <https://doi.org/10.1017/RDC.2017.108>.
59. Murail P, Bruzek J, Houët F, Cunha E. DSP: A tool for probabilistic sex diagnosis using worldwide variability in hip-bone measurements. *Bull Mem Soc Anthropol Paris* 2005;17(17 (3-4)):167–76.
60. Brooks S, Suchey JMM. Skeletal Age Determination based on the os pubis: a Comparison of the Acsadi-Nemeskeri and Suchey-Brooks Methods. *Hum Evol* 1990;5(3):227–38. <https://doi.org/10.1007/BF02437238>.

61. Curate F, Coelho J, Gonçalves D, Coelho C, Ferreira MT, Navega D, et al. A method for sex estimation using the proximal femur. *Forensic Sci Int* 2016.  
<https://doi.org/10.1016/j.forsciint.2016.06.011>.
62. Bertrand B, Cunha E, Bécart A, Gosset D, Hédouin V. Age at death estimation by cementochronology: Too precise to be true or too precise to be accurate? *Am J Phys Anthropol* 2019;169(3):464–81. <https://doi.org/10.1002/ajpa.23849>.
63. Goldberg M, Kulkarni AB, Young M, Boskey A. Dentin: structure, composition and mineralization. *Front Biosci (Elite Ed)* 2012;3:711–35. <https://doi.org/10.2741/e281>.
64. Lacruz RS, Habelitz S, Wright JT, Paine ML. Dental enamel formation and implications for oral health and disease. *Physiol Rev* 2017;97(3):939–93. <https://doi.org/10.1152/physrev.00030.2016>.
65. AlQahtani SJ, Hector MP, Liversidge HM. Brief communication: The London atlas of human tooth development and eruption. *Am J Phys Anthropol* 2010;142(3):481–90.  
<https://doi.org/10.1002/ajpa.21258>.
66. Billard C, Daire MY, Martin C. France: submerged prehistory on atlantic and mediterranean coasts. 2020.
67. Ubelaker DH, Buchholz BA. Complexities in the Use of Bomb-Curve Radiocarbon to Determine Time since Death of Human Skeletal Remains. *Forensic Science Communications* 2006;8(1):10.
68. Johnstone-Belford E, Fallon SJ, Dipnall JF, Blau S. The importance of bone sample selection when using radiocarbon analysis in cases of unidentified human remains. *Forensic Sci Int* 2022;341. <https://doi.org/10.1016/j.forsciint.2022.111480>.
69. Moorrees CFA, Fanning EA, Hunt EE. Age Variation of Formation Stages for Ten Permanent Teeth. *J Dent Res* 1963;42(6):1490–502. <https://doi.org/10.1177/00220345630420062701>.
70. Ubelaker DH, Parra RC. Radiocarbon analysis of dental enamel and bone to evaluate date of birth and death: Perspective from the southern hemisphere. *Forensic Sci Int* 2011;208(1–3):103–7.  
<https://doi.org/10.1016/j.forsciint.2010.11.013>.
71. Santos GM, De La Torre HAM, Boudin M, Bonafini M, Saverwyns S. Improved radiocarbon analyses of modern human hair to determine the year-of-death by cross-flow nanofiltered amino acids: common contaminants, implications for isotopic analysis, and recommendations. *Rapid Commun Mass Spectrom* 2015;29(19):1765–73. <https://doi.org/10.1002/RCM.7273>.
72. Geyh MA. Bomb radiocarbon dating of animal tissues and hair. *Radiocarbon* 2001;43(2 PART II):723–30. <https://doi.org/10.1017/s0033822200041382>.
73. Johnstone-Belford EC, Jacobsen G, Fallon SJ, Dipnall JF, Blau S. The effects of diet and beauty products on the uptake and storage of <sup>14</sup>C in hair and nails: ramifications for the application of



bomb pulse dating to forensic anthropological casework. *Forensic Sci Int* 2023;349:111771. <https://doi.org/10.1016/J.FORSCIINT.2023.111771>.

74. Michael AR, Blatt SH, Isa M, Redgrave A, Ubelaker DH. Identification of a decedent in a 103-year-old homicide case using forensic anthropology and genetic genealogy. *Forensic Sci Res* 2022;7(3):412–26. <https://doi.org/10.1080/20961790.2022.2034717>.
75. Köhler P. Using the Suess effect on the stable carbon isotope to distinguish the future from the past in radiocarbon. *Environmental Research Letters* 2016;11(12). <https://doi.org/10.1088/1748-9326/11/12/124016>.
76. National Academy of Sciences. *Strengthening forensic science in the United States: A path forward*. 2009.

UNCORRECTED MANUSCRIPT