



HAL
open science

Identifying the unidentified fauna enhances insights into hominin subsistence strategies during the Middle to Upper Palaeolithic transition

Virginie Sinet-Mathiot, William Rendu, Teresa Steele, Rosen Spasov, Stéphane Madelaine, Sylvain Renou, Marie-Cécile Soulier, Naomi Martisius, Vera Aldeias, Elena Endarova, et al.

► To cite this version:

Virginie Sinet-Mathiot, William Rendu, Teresa Steele, Rosen Spasov, Stéphane Madelaine, et al.. Identifying the unidentified fauna enhances insights into hominin subsistence strategies during the Middle to Upper Palaeolithic transition. *Archaeological and Anthropological Sciences*, 2023, 15 (9), pp.139. 10.1007/s12520-023-01830-4. hal-04701750

HAL Id: hal-04701750

<https://hal.science/hal-04701750v1>

Submitted on 18 Sep 2024

HAL is a multi-disciplinary open access archive for the deposit and dissemination of scientific research documents, whether they are published or not. The documents may come from teaching and research institutions in France or abroad, or from public or private research centers.

L'archive ouverte pluridisciplinaire **HAL**, est destinée au dépôt et à la diffusion de documents scientifiques de niveau recherche, publiés ou non, émanant des établissements d'enseignement et de recherche français ou étrangers, des laboratoires publics ou privés.



Identifying the unidentified fauna enhances insights into hominin subsistence strategies during the Middle to Upper Palaeolithic transition

Virginie Sinet-Mathiot¹ · William Rendu² · Teresa E. Steele³ · Rosen Spasov⁴ · Stéphane Madelaine^{5,6} · Sylvain Renou⁷ · Marie-Cécile Soulier⁸ · Naomi L. Martisius⁹ · Vera Aldeias¹⁰ · Elena Endarova⁴ · Paul Goldberg^{10,11,12} · Shannon J. P. McPherron¹³ · Zeljko Rezek¹⁴ · Dennis Sandgathe¹⁵ · Nikolay Sirakov¹⁶ · Svoboda Sirakova¹⁶ · Marie Soressi¹⁷ · Tsenka Tsanova^{13,18} · Alain Turq⁵ · Jean-Jacques Hublin^{1,14} · Frido Welker¹⁹ · Geoff M. Smith²⁰

Received: 16 August 2022 / Accepted: 18 July 2023 / Published online: 29 August 2023
© The Author(s) 2023

Abstract

Understanding Palaeolithic hominin subsistence strategies requires the comprehensive taxonomic identification of faunal remains. The high fragmentation of Late Pleistocene faunal assemblages often prevents proper taxonomic identification based on bone morphology. It has been assumed that the morphologically unidentifiable component of the faunal assemblage would reflect the taxonomic abundances of the morphologically identified portion. In this study, we analyse three faunal datasets covering the Middle to Upper Palaeolithic transition (MUPT) at Bacho Kiro Cave (Bulgaria) and Les Cottés and La Ferrassie (France) with the application of collagen type I peptide mass fingerprinting (ZooMS). Our results emphasise that the fragmented component of Palaeolithic bone assemblages can differ significantly from the morphologically identifiable component. We obtain contrasting identification rates between taxa resulting in an overrepresentation of morphologically identified reindeer (*Rangifer tarandus*) and an underrepresentation of aurochs/bison (*Bos/Bison*) and horse/European ass (*Equus*) at Les Cottés and La Ferrassie. Together with an increase in the relative diversity of the faunal composition, these results have implications for the interpretation of subsistence strategies during a period of possible interaction between Neanderthals and *Homo sapiens* in Europe. Furthermore, shifts in faunal community composition and in carnivore activity suggest a change in the interaction between humans and carnivores across the MUPT and indicate a possible difference in site use between Neanderthals and *Homo sapiens*. The combined use of traditional and biomolecular methods allows (zoo)archaeologists to tackle some of the methodological limits commonly faced during the morphological assessment of Palaeolithic bone assemblages.

Keywords ZooMS · Zooarchaeology · Bone surface modification · Subsistence behaviour · Middle to Upper Palaeolithic transition · Late Pleistocene

Introduction

The investigation of behavioural shifts in prey selection and hunting strategies during phases of major changes in the material record is key to understanding the relationship between human behavioural evolution, cultural variation, and population dynamics (Delagnes and Rendu 2011; Discamps et al. 2011; Niven et al. 2012; Rendu et al. 2012; Steele 2004). Traditionally, such behavioural patterns have been approached

through the analysis of the stone tools and faunal remains recovered from excavations at Palaeolithic sites. In particular, faunal specimens provide the opportunity to identify and document behaviour developed by human populations for the exploitation of their environment (Gaudzinski and Roebroeks 2000; Gaudzinski-Windheuser et al. 2014; Morin 2012; Pederzani et al. 2021; Smith et al. 2021; Stiner 1993). However, studying ancient fauna not only provides paleoenvironmental information, but when combined with the analysis of bone surface modifications related to human activity, it can fine-tune the timing of human occupations and helps to reconstruct human diet and interactions with other groups or even

Extended author information available on the last page of the article

species (Steele 2015). Indeed, faunal exploitation is related to a wide range of behaviours and cognitive aspects entwined with mobility, social organisation, technological development, and subsistence capacities (Marean and Assefa 1999).

However, Late Pleistocene bone assemblages are often highly fragmented, preventing proper taxonomic identification and anatomical attribution of many specimens based on morphology alone (Lyman 2002; Morin et al. 2017a). Several processes affect faunal remains, starting from decomposition, selective destruction in the sediment, post mortem transport, and burial, to preserve bone specimens that are potentially altered during excavation, cleaning treatment, and storage (Lyman 1994; Marean 1991). All these factors, geological, biological, and cultural, can lead to variability in faunal identification. Together with differential preservation, they can create a potential source of bias for the interpretation and quantification of relative abundances of taxa (Dirrigl 2002; Marean 1991; Marean and Kim 1998; Morin 2004; Morin et al. 2017a, 2017b; Pickering et al. 2006). Indeed, combined with the impact of human and carnivore activities at the site, these factors contribute to reduced proportions of taxonomically diagnostic bones resulting in a lower number of identifiable specimens. Such processes generate the potential to seriously distort various archaeological and ecological inferences (Faith 2007; Morin et al. 2017a).

Recent developments of biomolecular methods allow us to exploit the collagen preserved in these bone fragments to taxonomically identify faunal specimens (Buckley et al. 2009). The inclusion of the analysis of highly fragmented bone through proteomic screening using zooarchaeology by mass spectrometry (ZooMS) for the taxonomic assessment of Palaeolithic faunal assemblages has already demonstrated its great potential (Berto et al. 2021; Brown et al. 2021b, a; Buckley et al. 2017; Pothier Bouchard et al. 2020; Ruebens et al. 2022; Sinet-Mathiot et al. 2019; Welker et al. 2015) and highlighted the necessity to use a multi-methodological approach in studying human subsistence. Taxonomic identities from both the morphologically identified and the ZooMS-identified components can thus be correlated with bone surface modification analysis to address specimen surface preservation and bone accumulation agents through the reconstruction of taphonomic history. The analysis of the protein type I collagen provides taxonomic identity based on variations in amino acid sequences and allows the taxonomic identification of bone assemblages to be extended to the morphologically unidentifiable component. The previous application of ZooMS as a screening tool for faunal assemblages has provided variable results in terms of the comparability of the two components. Taxonomic abundances of the morphologically unidentifiable component of a faunal assemblage may not generally differ from the morphologically identifiable component (Berto et al. 2021; Buckley et al. 2017; Welker et al. 2016, 2017), but

that does not necessarily indicate a pattern (Ruebens et al. 2022; Sinet-Mathiot et al. 2019). Moreover, such differences could reflect a specific human behavioural signature related to bone fragmentation and intensity of carcass processing (Sinet-Mathiot et al. 2019). A better understanding of the source(s) of variability will help in anticipating the potential differences that may occur within certain bone assemblages.

The zooarchaeological literature frequently contains body size class attributions of bone specimens that cannot be reliably assigned to a particular taxon or clade. It is generally assumed that these body size class attributions are reliable and reflect or contain taxonomic information about the bone assemblage as a whole. However, previous ZooMS research has highlighted that this is a potentially unreliable approach (Sinet-Mathiot et al. 2019). Here, we test the fragmentary component of bone assemblages of three Late Pleistocene sites: Bacho Kiro Cave (Bulgaria) and Les Cottés and La Ferrassie (France). They all show rich and well-preserved stratigraphic sequences spanning the Middle to Upper Palaeolithic transition (MUPT). These sites offer the opportunity to discuss diachronic changes in subsistence strategies during the period of possible interaction between Neanderthal and Late Pleistocene *Homo sapiens* populations (Hajdinjak et al. 2021; Higham et al. 2014; Hublin 2015; Hublin et al. 2020; Prüfer et al. 2021). This work explores the implications of incorporating the analysis of the morphologically unidentifiable bone component into the description of faunal assemblages in terms of both overall bone accumulation and aims to advance our interpretation of human subsistence strategies during the MUPT. We address methodological limits commonly faced during the morphological assessment of faunal assemblages and demonstrate how the addition of biomolecular methods, such as untargeted ZooMS screening, can complement our understanding of subsistence behaviour by providing a clearer picture of prey selection and site occupation. By including assemblages that span the MUPT in Europe, we are thereby able to demonstrate that the assessment of the fragmented component of bone assemblages through ZooMS can provide different patterns of species frequencies than previously interpreted based solely on the morphologically identifiable record.

Material and methods

Sample selection

This study includes the ZooMS analysis of bone material from three Late Pleistocene sites (Bacho Kiro Cave, Les Cottés, and La Ferrassie; SI Fig. 1, SI Table 1). All the material taxonomically identified through bone morphology by zooarchaeologists will be referred to as the morphology component. Similarly, all fragmentary specimens morphologically

unidentifiable and taxonomically identified through ZooMS will be referred to as the ZooMS component. All three sites were recently excavated and have provided large, well-contextualised, and highly fragmented bone assemblages of individually piece-provenienced faunal remains. Bone surface analyses of both the morphologically identified and the fragmentary unidentifiable bone assemblages were assessed using comparable zooarchaeological methods and protocols. All faunal data were derived from recent excavation campaigns, and specimens from both the morphology and ZooMS components show similar spatial distributions over the excavated areas. As the fragment size cutoff of 20 mm was used for piece-proveniencing artefacts during the excavation of the sites and in order to permit eventual additional biomolecular analysis, fragmentary and morphologically unidentifiable piece-provenienced specimens generally > 20 mm in length were selected for proteomic analysis. Indeed, the zooarchaeological analysis of fragments smaller than 2 cm is commonly limited as taphonomic attributes are size dependent. Bone material resulting from sediment sieving during the excavation of the archaeological sites is not included in this study. All morphologically unidentifiable piece-provenienced specimens from the La Ferrassie layer 6 faunal assemblage were selected for ZooMS analysis. In the case of Bacho Kiro Cave and Les Cottés, specimens were randomly selected by the zooarchaeologists among the morphologically unidentifiable material without any selection towards bone morphology nor specific surface modifications.

Bacho Kiro Cave

Bacho Kiro Cave (Dryanovo, Bulgaria) is located on the northern slope of the Balkan mountain range (Stara Planina) and about 70 km south of the Danube River. Previously investigated during the twentieth century (Garrod et al. 1939; Kozłowski and Ginter 1982), the site was reopened for excavation in 2015 by the National Archaeological Institute with Museum from the Bulgarian Academy of Sciences (Sofia, Bulgaria) and the Max Planck Institute for Evolutionary Anthropology (Leipzig, Germany). The archaeological sequence spans the Middle Palaeolithic (MP) through to the Upper Palaeolithic (UP). The archaeological material recovered from two sectors (Main Sector and Niche 1) from layers I and J was recognised as part of the Initial Upper Palaeolithic marked by the earliest occurrence of Late Pleistocene *Homo sapiens* in Europe (Hublin et al. 2020). This starts around 45,990 cal BP in the upper part of layer J and considerably intensifies in layer I which is dated to 45,040–43,280 cal BP (Fewlass et al. 2020; Pederzani et al. 2021). This material comprises the earliest and largest number of *Homo sapiens* bone tool and ornament

assemblages in Europe, partly taxonomically identified through ZooMS (Martisius et al. 2022). The assemblage recovered from layer K was technologically associated with the MP and was deposited between $61 \pm 6,000$ and 51,000 year BP (Fewlass et al. 2020; Pederzani et al. 2021). We investigated 1,595 faunal remains through ZooMS from layer I (814 specimens), layer J (438 specimens), and layer K (343 specimens) from both the niche 1 and the main sector (Hublin et al. 2020). Zooarchaeological analysis was performed on 7,013 faunal remains from layers I, J, and K from both sectors following previously described methodology (Smith et al. 2021) and including 1,453 specimens assigned to a taxonomic group (1,077 from layer I, 232 from layer J, and 143 from layer K).

Les Cottés

Les Cottés (Vienne, France) is a cave located in the corridor between the Parisian basin and the Poitou in west-central France. The site was discovered in 1878 and was explored through several excavation campaigns (Bastin et al. 1976; Lévêque 1997; Pradel 1967), but the material included in this study is derived from an excavation initiated in 2006 by M. Soressi with support of the French Ministry of Culture and Communication and the Max Planck Institute for Evolutionary Anthropology (Soressi et al. 2010). Through ZooMS, we analysed 523 morphologically unidentifiable faunal specimens, which, together with the 152 presented in Welker et al. (2015) (137 undiagnostic fragments and 15 specimens analysed in a ZooMS blind test), means 675 specimens from Les Cottés were analysed with ZooMS. Of these, 220 are from the Mousterian (US08, dated between 46,051 and 42,034 cal BP using radiocarbon and between 55 and 48 ka according to the OSL measurements (Jacobs et al. 2015)), 217 are from the Châtelperronian (US06, dated between 42,961 and 40,344 cal BP), 168 are from the Protoaurignacian (US04 lower), and 70 are from the Early Aurignacian (US04 upper). The dates for the Aurignacian layers extend from 40,372 to 36,697 cal BP (Talamo et al. 2012) in radiocarbon years, or from 43 to 36 ka in OSL years (Jacobs et al. 2015). Interpretations coming from US04 upper are considered with caution due to the low number of specimens in comparison to the other layers. Bone surface analysis was standardised over the assemblage and was previously described elsewhere (Rendu et al. 2019). Of a total of 5,169 bone remains assessed through traditional zooarchaeology, 1,922 bone and dental specimens were morphologically identified in the range of subfamily to species (397 specimens from US08, 166 from US06, 715 from US04 lower, and 629 from US04 upper).

La Ferrassie

The Grand Abri of La Ferrassie (Savignac-de-Miremont, France) is in the Dordogne region of south-western France in a tributary valley to the Vézère River and was first excavated during the twentieth century by Capitan and Peyrony and then by Delporte (Delporte and Delibrias 1984; Peyrony 1934). An excavation conducted from 2010 to 2015 by Turq and colleagues further refines the stratigraphic sequence spanning the MUPT (Guérin et al. 2015; Turq et al. 2012). The Châtelperronian layer (layer 6) was dated to between 45,100 and 39,520 cal BP (Talamo et al. 2020) marking the earliest appearance of this lithic industry in the region. The faunal material from this layer that was morphologically identifiable to taxon is limited to 17.5% of the bone assemblage (142 specimens) and is dominated by reindeer (*Rangifer tarandus*). All piece-plotted, morphologically indeterminate specimens were processed through ZooMS (527 specimens).

ZooMS methodology

ZooMS extraction protocols employed for this study were partially described previously (Buckley et al. 2009; van Doorn et al. 2011; Welker et al. 2016). All 2,645 specimens were sampled (10–30 mg) using pliers and placed into 96-well plates. Soluble collagen was extracted through incubation in 100 μ L of 50 mM ammonium bicarbonate (AmBic) buffer at 65 °C for 1 h. In order to improve and verify the taxonomic identity obtained from soluble collagen, 440 specimens (70 for La Ferrassie, 369 for Les Cottés, and 1 for Bacho Kiro Cave) (SI Table 2) were demineralised in 130 μ L 0.6 M HCl at 4 °C for 18–20 h, neutralised to pH 7, and solubilised again in AmBic. Then, 50 μ L of the resulting supernatant was digested using trypsin (0.5 μ g/ μ L, Promega) overnight at 37 °C, acidified using trifluoroacetic acid (20% TFA), and then cleaned on Hypersep C18 96-well plates (Thermo Scientific) using a vacuum manifold. In short, a 96-well deepwell plate (Eppendorf) is placed beneath the Hypersep plate to collect the solutions. C18 filter tips from the Hypersep plate were conditioned with 200 μ L of 0.1% TFA in 50:50 acetonitrile and UHQ water (conditioning solution) and washed with 200 μ L of 0.1% TFA and UHQ water (washing solution). Peptide extracts were then vacuumed through the filters slowly to ensure optimal binding efficiency. The obtained waste solution was discarded. Filters were then washed again with 200 μ L of washing solution, and peptides were extracted in 100 μ L of conditioning solution and transferred to a 96-well plate. Digested peptides were spotted in triplicate on a MALDI Bruker plate with the addition of α -cyano-4-hydroxycinnamic acid (CHCA, Sigma) matrix, using a multichannel pipette (Thermo Fisher).

MALDI-TOF-MS analysis was conducted at the Fraunhofer IZI in Leipzig (Germany), using an autoflex speed LRF MALDI-TOF (Bruker) in reflector mode, positive polarity, and matrix suppression up to 590 Da and collected in the mass-to-charge range 1000–3500 m/z. Triplicates were merged for each sample in R version 4.0.5 (R Core Team 2021) and MALDIquant v. 1.21 (Gibb and Strimmer 2012). First, we smooth the intensity using a moving average and remove the baseline using the TopHat approach. Then, for each sample, we align the replicate spectra using SuperSmoother and a signal to noise ratio of 3, sum the three replicates to obtain a single spectrum, and remove the baseline once more, again using TopHat. Spectra were exported as .msd files. Taxonomic identifications were made using mMass 5.5.0. (Strohalm et al. 2010) through manual peptide marker mass identification in comparison to a database of peptide marker series for all European Pleistocene medium-to large-sized mammals (Welker et al. 2016). To assess any potential contamination by non-endogenous peptides, we performed laboratory blanks alongside the samples. These remained empty of collagenous peptides, excluding the possibility of modern laboratory or storage contamination.

Peptide marker series can be similar for some closely related species, which is the case for the species belonging to the following taxonomic groups: *Bos/Bison*, *Cervid/Saiga*, *Equidae*, and *Ursidae*. *Cervid/Saiga* can be attributed to either *Cervus elaphus* (red deer), *Megaloceros giganteus* (giant deer), *Alces alces* (elk), or *Dama* sp. (fallow deer). *Equidae* and *Ursidae* include, respectively, species from the genera *Equus* and *Ursus*, most likely *Equus ferus* and *Equus hydruntinus* or *Ursus spelaeus* and *Ursus arctos*. In order to facilitate the comparison between ZooMS and morphology components, the most common species and taxa were grouped into broader categories of *Bos/Bison* (*Bos primigenius*, *Bison priscus*, and *Bos/Bison* sp.), *Cervid/Saiga* (*C. elaphus*, *D. dama*, *M. giganteus*), *Ursidae* (*U. arctos*, *U. spelaeus*, and *Ursus* sp.), *Capra* sp. (*C. ibex* and *Capra* sp.), and *Equidae* (*E. ferus*, *E. hydruntinus*, and *Equus* sp.) (SI Table 3). At Bacho Kiro Cave, due to the high proportion of this taxonomic group, *Cervid* specimens from the morphology component were also included into the broader group *Cervid/Saiga*. Within the ZooMS component, the few specimens identified as *Cervid/Saiga/Capreolus capreolus* were included in the broader taxonomic group *Cervid/Saiga*, in order to allow the comparability of both components.

Suggested as an indicator of collagen preservation (Welker et al. 2017; Wilson et al. 2012), glutamine (Gln) deamidation ratios were calculated on all samples for peptide COL1 α 1 508–519 (Brown et al. 2021b, a), which is frequently observed in peptide fingerprints of collagen type I, following published protocols (van Doorn et al. 2012; Wilson et al. 2012). The deamidation ratio ranges from %Gln = 1.0 with non-deamidated glutamines to %Gln = 0.0

indicating a full deamidation of the glutamines. The Gln deamidation ratios obtained during routine ZooMS screening have been previously suggested to assess bone assemblage homogeneity (spatial and temporal variability within a site), to detect stratigraphic outliers (intrusive material or differential bone preservation), to inform on the preservational quality of specific peptides and specimens, or to look at the taxonomic distribution from a biomolecular perspective (Sinet-Mathiot et al. 2019; Welker et al. 2017; Wilson et al. 2012), although with varying success (Brown et al. 2021b, a).

Zooarchaeological and taphonomic methodology

All taphonomic modifications were recorded on the morphology- and ZooMS-identified specimens by the respective zooarchaeologists, consistently within and between studied sites. Bone surfaces for both the morphologically identified and unidentified components were assessed through visual inspection, using magnification when needed (up to $\times 20$ magnification) (Blumenschine et al. 1996). The maximum length of the bone specimens was measured individually with digital calipers.

Although traces of burning were recorded during taphonomic analyses using the scale proposed by Stiner and colleagues (Stiner and Kuhn 1995) (0: Unburnt to 6: Completely calcined), these burnt remains were excluded from subsequent ZooMS analyses due to poor collagen preservation. Weathering stages were recorded for all bones and provide a qualitative scale for understanding the exposure (short/long duration) of the bones prior to burial (Behrensmeier 1978). A slightly modified scheme was used on Les Cottés bone assemblages where specific modifications were recorded related to weathering (see Rendu et al. (2019)). Specifically, weathering was recorded according to three variables: exfoliation (the peeling of bone surface), cracking (the emergence of longitudinal cracks on bone surface), and disintegration (the complete destruction of the bone). In addition, other recorded modifications included root etching and abrasion (expressed as a percentage of bone surface affected). The schemes range from 0% (no visible modification observed) through 100% (the whole bone surface covered) (Smith et al. 2021; Behrensmeier 1978; Blumenschine et al. 1996; Domínguez-Rodrigo et al. 2017; Fisher 1995; Lee Lyman 1994; Olsen and Shipman 1988; Soulier and Costamagno 2017).

For all three bone assemblages, human modifications included traces related to butchery and carcass processing (cut marks, scraping marks, chop marks, marrow bone breakage), and carnivore modifications included tooth marks, gnawing traces, and damage from bone breakage and digestion as well as rodent tooth traces. The number of

identified specimens (NISP) represents the number of specimens assigned to a taxon.

When it was not possible to morphologically assign fragmentary bone specimens to a specific taxon, these were assigned to a specific body size class based on previous assignments (Morin 2012). The separation of specific taxa into different body size classes was normally done on the basis of both body and skeletal size (following (Morin 2012; Rendu et al. 2019; Smith et al. 2021)).

The combination of the ZooMS and morphology component allows for the assessment of skeletal element distributions and the possible identification of previously unrecognised skeletal elements, which has implications for our understanding of hunting strategies and carcass transport. As skeletal elements were identified, when possible, on taxonomically unidentifiable specimens, we aimed to correlate the skeletal part identifications with the ZooMS taxonomic identities in order to assess skeletal representation among both the morphology- and ZooMS-identified components. To assess skeletal element representation for the dominant taxa within each component, bone elements were categorised into body parts for each method of identification (cranial: cranium, mandible; axial: vertebrae, pelvis, rib; forelimb: humerus, radius, ulna; hindlimb: femur, tibia; distal limbs: carpals, metacarpal, tarsals, metatarsal, phalanges; LBN: long bone fragments, FBN: flat bone fragments) (based on Stiner (1991a, 1991b)). Within all three datasets, teeth and antler were categorised separately from the cranial body part, as their inclusion might bias the comparison between components. Indeed, antlers and horn cores tend to be rare and are more easily identified morphologically, reducing their representation in the ZooMS component. Anatomically unidentifiable specimens (NID) were excluded from the assessment of skeletal element representation as they did not provide substantial information.

Ecological diversity indices were calculated in order to investigate the effect of the addition of the ZooMS-identified specimens on the taxonomic diversity of the faunal community of each layer and site. We used the Shannon-Wiener index (H') (Shannon 1948) and R package *vegan* v. 2.6–2 (Oksanen et al. 2019) to quantify the taxonomic diversity of our three faunal assemblages between the ZooMS and morphology component and to assess any variation in faunal diversity between layers of each site, taking into account the taxonomic richness and the distribution of their abundance. As the Shannon-Wiener index is sensitive to sample size, values should be considered with caution when the sample size is small. Along with species richness, Pielou's evenness (J') measures taxonomic diversity by giving the count of individuals of each taxonomic group among each component and reflecting the evenness of the distributed abundances between taxa. The index value ranges from 0 (no evenness) to 1 (complete evenness).

Results

ZooMS analysis

ZooMS analysis of all three datasets shows well-preserved collagen type I with a high success rate of taxonomic identification, up to the range of subfamily or genus, between 90 and 97% (SI Table 1). For 82% of the samples, the semi-destructive extraction protocol (AmBic) is sufficient to obtain a ZooMS identification. At Bacho Kiro Cave, collagen preservation is excellent (also noted by Fewlass et al. (2020)) resulting in a high proportion of discriminant taxonomic identities. All ZooMS samples could be extracted using only the AmBic protocol, while we extracted one specimen through acid demineralisation as well to verify its taxonomic identity (*Castor fiber*). At both Les Cottés and La Ferrassie, samples were processed using both AmBic and acid demineralisation protocols to improve and optimise taxonomic identifications (SI Table 2).

Deamidation between stratigraphic units and taxa

Glutamine deamidation ratios are calculated in order to detect potential intrusive material between archaeological layers or differential collagen preservation between taxa. Because the data is not normally distributed (Shapiro-Wilk normality test, p -value < 0.05), we used Wilcoxon-Mann-Whitney tests to compare the glutamine deamidation ratios between taxa and layers. The deamidation ratios presented here are derived from samples analysed using the acid-free protocol. At Bacho Kiro Cave, we observe that older samples from layer K show elevated levels of deamidation with values significantly different between layers (SI Table 5, SI Fig. 2). In contrast, we note overlapping deamidation values between layers at Les Cottés (SI Fig. 3) with the exception of US06 which showed values significantly different from US04 lower and US08 (SI Table 5). Glutamine deamidation ratios seem to overlap between dominant taxa which would suggest that they have undergone similar molecular diagenetic processes within each site (SI Fig. 4). However, a few exceptions could be identified. At Bacho Kiro Cave, deamidation ratios show similarities between taxa, particularly within layer K, but ursid specimens tend to have glutamine deamidation values significantly different from other taxa in layers I and J, notably in comparison with *Bos/Bison*, *Capra* sp., and Equidae (SI Table 6). At Les Cottés, all taxonomic groups show similar deamidation ratios within each layer, except for a few *Rangifer tarandus* specimens ($n = 6$) showing deamidation values significantly different from Equidae in US04 lower (Wilcoxon-Mann-Whitney tests, statistic = 64,

p -values = 0.013, SI Table 6). At La Ferrassie, *Rangifer tarandus* and Cervid/Saiga specimens show deamidation values significantly different from *Bos/Bison* (SI Table 6). The statistical differences observed between some of the taxonomic groups and layers could be driven by discrepancies in sample sizes, taphonomic history, and site formation or butchery practices. However, further exploration is required in order to interpret these differences.

Taxonomic representation

Species representation among both ZooMS and morphology components are generally consistent within each site, but the addition of ZooMS permits the identification of taxa that were unrecognisable through morphology. At Les Cottés, ZooMS identified Felidae and Ursidae in the faunal community obtained from US06 but also resulted in the addition of Cervid/Saiga in US04 lower (SI Table 7). At Bacho Kiro Cave, the ZooMS analysis allowed for the identification of Elephantidae in layer J (SI Table 8). At La Ferrassie, the use of ZooMS results in a fourfold increase of the number of taxonomically identified specimens. Consequently, the taxonomic diversity for this layer was broadened, with the addition of *Capra* sp., Elephantidae, Rhinocerotidae, Ursidae, and several carnivores (SI Table 9).

Shannon-Wiener index calculations show that the diversity of the faunal community identified on a site can significantly change with the addition of ZooMS. More specifically, we observe an increase in the faunal diversity of the combined ZooMS and morphology components in the layers under study here at La Ferrassie, at Les Cottés, and at Bacho Kiro Cave (Fig. 1, SI Table 10). In contrast, the lower values of the Shannon-Wiener index, after the addition of ZooMS identities to the layer I faunal assemblage, at Bacho Kiro Cave indicate a lower taxonomic diversity. Such a pattern possibly emphasises a better identification rate within the morphology component related to a larger sample size or highlights a higher evenness of the ZooMS component due to the repeated identification of taxa showing a low abundance among the morphology component.

The occurrence of the dominant taxa, i.e. the taxa showing the highest proportions, among both components are consistent within each site (Bacho Kiro Cave: Ursidae, Equidae, Cervid/Saiga, *Capra* sp., and *Bos/Bison*; Les Cottés: *Bos/Bison*, Equidae, and *Rangifer tarandus*; La Ferrassie: *Bos/Bison*, Cervid/Saiga, Equidae, and *Rangifer tarandus*), but we observe differences in their relative contributions to the overall bone assemblage (Fig. 2). At Les Cottés and La Ferrassie, the ZooMS component indicates lower proportions of reindeer, offset by higher proportions of *Bos/Bison* and Equidae (SI Table 7, 9 and 11). We note a ninefold increase in the proportion of *Bos/Bison* at La Ferrassie. At

Fig. 1 Shannon-Wiener index for each studied layer of Bacho Kiro Cave, Les Cottés, and La Ferrassie compared between methods of taxonomic identification (see SI Table 10 for details). Confidence intervals (2.5–97.5%) are given for each value

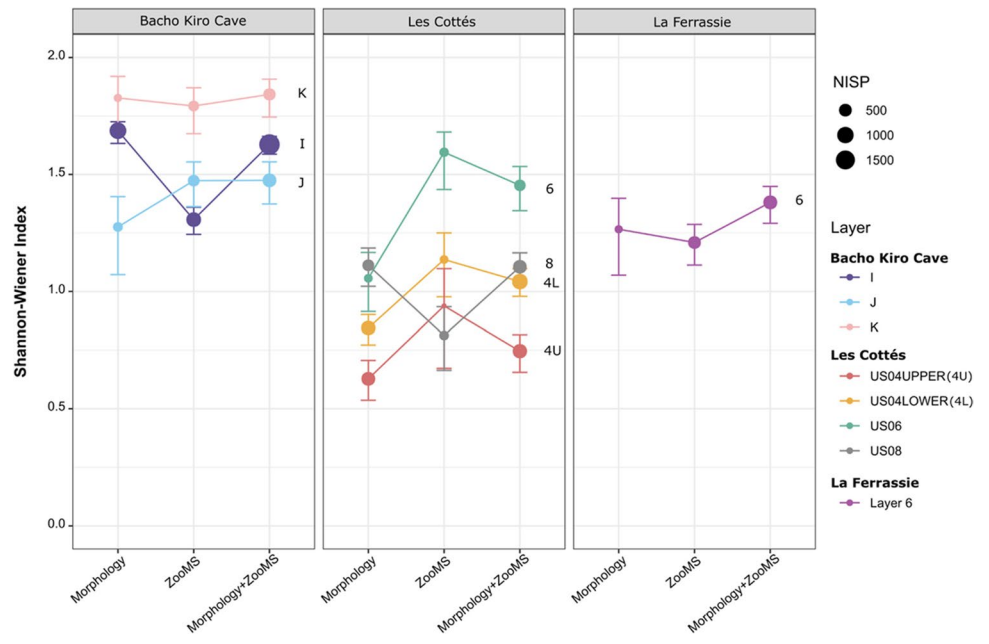
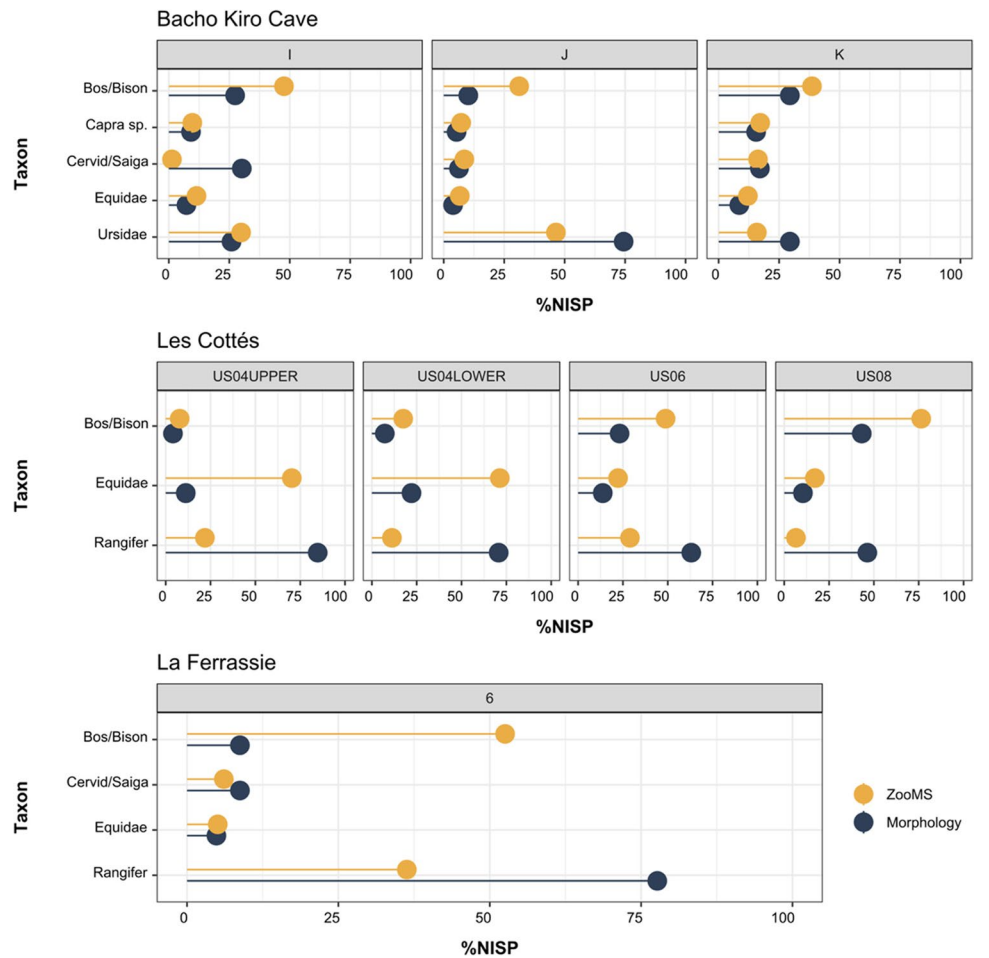


Fig. 2 Percentage of the dominant taxa among both ZooMS and morphology components at Bacho Kiro Cave, Les Cottés, and La Ferrassie



Les Cottés, we observe an on average twofold increase of *Bos/Bison* and Equidae with the addition of ZooMS to the analysis of the faunal assemblage. At Bacho Kiro Cave, and similar to Les Cottés and La Ferrassie, *Bos/Bison* remains are slightly more abundant within the ZooMS component, particularly in layers I and J. Conversely, Ursidae show a similar pattern as reindeer at La Ferrassie and Les Cottés with slightly lower proportions notably in layers J and K. We note a large difference between methods of identification for Cervid/Saiga in layer I, but these differences are not consistent throughout the other layers. When comparing the faunal composition between layers to assess any changes or shifts in the NISP of different taxa across the MUPT, we note at Les Cottés a progressive decrease in the proportions of *Bos/Bison* offset by an increase of Equidae from US08 to US04, which is particularly clear through the use of ZooMS. Despite the low number of specimens analysed through ZooMS from the Early Aurignacian layer (US04 upper) of Les Cottés, the results obtained show a continuous pattern with those from the layers below in terms of taxonomic abundances between the dominant taxa.

While the categorisation of morphologically unidentifiable specimens into body size classes remains a useful tool when no other alternative is available for the interpretation of this component of the assemblage, the correlation between taxonomic identifications provided by ZooMS with the body size classes indicates inconsistencies. Therefore, the observations made previously at Fumane Cave therefore do not seem to be an exception, but rather the norm (Martisius et al. 2020; Sinet-Mathiot et al. 2019). We observe inconsistencies between body size class attributions, which are largely based on bone size and cortical thickness, and ZooMS taxonomic assignments (SI Table 4). For example, Ursidae specimens are present in most carnivore and ungulate body size

class units (Fig. 3), several equid specimens are categorised among the large carnivore class and Caprinae and *Capra* sp. among the large ungulate class (Fig. 3). Although many zooarchaeologists are already using alternative nomenclatures (i.e. *mammal classes* or *unknown* instead of *ungulate* or *carnivore classes* (Castel 2011)) or standardisation tools (Discamps 2021), these results simply confirm that body size class attributions should be used with caution, especially when translating these classes to more specific taxonomic units and/or assessment of hominin subsistence strategies. When assigning bone specimens to generalised family attributions, one should cautiously avoid “taxonomic blindness” based on presumed abundance of cladistic assignments that are based on the thickness of the cortical bone.

Bone length distribution

As expected, larger bone fragments are generally more identifiable through comparative morphology as they often preserve more morphologically distinctive features. Smaller fragments tend to be identifiable only through ZooMS (Fig. 4). This pattern is particularly noticeable at Bacho Kiro Cave in layers I and K (SI Fig. 5). However, this is not the case for all taxa. We note a different specimen length distribution between both ZooMS and morphology components among dominant taxa. At Bacho Kiro Cave, *Bos/Bison*, Cervid/Saiga, and Equidae specimens show an opposite bipolar distribution of their specimen length whereas the two distributions are more similar for *Capra* sp. and Ursidae. Because the data is not normally distributed (Shapiro-Wilk normality test, p -value < 0.05), we used Wilcoxon-Mann-Whitney tests to compare the bone length distribution between taxa, layers, and method of identification. Bone specimens identified as *Capra* sp. and Ursidae through ZooMS show

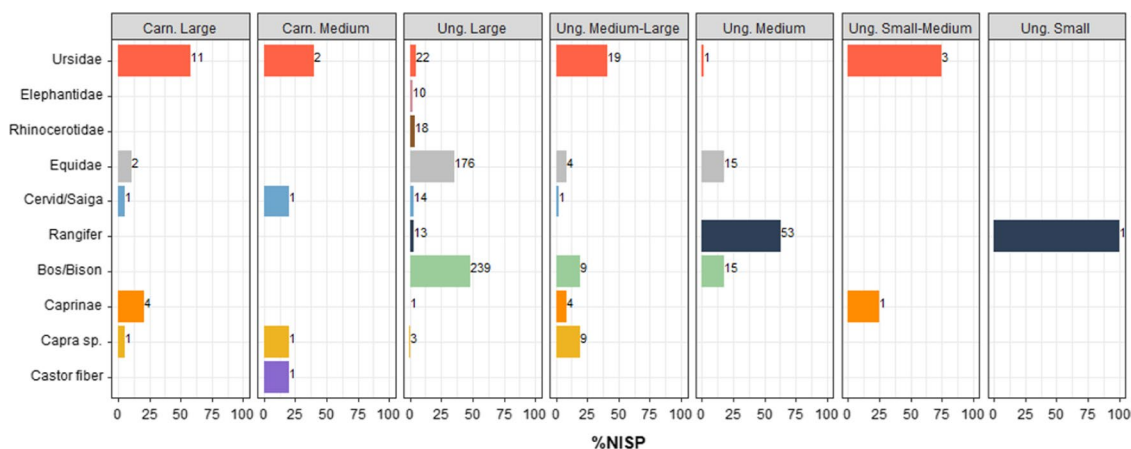
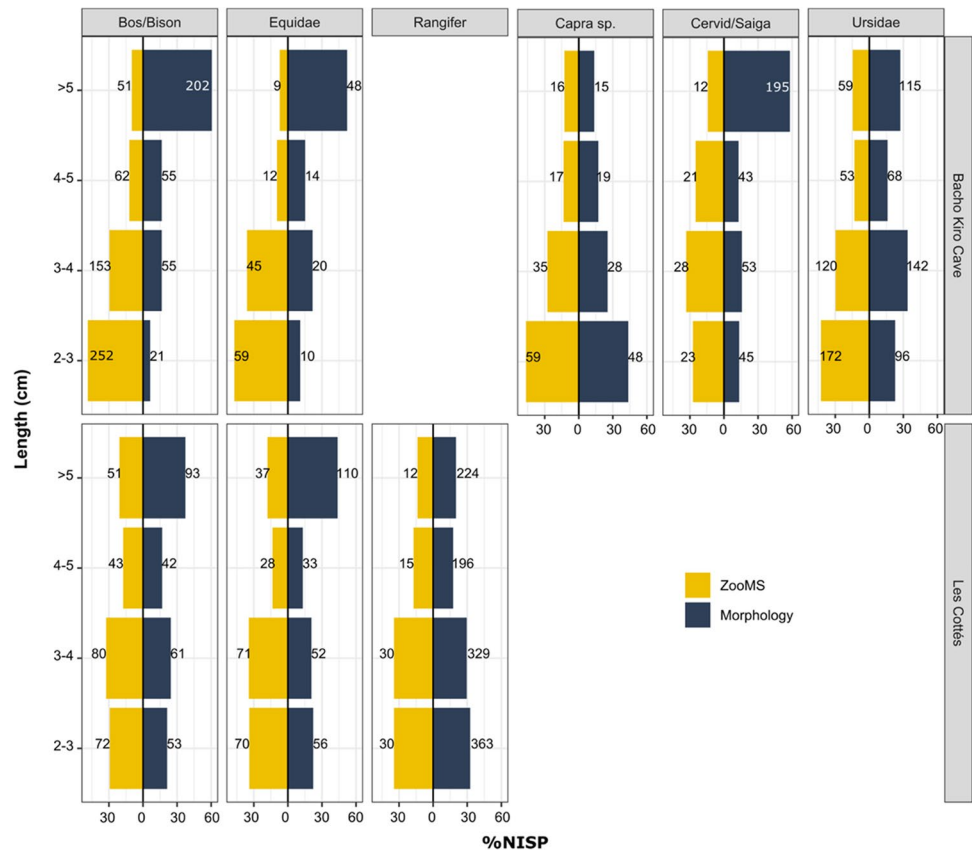


Fig. 3 Combined %NISP from Bacho Kiro Cave, Les Cottés, and La Ferrassie of taxa identified using ZooMS (rows) and morphology (column headings) in relation to their body size class attribution.

Carn, carnivore; Ung, ungulate. Each taxon is assigned a colour to help the visualisation of the graph. Numbers on the bars are the NISP per category

Fig. 4 Bone length distribution of the dominant taxa within the ZooMS (orange) and the morphology (blue) component for all studied layers at the sites of Bacho Kiro Cave and Les Cottés. Numbers on the bars are the NISP for each size class



a fragment length distribution significantly different from other taxonomic groups particularly in layer I (SI Table 12). Likewise, observations of the bone assemblage from Les Cottés indicate a similar trend with *Bos/Bison* and *Equidae* most often exhibiting opposite distributions, compared to the similar distributions of both ZooMS and morphology components for the reindeer specimens (SI Fig. 6). At Les Cottés, the bone length distribution of specimens identified morphologically as reindeer is significantly different from the *Bos/Bison* and of *Equidae* distributions in US04 and US08 (SI Table 13), but no differences are observed among the ZooMS component. When comparing the distribution between methods of identification, we also note significant differences for *Bos/Bison* and equid specimens in US04 and US08 (SI Table 14). The absence of metric measurements on the morphologically identified component from La Ferrassie prevents comparisons of bone length distribution between the ZooMS and morphological components. However, the ZooMS component represents 82.5% of the faunal assemblage, so a comparison of specimen length between dominant taxa for the ZooMS component is possible. Although specimens from the dominant taxa generally show similar length distributions, with a large proportion within the 2–3 cm range, equid bones tend to have fewer large fragments illustrated by a higher proportion of specimens within the smaller size classes (SI Fig. 7). Equid

fragments identified through ZooMS present a length distribution significantly different from *Bos/Bison*, *Cervid/Saiga*, and reindeer (SI Table 15), most likely due to an overrepresentation of equid fragments of 2–3 cm counterbalanced by an underrepresentation of specimens of 3–4 cm. Nevertheless, it should be noted that *Equidae* is the taxa with the smallest sample size, which might influence these results.

Bone surface modification analysis

Bone surface preservation

We investigated readability of the bone surfaces to rule out bone fragmentation related to environmental taphonomic factors. We find that, at Bacho Kiro Cave and La Ferrassie, the bone surfaces of specimens taxonomically identified both through ZooMS and morphology are only affected by low degrees of surface weathering, which cannot explain the differences in fragmentation between taxa and/or layers (SI Table 16 and 17).

Due to high stages of weathering at Les Cottés, many bone surfaces from the ZooMS component exhibit natural fractures. In particular, a large percentage of *Bos/Bison* fragments, from US06 and US08, and equid specimens in US04 indicate multiple types of surface damage (SI Fig. 8). These patterns are also recorded on reindeer at a high percentage

(> 50% for US04 and US06) within the morphology component. The readability of the surfaces, which reflects how bones were affected by weathering or other factors possibly leading to fragmentation, is generally better for the reindeer specimens compared to bones from *Bos/Bison* and equids (SI Fig. 9).

Bone assemblage accumulator

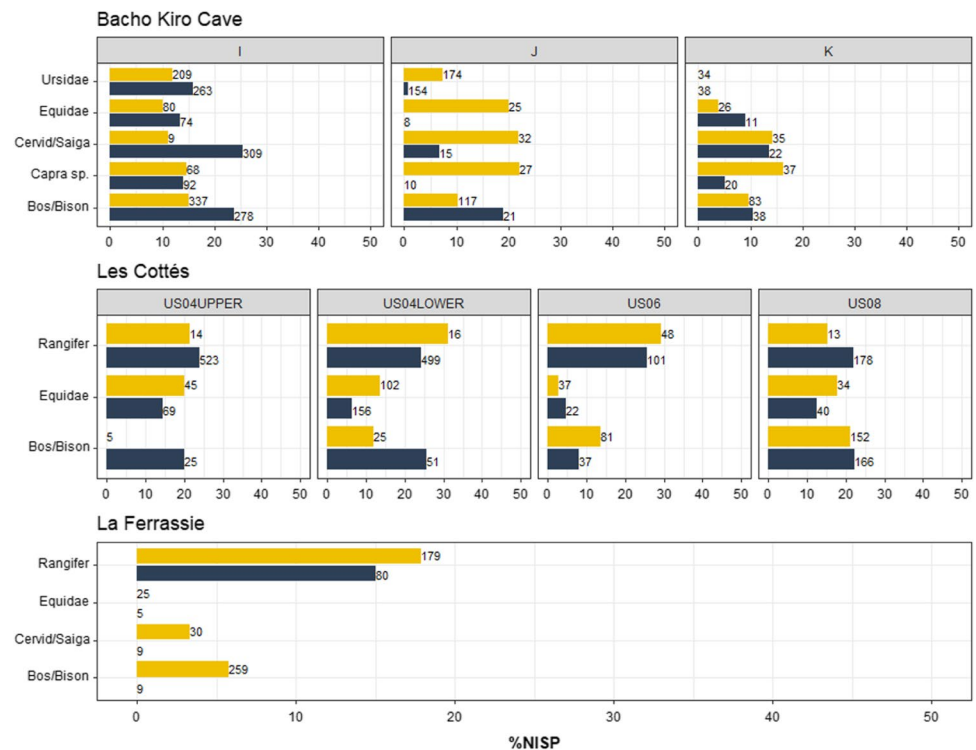
We investigated bone modifications associated with carnivore and human activity to identify the accumulator agents of the bone assemblage. We find that, within all three sites, ZooMS analysis allows for improved association of taxonomic identity with taphonomic data, which in several cases provides additional behavioural information. Overall, the inclusion of ZooMS identifications within zooarchaeological analyses highlights a diverse range of taxa exhibiting bone modifications from carnivore and human activity (SI Figs. 10 and 11). These results are particularly informative for layers J and K at Bacho Kiro Cave and at La Ferrassie with the addition of three to four taxa previously unassociated with the modifying agents (humans).

With the addition of ZooMS, carnivore modifications were identified at Bacho Kiro Cave on Cervid/Saiga (layer J: 3% NISP, layer K: 23% NISP) and *Capra* sp. (layer J: 11% NISP, layer K: 11% NISP) and on *Bos/Bison* (31% NISP) and Equidae (31% NISP) in layer K. Carnivore modifications within the ZooMS component of layer K affected 21% of the remains from the dominant taxa, a considerably higher

percentage than previously obtained through morphology (SI Fig. 12). At La Ferrassie, the proportion of carnivore activity within layer 6 appears relatively low compared to human activity as carnivore modifications were identified on only two *Bos/Bison* specimens within the ZooMS component (SI Fig. 12).

In addition to evidence of carnivore activity, anthropogenic modifications are also present on most taxa within all studied layers. Human modifications were recognised on equids (20% NISP) and *Capra* sp. (22% NISP) in layer J at Bacho Kiro Cave (Fig. 5), and we noted a relatively high proportion of percussion marks on Cervid/Saiga specimens from layer J (22% NISP) (SI Fig. 11 and SI Fig. 15). At La Ferrassie, human activity is identified on Cervid/Saiga (4% NISP) and *Bos/Bison* (6% NISP) but not on equid specimens, and percussion traces occur on a higher proportion of reindeer remains (9% NISP; Fig. 5 and SI Fig. 13). At Les Cottés, human modifications range between 10 and 20% among dominant taxa over all studied layers and occur at higher proportions on reindeer specimens (particularly in US04 and US06), mainly represented by cut marks and percussion traces (Fig. 5 and SI Fig. 14). At Bacho Kiro Cave and Les Cottés, we note a progressive reduction of carnivore activity from the Late Middle Palaeolithic to the Upper Palaeolithic alongside an increase of human modifications at Bacho Kiro Cave, reinforcing patterns previously described (Rendu et al. 2019; Smith et al. 2021). In addition, we note the recurrent occurrence of anthropogenic modifications on carnivore remains ($n = 93$) from various taxa such as canids

Fig. 5 Percentages of anthropogenic modifications within the ZooMS (orange) and morphology (blue) components on the dominant taxa at the sites of Bacho Kiro Cave, Les Cottés, and La Ferrassie. Numbers on the bars are the total NISP of specimens identified for the taxa



(*Canis lupus*, *Vulpes vulpes*), felids (*Panthera leo spelaea*, *Panthera pardus*), cave hyaenas (*Crocota crocota spelaea*), and ursids within layers I and J at Bacho Kiro Cave while layer K exhibits only two carnivores remains with human modifications (SI Table 18). At Les Cottés, only two canid specimens show human modifications, and no human modifications were observed on carnivore remains within layer 6 at La Ferrassie (SI Table 18).

Skeletal representation

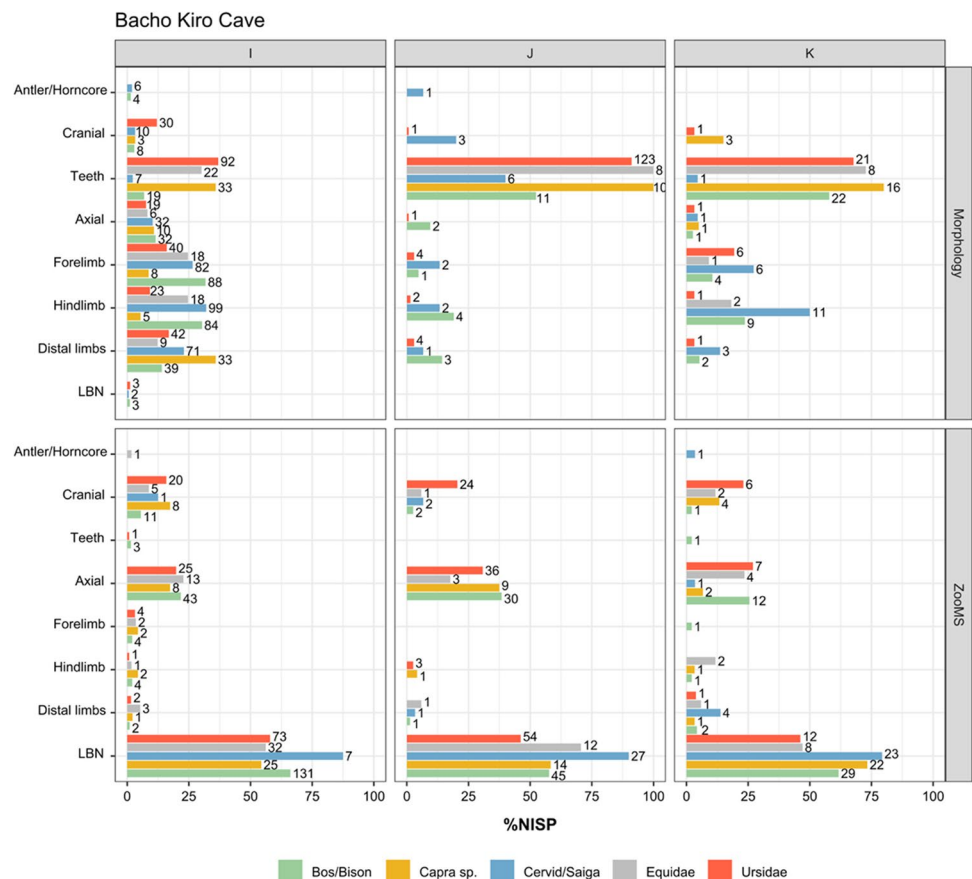
Due to their morphological specificities and as they are affected differently by taphonomic processes, teeth are largely represented in the morphology component and show the highest proportions among skeletal elements, particularly illustrated by the material from Bacho Kiro Cave and Les Cottés (Fig. 6 & SI Fig. 16). At Bacho Kiro Cave, the skeletal composition of the ZooMS component is mostly represented by long bones (LBN) and cranial and axial remains, with a higher proportion of axial elements within the ZooMS component explained by an overrepresentation of ribs (SI Table 19, Fig. 6). Rib elements are difficult to taxonomically identify as they do not retain many specific morphological features relative to their size and proportion in a skeleton. Long bone fragments (LBN) correspond to unidentified

bone fragments from forelimbs, hindlimbs, and distal limbs (metacarpals and metatarsals). Bone specimens categorised as LBN within the ZooMS component are predominantly represented by diaphysis fragments (either from the mid-shaft or near the epiphysis of the bones) but rarely from the epiphysis, as illustrated by the example on the material of Bacho Kiro Cave (SI Fig. 17). Within the morphology component at Les Cottés, we observe relatively similar proportions of limb remains between the taxa, with the exception of the absence of hindlimb and distal limb remains recorded for *Bos/Bison* in US06 of both components, but higher proportions of cranial specimens from *Bos/Bison* and Equidae (SI Fig. 16). At La Ferrassie, the elemental representation of the ZooMS component only contributes to a small extent to the skeletal representation of the morphology component as most of the remains were unidentifiable and had not been assigned to a body part (SI Fig. 18).

Discussion

This study combined palaeoproteomic and zooarchaeological analysis of faunal material from three datasets covering the Middle to Upper Palaeolithic transition. It aims to overcome methodological limits in taxonomic identification

Fig. 6 Skeletal distribution of the bone specimens identified through morphology (top) and ZooMS (bottom) from the dominant taxa at Bacho Kiro Cave. Numbers on the bars give the total NISP for each body part, layers, and ID method. Unidentified body parts (NID) were excluded from the plot. LBN, long bone fragment



resulting from bone fragmentation and to address human subsistence and fauna processing behaviour during a period of possible interaction between Neanderthals and Late Pleistocene *Homo sapiens* groups in Europe. Together with a high success rate of taxonomic identification, the inclusion of ZooMS analysis of the fragmented, unidentifiable component of bone assemblages can identify species previously unrecognised through traditional morphological analysis and, furthermore, be integrated and correlated with traditional zooarchaeological, taphonomic, and ecological data (Berto et al. 2021; Sinet-Mathiot et al. 2019; Welker et al. 2015). In the case of highly fragmented bone assemblages, this addition can provide highly valuable information for the interpretation of human subsistence. This is notably exemplified in our study at La Ferrassie layer 6 with a four-fold increase in taxonomic identification through ZooMS compared to the morphologically identified component ($NISP_{Morph} = 142$, $NISP_{ZooMS} = 518$).

Prey selection and sampling bias

In the absence of alternative methods to address the fragmented component of Palaeolithic bone assemblages, previous studies of past human behaviour related to subsistence strategies have relied solely on morphologically identifiable fauna, excluding a vast majority of the available bone specimens. However, the fragmented component of Palaeolithic bone assemblages can differ significantly from the morphologically identifiable component, highlighted by differences in proportions of the dominant taxonomic groups between morphologically identified and ZooMS components. Our study does not reflect the pattern observed in several other ZooMS screening studies which found a similar taxonomic composition of dominant species between both components (Berto et al. 2021; Buckley et al. 2017; Welker et al. 2016, 2017). In this study, discrepancies in taxonomic abundances between both components are seen through an overrepresentation of reindeer and an underrepresentation of *Bos/Bison* and equids at the sites of Les Cottés and La Ferrassie. These differences seem to be related to differential identification rates between taxa, possibly creating a reporting bias in the representation of the dominant taxa depending on their ease of identification. Thus, taxa such as reindeer or Ursidae will be overrepresented in the morphologically identified component as they are easy to differentiate even when fragmented. On the contrary, *Bos/Bison* and Equidae are more difficult to distinguish when fragmented and are often categorised as unidentifiable remains.

Assemblage composition and identification rates

The uniformity in low weathering patterns on the bone material from Bacho Kiro Cave and La Ferrassie sites indicate

that, throughout the stratigraphy, natural factors played a limited role in bone fragmentation. Overall, bone material was relatively quickly buried and suffered minimal re-exposure at these two sites. At Les Cottés, the degree of weathering was comparable among the dominant taxa, although reindeer showed slightly better bone surface readability. Further study is required to understand if this pattern could be explained through bone morphology or specific depositional conditions of the reindeer specimens (shorter exposition of the specimens prior to burying), especially knowing that glutamine deamidation ratios do not indicate a clear differential molecular preservation. Further, our analysis of collagen deamidation at each site does not provide a molecular diagenetic explanation for the differences in taxonomic proportion between the two bone components of each assemblage. When incorporating ZooMS identifications into the zooarchaeological analysis, we should keep in mind that both components, by definition, commonly show different bone length distributions, as larger fragments tend to be more easily identifiable morphologically. However, when comparing taxa, we note that this is not the case for all taxonomic groups (Pickering et al. 2006). Certain taxa, such as reindeer at Les Cottés and *Capra* sp. at Bacho Kiro Cave, can show a bone length distribution significantly different from other taxonomic groups (*Bos/Bison* and Equidae), possibly resulting from the size of the bone fragments most likely produced during marrow extraction and a different identification rate between these taxa. Indeed, because of the low cortical thickness relative to bone diameter and their smaller body size compared to *Bos/Bison* and equids, reindeer fragments will cover more of the reindeer bone proportionally, which would give it a better chance of preserving identifiable features. On the other hand, breaking open the bones of larger animals such as *Bos/Bison* or equids will produce larger fragments on average. Fragments of bovine bone specimens are often difficult to distinguish from homologous parts of Equidae or red deer as the skeletal elements of these taxa tend to overlap in size and morphology (Morin 2012). However, since reindeer are more easily identifiable, this results in increasing representation of this species within the morphological component alongside a limited proportion of identified *Bos/Bison* and equid specimens (Gobalet 2001).

The assessment of prey skeletal part distribution is often closely related to the taxonomic identification of the bone specimens. Small long bone shaft fragments tend to be difficult to identify due to a lack of diagnostic features on the bone diaphyses in combination with their high fragmentation rate due to marrow extraction (Morin et al. 2017a). Thus, the morphologically unidentifiable component analysed through ZooMS often contains a high proportion of long bone, particularly diaphysis portions, and rib fragments challenging the evaluation of skeletal distributions. Epiphysis portions tend to retain more specific morphological criteria

facilitating the taxonomic identification of the remains. However, their representation within the long bone fraction of the ZooMS component do not strongly differ from the morphology component at Bacho Kiro Cave. Thus, an underrepresentation of epiphyses can also result from selective destruction due to various factors such as differential preservation and bone density, carnivore activity, specific butchering practices like extraction of bone grease, and post-depositional or sampling bias during the archaeological excavation (Binford 1981; Grayson and Delpech 2008; Morin 2010, 2020; Yravedra and Domínguez-Rodrigo 2009). Behavioural inferences such as carcass processing and the selected transport of different body parts are often made based on skeletal part representation and abundance (Bartram et al. 1999; Binford 1981; Klein et al. 1999; Marean and Assefa 1999). The integration of skeletal representation with the taxonomic identification obtained through ZooMS has the potential to add elements to the inventory of the faunal record, contributing to our understanding of the transport of articulated remains to the site.

However, further integrating ZooMS data with standard zooarchaeological investigations will require better comparability of the metrics used in both components. The number of identified specimens (NISP) (Grayson 1984) is commonly used as a proxy for species abundance among the ZooMS components, since the minimum number of skeletal elements (MNE) and minimum number of individuals (MNI) cannot be compared quantitatively to ZooMS data. If bone fragments are identified based on their taxonomy, regardless of morphology or surface preservation, experimental models may be built, which would help us better understand how bone fragmentation in Palaeolithic faunal assemblages varies according to specimen size, as well as identify skeletal elements. ZooMS can help refine alternative methods to calculate NME such as diagnostic landmarks on bone elements or refitting bone shafts (Marean et al. 2001; Morin et al. 2016; Stiner 1994).

Subsistence during the Middle to Upper Palaeolithic transition

The addition, through peptide mass fingerprinting, of taxonomically identified bone specimens to faunal assemblages spanning a transitional phase during human evolution contributes to our understanding of patterns of shifts observed during the MUPT. Our results contribute further detail to the general picture that, over this period, the hominin diet was dominated by a range of medium and large herbivores (Discamps et al. 2011; Gaudzinski-Windheuser and Niven 2009; Gaudzinski-Windheuser and Roebroeks 2011; Jaouen et al. 2019; Niven et al. 2012; Rendu et al. 2019; Richards et al. 2008; Smith 2015). Our work highlights the exploitation of a more diverse range of taxa by both hominins and carnivores,

permitting the correlation of certain taxa with particular agents that were contributing to the bone accumulation on site, notably at Bacho Kiro Cave. Across dominant taxa, human modifications mainly consist of cut marks, with a low occurrence of percussion traces from marrow extraction, thus providing no suitable explanation for the difference in proportions between the components. The ZooMS analysis emphasises and refines shifts of proportions of taxa throughout the stratigraphy at Les Cottés, particularly between equids and *Bos/Bison* specimens (Rendu et al. 2019). These shifts in the faunal composition could represent either a slow change in the prey availability in the environment around the site or human selection strategies paralleling the expansion of Late Pleistocene *Homo sapiens* over Europe. Nonetheless, while the morphologically identified fauna suggests a more specialised focus on hunting reindeer (Rendu et al. 2019), our results suggest that this underestimates the exploitation of other species, in particular, Equidae. These results are particularly of interest within the framework of the debate about reindeer hunting specialisation (Grayson and Delpech 2002; Mellars 2004). Although the progressive increase of reindeer remains through the MUPT transition correlates with a progressive climatic degradation during MIS3 and can be explained by an adaptation of the human groups to environmental fluctuations (Banks et al. 2013; Discamps et al. 2011), the role of large ungulates in the human diet throughout the MUPT might have been underrepresented due to differential identification rates.

The incidence of carnivore modifications during late Neanderthal occupation of the sites suggests a context where both humans and carnivores were important in faunal accumulation and modification, still indicating frequent human occupation of the cave and sporadic carnivore visits, but the latter possibly more frequent than previously considered (Straus 1982). The progressive decrease of carnivore activity highlighted by the reduction of carnivore modifications from the MP to the UP at Bacho Kiro Cave and Les Cottés fits with the pattern previously detected in some other sites in Europe from this time period (Discamps 2014; Discamps et al. 2019; Rendu et al. 2019; Smith et al. 2021; Stiner and Kuhn 2006). This possible change of relationship of carnivores to humans from competitor to prey or source of raw material is emphasised by the appearance of human modifications on Ursidae remains during the IUP at Bacho Kiro Cave (alongside modifications on other carnivore species at Bacho Kiro Cave (Smith et al. 2021)). *Homo sapiens* started to exploit carnivore remains more intensively as a raw material, notably illustrated by the increase in bone artefacts made from cave bear bones and teeth at Bacho Kiro Cave and other sites in southeast Europe and southwest Asia during the IUP (Bosch et al. n.d.; Guadelli et al. 2011; Kuhn et al. 2009; Martisius et al. 2022; Stiner et al. 2013). Such specific needs in raw material can be investigated through

skeletal part representation and carcass processing (Rendu et al. 2019). Furthermore, the higher percentage of carnivore traces in the Middle Palaeolithic layers at Bacho Kiro Cave and at Les Cottés attest to their repetitive use of the site correlated with possible short duration of human occupation (Hublin et al. 2020; Smith et al. 2021). The interaction between human groups and large carnivores seems to change during the MUPT and might indicate an increasing predatory pressure of human groups on their environment (Stiner and Kuhn 2006) and/or a shorter duration of site occupation by Neanderthals compared to Late Pleistocene *Homo sapiens*.

ZooMS screening of fragmentary components of Palaeolithic bone assemblages should be systematically undertaken alongside the taphonomic analysis of the taxonomically unidentifiable specimens (see, for example, Discamps (2021)). In addition, the integration of the faunal data obtained from aDNA retrieved from the sediment of an archaeological site with the zooarchaeological and ZooMS analysis of Palaeolithic faunal assemblages has the potential to provide a better understanding of the various episodes of occupation of a site or inform about the potential origin of the DNA preserved in the sediment.

Conclusion

The analysis of the morphologically unidentifiable component of Pleistocene bone assemblages offers an exciting new avenue for research. Our work on faunal assemblages from sites with occupational sequence that span the MUPT has highlighted inter- and intra-site differences between assemblages, taxa, layers, and identification methods. We emphasise that the morphologically unidentifiable component of faunal assemblages does not necessarily reflect the morphologically identified component. Certain taxa are more readily identifiable based on morphology compared to others. Their bone elements show particular features allowing for their recognition even when fragmented (Morin et al. 2017a). This results in a discrepancy in the identification rate of differing taxa during the analysis of bone material. Taxonomic abundances are influenced by these methodological limits, and any interpretation related to past human subsistence behaviour and hunting strategies can potentially be biased. Similar patterns might be expected in other monospecific faunal assemblages, and the assessment of morphologically unidentifiable bone fractions through ZooMS can reveal conditions that influence the variability of the results.

The integration of fragmentary bone components, identified through ZooMS or other biomolecular methods (Rüther et al. 2022), within a coherent zooarchaeological framework allows for a more exhaustive evaluation of the preserved bone assemblage, unlocking behavioural

information based on skeletal part profiles, bone surface modifications, and ecological indices. Our large-scale, non-targeted ZooMS studies across the MUPT at Bacho Kiro Cave, Les Cottés, and La Ferrassie indicate an underestimated representation of the large ungulates such as *Bos/Bison* and Equidae, a progressive shift in prey selection from *Bos/Bison* to equids, a reduction in the frequency of site occupation by carnivores, and an increase in their exploitation by Upper Palaeolithic *Homo sapiens* over the course of their progressive dispersal across Europe. This approach provides complementary data for assessing preserved bone remains, contributes to our understanding of bone assemblage formation, and represents a future path for Palaeolithic zooarchaeology.

Supplementary information The online version contains supplementary material available at <https://doi.org/10.1007/s12520-023-01830-4>.

Acknowledgements We would like to thank Harold Dibble for co-directing the excavation at La Ferrassie and for his precious contribution during the early stages of this project. We would like to thank Jean-Jacques Cleyet Merle, Catherine Cretin, and Bernard Nicolas for facilitating access to the La Ferrassie fauna stored at the Musée National de Préhistoire (Les Eyzies, France). We thank Prof. Nikolay Spassov, the National Archaeological Institute and the National Museum of Natural History from the Bulgarian Academy of Sciences (Sofia, Bulgaria), and the Museum of History in Dryanovo for supporting the Bacho Kiro Cave fieldwork and storage of the faunal collection from Bacho Kiro Cave. Thanks are due to Jakob Hansen and Lindsey Paskulin for the technical assistance during sampling. We thank the IZI Fraunhofer (Leipzig, Germany), Stefan Kalkhof, and Johannes Schmidt for providing access to the MALDI-TOF MS instrument. We thank Karen Ruebens and members of the Welker group, Ragnheiður Diljá Ásmundsdóttir, Zandra Fagnäs, Jakob Hansen, Louise Le Meillour, Dorothea Mylopotamitaki, and Huan Xia for the comments on a previous version of the manuscript.

Author contributions V.S.M., G.M.S. and F.W. designed the research. V.S.M. and F.W. performed the proteomic analysis. W.R., T.E.S., R.S., S.M., S.R., M.-C.S., and N.L.M. performed zooarchaeological analysis. V.A., E.E., P.G., S.J.P.M., Z.R., D.S., N.S., S.S., M.S., T.T., A.T. and J.-J.H. provided samples and archaeological context. V.S.M., G.M.S. and F.W. wrote the manuscript with contributions of all authors.

Funding Open Access funding enabled and organized by Projekt DEAL. This study was funded by the Max Planck Society. T.E.S. received travel support through University of California, Davis' Small Grants in Aid of Research. M.S. is funded by the Dutch Research Council (NWO; VI.C.191.070). F.W. received funding from the European Research Council (ERC) under the European Union's Horizon 2020 research and innovation programme (grant agreement no. 948365). G.M.S. is funded by the European Union's Horizon 2020 research and innovation programme under the Marie Skłodowska-Curie scheme (grant agreement no. 101027850). N.L.M. was funded by the National Science Foundation (NSF-SBE; Award ID: 2004818). V. Aldeias is funded by the European Union (ERC, MATRIX project n°101041245).

Data availability The raw MALDI-TOF proteomics data and msd files generated in the framework of this study have been deposited to the open access OSF repository and are available through the following link: https://osf.io/xnf9w/?view_only=d1341d498402404ab74a048d0f116493.

Declarations

Competing interests The authors declare no competing interests.

Open Access This article is licensed under a Creative Commons Attribution 4.0 International License, which permits use, sharing, adaptation, distribution and reproduction in any medium or format, as long as you give appropriate credit to the original author(s) and the source, provide a link to the Creative Commons licence, and indicate if changes were made. The images or other third party material in this article are included in the article's Creative Commons licence, unless indicated otherwise in a credit line to the material. If material is not included in the article's Creative Commons licence and your intended use is not permitted by statutory regulation or exceeds the permitted use, you will need to obtain permission directly from the copyright holder. To view a copy of this licence, visit <http://creativecommons.org/licenses/by/4.0/>.

References

- Banks WE, Antunes N, Rigaud S, d'Errico F (2013) Ecological constraints on the first prehistoric farmers in Europe. *J Archaeol Sci* 40(6):2746–2753
- Bartram LE, Marean CW (1999) Explaining the “Klasies Pattern”: Kua Ethnoarchaeology, the Die Kelders Middle Stone Age Archaeofauna, Long Bone Fragmentation and Carnivore Ravaging. *J Archaeol Sci* 26(1):9–29
- Bastin B, Leveque F, Pradel L (1976) Recognition of interstadial pollen spectra between the Mousterian and the Old Perigordian of the Grotte des Cottes (Vienne). *Comptes Rendus Hebdomadaires Des Seances de l'Academie Des Sciences. Serie D: Sciences Naturelles*
- Behrensmeier AK (1978) Taphonomic and ecologic information from bone weathering. *Paleobiology* 4(2):150–162
- Berto C, Krajcarz MT, Moskal-del Hoyo M, Komar M, Sinet-Mathiot V, Zarzecka-Szubińska K, Krajcarz M, Szymanek M, Wertz K, Marciszak A et al (2021) Environment changes during Middle to Upper Palaeolithic transition in southern Poland (Central Europe). A multiproxy approach for the MIS 3 sequence of Koziarnia Cave (Kraków-Częstochowa Upland). *J Archaeol Sci Rep* 35:102723
- Binford LR (1981) *Bones: ancient men and modern myths*. Academic Press
- Blumenschine RJ, Marean CW, Capaldo SD (1996) Blind tests of Inter-analyst correspondence and accuracy in the identification of cut marks, percussion marks, and carnivore tooth marks on bone surfaces. *J Archaeol Sci* 23(4):493–507
- Bosch MD, Buck L, Stauss A (2019) Special issue: personal ornaments in early prehistory location, location, location: investigating perforation locations in *Tritia gibbosula* shells at Ksâr 'Akil (Lebanon) using micro-CT data
- Brown S, Douka K, Collins MJ, Richter KK (2021a) On the standardization of ZooMS nomenclature. *J Proteomics* 235:104041
- Brown S, Wang N, Oertle A, Kozlikin MB, Shunkov MV, Derevianko AP, Comeskey D, Jope-Street B, Harvey VL, Chowdhury MP, Buckley M, Higham T, Douka K (2021b) Zooarchaeology through the lens of collagen fingerprinting at Denisova Cave. *Sci Rep* 11(1):15457
- Buckley M, Collins M, Thomas-Oates J, Wilson JC (2009) Species identification by analysis of bone collagen using matrix-assisted laser desorption/ionisation time-of-flight mass spectrometry. *Rapid Commun Mass Spectrom RCM* 23(23):3843–3854
- Buckley M, Harvey VL, Chamberlain AT (2017) Species identification and decay assessment of Late Pleistocene fragmentary vertebrate remains from Pin Hole Cave (Creswell Crags, UK) using collagen fingerprinting. *Boreas* 46:402–411
- Castel JC (2011) Archéozoologie de l'Aurignacien de l'Abri Castanet (Sergeac, Dordogne, France): les fouilles 1994-1998. *Revue de paléobiologie* 30(2):783–815
- Delagnes A, Rendu W (2011) Shifts in Neandertal mobility, technology and subsistence strategies in western France. *J Archaeol Sci* 38(8):1771–1783
- Delporte H, Delibrias G, Delpech F, Donard E, Heim JL, Laville H, Marquet JC, Mourer-Chauviré C, Paquereau MM, Tuffreau A (1984) Le grand abri de La Ferrassie. In: *Fouilles 1968-1973, Laboratoire de Paléontologie humaine et de Préhistoire. Études quaternaires, mémoire 7*, p 277
- Dirrigl F J (2002) Differential identifiability between chosen North American gallinaceous skeletons and the effect of differential survivorship. *Acta Zool Cracov* 45:357–367
- Discamps E (2014) Ungulate biomass fluctuations endured by Middle and Early Upper Paleolithic societies (SW France, MIS 5–3): the contributions of modern analogs and cave hyena paleodemography. *Quat Int J Int Union Quat Res* 337:64–79
- Discamps E (2021) TIPZOO: a touchscreen interface for Palaeolithic zooarchaeology, towards making data entry and analysis easier, faster, and more reliable. *Peer Commun J* 1(e67)
- Discamps E, Bachelier F, Baillet M, Sitzia L (2019) The use of spatial taphonomy for interpreting pleistocene palimpsests: an interdisciplinary approach to the Châtelperronian and carnivore occupations at Cassenade (Dordogne, France). *PaleoAnthropology* 2019:362–388
- Discamps E, Jaubert J, Bachelier F (2011) Human choices and environmental constraints: deciphering the variability of large game procurement from Mousterian to Aurignacian times (MIS 5–3) in southwestern France. *Quatern Sci Rev* 30(19):2755–2775
- Domínguez-Rodrigo M, Saladié P, Cáceres I, Huguet R, Yravedra J, Rodríguez-Hidalgo A, Martín P, Pineda A, Marín J, Gené C, Aramendi J, Cobo-Sánchez L (2017) Use and abuse of cut mark analyses: the Rorschach effect. *J Archaeol Sci* 86:14–23
- Faith JT (2007) Changes in reindeer body part representation at Grotte XVI, Dordogne France. *J Archaeol Sci* 34(12):2003–2011
- Fewlass H, Talamo S, Wacker L, Kromer B, Tuna T, Fagault Y, Bard E, McPherron SP, Aldeias V, Maria R, Martisius NL, Paskulin L, Rezek Z, Sinet-Mathiot V, Sirakova S, Smith GM, Spasov R, Welker F, Sirakov N, Tsanova T, Hublin JJ (2020) A 14 C chronology for the Middle to Upper Palaeolithic transition at Bacho Kiro Cave, Bulgaria. *Nat Ecol Evol* 1–8
- Fisher JW (1995) Bone surface modifications in zooarchaeology. *J Archaeol Method Theory* 2(1):7–68
- Garrod DAE, Howe B, Gaul JH (1939) Excavation in the Cave of Bacho Kiro, North-East Bulgaria. *Bulletin of the American School of Prehistoric Research*. Cambridge, MA, 15, 46–70
- Gaudzinski S, Roebroeks W (2000) Adults only. Reindeer hunting at the middle palaeolithic site salzgitter lebenstedt, northern Germany. *J Hum Evol* 38(4):497–521
- Gaudzinski-Windheuser S, Kindler L, Pop E, Roebroeks W, Smith G (2014) The Eemian Interglacial lake-landscape at Neumark-Nord (Germany) and its potential for our knowledge of hominin subsistence strategies. *Quaternary International: The Journal of the International Union for Quaternary Research* 331:31–38
- Gaudzinski-Windheuser S, Niven L (2009) Hominin subsistence patterns during the Middle and Late Paleolithic in northwestern Europe. *The Evolution of Hominin Diets* 99–111
- Gaudzinski-Windheuser S, Roebroeks W (2011) On Neanderthal subsistence in last interglacial forest-ed environments in Northern Europe. In: *Neanderthal Lifeways, Subsistence and Technology*

- One Hundred Fifty Years of Neanderthal Study (Ed. by Conard N.J., Richter J.). Vertebrate Paleobiology and Paleoanthropology Series, Springer, New York, pp 61–71
- Gibb S, Strimmer K (2012) MALDIquant: a versatile R package for the analysis of mass spectrometry data. *Bioinformatics* 28(17):2270–2271
- Gobalet KW (2001) A critique of faunal analysis; inconsistency among experts in blind tests. *J Archaeol Sci* 28(4):377–386
- Grayson DK (1984) *Quantitative Zooarchaeology*. Academic Press
- Grayson DK, Delpech F (2002) Specialized early upper palaeolithic hunters in Southwestern France? *J Archaeol Sci* 29(12):1439–1449
- Grayson DK, Delpech F (2008) The large mammals of Roc de Combe (Lot, France): the Châtelperronian and Aurignacian assemblages. *J Anthropol Archaeol* 27(3):338–362
- Guadelli A, Fernandez P, Guadelli J-L, Miteva V, Sirakov N (2011) The Retouchers from the Gravettian Levels in Kozarnika Cave. *Archaeoplus* 5:155–162
- Guérin G, Frouin M, Talamo S, Aldeias V, Bruxelles L, Chiotti L, Dibble HL, Goldberg P, Hublin J-J, Jain M, Lahaye C, Madelaine S, Maureille B, McPherron SJP, Mercier N, Murray AS, Sandgathe D, Steele TE, Thomsen KJ, Turq A (2015) A multi-method luminescence dating of the Palaeolithic sequence of La Ferrassie based on new excavations adjacent to the La Ferrassie 1 and 2 skeletons. *J Archaeol Sci* 58:147–166
- Hajdinjak M, Mafessoni F, Skov L, Vernot B, Hübner A, Fu Q, Essel E, Nagel S, Nickel B, Richter J, Moldovan OT, Constantin S, Endarova E, Zahariev N, Spasov R, Welker F, Smith GM, Sinet-Mathiot V, Paskulin L, ... Pääbo S (2021) Initial Upper Palaeolithic humans in Europe had recent Neanderthal ancestry. *Nature* 592(7853):253–257
- Higham T, Douka K, Wood R, Ramsey CB, Brock F, Basell L, Camps M, Arrizabalaga A, Baena J, Barros-Ruiz C, Bergman C, Boitard C, Boscatto P, Caparrós M, Conard NJ, Draily C, Froment A, Galván B, Gambassini P, ... Jacobi R (2014) The timing and spatiotemporal patterning of Neanderthal disappearance. *Nature* 512(7514):306–309
- Hublin J-J (2015) The modern human colonization of western Eurasia: when and where? *Quatern Sci Rev* 118:194–210
- Hublin J-J, Sirakov N, Aldeias V, Bailey S, Bard E, Delvigne V, Endarova E, Fagault Y, Fewlass H, Hajdinjak M, Kromer B, Krumov I, Marreiros J, Martisius NL, Paskulin L, Sinet-Mathiot V, Meyer M, Pääbo S, Popov V, ... Tsanova T (2020) Initial Upper Palaeolithic Homo sapiens from Bacho Kiro Cave, Bulgaria. *Nature* 581(7808):299–302
- Jacobs Z, Li B, Jankowski N, Soressi M (2015) Testing of a single grain OSL chronology across the Middle to Upper Palaeolithic transition at Les Cottés (France). *J Archaeol Sci* 54:110–122
- Jaouen K, Richards MP, Le Cabec A, Welker F, Rendu W, Hublin J-J, Soressi M, Talamo S (2019) Exceptionally high $\delta^{15}\text{N}$ values in collagen single amino acids confirm Neandertals as high-trophic level carnivores. *Proc Natl Acad Sci USA* 116(11):4928–4933
- Klein RG, Cruz-Urbe K, Milo RG (1999) Skeletal part representation in archaeofaunas: comments on “Explaining the ‘Klasies Pattern’”: *Kua Ethnoarchaeology, the Die Kelders Middle Stone Age Archaeofauna, Long Bone Fragmentation and Carnivore Ravaging*” by Bartram & Marean. *J Archaeol Sci* 26(9):1225–1234
- Kozłowski JK, Ginter B (1982) *Excavation in the Bacho Kiro Cave (Bulgaria)*. Państwowe Wydawnictwo Naukowe
- Kuhn SL, Stiner MC, Güleç E, Özer I, Yılmaz H, Baykara I, Açıkkol A, Goldberg P, Molina KM, Ünay E, Suata-Alpaslan F (2009) The early Upper Paleolithic occupations at Üçağızlı Cave (Hatay, Turkey). *J Hum Evol* 56(2):87–113
- Lyman LR (1994) *Vertebrate taphonomy*. Cambridge University Press
- Lyman RL (2002) Taxonomic identification of zooarchaeological remains. *Rev Archaeol* 23(2):13–20
- Lévêque F (1997) Le Passage du Paléolithique moyen au Paléolithique supérieur: Données stratigraphiques de quelques gisements sous-grotte du sud-ouest [The transition from middle to Upper Paleolithic: stratigraphic sequences of some south-west sites of France.]. *Quaternaire* 8(2):279–287
- Marean CW (1991) Measuring the post-depositional destruction of bone in archaeological assemblages. *J Archaeol Sci* 18(6):677–694
- Marean CW, Abe Y, Nilssen PJ, Stone EC (2001) Estimating the minimum number of skeletal elements (MNE) in zooarchaeology: a review and a new image-analysis GIS approach. *Am Antiqu* 66(2):333–348
- Marean CW, Assefa Z (1999) Zooarchaeological evidence for the faunal exploitation behavior of Neandertals and early modern humans. *Evol Anthropol* 8:22–37
- Marean CW, Kim SY (1998) Mousterian large-mammal remains from kobeh cave behavioral implications for neandertals and early modern humans. *Curr Anthropol* 39(S1):S79–S114
- Martisius NL, Spasov R, Smith GM, Endarova E, Sinet-Mathiot V, Welker F, Aldeias V, Horta P, Marreiros J, Rezek Z, McPherron SP, Sirakov N, Sirakova S, Tsanova T, Hublin J-J (2022) Initial Upper Paleolithic bone technology and personal ornaments at Bacho Kiro Cave (Bulgaria). *J Hum Evol* 167:103198
- Martisius NL, Welker F, Dogandžić T, Grote MN, Rendu W, Sinet-Mathiot V, Wilcke A, McPherron SJP, Soressi M, Steele TE (2020) Non-destructive ZooMS identification reveals strategic bone tool raw material selection by Neandertals. *Sci Rep* 10(1):7746
- Mellars PA (2004) Reindeer specialization in the early Upper Palaeolithic: the evidence from south west France. *J Archaeol Sci* 31(5):613–617
- Morin E (2010) Taphonomic Implications of the Use of Bone as Fuel, in Théry-Parisot I, Chabal L, Costamagno S, The taphonomy of burned organic residues and combustion features in archaeological contexts, Proceedings of the round table, May 27–29 2008, CEPAM, P@lethnology, 2:209–217
- Morin E (2004) Late Pleistocene population interaction in western Europe and modern human origins: New insights based on the faunal remains from Saint-Césaire, southwestern France. *Ann Arbor: University of Michigan*
- Morin E (2012) *Reassessing Paleolithic subsistence: the Neandertal and Modern Human Foragers of Saint-Césaire*. Cambridge University Press
- Morin E (2020) Rethinking the emergence of bone grease procurement. *J Anthropol Archaeol* 59:101178
- Morin E, Ready E, Boileau A, Beauval C, Coumont M-P (2017a) Problems of identification and quantification in archaeozoological analysis, part I: insights from a Blind Test. *J Archaeol Method Theory* 24(3):886–937
- Morin E, Ready E, Boileau A, Beauval C, Coumont M-P (2017b) Problems of identification and quantification in archaeozoological analysis, part ii: presentation of an alternative counting method. *J Archaeol Method Theory* 24(3):938–973
- Morin E, Speth JD, Lee-Thorp J (2016) Middle Palaeolithic diets: a critical examination of the evidence. In: Lee-Thorp J, Katzenberg MA (eds) *The Oxford Handbook of the Archaeology of Diet*. Oxford, pp 1–33
- Niven L, Steele TE, Rendu W, Mallye J-B, McPherron SP, Soressi M, Jaubert J, Hublin J-J (2012) Neandertal mobility and large-game hunting: the exploitation of reindeer during the Quina Mousterian at Chez-Pinaud Jonzac (Charente-Maritime, France). *J Hum Evol* 63(4):624–635
- Oksanen J, Blanchet FG, Friendly M, Kindt R, Legendre P, McGinn D, Minchin PR, O’hara RB, Simpson GL, Solymos P et al (2019) *Vegan: community ecology package (version 2.5–6)*. The Comprehensive R Archive Network

- Olsen SL, Shipman P (1988) Surface modification on bone: trampling versus butchery. *J Archaeol Sci* 15(5):535–553
- Pederzani S, Britton K, Aldeias V, Bourgon N, Fewlass H, Lauer T, McPherron SP, Rezek Z, Sirakov N, Smith GM, Spasov R, Tran N-H, Tsanova T, Hublin J-J (2021) Subarctic climate for the earliest *Homo sapiens* in Europe. *Sci Adv* 7(39):eabi4642
- Peyrony D (1934) La Ferrassie. Moustérien-Périgordien-Aurignacien. *Préhistoire* 3:1–92
- Pickering TR, Egeland CP, Schnell AG, Osborne DL, Enk, J (2006). Success in identification of experimentally fragmented limb bone shafts: implications for estimates of skeletal element abundance in archaeofaunas. *Journal of Taphonomy* 4(2):97–108
- Pothier Bouchard G, Riel-Salvatore J, Negrino F, Buckley M (2020) Archaeozoological, taphonomic and ZooMS insights into the Protoaurignacian faunal record from Riparo Bombrini. *Quat Int* 551:243–263
- Pradel L (1967) La Grotte des Cottés, commune de Saint-Pierre-de-Maillé (Vienne); Moustérien—Périgordien—Aurignacien. *Datation Par Le Radiocarbone L'anthropologie* 71:271–277
- Prüfer K, Posth C, Yu H, Stoessel A, Spyrou MA, Deviese T, Mattonai M, Ribechini E, Higham T, Velemínský P, Brůžek J, Krause J (2021) A genome sequence from a modern human skull over 45,000 years old from Zlatý kůň in Czechia. *Nat Ecol Evol* 5(6):820–825
- R Core Team, 2021 (n.d.) R: A language and environment for statistical computing [R Foundation for Statistical Computing]
- Rendu W, Costamagno S, Meignen L, Soulier MC (2012) Monospecific faunal spectra in Mousterian contexts: implications for social behavior. *Quat Int* 247:50–58
- Rendu W, Renou S, Soulier M-C, Rigaud S, Roussel M, Soressi M (2019) Subsistence strategy changes during the Middle to Upper Paleolithic transition reveals specific adaptations of human populations to their environment. *Sci Rep* 9(1):15817
- Richards MP, Taylor G, Steele T, McPherron SP, Soressi M, Jaubert J, Orschiedt J, Mallye JB, Rendu W, Hublin JJ (2008) Isotopic dietary analysis of a Neanderthal and associated fauna from the site of Jonzac (Charente-Maritime) France. *J Hum Evol* 55(1):179–185
- Ruebens K, Sinet-Mathiot V, Talamo S, Smith GM, Welker F, Hublin J-J, McPherron SP (2022) The Late Middle Palaeolithic occupation of Abri du Maras (Layer 1, Neronian, Southeast France): integrating lithic analyses, ZooMS and radiocarbon dating to reconstruct Neanderthal hunting behaviour. *J Paleolit Archaeol* 5(1):4
- Rüther PL, Husic IM, Bangsgaard P et al (2022) SPIN enables high throughput species identification of archaeological bone by proteomics. *Nat Commun* 13:2458
- Shannon CE (1948) A mathematical theory of communication. *Bell Syst Tech J* 27(3):379–423
- Sinet-Mathiot V, Smith GM, Romandini M, Wilcke A, Peresani M, Hublin J-J, Welker F (2019) Combining ZooMS and zooarchaeology to study Late Pleistocene hominin behaviour at Fumane (Italy). *Sci Rep* 9(1):12350
- Smith GM (2015) Neanderthal megafaunal exploitation in Western Europe and its dietary implications: a contextual reassessment of La Cotte de St Brelade (Jersey). *J Hum Evol* 78:181–201
- Smith GM, Spasov R, Martisius NL, Sinet-Mathiot V, Aldeias V, Rezek Z, Ruebens K, Pederzani S, McPherron SP, Sirakova S, Sirakov N, Tsanova T, Hublin J-J (2021) Subsistence behavior during the Initial Upper Paleolithic in Europe: site use, dietary practice, and carnivore exploitation at Bacho Kiro Cave (Bulgaria). *J Hum Evol* 161:103074
- Soressi M, Roussel M, Rendu W, Primault J, Rigaud S, Texier JP, Richter D, Talamo S, Ploquin F, Larmignat B, Tavormina C, Hublin JJ (2010) Les Cottés (Vienne). Nouveaux travaux sur l'un des gisements de référence pour la transition Paléolithique moyen/supérieur. In: Buisson-Catil J, Primault J, (eds) *Mémoire* 384, Association des Publications Chauvinoises, Villefranche-de-Rouergue, pp 221–234
- Soulier M-C, Costamagno S (2017) Let the cutmarks speak! Experimental butchery to reconstruct carcass processing. *J Archaeol Sci Rep* 11:782–802
- Steele TE (2004) Variation in mortality profiles of red deer (*Cervus elaphus*) in Middle Palaeolithic assemblages from western Europe. *Int J Osteoarchaeol* 14(34):307–320
- Steele TE (2015) The contributions of animal bones from archaeological sites: the past and future of zooarchaeology. *J Archaeol Sci* 56:168–176
- Stiner MC (1991a) The faunal remains from Grotta Guattari: a taphonomic perspective. *Curr Anthropol* 32(2):103–117
- Stiner MC (1991b) Food procurement and transport by human and non-human predators. *J Archaeol Sci* 18(4):455–482
- Stiner MC (1993) Modern human origins faunal perspectives. *Annu Rev Anthropol* 22(1):55–82
- Stiner MC (1994) Honor among thieves: a zooarchaeological study of Neanderthal ecology
- Stiner MC, Kuhn SL (1995) DiVerential burning, recrystallization, and fragmentation of archaeological bone. *J Archaeol Sci* 22:223–237
- Stiner MC, Kuhn SL (2006) Changes in the “connectedness” and resilience of paleolithic societies in Mediterranean ecosystems. *Hum Ecol* 34(5):693–712
- Stiner MC, Kuhn SL, Güleç E (2013) Early upper paleolithic shell beads at Uçağızlı Cave I (Turkey): technology and the socioeconomic context of ornament life-histories. *J Hum Evol* 64(5):380–398
- Straus LG (1982) Carnivores and Cave Sites in Cantabrian Spain. *J Anthropol Res* 38(1):75–96
- Strohalm M, Kavan D, Novák P, Volný M, Havlíček V (2010) mMass 3: a cross-platform software environment for precise analysis of mass spectrometric data. *Anal Chem* 82(11):4648–4651
- Talamo S, Aldeias V, Goldberg P, Chiotti L, Dibble HL, Guérin G, Hublin J-J, Madelaine S, Maria R, Sandgathe D, Steele TE, Turq A, Mcpherron SJP (2020) The new 14 C chronology for the Palaeolithic site of La Ferrassie, France: the disappearance of Neanderthals and the arrival of *Homo sapiens* in France. *J Quat Sci* 35(7):961–973
- Talamo S, Soressi M, Roussel M, Richards M, Hublin J-J (2012) A radiocarbon chronology for the complete Middle to Upper Palaeolithic transitional sequence of Les Cottés (France). *J Archaeol Sci* 39(1):175–183
- Turq A, Dibble H, Goldberg P, McPherron S JP, Sandgathe D, Mercier N, Bruxelles L, Laville D, Madelaine S (2012) Reprise des fouilles dans la partie ouest du gisement de la Ferrassie, Savignac-de-Miremont, Dordogne: problématique et premiers résultats. In: Bertran P, Lenoble A (eds.), *Quaternaire continental d'Aquitaine: un point sur les travaux récents Quaternaire Continental d'Aquitaine, excursion AFEQ - ASF 2012*. France: Association des Sedimentologues Français, pp 78–87
- van Doorn NL, Hollund H, Collins MJ (2011) A novel and non-destructive approach for ZooMS analysis: ammonium bicarbonate buffer extraction. *Archaeol Anthropol Sci* 3(3):281
- van Doorn NL, Wilson J, Hollund H, Soressi M, Collins MJ (2012) Site-specific deamidation of glutamine: a new marker of bone collagen deterioration. *Rapid Commun Mass Spectrom: RCM* 26(19):2319–2327
- Welker F, Hajdinjak M, Talamo S, Jaouen K, Dannemann M, David F, Julien M, Meyer M, Kelso J, Barnes I, Brace S, Kamminga P, Fischer R, Kessler BM, Stewart JR, Pääbo S, Collins MJ, Hublin J-J (2016) Palaeoproteomic evidence identifies archaic hominins associated with the Châtelperronian at the Grotte du Renne. *Proc Natl Acad Sci USA* 113(40):11162–11167
- Welker F, Soressi MA, Roussel M, Riemsdijk I van, Hublin J-J, Collins MJ (2017) Variations in glutamine deamidation for a Châtelperronian

bone assemblage as measured by peptide mass fingerprinting of collagen. *STAR Sci Technol Archaeol Res* 3(1):15–27

Welker F, Soressi M, Rendu W, Hublin J-J, Collins M (2015) Using ZooMS to identify fragmentary bone from the Late Middle/Early Upper Palaeolithic sequence of Les Cottés, France. *J Archaeol Sci* 54:279–286

Wilson J, van Doorn NL, Collins MJ (2012) Assessing the extent of bone degradation using glutamine deamidation in collagen. *Anal Chem* 84(21):9041–9048

Yravedra J, Domínguez-Rodrigo M (2009) The shaft-based methodological approach to the quantification of long limb bones and its relevance to understanding hominid subsistence in the Pleistocene: application to four Palaeolithic sites. *J Quat Sci* 24(1):85–96

Publisher's note Springer Nature remains neutral with regard to jurisdictional claims in published maps and institutional affiliations.

Authors and Affiliations

Virginie Sinet-Mathiot¹ · William Rendu² · Teresa E. Steele³ · Rosen Spasov⁴ · Stéphane Madelaine^{5,6} · Sylvain Renou⁷ · Marie-Cécile Soulier⁸ · Naomi L. Martisius⁹ · Vera Aldeias¹⁰ · Elena Endarova⁴ · Paul Goldberg^{10,11,12} · Shannon J. P. McPherron¹³ · Zeljko Rezek¹⁴ · Dennis Sandgathe¹⁵ · Nikolay Sirakov¹⁶ · Svoboda Sirakova¹⁶ · Marie Soressi¹⁷ · Tsenka Tsanova^{13,18} · Alain Turq⁵ · Jean-Jacques Hublin^{1,14} · Frido Welker¹⁹ · Geoff M. Smith²⁰

✉ Virginie Sinet-Mathiot
virginie.sinetmathiot@palaome.org

✉ Frido Welker
frido.welker@sund.ku.dk

✉ Geoff M. Smith
G.Smith-548@kent.ac.uk

¹ Max Planck Institute for Evolutionary Anthropology, Leipzig, Germany

² ArchaeoZOOlogy in Siberia and Central Asia-ZooSCAN, CNRS-IAET SB RAS International Research Laboratory, IRL 2013, Institute of Archaeology SB RAS, Novosibirsk, Russia

³ Department of Anthropology, University of California, Davis, CA, USA

⁴ Archaeology Department, New Bulgarian University, Sofia, Bulgaria

⁵ Musée national de Préhistoire, Les Eyzies, France

⁶ CNRS, UMR 5199 PACEA, Université de Bordeaux, Pessac, France

⁷ HADÈS Agence Atlantique, Bordeaux, France

⁸ CNRS, UMR 5608 TRACES, Université de Toulouse-Jean Jaurès, Maison de la Recherche, Toulouse, France

⁹ Department of Anthropology, The University of Tulsa, Tulsa, OK, USA

¹⁰ Interdisciplinary Center for Archaeology and the Evolution of Human Behaviour, Universidade do Algarve, Campus de Gambelas, Faro, Portugal

¹¹ School of Earth, Atmospheric and Life Sciences, University of Wollongong, Wollongong, Australia

¹² Institut für Naturwissenschaftliche Archäologie-Geoarchäologie, Universität Tübingen, Tübingen, Germany

¹³ Department of Human Origins, Max Planck Institute for Evolutionary Anthropology, Leipzig, Germany

¹⁴ Chaire de Paléanthropologie, CIRB (UMR 7241–U1050), Collège de France, Paris, France

¹⁵ Department of Archaeology, Simon Fraser University, Burnaby, BC, Canada

¹⁶ National Institute of Archaeology With Museum, Bulgarian Academy of Sciences, Sofia, Bulgaria

¹⁷ Faculty of Archaeology, Leiden University, Leiden, The Netherlands

¹⁸ Department of Chemistry G. Ciamician, Alma Mater Studiorum, University of Bologna, Bologna, Italy

¹⁹ Globe Institute, University of Copenhagen, Copenhagen, Denmark

²⁰ School of Anthropology and Conservation, University of Kent, Canterbury, UK