



HAL
open science

**Implementation and assessment of a model including
mixotrophs and the carbonate cycle
(Eco3M_MIX-CarbOx v1.0) in a highly dynamic
Mediterranean coastal environment (Bay of Marseille,
France) – Part 2: Towards a better representation of
total alkalinity when modeling the carbonate system
and air–sea CO₂ fluxes**

Lucille Barré, Frédéric Diaz, Thibaut Wagener, Camille Mazoyer, Christophe Yohia, Christel Pinazo

► **To cite this version:**

Lucille Barré, Frédéric Diaz, Thibaut Wagener, Camille Mazoyer, Christophe Yohia, et al.. Implementation and assessment of a model including mixotrophs and the carbonate cycle (Eco3M_MIX-CarbOx v1.0) in a highly dynamic Mediterranean coastal environment (Bay of Marseille, France) – Part 2: Towards a better representation of total alkalinity when modeling the carbonate system and air–sea CO₂ fluxes. *Geoscientific Model Development*, 2024, 17 (15), pp.5851-5882. 10.5194/gmd-17-5851-2024. hal-04701283

HAL Id: hal-04701283

<https://hal.science/hal-04701283v1>

Submitted on 18 Sep 2024

HAL is a multi-disciplinary open access archive for the deposit and dissemination of scientific research documents, whether they are published or not. The documents may come from teaching and research institutions in France or abroad, or from public or private research centers.

L'archive ouverte pluridisciplinaire **HAL**, est destinée au dépôt et à la diffusion de documents scientifiques de niveau recherche, publiés ou non, émanant des établissements d'enseignement et de recherche français ou étrangers, des laboratoires publics ou privés.



Implementation and assessment of a model including mixotrophs and the carbonate cycle (Eco3M_MIX-CarbOx v1.0) in a highly dynamic Mediterranean coastal environment (Bay of Marseille, France) – Part 2: Towards a better representation of total alkalinity when modeling the carbonate system and air–sea CO₂ fluxes

Lucille Barré¹, Frédéric Diaz^{1,†}, Thibaut Wagener¹, Camille Mazoyer¹, Christophe Yohia², and Christel Pinazo¹

¹Aix Marseille Univ., Université de Toulon, CNRS, IRD, MIO, UM 110, 13288, Marseille, France

²Aix Marseille Univ., Université de Toulon, CNRS, IRD, OSU Institut Pythéas, 13288, Marseille, France

[†]deceased

Correspondence: Lucille Barré (lucille.barre@mio.osupytheas.fr) and Thibaut Wagener (thibaut.wagener@mio.osupytheas.fr)

Received: 23 February 2023 – Discussion started: 5 May 2023

Revised: 4 June 2024 – Accepted: 15 June 2024 – Published: 5 August 2024

Abstract. The Bay of Marseille (BoM), located in the north-western Mediterranean Sea, is affected by various hydrodynamic processes (e.g., Rhône River intrusion and upwelling events) that result in a highly complex local carbonate system. In any complex environment, the use of models is advantageous since it allows us to identify the different environmental forcings, thereby facilitating a better understanding. By combining approaches from two biogeochemical ocean models and improving the formulation of total alkalinity, we develop a more realistic representation of the carbonate system variables at high temporal resolution, which enables us to study air–sea CO₂ fluxes and seawater *p*CO₂ variations more reliably. We apply this new formulation to two particular scenarios that are typical for the BoM: (i) summer upwelling and (ii) Rhône River intrusion events. In both scenarios, our model was able to correctly reproduce the observed patterns of *p*CO₂ variability. Summer upwelling events are typically associated with a *p*CO₂ decrease that mainly results from decreasing near-surface temperatures. Furthermore, Rhône River intrusion events are typically associated with a *p*CO₂ decrease, although, in this case, the *p*CO₂ decrease results from a decrease in salinity and an overall increase in total alkalinity. While we were able to correctly represent the daily range of air–sea CO₂ fluxes, the present configuration of Eco3M_MIX-CarbOx does not al-

low us to correctly reproduce the annual cycle of air–sea CO₂ fluxes observed in the area. This pattern directly impacts our estimates of the overall yearly air–sea CO₂ flux as, even if the model clearly identifies the bay as a CO₂ sink, its magnitude was underestimated, which may be an indication of the limitations inherent in dimensionless models for representing air–sea CO₂ fluxes.

1 Introduction

Since the industrial revolution, atmospheric CO₂ concentrations have been constantly increasing (Mauna Loa Observatory: <https://gml.noaa.gov/ccgg/trends/>, last access: 20 June 2024). By absorbing large amounts of CO₂, the global ocean acts as an important sink of anthropogenic CO₂. Recent estimates suggest that this absorption corresponds to roughly 25 % of annual emissions (Friedlingstein et al., 2022). During this absorption process, CO₂ undergoes a series of acid–base reactions that eventually lead to the formation of carbonate ions (CO₃²⁻). Initially, dissolved CO₂ reacts with water to form carbonic acid (H₂CO₃), which then dissociates into bicarbonate (HCO₃⁻) and hydronium (H⁺) ions. In turn, HCO₃⁻ dissociates into CO₃²⁻ and H⁺ ions. In-

creased uptake of atmospheric CO₂ modifies this acid–base reaction chain, thus affecting the associated species concentrations, particularly of H⁺ ions, which increase significantly, resulting in a decrease in seawater pH. This phenomenon, known as ocean acidification (OA), is ubiquitous, as confirmed through global observations (Feely et al., 2009; Dore et al., 2009; Gonzales-Dávila et al., 2010; Bates et al., 2012). The increased uptake of atmospheric CO₂ not only results in lower pH but also modifies the overall carbonate equilibrium, which is slowly shifting towards higher HCO₃[−] and H₂CO₃ concentrations and lower CO₃^{2−} concentrations, which makes it more difficult for marine calcifiers to form their calcium carbonate shells (Orr et al., 2005).

Coastal oceans (depth < 200 m, Gattuso et al., 1998) account for over 10 % (0.18 to 0.45 Pg C per year; Laruelle et al., 2010, 2014) of the total oceanic CO₂ uptake (Thomas et al., 2004) and are therefore particularly impacted by OA, generally exhibiting more pronounced localized decreases in pH (e.g., Kapsenberg et al., 2017; Luchetta et al., 2010). Nonetheless, coastal environments are highly complex, mainly due to their high spatial and temporal variability, which makes their response to changes difficult to predict (Carstensen et al., 2018). Their proximity to the land means they are particularly exposed to anthropogenic pressures (run off and riverine input of anthropogenic nutrients and other chemical products, as well as organic matter rejects). Moreover, they are affected by strong physical forcings (e.g., tides, salinity gradients, wind-induced currents) and account for about 30 % of all oceanic primary production, which typically results in rich and diverse ecosystems (Gattuso et al., 1998).

The Mediterranean Sea is comparatively small and semi-enclosed; it receives nutrients through several pathways including Saharan dust depositions (Guerzoni et al., 1997) and numerous riverine inputs (e.g., Hopkins, 1992; Salat et al., 2002; Pujo-Pay et al., 2006). Considering the fact that the Mediterranean Sea is mostly oligotrophic (Morel and André, 1991), these inputs are highly significant for phytoplankton growth (Revelante and Gillmartin, 1976; Ludwig et al., 2009). These features render the biogeochemistry of the Mediterranean Sea particularly complex, especially with regard to the carbonate system. Several studies have investigated the carbonate system and air–sea CO₂ fluxes in these areas, typically using point measurements from various locations, including the Ligurian Sea (De Carlo et al., 2013; Kapsenberg et al., 2017), the Bay of Marseille (BoM; Wimart-Rousseau et al., 2020a), the Gulf of Trieste (Ingrosso et al., 2016), and the Adriatic Sea (Urbini et al., 2020). Overall, these studies agree with findings by Roobaert et al. (2019), who showed that coastal systems mostly act like CO₂ sinks on a yearly basis, although the CO₂ uptake shows a significant intra-annual variability.

Most modeling approaches to investigate carbonate system variables typically employ 3D coupled physical–

biogeochemical models and focus on larger coastal areas (e.g., Artioli et al., 2014; Bourgeois et al., 2016). If the focus is on smaller areas, this requires higher spatial and temporal resolutions to correctly represent the relevant processes (Bourgeois et al., 2016). However, higher spatial and temporal resolutions often result in a significant increase in the calculation time, which makes the repetition of numerical experiments – an important step to better understand the global functioning of the area and its reaction to environmental forcings – more difficult. A solution to avoid important calculation times is to use a dimensionless model. This type of model allows us to conduct large numbers of tests in short amounts of time. For instance, Lajaunie-Salla et al. (2021) used the dimensionless Eco3M-CarbOx model, which contains a carbonate module in which a carbonate system is resolved by using total alkalinity (TA) and dissolved inorganic carbon (DIC). Even if the DIC, the oceanic partial pressure of CO₂ (*p*CO₂), and the total pH (pH_T) representations look reliable, Eco3M-CarbOx tends to minimize the range of TA variations during the year, resulting in a near-constant TA (Lajaunie-Salla et al., 2021).

Here, we try to provide a more realistic representation of carbonate system variables in the BoM. As a starting point, we used the concept of the dimensionless Eco3M-CarbOx model (Lajaunie-Salla et al., 2021), which aims to represent a small volume of surface water (i.e., 1 m³) in the BoM. We developed a planktonic ecosystem model which contains, among other things, mixotrophic organisms; modified the carbonate module described by Lajaunie-Salla et al. (2021); and added it to our newly developed planktonic ecosystem model to obtain the Eco3M_MIX-CarbOx model (v1.0). We implemented two types of TA formulations and compared the simulation results to in situ observations to identify which formulation was capable of delivering the more realistic results: (i) a formulation that only considers biological processes (referred to as autochthonous formulation) and (ii) a new TA formulation that depends only on salinity (referred to as allochthonous formulation). Furthermore, we simulate air–sea CO₂ fluxes to determine whether the BoM acts as a sink or a source of CO₂, and we provide a detailed analysis of drivers of seawater *p*CO₂ variations for two specific hydrodynamic processes that are typical for the BoM: (i) Rhône River intrusion and (ii) summer upwelling events. With this study, we aim to provide a new tool which will allow us to obtain a reliable representation of the carbonate system in the simplest way possible: by using a dimensionless configuration which is easy to use and adapt and which gives results in a short amount of time.

The Eco3M_MIX-CarbOx model contains both a mixotrophy compartment and a representation of the carbonate system. The model description is split into two parts: (i) a description of how the organisms and their dynamics are represented in the model, with a particular focus on mixotrophic organisms, and (ii) a more detailed description of the carbonate module and the associated dynamics. While (ii) is

presented here, (i) has been presented in a companion paper (Barré et al., 2023).

2 Materials and methods

2.1 Study area

The BoM is located in the NW Mediterranean Sea, in the eastern part of the Gulf of Lion near Marseille. Due to its proximity to Marseille, the second biggest city in France, and to other urbanized areas along the coast (e.g., Fos-sur-Mer and Berre Lagoon to the west), the BoM is strongly affected by anthropogenic forcings, which results in significant inputs of anthropogenic nutrients such as ammonium (NH_4^+) and phosphate (PO_4^{3-}), chemical products, and organic matter (OM) (Millet et al., 2018) through urban rivers. Significant quantities of nutrients and freshwater are also provided by the Rhône River (Pont et al., 2002), the delta of which is located 35 km to the west of the bay. In specific wind conditions, the Rhône River plume can be pushed eastwards, supplying the bay with nitrate, which tends to boost the productivity of the area (Gatti et al., 2006; Fraysse et al., 2013, 2014). In addition to these inputs, the biogeochemical functioning of the BoM is affected by various hydrodynamic processes including strong mistral events (Yohia, 2017); upwelling events (Millot, 1990) which generally take place in specific locations, such as the Calanques of Marseille and the Côte Bleue; development of eddies (Schaeffer et al., 2011); and intrusions of oligotrophic water masses via the Northern Current (Barrier et al., 2016; Ross et al., 2016).

In Eco3M_MIX-CarbOx, environmental forcings are provided by in situ measurements of sea surface temperature (referred to as temperature in the following), salinity, and atmospheric $p\text{CO}_2$ in combination with simulation data of wind speed and solar irradiance.

To evaluate our representation of carbonate system variables, we compared our model results to in situ measurements by using a carbonate parameter dataset which includes TA, DIC, and salinity data (<https://www.seanoe.org>, last access: 14 February 2023). Measurements are performed fortnightly at SOLEMIO station. pH_T and $p\text{CO}_2$ are calculated based on measured TA and DIC using CO2SYSv3 (Sharp et al., 2020, originally developed by Lewis and Wallas, 1998) on MATLAB.

A detailed description of the forcings used by the model and a map of the study area showing the location of stations where measurements were carried out, along with places of interests, can be found in Sect. 2.1 of Barré et al. (2023) (Table 1 and Fig. 1, respectively).

2.2 Model description

In this study, we used the Eco3M_MIX-CarbOx model (v1.0), which was developed to represent the dynamics of the seawater carbonate system and mixotrophs in the BoM and

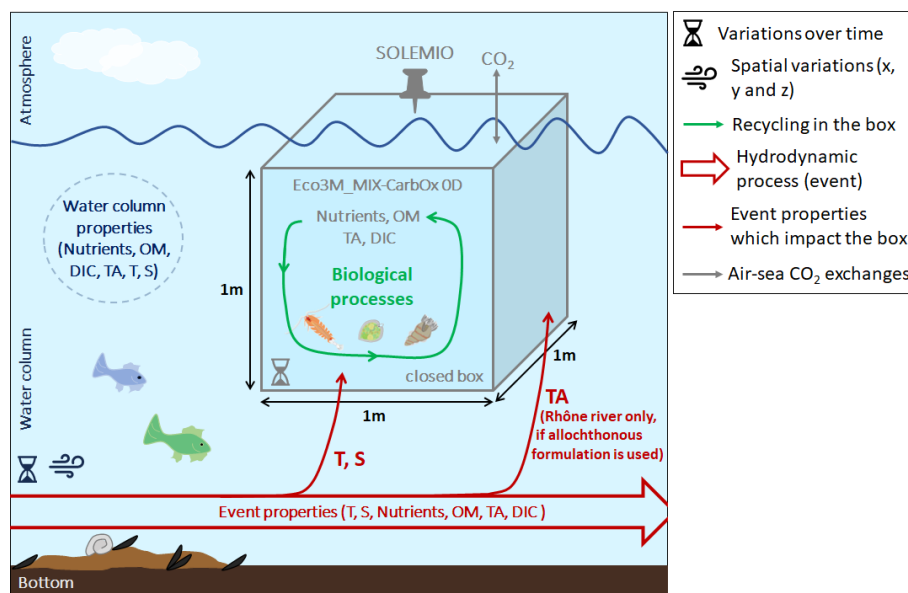
was implemented using the Eco3M (Ecological Mechanistic and Molecular Modelling) platform (Baklouti et al., 2006a, b). Eco3M_MIX-CarbOx is a dimensionless model (0D): we consider a volume of 1 m^3 of surface water at SOLEMIO station; in this volume, the state variables only vary over time as the model is not coupled with a hydrodynamic model. We chose to use a 0D configuration as this configuration has several advantages. Specifically, calculation times are low (around 45 min in our case), which allows us to make several test simulations to better understand the biogeochemical functioning of the BoM and its possible reactions to environmental forcings.

The Eco3M_MIX-CarbOx model includes seven compartments, namely zooplankton, mixotrophs, phytoplankton, heterotrophic bacteria, labile dissolved organic matter, detritic particulate organic matter, and dissolved inorganic matter, with the following carbonate system variables: dissolved inorganic carbon (DIC), total alkalinity (TA), pH calculated on the total scale (pH_T), and oceanic partial pressure of CO_2 ($p\text{CO}_2$). The carbonate system resolution required knowledge of at least two out of the four main variables of TA, DIC, pH_T , and $p\text{CO}_2$. As TA and DIC are conserved, a requirement for solving the source–sink state equations, the carbonate system resolution is based on those two variables in Eco3M_MIX-CarbOx. To provide a more realistic representation of the carbonate system, we modified the carbonate module described by Lajaunie-Salla et al. (2021) by focusing mainly on the state equations of TA and DIC as a realistic implementation of TA and DIC state variables is crucial to obtain reliable estimates of the diagnostic variables of pH_T and $p\text{CO}_2$. In addition to a modified carbonate module, Eco3M_MIX-CarbOx contains a mixotroph compartment, which is crucial for a reliable representation of TA and DIC as the presence of mixotrophs affects total photosynthesis, total respiration, and uptake and precipitation fluxes (Mitra et al., 2014).

By using the dimensionless model Eco3M_MIX-CarbOx, we aim to represent a small volume of surface water (1 m^3) at the SOLEMIO station (Fig. 1). This small volume is closed, which means that (i) it does not exchange matter (i.e., nutrients, organic matter, organisms) with the water column; (ii) in our case, as we implemented a carbonate module which allows the representation of air–sea CO_2 fluxes, the only exchanges allowed between the volume and the atmosphere are the air–sea CO_2 fluxes; and (iii) within the volume, the matter is continuously recycled. As a result, when the water column is impacted by a hydrodynamic event which modifies its properties (i.e., which brings nutrients, organic matter, impact salinity, or temperature, for example), the event impacts only the temperature and salinity of the volume (note: in the volume, TA may be impacted by a specific event – for example, Rhône River intrusion in the BoM, which we detailed in Sect. 2.2.2; Fig. 1), and total N and P are supposed to be conserved within the volume as, unlike

Table 1. Summary of simulation properties. Simulation with constant TA is detailed in the Supplement.

Simulation name	Total alkalinity	Temperature	Salinity	Air–sea CO ₂ fluxes	Biology
SIMCSTE – constant TA	Constant: TA = 2591.2 $\mu\text{mol kg}^{-1}$	Temperature file	Salinity file	Allowed	Yes
SIMC0 – modeled TA (autochthonous formulation)	Modeled	Temperature file	Salinity file	Allowed	Yes
SIMC1 – calculated TA (allochthonous formulation)	Calculated: TA = $f(S)$	Temperature file	Salinity file	Allowed	Yes
SIMC2 – aeration effect	Calculated: TA = $f(S)$	Temperature file	Salinity file	Not allowed	Yes
SIMC3 – biology effect	Calculated: TA = $f(S)$	Temperature file	Salinity file	Not allowed	No
SIMC4 – solubility effect	Calculated: TA = $f(S)$	Constant: $T = 16.4\text{ }^{\circ}\text{C}$	Constant: $S = 38.1$	Not allowed	No

**Figure 1.** Schematic representation of 0D concept used in this study with Eco3M_MIX-CarbOx. T : temperature, S : salinity, and OM: organic matter.

what is done for the C pool, we do not consider any external source or sink from or to the water column or the atmosphere.

In the following sections, we provide a detailed description of the carbonate system module. We also give a brief description of nutrients and organic matter representation. A detailed description of other compartments, especially of the mixotroph compartment, can be found in Barré et al. (2023). Equations and parameters used by the model are also explained in this previous study.

2.2.1 Nutrients and organic matter

As we use a dimensionless configuration, we assume that nutrients are fully the result of autochthonous biological processes. In other terms, we do not consider allochthonous inputs of nutrients (i.e., from rivers or the atmosphere, for instance; Fig. 1). For all the simulations, nutrient dynamics are represented by the following state equations:

$$\begin{aligned}
 \frac{\partial \text{NO}_3}{\partial t} &= \text{Nitrif}_{\text{NO}_3}^{\text{NH}_4} - \sum_{i=1}^2 \left(\text{Upt}_{\text{NO}_3}^{\text{Phy}_{N_i}} \right) - \text{Upt}_{\text{NO}_3}^{\text{CM}_{N_i}}, \\
 \frac{\partial \text{NH}_4}{\partial t} &= \text{Excr}_{\text{NH}_4}^{\text{COP}_N} + \text{Excr}_{\text{NH}_4}^{\text{NCM}_N} + \text{Remin}_{\text{NH}_4}^{\text{BAC}_N} \\
 &\quad - \sum_{i=1}^2 \left(\text{Upt}_{\text{NH}_4}^{\text{Phy}_{N_i}} \right) - \text{Upt}_{\text{NH}_4}^{\text{CM}_N} - \text{Upt}_{\text{NH}_4}^{\text{BAC}_N} - \text{Nitrif}_{\text{NH}_4}^{\text{NO}_3}, \\
 \frac{\partial \text{PO}_4}{\partial t} &= \text{Excr}_{\text{PO}_4}^{\text{COP}_P} + \text{Excr}_{\text{PO}_4}^{\text{NCM}_P} + \text{Remin}_{\text{PO}_4}^{\text{BAC}_P} \\
 &\quad - \sum_{i=1}^2 \left(\text{Upt}_{\text{PO}_4}^{\text{Phy}_{P_i}} \right) - \text{Upt}_{\text{PO}_4}^{\text{CM}_P} - \text{Upt}_{\text{PO}_4}^{\text{BAC}_P}, \quad (1)
 \end{aligned}$$

where i represents the number of classes of organisms. The NO_3^- concentration results from nitrification and phytoplankton and constitutive mixotroph (CM) uptakes. The NH_4^+ concentration results from copepods and non-constitutive mixotroph (NCM) excretion; remineralization by heterotrophic bacteria; uptakes by phytoplankton, CM, and heterotrophic bacteria; and losses from nitrification. The PO_4^{3-} concentration results from copepods and NCM excretion; remineralization by heterotrophic bacteria; and phytoplankton, CM, and heterotrophic bacteria uptakes.

As with nutrients dynamics, organic matter (dissolved and particulate) dynamics are only the result of autochthonous biological processes (Eqs. 2 and 3).

$$\begin{aligned}
 \frac{\partial \text{DOC}}{\partial t} &= \sum_{i=1}^2 \left(\text{Exu}_{\text{DOC}}^{\text{PHY}_{C_i}} \right) + \sum_{i=1}^2 \left(\text{Exu}_{\text{DOC}}^{\text{MIX}_{C_i}} \right) \\
 &\quad + \text{Excr}_{\text{DOC}}^{\text{COP}_C} + \text{Mort}_{\text{DOC}}^{\text{BAC}_C} - \text{BP}_{\text{DOC}}^{\text{BAC}_C} \\
 \frac{\partial \text{DON}}{\partial t} &= \sum_{i=1}^2 \left(\text{Exu}_{\text{DON}}^{\text{Phy}_{N_i}} \right) + \sum_{i=1}^2 \left(\text{Exu}_{\text{DON}}^{\text{MIX}_{N_i}} \right) \\
 &\quad + \text{Mort}_{\text{DON}}^{\text{BAC}_N} - \text{Upt}_{\text{DON}}^{\text{CM}_N} - \text{Upt}_{\text{DON}}^{\text{PICO}_N} - \text{Upt}_{\text{DON}}^{\text{BAC}_N} \\
 \frac{\partial \text{DOP}}{\partial t} &= \sum_{i=1}^2 \left(\text{Exu}_{\text{DOP}}^{\text{Phy}_{P_i}} \right) + \sum_{i=1}^2 \left(\text{Exu}_{\text{DOP}}^{\text{MIX}_{P_i}} \right) \\
 &\quad + \text{Mort}_{\text{DOP}}^{\text{BAC}_P} - \text{Upt}_{\text{DOP}}^{\text{CM}_P} - \text{Upt}_{\text{DOP}}^{\text{PICO}_P} - \text{Upt}_{\text{DOP}}^{\text{BAC}_P} \quad (2)
 \end{aligned}$$

In the above, i represents the number of classes of organisms. The concentration of dissolved organic carbon (DOC), nitrogen (DON), and phosphorus (DOP) depends on phytoplankton and mixotroph exudation; copepod excretion (DOC only); heterotrophic bacteria mortality (natural mortality); and CM, PICO, and heterotrophic bacteria uptake.

$$\begin{aligned}
 \frac{\partial \text{POC}}{\partial t} &= E_{\text{POC}}^{\text{COP}_C} + \text{Predation}_{\text{POC}}^{\text{COP}_C} - \text{BP}_{\text{POC}}^{\text{BAC}_C} \\
 \frac{\partial \text{PON}}{\partial t} &= E_{\text{PON}}^{\text{COP}_N} + \text{Predation}_{\text{PON}}^{\text{COP}_N} - \text{Upt}_{\text{PON}}^{\text{BAC}_N} \\
 \frac{\partial \text{POP}}{\partial t} &= E_{\text{POP}}^{\text{COP}_P} + \text{Predation}_{\text{POP}}^{\text{COP}_P} - \text{Upt}_{\text{POP}}^{\text{BAC}_P} \quad (3)
 \end{aligned}$$

The concentration of particulate organic carbon (POC), nitrogen (PON), and phosphorus (POP) depends on copepod egestion, predation by higher trophic levels on copepods (closure terms of the model), and heterotrophic bacteria production and uptake. Particulate organic matter (POM) particles are large enough to sink; however, we do not consider

a term to represent their removal from the surface box by sinking. In our case, the POM, such as with the dissolved organic matter (DOM) and nutrients, stays in the box and is constantly recycling (Fig. 1).

Detailed descriptions and formulations of processes can be found in Barré et al. (2023). Process notation descriptions can be found in Table A1 in Appendix A.

2.2.2 Carbonate system variable calculation

In Eco3M_MIX-CarbOx, we consider the four main carbonate system variables: TA, DIC, pH_T , and pCO_2 . We describe their calculation by the model in this section.

In Eco3M-CarbOx, TA representation lacks variations during the year. Eco3M-CarbOx did not account for TA inputs by rivers, especially by the Rhône River, which has an average alkalinity of $2885 \mu\text{mol kg}^{-1}$ (Schneider et al., 2007). To remedy this shortcoming, we decided to express TA in two ways. In the first way, we considered only autochthonous TA variations (i.e., variations in TA which result from processes which take place in the considered volume; Fig. 1). In the second way, we considered allochthonous TA variations (i.e., in the volume, TA dynamics are impacted by external contributions; Fig. 1). We then compared the outputs from each formulation to in situ data to determine which formulation delivered the more realistic results.

For the autochthonous formulation, we relied on the Eco3M-CarbOx TA state equation, which we modified to fit our modeled planktonic ecosystem. We first added a term of PO_4^{3-} remineralization by heterotrophic bacteria. We consider the fact that the uptake of 1 mol of PO_4^{3-} by phytoplankton increases TA by 1 mol and vice versa: for 1 mol of PO_4^{3-} released during remineralization, TA decreases by 1 mol (Wolf-Gladrow et al., 2007). As a last term, we included the mixotrophic uptake of nutrients. TA is calculated as follows:

$$\begin{aligned}
 \frac{\partial \text{TA}}{\partial t} &= 2 \cdot \text{Diss}_{\text{TA}}^{\text{CaCO}_3} + \sum_{i=1}^2 \left(\text{Upt}_{\text{NO}_3}^{\text{Phy}_{N_i}} \right) + \text{Upt}_{\text{NO}_3}^{\text{CM}_N} \\
 &\quad + \sum_{i=1}^2 \left(\text{Upt}_{\text{PO}_4}^{\text{PHY}_{P_i}} \right) + \text{Upt}_{\text{PO}_4}^{\text{CM}_P} + \text{Remin}_{\text{NH}_4}^{\text{BAC}_N} \\
 &\quad - \sum_{i=1}^2 \left(\text{Upt}_{\text{NH}_4}^{\text{PHY}_{N_i}} \right) - \text{Upt}_{\text{NH}_4}^{\text{CM}_N} - \text{Remin}_{\text{PO}_4}^{\text{BAC}_P} \\
 &\quad - 2 \cdot \text{Prec}_{\text{TA}}^{\text{CaCO}_3} - 2 \cdot \text{Nitrif}_{\text{TA}}, \quad (4)
 \end{aligned}$$

where i represents the number of classes of organisms. Process descriptions can be found in Appendix A (Table A1), and formulations are available in Barré et al. (2023). In this formulation, TA only depends on biogeochemical processes (i.e., TA riverine inputs are excluded).

For the allochthonous formulation, we first determined an oceanic TA– S correlation (Eq. 5; Fig. 2a) using the measurements of carbonate system parameters at SOLEMIO station (see Sect. 2.1). We only considered the TA values associated with salinity values > 37.8 as 37.8 was used as a threshold value to identify low-salinity events (LSEs) associated with

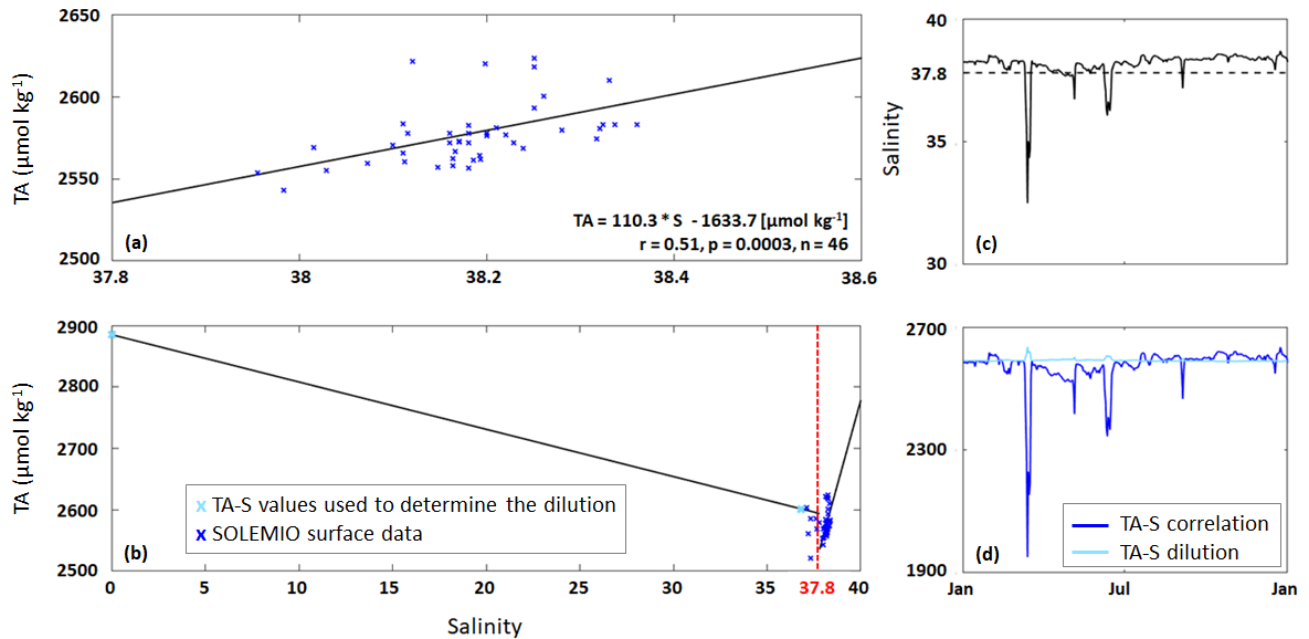


Figure 2. (a) TA–S correlation (black line) based on SOLEMIO surface data excluding low salinities ≤ 37.8 . (b) TA–S dilution (for $S \leq 37.8$) and TA–S correlation (for $S > 37.8$). (c) Salinity data used by the model (solid line) and $S = 37.8$ (dashed line). (d) TA calculated from TA–S correlation (Eq. 5) and TA–S dilution (Eq. 6).

Rhône River plume intrusions in the BoM (Frayse et al., 2014).

$$TA = 110.3 \cdot S - 1633.7 \text{ (}\mu\text{mol kg}^{-1}\text{)} \quad (5)$$

Second, using only those TA values associated with LSEs, we determined a separate TA–S formulation to quantify river water dilution (Eq. 6; Fig. 2b).

$$TA = -7.7 \cdot S + 2885 \text{ (}\mu\text{mol kg}^{-1}\text{)} \quad (6)$$

The carbonate dataset did not contain sufficient LSE data to create a reliable TA–S fit. Equation (6) was therefore derived based on two TA–S data pairs: $TA = 2885.0 \mu\text{mol kg}^{-1}$ and $S = 0$, representative of water masses near the Rhône River mouth (Schneider et al., 2007), and $TA = 2600.6 \mu\text{mol kg}^{-1}$ and $S = 36.82$, recorded at SOLEMIO station during a major LSE on 15 March 2017. Unlike Eq. (5), the TA–S dilution shows a negative slope that is typical of low-salinity river water (Fig. 2b).

We implemented both TA–S formulations in our Eco3M_MIX-CarbOx model, and the formulation to be used was chosen based on the salinity: if the salinity value used by the model for the time step considered is ≤ 37.8 , the TA–S dilution (Eq. 6) was applied; otherwise, for a salinity value > 37.8 , the TA–S correlation was applied (Eq. 5, Fig. 2c, d). With this method, TA only depends on salinity (i.e., biological processes are neglected).

The DIC formulation used in our Eco3M_MIX-CarbOx model is very similar to the formulation used in Eco3M-CarbOx, except for the fact that we added the mixotrophic

organisms' processes to our equation. As a result, DIC depends on phytoplankton, mixotrophs, zooplankton and bacterial respiration, air–sea CO_2 fluxes (aeration process), dissolution of CaCO_3 , phytoplankton and mixotroph photosynthesis, and precipitation of CaCO_3 (Eq. 7).

$$\begin{aligned} \frac{\partial \text{DIC}}{\partial t} = & \sum_{i=1}^2 \left(\text{Resp}_{\text{DIC}}^{\text{PHY}C_i} \right) \\ & + \sum_{i=1}^2 \left(\text{Resp}_{\text{DIC}}^{\text{MIX}C_i} \right) + \text{Resp}_{\text{DIC}}^{\text{COP}C} \\ & + \text{BR}_{\text{DIC}}^{\text{BAC}C} + \text{Diss}_{\text{DIC}}^{\text{CaCO}_3} \\ & - \sum_{i=1}^2 \left(\text{Photo}_{\text{DIC}}^{\text{PHY}C_i} \right) \\ & - \sum_{i=1}^2 \left(\text{Photo}_{\text{DIC}}^{\text{MIX}C_i} \right) - \text{Prec}_{\text{DIC}}^{\text{CaCO}_3} \\ & - \text{Aera}_{\text{DIC}} \end{aligned} \quad (7)$$

In the above, i represents the number of classes of organisms. Process descriptions can be found in Appendix A (Table A1), and formulations are available in Barré et al. (2023). As an additional modification, we use a more recent version of the gas transfer velocity calculation introduced by Wanninkhof (2014). The air–sea CO_2 fluxes are determined according to

$$\text{Aera} = \frac{K_{\text{ex}}}{H} \cdot \alpha \cdot (p\text{CO}_{2,\text{sw}} - p\text{CO}_{2,\text{atm}}), \quad (8)$$

where Aera (aeration) is in $\text{mmol m}^{-3} \text{ s}^{-1}$. K_{ex} represents the gas transfer velocity (Wanninkhof, 2014) (in cm h^{-1}), α represents the CO_2 solubility coefficient (Weiss, 1974) (in $\text{mol L}^{-1} \text{ atm}^{-1}$), $p\text{CO}_{2,\text{sw}}$ represents the seawater $p\text{CO}_2$

modeled at the previous time step (in μatm), $p\text{CO}_{2,\text{atm}}$ represents the atmospheric $p\text{CO}_2$ from CAV (Cinq Avenues station; see Fig. 1 in Barré et al. (2023) for location) (in μatm), and H represents the magnitude of the impacted layer in meters (in Eco3M_MIX-CarboX, $H = 1$ m). K_{ex} is calculated using

$$K_{\text{ex}} = 0.251 \cdot U_{10}^2 \cdot \left(\frac{660}{Sc}\right)^{\left(\frac{1}{2}\right)}, \quad (9)$$

where U_{10} is the wind speed (in m s^{-1}), and Sc is the Schmidt number calculated with the coefficients from Wanninkhof (2014). By convention, we will consider negative aeration values (i.e., $p\text{CO}_{2,\text{atm}} > p\text{CO}_{2,\text{sw}}$) to represent fluxes from the atmosphere into the ocean and vice versa. Furthermore, we will express air–sea CO_2 fluxes in the more frequently used units of mmol m^{-2} per unit time.

The pH_T and $p\text{CO}_2$ are then obtained using the value of TA and DIC. Their calculation is detailed in Appendix B. Simulations were conducted using both formulations (autochthonous and allochthonous) for the year 2017 (Table 1, SIMC0 and SIMC1). In addition, we ran a simulation in which TA is set to a constant ($\text{TA} = 2591.2 \mu\text{mol kg}^{-1}$, Table 1, SIMCSTE). This simulation and its results are detailed in the Supplement.

2.3 $\Delta p\text{CO}_2$ decomposition

To determine the drivers of the temporal variability of $p\text{CO}_2$, we use two types of $\Delta p\text{CO}_2$ decomposition. The first is based on Lovenduski et al. (2007) and evaluates TA, DIC, temperature, and salinity contributions to $p\text{CO}_2$ variations, while the second is based on Turi et al. (2014) and considers the contributions of biology, air–sea CO_2 fluxes, and solubility.

2.3.1 TA, DIC, T , and S drivers

Following the reasoning presented in Lovenduski et al. (2007), $p\text{CO}_2$ variations can be expressed as the sum of variations generated by changes in TA, DIC, temperature, and salinity as follow:

$$\begin{aligned} \Delta p\text{CO}_2 &= \Delta p\text{CO}_2^{\text{TA}} + \Delta p\text{CO}_2^{\text{DIC}} + \Delta p\text{CO}_2^T + \Delta p\text{CO}_2^S, \\ \Delta p\text{CO}_2 &= \frac{\partial p\text{CO}_2}{\partial \text{TA}} \cdot (\text{TA} - \overline{\text{TA}}) + \frac{\partial p\text{CO}_2}{\partial \text{DIC}} \cdot (\text{DIC} - \overline{\text{DIC}}) \\ &\quad + \frac{\partial p\text{CO}_2}{\partial T} \cdot (T - \overline{T}) + \frac{\partial p\text{CO}_2}{\partial S} \cdot (S - \overline{S}), \end{aligned} \quad (10)$$

where $\Delta p\text{CO}_2$ is in μatm . The overbar in $\overline{\text{TA}}$, $\overline{\text{DIC}}$, \overline{T} , and \overline{S} denotes the annual mean. Freshwater inputs can induce changes in TA and DIC. However, we isolate the changes in TA and DIC due to variations in freshwater inputs using the salinity-normalized TA ($n\text{TA} = \overline{S}/S \times \text{TA}$) and DIC

($n\text{DIC} = \overline{S}/S \times \text{DIC}$) and by adding another term to regroup them. For simplicity, we only use one term to designate salinity and freshwater inputs (i.e., $S + \text{Fw}$ term). Equation (10) can thus be rewritten as follows:

$$\begin{aligned} \Delta p\text{CO}_2 &= \Delta p\text{CO}_2^{n\text{TA}} + \Delta p\text{CO}_2^{n\text{DIC}} \\ &\quad + \Delta p\text{CO}_2^{S+\text{Fw}} + \Delta p\text{CO}_2^T \\ \Delta p\text{CO}_2 &= rS \cdot \frac{\partial p\text{CO}_2}{\partial \text{TA}} \cdot (n\text{TA} - \overline{n\text{TA}}) + rS \cdot \frac{\partial p\text{CO}_2}{\partial \text{DIC}} \\ &\quad \cdot (n\text{DIC} - \overline{n\text{DIC}}) + \frac{\partial p\text{CO}_2}{\partial S} \cdot (S - \overline{S}) \\ &\quad + \left[r\text{STA} \cdot \frac{\partial p\text{CO}_2}{\partial \text{TA}} \cdot (S - \overline{S}) + r\text{SDIC} \cdot \frac{\partial p\text{CO}_2}{\partial \text{DIC}} \right. \\ &\quad \left. \cdot (S - \overline{S}) \right] + \frac{\partial p\text{CO}_2}{\partial T} \cdot (T - \overline{T}) \\ rS &= \frac{S}{\overline{S}} |r\text{STA} = \frac{\overline{\text{TA}}}{\overline{S}} |r\text{SDIC} = \frac{\overline{\text{DIC}}}{\overline{S}}. \end{aligned} \quad (11)$$

See Appendix A in Lovenduski et al. (2007) for more details about the computation. Derivatives are obtained using the approach suggested by Sarmiento (2006).

2.3.2 Contributing processes

The second decomposition (Turi et al., 2014) aims to estimate the contribution of air–sea CO_2 exchanges, biological processes, and solubility effects to $p\text{CO}_2$ variations:

$$\Delta p\text{CO}_2 = \Delta p\text{CO}_2^{\text{aeration}} + \Delta p\text{CO}_2^{\text{biology}} + \Delta p\text{CO}_2^{\text{solubility}}. \quad (12)$$

With the modeling approach used here, we can easily identify the individual processes and evaluate their effect on $p\text{CO}_2$ variations. Several simulations are required to identify and separate the effects of the underlying processes (see Table 1, SIMC2 to SIMC4). SIMC2 aimed to quantify the effect of aeration process on $p\text{CO}_2$ variations. Starting from SIMC1, we disabled the air–sea CO_2 exchanges. SIMC3 aimed to estimate the effects of biology. Using the above reasoning, we deactivated all biological processes; i.e., neither the biology nor aeration was activated in SIMC3. Finally, SIMC4 aimed to evaluate the effect of solubility on $p\text{CO}_2$ variations. This was achieved by keeping both temperature and salinity constant, using their annual means. The three terms of Eq. (12) can be calculated as follows:

$$\Delta p\text{CO}_2^{\text{process}_i} = p\text{CO}_2^{\text{SIMC}(i-1)} - p\text{CO}_2^{\text{SIMC}(i)}, \quad (13)$$

where i is the simulation number for the process considered ($2 \leq i \leq 4$). The order in which the simulations are run is particularly important. For instance, we quantified the aeration effect (by deactivating aeration) before examining the effect of biological processes (also by deactivating them) because of the impact the biology can have on seawater $p\text{CO}_2$ and on aeration fluxes. Using similar reasoning, the impact of the

biology is assessed before the impact of solubility (obtained by setting temperature and salinity as constant); temperature itself has a significant effect on the biology (Lajaunie-Salla et al., 2021).

3 Results

3.1 Carbonate system variables

First, we performed an initial qualitative evaluation of Eco3M_MIX-CarbOx, comparing the output of SIMC0 (using the autochthonous TA formulation) and SIMC1 (using allochthonous TA formulation) for TA, DIC, $p\text{CO}_2$, and pH_T to the corresponding SOLEMIO surface data for 2017 (Fig. 3a–d). Next, we used four statistical indicators to compare model outputs and SOLEMIO data quantitatively: the percentage bias (%BIAS); the average error (AE); the average absolute error (AAE) and the root mean square deviation (RMSD, also referred to as the root mean square error (RMSE) in the literature). They were used with both Eco3M_MIX-CarbOx simulations, SIMC0 and SIMC1 (Table 1), and the reference Eco3M-CarbOx simulation (Lajaunie-Salla et al., 2021). By comparing the statistical indicators obtained for SIMC0, SIMC1, and Eco3M-CarbOx, we obtained an indication of how changes in the carbonate variable formulation affected the results. The statistical-indicator calculation is detailed in Appendix C.

The different TA formulations yielded very different model outputs for DIC, $p\text{CO}_2$, and pH_T (Fig. 3f–h). TA observations varied between 2560.8 and 2623.9 $\mu\text{mol kg}^{-1}$, with no apparent seasonal pattern (Fig. 3a). This variability is successfully represented by SIMC1 but not by SIMC0 (SIMC1 range: 2540 to 2635 $\mu\text{mol kg}^{-1}$). SIMC0 produces TA values that show a gradual and near-linear decrease from 2578 $\mu\text{mol kg}^{-1}$ in early January to 2572 $\mu\text{mol kg}^{-1}$ at the end of the year. The differences between SIMC0 and SIMC1 are most pronounced between August and December, where SIMC1 delivers systematically higher TA values compared to SIMC0 (Fig. 3e).

With regard to DIC, both SIMC0 and SIMC1 are capable of reproducing the seasonal variability present in the in situ data. From November to April, DIC has higher values (around 2320 $\mu\text{mol kg}^{-1}$ in both simulations), with lower values during the rest of the year (both have a minimum in August – SIMC0: 2234 $\mu\text{mol kg}^{-1}$ and SIMC1: 2254 $\mu\text{mol kg}^{-1}$; Fig. 3b). At the beginning of the year, SIMC1 seems to be closer to the observations than SIMC0, which shows fewer variations (e.g., SIMC1 appears to be better at reproducing the decrease visible at the end of April). Differences between SIMC0 and SIMC1 for DIC are similar to those observed for TA (Fig. 3e, f), although, in absolute terms, they are only about half of what we observed for TA. Nevertheless, these results show that the choice of the TA formulation strongly affects the DIC model results (Fig. 3f).

The in situ $p\text{CO}_2$ data exhibit strong variations throughout the year, especially from May to November, which are well represented in both simulations (Fig. 3c). Between January and April, both simulations overestimate the in situ $p\text{CO}_2$ values: while the simulations both predict $p\text{CO}_2$ values close to the CAV atmospheric $p\text{CO}_2$ at about 415 μatm , $p\text{CO}_2$ observed at SOLEMIO is lower, indicating under-saturation. For both simulations, a strong decrease in $p\text{CO}_2$ is modeled on 15 March in response to a Rhône River intrusion in the BoM. This event is particularly marked in the SIMC1 model results, which show a decrease from 450 to 300 μatm (compared to a decrease from 415 to 358 μatm with SIMC0). While this decrease is also visible in the in situ data, it is more moderate (392 to 367 μatm).

Regarding pH_T , both simulations produced similar dynamics as for $p\text{CO}_2$ (Fig. 3d vs. 3c). Both simulations deliver good representations of the observed pH_T variations between May and November, while from January to April, both simulations underestimate the in situ data (in situ: 8.12 vs. simulations: 8.07). The Rhône River intrusion is also visible in the pH_T data, which exhibit a sudden increase. While both simulations show this increase, it is more pronounced in the SIMC1 results (increase from 8.04 to 8.21) compared to SIMC0 (8.07 to 8.14), but in both cases, it is larger than in the observations (8.09 to 8.12).

The differences between both simulations for $p\text{CO}_2$ and pH_T do not exhibit any noticeable trend (Fig. 3g, h). However, looking at the annual average, SIMC1 produces lower (higher) $p\text{CO}_2$ (pH_T) values compared to SIMC0, with a mean difference of 2.3 μatm (-5×10^{-3}). Moreover, for both variables, the differences between SIMC0 and SIMC1 are more pronounced at the beginning of the year.

For statistical indicators, %BIAS values are systematically lower than 10%, with the highest values being obtained for $p\text{CO}_2$ at $\sim 6\%$, while the remaining variables had values of $< 1\%$. Similarly, $p\text{CO}_2$ had the highest RMSD, AAE, and AE, which suggests that this parameter is not as well represented in the model as the other variables. Furthermore, SIMC1 produced the best TA representation, resulting in the lowest values for %BIAS, AE, AAE, and RMSD (Table 2). Moreover, SIMC1 produced an annual mean TA that was closest to the observations. On the other hand, the SIMC0 and Eco3m-CarbOx results are fairly similar. SIMC0 produced a slightly better representation of TA compared to Eco3m-CarbOx (%BIAS, AE, AAE, and RMSD slightly lower). For pH_T , SIMC1 outperformed SIMC0 based on %BIAS (Table 2); however, AE, AAE, and RMSD values are similar for the three simulations. We then performed the calculation of statistical indicators for H^+ concentration as, according to some authors (Kwiatkowski and Orr, 2018), comparing H^+ concentrations is a better practice than comparing pH. Results are available in Appendix C. Based on Table C1, SIMC1 also outperformed SIMC0 based on AE and AAE. For studying DIC and $p\text{CO}_2$, the situation is less clear as the simulations performed differently for different

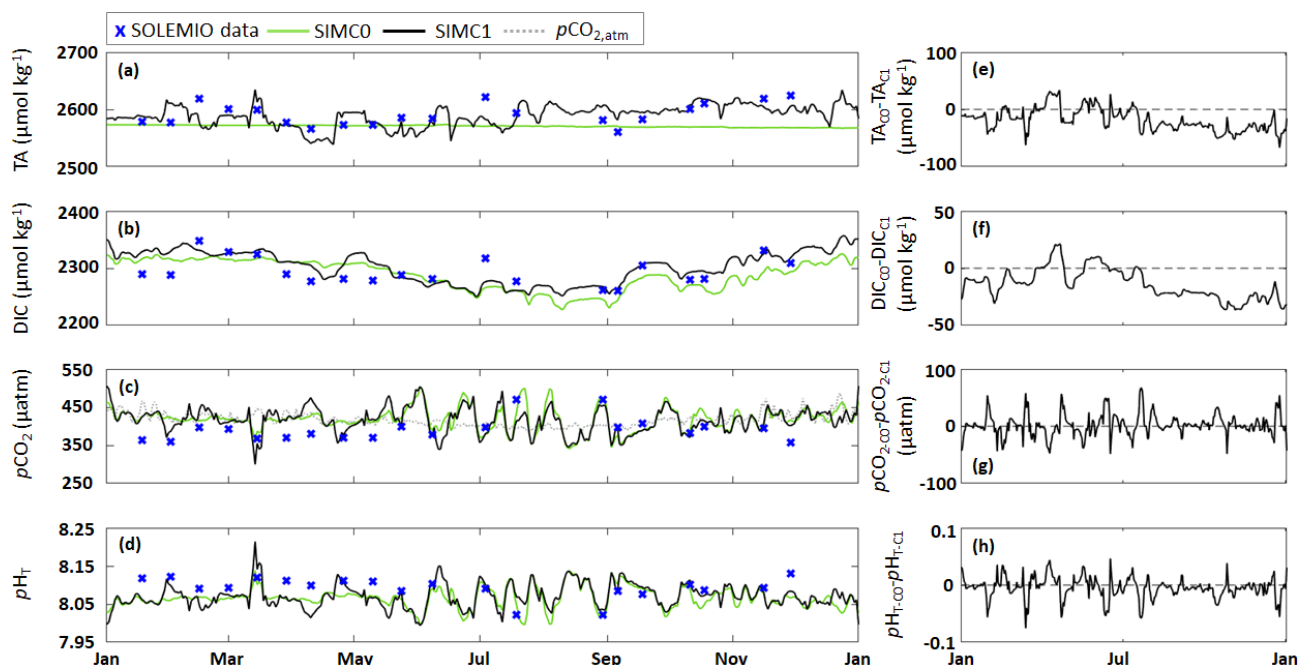


Figure 3. (a–d) Comparison of model outputs from the SIMC0 (autochthonous formulation) and SIMC1 (allochthonous formulation) model runs showing daily averages of (a) TA, (b) DIC, (c) seawater $p\text{CO}_2$ and CAV atmospheric $p\text{CO}_2$, and (d) pH_T . (e–h) Differences between SIMC0 and SIMC1 outputs for each variable ($\text{VARC0} - \text{VARC1}$).

Table 2. Comparison of the different model results to surface observations at SOLEMIO station for TA, DIC, seawater $p\text{CO}_2$, and pH_T . N represents the number of observations. Mean, SD, AE, AAE, and RMSD are in the same unit as the considered variable, i.e., $\mu\text{mol kg}^{-1}$ for TA and DIC and μatm for $p\text{CO}_2$. %BIAS is without a unit.

		TA	DIC	$p\text{CO}_2$	pH_T
N	Observations	20	20	20	20
Mean \pm SD	Observations	2591.2 ± 19.4	2294.9 ± 24.0	391.0 ± 31.0	8.09 ± 0.030
Mean \pm SD	SIMC0	2576.1 ± 1.5	2293.6 ± 25.1	413.5 ± 16.5	8.07 ± 0.015
	SIMC1	2588.6 ± 16.4	2301.1 ± 24.5	409.1 ± 21.4	8.07 ± 0.020
	CarbOx	2574.5 ± 3.6	2292.5 ± 26.0	413.9 ± 15.9	8.07 ± 0.010
%BIAS	SIMC0	0.58	0.05	−5.75	0.29
	SIMC1	0.09	−0.27	−4.61	0.21
	CarbOx	0.64	0.1	−5.86	0.29
AE	SIMC0	15.12	1.25	−22.5	0.02
	SIMC1	2.57	−6.2	−18.02	0.02
	CarbOx	16.7	2.4	−22.9	0.02
AAE	SIMC0	18.7	20.4	35.9	0.03
	SIMC1	16.3	17.2	34.7	0.03
	CarbOx	20.1	21.2	35.3	0.03
RMSD	SIMC0	24.90	24.26	38.75	0.04
	SIMC1	20.03	21.83	40.27	0.04
	CarbOx	26.56	24.90	38.29	0.04

indicators, making it difficult to pick a clear winner. Still, SIMC1 shows the best AAE and RMSD values for DIC and the best %BIAS, AE, and AAE for $p\text{CO}_2$. In conclusion,

SIMC1 shows the best overall indicator values for the examined variables (more specifically, it outperformed the other

simulations in 13 out of 20 indicator comparisons when including an H^+ concentration comparison).

3.2 Air–sea CO_2 fluxes

Throughout 2017, temperature varied from 13.3 to 25.9 °C (Fig. 4a), with the highest variability visible during the summer upwelling period (SUP). Apart from four low-salinity events in March, May, June, and September (all corresponding to the Rhône River intrusions), the salinity remained close to its mean value of 38.1 (Fig. 4a).

Wind speed was highly variable, with several strong gusts, especially during winter, when wind speeds often exceeded 10 m s^{-1} (Fig. 4b). Wind speed tends to be lower during summer and SUP, although these periods also show numerous strong wind events ($> 10\text{ m s}^{-1}$).

The sea–air pCO_2 difference exhibits the same seasonality as temperature, with high positive values during summer while oscillating around zero during the rest of the year. In general, the sea–air pCO_2 difference combines the patterns from temperature, salinity, and wind speed, which are the main underlying forcings. The local minimum in March corresponds to an extremely low-salinity event (Fig. 4c). However, during the SUP, the sea–air pCO_2 difference is mostly driven by temperature, as seen from the high variability between May and October, which coincides with the largest temperature variations.

In contrast, air–sea CO_2 fluxes do not show any seasonality, with values oscillating about zero throughout the year (Fig. 4d), yielding an integrated total of -0.21 mmol m^{-2} per year. Maximum positive values are obtained from November to March, when wind speeds are highest. Extreme negative values ($-13\text{ mmol m}^{-2}\text{ d}^{-1}$) can be seen in July, coinciding with high wind speed, negative sea–air pCO_2 difference, and a significant drop in temperature.

3.3 Main drivers of pCO_2 dynamics

3.3.1 Annual scale

Following the approach from Lovenduski et al. (2007), we used temperature (Fig. 5a), salinity (S), freshwater inputs (Fw), salinity-normalized TA (nTA), and salinity-normalized DIC (nDIC) (Fig. 5b) contributions to identify the underlying dynamics in the observed pCO_2 variations (Fig. 5c). Seasonal variations in temperature (Fig. 5a) produce seasonal anomalies in pCO_2 , with negative anomalies dominating from November to May and mostly positive anomalies throughout the remainder of the year (Fig. 5d). Anomalies generated by $S + Fw$ do not exhibit any seasonality but remain close to zero throughout the year, unless there is an LSE, during which the anomalies turn negative (-101 , -30 , -40 , and $-20\text{ }\mu\text{atm}$ for the four LSE). Anomalies generated by nDIC show the opposite seasonal trend compared to the anomalies generated by temperature; i.e., from Novem-

ber to May the nDIC-generated anomalies are positive and are negative during the rest of the year. The four LSEs are also clearly visible in the nDIC-generated anomalies, which exhibit sharp increases (increases of 506, 253, 243, and $152\text{ }\mu\text{atm}$, respectively). Also, nTA does not produce any seasonality in the anomalies but exhibits a sharp decrease during the four LSEs (decreases of 548, 242, 239, and $90\text{ }\mu\text{atm}$, respectively).

Following the approach by Turi et al. (2014), we examined the effects of aeration, biological processes, and solubility on pCO_2 variability (Fig. 5e). Aeration produced anomalies very similar to those observed for nDIC (Fig. 5d): positive from November to May and negative during the rest of the year. Since CO_2 solubility is controlled by temperature and salinity, solubility-generated anomalies essentially follow the trends and seasonality seen in temperature- and $S + Fw$ -generated anomalies (Fig. 5d): negative from November to May and mostly positive during the rest of the year (mean of $+9.2\text{ }\mu\text{atm}$).

The four LSEs are also visible in the solubility-generated anomalies generating strong decreases (Fig. 5e). However, only two LSEs are easily identifiable (on 15 March, with a drop from -41 to $-163\text{ }\mu\text{atm}$, and on 6 May, with a drop from 8 to $-75\text{ }\mu\text{atm}$), while the other two appear to be obscured by temperature-related counter-movements. Since aeration- and solubility-generated anomalies show opposite seasonality, they partly cancel each other out. While aeration seems to dominate from November to May (apart from LSE), solubility appears to dominate from May to November and during LSE. Biological processes are never the dominant driver of pCO_2 variations as they are systematically smaller (by a factor of 2 to 3) than aeration- and solubility-generated anomalies (Fig. 5e). Biology-induced anomalies are always negative, providing evidence that biological processes always decrease pCO_2 .

3.3.2 During the summer upwelling period (SUP)

The SUP is characterized by significant temperature variations (Fig. 5a) due to periodic upwelling events. During the 2017 SUP, there were three LSEs, which will be excluded here as we discuss them in the following section. nTA is nearly constant during the SUP, while nDIC shows marked variations (Fig. 5b) that are directly linked to variations in DIC (see Sect. 3.1). pCO_2 is also highly variable during the SUP (Fig. 5c). Using the approach from Lovenduski et al. (2007) (Fig. 5d), the SUP is characterized by a strong contribution of temperature, which shows strong positive anomalies (maximum of $170\text{ }\mu\text{atm}$ reached on 5 August), and nDIC, which shows strong negative anomalies (minimum of $-142\text{ }\mu\text{atm}$ reached on 24 July). $S + Fw$ and nTA do not represent significant drivers, with anomalies remaining close to zero. Using the approach in Turi et al. (2014) (Fig. 5e), we can see that solubility is a major driver producing large-amplitude variations in the pCO_2 anomalies con-

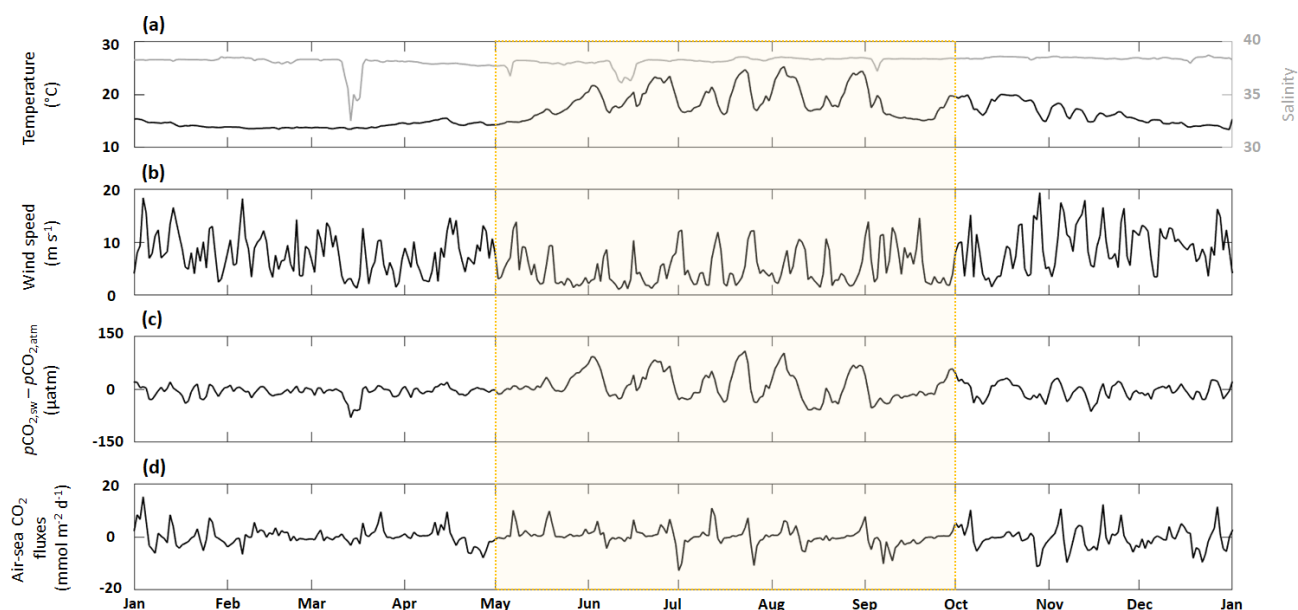


Figure 4. Time series of (a, e) in situ daily average sea surface temperature (black line) and salinity (gray line), (b, f) SIMC1 daily average wind speed, (c, g) the difference between SIMC1 daily average seawater $p\text{CO}_2$ and in situ daily average atmospheric $p\text{CO}_2$, (d, h) and SIMC1 daily average air-sea CO_2 fluxes (aeration process). The summer upwelling period (from 1 May to 1 October) is highlighted in yellow.

nected to similar variations in temperature (a drop in temperature causes the anomaly to change from positive to negative and vice versa) (Fig. 5a). Aeration, which mostly generates negative anomalies, counteracts solubility. During the SUP, we also observed an increase in the contribution of biological processes since associated anomalies are further decreased at the beginning of the period (from $-22 \mu\text{atm}$ on 1 May to $-40 \mu\text{atm}$ on 31 May).

Focusing on the upwelling event that took place between 23–27 July, we observe a sharp decrease in temperature (from 24.6 to 16.9°C ; Fig. 5a), no variation in $n\text{TA}$, and a slight increase in $n\text{DIC}$ (from 2242 to $2269 \mu\text{mol kg}^{-1}$; Fig. 5b). The event is also associated with a strong $p\text{CO}_2$ decrease (from 438 to $353 \mu\text{atm}$; Fig. 5c). Using the approach in Lovenduski et al. (2007), we observed a decrease in the temperature-generated anomaly (from $148 \mu\text{atm}$ at the beginning of the event to $5 \mu\text{atm}$ at the peak of the event). At the same time, the $n\text{DIC}$ -generated anomaly become less negative (from $-142 \mu\text{atm}$ at the beginning of the event to $-79 \mu\text{atm}$ at the peak of the event). Neither $n\text{TA}$ nor $S + \text{Fw}$ seem to have any significant impact on $p\text{CO}_2$ anomalies. Using the approach in Turi et al. (2014) (Fig. 5e), the upwelling event is characterized by a decrease in solubility-generated anomalies (from $79 \mu\text{atm}$ at the beginning of the event to $-24 \mu\text{atm}$ at the end of the event). Anomalies generated by aeration and biological processes tend to become, respectively, positive and less negative at the end of the event (aeration: -45 to $3 \mu\text{atm}$; biological processes: -30 to $-20 \mu\text{atm}$).

3.3.3 During a low-salinity event (LSE)

There were four LSEs during 2017: on 15 March, 6 May, 15 June, and 5 September. All four LSEs show similar patterns, namely a strong decrease in salinity (Fig. 5a), which in turn leads to an increase in both $n\text{TA}$ and $n\text{DIC}$ (Fig. 5, Table 3). Apart from the 5 September LSE, which shows an increase in $p\text{CO}_2$, the remaining LSEs coincide with significant $p\text{CO}_2$ decreases (Fig. 5c, Table 3).

When using the approach of Lovenduski et al. (2007), LSEs that do not take place immediately after an upwelling event (i.e., 15 March and 6 May) exhibit similar combinations of driver contributions; e.g., $n\text{TA}$ and $S + \text{Fw}$ create strong negative anomalies in both LSEs (with combined ($n\text{TA} + S + \text{Fw}$) contributions of $-614 \mu\text{atm}$ on 15 March and $-211 \mu\text{atm}$ on 6 May), which are partially canceled out by opposite $n\text{DIC}$ contributions ($547 \mu\text{atm}$ on 15 March and $235 \mu\text{atm}$ on 6 May). While temperature-generated anomalies showed no change during either event, they were still negative, and by adding their effect to those obtained for $n\text{TA}$ and $S + \text{Fw}$, we obtain a combined effect of $-656 \mu\text{atm}$ on 15 March and $-241 \mu\text{atm}$ on 6 May.

LSEs that take place immediately after a summer upwelling event (i.e., 15 June and 5 September) show similar variations in salinity, $n\text{TA}$, $n\text{DIC}$, and $p\text{CO}_2$ but also show an increase in temperature (from 16.5 to 20.5°C on 15 June and 17.5 to 19.8°C on 5 September; Fig. 5a). Also, the factors driving the anomalies are similar to those for the non-upwelling-related LSEs discussed in the previous paragraph.

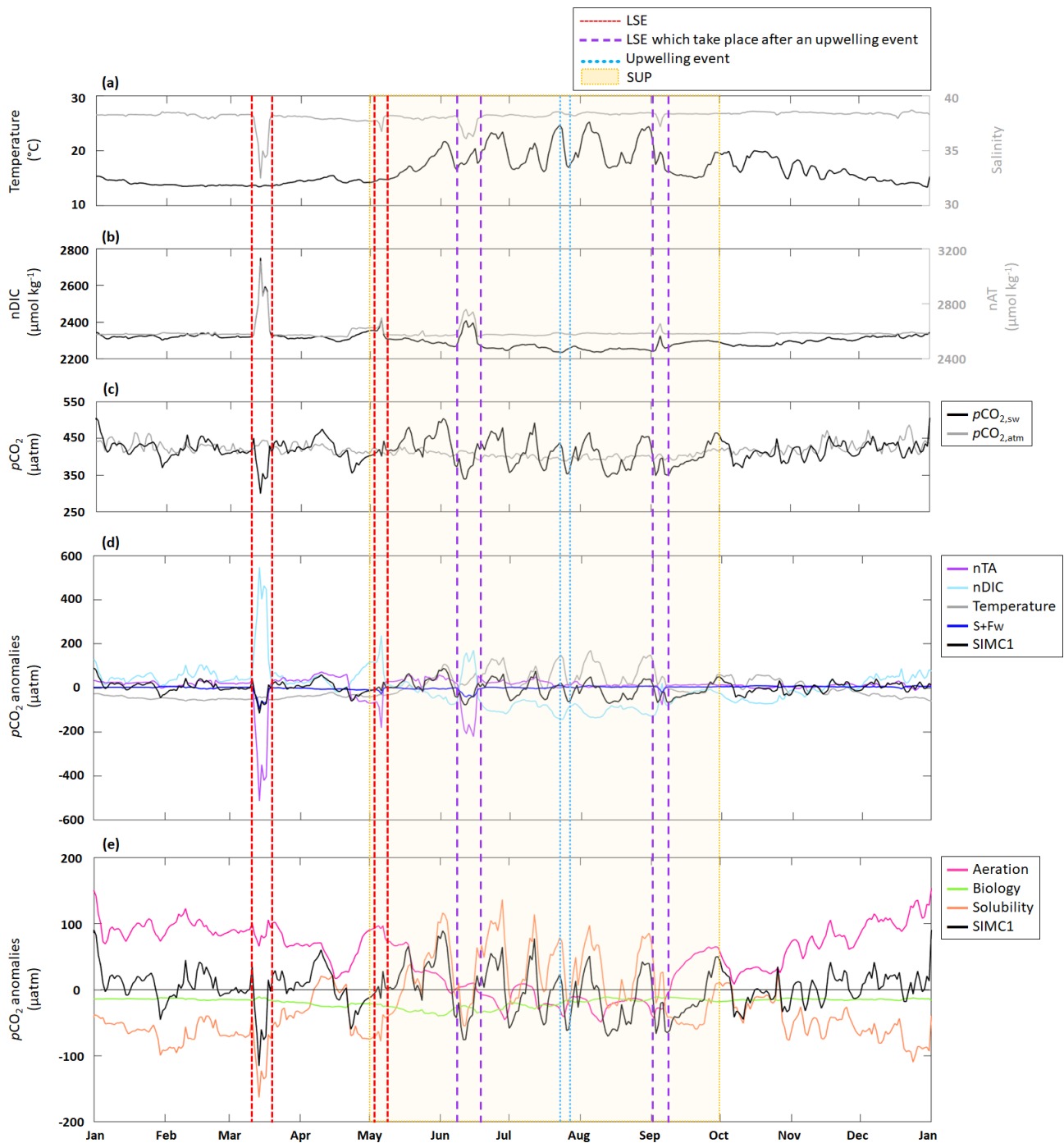


Figure 5. Time series for 2017 of daily average (a) in situ temperature and salinity; (b) modeled nDIC and nTA; (c) modeled seawater and in situ atmospheric $p\text{CO}_2$; (d) $p\text{CO}_2$ anomalies generated by DIC, TA, $S + \text{Fw}$, and temperature based on the approach in Lovenduski et al. (2007) (note: the dark-blue line is sometimes obscured by the black line, especially in March. An enlargement of panel (d) is available in Appendix D); and (e, j) $p\text{CO}_2$ anomalies generated by aeration, solubility, and biological processes based on the approach in Turi et al. (2014). LSE and an upwelling event have been highlighted. The summer upwelling period (SUP) is indicated by yellow shading.

The combined nTA and $S + \text{Fw}$ anomalies ($-260 \mu\text{atm}$ on 15 June and $-108 \mu\text{atm}$ on 5 September) are partially compensated for by the nDIC contribution (171 and $22 \mu\text{atm}$, respectively). Unlike for the previous events, we do see a sig-

nificant temperature effect for the upwelling-related LSEs: temperature-generated anomalies are positive ($45 \mu\text{atm}$ on 15 June and $53 \mu\text{atm}$ on 5 September) and support the nDIC contribution.

Table 3. Change in S , nTA, nDIC, and $p\text{CO}_2$ from before to during an LSE.

	S	nTA ($\mu\text{mol kg}^{-1}$)	nDIC ($\mu\text{mol kg}^{-1}$)	$p\text{CO}_2$ (μatm)
15 March	38.3 to 32.5	2570 to 3110	2320 to 2750	450 to 300
6 May	37.8 to 36.7	2560 to 2700	2308 to 2420	420 to 401
15 June	38.1 to 36.0	2580 to 2760	2273 to 2409	504 to 340
5 September	38.3 to 37.1	2583 to 2658	2241 to 2327	348 to 396

When following Turi et al. (2014) (Fig. 5e), all LSEs, with the exception of the 5 September LSE, are characterized by strong negative solubility-generated anomalies ($-163 \mu\text{atm}$ on 15 March, $-78 \mu\text{atm}$ on 6 May, and $-55 \mu\text{atm}$ on 15 June), partially compensated for by positive aeration-generated anomalies (65, 97, and $8 \mu\text{atm}$, respectively). The odd one out, which takes place on 5 September, shows a positive solubility-generated anomaly ($27 \mu\text{atm}$) and a negative aeration-generated anomaly ($-30 \mu\text{atm}$). In all four of the LSEs, biological processes did not have any significant impact on $p\text{CO}_2$ variations (anomalies generated by biological processes are 2 to 3 times lower than those generated by aeration or solubility).

4 Discussion

4.1 Impact of Rhône River inputs on TA variations

Due to its location near the Rhône River mouth, the BoM is particularly affected by freshwater inputs. In 2017, there were four LSEs in the BoM. Apart from being low in salinity, the Rhône River water entering the BoM also contains organic matter, nutrients, DIC, and alkalinity, with a mean TA of $2885 \mu\text{mol kg}^{-1}$ (Schneider et al., 2007). This input adds up to the effect of biological processes. We have seen that TA measurements in the BoM exhibit significant variability throughout the year (Fig. 3a), although they exhibit no obvious seasonality. By considering autochthonous (i.e., dependent on biological processes only) and allochthonous (i.e., dependent on river inputs only) formulations of TA, we were able to isolate the effects of the biology and riverine inputs and quantify their relative importance for the TA variations seen in the BoM.

With the autochthonous formulation, TA remained fairly constant throughout the year, which is similar to the results obtained by Lajaunie-Salla et al. (2021). In contrast, the allochthonous formulation produced a much higher variability in TA that was close to in situ observations. Several authors suggested that biological processes could have a large effect on TA dynamics in coastal areas (Krumins et al., 2013; Gustafsson et al., 2014). These findings are not confirmed by our model results, where changes in TA due to biology did not exceed $5 \mu\text{mol kg}^{-1}$ (Fig. 3a), which is insignificant compared to the changes attributed to other drivers, including riverine inputs. This suggests that TA variations in the BoM

are mostly driven by allochthonous factors. The importance of allochthonous contributions to TA variations has already been highlighted by several authors at the Mediterranean Sea scale (Copin-Montegut, 1993; Schneider et al., 2007; Hassoun et al., 2015). Other important drivers in the Mediterranean include TA exchanges with the Atlantic Ocean and Black Sea, as well as TA inputs from sediments and rain. For the particular location of our study area, we only considered river contributions. Having neglected other allochthonous drivers seems to be justified by the results, which showed a close match to observations and a generally better representation of the other carbonate system variables since DIC, $p\text{CO}_2$, and pH_T are all closely related to TA (Fig. 3 and Table 2). Several studies of TA variations in the Mediterranean Sea have been conducted at the sub-basin-scale, yielding different TA– S correlations for different study areas (Cossarini et al., 2015; Hassoun et al., 2015). For instance, the correlation proposed for the northwestern Mediterranean Sea suggests that local TA dynamics are mainly controlled by evaporation. We did not include this in our study as the BoM is strongly impacted by the Rhône River. By focusing on a smaller area, we could provide a TA formulation that represents this particular part of the Mediterranean very well.

While our results seem to provide a realistic representation of TA dynamics in the BoM, we could have included other factors such as sediments, which have been shown to be important for TA dynamics, particularly in coastal areas (Brenner et al., 2016; Gustafsson et al., 2014). We plan to add TA supplies by sediments in our future work. Moreover, from a more conceptual perspective, the use of the present TA allochthonous formulation allowed us to manage two cases of salinity, namely $S \leq 37.8$ and $S > 37.8$, with two different equations (Eqs. 5 and 6); however, the switch from one to another – in other words, crossing the threshold value – may lead to instabilities in TA representation. A solution to better manage the threshold-crossing case is to represent the Rhône River inputs more realistically. Here, we used two TA– S couples (TA and S at the mouth of the Rhône River and TA and S measured at SOLEMIO during the most significant Rhône River intrusion event) to obtain the dilution formulation. With this method, we do not take into account the seasonality of TA in the Rhône River, which can bring about significant variations (Fig. S2 and Table S3 of Supplement).

4.2 Impact of hydrodynamic processes on $p\text{CO}_2$ variations

4.2.1 Low-salinity events (LSEs)

The four LSEs observed in 2017 had several common characteristics: a salinity decrease (Fig. 5a) and apparent nTA and nDIC increases (Fig. 5b). Three of the four LSEs resulted in a $p\text{CO}_2$ decrease (15 March, 6 May, and 15 June; Fig. 5c). Rhône River intrusion events are often associated with a $p\text{CO}_2$ decrease since the introduced nutrients stimulate phytoplanktonic growth (Frayssé et al., 2014; Lajaunie-Salla et al., 2021). However, in our case, the decrease in $p\text{CO}_2$ observed on 15 March, 6 May, and 15 June was entirely caused by nTA and solubility effects (Fig. 5d, e). Generally, a TA increase is associated with a $p\text{CO}_2$ decrease that is proportional to the buffering state of the considered water mass (for high TA : DIC ratios, changes in $p\text{CO}_2$ are lower since the water mass is well buffered; Middelburg et al., 2020), which explains the negative $p\text{CO}_2$ anomalies associated with these three LSEs. Solubility depends on both salinity and temperature. Depending on the size and the duration of the Rhône River intrusion, the salinity effect on solubility can vary. When salinity decreases, the solubility of CO_2 in seawater also decreases, which results in a decrease in $p\text{CO}_2$ (Middelburg, 2019). The effects of temperature on solubility vary throughout the year. For instance, during the 15 March and 6 May LSEs, temperatures were low and fairly constant (Fig. 5a) and therefore only contributed a small amount to the negative anomaly (Fig. 5d). In contrast, for the 15 June LSE, temperature caused a positive $p\text{CO}_2$ anomaly (Fig. 5d). This difference can be explained by the fact that the 15 June LSE took place right after an upwelling event, probably facilitated by the Marseille eddy presence near the BoM, which tends to be observed just after mistral events (Frayssé et al., 2014). While the temperature dropped as a result of the upwelling, once the event was over, the temperature increased again, which caused the observed positive $p\text{CO}_2$ anomaly. Despite this positive temperature-related anomaly, the overall anomaly remained negative due to the strong effects of salinity and nTA during the LSE (Fig. 5c).

The 5 September LSE was associated with a $p\text{CO}_2$ increase (Fig. 5c) caused by nDIC and solubility effects (Fig. 5d, e): as salinity and nTA contributions remain weak, they are completely counterbalanced by nDIC and temperature contributions, resulting in an increase in $p\text{CO}_2$. During the 5 September LSE, observed salinity and temperature showed opposite patterns: the decrease in salinity is associated with an increase in temperature, and the increase in salinity after the peak of the LSE is associated with a temperature decrease (Fig. 5a). Unlike for the 15 June LSE, the temperature increase seen during the 5 September event was not caused by the end of the preceding upwelling event as the temperature was decreasing right after the LSE peak (Fig. 5a). We assume that this temperature increase was in-

stead caused by the intruding Rhône River water, which brought about the observed $p\text{CO}_2$ increase ($p\text{CO}_2$ increases exponentially with temperature; Middelburg, 2019).

In all four LSEs, biological processes did not have any significant impact on $p\text{CO}_2$ variations (Fig. 5e). To interpret this result, it is important to consider the assumptions used by Eco3M_MIX-CarbOx (Sect. 2.2). Rhône River intrusions can significantly modify the biogeochemistry of the bay as they are typically associated with temperature and salinity changes and TA, DIC, and nutrient inputs (Gatti et al., 2006; Frayssé et al., 2014; Lajaunie-Salla et al., 2021). Due to its 0D configuration, Eco3M_MIX-CarbOx only represents temperature and salinity changes and TA inputs (only if the allochthonous formulation is used for the latter; Fig. 1). For the studied events, linking measured surface salinity to measured DIC (Appendix E) showed that the four events are not systematically associated with a DIC increase at SOLEMIO even though the Rhône River mouth DIC value ($2877 \mu\text{mol kg}^{-1}$ – the value calculated by using TA and pH from Schneider et al. (2007) and Aucour et al. (1999), respectively) is much higher than the mean value at the station ($2294.9 \mu\text{mol kg}^{-1}$). Based on this observation, we can assume that, for DIC, the riverine signal is quickly lost when moving away from the Rhône River mouth and does not reach SOLEMIO station. Contrarily to TA, which is mainly affected by Rhône River inputs in the area, DIC is impacted by air–sea CO_2 exchanges and biological processes, which can explain this pattern. However, for more realism and as these inputs could affect $p\text{CO}_2$ variations by increasing the nDIC contribution, considering them could be an interesting addition to the present configuration. Moreover, linking measured surface salinity to measured nutrient concentrations (Appendix E) showed that only the first and last events (15 March and 5 September, respectively) have an impact on nutrient concentrations at SOLEMIO, with the first event being the most significant. Lajaunie-Salla et al. (2021) showed that these nutrient inputs led to an increase in chlorophyll concentration. This phytoplankton growth leads to a further decrease in $p\text{CO}_2$, which means that, by neglecting this, we possibly underestimated the importance of biological processes, especially of autotrophic processes, during these Rhône River intrusions.

4.2.2 Summer upwelling period (SUP)

During the SUP, regardless of whether there is an LSE, $p\text{CO}_2$ variations mostly depend on temperature and nDIC, which tend to produce anomalies of opposite signs (Fig. 5d). Temperature was highly variable during the SUP due to the succession of upwelling events, which explains its significant contribution to $p\text{CO}_2$ variations. nDIC contribution can be defined as the sum of aeration and biological-process contributions. During the SUP, biological processes represent 29 % of DIC variations (with 14 % attributed to primary production and 15 % to respiration; results not shown). The remain-

ing 71 % are contributions by aeration. While the contribution of aeration decreased during summer, this decrease was compensated for by a 9 % increase in the contribution by biological processes (Fig. 5e). The maximum negative anomaly generated by biological processes occurred at the beginning of the SUP, on 31 May (Fig. 5e), which is evidence that biological processes and, more precisely, autotrophic processes are enhanced during late spring. This feature is explained by the change in organisms' limitations. At the end of spring, organisms are less limited by temperature and light. Nevertheless, the overall contribution of biological processes was low compared to the contributions of aeration and temperature. This agrees with observations by Wimart-Rousseau et al. (2020a) and Lajaunie-Salla et al. (2021), who showed that $p\text{CO}_2$ variations and associated CO_2 fluxes are mostly driven by temperature in the BoM.

We showed that upwelling events were associated with strong decreases in $p\text{CO}_2$ (Fig. 5c), mostly as a result of temperature changes. The associated decrease in temperature further decreased $p\text{CO}_2$. This feature is only observed during upwelling events in summer when both temperatures and $p\text{CO}_2$ are high (Fig. 5a, c), stressing the importance of upwelling events for these variables. During upwelling events, aeration-generated anomalies change sign and become positive (Fig. 5e). The observed decrease in temperature resulted in a decrease in seawater $p\text{CO}_2$ to below atmospheric levels, thereby facilitating the absorption of atmospheric CO_2 , which caused the reversal in terms of the sign of the aeration-generated anomaly. During upwelling events, the contribution by biological processes is low compared to temperature and aeration, which both varied significantly (Fig. 5e). While upwelling events only occur at very specific locations (Côte Bleue and Calanques de Marseille) in our study area, they impact the temperature of the entire BoM (Pairaud et al., 2011). However, upwelling events also bring nutrients and DIC to the surface. In Eco3M_MIX-CarbOx, these effects are not considered, and upwelling events are only represented through temperature decreases in the volume. During the SUP, by linking surface temperature measurements and surface DIC and nutrient concentration measurements at SOLEMIO (Appendix E), we showed that (i) among the upwelling events, only two (at the beginning of July and in mid-September) are linked to a noticeable DIC variation, and (ii) surface nutrient concentration dynamics seem to be only slightly affected by upwelling events (nutrient concentrations remain close to 0 most of the time), explained by the fact that, when the upwelling takes place, nutrients which are upwelled are quickly consumed by the phytoplankton present in the area, thus not systematically reaching the station. Even though the effect of upwelling events on DIC and nutrient concentration seems to be limited at SOLEMIO station, it may be interesting to consider them for more realism as the temporal coverage of SOLEMIO measurements remains low (15 d), and we cannot exclude the fact that an impact can be observed but not caught by the measurements. Indeed,

even if low, a nutrient input can promote primary production (Frayse et al., 2013) then increase the contribution of biological processes (especially of autotrophic processes), resulting in a stronger decrease in $p\text{CO}_2$, while DIC inputs would increase the importance of nDIC, thereby reducing the decrease in $p\text{CO}_2$ associated with these events.

4.3 Air–sea CO_2 fluxes

We have shown that air–sea CO_2 fluxes oscillated between -13 and $15 \text{ mmol m}^{-2} \text{ d}^{-1}$ (Fig. 4d), which is a range similar to the one obtained by Wimart-Rousseau et al. (2020a) (-15 and $10 \text{ mmol m}^{-2} \text{ d}^{-1}$), suggesting that our model correctly represents the range of variations in air–sea CO_2 daily flux values during the year. CO_2 sinks associated with upwelling events (Lajaunie-Salla et al., 2021) are reproduced by our model. By calculating the daily mean value of air–sea CO_2 fluxes during the SUP, we obtained a positive value of $0.15 \text{ mmol m}^{-2} \text{ d}^{-1}$ (or 24.2 mmol m^{-2} for the entire SUP). To examine this result in more detail, we performed a sensitivity analysis of our air–sea CO_2 flux calculation (see Appendix F for details), which allowed us to identify the contributions of all relevant parameters (Table 4).

On average, air–sea CO_2 flux values during the SUP were mostly driven by the wind speed term, followed by sea–air $p\text{CO}_2$ differences, salinity, and finally temperature. According to Eqs. (8) and (9), wind speed, salinity, and temperature only affect the magnitude of air–sea CO_2 fluxes, while their sign is determined by the sea–air $p\text{CO}_2$ difference, which also impacts their magnitude significantly (Table 4). We have shown that, during the SUP, this difference is mostly driven by temperature since seawater $p\text{CO}_2$ variations are controlled by temperature at this time (Fig. 5d, e). A realistic representation of seawater $p\text{CO}_2$ is crucial to calculate air–sea CO_2 fluxes. Since seawater $p\text{CO}_2$ variations were correctly represented by the model during the SUP (Fig. 3c), the modeled air–sea CO_2 fluxes during the SUP should be reliable.

Over the entire year, air–sea CO_2 fluxes in the BoM essentially evened out, yielding only a slightly negative balance of $-0.21 \text{ mmol m}^{-2}$ per year. This is much lower than the -803 mmol m^{-2} per year suggested by Wimart-Rousseau et al. (2020a). The reason for this discrepancy may be related to the fact that our model overestimates seawater $p\text{CO}_2$ during winter, resulting in a sea–air difference close to zero (Fig. 4d). As a result, despite strong winds and low temperatures which would favor CO_2 absorption (Middelburg, 2019), the winter CO_2 sink is not well represented.

Seawater $p\text{CO}_2$, air–sea CO_2 fluxes, and DIC are closely connected (Appendix B). In Eco3M_MIX-CarbOx, aeration is simulated by applying Eq. (8) to 1 m^3 of surface water at SOLEMIO station, which tends to overestimate the impact of the aeration process on DIC and, due to the close link between DIC and $p\text{CO}_2$, also on $p\text{CO}_2$. Indeed, when the aeration process is applied to this small volume, the balance

Table 4. Results of the sensitivity analysis showing the effect of varying the relevant parameters by 10 %.

	Temperature		Salinity		Wind speed		$p\text{CO}_2$ difference	
	+10 %	−10 %	+10 %	−10 %	+10 %	−10 %	+10 %	−10 %
Air–sea CO_2 flux difference ($\text{mmol m}^{-2} \text{d}^{-1}$)	0.016	−0.017	0.044	−0.045	−0.440	0.398	−0.210	0.210

between the atmosphere and the volume is quickly reached, which then impacts the representation of $p\text{CO}_2$. To overcome this problem, we need to consider a larger layer of water on which the aeration process is applied. Consequently, we ran a simulation in which we considered a larger thickness of water ($H = 30.5$ m, annual mean value of the mixed-layer depth in the area; Eq. 8) on which to apply the aeration process. This simulation and its results are described in the Supplement. By increasing the volume on which the aeration process is applied, the annual mean value of air–sea CO_2 fluxes is more realistic ($-113.6 \text{ mmol m}^{-2} \text{ yr}^{-1}$) but, still, much lower than the one obtained by Wimart-Rousseau et al. (2020a) in the area. In fact, to represent the air–sea CO_2 fluxes, especially their annual mean value, in a more realistic way, we must consider, on the one hand, a realistic volume of water on which the aeration process is to be applied and, on the other hand, all the processes that take place in the water column and impact this flux, especially vertical mixing and matter transfer to the bottom of the water column. Consequently, in the present state, Eco3M_MIX-CarbOx is unable to represent the annual cycle of air–sea CO_2 fluxes. Overcoming this problem requires the switch to a 3D configuration, which is planned for our future work.

Most studies that investigated air–sea CO_2 fluxes and other carbonate system variables in various Mediterranean locations at different locations (Ligurian Sea, North Adriatic Sea, BoM) were based on measurements only and concluded that their study areas acted as CO_2 sinks during their study periods (e.g., Begovic, 2001; De Carlo et al., 2013; Ingrassio et al., 2016; Urbini et al., 2020; Wimart-Rousseau et al., 2020a). To the best of our knowledge, the only other study examining air–sea CO_2 fluxes in the BoM using a modeling approach was conducted by Lajaunie-Salla et al. (2021) using the Eco3m-CarbOx model, which is also dimensionless and based on a 1 m^3 volume like Eco3M_MIX-CarbOx and therefore also tends to underestimate the yearly fluxes. Most modeling studies have focused on larger scales and have employed at least 1D models. For instance, D’Ortenzio et al. (2008) used a coupled 1D model and found that the Mediterranean Sea, as a whole, was nearly balanced as the western and eastern basins act as a CO_2 sink and source, respectively, and therefore cancel each other out. Using a 3D coupled model and looking at even larger scales, Bourgeois et al. (2016) provided a complete analysis of the air–sea CO_2 fluxes in various coastal environments and have shown that they represent 4.5 % of the anthropogenic CO_2 uptake of the

global ocean. The 3D models typically allow more realistic representations of the water column; they would allow us to (i) consider a more realistic water column (volume and processes which impact it) to perform our air–sea CO_2 flux calculations, (ii) consider autochthonous and allochthonous contributions to TA variations, and (iii) consider the effects of nutrients and DIC inputs from the Rhône River intrusions and local upwellings. Nevertheless, the dimensionless model also offers some advantages, including a short simulation time and easy adaptability, which allowed us to provide a detailed analysis of drivers of seawater $p\text{CO}_2$ variations, particularly during specific hydrodynamic processes typical for the BoM. This type of study is still uncommon in the area as few of studies have investigated the carbonate system dynamics, especially the $p\text{CO}_2$ variation drivers, and this would have been a tedious task to realize in 3D (i.e., longer simulations and isolation of the $p\text{CO}_2$ variation drivers’ contributions are more difficult due to the complexity of the model).

5 Conclusion

Using the concept of the dimensionless Eco3M-CarbOx biogeochemical model as a starting point, we developed a new planktonic ecosystem model which contains, in addition to mixotroph organisms, a modified version of the carbonate module described by Lajaunie-Salla et al. (2021) to represent the carbonate system variables more realistically. First, we improved the parameterization of TA by developing two different formulations: (i) an autochthonous formulation that only considers biological contributions to TA variations and (ii) an allochthonous formulation that only depends on salinity, thus considering riverine contributions to TA variations. A comparison of both TA formulations showed that TA variations in the BoM were mostly due to allochthonous contributions. Then, we adapted the allochthonous formulation for modeling TA variations in the BoM, which yielded a helpful tool to complement the low-frequency in situ measurements. We use this new formulation to study air–sea CO_2 fluxes and seawater $p\text{CO}_2$ variations at SOLEMIO station in 2017, focusing on two hydrodynamic processes that are typical for the BoM: (i) Rhône River intrusions and (ii) summer upwelling events.

During the SUP, our model represented the CO_2 sinks generated by summer upwelling events, which are suggested by Lajaunie-Salla et al. (2021), and identified the underlying drivers of CO_2 variability. Furthermore, our model was

able to simulate the expected decrease in $p\text{CO}_2$ associated with summer upwelling events (Lajaunie-Salla et al., 2021). This decrease was mainly generated by temperature effects on $p\text{CO}_2$. LSEs were also represented by the model. They often generated a decrease in $p\text{CO}_2$ as a result of the decreasing salinity and increasing TA, especially when those two contributions were not counterbalanced by temperature effects. However, in winter, the model was unable to reproduce the undersaturation seen in seawater $p\text{CO}_2$ measurements at SOLEMIO station and rather overestimated it. As a result, the present configuration of Eco3M_MIX-CarbOx is unable to reproduce the commonly observed seasonality of air–sea CO_2 fluxes in the northwestern Mediterranean. This pattern directly impacts our estimates of the overall yearly air–sea CO_2 flux as, even if the model clearly identifies the bay as a CO_2 sink, it does not allow us to reproduce the observed mean annual value of air–sea CO_2 fluxes (our model: $-0.21 \text{ mmol m}^{-2}$ per year vs. model of Wimart-Rousseau et al. (2020a): -803 mmol m^{-2} per year).

The present work clearly highlighted the limitations of dimensionless models. Although this type of model possesses some advantages that facilitate an improved understanding of complex coastal systems, it has clear limitations when it comes to the representation of specific processes or variables, with obvious impacts on the results. The accuracy could be improved by employing a 3D coupled model, which would allow us to (i) improve our representation of air–sea CO_2 fluxes by applying them to the whole water column, (ii) improve our representation of TA by considering autochthonous and other allochthonous sources, and (iii) improve our representation of LSE and upwelling events by allowing us to consider the inputs of nutrients and DIC.

Appendix A: State equation process description

Table A1. Description of state equation processes.

Notation	Process
Copepods	
$\text{Excr}_{\text{NutX}}^{\text{COPX}}$ $\text{NutX} \in [\text{NH}_4^+, \text{PO}_4^{3-}]$ $X \in [\text{N}, \text{P}]$	Excretion of nutrient X by copepods
$\text{Excr}_{\text{DOC}}^{\text{COPC}}$	DOC excretion by copepods
$\text{ResP}_{\text{DIC}}^{\text{COPC}}$	Copepod respiration
$\text{E}_{\text{POX}}^{\text{COPX}}$ $X \in [\text{C}, \text{N}, \text{P}]$	Copepod egestion
$\text{Predation}_{\text{POX}}^{\text{COPX}}$ $X \in [\text{C}, \text{N}, \text{P}]$	Predation by higher trophic levels on copepods
Mixotrophs (Mix \in [NCM, CM])	
$\text{Exu}_{\text{DOX}}^{\text{MIX}_i}$ $X \in [\text{C}, \text{N}, \text{P}]$	DOX exudation by mixotrophs
$\text{ResP}_{\text{DIC}}^{\text{MIXC}}$	Mixotroph respiration
$\text{Photo}_{\text{DIC}}^{\text{MIXC}}$	Mixotroph photosynthesis
$\text{Excr}_{\text{NutX}}^{\text{NCMX}}$ $\text{NutX} \in [\text{NH}_4^+, \text{PO}_4^{3-}]$ $X \in [\text{N}, \text{P}]$	Excretion of nutrient X by NCM
$\text{Upt}_{\text{NutX}}^{\text{CMX}}$ $X \in [\text{N}, \text{P}]$ $\text{NutX} \in [\text{NO}_3^-, \text{NH}_4^+, \text{PO}_4^{3-}]$	Uptake of nutrient X by constitutive mixotrophs
$\text{Upt}_{\text{DOX}}^{\text{CMX}}$ $X \in [\text{N}, \text{P}]$	Uptake of DOX by constitutive mixotrophs
Phytoplankton (Phy \in [NMPHYTO, PICO])	
$\text{ResP}_{\text{DIC}}^{\text{PhyC}}$	Phytoplankton respiration
$\text{Photo}_{\text{DIC}}^{\text{PhyC}}$	Phytoplankton photosynthesis
$\text{Upt}_{\text{NutX}}^{\text{PhyX}}$ $\text{NutX} \in [\text{NO}_3^-, \text{NH}_4^+, \text{PO}_4^{3-}]$	Uptake of nutrient X by phytoplankton
$\text{Exu}_{\text{DOX}}^{\text{PhyX}}$ $X \in [\text{C}, \text{N}, \text{P}]$	DOX exudation by phytoplankton
$\text{Upt}_{\text{DOX}}^{\text{PICOX}}$ $X \in [\text{N}, \text{P}]$	Uptake of DOX by picophytoplankton
Heterotrophic bacteria	
$\text{BF}_X^{\text{BACC}}$ $X \in [\text{DOC}, \text{POC}]$	Bacterial production
$\text{BR}_{\text{DIC}}^{\text{BACC}}$	Bacterial respiration
$\text{Upt}_{\text{POX}}^{\text{BACX}}$ $X \in [\text{N}, \text{P}]$	POX uptake by heterotrophic bacteria
$\text{Exu}_{\text{DOX}}^{\text{PhyX}_i}$ $X \in [\text{C}, \text{N}, \text{P}]$	DOX exudation by phytoplankton
$\text{Remin}_{\text{BACX}}^{\text{NutX}}$ $\text{NutX} \in [\text{NH}_4^+, \text{PO}_4^{3-}]$ $X \in [\text{N}, \text{P}]$	Remineralization of nutrient X by heterotrophic bacteria
$\text{Mort}_{\text{DOX}}^{\text{BACX}}$	Heterotrophic bacteria natural mortality
Dissolved inorganic matter (DIM)	
$\text{Diss}_{\text{DIC}}^{\text{CaCO}_3}$	CaCO_3 dissolution
$\text{Prec}_{\text{DIC}}^{\text{CaCO}_3}$	CaCO_3 precipitation
NitriF	Nitrification
Aera _{DIC}	Air–sea CO_2 gas exchanges (aeration)

Appendix B: pH_T and pCO_2 calculation

The calculation method performed in the Eco3M_MIX-CarbOx model to obtain pH_T and pCO_2 is detailed below. As specified in Sect. 2, we used the method introduced by Lajaunie-Salla et al. (2021), which relies on CO2SYSv3 (Sharp et al., 2020), software originally developed by Lewis and Wallas (1998) to resolve the carbonate system using two of its four representative variables. This Appendix aims to complete Appendix A from Lajaunie-Salla et al. (2021) by providing some corrections. It also introduces the possibility of choosing between two types of TA formulations (autochthonous or allochthonous) to perform the calculation of pH_T and pCO_2 .

B1 Equilibrium constant and conservative element concentration calculations

In the following formulations, S represents the practical salinity.

B1.1 Conservative element concentrations and ionic strength

Table B1. Formulations of conservative element concentrations and ionic strength.

Description	Formulation	Units
Concentration of total fluoride (Riley, 1965)	$\text{TF} = \frac{0.000067}{18.998} \cdot \frac{S}{1.80655}$	mol kg^{-1}
Concentration of total sulfate (Morris and Riley, 1966)	$\text{TS} = \frac{0.14}{96.062} \cdot \frac{S}{1.80655}$	mol kg^{-1}
Concentration of total boron (Uppström, 1974)	$\text{TB} = \frac{0.000416 \cdot S}{35}$	mol kg^{-1}
Concentration of calcium ion (Riley and Tongudai, 1967)	$\text{Ca}^{2+} = \frac{0.02128}{40.087} \cdot \frac{S}{1.80655}$	mol kg^{-1}
Ionic strength (DOE, 1994)	$\text{IonS} = \frac{19.924 \cdot S}{1000 - 1.005 \cdot S}$	\emptyset

B1.2 Equilibrium constants

In the following formulations, T represents the temperature value converted to Kelvin (i.e., T (°C) + 273.15).

K_F (mol kg^{-1}): HF dissociation constant (Dickson and Riley, 1979b)

$$\ln(K_F) = \frac{1590.2}{T} - 12.641 + 1.525 \cdot \text{IonS}^{0.5}$$

$$K_F = \exp(\ln(K_F) \cdot (1 - 0.001005 \cdot S)) \quad (\text{B1})$$

K_F is expressed on the free pH scale.

K_S (mol kg⁻¹): HSO₄⁻ dissociation constant (Dickson, 1990a)

$$\begin{aligned} \ln(K_S)_{\text{temp}} &= -\frac{4276.1}{T} + 141.328 - 23.093 \cdot \ln(T) \\ &+ \left(-\frac{13856}{T} + 324.57 - 47.986 \cdot \ln(T) \right) \cdot \text{IonS}^{0.5} \\ \ln(K_S) &= \ln(K_S)_{\text{temp}} + \left(\frac{35474}{T} - 771.54 + 114723 \cdot \ln(T) \right) \\ &\cdot \text{IonS} - \frac{2698}{T} \cdot \text{IonS}^{1.5} + \frac{1776}{T} \cdot \text{IonS}^2 \\ K_S &= \exp(\ln(K_S) \cdot (1 - 0.001005 \cdot S)) \end{aligned} \quad (\text{B2})$$

K_S is expressed on the free pH scale.

K_B (mol kg⁻¹): B(OH)₃ dissociation constant (Dickson, 1990b)

$$\begin{aligned} \ln(K_B)_{\text{temp}} &= \\ &\frac{-8996.9 - 2890.53 \cdot S^{0.5} - 77.942 \cdot S + 1.728 \cdot S^{1.5} - 0.0996 \cdot S^2}{T} \\ &+ 148.0248 + 137.1942 \cdot S^{0.5} \\ \ln(K_B) &= \ln(K_B)_{\text{temp}} + 1.62142 \cdot S \\ &+ \left(-24.4344 - 25.085 \cdot S^{0.5} - 0.2474 \cdot S \right) \cdot \ln(T) \\ &+ 0.053105 \cdot S^{0.5} \cdot T \\ K_B &= \exp(\ln(K_B)) \end{aligned} \quad (\text{B3})$$

K_B is expressed on the total pH scale.

K_{ca} (mol kg⁻¹)²: dalcite formation constant (Mucci, 1983)

$$\begin{aligned} \log(K_{\text{ca}})_{\text{temp}} &= -171.9065 - 0.077993 \cdot T \\ &+ \frac{2839.319}{T} + 71.595 \cdot \log(T) \\ \log(K_{\text{ca}}) &= \log(K_{\text{ca}})_{\text{temp}} \\ &+ \left(-0.77712 + 0.0028426 \cdot T + \frac{178.34}{T} \right) \\ &\cdot S^{0.5} - 0.07711 \cdot S + 0.0041249 \cdot S^{1.5} \\ K_{\text{ca}} &= 10^{(\log(K_{\text{ca}}))} \end{aligned} \quad (\text{B4})$$

K_e (mol kg⁻¹): H₂O dissociation constant (Millero, 1995)

$$\begin{aligned} \ln(K_e) &= -\frac{13847.26}{T} + 148.9802 - 23.6521 \\ &\cdot \ln(T) + \left(-5.977 + \frac{118.67}{T} + 1.0495 \cdot \ln(T) \right) \\ &\cdot S^{0.5} - 0.01615 \cdot S \\ K_e &= \exp(\ln(K_e)) \end{aligned} \quad (\text{B5})$$

K_e is expressed on the seawater pH scale (SWS).

K_0 (mol kg⁻¹ atm⁻¹): CO₂ solubility (Weiss, 1974)

$$\begin{aligned} \ln(K_0)_{\text{temp}} &= -60.2409 + 93.4517 \cdot \frac{100}{T} \\ &+ 23.3585 \cdot \ln\left(\frac{T}{100}\right) \\ \ln(K_0) &= \ln(K_0)_{\text{temp}} + S \cdot (0.023517 - 0.023656 \\ &\cdot \frac{T}{100} + 0.0047036 \cdot \left(\frac{T}{100}\right)^2) \\ K_0 &= \exp(\ln(K_0)) \end{aligned} \quad (\text{B6})$$

K_1 (mol kg⁻¹): H₂CO₃ dissociation (Lueker et al., 2000)

$$\begin{aligned} pK_1 &= \frac{3633.86}{T} - 61.2172 + 9.6777 \cdot \ln(T) \\ &- 0.011555 \cdot S + 0.0001152 \cdot S^2 \\ K_1 &= 10^{(-pK_1)} \end{aligned} \quad (\text{B7})$$

K_1 is expressed on the total pH scale.

K_2 (mol kg⁻¹): HCO₃⁻ dissociation (Lueker et al., 2000)

$$\begin{aligned} pK_2 &= \frac{471.78}{T} + 25.929 - 3.16967 \cdot \ln(T) \\ &- 0.01781 \cdot S + 0.0001122 \cdot S^2 \\ K_2 &= 10^{(-pK_2)} \end{aligned} \quad (\text{B8})$$

K_2 is expressed on the total pH scale.

B1.3 pH-scale conversion

The pH calculation is performed on the total scale. Accordingly, the previous constants are converted if necessary (i.e., expressed on total pH scale) using the following conversion factors. Except for K_S and K_F , which must be expressed on the free pH scale, the other equilibrium constants must be converted to the total pH scale.

Table B2. Formulation of pH-scale conversion factors.

Description	Conversion factor
From the seawater pH scale (SWS) to the total pH scale	$1 + \frac{T_S}{K_S}$ $1 + \frac{T_S}{K_S} + \frac{T_F}{K_F}$
From free pH scale to total pH scale	$1 + \frac{T_S}{K_S}$

B1.4 Pressure correction

All the constants are corrected by the effect of hydrostatic pressure using the following formulations (Millero, 1995). We define T_K and T_C , which represent, respectively, the temperature in Kelvin and in Celsius. R represents the gas constant in mL bar⁻¹ K⁻¹ mol⁻¹ ($R =$

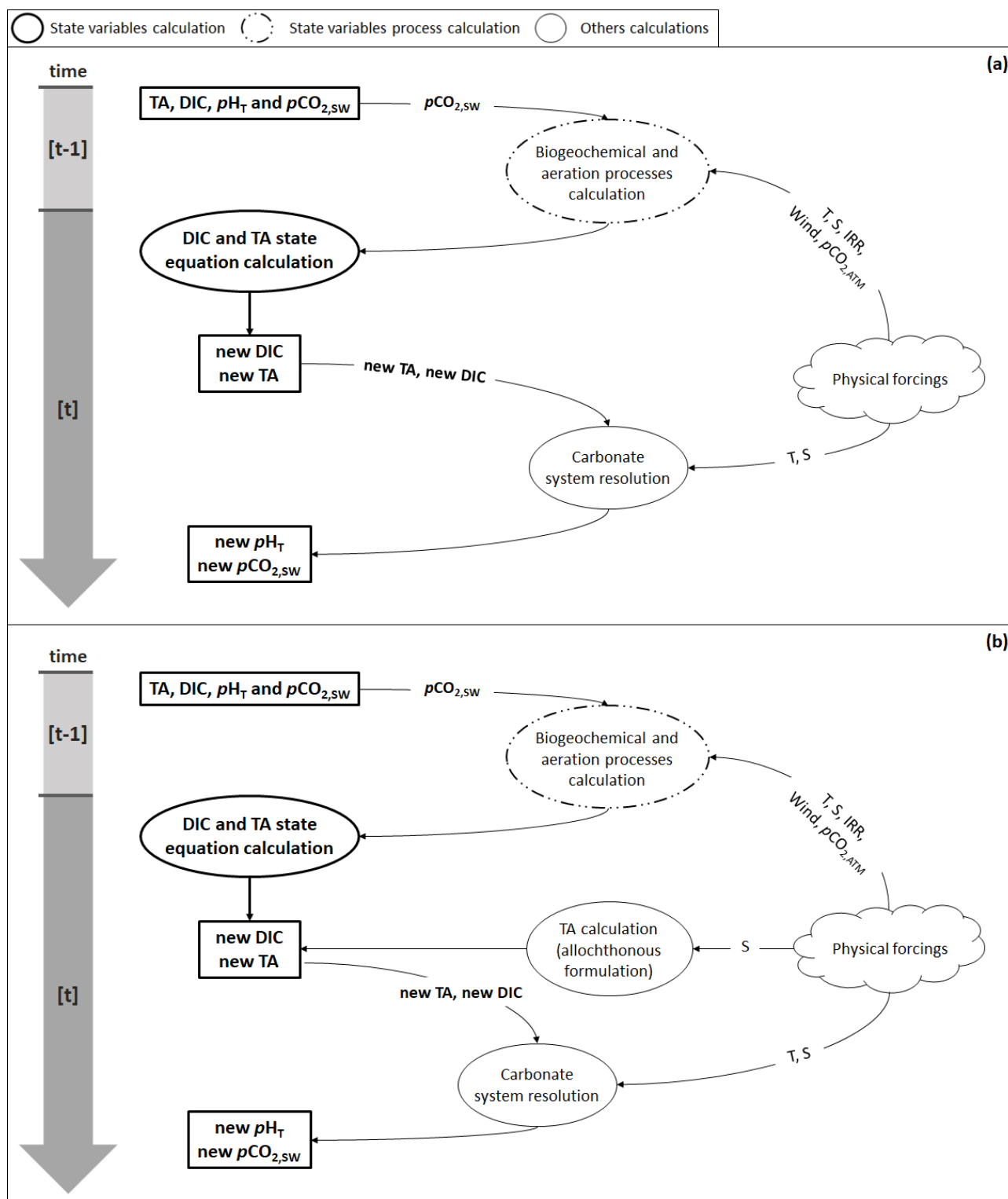


Figure B1. Flow diagram illustrating the steps needed to calculate pH_T and pCO_2 (a) using the autochthonous formulation (Eq. 4) and (b) with the allochthonous formulation (Eqs. 5 and 6). Physical forcings include temperature (T), salinity (S), solar irradiance (IRR), wind speed (wind), and atmospheric pCO_2 ($pCO_{2,ATM}$).

83.1451 mL bar⁻¹ K⁻¹ mol⁻¹), and P represents the pressure in bar.

Corrected K_F (mol kg⁻¹)

$$K_F \text{ CorrFac} = \frac{(9.78 + 0.009 \cdot T_C + 0.0009429 \cdot T_C^2 + 0.5 \cdot \left(\frac{-3.91 + 0.054 \cdot T_C}{1000}\right) \cdot P) \cdot P}{R \cdot T_K} \\ K_F = K_F \cdot \exp(K_F \text{ CorrFac}) \quad (\text{B9})$$

Corrected K_S (mol kg⁻¹)

$$K_S \text{ CorrFac} = \frac{(18.03 - 0.0466 \cdot T_C - 0.000316 \cdot T_C^2 + 0.5 \cdot \left(\frac{-4.53 + 0.09 \cdot T_C}{1000}\right) \cdot P) \cdot P}{R \cdot T_K} \\ K_S = K_S \cdot \exp(K_S \text{ CorrFac}) \quad (\text{B10})$$

Corrected K_B (mol kg⁻¹)

$$K_B \text{ CorrFac} = \frac{(29.48 - 0.1622 \cdot T_C + 0.002608 \cdot T_C^2 + 0.5 \cdot \left(\frac{-2.84}{1000}\right) \cdot P) \cdot P}{R \cdot T_K} \\ K_B = K_B \cdot \exp(K_B \text{ CorrFac}) \quad (\text{B11})$$

Corrected K_{ca} (mol kg⁻¹)²

$$K_{ca} \text{ CorrFac} = \frac{(48.76 - 0.5304 \cdot T_C + 0.5 \cdot \left(\frac{-11.76 + 0.3692 \cdot T_C}{1000}\right) \cdot P) \cdot P}{R \cdot T_K} \\ K_{ca} = K_{ca} \cdot \exp(K_{ca} \text{ CorrFac}) \quad (\text{B12})$$

Corrected K_e (mol kg⁻¹)

$$K_e \text{ CorrFac} = \frac{(20.02 - 0.1119 \cdot T_C + 0.001409 \cdot T_C^2 + 0.5 \cdot \left(\frac{-5.13 + 0.0794 \cdot T_C}{1000}\right) \cdot P) \cdot P}{R \cdot T_K} \\ K_e \text{ CorrFac} = K_e \cdot \exp(K_e \text{ CorrFac}) \quad (\text{B13})$$

Corrected K_1 (mol kg⁻¹)

$$K_1 \text{ CorrFac} = \frac{(25.5 - 0.1271 \cdot T_C + 0.5 \cdot \left(\frac{-3.08 + 0.0877 \cdot T_C}{1000}\right) \cdot P) \cdot P}{R \cdot T_K} \\ K_1 = K_1 \cdot \exp(K_1 \text{ CorrFac}) \quad (\text{B14})$$

Corrected K_2 (mol kg⁻¹)

$$K_2 \text{ CorrFac} = \frac{(15.82 + 0.0219 \cdot T_C + 0.5 \cdot \left(\frac{1.13 + 0.1475 \cdot T_C}{1000}\right) \cdot P) \cdot P}{R \cdot T_K} \\ K_2 = K_2 \cdot \exp(K_2 \text{ CorrFac}) \quad (\text{B15})$$

B1.5 Fugacity factor

To perform the calculation of the fugacity factor (FugFac), we supposed that the pressure value is close or equal to an atmosphere (Weiss, 1974).

T represents the temperature in Kelvin. We define P_{atm} as the atmospheric pressure in bar: $P_{\text{atm}} = 1.01325$ bar.

$$\ln(\text{FugFac}) = \frac{((-1636.75 + 12.0408 \cdot T - 0.0327957 \cdot T^2 + 3.16528 \cdot 0.00001 \cdot T^3) + 2 \cdot (57.7 - 0.118 \cdot T)) \cdot P_{\text{atm}}}{R \cdot T} \\ \text{FugFac} = \exp(\ln(\text{FugFac})) \quad (\text{B16})$$

B2 pH_T and pCO₂ calculation

Solving the equations of the carbonate system requires knowledge of TA and DIC. Depending on the TA formulation used, the steps followed by the model to issue the new pH_T and pCO₂ are described in Fig. B1. If TA is calculated using Eq. (4), biogeochemical and aeration processes are applied as described in Eqs. (4) and (7) in order to deliver new ([t] time step values) TA and DIC: air–sea CO₂ fluxes are calculated from temperature, salinity, wind speed, atmospheric pCO₂, and seawater pCO₂, and the biogeochemical processes required, at least, temperature and solar irradiance to be computed. When calculated, processes are applied in the form of fluxes to the previous TA and DIC ([$t - 1$] time step values) to solve their respective state equation. The pH_T and pCO₂ calculation is, then, performed using, in addition to TA and DIC, temperature and salinity data.

When TA is calculated using Eqs. (5) and (6), the biogeochemical and aeration fluxes computed during the first stage are only applied to DIC from the preceding time step, while TA is calculated after DIC based on the salinity data from the current time step. All subsequent steps are unchanged (Fig. B1b).

B2.1 pH_T calculation

pH_T is calculated using a buffering value (B) defined as the pH variation induced by an addition of acid or base to a specific solution (Van Slycke, 1922). In seawater, B can be expressed in terms of TA (Middelburg, 2019), which yields the following:

$$B = \frac{\partial \text{TA}}{\partial \text{pH}_T} \Leftrightarrow \Delta \text{pH}_T = \frac{\partial \text{TA}}{\sum_{i=1}^n B_i}, \quad (\text{B17})$$

where i represents a chemical species contributing to TA.

Accordingly, we calculate the pH_T difference between two model time steps (ΔpH_T) using an iterative method. We set the pH_T initial value to 8.0. We chose this value by considering the Mediterranean and Rhône River pH_T, which are, respectively, close and equal to 8.0. Finally, considering the fact that the measurement precision is rather close to 0.0004 (Clayton and Byrne, 1993), we set the tolerance threshold to 0.0001. The pH_T calculation is detailed in Fig. B2.

```

! pH initial value = 8.0
! pHTol = Tolerance threshold --> 0.0001
! deltaph = pH difference between two model iterations
! pH is calculated on total scale

if (nbIter < 1) pH = 8.0

pHTol = 0.0001
deltaph = pHTol + 1

do while (abs(deltaph) > pHTol)
H = 10^(-pH)
Denom = H^2 + K1 * H + K1 * K2
CALk = DIC * K1 * ((H + 2 * K2)/Denom) !Carbonate Alkalinity
BALk = (TB * KB)/(KB + H) ! Borate Alkalinity
OH = Ke/H
FreeToTot = 1 + (TS/KS)
HFree = H/FreeToTot
HSO4 = TS/(1+(KS/HFree))
HF = TF/(1+(KF/H))
Residual = TA - CALk - BALk - OH + HFree + HSO4 + HF
Slope = DIC * H * K1 * (H^2 + K1 * K2 + 4 * H * K2)
Slope = Slope/(Denom^2) + OH + H + (BALk * H)/(KB + H)
Slope = log(10) * Slope
deltaph = Residual/Slope

do while (abs(deltaph) > 1)
deltaph = deltaph/2
enddo

pH = pH + deltaph
enddo

```

Figure B2. pH_T calculation.

B2.2 pCO_2 and carbonate system species concentrations

pCO_2 is deduced using DIC, pH (via H^+ concentration), and equilibrium constants. We also calculate the concentrations of CO_2 , HCO_3^- , CO_3^{2-} , and $CaCO_3$ saturation (Ω).

Table B3. Formulation of pCO_2 and carbonate system species concentrations. Note: To apply these formulations, DIC has to be expressed in $mol\ kg^{-1}$ and Ca^{2+} and CO_3^{2-} in $\mu mol\ kg^{-1}$.

Description	Formulation	Units
pCO_2	$pCO_2 = \frac{DIC \cdot [H^+]^2}{[H^+]^2 + K_1 \cdot [H^+] + K_1 \cdot K_2} \cdot \frac{10^6}{K_0 \cdot \text{FugFac}}$	μatm
CO_2 concentration	$[CO_2^*] = \frac{(DIC \times 10^6)}{\left(1 + \frac{K_1}{[H^+]} + \frac{(K_1 \cdot K_2)}{[H^+]^2}\right)}$	$\mu mol\ kg^{-1}$
HCO_3^- concentration	$[HCO_3^-] = \frac{K_1 \cdot [CO_2^*]}{[H^+]}$	$\mu mol\ kg^{-1}$
CO_3^{2-} concentration	$[CO_3^{2-}] = \frac{K_2 \cdot [HCO_3^-]}{[H^+]}$	$\mu mol\ kg^{-1}$
$CaCO_3$ saturation state	$\Omega = \frac{[Ca^{2+}] \cdot [CO_3^{2-}] \times 10^{-6}}{K_{ca}}$	\emptyset

Appendix C: Statistic indicator calculation and application to H⁺ concentration

We used four statistical indicators for the comparison between simulation and SOLEMIO data: the percentage bias (%BIAS), the average error (AE), the average absolute error (AAE), and the root mean square deviation (RMSD, also referred to as the root mean square error (RMSE) in the literature). They were used with two Eco3M_MIX-CarbOx simulations (SIMC0 and SIMC1) and the reference Eco3M-CarbOx simulation (Lajaunie-Salla et al., 2021). The %BIAS is calculated as follows:

$$\%BIAS = \frac{\sum_{i=1}^N (O_i - M_i)}{\sum_{i=1}^N O_i} \cdot 100, \quad (C1)$$

where O represents the observations, and M represents the model results (Allen et al., 2007). This indicator allows us to quantify the model's tendency to under- or overestimate the observations. The closer the value is to 0, the better the model. Here, a positive %BIAS means that the model underestimated the in situ observations and vice versa. On an indicative basis, the %BIAS can be interpreted according to Maréchal (2004): absolute values of %BIAS allow us to assess the overall agreement between the model results and observations, and the agreement is considered to be excellent if %BIAS < 10 %, very good if 10 % ≤ %BIAS < 20 %, good if 20 % ≤ %BIAS < 40 %, and poor otherwise. We based our calculation of AE, AAE, and RMSD on Stow et al. (2009). Together, these three statistical indicators provide an indication of model prediction accuracy.

$$AE = \frac{\sum_{i=1}^N (O_i - M_i)}{n} \quad (C2)$$

$$AAE = \frac{\sum_{i=1}^N (|O_i - M_i|)}{n} \quad (C3)$$

$$RMSD = \sqrt{\frac{\sum_{i=1}^N (O_i - M_i)^2}{N}} \quad (C4)$$

The three of them aim to measure the size of the discrepancies between model results and observations; the closer the value is to 0, the better the agreement between model results and observations. However, when interpreting AE, it is important to note that values near zero can be misleading because negative and positive discrepancies can cancel each other out. That is why it is important to calculate, in addition to AE, AAE and RMSD, which allow us to overcome this effect (Stow et al., 2009). Such as with %BIAS, a positive value of AE means that the model underestimated the in situ observations and vice versa. The model data are averaged using the mean of the output from the date in question ±5 d. Using the temporal mean and standard deviation of the model results allowed us to better account for the variability at SOLEMIO station.

Table C1. Comparing the different model results to surface observations at SOLEMIO station for H^+ concentration. N represents the number of observations. Mean, SD, AE, AAE, and RMSD are in the same unit as the considered variable, i.e., mmol m^{-3} for H^+ concentrations. %BIAS is without a unit.

		[H^+]
N	Observations	20
Mean \pm SD	Observations	$8.08 \times 10^{-9} \pm 5.52 \times 10^{-10}$
Mean \pm SD	SIMC0	$8.89 \times 10^{-9} \pm 2.91 \times 10^{-10}$
	SIMC1	$8.39 \times 10^{-9} \pm 4.06 \times 10^{-10}$
	CarbOx	$8.52 \times 10^{-9} \pm 2.80 \times 10^{-10}$
%BIAS	SIMC0	-5.33
	SIMC1	-3.91
	CarbOx	-5.47
AE	SIMC0	-4.30×10^{-10}
	SIMC1	-3.15×10^{-10}
	CarbOx	-4.42×10^{-10}
AAE	SIMC0	6.45×10^{-10}
	SIMC1	6.05×10^{-10}
	CarbOx	6.36×10^{-10}
RMSD	SIMC0	6.98×10^{-10}
	SIMC1	7.14×10^{-10}
	CarbOx	6.93×10^{-10}

In addition to TA, DIC, pH_T , and pCO_2 , statistical indicators were calculated for H^+ concentrations (Table C1).

Appendix D: Time series of daily average $p\text{CO}_2$ anomalies generated by DIC, TA, $S + \text{Fw}$, and temperature based on the approach described by Lovenduski et al. (2007) for 2017 (enlargement of panel (d) of Fig. 5)

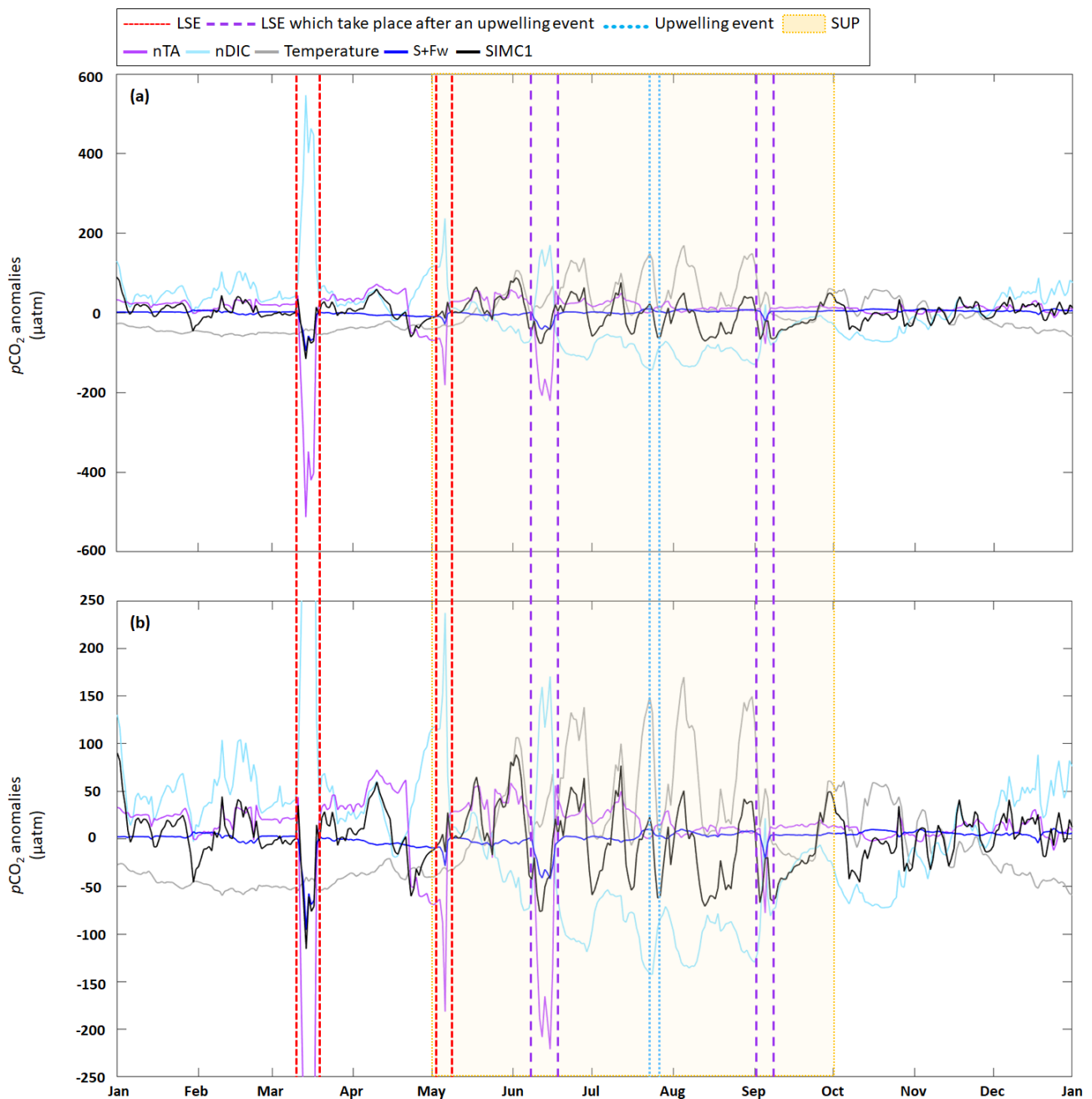


Figure D1. Time series for 2017 of daily average (a) $p\text{CO}_2$ anomalies generated by DIC, TA, $S + \text{Fw}$, and temperature based on the approach in Lovenduski et al. (2007) (note: the dark-blue line is sometimes obscured by the black line, especially in March); (b) enlargement of panel (a) between -250 and $250 \mu\text{atm}$. LSE and an upwelling event have been highlighted. The summer upwelling period (SUP) is indicated by yellow shading.

Appendix E: DIC and nutrients – SOLEMIO data interpolation

As we represent a closed volume, we do not consider nutrients and DIC inputs which could be associated with LSEs or upwelling events (Gatti et al., 2006; Frayse et al., 2013, 2014; Lajaunie-Salla et al., 2021). To assess if these inputs impact SOLEMIO, we interpolated DIC and nutrient measurements performed at the station, subsequently studying the trend observed during the events studied in the present study (Fig. E1).

Table E1. Surface DIC and nutrient concentration measurements at SOLEMIO station during LSEs and SUPs for the year 2017.

Date	Event	DIC ($\mu\text{mol kg}^{-1}$)	NO_3^- (mmol m^{-3})	NH_4^+ (mmol m^{-3})	PO_4^{3-} (mmol m^{-3})	
15 March	LSE	2323.8	5.5	0.03	0.07	
6 May	LSE		No measurement available			
10 May	SUP	2279.1	0.1	0.01	0.01	
24 May	SUP	2288.7	0.06	0.02	0.02	
8 June	SUP	2281.0	0.05	0.02	0.03	
15 June	LSE		No measurement available			
22 June	SUP	2299.0	0.09	0.01	0.09	
4 July	SUP	2316.9	0.03	0.04	0.03	
19 July	SUP	2277.6	0.4	1.05	0.07	
30 August	SUP	2262.4	0.02	0.12	0.02	
5 September	LSE and SUP	2260.3	0.9	0.04	0.05	
18 September	SUP	2305.4	0.04	0.02	0.02	

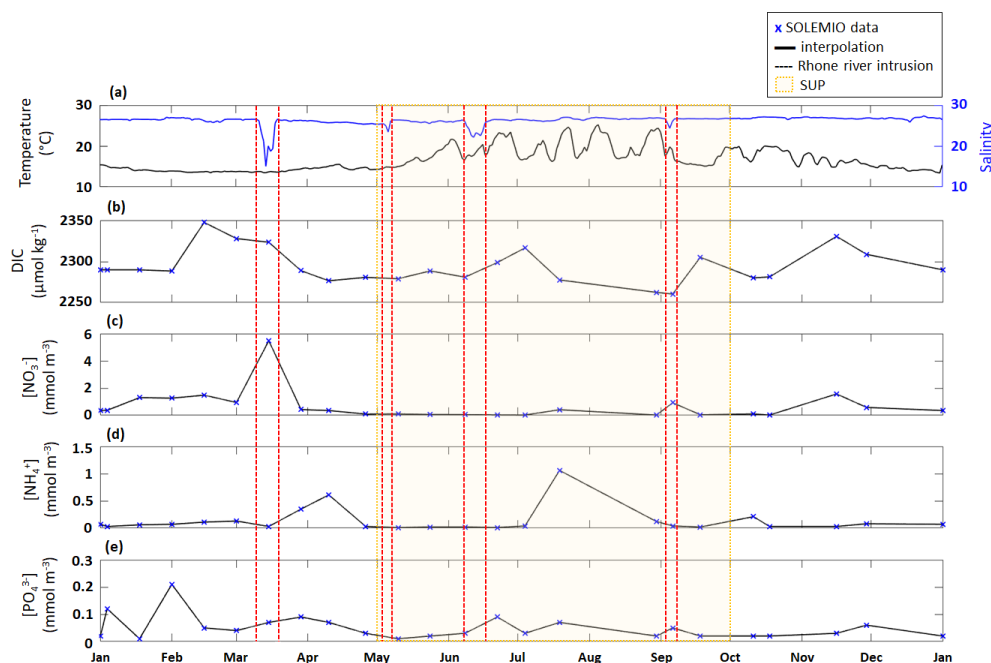


Figure E1. Time series of surface (a) temperature (PLANIER measurements, see Fig. 1 in Barré et al. (2023) for location) and salinity (CARRY measurements, see Fig. 1 in Barré et al. (2023) for location) and interpolated (b) DIC, (c) NO_3^- , (d) NH_4^+ , and (e) PO_4^{3-} concentrations at SOLEMIO station. SOLEMIO data are represented by blue markers. Rhône River intrusions studied here are indicated by the dotted red lines, and the SUP is shaded in yellow.

Appendix F: Sensibility analysis performed on air–sea CO₂ flux calculations

A sensibility analysis was performed to evaluate the importance of temperature, salinity, wind speed, and seawater–atmospheric *p*CO₂ difference terms in the air–sea CO₂ flux calculation. Previous terms are increased (decreased) one by one by 10%. Air–sea CO₂ fluxes are then post-processed using Eqs. (8) and (9). The calculation is performed using MATLAB. We present in Table 4 the mean difference between the reference air–sea CO₂ fluxes (i.e., calculated without increasing (decreasing) one of the calculation terms by 10%) and the air–sea CO₂ fluxes obtained by adding (removing) 10% to (from) one of the terms of the calculation (Eq. F1).

$$\Delta_{\text{Air-sea CO}_2\text{Fluxes}} = \frac{1}{N} \cdot \sum_{i=1}^N (\text{abs}(\text{Ref}) - \text{abs}(X_{10\%})) \quad (\text{F1})$$

In the above, $\Delta_{\text{Air-sea CO}_2\text{Fluxes}}$ is expressed in $\text{mmol m}^{-2} \text{s}^{-1}$, and N is the number of modeled values. X represents temperature, salinity, wind speed, or the difference between seawater and atmospheric *p*CO₂.

Code and data availability. The current version of Eco3M_MIX-CarbOx is available from the Zenodo website (<https://doi.org/10.5281/zenodo.7669658>, Barré et al., 2022) under the Creative Commons Attribution 4.0 international license, as are input data and scripts to run the model and to produce the plots for all the simulations presented in this paper.

SOLEMIO time series data (carbonate variables) are available on seanoe website (<https://doi.org/10.17882/72356>, Wimart-Rousseau et al., 2020b). Temperature data are only available on request by filling out the form for the station (Planier-Souquet) and years pre-selected (2017) on T-MEDNET website (<https://t-mednet.org/request-data>, Guillemain, 2021). Salinity data are available on osupytheas website (<https://doi.org/10.34930/79C421C5-9335-4957-88FA-804FB4AE4B43>, Garcia and Raimbault, 2022). The non-processed atmospheric *p*CO₂ data are available on ATMOSUD website (free access, <https://servicedata.atmosud.org/donnees-stations>, AtmoSud, 2024) by filling out the form for the station (Cinq Avenues), the period (1 January 2017 to 31 December 2017) and the frequency (an hour). The processed data are part of the AMC project (<https://www.otmed.fr/research-projects-and-results/result-2449>, Xueref-Remy et al., 2016) and are only available on request. Request should be addressed to Alexandre Armengaud and Irène Xueref-Remy.

Supplement. The supplement related to this article is available online at: <https://doi.org/10.5194/gmd-17-5851-2024-supplement>.

Author contributions. LB conceptualized this study, developed the Eco3M_MIX-CarbOx model v1.0, designed the numerical experiments, developed MATLAB software to visualize and process the model results, processed and analyzed the model results, wrote the initial draft of the paper, revised the paper, and answered reviewers' comments.

FD provided the initial version of the model code (without the carbonate module and with an initial implementation of the mixotroph organisms) and helped to develop the Eco3M_MIX-CarbOx v1.0. TW participated in the conceptualization of this study, participated in the data acquisition of carbonate variables, helped to design the numerical experiments, analyzed the model results, and reviewed, edited the initial draft of the paper, and helped to answer reviewers' comments. CM helped in the model development process by providing expertise on the code development to reduce the calculation time. CY provided the wind and irradiance data and maintained computing resources. CP acquired the funding, participated in the conceptualization of this study and supervised it, participated in the model development, designed the numerical experiments, analyzed the model results, reviewed and edited the initial draft of the paper and helped to answer reviewers' comments.

Competing interests. The contact author has declared that none of the authors has any competing interests.

Disclaimer. Publisher's note: Copernicus Publications remains neutral with regard to jurisdictional claims made in the text, published maps, institutional affiliations, or any other geographical representation in this paper. While Copernicus Publications makes every effort to include appropriate place names, the final responsibility lies with the authors.

Acknowledgements. We thank the National Service d'Observation en Milieu Littoral (SOMLIT) for its permission to use the SOLEMIO data. We would like to thank the crew members of the RV *Antedon II*, operated by the DT-INSU, for making these samplings possible and the team of the SAM platform (Service Atmosphère Mer) of the MIO for the help with the field work. We also thank Michel Lafont and Véronique Lagadec of the PACEM (Plateforme Analytique de Chimie des Environnements Marins) platform of the MIO and the SNAPO-CO₂ at LOCEAN, Paris. The SNAPO-CO₂ service at LOCEAN is supported by CNRS-INSU and OSU Ecce-Terra. We acknowledge the TMEDNet team for the permission to use the Planier-Souquet temperature data. We thank the ROMARIN network team for the permission to use the salinity data from Carry buoy. We thank the observatoire de la qualité de l'air en Région Sud Provence-Alpes-Côte d'Azur (ATMOSUD), in particular Alexandre Armengaud and the AMC (Aix-Marseille Carbon Pilot Study) project leaders, Irène Xueref-Remy and Dominique Lefèvre, for providing the atmospheric CO₂ data from the Cinq Avenue station. We acknowledge the staff of the "Cluster de calcul intensif HPC" platform of the OSU Institut PYTHEAS (Aix-Marseille Université, INSU-CNRS) for providing the computing facilities. We would like to thank Julien Lecubin from the Service Informatique de l'OSU Institut Pytheas for the technical assistance. We thank the XpertScientific team for the paper corrections.

Financial support. This work takes part of the IAMM project (Évaluer l'Impact de la métropole Aix-Marseille sur l'Acidification de la baie de Marseille et les conséquences sur les microorganismes marins, approche par Modélisation) funded by the public establish-

ment of the Ministry of the Environment, l'Agence de l'eau Rhône Méditerranée Corse (convention no. 2019 0827).

Review statement. This paper was edited by Andrew Yool and reviewed by Julien Palmieri and one anonymous referee.

References

- Allen, J. I., Holt, J. T., Blackford, J., and Proctor, R.: Error quantification of a high-resolution coupled hydrodynamic-ecosystem coastal-ocean model: Part 2. Chlorophyll-a, nutrients and SPM, *J. Marine Syst.*, 68, 381–404, <https://doi.org/10.1016/j.jmarsys.2007.01.005>, 2007.
- Artioli, Y., Blackford, J. C., Nondal, G., Bellerby, R. G. J., Wakelin, S. L., Holt, J. T., Butenschön, M., and Allen, J. I.: Heterogeneity of impacts of high CO₂ on the North Western European Shelf, *Biogeosciences*, 11, 601–612, <https://doi.org/10.5194/bg-11-601-2014>, 2014.
- AtmoSud: Données aux stations, AtmoSud [data set], <https://servicedata.atmosud.org/donnees-stations>, last access: 20 June 2024.
- Aucour, A. M., Sheppard, S. M., Guyomar, O., and Wattelet, J.: Use of ¹³C to trace origin and cycling of inorganic carbon in the Rhône river system, *Chem. Geol.*, 159, 87–105, [https://doi.org/10.1016/S0009-2541\(99\)00035-2](https://doi.org/10.1016/S0009-2541(99)00035-2), 1999.
- Baklouti, M., Diaz, F., Pinazo, C., Faure, V., and Queguiner, B.: Investigation of mechanistic formulations depicting phytoplankton dynamics for models of marine pelagic ecosystems and description of a new model, *Prog. Oceanogr.*, 71, 1–33, <https://doi.org/10.1016/j.pocean.2006.05.002>, 2006a.
- Baklouti, M., Faure, V., Pawlowski, L., and Sciandra, A.: Investigation and sensitivity analysis of a mechanistic phytoplankton model implemented in a new modular numerical tool (Eco3M) dedicated to biogeochemical modelling, *Prog. Oceanogr.*, 71, 34–58, <https://doi.org/10.1016/j.pocean.2006.05.003>, 2006b.
- Barré, L., Diaz, F., Wagener, T., Van Wambeke, F., Mazoyer, C., Yohia, C., and Pinazo, C.: Eco3M_MIX-CarbOx (v1.0), Zenodo [code], <https://doi.org/10.5281/zenodo.7669658>, 2022.
- Barré, L., Diaz, F., Wagener, T., Van Wambeke, F., Mazoyer, C., Yohia, C., and Pinazo, C.: Implementation and assessment of a model including mixotrophs and the carbonate cycle (Eco3M_MIX-CarbOx v1.0) in a highly dynamic Mediterranean coastal environment (Bay of Marseille, France) – Part 1: Evolution of ecosystem composition under limited light and nutrient conditions, *Geosci. Model Dev.*, 16, 6701–6739, <https://doi.org/10.5194/gmd-16-6701-2023>, 2023.
- Barrier, N., Petrenko, A. A., and Ourmières, Y.: Strong intrusions of the Northern Mediterranean Current on the eastern Gulf of Lion: insights from in-situ observations and high-resolution numerical modelling, *Ocean Dynam.*, 66, 313–327, <https://doi.org/10.1007/s10236-016-0921-7>, 2016.
- Bates, N. R., Best, M. H. P., Neely, K., Garley, R., Dickson, A. G., and Johnson, R. J.: Detecting anthropogenic carbon dioxide uptake and ocean acidification in the North Atlantic Ocean, *Biogeosciences*, 9, 2509–2522, <https://doi.org/10.5194/bg-9-2509-2012>, 2012.
- Begovic, M.: Contribution à l'étude du système des carbonates en Méditerranée-Distribution et variation spatio-temporelle de la pression partielle de CO₂ dans les eaux superficielles du bassin Liguro-Provençal, PhD Thesis, Université Pierre et Marie Curie – Paris VI, 2001.
- Bourgeois, T., Orr, J. C., Resplandy, L., Terhaar, J., Ethé, C., Gehlen, M., and Bopp, L.: Coastal-ocean uptake of anthropogenic carbon, *Biogeosciences*, 13, 4167–4185, <https://doi.org/10.5194/bg-13-4167-2016>, 2016.
- Brenner, H., Braeckman, U., Le Guitton, M., and Meysman, F. J. R.: The impact of sedimentary alkalinity release on the water column CO₂ system in the North Sea, *Biogeosciences*, 13, 841–863, <https://doi.org/10.5194/bg-13-841-2016>, 2016.
- Carstensen, J., Chierci, M., Gustafsson, B. G., and Gustafsson, E.: Long-term and seasonal trends in estuarine and coastal carbonate systems, *Global Biogeochem. Cycles*, 32, 497–513, <https://doi.org/10.1002/2017gb005781>, 2018.
- Clayton, T. D. and Byrne, R. H.: Spectrophotometric seawater pH measurements: total hydrogen ion concentration scale calibration of m-cresol purple and at-sea results, *Deep-Sea Res. Pt. I*, 40, 2115–2129, [https://doi.org/10.1016/0967-0637\(93\)90048-8](https://doi.org/10.1016/0967-0637(93)90048-8), 1993.
- Copin-Montegut, C.: Alkalinity and carbon budgets in the Mediterranean Sea, *Global Biogeochem. Cycles*, 7, 915–925, <https://doi.org/10.1029/93GB01826>, 1993.
- Cossarini, G., Lazzari, P., and Solidoro, C.: Spatiotemporal variability of alkalinity in the Mediterranean Sea, *Biogeosciences*, 12, 1647–1658, <https://doi.org/10.5194/bg-12-1647-2015>, 2015.
- De Carlo, E. H., Mousseau, L., Passafiume, O., Drupp, P. S., and Gattuso, J. -P.: Carbonate Chemistry and Air–Sea CO₂ Flux in a NW Mediterranean Bay Over a Four-Year Period: 2007–2011, *Aquat. Geochem.*, 19, 399–442, <https://doi.org/10.1007/s10498-013-9217-4>, 2013.
- Dickson, A. G.: Standard potential of the reaction: AgCl(s) + 1/2 H₂(g) = Ag(s) + HCl(aq), and the standard acidity constant of the ion HSO₄⁻ in synthetic seawater from 273.15 to 318.15 K, *J. Chem. Thermodynam.*, 22, 113–127, 1990a.
- Dickson, A. G.: Thermodynamics of the dissociation of boric acid in synthetic seawater from 273.15 to 318.15 K, *Deep-Sea Res.*, 37, 755–766, [https://doi.org/10.1016/0198-0149\(90\)90004-F](https://doi.org/10.1016/0198-0149(90)90004-F), 1990b.
- Dickson, A. G. and Riley, J. P.: The estimation of acid dissociation constants in seawater media from potentiometric titrations with strong base. I. The ionic product of water – KW, *Marine Chem.*, 7, 89–99, 1979a.
- Dickson, A. G. and Riley, J. P.: The estimation of acid dissociation constants in sea-water media from potentiometric titrations with strong base. II. The dissociation of phosphoric acid, *Marine Chem.*, 7, 101–109, [https://doi.org/10.1016/0304-4203\(79\)90002-1](https://doi.org/10.1016/0304-4203(79)90002-1), 1979b.
- DOE (U.S. Department of Energy): Handbook of methods for the analysis of the various parameters of the carbon dioxide system in seawater; version 2, edited by: Dickson, A. G. and Goyet, C., ORNL/CDIAC-74, 1994.
- Dore, J. E., Lukas, R., Sadler, D. W., Church, M. J., and Karl, D. M.: Physical and biogeochemical modulation of ocean acidification in the central North Pacific, *P. Natl. Acad. Sci. USA*, 106, 12235–12240, <https://doi.org/10.1073/pnas.0906044106>, 2009.

- D'Ortenzio, F., Antoine, D., and Marullo, S.: Satellite-driven modeling of the upper ocean mixed layer and air–sea CO₂ flux in the Mediterranean Sea, *Deep-Sea Res.*, 55, 405–434, <https://doi.org/10.1016/j.dsr.2007.12.008>, 2008.
- Feely, R. A., Doney, S. C., and Cooley, S. R.: Ocean Acidification: Present conditions and future changes in a high-CO₂ world, *Oceanography*, 22, 36–47, 2009.
- Frayse, M., Pinazo, C., Faure, V. M., Fuchs, R., Lazzari, P., Raimbault, P., and Peyraud, I.: Development of a 3D Coupled Physical-Biogeochemical Model for the Marseille Coastal Area (NW Mediterranean Sea): What Complexity Is Required in the Coastal Zone?, *PLoS ONE*, 8, e80012, <https://doi.org/10.1371/journal.pone.0080012>, 2013.
- Frayse, M., Pairaud, I., Ross, O. N., Faure, V. M., and Pinazo, C.: Intrusion of Rhone River diluted water into the Bay of Marseille: Generation processes and impacts on ecosystem functioning, *J. Geophys. Res.-Oceans*, 119, 6535–6556, <https://doi.org/10.1002/2014JC010022>, 2014.
- Friedlingstein, P., Jones, M. W., O'Sullivan, M., Andrew, R. M., Bakker, D. C. E., Hauck, J., Le Quéré, C., Peters, G. P., Peters, W., Pongratz, J., Sitch, S., Canadell, J. G., Ciais, P., Jackson, R. B., Alin, S. R., Anthoni, P., Bates, N. R., Becker, M., Bellouin, N., Bopp, L., Chau, T. T. T., Chevallier, F., Chini, L. P., Cronin, M., Currie, K. I., Decharme, B., Djeutchouang, L. M., Dou, X., Evans, W., Feely, R. A., Feng, L., Gasser, T., Gilfillan, D., Gkritzalis, T., Grassi, G., Gregor, L., Gruber, N., Gürses, Ö., Harris, I., Houghton, R. A., Hurtt, G. C., Iida, Y., Ilyina, T., Luijkx, I. T., Jain, A., Jones, S. D., Kato, E., Kennedy, D., Klein Goldewijk, K., Knauer, J., Korsbakken, J. I., Körtzinger, A., Landschützer, P., Lauvset, S. K., Lefèvre, N., Lienert, S., Liu, J., Marland, G., McGuire, P. C., Melton, J. R., Munro, D. R., Nabel, J. E. M. S., Nakaoka, S.-I., Niwa, Y., Ono, T., Pierrot, D., Poulter, B., Rehder, G., Resplandy, L., Robertson, E., Rödenbeck, C., Rosan, T. M., Schwinger, J., Schwingshackl, C., Séférian, R., Sutton, A. J., Sweeney, C., Tanhua, T., Tans, P. P., Tian, H., Tilbrook, B., Tubiello, F., van der Werf, G. R., Vuichard, N., Wada, C., Wanninkhof, R., Watson, A. J., Willis, D., Wiltshire, A. J., Yuan, W., Yue, C., Yue, X., Zaehle, S., and Zeng, J.: Global Carbon Budget 2021, *Earth Syst. Sci. Data*, 14, 1917–2005, <https://doi.org/10.5194/essd-14-1917-2022>, 2022.
- Garcia, F. and Raimbault, P.: Panache du Rhône: Suivi des eaux du Rhône en zone côtière par mesure haute fréquence de la salinité de surface, MIO UMR 7294 CNRS [data set], <https://doi.org/10.34930/79C421C5-9335-4957-88FA-804FB4AE4B43> (last access: 20 June 2024), 2022.
- Gatti, J., Petrenko, A., Devenon, J. -L., Leredde, Y., and Ulses, C.: The Rhone River dilution zone present in the northeastern shelf of the Gulf of Lion in December 2003, *Cont. Shelf Res.*, 26, 1794–1815, <https://doi.org/10.1016/j.csr.2006.05.012>, 2006.
- Gattuso, J. -P., Frankignoulle, M., and Wollast, R.: Carbon and carbonate metabolism in coastal aquatic ecosystems, *Annu. Rev. Ecol. Evol.*, 29, 405–34, <https://doi.org/10.1146/annurev.ecolsys.29.1.405>, 1998.
- González-Dávila, M., Santana-Casiano, J. M., Rueda, M. J., and Llinás, O.: The water column distribution of carbonate system variables at the ESTOC site from 1995 to 2004, *Biogeosciences*, 7, 3067–3081, <https://doi.org/10.5194/bg-7-3067-2010>, 2010.
- Guerzoni, S., Molinaroli, E., and Chester, R.: Saharan dust inputs to the western Mediterranean Sea: depositional patterns, geochemistry and sedimentological implications, *Deep-Sea Res. Pt. II*, 44, 631–654, [https://doi.org/10.1016/S0967-0645\(96\)00096-3](https://doi.org/10.1016/S0967-0645(96)00096-3), 1997.
- Guillemain, D.: Données de température à la station Planier-Souquet (5 m), Regional temperature observation network T-MEDNet [data set], <https://t-mednet.org/request-data> (last access: 20 June 2024), 2021.
- Gustafsson, E., Wällstedt, T., Humborg, C., Mörth, C.-M., and Gustafsson, B. G.: External total alkalinity loads versus internal generation: The influence of nonriverine alkalinity sources in the Baltic Sea, *Global Biogeochem. Cycles*, 28, 1358–1370, <https://doi.org/10.1002/2014GB004888>, 2014.
- Hassoun, A. E. R., Gemayel, E., Krasakopoulou, E., Goyet, C., Abboud-Abi Saab, M., Ziveri, P., Touratier, F., Guglielmi, V., and Flaco, C.: Modeling of the Total Alkalinity and the Total Inorganic Carbon in the Mediterranean Sea, *J. Water Resour. Ocean Sci.*, 4, 24–32, <https://doi.org/10.11648/j.wros.20150401.14>, 2015.
- Hopkins, T. S.: The structure of Ionian and Levantine Seas, *Rep. Meteorol. Oceanogr.*, 41, 35–56, Harvard Univ., Cambridge, Mass, 1992.
- Ingrosso, G., Giani, M., Cibic, T., Karuza, A., Kralj, M., and Del Negro, P.: Carbonate chemistry dynamics and biological processes along a river–sea gradient (Gulf of Trieste, northern Adriatic Sea), *J. Marine Syst.*, 155, 35–49, <https://doi.org/10.1016/j.jmarsys.2015.10.013>, 2016.
- Kapsenberg, L., Alliouane, S., Gazeau, F., Mousseau, L., and Gattuso, J.-P.: Coastal ocean acidification and increasing total alkalinity in the northwestern Mediterranean Sea, *Ocean Sci.*, 13, 411–426, <https://doi.org/10.5194/os-13-411-2017>, 2017.
- Krumins, V., Gehlen, M., Arndt, S., Van Cappellen, P., and Regnier, P.: Dissolved inorganic carbon and alkalinity fluxes from coastal marine sediments: model estimates for different shelf environments and sensitivity to global change, *Biogeosciences*, 10, 371–398, <https://doi.org/10.5194/bg-10-371-2013>, 2013.
- Kwiatkowski, L. and Orr, J. C.: Diverging seasonal extremes for ocean acidification during the twenty-first century, *Nat. Clim. Change*, 8, 141–145, <https://doi.org/10.1038/s41558-017-0054-0>, 2018.
- Lajaunie-Salla, K., Diaz, F., Wimart-Rousseau, C., Wagener, T., Lefèvre, D., Yohia, C., Xueref-Remy, I., Nathan, B., Armengaud, A., and Pinazo, C.: Implementation and assessment of a carbonate system model (Eco3M-CarbOx v1.1) in a highly dynamic Mediterranean coastal site (Bay of Marseille, France), *Geosci. Model Dev.*, 14, 295–321, <https://doi.org/10.5194/gmd-14-295-2021>, 2021.
- Laruelle, G. G., Dürr, H. H., Slomp, C. P., and Borges, A. V.: Evaluation of sinks and sources of CO₂ in the global coastal ocean using a spatially explicit typology of estuaries and continental shelves, *Geophys. Res. Lett.*, 37, L15607, <https://doi.org/10.1029/2010GL043691>, 2010.
- Laruelle, G. G., Lauerwald, R., Pfeil, B., and Regnier, P.: Regionalized global budget of the CO₂ exchange at the air–water interface in continental shelf seas, *Global Biogeochemical Cycles*, 28–11, 1199–1214, <https://doi.org/10.1002/2014GB004832>, 2014.
- Lewis, E. and Wallace, D.: Program developed for CO₂ system calculations, *osti.gov* [code], <https://doi.org/10.15485/1464255>, 1998.

- Lovenduski, N. S., Gruber, N., Scott, C. D., and Lima, I. D.: Enhanced CO₂ outgassing in the Southern Ocean from a positive phase of the Southern Annular Mode, *Global Biogeochem. Cycles*, 21, GB2026, <https://doi.org/10.1029/2006GB002900>, 2007.
- Luchetta, A., Cantoni, C., and Catalano, G.: New observations of CO₂-induced acidification in the northern Adriatic Sea over the last quarter century, *Chem. Ecol.*, 26, 1–17, <https://doi.org/10.1080/02757541003627688>, 2010.
- Ludwig, W. E., Dumont, M., Meybeck, M., and Heussner, S.: River discharges of water and nutrients to the Mediterranean and Black Sea: Major drivers for ecosystem changes during past and future decades?, *Prog. Oceanogr.*, 80, 199–217, <https://doi.org/10.1016/j.pocean.2009.02.001>, 2009.
- Lueker, T. J., Dickson, A. G., and Keeling, C. D.: Ocean pCO₂ calculated from dissolved inorganic carbon, alkalinity, and equations for K₁ and K₂: Validation based on laboratory measurements of CO₂ in gas and seawater at equilibrium, *Marine Chem.*, 70, 105–119, [https://doi.org/10.1016/S0304-4203\(00\)00022-0](https://doi.org/10.1016/S0304-4203(00)00022-0), 2000.
- Maréchal, D.: A soil-based approach to rainfall-runoff modelling in ungauged catchments for England and Wales, PhD Thesis, Cranfield University, 157 pp., 2004.
- Middelburg, J. J.: Marine carbon biogeochemistry, A primer for earth system scientists, Springer Briefs in Earth System Sciences, Springer Nature Switzerland AG, Cham, Switzerland, 2019.
- Middelburg, J. J., Soetaert, K., and Hagens, M.: Ocean alkalinity buffering and biogeochemical processes, *Rev. Geophys.*, 58, e2019RG000681, <https://doi.org/10.1029/2019RG000681>, 2020.
- Millero, F. J.: Thermodynamics of the carbon dioxide system in the oceans, *Geochim. Cosmochim. Ac.*, 59, 661–677, [https://doi.org/10.1016/0016-7037\(94\)00354-O](https://doi.org/10.1016/0016-7037(94)00354-O), 1995.
- Millet, B., Pinazo, C., Banaru, D., Pagès, R., Guiart, P., and Pairaud, I.: Unexpected spatial impact of treatment plant discharges induced by episodic hydrodynamic events: Modelling lagrangian transport of fine particles by Northern Current intrusions in the Bays of Marseille (France), Édité par João Miguel Dias, *PLoS ONE*, 13, e0195257, <https://doi.org/10.1371/journal.pone.0195257>, 2018.
- Millot, C.: The Gulf of Lions' hydrodynamic, *Cont. Shelf Res.*, 10, 885–894, 1990.
- Mitra, A., Flynn, K. J., Burkholder, J. M., Berge, T., Calbet, A., Raven, J. A., Granéli, E., Glibert, P. M., Hansen, P. J., Stoecker, D. K., Thingstad, F., Tillmann, U., Våge, S., Wilken, S., and Zubkov, M. V.: The role of mixotrophic protists in the biological carbon pump, *Biogeosciences*, 11, 995–1005, <https://doi.org/10.5194/bg-11-995-2014>, 2014.
- Morel, A. and André, J.-M.: Pigment distribution and primary production in the western Mediterranean as derived and modelled from coastal zone colour scanner observations, *J. Geophys. Res.-Oceans*, 96, 12685–12698, <https://doi.org/10.1029/91JC00788>, 1991.
- Morris, A. W. and Riley, J. P.: The bromide/chlorinity and sulphate/chlorinity ratio in sea water, *Deep-Sea Res.*, 13, 699–705, 1966.
- Mucci, A.: The solubility of calcite and aragonite in seawater at various salinities, temperatures, and one atmosphere total pressure, *Am. J. Sci.*, 283, 780–799, <https://doi.org/10.2475/ajs.283.7.780>, 1983.
- Orr, J. C., Fabry, V. J., Aumont, O., Bopp, L., Doney, S. C., Feely, R. A., Gnanadesikan, A., Gruber, N., Ishida, A., and Joos, F.: Anthropogenic Ocean acidification over the twenty-first century and its impact on calcifying organisms, *Nature*, 437, 681–686, <https://doi.org/10.1038/nature04095>, 2005.
- Pairaud, I., Gatti, J., Bensoussan, N., Verney, R., and Garreau, P.: Hydrology and circulation in a coastal area off Marseille: Validation of a nested 3D model with observations, *J. Marine Syst.*, 88, 20–33, <https://doi.org/10.1016/j.jmarsys.2011.02.010>, 2011.
- Pont, D., Simonnet, J.-P., and Walter, A. V.: Medium-term changes in suspended sediment delivery to the Ocean: Consequences of catchment heterogeneity and river management (Rhône River, France), *Estuar. Coast. Shelf Sci.*, 54, 1–18, <https://doi.org/10.1006/ecss.2001.0829>, 2002.
- Pujo-Pay, M., Conan, P., Joux, F., Oriol, L., Naudin, J.-J., and Cauwet, G.: Impact of phytoplankton and bacterial production on nutrient and DOM uptake in the Rhône River plume (NW Mediterranean), *Marine Ecol. Prog. Ser.*, 315, 43–54, <https://doi.org/10.3354/meps315043>, 2006.
- Revelante, N. and Gilmartin, M.: The effect of Po River discharge on phytoplankton dynamics in the Northern Adriatic Sea, *Marine Biol.*, 34, 259–271, <https://doi.org/10.1007/BF00388803>, 1976.
- Riley, J. P.: The occurrence of anomalously high fluoride concentrations in the North Atlantic, *Deep-Sea Res.*, 12, 219–220, 1965.
- Riley, J. P. and Tongudai, M.: The major cation/chlorinity ratios in sea water, *Chem. Geol.*, 2, 263–269, 1967.
- Roobaert, A., Laruelle, G. G., Landschützer, P., Gruber, N., Chou, L., and Regnier, P.: The Spatiotemporal Dynamics of the Sources and Sinks of CO₂ in the Global Coastal Ocean, *Global Biogeochem. Cycles*, 33, 1693–1714, <https://doi.org/10.1029/2019GB006239>, 2019.
- Ross, O. N., Fraysse, M., Pinazo, C., and Pairaud, I.: Impact of an intrusion by the Northern Current on the biogeochemistry in the Eastern Gulf of Lion, NW Mediterranean, *Estuar. Coast. Shelf Sci.*, 170, 1–9, 2016.
- Salat, J., Garcia, M. A., Cruzado, A., Palanques, A., Arin, L., Gomis, D., Guillen, J., De Leon, A., Puigdefàbregas, J., Sospedra, J., and Velasquez, Z. R.: Seasonal changes of water mass structure and shelf slope exchanges at the Ebro Shelf (NW Mediterranean), *Cont. Shelf Res.*, 22, 327–348, [https://doi.org/10.1016/S0278-4343\(01\)00031-0](https://doi.org/10.1016/S0278-4343(01)00031-0), 2002.
- Sarmiento, J. L.: Ocean biogeochemical dynamics, Princeton university press, 528, ISBN 9781400849079, 2006.
- Schaeffer, A., Molcard, A., Forget, P., Fraunié, P., and Garreau, P.: Generation mechanisms for mesoscale eddies in the Gulf of Lions: radar observation and modelling, *Ocean Dynam.*, 61, 1587–1609, <https://doi.org/10.1007/s10236-011-0482-8>, 2011.
- Schneider, A., Douglas, W. R. W., and Körtzinger, A.: Alkalinity of the Mediterranean Sea, *Geophys. Res. Lett.*, 34, L15608, <https://doi.org/10.1029/2006GL028842>, 2007.
- Sharp, J. D., Pierrot, D., Humpbreys, M. P., Epitalon, J.-M., Orr, J. C., Lewis, E. R., and Wallace, D. W. R.: CO₂SYsv3 for MATLAB (v3.0.1), Zenodo [code], <https://doi.org/10.5281/zenodo.3952803>, 2020.
- Stow, C. A., Jolliff, J., McGillicuddy Jr., D. J., Doney, S. C., Allen, J. I., Friedrichs, M. A., Rose, K. A., and Wallhead, P.: Skill assessment for coupled biological/physical models of marine systems, *J. Marine Syst.*, 76, 4–15, <https://doi.org/10.1016/j.jmarsys.2008.03.011>, 2009.

- Thomas, H., Bozec, Y., Elkalay, K., and De Baar, H. J. W.: Enhanced Open Ocean Storage of CO₂ from Shelf Sea Pumping, *Science*, 304–5673, 1005–1008, <https://doi.org/10.1126/science.1095491>, 2004.
- Turi, G., Lachkar, Z., and Gruber, N.: Spatiotemporal variability and drivers of pCO₂ and air–sea CO₂ fluxes in the California Current System: an eddy-resolving modeling study, *Biogeosciences*, 11, 671–690, <https://doi.org/10.5194/bg-11-671-2014>, 2014.
- Uppström, L. R.: The boron/chlorinity ratio of deep-sea water from the Pacific Ocean, *Deep-Sea Res.*, 21, 161–162, 1974.
- Urbini, L., Inghrosso, G., Djakovac, T., Piacentino, S., and Giani, M.: Temporal and Spatial Variability of the CO₂ System in a Riverine Influenced Area of the Mediterranean Sea, the Northern Adriatic, *Front. Marine Sci.*, 7, 7–679, <https://doi.org/10.3389/fmars.2020.00679>, 2020.
- Van Slyke, D. D.: On the measurement of buffer values and on the relationship of buffer value to the dissociation constant of the buffer and the concentration and reaction of the buffer solution, *J. Biol. Chem.*, 52, 525–570, 1922.
- Wanninkhof, R.: Relationship between wind speed and gas exchange over the ocean revisited, *Limnol. Oceanogr.-Methods*, 12, 351–362, <https://doi.org/10.4319/lom.2014.12.351>, 2014.
- Weiss, R.: Carbon dioxide in water and seawater: the solubility of a non-ideal gas, *Marine Chem.*, 2, 203–215, [https://doi.org/10.1016/0304-4203\(74\)90015-2](https://doi.org/10.1016/0304-4203(74)90015-2), 1974.
- Wimart-Rousseau, C., Lajaunie-Salla, K., Marrec, P., Wagener, T., Raimbault, P., Lagadec, V., Lafont, M., Garcia, N., Diaz, F., Pinazo, C., Yohia, C., Garcia, F., Xueref-Remy, I., Blanc, P. E., Armengaud, A., and Lefèvre, D.: Temporal variability of the carbonate system and air–sea CO₂ exchanges in a Mediterranean human-impacted coastal site, *Estuar. Coast. Shelf Sci.*, 236, 106641, <https://doi.org/10.1016/j.ecss.2020.106641>, 2020a.
- Wimart-Rousseau, C., Wagener, T., Raimbault, P., Lagadec, V., Lafont, M., Garcia, N., and Lefevre, D.: Oceanic carbonate chemistry measurements from discrete samples collected at the SOLEMIO station (Bay of Marseille – North western Mediterranean Sea) between 2016 and 2019, SEANOIE [data set], <https://doi.org/10.17882/72356>, 2020b.
- Wolf-Gladrow, D. A., Zeebe, R. E., Klaas, C., Körtzinger, A., and Dickson, A. G.: Total Alkalinity: The explicit conservative expression and its application to biogeochemical processes, *Marine Chem.*, 106, 287–300, <https://doi.org/10.1016/j.marchem.2007.01.006>, 2007.
- Xueref-Remy, I., Lefèvre, D., Nathan, B., Milne, M., Piazolla, J., Yohia, C., Armengaud, A., Blanc, P. E., Mevy, J.-P., Reiter, I., Paya, A., Lajaunie-Salla, K., Wimart-Rousseau, C., Diaz, F., Pinazo, C., and Wagener, T.: Aix-Marseille Carbon Pilot Study (AMC), <https://www.otmed.fr/research-projects-and-results/result-2449> (last access: 20 June 2024), 2016.
- Yohia, C.: Genèse du mistral par interaction barocline et advection du tourbillon potentiel, *Climatologie*, 13, 24–37, <https://doi.org/10.4267/climatologie.1182>, 2017.