



HAL
open science

Association Between Years of Education and Amyloid Burden in Patients With Subjective Cognitive Decline, MCI, and Alzheimer Disease

Merle Hönig, Daniele Altomare, Camilla Caprioglio, Lyduine Collij, Frederik Barkhof, Bart van Berckel, Philip Scheltens, Gill Farrar, Mark R Battle, Hendrik Theis, et al.

► **To cite this version:**

Merle Hönig, Daniele Altomare, Camilla Caprioglio, Lyduine Collij, Frederik Barkhof, et al.. Association Between Years of Education and Amyloid Burden in Patients With Subjective Cognitive Decline, MCI, and Alzheimer Disease. *Neurology*, 2024, 102 (6), pp.e208053. 10.1212/wnl.000000000208053 . hal-04696803

HAL Id: hal-04696803

<https://hal.science/hal-04696803v1>

Submitted on 13 Sep 2024

HAL is a multi-disciplinary open access archive for the deposit and dissemination of scientific research documents, whether they are published or not. The documents may come from teaching and research institutions in France or abroad, or from public or private research centers.

L'archive ouverte pluridisciplinaire **HAL**, est destinée au dépôt et à la diffusion de documents scientifiques de niveau recherche, publiés ou non, émanant des établissements d'enseignement et de recherche français ou étrangers, des laboratoires publics ou privés.



Distributed under a Creative Commons Attribution 4.0 International License

Association Between Years of Education and Amyloid Burden in Patients With Subjective Cognitive Decline, MCI, and Alzheimer Disease

Merle Höning, PhD, Daniele Altomare, PhD, Camilla Caprioglio, MSc, Lyduine Collij, PhD, Frederik Barkhof, MD, Bart Van Berckel, MD, Philip Scheltens, MD, PhD, Gill Farrar, PhD, Mark R. Battle, BSc, Hendrik Theis, MD, Kathrin Giehl, PhD, Gerard N. Bischof, PhD, Valentina Garibotto, MD, José Luis L. Molinuevo, MD, PhD, Oriol Grau-Rivera, MD, PhD, Julien Delrieu, MD, Pierre Payoux, MD, PhD, Jean Francois Demonet, MD, PhD, Agneta K. Nordberg, MD, PhD, Irina Savitcheva, MD, PhD, Zuzana Walker, MD, Paul Edison, MD, PhD, Andrew W. Stephens, MD, PhD, Rossella Gismondi, MD, Frank Jessen, MD, Christopher J. Buckley, PhD, Juan Domingo Gispert, PhD, Giovanni B. Frisoni, MD, and Alexander Drzezga, MD, for the AMYPAD Consortium

Correspondence

Dr. Höning
m.hoenig@fz-juelich.de

Neurology® 2024;102:e208053. doi:10.1212/WNL.0000000000208053

Abstract

Objectives

Higher-educated patients with Alzheimer disease (AD) can harbor greater neuropathologic burden than those with less education despite similar symptom severity. In this study, we assessed whether this observation is also present in potential preclinical AD stages, namely in individuals with subjective cognitive decline and clinical features increasing AD likelihood (SCD+).

Methods

Amyloid-PET information ($[^{18}\text{F}]$ Flutemetamol or $[^{18}\text{F}]$ Florbetaben) of individuals with SCD+, mild cognitive impairment (MCI), and AD were retrieved from the AMYPAD-DPMS cohort, a multicenter randomized controlled study. Group classification was based on the recommendations by the SCD-I and NIA-AA working groups. Amyloid PET images were acquired within 8 months after initial screening and processed with AMYPYPE. Amyloid load was based on global Centiloid (CL) values. Educational level was indexed by formal schooling and subsequent higher education in years. Using linear regression analysis, the main effect of education on CL values was tested across the entire cohort, followed by the assessment of an education-by-diagnostic-group interaction (covariates: age, sex, and recruiting memory clinic). To account for influences of non-AD pathology and comorbidities concerning the tested amyloid-education association, we compared white matter hyperintensity (WMH) severity, cardiovascular events, depression, and anxiety history between lower-educated and higher-educated groups within each diagnostic category using the Fisher exact test or χ^2 test. Education

From the Department of Nuclear Medicine, Faculty of Medicine and University Hospital Cologne (M.H., H.T., K.G., G.N.B., A.D.), University of Cologne; Institute of Neuroscience and Medicine (INM-2) (M.H., K.G., A.D.), Molecular Organization of the Brain, Forschungszentrum Jülich, Germany; Neurology Unit (D.A.), Department of Clinical and Experimental Sciences, University of Brescia, Italy; Laboratory of Neuroimaging of Aging (LANVIE) (D.A.), University of Geneva; Geneva Memory Center (D.A., C.C., G.B.F.), Geneva University Hospitals, Switzerland; Amsterdam UMC (L.C., F.B., B.V.B., P.S.), Location VUmc, Radiology; Amsterdam Neuroscience (L.C., F.B., B.V.B., P.S.), Brain Imaging, the Netherlands; Queen Square Institute of Neurology and Centre for Medical Image Computing (F.B.), University College London; GE Healthcare (G.F., M.R.B., C.J.B.), Pharmaceutical Diagnostics, Amersham, United Kingdom; Department of Neurology (H.T.), Faculty of Medicine and University Hospital Cologne, University of Cologne, Germany; Division of Nuclear Medicine and Molecular Imaging (V.G.), Diagnostic Department, University Hospitals of Geneva; Laboratory of Neuroimaging and Innovative Molecular Tracers (NIMTLab) (V.G.), Faculty of Medicine, Department of Radiology, University of Geneva; Center for Biomedical Imaging (CIBM) (V.G.), Geneva, Switzerland; Barcelonaβeta Brain Research Center (BBRC) (J.L.L.M., O.G.-R., J.D.G.), Pasqual Maragall Foundation, Barcelona, Spain; Gérontopôle (J.D., P.P., J.F.D.), Department of Geriatrics, Toulouse University Hospital; Maintain Aging Research Team (J.D.), CERPOP, Inserm, Université Paul Sabatier, Toulouse; ToNIC (P.P.), Toulouse NeuroImaging Center, Université de Toulouse, Inserm, UPS, France; Center for Alzheimer Research (A.K.N.), Department of Neurobiology, Care Sciences and Society, Karolinska Institutet; Theme Inflammation and Aging (A.K.N.), Karolinska University Hospital, Stockholm; Medical Radiation Physics and Nuclear Medicine (I.S.), Karolinska University Hospital, Sweden; Division of Psychiatry (Z.W.), University College London, London and Essex Partnership University NHS Foundation Trust; Department of Brain Sciences (P.E.), Imperial College London, United Kingdom; Life Molecular Imaging (A.W.S., R.G.), Berlin; Department of Psychiatry (F.J.), Faculty of Medicine and University Hospital Cologne, University of Cologne; and German Center for Neurodegenerative Diseases (DZNE) (F.J., A.D.), Bonn-Cologne, Germany.

Go to [Neurology.org/N](https://www.neurology.org/N) for full disclosures. Funding information and disclosures deemed relevant by the authors, if any, are provided at the end of the article.

The Article Processing Charge was funded by the authors.

Data used in preparation of this article were obtained from the AMYPAD project. As such, the investigators within AMYPAD contributed to the design and implementation of AMYPAD and/or provided data but did not participate in analysis or writing of this report. A complete listing of AMYPAD contributors can be found in Appendix 2 at links.lww.com/WNL/D365.

This is an open access article distributed under the terms of the Creative Commons Attribution License 4.0 (CC BY), which permits unrestricted use, distribution, and reproduction in any medium, provided the original work is properly cited.

groups were defined using a median split on education (Md = 13 years) in a subsample of the initial cohort, for whom this information was available.

Results

Across the cohort of 212 individuals with SCD+ (M(Age) = 69.17 years, F 42.45%), 258 individuals with MCI (M(Age) = 72.93, F 43.80%), and 195 individuals with dementia (M(Age) = 74.07, F 48.72%), no main effect of education (β = 0.52, 95% CI -0.30 to 1.58), but a significant education-by-group interaction on CL values, was found (p = 0.024) using linear regression modeling. This interaction was driven by a negative association of education and CL values in the SCD+ group (β = -0.11, 95% CI -4.85 to -0.21) and a positive association in the MCI group (β = 0.15, 95% CI 0.79-5.22). No education-dependent differences in terms of WMH severity and comorbidities were found in the subsample (100 cases with SCD+, 97 cases with MCI, 72 cases with dementia).

Discussion

Education may represent a factor oppositely modulating subjective awareness in preclinical stages and objective severity of ongoing neuropathologic processes in clinical stages.

Introduction

In Alzheimer disease (AD), longer formal education (i.e., higher education) is not only related to lower disease prevalence but also to greater tolerance against the effects of neuropathology on functionality. Given these observations, the concepts of resistance (i.e., withstanding neuropathology buildup) and resilience (i.e., coping with neuropathology) have been established.¹ Studies investigating resilience mechanisms reported that better-educated patients with mild cognitive impairment (MCI) and dementia harbor greater amyloid² and tau³ burden at the diagnosis compared with lower-educated counterparts with similar clinical impairment. Thus, higher education seems to diminish symptom severity and/or delay the onset of objectively symptomatic disease. The protective effects of education on AD pathology in potential preclinical stages of AD, namely subjective cognitive decline (SCD), have recently become of interest.

SCD occurs in approximately 25% of individuals older than 60 years but cannot be detected by standard neuropsychological tests.⁴ This concept can be extended to SCD plus (SCD+), which refers to additional features increasing AD likelihood.⁴ Of interest, recent studies demonstrated that higher education was associated with slower cognitive decline in individuals with SCD.⁵ It remains, however, unknown whether higher-educated individuals with SCD present greater neuropathologic burden compared with those with lower education. In this study, we examined the relationship between education and amyloid plaques, the characteristic AD neuropathologic hallmark, using PET imaging in individuals with SCD+, MCI, and dementia.

Methods

Participants

We used data of the AMYPAD-DPMS cohort, a phase 4, multicenter, prospective randomized controlled study,⁶ which aimed testing the clinical utility of amyloid PET. Participants presented cognitive complaints and were recruited from 8

European memory clinics. Subjects were randomized into 3 arms: early amyloid-PET (within 1 month from baseline), late amyloid-PET (8 months after baseline), or free choice (if and when it was requested by the managing physician). Classification into SCD+, MCI, or dementia was based on current recommendations by the SCD-I working group⁴ and NIA-AA^{7,8}. The most relevant features defining SCD+ were age 60-85 years, perceived memory decline within previous 5 years and duration >6 months, Mini-Mental State Examination (MMSE) > 24, exclusion of MCI, explicit concerns, and active seeking of consultation. According to the AMYPAD-DPMS inclusion criteria, age limit of patients with MCI and dementia was between 50 and 85 years; however, in this study, we included only those older than 60 years to match the age inclusion criterion of the SCD+ group (Table 1).

Standard Protocol Approvals, Registrations, and Patient Consents

The ethics committees of all recruiting clinics approved the study. All participants gave written informed consent. The trial was registered at EudraCT (2017-002527-21).

Biographical and Cognitive Data

Educational level was defined as formal schooling plus subsequent higher education in years. Cognitive performance (i.e., MMSE) and medical history (i.e., history of depression, anxiety or cardiovascular events, and hypertension) were acquired at the baseline visit.

Amyloid PET Imaging

For all patients, either a [¹⁸F]Flutemetamol or [¹⁸F]Florbetaben scan was available. PET acquisition consisted of 4 frames (4 × 5 minutes), acquired 90-110 minutes post injection. Because MRI was not routinely available, PET images were processed and quantified with AMYPYPE, which is a modified version of GE Healthcare's CortexID software. After spatial normalization to MNI space and intensity standardization using the whole cerebellum, the normalized PET scans were converted to the Centiloid (CL) scale allowing pooled analysis across tracer types.⁷ Global CL values were used for subsequent analyses.

Table 1 Inclusion Criteria and Sample Size of the Selected Cohort

| | Initial Sample (N = 840) | → | Evaluable PET scan | → | Available MMSE and >24 for SCD+ | → | Age range 60–85 y |
|-----------------|--------------------------|---|--------------------|---|---------------------------------|---|-------------------|
| SCD+ | n = 244 | | n = 219 | | n = 215 | | n = 212 |
| MCI | n = 341 | | n = 290 | | n = 287 | | n = 258 |
| Dementia | n = 255 | | n = 215 | | n = 213 | | n = 195 |

Abbreviation: MMSE = Mini-Mental State Examination.

White Matter Hyperintensities (WMH)

For a subset, structural MRI scans were obtained shortly after the baseline visit and rated by trained experts regarding the WMH severity using the Fazekas score.⁹

Statistical Analysis

To test the association between educational attainment and amyloid load, linear regression was used to first test the main effect of education on CL values correcting for age, sex, diagnostic group, and recruiting memory clinic. Next, an education-by-diagnostic-group interaction term was introduced to the regression model using dummy coding on diagnostic group. Underlying assumptions for regression were investigated (e.g., homoscedasticity and residual normality).

To account for potential influences of non-AD pathology and comorbidities concerning the education-amyloid association, we assessed education-dependent differences of WMH severity, hypertension, and history of depression or anxiety, cardiovascular event in a subgroup of the studied cohort. Given the variables' ordinal nature, we split the cohort into a higher-educated (>Md) and lower-educated (≤Md) group based on a median split on education (Md = 13 years). The Fisher exact test was used for the Fazekas score (due to observations $n < 5$) and χ^2 tests for the remaining comorbidity variable comparisons between education groups within and across diagnostic groups.

All analyses were performed using SPSS version 28. R Studio version 4.1.2 (package: ggplot2_3.3.6) was used for illustration.

Data Availability

Data not provided in the article because of space limitations may be shared (anonymized) at the request of any qualified investigator.

Results

Results are based on a total of 212 individuals with SCD+ (M(Age) = 69.17 ± 5.96, F 42.45%), 258 individuals with MCI (M(Age) = 72.93 ± 6.19, F 43.80%), and 195 individuals with dementia (M(Age) = 74.07 ± 6.33, F 48.72%) (Table 2). The SCD+ group was significantly younger ($H(2) = 65.27$, $\text{Eta}^2 = 0.098$), had higher MMSE scores ($H(2) = 325.89$, $\text{Eta}^2 = 0.491$) and education ($H(2) = 35.11$, $\text{Eta}^2 = 0.053$), and

lower CL values ($H(2) = 73.94$, $\text{Eta}^2 = 0.111$) than the MCI and dementia groups. Proportion of sex and tracer type was similar across groups. For detailed information on the subgroup (100 cases with SCD+, 97 with MCI, and 72 with dementia), please see the supplements (eAppendix 1, links.lww.com/WNL/D364).

The results of the linear regression yielded no main effect of education ($\beta = 0.52$, 95% CI –0.30–1.58) but a significant education-by-diagnostic-group interaction on CL values ($p = 0.024$). With increasing education, the SCD+ group presented lower CL values ($\beta = -0.11$, 95% CI –4.85 to –0.21) relative to the dementia group. By contrast, in the MCI group, higher education was linked to an increase in CL values ($\beta = 0.15$, 95% CI 0.79–5.22) relative to the SCD+ group (Figure). The effect sizes were overall rather small. In the subgroup, no education-dependent differences were observed for WMH severity and other comorbidities per diagnostic group (see eAppendix 1, links.lww.com/WNL/D364 for statistical summary).

Discussion

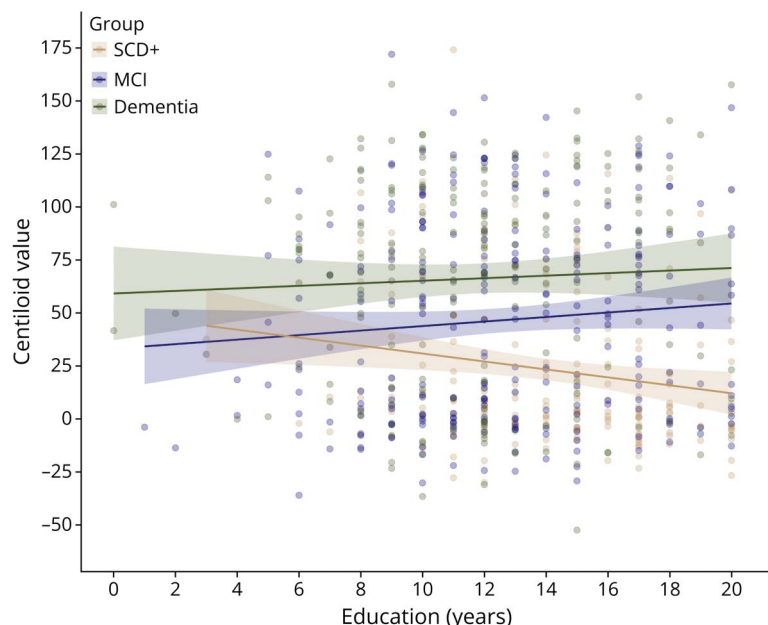
The findings indicate that higher-educated individuals in potential preclinical stages of AD (i.e., SCD+) may be more perceptive of the effects of subthreshold AD pathology on subjective functioning. By contrast, in clinical AD stages, higher educational attainment seems to be associated with a greater tolerance to the effects of marked amyloid burden on

Table 2 Demographic Characteristics of the Cohort Are Reported (Mean and SD)

| | SCD+, n = 212 | MCI, n = 258 | Dementia, n = 195 |
|-------------------------|---------------|---------------|-------------------|
| Age | 69.17 (5.96) | 72.93 (6.19) | 74.07 (6.33) |
| Sex (M/F) | 122/90 | 145/113 | 100/95 |
| MMSE | 28.74 (1.31) | 25.89 (3.02) | 21.82 (4.37) |
| Education | 14.02 (3.46) | 12.59 (3.94) | 11.75 (3.95) |
| Tracer FBB/FMT | 87/125 | 129/129 | 101/94 |
| Global Centiloid | 23.33 (37.97) | 46.58 (46.83) | 66.25 (49.68) |

Abbreviations: FBB = Florbetaben; FMT = Flutemetamol; MMSE = Mini-Mental State Examination.

Figure Association Between Years of Education and Centiloid Value for Potential Preclinical Stages (SCD+) and Clinical Stages (MCI and Dementia) of AD



objective cognitive measures. The latter observation is consistent with previous findings,² arguing that higher-educated patients with AD obtain resilience mechanisms, such as compensatory network recruitment strategies, supporting the prolongation of functional decline despite increasing neuropathologic burden.

By contrast, the observed inverse association in the SCD+ group could overall be explained by greater alertness and concern regarding their cognitive well-being and better access to health care systems. These factors may concomitantly contribute to the early diagnosis of SCD+, even at sub-threshold levels of AD pathology. Aside from this, higher education may be linked to resistance mechanisms, slowing pathology accumulation and thus disease progression. Indeed, the onset of MCI in cases with SCD was reported to be delayed by 9 years in individuals with higher premorbid intelligence.¹⁰ Yet, due to the cross-sectional nature of this study, this assumption of resistance mechanisms cannot be readily answered, and longitudinal designs are warranted. Moreover, we cannot rule out that better educated individuals with SCD+ may have additionally experienced from other pathologies than AD. Yet, in terms of WMH and other comorbidities, we did not observe an education effect.

Overall, the results indicate that education may have opposing modulatory effects depending on the disease stage. In potential preclinical stages, higher education may raise subjective awareness for ongoing neurodegenerative disease and may facilitate resistance mechanisms, while in clinical stages, higher education supports attenuation of objective symptomatic severity likely through resilience mechanisms.

Study Funding

The project leading to this publication has received funding from the Innovative Medicines Initiative 2 Joint Undertaking under grant agreement No. 115952. This Joint Undertaking receives the support from the European Union's Horizon 2020 research and innovation programme and EFPIA. This communication reflects the views of the authors and neither IMI nor the European Union and EFPIA are liable for any use that may be made of the information contained herein. D. Altomare received funding by the Fondation Recherche Alzheimer and the Swiss National Science Foundation (project CRSK-3_196354/1). F. Barkhof is supported by the NIHR biomedical research center at UCLH. H. Theis was supported by the program for rotation positions/Faculty of Medicine/University of Cologne and by the Cologne Clinician Scientist Program (CCSP)/Faculty of Medicine/University of Cologne. Funded by the Deutsche Forschungsgemeinschaft (DFG, German Research Foundation) (Project No. 413543196). V. Garibotto is supported by the Swiss National Science Foundation (projects 320030_169876, 320030_185028) the Schmidheiny foundation, the Fondation privée des HUG, and the Velux foundation. O. Grau-Rivera is supported by the Spanish Ministry of Science, Innovation and Universities (IJC2020-043417-I).

Disclosure

This communication reflects the views of the authors and neither IMI nor the European Union and EFPIA are liable for any use that may be made of the information contained in this study. M. Hoenig, D. Altomare, C. Caprioglio, P. Scheltens, B.N.M. van Berckel, G.N. Bischof, H. Theis, K. Giehl, J.L. Molinuevo, O. Grau-Rivera, J.F. Demonet, A. Nordberg, I. Savitcheva, and F. Jessen report no relevant conflicts of

interest related to this work. L. Collij has received research support from GE Healthcare (paid to institution). F. Barkhof received payment and honoraria from Bayer, Biogen-Idec, Merck, Novartis, Roche, IXICO Ltd, Combinostics, and Prothena for consulting, steering committee, or IDMC membership and research support through grants from EU/EFPIA Innovative Medicines Initiative Joint Undertaking (AMYPAD consortium), UK MS Society, PICTURE (IMDI-NWO), NIHR UCLH Biomedical Research Centre (BRC), and ECTRIMS-MAGNIMS. G. Farrar is a full-time employee of GE Healthcare. M. Battle is a full-time employee of GE Healthcare. V. Garibotto received financial support for research and/or speaker fees through her institution from Siemens Healthineers, GE Healthcare, and Novo Nordisk. O. Grau-Rivera has received financial support for a research project by Roche Diagnostics and F- Hoffmann La Roche (paid to institution) and speaker fees from Roche Diagnostics. J. Delrieu has received payment/honoraria from Biogen (presentation for Biogen in 2021) and has participated on a Data Safety Monitoring Board or Advisory Board for French board for Roche in 2020–2022. P. Payoux received research support and consultancy fees from GE Healthcare. Z. Walker received research support and consultancy fees from GE Healthcare. P. Edison was funded by the Medical Research Council and now by Higher Education Funding Council for England (HEFCE). He has also received grants from Alzheimer’s Research, UK, Alzheimer’s Drug Discovery Foundation, Alzheimer’s Society, UK, Alzheimer’s association, US, Medical Research Council, UK, Novo Nordisk, Piramal Life Sciences, and GE Healthcare. He is a consultant to Roche, Pfizer, and Novo Nordisk. He has received speaker fees from Novo Nordisk, Pfizer, Nordea, and Piramal Life Sciences. He has received educational and research grants from GE Healthcare, Novo Nordisk, Piramal Life Science/Life Molecular Imaging, Avid Radiopharmaceuticals and Eli Lilly. He was an external consultant to Novo Nordisk and a member of their Scientific Advisory Board. A.W. Stephens is a full-time employee of Life Molecular Imaging, GmbH. R. Gismondi is a full-time employee of Life Molecular Imaging, GmbH. C. Buckley is a full-time employee of GE Healthcare. J.D. Gispert has received research support from GE Healthcare, Roche Diagnostics, and Hoffmann-La Roche, given lectures in symposia sponsored by General Electric, Philips, and Biogen and has served as a consultant for Roche Diagnostics and Prothena. G.B. Frisoni has received unrestricted grants and support for event organization from ROCHE Pharmaceuticals, OM Pharma, Eisai Pharmaceuticals, and Biogen Pharmaceuticals. GBF Competitive research projects have been funded by H2020, Innovative Medicines Initiative (IMI), IMI2, Swiss National Science Foundation, and VELUX Foundation. He reports that the Centre de la mémoire at Geneva University Hospitals is funded by the following private donors under the supervision of the Private Foundation of Geneva University Hospitals: A.P.R.A. - Association Suisse pour la Recherche sur la Maladie d’Alzheimer, Genève; Fondation Segré, Genève; Race Against Dementia Foundation, London, UK; Fondation Child Care, Genève; Fondation

Edmond J. Safra, Genève; Fondation Minkoff, Genève; Fondazione Agusta, Lugano; McCall Macbain Foundation, Canada; Nicole et René Keller, Genève; and Fondation AETAS, Genève. A. Drzezga reports the following conflicts of interest: research support—Siemens Healthineers, Life Molecular Imaging, GE Healthcare, AVID Radiopharmaceuticals, Sofie, Eisai, and Novartis/AAA; speaker honorary/advisory boards—Siemens Healthineers, Sanofi, GE Healthcare, Biogen, Novo Nordisk, Invicro, Novartis/AAA, and Bayer Vital; stock: Siemens Healthineers and Lantheus Holding; patents: patent for 18F-PSMA7 (PSMA PET imaging tracer). 2-Alkoxy-6-[18F]Fluoronicotinoyl substituted Lys-C(O)-Glu derivatives as efficient probes for imaging of PSMA expressing tissues (Patent No.: EP3765097A1; Date of patent: Jan. 20, 2021). Go to [Neurology.org/N](https://www.neurology.org/N) for full disclosures.

Publication History

Received by *Neurology* April 28, 2023. Accepted in final form October 13, 2023. Solicited and externally peer reviewed. The handling editor was Associate Editor Linda A. Hershey, MD, PhD, FAAN.

Appendix 1 Authors

| Name | Location | Contribution |
|--------------------------------|--|---|
| Merle Hönig, PhD | Department of Nuclear Medicine, Faculty of Medicine and University Hospital Cologne, University of Cologne; Institute of Neuroscience and Medicine (INM-2), Molecular Organization of the Brain, Forschungszentrum Jülich, Germany | Drafting/revision of the article for content, including medical writing for content; study concept or design; and analysis or interpretation of data |
| Daniele Altomare, PhD | Neurology Unit, Department of Clinical and Experimental Sciences, University of Brescia, Italy; Laboratory of Neuroimaging of Aging (LANVIE), University of Geneva; Geneva Memory Center, Geneva University Hospitals, Switzerland | Drafting/revision of the article for content, including medical writing for content; major role in the acquisition of data; study concept or design; and analysis or interpretation of data |
| Camilla Caprioglio, MSc | Geneva Memory Center, Geneva University Hospitals, Switzerland | Major role in the acquisition of data; study concept or design |
| Lyduine Collij, PhD | Amsterdam UMC, Location VUmc, Radiology; Amsterdam Neuroscience, Brain Imaging, the Netherlands | Drafting/revision of the article for content, including medical writing for content; major role in the acquisition of data |
| Frederik Barkhof, MD | Amsterdam UMC, Location VUmc, Radiology; Amsterdam Neuroscience, Brain Imaging, the Netherlands; Queen Square Institute of Neurology and Centre for Medical Image Computing, University College London, United Kingdom | Drafting/revision of the article for content, including medical writing for content; major role in the acquisition of data; study concept or design; and analysis or interpretation of data |
| Bart Van Berckel, MD | Amsterdam UMC, Location VUmc, Radiology; Amsterdam Neuroscience, Brain Imaging, the Netherlands | Major role in the acquisition of data; study concept or design |

Continued

Appendix 1 (continued)

| Name | Location | Contribution |
|--|---|---|
| Philip Scheltens, MD, PhD | Amsterdam UMC, Location VUmc, Radiology; Amsterdam Neuroscience, Brain Imaging, the Netherlands | Major role in the acquisition of data; study concept or design |
| Gill Farrar, PhD | GE Healthcare, Pharmaceutical Diagnostics, Amersham, United Kingdom | Major role in the acquisition of data; study concept or design |
| Mark R. Battle, BSc | GE Healthcare, Pharmaceutical Diagnostics, Amersham, United Kingdom | Major role in the acquisition of data; study concept or design |
| Hendrik Theis, MD | Department of Nuclear Medicine; Department of Neurology, Faculty of Medicine and University Hospital Cologne, University of Cologne, Germany | Drafting/revision of the article for content, including medical writing for content; analysis or interpretation of data |
| Kathrin Giehl, PhD | Department of Nuclear Medicine, Faculty of Medicine and University Hospital Cologne, University of Cologne; Institute of Neuroscience and Medicine (INM-2), Molecular Organization of the Brain, Forschungszentrum Jülich, Germany | Major role in the acquisition of data; study concept or design |
| Gerard N. Bischof, PhD | Department of Nuclear Medicine, Faculty of Medicine and University Hospital Cologne, University of Cologne, Germany | Study concept or design; analysis or interpretation of data |
| Valentina Garibotto, MD | Division of Nuclear Medicine and Molecular Imaging, Diagnostic Department, University Hospitals of Geneva; Laboratory of Neuroimaging and Innovative Molecular Tracers (NIMTLab), Faculty of Medicine, Department of Radiology, University of Geneva; Center for Biomedical Imaging (CIBM), Geneva, Switzerland | Drafting/revision of the article for content, including medical writing for content; major role in the acquisition of data; and study concept or design |
| José Luis L. Molinuevo, MD, PhD | BarcelonaBeta Brain Research Center (BBRC), Pasqual Maragall Foundation, Barcelona, Spain | Drafting/revision of the article for content, including medical writing for content; major role in the acquisition of data; and study concept or design |
| Oriol Grau-Rivera, MD | BarcelonaBeta Brain Research Center (BBRC), Pasqual Maragall Foundation, Barcelona, Spain | Drafting/revision of the article for content, including medical writing for content; major role in the acquisition of data; and study concept or design |
| Julien Delrieu | Gérontopôle, Department of Geriatrics, Toulouse University Hospital; Maintain Aging Research team, CERPOP, Inserm, Université Paul Sabatier, Toulouse, France | Drafting/revision of the article for content, including medical writing for content; major role in the acquisition of data |
| Pierre Payoux, MD, PhD | Gérontopôle, Department of Geriatrics, Toulouse University Hospital; ToNIC, Toulouse Neuroimaging Center, Université de Toulouse, Inserm, UPS, France | Drafting/revision of the article for content, including medical writing for content; major role in the acquisition of data; and study concept or design |

Appendix 1 (continued)

| Name | Location | Contribution |
|---------------------------------------|---|---|
| Jean Francois Demonet, MD, PhD | Gérontopôle, Department of Geriatrics, Toulouse University Hospital, France | Major role in the acquisition of data; study concept or design |
| Agneta Karin Nordberg, MD, PhD | Center for Alzheimer Research, Department of Neurobiology, Care Sciences and Society, Karolinska institutet; Theme Inflammation and Aging, Karolinska University Hospital, Stockholm, Sweden | Drafting/revision of the article for content, including medical writing for content; major role in the acquisition of data; and study concept or design |
| Irina Savitcheva, MD, PhD | Medical Radiation Physics and Nuclear Medicine, Karolinska University Hospital, Sweden | Major role in the acquisition of data; study concept or design |
| Zuzana Walker, MD | Division of Psychiatry, University College London, London and Essex Partnership University NHS Foundation Trust, United Kingdom | Drafting/revision of the article for content, including medical writing for content; major role in the acquisition of data; and study concept or design |
| Paul Edison, MD, PhD | Department of Brain Sciences, Imperial College London, United Kingdom | Drafting/revision of the article for content, including medical writing for content; major role in the acquisition of data; and study concept or design |
| Andrew W. Stephens, MD, PhD | Life Molecular Imaging, Berlin, Germany | Major role in the acquisition of data; study concept or design |
| Rossella Gismondi, MD | Life Molecular Imaging, Berlin, Germany | Drafting/revision of the article for content, including medical writing for content; major role in the acquisition of data; and study concept or design |
| Frank Jessen, MD | Department of Psychiatry, Faculty of Medicine and University Hospital Cologne, University of Cologne; German Center for Neurodegenerative Diseases (DZNE), Bonn-Cologne, Germany | Major role in the acquisition of data; study concept or design |
| Christopher J. Buckley, PhD | GE Healthcare, Pharmaceutical Diagnostics, Amersham, United Kingdom | Major role in the acquisition of data; study concept or design |
| Juan Domingo Gispert, PhD | BarcelonaBeta Brain Research Center (BBRC), Pasqual Maragall Foundation, Barcelona, Spain | Major role in the acquisition of data; study concept or design |
| Giovanni B. Frisoni, MD | Geneva Memory Center, Geneva University Hospitals, Switzerland | Drafting/revision of the article for content, including medical writing for content; major role in the acquisition of data; study concept or design; and analysis or interpretation of data |
| Alexander Drzezza, MD | Department of Nuclear Medicine, Faculty of Medicine and University Hospital Cologne, University of Cologne; Institute of Neuroscience and Medicine (INM-2), Molecular Organization of the Brain, Forschungszentrum Jülich; German Center for Neurodegenerative Diseases (DZNE), Bonn-Cologne, Germany | Drafting/revision of the article for content, including medical writing for content; major role in the acquisition of data; study concept or design; and analysis or interpretation of data |

Appendix 2 Coinvestigators

Coinvestigators are listed at links.lww.com/WNL/D365.

References

1. Arenaza-Urquijo EM, Vemuri P. Resistance vs resilience to Alzheimer disease: clarifying terminology for preclinical studies. *Neurology*. 2018;90(15):695-703. doi:10.1212/WNL.0000000000005303
2. Kempainen NM, Aalto S, Karrasch M, et al. Cognitive reserve hypothesis: Pittsburgh compound B and fluorodeoxyglucose positron emission tomography in relation to education in mild Alzheimer's disease. *Ann Neurol*. 2008;63(1):112-118. doi:10.1002/ana.21212
3. Hoening MC, Bischof GN, Hammes J, et al. Tau pathology and cognitive reserve in Alzheimer's disease. *Neurobiol Aging*. 2017;57:1-7. doi:10.1016/j.neurobiolaging.2017.05.004
4. Jessen F, Amariglio RE, Van Boxtel M, et al. A conceptual framework for research on subjective cognitive decline in preclinical Alzheimer's disease. *Alzheimers Dement*. 2014;10(6):844-852. doi:10.1016/j.jalz.2014.01.001
5. Chen G, Zhao M, Yang K, et al. Education exerts different effects on cognition in individuals with subjective cognitive decline and cognitive impairment: a population-based study. *J Alzheimers Dis*. 2021;79(2):653-661. doi:10.3233/JAD-201170
6. Altomare D, Collij L, Caprioglio C, et al. Description of a European memory clinic cohort undergoing amyloid-PET: the AMYPAD Diagnostic and Patient Management Study. *Alzheimers Dement*. 2023;19(3):844-856. doi:10.1002/alz.12696
7. McKhann GM, Knopman DS, Chertkow H, et al. The diagnosis of dementia due to Alzheimer's disease: recommendations from the National Institute on Aging-Alzheimer's Association workgroups on diagnostic guidelines for Alzheimer's disease. *Alzheimers Dement*. 2011;7(3):263-269. doi:10.1016/j.jalz.2011.03.005
8. Albert MS, DeKosky ST, Dickson D, et al. The diagnosis of mild cognitive impairment due to Alzheimer's disease: recommendations from the National Institute on Aging-Alzheimer's Association workgroups on diagnostic guidelines for Alzheimer's disease. *Alzheimers Dement*. 2011;7(3):270-279. doi:10.1016/j.jalz.2011.03.008
9. Fazekas F, Chawluk JB, Alavi A, Hurtig HI, Zimmerman RA. MR signal abnormalities at 1.5T in Alzheimer's dementia and normal aging. *AJR Am J Roentgenol*. 1987;149(2):351-356. doi:10.2214/ajr.149.2.351
10. Mazzeo S, Padiglioni S, Bagnoli S, et al. The dual role of cognitive reserve in subjective cognitive decline and mild cognitive impairment: a 7-year follow-up study. *J Neurol*. 2019;266(2):487-497. doi:10.1007/s00415-018-9164-5

Submit Your Work to *Neurology*[®]

Neurology[®] journal, led by Editor-in-Chief José G. Merino, MD, MPhil, wants to review your research for publication! The flagship journal of the AAN, *Neurology* publishes outstanding peer-reviewed original research articles, editorials, and reviews to enhance patient care, education, clinical research, and professionalism. The Impact Factor of the journal is 10.1.

Learn how to prepare and submit your manuscript at: [NPub.org/Authors](https://www.npub.org/authors)

Submit Your Work to *Neurology*[®] *Genetics*

Neurology[®] *Genetics*, edited by Stefan M. Pulst, MD, Dr med, wants to review your research for publication! This online-only, open-access journal publishes peer-reviewed reports in the area of neurogenetics that elucidate the role of genetic and epigenetic variations in diseases and biological traits of the central and peripheral nervous systems.

Learn how to prepare and submit your manuscript at: [NPub.org/NGAuthors](https://www.npub.org/ngauthors)

Submit Your Work to *Neurology*[®] *Neuroimmunology & Neuroinflammation*

Neurology[®] *Neuroimmunology & Neuroinflammation*, edited by Josep Dalmau, MD, PhD, FAAN, wants to review your research for publication! This online-only, open-access journal publishes rigorously peer-reviewed reports of research in this area affecting the full range of neurologic diseases. The journal's Impact Factor is 8.8.

Learn how to prepare and submit your manuscript at: [NPub.org/NNAuthors](https://www.npub.org/nnauthors)
