



HAL
open science

When Methodological Innovation Changes the Game: A 10-Year Review of Environmental DNA (eDNA) Applied to Crayfish

Thomas Baudry, Valentin Vasselon, Carine Delaunay, Michael Sweet, Frédéric Grandjean

► **To cite this version:**

Thomas Baudry, Valentin Vasselon, Carine Delaunay, Michael Sweet, Frédéric Grandjean. When Methodological Innovation Changes the Game: A 10-Year Review of Environmental DNA (eDNA) Applied to Crayfish. *Aquatic Conservation: Marine and Freshwater Ecosystems*, 2024, 34 (9), 10.1002/aqc.4245 . hal-04684181

HAL Id: hal-04684181

<https://hal.science/hal-04684181v1>

Submitted on 14 Oct 2024

HAL is a multi-disciplinary open access archive for the deposit and dissemination of scientific research documents, whether they are published or not. The documents may come from teaching and research institutions in France or abroad, or from public or private research centers.

L'archive ouverte pluridisciplinaire **HAL**, est destinée au dépôt et à la diffusion de documents scientifiques de niveau recherche, publiés ou non, émanant des établissements d'enseignement et de recherche français ou étrangers, des laboratoires publics ou privés.



Distributed under a Creative Commons Attribution - NonCommercial 4.0 International License

REVIEW OPEN ACCESS

When Methodological Innovation Changes the Game: A 10-Year Review of Environmental DNA (eDNA) Applied to Crayfish

Thomas Baudry¹ | Valentin Vasselon² | Carine Delaunay¹ | Michael Sweet³ | Frédéric Grandjean¹

¹Laboratoire Écologie et Biologie des Interactions, Université de Poitiers, UMR CNRS 7267 Equipe Ecologie Evolution Symbiose, Poitiers Cedex, France | ²SCIMABIO-Interface, Thonon-les-Bains, France | ³Aquatic Research Facility, Nature-Based Solutions Research Centre, University of Derby, Derby, UK

Correspondence: Thomas Baudry (thms.baudry@gmail.com)

Received: 16 February 2024 | **Revised:** 25 July 2024 | **Accepted:** 6 August 2024

Funding: The authors warmly thank the Office Français pour la Biodiversité (OFB), which is funding the eCray'ON project (n°OFB-23-0497) during which this review work was devised and which is also funding Thomas Baudry's post-doctoral contract. This work was also supported by the Centre National de la Recherche Scientifique (CNRS) and the University of Poitiers for lab facilities and the Direction de l'Environnement, de l'Aménagement et du Logement de Martinique (DEAL) and the Office de l'Eau de Martinique (ODE), for financial and technical support in Thomas Baudry's post-doctoral contract.

Keywords: freshwater conservation | geographical biases | invasive/native species | PCR methods | protocol variety

ABSTRACT

The use of environmental DNA (eDNA) as a tool for monitoring represents a major innovative advance in environmental science, one that enables the detection of species without the need to observe or capture them. This article assesses the state of play of eDNA research targeting crayfish. We found a total of 41 peer-reviewed articles published between 2014 and 2023 on both native and invasive species. Most studies focused on invasive species (or a native/invasive species co-detection assessment) (65.8%). There was also a clear geographical bias across studies, with more than half conducted in Europe (51.2%) and a quarter in the United States (26.8%). In contrast, there were none conducted in Africa. The relatively large number of published studies has led to an interesting diversity of protocols designed or utilized, with most favouring the development of their own assays (69.33%). That said, filtration (as an eDNA capture method) was common (80.5%), along with the use of commercially available eDNA extraction kits (69.8%). The COI gene also appeared to be the preferred target region (89.33%). Such range of protocols is interesting, but is it optimal? Are the best protocols always being utilized? Or is the chance for novel application hampering our ability to explore larger trends across studies?

1 | Introduction

Crayfish represent a decapod crustacea taxonomic group of more than 600 species, from 38 genera and five families. The families include Astacidae (five genera), Cambaridae (14 genera), Parastacidae (18 genera), Cambaroididae (monogenetic) and Cricoidoscelosidae (monogenetic, but extinct). Crayfish are found on all continents, except Antarctic (Crandall and Buhay 2008; Crandall and De Grave 2017). They are very versatile with different species present across the entire span

of any given hydrographic network, from source to estuaries, and across different abiotic conditions (oligotrophic to eutrophic). For example, the Astacidae and specifically the *Austropotamobius* require cold waters and often inhabit upstream areas. In contrast, those from the genus *Pontastacus* mainly prefer warmer downstream waters (Souty-Grosset et al. 2006). Thanks to their relatively large size, long-lived characteristics (Souty-Grosset et al. 2006; Reynolds, Souty-Grosset, and Richardson 2013) and omnivorous diet (Nyström and Strand 1996; Nyström 1999; Reynolds, Souty-Grosset, and

This is an open access article under the terms of the [Creative Commons Attribution-NonCommercial](https://creativecommons.org/licenses/by-nc/4.0/) License, which permits use, distribution and reproduction in any medium, provided the original work is properly cited and is not used for commercial purposes.

© 2024 The Author(s). *Aquatic Conservation: Marine and Freshwater Ecosystems* published by John Wiley & Sons Ltd.

Richardson 2013), crayfish play major roles in aquatic food webs, and they are considered emblematic species. Further, they have historically been highly valued by man as a notable food source, and this has been recorded in various lines of historic writings and paintings (Swahn 2004).

This value has led to many introductions of non-native species. In the Middle Ages, this was almost certainly via exchanges between monasteries, for example, *Austropotamobius pallipes* in Ireland (Gouin et al. 2001). The rise of aquaculture in Europe meant an international crayfish trade soon established, and this resulted in major translocations, from North America at the end of the 19th century. The spiny-cheek crayfish (*Faxonius limosus*) was first recorded introduced into Poland in 1890 (Souty-Grosset et al. 2006). In the 1970s, the signal crayfish (*Pacifastacus leniusculus*) was introduced into Sweden (Souty-Grosset et al. 2006) and the red swamp crayfish (*Procambarus clarkii*) in Spain and France, in the 1970s (Oficialdegui, Sánchez, and Clavero 2020). Due to their high reproductive capacities and less specific habitat requirements, all are now widespread across Europe and actually now referred to as ‘Old Non-Indigenous Crayfish Species’ (Kouba, Petrussek, and Kozák 2014). In addition to generally outcompeting a country’s native species, they are also host (sometimes asymptotically) to pathogens (Longshaw 2011), like the oomycete (*Aphanomyces astaci*) responsible for crayfish plague (Becking et al. 2021). This has resulted in the documented decline of species such as the native noble crayfish (*Astacus astacus*) in Scandinavian countries (Strand et al. 2019) and white-clawed crayfish (*A. pallipes*) across Europe (Füederer et al. 2010; Grandjean et al. 2017).

In the 1980s, aquaculture regulations became much stricter; however, the aquarium trade for crayfish was just starting to emerge (Chucholl 2013). Over 120 species are now thought to be readily available for sale online (Chucholl 2013). Beyond their attractive appearance, many of these are easy to raise, characterized by high reproduction rates and growth. They are also often of a large size (dissuasive for some small predators) and exhibit high plasticity towards environmental conditions (Momot 1967; Corey 1987, 1988; Andriantsoa et al. 2019). One of these, the virile crayfish (*Faxonius virilis*), for example, was only recently identified as being present in England but has now colonized entire watersheds, sometimes outcompeting and displacing old established populations of *F. limosus* (Kouba, Petrussek, and Kozák 2014). The marbled crayfish (*Procambarus virginalis*) (the only known—abnormally—parthenogenetic decapod species) was introduced in Madagascar and is now out of control, colonizing 100,000 km² in 10 years, threatening the native biodiversity, including seven *Astacoides* endemic crayfish species (Andriantsoa et al. 2019). The same species is also spreading alarmingly fast across Europe and has been shown to carry crayfish plague (Ercoli et al. 2019; Mauvisseau, Tönges, et al. 2019). Faced with these threats and the loss of autochthonous populations, the fight against these exotic species, as well as the conservation of native species, seems essential, and urgent monitoring actions are needed.

Biological inventories of macroorganisms in aquatic environments are often performed by direct capture methods such as electrofishing or baited traps. However, a novel molecular

based tool dubbed ‘environmental DNA’ (eDNA) was designed (Ficetola et al. 2008), which arguably changed the game on how surveys for a number of species were undertaken. eDNA detection relies on the capture of genetic material (DNA) found in tissues, skin, eggs, mucus, etc., that are consistently being shed within their environment by the target organisms (Barnes and Turner 2015; Thomsen and Willerslev 2015). This approach offers the possibility to detect a targeted species even with low population density (i.e., invasive and/or rare, endangered endemic species), at any stage of life, without the need to observe it (Ficetola et al. 2008; Thomsen and Willerslev 2015), or at least within the realms of a certain error rate associated with any given survey technique (Burian et al. 2021). This original study focused on the invasive bullfrog (*Rana catesbeiana*) and targeted a 79-bp fragment of the cytochrome b gene (cyt-b). As proof-of-concept study, it launched the use of eDNA throughout the field of biology, mainly due to it being heralded as allowing large-scale study in a short time period, its ease of implementation in the field and its non-disruptive nature (Barnes and Turner 2015; Thomsen and Willerslev 2015; Hänfling et al. 2016).

Since this initial study (published 15 years ago), there have been thousands of papers produced on the topic (2923 in fact after a quick ‘eDNA NOT Extracellular DNA’ search, in *Web of Science*; <https://webofknowledge.com>; 25 September 2023). Across these 2923 papers, studies on aquatic organisms were mainly focused on fish (762) (‘eDNA NOT Extracellular DNA AND Fish’) or amphibians (143) (‘eDNA NOT Extracellular DNA AND Amphibians’), whereas 67 studies were found on crayfish (‘eDNA NOT Extracellular DNA AND Crayfish’). This spread in target species may be driven by several factors. For example, a preponderance of eDNA studies on fish could be attributed to more research teams working on these organisms (Belle, Stoeckle, and Geist 2019). But the imbalance might also be driven by methodological obstacles linked to the physiology of crayfish specifically, making the development and use of the methodology on-site more challenging (Dougherty et al. 2016). Indeed, unlike fish and amphibians, invertebrates do not continuously release mucus in the environment, which might limit detection as mucus is often cited as a major source of eDNA signal in aquatic ecosystem (e.g., Hervé et al. 2022). Despite these unknowns, the growing use of eDNA has led some to propose ‘rules of good practice’, in an attempt to ensure a level of quality and reliability of any results obtained and conclusions made. These are often derived from the MIQE guidelines (Minimum Information for Publication of Quantitative Real-Time PCR Experiments) (Bustin et al. 2009) and then translated to the specific constraints (field and lab experiments) associated with eDNA detection (Goldberg, Strickler, and Pilliod 2015). For reproducibility and comparisons, all these criteria were synthesized on a validation scale and statistically implemented (i.e., limit of detection [LOD] and limit of quantification [LOQ]) (Lesperance et al. 2021; Thalinger et al. 2021).

This review therefore aimed to first explore how eDNA-based methods are utilized across time and space with a specific focus on monitoring crayfish species (both native and invasive). We attempted this by investigating the evolution of usage since the first eDNA crayfish study appeared in Tréguier et al. (2014). We then assessed the diversity of protocols published (to date) and contextualized the applications.

2 | State of Play

We first conducted a literature search following the Moher et al. (2015) systematic review practices. Peer-reviewed articles from the *Web of Science*, published between 2008 (first eDNA study, led by Ficetola et al. 2008) and August 2023 were found by utilizing the key terms 'eDNA AND Crayfish NOT Extracellular DNA' and 'environmental DNA AND Crayfish NOT Extracellular DNA'. Extracellular DNA is largely used in medical studies (associated with more than 10,000 publications in *Web of Science*) and confusingly carried the same shortened abbreviation 'eDNA'. Finally, the 'environmental DNA AND Crayfish NOT Extracellular DNA' was not retained, because the 'environmental' term is a widely used word, resulting in a multitude of results. We also cross-referenced those found in the initial search and utilized their own reference lists to garner yet more studies. This resulted in a total of 77 articles being included in our meta-analysis. We then ensured all articles referred to crayfish eDNA, as some focused solely on crayfish plague or were review articles. Once the final list was acquired, we took (1) the metrics of the study (authors, year, title and DOI), (2) the study area, (3) the crayfish species studied and (4) their status in the geographical area (one study that can deal with several species, invasive and/or native), (5) the waterbody types (lakes, ponds, rivers, stream), (6) the PCR method used (endpoint PCR, qPCR or digital PCR [dPCR]), (7) the experimental set (forward and reverse primers, probe, targeted gene and amplicon length) (8) the assays origin (created in another study or developed in the current study), (9) the eDNA capture method (precipitation or filtration), (10) preservation, filter pore size and composition (if filtration) utilized, (11) the eDNA extraction method and (12) the main aims of the study (see [Supporting Information](#)). All these extracted data were then implemented in RStudio v.2023.031 (with R v.4.2.3; R Development Core Team 2023), with *ggplot2* package to perform the following graphical analyses.

Forty-one peer-reviewed studies met our criteria, and these were published between 2008 and September 2023 (Table 1). Although the first eDNA study was conducted in 2008, it was not until 2014 when the first crayfish eDNA paper was published. Since then, use of this molecular method has increased, with a maximum number of publications in any given year (2018 and 2020) reaching seven (Figure 1A). As highlighted in other eDNA reviews (Belle, Stoeckle, and Geist 2019; Schenekar 2023), strong geographical biases were observed. For example, more than half of the published studies were led by academics in Europe (51.21%), against only 26.8% and 17.1% in the United States and Asia, respectively. Only 2.4% came from the Caribbean and South America collectively (Figure 1B and Table 1). The waterbodies investigated were quite diverse, represented with 12 studies focused on lentic ecosystems (lakes and/or ponds; 29.3%), 16 on lotic ecosystems (rivers and/or streams; 39%), nine on both (21.95%) and, interestingly, three on cave groundwaters (7.3%) and one for detecting a terrestrial burrowing species (2.4%). Some studies integrated mesocosm experiments, and this part was sorted as working on 'lentic' ecosystems, because they rarely worked only on mesocosm but in combination with field waterbodies, for method validation.

An over-representation of certain genera and species was also noted, probably due to the status of the crayfish. Most of the studies focused on an invasion context (i.e., 46.3% of those assessed worked on invasive crayfish species) or a sympatry between

invasive and native species (19.5%). In contrast, only 34.1% aimed to detect native species (Figure 1C). See also Figure 1D (also see Table 1) for the preponderance of studies carried out on certain genera, such as *Faxonius*, *Pacifastacus* or *Procambarus*, well known to be old and/or highly invasive species (Kouba, Petrusek, and Kozák 2014; Peters et al. 2014; Laffitte et al. 2023).

3 | First Use on Crayfish

Following eDNA first use (Ficetola et al. 2008), the majority of studies focused on fish, likely due to the socio-economic importance of some species, their importance in the ecosystems and global spread of some invasive fish species (Belle, Stoeckle, and Geist 2019). Despite the importance of crayfish in freshwater ecosystems (Weinländer and Füreder 2016; Danilovic, Maguire, and Füreder 2022), it took 6 years for a study to focus on this group (Tréguier et al. 2014).

Tréguier et al. (2014) conducted the first crayfish eDNA study on the invasive *P. clarkii* in ponds in northwestern France (French Nature Park of Brière). They followed a rather elaborate primer validation and optimization protocol, reaching one of the highest levels of the Thalinger et al. (2021) scale. The primers and the probe were designed with Geneious, then tested in silico using the ecoPCR software, on the EMBL Bank database, showing 100% specificity for the targeted species. Their specificity was then tested in vitro by performing qPCR amplifications on DNA extracted from tissues of co-occurring species or species present on French territory (*A. astacus*, *Pontastacus leptodactylus*, *A. pallipes*, *F. limosus* and *P. leniusculus*). When validated, the authors determined the LOD (minimum concentration allowing a positive signal) and LOQ (minimum concentration giving acceptable yields for an approximation of quantification), thanks to DNA dilutions from 10^{-2} to 10^{-8} ng.μL⁻¹, amplified in eight replicates. Finally, the method was deployed in the field, at a large scale (158 ponds), where controls were carried out using trapping. For eDNA survey and isolation, Tréguier et al. (2014) adapted the protocol from Ficetola et al. (2008) with only slight modifications. Briefly, this included collecting water samples ~1 m from the shoreline at 20 locations evenly distributed around the pond. The samples were taken close to the bottom of the water column, after a gentle circular movement to resuspend eDNA fragments. eDNA isolation was done by centrifugation and then using Qiagen DNeasy Blood & Tissue Extraction Kit by changing some centrifugation parameters and volumes of solvents and making some subsamples to increase DNA extraction yields. Since then, many of the other studies have adapted, changed and modified this procedure with little agreement on the optimal method.

4 | A Wide Variety of Protocols

Across the whole eDNA field, protocols often vary. This can be explained (at least in part) by (1) a democratization of eDNA-based tools, and therefore its growing use; (2) a desire for optimization, tackling aspects around the amount of volume filtered, for example, or reaching high yields, with increased sensitivity of the assays; and (3) rapid technological advances in the area of molecular biology in general, for example, the development of commercial DNA extraction kits specially optimized for processing eDNA

TABLE 1 | Summary of the 41 studies dealing with eDNA and crayfish (considering the species studied), reported per global study area and country. The crayfish status, in the country considered, was also reported. Noted that some native crayfish species are considered as invasive in other localities.

Study Area	Country	Crayfish species	Crayfish status	Number of studies	Authors	
Asia	China	<i>Procambarus clarkii</i>	Invasive	1	Cai et al. (2017)	
	Japan	<i>P. clarkii</i>	Invasive	1	Ogata et al. (2022)	
		<i>Pacifastacus leniusculus</i>	Invasive	1	Ikeda et al. (2019)	
		<i>Cambaroides japonicus</i>	Native	3	Ikeda et al. (2016, 2019); Hinomura et al. (2023)	
	Malaysia	<i>Cherax quadricarinatus</i>	Invasive	2	Nasir et al. (2020); Dali et al. (2023)	
Caribbean	Martinique (French West Indies)	<i>C. quadricarinatus</i>	Invasive	1	Baudry et al. (2021)	
Europe	Belgium	<i>P. clarkii</i>	Invasive	1	Geerts et al. (2018)	
	Czech Republic	<i>Astacus astacus</i>	Native	1	Rusch et al. (2020)	
		<i>Faxonius limosus</i>	Invasive	1	Rusch et al. (2020)	
		<i>P. leniusculus</i>	Invasive	1	Rusch et al. (2020)	
		<i>Procambarus virginalis</i>	Invasive	1	Rusch et al. (2020)	
		<i>Austropotamobius pallipes</i>	Native	1	Troth et al. (2021)	
	England	<i>P. leniusculus</i>	Invasive	1	Dunn et al. (2017)	
		England and Wales	<i>A. pallipes</i>	Native	1	Robinson et al. (2018)
	England and Wales	<i>P. leniusculus</i>	Invasive	1	Robinson et al. (2018)	
		England and France	<i>A. pallipes</i>	Native	1	Troth et al. (2020)
	France	<i>A. pallipes</i>	Native	1	Baudry, Laffitte, et al. (2023)	
		<i>F. limosus</i>	Invasive	1	Mauvisseau et al. (2018)	
		<i>P. leniusculus</i>	Invasive	1	Mauvisseau et al. (2018)	
		<i>P. clarkii</i>	Invasive	2	Tréguier et al. (2014); Mauvisseau et al. (2018)	
		Germany	<i>A. astacus</i>	Native	1	Chucholl et al. (2021)
			<i>A. pallipes</i>	Native	1	Chucholl et al. (2021)
			<i>Austropotamobius torrentium</i>	Native	1	Chucholl et al. (2021)
			<i>Faxonius immnis</i>	Invasive	1	Chucholl et al. (2021)
			<i>F. limosus</i>	Invasive	1	Chucholl et al. (2021)
		Germany	<i>P. leniusculus</i>	Invasive	1	Chucholl et al. (2021)
<i>P. virginalis</i>	Invasive		1	Mauvisseau, Tönges, et al. (2019)		
Ireland	<i>A. pallipes</i>		Native	1	Atkinson et al. (2019)	
Italy	<i>A. pallipes</i>	Native	1	Manfrin et al. (2022)		
	<i>A. torrentium</i>	Native	1	Manfrin et al. (2022)		
	Luxembourg	<i>P. leniusculus</i>	Invasive	1	Porco et al. (2022)	

(Continues)

TABLE 1 | (Continued)

Study Area	Country	Crayfish species	Crayfish status	Number of studies	Authors
USA	Norway	<i>A. astacus</i>	Native	2	Strand et al. (2019); Johnsen et al. (2020)
		<i>P. leniusculus</i>	Invasive	2	Strand et al. (2019); Rusch et al. (2022)
	Scandinavia	<i>A. astacus</i>	Native	1	Agersnap et al. (2017)
		<i>P. leniusculus</i>	Invasive	1	Agersnap et al. (2017)
		<i>Pontastacus leptodactylus</i>	Invasive	1	Agersnap et al. (2017)
	Scotland	<i>P. leniusculus</i>	Invasive	1	Harper et al. (2018)
	Switzerland	<i>A. astacus</i>	Native	1	King et al. (2022)
		<i>A. pallipes</i>	Native	1	King et al. (2022)
		<i>A. torrentium</i>	Native	1	King et al. (2022)
		<i>F. limosus</i>	Invasive	1	King et al. (2022)
		<i>P. leniusculus</i>	Invasive	1	King et al. (2022)
		<i>P. leptodactylus</i>	Native	1	King et al. (2022)
		<i>P. clarkii</i>	Invasive	1	King et al. (2022)
		Wales	<i>P. leniusculus</i>	Invasive	1
	USA	<i>Cambarus aculabrum</i>	Native	2	Mouser et al. (2021, 2022)
		<i>Cambarus causeyi</i>	Native	1	Quebedeaux et al. (2023)
		<i>Cambarus setosus</i>	Native	2	Mouser et al. (2021, 2022)
		<i>Cambarus speleocoopi</i>	Native	1	Boyd et al. (2020)
		<i>Cambarus subterraneus</i>	Native	2	Mouser et al. (2021, 2022)
		<i>Cambarus tartarus</i>	Native	2	Mouser et al. (2021, 2022)
<i>Faxonius eupunctus</i>		Native	1	Rice, Larson, and Taylor (2018)	
<i>Faxonius rusticus</i>		Invasive	3	Dougherty et al. (2016); Larson et al. (2017); Coster et al. (2021)	
<i>Faxonius stygocaneyi</i>		Native	3	DiStefano et al. (2020); Mouser et al. (2021, 2022)	
<i>Pacifastacus fortis</i>		Native	1	Cowart et al. (2018)	
USA	<i>P. leniusculus</i>	Invasive	2	Larson et al. (2017); Cowart et al. (2018)	
	<i>P. clarkii</i>	Invasive	1	Curtis and Larson (2020)	
	South America	Ecuador	<i>P. clarkii</i>	Invasive	1

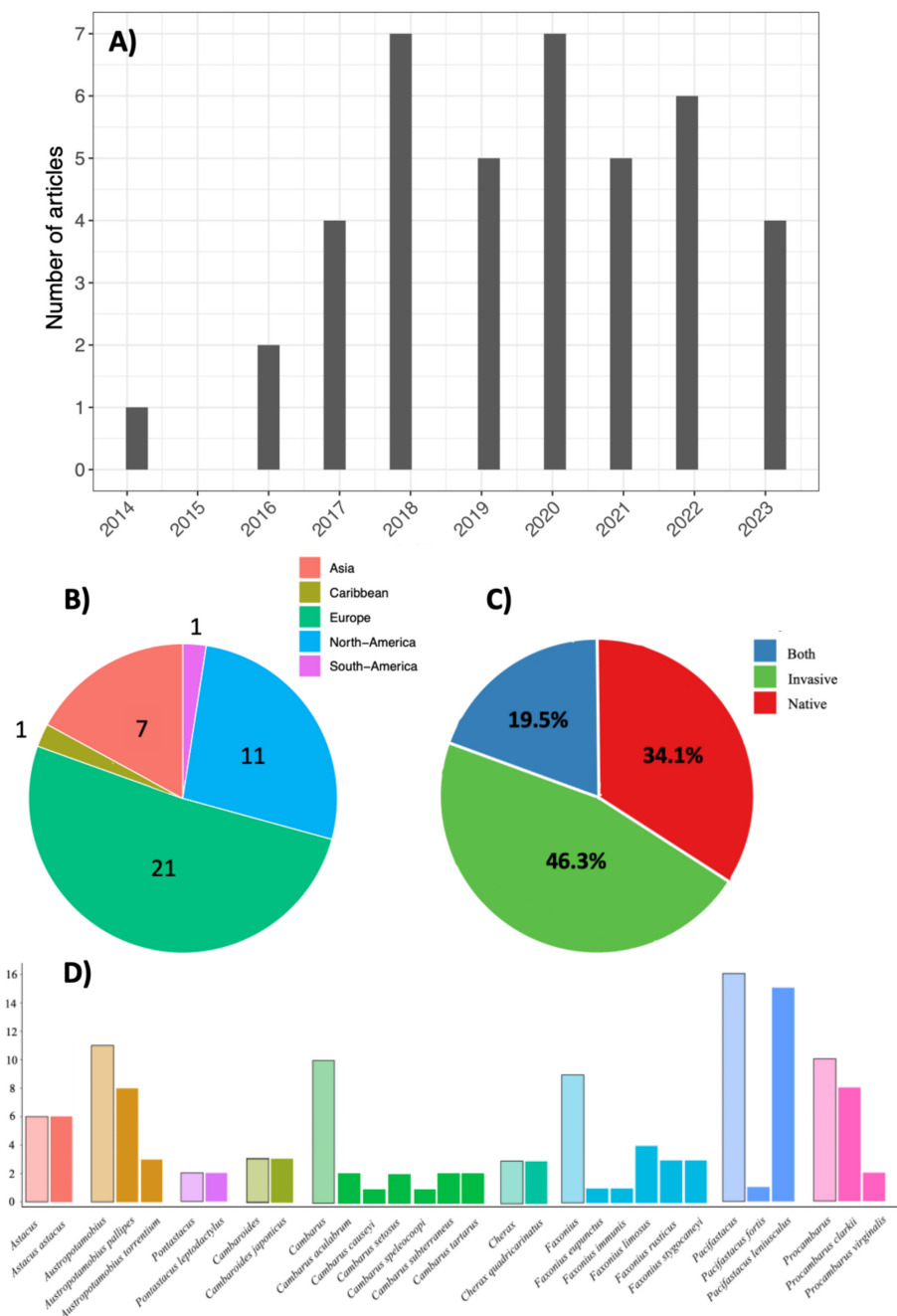


FIGURE 1 | Overview of the 41 studies using the eDNA-based methodology for crayfish monitoring following a Web of Science search (see State-of-play review section), with an analysis of the total number of publications per year (A), per geographical area (B), applied to native and/or invasive crayfish species (C) and the genera and species studied (D).

samples (i.e., Macherey-Nagel NucleoSpin eDNA, Qiagen DNeasy PowerWater or Sylphium Environmental DNA isolation).

The choice of protocol can often be simply linked to local laboratory habits with some products or constraints, such as the budgets obtained for a study or the price differences negotiated with the suppliers. Thus, for each step of the protocol, ranging from field sampling to PCR analyses, there are inevitably variable yields resulting. As an example, 69.33% of the studies retained in our review developed their own primers and probe assay, whereas 30.67% used existing ones. This has also led to many different assays for any given species, for example, eight for the European endangered white-clawed crayfish and 13 for the

invasive signal crayfish (Table 1). This means we are in need of more comparison studies to assess pros and cons across various choices in the eDNA process (Mauvisseau, Burian, et al. 2019).

4.1 | Assay Design (Targeted Gene and Amplicon Length)

The first discrepancies between studies can be found at the level of the target gene and amplicon length. As for the majority of eDNA studies on eukaryotic species, short fragments are favoured, usually around 100 bp. This follows the default parameters in Primer3 (Untergasser et al. 2012), and those

implemented in Geneious (Kearse et al. 2012), associated with mitochondrial genes (12S, 16S or cytochrome oxidase sub-unit I). The mitochondrial genome was largely preferred, probably thanks to the Barcode of Life (BOLD) program, which was created in 2004 and lists millions of reference genetic sequences to promote the continued use of the mitochondrial genome. It has long been considered the preferred genetic structure for taxonomic identification, thanks to the reduced size of the molecule, its abundance in tissues (up to 1000 mitochondria per cell) and its absence (or very low rate) of recombination between congeners of the same species, a result that is known to limit the risk of misidentification (Gissi, Iannelli, and Pesole 2008). Mitochondrial DNA fragments are also known to be less susceptible to environmental degradation (Jo, Takao, and Minamoto 2022)—an added benefit in the world of eDNA usage and the BOLD database assists researchers in the optimization of in silico testing.

For crayfish, all the published studies to date have indeed utilized the mitochondrial genome, with the majority targeting the COI gene (89.33%) (Figure 2). Only 9.33% focused on 16S and 1.33% on cytochrome oxidase sub-unit III (COX3) (Figure 2). The amplicon length ranged from 65 bp (*A. astacus*, *P. leniusculus*, *P. leptodactylus* and *P. clarkii*) to 295 bp (*Faxonius immunis*), with a mean length of 112.6 bp when all species were combined (median value of 109 bp) (Figure 2). Those assays that tend to favour slightly longer fragment lengths, such as 295 bp for *F. immunis* (Figure 2), may have emerged to account for the inter-specific genetic proximities (see primer similarities between common crayfish species in United States in Dougherty et al. 2016). For *P. virginialis*, the longer than average read lengths of the assays (167–189 bp) may be due to its genetic particularities. The marbled crayfish is known as the only triploid decapod species (Lukhaup 2001), and despite being now relatively well studied, its triploid genotype could lead to complication in primer design, due to the presence of sequence variations and

heteroplasmy. Nevertheless, thanks to thorough testing (in silico, in vitro and sometimes confirmation with Sanger sequencing), all studies working on *F. immunis* (Chucholl et al. 2021) and *P. virginialis* (Mauvisseau, Tönges, et al. 2019; Rusch et al. 2020) have succeeded in detecting the targeted species from eDNA water samples, with high reliability, reaching very low LOD (1 copy.μL⁻¹ in Rusch et al. 2020 or 0.552 pg.μL⁻¹ in Mauvisseau, Burian, et al. 2019). Interestingly, regarding target length of the fragments, what was true several years ago (concerning the degradation of eDNA and the detection of short eDNA fragments (around 100 bp and < 150 bp)), no longer seems so obvious. Now, many protocols offer up significant yields and seem to have reached high sensitivity. However, very few studies have performed comparative analyses of these different assays developed for the same species. See a good example for variation in success across primer pair for eDNA usage in the freshwater pearl mussel *Margaritifera margaritifera* (Mauvisseau, Burian, et al. 2019).

For crayfish, Geerts et al. (2018) have been the only one to try and ascertain primer superiority. They developed their own assay (primers and probe, called RodRiv) targeting a 109-bp fragment of the COX3 gene to detect the invasive *P. clarkii* in Belgium. This was then compared against the Tréguier et al. (2014) assay (SPY_ProCla, targeting a 65-bp fragment of the COI gene). They compared the efficiency of the two assays through four experimental designs: amplification of *P. clarkii* extract DNA (tissue), eDNA aquarium filter and eDNA field samples (both filtration and pellet/centrifugation). The SPY_ProCla set amplified the DNA extract better. But the newly RodRiv designed assay performed better for aquarium, field filtration and field pellet, with 83.3%, 50% and 50% of positive detection, respectively, compared to 8%, 41.7% and 16.7%, for the SPY_ProCla assay (Geerts et al. 2018). That said, the study did not exactly reproduce the protocol (field sampling and eDNA extraction) developed by Tréguier et al. (2014) for SPY_ProCla, which may explain the reduced performance of the SPY_ProCla assay. The reasoning

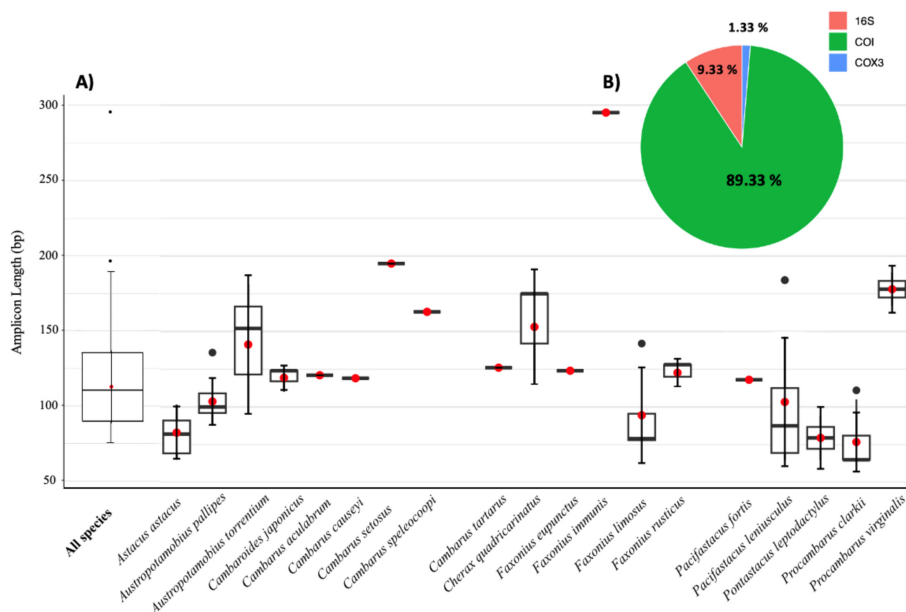


FIGURE 2 | Variation observed in the different species-specific assays, with the amplicon length targeted (in base pair), all species combined and analysed individually (A); as well as the targeted mitochondrial genes (cytochrome oxidase sub-unit I, COI; 16S or cytochrome oxidase sub-unit III, COX3) (B).

behind this variation in yields therefore remains unclear, and further studies are certainly needed to untangle the conclusions being drawn. For example, it would be interesting to conduct this on *A. pallipes*, where five distinct assays are known, with different characteristics in terms of targeted genes and amplification lengths: 96 bp in COI (Atkinson et al. 2019), 109 bp in COI (Troth et al. 2020), 99 bp in COI (Chucholl et al. 2021), 177 bp in COI (King et al. 2022) and 136 bp in 16S (Manfrin et al. 2022).

4.2 | Field Sampling

Field sampling is separated into two main steps: capture of the eDNA and preservation of the sample until analysis. The first studies assessed in this review all used the so-called precipitation method, which consists of collecting water (at one or more points) and centrifuging the sample (or all of the sub-samples), with the pellet representing the eDNA (Ficetola et al. 2008; Tréguier et al. 2014). Then, the filtration method appeared, consisting of filtering water from the body of interest, through a membrane of a given composition and pore size to fix the eDNA. This method now dominates studies, allowing the processing of large volumes of water. The precipitation method was often limited by the sample tube volume (usually a 50-mL Falcon tube). Filtration in contrast is often governed by the choice of filter pore size. Most studies aim for filtering 1 or 2 L and note if it clogs before, but depending on the filter pore sizes and the water turbidity, the volume processed can reach > 5 L (i.e., Strand et al. (2019) using 2 μ m pore size filters in clear Norway waters). The membranes used for an eDNA application are generally made of polyvinylidene difluoride (PVDF), polyethersulfone (PES), polycarbonate track etch (PCTE), nitrocellulose (NC) or

glass fibre (GF) and often have pores ranging from 0.2 to 5 μ m depending on the taxa and sizes of molecules targeted (Deiner et al. 2015; Djurhuus et al. 2017; Majaneva et al. 2018). When the filtration is completed, seven main preservation strategies stand out across the literature: absolute ethanol (EtOH), cetyltrimethylammonium bromide (CTAB), Longmire buffer, the first lysis buffer supplied in extraction kits (e.g., ATL buffer in Qiagen), dry frozen (i.e., without any chemical addition), or with silica beads (Deiner et al. 2015; Djurhuus et al. 2017; Majaneva et al. 2018). Again, some have attempted to ascertain the 'optimal' sampling protocol. For example, Majaneva et al. (2018), who studied freshwater metazoan communities, highlighted improved yields using 0.45- μ m NC filters (compared to 0.22 μ m NC and both 0.22 and 0.45 μ m PES). Filters kept dry or in lysis buffer have also been shown to give more consistent community structures (Majaneva et al. 2018). There is no consensus about the best conservation method for eDNA preservation (e.g., Renshaw et al. 2015; Hinlo et al. 2017); however, EtOH and dry preservation are widely used, probably thanks to their ease of use, as illustrated in Majaneva et al. (2018).

For crayfish studies specifically, a similar trend is also observed. The initial study utilized the precipitation method (Tréguier et al. 2014), but then soon all studies turned to filtration. This latter method now predominates in 80.5% of the studies assessed, against only 14.6% using precipitation (Figure 3A). Troth et al. (2020) investigated the effects of eDNA capture method on probability of detection for the white-clawed crayfish (in % of positive replicas) and sensitivity (Ct value) in lentic ecosystems by comparing the precipitation method versus the filtration method (integrating three different pore sizes, 0.22, 0.45 and 2 μ m). They showed significantly higher detection efficiency and sensitivity of the filtration method,

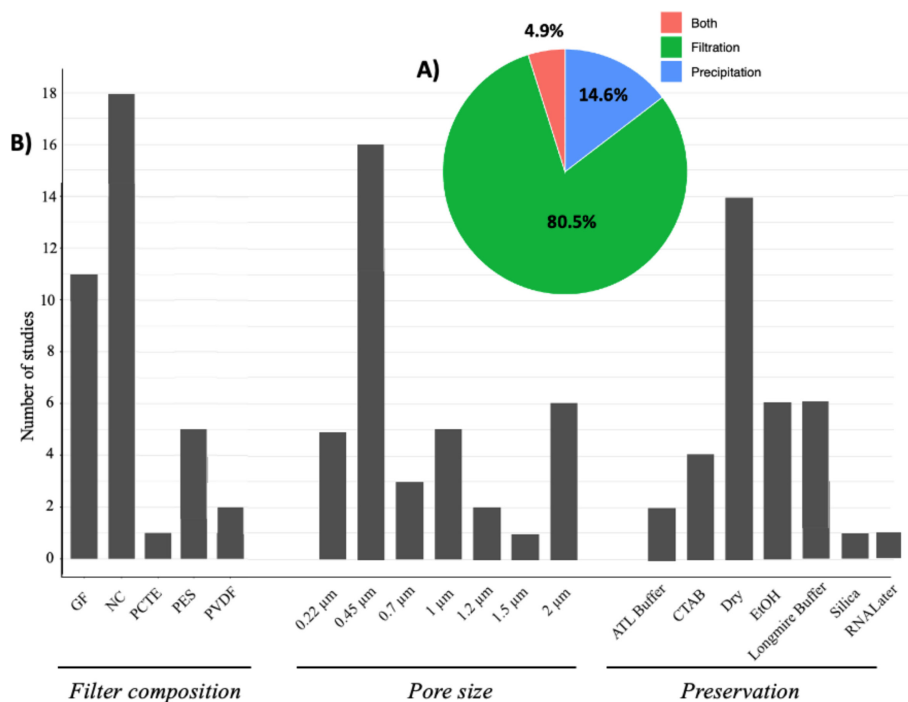


FIGURE 3 | Graphical representation of the wide diversity in terms of field protocols, especially the number of studies on crayfish using precipitation method or filtration (A). Barplots are based on studies using filtration and so represents the number of studies using the different strategies for filter composition (GF, NC, PCTE, PES and PVDF), filter pore size (0.22, 0.45, 0.7, 1, 1.2, 1.5 and 2 μ m) and filter preservation (ATL buffer, CTAB, Dry, EtOH, Longmire buffer, silica and RNA Later) (B).

with detection probabilities averaging around 10% for the precipitation method versus > 75% for filtration. Filters with a larger pore size (2 μm) appeared to have higher sensitivity (significantly lower Ct values), but the results were largely similar when considering detection probabilities (Troth et al. 2020).

As for other taxa, NC filters were the most commonly utilized for crayfish detection (in 18 studies), followed closely by GF filters (11 studies). The remaining eight used a mix of PCTE, PES and/or PVDF (Figure 3B). This preferential use of NC filters can be explained mainly by their reliability regardless of the target environment. Indeed, several studies have highlighted their versatility, with performances superior or equal to other types (GF or other plastic polymers). The variable findings in optimal type is likely driven by water quality and/or the choice of the extraction method (Kumar, Eble, and Gaither 2020). The most utilized filter pore sizes are 0.45 μm , in 16 of the studies assessed, with only six using 2 μm (Figure 3B). The 0.45- μm filters probably hold a preference due to their intermediate pore size, offering a good compromise between sufficient volume filtered (0.22 μm clogging very quickly in little turbid waters) and eDNA capture (> 5 μm potentially allowing mtDNA molecules to pass through). However, many studies (44.7%) are now starting to utilize larger pore sizes of their filters (0.7, 1, 1.2 and 2 μm) (Figure 3B). This is likely driven by a desire to filter greater volumes of water, maximizing capture of any and all eDNA molecules in the water column. Or alternatively, it may simply be due to the increased effort of filtering in more turbid waters, such as mangroves or stagnant systems. That said, caution should be taken here as accuracy appears inconsistent, and we remain unable to draw best practice guidelines from the available literature to date. Finally, we also acknowledge that field constraints will play a major role in the ultimate choice of preservative method. For example, with crayfish eDNA, the most used preservative method remains dry preservation (Figure 3B). This is certainly related to its ease of implementation in the field and its preservation efficiency when samples are processed quickly (short-term preservation). Others who have utilized EtOH or Longmire buffer do so as they offer long preservation times (years, if stored appropriately). Finally, it should be mentioned ATL buffer (lysis buffer in Qiagen extraction kit), RNALater and/or CTAB appear to offer increases in extraction yields (Kumar, Eble, and Gaither 2020). More detailed studies are needed to draw conclusions over the optimal method, and it will also likely vary not only between species and environment but also the eDNA extraction method used.

In brief, there are many different combinations when sampling eDNA, and the choice clearly impacts the reliability and repeatability. Field constraints (accessibility and time allocated, material available, etc.) can also vary greatly from one study to another, as can the needs of the study, and it is therefore difficult to propose a gold standard protocol that will be optimal for all. So, in this light, our recommendations are the use of NC filters for crayfish detection, adapting the pore size (0.45, 1.2 or 2 μm) according to the turbidity of the environment surveyed. The preservative method can be adapted according to the needs, with the knowledge that higher yields are often reached with short term preservation in lysis buffers (ATL or CTAB). However, when transporting between countries or ease of handling in the field, keeping the filters dry or in EtOH is a good option. If long-term preservation is preferable, treatment with Longmire

buffer should be considered. However, as always, we strongly recommend field-testing any protocol before conducting your experiment or survey.

4.3 | Laboratory Processes and Analysis

Across eDNA studies, whether for crayfish monitoring or other taxa, two eDNA extraction methodologies (from filters or pellets) have been mainly applied: the phenol–chloroform–isoamyl alcohol method (PCI) and the use of commercial kits (Figure 4). These methods present their own advantages and disadvantages. PCI is certainly less expensive (~0.5€ per sample, vs. ~3€ for Qiagen DNeasy Blood & Tissue) and often provide higher DNA yields (Geerts et al. 2018; Kumar, Eble, and Gaither 2020). But they rely on acutely toxic chemicals such as phenol, chloroform and β -mercaptoethanol (Kumar, Eble, and Gaither 2020). Commercial kits in contrast (despite their expense) do not involve hazardous chemicals. Some studies have tried to systematically compare and contrast these different eDNA isolation methods, but results appear highly variable depending on the unit observed (i.e., DNA concentration, Ct values and % of positive replicate) (Deiner et al. 2015; Piggott 2016; Djurhuus et al. 2017; Kumar, Eble, and Gaither 2020).

For crayfish detection, 69.8% of the studies resort to commercial extraction kits for isolation of eDNA, whereas 30.2% used the PCI method (Figure 4). Over the 33 studies using kits, 29 chose Qiagen, probably because it is the market leader, with a preference for DNeasy Blood & Tissue kit (24 studies vs. four for DNeasy PowerWater and one for PowerSoil) (Figure 4). The DNeasy PowerWater kit was initially developed for DNA extraction from water samples, with a promised increased power of inhibitor removal. However, its high market price (~12€ per sample) coupled with no observable or significant increase in performance capabilities against other kits resulted in low uptake (Deiner et al. 2015; Djurhuus et al. 2017).

After eDNA isolation comes amplification to detect (or not) the presence of a targeted crayfish species. Here again, protocol possibilities are numerous and even more context and lab dependent. Samples can be treated using endpoint-PCR (4.87% of eDNA crayfish studies), qPCR (75.6% of eDNA crayfish studies), dPCR (0%) or a combination (qPCR-dPCR: 7.3%; PCR and qPCR: 2.4%; PCR and dPCR: 2.4%). qPCR usage remains the most common, probably because of its ease of use and regular occurrence in many laboratories (Pabinger et al. 2009). It also allows a digital visualization of the results, with fluorescence (specific probe of the targeted species) representing a second control. dPCR performs quite similarly but is reputed to be more precise (at the copy number unit) and more reliable in the presence of inhibitors. This is primarily due to the fragmentation of the sample into droplets, analysed one by one (Doi et al. 2015; Mauvisseau, Davy-Bowker, et al. 2019; Brys et al. 2020). However, several crayfish studies, aiming at comparing the two PCR methods, did not find any perceivable differences in accuracy and efficiency between qPCR and dPCR (Johnsen et al. 2020; Baudry, Laffitte, et al. 2023). This may be due to advances in the Taq that can be utilized in qPCR assays. For example, Taqman Environmental MasterMix 2.0 allows for the near-total removal of inhibitors in a sample (Strand et al. 2011). Although basic PCR is still sometime

utilized solely for eDNA analysis, such studies are becoming much rarer, and this technique remains for simply validating the primers. However, more recent studies are again turning to qPCR and dPCR to test primers from the onset. EVA-Green or SYBR-Green mixes bind to the dsDNA amplified by the specific primers and emit a fluorescent signal. This has now been used in 14.28% of the studies included here, and interestingly, when only one species was targeted, the probe was 6-FAM labelled (67.35%), whereas the HEX and VIC fluorochromes were only used for multiplexing (6.12%). Finally, some studies (7.3%) developed 'non-conventional' methodologies, such as qPCR-LAMP (loop-mediated isothermal amplification) or the qPCR-HRM (high-resolution melt curve). The first is used in medicine and reputed to be highly specific and sensitive thanks to the use of specific Bst DNA polymerases (Porco et al. 2022). The second was initially utilized in SNPs genotyping thanks to its ability to discriminate variation in DNA sequences and so allows for multiplexing (Robinson et al. 2018; Robinson, de Leaniz, and Consuegra 2019). These will likely start to be explored in more detail as and when they show higher performance, but testing across methodologies must be undertaken as a matter of priority.

5 | Geographical Biases and Studies' Applications

Most eDNA studies targeting crayfish species have to date been led by researchers in the Northern Hemisphere (Europe and the United States) (32 studies of 41, representing 78%) (Figure 1B). A distinct gap was observed in the Caribbean (only one study, in Martinique, F.W.I.), South America (one study in Ecuador) and the African continent, where no studies have been undertaken

to date. There are multiple reasons why this is likely the case. First, although the Caribbean is considered to be biodiversity hotspot (Brown et al. 2019), they are no native crayfish present (Crandall and Buhay 2008; Crandall and De Grave 2017). In South America and Africa, native crayfish are present, but limited to restricted areas, for example, only in Argentina, Brazil, Chile and Uruguay (Almerão et al. 2015) and in Madagascar (for Africa) (Madzivanzira et al. 2020). The use of eDNA as a means of conservation is therefore not as readily taken up. However, as invasive crayfish species are starting to be noted, for example, *C. quadricarinatus* in Martinique (Baudry et al. 2020) and *P. virginalis* in Madagascar (Madzivanzira et al. 2020), we expect more studies to come from these regions in a near future. Another factor for this disparity across geographic range is of course inequality in funding opportunities and laboratory space available. That said, although Australia does not fit into this category and is a recognized biodiversity hotspot for crayfish (Crandall and Buhay 2008; Crandall and De Grave 2017), there have been no studies conducted here to date. However, this may be explained by the focus of conservation efforts on other species. That said, other factors such as (1) variation in extent of legal frameworks (which oblige regular aquatic biomonitoring) and/or (2) the incompleteness in DNA reference databases also hamper such studies to progress in many regions.

Further, the majority of eDNA studies on crayfish to date still focus on an invasion context (80.4%), with native species only accounting for 19.5% of studies (Figure 1C). Crayfish invasions are responsible for huge economic damages (Kouba et al. 2022), and mapping distribution of species is essential in conservation biology (Stewart et al. 2017; Greenhalgh et al. 2024). This

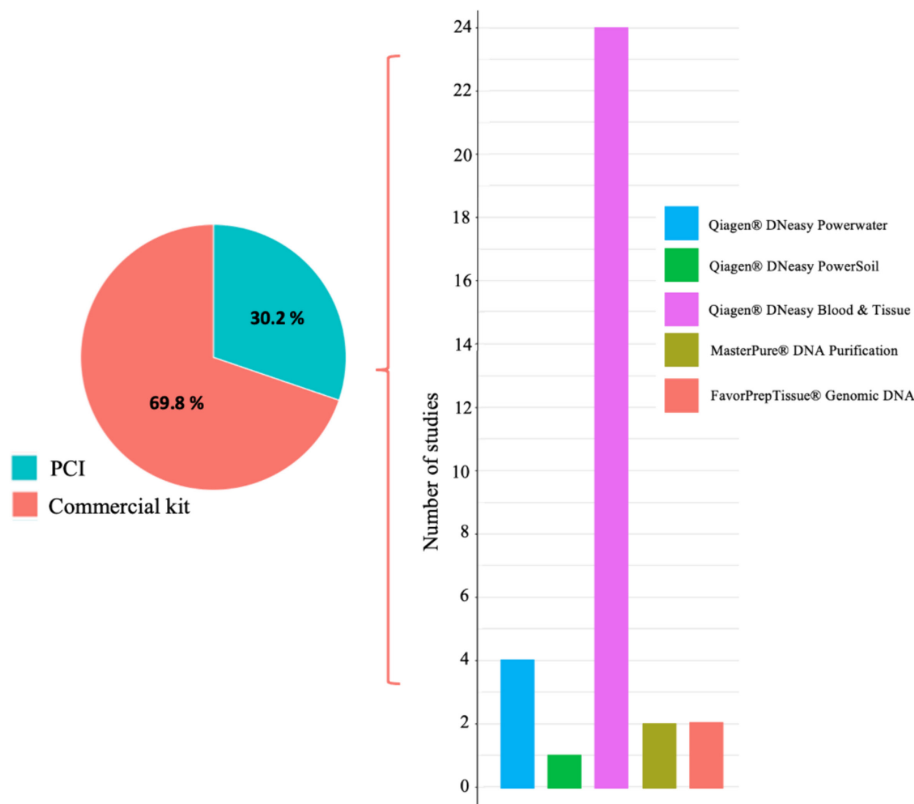


FIGURE 4 | Representation of the different protocols performed for eDNA extraction in crayfish studies (PCI or commercial kits), as well as the diversity of commercial kits used.

is certainly a major reason for the over-representation of eDNA crayfish studies in Europe. Indeed, Europe has more introduced crayfish species than native ones. Add on the impact that crayfish plague has had, and we see an influx in funds and effort on speeding up the mapping of populations of all crayfish species across mainland Europe and the United Kingdom (Füeder et al. 2010; Grandjean et al. 2017; Becking et al. 2021; Greenhalgh et al. 2024). This over-invasion context does however also exist in Africa, as Madzivanzira et al. (2020) reported nine crayfish species that have been introduced across the African continent: one from Europe (*A. astacus*), three from Australia (smooth marron *Cherax cainii*, yabby *Cherax destructor* and redclaw *C. quadricarinatus*) and five from the United States (*F. limosus*, *P. leniusculus*, *P. clarkii*, *P. virginalis* and the White River crayfish *Procambarus zonangulus*). Such observations are particularly alarming as mainland Africa did not naturally harbour its own freshwater crayfish species, with potamonautid crabs taking up the roles in this region (Crandall and Buhay 2008; Lodge et al. 2012; Madzivanzira et al. 2020). Madagascar alone hosts crayfish in this region with seven endemics of the *Astacoides* genus (Madzivanzira et al. 2020). We therefore should be prioritizing our effort in these areas, with the primary goal of keeping Madagascar free of additional invasive species and/or minimizing the impact of others across the mainland, and eDNA can certainly play a key role in such practices.

6 | Conclusion and Implication for Future

The eDNA-based methodology has certainly revolutionized the monitoring of aquatic organisms, making it possible to attest the presence or absence of a targeted taxa, at any life stage, regardless of its behaviour (nocturnal or diurnal) or whether it is invasive or native (Ficetola et al. 2008; Thomsen and Willerslev 2015). The capture of individuals does however still remain necessary, especially for genetic studies, for example, as there is a reliance on tissue sampling, but here again, eDNA assessments can orient the traditional survey by isolating species presence/absence (Baudry, Mauvisseau, et al. 2023). Many studies, especially on fish, have now moved to eDNA metabarcoding, thanks to democratization of access to next-generation sequencing (NGS) and the reduction of costs in general (Taberlet et al. 2018). This powerful eDNA-based method appeared around 2010 and provide exhaustive taxonomic lists within each sample analysed (Valentini et al. 2016; Taberlet et al. 2018). That said, it is still not fully optimized (and so not published) for crayfish. For a long time, generalist BF2/BR2 primers (Elbrecht and Leese 2017) have been used for biodiversity inventories of aquatic macroinvertebrates (group including crayfish), without the results being satisfactory for our taxon of interest (authors' unpublished data). That said, a new set of primers developed by Komai et al. (2019) and known as MiDeca appear promising. MiDeca has been tested in-silico and in vitro on crayfish species, but it is yet to be tested on freshwater systems in the field (Madduppa et al. 2022).

Despite the potential of applying metabarcoding for the study of crayfish, there remains a lack of sensitivity when it comes to targeting a limited number of individuals, and so single target assays will remain an important tool in the belt of managers, conservationists and scientists for years to come. Indeed, some

studies highlighted greater efficiency of targeted methods compared to metabarcoding (see Bylemans et al. 2019 for qPCR vs. metabarcoding comparison to detect redbfin perch *Perca fluviatilis*). The same authors concluded that although metabarcoding is a useful tool, a targeted tool was preferred when it comes to generating detailed distribution data. More recently, Moss et al. (2022) had converging results, working on amphibians. Here, qPCR also outperformed metabarcoding for detecting the two targeted species, but nevertheless the latter still remained superior to traditional field surveys. That said, due primarily to the sheer diversity of protocols available, at all steps, we (among others) have not been able to give clear guidance for a protocol to utilize. We have, however, been able to highlight certain trends in the literature, and it would therefore seem that the filtration method would be preferred, coupled with extraction using commercial kits, providing sufficient yields, with reagents respectful of the health of the experimenter. The PCR method should be adapted according to the equipment present in any given laboratory. Further, regarding a single target, we do not see compelling evidence that suggests dPCR has a technological advantage—at least one justifying the price increase that would be associated with its usage (for now). However, we do acknowledge that dPCR use seems to be growing, probably due to its ability of detecting every last copy of DNA in the droplets generated and the results being delivered in an interactive and user-friendly way. We also strongly recommend any researcher or commercial entity should always undertake preliminary testing to ascertain their protocols fit with local conditions (in vitro and mesocosm) before any deployment of the methodology on a large scale. This will make it possible not only to both point out certain critical aspects of the protocol and consider an alternative but also to fulfil the validation criteria of Thalinger et al. (2021).

We end by strongly encouraging eDNA users to follow the highest possible validation criteria and to provide as much detail as possible for reproducibility and comparison of experiments. For the moment, there is no universal methodology, but harmonization, or at least transparency with detection protocols and errors and limitations needs to be normalized. Indeed, as eDNA continues to grow in popularity and therefore its use in monitoring and conservation, we will soon see integration into legal monitoring frameworks and decision making (Morissette et al. 2021; Adams et al. 2024; Kelly et al. 2024).

Author Contributions

Thomas Baudry: conceptualization, methodology, data curation, formal analysis, investigation, software, validation, visualization, writing – original draft, writing – review and editing. **Valentin Vasselon:** conceptualization, supervision, project administration, validation, visualization, writing – review and editing. **Carine Delaunay:** investigation, data curation, validation, visualization, writing – review and editing. **Michael Sweet:** validation, visualization, writing – review and editing. **Frédéric Grandjean:** conceptualization, supervision, project administration, validation, visualization, writing – review and editing.

Acknowledgements

We thank Nicolas Poulet (OFB) for his helpful proofreading and literature search check before submission.

Conflicts of Interest

The authors declare no conflicts of interest.

Data Availability Statement

All data used in this review work can be found in the [Supporting Information](#).

References

- Adams, A. J., C. Kamoroff, N. R. Daniele, et al. 2024. "From eDNA to Decisions Using a Multi-method Approach to Restoration Planning in Streams." *Scientific Reports* 14, no. 1: 14335. <https://doi.org/10.1038/s41598-024-64612-5>.
- Agersnap, S., W. B. Larsen, S. W. Knudsen, et al. 2017. "Monitoring of Noble, Signal and Narrow-Clawed Crayfish Using Environmental DNA From Freshwater Samples." *PLoS ONE* 12, no. 6: e0179261. <https://doi.org/10.1371/journal.pone.0179261>.
- Almerão, M. P., E. Rudolph, C. Souty-Grosset, et al. 2015. "The Native South American Crayfishes (Crustacea, Parastacidae): State of Knowledge and Conservation Status." *Aquatic Conservation: Marine and Freshwater Ecosystems* 25: 288–301. <https://doi.org/10.1002/aqc.2488>.
- Andriantsoa, R., S. Tönges, J. Panteleit, et al. 2019. "Ecological Plasticity and Commercial Impact of Invasive Marbled Crayfish Populations in Madagascar." *BMC Ecology* 19, no. 1: 1–10. <https://doi.org/10.1186/s12898-019-0224-1>.
- Atkinson, S., J. E. L. Carlsson, B. Ball, M. Kelly-Quinn, and J. Carlsson. 2019. "Field Application of an eDNA Assay for the Threatened White-Clawed Crayfish *Austropotamobius pallipes*." *Freshwater Science* 38: 503–509. <https://doi.org/10.1101/562710>.
- Barnes, M. A., and C. R. Turner. 2015. "The Ecology of Environmental DNA and Implications for Conservation Genetics." *Conservation Genetics* 17, no. 1: 1–17. <https://doi.org/10.1007/s10592-015-0775-4>.
- Baudry, T., T. Becking, J. P. Goût, et al. 2020. "Invasion and Distribution of the Redclaw Crayfish, *Cherax quadricarinatus*, in Martinique." *Knowledge and Management of Aquatic Ecosystems* 421: 50. <https://doi.org/10.1051/kmae/2020041>.
- Baudry, T., M. Laffitte, C. Noizat, et al. 2023. "Influence of Distance From Source Population and Seasonality in eDNA Detection of White-Clawed Crayfish, Through qPCR and ddPCR Assays." *Environmental DNA* 5, no. 4: 733–749. <https://doi.org/10.1002/edn3.435>.
- Baudry, T., Q. Mauvisseau, A. Arqué, et al. 2023. "Environmental DNA Survey to Detect an Endemic Cryptic Fish, *Anablepsoides cryptocalus*, in Tropical Freshwater Streams." *Aquatic Conservation: Marine and Freshwater Ecosystems* 33, no. 3: 325–335. <https://doi.org/10.1002/aqc.3916>.
- Baudry, T., Q. Mauvisseau, J. Goût, et al. 2021. "Mapping a Super-Invader in a Biodiversity Hotspot, an eDNA-Based Success Story." *Ecological Indicators* 126: 107637. <https://doi.org/10.1016/j.ecolind.2021.107637>.
- Becking, T., A. Kiselev, V. Rossi, D. Street-Jones, F. Grandjean, and E. Gaulin. 2021. "Pathogenicity of Animal and Plant Parasitic *Aphanomyces* spp and Their Economic Impact on Aquaculture and Agriculture." *Fungal Biology Reviews* 40: 1–18. <https://doi.org/10.1016/j.fbr.2021.08.001>.
- Belle, C. C., B. C. Stoeckle, and J. Geist. 2019. "Taxonomic and Geographical Representation of Freshwater Environmental DNA Research in Aquatic Conservation." *Aquatic Conservation: Marine and Freshwater Ecosystems* 29, no. 11: 1996–2009. <https://doi.org/10.1002/aqc.3208>.
- Boyd, S. H., K. D. K. Niemiller, K. E. Dooley, J. Nix, and M. L. Niemiller. 2020. "Using Environmental DNA Methods to Survey for Rare Groundwater Fauna: Detection of an Endangered Endemic Cave Crayfish in Northern Alabama." *PLoS ONE* 15, no. 12: 1–13. <https://doi.org/10.1371/journal.pone.0242741>.
- Brown, N., D. Diaz, I. Angarita, et al. 2019. "Le hotspot de biodiversité des îles des Caraïbes." *PLoS ONE* 14, no. 12: 1–13. <https://doi.org/10.1371/journal.pone.0242741>.
- Bryns, R., D. Halfmaerten, S. Neyrinck, et al. 2020. "Reliable eDNA Detection and Quantification of the European Weather Loach (*Misgurnus fossilis*)." *Journal of Fish Biology* 98, no. 2: 399–414. <https://doi.org/10.1111/jfb.14315>.
- Burian, A., Q. Mauvisseau, M. Bulling, S. Domisch, S. Qian, and M. Sweet. 2021. "Improving the Reliability of eDNA Data Interpretation." *Molecular Ecology Resources* 21, no. 5: 1422–1433. <https://doi.org/10.1111/1755-0998.13367>.
- Bustin, S. A., V. Benes, J. A. Garson, et al. 2009. "The MIQE Guidelines: Minimum Information for Publication of Quantitative Real-Time PCR Experiments." *Clinical Chemistry* 55, no. 4: 611–622. <https://doi.org/10.1373/clinchem.2008.112797>.
- Bylemans, J., D. M. Gleeson, R. P. Duncan, C. M. Hardy, and E. M. Furlan. 2019. "A Performance Evaluation of Targeted eDNA and eDNA Metabarcoding Analyses for Freshwater Fishes." *Environmental DNA* 1, no. 4: 402–414. <https://doi.org/10.1002/edn3.41>.
- Cai, W., Z. Ma, C. Yang, et al. 2017. "Using eDNA to Detect the Distribution and Density of Invasive Crayfish in the HongheHani Rice Terrace World Heritage Site." *PLoS ONE* 12, no. 5: 1–13. <https://doi.org/10.1371/journal.pone.0177724>.
- Chucholl, C. 2013. "Invaders for Sale: Trade and Determinants of Introduction of Ornamental Freshwater Crayfish." *Biological Invasions* 15, no. 1: 125–141. <https://doi.org/10.1007/s10530-012-0273-2>.
- Chucholl, F., F. Fiolka, G. Segelbacher, and L. S. Epp. 2021. "eDNA Detection of Native and Invasive Crayfish Species Allows for Year-Round Monitoring and Large-Scale Screening of Lotic Systems." *Frontiers in Environmental Science* 9: 639380. <https://doi.org/10.3389/fenvs.2021.639380>.
- Corey, S. 1987. "Comparative Fecundity of Four Species of Crayfish in Southwestern Ontario, Canada (Decapoda, Astacidea)." *Crustaceana* 52, no. 3: 276–286. <https://doi.org/10.1163/156854087X00510>.
- Corey, S. 1988. "Comparative Life Histories of Two Populations of the Introduced Crayfish *Orconectes rusticus* (Girard, 1852) in Ontario." *Crustaceana* 55, no. 1: 29–38.
- Coster, S. S., M. N. Dillon, W. Moore, and G. T. Merovich. 2021. "The Update and Optimization of an eDNA Assay to Detect the Invasive Rusty Crayfish (*Faxonius rusticus*)." *PLoS ONE* 16, no. 10: e0259084. <https://doi.org/10.1371/journal.pone.0259084>.
- Cowart, D. A., K. G. H. Breedveld, M. J. Ellis, J. M. Hull, and E. R. Larson. 2018. "Environmental DNA (eDNA) Applications for the Conservation of Imperiled Crayfish (Decapoda: Astacidea) Through Monitoring of Invasive Species Barriers and Relocated Populations." *Journal of Crustacean Biology* 38, no. 3: 257–266. <https://doi.org/10.1093/jcbiol/ryu007>.
- Crandall, K. A., and Æ. J. E. Buhay. 2008. "Global Diversity of Crayfish (Astacidae, Cambaridae, and Parastacidae—Decapoda) in Freshwater." *Hydrobiologia* 595: 295–301. <https://doi.org/10.1007/s10750-007-9120-3>.
- Crandall, K. A., and S. De Grave. 2017. "An Updated Classification of the Freshwater Crayfishes (Decapoda: Astacidea) of the World, With a Complete Species List." *Journal of Crustacean Biology* 37, no. 5: 615–653. <https://doi.org/10.1093/jcbiol/rux070>.
- Curtis, A. N., and E. R. Larson. 2020. "No Evidence That Crayfish Carcasses Produce Detectable Environmental DNA (eDNA) in a Stream Enclosure Experiment." *PeerJ* 8: e9333. <https://doi.org/10.7717/peerj.9333>.
- Dali, M. Z. M., M. S. A. M. Nasir, A. G. Khaleel, et al. 2023. "Predicting *Cherax quadricarinatus* Habitat Distribution Patterns Through the Usage of GIS and eDNA Analysis in Terengganu, Malaysia."

- Sains *Malaysiana* 52, no. 2: 343–354. <https://doi.org/10.17576/jsm-2023-5202-03>.
- Danilovic, M., I. Maguire, and L. Füreder. 2022. “Overlooked Keystone Species in Conservation Plans of Fluvial Ecosystems in Southeast Europe: A Review of Native Freshwater Crayfish Species.” *Knowledge and Management of Aquatic Ecosystems* 423: 21. <https://doi.org/10.1051/kmae/2022016>.
- Deiner, K., J. C. Walser, E. Mächler, and F. Altermatt. 2015. “Choice of Capture and Extraction Methods Affect Detection of Freshwater Biodiversity From Environmental DNA.” *Biological Conservation* 183: 53–63. <https://doi.org/10.1016/j.biocon.2014.11.018>.
- DiStefano, R. J., D. Ashley, S. K. Brewer, J. B. Mouser, and M. Niemiller. 2020. “Preliminary Investigation of the Critically Imperiled Caney Mountain Cave Crayfish *Orconectes stygocaneyi* (Hobbs III, 2001) (Decapoda: Cambaridae) in Missouri, USA.” *Freshwater Crayfish* 25, no. 1: 47–57. <https://doi.org/10.5869/fc.2020.v25-1.047>.
- Djurhuus, A., J. Port, C. J. Closek, et al. 2017. “Evaluation of Filtration and DNA Extraction Methods for Environmental DNA Biodiversity Assessments Across Multiple Trophic Levels.” *Frontiers in Marine Science* 4: 314. <https://doi.org/10.3389/fmars.2017.00314>.
- Doi, H., T. Takahara, T. Minamoto, S. Matsuhashi, K. Uchii, and H. Yamanaka. 2015. “Droplet Digital Polymerase Chain Reaction (PCR) Outperforms Real-Time PCR in the Detection of Environmental DNA From an Invasive Fish Species.” *Environmental Science and Technology* 49, no. 9: 5601–5608. <https://doi.org/10.1021/acs.est.5b00253>.
- Dougherty, M. M., E. R. Larson, M. A. Renshaw, et al. 2016. “Environmental DNA (eDNA) Detects the Invasive Rusty Crayfish *Orconectes rusticus* at Low Abundances.” *Journal of Applied Ecology* 53, no. 3: 722–732. <https://doi.org/10.1111/1365-2664.12621>.
- Dunn, N., V. Priestley, A. Herraiz, R. Arnold, and V. Savolainen. 2017. “Behavior and Season Affect Crayfish Detection and Density Inference Using Environmental DNA.” *Ecology and Evolution* 7, no. 19: 7777–7785. <https://doi.org/10.1002/ece3.3316>.
- Elbrecht, V., and F. Leese. 2017. “Validation and Development of COI Metabarcoding Primers for Freshwater Macroinvertebrate Bioassessment.” *Frontiers in Environmental Science* 5: 1–11. <https://doi.org/10.3389/fenvs.2017.00011>.
- Ercoli, F., K. Kaldre, T. Paaver, and R. Gross. 2019. “First Record of an Established Marbled Crayfish *Procambarus virginalis* (Lyko, 2017) Population in Estonia.” *BioInvasions Records* 8, no. 3: 675–683. <https://doi.org/10.3391/bir.2019.8.3.25>.
- Ficetola, G. F., C. Miaud, F. Pompanon, and P. Taberlet. 2008. “Species Detection Using Environmental DNA From Water Samples.” *Biology Letters* 4: 423–425. <https://doi.org/10.1098/rsbl.2008.0118>.
- Füreder, L., F. Gherardi, D. Holdich, J. Reynolds, P. Sibley, and C. Souty-Grosset. 2010. “*Austropotamobius pallipes*.” The IUCN Red List of Threatened Species 2010.
- Geerts, A. N., P. Boets, S. Van den Heede, P. Goethals, and C. Van der heyden. 2018. “A Search for Standardized Protocols to Detect Alien Invasive Crayfish Based on Environmental DNA (eDNA): A Lab and Field Evaluation.” *Ecological Indicators* 84: 564–572. <https://doi.org/10.1016/j.ecolind.2017.08.068>.
- Gissi, C., F. Iannelli, and G. Pesole. 2008. “Evolution of the Mitochondrial Genome of Metazoa as Exemplified by Comparison of Congeneric Species.” *Heredity* 101, no. 4: 301–320. <https://doi.org/10.1038/hdy.2008.62>.
- Goldberg, C. S., K. M. Strickler, and D. S. Pilliod. 2015. “Moving Environmental DNA Methods From Concept to Practice for Monitoring Aquatic Macroorganisms.” *Biological Conservation* 183: 1–3. <https://doi.org/10.1016/j.biocon.2014.11.040>.
- Gouin, N., F. Grandjean, D. Bouchon, J. D. Reynolds, and C. Souty-Grosset. 2001. “Population Genetic Structure of the Endangered Freshwater Crayfish *Austropotamobius pallipes*, Assessed Using RAPD Markers.” *Heredity* 87, no. 1: 80–87. <https://doi.org/10.1046/j.1365-2540.2001.00909.x>.
- Grandjean, F., J. Roques, C. Delaunay, A. Petrusek, T. Becking, and M. Collas. 2017. “Status of *Pacifastacus leniusculus* and Its Role in Recent Crayfish Plague Outbreaks in France: Improving Distribution and Crayfish Plague Infection Patterns.” *Aquatic Invasions* 12, no. 4: 541–549. <https://doi.org/10.3391/ai.2017.12.4.10>.
- Greenhalgh, J. A., R. Banks, R. A. Collins, et al. 2024. “Environmental DNA Can Inform the Trade-Off Between Proactive and Reactive Strategies for Crayfish Conservation.” *Environmental DNA* 6, no. 3: e571. <https://doi.org/10.1002/edn3.571>.
- Hänfling, B., L. L. Handley, D. S. Read, et al. 2016. “Environmental DNA Metabarcoding of Lake Fish Communities Reflects Long-Term Data From Established Survey Methods.” *Molecular Ecology* 25, no. 13: 3101–3119. <https://doi.org/10.1111/mec.13660>.
- Harper, K., P. Anucha, J. Turnbull, C. Bean, and M. Leaver. 2018. “Searching for a Signal: Environmental DNA (eDNA) for the Detection of Invasive Signal Crayfish, *Pacifastacus leniusculus* (Dana, 1852).” *Management of Biological Invasions* 9, no. 2: 137–148. <https://doi.org/10.3391/mbi.2018.9.2.07>.
- Hervé, A., I. Domaizon, J. M. Baudoin, et al. 2022. “Spatio-Temporal Variability of eDNA Signal and Its Implication for Fish Monitoring in Lakes.” *PLoS ONE* 17, no. 8: e0272660. <https://doi.org/10.1371/journal.pone.0272660>.
- Hinlo, R., D. Gleeson, M. Lintermans, and E. Furlan. 2017. “Methods to Maximise Recovery of Environmental DNA From Water Samples.” *PLoS ONE* 12, no. 6: e0179251. <https://doi.org/10.1371/journal.pone.0179251>.
- Hinosawa, T., S. Kinami, A. Sogabe, A. Ohtaka, N. Azuma, and H. Ikeda. 2023. “Habitat Preferences, Genetic Isolation and Climatic Vulnerability of an Endangered Freshwater Crayfish and a Widespread Freshwater Crab in Streams of Northern Japan.” *Aquatic Conservation: Marine and Freshwater Ecosystems* 33, no. 7: 761–772. <https://doi.org/10.1002/aqc.3953>.
- Ikeda, K., H. Doi, K. Tanaka, T. Kawai, and J. N. Negishi. 2016. “Using Environmental DNA to Detect an Endangered Crayfish *Cambaroides japonicus* in Streams.” *Conservation Genetics Resources* 8, no. 3: 231–234. <https://doi.org/10.1007/s12686-016-0541-z>.
- Ikeda, K., H. Doi, S. Terui, et al. 2019. “Estimating Native and Invasive Crayfish Distributions in Relation to Culvert Barriers With Environmental DNA.” *Freshwater Science* 38, no. 3: 629–641. <https://doi.org/10.1086/704998>.
- Jo, T., K. Takao, and T. Minamoto. 2022. “Linking the State of Environmental DNA to Its Application for Biomonitoring and Stock Assessment: Targeting Mitochondrial/Nuclear Genes, and Different DNA Fragment Lengths and Particle Sizes.” *Environmental DNA* 4: 271–283. <https://doi.org/10.1002/edn3.253>.
- Johnsen, S. I., D. A. Strand, J. C. Rusch, and T. Vrålstad. 2020. “Environmental DNA (eDNA) monitoring of Noble Crayfish *Astacus astacus* in Lentic Environments Offers Reliable Presence-Absence Surveillance – But Fails to Predict Population Density.” *Frontiers in Environmental Science* 8: 612253. <https://doi.org/10.3389/fenvs.2020.612253>.
- Kearse, M., R. Moir, A. Wilson, et al. 2012. “Geneious Basic: An Integrated and Extendable Desktop Software Platform for the Organization and Analysis of Sequence Data.” *Bioinformatics* 28, no. 12: 1647–1649. <https://doi.org/10.1093/bioinformatics/bts199>.
- Kelly, R. P., D. M. Lodge, K. N. Lee, et al. 2024. “Toward a National eDNA Strategy for the United States.” *Environmental DNA* 6: e432. <https://doi.org/10.1002/edn3.432>.
- King, A. C., R. Krieg, A. Weston, and A. K. Zenker. 2022. “Using eDNA to Simultaneously Detect the Distribution of Native and Invasive Crayfish Within an Entire Country.” *Journal of Environmental Management* 302: 113929. <https://doi.org/10.1016/j.jenvman.2021.113929>.

- Komai, T., R. O. Gotoh, T. Sado, and M. Miya. 2019. "Development of a New set of PCR Primers for eDNA Metabarcoding Decapod Crustaceans." *Metabarcoding and Metagenomics* 3: e33835. <https://doi.org/10.3897/mbmg.3.33835>.
- Kouba, A., F. J. Oficialdegui, R. N. Cuthbert, et al. 2022. "Identifying Economic Costs and Knowledge Gaps of Invasive Aquatic Crustaceans." *Science of the Total Environment* 813: 152325. <https://doi.org/10.1016/j.scitotenv.2021.152325>.
- Kouba, A., A. Petrusek, and P. Kozák. 2014. "Continental-Wide Distribution of Crayfish Species in Europe: Update and Maps." *Knowledge and Management of Aquatic Ecosystems* 413: 05. <https://doi.org/10.1051/kmae/2014007>.
- Kumar, G., J. E. Eble, and M. R. Gaither. 2020. "A Practical Guide to Sample Preservation and Pre-PCR Processing of Aquatic Environmental DNA." *Molecular Ecology Resources* 20, no. 1: 29–39. <https://doi.org/10.1111/1755-0998.13107>.
- Laffitte, M., T. Baudry, M. Guilmet, et al. 2023. "A New Invader in Freshwater Ecosystems in France: The Rusty Crayfish *Faxonius rusticus* (Girard, 1852)." *BioInvasions Records* 12, no. 2: 457–468. <https://doi.org/10.3391/bir.2023.12.2.10>.
- Larson, E. R., M. A. Renshaw, C. A. Gantz, et al. 2017. "Environmental DNA (eDNA) Detects the Invasive Crayfishes *Orconectes rusticus* and *Pacifastacus leniusculus* in Large Lakes of North America." *Hydrobiologia* 800, no. 1: 173–185. <https://doi.org/10.1007/s10750-017-3210-7>.
- Lesperance, M. L., M. J. Allison, L. C. Bergman, M. D. Hocking, and C. C. Helbing. 2021. "A Statistical Model for Calibration and Computation of Detection and Quantification Limits for Low Copy Number Environmental DNA Samples." *Environmental DNA* 3, no. 5: 970–981. <https://doi.org/10.1002/edn3.220>.
- Lodge, D. M., A. Deines, F. Gherardi, et al. 2012. "Global Introductions of Crayfishes: Evaluating the Impact of Species Invasions on Ecosystem Services." *Annual Review of Ecology, Evolution, and Systematics* 43: 449–472. <https://doi.org/10.1146/annurev-ecolsys-111511-103919>.
- Longshaw, M. 2011. "Diseases of Crayfish: A Review." *Journal of Invertebrate Pathology* 106: 54–70. <https://doi.org/10.1016/j.jip.2010.09.013>.
- Lukhaup, C. 2001. "Procambarus sp. The Marbled Crayfish." *Aquaristik Aktuell* 7–8: 48–51.
- Madduppa, H., L. M. I. Sani, K. C. Nugroho, et al. 2022. "eDNA Metabarcoding of Decapod Crustaceans Across Indonesian Seas Has Implications for Biodiversity Conservation and Fisheries Sustainability." *Frontiers in Marine Science* 9: 918295. <https://doi.org/10.3389/fmars.2022.918295>.
- Madzivanzira, T. C., J. South, L. E. Wood, et al. 2020. "A Review of Freshwater Crayfish Introductions in Africa." *Reviews in Fisheries Science & Aquaculture* 29, no. 2: 218–241. <https://doi.org/10.1080/23308249.2020.1802405>.
- Majaneva, M., O. H. Diserud, S. H. C. Eagle, E. Boström, M. Hajibabaei, and T. Ekrem. 2018. "Environmental DNA Filtration Techniques Affect Recovered Biodiversity." *Scientific Reports* 8, no. 1: 1–11. <https://doi.org/10.1038/s41598-018-23052-8>.
- Manfrin, C., M. Zanetti, D. Stanković, et al. 2022. "Detection of the Endangered Stone Crayfish *Austropotamobius torrentium* (Schrank, 1803) and Its Congeneric *A. pallipes* in Its Last Italian Biotope by eDNA Analysis." *Diversity* 14, no. 3: 205. <https://doi.org/10.3390/d14030205>.
- Mauvisseau, Q., A. Burian, C. Gibson, R. Brys, A. Ramsey, and M. Sweet. 2019. "Influence of Accuracy, Repeatability and Detection Probability in the Reliability of Species-Specific eDNA Based Approaches." *Scientific Reports* 9: 580. <https://doi.org/10.1038/s41598-018-37001-y>.
- Mauvisseau, Q., A. Coignet, C. Delaunay, F. Pinet, D. Bouchon, and C. Souty-Grosset. 2018. "Environmental DNA as an Efficient Tool for Detecting Invasive Crayfishes in Freshwater Ponds." *Hydrobiologia* 805, no. 1: 163–175. <https://doi.org/10.1007/s10750-017-3288-y>.
- Mauvisseau, Q., J. Davy-Bowker, M. Bulling, et al. 2019. "Combining ddPCR and Environmental DNA to Improve Detection Capabilities of a Critically Endangered Freshwater Invertebrate." *Scientific Reports* 9, no. 1: 1–9. <https://doi.org/10.1038/s41598-019-50571-9>.
- Mauvisseau, Q., S. Tönges, R. Andriantsoa, F. Lyko, and M. Sweet. 2019. "Early Detection of an Emerging Invasive Species: EDNA Monitoring of a Parthenogenetic Crayfish in Freshwater Systems." *Management of Biological Invasions* 10: 461–472. <https://doi.org/10.3391/mbi.2019.10.3.04>.
- Moher, D., L. Shamseer, M. Clarke, et al. 2015. "Preferred Reporting Items for Systematic Review and Meta-Analysis Protocols (PRISMA-P)." *Systematic Reviews* 4, no. 1: 1–9. <https://doi.org/10.1186/2046-4053-4-1>.
- Momot, W. T. 1967. "Population Dynamics and Productivity of the Crayfish, *Orconectes virilis*, in a Marl Lake." *American Midland Naturalist* 78, no. 1: 55–81. <https://doi.org/10.2307/2423370>.
- Morissette, J., S. Burgiel, K. Brantley, et al. 2021. "Strategic Considerations for Invasive Species Managers in the Utilization of Environmental DNA (eDNA): Steps for Incorporating This Powerful Surveillance Tool." *Management of Biological Invasions* 12, no. 3: 747–775. <https://doi.org/10.3391/mbi.2021.12.3.15>.
- Moss, W. E., L. R. Harper, M. A. Davis, C. S. Goldberg, M. M. Smith, and P. T. J. Johnson. 2022. "Navigating the Trade-Offs Between Environmental DNA and Conventional Field Surveys for Improved Amphibian Monitoring." *Ecosphere* 13: e3941. <https://doi.org/10.1002/ecs2.3941>.
- Mouser, J. B., S. K. Brewer, M. L. Niemiller, R. Mollenhauer, and R. A. Van Den Bussche. 2021. "Refining Sampling Protocols for Cavefishes and Cave Crayfishes to Account for Environmental Variation." *Subterranean Biology* 39: 79–105. <https://doi.org/10.3897/SUBTBIO.39.64279>.
- Mouser, J. B., S. K. Brewer, M. L. Niemiller, R. Mollenhauer, and R. A. Van Den Bussche. 2022. "Lithology and Disturbance Drive Cavefish and Cave Crayfish Occurrence in the Ozark Highlands Ecoregion." *Scientific Reports* 12, no. 1: 19559. <https://doi.org/10.1038/s41598-022-21791-3>.
- Nasir, S. A. M., A. G. Khaleel, N. A. Badaluddin, et al. 2020. "Development of Species-Specific Primer Sets for Australian Redclaw Crayfish (*Cherax quadricarinatus*) Detection From Water Environmental DNA (eDNA)." *Bioscience Research* 17: 90–99.
- Nyström, P. 1999. "Ecological Impact of Introduced and Native Crayfish on Freshwater Communities: European Perspectives." In *Crayfish in Europe as Alien Species – How to Make the Best of Bad Situation?* edited by F. Gherardi and D. M. Holdich, 63–85. London: Routledge.
- Nyström, P., and J. A. Strand. 1996. "Grazing by a Native and an Exotic Crayfish on Aquatic Macrophytes." *Freshwater Biology* 36, no. 3: 673–682. <https://doi.org/10.1046/j.1365-2427.1996.d01-508.x>.
- Oficialdegui, F. J., M. I. Sánchez, and M. Clavero. 2020. "One Century Away From Home: How the Red Swamp Crayfish Took Over the World." *Reviews in Fish Biology and Fisheries* 30: 121–135. <https://doi.org/10.1007/s11160-020-09594-z>.
- Ogata, S., H. Doi, T. Igawa, S. Komaki, and T. Takahara. 2022. "Environmental DNA Methods for Detecting Two Invasive Alien Species (American Bullfrog and Red Swamp Crayfish) in Japanese Ponds." *Ecological Research* 37, no. 6: 701–710. <https://doi.org/10.1111/1440-1703.12341>.
- Pabinger, S., G. G. Thallinger, R. Snajder, H. Eichhorn, R. Rader, and Z. Trajanoski. 2009. "qPCR: Application for Real-Time PCR Data Management and Analysis." *BMC Bioinformatics* 10: 268. <https://doi.org/10.1186/1471-2105-10-268>.
- Peters, J. A., M. J. Cooper, S. M. Creque, et al. 2014. "Historical Changes and Current Status of Crayfish Diversity and Distribution in the

- Laurentian Great Lakes.” *Journal of Great Lakes Research* 40, no. 1: 35–46. <https://doi.org/10.1016/j.jglr.2014.01.003>.
- Piggott, M. P. 2016. “Evaluating the Effects of Laboratory Protocols on eDNA Detection Probability for an Endangered Freshwater Fish.” *Ecology and Evolution* 6, no. 9: 2739–2750. <https://doi.org/10.1002/ece3.2083>.
- Porco, D., S. Hermant, C. A. Purnomo, M. Horn, G. Marson, and G. Colling. 2022. “eDNA-Based Detection of the Invasive Crayfish *Pacifastacus leniusculus* in Streams With a LAMP Assay Using Dependent Replicates to Gain Higher Sensitivity.” *Scientific Reports* 12, no. 1: 6553. <https://doi.org/10.1038/s41598-022-10545-w>.
- Quebedeaux, K. B., C. A. Taylor, A. N. Curtis, and E. R. Larson. 2023. “A Multi-method Approach for Assessing the Distribution of a Rare, Burrowing North American Crayfish Species.” *PeerJ* 11: e14748. <https://doi.org/10.7717/peerj.14748>.
- R Development Core Team. 2023. “R: A Language and Environment for Statistical Computing.” <https://www.R-project.org/>.
- Renshaw, M. A., B. P. Olds, C. L. Jerde, M. M. Mcveigh, and D. M. Lodge. 2015. “The Room Temperature Preservation of Filtered Environmental DNA Samples and Assimilation Into a Phenol-Chloroform-Isoamyl Alcohol DNA Extraction.” *Molecular Ecology Resources* 15, no. 1: 168–176. <https://doi.org/10.1111/1755-0998.12281>.
- Reynolds, J., C. Souty-Grosset, and A. Richardson. 2013. “Ecological Roles of Crayfish in Freshwater and Terrestrial Habitats.” *Freshwater Crayfish* 19, no. 2: 197–218. <https://doi.org/10.5869/fc.2013.v19-2.197>.
- Riascos, L., A. N. Geerts, T. Oña, et al. 2018. “DNA-Based Monitoring of the Alien Invasive North American Crayfish *Procambarus clarkii* in Andean Lakes (Ecuador).” *Limnologia* 70: 20–25. <https://doi.org/10.1016/j.limno.2018.02.002>.
- Rice, C. J., E. R. Larson, and C. A. Taylor. 2018. “Environmental DNA Detects a Rare Large River Crayfish but With Little Relation to Local Abundance.” *Freshwater Biology* 63, no. 5: 443–455. <https://doi.org/10.1111/fwb.13081>.
- Robinson, C. V., C. G. de Leaniz, and S. Consuegra. 2019. “Effect of Artificial Barriers on the Distribution of the Invasive Signal Crayfish and Chinese Mitten Crab.” *Scientific Reports* 9, no. 1: 1–11. <https://doi.org/10.1038/s41598-019-43570-3>.
- Robinson, C. V., T. M. Uren Webster, J. Cable, J. James, and S. Consuegra. 2018. “Simultaneous Detection of Invasive Signal Crayfish, Endangered White-Clawed Crayfish and the Crayfish Plague Pathogen Using Environmental DNA.” *Biological Conservation* 222: 241–252. <https://doi.org/10.1016/j.biocon.2018.04.009>.
- Rusch, J. C., M. Mojžišová, D. A. Strand, J. Svobodová, T. Vrålstad, and A. Petrusek. 2020. “Simultaneous Detection of Native and Invasive Crayfish and *Aphanomyces astaci* From Environmental DNA Samples in a Wide Range of Habitats in Central Europe.” *NeoBiota* 58: 1–32. <https://doi.org/10.3897/neobiota.58.49358>.
- Rusch, J. C., D. A. Strand, C. Laurendz, et al. 2022. “Exploring the eDNA Dynamics of the Host-Pathogen Pair *Pacifastacus leniusculus* (Decapoda) and *Aphanomyces astaci* (Saprolegniales) Under Experimental Conditions.” *NeoBiota* 79: 1–29. <https://doi.org/10.3897/NEOBOTA.79.82793>.
- Schenekar, T. 2023. “The Current State of eDNA Research in Freshwater Ecosystems: Are We Shifting From the Developmental Phase to Standard Application in Biomonitoring?” *Hydrobiologia* 850: 1263–1282. <https://doi.org/10.1007/s10750-022-04891-z>.
- Souty-Grosset, C., D. M. Holdich, P. Y. Noël, J. D. Reynolds, and P. Haffner. 2006. “Atlas of Crayfish in Europe.” *Collection Patrimoines Naturels* 64: 187.
- Stewart, K., H. Ma, J. Zheng, and J. Zhao. 2017. “Using Environmental DNA to Assess Population-Wide Spatiotemporal Reserve Use.” *Conservation Biology* 31, no. 5: 1173–1182. <https://doi.org/10.1111/cobi.12910>.
- Strand, D., A. Holst-Jensen, H. Vijugrein, et al. 2011. “Detection and Quantification of the Crayfish Plague Agent in Natural Waters: Direct Monitoring Approach for Aquatic Environments.” *Diseases of Aquatic Organisms* 95: 9–17. <https://doi.org/10.3354/dao02334>.
- Strand, D. A., S. I. Johnsen, J. C. Rusch, et al. 2019. “Monitoring a Norwegian Freshwater Crayfish Tragedy: eDNA Snapshots of Invasion, Infection and Extinction.” *Journal of Applied Ecology* 56, no. 7: 1661–1673. <https://doi.org/10.1111/1365-2664.13404>.
- Swahn, J.-O. 2004. “The Cultural History of Crayfish.” *Bulletin Français de la Pêche et de la Pisciculture* 372-373: 243–251.
- Taberlet, P., A. Bonin, L. Zinger, and E. Coissac. 2018. *Environmental DNA: for Biodiversity Research and Monitoring*. Oxford: Oxford University Press.
- Thalinger, B., K. Deiner, L. R. Harper, et al. 2021. “A Validation Scale to Determine the Readiness of Environmental DNA Assays for Routine Species Monitoring.” *Environmental DNA* 3, no. 4: 823–836. <https://doi.org/10.1002/edn3.189>.
- Thomsen, P. F., and E. Willerslev. 2015. “Environmental DNA - An Emerging Tool in Conservation for Monitoring Past and Present Biodiversity.” *Biological Conservation* 183: 4–18. <https://doi.org/10.1016/j.biocon.2014.11.019>.
- Tréguier, A., J. M. Paillisson, T. Dejean, A. Valentini, M. A. Schlaepfer, and J. M. Roussel. 2014. “Environmental DNA Surveillance for Invertebrate Species: Advantages and Technical Limitations to Detect Invasive Crayfish *Procambarus clarkii* in Freshwater Ponds.” *Journal of Applied Ecology* 51, no. 4: 871–879. <https://doi.org/10.1111/1365-2664.12262>.
- Troth, C. R., A. Burian, Q. Mauvisseau, et al. 2020. “Development and Application of eDNA-Based Tools for the Conservation of White-Clawed Crayfish.” *Science of the Total Environment* 748: 141394. <https://doi.org/10.1016/j.scitotenv.2020.141394>.
- Troth, C. R., M. J. Sweet, J. Nightingale, and A. Burian. 2021. “Seasonality, DNA Degradation and Spatial Heterogeneity as Drivers of eDNA Detection Dynamics.” *Science of the Total Environment* 768: 144466. <https://doi.org/10.1016/j.scitotenv.2020.144466>.
- Untergasser, A., I. Cutcutache, T. Koressaar, et al. 2012. “Primer3—New Capabilities and Interfaces.” *Nucleic Acids Research* 40, no. 15: e115.
- Valentini, A., P. Taberlet, C. Miaud, et al. 2016. “Next-Generation Monitoring of Aquatic Biodiversity Using Environmental DNA Metabarcoding.” *Molecular Ecology* 25, no. 4: 929–942. <https://doi.org/10.1111/mec.13428>.
- Weinländer, M., and L. Füreder. 2016. “Native and Alien Crayfish Species: Do Their Trophic Roles Differ?” *Freshwater Science* 35, no. 4: 1340–1353. <https://doi.org/10.1086/689031>.

Supporting Information

Additional supporting information can be found online in the Supporting Information section.