



HAL
open science

Integrating adaptation pathways and Ostrom's framework for sustainable governance of social-ecological systems in a changing world

Jean-Baptiste Pichancourt, Antoine Brias, Anne Bonis

► To cite this version:

Jean-Baptiste Pichancourt, Antoine Brias, Anne Bonis. Integrating adaptation pathways and Ostrom's framework for sustainable governance of social-ecological systems in a changing world. PeerJ, 2025, 13, pp.e18938. <10.7717/peerj.18938>. <hal-04680185v3>

HAL Id: hal-04680185

<https://hal.science/hal-04680185v3>

Submitted on 27 Feb 2025

HAL is a multi-disciplinary open access archive for the deposit and dissemination of scientific research documents, whether they are published or not. The documents may come from teaching and research institutions in France or abroad, or from public or private research centers.

L'archive ouverte pluridisciplinaire **HAL**, est destinée au dépôt et à la diffusion de documents scientifiques de niveau recherche, publiés ou non, émanant des établissements d'enseignement et de recherche français ou étrangers, des laboratoires publics ou privés.



Distributed under a Creative Commons CC BY 4.0 - Attribution - International License

Integrating adaptation pathways and Ostrom's framework for sustainable governance of social-ecological systems in a changing world

Jean-Baptiste Pichancourt^{1,*}, Antoine Brias^{2,*} and Anne Bonis²

¹ Université Clermont Auvergne (UCA), INRAE, UR 1465 LISC, Clermont-Ferrand, France

² Université Clermont Auvergne (UCA), CNRS, UMR 6042 GEOLAB, Clermont-Ferrand, France

* These authors contributed equally to this work.

ABSTRACT

Dynamic Adaptive Policy Pathway (DAPP) maps are used to plan management decisions in contexts of high uncertainty, such as those driven by environmental changes affecting critical assets. Recent discussions emphasize their relevance for addressing complex common-pool resource challenges, where diverse species, actors, and ecosystem services are intricately connected. However, designing DAPPs for such multifaceted social-ecological systems (SES) is challenging due to the extensive range of potential adaptation options. This study presents a general method to address these challenges by leveraging Ostrom's theoretical frameworks for the governance of common pool resources—the Institutional Analysis & Development framework (IADF), the social-ecological systems framework (SESF), and the coupled infrastructure systems framework (CISF). These frameworks were used to design nested DAPP maps that structure a large number of adaptation actions across multiple levels of institutional arrangement (operational, collective-choice, constitutional), and then develop a mathematical model to analyze the dynamic robustness of a SES across all potential pathways. The method was applied to predict and understand DAPP maps for supporting the collective management of hedgerow networks delivering diverse ecosystem services. DAPP maps for two SES were compared—one rural and one peri-urban—in France's agro-ecological landscapes of the Auvergne region. We further modeled the impact of climate change on hedgerows characterized by different size and species richness, revealing the sensitivity of these DAPP maps to transit between nine nested institutional arrangements. We discuss the methodological and practical implications of this approach for managing SES characterized by greater diversities of interconnected species, actors, and ecosystem services, highlighting its strengths and challenges in guiding adaptation under deep uncertainty.

Submitted 17 May 2024
Accepted 15 January 2025
Published 24 February 2025

Corresponding author
Jean-Baptiste Pichancourt,
jean-baptiste.pichancourt@inrae.fr

Academic editor
Anastazia Banaszak

Additional Information and
Declarations can be found on
page 27

DOI [10.7717/peerj.18938](https://doi.org/10.7717/peerj.18938)

© Copyright
2025 Pichancourt et al.

Distributed under
Creative Commons CC-BY 4.0

OPEN ACCESS

Subjects Biodiversity, Ecology, Mathematical Biology, Coupled Natural and Human Systems, Natural Resource Management

Keywords Agroecosystem, Hedgerows, Biodiversity, Ecosystem services, SES analysis, Robustness framework, Complex dynamical system, Viability theory, DAPP maps

INTRODUCTION

The Adaptation Pathways Framework ([Wise et al., 2014](#); [Werners et al., 2021](#)) supports the collective exploration of adaptation options for vulnerable assets under global environmental changes, accounting for how time influences perceptions of future outcomes. This framework emphasizes the role of human imagination in envisioning incremental adaptation pathways and recognizes how consensual or conflicting expectations actively shape the complex realities of social-ecological systems (SES).

The Dynamic Adaptive Policy Pathway (DAPP) approach maps adaptation as sequences of potential actions, reassessed over time ([Haasnoot et al., 2013](#); [Haasnoot, Warren & Kwakkel, 2019](#)). While DAPP maps are widely recognized for their flexibility and efficiency in diverse contexts ([Werners et al., 2021](#)), recent studies highlight limitations in addressing more complex SES ([Hermans et al., 2017](#); [Roelich & Giesekam, 2019](#); [Stanton & Roelich, 2021](#)).

Complex SES encompass a wide diversity of interlinked species, ecosystem services, actors, infrastructures, and institutional rules, all of which can shape the set of possible actions within DAPPs. Sustaining ecosystem service (ES) needs in such complex SES often requires simultaneous or sequential adaptation interventions across various ecological and social components ([Allen et al., 2012](#)). This complexity can result in an overwhelming number of possible pathways. For instance, a simple scenario involving the choice between 10 actions (targeting different species, ecosystems, ecosystem services and/or actors) reassessed over 10 time steps, generates 10^{10} (10 billions) pathways, each requiring viability testing.

To address the complexity of socio-ecological systems (SES), a series of qualitative studies conducted in the same agro-ecological region of the French Alps have developed simplified guidelines for designing DAPP maps ([Colloff et al., 2016](#); [Lavorel et al., 2019, 2020](#); [Bergeret & Lavorel, 2022](#)). Although these studies were not explicitly framed using Ostrom's governance theory of common-pool resource (CPR) ([Ostrom, 1990](#)), their findings collectively align remarkably well with Ostrom's principles. Specifically, they illustrate how authority can be progressively devolved, as collectives transition from formulating broad adaptive visions ([Colloff et al., 2016](#); [Lavorel et al., 2019](#)) to implementing operational actions for on-ground CPR management ([Lavorel et al., 2020](#); [Bergeret & Lavorel, 2022](#)). However, these studies stop short of explicitly addressing how devolution and horizontal interactions should be adapted within and between hierarchical levels of institutional organization to facilitate polycentric governance in adaptation efforts. Ostrom's theory emphasizes the importance of nested governance, identifying four interrelated levels that could serve as a structure for adaptation decisions and rules in complex SES. By integrating these nested levels, the above-mentioned works could have more effectively demonstrated how to structure the processes and interactions that underpin sustainable governance and adaptation in polycentric systems, notably:

1. *Level of meta-constitutional-choice arrangements (MCA)*: adaptation begins with broad shifts in societal visions or worldviews, each prioritizing different values and objectives (e.g., [Colloff et al., 2016](#); [Lavorel et al., 2019, 2020](#); [Bruley et al., 2021](#); [Bergeret &](#)

Lavorel, 2022). For example, rural communities adapting to urbanization or mountain regions adapting to climate change may require a redefinition of institutional priorities, such as in functional bio-diversity types, ES needs, landscape archetypes, or broad definitions of institutions and rule clusters (*Lapointe, Cumming & Gurney, 2019; Lavorel et al., 2019; Bergeret & Lavorel, 2022*).

2. *Level of constitutional-choice arrangements (CCA)*: Within each MCA, multiple CCA can be envisioned, redistributing authority, rights and roles among actors and infrastructures. These arrangements determine who is eligible to manage ES and in what capacity (cf. *Ostrom, 1990*). For example, *Bergeret & Lavorel (2022)* show that different actor combinations may prove more effective depending on the prevailing MCA vision.

3. *Adaptation of collective-choice arrangements (KCA)*: within each CCA, different networks of eligible actors, infrastructures and roles can be envisioned to manage ES resources, resulting in different KCA. However, “reaching a consensus” on new KCA is often a significant challenge for SES adaptation (*Bruley et al., 2021*), especially when roles and responsibilities remain unclear.

4. *Adaptation of operational-choice arrangements (OCA)*: The final level, within each KCA, involves adapting the target, frequency or intensity of specific operational actions, such as species harvesting, monitoring, or regulating resource access. For example, *Bergeret & Lavorel (2022)* identified 327 possible adaptation of operational actions (among three MCA), which would involve altering ecosystem variables directly, or enabling self-transformation through interventions like creating semi-natural infrastructures (like grasslands or hedgerows) that are species-rich and functionally connected (e.g., *Lavorel et al., 2020; Bruley et al., 2021*).

Given the structure of DAPP maps, it becomes evident that organizing adaptation actions across multiple levels of governance (OCA, KCA, CCA, MCA, *etc.*) in a way that accounts for unforeseen feedback and spillover effects is challenging. Additionally, comparing DAPP maps across case studies is impractical without a standardized approach. Navigating this hierarchy of nested governance structures is crucial for understanding and securing effective adaptation. Actions at lower levels may compromise long-term sustainability at higher levels, and vice versa, highlighting the need for alignment across governance scales (*Ostrom, 1990*). Standardizing the design of nested DAPP maps would improve their ability to capture complex systemic interactions, better explain emerging adaptation challenges, and facilitate meaningful comparisons across case studies.

Theoretical principles and analytical frameworks developed by Ostrom may provide a robust foundation for designing such nested DAPP maps. The Institutional Analysis and Development Framework (IADF) (*Ostrom, 1990*) examines how clusters of institutional rules and sequences of adaptive policy decisions shape actor behavior within action arenas, drive SES outcomes, and create feedback loops at different level of institutional organization. In theory, this temporal and iterative structure aligns well with the DAPP approach. Building on the IADF, two derivative frameworks may also enhance its applicability to DAPP maps. The social-ecological systems framework (SESF) (*Ostrom, 2007*) was designed to refine the IADF by identifying key variables—such as resource units, governance systems, actors, and infrastructures—that influence SES adaptive capacities or

can be targeted for adaptation. The coupled infrastructure systems framework (CISF) (Anderies, Janssen & Ostrom, 2004) extends these insights by focusing on the interactions between social and ecological infrastructures and human actors within nested institutional arrangements. By representing polycentric governance models as systems of equations (Muneepeerakul & Anderies, 2020), these frameworks allow for the prediction of governance capacities to prevent failures and maintain long-term system robustness under external stressors.

Objective and structure of the article

Building on these theoretical foundations, we aim to integrate Ostrom's frameworks with mathematical methods to enhance the design of nested DAPP maps and deepen the understanding of complex SES adaptations across multiple levels of organization. The methodology section elaborates on the general formalism, detailing the steps and mathematical links between rule clustering at different levels for the IADF, SESF, CISF, and DAPP.

We apply this method to an agro-ecological landscape characterized by species-rich hedgerow networks that provide a bundle of ES to the local community. Our case study focuses on two archetypal SES—peri-urban and rural—each defined by distinct MCA visions of ES needs. We also account for variations in hedgerow height and plant species richness, which are differentially influenced by human management and climate change, and in turn, affect the dynamic delivery of ES in our model. The resulting DAPP maps highlight the adaptive pathways required to address the challenges of climate change, particularly drought stress, on hedgerow functionality. These maps reveal nested levels of viable adaptation and capture differences in SES archetypes under varying climate stress scenarios.

Finally, we identify key indicators that elucidate the primary drivers influencing DAPP map variations and adaptation outcomes, offering insights into the complex interplay between nested human management, ecosystem functionality, and climate change.

METHODOLOGY

We used a six-step workflow to show how to mathematically derive such nested DAPP maps from Ostrom's theoretical frameworks. The process begins by applying the SESF to redefine the possible set of adaptation actions used in DAPP, based on targeted attributes within the SES. Next, the CISF serves as a secondary filter to redistribute adaptive action targets according to the roles attributed to various actors and infrastructures, across nested levels of institutional arrangements (OCA, KCA, CCA, MCA, *etc.*). This step aligns with Ostrom's principles of polycentric and nested governance (Ostrom, 1990). Subsequent steps transform the nested CISF representations into equations describing SES dynamics (Muneepeerakul & Anderies, 2020), link these equations to viable control theory (Aubin, Bayen & Saint-Pierre, 2011), and infer a mathematical definition and graph-theoretical representation of viable or optimal nested DAPP maps. Finally, we demonstrate how to retrospectively analyze the role of specific actions in shaping pathway viability.

STEP 1. USING THE SESF FOR DEFINING THE SET OF ACTIONS BASED ON ADAPTATION TARGETS

The first step consists in defining the set of n possible adaptation actions $U = \{u_1, u_2, \dots, u_n\}$, according to the attributes of the SES. The importance of certain attributes can change with the SES context. Selecting the appropriate target, trigger and scale of these actions necessitates a comprehensive description of the SES attributes, which was made possible with the use of Ostrom's SESF (Ostrom, 2007, 2009).

The SESF—derived from the simplification of the 450 attributes presented in Ostrom's CPR codebook (Ostrom et al., 1989)—provides a reduced set of 1st tier SES attributes, that can be used as potential action targets. This set can be further unpacked into 2nd, 3rd, 4th, etc... tier attributes, if the context and data availability require it. Different iterations of the SESF multi-tier structure were created (Ostrom & Cox, 2010; Basurto, Gelcich & Ostrom, 2013; McGinnis & Ostrom, 2014; Vogt et al., 2015), but we were interested in one that could analyze SES rich in species, ES and actors.

Step 1.1. Definition of the 1st tier action set

For the 1st tier, we used the SESF version developed by McGinnis & Ostrom (2014), emphasizing the generalization from users to actors attributes. As such, we defined U as a set of eight possible sub-sets of actions targeting different elements of the SES, such as $U = \{U_S, U_{GS}, U_{RS}, U_{RU}, U_{GS}, U_A, U_I, U_O\}$ (see Table 1 for definitions of subsets).

Step 1.2. Definition of the 2nd tier action set

The 1st tier action set was then decomposed to emphasize a 2nd tier of possible action sets. For instance $U_S \in U$ was defined as $U_S = \{U_{S2}, U_{S3}, U_{S4}, U_{S5}, U_{S6}, U_{S7}, U_{S8}, U_{S9}\}$ as per Table 1, emphasizing the possible actions involving various external elements impacting/ed on/by the SES. Some second tier attributes were modified using Vogt et al.'s (2015) SESF version, in order to better integrate ecological and ES attributes as possible targets of adaptation (see Table 1). We particularly transformed its 2nd tier attribute “externalities to other SES” (O3) into a 3rd tier action (see step 1.3) to emphasize the role of ecological resource infrastructures and associated species.

Step 1.3. Definition of the 3rd tier action set

We further introduced a 3rd tier action subset in anticipation of the integration of the action sets into the CISF (step 2). For instance, we subdivided certain 2nd tier attributes (see action sets in Table 1: $U_{S1}:U_{S3}$, U_{RS4} , U_{RU1} , U_{RU3} , $U_{GS2}:U_{GS10}$, $U_{A1}:U_{A9}$, $U_{I2}:U_{I10}$, U_{O1}) into three new 3rd tier attributes to emphasize the fact that actions can target different roles attributed to actors (A in Table 1), to infrastructures from the resource and governance systems (RS , GS), interactions (I) and outcomes (O). The 3rd tier action set U emphasized the three following roles:

(i) **Resource exploitation role (E)** attributed to exploiting actors ($U_{E:A_2}$), social infrastructures (e.g., norms and social capital, $U_{E:A_6}$), of institutional infrastructures (e.g., rules-in use, strategies: $U_{E:GS_1}$ to $U_{E:GS_{10}}$) and of physical infrastructures (such as supply chains or exploiting technologies, $U_{E:S_7}$). These attributes involve various social-ecological

Table 1 Definition of the 2nd tier action set U based on the social-ecological system framework (SESF).

Set U of 2 nd tier actions based on a version of Ostrom's social-ecological system framework (SESF)	
Set of actions related to the social, economic & political settings (U_S)	
U_{S1}	Economic development ^{*,†}
U_{S2}	Demographic trends ^{*,†}
U_{S3}	Political stability (rate of political change) ^{*,†}
U_{S4}	Other governance systems [†]
U_{S5}	Markets [†]
U_{S6}	Media organizations [†]
U_{S7}	Technology [†]
Set of actions related to the resource systems (U_{RS})	
U_{RS1}	Sector
U_{RS2}	Clarity of system boundaries
U_{RS3}	Size of resource system
U_{RS4}	Human constructed facilities [*]
U_{RS5}	Productivity of the system
U_{RS6}	Equilibrium properties
U_{RS7}	Predictability of system dynamics
U_{RS8}	Storage characteristics
U_{RS9}	Location
U_{RS10}	Ecosystem history
Set of actions related to the governance systems (U_{GS})	
U_{GS1}	Policy area
U_{GS2}	Geographic scale of governance system [*]
U_{GS3}	Proportion of participating population ^{**}
U_{GS4}	Regime type (demo/auto-cratic, mono/poly-centric) [*]
U_{GS5}	Rule-making organizations [*]
U_{GS6}	Rules-in-use [*]
U_{GS7}	Property rights systems (relations among people in relation to resource units and infrastructures) [*]
U_{GS8}	Repertoire of cultural knowledge, beliefs, norms, practices (strategies) with no rules and sanctions [*]
U_{GS9}	Network structure (connections among the rule-making organizations and the population subject to these rules) ^{*,**}
U_{GS10}	Historical continuity of the governance system (recent vs long-lasting, open vs close to internal adaptation) [*]
Set of actions related to the actors (U_A)	
U_{A1}	Number of relevant actors [*]
U_{A2}	Socio-economic attributes [*]
U_{A3}	History of past experience ^{*,**}
U_{A4}	Location [*]
U_{A5}	Leadership/entrepreneurship [*]
U_{A6}	Norms/(trust-reciprocity)/social capital [*]
U_{A7}	Knowledge of SES/mental models/beliefs [*]
U_{A8}	Proportion of resource dependent actors [*]
U_{A9}	Technologies available [*]
Set of actions related to the interactions (UI)	
U_{I1}	Harvesting/using resource units by divers users
U_{I2}	Information sharing among actors ^{*,**}
U_{I3}	Deliberation process ^{*,**}
U_{I4}	Conflicts among actors ^{*,**}
U_{I5}	Investment activities ^{*,**}
U_{I6}	Lobbying activities ^{*,**†}
U_{I7}	Self-organizing activities ^{*,**}
U_{I8}	Networking activities ^{*,**}
Set of actions related to the resource units (U_{RU})	
U_{RU1}	Resource unit mobility ^{*,**†}
U_{RU2}	Growth or replacement rate of resource units
U_{RU3}	Interactions among resource units ^{*,†}
U_{RU4}	Economic value
U_{RU5}	Number of units
U_{RU6}	Distinctive characteristics
U_{RU7}	Spatial & temporal distribution
Set of actions related to the outcomes (UO)	
U_{O1}	Social performance measures (e.g., efficiency, equity, accountability, sustainability) ^{*,**}
U_{O2}	Ecological performance measures (e.g., overharvested, resilience, robustness, biodiversity) ^{**}
U_{O3}	Externalities to other SES [†]

Table 1 (continued)

Set U of 2nd tier actions based on a version of Ostrom's social-ecological system framework (SESF)U₁₉ Monitoring activities^{***}U₁₁₀ Evaluative activities^{***}

Notes:

* Indicates that the action set is decomposed into three 3rd tier action subsets targeting actors and infrastructures with exploitation (*E*), conservation (*C*) and policy-making (*P*) roles.

** Signifies that the 3rd tier set is extended to account for the directional influences of one 3rd tier attribute on the other, or also the resource system (RS).

† Indicates the decomposition of 3rd tier into 4th tier action subset to account for the level of institutional arrangement that trigger this action: operational-choice arrangement (OCA), collective-choice arrangement (KCA), constitutional-choice arrangements (CCA), meta-constitutional arrangement (MCA), etc.

interactions ($U_{E:I_1}$ to $U_{E:I_{10}}$) associated with the hedgerows' resource appropriation, provisioning, production, distribution/supply (chain), transformation, consumption/use and monitoring of own cost-effectiveness. They also involve various resource outcomes ($U_{E:O_1} \rightarrow U_{E:O_3}$) in relation with the production of the desired ES. These attributes can all be related with the sustainable dimension of the resource utilization, provided they solely benefit from utilitarian objectives.

(ii) **Resource Conservation role (C)** (3rd tier action set noted e.g., $U_{C:A_1}$) is attributed to actors and infrastructures involved in supporting, maintaining, and monitoring resource systems to uphold broader societal and ecological values. The C-role often encompasses resource management driven by intrinsic ethical or aesthetic motivations—such as valuing life for its own sake, preserving cultural heritage, or safeguarding landscape beauty. Additionally, the C-role extends to the management of ES with utilitarian benefits that go beyond the immediate resource owners. These benefits may serve local communities, national interests, or even the global population. Examples include actions to prevent wildfires and landslides that could threaten nearby villages or enhancing carbon sequestration to mitigate global climate change.

(iii) **Policy-making role (P)** (3rd tier action set noted e.g., $U_{P:A_2}$) refers first to the role of support for *E* and/or *C* roles. It also refers to the role of arbitration and conflict-resolution between *E* and *C* roles, when trade-offs emerge between purely utilitarian *E* values and intrinsic or collective *C* values. Thirdly, it refers to the role of triggering adaptation actions during the DAPP process, like when changing operational, collective or constitutional arrangements.

It is important to note that SES do not necessarily possess *E*, *C*, and/or *P* role attributes and associated actions. For instance a resource free of humans do not have *E*, *C* and *P*. Furthermore, all the combinations between the three can in theory be found.

Following the same logic of defining these three roles targeted by these actions, we further specified the role that triggers these actions on the targeted role. For instance, the *C*-role can trigger an action targeting the economic attributes (A_2) of the *E*-role. Using the SESF logic, this action was encoded as $U_{C \rightarrow E:A_2}$.

Step 1.4. Definition of the 4th tier action set

We then defined a 4th tier action set, relative to the nested levels of adaptation initiatives operating at different time scales.

Using examples from *Ostrom (1990)* that were presented in the introduction, we define the adaptation actions at the level of the operational-choice arrangement (U^{OCA}), of collective-choice arrangement (U^{KCA}), of constitutional-choice arrangement (U^{CCA}), meta-constitutional-choice arrangement (U^{MCA}), *etc.* These levels are nested and can be attributed to any kind of roles defined in step 1.3 (cf. [Table 1](#) for the sub-set possessing this 4th tier attribution). For instance, $U_{C \rightarrow E:A_2}^{OCA_1 \rightarrow OCA_2}$ means that the adaptation of OCA_1 into OCA_2 consists in changing the action that role C triggers on attributes A_2 of E -role. Using the same logic, we will see in step 2.2 how to define adaptation actions at other upper levels of institutional arrangements (KCA, CCA, MCA, *etc.*).

STEP 2. USING THE CISF FOR A SYSTEMIC ORGANIZATION OF ACTIONS BETWEEN ROLES

Step 2 consists in using the systemic representation provided by the CISF to organize the actions defined in step 1 between roles. The CISF, as originally defined by *Anderies, Janssen & Ostrom (2004)*, represents any SES as an interacting system of potentially four compartments: One ecological resource compartment (R), and three social role compartments, originally referred to as the resource users (RU), the public infrastructures (PI) and the public infrastructure providers (PIP). These three compartments represent three role decision centers that can compete and/or cooperate, reflecting the polycentric nature of the action arena of the IADF around the resource (*Anderies, Barreteau & Brady, 2019; Muneeppeerakul & Anderies, 2020*). Their interactions, represent actions that are encoded using specific numbers (cf. *Anderies, Barreteau & Brady, 2019*, and [Fig. 1](#)), which can be linked to the encoding of the SESF and CPR frameworks developed by Ostrom, as outlined by *Anderies & Janssen (2013)* and *Bernstein et al. (2019)*.

Step 2.1. Defining the model used for the CISF

The CISF is flexible and different model implementations can be defined. Here we defined the three interacting compartments RU, PI and PIP has representing the three interacting roles that actors and governance systems' infrastructures possess (respectively E , C and P), as defined in step 1.3. This way, each role compartment could possess its own model of representation (as defined in *Aggarwal & Anderies, 2023*), set of actors and infrastructures (like in *Pichancourt, 2023, 2024*). Furthermore like in *Muneeppeerakul & Anderies (2020)* or *Pichancourt (2023, 2024)*, the same actor and infrastructure can possess multiple roles (E , C and P), whose rate of implication or interaction rate is modeled using any of the following linking action sets U_{2a} , U_{2b} , U_{3a} , U_{3b} , U_{6a} , U_{6b} from [Fig. 1](#). For example, actors and private/shared infrastructures can simultaneously be attributed to (i) a supply chain role in E (*e.g.*, as farmers and intermediary supply chains from farm to fork, forest harvesters with their sawmills and tracks, fishermen from the fleet to the auction house and fish market), (ii) a conservation role in C (*e.g.*, as neighboring group of farmers in partnership with public, private or NGOs conservation agencies), and (iii) a policy or arbitration role of P (*e.g.*, as a board member of a governing body that is buying lands and renting them to farmers, and set specific rules and granting schemes). Using this encoding we attributed multiple actions sets from the SESF to one code of action defined in the CISF ([Fig. 1](#)).

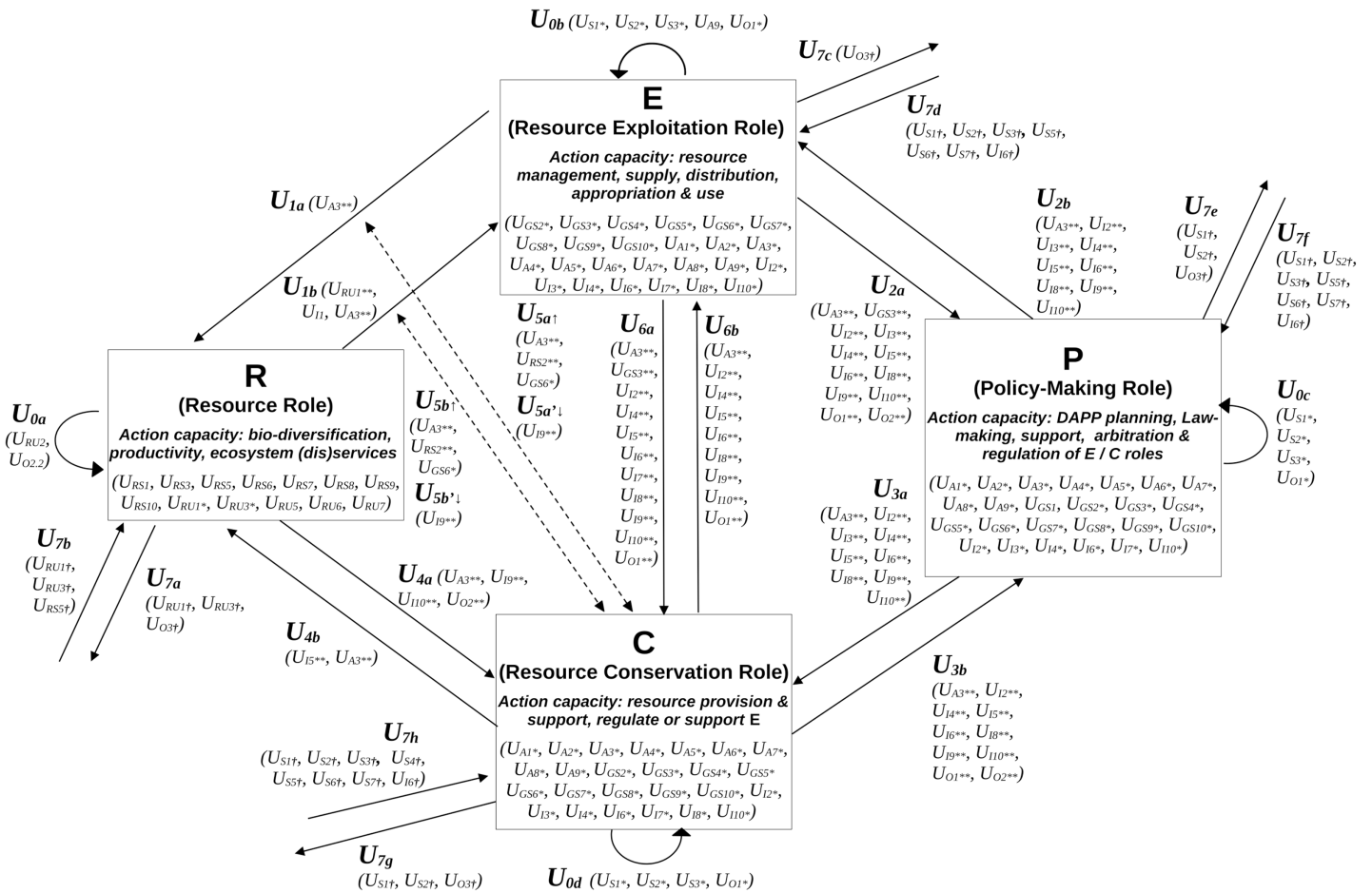


Figure 1 Systemic modeling of adaptation actions using the coupled infrastructure system framework (CISF). Compartments represent ecological and social roles: the resource role (R) includes species, ecological infrastructures (e.g., forests, hedgerows, grasslands, rivers), and associated ecological processes, while the exploitation (E), conservation (C), and policy-making (P) roles involve actors, infrastructures, and actions. Internal dynamics of each role's capacity for action are shown as self-loops (i.e., action sets $U_{0a} \rightarrow U_{0d}$). Interactions between compartments are represented by action sets ($U_{1a} \rightarrow U_{1b}$ to $U_{6a} \rightarrow U_{6b}$), and with the broader environmental settings by $U_{7a} \rightarrow U_{7g}$. References to action sets from the SESF (see Table 1) are included in brackets, e.g., U_{2a} corresponds to $P_{P \rightarrow E}$ from the SESF (see step 1.3) and can be associated with targeting many attributes of the B-role (e.g.,). An asterisk (*) indicates that the action set is decomposed into three 3rd tier action subsets targeting actors and infrastructures with exploitation (E), conservation (C) and policy-making (P) roles. Two asterisks (**) signify that the 3rd tier set is extended to account for the directional influences of one 3rd tier attribute on the other, or also the resource system (RS). A dagger (†) indicates the decomposition of 3rd tier into 4th tier action subset to account for the level of institutional arrangement that trigger this action: operational-choice arrangement (OCA), collective-choice arrangement (KCA), constitutional-choice arrangements (CCA), meta-constitutional arrangement (MCA), etc. Full-size DOI: 10.7717/peerj.18938/fig-1

Based on this structure (cf. Fig. 1), we then model how the different roles interact with the external context (i.e., associated with action set U_S from Table 1), using any of the set action links U_{7d} , U_{7f} , U_{7h} . For instance, an external NGO can offer three distinct technological training schemes to increase the capacity of action of the three role compartments (i.e., U_{S7} from Table 1): one for actors with exploiting roles on how to sustainably exploit their private resource R for private or club ES benefits ($U_{7d} = U_{E:S7}$); another for actors with broader conservation role on how to collectively monitor or restore the state of R for broader public and common ES outcomes ($U_{7f} = U_{C:S7}$); and a third for

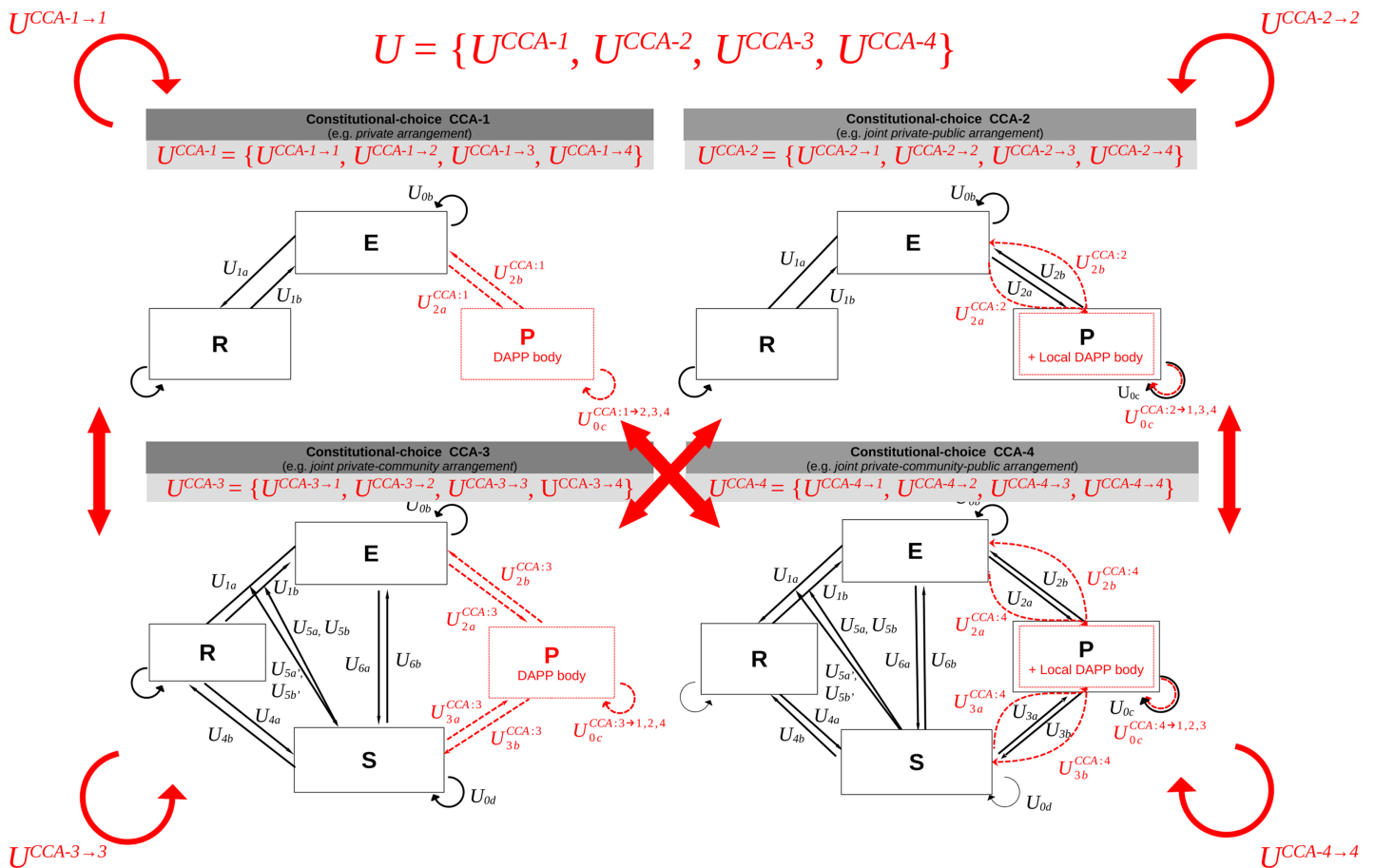


Figure 2 Adaptation at the level of constitutional-choice arrangements (CCA). Define the set of CCA and adaptation actions between them, using four examples of CCA. The elements in red refer to the CCA level of adaptation, *i.e.*, the type of constitutional-level actions that are required for the policy-making role *P* to trigger a constitutional change (e.g., from CCA:1 to others with action set $U^{CCA:1 \rightarrow 2,3,4}$), and influence or respond to the need of other roles *E* and *C* when implementing this change (e.g., action sets U^{CCA}). Full-size DOI: 10.7717/peerj.18938/fig-2

actors or infrastructures with broader governing role to establishing DAPP rules at a certain level ($U_{7h} = U_{P:S7}$).

Step 2.2. Define adaptation actions per level of governance arrangement

In step 2.2 we use the CISF to define adaptation actions at different level of governance arrangement (*i.e.*, OCA, KCA, CCA, MCA, *etc.*). Different CCAs of interest can be defined by specifying the eligibility criteria for certain roles within the CISF. This can be achieved by switching on and off specific roles as needed (see Fig. 2).

For every CCA, adaptation actions at a KCA level are modeled by switching on and off of certain interactions between role compartments, leading to different coordination networks and chains of actions between actors and infrastructures, within and between roles (Fig. 3).

Finally, for every KCA, different OCA and their transition can be modeled by changing the acceptable range for the intensity or frequency of operational actions (Fig. 4).

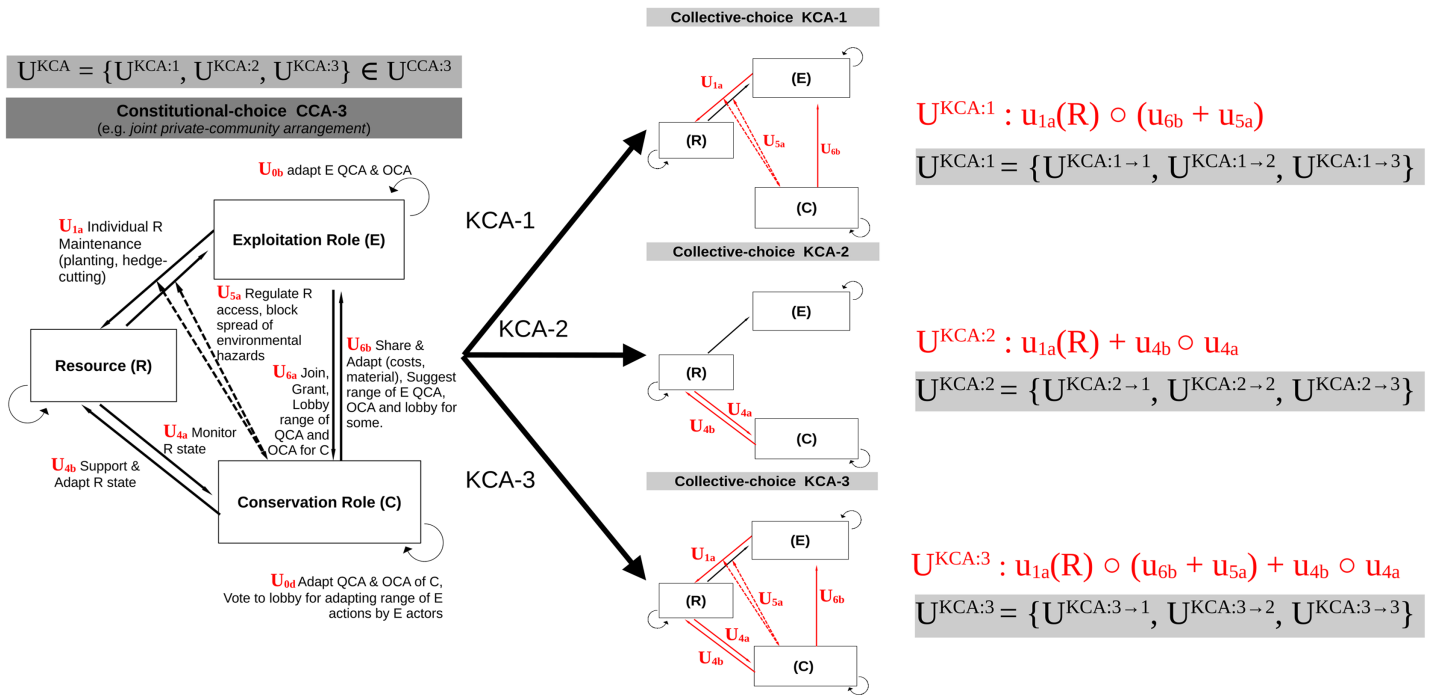


Figure 3 Adaptation at the level of collective-choice arrangements (KCA). Define the set of KCA and adaptation actions between them, using three fictitious examples. These adaptation actions deal with changing the composition (chain, network) of actions between the illegible roles defined in step 2.2.1. Here, every KCA is associated with its mathematical expression for the composition of action (red color), and the set of possible actions from one KCA to the others (gray color).

Full-size DOI: 10.7717/peerj.18938/fig-3

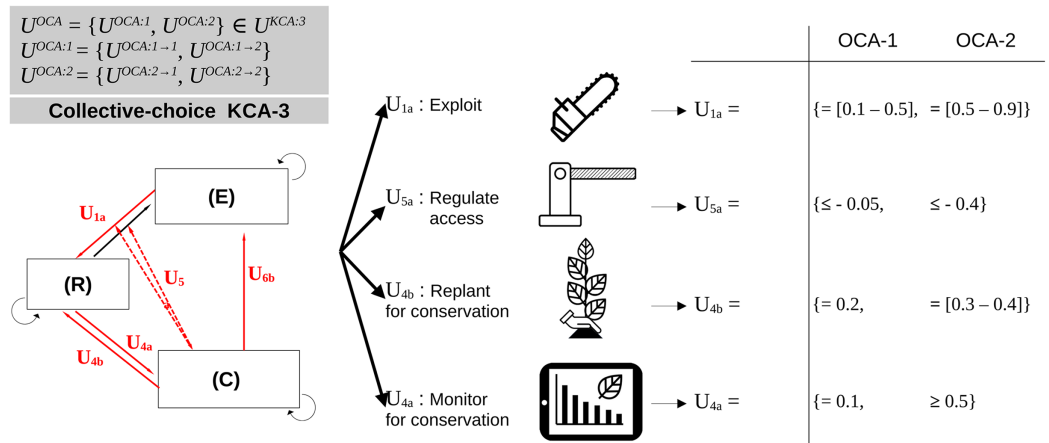


Figure 4 Adaptation at the level of operational-choice arrangements (OCA). Define the set of OCA and possible adaptation actions between them, using two fictitious examples. These adaptation actions deal with changing the intensity, frequency or type of each operational action. Here, every OCA is associated with the set of possible actions from one OCA to another (gray color).

Full-size DOI: 10.7717/peerj.18938/fig-4

STEP 3. TRANSFORMATION OF THE CISF MODEL INTO A SET OF EQUATIONS

The interest of formulating a model based on the CISF, is that it systematizes the modeling of possible systemic adaptation and spillover problems (Anderies, 2015; Anderies, Barreteau & Brady, 2019; Houballah, Cordonnier & Mathias, 2020), and transforms them into a set of equations. By doing so we can predict infrastructural vulnerabilities related to ES production and external disturbances (Anderies, 2015; Muneeppeerakul & Anderies, 2020). When combined with the viable control theory (Aubin, Bayen & Saint-Pierre, 2011; Martin, Deffuant & Calabrese, 2011), we can use the CISF to estimate system-wide metrics of robustness or resilience (Muneeppeerakul & Anderies, 2017; Homayounfar et al., 2018; Houballah, Mathias & Cordonnier, 2021).

To create a system of equations, every action set at an operational level (OCA) must be defined as rates impacting the state of the targeted role. But every action and rate defined within the CISF (Fig. 1) can denote distinct interpretations through the SESF (Table 1), and thus algebraic formulations. Consequently, modelers need to make deliberate choices regarding their specific definition, like we did in the application example (see Supplemental Material). Nevertheless, some general recommendations can still be formulated in agreement with the general context of the article.

First, R can be defined through its potential for producing ES, ranging from 0 to +1 for each of them. The ecological dynamics of R (i.e., the action of R on itself, noted U_{0a}) and actions sets U_{1a} , U_{4b} and U_{7b} impact the potential of R for producing ES, all ranging between $[-1, +1]$ (see Fig. 2). Similarly, for each social role compartment (B , C , and P), the actions directed toward them define the relative capacity of actions gained or lost, within the range $[-1, +1]$ or $[0, +1]$. Self-loops (U_{0b} , U_{0c} , U_{0d} : $[-1, +1]$) denote the natural growth or decay of the capacity of action of the respective roles B , P and C . This could be negative (loss through natural death or socio-cultural or economic instability), positive (e.g., gain through internal creativity), or neutral based on precise definitions.

Furthermore, action set U_{1a} represents the management rate $[0, +1]$ by E on R , while U_{1b} represents the action set describing the extraction, supply, and transformation of a unit of ES into useful benefit for the state of R $[-1, +1]$. Similarly, U_{2a} represents the action that improves the P -state when monitoring the E -state $[0, +1]$, whereas U_{3b} represents the same type of action that increases or decreases C -state when interacting with P $[-1, +1]$. U_{4a} represents the action that increases C -state through monitoring R -state $[0, +1]$, and U_{4b} denotes the action of C to support, increase or restrict the rate of change $0a$ of R $[-1, +1]$. Action set U_{6a} reflects the C -state gains or loss when E interacts with C ; whereas U_{6b} can represent the action that leads E -state gain or loss through support or sanctions by C $[-1, +1]$. U_{5a} and U_{5b} denote E -state gains from monitoring action sets U_{1a} and U_{1b} , respectively, within the range of $[0, +1]$. Similarly, $U_{5a'}$ and $U_{5b'}$ represent the regulation rate on respectively U_{1a} and U_{1b} $[0, +1]$. U_{7b} signify the action of the external settings of R on its dynamics, e.g., climate stressing (acting) R by affecting natural resource infrastructure (e.g., hedgerows and associated species) producing ES $[-1, 0]$. Additionally, U_{7d} , U_{7f} and U_{7h}

indicate E , C and P state gains, respectively, resulting from external socio-economic or climate factors or actions. Finally, U_{7a} , U_{7c} , U_{7e} , and U_{7g} represent externalities (processes or actions) of ES flowing to other SES outside the one studied $[-1, +1]$.

Altogether, the total weight of all linking actions (which includes self-loops) directed toward each of the four compartments, adds up to 1, such that: for E : $U_{0b} + U_{1b} + U_{2b} + U_{6b} + U_{7d} = 1$, for P : $U_{0c} + U_{2a} + U_{3b} + U_{7f} = 1$, and for C : $U_{0d} + U_{3a} + U_{4a} + U_{6a} + U_{7h} = 1$.

Based on these general definitions—and following the CISF methodology described by [Anderies, Janssen & Schlager \(2016\)](#), [Muneepeerakul & Anderies \(2017, 2020\)](#), and [Houballah, Mathias & Cordonnier \(2021\)](#), [Houballah, Cordonnier & Mathias \(2023\)](#)—we obtain the most general system of equations describing the processes link the R state dynamics to the state dynamics of E , C and P ; taking into account possible uncertainties:

$$\left\{ \begin{array}{l} \frac{dR}{dt} = \overbrace{U_{0a} \cdot R}^{\text{Natural ES Growth}} \pm \overbrace{U_{7b} \cdot R}^{\text{Impact of SES Settings}} - \overbrace{U_{7a} \cdot R}^{\text{ES Externalities}} \\ + \overbrace{U_{4a} \cdot R \cdot C}^{\text{R Supported by C}} - \overbrace{U_{1b} \cdot R \cdot E}^{\text{ES Access \& Flow}} \cdot \overbrace{U_{5b} \cdot C}^{\text{Regulation}} + \overbrace{U_{1a} \cdot E \cdot R}^{\text{Access \& Management}} \cdot \overbrace{U_{5a} \cdot C}^{\text{Regulation}} \\ \frac{dE}{dt} = \pm \overbrace{U_{0b} \cdot E}^{\text{Natural Growth/Decay}} \pm \overbrace{U_{7d} \cdot E}^{\text{Impact of SES Settings}} - \overbrace{U_{7c} \cdot E}^{\text{Externalities}} \\ + \overbrace{U_{1b} \cdot R \cdot E}^{\text{Access R \& ES Flow}} \cdot \overbrace{U_{5b} \cdot C}^{\text{Regulation}} + \overbrace{U_{6b'} \cdot E \cdot C}^{\text{C Support \& Regulation}} \pm \overbrace{U_{2b} \cdot E \cdot P}^{\text{P Support \& Sanctions}} \\ \frac{dC}{dt} = \pm \overbrace{U_{0d} \cdot C}^{\text{Natural Growth/Decay}} \pm \overbrace{U_{7h} \cdot C}^{\text{Impact of SES Settings}} - \overbrace{U_{7g} \cdot C}^{\text{Externalities}} \\ + \overbrace{U_{1b} \cdot R \cdot E}^{\text{Access \& ES Flow}} \cdot \overbrace{U_{5b'} \cdot C}^{\text{Monitoring}} + \overbrace{U_{1a} \cdot R \cdot E}^{\text{Access \& Management}} \cdot \overbrace{U_{5a'} \cdot C}^{\text{Monitoring}} \\ + \overbrace{(U_{6a} - U_{6b}) \cdot E \cdot C}^{\text{E Joining/leaving}} \pm \overbrace{U_{3a} \cdot P \cdot C}^{\text{P Support \& Sanctions}} \\ \frac{dP}{dt} = \pm \overbrace{U_{0c} \cdot P}^{\text{Natural Growth/Decay}} \pm \overbrace{U_{7f} \cdot C}^{\text{Impact of SES Settings}} - \overbrace{U_{7e} \cdot C}^{\text{Externalities}} \\ \pm \overbrace{U_{2a} \cdot E \cdot P}^{\text{Joint/Support/Sanction}} \pm \overbrace{U_{3b} \cdot C \cdot P}^{\text{Joint/Support/Sanction}} \end{array} \right. \quad \begin{array}{l} (1a) \\ (1b) \\ (1c) \\ (1d) \end{array}$$

STEP 4. ANALYSIS OF THE VIABILITY OF VARIOUS CIS ARRANGEMENTS UNDER DIFFERENT LEVELS OF GLOBAL STRESSORS

Step 4.1. Definition of the constraint domain of satisfaction for the levels of ES

Based on Eq. (1), we can evaluate the congruence between costs and benefits for all the possible scenarios of CIS arrangements (CCA, KCA and OCA), as specified by Ostrom's

second design principle of good governance (*Ostrom, 1990*). To achieve this, we must respect the basic condition that the state turnover of \mathbf{R} , such that:

$$\frac{dR}{dt} \geq 0 \Rightarrow U_{0a} + (U_{1a} \cdot U_{5a'} + U_{4b})C \geq U_{7b} + U_{1b} \cdot U_{5a}. \quad (2)$$

From Eq. (2) and Fig. 2, we see that the potential resource turn-over rate (dR/dt) depends on both the intrinsic rate of increase of \mathbf{R} (U_{0a}), and the conservation actions originating from either \mathbf{E} through U_{1a} or from \mathbf{C} through U_{4b} .

Now imagine that the \mathbf{E} -state is defined by the level of n ecosystem services ES_1, ES_2, \dots, ES_n , exploited by \mathbf{E} . The state space of \mathbf{R} is now defined as

$S_R = \{ES_1, ES_2, \dots, ES_i, \dots, ES_n\} \in \mathbb{R}^n$. Equation (1a) would be thus

$$\frac{dR(ES)}{dt} = \left(\frac{dES_1}{dt}, \frac{dES_2}{dt}, \dots, \frac{dES_n}{dt} \right).$$

Population needs would be defined as viable *iff* the delivery of n ecosystem services (ES^+) or disservices (ES^-) respect the following constraints: $ES^+_i \geq ES^+_{i,\min}$ and $ES^-_j \leq ES^-_{j,\max}$, where $ES^+_{i,\min}$ and $ES^-_{j,\max}$ represent the minimal and maximal acceptable value of ES_i or j respectively associated with actors' needs. Together for the n ES, these threshold form a constraint domain K_R , that we refer to as the *satisfactory domain* of \mathbf{R} , such that $K_R = \{(ES_1, ES_2, \dots, ES_n) \vee ES_i^{\min} \leq ES_i \leq ES_i^{\max} \forall i, K \in S_R\}$.

Step 4.2. Definition of the set of viable trajectories of resource that respect K_R

Based on the Eq. (2) and K_R , we now define robustness (or lack thereof) as the subset of the state space for which there is at least one sequence of adaptive governance action $u(\cdot) \in A(T)$ for $t \in [0, T]$, starting from the initial state, that robustly keeps the SES's trajectory within K_R , for any time step t during the time horizon T . As such, and following *Aubin, Bayen & Saint-Pierre's (2011)* Viable Control Theory, we state that $u(\cdot)$ is viable (*i.e.*, robust¹) and the set of all viable $u(\cdot)$, is called the viability kernel $Viab_{K_R}$ defined as:

$$Viab_{K_R}(T) = \{R(t=0) \in K_R : \exists u(\cdot), \text{ such that } \forall t \in [0, T], R(t) \in K_R\}. \quad (3)$$

In the most general case specified after *Ostrom (1990)*, the nested sets of adaptive actions of governance changes are defined for $u(t) \in U^{OCA} \in U^{KCA} \in U^{CCA} \in U^{MCA} \dots \in U$, such that:

$$u(\cdot) = (u^{CCA:KCA:OCA}(0), u^{CCA:KCA:OCA}(1), \dots, u^{CCA:KCA:OCA}(t), \dots, u^{CCA:KCA:OCA}(T)). \quad (4)$$

In practice, we efficiently compute $Viab_{K_R}$ for Eq. (1) representing the dynamics of the SES, using the Saint-Pierre backward algorithm on a discrete grid of the state space (*Aubin, Bayen & Saint-Pierre, 2011*).

STEP 5. DEDUCING THE DAPP MAP FROM THE SUBSET OF VIABLE SOLUTION

From Eqs. (3) and (4), we then define the regulation map \mathcal{R}_K (cf. *Aubin, Bayen & Saint-Pierre, 2011*: definition 2.9.4. p.73) used for mapping any state of \mathbf{R} in K_R to the subset \mathcal{R}_K

¹ See *Martin, Deffuant & Calabrese (2011)* for the resilient case.

consisting of controls U which are viable, in the sense that the corresponding direction dR/dt (cf. Eq. (1a)) is viable at any given point of the state space, such that:

$$\mathcal{R}(R(t)) = \left\{ u \in U(R) : R \in K_R, \frac{dR}{dt} = f(R(t), u(t)) \in \text{Viab}_{K_R} \right\}. \quad (5)$$

We then transform Eq. (5) into a DAPP map, as represented by [Haasnoot, Warren & Kwakkel \(2019\)](#), by defining it as a directed graph $G = (V, L)$, where:

- $V \rightarrow U \times T$ are vertex/nodes at times t_0, t_1, \dots, t_T for every possible action $u(t)$, such that $V = \bigcup_{t=0}^T U(R(t))$
- $L = \{e_{ij}\} \subseteq V \times V$ are links (*i.e.* edges between vertices) representing possible viable state transitions between decision nodes under control $u(t)$, such that:
 $L = u(t), u(t+1) | u(t) \in \mathcal{R}_K(R(t), u(t)), u(t+1) \in \mathcal{R}_K(R(t+1), u(t+1))$

The possible number of viable pathways represented in the graph will thus be equal or smaller than $\dim(G)_{\max} = U^T$.

STEP 6. ASSESSING PATHWAY SENSITIVITY TO SOCIAL-ECOLOGICAL CHANGES

Once we defined the viable DAPP map, we analyzed for every DAPP map, which actions explained retrospectively differences in viable outcomes, *i.e.*, $\frac{d\text{Viab}(R)}{du(\cdot)}$. This step is detailed in [Supplemental S2](#) in relation with the constraints associated with the application example.

APPLICATION EXAMPLE

Specification of the application example

The method was applied to a case study involving two SES sites in central France (one peri-urban and one rural), each with distinct visions and needs regarding ES, corresponding to different history and MCA. For each SES, adaptation actions were defined at the CCA and KCA levels, while OCA actions remained fixed for every KCA. Operational actions focused on managing a hedgerow network, with transitions between different hedgerow states defined by height and plant species richness (and the presence/absence of hedgerows). Since these states produced nine ES and were influenced by climate change, we compared DAPP maps across three climate stress levels for two SES.

DAPP maps were organized around nine potential scenarios of nested governance (CCA|KCA), with adaptations considered every five years over a 30-year period. This resulted in 4,782,969 (9^7) possible governance pathways, each evaluated for viability.

With this approach, we modeled DAPP maps where, for every step, we identified the type of nested governance arrangement (CCA, KCA and OCA). We then determined what these adaptations assumed in term of changes in the SES structure (through the CISF). We

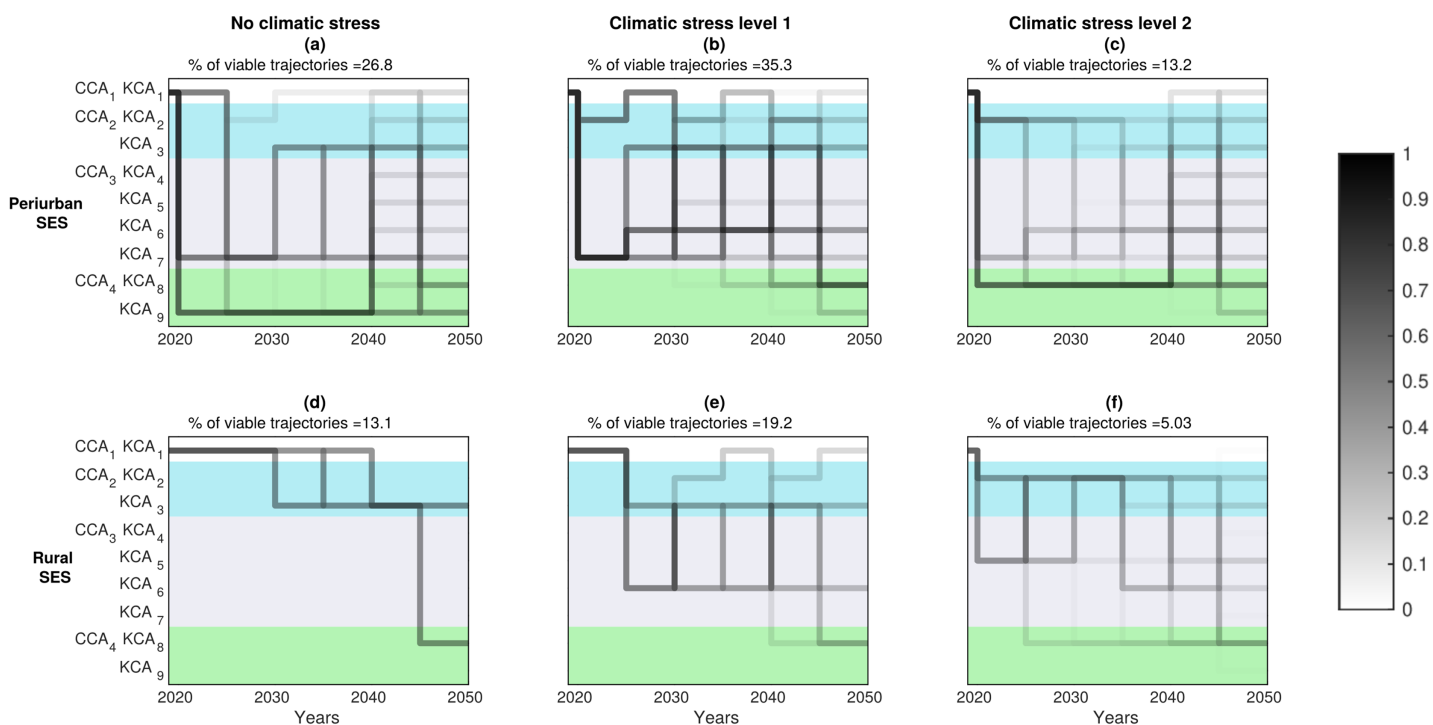


Figure 5 Probability DAPP maps. Probability to find viable pathways of governance adaptation that meet the set of satisfaction constraints for all ecosystem services (ES), for two types of SES, three climate stress levels, and nine nested governance scenarios. Every panel provides the percentage of total viable trajectories starting from the state of the SES in 2020. A total of $9^7 = 4,782,969$ pathways were estimated by combining CCA and KCA over the 30-years period and transitions every five years, *i.e.*, between two successive decision nodes. Pathway sequences that are not represented in dark represent (irreversibly) non-viable five years sequences regarding the studied ES. Darker segments (on a 0–1 white and black scale) mean greater number of such unique 30-year long viable pathways crossing the 5-year segment between two decision nodes.

Full-size DOI: [10.7717/peerj.18938/fig-5](https://doi.org/10.7717/peerj.18938/fig-5)

finally checked the underpinning definitions of the SES attributes (using Ostrom's SESF) that these adaptations implied.

We provide in supplementary files details on how we performed the SESF analysis (S1), gathered ecological data to model the resource dynamics (S2), applied the methodological steps to create DAPP maps (S3) and coded the model into Gnu-Octave (Eaton *et al.*, 2024) to produce the results (S4). The main results are summarized below, with S5 providing supplementary results.

Five-year time-step evaluation of the viability and security of governance pathways

DAPP maps presented in Fig. 5 globally confirm our expectation that keeping the same governance arrangement for 30 years (especially CCA₁, the one most frequently observed in our study site) is not predicted to be viable. They show on the contrary, that multiple adaptations are required, involving sequences of transitions between various combinations of CCA/KCA.

We decomposed the possible 30-year pathways into succession of 5-year pathway segments between two decision steps/nodes. We show that some of these segments are crossed by many unique 30-year pathway options, offering thus a broader range of future

adaptation options. The darker segments on Fig. 5 seem less sensitive to an increase in climate stress level (0, 1, 2), but are sensitive to change in the SES context (peri-urban, rural).

The diversity of viable pathway segments and transitions options also changed with the SES type. More specifically, peri-urban SES (Figs. 5A–5C) offered a greater choice of viable pathways than rural SES, especially between viable KCA options within CCA_{2,3} or 4 options. This pattern was pretty insensitive to the increase in the level of climatic stress. This matched with the greater constraints on the satisfactory space that characterizes rural SES (see Table S2 in Supplemental S2). Accordingly, in rural SES, fewer satisfactory options of KCA transitions per CCA option were predicted (Figs. 5D–5F). There, actors would have to accept more drastic CCA transitions in order to respect the limits of the ES satisfactory domain. This is true in particular with no additional climate stress (Fig. 5D), as actors do have to first transit through CCA-B2. This first transition corresponds to contracting with the state government to become eligible for payments for ecosystem services (PES) (Fig. 4D, see links 2a,b in Fig. 2B). Then, 20 years later, we predict that viability maintenance of the rural SES requires to transform CCA₂|KCA₂ into CCA₄|KCA₈. This transformation is more demanding than from CCA₁ to CCA₂|KCA₂, as it involves the setting of a new *P*-role for arbitration, collective rules and economic support between *C* and *E* (cf. Fig. 1). Unexpectedly, increased drought stress is predicted to diversify the number of KCA options, especially within the CCA₃ option (Figs. 5E, 5F). However this larger choice is expected to come at the expense of the security level for every KCA choice (lighter gray shade), making those KCA transitions riskier.

The most secured 30-year viable decision pathways

We then selected the top 10% most secured options of viable 30-years adaptation pathways within the ES satisfactory domain out of the options in Fig. 6. This selection reduced in some cases drastically the number of viable pathways. For instance, for peri-urban SES, this subset of pathways requires transit as fast as possible toward a combination of CCA₄|KCA₉ when climate stress level is the lowest (Fig. 6A, option of arrangement CCA₄|KCA₉; see Table S1 in Supplemental S2 for details); or to transit through CCA₄|KCA₈ when climate stress level is the greatest (Fig. 6C, option D.1). Such drastic transformations are predicted to have large benefits, as they lead to a state where all the other governance pathway options become viable by 2040–2050. Interestingly, at climate stress level 1 (Fig. 6B), there is still a great diversity of highly secured viable pathways that sustain the required levels for all ES to be viable.

Similarly, in the rural SES, the most secured pathways lead a reduction in the transition time to CCA₂|KCA₃ for climate stress level 0 (Fig. 6D) or toward CCA₃|KCA₅ for climate stress level 2 (Fig. 6F). Subsequently, securing adaptation are achieved by further shortening the time required to transition to CCA₄|KCA₉ (Figs. 5D, 5F).

The model unexpectedly predicts that actors from the two SES will have a larger range of secured options at different time scales under climate stress level 1, as opposed to under milder or harsher conditions (Figs. 6B, 6E). This appears particularly true for peri-urban SES (Fig. 6E).

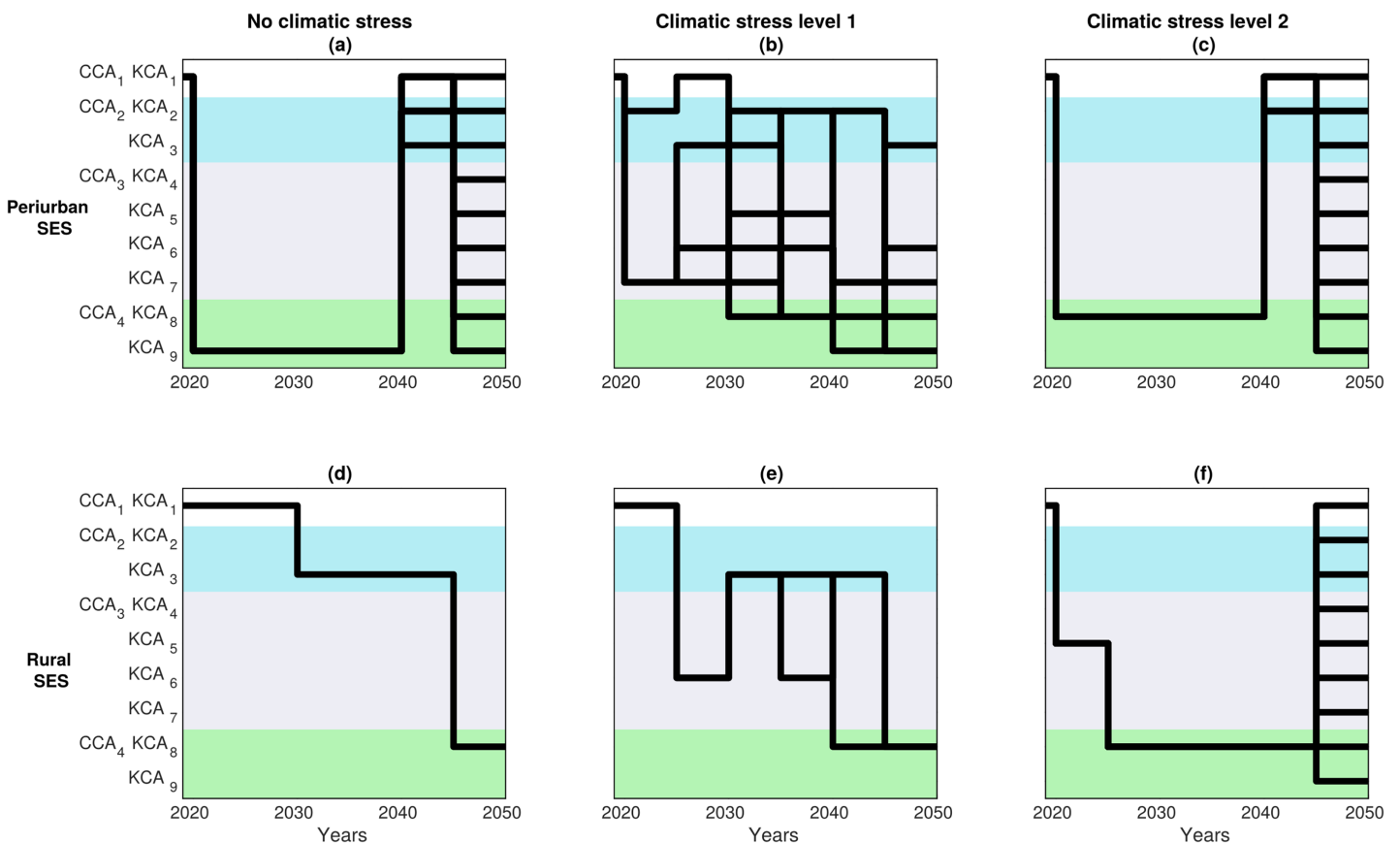


Figure 6 Most secured DAPP maps. These maps represent the 10% most secured options of viable trajectories that respected the (normalized) sum of constraints for all ecosystem services. See Table S1 from Supplemental S2 for the exact definition of the nine CCA, KCA and associated OCA.

Full-size DOI: 10.7717/peerj.18938/fig-6

Switching pathways to prioritize different ES and resolve actor conflicts

Optimal DAPP maps (Fig. 7) were derived from Fig. 6, and showed viable adaptation pathways that maximize one ES^+ at a time (or minimize one ES^-). For example, in peri-urban SES with minimal level of climate stress (Fig. 7A), we predict that transiting directly to $CCA_4|KCA_9$ (as Fig. 6A would suggest to do to be more secured) will minimize the costs of maintenance but without maximizing the other ES^+ (or minimizing the other ES^-). The target of minimizing environmental hazards rather requires to delay the transition to $CCA_3|KCA_7$ (i.e., by creating a C-role) then the arrangement $CCA_2|KCA_3$ (i.e., contracting for PES). Maximizing all the other ES^+ would require to transit first through the arrangement $CCA_3|KCA_7$, and then either $CCA_2|KCA_3$ or $CCA_4|KCA_8$.

These results highlighted how the choices of pathways optimizing one ES^+/ES^- can impact other ES level through trade-off effects (Fig. 8). For instance, the pathway that maximizes pollination as priority objective (i.e., through pathway $CCA_1|KCA_1(2020) \rightarrow CCA_3|KCA_7(2020-2030) \rightarrow CCA_2|KCA_3(2030-2040) \rightarrow CCA_4|KCA_8(2040-2050)$ in Fig. 7A), is expected to produce positive, thus synergistic, effects by reducing environmental hazards (brown line) and maximizing fruit production (Fig. 8A). This pathway is also predicted to have negative impacts on wood biomass production (green line), sunlight protection (blue

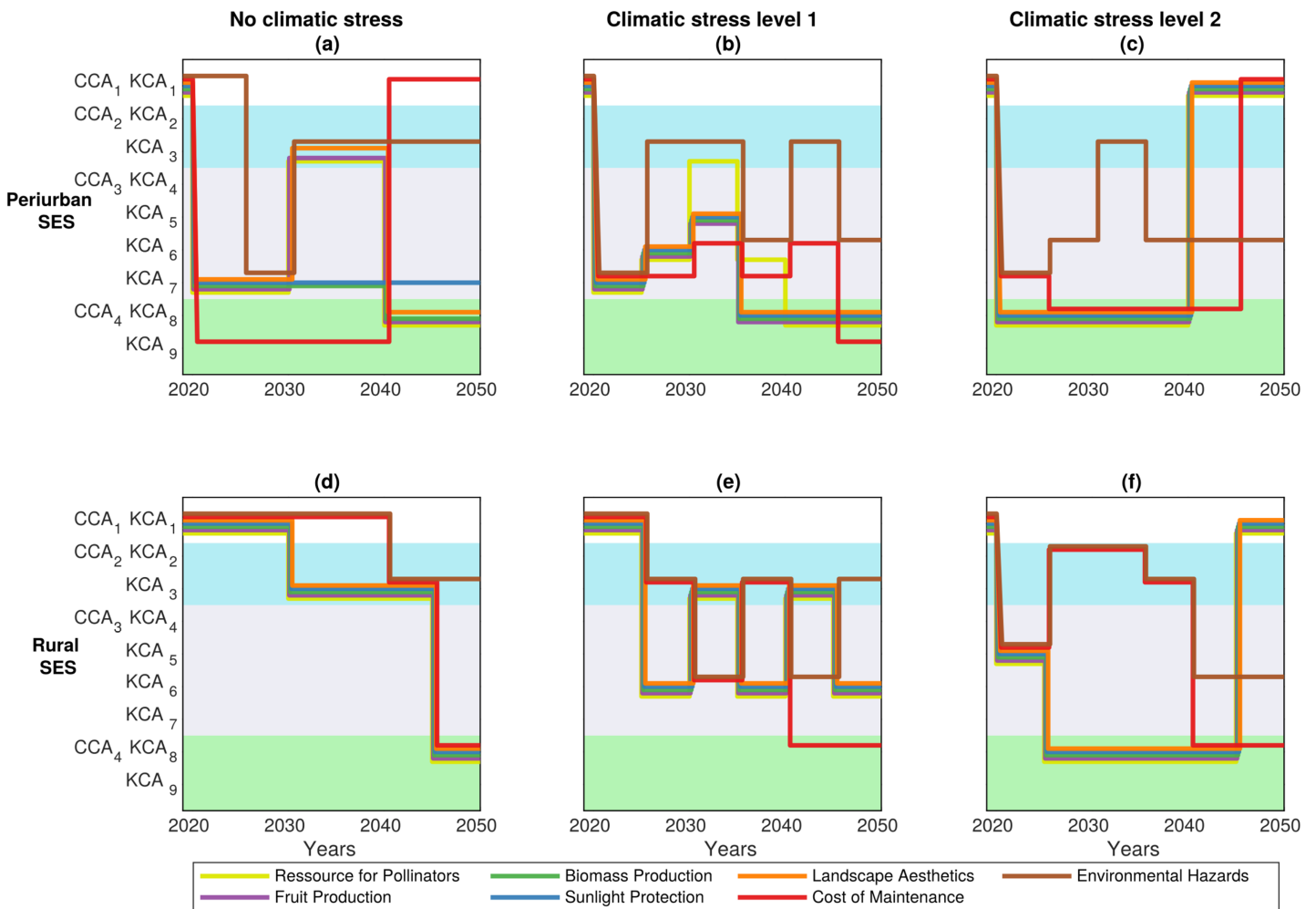


Figure 7 Optimal DAPP maps. These maps represent the subset of the most optimal sequence of institutional adaptation for each of the seven ecosystem services to be maximized or minimized. See Table S1 from Supplemental S2 for the exact definition of the nine CCA, KCA and associated OCA. [Full-size !\[\]\(af99fa9aa0dfe154ab748304eabf258c_img.jpg\) DOI: 10.7717/peerj.18938/fig-7](https://doi.org/10.7717/peerj.18938/fig-7)

line) and landscape aesthetics (orange line). Consequently, new winners and losers relative to the ES are expected to emerge with changing pathways and thus according to the ES⁺ or ES⁻ that are prioritized. Conversely, if actors seek to minimize the ES⁻ “cost of maintenance” (Fig. 7F), then the most optimal adaptation pathway involves the following transition: CCA₁|KCA₁(2020) → CCA₄|KCA₉(2020–2040) → CCA₁|KCA₁(2040–2050) (Fig. 7A). This should result in a continual parallel decline of all the other ES⁺ and ES⁻ over the next 30 years (Fig. 8F), alleviating the risks of ES trade-offs.

Sensitivity of DAPPs to changes in climate stress, SES and hedgerow types

Set of viability solutions according to the proportions of hedgerow types

We represented the viability kernel in the hedgerow state-space (Fig. 9) and examined how its size and shape—proxies for the number and types of adaptation pathways—were

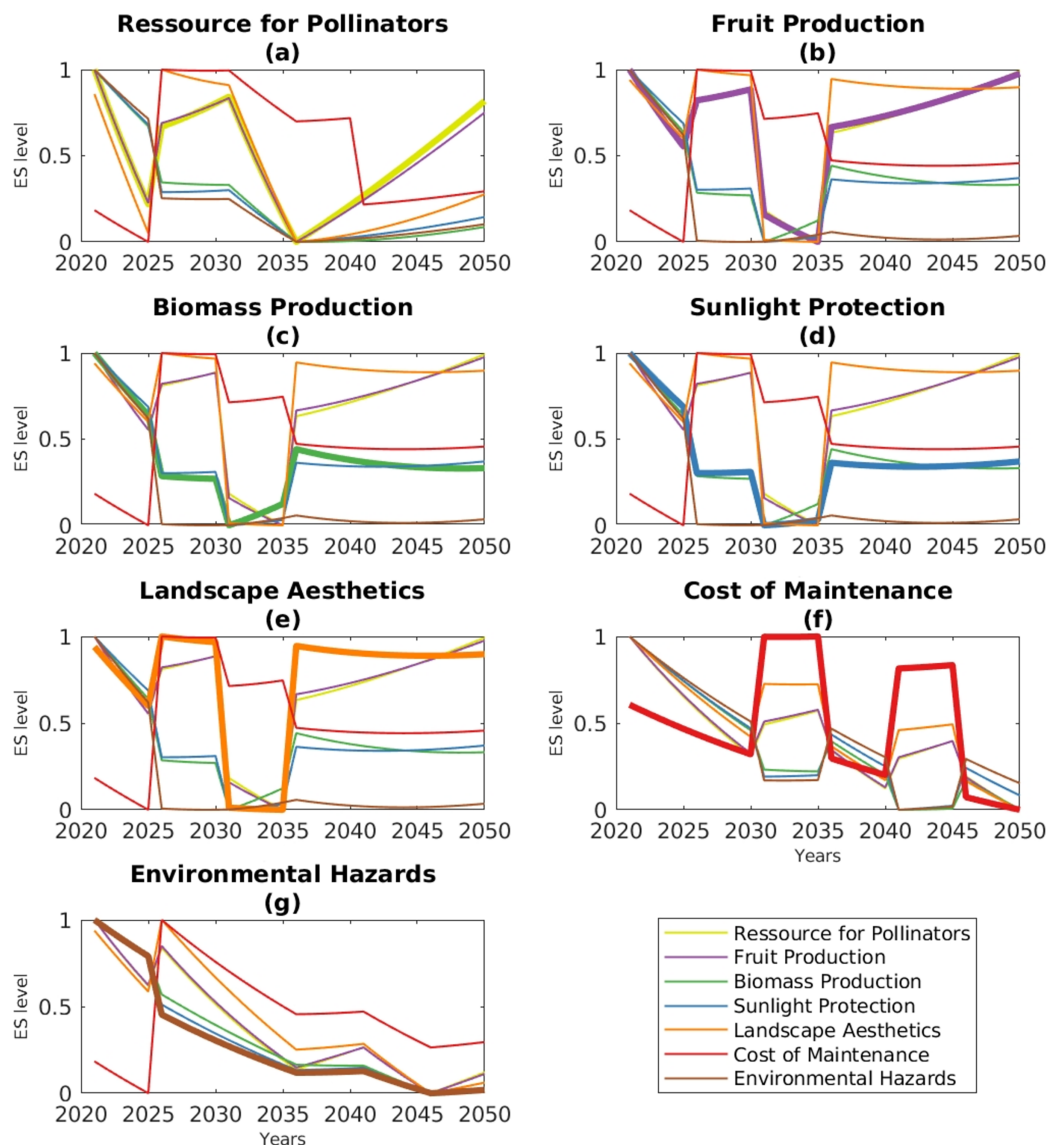


Figure 8 Predicted temporal dynamics of seven ecosystem services (ES^+) and disservices (ES^-) under the most optimal adaptation pathways, either maximizing ES^+ or minimizing ES^- , as indicated by the labels. For example, (A) shows that the maximized ES^+ is pollinator resources (thicker trend line), while the other ES^+/ES^- are allowed to vary (thinner trend lines). Results are based on the optimal DAPP map from Fig. 5A for a peri-urban SES under minimal climate stress. Supplemental S5 provides results for the other five DAPP maps from Figs. 7B–7F. [Full-size !\[\]\(fb59cbe3d37e4884dda75bb41b3362b0_img.jpg\) DOI: 10.7717/peerj.18938/fig-8](https://doi.org/10.7717/peerj.18938/fig-8)

influenced by the proportion of different hedgerow types: species-poor hedgerows (PH) vs species-rich hedgerows (RH), and tall hedgerows (TH) vs short hedgerows (SH).

We found that its shape and size were bound by minimal and maximal proportions of every hedgerow type, but that the proportions differed with climatic stress levels and SES types. For peri-urban SES, viable pathways were found under greater climatic stress, with a large range of proportions of RH, but a narrower one for PH (Fig. 9). By contrast in rural SES, greater climatic stress levels fit with viable pathways with much narrower ranges of

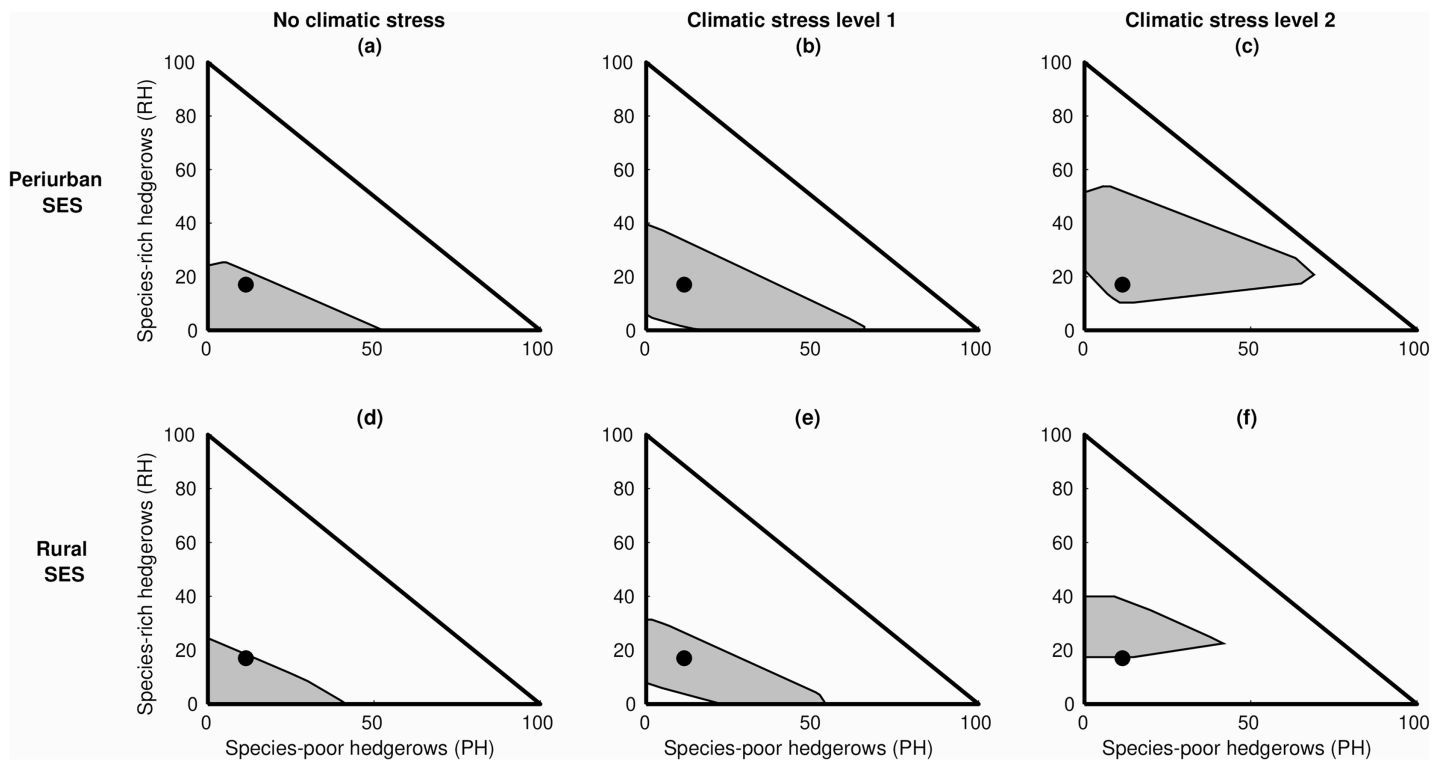


Figure 9 Influence of level of hedgerows species richness on the size and shape of the viability kernel. 2D cut of the four-dimensional viability kernel, expressed as a function of species-poor hedgerows (PH) and species-rich hedgerows (RH) for the two types of social-ecological systems (rural, peri-urban) and the three levels of climate stress. Blue dots close to the viability kernel limit mean that there are less options to adapt the hedgerow network through different nested governance arrangements changes, and thus are less secured. [Full-size !\[\]\(037823d088c5f59cc522c4ec720b3bb3_img.jpg\) DOI: 10.7717/peerj.18938/fig-9](https://doi.org/10.7717/peerj.18938/fig-9)

proportion of both PH and RH. Patterns were somehow similar when considering species diversity to describe hedgerow types (Fig. S9 in Supplemental S5).

Overall, as climate stress increases, maintaining large diversity of viable pathway options should require relatively more RH than PH (Fig. 9) and more TH than SH (Fig. S9), regardless of the type of SES. If the state of the hedgerows remain constant (blue dots close to the threshold in Figs. 9 and S9), then greater climate change would put both SES types in an unsecured state, reducing drastically the number of possible adaptive actions, and increasing the risk of being trapped into a non-viable state (Figs. 9C, 9F and S9C, S9F).

Expected security gains per ES from switching hedgerow management targets

ES^+ and ES^- depended for a large part on the hedgerow species richness and height (see model in Table S2). We analyzed retrospectively whether switching actions from one hedgerow type to another may lead to more or less security gains, expressed as a distance to the limits of the ES satisfactory domain K_r (within $Viab_{K_r}$) for every ES^+ and ES^- , following methodological step 6. This was done for both the viable and non-viable adaptation pathways. We then analyzed whether the results contrasted when changing SES

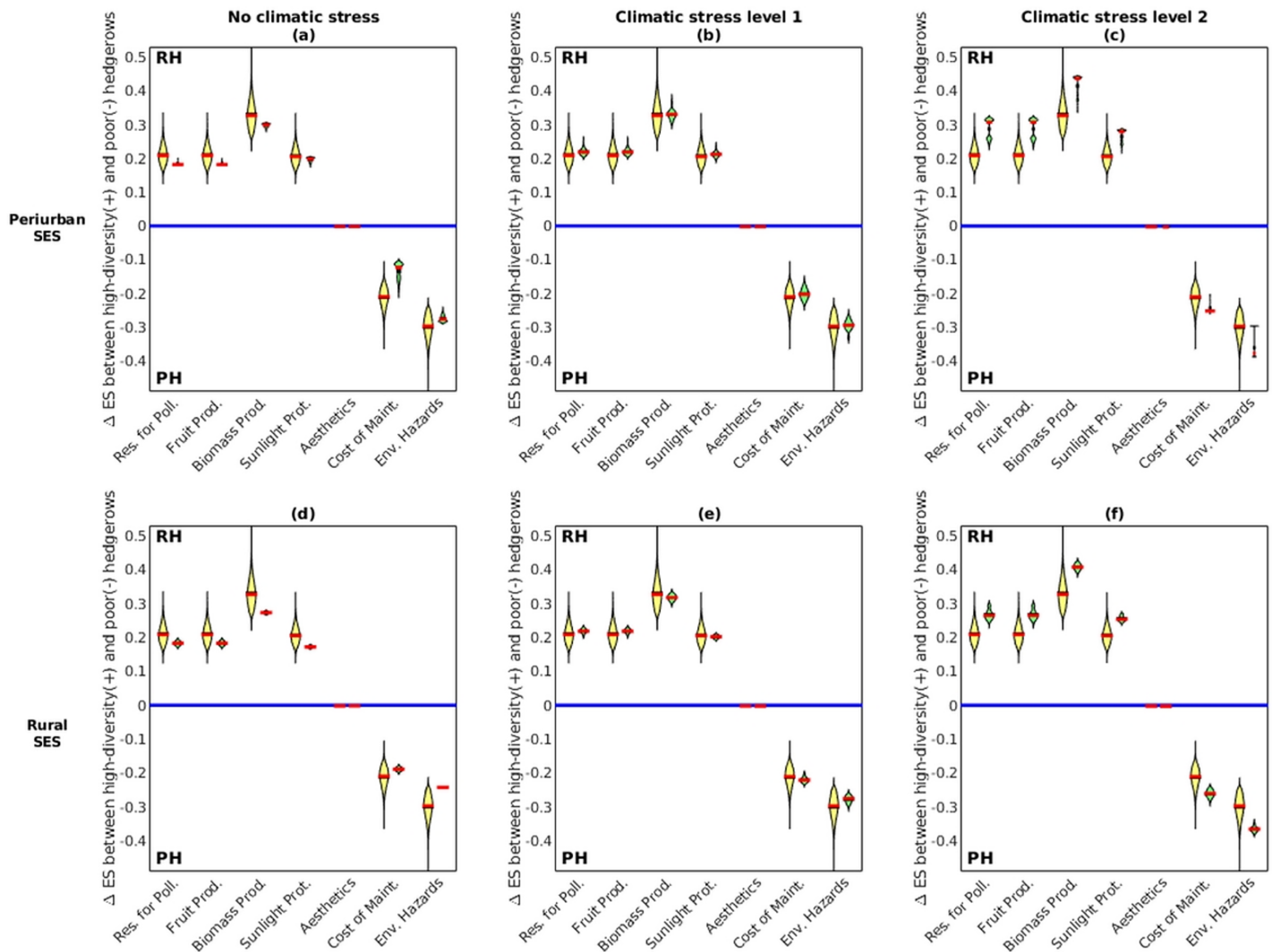


Figure 10 For every ecosystem service (ES), measure of the security gains ΔES_{TH-SH} relative to the limits of the ES satisfactory domain (*i.e.*, distance from the blue baseline), when switching the target of management from species-poor hedgerows. As per the explanation in the method section 2.6.2, $\Delta ES_{RH-PH} > 0$ indicates greater security gains when acting more on RH than on PH; whereas $\Delta ES_{RH-PH} < 0$ indicates the opposite. The violins represent the probability density of ΔES values (with median in red) associated with all the adaptation pathways that are both viable and non-viable (yellow violins), or viable only (green violins). ES full name are provided in Fig. 8. Similar results are presented in Fig. S10 of Supplemental S5 between tall and short hedgerows. Full-size [DOI: 10.7717/peerj.18938/fig-10](https://doi.org/10.7717/peerj.18938/fig-10)

type and climatic stress level. The analysis revealed three consistent patterns of ES security shared between the two SES types (Figs. 10 and S10).

Viable pathways (green violins) that increased relatively more the proportion of RH than PH (Fig. 10) were likely to build greater security in the viable ES^+ provisioning (for pollination, fruit production, biomass production and sunlight protection). Conversely, viable pathways that increased relatively more the proportion of PH than RH (Fig. 10) were also likely to build greater security for keeping ES^- (*i.e.*, maintenance costs, environmental hazards) within the satisfactory threshold. In the absence of additional climate stress, we found only limited contrasts between viable and non-viable pathways (Figs. 10A, 10D and S10A, S10D). Increasing climate stress levels was predicted to amplify

existing patterns of ES security, by pushing for even more RH for ES⁺ and even more PH for ES⁻.

Similar pattern of viability was observed for ES⁺ security when increasing TH over SH and for ES⁻ when increasing SH over TH (see Fig. S10 in Supplemental S5). This pattern of priorities between hedgerow types was consistent across climate stress levels 0 and 1, but reversed at climate stress level 2 (see e.g., Fig. S10C for environmental hazards).

In the particular case of landscape aesthetics, ES security gains were not impacted by changing hedgerow types, as it was defined as the Shannon index of the diversity of all hedgerows, and was thus insensitive to changing any one type of hedgerow (see Table S2).

DISCUSSION

DAPP maps enriches our predictions of potential adaptation options

Previous studies on the use of DAPP maps highlighted the importance of integrating detailed information on the SES context of adaptation (e.g., Stanton & Roelich, 2021). However, these studies also indicate that guidelines for organizing this information in a way that reflects the hierarchical nature of SES management.

Our goal was to demonstrate how to construct information-rich nested DAPP maps using Ostrom's (1990) governance theory. We had two complementary objectives. The primary was practical: to design effective decision-support tools. The second was theoretical: to question whether and how the nature of abstract structures—such as nested adaptive institutional arrangements—could explain changes that manifest in the state, structure and dynamics of empirical phenomena, such as biodiversity, ecological infrastructures (hedgerows) and the delivery of ecosystem services to a diversity of actors.

To achieve this, we developed a method grounded in Ostrom's main frameworks (i.e., IADF, SESF and CISF). Using these, we mathematically derived a social-ecologically rich set of adaptation actions and predictive, viable DAPP maps. We applied this method to analyze the long-term sustainable provision of ES produced by hedgerows in two SES, under climate change.

The results emphasized the influence of the SES type (rural vs per-urban) and climate stress levels (three drought levels) on possible pathways of nested governance adaptation supporting ES provisioning. We found that a wide diversity of possible nested arrangements and transitions between them were viable (among the ~5 million possible pathways), highlighting the great flexibility for diverse actors to meet their needs.

This nested DAPP approach demonstrates strong potential for tackling unique and complex SES adaptation challenges, while maintaining a sufficiently generic framework. We discuss the strengths and limitations of this method in the context of our case study.

Nested structure of DAPP maps enables more incremental adaptation options

Previous DAPP approaches, applied on complex SES involving biodiversity and ES, were defined at distinct levels of governance (e.g., Colloff et al., 2016; Lavorel et al., 2019, 2020; Bruley et al., 2021; Bergeret & Lavorel, 2022). The added-value of our integrated method was to show how to generate nested DAPP maps between these levels, involving adaptation

actions between OCAs, within and between different KCAs, CCAs, for two SES characterized by different MCAs.

In the archetypical SES we presented, most actors who possessed hedgerows primarily used the nested governance structure $CCA_1|KCA_1$ (with a fixed OCA detailed in [Supplemental S2](#)). Our results indicate that this polycentric arrangement may not be sustainable in the long term, especially if climate change impacts hedgerows that are tall and biodiverse.

For rural actors, the most secured nested arrangement to stay in a viable pathway ([Fig. 5](#)) would be to transform $CCA_1|KCA_1$ into the most complex and polycentric $CCA_4|KCA_8$ (see [Fig. 2](#) and further details in [Table S1](#) from [Supplemental S2](#)). Even if we predict a permitted delay of few decades for this transition, in practice a direct $CCA_1 \rightarrow 4$ transformation should be very costly (for economic, technical, social or even cultural reasons). It could be anticipated from the required substantial disparities between CCA_1 and CCA_4 in collaboration skills, mutual trust, and the willingness to delegate power and roles among *E*, *C*, and *P* roles ([Ostrom, 1990](#); [Ban et al., 2015](#); [Anderies, Barreteau & Brady, 2019](#)). Changing KCA or even OCA would thus require less drastic investments for adaptation than changing CCA, and thus are expected to be adapted more regularly. This was confirmed by the semi-structured interview of actors in our study site ([Supplemental S1](#)). But we lacked sufficient data to evaluate the specific costs involved in the transition between different CCA and KCA.

Factoring in these costs may yield nested DAPP maps that better align to the need for more incremental transition pathways, similar to what we predicted in the peri-urban DAPP maps. For example, transitioning through $CCA_1 \rightarrow 2$ or $CCA_1 \rightarrow 3$ first, rather than directly from $CCA_1 \rightarrow 4$.

The method produced complex tipping points in adaptation pathways

The DAPP framework was initially designed with questions of systemic robustness in mind ([Haasnoot et al., 2013](#); [Haasnoot, Warren & Kwakkel, 2019](#)), but not for a great number of nested actions and levels of systemic robustness and spillovers.

Here, we compared the effects of actions on emerging DAPP responses between two SES (peri-urban and rural), whose differences primarily rested on the constraints of ES levels for actors' satisfaction and the impact of climate change on hedgerows between climate stress levels. All other factors were kept the same because the data we gathered and analyzed through the SESF did not provide enough evidence to detect significant differences between the two SES (see [Supplemental S1](#)).

Remarkably, by simply adjusting ES needs to the SES context and the climate stress impacts on hedgerows, we observed the emergence of entirely distinct DAPP maps. These maps had different patterns of transition pathways ([Figs. 5–7](#)) and of associated trade-offs and synergies among ES resource users ([Fig. 8](#)). The complexity of the patterns was akin to the systemic nature of the CIFS representation, as expected by [Anderies \(2015\)](#). DAPP maps also emerged different patterns of viable (robust) pathways ([Fig. 5](#)). We also demonstrated how the adaptation choices involved changes in the relative proportion of species-rich/poor and short/tall hedgerows ([Figs. 9, 10, S9, S10](#)).

Some of these results were particularly unexpected. For instance, a slight shift in ES preferences between rural and peri-urban SES led to even more pronounced differences in diversity and priorities of pathway options and ES dynamics. Additionally, compared to the rural SES, the best options for securing the viability of peri-urban SES involved a swifter transition to the more intricate CCA₄, with joint arrangements between private, community, and public sectors (see [Table S1](#) for details). Another intriguing finding was the fact that moderate climate stress (level 1) diversified adaptation options, while severe stress (level 2) significantly limited them.

These emerging patterns of diversification or simplification of pathway options, along with others detailed in Supplementary Results [S5](#), remain not fully understood, even though our analyses in [Figs. 10](#) and [S10](#) provided some insights into the key hedgerow types and ES influencing these changes. This highlights the need for further analyses on how changes in actions, hedgerows, and ES production affect pathway diversification.

Perspectives for using this approach for more complex SES

In our study, we considered seven ES as (in) tangible resource units, flowing from the **R** compartment to the exploitation role compartment **E** (through action set U_{1b} in [Fig. 1](#)). Following the *Millennium Ecosystem Assessment (MEA) (2005)*, these ES represent mostly *provisioning* ES (wood, fruits, etc.) and *cultural* ES (landscape aesthetics). However following the MEA, two other ES categories are worth considering, namely *supporting* and *regulating* ES. More recently, [Colloff et al. \(2016\)](#) developed the concept of ‘*adaptation services*,’ which refers to specific types of supporting or regulating services that enhance the resilience of social systems by providing climate-related benefits, such as protection, resilience, or enabling adaptive options.

The CISF is valuable because it streamlines the modeling of ES from interconnected ecological infrastructures, while also highlighting how the chain of ES and infrastructures can resemble collective-choice arrangements (KCA), a concept emphasized by researchers like [La Notte et al. \(2017\)](#) and [Lavorel et al. \(2019\)](#). For example hedgerows, as semi-natural infrastructures provide supporting ES like pollination and pest control (akin to action set U_{4a}), which enhance crop growth (U_{0a}), and regulating ES such as water flow management (U_{5a}). If biodiversity in hedgerows or grasslands adjusts to climate change, their effects could impact the **C**, **R**, and **E** states, similar to a KCA. The same approach can be used to enrich DAPP studies, like those presented by [Lavorel et al. \(2019\)](#). For instance in their article, grasslands can be described as having a **C**-role through the control of erosion on adjacent fields (*i.e.* using action set U_{5a}). Similarly carbon storage, fodder resilience, and services like aesthetics and shade can be defined using different action sets (U_{0a} , U_{4a} , U_{1b} , U_{6b}). Lastly, services like connectivity and *transformability* are connected to the **R** and **C**-role compartments, and transformability can be modeled as the acceptable range of structural, compositional or entropic² changes in **R** or **C** tolerated by other roles.

Together these examples suggest that the CISF (and thus by association the SESF through [Fig. 1](#)) could flexibly be used to model potentially very complex KCA, and by extension DAPP problems, involving complex networks of roles attributed to ecological

² cf. Greek term “tropos” signifying transformation.

infrastructures, species, actors and ES (cf. [Vogt et al., 2015](#); [Partelow & Winkler, 2016](#); [Rova & Pranovi, 2017](#)).

CONCLUSION AND PERSPECTIVES

Our objective was to develop DAPP maps enriched with socio-ecological information, integrating Ostrom's frameworks (IADF, SESF, and CISF) with concepts from complex dynamical systems and viable control theories. This approach enabled the creation of innovative maps that balance three key dimensions of SES adaptation: (i) identifying socio-ecological attributes *via* SESF, (ii) modeling systemic risks and robustness through CISF and viability theory, and (iii) mapping nested governance-adaptations through IADF and CISF.

By applying this framework to one case study, we demonstrated how viable short- and long-term adaptation pathways and ecosystem service (ES) outcomes emerge under the influence of governance pathways, SES types, and climate stress levels. Our findings underscore the importance of defining SES targets, actor roles, infrastructure vulnerabilities, and nested governance structures in predicting these patterns.

A key contribution of our approach lies in achieving logical completeness between Ostrom's theoretical frameworks, viability theory and DAPP maps, providing a deeper understanding of the socio-ecological elements that constrain or foster adaptiveness. However, despite its theoretical strengths, practical challenges remain for actors seeking to operationalize this approach in governance planning under climate change. Questions about its usability and alignment with actors' life-history constraints (cf. [Stanton & Roelich, 2021](#)) merit further exploration, especially given the growing adoption of DAPP maps by policymakers.

Future work should focus on refining and testing these novel maps to ensure they are both practical and widely accessible. This includes enabling scientists and local actors to apply them effectively for SES adaptation or to test elements of Ostrom's governance theory in adaptive contexts. As a next step, we propose building on insights from the integration of serious gaming methods with DAPP maps ([Blackett et al., 2022](#)) to further test the incorporation of elements developed in our article.

ACKNOWLEDGEMENTS

We thank Johannes STEIGER for early discussions and advices on actors and local SES. We express our gratitude to Pr. J. Marty Anderies for engaging in fruitful discussions regarding the use of the CISF, ensuring its alignment with our present objectives. We thank Dr. Magali Weissgerber, and master students Elise Krief, Lisa Minaca, Quentin Guillois and Loïc Montel for their contribution to, respectively, interviews with local actors, field hedgerows surveys, aerial photographs analyses and GIS maps elaboration, as well as SESF analyses.

ADDITIONAL INFORMATION AND DECLARATIONS

Funding

The work, including the master's student and the post-doctoral fellowship of Antoine Brias, was supported by the PACSEN project (led by Anne Bonis) and funded by the European Regional Development Fund (European Union) and the FEDER Auvergne-Rhône-Alpes. The funders had no role in study design, data collection and analysis, decision to publish, or preparation of the manuscript.

Grant Disclosures

The following grant information was disclosed by the authors:
PACSEN Project.
European Regional Development Fund (European Union).
FEDER Auvergne-Rhône-Alpes.

Competing Interests

The authors declare that they have no competing interests.

Author Contributions

- Jean-Baptiste Pichancourt conceived and designed the experiments, performed the experiments, prepared figures and/or tables, authored or reviewed drafts of the article, and approved the final draft.
- Antoine Brias performed the experiments, analyzed the data, prepared figures and/or tables, wrote the code of the model, and approved the final draft.
- Anne Bonis conceived and designed the experiments, performed the experiments, authored or reviewed drafts of the article, and approved the final draft.

Data Availability

The following information was supplied regarding data availability:

The raw data are available in the [Supplemental Files](#) and at Anonymous Authors. 2024. Integrating Adaptation Pathways and Ostrom's Framework for Sustainable Governance of Social-Ecological Systems in a Changing World DOI 10.57745/IVWYL4.

Supplemental Information

Supplemental information for this article can be found online at <http://dx.doi.org/10.7717/peerj.18938#supplemental-information>.

REFERENCES

- Aggarwal RM, Anderies JM. 2023. Understanding how governance emerges in social-ecological systems: insights from archetype analysis. *Ecology and Society* 28(2):2 DOI 10.5751/ES-14061-280202.
- Allen J, DuVander J, Kubiszewski I, Ostrom E. 2012. Institutions for managing ecosystem services. *Solutions Journal* 2(6):44–48.

- Anderies JM. 2015.** Understanding the dynamics of sustainable social-ecological systems: human behavior, institutions, and regulatory feedback networks. *Bulletin of Mathematical Biology* 77(2):259–280 DOI 10.1007/s11538-014-0030-z.
- Anderies JM, Barreteau O, Brady U. 2019.** Refining the robustness of social-ecological systems framework for comparative analysis of coastal system adaptation to global change. *Regional Environmental Change* 19(7):1891–1908 DOI 10.1007/s10113-019-01529-0.
- Anderies JM, Janssen MA. 2013.** Robustness of social-ecological systems: implications for public policy. *Policy Studies Journal* 41(3):513–536 DOI 10.1111/psj.12027.
- Anderies JM, Janssen MA, Ostrom E. 2004.** A framework to analyze the robustness of social-ecological systems from an institutional perspective. *Ecology and Society* 9(1):18 DOI 10.5751/ES-00610-090118.
- Anderies J, Janssen M, Schlager E. 2016.** Institutions and the performance of coupled infrastructure systems. *International Journal of the Commons* 10(2):495 DOI 10.18352/ijc.651.
- Aubin JP, Bayen AM, Saint-Pierre P. 2011.** *Viability theory*. Second Edition. Berlin, Heidelberg: Springer, 803.
- Ban NC, Evans LS, Nenadovic M, Schoon M. 2015.** Interplay of multiple goods, ecosystem services, and property rights in large social-ecological marine protected areas. *Ecology and Society* 20(4):2 DOI 10.5751/ES-07857-200402.
- Basurto X, Gelcich S, Ostrom E. 2013.** The social-ecological system framework as a knowledge classificatory system for benthic small-scale fisheries. *Global Environmental Change* 23(6):1366–1380 DOI 10.1016/j.gloenvcha.2013.08.001.
- Bergeret A, Lavorel S. 2022.** Stakeholder visions for trajectories of adaptation to climate change in the Drôme catchment (French Alps). *Regional Environmental Change* 22(1):33.
- Bernstein M, del Mar Mancha-Cisneros M, Tyson M, Brady U, Rubiños C, Shin HC, Vallury S, Smith-Heisters S, Ratajczyk E. 2019.** Mapping Ostrom’s common-pool resource systems coding handbook to the coupled infrastructure systems framework to enable comparative research. *International Journal of the Commons* 13(1):528 DOI 10.18352/ijc.904.
- Blackett P, FitzHerbert S, Luttrell J, Hopmans T, Lawrence H, Colliar J. 2022.** Marae-opoly: supporting localised Māori climate adaptation decisions with serious games in Aotearoa New Zealand. *Sustainability Science* 17:1–17 DOI 10.1007/s11625-021-00998-9.
- Bruley E, Locatelli B, Colloff MJ, Salliou N, Métris T, Lavorel S. 2021.** Actions and leverage points for ecosystem-based adaptation pathways in the Alps. *Environmental Science & Policy* 124:567–579 DOI 10.1016/j.envsci.2021.07.023.
- Colloff MJ, Doherty MD, Lavorel S, Dunlop M, Wise RM, Prober SM. 2016.** Adaptation services and pathways for the management of temperate montane forests under transformational climate change. *Climatic Change* 138:267–282 DOI 10.1007/s10584-016-1724-z.
- Eaton JW, Bateman D, Hauberg S, Wehbring R. 2024.** GNU Octave version 9.2.0 manual: a high-level interactive language for numerical computations. GNU Project. Available at <https://www.gnu.org/software/octave/doc/interpreter>.
- Haasnoot M, Kwakkel JH, Walker WE, Ter Maat J. 2013.** Dynamic adaptive policy pathways: a method for crafting robust decisions for a deeply uncertain world. *Global Environmental Change* 23(2):485–498 DOI 10.1016/j.gloenvcha.2012.12.006.
- Haasnoot M, Warren A, Kwakkel JH. 2019.** Dynamic adaptive policy pathways (DAPP). In: *Decision Making under Deep Uncertainty: From Theory to Practice*. Cham: Springer, 71–92.
- Hermans LM, Haasnoot M, ter Maat J, Kwakkel JH. 2017.** Designing monitoring arrangements for collaborative learning about adaptation pathways. *Environmental Science & Policy* 69(S2):29–38 DOI 10.1016/j.envsci.2016.12.005.

- Homayounfar M, Muneeppeerakul R, Anderies JM, Muneeppeerakul CP. 2018.** Linking resilience and robustness and uncovering their trade-offs in coupled infrastructure systems. *Earth System Dynamics* **9**(4):1159–1168 DOI [10.5194/esd-9-1159-2018](https://doi.org/10.5194/esd-9-1159-2018).
- Houballah M, Cordonnier T, Mathias JD. 2020.** Which infrastructures for which forest function? Analyzing multifunctionality through the social-ecological system framework. *Ecology and Society* **25**(1):22 DOI [10.5751/ES-11424-250122](https://doi.org/10.5751/ES-11424-250122).
- Houballah M, Mathias J-D, Cordonnier T. 2021.** An infrastructure perspective for enhancing multi-functionality of forests: a conceptual modeling approach. *Earth's Future* **9**(1):e2019EF001369 DOI [10.1029/2019EF001369](https://doi.org/10.1029/2019EF001369).
- Houballah M, Cordonnier T, Mathias JD. 2023.** Maintaining or building roads? An adaptive management approach for preserving forest multifunctionality. *Forest Ecology and Management* **537**:120957 DOI [10.1016/j.foreco.2023.120957](https://doi.org/10.1016/j.foreco.2023.120957).
- La Notta A, D'Amato D, Mäkinen H, Paracchini ML, Liquete C, Egoh B, Geneletti D, Crossman ND. 2017.** Ecosystem services classification: a systems ecology perspective of the cascade framework. *Ecological Indicators* **74**(3):392–402 DOI [10.1016/j.ecolind.2016.11.030](https://doi.org/10.1016/j.ecolind.2016.11.030).
- Lapointe M, Cumming GS, Gurney GG. 2019.** Comparing ecosystem service preferences between urban and rural dwellers. *Bioscience* **69**(2):108–116 DOI [10.1093/biosci/biy151](https://doi.org/10.1093/biosci/biy151).
- Lavorel S, Colloff MJ, Locatelli B, Gorddard R, Prober SM, Gabillet M, Devaux C, Laforgue D, Peyrache-Gadeau V. 2019.** Mustering the power of ecosystems for adaptation to climate change. *Environmental Science & Policy* **92**:87–97 DOI [10.1016/j.envsci.2018.11.010](https://doi.org/10.1016/j.envsci.2018.11.010).
- Lavorel S, Locatelli B, Colloff MJ, Bruley E. 2020.** Co-producing ecosystem services for adapting to climate change. *Philosophical Transactions of the Royal Society B* **375**(1794):20190119 DOI [10.1098/rstb.2019.0119](https://doi.org/10.1098/rstb.2019.0119).
- Martin S, Deffuant G, Calabrese JM. 2011.** Defining resilience mathematically: from attractors to viability. Viability and resilience of complex systems: concepts, methods and case studies from ecology and society. *Understanding Complex Systems* **2011**:15–36 DOI [10.1007/978-3-642-20423-4_2](https://doi.org/10.1007/978-3-642-20423-4_2).
- McGinnis MD, Ostrom E. 2014.** Social-ecological system framework: initial changes and continuing challenges. *Ecology and Society* **19**(2):12 DOI [10.5751/ES-06387-190230](https://doi.org/10.5751/ES-06387-190230).
- Millennium Ecosystem Assessment (MEA). 2005.** *Ecosystems and human well-being: general synthesis*. Washington, D.C: Island Press.
- Muneeppeerakul R, Anderies JM. 2017.** Strategic behaviors and governance challenges in social-ecological systems. *Earth's Future* **5**(8):865–876.
- Muneeppeerakul R, Anderies JM. 2020.** The emergence and resilience of self-organized governance in coupled infrastructure systems. *Proceedings of the National Academy of Sciences of the United States of America* **117**(9):4617–4622 DOI [10.1073/pnas.1916169117](https://doi.org/10.1073/pnas.1916169117).
- Ostrom E. 1990.** *Governing the commons: the evolution of institutions for collective action*. Cambridge: Cambridge University Press.
- Ostrom E. 2007.** A diagnostic approach for going beyond panaceas. *Proceedings of the National Academy of Sciences of the United States of America* **104**(39):15181–15187 DOI [10.1073/pnas.0702288104](https://doi.org/10.1073/pnas.0702288104).
- Ostrom E. 2009.** A general framework for analyzing sustainability of social-ecological systems. *Science* **325**(5939):419–422 DOI [10.1126/science.1172133](https://doi.org/10.1126/science.1172133).
- Ostrom E, Agrawal A, Blomquist W, Schlager E, Tang SY. 1989.** CPR coding manual. In: *Ostrom Workshop in Political Theory and Policy Analysis*.

- Ostrom E, Cox M. 2010.** Moving beyond panaceas: a multi-tiered diagnostic approach for social-ecological analysis. *Environmental Conservation* **37**(4):451–463
DOI [10.1017/S0376892910000834](https://doi.org/10.1017/S0376892910000834).
- Partelow S, Winkler KJ. 2016.** Interlinking ecosystem services and Ostrom’s framework through orientation in sustainability research. *Ecology and Society* **21**(3):27
DOI [10.5751/ES-08524-210327](https://doi.org/10.5751/ES-08524-210327).
- Pichancourt JB. 2023.** Some fundamental elements for studying social-ecological co-existence in forest common pool resources. *PeerJ* **11**:e14731 DOI [10.7717/peerj.14731](https://doi.org/10.7717/peerj.14731).
- Pichancourt JB. 2024.** Navigating the complexities of the forest land sharing vs sparing logging dilemma: analytical insights through the governance theory of social-ecological systems dynamics. *PeerJ* **12**:e16809 DOI [10.7717/peerj.16809](https://doi.org/10.7717/peerj.16809).
- Roelich K, Giesekam J. 2019.** Decision making under uncertainty in climate change mitigation: introducing multiple actor motivations, agency and influence. *Climate Policy* **19**(2):175–188
DOI [10.1080/14693062.2018.1479238](https://doi.org/10.1080/14693062.2018.1479238).
- Rova S, Pranovi F. 2017.** Analysis and management of multiple ecosystem services within a social-ecological context. *Ecological Indicators* **72**(325):436–443
DOI [10.1016/j.ecolind.2016.07.050](https://doi.org/10.1016/j.ecolind.2016.07.050).
- Stanton MCB, Roelich K. 2021.** Decision making under deep uncertainties: a review of the applicability of methods in practice. *Technological Forecasting and Social Change* **171**(3):120939
DOI [10.1016/j.techfore.2021.120939](https://doi.org/10.1016/j.techfore.2021.120939).
- Vogt JM, Epstein GB, Mincey SK, Fischer BC, McCord P. 2015.** Putting the “E” in SES: unpacking the ecology in the Ostrom social-ecological system framework. *Ecology and Society* **20**(1):55 DOI [10.5751/ES-07239-200155](https://doi.org/10.5751/ES-07239-200155).
- Werners SE, Wise RM, Butler JR, Totin E, Vincent K. 2021.** Adaptation pathways: a review of approaches and a learning framework. *Environmental Science & Policy* **116**:266–275
DOI [10.1016/j.envsci.2020.11.003](https://doi.org/10.1016/j.envsci.2020.11.003).
- Wise RM, Fazey I, Smith MS, Park SE, Eakin HC, Van Garderen EA, Campbell B. 2014.** Reconceptualising adaptation to climate change as part of pathways of change and response. *Global Environmental Change* **28**(4):325–336 DOI [10.1016/j.gloenvcha.2013.12.002](https://doi.org/10.1016/j.gloenvcha.2013.12.002).