



HAL
open science

Long chain omega-3 fatty acid dietary content determines escape response efficiency in golden grey mullet

Marie Vagner, Salomé Ducos, Nicolas Graziano, Fabienne Le Grand, Antoine Bideau, Emmanuel Dubillot, Christel Lefrançois

► To cite this version:

Marie Vagner, Salomé Ducos, Nicolas Graziano, Fabienne Le Grand, Antoine Bideau, et al.. Long chain omega-3 fatty acid dietary content determines escape response efficiency in golden grey mullet. Colloque d'Ecophysiologie Animale, 2023, Plouzané, France. hal-04679042

HAL Id: hal-04679042

<https://hal.science/hal-04679042v1>

Submitted on 27 Aug 2024

HAL is a multi-disciplinary open access archive for the deposit and dissemination of scientific research documents, whether they are published or not. The documents may come from teaching and research institutions in France or abroad, or from public or private research centers.

L'archive ouverte pluridisciplinaire **HAL**, est destinée au dépôt et à la diffusion de documents scientifiques de niveau recherche, publiés ou non, émanant des établissements d'enseignement et de recherche français ou étrangers, des laboratoires publics ou privés.

Dietary long-chain omega-3 fatty acids determine escape response efficiency in golden mullet



Marie VAGNER

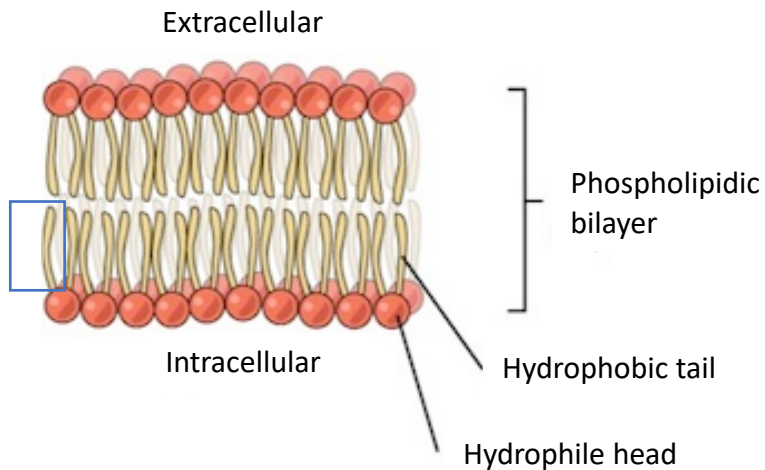
Salomé Ducos, Nicolas Graziano, Fabienne Le Grand, Antoine Bideau,
Emmanuel Dubillot, Christel Lefrançois

UMR LEMAR, Pouzané France

- Lipids and fatty acids (Tocher, 2003)

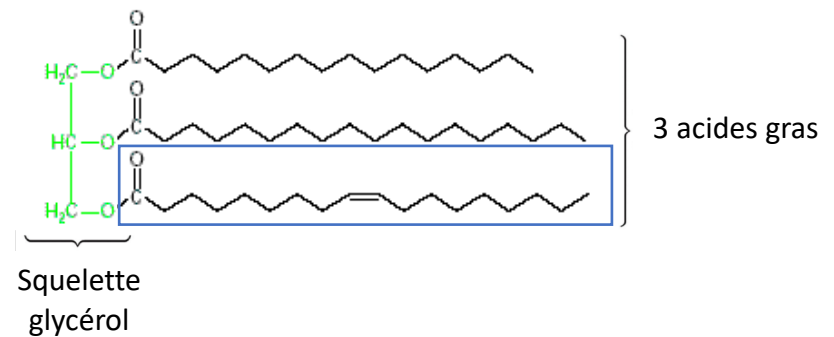
Polar lipids (PL) = Structural lipids

Cell membranes properties



Neutral lipids (NL) = Reserve lipids

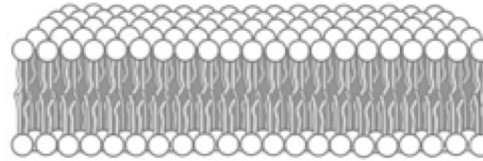
Metabolic energy source



Long chain N-3 polyunsaturated fatty acids (LC omega 3):

Structural components of the cell membranes

- EPA (eicosapentaenoic acid, 20:5n-3)
- DHA (docosahexaenoic acid, 22:6n-3)

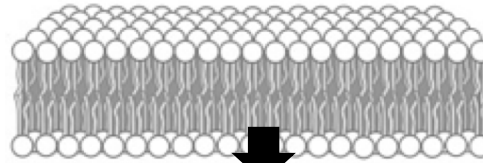


Long chain N-3 polyunsaturated fatty acids (LC omega 3):

Structural components of the cell membranes

- **EPA** (eicosapentaenoic acid, 20:5n-3)

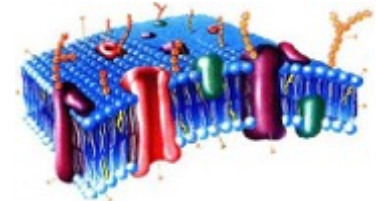
- **DHA** (docosahexaenoic acid, 22:6n-3)



Fluidity and permeability of membranes

Conformation & activity of embedded proteins

Development & functions of cells and tissues

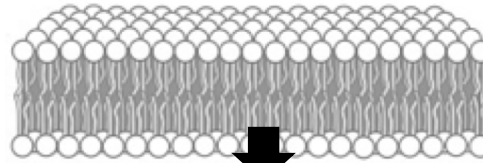


Long chain N-3 polyunsaturated fatty acids (LC omega 3):

Structural components of the cell membranes

- **EPA** (eicosapentaenoic acid, 20:5n-3)

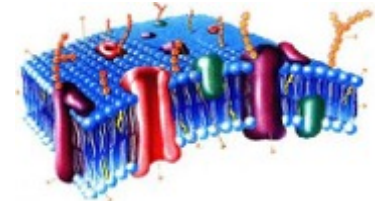
- **DHA** (docosahexaenoic acid, 22:6n-3)



Fluidity and permeability of membranes

Conformation & activity of embedded proteins

Development & functions of cells and tissues



Individual (growth, locomotion, metabolism, reproduction ...)

Population (reproduction, growth, survival)

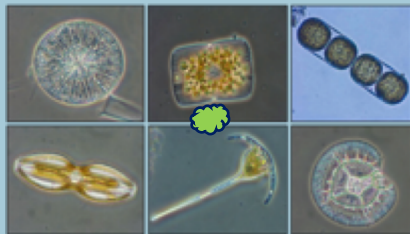
Ecosystem (habitat selection, migration, predator-prey relationships,...)

While necessary to maintain vital functions, LC omega 3 weakly synthesized *de novo* by marine fishes

While necessary to maintain vital functions, LC omega 3 weakly synthesized *de novo* by marine fishes

→ **Must be supplied by food**

Ocean



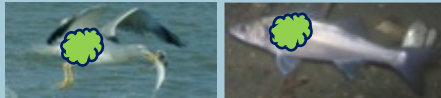
Primary producers

EPA+DHA



↑ Main vector of LC
omega 3

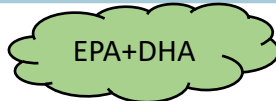
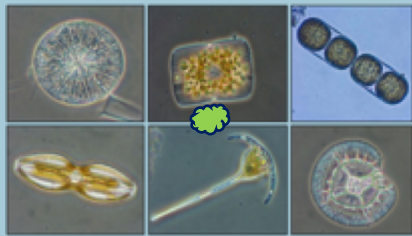
Secondary
consumers



Primary
consumers



Primary
producers

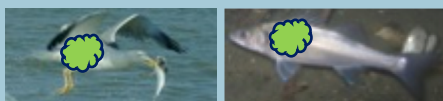




Human

↑ Main vector of LC omega 3

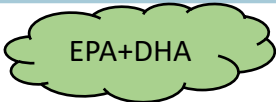
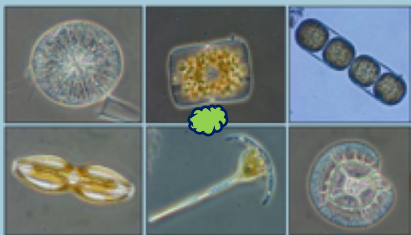
Secondary consumers



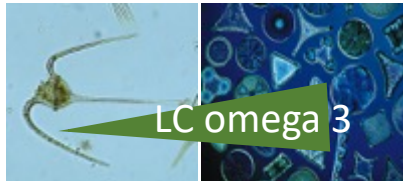
Primary consumers



Primary producers

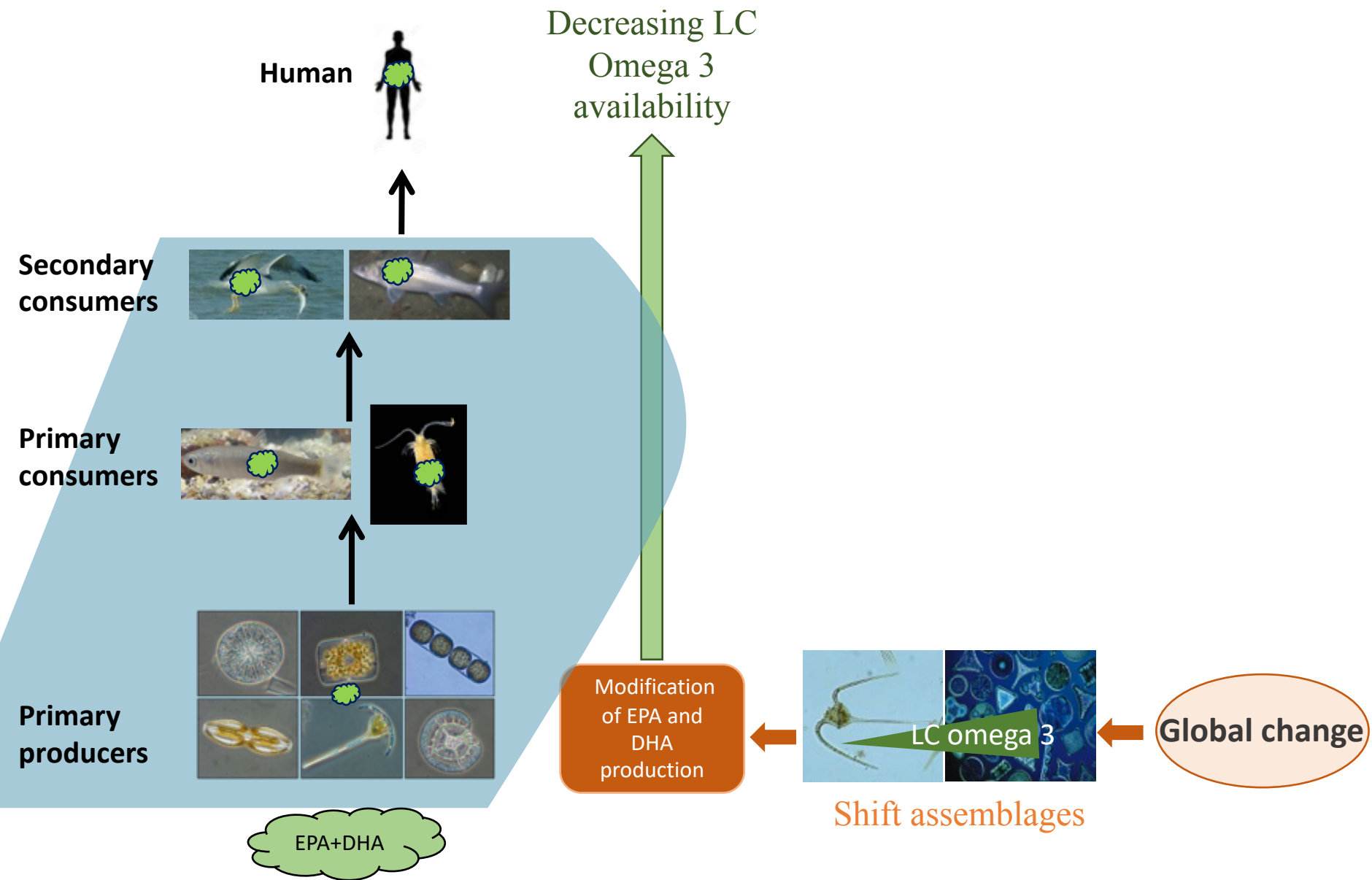


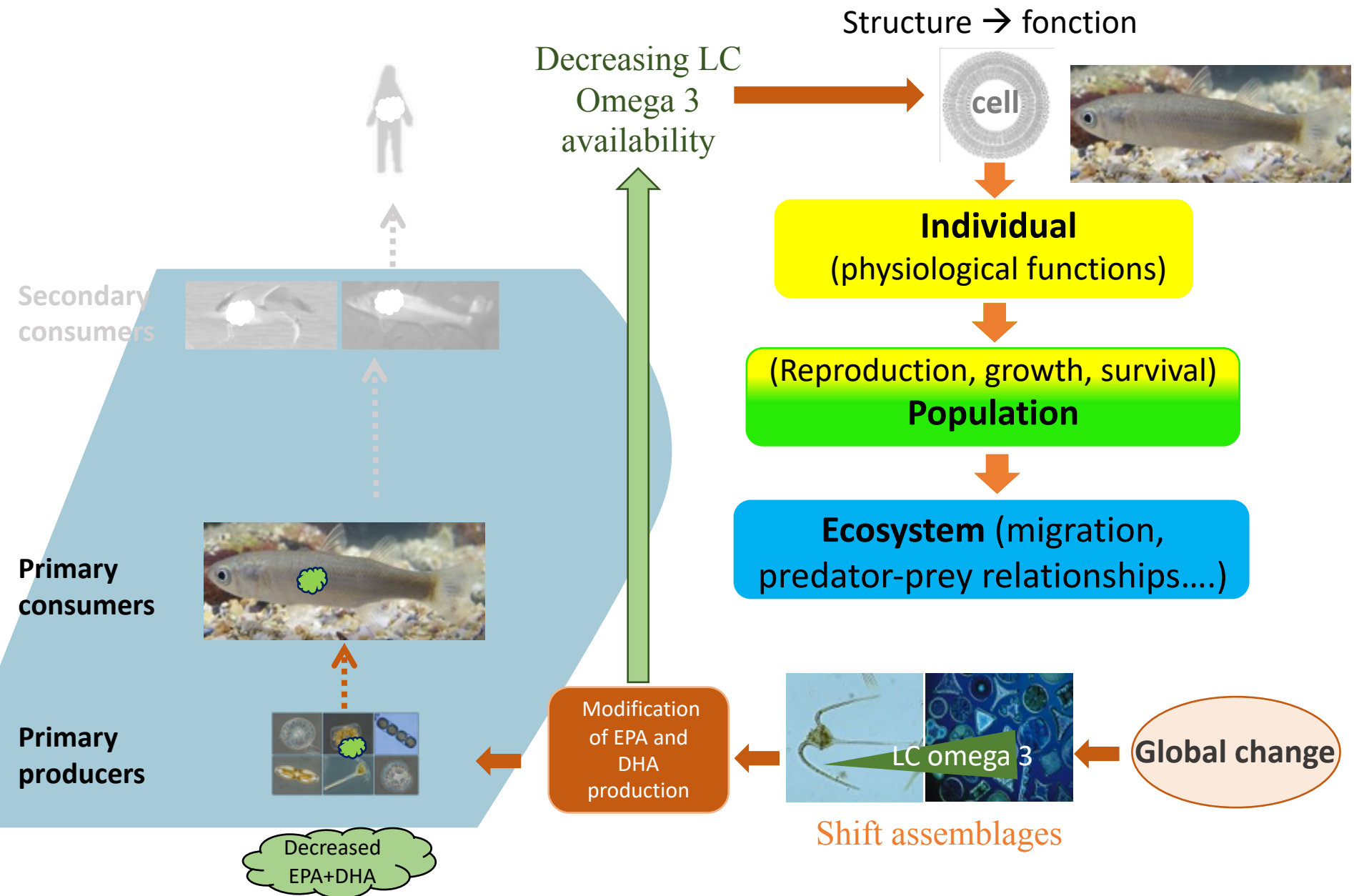
Modification of EPA and DHA production

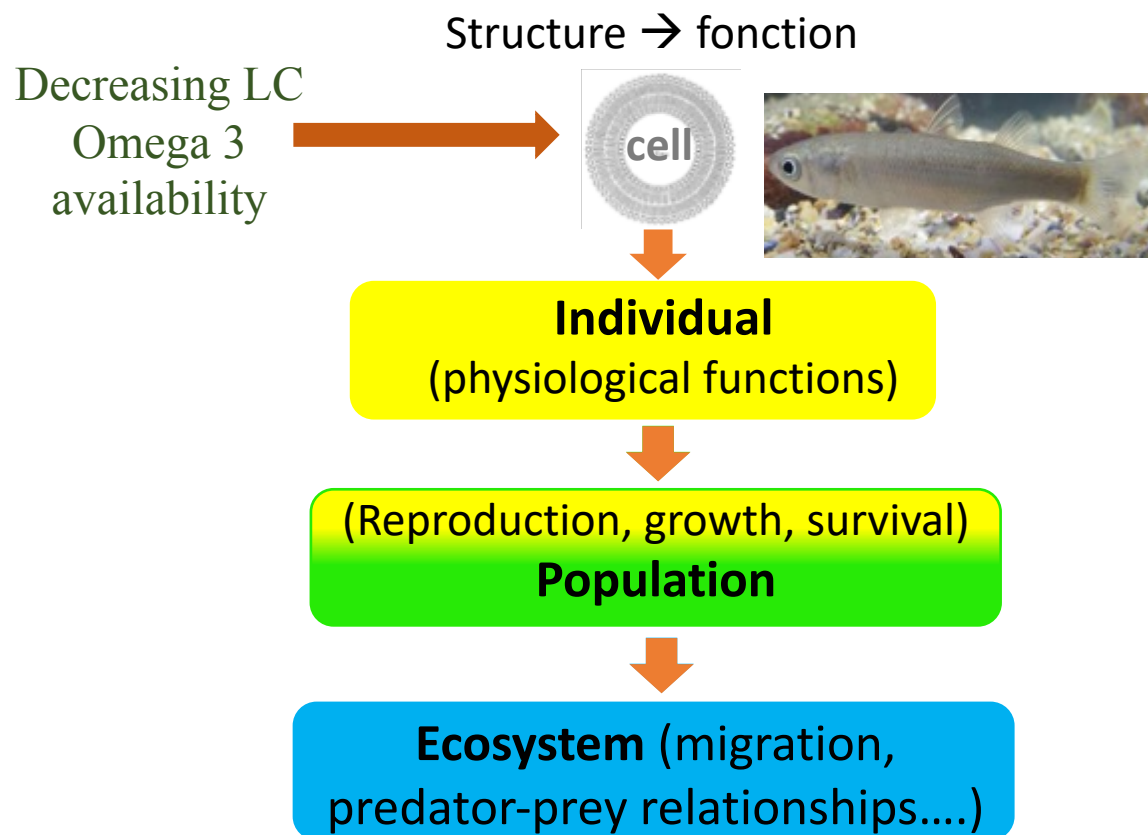


Shift assemblages of communities

Global change

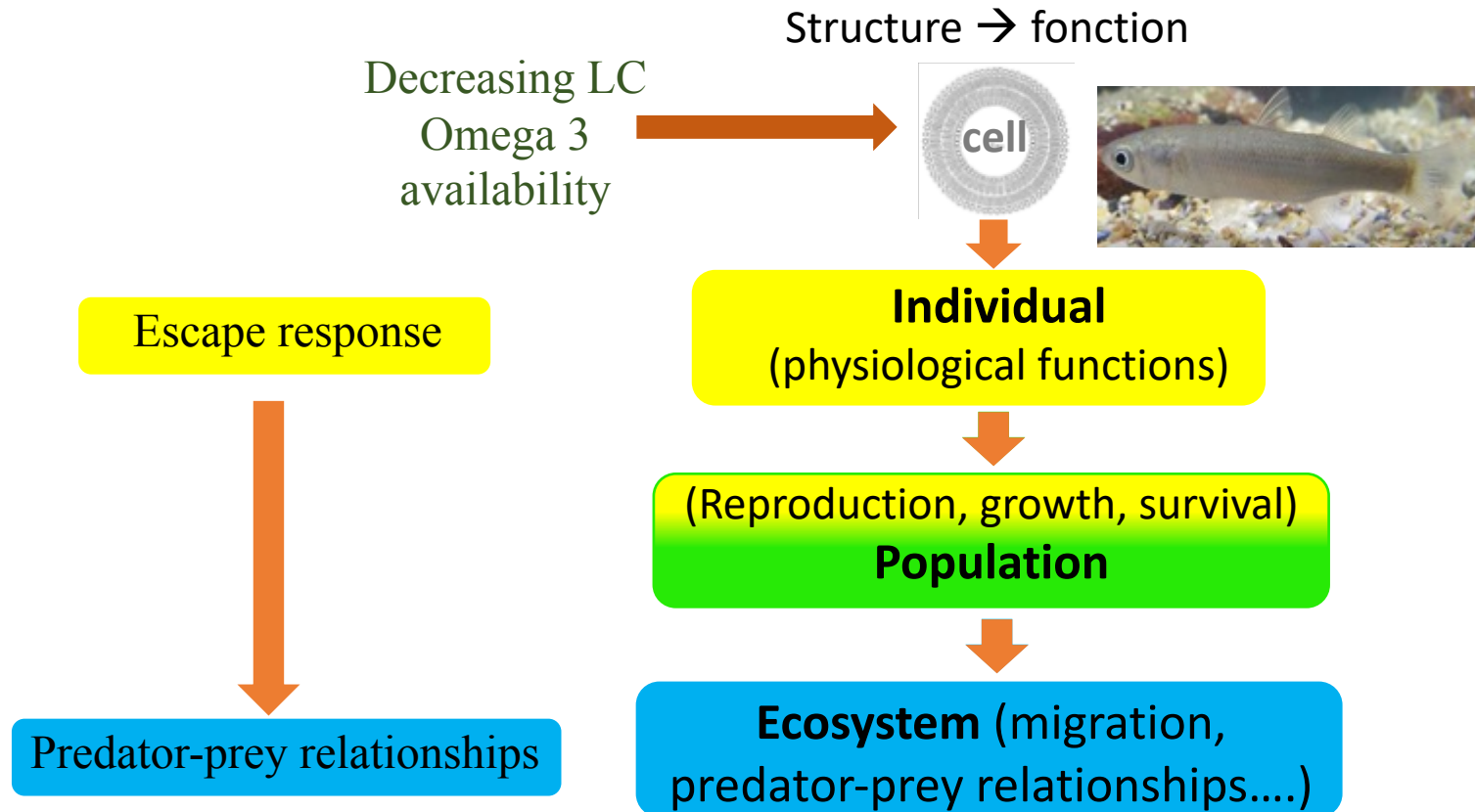






Objective:

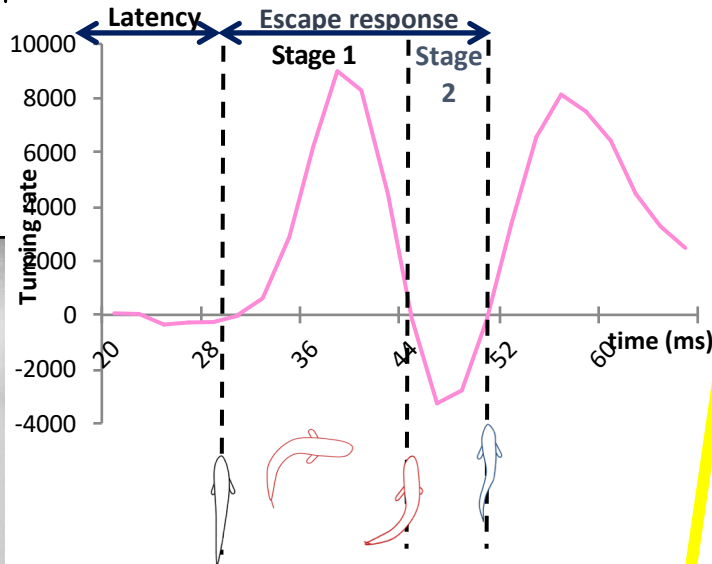
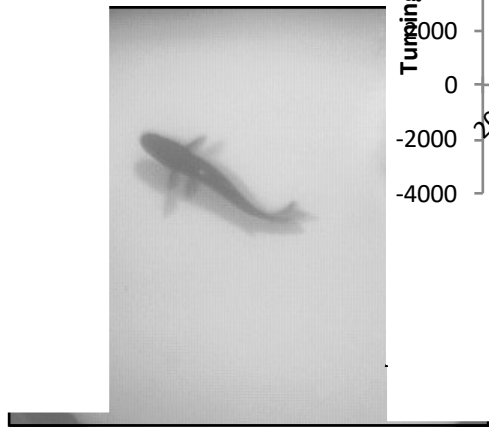
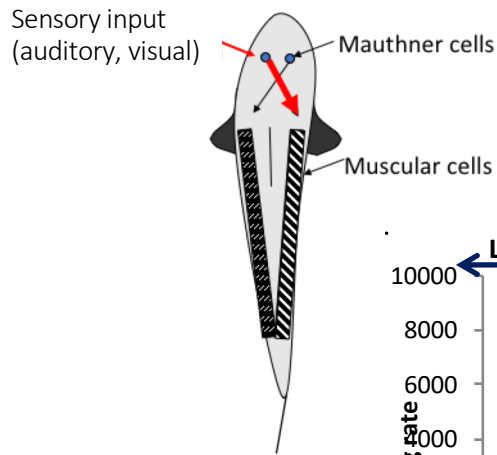
What is the effect of a decreasing LC omega 3 availability on fish individual performance?



Objective:

What is the effect of a decreasing LC omega 3 availability on fish individual performance?

- Reflex response governed by Mauthner cells (brain) and which activate muscle cells
- Essential in prey-predator relationships
- Anaerobically-powered that necessitates a recovery phase which is fueled aerobically



Decreasing LC Omega 3 availability

Structure → fonction



Escape response

Predator-prey relationships

Objective:

To evaluate the effects of depleted LC omega 3 dietary content on escape performance in the golden grey mullet, a grazer of high ecological importance

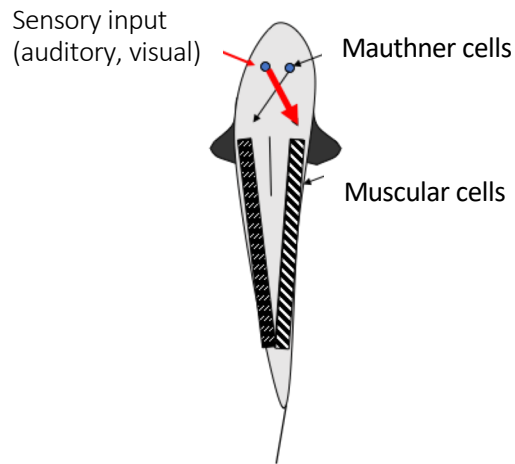


Golden grey mullet
Chelon aurata

- Feed directly on primary producers (microalgae)
- Key compartment in the mudflat ecosystems : the main export pathway of biofilm from tidal flat ecosystems (biotic vector)



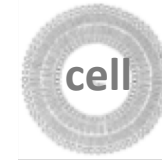
Hypotheses



Decreasing LC
Omega 3
availability



Cell membrane composition in brain
and muscle



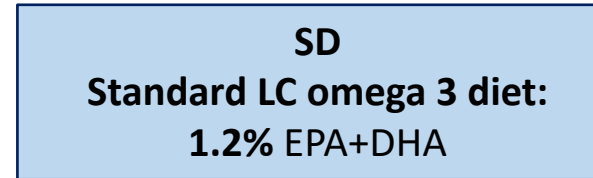
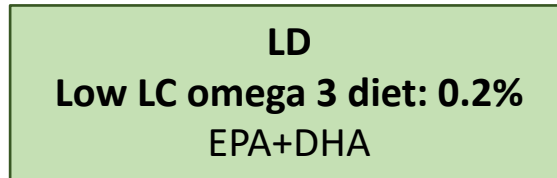
Muscle and brain cell functionality



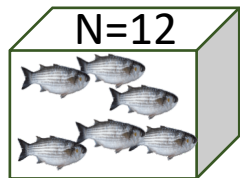
Modification of Escape response

2 Experimental conditions

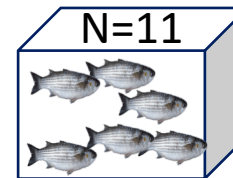
- 2 isolipidic & isoproteic diets contrasted by their LC omega 3 content:



20°C
2 months

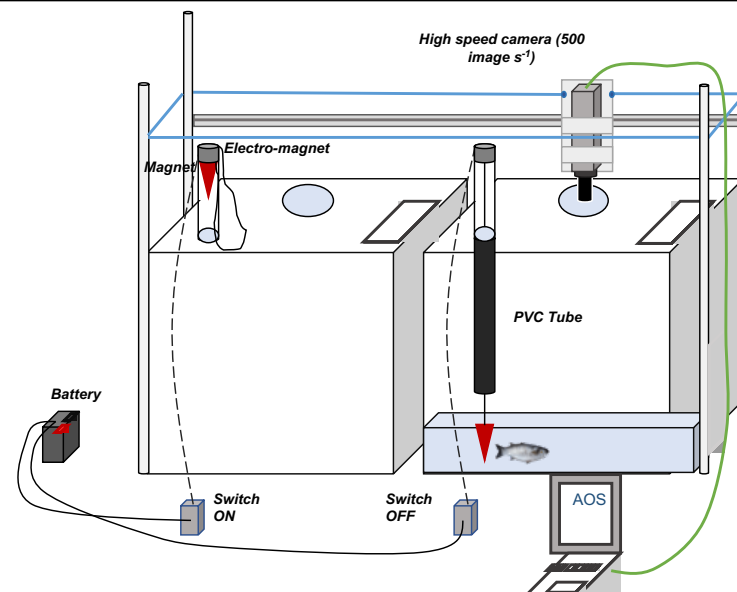


Needs known to be at 0.7%
in European sea bass
juveniles



Biometric analyses

Escape response analyses



On all individuals

Non-locomotion variables
(mainly dependent on brain)



- Responsiveness
- Latency (msec)
- Directionality (towards or away from the stimulus)

Locomotion variables
(mainly dependent on muscle)



- Total duration of escape response (msec)
- Cumulative distance (m)
- Maximum velocity (m s^{-1})
- Maximum acceleration (m s^{-2})
- Turning rate ($^{\circ} \text{msec}^{-1}$)

On all individuals

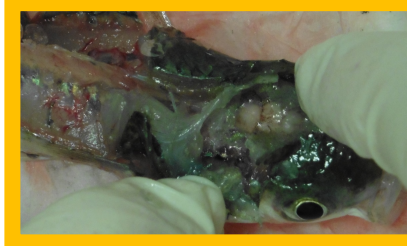
Non-locomotion variables

- Responsiveness
- Latency (msec)
- Directionality (towards or away from the stimulus)

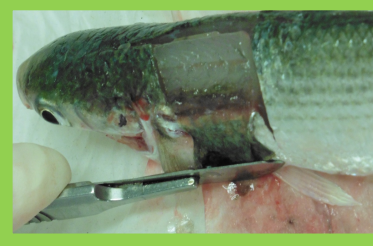
Locomotion variables

- Total duration of escape response (msec)
- Cumulative distance
- Maximum velocity
- Maximum acceleration
- Turning rate ($^{\circ} \text{msec}^{-1}$)

Fatty acid analyses in brain and muscle
(membranes and reserve lipids)



Brain



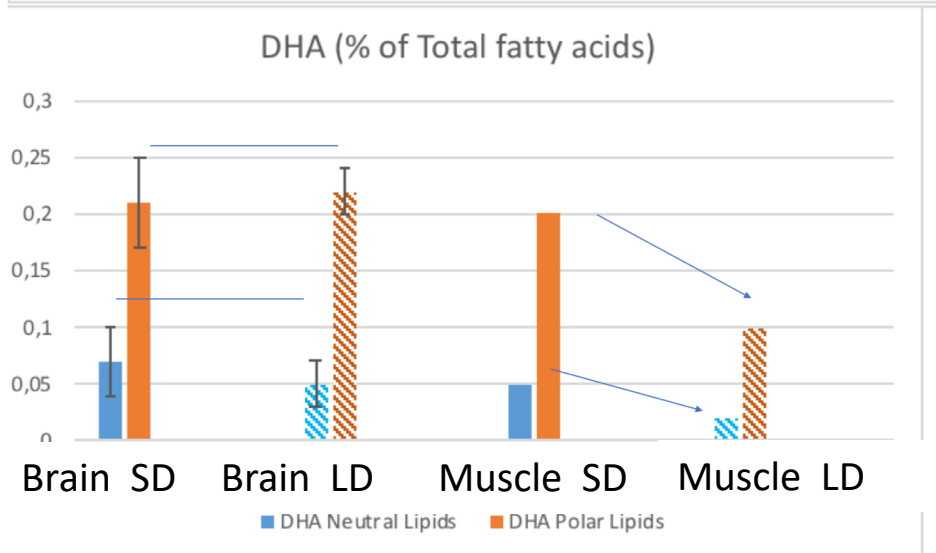
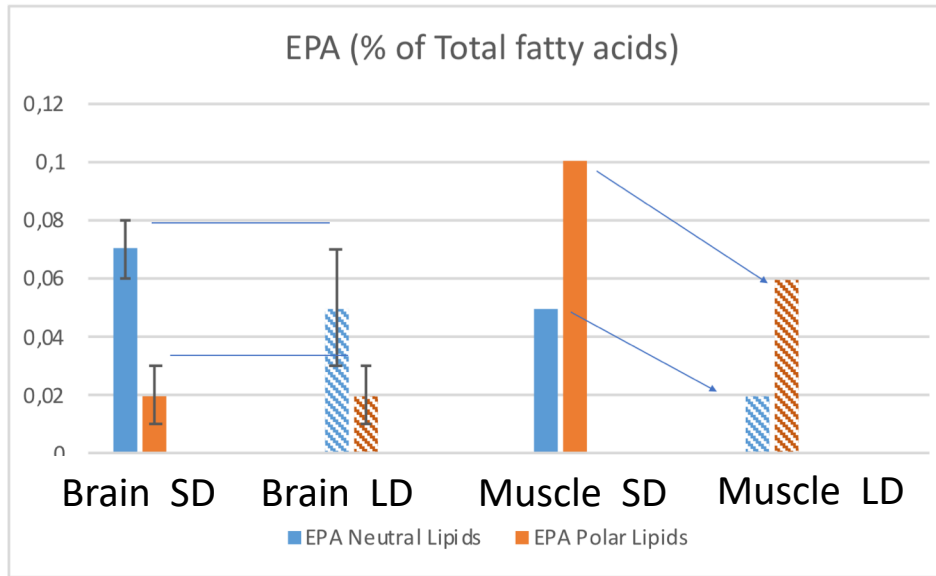
Muscle

Growth performances and condition

Groups	Weight (g)	Total length (cm)	Fulton index	Hepato-somatic Index
LD	40.6 ± 1.5	16.6 ± 0.2	0.0088 ± 0.0001	1.6 ± 0.1
SD	36.4 ± 2.0	16.0 ± 0.2	0.0089 ± 0.0003	1.2 ± 0.1
Statistics	t = 1.66	t = 2.07	t = -0.36	t = 1.84
(t-test)	df = 19	df = 19	df = 19	df = 19
	p = 0.12	p = 0.05	p = 0.72	p = 0.08

- No difference in growth performance or body condition

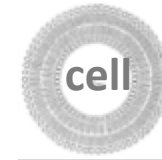
Fatty acid content



Decreasing LC
Omega 3
availability



Cell membrane composition in brain
and muscle



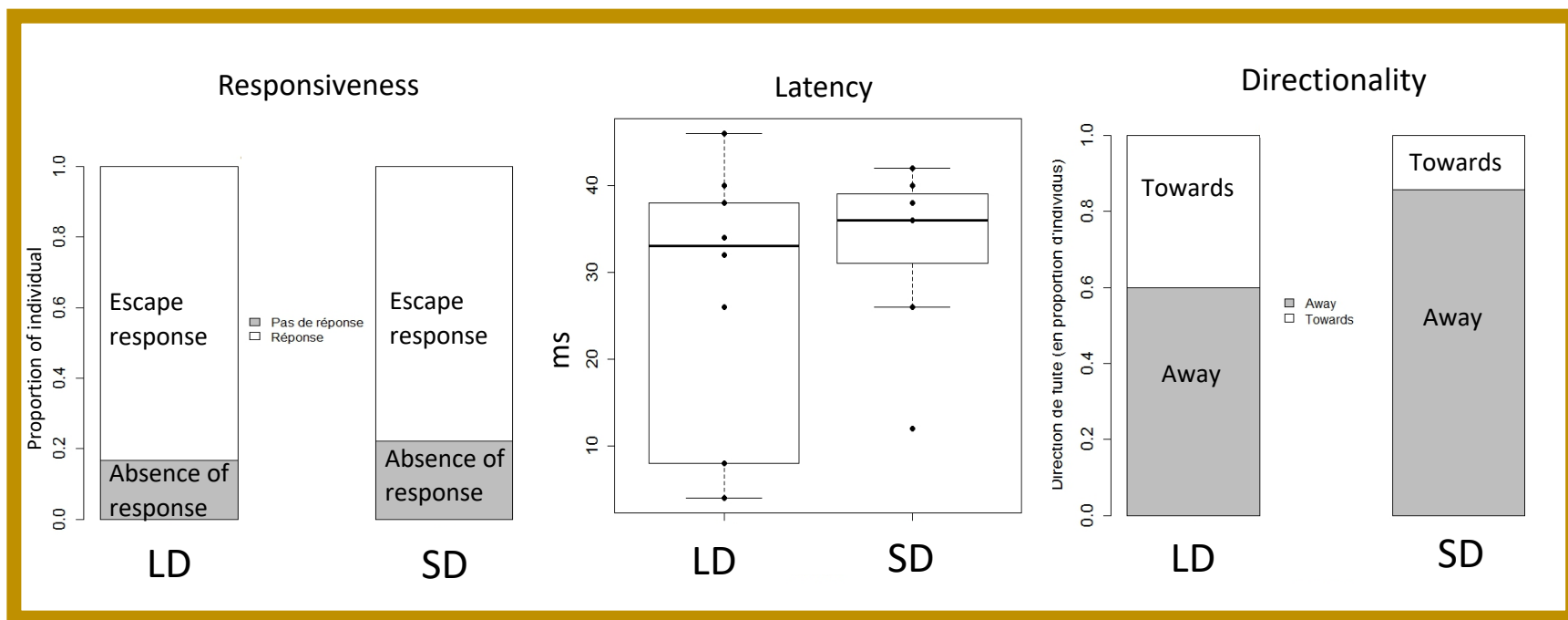
- DHA & EPA reflected diet fatty acid composition in muscle, but not in brain.
- Brain composition preserved in both groups, to maintain cognitive capacity

Non-Locomotion variables (mainly dependant on brain)

NS

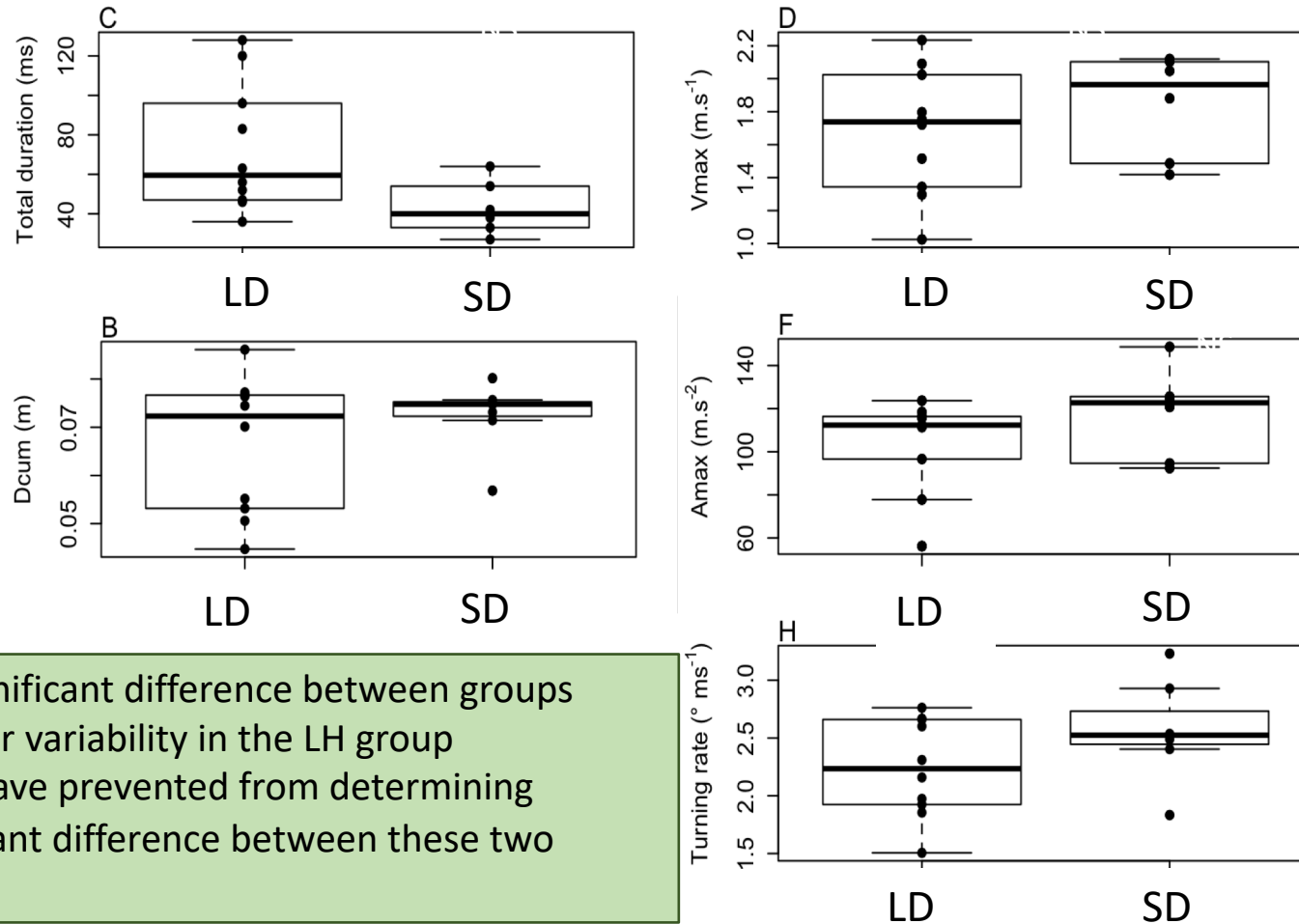
NS

NS

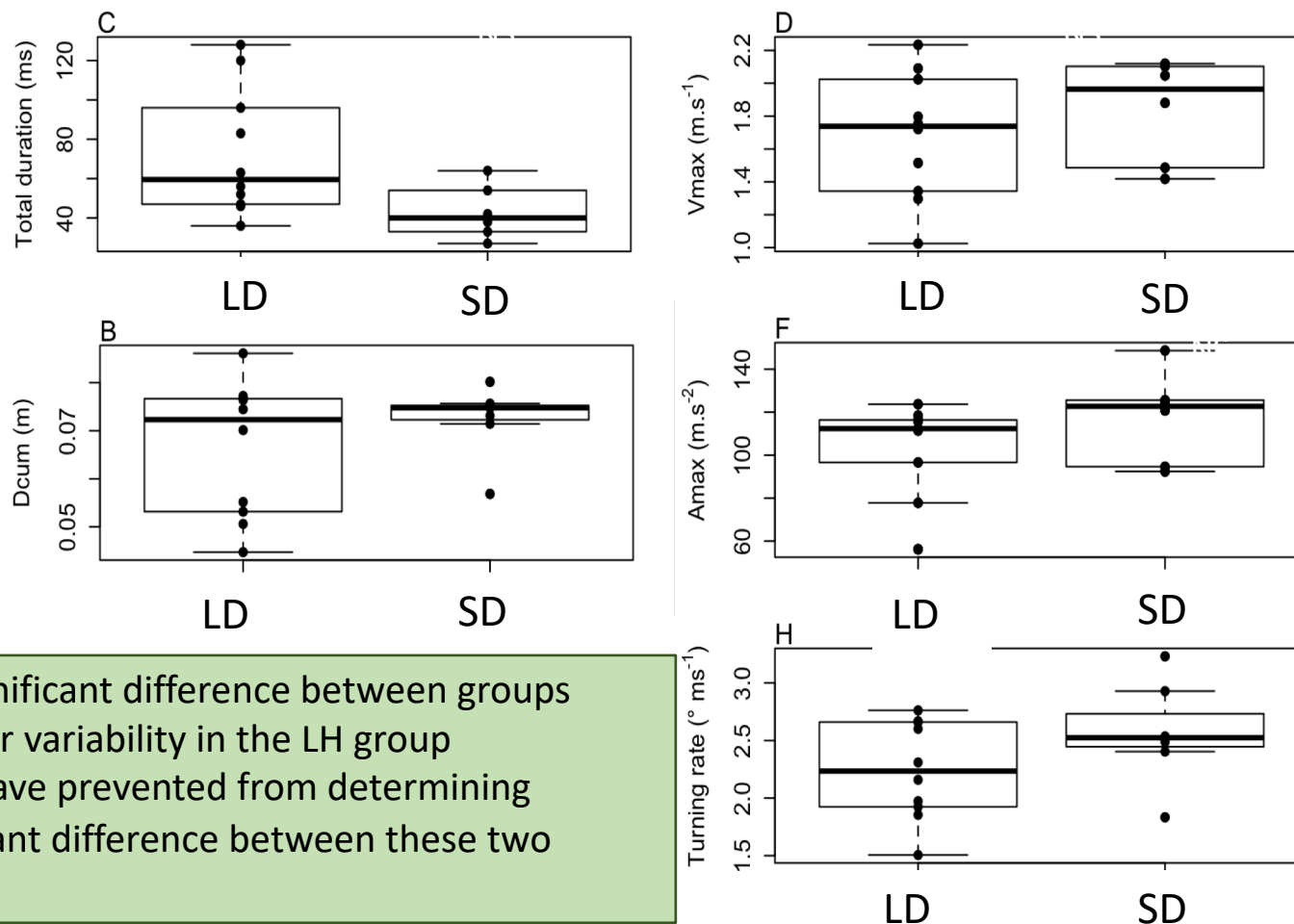


- No difference in responsiveness, latency, directionality between dietary groups

Locomotion variables (Mainly dependent on muscle)

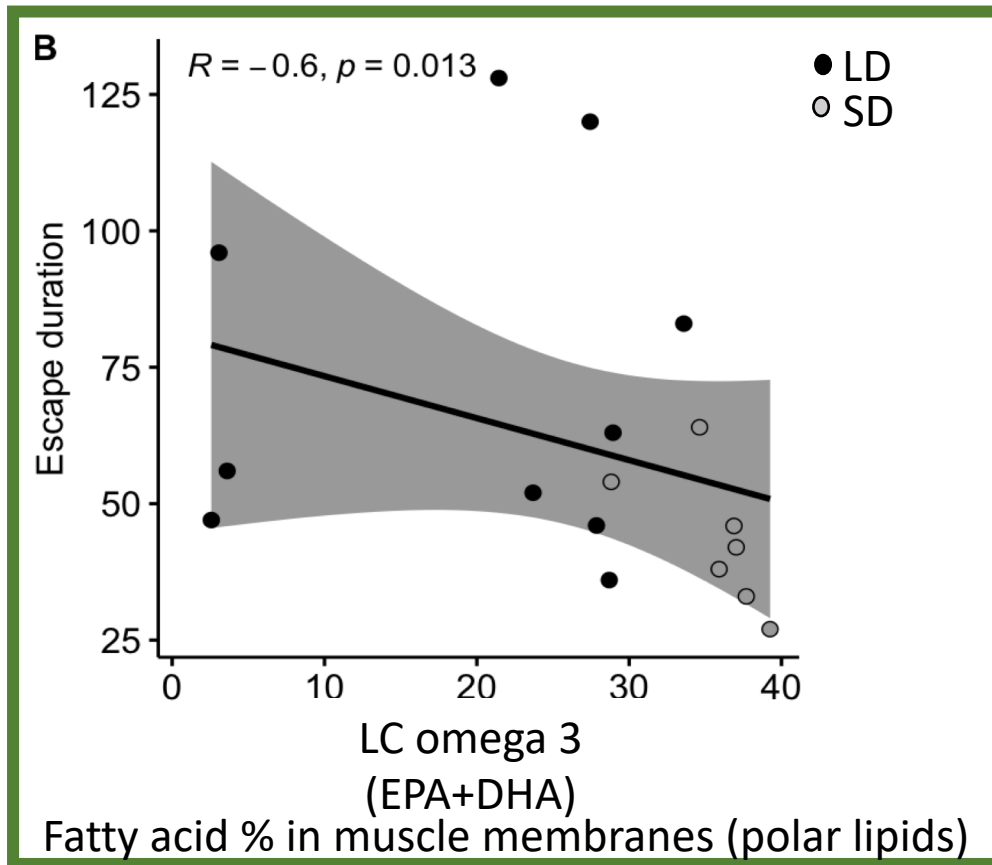
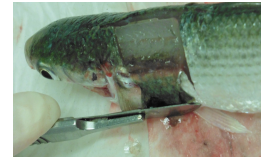


Locomotion variables (Mainly dependent on muscle)



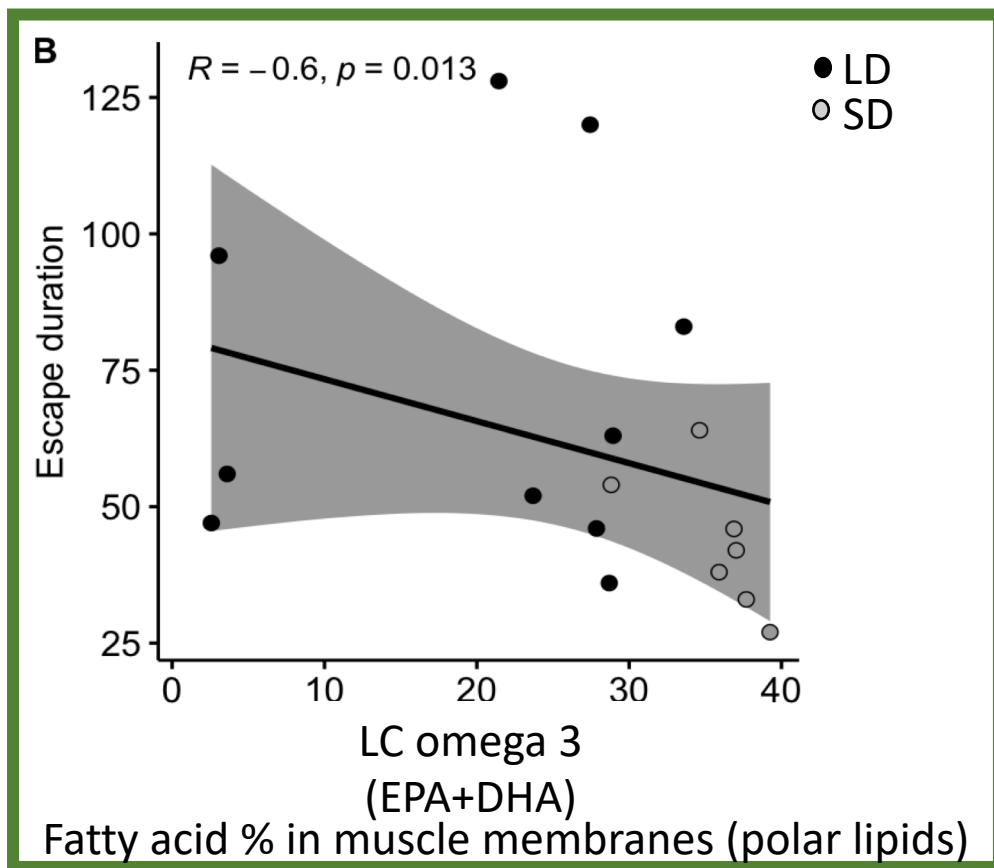
Are there any correlations between LC omega 3 muscle content and locomotion variables?

Locomotion variables



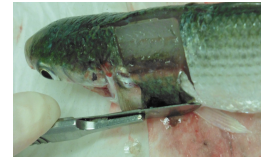
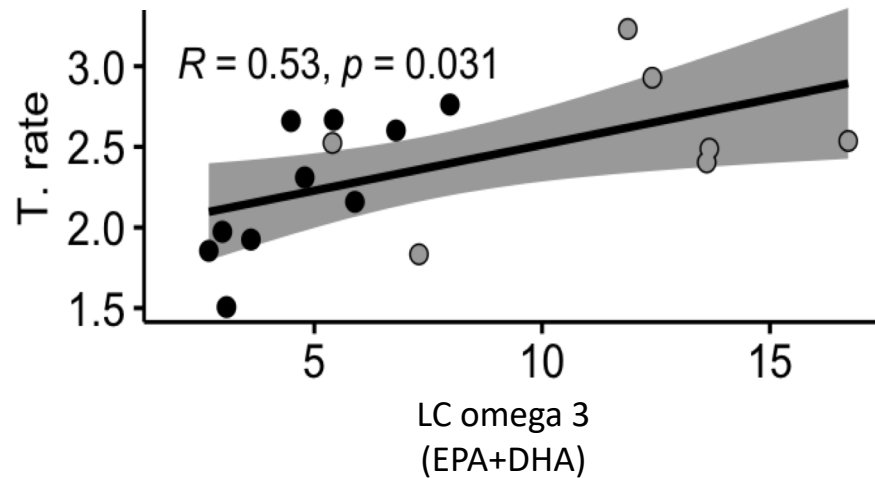
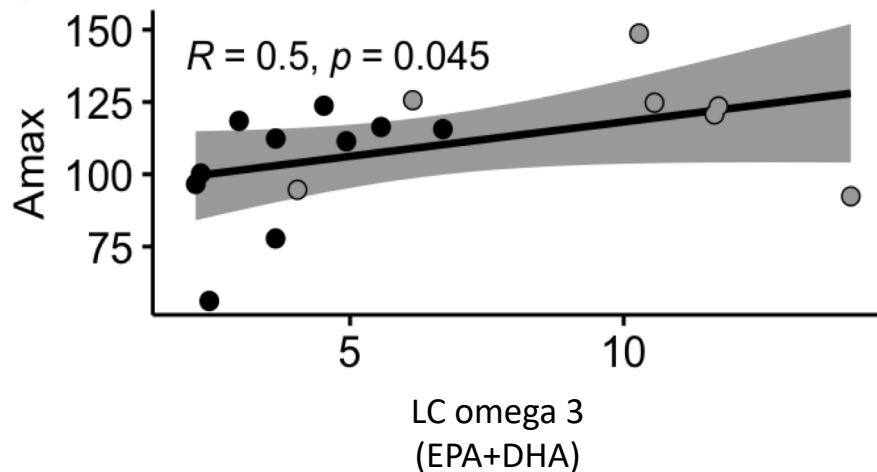
- A lower LC omega 3 content (including EPA and DHA) in muscle membranes, tend to be correlated with a longer escape response.

Locomotion variables



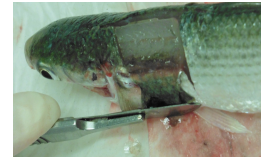
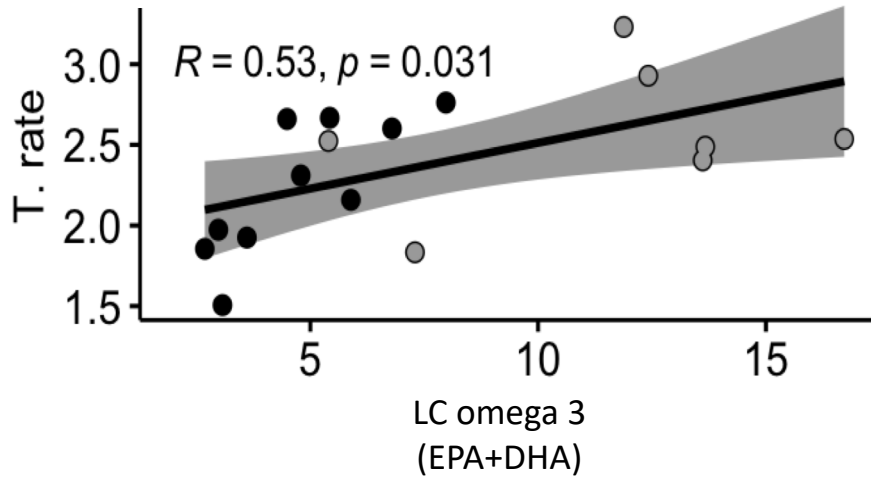
- A lower LC omega 3 content (including EPA and DHA) in muscle membranes, tend to be correlated with a longer escape response.
- A longer response may increase the energetic cost required for an individual to escape from a predator.

Fatty acid % in lipid reserve of muscle

Turning rate ($^{\circ} \text{msec}^{-1}$)● LD
○ SDMaximum Acceleration (m s^{-2})

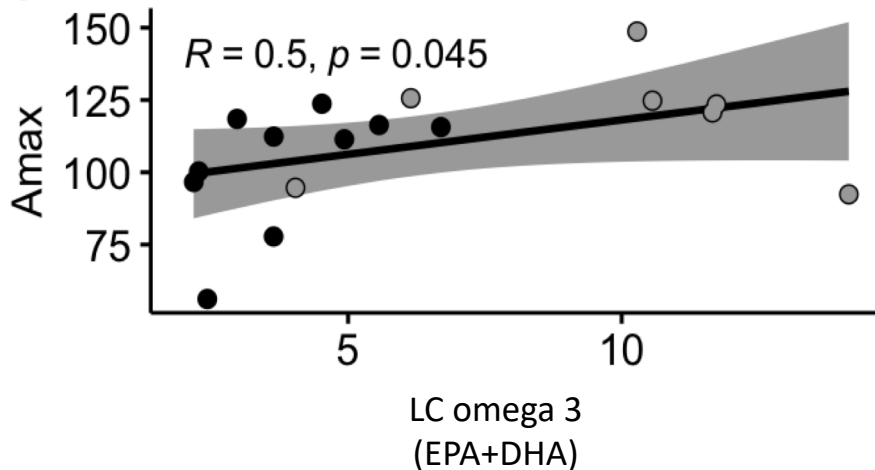
A lower LC omega 3 (including EPA+DHA) content in lipid reserves of muscle tend to be correlated with decreased turning rates and maximum acceleration

Fatty acid % in lipid reserve of muscle

Turning rate ($^{\circ} \text{msec}^{-1}$)

● LD
○ SD

↑ Better survival

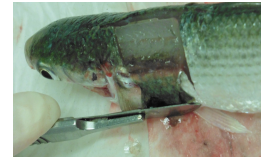
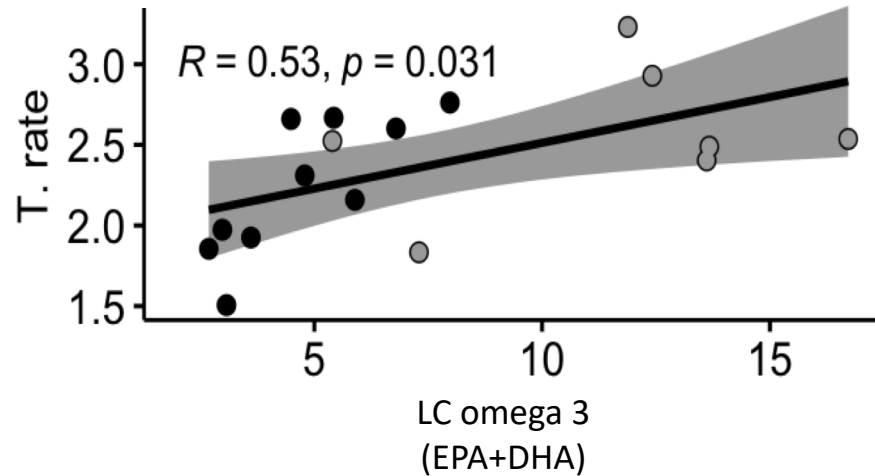
Maximum Acceleration (m s^{-2})

A lower LC omega 3 (including EPA+DHA) content in lipid reserves of muscle tend to be correlated with decreased turning rates and maximum acceleration

Both variables contributes to better chances to escape from the predator

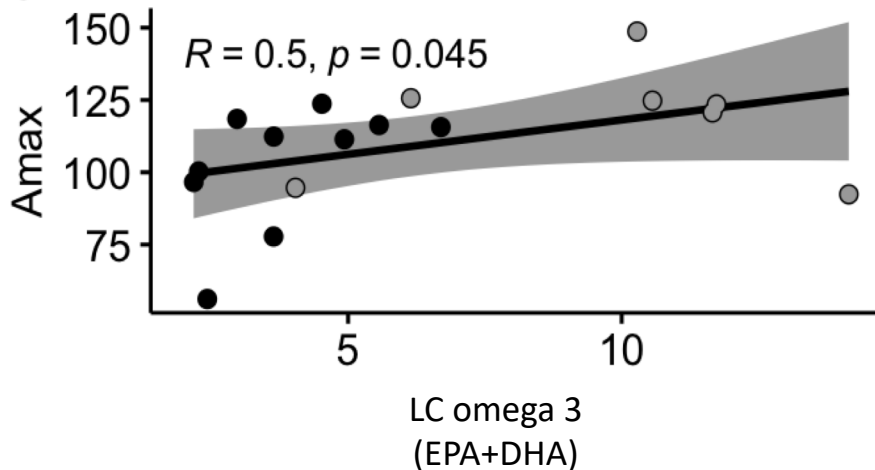
↑ Better survival

Fatty acid % in lipid reserve of muscle

Turning rate ($^{\circ} \text{msec}^{-1}$)

● LD
○ SD

A lower LC omega 3 (including EPA+DHA) content in lipid reserves of muscle tend to be correlated with decreased turning rates and maximum acceleration

Maximum Acceleration (m s^{-2})

Both variables contributes to better chances to escape from the predator

Lower LC omega 3 tend to decrease the chances to escape from a predator

- Growth rate and escape responses variables were similar in both dietary groups

- Growth rate and escape responses variables were similar in both dietary groups

Decreasing LC
Omega 3
availability



Structure → fonction



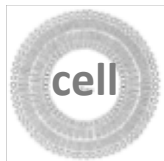
- Tissue composition modified by diet in both PL and NL of muscle
- But not in the brain, certainly to preserve cognitive capacities

- Growth rate and escape responses variables were similar in both dietary groups

Decreasing LC
Omega 3
availability



Structure → fonction



Escape response

- Tissue composition modified by diet in both PL and NL of muscle
- But not in the brain, certainly to preserve cognitive capacities

- A greater variability in escape response variables in LC omega 3 depleted group compared to control group may have prevented from determining significant difference between these two groups.

- Growth rate and escape responses variables were similar in both dietary groups

Decreasing LC
Omega 3
availability



Structure → fonction



Some correlations may exist between escape response variables and LC omega 3 content in muscle

Escape response

- Allonging response duration
- Reducing maximum acceleration and turning rate

Decreasing LC
Omega 3
availability



Structure → fonction



Some correlations may exist between escape response variables and LC omega 3 content in muscle

Escape response

- Allonging response duration
- Reducing maximum acceleration and turning rate



Higher energetic cost

Decreasing LC
Omega 3
availability



Structure → fonction



Some correlations may exist between escape response variables and LC omega 3 content in muscle

Escape response

- Allonging response duration
- Reducing maximum acceleration and turning rate



Higher energetic cost



May be compensated by

These results may suggest some effects of EPA and DHA dietary changes on the predator-prey relationships, in the context of global change

Further studies required to examine these effects

- the interindividual variability
- The effect of LC omega 3 dietary depletion on the energetic cost of escape response



Nicolas Graziano, IUT



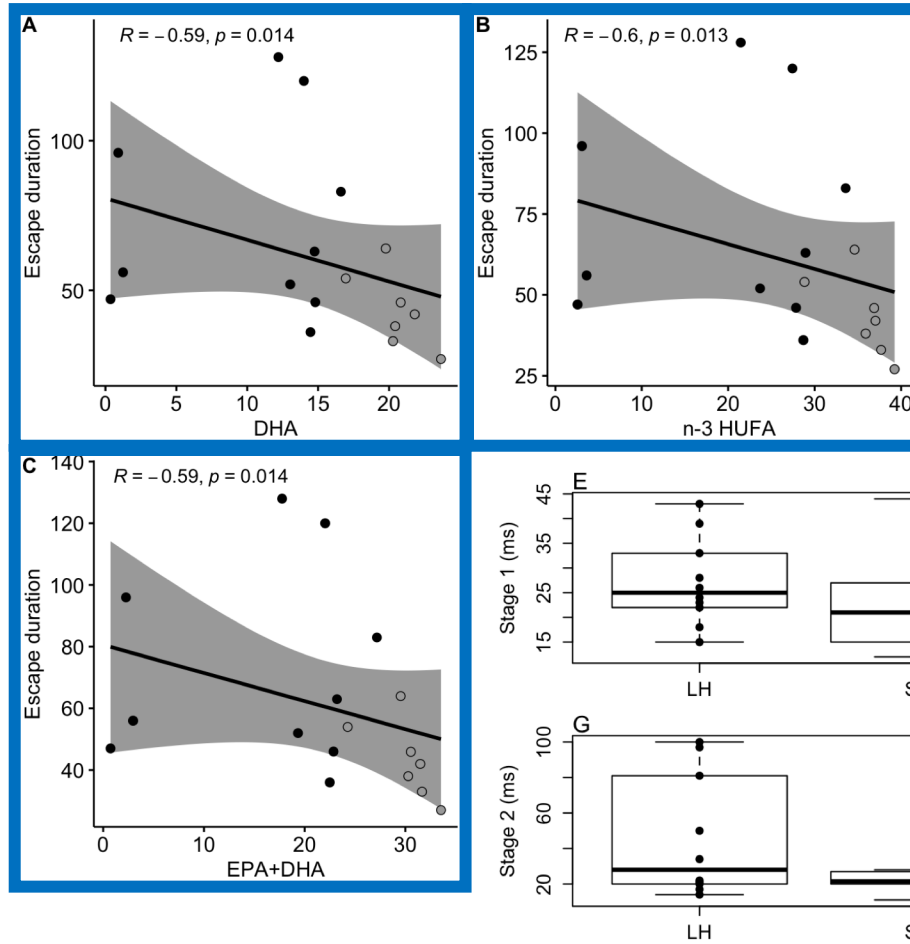
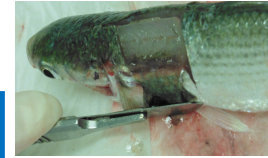
Salomé Ducos, Master 1



Merci de votre attention

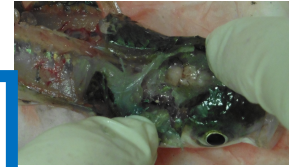
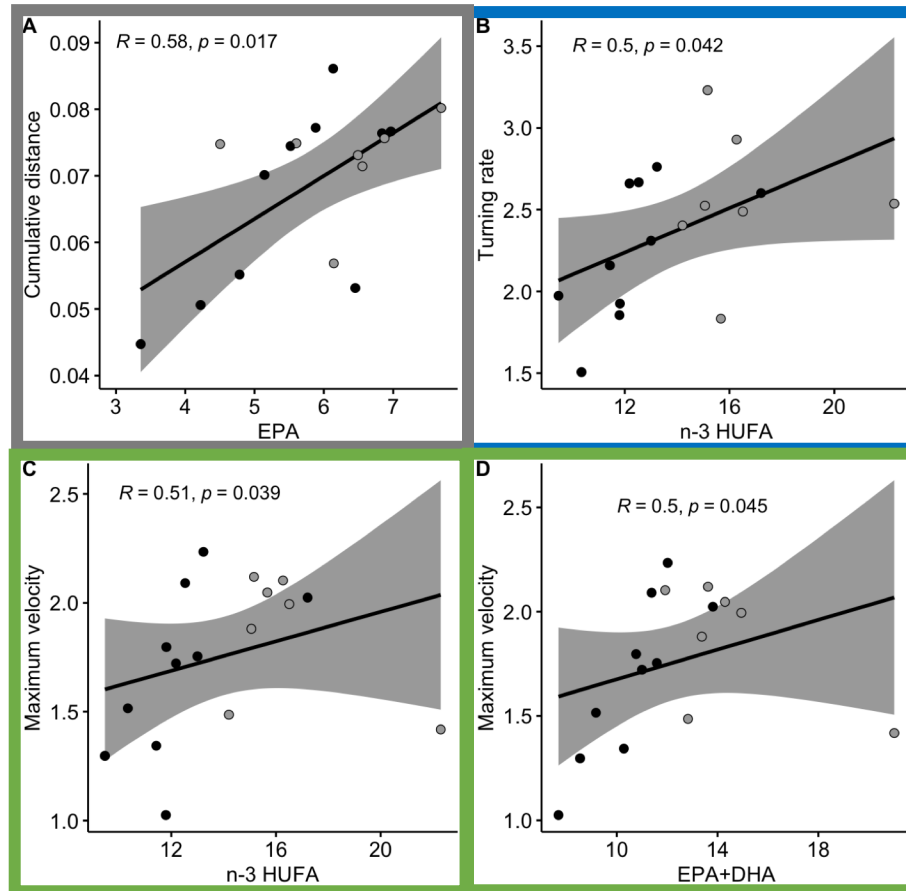
This work is a contribution to the project ECONAT Axe 1 - Ressources Marines Littorales: qualité et éco-valorisation, funded by the Contrat de Plan Etat-Région and the CNRS and the European Regional Development Fund.

Fatty acid % in muscle membranes (polar lipids)

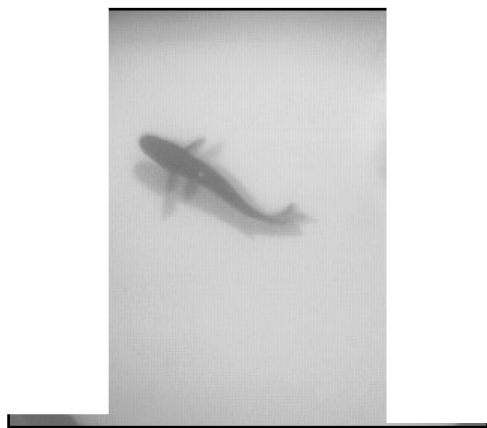


in muscle use.

Fatty acid % in brain lipid reserves (neutral lipids)



- A brief reflex (30-100 ms) that allows the animal to escape from danger
- Very short latency (~ 10-50 ms vs 100 ms in mammals/ cf sprinter)
- Reaches a speed of around 10-20 body lengths s^{-1}
- Very high acceleration (around $100 m s^{-2}$, i.e. 10 g).
- Very high angular velocity (around $5-10^{\circ} ms^{-1}$, i.e. the fish can cover $\sim 90^{\circ}$ in ~ 10 ms)



Decreasing LC
Omega 3
availability

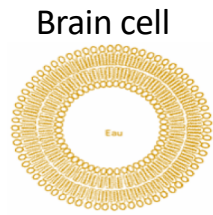
Structure \rightarrow fonction



Escape response

Predator-prey relationships

Conclusions

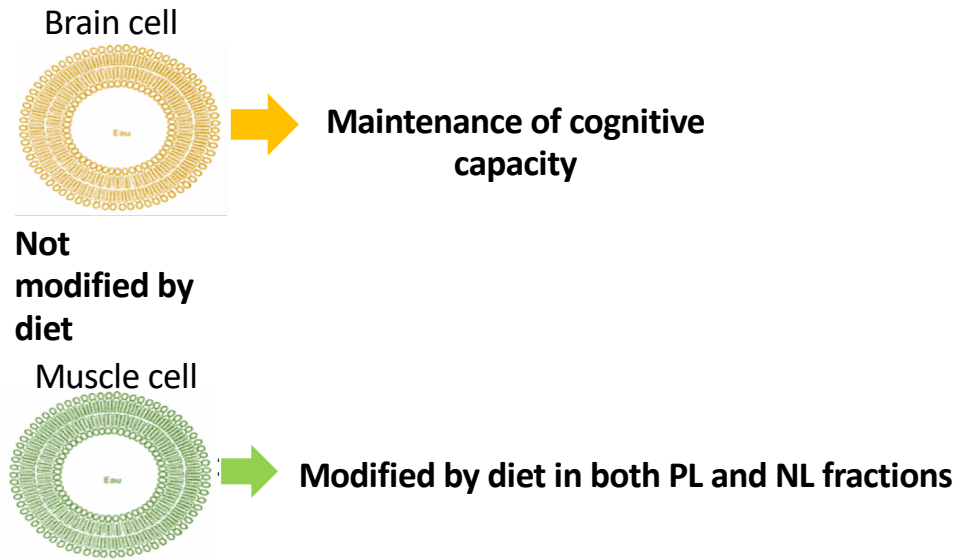


**Not
modified by
diet**

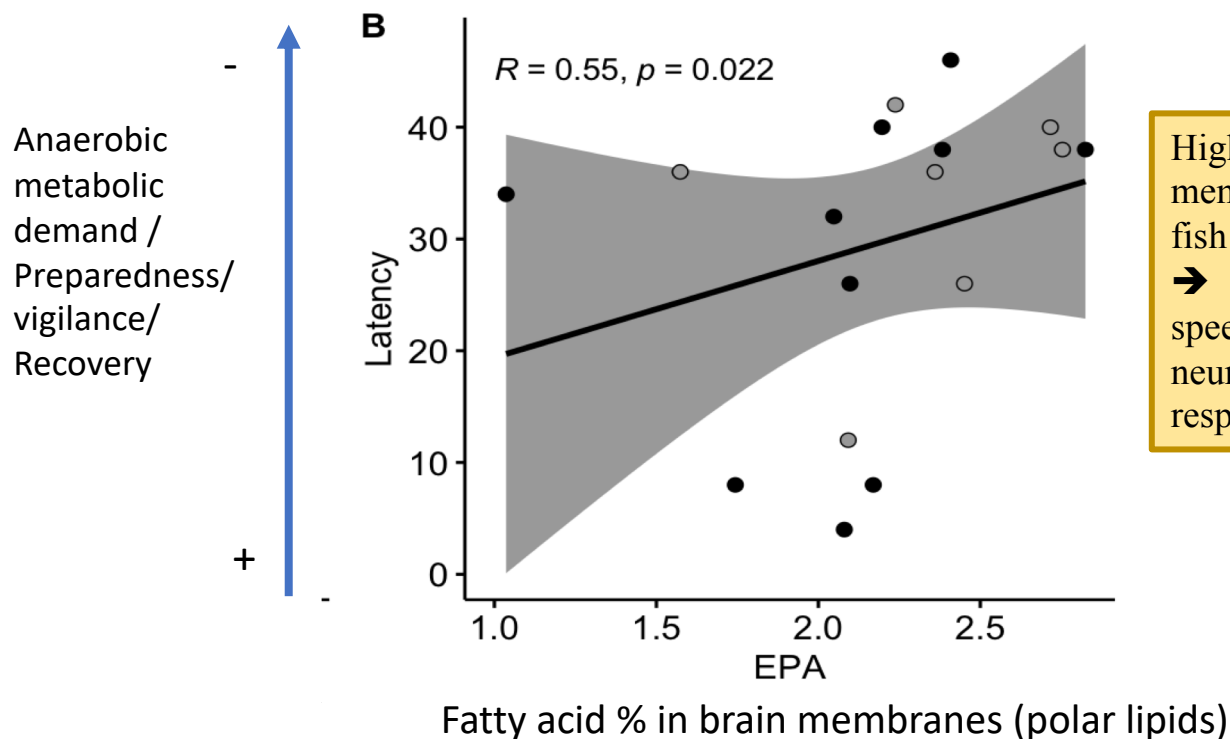
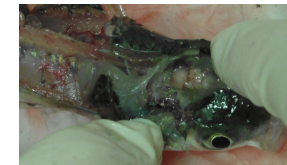


**Maintenance of cognitive
capacity**

Conclusions



Non-Locomotion variables



Higher the EPA content in brain membranes, slower the reactivity of fish to the stimulus
 → Would be related to a lower speed in the translation of the neural signal to activate escape response.

Short response latency → high preparedness to escape (vigilance) → high metabolic demand → longer recovery times in fast reactors. (Killen et al. 2015)

→ It exists a trade-off between the increased vigilance and metabolic demand

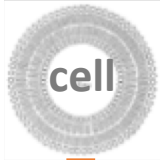
EPA → longer latency → lower vigilance → lower metabolic demand → shorter aerobic recovery times after escaping

- Strong correlations exist between some escape response variables and LC omega 3 content in fish tissue:

Decreasing LC
Omega 3
availability



Structure → fonction



Escape response

- EPA in brain membrane would play a role in allonging latency



Could further participate to reduce recovery times

- Growth rate and escape responses variables were similar in both dietary groups
- A greater variability in escape response variable measured in LC omega 3 depleted group compared to the control group,
 - May have prevented from determining significant difference between these two groups.

Decreasing LC
Omega 3
availability



Structure → fonction



Escape response

- EPA in brain membrane would play a role in allonging latency

- Strong correlations exist between some escape response variables and LC omega 3 content in fish tissue:
 - that could further participate to reduce recovery times
 - Allonging its duration
 - Reducing maximum acceleration and turning rate

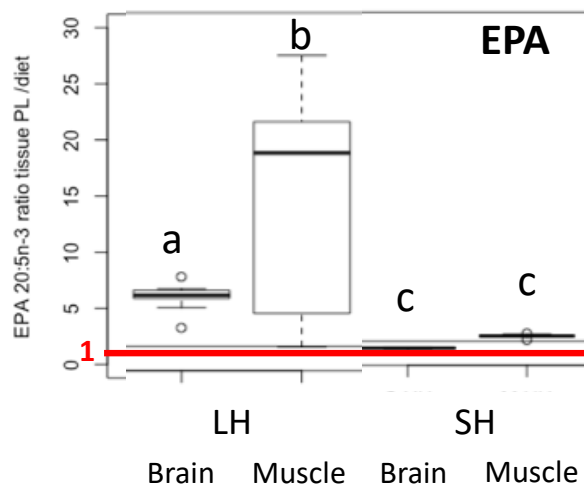
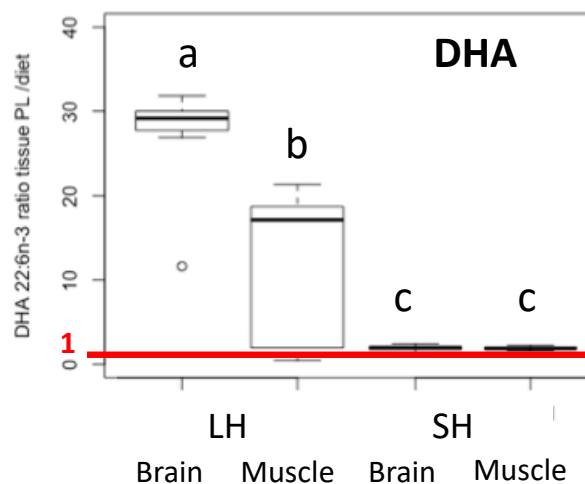
could further participate to reduce recovery times

When looking at FA composition in membranes of both muscle and brain.....

EPA → longer latency → lower vigilance → lower metabolic demand → shorter aerobic recovery times after escaping

- Higher the LC omega 3 content (including EPA and DHA) in muscle membranes, shorter the response.
- A shorter response may reduce the energetic cost required for an individual to escape from a predator.

.....Our result suggest that higher EPA and DHA in membranes would reduce energetic cost of escape response



Selective retention => deficiency in the tissue

Absence of retention => Fatty acid supplied by diet correspond to the needs

- DHA and EPA more stored in LH fish than in SH fish, probably to face their low dietary availability

